

# FIELD HOCKEY



## Quickfacts and Table of Contents

### GENERAL INFORMATION

Location .....	Iowa City, IA
Founded .....	1847
Enrollment .....	29,979
Nickname .....	Hawkeyes
Home Field/Capacity .....	Grant Field/1,000
Conference .....	Big Ten
School Colors .....	Black and Gold
University President .....	Sally Mason
Director of Athletics .....	Gary Barta
Field Hockey Administrator .....	Paula Jantz
Administrative Phone .....	(319) 335-9247
Administrative Fax .....	(319) 335-9333
Academic Services Phone .....	(319) 335-7599
Athletic Training Phone .....	(319) 335-9393
Marketing and Promotion Phone .....	(319) 335-9431

### COACHING INFORMATION

Head Coach .....	Tracey Griesbaum
Alma Mater/Year .....	West Chester/1989
Record at Iowa/Years .....	80-54/7
Overall Record/Years .....	93-75/9
E-mail Address .....	tracey-griesbaum@iowafieldhockey.com
Assistant Coach .....	Lisa Cellucci
Alma Mater/Year .....	University of Iowa/1998
E-mail Address .....	lisa-cellucci@iowafieldhockey.com
Assistant Coach .....	Meridith Thorpe
Alma Mater/Year .....	Virginia/1999
E-mail Address .....	meridith-thorpe@iowafieldhockey.com
Field Hockey Secretary .....	Kendra Wieditz
Field Hockey Office Phone .....	(319) 335-9259

The mission of the Department of Athletics is to provide the administrative and coaching support, facilities, resources, and equipment necessary for student athletes to graduate from The University of Iowa while participating in broad based championship caliber athletic competition. The overall well-being of the participant and integrity of the program will be paramount in all that we do.

The University of Iowa prohibits discrimination in employment, educational programs, and activities on the basis of race, national origin, color, creed, religion, sex, age, disability, veteran status, sexual orientation, gender identity, or associational preference. The University also affirms its commitment to providing equal opportunities and equal access to University facilities. For additional information, contact the Office of Equal Opportunity and Diversity, (319) 335-0705.



### TABLE OF CONTENTS

Head Coach - Tracey Griesbaum .....	2-3
Assistant Coach - Lisa Cellucci .....	4
Assistant Coach Meridith Thorpe and Volunteer Assistant Barb Weinberg ..	5
2007 Schedule .....	6
Roster .....	7
2007 Season Preview .....	8-9
Meet The Hawkeyes .....	10-22
Big Ten Conference .....	23
Big Ten Network .....	24
Grant Field .....	25
Hawkeye Tennis and Recreation Center .....	26
Alumni Reunion .....	27
Iowa Field Hockey Camp .....	28
Hawkeyes in the Coaching Ranks .....	29
Hawkeyes in USA Field Hockey .....	30-31
Iowa Tradition in USFHA .....	32-33
2007 Opponents .....	34-35
Why Iowa? .....	36-37
Hawkeyes in the Classroom .....	38
2006 Season Review .....	39
2006 Statistics .....	40-41
Hawkeye Championship Teams .....	42-43
All-Time Letterwinners .....	44
Hawkeye Records .....	45
Hawkeye Honor Roll .....	46-48
All-Time Series .....	48
Hawkeyes in the NCAA Tournament .....	49
All-Time Results .....	50-54
University Section .....	55-64

### MEDIA INFORMATION

Field Hockey SID .....	Jake Holtorf
Sports Information Phone .....	(319) 335-9411
Sports Information Fax .....	(319) 335-9417
E-Mail Address .....	jacob-holtorf@uiowa.edu
Big Ten Conference Phone .....	(847) 696-1010
Web Address .....	www.hawkeyesports.com

**PRACTICE ATTENDANCE** - All practices are open to the media, and interviews may be conducted 15 minutes prior to or at the completion of practice. However, media must inform Jake Holtorf (319-335-9411) of their intention to attend practice. The Hawkeyes practice from 2:30-5 p.m. at Grant Field.

**PLAYER INTERVIEWS** - All player interviews are coordinated through Jake Holtorf of the sports information office. Please contact Jake (319-335-9411) so that he may set a time for an interview which does not interfere with the student-athlete's academic or practice schedules.

The University of Iowa field hockey media guide was written and designed by Jake Holtorf. Photographs provided by David Bress, Joe Faraoni, the University Relations Photo Unit and the UI Visual Center's Photographic Services. Cover artwork designed by Stefanie Mason. Printing done by UI Printing in Iowa City, Iowa.



# FIELD HOCKEY

Head Coach Tracey Griesbaum



## **Tracey Griesbaum**

**Head Coach**

**Eighth Year**

**West Chester Univ., 1989**

Entering her eighth season as the head coach at the University of Iowa, Tracey Griesbaum is looking for a strong showing in 2007 from the reigning Big Ten Tournament Champions.



Last season, Griesbaum guided the Hawkeyes to a 12-9 record, a Big Ten Tournament Championship, an appearance in the NCAA Tournament and a ranking of 14th in the final STX/National Field Hockey Coaches Association Poll. Iowa had a preseason rank of 12, but a tough schedule with many close losses dropped the Hawkeyes' rank. Six of Iowa's nine losses came against teams ranked in the top five and only two of their losses were by more than one goal.

In the first year of the Griesbaum era, the Hawkeyes fielded an extremely young team that finished with a respectable 12-8 record and a third place finish in the Big Ten.

Year two, was better for the Hawkeyes. They finished with a record of 13-5, an appearance in the Big Ten Tournament Championship game and ended the season ranked No. 12 by the NFCHA. On their way to the Big Ten Tournament Championship game, Griesbaum led the Hawkeyes past the co-Big Ten regular season champions, Michigan State 3-2 in overtime.

In the third year under Griesbaum, the Hawkeyes finished with a 9-8 record and ranked No. 20 by the NFCHA. The Hawkeyes opened the season with a great shutout victory over eventual National Champion Wake Forest, 1-0. They closed the season with a 2-1, double overtime loss to the eventual national runner-up Penn State. Six of the Iowa losses came by only one goal.

In 2003, the Hawkeyes finished 11-8 with a final ranking of 16th by STX/NFCHA. During the season, Iowa reached as high as No. 6 in the poll. Six of Iowa's eight losses came from team ranked in the top ten.

During Griesbaum's fifth year, she directed the Hawkeyes to a 13-8 record and their 13th regular season Big Ten Championship with a 5-1 conference record. The Hawkeyes' exceptional play earned them a trip to the NCAA Tournament for the 16th time in school history. Griesbaum was named Big Ten Coach of the Year and the Division I Coach of the Year by WomensFieldHockey.com for her efforts.

In 2005, Iowa fielded a young team that resembled Griesbaum's first Hawkeye squad in 2000. As in 2000, the '05 team finished the year with a 12-8 record and a third place finish in the Big Ten.

Griesbaum has a long history with the United States Field Hockey program. She has served in many capacities within the USFHA, including a full-time assistant and head coach for the U.S. Under-21 Team. She led the Under-21 team to a second-place finish at the Pan American Junior Championships and a spot in the 2001 Junior World Cup, where she served as an assistant coach. Her work was good enough to earn her the 2000 United States Field Hockey Coach of the Year award.

Before leaving to accept her post with U.S.A. Field Hockey, Griesbaum was an assistant coach with the Hawkeyes for eight seasons.

# FIELD HOCKEY

Head Coach Tracey Griesbaum



She helped Iowa win four Big Ten Championships, advancing to the NCAA Tournament six times and the Final Four four times.

While Griesbaum worked for the United States Team in a full-time capacity for only one year, she has served the organization for 16 years as a coach.

In 2006, Griesbaum was the head coach of the Midwest Region's EPTC Program team, which placed third at the national tournament. She also coached the Midwest in 2004 and attended the FIH Coaching Course held in conjunction with the Champions Challenge and coached at the Elite Team Trials.

Griesbaum was head coach of the 2000 Super Camp and B Camp, and an assistant coach for the 1999 Under-20 Junior National Team which toured Canada and Argentina.

During the summer of 1998, she worked with the USA Field Hockey program. She was the head coach for the USA Under-23 team that competed in the USFHA National Indoor Tournament, toured Holland playing various club teams and competed in Canada against the Canadian National and Under-23 squads.

Griesbaum has also coached at the USFHA A-camp since 1995. In 1998, she was one of 38 international coaches selected to attend the International Field Hockey coaching course, held in conjunction with the 1998 World Cup in Holland.

In the spring and summer of 1997, Griesbaum worked camps and coached the national teams throughout the country. She coached at the United States Field Hockey Association A-Camp and served as assistant coach for the United States Under-21 National Team that played in the Junior National World Cup Qualifying Tournament in January of 1997 (Santiago, Chile). Griesbaum participated in that same tournament as an assistant coach in Venezuela in the fall of 1992.

In 1996, 1997, 1999, and 2001-04 she was a selector at the National Futures Tournament in Maryland. Those same summers Griesbaum was a coach at the USFHA B-Camp. Following B-Camp she coached the Under-18 team in a mini-tournament held in Boston (1996).

During the summer of 1996, Griesbaum was the co-head coach of the U.S. Under-18 National Team which traveled to Montreal, Quebec to compete in the Montreal Cup.

As the head coach at LaSalle University in Philadelphia, PA, during the 1990 and 1991 seasons, Griesbaum led her team to a 13-21-3 overall record.

A 1989 graduate of West Chester University, Griesbaum earned a bachelor's degree in liberal arts with a minor in health sciences and coaching. She was former Hawkeye coach Beth Beglin's first recruit at West Chester University in 1984 and was a three-time regional All-American and a two-time national All-American. In 1987 she was named the Pennsylvania Association Intercollegiate Athletics for Women (PAIAW) Field Hockey Player of the Year and Female Athlete of the Year.

Griesbaum, a 1987 Broderick Award Nominee, also has extensive international playing experience. She was a member of the U.S. National Team from 1989-91, 1993 and the U.S. National Reserve Team in 1988. Griesbaum played on the U.S. National team that competed in the 1993 Intercontinental Cup. She played in the 1991 Pan American Games, World University Games and Olympic Qualifying. She was a two-time U.S. Olympic Festival participant, winning the Gold Medal in 1989. In 2003, she played in the North American Premiere League for Philadelphia, and played three years in the USFHA Summer League.

## Under Griesbaum

- \* 9 All-Americans
  - 4 First Team
  - 2 Second Team
  - 3 Third Team
- \* 26 All-Region
- \* 27 All-Big Ten
  - 11 First Team
  - 16 Second Team
- \* 2 Big Ten Defensive Player of the Year
- \* 2 Big Ten Freshman of the Year
- \* 1 Big Ten Regular Season Championship
- \* 1 Big Ten Tournament Championship
- \* 2 NCAA Tournament Appearances

## Griesbaum's Year-By-Year Records at Iowa

Year	Record	Pct.	Big Ten (Final)	Ranking
2000	12-8	.600	3-3	NR
2001	13-5	.722	3-3	12th
2002	9-8	.530	2-4	20th
2003	11-8	.579	2-4	16th
2004	13-8	.619	5-1	11th
2005	10-8	.556	3-3	14th
2006	12-9	.571	2-4	14th
Overall Record			Big Ten Record	
80-54 (.597)			20-22 (.476)	





# FIELD HOCKEY

Assistant Coach Lisa Cellucci



## **Lisa Cellucci** **Assistant Coach** **Eighth Year** **University of Iowa, 1998**

Lisa Cellucci is in her eighth season as an assistant on the Hawkeye coaching staff. She is the recruiting coordinator, director of Iowa Field Hockey Camp and primarily works with

the goalkeepers and the defense.

In her seven years at Iowa, the Hawkeyes have compiled an 80-54 record and have been consistently ranked in the NFHCA top 20. In 2006, Cellucci helped coach the Hawkeyes to their first Big Ten Tournament Championship since 1994 and their 18th NCAA Tournament appearance.

During Cellucci's time with Iowa, Hawkeye goalkeepers have enjoyed tremendous success. Barb Weinberg, a 2005 graduate and currently a volunteer assistant coach, has become one of nation's top goalkeepers and is currently part of the USA National Team. Under Cellucci's guidance Weinberg became a two-time all-American, three-time all-Big Ten selection and three time all-region pick.

Last season, Cellucci was a crucial part in the Hawkeyes' success. She coached sophomore goalkeepers Lissa Munley and Melissa Helsel to a total of three shutouts, including one during the second round of the Big Ten Tournament against regular-season champion Ohio State. The goalkeepers allowed one goal or less in 13 of the Hawkeyes' 21 games, including a streak of nine contests.

As a player, Cellucci was one of the greatest goalkeepers ever to don the Black and Gold. During her four years with Iowa, the Broomall, PA, native was a three-time all-American, four-time all-Big Ten selection and four-time regional all-American.

In her playing days, Cellucci made an immediate impact for the Hawkeyes. As a freshman, she earned first team all-Big Ten, first team regional all-American and third team NFHCA all-American honors as she helped Iowa to a 16-4 record. Her sophomore campaign was even more impressive, when she went 18-3 and was first team all-Big Ten and a regional all-American, along with being second team NFHCA All-American.

During her senior campaign, Cellucci became Iowa's all-time saves leader by stopping her 494th shot in a 5-3 win over Ball State. She ended her career with 592 saves.

A member of the U.S. National Team from 1999-2000, Cellucci has extensive experience with the U.S. program. She played on the 1998 U.S. Under-23 National Team and on the U.S. Under-18 National Team in 1994. Cellucci also participated in three U.S.

Olympic Festivals (1993, 1994 and 1995) and won a gold medal at the 1993 Festival and a bronze medal at the 1995 Festival.

She also has coaching experience at the national level, coaching at the 2003-2006 A-Camps and the 2000-2004 B-Camps and the USFHA Super Camp. During the summer of 2005, Cellucci coached in the U.S. EPTC program that finished second at the National Tournament and was a goalkeeping coach at the U.S. Elite Team Trials. In 2006, she joined Griesbaum on the staff of the EPTC Midwest team that placed third in the USA Field Hockey Championships in Virginia Beach, VA. Last summer, Cellucci was, once again, part of the High Performance Training Center (formerly known as EPTC) coaching staff. She was joined by six current and two former Hawkeye student-athletes at the National Tournament.

Before returning to Iowa as a coach, Cellucci was an assistant coach at James Madison, where she helped the Dukes to a 15-7 record and a spot in the NCAA Tournament in 1999.

Cellucci graduated from the University of Iowa in 1998 with a Bachelor of Arts degree in Communication Studies.

### **The Cellucci File**

- 1998 U.S. Under-23 Team Member
- 1999 Pan American Team (alt.)
- 1999 U.S. National Team Tour of England
- 1999-2000 U.S. National Team Member
- Three-time NFHCA All-American
- Four-time All-Big Ten Selection
- All-time Saves Leader at Iowa (592)
- 2003-2005 A-Camp Coach
- 2005-2007 U.S. HPTC Coach
- 2005-2006 Elite Team Trials Coach
- All-time Saves Leader at Iowa (592)



# FIELD HOCKEY



Assistant Coaches Meridith Thorpe and Barb Weinberg



## **Meridith Thorpe** Assistant Coach First Year University of Virginia, 1999

Meridith Thorpe is in her first season as an assistant coach for the Iowa field hockey team. She will be looking to help the Hawkeyes improve on their 2006 season, which included

a Big Ten Tournament championship and a berth in the NCAA Tournament.

Last spring, Thorpe accepted the assistant coach position at the University of Richmond. Her primary role was developing team strategies and conducting individual on-field work sessions with players. Before joining the coaching staff at Richmond, Thorpe served as the head coach at The Covenant School in Charlottesville, VA.

Prior to her time at The Covenant School, Thorpe was an assistant at her alma mater, the University of Virginia. She was a member of the coaching staff for six seasons helping the Cavaliers advance to the NCAA Tournament twice.

Thorpe was an assistant coach at Ohio State before returning to Virginia. During her two year stay, the Buckeyes spent the entire time in the NFHCA top-20 and reached the Big Ten Tournament semifinals both years.

Thorpe served as the head coach of the USFHA in Columbus and as a selector for the Great Lakes Tournament teams in 1999-2000.

During her playing days, Thorpe had a decorated career. She was a member of the U.S. National team in 1997-1998, the U.S. Under-21 team from 1995 to 1997 and in 1994 and also Thorpe played for the U.S. Under-18 team.

Thorpe holds the career point and career goal records at the University of Virginia and in the Atlantic Coast Conference (ACC) with 230 career points and 101 goals.

Thorpe became the first Virginia field hockey player to be named a NFHCA first-team all-American. She was a four-time all-American, including three years as a first team selection. Thorpe was named the ACC Rookie of the Year in 1995. She is one of only three athletes in conference history to be selected to the all-ACC team four years. In 1997, Thorpe was named the University of Virginia's Female Athlete of the Year. In 2002, she was named to the ACC 50th Anniversary Team.

Thorpe graduated from the University of Virginia in 1999 with a degree in sociology.



## **Barb Weinberg** Volunteer Assistant Coach First Year University of Iowa, 2004

Barb Weinberg, one of the greatest field hockey goalkeepers to ever play for the Iowa Hawkeyes, is beginning her first year on the Iowa sidelines as a volunteer assistant coach.

She is currently a member of the United States National Squad.

Under the watchful eye of Assistant Coach Lisa Cellucci, Weinberg led the Hawkeyes in saves all four years during her collegiate career (2001-04).

During her freshman season, Weinberg played in 11 games with nine starts. She was named Big Ten Player of the Week after guiding Iowa to a victory over No. 17 Penn State in her first career start. Weinberg led the Hawkeyes to a Big Ten Tournament semi-final win over No. 6 Michigan State, earning Iowa a spot in the championship game.

As a sophomore, Weinberg stopped 82 shots on her way to being named first team all-Big Ten and second team NFHCA all-American. She started all 17 games for the Hawkeyes, recording five shutouts, including one over eventual NCAA Champion Wake Forest.

Weinberg started all 19 games in goal as a junior on her way to being named a NFHCA second team all-American, first team all-Big Ten and a NFHCA first team west regional all-American. She played every minute of the season while recording six shutouts including a 5:06.20 (spanning five games) without allowing a goal.

In her final season with the Hawkeyes, Weinberg was a NFHCA first team all-American and first team all-Big Ten. She recorded a save percentage of .793 with four shutouts, leading the Hawkeyes to a Big Ten Championship and a berth in the NCAA Tournament with an overall record of 13-8 and a conference record of 5-1.

Weinberg has achieved success on a national level as well. In 2002 she competed with the under-23 National Team on the South Africa Tour and the First Pan-Am Indoor Cup. Weinberg has been a member of the USA National Team since 2005.

In 2005, she was part of the Champion's Challenge Team in Virginia Beach, Va. In 2006 she played on the Four Nation's Tournament Team and the sixth place World Cup Team in Madrid, Spain. She was part of the 2007 Chile Four-Nation Team Champions.

In addition to her playing career, she also served as the goalkeeping coach at the International Field Hockey Club of Kentucky. She helped advance several goalkeepers to play at the college level.

Weinberg graduated from the University of Iowa with a degree in Psychology and Health and Sports Studies in 2005.



# FIELD HOCKEY

2007 Schedule

## SCHEDULE

Date	Opponent	Location	Time (CT)
August 25	vs. Wake Forest	Ann Arbor, MI (Big Ten/ACC Chal.)	10 a.m.
August 26	vs. North Carolina	Ann Arbor, MI (Big Ten/ACC Chal.)	10 a.m.
September 2	at Duke	Durham, NC	12 p.m.
September 3	vs. William & Mary	Durham, NC	12 p.m.
<b>September 7</b>	<b>Louisville</b>	<b>Grant Field</b>	<b>3 p.m.</b>
<b>September 9</b>	<b>Missouri State</b>	<b>Grant Field</b>	<b>1 p.m.</b>
September 15	vs. Sacred Heart	Fairfield, CT	12 p.m.
September 16	at Fairfield	Fairfield, CT	11 a.m.
September 21	at Michigan*	Ann Arbor, MI	2 p.m.
September 23	at Central Michigan	Mt. Pleasant, MI	11 a.m.
<b>September 30</b>	<b>Indiana*</b>	<b>Grant Field</b>	<b>1 p.m.</b>
October 5	at Northwestern*	Evanston, IL	3 p.m.
October 6	vs. Providence	Evanston, IL	2 p.m.
October 14	at Ohio State*!	Columbus, OH	12 p.m.
<b>October 20</b>	<b>Penn State*!</b>	<b>Grant Field</b>	<b>4 p.m.</b>
<b>October 25</b>	<b>Northwestern</b>	<b>Grant Field</b>	<b>3 p.m.</b>
<b>October 27</b>	<b>Michigan State*</b>	<b>Grant Field</b>	<b>12 p.m.</b>
November 1-4	Big Ten Tournament	Columbus, OH	TBA
November 9-11	at NCAA Tournament	TBD	TBA
November 16-18	at NCAA Final Four	College Park, MD	TBA

\*Big Ten Conference Game

! - Televised by the Big Ten Network

**Bold = Home Games**



Meghan Beamesderfer



Lauren Pfeiffer



Lindsey Duffy



# FIELD HOCKEY

Roster



## ROSTER

No.	Name	Pos.	Year	Hometown/High School
0	Melissa Helsel	GK	Jr.	Elizabethtown, PA/Donegal
2	Roz Ellis	B/MF	Jr.	Lewisburg, PA/Lewisburg
5	Caitlin McCurdy	F/MF	Jr.	Mountain Top, PA/Crestwood
6	Lissa Munley	GK	Jr.	Mountain Top, PA/Crestwood
7	Katie Naughton	F/MF	Jr.	Goffstown, NH/Goffstown
9	Lindsey Duffy	F	Jr.	San Diego, CA/Scripps Ranch
10	Amy Baxter	B/MF	Fr.	Warrington, PA/Central Bucks HS South
13	Jess Werley	F/MF	So.	Allentown, PA/Emmaus
14	Paige Lowrey	B/MF	Fr.	Denver, CO/Colorado Academy
15	Meghan Beamesderfer	B/MF	So.	Lititz, PA/Warwick
16	Kadi Sickel	B	Sr.	Plaistow, NH/Timberlane
17	Lauren Pfeiffer	MF	Jr.	Mt. Laurel, NJ/Lenape
19	Adrienne Dybus	F	Sr.	St. Louis, MO/Ursuline Academy
20	Caroline Blaum	F/MF	Jr.	Wilkes-Barre, PA/Wyoming Seminary
21	Tricia Dean	MF	So.	Bear, DE/William Penn
22	Sarah Pergine	B/MF	Fr.	Collegeville, PA/Perkiomen Valley
23	Maggie Neill	B	Fr.	Ambler, PA/Hatboro-Horsham
24	Chelsea Miller	MF	Fr.	Dallas, TX/Hockaday School

**Head Coach:** Tracey Griesbaum

**Assistant Coaches:** Lisa Cellucci, Meredith Thorpe

**Volunteer Assistant Coach:** Param Singh, Barb Weinberg



Adrienne Dybus



Roz Ellis



Caroline Blaum



# FIELD HOCKEY

## 2007 Season Preview

The 2006 Iowa Field Hockey team battled through a difficult schedule to finish with a 12-9 record. But, the Hawkeyes shined when it mattered most, winning their first Big Ten Tournament Championship since 1994 and earning the 18th NCAA field hockey tournament appearance in school history.

Iowa returns several student-athletes who have gained valuable experience. They include four regional all-Americans, three all-Big Ten selections and six members of the United States Field Hockey Association's (USFHA) High Performance Training Center (HPTC) Midwest team.

"We are excited to have a core group returning," said Head Coach **Tracey Griesbaum** said. "The girls gained a lot of experience last season. We are looking to play a more potent style in 2007. By having many returning players, it allows us to add both offensive and defensive strategies to our repertoire."

Griesbaum will be joined by assistant coach **Lisa Cellucci** for the eighth year. **Meridith Thorpe** and **Barb Weinberg** will join the staff for their first season.

### FORWARDS

The forward line looks to be exceptional this season. Back is junior **Caitlin McCurdy**, who was the leading scorer in 2005 and tied for the lead last season. Joining McCurdy on the forward line will be junior **Caroline Blaum** and sophomore **Jess Werley**.

Second team all-Big Ten forward McCurdy led the team as a freshman with 28 points and 11 goals. This past summer, McCurdy played with the United States under-21 team in China and was a member of the HPTC Midwest team.

Blaum returns after sitting-out last season due to a knee injury. She is a talented offensive threat who was a second team all-Big Ten selection in 2005 and a member of the HPTC Midwest team in 2006 and 2007.

Werley will look to help McCurdy and Blaum on the forward line. Werley had an exceptional freshman year. She played in all 21 games and gained valuable experience.

"Having Caroline back will give us great leadership and scoring potential," Griesbaum said.

Also returning for the Hawkeyes are **Lindsey Duffy**, **Adrienne Dybus** and **Katie Naughton**. Each of them played significant minutes last season and will provide excellence depth in 2007.

Talented freshman **Sarah Pergine** will be looking to challenge for playing time on the forward line.

### MIDFIELD

Returning to the midfield will be a pair of starters, junior **Lauren Pfeiffer** and sophomore **Tricia Dean**.

"The midfield line needs to step-up and create scoring chances for the team. They will also be held accountable for a high level of communication and organizational ability to help maintain structure in our offense and defense," Griesbaum said.



**The 2007 Hawkeyes will face one of the nation's toughest schedules.**

Last season, Pfeiffer was a regional all-American, Big Ten Tournament Most Valuable Player and the National Player of the Week by womensfieldhockey.com (Nov. 13). Pfeiffer tied for the team lead (McCurdy) with 22 points and 10 goals. She was a member of the HPTC Midwest team in 2006 and 2007.

Dean could also see considerable time in the midfield. She had an outstanding freshman campaign starting all 21 games with one goal.

Also competing for time in the midfield will be Werley and Naughton, both played in all 21 games last season.

Freshman **Chelsea Miller** will look to contribute important minutes as well.

### DEFENSE

The Hawkeyes hope to fill a huge void left by all-American, two-time Big Ten Defensive Player of the Year Heather Schnepf.

Senior **Kadi Sickel** will look to anchor the Hawkeye defense. Sickel joined McCurdy on the US Under-21 team, which traveled to China last summer and the HPTC Midwest team.

Joining Sickel is last season's Big Ten Freshman of the Year **Meghan Beamesderfer**. She is exceptionally fast and a much needed asset to the Hawkeye defense. She started 21 games for the 2006 Hawkeyes and was part of the HPTC Midwest team.

Junior **Roz Ellis** will also join the defense. She started every game last season for the Hawkeyes and was a member of the HPTC Midwest team.



# FIELD HOCKEY

2007 Season Preview



"These three players understand the system and are all very athletic and talented," Griesbaum said.

Looking to strengthen the defense will be talented freshmen, **Amy Baxter**, **Maggie Neill** and **Paige Lowrey**.

## GOALKEEPING

Returning goalkeepers are **Lissa Munley** and **Melissa Helsel**.

Munley recorded two shutouts in 20 starts and was an alternate for the HPTC Midwest team. Helsel recorded a shutout in her only start of the season.

"We are looking for these two to be at another level with their skills and tactics," Griesbaum said.

## SCHEDULE

The Hawkeyes, once again, have an extremely challenging schedule in 2007.

"Our strength of schedule will rank with the best in the country," said Griesbaum.

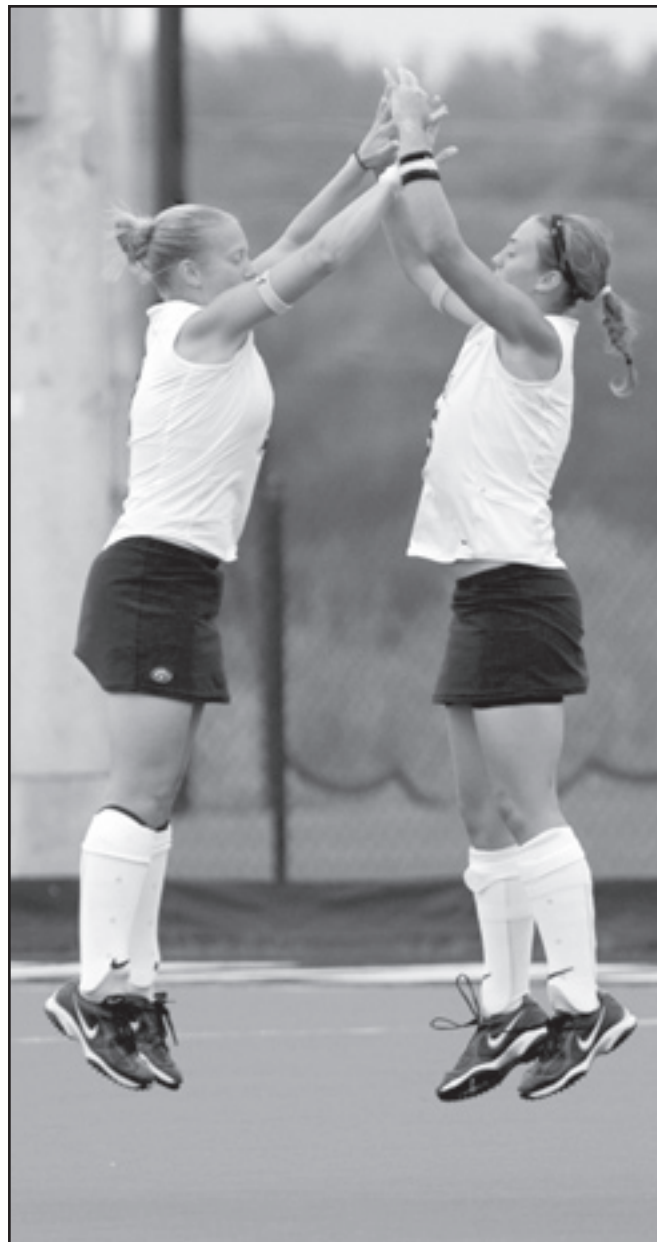
The Hawkeyes kick-off their season in Ann Arbor, MI, for the sixth-consecutive season. They will play 2006 NCAA runner-up Wake Forest (Aug. 25) and follow with North Carolina (Aug. 26).

The following weekend Iowa will travel to Durham, NC, where they will take on 2006 Final Four participant Duke (Sept. 2) and William & Mary (Sept. 3), a team ranked in six of the eleven NFCA polls.

The Hawkeyes' first home game is against the University of Louisville (Sept. 7). Louisville reached as high as tenth in the 2006 rankings.

The schedule does not get easier for Iowa as the season moves on. The Hawkeyes open Big Ten play at Michigan (Sept. 21). The Hawkeyes will visit 2006 Big Ten regular-season champion Ohio State (Oct. 14) to conclude the regular-season road schedule.

The Hawkeyes end the regular-season with a three game home stand against Penn State, Northwestern and Michigan State.





# FIELD HOCKEY

Meet The Hawkeyes



## Adrienne Dybus

Senior

Forward

St. Louis, MO

Ursuline Academy

# #19

**2006 as a Junior...** Played in 16 of Iowa's 21 games... recorded three shots on goal.

**2005 as a Sophomore...** Saw action in 13 games as a forward... earned her first collegiate points with an assist in a victory (3-1) over Northwestern (Oct. 14).

**2004 as a Freshman...** Was a member of the practice squad.

**High School...** Team captain senior year... played for the St. Louis Stix club team in 2002 that was coached by Lucy Durbin... was a three-year letterwinner as a midfielder in lacrosse... two-time all-American lacrosse player (2003, 2004)... four-year honor roll student... participated in Ursuline Academy's Culture Club... member of Fellowship of Christian Athletes.

**Personal...** Born August 27, 1985... daughter of Steve and Linda Dybus... sibling to Alanna, Erin and Steven... father played lacrosse at Cornell University... Interdepartmental Studies major (Health Coaching and Aging Studies).



## Dybus' Career Statistics

Year	GP	GS	SH	G	A	PTS	DS
2005	13	0	3	0	1	1	0
2006	16	0	3	0	0	0	0
Totals	29	0	6	0	1	1	0

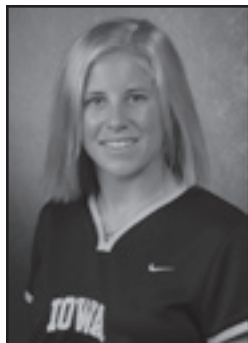




# FIELD HOCKEY



Meet The Hawkeyes



## Kadi Sickel

Senior

Back

Plaistow, NH

Timberlane Regional HS

#16

**Hawk Item...** Member of the 2006-07 United States Under-21 Squad... member of the HPTC Midwest Region team.

**2006 as a Junior...** Third team all-America selection by womensfieldhockey.com... selected as a first team NFHCA West Regional all-American and second team all-Big Ten... started all 21 games... led the team in assists with 12... had a goal and an assist in Iowa's win over Boston University (4-2)... recorded two assists during the Big Ten Tournament.

**2005 as a Sophomore...** Started all 18 games... scored five goals on 12 attempts for a team-leading shot percentage of .417... knocked in the game-winning goal in a victory over Stanford (3-1)... scored go-ahead goal in a win over Pacific (8-1)... tallied two goals in a victory over Michigan State (3-2).

### Sickel's Career Statistics

Year	GP	GS	SH	G	A	PTS	DS
2004	21	21	9	5	0	10	1
2005	18	18	12	5	0	10	1
2006	21	21	8	3	12	18	0
<b>Totals</b>	<b>60</b>	<b>60</b>	<b>29</b>	<b>13</b>	<b>12</b>	<b>38</b>	<b>2</b>

**2004 as a Freshman...** Started all 21 games for the Hawkeyes... scored game-winning overtime goals in back-to-back games against No. 8 Michigan (Oct. 10) and No. 19 Penn State (Oct. 15)... scored five goals on the year, three game-winners... scored on her first-career shot on goal against No. 1 two-time defending NCAA Champion Wake Forest (Aug. 28).

**High School...** First team all-American... 2003 New Hampshire Player of the Year... 2003 Eagle Tribune Player of the Year... first team all-state as a senior, second team as a junior and sophomore... team MVP as a senior, defensive MVP as a junior and sophomore... high school coach was Mim Ryan... member of the 2001 U.S. Under-16 team... National Futures Tournament participant (2001-03) and Futures Elite (2002-03)... 2004 A Camp participant... 2003 B Camp participant.

**Personal...** Born August 9, 1986... daughter of Paul and Ellen Sickel... has one older sister, Lauren, and three younger siblings - Derek, Julie, and Chelsea... Lauren played field hockey at Providence... Theatre Arts major.







# FIELD HOCKEY

Meet The Hawkeyes



**Caroline Blaum**  
 Junior **#20**  
 Forward/Midfield  
 Wilkes-Barre, PA  
 Wyoming Seminary College Prep

**Hawk Item...** Member of the 2005 United States Under-21 Squad... member of the HPTC's Midwest Region team... earned honors as the top goal scorer in

the 2006 USA Field Hockey Championships... team captain.

**2006 as a Junior...** Sat out the season due to an injury... one of three team captains... voted by her teammates for the Dr. Christine Grant Leadership Award and the Nancy McLinden Carr Award in honor of her enthusiasm, energy and positive attitude.

**2005 as a Sophomore...** Second team all-Big Ten selection... named team captain... one of three team captains... voted by teammates for the Dr. Christine Grant Leadership Award... started all 18 games as a midfielder for the Hawkeyes... scored three goals and had three assists for nine points... slammed home the go-ahead goal in 6-1 victory against Ball State (Sept. 9)... dished out two assists in 4-3 win over Northwestern (Oct. 4).

**2004 as a Freshman...** Started all 21 games for the Hawkeyes... recorded 14 points on six goals and two assists... scored back-to-back game-winning overtime goals over Northwestern and Michigan State at the Big Ten Tournament... recorded two goals and two assists at the Big Ten Tournament.

**High School...** Second team all-American and first team regional all-American as a senior... two-time first team all-state (2002-03) and two-time Wyoming Valley Conference All-Star (2002-03)... three-year varsity starter and four-year letterwinner... helped her Wyoming Seminary College Preparatory School to the 2001 Class AA State Championship... coached by Karen Klassner... 2004 B-Camp.

**Personal...** Born November 8, 1985... daughter of Beth and Kevin Blaum... has a younger sister, Elizabeth... English major.

## Blaum's Career Statistics

Year	GP	GS	SH	G	A	PTS	DS
2004	21	21	24	6	2	14	0
2005	18	18	19	3	3	9	0
2006	SAT OUT DUE TO INJURY						
<b>Totals</b>	<b>39</b>	<b>39</b>	<b>43</b>	<b>9</b>	<b>5</b>	<b>23</b>	<b>0</b>



# FIELD HOCKEY

Meet The Hawkeyes



## Lindsey Duffy

Junior

Forward

San Diego, CA

Scripps Ranch

#9

**2006 as a Sophomore...** Started 11 and played in 19 games for the Hawkeyes... collected first collegiate points in a 5-1 victory over Kent State

with two goals... scored third goal of the season in a 4-3 overtime loss to No. 6 Ohio State.

**2005 as a Freshman...** Started two games and played in 13 games as a forward... took seven shots on goal.

**High School...** As a senior, she was the leading scorer with 18 goals, 19 assists and 55 points on the way to a 24-1 record... selected to the Western League first team and the California Interscholastic Federation second team in 2004... as a junior she was part of the CalCup Women's Under-19 Division Championship squad that went 25-0... two-time selection to the San Diego Union Tribune all-Academic team... Scripps Ranch team was three-time Western League Champions and CIF Division II Champions from 2002-2004... high school coach was Jane Morrill... member of the USFHA Futures Program from 2002-2005... three-year letterwinner as a midfielder for the varsity soccer team.

**Personal...** Born May 6, 1987... parents are Susan and Patrick Duffy... younger sister, Alicia... Health and Sports Studies major.



## Duffy's Career Statistics

Year	GP	GS	SH	G	A	PTS	DS
2005	13	2	7	0	0	0	0
2006	19	11	11	3	0	6	0
<b>Totals</b>	<b>32</b>	<b>13</b>	<b>18</b>	<b>3</b>	<b>0</b>	<b>6</b>	<b>0</b>







# FIELD HOCKEY

Meet The Hawkeyes



## Roz Ellis

Junior

Back/Midfield

Lewisburg, PA

Lewisburg Area HS

#2

**Hawk Item...** Member of the U.S. Under-21 team... member of the 2007 HPTC's Midwest Region team... member of the 2006 HPTC California Team.

**2006 as a Sophomore...** Started all 21 games for the Hawkeyes... scored the game-winning goal in a 2-1 victory over Northwestern (Oct. 22)... recorded an assist in a 2-0 win over West Chester.

**2005 as a Freshman...** Started all 18 games for the Hawkeyes... scored first collegiate goal in 6-1 rout over Ball State (Sept. 9).

**High School...** Was a team captain and team MVP after squad posted a 23-2 record as a senior... scored 16 goals and had 17 assists as a senior... 14 goals and 18 assists during junior year... both senior and junior seasons was selected to the SVL first team... Daily Item Player of the Year in 2004... high school squad advanced to the Elite Eight round of the Class AA state tournament in 2004 and the Sweet Sixteen round in 2003... helped lead team to a first place finish in the SVL conference in 2004 and a second place finish in 2003... was voted her team's Most Valuable Midfielder after junior season... high school coach was Christa Dieffenderfer... played for the Storm Trooper Lightning club team in the East Coast Field Hockey league from 2002-2004... was an East Coast All-Star... club team was coached by Bill Gaudette... also participated in basketball and track and field... honor roll student and Spanish Club member... Girl Scout and Relay for Life participant.

**Personal...** Born August 7, 1986... daughter of Darcie Hostetler and Peter Ellis... has four older siblings - Josh, Lauren, Erin and Evan... English major.

## Ellis' Career Statistics

Year	GP	GS	SH	G	A	PTS	DS
2005	18	18	5	1	0	2	0
2006	21	21	7	1	1	3	0
<b>Totals</b>	<b>39</b>	<b>39</b>	<b>12</b>	<b>2</b>	<b>1</b>	<b>5</b>	<b>0</b>





# FIELD HOCKEY

Meet The Hawkeyes



**Melissa Helsel**  
**Junior**  
**Goalkeeper**  
**Elizabethtown, PA**  
**Donegal High School**

**#0**

**2006 as a Sophomore...** Played in and started one game for the Hawkeyes... recorded a shutout against West Chester (Sept. 10).

**2005 as a Freshman...** Did not see action.

**High School...** Team captain senior year in which she registered 135 saves and an .860 save rate... after senior and sophomore seasons was voted to the Lancaster-Lebanon League All-Star second team... overall record in three years was 30-14-5 including 19 shutouts... team MVP as a freshman... Donegal advanced to the first round of district playoffs in 2002-2004... high school coach was Jessica Rose... played three years for the Lanco Premier Club team from 2003-2004 which won the Delaware Diamond State Games in 2003... Lanco Premier was a USFHA National Festival pool winner in 2003 and AAU Spring Classic Tournament winner in 2003... club coach was Bree Gillespie... also played soccer for two years... four-time Summa Honor Roll student... Mathematics Honor Society in 2003 and 2004... part of the yearbook editorial staff.

**Personal...** Born January 27, 1987... parents are John and Lynn Helsel... mother played field hockey at Shippensburg University... has one younger sister, Shawna... Interdepartmental Studies major (Health Science track).



## Helsel's Career Statistics

Year	GP	GS	MIN	SV	SV %	GA	GAA	SHO
2005			Did Not See Action					
2006	1	1	70:00	3	1.00	0	0.00	1
<b>Totals</b>	<b>1</b>	<b>1</b>	<b>70:00</b>	<b>3</b>	<b>1.00</b>	<b>0</b>	<b>0.00</b>	<b>1</b>





# FIELD HOCKEY

Meet The Hawkeyes



## Caitlin McCurdy Junior #5

Forward/Midfield  
Mountain Top, PA  
Crestwood HS

**Hawk Item...** Member of the 2006-07 U.S. Under-21 team and 2007 HPTC Midwest Region team.

**2006 as a Sophomore...** Second-team NFHCA West Regional pick and all-Big Ten second team selection... started all 21 games for the Hawkeyes... earned Big Ten Player of the Week after recording one goal and two assists in a 5-1 win over Kent State (Sept. 1) along with two goals in a 3-2 overtime loss against No. 3 Duke (Sept. 3)... scored the game-winning goal against Stanford (Sept. 13)... recorded both Iowa goals in a 2-1 double-overtime time victory over Michigan State (Oct. 14)... scored one goal in the Big Ten Tournament semifinal victory over Ohio State, 2-1... tied for the team lead in goals (10) and points (22).

**2005 as a Freshman...** Second-team NFHCA West Regional pick, member of the [www.WomensFieldHockey.com](http://www.WomensFieldHockey.com) all-Rookie team, all-Big Ten second team pick and Big Ten Freshman of the Year...

started all 18 games... scored first collegiate points with one goal and two assists in 6-1 win over Ball State (Sept. 9)... two goals in 5-0 win against Providence (Sept. 11)... scored unassisted goal in Iowa's 3-2 victory over Michigan State (Oct. 1)... two goals in 3-1 win at Northwestern (Oct. 14)... picked up game winning goal in 2-1 overtime victory against Indiana... led team with 11 goals, including three game-winners... first on team in points (28) and second in assists (6).

**High School...** Led Crestwood to back-to-back Class AA state titles in 2003 and 2004... led squad to a 26-0 finish in 2004... first team all-state, all-regional and all-American as a junior and senior... Wyoming Valley Conference champs in 2003 and 2004... high school coach was Elvetta Gemski... played for the Storm Trooper Lightning club squad... USFHA Futures Camp (2003-2005)... National Futures Tournament participant in 2003 and 2004... scored game-winning stroke to earn gold in the 2003 AAU Junior Olympics... traveled overseas with the USFHA Future Elite squad in 2004... earned four varsity letters in soccer.

**Personal...** Born January 23, 1987... parents are Terry McCurdy and Robert Clark... has two older sisters, Lauren and Leah, and a younger brother, Aaron... attended same high school as Lissa Munley... Psychology major.

## McCurdy's Career Statistics

Year	GP	GS	SH	G	A	PTS	DS
2005	18	18	65	11	6	28	0
2006	21	21	75	10	2	22	0
<b>Totals</b>	<b>39</b>	<b>39</b>	<b>140</b>	<b>21</b>	<b>8</b>	<b>50</b>	<b>0</b>





# FIELD HOCKEY

Meet The Hawkeyes



## Lissa Munley

Junior

Goalkeeper

Mountain Top, PA

Crestwood HS

#6

**Hawk Item...** Alternate for the 2007 HPTC Midwest Region team.

**2006 as a Sophomore...** Started and played in 20 of the 21 Hawkeye games... recorded two shut-outs, Providence 1-0 (Sept. 17) and No. 5 Ohio State in the Big Ten Tournament semifinal game 2-0 (Nov. 4)... recorded 78 saves for a .684 save percentage... saved a season-high seven shots against Ohio State (Sept. 24) and Louisville (Oct. 29).

**2005 as a Freshman...** Started all 18 games in goal with a 10-8 record... played 1,257 minutes for the Hawkeyes, sitting out only 11 minutes... recorded one shutout against Providence, 5-0 (Sept. 11)... recorded 77 saves for a .688 save percentage... had just 35 goals scored against her for an average of 1.95 per game... season-high eight saves against Michigan (Oct. 28).

**High School...** Helped her squad to a perfect 26-0 record in 2004 with 94 saves and 18 shutouts... anchored Crestwood's defense on the way to repeat state Class AA titles in 2003 and 2004... Wyoming Valley Conference all-Star and first team all-State pick in 2003 and 2004... MidEast Regional all-American as a junior... a career .851 save percentage and .547 goals against average... Wyoming Valley Conference champs in 2003 and 2004... high school coach was Elvetta Gemski... played for the Valley Styx indoor club for three years... participated in the USFHA Futures B Camp in 2003... earned two letters in basketball... also played soccer for three years winning the Wyoming Valley Conference in 2002 and 2003... National Honor Roll student... volunteer for Relay for Life and the American Cancer Society.

**Personal...** Born September 17, 1986... daughter of Kevin and Wendy Munley... two younger brothers, Kevin and Jarad... attended same high school as Caitlin McCurdy... English Education major.

## Munley's Career Statistics

Year	GP	GS	MIN	SV	SV %	GA	GAA	SHO
2005	18	18	1257:07	77	.688	35	1.95	1
2006	20	20	1471:07	78	.684	36	2.20	2
<b>Totals</b>	<b>38</b>	<b>38</b>	<b>2728:14</b>	<b>155</b>	<b>.686</b>	<b>71</b>	<b>2.08</b>	<b>3</b>







# FIELD HOCKEY

Meet The Hawkeyes



## Katie Naughton

Junior

Forward

Goffstown, NH

Goffstown Area HS

#7

**2006 as a Sophomore...** Saw action in all 21 games while starting one... scored one goal in a 2-1 victory over Northwestern (Oct. 22).

**2005 as a Freshman...** Saw action in all 18 games and started eight as a forward... tallied 11 points on five goals and one assist... season-high two goals in 7-1 win over Appalachian State (Sept. 18).

**High School...** Regional all-American selection senior year... New Hampshire Class L all-state first team selection junior and senior years... as a senior captain, she led her squad to a second place finish in the New Hampshire's largest high school class... led the team in goals her sophomore (13), junior (13) and senior (10) seasons... high school coaches were Kim McCann and Jess Brown... played on the USFHA Under-16 National Squad in 2003 that competed in The Netherlands and Australia... bronze medal squad player in 2002 and 2003 AAU Junior Olympics... 2002-2004 competed in the National Futures Tournament in Virginia Beach... member of Seacoast United club team... four-year letterwinner on softball team as a pitcher and center fielder.

**Personal...** Born August 20, 1987... daughter of Peggy and Kevin Naughton... two brothers, Sean and Patrick... Health and Sport Studies major.



## Naughton's Career Statistics

Year	GP	GS	SH	G	A	PTS	DS
2005	18	8	23	5	1	11	0
2006	21	1	5	1	0	2	0
Totals	39	9	28	6	1	13	0



# FIELD HOCKEY

Meet The Hawkeyes



**Lauren Pfeiffer**  
**Junior**  
**Midfield/Back**  
**Mt. Laurel, NJ**  
**Lenape HS**

**#17**

**Hawk Item...** Member of the 2006 United States Under-21 squad... 2007 U-21 team... competed for the 2007 HPTC Midwest Region team.

**2006 as a Sophomore...** Named second team NFHCA West Regional all-American... Most Valuable Player of the Big Ten Tournament... scored five goals in three days on the way to the Big Ten Tournament Title (Michigan 2, Ohio State 1, Penn State 2)... named womensfieldhockey.com National Player of the Week (Nov. 13)... knocked in the game-winner against Louisville (Oct. 29)... scored game-winners against Michigan (Nov. 3) and Penn State (Nov. 5)... tied for the team lead in goals scored (10) and for total points (22).

**2005 as a Freshman...** Named to the 2005 all-Big Ten Tournament team... tied for second on the team in goals with eight and had two assists for 18 points... scored game-winning goal in 2-1 win against California (Sept. 3)... notched two goals in 6-1 victory over Ball State (Sept. 9)... was successful on first collegiate penalty shot against Michigan (Nov. 4).

**High School...** Three-time all-State and all-South Jersey selection... Olympic conference selection... as a senior, set a school record with 23 goals and 21 assists... a NFHCA regional all-American and Academic all-American... 2003 Junior Olympian... 2004 FDIC camp and USFHA B camp participant... won a gold medal in the 2004 Canadian-American Challenge.

**Personal...** Parents are Robert and Harla Pfeiffer... has two sisters, Kelly and Jennifer... Business Marketing major.



## Pfeiffer's Career Statistics

Year	GP	GS	SH	G	A	PTS	DS
2005	18	18	45	8	2	18	0
2006	21	21	76	10	2	22	0
<b>Totals</b>	<b>39</b>	<b>39</b>	<b>121</b>	<b>18</b>	<b>4</b>	<b>40</b>	<b>0</b>



# FIELD HOCKEY

Meet The Hawkeyes



## Meghan Beamesderfer

Sophomore  
Back/Midfielder  
Lititz, PA  
Warrick HS

#15

**Hawk Item...** Member of the 2007 HPTC Midwest Region team.

**2006 as a Freshman...** NFHCA West Regional all-America selection... Big Ten Freshman of the Year... all-Rookie team selection by womensfieldHockey.com... started all 21 games... recorded her first career point against Northwestern (Oct. 8) with an assist in a 3-1 victory... tallied an assist in a 2-1 victory against Northwestern (Oct. 22)... was a main contributor on the Hawkeyes' defensive penalty corner unit.

**High School...** NFHCA second-team all-American... first-team regional all-American... first-team all-state and first-team all-conference after senior season... led team to state semi-finals in 2004 and 2005... district and conference champions senior and junior seasons... set single-season assist record with 18 as a junior... third-best in school history in career assists... high school coach was Bob Derr... Under-16 U.S. National Team member in 2004... FDIC Invitational Camp 2004, 2005 Olympian... participated in Futures Elite program, 2004-2006... 2003 and 2004 Junior Olympian... earned the most varsity letters by a female (12) in Warwick school history.

**Personal...** Born January 7, 1988... daughter of Craig and Ann Beamesderfer and Larry and Nancy Zeamer... has six sisters -- Kate, Laura, Kara, Lauren, Allyson and Emily... Education/Health and Sport Studies major.

### Beamesderfer's Career Statistics

Year	GP	GS	SH	G	A	PTS	DS
2006	21	21	3	0	2	2	0
<b>Total</b>	<b>21</b>	<b>21</b>	<b>3</b>	<b>0</b>	<b>2</b>	<b>2</b>	<b>0</b>



## Tricia Dean

Sophomore  
Midfielder/Forward  
Bear, DE  
William Penn HS

#21

**2006 as a Freshman...** Started and played all 21 games... recorded first collegiate points with a goal in a 5-1 victory over Kent State (Sept. 1).

**High School...** Two-time NFHCA all-South Regional Team and first-team all-state selection... three-time Blue Hen all-Conference pick... team captain and MVP as a senior... 2005 Wendy's Heisman State Finalist... top scorer in the state of Delaware in 2005 with 30 goals and ten assists... helped lead her team to three conference championship titles... played in and started every game but one in high school with 56 career goals and 32 career assists... high school coach was Loveita Moffett... seven-year member of the Strikers Club Team coached by Bill Dean and Ken Falgowski... club team won national indoor title in 2004 and 2005 and were National Festival Champions 2002-2004... part of the Under-16 U.S. Team 2003 and 2004... 2001-2003 AAU Junior Olympian... Futures Elite participant 2002-2006... 2005 Olympic Development Select... four-time all-conference academic selection with honors... National Honor Society and Spanish Honor Society member... Student Government.

**Personal...** Born August 22, 1988... daughter of Bill and Betty Dean... one older sister, Laura... Business major.

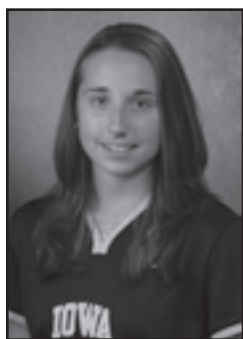
### Dean's Career Statistics

Year	GP	GS	SH	G	A	PTS	DS
2006	21	21	7	1	0	2	0
<b>Totals</b>	<b>21</b>	<b>21</b>	<b>7</b>	<b>1</b>	<b>0</b>	<b>2</b>	<b>0</b>



# FIELD HOCKEY

Meet The Hawkeyes



## Jess Werley

Sophomore  
Midfielder/Back  
Allentown, PA  
Emmaus HS

#13

**2006 as a Freshman...** Played in all 21 games... attempted a total of seven shots.

four district titles... holds the school record for assists in consecutive games played ... high school and FireStyx club coach was Sue Butz-Stavin... Futures Elite participant from 2003-2006... club team placed first in National Futures Tournament in 2004 and 2005... 2004 Junior Olympian... participated in 2005 Canada vs. American Challenge... 2005 Futures Developmental Invitational Camp participant... varsity letterwinner in track.

**Personal...** Born February 21, 1988... daughter of Robert and Paula Werley... has a sister, Cindy, and a brother, Scott... Cindy played field hockey at North Carolina... open major.

**High School...** Won two state championships during junior and senior years, with team suffering only one loss during those two seasons ... a first team all-Lehigh Valley Conference, all-area, and all-state selection during junior and senior campaigns... as a senior was a first team all-American, first team regional all-American and was her team's Most Valuable Player... scored 64 goals and dished out 62 assists during four year career... helped lead Emmaus to

## Werley's Career Statistics

Year	GP	GS	SH	G	A	PTS	DS
2006	21	20	7	0	0	0	0
Total	21	20	7	0	0	0	0



Jess Werley



Meghan Beamesderfer



Tricia Dean



# FIELD HOCKEY

Meet The Hawkeyes



**Amy Baxter**  
Freshman  
Back/Midfielder  
Warrington, PA  
Central Bucks HS South  
**#10**

**High School...** Futures Elite and all-state in 2006... first team all-league in 2004-06... named team Most Valuable Player... played in the Junior Olympics in 2004 and 2005... played in the National Futures Championship in 2003-06, won the gold medal in 2004 and the bronze in 2005... played in the National Indoor tournament in 2004-06, winning the pool in 2006... participated at the National Hockey Festival in 2004-06, winning the pool all three years.

**Personal...** Born May 26, 1989... daughter of Sharon and Charles Baxter... has a brother Stephen... open major... father played soccer at LaSalle University and is cousins with Penn State field hockey player Allison Scola.



**Paige Lowrey**  
Freshman  
Back/Midfielder  
Denver, CO  
Colorado Academy  
**#14**

**High School...** Played in the California Cup, the Festival as well as the Futures at a regional and national level... state finalist three years in a row... voted Most

Valuable Player by her teammates.

**Personal...** Born February 13, 1988... daughter of John and Debra Lowrey Jr... sibling to Blake and Chase... Environmental Studies and Geography major.



**Chelsea Miller**  
Freshman  
Midfielder  
Dallas, TX  
Hockaday School  
**#24**

**High School...** Futures Elite selection in 2005-06... member of the NFHCA High School National Academic Squad in 2006... participated in the National

Futures Championships in 2004 and 2005... Penn Monto/NFHCA High School all-Region team in 2006... first team all-Southwest Preparatory Conference in 2004-06... earned 12 varsity letters in three sports (field hockey, soccer and softball).

**Personal...** Born July 29, 1988... daughter of David and Barbara Miller... sibling to Mackenzie and Hannah... open major.



**Maggie Neill**  
Freshman  
Back  
Ambler, PA  
Hatboro-Horsham  
**#23**

**High School...** First team all-state and academic all-state... earned all-league and all-area honors... member of four National Hockey Festival Championship winning teams and three National Indoor Tournament Championship teams... won the silver medal at the 2005 Argentine Hockey Cup.

**Personal...** Born on June 13, 1989... daughter of Don and Beth Ann Neill... sister to Kelly and Kristin... Pre-law major.



**Sarah Pergine**  
Freshman  
Back/Midfielder  
Collegeville, PA  
Perkiomen Valley  
**#22**

**High School...** First team PAC-10 League in 2005-06... second team *Philadelphia Inquirer* all-southeastern, PA in 2006... Pottstown Mercury all-area and *Norristown Times Herald* all-area 2005-06... finished high school career with 50 goals and 46 assists... won team's Top Offensive Player Award in 2005-06.

**Personal...** Born on June 2, 1989... daughter of James and Melissa Pergine... sister to Katlyn and Eric... Clinical Laboratory Sciences.

# FIELD HOCKEY

Big Ten Conference



When people think of collegiate field hockey, their thoughts primarily go out east, where Atlantic Coast Conference and Big East schools are often seen as national powerhouses.

Considering the majority of field hockey is played in areas other than the Midwest, the Big Ten is a conference that is easily forgotten.

The Big Ten has quickly become one of the premier field hockey conferences in the nation.

In the 23 years the conference has sponsored field hockey, Big Ten schools have advanced to NCAA Tournament 61 times.

Last season, Iowa, Ohio State and Penn State represented the conference in the national tournament field of 16 teams. Penn State defeated North Carolina in the first round before bowing out to eventual tournament champions Maryland. Ohio State also advanced to the quarterfinal round. The Hawkeyes were defeated in a physical game against Virginia during the first round.

In 2004, Michigan State reached the Final Four, making it the fourth consecutive year the Big Ten has sent a team to the Final Four. The league record for consecutive years in the National Semifinals is eight, when either Iowa or Northwestern reached the Final Four every year from 1983-1990.

In 2003, Michigan advanced to the Final Four for the third time in school history.

In 2002, the Big Ten had a pair of teams in the Final Four for

the second-consecutive year when Michigan State and Penn State each won regional tournaments. The Nittany Lions advanced to the championship game and were the national runner-up.

In 2001, the Big Ten ended the year with five of its seven teams ranked in the top 20 by the NFHCA. Both Michigan and Michigan State represented the conference in the Final Four. The Wolverines went on to become the second Big Ten School to win the National Championship. Iowa was the first in 1986.

The Big Ten has been represented in the Final Four 19 times.

The Hawkeyes lead the Big Ten Conference schools with eight Final Four appearances.

Individually, the Big Ten produced some of the top field hockey players in the nation. In the last four seasons, the conference produced 43 NFHCA All-Americans, 14 of which were on the first team.

The Big Ten Conference began sponsoring field hockey in 1981 with a conference tournament, then began full league play in 1982.

From 1989-91, five conference teams competed in the Midwest Collegiate Field Hockey Conference along with the Northern Illinois Huskies. But when Penn State joined up with the Big Ten in 1991, the league resumed sponsoring a conference season.

In conference play, each team now plays each other only once, with the season ending with the Big Ten Tournament. The site of the Big Ten Tournament is determined on a rotating basis. The 2006 championships were held in Ann Arbor, MI.







# FIELD HOCKEY

Big Ten Network



In June 2006, the Big Ten announced the creation of the Big Ten Network, a national network devoted to Big Ten athletic and academic programs. Available to all cable and satellite providers nationwide, with most programs offered in stunning high-definition television (HDTV), the network will allow fans to see their home teams, regardless of where they live.

The network is led by President Mark Silverman, a former Disney executive who came to the network after serving as the general manager and senior vice president of ABC Cable Networks Group since April of 2004, managing the company's equity in such channels as Lifetime Television, A&E Network and the History Channel, each of which recorded their best financial performance in 2005. Silverman was also responsible for developing and launching new cable channels, shows and other key initiatives.

The Big Ten Network launches its inaugural season in August 2007 with football, men's and women's basketball, a nightly studio show, classics and coaches shows, along with more Olympic sporting events and exposure for women's sports than has ever been aired on any other network. In June 2007, the Big Ten announced that the Big Ten Network will become the first national network to commit to "event equality" for men's and women's sports on all network-controlled media within the first three years of launch. This dedication to "event equality" highlights the Big Ten's ongoing dedication to gender equity, which is aligned with the commitment of conference institutions to provide fairness for all female student-athletes.

The programming on the Big Ten Network and alternative network-controlled platforms will include, but is not limited to: More than 35 football games each season, more than 105 regular season men's basketball games, a nightly studio show including segments from each campus, women's sports, including basketball, volleyball, soccer and softball, more than 170 Olympic sporting events including baseball, soccer, tennis, volleyball, swimming, diving and more, classic games and historical footage from ESPN and ABC libraries, original campus programming produced

by Big Ten member universities showcasing their academic excellence, talented students and award-winning programs and weekly coaches shows.

Located in the historic Montgomery Ward building in Chicago, the Big Ten Network is the first national television network to call the largest city in the Midwest its home. The original section of the building was designated as a historic landmark in 2000 for its significant role in American retail history. The space includes two studios and three control rooms as well as a 20,000 square-foot office space.

In May, the Big Ten Network announced its first on-air hire, signing ESPN college sports expert Dave Revsine to be its lead studio host. Revsine joined ESPN in October of 1996 as an anchor for ESPNNews and filled a variety of roles for the network over the past 10 years. The Northwestern graduate has anchored SportsCenter, hosted ESPN Radio's College GameDay for the last six years and hosted ESPN Radio's coverage of several BCS Championship games. He also hosted studio halftimes for basketball and co-hosted ESPN's coverage of the last two men's Final Fours.

In addition to airing more coverage of Big Ten sports than ever before, the Big Ten Network will also provide numerous benefits to communities around the Big Ten. Those include increased exposure for women's sports, providing positive role models for girls; a greater economic impact to the communities from added sporting event production, with the potential to generate higher attendance; and greater national exposure for the excellence that surrounds the academic endeavors of Big Ten universities, some of the most highly regarded in the nation. Also, an internship program at each of the 11 universities will offer students training for careers in sports, television and entertainment.

The Big Ten Network is a joint venture between subsidiaries of the Big Ten Conference and Fox Cable Networks. For more information regarding the Big Ten Network, visit [www.BigTenNetwork.com](http://www.BigTenNetwork.com).

# FIELD HOCKEY

Grant Field



The 2006 season marked the second year the Hawkeyes have played on the new Grant Field. Grant Field is one of the best facilities in the nation with a state-of-the-art playing surface, permanent grandstand, concessions, rest rooms and a press box.

Whether playing on the new Grant Field, or on the original facility which was introduced in 1989, opponents have usually left Iowa City unhappy.

The Hawkeyes own an overall home record of 111-27, a conference record of 51-15 at home and an 11-2 record in NCAA tournament games played in Iowa City.

Originally named the Hawkeye Field Hockey Field, the facility was renamed in honor of former University of Iowa Women's Athletics Director and founder of Iowa Field Hockey Dr. Christine Grant on September 22, 1991. The new field was re-dedicated on October 8, 2006.

The Hawkeyes set a home attendance record October 24, 1993 with 1,339 fans watching Iowa defeat No. 4 Penn State, 4-0.

Iowa has gone undefeated on its home field in six separate seasons, including a 40-game home winning streak.

Top-notch locker rooms for Grant Field are located in the Hawkeye Tennis and Recreation Center (HTRC). Also in the HTRC is an athletic-training room and an indoor playing surface. The indoor field gives the Hawkeyes a chance to define their skills during the off-season and protects them from inclement weather.



## Year-By-Year Grant Field Records (New stadium beginning 2005)

Year	Overall	Big Ten
2006	3-3	1-2
2005	5-3	2-1
2004	8-1	3-0
2003	6-3	1-2
2002	2-2	0-2
2001	5-1	2-1
2000	5-3	2-1
1999	9-0	5-0
1998	5-3	2-3
1997	5-3	3-2
1996	9-1	5-0
1995	8-2	5-0
1994	5-2	4-1
1993	8-0	3-0
1992	10-0	4-0
1991	6-0	3-0 (MCFHC)
1990	8-0	4-0 (MCFHC)
1989	4-0	3-0
<b>Total</b>	<b>111-27</b>	<b>51-15</b>



The 2006 Hawkeyes join Director of Athletics Gary Barta and former Director of Women's Athletics Dr. Christine Grant for the re-dedication of Grant Field.



# FIELD HOCKEY

Hawkeye Tennis and Recreation Center



**Iowa Locker Room**



**Hawkeye Lounge**



**Athletic Training Room and Indoor Turf Facility**



# FIELD HOCKEY

Alumni Reunion



The Iowa field hockey team hosted an Alumni Weekend honoring the 20th anniversary of the 1986 National Championship team, last April.

The weekend was highlighted by alumni playing the current Hawkeyes in a game at Grant Field.

A total of six Olympians, 50 all-Americans and 64 first team all-Big Ten selections participated in the game. There were also four Hawkeye coaches in attendance, including the founder of Iowa Field Hockey, Dr. Christine Grant.

Also included in the festivities was a social at the Roy G. Karro Building Athletics Hall of Fame, a golf outing at Finkbine Golf Course and a banquet in the Paul W. Brechler press box at Kinnick Stadium to wrap-up the event.



(L to R): Dr. Christine Grant, Beth Beglin, Tracey Griesbaum and Judith Davidson





# FIELD HOCKEY

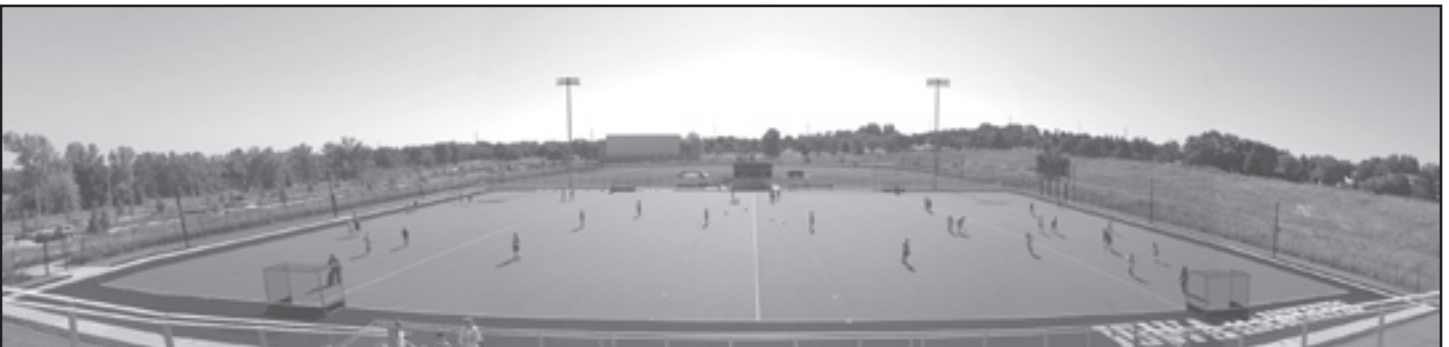
Iowa Field Hockey Camp



Each summer, field hockey players come to Iowa City for the Iowa Field Hockey Camp.



Campers ages 13-18 participate in the camp led by the Hawkeye coaching staff as well as current and former Iowa players. Jess Werley (left) and Tricia Dean (right) are pictured.



Participants have the advantage of state-of-the-art facilities. Grant Field is considered one of the top complexes in the country. Campers also play alongside accomplished college players.

# FIELD HOCKEY

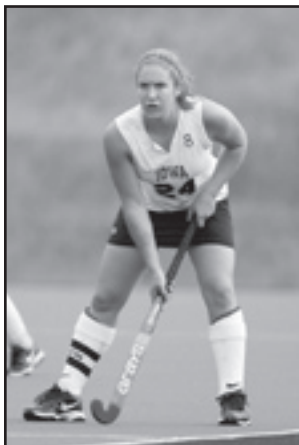
Hawkeyes in the Coaching Ranks



## Hawkeyes In The Coaching Ranks

One of the most definitive statements that reflects upon the quality of the Iowa field hockey program is the number of alumni that have chosen to enter the coaching profession and the number of Hawkeye assistants that have become head coaches. Below is a list of former Hawkeyes who have or are currently coaching at various levels.

<u>Name</u>	<u>Position</u>	<u>School</u>	<u>Name</u>	<u>Position</u>	<u>School</u>
Joan Behrends	Head Coach	White Plains H.S.	Michelle Madison	Head Coach	Virginia
Ange Bradley	Head Coach	Syracuse	Melisa Meccage	Asst. Coach	Princeton
Mary Casabian	Asst. Coach	Virginia (1999-2001)	Diane Monkiewicz	Head Coach	Mansfield Univ.
Lisa Cellucci	Asst. Coach	Iowa	Quan Nim	Asst. Coach	William and Mary
Dawn Chamberlin	Head Coach	Salisbury State	Marcia Pankratz	Head Coach	Michigan (1996-2004)
Diane DeMiro	Asst. Coach	West Essex H.S.	Annette Payne	Head Coach	Ball State
Amy Fowler	Head Coach	Dartmouth	Emily Rinde-Thorsen	Head Coach	Kimball Union H.S.
Pattie Gillern	Asst. Coach	Rutgers	Amy Robertson	Head Coach	Indiana
Kristy Gleason	Asst. Coach	Iowa (2006)	Saleema Rogers	Asst. Coach	Stanford (2005)
Kristen Holmes	Head Coach	Princeton	Patty Shea	Head Coach	UMass
Kerry Horgan	Head Coach	Kent State (1997-2005)	Liz Tchou	Head Coach	Rutgers
Debbie Humpage	Head Coach	Conn. College	Sarah Thorn	Asst. Coach	American
Lesley Irvine	Head Coach	Stanford	Kara Zappone	Asst. Coach	Fairfield
Sue Lowly	Head Coach	Bridgewater College (1996-99)	Jessica Zosky	Asst. Coach	Lehigh



**Kara Zappone**  
Class of 2007  
Assistant Coach - Fairfield



**Kristen Holmes-Winn**  
Class of 1996  
Head Coach - Princeton



**Sarah Thorn**  
Class of 1999  
Asst. Coach - American



**Amy Fowler**  
Class of 1993  
Head Coach - Dartmouth





# FIELD HOCKEY

Hawkeyes in USA Field Hockey

## KADI SICKEL (2004-present)



- 2007 HPTC Midwest Region Team
- 2007 United States Under-21 Team
- 2006 United States Under-21 Team
- 2006 U.S/Canada Challenge
- 2006 EPTC Midwest Region Team
- 2005 EPTC Midwest Region Team
- 2005 United States Under-21 Team
- 2004 United States Under-21 Squad (alternate)

## CAROLINE BLAUM (2004-present)



- 2007 HPTC Midwest Region Team
- 2006 EPTC Midwest Region Team
- 2005 United States Under-21 Team
- 2004 United States Under-21 Squad (alternate)

## CAITLIN McCURDY (2005-present)



- 2007 HPTC Midwest Region Team
- 2007 United States Under-21 Team
- 2006 United States Under-21 Team
- 2006 U.S/Canada Challenge
- 2006 EPTC Midwest Region Team
- 2005 EPTC PA/NJ Team

## LAUREN PFEIFFER (2005-present)



- 2007 HPTC Midwest Region Team
- 2007 United States Under-21 Squad
- 2006 United States Under-21 Team
- 2006 U.S/Canada Challenge
- 2006 EPTC Midwest region Team
- 2005 United States Under-21 Squad
- 2005 Canada/America Challenge

## ROZ ELLIS (2005-present)



- 2007 HPTC Midwest Region Team
- 2007 United States Under-21 Squad
- 2006 United States Under-21 Team
- 2006 U.S/Canada Challenge
- 2006 EPTC California Team

## MEGHAN BEAMESDERFER (2006-present)



- 2007 HPTC Midwest Region Team

## LISSA MUNLEY (2005-present)



- 2007 HPTC Midwest Region Team (Alternate)

## HEATHER SCHNEPF (2003-2006) (STUDENT ASSISTANT COACH)



- 2007 HPTC Midwest Region Team
- 2006 EPTC Midwest Region Team
- 2005 United States Under-21 Squad
- 2005 Junior World Cup Team
- 2005 EPTC Midwest Region Team
- 2004 United States Under-21 Team
- 2003 United States Under-21 Team (Alternate)

# FIELD HOCKEY

Hawkeyes in USA Field Hockey



## **HEAD COACH TRACEY GRIESBAUM**

- Head Coach, 2005-06 EPTC Midwest Team
- 2005-06 USA Elite Team Trials Coach
- 2000 USFHA National Coach of the Year
- Assistant Coach, 2001-04 U.S. Under-21 Team
- Assistant Coach, 2000 United States National Team
- Head Coach, 2000 U.S. Under-21 Team
- Assistant Coach, 1999 U.S. Under-20 Team
- Head Coach, 1998 U.S. Under-23 Team
- Assistant Coach, 1997 and 1993 U.S. Under-21 Team
- 2001-02 USFHA Board of Directors Member
- United States National Team Member (1989-91, '93)
- 1999, 2001-2002 United Airlines Summer League



## **ASSISTANT COACH LISA CELLUCCI**

- Asst. Coach, 2005-07 EPTC Midwest Team
- 1999-00 U.S. National Team Member
- 1999 United States National Team Tour of England
- 1999 U.S. Pan American Team Alternate
- 1998 U.S. Under-23 Team Member
- 1993-95 Olympic Sports Festival
- 2000-04 A-Camp Coach
- 2000-04 B-Camp Coach
- 2005-07 HPTC Midwest Region Coach
- 2005-06 USA Elite Team Trials Camp Coach
- 1998-2002 United Airlines Summer League



## **VOLUNTEER ASSISTANT COACH BARB WEINBERG**

- 2005-present U.S. National Team
- 2007 HPTC Midwest Region Team
- 2007 Chile Four Nation Tournament
- 2006 World Cup Team
- 2002 U.S. Under-23 Team (alt.)
- 2002 U.S. Under-23 Team South Africa Tour



## **ASSISTANT COACH MERIDITH THORPE**

- Head Coach USFHA Futures
- 1997-1998 U.S. National Team
- 1995-1997 U.S. Under-21 Team
- 1994 U.S. Under-18 Team
- Olympic Festival Participant





# FIELD HOCKEY

Iowa Tradition in the USFHA

## Former Hawkeyes Representing The United States National Team

Deb Brickey - 1989-90  
 Lisa Cellucci - 1999  
 Natalie Dawson - 2001-03  
 Sarah Dawson - 2005-present  
 Kris Fillat - 1990-93, '95-96, '99  
 Kristy Gleason - 1990, '93, '97-98  
 Kristen Holmes - 1995-96, 2005  
 Mary Koboldt - 1987-90  
 Donna Lee - 1985-90



Diane Loosbrock - 1989-90  
 Melisa Miller - 1996  
 Marcia Pankratz - 1985-90, '95-96  
 Erica Richards - 1990  
 Liz Tchou - 1989-93, '95-96  
 Erin Walsh - 1990  
 Barb Weinberg - 2005-present  
 Andrea Wieland - 1991-93, '95-96



**MARCIA PANKRATZ**  
**(1982-86)**

- 1988, 1996 U.S. Olympic Team
- 1985-90, 1995, U.S. National Team
- 1987, 1995 U.S. Pan American Team
- 1985, 1987, 1989 U.S. Olympic Festival
- 1986, 1994 U.S. World Cup Team
- 1985 U.S. Junior National Team
- First Team Big Ten All-Decade Team
- Two Time First Team All-American



**LIZ TCHOU**  
**(1984-88)**

- 1996 U.S. Olympic Team
- 1989-93, 1995 U.S. National Team
- 1991, 1995 U.S. Pan American Team
- 1985, 1989-90 U.S. Olympic Festival
- 1994 U.S. World Cup Team
- 1988 U.S. National Reserve Team
- Only Hawkeye To Have Number Retired (3)
- Big Ten All-Decade Team (1981-91)



**SARAH DAWSON**  
**(2001-04)**

- 2005-Present U.S. National Team
- 2007 HPTC Pennsylvania Region Team
- 2007 Champions Challenge
- 2006 World Cup Team
- First Team All-American (2004)
- Two-Time All-Big Ten



# FIELD HOCKEY

Iowa Tradition in the USFHA



## **KRIS FILLAT (1988-92)**

- 2000 U.S. Olympic Qualifying Team
- 1996 U.S. Olympic Team
- 1990-93, 95-96, 98-00 U.S. National Team
- 1991, 1995, 1999 U.S. Pan American Team
- 1990, 1994, 1998 U.S. World Cup Team
- Two-time first-team All-American
- Three-time All-Regional
- Two-time All-Big Ten
- 1992 NCAA All-Tournament Team
- 1990 U.S. Olympic Festival

*"Being from California, I was hesitant about spending four years of my life in Iowa. As soon as I saw the campus and athletic facilities, there was no longer a doubt in my mind. Iowa was the perfect balance of community, academics and athletics. I was able to achieve my academic goals as well as my athletic ones."*



## **ANDREA WIELAND (1987-91)**

- 1996 U.S. Olympic Team
- 1991-93, 1995-96 U.S. National Team
- 1994, 1998 U.S. World Cup Team
- 1991, 1995 U.S. Pan American Team
- 1990-91 U.S. Olympic Festival
- 1988-89 U.S. Junior National Team
- Two-Time First Team All-American
- Three-time All-Regional
- Two-time First Team All-Big Ten

*"I never would've made the Olympic team had I gone somewhere else. I learned how to compete, and I developed the total package of skills (mental, physical, emotional, nutritional) needed to compete at the highest level. I often find myself relying on the attitudes, teamwork and leadership skills I developed as a player at Iowa. I had the greatest coaches and teammates in the country looking out for my best interest personally, socially and athletically."*



1996 Hawkeye Olympians Kris Fillat, Marcia Pankratz, Andrea Wieland and Liz Tchou.



# FIELD HOCKEY

## 2007 Opponents

### Wake Forest

August 25

Big Ten/ACC Challenge - Ann Arbor, MI

Location.....Winston-Salem, North Carolina  
 Founded.....1834  
 Athletic Director.....Ron Wellman  
 Colors.....Old Gold & Black  
 Nickname.....Demon Deacons  
 Conference.....Atlantic Coast  
 2006 Record.....22-2  
 2006 Conference Record.....4-1/T-1st  
 Head Coach.....Jennifer Averill  
 Alma Mater/Year.....Northwestern/1987  
 Record at UNC/Years.....219-91-3/15  
 Career Record/Years.....239-123-6/18  
 Series Record.....Wake Forest leads 6-1  
 Field Hockey SID.....Jen Landes  
 Office Phone.....(336)758-5842

### William & Mary

September 3

Durham, NC

Location.....Williamsburg, Virginia  
 Founded.....1693  
 Athletic Director.....Terry Driscoll  
 Colors.....Green, Gold and Silver  
 Nickname.....Tribe  
 Conference.....Colonial Athletic Association  
 2006 Record.....10-9  
 2006 Conference Record.....4-4/T-4th  
 Head Coach.....Peel Hawthorne  
 Alma Mater/Year.....William & Mary/1980  
 Record at William & Mary/Years.....232-165-2/20  
 Career Record/Years.....263-182-5/24  
 Series Record.....0-0  
 Field Hockey SID.....Kris Sears  
 Office Phone.....(757)221-3368

### Fairfield

September 15

Fairfield, CT

Location.....Fairfield, Connecticut  
 Founded.....1942  
 Athletic Director.....Eugene P. Doris  
 Colors.....Red and White  
 Nickname.....Stags  
 Conference.....Northeast  
 2006 Record.....6-13  
 2006 Conference Record.....4-4/T-5th  
 Head Coach.....Jackie Kane  
 Alma Mater/Year.....Fairfield/1987  
 Record at Stanford/Years.....92-145/12  
 Career Record/Years.....Same  
 Series Record.....0-0  
 Field Hockey SID.....Jack Jones  
 Office Phone.....(203)254-4116

### North Carolina

August 26

Big Ten/ACC Challenge - Ann Arbor, MI

Location.....Chapel Hill, North Carolina  
 Founded.....1789  
 Athletic Director.....Dick Baddour  
 Colors.....Carolina Blue and White  
 Nickname.....Tar Heels  
 Conference.....Atlantic Coast  
 2006 Record.....13-9  
 2006 Conference Record.....1-4/6th  
 Head Coach.....Karen Shelton  
 Alma Mater/Year.....West Chester/1979  
 Record at UNC/Years.....424-125-9/26  
 Career Record/Years.....Same  
 Series Record.....UNC leads 18-1  
 Field Hockey SID.....Dana Gelin  
 Office Phone.....(919)962-0083

### Louisville

September 7

Iowa City, IA

Location.....Louisville, Kentucky  
 Founded.....1798  
 Athletic Director.....Tom Jurich  
 Colors.....Red, Black and White  
 Nickname.....Cardinals  
 Conference.....Big East  
 2006 Record.....12-8  
 2006 Conference Record.....5-1/1st  
 Head Coach.....Pam Bustin  
 Alma Mater/Year.....Massachusetts/1990  
 Record at Louisville/Years.....100-91/9  
 Career Record/Years.....109-99/10  
 Series Record.....Louisville leads 3-1  
 Field Hockey SID.....Lori Korte  
 Office Phone.....(502)852-3086

### Sacred Heart

September 16

Fairfield, CT

Location.....Fairfield, Connecticut  
 Founded.....1939  
 Athletic Director.....Mike Lynch  
 Colors.....Scarlet and White  
 Nickname.....Terriers  
 Conference.....American East  
 2005 Record.....16-6  
 2005 Conference Record.....4-1/T-1st  
 Head Coach.....Sally Starr  
 Alma Mater/Year.....Ursinus/1978  
 Record at Boston/Years.....298-188-19/25  
 Career Record/Years.....314-201-22/27  
 Series Record.....6-0  
 Field Hockey SID.....Brian Kelley  
 Office Phone.....(617)353-2872

### Duke

September 2

Durham, NC

Location.....Durham, North Carolina  
 Founded.....1838  
 Athletic Director.....Joe Alleva  
 Colors.....Royal Blue and White  
 Nickname.....Blue Devils  
 Conference.....Atlantic Coast  
 2006 Record.....16-6  
 2006 Conference Record.....3-2/3rd  
 Head Coach.....Beth Bozman  
 Alma Mater/Year.....Trenton State/1976  
 Record at Duke/Years.....72-20/4  
 Career Record/Years.....275-97-6/20  
 Series Record.....Duke Leads 3-1  
 Field Hockey SID.....Maegan Azpiazu  
 Office Phone.....(919)684-3328

### Missouri State

September 9

Iowa City, IA

Location.....Springfield, Missouri  
 Founded.....1905  
 Athletic Director.....Bill Rowe  
 Colors.....Maroon and White  
 Nickname.....Bears  
 Conference.....Mid-America  
 2006 Record.....5-13  
 2006 Conference Record.....1-9/6th  
 Head Coach.....Dawn Porter  
 Alma Mater/Year.....Maine/1997  
 Record at Missouri State/Years.....70-102/9  
 Career Record/Years.....Same  
 Series Record.....Iowa leads 20-5-1  
 Field Hockey SID.....Bridgette Robles  
 Office Phone.....(417)836-5402

### Michigan

September 21

Ann Arbor, MI

Location.....Ann Arbor, Michigan  
 Founded.....1817  
 Athletic Director.....Bill Martin  
 Colors.....Maize and Blue  
 Nickname.....Wolverines  
 Conference.....Big Ten  
 2005 Record.....11-9  
 2005 Conference Record.....4-2  
 Head Coach.....Nancy Cox  
 Alma Mater/Year.....Eastern Michigan/1986  
 Record at Michigan/Years.....27-17/2  
 Career Record/Years.....Same  
 Series Record.....Iowa leads 36-13  
 Field Hockey SID.....Leah Howard  
 Office Phone.....(734)763-4423

# FIELD HOCKEY

2007 Opponents



## Central Michigan

September 23  
Mt. Pleasant, MI

Location.....Mt. Pleasant, Michigan  
Founded.....1892  
Athletic Director.....Dave Heeke  
Colors.....Maroon and Gold  
Nickname.....Chippewas  
Conference.....Mid-American  
2006 Record.....11-10  
2006 Conference Record.....6-4/T-2nd  
Head Coach.....Christy Freese  
Alma Mater/Year.....Ohio State/1980  
Record at Central Michigan/Years.....169-226-6/21  
Career Record/Years.....177-233-7/22  
Series Record.....Iowa leads 3-0  
Field Hockey SID.....Jackie Driscoll  
Office Phone.....(989)774-3277

## Providence

October 6  
Evanston, IL

Location.....Providence, Rhode Island  
Founded.....1917  
Athletic Director.....Robert G. Driscoll, Jr.  
Colors.....Black, White & Silver  
Nickname.....Friars  
Conference.....Big East  
2006 Record.....18-4  
2006 Conference Record.....5-1/T-1st  
Head Coach.....Diane Madl  
Alma Mater/Year.....Connecticut/1989  
Record at Providence/Years.....50-50/6  
Career Record/Years.....Same  
Series Record.....Iowa leads 3-0  
Field Hockey SID.....Jennifer Rynearson  
Office Phone.....(401)865-2208

## Michigan State

October 27  
Iowa City, IA

Location.....East Lansing, Michigan  
Founded.....1855  
Athletic Director.....Ron Mason  
Colors.....Green and White  
Nickname.....Spartans  
Conference.....Big Ten  
2006 Record.....8-12  
2006 Conference Record.....1-5/T-6th  
Head Coach.....Rolf van de Kerkhof  
Alma Mater/Year.....Fonty's Hogeschool-Tilburg/1996  
Record at Michigan State/Years.....8-12/1  
Career Record/Years.....Same  
Series Record.....Iowa leads 41-8-1  
Field Hockey SID.....TBA  
Office Phone.....(517)355-2271

## Indiana

September 30  
Iowa City, IA

Location.....Bloomington, Indiana  
Founded.....1820  
Athletic Director.....Rick Greenspan  
Colors.....Cream and Crimson  
Nickname.....Hoosiers  
Conference.....Big Ten  
2006 Record.....14-5  
2006 Conference Record.....4-2/T-2nd  
Head Coach.....Amy Robertson  
Alma Mater/Year.....UMass/1988  
Record at Indiana/Years.....59-69/7  
Career Record/Years.....Same  
Series Record.....Iowa Leads 8-5  
Field Hockey SID.....Ashley Thornburg  
Office Phone.....(812)855-4770

## Ohio State

October 14  
Columbus, OH

Location.....Columbus, Ohio  
Founded.....1870  
Athletic Director.....Eugene Smith  
Colors.....Scarlet and Gray  
Nickname.....Buckeyes  
Conference.....Big Ten  
2006 Record.....15-4  
2006 Conference Record.....5-1/1st  
Head Coach.....Anne Wilkinson  
Alma Mater/Year.....Delaware/1986  
Record at Ohio State/Years.....136-82/11  
Career Record/Years.....215-165-8/20  
Series Record.....Iowa leads 41-9-1  
Field Hockey SID.....Courtney Walerius  
Office Phone.....(614)292-0088

## Northwestern

October 5/October 25  
Evanston, IL/Iowa City, IA

Location.....Evanston, Illinois  
Founded.....1851  
Athletic Director.....Mark Murphy  
Colors.....Purple and White  
Nickname.....Wildcats  
Conference.....Big Ten  
2006 Record.....7-12  
2006 Conference Record.....1-5/T-6th  
Head Coach.....Kelly McCollum  
Alma Mater/Year.....Northwestern/1995  
Record at Northwestern/Years.....21-36/3  
Career Record/Years.....Same  
Series Record.....Iowa leads 45-19-4  
Field Hockey SID.....Andrew Tanker  
Office Phone.....(847)491-8800

## Penn State

October 20  
Iowa City, IA

Location.....University Park, Pennsylvania  
Founded.....1855  
Athletic Director.....Tim Curley  
Colors.....Blue and White  
Nickname.....Nittany Lions  
Conference.....Big Ten  
2006 Record.....16-6  
2006 Conference Record.....4-2/T-2nd  
Head Coach.....Char Morett  
Alma Mater/Year.....Penn State/1979  
Record at Penn State/Years.....326-114-8/20  
Career Record/Years.....363-130-16/23  
Series Record.....Iowa leads 21-17-2  
Field Hockey SID.....Matt Beltz  
Office Phone.....(814)865-1757







# FIELD HOCKEY

## Why Iowa?



*"From the first day that I walked on the campus of the University of Iowa, I knew I had found a home away from home. I am honored and proud to be given the opportunity to wear black and gold and be part of the great Hawkeye tradition. It is here that I have learned what being a Hawkeye means - strong values, goals and commitments to my teammates and coaches which has made a strong, successful family. I look forward to the upcoming seasons and growing as a person and player. I have been fortunate enough to have experienced Iowa's athletics, academics and developed many close friendships which will influence who I am for the rest of my life."*

**Meghan Beamesderfer**  
**Sophomore - Lititz, Pennsylvania**

*"I chose to come to Iowa because of the overall supportive atmosphere for student-athletes. Every Hawkeye seems to bleed black and gold. This amazing group of girls and their competitive spirit is something I am extremely grateful to be a part of."*

**Tricia Dean**  
**Sophomore - Bear, Delaware**



*"When I first came to Iowa City, I knew right away that it was the place for me. After meeting the team and the coaches I could not imagine myself any other place. The Hawks are a family, a home away from home. The passion we all share for field hockey is unlike any other I've ever encountered. We are a small group determined to be the best, not only on the field, but in the classroom, in the weightroom, and in our lives. I have learned so much from this outstanding group of people, it would be harder for me to imagine Why Not Iowa?"*

**Kadi Sichel**  
**Senior - Plaistow, New Hampshire**

# FIELD HOCKEY

Why Iowa?



*"Being a Hawkeye is one of the greatest achievements of my life. It has instantly become the greatest privilege that I could have received. I love the team relationship and their constant intensity. Their love for the game is completely contagious, and they are the type that will make any workout worthwhile. This is an awesome group of people and I am extremely honored to be on the same field as them."*

**Caroline Blaum**  
Junior - Wilkes-Barre, Pennsylvania



*"For me, being a Hawkeye can be defined by only one word: PRIDE. This team has earned the respect and interest of many fans because they function together; like a well-oiled machine on the field and like a family off of the field. The opportunity to be a part of something that is so much more powerful than yourself cannot be passed up or overlooked. These girls and coaches give you a sense of belonging that is insurmountable at times. You can only achieve great things when you are a part of a team as proud as Iowa Field Hockey."*

**Sarah Pergine**  
Freshman - Collegeville, Pennsylvania

*"When I decided to come to Iowa, I became a Hawkeye forever. Players, coaches, and staff - past and present, have surrounded me with the tools that are necessary to strive for achieving tasks that some may see as impossible. At Iowa, I see it as another daily task; where one step at a time is completing a goal within itself. I love the way that the team continues to grow with every opportunity it encounters and the way that our relationships are able to develop so quickly. It is simply difficult to explain Iowa in words but in my heart, it has been home."*

**Lissa Munley**  
Sophomore - Mountain Top, Pennsylvania





# FIELD HOCKEY

Hawkeyes in the Classroom

## Iowa Field Hockey is Tops on the Field AND in the Classroom

### 2006-07 Hawkeye Academic Record

- Three members of the Academic All-Big Ten team
- Four members of the National Field Hockey Coaches Association Division I National Academic Squad
- 11 of the 17 members of the 2006 team had a GPA over 3.0
- Team cumulative GPA over 3.0
- 47% of the student-athletes at Iowa earned GPA over 3.0



Lauren Pfeiffer



Lissa Munley



Tricia Dean





The 2006 season began on a sour note. During an exhibition game against Missouri State, junior Caroline Blaum went down with a knee injury in pre-game warm-up. She was forced to sit out the entire season. With Blaum on the sidelines encouraging her teammates, the Hawkeyes wasted no time diving into a brutal schedule.

The No. 12 Iowa Hawkeyes opened their season in Chapel Hill, NC, at the Big Ten/ACC Challenge. Wake Forest, ranked second, attacked a young Iowa team in a 6-0 shutout. The Hawkeyes then lost to No. 5 North Carolina 2-1.

When Head Coach Tracey Griesbaum and her team returned to Grant Field to take on Kent State, the outcome was much different. The Hawkeyes overpowered the Golden Flashes 5-1. Caitlin McCurdy tallied a goal and two assists in the win. Duke University was next up at Grant Field. The Blue Devils, ranked third, defeated Iowa in overtime 3-2 with McCurdy scoring both Iowa goals. At weeks end, McCurdy tallied two goals along with two assists to earn her third career Big Ten Athlete of the Week honor.

A trip to West Chester was up next for the Black and Gold. First, the Hawkeyes were upset by Villanova 5-1. Iowa then defeated West Chester 2-0. Back-up goalkeeper Melissa Helsel recorded her first career start and shutout.

Stanford visited Grant Field only to lose, 2-1. Later in the week, Griesbaum and her squad traveled to Providence, RI, to play a pair of games. Iowa triumphed over Boston University 4-1, with four different Hawkeyes scoring. Next, they beat Providence 1-0. Goalkeeper Lissa Munley recorded her second career shutout.

The Black and Gold opened Big Ten play with a pair of overtime losses at Grant Field. The Hawkeyes were defeated by Michigan (2-1) and No. 6 Ohio State (4-3). Kara Zappone scored two goals in the Ohio State loss. The Ohio State game marked the rededication of Grant Field in honor of Dr. Christine Grant.

Iowa lowered its conference record to 0-3 after a 2-1 loss to No. 12 Indiana. But, the Hawkeyes got back on track with a three game winning stretch against Northwestern twice (3-1, 2-1) and Michigan State (2-1). The Michigan State game was a battle, but the Hawkeyes prevailed in double overtime. McCurdy scored both of the Iowa goals.

The Hawkeyes finished the regular season with a pair of road games against No. 7 Penn State and No. 11 Louisville. Iowa lost a close contest to Penn State (1-0) but bounced back against Louisville (2-1).

Griesbaum and the Hawkeyes entered the Big Ten Tournament seeded fifth. First, the Hawkeyes were paired against No. 15 Michigan. Lauren Pfeiffer scored both goals in a 2-1 victory. Next, the Hawkeyes played regular-season champion Ohio State. The Hawkeyes prevailed 2-0. Munley, recorded her second shut-out of the season while McCurdy and Pfeiffer each scored goals. The championship game matched the Hawkeyes with sixth-ranked Penn State. Pfeiffer was, once again, unstoppable. She scored both goals in the 2-1 victory, leading Iowa to its first Big Ten Tournament title since 1994. Pfeiffer, no surprise, was named Big Ten Tournament MVP after recording five goals in just three games.

Winning the Big Ten Tournament gained the Hawkeyes a spot in their 18th NCAA Tournament. Iowa traveled to Winston-Salem, NC, and matched up with No. 10 Virginia. The Cavaliers ended the Hawkeye season via a 1-0 loss.

### POSTSEASON AWARDS

Once again, the Hawkeyes had many players honored nationally, regionally and in the conference.

Heather Schnepf led the award winners by being named first team all-American, unanimous first team all-Big Ten for the second straight year and recognized as the Big Ten Defensive Player of the Year for the second time. She is only the third player in conference history to win the award in back-to-back years. Schnepf was also named Iowa's Most Valuable Player by her teammates.

Caitlin McCurdy and Kadi Sickel were second team all-Big Ten selections. Sickel was named to the womensfieldhockey.com third all-America team and was a regional all-American.

Meghan Beamesderfer was named Big Ten Freshman of the Year, regional all-American and was voted Practice Player of the Year by her teammates.

Lauren Pfeiffer was a regional all-American, Big Ten Most Valuable Player and was National Player of the Week (Nov. 7) by womensfieldhockey.com for her efforts during the Big Ten Tournament.

Kara Zappone recieved the Big Ten Sportsmanship award.

Other team awards included the Dr. Christine Grant Leadership Award, which was presented to Caroline Blaum. Blaum and Adrienne Dybus received the Nancy McLinden Carr Award in honor of their enthusiasm, energy and positive attitude.





# FIELD HOCKEY

2006 Statistics

## 2006 OVERALL STATISTICS

### Scoring

No.	Player	Yr	GP	GS	Shots	Shot%	Goals	Assists	Points	DS	GWG	PS	Career				
													GP	Sh	G	A	Pts
17	Lauren Pfeiffer	So.	21	21	76	.132	10	2	22	0	4	3-3	39	121	18	4	40
5	Caitlin McCurdy	So.	21	21	75	.133	10	2	22	0	3	0-0	39	140	21	8	50
8	Heather Schnepf	Sr.	21	21	26	.154	4	9	17	1	1	0-0	71	92	11	13	35
24	Kara Zappone	Sr.	21	21	16	.250	4	0	8	0	1	0-0	57	49	13	3	29
9	Lindsey Duffy	So.	19	11	11	.273	3	0	6	0	1	0-0	32	18	3	0	6
11	Kelly Hondros	Fr.	20	10	10	.100	1	1	3	0	0	0-0	20	10	1	1	3
16	Kadi Sickel	Jr.	21	21	8	.375	3	12	18	0	0	0-0	60	29	13	12	38
21	Tricia Dean	Fr.	21	21	7	.143	1	0	2	0	0	0-0	21	7	1	0	2
13	Jess Werley	Fr.	21	20	7	.000	0	0	0	0	0	0-0	21	7	0	0	0
2	Roz Ellis	So.	21	21	7	.143	1	1	3	0	1	0-0	39	12	2	1	5
7	Katie Naughton	So.	21	1	5	.200	1	0	2	0	0	0-0	39	28	6	1	13
19	Adrienne Dybus	Jr.	16	0	3	.000	0	0	0	0	0	0-0	29	6	0	1	2
10	Sarah Stark	Fr.	12	0	3	.000	0	0	0	0	0	0-0	12	3	0	0	0
15	Meghan Beamesderfer	Fr.	21	21	3	.000	0	2	2	0	0	0-0	21	3	0	2	2
<b>Iowa Totals</b>					<b>257</b>	<b>.148</b>	<b>38</b>	<b>29</b>	<b>105</b>	<b>1</b>	<b>11</b>	<b>3-3</b>					

### Goalkeeping

No.	Player	Yr	Season								Career					
			GP	GS	Sv	GA	Sho	Sv%	GAA	Min	Rec	GP	Sv	GA	Sv%	GAA
6	Lissa Munley	So.	20	20	78	36	2	.684	2.20	1471:07	22-17	39	155	71	.686	2.08
32	Melissa Helsel	Fr.	1	1	3	0	1	1.000	0.00	70:00	1-0	1	7	1	1.000	0.00
Iowa Totals					81	36	3	.692	2.10	1541:07						

### Iowa Team Totals By Period

	1	2	OT	2OT	Total
Goals Scored	17	19	1	1	38
Shots Taken	120	121	10	2	253
Goalkeeper Saves	40	39	2	0	81
Penalty Corners	58	72	3	1	134

### Opponent Totals By Period

	1	2	OT	2OT	Tot
Goals Scored	13	20	3	0	36
Shots Taken	98	123	10	0	231
Goalkeeper Saves	57	52	6	0	115
Penalty Corners	60	73	6	0	139

## 2006 BIG TEN STATISTICS

### Scoring

No.	Player	Yr	GP	GS	Shots	Shot %	Goals	Assists	Points	DS	GWG	PS	Career				
													GP	Sh	G	A	Pts
17	Lauren Pfeiffer	So.	6	6	27	.074	2	1	5	0	0	0-0	12	34	2	2	6
5	Caitlin McCurdy	So.	6	6	16	.188	3	0	6	0	1	0-0	12	41	10	0	20
8	Heather Schnepf	Sr.	6	6	8	.125	1	1	3	1	1	0-0	23	28	2	2	6
24	Kara Zappone	Sr.	6	6	6	.333	2	0	4	0	0	0-0	21	15	4	0	8
16	Kadi Sickel	Jr.	6	6	5	.200	1	2	4	0	0	0-0	18	13	6	2	14
9	Lindsey Duffy	So.	6	4	4	.250	1	0	2	0	0	0-0	8	4	1	0	2
11	Kelly Hondros	So.	6	3	4	.000	0	0	0	0	0	0-0	6	4	0	0	0
2	Roz Ellis	So.	6	6	3	.143	0	0	0	0	0	0-0	12	3	0	0	0
19	Adrienne Dybus	Jr.	6	0	3	.000	0	0	0	0	0	0-0	11	3	0	1	1
13	Jess Werley	Fr.	6	5	2	.000	0	0	0	0	0	0-0	6	2	0	0	0
15	Meghan Beamesderfer	Fr.	6	6	2	.000	0	1	1	0	0	0-0	6	2	0	1	1
21	Tricia Dean	Fr.	6	6	1	.000	0	0	0	0	0	0-0	6	1	0	0	0
7	Katie Naughton	So.	6	0	0	.000	0	0	0	0	0	0-0	12	4	0	0	0
10	Sarah Stark	Fr.	4	0	1	.000	0	0	0	0	0	0-0	4	1	0	0	0
<b>Iowa Totals</b>					<b>82</b>	<b>.190</b>	<b>10</b>	<b>5</b>	<b>25</b>	<b>1</b>	<b>2</b>	<b>0-0</b>					

### Goalkeeping

2006 Season											Career					
No.	Player	Yr	GP	GS	Sv	GA	Sho	Sv%	GAA	Min	Rec	GP	Sv	GA	Sv%	GAA
6	Lissa Munley	So.	6	6	26	11	0	.703	2.09	473:39	5-7	12	62	25	.713	1.94
Iowa Totals					26	11	0	.703	2.09	473:39						

### Iowa Team Totals By Period

	1	2	OT	2OT	Total
Goals Scored	4	5	0	1	10
Shots Taken	35	37	9	2	83
Goalkeeper Saves	18	7	1	0	26
Penalty Corners	16	23	2	1	42

### Opponent Totals By Period

	1	2	OT	2OT	Tot
Goals Scored	5	4	2	0	11
Shots Taken	31	20	7	0	58
Goalkeeper Saves	17	16	6	0	39
Penalty Corners	22	16	5	0	43

# FIELD HOCKEY

2006 Statistics



## 2006 SEASON RESULTS

Date	Opponent	Site	W/L	Goals Scored		Corners		Overall Record	Big Ten Record	Scorer	Assists	GK/Saves
				Iowa	Opp.	Iowa	Opp.					
8/26	#2 Wake Forest (Big Ten/ACC Challenge)	Durham, NC	L	0	6	0	6	0-1	0-0	-	-	Munley/4
8/27	#5 North Carolina (Big Ten/ACC Challenge)	Durham, NC	L	1	2	4	6	0-2	0-0	McCurdy	Sickel/Schnepf	Munley/5
9/1	<b>Kent State</b>	<b>Iowa City, IA</b>	<b>W</b>	<b>5</b>	<b>1</b>	<b>18</b>	<b>2</b>	<b>1-2</b>	<b>0-0</b>	Dean Duffy McCurdy Duffy Sickel McCurdy McCurdy	- McCurdy - McCurdy - Sickel, Schnepf Sickel, Schnepf	Munley/0
9/3	<b>#3 Duke</b>	<b>Iowa City, IA</b>	<b>L (OT)</b>	<b>2</b>	<b>3</b>	<b>5</b>	<b>10</b>	<b>1-3</b>	<b>0-0</b>	McCurdy McCurdy	Sickel, Schnepf Sickel, Schnepf	Munley/7
9/9	Villanova	West Chester, PA	L	1	5	6	8	1-4	0-0	Zappone	Sickel, Schnepf	Munley/6
9/10	West Chester	West Chester, PA	W	2	0	6	2	2-4	0-0	Zappone Schnepf Ellis	Schnepf Ellis	Helsel/3
9/13	<b>Stanford</b>	<b>Iowa City, IA</b>	<b>W</b>	<b>2</b>	<b>1</b>	<b>6</b>	<b>4</b>	<b>3-4</b>	<b>0-0</b>	Pfeiffer	Sickel, Schnepf	Munley/2
9/16	Boston University	Providence, RI	W	4	2	4	5	4-4	0-0	Sickel Schnepf Pfeiffer McCurdy Zappone Pfeiffer	- Sickel (Stroke) Pfeiffer - - - Sickel	Munley/1
9/17	#16 Providence	Providence, RI	W	1	0	12	6	5-4	0-0	Zappone	-	Munley/4
9/22	<b>Michigan</b>	<b>Iowa City, IA</b>	<b>L (OT)</b>	<b>1</b>	<b>2</b>	<b>10</b>	<b>7</b>	<b>5-5</b>	<b>0-1</b>	Pfeiffer	Sickel	Munley/6
9/24	<b>#6 Ohio State</b>	<b>Iowa City, IA</b>	<b>L (OT)</b>	<b>3</b>	<b>4</b>	<b>8</b>	<b>13</b>	<b>5-6</b>	<b>0-2</b>	Duffy Zappone Zappone Sickel McCurdy Schnepf Pfeiffer	- - - - - - Sickel, Schnepf	Munley/7
9/29	#12 Indiana	Bloomington, IN	L	1	2	5	2	5-7	0-3	Sickel	-	Munley/3
10/8	<b>Northwestern</b>	<b>Iowa City, IA</b>	<b>W</b>	<b>3</b>	<b>1</b>	<b>8</b>	<b>3</b>	<b>6-7</b>	<b>1-3</b>	McCurdy Schnepf Pfeiffer	Beamesderfer - Sickel, Schnepf	Munley/2
10/14	Michigan State	East Lansing, MI	W (2OT)	2	1	4	9	7-7	2-3	McCurdy McCurdy Naughton Ellis	- Pfeiffer Beamesderfer -	Munley/4
10/22	Northwestern	Evanston, IL	W	2	1	6	5	8-7	2-3	-	-	Munley/0
10/27	#7 Penn State	University Park, PA	L	0	1	7	9	8-8	2-4	-	-	Munley/4
10/29	#11 Louisville	Louisville, KY	W	2	1	4	10	9-8	2-4	Hondros Pfeiffer Pfeiffer Pfeiffer McCurdy Pfeiffer Pfeiffer	- Sickel Schnepf Sickel, Schnepf Hondros (Stroke) Sickel, Schnepf (Stroke)	Munley/7
11/3	#15 Michigan (Big Ten Tournament)	Ann Arbor, MI	W (OT)	2	1	7	9	10-8	2-4	-	-	Munley/6
11/4	#5 Ohio State (Big Ten Tournament)	Ann Arbor, MI	W	2	0	1	10	11-8	2-4	-	-	Munley/3
11/5	#6 Penn State (Big Ten Tournament)	Ann Arbor, MI	W	2	1	7	8	12-8	2-4	-	-	Munley/2
11/11	#10 Virginia (NCAA Tournament)	Winston-Salem, NC	L	0	1	2	5	12-9	2-4	-	-	Munley/5







# FIELD HOCKEY

## Championship Teams



**1982 Big Ten Regular Season Champions**  
21-2 Overall, 6-0 Big Ten  
Iowa's first NCAA Tournament, Elite Eight



**1983 Big Ten Regular Season Co-Champions**  
19-3-2 Overall, 9-1 Big Ten  
NCAA Tournament Elite Eight



**1984 NCAA Tournament Runner-up**  
Big Ten Regular Season Runner-up  
17-5-3 Overall, 8-1-1 Big Ten



**1986 NCAA Champions**  
Big Ten Regular Season Champions  
19-2-1 Overall, 9-1 Big Ten

**1987 Big Ten Regular Season Champions**  
17-5-2 Overall, 8-0-2 Big Ten  
NCAA Tournament Final Four (Fourth Place)  
(Picture Unavailable)



**1988 NCAA Tournament Runner-up**  
Big Ten Regular Season Runner-up  
19-6 Overall, 6-2 Big Ten



**1989 MCFHC Regular Season Champions**  
19-2-2 Overall, 9-0-1 MCFHC  
NCAA Tournament Final Four



**1990 MCFHC Regular Season Champions**  
20-4 Overall, 9-1 MCFHC  
NCAA Tournament Final Four (Third Place)



**1991 MCFHC Regular Season Champions**  
17-2-1 Overall, 10-0 MCFHC  
NCAA Tournament Elite Eight



# FIELD HOCKEY

## Championship Teams



**1992 NCAA Tournament Runner-up**  
Big Ten Regular Season Champions  
20-1 Overall, 10-0 Big Ten



**1996 Big Ten Regular Season Champions**  
18-3 Overall, 10-0 Big Ten  
NCAA Elite Eight



**1993 Big Ten Regular Season Runner-up**  
18-4 Overall, 8-2 Big Ten  
NCAA Tournament Final Four



**1999 Big Ten Regular Season Champions**  
19-3 Overall, 9-1 Big Ten  
NCAA Final Four



**1994 Big Ten Tournament Champions**  
15-8 Overall, 6-4 Big Ten  
NCAA Tournament Final Four



**2004 Big Ten Regular Season Co-Champions**  
13-8 Overall, 5-1 Big Ten  
NCAA Tournament



**1995 Big Ten Regular Season Champions**  
16-4 Overall, 10-0 Big Ten  
NCAA Tournament Elite Eight



**2006 Big Ten Tournament Champions**  
12-9 Overall, 2-4 Big Ten  
NCAA Tournament



# FIELD HOCKEY

## All-Time Letterwinners

<b>-A-</b>			Stephanie Height	1978-81	Owego, NY	Nancy Peters	1977-78	Richmond, VA
Amy Aaronson	1990-93	El Macero, CA	Megan Heise	2005	Chilliwack, B.C.	<b>Lauren Pfeiffer</b>	<b>2005-</b>	<b>Mt. Laurel, NJ</b>
Mandy Abblitt	1993-96	Wilmington, DE	<b>Melissa Helsel</b>	<b>2005-</b>	<b>Elizabethtown, PA</b>	<b>-R-</b>		
Betsy Albert	1978-79	Huntington Station, NY	Kim Hermann	1982-86	Lake Forest, IL	Whitney Raffo	2004	Chatham, NJ
Pamela Asselmeier	1979-82	Glenn Ellyn, IL	Kelly Hondros	2006	Columbus, OH	Erica Richards	1986-90	Pennsauken, NJ
<b>-B-</b>			Erica Houck	2003	Fleetwood, PA	Emily Rinde-Thorsen	2000-02	Newport, RI
Carol Barr	1979-83	Endwell, NY	Kristen Holmes	1992-96	Raynham, MA	Deb Robertson	1985-89	Garden Grove, CA
Carolyn Bartley	1987-89	Cranbury, NJ	Debbie Humpage	1991-95	Cheshire, CT	Katie Rhodes	2004	Emmaus, PA
<b>Meghan Beamesderfer</b>	<b>2006-</b>	<b>Lititz, PA</b>	Suzanne Humphrey	1977-79	Slingerlands, NY	Shelby Roche	2002-05	Escondido, CA
Joan Behrends	1982-86	Mahopac, NY	Katelyn Hurton	1996-97	Lynnfield, MA	Leticia Rodriguez	1978-82	Iowa City, IA
Debbie Birrell	2002-05	Shelbyville, KY	<b>-I-</b>			Jamie Rofrano	1989-93	Medford Lakes, NJ
<b>Caroline Blaum</b>	<b>2003-</b>	<b>Wilkes-Barre, PA</b>	Lesley Irvine	1999	Northants, England	Saleema Rogers	1999-02	Oak Park, IL
Sarah Jane Bowe	1977-78	Fargo, ND	<b>-K-</b>			<b>-S-</b>		
Deborah Brickey	1982-86	St. Louis, MO	Theresa Kennedy	1990-91	Silver Springs, MD	RosAnna Salcido	1983-87	Baldwin Park, CA
Holly Brock	1996	Rehoboth Beach, DE	Shirley Kessler	1988-90	San Diego, CA	Melanie Sanders	1986-87	Robeson, PA
Susan Brooks	1986-87	Cedar Rapids, IA	Aimee Klapach	1990-94	Medford, NJ	Melissa Sanders	1986-90	Robeson, PA
Peggy Brown	1977-78	Arlington, VA	Mary Koboldt	1982-86	St. Louis, MO	Vicky Sax	1982-85	Vestal, NY
Heather Bryant	1990-94	Northcrest, DE	Frederique Koch	1986-87	Soirle, Netherlands	Jennifer Schmidt	1996	Robeson, PA
Tiffany Bybel	1990-94	Millville, NJ	Mary Kraybill	1991-95	Bow, NH	Heather Schnepf	2003-06	Medford Lakes, NJ
Suzanne Bury	1979-83	Delcano, NJ	Leslie Krebs	1978-82	Winnetka, IL	M.B. Schwarze	1977-82	Lake Bluff, IL
<b>-C-</b>			Jessica Krochmal	1993-95	Bow, NH	Carol Scherbaum	1978-79	Woodstock, IL
Jean Carlson	1977-79	Auburn, MA	<b>-L-</b>			Jennifer Scott	1980-82	Oak Park, IL
Gina Carr	1998-01	Milford, PA	Adria LaSavage	1999-02	Ann Arbor, MI	Carla Seltzer	1977-79	Schamburg, IL
Mary Casabian	1993-96	Bridgewater, MA	Donna Lee	1979-83	Mattapan, MA	Cindy Skordas	1987-90	San Diego, CA
Lisa Cellucci	1994-98	Broomall, PA	Carolyn Lee	1999-02	San Deigo, CA	<b>Kadi Sickel</b>	<b>2004-</b>	<b>Plaistow, NH</b>
Dawn Chamberlin	1981-85	North Hills, PA	Tiffany Leister	1999-02	Oley, PA	Kelly Slattery	2003-05	St. Louis, MO
Gesa Clasen	1986-87	Hamburg, Germany	Tammy Leister	2001-04	Oley, PA	Emily Smith	1992-96	Lakewood, CO
Lindsay Coile	1994-95	Mountain Top, PA	Kerry Lessard	1995-98	Watertown, MA	Karen Smith	1977-78	Waterloo, IA
<b>-D-</b>			Diane Loosbrook	1985-89	San Diego, CA	Rachel Smith	1992-94	Plymouth, MA
Natalie Dawson	1997-99	Berlin, NJ	Sue Lowley	1981-83	Plainfield, IL	Susan Smith	1977-79	Davenport, IA
Sarah Dawson	2001-04	Berlin, NJ	<b>-M-</b>			Lynn Stadtmueller	1980-82	Rockford, IL
Patricia Dauley	1978-82	Endwell, NY	Browyn Markell	1983-84	Garden Grove, CA	Sarah Stark	2006	Nashotah, WI
<b>Tricia Dean</b>	<b>2006-</b>	<b>Bear, DE</b>	Mitra Massih	1977-79	Council Bluffs, IA	Sonia Steffler	1996-98	Fallbrook, CA
Barbara deKanter	1987-88	Rotterdam, Neth.	Beth McCracken	1977-78	Dumont, IA	Lauren Stiver	2001-04	Amherst, NY
Bernadette Demers	1985-89	North Haverhill, NH	<b>Caitlin McCurdy</b>	<b>2005-</b>	<b>Mountain Top, PA</b>	Linda Sutton	1977-80	Palm Beach Gardens, FL
Diane DeMiro	1993-96	North Caldwell, NJ	Kitty McLinden	1994-95	Flossmoor, IL	Lisa Sweeney	1988-92	San Antonio, TX
LeAnn Detwiler	1981-85	Haddonfield, NJ	Nancy McLinden	1992-95	Flossmoor, IL	<b>-T-</b>		
Wendy DeWane	1978-82	Genesee, PA	Margot McMahon	2000, 2002-04	St. Louis, MO	Elizabeth Tchou	1984-88	Medford Lakes, NJ
Kelly Dolan	1996-99	Lincoln, RI	Charlie McNally	1977-78	Valley Cottage, NY	Anne-Marie Thomas	1979-83	Dorval, Quebec
Kelly Druley	1996-99	E. Falmouth, MA	Silke Meier	1987-88	Krefeld, West Germany	Sarah Thorn	1996-99	Audobon, PA
Karen Dowling	1977-78	Bayshore, NY	Maria Merluzzi	1998-01	Lehigh, PA	Jibs Thorson	1988-92	Pataskala, OH
<b>Lindsey Duffy</b>	<b>2005-</b>	<b>San Diego, CA</b>	Michelle Millang	1977-78	Des Moines, IA	Aileen Trender	1986-90	Harrington Park, NJ
<b>Adrienne Dybus</b>	<b>2005-</b>	<b>St. Louis, MO</b>	Anita Miller	1998-99	Lititz, PA	<b>-W-</b>		
<b>-E-</b>			Lindsay Miller	2000-03	Gap, PA	Patti Wanner	1983-87	West Lawn, PA
Lauren Edwards	1999-02	Chatham, NJ	Melissa Miller	1994-97	Palmyra, PA	Taylor Webb	2003	Port Murray, NJ
Ellen Egan	1979-84	Gibbsboro, NJ	Marcy Mills	1978-82	Dayton, OH	Kim Webster	1983-84	Katonah, NY
Susie Eldh	1977-78	Westport, CT	Diane Monkiewicz	1981-84	Collegeville, PA	Meg Weir	2000	Oklahoma City, OK
<b>Roz Ellis</b>	<b>2005-</b>	<b>Lewisburg, PA</b>	Courtney Moore	2003	Virginia Beech, VA	Caitlin Weller	2003-04	Oak Park, IL
Jessica Enoch	1992-95	Wayne, PA	Jane Morris	1977-81	Glencoe, IL	Barb Weinberg	2000-04	Louisville, KY
<b>-F-</b>			Eileen Moyer	1987-92	Collegeville, PA	<b>Jess Werley</b>	<b>2006-</b>	<b>Allentown, PA</b>
Kris Fillat	1988-93	San Diego, CA	Pam Moyer	1980-84	Palatine, IL	Laurie Westfall	1977-79	Austin, TX
Sarah Fanjul	1981-84	Haddonfield, NJ	<b>Lissa Munley</b>	<b>2005-</b>	<b>Mountain Top, PA</b>	Hope Whitcraft	1983-86	Gibbsboro, NJ
Kelly Flanagan	1977-78	Endicott, NY	Michelle Murgatroyd	1985-89	Pretoria, South Africa	Erin Walsh	1986-90	Virginia Beach, VA
Tiffany Fodera	1998-01	Allentown, NJ	<b>-N-</b>			Andrea Wieland	1987-91	Atlanta, GA
Jennifer Foley	1997	Falmouth, MA	Karen Napolitano	1984-87	Selden, NY	Arleen Wilser	1978-81	Poughkeepsie, NY
Alycyn Freet	1996-99	Palmyra, PA	<b>Katie Naughton</b>	<b>2005-</b>	<b>Goffstown, NH</b>	Michelle Wilson	1994-98	St. Louis, MO
Amy Fowler	1989-93	Voorhees, NJ	Quan Nim	1995-99	Bayside, VA	Nicole Wilson	1994-96	Gibbsboro, NJ
Cherie Freddie	1986-90	San Diego, CA	Kristi Nohelty	1992-93	San Jose, CA	<b>-V-</b>		
<b>-G-</b>			Kathy Nolan	1977-79	Davenport, IA	Patricia VanMeter	1980-82	Riverside, NJ
Michelle Gaudette	1991-93	Hummelstown, PA	<b>-O-</b>			Katherine Vella	2004	Sydney, Australia
Gloria Gibson	1980-82	Mt. Ayr, IA	Julie Osborne	1977-79	Morton Grove, IL	<b>-Z-</b>		
Susan Gibson	1997-00	Newville, PA	<b>-P-</b>			Karen Zamora	1978-79	Grimes, IA
Patricia Gillern	2000-03	Medford, NJ	Gina Palma	2000-03	New Fairfield, CT	Kara Zappone	2003-06	Queensbury, NY
Gina Glass	1977-78	Rockville, MD	Marica Pankratz	1982-86	Southboro, MA	Jessica Zosky	2000-03	Orefield, PA
Kristy Gleason	1989-94	Amesbury, MA	Ann Pare`	1992-95	Southbury, CT			
<b>-H-</b>			Tina Parrott	1985-89	San Jose, CA			
Rebekah Heavrin	2000-02	Castle Rock, CO	Annette Payne	1994-97	St. Louis, MO			

\*Current Players in **BOLD**

\*Current Players in BOLD





### Year-by-Year Goals Leaders

Year	Player	Goals
1979	Kelly Flanagan	23
1980	Anne-Marie Thomas	23
1981	Anne-Marie Thomas	24
1982	Anne-Marie Thomas	28
1983	Ellen Egan (Led Nation)	42
1984	Marcia Pankratz	26
1985	Marcia Pankratz	25
1986	Liz Tchou	15
	RosAnna Salcido	15
1987	Liz Tchou	30
1988	Erica Richards	27
1989	Kristy Gleason	27
1990	Kristy Gleason	33
1991	Heather Bryant	21
1992	Kristy Gleason	39
1993	Kristy Gleason	33
1994	Debbie Humpage	14
1995	Diane DeMiro	18
1996	Diane DeMiro	19
1997	Kerry Lessard	25
1998	Kerry Lessard	23
1999	Lesley Irvine	17
2000	Tiffany Fodera	10
2001	Sarah Dawson	10
2002	Pattie Gillern	6
	Tiffany Leister	6
2003	Pattie Gillern	15
2004	Sarah Dawson	12
2005	Caitlin McCurdy	11
2006	Caitlin McCurdy	10
	Lauren Pfeiffer	10

### Single Season Team

Most Goals in a Season
91 in 1985 (24 games)
Best Goals Scored Average in a Season
3.86 in 1992 (21 games, 81 goals)
Best Goals Against Average in a Season
0.45 in 1993 (22 games, 10 goals against)
Most Shutouts
16 in 1993 (22 games)
Fewest Goals Allowed
10 in 1993 (22 games)
Most Wins in a Season
25 in 1981 (31 games)
Fewest Losses in a Season
1 in 1992 (21 games)
Most Losses in a Season
10 in 1997 (18 games)
Most Opponent Shutouts in a Season
6 in 1994 (23 games)
Fewest Opponent Shutouts in a Season
0 in 1984, 1991, 1996
Most Goals Allowed in a Season
42 in 1997 (18 games)
Longest Winning Streak
20 in 1992
Most Consecutive Games Without a Loss
21 in 1989
Most Iowa Goals Scored in a Single Game
14 (14-0) vs. Michigan, 1985
Most Goals Allowed in a Single Game
10 vs. Bemidji State, 1977

### Year-by-Year Points Leaders

Year	Player	Points
1980	Anne-Marie Thomas	55
1981	Anne-Marie Thomas	57
1982	Anne-Marie Thomas	66
1983	Ellen Egan	91
1984	Marcia Pankratz	57
1985	Marcia Pankratz	55
1986	RosAnna Salcido	38
1987	Liz Tchou	65
1988	Erica Richards	57
1989	Kristy Gleason	58
1990	Kristy Gleason	69
1991	Heather Bryant	45
1992	Kristy Gleason	83
1993	Kristy Gleason	75
1994	Debbie Humpage	30
1995	Diane DeMiro	46
1996	Diane DeMiro	45
1997	Kerry Lessard	56
1998	Kerry Lessard	48
1999	Lesley Irvine	47
2000	Tiffany Fodera	20
2001	Sarah Dawson	23
2002	Pattie Gillern	14
2003	Pattie Gillern	32
2004	Sarah Dawson	34
2005	Caitlin McCurdy	28
2006	Caitlin McCurdy	22
	Lauren Pfeiffer	22

### Individual Single Game

Goals Scored
6, Kerry Lessard vs. Pacific, 9-20-97
Assists
5, Lisa Sweeney vs. N. Illinois, 10-05-91
Goalkeeper Saves
25, Andrea Wieland vs. Old Dominion, 9-21-90
Points
12, Kerry Lessard vs. Pacific, 9-20-97

### Career Assists

Rank	Player	Ast. (Years)
1	Deb Brickey	59 (1982-85)
2	Michelle Murgatroyd	57 (1984-87)
3	Jamie Rofrano	51 (1989-92)
4	Mary Kraybill	46 (1991-95)
5	Kerry Horgan	45 (1988-91)
6	Tiffany Bybel	41 (1990-93)
7	Erin Walsh	36 (1986-89)
8	Alycyn Freet	35 (1996-99)
9	Anne-Marie Thomas	34 (1979-82)
	Lisa Sweeney	34 (1988-91)

### Year-by-Year Assists Leaders

Year	Player	Assists
1980	Anne-Marie Thomas	9
1981	Anne-Marie Thomas	9
1982	Anne-Marie Thomas	10
1983	Deb Brickey	16
1984	Deb Brickey	20
1985	Deb Brickey	13
1986	Michelle Murgatroyd	10
1987	Barbara deKanter	22
1988	Erin Walsh	16
	Michelle Murgatroyd	16
1989	Aileen Trendler	25
1990	Kerry Horgan	29
1991	Lisa Sweeney	24
1992	Jamie Rofrano	26
1993	Mary Kraybill	26
1994	Emily Smith	19
1995	Ann Pare	10
	Diane DeMiro	10
1996	Kristen Holmes	11
1997	Melisa Miller	9
1998	Alycyn Freet	14
1999	Alycyn Freet	14
2000	Lauren Edwards	9
2001	Maria Merluzzi	7
2002	Lauren Edwards	6
2003	Lindsay Miller	6
2004	Sarah Dawson	10
2005	Debbie Birrell	7
2006	Kadi Sickel	12

### Individual Single Season

Points
93, Ellen Egan, 1983
Goals
42, Ellen Egan, 1983
Assists
29, Kerry Horgan, 1990
Goalkeeper Victories
25, Donna Lee, 1981
Goalkeeper Shutouts
14, Jessica Krochmal, 1993
14, Eileen Moyer, 1989
Goalkeeper Saves
185, Donna Lee, 1980

### Career Goals

Rank	Player	Goals (Years)
1	Kristy Gleason	132 (1989-93)
2	Anne-Marie Thomas	88 (1979-82)
3	Marcia Pankratz	76 (1982-85)
	Erica Richards	76 (1986-89)
5	Liz Tchou	75 (1984-87)
6	Ellen Egan	68 (1980-83)
7	Kerry Lessard	64 (1995-98)
8	Kelly Flanagan	62 (1977-80)
9	Diane DeMiro	48 (1993-96)
10	Kris Fillat	46 (1988-92)

### Year-by-Year Saves Leaders

Year	Player	Saves
1980	Donna Lee	185
1981	Donna Lee	173
1982	Donna Lee	134
1983	Unavailable	
1984	Joan Behrends	77
1985	Unavailable	
1986	Karen Napolitano	86
1987	Andrea Wieland	127
1988	Andrea Wieland	124
1989	Eileen Moyer	120
1990	Andrea Wieland	126
1991	Eileen Moyer	103
1992	Andrea Wieland	95
1993	Jessica Krochmal	77
1994	Jessica Krochmal	95
1995	Lisa Cellucci	135
1996	Lisa Cellucci	138
1997	Lisa Cellucci	153
1998	Lisa Cellucci	166
1999	Kelly Druley	104
2000	Saleema Rogers	93
2001	Barb Weinberg	45
2002	Barb Weinberg	82
2003	Barb Weinberg	106
2004	Barb Weinberg	138
2005	Lissa Munley	77
2006	Lissa Munley	78

### Individual Career Records

Points
285, Kristy Gleason, 1989-1993
Goals
132, Kristy Gleason, 1989-1993
Assists
59, Deb Brickey, 1982-85
Goalkeeper Victories
79, Donna Lee, 1979-82
Goalkeeper Shutouts
48, Donna Lee, 1979-82
Goalkeeper Saves
592, Lisa Cellucci, 1995-98



# FIELD HOCKEY

## Hawkeye Honor Roll

### OLYMPIANS



**Kris Fillat**  
1996



**Mary Koboldt**  
1988



**Donna Lee**  
1988



**Marcia Pankratz**  
1988, 1996



**Liz Tchou**  
1996



**Andrea Wieland**  
1996



**Beth Beglin**  
(Iowa Coach)  
1980, '84, '88

**National Coach of the Year**  
Beth Beglin ..... '92

**Womensfieldhockey.com**  
**National Coach of the Year**  
Tracey Griesbaum ..... '04

**All-Americans - First Team**  
(National Field Hockey  
Coaches Association)

Deb Brickey ..... '84, '85  
Tiffany Bybel ..... '93  
Sue Bury ..... '81, '82  
Pat Dauley ..... '81  
Sarah Dawson ..... '04  
Diane DeMiro ..... '95, '96  
Kelly Druley ..... '99  
Ellen Egan ..... '83  
Kris Fillat ..... '90, '92  
Amy Fowler ..... '91, '92  
Cherie Freddie ..... '88, '89  
Kristy Gleason ..... '89, '90, '92, '93  
Kim Herrmann ..... '84  
Kristen Holmes ..... '94, '96  
Mary Koboldt ..... '85  
Donna Lee ..... '81, '82  
Tiffany Leister ..... '02  
Diane Loosbrock ..... '88  
Melisa Miller ..... '97  
Karen Napolitano ..... '86  
Marcia Pankratz ..... '84, '85  
Ann Pare ..... '95  
Erica Richards ..... '88, '89  
RosAnna Salcido ..... '86  
Heather Schnepf ..... '06  
Liz Tchou ..... '87  
Jibs Thorson ..... '91  
Aileen Trendler ..... '89  
Andrea Wieland ..... '90, '92  
**Barb Weinberg** ..... '04

**All-Americans - Second Team**  
(NFHCA)

Heather Bryant ..... '91, '93  
Tiffany Bybel ..... '92  
**Lisa Cellucci** ..... '96  
Jessica Enoch ..... '95  
Amy Fowler ..... '90  
Debbie Humpage ..... '94  
Mary Koboldt ..... '84  
Kerry Lessard ..... '97, '98  
Melisa Miller ..... '96  
Quan Nim ..... '99

Jamie Rofrano ..... '92  
Heather Schnepf ..... '05  
Lisa Sweeney ..... '91  
**Barb Weinberg** ..... '03

**All-Americans - Third Team**  
(NFHCA)

**Lisa Cellucci** ..... '95, '98  
Natalie Dawson ..... '00  
Pattie Gillem ..... '03  
Tiffany Leister ..... '01  
Sarah Thorn ..... '99

**All-Americans**  
**Honorable Mention (NFHCA)**

Heather Bryant ..... '92  
Aimee Klapach ..... '93  
Jessica Krochmal ..... '93  
Karen Napolitano ..... '85  
Tina Parrott ..... '88  
Erica Richards ..... '87  
Missi Sanders ..... '89  
Erin Walsh ..... '89

**All-Region Team (NFHCA)**

Mandy Abblitt ..... '95  
Debbie Birrell ..... '04, '05  
Heather Bryant ..... '90, '91, '92, '93  
Deb Brickey ..... '84, '85  
Tiffany Bybel ..... '90, '91, '92, '93  
Gina Carr ..... '00  
Mary Casabian ..... '94, '95, '96

**Lisa Cellucci** ..... '95, '96, '98  
Natalie Dawson ..... '00  
Sarah Dawson ..... '04  
Diane DeMiro ..... '94, '95, '96  
Kelly Druley ..... '99  
Jessica Enoch ..... '93, '94, '95  
Kris Fillat ..... '89, '90, '92  
Tiffany Fodera ..... '00, '01  
Amy Fowler ..... '90, '91, '92  
Alycyn Freet ..... '97, '99  
Cherie Freddie ..... '87, '88, '89  
Pattie Gillem ..... '03  
Kristy Gleason ..... '89, '90, '92, '93  
Kim Herrmann ..... '84, '85  
Kristen Holmes ..... '93, '94, '96  
Kerry Horgan ..... '91  
Debbie Humpage ..... '93, '94  
Lesley Irvine ..... '99  
Aimee Klapach ..... '92, '93  
Mary Koboldt ..... '84  
Mary Kraybill ..... '94  
Jessica Krochmal ..... '93

Tiffany Leister ..... '00, '01, '02  
Kerry Lessard ..... '97, '98  
Diane Loosbrock ..... '87, '88  
**Caitlin McCurdy** ..... '05, '06  
Nancy McLinden ..... '95  
Anita Miller ..... '99  
Melisa Miller ..... '95, '96, '97  
Lindsay Miller ..... '03  
Eileen Moyer ..... '89, '90, '91  
Michelle Murgatroyd ..... '86  
Karen Napolitano ..... '85, '86  
Quan Nim ..... '95, '98, '99  
Marcia Pankratz ..... '84, '85  
Ann Pare ..... '93, '94, '95  
Tina Parrott ..... '88  
**Lauren Pfeiffer** ..... '06  
Erica Richards ..... '87, '88, '89  
Deb Robertson ..... '86, '88  
Jamie Rofrano ..... '91, '92  
RosAnna Salcido ..... '85, '86  
Missi Sanders ..... '88, '89  
Heather Schnepf ..... '04, '05, '06  
Emily Smith ..... '94  
Lauren Stiver ..... '01, '02, '03, '04  
**Kadi Sickel** ..... '06

Lisa Sweeney ..... '91  
Liz Tchou ..... '85, '86, '87  
Sarah Thorn ..... '98, '99  
Jibs Thorson ..... '90, '91  
Aileen Trendler ..... '88, 1989  
Erin Walsh ..... '89  
Patti Wanner ..... '85  
**Barb Weinberg** ..... '02, '03, '04  
Andrea Wieland ..... '88, '90, '92

**National Academic Award**  
(NFHCA)

**Tricia Dean** ..... '06  
Kelly Dolan ..... '98  
Susan Gibson ..... '98  
**Melissa Helsel** ..... '05  
**Kelly Hondros** ..... '06  
Tammy Leister ..... '03, '04  
**Lissa Munley** ..... '05, '06  
**Lauren Pfeiffer** ..... '05, '06  
Kelly Slattery ..... '03, '04, '05

**All-Big Ten Conference/MCFHC**

**First-Team**

Deb Brickey ..... '83, '84, '85  
Heather Bryant ..... '93  
Sue Bury ..... '82  
Tiffany Bybel ..... '91, '92, '93  
Mary Casabian ..... '95, '96

**Lisa Cellucci** ..... '95, '96  
Dawn Chamberlain ..... '84  
Natalie Dawson ..... '00  
Sarah Dawson ..... '04  
Diane DeMiro ..... '95, '96  
Lee Ann Detwiler ..... '84  
Kelly Druley ..... '99  
Ellen Egan ..... '83  
Jessica Enoch ..... '95  
Kris Fillat ..... '90, '92  
Tiffany Fodera ..... '01  
Amy Fowler ..... '90, '91, '92  
Cherie Freddie ..... '87, '88, '89  
Pattie Gillem ..... '03  
Kristy Gleason ..... '89, '90, '92, '93  
Kim Herrmann ..... '83, '85  
Kristen Holmes ..... '94, '95, '96  
Debbie Humpage ..... '94  
Mary Koboldt ..... '83, '84, '85  
Donna Lee ..... '82  
Tiffany Leister ..... '01, '02  
Kerry Lessard ..... '97, '98  
Diane Loosbrock ..... '87, '88  
Melisa Miller ..... '96, '97  
Quan Nim ..... '99  
Karen Napolitano ..... '86  
Marcia Pankratz ..... '84, '85  
Ann Pare ..... '95  
Erica Richards ..... '87, '88, '89  
Deb Robertson ..... '86, '88  
RosAnna Salcido ..... '84  
Missi Sanders ..... '88  
Heather Schnepf ..... '05, '06  
Lisa Sweeney ..... '91  
Liz Tchou ..... '84, '85, '86, '87  
Anne-Marie Thomas ..... '82  
Sarah Thorn ..... '99  
Jibs Thorson ..... '91  
Aileen Trendler ..... '88, '89  
Erin Walsh ..... '89  
Patti Wanner ..... '86  
**Barb Weinberg** ..... '02, '03, '04  
Andrea Wieland ..... '90, '92

**Second-Team**

Mandy Abblitt ..... '95, '96  
Debbie Birrell ..... '04, '05  
**Caroline Blaum** ..... '05  
Heather Bryant ..... '91, '92  
Tiffany Bybel ..... '90  
Gina Carr ..... '00  
**Lisa Cellucci** ..... '97, '98  
Diane DeMiro ..... '94  
Natalie Dawson ..... '99

Sarah Dawson ..... '03  
Kelly Dolan ..... '99  
Jessica Enoch ..... '94  
Tiffany Fodera ..... '00  
Alycyn Freet ..... '99  
Kim Herrmann ..... '84  
Kristen Holmes ..... '93  
Lesley Irvine ..... '99  
Aimee Klapach ..... '93  
Mary Koboldt ..... '82  
Mary Kraybill ..... '94  
Kerry Lessard ..... '96  
Bronwyn Markell ..... '83  
**Caitlin McCurdy** ..... '05, '06  
Nancy McLinden ..... '95  
Lindsay Miller ..... '02, '03  
Melisa Miller ..... '95  
Anita Miller ..... '99  
Eileen Moyer ..... '91  
Michelle Murgatroyd ..... '86, '87, '88  
Quan Nim ..... '98  
Jamie Rofrano ..... '91, '92  
Missi Sanders ..... '89  
Heather Schnepf ..... '04  
**Kadi Sickel** ..... '06  
Lauren Stiver ..... '01, '02, '03, '04  
Lisa Sweeney ..... '90  
Deb Robertson ..... '85  
Sarah Thorn ..... '98  
Jibs Thorson ..... '90  
Aileen Trendler ..... '87  
Erin Walsh ..... '88  
Andrea Wieland ..... '88

**Honorable Mention Team**

Joan Behrends ..... 1985  
RosAnna Salcido ..... 1985  
Patti Wanner ..... 1985

**Big Ten All-Tournament Team**

Sue Bury ..... '81  
Pat Dauley ..... '80, '81  
Wendy DeWane ..... '81  
Kelly Flanagan ..... '80  
Lesley Irvine ..... '99  
Tiffany Leister ..... '01  
Melissa Miller ..... '97  
Quan Nim ..... '99  
**Lauren Pfeiffer** ..... '05, '06\*  
Anne-Marie Thomas ..... '80, '81  
Heather Schnepf ..... '04, '06  
Kelly Slattery ..... '04  
Lauren Stiver ..... '01  
Sarah Thorn ..... '99

\*Tournament = MVP



# FIELD HOCKEY

## Hawkeye Honor Roll



Erica Richard is a member of the 2007 Iowa Athletics Hall of Fame Class.



Barb Weinberg was a member of the 2003 and 2004 NFCA All-American teams and a three-time first team all-Big Ten pick.



Assistant Coach Lisa Cellucci was a four-time all-Big Ten Selection.

### Big Ten All-Academic Team

Carolyn Bartley.....'88, '89  
Tiffany Bybel.....'93  
Kelly Dolan.....'98, '99  
Jessica Enoch.....'93, '94, '95  
Susan Gibson.....'98, '99, '00  
Patricia Gillern.....'00, '01, '02, '03  
Rebekah Heavrin.....'00, '01, '02

### Melissa Helsel.....'06

Aimee Klapach.....'91, '92, '93  
Mary Kraybill.....'94  
Jessica Krochmal.....'93, '94, '95  
Adraia LaSovage.....'00  
Carolyn Lee.....'00, '01, '02  
Tammy Leister.....'02, '03, '04  
Tiffany Leister.....'00  
Melisa Miller.....'95  
Maria Merluzzi.....'99, '00, '01

### Lissa Munley.....'06

Karen Napolitano.....'86  
Tina Parrott.....'88  
Lauren Pfeiffer.....'06  
Erica Richards.....'89  
Emily Rinde-Thorsen.....'00, '02  
Shelby Roche.....'05  
Missi Sanders.....'87, '88, '89  
Heather Schnepf.....'04, '05, '06  
Cindy Skordas.....'88, '89, '90  
Kelly Slattery.....'04, '05  
Rachel Smith.....'92, '93, '94  
Lisa Sweeney.....'89, '90, '91  
Liz Tchou.....'86

Aileen Trendler.....'88, '89  
**Barb Weinberg.....'03, '04**  
Andrea Wieland.....'88, '90, '92  
Jessica Zosky.....'00, '01, '02, '03

### Big Ten Coach of the Year

Beth Beglin.....'92, '95, '96, '99  
**Tracey Griesbaum.....'04**

### Big Ten Most Valuable Player

Kristy Gleason.....'92, '93  
Kristen Holmes.....'96  
Melisa Miller.....'97

### Big Ten Offensive

#### Player of the Year

Kristy Gleason.....'92, '93  
Diane DeMiro.....'95

### Big Ten Defensive

#### Player of the Year

Mary Casabian.....'96  
Amy Fowler.....'91  
Tiffany Leister.....'99  
Deborah Robertson.....'86  
Heather Schnepf.....'05, '06

### Big Ten Freshman

#### Player of the Year

**Meghan Beamesderfer.....'06**  
Tiffany Leister.....'99  
**Caitlin McCurdy.....'05**

### Big Ten Medal of Honor

Karen Napolitano.....1986-87  
Marcia Pankratz.....1985-86  
Liz Tchou.....1988-89  
Deb Robertson.....1988-89  
Erica Richards.....1989-90  
Heather Schnepf.....2006-07  
Liz Tchou.....1987-88  
Andrea Wieland.....1992-93

### Big Ten Sportsmanship Award

**Barb Weinberg.....'04**  
Kara Zappone.....'05, '06

### Big Ten-Suzy Favor

#### Athlete of the Year

Kristy Gleason.....1993-94

### NCAA Woman of the Year

#### Iowa Winner

Andrea Wieland.....1992-93

### NCAA Woman of the Year

#### Top Ten

Andrea Wieland.....1992-93

### NCAA Post-Graduate Award

Jessica Enoch.....'95

### Midwest/West Regional

#### Coach of the Year

Beth Beglin.....'90, '92, '94, '96

### NCAA All-Tournament Team

Quan Nim, forward.....'99  
Jessica Enoch, sweeper.....'94  
Tiffany Bybel, back.....'93  
Kristy Gleason, forward.....'93  
Tiffany Bybel, back.....'92  
Kris Fillat, forward.....'92  
Amy Fowler, defender.....'92  
Andrea Wieland, goalkeeper.....'92  
Amy Fowler, defender.....'90  
Kristy Gleason, forward.....'90  
Andrea Wieland, goalkeeper.....'90  
Missi Sanders, forward.....'89  
Erin Walsh, defender.....'89  
Cherie Freddie, forward.....'88  
Diane Loosbrock, back.....'88  
Deb Robertson, midfielder.....'88  
Missi Sanders, forward.....'88  
Liz Tchou, forward.....'87  
Karen Napolitano, goalkeeper.....'86  
Deb Robertson, midfielder.....'86  
Patti Wanner, midfielder.....'86  
Deb Brickey, forward.....'84  
Kim Herrmann, midfielder.....'84  
Mary Koboldt, midfielder.....'84  
Marcia Pankratz, forward.....'84

### IAIW All-Tournament Team

Ellen Egan, forward.....'81

### U.S. Olympic/Sports Festival

Deb Brickey.....'85-87, '89, '90  
Heather Bryant.....'91, '93, '94  
Sue Bury.....'81, '82, '85  
Tiffany Bybel.....'91, '93

### Lisa Cellucci.....'93-95

Diane DeMiro.....'93, '94  
Ellen Egan.....'82, '83  
Kris Fillat.....'90  
Amy Fowler.....'91  
Kristy Gleason.....'90, '91

### Tracey Griesbaum.....'89, '90

Kristen Holmes.....'93, '94  
Mary Koboldt.....'85, '86-90  
Mary Kraybill.....'91  
Donna Lee.....'89  
Diane Loosbrock.....'89, '90  
Melisa Miller.....'95  
Karen Napolitano.....'86  
Marcia Pankratz.....'85, '87, '89  
Tina Parrott.....'89, '90  
Erica Richards.....'89, '90  
Deb Robertson.....'86, '89  
RosAnna Salcido.....'86, '89, '90  
Patty Shea.....'85, '87, '89  
Liz Tchou.....'85, '89, '90  
Jibs Thorson.....'90, '91  
Erin Walsh.....'90  
Andrea Wieland.....'90, '91

### United States Olympic Team

Beth Beglin.....'80, '84, '88  
Kris Fillat.....'96  
Kristen Holmes (alt.).....'96  
Mary Koboldt.....'88  
Donna Lee.....'88  
Marcia Pankratz.....'88, '96  
Patty Shea.....'88, '96  
Liz Tchou.....'96  
Andrea Wieland.....'96

### U.S. Pan American Team

Beth Beglin.....1987  
Deb Brickey (alt.).....1987  
**Lisa Cellucci (alt.).....1999**  
Kris Fillat.....1991, 1995, 1999  
Kristy Gleason.....1991  
**Tracey Griesbaum.....1991**  
Mary Koboldt.....1987  
Donna Lee.....1987  
Karen Napolitano (alt.).....1987  
Marcia Pankratz.....1987, 1995  
Patty Shea.....1987, 1995  
Liz Tchou.....1991, 1995  
Andrea Wieland 1991 (alt.), 1995

### U.S. Junior

#### Pan American Team

Heather Schnepf.....2005

### USA World Cup Team

Beth Beglin.....1982, 1986  
Kris Fillat.....1990, 1994, 1998  
Kristy Gleason.....1998  
Kristen Holmes.....1998  
Marcia Pankratz.....1986, 1994  
Patty Shea.....1986, 1994  
Liz Tchou.....1994  
Andrea Wieland 1994, 1998 (alt.)

### USA National Team

Beth Beglin.....1977-87  
Deb Brickey.....1989-90  
**Lisa Cellucci.....1999**  
Natalie Dawson.....2000-01  
Sarah Dawson.....2005  
Kris Fillat 1990-93, 1995-96, 1999  
Kristy Gleason.....1991-92  
**Tracey Griesbaum 1989-91, 1993**  
Kristen Holmes.....1995, 1996  
Mary Koboldt.....1987-90  
Donna Lee.....1985-90  
Diane Loosbrock.....1989-91  
Melisa Miller.....1996  
Marcia Pankratz.....1985-90, 1995  
Erica Richards.....1990  
Patty Shea.....1985-91, 1995-96  
Liz Tchou.....1989-93, 1995  
Erin Walsh.....1990  
**Barb Weinberg.....2005-2007**  
Andrea Wieland 1991-93, 1995-96

Current Player = **BOLD**





# FIELD HOCKEY

## Honor Roll/All-Time Series

### USA Under-23 Team

Lisa Cellucci.....	1998
Sarah Dawson (alt.).....	2003
Lauren Edwards.....	2002
Tiffany Leister.....	2002-03
Lindsay Miller.....	2002-03
Barb Weinberg.....	2002

### USA Under-21 Team

Caroline Blaum.....	2005
Tiffany Leister.....	2000-01
Caitlin McCurdy.....	2007
Lauren Pfeiffer.....	2005
Heather Schnepf.....	2004-05
Kadi Sickel.....	2005, 2006
Lauren Stiver.....	2002

### USA Under-20 Team

Lauren Stiver.....	2003
--------------------	------

### USA Under-19 Team

Kelly Slattery.....	2004
Lauren Stiver.....	2002

### USA National Reserve Team

Deb Brickey.....	1988
Tracey Griesbaum.....	1988
Kristen Holmes.....	1995
RosAnna Salcido.....	1988
Liz Tchou.....	1988

### USA Junior National Team

Deb Brickey.....	1987
Heather Bryant.....	1992
Ellen Egan.....	1983
Kris Fillat.....	1989
Cherie Freddie.....	1988-89
Kristy Gleason.....	1989 (a), 1990
Mary Koboldt.....	1985

Karen Napolitano.....	1986-87
Marcia Pankratz.....	1985
Deb Robertson.....	1987
Missi Sanders.....	1989
Aileen Trendler.....	1989
Erin Walsh.....	1989
Andrea Wieland.....	1988-89

### Honda-Broderick Sports Award Nominees

Diane DeMiro.....	1995-96
Cherie Freddie.....	1989-90
Kristy Gleason.....	1992-93, 1993-94
Kristen Holmes.....	1996-97
Mary Koboldt.....	1983
Marcia Pankratz.....	1985-86
Erica Richards.....	1988-89
Liz Tchou.....	1987-88
Andrea Wieland.....	1990-91

<b>Honda-Broderick Sports Award Winner</b>	
Kristy Gleason.....	1993-94

### Big Ten Conference All-Decade Team (1981-91)

#### FIRST-TEAM.....SECOND-TEAM

Deb Brickey.....	Pat Dauley
Sue Bury.....	Ellen Egan
Cherie Freddie.....	Kris Fillat
Kristy Gleason.....	Kim Herrmann
Donna Lee.....	Mary Koboldt
Marcia Pankratz.....	Karen Napolitano
Erica Richards.....	RosAnna Salcido
Liz Tchou.....	Aileen Trendler
Diane Loosbrock.....	Andrea Wieland

Opponent	Home	Away	Neu.	Over.	1st Yr.
American University	0-0	0-0	1-1	1-1	1996
Appalachian State	0-0	0-0	1-0	1-0	2005
Ball State	11-0	2-2	6-0	19-2	1983
Bemidji State	0-0	0-0	0-2	0-2	1977
Bentley College	0-0	0-0	1-0	1-0	1979
Boston University	1-0	5-0	1-0	7-0	1991
California	2-0	2-1	4-0	8-1	1983
Cal State-Chico	1-0	0-0	1-0	2-0	1988
Carleton College	0-0	2-0	0-0	2-0	1978
<b>Central Michigan</b>	<b>0-0</b>	<b>2-0</b>	<b>1-0</b>	<b>3-0</b>	<b>1982</b>
Central Missouri	2-1	1-1	0-0	3-2	1977
Colgate	0-0	0-0	2-0	2-0	1980
Colorado	0-0	0-0	1-0	1-0	1982
Connecticut	0-0	0-1	1-3	1-4	1982
Davis and Elkins	0-0	0-0	0-3	0-3	1979
Delaware	0-0	0-2	1-0	1-2	1980
<b>Duke</b>	<b>0-1</b>	<b>0-1</b>	<b>1-1</b>	<b>1-3</b>	<b>1986</b>
Eastern Illinois	0-0	0-0	1-1	1-1	1980
Eastern Kentucky	0-0	0-0	1-0	1-0	1982
Emporia State	0-0	0-0	1-0	1-0	1979
<b>Fairfield</b>	<b>0-0</b>	<b>0-0</b>	<b>0-0</b>	<b>0-0</b>	<b>2007</b>
Graceland College	2-0	0-0	3-0	5-0	1977
Grinnell	3-0	3-0-1	1-0	7-0-1	1977
Illinois State	1-0	0-0	0-0	1-0	1980
<b>Indiana</b>	<b>3-1</b>	<b>2-2</b>	<b>3-2</b>	<b>8-5</b>	<b>1977</b>
Indiana State	0-0	1-0	2-0	3-0	1981
Iowa Wesleyan	1-0	1-0	2-0	4-0	1977
James Madison	1-0	0-1	2-0	3-1	1987
Kansas	1-0	0-0	1-0	2-0	1977
Kent State	2-0	0-0	0-0	2-0	1997
LaSalle	0-0	0-0	2-0	2-0	1995
Lock Haven	0-0	0-0	2-0	2-0	1985
<b>Louisville</b>	<b>0-1</b>	<b>1-0</b>	<b>0-2</b>	<b>1-3</b>	<b>2000</b>
Luther College	0-0-1	2-0	0-0-1	2-0-2	1977
Maryland	1-2	0-2	2-3-1	3-7-1	1984
Massachusetts	2-0	0-0-1	5-1	7-1-1	1979
Miami of Ohio	2-0	3-0	3-0	8-0	1985
<b>Michigan</b>	<b>13-6</b>	<b>16-4</b>	<b>7-1</b>	<b>36-11</b>	<b>1979</b>
<b>Michigan State</b>	<b>16-4</b>	<b>14-4</b>	<b>11-0-1</b>	<b>41-8-1</b>	<b>1977</b>
Minnesota	3-0	1-0	3-0	7-0	1979
<b>Missouri State</b>	<b>12-0</b>	<b>0-0</b>	<b>9-5-1</b>	<b>21-5-1</b>	<b>1977</b>
Missouri-St. Louis	1-0	1-0	0-0	2-0	1979
Morehead State	0-0	0-0	0-1	0-1	1978
Nebraska	0-0	3-0	0-0	3-0	1977
New Hampshire	3-0	5-1-1	3-0	11-1-1	1980
<b>North Carolina</b>	<b>1-1</b>	<b>0-4</b>	<b>0-12</b>	<b>1-17</b>	<b>1984</b>
North Dakota	0-0	0-0	2-0	2-0	1978
Northeastern	0-2	3-0	2-1-1	5-3-1	1981

Opponent	Home	Away	Neu.	Over.	1st Yr.
Northeast Missouri	1-0	0-0	0-0	1-0	1977
Northern Illinois	8-1	3-0-1	4-0	15-1-1	1977
Northern Iowa	0-0-1	1-0	2-0	3-0-1	1977
Northern Michigan	0-0	0-0	1-0	1-0	1981
<b>Northwestern</b>	<b>24-6-2</b>	<b>16-10-2</b>	<b>5-1</b>	<b>45-19-4</b>	<b>1977</b>
Notre Dame	0-0	0-0	1-0	1-0	1979
Ohio University	1-1	1-1	0-0	2-2	1988
<b>Ohio State</b>	<b>16-2</b>	<b>13-6</b>	<b>10-1</b>	<b>39-9</b>	<b>1980</b>
Old Dominion	0-0	1-3	0-8-1	1-11-1	1980
Pacific	2-0	0-0	0-0	2-0	1997
<b>Penn State</b>	<b>9-2-1</b>	<b>5-9</b>	<b>7-6</b>	<b>21-17-1</b>	<b>1981</b>
Princeton	0-1	0-0	0-0	0-1	1996
Principia College	1-0	0-0	0-0	1-0	1979
<b>Providence</b>	<b>2-0</b>	<b>1-0</b>	<b>1-0</b>	<b>4-0</b>	<b>1989</b>
Purdue	5-0	4-0	5-1	14-1	1979
Quinnipiac	0-0	0-0	1-0	1-0	2004
Richmond	1-0	1-0	0-0	2-0	1998
Rutgers	2-0	2-0	1-0-1	5-0-1	1982
<b>Sacred Heart</b>	<b>0-0</b>	<b>0-0</b>	<b>0-0</b>	<b>0-0</b>	<b>2007</b>
San Jose State	0-0	1-0	3-0	4-0	1982
St. Louis	8-1	4-1-1	1-3	13-5-1	1977
SE Missouri State	1-0	0-0	0-1	1-1	1977
SIU-Carbondale	2-0	0-0	1-0	3-0	1982
SIU-Edwardsville	0-0	0-0	0-1	0-1	1980
Springfield College	0-0	1-0	0-1	1-1	1979
Stanford	2-1	1-0	6-1	9-2	1983
Syracuse	0-0	0-0	1-0	1-0	2003
Temple	1-0	2-2-1	2-1	5-3-1	1984
Toledo	0-0	1-0	3-0	4-0	1985
Toronto (Canada)	0-0	1-0	0-0	1-0	1981
Towson	0-0	0-0	2-0	2-0	1998
Villanova	0-0	0-0	0-1	0-1	2006
Virginia	1-0	0-0	0-2	1-2	1993
Virginia Commonwealth	1-0	1-0	0-0	2-0	1993
<b>Wake Forest</b>	<b>0-2</b>	<b>1-0</b>	<b>1-3</b>	<b>2-5</b>	<b>2001</b>
Washington State	0-0	0-0	2-0	2-0	1981
Waterloo (Canada)	0-0	0-0	1-0	1-0	1981
West Chester	0-0	2-0	0-0	2-0	1988
Western Illinois	4-1	2-1	0-0	6-2	1978
Western Michigan	0-0	0-0	1-0	1-0	1981
Wheaton College	0-0	1-0	0-0	1-0	1980
Wisconsin-Madison	1-0	0-0	2-0	3-0	1977
Wisconsin-LaCrosse	1-0	0-0	0-0-1	1-0-1	1978
<b>William &amp; Mary</b>	<b>0-0</b>	<b>0-0</b>	<b>0-0</b>	<b>0-0</b>	<b>2007</b>
York	0-1	0-0	0-0-1	0-1-1	1981
<b>All-time</b>	<b>179-39-5</b>	<b>136-59-8</b>	<b>154-70-9</b>	<b>469-168-21</b>	

2007 Opponents in Bold

# FIELD HOCKEY

Hawkeyes In The NCAA Tournament



## Overall Record: 24-19

**1982**

**NCAA Regionals (Storrs, Conn.)**

11/13 Massachusetts W, 1-0 (2ot)  
11/14 Connecticut L, 2-3 (2ot)

**1983**

**NCAA Regionals (Iowa City)**

11/13 Northwestern L, 1-2

**1984**

**NCAA Regionals (Evanston, Ill.)**

11/11 San Jose State W, 5-2  
11/12 Northwestern W, 2-0

**NCAA Final Four (Springfield, Mass.)**

11/17 Temple W, 2-0  
11/18 Old Dominion L, 1-5

**1985**

**NCAA Regionals (Evanston, Ill.)**

11/16 Stanford W, 3-0  
11/17 Northwestern L, 2-3 (3ot)

**1986**

**NCAA Regionals (Iowa City)**

11/16 Northwestern W, 2-1

**NCAA Final Four**

11/22 Penn State W, 2-0  
11/23 New Hampshire W, 2-1

**1987**

**NCAA Regionals (Iowa City)**

11/15 Northwestern W, 1-0

**NCAA Final Four**

11/21 Maryland L, 1-2  
11/22 Massachusetts L, 1-3

**1988**

**NCAA Regionals (Iowa City)**

11/12 Cal State-Chico W, 3-0  
11/13 Northwestern W, 3-4 (ot)

**NCAA Final Four (Philadelphia)**

11/19 Northeastern W, 2-0  
11/20 Old Dominion L, 1-2

**1989**

**NCAA Regionals (Iowa City)**

11/12 Providence W, 5-0

**NCAA Final Four (Springfield, Mass.)**

11/18 North Carolina L, 0-1  
11/19 Northwestern L, 1-2

**1990**

**NCAA Regionals (Iowa City)**

11/8 Stanford W, 7-2

**NCAA Regional Finals (Evanston, Ill.)**

11/11 Northwestern W, 2-0

**NCAA Final Four (Piscataway, N.J.)**

11/17 Old Dominion L, 0-1  
11/18 Penn State W, 3-0

**1991**

**NCAA Regionals (Iowa City)**

11/14 Stanford W, 5-0

**NCAA Regional Final (College Park, Md.)**

11/17 Maryland L, 1-2

**1992**

**NCAA Regionals (Iowa City)**

11/15 Ball State W, 5-1

**NCAA Final Four (Richmond, Va.)**

11/21 Massachusetts W, 3-1  
11/22 Old Dominion L, 0-4

**1993**

**NCAA Regionals (Iowa City)**

11/14 Northwestern W, 2-1

**NCAA Final Four (Piscataway, N.J.)**

11/20 Maryland L, 0-1

**1994**

**NCAA Regionals (Iowa City)**

11/10 California W, 3-2

**NCAA Regional Finals (Norfolk, Va.)**

11/13 Old Dominion W, 3-2 (ot)

**NCAA Final Four (Boston, Mass.)**

11/19 North Carolina L, 1-4

**1995**

**NCAA Regionals (Iowa City)**

11/12 Northeastern L, 0-1

**1996**

**NCAA Regionals (Iowa City)**

11/17 Princeton L, 4-5 (ot)

**1999**

**NCAA Regionals (Iowa City)**

11/12 Kent State W, 3-2

11/14 North Carolina W, 2-0

**NCAA Final Four**

11/19 Maryland L, 1-2 (2ot)

**2004**

**NCAA Regionals (College Park, MD)**

11/13 American L, 1-2

**2006**

**NCAA Regionals (Winston-Salem, NC)**

11/11 Virginia L, 0-1





# FIELD HOCKEY

## All-Time Results



### Margie Greenberg

Head Coach: 1977

Career Record: 17-5-3

#### 1977 (17-5-3)

Nebraska	W	4-1
Kansas	W	2-1
Iowa Wesleyan	W	4-0
SE Missouri	W	1-0
Grinnell	W	2-0
N. Illinois	T	1-1
Northwestern	W	3-0
NE Missouri	W	2-1
Luther	W	1-0
Northern Iowa	T	0-0
Iowa Wesleyan	W	7-0
Central Missouri	L	0-1
Graceland	W	2-0
Grinnell	W	3-0

#### Big Ten Tournament

Indiana	L	0-1
Michigan State	T	2-2
Wisconsin	W	4-0

#### AIAW State Tournament

Iowa Wesleyan	W	4-1
Luther	W	5-0
Graceland (ot)	W	3-2
Grinnell	W	2-0
Northern Iowa	W	1-0

#### AIAW Region 6 Tournament

Bemidji State	L	0-10
Saint Louis	L	1-3
SW Missouri	L	0-1



### Judith Davidson

Head Coach: 1978-87

Career Record: 185-55-19

#### 1978 (12-9-4)

9/9	Western Illinois	L	0-2
9/15	@ Graceland	W	5-0
9/16	vs. SE Missouri	L	1-3
9/16	@ Central Missouri	L	0-1
9/22	@ Northern Iowa	W	4-0
9/23	N. Illinois	L	4-1
9/27	@ Grinnell	T	0-0
10/3	Luther	T	0-0
10/6	vs. Wis.-LaCrosse	T	1-1
10/6	vs. North Dakota	W	1-0
10/7	vs. Carleton (ot)	W	6-5
10/13	Northwestern	L	2-3
10/14	Kansas (ot)	W	6-5
10/17	Grinnell	W	3-0

#### Big Ten Tournament, East Lansing, MI

10/20	vs. Wisconsin	W	1-0
-------	---------------	---	-----

10/20	vs. Indiana	L	2-3
-------	-------------	---	-----

#### AIAW State Tournament, at Grinnell, IA

10/27	vs. Graceland	W	1-0
10/27	vs. Iowa Wesleyan	W	9-0
10/27	@ Grinnell	W	2-0
10/28	vs. Luther	T	0-0
10/28	vs. Northern Iowa	W	2-0

#### AIAW Region 6 Tournament, at St. Louis, MO

11/9	vs. North Dakota	W	6-0
11/9	vs. SW Missouri	L	0-6
11/10	vs. Bemidji State	L	0-1
11/10	vs. Morehead State	L	1-2

#### 1979 (17-8-1)

9/12	Minnesota (ot)	W	4-3
9/15	@ Nebraska	W	7-0
9/15	vs. Emporia State	W	6-0
9/15	@ Nebraska	W	5-0
9/21	@ W. Illinois	L	1-2
9/22	@ Missouri-SL	W	1-0
9/22	vs. SW Missouri	L	2-4
9/23	@ St. Louis	L	1-2
9/25	@ Grinnell	W	2-0
9/28	Principia	W	4-0
9/29	Central Missouri	W	2-1
9/29	Graceland	W	3-1
10/5	vs. Carleton	W	3-2
10/6	vs. SW Missouri	L	0-3
10/12	vs. Notre Dame	W	3-0
10/12	vs. Michigan	W	2-0
10/13	@ Northwestern	W	2-1
10/16	Grinnell	W	2-0

#### Big Ten Tournament, at Ann Arbor, MI

10/18	vs. Indiana (ot)	W	2-1
10/18	vs. Purdue	L	1-4
11/3	vs. Bentley	W	3-2
11/4	@ Massachusetts	T	1-1

#### AIAW Region 6, at Northfield, MN

11/9	vs. Minnesota	W	2-0
11/10	vs. Saint Louis	L	1-4

#### AIAW National Championship, at Princeton, NJ

11/28	vs. Davis & Elkins	L	0-3
11/29	vs. Springfield (ot)	L	3-4

#### 1980 (19-7-1)

9/12	vs. SW Missouri	W	4-1
9/13	@ Central Missouri	W	1-0
9/13	vs. SIU-Edwardsville (ot)	L	2-3
9/18	Ohio State	W	1-0
9/19	Western Illinois	W	2-0
9/20	Wis.-La Crosse	W	6-1
9/21	Saint Louis	L	0-2
9/23	Minnesota	W	4-0
9/26	vs. Eastern Illinois	W	2-0
9/27	@ Saint Louis	T	3-3
10/3	vs. Colgate (ot)	W	4-3
10/4	@ New Hampshire	L	0-1
10/5	@ Springfield	W	3-1
10/10	Northwestern	W	3-1
10/11	Illinois State	W	3-0
10/12	Wisconsin	W	7-0
10/12	Missouri-SL	W	2-0

#### Big Ten Tournament, at Madison, WI

10/17	vs. Indiana	W	4-2
10/17	vs. Purdue	W	2-1
10/18	vs. Michigan State	W	1-0

10/24	@ Wheaton	W	6-1
10/25	@ Northern Illinois	W	2-0
10/25	vs. Eastern Illinois	L	0-2

#### AIAW Region 6 Tournament, at Grinnell, IA

11/7	vs. Minnesota	W	1-0
11/8	vs. Saint Louis (ot)	L	1-2

#### AIAW National Championship

11/19	vs. Delaware	L	0-3
11/20	vs. Old Dominion (ot)	L	0-1

#### 1981 (25-5-1, 3-0 Big Ten)

9/11	Purdue	W	3-0
9/12	vs. Indiana State	W	2-0
9/12	@ N. Illinois	W	5-1
9/18	@ New Hampshire	W	2-1
9/19	vs. Northeastern	W	2-1
9/20	vs. Penn State	L	0-3
9/24	@ Northern Illinois	W	7-0
9/26	vs. Western Michigan	W	7-1
9/26	vs. Waterloo	W	3-0
9/27	vs. Toronto	W	1-0
2/28	@ York	T	2-2
9/29	Western Illinois	W	2-0
10/2	@ SW Missouri (ot)	W	3-2
10/3	@ Michigan	W	3-0
10/3	vs. Northern Michigan	W	5-0
10/9	Minnesota	W	6-0
10/9	Central Missouri	W	4-2
10/10	Indiana	W	3-1
10/11	York	L	0-3

#### Big Ten Tournament, at Iowa City

10/16	Minnesota	W	6-1
10/16	Indiana	W	6-2
10/17	Purdue	W	1-0
10/20	@ Western Illinois (ot)	W	4-3
10/23	@ Ohio State	W	2-0
10/24	vs. Davis & Elkins	L	1-2
10/31	vs. Saint Louis	W	2-1
10/31	@ Northwestern	W	1-0

#### AIAW Region 6 Tournament, at Grinnell, IA

11/7	vs. Minnesota	W	3-0
------	---------------	---	-----

#### AIAW National Champ., at Berkeley, CA

11/19	vs. Washington St. (ot)	W	2-1
11/20	vs. Penn State	L	1-4
11/21	vs. Davis & Elkins	L	1-2



Rosanna Salcido



# FIELD HOCKEY



## All-Time Results

### 1982 (21-2, 6-0 Big Ten)

9/10	Purdue	W	2-1
9/11	Western Illinois	W	8-0
9/11	Northern Illinois	W	4-0
9/12	SW Missouri	W	3-0
9/17	@ Delaware	W	3-1
9/18	vs. New Hampshire	W	1-0
9/19	@ Rutgers (ot)	W	2-1
10/1	vs. Eastern Kentucky	W	4-0
10/2	vs. Indiana State	W	5-0
10/2	vs. Central Michigan	W	1-0
10/8	Northwestern	W	2-0
10/10	Michigan State	W	6-0
10/15	@ Michigan	W	2-1
10/16	vs. Ohio State	W	4-0
10/22	SIU-Carbondale	W	4-1
10/23	Northwestern	W	3-2
10/23	St. Louis	W	6-0
10/28	vs. Old Dominion	L	0-4
10/30	vs. Washington St.	W	4-0
10/30	vs. San Jose State	W	2-1
11/5	vs. Colorado	W	4-0

### NCAA First Round Game, at Storrs, CT

11/13	vs. Massachusetts (2ot)	W	1-0
-------	-------------------------	---	-----

### NCAA Regional Final, at Storrs, CT

11/14	@ Connecticut (2ot)	L	2-3
-------	---------------------	---	-----

### 1983 (19-3-2, 9-1 Big Ten)

9/9	@ Saint Louis	W	3-0
9/10	@ Indiana State	W	9-0
9/11	vs. SW Missouri	T	1-1
9/11	vs. SIU-Carbondale	W	3-0
9/14	@ W. Illinois	W	5-0
9/16	Ball State	W	5-1
9/18	N. Illinois	W	5-1
9/23	@ Ohio State	W	4-1
9/24	vs. Michigan State	W	7-1
9/30	@ New Hampshire	W	1-0
10/1	vs. Connecticut	L	0-4
10/2	vs. Penn State	T	1-1
10/7	vs. Stanford	W	2-1
10/8	@ Northwestern	W	4-0
10/9	vs. California	W	2-1
10/14	@ Purdue	W	3-1
10/15	vs. Michigan State	W	5-0
10/21	Michigan	W	6-0
10/23	Purdue	W	4-0
10/28	@ Michigan	W	5-1
10/29	vs. Ohio State	W	5-0
11/2	W. Illinois	W	5-0
11/5	Northwestern (ot)	L	3-4

### NCAA Regional Final, Iowa City

11/13	Northwestern	L	1-2
-------	--------------	---	-----

### 1984 (17-5-3, 8-1-1 Big Ten)

9/7	@ Ball State	W	2-0
9/8	vs. Maryland	T	0-0
9/9	@ N. Illinois	W	9-0
9/14	@ San Jose State	W	2-0
9/15	@ California	W	3-0
9/16	vs. Stanford	L	1-2
9/21	@ Temple	L	1-2
9/22	@ North Carolina	L	1-2
9/23	vs. Rutgers	T	2-2
9/29	@ Northwestern	L	1-2
10/5	@ Michigan State	W	5-0
10/6	vs. Purdue	W	3-0
10/12	Ohio State	W	2-0

10/14	Michigan State	W	6-0
10/17	@ Ohio State	W	5-1
10/18	vs. Michigan	W	9-2
10/19	vs. Penn State (ot)	W	2-1
10/26	Northwestern (2ot)	T	2-2
10/28	SW Missouri	W	6-1
11/2	@ Michigan	W	4-1
11/3	vs. Purdue	W	3-0

### NCAA First Round, Evanston, IL

11/11	vs. San Jose State	W	5-2
-------	--------------------	---	-----

### NCAA Regional Final, Evanston, IL

11/12	@ Northwestern	W	2-0
-------	----------------	---	-----

### NCAA Final Four, Springfield, MA

11/17	vs. Temple	W	2-0
11/18	vs. Old Dominion	L	1-5*

\* NCAA Championship Game

### 1985 (19-4-1, 9-1 Big Ten)

9/7	vs. SW Missouri	W	5-0
9/8	vs. Miami (Ohio)	W	7-1
9/13	vs. Toledo	W	3-1
9/14	vs. Ball State	W	4-0
9/15	@ N. Illinois	W	6-0
9/19	vs. Massachusetts	W	2-0
9/21	@ New Hampshire (2ot)	T	1-1
9/22	vs. Connecticut	L	0-1
9/29	@ Northwestern (2ot)	L	0-1
10/4	@ Ohio State	W	3-0
10/5	vs. Michigan	W	14-0
10/6	vs. Lock Haven	W	4-0
10/11	Ohio State	W	6-1
10/12	Saint Louis	W	4-0
10/13	Michigan State	W	2-1
10/18	@ Purdue	W	1-0
10/19	Michigan State	W	6-0
10/26	Northwestern	W	2-1
11/1	Michigan	W	9-0
11/3	Purdue	W	2-0
11/9	vs. Temple	W	4-0
11/10	@ Old Dominion	L	1-2

### NCAA First Round Game, Evanston, IL

11/16	Stanford	W	3-0
-------	----------	---	-----

### NCAA Regional Final, Evanston, IL

11/17	Northwestern (3ot)	L	2-3*
-------	--------------------	---	------

\* lost 2-1 in second stroke-off  
(three scoreless overtimes, 3-3 in first stroke-off)

### 1986 (19-2-1, 9-1 Big Ten)

9/5	@ Toledo	W	12-0
9/6	vs. Penn State	W	3-1
9/7	vs. Lock Haven	W	2-0
9/13	vs. Ball State	W	2-0
9/19	@ North Carolina	L	1-4
9/20	vs. Old Dominion	T	2-2
9/21	vs. Duke	W	6-0
9/26	@ Ohio State	W	3-0
9/27	vs. Michigan	W	2-0
10/3	Michigan State	W	4-0
10/5	Purdue	W	3-0
10/10	@ Purdue	W	1-0
10/11	vs. Michigan	W	4-1
10/18	Northwestern	W	4-2
10/25	@ Northwestern	L	0-1
10/31	@ Michigan State	W	2-0
11/1	vs. Ohio State	W	6-0
11/7	@ Rutgers	W	3-0
11/8	vs. Massachusetts	W	3-1

### NCAA Regional Final, Iowa City

11/16	Northwestern	W	2-1
-------	--------------	---	-----

### NCAA Final Four, at Norfolk, VA

11/22	vs. Penn State	W	2-0
11/23	vs. New Hampshire	W	2-1*

\* NCAA Championship Game

### 1987 (17-5-2, 8-0-2 Big Ten)

9/4	Miami (Ohio)	W	6-0
9/6	N. Illinois	W	6-0
9/11	vs. Connecticut (ot)	L	2-3
9/14	vs. New Hampshire	W	1-0
9/18	vs. San Jose State	W	2-0
9/19	vs. Toledo	W	3-0
9/20	vs. Ball State	W	4-0
9/25	@ Old Dominion	L	1-5
9/26	vs. North Carolina	L	0-5
9/27	vs. James Madison	W	1-0
10/2	@ Purdue	W	2-1
10/3	vs. Michigan (2ot)	W	3-2
10/9	Ohio State	W	8-0
10/10	Saint Louis	W	5-0
10/11	Michigan State	W	5-0
10/17	Northwestern (2ot)	T	0-0
10/24	@ Northwestern (2ot)	T	1-1
10/30	@ Michigan State	W	4-0
10/31	vs. Purdue	W	1-0
11/6	Ohio State	W	10-1
11/8	Michigan	W	4-0

### NCAA Regional Final, Iowa City

11/15	Northwestern	W	1-0
-------	--------------	---	-----

### NCAA Final Four, Chapel Hill, NC

11/21	Maryland	L	1-2
11/22	Massachusetts	L	1-3



Former Hawkeyes Erica Richards and Erin Walsh celebrate.



# FIELD HOCKEY

## All-Time Results



### Beth Beglin

Head Coach: 1988-1999

Career Record: 199-57-3

#### 1988 (19-6, 6-2 Big Ten)

9/2	Ohio Univ.	W	8-0
9/4	Northern Illinois	W	3-0
9/10	@ Delaware	L	0-3
9/11	vs. West Chester	W	5-2
9/16	vs. SW Missouri St.	W	4-1
9/17	vs. Ball State	W	2-0
9/18	@ Saint Louis	W	5-0
9/22	@ North Carolina	L	0-2
9/24	vs. Maryland	W	4-2
9/25	vs. Old Dominion	L	0-1
10/1	Northwestern	L	0-1
10/7	@ Michigan State	W	5-0
10/8	vs. Ohio State	W	6-1
10/14	@ Northwestern	L	1-2
10/15	vs. California	W	2-0
10/21	Michigan	W	8-1
10/22	James Madison	W	4-3
10/23	SIU-Carbondale	W	7-0
10/28	@ Michigan	W	2-0
10/29	vs. Ohio State	W	4-0
11/5	@ Michigan State	W	4-0

#### NCAA First Round Game, Iowa City

11/12	Cal State-Chico	W	3-0
-------	-----------------	---	-----

#### NCAA Regional Final, Iowa City

11/13	Northwestern (ot)	W	4-3
-------	-------------------	---	-----

#### NCAA Final Four, Philadelphia, PA

11/19	vs. Northeastern	W	2-0
11/20	vs. Old Dominion	L	1-2*

\* - NCAA Championship game

#### 1989 (19-2-2, 9-0-1 Big Ten)

8/31	@ Saint Louis	W	3-0
9/2	vs. Toledo	W	5-0
9/3	vs. SW Missouri	W	4-0
9/7	vs. Northeastern	T	2-2 (ot)
9/8	vs. Ball State	W	3-0
9/15	vs. Stanford	W	4-1
9/16	vs. Cal State-Chico	W	4-0
9/17	@ California	W	6-0
9/22	Michigan State	W	12-0
9/24	Michigan	W	3-1
9/30	@ Northwestern	T	2-2 (ot)
10/6	@ Michigan State	W	4-0
10/7	vs. Ohio State	W	4-0
10/14	vs. Massachusetts	W	2-0
10/15	@ New Hampshire	W	4-2
10/20	@ Michigan	W	3-0
10/21	vs. Northern Illinois	W	3-2 (ot)
10/28	Northwestern	W	2-0
11/3	Ohio State	W	7-1
11/5	N. Illinois	W	2-0

#### NCAA Regional Final, at Iowa City

11/12	Providence	W	5-0
-------	------------	---	-----

#### NCAA Final Four, at Springfield, MA

11/18	North Carolina	L	0-1
11/19	Northwestern	L	1-2

#### 1990 (20-4, 9-1 MCFHC)

8/31	vs. Maine	W	6-0
9/1	vs. SW Missouri	W	3-1
9/3	vs. Miami (Ohio)	W	5-1
9/7	Ball State	W	4-0
9/9	Massachusetts	W	1-0
9/14	@ Michigan State	W	3-0
9/15	vs. Ohio State	W	4-0
9/21	@ Old Dominion (2ot)	L	0-1
9/23	vs. North Carolina	L	1-2
9/28	Saint Louis	W	2-1
9/30	Ohio State	W	3-0
10/6	vs. California	W	7-0
10/7	vs. James Madison	W	3-0
10/11	@ N. Illinois	W	2-0
10/13	@ Northwestern	L	0-1
10/19	Michigan State	W	6-0
10/21	Michigan	W	3-1
10/26	@ Michigan	W	5-0
10/27	vs. N. Illinois	W	2-1
11/3	Northwestern (ot)	W	3-2

#### NCAA First Round Game, Iowa City

11/8	Stanford	W	7-2
------	----------	---	-----

#### NCAA Regional Final, Evanston, IL

11/11	@ Northwestern	W	2-0
-------	----------------	---	-----

#### NCAA Final Four, Piscataway, NJ

11/17	vs. Old Dominion	L	0-1
11/18	vs. Penn State	W	1-0

#### 1991 (17-2-1, 10-0 MCFHC)

9/7	vs. Miami (Ohio)	W	7-1
9/8	vs. Ball State	W	4-0
9/13	vs. Northeastern (ot)	W	2-1
9/15	@ Boston Univ. (ot)	W	3-2
9/20	Saint Louis	W	7-2
9/21	New Hampshire	W	3-0
9/27	@ Ohio State	W	4-1
9/28	vs. Michigan State	W	7-0
10/5	N. Illinois	W	6-0
10/11	@ Michigan (ot)	W	2-0
10/12	vs. Michigan State	W	4-0
10/18	@ Temple (ot)	T	2-2
10/20	vs. Old Dominion	L	1-4
10/25	Northwestern	W	3-2
10/27	Michigan	W	4-1
11/3	@ N. Illinois	W	5-0
11/8	@ Ohio State	W	1-0
11/9	vs. Northwestern	W	2-1

#### NCAA First Round Game, Iowa City

11/14	Stanford	W	5-0
-------	----------	---	-----

#### Regional Final, College Park, MD

11/17	@ Maryland	L	1-2
-------	------------	---	-----

#### 1992 (20-1, 10-0 Big Ten)

9/10	@ Rutgers	W	7-0
<b>9/12-13 Temple Invitational (1st)</b>			
9/12	vs. North Carolina	W	4-1
9/13	@ Temple	W	4-1
9/18	Ball State	W	4-0
9/20	Boston Univ.	W	5-2
9/25	Northwestern	W	2-0
9/27	Maryland	W	3-0
10/3	vs. Ohio State	W	6-2
10/4	@ Penn State	W	2-1
10/9	vs. SW Missouri St.	W	2-0

10/11	@ Northwestern	W	2-0
10/16	Penn State (2ot)	W	3-2
10/18	Michigan	W	7-1
10/23	Michigan State	W	4-0
10/25	Saint Louis	W	7-0
10/31	Ohio State	W	4-1
11/7	vs. Michigan State	W	5-1
11/8	@ Michigan	W	2-0

#### NCAA Regional Final, Iowa City

11/15	Ball State	W	5-1
-------	------------	---	-----

#### NCAA Final Four, Richmond, VA

11/21	vs. Massachusetts	W	3-1
11/22	vs. Old Dominion	L	4-0*

\* NCAA Championship Game

#### 1993 (18-4, 8-2 Big Ten)

##### Hawkeye Invitational (1st)

9/4	Virginia	W	6-0
9/5	Ball State	W	4-0
9/11	vs. Miami (Ohio)	W	7-0
9/12	@ Saint Louis	W	7-0
9/16	@ Northeastern	W	2-0
9/18	vs. Maryland	L	1-2
9/19	@ Boston Univ.	W	2-0
9/25	Virginia Comm.	W	4-0
9/26	New Hampshire	W	5-0
10/2	vs. Michigan	W	2-0
10/3	@ Penn State	L	0-1
10/9	@ Northwestern	L	0-2
10/10	SW Missouri St.	W	7-0
10/16	vs. Ohio State (ot)	W	1-0
10/17	@ Michigan	W	3-0
10/22	Michigan State	W	5-0
10/24	Penn State	W	4-0
10/30	Northwestern	W	3-0
11/6	vs. Michigan State	W	4-3
11/7	@ Ohio State	W	5-0

#### NCAA Regional Final, Iowa City

11/14	Northwestern	W	2-1
-------	--------------	---	-----

#### NCAA Final Four, Piscataway, NJ

11/20	vs. Maryland	L	0-1
-------	--------------	---	-----



Kristy Gleason

# FIELD HOCKEY

## All-Time Results



### 1994 (15-8, 6-4 Big Ten)

9/3	@ Ball State	L	0-2
9/4	@ Miami (Ohio)	W	3-0
9/8	@ Virginia Comm.	W	4-3
9/10	vs. Maryland	W	2-1
9/11	@ Virginia (2ot)	L	0-1

### 9/17-18 Hawkeye Invitational (2nd)

9/17	SW Missouri St.	W	5-1
9/18	Northeastern	L	0-2
9/23	Michigan State	W	4-0
9/25	Michigan	W	3-1
10/2	Northwestern	W	3-2
10/7	@ Penn State	L	0-2
10/9	@ Ohio State (2ot)	L	1-2
10/6	@ Northwestern	L	0-4
10/21	@ Michigan (2ot)	W	3-2
10/23	@ Michigan State	W	2-1
10/28	Ohio State	W	6-0
10/30	Penn State	L	0-2

### 11/4-6 Big Ten Tournament, Columbus, OH

11/4	Michigan State	W	3-2
11/5	Penn State (ot)	W	1-0
11/6	Northwestern	W	2-1*

### NCAA Tournament First Round, Iowa City

11/10	California	W	3-2
-------	------------	---	-----

### NCAA Regional Final, Norfolk, VA

11/13	@ Old Dominion (ot)	W	3-2
-------	---------------------	---	-----

### NCAA Final Four, Boston, MA

11/19	vs. North Carolina	L	1-4
-------	--------------------	---	-----

\* won 3-1 in second stroke-off

(two scoreless overtimes, 4-4 in first stroke-off)

### 1995 (16-4, 10-0 Big Ten)

9/2	Ball State	W	2-1
9/4	SW Missouri State	W	10-0
9/7	@ Boston University	W	1-0

### Temple Invitational

9/9	vs. North Carolina	L	3-4
9/10	vs. LaSalle	W	6-0

### Hawkeye Invitational (2nd)

9/16	Rutgers	W	4-1
9/17	Maryland	L	2-3*
9/22	@ Ohio State	W	1-0
9/24	@ Penn State	W	2-0
9/29	Michigan (ot)	W	4-3
10/1	Michigan State	W	2-1
10/8	@ Northwestern	W	2-0
10/13	@ Michigan State	W	3-2
10/15	@ Michigan	W	3-2
10/20	Penn State	W	3-2
10/22	Ohio State	W	3-0
10/28	Northwestern	W	4-3

### Big Ten Tournament, University Park, PA

11/4	vs. Ohio State	W	2-1
11/5	@ Penn State	L	1-4

### NCAA Tournament, Iowa City

11/12	Northeastern	L	0-1
-------	--------------	---	-----

\*Penalty Strokes

(two scoreless overtimes, 3-2 in first stroke-off)

### 1996 (18-3, 10-0 Big Ten)

8/30	SW Missouri State	W	7-0
9/1	Ball State	W	2-0
9/7	@ Northeastern	W	1-0
9/8	@ Boston University	W	3-2

### Hawkeye Invitational (1st)

9/14	Saint Louis	W	13-0
9/15	Massachusetts	W	2-1

### @ Maryland Tournament (2nd)

9/21	vs. American University	W	4-2
9/22	Maryland	L	1-2
9/28	Northwestern	W	3-2
10/4	@ Penn State	W	4-1
10/6	@ Ohio State	W	3-1
10/11	Michigan	W	6-1
10/13	Michigan State	W	2-1
10/18	Ohio State	W	3-2
10/20	Penn State	W	5-1
10/27	@ Northwestern	W	1-0
11/1	@ Michigan State	W	4-0
11/3	@ Michigan	W	3-0

### Big Ten Tournament, Evanston, IL

11/9	@ Northwestern	W	1-0
11/10	vs. Penn State	L	1-3

### NCAA Tournament, Iowa City

11/17	Princeton (ot)	L	4-5
-------	----------------	---	-----

### 1997 (8-10, 4-6 Big Ten)

8/31	@ Ball State	L	0-5
9/1	@ Miami (Ohio)	W	5-0

### Temple Invitational (4th)

9/13	vs. North Carolina	L	0-2
9/14	@ Temple	L	0-2

### Hawkeye Invitational (1st)

9/20	Pacific	W	11-1
9/21	Kent State	W	7-2
9/26	@ Michigan	L	1-2
9/28	@ Michigan State	W	2-0
10/3	Ohio State	W	4-3
10/5	Penn State (2ot)	W	4-3
10/11	vs. SW Missouri State#	W	11-0
10/12	@ Northwestern	L	0-1
10/17	Michigan State	W	2-1
10/19	Michigan	L	2-3
10/26	Northwestern	L	1-3
10/31	@ Ohio State (ot)	L	3-4
11/2	@ Penn State	L	1-7

### Big Ten Tournament, Iowa City

11/17	Michigan State	L	1-3
-------	----------------	---	-----

# - at Evanston, Ill.

### 1998 (10-10, 4-6 Big Ten)

9/5	vs. Duke	L	1-2
9/7	vs. North Carolina	L	1-2
9/10	@ James Madison	L	2-4
9/12	vs. Towson	W	5-0
9/13	@ Richmond	W	1-0

### Hawkeye Invitational (1st)

9/19	Miami (Ohio)	W	5-1
9/20	Ball State	W	5-3
9/25	@ Penn State	L	1-6
9/27	@ Ohio State (ot)	L	0-1
10/2	Michigan	L	0-2
10/4	Michigan State	L	2-3
10/9	Northwestern	L	2-3
10/11	SW Missouri State	W	4-0
10/16	Penn State	W	4-2
10/18	Ohio State	W	6-1
10/25	@ Northwestern	W	1-0
10/30	@ Michigan State (ot)	L	2-3
11/1	@ Michigan	W	3-0

### Big Ten Tournament, East Lansing, MI

11/6	@ Michigan State	W	3-1
11/7	vs. Penn State	L	2-3

### 1999 (19-3, 9-1 Big Ten)

### Hawkeye Invitational (1st)

8/28	vs. Maine	W	2-0
8/30	vs. Ohio	W	5-1
9/3	at Stanford	W	2-0
9/4	vs. Pacific	W	3-0
9/6	vs. California	W	3-2
9/19	at Delaware	W	3-1
9/24	vs. Ohio St.	W	6-1
9/26	vs. Penn St.	W	2-0

10/1	at Northwestern	W	2-1
10/2	vs. SW Missouri St.	W	3-0
10/8	at Michigan	L	0-1
10/10	at Michigan St.	W	2-1
10/15	at Ohio St.	W	3-2
10/17	at Penn St.	W	3-2
10/22	vs. Michigan St.	W	3-1
10/24	vs. Michigan	W	1-0
10/30	vs. Northwestern	W	3-2

### Big Ten Tournament, Columbus, OH

11/6	vs. Ohio St.	W	3-0
11/7	vs. Michigan	L	1-2

### NCAA Tournament, Iowa City

11/12	vs. Kent State	W	3-2
11/14	vs. North Carolina	W	2-0

### NCAA Final Four, Boston, MA

11/19	vs. Maryland (2OT)	L	1-2
-------	--------------------	---	-----



## Tracey Griesbaum

Head Coach: 2000-Present  
Career Record: 68-45

### 2000 (12-8, 3-3 Big Ten)

### Hawkeye Invitational (3rd)

8/26	Louisville	L	1-2
8/27	Richmond (ot)	W	2-1
9/1	@ Saint Louis	W	5-0
9/3	vs. Wake Forest	L	1-2
9/4	vs. Stanford (ot)	W	2-1
9/9	vs. North Carolina	L	0-5
9/10	vs. Towson	W	2-0

### Big East Challenge

9/16	Syracuse (ot)	L	1-2
9/17	Delaware	W	6-1
9/23	@ Penn State	L	1-4
9/29	Michigan	L	0-4
10/1	SW Missouri State	W	2-0
10/8	Ohio State	W	2-1
10/13	@ Michigan State	L	1-2
10/15	@ Central Michigan	W	6-0
10/21	@ Northwestern	W	1-0
10/22	@ Indiana	W	5-0
10/29	Northwestern	W	1-0

### Big Ten Tournament, East Lansing, MI

11/3	vs. Michigan State	W	2-0
11/4	vs. Penn State	L	1-3





# FIELD HOCKEY

## All-Time Results

### 2001 (13-5, 3-3 Big Ten)

8/25	vs. Saint Louis	W	5-0
<b>Hawkeye Invitational (1st)</b>			
8/31	at Maine	W	2-0
9/1	vs. Colgate	W	5-0
9/3	vs. New Hampshire	W	3-1
9/8	vs. Ball State	W	1-0
9/9	vs. Stanford (ot)	W	3-2
9/23	at Ohio State	L	1-4
9/24	at Ohio University	L	0-4
9/28	at Michigan	L	1-4
10/5	vs. Penn State	W	2-1
10/14	at Northwestern	W	2-1
10/19	vs. Indiana	W	8-1
10/21	vs. SW Missouri St.	W	2-0
10/24	vs. Northwestern	W	3-1
10/26	vs. Michigan State	L	1-2
<b>Big Ten Tournament, Evanston, IL</b>			
11/2	vs. Penn State (ot)	W	3-2
11/3	vs. Michigan State (ot)	W	3-2
11/4	vs. Ohio State	L	1-2

### 2002 (9-8, 2-4 Big Ten)

<b>Big Ten/ACC Challenge, Chapel Hill, NC</b>			
8/31	vs. Wake Forest	W	1-0
9/1	vs. North Carolina (ot)	L	2-3
9/7	at Temple	W	2-1
9/8	vs. Louisville	L	1-3
<b>Big Ten/BIG EAST Challenge, Ann Arbor, MI</b>			
9/14	vs. Connecticut	W	2-0
9/15	Providence	W	3-0
9/21	California	L	2-3
9/22	Stanford (ot)	W	1-0
9/28	Northwestern	W	4-1
10/9	at Northwestern	W	2-1
10/11	Michigan	L	0-2
10/13	SW Missouri State	W	1-0
10/19	at Michigan State	L	1-2
10/25	at Indiana	W	3-1
10/27	Ohio State (ot)	L	0-1
11/3	at Penn State (2ot)	L	2-3
<b>Big Ten Tournament, Columbus, OH</b>			
11/8	vs. Ohio State	L	0-2

### 2003 (11-8, 2-4 Big Ten)

<b>Big Ten/ACC Challenge, Ann Arbor, MI</b>			
8/31	vs. Wake Forest	L	0-1(ot)
9/1	vs. North Carolina	L	0-3
9/6	vs. Syracuse	W	6-1
9/7	at New Hampshire	W	9-1
9/17	Northwestern	W	1-0
9/19	Ball State	W	2-0
9/21	Temple	W	1-0
9/25	California	W	2-1(ot)
9/27	Penn State	W	1-0
9/28	SW Missouri State	W	5-0
10/4	at Michigan	L	0-1
10/5	Central Michigan	W	3-2
10/11	Michigan State	L	1-3
10/17	at Ohio State	L	1-2
10/19	at Ohio	W	2-1 (ot)
10/26	at Northwestern	W	2-0
10/31	Indiana	L	2-3 (2ot)
11/2	Wake Forest	L	0-4
<b>Big Ten Tournament, State College, PA</b>			
11/7	vs. Penn State	L	1-3

### 2004 (13-8, 5-1 Big Ten)

<b>Big Ten/ACC Challenge, Winston-Salem, NC</b>			
8/28	vs. Wake Forest	L	2-3
8/29	vs. North Carolina	L	0-5
9/4	vs. North Carolina	L	0-1
9/5	at Temple	W	5-1
9/10	vs. Stanford	L	1-5
9/17	vs. Ohio	W	3-1
9/19	vs. New Hampshire	W	5-0
9/24	at Northwestern	L	0-1 (2ot)
9/26	at Indiana	W	4-1
10/7	vs. Pacific	W	2-1 (2ot)
10/9	vs. Ohio State	W	2-0
10/10	vs. Michigan	W	4-3 (ot)
10/15	at Penn State	W	2-1 (2ot)
10/16	vs. Quinnipiac	W	4-0
10/22	at Michigan State	L	1-2 (ot)
10/29	vs. Northwestern	W	3-2
10/31	vs. SW Missouri State	W	5-2

### Big Ten Tournament, Evanston, IL

11/5	vs. Northwestern	W	3-2 (ot)
11/6	vs. Michigan State	W	1-0 (ot)
11/7	vs. Michigan	L	2-3
<b>NCAA Tournament, College Park, MD</b>			
11/13	vs. American	L	1-2

### 2005 (10-8, 3-3 Big Ten)

<b>Big Ten/ACC Challenge, Iowa City, Ia.</b>			
8/27	vs. Wake Forest	L	0-2
8/28	vs. North Carolina	L	0-1
9/2	at Stanford	W	3-1
9/3	at Cal	W	2-1
9/5	vs. Pacific	W	8-1
9/9	vs. Ball State	W	6-1
9/11	vs. Providence	W	5-0
9/17	at Duke	L	2-3
9/18	vs. Appalachian St.	W	7-1
9/25	at Ohio State	L	2-4
10/1	vs. Michigan State	W	3-2
10/4	vs. Northwestern	W	3-2
10/8	vs. Penn State	L	0-4
10/14	at Northwestern	W	3-1
10/22	vs. Indiana	W	2-1 (ot)
10/28	at Michigan	L	1-2
10/29	vs. Louisville	L	2-5

### Big Ten Tournament, Iowa City

11/4	vs. Michigan	L	2-3
------	--------------	---	-----

### 2006 (12-9, 2-4 Big Ten)

<b>Big Ten/ACC Challenge, Chapel Hill, NC</b>			
8/26	at Wake Forest	L	0-6
8/27	vs. North Carolina	L	1-2
9/1	Kent State	W	5-1
9/3	Duke	L	2-3 (OT)
9/9	vs. Villanova	L	1-5
9/10	at West Chester	W	2-0
9/13	Stanford	W	2-1
9/16	vs. Boston University	W	4-2
9/17	at Providence	W	1-0
9/22	Michigan	L	1-2 (OT)
9/24	Ohio State	L	3-4 (OT)
9/29	at Indiana	L	1-2
10/8	Northwestern	W	3-1
10/14	at Michigan State	W	2-1 (2 OT)
10/22	at Northwestern	W	2-1
10/27	at Penn State	L	0-1

10/29	at Louisville	W	2-1
<b>Big Ten Tournament, Ann Arbor, MI</b>			
11/3	Michigan	W	2-1 (OT)
11/4	vs. Ohio State	W	2-0
11/5	vs. Penn State	W	2-1
<b>NCAA Tournament, Winston-Salem, NC</b>			
11/11	vs. Virginia	L	0-1



Tricia Dean



Jess Werley



**Sally Mason**  
University President

Sally Mason became the 20th President of The University of Iowa on August 1, 2007. She holds a full professorship with tenure in the Department of Biological Sciences of the College of Liberal Arts and Sciences.

President Mason served as Provost of Purdue University from 2001-2007, where she was responsible for planning, managing, and reviewing all academic programs at Purdue's West Lafayette and four affiliated branch campuses throughout Indiana. Her accomplishments as Provost included increasing diversity, recruiting top faculty, doubling the research program, advancing public engagement, and improving the learning environment for students. During President Mason's tenure as Provost, Purdue hired over 800 new faculty, 300 of which were new positions; 56% of those hires were women and/or minorities. She also formed a diversity leadership group while at Purdue.

President Mason was instrumental in the development of Purdue's Discovery Park, an interdisciplinary research incubator focused on such topics as nanotechnology, entrepreneurship, and biosciences. The daughter of an immigrant family and the first child to attend college, President Mason received her B.S. in zoology from The University of Kentucky in 1972, her M.S. from Purdue University in 1974, and her Ph.D. in cellular, molecular, and developmental biology from The University of Arizona in 1978. She subsequently spent two years at Indiana University in Bloomington doing postdoctoral research before joining The University of Kansas in 1981. A strong advocate of undergraduate education, she received awards for outstanding undergraduate advising and teaching, and she was awarded a prestigious Kemper Teaching Fellowship. During her 21 years at Kansas, President Mason served as a full professor in the Department of Molecular Biosciences, Acting Chair of the Department of Physiology and Cell Biology, and Associate Dean in the College of Liberal Arts and Sciences. In 1995, she was appointed Dean of the College of Liberal Arts and Sciences, the largest academic unit on the University of Kansas campus.

President Mason is the author of many scientific papers and has obtained a number of research grants from the National Science Foundation, the National Institutes of Health, the Wesley Research Foundation, and the Lilly Endowment. Her research interests have focused on the developmental biology, genetics, and biochemistry of pigment cells and pigments in the skin of vertebrates. She has served as President of both the PanAmerican Society for Pigment Cell Research and the Council of Colleges of Arts and Sciences, and has served as Chair of the Advisory Committee to the National Science Foundation Directorate for Education and Human Resources (EHR) and the Executive Committee of the National Association of State Universities and Land-Grant Colleges (NASULGC) Chief Academic Officers Group. She also served on the Executive Committee of the Committee on Institutional Cooperation (CIC) from 2003-2007 and was appointed to the National Medal of Science Selection Committee from 2006-2008.

President Mason is married to Ken Mason, an educator and textbook author who teaches biological sciences at The University of Iowa.



**Gary Barta**  
Director of Athletics

Gary Barta is beginning his second year as Athletic Director at The University of Iowa. He became the University's 11th Director of Intercollegiate Athletics on August 1, 2006. He succeeded Robert Bowsby, who left after 15 years at Iowa to take over the program at Stanford.

A native Midwesterner, Barta signed a five-year contract to lead one of the most successful athletic programs in the nation. His wife Connie is a native of Waterloo, Iowa. The two met while Barta was an Assistant Athletic Director at Northern Iowa.

Barta has already put his stamp on Hawkeye Athletics during his first year in Iowa City. He oversaw the final stages of the \$89 million renovation at Kinnick Stadium and the new Paul W. Brechler Press Box. He officially opened Iowa's new Hawkeye Tennis and Recreation Center. In the spring of 2007 he hired new Head Men's Basketball Coach Todd Lickliter from Butler University. Lickliter's hiring came on the heels of his team's Sweet 16 appearance and his being named the NABC Division I Coach of the Year. Basketball experts from around the country are touting this as an outstanding hire.

Several other initiatives were set in motion during Barta's first year. An Athletic Department Strategic Plan has been launched mapping out the vision and goals for the future. Plans are underway to build a new \$6.1 million boathouse for the rowing program. Construction begins this fall on a new Campus Wellness and Recreation Center which includes a first-class aquatic center. It will serve as the new home to the Hawkeye men's and women's swimming and diving teams. Carver-Hawkeye Arena is in the early planning stage of a \$30-\$40 million renovation that will add a practice facility, improve the fan experience, and renovate and add office space. In addition to facilities, the Strategic Plan lays out goals for academic achievement, championship success, fiscal growth, and overall student-athlete, coach, and staff performance.

Barta has over 20 years of university and athletic administration experience. Before taking over at Iowa he had been the Wyoming Athletic Director since October of 2003. From November 1996 to October 2003, he was Senior Associate Athletic Director for External Relations and Sports Programs at the University of Washington in Seattle. From 1990 to 1996, he was associated with the University of Northern Iowa in Cedar Falls, where he was the Director of Athletic Development and External Relations. He also served as Associate Director of Development at North Dakota State University in Fargo, from 1988-90, where he was involved in fund-raising for athletics, the colleges of business and engineering, and the University's annual fund.

Wyoming received the NCAA Division IA Program of Excellence Award in 2006 during Barta's tenure there, which honors athletic programs that are superior athletically, academically, and in student-athlete life skills preparation.

Barta, and his wife, Connie, have a son, Luke (9) and a daughter, Madison (7). He was born September 4, 1963, in Minneapolis, MN.





# FIELD HOCKEY

Hawkeye Athletics

The University of Iowa Athletic Department is under the direction of Gary Barta and is regarded as one of the top intercollegiate programs in the nation.

The men's and women's departments, operating separately for over 25 years, merged in 2001. It combined nationally recognized programs for both genders into one successful and progressive unit.

Combining their successes on the playing fields with continued success and recognition in the classroom, UI student-athletes practice and perform in some of the best facilities in the nation. The support of their efforts and attendance by Hawkeye fans ranks among the best in the country.

While the Hawkeyes continue to compete with the best in the nation in a variety of sports, Iowa continues to boast some of the most impressive athletic facilities in the nation, operated by one of the most respected departments.

Several new projects are underway on the Iowa campus. Some of the latest additions to the UI campus are the Roy G. Karro Athletics Hall of Fame and Visitors Center and the Russell and Ann Gerdin Athletic Learning Center. Construction on the new Campus Recreation and Wellness Center will also begin in the fall of 2007.

Kinnick Stadium received a major up-grading and renovation that was completed just prior to the 2006 season. The \$89 million project included the replacing of the south end zone stands and building of a four-level press box that houses 47 guest suites. New scoreboards, video walls, concession stands and new restrooms were also part of the project.

Additional priorities for the Iowa program include the establishment and development of endowments for all sports programs, the continued enhancement of graduation rates, and the implementation of a long-range plan to ensure Iowa's

**Kinnick Stadium (70,585) recently underwent an \$89-million renovation.**



financial, academic and competitive future. As an example, all of Iowa's 13 scholarships for men's basketball are fully endowed. The graduation rate of Iowa's student-athletes has improved in each of the past 10 years and has consistently ranked above the graduation rate of all UI students. Hawkeye athletes have garnered more than 70 academic All-America honors since 1992. The 2006-07 school year saw the University of Iowa produce 125 academic all-Big Ten athletes.

Iowa athletes have been recognized as all-Americans in their sport on 223 occasions during the past 15 years.

Iowa's athletic teams, during the 2006-07 athletic year, continued its trend of success on the playing fields and in academic pursuits.

The Hawkeye football team enjoyed a trip to the 2006 Alamo Bowl, where they faced the defending national champion Texas Longhorns. Iowa followed its 11-2 mark of 2002 with a 10-3 record in 2003 and a 10-2 mark in 2004, finishing each of those seasons ranked eighth nationally.

Iowa's men's and women's basketball teams have advanced to post-season play in six of the last seven seasons. The men's team is in its first season under new Head Coach Todd Lickliter, who was named the 2007 NABC Coach of the Year.

The Iowa wrestling squad crowned an NCAA Champion in Mark Perry last season and three Hawkeyes were named all-Americans. Former Hawkeye three-time NCAA Champion and Olympic Gold Medalist Tom Brands is in his second season as head coach. He is joined on the staff by the legendary Dan Gable, who led Iowa to 15 NCAA titles and 21 Big Ten Championships in his 21 seasons as head coach.

The Iowa field hockey team won three matches in three days to claim the 2006 Big Ten Tournament title and earned an automatic berth in the NCAA Tournament. Iowa won a field hockey national title in 1986 and has produced six olympians, 17 national team players, 73 all-Americans and 140 all-Big Ten picks.

The Hawkeye men's cross country team advanced to the NCAA Championships for the third-consecutive year in the fall of 2006, while the men's track team crowned three Big Ten champions and one all-American. The women's cross country team also qualified for the NCAA Championships and had two all-Americans. Women's track and had five athletes claim Big Ten titles and all-American honors.

Iowa's softball team has been selected to NCAA regional action 11 times in the past 14 seasons. Iowa has advanced to the World Series on four occasions over the past 12 seasons and Coach Gayle Blevins is one of three coaches to reach 1,000 career victories.

From the rankings on the court, playing fields, classroom, fan and community support, to the ranking as a program that boasts some of the best athletic facilities in the nation, it's easy to understand why Iowa fans everywhere truly believe, "It's great to be a Hawkeye."



**Iowa has hosted many postseason championships, including the 2005 Big Ten wrestling championships.**





Since its inception in 1979, Athletics Student Services has evolved from a two-person, academic support service to a broad-based, nationally prominent student support services operation. Its purpose is to offer academic and personal support services that will assist student-athletes in making timely and satisfactory progress toward their degrees and becoming tomorrow's leaders.

Athletics Student Services focuses on four important areas — academic counseling and monitoring, educational and support programs, retention programs and compliance services — when working with student-athletes. Following are descriptions of some of the programs, services and opportunities available in those areas.

## **ATHLETICS LEARNING CENTER**

The \$4.6 million Russell A. and Ann Gerdin Athletics Learning Center opened in August of 2003 and gives all Iowa student-athletes a state-of-the-art facility to help them with their educations. The Athletics Learning Center is a multi-level, 20,000 square foot facility which provides a computer center, study areas, classes and meeting places for all Hawkeye student-athletes.

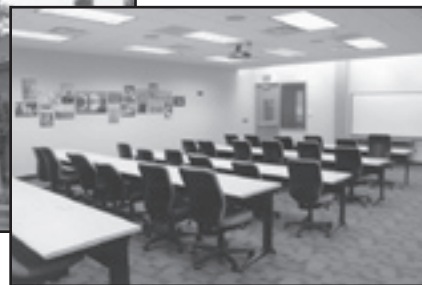
The Learning Center features an auditorium that converts into two classrooms, separate study rooms for under and upper-class student-athletes with 28 study carrels, a computer lab, five tutorial rooms, the book loan repository, office space for Iowa's Student Services staff and a display area to recognize the academic accomplishments of Iowa's student-athletes.

## **ACADEMIC COUNSELING & MONITORING**

Athletics coordinators work closely with student-athletes and their university-assigned advisors from the time they arrive on campus until the time they leave the University. Along with focusing on academic planning matters such as goal-setting, plans of study, choosing majors and degree requirements, athletics coordinators also help student-athletes understand NCAA, Big Ten and University academic policies. They also solicit feedback from instructors on academic progress made by student-athletes.



**The \$4.6 million Russell A. and Ann Gerdin Athletics Learning Center opened in August of 2003.**



## **TRANSITION SEMINAR**

All new student-athletes attend an eight-week transition seminar during the fall semester that is geared toward helping them make the transition from high school to college successfully. Seminar topics include time management skills, learning and study strategies, the culture and rules of the university, and life skills concerning alcohol and other substances, relationships and intimacy, diversity, tolerance, values and character.

## **RETENTION**

A full-time staff member directs the retention program, which identifies student-athletes who may need tailored academic assistance and structure, and implements individualized learning plans to help them succeed. Such plans may include daily and weekly planning sessions with athletics coordinators and retention staff, tutoring, study groups, mainstreaming into on-campus services like the writing center, math labs and services for students with learning disabilities.

## **MINORITY ENRICHMENT PROGRAM**

This program offers a culturally supportive environment in which minority student-athletes have the opportunity to develop friendships and a support network in the university. A core focus group of students and staff coordinate programs such as guest speakers, holiday celebrations, community service activities with the local neighborhood centers, events with Cultural Centers and networking with minority faculty, staff, professional and business leaders.

## **CHAMPS/LIFE SKILLS**

Life skills programs are conducted throughout the year with and for student athletes on quality of life issues critical to personal growth, such as personal accountability, responsible use and nonuse of alcohol, diversity and gambling.

## **TUTORING**

Tutoring is available free of charge to all student-athletes. Tutors, who are post-graduates and teachers, help with course content as well as study strategies and are available in virtually all general education program subjects.

## **CAREER GUIDANCE & DEVELOPMENT**

Planning a meaningful career and a fulfilling life is an ongoing process of expanding and narrowing choices, beginning when student-athletes arrive on campus and continuing throughout their college career and lifetime. The professional staff works with other career development professionals on campus to offer individual consultation, career development seminars, workshops, referrals to other campus offices and special events like the Senior Recognition Banquet for graduating student-athletes.

## **COMPARE THE NUMBERS**

Iowa's student-athletes have outperformed the University's entire student population each year since the NCAA started requiring a report of student-athlete graduation rates.



# FIELD HOCKEY

## Distinguished Alumni

When student-athletes consider their future, they should consider prospects beyond athletics. A list of all University of Iowa alumni who have distinguished themselves professionally would be difficult to assemble and could never be complete. However, some are truly outstanding in their area of expertise.

### BUSINESS

**Leland C. Adams**, *Former president, Amoco Production Co.*

**John J. Balles**, *former president, Federal Reserve Bank of San Francisco*

**Arthur A. Collins**, *Founder, Collins Radio (Rockwell Collins)*

**Kathleen A. Dore**, *Executive vice president and general manager, Bravo Television Network & the Independent Film Channel*

**John W. English**, *former vice president and chief investment officer, Ford Foundation*

**H. John Hawkinson**, *former president and director of funds, Kemper Financial Services Inc.*

**Richard O. Jacobson**, *President, Jacobson Warehouse Co.*

**Bill Krause**, *President, Krause Gentle Corp.*

**Richard Levitt**, *Chairman & CEO, Nellis Corp.*

**John Pappajohn**, *Venture capitalist, entrepreneur; President, Equity Dynamics, Inc.*

### EDUCATION

**Joseph N. Crowley**, *President, University of Nevada at Reno and former NCAA president*

**R. Wayne Duke**, *Former commissioner, Big Ten Conference*

**E.F. Lindquist**, *Co-founder, American College Testing (ACT) Program*

**John B. McLendon**, *First black coach inducted into The Basketball Hall of Fame*

**Eddie Robinson**, *Legendary football coach, Grambling State University*

**Wilbur Schramm**, *International authority on communications and founder, Iowa Writers' Workshop*

**Richard Schultz**, *Executive Director, United States Olympic Committee; Former Executive Director, NCAA*

**James Van Allen**, *Space Physicist*

### ENTERTAINMENT

**Ashton Kutcher**, *Actor, creator of MTV's Punk'd*

**Simon Estes**, *International opera star*

**John Falsey**, *Executive producer of television's "Northern Exposure" & "I'll Fly Away"*

**Robin L. Green**, *Executive producer, The Sopranos*

**Al Jarreau**, *Grammy Award-winning singer*

**Mark Johnson**, *Film producer and Oscar Award winner for Rainman*

**Alex Karras**, *former NFL All-Pro, Detroit Lions; actor, Victor, Victoria; Blazing Saddles; "Webster"*



**Tom Brokaw**

**Barry Kemp**, *television producer, creator of the hit series "Coach"*

**Dave Keuning**, *guitarist, The Killers*

**Shirley Rich Krohn**, *Casting director for Kramer vs Kramer, Three Days of the Condor, Taps, Saturday Night Fever*

**Richard Maibaum**, *Writer of James Bond motion picture scripts*

**Brandon Routh**, *Actor, Superman Returns*

**Gene Wilder**, *Actor, Silver Streak, Young Frankenstein, Stir Crazy*

### GOVERNMENT

**David Bonior**, *U.S. House of Representatives, Mt. Clemons, MI*

**Terry Branstad**, *former Governor of Iowa*

**General Charles A. Horner**, *Architect of the United States air war against Iraq during the Persian Gulf War/Desert Storm*

**Mary Louise Smith**, *noted political party leader and civil rights proponent*

**Juanita Kidd Stout**, *First black woman elected to a state Supreme Court*

### LITERATURE

**Mildred Wirt Benson**, *Author of 23 Nancy Drew mysteries and first woman to receive master's degree in journalism at Iowa*

**John Irving**, *Writer, The World According to Garp, The Cider House Rules*

**W.P. Kinsella**, *Writer, Shoeless Joe*

**Margaret Walker**, *Writer, Jubilee*

### MEDIA

**Alan Abelson**, *Editor, Barron's*

**Tom Brokaw**, *Former Anchorman, NBC News*

**John Cochran**, *Correspondent, ABC News*

**Paul Conrad**, *Political cartoonist and three-time*



**Juanita Kidd Stout**

*winner of the Pulitzer Prize*

**George Gallup**, *Founder, The Gallup Poll*

**Charles Guggenheim**, *Documentary filmmaker, Peabody and Oscar award winner*

**Bob Miller**, *Broadcaster, Los Angeles Kings*

**Herbert Nipson**, *Executive Editor, Ebony*

**Brian Ross**, *Correspondent, ABC News, NBC News; Peabody and Emmy award winner*

**Carole Simpson**, *Anchor, ABC News*

### MEDICINE

**Dr. Nancy Andreasen**, *Psychiatrist renowned for her research on schizophrenia, as well as creativity*

**Dr. Johann L. Ehrenhaft**, *Pioneer in field of open heart surgery*

**Dr. Robert C. Hardin**, *Developed blood bank protocols during WW II based on seminal work on blood preservation*

**Dr. Don H. O'Donoghue**, *sports medicine pioneer*

**Dr. Emory D. Warner**, *World recognized pathologist*

### PULITZER PRIZE WINNERS

**Marquis Childs**, 1970, *St. Louis Post Dispatch*

**Rita Dove**, 1987, *Thomas and Beulah; U.S. Poet Laureate*

**Jorie Graham**, 1996, *The Dream of the Unified Field; New and Selected Poems*

**J. Tracy Kidder**, 1982, *The Soul of a New Machine*

**James A. McPherson**, 1978, *Elbow Room*

**Jane Smiley**, 1992, *A Thousand Acres*

**Tennessee Williams**, 1948, *A Streetcar Named Desire; 1955, Cat on a Hot Tin Roof*



# FIELD HOCKEY

Sports Medicine and Athletic Training



## **ATHLETIC TRAINING & SPORTS MEDICINE**

Continuing to set the standard in athletic training and Sports Medicine Service, The University of Iowa provides the student-athlete with exemplary medical care. Athletic Training Services connect student-athletes to University of Iowa Hospitals & Clinics (UIHC) resources and specialty areas. Iowa's staff of 10 full-time licensed athletic trainers and 7 graduate assistant licensed athletic trainers provide health care services in five athletic training rooms. These services include evaluation, treatment, injury rehabilitation programs, and prevention programs. With physical conditioning as a major component of a prevention program, the athletic trainers combine with strength and conditioning coaches to pave the way for safe, effective, and enhanced participation in intercollegiate athletics.

Services from the UIHC, one of the world's largest university-owned teaching hospitals, support the efforts of the athletic trainers and other specialty sports medicine staff. Located next to Kinnick Stadium, the hospital offers a cutting-edge environment where staff physicians, sports medicine fellows, sports physical therapists, and athletic trainers care for student-athletes and produce successful outcomes. Dedicated research and education result in outstanding care. Athletic trainers form a team with orthopaedic and primary care physicians for every Hawkeye sport. Many of the physicians are fellowship trained in their specialty area and lecture locally, nationally, and around the world. In addition each athlete has access to orthotists, nutritionists, psychologists, and specialty physicians at the UIHC. Immediate accessibility to see physicians and other health care professionals provides comprehensive health care that returns the student-athlete to practice and competition.

## **RECREATION BUILDING ATHLETIC TRAINING ROOM**

The Recreation Building Athletic Training Room is used by the Hawkeye baseball, cross country, track and field, tennis and soccer teams. The athletic training staff consists of associate director

Doug West, PhD, LAT, CSCS and three graduate assistant licensed athletic trainers. The training room has excellent facilities to conduct evaluations, treatments, and rehabilitation for the student-athlete. The facility is a spacious room with equipment to enhance cardiopulmonary and strength performance, including ellipticals by Precor, the LeMond independent pedal bike with PowerCrank, and the Keiser Functional Trainer. There are also traditional electrical stimulation, ultrasound, TENS, hydrocollator, and hydrotherapy treatment options. These treatment, rehabilitative and preventive options along with newer technology, like the Hivamat, prepare the Hawkeyes for action and return injured Hawkeyes to competition.

## **THE HAWKEYE STRENGTH TRAINING PROGRAM**

The program is designed to develop strength, explosiveness, speed, coordination, balance and flexibility. All qualities are developed through progression of exercises in four phases of training:

1. **work capacity** - ability to perform work for a prolonged time and recover quickly
2. **strength** - ability to exert force
3. **power** - ability to exert strength quickly
4. **speed** - ability to move the body in shortest time possible.

The highest level of performance is achieved by training under close supervision, in a year-round program. Improvement is monitored closely through the newest and best technology. Electronic timing devices are used to measure sprints, while a microcomputer device is used to monitor peak velocity and power outputs in weight training movements. With this technological support, the athletes are constantly receiving immediate feedback on their development.

## **STRENGTH & CONDITIONING MISSION**

"The mission of our strength and conditioning program is performance enhancement, while reducing the risk of injury through a detailed progression of exercises."



**The Recreation Building Athletic Training Room has excellent facilities to conduct evaluations, treatments, and rehabilitation for the student-athlete.**



**The 1,800-square foot Recreation Building strength training facility is equipped with eight Olympic platforms, squat racks, medicine balls, physio balls and over 10,000 pounds of free weights.**





# FIELD HOCKEY

The University of Iowa

## AN EXCEPTIONAL CHOICE

Since 1847, The University of Iowa has distinguished itself as a leader among public universities. Today its programs in health, business, engineering, education, law, the arts, communications, and the sciences are known worldwide for their excellence and innovation.

## OUTSTANDING ACADEMIC

### OPPORTUNITIES

Iowa offers degrees in 11 colleges: Business, Dentistry, Education, Engineering, Law, Liberal Arts and Sciences, Medicine, Nursing, Pharmacy, Public Health, and the Graduate College. Undergraduates can choose from more than 100 areas of study.

## A FUN PLACE TO CALL HOME

Iowa City is a classic university town where learning and creating truly matter. The city blends the vibrant University campus and the natural beauty of the Iowa River with nearby shopping, entertainment, and residential areas.

## COMMANDING RESOURCES

The University operates one of the largest research library systems in the country. Iowa equips its classrooms and laboratories with the latest in computer technology. Students benefit from this technology-rich environment coupled with the high personal attention of University faculty and staff. Visit the University's web site at [www.uiowa.edu](http://www.uiowa.edu) to take a virtual campus tour or find out more about its programs of study.

## MORE THAN A TASTE OF THE ARTS

Hancher Auditorium, the University's outstanding arts showplace, presents an amazing array of world-renowned performers, and students may purchase tickets to performances at reduced rates. Premier works of art are displayed not only at the Museum of Art but in most University buildings and plazas throughout campus. Students may participate in theater, music, and dance groups.

## WHAT DISTINGUISHES AN IOWA EDUCATION?

**Success.** Iowa's philosophy is that if students meet the entrance requirements, the University is going to do everything it can to help students to graduate. An Iowa degree



**U.S. News & World Report ranked UI as the 21st best public university in the nation in 2004 and 2005 and the 25th best in 2006.**

spells success in the job market, giving students the skills to continue learning and growing throughout their careers.

**Excellence.** The faculty is stellar. Students are amazed not only at how much they know but at how enthused they are about sharing that knowledge and getting students excited about their subject.

### **Comfortable class sizes**

Here are average class sizes for some typical first-year courses:

Rhetoric .....	22 in class
Biology .....	600 in lecture, 24 in lab
Western Civilization .....	260 in lecture 22 in discussion group
Calculus.....	25 in class
German.....	15 in class
First-year seminar.....	13 in class

### TIME AND SPACE TO PLAY

Every year about 90 percent of Iowa's students make use of the University's recreational facilities. Each season offers a full

schedule of intramural and club sports, ranging from rugby, tennis, and golf to volleyball, soccer, and swimming. Individual workouts are a part of many students' daily routines. Students also make use of campus walking and running trails, bikeways, ski trails, golf courses, and canoe and sailboat rentals to relax and enjoy leisure time.

## CONSIDER IOWA'S ADVANTAGES

- ◆ According to the Fiske Guide to Colleges, the University of Iowa is a "Best Buy" for an outstanding, affordable education.
- ◆ Iowa celebrates diversity—the University attracts students from more than 100 countries and all 50 U.S. states.
- ◆ Iowa's students and faculty have an enthusiasm for learning and for having fun.
- ◆ Iowa is part of the Big Ten Conference, sharing academic and athletic traditions among a group of America's leading universities.
- ◆ Iowa's faculty members not only offer a full range of academic offerings for students, they actively engage in innovative research projects within their specialty areas.
- ◆ Students can easily travel a half day by car to a number of large American cities, including Chicago, Minneapolis/St. Paul, Kansas City, St. Louis, and Omaha.
- ◆ Iowa City holds a cosmopolitan charm all its own as a gathering place for the world's writers, for world-renowned artists, and for noted visiting lecturers.
- ◆ The University's 400+ student organizations include fraternities, sororities, and many professional and cultural societies.
- ◆ The University's career and placement services match students with companies for internships and other professional experiences throughout their education.
- ◆ The University's graduates excel in their careers, often holding leadership positions within their professions and communities.



## THE COLLEGES

Freshmen who enroll at The University of Iowa are admitted to either the College of Liberal Arts and Sciences or the College of Engineering. The General Education Program allows students to sample courses in more than 100 areas of study. At Iowa, students are required to take electives, major courses, and general education course work.

### LIBERAL ARTS & SCIENCES

**Undergraduate Degrees Offered** - Bachelor of Arts (BA) and Science (BS) in 58 major fields; Bachelor of Fine Arts (BFA) in Music (BM) and of Liberal Studies (BLS).

**Admission** - Freshmen and transfer students are to meet the college's admissions requirements.

### ENGINEERING

**Undergraduate Degrees Offered** - Bachelor of Science in Engineering (BSE) in six majors- biomedical, chemical, civil, electrical, industrial, and mechanical engineering.

**Admission** - Students must meet the college's high admissions requirements.

### BUSINESS

**Undergraduate Degrees Offered** - Bachelor of Business Administration (BBA) in six majors: accounting, economics, finance, management, management information systems, and marketing.

**Admission** - Requires one or two years of pre-business study in the College of Liberal Arts and Sciences. Details at [www.biz.uiowa.edu/upo/admissions/](http://www.biz.uiowa.edu/upo/admissions/).

### EDUCATION

**Teacher Education Programs** - Elementary Education, Art Education, English Education, Foreign Language Education, Mathematics Education, Music Education, Science Education, and Social Studies Education. Additional teaching minors in Coaching, ESL (English as a Second Language), Hearing Impaired, Reading, and Talented and Gifted.

**Admission** - Review all admission requirements and program guides at [www.education.uiowa.edu/tess/](http://www.education.uiowa.edu/tess/)

### NURSING

**Undergraduate Degrees Offered:** Bachelor of Science in Nursing (BSN).

**Admission:** Students complete one year of pre-requisite courses in the College of Liberal Arts and Sciences and apply for admission during the second semester of the first year. The College of Nursing has competitive admission. The BSN requires three years of study once the student earns admission.

### PHARMACY

**Professional Degree Offered** - Doctor of Pharmacy (PharmD)

**Admission** - Students must successfully complete required pre-pharmacy course work in the College of Liberal Arts and Sciences. These requirements may be met in two years but do not guarantee admission. Students must also complete the Pharmacy College Admission Test (PCAT).

### GRADUATE AND PROFESSIONAL DEGREES

Many student-athletes who have attended The University of Iowa and completed their undergraduate degrees continue their education at the University.

Student-athletes who attend graduate or professional school must first complete course work toward a bachelor's degree in their field of study. The University also offers undergraduates the opportunity to participate in research and overseas study programs, as well as internships that will help prepare them for graduate school.



1



2



3



4

#### CAPTIONS FOR CAMPUS PHOTOS

- 1) The state-of-the-art Pappajohn Business Building.
- 2) The University Museum of Art houses 12,000 permanent works of art.
- 3) The University of Iowa Dental Science Program is one of the oldest in the nation.
- 4) The University of Iowa College of Law is one of the best and most respected law schools in the country.





# FIELD HOCKEY

The University of Iowa

## HOUSING

Each athletics team has its own rules regarding residence of incoming freshmen. Across the University, about 90 percent of freshmen choose to live on campus in one of the 10 residence halls. Most student-athletes live at least two years on campus.

The residence halls have full-service dining rooms, study lounges, laundry facilities, recreational facilities, vending, and bank machines. Each room has high-speed computer connections for e-mail and Internet access, plus there are wireless networking hot spots in a variety of locations across campus. Iowa also offers wireless networking in 52 buildings and several outdoor areas, providing more than 265 access points across campus.

## SAFETY

- 11:55 p.m. - 2:10 a.m.: Free SafeRide buses take students home Fridays and Saturdays during the fall and spring semesters.
- Special telephones with blue lights are stationed across campus with a direct link to the UI Department of Public Safety.
- University of Iowa Police personnel educate students on safety during summer orientation.
- The Rape Victim Advocacy Program cooperates with the UI Department of Public Safety and participates in Sexual Crime Awareness Week.

## LIBRARIES

The University of Iowa Libraries supports the academic achievement of all student-athletes with specialized courses, one-on-one consultations with librarians, 24/7 access to electronic resources through the web site ([www.lib.uiowa.edu](http://www.lib.uiowa.edu)), and extended hours, which can accommodate complicated practice and travel schedules. UI Librarians help students find answers, whether they're on a web site, in a book, journal, government document, or database. Librarians also plan and teach students how to find, evaluate, and use information from a variety of sources--skills they will use throughout their lives.

## CAREER PLANNING

Finding and pursuing a career takes careful planning. The Pomerantz Career Center is extremely valuable for student-athletes and can help identify skills that transfer from athletics to the workplace. The program suggests a timeline each student-athlete may follow throughout his or her stay at Iowa. The components of the program include:

- Individualized career advising
- Career education programs
- Summer job/internship opportunities
- Resume and cover letter development
- Preparing for life after college athletics

## COMPUTERS

There are 26 Instructional Technology Centers all over the campus which are filled with 1,200 computers. These facilities are open at least 50 hours a week. Some are open 24 hours. Also, the Information



Arcade in the Main Library provides a variety of specialized computing tools. The Computer Demo Center provides information for students who want to purchase computers and software.

## SKILLS LABS & SUPPORT

Many academic departments offer skills labs to help students improve skills necessary to succeed at Iowa, such as writing, speaking, math, science, and foreign language. Assistance with skills such as note-taking, time-management, and test-taking are available through resources such as the College Transition Seminar (a credit-bearing course offered through University College), University Counseling Services, and Athletic Student Services staff.

## HEALTH SERVICES

The University of Iowa provides the student-athlete with the most up-to-date and highest-quality medical care available. Students at Iowa can go to Student Health Service, which is open Monday through Friday. The service is supported by a fee paid by all full-time students. It offers students unlimited free office visits (there is a charge for other procedures done in the office, such as blood tests).

## CULTURAL CENTERS

Four cultural centers on campus provide a welcoming setting where students from various cultures can find cultural, academic, and personal support services: the Latino and Native American Cultural Center, the Afro American Cultural Center, the Asian Pacific American Cultural Center, and the Lesbian, Gay, Bisexual, and Transgender Resource and Education Center.

## CAMBUS

There are six primary bus routes throughout the Iowa campus. The University Cambus provides over three million free rides to class and to the dorms for students each year. Some routes run seven days a week, and some run until 2:30 a.m. Cambus also operates a specialized transportation service for persons with disabilities.



# FIELD HOCKEY

The Iowa City Community



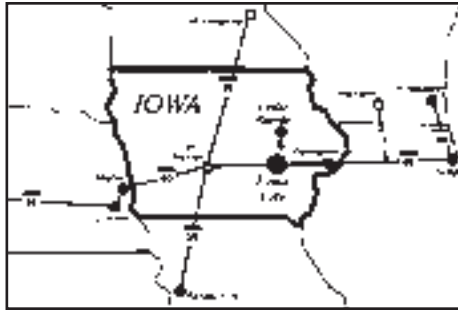
Iowa City is a diverse, highly cosmopolitan community of 60,000 set in the natural scenic beauty of Iowa's rolling hills and woods along the tree-lined banks of the Iowa River. Iowa City has all the art galleries, ethnic foods, historic architecture and vibrant atmosphere of a much larger city, but with the compactness and friendly feeling of a small town.

As a place to live, Iowa City keeps winning awards and accolades - Named one of the ten most enlightened towns in the country by Utne Reader, listed in the book The 100 Best Small Art Towns in America and selected the number-one place to live in the nation by Editor & Publisher magazine.

Economically, businesses such as Rockwell Collins, American College Testing and Procter & Gamble help keep the city booming. In Coralville, a branch office of Geico Auto Insurance has provided many residents with employment opportunities.

Culturally, Iowa City is alive with concerts, art exhibits, readings, plays and art events of all kinds. Located on the University of Iowa campus, Hancher Auditorium is a nationally-known performance center that brings in the best of Broadway, classical and jazz music, dance and other performances. The University of Iowa Theater Arts department also produces a full schedule of plays each year, featuring the work of student performers and directors. So whether you enjoy the arts as a spectator or as an outlet for your own creativity, Iowa City has the opportunities.

Residents of Iowa City are not only economically and culturally enriched, they also take advantage of the numerous recreational facilities offered around town. The area's more than 30 parks provide opportunities for year-round activities including boating, hiking, swimming, fishing and skiing.



**Iowa City is located in eastern Iowa and is an easy trip to such cities as Des Moines (the capital of Iowa), Chicago, St. Louis, Kansas City, and Minneapolis. Also, Cedar Rapids, a city of more than 150,000, is just a short drive north of Iowa City. The Eastern Iowa Airport, which links residents to every major airport in the Midwest, nation and world, is only 20 minutes away.**



**The "Ped Mall" is a relaxed, no-cars-allowed outdoor plaza in the heart of downtown Iowa City which has cafes, boutiques, outdoor food vendors and street performers.**



**The Coral Ridge Mall is the largest shopping mall in Eastern Iowa.**

The city's greatest charm, however, remains the sincere friendliness of its citizens, the cosmopolitan atmosphere and the successful partnership built between the community and the University.

## OLD CAPITOL

One of the most recognizable sites in Iowa City is the gold dome of the Old Capitol which is situated in the heart of downtown. Built in 1840, it is Iowa City's most historic building. The Old Capitol was the site of the first governor inauguration as well as the first six Iowa General Assemblies. It is also where the state's Constitution was drafted. When the capital was moved to Des Moines in 1857, the Old Capitol was dedicated to The University of Iowa, becoming the first building owned by the University.

## CORALVILLE LAKE

Just north of Iowa City is Coralville Lake, an outdoor recreational area that offers a variety of opportunities for the public. Coralville Lake offers picnic shelters, biking, hiking, fishing, boating, swimming, hunting, camping, snowmobiling, cross country skiing, golf and disc golf.

## PEDESTRIAN MALL

Located downtown and in walking distance of many of the University's dormitories is the Pedestrian Mall. It is a perfect place to sit outside and study or hang out with friends. During the fall, spring and summer months there are concerts and art festivals in the Pedestrian Mall.

## CORAL RIDGE MALL

The Coral Ridge Mall is a 1.2-million-square-foot shopping center located just minutes from the UI campus. The center combines a mix of over 120 specialty shops and strong department stores including Dillards, JC Penney, Sears, Target and Younkers. Coral Ridge also offers entertainment features such as an NHL-regulation-sized indoor ice arena, state-of-the-art 10-screen movie theatre and a large carousel along with a 1,000-seat food court with sit-down restaurants. Specialty stores include Abercrombie & Fitch, Barnes & Noble, Gap, Old Navy, Scheels All Sports and Pier 1 Imports.

**For More Information Contact:  
Iowa City/Coralville  
Convention & Visitors Bureau  
900 First Avenue, Coralville 52241;  
319/337-6592 or 800/283-6592**



# FIELD HOCKEY

## Hawkeye Traditions

### THE HAWKEYE NICKNAME

The University of Iowa borrowed its athletic nickname from the state of Iowa many years ago. The name Hawkeye was originally the name of the hero in the fictional novel, *The Last of the Mohicans*, written by James Fenimore Cooper. Cooper had the Delaware Indians bestow the name on a white scout who lived with them. In 1838, 12 years after the book was published, people in the territory of Iowa acquired the nickname, chiefly through the efforts of Judge David Rorer of Burlington and James Edwards of Fort Madison. Edwards, editor of the Fort Madison Patriot, moved his paper to Burlington in 1843 and renamed it the Burlington Hawkeye. The two men continued their campaign to popularize the name, and territorial officials eventually gave it their formal approval.

### HERKY THE HAWKEYE

The Hawkeye nickname gained a tangible symbol in 1948 when a cartoon character, later to be named Herky the Hawkeye was hatched. The creator was Richard Spencer III, instructor of journalism at Iowa. The impish Hawk was an immediate hit and acquired a name through a statewide contest staged by the athletic department. John Franklin, a Belle Plaine alumnus, was the man who suggested Herky. Since his birth more than 45 years ago, Herky has symbolized Iowa athletics and epitomized University life. He even donned a military uniform during the Korean War and became the insignia of the 124th Fighter Squadron. During the mid-1950s, Herky came to life at a football game as the Iowa mascot. Since that time, Herky has been a familiar figure at Iowa athletics events.

### SCHOOL COLORS

For 40 years Iowa was without school colors, but in 1887 a group of 50 seniors met on the steps of the Old Capitol to decide what are now the school official colors. They chose Old Gold, the color of Iowa's vast corn fields and Black, the color of the rich soil.



### SCHOOL FIGHT SONG

The Iowa Fight Song was written in 1950 by Mason City, Iowa, native Meredith Willson. Best known as the creator of Broadway's "The Music Man," Willson was awarded a 1963 University of Iowa Alumni Association Distinguished Service Award for "setting the spirit of Iowa to music." The lively cheer is sung hundreds of times during Iowa athletics events the year around.

*The word is Fight, Fight,  
Fight for IOWA  
Let every loyal Iowan sing;  
The word is Fight, Fight  
Fight for IOWA  
Until the walls and  
rafters ring  
(Go Hawks!)  
Come on and cheer,  
cheer, cheer  
for IOWA  
Come on and cheer until you hear  
the final gun.  
The word is Fight, Fight, Fight for IOWA  
Until the game is won.*