



# University of Iowa Women's Basketball

**Game #11**

**December 11, 2012**

## 2012-13 Schedule/Results 7-3 Overall, 0-0 Big Ten

11/9	Northern Illinois <sup>^</sup>	W, 63-40
11/11	Illinois State <sup>^</sup>	W, 74-64
11/14	Middle Tennessee <sup>^</sup>	W, 69-63 (OT)
11/18	North Carolina <sup>^</sup>	L, 64-77
11/20	Robert Morris	W, 58-44
11/23	at Florida International#	L, 65-66
11/25	vs. #12 West Virginia	W, 79-70
11/28	at Florida State <sup>~</sup>	L, 69-83
12/1	Northern Iowa	W, 68-46
12/6	#22 Iowa State*	W, 50-42
12/16	at Drake	2 p.m.
12/19	Missouri State	5:30 p.m.
12/28	vs. Texas%	10 p.m.
12/30	vs. C. Mich./San Diego%	2 or 4 p.m.
1/3	Ohio State	5:30 p.m.
1/6	Michigan	12 p.m.
1/10	at Wisconsin	7:30 p.m.
1/17	at Michigan State	5 p.m.
1/20	Purdue	3 p.m.
1/24	Wisconsin	7 p.m.
1/27	at Michigan	1 p.m.
1/31	at Illinois	7 p.m.
2/3	Northwestern	1 p.m.
2/7	at Minnesota	7:30 p.m.
2/11	Nebraska	6:30 or 7:30 p.m.
2/14	Penn State	7 p.m.
2/17	at Purdue	4 p.m.
2/24	at Nebraska	2 p.m.
2/28	Indiana	TBA
3/3	at Northwestern	TBA

<sup>^</sup> -- WNIT

# -- FIU Thanksgiving Classic, Miami

<sup>~</sup> -- ACC/Big Ten Challenge

\* - Iowa Corn Cy-Hawk Series

% -- San Diego Surf 'N Slam Classic, San Diego

## Pronunciation Guide

Lisa Bluder.....	BLUE-dir
Kali Peschel.....	PEH-shull
Theairra Taylor.....	thee-AIR-uh

SID Contact: Aaron Blau (@AaronBlau)  
E-Mail: aaron-blau@hawkeyesports.com

Office: (319) 335-9268  
Cell: (319) 430-5103



### Drake (3-5) vs. Iowa (7-3)

Dec. 16, 2012 • 2 p.m.

Des Moines, Iowa • Knapp Center

**Radio:** AM-800 KXIC, AM-600 WMT, AM-1040 WHO

**TV:** Mediacom • **Webcast:** N/A • **Live Stats:** hawkeyesports.com

**Series Record:** Iowa trails, 24-20



### THE SETTING

The University of Iowa women's basketball team returns to the court after a nine-day break for finals week, traveling to Des Moines on Sunday to take on the Drake Bulldogs. Tip-off is scheduled for 2 p.m.

### ON YOUR TELEVISION

Sunday's game will be televised live on Mediacom (MC22). Larry Morgan and Laura Leonard will call the action.

### AUDIO COVERAGE

Brent Balbinot and Shelley Till will call Sunday's game for the Hawkeye Radio Network. Hawkeye fans can listen to the contest on AM-800 KXIC in Iowa City, AM-600 WMT in Cedar Rapids, AM-1040 WHO in Des Moines or on the Hawkeye All-Access page of [hawkeyesports.com](http://hawkeyesports.com).

### ON YOUR COMPUTER

Hawkeye fans can follow the game via live stats. The live stats link can be accessed under the "Calendar" tab on the front page of [hawkeyesports.com](http://hawkeyesports.com) or on the women's basketball schedule page.

### IOWA HISTORY

Iowa has played 1,108 games since beginning basketball in 1974. Iowa's overall record is 678-430 (.612). That includes a 340-170 (.667) mark in regular season Big Ten contests and a 339-92 (.787) mark in Carver-Hawkeye Arena.

## Tentative Starting Lineup

Iowa Hawkeyes (7-3)					
Pos.	No.	Name	Ht.	Yr.	Statistical Summary
G	22	Samantha Logic	5-8	So.	8.3 ppg, 5.5 rpg, 6.1 apg, .447 FG%, .722 FT% - Committed only two turnovers over last two games
G	24	Jaime Printy	5-11	Sr.	12.4 ppg, 4.1 rpg, 3.4 apg, .382 FG%, .943 FT% - Only missed three free throw attempts this season (50-of-53) and made 32 of last 33 attempts
G	23	Theairra Taylor	5-11	Jr.	7.0 ppg, 5.4 rpg, 1.7 apg, .382 FG%, .591 FT% - Scored in double figures for ninth time in career in Iowa's win over Iowa State
F	51	Bethany Doolittle	6-4	So.	6.7 ppg, 5.5 rpg, 1.8 bpg, .372 FG%, .1000 FT% - Played at least 30 minutes in five of Iowa's 10 games
C	12	Morgan Johnson	6-5	Sr.	17.3 ppg, 7.5 rpg, 2.1 bpg, .558 FG%, .734 FT% - Eclipsed 700 career rebound mark in Iowa's win over Iowa State

Head Coach: Lisa Bluder (Northern Iowa, 1983); 13th Season at Iowa (237-147); 29th Season Overall (593-289)



## Inside the Numbers

	IOWA	DRAKE
Scoring Average	65.9	63.9
Scoring Defense	59.5	65.4
Scoring Margin	+6.4	-1.5
FG%	.413	.361
FG% Defense	.331	.382
FT%	.747	.711
3-PT FG%	.302	.306
3-PT FG% Defense	.255	.272
Rebound Margin	+1.4	+2.9
Assists Per Game	15.2	13.4
Turnovers Per Game	18.3	17.5
Turnover Margin	-1.8	-2.6
Steals Per Game	6.1	6.0
Blocks Per Game	5.8	2.6

## Iowa vs. Drake Series History

Iowa trails, 24-20  
Last 10 Meeting Listed Below

12/20/11.....	at Iowa .....	W, 71-46
12/20/10.....	at Drake .....	W, 75-71
12/20/09.....	at Iowa .....	W, 73-61
12/20/08.....	at Drake .....	W, 71-53
11/13/07.....	at Iowa .....	W, 62-50
12/22/06.....	at Drake .....	W, 77-70
12/18/05.....	at Iowa .....	W, 92-72
12/18/04.....	at Drake .....	W, 80-69
12/21/03.....	at Iowa .....	W, 79-65
12/21/02.....	at Drake .....	W, 72-52

## How Many Times a Hawkeye Player...

<b>Scored 20 or More Points</b>	
Morgan Johnson.....	4
Jaime Printy .....	1
<b>Scored 15 or More Points</b>	
Morgan Johnson.....	7
Jaime Printy .....	3
Bethany Doolittle.....	1
Samantha Logic .....	1
<b>Grabbed 10 or More Rebounds</b>	
Morgan Johnson.....	3
Theairra Taylor.....	1
<b>Grabbed 7 or More Rebounds</b>	
Morgan Johnson.....	4
Bethany Doolittle.....	4
Theairra Taylor.....	3
Samantha Logic .....	3
Jaime Printy .....	1
<b>Dished out 7 or More Assists</b>	
Samantha Logic .....	5
<b>Dished out 5 or More Assists</b>	
Samantha Logic .....	6
Jaime Printy .....	3
Theairra Taylor.....	1
Morgan Johnson.....	1
<b>Recorded 4 or More Steals</b>	
Samantha Logic .....	1
<b>Blocked 3 or More Shots</b>	
Bethany Doolittle.....	2
Morgan Johnson.....	2

## 2012-13 Margin of Victory/Defeat

Points	1	2	3	4	5	6	7	8	9	10-14	15-19	20+
Wins	0	0	0	0	0	1	0	1	1	2	0	2
Losses	1	0	0	0	0	0	0	0	0	2	0	0

### SCOUTING DRAKE

The Drake Bulldogs are 3-5 overall, with wins at home against Illinois-Chicago and Chicago State and a road win at North Dakota State.

In their most recent game, the Bulldogs dropped a 67-63 overtime decision at North Dakota on Dec. 8. North Dakota limited Drake to just 32.4 percent shooting (24-of-74) from the floor. Mary Pat Specht led Drake with 14 points off the bench while Carly Grenfell and Kyndal Clark each had 12 points. Clark added six rebounds and five assists.

Clark leads the team with 13 points per game. Morgan Reid is next at 10.3 points and has a team-best 8.4 rebounds per contest. Grenfell is averaging 9.4 points per game and shooting 50 percent (26-of-52) from the field.

As a team, Drake is averaging 63.9 points per game and shooting 36.1 percent (180-of-499) from the field, including 30.6 (45-of-147) from 3-point distance.

### IOWA VS. DRAKE NOTES

- Drake leads the all-time series, 24-20. Iowa has won the last 10 games in the series, including the last five in Des Moines. The Hawkeyes are 9-11 all-time at Drake.
- Iowa head coach Lisa Bluder coached 10 successful seasons (1990-2000) at Drake before joining the Hawkeyes.
- Iowa associate head coach Jan Jensen and assistant coach Jenni Fitzgerald both played and coached at Drake. Jensen is one of only two Drake women's basketball players to have her uniform retired. Both Jensen and Fitzgerald received the Drake Double D Award, which is the highest honor Drake bestows on its student-athletes.
- Drake head coach Jennie (Lillis) Baranczyk was a four-year letterwinner at Iowa, graduating in 2004. She was an honorable mention All-American and a three-time All-Big Ten selection. She still ranks fourth in career scoring (1,762), fifth in blocks (114), sixth in rebounds (827), eighth in steals (190) and 13th in assists (297).
- Sunday marks the first time in four years that this game hasn't been played on Dec. 20.

### LAST MEETING

Iowa used a solid defensive effort and a strong shooting night to defeat intra-state rival Drake, 71-46 (Dec. 20, 2011) inside Carver-Hawkeye Arena.

The Hawkeyes held Drake to just a 34.5 (20-of-58) field goal percentage, including a 24 percent (6-of-25) percentage in the first half. Iowa forced 22 turnovers and turned them into 18 points.

Iowa made its first five shots and six of its first seven to take an early 14-4 lead. The Hawkeyes led by as many as 27 points early in the second half.

Jaime Printy led Iowa with 16 points. Samantha Logic added 12 points, six rebounds and four assists.

## 2012-13 Iowa Hawkeye Roster

No.	Name	Yr.	Ht.	Pos.	Hometown (High School/College)
3	Claire Till	Fr.	6-0	G	Dubuque, Iowa (Dubuque Wahlert)
11	Trisha Nesbitt	Sr.	5-7	G	Ames, Iowa (Ames)
12	Morgan Johnson	Sr.	6-5	C	Platte City, Mo. (Platte County)
13	Kathy Thomas	So.	5-6	G	Flint, Mich. (Highland CC, KS)
21	Melissa Dixon	So.	5-8	G	Johnsburg, Ill. (Johnsburg)
22	Samantha Logic	So.	5-9	G	Racine, Wis. (Racine J.I. Case)
23	Theairra Taylor	Jr.	5-11	G	St. Paul, Minn. (Central)
24	Jaime Printy	Sr.	5-11	G	Marion, Iowa (Linn-Mar)
25	Kali Peschel	Fr.	6-1	G	Sauk Centre, Minn. (Sauk Centre)
33	Kathryn Reynolds	So.	5-7	G	Cincinnati, Ohio (Mount Notre Dame)
45	Nicole Smith	Fr.	6-4	C	Rockton, Ill. (Hononegah)
51	Bethany Doolittle	So.	6-4	C	Oakdale, Minn. (Hill-Murray)
54	Kayla Timmerman	Fr.	6-3	F	Wayzata, Minn. (Wayzata)

**Head Coach:** Lisa Bluder      **Associate Head Coach:** Jan Jensen  
**Assistant Coaches:** Jenni Fitzgerald and Shannon Gage



## 2012-13 Team Captains

Iowa captains are seniors  
Jaime Printy, Morgan Johnson and Trisha Nesbitt

### HAWKEYES DEFEAT NO. 22 IOWA STATE

Iowa used strong scoring runs to start and end the game to knock off 22nd-ranked Iowa State, 50-42 on Dec. 6 inside Carver-Hawkeye Arena.

The Hawkeyes scored the first 14 points of the game and held a 16-3 advantage with 12:31 left. Iowa State responded, cutting the lead to just 18-15 with 6:34 remaining in the first half and the Hawkeyes took a 20-17 lead into halftime.

Iowa cruised to a 39-28 advantage with 7:13 left in the game, but another Iowa State surge tied the game at 39. The Hawkeyes closed the game with an 11-3 run, sealing the victory.

Theiarra Taylor had 11 points and nine rebounds while Melissa Dixon sparked the Hawkeyes with 11 points off the bench. Samantha Logic had six points, nine rebounds and four assists.

### IOWA IN THE RANKINGS

Iowa is receiving votes in the Associated Press and ESPN/USA Today Top 25 polls.

Seven Iowa opponents are ranked in the Associated Press and ESPN/USA Today polls: Penn State (11th/10th), Purdue (15th/14th), Texas (18th/20th), North Carolina (19th/RV), Ohio State (20th/19th), West Virginia (25th/22nd) and Nebraska (RV/24th).

In addition, Florida State, Iowa State and Michigan State are receiving votes.

### IOWA CONTINUES TREND AGAINST RANKED FOES

- Iowa's win over 12th-ranked West Virginia (Nov. 25) marked the 14th time under Lisa Bluder that the Hawkeyes have defeated a top-15 team.
- The Hawkeyes have recorded at least one win against a top-25 team in all but two seasons under Bluder. In nine of those seasons, Iowa has knocked off at least one top-15 opponent.
- West Virginia was the highest ranked opponent the Hawkeyes have defeated since knocking off No. 10 Michigan State (66-64) on Jan. 27, 2011.
- This season marks just the fifth time in school history that Iowa has defeated two ranked nonconference opponents prior to Big Ten play, and the first time since 1995 (No. 12 West Virginia and No. 22 Iowa State). The other years include 1993, 1992 and 1990.

### IMPROVED DEFENSIVE NUMBERS

- Through 10 games last season, Iowa was giving up an average of 64.5 points. Against a much tougher nonconference schedule in 2012, the Hawkeyes are allowing 59.5 points, a difference of five points per game.
- Iowa leads the Big Ten and ranks 16th in the NCAA in blocks per game at 5.8.
- The Hawkeyes are third in the Big Ten and 27th in the NCAA in field goal percentage defense, limiting opponents to just a 33.1 field goal percentage. Iowa is also third in the Big Ten in 3-point field goal percentage defense at 25.5 percent.
- Iowa has shut down its opponents leading scorer in the past two games. Northern Iowa's Jacqui Kalin was averaging 19 points per game and was limited to just nine points against Iowa. Iowa State's Hallie Christofferson was averaging 15.2 points per game and scored 10 at Iowa.

## Head Coach Lisa Bluder

Lisa Bluder (pronounced BLUE-dir) is in her 13th season as head coach at the University of Iowa and her 29th season as a college head coach. She is a three-time Big Ten and two-time WBCA Regional Coach of the Year.

Bluder has a career record of 593-289 (.672), including a 237-147 (.617) record at Iowa, a 187-106 (.638) record in 10 seasons (1990-2000) at Drake and a six-year mark (1984-90) of 169-36 (.824) at St. Ambrose.

Bluder is Iowa's second all-time winningest coach and trails only C. Vivian Stringer. She has guided the Hawkeyes to 11 postseason tournaments (9 NCAA, 2 WNIT) and nine upper-division finishes in the Big Ten Conference, including winning a share of the league championship in 2008 and taking home the conference tournament title in 2001.

In her first season with the Hawkeyes, Bluder transformed a struggling program into a 21-game winner. Iowa finished second in the Big Ten, won the conference tournament and advanced to the second round of the NCAA Tournament. Bluder became Iowa's third coach to be named Big Ten Coach of the Year. She was also honored as the College Coach of the Year by the *Women's Basketball News Service* and was named the WBCA District 6 Coach of the Year. Iowa's 2001-02 squad finished fourth in the Big Ten and advanced to the second round of the NCAA Tournament for the second consecutive year. In 2003, Bluder guided the Hawkeyes to their first-ever WNIT appearance. Iowa, which had nine underclassmen on its roster, advanced to the quarterfinals before falling to Creighton. In 2004-05, Iowa finished 23-10, starting the year 13-0 and was the last Division I undefeated team standing. In 2005-06, Bluder mentored a team plagued by injuries to a fifth-place Big Ten finish and an NCAA Tournament berth.

In her 10 years at Drake, Bluder brought great success and tradition to the Bulldog program and established herself as one of the top coaches in the country. She led Drake to five 20-plus win seasons in her last six years, including five post-season appearances. She guided the Bulldogs to eight Missouri Valley Conference Tournament appearances, reaching the semifinals six times and winning the tournament four times. Bluder was also named the Conference Coach of the Year three times at Drake.

Bluder began her coaching career at St. Ambrose, where she coached six successful seasons, building the Bees into a NAIA powerhouse. During her tenure at St. Ambrose, Bluder guided the Bees to four straight national tournaments, including two consecutive Final Four appearances. The 1990 St. Ambrose team was ranked No. 1 and Bluder was named the NAIA Converse Coach of the Year.

A graduate of Linn-Mar High School in Marion, Iowa, Bluder was a three-year starter at Northern Iowa. She graduated from UNI in 1983 with a bachelor's degree in marketing.



## Press Conferences

Below is a list of press conferences for Head Iowa Women's Basketball Coach Lisa Bluder. Press conferences will be held in the Media Room on the first floor of Carver-Hawkeye Arena. Select student-athletes will be available after Coach Bluder addresses the media.

Friday, December 14..... 11:30 a.m.  
Wednesday, Jan. 2 ..... TBA  
Wednesday, Jan. 9 ..... TBA  
Tuesday, Jan. 15 ..... TBA  
Wednesday, Jan. 23 ..... TBA  
Tuesday, Jan. 29 ..... TBA  
Tuesday, Feb. 5 ..... TBA  
Wednesday, Feb. 13 ..... TBA  
Friday, Feb. 22 ..... TBA  
Week of Feb. 4 (B1G Tourney)..... TBA

## Follow the Hawkeyes on Twitter

Iowa Women's Basketball.... @IowaWBB  
Claire Till..... @clairetill3  
Trisha Nesbitt.....@TNesbitt11  
Morgan Johnson..... @MoJohnson12  
Kathy Thomas .....@datgurlgotgame\_  
Melissa Dixon ..... @MDix21  
Theairra Taylor..... @two3KneeTaylor  
Jaime Printy.....@jprinty24  
Kali Peschel..... @KaliPeschel  
Nicole Smith .....@NicoleSmith42  
Kayla Timmerman.....@timmykay54  
Jan Jensen ..... @golowa  
Jenni Fitzgerald..... @jlefty21  
Abby Emmert ..... @abbyemmert

## Press Conference FTP Information

Weekly press conference footage will be available to media outlets via [www.dropbox.com](http://www.dropbox.com).  
Username: ath-media@uiowa.edu  
Password: hawks2012

### PRINTY CLOSE TO B1G FREE THROW RECORDS

Jaime Printy currently owns an 88.6 career free throw percentage (358-of-404). Former Hawkeye Wendy Ausdemore holds the Iowa and Big Ten record for career free throw percentage at 89.2 (174-of-195).

Printy is shooting 94.3 percent (50-of-53) for the season. The Big Ten single season record is 92.5 percent (99-of-107) by Indiana's Cyndi Valentin.

### PRINTY FREE THROW NOTES

- Printy has gone 4-of-4 from the line against Northern Illinois and Northern Iowa, 6-of-6 against Iowa State, 11-of-11 against Middle Tennessee and 17-of-17 against West Virginia.
- Printy converted 21-consecutive free throws between Iowa's game vs. North Carolina and the road contest at Florida State. She has put together a string of at least 20-consecutive made free throws in each year of her career. She converted 27-straight as a freshman and 32-straight as a sophomore and junior. Iowa's record for consecutive free throws made is 33 by Lindsey Meder.

### FREE THROW RECORDS FALL AGAINST WEST VIRGINIA

- Jaime Printy is only the third player in Big Ten history to go 17-of-17 from the free throw line, matching the best single game free throw performance in conference history. Wisconsin's Michele Kozelka (1989) and Keisha Anderson (1996) are the only other players in Big Ten history to accomplish the feat.
- Printy's 17 made free throws tied the single game school record and are tied for the second most made free throws in Big Ten history.
- Printy's performance against West Virginia marked the ninth time in school history that an Iowa player has been perfect from the free throw line (minimum 10 attempts). Printy now has three of those marks, with one of those performances coming earlier this year against Middle Tennessee (11-for-11). The other came against Indiana (10-for-10) on Feb. 27, 2011.
- As a team, the Hawkeyes set the Big Ten and school record for made free throws made (42) and set the school record for free throw attempts (50).

### JOHNSON SETS BLOCK RECORD

Morgan Johnson became the Iowa career leader in blocks against Florida International (Nov. 23).

Johnson entered the game needing two blocks to break Tangela Smith's career blocks record and she finished with five.

Johnson currently ranks eighth in Big Ten history with 246 blocks.

### MILESTONE NOTES

- Jaime Printy is just the third player in school history with 1,500 career points, 400 career rebounds and 300 career assists. Michelle Edwards and Franthea Price are the other two Iowa players to record those career numbers.
- Morgan Johnson is only the second player in school history to collect over 200 blocks, joining Tangela Smith.

### STELLAR FROM THE FIELD

Morgan Johnson owns a career field goal percentage of 51.6 percent, converting on 498-of-965 shot attempts.

Johnson has played in 106 career games and attempted 10 or more shots in 44 of those contests. She has shot over 50 percent from the field in 31 of those games.

Johnson had 10 or more shot attempts in eight games as a freshman, making over half of her shots in six of those games. She went over 50 percent in eight of the 13 games she shot at least 10 times as a sophomore and 11-of-15 in those games as a junior.

Johnson has eight games with over 10 shots as a senior, converting at least 50 percent six times.



## Big Ten Overall Individual Stats (thru Dec. 10)

<b>Morgan Johnson</b>	<b>Rank</b>	<b>Avg.</b>	<b>Samantha Logic</b>	<b>Rank</b>	<b>Avg.</b>
Field Goal Percentage	4th	.558	Assists	3rd	6.1
Blocks	4th	2.1	Steals	11th	2.1
Rebounding	T-5th	7.5	Assist/Turnover Ratio	13th	1.3
Scoring	7th	17.3			
Offensive Rebounds	9th	2.6	<b>Bethany Doolittle</b>	<b>Rank</b>	<b>Avg.</b>
Defensive Rebounds	11th	4.9	Blocks	5th	1.8
			<b>Melissa Dixon</b>	<b>Rank</b>	<b>Avg.</b>
<b>Jaime Printy</b>	<b>Rank</b>	<b>Avg.</b>	3-Pointers Made	T-12th	1.6
Free Throw Percentage	1st	.943			
3-Pointers Made	T-12th	1.6			
Assists	15th	3.4			
Scoring	T-22nd	12.4			

### LOGIC LIKES TO SHARE

Samantha Logic has collected five or more assists in Iowa's last six of Iowa's last eight games. She tied a school record with 12 assists against Middle Tennessee, dished out six against North Carolina, nine against Robert Morris and seven against Florida International, West Virginia and Florida State.

### INJURY UPDATE

- Sophomore Kathryn Reynolds will miss the entire 2012-13 season after tearing her left ACL during offseason workouts in April. The injury was the second tear to Reynolds' left ACL. She tore the same ligament six games into her junior season in high school.
- Freshman Claire Till was diagnosed with a stress fracture in her right femur on Nov. 29. She will be sidelined 3-4 weeks.

### BLUDER CLOSING IN ON MILESTONE

Head coach Lisa Bluder is just seven wins away from career win No. 600. Bluder entered the 2012-13 season as the 26th winningest active coach and the 46th overall winningest coach in NCAA women's basketball history (by victories).

Only 41 coaches in NCAA women's basketball history (all divisions) have reached the 600 career win plateau.

### PRECONFERENCE ALL-TOURNAMENT TEAM HONORS

Morgan Johnson was named to the Preseason WNIT all-tournament team, while Jaime Printy was selected to both the Preseason WNIT and FIU Thanksgiving all-tournament teams.

### JOHNSON NAMED BIG TEN PLAYER OF THE WEEK

Morgan Johnson was named Big Ten Player of the Week (Nov. 19) for her efforts in the Pre-season WNIT semifinals and championship game.

Johnson averaged 20 points, 9.5 rebounds and shot 76.2 percent (16-of-21) from the floor against two tough opponents in Middle Tennessee and North Carolina.

Johnson started the week with 20 points (8-of-10 FGs), eight rebounds and two blocks in Iowa's overtime win over Middle Tennessee. She followed with another 20-point performance, along with 11 rebounds, against ACC opponent North Carolina, battling 6-6 center Waltiea Rolle in the paint.

The award was Johnson's second weekly honor from the Big Ten in her career. She was named Big Ten Player of the Week last year after scoring 37 points at Bradley.

### MOVING UP CAREER CHARTS

- Morgan Johnson is Iowa's all-time blocks leader (246), 11th in career rebounds (705) and 16th in career scoring (1,265). She needs 22 more rebounds to move past Franthea Price for 10th place and 19 more points to past Necole Tunsil for 15th place.
- Jaime Printy ranks fourth in career 3-pointers made (213), eighth in career scoring (1,533) and 11th in career assists (338). She needs nine more 3-pointers to move past Wendy Ausdemore for third place, 66 more points to move past Tangela Smith for eighth place and two more assists to move past Kachine Alexander for 10th place.

## Big Ten Overall Stats (thru Dec. 10)

<b>Scoring Offense</b>	
1. Penn State	76.7
9. Iowa	65.9
<b>Scoring Defense</b>	
1. Michigan State	43.4
T6. Iowa	59.5
<b>Scoring Margin</b>	
1. Michigan State	+24.6
T7. Iowa	+6.4
<b>Free Throw Percentage</b>	
1. Wisconsin	.446
4. Iowa	.747
<b>Field Goal Percentage</b>	
1. Ohio State	.496
8. Iowa	.413
<b>Field Goal Percentage Defense</b>	
1. Michigan State	.303
3. Iowa	.331
<b>3-Point Field Goals Made</b>	
1. Michigan	6.7
11. Iowa	4.5
<b>3-Point Field Goal Percentage</b>	
1. Ohio State	.444
9. Iowa	.302
<b>3-Point Field Goal Percentage Defense</b>	
1. Michigan State	.237
3. Iowa	.255
<b>Rebounding</b>	
1. Penn State	44.2
4. Iowa	40.8
<b>Rebounding Allowed</b>	
1. Purdue	30.2
10. Iowa	39.4
<b>Rebounding Margin</b>	
1. Michigan State	+9.8
9. Iowa	+1.4
<b>Offensive Rebounds</b>	
1. Penn State	17.0
9. Iowa	11.5
<b>Defensive Rebounds</b>	
1. Michigan State	30.3
3. Iowa	29.3
<b>Blocked Shots</b>	
1. Iowa	5.8
<b>Assists</b>	
1. Northwestern	17.3
7. Iowa	15.2
<b>Steals</b>	
1. Penn State	10.9
11. Iowa	6.1
<b>Turnover Margin</b>	
1. Ohio State	+3.5
10. Iowa	-1.8
<b>Assist/Turnover Ratio</b>	
1. Michigan State	1.3
9. Iowa	0.8



## Career Scoring in Iowa History

Rank...No.....	Player.....	Years
5..... 1742.....	Franthea Price.....	86-90
6..... 1606.....	Toni Foster.....	89-93
7..... 1598.....	Tangela Smith.....	94-98
<b>8..... 1533.....</b>	<b>Jaime Printy.....</b>	<b>10-</b>
14..... 1319.....	Amy Herrig.....	95-99
15..... 1283.....	Necole Tunsil.....	90-94
16..... 1265.....	Morgan Johnson.....	10-

## Career 3-Pointers in Iowa History

Rank...No.....	Player.....	Years
1..... 261.....	Lindsey Meder.....	98-02
2..... 231.....	Kamille Wahlin.....	09-Pr.
3..... 221.....	Wendy Ausdemore.....	05-09
4..... 213.....	Jaime Printy.....	10-

## Career Blocks in Iowa History

Rank...No.....	Player.....	Years
1..... 246.....	Morgan Johnson.....	10-Pr
2..... 235.....	Tangela Smith.....	94-98

## Career Rebounds in Iowa History

Rank...No.....	Player.....	Years
7..... 792.....	Krista VandeVenter.....	04-08
8..... 789.....	Amy Herrig.....	95-99
9..... 745.....	Randi Peterson.....	97-01
10..... 726.....	Franthea Price.....	86-90
11..... 705.....	Morgan Johnson.....	10-Pr

## Career Assists in Iowa History

Rank...No.....	Player.....	Years
4..... 412.....	Kristi Smith.....	05-09
5..... 391.....	Johanna Solverson.....	02-05
6..... 387.....	Franthea Price.....	86-90
7..... 367.....	Steph Schueler.....	87-91
8..... 357.....	Nadine Domond.....	94-98
9..... 353.....	Jolette Law.....	86-90
10..... 339.....	Kachine Alexander.....	08-11
11..... 338.....	Jaime Printy.....	10-Pr

## Hawkeyes in NCAA Stats (thru Dec. 9)

<b>Iowa</b>	<b>Rank</b>	<b>Avg.</b>
Blocks Per Game	16th	5.8
Field Goal Percentage Defense	27th	33.1
Free Throw Percentage	32nd	74.7
Assists Per Game	60th	15.2
3-Point Percentage Defense	62nd	25.5
Field Goal Percentage	75th	41.3
<b>Morgan Johnson</b>	<b>Rank</b>	<b>Avg.</b>
Field Goal Percentage	33rd	55.8
Blocks Per Game	47th	2.1
Points Per Game	73rd	17.3
<b>Jaime Printy</b>	<b>Rank</b>	<b>Avg.</b>
Free Throw Percentage	10th	94.3
<b>Samantha Logic</b>	<b>Rank</b>	<b>Avg.</b>
Assists Per Game	19th	6.1
<b>Bethany Doolittle</b>	<b>Rank</b>	<b>Avg.</b>
Blocks Per Game	70th	1.8

## 2012-13 Big Ten Standings/Schedule (thru Dec. 10)

Team	Big Ten	Pct.	Overall	Pct.	
Purdue	0-0	.000	9-1	.900	<b>Tuesday, December 11</b> Michigan at Eastern Michigan
Michigan State	0-0	.000	8-1	.889	<b>Wednesday, December 12</b> Oregon at Illinois (BTN.com) Penn State at Virginia Tech
Penn State	0-0	.000	7-2	.778	<b>Saturday, December 15</b> Western Michigan at Michigan (BTN.com) Ohio State at Washington State Eastern Illinois at Wisconsin (BTN.com)
Michigan	0-0	.000	7-2	.778	<b>Sunday, December 16</b> SIU-Edwardsville at Indiana (BTN.com) Iowa at Drake (Mediacom) IPFW at Michigan State Nebraska at South Florida South Dakota State at Penn State Purdue at Oakland
Minnesota	0-0	.000	9-3	.750	
Ohio State	0-0	.000	6-2	.750	
Nebraska	0-0	.000	7-3	.700	
Iowa	0-0	.000	7-3	.700	
Northwestern	0-0	.000	6-3	.667	
Wisconsin	0-0	.000	6-3	.667	
Indiana	0-0	.000	6-4	.600	
Illinois	0-0	.000	5-4	.556	

### PRINTY NAMED SENIOR CLASS AWARD NOMINEE

Senior Jaime Printy is one of 30 NCAA Division I women's basketball players to be named a candidate for the 2012 Senior CLASS Award.

An acronym for Celebrating Loyalty and Achievement for Staying in School, the Senior CLASS Award focuses on the total student-athlete and encourages students to use their platform in athletics to make a positive impact as leaders in their communities.

Printy has excelled both on and off the court during her career. The Marion, Iowa, native is one of the most decorated players in Iowa history, earning Big Ten Freshman of the Year honors in 2010, Associated Press Honorable Mention All-America accolades as a sophomore and All-Big Ten recognition as a junior.

Off the court, Printy has been named Capital One Academic All-District, is a member of the Dean's List and is a two-time Academic All-Big Ten selection. She is active in the eastern Iowa community, volunteering with numerous charities, organizations and local elementary schools.

### JOHNSON NAMED PRESEASON ALL-BIG TEN

Senior center Morgan Johnson was named Preseason All-Big Ten at the annual Big Ten Media Day in Chicago.

Johnson was one of seven players chosen by the league coaches for the Preseason All-Big Ten team. She was joined on the coaches team by Rachel Banham (Minnesota), Jordan Hooper (Nebraska), Tayler Hill (Ohio State), Courtney Moses (Purdue) and Alex Bentley and Maggie Lucas (Penn State).

The media Preseason All-Big Ten team consisted of Hooper and Lindsey Moore (Nebraska), Hill, Bentley and Lucas.

Johnson was a second team All-Big Ten selection as a junior last season, averaging 14.9 points and 6.6 rebounds. She led the Big Ten and ranked seventh in the NCAA in field goal percentage (54.9). She also ranked second in the Big Ten and 26th in the country in blocks per game (2.3).

This year marks the third consecutive season that a Hawkeye player has been named Preseason All-Big Ten (Kachine Alexander – 2010, Jaime Printy – 2011).

### SUCCESS UNDER BLUDER

Last season marked the ninth time in 12 seasons under head coach Lisa Bluder that Iowa has been selected for the NCAA Tournament, including each of the last five seasons. The Hawkeyes have participated in postseason play in all but one season under Bluder (two WNIT appearances).

In addition, Iowa finished with a winning record for the 11th time in 12 seasons under Bluder. Iowa's tie for second place in the Big Ten is also the ninth time, under Bluder, the Hawkeyes recorded an upper-division finish in the conference.

### IOWA WOMEN'S BASKETBALL AND SOCIAL MEDIA

The Hawkeye women's basketball has four different social media outlets. Check out the Iowa women's basketball Facebook page or the University of Iowa Athletics Facebook page. Fans can also follow @IowaWBB or @TheIowaHawkeyes on Twitter.

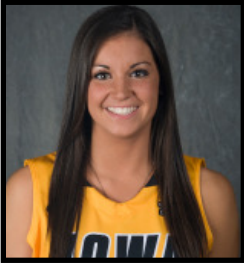




# University of Iowa Women's Basketball

## Updated Iowa Player Bio

### Claire Till



# 3

**Guard, 6-0, Freshman**  
**Dubuque, Iowa**  
**Dubuque Wahlert HS**

- Seven points and six rebounds against Florida International.
- Five points and two rebounds in win over Robert Morris.
- Scored three points and recorded six rebounds in collegiate debut vs. NIU.
- Two-time all-state selection.
- Three-time IBCA Select Team member.
- Four-time first team all-conference and all-district pick.
- Underwent three surgeries in high school to repair injured knee.

#### Personal Bests

**Points:** 7 at Florida International (11/23/12)  
**Rebounds:** 6, twice, last at FIU (11/23/12)  
**FGM:** 1, 4x, last at FIU (11/23/12)  
**FGA:** 6 at Florida International (11/23/12)  
**3-pt FG:** 1, twice, last vs. RMU (11/20/12)  
**3-pt FGA:** 2, twice, last at FIU (11/23/12)  
**FTM:** 5, twice, last vs. WVU (11/25/12)  
**FTA:** 8 at Florida International (11/23/12)  
**Assists:** 1, twice, last at FSU (11/28/12)  
**Steals:** 1, 3x, last vs. WVU (11/25/12)  
**Blocks:** 1, twice, last at FSU (11/28/12)  
**Minutes:** 18 at Florida International (11/23/12)

### 2012-13 Game-by-Game

#03 Till, Claire

Opponent	Date	gs	min	Total		3-Pointers		Free throws		Rebounds			pf	a	t/o	blk	stl	pts	avg	
				fg-fga	pct	3fg-fga	pct	ft-fa	pct	off	def	tot								avg
NORTHERN ILLINOIS	11/9/12	11	1-3	.333	1-2	.500	0-2	.000	1	5	6	6.0	3	0	0	1	1	3	3.0	
ILLINOIS STATE	11/11/12	7	1-2	.500	0-0	.000	2-2	1.000	0	3	3	4.5	1	0	2	0	1	4	3.5	
MIDDLE TENNESSEE	11/14/12	8	0-1	.000	0-0	.000	0-0	.000	0	1	1	3.3	2	0	0	0	0	0	2.3	
NORTH CAROLINA	11/18/12	6	0-0	.000	0-0	.000	1-2	.500	0	2	2	3.0	0	1	2	0	0	1	2.0	
ROBERT MORRIS	11/20/12	16	1-2	.500	1-1	1.000	2-2	1.000	0	2	2	2.8	0	0	2	0	0	5	2.6	
at FIU	11/23/12	18	1-6	.167	0-2	.000	5-8	.625	5	1	6	3.3	0	0	0	0	0	7	3.3	
vs WVU	11/25/12	14	0-1	.000	0-0	.000	5-6	.833	2	0	2	3.1	1	0	1	0	1	5	3.6	
at Florida State	11/28/12	12	0-2	.000	0-1	.000	0-0	.000	0	1	1	2.9	2	1	0	1	0	0	3.1	
Totals		0	92	4-17	.235	2-6	.333	15-22	.682	8	15	23	2.9	9	2	7	2	3	25	3.1

Games played: 8  
 Minutes/game: 11.5  
 Points/game: 3.1  
 FG Pct: 23.5  
 3FG Pct: 33.3  
 FT Pct: 68.2

Rebounds/game: 2.9  
 Assists/game: 0.3  
 Turnovers/game: 0.9  
 Assist/turnover ratio: 0.3  
 Steals/game: 0.4  
 Blocks/game: 0.3

#### CAREER STATISTICS

YEAR	G/GS	FG-A	PCT	3-PT	PCT	FT-A	PCT	O-D-REB	AVG	PF-FO	AS	TO	BK	ST	PTS	AVG
Fresh.	8/0	4-17	.235	2-6	.333	15-22	.682	8-15-23	2.9	9-0	2	7	2	3	25	3.1





# University of Iowa Women's Basketball

## Updated Iowa Player Bio

### Trisha Nesbitt



# 11

**Guard, 5-7, Senior**  
**Ames, Iowa**  
**Ames HS**

- Academic All-Big Ten in 2011-12.
- Had minor knee surgery Nov. 15, 2011 and missed the first 10 games of the season as a junior.
- Saw first action last season Dec. 20 vs. Drake, recording one rebound and one steal in seven minutes of play.

#### Personal Bests

**Points:** 10 vs. Michigan State (3/6/10)  
**Rebounds:** 3, 2x, last vs. NIU (11/9/12)  
**FGM:** 4 vs. Michigan State (3/6/10)  
**FGA:** 8 at Indiana (2/11/10)  
**3-pt FG:** 2, 2x, last vs. MSU (3/6/10)  
**3-pt FGA:** 4, 2x, last vs. Stanford (3/22/10)  
**FTM:** 4, 2x, last vs. SDSU (12/22/09)  
**FTA:** 5 at UNI (11/22/09)  
**Assists:** 4, 3x, last at Iowa St. (12/10/09)  
**Steals:** 3 at Minnesota (1/3/10)  
**Blocks:** - - -  
**Minutes:** 37 at Indiana (2/11/10)

### 2012-13 Game-by-Game

#11 Nesbitt, Trisha

Opponent	Date	gs	min	Total		3-Pointers		Free throws		Rebounds				pf	a	t/o	blk	stl	pts	avg	
				fg-fga	pct	3fg-fga	pct	ft-fa	pct	off	def	tot	avg								
NORTHERN ILLINOIS	11/9/12		18	1-1	1.000	1-1	1.000	0-0	.000	0	3	3	3.0	0	1	2	0	0	3	3.0	
ILLINOIS STATE	11/11/12		15	0-3	.000	0-1	.000	3-4	.750	0	1	1	2.0	3	0	1	0	1	3	3.0	
MIDDLE TENNESSEE	11/14/12		4	1-1	1.000	0-0	.000	0-0	.000	0	0	0	1.3	0	0	0	0	0	2	2.7	
NORTH CAROLINA	11/18/12		5	1-2	.500	0-1	.000	0-0	.000	0	0	0	1.0	0	0	0	0	0	2	2.5	
ROBERT MORRIS	11/20/12		13	0-0	.000	0-0	.000	0-0	.000	0	2	2	1.2	0	2	0	0	0	0	2.0	
at FIU	11/23/12		8	1-2	.500	0-0	.000	0-0	.000	0	1	1	1.2	1	1	0	0	0	2	2.0	
vs WVU	11/25/12		14	1-1	1.000	1-1	1.000	1-2	.500	0	0	0	1.0	2	1	1	0	1	4	2.3	
at Florida State	11/28/12		5	0-0	.000	0-0	.000	0-0	.000	0	0	0	0.9	1	0	0	0	1	0	2.0	
UNI	12/1/12		5	0-0	.000	0-0	.000	0-0	.000	0	0	0	0.8	0	0	0	0	0	0	1.8	
IOWA STATE	12/6/12		6	0-0	.000	0-0	.000	0-0	.000	0	1	1	0.8	1	0	0	0	0	0	1.6	
<b>Totals</b>			0	93	5-10	.500	2-4	.500	4-6	.667	0	8	8	0.8	8	5	4	0	3	16	1.6

Games played: 10  
 Minutes/game: 9.3  
 Points/game: 1.6  
 FG Pct: 50.0  
 3FG Pct: 50.0  
 FT Pct: 66.7

Rebounds/game: 0.8  
 Assists/game: 0.5  
 Turnovers/game: 0.4  
 Assist/turnover ratio: 1.3  
 Steals/game: 0.3

#### CAREER STATISTICS

YEAR	G/GS	FG-A	PCT	3-PT	PCT	FT-A	PCT	O-D-REB	AVG	PF-FO	AS	TO	BK	ST	PTS	AVG
Fresh.	34/1	25-85	.294	9-36	.250	25-31	.806	2-22-24	0.7	46-0	43	42	0	14	84	2.5
Soph.	16/0	3-13	.231	2-6	.333	0-1	.000	0-4-4	0.3	7-0	5	10	0	1	8	0.5
Junior	15/0	1-8	.125	0-6	.000	3-4	.750	1-2-3	0.2	10-0	4	3	0	3	5	0.3
Senior	10/0	5-10	.500	2-4	.500	4-6	.667	0-8-8	0.8	8-0	5	4	0	3	16	1.6
<b>TOTALS</b>	<b>75/1</b>	<b>34-116</b>	<b>.293</b>	<b>13-52</b>	<b>.250</b>	<b>32-42</b>	<b>.762</b>	<b>3-36-39</b>	<b>0.5</b>	<b>71-0</b>	<b>57</b>	<b>59</b>	<b>0</b>	<b>21</b>	<b>113</b>	<b>1.5</b>







# University of Iowa Women's Basketball

## Updated Iowa Player Bio

### Morgan Johnson



# 12

**Center, 6-5, Senior**  
**Platte City, Mo.**  
**Platte County HS**

- Iowa career blocks leader (246), 11th in career rebounds (705) and 16th in career scoring (1,265).
- Recorded 15 career double-doubles, including three as a freshman, five as a sophomore, four as a junior and three as a senior.
- Third double-double of the season with 19 points, 12 rebounds and a career-high five assists in win over Northern Iowa.
- 20 points at Florida State.
- 19 points in win over West Virginia.
- Second double-double of the season with 19 points and 11 rebounds in win over Robert Morris.
- Big Ten Player of the Week (Nov. 19).
- First double-double of the season with 20 points and 11 rebounds vs. N. Carolina.
- 20 points and eight rebounds in win over Middle Tennessee.
- 24 points (12-of-13 FTs) and nine rebounds in win over Illinois State.
- Preseason All-Big Ten selection.

### 2012-13 Game-by-Game

#12 Johnson, Morgan

Opponent	Date	gs	min	Total		3-Pointers		Free throws		Rebounds			pf	a	t/o	blk	stl	pts	avg		
				fg-fga	pct	3fg-fga	pct	ft-fa	pct	off	def	tot								avg	
NORTHERN ILLINOIS	11/9/12	*	20	4-11	.364	0-0	.000	3-5	.600	1	4	5	5.0	2	0	1	0	1	11	11.0	
ILLINOIS STATE	11/11/12	*	30	6-14	.429	0-0	.000	12-13	.923	4	5	9	7.0	2	2	2	5	1	24	17.5	
MIDDLE TENNESSEE	11/14/12	*	41	8-10	.800	0-0	.000	4-6	.667	2	6	8	7.3	4	1	0	2	0	20	18.3	
NORTH CAROLINA	11/18/12	*	39	8-11	.727	0-0	.000	4-5	.800	3	8	11	8.3	4	1	2	2	2	20	18.8	
ROBERT MORRIS	11/20/12	*	33	8-13	.615	0-0	.000	3-5	.600	5	6	11	8.8	3	0	3	0	0	19	18.8	
at FIU	11/23/12	*	36	6-9	.667	0-0	.000	2-2	1.000	3	3	6	8.3	2	2	3	5	0	14	18.0	
vs WVU	11/25/12	*	30	6-11	.545	0-0	.000	7-11	.636	0	3	3	7.6	3	1	2	2	1	19	18.1	
at Florida State	11/28/12	*	30	8-15	.533	0-0	.000	4-4	1.000	3	1	4	7.1	2	1	2	2	0	20	18.4	
UNI	12/1/12	*	35	6-11	.545	0-0	.000	7-11	.636	4	8	12	7.7	2	5	2	2	2	19	18.4	
IOWA STATE	12/6/12	*	38	3-8	.375	0-0	.000	1-2	.500	1	5	6	7.5	1	2	4	1	1	7	17.3	
Totals			10	332	63-113	.558	0-0	.000	47-64	.734	26	49	75	7.5	25	15	21	21	8	173	17.3

Games played: 10  
 Minutes/game: 33.2  
 Points/game: 17.3  
 FG Pct: 55.8  
 FT Pct: 73.4

Rebounds/game: 7.5  
 Assists/game: 1.5  
 Turnovers/game: 2.1  
 Assist/turnover ratio: 0.7  
 Steals/game: 0.8  
 Blocks/game: 2.1

#### Personal Bests

**Points:** 37 at Bradley (12/17/11)  
**Rebounds:** 16 vs. Illinois (1/5/12)  
**FGM:** 13 at Bradley (12/17/11)  
**FGA:** 21 vs. Virginia Tech (11/30/11)  
**3-pt FG:** 1 at Iowa State (12/10/09)  
**3-pt FGA:** 2 at Iowa State (12/10/09)  
**FTM:** 12 vs. Illinois State (11/11/12)  
**FTA:** 13 vs. Illinois State (11/11/12)  
**Assists:** 5 vs. Northern Iowa (12/1/12)  
**Steals:** 3, 3x, last at Nwstern (2/13/11)  
**Blocks:** 8 vs. Minnesota (2/18/10)  
**Minutes:** 41 vs. Middle Tennessee (11/14/12)

#### CAREER STATISTICS

YEAR	G/GS	FG-A	PCT	3-PT	PCT	FT-A	PCT	O-D-REB	AVG	PF-FO	AS	TO	BK	ST	PTS	AVG
Fresh.	34/34	124-250	.496	1-4	.250	48-76	.632	78-139-217	6.4	87-2	24	61	79	15	297	8.7
Soph.	31/30	132-276	.478	0-0	.000	70-96	.729	90-118-208	6.7	83-3	25	58	76	21	334	10.8
Junior	31/31	179-326	.549	0-0	.000	103-141	.730	67-138-205	6.6	96-4	24	64	70	12	461	14.9
Senior	10/10	63-113	.558	0-0	.000	47-64	.734	26-49-75	7.5	25-0	15	21	21	8	173	17.3
<b>TOTALS</b>	<b>106/105</b>	<b>498-965</b>	<b>.516</b>	<b>1-4</b>	<b>.250</b>	<b>268-377</b>	<b>.711</b>	<b>261-444-705</b>	<b>6.7</b>	<b>291-9</b>	<b>88</b>	<b>204</b>	<b>246</b>	<b>56</b>	<b>1265</b>	<b>11.9</b>





# University of Iowa Women's Basketball

## Updated Iowa Player Bio

### Kathy Thomas



# 13

**Guard, 5-6, Sophomore  
Flint, Mich.  
Highland CC (Kan.)**

- Scored eight points in collegiate debut vs. NIU.
- NJCAA first team All-American at Highlands Community College.
- Jayhawk Conference Player and Freshman of the Year.
- Led Highland Community College to 28-4 overall record, second place finish in Jayhawk Conference and NJCAA Division II District B finals appearance, the most successful season in school history.
- Averaged 13.2 points, 8.9 assists and 9.8 steals as a senior in high school.

#### Personal Bests

**Points:** 8 vs. NIU (11/9/12)  
**Rebounds:** 3 vs. Ill. State (11/11/12)  
**FGM:** 3 vs. NIU (11/9/12)  
**FGA:** 4 vs. NIU (11/9/12)  
**3-pt FG:** 1 vs. Robert Morris (11/20/12)  
**3-pt FGA:** 1 vs. Robert Morris (11/20/12)  
**FTM:** 5 vs. Ill. State (11/11/12)  
**FTA:** 8 vs. Ill. State (11/11/12)  
**Assists:** 3 vs. Ill. State (11/11/12)  
**Steals:** 1 vs. Ill. State (11/11/12)  
**Blocks:** ---  
**Minutes:** 16 vs. Ill. State (11/11/12)

### 2012-13 Game-by-Game

#13 Thomas, Kathy

Opponent	Date	gs	min	Total		3-Pointers		Free throws			Rebounds			pf	a	t/o	blk	stl	pts	avg
				fg-fga	pct	3fg-fga	pct	ft-fa	pct	off	def	tot	avg							
NORTHERN ILLINOIS	11/9/12	15	3-4	.750	0-0	.000	2-2	1.000	1	1	2	2.0	3	0	1	0	0	0	8	8.0
ILLINOIS STATE	11/11/12	16	0-2	.000	0-0	.000	5-8	.625	2	1	3	2.5	3	3	3	0	1	5	6.5	
MIDDLE TENNESSEE	11/14/12	2	0-0	.000	0-0	.000	0-0	.000	0	0	0	1.7	1	0	0	0	0	0	4.3	
NORTH CAROLINA	11/18/12	2	0-0	.000	0-0	.000	0-0	.000	0	0	0	1.3	1	0	0	0	0	0	3.3	
ROBERT MORRIS	11/20/12	10	1-3	.333	1-1	1.000	0-0	.000	0	1	1	1.2	2	1	0	0	0	3	3.2	
at FIU	11/23/12	8	0-0	.000	0-0	.000	0-0	.000	0	0	0	1.0	0	0	0	0	0	0	2.7	
UNI	12/1/12	7	0-1	.000	0-0	.000	0-0	.000	0	2	2	1.1	2	1	0	0	0	0	2.3	
IOWA STATE	12/6/12	6	0-1	.000	0-1	.000	3-4	.750	1	1	2	1.3	1	0	0	0	0	3	2.4	
Totals		0	66	4-11	.364	1-2	.500	10-14	.714	4	6	10	1.3	13	5	4	0	1	19	2.4

Games played: 8  
 Minutes/game: 8.3  
 Points/game: 2.4  
 FG Pct: 36.4  
 3FG Pct: 50.0  
 FT Pct: 71.4

Rebounds/game: 1.3  
 Assists/game: 0.6  
 Turnovers/game: 0.5  
 Assist/turnover ratio: 1.3  
 Steals/game: 0.1

#### CAREER STATISTICS

YEAR	G/GS	FG-A	PCT	3-PT	PCT	FT-A	PCT	O-D-REB	AVG	PF-FO	AS	TO	BK	ST	PTS	AVG
Fresh.	8/0	4-11	.364	1-2	.500	10-14	.714	4-6-10	1.3	13-0	5	4	0	1	19	2.4





# University of Iowa Women's Basketball

## Updated Iowa Player Bio

### Melissa Dixon



# 21

**Guard, 5-8, Sophomore**  
**Johnsburg, Ill.**  
**Johnsburg HS**

- 11 points in win over Iowa State.
- 12 points against North Carolina.
- Career-high 22 points (8-18 FGs, 6-15 3Pt. FGs) in win over Michigan as a freshman.
- Suffered torn meniscus at Ohio State (Jan. 2, 2012) as a freshman. Missed a total of seven games.
- First career start came at Indiana, registering career-highs in points (19), field goals made (7), 3-pointers made and attempted (5-for-10), steals (3) and minutes (28).

#### Personal Bests

**Points:** 22 vs. Michigan (2/26/12)  
**Rebounds:** 4, 4x, last vs. Minnesota (2/9/12)  
**FGM:** 8 vs. Michigan (2/26/12)  
**FGA:** 18 vs. Michigan (2/26/12)  
**3-pt FG:** 6 vs. Michigan (2/26/12)  
**3-pt FGA:** 15 vs. Michigan (2/26/12)  
**FTM:** 5, 2x, last vs. Drake (12/20/11)  
**FTA:** 6, 2x, last vs. Drake (12/20/11)  
**Assists:** 4 vs. Nebraska (3/2/12)  
**Steals:** 3 at Indiana (2/5/12)  
**Blocks:** 1, 3x, last vs. Ill. State (11/11/12)  
**Minutes:** 34, twice, last vs. MTSU (11/14/12)

### 2012-13 Game-by-Game

#21 Dixon, Melissa

Opponent	Date	gs	min	Total		3-Pointers		Free throws		Rebounds			pf	a	t/o	blk	stl	pts	avg		
				fg-fga	pct	3fg-fga	pct	ft-fa	pct	off	def	tot								avg	
NORTHERN ILLINOIS	11/9/12	*	24	3-4	.750	2-3	.667	0-0	.000	0	2	2	2.0	2	2	1	0	1	8	8.0	
ILLINOIS STATE	11/11/12	*	24	2-3	.667	2-3	.667	2-2	1.000	0	0	0	1.0	4	2	1	1	0	8	8.0	
MIDDLE TENNESSEE	11/14/12	*	34	2-9	.222	2-7	.286	0-1	.000	0	1	1	1.0	2	1	1	0	2	6	7.3	
NORTH CAROLINA	11/18/12		20	5-11	.455	2-8	.250	0-0	.000	0	1	1	1.0	4	0	2	0	0	12	8.5	
ROBERT MORRIS	11/20/12		17	2-8	.250	2-7	.286	0-0	.000	0	2	2	1.2	2	0	3	0	0	6	8.0	
at FIU	11/23/12		19	3-11	.273	2-7	.286	0-0	.000	0	2	2	1.3	2	0	0	0	0	8	8.0	
vs WVU	11/25/12		17	0-2	.000	0-1	.000	0-0	.000	0	0	0	1.1	2	0	1	0	0	0	6.9	
at Florida State	11/28/12		14	1-5	.200	0-3	.000	1-1	1.000	0	0	0	1.0	0	1	0	0	1	3	6.4	
UNI	12/1/12		16	2-4	.500	2-2	1.000	0-0	.000	1	1	2	1.1	2	1	0	0	0	6	6.3	
IOWA STATE	12/6/12		19	4-8	.500	2-5	.400	1-3	.333	0	2	2	1.2	1	1	1	0	1	11	6.8	
Totals			3	204	24-65	.369	16-46	.348	4-7	.571	1	11	12	1.2	21	8	10	1	5	68	6.8

Games played: 10  
 Minutes/game: 20.4  
 Points/game: 6.8  
 FG Pct: 36.9  
 3FG Pct: 34.8  
 FT Pct: 57.1

Rebounds/game: 1.2  
 Assists/game: 0.8  
 Turnovers/game: 1.0  
 Assist/turnover ratio: 0.8  
 Steals/game: 0.5  
 Blocks/game: 0.1

#### CAREER STATISTICS

YEAR	G/GS	FG-A	PCT	3-PT	PCT	FT-A	PCT	O-D-REB	AVG	PF-FO	AS	TO	BK	ST	PTS	AVG
Fresh.	24/8	50-141	.355	35-98	.357	27-33	.818	17-25-42	1.8	47-1	18	28	2	15	162	6.8
Soph.	10/3	24-65	.369	16-46	.348	4-7	.571	1-11-12	1.2	21-0	8	10	1	5	68	6.8
<b>TOTALS</b>	<b>34/11</b>	<b>74-206</b>	<b>.359</b>	<b>51-144</b>	<b>.354</b>	<b>31-40</b>	<b>.775</b>	<b>19-36-54</b>	<b>1.6</b>	<b>68-1</b>	<b>26</b>	<b>38</b>	<b>3</b>	<b>20</b>	<b>230</b>	<b>6.8</b>





# University of Iowa Women's Basketball

## Updated Iowa Player Bio

### Samantha Logic



# 22

**Guard, 5-9, Sophomore**  
**Racine, Wis.**  
**Racine J.I. Case HS**

- Recorded seven career double-doubles, including one triple-double. Six double-doubles are points and rebounds, one is points and assists.
- 15 points, four rebounds and three assists in win over Northern Iowa.
- 14 points, seven rebounds, seven assists and three steals at Florida State.
- Nine points, seven rebounds and seven assists in win over West Virginia.
- 12 points, six rebounds, six assists and four steals against North Carolina.
- Tied school record with 12 assists in win over Middle Tennessee.
- Third team Freshman All-American by Full Court.
- Unanimous selection for Big Ten All-Freshman Team.

#### Personal Bests

**Points:** 20, 2x, last vs. Minn. (2/9/12)  
**Rebounds:** 18 at Michigan (2/16/12)  
**FGM:** 7, 6x, last vs. UNI (12/1/12)  
**FGA:** 18 vs. Nebraska (3/2/12)  
**3-pt FG:** 3 vs. Drake (12/20/11)  
**3-pt FGA:** 4, 3x, last at Nwstern (2/23/12)  
**FTM:** 8 at Northwestern (2/23/12)  
**FTA:** 10 at Northwestern (2/23/12)  
**Assists:** 12 vs. Middle Tennessee (11/14/12)  
**Steals:** 4 vs. North Carolina (11/18/12)  
**Blocks:** 2 vs. Miss. Valley State (12/22/11)  
**Minutes:** 40 vs. Middle Tennessee (11/14/12)

### 2012-13 Game-by-Game

#22 Logic, Samantha

Opponent	Date	gs	min	Total		3-Pointers		Free throws		Rebounds			pf	a	t/o	blk	stl	pts	avg		
				fg-fga	pct	3fg-fga	pct	ft-fa	pct	off	def	tot								avg	
NORTHERN ILLINOIS	11/9/12	*	25	5-8	.625	0-0	.000	0-0	.000	0	3	3	3.0	1	2	2	0	2	10	10.0	
ILLINOIS STATE	11/11/12	*	24	1-6	.167	0-1	.000	4-4	1.000	3	2	5	4.0	2	4	6	1	2	6	8.0	
MIDDLE TENNESSEE	11/14/12	*	40	0-6	.000	0-2	.000	0-1	.000	1	2	3	3.7	2	12	6	1	2	0	5.3	
NORTH CAROLINA	11/18/12	*	31	6-10	.600	0-1	.000	0-0	.000	3	3	6	4.3	2	6	7	0	4	12	7.0	
ROBERT MORRIS	11/20/12	*	28	2-7	.286	0-2	.000	0-0	.000	3	3	6	4.6	1	9	2	0	3	4	6.4	
at FIU	11/23/12	*	32	3-6	.500	1-1	1.000	0-0	.000	3	2	5	4.7	3	7	4	0	1	7	6.5	
vs WVU	11/25/12	*	34	2-6	.333	0-0	.000	5-6	.833	2	5	7	5.0	5	7	9	0	3	9	6.9	
at Florida State	11/28/12	*	36	7-11	.636	0-1	.000	0-0	.000	2	5	7	5.3	4	7	10	0	3	14	7.8	
UNI	12/1/12	*	33	7-9	.778	0-1	.000	1-1	1.000	1	3	4	5.1	3	3	1	1	1	15	8.6	
IOWA STATE	12/6/12	*	28	1-7	.143	1-3	.333	3-6	.500	4	5	9	5.5	3	4	1	1	0	6	8.3	
Totals			10	311	34-76	.447	2-12	.167	13-18	.722	22	33	55	5.5	26	61	48	4	21	83	8.3

Games played: 10  
 Minutes/game: 31.1  
 Points/game: 8.3  
 FG Pct: 44.7  
 3FG Pct: 16.7  
 FT Pct: 72.2

Rebounds/game: 5.5  
 Assists/game: 6.1  
 Turnovers/game: 4.8  
 Assist/turnover ratio: 1.3  
 Steals/game: 2.1  
 Blocks/game: 0.4

#### CAREER STATISTICS

YEAR	G/GS	FG-A	PCT	3-PT	PCT	FT-A	PCT	O-D-REB	AVG	PF-FO	AS	TO	BK	ST	PTS	AVG
Fresh.	31/31	109-261	.418	15-49	.306	59-79	.747	87-133-220	7.1	73-1	136	113	7	47	292	9.4
Soph.	10/10	34-76	.447	2-12	.167	13-18	.722	22-33-55	5.5	26-1	61	48	4	21	83	8.3
<b>TOTALS</b>	<b>41/41</b>	<b>143-337</b>	<b>.424</b>	<b>17-61</b>	<b>.279</b>	<b>72-97</b>	<b>.742</b>	<b>109-166-275</b>	<b>6.7</b>	<b>99-2</b>	<b>197</b>	<b>161</b>	<b>11</b>	<b>68</b>	<b>375</b>	<b>9.1</b>





# University of Iowa Women's Basketball

## Updated Iowa Player Bio

### Theairra Taylor



# 23

**Guard, 5-11, Junior**  
**St. Paul, Minn.**  
**Central HS**

- 11 points and nine rebounds in win over Iowa State. Named CollegeSportsMadness.com's Big Ten Player of the Week for her performance.
- First career double-double with 10 points and 11 rebounds, also tied career high with five assists, in win over Illinois State.
- Season-high 14 points, along with six rebounds and two assists in 26 minutes of play vs. California as a sophomore.
- 10 points and tied a career-high with three steals in win over Michigan State as a sophomore.
- Suffered third ACL in a 20-month span during preseason workouts in 2010. Missed a total of 53 games with ACL injuries from 2009 through 2011.

#### Personal Bests

**Points:** 16 vs. W&M (11/24/09)  
**Rebounds:** 11 vs. Ill. State (11/11/12)  
**FGM:** 7 vs. W&M (11/24/09)  
**FGA:** 15 vs. W&M (11/24/09)  
**3-pt FG:** 2 vs. W&M (11/24/09)  
**3-pt FGA:** 5 vs. Boston College (12/2/09)  
**FTM:** 4, 5x, last vs. WVU (11/25/12)  
**FTA:** 5 vs. West Virginia (11/25/12)  
**Assists:** 5, twice, vs. Ill. State (11/11/12)  
**Steals:** 4 at Northwestern (2/23/12)  
**Blocks:** 4, 3x, last vs. Michigan (12/6/09)  
**Minutes:** 36 vs. W&M (11/24/09)

### 2012-13 Game-by-Game

#23 Taylor, Theairra

Opponent	Date	gs	min	Total		3-Pointers		Free throws		Rebounds			pf	a	t/o	blk	stl	pts	avg		
				fg-fga	pct	3fg-fga	pct	ft-fa	pct	off	def	tot								avg	
NORTHERN ILLINOIS	11/9/12	*	19	2-4	.500	1-1	1.000	0-0	.000	0	1	1	1.0	1	1	1	0	5	5.0		
ILLINOIS STATE	11/11/12	*	21	3-6	.500	1-1	1.000	3-4	.750	0	11	11	6.0	1	5	2	0	2	10	7.5	
MIDDLE TENNESSEE	11/14/12	*	23	3-8	.375	1-4	.250	0-2	.000	1	3	4	5.3	2	2	4	2	1	7	7.3	
NORTH CAROLINA	11/18/12	*	25	1-6	.167	0-3	.000	1-3	.333	1	3	4	5.0	2	1	2	0	0	3	6.3	
ROBERT MORRIS	11/20/12	*	20	3-7	.429	1-4	.250	0-0	.000	0	4	4	4.8	0	0	3	0	1	7	6.4	
at FIU	11/23/12	*	19	2-5	.400	0-1	.000	2-2	1.000	0	3	3	4.5	2	2	2	0	0	6	6.3	
vs WVU	11/25/12	*	23	1-3	.333	0-1	.000	4-5	.800	1	6	7	4.9	4	0	2	1	0	6	6.3	
at Florida State	11/28/12	*	33	4-11	.364	0-2	.000	1-2	.500	2	4	6	5.0	2	1	4	2	0	9	6.6	
UNI	12/1/12	*	28	3-6	.500	0-2	.000	0-0	.000	1	4	5	5.0	0	2	0	0	0	6	6.6	
IOWA STATE	12/6/12	*	27	4-12	.333	1-3	.333	2-4	.500	4	5	9	5.4	0	3	5	1	2	11	7.0	
<b>Totals</b>			10	238	26-68	.382	5-22	.227	13-22	.591	10	44	54	5.4	14	17	25	7	6	70	7.0

Games played: 10  
 Minutes/game: 23.8  
 Points/game: 7.0  
 FG Pct: 38.2  
 3FG Pct: 22.7  
 FT Pct: 59.1

Rebounds/game: 5.4  
 Assists/game: 1.7  
 Turnovers/game: 2.5  
 Assist/turnover ratio: 0.7  
 Steals/game: 0.6  
 Blocks/game: 0.7

#### CAREER STATISTICS

YEAR	G/GS	FG-A	PCT	3-PT	PCT	FT-A	PCT	O-D-REB	AVG	PF-FO	AS	TO	BK	ST	PTS	AVG
Fresh.	10/8	29-86	.337	9-26	.346	14-18	.778	15-34-49	4.9	22-1	24	29	10	13	81	8.1
Soph.	31/0	37-97	.381	2-18	.111	19-29	.655	35-57-92	3.0	53-1	30	47	11	18	95	3.1
Junior	10/10	26-68	.382	5-22	.227	13-22	.591	10-44-54	5.4	14-0	17	25	7	6	70	7.0
<b>TOTALS</b>	<b>51/18</b>	<b>92-251</b>	<b>.367</b>	<b>16-66</b>	<b>.242</b>	<b>46-69</b>	<b>.667</b>	<b>60-135-195</b>	<b>3.8</b>	<b>89-2</b>	<b>71</b>	<b>101</b>	<b>28</b>	<b>37</b>	<b>246</b>	<b>4.8</b>





# University of Iowa Women's Basketball

## Updated Iowa Player Bio

### Jaime Printy



# 24

**Guard, 5-11, Senior**

**Marion, Iowa**

**Linn-Mar HS**

- Ranks fourth in career three-pointers made (213), eighth in career scoring (1,533) and 11th in career assists (338).
- Senior CLASS Award nominee.
- 19 points (17-of-17 FTs) and seven rebounds in win over West Virginia.
- 12 points, five rebounds and four assists vs. North Carolina, returning to starting lineup for first time since ACL injury as a junior.
- 26 points, including game-tying 3-pointer with 1.6 seconds left in regulation, along with five rebounds and six assists, in win over Middle Tennessee. Also tied school record for FT percentage (11-for-11).
- 11 points and three assists in season-opening win over NIU, recording first action since tearing ACLn left knee in final 30 seconds of overtime at Wisconsin (Feb. 2, 2012).

#### Personal Bests

**Points:** 32 vs. Illinois (2/24/11)  
**Rebounds:** 9 vs. W&M (11/24/09)  
**FGM:** 11 at Indiana (2/11/10)  
**FGA:** 25 vs. Michigan (1/2/11)  
**3-pt FG:** 5, 3x, last vs. Western Illinois (12/9/11)  
**3-pt FGA:** 15 vs. Michigan (1/2/11)  
**FTM:** 17 vs. West Virginia (11/25/12)  
**FTA:** 17 vs. West Virginia (11/25/12)  
**Assists:** 9 vs. Iowa State (12/9/10)  
**Steals:** 5 at Bradley (12/17/11)  
**Blocks:** 1, 13x, last vs. WVU (11/26/12)  
**Minutes:** 40 vs. Illinois (1/5/12)

### 2012-13 Game-by-Game

#24 Printy, Jaime

Opponent	Date	pts	mins	Total		3-Pointers		Free throws		Rebounds			PF			STK				
				fg	fg%	fg	fg%	ft	ft%	off	def	tot	pts	2	1	blk	off	def	tot	
NORTHERN ILLINOIS	11/29/12	16	34	7-20	.350	1-1	1.000	4-4	1.000	0	1	1	1.0	1	3	1	0	1	11	11.0
ILLINOIS STATE	11/11/12	15	0-4	.000	0-3	.000	1-2	.500	0	2	2	1.5	0	1	2	0	0	1	6.0	
MIDDLE TENNESSEE	11/14/12	30	6-13	.462	3-7	.429	11-11	1.000	1	4	5	2.7	1	6	5	0	1	26	12.7	
NORTH CAROLINA	11/18/12 *	39	3-15	.200	3-12	.250	3-4	.750	0	5	5	3.3	4	4	8	0	1	12	12.5	
ROBERT MICHIGAN	11/20/12 *	31	2-4	.500	2-4	.500	2-2	1.000	1	5	6	3.0	0	5	2	0	1	8	11.6	
at FIU	11/23/12 *	34	5-12	.417	4-9	.444	1-1	1.000	2	3	5	4.0	2	4	3	0	0	15	12.2	
vs WVU	11/25/12 *	33	1-3	.333	0-2	.000	17-17	1.000	0	7	7	4.4	1	3	4	1	0	19	13.1	
at Florida State	11/26/12 *	33	5-7	.714	2-4	.500	1-2	.500	0	1	1	4.0	2	1	6	0	0	13	13.1	
IOWA	12/1/12 *	30	2-7	.286	1-4	.250	4-4	1.000	0	3	3	3.0	1	5	3	0	0	9	12.7	
<b>Totals</b>		6	269	27-69	.391	16-46	.348	44-47	.936	4	31	35	3.9	12	32	34	1	4	114	12.7

**Games played:** 9  
**Minutes/game:** 29.9  
**Points/game:** 12.7  
**FG Pct:** 39.1  
**3FG Pct:** 34.0  
**FT Pct:** 93.6

**Rebounds/game:** 3.9  
**Assists/game:** 3.6  
**Turnovers/game:** 3.8  
**Assist/turnover ratio:** 0.9  
**Steals/game:** 0.4  
**Blocks/game:** 0.1

#### CAREER STATISTICS

YEAR	G/GS	FG-A	PCT	3-PT	PCT	FT-A	PCT	O-D-REB	AVG	PF-FO	AS	TO	BK	ST	PTS	AVG
Fresh.	34/34	168-406	.414	82-212	.387	83-94	.883	35-101-136	4.0	77-1	99	82	4	30	501	14.7
Soph.	31/31	168-391	.430	70-183	.383	114-132	.864	21-109-130	4.2	60-0	109	91	7	34	520	16.8
Junior	23/23	116-329	.353	45-155	.290	111-125	.888	32-70-102	4.4	45-1	96	70	3	46	388	16.9
Senior	10/7	29-76	.382	16-49	.327	50-53	.943	5-36-41	4.1	13-0	34	37	1	6	124	12.4
<b>TOTALS</b>	<b>98/95</b>	<b>481-1202</b>	<b>.400</b>	<b>213-599</b>	<b>.356</b>	<b>358-404</b>	<b>.886</b>	<b>93-316-409</b>	<b>4.2</b>	<b>195-2</b>	<b>338</b>	<b>280</b>	<b>15</b>	<b>116</b>	<b>1533</b>	<b>15.6</b>





# University of Iowa Women's Basketball

## Updated Iowa Player Bio

### Kali Peschel



# 25

**Guard, 6-1, Freshman**  
**Sauk Centre, Minn.**  
**Sauk Centre HS**

- Recorded five rebounds in collegiate debut vs. NIU.
- Miss Minnesota Basketball finalist.
- Two-time all-state selection.
- Started for her high school team as an eighth grader.
- Only played 11 games as a senior after suffering ACL injury between her junior and senior seasons.

#### Personal Bests

**Points:** 3 vs. Northern Iowa (12/1/12)  
**Rebounds:** 5 vs. Northern Illinois (11/9/12)  
**FGM:** 1 vs. Northern Iowa (12/1/12)  
**FGA:** 6 vs. Northern Illinois (11/9/12)  
**3-pt FG:** ---  
**3-pt FGA:** 2, twice, last vs. UNI (12/1/12)  
**FTM:** 1, twice, last vs. UNI (12/1/12)  
**FTA:** 2, twice, last vs. UNI (12/1/12)  
**Assists:** 1 vs. Northern Illinois (11/9/12)  
**Steals:** 1, twice, last vs. UNI (12/1/12)  
**Blocks:** 1 vs. Northern Iowa (12/1/12)  
**Minutes:** 18, twice, last vs. UNI (12/1/12)

### 2012-13 Game-by-Game

#25 Peschel, Kali

Opponent	Date	gs	min	Total		3-Pointers		Free throws		Rebounds				pf	a	t/o	blk	stl	pts	avg
				fg-fga	pct	3fg-fga	pct	ft-fa	pct	off	def	tot	avg							
NORTHERN ILLINOIS	11/9/12	18	0-6	.000	0-2	.000	1-2	.500	3	2	5	5.0	3	1	0	0	0	1	1.0	
ILLINOIS STATE	11/11/12	16	0-2	.000	0-1	.000	0-0	.000	0	3	3	4.0	1	0	2	0	0	0	0.5	
MIDDLE TENNESSEE	11/14/12	2	0-0	.000	0-0	.000	0-0	.000	0	1	1	3.0	0	0	0	0	0	0	0.3	
ROBERT MORRIS	11/20/12	5	0-0	.000	0-0	.000	0-0	.000	0	0	0	2.3	2	0	0	0	1	0	0.3	
at FIU	11/23/12	2	0-1	.000	0-0	.000	0-0	.000	2	0	2	2.2	0	0	0	0	0	0	0.2	
at Florida State	11/28/12	3	0-1	.000	0-0	.000	0-0	.000	2	0	2	2.2	0	0	0	0	0	0	0.2	
UNI	12/1/12	18	1-4	.250	0-2	.000	1-2	.500	1	1	2	2.1	3	0	2	1	1	3	0.6	
IOWA STATE	12/6/12	6	0-0	.000	0-0	.000	0-0	.000	0	0	0	1.9	2	0	0	0	0	0	0.5	
Totals		70	1-14	.071	0-5	.000	2-4	.500	8	7	15	1.9	11	1	4	1	2	4	0.5	

Games played: 8  
 Minutes/game: 8.8  
 Points/game: 0.5  
 FG Pct: 7.1  
 3FG Pct: 0.0  
 FT Pct: 50.0

Rebounds/game: 1.9  
 Assists/game: 0.1  
 Turnovers/game: 0.5  
 Assist/turnover ratio: 0.3  
 Steals/game: 0.3  
 Blocks/game: 0.1

#### CAREER STATISTICS

YEAR	G/GS	FG-A	PCT	3-PT	PCT	FT-A	PCT	O-D-REB	AVG	PF-FO	AS	TO	BK	ST	PTS	AVG
Fresh.	8/0	1-14	.071	0-5	.000	2-4	.500	8-7-15	1.9	11-0	1	4	1	2	4	0.5





# University of Iowa Women's Basketball

Updated Iowa Player Bio

## Kathryn Reynolds



# 33

**Guard, 5-7, Sophomore**  
**Cincinnati, Ohio**  
**Mount Notre Dame HS**

- Will miss entire 2012-13 season after suffering an ACL injury in April during offseason workouts.
- Five assists in win over Western Illinois as a freshman.
- Played 12 minutes in first career game, a win over Harvard.

### Personal Bests

**Points:** 4 vs. Drake (12/20/11)  
**Rebounds:** 2 vs. Texas A&M (11/26/11)  
**FGM:** 2 vs. Drake (12/20/11)  
**FGA:** 3, 2x, last vs. Drake (12/20/11)  
**3-pt FG:** ---  
**3-pt FGA:** 1, 7x, last vs. Michigan State (2/12/12)  
**FTM:** 2 vs. Western Illinois (12/9/11)  
**FTA:** 2, 3x, last vs. W. Illinois (12/9/11)  
**Assists:** 5 vs. W. Illinois (12/9/11)  
**Steals:** ---  
**Blocks:** ---  
**Minutes:** 20 vs. W. Illinois (12/9/11)

## 2012-13 Game-by-Game

### CAREER STATISTICS

YEAR	G/GS	FG-A	PCT	3-PT	PCT	FT-A	PCT	O-D-REB	AVG	PF-FO	AS	TO	BK	ST	PTS	AVG
Fresh.	21/0	5-16	.313	0-7	.000	3-4	.750	1-8-9	0.4	6-0	15	11	0	0	13	0.7
Soph.																
<b>TOTALS</b>	<b>21/0</b>	<b>5-16</b>	<b>.313</b>	<b>0-7</b>	<b>.000</b>	<b>3-4</b>	<b>.750</b>	<b>1-8-9</b>	<b>0.4</b>	<b>6-0</b>	<b>15</b>	<b>11</b>	<b>0</b>	<b>0</b>	<b>13</b>	<b>0.7</b>







# University of Iowa Women's Basketball

## Updated Iowa Player Bio

### Nicole Smith



# 45

**Center, 6-4, Freshman**  
**Rockton, Ill.**  
**Hononegah HS**

- Recorded one rebound in collegiate debut vs. NIU.
- Three-time all-state selection.
- Three-time all-conference pick.
- Recorded triple-double in high school with 20 points (10-for-10) 10 rebounds and 10 blocks.
- Played in 26 games as a senior before suffering ACL injury

#### Personal Bests

**Points:** ---  
**Rebounds:** 1 vs. NIU (11/9/12)  
**FGM:** ---  
**FGA:** 2 vs. NIU (11/9/12)  
**3-pt FG:** ---  
**3-pt FGA:** ---  
**FTM:** ---  
**FTA:** ---  
**Assists:** ---  
**Steals:** ---  
**Blocks:** ---  
**Minutes:** 3 vs. NIU (11/9/12)

### 2012-13 Game-by-Game

#45 Smith, Nicole

Opponent	Date	gs	min	Total		3-Pointers		Free throws		Rebounds			pf	a	t/o	blk	stl	pts	avg
				fg-fga	pct	3fg-fga	pct	ft-fta	pct	off	def	tot							
NORTHERN ILLINOIS	11/9/12	3		0-2	.000	0-0	.000	0-0	.000	0	1	1	1.0	0	0	0	0	0	0.0
ILLINOIS STATE	11/11/12	2		0-0	.000	0-0	.000	0-0	.000	0	0	0	0.5	0	0	0	0	0	0.0
UNI	12/1/12	1		0-0	.000	0-0	.000	0-0	.000	0	0	0	0.3	0	0	0	0	0	0.0
<b>Totals</b>		<b>0</b>	<b>6</b>	<b>0-2</b>	<b>.000</b>	<b>0-0</b>	<b>.000</b>	<b>0-0</b>	<b>.000</b>	<b>0</b>	<b>1</b>	<b>1</b>	<b>0.3</b>	<b>0</b>	<b>0</b>	<b>0</b>	<b>0</b>	<b>0</b>	<b>0.0</b>

Games played: 3  
 Minutes/game: 2.0  
 FG Pct: 0.0

Rebounds/game: 0.3

#### CAREER STATISTICS

YEAR	G/GS	FG-A	PCT	3-PT	PCT	FT-A	PCT	O-D-REB	AVG	PF-FO	AS	TO	BK	ST	PTS	AVG
Fresh.	3/0	0-2	.000	0-0	.000	0-0	.000	0-1-1	0.3	0-0	0	0	0	0	0	0.0





# University of Iowa Women's Basketball

## Updated Iowa Player Bio

### Bethany Doolittle



# 51

**Center, 6-4, Sophomore**  
**Oakdale, Minn**  
**Hill-Murray HS**

- 10 points and nine rebounds at Florida State.
- Career-high 17 points, along with six rebounds, in win over West Virginia.
- Eight points, tied a career-high with nine rebounds and blocked five shots in win over Middle Tennessee.
- Career-high six blocks in season-opening win vs. NIU.
- Tied a career-high with 10 points, along with five rebounds, in win over Michigan State as a freshman.
- 10 points and six rebounds in just 11 minutes of action off the bench in win at Northern Iowa as a freshman.

#### Personal Bests

**Points:** 17 vs. West Virginia (11/25/12)  
**Rebounds:** 9, twice, last at FSU (11/28/12)  
**FGM:** 7 vs. West Virginia (11/25/12)  
**FGA:** 12 vs. West Virginia (11/25/12)  
**3-pt FG:** ---  
**3-pt FGA:** 1, 3x, last vs. Iowa State (12/6/12)  
**FTM:** 4 vs. Michigan State (2/12/12)  
**FTA:** 5 vs. Michigan State (2/12/12)  
**Assists:** 2 vs. Western Illinois (12/9/11)  
**Steals:** 2, twice, last vs. UNC (11/18/12)  
**Blocks:** 6 vs. NIU (11/9/12)  
**Minutes:** 36 vs. Iowa State (12/6/12)

### 2012-13 Game-by-Game

#51 Doolittle, Bethany

Opponent	Date	gs	min	Total		3-Pointers		Free throws		Rebounds				pf	a	t/o	blk	stl	pts	avg	
				fg-fga	pct	3fg-fga	pct	ft-fa	pct	off	def	tot	avg								
NORTHERN ILLINOIS	11/9/12	*	21	1-8	.125	0-0	.000	0-0	.000	0	0	0	0.0	2	0	1	6	0	2	2.0	
ILLINOIS STATE	11/11/12	*	25	4-10	.400	0-1	.000	0-0	.000	0	5	5	2.5	1	0	2	2	1	8	5.0	
MIDDLE TENNESSEE	11/14/12	*	30	4-7	.571	0-0	.000	0-0	.000	4	5	9	4.7	3	0	4	5	0	8	6.0	
NORTH CAROLINA	11/18/12	*	32	1-7	.143	0-0	.000	0-0	.000	2	5	7	5.3	3	1	2	2	2	2	5.0	
ROBERT MORRIS	11/20/12	*	20	2-9	.222	0-0	.000	0-0	.000	1	4	5	5.2	2	1	1	1	0	4	4.8	
at FIU	11/23/12	*	22	3-5	.600	0-0	.000	0-0	.000	0	3	3	4.8	3	0	2	0	0	6	5.0	
vs WVU	11/25/12	*	31	7-12	.583	0-0	.000	3-3	1.000	1	5	6	5.0	4	0	2	1	0	17	6.7	
at Florida State	11/28/12	*	34	5-9	.556	0-0	.000	0-0	.000	4	5	9	5.5	3	1	2	1	1	10	7.1	
UNI	12/1/12	*	26	4-11	.364	0-0	.000	0-0	.000	1	6	7	5.7	2	0	1	0	1	8	7.2	
IOWA STATE	12/6/12	*	36	1-8	.125	0-1	.000	0-0	.000	0	4	4	5.5	3	0	1	0	1	2	6.7	
<b>Totals</b>			10	277	32-86	.372	0-2	.000	3-3	1.000	13	42	55	5.5	26	3	18	18	6	67	6.7

Games played: 10  
 Minutes/game: 27.7  
 Points/game: 6.7  
 FG Pct: 37.2  
 3FG Pct: 0.0  
 FT Pct: 100.0

Rebounds/game: 5.5  
 Assists/game: 0.3  
 Turnovers/game: 1.8  
 Assist/turnover ratio: 0.2  
 Steals/game: 0.6  
 Blocks/game: 1.8

#### CAREER STATISTICS

YEAR	G/GS	FG-A	PCT	3-PT	PCT	FT-A	PCT	O-D-REB	AVG	PF-FO	AS	TO	BK	ST	PTS	AVG
Fresh.	31/0	46-99	.465	0-1	.000	24-30	.800	13-44-57	1.8	51-0	6	19	19	9	116	3.7
Soph.	10/10	32-86	.372	0-2	.000	3-3	1.000	13-42-55	5.5	26-0	3	18	18	6	67	6.7
<b>TOTALS</b>	<b>41/10</b>	<b>78-185</b>	<b>.422</b>	<b>0-3</b>	<b>.000</b>	<b>27-33</b>	<b>.818</b>	<b>26-86-112</b>	<b>2.7</b>	<b>77-0</b>	<b>9</b>	<b>37</b>	<b>37</b>	<b>15</b>	<b>183</b>	<b>4.5</b>





# University of Iowa Women's Basketball

## Updated Iowa Player Bio

### Kayla Timmerman



# 54

### 2012-13 Game-by-Game

#54 Timmerman, Kayla

Opponent	Date	gs	min	Total		3-Pointers		Free throws		Rebounds				pf	a	t/o	blk	stl	pts	avg
				fg-fga	pct	3fg-fga	pct	ft-fa	pct	off	def	tot	avg							
NORTHERN ILLINOIS	11/9/12	10	0-2	.000	0-0	.000	1-2	.500	0	1	1	1.0	0	0	0	2	0	1	1.0	
ILLINOIS STATE	11/11/12	5	2-2	1.000	1-1	1.000	0-2	.000	0	0	0	0.5	0	1	0	1	0	5	3.0	
MIDDLE TENNESSEE	11/14/12	3	0-0	.000	0-0	.000	0-0	.000	0	0	0	0.3	0	0	0	0	0	0	2.0	
NORTH CAROLINA	11/18/12	1	0-0	.000	0-0	.000	0-0	.000	0	0	0	0.3	0	0	0	0	0	0	1.5	
ROBERT MORRIS	11/20/12	7	1-4	.250	0-0	.000	0-0	.000	1	2	3	0.8	1	0	2	0	0	2	1.6	
at FIU	11/23/12	2	0-0	.000	0-0	.000	0-0	.000	0	0	0	0.7	1	0	1	0	0	0	1.3	
vs WVU	11/25/12	4	0-0	.000	0-0	.000	0-0	.000	0	1	1	0.7	1	0	1	0	0	0	1.1	
UNI	12/1/12	1	1-1	1.000	0-0	.000	0-0	.000	0	1	1	0.8	1	0	0	0	0	2	1.3	
Totals		0	33	4-9	.444	1-1	1.000	1-4	.250	1	5	6	0.8	4	1	4	3	0	10	1.3

Games played: 8  
 Minutes/game: 4.1  
 Points/game: 1.3  
 FG Pct: 44.4  
 3FG Pct: 100.0  
 FT Pct: 25.0

Rebounds/game: 0.8  
 Assists/game: 0.1  
 Turnovers/game: 0.5  
 Assist/turnover ratio: 0.3  
 Blocks/game: 0.4

**Forward, 6-3, Freshman**

**Wayzata, Minn.**

**Wayzata HS**

- Recorded one point and one rebound in collegiate debut vs. NIU.
- Miss Minnesota Basketball candidate.
- Athena Award nominee.
- Two-time all-state selection.
- Standout in track and field, winning conference championship in shot put and discus and participated in state meet in both events.

**Personal Bests**

- Points:** 5 vs. Ill. State (11/11/12)
- Rebounds:** 3 vs. Robert Morris (11/20/12)
- FGM:** 2 vs. Ill. State
- FGA:** 4 vs. Robert Morris (11/20/12)
- 3-pt FG:** 1 vs. Ill. State (11/11/12)
- 3-pt FGA:** 1 vs. Ill. State (11/11/12)
- FTM:** 1 vs. NIU (11/9/12)
- FTA:** 2, twice, last vs. Ill. State (11/11/12)
- Assists:** 1 vs. Ill. State (11/11/12)
- Steals:** ---
- Blocks:** 2 vs. NIU (11/9/12)
- Minutes:** 10 vs. NIU (11/9/12)

**CAREER STATISTICS**

YEAR	G/GS	FG-A	PCT	3-PT	PCT	FT-A	PCT	O-D-REB	AVG	PF-FO	AS	TO	BK	ST	PTS	AVG
Fresh.	8/0	4-9	.444	1-1	1.000	1-4	.250	1-5-6	0.8	4-0	1	4	3	0	10	1.3





# University of Iowa Women's Basketball

## Game-by-Game Results

Overall: 7-3

Big Ten: 0-0

Home: 6-1

Away: 0-2

Neutral: 1-0

Date	Opponent	Result	Attend.	Top Scorer	Top Rebounder
Nov. 9	Northern Illinois <sup>^</sup>	W, 63-40	4,739	Johnson, Printy (11)	Till (6)
Nov. 11	Illinois State <sup>^</sup>	W, 74-64	2,930	Johnson (24)	Taylor (11)
Nov. 14	Middle Tennessee <sup>^</sup>	W, 69-63	1,691	Printy (26)	Doolittle (9)
Nov. 18	North Carolina <sup>^</sup>	L, 64-77	3,073	Johnson (20)	Johnson (11)
Nov. 20	Robert Morris	W, 58-44	3,032	Johnson (19)	Johnson (11)
Nov. 23	at Florida International <sup>#</sup>	L, 65-66	430	Printy (15)	Johnson, Till (6)
Nov. 25	vs. West Virginia <sup>#</sup>	W, 79-70	387	Johnson, Printy (19)	Logic, Printy, Taylor (7)
Nov. 28	at Florida State <sup>~</sup>	L, 69-83	2,389	Johnson (20)	Doolittle (9)
Dec. 1	Northern Iowa	W, 68-46	6,368	Johnson (19)	Johnson (12)
Dec. 6	Iowa State <sup>*</sup>	W, 50-42	4,483	Dixon, Taylor (11)	Logic, Taylor (9)
Dec. 16	at Drake				
Dec. 19	Missouri State				
Dec. 28	vs. Texas <sup>%</sup>				
Dec. 20	vs. C. Michigan/San Diego <sup>%</sup>				
Jan. 3	Ohio State				
Jan. 6	Michigan				
Jan. 10	at Wisconsin				
Jan. 17	at Michigan State				
Jan. 20	Purdue				
Jan. 24	Wisconsin				
Jan. 27	at Michigan				
Jan. 31	at Illinois				
Feb. 3	Northwestern				
Feb. 7	at Minnesota				
Feb. 11	Nebraska				
Feb. 14	Penn State				
Feb. 17	at Purdue				
Feb. 24	at Nebraska				
Feb. 28	Indiana				
March 3	at Northwestern				

<sup>^</sup> - Preseason WNIT

<sup>#</sup> - FIU Thanksgiving Classic, Miami

<sup>~</sup> - ACC/Big Ten Challenge

<sup>\*</sup> - Iowa Corn Cy-Hawk Series

<sup>%</sup> - San Diego Surf 'N Slam Classic, San Diego

Attendance Summary	Games	Totals	Average
Home	7	26,307	3,759
Away	2	2,819	1,410
Neutral	1	387	387
<b>Totals</b>	<b>10</b>	<b>29,522</b>	<b>2,953</b>





# University of Iowa Women's Basketball

## Game-by-Game Statistics

Team	Score	FG-A	PCT	3-PT. FG	PCT	FT-A	PCT	REB	PF	AS	TO	BLK	ST
Northern Illinois	40	14-48	29.2%	1-9	11.1%	11-19	57.9%	44	19	3	22	2	6
at Iowa	63	23-57	40.4%	6-10	60.0%	11-17	64.7%	34	18	10	10	10	6
Illinois State	64	25-76	32.9%	2-14	14.3%	12-21	57.1%	44	27	6	17	4	15
at Iowa	74	19-54	35.2%	4-12	33.3%	32-41	78.0%	50	18	18	23	10	9
Middle Tennessee	63	22-70	31.4%	7-30	23.3%	12-18	66.7%	46	22	9	20	3	12
at Iowa	69	24-55	43.6%	6-20	30.0%	15-21	71.4%	40	17	22	20	10	6
North Carolina	77	27-66	40.9%	8-22	36.4%	15-27	55.6%	45	18	14	20	4	15
at Iowa	64	25-62	40.3%	5-25	20.0%	9-14	64.3%	43	20	14	25	4	9
Robert Morris	44	15-53	28.3%	6-21	28.6%	8-14	57.1%	34	11	12	16	2	4
at Iowa	58	22-57	38.6%	7-19	36.8%	7-9	77.8%	44	13	18	18	1	6
at Florida International	66	24-65	36.9%	4-15	26.7%	14-17	82.4%	37	16	8	10	3	6
Iowa	65	24-57	42.1%	7-20	35.0%	10-13	76.9%	39	16	16	16	5	1
vs. West Virginia	70	21-72	29.2%	6-28	21.4%	22-29	75.9%	41	35	12	15	1	10
Iowa	79	18-39	46.2%	1-5	20.0%	42-50	84.0%	39	23	12	23	5	6
at Florida State	83	31-63	49.2%	5-10	50.0%	16-22	72.7%	29	10	18	13	4	12
Iowa	69	30-61	49.2%	2-11	18.2%	7-9	77.8%	35	16	13	24	6	6
Northern Iowa	46	12-53	22.6%	8-29	27.6%	14-16	87.5%	31	17	9	11	0	2
at Iowa	68	26-54	48.1%	3-11	27.3%	13-18	72.2%	43	16	17	9	4	5
Iowa State	42	15-57	26.3%	7-34	20.6%	5-5	100.0%	43	20	7	21	1	6
at Iowa	50	15-51	29.4%	4-16	25.0%	16-25	64.0%	41	13	12	15	3	7





# University of Iowa Women's Basketball

## Season & Career Bests

### Season Bests

Player	Points	3-Pointers	Rebounds	Assists	Blocks	Steals
#3 Claire Till	7 at FIU	1, twice	6, twice	1, twice	1, twice	1, three times
#11 Trisha Nesbitt	4 vs. West Virginia	1, twice	3 vs. Northern Illinois	2 vs. Robert Morris	---	2 vs. North Carolina
#12 Morgan Johnson	24 vs. Illinois State	---	12 vs. Northern Iowa	5 vs. Northern Iowa	5, twice	2 vs. Northern Iowa
#13 Kathy Thomas	8 vs. Northern Illinois	1 vs. Robert Morris	3 vs. Illinois State	3 vs. Illinois State	---	1, twice
#21 Melissa Dixon	12 vs. North Carolina	2, eight times	2, five times	2, twice	1 vs. Illinois State	2 vs. MTSU
#22 Samantha Logic	15 vs. Northern Iowa	1, twice	9 vs. Iowa State	12 vs. MTSU	1, four times	4 vs. North Carolina
#23 Theairra Taylor	11 vs. Iowa State	1, five times	11 vs. Illinois State	5 vs. Illinois State	2, twice	2, twice
#24 Jaime Printy	26 vs. MTSU	4 at FIU	7 vs. West Virginia	6 vs. MTSU	1 vs. West Virginia	2 vs. Iowa State
#25 Kali Peschel	3 vs. Northern Iowa	---	5 vs. Northern Illinois	1 vs. Northern Illinois	1 vs. Northern Iowa	1, twice
#33 Kathryn Reynolds	---	---	---	---	---	---
#45 Nicole Smith	---	---	1 vs. Northern Illinois	---	---	---
#51 Bethany Doolittle	17 vs. West Virginia	---	9, twice	1, three times	6 vs. Northern Illinois	2 vs. North Carolina
#54 Kayla Timmerman	5 vs. Illinois State	1 vs. Illinois State	3 vs. Robert Morris	1 vs. Illinois State	2 vs. Northern Illinois	---

### Career Bests

Player	Points	3-Pointers	Rebounds	Assists	Blocks	Steals
#3 Claire Till	<b>7 at FIU</b>	<b>1, twice</b>	<b>6, twice</b>	<b>1, twice</b>	<b>1, twice</b>	<b>1, three times</b>
#11 Trisha Nesbitt	10, Michigan State	2, Columbia	<b>3, 3 times</b>	4, three times	1, Michigan State '11	3, Minnesota
#12 Morgan Johnson	37 at Bradley	---	16 vs. Illinois	<b>5 vs. Northern Iowa</b>	8, Minnesota, '10	3, three times
#13 Kathy Thomas	<b>8 vs. Northern Illinois</b>	<b>1 vs. Robert Morris</b>	<b>3 vs. Illinois State</b>	<b>3 vs. Illinois State</b>	---	<b>1, twice</b>
#21 Melissa Dixon	22 vs. Michigan	6 vs. Michigan	4, four times	4 vs. Nebraska	<b>1, 4 times</b>	3 at Indiana
#22 Samantha Logic	20, twice	3 vs. Drake	18 at Michigan	<b>12 vs. MTSU</b>	2 vs. MVSU	<b>4 vs. North Carolina</b>
#23 Theairra Taylor	20, William & Mary	3, William & Mary	<b>11 vs. Illinois State</b>	6, Santa Clara	4, Michigan	4 at Northwestern
#24 Jaime Printy	32 vs. Illinois, '11	5, three times	9, William & Mary	9, Iowa State, '10	<b>1, 13 times</b>	5 at Bradley
#25 Kali Peschel	<b>3 vs. Northern Iowa</b>	---	<b>5 vs. Northern Illinois</b>	<b>1 vs. Northern Illinois</b>	<b>1 vs. Northern Iowa</b>	<b>1, twice</b>
#33 Kathryn Reynolds	4 vs. Drake	---	2 vs. Texas A&M	5 vs. Western Illinois	---	---
#45 Nicole Smith	---	---	<b>1 vs. Northern Illinois</b>	---	---	---
#51 Bethany Doolittle	<b>17 vs. West Virginia</b>	---	<b>9, twice</b>	2 vs. Western Illinois	<b>6 vs. Northern Illinois</b>	<b>2, twice</b>
#54 Kayla Timmerman	<b>5 vs. Illinois State</b>	<b>1 vs. Illinois State</b>	<b>3 vs. Robert Morris</b>	<b>1 vs. Illinois State</b>	<b>2 vs. Northern Illinois</b>	---

**BOLD** - set career best during current season

\* - - tied school single-game and Carver-Hawkeye Arena record





# University of Iowa Women's Basketball

## The Last Time...

### The Last Time a Player . . .

#### **Had 30 or more points**

Iowa -- 37, Morgan Johnson, at Bradley, 12/17/11  
Opponent -- 31, Jerica Coley, Florida International, 11/23/12

#### **Made at least 80% of her FGA (10 att.)**

Iowa -- .800 (8-10), Morgan Johnson, vs. Middle Tennessee, 11/14/2012  
Opponent -- .857 (12-14), Kelsey Budd, Bradley, 12/17/11

#### **Made 100% of her FTA (10 att.)**

Iowa -- 1.000 (17-17), Jamie Printy, vs. West Virginia, 11/14/2012<sup>^</sup>  
Opponent -- 1.000 (11-11), Courtney Vandersloot, Gonzaga, 3/19/11

#### **Had 15 or more rebounds**

Iowa -- 18, Samantha Logic, at Michigan, 2/16/12  
Opponent -- 16, Artemis Spanou, Robert Morris, 11/20/2012

#### **Had 10 or more assists**

Iowa -- 12, Samantha Logic, vs. Middle Tennessee, 11/14/2012  
Opponent -- 10, Brittney McCoy, Minnesota, 2/18/10

#### **Had 5 or more blocks**

Iowa -- 5, Morgan Johnson, at Florida International, 11/23/12  
Opponent -- 5, Ebony Ellis, Northern Illinois, 12/8/07

#### **Had 5 or more steals**

Iowa -- 5, Kelly Krei, at Indiana, 2/5/12  
Opponent -- 8, Jamie Russell, Illinois State, 11/11/12

### The Last Time A Team . . .

#### **Scored 100 or more points**

Iowa -- 100 vs. Minnesota, 2/12/88  
Opponent -- 101, Iowa State, 12/3/03

#### **Scored 40 or fewer points**

Iowa -- 40, vs. Illinois, 2/10/77  
Opponent -- 40, Northern Illinois, 11/9/12

#### **Won an overtime game**

Iowa -- 69-63, vs. Middle Tennessee, 11/14/12  
Opponent -- 81-78, Kansas State, 12/3/11

#### **Made at least 60% of its FGA (20 att.)**

Iowa -- .632 (36-57), vs. Rider, 11/26/05  
Opponent -- .654 (34-52), Ohio State, 2/12/06

#### **Made at least 50% of its 3-pt. FGA (8 att.)**

Iowa -- .600 (6-10) vs. Northern Illinois, 11/9/12  
Opponent -- .500 (5-10), Florida State, 11/28/12

#### **Made at least 90% of its FTA (10 att.)**

Iowa -- .900 (9-10), vs. California, 3/18/12  
Opponents -- .941 (16-17), UNI, 11/19/11

\* - Carver-Hawkeye Arena record ^ - school record





# University of Iowa Women's Basketball

## Miscellaneous Records and Statistics

### GAME-BY-GAME, POINTS-REBOUNDS-ASSISTS-STEALS

# -- starter	3	11	12	13	21	22	23	24	25	33	45	51	54	
Date	Till	Nesbitt	Johnson	Thomas	Dixon	Logic	Taylor	Printy	Peschel	Reynolds	Smith	Doolittle	Timmerman	
Opponent	P-R-A-S	P-R-A-S	P-R-A-S	P-R-A-S	P-R-A-S	P-R-A-S	P-R-A-S	P-R-A-S	P-R-A-S	P-R-A-S	P-R-A-S	P-R-A-S	P-R-A-S	
Nov. 9	Northern Illinois	3-6-0-1	3-3-1-0	11-5-0-1#	8-2-0-0	8-2-2-1#	10-3-2-2#	5-1-1-0#	11-1-3-1	1-5-1-0	DNP	0-1-0-0	2-0-0-0#	1-1-0-0
Nov. 11	Illinois State	4-3-0-1	3-1-0-1	24-9-2-1#	5-3-3-1	8-0-2-0#	6-5-4-2#	10-11-5-2#	1-2-1-0	0-3-0-0	DNP	0-0-0-0	8-5-0-1#	5-0-1-0
Nov. 14	Middle Tennessee	0-1-0-0	2-0-0-0	20-8-1-0#	0-0-0-0	6-1-1-2#	0-3-12-2#	7-4-2-1#	26-5-6-1	0-1-0-0	DNP	DNP	8-9-0-0#	0-0-0-0
Nov. 18	North Carolina	1-2-1-0	2-0-0-0	20-11-1-2#	0-0-0-0	12-1-0-0	12-6-6-4#	3-4-1-0#	12-5-4-1#	DNP	DNP	DNP	2-7-1-2#	0-0-0-0
Nov. 20	Robert Morris	5-2-0-0	0-2-2-0	19-11-0-0#	3-1-1-0	6-2-0-0	4-6-9-3#	7-4-0-1#	8-6-5-1#	0-0-0-1	DNP	DNP	4-5-1-0#	2-3-0-0
Nov. 23	Florida International	6-7-0-0	2-1-1-0	14-6-2-0#	0-0-0-0	8-2-0-0	7-5-7-1#	6-3-2-0#	15-5-4-0#	0-2-0-0	DNP	DNP	6-3-0-0#	0-0-0-0
Nov. 25	West Virginia	5-2-0-1	4-0-1-1	19-3-1-1#	DNP	0-0-0-0	9-7-7-3#	6-7-0-0#	19-7-3-0#	DNP	DNP	DNP	17-6-0-0#	0-1-0-0
Nov. 28	Florida State	0-1-1-0	0-0-0-1	20-4-1-0#	DNP	3-0-1-1	14-7-7-3#	9-6-1-0#	13-1-1-0#	0-2-0-0	DNP	DNP	10-9-1-1#	DNP
Dec. 1	Northern Iowa	DNP	0-0-0-0	19-12-5-2#	0-2-1-0	6-2-1-0	15-4-3-1#	6-5-2-0#	9-3-5-0#	3-2-0-1	DNP	0-0-0-0	8-7-0-1#	2-1-0-0
Dec. 6	Iowa State	DNP	0-1-0-0	7-6-2-1#	3-2-0-0	11-2-1-1	6-9-4-0#	11-9-3-2#	10-6-2-2#	0-0-0-0	DNP	DNP	2-4-0-1#	DNP

### IOWA RECORD WHEN...

Playing at home:.....	6-1	Iowa has more rebounds:.....	3-2
Playing on the road:.....	0-2	Opponent has more rebounds:.....	4-1
Playing on a neutral floor:.....	1-0	Rebounds are equal:.....	0-0
Leading at the half:.....	5-1	Iowa has more assists:.....	6-1
Trailing at the half:.....	2-2	Opponent has more assists:.....	0-1
Tied at the half:.....	0-0	Assists are equal:.....	1-1
Wearing white:.....	2-0	Iowa has fewer turnovers:.....	3-0
Wearing black:.....	1-2	Opponent has fewer turnovers:.....	3-3
Wearing gold:.....	4-1	Turnovers are equal:.....	1-0
Wearing pink:.....	0-0	Iowa has more steals:.....	3-0
Scoring 80+ points:.....	0-0	Opponent has more steals:.....	3-3
Scoring 70-79 points:.....	2-0	Steals are equal:.....	1-0
Scoring 60-69 points:.....	3-3	Playing on Sunday:.....	2-1
Scoring 60 or fewer points:.....	2-0	Playing on Monday:.....	0-0
Allowing 80+ points:.....	0-1	Playing on Tuesday:.....	1-0
Allowing 70-79 points:.....	1-1	Playing on Wednesday:.....	1-1
Allowing 60-69 points:.....	2-1	Playing on Thursday:.....	1-0
Allowing 60 or fewer points:.....	4-0	Playing on Friday:.....	1-1
Shooting at least 50% FG:.....	0-0	Playing on Saturday:.....	1-0
Shooting less than 50% FG:.....	7-3	Playing on BTN:.....	1-0
Shooting at least 80% FT:.....	1-0	Playing on CBS Sports Network:.....	0-1
Shooting less than 80% FT:.....	6-3	Playing on ESPN2:.....	0-0
Shooting at least 40% 3-pt. FG:.....	1-0	Playing on Mediacom:.....	2-0
Shooting less than 40% 3-pt. FG:.....	6-3	Playing on no TV:.....	4-2
Most 1st half points:.....	39 vs. Ill. State (Nov. 11)	Largest Iowa lead:.....	27 vs. NIU (Nov. 9)
Most 2nd half points:.....	54 vs. West Virginia (Nov. 25)	Largest Iowa deficit:.....	22 vs. UNC (Nov. 18)
Fewest opponent 1st half points:.....	13 vs. NIU (Nov. 9)	Largest halftime lead:.....	31 vs. NIU (Nov. 9)
Fewest opponent 2nd half points:.....	22 vs. UNI (Dec. 1)	Largest halftime deficit:.....	22 vs. UNC (Nov. 18)

### LATE GAME CLUTCH FREE THROW SHOOTING

In Final Five Minutes of Game			
Player	FTM	FTA	Pct.
Jaime Printy	18	18	1.000
Morgan Johnson	10	10	1.000
Samantha Logic	5	8	.625
Claire Till	3	6	.500
Kathy Thomas	2	4	.500
Melissa Dixon	0	1	.000
Kayla Timmerman	0	2	.000
<b>TOTALS</b>	<b>38</b>	<b>49</b>	<b>.776</b>
In Final Two Minutes of Game			
Player	FTM	FTA	Pct.
Jaime Printy	14	14	1.000
Morgan Johnson	4	4	1.000
Samantha Logic	1	2	.500
Claire Till	1	4	.250
Melissa Dixon	0	1	.000
Kathy Thomas	0	2	.000
<b>TOTALS</b>	<b>20</b>	<b>27</b>	<b>.741</b>
In Final One Minute of Game			
Player	FTM	FTA	Pct.
Jaime Printy	12	12	1.000
Samantha Logic	1	2	.500
Claire Till	1	4	.250
Kathy Thomas	0	2	.000
<b>TOTALS</b>	<b>14</b>	<b>20</b>	<b>.700</b>
In Overtime			
Player	FTM	FTA	Pct.
Jaime Printy	6	6	1.000
Morgan Johnson	0	2	.000
Melissa Dixon	0	1	.000
<b>TOTALS</b>	<b>6</b>	<b>9</b>	<b>.667</b>







# University of Iowa Women's Basketball

## Season Highs And Lows/Specialty Statistics

CATEGORY		IOWA	OPPONENTS
<b>Points</b>	High Low	79 vs. West Virginia 50 vs. Iowa State	83, Florida State 40, Northern Illinois
<b>FG Made</b>	High Low	30 at Florida State 15 vs. Iowa State	31, Florida State 12, Northern Iowa
<b>FG Att.</b>	High Low	62 vs. North Carolina 39 vs. West Virginia	76, Illinois State 48, Northern Illinois
<b>FG%</b>	High Low	49.2 at Florida State 29.4 vs. Iowa State	49.2, Florida State 22.6, Northern Iowa
<b>3FG Made</b>	High Low	7, twice, last at Florida International 1 vs. West Virginia	8, two teams 1, Northern Illinois
<b>3FG Att.</b>	High Low	25 vs. North Carolina 5 vs. West Virginia	34, Iowa State 9, Northern Illinois
<b>3FG%</b>	High Low	60.0 vs. Northern Illinois 18.2 at Florida State	50.0, Florida State 11.1, Northern Illinois
<b>FTM</b>	High Low	42 vs. West Virginia 7, twice, last at Florida State	22, West Virginia 5, Iowa State
<b>FTA</b>	High Low	50 vs. West Virginia 9, twice, last at Florida State	29, West Virginia 5, Iowa State
<b>FT% (min. 10)</b>	High Low	84.0 vs. West Virginia 64.0 vs. Iowa State	87.5, Northern Iowa 55.6, North Carolina
<b>Off. Reb.</b>	High Low	16, twice, last at Florida State 6 vs. Northern Illinois	23, West Virginia 10, two teams
<b>Def. Reb.</b>	High Low	38 vs. Illinois State 19 at Florida State	33, Northern Illinois 15, Florida State
<b>Total Reb.</b>	High Low	50 vs. Illinois State 34 vs. Northern Illinois	46, Middle Tennessee 29, Florida State
<b>Assists</b>	High Low	22 vs. Middle Tennessee 10 vs. Northern Illinois	18, Florida State 3, Northern Illinois
<b>Steals</b>	High Low	9, twice, last vs. North Carolina 1 at Florida International	15, two teams 1, West Virginia
<b>Blocks</b>	High Low	10, three times, last vs. Middle Tennessee 1 vs. Robert Morris	4, three teams 0, Northern Iowa
<b>Turnovers</b>	High Low	25 vs. North Carolina 9 vs. Northern Iowa	22, Northern Illinois 10, Florida International
<b>Fouls</b>	High Low	23 vs. West Virginia 13, twice, last vs. Iowa State	35, West Virginia 10, Florida State

### GAME-BY-GAME SPECIALTY STATS

Date	Opponent	Pts. Off TO's	Pts. in Paint	2nd Chance	Fast Break
Nov. 9	Northern Illinois	26-6	24-10	4-3	3-2
Nov. 11	Illinois State	18-20	22-24	8-6	18-11
Nov. 14	Middle Tennessee	15-11	24-26	11-12	2-6
Nov. 18	North Carolina	12-22	30-24	6-22	15-14
Nov. 20	Robert Morris	16-12	22-10	11-6	2-2
Nov. 23	Florida International	6-20	24-20	13-15	6-6
Nov. 25	West Virginia	14-20	24-18	11-22	0-4
Dec. 1	Northern Iowa	11-11	34-4	9-5	2-0
Dec. 6	Iowa State	12-12	14-12	10-8	2-4

## IOWA AND OPPONENT INDIVIDUAL HIGH PERFORMANCES

CATEGORY		IOWA	OPPONENTS
Points	26	Jaime Printy vs. Middle Tennessee	31 Jerica Coley, Florida International
Field Goals Made	8	Morgan Johnson vs. MTSU, UNC, RMU, at FSU	12 Jamie Russell, Illinois State
Field Goals Attempted	15	Printy vs. UNC, Johnson at FSU	28 Russell, Ill. State; Coley, FIU
3-Point Field Goals Made	4	Jaime Printy at Florida International	5 Taylor Palmer, West Virginia
3-Point Field Goals Attempted	12	Jaime Printy vs. North Carolina	13 Taylor Palmer, West Virginia
Free Throws Made	17	Jaime Printy vs. West Virginia	6 Three players
Free Throws Attempted	17	Jaime Printy vs. West Virginia	9 Xylina McDaniel, North Carolina
Offensive Rebounds	5	Johnson vs. RMU, Till at FIU	11 Ebony Rowe, Middle Tennessee
Defensive Rebounds	11	Theairra Taylor vs. Ill. State	13 Artemis Spanou, Robert Morris
Total Rebounds	12	Morgan Johnson vs. Northern Iowa	16 Rowe, MTSU; Spanou, RMU
Assists	12	Samantha Logic vs. Middle Tennessee	6 Leonor Rodriguez, Florida State
Steals	4	Samantha Logic vs. North Carolina	8 Jamie Russell, Illinois State
Blocks	6	Bethany Doolittle vs. NIU	3 Waltiea Rolle, North Carolina











**2012-13 IOWA WOMEN'S BASKETBALL**  
**Iowa Combined Team Statistics (as of Dec 06, 2012)**  
**All games**



<b>RECORD:</b>	<b>OVERALL</b>	<b>HOME</b>	<b>AWAY</b>	<b>NEUTRAL</b>
ALL GAMES	7-3	6-1	0-2	1-0
CONFERENCE	0-0	0-0	0-0	0-0
NON-CONFERENCE	7-3	6-1	0-2	1-0

#	Player	gp-gs	min	avg	Total		3-Point		F-Throw		Rebounds				pf	dq	a	to	blk	stl	pts	avg		
					fg-fga	fg%	3fg-fga	3fg%	ft-fa	ft%	off	def	tot	avg										
12	Johnson, Morgan	10-10	332	33.2	63-113	.558	0-0	.000	47-64	.734	26	49	75	7.5	25	0	15	21	21	8	173	17.3		
24	Printy, Jaime	10-7	303	30.3	29-76	.382	16-49	.327	50-53	.943	5	36	41	4.1	13	0	34	37	1	6	124	12.4		
22	Logic, Samantha	10-10	311	31.1	34-76	.447	2-12	.167	13-18	.722	22	33	55	5.5	26	1	61	48	4	21	83	8.3		
23	Taylor, Theairra	10-10	238	23.8	26-68	.382	5-22	.227	13-22	.591	10	44	54	5.4	14	0	17	25	7	6	70	7.0		
21	Dixon, Melissa	10-3	204	20.4	24-65	.369	16-46	.348	4-7	.571	1	11	12	1.2	21	0	8	10	1	5	68	6.8		
51	Doolittle, Bethany	10-10	277	27.7	32-86	.372	0-2	.000	3-3	1.000	13	42	55	5.5	26	0	3	18	18	6	67	6.7		
03	Till, Claire	8-0	92	11.5	4-17	.235	2-6	.333	15-22	.682	8	15	23	2.9	9	0	2	7	2	3	25	3.1		
13	Thomas, Kathy	8-0	66	8.3	4-11	.364	1-2	.500	10-14	.714	4	6	10	1.3	13	0	5	4	0	1	19	2.4		
11	Nesbitt, Trisha	10-0	93	9.3	5-10	.500	2-4	.500	4-6	.667	0	8	8	0.8	8	0	5	4	0	3	16	1.6		
54	Timmerman, Kayla	8-0	33	4.1	4-9	.444	1-1	1.000	1-4	.250	1	5	6	0.8	4	0	1	4	3	0	10	1.3		
25	Peschel, Kali	8-0	70	8.8	1-14	.071	0-5	.000	2-4	.500	8	7	15	1.9	11	0	1	4	1	2	4	0.5		
45	Smith, Nicole	3-0	6	2.0	0-2	.000	0-0	.000	0-0	.000	0	1	1	0.3	0	0	0	0	0	0	0	0.0		
Team											17	36	53											
Total.....		10	2025		226-547	.413	45-149	.302	162-217	.747	115	293	408	40.8	170	1	152	183	58	61	659	65.9		
Opponents.....		10	2025		206-623	.331	54-212	.255	129-188	.686	155	239	394	39.4	195	6	98	165	24	88	595	59.5		

<b>TEAM STATISTICS</b>	<b>IOWA</b>	<b>OPP</b>	<b>Date</b>	<b>Opponent</b>	<b>Score</b>	<b>Att.</b>
SCORING	659	595	^	11/9/12	NORTHERN ILLINOIS	W 63-40 4739
Points per game	65.9	59.5	^	11/11/12	ILLINOIS STATE	W 74-64 2930
Scoring margin	+6.4	-	^	11/14/12	MIDDLE TENNESSEE	Wot 69-63 1691
FIELD GOALS-ATT	226-547	206-623	^	11/18/12	NORTH CAROLINA	L 64-77 3073
Field goal pct	.413	.331		11/20/12	ROBERT MORRIS	W 58-44 3032
3 POINT FG-ATT	45-149	54-212	#	11/23/12	at FIU	L 65-66 430
3-point FG pct	.302	.255	#	11/25/12	vs WVU	W 79-70 387
3-pt FG made per game	4.5	5.4		11/28/12	at Florida State	L 69-83 2389
FREE THROWS-ATT	162-217	129-188		12/1/12	UNI	W 68-46 6368
Free throw pct	.747	.686		12/6/12	IOWA STATE	W 50-42 4483
F-Throws made per game	16.2	12.9	^ = Preseason WNIT			
REBOUNDS	408	394	# = at FIU Thanksgiving Classic; Miami			
Rebounds per game	40.8	39.4	* = Conference game			
Rebounding margin	+1.4	-				
ASSISTS	152	98				
Assists per game	15.2	9.8				
TURNOVERS	183	165				
Turnovers per game	18.3	16.5				
Turnover margin	-1.8	-				
Assist/turnover ratio	0.8	0.6				
STEALS	61	88				
Steals per game	6.1	8.8				
BLOCKS	58	24				
Blocks per game	5.8	2.4				
ATTENDANCE	26316	3206				
Home games-Avg/Game	7-3759	2-1410				
Neutral site-Avg/Game	-	1-387				

<b>Score by Periods</b>	<b>1st</b>	<b>2nd</b>	<b>OT</b>	<b>Totals</b>
Iowa	290	359	10	659
Opponents	272	319	4	595