



IOWA BASKETBALL

@IowaWBB Notes

23 NCAA Tournaments • 5 Sweet Sixteens • 3 Elite Eights • 1993 NCAA Final Four • 11 Big Ten Titles

2014-15 Schedule/Results (24-6, 14-4)

11/14	USC Upstate	W, 107-56
11/16	Robert Morris	W, 85-67
11/21	Pepperdine^	W, 97-68
11/22	Dayton^	W, 90-83
11/25	UNI	W, 73-45
11/28	vs. Arkansas #	L, 67-77
11/29	vs. Gonzaga #	W, 79-67
12/4	at #7 Louisville &	L, 52-86
12/7	Colorado	W, 78-63
12/11	Iowa State %	W, 76-67
12/21	at Drake	W, 100-98
12/28	Penn State	W, 77-52
1/4	at #16 Rutgers	W, 79-72
1/8	at Illinois	L, 61-73
1/11	Purdue	W, 73-59
1/14	Northwestern	W, 83-70
1/18	at Michigan State	W, 52-50
1/22	Michigan	W, 76-70
1/26	#15 Nebraska	W, 78-72 (OT)
1/29	at Northwestern	W, 102-99
2/1	at #5 Maryland	L, 88-93
2/5	Ohio State	W, 73-65
2/8	at Wisconsin	W, 87-75
2/12	at #20 Nebraska	W, 69-61
2/15	Indiana	W, 81-64
2/17	at Minnesota	L, 80-93
2/21	at Ohio State	L, 82-100
2/26	Wisconsin	W, 78-74
3/1	Minnesota	W, 92-76
3/6	Nebraska!	W, 74-65
3/7	Ohio State!	8:30 p.m. (BTN)
3/8	Big Ten Championship!	6 p.m. (ESPN)

^ -- Hawkeye Challenge (Nov. 21-22)
 # -- South Point Thanksgiving Shootout (Nov. 28-29)
 & -- ACC/Big Ten Challenge
 % -- Iowa Corn Cy-Hawk Series
 ! -- Big Ten Tournament
 All times listed Central

Communications Contact: Patrick Sojka
 E-Mail: patrick-sojka@uiowa.edu

Office: (319) 353-5977
 Cell: (319) 325-7932

Big Ten Tournament - Game 31 Information

#14/15 Iowa (24-6, 14-4) vs. Ohio State (22-9, 13-5)



March 7, 2015 • 8:30 p.m. (CT)
 Sears Centre Arena
 Hoffman Estates, Ill.



TV: BTN

TV Talent: Lisa Byington, Stephanie White, & Christy Winters Scott

Radio: AM-800 KXIC, AM-600 WMT, AM-1040 WHO (Hawkeye Radio Network)

Radio Talent: Brent Balbinot and Shelley Till

Twitter Updates: @IowaWBB

Live Stats/Audio: hawkeyesports.com

Quick Hits

- Iowa, the No. 2 seed, defeated Nebraska, the No. 7 seed, 74-65, for the third time this season on Friday night in the quarterfinals to advance to the semifinals for the second-straight season, and 10th time overall.
- Iowa defeated Ohio State in the Big Ten Tournament semifinals a year ago, 77-73.
- Ohio State's Kelsey Mitchell leads the nation in 3-pointers per game (3.68), while Iowa's Melissa Dixon is second (3.67).
- Iowa advanced to the Big Ten Tournament title game last year. The Hawkeyes have won two tournament titles (1997, 2001), and advanced to four championship games.
- Samantha Logic (first team), Melissa Dixon (second), Ally Disterhoft (second), and Bethany Doolittle (second) earned All-Big Ten honors. Iowa equaled Maryland for the most all-league selections.
- Iowa's senior class -- Melissa Dixon, Bethany Doolittle, Samantha Logic, and Kathryn Reynolds -- is the program's winningest graduating class in 21 years, in terms of total victories over four seasons (91 wins).
- Iowa is ranked No. 14 in the Associated Press Top-25 poll and No. 15 in the USA Today Coaches poll. Iowa has been ranked in all 17 weeks this season.
- Iowa's NCAA RPI is No. 8. Iowa is 13-5 against teams in the top 50 of the RPI.
- Samantha Logic and Ally Disterhoft were both named Academic All-Americans, representing 2-of-15 student-athletes nationally to earn the honor. Iowa is the only Division I school in the nation to have two honorees.
- Logic, the NCAA's active career assists leader (859), is the first player in NCAA history to record at least 1,400 career points, 800 rebounds, 800 assists, and 200 steals.
- Iowa is the only Big Ten team, and one of only 14 teams in the country, to appear in the last seven NCAA Tournaments. There are 349 Division I teams.

Stay Connected



FOLLOW US
IOWA
 WOMEN'S BASKETBALL



IOWAWBB

Pronunciation Guide

Lisa Bluder	BLUE-dir
Christina Buttenham	BUTT-in-HAM
Ally Disterhoft	DIST-ir-hoft
Alexa Kastanek	UH-LEX-UH kuh-STON-ik
Carly Mohns	MOANS
Kali Peschel	Cal-EE PEH-shull
Hailey Schneden	SCHNAY-din

Projected Starting Lineup (based on last game)



G • 22 • Samantha Logic
 5-9 • Sr. • Racine, Wis.

PTS	AST	REB	FT%
13.5	7.9	6.8	.711



G/F • 2 • Ally Disterhoft
 6-0 • So. • Iowa City, Iowa

PTS	REB	FG%	FT%
15.2	6.1	.434	.808



G • 21 • Melissa Dixon
 5-8 • Sr. • Johnsbury, Ill.

PTS	3-PT%	FG%	FT%
14.8	.449	.456	.875



G • 15 • Whitney Jennings
 5-5 • Fr. • Logansport, Ind.

PTS	AST	FG%	FT%
8.9	2.8	.388	.659



Head Coach Lisa Bluder
 15th season at Iowa (302-172)
 31st season overall (658-314)
 • 1-of-10 active major college coaches with 600 or more wins



C • 51 • Bethany Doolittle
 6-4 • Sr. • Oakdale, Minn.

PTS	REB	FG%	FT%
13.7	6.9	.485	.655



Inside the Numbers

	IOWA	OPP
Scoring Average	79.6	72.0
Scoring Defense	72.0	79.6
Scoring Margin	+7.6	-7.6
FG%	.456	.416
FG% Defense	.416	.456
FT%	.726	.727
3-PT FG%	.388	.336
3-PT FG% Defense	.336	.388
Rebound Margin	-4.7	+4.7
Assists Per Game	18.3	14.7
Turnovers Per Game	13.5	17.2
Turnover Margin	+3.7	-3.7
Steals Per Game	7.4	6.7
Blocks Per Game	4.3	3.7

Iowa Athletic Communications

S300 Carver-Hawkeye Arena
Iowa City, Iowa 52242
Phone: 319-335-9411
Fax: 319-335-9417

hawkeyesports.com
iowawbb.com

WBB Contact: Patrick Sojka
Cell: 319-325-7932
Office: 319-353-5977
Email: patrick-sojka@uiowa.edu

How Many Times a Hawkeye Player...

Scored 20 or More Points	
Melissa Dixon	9
Samantha Logic	6
Ally Disterhoft	5
Bethany Doolittle	4
Scored 15 or More Points	
Ally Disterhoft	17
Melissa Dixon	15
Bethany Doolittle	13
Samantha Logic	11
Whitney Jennings	5
Kali Peschel	1
Grabbed 10 or More Rebounds	
Bethany Doolittle	8
Samantha Logic	5
Ally Disterhoft	2
Grabbed 7 or More Rebounds	
Samantha Logic	15
Ally Disterhoft	11
Bethany Doolittle	12
Kali Peschel	3
Carly Mohns	1
Claire Till	1
Dished out 7 or More Assists	
Samantha Logic	16
Ally Disterhoft	1
Dished out 5 or More Assists	
Samantha Logic	22
Whitney Jennings	3
Ally Disterhoft	2
Melissa Dixon	1
Recorded 3 or More Steals	
Samantha Logic	7
Whitney Jennings	5
Melissa Dixon	4
Bethany Doolittle	4
Ally Disterhoft	1
Blocked 3 or More Shots	
Bethany Doolittle	14
Chase Coley	1

2014-15 Margin of Victory/Defeat

Points	1	2	3	4	5	6	7	8	9	10-14	15-19	20+
Wins	0	2	1	1	0	2	2	2	2	4	4	4
Losses	0	0	0	0	1	0	0	0	0	3	1	1

THE SETTING:

The 14th-ranked and second-seeded University of Iowa women's basketball team (24-6, 14-4) faces No. 3 seed Ohio State (22-9, 13-5) on Saturday at 8:30 p.m. (CT) in the Big Ten Tournament semifinals at Sears Centre Arena in Hoffman Estates, Illinois. The winner advances to Sunday's championship game (6 p.m., ESPN) to face No. 1 seed Maryland or No. 4 seed Northwestern.

The Hawkeyes opened tournament action with a 74-65 victory over seventh-seeded Nebraska on Friday in the quarterfinals.

WATCH THE ACTION:

Saturday's contest will be broadcast live on BTN and BTN2Go. Lisa Byington, Stephanie White, and Christy Winters Scott will call the action. Iowa is 20-2 when playing on BTN since the start of last season.

BTN will carry 10 games of the Big Ten Women's Basketball Tournament on Thursday, Friday, and Saturday, while Wednesday's opening games will appear on BTN Plus. The championship game will be televised by ESPN.

AUDIO COVERAGE:

Brent Balbinot and Shelley Till will call the action for the Hawkeye Radio Network. Hawkeye fans can listen to the contest on the Hawkeye Radio Network (AM-800 KXIC in Iowa City, AM-1360 KMJM in Cedar Rapids, AM-1040 WHO in Des Moines) or on the Hawkeye All-Access page of hawkeyesports.com. Balbinot is in his 11th season as Iowa's play-by-play voice. Till is in her 10th providing analysis.

FOLLOW THE ACTION:

Hawkeye fans can also follow the game via live stats (Gametracker). The link can be accessed on the women's basketball schedule page of hawkeyesports.com. Follow @iowawbb on Twitter for live game updates.

HAWKEYES KNOCK OUT NEBRASKA:

- Second-seeded Iowa opened Big Ten Tournament play with a 74-65 win over seventh-seeded Nebraska on Friday in the quarterfinals.
- The Hawkeyes swept all three meetings against Nebraska this season.
- Iowa is 21-18 all-time in the Big Ten Tournament. Only three schools have won more tournament games.
- Four reached double figures for the Hawkeyes: Ally Disterhoft (16), Bethany Doolittle (15), Samantha Logic (15), Kali Peschel (13).
- Logic reached double figures for the sixth straight game, while Doolittle finished in double figures for the 13th consecutive game.
- Disterhoft scored in double figures for the 26th time this season. She averages 16 points and 8.2 rebounds in her five Big Ten Tournament games played.
- Peschel reached double figures for the second consecutive time against Nebraska, and tied her career-high with three 3-pointers.
- Disterhoft and Doolittle were each one rebound from earning a double-double.
- Claire Till came off the bench to record a season-high eight rebounds.

2014-15 Iowa Hawkeye Roster

No.	Name	Yr.	Ht.	Pos.	Hometown (High School)
1	Alexa Kastanek	So.	5-10	G	Lincoln, Neb. (Southeast)
2	Ally Disterhoft	So.	6-0	G	Iowa City, Iowa (West)
3	Claire Till	Jr.	6-0	F	Dubuque, Iowa (Wahlert)
4	Chase Coley	Fr.	6-3	F	Minneapolis, Minn. (Washburn)
15	Whitney Jennings	Fr.	5-5	G	Logansport, Ind. (Logansport)
21	Melissa Dixon	Sr.	5-8	G	Johnsburg, Ill. (Johnsburg)
22	Samantha Logic	Sr.	5-9	G	Racine, Wis. (J.I. Case)
23	Christina Buttenham	Fr.	6-0	F	Hamilton, Ontario, Canada (St. Mary Catholic Secondary)
25	Kali Peschel	Jr.	6-1	F	Sauk Centre, Minn. (Sauk Centre)
33	Kathryn Reynolds	Sr.	5-7	G	Cincinnati, Ohio (Mount Notre Dame)
34	Carly Mohns	Fr.	6-1	F	Brodhead, Wis. (Brodhead)
40	Hailey Schneden	So.	6-2	F	Davenport, Iowa (Assumption)
45	Nicole Smith	Jr.	6-4	C	Rockton, Ill. (Hononegah)
51	Bethany Doolittle	Sr.	6-4	C	Oakdale, Minn. (Hill-Murray)

Head Coach: Lisa Bluder

Associate Head Coach: Jan Jensen

Assistant Coaches: Jenni Fitzgerald, Lacey Goldwire

Director of Basketball Operations: Abby Emmert



2014-15 Team Captains

Iowa captains are seniors Melissa Dixon, Samantha Logic, and Kathryn Reynolds.

4 HAWKEYES EARN ALL-BIG TEN HONORS:

- Samantha Logic, Melissa Dixon, Ally Disterhoft, and Bethany Doolittle have earned All-Big Ten honors.
- For the second-straight year, Logic has been named a unanimous first team selection by the coaches, and a first team selection by the media.
- Logic becomes the first Hawkeye since Kachine Alexander (2010, 2011) to earn multiple first-team All-Big Ten honors, and the ninth in program history. The team co-captain has been honored by the Big Ten in all four years, earning third team honors as a sophomore, while being named to the All-Freshman Team in 2012.
- Dixon and Disterhoft earned second team honors from both the coaches and the media, while Doolittle earned second team honors from the coaches, and honorable mention honors from the media. Dixon also earned Iowa's Sportsmanship Award nomination.
- Iowa equaled Maryland for the most all-league selections.
- Iowa's four selections are the most since 2009. The Hawkeyes have had three All-Big Ten honorees in each of the previous five years.

BIG TEN TOURNAMENT NOTES:

- The 14th-ranked Hawkeyes finished second in the Big Ten and earned the No. 2 seed in the 2015 Big Ten Conference Tournament. The tournament, set for March 4-8 at features a five-day format for the first time in conference history. Iowa earned a double-bye in the inaugural 14-team format.
- The Hawkeyes fell short of their quest to win four games in four days in last year's Big Ten Tournament, falling to Nebraska in the Big Ten title game, 72-65. Iowa defeated Illinois in the first round (81-62), and Purdue in the quarterfinals (87-80), before downing Ohio State in the semifinals (77-73). Ally Disterhoft, Bethany Doolittle, and Samantha Logic were all selected to the Big Ten All-Tournament Team.
- Iowa is making its second-straight semifinal appearance and 10th overall.
- Iowa is 21-18 all-time in the Big Ten Tournament; only three schools have won more tournament games.
- The Hawkeyes have claimed two tournament titles (1997, 2001), and made four championship game appearances.
- Iowa (5-1 all-time as the No. 2 seed) won the tournament as a No. 2 seed in Lisa Bluder's first season as head coach (2001), and advanced to the semifinals as the second seed in 2008.

SERIES HISTORY/NOTES -- OHIO STATE:

- Iowa is 31-31 all-time against Ohio State.
- The Hawkeyes split with the Buckeyes this season, winning 73-65 on Feb. 5 at home and falling 100-82 on Feb. 21 on the road.
- The Hawkeyes have won five of the last six meetings against Ohio State dating back to Jan. 3, 2013.
- Iowa is 2-3 all-time against Ohio State in the Big Ten Tournament, including a 77-73 win over the Buckeyes in the semifinal round last year.

LOGIC NAMED BIG TEN AND NATIONAL PLAYER OF THE WEEK:

- Senior point guard Samantha Logic was named Big Ten Player of the Week and ESPN's National Player of the Week on March 2.
- The laurel marked Logic's sixth career weekly honor.
- Logic averaged 22 points, eight rebounds, and 11 assists per game last week, leading the Hawkeyes to wins over Wisconsin and Minnesota. Against the Badgers, she finished one assist shy of her sixth career triple-double, registering 20 points, 10 rebounds, and nine assists. In the Senior Day win over the Gophers, Logic recorded her 30th career double-double, recording 24 points and 13 assists, to go along with six rebounds.

#COREFOUR:

- The University of Iowa honored seniors Melissa Dixon, Bethany Doolittle, Samantha Logic, and Kathryn Reynolds following the conclusion of Iowa's win over Minnesota on March 1.
- The group has led Iowa to 91 victories over the last four seasons, and the NCAA Tournament in each of the last three years.
- The #CoreFour is Iowa's winningest (91 wins in four years) graduating class in 21 years, in terms of total victories. The 1994 class had 94 total wins. The 1990 class holds the record with 105 wins in four seasons.

Head Coach Lisa Bluder

Lisa Bluder (pronounced BLUE-dir), the all-time winningest coach in program history, is in her 15th season as head coach at the University of Iowa and her 31st season as a college head coach.



Under her direction, the Hawkeyes have advanced to 13 postseason appearances (11 NCAA and two WNIT) in 14 seasons, including NCAA Tournament berths in each of the last seven seasons. Iowa is the only team in the Big Ten, and one of 14 in NCAA Division I women's basketball, to qualify for the NCAA Tournament in each of the last seven years. There are 349 Division I teams.

Bluder, the 2015 Carol Eckman Award winner, has posted a 302-172 (.637) record at Iowa and her career record stands at 658-314 (.677). Bluder surpassed Hall of Famer C. Vivian Stringer (269 wins) as the all-time winningest coach in program history on Feb. 10, 2014, as the Hawkeyes defeated Northwestern, 90-84.

Bluder, 1-of-10 active major college coaches with 600 or more wins, is a three-time Big Ten Coach of the Year (2001, 2008 and 2010) and two-time WBCA Regional Coach of the Year (2001 and 2008). She has guided Iowa to a winning record in 14 of her 15 years at Iowa, including 11 upper-division finishes in the challenging Big Ten Conference. Bluder, who ranks fourth among Big Ten coaches all-time in league victories (152), has led Iowa to nine 20-win seasons in her 14 years, including seven of the last eight years.

Bluder has coached numerous players to different awards in her 14 years in Iowa City. She has mentored 19 players to 44 All-Big Ten honors, including 12 first team picks, 14 second, 10 third and eight honorable mention selections. She has also had two Big Ten Freshman of the Year award winners, two Big Ten Sixth Player of the Year recipients, six members of the Big Ten All-Freshman team and three players named to the Big Ten All-Defensive team, with Kachine Alexander earning the honor twice.

Five players during Bluder's tenure have earned a total of six Women's Basketball Coaches Association (WBCA) all-region team accolades and six players have earned a total of 11 honorable mention All-America honors.

With Bluder on the Iowa sidelines, student-athletes have been named Academic All-Big Ten 67 times, including a program-best eight honorees in 2011 and 2012. The 67 honorees equal the third-highest total in the Big Ten during the last 14 years.

In her 10 years at Drake, Bluder brought great success and tradition to the Bulldog program and established herself as one of the top coaches in the country. She led Drake to five 20-plus win seasons in her last six years, including five post-season appearances. She guided the Bulldogs to eight Missouri Valley Conference Tournament appearances, reaching the semifinals six times and winning the tournament four times. Bluder was also named the Conference Coach of the Year three times at Drake.

Bluder began her coaching career at St. Ambrose, where she coached six successful seasons, building the Bees into a NAIA powerhouse. During her tenure at St. Ambrose, Bluder guided the Bees to four straight national tournaments, including two consecutive Final Four appearances. The 1990 St. Ambrose team was ranked No. 1 and Bluder was named the NAIA Converse Coach of the Year.

A graduate of Linn-Mar High School in Marion, Iowa, Bluder was a three-year starter at Northern Iowa. She graduated from UNI in 1983 with a bachelor's degree in marketing.

Career Coaching Record: 658-314 (.677)

Record at St. Ambrose: 169-36 (.824)

Record at Drake: 187-106 (.638)

Conference record at Drake: 116-60 (.659)

Record at Iowa: 302-172 (.637)

Conference record at Iowa: 152-96 (.613)



Final Big Ten Standings

Team	Big Ten	Pct.	Overall	Pct.
Maryland	18-0	1.000	27-2	.931
IOWA	14-4	.778	23-6	.793
Ohio State	13-5	.722	21-9	.700
Northwestern	12-6	.667	22-7	.759
Rutgers	12-6	.667	21-8	.724
Minnesota	11-7	.611	22-8	.733
Nebraska	10-8	.556	20-9	.690
Michigan	8-10	.444	16-13	.552
Michigan State	7-11	.389	15-14	.517
Illinois	6-12	.333	15-15	.500
Wisconsin	5-13	.278	9-19	.321
Indiana	4-14	.222	14-15	.483
Purdue	3-15	.167	10-19	.345
Penn State	3-14	.167	6-23	.207



National Rankings

Associated Press Poll

March 2

1. UConn (35)875
2. Notre Dame832
3. South Carolina ..796
4. Maryland.....774
5. Tennessee.....722
6. Baylor687
7. Florida State.....673
8. Oregon State622
9. Arizona State.....577
10. Louisville540
11. Mississippi State 508
12. Kentucky500
13. Princeton.....458
14. IOWA.....381
15. North Carolina...358
16. Duke351
17. Chattanooga.....290
18. Texas A&M.....261
19. Stanford.....218
20. Florida Gulf Coast.....177
21. George Washington. 145
22. Syracuse115
23. Rutgers107
24. Northwestern99
25. Seton Hall69

USA TODAY Coaches Poll

March 3

1. UConn (32)800
2. Notre Dame764
3. Maryland.....724
4. South Carolina ...713
5. Tennessee.....673
6. Florida State.....626
7. Baylor610
8. Arizona State550
9. Oregon State545
10. Louisville481
11. Kentucky449
12. North Carolina...409
13. Mississipp State.391
14. Princeton.....388
15. IOWA.....384
16. Duke298
17. Texas A&M277
18. Chattanooga.....225
19. George Washington.172
20. Stanford.....164
21. Florida Gulf Coast...159
22. Rutgers130
23. Seton Hall117
24. Syracuse.....55
25. Nebraska.....53

DISTERHOFT, LOGIC NAMED ACADEMIC ALL-AMERICANS:

- Ally Disterhoft and Samantha Logic have been named Capital One Academic All-Americans.
- The Hawkeye duo has been named to the 2014-15 Capital One Academic All-America® Division I third team.
- Disterhoft, a business major, and Logic, a health and human physiology and sports studies major, account for two of the 15 honorees, and represent two of the three honorees from the Big Ten.
- Iowa is the only Division I school in the nation to have two honorees.
- Disterhoft is the only sophomore to earn the accolade.

300 AT IOWA:

- Head coach Lisa Bluder has led the Hawkeyes to 302 wins in her 15 seasons at the helm of the program. She earned her 300th victory at Iowa on Feb. 26 vs. Wisconsin (78-74).
- Two other coaches have won 300 or more games while at a Big Ten school (as a member of the conference): Karen Langeland, Michigan State (376 wins) and Rene Portland, Penn State (335 wins).
- Iowa logged its 20th victory of the season on Feb. 12 at Nebraska. It is the team's quickest 20-win season since 1995-96.
- Bluder has led Iowa to three consecutive 20-win seasons and eight overall. Iowa has won at least 20 games in seven of the last eight years.
- Bluder owns a 302-172 (.637) mark at Iowa and a 658-314 (.677) overall record in 31 seasons as a head coach.

HAWKEYES AT CARVER-HAWKEYE ARENA:

- The Hawkeyes are 365-101 (.781) all-time inside Carver-Hawkeye Arena, and 11-6 in NCAA Tournament games. Iowa is 105-23 in its last 128 games inside Carver-Hawkeye Arena.
- The Hawkeyes are 16-0 at home this season, setting a program record for wins at home in a single season.
- Iowa is 1-of-13 teams nationally (out of 349 schools) to finish undefeated at home during the regular season, and 1-of-4 to finish undefeated at home when playing at least 16 home games, joining Baylor, Tennessee, and Wichita State.
- Iowa has won 19-straight regular season home games dating back to last year.
- Iowa last finished undefeated at home during the 1995-96 season (14-0). The Hawkeyes have finished undefeated at home four times (1987-88, 14-0; 1988-89, 14-0; 1992-93, 15-0; 1995-96, 14-0). Iowa advanced to the NCAA Final Four during the 1992-93 season.
- The Hawkeyes are 30-4 at home over the last two years.

HAWKEYES IN BIG TEN PLAY:

Iowa head coach Lisa Bluder is a three-time Big Ten Coach of the Year (2001, 2008 and 2010). She has guided Iowa to 11 upper-division finishes in the Big Ten in 15 seasons. Iowa won a share of the Big Ten regular season championship in 2008 and finished in a three-way tie for second in 2009. The Hawkeyes clinched a share of the title in 2008 with a win at Wisconsin in the regular season finale (March 2, 2008).

Since the 2008 season, Iowa has finished first once, second three times, third twice, fourth once, and seventh once. Iowa finished second in the inaugural 14-team league in 2015.

LOGIC NAMED LIEBERMAN AWARD FINALIST FOR 2ND-STRAIGHT YEAR:

- Senior point guard Samantha Logic has been named a finalist for the 2015 Nancy Lieberman Award, the Naismith Memorial Basketball Hall of Fame announced on Feb. 23. It marks the second-straight year Logic has been named a finalist.
- The award recognizes the top point guard in women's NCAA Division I college basketball. Candidates exhibit the floor leadership, play-making and ball-handling skills of Hall of Famer Nancy Lieberman.

WBCA HONORS BLUDER WITH 2015 CAROL ECKMAN AWARD:

- Lisa Bluder is the winner of the 2015 Carol Eckman Award, the Women's Basketball Coaches Association (WBCA) announced Feb. 19.
- The Carol Eckman Award is presented annually to an active WBCA member coach who exemplifies Eckman's spirit, integrity and character through sportsmanship, commitment to the student-athlete, honesty, ethical behavior, courage and dedication to purpose. The award is named in honor of the late Carol Eckman, the former West Chester State College coach, who is considered the "Mother of the Women's Collegiate Basketball Championship." Eckman organized the first women's basketball championship at West Chester in 1969, and continued to garner recognition and support for the women's game until her death from cancer in 1985.

#LOGICALCHOICE:

- Hawkeye guard Samantha Logic was named one of 10 finalists for the 2014-15 Senior CLASS Award on Feb. 12.
- Nationwide fan voting has begun to select the winner at seniordclassaward.com.
- Fans can vote for Logic -- the #LogicalChoice -- once per day on every device until March 23.
- The Racine, native is the lone finalist from the Big Ten Conference.
- An acronym for Celebrating Loyalty and Achievement for Staying in School, the Senior CLASS Award focuses on the total student-athlete and encourages students to use their athletic platforms to make a positive impact as leaders in their communities.
- To be eligible for the award, student-athletes must be classified as NCAA Division I seniors and have notable achievements in four areas of excellence: community, classroom, character and competition.

BEST START SINCE...:

- The Hawkeyes have enjoyed their best start in Big Ten play since the 1997-98 season, and their best start overall since the 1995-96 season. The Hawkeyes finished 27-4 overall and 15-1 in Big Ten action that year while advancing to the Sweet Sixteen.
- Iowa has won 23 regular season games in each of the last two seasons.



FUN FACTS:

- Iowa is 51-15 overall since the start of last season (27-9 last year; 24-6 this year).
- The Hawkeyes enter postseason action ranked No. 7 (out of 349 schools) in the NCAA RPI.
- Iowa is 13-5 against teams in the top 57 of the RPI.
- Iowa is 22-3 this season when scoring 70 or more points, and 2-3 when failing to reach the 70-point plateau.
- The Hawkeyes are 15-1 when registering more steals than their opponent this year, and 17-3 when recording fewer turnovers.
- Iowa ranks seventh nationally, and first in the Big Ten, in assists per game (18.3). The Hawkeyes are 16-2 when notching more assists than their opponent.
- The Hawkeyes are third nationally in 3-point field goal percentage (39%), 10th in field goal percentage (45.7%), eighth in scoring offense (79.8), sixth in assist to turnover ratio (1.38), and 14th in 3-pointers per game (8.2).

THE TOP 3-POINT SHOOTER IN THE LAND:

- Iowa senior Melissa Dixon is second in the nation in 3-point field goals per game, averaging 3.67. Ohio State's Kelsey Mitchell is first at 3.68.
- Dixon is second in the Big Ten and sixth nationally in 3-point percentage (44.9%).
- Dixon has made 110 in 30 games, while Ohio State's Kelsey Mitchell has made 114 in 31 games. No other player in the country has converted more than 94. Dixon has attempted 245 3-pointers this year, and Mitchell has attempted 303.
- Dixon is third in Big Ten history with 320 career 3-pointers. She is five 3-pointers from the NCAA's all-time top-25 list, and third in career 3-pointers among active players.
- Dixon has set an arena record at four venues this season (Iowa - 8, Illinois - 8, Drake - 10, Northwestern - 9).
- Dixon made six 3-pointers (6-of-10) in the win at Rutgers on Jan. 4, surpassing Lindsey Meder (261) for the most in Iowa history.
- She scored 31 points in Iowa's win at Drake on Dec. 21, making 10 3-pointers (10-of-14), setting a new school record. The previous school record was seven, accomplished five times in program history, twice by Dixon; the NCAA and Big Ten record for 3-pointers in a single game is 12.
- Dixon finished 9-of-10 from 3-point range in Iowa's 102-99 win at Northwestern (Jan. 29).
- Dixon finished 8-of-11 from 3-point range in the Senior Day win over Minnesota (March 1), marking the fourth game this season she has made at least eight 3-pointers in a game (10 at Drake, 8 at Illinois, 9 at Northwestern). The eight 3-pointers set a new Carver-Hawkeye Arena record.

1,000-POINT CLUB:

- Four members of this year's team have reached, or have the potential to reach 1,000 career points this season.
- Senior Samantha Logic (1,495 points) ranks 10th on Iowa's all-time scoring list. Morgan Johnson is ninth (1,582).
- Senior Melissa Dixon (1,421 points) is 14th.
- Senior Bethany Doolittle became the 33rd member of Iowa's 1,000-point club in the Hawkeyes' win over Penn State on Dec. 28. She has 1,284 career points to rank 18th.
- Sophomore Ally Disterhoft has 930 career points. She tallied 474 in 36 games as a freshman last year (13.2 per game), and is averaging 15.2 points per game this season.

MOVING UP CAREER CHARTS:

- Samantha Logic (859 career assists) surpassed Cara Consuegra (1997-2001; 576) as Iowa's all-time assists leader during Iowa's win at Illinois on March 2, 2014, during the 2013-14 regular season finale. She is third in assists in Big Ten history. Nancy Kennelly of Northwestern is second (892) and Ohio State's Samantha Prahalis is first (901). She ranks 15th in NCAA history in assists.
- Melissa Dixon is Iowa's career record holder for 3-pointers (320). She is third in Big Ten history. Kelly Mazzante of Penn State is second (357), while Maggie Lucas of Penn State is the Big Ten record holder (365).
- Bethany Doolittle is second all-time in program history with 264 career blocks. Morgan Johnson is first with 293. Doolittle needs 10 blocks for ninth in Big Ten history.

IOWA RANKED FOR THE 17TH-STRAIGHT WEEK THIS SEASON:

- Iowa is No. 14 in this week's *Associated Press* Top-25 poll and No. 17 in the *USA Today* Coaches poll. Iowa has been ranked in each of the first 17 weeks this year: preseason (19/19), week 2 (18/18), week 3 (17/16), week 4 (22/19), week 5 (24/24), week 6 (23/24), week 7 (23/20), week 8 (20/20), week 9 (17/17), week 10 (22/21), week 11 (20/18), week 12 (20/17), week 13 (16/17), week 14 (14/13), week 15 (13/11), week 16 (17/16), and week 17 (14/15).
- It marks the longest Iowa has been ranked since being ranked for 18-straight weeks during the 1995-96 season.
- Iowa's No. 11 ranking during week 15 marked its highest in the *USA Today* Coaches poll since the 1996-97 season.
- In the AP Poll, Maryland is No. 4, followed by Iowa (No. 14), Rutgers (No. 23), and Northwestern (No. 24). Nebraska and Ohio State are receiving votes.

2015 Recruiting Class

Tania Davis (Grand Blanc, Michigan), Megan Gustafson (Port Wing, Wisconsin), Tagyn Larson (Sioux Falls, South Dakota) and Hannah Stewart (Minot, North Dakota) have signed National Letters of Intent to attend the University of Iowa next fall. Iowa's class is ranked 18th nationally by ESPN HoopGurlz.

Davis, a 5-foot-4 guard from Goodrich High School in Grand Blanc, Michigan, is an ESPN HoopGurlz Top 100 recruit, ranking as the 37th-best prospect nationally and the 12th-best point guard. She is ranked as the top prospect in the 2015 class in the state of Michigan by Lady Baller Insider.

The two-time team captain has led Goodrich to three-straight conference titles, a district championship, and two state titles. Davis earned honorable mention all-conference honors as a freshman, leading Goodrich to a 28-0 record and a state title, playing in 28 contests while making six starts. She averaged 8.1 points, 2.1 rebounds, 2.3 assists, and 1.7 steals. As a sophomore, Davis started all 28 games while averaging 17.6 points, 2.7 rebounds, 4.0 assists, 3.2 steals, leading Goodrich to a 25-3 record and a second-consecutive state title. She earned first team all-conference, Basketball Coaches Association Class B All-State, Associated Press Class B Special Mention All-State, Detroit Free Press First Team All-State Class B, and Detroit News First Team All-State Class B honors.

Last year as a junior, Davis led Goodrich to a district title and a 22-3 record, averaging 19.1 points, 3.0 rebounds, 4.1 assists, and 3.2 steals, while starting all 25 games. She earned MLive (Flint) Player of the Year, Associated Press Class B Player of the Year, Basketball Coaches Association Best of the Best (top 11 players in state), Detroit Free Press First Team All-State Class B, Detroit News First Team All-State, and first team all-conference honors. Davis notched five 25-point games, including a 41-point performance. A National Honor Society member, she has been a member of the honor roll every semester since her freshman year.

Gustafson, a 6-foot-3 forward from South Shore High School in Port Wing, Wisconsin, is an ESPN HoopGurlz Top 100 recruit (No. 92). The two-time team captain is a three-time first team all-conference honoree and a two-time first team all-state selection. As a freshman, she averaged 19.9 points, 13.7 rebounds, and 5.3 blocks. Gustafson led South Shore to a conference, regional, and sectional championship as a sophomore, averaging 30.9 points, 12.6 rebounds, and 5.6 blocks in 28 starts as team finished 27-1. Last year as a junior, she started all 27 games, leading team to a 26-1 record and conference and regional titles. Gustafson averaged 29.8 points, 18.9 rebounds, and 5.9 blocks.

Gustafson is also a four-time all-conference selection in volleyball, and competes in the shot put, discus, triple jump, 300-meter hurdles, and 100-meter hurdles in track. She finished seventh in the shot put and 11th in the discus in last year's state track meet. Gustafson, a National Honor Society member, has been an honor roll student throughout high school. She has served as class president all four years of high school, and served as a student council member as a junior.

Larson, a 6-foot-2 forward from Roosevelt High School in Sioux Falls, South Dakota, is a three-time all-state and all-city honoree. She is a two-time all-tournament and all-conference selection, and has been named to the Argus Leader First Five. Larson averaged 12 points and eight rebounds and registered 90 blocks as a sophomore, leading Roosevelt to a conference title. As a junior she averaged 16 points and eight rebounds, tallying 69 blocks. She shot 51 percent from the field and 80 percent from the foul line. Larson holds the school record for career blocks and blocks in a game, and needs 71 rebounds to become the school's career leader.

Larson is a standout outside hitter for the Roosevelt volleyball team, earning all-state, all-conference, and all-city honors. Named a Hometown Hero for her high school, she is also involved in Spanish Club, Cancer Awareness Club, and Fellowship of Christian Athletes.

Stewart, a 6-foot-2 forward from Bishop Ryan High School in Minot, North Dakota, is an ESPN HoopGurlz Top 100 recruit (No. 95). She has played varsity basketball since she was in eighth grade, when she averaged 7.8 points, 6.4 rebounds, 1.7 assists, 1.9 steals, and 1.7 blocks, as team finished third in Region 6. As a freshman, Stewart averaged 18.7 points, 10.2 rebounds, 1.8 assists, 3.6 steals, and 2.2 blocks, leading team to a 26-2 record, a conference title, and a fifth-place finish at the state tournament. She was named all-state, all-region, all-district, and to the state all-tournament team.

Stewart has led Bishop Ryan to a state record 57-game winning streak entering her senior year, winning conference and state championships in each of the last two years. As a sophomore, she averaged 21.9 points, 10.5 rebounds, 2.1 assists, 4.7 steals, and 3.2 blocks, while posting 23.0 points, 11.3 rebounds, 2.4 assists, 4.3 steals, and 2.9 blocks per contest as a junior. A two-time team captain, she has garnered all-state, all-region, all-district, state all-tournament team, and state tournament MVP honors in each of the last two years. Stewart was a Gatorade Player of the Year nominee in 2014, an all-area athlete in 2013 and 2014, and athlete of the year for the state of North Dakota in 2014. She holds school records for career points (1,955), rebounds (1,047), blocks (274), and steals (397), and rebounds in a single game (16).

Stewart is also a standout volleyball player, earning all-district and all-region honors. She plays pitcher and shortstop in softball, and owns the school records for home runs, career hits, and pitching wins. Stewart tossed a no-hitter in the 2013 state tournament. She has guided Bishop Ryan to three-straight conference titles and three-consecutive state runner-up finishes, while being named all-state and state all-tournament four times and a nominee for the Gatorade Player of the Year twice.

A 4.0 student, Stewart serves as National Honor Society president, and is a member of the speech team, Rotary Club, and S.A.D.D. She is also a Special Olympics volunteer and plays violin in the orchestra.

Name	Pos.	Ht.	Hometown
Tania Davis	G	5-4	Grand Blanc, Michigan
Megan Gustafson	F	6-3	Port Wing, Wisconsin
Tagyn Larson	F	6-2	Sioux Falls, South Dakota
Hannah Stewart	F	6-2	Minot, South Dakota



Career Scoring in Iowa History

Rank..	No..	Player	Years
9	1582	Morgan Johnson	10-13
10	1495	Samantha Logic	12-Pres.
11	1483	Kamille Wahlin	09-12
12	1455	Kristi Smith	05-09
13	1439	Megan Skouby	05-09
14	1421	Melissa Dixon	12-Pres.
15	1343	Wendy Ausdemore	05-09
16	1335	Lisa Becker	83-87
17	1319	Amy Herrig	95-99
18	1284	Bethany Doolittle	12-Pres.

Career Games Started in Iowa History

Rank..	No..	Player	Years
1	131	Samantha Logic	12-Pres.
2	129	Morgan Johnson	10-13
3	121	Jennie Lillis	01-04

Consecutive Games Played in Iowa History

Rank..	No..	Player	Years
1	131	Samantha Logic	12-Pres.
2	130	Morgan Johnson	10-13
3	123	Wendy Ausdemore	05-09
3	123	Kristi Smith	05-09
3	123	Franthea Price	86-90
4	122	Jennie Lillis	01-04

Career Blocks in Iowa History

Rank..	No..	Player	Years
1	293	Morgan Johnson	10-13
2	264	Bethany Doolittle	12-Pres.
3	235	Tangela Smith	94-98
4	153	Megan Skouby	05-09

Assists in Big Ten History

Rank..	No..	Player	Years
1	901	Samantha Prahalis (OSU)	09-12
2	892	Nancy Kennelly (NU)	89-93
3	859	Samantha Logic	12-Pres.
4	826	Tina Nicholson (PSU)	93-96
5	791	Helen Darling (PSU)	97-00
6	776	Jess Strom (PSU)	02-05

3-Pointers in Big Ten History

Rank..	No..	Player	Years
1	365	Maggie Lucas (PSU)	11-14
2	357	Kelly Mazzante (PSU)	01-04
3	320	Melissa Dixon	12-Pres.
4	294	Lindsay Bowen (MSU)	03-06
5	293	Amber Moore (ILL)	11-14

- The Hawkeyes finished the 2013-14 season ranked 19th in the AP Top-25 poll, and 26th (receiving votes) in the *USA Today* Coaches poll. Iowa was ranked for eight weeks last season in the AP poll, and received votes in nine additional weeks.

LOGIC NAMED TO DAWN STALEY AWARD WATCH LIST:

Senior Samantha Logic is one of 16 student-athletes to be named to the Midseason Watch List for the Dawn Staley Award. The Dawn Staley Award is given to the most outstanding collegiate guard in the country; a player who exemplifies the skills that Dawn possessed during her career (ball handling, scoring, her ability to distribute the basketball, and her will to win).

LOGIC NAMED TO WOODEN AWARD MIDSEASON TOP 20:

Senior Samantha Logic has been named to the John R. Wooden Award Women's Midseason Top 20 list, comprised of the front-runners for college basketball's most prestigious individual honor. The list is chosen by a poll of national women's college basketball media members. Logic is the only player from the Big Ten on the midseason list.

MOST BIG VICTORIES:

Head coach Lisa Bluder has 152 career Big Ten victories (152-96), surpassing former Ohio State head coach Jim Foster (136) for the fourth-most in league history. Karen Langeland of Michigan State has the third most (156), while Rene Portland of Penn State is second (176). Former Hawkeye head coach and current Rutgers coach C. Vivian Stringer is first with 181 wins. She won 169 at Iowa.

DIXON SETS 3-POINT RECORD IN WIN AT DRAKE:

Senior Melissa Dixon made 10 3-pointers (10-of-14) in Iowa's 100-98 win at Drake on Dec. 21, setting a new school record. The previous school record was seven, accomplished five times in program history, twice by Dixon. The NCAA and Big Ten record for 3-pointers in a single game is 12. She finished with 31 points. Dixon was named to the Big Ten Player of the Week Honor Roll.

ANOTHER TRIPLE-DOUBLE:

Senior Samantha Logic notched her fifth career triple-double on Nov. 22, tallying 12 points, 11 rebounds, and 10 assists to lead Iowa over Dayton in the Hawkeye Challenge title game. She is tied for the fifth-most triple-doubles in NCAA history, and has the most of any player as a member of the Big Ten. Suzie McConnell of Penn State (1985-88) and Louella Tomlinson of St. Mary's (CA) (2008-11) hold the career record with seven. Stanford's Nicole Powell (2001-04) and Alyssa Thomas of Maryland (2011-14) both posted six in their careers. Logic, Joskeen Garner (Northwestern State, 1993-96), Shalee Lehning (Kansas State, 2006-09), and Brittney Griner (Baylor, 2010-13), all have five career triple-doubles.

PESCHEL NAMED TO ALL STATE GOOD WORKS TEAM:

Junior Kali Peschel has been nominated for the 2015 Allstate WBCA Good Works Team®. This prestigious community service award recognizes a distinguished group of student-athletes who have demonstrated a commitment to enriching the lives of others and contributing to the greater good in their communities.

Peschel, a junior from Sauk Centre, Minnesota, has played in every game for the Hawkeyes the last two seasons. She was a 2014 Academic All-Big Ten honoree.

TOUGH SCHEDULE:

Iowa has played the 19th toughest schedule in the country this season, and the second-toughest schedule among Big Ten teams (Purdue). Iowa's schedule this season featured 29 regular season games (18 conference, 11 nonconference). Of those 29 contests, 20 came against teams that played in a postseason tournament last season. Seventeen-of-24 teams the Hawkeyes played this season reached a postseason tournament a year ago.

With the addition of Maryland and Rutgers to the Big Ten, the 14 league teams competed in an 18-game conference schedule, playing five teams both home and away and eight teams once. Each team played four of its single-play opponents at home and four on the road. Iowa played Minnesota, Nebraska, Northwestern, Ohio State, and Wisconsin twice, while playing the other eight league teams once.

NCAA STREAK BEST IN BIG TEN:

Iowa is the only Big Ten team, and one of only 14 teams in the country, to appear in the last seven NCAA Tournaments. There are 349 Division I teams.

Iowa is 1-of-21 teams to advance to the Second Round of the NCAA Tournament in each of the last two seasons. The Hawkeyes, a No. 6 seed in the 2014 NCAA Tournament, defeated 11th-seeded Marist in the First Round, 87-65, marking the fourth-largest margin of victory in an NCAA Tournament game in program history.

IOWA HISTORY:

Iowa has played 1,198 games since beginning basketball in 1974. Iowa's overall record is 743-455 (.620). That includes a 373-187 (.667) mark in regular season Big Ten contests and a 365-101 (.781) mark in Carver-Hawkeye Arena.

IOWAWBB.COM:

Check out the Iowa women's basketball team's website, iowawbb.com, devoted to everything on-and-off-the-court surrounding the program. iowawbb.com, allows fans a chance to go behind the scenes with the Hawkeye basketball program. The site is complete with exclusive videos, photo galleries, and content featuring the basketball program.

UP NEXT:

The Hawkeyes will make their eighth-straight appearance in the NCAA Tournament.





IOWA BASKETBALL

2014-15 Roster



**#1
Alexa Kastanek**
Sophomore
Guard



**#2
Ally Disterhoft**
Sophomore
Guard



**#3
Claire Till**
Junior
Forward



**#4
Chase Coley**
Freshman
Forward



**#15
Whitney Jennings**
Freshman
Guard



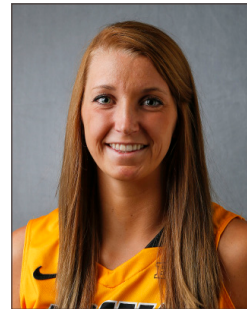
**#21
Melissa Dixon**
Senior
Guard



**#22
Samantha Logic**
Senior
Guard



**#23
Christina Buttenham**
Freshman
Forward



**#25
Kali Peschel**
Junior
Forward



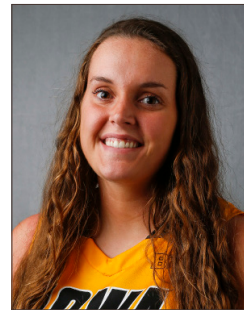
**#33
Kathryn Reynolds**
Senior
Guard



**#34
Carly Mohns**
Freshman
Forward



**#40
Hailey Schneden**
Sophomore
Forward



**#45
Nicole Smith**
Junior
Center



**#51
Bethany Doolittle**
Senior
Center



Lisa Bluder
Head Coach



Jan Jensen
Associate
Head Coach



Jenni Fitzgerald
Assistant Coach



Lacey Goldwire
Assistant Coach



Abby Emmert
Director of
Basketball
Operations



Lindsay Davis
Video
Coordinator





IOWA BASKETBALL

Season Box Scores



Official Basketball Box Score -- Game Totals -- Final Statistics
USC Upstate vs Iowa
11/14/14 6 p.m. at Carver-Hawkeye Arena - Iowa City, Iowa



USC Upstate 56 • 0-1

#	Player	Total		3-Ptr		Rebounds		PF	TP	A	T	Blk	Stl	Min
		FG-FGA	FG-FGA	FT-FTA	Off	Def	Off							
32	HICKS, Shelby	1-4	0-1	0-1	4	3	7	2	0	3	0	2	23	
15	RITTER, Coco	1-6	0-0	1-2	2	2	4	1	11	0	2	0	13	
11	CLENCY, Brittany	1-6	0-2	2-2	1	1	2	1	4	4	0	0	28	
13	JEFFERSON, Raven	2-10	0-2	2-2	0	2	2	1	6	2	5	0	24	
21	DICKERSON, Kristen	1-4	1-2	0-0	0	1	1	3	3	0	3	0	23	
00	BOGLE, Lauren	0-5	0-0	0-0	1	1	2	1	0	4	0	3	6	
01	BERRY, Nora	1-2	1-2	0-0	0	2	2	2	3	0	0	0	7	
03	HADDOCK, Travonda	2-4	1-2	3-5	0	0	0	3	8	1	4	0	13	
22	STANFORD, Alex	1-4	0-0	0-0	0	0	2	3	2	1	2	0	8	
23	EDWARDS, Sharmayne	2-7	0-1	2-2	0	1	1	0	6	1	0	0	20	
24	DAVIS, A'Lexus	0-1	0-0	1-2	0	0	0	4	1	0	0	1	6	
31	HERR, Maddie	0-2	0-2	1-2	0	3	3	0	1	1	1	0	15	
34	STARLING, Brittany	4-7	0-0	1-1	0	3	5	9	0	1	0	0	14	
	Team				3	2	5							
	Totals	20-62	3-14	13-19	11	21	32	26	56	9	26	0	9	200

FG % 1st Half: 7-30 23.3% 2nd half: 13-32 40.6% Game: 20-62 32.3%
3FG % 1st Half: 2-6 33.3% 2nd half: 1-8 12.5% Game: 3-14 21.4%
FT % 1st Half: 6-7 85.7% 2nd half: 7-12 58.3% Game: 13-19 68.4%

Deadball Rebounds: 1

Iowa 107 • 1-0

#	Player	Total		3-Ptr		Rebounds		PF	TP	A	T	Blk	Stl	Min
		FG-FGA	FG-FGA	FT-FTA	Off	Def	Off							
51	Doolittle, Bethany	7-13	0-0	1-2	2	8	10	1	15	0	1	0	2	21
02	Disterhoft, Ally	7-8	1-1	4-5	4	1	5	1	19	5	1	0	2	17
15	Jennings, Whitney	1-7	0-4	5-6	0	2	5	3	7	5	4	1	0	28
21	Dixon, Melissa	5-6	4-5	2-2	0	5	2	16	3	0	0	2	22	
22	Logic, Samantha	3-7	1-3	4-5	0	3	3	11	7	5	0	3	24	
01	Kastanek, Alexa	3-3	2-2	2-2	0	0	0	1	10	2	1	0	0	17
03	Till, Claire	0-0	0-0	0-0	0	1	1	2	0	1	1	0	0	5
04	Coley, Chase	2-3	0-0	3-5	1	1	2	1	7	1	0	1	0	11
23	Buttenham, Christina	2-7	0-3	1-2	1	2	3	2	5	1	2	0	1	14
25	Peschel, Kalli	1-2	0-0	4-4	1	4	4	6	1	1	0	0	12	
33	Reynolds, Kathryn	3-4	0-4	0-0	0	1	0	0	0	0	0	0	0	9
34	Mohs, Carly	1-2	0-0	0-6	3	4	7	2	2	1	0	0	1	14
40	Schneden, Hailey	0-0	0-0	0-0	0	1	1	0	0	0	0	0	0	2
45	Smith, Nicole	0-0	0-0	0-0	0	1	1	2	0	0	0	0	0	4
	Team				1	3	4							
	Totals	35-62	11-22	26-39	13	36	49	22	107	27	16	2	12	200

FG % 1st Half: 22-36 61.1% 2nd half: 13-26 50.0% Game: 35-62 56.5%
3FG % 1st Half: 6-11 54.5% 2nd half: 5-11 45.5% Game: 11-22 50.0%
FT % 1st Half: 9-13 69.2% 2nd half: 17-26 65.4% Game: 26-39 66.7%

Deadball Rebounds: 6

Officials: Angie Enlund, Bruce Morris, John Whitson
Technical fouls: USC Upstate-None. Iowa-None.
Attendance: 5291
Fouled Out: #34 USC 4:20 2nd
Game Duration: 1:58

Game 1

Score by periods	1st	2nd	Total
USC Upstate	22	34	56
Iowa	59	48	107

Last FG - UPST 2nd-03:11, IOWA 2nd-02:10.
Largest lead - UPST by 5 1st-18:25, IOWA by 58 2nd-08:11.
UPST led for 02:03. IOWA led for 36:42. Game was tied for 01:15.

Score tied - 0 times.
Lead changed - 1 time.



Official Basketball Box Score -- Game Totals -- Final Statistics
Robert Morris vs Iowa
11/16/14 2 p.m. at Carver-Hawkeye Arena - Iowa City, Iowa



Robert Morris 67 • 0-1

#	Player	Total		3-Ptr		Rebounds		PF	TP	A	T	Blk	Stl	Min
		FG-FGA	FG-FGA	FT-FTA	Off	Def	Off							
22	SMITH, Megan	4-9	1-2	2-2	1	3	4	5	11	1	4	1	0	25
44	OLINGENDE, Jolie	1-4	0-0	2-4	2	5	7	2	4	0	1	1	0	18
04	STAMOLAMPROU, Anna	8-14	4-9	1-5	1	6	7	1	21	2	2	0	2	39
14	RAVELLI, Ashley	3-13	3-9	2-2	0	2	2	2	11	3	2	0	0	35
41	JACKSON, Randi	0-0	0-0	0-0	0	1	1	2	0	0	0	0	0	22
01	JONES, Jocelynn	0-5	0-3	3-4	1	2	3	5	3	0	0	0	0	8
10	NAVARRO, Rebeca	3-6	2-4	2-2	1	1	2	2	10	0	0	2	1	19
11	BROWN, Jonee	1-2	0-0	2-2	0	1	1	0	4	2	1	0	1	12
21	MULRAIN, Mikalah	1-2	0-0	1-3	0	1	1	0	3	1	0	0	0	17
31	OURSLEER, Cassie	0-1	0-0	0-0	0	1	1	3	0	0	1	0	2	4
43	SOLE, Judith	0-0	0-0	0-0	0	0	0	1	0	0	1	0	0	1
	Team				2	1	3							
	Totals	21-56	10-27	15-24	8	24	32	23	67	9	14	4	6	200

FG % 1st Half: 10-29 34.5% 2nd half: 11-27 40.7% Game: 21-56 37.5%
3FG % 1st Half: 5-13 38.5% 2nd half: 5-14 35.7% Game: 10-27 37.0%
FT % 1st Half: 6-13 46.2% 2nd half: 9-11 81.8% Game: 15-24 62.5%

Deadball Rebounds: 5

Iowa 85 • 2-0

#	Player	Total		3-Ptr		Rebounds		PF	TP	A	T	Blk	Stl	Min
		FG-FGA	FG-FGA	FT-FTA	Off	Def	Off							
25	Peschel, Kalli	7-9	1-2	4-5	4	4	8	2	19	1	2	1	1	31
51	Doolittle, Bethany	6-11	0-0	0-0	2	3	5	2	12	3	2	2	2	30
02	Disterhoft, Ally	3-10	0-2	2-2	2	0	2	3	8	1	1	0	1	18
21	Dixon, Melissa	7-13	6-11	1-1	0	1	1	3	21	3	0	0	1	26
22	Logic, Samantha	1-5	0-1	5-6	0	14	14	3	7	11	5	0	1	35
01	Kastanek, Alexa	0-0	0-0	3-4	0	1	1	1	3	0	1	0	0	14
04	Coley, Chase	2-2	0-0	1-3	0	1	1	1	5	0	1	0	8	
15	Jennings, Whitney	1-6	0-1	0-0	0	1	1	3	2	1	0	0	2	21
23	Buttenham, Christina	4-6	0-1	0-0	0	3	3	1	8	0	0	0	1	10
33	Reynolds, Kathryn	0-0	0-0	0-0	0	0	0	0	0	0	0	0	0	2
34	Mohs, Carly	0-1	0-0	0-0	1	0	1	2	0	0	2	0	0	5
	Team				3	3	6							
	Totals	31-63	7-18	16-21	12	31	43	21	85	21	15	4	9	200

FG % 1st Half: 13-30 43.3% 2nd half: 18-33 54.5% Game: 31-63 49.2%
3FG % 1st Half: 5-14 35.7% 2nd half: 2-4 50.0% Game: 7-18 38.9%
FT % 1st Half: 11-14 78.6% 2nd half: 5-7 71.4% Game: 16-21 76.2%

Deadball Rebounds: 1

Officials: Mark Zentz, Jeff Cross, Missy Brooks
Technical fouls: Robert Morris-None. Iowa-None.
Attendance: 4030
Fouled Out: #01 RMU 13:05 2nd, #22 RMU 3:51 2nd
Game Duration: 2:08

Game 2

Score by periods	1st	2nd	Total
Robert Morris	31	36	67
Iowa	42	43	85

Last FG - RMU 2nd-00:40, IOWA 2nd-00:56.
Largest lead - RMU by 1 1st-14:15, IOWA by 21 2nd-01:42.
RMU led for 02:22. IOWA led for 37:54. Game was tied for 01:25.

Score tied - 3 times.
Lead changed - 2 times.



Official Basketball Box Score -- Game Totals -- Final Statistics
Pepperdine vs Iowa
11/21/14 7:30 p.m. at Carver-Hawkeye Arena - Iowa City, Iowa



Pepperdine 68 • 1-2

#	Player	Total		3-Ptr		Rebounds		PF	TP	A	T	Blk	Stl	Min
		FG-FGA	FG-FGA	FT-FTA	Off	Def	Off							
24	PETTEPIER, Krista	1-2	0-0	0-0	5	0	5	3	2	1	3	1	2	21
51	WALLACE, Keitra	5-12	2-2	1-4	2	5	7	3	13	1	4	0	2	25
10	RICHARDSON, Bria	4-11	1-5	2-2	1	1	2	4	11	4	5	1	0	32
11	SHOUSHTARI, Ea	4-15	4-13	2-2	0	4	4	3	14	4	2	2	1	35
22	GREEN, Allie	7-17	2-8	0-0	0	5	5	1	16	2	2	0	1	34
03	JACOBS, Kim	0-1	0-1	0-0	1	0	1	0	0	1	0	0	0	4
14	STANBACK, Devin	2-3	0-0	0-0	0	0	0	0	4	0	0	0	0	4
25	EMERSON, Tessa	0-0	0-0	0-0	0	0	0	1	0	1	0	0	0	7
30	OGWUMIKE, Olivia	1-2	0-0	2-2	1	2	3	1	4	0	0	0	0	17
44	BROCKWAY, Kelsey	2-3	0-0	0-1	1	2	3	2	4	0	0	1	0	19
	Team				2	1	3							
	Totals	26-66	9-29	7-11	13	20	33	18	68	14	16	5	7	200

FG % 1st Half: 10-32 31.3% 2nd half: 16-34 47.1% Game: 26-66 39.4%
3FG % 1st Half: 5-14 35.7% 2nd half: 4-15 26.7% Game: 9-29 31.0%
FT % 1st Half: 5-6 83.3% 2nd half: 2-5 40.0% Game: 7-11 63.6%

Deadball Rebounds: 2

Iowa 97 • 3-0

#	Player	Total		3-Ptr		Rebounds		PF	TP	A	T	Blk	Stl	Min
		FG-FGA	FG-FGA	FT-FTA	Off	Def	Off							
25	Peschel, Kalli	1-3	0-0	5-6	3	1	4	3	7	1	3	0	2	25
51	Doolittle, Bethany	2-6	0-0	0-2	2	4	6	2	4	1	0	2	1	19
02	Disterhoft, Ally	5-10	2-4	2-2	4	6	10	2	14	3	2	0	0	22
21	Dixon, Melissa	7-12	6-11	0-0	1	1	2	2	20	1	1	0	0	23
22	Logic, Samantha	5-7	0-0	2-2	0	6	6	1	12	9	6	1	1	25
01	Kastanek, Alexa	1-7	1-3	2-3	2	2	4	3	5	0	1	0	0	20
03	Till, Claire	0-0	0-0	0-0	0	0	0	0	0	1	0	0	1	4
04	Coley, Chase	2-3	0-0	0-0	1	1	2	0	4	1	0	0	0	12
15	Jennings, Whitney	4-8	2-4	1-3	0	1	1	0	11	5	0	0	3	23
23	Buttenham, Christina	3-5	3-3	0-0	0	2	2	0	9					



IOWA BASKETBALL

Season Box Scores



Official Basketball Box Score -- Game Totals -- Final Statistics
UNI vs Iowa
11/25/14 7 p.m. at Carver-Hawkeye Arena - Iowa City, Iowa



UNI 45 • 1-2

#	Player	Total			3-Ptr			Rebounds			PF	TP	A	TO	Blk	Stl	Min
		FG-FGA	FG-FGA	FT-FTA	FG-FGA	FG-FGA	FT-FTA	Off	Def	Tot							
42	Kettel, Jen	f	3-0	0-0	7-7	4	7	11	3	13	0	5	1	2	29		
02	Weekly, Madison	g	1-8	1-3	0-0	0	2	2	1	3	1	4	0	2	28		
13	Lamar, Sharnae	g	1-5	0-0	0-0	0	1	1	1	2	1	1	0	0	12		
14	Davison, Stephanie	g	6-10	1-2	1-1	3	3	6	4	13	2	3	2	2	36		
22	Brown, Brooke	g	1-1	0-0	1-1	1	3	4	2	3	1	2	0	0	30		
03	Dohnalek, Erin	g	0-1	0-0	0-0	0	1	1	3	0	1	2	0	0	5		
05	Sorenson, Amber	g	2-8	2-8	0-0	1	2	3	1	6	0	0	0	0	20		
10	Herzberg, Ellie	g	1-6	0-1	1-2	0	2	2	1	3	1	0	0	0	23		
11	Davison, Angie	g	0-1	0-0	0-0	0	0	0	1	0	0	1	0	0	4		
23	Smith, Ty	g	0-2	0-1	0-0	0	1	1	0	0	0	2	0	0	2		
44	Johnson, Alyssa	g	1-1	0-0	0-2	1	3	4	2	2	1	1	0	0	11		
	Team					1	0	1									
	Totals		16-52	4-16	9-12	11	25	36	19	45	8	22	3	4	200		

FG % 1st Half: 9-26 34.6% 2nd half: 7-26 26.9% Game: 16-52 30.8%
 3FG % 1st Half: 3-6 50.0% 2nd half: 1-10 10.0% Game: 4-16 25.0%
 FT % 1st Half: 0-0 0.0% 2nd half: 9-12 75.0% Game: 9-12 75.0%

Iowa 73 • 5-0

#	Player	Total			3-Ptr			Rebounds			PF	TP	A	TO	Blk	Stl	Min
		FG-FGA	FG-FGA	FT-FTA	FG-FGA	FG-FGA	FT-FTA	Off	Def	Tot							
51	Doolittle, Bethany	c	3-11	0-0	0-2	2	4	6	4	6	0	2	0	3	27		
02	Disterhoft, Ally	g	5-11	1-1	7-7	3	3	6	1	18	1	1	1	0	27		
15	Jennings, Whitney	g	4-6	2-2	2-4	0	2	2	0	12	4	1	1	0	29		
21	Dixon, Melissa	g	2-5	1-3	0-0	0	2	2	1	5	2	0	1	0	27		
22	Logic, Samantha	g	6-12	1-4	0-0	2	5	7	2	13	4	2	0	2	29		
01	Kastanek, Alexa	g	3-8	2-5	0-0	0	1	1	0	8	0	0	0	0	14		
03	Till, Claire	g	0-0	0-0	0-0	0	0	0	0	0	0	0	0	0	2		
04	Coley, Chase	g	0-2	0-0	0-0	1	2	3	0	0	0	1	1	0	8		
23	Buttenham, Christina	g	2-2	0-0	2-2	0	1	1	1	6	1	1	0	2	12		
25	Peschel, Kali	g	1-2	1-1	2-2	1	1	2	3	5	0	0	0	0	17		
33	Reynolds, Kathryn	g	0-0	0-0	0-0	0	1	1	0	0	1	0	0	0	2		
34	Mohns, Carly	g	0-1	0-0	0-0	0	3	3	2	0	0	1	1	0	6		
	Team					1	1	2									
	Totals		26-60	8-16	13-17	10	26	36	14	73	13	9	5	10	200		

FG % 1st Half: 10-27 37.0% 2nd half: 16-33 48.5% Game: 26-60 43.3%
 3FG % 1st Half: 2-4 50.0% 2nd half: 6-12 50.0% Game: 8-16 50.0%
 FT % 1st Half: 4-4 100.0% 2nd half: 9-13 69.2% Game: 13-17 76.5%

Officials: Jesse Dickerson, Felicia Grinter, Amy Bonner
 Technical fouls: UNI-None. Iowa-None.
 Attendance: 3711

Score by periods	1st	2nd	Total
UNI	21	24	45
Iowa	26	47	73

Last FG - UNI 2nd-03:21, IOWA 2nd-00:28.
 Largest lead - UNI by 4 1st-15:01, IOWA by 28 2nd-00:28.
 UNI led for 10:29. IOWA led for 27:09. Game was tied for 02:18.

Game 5

	In	Off	2nd	Fast	Bench
Points	Paint	T/O	Chance	Break	
UNI	14	0	14	0	11
IOWA	26	15	7	11	19

Score tied - 2 times.
 Lead changed - 7 times.



Official Basketball Box Score -- Game Totals -- Final Statistics
Arkansas vs Iowa
11/28/14 1:00 PM at South Point Hotel (Las Vegas, NV)



Arkansas 77 • 5-0

#	Player	Total			3-Ptr			Rebounds			PF	TP	A	TO	Blk	Stl	Min
		FG-FGA	FG-FGA	FT-FTA	FG-FGA	FG-FGA	FT-FTA	Off	Def	Tot							
00	JACKSON, Jessica	f	7-15	4-6	4-6	3	4	7	3	22	0	4	2	1	28		
42	BOWEN, Jhasmin	f	5-9	0-0	4-9	5	4	9	3	14	1	3	0	1	35		
11	BERNA, Calli	g	0-6	0-3	0-0	1	4	5	1	0	9	2	0	1	37		
15	BROOKS, Kelsey	g	8-14	1-3	7-12	3	5	8	3	24	0	7	1	1	38		
33	WOLFF, Melissa	g	3-7	0-0	3-4	4	6	10	0	9	1	1	1	1	38		
14	BOSTAD, McKinley	g	0-1	0-0	0-0	0	0	0	1	0	0	0	0	0	3		
21	POWELL, Katie	g	2-2	0-0	0-0	0	1	1	1	4	0	0	0	0	8		
25	BAILEY, Joey	g	1-2	0-0	2-2	0	3	3	2	4	0	1	0	0	12		
32	WEST, Khadijah	g	0-1	0-0	0-0	1	0	1	1	0	0	0	0	0	1		
	Team					2	5	7									
	Totals		26-57	5-12	20-33	19	32	51	15	77	11	18	4	7	200		

FG % 1st Half: 9-25 36.0% 2nd half: 17-32 53.1% Game: 26-57 45.6%
 3FG % 1st Half: 2-3 66.7% 2nd half: 3-9 33.3% Game: 5-12 41.7%
 FT % 1st Half: 5-6 83.3% 2nd half: 15-27 55.6% Game: 20-33 60.6%

Iowa 67 • 5-1

#	Player	Total			3-Ptr			Rebounds			PF	TP	A	TO	Blk	Stl	Min
		FG-FGA	FG-FGA	FT-FTA	FG-FGA	FG-FGA	FT-FTA	Off	Def	Tot							
51	Doolittle, Bethany	c	2-6	0-0	0-0	0	2	2	5	4	0	3	3	0	19		
02	Disterhoft, Ally	g	11-17	1-2	0-2	2	4	6	4	23	1	2	0	1	34		
15	Jennings, Whitney	g	4-7	2-2	0-0	0	3	3	5	10	1	1	0	1	35		
21	Dixon, Melissa	g	4-8	2-5	0-0	0	3	3	4	10	0	2	0	0	36		
22	Logic, Samantha	g	4-14	2-4	1-1	1	1	2	2	11	3	3	0	2	35		
01	Kastanek, Alexa	g	0-1	0-0	0-0	0	0	0	0	0	0	1	0	1	4		
04	Coley, Chase	g	2-5	0-0	1-3	0	3	3	4	5	0	0	3	1	20		
23	Buttenham, Christina	g	0-0	0-0	0-0	0	0	0	0	1	0	1	0	0	2		
25	Peschel, Kali	g	2-4	0-1	0-0	0	1	1	0	4	1	0	0	0	13		
34	Mohns, Carly	g	0-0	0-0	0-0	0	0	0	1	0	0	0	0	0	2		
	Team					1	3	4									
	Totals		29-62	7-14	2-6	4	20	24	26	67	6	13	6	6	200		

FG % 1st Half: 13-27 48.1% 2nd half: 16-35 45.7% Game: 29-62 46.8%
 3FG % 1st Half: 1-4 25.0% 2nd half: 6-10 60.0% Game: 7-14 50.0%
 FT % 1st Half: 0-1 0.0% 2nd half: 2-5 40.0% Game: 2-6 33.3%

Officials: Kelly Johnson, Charlie Hust, Ron Luedington
 Technical fouls: Arkansas-None. Iowa-None.
 Attendance: 216

Score by periods	1st	2nd	Total
Arkansas	25	52	77
Iowa	27	40	67

Last FG - AR 2nd-01:31, IOWA 2nd-00:08.
 Largest lead - AR by 12 2nd-00:12, IOWA by 2 1st-04:00.
 AR led for 26:51. IOWA led for 04:02. Game was tied for 09:05.

Game 6

	In	Off	2nd	Fast	Bench
Points	Paint	T/O	Chance	Break	
AR	28	9	9	0	8
IOWA	42	17	3	2	9

Score tied - 7 times.
 Lead changed - 6 times.



Official Basketball Box Score -- Game Totals -- Final Statistics
Iowa vs Gonzaga
11/29/14 3:30PM at South Point Hotel (Las Vegas, NV)



Iowa 79 • 6-1

#	Player	Total			3-Ptr			Rebounds			PF	TP	A	TO	Blk	Stl	Min
		FG-FGA	FG-FGA	FT-FTA	FG-FGA	FG-FGA	FT-FTA	Off	Def	Tot							
51	Peschel, Kali	f	1-2	0-1	0-0	0	0	0	4	2	2	1	0	2	9		
25	Doolittle, Bethany	c	3-9	0-0	4-7	6	6	12	4	10	0	1	0	1	33		
02	Disterhoft, Ally	g	3-9	1-4	5-6	0	4	3	12	4	3	0	0	0	32		
21	Dixon, Melissa	g	4-15	4-13	1-2	0	2	2	13	2	3	0	0	0	27		
22	Logic, Samantha	g	5-10	1-1	5-5	1	4	5	16	4	1	1	3	35			
01	Kastanek, Alexa	g	1-2	0-0	0-0	1	0	1	2	1	0	0	1	10			
03	Till, Claire	g	0-1	0-0	0-0	1	0	1	0	0	0	0	0	1	2		
04	Coley, Chase	g	0-0	0-0	0-0	0	0	0	1	0	0	0	0	0	4		
15	Jennings, Whitney	g	7-9	2-4	3-4	0	2	2	1	19	1	2	0	2	33		
23	Buttenham, Christina	g	1-3	1-3	1-2	0	1	1	4	0	1	0	0	0	7		
34	Mohns, Carly	g	0-1	0-1	1-2	1	1	2	2	1	1	0	0	1	8		
	Team					2	5	7									
	Totals		25-61	9-27	20-28	12	25	37	25	79	15	12	1	11	200		

FG % 1st Half: 15-30 50.0% 2nd half: 10-31 32.3% Game: 25-61 41.0%
 3FG % 1st Half: 5-14 35.7% 2nd half: 4-13 30.8% Game: 9-27 33.3%
 FT % 1st Half: 4-9 44.4% 2nd half: 16-19 84.2% Game: 20-28 71.4%

Gonzaga 67 • 3-2

#	Player	Total			3-Ptr			Rebounds			PF	TP	A	TO	Blk	Stl	Min
		FG-FGA	FG-FGA	FT-FTA	FG-FGA	FG-FGA	FT-FTA	Off	Def	Tot							
14	GREINACHER, Sunny	f	6-12	0-1	4-4	4	3	7	4	16	0	3	0	0	33		
44	CHESLEK, Shelby	c	4-8	0-0	2-2	4	9	13	4	10	1	2	3	1	25		
05	STRITON, Georgia	g	2-4	1-2	3-5	0	2	2	3	8	6	4	0	1	28		
24	ALBANEZ, Keani	g	3-10	1-5	0-0	1	3	4	7	0	5	0	1	1	22		
33	SHERBERT, Lindsay	g	3-13	3-7	2-2	2	5	7	2	11	1	1	0	1	30		
12	WOLFRAM, Emma	g	1-4	0-0													



IOWA BASKETBALL

Season Box Scores



Official Basketball Box Score -- Game Totals -- Final Statistics
Colorado vs Iowa
 12/7/14 2 p.m. at Carver-Hawkeye Arena - Iowa City, Iowa



Colorado 63 • 6-2

##	Player	Total			3-Ptr			Rebounds			PF	TP	A	TO	Blk	Stl	Min
		FG-FGA	FG-FGA	FT-FTA	FG-FGA	FG-FGA	FT-FTA	Off	Def	Tot							
22	Smith, Haley	4-12	0-2	0-0	2	2	4	4	8	2	3	1	0	0	0	30	
34	Reese, Jen	6-9	0-0	2-2	3	2	5	4	14	0	1	0	0	0	20		
50	Swan, Jamee	4-13	0-0	0-2	5	7	12	2	8	2	2	2	2	0	31		
01	Kresl, Lexy	1-10	0-4	0-0	1	3	4	5	2	6	4	0	3	3	32		
21	Sborov, Jasmine	6-10	1-3	4-6	5	7	12	4	17	1	4	0	0	0	39		
13	Thomas, Brecca	1-4	0-1	0-0	1	1	2	1	2	1	2	0	0	0	18		
15	Correal, Zoe	0-0	0-0	0-0	0	0	0	2	0	0	1	0	0	0	5		
20	Hartmann, Alina	1-1	1-1	0-0	0	0	0	1	3	0	0	0	0	0	2		
24	Huggins, Lauren	1-3	1-3	0-0	1	2	3	2	3	0	0	0	1	1	13		
31	Beard-Falls, Zoe	2-5	0-1	2-5	4	1	5	2	6	2	2	0	0	0	10		
	Team				1	5	6										
	Totals	26-67	3-15	8-15	23	30	53	27	63	14	19	3	6	200			

FG % 1st Half: 10-35 28.6% 2nd half: 16-32 50.0% Game: 26-67 38.8% Deadball Rebounds 2
 3FG % 1st Half: 2-10 20.0% 2nd half: 1-5 20.0% Game: 3-15 20.0%
 FT % 1st Half: 6-9 66.7% 2nd half: 2-6 33.3% Game: 8-15 53.3%

Iowa 78 • 7-2

##	Player	Total			3-Ptr			Rebounds			PF	TP	A	TO	Blk	Stl	Min
		FG-FGA	FG-FGA	FT-FTA	FG-FGA	FG-FGA	FT-FTA	Off	Def	Tot							
51	Doolittle, Bethany	4-16	0-0	1-2	4	6	10	3	11	0	1	2	2	3	33		
02	Disterhoft, Ally	5-9	2-3	5-10	4	4	8	1	15	1	1	0	2	1	36		
15	Jennings, Whitney	2-4	0-1	2-4	0	4	4	2	6	4	2	0	1	3	35		
21	Dixon, Melissa	8-14	5-10	2-2	2	2	2	2	23	2	3	0	1	3	37		
22	Logic, Samantha	2-6	1-2	5-6	1	3	4	2	10	4	1	0	2	2	27		
01	Kastanek, Alexa	1-5	0-2	1-1	0	2	2	3	0	1	1	0	0	0	12		
03	Till, Claire	1-1	0-0	0-0	2	0	2	1	2	1	0	0	0	0	7		
23	Buttenham, Christina	0-1	0-0	0-0	0	0	0	0	0	0	0	0	0	0	2		
25	Peschel, Kali	3-6	0-1	2-2	0	2	2	3	8	0	1	1	0	1	19		
34	Mohns, Carly	0-0	0-0	0-0	0	0	0	0	0	0	0	0	0	1			
	Team				2	2	2										
	Totals	26-62	8-19	18-27	13	23	36	16	78	12	11	4	8	200			

FG % 1st Half: 12-29 41.4% 2nd half: 14-33 42.4% Game: 26-62 41.9% Deadball Rebounds 2
 3FG % 1st Half: 4-10 40.0% 2nd half: 4-9 44.4% Game: 8-19 42.1%
 FT % 1st Half: 7-12 58.3% 2nd half: 11-15 73.3% Game: 18-27 66.7%

Officials: Gina Cross, Kevin Pethel, Tom Hallead
 Technical fouls: Colorado-Kresl, Lexy. Iowa-None.
 Attendance: 6061
 Fouled Out: #01 CU 1:01 2nd

Score by periods	1st	2nd	Total
Colorado	28	35	63
Iowa	35	43	78

Points	In	Off	2nd	Fast	Bench
COLO	Paint	T/O	Chance	Break	
IOWA	28	10	21	6	14
	26	19	13	2	13

Last FG - COLO 2nd-02:23, IOWA 2nd-01:29.
 Largest lead - COLO by 2 1st-17:40, IOWA by 18 2nd-04:31.
 COLO led for 01:45. IOWA led for 34:41. Game was tied for 03:07.

Game 9

Score tied - 4 times.
 Lead changed - 6 times.



Official Basketball Box Score -- Game Totals -- Final Statistics
Iowa State vs Iowa
 12/11/14 7:10 p.m. at Carver-Hawkeye Arena - Iowa City, Iowa



Iowa State 67 • 5-2

##	Player	Total			3-Ptr			Rebounds			PF	TP	A	TO	Blk	Stl	Min
		FG-FGA	FG-FGA	FT-FTA	FG-FGA	FG-FGA	FT-FTA	Off	Def	Tot							
22	Williamson, Brynn	0-4	0-3	2-2	2	2	4	4	2	0	3	1	1	24			
44	Fernstrom, Bryanna	2-6	0-2	2-2	1	2	3	2	6	0	2	1	0	15			
04	Moody, Nikki	4-7	2-3	2-2	0	2	2	5	12	4	2	0	0	23			
11	Buckley, Jadda	8-13	2-4	7-8	1	2	3	0	25	2	3	0	1	36			
12	Johnson, Seanna	2-11	0-3	2-3	5	7	12	3	6	0	0	0	2	36			
02	Bell, Nakiah	0-1	0-1	0-0	0	0	0	0	0	0	0	0	0	5			
03	Durr, Emily	2-4	1-2	0-0	1	5	6	2	5	1	1	0	0	25			
15	Blaskowsky, Nicole	3-11	3-11	2-3	0	3	3	3	11	1	1	0	1	22			
32	Ellis, Fallon	0-1	0-0	0-0	2	1	3	4	0	1	2	0	0	10			
34	Baier, Madison	0-0	0-0	0-0	2	0	2	0	0	0	0	1	0	4			
	Team				2	1	3										
	Totals	21-58	8-29	17-20	16	25	41	23	67	9	14	3	5	200			

FG % 1st Half: 12-31 38.7% 2nd half: 9-27 33.3% Game: 21-58 36.2% Deadball Rebounds 2
 3FG % 1st Half: 5-16 31.3% 2nd half: 3-13 23.1% Game: 8-29 27.6%
 FT % 1st Half: 6-8 75.0% 2nd half: 11-12 91.7% Game: 17-20 85.0%

Iowa 76 • 8-2

##	Player	Total			3-Ptr			Rebounds			PF	TP	A	TO	Blk	Stl	Min
		FG-FGA	FG-FGA	FT-FTA	FG-FGA	FG-FGA	FT-FTA	Off	Def	Tot							
51	Doolittle, Bethany	3-8	0-0	2-2	1	2	3	4	8	0	1	3	1	28			
02	Disterhoft, Ally	6-10	2-4	2-4	2	4	6	1	16	1	1	0	1	36			
15	Jennings, Whitney	4-13	1-7	6-8	0	1	1	3	15	3	1	0	3	27			
21	Dixon, Melissa	3-6	1-4	2-2	0	0	0	4	9	2	2	0	1	30			
22	Logic, Samantha	3-8	1-4	0-3	1	6	7	2	7	6	5	0	1	32			
01	Kastanek, Alexa	2-3	2-2	2-2	0	2	2	2	8	2	0	0	0	10			
03	Till, Claire	0-2	0-0	0-0	3	2	5	2	0	1	0	0	0	11			
23	Buttenham, Christina	0-0	0-0	0-0	0	0	0	0	0	0	0	0	0	1			
25	Peschel, Kali	4-9	3-4	2-2	5	2	7	1	13	0	2	0	0	25			
	Team				3	3	6										
	Totals	25-59	10-25	16-23	15	22	37	19	76	14	13	3	7	200			

FG % 1st Half: 15-26 57.7% 2nd half: 10-33 30.3% Game: 25-59 42.4% Deadball Rebounds 1
 3FG % 1st Half: 5-10 50.0% 2nd half: 5-15 33.3% Game: 10-25 40.0%
 FT % 1st Half: 9-10 90.0% 2nd half: 7-13 53.8% Game: 16-23 69.6%

Officials: Lisa Mattingly, Felicia Grinter, Brian Hall
 Technical fouls: Iowa State-None. Iowa-None.
 Attendance: 4902
 Iowa Corn Cy-Hawk Series
 Fouled Out: #04 ISU 1:13 2nd

Score by periods	1st	2nd	Total
Iowa State	35	32	67
Iowa	44	32	76

Points	In	Off	2nd	Fast	Bench
ISU	Paint	T/O	Chance	Break	
IOWA	20	21	7	0	16
	28	16	11	2	21

Last FG - ISU 2nd-00:54, IOWA 2nd-03:26.
 Largest lead - ISU by 1 1st-05:26, IOWA by 10 2nd-17:00.
 ISU led for 00:20. IOWA led for 38:23. Game was tied for 00:43.

Game 10

Score tied - 3 times.
 Lead changed - 2 times.



Official Basketball Box Score -- Game Totals -- Final Statistics
Iowa vs Drake
 12-21-14 2:05 p.m. at Knapp Center (Des Moines, Iowa)



Iowa 100 • 9-2

##	Player	Total			3-Ptr			Rebounds			PF	TP	A	TO	Blk	Stl	Min
		FG-FGA	FG-FGA	FT-FTA	FG-FGA	FG-FGA	FT-FTA	Off	Def	Tot							
51	Doolittle, Bethany	6-11	0-0	3-7	1	2	3	4	15	4	1	1	1	32			
02	Disterhoft, Ally	6-11	1-3	5-8	0	3	3	0	18	1	1	1	1	35			
15	Jennings, Whitney	5-8	1-1	5-7	1	1	2	4	16	4	1	0	1	24			
21	Dixon, Melissa	10-14	10-14	1-2	0	4	4	1	31	2	0	0	0	36			
22	Logic, Samantha	7-13	1-3	3-3	3	8	11	2	18	8	6	0	2	38			
01	Kastanek, Alexa	0-4	0-1	0-0	0	1	1	1	0	0	0	0	0	12			
03	Till, Claire	0-1	0-0	0-0	0	1	1	2	0	0	0	0	0	7			
23	Buttenham, Christina	0-0	0-0	0-0	0	0	0	0	0	0	0	0	0	2			
25	Peschel, Kali	1-2	0-0	0-0	2	0	2	1	2	0	2	0	1	14			
	Team				3	2	5										
	Totals	35-64	13-22	17-27	10	22	32	16	100	19	11	2	7	200			

FG % 1st Half: 17-34 50.0% 2nd half: 18-30 60.0% Game: 35-64 54.7% Deadball Rebounds 2,1
 3FG % 1st Half: 8-15 53.3% 2nd half: 5-7 71.4% Game: 13-22 59.1%
 FT % 1st Half: 1-4 25.0% 2nd half: 16-23 69.6% Game: 17-27 63.0%

Drake 98 • 5-6

##	Player	Total			3-Ptr			Rebounds			PF	TP	A	TO	Blk	Stl	Min
		FG-FGA	FG-FGA	FT-FTA	FG-FGA	FG-FGA	FT-FTA	Off	Def	Tot							
03	Wendell, Lizzy	15-24	7-11	6-6	2	2	4	2	43	0	3	0	0	33			



IOWA BASKETBALL

Season Box Scores



Official Basketball Box Score -- Game Totals -- Final Statistics
Iowa vs Rutgers
1/4/15 12:00 pm at The RAC - Piscataway, N.J.



Iowa 79 • 11-2,2-0 Big Ten

##	Player	Total			3-Ptr			Rebounds			PF	TP	A	TO	Blk	Stl	Min
		FG	FGA	FT	FTA	Off	Def	Off	Def	Total							
02	Disterhoft, Ally	f	4-9	1-3	5-6	2	0	1	1	14	3	2	1	2	34		
51	Doolittle, Bethany	c	6-10	0-0	2-8	2	6	8	4	14	1	2	2	2	32		
15	Jennings, Whitney	g	2-6	0-2	3-6	1	2	3	2	7	2	3	0	1	34		
21	Dixon, Melissa	g	7-13	6-10	1-2	1	4	5	3	21	5	0	0	2	29		
22	Logic, Samantha	g	7-10	3-4	0-2	1	3	4	1	17	6	5	0	3	40-		
01	Kastanek, Alexa	g	0-1	0-1	0-0	0	0	0	1	0	1	2	0	0	8		
03	Till, Claire	g	0-0	0-0	0-0	0	0	0	1	0	0	0	0	0	2		
04	Coley, Chase	g	3-4	0-0	0-0	1	3	4	3	6	0	2	0	0	6		
23	Buttenham, Christina	g	0-2	0-1	0-0	0	0	0	0	0	0	0	0	0	2		
25	Peschel, Kali	g	0-1	0-1	0-0	2	0	2	1	0	1	1	0	0	13		
Team			4 3 7														
Totals			29-56	10-22	11-24	13	21	34	17	79	19	17	3	10	200		

FG % 1st Half: 13-25 52.0% 2nd half: 16-31 51.6% Game: 29-56 51.8%
 3FG % 1st Half: 5-10 50.0% 2nd half: 5-12 41.7% Game: 10-22 45.5%
 FT % 1st Half: 3-7 42.9% 2nd half: 8-17 47.1% Game: 11-24 45.8%

Rutgers 72 • 10-4,1-2 Big Ten

##	Player	Total			3-Ptr			Rebounds			PF	TP	A	TO	Blk	Stl	Min
		FG	FGA	FT	FTA	Off	Def	Off	Def	Total							
02	Copper, Kahleah	f	8-13	0-0	6-7	3	1	4	2	22	4	4	0	0	38		
44	Laney, Betnijah	g	2-11	0-2	5-6	3	10	13	3	9	5	3	0	0	38		
01	Hollivay, Rachel	c	3-3	0-0	1-1	0	2	2	4	7	0	4	3	1	17		
03	Scaife, Tyler	g	9-24	2-5	0-0	0	3	3	2	20	3	1	1	0	40		
15	Davis, Syessence	g	2-3	0-1	0-0	0	1	1	3	4	4	3	1	2	25		
10	Parker, Shrita	g	1-5	0-2	4-4	2	1	3	1	6	1	2	0	0	18		
13	Hernandez, Cynthia	g	0-1	0-1	0-0	0	0	0	0	0	0	0	0	0	1		
20	Evans, Christa	g	0-1	0-0	0-0	0	0	0	0	0	0	0	0	0	1		
43	Butts, Ariel	g	2-4	0-0	0-0	5	5	10	3	4	0	0	0	0	22		
Team			5 0 5														
Totals			27-65	2-11	16-18	18	23	41	20	72	17	17	5	3	200		

FG % 1st Half: 11-32 34.4% 2nd half: 16-33 48.5% Game: 27-65 41.5%
 3FG % 1st Half: 0-3 0.0% 2nd half: 2-8 25.0% Game: 2-11 18.2%
 FT % 1st Half: 8-10 80.0% 2nd half: 8-8 100.0% Game: 16-18 88.9%

Officials: Sue Blach, Tim Daley, Bruce Morris
 Technical fouls: Iowa-None. Rutgers-None.
 Attendance: 2542

Score by periods	1st	2nd	Total
Iowa	34	45	79
Rutgers	30	42	72

	In	Off	2nd	Fast	Bench
Points	Paint	T/O	Chance	Break	
IOWA	32	16	12	17	6
RU	28	13	13	10	10

Game 13

Last FG - IOWA 2nd-01:23, RU 2nd-00:31.
 Largest lead - IOWA by 13 2nd-06:23, RU by 4 1st-18:57.
 IOWA led for 33:16, RU led for 03:00. Game was tied for 03:34.

Score tied - 3 times.
 Lead changed - 3 times.



Official Basketball Box Score -- Game Totals -- Final Statistics
Iowa vs Illinois
1/8/15 7:05 p.m. at State Farm Center, Champaign, Ill.



Iowa 61 • 11-3, 2-1

##	Player	Total			3-Ptr			Rebounds			PF	TP	A	TO	Blk	Stl	Min
		FG	FGA	FT	FTA	Off	Def	Off	Def	Total							
51	Doolittle, Bethany	c	3-12	0-0	0-0	3	4	7	3	6	0	2	3	2	32		
02	Disterhoft, Ally	g	4-10	1-4	3-4	2	5	7	3	12	4	4	0	0	37		
15	Jennings, Whitney	g	2-7	1-4	0-0	1	3	4	3	5	0	5	1	2	29		
21	Dixon, Melissa	g	8-17	8-16	0-0	0	1	1	2	24	1	4	0	1	38		
22	Logic, Samantha	g	4-10	0-2	0-0	5	2	7	4	8	14	2	1	3	33		
01	Kastanek, Alexa	g	0-1	0-0	0-0	0	0	0	1	0	0	2	1	10			
03	Till, Claire	g	2-2	0-0	0-0	1	2	3	2	4	1	0	0	0	6		
04	Coley, Chase	g	1-2	0-0	0-0	0	0	0	0	2	0	0	0	0	2		
23	Buttenham, Christina	g	0-1	0-1	0-0	0	0	0	0	0	1	0	0	0	3		
25	Peschel, Kali	g	0-1	0-0	0-0	0	1	1	0	0	2	0	0	0	10		
Team			3 4 7														
Totals			24-63	10-27	3-4	15	22	37	18	61	20	22	6	10	200		

FG % 1st Half: 14-34 41.2% 2nd half: 10-29 34.5% Game: 24-63 38.1%
 3FG % 1st Half: 4-10 40.0% 2nd half: 6-17 35.3% Game: 10-27 37.0%
 FT % 1st Half: 3-3 100.0% 2nd half: 0-1 0.0% Game: 3-4 75.0%

Illinois 73 • 11-4, 2-1

##	Player	Total			3-Ptr			Rebounds			PF	TP	A	TO	Blk	Stl	Min
		FG	FGA	FT	FTA	Off	Def	Off	Def	Total							
34	Grant, Jacqui	f	3-6	0-2	0-0	3	12	15	3	6	3	3	0	2	36		
32	White, Chatrice	c	9-14	3-4	1-2	1	5	6	1	22	1	3	4	5	37		
15	Simmons, Kylee	g	5-10	4-9	2-4	0	1	1	3	16	4	1	0	1	40		
20	Carter, Brittany	g	7-14	1-2	4-7	1	3	4	1	19	5	1	0	5	40		
22	Crawford, Ivory	g	0-2	0-1	0-0	0	0	0	1	0	1	0	1	0	9		
03	Tuck, Taylor	g	2-6	0-1	2-2	4	1	5	0	6	1	1	1	0	27		
10	Coleman, Amarah	g	1-3	0-0	2-2	0	2	2	0	4	0	5	0	0	11		
21	Kissingner, Brooke	g	0-1	0-1	0-0	0	0	0	0	1	1	0	0	0	0+		
Team			1 0 1														
Totals			27-56	8-20	11-17	10	24	34	9	73	15	16	5	14	200		

FG % 1st Half: 12-33 36.4% 2nd half: 15-23 65.2% Game: 27-56 48.2%
 3FG % 1st Half: 3-12 25.0% 2nd half: 5-8 62.5% Game: 8-20 40.0%
 FT % 1st Half: 3-4 75.0% 2nd half: 8-13 61.5% Game: 11-17 64.7%

Officials: Beverly Roberts, Bob Trammell, Frank Steratore
 Technical fouls: Iowa-None. Illinois-None.
 Attendance: 1650

Score by periods	1st	2nd	Total
Iowa	35	26	61
Illinois	30	43	73

	In	Off	2nd	Fast	Bench
Points	Paint	T/O	Chance	Break	
IOWA	22	15	10	4	6
ILL	32	26	8	2	10

Game 14

Last FG - IOWA 2nd-00:34, ILL 2nd-01:19.
 Largest lead - IOWA by 14 1st-08:56, ILL by 12 2nd-00:38.
 IOWA led for 27:51, ILL led for 09:31. Game was tied for 02:36.

Score tied - 2 times.
 Lead changed - 5 times.



Official Basketball Box Score -- Game Totals -- Final Statistics
Purdue vs Iowa
1/11/15 1:06 pm at Carver-Hawkeye Arena - Iowa City, Iowa



Purdue 59 • 9-7, 2-3

##	Player	Total			3-Ptr			Rebounds			PF	TP	A	TO	Blk	Stl	Min
		FG	FGA	FT	FTA	Off	Def	Off	Def	Total							
23	Clemons, Liza	f	3-6	0-0	4-6	4	5	9	4	10	1	2	0	0	35		
32	Bays, Whitney	g	3-14	0-0	7-9	4	7	11	4	13	1	1	0	0	33		
01	Morrisette, Ashley	g	7-17	1-9	0-0	0	2	2	4	15	2	4	0	2	34		
24	Keys, Andreona	g	2-5	1-1	4-4	3	4	7	3	9	2	2	0	2	26		
25	Wilson, April	g	1-7	1-3	0-0	2	3	5	1	3	1	5	0	0	36		
04	Thornton, Torrie	g	1-2	0-0	0-0	2	2	4	2	2	1	1	1	0	14		
10	Hamby, Hayden	g	1-4	1-3	0-0	1	1	2	2	3	1	2	0	1	16		
22	Horrocks, Bree	g	2-3	0-0	0-0	0	0	0	0	4	1	1	0	0	6		
Team			3 1 4														
Totals			20-58	4-16	15-19	19	25	44	20	59	10	18	1	5	200		

FG % 1st Half: 12-27 44.4% 2nd half: 8-31 25.8% Game: 20-58 34.5%
 3FG % 1st Half: 3-7 42.9% 2nd half: 1-9 11.1% Game: 4-16 25.0%
 FT % 1st Half: 0-2 0.0% 2nd half: 15-17 88.2% Game: 15-19 78.9%

Iowa 73 • 12-3, 3-1

##	Player	Total			3-Ptr			Rebounds			PF	TP	A	TO	Blk	Stl	Min
		FG	FGA	FT	FTA	Off	Def	Off	Def	Total							
51	Doolittle, Bethany	c	6-10	0-0	3-4	1	2	3	4	15	0	0	3	2	26		
02	Disterhoft, Ally	g	5-10	1-2	6-6	2	3	5	3	17	4	1	0	2	34		
15	Jennings, Whitney	g	2-7	0-3	4-4	1	3	4	2	8	2	3	1	1	35		
21	Dixon, Melissa	g	7-14	2-7	2-2	0	2	2	0	18	3	0	0	3	33		
22	Logic, Samantha	g	3-9	0-2	0-0	2	3	5	2	6	8	2	1	2	34		



IOWA BASKETBALL

Season Box Scores



Official Basketball Box Score -- Game Totals -- Final Statistics
Iowa vs Michigan State
1/18/15 3 p.m. at East Lansing, Mich. (Breslin Center)



Iowa 52 • 14-3, 5-1 BIG

#	Player	Total			3-Ptr			Rebounds			PF	TP	A	TO	Blk	Stl	Min
		FG-FGA	FG-FGA	FT-FTA	FG-FGA	FG-FGA	FT-FTA	Off	Def	Tot							
02	Disterhoft, Ally	3-14	1-6	5-8	4	3	7	1	12	0	0	0	0	0	0	38	
15	Jennings, Whitney	2-5	0-2	1-2	0	4	4	1	5	2	4	0	0	0	0	32	
21	Dixon, Melissa	4-10	1-5	4-5	0	4	4	2	13	1	3	0	0	0	0	32	
22	Logic, Samantha	5-14	1-4	2-3	1	3	4	3	13	4	5	0	2	2	35		
51	Doolittle, Bethany	1-7	0-0	0-0	0	3	3	4	2	0	3	0	2	2	23		
03	Till, Claire	0-0	0-0	0-0	1	2	3	2	0	0	0	0	0	0	11		
04	Coley, Chase	1-1	0-0	1-2	2	1	3	0	3	0	0	0	0	0	6		
23	Buttenham, Christina	0-0	0-0	0-0	0	1	1	0	0	0	0	0	0	0	1		
25	Peschel, Kali	2-4	0-2	0-0	2	5	7	0	4	0	0	0	0	1	22		
	Team				3	2	5				1						
	Totals	18-55	3-19	13-20	13	28	41	13	52	7	16	0	8	200			

FG % 1st Half: 11-29 37.9% 2nd half: 7-26 26.9% Game: 18-55 32.7% Deadball Rebounds 4
 3FG % 1st Half: 2-11 18.2% 2nd half: 1-8 12.5% Game: 3-19 15.8%
 FT % 1st Half: 7-10 70.0% 2nd half: 6-10 60.0% Game: 13-20 65.0%

Michigan State 50 • 9-9, 1-6 BIG

#	Player	Total			3-Ptr			Rebounds			PF	TP	A	TO	Blk	Stl	Min
		FG-FGA	FG-FGA	FT-FTA	FG-FGA	FG-FGA	FT-FTA	Off	Def	Tot							
01	Jankoska, Tori	2-8	1-6	2-2	1	2	3	4	7	1	1	0	1	32			
02	Miller, Cara	2-7	0-3	0-0	1	3	4	3	4	0	2	0	0	30			
14	Morrissey, Anna	2-7	2-7	0-0	0	1	1	1	6	1	1	0	1	33			
23	Powers, Aerial	5-16	2-6	4-4	2	9	11	4	16	6	6	3	3	39			
24	Mills, Becca	4-11	0-1	0-0	5	8	13	1	8	6	3	1	2	39			
52	Gussert, Lexi	2-5	0-0	1-2	0	2	2	1	5	0	0	0	0	15			
55	Johnson, Kennedy	2-4	0-0	0-0	2	0	2	4	4	0	4	1	0	12			
	Team				0	2	2										
	Totals	19-58	5-23	7-8	11	27	38	18	50	14	17	5	7	200			

FG % 1st Half: 10-32 31.3% 2nd half: 9-26 34.6% Game: 19-58 32.8% Deadball Rebounds 1
 3FG % 1st Half: 3-13 23.1% 2nd half: 2-10 20.0% Game: 5-23 21.7%
 FT % 1st Half: 4-4 100.0% 2nd half: 3-4 75.0% Game: 7-8 87.5%

Officials: Barb Smith, Dawn Marsh, Bob Entlerline
 Technical fouls: Iowa-None. Michigan State-None.
 Attendance: 8923

Score by periods	1st	2nd	Total
Iowa	31	21	52
Michigan State	27	23	50

Score tied - 1 time.
 Lead changed - 1 time.

Game 17

	In	Off	2nd	Fast	Bench
Points	Paint	T/O	Chance	Break	
IOWA	30	13	12	14	7
MSU	24	7	10	6	9



Official Basketball Box Score -- Game Totals -- Final Statistics
Michigan vs Iowa
1/22/15 8 p.m. at Carver-Hawkeye Arena - Iowa City, Iowa



Michigan 70 • 12-6, 4-3

#	Player	Total			3-Ptr			Rebounds			PF	TP	A	TO	Blk	Stl	Min
		FG-FGA	FG-FGA	FT-FTA	FG-FGA	FG-FGA	FT-FTA	Off	Def	Tot							
22	Goree, Cysha	11-14	0-0	4-4	7	6	13	2	26	3	5	0	0	0	0	36	
02	Thompson, Siera	4-13	2-9	0-0	1	2	3	3	10	2	0	0	0	0	33		
05	Smith, Shannon	1-8	0-1	0-2	0	4	4	3	2	3	0	0	3	35			
14	Elmblad, Nicole	3-5	0-0	3-4	4	7	11	2	9	0	4	1	1	31			
20	Williams, Danielle	1-2	0-1	0-0	1	0	1	2	0	0	0	0	1	13			
01	Ristovski, Madison	0-0	0-0	0-0	0	0	0	0	0	0	0	0	0	14			
03	Flaherty, Katelynn	8-18	3-10	0-2	0	0	0	1	19	3	3	0	0	29			
11	Dunston, Jillian	1-2	0-0	0-0	4	1	5	2	2	2	0	0	0	9			
	Team				0	0	0										
	Totals	29-62	5-21	7-12	17	20	37	14	70	16	15	1	5	200			

FG % 1st Half: 16-33 48.5% 2nd half: 13-29 44.8% Game: 29-62 46.8% Deadball Rebounds 3
 3FG % 1st Half: 0-8 0.0% 2nd half: 5-13 38.5% Game: 5-21 23.8%
 FT % 1st Half: 0-2 0.0% 2nd half: 7-10 70.0% Game: 7-12 58.3%

Iowa 76 • 15-3, 6-1

#	Player	Total			3-Ptr			Rebounds			PF	TP	A	TO	Blk	Stl	Min
		FG-FGA	FG-FGA	FT-FTA	FG-FGA	FG-FGA	FT-FTA	Off	Def	Tot							
51	Doolittle, Bethany	5-7	0-0	3-4	1	4	5	1	13	4	4	2	3	31			
02	Disterhoft, Ally	7-14	0-3	0-0	1	2	3	3	14	3	1	0	0	36			
15	Jennings, Whitney	5-10	2-5	0-0	0	1	1	2	12	2	1	0	1	36			
21	Dixon, Melissa	6-13	2-8	2-3	0	0	0	3	16	4	0	0	0	31			
22	Logic, Samantha	5-7	2-2	1-2	2	5	7	0	13	11	6	0	0	36			
01	Kastanek, Alexa	0-0	0-0	0-0	0	1	1	0	0	1	0	0	0	2			
03	Till, Claire	2-2	0-0	0-0	0	1	1	1	4	0	0	0	0	8			
04	Coley, Chase	0-0	0-0	0-0	0	0	0	0	0	0	0	0	0	1			
23	Buttenham, Christina	1-1	0-0	0-0	0	0	0	0	2	0	0	0	0	2			
25	Peschel, Kali	1-2	0-0	0-0	1	2	3	1	2	1	0	0	0	17			
	Team				2	2	4										
	Totals	32-56	6-18	6-9	7	18	25	12	76	25	13	2	3	200			

FG % 1st Half: 15-25 60.0% 2nd half: 17-31 54.8% Game: 32-56 57.1% Deadball Rebounds 0
 3FG % 1st Half: 3-8 37.5% 2nd half: 3-10 30.0% Game: 6-18 33.3%
 FT % 1st Half: 3-4 75.0% 2nd half: 3-5 60.0% Game: 6-9 66.7%

Officials: Bob Trammell, Tim Daley, Amy Bonner
 Technical fouls: Michigan-None. Iowa-None.
 Attendance: 3584

Score by periods	1st	2nd	Total
Michigan	32	38	70
Iowa	36	40	76

Score tied - 1 time.
 Lead changed - 0 times.

Game 18

	In	Off	2nd	Fast	Bench
Points	Paint	T/O	Chance	Break	
MICH	36	12	11	6	21
IOWA	42	9	8	12	8



Official Basketball Box Score -- Game Totals -- Final Statistics
Nebraska vs Iowa
1/26/15 8 p.m. at Carver-Hawkeye Arena - Iowa City, Iowa



Nebraska 72 • 15-4, 5-3

#	Player	Total			3-Ptr			Rebounds			PF	TP	A	TO	Blk	Stl	Min
		FG-FGA	FG-FGA	FT-FTA	FG-FGA	FG-FGA	FT-FTA	Off	Def	Tot							
03	Sample, Hailee	3-4	0-0	0-0	3	5	8	3	6	1	2	1	0	0	39		
23	Cady, Emily	8-18	0-2	3-4	3	15	18	4	19	1	4	1	0	42			
01	Laudermill, Teara	5-15	0-2	9-10	0	1	1	1	19	4	1	0	2	39			
13	Jeffery, Brandi	2-7	0-0	4-4	2	5	7	4	8	0	3	0	3	33			
33	Theriot, Rachel	7-20	1-3	0-0	0	1	1	3	15	5	6	1	0	45			
05	Romeo, Natalie	1-4	1-3	0-0	0	1	1	0	3	2	0	0	0	15			
22	Havers, Allie	1-1	0-0	0-0	0	1	1	0	2	0	1	0	0	9			
30	Smith, Chandler	0-0	0-0	0-0	0	0	0	1	0	0	0	0	0	3			
	Team				2	4	6										
	Totals	27-69	2-10	16-18	10	32	42	17	72	13	18	3	5	225			

FG % 1st Half: 12-32 37.5% 2nd half: 11-28 39.3% OT: 4-9 44.4% Game: 27-69 39.1% Deadball Rebounds 0
 3FG % 1st Half: 0-5 0.0% 2nd half: 1-3 33.3% OT: 1-2 50.0% Game: 2-10 20.0%
 FT % 1st Half: 4-4 100.0% 2nd half: 10-12 83.3% OT: 2-2 100.0% Game: 16-18 88.9%

Iowa 78 • 16-3, 7-1

#	Player	Total			3-Ptr			Rebounds			PF	TP	A	TO	Blk	Stl	Min
		FG-FGA	FG-FGA	FT-FTA	FG-FGA	FG-FGA	FT-FTA	Off	Def	Tot							
51	Doolittle, Bethany	5-9	0-0	2-2	1	5	6	4	12	0	5	3	4	23			
02	Disterhoft, Ally	7-15	1-3	5-6	0	13	13	2	20	1	1	2	2	38			
15	Jennings, Whitney	1-8	1-3	2-4	0	1	1	2	5	4	0	0	0	35			
21	Dixon, Melissa	2-6	1-2	2-2	0	2	2	0	7	0	2	0	3	38			
22	Logic, Samantha	10-18	0-1	2-3	2	5	7	2	22	8	4	0	1	41			
01	Kastanek, Alexa	0-0	0-0	0-0	0	0	0	0	0	1	0	0	0	1			
03	Till, Claire	0-1	0-0	0-0	0	2	2	0	0	1	0	0	0	13			
04	Coley, Chase	2-2	0-0	0-0	2	1	3	0	4	0	0	1	0	9			
23	Buttenham, Christina	1-3	1-1	0-0	0	1	1	1	3	0	1	0	0	11			
25	Peschel, Kali	2-6	1-3	0-0	1	3	4	1	5	0	1	0	0	16			
	Team																



IOWA BASKETBALL

Season Box Scores



Official Basketball Box Score -- Game Totals -- Final Statistics
Iowa vs Maryland
02/01/15 4:00 p.m. at College Park, Md. (XFINITY Center)



Iowa 88 • 17-4, 8-2

#	Player	Total			3-Ptr			Rebounds			PF	TP	A	TO	Blk	Stl	Min
		FG	FGA	FT	FTA	Off	Def	Tot									
51	Doolittle, Bethany	c	7-15	0-0	2-2	2	4	6	3	16	1	2	1	0	1	34	
02	Disterhoft, Ally	g	6-13	2-4	8-10	3	3	6	2	22	2	2	0	0	1	33	
15	Jennings, Whitney	g	0-3	0-0	2-2	0	1	1	4	2	1	2	0	0	0	18	
21	Dixon, Melissa	g	5-11	4-8	4-4	0	2	2	3	18	2	2	0	0	2	37	
22	Logic, Samantha	g	7-8	1-1	2-3	0	6	6	3	17	7	5	0	1	38		
01	Kastanek, Alexa	g	4-5	0-0	0-1	0	0	0	3	8	1	1	0	0	8		
03	Till, Claire	g	0-0	0-0	0-0	1	0	1	3	0	0	0	0	0	6		
23	Buttenham, Christina	g	1-2	0-1	0-0	1	1	2	0	2	0	1	0	0	7		
25	Peschel, Kali	g	1-1	1-1	0-0	0	2	2	5	3	1	0	0	1	19		
	Team					1	2	3									
	Totals		31-59	8-15	18-22	8	21	29	26	88	15	13	1	6	200		

FG % 1st Half: 16-33 48.5% 2nd half: 15-26 57.7% Game: 31-59 52.5%
 3FG % 1st Half: 6-11 54.5% 2nd half: 2-4 50.0% Game: 8-15 53.3%
 FT % 1st Half: 7-8 87.5% 2nd half: 11-14 78.6% Game: 18-22 81.8%

Deadball Rebounds 1

Maryland 93 • 19-2, 10-0

#	Player	Total			3-Ptr			Rebounds			PF	TP	A	TO	Blk	Stl	Min
		FG	FGA	FT	FTA	Off	Def	Tot									
05	Malina Howard	c	1-5	0-0	0-0	2	1	3	2	2	0	0	1	0	0	18	
42	Brionna Jones	c	6-8	0-0	7-9	9	6	15	4	19	1	1	0	2	26		
01	Laurin Mincy	g	4-11	0-3	7-8	2	0	2	2	15	3	3	0	0	36		
04	Lexie Brown	g	7-11	4-7	8-9	0	0	0	3	26	7	1	0	2	30		
32	S. Walker-Kimbrough	g	4-9	0-0	1-2	0	5	5	4	9	2	1	0	0	29		
02	Kiara Leslie	g	3-7	0-2	1-2	2	4	6	3	7	1	2	1	0	24		
03	Brene Moseley	g	2-6	0-1	2-3	0	0	0	1	6	1	0	0	1	13		
12	Kristen Conroy	g	1-6	1-5	0-0	0	2	2	1	3	3	3	0	1	11		
15	Chloe Pavlech	g	0-0	0-0	0-0	0	0	0	0	0	0	0	0	0	1		
22	Tierney Pfirman	g	2-2	0-0	2-2	1	3	4	0	6	0	1	0	0	12		
33	A'Lexus Harrison	g	0-0	0-0	0-0	0	0	0	0	0	0	0	0	0	0+		
	Team					2	2	4									
	Totals		30-65	5-18	28-35	18	23	41	20	93	18	12	2	7	200		

FG % 1st Half: 14-33 42.4% 2nd half: 16-32 50.0% Game: 30-65 46.2%
 3FG % 1st Half: 3-12 25.0% 2nd half: 2-6 33.3% Game: 5-18 27.8%
 FT % 1st Half: 13-15 86.7% 2nd half: 15-20 75.0% Game: 28-35 80.0%

Deadball Rebounds 3

Officials: Amy Bonner, Angelica Suffren, Frank Steratore
 Technical fouls: Iowa-None. Maryland-None.
 Attendance: 5373

Score by periods	1st	2nd	Total
Iowa	45	43	88
Maryland	44	49	93

Points	In	Off	2nd	Fast	Bench
Paint	Paint	T/O	Chance	Break	Bench
IOWA	26	15	6	9	13
UMD	36	20	28	12	22

Game 21

Score tied - 6 times.
Lead changed - 9 times.

Last FG - IOWA 2nd-00:08, UMD 2nd-00:38.
Largest lead - IOWA by 10 1st-14:07, UMD by 7 2nd-00:16.
IOWA led for 25:58, UMD led for 11:14. Game was tied for 02:48.



Official Basketball Box Score -- Game Totals -- Final Statistics
Ohio State vs Iowa
2/5/15 7 p.m. at Carver-Hawkeye Arena - Iowa City, Iowa



Ohio State 65 • 15-8, 7-4

#	Player	Total			3-Ptr			Rebounds			PF	TP	A	TO	Blk	Stl	Min
		FG	FGA	FT	FTA	Off	Def	Tot									
22	Alexa Hart	f	7-9	0-0	0-2	4	6	10	1	14	0	4	4	2	29		
03	Kelsey Mitchell	g	4-12	1-6	6-7	1	2	3	3	15	4	9	0	0	35		
13	Cait Craft	g	1-2	1-2	0-0	1	3	4	3	3	4	3	0	2	39		
20	Ameryst Alston	g	4-15	1-5	2-2	2	2	4	5	11	2	3	0	0	31		
14	Asia Doss	g	4-13	1-2	0-0	0	6	6	1	9	0	1	2	4	31		
21	Lisa Blair	g	1-2	0-0	0-0	0	1	1	0	2	0	0	1	0	9		
32	Shayla Cooper	g	5-13	1-2	0-1	3	8	11	5	11	0	1	1	0	26		
	Team					3	1	4									
	Totals		26-66	5-17	8-12	14	29	43	18	65	10	21	8	8	200		

FG % 1st Half: 13-35 37.1% 2nd half: 13-31 41.9% Game: 26-66 39.4%
 3FG % 1st Half: 1-7 14.3% 2nd half: 4-10 40.0% Game: 5-17 29.4%
 FT % 1st Half: 2-2 100.0 2nd half: 6-10 60.0% Game: 8-12 66.7%

Deadball Rebounds 2

Iowa 73 • 18-4, 9-2

#	Player	Total			3-Ptr			Rebounds			PF	TP	A	TO	Blk	Stl	Min
		FG	FGA	FT	FTA	Off	Def	Tot									
51	Doolittle, Bethany	c	9-20	0-0	1-2	6	7	13	1	19	1	1	5	1	34		
02	Disterhoft, Ally	g	6-18	1-4	8-10	0	6	6	2	21	1	1	0	0	38		
15	Jennings, Whitney	g	5-9	2-4	0-0	0	2	2	5	12	2	2	0	1	23		
21	Dixon, Melissa	g	4-8	3-7	2-2	2	4	6	2	13	3	1	0	1	37		
22	Logic, Samantha	g	2-10	0-2	2-4	4	5	9	3	6	12	7	0	4	39		
01	Kastanek, Alexa	g	0-0	0-0	0-0	0	0	0	0	1	0	0	0	0	1		
03	Till, Claire	g	0-0	0-0	0-0	0	1	1	0	0	0	1	0	0	4		
23	Buttenham, Christina	g	0-1	0-0	0-0	0	0	0	0	0	0	0	0	0	3		
25	Peschel, Kali	g	1-4	0-2	0-0	3	1	4	0	2	1	2	1	1	21		
	Team					3	2	5									
	Totals		27-70	6-19	13-18	18	28	46	14	73	20	17	6	8	200		

FG % 1st Half: 15-38 39.5% 2nd half: 12-32 37.5% Game: 27-70 38.6%
 3FG % 1st Half: 4-10 40.0% 2nd half: 2-9 22.2% Game: 6-19 31.6%
 FT % 1st Half: 7-8 87.5% 2nd half: 6-10 60.0% Game: 13-18 72.2%

Deadball Rebounds 1

Officials: Jesse Dickerson, Cameron Inouye, John Whitson
 Technical fouls: Ohio State-TEAM, Iowa-None.
 Attendance: 4572
 Fouled Out: #14 OSU 2:30 2nd, #32 OSU :14 2nd, #15 IA :08 2nd

Score by periods	1st	2nd	Total
Ohio State	29	36	65
Iowa	41	32	73

Points	In	Off	2nd	Fast	Bench
Paint	Paint	T/O	Chance	Break	Bench
OSU	32	14	17	0	13
IOWA	36	18	14	8	2

Game 22

Score tied - 3 times.
Lead changed - 1 time.

Last FG - OSU 2nd-00:31, IOWA 2nd-01:34.
Largest lead - OSU by 4 1st-17:31, IOWA by 20 1st-09:15.
OSU led for 02:27, IOWA led for 35:08. Game was tied for 02:25.



Official Basketball Box Score -- Game Totals -- Final Statistics
Iowa vs Wisconsin
02/08/15 2:05PM at Kohl Center - Madison, Wisconsin



Iowa 87 • 19-4, 10-2

#	Player	Total			3-Ptr			Rebounds			PF	TP	A	TO	Blk	Stl	Min
		FG	FGA	FT	FTA	Off	Def	Tot									
51	Doolittle, Bethany	c	7-11	0-0	4-5	2	3	5	4	18	3	4	3	5	32		
02	Disterhoft, Ally	g	7-10	1-3	2-2	2	5	7	0	17	2	1	0	1	33		
15	Jennings, Whitney	g	4-8	1-3	1-2	0	0	0	2	10	1	2	0	2	31		
21	Dixon, Melissa	g	0-4	0-3	2-2	0	1	1	4	2	1	0	0	2	27		
22	Logic, Samantha	g	12-18	1-3	5-6	2	5	7	1	30	4	5	0	3	36		
01	Kastanek, Alexa	g	2-3	1-2	1-2	0	3	3	2	6	2	0	0	1	12		
03	Till, Claire	g	0-1	0-0	0-0	2	2	2	2	0	0	0	0	0	4		
04	Coley, Chase	g	1-1	0-0	0-0	0	0	0	0	2	0	2	0	0	5		
23	Buttenham, Christina	g	0-0	0-0	0-0	0	0	0	2	0	0	0	0	0	2		
25	Peschel, Kali	g	0-1	0-0	2-2	0	2	2	1	2	0	1	0	0	13		
33	Reynolds, Kathryn	g	0-0	0-0	0-0	0	0	0	0	0	0	0	0	0	1		
34	Mohns, Carly	g	0-1	0-0	0-0	0	0	0	0	0	0	0	0	0	1		
	Team					1	1	2									
	Totals		33-58	4-15	17-21	7	22	29	18	87	13	15	3	14	200		

FG % 1st Half: 16-29 55.2% 2nd half: 17-29 58.6% Game: 33-58 56.9%
 3FG % 1st Half: 1-4 25.0% 2nd half: 3-11 27.3% Game: 4-15 26.7%
 FT % 1st Half: 9-9 100.0 2nd half: 8-12 66.7% Game: 17-21 81.0%

Deadball Rebounds 2.1

Wisconsin 75 • 8-14, 4-8

#	Player	Total			3-Ptr			Rebounds			PF	TP	A	
---	--------	-------	--	--	-------	--	--	----------	--	--	----	----	---	--



IOWA BASKETBALL

Season Box Scores



Official Basketball Box Score -- Game Totals -- Final Statistics
Indiana vs Iowa
2/15/15 5 p.m. at Carver-Hawkeye Arena - Iowa City, Iowa



Indiana 64 • 14-11, 4-10

#	Player	Total		3-Ptr		Rebounds		PF	TP	A	TO	Blk	Stl	Min	
		FG-FGA	FG-FGA	FT-FTA	Off Def Tot	Off Def Tot									
33	Amanda Cahill	r	2-3	1-2	5-5	1	4	5	5	10	0	0	0	1	16
43	Jenn Anderson	c	1-2	0-0	0-0	0	1	1	3	2	1	1	0	0	16
03	Tyra Buss	g	1-4	0-2	2-2	0	3	3	1	4	2	5	0	1	29
05	Larryn Brooks	g	2-10	0-4	2-2	0	1	1	1	6	4	5	1	0	36
23	Alexis Gassion	g	4-8	1-3	6-7	1	9	10	0	15	4	0	0	1	37
02	Jess Walter		6-7	5-5	1-1	1	0	1	0	18	0	1	0	0	24
10	Taylor Agler		1-2	1-2	0-0	0	1	1	1	3	1	0	0	1	10
27	Karlee McBride		2-6	1-4	1-2	0	3	3	1	6	2	4	0	1	17
31	Maura Muensterman		0-1	0-1	0-0	0	0	0	1	0	0	0	0	0	3
40	Lyndsay Leikem		0-2	0-1	0-0	2	0	2	1	0	0	0	0	0	12
	Team					0	0	0							
	Totals		19-45	9-24	17-19	5	22	27	14	64	14	16	1	5	200

FG % 1st Half: 8-20 40.0% 2nd half: 11-25 44.0% Game: 19-45 42.2% Deadball Rebounds 0
 3FG % 1st Half: 4-11 36.4% 2nd half: 5-13 38.5% Game: 9-24 37.5%
 FT % 1st Half: 6-6 100.0 2nd half: 11-13 84.6% Game: 17-19 89.5%

Iowa 81 • 21-4, 12-2

#	Player	Total		3-Ptr		Rebounds		PF	TP	A	TO	Blk	Stl	Min	
		FG-FGA	FG-FGA	FT-FTA	Off Def Tot	Off Def Tot									
51	Doolittle, Bethany	c	6-9	0-0	0-1	1	2	3	1	12	1	1	0	0	22
02	Disterhoft, Ally	g	4-10	2-5	1-1	2	4	6	0	11	0	3	0	0	30
15	Jennings, Whitney	g	1-6	1-4	0-0	1	1	2	2	3	4	0	0	0	18
21	Dixon, Melissa	g	5-14	1-11	1-1	1	0	1	3	15	1	0	0	1	26
22	Logic, Samantha	g	5-9	1-3	2-2	2	4	6	1	13	11	2	0	0	33
01	Kastanek, Alexa	g	2-3	1-2	2-2	0	4	4	1	7	3	0	0	1	15
03	Till, Claire	g	1-1	0-0	0-0	1	1	2	1	2	0	0	1	0	5
04	Coley, Chase	g	4-5	0-0	1-2	2	1	3	0	9	1	1	0	0	13
23	Buttenham, Christina	g	2-5	1-2	0-0	0	2	2	0	5	2	2	0	0	14
25	Peschel, Kall	g	1-2	0-1	0-0	1	2	3	3	2	2	0	0	1	17
33	Reynolds, Kathryn	g	0-0	0-0	0-0	0	0	0	0	0	1	0	0	0	2
34	Mohns, Carly	g	1-1	0-0	0-0	2	2	4	1	2	0	1	0	0	2
40	Schreden, Hailey	g	0-0	0-0	0-0	0	0	0	0	0	0	0	0	0	1
45	Smith, Nicole	g	0-0	0-0	0-0	0	0	0	0	0	0	0	0	0	2
	Team					2	0	2							
	Totals		32-65	10-28	7-9	13	23	36	13	81	26	10	1	3	200

FG % 1st Half: 13-34 38.2% 2nd half: 19-31 61.3% Game: 32-65 49.2% Deadball Rebounds 0
 3FG % 1st Half: 6-21 28.6% 2nd half: 4-7 57.1% Game: 10-28 35.7%
 FT % 1st Half: 3-3 100.0 2nd half: 4-6 66.7% Game: 7-9 77.8%

Officials: Jesse Dickerson, Angie Enlund, Bob Enterline
 Technical fouls: Indiana-None. Iowa-None.
 Attendance: 8748
 Fouled Out: #33 IU 4:51 2nd

Score by periods	1st	2nd	Total
Indiana	26	38	64
Iowa	35	46	81

Last FG - IND 2nd-00:15, IOWA 2nd-00:26.
 Largest lead - IND by 4 1st-18:32, IOWA by 22 2nd-02:25.
 IND led for 04:52, IOWA led for 34:12. Game was tied for 00:56.

Game 25

Score by periods	1st	2nd	Total
Iowa	42	38	80
Minnesota	48	45	93

Score tied - 2 times.
 Lead changed - 7 times.



Official Basketball Box Score -- Game Totals -- Final Statistics
Iowa vs Minnesota
02/17/15 8:00 PM at Williams Arena (Minneapolis, Minn.)



Iowa 80 • 21-5, 12-3 Big T

#	Player	Total		3-Ptr		Rebounds		PF	TP	A	TO	Blk	Stl	Min	
		FG-FGA	FG-FGA	FT-FTA	Off Def Tot	Off Def Tot									
02	Disterhoft, Ally	f	3-11	2-5	0-0	3	2	5	2	8	4	0	0	0	36
51	Doolittle, Bethany	c	8-18	0-0	2-2	2	9	11	1	18	1	3	5	1	31
15	Jennings, Whitney	g	1-9	1-7	0-0	0	1	1	2	3	3	0	0	1	32
21	Dixon, Melissa	g	6-19	5-17	0-0	0	2	2	3	17	0	0	0	0	36
22	Logic, Samantha	g	11-19	3-5	1-2	1	7	8	3	26	13	0	1	4	38
01	Kastanek, Alexa	g	0-2	0-1	0-0	2	1	3	0	0	4	1	0	0	8
03	Till, Claire	g	0-0	0-0	0-0	0	0	0	0	1	0	0	0	0	0+
04	Coley, Chase	g	3-4	0-0	0-0	0	1	1	2	6	0	0	1	0	9
25	Peschel, Kall	g	0-2	0-0	2-2	0	1	1	0	2	1	0	1	0	10
	Team					3	0	3							
	Totals		32-84	11-35	5-6	11	24	35	14	80	26	4	8	6	200

FG % 1st Half: 18-43 41.9% 2nd half: 14-41 34.1% Game: 32-84 38.1% Deadball Rebounds 0
 3FG % 1st Half: 4-16 25.0% 2nd half: 7-19 36.8% Game: 11-35 31.4%
 FT % 1st Half: 2-2 100.0 2nd half: 3-4 75.0% Game: 5-6 83.3%

Minnesota 93 • 21-6, 10-5 Big T

#	Player	Total		3-Ptr		Rebounds		PF	TP	A	TO	Blk	Stl	Min	
		FG-FGA	FG-FGA	FT-FTA	Off Def Tot	Off Def Tot									
23	Kelley, Shae	f	6-8	0-0	1-2	0	8	8	2	13	2	4	1	0	24
32	Zahui, Amanda	c	16-31	1-1	6-6	7	22	29	1	39	2	4	2	39	
03	Mullaney, Shayne	g	3-6	0-2	0-0	0	4	4	1	6	9	3	0	1	40
04	Bailey, Mikayla	g	2-4	2-3	4-4	0	5	5	1	10	4	1	1	0	37
33	Wagner, Carlie	g	5-12	5-6	2-2	1	0	1	0	17	6	2	0	0	37
02	McDaniel, Stabresa	g	0-1	0-0	0-0	1	0	1	0	1	0	0	0	0	6
20	Hirt, Kayla	g	3-7	0-0	2-2	1	3	4	0	8	1	0	0	1	17
	Team					1	0	1							
	Totals		35-69	8-12	15-16	11	42	53	6	93	25	14	6	4	200

FG % 1st Half: 20-44 45.5% 2nd half: 15-25 60.0% Game: 35-69 50.7% Deadball Rebounds 0
 3FG % 1st Half: 6-9 66.7% 2nd half: 2-3 66.7% Game: 8-12 66.7%
 FT % 1st Half: 2-2 100.0 2nd half: 13-14 92.9% Game: 15-16 93.8%

Officials: Bob Trammell, Bryan Enterline, Denise Brooks
 Technical fouls: Iowa-None. Minnesota-None.
 Attendance: 3265

Score by periods	1st	2nd	Total
Iowa	42	38	80
Minnesota	48	45	93

Last FG - IOW 2nd-00:21, MINN 2nd-01:02.
 Largest lead - IOW by 3 1st-19:20, MINN by 15 2nd-01:02.
 IOW led for 00:18, MINN led for 36:41. Game was tied for 03:01.

Game 26



Official Basketball Box Score -- Game Totals -- Final Statistics
Iowa vs Ohio State
02/21/15 7:00 p.m. at Columbus, Ohio (Value City Arena)



Iowa 82 • 21-6, 12-4

#	Player	Total		3-Ptr		Rebounds		PF	TP	A	TO	Blk	Stl	Min	
		FG-FGA	FG-FGA	FT-FTA	Off Def Tot	Off Def Tot									
51	Doolittle, Bethany	c	9-14	0-0	0-0	0	4	4	3	18	0	1	1	0	24
02	Disterhoft, Ally	g	5-16	1-3	4-4	5	4	9	3	15	2	2	0	0	34
15	Jennings, Whitney	g	5-11	1-3	3-3	0	0	0	1	14	3	0	0	0	35
21	Dixon, Melissa	g	2-11	2-11	2-2	0	1	1	4	8	1	1	0	1	33
22	Logic, Samantha	g	9-17	1-3	4-4	2	5	7	5	23	6	4	0	0	34
01	Kastanek, Alexa	g	0-2	0-0	0-0	1	0	1	1	0	0	0	0	0	8
03	Till, Claire	g	0-0	0-0	0-0	1	1	1	0	0	0	1	0	0	3
04	Coley, Chase	g	2-3	0-0	0-0	2	3	5	0	4	1	2	1	0	13
23	Buttenham, Christina	g	0-1	0-0	0-0	1	0	1	0	0	0	0	0	0	3
25	Peschel, Kall	g	0-2	0-1	0-0	0	2	2	0	0	1	1	0	0	12
33	Reynolds, Kathryn	g	0-0	0-0	0-0	0	0	0	0	0	0	0	0	0	1
	Team					5	2	7							
	Totals		32-77	5-21	13-13	16	22	38	19	82	14	12	2	1	200

FG % 1st Half: 20-39 51.3% 2nd half: 12-38 31.6% Game: 32-77 41.6% Deadball Rebounds 0
 3FG % 1st Half: 4-9 44.4% 2nd half: 1-12 8.3% Game: 5-21 23.8%
 FT % 1st Half: 4-4 100.0 2nd half: 9-9 100.0 Game: 13-13 100.0

Ohio State 100 • 19-9, 11-5

#	Player	Total		3-Ptr		Rebounds		PF	TP	A	TO	Blk	Stl	Min	
		FG-FGA	FG-FGA	FT-FTA	Off Def Tot	Off Def Tot									
22	Alexa Hart	f	7-13	0-0	3-5	7	3	10	4	17	0	2	4	0	27
03	Kelsey Mitchell	g	5-9	3-6	4-4	0	2	2	3	17	2	6	0	0	33
13	Cait Craft	g	3-7	3-6	1-2	0	4	4	0	10	3	1	0	1	40
14	Ameryst Alston	g	10-16	5-6	4-4	1	3	4	0	29	11	2	0	1	37
20	Asia Doss	g	2-8	0-2	3-4	0	2	2	5	7	2	0	0	0	22
21	Lisa Blair	g	3-4	0-0	0-0	2	4	6	1	6	0	1	2	0	9
25	Amy Scullion	g	0-1	0-0	0-0	0	0	0	0	0	0	0	0	0	4
23	Shayla Cooper	g	6-13	0-0	2-2	3	9	12	1	14	2	3	1	1	28
	Team					2	2	4							
	Totals		36-71	11-20	17-21	15	29	44	14	100	20	15	7	5	200

FG % 1st Half: 19-42 45.2% 2nd half: 17-29 58.6% Game: 36-71 50.7% Deadball Rebounds 0
 3FG % 1st Half: 5-10 50.0% 2nd half: 6-10 60.0% Game: 11-20 55.0%
 FT % 1st Half: 2-2 100.0 2nd half: 15-19 78.9% Game: 17-21 81.0%

Officials: Dee Kantner, Sue Blaich, Michael McConnell
 Technical fouls: Iowa-



IOWA BASKETBALL

Season Box Scores



Official Basketball Box Score -- Game Totals -- Final Statistics
Minnesota vs Iowa
3/1/15 2 p.m. at Carver-Hawkeye Arena - Iowa City, Iowa



Minnesota 76 • 22-8, 11-7

##	Player	Total			3-Ptr			Rebounds			PF	TP	A	TO	Blk	Stl	Min
		FG-FGA	FG-FGA	FT-FTA	FG-FGA	FG-FGA	FT-FTA	Off	Def	Tot							
23	Kelley, Shae	f	11-23	0-0	7-14	6	6	12	3	29	1	8	0	1	35		
32	Zahui, Amanda	c	11-16	0-0	0-0	8	13	21	3	22	0	2	7	1	36		
03	Mullaney, Shayne	g	3-8	1-3	1-1	0	2	2	2	8	11	3	0	0	40		
24	Bailey, Mikayla	g	1-9	1-8	2-2	2	1	3	5	5	2	2	0	0	36		
33	Wagner, Carlie	g	2-10	2-6	0-0	0	2	2	1	6	4	3	0	2	38		
02	McDaniel, Stabresa	g	1-1	0-0	0-0	0	0	0	0	2	0	0	0	0	5		
20	Hirt, Kayla	g	2-3	0-0	0-0	1	1	2	0	4	0	2	0	0	9		
22	Hedstrom, Joanna	g	0-1	0-1	0-0	0	0	0	0	0	0	0	0	0	1		
Team						4	2	6									
Totals			31-71	4-18	10-17	21	27	48	14	76	18	20	7	4	200		

FG % 1st Half: 15-38 39.5% 2nd half: 16-33 48.5% Game: 31-71 43.7% Deadball Rebounds 4
 3FG % 1st Half: 2-10 20.0% 2nd half: 2-8 25.0% Game: 4-18 22.2%
 FT % 1st Half: 5-6 83.3% 2nd half: 5-11 45.5% Game: 10-17 58.8%

Iowa 92 • 23-6, 14-4

##	Player	Total			3-Ptr			Rebounds			PF	TP	A	TO	Blk	Stl	Min
		FG-FGA	FG-FGA	FT-FTA	FG-FGA	FG-FGA	FT-FTA	Off	Def	Tot							
51	Doolittle, Bethany	c	5-16	0-0	2-2	4	8	12	4	12	1	0	9	4	26		
02	Disterhoft, Ally	g	1-7	1-3	4-4	3	3	6	1	7	4	1	1	0	34		
15	Jennings, Whitney	g	4-10	2-6	0-0	0	2	2	0	10	4	0	0	0	34		
21	Dixon, Melissa	g	8-12	8-11	3-4	0	0	0	1	27	2	0	0	0	33		
22	Logic, Samantha	g	10-18	0-0	4-4	2	4	6	2	24	13	5	0	1	39		
01	Kastanek, Alexa	g	0-0	0-0	0-0	0	0	0	0	2	1	0	0	0	8		
03	Till, Claire	g	3-3	0-0	0-0	0	1	1	2	6	0	0	0	0	9		
04	Coley, Chase	g	0-0	0-0	0-0	1	0	1	0	1	0	0	0	0	5		
23	Buttenham, Christina	g	0-0	0-0	0-0	0	0	0	0	0	0	0	0	0	1		
25	Peschel, Kali	g	1-4	1-2	0-0	1	1	2	1	3	1	2	0	0	9		
33	Reynolds, Kathryn	g	1-1	1-1	0-0	0	0	0	0	3	0	0	0	0	1		
34	Mohns, Carly	g	0-0	0-0	0-0	0	1	1	0	0	0	1	0	0	1		
Team						1	2	3									
Totals			33-71	13-23	13-14	12	22	34	12	92	28	10	10	5	200		

FG % 1st Half: 16-38 42.1% 2nd half: 17-33 51.5% Game: 33-71 46.5% Deadball Rebounds 0
 3FG % 1st Half: 6-12 50.0% 2nd half: 7-11 63.6% Game: 13-23 56.5%
 FT % 1st Half: 4-4 100.0 2nd half: 9-10 90.0% Game: 13-14 92.9%

Officials: Michael McConnell, Cameron Inouye, Shannon Feck
 Technical fouls: Minnesota-None. Iowa-None.
 Attendance: 9726
 Fouled Out: # 24 Minn 1:26 2nd

Game 29

Score by periods	1st	2nd	Total
Minnesota	37	39	76
Iowa	42	50	92

	In Paint	Off T/O	2nd Chance	Fast Break	Bench
MINN	40	11	23	6	6
IOWA	24	27	14	7	12

Last FG - MINN 2nd-00:13, IOWA 2nd-00:47.
 Largest lead - MINN by 3 1st-06:27, IOWA by 20 2nd-00:47.
 MINN led for 01:48, IOWA led for 34:46, Game was tied for 03:15.

Score tied - 4 times.
 Lead changed - 4 times.

Official Basketball Box Score -- Game Totals -- Final Statistics
Nebraska vs Iowa
3/6/15 6:00 pm at Sears Centre Hoffman Estates, IL

Nebraska 65 • 21-10, 10-8

##	Player	Total			3-Ptr			Rebounds			PF	TP	A	TO	Blk	Stl	Min
		FG-FGA	FG-FGA	FT-FTA	FG-FGA	FG-FGA	FT-FTA	Off	Def	Tot							
23	Cady, Emily	f	4-9	0-0	7-7	4	4	8	4	15	0	0	3	1	34		
3	Sample, Haillie	f	1-5	0-0	0-0	7	3	10	5	2	2	2	1	1	39		
1	Laudermill, Tear'a	g	7-22	1-3	1-4	0	3	3	4	16	5	3	0	3	33		
13	Jeffery, Brandi	g	6-14	2-5	0-0	1	4	5	4	14	2	4	1	2	36		
5	Romeo, Natalie	g	4-15	4-11	2-5	1	1	2	4	14	1	2	0	1	40		
11	Ramaciari, Estther	g	0-0	0-0	0-0	0	0	0	0	0	0	0	0	0	1		
12	Wood, Emily	g	0-0	0-0	0-0	0	0	0	0	0	0	0	0	0	04		
22	Havers, Allie	g	1-2	0-0	2-2	0	1	1	0	4	0	0	0	0	6		
30	Smith, Chandler	g	0-0	0-0	0-0	0	0	0	0	0	0	1	0	0	2		
34	Cincore, Jasmine	g	0-4	0-2	0-0	0	0	0	1	0	1	0	0	2	9		
Team						2	8	10									
Totals			23-71	7-21	12-18	15	24	39	22	65	11	12	5	10	200		

FG % 1st Half: 12-31 38.7% 2nd half: 11-40 27.5% Game: 23-71 32.4% Deadball Rebounds 2
 3FG % 1st Half: 3-9 33.3% 2nd half: 4-12 33.3% Game: 7-21 33.3%
 FT % 1st Half: 6-8 75.0% 2nd half: 6-10 60.0% Game: 12-18 66.7%

Iowa 74 • 24-6, 14-4

##	Player	Total			3-Ptr			Rebounds			PF	TP	A	TO	Blk	Stl	Min
		FG-FGA	FG-FGA	FT-FTA	FG-FGA	FG-FGA	FT-FTA	Off	Def	Tot							
51	Doolittle, Bethany	c	7-10	0-0	1-1	1	8	9	4	15	1	2	4	0	22		
15	Jennings, Whitney	g	1-7	1-3	3-5	0	0	0	0	2	6	3	1	1	32		
2	Disterhoft, Ally	g	5-14	0-1	6-6	3	6	9	3	16	3	6	2	2	36		
23	Dixon, Melissa	g	2-5	1-2	2-2	0	4	4	3	7	2	3	0	0	34		
22	Logic, Samantha	g	6-13	1-5	2-4	0	5	5	2	15	6	5	2	0	40		
1	Kastanek, Alexa	g	0-2	0-2	0-0	0	0	0	0	1	0	0	0	0	3		
25	Peschel, Kali	g	4-6	3-5	2-2	0	4	4	4	13	0	2	1	0	15		
3	Till, Claire	g	1-1	0-0	0-0	1	7	8	0	2	1	0	0	0	15		
4	Coley, Chase	g	0-0	0-0	0-0	0	1	1	2	0	0	1	0	0	3		
Team						6	2	8									
Totals			26-58	6-18	16-20	11	37	48	20	74	16	20	10	4	200		

FG % 1st Half: 15-31 48.4% 2nd half: 11-27 40.7% Game: 26-58 44.8% Deadball Rebounds 1
 3FG % 1st Half: 3-11 27.3% 2nd half: 3-7 42.9% Game: 6-18 33.3%
 FT % 1st Half: 3-4 75.0% 2nd half: 13-16 81.3% Game: 16-20 80.0%

Officials: Sue Blauch, Barb Smith, Tim Daley
 Technical fouls: Nebraska-None. Iowa-None.
 Attendance:
 2015 Big Ten Women's Basketball Tournament
 Game #9

Game 30

Score by periods	1st	2nd	Total
Nebraska	33	32	65
Iowa	36	38	74

	In Paint	Off T/O	2nd Chance	Fast Break	Bench
NEB	24	17	14	12	4
IOWA	30	12	10	4	15

Last FG - NEB 2nd-00:43, IOWA 2nd-04:21.
 Largest lead - NEB by 3 1st-14:21, IOWA by 15 2nd-14:05.
 NEB led for 02:24, IOWA led for 33:07, Game was tied for 04:17.

Score tied - 5 times.
 Lead changed - 2 times.





IOWA BASKETBALL

2014 Big Ten Tournament Box Scores

Official Basketball Box Score -- Game Totals -- Final Statistics
Illinois vs Iowa
 03/06/14 2:25pm EST at Bankers Life Fieldhouse-Indianapolis, IN

Illinois 62 • 9-21

#	Player	Total			3-Ptr			Rebounds			PF	TP	A	T	Blk	Stl	Min
		FG-FGA	FG-FGA	FT-FTA	FG-FGA	FG-FGA	FT-FTA	Off	Def	Tot							
00	Hartwell, Sarah	0-2	0-1	0-0	0	0	0	0	0	0	0	0	0	0	0	4	
02	Gleason, Taylor *	0-5	0-0	0-0	4	2	6	3	0	0	2	0	0	0	0	27	
03	Tuck, Taylor	0-2	0-0	0-0	1	1	2	1	0	0	1	3	0	0	1	9	
04	Livingston, Sarah	0-1	0-0	0-0	0	0	0	0	0	0	0	0	0	0	0	3	
05	Oden, Nia	1-3	0-0	0-0	1	0	1	3	2	0	1	0	0	0	0	14	
12	McConnell, Ashley *	2-6	2-6	1-2	2	1	3	0	7	4	0	0	0	0	0	33	
22	Crawford, Ivory *	5-16	0-2	5-8	6	5	11	5	15	4	5	1	5	3	32		
23	Smith, Alexis	0-2	0-0	2-2	0	1	1	3	2	1	1	0	0	2	17		
34	Grant, Jacqui *	4-9	2-4	0-0	1	2	3	5	10	1	2	0	2	23			
42	Moore, Amber	10-23	4-14	2-2	0	0	0	3	26	2	1	1	2	38			
Team						2		4									
Totals		22-69	8-29	10-14	17	14	31	23	62	13	15	2	16	20	60		

FG % 1st Half: 11-32 34.4% 2nd half: 11-37 29.7% Game: 22-69 31.9% Deadball
 3FG % 1st Half: 3-13 23.1% 2nd half: 5-16 31.3% Games: 8-29 27.6% Rebounds
 FT % 1st Half: 4-5 80.0% 2nd half: 6-9 66.7% Game: 10-14 71.4%

Iowa 81 • 24-7

#	Player	Total			3-Ptr			Rebounds			PF	TP	A	T	Blk	Stl	Min
		FG-FGA	FG-FGA	FT-FTA	FG-FGA	FG-FGA	FT-FTA	Off	Def	Tot							
01	Kastanek, Alexa	2-5	1-3	0-0	0	2	2	2	5	5	3	0	1	22			
02	Disterhoft, Ally *	4-7	1-2	5-6	5	7	12	0	14	2	2	1	1	31			
03	Till, Claire	1-3	0-0	3-4	1	0	1	4	5	0	1	1	0	10			
21	Dixon, Melissa *	6-11	2-6	1-2	0	3	3	3	15	1	5	0	0	29			
22	Logic, Samantha *	1-3	0-0	3-4	1	10	11	4	5	6	7	0	3	29			
23	Taylor, Theairra *	2-4	2-3	2-2	0	5	5	2	8	5	2	0	1	29			
25	Peschel, Kali	0-2	0-0	1-2	1	1	2	0	1	1	1	1	0	20			
33	Reynolds, Kathryn	0-0	0-0	0-0	0	0	0	0	0	0	0	0	0	1			
45	Smith, Nicole	1-1	0-0	0-0	1	0	1	0	2	0	0	0	1	0			
51	Doollittle, Bethany *	10-14	0-0	6-6	1	2	3	2	26	0	3	2	0	28			
Team						3		5									
Totals		27-50	6-15	21-26	12	33	45	17	81	20	24	6	6	200			

FG % 1st Half: 12-26 46.2% 2nd half: 15-24 62.5% Game: 27-50 54.0% Deadball
 3FG % 1st Half: 4-7 57.1% 2nd half: 2-8 25.0% Games: 6-15 40.0% Rebounds
 FT % 1st Half: 13-14 92.9% 2nd half: 8-12 66.7% Game: 21-26 80.8%

Officials: Felicia Griner, Bryan Enterlin & Maj Forsberg
 Technical fouls: Illinois-None. Iowa-None.
 Attendance:
 Session I Attendance: 5,070

Score by periods	1st	2nd	Total
Illinois	29	33	62
Iowa	41	40	81

Last FG - ILL 2nd-05:17, IOWA 2nd-00:26.
 Largest lead - ILL by 1 1st-04:22, IOWA by 22 2nd-09:13.

Points	In	Off	2nd	Fast	Bench
ILL	22	22	9	8	4
IOWA	32	16	13	10	13

Score tied - 1 time.
 Lead changed - 2 times.

First Round

Official Basketball Box Score -- Game Totals -- Final Statistics
Iowa vs Purdue
 03/07/14 2:33 pm at Bankers Life Fieldhouse-Indianapolis, IN

Iowa 87 • 25-7

#	Player	Total			3-Ptr			Rebounds			PF	TP	A	T	Blk	Stl	Min
		FG-FGA	FG-FGA	FT-FTA	FG-FGA	FG-FGA	FT-FTA	Off	Def	Tot							
01	Kastanek, Alexa	2-4	0-1	0-0	0	0	0	1	4	1	2	0	2	16			
02	Disterhoft, Ally *	2-11	0-4	8-10	4	4	8	0	12	0	2	1	0	32			
03	Till, Claire	2-3	0-0	0-0	2	1	3	2	4	1	0	0	1	15			
21	Dixon, Melissa *	5-14	2-7	6-6	1	2	3	4	18	1	1	0	0	26			
22	Logic, Samantha *	4-5	1-1	3-3	0	5	5	2	12	11	4	0	2	34			
23	Taylor, Theairra *	7-15	2-3	1-1	0	5	5	0	17	3	1	0	2	39			
25	Peschel, Kali	1-1	0-0	2-2	1	4	5	0	4	0	1	0	0	13			
33	Reynolds, Kathryn	0-0	0-0	0-0	0	0	0	0	0	0	0	0	0	0+			
40	Snedden, Hailey	0-0	0-0	0-0	0	0	0	0	0	0	0	0	0	0+			
45	Smith, Nicole	0-0	0-0	0-0	0	0	0	0	0	0	0	0	0	0+			
51	Doollittle, Bethany *	7-16	0-0	2-2	2	1	3	4	16	1	0	0	0	25			
Team						4		0									
Totals		30-69	5-16	22-24	14	22	36	13	87	18	11	1	7	200			

FG % 1st Half: 13-38 34.2% 2nd half: 17-31 54.8% Game: 30-59 43.5% Deadball
 3FG % 1st Half: 4-10 40.0% 2nd half: 1-6 16.7% Games: 5-16 31.3% Rebounds
 FT % 1st Half: 5-5 100.0 2nd half: 17-19 89.5% Game: 22-24 91.7%

Purdue 80 • 21-8

#	Player	Total			3-Ptr			Rebounds			PF	TP	A	T	Blk	Stl	Min
		FG-FGA	FG-FGA	FT-FTA	FG-FGA	FG-FGA	FT-FTA	Off	Def	Tot							
01	Morrisette, Ashley	0-1	0-1	0-0	0	0	0	1	0	0	0	0	0	0+			
04	Thornton, Torrie	0-1	0-0	0-0	0	0	0	0	0	0	0	0	0	1			
10	Hamby, Hayden	2-3	2-3	0-0	0	1	1	6	0	0	0	0	1	6			
13	Perry, Bridget	1-3	0-0	0-0	0	0	0	3	2	0	0	0	1	13			
15	Moses, Courtney *	7-16	3-9	7-7	0	0	0	1	24	1	2	0	2	36			
20	Williams, Dee Dee *	1-5	0-2	4-4	2	5	7	4	6	2	3	0	0	30			
21	Masse, Joslyn	0-0	0-0	0-0	0	0	0	0	0	0	0	0	0	0+			
23	Clemmons, Liza *	7-9	0-0	0-0	2	6	8	3	14	0	1	1	0	34			
25	Wilson, April *	4-9	2-4	0-0	0	5	5	3	10	7	6	0	3	39			
32	Bays, Whitney	6-8	0-0	2-4	2	8	10	4	14	3	4	0	0	30			
42	Redmon, Camille *	2-4	0-0	0-0	2	2	4	4	4	1	2	3	0	11			
Team						1		1									
Totals		30-59	7-19	13-15	8	26	34	24	80	14	20	4	7	200			

FG % 1st Half: 14-28 50.0% 2nd half: 16-31 51.6% Game: 30-59 50.8% Deadball
 3FG % 1st Half: 3-8 37.5% 2nd half: 4-11 36.4% Games: 7-19 36.8% Rebounds
 FT % 1st Half: 8-9 88.9% 2nd half: 5-6 83.3% Game: 22-24 91.7%

Officials: Sue Blauch, Cameron Inouye & Gina Cross
 Technical fouls: Iowa-None. Purdue-None.
 Attendance:
 Session III Attendance: 5,903

Score by periods	1st	2nd	Total
Iowa	35	52	87
Purdue	39	41	80

Last FG - IOWA 2nd-00:44, PUR 2nd-00:14.
 Largest lead - IOWA by 9 2nd-00:26, PUR by 9 1st-03:10.

Quarterfinals

Points	In	Off	2nd	Fast	Bench
IOWA	46	32	15	6	12
PUR	42	12	15	16	22

Score tied - 9 times.
 Lead changed - 13 times.

Official Basketball Box Score -- Game Totals -- Final Statistics
Ohio State vs Iowa
 03/08/14 3:33 pm at Bankers Life Fieldhouse-Indianapolis, IN

Ohio State 73 • 17-18

#	Player	Total			3-Ptr			Rebounds			PF	TP	A	T	Blk	Stl	Min
		FG-FGA	FG-FGA	FT-FTA	FG-FGA	FG-FGA	FT-FTA	Off	Def	Tot							
12	Kynard, Maleeka	0-0	0-0	0-0	0	0	0	0	0	0	0	0	0	0	2		
13	Craft, Cait *	3-7	1-4	1-1	1	3	4	2	8	1	1	0	0	40			
14	Alston, Ameryst *	8-13	1-3	3-5	0	3	3	4	20	1	6	3	2	37			
21	Blair, Lisa	1-1	0-0	0-0	0	0	0	0	2	0	0	0	0	1			
22	Moore, Darryce *	5-8	0-0	5-6	4	3	7	3	15	0	0	0	0	19			
23	Ellerbe, Martina	7-12	1-5	0-0	4	5	9	1	15	1	1	4	0	40			
25	Scullion, Amy *	0-4	0-0	0-0	1	1	2	1	0	0	2	0	0	19			
31	Ferguson, Raven	3-11	0-4	3-4	0	3	3	5	9	4	2	0	1	21			
33	Adams, Ashley	2-4	0-0	0-0	1	2	3	4	4	1	2	2	3	21			
Team						1		2									
Totals		29-56	3-16	12-16	12	22	34	20	73	10	14	9	6	200			

FG % 1st Half: 17-29 58.6% 2nd half: 12-27 44.4% Game: 29-56 51.8% Deadball
 3FG % 1st Half: 2-6 33.3% 2nd half: 1-10 10.0% Games: 3-16 18.8% Rebounds
 FT % 1st Half: 6-8 75.0% 2nd half: 6-8 75.0% Game: 12-16 75.0%

Iowa 77 • 26-7

#	Player	Total			3-Ptr			Rebounds			PF	TP	A	T	Blk	Stl	Min
		FG-FGA	FG-FGA	FT-FTA	FG-FGA	FG-FGA	FT-FTA	Off	Def	Tot							
02	Disterhoft, Ally *	5-13	1-4	7-8	3	5	8	1	18	3	2	0	0	36			
03	Till, Claire	0-1	0-0	0-0	0	1	1	2	3	0	0	0	0	14			
21	Dixon, Melissa *	5-11	4-10	2-2	2	2	2	4									



IOWA BASKETBALL

2014 Big Ten Tournament Stats



IOWA WOMENS BASKETBALL Iowa Combined Team Statistics (as of Mar 03, 2015) 2014 B1G Tourney



RECORD:	OVERALL	HOME	AWAY	NEUTRAL
ALL GAMES	3-1	0-0	0-0	3-1
CONFERENCE	0-0	0-0	0-0	0-0
NON-CONFERENCE	3-1	0-0	0-0	3-1

#	Player	gp-gs	min	avg	Total		3-Point		F-Throw		Rebounds				pf	dq	a	to	blk	stl	pts	avg	
					fg-fga	fg%	3fg-fga	3fg%	ft-fa	ft%	off	def	tot	avg									
51	Doolittle, Bethany	4-4	106	26.5	27-49	.551	0-0	.000	13-16	.813	6	10	16	4.0	14	0	4	4	6	6	67	16.8	
02	Disterhoft, Ally	4-4	138	34.5	17-43	.395	2-15	.133	28-34	.824	14	18	32	8.0	4	0	8	9	3	2	64	16.0	
21	Dixon, Melissa	4-4	127	31.8	20-45	.444	11-28	.393	9-10	.900	1	7	8	2.0	13	0	7	9	0	2	60	15.0	
23	Taylor, Theairra	4-4	119	29.8	19-40	.475	8-15	.533	5-6	.833	1	17	18	4.5	9	1	10	11	2	5	51	12.8	
22	Logic, Samantha	4-4	137	34.2	10-24	.417	3-8	.375	9-11	.818	3	22	25	6.3	12	0	32	14	0	9	32	8.0	
01	Kastanek, Alexa	2-0	38	19.0	4-9	.444	1-4	.250	0-0	.000	0	2	2	1.0	3	0	6	5	0	3	9	4.5	
03	Till, Claire	4-0	58	14.5	5-12	.417	2-3	.667	6-8	.750	6	4	10	2.5	13	1	4	2	1	1	18	4.5	
25	Peschel, Kali	4-0	65	16.3	2-12	.167	0-4	.000	3-4	.750	3	6	9	2.3	4	0	1	3	1	2	7	1.8	
45	Smith, Nicole	2-0	1	0.5	1-1	1.000	0-0	.000	0-0	.000	1	0	1	0.5	0	0	0	0	1	0	2	1.0	
33	Reynolds, Kathryn	4-0	11	2.8	0-3	.000	0-2	.000	0-0	.000	1	0	1	0.3	0	0	0	0	0	0	0	0.0	
40	Schneden, Hailey	1-0	0	0.0	0-0	.000	0-0	.000	0-0	.000	0	0	0	0.0	0	0	0	0	0	0	0	0.0	
Team											11	6	17										
Total.....		4	800		105-238	.441	27-79	.342	73-89	.820	47	92	139	34.8	73	2	72	57	14	30	310	77.5	
Opponents.....		4	800		101-248	.407	20-81	.247	65-81	.802	63	94	157	39.2	80	-	46	65	16	32	287	71.8	

TEAM STATISTICS	IOWA	OPP	Date	Opponent	Score	Att.
SCORING	310	287	# 3/6/14	vs Illinois	w 81-62	5070
Points per game	77.5	71.8	# 3/7/14	vs Purdue	w 87-80	5903
Scoring margin	+5.8	-	# 3/8/14	vs Ohio State	w 77-73	6890
FIELD GOALS-ATT	105-238	101-248	# 3/9/14	vs Nebraska	L 65-72	5743
Field goal pct	.441	.407	^ = Hawkeye Challenge			
3 POINT FG-ATT	27-79	20-81	& = Cancun Challenge			
3-point FG pct	.342	.247	% = Big Ten/ACC Challenge			
3-pt FG made per game	6.8	5.0	* = Conference game			
FREE THROWS-ATT	73-89	65-81	# = Big Ten Tournament			
Free throw pct	.820	.802	+ = NCAA Tournament			
F-Throws made per game	18.3	16.3				
REBOUNDS	139	157				
Rebounds per game	34.8	39.2				
Rebounding margin	-4.5	-				
ASSISTS	72	46				
Assists per game	18.0	11.5				
TURNOVERS	57	65				
Turnovers per game	14.3	16.3				
Turnover margin	+2.0	-				
Assist/turnover ratio	1.3	0.7				
STEALS	30	32				
Steals per game	7.5	8.0				
BLOCKS	14	16				
Blocks per game	3.5	4.0				
ATTENDANCE	0	23606				
Home games-Avg/Game	0-0	0-0				
Neutral site-Avg/Game	-	4-5902				

Score by Periods	1st	2nd	Totals
Iowa	149	161	310
Opponents	144	143	287





IOWA BASKETBALL

Overall Stats



2015 Iowa Women's Basketball Iowa Combined Team Statistics (as of Mar 06, 2015) All games



RECORD:	OVERALL	HOME	AWAY	NEUTRAL
ALL GAMES	24-6	16-0	6-5	2-1
CONFERENCE	14-4	9-0	5-4	0-0
NON-CONFERENCE	10-2	7-0	1-1	2-1

#	Player	gp-gs	min	avg	Total		3-Point		F-Throw		Rebounds				pf	dq	a	to	blk	stl	pts	avg		
					fg-fga	fg%	3fg-fga	3fg%	ft-fa	ft%	off	def	tot	avg										
02	Disterhoft, Ally	30-30	968	32.3	148-341	.434	34-99	.343	126-156	.808	70	114	184	6.1	53	0	73	50	11	24	456	15.2		
21	Dixon, Melissa	30-30	932	31.1	146-320	.456	110-245	.449	42-48	.875	7	63	70	2.3	70	0	49	35	1	29	444	14.8		
51	Doolittle, Bethany	30-30	848	28.3	177-365	.485	0-0	.000	57-87	.655	67	140	207	6.9	90	1	34	59	80	43	411	13.7		
22	Logic, Samantha	30-30	1046	34.9	159-326	.488	28-80	.350	59-83	.711	43	161	204	6.8	65	2	237	115	11	55	405	13.5		
15	Jennings, Whitney	30-27	909	30.3	90-232	.388	32-100	.320	56-85	.659	6	50	56	1.9	65	2	84	49	6	34	268	8.9		
25	Peschel, Kali	30-3	480	16.0	46-107	.430	16-42	.381	31-36	.861	34	53	87	2.9	61	1	20	32	5	12	139	4.6		
04	Coley, Chase	25-0	179	7.2	31-49	.633	0-0	.000	9-17	.529	17	24	41	1.6	19	0	6	13	9	1	71	2.8		
01	Kastanek, Alexa	29-0	245	8.4	24-71	.338	10-28	.357	17-22	.773	7	24	31	1.1	29	0	25	20	2	11	75	2.6		
23	Buttenham, Christina	27-0	161	6.0	27-59	.458	8-23	.348	4-10	.400	4	18	22	0.8	12	0	9	14	0	6	66	2.4		
33	Reynolds, Kathryn	9-0	25	2.8	5-7	.714	5-7	.714	0-0	.000	0	2	2	0.2	0	0	2	0	0	1	15	1.7		
03	Till, Claire	26-0	155	6.0	13-23	.565	0-1	.000	0-2	.000	16	25	41	1.6	34	0	4	9	2	4	26	1.0		
34	Mohns, Carly	14-0	64	4.6	5-10	.500	0-1	.000	1-8	.125	6	13	19	1.4	11	0	3	5	1	3	11	0.8		
45	Smith, Nicole	3-0	8	2.7	1-1	1.000	0-0	.000	0-0	.000	0	1	1	0.3	2	0	0	1	1	0	2	0.7		
40	Schneden, Hailey	3-0	5	1.7	0-0	.000	0-0	.000	0-0	.000	1	1	2	0.7	0	0	2	0	0	0	0	0.0		
Team											67	58	125					4						
Total.....		30	6025		872-1911	.456	243-626	.388	402-554	.726	345	747	1092	36.4	511	6	548	406	129	223	2389	79.6		
Opponents.....		30	6025		784-1886	.416	189-563	.336	403-554	.727	438	796	1234	41.1	552	-	442	516	110	202	2160	72.0		

TEAM STATISTICS	IOWA	OPP	Date	Opponent	Score	Att.
SCORING	2389	2160	11/14/14	USC UPSTATE	w 107-56	5291
Points per game	79.6	72.0	11/16/14	ROBERT MORRIS	w 85-67	4030
Scoring margin	+7.6	-	^ 11/21/14	PEPPERDINE	w 97-68	3578
FIELD GOALS-ATT	872-1911	784-1886	^ 11/22/14	DAYTON	w 90-83	3381
Field goal pct	.456	.416	11/25/14	UNI	w 73-45	3711
3 POINT FG-ATT	243-626	189-563	& 11/28/14	vs Arkansas	L 67-77	216
3-point FG pct	.388	.336	& 11/29/14	vs Gonzaga	w 79-67	177
3-pt FG made per game	8.1	6.3	\$ 12/4/14	at LOUISVILLE	L 52-86	7854
FREE THROWS-ATT	402-554	403-554	12/7/14	COLORADO	w 78-63	6061
Free throw pct	.726	.727	12/11/14	IOWA STATE	w 76-67	4902
F-Throws made per game	13.4	13.4	12/21/14	at Drake	w 100-98	3130
REBOUNDS	1092	1234	* 12/28/14	PENN STATE	w 77-52	5411
Rebounds per game	36.4	41.1	* 1/4/15	at Rutgers	w 79-72	2542
Rebounding margin	-4.7	-	* 1/8/15	at Illinois	L 61-73	1650
ASSISTS	548	442	* 1/11/15	PURDUE	w 73-59	7359
Assists per game	18.3	14.7	* 1/14/15	NORTHWESTERN	w 83-70	4027
TURNOVERS	406	516	* 1/18/15	at Michigan State	w 52-50	8923
Turnovers per game	13.5	17.2	* 1/22/15	MICHIGAN	w 76-70	3584
Turnover margin	+3.7	-	* 1/26/15	NEBRASKA	Wot 78-72	4489
Assist/turnover ratio	1.3	0.9	* 1/29/15	at Northwestern	w 102-99	987
STEALS	223	202	* 2/1/15	at Maryland	L 88-93	5373
Steals per game	7.4	6.7	* 2/5/15	OHIO STATE	w 73-65	4572
BLOCKS	129	110	* 2/8/15	at Wisconsin	w 87-75	11428
Blocks per game	4.3	3.7	* 2/12/15	at Nebraska	w 69-61	5260
ATTENDANCE	83406	57276	* 2/15/15	INDIANA	w 81-64	8748
Home games-Avg/Game	16-5213	11-5171	* 2/17/15	at Minnesota	L 80-93	3265
Neutral site-Avg/Game	-	3-131	* 2/21/15	at Ohio State	L 82-100	6471
			* 2/26/15	WISCONSIN	w 78-74	4536
			* 3/1/15	MINNESOTA	w 92-76	9726
			3/6/15	vs Nebraska	w 74-65	0

Score by Periods	1st	2nd	OT	Totals
Iowa	1147	1225	17	2389
Opponents	1007	1142	11	2160





IOWA BASKETBALL

Big Ten Stats



IOWA WOMENS BASKETBALL Iowa Combined Team Statistics (as of Mar 01, 2015) Conference games



RECORD:	OVERALL	HOME	AWAY	NEUTRAL
ALL GAMES	14-4	9-0	5-4	0-0
CONFERENCE	14-4	9-0	5-4	0-0
NON-CONFERENCE	0-0	0-0	0-0	0-0

#	Player	gp-gs	min	avg	Total		3-Point		F-Throw		Rebounds				pf	dq	a	to	blk	stl	pts	avg
					fg-fga	fg%	3fg-fga	3fg%	ft-fa	ft%	off	def	tot	avg								
21	Dixon, Melissa	18-18	592	32.9	89-204	.436	67-155	.432	31-35	.886	5	34	39	2.2	41	0	30	19	0	22	276	15.3
51	Doolittle, Bethany	18-18	523	29.1	119-233	.511	0-0	.000	38-53	.717	39	87	126	7.0	51	0	23	40	56	29	276	15.3
02	Disterhoft, Ally	18-18	629	34.9	85-206	.413	23-69	.333	77-93	.828	39	72	111	6.2	28	0	50	24	7	14	270	15.0
22	Logic, Samantha	18-18	660	36.7	108-211	.512	19-49	.388	30-46	.652	28	93	121	6.7	39	1	162	70	7	33	265	14.7
15	Jennings, Whitney	18-18	556	30.9	51-138	.370	18-61	.295	26-38	.684	5	29	34	1.9	39	1	50	32	2	13	146	8.1
04	Coley, Chase	16-0	101	6.3	23-31	.742	0-0	.000	2-4	.500	12	14	26	1.6	9	0	4	9	3	0	48	3.0
25	Peschel, Kali	18-0	263	14.6	19-54	.352	8-24	.333	8-9	.889	14	31	45	2.5	31	1	11	15	2	5	54	3.0
23	Buttenham, Christina	16-0	77	4.8	11-28	.393	3-11	.273	0-0	.000	3	9	12	0.8	4	0	4	9	0	1	25	1.6
01	Kastanek, Alexa	17-0	106	6.2	10-28	.357	3-10	.300	3-6	.500	4	14	18	1.1	14	0	19	13	1	6	26	1.5
03	Till, Claire	17-0	98	5.8	10-15	.667	0-1	.000	0-0	.000	9	13	22	1.3	26	0	1	5	2	2	20	1.2
33	Reynolds, Kathryn	4-0	5	1.3	1-1	1.000	1-1	1.000	0-0	.000	0	0	0	0.0	0	0	1	0	0	0	3	0.8
34	Mohns, Carly	5-0	12	2.4	1-2	.500	0-0	.000	0-0	.000	0	3	3	0.6	1	0	0	2	0	1	2	0.4
40	Schneden, Hailey	1-0	1	1.0	0-0	.000	0-0	.000	0-0	.000	0	0	0	0.0	0	0	0	0	0	0	0	0.0
45	Smith, Nicole	1-0	2	2.0	0-0	.000	0-0	.000	0-0	.000	0	0	0	0.0	0	0	0	0	0	0	0	0.0
Team											40	33	73					3				
Total.....		18	3625		527-1151	.458	142-381	.373	215-284	.757	198	432	630	35.0	283	3	355	241	80	126	1411	78.4
Opponents.....		18	3625		485-1130	.429	113-314	.360	235-315	.746	253	474	727	40.4	288	-	291	303	68	116	1318	73.2

TEAM STATISTICS	IOWA	OPP	Date	Opponent	Score	Att.
SCORING	1411	1318	* 12/28/14	PENN STATE	w 77-52	5411
Points per game	78.4	73.2	* 1/4/15	at Rutgers	w 79-72	2542
Scoring margin	+5.2	-	* 1/8/15	at Illinois	L 61-73	1650
FIELD GOALS-ATT	527-1151	485-1130	* 1/11/15	PURDUE	w 73-59	7359
Field goal pct	.458	.429	* 1/14/15	NORTHWESTERN	w 83-70	4027
3 POINT FG-ATT	142-381	113-314	* 1/18/15	at Michigan State	w 52-50	8923
3-point FG pct	.373	.360	* 1/22/15	MICHIGAN	w 76-70	3584
3-pt FG made per game	7.9	6.3	* 1/26/15	NEBRASKA	wot 78-72	4489
FREE THROWS-ATT	215-284	235-315	* 1/29/15	at Northwestern	w 102-99	987
Free throw pct	.757	.746	* 2/1/15	at Maryland	L 88-93	5373
F-Throws made per game	11.9	13.1	* 2/5/15	OHIO STATE	w 73-65	4572
REBOUNDS	630	727	* 2/8/15	at Wisconsin	w 87-75	11428
Rebounds per game	35.0	40.4	* 2/12/15	at Nebraska	w 69-61	5260
Rebounding margin	-5.4	-	* 2/15/15	INDIANA	w 81-64	8748
ASSISTS	355	291	* 2/17/15	at Minnesota	L 80-93	3265
Assists per game	19.7	16.2	* 02/21/15	at Ohio State	L 82-100	6471
TURNOVERS	241	303	* 2/26/15	WISCONSIN	w 78-74	4536
Turnovers per game	13.4	16.8	* 3/1/15	MINNESOTA	w 92-76	9726
Turnover margin	+3.4	-				
Assist/turnover ratio	1.5	1.0				
STEALS	126	116				
Steals per game	7.0	6.4				
BLOCKS	80	68				
Blocks per game	4.4	3.8				
ATTENDANCE	52452	45899				
Home games-Avg/Game	9-5828	9-5100				
Neutral site-Avg/Game	-	0-0				

^ = Hawkeye Challenge
 & = South Point Thanksgiving Shootout
 \$ = ACC/Big Ten Challenge
 * = Conference game

Score by Periods	1st	2nd	OT	Totals
Iowa	692	702	17	1411
Opponents	614	693	11	1318



NCAA Statistics

Iowa - 2014-15 Women's Basketball Ranking Summary thru games 03/06/2015

Statistic	National Rank	Conference Rank	Value	National Leader	Value	Conference Leader	Value
Assist Turnover Ratio (343 ranked)	7	1	1.35	Villanova	1.74	Iowa	1.35
Assists Per Game (343 ranked)	7	1	18.3	UConn	21.7	Iowa	18.3
Blocked Shots Per Game (342 ranked)	68	7	4.3	UConn	8.2	Ohio St.	6.3
Defensive Rebounds per Game (30 ranked)				Idaho	31	Minnesota	30
Field-Goal Percentage (343 ranked)	10	2	45.6	UConn	53.8	Maryland	48.1
Field-Goal Percentage Defense (343 ranked)	274	12	41.6	UConn	29.7	Rutgers	36.7
Free-Throw Percentage (343 ranked)	57	6	72.6	Drexel	78.4	Maryland	75.0
Offensive Rebounds per Game (30 ranked)				Sacramento St.	20		
Personal Fouls Per Game (343 ranked)	129	10	17.0	Chattanooga	11.0	Nebraska	13.0
Rebound Margin (343 ranked)	300	14	-4.7	George Washington	13.8	Maryland	10.9
Scoring Defense (343 ranked)	318	14	72.0	UConn	47.1	Rutgers	60.0
Scoring Margin (343 ranked)	63	5	7.6	UConn	42.2	Maryland	20.1
Scoring Offense (343 ranked)	8	3	79.6	UConn	89.3	Ohio St.	80.5
Steals Per Game (343 ranked)	195	9	7.4	Sacramento St.	16.5	Illinois	11.2
Three Pt FG Defense (343 ranked)	286	12	33.6	Alabama St.	22.2	Maryland	28.1
Three-Point Field Goals Per Game (343 ranked)	17	1	8.1	Sacramento St.	12.6	Iowa	8.1
Three-Point Field-Goal Percentage (343 ranked)	3	1	38.8	Princeton	41.1	Iowa	38.8
Turnover Margin (343 ranked)	46	5	3.67	Sacramento St.	11.86	Illinois	5.23
Turnovers Per Game (343 ranked)	32	2	13.5	Villanova	8.6	Nebraska	13.5
Won-Lost Percentage (343 ranked)	26	2	80.0	Princeton	100.0	Maryland	93.3

Statistic	Player	National Rank	Conference Rank	Value	National Leader	Value	Conference Leader	Value
Assist Turnover Ratio (248 ranked)	Samantha Logic	49	2	2.06	Gillian Abshire, Quinnipiac	4.04	Syessence Davis, Rutgers	3.18
Assists Per Game (249 ranked)	Samantha Logic	3	1	7.9	Niya Johnson, Baylor	8.8	Samantha Logic, Iowa	7.9
Blocked Shots Per Game (249 ranked)	Bethany Doolittle	22	3	2.67	Sophia Ederaine, San Diego	4.76	Amanda Zahui B., Minnesota	4.19
Defensive Rebounds per Game (30 ranked)					Vicky McIntyre, Oral Roberts	11	Amanda Zahui B., Minnesota	9
Double Doubles (42 ranked)					Jillian Alleyne, Oregon	28	Aerial Powers, Michigan St.	24
Field-Goal Percentage (250 ranked)	Samantha Logic	70	8	48.8	Brianna Turner, Notre Dame	68.1	Alexa Hart, Ohio St.	60.6
	Bethany Doolittle	74	9	48.5				
Final Points (0 ranked)								
Free-Throw Percentage (250 ranked)	Ally Disterhoft	92	6	80.8	Nici Gilday, Santa Clara	94.5	Laurin Mincy, Maryland	86.1
Offensive Rebounds per Game (30 ranked)					Cheyenne Parker, Middle Tenn.	5	Cyasha Goree, Michigan	5
Points Per Game (249 ranked)	Ally Disterhoft	167	12	15.2	Jasmine Nwajei, Wagner	24.8	Kelsey Mitchell, Ohio St.	24.7
	Melissa Dixon	185	14	14.8				
Rebounds Per Game (250 ranked)					Vicky McIntyre, Oral Roberts	15.5	Amanda Zahui B., Minnesota	12.6
Steals Per Game (250 ranked)	Samantha Logic	191	10	1.83	Regina Okoye, Weber St.	3.79	Syessence Davis, Rutgers	3.39
Three-Point Field Goals Per Game (246 ranked)	Melissa Dixon	2	2	3.67	Kelsey Mitchell, Ohio St.	3.68	Kelsey Mitchell, Ohio St.	3.68
Three-Point Field-Goal Percentage (156 ranked)	Melissa Dixon	5	2	44.9	Kaleena Mosqueda-Lewis, UConn	51.4	Nicole Bauman, Wisconsin	48.8
Triple Doubles (3 ranked)	Samantha Logic	3	2	1	Amanda Zahui B., Minnesota	2	Amanda Zahui B., Minnesota	2
					Brittany Boyd, California	2		