

Year-By-Year Records

Year	Coach	Overall Games			Off. Avg.	Def. Avg.	Big Ten Games	
		W-L	Home	Away			W-L	Rank
1974-75	Lark Birdsong	5-16	1-3	4-13	49.9	---		
1975-76	Lark Birdsong	9-18	3-7	6-11	55.2	---		
1976-77	Lark Birdsong	10-11	3-5	7-6	66.0	---		
1977-78	Lark Birdsong	8-15	3-4	5-11	70.9	---		
1978-79	Lark Birdsong	18-11	7-2	11-9	76.5	---		
1979-80	Judy McMullen	15-14	5-5	10-9	68.5	---		
1980-81	Judy McMullen	8-17	4-4	4-13	72.6	77.8		
1981-82	Judy McMullen	8-17	3-6	5-11	62.4	72.7		
1982-83	Judy McMullen	7-20	6-7	1-13	62.7	70.9	2-16	T9th
1983-84	C. Vivian Stringer	17-10	10-2	7-8	65.8	58.8	11-7	T3rd
1984-85	C. Vivian Stringer	20-8	11-1	9-7	64.2	55.4	14-4	2nd
1985-86	C. Vivian Stringer	22-7	14-1	8-6	66.7	57.0	15-3	2nd
1986-87	C. Vivian Stringer	26-5	14-1	12-4	71.1	56.9	17-1	T1st
1987-88	C. Vivian Stringer	29-2	14-0	15-2	77.6	57.6	17-1	1st
1988-89	C. Vivian Stringer	27-5	14-0	12-5	75.3	59.8	16-2	T1st
1989-90	C. Vivian Stringer	23-6	11-3	12-3	76.2	57.9	15-3	T1st
1990-91	C. Vivian Stringer	21-9	11-2	10-7	67.8	59.2	13-5	T2nd
1991-92	C. Vivian Stringer	25-4	13-1	12-3	70.7	58.0	16-2	1st
1992-93	C. Vivian Stringer	27-4	15-0	12-4	72.8	54.3	16-2	T1st
1993-94	C. Vivian Stringer	21-7	11-2	10-5	63.9	57.8	13-5	3rd
1994-95	C. Vivian Stringer	11-17	6-5	5-12	58.7	58.6	6-10	9th
1995-96	Angie Lee	27-4	14-0	9-4	69.4	59.4	15-1	1st
1996-97	Angie Lee	18-12	6-5	12-7	67.3	59.9	9-7	T4th
1997-98	Angie Lee	18-11	10-3	8-8	68.5	65.1	13-3	1st
1998-99	Angie Lee	12-15	7-6	5-9	70.4	72.4	7-9	8th
1999-00	Angie Lee	9-18	7-6	2-12	67.3	70.7	6-10	7th
2000-01	Lisa Bluder	21-10	12-2	9-8	76.7	69.6	12-4	T2nd
2001-02	Lisa Bluder	18-11	9-4	9-7	76.2	70.1	10-6	4th
2002-03	Lisa Bluder	18-15	12-5	6-10	72.0	71.0	6-10	7th
2003-04	Lisa Bluder	16-13	7-6	9-7	73.4	73.4	10-6	T4th
2004-05	Lisa Bluder	23-10	11-4	12-6	69.8	64.4	8-8	6th
Totals		537-342	274-102	258-240			267-125	

C. Vivian Stringer



1974-75

(5-16 - Lark Birdsong)

Date	Opponent	W-L	Score
11/20	at Drake	L	64-75
11/25	William Penn	L	29-74
12/3	at Grandview	L	unavailable

Big Ten Championship

12/6	Indiana	L	58-86
12/6	Minnesota	W	55-33
12/7	Illinois	W	62-46
12/8	Wisconsin	L	49-65
12/15	at Northern Illinois	W	58-37
1/17	at Mt. Mercy	L	66-76
1/18	Wartburg	L	52-60
1/21	at Iowa Wesleyan	L	58-67
1/25	at Western Illinois	L	50-62
1/28	at William Penn	L	33-91
1/31	Cornell	W	91-23
2/2	Iowa State	L	47-65
2/8	at Northern Iowa	L	39-83

IAIAW District Championship

2/14	William Penn	L	22-73
2/15	Iowa Wesleyan	L	32-68
2/17	Mt. Mercy	L	59-70
3/1	Coe	L	45-47
3/2	Marycrest	W	73-37

1975-76

(9-18 - Lark Birdsong)

Date	Opponent	W-L	Score
11/17	Mt. Mercy	L	41-70
11/18	at Drake	L	62-65
11/25	Upper Iowa	W	70-40
12/2	Coe	L	58-59
12/5	at Iowa State	L	63-92
12/7	at Central Missouri	L	56-72
12/10	Grandview	L	53-112
12/11	Central	L	56-69
1/9	at Mt. Mercy	L	75-90
1/10	Graceland	L	52-54
1/16	Central	W	57-54
1/18	at UW - Platteville	W	91-57
1/20	at Coe	L	51-62
1/24	Illinois State	L	48-90
1/27	Clarke College	W	68-32
1/28	at Luther	L	45-94
1/31	Northern Illinois	L	53-54
2/3	at William Penn	L	39-96

Big Ten Championship

2/4	Illinois	W	63-54
2/4	Michigan State	L	54-83
2/5	Purdue	L	42-53

IAIAW District Championship

2/13	St. Ambrose	W	52-27
2/14	Mt. Mercy	L	35-61
2/14	Coe	W	66-48
2/15	Iowa Wesleyan	W	60-54
2/16	Mt. Mercy	L	49-59
2/16	Drake	W	67-42

1976-77

(10-11 - Lark Birdsong)

Date	Opponent	W-L	Score
11/15	at Marshalltown CC	W	79-26
11/18	at Upper Iowa	W	78-40
11/22	at St. Ambrose	W	88-47
12/2	Central	W	54-52
12/4	Drake	L	59-82
12/7	Iowa Wesleyan	L	47-48
12/17	at Indian Hills CC	W	74-53
1/5	at Illinois	L	54-58
1/19	Mt. Mercy	W	65-61
1/22	UW - Platteville	W	76-53
1/25	Simpson	L	60-69
2/1	William Penn	L	45-76
2/5	at N. Iowa CC	W	70-65
2/6	at Iowa State	L	58-71
2/8	Luther	L	57-76

Big Ten Championships

2/10	Illinois	L	40-53
2/11	Purdue	L	63-67

IAIAW State Championship

2/15	Indian Hills CC	W	70-47
2/18	Drake	L	56-64
2/18	Luther	W	77-71
2/18	Iowa State	L	73-82



The 1987-88 Hawkeyes were the Big Ten Conference champions with a 17-1 record, and advanced to the NCAA West Regional final.

1977-78

(8-15 - Lark Birdsong)

Date	Opponent	W-L	Score
11/15	at Simpson	L	78-84
11/18	Drake	L	66-77
11/21	at Luther	L	60-72
11/22	at Grandview	W	88-73
11/29	Central	W	70-44
12/3	Iowa State	L	71-74 (ot)
12/10	at Iowa Wesleyan	W	81-54
12/16	William Penn	L	53-70

Jennies Classic

1/12	Central Missouri	L	63-70
1/13	vs. Nebraska	L	63-71
1/14	vs. South Dakota State	W	73-63
1/17	Iowa Wesleyan	W	76-48
1/21	Illinois	L	60-62
2/4	Northern Iowa	W	74-54
1/31	at Central	L	66-76
1/27	at Northern Illinois	W	96-44
1/29	at Mt. Mercy	L	75-86

Big Ten Championship

2/4	Purdue	L	63-72
2/14	at William Penn	L	57-82
2/18	Minnesota	L	79-84

IAIAW State Championship

2/23	Iowa State	W	77-60
2/24	Drake	L	60-88
2/25	Iowa State	L	82-87

1978-79

(18-11 - Lark Birdsong)

Date	Opponent	W-L	Score
11/15	Simpson	W	101-75
11/17	at William Penn	L	72-81

William Woods Tournament

11/24	vs. Missouri Southern	W	89-84
11/25	vs. Western Illinois	W	75-66
11/25	William Woods	L	58-64
11/27	Northern Iowa	W	106-61
12/2	Wisconsin	W	75-68
12/4	Iowa State	W	87-70
12/8	at Central College	W	76-70
12/12	at Drake	L	80-94
12/15	Nebraska-Omaha	W	63-61
12/23	Minnesota	W	91-82
1/5	at Central Missouri	L	62-72
1/8	at Kansas State	L	80-93
1/9	at Northeast Missouri	W	62-50
1/19	at Illinois State	W	82-71
1/20	at Illinois	L	53-60

1/23	Mt. Mercy	L	66-71
1/26	at Northern Iowa	W	90-55
1/30	Drake	L	63-96
2/3	at Minnesota	L	79-90
2/6	St. Ambrose	W	82-59

Big Ten Championship

2/8	Michigan	W	79-70
2/9	Minnesota	L	64-86
2/14	Iowa State	W	81-70
2/17	Northwest Missouri	W	71-63
2/19	Grandview	W	72-69

IAIAW State Championship

2/22	Iowa State	W	68-67
2/24	Drake	L	71-101

1979-80

(15-14 - Judy McMullen)

Date	Opponent	W-L	Score
11/16	Delta State	L	73-77
11/17	Western Illinois	W	86-55
11/27	William Penn	L	68-69
11/28	Central Missouri	L	76-89
12/1	Wisconsin	W	68-51
12/4	at Grandview	W	96-66
12/11	Drake	L	62-71
12/15	at Iowa State	L	69-80
12/22	at Nebraska	L	66-67
1/3	Brigham Young	L	79-103
1/4	Washington State	W	69-51
1/5	at Utah	L	73-77
1/9	at Illinois	W	71-44
1/14	at Colorado State	W	74-67
1/16	at Texas Women's	W	58-50
1/18	at Texas	L	49-75
1/25	DePaul	W	58-56
1/29	Iowa State	W	66-50
2/2	at South Dakota	W	70-48
2/4	at Drake	L	67-76

Big Ten Championship

2/8	Ohio State	W	61-60
2/9	Northwestern	L	66-69
2/10	Michigan State	W	63-58
2/12	Minnesota	W	70-68
2/16	at Northwest Missouri	L	50-71
2/23	at Minnesota	L	67-92

IAIAW Sub-Regional Championship

2/28	Northwest Missouri	L	71-73 (ot)
------	--------------------	---	------------

Northern Lights Invitational

3/14	vs. Wyoming	W	68-65
3/15	at Alaska	W	73-52

1980-81

(8-17 - Judy McMullen)

Date	Opponent	W-L	Score
11/13	Texas	L	62-82
11/15	at Wisconsin	L	69-73
11/21	South Dakota	L	72-75
11/22	Minnesota	L	71-94
11/25	at William Penn	L	64-80
12/2	Iowa State	W	67-66

New Mexico State Invitational

12/4	vs. Portland State	W	88-82
12/5	vs. Wichita State	L	76-87
12/6	at New Mexico State	W	83-69
12/11	Utah	W	89-83
12/13	at DePaul	W	97-87
12/23	Drake	L	71-74
12/30	at Illinois	L	76-78

Lady Griz Insurance Classic

1/6	at Montana	L	54-63
1/7	vs. Brigham Young	L	76-87
1/10	Grand View	W	81-68
1/13	at South Dakota	L	68-78
1/21	at Iowa State	W	66-62
1/24	at Western Illinois	L	81-83
1/27	Northwest Missouri	W	83-70
1/30	at Minnesota	L	52-71
2/3	at Drake	L	56-83

Big Ten Championship

2/13	Wisconsin	L	67-88
2/20	at UIC	L	77-78
2/21	at Northwestern	L	63-85

1981-82

(8-17 - Judy McMullen)

Date	Opponent	W-L	Score
11/15	Minnesota	L	52-77

Cal-Poly Straw Hat Pizza Classic

11/19	vs. Pacific	L	70-81
11/20	vs. Biola	W	73-68
11/21	Cal-Poly	W	64-57
12/2	at Iowa State	L	59-82
12/6	Northwestern	L	80-92
12/11	William Penn	L	68-85
12/12	Illinois	L	51-76
12/19	UIC	W	69-52
1/5	Northern Illinois	L	57-69
1/8	Western Illinois	W	72-68
1/12	at National College	W	66-59

1/21	Iowa State	W	62-44
1/23	at Central Missouri	L	53-81
1/25	at Minnesota	L	43-90
1/27	at Northern Iowa	W	74-68 (ot)
1/29	at Nebraska-Omaha	L	54-64
1/30	at Creighton	L	66-74
2/6	Drake	L	63-77

Big Ten Tournament

2/12	Wisconsin	L	64-78
2/17	at Grandview	L	54-76
2/20	at Drake	L	61-96
2/26	Central Missouri	W	68-62
3/3	Wisconsin	L	64-78

IAIAW Region 6 Championship

3/11	Iowa State	L	52-64
------	------------	---	-------

1982-83

(7-20, 2-16 - Judy McMullen)

Date	Opponent	W-L	Score
11/19	at Bradley	W	85-82
11/23	Iowa State	W	64-59
12/5	at Drake	L	75-88

Sun Devil/Dial Classic

12/9	vs. California	L	66-89
12/10	vs. Wyoming	L	63-79
12/11	Idaho State	W	74-65
12/18	National College	W	71-52
12/30	at Northern Illinois	L	71-74
1/7	at Michigan State	L	56-64
1/9	at Michigan	L	62-83
1/12	Northern Iowa	W	66-65
1/16	Northwestern	L	56-71
1/21	Minnesota	L	62-73
1/23	Wisconsin	L	47-68
1/28	at Ohio State	L	57-77
1/30	at Indiana	L	51-68
2/4	Illinois	L	69-71
2/6	Purdue	W	76-70
2/11	at Purdue	L	53-63
2/14	at Illinois	L	69-71
2/18	Indiana	L	59-65
2/20	Ohio State	L	57-72
2/23	at Wisconsin	L	44-68
2/27	at Minnesota	L	53-78
3/4	at Northwestern	L	54-81
3/10	Michigan	W	72-50
2/12	Michigan State	L	62-70

1983-84

(17-10, 11-7 - C. Vivian Stringer)

Date	Opponent	W-L	Score
11/28	Drake	L	56-58
12/1	at Northern Iowa	W	71-64
12/5	at Iowa State	W	86-75 (ot)

Indiana State Classic

12/9	at Indiana State	W	82-53
12/10	vs. Evansville	W	76-64
12/16	Bradley	W	70-46

Miami University Dial Classic

12/30	Connecticut	W	78-43
12/31	Northern Illinois	L	65-69
1/3	at Delta State	L	70-93
1/6	Michigan State	W	70-62
1/6	Michigan	W	70-51
1/8	at Northwestern	L	51-59
1/18	at Minnesota	L	55-57
1/22	at Wisconsin	L	49-50
1/27	Ohio State	L	56-64
1/29	Indiana	W	54-50
2/2	at Illinois	L	55-64
2/5	at Purdue	W	49-39
2/10	Purdue	W	78-40
2/13	Illinois	W	74-65
2/17	at Indiana	L	62-68
2/19	at Ohio State	L	60-82
2/24	Wisconsin	W	46-37
2/26	Minnesota	W	79-58
3/3	Northwestern	W	72-61
3/8	at Michigan	W	71-54
3/10	at Michigan State	W	72-62

1984-85

(20-8, 14-4 - C. Vivian Stringer)

Date	Opponent	W-L	Score
11/28	at Drake	L	59-69

San Jose State Classic

11/30	vs. Southern California	L	57-77
12/1	at San Jose State	W	67-45
12/9	Illinois State	W	65-57
12/15	Iowa State	W	81-41

La Salle Tournament

12/27	vs. SW Louisiana	W	62-39
12/28	at La Salle	W	70-51
12/29	St. Joseph's (Pa.)	L	60-61
1/2	at Penn State	L	47-87
1/4	at Purdue	W	68-54
1/6	at Illinois	W	66-61
1/9	Nebraska	W	62-41
1/10	Minnesota	W	60-38
1/17	Michigan State	W	53-36
1/19	Michigan	W	70-45
1/24	at Northwestern	W	70-51
1/26	at Wisconsin	L	54-65
1/31	Indiana	W	69-49
2/3	Ohio State	L	47-56
2/8	at Minnesota	W	66-58
2/15	at Michigan	W	79-49
2/17	at Michigan State	W	77-55
2/22	Wisconsin	W	64-52
2/24	Northwestern	W	71-61
3/1	at Ohio State	L	41-64
3/3	at Indiana	L	48-63
3/7	Illinois	W	79-66
3/9	Purdue	W	85-61

1985-86

(22-7, 15-3 - C. Vivian Stringer)

Date	Opponent	W-L	Score
------	----------	-----	-------

Amana-Hawkeye Classic

11/22	Bradley	W	75-39
11/23	Memphis	W	77-56
11/25	Creighton	W	66-60

Louisiana State Crawfish Classic

11/29	vs. Miami, Fla.	W	83-63
11/30	at Louisiana State	L	56-57
12/2	at W. Kentucky	L	67-77
12/4	at Iowa State	W	63-57
12/8	Penn State	W	65-63
12/11	Drake	L	63-64
1/3	Purdue	W	79-52
1/5	Illinois	W	74-57
1/10	at Minnesota	W	66-63
1/17	at Michigan State	W	60-57
1/19	at Michigan	L	56-58



The 1990-91 Hawkeye squad were co-champions of the Big Ten Conference and finished 23-6, advancing to the NCAA Tournament.

1/24	Northwestern	W	72-58
1/26	Wisconsin	W	68-32
1/31	at Indiana	W	47-46
2/2	at Ohio State	L	54-70
2/7	Minnesota	W	61-51
2/10	Miami, Fla.	W	75-46
2/14	Michigan	W	63-42
2/16	Michigan State	W	61-48
2/21	at Wisconsin	W	61-47
2/23	at Northwestern	W	69-66 (ot)
2/28	Ohio State	W	75-64
3/2	Indiana	W	63-47
3/6	at Illinois	L	68-78
3/8	at Purdue	W	80-63
NCAA Tournament - Second Round			
3/20	at Tennessee	L	68-73

1986-87

(26-5, 17-1 - C. Vivian Stringer)

Date	Opponent	W-L	Score
------	----------	-----	-------

Amana-Hawkeye Classic

11/29	Boston	W	70-48
11/30	Tennessee	L	56-74
12/2	at Nebraska	L	74-85
12/3	at Drake	W	71-57
12/4	Iowa State	W	70-51
12/13	at Illinois State	W	71-56
12/21	Western Kentucky	W	67-47

North Carolina State Classic

12/29	vs. Penn State	L	74-78 (ot)
12/30	vs. Indiana	W	63-56
1/2	at Wisconsin	W	83-44
1/4	at Northwestern	W	72-61
1/7	Louisiana State	W	68-49
1/9	Minnesota	W	81-40
1/19	Illinois	W	80-53
1/18	Purdue	W	68-54
1/23	at Indiana	W	60-49
1/25	at Ohio State	L	54-67
1/30	Michigan State	W	83-61
2/1	Michigan	W	75-54
2/6	at Minnesota	W	78-60
2/13	at Purdue	W	86-68
2/15	at Illinois	W	70-54
2/20	Ohio State	W	66-54
2/22	Indiana	W	71-50
2/27	at Michigan	W	78-54
3/1	at Michigan State	W	71-49
3/4	Northwestern	W	70-53
3/7	Wisconsin	W	78-56

NCAA Tournament - Second Round

3/15	New Orleans	W	68-46
------	-------------	---	-------

NCAA Tournament - Midwest Regional

3/19	vs. Georgia	W	62-60
3/21	Louisiana Tech	L	65-66

1987-88

(29-2, 17-1 - C. Vivian Stringer)

Date	Opponent	W-L	Score
------	----------	-----	-------

Amana-Hawkeye Classic

11/28	Missouri	W	85-71
11/28	Georgia	W	66-56
11/29	at Iowa State	W	93-49

Northern Illinois Fastbreak Fest

12/5	vs. Long Beach State	W	82-75
12/6	at Northern Illinois	W	81-73
12/11	Nebraska	W	68-58

Burger King/Orange Bowl Classic

12/28	vs. Auburn	W	73-69
12/29	vs. Virginia	W	75-59
12/30	vs. Texas	W	75-65
1/8	at Wisconsin	W	79-59
1/10	Northwestern	W	81-43
1/15	at Minnesota	W	84-41
1/22	at Illinois	W	90-63
1/24	at Purdue	W	67-57
1/29	Indiana	W	72-48
1/31	Ohio State	W	75-64
2/2	at Michigan State	W	77-52
2/5	at Michigan	W	89-54
2/12	Minnesota	W	100-51
2/16	Drake	W	74-38
2/19	Purdue	W	66-52
2/21	Illinois	W	87-36
2/26	at Ohio State	L	54-58
2/28	at Indiana	W	71-47
3/4	Michigan	W	76-55



The 1995-96 Hawkeyes went undefeated at home (14-0), won their first outright Big Ten title since 1990-91 and advanced to the NCAA Midwest Regional.

3/6	Michigan State	W	52-46
3/10	at Northwestern	W	76-66
3/12	Wisconsin	W	98-50

NCAA Tournament - Second Round

3/18	Stephen F. Austin	W	83-65
------	-------------------	---	-------

NCAA Tournament - West Regional

3/24	vs. Southern California	W	79-67
3/26	at Long Beach State	L	78-98

1988-89

(27-5, 16-2 - C. Vivian Stringer)

Date	Opponent	W-L	Score
------	----------	-----	-------

Hawaii Wahine Classic

11/25	vs. Wyoming	W	83-40
11/26	vs. Louisiana Tech	L	58-62
11/27	vs. Washington	W	53-51

Kansas Dial Soap Classic

12/2	vs. Grambling State	W	80-66
12/3	at Kansas	L	63-67
12/7	Iowa State	W	79-46

Amana-Hawkeye Classic

12/10	Miami of Ohio	W	73-44
12/11	Wake Forest	W	78-62
12/22	Oregon State	W	90-45

Burger King/Pepsi Classic

12/28	vs. Oklahoma	W	86-69
12/29	vs. Nebraska	W	84-67
1/6	Michigan	W	82-42
1/8	Michigan State	W	89-49
1/13	at Illinois	W	82-64
1/15	Ohio State	W	84-70
1/18	at Drake	W	71-65
1/21	Minnesota	W	97-54
1/27	Indiana	W	77-61
1/29	at Purdue	L	56-67
2/3	at Wisconsin	W	67-57
2/5	at Northwestern	W	63-53
2/10	Purdue	W	66-64
2/12	Illinois	W	82-50
2/17	at Minnesota	W	80-73
2/21	at Ohio State	L	57-66
2/24	at Indiana	W	70-63 (ot)
3/3	Northwestern	W	77-46
3/5	Wisconsin	W	78-52
3/9	at Michigan	W	79-61
3/11	at Michigan State	W	74-63

NCAA Tournament - Second Round

3/18	Tennessee Tech	W	77-75
------	----------------	---	-------

NCAA Tournament - Midwest Regional

3/23	vs. Stanford	L	74-98
------	--------------	---	-------

1989-90

(23-6, 15-3 - C. Vivian Stringer)

Date	Opponent	W-L	Score
------	----------	-----	-------

Amana-Hawkeye Classic

11/25	Howard	W	90-57
11/26	Connecticut	W	81-49
11/29	at Nebraska	W	74-55

Louisiana Tech Dial Soap Classic

12/1	vs. Saint Joseph's	W	76-57
12/2	at Louisiana Tech	L	82-85
12/8	DePaul	W	70-58
12/10	Drake	W	70-58
12/17	at Iowa State	W	75-55

Hilton Head Island Super Shootout

12/28	at South Carolina	L	76-82
12/29	vs. North Carolina	W	106-81
1/5	at Michigan State	L	61-62
1/7	at Michigan	W	65-54
1/12	Illinois	W	85-51
1/14	Purdue	L	63-66
1/19	at Minnesota	W	79-43
1/26	at Indiana	W	63-52
1/28	at Ohio State	W	71-48
2/2	Wisconsin	W	84-52
2/4	Northwestern	L	63-64
2/9	at Illinois	W	59-51
2/11	at Purdue	W	70-67 (ot)
2/16	Minnesota	W	87-58
2/23	Ohio State	W	94-51
2/25	Indiana	W	85-47
3/2	at Northwestern	W	64-43
3/4	at Wisconsin	W	79-60
3/8	Michigan	W	78-47
3/10	Michigan State	W	86-58

NCAA Tournament - Second Round

3/17	Vanderbilt	L	56-61
------	------------	---	-------

1990-91

(21-9, 13-5 - C. Vivian Stringer)

Date	Opponent	W-L	Score
------	----------	-----	-------

Amana-Hawkeye Classic

11/24	UCLA	W	81-52
11/25	Louisiana State	W	73-65
11/29	at Connecticut	W	58-41
12/1	at Penn State	L	62-82
12/4	at Drake	W	74-49
12/8	at DePaul	W	66-52
12/16	Nebraska	W	80-46
12/30	at Washington	L	61-71
1/2	at Wisconsin	L	67-78

Big Ten - SEC Challenge

1/5	vs. Georgia	L	51-62
1/11	Illinois	W	63-47
1/13	Purdue	L	75-84 (ot)
1/18	at Indiana	L	59-74
1/20	at Ohio State	W	88-68
1/25	Minnesota	W	70-51
2/1	Michigan State	L	54-64
2/3	Michigan	W	79-60
2/5	at Northwestern	W	64-60
2/8	at Purdue	W	56-53
2/10	at Illinois	W	63-43
2/15	Ohio State	W	70-47
2/17	Indiana	W	86-55
2/22	at Minnesota	W	70-46
2/25	Louisiana Tech	W	72-57
2/17	at Michigan	W	76-64
3/1	at Michigan State	L	48-49
3/3	Northwestern	W	67-58
3/9	Wisconsin	W	85-76 (ot)

NCAA Tournament - First Round

3/13	at Montana	W	64-53
------	------------	---	-------

NCAA Tournament - Second Round

3/16	at Washington	L	53-70
------	---------------	---	-------

1991-92

(25-4, 16-2 - C. Vivian Stringer)

Date	Opponent	W-L	Score
11/27	at Kentucky	W	77-68
11/29	Iowa State	W	70-58

Amana-Hawkeye Classic

11/30	Ohio University	W	97-52
12/1	Washington	W	58-39

Mid-America Classic

12/6	vs. Wright State	W	87-41
12/7	at Missouri	W	89-62
12/11	at Nebraska	W	64-59

SEC-Big Ten Challenge

12/28	Vanderbilt	L	65-95
1/3	Penn State	W	61-53
1/10	Minnesota	W	85-68
1/13	at Louisiana Tech	W	61-57
1/17	Indiana	W	80-71
1/19	Ohio State	W	73-56
1/24	at Michigan State	W	71-64
1/26	at Michigan	W	73-61
1/31	Illinois	W	68-42
2/2	Purdue	W	65-64
2/7	at Wisconsin	L	58-74
2/9	at Northwestern	W	90-72
2/14	at Ohio State	W	68-59
2/16	at Indiana	W	59-57
2/21	Michigan	W	81-45
2/23	Michigan State	W	70-47
2/28	at Purdue	L	64-72
3/1	at Illinois	W	56-36
3/4	Northwestern	W	73-65
3/8	Wisconsin	W	63-36
3/12	at Minnesota	W	65-47

NCAA Tournament - Second Round

3/22	SW Missouri State	L	60-61 (ot)
------	-------------------	---	------------

1992-93

(27-4, 16-2 - C. Vivian Stringer)

Date	Opponent	W-L	Score
12/4	at Pittsburgh	W	70-59
12/6	at Maryland	W	53-50

Amana-Hawkeye Classic

12/11	West Virginia	W	74-44
12/11	Charlotte	W	60-38
12/20	Drake	W	90-44

FIU Sun and Fun Classic

1/2	vs. Bucknell	W	97-39
1/3	vs. Colorado	L	70-72
1/4	vs. Eastern Kentucky	W	67-63
1/8	Wisconsin	W	65-39
1/10	at Minnesota	W	75-47
1/15	at Illinois	W	65-57
1/17	at Northwestern	W	60-55
1/22	Indiana	W	79-50
1/26	Northern Illinois	W	92-59
1/29	at Michigan	W	84-54
1/31	at Michigan State	W	75-55
2/5	Ohio State	W	79-62
2/7	Penn State	W	84-59
2/12	Northwestern	W	68-62

2/14	Illinois	W	77-58
2/19	at Purdue	W	63-55
2/21	at Indiana	W	68-46
2/26	Michigan State	W	76-46
2/28	Michigan	W	71-34
3/5	at Penn State	L	64-70
3/7	at Ohio State	L	60-72
3/12	Minnesota	W	83-59

NCAA Tournament - Second Round

3/17	at Old Dominion	W	82-56
------	-----------------	---	-------

NCAA Tournament - Midwest Regional

3/25	Auburn	W	63-50
3/27	Tennessee	W	72-56

NCAA Women's Final Four - Atlanta

4/3	vs. Ohio State	L	72-73 (ot)
-----	----------------	---	------------

1993-94

(21-7, 13-5 - C. Vivian Stringer)

Date	Opponent	W-L	Score
------	----------	-----	-------

Prairie Lights Hawkeye Classic

11/28	Louisiana Tech	W	70-66
12/1	at Drake	W	73-64
12/5	Southwest Missouri	W	67-55
12/19	at James Madison	W	72-44
12/21	at West Virginia	W	69-57

USC Christmas Tournament

12/29	vs. Houston	W	59-44
12/30	at Southern California	W	50-49
1/5	Minnesota	W	69-59
1/7	at Wisconsin	W	74-67
1/14	Illinois	W	53-37
1/16	Northwestern	W	67-59
1/21	at Indiana	L	58-82
1/25	at Northern Illinois	L	56-59
1/28	Michigan	W	78-56
1/30	Michigan State	W	54-46
2/4	at Ohio State	W	64-61
2/6	at Penn State	L	61-63
2/11	at Northwestern	L	47-55
2/13	at Illinois	W	55-52
2/18	Purdue	W	62-48
2/20	Indiana	L	59-63
2/25	at Michigan State	W	63-56
2/27	at Michigan	W	65-55
3/4	Penn State	W	78-68
3/6	Ohio State	W	59-57
3/11	at Minnesota	L	58-64

NCAA Tournament - First Round

3/16	Mount St. Mary's	W	70-47
------	------------------	---	-------

NCAA Tournament - Second Round

3/20	Alabama	L	78-84
------	---------	---	-------

1994-95

(11-17, 6-10 - C. Vivian Stringer)

Date	Opponent	W-L	Score
------	----------	-----	-------

Prairie Lights Hawkeye Classic

11/26	James Madison	W	60-30
11/27	Southern California	W	65-55
11/30	at Southwest Missouri	L	48-60

Stephen F. Austin Dial Classic

12/2	vs. Florida Atlantic	W	67-42
12/3	at Stephen F. Austin	L	70-79 (ot)
12/8	Creighton	L	53-63

Stanford Cardinal Classic

12/17	vs. NW Louisiana St.	L	53-54
12/18	vs. St. Mary's (Calif.)	W	73-48
12/20	at UC Santa Barbara	L	48-61
12/28	Illinois	W	59-51
12/30	Michigan	W	53-36
1/6	at Wisconsin	L	62-72
1/8	at Western Kentucky	L	43-79
1/13	at Purdue	L	45-63
1/15	at Michigan State	L	70-71 (2 ot)
1/20	Indiana	W	60-55
1/22	Northwestern	L	57-58
2/13	at Minnesota	L	56-70
2/14	Ohio State	W	67-61
2/15	at Indiana	L	49-57
2/16	Michigan State	L	55-62
2/12	Purdue	L	55-62
2/17	at Penn State	L	62-73
2/19	Wisconsin	L	55-62
2/24	at Michigan	W	71-43
2/26	at Illinois	W	69-61

Big Ten Tournament - First Round

3/3	Minnesota	W	57-44
3/4	Penn State	L	62-69

1995-96

(27-4, 15-1 - Angie Lee)

Date	Opponent	W-L	Score
------	----------	-----	-------

Prairie Lights Hawkeye Classic

11/24	Stephen F. Austin	W	64-58
11/25	UC Santa Barbara	W	68-57
11/29	at Creighton	W	68-41

Kansas Dial Classic

12/2	vs. Saint Joseph's	W	66-49
12/3	at Kansas	W	65-58 (ot)
12/7	Drake	W	67-44

Carolinas Holiday Beach Classic

12/19	vs. Appalachian State	W	68-66
12/20	vs. Georgia	L	52-79
12/21	vs. North Carolina	W	73-64



The 1996-97 Hawkeyes won the Big Ten Tournament title and advanced to the NCAA Tournament.

12/27	at Illinois	W	73-64
12/29	at Michigan	W	69-53
1/5	Wisconsin	W	68-48
1/7	Western Kentucky	W	68-54
1/12	Purdue	W	68-57
1/14	Michigan State	W	75-56
1/19	at Indiana	W	64-56
1/21	at Northwestern	W	64-51
1/28	Minnesota	W	94-51
2/2	at Ohio State	W	82-75
2/4	Indiana	W	77-51
2/9	at Michigan State	W	71-65
2/11	at Purdue	L	42-62
2/16	Penn State	W	81-69
2/18	at Wisconsin	W	67-63
2/23	Michigan	W	74-52
2/25	Illinois	W	73-55

Big Ten Tournament

3/1	Illinois	W	74-56
3/2	Purdue	L	68-76

NCAA Tournament - First Round

3/14	Butler	W	72-67
------	--------	---	-------

NCAA Tournament - Second Round

3/16	DePaul	W	72-71
------	--------	---	-------

NCAA Midwest Regional - Semifinal

3/21	vs. Vanderbilt	L	63-74
------	----------------	---	-------

1996-97

(18-12, 9-7 - Angie Lee)

Date	Opponent	W-L	Score
11/15	Illinois State	W	66-41
11/17	Notre Dame	L	50-61
11/19	Iowa State	W	64-53

Kona Women's Basketball Invitational

12/6	vs. Boise State	W	89-34
12/7	vs. Pacific	W	80-60
12/8	vs. Nebraska	L	67-73

Big Ten-SEC Challenge

12/13	at Florida	L	58-68
12/21	at Drake	L	59-80
12/28	at Minnesota	W	61-48
12/30	at Ohio State	W	69-59
1/2	at W. Kentucky	W	61-48
1/5	Wisconsin	L	63-69
1/10	at Northwestern	W	73-61
1/12	at Purdue	L	52-62
1/21	Penn State	L	60-61
1/24	at Indiana	W	78-58
1/26	Michigan	L	63-75
1/31	at Illinois	L	75-83
2/2	Michigan State	W	82-62
2/7	Purdue	L	48-53
2/9	Northwestern	W	80-56
2/14	at Wisconsin	L	56-59
2/16	at Penn State	W	66-63
2/21	Ohio State	W	80-59
2/23	Minnesota	W	78-42

Big Ten Tournament

2/28	Northwestern	W	78-68
3/1	Indiana	W	87-53
3/2	Illinois	W	63-56

NCAA Tournament - First Round

3/14	vs. North Carolina State	W	56-50
------	--------------------------	---	-------

NCAA Tournament - Second Round

3/16	at Connecticut	L	53-72
------	----------------	---	-------

1997-98

(18-11, 13-3 - Angie Lee)

Date	Opponent	W-L	Score
11/16	Drake	W	66-63 (ot)

Reebok Classic

11/23	vs. Arkansas	L	57-83
11/25	vs. Connecticut	L	55-65

Prairie Lights Classic

11/29	CS Northridge	W	67-56
11/30	Washington	L	62-63

Central Fidelity Invite

12/6	vs. Louisiana Tech	L	58-83
12/7	at Richmond	W	78-66
12/13	Iowa State	L	57-74

Honda Elite Four Classic

12/21	vs. Vanderbilt	L	54-60
12/28	Minnesota	W	91-55
12/30	Ohio State	W	66-57
1/2	at Penn State	W	78-69
1/9	Northwestern	W	65-58



The 1997-98 Hawkeyes won the Big Ten Conference regular season with a record of 18-11 (13-3) and advanced to the second round of the NCAA Midwest Regional.

1/11	Purdue	L	66-75 (ot)
1/20	at Wisconsin	W	66-63
1/23	Indiana	W	68-61
1/25	at Michigan	L	65-69 (ot)
1/30	Illinois	W	82-71
2/1	at Michigan State	L	62-66
2/6	at Purdue	W	73-67
2/8	at Northwestern	W	79-72
2/13	Wisconsin	W	87-76
2/15	Penn State	W	73-49
2/20	at Ohio State	W	74-71
2/22	at Minnesota	W	71-59

Big Ten Tournament

2/28	Ohio State	W	72-54
3/1	Purdue	L	60-61

NCAA Tournament - First Round

3/13	Massachusetts	W	77-59
------	---------------	---	-------

NCAA Tournament - Second Round

3/15	Kansas	L	58-62
------	--------	---	-------

1998-99

(12-15, 7-9 - Angie Lee)

Date	Opponent	W-L	Score
11/15	at Washington	L	76-84
11/17	Iowa State	L	65-81
11/20	Weber State	W	77-57
11/22	Western Kentucky	L	65-68

Prairie Lights Classic

11/27	Missouri	W	75-68
11/28	Princeton	W	59-44

Syracuse Carrier Classic

12/4	vs Kent State	W	62-58
12/5	at Syracuse	W	70-64
12/8	at Drake	L	73-86
12/20	at Auburn	L	55-78
12/28	Illinois	W	89-86
1/3	at Wisconsin	L	72-79
1/5	at Minnesota	L	58-66
1/8	Indiana	W	77-76
1/10	Purdue	L	69-71 (ot)
1/15	at Penn State	L	60-66
1/17	at Michigan State	L	64-70
1/22	Michigan	L	67-86
1/29	Michigan State	L	69-81
1/31	Penn State	L	64-88
2/5	at Ohio State	L	66-70
2/7	at Indiana	W	73-69
2/12	Minnesota	W	79-62
2/14	Northwestern	W	86-69
2/19	at Michigan	W	78-75
2/21	at Illinois	L	73-86

Big Ten Tournament

2/28	vs. Northwestern	L	71-75
------	------------------	---	-------

1999-00

(9-18, 6-10 - Angie Lee)

Date	Opponent	W-L	Score
11/19	at Marquette	L	64-69
11/21	Connecticut	L	45-73

Gazette Hawkeye Challenge

11/27	Bradley	W	92-49
11/28	Syracuse	W	76-73
12/2	at Utah	L	61-70
12/4	at Weber State	W	73-55
12/11	at Iowa State	L	69-79
12/18	Auburn	L	55-91
12/20	Drake	L	59-84
12/30	at Penn State	L	63-80
1/2	Indiana	W	82-68
1/7	at Illinois	L	60-86
1/9	at Northwestern	L	52-53
1/13	Minnesota	W	80-51
1/16	Penn State	L	64-78
1/20	Michigan State	L	77-82
1/23	at Michigan	L	78-82
1/27	Wisconsin	W	66-62
1/30	at Arkansas	L	65-72
2/3	at Indiana	L	67-70
2/6	at Michigan State	L	64-74
2/13	Illinois	W	80-73
2/17	Ohio State	W	68-60
2/20	at Minnesota	W	77-53
2/24	Michigan	L	61-78
2/27	at Purdue	L	59-73

Big Ten Tournament

3/2	vs. Northwestern	L	59-68
-----	------------------	---	-------

2000-01

(21-10, 12-4 - Lisa Bluder)

Date	Opponent	W-L	Score
11/17	Marquette	W	70-57
11/19	Utah	L	42-66
11/22	Iowa State	L	76-86

Gazette Hawkeye Challenge

11/25	Western Illinois	W	99-54
11/26	Nevada	W	73-59
12/1	at Mount St. Mary's	W	89-63
12/3	at George Washington	L	64-78
12/7	at SW Missouri State	L	87-101
12/10	Colorado	W	92-66
12/16	at Drake	L	58-73
12/28	Northwestern	W	95-61
12/31	at Wisconsin	L	91-94
1/4	at Purdue	L	58-73
1/7	Michigan	W	79-58
1/14	Wisconsin	W	74-68
1/17	at Ohio State	L	52-79
1/21	Penn State	W	79-64

1/25	at Northwestern	W	92-52
2/1	at Michigan State	W	71-56
2/4	Indiana	W	83-56
2/8	Purdue	W	96-87
2/11	at Minnesota	W	82-71
2/15	at Michigan	L	78-80
2/18	Ohio State	W	74-59
2/22	Michigan State	W	50-47
2/25	at Illinois	W	75-64

Big Ten Tournament

3/2	vs. Indiana	W	81-76
3/3	vs. Illinois	W	86-79
3/4	vs. Purdue	W	75-70

NCAA Tournament - First Round

3/17	vs. Oregon	W	89-82 (ot)
------	------------	---	------------

NCAA Tournament - Second Round

3/19	at Utah	L	69-78
------	---------	---	-------

2001-02

(18-11, 10-6 - Lisa Bluder)

Date	Opponent	W-L	Score
------	----------	-----	-------

Great Alaska Shootout

11/20	vs. Gonzaga	W	69-54
11/21	vs. Marquette	W	90-72
11/25	Drake	L	72-75 (ot)
11/27	Southwest Missouri St.	W	84-64
11/30	at Denver	W	84-72
12/1	at Colorado	L	83-92

Gazette Hawkeye Challenge

12/7	Texas-Pan American	W	86-38
12/8	Kent State	W	76-65
12/12	at Iowa State	L	64-82
12/15	Creighton	W	86-43
12/22	at Northwestern	W	74-47
12/30	Wisconsin	L	61-68
1/3	at Ohio State	L	63-82
1/6	Purdue	W	90-75
1/10	Northwestern	W	82-68
1/13	at Indiana	W	73-65
1/20	Ohio State	W	79-65
1/24	Michigan State	W	75-55
1/27	at Purdue	L	68-82
1/31	at Michigan	L	74-82
2/3	Minnesota	L	83-94
2/7	at Wisconsin	W	76-64
2/10	at Penn State	W	96-81
2/14	Michigan	L	80-91
2/20	at Michigan State	W	69-59
2/24	Illinois	W	79-71

Big Ten Tournament

3/1	vs. Indiana	L	76-78 (ot)
-----	-------------	---	------------

NCAA Tournament - First Round

3/16	vs. Virginia	W	69-62
------	--------------	---	-------

NCAA Tournament - Second Round

3/18	Connecticut	L	48-86
------	-------------	---	-------

2002-03

(18-15, 6-10 - Lisa Bluder)

Date	Opponent	W-L	Score
------	----------	-----	-------

KCRG TV-9 Hawkeye Challenge

11/23	IUPUI	W	84-75 (ot)
11/24	Charlotte	W	85-70
11/26	Northern Iowa	W	98-68

LMU Thanksgiving Classic

11/29	vs. NC State	L	66-69 (ot)
11/30	vs. South Alabama	W	83-62
12/4	Iowa State	W	64-39
12/8	at Creighton	L	62-89
12/12	Denver	W	83-49
12/21	at Drake	W	72-52
12/29	Missouri	W	87-65

Big Ten/Big XII Challenge

1/5	at Kansas State	L	60-103
1/9	at Penn State	L	52-86
1/12	at Minnesota	L	65-94
1/16	Northwestern	W	72-60
1/21	Wisconsin	W	77-60
1/23	at Purdue	L	64-83
1/26	at Ohio State	L	59-74
1/30	Indiana	W	78-62
2/2	Illinois	L	72-82
2/6	at Michigan	W	65-57
2/9	at Illinois	L	58-73
2/13	at Indiana	L	68-89
2/16	Penn State	W	80-75

2/20	Minnesota	L	60-77
2/23	at Wisconsin	W	76-59
2/27	Michigan State	L	58-68
3/2	Purdue	L	68-78

Big Ten Tournament

3/6	vs. Northwestern	W	70-58
3/7	vs. Minnesota	W	80-77
3/9	vs. Purdue	L	57-84

WNIT - First Round

3/20	Saint Louis	W	93-64
------	-------------	---	-------

WNIT - Second Round

3/23	Marquette	W	76-73
------	-----------	---	-------

WNIT - Quarterfinals

3/25	Creighton	L	64-70
------	-----------	---	-------

2003-04

(18-15, 10-6 - Lisa Bluder)

Date	Opponent	W-L	Score
------	----------	-----	-------

KCRG TV-9 Hawkeye Challenge

11/21	Butler	W	83-60
11/22	Houston	L	64-70

FIU Thanksgiving Classic

11/28	vs. Saint Joseph's	W	62-58
11/29	at Florida International	W	93-86
12/3	at Iowa State	L	94-101 (2ot)
12/5	at Marquette	W	65-62
12/8	at Northern Iowa	W	76-67
12/12	Kansas State	L	60-82
12/21	Drake	W	79-65
12/28	Creighton	L	72-84 (ot)
12/30	at Missouri	L	65-75
1/2	Illinois	W	91-73
1/8	at Penn State	L	64-92
1/11	at Minnesota	L	61-75
1/15	Indiana	W	72-65
1/18	Wisconsin	W	66-46
1/25	Michigan	W	69-58
1/29	at Northwestern	W	76-61
2/1	at Michigan State	W	78-67
2/5	Ohio State	L	82-93
2/10	Purdue	L	79-90
2/12	at Wisconsin	W	87-82 (ot)
2/15	at Indiana	W	78-69
2/19	Minnesota	W	81-61
2/22	Penn State	L	58-70
2/26	at Purdue	L	55-84
2/29	at Illinois	W	89-64

Big Ten Tournament

3/5	vs. Michigan State	L	54-81
-----	--------------------	---	-------

NCAA Tournament - First Round

3/21	at Virginia Tech	L	76-89
------	------------------	---	-------

2004-05

(23-10, 8-8 - Lisa Bluder)

Date	Opponent	W-L	Score
------	----------	-----	-------

KCRG-TV9 Hawkeye Challenge

11/19	Southern Illinois	W	66-50
11/20	Missouri	W	75-54

Junkanoo Jam

11/26	vs. Florida	W	65-65
11/27	vs. Oklahoma	W	54-47
12/1	Iowa State	W	89-80
12/5	Northern Iowa	W	77-50
12/8	Marquette	W	78-72
12/10	at Creighton	W	91-82 (ot)
12/18	at Drake	W	80-69
12/21	Western Illinois	W	76-69
12/28	at UW-Milwaukee	W	59-51
12/30	Indiana	W	62-51
1/2	at Illinois	W	72-58
1/6	Penn State	L	71-77
1/9	at Michigan State	L	56-68
1/13	at Ohio State	L	57-80
1/16	Northwestern	W	81-76
1/23	at Drake	L	75-79
1/27	Michigan	W	71-63
2/3	at Minnesota	L	50-81
2/6	Wisconsin	L	78-88
2/10	at Northwestern	W	60-40
2/13	Ohio State	L	60-67
2/17	Michigan State	L	60-67
2/19	at Michigan	W	78-59
2/24	Illinois	W	87-63
2/27	at Indiana	W	56-53

Big Ten Tournament

3/3	vs. Michigan	W	70-42
3/4	vs. Penn State	L	66-68

WNIT - First Round

3/18	Creighton	W	67-52
------	-----------	---	-------

WNIT - Second Round

3/21	at Nebraska	W	71-67
------	-------------	---	-------

WNIT - Quarterfinals

3/24	vs. Arkansas State	W	66-52
------	--------------------	---	-------

WNIT - Semifinals

3/28	at SW Missouri State	L	80-89
------	----------------------	---	-------



The 2000-01 Iowa Hawkeyes captured its second-ever Big Ten Tournament title and advanced to the second round of the NCAA Tournament.

Big Ten Post-Season Tournament

1995 – Indianapolis, IN

(9) Iowa 57, (8) Minnesota 44
(1) Penn State 69, (9) Iowa 62

1996 – Indianapolis, IN

(1) Iowa 74, Illinois 56
(4) Purdue 76, (1) Iowa 68

1997 – Indianapolis, IN

(4) Iowa 73, (5) Northwestern 63
(4) Iowa 87, (8) Indiana 72
(4) Iowa 63, (3) Illinois 56

1998 – Indianapolis, IN

(1) Iowa 72, (8) Ohio State 54
(4) Purdue 61, (1) Iowa 60

1999 – Indianapolis, IN

(9) Northwestern 75, (8) Iowa 71

2000 – Indianapolis, IN

(10) Northwestern 68, (7) Iowa 59

2001 – Grand Rapids, MI

(2) Iowa 81, (7) Indiana 76
(2) Iowa 86, (6) Illinois 79
(2) Iowa 75, (1) Purdue 70

2002 – Indianapolis, IN

(5) Indiana 78, (4) Iowa 74 -- ot

2003 – Indianapolis, IN

(7) Iowa 70, (10) Northwestern 58
(7) Iowa 80, (2) Minnesota 77
(3) Purdue 87, (7) Iowa 57

2004 – Indianapolis, IN

(5) Michigan State 81, (4) Iowa 54

2005 -- Indianapolis, IN

(6) Iowa 70, (11) Michigan 42
(6) Iowa 66, (3) Penn State 68

Note: Number in parenthesis denotes seed in tournament

Big Ten/Big XII Challenge

2002-03 – Manhattan, KS

Kansas State 103, Iowa 60

Big Ten/SEC Challenge

1990-91 – Iowa City, IA

Georgia 62, Iowa 51

1991-92 – Iowa City, IA

Vanderbilt 95, Iowa 65

1996-97 – Gainesville, FL

Florida 68, Iowa 58

Burger King/Orange Bowl Classic – Miami, FL

1987-88

Iowa 73, Auburn 69
Iowa 75, Virginia 59
Iowa 75, Texas 65

1988-89

Iowa 86, Oklahoma 69
Iowa 84, Nebraska 67

Cal-Poly Classic – San Luis Obispo, CA

1981-82

Pacific 81, Iowa 70
Iowa 73, Biola 68
Iowa 64, Cal-Poly 57

Carolinas Holiday Beach Classic – Myrtle Beach, SC

1995-96

Iowa 68, Appalachian State 66
Georgia 79, Iowa 52

Central Fidelity Invitational – Richmond, VA

1997-98

Louisiana Tech 83, Iowa 58
Iowa 78, Richmond 66

FIU Sun and Fun Classic – Miami, FL

1992-93

Iowa 97, Bucknell 39
Colorado 72, Iowa 70
Iowa 67, Eastern Kentucky 63

FIU Thanksgiving Classic – Miami, FL

2003-04

Iowa 62, Saint Joseph's 58
Iowa 93, Florida International 86

Great Alaska Shootout – Anchorage, AK

1979-80

Iowa 68, Wyoming 65
Iowa 73, Alaska 52

2001-02

Iowa 69, Marquette 54
Iowa 90, Marquette 72

Hawai'i Wahine Classic – Honolulu, HI

1988-89

Iowa 83, Wyoming 40
Louisiana Tech 62, Iowa 58
Iowa 53, Washington 51

Hawkeye Challenge – Iowa City, IA

1985-86

Iowa 75, Bradley 39
Iowa 77, Memphis 56

1986-87

Iowa 70, Boston 48
Tennessee 74, Iowa 56

1987-88

Iowa 85, Missouri 71
Iowa 66, Georgia 56

1988-89

Iowa 73, Miami (OH) 44
Iowa 78, Wake Forest 62

1989-90

Iowa 90, Howard 57
Iowa 81, Connecticut 49

1990-91

Iowa 81, UCLA 52
Iowa 73, Louisiana State 65

1991-92

Iowa 97, Ohio 52
Iowa 58, Washington 58

1992-93

Iowa 74, West Virginia 44
Iowa 60, Charlotte 38

1993-94

Iowa 70, Louisiana Tech 66

1994-95

Iowa 60, James Madison 30
Iowa 65, Southern California 55

1995-96

Iowa 64, Stephen F. Austin 58
Iowa 68, UC-Santa Barbara 57

1997-98

Iowa 67, CS-Northridge 56
Washington 63, Iowa 62

1998-99

Iowa 75, Missouri 68
Iowa 59, Princeton 44

1999-00

Iowa 92, Bradley 49
Iowa 76, Syracuse 73

2000-01

Iowa 99, Western Illinois 54
Iowa 73, Nevada 59

2001-02

Iowa 86, UT Pan American 38
Iowa 76, Kent State 65

2002-03

Iowa 84, IUPUI 75 (ot)
Iowa 85, Charlotte 70

2003-04

Iowa 83, Butler 60
Houston 70, Iowa 64

2004-05

Iowa 66, Southern Illinois 50
Iowa 75, Missouri 54

Hilton Head Island Super Shootout – Hilton Head, SC

1989-90

South Carolina 82, Iowa 76
Iowa 106, North Carolina 81

Honda Elite Four Classic – Orlando, FL

1997-98

Vanderbilt 60, Iowa 54

Indiana State Classic – Terre Haute, IN

1983-84

Iowa 82, Indiana State 53
Iowa 76, Evansville 64

Jennies Classic – Warrensburg, MO

1977-78

Central Missouri 70, Iowa 63
Nebraska 71, Iowa 63
Iowa 73, South Dakota State 63

Junkanoo Jam -- Freeport, Bahamas

Iowa 65, Florida 62
Iowa 54, Oklahoma 47

Kansas Classic – Lawrence, KS

1988-89

Iowa 80, Grambling State 66
Kansas 67, Iowa 63

1995-96

Iowa 66, Saint Joseph's 49
Iowa 65, Kansas 58 (ot)

Kona Invitational – Kailua-Kona, HI**1996-97**

Iowa 89, Boise State 34
Iowa 80, Pacific 60
Nebraska 73, Iowa 67

La Salle Tournament – Philadelphia, PA**1984-85**

Iowa 62, SW Louisiana 39
Iowa 70, La Salle 51
St. Joseph's (PA) 61, Iowa 60

Lady Griz Classic – Missoula, MT**1980-81**

Montana 63, Iowa 54
BYU 87, Iowa 76

LMU Thanksgiving Classic – Los Angeles, CA**2002-03**

NC State 69, Iowa 66 (ot)
Iowa 83, South Alabama 62

LSU Crawfish Classic – Baton Rouge, LA**1985-86**

Iowa 83, Miami (FL) 63
Louisiana State 57, Iowa 56

Louisiana Tech Dial Soap Classic – Ruston, LA**1989-90**

Iowa 76, Saint Joseph's 57
Louisiana Tech 85, Iowa 82

Miami University Dial Classic – Miami, FL**1983-84**

Iowa 78, Connecticut 43
Northern Illinois 69, Iowa 65

Mid-America Classic – Columbia, MO**1991-92**

Iowa 87, Wright State 41
Iowa 89, Missouri 62

New Mexico State Invitational – Las Cruces, NM**1980-81**

Iowa 88, Portland State 82
Wichita State 87, Iowa 76
Iowa 83, New Mexico State 69

North Carolina State Classic – Raleigh, NC**1986-87**

Penn State 78, Iowa 74 (ot)
Iowa 63, Indiana 56

Northern Illinois Fastbreak Fest – DeKalb, IL**1987-88**

Iowa 82, Long Beach State 75
Iowa 81, Northern Illinois 73

Reebok Classic – Boston, MA**1997-98**

Arkansas 83, Iowa 57
Connecticut 65, Iowa 55

San Jose State Classic – San Jose, CA**1984-85**

Southern California 77, Iowa 57
Iowa 67, San Jose State 45

Stanford Cardinal Classic – Stanford, CA**1994-95**

NW Louisiana State 54, Iowa 53
Iowa 73, St. Mary's (CA) 48

Stephen F. Austin Dial Classic – Nacogdoches, TX**1994-95**

Iowa 67, Florida Atlantic
Stephen F. Austin 79, Iowa 70 (ot)

Sun Devil/Dial Classic -- Tempe, AZ**1982-83**

California 89, Iowa 66
Wyoming 79, Iowa 63

Syracuse Carrier Classic – Syracuse, NY**1998-99**

Iowa 62, Kent State 58
Iowa 70, Syracuse 64

USC Christmas Tournament – Los Angeles, CA**1993-94**

Iowa 59, Houston 44
Iowa 50, Southern California 49

William Woods Tournament – Fulton, MO**1978-79**

Iowa 89, Missouri Southern 84
Iowa 75, Western Illinois 66
William Woods 64, Iowa 58

November 13: (0-1)

1980__ Texas _____ L__ 62-82

November 15: (3-4)

1976__ at Marshalltown CC W__ 79-26
1977__ at Simpson _____ L__ 78-84
1978__ Simpson _____ W__ 101-75
1980__ at Wisconsin _____ L__ 69-73
1981__ Minnesota _____ L__ 52-77
1996__ Illinois State _____ W__ 66-41
1998__ at Washington _____ L__ 76-84

November 16: (1-1)

1979__ Delta State _____ L__ 73-77
1997__ Drake (ot) _____ W__ 66-63

November 17: (2-4)

1975__ Mt. Mercy _____ L__ 41-70
1978__ at William Penn _____ L__ 72-81
1979__ Western Illinois _____ W__ 86-55
1996__ Notre Dame _____ L__ 50-61
1998__ Iowa State _____ L__ 65-81
2000__ Marquette _____ W__ 70-57

November 18: (1-2)

1975__ at Drake _____ L__ 62-65
1976__ at Upper Iowa _____ W__ 78-40
1977__ Drake _____ L__ 66-77

November 19: (3-3)

1981__ Pacific _____ L__ 70-81
1982__ at Bradley _____ W__ 85-82
1996__ Iowa State _____ W__ 64-53
1999__ at Marquette _____ L__ 64-69
2000__ Utah _____ L__ 42-66
2004__ Southern Illinois _____ W__ 66-50

November 20: (4-1)

1974__ at Drake _____ L__ 64-75
1981__ Biola _____ W__ 73-68
1998__ Weber State _____ W__ 77-57
2001__ Gonzaga _____ W__ 69-54
2004__ Missouri _____ W__ 75-54

November 21: (3-3)

1977__ at Luther _____ L__ 60-72
1980__ South Dakota _____ L__ 72-75
1981__ Cal-Poly _____ W__ 64-57
1999__ Connecticut _____ L__ 45-73
2001__ Marquette _____ W__ 90-72
2003__ Butler _____ W__ 83-60

November 22: (3-4)

1976__ at St. Ambrose _____ W__ 88-47
1977__ at Grandview _____ W__ 88-73
1980__ Minnesota _____ L__ 71-94
1985__ Bradley _____ W__ 75-39
1998__ Western Kentucky _____ L__ 65-68
2000__ Iowa State _____ L__ 76-86
2003__ Houston _____ L__ 64-70

November 23: (3-1)

1982__ Iowa State _____ W__ 64-59
1985__ Memphis _____ W__ 77-56
1997__ Arkansas _____ L__ 57-83
2002__ IUPUI (ot) _____ W__ 84-75

November 24: (4-0)

1978__ Missouri Southern _____ W__ 89-84
1990__ UCLA _____ W__ 81-52
1995__ Stephen F. Austin _____ W__ 64-58
2002__ Charlotte _____ W__ 85-70

November 25: (7-5)

1974__ William Penn _____ L__ 29-74
1975__ Upper Iowa _____ W__ 70-40
1978__ Western Illinois _____ W__ 75-66
1978__ William Woods _____ L__ 58-64
1980__ William Penn _____ L__ 64-80
1988__ Wyoming _____ W__ 83-40
1989__ Howard _____ W__ 90-57
1990__ Louisiana State _____ W__ 73-65
1995__ UC Santa Barbara _____ W__ 68-57
1997__ Connecticut _____ L__ 55-65
2000__ Western Illinois _____ W__ 99-54
2001__ Drake (ot) _____ L__ 72-75

November 26: (5-1)

1988__ Louisiana Tech _____ L__ 58-62
1989__ Connecticut _____ W__ 81-49
1994__ James Madison _____ W__ 60-30
2000__ Nevada _____ W__ 73-59
2002__ Northern Iowa _____ W__ 98-68
2004__ vs. Florida _____ W__ 65-62

November 27: (8-1)

1978__ Northern Iowa _____ W__ 106-61
1979__ William Penn _____ L__ 68-69
1988__ Washington _____ W__ 53-51
1991__ at Kentucky _____ W__ 77-68
1994__ Southern California _____ W__ 65-55
1998__ Missouri _____ W__ 75-68
1999__ Bradley _____ W__ 92-49
2001__ SMS _____ W__ 84-64
2004__ vs. Oklahoma _____ W__ 54-47

November 28: (6-3)

1979__ Central Missouri _____ L__ 76-89
1983__ Drake _____ L__ 56-58
1984__ at Drake _____ L__ 59-69
1987__ Missouri _____ W__ 85-71
1988__ Georgia _____ W__ 66-56
1993__ Louisiana Tech _____ W__ 70-66
1998__ Princeton _____ W__ 59-44
1999__ Syracuse _____ W__ 76-73
2003__ St. Joseph's _____ W__ 62-58

November 29: (10-1)

1977__ Central _____ W__ 70-44
1985__ Miami, FL _____ W__ 83-63
1986__ Boston _____ W__ 70-48
1987__ at Iowa State _____ W__ 93-49
1989__ at Nebraska _____ W__ 74-55
1990__ at Connecticut _____ W__ 58-41
1991__ Iowa State _____ W__ 70-58
1995__ at Creighton _____ W__ 68-41
1997__ CS Northridge _____ W__ 67-56
2002__ NC State (ot) _____ L__ 66-69
2003__ Fla. International _____ W__ 93-86

November 30: (3-5)

1984__ Southern California _____ L__ 57-77
1985__ Louisiana State _____ L__ 56-57
1986__ Tennessee _____ L__ 56-74
1991__ Ohio University _____ W__ 97-52
1994__ at SMS _____ L__ 48-60
1997__ Washington _____ L__ 62-63
2001__ Denver _____ W__ 84-72
2002__ South Alabama _____ W__ 83-62

December 1: (9-1)

1979__ Wisconsin _____ W__ 68-51
1983__ at Northern Iowa _____ W__ 71-64
1984__ San Jose State _____ W__ 67-45
1989__ Saint Joseph's _____ W__ 76-57
1990__ at Penn State _____ L__ 62-82
1991__ Washington _____ W__ 58-39
1993__ at Drake _____ W__ 73-64
2000__ at Mount St. Mary's _____ W__ 89-63
2001__ at Colorado _____ W__ 83-92
2004__ Iowa State _____ W__ 89-80

December 2: (6-6)

1975__ Coe _____ L__ 58-59
1976__ Central _____ W__ 54-52
1978__ Wisconsin _____ W__ 75-68
1980__ Iowa State _____ W__ 67-66
1981__ at Iowa State _____ L__ 59-82
1985__ at W. Kentucky _____ L__ 67-77
1986__ at Nebraska _____ L__ 74-85
1988__ Grambling State _____ L__ 82-85
1994__ Florida Atlantic _____ W__ 67-42
1995__ Saint Joseph's _____ W__ 66-49
1999__ at Utah _____ L__ 61-70

December 3: (2-6)

1974__ at Grandview _____ L__ u/a
1977__ Iowa State (ot) _____ L__ 71-74
1986__ at Drake _____ W__ 71-57
1988__ at Kansas _____ L__ 63-67
1994__ at S.F. Austin (ot) _____ L__ 70-79
1995__ at Kansas (ot) _____ W__ 65-58
2000__ at Geo. Wash. _____ L__ 64-78
2003__ at Iowa State (2ot) _____ L__ 94-101

December 4: (10-0)

1976__ Drake _____ L__ 59-82
1978__ Iowa State _____ W__ 87-70
1979__ at Grandview _____ W__ 96-66
1980__ Portland State _____ W__ 88-82
1985__ at Iowa State _____ W__ 63-57
1986__ Iowa State _____ W__ 70-51
1990__ at Drake _____ W__ 74-49
1992__ at Pittsburgh _____ W__ 70-59
1998__ Kent State _____ W__ 62-58
1999__ at Weber State _____ W__ 73-55
2002__ Iowa State _____ W__ 64-39

December 5: (6-3)

1975__ at Iowa State _____ L__ 63-92
1980__ Wichita State _____ L__ 76-87
1982__ at Drake _____ L__ 75-88
1983__ at Iowa State (ot) _____ W__ 86-75
1987__ Long Beach State _____ W__ 82-75
1993__ Southwest Missouri _____ W__ 67-55
1998__ at Syracuse _____ W__ 70-64
2003__ at Marquette _____ W__ 65-62
2004__ Northern Iowa _____ W__ 77-50

December 6: (6-3)

1974__ Indiana _____ L__ 58-86
1974__ Minnesota _____ W__ 55-33
1980__ New Mexico State _____ W__ 83-69
1981__ Northwestern _____ L__ 80-92
1987__ Northern Illinois _____ W__ 81-73
1991__ Wright State _____ W__ 87-41
1992__ at Maryland _____ W__ 53-50
1996__ Boise State _____ W__ 89-34
1997__ Louisiana Tech _____ L__ 58-83

December 7: (7-3)

1974__ Illinois _____ W__ 62-46
1975__ at Central Missouri _____ L__ 56-72
1976__ Iowa Wesleyan _____ L__ 47-48
1988__ Iowa State _____ W__ 79-46
1991__ at Missouri _____ W__ 89-62
1995__ Drake _____ W__ 67-44
1996__ Pacific _____ W__ 80-60
1997__ at Richmond _____ W__ 78-66
2000__ at SMS _____ L__ 87-101
2001__ UT-Pan American _____ W__ 86-38

December 8: (7-5)

1974__ Wisconsin _____ L__ 49-65
1978__ at Central College _____ W__ 76-70
1985__ Penn State _____ W__ 65-63
1989__ DePaul _____ W__ 70-58
1990__ at DePaul _____ W__ 66-52
1994__ Creighton _____ L__ 53-63
1996__ Nebraska _____ L__ 67-73
1998__ at Drake _____ L__ 73-86
2001__ Kent State _____ W__ 76-65
2002__ at Creighton _____ L__ 82-89
2003__ at Northern Iowa _____ W__ 76-67
2004__ Marquette _____ W__ 78-72

December 9: (2-1)

1982__ California _____ L__ 66-89
1983__ Indiana State _____ W__ 82-53
1984__ Illinois State _____ W__ 65-57

December 10: (6-2)

1975__ Grandview _____ L__ 53-112
1977__ at Iowa Wesleyan _____ W__ 81-54
1982__ Wyoming _____ L__ 63-79
1983__ Evansville _____ W__ 76-64
1988__ Miami of Ohio _____ W__ 73-44
1989__ Drake _____ W__ 70-58
2000__ Colorado _____ W__ 92-66
2004__ at Creighton (ot) _____ W__ 91-82

December 11: (7-5)

1975__ Central _____ L__ 56-69
1979__ Drake _____ L__ 62-71
1980__ Utah _____ W__ 89-83
1981__ William Penn _____ L__ 68-85
1982__ Idaho State _____ W__ 74-65
1985__ Drake _____ L__ 63-64
1987__ Nebraska _____ W__ 68-58
1988__ Wake Forest _____ W__ 78-62
1991__ at Nebraska _____ W__ 64-59
1992__ West Virginia _____ W__ 74-44
1992__ Charlotte _____ W__ 60-38
1999__ at Iowa State _____ L__ 69-79

December 12: (1-4)

1978__ at Drake _____ L__ 80-94
1981__ Illinois _____ L__ 51-76
2001__ at Iowa State _____ L__ 64-82
2002__ Denver _____ W__ 83-49
2003__ Kansas State _____ L__ 60-82

December 13: (2-2)

1980__ at DePaul _____ W__ 97-87
1986__ at Illinois State _____ W__ 71-56
1996__ at Florida _____ L__ 58-68
1997__ Iowa State _____ L__ 57-74

December 15: (4-1)

1974__ at Northern Illinois _____ W__ 58-37
1978__ Nebraska-Omaha _____ W__ 63-61
1979__ at Iowa State _____ L__ 69-80
1984__ Iowa State _____ W__ 81-48
2001__ Creighton _____ W__ 86-43

December 16: (2-2)

1977__ William Penn _____ L__ 53-70
1983__ Bradley _____ W__ 70-46
1990__ Nebraska _____ W__ 80-46
2000__ at Drake _____ L__ 58-73

December 17: (2-1)

1976__ at Indian Hills _____ W__ 74-53
1989__ at Iowa State _____ W__ 75-55
1994__ NW Louisiana State _____ L__ 53-54

December 18: (3-1)

1982	National College	W	71-52
1994	St. Mary's (Calif.)	W	73-48
1999	Auburn	L	55-91
2004	at Drake	W	80-69

December 19: (3-0)

1981	UIC	W	69-52
1993	at James Madison	W	72-44
1995	Appalachian State	W	68-66

December 20: (1-4)

1992	Drake	W	90-44
1994	at UCSB	L	48-61
1995	Georgia	L	52-79
1998	at Auburn	L	55-78
1999	Drake	L	59-84

December 21: (6-2)

1986	Western Kentucky	W	67-47
1993	at West Virginia	W	69-57
1995	North Carolina	W	73-64
1996	at Drake	L	59-80
1997	vs. Vanderbilt	L	54-60
2002	at Drake	W	72-52
2003	Drake	W	79-65
2004	Western Illinois	W	76-69

December 22: (2-1)

1979	at Nebraska	L	66-67
1988	Oregon State	W	90-45
2001	at Northwestern	W	74-47

December 23: (1-1)

1978	Minnesota	W	91-82
1980	Drake	L	71-74

December 27: (2-0)

1984	vs. SW Louisiana	W	62-39
1995	at Illinois	W	73-64

December 28: (9-3)

1984	La Salle	W	70-51
1987	vs. Auburn	W	73-69
1988	vs. Oklahoma	W	86-69
1989	at South Carolina	L	76-82
1991	Vanderbilt	L	65-95
1994	Illinois	W	59-51
1996	at Minnesota	W	61-48
1997	Minnesota	W	91-55
1998	Illinois	W	89-86
2000	Northwestern	W	95-61
2003	Creighton (ot)	L	72-84
2004	at UW-Milwaukee	W	59-51

December 29: (6-2)

1984	St. Joseph's (Pa.)	L	60-61
1986	vs. Penn State (ot)	L	74-78
1987	Virginia	W	75-59
1988	vs. Nebraska	W	84-67
1989	vs. North Carolina	W	106-81
1993	vs. Houston	W	59-44
1995	at Michigan	W	69-53
2002	Missouri	W	87-65

December 30: (8-5)

1980	at Illinois	L	76-78
1983	Connecticut	W	78-43
1986	vs. Indiana	W	63-56
1987	Texas	W	75-65
1989	at Washington	L	61-71
1993	at USC	W	50-49
1994	Michigan	W	53-36
1996	at Ohio State	W	69-59
1997	Ohio State	W	66-57
1999	at Penn State	L	63-80
2001	Wisconsin	L	61-68
2003	at Missouri	L	65-75
2004	Indiana	W	62-51

December 31: (0-2)

1983	Northern Illinois	L	65-69
2000	at Wisconsin	L	91-94

January 2: (7-2)

1985	at Penn State	L	47-87
1987	at Wisconsin	W	83-44
1991	at Wisconsin	L	67-78
1993	vs. Bucknell	W	97-39
1997	at W. Kentucky	W	61-48
1998	at Penn State	W	78-69
2000	Indiana	W	82-68
2004	Illinois	W	91-73
2005	at Illinois	W	72-58

January 3: (2-5)

1980	Brigham Young	L	79-103
1984	at Delta State	L	70-93
1986	Purdue	W	79-52
1992	Penn State	W	61-53
1993	vs. Colorado	L	70-72
1999	at Wisconsin	L	72-79
2002	at Ohio State	L	63-82

January 4: (2-1)

1980	Washington State	W	69-51
1987	at Northwestern	W	72-61
2001	at Purdue	L	58-73

January 5: (4-9)

1977	at Illinois	L	54-58
1979	at Central Missouri	L	62-72
1980	at Utah	L	73-77
1982	at Northern Illinois	L	57-69
1985	at Purdue	W	68-54
1986	Illinois	W	74-57
1990	at Michigan State	L	61-62
1991	Georgia	L	51-62
1994	Minnesota	W	69-59
1996	Wisconsin	W	68-48
1997	Wisconsin	L	63-69
1999	at Minnesota	L	58-66
2003	at Kansas State	L	60-103

January 6: (5-3)

1981	at Montana	L	54-63
1984	Michigan State	W	70-62
1984	Michigan	W	70-51
1985	at Illinois	W	66-61
1989	Michigan	W	82-42
1995	at Wisconsin	L	62-72
2002	Purdue	W	90-75
2005	Penn State	L	71-77

January 7: (5-3)

1981	vs. Brigham Young	L	76-87
1983	at Michigan State	L	56-64
1987	Louisiana State	W	68-49
1990	at Michigan	W	54-54
1994	at Wisconsin	W	74-67
1996	Western Kentucky	W	68-54
2000	at Illinois	L	60-86
2001	Michigan	W	79-58

January 8: (4-4)

1979	at Kansas State	L	80-93
1982	Western Illinois	W	72-68
1984	at Northwestern	L	51-59
1989	Michigan State	W	89-49
1993	Wisconsin	W	65-39
1995	at W. Kentucky	L	43-79
1999	Indiana	W	77-76
2004	at Penn State	L	64-92

January 9: (5-5)

1976	at Mt. Mercy	L	75-90
1979	at NE Missouri	W	62-50
1980	at Illinois	W	71-44
1983	at Michigan	L	62-83
1985	Nebraska	W	62-41
1987	Minnesota	W	81-40
1998	Northwestern	W	65-58
2000	at Northwestern	L	52-53
2003	at Penn State	L	52-86
2005	at Michigan State	L	56-68

January 10: (9-2)

1976	Graceland	L	52-54
1981	Grand View	W	81-68
1985	Minnesota	W	60-38
1986	at Minnesota	W	66-63
1988	Northwestern	W	81-43
1991	Illinois	W	63-47
1992	Minnesota	W	85-68
1993	at Minnesota	W	75-47
1997	at Northwestern	W	73-61
1999	Purdue	L	69-71 (ot)
2002	Northwestern	W	82-68

January 11: (0-2)

1998	Purdue (ot)	L	66-75
2004	at Minnesota	L	61-75

January 12: (4-3)

1978	Central Missouri	L	63-70
1982	at National College	W	66-59
1983	Northern Iowa	W	66-65
1990	Illinois	W	85-51
1996	Purdue	W	68-57
1997	at Purdue	L	52-62
2003	at Minnesota	L	65-94

January 13: (4-5)

1978	Nebraska	L	63-71
1981	at South Dakota	L	68-78
1989	at Illinois	W	82-64
1991	Purdue (ot)	L	75-84
1992	at Louisiana Tech	W	61-57
1995	at Purdue	L	45-63
2000	Minnesota	W	80-51
2002	at Indiana	W	73-65
2005	at Ohio State	L	57-80

January 14: (4-1)

1978	S. Dakota State	W	73-63
1980	at Colorado State	W	74-67
1990	Purdue	L	63-66
1996	Michigan State	W	75-56
2001	Wisconsin	W	74-68

January 15: (4-2)

1988	at Minnesota	W	84-41
1989	Ohio State	W	84-70
1993	at Illinois	W	53-37
1995	at Mich. St. (2ot)	L	70-71
1999	at Penn State	L	60-66
2004	Indiana	W	72-65

January 16: (4-2)

1976	Central	W	57-54
1983	Northwestern	L	56-71
1994	Northwestern	W	67-59
2000	Penn State	L	64-78
2003	Northwestern	W	72-60
2005	Northwestern	W	81-76

January 17: (6-3)

1975	at Mt. Mercy	L	66-76
1978	Iowa Wesleyan	W	76-48
1980	at Texas Women's	W	58-50
1985	Michigan State	W	53-36
1986	at Michigan State	W	60-57
1992	Indiana	W	80-71
1993	at Northwestern	W	60-55
1999	at Michigan State	L	64-70
2001	at Ohio State	L	52-79

January 18: (4-4)

1975	Wartburg	L	52-60
1976	at UW - Platteville	W	91-57
1980	at Texas	L	49-75
1984	at Minnesota	L	62-73
1987	Purdue	W	68-54
1989	at Drake	W	71-65
1991	at Indiana	L	59-74
2004	Wisconsin	W	66-46

January 19: (7-1)

1977	at Mt. Mercy	W	65-61
1979	at Illinois State	W	82-71
1985	Michigan	W	70-45
1986	at Michigan	L	56-58
1987	Illinois	W	80-53
1990	at Minnesota	W	79-43
1992	Ohio State	W	73-56
1996	at Indiana	W	64-56

January 20: (4-3)

1976	at Coe	L	51-62
1979	at Illinois	L	53-60
1991	at Ohio State	W	88-68
1995	Indiana	W	60-55
1998	at Wisconsin	W	66-63
2000	Michigan State	L	77-82
2002	Ohio State	W	79-65

January 21: (6-5)

1975	at Iowa Wesleyan	L	58-67
1978	Illinois	L	60-62
1981	at Iowa State	W	66-62
1982	Iowa State	W	62-44
1983	Minnesota	L	62-73
1989	Minnesota	W	97-54
1994	at Indiana	L	58-82
1996	at Northwestern	W	64-51
1997	Penn State	L	60-61
2001	Penn State	W	79-64
2003	Wisconsin	W	77-60

January 22: (2-3)

1984	at Wisconsin	L	49-50
1988	at Illinois	W	90-63
1993	Indiana	W	79-50
1995	Northwestern	L	57-58
1999	Michigan	L	67-86

January 23: (2-6)

1979	Mt. Mercy	L	66-71
1982	at Central Missouri	L	53-81
1983	Wisconsin	L	47-68
1987	at Indiana	W	60-49
1998	Indiana	W	68-61
2000	at Michigan	L	78-82
2003	at Purdue	L	64-83
2005	at Purdue	L	75-79

January 24: (5-2)

1976	Illinois State	L	48-90
1981	at Western Illinois	L	81-83
1985	at Northwestern	W	70-51
1986	Northwestern	W	72-58
1988	at Purdue	W	67-57
1997	at Indiana	W	78-58
2002	Michigan State	W	75-55

January 25: (4-6)

1975	at Western Illinois	L	50-62
1977	Simpson	L	60-69
1980	DePaul	W	58-56
1982	at Minnesota	L	43-90
1988	at Ohio State	L	54-67
1991	Minnesota	W	70-51
1994	at Northern Illinois	L	56-59
1998	at Michigan	L	65-69 (ot)
2001	at Northwestern	W	92-52
2004	Michigan	W	69-58

January 26: (5-3)

1979	at Northern Iowa	W	90-55
1985	at Wisconsin	L	54-65
1986	Wisconsin	W	68-32
1990	at Indiana	W	63-52
1992	at Michigan	W	73-61
1993	Northern Illinois	W	92-59
1997	Michigan	L	63-75
2003	at Ohio State	L	59-74

January 27: (7-2)

1976	Clarke College	W	68-32
1978	at Northern Illinois	W	96-44
1981	Northwest Missouri	W	83-70
1982	at N. Iowa (ot)	W	74-68
1984	Ohio State	L	56-64
1989	Indiana	W	77-61
2000	Wisconsin	W	66-62
2002	at Purdue	L	68-82
2005	Michigan	W	71-63

January 28: (3-3)

1975	at William Penn	L	33-91
1976	at Luther	L	45-94
1983	at Ohio State	L	57-77
1990	at Ohio State	W	71-48
1994	Michigan	W	78-56
1996	Minnesota	W	94-51

January 29: (5-4)

1978	at Mt. Mercy	L	75-86
1980	Iowa State	W	66-50
1982	at Neb.-Omaha	L	54-64
1984	Indiana	W	54-50
1988	Indiana	W	72-48
1989	at Purdue	L	56-67
1993	at Michigan	W	84-54
1999	Michigan State	L	69-81
2004	at Northwestern	W	76-61

January 30: (4-5)

1979	Drake	L	63-96
1981	at Minnesota	L	52-71
1982	at Creighton	L	66-74
1983	at Indiana	L	51-68
1987	Michigan State	W	83-61
1994	Michigan State	W	54-46
1998	Illinois	W	82-71
2000	at Arkansas	L	65-72
2003	Indiana	W	78-62

January 31: (6-5)

1975	Cornell	W	91-23
1976	at Northern Illinois	L	53-54
1978	at Central	L	66-76
1985	Indiana	W	69-49
1986	at Indiana	W	47-46
1988	Ohio State	W	75-64
1992	Illinois	W	68-42
1993	at Michigan State	W	75-55
1997	at Illinois	L	75-83
1999	Penn State	L	64-88
2002	at Michigan	L	74-82

February 1: (3-3)

1977	William Penn	L	45-76
1987	Michigan	W	75-54
1991	Michigan State	L	54-64
1998	at Michigan State	L	62-66
2001	at Michigan State	W	71-56
2004	at Michigan State	W	78-67

February 2: (6-4)

1975	Iowa State	L	47-65
1980	at South Dakota	W	70-48
1984	at Illinois	L	55-64
1986	at Ohio State	L	54-70
1988	at Michigan State	W	77-52
1990	Wisconsin	W	84-52
1992	Purdue	W	65-64
1996	at Ohio State	W	82-75
1997	Michigan State	W	82-62
2003	Illinois	L	72-82

February 3: (2-7)

1976	at William Penn	L	39-96
1979	at Minnesota	L	79-90
1981	at Drake	L	56-83
1985	Ohio State	L	47-56
1989	at Wisconsin	W	67-57
1991	Michigan	W	79-60
2000	at Indiana	L	67-70
2002	Minnesota	L	83-94
2005	at Minnesota	L	50-81

February 4: (4-5)

1976	Illinois	W	63-54
1976	Michigan State	L	54-83
1978	Purdue	L	63-72
1980	at Drake	L	67-76
1983	Illinois	L	69-71
1990	Northwestern	L	63-64
1994	at Ohio State	W	64-61
1996	Indiana	W	77-51
2001	Indiana	W	83-56

February 5: (6-4)

1976	Purdue	L	42-53
1977	at N. Iowa CC	W	70-65
1984	at Purdue	W	49-39
1988	at Michigan	W	89-54
1989	at Northwestern	W	63-53
1991	at Northwestern	W	64-60
1993	Ohio State	W	79-62
1999	at Ohio State	L	66-70
2004	Ohio State	L	82-93

February 6: (4-5)

1977	at Iowa State	L	58-71
1979	St. Ambrose	W	85-59
1982	Drake	L	63-77
1983	Purdue	W	76-70
1987	at Minnesota	W	78-60
1994	at Penn State	L	61-63
1998	at Purdue	L	48-53
2000	at Michigan State	L	64-74
2003	at Michigan	W	65-57
2005	Wisconsin	L	78-88

February 7: (3-2)

1986	Minnesota	W	61-51
1992	at Wisconsin	L	58-74
1993	Penn State	W	84-59
1997	Purdue	L	48-53
1999	at Indiana	W	73-69

February 8: (7-2)

1975	at Northern Iowa	L	39-83
1976	Luther	L	57-76
1979	Michigan	W	79-70
1980	Ohio State	W	61-60
1985	at Minnesota	W	66-58
1991	at Purdue	W	56-53
1998	at Northwestern	W	79-72
2001	at Purdue	W	96-87
2002	at Wisconsin	W	76-64

February 9: (4-3)

1979	Minnesota	L	64-86
1980	Northwestern	L	66-69
1990	at Illinois	W	59-51
1992	at Northwestern	W	90-72
1996	at Michigan State	W	71-65
1997	Northwestern	W	80-56
2003	at Illinois	L	58-73

February 10: (7-2)

1977	Illinois	L	40-53
1980	Michigan State	W	63-58
1984	Purdue	W	78-40
1986	Miami, Fla.	W	75-46
1989	Purdue	W	66-64
1991	at Illinois	W	63-43
2002	at Penn State	W	96-81
2004	Purdue	L	79-90
2005	at Northwestern	W	60-40

February 11: (2-4)

1977	Purdue	L	63-67
1983	at Purdue	L	53-63
1990	at Purdue (ot)	W	70-67
1994	at Northwestern	L	47-55
1996	at Purdue	L	42-62
2001	at Minnesota	W	82-71

February 12: (6-2)

1980	Minnesota	W	70-68
1982	Wisconsin	L	64-78
1988	Minnesota	W	100-51
1989	Illinois	W	82-50
1993	Northwestern	W	68-62
1995	Purdue	L	55-62
1999	Minnesota	W	79-62
2004	at Wisconsin (ot)	W	87-82

February 13: (6-3)

1976	St. Ambrose	W	52-27
1981	Wisconsin	L	67-88
1984	Illinois	W	74-65
1987	at Purdue	W	86-68
1994	at Illinois	W	55-52
1995	at Minnesota	L	56-70
1998	Wisconsin	W	87-76
2000	Illinois	W	80-73
2005	Ohio State	L	60-67

February 14: (7-7)

1975	William Penn	L	22-73
1976	Mt. Mercy	L	35-61
1976	Coe	W	66-48
1978	at William Penn	L	57-82
1979	Iowa State	W	81-70
1983	at Illinois	L	69-71
1986	Michigan	W	63-42
1992	at Ohio State	W	68-59
1993	Illinois	W	77-58
1995	Ohio State	W	67-61
1997	at Wisconsin	L	56-59
1999	Northwestern	W	86-69
2002	Michigan	L	80-91
2003	at Indiana	L	68-89

February 15: (7-3)

1975	Iowa Wesleyan	L	32-68
1976	Iowa Wesleyan	W	60-54
1977	Indian Hills CC	W	70-47
1985	at Michigan	W	79-49
1987	at Illinois	W	70-54
1991	Ohio State	W	70-47
1995	at Indiana	L	49-57
1998	Penn State	W	73-49
2001	at Michigan	L	78-80
2004	at Indiana	W	78-69

February 16: (8-3)

1976	Mt. Mercy	L	49-59
1976	Drake	W	67-42
1980	at NW Missouri	L	50-71
1986	Michigan State	W	61-48
1988	Drake	W	74-38
1990	Minnesota	W	87-58
1992	at Indiana	W	59-57
1995	Michigan State	L	55-62
1996	Penn State	W	81-69
1997	at Penn State	W	66-63
2003	Penn State	W	80-75

February 17: (5-5)

1975	Mt. Mercy	L	59-70
1979	NW Missouri	W	71-63
1982	at Grandview	L	54-76
1984	at Indiana	L	62-68
1985	at Michigan State	W	77-55
1989	at Minnesota	W	80-73
1991	Indiana	W	86-55
1995	at Penn State	L	62-73
2000	Ohio State	W	68-60
2005	Michigan State	L	60-67

February 18: (4-4)

1977	Drake	L	56-64
1977	Luther	W	77-71
1977	Iowa State	L	73-82
1978	Minnesota	L	79-84
1983	Indiana	L	59-65
1994	Purdue	W	62-48
1996	at Wisconsin	W	67-63
2001	Ohio State	W	74-59

February 19: (6-2)

1979	Grandview	W	72-69
1984	at Ohio State	L	60-82
1988	Purdue	W	66-52
1993	at Purdue	W	63-55
1995	Wisconsin	L	55-62
1999	at Michigan	W	78-75
2004	Minnesota	W	81-61
2005	at Michigan	W	78-59

February 20: (4-5)

1981	at UIC	L	77-78
1982	at Drake	L	61-96
1983	Ohio State	L	57-72
1987	Ohio State	W	66-54
1994	Indiana	L	59-63
1998	at Ohio State	W	74-71
2000	at Minnesota	W	77-53
2002	at Michigan State	W	69-59
2003	Minnesota	L	60-77

February 21: (5-2)

1981	at Northwestern	L	63-85
1986	at Wisconsin	W	61-47
1988	Illinois	W	87-36
1992	Michigan	W	81-45
1993	at Indiana	W	68-46
1997	Ohio State	W	80-59
1999	at Illinois	L	73-86

February 22: (6-1)

1979	Iowa State	W	68-67
1985	Wisconsin	W	64-52
1987	Indiana	W	71-50
1991	at Minnesota	W	70-46
1998	at Minnesota	W	71-59
2001	Michigan State	W	50-47
2004	Penn State	L	58-70

February 23: (7-2)

1978	Iowa State	W	77-60
1980	at Minnesota	L	67-92
1983	at Wisconsin	L	64-78
1986	at Northwestern (ot)	W	69-66
1990	Ohio State	W	94-51
1992	Michigan State	W	70-47
1996	Michigan	W	74-52
1997	Minnesota	W	78-42
2003	at Wisconsin	W	76-59

February 24: (6-3)

1978	Drake	L	60-88
1979	Drake	L	71-101
1984	Wisconsin	W	46-37
1985	Northwestern	W	71-61
1989	at Indiana	W	70-63
1995	at Michigan	W	71-43
2000	Michigan	L	61-78
2002	Illinois	W	79-71
2005	Illinois	W	87-63

February 25: (5-1)

1978	Iowa State	L	82-87
1990	Indiana	W	85-47
1991	Louisiana Tech	W	72-57
1994	at Michigan State	W	63-56
1996	Illinois	W	73-55
2001	at Illinois	W	75-64

February 26: (4-2)

1982	Central Missouri	W	68-62
1984	Minnesota	W	79-58
1988	at Ohio State	L	54-58
1993	Michigan State	W	76-46
1995	at Illinois	W	69-61
2004	at Purdue	L	55-84

February 27: (3-2)

1987	at Michigan	W	78-54
1994	at Michigan	W	65-55
2000	at Purdue	L	59-73
2003	Michigan State	L	58-68
2005	at Indiana	W	56-53

February 28: (5-3)

1980	NW Missouri (ot)	L	71-73
1986	Ohio State	W	75-64
1988	at Indiana	W	71-47
1992	at Purdue	L	64-72
1993	Michigan	W	71-34
1997	Northwestern	W	78-68
1998	Ohio State	W	72-54
1999	Northwestern	L	71-75

February 29: (1-0)

2004	at Illinois	W	89-64
------	-------------	---	-------

March 1: (4-4)

1975	Coe	L	45-47
1985	at Ohio State	L	41-64
1987	at Michigan State	W	71-49
1991	at Michigan	W	76-64
1996	Illinois	W	74-56
1997	Indiana	W	87-53
1998	Purdue	L	60-61
2002	Indiana (ot)	L	76-78

March 2: (5-3)

1975	Marycrest	W	73-37
1986	Indiana	W	63-47
1990	at Northwestern	W	64-43
1996	Purdue	L	68-76
1997	Illinois	W	63-56
2000	Northwestern	L	59-68
2001	Indiana	W	81-76
2003	Purdue	L	68-78

March 3: (5-3)

1982	Wisconsin	L	64-78
1984	Northwestern	W	72-61
1985	at Indiana	L	48-63
1989	Northwestern	W	77-46
1991	at Michigan State	L	48-49
1995	Minnesota	W	57-44
2001	Illinois	W	86-79
2005	vs. Michigan	W	70-42

March 4: (5-3)

1983	at Northwestern	L	54-81
1987	Northwestern	W	70-53
1988	Michigan	W	76-55
1990	at Wisconsin	W	79-60
1994	Penn State	W	78-68
1995	Penn State	L	62-69
2001	Purdue	W	75-70
2005	vs. Penn State	L	66-68

March 5: (1-2)

1989	Wisconsin	W	78-52
1992	at Penn State	L	64-70
2003	Michigan State	L	54-81

March 6: (3-1)

1986	at Illinois	L	68-78
1988	Michigan State	W	52-46
1994	Ohio State	W	59-57
2003	Northwestern	W	70-58

March 7: (4-1)

1985	Illinois	W	79-66
1987	Wisconsin	W	78-56
1991	Northwestern	W	67-58
1992	at Ohio State	L	60-72
2003	Minnesota	W	80-77

March 8: (3-0)

1984	at Michigan	W	71-54
1986	at Purdue	W	80-63
1990	Michigan	W	78-47

March 9: (3-1)

1985	Purdue	W	85-61
1989	at Michigan	W	79-61
1991	Wisconsin (ot)	W	85-76
2003	Purdue	L	57-84

March 10: (4-0)

1983	Michigan	W	72-50
1984	at Michigan State	W	72-62
1988	at Northwestern	W	76-66
1990	Michigan State	W	86-58

March 11: (1-2)

1982	Iowa State	L	52-64
1989	at Michigan State	W	74-63
1994	at Minnesota	L	58-64

March 12: (2-0)

1988	Wisconsin	W	98-50
1992	Minnesota	W	83-59

March 13: (2-0)

1991	at Montana	W	64-53
1998	Massachusetts	W	77-59

March 14: (3-0)

1980	Wyoming	W	68-65
1996	Butler	W	72-67
1997	NC State	W	56-50

March 15: (2-1)

1980	Alaska	W	73-52
1987	New Orleans	W	68-46
1998	Kansas	L	58-62

March 16: (3-2)

1991	at Washington	L	53-70
1994	Mount St. Mary's	W	70-47
1996	DePaul	W	72-71
1997	Connecticut	L	53-72
2002	Virginia	W	69-62

March 17: (2-1)

1990	Vanderbilt	L	56-61
1992	at Old Dominion	W	82-56
2001	Oregon (ot)	W	89-82

March 18: (3-1)

1988	Stephen F. Austin	W	83-65
1989	Tennessee Tech	W	77-75
2002	Connecticut	L	48-86
2005	Creighton	W	67-52

March 19: (1-1)

1987	Georgia	W	62-60
2001	at Utah	L	69-78

March 20: (1-2)

1986	at Tennessee	L	68-73
1994	Alabama	L	78-84
2003	St. Louis	W	93-64

March 21: (1-3)

1987	Louisiana Tech	L	65-66
1996	Vanderbilt	L	63-74
2004	at Virginia Tech	L	76-89
2005	at Nebraska	W	71-67

March 23: (1-1)

1989	Stanford	L	74-98
2003	Marquette	W	76-73

March 24: (2-0)

1988	USC	W	79-67
2005	vs. Arkansas State	W	66-52

March 25: (1-1)

1992	Auburn	W	63-50
2003	Creighton	L	64-70

March 26: (0-1)

1988	at Long Beach St.	L	78-98
------	-------------------	---	-------

March 27: (1-0)

1992	Tennessee	W	72-56
------	-----------	---	-------

March 28: (0-1)

2005	at SMS	L	80-89
------	--------	---	-------

April 3: (0-1)

1992	Ohio State (ot)	L	72-73
------	-----------------	---	-------



Coincidentally, over the past 34 years, four of Iowa's eight games played on December 3rd have been overtime contests, including one double overtime thriller.

Photo not available



The 1986-87 team won its first Big Ten Championship when the Hawkeyes claimed a share of the title with a 17-1 conference record. The team would go on and advance to the Elite Eight in the NCAA Tournament.



In 1988-89, the Hawkeyes claimed a share of the Big Ten Championship with a 15-3 mark. This group of Hawkeyes would extend its home winning streak to 41 games, the second-longest in the nation at the time.



The 1987-88 Iowa Hawkeyes won its first outright Big Ten Championship with a 17-1 regular season conference mark. The team finished the season ranked No. 2 in the final Associated Press poll.



During the 1989-90 season, the Hawkeyes won a share of the Big Ten Championship with a 15-3 conference record. The Hawkeyes finished the season ranked No. 10 in the final Associated Press poll.



The 1991-92 Hawkeyes won the Big Ten Championship outright with a 16-2 conference record. Iowa finished the season ranked No. 7 in the final Associated Press poll.



In 1995-96, the Hawkeyes finished with a 15-1 mark to win its seventh Big Ten Championship. This group of Hawkeyes finished the season ranked No. 7 in the final Associated Press poll.



With a 16-2 conference record, Iowa claimed a share of the Big Ten Championship during the 1992-93 season. This special group of Hawkeyes would go on to become the only Iowa team to advance to the Final Four.



Iowa's last group of conference champions, the 1997-98 squad finished the regular season with a 13-3 conference mark to secure its eighth Big Ten Championship. The team finished the season ranked No. 24 in the final Associated Press poll.

The Iowa Hawkeyes have celebrated Big Ten Tournament Championship victories in 1997 and 2001.

The 1997 Hawkeyes finished the regular season in fourth-place and knew they needed to win the Big Ten Tournament in order to advance to the NCAA Tournament.

Iowa was able to contain the sharp-shooting Northwestern Wildcats and held on for a 78-68 win in the quarterfinals. The Hawkeyes used a team effort to defeat Indiana, 87-53 in the semifinals. Iowa prevailed in the championship game, 63-56, over Illinois to receive the Big Ten's automatic bid into the NCAA Tournament.

Junior Angela Hamblin earned the tournament's MVP honor, averaging 13.3 points per game and 7.3 rebounds per game during the tournament.

In 2001, Iowa completed the regular season in second-place and entered the Big Ten Tournament as the only team to have defeated every conference team at least once during the regular season.

Iowa captured the Big Ten Tournament with three thrilling victories. The Hawkeyes rallied from 19 points down to defeat Indiana in the quarterfinals, 81-76. Brimming with confidence, the Hawkeyes bounced Illinois in the semifinals, 86-79, to advance to the championship game against Purdue. A game that saw 11 lead changes, Iowa prevailed with a 75-70 win to snap the Boilermakers three-year run as Big Ten Tournament Champions.

It was almost like a Hollywood movie script, in her final Big Ten Tournament game on her 22nd birthday, senior Cara Consuegra led Iowa to victory and was named the tournament's Most Outstanding Player. Consuegra averaged 19.0 points per game and 6.3 assists per game.

Iowa will gun for its third Big Ten Tournament Championship, March 2-6, 2006, in Indianapolis, Indiana.



The 1997 Hawkeyes celebrate their Big Ten Tournament Championship.



Cara Consuegra was named the 2001 Big Ten Tournament's Most Outstanding Player.



Tangela Smith takes her turn cutting down the net after Iowa won the 1997 Big Ten Tournament.



Iowa is all smiles after winning its second Big Ten Tournament in 2001.

15 NCAA Tournaments And Counting

Since the NCAA began sponsoring a women's basketball championship tournament in 1982, the Hawkeyes have advanced to the prestigious event 15 times -- the second most next to Penn State among Big Ten Conference schools.

In 1983, former Hawkeye head coach C. Vivian Stringer took over the Iowa program after it had suffered three straight losing seasons. In her first year, she produced a winner with a 17-10 overall record. That 1983-84 squad finished third in the Big Ten Conference.

In 1984-85, the program took another step forward finishing 20-8 and second in the Big Ten with a 14-4 record. The Hawkeyes shattered the NCAA attendance record as 22,157 fans packed Carver-Hawkeye Arena to watch the Hawkeyes challenge Ohio State.

By 1985-86, the Hawkeyes were ready for even bigger challenges. Iowa had never received an NCAA bid, and that is what Stringer and her Hawkeyes wanted to achieve. The goal was met as Iowa advanced to the second round. As well, the Hawkeyes finished ranked 12th in the nation.

The most memorable season in Hawkeye women's basketball history was 1992-93. Despite numerous personal tragedies, Iowa won its way to the NCAA Final Four in Atlanta, GA.

Stringer built a strong tradition of excellence for women's basketball that continues to blossom today.



Iowa has built a strong tradition of excellence during its 30-year history. Winning conference championships and having a strong presence in the NCAA Tournament is common practice at Iowa.



The 1992-93 Iowa Hawkeyes won the Mid-east Regional hosted by the University of Iowa, and advanced to their first-ever NCAA Final Four.

Not only did Stringer lead the Hawkeyes to nine consecutive NCAA Tournament appearances before her departure to Rutgers University, but they won six Big Ten titles and numerous players earned conference and national honors.

In 1995, Angie Lee took over the program and she continued the winning tradition that Hawkeye fans have come to expect.

In her first year at the helm of the Iowa program, she led the Hawkeyes to their first outright Big Ten title since 1991-92. Iowa finished the season 27-4 and ranked seventh in the nation. Also, the Hawkeyes advanced to the NCAA Mid-east Regional semi-final game. Not only did Lee earn numerous Coach of the Year laurels, but many of her players received postseason honors.



The Hawkeyes celebrate their 72-56 victory over Tennessee in Carver-Hawkeye Arena to advance to the Final Four.



Iowa expresses jubilation after defeating DePaul, 72-71, and advancing to the Sweet 16 in 1996.

In Lee's second season, Iowa advanced to its 11th NCAA Tournament winning the Big Ten Tournament. The Hawkeyes advanced to the second round losing to defending NCAA champion Connecticut in Storrs, CT.

In 1998, the Hawkeyes, after winning the Big Ten regular season title, advanced to its 12th NCAA Tournament and hosted the regionals. After defeating Massachusetts, 77-59, in the first round, the Hawkeyes were defeated by Kansas in the second round, 62-58.

After two seasons of missing the NCAA Tournament, new Iowa Head Coach Lisa Bluder coached the Hawkeyes to the NCAA Tournament after winning the Big Ten Tournament title. Receiving the No. 4 seed, Iowa was unable to host a regional site due to Iowa's arena serving as host for the NCAA Wrestling Championships. Undaunted, Iowa traveled to Salt Lake City. Iowa defeated Oregon in the first round before ultimately falling to Utah and the nation's toughest defense in the second round.

For the second consecutive year, the Hawkeyes advanced to the NCAA Tournament and the second round. The Hawkeyes finished the Big Ten regular season in fourth-place and received the No. 9 seed in the Midwest Region. Iowa was sent away from Iowa City to play in one of the toughest regionals in Storrs, CT. The Hawkeyes opened tournament play with a 69-62 victory over No. 8 seed Virginia and then lost to the eventual national champions Connecticut, 86-48, in front of a capacity crowd.

In 2003-04, Iowa returned to the NCAA Tournament where the Hawkeyes received an at-large bid. The Hawkeyes were the only team in the tournament field that received an at-large berth with 16 victories. Placing fourth in one of the toughest conferences in the nation and boasting one of toughest schedules in the country, the selection committee selected Iowa as a No. 9 seed and sent the Hawkeyes to No. 8 seed Virginia Tech. The Hokies downed the Hawkeyes (89-76) to end Iowa's exciting season.

With eight experienced letterwinners returning, including two starters, the Hawkeyes expect another return and run through the big dance.



The 2001-02 Hawkeyes advanced to their 14th NCAA Tournament. Iowa lost in the second round to the eventual national champion Connecticut Huskies in Storrs, CT.

Here is a look at the continued growth of the Hawkeye basketball program since the NCAA began sponsoring a national championship tournament.

1981-82

- ◆ Season Record: 8-17 overall

1982-83

- ◆ Season Record: 7-20 overall, 2-16 Big Ten

1983-84

- ◆ Season Record: 17-10 overall, 11-7 Big Ten (3rd)

1984-85

- ◆ Season Record: 20-8 overall, 14-4 Big Ten (2nd)
- ◆ Nation's No. 2 defensive team (scoring defense)
- ◆ Led the Big Ten in scoring defense
- ◆ Shattered NCAA attendance record - 22,157

1985-86

- ◆ Season Record: 22-7 overall, 15-3 Big Ten (2nd)
- ◆ NCAA Tournament (advanced to second round)
- ◆ Ranked 12th on final Associated Press poll
- ◆ Ranked 12th on final USA Today poll
- ◆ Led the Big Ten in scoring defense
- ◆ Recorded undefeated home season (14-0)

1986-87

- ◆ Season Record: 26-5 overall, 17-1 in the Big Ten (tie 1st)
- ◆ NCAA Tournament (advanced to regional final)
- ◆ Ranked ninth on final Associated Press poll
- ◆ Ranked seventh on final USA Today poll
- ◆ Led the Big Ten in scoring defense



Former Iowa head coach C. Vivian Stringer was all smiles after the Hawkeyes won the 1993 NCAA Midwest Regional to advance to Iowa's first Final Four.

1987-88

- ◆ Season Record: 29-2 overall, 17-1 Big Ten (1st)
- ◆ NCAA Tournament (advanced to regional final)
- ◆ Ranked 2nd on final Associated Press poll
- ◆ Ranked 6th on final USA Today poll
- ◆ Ranked first on both polls for eight consecutive weeks
- ◆ Led the Big Ten in field goal defense, rebound margin, turnover margin, scoring offense, scoring defense, scoring margin
- ◆ Set Iowa records for most wins (29), longest win streak (22), longest home win streak (14), overall average attendance (5,990), overall Big Ten average attendance (7,071), tied most wins in a Big Ten season (17)
- ◆ Became first school in the nation to sell out a regular season women's game. Iowa vs. Ohio State was sold-out 30 hours prior to tip-off
- ◆ Recorded undefeated home season (14-0).



The 1989-90 Hawkeyes shared the conference championship and finished the season ranked No. 10 in the Associated Press poll.

1988-89

- ◆ Season Record: 27-5 overall, 16-2 Big Ten (tie 1st)
- ◆ NCAA Tournament (advanced to regional semifinal)
- ◆ Ranked 8th on final Associated Press poll
- ◆ Ranked 11th on final *USA Today* poll
- ◆ Led Big Ten in scoring margin, rebound margin, turnover margin, scoring defense
- ◆ Extended home win streak to 41 games, the second-longest in the nation

1989-90

- ◆ Season Record: 23-6 overall, 15-3 Big Ten (tie 1st)
- ◆ NCAA Tournament (advanced to second round)
- ◆ Ranked 10th on final Associated Press poll
- ◆ Ranked 18th on final *USA Today* poll
- ◆ Led the Big Ten in field goal defense, scoring defense, scoring margin and turnover margin
- ◆ Recorded undefeated home season (14-0)
- ◆ Signed the nation's No. 1-ranked recruiting class

1990-91

- ◆ Season Record: 21-9 overall, 13-5 Big Ten (tie 2nd)
- ◆ NCAA Tournament (advanced to second round)
- ◆ Ranked 23rd on final Associated Press poll
- ◆ Ranked 22nd on final *USA Today* poll
- ◆ Led the Big Ten in scoring defense, opponents rebounds
- ◆ Ranked 10th on final *USA Today* poll
- ◆ Led the Big Ten in scoring defense, field goal defense and opponents' rebounds

1991-92

- ◆ Season Record: 25-4 overall, 16-2 Big Ten (1st)
- ◆ NCAA Tournament (advanced to second round)
- ◆ Ranked 7th on final Associated Press poll
- ◆ Ranked 10th on final *USA Today* poll
- ◆ Led the Big Ten in scoring defense and field goal percentage

1992-93

- ◆ Season Record: 27-4 overall, 16-2 Big Ten (tie 1st)
- ◆ NCAA Tournament (advanced to the Final Four)
- ◆ Midwest Regional Champions
- ◆ Ranked fourth on final Associated Press poll
- ◆ Ranked third on final *USA Today* poll
- ◆ Recorded undefeated home season (15-0)
- ◆ Led nation in scoring defense
- ◆ Led the Big Ten in scoring defense, scoring margin, opponents' field goal percentage, opponents' rebounds and rebound margin



In 1996-97, Iowa won the Big Ten Tournament in Indianapolis, to advance to the NCAA Tournament. Iowa defeated N.C. State in the first round and was defeated by Connecticut in the second round.

1993-94

- ◆ Season Record: 21-7 overall, 13-5 Big Ten (3rd)
- ◆ NCAA Tournament (advanced to second round)
- ◆ Ranked 13th on final Associated Press poll
- ◆ Ranked 13th on final *USA Today* poll
- ◆ Ranked No. 2 nationally for eight weeks
- ◆ Only Division I team in the state of Iowa - men's or women's to enter postseason play
- ◆ Led the Big Ten in scoring defense and three-point field goal percentage
- ◆ Signed the nation's No. 1-ranked recruiting class

1994-95

- ◆ Season Record: 11-17 overall, 6-10 Big Ten (9th)
- ◆ Ranked five weeks by the Associated Press poll, reaching No. 12
- ◆ Ranked five weeks by the *USA Today* poll, reaching No. 10

1995-96

- ◆ Season Record: 27-4 overall, 15-1 Big Ten (1st)
- ◆ NCAA Tournament (advanced to regional semifinal)
- ◆ Captured first outright Big Ten title since 1991-92
- ◆ Undefeated at home (14-0)
- ◆ Ranked seventh in final Associated Press poll
- ◆ Ranked ninth in final USA Today-WBCA poll
- ◆ Led the Big Ten in scoring defense, opponents field goal percentage, rebounds and blocked shots

1996-97

- ◆ Season Record: 18-12 overall, 9-7 Big Ten (tie 4th)
- ◆ Won Big Ten Tournament title
- ◆ NCAA Tournament (advanced to second round)
- ◆ Led the Big Ten in field goal percentage, rebounding margin, opponent field goal percentage, rebounding margin and blocked shots

1997-98

- ◆ Season Record: 18-11 overall, 13-3 Big Ten (1st)
- ◆ Won Big Ten Regular Season Title
- ◆ NCAA Tournament (advanced to second round)
- ◆ Led the Big Ten in field goal percentage, rebounding margin, and blocked shots.
- ◆ Ranked 24th in final Associated Press poll.
- ◆ Four players signed with WNBA and ABL

1998-99

- ◆ Season Record: 12-15 overall, 7-9 Big Ten (8th)
- ◆ Led the Big Ten in defensive rebounds and finished 2nd in three point field goal percentage

1999-00

- ◆ Season Record: 9-18 overall, 6-10 Big Ten (7th)
- ◆ Led the Big Ten in offensive rebounds

2000-01

- ◆ Season Record: 21-10 overall, 12-4 Big Ten (tie 2nd)
- ◆ Won Big Ten Tournament
- ◆ NCAA Tournament (advanced to second round)
- ◆ Cara Consuegra was drafted by the WNBA
- ◆ Lindsey Meder became Iowa's first female women's basketball player to be selected to the Verizon Academic All-America First Team
- ◆ Ranked 16th in final Associated Press poll
- ◆ Ranked 21st in final ESPN/USA Today poll
- ◆ Led the Big Ten in assists, three-point field goal percentage, assist/tunrover ratio and three-point field goal defense



The 1995-96 Iowa Hawkeyes won the Big Ten regular season title and ranked seventh in the final Associated Press poll.

2001-02

- ◆ Season Record: 18-11 overall, 10-6 Big Ten (4th)
- ◆ NCAA Tournament (advanced to second round)
- ◆ Lindsey Meder and Jerica Watson were drafted by the WNBA
- ◆ Lindsey Meder was selected to the Verizon Academic All-America First Team for the second consecutive year
- ◆ Ranked 13th in the nation in assists per game and 17th in 3-point field goals per game
- ◆ Led the Big Ten in assists, three-point field goals made and rebounds

2002-03

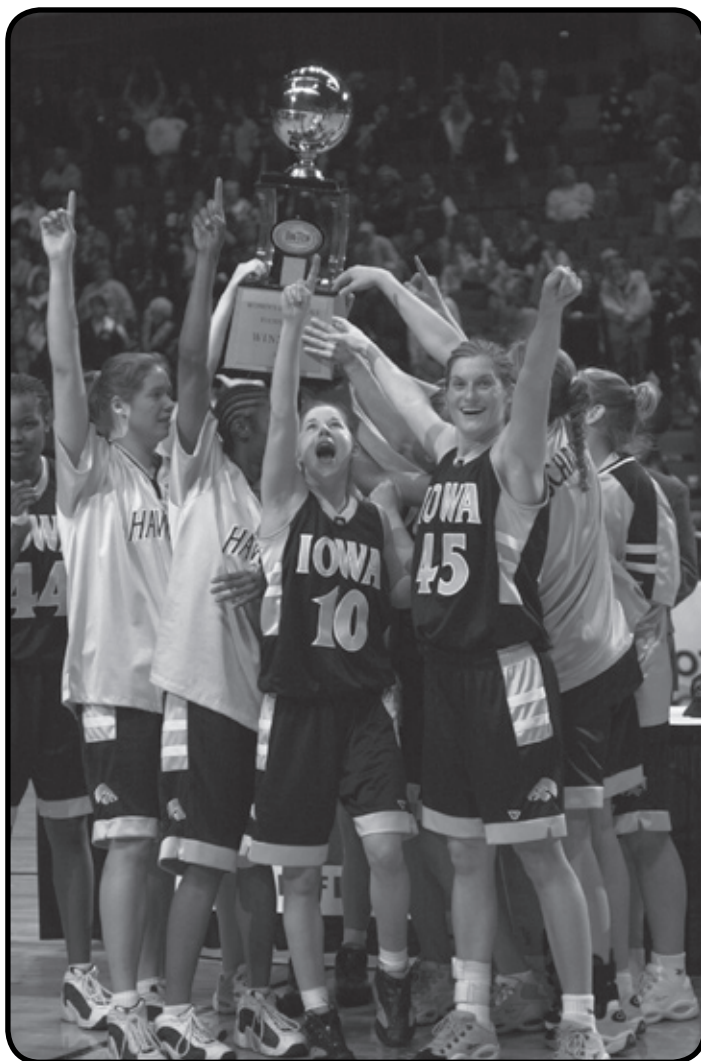
- ◆ Season Record: 18-15 overall, 6-10 Big Ten (7th)
- ◆ WNIT appearance (advanced to quarterfinals)
- ◆ Ranked 18th in the nation in assists per game
- ◆ Led the Big Ten in rebounding and defensive rebounds
- ◆ Jennie Lillis was named a WBCA Region 6 All-America Honorable Mention

2003-04

- ◆ Season Record: 16-13 overall, 10-6 Big Ten (T4th)
- ◆ NCAA Tournament appearance
- ◆ Ranked eighth in the nation in free throw percentage
- ◆ Ranked 19th in the nation in scoring and assists
- ◆ Led the Big Ten in scoring, free throws made and assists

2004-05

- ◆ Season Record: 23-10 overall, 8-8 Big Ten (6th)
- ◆ WNIT appearance (advanced to semifinals)
- ◆ Ranked sixth nationally in least fouls per game, 10th in field goal percentage, 33rd in assists and 43rd in scoring
- ◆ Ranked second in the Big Ten in field goal percentage and third in scoring
- ◆ Last team to start the season undefeated (13-0)



The 2000-01 Iowa Hawkeyes captured the Big Ten Tournament title in Lisa Bluder's first season as the Hawkeyes' head coach.

The Hawkeyes upset fifth-ranked Purdue, 75-70, to win the tournament in Grand Rapids, MI.

Iowa's Record By Decade

<u>Years</u>	<u>Record</u>	<u>Pct.</u>
1974-1979	53-77	.408
1980-1989	184-101	.646
1990-1999	198-94	.678
2000-2005	102-70	.593

All-Time WNIT Results 5-2 Record

2003

1st Round - Defeated Saint Louis, 93-64, in Iowa City, IA
2nd Round - Defeated Marquette, 76-73, in Iowa City, IA
Quarterfinals - Lost to Creighton, 64-70, in Iowa City, IA

2004

1st Round - Defeated Creighton, 67-52, in Iowa City, IA
2nd Round - Defeated Nebraska, 71-67, in Lincoln, NE
Quarterfinals - Defeated Arkansas State, 66-52, in Cedar Rapids, IA
Semifinals - Lost to Southwest Missouri State, 89-80, in Springfield, MO

ALL-TIME NCAA TOURNAMENT RESULTS 16-15 Record

1985-86 Midwest Region

2nd Round - Lost to Tennessee, 68-73 in Knoxville, TN

1986-87 Midwest Region (No. 3 seed)

2nd Round - Defeated New Orleans, 69-46 in Iowa City
Sweet 16 - Defeated Georgia, 62-60 in Monroe, LA
Elite 8 - Lost to Louisiana Tech, 65-66 in Monroe, LA

1987-88 West Region (No. 1 seed)

2nd Round - Defeated Stephen F. Austin, 83-65 in Iowa City
Sweet 16 - Defeated Southern Cal., 76-67 in Long Beach, CA
Elite 8 - Lost to Long Beach State, 78-98 in Long Beach, CA

1988-89 Midwest Region (No. 3 seed)

2nd Round - Defeated Tennessee Tech, 77-75 in Iowa City
Sweet 16 - Lost to Stanford, 74-98 in Ruston, LA

1989-90 Midwest Region (No. 3 seed)

2nd Round - Lost to Vanderbilt, 56-61 in Iowa City

1990-91 West Region (No. 6 seed)

1st Round - Defeated Montana, 64-53 in Missoula, MT
2nd Round - Lost to Washington, 53-70 in Seattle, WA

1991-92 Midwest Region (No. 1 seed)

2nd Round - Lost to SW Missouri State, 60-61 (ot) in Iowa City

1992-93 Midwest Region (No. 2 seed)

2nd Round - Defeated Old Dominion, 82-56 in Norfolk, VA
Sweet 16 - Defeated Auburn, 63-50 in Iowa City
Elite 8 - Defeated Tennessee, 72-56 in Iowa City
Final Four - Lost to Ohio State, 72-73 (ot) in Atlanta, GA

1993-94 Midwest Region (No. 3 seed)

1st Round - Defeated Mt. St. Mary's, 70-47 in Iowa City
2nd Round - Lost to Alabama, 78-84 in Iowa City

1995-96 Midwest Region (No. 2 seed)

1st Round - Defeated Butler, 72-67 in Iowa City
2nd Round - Defeated DePaul, 72-71 in Iowa City
Sweet 16 - Lost to Vanderbilt, 63-74 in Rosemont, IL

1996-97 Midwest Region (No. 9 seed)

1st Round - Defeated North Carolina State, 56-50 in Storrs, CT
2nd Round - Lost to Connecticut, 53-72 in Storrs, CT

1997-98 Midwest Region (No. 4 seed)

1st Round - Defeated Massachusetts, 77-59, in Iowa City
2nd Round - Lost to Kansas, 58-62, in Iowa City

2000-01 Midwest Region (No. 4 seed)

1st Round - Defeated Oregon, 89-82 (OT), in Salt Lake City, UT
2nd Round - Lost to Utah, 69-78, in Salt Lake City, UT

2001-02 Midwest Region (No. 9 seed)

1st Round - Defeated Virginia, 69-62, in Storrs, CT
2nd Round - Lost to Connecticut, 48-86, in Storrs, CT

2003-04 East Region (No. 9 seed)

1st Round - Lost to Virginia Tech, 89-76, in Blacksburg, VA

Iowa NCAA Tournament Records
Individual

Points	32, Tangela Smith vs. UMass, 1998
FG	13, Michelle Edwards vs. S.F. Austin, 1988
FGA	22, Michelle Edwards vs. S.F. Austin, 1988
3pt. FG	5, Arnedo Yarbrough vs. Mount St. Mary's, 1994
	5, Arnedo Yarbrough vs. Alabama, 1994
3pt. FGA	13, Arnedo Yarbrough vs. Mount St. Mary's, 1994
FT	8, Lisa Long vs. Louisiana Tech, 1987
	8, Tangela Smith vs. UMass, 1998
	8, Laurie Aaron vs. Ohio State, 1993
FTA	12, Tangela Smith vs. UMass, 1998
Rebounds	17, Shanda Berry vs. Southern California, 1988
Assists	11, Jolette Law vs. Southern California, 1988
Blocks	5, Tangela Smith vs. Butler, 1996
Steals	7, Laurie Aaron vs. Old Dominion, 1993

Team

Points	89 vs. Oregon, 2001
FG	34 vs. S.F. Austin, 1988
	34 vs. Tennessee Tech, 1989
FGA	75 vs. Alabama, 1994
FG%	61.8% vs. Tennessee Tech (34-of-55), 1989
3pt. FG	9 vs. Alabama, 1994
3pt. FGA	20 vs. Alabama, 1994
FT	28 vs. Tennessee, 1993
FTA	34 vs. Tennessee, 1993
FT%	88.2% vs. Virginia Tech (15-of-17), 2004
Rebounds	48 vs. Southern California, 1988
Assists	24 vs. Southern California, 1988
Blocks	8 vs. Virginia Tech, 2004
Steals	18 vs. S.F. Austin, 1988

Iowa Big Ten Tournament Records
Individual

Points	28, Tangela Smith vs. Ohio State, 1998
FG	12, Tangela Smith vs. Ohio State, 1998
FGA	21, Lindsey Meder vs. Northwestern, 2000
3pt. FG	5, Leah Magner vs. Illinois, 2001
3pt. FGA	11, Leah Magner vs. Northwestern, 2000
FT	11, Cara Consuegra vs. Purdue, 2001
FTA	14, Cara Consuegra vs. Purdue, 2001
Rebounds	15, Randi Peterson vs. Indiana, 2001
Assists	9, Cara Consuegra vs. Illinois, 2001
Blocks	5, Jamie Cavey vs. Penn State, 2005
Steals	6, Randi Peterson vs. Northwestern, 2000

Team

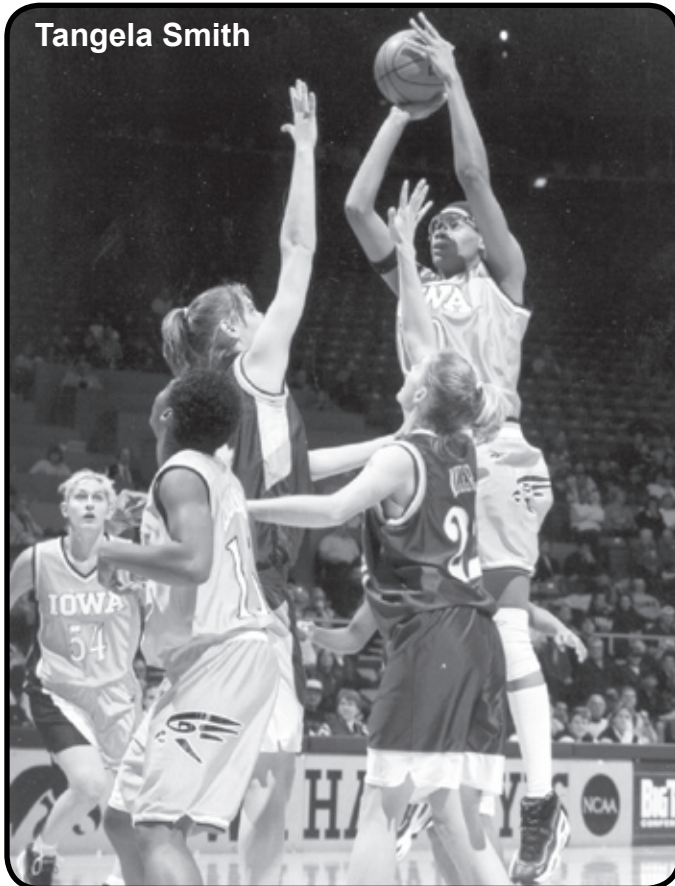
Points	87 vs. Indiana, 1997
FG	31 vs. Illinois, 2001
FGA	67 vs. Northwestern, 1999
	67 vs. Indiana, 2001
FG%	58.3% vs. Minnesota (28-of-48), 2003
3pt. FG	10 vs. Illinois, 2001
3pt. FGA	21 vs. Northwestern, 2000
	21 vs. Illinois, 2001
FT	28 vs. Indiana, 2001
FTA	35 vs. Indiana, 2001
FT%	1.000 vs. Purdue (12-of-12), 1998
Rebounds	52 vs. Northwestern, 2003
Assists	22 vs. Illinois, 2001
Blocks	7 vs. Northwestern, 1997
Steals	15 vs. Illinois, 1997

Iowa National Invitation Tournament Records
Individual

Points	23, Jamie Cavey vs. Creighton, 2005
FG	9, Jamie Cavey vs. Marquette, 2003
	9, Jamie Cavey at SMS, 2005
FGA	19, Crystal Smith vs. Arkansas State, 2005
	19, Jamie Cavey at SMS, 2005
3pt. FG	4, Jenna Armstrong at SMS, 2005
3pt. FGA	6, Kristi Faulkner vs. Marquette, 2003
	6, Johanna Solverson vs. Marquette, 2003
FT	7, Kristi Faulkner vs. Marquette, 2003
FTA	8, Jamie Cavey vs. Arkansas State, 2005
Rebounds	13, Jamie Cavey at SMS, 2005
Assists	8, Johanna Solverson, at SMS, 2005
Blocks	4, Jennie Lillis vs. Marquette, 2003
Steals	5, Crystal Smith vs Creighton, 2005

Team

Points	93 vs. Saint Louis, 2003
FG	35 vs. Saint Louis, 2003
FGA	68 vs. Saint Louis, 2003
FG%	52.9% at Nebraska (27-of-51), 2005
3pt. FG	9 at SMS, 2005
3pt. FGA	20 vs. Marquette, 2003
FT	19 vs. Saint Louis, 2003
FTA	22 vs. Saint Louis, 2003
FT%	88.2% vs. Marquette (15-of-17), 2003
Rebounds	57 vs. Saint Louis, 2003
Assists	26 at SMS, 2005
Blocks	4 vs. Saint Louis, 2003
	4 vs. Marquette, 2003
Steals	12 vs. Creighton, 2005

Tangela Smith


Hawkeye Challenge History

This season marks the 20th year that the Iowa women's basketball team will host its annual Hawkeye Challenge. Iowa has won 16 of the 19 tournaments and boast a 34-4 record. The Hawkeyes will gun for their 17th tournament title when they play Vermont in the opening round on December 3. The other first round match-up pits former Iowa Head Coach Vivian Stringer's Rutgers squad against San Jose State. This will be only the fourth time in the tournament's 20-year history that it is being held in December.

Saturday, December 3

12:00 p.m. -- San Jose State vs. Rutgers

2:15 p.m. -- Vermont vs. Iowa

Sunday, December 4

12:00 p.m. -- Consolation Game

2:15 p.m. -- Championship Game

1985 Amana Hawkeye Classic

Iowa 75, Bradley 39
 Memphis State 68, NC State 58
 NC State 82, Bradley 42 (3rd)
 Iowa 77, Memphis State 56 (1st)

1986 Amana Hawkeye Classic

Tennessee 86, Providence 70
 Iowa 70, Boston 48
 Providence 74, Boston 60 (3rd)
 Tennessee 74, Iowa 56 (1st)

1987 Amana Hawkeye Classic

Georgia 58, Southern Illinois 53
 Iowa 85, Missouri 71
 Southern Illinois 69, Missouri 51 (3rd)
 Iowa 66, Georgia 56 (1st)

1988 Amana Hawkeye Classic

Iowa 73, Miami of Ohio 44
 Wake Forest 79, Eastern Illinois 66
 Eastern Illinois 63, Miami of Ohio 59 (3rd)
 Iowa 78, Wake Forest 62 (1st)

1989 Amana Hawkeye Classic

Iowa 90, Howard 57
 Connecticut 93, Penn State 84 (OT)
 Penn State 107, Howard 69 (3rd)
 Iowa 81, Connecticut 49 (1st)

1990 Amana Hawkeye Classic

Iowa 81, UCLA 52
 LSU 74, Kansas 63
 Kansas 76, UCLA 63 (3rd)
 Iowa 73, LSU 65 (OT, 1st)

1991 Amana Hawkeye Classic

Washington 101, Northern Illinois 91 (2OT)
 Iowa 97, Ohio 52
 Northern Illinois 73, Ohio 63 (3rd)
 Iowa 58, Washington 39 (1st)

1992 Amana Hawkeye Classic

Charlotte 57, Kentucky 54
 Iowa 74, West Virginia 44
 Kentucky 73, West Virginia 63 (3rd)
 Iowa 60, UNC Charlotte 38 (1st)

1993 Prairie Lights Hawkeye Classic

Iowa 68, Laurentian 53
 La. Tech 65, Butler 61
 Butler 73, Laurentian 63 (3rd)
 Iowa 70, La. Tech 66 (1st)

1994 Prairie Lights Classic

Southern Cal 87, Marquette 76
 Iowa 60, James Madison 30
 Marquette 81, James Madison 65 (3rd)
 Iowa 65, Southern Cal 55 (1st)

1995 Prairie Lights Hawkeye Classic

UC Santa Barbara 68, Maryland 52
 Iowa 64, Stephen F. Austin 58
 Maryland 67, Stephen F. Austin 63 (3rd)
 Iowa 68, UC Santa Barbara 57 (1st)

1996 - No Classic Held**1997 Prairie Lights Hawkeye Classic**

Washington 75, Kansas 64
 CS Northridge 67, Iowa 56
 Kansas 79, CS Northridge 66 (3rd)
 Washington 63, Iowa 62 (1st)

1998 Hawkeye Classic (Only three teams)

Missouri 80, Princeton 56
 Iowa 59, Princeton 44
 Iowa 75, Missouri 68 (1st)

1999 Gazette Hawkeye Classic

Iowa 92, Bradley 49
 Syracuse 81, Chicago State 55
 Bradley 77, Chicago State 42 (3rd)
 Iowa 76, Syracuse 73 (1st)

2000 Gazette Hawkeye Challenge

Iowa 99, Western Illinois 54
 Nevada-Reno 82, American 59
 Western Illinois 72, American 66 (3rd)
 Iowa 73, Nevada-Reno 59 (1st)

2001 Gazette Hawkeye Challenge

Kent State 74, UAB 59
 Iowa 86, UTPA 38
 UAB 102, UTPA 75 (3rd)
 Iowa 76, Kent State 65 (1st)

2002 KCRG-TV9 Hawkeye Challenge

Charlotte 61, Murray State 44
 Iowa 84, IUPUI 75 (OT)
 Murray State 70, IUPUI 66 (OT, 3rd)
 Iowa 85, Charlotte 70 (1st)

2003 KCRG-TV9 Hawkeye Challenge

Houston 66, Gonzaga 54
 Iowa 83, Butler, 60
 Gonzaga 65, Butler 59 (3rd)
 Houston 70, Iowa 64 (1st)

2004 KCRG-TV9 Hawkeye Challenge

Missouri 68, Northern Illinois 61
 Iowa 66, Southern Illinois 50
 Northern Illinois 61, Southern Illinois 43 (3rd)
 Iowa 75, Missouri 54 (1st)



Members of the Hawkeyes celebrate after a buzzer-beater victory over Syracuse to win the 1999 Hawkeye Challenge.

Iowa's nationally ranked softball program dealt Iowa State a 4-0 defeat on April 19, 2005 at Pearl Field on the University of Iowa campus, a win that extended the UI's margin of victory in the inaugural year of the Hy-Vee Cy-Hawk Series to 13-8.

Iowa won five of the nine events that pit intercollegiate athletics teams representing the two institutions in head-to-head competition during the 2004-05 academic year. The UI also earned two points for having earned a graduation rate for its student-athletes (69 percent) higher than the national average (62 percent), according to the graduation rates data compiled and disseminated annually by the NCAA.

Iowa's victories came in the Series' inaugural event, the annual college football game played this academic year in Iowa City and won by the Hawkeyes, 17-10; women's basketball (89-80), women's swimming and diving (214-85), men's basketball (70-63) and softball (4-0).

Iowa State's victories came in soccer (6-1), wrestling (19-16), and women's gymnastics twice (195.575-192.04 and 195.85-194.15).

"We're delighted in the final outcome, obviously. However, we're equally excited about using what we learned in this first year to make the Hy-Vee Cy-Hawk Series better in the years to come," said UI Director of Athletics Bob Bowlsby.

Bowlsby said Iowa repeating as champions will be a daunting task, noting that, at a minimum, the football, men's basketball, women's basketball and wrestling events all will be staged on the Iowa State campus in 2005-06. This season's Hy-Vee Cy-Hawk Series schedule is listed below:

Date	Event	Site
Sept. 7	Soccer (2 points)	Iowa City
Sept. 10	Football (3 points)	Ames
Dec. 2	Wrestling (2 points)	Ames
Dec. 8	Women's Basketball (2 points)	Ames
Dec. 9	Men's Basketball (2 points)	Ames
Jan. 28	Women's Gymnastics (2 points)	Iowa City
March 17	Women's Gymnastics (2 points)	Ames
TBA	Softball (2 points)	Ames

Academic Opportunities

Two points for an institution if the student-athlete graduation rate for all student-athletes is greater than the national average for all student-athletes, according to the annual graduation rate report issued each September/October by the NCAA.



Iowa Athletic Director Bob Bowlsby (left) accepts the 2004-05 Hy-Vee Cy-Hawk Series Trophy from Hy-Vee Vice President of Purchasing and Marketing Ron Taylor (right).

Below are the results from the 2004-05 Hy-Vee Cy-Hawk Series:

Football: Iowa 17, Iowa State 10
Iowa leads Series, 3-0

Soccer: Iowa State 6, Iowa 1
Iowa leads Series, 3-2

Women's Basketball: Iowa 89, Iowa State 80
Iowa leads Series, 5-2

Women's Swimming and Diving: Iowa 214, Iowa State 85
Iowa leads Series, 7-2

Wrestling: Iowa State, 19, Iowa 16
Iowa leads Series, 7-4

Men's Basketball: Iowa 70, Iowa State 63
Iowa leads Series, 9-4

Women's Gymnastics: Iowa State 195.575, Iowa 192.40
Iowa leads Series, 9-6

Women's Gymnastics: Iowa State 195.85, Iowa 194.15
Iowa leads Series, 9-8

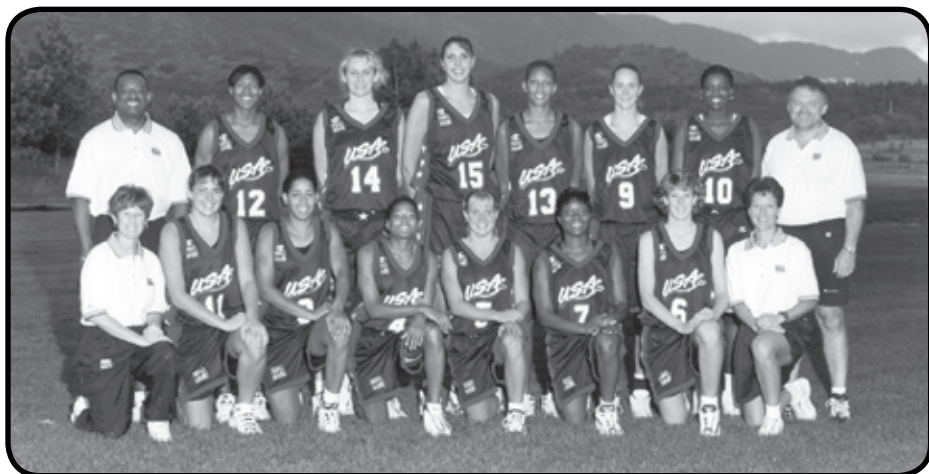
Softball: Iowa 4, Iowa State 0
Iowa leads Series, 11-8

Academic Opportunities
Iowa receives two points

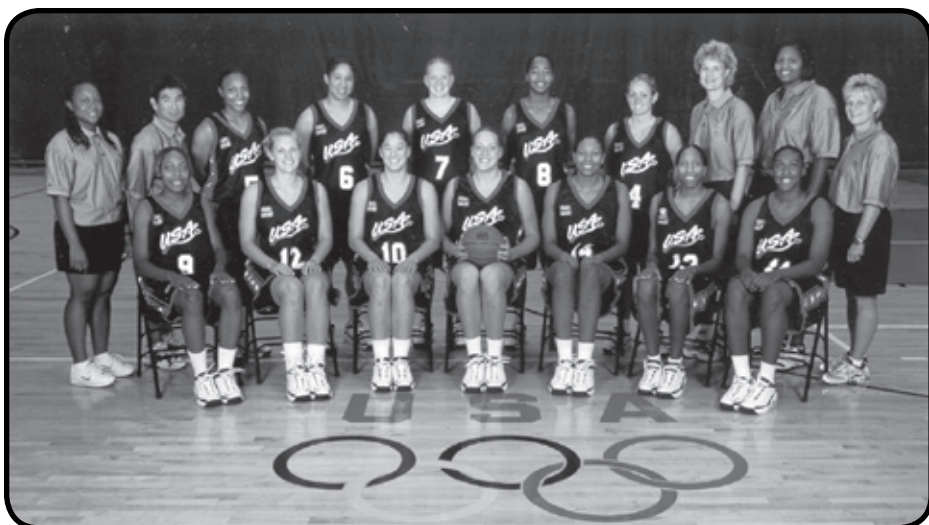
FINAL SCORE
Iowa 13, Iowa State 8



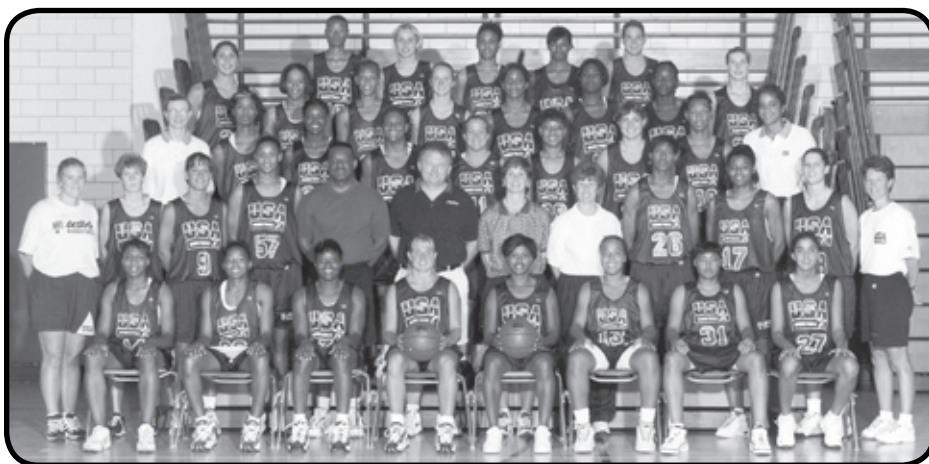
IOWA PRODUCES NATION'S BEST



Amy Herrig (back row - #14) was a member of the gold medalists 1997 USA World University Games Team.



Lisa Bluder (back row - third from right) was an assistant coach on the gold medalists 2001 USA World University Games Team.



Nadine Domond (front row - first from left) and Amy Herrig (fifth row - second from left) were members of the 1997 USA Women's National Team Trials.

United States

Pan American Team

Amy Herrig, 1999
Michelle Edwards, 1991
Cindy Haugejorde, 1977

United States Olympic Trials

Lisa Becker, 1984
Shanda Berry, 1988, 1996
Michelle Edwards, 1988, 1992
Cindy Haugejorde, 1980
Franthea Price, 1988

United States World

Junior National Team

Shanda Berry (alternate), 1985
Franthea Price, 1986

United States World

University Games Team

Amy Herrig, 1997
Lisa Bluder, 2001 (Asst. Coach)

Naismith All-American

Michelle Edwards, 1988

Associated Press

Honorable Mention

Amy Herrig, 1999
Cara Consuegra, 2001

United States World

University Games Team Trials

Lindsey Meder, 2001
Krista VandeVenter, 2005

United States World

Championship Qualifying Team

Shanda Berry, 1993

United States Select Team

Lisa Becker, 1985, 1987
Shanda Berry, 1986, 1987
Michelle Edwards, 1986
Cindy Haugejorde, 1978
Amy Herrig, 1996
Lisa Long, 1986
Franthea Price, 1989
Tangela Smith, 1996

National Olympic Festival

Shanda Berry, 1985
Nadine Domond, 1995
Michelle Edwards, 1985
Toni Foster, 1987, 1991
Tiffany Gooden, 1995
Amy Herrig, 1995
Lisa Long, 1985
Cathy Marx, 1991
Franthea Price, 1985, 1986
Jolynn Schneider, 1986
Tangela Smith, 1995
Trisha Waugh, 1987

Big Ten Conference Player of the Year

Michelle Edwards, 1988
Toni Foster, 1993
Franthea Price, 1990
Tangela Smith, 1998

Champion National Player of the Year

Michelle Edwards, 1988

U.S. Basketball Writers' All-American

Necole Tunsil, 1994

United States

William R. Jones Cup Team

Shanda Berry, 1987
Nadine Domond, 1997
Jolette Law, 1988
Franthea Price, 1987
Tangela Smith, 1997
Angie Lee, 1998 (Asst. Coach)

Kodak All-American

Michelle Edwards, 1988
Toni Foster, 1993
Franthea Price, 1990

Honorable Mention Preseason Naismith Player of the Year Nominee

Tangela Smith, 1996-97
Nadine Domond, 1997-98

NCAA Post-Graduate Scholarship Recipient

Jolynn Schneider, 1988
Tiffany Gooden, 1998
Shannon Perry, 1998
Cara Consuegra, 2001
Lindsey Meder, 2002
Jennie Lillis, 2004

Verizon Academic All-America

Lindsey Meder, 2001, 2002

Kodak District All-American

Shanda Berry, 1989
Michelle Edwards, 1987, 1988
Toni Foster, 1992, 1993
Cindy Haugejorde, 1980
Jolette Law, 1990
Jennie Lillis (HM), 2003
Franthea Price, 1989, 1990
Necole Tunsil, 1994
Tangela Smith, 1998

Robin Roberts/WBCA Sports Communications Scholarship

Shannon Perry, 1998

Street & Smith's

Preseason All-American

Shanda Berry, 1988
Michelle Edwards, 1986, 1987
Toni Foster, 1991, 1992
Tia Jackson, 1993, 1994
Franthea Price, 1988, 1989
Stephanie Schueler, 1990

Chicago Tribune

Silver Basketball Recipient

Michelle Edwards, 1988
Franthea Price, 1990
Tangela Smith, 1996



(l-r) Shannon Perry, Michelle Edwards and Robin Roberts pose for a picture after Perry was awarded the WBCA Communication Scholarship in 1998.





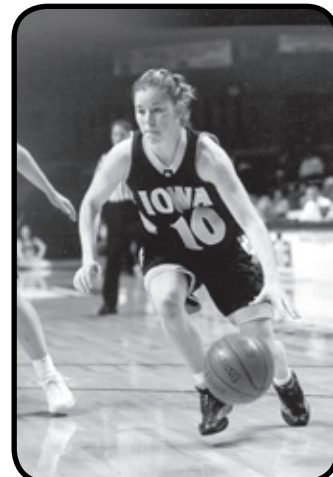
Michelle Edwards was the first Hawkeye to be named the Champion National Player of the Year (1988).



Toni Foster (1988-92) is one of three Hawkeyes to earn Kodak All-American honors (1993).



Shanda Berry (1985-89) was invited to tryout for the United States Olympic teams in 1988 and 1996.



Lindsey Meder was a two-time Verizon Academic All-America First Team selection in 2001 and 2002. She is the only Hawkeye to accomplish this feat.

All-Big Ten Conference

First Team

Shanda Berry, 1989
 Cara Consuegra, 2001
 Michelle Edwards, 1986, 1987, 1988
 Toni Foster, 1991, 1992, 1993
 Amy Herrig, 1999
 Jolette Law, 1989, 1990
 Jennie Lillis, 2003
 Lisa Long, 1987
 Lindsey Meder, 2001, 2002
 Randi Peterson, 2001
 Franthea Price, 1988, 1990
 Stephanie Schueler, 1991
 Tangela Smith, 1996
 Necole Tunsil, 1994
 Tangela Smith, 1998

Second Team

Shanda Berry, 1988
 Jamie Cavey, 2005
 Tiffany Gooden, 1996
 Lisa Long, 1985, 1986
 Franthea Price, 1989
 Stephanie Schueler, 1990
 Nadine Domond, 1998
 Angela Hamblin, 1998
 Cara Consuegra, 2000
 Jennie Lillis, 2002, 2004
 Lindsey Meder, 2000

Third Team

Jamie Cavey, 2004
 Kristi Faulkner, 2003, 2004
 Angela Hamblin, 1997
 Crystal Smith, 2005

Honorable Mention

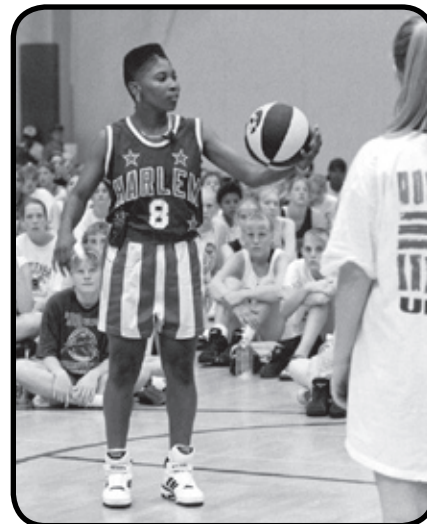
Laurie Aaron, 1992, 1993
 Lisa Becker, 1985, 1987
 Tricia Blair, 1987
 Robin Christian, 1989
 Karen Clayton, 1996
 Cara Consuegra, 1999
 Nadine Domond, 1996, 1997
 Tia Jackson, 1993, 1995
 Lynn Kennedy, 1985, 1986
 Jolette Law, 1988
 Cathy Marx, 1994
 Jolynn Schneider, 1988
 Tangela Smith, 1997
 Necole Tunsil, 1992, 1993

Academic All-Big Ten

Jenna Armstrong, 2003, 2004
 Lisa Becker, 1986, 1987
 Jamie Cavey, 2003, 2004, 2005
 Karen Clayton, 1994, 1995, 1996
 Cara Consuegra, 1999, 2000, 2001
 Kristi Faulkner, 2002, 2003, 2004
 Tiffany Gooden, 1996, 1997, 1998
 Felicia Hall, 1989
 Amy Herrig, 1997, 1998, 1999
 Morgan Kasperek, 2004, 2005
 Susan Koering, 1995, 1996, 1997
 Jennie Lillis, 2002, 2003, 2004
 Leah Magner, 2001, 2002
 Becca McCann, 2002, 2003, 2004
 Lindsey Meder, 2000, 2001, 2002
 Shannon Perry, 1996, 1997, 1998
 Tiffany Reedy, 2004, 2005
 Lindsay Richards, 2004
 Randi Peterson, 1999, 2000, 2001
 Laura Podolak, 2000
 Jody Ratigan, 1988, 1989, 1990
 Jolynn Schneider, 1988
 Becky Shrigley, 1990, 1992
 Trisha Waugh, 1990, 1991

Big Ten Freshman of the Year

Lisa Becker, 1984
 Franthea Price, 1987
 Tiffany Gooden, 1995



Jolette Law (1986-90) was an All-American in 1990 and went on to spend four years touring with the Harlem Globetrotters. She is now an assistant coach for Vivan Stringer at Rutgers.



Franthea Price (1986-90) was a member of the United States World Junior National Team in 1986, and was named to the Kodak All-American team in 1990.

Thirty-four different numbers have been worn by the Hawkeyes throughout the years. Michelle Edwards (No. 30) is the only Hawkeye to have her jersey retired. Freshmen Nicole VanderPol and Lindsey Nyenhuis become only the third Hawkeye players to wear their respective uniform number. VanderPol is wearing No. 43, while Nyenhuis wears No. 50.

1	Amber O'Brien	21	Necole Tunsil Robin Christian Tricia Blair Jenni Mayer Cara Consuegra	33	Melinda Hippen Jane Heilskov Barb Muelle Katharine Peters Laura Podolak Deb Remmerde	42	Jackie Regel Cyndi Gaule Tiffany Reedy
2	Kristi Faulkner*					43	Connie Davis Cindy Haugejorde Nicole VanderPol
3	Myesha Bledsoe Abby Emmert	22	Susan Koering Becky Shrigley Jolynn Schneider Lisa Anderson Joni Rensvold Shirley Vargason Mary Berdo Kristi Faulkner	34	Simone Edwards Molly Tideback Jolette Law Connie Grauer Connie Davis Cindy Johnson Lori Offergeld Becky Moessner Johanna Solverson	44	Trisha Waugh Marva Fuller Cheryl Baker Beatrice Bullock Megan Skouby
4	Stacy Frese Kadaiya Johns					45	Randi Peterson Morgan Kasperek
5	Jerica Watson April Calhoun	23	Demetria Bright Robin Anderson Molly Finn DeDe Towe Mary Berdo Amy Van Arkel	35	Timicha Kirby Kristen Johnson Diane Wilson Teresa Meyer	50	Tangela Smith Jennie Lillis Lindsey Nyenhuis
10	Arnedra Yarbrough Stephanie Schueler Tracy Washington Kris Rogers Chinyere Vann Kari Knopf Lindsey Meder Crystal Smith	24	Angela Hamblin Katie Abrahamson Rena McMillon Lisa Long Angie Lee Carmen Kinrade Melinda Welter Jeneé Graham	40	Melinda Hippen Gail Hudash Erin McGrane Laura Shawver Tracy Schrupp Stacy Schlapkohl	51	Lisa Becker Krista VandeVenter
11	Karen Clayton Cassandra Rahming Sue Roeder Jenna Armstrong* Kristi Smith	25	Franthea Price Pam DuBose Diana Williams	41	Darlene Kandel Terri Lusignan Cheri Young Karen Swanson Lynn Oberbillig Tiffany Gooden Cathy Marx Shanda Berry Julie Genzen Diane Wilson	52	Holly Andersen Hilleri Jennings Jamie Cavey
12	Laurie Aaron Lorelei Watts Tammy McKay Maureen Riopelle Sue Beckwith Margie Rubow Leah Magner Jenna Armstrong	30	Michelle Edwards Angie Lee Polly Ven Horst			54	Amy Herrig Toni Foster Becca McCann
13	Nadine Domond Kim Nelson Sue Beckwith April Calhoun*	31	Malikah Willis Andrea Harmon Jill Taylor Donna Freitag Kris Wistrom Terri Lusignan Diane Wilson Barb Mueller			55	Jenny Noll
14	Felicia Hall Lynn Kennedy Lindsay Geoffroy	32	Natalie Chambers Erinn Reed LaTonya Tate Pam Williams Ann Kildahl Kim Howard Angela Gallagher Tia Jackson Jody Ratigan Maureen McAlpine Wendy Ausdemore				
15	Shannon Perry Virgie Dillingham Patrice Jennings						
20	Antonia Macklin Angie Lewis Lindsay Richards						

**Wore that number during the 2001-02 season.*

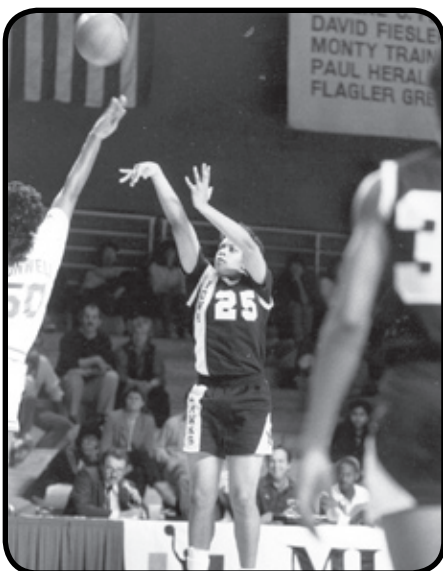


Michelle Edwards, the 1988 Champion Player of the Year, is the only women's basketball player to have her jersey (No. 30), retired.



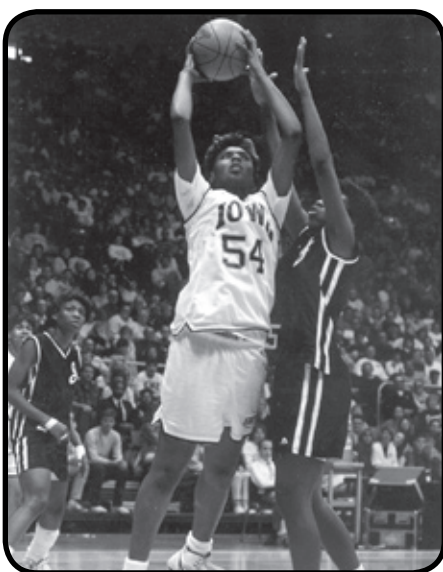
Michelle Edwards (1984-88)

A native of Boston, Massachusetts, Michelle Edwards is one of the most decorated players in Iowa women's basketball history. The 5-9 guard, nicknamed "Ice", amassed a career record of 102-22 from 1984-1988. During her four years, Edwards led the Hawkeyes to three NCAA Tournament appearances and two Big Ten titles. In 1988, she was named the Champion Products National Player of the Year, the highest honor in women's collegiate basketball. Edwards garnered several other honors that year including being named a Kodak all-American, a Naismith all-American, a USBWA all-American, the Big Ten Player of the Year, and the University of Iowa Athlete of the Year. In her senior season, Edwards also led Iowa to its first ever national number one ranking, along with a record of 29-2 overall and 17-1 in the Big Ten. She paced the Hawkeyes with an average of 20 points per game, 4.8 rebounds per game, 4.5 assists per game, and 2.9 steals per game. The three-time first team all-Big Ten selection is the only Hawkeye to have her jersey retired (No. 30). Edwards ranks high in several Iowa statistical categories, including second in career assists (431), third in career scoring (1,821), and third in career steals (235). She also ranks second among single season scoring leaders (621) and is tied for first in assists in a single game (12). Edwards played in the National Olympic Festival in 1985 and was a member of the U.S. Select Team in 1986. In 1991, she was part of the United States Pan American Team, and she also competed in the U.S. Olympic Trials in 1988 and 1992. Upon graduation, Edwards played professionally in Italy for nine seasons before joining the WNBA during its inaugural year in 1997. She then spent three seasons with the Cleveland Rockers and two seasons with the Seattle Storm.



Franthea Price (1986-90)

Franthea Price played for the Hawkeyes from 1986-1990, and in her senior season she became the second Kodak all-American in school history. The four-year starter from River Rouge, Michigan, had an impressive career at Iowa, which began with her being named the Big Ten Freshman of the Year in 1987. Price was named to the first team all-Big Ten in 1988 and 1990, and she was named second team all-Big Ten in 1989. In her senior year, Price earned the honor of Big Ten Player of the Year and led the conference in scoring with 19.8 points per game. The 5-9 forward led the Hawkeyes in several statistical categories that year including scoring (21.2), rebounding (7.1), steals (2.9), and three-point field goals (47). A consistent contributor, Price scored in double figures in 34 of her last 35 games. She holds the school record for career steals with 321, and is tied for first for most steals in a single game with nine. Price also ranks fifth in career scoring (1,742), third in career assists (387), and eighth in career rebounds (726). Outside of Iowa, Price was a member of the U.S. World Junior National Team in 1986 and competed in the National Olympic Festival in 1985 and 1986. In 1987, Price won a gold medal as part of the United States William R. Jones Cup team, and she was a member of the United States Select team in 1989. Price also competed in the U.S. Olympic Trials in 1988. After finishing her career at Iowa, Price played professionally in Spain for several years before joining the WNBA Sacramento Monarchs in 1998.



Toni Foster (1989-93)

A 6-1 forward from Chicago, Illinois, Toni Foster was named a Kodak all-American in 1993 and was a finalist for Champion Player of the Year. Foster played for the Hawkeyes from 1989-1993, and led the team in both scoring and rebounding for three consecutive years, a feat accomplished only once previously. A three-time first team all-Big Ten selection, Foster was named the Big Ten Player of the Year in 1993. She was also named the 1993 SportsChannel Player of the Year. During her senior season, Price led Iowa in scoring (15.7), rebounding (8.2), and blocked shots (1.3). She collected 27 double-doubles during her illustrious career, including nine in her senior year. In Iowa's career statistical categories, Foster ranks second in both rebounds (887) and blocks (145). She also ranks sixth in scoring (1,606) and ninth in steals (167). Foster competed in the National Olympic Festival in 1987 and 1991. When the WNBA was formed in 1997, Foster was the seventh overall pick and was selected by the Phoenix Mercury. She spent two seasons with the Mercury before joining the Seattle Storm in 1999 by way of an expansion draft.

Name	Years	Hometown
Laurie Aaron	89-93	Detroit, MI
Katie Abrahamson	88-90	Cedar Rapids, IA
Holly Andersen	81-82	Morton Grove, IL
Lisa Anderson	80-84	Oregon, WI
Robin Anderson	80-85	Brandt, SD
Jenna Armstrong	01-05	Stockton, MO
Cheryl Baker	82-84	Grinnell, KA
Lisa Becker	83-87	Cedar Rapids, IA
Sue Beckwith	77-80	Boone, IA
Mary Berdo	96-97, 99-01	Washington, IA
Shanda Berry	85-89	Oelwein, IA
Tricia Blair	83-87	McFarland, WI
Myesha Bledsoe	1999	Milwaukee, WI
Demetria Bright	90-92	Lexington, KY
Beatrice Bullock	98-02	Anchorage, AK
April Calhoun	01-03	New Hope, MN
Jamie Cavey	01-05	Mechanicsville, IA
Robin Christian	85-89	Roxbury, MA
Karen Clayton	92-96	Raleigh, NC
Cara Consuegra	97-01	Mt. Airy, MD
Connie Davis	80-84	DeKalb, IL
Virgie Dillingham	90-94	Richmond, KY
Nadine Domond	94-98	Bridgeport, CT
Pam DuBose	83-85	Detroit, MI
Michelle Edwards	84-88	Boston, MA
Simone Edwards	93-97	Kingston, Jamaica
Abby Emmert	04-	Winterset, IA
Kristi Faulkner	01-04	Glen Ellyn, IL
Molly Finn	78-81	Columbus, OH
Toni Foster	89-93	Chicago, IL
Donna Freitag	81-83	Oregon, WI
Stacy Frese	95-96	Cedar Rapids, IA
Marva Fuller	84-88	Holly, MI
Angela Gallagher	75-81	Chillicothe, IL
Cyndi Gaule	78-81	Burlington, IA
Julie Genzen	81-83	Bloomington, IL
Lindsay Geoffroy	01-04	Los Alamitos, CA
Jeneé Graham	04-	Bolingbrook, IL
Tiffany Gooden	94-98	Fort Wayne, IN
Connie Grauer	82-86	Cherokee, IA
Felicia Hall	87-91	Shreveport, LA
Angela Hamblin	95-98	Gary, IN
Andrea Harmon	90-94	Oklahoma City, OK
Cindy Haugejorde	76-80	Parkville, MN
Jane Heilskov	79-81	Hampton, IA
Amy Herrig	95-99	Dubuque, IA
Melinda Hippen	80-82	Parkersburg, IA
Kim Howard	78-82	Estherville, IA
Tia Jackson	90-95	Mardela Springs, MD
Patrice Jennings	98-00	Chicago, IL
Hillari Jennings	99-00	Manly, IA
Cindy Johnson	78-81	Indianola, IA
Kristen Johnson	82-86	Rochester, MN
Morgan Kasperek	02-	Hinsdale, IL
Darleen Kendel	81-82	Barbeton, OH
Lynn Kennedy	83-87	Irvington, NJ
Ann Kildahl	82-83	Tomah, WI
Carmen Kinrade	78-79	Maquoketa, IA
Timicha Kirby	94-95	Lynwood, CA
Kari Knopf	97-98	Des Moines, IA
Susan Koering	93-97	Stanwood, IA
Jollette Law	86-90	Florence, SC
Angie Lee	80-84	Paxton, IL
Angie Lewis	83-85	Largo, MD
Jennie Lillis	00-04	Urbandale, IA
Lisa Long	83-87	Newark, NJ
Terri Lusignan	78-82	Park Ridge, IL

Name	Years	Hometown
Antonia Macklin	91-95	Boston, MA
Leah Magner	98-02	Palmer, AK
Cathy Marx	90-94	East Moline, IL
Jenni Mayer	75-77	Winthrop Harbor, IL
Maureen McAlpine	82-86	Rochester, MN
Becca McCann	00-04	Saginaw, MI
Erin McGrane	77-80	Dubuque, IA
Tammy McKay	83-87	McFarland, WI
Rena McMillon	87-89	Pompano Beach, FL
Lindsey Meder	98-02	Solon, IA
Teresa Meyer	75-79	Overland Park, KA
Becky Moessner	75-78	Waterloo, IA
Barb Mueller	75-80	Paullina, IA
Kim Nelson	81-83	Denison, IA
Jenny Noll	93-97	Muscatine, IA
Lynn Oberbillig	75-78	Northampton, MA
Amber O'Brien	99-03	Worthington, MN
Lori Offergeld	77-81	Chicago, IL
Shannon Perry	94-98	Carson, CA
Katharine Peters	75-78	Dubuque, IA
Randi Peterson	97-01	Cedar Falls, IA
Laura Podolak	98-00	Basalt, CO
Ebone Pope	04-	Ottumwa, IA
Franthea Price	86-90	River Rouge, MI
Cassandra Rahming	88-92	W. Palm Beach, FL
Jody Ratigan	86-90	Neola, IA
Erinn Reed	93-94	Saginaw, MI
Tiffany Reedy	02-	Dysart, IA
Jackie Regel	79-83	Glen Ellyn, IL
Joni Rensvold	78-82	Cedar Rapids, IA
Lindsay Richards	02-03	Barrington, IL
Maureen Riopelle	80-81	Appleton, WI
Sue Roeder	78-81	Dubuque, IA
Kris Rogers	76-82	Iowa City, IA
Margie Rubow	75-78	Brighton, CO
Stacy Schlappkohl	04-	Durant, IA
Jolynn Schneider	84-88	Grosse Pointe, MI
Tracy Schrupp	99-03	Gillette, WY
Stephanie Schueler	87-91	Sioux Falls, SD
Becky Shrigley	88-92	Nashua, NH
Laura Shawver	75-79	San Francisco, CA
Crystal Smith	02-	Haughton, LA
Tangela Smith	94-98	Chicago, IL
Johanna Solverson	02-	Lake Zurich, IL
Karen Swanson	78-79	
LaTonya Tate	88-92	Detroit, MI
Jill Taylor	88-90	Ambler, PA
Molly Tideback	90-93	Waterloo, IA
DeDe Towe	76-80	Alburnett, IA
Necole Tunsil	90-94	St. Petersburg, FL
Krista VandeVenter	04-	Osseo, MN
Chinyere Vann	96-97	Brooklyn, NY
Shirley Vargason	75-78	St. Charles, IL
Polly Ven Horst	76-92	Dallas, TX
Amy Van Arkel	98-00	Cedar Falls, IA
Tracy Washington	84-86	Philadelphia, PA
Jerica Watson	98-02	Milwaukee, WI
Lorelei Watts	87-89	Rock Island, IL
Trisha Waugh	88-91	Jefferson, IA
Melinda Welter	75-79	Glen Ellyn, IL
Diana Williams	75-80	Chicago, IL
Pam Williams	84-88	Chicago, IL
Malikah Willis	94-98	Cleveland, OH
Diane Wilson	76-81	New London, IA
Kris Wistrom	79-83	Des Moines, IA
Arneda Yarbrough	91-95	Racine, WI
Cheri Young	79-82	Muscatine, IA



The Hawkeye Visions Endowment Program: Investing in a Winning Future, is a 10-year campaign with a \$25 million goal, which seeks to create permanently endowed scholarships for all starting positions in UI athletics. The program currently includes approximately 100 fully endowed scholarships, 50 partially endowed scholarships, 25 scholarships which are in the development stages and 30 future scholarship gifts. The following scholarships are fully endowed awards which are currently dedicated to the UI women's basketball program.

Micheal and Patricia Beal Women's Basketball Scholarship

The Beal Scholarship was established in 2002 by Micheal and Patricia Beal, from Muscatine, Iowa. Micheal works at Monsanto Company's Muscatine plant. Patricia works for Scott's Outdoors in Muscatine. The Beals are longtime football and women's basketball season ticket holders.

P. Sue Beckwith, M.D. Women's Basketball Scholarship

The P. Sue Beckwith, M.D. Women's Basketball Scholarship was established in 2005 to honor Sue's father, F.W. Beckwith of Boone, Iowa, and in memory of her mother Esther Beckwith. Sue graduated from the University of Iowa's College of Medicine in 1984 and was a women's basketball letterwinner during her undergraduate years. Sue is a surgeon in the Des Moines area. This scholarship is in appreciation of the sacrifice, devotion and unconditional support parents of student athletes share with their children throughout their lives.

John and Mary Ann Colloton Women's Basketball Scholarship

The Colloton Women's Basketball Scholarship, along with similar scholarships in men's basketball, football, and wrestling was established in 1998 by a generous gift from longtime Hawkeye fans John and Mary Ann Colloton of Iowa City. John, with degrees from Loras College and the UI, was director of the UI Hospitals and Clinics from 1971-93. He is the UI's Vice-President emeritus for Statewide Health Services, received a UI Distinguished Alumni Award in 1999 and is a Varsity Club Honorary Letterwinner. Mary Ann, a 1957 UI graduate, served as a staff nurse at the UIHC from 1957-63 and is an active community volunteer.

Donald W. and Marilyn Heineking Women's Basketball Scholarship

The Heineking Women's Basketball Scholarship was established in 2002 along with a similar scholarship for football. Then, in 2003, they added a wrestling scholarship and a men's basketball manager's scholarship. And in 2004, Don funded a baseball and softball scholarship. Don is a 1958 UI business graduate and president of Security State Bank in Hubbard, Iowa. He is also a long-time supporter of Iowa athletics, member of Johnson County I-Club Board of Directors and a member of the Iowa Scholarship Fund Board of Directors. Don lives in Iowa City and is a member of the Presidents Club of the UI Foundation. Marilyn passed away in February of 2004.

Bud and Georgia Johnson Women's Basketball Scholarship

Bud and Georgia Johnson of Monticello, Iowa established their scholarship in 2004. They are avid fans of Iowa women's basketball and are instrumental in getting a group of 40-plus fans from their surrounding area to home games. Bud and Georgia are owners of Minn-Tex Citrus, Inc. in Monticello and are very active supporters of University of Iowa athletics. Both are members of the Presidents Club of the UI Foundation.

Jack and Ailene Liechty Women's Basketball Scholarship

The Liechty Women's Basketball Scholarship, along with similar scholarships in men's basketball, men's golf, and football, was established by Ailene in honor of her husband, Jack, who passed away in 1994. Jack was in the newspaper business for 51 years with the Des Moines Register, the Iowa City Press-Citizen, the Speidel Company and Gannett. Ailene lives in Iowa City and supports a variety of civic and UI causes. She received a Distinguished Alumni Award in from the UI in 1999.

William and Kay Pitlik Women's Basketball Scholarship

University of Iowa alumni Bill and Kay Pitlik of Cedar Rapids, Iowa first created an endowed scholarship fund in 1998 to show their love for the Hawkeyes. Since that time, they've established four more athletic scholarships bringing the Pitlik Scholarships to an amazing total of five. They are former owners of the Pepsi-Cola Bottling Company in Cedar Rapids. The Pitliks are avid Hawkeye fans and also have endowed scholarships for softball, wrestling and two for football.

NEWSPAPERS

Des Moines Register, 715 Locust Street,
Des Moines, IA 50309. PH: (800) 532-1455 or (515) 284-8134,
FAX: (515) 286-2504
Contact: Dan Johnson - Editor: Randy Brubaker

Iowa City Press-Citizen, 1725 North Dodge, Iowa City, IA
52245 PH: (319) 339-7368, FAX: (319) 339-7342
Contact: Pat Harty - Editor: Ryan Suchomel

Cedar Rapids Gazette, 500 3rd Ave., SE,
Cedar Rapids, IA 52401
PH: (800) 397-8258 or (319) 398-8293, FAX: (319) 398-5861
Contact: John Riehl - Editor: J.R. Ogden

Quad City Times, 500 E. 3rd St., Davenport, IA 52801
PH: (800) 437-4648 or (319) 383-2287, FAX: (319) 383-2370
Editor: Steve Batterson

The Daily Iowan, 111 Communications Bldg.,
Iowa City, IA 52242 PH: (319) 335-5848, FAX: (319) 335-6184
Editor: Brian Triplett

Voice of the Hawkeyes, Box 187, Iowa City, IA 52244
PH: (319) 354-7043, FAX: (319) 354-7202
Editor: Todd Brommelkamp

Waterloo Courier, Box 504, Waterloo, IA 50704
PH: (800) 798-1702 or (319) 291-1469, FAX: 319-2991-2069
Contact: Kevin Evans

Moline Dispatch, 1720 5th Ave., Moline, IL 61265
PH: (309) 757-4974, FAX: 309-797-0317
Contact: Mark Nesseler

RADIO

KRUI Radio, 379 IMU, Iowa City, IA 52244
PH: (319) 335-9525, FAX: (319) 335-9526
Contact: John Sears

KCJJ Radio, P.O. Box 2118, Iowa City, IA 52244
PH: (319) 354-1242, FAX: (319) 354-1921
Contact: Tom Suter

WMT Radio, P.O. Box 2147, Cedar Rapids, IA 52406
PH: (800) 933-7767 or (319) 395-0533, FAX: (319) 393-0918
Contact: Bob Bruce

WHO Radio, 1801 Grand Avenue, Des Moines, IA 50308
PH: (515) 242-3500, FAX: (515) 242-3553
Contact: TBD

KXIC Radio, P.O. Box 2388, Iowa City, IA 52244
PH: (319) 354-9500, FAX: (319) 354-9504
Contact: Brent Balbinot

KRNA Radio, 425 2nd St. SE, 4th Floor,
Cedar Rapids, IA 52401
PH: (319) 861-3289, FAX: (319) 363-8062
Contact: Gregg Scharnau

TELEVISION

KCRG Television, 501 Second Avenue, SE,
Cedar Rapids, IA 52401. PH: (319) 398-8325,
FAX: (319) 368-8505
Contact: John Campbell, Scott Saville

KGAN Television, P.O. Box 3131, Cedar Rapids, IA 52406
PH: (800) 222-5426 or (319) 395-9081, FAX: (319) 395-0113
Contact: Jared Aarons

KWWL Television, 500 E. 4th St., Waterloo, IA 50703
PH: (319) 291-1290, FAX: (319) 291-1233
Contact: Rick Coleman, Chris Kolkhorst

KCCI Television, 888 9th St., Des Moines IA 50309
PH: (800) 927-8841 or (515) 247-8811 or 8812,
FAX: (515) 244-0202
Contact: Heidi Soliday

WHBF Television, 231 18th Street, Rock Island, IL 61201
PH: (309) 786-5441, FAX: 309-788-4975 or 3642
Contact: Jay Kidwell

WQAD Television, 303 Park 16th Street, Moline, IL 61265
PH: (309) 736-3325 or (309) 736-3300, FAX: (309) 736-3306
Contact: Mike Kleinstub and Dan Burich

KWQC Television, 805 Brady Street, Davenport, IA 52808
PH: (800) 927-6397 or (319) 383-7037, FAX: 319-383-7131
Contact: Thom Cornelius and Dan Pearson

WHO Television, 1801 Grand Avenue, Des Moines, IA 50308
PH: (800) 835-1313 or (515) 242-3739 or 3606,
FAX: (515) 242-3796
Contact: Keith Murphy

WOI Television, 3903 West Town Pkwy., Des Moines, IA
50266 PH: (515) 282-5555, FAX: 515-457-1034
Contact: John Walters

WIRE SERVICE

Associated Press, 505 5th Ave., Suite 1000, Des Moines, IA
50309 PH: (800) 453-2113 or (515) 243-3281,
FAX: (515) 243-1550
Des Moines Contact: *Chuck Schoffner*,
Iowa City Contact: *Todd Dvorak*,
PH: (319) 337-5615, FAX: (319) 337-6126



Coordinating media operations for the Iowa women's basketball team is Assistant Sports Information Director Matthew Weitzel. The entire Iowa staff is available to answer questions, fill requests, arrange interviews, provide photographs and assist the media in obtaining information on the Hawkeyes.

CREDENTIAL REQUESTS:

Credential requests should be made by e-mail or by fax on company letterhead. Requests made 10 days in advance will be mailed. All others not secured by game day may be picked up at the Sports Information Office during regular business hours or prior to the game at Will Call, located at the northwest entrance of Carver-Hawkeye Arena near the Ticket Office.

PRESS ROW:

Press Row is located on the northwest side of Carver-Hawkeye Arena behind the Iowa team bench. Television cameras and visiting team video equipment are not allowed at Press Row. Space for this equipment is available upon request on the east side of Carver-Hawkeye Arena at concourse level.

POSTGAME INTERVIEWS:

Postgame interviews with the head coaches and selected players from both teams will be held in the Press Room located up the tunnel at the north end of Carver-Hawkeye Arena. Requests for players should be directed to a member of the sports information staff during the second half of each game. Interviews will begin after a required 10-minute "cooling-off" period. Only members of the working press with proper credentials will be allowed in the Hospitality and Press rooms. Locker rooms are closed to the media.

LODGING:

Motels in the Iowa City area that have both a restaurant and lounge are the: Canterbury Inn (351-0400), Country Inn (351-1010), Hampton Inn Suites (351-6600), Quality Inn on Highlander Plaza (354-2000), Sheraton (337-4058), Inns USA (645-2466), Clarion & Hampton Inns (351-5049) and Ramada Inn (354-7770). The area code is 319.

GAME DAY SERVICES:

The Iowa Sports Information staff will provide play-by-play and statistics at halftime and following the game. Quotes from the coaches and players interviewed at the postgame press conference will be made available upon request. Please make arrangements for this service prior to the game.

E-MAIL SERVICES:

All game notes and post-game statistics and play-by-play are available via e-mail in *pdf* format. To be placed on the e-mail list, contact a member of the sports information staff. This information is also posted timely on the official Iowa website:

www.hawkeyesports.com

FAX SERVICES:

One FAX machine is available to members of the working media free of charge on a first-come, first-serve basis. Please make arrangements for its use with a member of the Iowa Sports Information staff prior to the game.

TELEPHONES:

Several telephones are available to members of the working press in the Sports Information Office, Room 157 of Carver-Hawkeye Arena. Please make arrangements for entry into the office with a member of the Iowa Sports Information staff prior to the game. Should you need a telephone on press row, please make arrangements by calling Telecommunications at: (319) 335-2945.

SPORTS INFORMATION MAILING ADDRESS:

157 Carver-Hawkeye Arena
Iowa City, Iowa, 52242-1020

SPORTS INFORMATION PHONE NUMBERS:

Basketball Contact: Matthew Weitzel

Weitzel's Office Phone: (319) 335-9411

Weitzel at Home: (319) 330-1262

E-Mail Address: matthew-weitzel@hawkeyesports.com

Sports Information Director: Phil Haddy

Associate Sports Information Director: Steve Roe

Assistant Sports Information Director: Traci Wagner

Assistant Sports Information Director: Tony Wirt

Secretary: Theresa Walenta

Graduate Assistant: Tara Meekma

Student Assistants: Aaron Blau, Marcus Dittmer, Matt Jansen, Janey Kiryluk, Andrea Breen and Alison Moeller

Press Row Phone: (319) 335-7284

Office Fax: (319) 335-9417

INTERNET WEB ADDRESS:

Updated information on the Iowa women's basketball team is available on the University of Iowa's athletic department home page on the Internet. Game notes, post-game reports, player and coaches bios, player game-by-game statistics, team overall and conference statistics and more can be found on the web site. The address is:

www.hawkeyesports.com



Phil Haddy



Steve Roe



Matthew Weitzel



Traci Wagner



Tony Wirt



Theresa Walenta