



University of Iowa Women's Basketball

Game #5

November 21, 2011

2011-12 Schedule/Results 3-1 Overall, 0-0 Big Ten

11/12	Harvard#	W, 90-81
11/13	UNLV#	L, 59-69
11/16	Albany	W, 82-60
11/19	at Northern Iowa	W, 78-74
11/25	vs. St. John's%	12 p.m.
11/26	vs. Temple/Texas A&M%	12/2:15 p.m.
11/30	Virginia Tech\$	7 p.m.
12/3	at Kansas State~	7 p.m.
12/7	at Iowa State+	7 p.m.
12/9	Western Illinois	7 p.m.
12/17	at Bradley	7 p.m.
12/20	Drake	7 p.m.
12/22	Mississippi Valley State	5 p.m.
12/30	Northwestern	7 p.m.
1/2	at Ohio State	12 or 2 p.m.
1/5	Illinois	7 p.m.
1/8	Nebraska	3 p.m.
1/15	at Purdue	1 p.m.
1/19	Wisconsin	7 p.m.
1/22	at Penn State	2 p.m.
1/26	at Nebraska	7 p.m.
1/28	Purdue	2 p.m.
2/2	at Wisconsin	7 p.m.
2/5	at Indiana	1 p.m.
2/9	Minnesota	7 p.m.
2/12	Michigan State	2 p.m.
2/16	at Michigan	7 p.m.
2/23	at Northwestern	5 or 7 p.m.
2/26	Michigan	1 or 3 p.m.

-- KCRG-TV 9 Hawkeye Challenge, Iowa City

% -- Junkanoo Jam, Bahamas

\$ -- Big Ten/ACC Challenge

~ -- Big Ten/Big 12 Challenge

Pronunciation Guide

Lisa Bluder.....	BLUE-dir
Megan Considine.....	CAHN-sih-dine
Kamille Wahlin.....	Kah-MEAL Wah-LEEN
Kelly Krei.....	CRY
Theairra Taylor.....	thee-AIR-uh

SID Contact: Aaron Blau
E-Mail: aaron-blau@hawkeyesports.com

Office: (319) 335-9268
Cell: (319) 430-5103



St. John's (1-2) vs. Iowa (3-1)

Nov. 25, 2011 • 12 p.m. (CT)

Freeport, Bahamas • St. George's Gym

Radio: AM-800 KXIC, AM-1360 KMJM, AM-1460 KXNO
TV: N/A • **Webcast:** hawkeyesports.com • **Live Stats:** N/A
Series Record: First Meeting



THE SETTING

The University of Iowa women's basketball team heads to The Bahamas for Thanksgiving Break. The Hawkeyes will compete in the Junkanoo Jam in Freeport and will face St. John's Friday at 12 p.m. (CT).

Iowa will take on either Texas A&M or Temple Saturday.

AUDIO COVERAGE

Brent Balbinot and Shelley Till will call Friday's game for the Hawkeye Radio Network. Hawkeye fans can listen to the contest on AM-800 KXIC in Iowa City, AM-1360 KMJM in Cedar Rapids, AM-1460 KXNO in Des Moines or on the Hawkeye All-Access page of hawkeyesports.com. Balbinot is in his eighth season as Iowa's play-by-play voice, while Till is in her seventh providing analysis.

ON YOUR COMPUTER

All Junkanoo Jam games will have a live video stream for a \$4.99 fee. The video link can be found on hawkeyesports.com.

IOWA HISTORY

Iowa has played 1,071 games since beginning basketball in 1974. Iowa's overall record is 655-416 (.612). That includes a 329-165 (.666) mark in regular season Big Ten contests and a 311-90 (.776) mark in Carver-Hawkeye Arena.

Tentative Starting Lineup

Iowa Hawkeyes (3-1)

Pos.	No.	Name	Ht.	Yr.	Statistical Summary
G	2	Kamille Wahlin	5-8	Sr.	10.8 ppg, 2.8 rpg, 2.3 apg, .457 FG%, .750 FT% - Hit three-pointer with 31 seconds left to give Iowa win over Northern Iowa
G	24	Jaime Printy	5-11	Jr.	20.8 ppg, 5.8 rpg, 4.8 apg, .424 FG%, .962 FT% - Made 25 of 26 free throws this season
G	22	Samantha Logic	5-8	Fr.	7.3 ppg, 5.5 rpg, 3.3 apg, .357 FG%, .900 FT% - Team-best eight steals through three games
F	20	Kelly Krei	6-2	Sr.	11.0 ppg, 5.5 rpg, 1.5 apg, .464 FG%, 1.000 FT% - Leads team with 10 made three-pointers
C	12	Morgan Johnson	6-5	Jr.	13.3 ppg, 5.5 rpg, 4.0 bpg, .514 FG%, .750 FT% - Team-best 10 blocks through two games

Head Coach: Lisa Bluder (Northern Iowa, 1983); 12th Season at Iowa (214-133); 28th Season Overall (570-275)



Inside the Numbers

	IOWA	STJ
Scoring Average	77.2	68.7
Scoring Defense	71.0	67.3
Scoring Margin	+6.3	+1.3
FG%	.447	.463
FG% Defense	.399	.395
FT%	.843	.700
3-PT FG%	.377	.226
3-PT FG% Defense	.312	.340
Rebound Margin	-0.5	+0.0
Assists Per Game	17.5	12.0
Turnovers Per Game	16.3	15.3
Turnover Margin	-0.5	+0.3
Steals Per Game	6.0	10.0

St. John's vs. Iowa Series History

First Meeting

How Many Times a Hawkeye Player...

Scored 20 or More Points

Jaime Printy	2
Morgan Johnson	1

Scored 15 or More Points

Jaime Printy	4
Morgan Johnson	2
Kelly Krei	1
Kamille Wahlin	1

Grabbed 10 or More Rebounds

Kelly Krei	1
Samantha Logic	1

Grabbed 7 or More Rebounds

Morgan Johnson	1
Kelly Krei	1
Samantha Logic	1
Jaime Printy	1

Dished out 7 or More Assists

Jaime Printy	1
--------------------	---

Dished out 5 or More Assists

Jaime Printy	1
Kelly Krei	1

Recorded 4 or More Steals

n/a

Blocked 3 or More Shots

Morgan Johnson	2
----------------------	---

2011-12 Margin of Victory/Defeat

Points	1	2	3	4	5	6	7	8	9	10-14	15-19	20+
Wins	0	0	0	1	0	0	0	0	1	0	0	1
Losses	0	0	0	0	0	0	0	0	0	1	0	0

SCOUTING ST. JOHN'S

The St. John's Red Storm are 1-2 overall. St. John's opened the season with a 64-58 loss at home to St. Bonaventure, but rebounded with a 66-45 win over La Salle. The Red Storm recently dropped a road contest at Hofstra, 93-82.

Nadirah McKenith leads the team with 16.7 points per game. Eugene McPherson is next at 14.7 points per contest, while Shenneika Smith is averaging 13.3 points and leads the team with 6.3 rebounds.

As a team, St. John's is scoring 68.7 points per game and is shooting .463 (82-117) from the field, including .226 (7-31) from three-point range.

SCOUTING TEMPLE

The Temple Owls are 2-2 overall. Temple started the season with a home win over Miami, Ohio (70-36) and a road win at Northeastern (72-58). The Owls have dropped their last two games, both on the road (Ohio State, 70-66 and Northern Illinois, 58-52).

Three players are averaging double figures for Temple, led by Shey Peddy's 14 points per game. Kristen McCarthey is next at 13.5 points and is the team's leading rebounder at 6.3 boards per contest. Brittany Lewis is scoring 13 points per game.

The Owls are averaging 65 points per game and shooting .386 (21-74) from the field, including .284 (21-74) from three-point range.

SCOUTING TEXAS A&M

The defending NCAA champion Texas A&M Aggies are 4-0 on the season after wins over Lamar (83-58), Louisville (76-58) Arkansas-Little Rock (83-54) and Mississippi State (93-47).

Kelsey Bone leads the team with 15.5 points and 7.8 rebounds per game. Tyra White is next at 14.5 points, followed by Sydney Carter's 12 points per contest. Adaora Elonu is averaging 10.5 points and 6.3 boards.

Texas A&M is averaging 83.8 points per game and shooting .467 (129-276) from the field, including 8-38 (.211) from three-point range.

JUNKANOO JAM NOTES

- Iowa has never faced St. John's, Temple or Texas A&M.
- This is Iowa's second trip to the Bahamas and the Junkanoo Jam. Iowa's only other appearance was in 2004, when the Hawkeyes defeated Florida (65-62) and No. 21 ranked Oklahoma (54-47).

2011-12 Iowa Hawkeye Roster

No.	Name	Yr.	Ht.	Pos.	Hometown (High School/College)
2	Kamille Wahlin	Sr.	5-8	G	Crookston, MN (Crookston)
3	Kalli Hansen	Sr.	5-11	F	Olin, IA (Kirkwood CC)
4	Megan Considine	Sr.	5-8	G	Byron, IL (Byron)
11	Trisha Nesbitt	Jr.	5-7	G	Ames, IA (Ames)
12	Morgan Johnson	Jr.	6-5	C	Platte City, MO (Platte County)
20	Kelly Krei	Sr.	6-2	F	Iowa City, IA (City)
21	Melissa Dixon	Fr.	5-8	G	Johnsburg, IL (Johnsburg)
22	Samantha Logic	Fr.	5-9	G	Racine, WI (Racine J.I. Case)
23	Theairra Taylor	RS So.	5-11	G	St. Paul, MN (Central)
24	Jaime Printy	Jr.	5-11	G	Marion, IA (Linn-Mar)
32	Jade Rogers	So.	6-0	F	Cedar Rapids, IA (Kennedy)
33	Kathryn Reynolds	Fr.	5-7	G	Cincinnati, OH (Mount Notre Dame)
34	Virgina Johnson	Fr.	6-2	F	Iowa City, IA (City)
51	Bethany Doolittle	Fr.	6-4	C	Oakdale, MN (Hill-Murray)

Head Coach: Lisa Bluder Associate Head Coach: Jan Jensen
Assistant Coaches: Jenni Fitzgerald and Shannon Gage



2011-12 Team Captains

Iowa captains are seniors Kamille Wahlin, Kelly Krei and Megan Considine

IOWA IN THE RANKINGS

The Hawkeyes are receiving votes in both the Associated Press and the ESPN/USA Today Top 25.

Three Iowa opponents are also ranked in the AP and ESPN/USA Today polls: Penn State (11/11), Purdue (16/20) and Ohio State (24/25). Iowa could potentially face defending NCAA champion Texas A&M in the Junkanoo Jam over Thanksgiving. The Aggies are ranked sixth in both polls.

In addition, St. John's, Michigan State, Iowa State and Kansas State are receiving votes.

HAWKEYES HOLD OFF PANTHERS FOR ROAD WIN

Iowa picked up its first road win with a 78-74 win at Northern Iowa Saturday.

The Hawkeyes enjoyed a 14 point lead with 12 minutes remaining, but a hard-fought comeback by the Panthers saw them gain a 74-73 lead with 36 seconds left. Senior Kamille Wahlin buried a deep three-pointer with 31 seconds on the clock to give Iowa a 76-74 advantage, and a tough defensive stop on Northern Iowa's next possession led to a pair of game-clinching free throws by junior Jaime Printy.

Five players hit double figures for Iowa, led by Morgan Johnson's 23 points (9-13 FGs). Printy added 18 points, seven rebounds and three assists, while Samantha Logic, Bethany Doolittle and Wahlin each netted 10.

LOGIC COLLECTS DOUBLE-DOUBLE

Freshman Samantha Logic scored 10 points and grabbed 11 rebounds Saturday at Northern Iowa for her first career double-double.

Logic's double-double was the first for an Iowa freshman since the 2009-10 season. Morgan Johnson had 16 points and 11 rebounds vs. Purdue (Jan. 31, 2010).

PRINTY'S CONSISTENT WEEK

Junior Jaime Printy averaged 17 points, six rebounds, 5.5 assists and two steals in Iowa's two wins last week.

Printy clinched Iowa's win at Northern Iowa by sinking two free throws with 14 seconds remaining, finishing with 18 points (6-12 FGs), seven rebounds and three assists.

She started the week with 16 points, five rebounds and eight assists against Albany.

Printy was a perfect 13-13 from the free throw line last week and has made 21-straight free throws, dating back to Iowa's game vs. UNLV (Nov. 13).

DOOLITTLE PRODUCTIVE OFF THE BENCH

Freshman Bethany Doolittle has emerged as a scoring threat off the bench for Iowa in the paint.

Doolittle has netted 18 points combined in her last two games, including 10 points (4-5 FGs) and six rebounds in just 11 minutes of action at Northern Iowa.

Doolittle scored eight points (4-6 FGs) in 17 minutes of play in Iowa's win vs. Albany.

Doolittle is averaging 6.5 points and 13.3 minutes this season.

Head Coach Lisa Bluder

Lisa Bluder (pronounced BLUE-dir) is in her 12th season as head coach at the University of Iowa and her 28th season as a college head coach. She is a three-time Big Ten and two-time WBCA Regional Coach of the Year.

Bluder, 48, has a career record of 570-275 (.675), including a 214-133 (.617) record at Iowa, a 187-106 (.638) record in 10 seasons (1990-2000) at Drake and a six-year mark (1984-90) of 169-36 (.824) at St. Ambrose.

Bluder is Iowa's second all-time winningest coach and trails only C. Vivian Stringer. She has guided the Hawkeyes to 10 post-season tournaments (8 NCAA, 2 WNIT) and eight upper-division finishes in the Big Ten Conference, including winning a share of the league championship in 2008 and tying for second place in 2009.

In her first season with the Hawkeyes, Bluder transformed a struggling program into a 21-game winner. Iowa finished second in the Big Ten, won the conference tournament and advanced to the second round of the NCAA Tournament. Bluder became Iowa's third coach to be named Big Ten Coach of the Year. She was also honored as the College Coach of the Year by the *Women's Basketball News Service* and was named the WBCA District 6 Coach of the Year. Iowa's 2001-02 squad finished fourth in the Big Ten and advanced to the second round of the NCAA Tournament for the second consecutive year. In 2003, Bluder guided the Hawkeyes to their first-ever WNIT appearance. Iowa, which had nine underclassmen on its roster, advanced to the quarterfinals before falling to Creighton. In 2004-05, Iowa finished 23-10, starting the year 13-0 and was the last Division I undefeated team standing. In 2005-06, Bluder mentored a team plagued by injuries to a fifth-place Big Ten finish and an NCAA Tournament berth.

In her 10 years at Drake, Bluder brought great success and tradition to the Bulldog program and established herself as one of the top coaches in the country. She led Drake to five 20-plus win seasons in her last six years, including five post-season appearances. She guided the Bulldogs to eight Missouri Valley Conference Tournament appearances, reaching the semifinals six times and winning the tournament four times. Bluder was also named the Conference Coach of the Year three times at Drake.

Bluder began her coaching career at St. Ambrose, where she coached six successful seasons, building the Bees into a NAIA powerhouse. During her tenure at St. Ambrose, Bluder guided the Bees to four straight national tournaments, including two consecutive Final Four appearances. The 1990 St. Ambrose team was ranked No. 1 and Bluder was named the NAIA Converse Coach of the Year.

A graduate of Linn-Mar High School in Marion, IA, Bluder was a three-year starter at Northern Iowa. She graduated from UNI in 1983 with a bachelor's degree in marketing.



Press Conferences

Below is a list of press conferences for Head Iowa Women's Basketball Coach Lisa Bluder. Press conferences will be held in the Media Room on the first floor of Carver-Hawkeye Arena. Select student-athletes will be available after Coach Bluder addresses the media.

Monday, December 5 12:15 p.m.
Thursday, December 29..... TBA
Tuesday, January 3..... TBA
Wednesday, January 11..... TBA
Wednesday, January 18..... TBA
Wednesday, January 25..... TBA
Tuesday, January 31..... TBA
Wednesday, February 8..... TBA
Wednesday, February 15..... TBA
Wednesday, February 22..... TBA
Tuesday, February 28..... TBA

Big Ten Coaches Teleconferences

The Big Ten Conference has scheduled teleconferences with women's basketball coaches each month during the Big Ten portion of the 2011-12 season. The teleconferences are held the first Tuesday of January, February and March, and will begin at 9 a.m. (CT).

Contact the Big Ten office of the Iowa Athletic Communications Office for the tele-conference and play-back phone numbers. Below is a schedule of coaches.

9:00Felisha Legette-Jack, Indiana
9:08Kevin Borseth, Michigan
9:16Coquese Washington, PSU
9:24Sharon Versyp, Purdue
9:32Joe McKeown, Northwestern
9:40Bobbie Kelsey, Wisconsin
9:48Suzy Merchant, Michigan St.
9:56Jim Foster, Ohio St.
10:04.....Lisa Bluder, Iowa
10:12Pam Borton, Minnesota
10:20Jollette Law, Illinois
10:28Connie Yori, Nebraska

Satellite Coordinates Information

Dates and information on the 2011-12 Winter Sports Uplinks will be added at a later date. The uplinks will most likely start in December. Please call the Athletic Communications Office with any questions.

KREI HITTING THE GLASS

Kelly Krei recorded her third career double-double vs. Albany (Nov. 16) with 13 points and 10 rebounds.

Krei's first double-double came at home vs. Indiana as a sophomore (14 points and 13 rebounds). Her second was in the season opener vs. Southern in the Islander Tip-Off Classic, hosted by Texas A&M Corpus Christi, as a junior (20 points and 10 rebounds).

HITTING FROM OUTSIDE

Kelly Krei has emerged as Iowa's top three-point shooter, through four games, this season. Krei is 10-18 from beyond the arc and leads the team with a .556 three-point percentage.

The Iowa City native was a perfect 3-3 against Albany and was 4-6 vs. Harvard in the season opener.

MAJOR BENCH POINTS

Iowa's 26 points off the bench vs. Albany were the most for a Hawkeye team in 26 games.

The Hawkeyes scored 26 bench points against Virginia Tech last year in Cancun. Before the Virginia Tech game a year ago, the last time an Iowa team scored 26 or more bench points was against Texas State in 2008 (27 off the bench).

EARLY CHARITY STRIPE SUCCESS

The Hawkeyes have cashed in from the free throw line so far this season.

Iowa has only missed 13 free throws in 83 attempts and is shooting .843 from the line.

Against Albany, Iowa was 23-27 from the line. The Hawkeyes were a perfect 10-10 against UNLV and went 21-27 against Harvard.

NESBITT SIDELINED WITH KNEE SURGERY

Junior Trisha Nesbitt will be sidelined after having minor knee surgery Nov. 15. She is expected to miss 3-6 weeks of action.

PRINTY AND WAHLIN NAMED TO ALL-TOURNAMENT TEAM

Junior Jaime Printy and senior Kamille Wahlin were named to the Hawkeye Challenge all-tournament team Nov. 13.

Printy led Iowa in scoring vs. both Harvard (24 points) and UNLV (25 points). She added six rebounds and four assists vs. Harvard, along with five rebounds and four assists vs. UNLV.

Printy was also named CollegeSportsMadness.com's Big Ten Player of the Week.

Wahlin netted nine points against Harvard and scored 15 vs. UNLV. She also had two rebounds and three assists against the Rebels.

STAT SHEET STUFFER

Freshman Samantha Logic recorded impressive stat lines in Iowa's first two games of the season.

Logic tallied nine points, five rebounds, four assists and three steals in the season opener against Harvard (Nov. 12). She followed with four points, two rebounds, four assists and two steals against UNLV (Nov. 13).

MOVING UP CAREER CHARTS

Four Hawkeyes are currently working their way up the career records lists at Iowa.

- Kamille Wahlin ranks fourth in career three-pointers made (175), 11th in career assists (317) and 24th in career scoring (1,127). She needs 11 more three-pointers to move past Kristi Smith into third place, six more assists to move past Lisa Anderson for 10th place and three more points to move into 23rd place.
- Morgan Johnson ranks second in career blocks (165) and needs 71 more to move past Tangela Smith for first place.
- Jaime Printy ranks fifth in career three-pointers made (160) and 25th in career scoring (1,104). She needs 16 more three-pointers to move past Wahlin for fourth place and 24 more points to move into 25th place.
- Kelly Krei ranks eighth in career three-pointers made (126) and needs 13 more to move past Kristi Faulkner into seventh place.



Final 2010-11 Big Ten Overall Individual Stats

Kachine Alexander	Rank	Avg.	Morgan Johnson	Rank	Avg.
Offensive Rebounds	2nd	3.3	Blocks	2nd	2.5
Rebounding	3rd	9.5	Offensive Rebounds	6th	2.9
Defensive Rebounds	4th	6.2	Rebounding	8th	6.7
Minutes Played	7th	34.8	Field Goal Percentage	10th	.478
Steals	10th	1.7	Scoring	25th	10.8
Assist/Turnover Ratio	10th	1.2	Kamille Wahlin	Rank	Avg.
Scoring	11th	14.5	Assists	7th	3.8
Assists	13th	3.5	3-Pointers Made	9th	1.8
Jaime Printy	Rank	Avg.	Assist/Turnover Ratio	9th	1.3
Free Throw Percentage	3rd	.864	Scoring	16th	12.0
3-Pointers Made	3rd	2.3	Kelly Krei	Rank	Avg.
Scoring	5th	16.8	3-Pointers Made	10th	1.7
3-Point Percentage	6th	.383	Defensive Rebounds	13th	3.9
Assist/Turnover Ratio	11th	1.2	Rebounding	20th	5.1
Assists	12th	3.5			

HAWKEYES PICKED TO FINISH THIRD

The Iowa women's basketball team was picked to finish third by both the league coaches and media. Penn State was chosen as the favorite in both polls.

Junior Jaime Printy was a preseason all-Big Ten selection by both the league media and coaches.

PRINTY NAMED TO WATCH LISTS

Junior Jaime Printy has been named to both the "Wade Watch" and Wooden Award Watch Lists. The "Wade Watch" List is made up of the top 25 preseason women's basketball players while the Wooden Award includes 30 student-athletes.

The Wade Trophy and Wooden Award are considered the two most prestigious awards in NCAA women's college basketball.

PRINTY NOTES FROM LAST SEASON

- Became the youngest player in school history to earn All-America honors, taking home Associated Press honorable mention accolades as a sophomore. She is the only returning All-American in the Big Ten this season.
- Became the first player in school history to reach the 1,000 career point milestone as a sophomore.
- Earned second team All-Big Ten honors by the coaches and was a third team pick by the media.
- One of eight Hawkeyes named Academic All-Big Ten.
- Named Big Ten Player of the Week once.
- Started all 31 games and led the Hawkeyes with 16.8 points per game.
- Tied school record for free throw percentage in a single game (10-10, 1.000 vs. Indiana), three-pointers attempted in a single game (15 vs. Michigan) and three-pointers made in an NCAA Tournament game (5 vs. Gonzaga).

AWARD WINNERS RETURNING

- Jaime Printy was named honorable mention All-America by the Associated Press. She was also a second team All-Big Ten selection by the coaches and a third team pick by the media. She was also named Big Ten Player of the Week once.
- Kamille Wahlin was an honorable mention All-Big Ten selection by the league coaches and media. Wahlin was named a National Strength and Conditioning Association All-American. She also earned all-tournament honors at the Islander Tip-Off Tournament and the Caribbean Challenge.
- Morgan Johnson was named the KCRG-TV9 All-Tournament team.

Final 2010-11 Big Ten Overall Stats

Scoring Offense	
1. Penn State	76.9
3. Iowa	71.0
Scoring Defense	
1. Michigan State	55.2
5. Iowa	63.9
Scoring Margin	
1. Michigan State	+12.1
4. Iowa	+7.1
Free Throw Percentage	
1. Purdue	.776
2. Iowa	.758
Field Goal Percentage	
1. Ohio State	.455
9. Iowa	.412
Field Goal Percentage Defense	
1. Purdue	.364
5. Iowa	.393
3-Point Field Goals Made	
1. Michigan	7.4
2. Iowa	7.0
3-Point Field Goal Percentage	
1. Penn State	.415
9. Iowa	.319
3-Point Field Goal Percentage Defense	
1. Michigan State	.289
4. Iowa	.307
Rebounding	
1. Iowa	38.8
Rebounding Allowed	
1. Michigan State	30.1
8. Iowa	35.2
Rebounding Margin	
1. Michigan State	+7.7
3. Iowa	+3.5
Offensive Rebounds	
1. Michigan State	14.4
3. Iowa	12.6
Defensive Rebounds	
1. Iowa	26.2
Blocked Shots	
1. Ohio State	4.9
6. Iowa	3.8
Assists	
1. Northwestern	16.0
3. Iowa	13.9
Steals	
1. Michigan State	9.6
10. Iowa	5.8
Turnover Margin	
1. Michigan	+3.2
6. Iowa	+0.0
Assist/Turnover Ratio	
1. Ohio State	1.2
4. Iowa	1.0



Career Scoring in Iowa History

Rank	No.	Player	Years
20	1147	Cara Consuegra	97-01
21	1137	Jolette Law	86-90
22	1130	Johanna Solverson	02-05,08
23	1129	Lisa Anderson	80-84
24	1127	Kamille Wahlin	09-Pr
25	1104	Jaime Printy	10-Pr
26	1100	Shanda Berry	85-89
27	1048	Kim Howard	78-82
28	1046	Robin Anderson	80-85
29	1024	Tiffany Goden	94-98

Career 3-Pointers in Iowa History

Rank	No.	Player	Years
1	261	Lindsey Meder	98-02
2	221	Wendy Ausdemore	05-09
3	185	Kristi Smith	05-09
4	175	Kamille Wahlin	09-Pr
5	160	Jaime Printy	10-Pr
6	156	Leah Magner	98-02
7	138	Kristi Faulkner	01-04
8	126	Kelly Krei	09-Pr
9	125	Johanna Solverson	02-05,08
10	118	Nadine Domond	94-98
11	116	Crystal Smith	02-06

Career Blocks in Iowa History

Rank	No.	Player	Years
1	235	Tangela Smith	94-98
2	165	Morgan Johnson	10-Pr

Career Assists in Iowa History

Rank	No.	Player	Years
10	322	Lisa Anderson	80-84
11	317	Kamille Wahlin	09-Pr

Hawkeyes in Final 2010-11 NCAA Stats

Iowa	Rank	Avg.
Personal Fouls Per Game	8th	13.3
Free Throw Percentage	14th	.761
3-Pointers Made Per Game	22nd	7.3
Turnovers Per Game	27th	14.6
Assist/Turnover Ratio	28th	0.98
Scoring Offense	42nd	71.0
Win/Loss Percentage	46th	.710
Rebounding Margin	62nd	+3.6
Scoring Margin	65th	7.1
Assists Per Game	73rd	14.3
Blocks Per Game	84th	3.9

Jaime Printy	Rank	Avg.
Free Throw Percentage	22nd	.864
3-Point Percentage	52nd	.383
Points Per Game	67th	16.8

Morgan Johnson	Rank	Avg.
Blocks Per Game	22nd	2.5

2011-12 Big Ten Standings/Schedule

Team	Big Ten	Pct.	Overall	Pct.
Michigan	0-0	.000	4-0	1.000
Nebraska	0-0	.000	3-0	1.000
Northwestern	0-0	.000	3-0	1.000
Purdue	0-0	.000	3-0	1.000
Ohio State	0-0	.000	2-0	1.000
Iowa	0-0	.000	3-1	.750
Penn State	0-0	.000	3-1	.750
Indiana	0-0	.000	2-1	.667
Michigan State	0-0	.000	3-2	.600
Minnesota	0-0	.000	3-2	.600
Illinois	0-0	.000	2-3	.400
Wisconsin	0-0	.000	1-3	.250

Tuesday, November 22
Chicago State at Purdue (BTN.com)
Indiana at Miami (OH)
Michigan State at Milwaukee
Northwestern at LSU
Howard at Ohio State

Wednesday, November 23
Wisconsin at BYU

Thursday, November 24
Green Bay vs. Illinois
Prairie View A&M vs. Michigan
Tulane vs. Purdue

Friday, November 25
St. John's vs. Iowa
Arizona State vs. Illinois
Toledo vs. Indiana
Washington State vs. Michigan
Quinnipiac vs. Minnesota
Nebraska at Florida A&M
Stony Brook at Ohio State
Iowa State vs. Penn State
Kansas State vs. Purdue
Montana State vs. Wisconsin

SUCCESS UNDER BLUDER

Last season marked the eighth time in 11 seasons under head coach Lisa Bluder that Iowa has been selected for the NCAA Tournament, including each of the last four seasons. The Hawkeyes have participated in postseason play in all but one season under Bluder (two WNIT appearances).

In addition, Iowa finished with a winning record for the 10th time in 11 seasons under Bluder. Iowa's tie for third place in the Big Ten is also the eighth time, under Bluder, the Hawkeyes recorded an upper-division finish in the conference.

Iowa also tallied its sixth 20-win season under Bluder, including each of the last four seasons.

JUMP IN ATTENDANCE LAST SEASON

The University of Iowa had the second-largest increase in attendance from the previous season among Division I women's basketball programs, according to data released by the NCAA. Lisa Bluder's squad also finished the 2010-11 season ranked 13th nationally in average attendance, the highest ranking since the 1997-98 season when the UI ranked ninth.

Iowa jumped from an average of 3,488 fans during the 2009-10 season to 5,823 fans for the 2010-11 season, a boost of 2,335 fans. Louisville was the only other school to see a larger increase, adding 4,462 fans.

Iowa's total attendance figure of 81,528 is the third-highest in school history, while the average of 5,823 is the fourth best in school history.

Iowa's top crowd of the season came on Jan. 8 vs. Ohio State, when 9,865 fans saw the Hawkeyes knock off the 20th-ranked Buckeyes. That crowd was the 11th-largest single-game crowd in women's basketball history.

NEW HAWKEYES RANK HIGH

Iowa's freshmen class was tabbed as the 11th best recruiting class of 2011 by ESPNHoopGurlz.com. The class includes five players, one at each position.

Included in the class is guard Samantha Logic, who is the third McDonald's High School All-American to commit to the University of Iowa under Head Coach Lisa Bluder.

TOUGH SCHEDULE IN 11-12

The Hawkeyes are scheduled to face 14 teams who advanced to postseason play a year ago, including 10 NCAA Tournament teams.

Iowa will play six non-conference games on the road, with two of those matchups coming in the Bahamas at the Junkanoo Jam. Iowa will face St. John's in the first round and could potentially play the defending NCAA national champions in Texas A&M in the final game.

TWO PLAYERS OUT FOR THE SEASON

Senior Megan Considine and sophomore Jade Rogers will both miss the entire 2011-12 season.

Considine suffered a torn Achilles tendon during preseason workouts. Rogers had surgery to repair an injured knee.





University of Iowa Women's Basketball

Updated Iowa Player Bio

Kamille Wahlin



2

2011-12 Game-by-Game

Opponent	Date	gs	min	Total		3-Pointers		Free throws		Rebounds				pf	a	t/o	blk	stl	pts	avg	
				fg-fga	pct	3fg-fga	pct	ft-fa	pct	off	def	tot	avg								
HARVARD	11/12/11	*	22	3-5	.600	2-4	.500	1-2	.500	1	0	1	1.0	3	2	2	0	1	9	9.0	
UNLV	11/13/11	*	38	6-13	.462	3-9	.333	0-0	.000	0	2	2	1.5	0	3	2	0	2	15	12.0	
ALBANY	11/16/11	*	26	3-5	.600	1-3	.333	2-2	1.000	0	4	4	2.3	0	2	3	0	0	9	11.0	
at UNI	11/19/11	*	36	4-12	.333	2-6	.333	0-0	.000	1	3	4	2.8	1	2	3	0	1	10	10.8	
Totals			4	122	16-35	.457	8-22	.364	3-4	.750	2	9	11	2.8	4	9	10	0	4	43	10.8

Games played: 4
 Minutes/game: 30.5
 Points/game: 10.8
 FG Pct: 45.7
 3FG Pct: 36.4
 FT Pct: 75.0

Rebounds/game: 2.8
 Assists/game: 2.3
 Turnovers/game: 2.5
 Assist/turnover ratio: 0.9
 Steals/game: 1.0

Guard, 5-8, Senior
Crookston MN
Crookston HS

- Named team captain.
- Hawkeye Challenge all-tournament team selection.
- Hit go-ahead three-pointer with 31 seconds left for win at Northern Iowa.
- 15 points and three assists vs. UNLV.
- Ranks fourth in career three-pointers made (175), 11th in career assists (317) and 24th in career scoring (1,127).
- Honorable mention All-Big Ten selection by league coaches and media in 2010-11.
- Academic All-Big Ten in 2010-11.

Personal Bests

Points: 33 at UNI (11/22/09)
Rebounds: 11 vs. James Madison (11/25/10)
FGM: 11 at UNI (11/22/09)
FGA: 19 at UNI (11/22/09)
3-pt FG: 7 at Penn State (12/28/09)
3-pt FGA: 15 at Penn State (12/28/09)
FTM: 6 vs. Penn State (3/5/10)
FTA: 6, 3 times, last vs. Rutg. (3/20/10)
Assists: 10 vs. Michigan (1/26/09)
Steals: 4 vs. Wisconsin (12/31/09)
Blocks: 1, 3 times, last vs. Michigan (1/2/11)
Minutes: 43 vs. Penn State (2/1/09)

CAREER STATISTICS

YEAR	G/GS	FG-A	PCT	3-PT	PCT	FT-A	PCT	O-D-REB	AVG	PF-FO	AS	TO	BK	ST	PTS	AVG
Fresh.	32/14	90-191	.471	28-68	.412	35-46	.761	19-83-102	3.2	27-0	87	60	1	22	243	7.6
Soph.	33/33	171-416	.411	84-225	.373	43-51	.843	7-109-116	3.5	57-0	104	115	1	31	469	14.2
Junior	31/31	133-345	.386	55-180	.306	51-60	.850	5-98-103	3.3	35-0	117	89	3	23	372	12.0
Senior	4/4	16-35	.457	8-22	.364	3-4	.750	2-9-11	2.8	4-0	9	10	0	4	43	10.8
TOTALS	100/82	410-987	.415	175-495	.354	132-161	.820	33-299-332	3.3	93-0	317	274	5	80	1,127	11.3





University of Iowa Women's Basketball

Updated Iowa Player Bio

Kalli Hansen



3

**Forward, 5-11, Senior
Olin, IA
Kirkwood CC**

- First collegiate action came against Central Michigan, after missing first four games with back injury.
- Transferred to Iowa after playing two seasons at Kirkwood Community College in Cedar Rapids.
- Helped lead Kirkwood to back-to-back NJCAA regional and national championships while compiling an impressive 75-2 record over the two-year stretch.
- First team All-American and All-Region selection at Kirkwood.

Personal Bests

Points: 8 vs. Virginia Tech (11/26/10)
Rebounds: 8 at Minnesota (1/5/11)
FGM: 3 vs. Virginia Tech (11/26/10)
FGA: 4 vs. Virginia Tech (11/26/10)
3-pt FG: 2 vs. Virginia Tech (11/26/10)
3-pt FGA: 2, 4x, last at Indiana (2/27/11)
FTM: 4 at Minnesota (1/5/11)
FTA: 6 at Minnesota (1/5/11)
Assists: 2 vs. UNLV (11/13/11)
Steals: 1, 3x, last vs. Ohio State (1/8/11)
Blocks: 1, twice, last vs Albany (11/16/11)
Minutes: 19 at Minnesota (1/5/11)

2011-12 Game-by-Game

Opponent	Date	gs	min	Total		3-Pointers		Free throws		Rebounds				pf	a	t/o	blk	stl	pts	avg
				fg-fga	pct	3fg-fga	pct	ft-fa	pct	off	def	tot	avg							
HARVARD	11/12/11	18	1-2	.500	0-0	.000	2-2	1.000	0	2	2	2.0	0	1	2	1	0	4	4.0	
UNLV	11/13/11	14	0-2	.000	0-1	.000	0-0	.000	0	2	2	2.0	3	2	0	0	0	0	2.0	
ALBANY	11/16/11	8	1-1	1.000	0-0	.000	0-0	.000	1	0	1	1.7	2	1	0	1	0	2	2.0	
at UNI	11/19/11	9	0-2	.000	0-1	.000	0-0	.000	3	0	3	2.0	1	1	0	0	0	1.5		
Totals		0	49	2-7	.286	0-2	.000	2-2	1.000	4	4	8	2.0	6	5	2	2	0	6	1.5

Games played: 4
 Minutes/game: 12.3
 Points/game: 1.5
 FG Pct: 28.6
 3FG Pct: 0.0
 FT Pct: 100.0

Rebounds/game: 2.0
 Assists/game: 1.3
 Turnovers/game: 0.5
 Assist/turnover ratio: 2.5
 Blocks/game: 0.5

CAREER STATISTICS

YEAR	G/GS	FG-A	PCT	3-PT	PCT	FT-A	PCT	O-D-REB	AVG	PF-FO	AS	TO	BK	ST	PTS	AVG
Junior	27/0	21-51	.412	11-29	.379	7-14	.500	17-28-45	1.7	16-0	5	16	2	5	60	2.2
Senior	4/0	2-7	.286	0-2	.000	2-2	1.000	4-4-8	2.0	6-0	5	2	2	0	6	1.5
TOTALS	31/0	23-58	.397	11-31	.355	9-16	.563	21-32-53	1.7	22-0	10	18	4	5	66	2.1





University of Iowa Women's Basketball

Updated Iowa Player Bio

Megan Considine

2011-12 Game-by-Game



4

Guard, 5-8, Senior
Byron, IL
Byron HS

- Will miss the entire 2011-12 season after tearing her Achilles in preseason workouts.
- Named team captain.
- Academic All-Big Ten in 2010-11.

Personal Bests

Points: 5 vs. Northeastern (11/20/10)
Rebounds: 4 vs. Southern (11/12/10)
FGM: 2, twice, last vs. Northeastern (11/20/10)
FGA: 6 vs. Bradley (11/16/10)
3-pt FG: 1 vs. Southern (11/12/10)
3-pt FGA: 4 vs. Bradley (11/16/10)
FTM: 3 vs. Penn State (2/6/11)
FTA: 4 vs. Penn State (2/6/11)
Assists: 2 vs. Northeastern (11/20/10)
Steals: 3 vs. Bradley (11/16/10)
Blocks: - - -
Minutes: 21 vs. Bradley (11/16/10)

CAREER STATISTICS

YEAR	G/GS	FG-A	PCT	3-PT	PCT	FT-A	PCT	O-D-REB	AVG	PF-FO	AS	TO	BK	ST	PTS	AVG
Soph.	6/0	0-3	.000	0-2	.000	2-2	1.000	2-1-3	0.5	1-0	1	1	0	0	2	0.3
Junior	18/0	7-26	.269	1-12	.083	7-9	.778	13-5-18	1.0	15-0	10	6	0	5	22	1.2
TOTALS	24/0	7-29	.241	1-14	.071	9-11	.818	15-6-21	0.9	16-0	11	7	0	5	24	1.0





University of Iowa Women's Basketball

Updated Iowa Player Bio

Trisha Nesbitt

2011-12 Game-by-Game



11

Guard, 5-7, Junior
Ames, IA
Ames HS

- Had minor knee surgery Nov. 15 and will miss 3-6 weeks.
- Academic All-Big Ten in 2010-11.
- Saw first action of the season at Minnesota in 2010-11 after missing first 15 games with foot injury.

Personal Bests

Points: 10 vs. Michigan State (3/6/10)
Rebounds: 3 vs. W&M (11/24/09)
FGM: 4 vs. Michigan State (3/6/10)
FGA: 8 at Indiana (2/11/10)
3-pt FG: 2, twice, last vs. MSU (3/6/10)
3-pt FGA: 4, twice, last vs. Stanford (3/22/10)
FTM: 4, twice, last vs. SDSU (12/22/09)
FTA: 5 at UNI (11/22/09)
Assists: 4, 3x, last at Iowa State (12/10/09)
Steals: 3 at Minnesota (1/3/10)
Blocks: - - -
Minutes: 37 at Indiana (2/11/10)

CAREER STATISTICS

YEAR	G/GS	FG-A	PCT	3-PT	PCT	FT-A	PCT	O-D-REB	AVG	PF-FO	AS	TO	BK	ST	PTS	AVG
Fresh.	34/1	25-85	.294	9-36	.250	25-31	.806	2-22-24	0.7	46-0	43	42	0	14	84	2.5
Soph.	16/0	3-13	.231	2-6	.333	0-1	.000	0-4-4	0.3	7-0	5	10	0	1	8	0.5
Junior																
TOTALS	50/1	28-98	.286	11-42	.262	25-32	.781	2-26-28	0.6	53-0	48	52	0	15	92	1.8

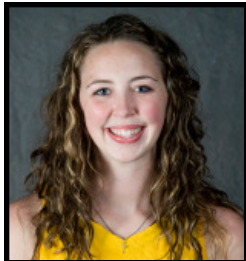




University of Iowa Women's Basketball

Updated Iowa Player Bio

Morgan Johnson



12

Center, 6-5, Junior
Platte City, MO
Platte County HS

- Ranks second in career blocks (165).
- 23 points and five rebounds and four blocks in win at Northern Iowa
- 12 points, six rebounds and two blocks in win over Albany.
- 18 points, eight rebounds and three blocks on her 21st birthday against Harvard.
- Academic All-Big Ten in 2010-11.
- Capital One Academic All-District pick in 2010-11.
- Holds school record for blocks by a sophomore (75).

Personal Bests

Points: 26 at South Dakota St. (12/18/10)
Rebounds: 13, twice, last at Illinois (1/30/11)
FGM: 10 vs. Central Michigan (11/21/10)
FGA: 16, twice, last vs. C. Michigan (11/21/10)
3-pt FG: 1 at Iowa State (12/10/09)
3-pt FGA: 2 at Iowa State (12/10/09)
FTM: 8, twice, last vs. Harvard (11/12/11)
FTA: 10, twice, last vs. Harvard (11/12/11)
Assists: 4, twice, last vs. Penn St. (1/14/10)
Steals: 3, 3x, last at Nwwestern (2/13/11)
Blocks: 8 vs. Minnesota (2/18/10)
Minutes: 36 at Minnesota (1/3/10)

2011-12 Game-by-Game

Opponent	Date	gs	min	Total		3-Pointers		Free throws		Rebounds				pf	a	t/o	blk	stl	pts	avg	
				fg-fga	pct	3fg-fga	pct	ft-fa	pct	off	def	tot	avg								
HARVARD	11/12/11	*	23	5-10	.500	0-0	.000	8-10	.800	1	7	8	8.0	4	2	0	3	1	18	18.0	
UNLV	11/13/11	*	23	0-5	.000	0-0	.000	0-0	.000	0	3	3	5.5	3	0	1	1	0	0	9.0	
ALBANY	11/16/11	*	19	5-9	.556	0-0	.000	2-3	.667	2	4	6	5.7	2	0	1	2	1	12	10.0	
at UNI	11/19/11	*	29	9-13	.692	0-0	.000	5-7	.714	3	2	5	5.5	3	1	2	4	0	23	13.3	
Totals			4	94	19-37	.514	0-0	.000	15-20	.750	6	16	22	5.5	12	3	4	10	2	53	13.3

Games played: 4
 Minutes/game: 23.5
 Points/game: 13.3
 FG Pct: 51.4
 FT Pct: 75.0

Rebounds/game: 5.5
 Assists/game: 0.8
 Turnovers/game: 1.0
 Assist/turnover ratio: 0.8
 Steals/game: 0.5
 Blocks/game: 2.5

CAREER STATISTICS

YEAR	G/GS	FG-A	PCT	3-PT	PCT	FT-A	PCT	O-D-REB	AVG	PF-FO	AS	TO	BK	ST	PTS	AVG
Fresh.	34/34	124-250	.496	1-4	.250	48-76	.632	78-139-217	6.4	87-2	24	61	79	15	297	8.7
Soph.	31/30	132-276	.478	0-0	.000	70-96	.729	90-118-208	6.7	83-3	25	58	76	21	334	10.8
Junior	4/4	19-37	.514	0-0	.000	15-20	.750	6-16-22	5.5	12-0	3	4	10	2	53	13.3
TOTALS	69-68	275-563	.488	1-4	.250	133-192	.693	174-273-447	6.5	182-5	52	123	165	38	684	9.9





University of Iowa Women's Basketball

Updated Iowa Player Bio

Kelly Krei



20

Forward, 6-2, Senior
Iowa City, IA
City HS

- Named team captain.
- Ranks eighth in career three-pointers made (126).
- Third career double-double with 13 points and 10 rebounds in win over Albany.
- 16 points (4-6 3Pt. FGs) and five rebounds in win over Harvard.
- Academic All-Big Ten in 2010-11.
- Capital One Academic All-District pick in 2010-11.

Personal Bests

Points: 20, 3x, last at Nwstern (2/13/11)
Rebounds: 13 vs. Indiana (2/25/10)
FGM: 7 vs. Ohio State (3/7/10)
FGA: 13, twice, last vs. Ohio St. (3/7/10)
3-pt FG: 5, twice, last vs. Iowa State (12/9/10)
3-pt FGA: 9, twice, last at Gonzaga (3/19/11)
FTM: 9 vs. Northwestern (1/24/10)
FTA: 11 vs. Northwestern (1/24/10)
Assists: 5, vs. Albany (11/16/11)
Steals: 6 vs. Wisconsin (12/31/09)
Blocks: 3, twice, last vs. C. Michigan (11/21/10)
Minutes: 40, twice, last vs. Kansas (11/18/09)

2011-12 Game-by-Game

Opponent	Date	gs	min	Total		3-Pointers		Free throws		Rebounds				Other							
				fg-fga	pct	3fg-fga	pct	ft-fa	pct	off	def	tot	avg	pf	a	t/o	blk	stl	pts	avg	
HARVARD	11/12/11	*	32	5-7	.714	4-6	.667	2-2	1.000	3	2	5	5.0	1	0	3	0	1	16	16.0	
UNLV	11/13/11	*	32	3-10	.300	1-5	.200	2-2	1.000	2	2	4	4.5	3	1	0	0	2	9	12.5	
ALBANY	11/16/11	*	32	3-5	.600	3-3	1.000	4-4	1.000	1	9	10	6.3	1	5	2	2	1	13	12.7	
at UNI	11/19/11	*	31	2-6	.333	2-4	.500	0-0	.000	1	2	3	5.5	1	0	1	0	1	6	11.0	
Totals			4	127	13-28	.464	10-18	.556	8-8	1.000	7	15	22	5.5	6	6	6	2	5	44	11.0

Games played: 4
 Minutes/game: 31.8
 Points/game: 11.0
 FG Pct: 46.4
 3FG Pct: 55.6
 FT Pct: 100.0

Rebounds/game: 5.5
 Assists/game: 1.5
 Turnovers/game: 1.5
 Assist/turnover ratio: 1.0
 Steals/game: 1.3
 Blocks/game: 0.5

CAREER STATISTICS

YEAR	G/GS	FG-A	PCT	3-PT	PCT	FT-A	PCT	O-D-REB	AVG	PF-FO	AS	TO	BK	ST	PTS	AVG
Fresh.	27/0	19-54	.352	7-19	.368	30-37	.811	7-55-62	2.3	27-0	11	29	2	6	75	2.8
Soph.	34/33	94-230	.409	55-136	.404	54-72	.750	48-113-161	4.7	74-1	37	63	16	42	297	8.7
Junior	31/31	89-249	.357	54-163	.331	55-76	.724	37-122-159	5.4	50-0	38	39	16	27	287	9.3
Senior	4/4	13-28	.464	10-18	.556	8-8	1.000	7-15-22	5.5	6-0	6	6	2	5	44	11.0
TOTALS	96/68	215-561	.383	126-336	.375	147-193	.762	99-305-404	4.2	157-1	92	137	36	80	703	7.3





University of Iowa Women's Basketball

Updated Iowa Player Bio

Melissa Dixon



21

Guard, 5-8, Freshman
Johnsburg, IL
Johnsburg HS

- Scored six points on 19th birthday in first career game, a win over Harvard.
- Miss Basketball of Illinois Top 10 finalist.
- Three-time team MVP and team captain as a junior and senior.
- 11-time all-state selection, including first team honors by the Associated Press, Illinois Basketball Coaches Association, Chicago Sun-Times, Champaign News Gazette and IBS as a senior.

Personal Bests

Points: 8 vs. Albany (11/16/11)
Rebounds: 1, 4x, last at UNI (11/19/11)
FGM: 2, twice, last vs. Albany (11/16/11)
FGA: 5, twice, last vs. Albany (11/16/11)
3-pt FG: 2 vs. Albany (11/16/11)
3-pt FGA: 2, twice, last vs. Albany (11/16/11)
FTM: 2 vs. Albany (11/16/11)
FTA: 2, 3x, last at UNI (11/19/11)
Assists: 1, 3x, last at UNI (11/19/11)
Steals: ---
Blocks: ---
Minutes: 15 vs. Harvard (11/12/11)

2011-12 Game-by-Game

Opponent	Date	gs	min	Total		3-Pointers		Free throws		Rebounds				pf	a	t/o	blk	stl	pts	avg
				fg-fga	pct	3fg-fga	pct	ft-fa	pct	off	def	tot	avg							
HARVARD	11/12/11	15		2-5	.400	1-2	.500	1-2	.500	0	1	1	1.0	1	0	0	0	0	6	6.0
UNLV	11/13/11	7		0-1	.000	0-1	.000	0-0	.000	0	1	1	1.0	1	1	0	0	0	0	3.0
ALBANY	11/16/11	12		2-5	.400	2-2	1.000	2-2	1.000	0	1	1	1.0	1	1	3	0	0	8	4.7
at UNI	11/19/11	6		0-0	.000	0-0	.000	1-2	.500	1	0	1	1.0	1	1	1	0	0	1	3.8
Totals		0	40	4-11	.364	3-5	.600	4-6	.667	1	3	4	1.0	4	3	4	0	0	15	3.8

Games played: 4
 Minutes/game: 10.0
 Points/game: 3.8
 FG Pct: 36.4
 3FG Pct: 60.0
 FT Pct: 66.7

Rebounds/game: 1.0
 Assists/game: 0.8
 Turnovers/game: 1.0
 Assist/turnover ratio: 0.8

CAREER STATISTICS

YEAR	G/GS	FG-A	PCT	3-PT	PCT	FT-A	PCT	O-D-REB	AVG	PF-FO	AS	TO	BK	ST	PTS	AVG
Fresh.	4/0	4-11	.364	3-5	.600	4-6	.667	1-3-4	1.0	4-0	3	4	0	0	15	3.8





University of Iowa Women's Basketball

Updated Iowa Player Bio

Samantha Logic



22

**Guard, 5-9, Freshman
Racine, WI
Racine J.I. Case HS**

- First career double-double with 10 points and 11 rebounds in win at Northern Iowa.
- McDonald's High School All-American, WBCA All-American and Parade All-American.
- Associated Press and Gatorade Player of the Year in Wisconsin.
- Ranked as the No. 10 recruit in 2011 class by ESPNHoopGurlz, No. 12 by Blue Star Basketball and No. 14 by the All-Star Girls Report.

Personal Bests

Points: 10 at UNI (11/19/11)
Rebounds: 11 at UNI (11/19/11)
FGM: 3 at UNI (11/19/11)
FGA: 11 at UNI (11/19/11)
3-pt FG: ---
3-pt FGA: 2 at UNI (11/19/11)
FTM: 4 at UNI (11/19/11)
FTA: 4, twice, last at UNI (11/19/11)
Assists: 4, 3x, last at UNI (11/19/11)
Steals: 3 vs. Harvard (11/12/11)
Blocks: 1 vs. UNLV (11/13/11)
Minutes: 30 vs. Harvard (11/12/11)

2011-12 Game-by-Game

Opponent	Date	gs	min	Total		3-Pointers		Free throws		Rebounds				pf	a	t/o	blk	stl	pts	avg	
				fg-fga	pct	3fg-fga	pct	ft-fa	pct	off	def	tot	avg								
HARVARD	11/12/11	*	30	3-7	.429	0-0	.000	3-4	.750	4	1	5	5.0	3	4	3	0	3	9	9.0	
UNLV	11/13/11	*	27	2-6	.333	0-1	.000	0-0	.000	1	1	2	3.5	4	4	6	1	2	4	6.5	
ALBANY	11/16/11	*	16	2-4	.500	0-0	.000	2-2	1.000	2	2	4	3.7	4	1	2	0	1	6	6.3	
at UNI	11/19/11	*	29	3-11	.273	0-2	.000	4-4	1.000	4	7	11	5.5	4	4	4	0	2	10	7.3	
Totals			4	102	10-28	.357	0-3	.000	9-10	.900	11	11	22	5.5	15	13	15	1	8	29	7.3

Games played: 4
 Minutes/game: 25.5
 Points/game: 7.3
 FG Pct: 35.7
 3FG Pct: 0.0
 FT Pct: 90.0

Rebounds/game: 5.5
 Assists/game: 3.3
 Turnovers/game: 3.8
 Assist/turnover ratio: 0.9
 Steals/game: 2.0
 Blocks/game: 0.3

CAREER STATISTICS

YEAR	G/GS	FG-A	PCT	3-PT	PCT	FT-A	PCT	O-D-REB	AVG	PF-FO	AS	TO	BK	ST	PTS	AVG
Fresh.	4/4	10-28	.357	0-3	.000	9-10	.900	11-11-22	5.5	15-0	13	15	1	8	29	7.3





University of Iowa Women's Basketball

Updated Iowa Player Bio

Theairra Taylor



23

Guard, 5-11, RS Sophomore
St. Paul, MN
Central HS

- Returned to the court in season opener vs. Harvard, playing two minutes.
- Suffered third ACL in a 20-month span during preseason workouts in 2010. Missed a total of 53 games with ACL injuries from 2009 through 2011.

Personal Bests

Points: 16 vs. W&M (11/24/09)
Rebounds: 9 vs. W&M (11/24/09)
FGM: 7 vs. W&M (11/24/09)
FGA: 15 vs. W&M (11/24/09)
3-pt FG: 2 vs. W&M (11/24/09)
3-pt FGA: 5 vs. Boston College (12/2/09)
FTM: 4, 3x, last vs. Columbia (11/28/09)
FTA: 4, 4x, last vs. Drake (12/20/09)
Assists: 5 vs. W&M (11/24/09)
Steals: 3, twice, last vs. Mich (12/6/09)
Blocks: 4, twice, last vs. Mich (12/6/09)
Minutes: 36 vs. W&M (11/24/09)

2011-12 Game-by-Game

Opponent	Date	gs	min	Total		3-Pointers		Free throws		Rebounds				pf	a	t/o	blk	stl	pts	avg
				fg-fga	pct	3fg-fga	pct	ft-fa	pct	off	def	tot	avg							
HARVARD	11/12/11	2	0-1	.000	0-1	.000	0-0	.000	0	0	0	0.0	1	2	1	0	0	0	0.0	
UNLV	11/13/11	7	1-1	1.000	0-0	.000	0-0	.000	1	3	4	2.0	2	1	1	0	0	2	1.0	
ALBANY	11/16/11	13	2-4	.500	0-0	.000	1-2	.500	0	2	2	2.0	2	2	1	0	0	5	2.3	
at UNI	11/19/11	11	0-2	.000	0-1	.000	0-0	.000	1	3	4	2.5	0	2	2	1	0	0	1.8	
Totals		0	33	3-8	.375	0-2	.000	1-2	.500	2	8	10	2.5	5	7	5	1	0	7	1.8

Games played: 4
 Minutes/game: 8.3
 Points/game: 1.8
 FG Pct: 37.5
 3FG Pct: 0.0
 FT Pct: 50.0

Rebounds/game: 2.5
 Assists/game: 1.8
 Turnovers/game: 1.3
 Assist/turnover ratio: 1.4
 Blocks/game: 0.3

CAREER STATISTICS

YEAR	G/GS	FG-A	PCT	3-PT	PCT	FT-A	PCT	O-D-REB	AVG	PF-FO	AS	TO	BK	ST	PTS	AVG
Fresh.	10/8	29-86	.337	9-26	.346	14-18	.778	15-34-49	4.9	22-1	24	29	10	13	81	8.1
Soph.	4/0	3-8	.375	0-2	.000	1-2	.500	2-8-10	2.5	5-0	7	5	1	0	7	1.8
TOTALS	14/8	32-94	.340	9-28	.321	15-20	.750	17-42-59	4.2	27-1	31	34	11	13	88	6.3





University of Iowa Women's Basketball

Updated Iowa Player Bio

Jaime Printy



24

Guard, 5-11, Junior
Marion, IA
Linn-Mar HS

- Ranks fifth in career three-pointers made (160) and 25th in career scoring (1,104).
- 16 points, five rebounds and eight assists win over Albany.
- Hawkeye Challenge all-tournament team selection.
- 25 points, five rebounds and four assists vs. UNLV.
- 24 points, six rebounds and four assists in win over Harvard.
- One of five players named Preseason All-Big Ten.
- Honorable mention All-American by the Associated Press in 2010-11.
- Second team All-Big Ten selection by league coaches and third team All-Big Ten picks by league media in 2010-11.
- Academic All-Big Ten in 2010-11.

Personal Bests

Points: 32 vs. Illinois (2/24/11)
Rebounds: 9 vs. W&M (11/24/09)
FGM: 11 at Indiana (2/11/10)
FGA: 25 vs. Michigan (1/2/11)
3-pt FG: 5, twice, last at Gonzaga (3/19/11)
3-pt FGA: 15 vs. Michigan (1/2/11)
FTM: 10 at Indiana (2/27/11)
FTA: 12 vs. Northwestern (1/24/10)
Assists: 9 vs. Iowa State (12/9/10)
Steals: 4 vs. Gonzaga (3/19/11)
Blocks: 1, 9x, last vs. Wisconsin (2/16/11)
Minutes: 38, 5x, last at Nwstern (2/13/11)

2011-12 Game-by-Game

Opponent	Date	gs	min	Total		3-Pointers		Free throws		Rebounds				pf	a	t/o	blk	stl	pts	avg	
				fg-fga	pct	3fg-fga	pct	ft-fa	pct	off	def	tot	avg								
HARVARD	11/12/11	*	34	9-19	.474	2-6	.333	4-5	.800	1	5	6	6.0	1	4	2	0	0	24	24.0	
UNLV	11/13/11	*	35	7-18	.389	3-10	.300	8-8	1.000	2	3	5	5.5	0	4	6	0	1	25	24.5	
ALBANY	11/16/11	*	36	3-10	.300	1-3	.333	9-9	1.000	1	4	5	5.3	2	8	4	0	2	16	21.7	
at UNI	11/19/11	*	34	6-12	.500	2-5	.400	4-4	1.000	0	7	7	5.8	3	3	2	0	2	18	20.8	
Totals			4	139	25-59	.424	8-24	.333	25-26	.962	4	19	23	5.8	6	19	14	0	5	83	20.8

Games played: 4
 Minutes/game: 34.8
 Points/game: 20.8
 FG Pct: 42.4
 3FG Pct: 33.3
 FT Pct: 96.2

Rebounds/game: 5.8
 Assists/game: 4.8
 Turnovers/game: 3.5
 Assist/turnover ratio: 1.4
 Steals/game: 1.3

CAREER STATISTICS

YEAR	G/GS	FG-A	PCT	3-PT	PCT	FT-A	PCT	O-D-REB	AVG	PF-FO	AS	TO	BK	ST	PTS	AVG
Fresh.	34/34	168-406	.414	82-212	.346	83-94	.883	35-101-136	4.0	77-1	99	82	4	30	501	14.7
Soph.	31/31	168-391	.430	70-183	.383	114-132	.864	21-109-130	4.2	60-0	109	91	7	34	520	16.8
Junior	4/4	25-59	.424	8-24	.333	25-26	.962	4-19-23	5.8	6-0	19	14	0	5	83	20.8
TOTALS	69/69	361-856	.422	160-419	.382	222-252	.881	60-229-289	4.2	143-1	227	187	11	69	1,104	16.0





University of Iowa Women's Basketball

Updated Iowa Player Bio

Jade Rogers

2011-12 Game-by-Game



32

Forward, 6-0, Freshman
Cedar Rapids, IA
Kennedy HS

- Will miss the entire 2011-12 season after having season-ending surgery to repair an injured left knee.

Personal Bests

Points: 5, twice, last vs. Indiana (1/16/11)
Rebounds: 5 vs. Central Michigan (11/21/10)
FGM: 2, twice, last vs. Indiana (1/16/11)
FGA: 4 vs. Virginia Tech (11/26/10)
3-pt FG: - - -
3-pt FGA: - - -
FTM: 1, twice, last vs. Indiana (1/16/11)
FTA: 2, twice, last vs. Indiana (1/16/11)
Assists: 1, 3x, last vs. Va. Tech (11/26/10)
Steals: 2 vs. Bradley (11/16/10)
Blocks: 1. 2x, last vs. Minnesota (2/10/11)
Minutes: 11 vs. Virginia Tech (11/26/10)

CAREER STATISTICS

YEAR	G/GS	FG-A	PCT	3-PT	PCT	FT-A	PCT	O-D-REB	AVG	PF-FO	AS	TO	BK	ST	PTS	AVG
Fresh.	13/0	9-22	.409	0-0	.000	3-11	.273	8-14-22	1.7	11-0	4	5	2	5	21	1.6





University of Iowa Women's Basketball

Updated Iowa Player Bio

Kathryn Reynolds



33

2011-12 Game-by-Game

Opponent	Date	gs	min	Total		3-Pointers		Free throws		Rebounds				pf	a	t/o	blk	stl	pts	avg	
				fg-fga	pct	3fg-fga	pct	ft-fa	pct	off	def	tot	avg								
HARVARD	11/12/11	12		0-0	.000	0-0	.000	0-0	.000	0	0	0	0	0	1	1	0	0	0	0	0.0
UNLV	11/13/11	2		0-0	.000	0-0	.000	0-0	.000	0	0	0	0	0	0	0	0	0	0	0	0.0
ALBANY	11/16/11	16		0-3	.000	0-1	.000	0-0	.000	0	0	0	0	0	1	2	0	0	0	0	0.0
at UNI	11/19/11	4		0-0	.000	0-0	.000	0-0	.000	0	0	0	0	0	1	1	2	0	0	0	0.0
Totals		0	34	0-3	.000	0-1	.000	0-0	.000	0	0	0	0	0	3	4	2	0	0	0	0.0

Games played: 4
 Minutes/game: 8.5
 FG Pct: 0.0
 3FG Pct: 0.0

Assists/game: 1.0
 Turnovers/game: 0.5
 Assist/turnover ratio: 2.0

**Guard, 5-7, Freshman
 Cincinnati, OH
 Mount Notre Dame HS**

- Played 12 minutes in first career game, a win over Harvard.
- Selected to Ohio-Kentucky All-Star Game as a senior.
- Given Ohio Athletic Association's Archie Griffin Sportsmanship Award as a senior.
- Three-time all-conference selection, including second team honors as a sophomore and first team honors as a senior.

Personal Bests

Points: ---
 Rebounds: ---
 FGM: ---
 FGA: 3 vs. Albany (11/16/11)
 3-pt FG: ---
 3-pt FGA: 1 vs. Albany (11/16/11)
 FTM: ---
 FTA: ---
 Assists: 2 vs. Albany (11/16/11)
 Steals: ---
 Blocks: ---
 Minutes: 16 vs. Albany (11/16/11)

CAREER STATISTICS

YEAR	G/GS	FG-A	PCT	3-PT	PCT	FT-A	PCT	O-D-REB	AVG	PF-FO	AS	TO	BK	ST	PTS	AVG
Fresh.	4/0	0-3	.000	0-1	.000	0-0	.000	0-0-0	0.0	3-0	4	2	0	0	0	0.0





University of Iowa Women's Basketball

Updated Iowa Player Bio

Virginia Johnson



34

2011-12 Game-by-Game

Opponent	Date	gs	min	Total		3-Pointers		Free throws		Rebounds				pf	a	t/o	blk	stl	pts	avg
				fg-fga	pct	3fg-fga	pct	ft-fa	pct	off	def	tot	avg							
HARVARD	11/12/11	2		0-0	.000	0-0	.000	0-0	.000	0	0	0	0.0	0	0	0	0	0	0	0.0
ALBANY	11/16/11	5		1-1	1.000	0-0	.000	1-1	1.000	0	1	1	0.5	0	1	0	0	0	3	1.5
Totals		0	7	1-1	1.000	0-0	.000	1-1	1.000	0	1	1	0.5	0	1	0	0	0	3	1.5

Games played: 2
 Minutes/game: 3.5
 Points/game: 1.5
 FG Pct: 100.0
 FT Pct: 100.0

Rebounds/game: 0.5
 Assists/game: 0.5
 Assist/turnover ratio: 99.9

Forward, 6-2, Freshman
Iowa City, IA
City HS

- Played two minutes in first career game, a win over Harvard.
- No. 62 ranked recruit in the 2011 class according to ESPNHoopGurlz and the a top 100 recruit by Blue Star Basketball.
- Nine-time all-state selection, including first team honors by both the Iowa Newspaper Association and the Iowa Basketball Coaches Association as a sophomore, junior and senior.
- Three-time first team all-region and all-conference pick.

Personal Bests

Points: 3 vs. Albany (11/16/11)
Rebounds: 1 vs. Albany (11/16/11)
FGM: 1 vs. Albany (11/16/11)
FGA: 1 vs. Albany (11/16/11)
3-pt FG: ---
3-pt FGA: ---
FTM: 1 vs. Albany (11/16/11)
FTA: 1 vs. Albany (11/16/11)
Assists: 1 vs. Albany (11/16/11)
Steals: ---
Blocks: ---
Minutes: 5 vs. Albany (11/16/11)

CAREER STATISTICS

YEAR	G/GS	FG-A	PCT	3-PT	PCT	FT-A	PCT	O-D-REB	AVG	PF-FO	AS	TO	BK	ST	PTS	AVG
Fresh.	2/0	1-1	1.000	0-0	.000	1-1	1.000	0-1-1	0.5	0-0	1	0	0	0	3	1.5





University of Iowa Women's Basketball

Updated Iowa Player Bio

Bethany Doolittle



51

2011-12 Game-by-Game

Opponent	Date	gs	min	Total		3-Pointers		Free throws		Rebounds				pf	a	t/o	blk	stl	pts	avg
				fg-fga	pct	3fg-fga	pct	ft-fa	pct	off	def	tot	avg							
HARVARD	11/12/11	10	2-3	.667	0-0	.000	0-0	.000	0	0	0	0.0	1	0	0	0	0	0	4	4.0
UNLV	11/13/11	15	2-4	.500	0-0	.000	0-0	.000	0	0	0	0.0	2	0	0	1	0	4	4.0	
ALBANY	11/16/11	17	4-6	.667	0-0	.000	0-2	.000	1	2	3	1.0	0	0	1	1	0	8	5.3	
at UNI	11/19/11	11	4-5	.800	0-0	.000	2-2	1.000	1	5	6	2.3	1	0	1	1	0	10	6.5	
Totals		0	53	12-18	.667	0-0	.000	2-4	.500	2	7	9	2.3	4	0	2	3	0	26	6.5

Games played: 4
 Minutes/game: 13.3
 Points/game: 6.5
 FG Pct: 66.7
 FT Pct: 50.0

Rebounds/game: 2.3
 Turnovers/game: 0.5
 Blocks/game: 0.8

Center, 6-4, Freshman
Oakdale, MN
Hill-Murray HS

- 10 and six rebounds in just 11 minutes of action off the bench in win at Northern Iowa.
- Four points in 10 minutes of play in first career game, a win over Harvard.
- Miss Minnesota Basketball finalist.
- Four-time all-state selection, including Minnesota Coaches Association and Associated Press first team honors
- Three-time all-conference pick and named conference's Defensive Player of the Year as a senior

Personal Bests

Points: 10 at UNI (11/19/11)
Rebounds: 6 at UNI (11/19/11)
FGM: 4, twice, last at UNI (11/19/11)
FGA: 6 vs. Albany (11/16/11)
3-pt FG: ---
3-pt FGA: ---
FTM: 2 at UNI (11/19/11)
FTA: 2, twice, last at UNI (11/19/11)
Assists: ---
Steals: ---
Blocks: 1, 3x, last at UNI (11/19/11)
Minutes: 17 vs. Albany (11/16/11)

CAREER STATISTICS

YEAR	G/GS	FG-A	PCT	3-PT	PCT	FT-A	PCT	O-D-REB	AVG	PF-FO	AS	TO	BK	ST	PTS	AVG
Fresh.	4/0	12-18	.667	0-0	.000	2-4	.500	2-7-9	2.3	4-0	0	2	3	0	26	6.5





University of Iowa Women's Basketball

Game-by-Game Results

Overall: 3-1

Big Ten: 0-0

Home: 2-1

Away: 1-0

Neutral: 0-0

Date	Opponent	Result	Attend.	Top Scorer	Top Rebounder
Nov. 12	Harvard*	W, 90-81	2,873	Printy (24)	Johnson (8)
Nov. 13	UNLV*	L, 59-69	3,287	Printy (25)	Printy (5)
Nov. 16	Albany	W, 82-60	2,909	Printy (16)	Krei (10)
Nov. 19	at Northern Iowa	W, 78-74	4,077	Johnson (23)	Logic (11)
Nov. 25	vs. St. John's#				
Nov. 26	Temple/Texas A&M#				
Nov. 30	Virginia Tech&				
Dec. 3	at Kansas State\$				
Dec. 7	at Iowa State				
Dec. 9	Western Illinois				
Dec. 17	at Bradley				
Dec. 20	Drake				
Dec. 22	Mississippi Valley State				
Dec. 30	Northwestern				
Jan. 2	at Ohio State				
Jan. 5	Illinois				
Jan. 8	Nebraska				
Jan. 15	at Purdue				
Jan. 19	Wisconsin				
Jan. 22	at Penn State				
Jan. 26	at Nebraska				
Jan. 28	Purdue				
Feb. 2	at Wisconsin				
Feb. 5	at Indiana				
Feb. 9	Minnesota				
Feb. 12	Michigan State				
Feb. 16	at Michigan				
Feb. 23	at Northwestern				
Feb. 26	Michigan				

* - Hawkeye Challenger, Iowa City, IA

- Junkanoo Jam, Bahamas

& - Big Ten/ACC Challenge

\$ - Big Ten/Big 12 Challenge

Attendance Summary	Games	Totals	Average
Home	3	9,069	3,023
Away	1	4,077	4,077
Neutral	---	---	---
Totals	4	13,146	3,287





University of Iowa Women's Basketball

Game-by-Game Statistics

Team	Score	FG-A	PCT	3-PT. FG	PCT	FT-A	PCT	REB	PF	AS	TO	BLK	ST
Harvard	81	31-69	44.9%	8-20	40.0%	11-17	64.7%	39	20	14	15	5	7
at Iowa	90	30-59	50.8%	9-19	47.4%	21-27	77.8%	35	16	16	14	4	6
UNLV	69	24-59	40.7%	6-17	35.3%	15-21	71.4%	49	13	13	22	2	10
at Iowa	59	21-60	35.0%	7-27	25.9%	10-10	100%	29	18	16	16	3	7
Albany	60	24-69	34.8%	4-18	22.2%	8-17	47.1%	37	23	10	15	4	12
at Iowa	82	26-53	49.1%	7-12	58.3%	23-27	85.2%	42	15	23	17	6	5
at Northern Iowa	74	26-66	39.4%	6-22	27.3%	16-17	94.1%	31	17	12	11	4	11
Iowa	78	28-63	44.4%	6-19	31.6%	16-19	84.2%	48	16	15	18	6	6

vs. St John's

[Iowa](#)

vs. Temple/St. John's

[at Iowa](#)

Virginia Tech

[at Iowa](#)

at Kansas State

[Iowa](#)

at Iowa State

[Iowa](#)

Western Illinois

[at Iowa](#)

at Bradley

[Iowa](#)

Drake

[at Iowa](#)

Miss. Valley State

[at Iowa](#)

Northwestern

[at Iowa](#)

at Ohio State

[Iowa](#)

Illinois

[at Iowa](#)

Nebraska

[at Iowa](#)

at Purdue

[Iowa](#)

Wisconsin

[at Iowa](#)

at Penn State

[Iowa](#)

at Nebraska

[Iowa](#)

Purdue

[at Iowa](#)

at Wisconsin

[Iowa](#)

at Indiana

[Iowa](#)

Minnesota

[at Iowa](#)

Michigan State

[at Iowa](#)

at Michigan

[Iowa](#)

at Northwestern

[Iowa](#)

Michigan

[at Iowa](#)





University of Iowa Women's Basketball

Season & Career Bests

Season Bests

Player	Points	3-Pointers	Rebounds	Assists	Blocks	Steals
Megan Considine	---	---	---	---	---	---
Melissa Dixon	8 vs. Albany	2 vs. Albany	1, four times	1, three times	1, at UNI	---
Bethany Doolittle	10 at UNI	---	6 at UNI	---	1, twice	---
Kalli Hansen	4 vs. Harvard	---	3 at UNI	2 vs. UNLV	1, twice	---
Morgan Johnson	23 at UNI	---	8 vs. Harvard	2 vs. Harvard	4 at UNI	1, twice
Virginia Johnson	3 vs. Albany	---	1 vs. Albany	1 vs. Albany	---	---
Kelly Krei	16 vs. Harvard	4 vs. Harvard	10 vs. Albany	5 vs. Albany	2 vs. Albany	2 vs. UNLV
Samantha Logic	10 at UNI	---	11 at UNI	4, three times	1 vs. UNLV	3 vs. Harvard
Trisha Nesbitt	---	---	---	---	---	---
Jaime Printy	25 vs. UNLV	3 vs. UNLV	7 at UNI	8 vs. Albany	---	2, twice
Kathryn Reynolds	---	---	---	2 vs. Albany	---	---
Jade Rogers	---	---	---	---	---	---
Theairra Taylor	5 vs. Albany	---	4, twice	2, three times	1 at UNI	---
Kamille Wahlin	15 vs. UNLV	3 vs. UNLV	4, twice	3 vs. UNLV	---	2 vs. UNLV

Career Bests

Player	Points	3-Pointers	Rebounds	Assists	Blocks	Steals
Megan Considine	5, Northeastern	1 vs. Southern	4 vs. Southern, '10	2 vs. N'eastern	---	3, vs. Bradley
Melissa Dixon	8 vs. Albany	2 vs. Albany	1, four times	1, three times	1, at UNI	---
Bethany Doolittle	10 at UNI	---	6 at UNI	---	1, twice	---
Kalli Hansen	8 vs. Virginia Tech	2 vs. Virginia Tech	8 vs. Minnesota, '10	2 vs. UNLV	1, twice	---
Morgan Johnson	26, at SDSU	---	13, twice	4, twice	8, Minnesota, '10	3, three times
Virginia Johnson	3 vs. Albany	---	1 vs. Albany	1 vs. Albany	---	---
Kelly Krei	20, three times	5, twice	13, Indiana, '10	5 vs. Albany	3, Michigan '10	6, Wisconsin '10
Samantha Logic	10 at UNI	---	11 at UNI	4, three times	1 vs. UNLV	3 vs. Harvard
Trisha Nesbitt	10, Michigan State	2, Columbia	3, William & Mary	4, three times	1, Michigan State '11	3, Minnesota
Jaime Printy	32 vs Illinois, '11	5, twice	9, William & Mary	9, Iowa State, '10	1, nine times	4 vs. Gonzaga, '11
Kathryn Reynolds	---	---	---	2 vs. Albany	---	---
Jade Rogers	5, twice	---	5 vs. Central Michigan	1, three times	1, twice	1 vs. N'eastern
Theairra Taylor	20, William & Mary	3, William & Mary	9, William & Mary	6, Santa Clara	4, Michigan	3, twice
Kamille Wahlin	33, UNI	7, Penn State	11 vs. James Madison	10, Michigan, '09	1, three times	4, Wisconsin '10

BOLD - set career best during curent season

* - - tied school single-game and Carver-Hawkeye Arena record





University of Iowa Women's Basketball

The Last Time...

The Last Time a Player . . .

Had 30 or more points

Iowa -- 32, Jaime Printy, Illinois, 2/21/11
Opponent -- 34, Courtney Vandersloot, Gonzaga, 3/19/11

Made at least 80% of her FGA (10 att.)

Iowa -- 1.000 (10-10), Jaime Printy, at Indiana, 2/27/11[^]
Opponent -- .875 (14-16), Liz Shimek, Michigan State, 3/3/06

Made 100% of her FTA (10 att.)

Iowa -- 1.000 (10-10), Jamie Printy, at Indiana, 2/27/11[^]
Opponent -- 1.000 (11-11), Courtney Vandersloot, Gonzaga, 3/19/11

Had 15 or more rebounds

Iowa -- 17, Kachine Alexander, Penn State, 2/6/11
Opponent -- 17, Jamie Smith, UNLV, 11/13/11

Had 10 or more assists

Iowa -- 10, Kachine Alexander vs. Penn State, 2/1/09
Opponent -- 10, Brittnay McCoy, Minnesota, 2/18/10

Had 5 or more blocks

Iowa -- 5, Morgan Johnson, Illinois, 2/25/11
Opponent -- 5, Ebony Ellis, Northern Illinois, 12/8/07

Had 5 or more steals

Iowa -- 6, Kachine Alexander, Penn State, 2/6/11
Opponent -- 5, Alex Bentley, Penn State, 2/6/11

The Last Time A Team . . .

Scored 100 or more points

Iowa -- 100 vs. Minnesota, 2/12/88
Opponent -- 101, Iowa State, 12/3/03

Scored 40 or fewer points

Iowa -- 40, vs. Illinois, 2/10/77
Opponent -- 40, Iowa State, 12/9/10

Won an overtime game

Iowa -- 68-60, at Wisconsin, 2/28/10
Opponent -- 72-69, at Minnesota 1/3/10

Made at least 60% of its FGA (20 att.)

Iowa -- .632 (36-57), vs. Rider, 11/26/05
Opponent -- .654 (34-52), Ohio State, 2/12/06

Made at least 50% of its 3-pt. FGA (8 att.)

Iowa -- .583 (7-12), vs. Albany, 11/16/11
Opponent -- .533 (8-15), Illinois, 2/25/11

Made at least 90% of its FTA (10 att.)

Iowa -- 1.000 (10-10), vs. UNLV, 11/13/11
Opponents -- .941 (16-17), UNI 11/19/11

* - Carver-Hawkeye Arena record ^ - school record





University of Iowa Women's Basketball

Miscellaneous Records and Statistics

GAME-BY-GAME, POINTS-REBOUNDS-ASSISTS-STEALS

# -- starter	2	3	4	11	12	20	21	22	23	24	32	33	34	51	
Date	Opponent	P-R-A-S	P-R-A-S	P-R-A-S	P-R-A-S	P-R-A-S	P-R-A-S	P-R-A-S	P-R-A-S	P-R-A-S	P-R-A-S	P-R-A-S	P-R-A-S	P-R-A-S	
11-12-11	Harvard	9-1-2-1	4-2-1-0	DNP	DNP	18-8-2-1	16-5-0-1	6-1-0-0	9-5-4-3	0-0-2-0	24-6-4-0	DNP	0-0-1-0	0-0-0-0	4-0-0-0
11-13-11	UNLV	15-2-3-2	0-2-2-0	DNP	DNP	0-3-0-0	9-4-1-2	0-1-1-0	4-2-4-2	2-4-1-0	25-5-4-1	DNP	0-0-0-0	DNP	4-0-0-0
11-16-11	Albany	9-4-2-0	2-1-1-0	DNP	DNP	12-6-0-1	13-10-5-1	8-1-1-0	6-4-1-1	5-2-2-0	16-5-8-2	DNP	0-0-2-0	3-1-1-0	8-3-0-0
11-19-11	Northern Iowa	10-4-2-1	0-3-1-0	DNP	DNP	23-5-1-0	6-3-0-1	1-1-1-0	10-11-4-2	0-4-2-0	18-7-3-2	DNP	0-0-1-0	DNP	10-6-0-0

IOWA RECORD WHEN...

	OVERALL	BIG TEN		OVERALL	BIG TEN
Playing at home:	2-1	0-0	Iowa has more assists:	3-1	0-0
Playing on the road:	1-0	0-0	Opponent has more assists:	0-0	0-0
Playing on a neutral floor:	0-0	0-0	Assists are equal:	0-0	0-0
Leading at the half:	2-1	0-0	Iowa has fewer turnovers:	1-1	0-0
Trailing at the half:	1-0	0-0	Opponent has fewer turnovers:	2-0	0-0
Tied at the half:	0-0	0-0	Turnovers are equal:	0-0	0-0
Wearing white:	2-1	0-0	Iowa has more steals:	0-0	0-0
Wearing black:	1-0	0-0	Opponent has more steals:	3-1	0-0
Wearing gold:	0-0	0-0	Steals are equal:	1-0	0-0
Wearing pink:	0-0	0-0	Game is decided by 1-4 points:	0-0	0-0
Scoring 80 points or more:	2-0	0-0	Game is decided by 5-10 points:	1-1	0-0
Scoring 70-79 points:	1-0	0-0	Game is decided by 11 points or more:	1-0	0-0
Scoring 60-69 points:	0-0	0-0	Bench outscores opponent bench:	2-0	0-0
Scoring 50-59 points:	0-1	0-0	Playing on Sunday:	0-1	0-0
Scoring fewer than 50 points:	0-0	0-0	Playing on Monday:	0-0	0-0
Allowing 80 points or more:	1-0	0-0	Playing on Tuesday:	0-0	0-0
Allowing 70-79 points:	1-0	0-0	Playing on Wednesday:	1-0	0-0
Allowing 60-69 points:	1-1	0-0	Playing on Thursday:	0-0	0-0
Allowing 50-59 points:	0-0	0-0	Playing on Friday:	0-0	0-0
Allowing fewer than 50 points:	0-0	0-0	Playing on Saturday:	2-0	0-0
Shooting 50% or better FG:	1-0	0-0	Playing on CBS:	0-0	0-0
Shooting less than 50% FG:	2-1	0-0	Playing on ESPN2:	0-0	0-0
Opponent shoots 50% FG or better:	0-0	0-0	Playing on Big Ten Network:	0-0	0-0
Opponent shoots less than 50% FG:	3-1	0-0	Playing on KCRG-TV9:	0-0	0-0
Iowa has higher FG%:	3-0	0-0	Playing on Mediacom Connections:	0-0	0-0
Opponent has higher FG%:	0-1	0-0	Playing on opp. television:	0-0	0-0
FG% is equal:	0-0	0-0	Playing on no television:	3-1	0-0
Iowa outrebounds opponent:	2-0	0-0	Biggest Iowa lead:	24	
Opponent has more rebounds:	1-1	0-0	Biggest Iowa deficit:	14	
Rebounds are equal:	0-0	0-0	Biggest lead in a loss:	9	
Shoots at least 80% FT:	2-1	0-0	Biggest deficit in a win:	14	
Shoots less than 80% FT:	1-0	0-0	Biggest halftime lead:	14	
Opponent shoots at least 80% FT:	1-0	0-0	Biggest halftime deficit:	3	
Opponent shoots less than 80% FT:	2-1	0-0	Best Iowa 1st half FG%:	438	
Iowa shoots more FT:	3-0	0-0	Worst Iowa 1st half FG%:	321	
Opponent shoots more FT:	0-1	0-0	Best Iowa 2nd half FG%:	586	
FT attempts are equal:	0-0	0-0	Worst 2nd half FG%:	375	
Iowa has higher FT%:	2-1	0-0	Best Opp. 1st half FG%:	429	
Opponent has higher FT%:	1-0	0-0	Worst Opp. 1st half FG%:	235	
FT% is equal:	0-0	0-0	Best Opp. 2nd half FG%:	471	
Shoots at least 40% 3-pt:	2-0	0-0	Worst Opp. 2nd half FG%:	448	
Shoots less than 40% 3-pt:	1-1	0-0	Most points by Iowa in 1st half:	37	
Opponent shoots at least 40% 3-pt:	1-0	0-0	Fewest points by Iowa in 1st half:	31	
Opponent shoots less than 40% 3-pt:	2-1	0-0	Most points by opp. in 1st half:	40	
Iowa has higher 3-pt%:	3-0	0-0	Fewest points by opp. in 1st half:	23	
Opponent has higher 3-pt%:	0-1	0-0	Most points by Iowa in 2nd half:	53	
3-pt% is equal:	0-0	0-0	Fewest points by Iowa in 2nd half:	28	
			Most points by opp. in 2nd half:	42	
			Fewest points by opp. in 2nd half:	37	

LATE GAME CLUTCH FREE THROW SHOOTING

In Final Five Minutes of Game

Player	FTM	FTA	Pct.
Kelly Krei	2	2	1.000
Morgan Johnson	5	6	.833
Jaime Printy	4	4	1.000
TOTALS	11	12	.917

In Final Two Minutes of Game

Player	FTM	FTA	Pct.
Morgan Johnson	3	4	.750
TOTALS	3	4	.750

In Final One Minute of Game

Player	FTM	FTA	Pct.
Jaime Printy	2	2	1.000
Virginia Johnson	1	1	1.000
TOTALS	3	3	1.000





University of Iowa Women's Basketball

Season Highs And Lows/Specialty Statistics

CATEGORY	IOWA	OPPONENTS
Points	High 90 vs. Harvard Low 59 vs. UNLV	81 (Harvard) 60 (Albany)
FG Made	High 30 vs. Harvard Low 21 vs. UNLV	31 (Harvard) 24 (UNLV, Albany)
FG Att.	High 63 at UNI Low 53 vs. Albany	69 (Harvard, Albany) 59 (UNLV)
FG%	High .508 vs. Harvard Low .350 vs. UNLV	.449 (Harvard) .348 (Albany)
3FG Made	High 9 vs. Harvard Low 6 at UNI	8 (Harvard) 4 (Albany)
3FG Att.	High 27 vs. UNLV Low 12 vs. Albany	22 (UNI) 17 (UNLV)
3FG%	High .583 vs. Albany Low .259 vs. UNLV	.400 (Harvard) .222 (Albany)
FTM	High 23 vs. Albany Low 10 vs. UNLV	16 (UNI) 8 (Albany)
FTA	High 27, twice, last vs. Albany Low 10 vs. UNLV	21 (UNLV) 17 (Harvard, Albany, UNI)
FT% (min. 10)	High 1.000 vs. UNLV Low .778 vs. Harvard	.941 (UNI) .471 (Albany)
Off. Reb.	High 18 at UNI Low 9 vs. UNLV	19 (Harvard, UNLV) 11 (UNI)
Def. Reb.	High 31 vs. Albany Low 20 vs. UNLV	30 (UNLV) 19 (Albany)
Total Reb.	High 48 at UNI Low 29 vs. UNLV	49 (UNLV) 31 (UNI)
Assists	High 23 vs. Albany Low 15 at UNI	14 (Harvard) 10 (Albany)
Steals	High 7 vs. UNLV Low 5 vs. Albany	12 (Albany) 7 (Harvard)
Blocks	High 6, twice, last at UNI Low 3 vs. UNLV	5 (Harvard) 2 (UNLV)
Turnovers	High 18 at UNI Low 14 vs. Harvard	22 (UNLV) 12 (UNI)
Fouls	High 18 vs. UNLV Low 15 vs. Albany	23 (Albany) 13 (UNLV)

GAME-BY-GAME SPECIALTY STATS					
Date	Opponent	Pts. Off TO's	Pts. in Paint	2nd Chance	Fast Break
Nov. 12	Harvard	16-17	32-40	15-16	4-4
Nov. 13	UNLV	18-16	22-30	5-11	6-6
Nov. 16	Albany	12-12	26-28	17-12	13-4
Nov. 19	at Northern Iowa	17-20	26-32	16-11	4-6
Nov. 25	vs. St. John's				
Nov. 26	vs. Temple/Texas A&M				
Nov. 30	Virginia Tech				
Dec. 3	at Kansas State				
Dec. 7	at Iowa State				
Dec. 9	Western Illinois				
Dec. 17	at Bradley				
Dec. 20	Drake				
Dec. 22	Mississippi Valley State				
Dec. 30	Northwestern				
Jan. 2	at Ohio State				
Jan. 5	Illinois				
Jan. 8	Nebraska				
Jan. 15	at Purdue				
Jan. 19	Wisconsin				
Jan. 22	at Penn State				
Jan. 26	at Nebraska				
Jan. 28	Purdue				
Feb. 2	at Wisconsin				
Feb. 5	at Indiana				
Feb. 9	Minnesota				
Feb. 12	Michigan State				
Feb. 16	at Michigan				
Feb. 23	at Northwestern				
Feb. 26	Michigan				

IOWA AND OPPONENT INDIVIDUAL HIGH PERFORMANCES

CATEGORY	IOWA	OPPONENTS
Points	25 (Jaime Printy vs. UNLV)	28 (Christine Clark, Harvard)
Field Goals Made	9 (Printy vs. Harv., Johnson at UNI)	10 (Clark, Harv./Thompson, UNLV)
Field Goals Attempted	19 (Jaime Printy vs. Harvard)	20 (Christine Clark, Harvard)
3-Point Field Goals Made	4 (Kelly Krei vs. Harvard)	4 (Thompson, UNLV/Oney, UNI)
3-Point Field Goals Attempted	10 (Jaime Printy vs. UNLV)	12 (Henry, Albany/Oney, UNI)
Free Throws Made	9 (Jaime Printy vs. Albany)	7 (Christine Clark, Harvard)
Free Throws Attempted	10 (Morgan Johnson vs. Harvard)	11 (Christine Clark, Harvard)
Offensive Rebounds	4 (Samantha Logic vs. Harvard, at UNI)	7 (Jamie Smith, UNLV)
Defensive Rebounds	9 (Kelly Krei vs. Albany)	10 (Smith/Nzeukou, UNLV)
Total Rebounds	11 (Samantha Logic at UNI)	17 (Jamie Smith, UNLV)
Assists	8 (Jaime Printy vs. Albany)	6 (Brogan Berry, Harvard)
Steals	4 (Jaime Printy vs. Albany)	3 (Hagedorn, Harv./Forster, Albany/Madrugal, UNI)
Blocks	4 (Morgan Johnson at UNI)	3 (Clark, Harv./Madrugal, UNI)





University of Iowa Women's Basketball

Season Box Scores



Official Basketball Box Score -- Game Totals -- Final Statistics
Harvard vs Iowa
 11/12/11 7:05 PM at Carver-Hawkeye Arena, Iowa City, IA



Harvard 81 • 0-1

#	Player	FG-FGA	3-Ptr		Rebounds			PF	TP	A TO	Bk Stl	Min			
			FG-FGA	FT-FTA	Off	Def	Tot								
21	Lippert, Victoria	f	2-7	1-4	0-0	3	4	7	4	5	3	3	0	2	25
25	Rutzen, Miriam	c	2-4	2-2	0-0	1	2	3	5	6	1	2	1	0	16
04	Berry, Brogan	g	3-9	1-1	1-1	0	2	2	2	8	6	1	0	0	35
13	Golen, Emma	g	1-7	1-5	1-2	2	3	5	0	4	0	3	0	0	34
22	Clark, Christine	g	10-20	1-3	7-11	4	2	6	3	28	3	4	3	1	35
02	Hagedorn, Elle	g	4-8	1-4	1-1	2	3	5	2	10	1	0	1	3	23
01	Mullins, Missy	g	5-8	1-1	1-2	1	2	3	3	12	0	1	0	1	23
12	Louie, Lindsay	g	0-0	0-0	0-0	0	0	0	0	0	0	0	0	0	0+
32	Gordon, Elise	g	4-6	0-0	0-0	4	1	5	1	8	0	1	0	0	9
	Team					2	1	3							
	Totals		31-69	8-20	11-17	19	20	39	20	81	14	15	5	7	200

FG % 1st Half: 15-35 42.9% 2nd half: 16-34 47.1% Game: 31-69 44.9% Deadball Rebounds 2
 3FG % 1st Half: 5-13 38.5% 2nd half: 3-7 42.9% Game: 8-20 40.0%
 FT % 1st Half: 5-7 71.4% 2nd half: 6-10 60.0% Game: 11-17 64.7%

Iowa 90 • 1-0

#	Player	FG-FGA	3-Ptr		Rebounds			PF	TP	A TO	Bk Stl	Min			
			FG-FGA	FT-FTA	Off	Def	Tot								
20	Krei, Kelly	f	5-7	4-6	2-2	3	2	5	1	16	0	3	0	1	32
24	Printy, Jaime	f	9-19	2-6	4-5	1	5	6	1	24	4	2	0	0	34
12	Johnson, Morgan	c	5-10	0-0	8-10	1	7	8	4	18	2	0	3	1	23
02	Wahlin, Kamille	g	3-5	2-4	1-2	1	0	1	3	9	2	2	0	1	22
22	Logic, Samantha	g	3-7	0-0	3-4	4	1	5	3	9	4	3	0	3	30
03	Hansen, Kalli	g	1-2	0-0	2-2	0	2	2	0	4	1	2	1	0	18
21	Dixon, Melissa	g	2-5	1-2	1-2	0	1	1	1	6	0	0	0	0	15
23	Taylor, Theairra	g	0-1	0-1	0-0	0	0	0	1	0	2	1	0	0	2
33	Reynolds, Kathryn	g	0-0	0-0	0-0	0	0	0	1	0	1	0	0	0	12
34	Johnson, Virginia	g	0-0	0-0	0-0	0	0	0	0	0	0	0	0	0	2
51	Doolittle, Bethany	g	2-3	0-0	0-0	0	0	0	1	4	0	0	0	0	10
	Team					2	5	7			1				
	Totals		30-59	9-19	21-27	12	23	35	16	90	16	14	4	6	200

FG % 1st Half: 13-30 43.3% 2nd half: 17-29 58.6% Game: 30-59 50.8% Deadball Rebounds 3
 3FG % 1st Half: 4-8 50.0% 2nd half: 5-11 45.5% Game: 9-19 47.4%
 FT % 1st Half: 7-11 63.6% 2nd half: 14-16 87.5% Game: 21-27 77.8%

Officials: Lisa Mattingly, Tina Napier, Ann Schroeder
 Technical fouls: Harvard-None. Iowa-None.
 Attendance: 2873
 Fouled Out: Harvard #25 1:39 2nd

Score by periods	1st	2nd	Total
Harvard	40	41	81
Iowa	37	53	90



Official Basketball Box Score -- Game Totals -- Final Statistics
UNLV vs Iowa
 11/13/11 2:30 PM at Carver-Hawkeye Arena, Iowa City, IA



UNLV 69 • 2-0

#	Player	FG-FGA	3-Ptr		Rebounds			PF	TP	A TO	Bk Stl	Min			
			FG-FGA	FT-FTA	Off	Def	Tot								
11	SMITH, Jamie	f	4-13	2-4	2-4	7	10	17	2	12	0	3	2	1	35
51	SANFORD, Lenita	f	2-6	0-0	6-9	3	6	9	2	10	5	4	0	0	24
03	NZEUKOU, Sandrine	c	4-8	0-0	5-6	5	10	15	2	13	1	2	0	0	36
30	BELL, Mia	g	1-7	0-2	0-0	1	1	2	2	2	5	3	0	2	37
45	THOMPSON, Kelli	g	10-19	4-9	2-2	0	2	2	1	26	1	2	0	2	35
05	STYLES, Markiell	g	3-3	0-0	0-0	1	0	1	3	6	0	4	0	2	19
22	HAYNES, Rmanii	g	0-0	0-0	0-0	0	0	0	1	0	0	1	0	0	3
24	CESARZ, Alana	g	0-0	0-0	0-0	0	0	0	0	0	0	0	0	0	5
42	MILLER, Danielle	g	0-3	0-2	0-0	0	0	0	0	0	1	2	0	1	6
	Team					2	1	3			1				
	Totals		24-59	6-17	15-21	19	30	49	13	69	13	22	2	10	200

FG % 1st Half: 11-30 36.7% 2nd half: 13-29 44.8% Game: 24-59 40.7% Deadball Rebounds 2
 3FG % 1st Half: 4-9 44.4% 2nd half: 2-8 25.0% Game: 6-17 35.3%
 FT % 1st Half: 4-6 66.7% 2nd half: 11-15 73.3% Game: 15-21 71.4%

Iowa 59 • 1-1

#	Player	FG-FGA	3-Ptr		Rebounds			PF	TP	A TO	Bk Stl	Min			
			FG-FGA	FT-FTA	Off	Def	Tot								
20	Krei, Kelly	f	3-10	1-5	2-2	2	2	4	3	9	1	0	0	1	32
24	Printy, Jaime	f	7-18	3-10	8-8	2	3	5	0	25	4	6	0	1	35
12	Johnson, Morgan	c	0-5	0-0	0-0	0	3	3	0	3	0	1	1	0	23
02	Wahlin, Kamille	g	6-13	3-9	0-0	0	2	2	0	15	3	2	0	2	38
22	Logic, Samantha	g	2-6	0-1	0-0	1	1	2	4	4	4	6	1	2	27
03	Hansen, Kalli	g	0-2	0-1	0-0	0	2	2	3	0	2	0	0	0	14
21	Dixon, Melissa	g	0-1	0-1	0-0	0	1	1	1	0	1	0	0	0	7
23	Taylor, Theairra	g	1-1	0-0	0-0	1	3	4	2	2	1	1	0	0	7
33	Reynolds, Kathryn	g	0-0	0-0	0-0	0	0	0	0	0	0	0	0	0	2
51	Doolittle, Bethany	g	2-4	0-0	0-0	0	0	0	2	4	0	0	1	0	15
	Team					3	3	6							
	Totals		21-60	7-27	10-10	9	20	29	18	59	16	16	3	7	200

FG % 1st Half: 9-28 32.1% 2nd half: 12-32 37.5% Game: 21-60 35.0% Deadball Rebounds 0
 3FG % 1st Half: 5-12 41.7% 2nd half: 2-15 13.3% Game: 7-27 25.9%
 FT % 1st Half: 8-8 100.0% 2nd half: 2-2 100.0% Game: 10-10 100.0%

Officials: Tina Napier, Lisa Mattingly, Ann Schroeder
 Technical fouls: UNLV-None. Iowa-None.
 Attendance: 287

Score by periods	1st	2nd	Total
UNLV	30	39	69
Iowa	31	28	59

Last FG - UNLV 2nd-01:26, IOWA 2nd-00:31. Score tied - 3 times. Largest lead - UNLV by 13 1st-08:47, IOWA by 9 2nd-14:47. Lead changed - 7 times.



Official Basketball Box Score -- Game Totals -- Final Statistics
Albany vs Iowa
 11/16/11 7:00 PM at Carver-Hawkeye Arena, Iowa City, IA



Albany 60 • 2-1

#	Player	FG-FGA	3-Ptr		Rebounds			PF	TP	A TO	Bk Stl	Min			
			FG-FGA	FT-FTA	Off	Def	Tot								
11	Forster, Julie	f	6-14	0-0	1-5	6	4	10	4	13	1	3	1	3	33
21	Williams, Keyana	c	2-2	0-0	0-0	1	1	2	3	4	0	1	0	0	8
01	Callaway, Cassandra	g	2-11	0-1	1-2	2	1	3	2	5	4	4	0	2	36
05	Henry, Ebone	g	6-19	3-12	2-3	0	4	4	4	17	1	2	1	1	27
10	Lowie, Lindsey	g	1-5	1-5	0-0	0	1	1	3	3	0	1	0	1	17
02	Couch, Cyndra	g	3-4	0-0	0-0	2	1	3	0	6	0	1	0	2	8
04	Royals, Sarah	g	2-2	0-0	0-1	0	0	0	1	4	0	0	0	0	14
24	Jones, Adrienne	g	1-9	0-0	3-4	0	1	1	4	5	2	2	0	1	29
33	Makopondo, Tabitha	g	1-3	0-0	1-2	3	3	6	2	3	2	1	2	2	28
	Team					4	3	7							
	Totals		24-69	4-18	8-17	18	19	37	23	60	10	15	4	12	200

FG % 1st Half: 8-34 23.5% 2nd half: 16-35 45.7% Game: 24-69 34.8% Deadball Rebounds 5
 3FG % 1st Half: 1-8 12.5% 2nd half: 3-10 30.0% Game: 4-18 22.2%
 FT % 1st Half: 6-10 60.0% 2nd half: 2-7 28.6% Game: 8-17 47.1%

Iowa 82 • 2-1

#	Player	FG-FGA	3-Ptr		Rebounds			PF	TP	A TO	Bk Stl	Min			
			FG-FGA	FT-FTA	Off	Def	Tot								
20	Krei, Kelly	f	3-5	3-3	4-4	1	9	10	1	13	5	2	2	1	32
24	Printy, Jaime	f	3-10	1-3	9-9	1	4	5	2	16	8	4	0	2	36
12	Johnson, Morgan	c	5-9	0-0	2-3	2	4	6	2	12	0	1	2	1	19
02	Wahlin, Kamille	g	3-5	1-3	2-2	0	4	4	0	9	2	3	0	0	26
22	Logic, Samantha	g	2-4	0-0	2-2	2	2	4	4	6	1	2	0	1	16
03	Hansen, Kalli	g	1-1	0-0	0-0	1	0	1	2	2	1	0	1	0	8
21	Dixon, Melissa	g	2-5	2-2	2-2	0	1	1	1	8	1	3	0	0	12
23	Taylor, Theairra	g	2-4	0-0	1-2	0	2	2	2	5	2	1	0	0	13
33	Reynolds, Kathryn	g	0-3	0-1	0-0	0	0	0	1	0	2	0	0	0	16
34	Johnson, Virginia	g	1-1	0-0	1-1	0	1	1	0	3	1	0	0	0	5
51	Doolittle, Bethany	g	4-6	0-0	0-2	1	2	3	0	8	0	1	1	0	17
	Team					3	2	5							
	Totals		26-53	7-12	23-27	11	31	42	15	82	23	17	6	5	200

FG % 1st Half: 11-26 42.3% 2nd half: 15-27 55.6% Game: 26-53 49.1% Deadball Rebounds 1
 3FG % 1st Half: 2-4 50.0% 2nd half: 5-8 62.5% Game: 7-12 58.3%
 FT % 1st Half: 13-15 86.7% 2nd half: 10-12 83.3% Game: 23-27 85.2%

Officials: Beverly Roberts, Tim Daley, Rod Creech
 Technical fouls: Albany-None. Iowa-None.
 Attendance: 2909

Score by periods	1st	2nd	Total
Albany	23	37	60
Iowa	37	45	82

Last FG - ALBANY 2nd-00:19, IOWA 2nd-00:41. Score tied - 3 times. Largest lead - ALBANY None, IOWA by 24 2nd-00:41. Lead changed - 0 times.



Official Basketball Box Score -- Game Totals -- Final Statistics
Iowa vs UNI
 11/19/11 3 p.m. at Cedar Falls, Iowa (McLeod Center)



Iowa 78 • 3-1

#	Player	
---	--------	--



**2011-12 Iowa Women's Basketball
Iowa Combined Team Statistics (as of Nov 19, 2011)
All games**



RECORD:	OVERALL	HOME	AWAY	NEUTRAL
ALL GAMES	3-1	2-1	1-0	0-0
CONFERENCE	0-0	0-0	0-0	0-0
NON-CONFERENCE	3-1	2-1	1-0	0-0

#	Player	gp-gs	min	avg	Total		3-Point		F-Throw		Rebounds				pf	dq	a	to	blk	stl	pts	avg
					fg-fga	fg%	3fg-fga	3fg%	ft-fa	ft%	off	def	tot	avg								
24	Printy, Jaime	4-4	139	34.8	25-59	.424	8-24	.333	25-26	.962	4	19	23	5.8	6	0	19	14	0	5	83	20.8
12	Johnson, Morgan	4-4	94	23.5	19-37	.514	0-0	.000	15-20	.750	6	16	22	5.5	12	0	3	4	10	2	53	13.3
20	Krei, Kelly	4-4	127	31.8	13-28	.464	10-18	.556	8-8	1.000	7	15	22	5.5	6	0	6	6	2	5	44	11.0
02	Wahlin, Kamille	4-4	122	30.5	16-35	.457	8-22	.364	3-4	.750	2	9	11	2.8	4	0	9	10	0	4	43	10.8
22	Logic, Samantha	4-4	102	25.5	10-28	.357	0-3	.000	9-10	.900	11	11	22	5.5	15	0	13	15	1	8	29	7.3
51	Doolittle, Bethany	4-0	53	13.3	12-18	.667	0-0	.000	2-4	.500	2	7	9	2.3	4	0	0	2	3	0	26	6.5
21	Dixon, Melissa	4-0	40	10.0	4-11	.364	3-5	.600	4-6	.667	1	3	4	1.0	4	0	3	4	0	0	15	3.8
23	Taylor, Theairra	4-0	33	8.3	3-8	.375	0-2	.000	1-2	.500	2	8	10	2.5	5	0	7	5	1	0	7	1.8
03	Hansen, Kalli	4-0	49	12.3	2-7	.286	0-2	.000	2-2	1.000	4	4	8	2.0	6	0	5	2	2	0	6	1.5
34	Johnson, Virginia	2-0	7	3.5	1-1	1.000	0-0	.000	1-1	1.000	0	1	1	0.5	0	0	1	0	0	0	3	1.5
33	Reynolds, Kathryn	4-0	34	8.5	0-3	.000	0-1	.000	0-0	.000	0	0	0	0.0	3	0	4	2	0	0	0	0.0
Team											11	11	22				1					
Total.....		4	800		105-235	.447	29-77	.377	70-83	.843	50	104	154	38.5	65	0	70	65	19	24	309	77.2
Opponents.....		4	800		105-263	.399	24-77	.312	50-72	.694	67	89	156	39.0	73	-	49	63	15	40	284	71.0

TEAM STATISTICS	IOWA	OPP	Date	Opponent	Score	Att.
SCORING	309	284	^ 11/12/11	HARVARD	W 90-81	3673
Points per game	77.2	71.0	^ 11/13/11	UNLV	L 59-69	3287
Scoring margin	+6.3	-	11/16/11	ALBANY	W 82-60	2909
FIELD GOALS-ATT	105-235	105-263	11/19/11	at UNI	W 78-74	4077
Field goal pct	.447	.399	* - Conference game			
3 POINT FG-ATT	29-77	24-77				
3-point FG pct	.377	.312				
3-pt FG made per game	7.3	6.0				
FREE THROWS-ATT	70-83	50-72				
Free throw pct	.843	.694				
F-Throws made per game	17.5	12.5				
REBOUNDS	154	156				
Rebounds per game	38.5	39.0				
Rebounding margin	-0.5	-				
ASSISTS	70	49				
Assists per game	17.5	12.3				
TURNOVERS	65	63				
Turnovers per game	16.3	15.8				
Turnover margin	-0.5	-				
Assist/turnover ratio	1.1	0.8				
STEALS	24	40				
Steals per game	6.0	10.0				
BLOCKS	19	15				
Blocks per game	4.8	3.8				
ATTENDANCE	9869	4077				
Home games-Avg/Game	3-3290	1-4077				
Neutral site-Avg/Game	-	0-0				

Score by Periods	1st	2nd	Totals
Iowa	141	168	309
Opponents	125	159	284