



IOWA BASKETBALL

WOMEN'S HOOPS NOTES

22 NCAA Tournaments • 5 Sweet Sixteens • 3 Elite Eights • 1993 NCAA Final Four • 11 Big Ten Titles

2013-14 Schedule/Results (14-5, 2-3)

11/8	UC Riverside ^	W, 70-56
11/10	#14 Dayton ^	W, 97-93 (OT)
11/13	Arkansas-Pine Bluff	W, 76-38
11/17	Stony Brook	W, 78-40
11/20	at #16 Colorado	L, 87-90
11/24	at Northern Iowa	W, 67-60
11/28	vs. USC #	W, 78-65
11/29	vs. Boston College #	W, 78-68
11/30	vs. UNC-Wilmington #	W, 102-65
12/5	#22 Syracuse &	W, 97-91
12/7	Idaho State	W, 95-47
12/12	at #11 Iowa State %	L, 70-83
12/21	Drake	W, 73-51
12/28	North Dakota	W, 88-62
1/2	at Indiana	L, 84-86
1/5	#15 Penn State	L, 71-87
1/8	Minnesota	W, 78-71
1/12	at Wisconsin	W, 82-65
1/16	Michigan State	L, 72-88
1/19	at Ohio State	2 p.m.
1/25	Indiana	6 p.m.
1/29	at Minnesota	7 p.m.
2/1	Nebraska	2 p.m.
2/6	at Penn State	5 p.m.
2/10	Northwestern	6 p.m.
2/13	Illinois	8 p.m.
2/16	at Purdue	TBA
2/22	at Michigan	12:30 p.m.
2/27	Ohio State	6/8 p.m.
3/2	at Illinois	1/3/5 p.m.

^ -- Hawkeye Challenge (Nov. 8-10)
 # -- Cancun Challenge (Nov. 28-30)
 & -- Big Ten/ACC Challenge
 % -- Iowa Corn Cy-Hawk Series

Communications Contact: Patrick Sojka
 E-Mail: patrick-sojka@uiowa.edu

Office: (319) 353-5977
 Cell: (319) 325-7932

Game 20 Information

Iowa (14-5, 2-3) at Ohio State (12-8, 2-2)



Jan. 19, 2014 • 2 p.m. (CT)
 Value City Arena
 Columbus, Ohio



TV: BTN (BTN2GO)
 TV Talent: Kevin Lee and Shelley Till
 Radio: AM-800 KXIC, AM-600 WMT, AM-1040 WHO (Hawkeye Radio Network)
 Radio Talent: Brent Balbinot and Wendy Ausdemore
 Live Stats/Audio: hawkeyesports.com
 Twitter Updates: @IowaWBB
 Series: Ohio State leads, 30-27

Quick Hits

- Iowa defeated Ohio State in the only meeting between the two teams last season, winning 77-71 in overtime inside Carver-Hawkeye Arena on Jan. 3, 2013.
- Junior guard Samantha Logic, the Big Ten leader in assists, is nearly averaging a triple-double over the last seven contests (15.9 points, 9.1 rebounds, and 7.7 assists). She has registered a triple-double and three double-doubles during the stretch.
- Logic is the only player in the Big Ten to average 14 or more points (14.6), six or more rebounds (6.8), and six or more assists (6.9).
- Junior center Bethany Doolittle has scored 19 or more points in three-straight games, and in four of the last five (20, 8, 19, 20, 21).
- Iowa is averaging 81.2 points and 18.5 assists per contest, leading the Big Ten in both categories. In addition, the Hawkeyes are 18th nationally in scoring offense and 13th in assists per game.
- Iowa has had three or more players score in double figures in each of the last 17 contests, including three in the loss to Michigan State (Doolittle 21, Logic 13, Disterhoft 12).
- Five Hawkeyes are averaging double figures (Logic, Dixon, Doolittle, Disterhoft, and Taylor).
- Iowa is the only team in the Big Ten with three players averaging 13.9 or more points per game (Logic - 14.6, Doolittle - 14.5, Dixon - 13.9).
- Lisa Bluder needs five wins to surpass Hall of Famer C. Vivian Stringer (269 wins) as Iowa's all-time winningest coach. Bluder is one of 13 active Division I coaches with 600 or more wins.

Stay Connected



/iowawomenshoops



@IowaWBB

Pronunciation Guide

Lisa Bluder	BLUE-dir
Ally Disterhoft	DIST-ir-hoft
Alexa Kastanek	UH-LEX-UH kuh-STON-ik
Kali Peschel	Cal-EE PEH-shull
Hailey Schneden	SCHNAY-din
Theairra Taylor	thee-AIR-uh

Iowa Projected Starting Lineup (Based on last game's starters)



G • 22 • Samantha Logic
 5-9 • Jr. • Racine, Wis.

PTS	AST	FG%	FT%
14.6	6.9	.497	.805



G • 23 • Theairra Taylor
 5-11 • RS Sr. • St. Paul, Minn.

PTS	REB	FG%	FT%
10.5	4.4	.436	.691



G • 21 • Melissa Dixon
 5-8 • Jr. • Johnsburg, Ill.

PTS	3-PT%	FG%	FT%
13.9	.333	.367	.889



F • 25 • Kali Peschel
 6-1 • So. • Sauk Centre, Minn.

PTS	REB	FG%	FT%
6.3	5.2	.366	.754



Head Coach Lisa Bluder
 14th season at Iowa (265-162)
 30th season overall (621-304)
 -- one of 13 active Division I coaches
 with 600 or more wins



C • 51 • Bethany Doolittle
 6-4 • Jr. • Oakdale, Minn.

PTS	REB	FG%	FT%
14.5	5.3	.581	.727



Inside the Numbers

	IOWA	OSU
Scoring Average	81.2	64.7
Scoring Defense	68.7	62.0
Scoring Margin	+12.5	+2.8
FG%	.458	.415
FG% Defense	.380	.354
FT%	.725	.726
3-PT FG%	.314	.316
3-PT FG% Defense	.312	.313
Rebound Margin	-1.4	-1.6
Assists Per Game	18.5	12.2
Turnovers Per Game	14.5	16.9
Turnover Margin	+3.0	-0.4
Steals Per Game	8.9	6.6
Blocks Per Game	5.2	4.9

Iowa Athletic Communications

S300 Carver-Hawkeye Arena
Iowa City, Iowa 52242
Phone: 319-335-9411
Fax: 319-335-9417

hawkeyesports.com
iowawomensbasketball.com

WBB Contact: Patrick Sojka
Cell: 319-325-7932
Office: 319-353-5977
Email: patrick-sojka@uiowa.edu

How Many Times a Hawkeye Player...

Scored 20 or More Points

Samantha Logic	5
Bethany Doolittle	5
Melissa Dixon	4
Theairra Taylor	1
Ally Disterhoft	1

Scored 15 or More Points

Bethany Doolittle	10
Samantha Logic	9
Melissa Dixon	7
Ally Disterhoft	5
Theairra Taylor	2
Kali Peschel	1

Grabbed 10 or More Rebounds

Samantha Logic	4
Kali Peschel	3
Bethany Doolittle	1
Claire Till	1

Grabbed 7 or More Rebounds

Samantha Logic	10
Ally Disterhoft	9
Kali Peschel	5
Bethany Doolittle	4
Claire Till	3
Theairra Taylor	2
Alexa Kastanek	1

Dished out 7 or More Assists

Samantha Logic	10
Theairra Taylor	2

Dished out 5 or More Assists

Samantha Logic	15
Theairra Taylor	5
Alexa Kastanek	2
Melissa Dixon	1
Kali Peschel	1

Recorded 4 or More Steals

Melissa Dixon	2
Samantha Logic	2
Theairra Taylor	1

Blocked 3 or More Shots

Bethany Doolittle	10
-------------------	----

2013-14 Margin of Victory/Defeat

Points	1	2	3	4	5	6	7	8	9	10-14	15-19	20+
Wins	0	0	0	1	0	1	2	0	0	3	1	6
Losses	0	1	1	0	0	0	0	0	0	1	2	0

THE SETTING:

The University of Iowa women's basketball team (14-5, 2-3) continues Big Ten action on the road this weekend, playing at Ohio State (12-8, 2-2) on Sunday. Tip-off is scheduled for 2 p.m. (CT) at Value City Arena in Columbus, Ohio.

WATCH LIVE ON BIG TEN NETWORK:

Sunday's contest will be televised nationally on BTN (BTN2GO). Kevin Lee and Shelley Till will call the action.

AUDIO COVERAGE:

Brent Balbinot and former Hawkeye All-Big Ten honoree Wendy Ausdemore will call the action for the Hawkeye Radio Network. Hawkeye fans can listen to the contest on AM-800 KXIC in Iowa City, AM-1360 KMJM in Cedar Rapids, AM-1040 WHO in Des Moines or on the Hawkeye All-Access page of hawkeyesports.com. Balbinot is in his 10th season as Iowa's play-by-play voice.

FOLLOW THE ACTION:

Fans can also follow the action via live stats (Gametracker). The "GT" link can be accessed under the "Calendar" tab on the front page of hawkeyesports.com or on the women's basketball schedule page. Follow @IowaWBB on Twitter for game updates.

IOWA HISTORY:

Iowa has played 1,151 games since beginning basketball in 1974. Iowa's overall record is 706-445 (.613). That includes a 350-181 (.660) mark in regular season Big Ten contests and a 344-99 (.776) mark in Carver-Hawkeye Arena.

IN THE RANKINGS:

Iowa is receiving votes in The Associated Press Top 25 poll this week and the USA Today Coaches Poll. The Hawkeyes have been ranked as high as No. 21/24 this season.

Five Iowa opponents are ranked in the Associated Press/USA Today polls: Iowa State (13/11), Penn State (16/17), Nebraska (18/16), Colorado (21/20), and Purdue (22/19). In addition, Indiana, Michigan State, Syracuse and Michigan are receiving votes.

FREE TICKETS AT MIDWESTONE BANKS:

MidWestOne Bank has partnered with the Iowa women's basketball team by purchasing 2,500 tickets to the "Go Red for Women" game against Indiana on Saturday, Jan. 25, at 6 p.m. The Iowa Hawkeyes are encouraging fans to "Go Red For Women," but wear "Black & Gold" for Iowa.

Fans can pick up free tickets at any Johnson County branch of MidWestOne, while supplies last.

"Go Red for Women" is a nationwide movement encouraging and celebrating heart health among women. This year marks the 10th anniversary of "Go Red for Women" and during that time, about 650,000 women's lives have been saved from Cardiovascular diseases.

Tickets are also available at the regular price of \$10 for adults and \$6 for youth by calling 1-800-IA-HAWKS or visiting hawkeyesports.com. Tickets are free for UI students.

CLIMBING TO THE TOP:

Lisa Bluder needs five wins to surpass Hall of Famer C. Vivian Stringer (269) as Iowa's all-time winningest coach. Bluder -- one of 13 active Division I coaches with 600 or more wins -- is 265-161 all-time as the Hawkeye head coach.

NCAA STREAK LEADS THE BIG TEN:

Iowa is the only Big Ten team, and one of only 13 teams in the country, to have appeared in the last six NCAA Tournaments.

2013-14 Iowa Hawkeye Roster

No.	Name	Yr.	Ht.	Pos.	Hometown (High School)
1	Alexa Kastanek	Fr.	5-10	G	Lincoln, Neb. (Lincoln Southeast)
2	Ally Disterhoft	Fr.	6-0	G	Iowa City, Iowa (Iowa City West)
3	Claire Till	So.	6-0	F	Dubuque, Iowa (Dubuque Wahlert)
21	Melissa Dixon	Jr.	5-8	G	Johnsburg, Ill. (Johnsburg)
22	Samantha Logic	Jr.	5-9	G	Racine, Wis. (Racine J.I. Case)
23	Theairra Taylor	RS Sr.	5-11	G	St. Paul, Minn. (Central)
25	Kali Peschel	So.	6-1	F	Sauk Centre, Minn. (Sauk Centre)
33	Kathryn Reynolds	RS So.	5-7	G	Cincinnati, Ohio (Mount Notre Dame)
40	Hailey Schneden	Fr.	6-2	F	Davenport, Iowa (Assumption)
45	Nicole Smith	So.	6-4	C	Rockton, Ill. (Hononegah)
51	Bethany Doolittle	Jr.	6-4	C	Oakdale, Minn. (Hill-Murray)

Head Coach: Lisa Bluder

Associate Head Coach: Jan Jensen

Assistant Coaches: Jenni Fitzgerald, Lacey Goldwire

Director of Basketball Operations: Abby Emmert



2013-14 Team Captains

Iowa captains are senior Theairra Taylor and junior Samantha Logic.

SCOUTING OHIO STATE:

- Ohio State is 12-8 overall and 2-2 in Big Ten play. The Buckeyes opened league play with a home victory over Purdue (89-78) on Jan. 2 before dropping a 64-49 decision to Michigan in Columbus on Jan. 5. Ohio State topped Indiana on the road (70-51) on Jan. 11, before dropping its last contest at Penn State on Jan. 16, 66-42.
- Ohio State is 10-3 at home this season.
- Sophomore guard Ameryst Alston leads the Buckeyes in scoring, averaging 16.7 points per contest. Senior center Darryce Moore, Ohio State's second-leading scorer, leads the team in rebounding (6.3/game).
- Ohio State is coached by Kevin McGuff. He is in his first season at the helm of the program. McGuff completed his 11th year as a head coach in 2013, with the last two at the University of Washington and the previous nine at Xavier University. He has compiled an overall record of 267-107 and has reached the postseason each year.

IOWA-OHIO STATE SERIES NOTES:

- Iowa and Ohio State will also meet in Iowa City on Thursday, Feb. 27.
- The Buckeyes lead the all-time series, 30-27.
- Iowa dropped an 84-71 decision in the last meeting in Columbus on Jan. 2, 2012. Iowa led at the half, 40-39, but Ohio State remained undefeated (15-0) with a 45-point second half.
- Iowa and Ohio State have met once during the NCAA Tournament. The Buckeyes topped the Hawkeyes, 73-72, in overtime at the 1993 NCAA Final Four.

THE LAST MEETING:

Iowa defeated Ohio State in the only meeting between the two teams last season, winning 77-71 in overtime inside Carver-Hawkeye Arena on Jan. 3, 2013. Four Hawkeyes (Theairra Taylor 19, Samantha Logic 17, Morgan Johnson 16, Jaime Printy 14) scored in double figures to lead Iowa past No. 24 Ohio State in last season's Big Ten opener.

HAWKEYES IN BIG TEN PLAY:

Iowa head coach Lisa Bluder, the dean of Big Ten coaches, is a three-time Big Ten Coach of the Year (2001, 2008 and 2010). She has guided Iowa to nine upper-division finishes in the Big Ten in 13 seasons. Iowa won a share of the Big Ten regular season championship in 2008 and finished in a three-way tie for second in 2009. The Hawkeyes clinched a share of the title in 2008 with a win at Wisconsin in the regular season finale (March 2, 2008).

DEFYING LOGIC:

- Samantha Logic is the only player in the Big Ten to average 14 or more points (14.6), six or more rebounds (6.8), and six or more assists (6.9).
- She ranks 12th in scoring, 13th in rebounding, first in assists, and third in steals (2.2) and assist/turnover ratio (1.8).
- Logic is second in career assists (485) at Iowa. Cara Consuegra (1997-2001) is Iowa's all-time assists leader (576).
- She has 132 assists this season, equaling Jolette Law for the fourth-highest total for a junior in program history.
- Logic is 15th in the NCAA in career assists among active players, and sixth in assists/game (5.77).
- Logic, the Big Ten leader in assists (6.9/game), is nearly averaging a triple-double over the last seven contests (15.9 points, 9.1 rebounds, and 7.7 assists).
- She has registered a triple-double and three double-doubles during the stretch.
- Last season, Logic led the Big Ten and ranked 15th in the NCAA with 6.4 assists per game. She leads the Big Ten in the category this season, and is eighth nationally.
- Logic's 10 career games with double digit assists are the most in program history. Cara Consuegra is second with nine games of 10 or more assists. The next closest Hawkeyes on the list are Kachine Alexander, Jolette Law and Michelle Edwards, with two career games.
- Logic -- who has 18 career double-doubles -- became Iowa's single-season assist record holder a year ago, breaking the mark in Iowa's win at Northwestern (March 3). Logic entered the game tied with Cara Consuegra (2000-01) at 191 assists. Logic collected seven assists at Northwestern and finished the season with 217.
- Logic recorded her 13th career double-double (16 points, 14 assists) on Nov. 10, leading the Hawkeyes to a 97-93 overtime victory against No. 14 Dayton. Logic hit the game-tying 3-pointer with nine seconds remaining in regulation to send the game into overtime. The 14 assists equaled a personal best and Iowa school record, and are the most in Carver-Hawkeye Arena history. The previous high was 12 (three times).

Head Coach Lisa Bluder

Lisa Bluder (pronounced BLUE-dir) is in her 14th season as head coach at the University of Iowa and her 30th season as a college head coach. She is a three-time Big Ten and two-time WBCA Regional Coach of the Year.

Bluder has a career record of 621-304 (.674), including a 265-162 (.624) record at Iowa, a 187-106 (.638) record in 10 seasons (1990-2000) at Drake and a six-year mark (1984-90) of 169-36 (.824) at St. Ambrose.

Bluder is Iowa's second all-time winningest coach and trails only C. Vivian Stringer (269 wins). She has guided the Hawkeyes to 12 postseason tournaments (10 NCAA, 2 WNIT) and nine upper-division finishes in the Big Ten Conference, including winning a share of the league championship in 2008 and taking home the conference tournament title in 2001.

In her first season with the Hawkeyes, Bluder transformed a struggling program into a 21-game winner. Iowa finished second in the Big Ten, won the conference tournament and advanced to the second round of the NCAA Tournament. Bluder became Iowa's third coach to be named Big Ten Coach of the Year. She was also honored as the College Coach of the Year by the Women's Basketball News Service and was named the WBCA District 6 Coach of the Year. Iowa's 2001-02 squad finished fourth in the Big Ten and advanced to the second round of the NCAA Tournament for the second consecutive year. In 2003, Bluder guided the Hawkeyes to their first-ever WNIT appearance. Iowa, which had nine underclassmen on its roster, advanced to the quarterfinals before falling to Creighton. In 2004-05, Iowa finished 23-10, starting the year 13-0 and was the last Division I undefeated team standing. In 2005-06, Bluder mentored a team plagued by injuries to a fifth-place Big Ten finish and an NCAA Tournament berth.

In her 10 years at Drake, Bluder brought great success and tradition to the Bulldog program and established herself as one of the top coaches in the country. She led Drake to five 20-plus win seasons in her last six years, including five post-season appearances. She guided the Bulldogs to eight Missouri Valley Conference Tournament appearances, reaching the semifinals six times and winning the tournament four times. Bluder was also named the Conference Coach of the Year three times at Drake.

Bluder began her coaching career at St. Ambrose, where she coached six successful seasons, building the Bees into a NAIA powerhouse. During her tenure at St. Ambrose, Bluder guided the Bees to four straight national tournaments, including two consecutive Final Four appearances. The 1990 St. Ambrose team was ranked No. 1 and Bluder was named the NAIA Converse Coach of the Year.

A graduate of Linn-Mar High School in Marion, Iowa, Bluder was a three-year starter at Northern Iowa. She graduated from UNI in 1983 with a bachelor's degree in marketing.



Career Coaching Record: 621-304 (.674)

Record at St. Ambrose: 169-36 (.824)

Record at Drake: 187-106 (.638)

Record at Iowa: 265-162 (.624)

Conference record at Iowa: 129-90 (.593)

Conference record at Drake: 116-60 (.659)



2013-14 Big Ten Standings

Team	Big Ten	Pct.	Overall	Pct.
Michigan State	4-0	1.000	12-5	.706
Nebraska	3-1	.750	13-3	.813
Penn State	3-1	.750	12-4	.750
Michigan	3-1	.750	12-5	.706
Ohio State	2-2	.500	12-8	.600
Wisconsin	2-2	.500	9-7	.563
IOWA	2-3	.400	14-5	.727
Indiana	1-2	.333	14-2	.875
Purdue	1-3	.250	11-5	.688
Minnesota	1-3	.250	12-6	.667
Northwestern	1-3	.250	11-6	.647
Illinois	1-3	.250	8-9	.471



Jan. 17

Indiana at Purdue 6 p.m.

Jan. 18

Illinois at Michigan 11 a.m.
Wisconsin at Northwestern 2 p.m.

Jan. 19

Minnesota at Indiana 1 p.m.
Iowa at Ohio State 2 p.m.
Penn State at Michigan State 4 p.m.
Purdue at Nebraska 4 p.m.

(All times listed Central)

National Rankings

Associated Press Poll

Jan. 13

1. Connecticut (36) 900
2. Notre Dame841
3. Duke828
4. Stanford811
5. Louisville736
6. Maryland723
7. Baylor696
8. South Carolina ...647
9. North Carolina...571
10. Kentucky540
11. Oklahoma St539
12. Tennessee522
13. Iowa State453
14. LSU404
15. California330
16. Penn State302
17. Florida State301
18. Nebraska246
19. Arizona State230
20. NC State183
21. Colorado179
22. Purdue172
23. Rutgers101
24. Vanderbilt96
25. Texas A&M95
RV. IOWA 8

Coaches Poll

Jan. 14

1. Connecticut (32) 800
2. Notre Dame760
3. Duke733
4. Stanford713
5. Louisville669
6. Maryland638
7. Baylor578
8. South Carolina ...571
9. North Carolina...506
10. Tennessee491
11. Iowa State478
12. Kentucky467
13. Oklahoma St432
14. LSU354
15. California333
16. Nebraska300
17. Penn State275
18. Florida State267
19. Purdue183
20. Colorado150
21. NC State107
21. Texas A&M107
23. Gonzaga96
24. Arizona State91
25. Vanderbilt64
RV. IOWA 2

BALANCED ATTACK:

Five Hawkeyes are averaging double figures: Samantha Logic (14.6), Bethany Doolittle (14.5), Melissa Dixon (13.9), Ally Disterhoft (12.0), and Theairra Taylor (10.5).

Iowa has had three or more players score in double figures in each of the last 17 contests, including three in the loss to Michigan State (Doolittle 21, Logic 13, Disterhoft 12).

Iowa is the only team in the Big Ten with three players averaging 13.9 or more points per game (Logic - 14.6, Doolittle - 14.5, Dixon - 13.9).

MOVING UP CAREER CHARTS:

- Samantha Logic is second in career assists (485). Cara Consuegra (1997-2001) is Iowa's all-time assists leader (576).
- Melissa Dixon is fifth in career 3-pointers (164). Dixon surpassed Kelli Krei (162) during Iowa's win over Minnesota on Jan. 8. Kristi Smith is fifth with 185.
- Bethany Doolittle is fifth all-time with 136 career blocks. Toni Foster is fourth with 145.

LEADING THE BIG TEN IN ASSISTS:

- The Hawkeyes lead the Big Ten in assists, averaging 18.5 per contest. Iowa also leads the league in assist/turnover ratio (1.3).
- Samantha Logic leads the league in assists, averaging 6.9 a game.
- Iowa tallied 28 assists on 31 made field goals on Dec. 7 in its win over Idaho State. The Hawkeyes have tallied 28 or more assists four times this season. The school record for assists in a game is 31.
- Iowa broke the school record for single-season assists last year in the win over Miami (March 24). The previous record of 514 was set in 2011-12. Iowa finished with 531 assists. Iowa finished second in the Big Ten and 26th in the NCAA with 15.7 assists per game. Iowa recorded at least 17 assists in 15 games, including five games with 20 or more.

HAWKEYES EARN BIG ROAD WIN IN MADISON:

Iowa won at Wisconsin on Jan. 12 inside the Kohl Center, 82-65. Iowa jumped out to a 16-6 lead and never trailed the Badgers. With 20 points each, Ally Disterhoft and Bethany Doolittle paced an Iowa attack that had four players in double figures. Logic added 16 points, 11 assists and seven assists, registering her 18th career double-double. Senior Theairra Taylor posted 13 points, seven assists, three rebounds, and four steals.

IOWA DOWNS MINNESOTA FOR FIRST BIG TEN WIN

Senior Theairra Taylor, a Minnesota native, guided the Hawkeyes past Minnesota on Jan. 8 in Iowa City, 78-71, on "Theairra Taylor Bobblehead Night". Taylor finished the contest with a season-high 20 points, and matched her previous season-high point total of 16 before halftime. She scored her 12th point 11:36 into the contest, putting her on pace for more than a point a minute. At halftime she had made 6-of-8 field goals, 2-of-3 3-pointers, and 2-of-2 free throws. In the second half she scored four points, making her only field goal and both free throws. Taylor wasn't alone, as it took an entire effort by the Hawkeyes to overcome a 32-point performance by Minnesota's Rachel Banham. Bethany Doolittle scored 19 points, followed by Melissa Dixon with 13, Samantha Logic with 11, and Ally Disterhoft with nine.

NONCONFERENCE RECAP:

Iowa's 12 wins prior to the start of conference play equaled the most in a season under head coach Lisa Bluder. Iowa finished 12-1 in its pre-conference slate during the 2010-11 campaign. The Hawkeyes were 11-3 prior to the start of league play last season, and 11-0 in 2004-05.

DIXON EQUALS SCHOOL 3-POINT RECORD:

- Junior guard Melissa Dixon finished with seven 3-point field goals in wins over Syracuse and UNC-Wilmington, tying a personal and school record; the feat has been accomplished five times in program history (twice by Dixon).
- After converting seven 3-pointers total during the first six games of the season (7-of-46), Dixon has made 44 over the last 12 games (44-of-105).
- Prior to the Cancun Challenge, Dixon was averaging 9.7 points per game. She is now averaging 13.9 points per outing.

BLUDER GETS WIN NO. 600:

Head coach Lisa Bluder became the 42nd coach in NCAA women's basketball history (all divisions), and only the 25th Division I head coach (minimum 10 years at a DI school) to collect 600 wins, Jan. 20 vs. Purdue. Bluder is one of 13 active Division I coaches with 600 or more wins.

BLUDER SIGNS CONTRACT EXTENSION:

Head coach Lisa Bluder has agreed to a one-year contract extension that secures her as head coach of the women's basketball program at the University of Iowa through the 2019 basketball season, UI Director of Athletics Gary Barta announced Dec. 26, 2013.



Big Ten Overall Stats

Scoring Offense

1. Iowa	81.2
2. Michigan State	77.2

Scoring Defense

1. Minnesota	60.5
10. Iowa	68.7

Scoring Margin

1. Nebraska	+14.8
4. Iowa	+12.5

Free Throw Percentage

1. Nebraska	.795
9. Iowa	.725

Field Goal Percentage

1. Minnesota	.467
3. Iowa	.458

Field Goal Percentage Defense

1. Northwestern	.348
8. Iowa	.380

3-Point Field Goals Made

1. Purdue	7.1
4. Iowa	6.7

3-Point Field Goal Percentage

1. Minnesota	.433
10. Iowa	.314

3-Point Field Goal Percentage Defense

1. Indiana	.253
8. Iowa	.312

Rebounding

1. Penn State	46.4
6. Iowa	38.9

Rebounding Allowed

1. Michigan	31.8
10. Iowa	40.3

Rebounding Margin

1. Michigan	+9.3
9. Iowa	-1.4

Offensive Rebounds

1. Penn State	15.2
7. Iowa	11.6

Defensive Rebounds

1. Nebraska	32.0
10. Iowa	27.3

Blocked Shots

1. Northwestern	7.5
3. Iowa	5.2

Assists

1. Iowa	18.5
2. Michigan State	17.5

Steals

1. Illinois	11.8
4. Iowa	8.9

Turnover Margin

1. Illinois	+6.4
2. Iowa	+3.0

Assist/Turnover Ratio

1. Iowa	1.3
2. Michigan State	1.1

Big Ten Overall -- Individual Stats

Samantha Logic	Rank	Avg.	Bethany Doolittle	Rank	Avg.
Assists	1st	6.9	Blocks	T-1st	3.1
Assist/Turnover Ratio	3rd	1.8	Field Goal Percentage	1st	.585
Steals	3rd	2.2	Scoring	14th	14.5
Scoring	12th	14.6			
Field Goal Percentage	13th	.500	Kali Peschel	Rank	Avg.
Rebounding	13th	6.8	Offensive Rebounds	13th	2.0
Melissa Dixon	Rank	Avg.	Ally Disterhoft	Rank	Avg.
3-Pointers Made	3rd	2.7	Field Goal Percentage	6th	.530
Free Throw Percentage	5th	.889	Scoring	29th	12.0
Scoring	18th	13.9			
			Theairra Taylor	Rank	Avg.
			Assist/Turnover Ratio	10th	1.4
			Steals	14th	1.5

HAWKEYES CONTINUE TREND AGAINST RANKED FOES:

- Iowa is 2-3 this season against ranked opponents:
 - W vs. No. 14 Dayton (97-93 in overtime) – Nov. 10
 - L at No. 16 Colorado (90-87) – Nov. 20
 - W vs. No. 22 Syracuse (97-91) – Dec. 5
 - L at No. 11 Iowa State (83-70) – Dec. 12
 - L vs. No. 15 Penn State (87-71) – Jan. 5
- The Hawkeyes have defeated nine top-25 opponents since the start of last season (9-7 record).
- Iowa is averaging 84.4 points per game during its five contests against ranked teams this season.
- The Hawkeyes have recorded at least one win against a top-25 team in all but two seasons under Bluder. In nine of those seasons, Iowa has knocked off at least one top-15 opponent.
- This year marked the seventh time in school history that Iowa played at least three ranked teams prior to conference action. Iowa faced five ranked opponents in 1990 (2-3 record) and three in 2012 (3-0), 1999 (0-3), 1995 (2-1), 1993 (3-0), and 1989 (1-2).
- Last season marked just the second time in school history that Iowa defeated three ranked teams prior to Big Ten play (No. 12 West Virginia, No. 22 Iowa State, No. 20 Texas). The only other time Iowa defeated three ranked opponents was in 1993 (No. 4 Louisiana Tech, No. 20 Missouri State, No. 9 Southern California).
- Iowa tied the school record for number of wins over ranked teams in a season last year with seven. The Hawkeyes have accomplished the feat three other times (1995-96, 1993-94, 1992-93). Iowa faced 11 ranked teams last season, which tied for the most games against ranked opponents in a season. The only other time Iowa played 11 ranked teams in a season was in 1992-93 (7-4 record).

BIG HONOR ROLL:

- Two Hawkeyes -- Samantha Logic and Melissa Dixon -- have been named to the Big Ten Player of the Week Honor Roll in the last eight weeks. Iowa has had a player named to the Honor Roll or be named Player of the Week in six of the last eight weeks.
- Logic was named Big Ten Player of the Week on Nov. 12 for her efforts in Iowa's wins against UC Riverside and No. 14 Dayton, and on Dec. 23 following her triple-double against Drake.
- Logic was named to the Honor Roll on Nov. 25 after averaging 21.5 points, 7.5 rebounds, 4.0 assists and 2.0 steals as Iowa split a pair of road contests at No. 16 Colorado and Northern Iowa.
- Dixon was honored Dec. 2 after being named MVP of the Cancun Challenge Mayan Division, where she averaged 22.3 points per game, including a career-high 32 against UNC-Wilmington.
- Dixon was honored again on Dec. 9, after helping Iowa to wins over No. 22 Syracuse and Idaho State, averaging 25.5 points per game, while converting 13-of-21 3-point attempts.
- Logic was named to the Honor Roll on Dec. 31. She finished with 21 points, eight assists, seven rebounds and two steals while shooting 60 percent from the floor in a win over North Dakota.
- Logic was named to the Honor Roll on Jan. 13 after averaging 13.5 points, 9.5 rebounds, 7.5 assists and 4.0 steals in wins against Minnesota (Jan. 8) and Wisconsin (Jan. 12).

LOGIC NAMED BIG PLAYER OF THE WEEK:

Iowa junior guard Samantha Logic was named Big Ten Player of the Week on Dec. 23 following her second career triple-double in Iowa's 73-51 win over Drake on Dec. 21.

Logic (5-foot-9) -- the Big Ten leader in assists -- tallied 12 points, 10 assists and 17 rebounds, while shooting 85.7 percent from the field on 6-of-7 shooting and added two steals. She last accomplished the feat on Feb. 26, 2012, against Michigan (13 points, 11 rebounds, 11 assists).

Logic, the only current Big Ten player with two career triple-doubles, has two of the five triple-doubles in program history -- Cara Consuegra, Kachine Alexander (twice).

The award marked Logic's fourth career Player of the Week honor, and second this season (Nov. 12).



News Conferences

Following is a list of dates for remaining basketball news conferences with Lisa Bluder. The news conferences take place in the Media Room on the ground floor of Carver-Hawkeye Arena. Selected players will be available after Bluder meets with the media.

Following are the news conference dates:

Jan.	Tuesday, 21st	Thursday, 30th
Feb.	Friday, 7th	Tuesday, 25th
March	Week of the 3rd (BIG Tourney)	

Coach and Player Interviews

Media interested in setting up interviews with players and/or coaches need to coordinate their requests through Patrick Sojka in the Iowa Athletic Communications Office.

Postgame Interviews

Postgame press conferences include both head coaches in the Media Room. Requested Iowa players will also be available in the Media Room while visiting players outside their locker room.

Social Media

In addition to obtaining the most up-to-date information on Iowa's official website: hawkeyesports.com, fans and media can also get additional information, notes, photos, promotions, videos and more via Iowa basketball's social media sites. Follow Hawkeye hoops on Twitter (@IowaWBB) and on Facebook ([facebook.com/iowawomenshoops](https://www.facebook.com/iowawomenshoops)).

Follow the Hawkeyes on Twitter

Iowa Women's Hoops..... @IowaWBB
Lisa Bluder..... @LisaBluder
Jan Jensen..... @golowa
Jenni Fitzgerald..... @jlefty21
Lacey Goldwire..... @LaceyGoldwire
Abby Emmert..... @abbyemmert
Ally Disterhoft..... @ADisterhoft
Alexa Kastanek..... @KSTAN23
Claire Till..... @clairetill3
Melissa Dixon..... @MDix21
Theairra Taylor..... @two3KneeTaylor
Kali Peschel..... @KaliPeschel
Kathryn Reynolds..... @kc_reynolds
Hailey Schneden..... @Slimschnedy
Nicole Smith..... @NicoleSmith42

IOWA SETS NEW SINGLE-GAME 3-POINT RECORD:

The Hawkeyes won their sixth game in a row, thanks to a school record 17 made 3-point field goals, 95-47, on Dec. 7 against Idaho State inside Carver-Hawkeye Arena.

Iowa shot 56.4-percent from the field for the game and held the Bengals to 21.5-percent (11.8-percent in the second half). While the Hawkeyes made 75-percent of their two-point field goals (14-of-21), the real story was their success from long range.

Junior Melissa Dixon converted six 3-pointers, giving her 20 in the last three games. She had a school-record seven against UNC-Wilmington and Syracuse. Senior Theairra Taylor made four 3-pointers against Idaho State, freshman Ally Disterhoft had three, sophomore Kathryn Reynolds added two, and junior Samantha Logic and freshman Alexa Kastanek made one apiece.

The previous record was 14, last accomplished on Dec. 22, 2011, against Mississippi Valley State.

NCAA 1ST AND 2ND ROUND TICKETS ON SALE:

Tickets for the 2014 NCAA Division I Women's Basketball Championship First and Second Rounds, hosted by the University of Iowa, are now on sale for UI women's basketball season ticket holders and the general public.

Iowa's First and Second Round Games will be played Sunday, March 23 (4:30 and 7 p.m.) and Tuesday, March 25 (8:30 p.m.). The UI was one of 16 sites chosen to host First and Second Round Games, and 1-of-8 chosen to host in back-to-back years.

Fans can order tickets by calling 1-800-IA-HAWKS, visiting the Carver-Hawkeye Arena ticket office, or by visiting hawkeyesports.com.

SUCCESS UNDER BLUDER:

Last season marked the 10th time in 13 seasons under head coach Lisa Bluder -- one of 13 active Division I coaches with 600 or more wins -- that Iowa has been selected for the NCAA Tournament, including each of the last six seasons. The Hawkeyes have participated in postseason play in all but one season under Bluder (two WNIT appearances).

It also marked the seventh time in Bluder's 13 seasons that the Hawkeyes reached 20 wins. Iowa has collected 20 or more wins in five of the last six years. In addition, Iowa finished with a winning record for the 12th time in 13 seasons under Bluder.

ANOTHER TOP ATTENDANCE YEAR:

Iowa ranked 19th in the country in attendance in 2013, averaging 4,567 fans per contest, marking the third-straight season that Iowa has ranked inside the top 20 in attendance.

REYNOLDS NOMINATED FOR ALL STATE WBCA GOOD WORKS TEAM:

Kathryn Reynolds has been nominated for the Women's Basketball Coaches Association Allstate Good Works Team. The announcement was made Dec. 3 by the Women's Basketball Coaches Association (WBCA), the National Association of Basketball Coaches (NABC), and Allstate Insurance Company. Reynolds was one-of-five Big Ten players nominated.

FOLLOW THE HAWKEYES:

Check out the Iowa women's basketball Facebook page (/iowawomenshoops) or the University of Iowa Athletics Facebook page. Fans can also follow @IowaWBB or @TheIowaHawkeyes on Twitter.

UP NEXT:

Iowa returns home to host Indiana on Saturday, Jan. 25. Tip is set for 6 p.m. (CT) on Mediacom Court at Carver-Hawkeye Arena. The contest can be seen live on BTN (BTN2G0).





IOWA BASKETBALL

2013-14 Roster



**#1
Alexa Kastanek**
5-10, Freshman
Guard



**#2
Ally Disterhoft**
6-0, Freshman
Guard



**#3
Claire Till**
6-0, Sophomore
Forward



**#21
Melissa Dixon**
5-8, Junior
Guard



**#22
Samantha Logic**
5-9, Junior
Guard



**#23
Theairra Taylor**
5-11, Senior
Guard



**#25
Kali Peschel**
6-1, Sophomore
Forward



**#33
Kathryn Reynolds**
5-7, Sophomore
Guard



**#40
Hailey Schneden**
6-2, Freshman
Forward



**#45
Nicole Smith**
6-4, Sophomore
Center



**#51
Bethany Doolittle**
6-4, Junior
Center



Lisa Bluder
Head Coach



Jan Jensen
Associate
Head Coach



Jenni Fitzgerald
Assistant Coach



Lacey Goldwire
Assistant Coach



Abby Emmert
Director of
Basketball
Operations



Lindsay Davis
Video
Coordinator





IOWA BASKETBALL

PLAYER BIOS

22 NCAA Tournaments • 5 Sweet Sixteens • 3 Elite Eights • 1993 NCAA Final Four • 11 Big Ten Titles

Alexa Kastanek

2013-14 Game-by-Game



Guard • 5-10 • Freshman
Lincoln, Neb.
Southeast

- Competed in all 19 games
- Converted season-best three 3-pointers in win over North Dakota (Dec. 28)
- Saw first career action in season-opener against UC Riverside (11/8), tallying five points
- Tallied season-best 12 points and season-high 23 minutes in Cancun Challenge win against UNC-Wilmington
- First player in Lincoln Southeast High School history to start and play in every game since freshman season
- *ESPN HoopGurlz* Top 100 recruit

Opponent	Date	gs	min	Total		3-Pointers		Free throws		Rebounds			pf	a	t/o	blk	stl	pts	avg	
				fg-fga	pct	3fg-fga	pct	ft-fa	pct	off	def	tot								avg
UC RIVERSIDE	11/8/13	15	1-3	.333	1-2	.500	2-2	1.000	0	0	0	0.0	0	1	0	0	3	5	5.0	
DAYTON	11/10/13	6	0-1	.000	0-1	.000	0-0	.000	0	1	1	0.5	0	0	2	0	0	0	2.5	
ARKANSAS-PINE BLUFF	11/13/13	21	3-8	.375	1-3	.333	1-2	.500	0	7	7	2.7	3	5	2	0	1	8	4.3	
STONY BROOK	11/17/13	17	1-3	.333	0-2	.000	1-4	.250	0	1	1	2.3	2	1	3	0	0	3	4.0	
at Colorado	11/20/13	12	2-5	.400	1-3	.333	1-2	.500	0	1	1	2.0	1	1	2	0	1	6	4.4	
at UNI	11/24/13	10	1-5	.200	0-3	.000	2-2	1.000	1	0	1	1.8	3	1	1	0	0	4	4.3	
vs USC	11/28/13	3	0-1	.000	0-1	.000	0-0	.000	0	1	1	1.7	1	0	0	0	0	0	3.7	
vs Boston College	11/29/13	3	1-2	.500	0-1	.000	1-1	1.000	0	1	1	1.6	2	0	0	0	0	3	3.6	
vs UNCW	11/30/13	23	5-9	.556	2-3	.667	0-0	.000	0	1	1	1.6	1	1	1	0	2	12	4.6	
SYRACUSE	12/5/13	15	2-6	.333	2-4	.500	0-0	.000	1	1	2	1.6	3	2	0	0	0	6	4.7	
IDAHO STATE	12/7/13	19	1-6	.167	1-4	.250	1-2	.500	0	0	0	1.5	1	4	2	1	0	4	4.6	
at Iowa State	12/12/13	14	1-4	.250	0-1	.000	2-4	.500	1	2	3	1.6	3	0	2	0	2	4	4.6	
DRAKE	12/21/13	22	4-8	.500	0-3	.000	0-0	.000	0	1	1	1.5	1	5	2	0	2	8	4.8	
NORTH DAKOTA	12/28/13	14	4-5	.800	3-4	.750	0-0	.000	0	2	2	1.6	1	3	2	0	1	11	5.3	
at Indiana	1/2/14	15	2-4	.500	0-2	.000	0-2	.000	0	1	1	1.5	0	1	2	0	0	4	5.2	
PENN STATE	1/5/14	12	0-4	.000	0-2	.000	0-0	.000	1	0	1	1.5	2	1	0	1	0	0	4.9	
MINNESOTA	1/8/14	6	0-1	.000	0-1	.000	2-2	1.000	0	0	0	1.4	0	0	0	0	0	2	4.7	
at Wisconsin	01/12/14	8	1-4	.250	1-1	1.000	0-0	.000	1	3	4	1.6	2	1	1	0	1	3	4.6	
MICHIGAN STATE	1/16/14	20	4-8	.500	0-2	.000	0-1	.000	0	1	1	1.5	2	1	0	0	1	8	4.8	
Totals		0	255	33-87	.379	12-43	.279	13-24	.542	5	24	29	1.5	28	28	22	2	14	91	4.8

Games played: 19
 Minutes/game: 13.4
 Points/game: 4.8
 FG Pct: 37.9
 3FG Pct: 27.9
 FT Pct: 54.2

Rebounds/game: 1.5
 Assists/game: 1.5
 Turnovers/game: 1.2
 Assist/turnover ratio: 1.3
 Steals/game: 0.7
 Blocks/game: 0.1

Personal Bests

- Points:** 12 vs. UNC-Wilmington (11/30/13)
- Rebounds:** 7 vs. Ark-Pine Bluff (11/13/13)
- FGM:** 5 vs. UNC-Wilmington (11/30/13)
- FGA:** 9 vs. UNC-Wilmington (11/30/13)
- 3-pt FG:** 3 vs. North Dakota (12/28/13)
- 3-pt FGA:** 4, 3x, last vs. North Dakota (12/28/13)
- FTM:** 2, 3x, last vs. Minnesota (1/8/14)
- FTA:** 5 at Wisconsin (1/12/14)
- Assists:** 5, 2x, last vs. Drake (12/21/13)
- Steals:** 3 vs. UC Riverside (11/8/13)
- Blocks:** 1, 2x, last vs. Penn State (1/5/14)
- Minutes:** 23 vs. UNC-Wilmington (11/30/13)

Season	gp-gs	min/avg	Total		3-Point		F-Throws		Rebounds				Scoring							
			fg-fga	pct	fg-fga	pct	ft-fa	pct	off	def	tot	avg	pf	fo	ast	to	blk	stl	pts	avg
2013-14	19-0	255/13.4	33-87	.379	12-43	.279	13-24	.542	5	24	29	1.5	28	0	28	22	2	14	91	4.8
TOTAL	19-0	255/13.4	33-87	.379	12-43	.279	13-24	.542	5	24	29	1.5	28	0	28	22	2	14	91	4.8





IOWA BASKETBALL

PLAYER BIOS

22 NCAA Tournaments • 5 Sweet Sixteens • 3 Elite Eights • 1993 NCAA Final Four • 11 Big Ten Titles

Ally Disterhoft

2013-14 Game-by-Game



Guard • 6-0 • Freshman
Iowa City, Iowa
West

- Averaging 12.0 points and 5.6 rebounds per contest off the bench -- Iowa's second-leading rebounder and fourth-leading scorer
- Led Iowa in rebounding in five games
- Fifth among B1G freshmen in rebounding, eighth in scoring
- Sixth in the Big Ten in field goal percentage (.530)
- Played in all 19 games, scoring in double figures in 12 contests, including seven of the last nine
- Tallied six or more rebounds in 11-of-19 games
- Posted a season-best 20 points in win at Wisconsin (1/12)
- Saw first career action in season-opener against UC Riverside (11/8), tallying five points
- Named to the 2013 PARADE All-America Girls Basketball Team -- one of 40 high school seniors selected to the All-America team
- Named Miss Iowa Basketball by the Iowa Newspaper Association and the Iowa Gatorade Player of the Year as a senior
- ESPN HoopGurlz Top 100 recruit

Opponent	Date	gs	min	Total		3-Pointers		Free throws		Rebounds			pf	a	t/o	blk	stl	pts	avg	
				fg-fga	pct	3fg-fga	pct	ft-fa	pct	off	def	tot								avg
UC RIVERSIDE	11/8/13	29	2-6	.333	0-0	.000	3-3	1.000	2	6	8	8.0	1	0	1	0	0	7	7.0	
DAYTON	11/10/13	30	7-13	.538	2-3	.667	3-3	1.000	3	3	6	7.0	3	2	3	0	1	19	13.0	
ARKANSAS-PINE BLUFF	11/13/13	23	5-12	.417	2-4	.500	0-2	.000	5	4	9	7.7	4	4	0	1	1	12	12.7	
STONY BROOK	11/17/13	28	6-8	.750	2-3	.667	3-4	.750	2	7	9	8.0	2	0	2	2	2	17	13.8	
at Colorado	11/20/13	26	2-3	.667	0-0	.000	4-4	1.000	0	3	3	7.0	5	1	3	0	0	8	12.6	
at UNI	11/24/13	29	4-8	.500	1-2	.500	5-10	.500	1	6	7	7.0	3	0	2	1	2	14	12.8	
vs USC	11/28/13	27	1-4	.250	0-2	.000	6-6	1.000	1	6	7	7.0	0	2	1	0	2	8	12.1	
vs Boston College	11/29/13	24	2-5	.400	0-1	.000	2-2	1.000	2	5	7	7.0	2	2	3	0	1	6	11.4	
vs UNCW	11/30/13	25	8-10	.800	0-0	.000	0-0	.000	5	3	8	7.1	1	3	2	0	1	16	11.9	
SYRACUSE	12/5/13	16	1-4	.250	0-1	.000	3-3	1.000	0	2	2	6.6	3	1	1	0	0	5	11.2	
IDAHO STATE	12/7/13	22	5-6	.833	3-4	.750	1-3	.333	1	5	6	6.5	1	2	1	0	0	14	11.5	
at Iowa State	12/12/13	27	3-8	.375	0-1	.000	5-8	.625	0	4	4	6.3	2	2	3	0	0	11	11.4	
DRAKE	12/21/13	28	8-14	.571	1-5	.200	0-1	.000	2	7	9	6.5	1	0	1	0	1	17	11.8	
NORTH DAKOTA	12/28/13	27	5-8	.625	2-4	.500	0-0	.000	1	1	2	6.2	1	3	1	1	3	12	11.9	
at Indiana	1/2/14	22	4-5	.800	0-0	.000	5-7	.714	0	1	1	5.9	2	0	0	0	2	13	11.9	
PENN STATE	1/5/14	22	2-5	.400	1-1	1.000	3-4	.750	0	2	2	5.6	3	0	5	0	0	8	11.7	
MINNESOTA	1/8/14	28	2-10	.200	0-4	.000	5-6	.833	1	3	4	5.5	1	2	1	0	0	9	11.5	
at Wisconsin	01/12/14	27	7-11	.636	3-5	.600	3-5	.600	2	3	5	5.5	3	2	4	0	0	20	12.0	
MICHIGAN STATE	1/16/14	26	6-11	.545	0-3	.000	0-0	.000	4	3	7	5.6	1	0	2	0	1	12	12.0	
Totals		0	486	80-151	.530	17-43	.395	51-71	.718	32	74	106	5.6	39	26	36	5	17	228	12.0

Games played: 19
 Minutes/game: 25.6
 Points/game: 12.0
 FG Pct: .530
 3FG Pct: .395
 FT Pct: .718

Rebounds/game: 5.6
 Assists/game: 1.4
 Turnovers/game: 1.9
 Assist/turnover ratio: 0.7
 Steals/game: 0.9
 Blocks/game: 0.3

Personal Bests

- Points:** 20 at Wisconsin (1/12/14)
- Rebounds:** 9, 3x, last vs. Drake (12/21/13)
- FGM:** 8, 2x, last vs. Drake (12/21/13)
- FGA:** 14 vs. Drake (12/21/13)
- 3-pt FG:** 3, 2x, last at Wisconsin (1/12/14)
- 3-pt FGA:** 5, 2x, last at Wisconsin (1/12/14)
- FTM:** 6 vs. USC (11/28/13)
- FTA:** 10 at UNI (11/24/13)
- Assists:** 4 vs. Ark-Pine Bluff (11/13/13)
- Steals:** 3 vs. North Dakota (12/28/13)
- Blocks:** 2 vs. Stony Brook (11/17/13)
- Minutes:** 30 vs. Dayton (11/10/13)

Season	gp-gs	min/avg	Total		3-Point		F-Throws		Rebounds				Scoring							
			fg-fga	pct	fg-fga	pct	ft-fa	pct	off	def	tot	avg	pf	fo	ast	to	blk	stl	pts	avg
2013-14	19-0	486/25.6	80-151	.530	17-43	.395	51-71	.718	32	74	106	5.6	39	1	26	36	5	17	228	12.0
TOTAL	19-0	486/25.6	80-151	.530	17-43	.395	51-71	.718	32	74	106	5.6	39	1	26	36	5	17	228	12.0





IOWA BASKETBALL

PLAYER BIOS

22 NCAA Tournaments • 5 Sweet Sixteens • 3 Elite Eights • 1993 NCAA Final Four • 11 Big Ten Titles

Claire Till

2013-14 Game-by-Game



**Forward • 6-0 • Sophomore
Dubuque, Iowa
Wahlert**

- Played in all 19 games
- Averaging 3.8 rebounds off the bench
- Registered eight rebounds last time out against Penn State
- Grabbed a career-best 12 rebounds in win against Arkansas-Pine Bluff (11/13)
- Missed a total of six games with a stress reaction in right femur last season (missed four games from Dec. 1-Dec. 28 and two games from Jan. 6-Jan.17)
- Underwent three surgeries in high school to repair injured knee

Opponent	Date	gs	min	Total		3-Pointers		Free throws		Rebounds			pf	a	t/o	blk	stl	pts	avg	
				fg-fga	pct	3fg-fga	pct	ft-fa	pct	off	def	tot								avg
UC RIVERSIDE	11/8/13	23	2-3	.667	0-0	.000	0-1	.000	1	4	5	5.0	3	1	1	0	1	4	4.0	
DAYTON	11/10/13	10	1-2	.500	1-2	.500	2-2	1.000	0	1	1	3.0	2	0	1	0	0	5	4.5	
ARKANSAS-PINE BLUFF	11/13/13	25	0-5	.000	0-3	.000	0-0	.000	4	8	12	6.0	1	2	0	2	1	0	3.0	
STONY BROOK	11/17/13	19	2-4	.500	0-1	.000	2-4	.500	6	1	7	6.3	4	2	1	0	0	6	3.8	
at Colorado	11/20/13	20	2-3	.667	1-2	.500	1-5	.200	2	2	4	5.8	3	0	0	0	1	6	4.2	
at UNI	11/24/13	12	1-2	.500	0-0	.000	1-2	.500	2	0	2	5.2	1	0	0	0	0	3	4.0	
vs USC	11/28/13	24	2-3	.667	0-0	.000	3-3	1.000	0	3	3	4.9	2	1	4	0	1	7	4.4	
vs Boston College	11/29/13	10	1-3	.333	0-0	.000	0-1	.000	1	2	3	4.6	2	1	1	0	0	2	4.1	
vs UNCW	11/30/13	20	1-7	.143	0-1	.000	2-2	1.000	2	1	3	4.4	2	3	0	0	1	4	4.1	
SYRACUSE	12/5/13	6	0-2	.000	0-1	.000	1-2	.500	1	0	1	4.1	1	0	0	1	0	1	3.8	
IDAHO STATE	12/7/13	16	1-1	1.000	0-0	.000	0-4	.000	3	2	5	4.2	5	2	2	2	0	2	3.6	
at Iowa State	12/12/13	6	1-2	.500	0-0	.000	0-0	.000	0	2	2	4.0	4	0	1	0	0	2	3.5	
DRAKE	12/21/13	17	3-4	.750	0-1	.000	0-0	.000	0	2	2	3.8	2	0	1	1	3	6	3.7	
NORTH DAKOTA	12/28/13	17	0-2	.000	0-0	.000	0-0	.000	1	2	3	3.8	3	1	1	0	1	0	3.4	
at Indiana	1/2/14	15	0-2	.000	0-1	.000	0-0	.000	1	2	3	3.7	3	0	1	1	0	0	3.2	
PENN STATE	1/5/14	16	0-2	.000	0-0	.000	1-2	.500	2	6	8	4.0	2	0	1	1	0	1	3.1	
MINNESOTA	1/8/14	4	1-2	.500	0-0	.000	0-0	.000	1	0	1	3.8	1	0	0	1	0	2	3.0	
at Wisconsin	01/12/14	11	0-2	.000	0-0	.000	0-0	.000	1	1	2	3.7	0	0	2	0	1	0	2.8	
MICHIGAN STATE	1/16/14	24	1-2	.500	0-0	.000	2-7	.286	1	4	5	3.8	5	0	0	0	2	4	2.9	
Totals		0	295	19-53	.358	2-12	.167	15-35	.429	29	43	72	3.8	46	13	17	9	12	55	2.9

Games played: 19
Minutes/game: 15.5
Points/game: 2.9
FG Pct: 35.8
3FG Pct: 16.7
FT Pct: 42.9

Rebounds/game: 3.8
Assists/game: 0.7
Turnovers/game: 2.9
Assist/turnover ratio: 0.8
Steals/game: 0.6
Blocks/game: 0.5

Personal Bests

- Points:** 7, 2x, last vs. USC (11/28/13)
- Rebounds:** 12 vs. Ark-Pine Bluff (11/13/13)
- FGM:** 3, vs. Drake 12/21/13)
- FGA:** 8 vs. Drake (12/21/13)
- 3-pt FG:** 1, 4x, last at Colorado (11/20/13)
- 3-pt FGA:** 3 vs. Ark-Pine Bluff (11/13/13)
- FTM:** 5, 2x, last vs. WVU (11/25/12)
- FTA:** 8 at Florida International (11/23/12)
- Assists:** 3 vs. UNC-Wilmington (11/30/13)
- Steals:** 3 vs. Drake (12/21/13)
- Blocks:** 2, 2x, last vs. Idaho State (12/7/13)
- Minutes:** 25 vs. Ark-Pine Bluff (11/13/13)

Season	gp-gs	min/avg	Total		3-Point		F-Throws		Rebounds				Scoring							
			fg-fga	pct	fg-fga	pct	ft-fa	pct	off	def	tot	avg	pf	fo	ast	to	blk	stl	pts	avg
2012-13	16-0	108/6.8	5-20	.250	2-7	.286	15-22	.682	9	17	26	1.6	11	0	3	9	3	3	27	1.7
2013-14	19-0	295/15.5	19-53	.358	2-12	.167	15-35	.429	29	43	72	3.8	46	2	13	17	9	12	55	2.9
TOTAL	35-0	403/11.5	24-73	.329	4-19	.211	30-57	.526	38	60	98	2.8	57	2	16	26	12	15	82	2.3



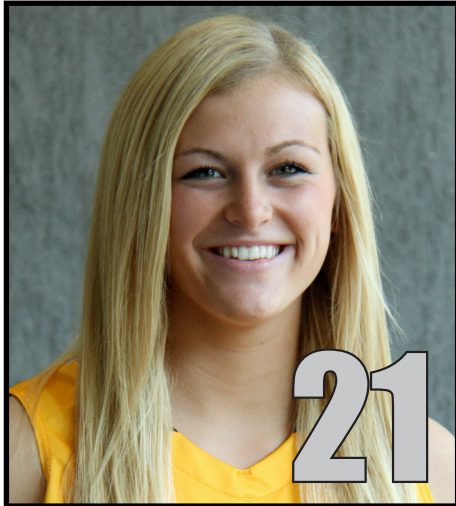


IOWA BASKETBALL

PLAYER BIOS

22 NCAA Tournaments • 5 Sweet Sixteens • 3 Elite Eights • 1993 NCAA Final Four • 11 Big Ten Titles

Melissa Dixon



Guard • 5-8 • Junior
Johnsburg, Ill.
Johnsburg

- Fifth in career 3-pointers (164) at Iowa. Kristi Smith is fifth (185) on the all-time list.
- Fifth in Big Ten free throw percentage (.889), third in 3-pointers per game (2.7), 18th in scoring (13.9)
- Ranks 35th nationally in 3-point field goals per game (2.7), and 22nd in free throw percentage (.889)
- After converting a combined seven 3-pointers during the first six games of the season (7-of-46), has made 44 over the last 13 (44-of-107)
- Finished with seven 3-point field goals in wins over Syracuse and UNC-Wilmington, tying a personal and school record; feat has been accomplished five times in program history (twice by Dixon)
- Converted 20 3-pointers in three games vs. UNC-Wilmington, Syracuse, Idaho State -- the most in a three-game stretch in school history
- Scored 17 points or more during a five-game stretch from Nov. 28 to Dec. 7 (18, 17, 32, 27, 24), for an average of 23.6 points per game

2013-14 Game-by-Game

Opponent	Date	gs	min	Total		3-Pointers		Free throws		Rebounds				pf	t/o	blk	stl	pts	avg		
				fg-fga	pct	3fg-fga	pct	ft-fa	pct	off	def	tot	avg								
UC RIVERSIDE	11/8/13	*	31	0-10	.000	0-7	.000	2-2	1.000	0	1	1	1.0	2	3	2	0	1	2	2.0	
DAYTON	11/10/13	*	34	4-11	.364	2-8	.250	3-3	1.000	0	1	1	1.0	4	5	1	0	0	13	7.5	
ARKANSAS-PINE BLUFF	11/13/13	*	23	6-17	.353	2-11	.182	3-4	.750	0	1	1	1.0	2	4	3	0	2	17	10.7	
STONY BROOK	11/17/13	*	28	3-12	.250	2-10	.200	4-5	.800	0	3	3	1.5	4	2	1	0	5	12	11.0	
at Colorado	11/20/13	*	32	2-12	.167	0-5	.000	3-4	.750	1	3	4	2.0	4	2	3	0	3	7	10.2	
at UNI	11/24/13	*	24	2-7	.286	1-5	.200	2-2	1.000	0	4	4	2.3	5	2	2	0	0	7	9.7	
vs USC	11/28/13	*	26	7-14	.500	3-8	.375	1-1	1.000	0	0	0	2.0	3	2	0	0	1	18	10.9	
vs Boston College	11/29/13	*	32	6-16	.375	5-13	.385	0-0	.000	1	1	2	2.0	2	5	2	0	0	17	11.6	
vs UNCW	11/30/13	*	24	11-18	.611	7-13	.538	3-3	1.000	0	4	4	2.2	3	1	2	0	0	32	13.9	
SYRACUSE	12/5/13	*	34	7-11	.636	7-10	.700	6-6	1.000	0	2	2	2.2	4	1	4	0	2	27	15.2	
IDAHO STATE	12/7/13	*	28	6-11	.545	6-11	.545	6-6	1.000	0	3	3	2.3	1	4	1	0	1	24	16.0	
at Iowa State	12/12/13	*	27	3-7	.429	3-5	.600	2-2	1.000	0	2	2	2.3	4	1	1	0	1	11	15.6	
DRAKE	12/21/13	*	31	5-19	.263	2-11	.182	1-1	1.000	1	1	2	2.2	2	1	1	0	6	13	15.4	
NORTH DAKOTA	12/28/13	*	26	5-14	.357	3-11	.273	0-0	.000	1	0	1	2.1	4	1	1	0	0	13	15.2	
at Indiana	1/2/14	*	37	2-6	.333	2-5	.400	3-4	.750	0	4	4	2.3	3	1	3	0	0	9	14.8	
PENN STATE	1/5/14	*	39	8-22	.364	4-11	.364	2-4	.500	0	2	2	2.3	3	0	1	0	1	22	15.3	
MINNESOTA	1/8/14	*	34	3-9	.333	2-6	.333	5-5	1.000	0	1	1	2.2	1	2	0	0	0	13	15.1	
at Wisconsin	01/12/14	*	24	2-3	.667	0-0	.000	2-2	1.000	0	3	3	2.2	3	2	0	0	0	6	14.6	
MICHIGAN STATE	1/16/14	*	20	1-7	.143	0-3	.000	0-0	.000	1	0	1	2.2	3	3	1	0	0	2	13.9	
Totals			19	554	83-226	.367	51-153	.333	48-54	.889	5	36	41	2.2	57	42	31	0	23	265	13.9

Games played: 19
 Minutes/game: 29.2
 Points/game: 13.9
 FG Pct: 36.7
 3FG Pct: 33.3
 FT Pct: 88.9

Rebounds/game: 2.2
 Assists/game: 2.2
 Turnovers/game: 1.6
 Assist/turnover ratio: 1.4
 Steals/game: 1.2

- Named to Big Ten Player of the Week Honor Roll in two straight-weeks (Dec. 2, Dec. 9)
- At Cancun Challenge, averaged 22.3 points and five 3-pointers per contest, adding six rebounds and eight assists; had at least 17 points in each of Iowa's three victories
- Finished with a career-best and game-high 32 points in the win against UNC-Wilmington; made seven 3-pointers, setting a personal record and tying the Iowa single game record
- Started all 19 games this season
- Tallied two or more 3-pointers in 14-of-19 games this season, including 11 of the last 13 (11-straight games from Nov. 28 - Jan. 8)
- Big Ten Sixth Player of the Year in 2013
- Suffered torn meniscus at Ohio State (Jan. 2, 2012) as a freshman; missed a total of seven games

Personal Bests

- Points:** 32 vs. UNC-Wilmington (11/30/13)
- Rebounds:** 4, 7x, last vs. Indiana (1/2/14)
- FGM:** 11 vs. UNC-Wilmington (11/30/13)
- FGA:** 22 vs. Penn State (1/5/14)
- 3-pt FG:** 7, 2x, last vs. Syracuse (12/5/13)
- 3-pt FGA:** 15 vs. Michigan (2/26/12)
- FTM:** 6, 2x, last vs. Idaho State (12/7/13)
- FTA:** 6, 4x, last vs. Idaho State (12/7/13)
- Assists:** 5, 2x, last vs. Boston College (11/29/13)
- Steals:** 6 vs. Drake (12/21/13)
- Blocks:** 1, 3x, last vs. Ill. State (11/11/12)
- Minutes:** 39 vs. Penn State (1/5/14)

Season	gp-gs	min/avg	Total		3-Point		F-Throws		Rebounds				Scoring							
			fg-fga	pct	fg-fga	pct	ft-fa	pct	off	def	tot	avg	pf	fo	ast	to	blk	stl	pts	avg
2011-12	24-8	425/17.7	50-141	.355	35-98	.357	27-33	.818	17	25	42	1.8	47	1	18	28	2	15	162	6.8
2012-13	34-3	788/23.2	121-289	.419	78-196	.398	22-31	.710	9	42	51	1.5	72	1	33	39	1	20	342	10.1
2013-14	19-19	554/29.2	83-226	.367	51-153	.333	48-54	.889	5	36	41	2.2	57	1	42	31	0	23	265	13.9
TOTAL	77-30	1767/22.9	254-656	.387	164-447	.367	97-118	.822	31	103	134	1.7	176	3	93	98	3	58	769	10.0





IOWA BASKETBALL

PLAYER BIOS

22 NCAA Tournaments • 5 Sweet Sixteens • 3 Elite Eights • 1993 NCAA Final Four • 11 Big Ten Titles

Samantha Logic



Guard • 5-9 • Junior
Racine, Wis.
Racine J.I. Case

- Second in career assists (485) in program history
- Only player in the Big Ten to average 14 or more points (14.6), six or more rebounds (6.8), and six or more assists (6.9)
- Logic, the Big Ten leader in assists (6.9/game), is nearly averaging a triple-double over the last seven contests (15.9 points, 9.1 rebounds, and 7.7 assists). She has registered a triple-double and three double-doubles during the stretch
- Leads the Big Ten in assists (6.9/game), and ranks 12th in scoring, 13th in rebounding, and third in steals (2.2) and assist/turnover ratio (1.8)
- Ranks eighth nationally in assists per game
- Logic is 15th in the NCAA in career assists among active players, and sixth in assists/game (5.77)
- Started all 84 games of her career
- Posted 132 assists this season, which ties Jollette Law for the fourth-highest total for a junior in program history.
- Named to the Big Ten Honor Roll on Jan. 13 after averaging 13.5 points, 9.5 rebounds, 7.5 assists and 4.0 steals in wins against Minnesota (Jan. 8) and Wisconsin (Jan. 12)
- Posted 16th and 17th career double-doubles in opening week of Big Ten play, (at Indiana: 25 points, 12 rebounds) and (vs. Penn State: 13 points, 12 assists)
- Named Big Ten Player of the Week (Dec. 23) after recording her second career triple-double in win over Drake (Dec. 21), tallying 12 points, 10 assists and 17 rebounds; last accomplished the feat on Feb. 26, 2012 against Michigan (13 points, 11 rebounds, 11 assists)
- Only current Big Ten player with two career triple-doubles
- There have been five triple-doubles in Iowa history (Cara Consuegra, Kachine Alexander (twice), Logic (twice))

2013-14 Game-by-Game

Opponent	Date	gs	min	Total		3-Pointers		Free throws		Rebounds					pts	avg					
				fg-fga	pct	3fg-fga	pct	ft-fa	pct	off	def	tot	avg	pf			a	t/o	blk	stl	
UC RIVERSIDE	11/8/13	*	32	11-20	.550	1-1	1.000	5-6	.833	1	6	7	7.0	2	5	4	2	3	28	28.0	
DAYTON	11/10/13	*	43	4-10	.400	3-4	.750	5-6	.833	0	5	5	6.0	3	14	8	0	3	16	22.0	
ARKANSAS-PINE BLUFF	11/13/13	*	22	0-1	.000	0-0	.000	0-0	.000	3	4	7	6.3	1	5	4	0	3	0	14.7	
STONY BROOK	11/17/13	*	26	3-7	.429	0-3	.000	2-2	1.000	1	4	5	6.0	2	7	2	1	0	8	13.0	
at Colorado	11/20/13	*	36	9-19	.474	1-6	.167	7-9	.778	0	5	5	5.8	4	6	6	0	2	26	15.6	
at UNI	11/24/13	*	37	4-11	.364	1-4	.250	8-11	.727	1	9	10	6.5	1	2	2	1	2	17	15.8	
vs USC	11/28/13	*	37	7-13	.538	4-5	.800	4-5	.800	0	3	3	6.0	3	7	4	0	1	22	16.7	
vs Boston College	11/29/13	*	38	3-9	.333	1-4	.250	3-4	.750	1	3	4	5.8	1	6	4	0	3	10	15.9	
vs UNCW	11/30/13	*	18	0-1	.000	0-0	.000	2-2	1.000	0	4	4	5.6	1	11	1	0	3	2	14.3	
SYRACUSE	12/5/13	*	33	6-11	.545	0-3	.000	2-2	1.000	3	0	3	5.3	2	7	4	0	1	14	14.3	
IDAHO STATE	12/7/13	*	25	2-5	.400	1-3	.333	0-0	.000	0	5	5	5.3	1	4	2	0	0	5	13.5	
at Iowa State	12/12/13	*	34	7-14	.500	0-2	.000	4-6	.667	1	6	7	5.4	4	4	5	0	1	18	13.8	
DRAKE	12/21/13	*	35	6-7	.857	0-1	.000	0-0	.000	5	12	17	6.3	2	10	4	0	2	12	13.7	
NORTH DAKOTA	12/28/13	*	32	6-10	.600	0-1	.000	9-12	.750	3	4	7	6.4	2	8	4	0	2	21	14.2	
at Indiana	1/2/14	*	34	9-15	.600	1-3	.333	6-7	.857	5	7	12	6.7	4	3	2	0	1	25	14.9	
PENN STATE	1/5/14	*	40	5-11	.455	1-2	.500	2-2	1.000	2	2	4	6.6	4	12	4	1	4	13	14.8	
MINNESOTA	1/8/14	*	40	5-7	.714	0-0	.000	1-1	1.000	3	5	8	6.6	1	8	4	0	5	11	14.6	
at Wisconsin	01/12/14	*	39	6-15	.400	1-3	.333	3-3	1.000	2	9	11	6.9	2	7	4	1	3	16	14.7	
MICHIGAN STATE	1/16/14	*	34	5-11	.455	0-1	.000	3-4	.750	1	4	5	6.8	4	6	4	0	3	13	14.6	
Totals			19	635	98-197	.497	15-46	.326	66-82	.805	32	97	129	6.8	44	132	72	6	42	277	14.6

Games played: 19
 Minutes/game: 33.4
 Points/game: 14.6
 FG Pct: 49.7
 3FG Pct: 32.6
 FT Pct: 80.5

Rebounds/game: 6.8
 Assists/game: 6.9
 Turnovers/game: 3.8
 Assist/turnover ratio: 1.8
 Steals/game: 2.2
 Blocks/game: 0.3

- In win against Syracuse, returned following a first-half injury to finish with 14 points and seven assists
- 1-of-2 conference juniors named Preseason All-Big Ten
- Named to BIG Player of the Week Honor Roll (Nov. 25) after averaging 21.5 points, 7.5 rebounds, 4.0 assists and 2.0 steals as Iowa split a pair of road contests against No. 16 Colorado and Northern Iowa
- Selected to Cancun Challenge Mayan Division All-Tournament Team
- Named tournament MVP of the Hawkeye Challenge after averaging 22 points, 9.5 assists, 6.0 rebounds, and 3.0 steals, leading Iowa to the team title; went 4-of-5 from 3-point range and made 10-of-12 free throws
- Named Big Ten Player of Week (Nov. 12) for her efforts in Iowa's wins against UC Riverside and No. 14 Dayton
- Hit the game-tying 3-pointer with nine seconds remaining in regulation to send the game into overtime in win vs. No. 14 Dayton
- Recorded 18 career double-doubles, including two triple-doubles. 14 double-doubles are points/rebounds, three are points/assists and one is rebounds/assists.
- Has 10 career games with double-digit assists, surpassing Cara Consuegra (nine) for the most in program history
- Third team All-Big Ten by media, honorable mention All-Big Ten by coaches last season
- Academic All-Big Ten selection in 2013
- Unanimous selection for Big Ten All-Freshman Team in 2011-12
- 2013-14 team co-captain

Personal Bests

Points: 28 vs. UC Riverside (11/8/13)
Rebounds: 18 at Michigan (2/16/12)
FGM: 11 vs. UC Riverside (11/8/13)
FGA: 20 vs. UC Riverside (11/8/13)
3-pt FG: 4 vs. USC (11/28/13)
3-pt FGA: 6 at Colorado (11/20/13)
FTM: 9 vs. North Dakota (12/28/13)
FTA: 12 vs. North Dakota (12/28/13)
Assists: 14, 2x, last vs. Dayton (11/10/13)
Steals: 5 vs. Minnesota (1/8/14)
Blocks: 2, 3x, last vs. UC Riverside (11/8/13)
Minutes: 43 vs. Dayton (11/10/13)

Season	gp-gs		Total		3-Point		F-Throws		Rebounds				Scoring										
	gp	gs	fg-fga	pct	fg-fga	pct	ft-fa	pct	off	def	tot	avg	pf	fo	ast	to	blk	stl	pts	avg			
2011-12	31	31	109	261	.418	15	49	.306	59	79	.747	87	133	220	7.1	73	1	136	113	7	47	292	9.4
2012-13	34	34	125	268	.466	15	51	.294	56	85	.659	81	146	227	6.7	91	3	217	159	13	62	321	9.4
2013-14	19	19	98	197	.497	15	46	.326	66	82	.805	32	97	129	6.8	44	0	132	72	6	42	277	14.6
TOTAL	84	84	332	726	.457	45	146	.308	181	246	.736	200	376	576	6.9	208	4	485	344	26	151	890	10.6





IOWA BASKETBALL

PLAYER BIOS

22 NCAA Tournaments • 5 Sweet Sixteens • 3 Elite Eights • 1993 NCAA Final Four • 11 Big Ten Titles

Theairra Taylor

2013-14 Game-by-Game



Guard • 5-11 • RS Senior
St. Paul, Minn.
Central

- Iowa's lone senior
- Played in 94 career games, with 61 starts
- 14th in the Big Ten in steals (1.5), and 10th in assist/turnover ratio (1.4)
- Scored in double figures in six of the last nine games, while registering nine points twice
- Notched a season-best 20 points, to go along with six rebounds, in win over Minnesota on "Theairra Taylor Bobblehead Night"
 - Posted nine points, team-best eight assists, and seven rebounds in win against No. 22 Syracuse in Big Ten/ACC Challenge
 - Equaled a career best with four 3-point field goals in win over Idaho State (Dec. 7), scoring a season-high 16 points
 - Started every game since start of last season
- 2013-14 team co-captain
- Started all 34 games last year, and was named team's Most Improved Player
- Suffered third ACL in a 20-month span during preseason workouts in 2010. Missed a total of 53 games with ACL injuries from 2009 through 2011

Opponent	Date	gs	min	Total		3-Pointers		Free throws		Rebounds				pf	t/o	blk	stl	pts	avg		
				fg-fga	pct	3fg-fga	pct	ft-fa	pct	off	def	tot	avg								
UC RIVERSIDE	11/8/13	*	19	3-8	.375	1-3	.333	2-4	.500	0	1	1	1.0	3	1	0	0	9	9.0		
DAYTON	11/10/13	*	31	4-11	.364	2-4	.500	0-0	.000	1	3	4	2.5	3	5	4	0	2	10	9.5	
ARKANSAS-PINE BLUFF	11/13/13	*	22	3-5	.600	0-1	.000	3-6	.500	1	4	5	3.3	2	2	1	1	9	9.3		
STONY BROOK	11/17/13	*	24	6-13	.462	0-3	.000	2-2	1.000	3	3	6	4.0	2	2	0	1	3	14	10.5	
at Colorado	11/20/13	*	21	3-7	.429	2-4	.500	4-6	.667	0	3	3	3.8	5	1	4	1	2	12	10.8	
at UNI	11/24/13	*	28	2-4	.500	0-1	.000	1-2	.500	0	5	5	4.0	4	2	4	0	1	5	9.8	
vs USC	11/28/13	*	33	4-13	.308	1-4	.250	2-3	.667	3	1	4	4.0	0	2	1	0	3	11	10.0	
vs Boston College	11/29/13	*	28	3-6	.500	1-3	.333	3-3	1.000	3	2	5	4.1	3	4	2	0	10	10.0		
vs UNCW	11/30/13	*	21	2-4	.500	0-1	.000	1-1	1.000	0	5	5	4.2	0	6	2	0	2	5	9.4	
SYRACUSE	12/5/13	*	27	2-8	.250	2-5	.400	3-6	.500	2	5	7	4.5	2	8	1	0	1	9	9.4	
IDAHO STATE	12/7/13	*	25	6-8	.750	4-6	.667	0-0	.000	0	5	5	4.5	1	5	2	2	0	16	10.0	
at Iowa State	12/12/13	*	37	5-15	.333	2-5	.400	0-0	.000	1	3	4	4.5	5	1	3	1	3	12	10.2	
DRAKE	12/21/13	*	24	3-7	.429	1-3	.333	2-2	1.000	1	0	1	4.2	3	1	2	2	0	9	10.1	
NORTH DAKOTA	12/28/13	*	29	4-9	.444	0-3	.000	6-6	1.000	1	5	6	4.4	1	2	2	0	2	14	10.4	
at Indiana	1/2/14	*	29	1-8	.125	0-4	.000	1-4	.250	1	6	7	4.5	4	6	3	0	0	3	9.9	
PENN STATE	1/5/14	*	24	4-8	.500	0-2	.000	2-4	.500	0	3	3	4.4	4	2	1	0	1	10	9.9	
MINNESOTA	1/8/14	*	36	7-9	.778	2-3	.667	4-4	1.000	0	6	6	4.5	1	0	5	1	2	20	10.5	
at Wisconsin	01/12/14	*	34	5-11	.455	1-3	.333	2-2	1.000	0	3	3	4.4	2	7	3	0	4	13	10.6	
MICHIGAN STATE	1/16/14	*	32	4-9	.444	1-4	.250	0-0	.000	0	4	4	4.4	3	0	1	0	1	9	10.5	
Totals			19	524	71-163	.436	20-62	.323	38-55	.691	17	67	84	4.4	48	57	42	9	28	200	10.5

Games played: 19
 Minutes/game: 27.6
 Points/game: 10.5
 FG Pct: 43.6
 3FG Pct: 32.3
 FT Pct: 69.1

Rebounds/game: 4.4
 Assists/game: 3.0
 Turnovers/game: 2.2
 Assist/turnover ratio: 1.4
 Steals/game: 1.5
 Blocks/game: 0.5

Personal Bests

- Points:** 22 vs. Nebraska (3/8/13)
- Rebounds:** 11, 2x, last at Purdue (2/17/13)
- FGM:** 8, 2x, last vs. Nebraska (3/8/13)
- FGA:** 16 vs. Nebraska (3/8/13)
- 3-pt FG:** 4, 2x, last vs. Idaho State (12/7/13)
- 3-pt FGA:** 6, 3x, vs. Idaho State (12/7/13)
- FTM:** 6 vs. North Dakota (12/28/13)
- FTA:** 6, 3x, last vs. North Dakota (12/28/13)
- Assists:** 8 vs. Syracuse (12/5/13)
- Steals:** 4, 3x, last at Wisconsin (1/12/14)
- Blocks:** 5 vs. Northwestern (3/7/13)
- Minutes:** 37 at Iowa State (12/12/13)

Season	gp-gs	min/avg	Total		3-Point		F-Throws			Rebounds				Scoring						
			fg-fga	pct	fg-fga	pct	ft-fa	pct	off	def	tot	avg	pf	fo	ast	to	blk	stl	pts	avg
2009-10	10-8	247/24.7	29-86	.337	9-26	.346	14-18	.778	15	34	49	4.9	22	1	24	29	10	13	81	8.1
2011-12	31-0	361/11.6	37-97	.381	2-18	.111	19-29	.655	35	57	92	3.0	53	1	30	47	11	18	95	3.1
2012-13	34-34	893/26.3	110-280	.393	28-81	.346	47-62	.758	35	119	154	4.5	56	1	80	76	26	41	295	8.7
2013-14	19-19	524/27.6	71-163	.436	20-62	.323	38-55	.691	17	67	84	4.4	48	2	57	42	9	28	200	10.5
TOTAL	94-61	2025/21.5	247-626	.395	59-187	.316	118-164	.720	102	277	379	4.0	179	5	191	194	56	100	671	7.1





IOWA BASKETBALL

PLAYER BIOS

22 NCAA Tournaments • 5 Sweet Sixteens • 3 Elite Eights • 1993 NCAA Final Four • 11 Big Ten Titles

Kali Peschel



Forward • 6-1 • Sophomore
Sauk Centre, Minn.
Sauk Centre

- Started all 19 games this season; the first starts of her career
- Ranks 13th in the Big Ten in offensive rebounds per game (2.0), and is fourth in rebounding on the team (5.2)
- Iowa's leading rebounder in four contests, including two double-figure totals (11 vs. UC Riverside, 14 vs. Dayton)
- Had career game in win against No. 14 Dayton, tallying first career double-double (12 points, 14 rebounds)
- Named to Hawkeye Challenge All-Tournament team
- Started for her high school team as an eighth grader
- Only played 11 games as a senior in high school after suffering ACL injury between her junior and senior seasons

2013-14 Game-by-Game

Opponent	Date	gs	min	Total		3-Pointers		Free throws		Rebounds				pf	a	t/o	blk	stl	pts	avg	
				fg-fga	pct	3fg-fga	pct	ft-fa	pct	off	def	tot	avg								
UC RIVERSIDE	11/8/13	*	28	2-4	.500	0-1	.000	3-4	.750	2	9	11	11.0	1	1	2	0	1	7	7.0	
DAYTON	11/10/13	*	30	4-11	.364	2-5	.400	2-3	.667	6	8	14	12.5	3	2	2	0	1	12	9.5	
ARKANSAS-PINE BLUFF	11/13/13	*	20	1-3	.333	0-2	.000	1-2	.500	3	2	5	10.0	2	0	0	1	0	3	7.3	
STONY BROOK	11/17/13	*	24	1-7	.143	0-3	.000	0-0	.000	3	4	7	9.3	2	0	2	1	0	2	6.0	
at Colorado	11/20/13	*	23	5-6	.833	1-1	1.000	1-1	1.000	1	1	2	7.8	5	0	0	0	1	12	7.2	
at UNI	11/24/13	*	20	1-7	.143	0-2	.000	4-6	.667	2	4	6	7.5	3	2	1	0	2	6	7.0	
vs USC	11/28/13	*	32	2-8	.250	1-2	.500	1-2	.500	4	2	6	7.3	3	1	3	0	1	6	6.9	
vs Boston College	11/29/13	*	34	3-6	.500	1-3	.333	8-8	1.000	1	1	2	6.6	2	2	0	0	0	15	7.9	
vs UNCW	11/30/13	*	23	1-3	.333	0-2	.000	5-6	.833	3	2	5	6.4	2	3	1	0	1	7	7.8	
SYRACUSE	12/5/13	*	31	3-8	.375	0-1	.000	4-6	.667	2	6	8	6.6	3	6	1	2	0	10	8.0	
IDAHO STATE	12/7/13	*	23	0-3	.000	0-3	.000	5-6	.833	2	4	6	6.5	4	2	2	0	0	5	7.7	
at Iowa State	12/12/13	*	16	0-2	.000	0-1	.000	0-0	.000	1	2	3	6.3	4	0	1	0	0	0	7.1	
DRAKE	12/21/13	*	9	1-4	.250	0-2	.000	0-0	.000	0	2	2	5.9	3	1	0	0	0	2	6.7	
NORTH DAKOTA	12/28/13	*	23	1-2	.500	1-2	.500	2-2	1.000	3	7	10	6.2	3	1	0	1	1	5	6.6	
at Indiana	1/2/14	*	23	3-7	.429	0-2	.000	4-5	.800	1	2	3	6.0	5	1	2	0	0	10	6.8	
PENN STATE	1/5/14	*	23	3-6	.500	0-2	.000	3-6	.500	1	3	4	5.9	3	0	3	2	0	9	6.9	
MINNESOTA	1/8/14	*	16	1-1	1.000	0-0	.000	0-0	.000	0	0	0	5.5	4	0	1	0	0	2	6.6	
at Wisconsin	01/12/14	*	22	2-4	.500	0-1	.000	0-0	.000	1	1	2	5.3	3	1	1	0	0	4	6.5	
MICHIGAN STATE	1/16/14	*	11	0-1	.000	0-0	.000	3-4	.750	2	0	2	5.2	1	0	0	0	0	3	6.3	
Totals			19	431	34-93	.366	6-35	.171	46-61	.754	38	60	98	5.2	56	23	22	7	8	120	6.3

Games played: 19
 Minutes/game: 22.7
 Points/game: 6.3
 FG Pct: 36.6
 3FG Pct: 17.1
 FT Pct: 75.4

Rebounds/game: 5.2
 Assists/game: 1.2
 Turnovers/game: 1.2
 Assist/turnover ratio: 1.0
 Steals/game: 0.4
 Blocks/game: 0.4

Personal Bests

- Points:** 15 vs. Boston College (11/29/13)
- Rebounds:** 14 vs. Dayton (11/10/13)
- FGM:** 5 at Colorado (11/20/13)
- FGA:** 11 vs. Dayton (11/10/13)
- 3-pt FG:** 2 vs. Dayton (11/10/13)
- 3-pt FGA:** 5 vs. Dayton (11/10/13)
- FTM:** 8 vs. Boston College (11/29/13)
- FTA:** 8 vs. Boston College (11/29/13)
- Assists:** 6 vs. Syracuse (12/5/13)
- Steals:** 2 at UNI (11/24/13)
- Blocks:** 2, 2x, last vs. Penn State (1/5/14)
- Minutes:** 34 vs. Boston College (11/29/13)

Season	gp-gs	min/avg	Total		3-Point		F-Throws		Rebounds				Scoring							
			fg-fga	pct	fg-fga	pct	ft-fa	pct	off	def	tot	avg	pf	fo	ast	to	blk	stl	pts	avg
2012-13	28-0	198/7.1	4-26	.154	1-11	.091	7-12	.583	18	11	29	1.0	28	0	8	9	4	6	16	0.6
2013-14	19-19	431/22.7	34-93	.366	6-35	.171	46-61	.754	38	60	98	5.2	56	2	23	22	7	8	120	6.3
TOTAL	47-19	629/13.4	38-119	.319	7-46	.152	53-73	.726	56	71	127	2.7	84	2	31	31	11	14	136	2.9





IOWA BASKETBALL

PLAYER BIOS

22 NCAA Tournaments • 5 Sweet Sixteens • 3 Elite Eights • 1993 NCAA Final Four • 11 Big Ten Titles

Kathryn Reynolds

2013-14 Game-by-Game



Opponent	Date	gs	min	Total		3-Pointers		Free throws		Rebounds			pf	a	t/o	blk	stl	pts	avg	
				fg-fga	pct	3fg-fga	pct	ft-fa	pct	off	def	tot								avg
UC RIVERSIDE	11/8/13	1	0-0	.000	0-0	.000	0-0	.000	0	0	0	0	0	0	0	0	0	0	0.0	
ARKANSAS-PINE BLUFF	11/13/13	14	3-5	.600	2-4	.500	0-0	.000	0	0	0	0.0	2	1	0	0	0	8	4.0	
STONY BROOK	11/17/13	9	1-3	.333	1-3	.333	2-2	1.000	0	1	1	0.3	0	0	0	0	0	5	4.3	
at UNI	11/24/13	5	0-1	.000	0-1	.000	0-0	.000	0	0	0	0.3	0	0	0	0	0	0	3.3	
vs Boston College	11/29/13	1	0-0	.000	0-0	.000	0-0	.000	0	0	0	0.2	0	0	0	0	0	0	2.6	
vs UNCW	11/30/13	18	2-5	.400	0-2	.000	0-0	.000	0	0	0	0.2	1	2	1	0	0	4	2.8	
IDAHO STATE	12/7/13	12	2-3	.667	2-3	.667	0-0	.000	0	1	1	0.3	0	1	0	0	0	6	3.3	
DRAKE	12/21/13	3	0-0	.000	0-0	.000	0-0	.000	0	0	0	0.3	0	0	0	0	0	0	2.9	
NORTH DAKOTA	12/28/13	5	0-1	.000	0-0	.000	0-0	.000	0	0	0	0.2	0	0	1	0	0	0	2.6	
at Wisconsin	01/12/14	1	0-0	.000	0-0	.000	0-0	.000	0	0	0	0.2	0	0	0	0	0	0	2.3	
MICHIGAN STATE	1/16/14	3	0-0	.000	0-0	.000	0-0	.000	0	0	0	0.2	0	0	0	0	0	0	2.1	
Totals		0	72	8-18	.444	5-13	.385	2-2	1.000	0	2	2	0.2	3	4	2	0	0	23	2.1

Games played: 11
 Minutes/game: 6.5
 Points/game: 2.1
 FG Pct: 44.4
 3FG Pct: 38.5
 FT Pct: 100.0

Rebounds/game: 0.2
 Assists/game: 0.4
 Turnovers/game: 0.2
 Assist/turnover ratio: 2.0

Guard • 5-7 • RS Sophomore
Cincinnati, Ohio
Mount Notre Dame

- Nominated for the Women's Basketball Coaches Association (WBCA) Allstate Good Works Team; one of 84 WBCA nominees for the prestigious award; one-of-five student-athletes from Big Ten
- Played in 11 contests this season
- Tallied career-best eight points in win against Arkansas-Pine Bluff (11/13)
- Academic All-Big Ten selection in 2013
- Missed entire 2012-13 season after suffering an ACL injury during offseason workouts
- Played in 21 games as a freshman in 2011-12

Personal Bests

- Points:** 8 vs. Ark-Pine Bluff (11/13/13)
- Rebounds:** 2 vs. Texas A&M (11/26/11)
- FGM:** 3 vs. Ark-Pine Bluff (11/13/13)
- FGA:** 5, 2x, last vs. UNC-Wilmington (11/30/13)
- 3-pt FG:** 2, 2x, last vs. Idaho State (12/7/13)
- 3-pt FGA:** 4 vs. Ark-Pine Bluff (11/13/13)
- FTM:** 2, 2x, last vs. Stony Brook (11/13/13)
- FTA:** 2, 4x, last vs. Stony Brook (11/13/13)
- Assists:** 5 vs. W. Illinois (12/9/11)
- Steals:** ---
- Blocks:** ---
- Minutes:** 20 vs. W. Illinois (12/9/11)

Season	gp-gs	min/avg	Total		3-Point		F-Throws		Rebounds				Scoring							
			fg-fga	pct	fg-fga	pct	ft-fa	pct	off	def	tot	avg	pf	fo	ast	to	blk	stl	pts	avg
2011-12	21-0	129/6.1	5-16	.313	0-7	.000	3-4	.750	1	8	9	0.4	6	0	15	11	0	0	13	0.6
2013-14	11-0	72/6.5	8-18	.444	5-13	.385	2-2	1.000	0	2	2	0.2	3	0	4	2	0	0	23	2.1
TOTAL	32-0	201/6.3	13-34	.382	5-20	.250	5-6	.833	1	10	11	0.3	9	0	19	13	0	0	36	1.1





IOWA BASKETBALL

PLAYER BIOS

22 NCAA Tournaments • 5 Sweet Sixteens • 3 Elite Eights • 1993 NCAA Final Four • 11 Big Ten Titles

Hailey Schneden



2013-14 Game-by-Game

Opponent	Date	gs	min	Total		3-Pointers		Free throws		Rebounds				pf	a	t/o	blk	stl	pts	avg
				fg-fga	pct	3fg-fga	pct	ft-fa	pct	off	def	tot	avg							
ARKANSAS-PINE BLUFF	11/13/13	6	0-0	.000	0-0	.000	2-2	1.000	0	0	0	0.0	2	1	0	1	0	2	2.0	
STONY BROOK	11/17/13	9	1-1	1.000	0-0	.000	0-0	.000	0	1	1	0.5	1	1	0	1	1	2	2.0	
vs USC	11/28/13	1	0-0	.000	0-0	.000	0-0	.000	0	0	0	0.3	0	0	0	0	0	1.3		
vs UNCW	11/30/13	10	1-2	.500	0-0	.000	0-2	.000	1	1	2	0.8	1	0	1	0	0	2	1.5	
IDAHO STATE	12/7/13	3	1-2	.500	0-0	.000	0-0	.000	0	1	1	0.8	0	0	0	0	0	2	1.6	
DRAKE	12/21/13	1	0-0	.000	0-0	.000	0-0	.000	0	0	0	0.7	0	0	0	0	0	1.3		
NORTH DAKOTA	12/28/13	2	0-0	.000	0-0	.000	0-0	.000	0	1	1	0.7	0	1	0	0	1	1.1		
MICHIGAN STATE	1/16/14	0	0-0	.000	0-0	.000	0-0	.000	0	0	0	0.6	0	0	0	0	0	1.0		
Totals		0	32	3-5	.600	0-0	.000	2-4	.500	1	4	5	0.6	4	3	1	2	8	1.0	

Games played: 8
 Minutes/game: 4.0
 Points/game: 1.0
 FG Pct: 60.0
 FT Pct: 50.0

Rebounds/game: 0.6
 Assists/game: 0.4
 Turnovers/game: 1.0
 Assist/turnover ratio: 3.0
 Steals/game: 0.3
 Blocks/game: 0.3

**Forward • 6-2 • Freshman
 Davenport, Iowa
 Assumption**

- Joined program as a walk-on
- Saw first career action in win over Arkansas-Pine Bluff on Nov. 13, playing six minutes
- Two-time all-state selection led Davenport Assumption to three-straight state titles, and four-straight conference championships

Personal Bests

- Points:** 2, 4x, last vs. Idaho State (12/7/13)
- Rebounds:** 2 vs. UNC-Wilmington (11/30/13)
- FGM:** 1, 3x, last vs. Idaho State (12/7/13)
- FGA:** 2, 2x, last vs. Idaho State (12/7/13)
- 3-pt FG:** ---
- 3-pt FGA:** ---
- FTM:** 2 vs. Ark-Pine Bluff (11/13/13)
- FTA:** 2, 2x, last vs. UNC-Wilmington (11/30/13)
- Assists:** 1, 2x, last vs. Stony Brook (11/17/13)
- Steals:** 1, 2x, last vs. North Dakota (12/28/13)
- Blocks:** 1, 2x, last vs. Stony Brook (11/17/13)
- Minutes:** 10 vs. UNC-Wilmington (11/30/13)

Season	gp-gs	min/avg	Total		3-Point		F-Throws		Rebounds				Scoring							
			fg-fga	pct	fg-fga	pct	ft-fa	pct	off	def	tot	avg	pf	fo	ast	to	blk	stl	pts	avg
2013-14	8-0	32/4.0	3-5	.600	0-0	.000	2-4	.500	1	4	5	0.6	4	0	3	1	2	2	8	1.0
TOTAL	8-0	32/4.0	3-5	.600	0-0	.000	2-4	.500	1	4	5	0.6	4	0	3	1	2	2	8	1.0





IOWA BASKETBALL

PLAYER BIOS

22 NCAA Tournaments • 5 Sweet Sixteens • 3 Elite Eights • 1993 NCAA Final Four • 11 Big Ten Titles

Nicole Smith



Center • 6-4 • Sophomore
Rockton, Ill.
Hononegah

- Will miss approximately 10-14 weeks with injury in right knee

Personal Bests

Points: 4 vs. Missouri State (12/19/12)
Rebounds: 1 vs. NIU (11/9/12)
FGM: 1, 2x, last vs. Texas (12/28/12)
FGA: 2 vs. NIU (11/9/12)
3-pt FG: ---
3-pt FGA: ---
FTM: 2 vs. Missouri State (12/19/12)
FTA: 2 vs. Missouri State (12/19/12)
Assists: ---
Steals: ---
Blocks: ---
Minutes: 4 vs. Missouri State (12/19/12)

Season	gp-gs	min/avg	Total		3-Point		F-Throws		Rebounds				Steals			Scoring				
			fg-fga	pct	fg-fga	pct	ft-fa	pct	off	def	tot	avg	pf	fo	ast	to	blk	stl	pts	avg
2012-13	7-0	12/1.7	2-4	.500	0-0	.000	2-2	1.000	0	1	1	0.1	2	0	0	1	0	0	6	0.9
TOTAL	7-0	12/1.7	2-4	.500	0-0	.000	2-2	1.000	0	1	1	0.1	2	0	0	1	0	0	6	0.9





IOWA BASKETBALL

PLAYER BIOS

22 NCAA Tournaments • 5 Sweet Sixteens • 3 Elite Eights • 1993 NCAA Final Four • 11 Big Ten Titles

Bethany Doolittle



2013-14 Game-by-Game

Opponent	Date	gs	min	Total		3-Pointers		Free throws		Rebounds				pf	a	t/o	blk	stl	pts	avg	
				fg-fga	pct	3fg-fga	pct	ft-fa	pct	off	def	tot	avg								
UC RIVERSIDE	11/8/13	*	22	3-11	.273	0-0	.000	2-2	1.000	0	5	5	5.0	4	0	1	2	1	8	8.0	
DAYTON	11/10/13	*	41	10-13	.769	0-0	.000	2-4	.500	2	3	5	5.0	3	2	0	6	3	22	15.0	
ARKANSAS-PINE BLUFF	11/13/13	*	24	8-14	.571	0-0	.000	1-2	.500	1	3	4	4.7	1	2	1	4	2	17	15.7	
STONY BROOK	11/17/13	*	16	4-6	.667	0-0	.000	1-2	.500	4	3	7	5.3	4	0	2	5	0	9	14.0	
at Colorado	11/20/13	*	30	5-9	.556	0-0	.000	0-1	.000	4	3	7	5.6	3	0	2	1	2	10	13.2	
at UNI	11/24/13	*	35	5-15	.333	0-0	.000	1-3	.333	2	6	8	6.0	3	1	2	2	3	11	12.8	
vs USC	11/28/13	*	17	3-4	.750	0-0	.000	0-0	.000	3	3	6	6.0	5	0	1	0	0	6	11.9	
vs Boston College	11/29/13	*	30	7-11	.636	0-0	.000	1-2	.500	0	3	3	5.6	3	3	2	1	1	15	12.3	
vs UNCW	11/30/13	*	18	6-6	1.000	0-0	.000	6-6	1.000	0	2	2	5.2	2	0	2	1	1	18	12.9	
SYRACUSE	12/5/13	*	38	12-16	.750	0-0	.000	1-2	.500	1	5	6	5.3	1	3	2	4	1	25	14.1	
IDAHO STATE	12/7/13	*	27	7-10	.700	0-0	.000	3-4	.750	3	7	10	5.7	1	4	0	3	3	17	14.4	
at Iowa State	12/12/13	*	39	6-11	.545	0-0	.000	0-0	.000	2	4	6	5.8	4	0	2	3	1	12	14.2	
DRAKE	12/21/13	*	30	3-9	.333	0-0	.000	0-0	.000	2	5	7	5.8	3	2	1	7	0	6	13.5	
NORTH DAKOTA	12/28/13	*	25	6-16	.375	0-0	.000	0-0	.000	0	3	3	5.6	3	0	1	4	1	12	13.4	
at Indiana	1/2/14	*	25	10-15	.667	0-0	.000	0-0	.000	3	2	5	5.6	5	1	0	6	0	20	13.9	
PENN STATE	1/5/14	*	24	4-6	.667	0-0	.000	0-0	.000	1	2	3	5.4	4	1	2	2	1	8	13.5	
MINNESOTA	1/8/14	*	36	5-10	.500	0-0	.000	9-10	.900	0	6	6	5.5	2	1	0	2	1	19	13.8	
at Wisconsin	01/12/14	*	34	10-13	.769	0-0	.000	0-0	.000	4	1	5	5.4	1	3	1	1	2	20	14.2	
MICHIGAN STATE	1/16/14	*	30	8-15	.533	0-0	.000	5-6	.833	0	2	2	5.3	3	0	3	4	1	21	14.5	
Totals			19	541	122-210	.581	0-0	.000	32-44	.727	32	68	100	5.3	55	23	25	58	24	276	14.5

Center • 6-4 • Junior
Oakdale, Minn.
Hill-Murray

Games played: 19
 Minutes/game: 28.5
 Points/game: 14.5
 FG Pct: 58.1
 FT Pct: 72.7

Rebounds/game: 5.3
 Assists/game: 1.2
 Turnovers/game: 1.3
 Assist/turnover ratio: 0.9
 Steals/game: 1.3
 Blocks/game: 3.1

- Fifth all-time in program history with 136 career blocks; Toni Foster is fourth with 145
- Scored 19 or more points in three-straight games, and in 4-of-last 5 (20, 8, 19, 20, 21)
- Tallied career-best seven blocks in Iowa's win over Drake (Dec. 21), one shy of the school record
- Posted 17 points and 10 rebounds in win against Idaho State (Dec. 7), registering her second career double-double
- Tallied three or more blocks in 10 games, and tallied at least one block in every game but one this season
- Tied for first in Big Ten and 11th nationally in blocked shots (3.1), and ranks 14th in the Big Ten in scoring (14.5)
- First in the Big Ten, and 19th nationally, in field goal percentage (.581)
- Ranks 23rd in the nation among active players in career blocks/game (1.59)
- Has three of the highest single-game block totals in the Big Ten this season
- Started all 19 games this season
- Named to Hawkeye Challenge All-Tournament Team
- 2013 Academic All-Big Ten Selection
- Started all 34 games last year, and played in all 31 as a freshman in 2011-12

Personal Bests

- Points:** 25 vs. Syracuse (12/5/13)
- Rebounds:** 12 vs. Missouri State (12/19/12)
- FGM:** 12 vs. Syracuse (12/5/13)
- FGA:** 16, 2x, vs. North Dakota (12/28/13)
- 3-pt FG:** ---
- 3-pt FGA:** 1, 4x, last vs. Northwestern (3/7/13)
- FTM:** 9 vs. Minnesota (1/8/14)
- FTA:** 10 vs. Minnesota (1/8/14)
- Assists:** 4, 2x, last vs. Idaho State (12/7/13)
- Steals:** 3, 6x, last vs. Idaho State (12/7/13)
- Blocks:** 7 vs. Drake (12/7/13)
- Minutes:** 42 vs. Ohio State (1/3/13)

Season	gp-gs	min/avg	Total		3-Point		F-Throws		Rebounds				Scoring							
			fg-fga	pct	fg-fga	pct	ft-fa	pct	off	def	tot	avg	pf	fo	ast	to	blk	stl	pts	avg
2011-12	31-0	366/11.8	46-99	.465	0-1	.000	24-30	.800	13	44	57	1.8	51	0	6	19	19	9	116	3.7
2012-13	34-34	966/28.4	113-267	.423	0-3	.000	19-28	.679	54	131	185	5.4	84	1	19	47	59	31	245	7.2
2013-14	19-19	541/28.5	122-210	.581	0-0	.000	32-44	.727	32	68	100	5.3	55	2	23	25	58	24	276	14.5
TOTAL	84-53	1873/22.3	281-576	.488	0-4	.000	75-102	.735	99	243	342	4.1	190	3	48	91	136	64	637	7.6





IOWA BASKETBALL

WOMEN'S HOOPS NOTES

Game-by-Game Results

Overall: 14-5

Big Ten: 2-3

Home: 9-2

Away: 2-3

Neutral: 3-0

Date	Opponent	Result	Attend.	Top Scorer	Top Rebounder
Nov. 8	UC Riverside #	W, 70-56	3,162	Logic (28)	Peschel (11)
Nov. 10	#14 Dayton #	W, 97-93 (OT)	3,370	Doolittle (22)	Peschel (14)
Nov. 13	Arkansas-Pine Bluff	W, 76-38	2,810	Doolittle, Dixon (17)	Till (12)
Nov. 17	Stony Brook	W, 78-40	3,470	Disterhoft (17)	Disterhoft (9)
Nov. 20	at #16 Colorado	L, 90-87	3,501	Logic (26)	Doolittle (7)
Nov. 24	at Northern Iowa	W, 67-60	3,502	Logic (17)	Logic (10)
Nov. 28	vs. USC ~	W, 78-65	507	Logic (22)	Disterhoft (8)
Nov. 29	vs. Boston College ~	W, 78-68	934	Dixon (17)	Disterhoft (7)
Nov. 30	vs. UNC-Wilmington ~	W, 102-65	934	Dixon (32)	Disterhoft (8)
Dec. 5	#22 Syracuse %	W, 97-91	3,323	Dixon (27)	Peschel (8)
Dec. 7	Idaho State	W, 95-47	3,168	Dixon (24)	Doolittle (10)
Dec. 12	at #11 Iowa State *	L, 83-70	11,543	Logic (18)	Logic (7)
Dec. 21	Drake	W, 73-51	5,598	Disterhoft (17)	Logic (17)
Dec. 28	North Dakota	W, 88-62	4,209	Logic (21)	Peschel (10)
Jan. 2	at Indiana	L, 86-84	2,888	Logic (25)	Logic (12)
Jan. 5	#15 Penn State	L, 87-71	6,230	Dixon (22)	Till (8)
Jan. 8	Minnesota	W, 78-71	3,460	Taylor (20)	Logic (8)
Jan. 12	at Wisconsin	W, 82-65	5,245	Doolittle, Disterhoft (20)	Logic (11)
Jan. 16	Michigan State	L, 88-72	4,176	Doolittle (21)	Disterhoft (7)
Jan. 19	at Ohio State				
Jan. 25	Indiana				
Jan. 29	at Minnesota				
Feb. 1	Nebraska				
Feb. 6	at Penn State				
Feb. 10	Northwestern				
Feb. 13	Illinois				
Feb. 16	at Purdue				
Feb. 22	at Michigan				
Feb. 27	Ohio State				
Mar. 2	at Illinois				

- Hawkeye Challenge

~ - Cancun Challenge

% - Big Ten/ACC Challenge

* - Iowa Corn Cy-Hawk Series

Attendance Summary	Games	Totals	Average
Home	11	42,967	3,906
Away	5	26,679	5,335
Neutral	3	2,375	791
Totals	19	72,030	3,791





IOWA BASKETBALL

WOMEN'S HOOPS NOTES

Game-by-Game Statistics

Team	Score	FG-A	PCT	3-PT. FG	PCT	FT-A	PCT	REB	PF	AS	TO	BLK	ST
UC Riverside	56	19-58	32.8%	3-21	14.3%	15-19	78.9%	45	21	10	20	2	4
at Iowa	70	24-65	36.9%	3-14	21.4%	16-24	79.2%	42	16	12	11	4	10
#14 Dayton	97	30-69	43.5%	10-26	38.5%	23-31	74.2%	40	21	17	21	5	9
at Iowa	93	34-72	47.2%	12-27	44.4%	17-21	81.0%	41	21	30	22	6	10
Arkansas-Pine Bluff	38	13-63	20.6%	3-8	37.5%	9-21	42.9%	49	20	4	17	3	7
at Iowa	76	29-70	41.4%	7-28	25.0%	11-20	55.0%	55	20	26	12	10	11
Stony Brook	40	11-59	18.6%	1-15	6.7%	17-24	70.8%	43	23	5	20	1	6
at Iowa	78	28-64	43.8%	5-28	19.9%	17-25	68.0%	50	23	15	13	11	11
Iowa	87	30-64	46.9%	6-21	28.6%	21-32	65.6%	35	30	11	20	2	12
at #16 Colorado	90	27-62	43.5%	6-19	31.6%	30-40	75.0%	44	29	18	20	3	9
Iowa	67	20-60	33.3%	3-18	16.7%	24-38	63.2%	46	23	10	14	4	10
at UNI	60	19-61	31.1%	7-36	19.4%	15-20	75.0%	43	30	10	18	2	3
USC	65	27-59	45.8%	3-11	27.3%	8-10	80.0%	36	25	16	18	2	9
vs. Iowa	78	22-60	43.3%	9-22	40.9%	17-20	85.0%	31	17	15	15	0	9
Boston College	68	24-54	44.4%	9-19	47.4%	11-17	64.7%	32	23	14	16	2	8
vs. Iowa	78	26-58	44.8%	8-25	32.0%	18-21	85.7%	31	17	23	14	1	5
UNC-Wilmington	65	24-60	40.0%	2-15	13.3%	15-19	78.9%	31	14	18	17	0	10
vs. Iowa	102	37-65	56.9%	9-22	40.9%	19-22	86.4%	38	14	30	13	1	11
#22 Syracuse	91	35-73	47.9%	10-30	30.0%	11-19	57.9%	43	23	21	11	5	8
at #25 Iowa	97	33-66	50%	11-25	44.0%	20-27	74.1%	38	19	28	13	7	5
Idaho State	47	14-65	21.5%	9-33	27.3%	10-16	62.5%	36	19	12	13	1	5
at #25 Iowa	95	31-55	56.4%	17-34	50.0%	16-25	64.0%	46	15	28	12	8	4
#21 Iowa	70	26-63	41.3%	5-15	33.3%	13-20	65.0%	37	30	8	18	4	8
at #11 Iowa State	83	18-56	32.1%	10-27	37.0%	37-49	75.5%	46	18	14	17	6	4
Drake	51	18-61	29.5%	6-29	20.7%	9-13	69.2%	43	11	12	21	1	4
at #22 Iowa	73	33-72	45.8%	4-26	15.4%	3-4	75.0%	42	17	20	12	10	14
North Dakota	62	23-58	39.7%	4-14	28.6%	12-22	54.5%	37	14	14	21	5	6
at #21 Iowa	88	31-67	46.3%	9-25	36.0%	17-20	85.0%	40	18	20	14	6	12
#22 Iowa	84	31-62	50.0%	3-17	17.6%	19-29	65.5%	39	26	13	13	7	3
at Indiana	86	28-64	43.8%	11-23	27.8%	19-33	57.6%	42	19	19	11	3	7
#15 Penn State	87	33-69	47.8%	5-15	33.3%	16-20	80.0%	50	23	12	19	6	6
at #22 Iowa	71	26-64	40.6%	6-20	30.0%	13-22	59.1%	34	25	16	18	7	7
Minnesota	71	27-60	45.0%	9-20	45.0%	8-11	72.7%	34	24	13	17	3	9
at Iowa	78	24-49	49.0%	4-14	28.6%	26-28	92.9%	26	11	13	13	4	8
Iowa	82	33-63	52.4%	6-13	46.2%	10-12	83.3%	39	16	23	16	2	11
at Wisconsin	65	24-60	40.0%	7-20	35.0%	10-12	83.3%	28	19	9	14	3	5
Michigan State	88	30-58	51.7%	9-14	64.3%	19-25	76.0%	44	22	18	21	2	8
at Iowa	72	29-64	45.3%	1-13	7.7%	13-22	59.1%	29	22	10	12	4	9





IOWA BASKETBALL

WOMEN'S HOOPS NOTES

Season & Career Bests

Season Bests

Player	Points	3-Pointers	Rebounds	Assists	Blocks	Steals
#1 Alexa Kastanek	12 vs. UNCW	3 vs. North Dakota	7 vs. Ark. Pine Bluff	5, twice	1, twice	3 vs. UC Riverside
#2 Ally Disterhoft	20 at Wisconsin	3, twice	9, three times	4 vs. Ark. Pine Bluff	2 vs. Stony Brook	3 vs. North Dakota
#3 Claire Till	7 vs. USC	1, twice	12 vs. Ark. Pine Bluff	3 vs. UNCW	2, twice	3 vs. Drake
#21 Melissa Dixon	32 vs. UNCW	7, twice *	4, four times	5, twice	---	6 vs. Drake
#22 Samantha Logic	28 vs. UC Riverside	4 vs. USC	17 vs. Drake	14 vs. Dayton	2 vs. UC Riverside	5 vs. Minnesota
#23 Theairra Taylor	20 vs. Minnesota	4 vs. Idaho State	7 vs. Syracuse	8 vs. Syracuse	2, twice	4 at Wisconsin
#25 Kali Peschel	15 vs. Boston College	2 vs. Dayton	14 vs. Dayton	6 vs. Syracuse	2, twice	2 at UNI
#33 Kathryn Reynolds	8 vs. Ark. Pine Bluff	2, twice	1, twice	2 vs. UNCW	---	---
#40 Hailey Schneden	2, four times	---	2 vs. UNCW	1, twice	1, twice	1, twice
#45 Nicole Smith	---	---	---	---	---	---
#51 Bethany Doolittle	25 vs. Syracuse	---	10 vs. Idaho State	4 vs. Idaho State	7 vs. Drake	3, twice

Career Bests

Player	Points	3-Pointers	Rebounds	Assists	Blocks	Steals
#1 Alexa Kastanek	12 vs. UNCW	3 vs. North Dakota	7 vs. Ark. Pine Bluff	5, twice	1, twice	3 vs. UC Riverside
#2 Ally Disterhoft	20 at Wisconsin	3, twice	9, three times	4 vs. Ark. Pine Bluff	2 vs. Stony Brook	3 vs. North Dakota
#3 Claire Till	7, twice	1, four times	12 vs. Ark. Pine Bluff	3 vs. UNCW	2, twice	3 vs. Drake
#21 Melissa Dixon	32 vs. UNCW	7, twice *	4, seven times	5, twice	1, three times	6 vs. Drake
#22 Samantha Logic	28 vs. Dayton	4 vs. USC	18 at Michigan	14, twice *	2, three times	5 vs. Minnesota
#23 Theairra Taylor	22 vs. Nebraska	4, twice	11, twice	8 vs. Syracuse	5 vs. Northwestern	4, three times
#25 Kali Peschel	15 vs. Boston College	2 vs. Dayton	14 vs. Dayton	6 vs. Syracuse	2, twice	2 at UNI
#33 Kathryn Reynolds	8 vs. Ark. Pine Bluff	2, twice	2 vs. Texas A&M	5 vs. Western Illinois	---	---
#40 Hailey Schneden	2, four times	---	2 vs. UNCW	1, twice	1, twice	1 vs. Stony Brook
#45 Nicole Smith	4 vs. Missouri State	---	1 vs. Northern Illinois	---	---	---
#51 Bethany Doolittle	25 vs. Syracuse	---	12 vs. Missouri State	4, twice	7 vs. Drake	3, five times

BOLD - set career best during current season

* - - tied school single-game record





The Last Time...

The Last Time a Player . . .

Had 30 or more points

Iowa -- 32, Melissa Dixon, vs. UNCW, 11/30/13
Opponent -- 32, Rachel Banham, Minnesota, 1/8/14

Made at least 80% of her FGA (10 att.)

Iowa -- .800 (8-10), Ally Disterhoft, vs. UNCW, 11/30/13
Opponent -- .857 (12-14), Kelsey Budd, Bradley, 12/17/11

Made 100% of her FTA (10 att.)

Iowa -- 1.000 (11-11), Morgan Johnson, at Wisconsin, 1/10/13
Opponent -- 1.000 (11-11), Courtney Vandersloot, Gonzaga, 3/19/11

Had 15 or more rebounds

Iowa -- 17, Samantha Logic, vs. Drake, 12/21/13
Opponent -- 15, Amanda Zahui, Minnesota, 1/8/14

Had 10 or more assists

Iowa -- 12, Samantha Logic, vs. Penn State, 1/5/14
Opponent -- 10, Brittney McCoy, Minnesota, 2/18/10

Had 5 or more blocks

Iowa -- 6, Bethany Doolittle, at Indiana, 1/2/14
Opponent -- 5, Ebony Ellis, Northern Illinois, 12/8/07

Had 5 or more steals

Iowa -- 5, Samantha Logic, vs. Minnesota, 1/8/14
Opponent -- 5, Kelva Atkins, UNCW, 11/30/13

The Last Time A Team . . .

Scored 100 or more points

Iowa -- 102 vs. UNCW, 11/30/13
Opponent -- 101, Iowa State, 12/3/03

Scored 40 or fewer points

Iowa -- 40, vs. Illinois, 2/10/77
Opponent -- 40, Stony Brook, 11/17/13

Won an overtime game

Iowa -- 97-93 vs. Dayton, 11/10/13
Opponent -- 81-78, Kansas State, 12/3/11

Made at least 60% of its FGA (20 att.)

Iowa -- .632 (36-57), vs. Rider, 11/26/05
Opponent -- .654 (34-52), Ohio State, 2/12/06

Made at least 50% of its 3-pt. FGA (8 att.)

Iowa -- .500 (17-34), vs. Idaho State, 12/7/13
Opponent -- .643 (9-14), Michigan State, 1/16/14

Made at least 90% of its FTA (10 att.)

Iowa -- .929 (26-28), vs. Minnesota, 1/8/14
Opponents -- .900 (9-10), Northwestern, 3/7/13

* - Carver-Hawkeye Arena record ^ - school record





IOWA BASKETBALL

WOMEN'S HOOPS NOTES

Miscellaneous Records and Statistics

GAME-BY-GAME, POINTS-REBOUNDS-ASSISTS-STEALS

# -- starter	1	2	3	21	22	23	25	33	40	45	51
Date	Kastanek	Disterhoft	Till	Dixon	Logic	Taylor	Peschel	Reynolds	Schneden	Smith	Doolittle
Opponent	P-R-A-S	P-R-A-S	P-R-A-S	P-R-A-S	P-R-A-S	P-R-A-S	P-R-A-S	P-R-A-S	P-R-A-S	P-R-A-S	P-R-A-S
Nov. 8	UC Riverside	5-0-1-3	7-8-0-0	4-5-1-1	2-1-3-1#	28-7-5-3#	9-1-1-0#	7-11-1-1#	0-0-0-0	DNP	8-5-0-1#
Nov. 10	#14 Dayton	0-1-0-0	19-6-2-1	5-1-0-0	13-1-5-0#	16-5-4-3#	10-4-5-2#	12-14-2-1#	DNP	DNP	22-5-2-3#
Nov. 13	Arkansas-Pine Bluff	9-5-2-1	12-9-4-1	0-12-2-1	17-1-4-2#	0-7-5-3#	9-5-2-1#	3-5-0-0#	8-0-1-0	DNP	17-4-2-2#
Nov. 17	Stony Brook	3-1-1-0	17-9-0-2	6-7-2-0	12-3-2-5#	8-5-7-0#	14-6-2-3#	2-7-0-0#	5-1-0-0	DNP	9-7-0-0#
Nov. 20	at #16 Colorado	6-1-1-1	8-3-1-0	6-4-0-1	7-4-2-3#	26-5-6-2#	12-3-1-2#	12-2-0-1#	DNP	DNP	10-7-0-2#
Nov. 24	at UNI	4-1-1-0	14-7-0-2	3-2-0-0	7-4-2-0#	17-10-2-2#	5-5-2-1#	6-6-2-2#	0-0-0-0	DNP	11-8-1-3#
Nov. 28	vs. USC	0-1-0-0	8-7-2-2	7-3-1-1	18-0-2-1#	22-3-7-1#	11-4-2-3#	6-6-1-1#	DNP	DNP	6-6-0-0#
Nov. 29	vs. Boston College	3-1-0-0	6-7-2-1	2-3-1-0	17-2-5-0#	10-4-6-3#	10-5-4-0#	15-2-2-0#	0-0-0-0	DNP	15-3-3-1#
Nov. 30	vs. UNC-Wilmington	12-1-1-2	16-8-3-1	4-3-3-1	32-4-1-0#	2-4-11-3#	5-5-6-2#	7-5-3-1#	4-0-2-0	DNP	18-2-0-1#
Dec. 5	#22 Syracuse	6-2-2-0	5-2-1-0	1-1-0-0	27-2-1-2#	14-3-7-1#	9-7-8-1#	10-8-6-0#	DNP	DNP	25-6-3-1#
Dec. 7	Idaho State	4-0-4-0	14-6-2-0	2-5-2-0	24-3-4-1#	5-5-4-0#	16-5-5-0#	5-6-2-0#	6-1-1-0	DNP	17-10-4-3#
Dec. 12	at #11 Iowa State	4-3-0-2	11-4-2-0	2-2-0-0	11-2-1-1#	18-7-4-1#	12-4-1-3#	0-3-0-0#	DNP	DNP	12-6-0-1#
Dec. 21	Drake	8-1-5-2	17-9-0-1	6-2-0-3	13-2-1-6#	12-17-10-2#	9-1-1-0#	2-2-1-0#	0-0-0-0	DNP	6-7-2-0#
Dec. 28	North Dakota	11-2-3-1	12-2-3-3	0-3-1-1	13-1-0-0#	21-7-8-2#	14-6-2-2#	5-10-1-1#	0-0-0-0	DNP	12-3-0-1#
Jan. 2	at Indiana	4-1-1-0	13-1-0-2	0-3-0-0	9-4-1-0#	25-12-3-1#	3-7-6-0#	10-3-1-0#	DNP	DNP	20-5-1-0#
Jan. 5	#15 Penn State	0-1-1-0	8-2-0-0	1-8-0-0	22-2-0-1#	13-4-12-4#	10-3-2-1#	9-4-0-0#	DNP	DNP	8-3-1-1#
Jan. 8	Minnesota	2-0-0-0	9-4-2-0	2-1-0-0	13-1-2-0#	11-8-8-5#	20-6-0-2#	2-0-0-0#	DNP	DNP	19-6-1-1#
Jan. 12	at Wisconsin	3-4-1-1	20-5-2-0	0-2-0-1	6-3-2-0#	16-11-7-3#	13-3-7-4#	4-2-1-0#	0-0-0-0	DNP	20-5-3-2#
Jan. 16	Michigan State	8-1-1-1	12-7-0-1	4-5-0-2	2-1-3-0#	13-5-6-3#	9-4-0-1#	3-2-0-0#	0-0-0-0	DNP	21-2-0-1#

IOWA RECORD WHEN...

Playing at home:.....	9-2	Iowa has more rebounds:.....	7-0
Playing on the road:.....	2-3	Opponent has more rebounds:.....	7-5
Playing on a neutral floor:.....	3-0	Rebounds are equal:.....	0-0
Leading at the half:.....	12-0	Iowa has more assists:.....	11-1
Trailing at the half:.....	2-5	Opponent has more assists:.....	1-4
Tied at the half:.....	0-0	Assists are equal:.....	2-0
Wearing white:.....	9-2	Iowa has fewer turnovers:.....	11-2
Wearing black:.....	5-3	Opponent has fewer turnovers:.....	3-2
Wearing gold:.....	0-0	Turnovers are equal:.....	0-1
Wearing pink:.....	0-0	Iowa has more steals:.....	9-4
Scoring 80+ points:.....	6-2	Opponent has more steals:.....	4-1
Scoring 70-79 points:.....	7-3	Steals are equal:.....	1-0
Scoring 60-69 points:.....	1-0	Playing on Sunday:.....	4-1
Scoring 59 or fewer points:.....	0-0	Playing on Monday:.....	0-0
Allowing 80+ points:.....	2-5	Playing on Tuesday:.....	0-0
Allowing 70-79 points:.....	1-0	Playing on Wednesday:.....	1-1
Allowing 60-69 points:.....	6-0	Playing on Thursday:.....	3-3
Allowing 59 or fewer points:.....	5-0	Playing on Friday:.....	2-0
Shooting at least 50% FG:.....	4-1	Playing on Saturday:.....	4-0
Shooting less than 50% FG:.....	10-4	Playing on BTN:.....	1-0
Shooting at least 80% FT:.....	7-0	Playing on CBS Sports Network:.....	0-0
Shooting less than 80% FT:.....	7-5	Playing on ESPN2:.....	0-0
Shooting at least 40% 3-pt. FG:.....	6-0	Playing on Mediacom:.....	2-2
Shooting less than 40% 3-pt. FG:.....	8-5	Playing on BTDN.....	5-0
Most 1st half points:..50 vs. UNC-Wilmington (Nov. 30)		Playing on KCRG.....	1-0
Most 2nd half points:.....60 vs. Syracuse (Dec. 5)		Largest Iowa lead:.....50 vs. Idaho State (Dec. 7)	
Fewest opponent 1st half points: 21, Stony Brook (Nov. 17)		Largest Iowa deficit:.....29 vs. Michigan State (Jan. 16)	
Fewest opponent 2nd half points: 18, Idaho State (Dec. 7)		Largest halftime lead:..31 vs. Arkansas-Pine Bluff (Nov. 13)	
		Largest halftime deficit: 21 vs. Michigan State (Jan. 16)	





IOWA BASKETBALL

WOMEN'S HOOPS NOTES

Season Highs And Lows/Specialty Statistics

CATEGORY		IOWA	OPPONENTS
Points	High Low	102 vs. UNCW 67 at UNI	93, Dayton 38, Arkansas-Pine Bluff
FG Made	High Low	37 vs. UNCW 20 at UNI	35, Syracuse 11, Stony Brook
FG Att.	High Low	72, twice, last vs. Drake 49 vs. Minnesota	73, Syracuse 54, Boston College
FG%	High Low	56.9 vs. UNCW 33.3 at UNI	47.9, Syracuse 18.6, Stony Brook
3FG Made	High Low	17 vs. Idaho State 1 vs. Michigan State	11, Indiana 1, Stony Brook
3FG Att.	High Low	34 vs. Idaho State 13, twice, last vs. Michigan State	36, UNI 8, Arkansas-Pine Bluff
3FG%	High Low	50.0 vs. Idaho State 7.7 vs. Michigan State	64.3, Michigan State 6.7, Stony Brook
FTM	High Low	26 vs. Minnesota 3 vs. Drake	37, Iowa State 8, USC
FTA	High Low	38 at UNI 4 vs. Drake	49, Iowa State 10, USC
FT% (min. 10)	High Low	92.9 vs. Minnesota 55.0 vs. Arkansas-Pine Bluff	83.3, Wisconsin 42.9, Arkansas-Pine Bluff
Off. Reb.	High Low	20 vs. Stony Brook 7 vs. UC Riverside	22, Stony Brook 8, UC Riverside
Def. Reb.	High Low	37 vs. Arkansas-Pine Bluff 19 vs. USC	37, twice, last UNI 17, UNCW
Total Reb.	High Low	55 vs. Arkansas-Pine Bluff 26 vs. Minnesota	50, Penn State 28, Wisconsin
Assists	High Low	30, twice, last vs. UNCW 8 at Iowa State	21, Syracuse 4, Arkansas-Pine Bluff
Steals	High Low	14 vs. Drake 3 at Indiana	10, UNCW 3, UNI
Blocks	High Low	11 vs. Stony Brook 0 vs. USC	6, Iowa State 0, UNCW
Turnovers	High Low	22 vs. Dayton 11 vs. UC Riverside	21, four times, last Michigan State 11, twice, last Indiana
Fouls	High Low	30, twice, last at Iowa State 11 vs. Minnesota	30, UNI 11, Drake

GAME-BY-GAME SPECIALTY STATS					
Date	Opponent	IA-Opp.	IA-Opp.	IA-Opp.	IA-Opp.
		Pts. Off TO's	Pts. in Paint	2nd Chance	Fast Break
11/8	UC Riverside	17-8	36-16	7-12	14-0
11/10	Dayton	36-26	32-36	14-12	9-6
11/13	Arkansas-Pine Bluff	14-8	24-14	10-12	20-0
11/17	Stony Brook	22-8	38-18	22-11	0-2
11/20	Colorado	20-26	40-24	11-11	10-4
11/24	Northern Iowa	20-9	28-22	3-4	4-2
11/28	USC	20-19	32-40	11-11	5-8
11/29	Boston College	17-15	24-20	15-7	2-5
11/30	UNC-Wilmington	26-15	46-32	11-12	12-4
12/5	Syracuse	14-19	30-38	9-15	7-11
12/7	Idaho State	22-10	16-8	12-9	10-0
12/12	Iowa State	9-13	34-14	6-16	4-5
12/21	Drake	31-3	46-16	12-4	16-2
12/28	North Dakota	20-14	32-24	11-10	20-0
1/2	Indiana	16-7	50-32	11-14	2-0
1/5	Penn State	13-12	32-38	1-16	4-6
1/8	Minnesota	22-5	32-24	4-13	10-0
1/12	Wisconsin	24-15	34-26	8-10	16-4
1/16	Michigan State	11-17	42-32	11-11	2-12
1/19	Ohio State				
1/25	Indiana				
1/29	Minnesota				
2/1	Nebraska				
2/6	Penn State				
2/10	Northwestern				
2/13	Illinois				
2/16	Purdue				
2/22	Michigan				
2/27	Ohio State				
3/2	Illinois				

IOWA AND OPPONENT INDIVIDUAL HIGH PERFORMANCES

CATEGORY		IOWA	OPPONENTS
Points	32	Melissa Dixon vs. UNCW	32 Rachel Banhum, Minnesota
Field Goals Made	12	Bethany Doolittle vs. Syracuse	12 Rachel Banhum, Minnesota
Field Goals Attempted	20	Samantha Logic vs. UC Riverside	22 Rachel Banhum, Minnesota
3-Point Field Goals Made	7	twice, last by Melissa Dixon vs. Syracuse	5 five times, last by Sari Noga, Minnesota
3-Point Field Goals Attempted	13	Melissa Dixon vs. UNCW	13 Amber Sorenson, UNI
Free Throws Made	9	twice, last by Bethany Doolittle vs. Minnesota	14 Jadda Buckley, Iowa State
Free Throws Attempted	12	Samantha Logic vs. North Dakota	16 Jadda Buckley, Iowa State
Offensive Rebounds	6	twice, last by Claire Till vs. Stony Brook	8 Amanda Zahui, Minnesota
Defensive Rebounds	12	Samanta Logic vs. Drake	10 twice, last by Lizzy Wendell, Drake
Total Rebounds	17	Samantha Logic vs. Drake	16 Seanna Johnson, Iowa State
Assists	14	Samantha Logic vs. Dayton	9 Larryn Brooks, Indiana
Steals	6	Melissa Dixon vs. Drake	5 Kelva Atkins, UNCW
Blocks	7	Bethany Doolittle vs. Drake	3 Simone Deloach, Indiana





IOWA BASKETBALL

Overall Stats



IOWA WOMENS BASKETBALL Iowa Combined Team Statistics (as of Jan 16, 2014) All games



RECORD:	OVERALL	HOME	AWAY	NEUTRAL
ALL GAMES	14-5	9-2	2-3	3-0
CONFERENCE	2-3	1-2	1-1	0-0
NON-CONFERENCE	12-2	8-0	1-2	3-0

#	Player	gp-gs	min	Total		3-Point		F-Throw		Rebounds				pf	dq	a	to	blk	stl	pts	avg				
				fg-fga	fg%	3fg-fga	3fg%	ft-fga	ft%	off	def	tot	avg												
22	Logic, Samantha	19-19	635	33.4	98-197	.497	15-46	.326	66-82	.805	32	97	129	6.8	44	0	132	72	6	42	277	14.6			
51	Doolittle, Bethany	19-19	541	28.5	122-210	.581	0-0	.000	32-44	.727	32	68	100	5.3	55	2	23	25	58	24	276	14.5			
21	Dixon, Melissa	19-19	554	29.2	83-226	.367	51-153	.333	48-54	.889	5	36	41	2.2	57	1	42	31	0	23	265	13.9			
02	Disterhoft, Ally	19-0	486	25.6	80-151	.530	17-43	.395	51-71	.718	32	74	106	5.6	39	1	26	36	5	17	228	12.0			
23	Taylor, Theairra	19-19	524	27.6	71-163	.436	20-62	.323	38-55	.691	17	67	84	4.4	48	2	57	42	9	28	200	10.5			
25	Peschel, Kali	19-19	431	22.7	34-93	.366	6-35	.171	46-61	.754	38	60	98	5.2	56	2	23	22	7	8	120	6.3			
01	Kastanek, Alexa	19-0	255	13.4	33-87	.379	12-43	.279	13-24	.542	5	24	29	1.5	28	0	28	22	2	14	91	4.8			
03	Till, Claire	19-0	295	15.5	19-53	.358	2-12	.167	15-35	.429	29	43	72	3.8	46	2	13	17	9	12	55	2.9			
33	Reynolds, Kathryn	11-0	72	6.5	8-18	.444	5-13	.385	2-2	1.000	0	2	2	0.2	3	0	4	2	0	0	23	2.1			
40	Schneden, Hailey	8-0	32	4.0	3-5	.600	0-0	.000	2-4	.500	1	4	5	0.6	4	0	3	1	2	2	8	1.0			
Team											29	44	73												5
Total.....		19	3825		551-1203	.458	128-407	.314	313-432	.725	220	519	739	38.9	380	10	351	275	98	170	1543	81.2			
Opponents.....		19	3825		444-1169	.380	123-394	.312	295-422	.699	264	502	766	40.3	404	-	256	332	55	127	1306	68.7			

TEAM STATISTICS	IOWA	OPP	Date	Opponent	Score	Att.
SCORING	1543	1306	^ 11/8/13	UC RIVERSIDE	w 70-56	3162
Points per game	81.2	68.7	^ 11/10/13	DAYTON	Wot 97-93	3370
Scoring margin	+12.5	-	11/13/13	ARKANSAS-PINE BLUFF	w 76-38	2810
FIELD GOALS-ATT	551-1203	444-1169	11/17/13	STONY BROOK	w 78-40	3470
Field goal pct	.458	.380	11/20/13	at Colorado	L 87-90	3501
3 POINT FG-ATT	128-407	123-394	11/24/13	at UNI	w 67-60	3502
3-point FG pct	.314	.312	11/28/13	vs USC	w 78-65	507
3-pt FG made per game	6.7	6.5	11/29/13	vs Boston College	w 78-68	934
FREE THROWS-ATT	313-432	295-422	11/30/13	vs UNCW	w 102-65	934
Free throw pct	.725	.699	12/5/13	SYRACUSE	w 97-91	3323
F-Throws made per game	16.5	15.5	12/7/13	IDAHO STATE	w 95-47	3168
REBOUNDS	739	766	12/12/13	at Iowa State	L 70-83	11543
Rebounds per game	38.9	40.3	12/21/13	DRAKE	w 73-51	5598
Rebounding margin	-1.4	-	12/28/13	NORTH DAKOTA	w 88-62	4209
ASSISTS	351	256	* 1/2/14	at Indiana	L 84-86	2888
Assists per game	18.5	13.5	* 1/5/14	PENN STATE	L 71-87	6230
TURNOVERS	275	332	* 1/8/14	MINNESOTA	w 78-71	3460
Turnovers per game	14.5	17.5	* 01/12/14	at Wisconsin	w 82-65	5245
Turnover margin	+3.0	-	* 1/16/14	MICHIGAN STATE	L 72-88	4176
Assist/turnover ratio	1.3	0.8				
STEALS	170	127	^ = Hawkeye Challenge			
Steals per game	8.9	6.7	* = Conference game			
BLOCKS	98	55				
Blocks per game	5.2	2.9				
ATTENDANCE	42976	29054				
Home games-Avg/Game	11-3907	5-5336				
Neutral site-Avg/Game	-	3-792				

Score by Periods	1st	2nd	OT	Totals
Iowa	709	827	7	1543
Opponents	651	652	3	1306





IOWA BASKETBALL

Big Ten Stats



IOWA WOMENS BASKETBALL Iowa Combined Team Statistics (as of Jan 16, 2014) Conference games



RECORD:	OVERALL	HOME	AWAY	NEUTRAL
ALL GAMES	2-3	1-2	1-1	0-0
CONFERENCE	2-3	1-2	1-1	0-0
NON-CONFERENCE	0-0	0-0	0-0	0-0

#	Player	gp-gs	min	avg	Total		3-Point		F-Throw		Rebounds				pf	dq	a	to	blk	stl	pts	avg
					fg-fga	fg%	3fg-fga	3fg%	ft-fa	ft%	off	def	tot	avg								
51	Doolittle, Bethany	5-5	149	29.8	37-59	.627	0-0	.000	14-16	.875	8	13	21	4.2	15	1	6	6	15	5	88	17.6
22	Logic, Samantha	5-5	187	37.4	30-59	.508	3-9	.333	15-17	.882	13	27	40	8.0	15	0	36	18	2	16	78	15.6
02	Disterhoft, Ally	5-0	125	25.0	21-42	.500	4-13	.308	16-22	.727	7	12	19	3.8	10	0	4	12	0	3	62	12.4
23	Taylor, Theairra	5-5	155	31.0	21-45	.467	4-16	.250	9-14	.643	1	22	23	4.6	14	0	15	13	1	8	55	11.0
21	Dixon, Melissa	5-5	154	30.8	16-47	.340	8-25	.320	12-15	.800	1	10	11	2.2	13	0	8	7	0	1	52	10.4
25	Peschel, Kali	5-5	95	19.0	9-19	.474	0-5	.000	10-15	.667	5	6	11	2.2	16	1	2	7	2	0	28	5.6
01	Kastanek, Alexa	5-0	61	12.2	7-21	.333	1-8	.125	2-5	.400	2	5	7	1.4	6	0	4	3	1	2	17	3.4
03	Till, Claire	5-0	70	14.0	2-10	.200	0-1	.000	3-9	.333	6	13	19	3.8	11	1	0	4	3	3	7	1.4
40	Schneden, Hailey	1-0	0	0.0	0-0	.000	0-0	.000	0-0	.000	0	0	0	0.0	0	0	0	0	0	0	0	0.0
33	Reynolds, Kathryn	2-0	4	2.0	0-0	.000	0-0	.000	0-0	.000	0	0	0	0.0	0	0	0	0	0	0	0	0.0
Team											6	10	16				2					
Total.....		5	1000		143-302	.474	20-77	.260	81-113	.717	49	118	167	33.4	100	3	75	72	24	38	387	77.4
Opponents.....		5	1000		142-311	.457	40-91	.440	73-102	.716	66	132	198	39.6	107	-	71	82	17	35	397	79.4

TEAM STATISTICS	IOWA	OPP	Date	Opponent	Score	Att.
SCORING	387	397	* 1/2/14	at Indiana	L 84-86	2888
Points per game	77.4	79.4	* 1/5/14	PENN STATE	L 71-87	6230
Scoring margin	-2.0	-	* 1/8/14	MINNESOTA	W 78-71	3460
FIELD GOALS-ATT	143-302	142-311	* 01/12/14	at Wisconsin	W 82-65	5245
Field goal pct	.474	.457	* 1/16/14	MICHIGAN STATE	L 72-88	4176
3 POINT FG-ATT	20-77	40-91	^ = Hawkeye Challenge			
3-point FG pct	.260	.440	* = Conference game			
3-pt FG made per game	4.0	8.0				
FREE THROWS-ATT	81-113	73-102				
Free throw pct	.717	.716				
F-Throws made per game	16.2	14.6				
REBOUNDS	167	198				
Rebounds per game	33.4	39.6				
Rebounding margin	-6.2	-				
ASSISTS	75	71				
Assists per game	15.0	14.2				
TURNOVERS	72	82				
Turnovers per game	14.4	16.4				
Turnover margin	+2.0	-				
Assist/turnover ratio	1.0	0.9				
STEALS	38	35				
Steals per game	7.6	7.0				
BLOCKS	24	17				
Blocks per game	4.8	3.4				
ATTENDANCE	13866	8133				
Home games-Avg/Game	3-4622	2-4066				
Neutral site-Avg/Game	-	0-0				

Score by Periods	1st	2nd	Totals
Iowa	161	226	387
Opponents	197	200	397

