



IOWA BASKETBALL

WOMEN'S HOOPS NOTES

22 NCAA Tournaments • 5 Sweet Sixteens • 3 Elite Eights • 1993 NCAA Final Four • 11 Big Ten Titles

2013-14 Schedule/Results (12-4, 0-2)

11/8	UC Riverside ^	W, 70-56
11/10	#14 Dayton ^	W, 97-93 (OT)
11/13	Arkansas-Pine Bluff	W, 76-38
11/17	Stony Brook	W, 78-40
11/20	at #16 Colorado	L, 87-90
11/24	at Northern Iowa	W, 67-60
11/28	vs. USC #	W, 78-65
11/29	vs. Boston College #	W, 78-68
11/30	vs. UNC-Wilmington #	W, 102-65
12/5	#22 Syracuse &	W, 97-91
12/7	Idaho State	W, 95-47
12/12	at #11 Iowa State %	L, 70-83
12/21	Drake	W, 73-51
12/28	North Dakota	W, 88-62
1/2	at Indiana	L, 84-86
1/5	#15 Penn State	L, 71-87
1/8	Minnesota	7 p.m.
1/12	at Wisconsin	Noon
1/16	Michigan State	7 p.m.
1/19	at Ohio State	2 p.m.
1/25	Indiana	6 p.m.
1/29	at Minnesota	7 p.m.
2/1	Nebraska	2 p.m.
2/6	at Penn State	5 p.m.
2/10	Northwestern	6 p.m.
2/13	Illinois	8 p.m.
2/16	at Purdue	TBA
2/22	at Michigan	12:30 p.m.
2/27	Ohio State	6/8 p.m.
3/2	at Illinois	1/3/5 p.m.

^ -- Hawkeye Challenge (Nov. 8-10)
 # -- Cancun Challenge (Nov. 28-30)
 & -- Big Ten/ACC Challenge
 % -- Iowa Corn Cy-Hawk Series

Communications Contact: Patrick Sojka
 E-Mail: patrick-sojka@uiowa.edu

Office: (319) 353-5977
 Cell: (319) 325-7932

Game 17 Information

Iowa (12-4, 0-2) vs. Minnesota (11-4, 0-1)



Jan. 8, 2014 • 7 p.m. (CT)
 Carver-Hawkeye Arena
 Iowa City, Iowa



Web: Big Ten Digital Network
 Radio: AM-800 KXIC, AM-600 WMT, AM-1040 WHO (Hawkeye Radio Network)
 Radio Talent: Brent Balbinot and Shelley Till
 Live Stats/Audio: hawkeyesports.com
 Twitter Updates: @IowaWBB
 Series: Iowa leads, 45-23

Quick Hits

- The Hawkeyes are 8-1 at home this season, and 83-20 in their last 103 games inside Carver-Hawkeye Arena.
- Junior guard Samantha Logic -- the Big Ten leader in assists -- is nearly averaging a triple-double over the last four contests (17.8 points, 10 rebounds, and 8.25 assists).
- Iowa has won four of the last five meetings against Minnesota, and eight of the last 11 in the series.
- The Hawkeyes have won the last five meetings in Iowa City, and are 22-5 all-time against the Gophers in Carver-Hawkeye Arena.
- Iowa is averaging 81.9 points and 19.1 assists per contest, leading the Big Ten in both categories. In addition, the Hawkeyes are 12th nationally in assists per game.
- Iowa has had three or more players score in double figures in each of the last 14 contests, including three in the loss to Penn State on Sunday (Dixon 22, Logic 13, Taylor 10).
- Four Hawkeyes are averaging double figures (Logic, Dixon, Doolittle, Disterhoft).
- After converting seven 3-pointers total during the first six games of the season (7-of-46), junior guard Melissa Dixon has made 42 over the last 10 games (42-of-99).
- Lisa Bluder needs seven wins to surpass Hall of Famer C. Vivian Stringer (269 wins) as Iowa's all-time winningest coach. Bluder is one of 13 active Division I coaches with 600 or more wins.

Stay Connected



/iowawomenshoops



@IowaWBB

Pronunciation Guide

Lisa Bluder	BLUE-dir
Ally Disterhoft	DIST-ir-hoft
Alexa Kastanek	UH-LEX-UH kuh-STON-ik
Kali Peschel	Cal-EE PEH-shull
Hailey Schneden	SCHNAY-din
Theairra Taylor	thee-AIR-uh

Iowa Projected Starting Lineup (Based on last game's starters)



G • 22 • Samantha Logic
 5-9 • Jr. • Racine, Wis.

PTS	AST	FG%	FT%
15.3	6.9	.500	.797



G • 23 • Theairra Taylor
 5-11 • RS Sr. • St. Paul, Minn.

PTS	REB	FG%	FT%
9.9	4.4	.410	.653



G • 21 • Melissa Dixon
 5-8 • Jr. • Johnsburg, Ill.

PTS	3-PT%	FG%	FT%
14.8	.340	.340	.872



F • 25 • Kali Peschel
 6-1 • So. • Sauk Centre, Minn.

PTS	REB	FG%	FT%
6.9	5.9	.356	.754



Head Coach Lisa Bluder
 14th season at Iowa (263-161)
 30th season overall (619-303)
 -- one of 13 active Division I coaches
 with 600 or more wins



C • 51 • Bethany Doolittle
 6-4 • Jr. • Oakdale, Minn.

PTS	REB	FG%	FT%
13.5	5.4	.576	.643



Inside the Numbers

	IOWA	MINN
Scoring Average	81.9	67.8
Scoring Defense	67.6	57.6
Scoring Margin	+14.3	+10.2
FG%	.453	.471
FG% Defense	.366	.348
FT%	.714	.735
3-PT FG%	.319	.430
3-PT FG% Defense	.290	.285
Rebound Margin	+0.9	+3.8
Assists Per Game	19.1	15.6
Turnovers Per Game	14.6	15.7
Turnover Margin	+2.9	-2.7
Steals Per Game	8.9	4.9
Blocks Per Game	5.5	5.5

Iowa Athletic Communications

S300 Carver-Hawkeye Arena
Iowa City, Iowa 52242
Phone: 319-335-9411
Fax: 319-335-9417

hawkeyesports.com
iowawomensbasketball.com

WBB Contact: Patrick Sojka
Cell: 319-325-7932
Email: patrick-sojka@uiowa.edu

How Many Times a Hawkeye Player...

Scored 20 or More Points

Samantha Logic	5
Melissa Dixon	4
Bethany Doolittle	3

Scored 15 or More Points

Samantha Logic	8
Bethany Doolittle	7
Melissa Dixon	7
Ally Disterhoft	4
Kali Peschel	1
Theairra Taylor	1

Grabbed 10 or More Rebounds

Kali Peschel	3
Samantha Logic	3
Bethany Doolittle	1
Claire Till	1

Grabbed 7 or More Rebounds

Ally Disterhoft	8
Samantha Logic	8
Kali Peschel	5
Bethany Doolittle	4
Claire Till	3
Theairra Taylor	2
Alexa Kastanek	1

Dished out 7 or More Assists

Samantha Logic	8
Theairra Taylor	1

Dished out 5 or More Assists

Samantha Logic	12
Theairra Taylor	4
Alexa Kastanek	2
Melissa Dixon	1
Kali Peschel	1

Recorded 4 or More Steals

Melissa Dixon	2
Samantha Logic	1

Blocked 3 or More Shots

Bethany Doolittle	9
-------------------	---

2013-14 Margin of Victory/Defeat

Points	1	2	3	4	5	6	7	8	9	10-14	15-19	20+
Wins	0	0	0	1	0	1	1	0	0	3	0	6
Losses	0	1	1	0	0	0	0	0	0	1	1	0

THE SETTING:

The University of Iowa women's basketball team (12-4, 0-2) hosts Minnesota (11-4, 0-1) on Wednesday. Tip is set for 7 p.m. (CT) on Mediacom Court at Carver-Hawkeye Arena. The Hawkeyes, 8-1 at home this season, have won 8-of-11 overall.

Tickets are \$10 for adults. Youth -- high school-aged and younger -- are admitted free to all weekday games, while weekend games are \$6. Youth -- five years old and younger -- are admitted free to all games, and UI students are admitted free. Tickets can be purchased online at hawkeyesports.com, over the phone at 1-800 IA-HAWKS, and at the UI Athletics Ticket Office in Carver-Hawkeye Arena.

PROMOTIONS:

- Theairra Taylor Bobblehead Night -- Free Theairra Taylor bobbleheads for the first 2,000 fans.
- Four Pack Night -- Purchase four tickets, four hot dogs, and four drinks for only \$30 (must be ordered in advance).
- Free posters and schedule cards inside all four main entrances while supplies last.
- Halftime entertainment: Iowa Dance Team.

AUDIO COVERAGE:

Brent Balbinot and Shelley Till will call the action for the Hawkeye Radio Network. Hawkeye fans can listen to the contest on AM-800 KXIC in Iowa City, AM-1360 KMJM in Cedar Rapids, AM-1040 WHO in Des Moines, and other stations, or on the Hawkeye All-Access page of hawkeyesports.com. Balbinot is in his 10th season as Iowa's play-by-play voice, while Till is in her ninth providing analysis.

FOLLOW THE ACTION:

Fans can watch live on the Big Ten Digital Network ([video.BTN.com](http://video BTN.com)). Fans can also follow the action via live stats (Gametracker). The "GT" link can be accessed under the "Calendar" tab on the front page of hawkeyesports.com or on the women's basketball schedule page. Follow @IowaWBB on Twitter for game updates.

IOWA HISTORY:

Iowa has played 1,148 games since beginning basketball in 1974. Iowa's overall record is 704-444 (.613). That includes a 348-180 (.662) mark in regular season Big Ten contests and a 343-98 (.776) mark in Carver-Hawkeye Arena.

IN THE RANKINGS:

Iowa is receiving votes in The Associated Press Top 25 poll this week and the USA Today Coaches Poll. The Hawkeyes were ranked No. 22/23 last week.

Six Iowa opponents are also ranked in the Associated Press/USA Today polls: Iowa State (11/9), Penn State (14/15), Nebraska (16/14), Colorado (17/18), Purdue (21/20), and Indiana (22/RV). In addition, Syracuse and Ohio State are receiving votes.

CLIMBING TO THE TOP:

Lisa Bluder needs seven wins to surpass Hall of Famer C. Vivian Stringer (269) as Iowa's all-time winningest coach. Bluder -- one of 13 active Division I coaches with 600 or more wins -- is 263-161 all-time as the Hawkeye head coach.

NCAA STREAK LEADS THE BIG TEN:

Iowa is the only Big Ten team, and one of only 13 teams in the country, to have appeared in the last six NCAA Tournaments.

2013-14 Iowa Hawkeye Roster

No.	Name	Yr.	Ht.	Pos.	Hometown (High School)
1	Alexa Kastanek	Fr.	5-10	G	Lincoln, Neb. (Lincoln Southeast)
2	Ally Disterhoft	Fr.	6-0	G	Iowa City, Iowa (Iowa City West)
3	Claire Till	So.	6-0	F	Dubuque, Iowa (Dubuque Wahlert)
21	Melissa Dixon	Jr.	5-8	G	Johnsburg, Ill. (Johnsburg)
22	Samantha Logic	Jr.	5-9	G	Racine, Wis. (Racine J.I. Case)
23	Theairra Taylor	RS Sr.	5-11	G	St. Paul, Minn. (Central)
25	Kali Peschel	So.	6-1	F	Sauk Centre, Minn. (Sauk Centre)
33	Kathryn Reynolds	RS So.	5-7	G	Cincinnati, Ohio (Mount Notre Dame)
40	Hailey Schneden	Fr.	6-2	F	Davenport, Iowa (Assumption)
45	Nicole Smith	So.	6-4	C	Rockton, Ill. (Hononegah)
51	Bethany Doolittle	Jr.	6-4	C	Oakdale, Minn. (Hill-Murray)

Head Coach: Lisa Bluder

Associate Head Coach: Jan Jensen

Assistant Coaches: Jenni Fitzgerald, Lacey Goldwire

Director of Basketball Operations: Abby Emmert



2013-14 Team Captains

Iowa captains are senior Theairra Taylor and junior Samantha Logic.

SCOUTING MINNESOTA:

- Minnesota is 11-4 overall and 0-1 in Big Ten play following an 81-56 loss to Michigan State at Williams Arena in Minneapolis on Jan. 4.
- The Gophers are 1-2 on the road this season, winning at Northern Iowa in their season opener (73-55), and falling at Creighton (63-52) and at Hawai'i (77-71, OT).
- Minnesota is led in scoring by junior guard Rachel Banham (20.6 points/game) and redshirt freshman center Amanda B. Zahui (15.2). Banham has scored in double figures in every game this season except for one (Oakland, Dec. 29). Zahui, 6-foot-5, has scored 16 or more points in each of the last seven contests. In addition, she has posted double-digit rebounds in 11-of-15 games this season.
- Minnesota leads the nation in 3-point shooting percentage (.443).
- Minnesota is coached by Pam Borton. Borton, in her 12th season at the helm, is the winningest head coach in program history.

IOWA-MINNESOTA SERIES NOTES:

- Iowa leads the all-time series against Minnesota, 45-23.
- Iowa has won four of the last five meetings, and eight of the last 11 in the series.
- The Hawkeyes have won the last five meetings in Iowa City, and are 22-5 all-time against the Gophers in Carver-Hawkeye Arena.

THE LAST MEETING:

Minnesota claimed the only meeting between the two teams last season, winning 72-60 in Minneapolis. Rachel Banham led all scorers with 34 points. The Hawkeyes were led by Jaime Printy (21 points) and Morgan Johnson, who posted a double-double (13 points, 10 rebounds).

HAWKEYES IN BIG TEN PLAY:

Iowa head coach Lisa Bluder, the dean of Big Ten coaches, is a three-time Big Ten Coach of the Year (2001, 2008 and 2010). She has guided Iowa to nine upper-division finishes in the Big Ten in 13 seasons. Iowa won a share of the Big Ten regular season championship in 2008 and finished in a three-way tie for second in 2009.

NONCONFERENCE RECAP:

Iowa's 12 wins prior to the start of conference play equaled the most in a season under head coach Lisa Bluder. Iowa finished 12-1 in its pre-conference slate during the 2010-11 campaign. The Hawkeyes were 11-3 prior to the start of league play last season, and 11-0 in 2004-05.

BALANCED ATTACK:

Five Hawkeyes are averaging at least 9.9 points per game: Melissa Dixon (15.3), Samantha Logic (14.8), Bethany Doolittle (13.5), Ally Disterhoft (11.7), and Theairra Taylor (9.9).

Iowa has had three or more players score in double figures in each of the last 14 contests, including three in the loss to Penn State (Dixon 22, Logic 13, Taylor 10).

MOVING UP CAREER CHARTS:

- Samantha Logic is second in career assists (464). Cara Consuegra (1997-2001) is Iowa's all-time assists leader (576).
- Melissa Dixon has 162 career 3-pointers, equaling Kelli Krei for sixth on Iowa's all-time list. Kristi Smith is fifth with 185.
- Bethany Doolittle is fifth all-time with 129 career blocks. Toni Foster is fourth with 145.

LEADING THE BIG TEN IN ASSISTS:

- The Hawkeyes lead the Big Ten in assists, averaging 19.1 per contest. Iowa also leads the league in assist/turnover ratio (1.3).
- Samantha Logic leads the league in assists, averaging 6.9 a game.
- Iowa tallied 28 assists on 31 made field goals on Dec. 7 in its win over Idaho State. The Hawkeyes have tallied 28 or more assists four times this season. The school record for assists in a game is 31.
- Iowa broke the school record for single-season assists last year in the win over Miami (March 24). The previous record of 514 was set in 2011-12. Iowa finished with 531 assists. Iowa finished second in the Big Ten and 26th in the NCAA with 15.7 assists per game. Iowa recorded at least 17 assists in 15 games, including five games with 20 or more.

Head Coach Lisa Bluder

Lisa Bluder (pronounced BLUE-dir) is in her 14th season as head coach at the University of Iowa and her 30th season as a college head coach. She is a three-time Big Ten and two-time WBCA Regional Coach of the Year.

Bluder has a career record of 619-303 (.673), including a 263-161 (.623) record at Iowa, a 187-106 (.638) record in 10 seasons (1990-2000) at Drake and a six-year mark (1984-90) of 169-36 (.824) at St. Ambrose.

Bluder is Iowa's second all-time winningest coach and trails only C. Vivian Stringer (269 wins). She has guided the Hawkeyes to 12 postseason tournaments (10 NCAA, 2 WNIT) and nine upper-division finishes in the Big Ten Conference, including winning a share of the league championship in 2008 and taking home the conference tournament title in 2001.

In her first season with the Hawkeyes, Bluder transformed a struggling program into a 21-game winner. Iowa finished second in the Big Ten, won the conference tournament and advanced to the second round of the NCAA Tournament. Bluder became Iowa's third coach to be named Big Ten Coach of the Year. She was also honored as the College Coach of the Year by the Women's Basketball News Service and was named the WBCA District 6 Coach of the Year. Iowa's 2001-02 squad finished fourth in the Big Ten and advanced to the second round of the NCAA Tournament for the second consecutive year. In 2003, Bluder guided the Hawkeyes to their first-ever WNIT appearance. Iowa, which had nine underclassmen on its roster, advanced to the quarterfinals before falling to Creighton. In 2004-05, Iowa finished 23-10, starting the year 13-0 and was the last Division I undefeated team standing. In 2005-06, Bluder mentored a team plagued by injuries to a fifth-place Big Ten finish and an NCAA Tournament berth.

In her 10 years at Drake, Bluder brought great success and tradition to the Bulldog program and established herself as one of the top coaches in the country. She led Drake to five 20-plus win seasons in her last six years, including five post-season appearances. She guided the Bulldogs to eight Missouri Valley Conference Tournament appearances, reaching the semifinals six times and winning the tournament four times. Bluder was also named the Conference Coach of the Year three times at Drake.

Bluder began her coaching career at St. Ambrose, where she coached six successful seasons, building the Bees into a NAIA powerhouse. During her tenure at St. Ambrose, Bluder guided the Bees to four straight national tournaments, including two consecutive Final Four appearances. The 1990 St. Ambrose team was ranked No. 1 and Bluder was named the NAIA Converse Coach of the Year.

A graduate of Linn-Mar High School in Marion, Iowa, Bluder was a three-year starter at Northern Iowa. She graduated from UNI in 1983 with a bachelor's degree in marketing.



Career Coaching Record: 619-303 (.673)

Record at St. Ambrose: 169-36 (.824)

Record at Drake: 187-106 (.638)

Record at Iowa: 263-161 (.623)

Conference record at Iowa: 127-89 (.593)

Conference record at Drake: 116-60 (.659)



2013-14 Big Ten Standings

Team	Big Ten	Pct.	Overall	Pct.
Indiana	1-0	1.000	14-0	1.000
Nebraska	1-0	1.000	11-2	.846
Penn State	1-0	1.000	10-3	.769
Michigan	1-0	1.000	10-4	.714
Michigan State	1-0	1.000	9-5	.643
Wisconsin	1-0	1.000	8-5	.615
Ohio State	1-1	.500	11-7	.611
Purdue	0-1	.000	10-3	.763
Minnesota	0-1	.000	11-4	.733
Northwestern	0-1	.000	10-4	.714
Illinois	0-1	.000	7-7	.500
IOWA	0-2	.000	12-4	.750



Jan. 7

Illinois at Northwestern 6 p.m. (CT)
 Indiana at Purdue 6 p.m. (CT)

Jan. 8

Minnesota at Iowa 7 p.m. (CT)

Jan. 9

Nebraska at Michigan St. 6 p.m. (CT)
 Wisconsin at Michigan 6 p.m. (CT)
 Purdue at Northwestern 7 p.m. (CT)
 Penn State at Illinois 8 p.m. (CT)

National Rankings

Associated Press Poll

Jan. 6

1. Connecticut (36) 900
2. Notre Dame842
3. Duke826
4. Stanford.....810
5. Louisville737
6. Maryland.....722
7. Baylor671
8. Tennessee641
9. Kentucky602
10. South Carolina ...538
11. Iowa State525
12. LSU505
13. North Carolina...464
14. Penn State411
15. Oklahoma St.....385
16. Nebraska328
17. Colorado307
18. Florida State.....281
19. California.....186
20. North Carolina St.164
21. Purdue145
22. Indiana.....140
23. Arizona State103
24. San Diego91
25. Georgia.....88
RV. IOWA.....17

Coaches Poll

Jan. 7

1. Connecticut (32) 800
2. Notre Dame758
3. Duke734
4. Stanford716
5. Louisville663
6. Maryland.....630
7. Baylor576
8. Tennessee564
9. Iowa State.....537
10. Kentucky536
11. South Carolina ...479
12. North Carolina...415
13. LSU402
14. Nebraska374
15. Penn State331
16. Oklahoma St.....317
17. Florida State.....264
18. Colorado254
19. California.....220
20. Purdue143
21. Georgia108
22. Oklahoma88
23. North Carolina St.76
24. San Diego75
25. Arkansas.....55
RV. IOWA.....17

LOGIC BREAKS ASSIST RECORD:

- Last season, Logic led the Big Ten and ranked 15th in the NCAA with 6.4 assists per game. She leads the Big Ten in the category this season, and is 10th nationally.
- Logic's 10 games with double digit assists are the most in program history. Cara Consuegra is second with nine games of 10 or more assists. The next closest Hawkeyes on the list are Kachine Alexander, Jollette Law and Michelle Edwards, with two career games.
- Logic recorded seven or more assists in 15 games, including four games with 10 or more. She had at least five assists in 24 games.
- Samantha Logic recorded her 13th career double-double (16 points, 14 assists) on Nov. 10, leading the Hawkeyes to a 97-93 overtime victory against No. 14 Dayton. Logic hit the game-tying 3-pointer with nine seconds remaining in regulation to send the game into overtime. The 14 assists equaled a personal best and Iowa school record, and are the most in Carver-Hawkeye Arena history. The previous high was 12 (three times).
- Logic -- who now has 17 career double-doubles -- became Iowa's single-season assist record holder a year ago, breaking the mark in Iowa's win at Northwestern (March 3). Logic entered the game tied with Cara Consuegra (2000-01) at 191 assists. Logic collected seven assists at Northwestern and finished with 217.

HAWKEYES CONTINUE TREND AGAINST RANKED FOES:

- Iowa is 2-3 this season against ranked opponents:
 - W vs. No. 14 Dayton (97-93 in overtime) -- Nov. 10
 - L at No. 16 Colorado (90-87) -- Nov. 20
 - W vs. No. 22 Syracuse (97-91) -- Dec. 5
 - L at No. 11 Iowa State (83-70) -- Dec. 12
 - L vs. No. 15 Penn State (87-71) -- Jan. 5
- The Hawkeyes have defeated nine top-25 opponents since the start of last season (9-7 record).
- Iowa is averaging 84.4 points per game during its five contests against ranked teams this season.
- The Hawkeyes have recorded at least one win against a top-25 team in all but two seasons under Bluder. In nine of those seasons, Iowa has knocked off at least one top-15 opponent.
- This year marked the seventh time in school history that Iowa played at least three ranked teams prior to conference action. Iowa faced five ranked opponents in 1990 (2-3 record) and three in 2012 (last year) (3-0), 1999 (0-3), 1995 (2-1), 1993 (3-0), and 1989 (1-2).
- Last season marked just the second time in school history that Iowa defeated three ranked teams prior to Big Ten play (No. 12 West Virginia, No. 22 Iowa State, No. 20 Texas). The only other time Iowa defeated three ranked opponents was in 1993 (No. 4 Louisiana Tech, No. 20 Missouri State, No. 9 Southern California).
- Iowa tied the school record for number of wins over ranked teams in a season last year with seven. The Hawkeyes have accomplished the feat three other times (1995-96, 1993-94, 1992-93). Iowa faced 11 ranked teams last season, which tied for the most games against ranked opponents in a season. The only other time Iowa played 11 ranked teams in a season was in 1992-93 (7-4 record).

BIG HONOR ROLL:

- Two Hawkeyes -- Samantha Logic and Melissa Dixon -- have been named to the Big Ten Player of the Week Honor Roll in the last seven weeks. Iowa has had a player named to the Honor Roll or be named Player of the Week in five of the last seven weeks.
- Logic was named to the Honor Roll on Nov. 25 after averaging 21.5 points, 7.5 rebounds, 4.0 assists and 2.0 steals as Iowa split a pair of road contests at No. 16 Colorado and UNI.
- Dixon was honored Dec. 2 after being named MVP of the Cancun Challenge Mayan Division, where she averaged 22.3 points per game, including a career-high 32 against UNC-Wilmington.
- Dixon was honored again on Dec. 9, after helping Iowa to wins over No. 22 Syracuse and Idaho State last week, averaging 25.5 points per game, while converting 13-of-21 3-point attempts.
- Logic was to the Honor Roll on Dec. 31. She finished with 21 points, eight assists, seven rebounds and two steals while shooting 60 percent from the floor in a win over North Dakota.
- Logic was named Big Ten Player of Week on Nov. 12 for her efforts in Iowa's wins against UC Riverside and No. 14 Dayton, and on Dec. 23 following her triple-double against Drake.

DIXON TURNS IT AROUND FROM 3-POINT RANGE:

- Junior guard Melissa Dixon finished with six 3-point field goals in Iowa's win over Idaho State on Dec. 7 -- one shy of her personal record and the school record (seven -- accomplished five times, twice by Dixon).
- After converting seven 3-pointers total during the first six games of the season (7-of-46), Dixon has made 42 over the last 10 games (42-of-99).
- Prior to the Cancun Challenge, Dixon was averaging 9.7 points per game. She is now averaging 15.3 points per outing.

BLUDER GETS WIN NO. 600:

Head coach Lisa Bluder became the 42nd coach in NCAA women's basketball history (all divisions) and only the 25th Division I head coach (minimum 10 years at a DI school) to collect 600 wins Jan. 20 vs. Purdue. Bluder is one of 13 active Division I coaches with 600 or more wins.



Big Ten Overall Stats

Scoring Offense

1. Iowa	81.9
2. Indiana	78.9

Scoring Defense

1. Minnesota	57.6
10. Iowa	67.6

Scoring Margin

1. Nebraska	+17.5
3. Iowa	+14.3

Free Throw Percentage

1. Penn State	.795
10. Iowa	.714

Field Goal Percentage

1. Michigan	.473
5. Iowa	.453

Field Goal Percentage Defense

1. Northwestern	.338
7. Iowa	.366

3-Point Field Goals Made

1. Purdue	7.5
3. Iowa	7.3

3-Point Field Goal Percentage

1. Minnesota	.430
11. Iowa	.319

3-Point Field Goal Percentage Defense

1. Indiana	.252
6. Iowa	.288

Rebounding

1. Penn State	45.8
6. Iowa	40.3

Rebounding Allowed

1. Michigan	31.4
10. Iowa	41.2

Rebounding Margin

1. Michigan	+10.0
9. Iowa	-0.9

Offensive Rebounds

1. Penn State	14.7
6. Iowa	12.1

Defensive Rebounds

1. Nebraska	32.4
8. Iowa	28.3

Blocked Shots

1. Northwestern	7.2
3. Iowa	5.5

Assists

1. Iowa	19.1
2. Michigan State	17.2

Steals

1. Illinois	11.9
4. Iowa	8.9

Turnover Margin

1. Illinois	+6.3
3. Iowa	+2.9

Assist/Turnover Ratio

1. Iowa	1.3
2. Indiana	1.2

Big Ten Overall -- Individual Stats

Samantha Logic	Rank	Avg.	Bethany Doolittle	Rank	Avg.
Assists	1st	6.9	Blocks	2nd	3.2
Assist/Turnover Ratio	3rd	1.9	Field Goal Percentage	3rd	.576
Steals	6th	1.9	Scoring	19th	13.5
Scoring	13th	14.8			
Field Goal Percentage	13th	.500	Kali Peschel	Rank	Avg.
Rebounding	15th	6.6	Offensive Rebounds	11th	2.2
			Rebounding	20th	5.9
Melissa Dixon	Rank	Avg.	Ally Disterhoft	Rank	Avg.
3-Pointers Made	2nd	3.1	Field Goal Percentage	5th	.546
Free Throw Percentage	5th	.872			
Scoring	10th	15.3			
Theairra Taylor	Rank	Avg.			
Assist/Turnover Ratio	7th	1.5			

LOGIC NAMED BIG PLAYER OF THE WEEK:

Iowa junior guard Samantha Logic was named Big Ten Player of the Week on Monday following her second career triple-double in Iowa's 73-51 win over Drake on Dec. 21.

Logic (5-foot-9) -- the Big Ten leader in assists -- tallied 12 points, 10 assists and 17 rebounds, while shooting 85.7 percent from the field on 6-of-7 shooting and added two steals. She last accomplished the feat on Feb. 26, 2012, against Michigan (13 points, 11 rebounds, 11 assists).

Logic, the only current Big Ten player with two career triple-doubles, has two of the five triple-doubles in program history -- Cara Consuegra, Kachine Alexander (twice).

The Racine, Wis., native, who has 15 career double-doubles, is second in career assists (441). She surpassed Michelle Edwards (431) during Iowa's win over the Bulldogs. Logic, 1-of-2 conference juniors named preseason All-Big Ten, has nine career games with double-digit assists, equaling Cara Consuegra for the most in program history.

The award marks Logic's fourth career Player of the Week honor, and second this season (Nov. 12).

IOWA SETS NEW SINGLE-GAME 3-POINT RECORD:

The Hawkeyes won their sixth game in a row, thanks to a school record 17 made 3-point field goals, 95-47, on Dec. 7 against Idaho State inside Carver-Hawkeye Arena.

Iowa shot 56.4-percent from the field for the game and held the Bengals to 21.5-percent (11.8-percent in the second half). While the Hawkeyes made 75-percent of their two-point field goals (14-of-21), the real story was their success from long range.

Junior Melissa Dixon converted six 3-pointers, giving her 20 in the last three games. She had a school-record seven against UNC-Wilmington and Syracuse. Senior Theairra Taylor made four 3-pointers against Idaho State, freshman Ally Disterhoft had three, sophomore Kathryn Reynolds added two, and junior Samantha Logic and freshman Alexa Kastanek made one apiece.

The previous record was 14, last accomplished on Dec. 22, 2011, against Mississippi Valley State.

NCAA 1ST AND 2ND ROUND TICKETS ON SALE:

Tickets for the 2014 NCAA Division I Women's Basketball Championship First and Second Rounds, hosted by the University of Iowa, are now on sale for UI women's basketball season ticket holders and the general public.

Iowa's First and Second Round Games will be played Sunday, March 23 (4:30 and 7 p.m.) and Tuesday, March 25 (8:30 p.m.). The UI was one of 16 sites chosen to host First and Second Round Games, and 1-of-8 chosen to host in back-to-back years.

Fans can order tickets by calling 1-800-IA-HAWKS, visiting the Carver-Hawkeye Arena ticket office, or by visiting hawkeye-sports.com.

FOLLOW THE HAWKEYES:

Check out the Iowa women's basketball Facebook page ([/iowawomenshoops](http://iowawomenshoops)) or the University of Iowa Athletics Facebook page. Fans can also follow @IowaWBB or @TheIowaHawkeyes on Twitter.

UP NEXT:

The Hawkeyes continue Big Ten action on the road this weekend, playing at Wisconsin on Sunday. Tip is set for noon (CT). Iowa returns home to host Michigan State on Thursday, Jan. 16. Tip is set for 7 p.m. (CT) on Mediacom Court at Carver-Hawkeye Arena.





IOWA BASKETBALL

2013-14 Roster



**#1
Alexa Kastanek**
5-10, Freshman
Guard



**#2
Ally Disterhoft**
6-0, Freshman
Guard



**#3
Claire Till**
6-0, Sophomore
Forward



**#21
Melissa Dixon**
5-8, Junior
Guard



**#22
Samantha Logic**
5-9, Junior
Guard



**#23
Theairra Taylor**
5-11, Senior
Guard



**#25
Kali Peschel**
6-1, Sophomore
Forward



**#33
Kathryn Reynolds**
5-7, Sophomore
Guard



**#40
Hailey Schneden**
6-2, Freshman
Forward



**#45
Nicole Smith**
6-4, Sophomore
Center



**#51
Bethany Doolittle**
6-4, Junior
Center



Lisa Bluder
Head Coach



Jan Jensen
Associate
Head Coach



Jenni Fitzgerald
Assistant Coach



Lacey Goldwire
Assistant Coach



Abby Emmert
Director of
Basketball
Operations



Lindsay Davis
Video
Coordinator





IOWA BASKETBALL

PLAYER BIOS

22 NCAA Tournaments • 5 Sweet Sixteens • 3 Elite Eights • 1993 NCAA Final Four • 11 Big Ten Titles

Alexa Kastanek

2013-14 Game-by-Game



Guard • 5-10 • Freshman
Lincoln, Neb.
Southeast

- Competed in all 16 games
- Converted season-best three 3-pointers in win over North Dakota (Dec. 28)
- Saw first career action in season-opener against UC Riverside (11/8), tallying five points
- Tallied season-best 12 points and season-high 23 minutes in Cancun Challenge win against UNC-Wilmington
- First player in Lincoln Southeast High School history to start and play in every game since freshman season
- *ESPN HoopGurlz* Top 100 recruit

Opponent	Date	gs	min	Total		3-Pointers		Free throws		Rebounds				pf	a	t/o	blk	stl	pts	avg
				fg-fga	pct	3fg-fga	pct	ft-fa	pct	off	def	tot	avg							
UC RIVERSIDE	11/8/13	15	1-3	.333	1-2	.500	2-2	1.000	0	0	0	0.0	0	1	0	0	3	5	5.0	
DAYTON	11/10/13	6	0-1	.000	0-1	.000	0-0	.000	0	1	1	0.5	0	0	2	0	0	0	2.5	
ARKANSAS-PINE BLUFF	11/13/13	21	3-8	.375	1-3	.333	1-2	.500	0	7	7	2.7	3	5	2	0	1	8	4.3	
STONY BROOK	11/17/13	17	1-3	.333	0-2	.000	1-4	.250	0	1	1	2.3	2	1	3	0	0	3	4.0	
at Colorado	11/20/13	12	2-5	.400	1-3	.333	1-2	.500	0	1	1	2.0	1	1	2	0	1	6	4.4	
at UNI	11/24/13	10	1-5	.200	0-3	.000	2-2	1.000	1	0	1	1.8	3	1	1	0	0	4	4.3	
vs USC	11/28/13	3	0-1	.000	0-1	.000	0-0	.000	0	1	1	1.7	1	0	0	0	0	0	3.7	
vs Boston College	11/29/13	3	1-2	.500	0-1	.000	1-1	1.000	0	1	1	1.6	2	0	0	0	0	3	3.6	
vs UNCW	11/30/13	23	5-9	.556	2-3	.667	0-0	.000	0	1	1	1.6	1	1	1	0	2	12	4.6	
SYRACUSE	12/5/13	15	2-6	.333	2-4	.500	0-0	.000	1	1	2	1.6	3	2	0	0	0	6	4.7	
IDAHO STATE	12/7/13	19	1-6	.167	1-4	.250	1-2	.500	0	0	0	1.5	1	4	2	1	0	4	4.6	
at Iowa State	12/12/13	14	1-4	.250	0-1	.000	2-4	.500	1	2	3	1.6	3	0	2	0	2	4	4.6	
DRAKE	12/21/13	22	4-8	.500	0-3	.000	0-0	.000	0	1	1	1.5	1	5	2	0	2	8	4.8	
NORTH DAKOTA	12/28/13	14	4-5	.800	3-4	.750	0-0	.000	0	2	2	1.6	1	3	2	0	1	11	5.3	
at Indiana	1/2/14	15	2-4	.500	0-2	.000	0-2	.000	0	1	1	1.5	0	1	2	0	0	4	5.2	
PENN STATE	1/5/14	12	0-4	.000	0-2	.000	0-0	.000	1	0	1	1.5	2	1	0	1	0	0	4.9	
Totals		0	221	28-74	.378	11-39	.282	11-21	.524	4	20	24	1.5	24	26	21	2	12	78	4.9

Games played: 16
 Minutes/game: 13.8
 Points/game: 4.9
 FG Pct: 37.8
 3FG Pct: 28.2
 FT Pct: 52.4

Rebounds/game: 1.5
 Assists/game: 1.6
 Turnovers/game: 1.3
 Assist/turnover ratio: 1.2
 Steals/game: 0.8
 Blocks/game: 0.1

Personal Bests

- Points:** 12 vs. UNC-Wilmington (11/30/13)
- Rebounds:** 7 vs. Ark-Pine Bluff (11/13/13)
- FGM:** 5 vs. UNC-Wilmington (11/30/13)
- FGA:** 9 vs. UNC-Wilmington (11/30/13)
- 3-pt FG:** 3 vs. North Dakota (12/28/13)
- 3-pt FGA:** 4, 3x, last vs. North Dakota (12/28/13)
- FTM:** 2, 2x, last at UNI (11/24/13)
- FTA:** 4 vs. Stony Brook (11/17/13)
- Assists:** 5, 2x, last vs. Drake (12/21/13)
- Steals:** 3 vs. UC Riverside (11/8/13)
- Blocks:** 1, 2x, last vs. Penn State (1/5/14)
- Minutes:** 23 vs. UNC-Wilmington (11/30/13)

Season	gp-gs	min/avg	Total		3-Point		F-Throws		Rebounds				Scoring							
			fg-fga	pct	fg-fga	pct	ft-fa	pct	off	def	tot	avg	pf	fo	ast	to	blk	stl	pts	avg
2013-14	16-0	221/13.8	28-74	.378	11-39	.282	11-21	.524	4	20	24	1.5	24	0	26	21	2	12	78	4.9
TOTAL	16-0	221/13.8	28-74	.378	11-39	.282	11-21	.524	4	20	24	1.5	24	0	26	21	2	12	78	4.9





IOWA BASKETBALL

PLAYER BIOS

22 NCAA Tournaments • 5 Sweet Sixteens • 3 Elite Eights • 1993 NCAA Final Four • 11 Big Ten Titles

Ally Disterhoft

2013-14 Game-by-Game



Guard • 6-0 • Freshman
Iowa City, Iowa
West

- Averaging 11.7 points and 5.6 rebounds per contest off the bench -- Iowa's third-leading rebounder and fourth-leading scorer
- Led Iowa in rebounding in four games
- Fifth among B1G freshmen in rebounding, eighth in scoring
- Fifth in the Big Ten in field goal percentage (.546)
- Played in all 16 games, scoring in double figures in 10 contests, including five of the last six
- Tallied six or more rebounds in 10-of-16 games
- Saw first career action in season-opener against UC Riverside (11/8), tallying five points
- Named to the 2013 PARADE All-America Girls Basketball Team -- one of 40 high school seniors selected to the All-America team
- Named Miss Iowa Basketball by the Iowa Newspaper Association and the Iowa Gatorade Player of the Year as a senior
- ESPN HoopGurlz Top 100 recruit

Opponent	Date	gs	min	Total		3-Pointers		Free throws		Rebounds			pf	a	t/o	blk	stl	pts	avg	
				fg-fga	pct	3fg-fga	pct	ft-fga	pct	off	def	tot								avg
UC RIVERSIDE	11/8/13	29	2-6	.333	0-0	.000	3-3	1.000	2	6	8	8.0	1	0	1	0	0	7	7.0	
DAYTON	11/10/13	30	7-13	.538	2-3	.667	3-3	1.000	3	3	6	7.0	3	2	3	0	1	19	13.0	
ARKANSAS-PINE BLUFF	11/13/13	23	5-12	.417	2-4	.500	0-2	.000	5	4	9	7.7	4	4	0	1	1	12	12.7	
STONY BROOK	11/17/13	28	6-8	.750	2-3	.667	3-4	.750	2	7	9	8.0	2	0	2	2	2	17	13.8	
at Colorado	11/20/13	26	2-3	.667	0-0	.000	4-4	1.000	0	3	3	7.0	5	1	3	0	0	8	12.6	
at UNI	11/24/13	29	4-8	.500	1-2	.500	5-10	.500	1	6	7	7.0	3	0	2	1	2	14	12.8	
vs USC	11/28/13	27	1-4	.250	0-2	.000	6-6	1.000	1	6	7	7.0	0	2	1	0	2	8	12.1	
vs Boston College	11/29/13	24	2-5	.400	0-1	.000	2-2	1.000	2	5	7	7.0	2	2	3	0	1	6	11.4	
vs UNCW	11/30/13	25	8-10	.800	0-0	.000	0-0	.000	5	3	8	7.1	1	3	2	0	1	16	11.9	
SYRACUSE	12/5/13	16	1-4	.250	0-1	.000	3-3	1.000	0	2	2	6.6	3	1	1	0	0	5	11.2	
IDAHO STATE	12/7/13	22	5-6	.833	3-4	.750	1-3	.333	1	5	6	6.5	1	2	1	0	0	14	11.5	
at Iowa State	12/12/13	27	3-8	.375	0-1	.000	5-8	.625	0	4	4	6.3	2	2	3	0	0	11	11.4	
DRAKE	12/21/13	28	8-14	.571	1-5	.200	0-1	.000	2	7	9	6.5	1	0	1	0	1	17	11.8	
NORTH DAKOTA	12/28/13	27	5-8	.625	2-4	.500	0-0	.000	1	1	2	6.2	1	3	1	1	3	12	11.9	
at Indiana	1/2/14	22	4-5	.800	0-0	.000	5-7	.714	0	1	1	5.9	2	0	0	0	2	13	11.9	
PENN STATE	1/5/14	22	2-5	.400	1-1	1.000	3-4	.750	0	2	2	5.6	3	0	5	0	0	8	11.7	
Totals		0	405	65-119	.546	14-31	.452	43-60	.717	25	65	90	5.6	34	22	29	5	16	187	11.7

Games played: 16
Minutes/game: 25.3
Points/game: 11.7
FG Pct: 54.6
3FG Pct: 45.2
FT Pct: 71.7

Rebounds/game: 5.6
Assists/game: 1.4
Turnovers/game: 1.8
Assist/turnover ratio: 0.8
Steals/game: 1.0
Blocks/game: 0.3

Personal Bests

- Points:** 19 vs. Dayton (11/10/13)
- Rebounds:** 9, 3x, last vs. Drake (12/21/13)
- FGM:** 8, 2x, last vs. Drake (12/21/13)
- FGA:** 14 vs. Drake (12/21/13)
- 3-pt FG:** 3 vs. Idaho State (12/7/13)
- 3-pt FGA:** 5 vs. Drake (12/21/13)
- FTM:** 6 vs. USC (11/28/13)
- FTA:** 10 at UNI (11/24/13)
- Assists:** 4 vs. Ark-Pine Bluff (11/13/13)
- Steals:** 3 vs. North Dakota (12/28/13)
- Blocks:** 2 vs. Stony Brook (11/17/13)
- Minutes:** 30 vs. Dayton (11/10/13)

Season	gp-gs	min/avg	Total		3-Point		F-Throws		Rebounds				Scoring							
			fg-fga	pct	fg-fga	pct	ft-fga	pct	off	def	tot	avg	pf	fo	ast	to	blk	stl	pts	avg
2013-14	16-0	405/25.3	65-119	.546	14-31	.452	43-60	.717	25	65	90	5.6	34	1	22	29	5	16	187	11.7
TOTAL	16-0	405/25.3	65-119	.546	14-31	.452	43-60	.717	25	65	90	5.6	34	1	22	29	5	16	187	11.7





IOWA BASKETBALL

PLAYER BIOS

22 NCAA Tournaments • 5 Sweet Sixteens • 3 Elite Eights • 1993 NCAA Final Four • 11 Big Ten Titles

Claire Till

2013-14 Game-by-Game



**Forward • 6-0 • Sophomore
Dubuque, Iowa
Wahlert**

- Played in all 16 games
- Averaging 4.0 rebounds off the bench
- Registered eight rebounds last time out against Penn State
- Grabbed a career-best 12 rebounds in win against Arkansas-Pine Bluff (11/13)
- Missed a total of six games with a stress reaction in right femur last season (missed four games from Dec. 1-Dec. 28 and two games from Jan. 6-Jan.17)
- Underwent three surgeries in high school to repair injured knee

Opponent	Date	gs	min	Total		3-Pointers		Free throws		Rebounds			pf	a	t/o	blk	stl	pts	avg	
				fg-fga	pct	3fg-fga	pct	ft-fa	pct	off	def	tot								avg
UC RIVERSIDE	11/8/13	23		2-3	.667	0-0	.000	0-1	.000	1	4	5	5.0	3	1	1	0	1	4	4.0
DAYTON	11/10/13	10		1-2	.500	1-2	.500	2-2	1.000	0	1	1	3.0	2	0	1	0	0	5	4.5
ARKANSAS-PINE BLUFF	11/13/13	25		0-5	.000	0-3	.000	0-0	.000	4	8	12	6.0	1	2	0	2	1	0	3.0
STONY BROOK	11/17/13	19		2-4	.500	0-1	.000	2-4	.500	6	1	7	6.3	4	2	1	0	0	6	3.8
at Colorado	11/20/13	20		2-3	.667	1-2	.500	1-5	.200	2	2	4	5.8	3	0	0	0	1	6	4.2
at UNI	11/24/13	12		1-2	.500	0-0	.000	1-2	.500	2	0	2	5.2	1	0	0	0	0	3	4.0
vs USC	11/28/13	24		2-3	.667	0-0	.000	3-3	1.000	0	3	3	4.9	2	1	4	0	1	7	4.4
vs Boston College	11/29/13	10		1-3	.333	0-0	.000	0-1	.000	1	2	3	4.6	2	1	1	0	0	2	4.1
vs UNCW	11/30/13	20		1-7	.143	0-1	.000	2-2	1.000	2	1	3	4.4	2	3	0	0	1	4	4.1
SYRACUSE	12/5/13	6		0-2	.000	0-1	.000	1-2	.500	1	0	1	4.1	1	0	0	1	0	1	3.8
IDAHO STATE	12/7/13	16		1-1	1.000	0-0	.000	0-4	.000	3	2	5	4.2	5	2	2	2	0	2	3.6
at Iowa State	12/12/13	6		1-2	.500	0-0	.000	0-0	.000	0	2	2	4.0	4	0	1	0	0	2	3.5
DRAKE	12/21/13	17		3-4	.750	0-1	.000	0-0	.000	0	2	2	3.8	2	0	1	1	3	6	3.7
NORTH DAKOTA	12/28/13	17		0-2	.000	0-0	.000	0-0	.000	1	2	3	3.8	3	1	1	0	1	0	3.4
at Indiana	1/2/14	15		0-2	.000	0-1	.000	0-0	.000	1	2	3	3.7	3	0	1	1	0	0	3.2
PENN STATE	1/5/14	16		0-2	.000	0-0	.000	1-2	.500	2	6	8	4.0	2	0	1	1	0	1	3.1
Totals		0	256	17-47	.362	2-12	.167	13-28	.464	26	38	64	4.0	40	13	15	8	9	49	3.1

Games played: 16
 Minutes/game: 16.0
 Points/game: 3.1
 FG Pct: 36.2
 3FG Pct: 16.7
 FT Pct: 46.4

Rebounds/game: 4.0
 Assists/game: 0.8
 Turnovers/game: 0.9
 Assist/turnover ratio: 0.9
 Steals/game: 0.6
 Blocks/game: 0.5

Personal Bests

- Points:** 7, 2x, last vs. USC (11/28/13)
- Rebounds:** 12 vs. Ark-Pine Bluff (11/13/13)
- FGM:** 3, vs. Drake 12/21/13)
- FGA:** 8 vs. Drake (12/21/13)
- 3-pt FG:** 1, 4x, last at Colorado (11/20/13)
- 3-pt FGA:** 3 vs. Ark-Pine Bluff (11/13/13)
- FTM:** 5, 2x, last vs. WVU (11/25/12)
- FTA:** 8 at Florida International (11/23/12)
- Assists:** 3 vs. UNC-Wilmington (11/30/13)
- Steals:** 3 vs. Drake (12/21/13)
- Blocks:** 2, 2x, last vs. Idaho State (12/7/13)
- Minutes:** 25 vs. Ark-Pine Bluff (11/13/13)

Season	gp-gs	min/avg	Total		3-Point		F-Throws		Rebounds				Scoring							
			fg-fga	pct	fg-fga	pct	ft-fa	pct	off	def	tot	avg	pf	fo	ast	to	blk	stl	pts	avg
2012-13	16-0	108/6.8	5-20	.250	2-7	.286	15-22	.682	9	17	26	1.6	11	0	3	9	3	3	27	1.7
2013-14	16-0	256/16.0	17-47	.362	2-12	.167	13-28	.464	26	38	64	4.0	40	1	13	15	8	9	49	3.1
TOTAL	32-0	364/11.4	22-67	.328	4-19	.211	28-50	.560	35	55	90	2.8	51	1	16	24	11	12	76	2.4



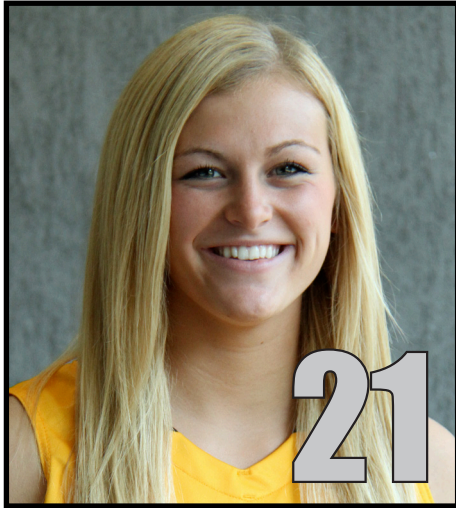


IOWA BASKETBALL

PLAYER BIOS

22 NCAA Tournaments • 5 Sweet Sixteens • 3 Elite Eights • 1993 NCAA Final Four • 11 Big Ten Titles

Melissa Dixon



Guard • 5-8 • Junior
Johnsburg, Ill.
Johnsburg

- Tied for sixth in career 3-pointers (162) at Iowa with Kelli Krei. Kristi Smith is fifth (185).
- Fifth in Big Ten free throw percentage (.872), second in 3-pointers per game (3.1), 10th in scoring (15.3)
- Ranks 17th nationally in 3-point field goals per game (3.1), and 35th in free throw percentage (.872)
- After converting seven 3-pointers total during the first six games of the season (7-of-46), has made 42 over the last 10 (42-of-99)
- Finished with seven 3-point field goals in wins over Syracuse and UNC-Wilmington, tying a personal and school record; feat has been accomplished five times in program history (twice by Dixon)
- Converted 20 3-pointers in three games vs. UNC-Wilmington, Syracuse, Idaho State -- the most in a three-game stretch in school history
- Scored 17 points or more during a five-game stretch from Nov. 28 to Dec. 7 (18, 17, 32, 27, 24), for an average of 23.6 points per game

2013-14 Game-by-Game

Opponent	Date	gs	min	Total		3-Pointers		Free throws		Rebounds				pf	t/o	blk	stl	pts	avg		
				fg-fga	pct	3fg-fga	pct	ft-fa	pct	off	def	tot	avg								
UC RIVERSIDE	11/8/13	*	31	0-10	.000	0-7	.000	2-2	1.000	0	1	1	1.0	2	3	2	0	1	2	2.0	
DAYTON	11/10/13	*	34	4-11	.364	2-8	.250	3-3	1.000	0	1	1	1.0	4	5	1	0	0	13	7.5	
ARKANSAS-PINE BLUFF	11/13/13	*	23	6-17	.353	2-11	.182	3-4	.750	0	1	1	1.0	2	4	3	0	2	17	10.7	
STONY BROOK	11/17/13	*	28	3-12	.250	2-10	.200	4-5	.800	0	3	3	1.5	4	2	1	0	5	12	11.0	
at Colorado	11/20/13	*	32	2-12	.167	0-5	.000	3-4	.750	1	3	4	2.0	4	2	3	0	3	7	10.2	
at UNI	11/24/13	*	24	2-7	.286	1-5	.200	2-2	1.000	0	4	4	2.3	5	2	2	0	0	7	9.7	
vs USC	11/28/13	*	26	7-14	.500	3-8	.375	1-1	1.000	0	0	0	2.0	3	2	0	0	1	18	10.9	
vs Boston College	11/29/13	*	32	6-16	.375	5-13	.385	0-0	.000	1	1	2	2.0	2	5	2	0	0	17	11.6	
vs UNCW	11/30/13	*	24	11-18	.611	7-13	.538	3-3	1.000	0	4	4	2.2	3	1	2	0	0	32	13.9	
SYRACUSE	12/5/13	*	34	7-11	.636	7-10	.700	6-6	1.000	0	2	2	2.2	4	1	4	0	2	27	15.2	
IDAHO STATE	12/7/13	*	28	6-11	.545	6-11	.545	6-6	1.000	0	3	3	2.3	1	4	1	0	1	24	16.0	
at Iowa State	12/12/13	*	27	3-7	.429	3-5	.600	2-2	1.000	0	2	2	2.3	4	1	1	0	1	11	15.6	
DRAKE	12/21/13	*	31	5-19	.263	2-11	.182	1-1	1.000	1	1	2	2.2	2	1	1	0	6	13	15.4	
NORTH DAKOTA	12/28/13	*	26	5-14	.357	3-11	.273	0-0	.000	1	0	1	2.1	4	1	1	0	0	13	15.2	
at Indiana	1/2/14	*	37	2-6	.333	2-5	.400	3-4	.750	0	4	4	2.3	3	1	3	0	0	9	14.8	
PENN STATE	1/5/14	*	39	8-22	.364	4-11	.364	2-4	.500	0	2	2	2.3	3	0	1	0	1	22	15.3	
Totals			16	476	77-207	.372	49-144	.340	41-47	.872	4	32	36	2.3	50	35	28	0	23	244	15.3

Games played: 16
 Minutes/game: 29.8
 Points/game: 15.3
 FG Pct: 37.2
 3FG Pct: 34.0
 FT Pct: 87.2

Rebounds/game: 2.3
 Assists/game: 2.2
 Turnovers/game: 1.8
 Assist/turnover ratio: 1.3
 Steals/game: 1.4

- Named to Big Ten Player of the Week Honor Roll in two straight-weeks (Dec. 2, Dec. 9)
- In Cancun, averaged 22.3 points and five 3-pointers per contest, adding six rebounds and eight assists; had at least 17 points in each of Iowa's three victories
- Finished with a career-best and game-high 32 points in the win against UNC-Wilmington; made seven 3-pointers, setting a personal record and tying the Iowa single game record
- Started all 16 games this season
- Tallied two or more 3-pointers in 13-of-16 games this season, including the last 10
- Big Ten Sixth Player of the Year in 2013
- Suffered torn meniscus at Ohio State (Jan. 2, 2012) as a freshman; missed a total of seven games

Personal Bests

- Points:** 32 vs. UNC-Wilmington (11/30/13)
- Rebounds:** 4, 7x, last vs. Indiana (1/2/14)
- FGM:** 11 vs. UNC-Wilmington (11/30/13)
- FGA:** 22 vs. Penn State (1/5/14)
- 3-pt FG:** 7, 2x, last vs. Syracuse (12/5/13)
- 3-pt FGA:** 15 vs. Michigan (2/26/12)
- FTM:** 6, 2x, last vs. Idaho State (12/7/13)
- FTA:** 6, 4x, last vs. Idaho State (12/7/13)
- Assists:** 5, 2x, last vs. Boston College (11/29/13)
- Steals:** 6 vs. Drake (12/21/13)
- Blocks:** 1, 3x, last vs. Ill. State (11/11/12)
- Minutes:** 39 vs. Penn State (1/5/14)

Season	gp-gs	min/avg	Total		3-Point		F-Throws		Rebounds				Scoring							
			fg-fga	pct	fg-fga	pct	ft-fa	pct	off	def	tot	avg	pf	fo	ast	to	blk	stl	pts	avg
2011-12	24-8	425/17.7	50-141	.355	35-98	.357	27-33	.818	17	25	42	1.8	47	1	18	28	2	15	162	6.8
2012-13	34-3	788/23.2	121-289	.419	78-196	.398	22-31	.710	9	42	51	1.5	72	1	33	39	1	20	342	10.1
2013-14	16-16	476/29.8	77-207	.372	49-144	.340	41-47	.872	4	32	36	2.3	50	1	35	28	0	23	244	15.3
TOTAL	74-27	1689/22.8	248-637	.389	162-438	.370	90-111	.811	30	99	129	1.7	169	3	86	95	3	58	748	10.1





IOWA BASKETBALL

PLAYER BIOS

22 NCAA Tournaments • 5 Sweet Sixteens • 3 Elite Eights • 1993 NCAA Final Four • 11 Big Ten Titles

Samantha Logic



Guard • 5-9 • Junior
Racine, Wis.
Racine J.I. Case

- Second in career assists (464)
- Leads the Big Ten in assists (6.9/game), and ranks 13th in scoring (14.8)
- Ranks 10th nationally in assists per game
- Started all 81 games of her career
- Posted 16th and 17th career double-doubles last week, (at Indiana: 25 points, 12 rebounds) and (vs. Penn State: 13 points, 12 assists).
- Named Big Ten Player of the Week twice this season (Dec. 23; Nov. 12)
- Named Big Ten Player of the Week (Dec. 23) after recording her second career triple-double in win over Drake (Dec. 21), tallying 12 points, 10 assists and 17 rebounds; last accomplished the feat on Feb. 26, 2012 against Michigan (13 points, 11 rebounds, 11 assists)
- Only current Big Ten player with two career triple-doubles
- There have been five triple-doubles in Iowa history (Cara Consuegra, Kachine Alexander (twice), Logic (twice))
- In win against Syracuse, returned following a first-half injury to finish with 14 points and seven assists
- 1-of-2 conference juniors named Preseason All-Big Ten
- Named to B1G Player of the Week Honor Roll (Nov. 25) after averaging 21.5 points, 7.5 rebounds, 4.0 assists and 2.0 steals as Iowa split a pair of road contests against No. 16 Colorado and Northern Iowa

2013-14 Game-by-Game

Opponent	Date	gs	min	Total		3-Pointers		Free throws		Rebounds				pf	a	t/o	blk	stl	pts	avg	
				fg-fga	pct	3fg-fga	pct	ft-fga	pct	off	def	tot	avg								
UC RIVERSIDE	11/8/13	*	32	11-20	.550	1-1	1.000	5-6	.833	1	6	7	7.0	2	5	4	2	3	28	28.0	
DAYTON	11/10/13	*	43	4-10	.400	3-4	.750	5-6	.833	0	5	5	6.0	3	14	8	0	3	16	22.0	
ARKANSAS-PINE BLUFF	11/13/13	*	22	0-1	.000	0-0	.000	0-0	.000	3	4	7	6.3	1	5	4	0	3	0	14.7	
STONY BROOK	11/17/13	*	26	3-7	.429	0-3	.000	2-2	1.000	1	4	5	6.0	2	7	2	1	0	8	13.0	
at Colorado	11/20/13	*	36	9-19	.474	1-6	.167	7-9	.778	0	5	5	5.8	4	6	6	0	2	26	15.6	
at UNI	11/24/13	*	37	4-11	.364	1-4	.250	8-11	.727	1	9	10	6.5	1	2	2	1	2	17	15.8	
vs USC	11/28/13	*	37	7-13	.538	4-5	.800	4-5	.800	0	3	3	6.0	3	7	4	0	1	22	16.7	
vs Boston College	11/29/13	*	38	3-9	.333	1-4	.250	3-4	.750	1	3	4	5.8	1	6	4	0	3	10	15.9	
vs UNCW	11/30/13	*	18	0-1	.000	0-0	.000	2-2	1.000	0	4	4	5.6	1	11	1	0	3	2	14.3	
SYRACUSE	12/5/13	*	33	6-11	.545	0-3	.000	2-2	1.000	3	0	3	5.3	2	7	4	0	1	14	14.3	
IDAHO STATE	12/7/13	*	25	2-5	.400	1-3	.333	0-0	.000	0	5	5	5.3	1	4	2	0	0	5	13.5	
at Iowa State	12/12/13	*	34	7-14	.500	0-2	.000	4-6	.667	1	6	7	5.4	4	4	5	0	1	18	13.8	
DRAKE	12/21/13	*	35	6-7	.857	0-1	.000	0-0	.000	5	12	17	6.3	2	10	4	0	2	12	13.7	
NORTH DAKOTA	12/28/13	*	32	6-10	.600	0-1	.000	9-12	.750	3	4	7	6.4	2	8	4	0	2	21	14.2	
at Indiana	1/2/14	*	34	9-15	.600	1-3	.333	6-7	.857	5	7	12	6.7	4	3	2	0	1	25	14.9	
PENN STATE	1/5/14	*	40	5-11	.455	1-2	.500	2-2	1.000	2	2	4	6.6	4	12	4	1	4	13	14.8	
Totals			16	522	82-164	.500	14-42	.333	59-74	.797	26	79	105	6.6	37	111	60	5	31	237	14.8

Games played: 16
 Minutes/game: 32.6
 Points/game: 14.8
 FG Pct: 50.0
 3FG Pct: 33.3
 FT Pct: 79.7

Rebounds/game: 6.6
 Assists/game: 6.9
 Turnovers/game: 3.8
 Assist/turnover ratio: 1.9
 Steals/game: 1.9
 Blocks/game: 0.3

- Selected to Cancun Challenge Mayan Division All-Tournament Team
- Named tournament MVP of the Hawkeye Challenge after averaging 22 points, 9.5 assists, 6.0 rebounds, and 3.0 steals, leading Iowa to the team title; went 4-of-5 from 3-point range and made 10-of-12 free throws
- Named Big Ten Player of Week (Nov. 12) for her efforts in Iowa's wins against UC Riverside and No. 14 Dayton
- Hit the game-tying 3-pointer with nine seconds remaining in regulation to send the game into overtime in win vs. No. 14 Dayton
- Recorded 17 career double-doubles, including two triple-doubles. 13 double-doubles are points/rebounds, three are points/assists and one is rebounds/assists.
- Has 10 career games with double-digit assists, surpassing Cara Consuegra (nine) for the most in program history
- Third team All-Big Ten by media, honorable mention All-Big Ten by coaches last season
- Academic All-Big Ten selection in 2013
- Unanimous selection for Big Ten All-Freshman

Personal Bests

Points: 28 vs. UC Riverside (11/8/13)
Rebounds: 18 at Michigan (2/16/12)
FGM: 11 vs. UC Riverside (11/8/13)
FGA: 20 vs. UC Riverside (11/8/13)
3-pt FG: 4 vs. USC (11/28/13)
3-pt FGA: 6 at Colorado (11/20/13)
FTM: 9 vs. North Dakota (12/28/13)
FTA: 12 vs. North Dakota (12/28/13)
Assists: 14, 2x, last vs. Dayton (11/10/13)
Steals: 4, 3x, last vs. Penn State (1/5/14)
Blocks: 2, 3x, last vs. UC Riverside (11/8/13)
Minutes: 43 vs. Dayton (11/10/13)

Season	gp-gs	min/avg	Total		3-Point		F-Throws		Rebounds				Scoring							
			fg-fga	pct	fg-fga	pct	ft-fga	pct	off	def	tot	avg	pf	fo	ast	to	blk	stl	pts	avg
2011-12	31-31	912/29.4	109-261	.418	15-49	.306	59-79	.747	87	133	220	7.1	73	1	136	113	7	47	292	9.4
2012-13	34-34	1163/34.2	125-268	.466	15-51	.294	56-85	.659	81	146	227	6.7	91	3	217	159	13	62	321	9.4
2013-14	16-16	522/32.6	82-164	.500	14-42	.333	59-74	.797	26	79	105	6.6	37	0	111	60	5	31	237	14.8
TOTAL	81-81	2597/32.1	316-693	.456	44-142	.310	174-238	.731	194	358	552	6.8	201	4	464	332	25	140	850	10.5





IOWA BASKETBALL

PLAYER BIOS

22 NCAA Tournaments • 5 Sweet Sixteens • 3 Elite Eights • 1993 NCAA Final Four • 11 Big Ten Titles

Theairra Taylor

2013-14 Game-by-Game



Guard • 5-11 • RS Senior
St. Paul, Minn.
Central

- Iowa's lone senior
- Played in 91 career games, with 58 starts
- Scored in double figures in four of the last six games
- Posted nine points, team-best eight assists, and seven rebounds in win against No. 22 Syracuse in Big Ten/ACC Challenge
- Equaled a career best with four 3-point field goals in win over Idaho State (Dec. 7), scoring a season-high 16 points
- Started every game since start of last season
- 2013-14 team co-captain
- Started all 34 games last year, and was named team's Most Improved Player
- Suffered third ACL in a 20-month span during preseason workouts in 2010. Missed a total of 53 games with ACL injuries from 2009 through 2011

Opponent	Date	gs	min	Total		3-Pointers		Free throws		Rebounds				pf	t/o	blk	stl	pts	avg		
				fg-fga	pct	3fg-fga	pct	ft-fa	pct	off	def	tot	avg								
UC RIVERSIDE	11/8/13	*	19	3-8	.375	1-3	.333	2-4	.500	0	1	1	1.0	3	1	0	0	9	9.0		
DAYTON	11/10/13	*	31	4-11	.364	2-4	.500	0-0	.000	1	3	4	2.5	3	5	4	0	2	10	9.5	
ARKANSAS-PINE BLUFF	11/13/13	*	22	3-5	.600	0-1	.000	3-6	.500	1	4	5	3.3	2	2	1	1	9	9.3		
STONY BROOK	11/17/13	*	24	6-13	.462	0-3	.000	2-2	1.000	3	3	6	4.0	2	2	0	1	3	14	10.5	
at Colorado	11/20/13	*	21	3-7	.429	2-4	.500	4-6	.667	0	3	3	3.8	5	1	4	1	2	12	10.8	
at UNI	11/24/13	*	28	2-4	.500	0-1	.000	1-2	.500	0	5	5	4.0	4	2	4	0	1	5	9.8	
vs USC	11/28/13	*	33	4-13	.308	1-4	.250	2-3	.667	3	1	4	4.0	0	2	1	0	3	11	10.0	
vs Boston College	11/29/13	*	28	3-6	.500	1-3	.333	3-3	1.000	3	2	5	4.1	3	4	2	0	0	10	10.0	
vs UNCW	11/30/13	*	21	2-4	.500	0-1	.000	1-1	1.000	0	5	5	4.2	0	6	2	0	2	5	9.4	
SYRACUSE	12/5/13	*	27	2-8	.250	2-5	.400	3-6	.500	2	5	7	4.5	2	8	1	0	1	9	9.4	
IDAHO STATE	12/7/13	*	25	6-8	.750	4-6	.667	0-0	.000	0	5	5	4.5	1	5	2	2	0	16	10.0	
at Iowa State	12/12/13	*	37	5-15	.333	2-5	.400	0-0	.000	1	3	4	4.5	5	1	3	1	3	12	10.2	
DRAKE	12/21/13	*	24	3-7	.429	1-3	.333	2-2	1.000	1	0	1	4.2	3	1	2	2	0	9	10.1	
NORTH DAKOTA	12/28/13	*	29	4-9	.444	0-3	.000	6-6	1.000	1	5	6	4.4	1	2	2	0	2	14	10.4	
at Indiana	1/2/14	*	29	1-8	.125	0-4	.000	1-4	.250	1	6	7	4.5	4	6	3	0	0	3	9.9	
PENN STATE	1/5/14	*	24	4-8	.500	0-2	.000	2-4	.500	0	3	3	4.4	4	2	1	0	1	10	9.9	
Totals			16	422	55-134	.410	16-52	.308	32-49	.653	17	54	71	4.4	42	50	33	8	21	158	9.9

Games played: 16
 Minutes/game: 26.4
 Points/game: 9.9
 FG Pct: 41.0
 3FG Pct: 30.8
 FT Pct: 65.3

Rebounds/game: 4.4
 Assists/game: 3.1
 Turnovers/game: 2.1
 Assist/turnover ratio: 1.5
 Steals/game: 1.3
 Blocks/game: 0.5

Personal Bests

- Points:** 22 vs. Nebraska (3/8/13)
- Rebounds:** 11, 2x, last at Purdue (2/17/13)
- FGM:** 8, 2x, last vs. Nebraska (3/8/13)
- FGA:** 16 vs. Nebraska (3/8/13)
- 3-pt FG:** 4, 2x, last vs. Idaho State (12/7/13)
- 3-pt FGA:** 6, 3x, vs. Idaho State (12/7/13)
- FTM:** 6 vs. North Dakota (12/28/13)
- FTA:** 6, 3x, last vs. North Dakota (12/28/13)
- Assists:** 8 vs. Syracuse (12/5/13)
- Steals:** 4, 2x, last vs. Miami (3/24/13)
- Blocks:** 5 vs. Northwestern (3/7/13)
- Minutes:** 37 at Iowa State (12/12/13)

Season	gp-gs	min/avg	Total		3-Point		F-Throws			Rebounds				Scoring						
			fg-fga	pct	fg-fga	pct	ft-fa	pct	off	def	tot	avg	pf	fo	ast	to	blk	stl	pts	avg
2009-10	10-8	247/24.7	29-86	.337	9-26	.346	14-18	.778	15	34	49	4.9	22	1	24	29	10	13	81	8.1
2011-12	31-0	361/11.6	37-97	.381	2-18	.111	19-29	.655	35	57	92	3.0	53	1	30	47	11	18	95	3.1
2012-13	34-34	893/26.3	110-280	.393	28-81	.346	47-62	.758	35	119	154	4.5	56	1	80	76	26	41	295	8.7
2013-14	16-16	422/26.4	55-134	.410	16-52	.308	32-49	.653	17	54	71	4.4	42	2	50	33	8	21	158	9.9
TOTAL	91-58	1923/21.1	231-597	.387	55-177	.311	112-158	.709	102	264	366	4.0	173	5	184	185	55	93	629	6.9





IOWA BASKETBALL

PLAYER BIOS

22 NCAA Tournaments • 5 Sweet Sixteens • 3 Elite Eights • 1993 NCAA Final Four • 11 Big Ten Titles

Kali Peschel



Forward • 6-1 • Sophomore
Sauk Centre, Minn.
Sauk Centre

- Started all 16 games this season; the first starts of her career
- Ranks 11th in the Big Ten in offensive rebounds per game (2.2), and is second in rebounding on the team (5.9)
- Iowa's leading rebounder in four contests, including two double-figure totals (11 vs. UC Riverside, 14 vs. Dayton)
- Had career game in win against No. 14 Dayton, tallying first career double-double (12 points, 14 rebounds)
- Named to Hawkeye Challenge All-Tournament team
- Started for her high school team as an eighth grader
- Only played 11 games as a senior in high school after suffering ACL injury between her junior and senior seasons

2013-14 Game-by-Game

Opponent	Date	gs	min	Total		3-Pointers		Free throws		Rebounds				pf	a	t/o	blk	stl	pts	avg	
				fg-fga	pct	3fg-fga	pct	ft-fa	pct	off	def	tot	avg								
UC RIVERSIDE	11/8/13	*	28	2-4	.500	0-1	.000	3-4	.750	2	9	11	11.0	1	1	2	0	1	7	7.0	
DAYTON	11/10/13	*	30	4-11	.364	2-5	.400	2-3	.667	6	8	14	12.5	3	2	2	0	1	12	9.5	
ARKANSAS-PINE BLUFF	11/13/13	*	20	1-3	.333	0-2	.000	1-2	.500	3	2	5	10.0	2	0	0	1	0	3	7.3	
STONY BROOK	11/17/13	*	24	1-7	.143	0-3	.000	0-0	.000	3	4	7	9.3	2	0	2	1	0	2	6.0	
at Colorado	11/20/13	*	23	5-6	.833	1-1	1.000	1-1	1.000	1	1	2	7.8	5	0	0	0	1	12	7.2	
at UNI	11/24/13	*	20	1-7	.143	0-2	.000	4-6	.667	2	4	6	7.5	3	2	1	0	2	6	7.0	
vs USC	11/28/13	*	32	2-8	.250	1-2	.500	1-2	.500	4	2	6	7.3	3	1	3	0	1	6	6.9	
vs Boston College	11/29/13	*	34	3-6	.500	1-3	.333	8-8	1.000	1	1	2	6.6	2	2	0	0	0	15	7.9	
vs UNCW	11/30/13	*	23	1-3	.333	0-2	.000	5-6	.833	3	2	5	6.4	2	3	1	0	1	7	7.8	
SYRACUSE	12/5/13	*	31	3-8	.375	0-1	.000	4-6	.667	2	6	8	6.6	3	6	1	2	0	10	8.0	
IDAHO STATE	12/7/13	*	23	0-3	.000	0-3	.000	5-6	.833	2	4	6	6.5	4	2	2	0	0	5	7.7	
at Iowa State	12/12/13	*	16	0-2	.000	0-1	.000	0-0	.000	1	2	3	6.3	4	0	1	0	0	0	7.1	
DRAKE	12/21/13	*	9	1-4	.250	0-2	.000	0-0	.000	0	2	2	5.9	3	1	0	0	0	2	6.7	
NORTH DAKOTA	12/28/13	*	23	1-2	.500	1-2	.500	2-2	1.000	3	7	10	6.2	3	1	0	1	1	5	6.6	
at Indiana	1/2/14	*	23	3-7	.429	0-2	.000	4-5	.800	1	2	3	6.0	5	1	2	0	0	10	6.8	
PENN STATE	1/5/14	*	23	3-6	.500	0-2	.000	3-6	.500	1	3	4	5.9	3	0	3	2	0	9	6.9	
Totals			16	382	31-87	.356	6-34	.176	43-57	.754	35	59	94	5.9	48	22	20	7	8	111	6.9

Games played: 16
 Minutes/game: 23.9
 Points/game: 6.9
 FG Pct: 35.6
 3FG Pct: 17.6
 FT Pct: 75.4

Rebounds/game: 5.9
 Assists/game: 1.4
 Turnovers/game: 1.3
 Assist/turnover ratio: 1.1
 Steals/game: 0.5
 Blocks/game: 0.4

Personal Bests

- Points:** 15 vs. Boston College (11/29/13)
- Rebounds:** 14 vs. Dayton (11/10/13)
- FGM:** 5 at Colorado (11/20/13)
- FGA:** 11 vs. Dayton (11/10/13)
- 3-pt FG:** 2 vs. Dayton (11/10/13)
- 3-pt FGA:** 5 vs. Dayton (11/10/13)
- FTM:** 8 vs. Boston College (11/29/13)
- FTA:** 8 vs. Boston College (11/29/13)
- Assists:** 6 vs. Syracuse (12/5/13)
- Steals:** 2 at UNI (11/24/13)
- Blocks:** 2, 2x, last vs. Penn State (1/5/14)
- Minutes:** 34 vs. Boston College (11/29/13)

Season	gp-gs	min/avg	Total		3-Point		F-Throws		Rebounds				Scoring							
			fg-fga	pct	fg-fga	pct	ft-fa	pct	off	def	tot	avg	pf	fo	ast	to	blk	stl	pts	avg
2012-13	28-0	198/7.1	4-26	.154	1-11	.091	7-12	.583	18	11	29	1.0	28	0	8	9	4	6	16	0.6
2013-14	16-16	382/23.9	31-87	.356	6-34	.176	43-57	.754	35	59	94	5.9	48	2	22	20	7	8	111	6.9
TOTAL	44-16	580/13.2	35-113	.310	7-45	.156	50-69	.725	53	70	123	2.8	76	2	30	29	11	14	127	2.9





IOWA BASKETBALL

PLAYER BIOS

22 NCAA Tournaments • 5 Sweet Sixteens • 3 Elite Eights • 1993 NCAA Final Four • 11 Big Ten Titles

Kathryn Reynolds



Guard • 5-7 • RS Sophomore
Cincinnati, Ohio
Mount Notre Dame

- Nominated for the Women's Basketball Coaches Association (WBCA) Allstate Good Works Team; one of 84 WBCA nominees for the prestigious award; one-of-five student-athletes from Big Ten
- Played in nine contests this season
- Tallied career-best eight points in win against Arkansas-Pine Bluff (11/13)
- Academic All-Big Ten selection in 2013
- Missed entire 2012-13 season after suffering an ACL injury during offseason workouts
- Played in 21 games as a freshman in 2011-12

2013-14 Game-by-Game

Opponent	Date	gs	min	Total		3-Pointers		Free throws		Rebounds				pf	a	t/o	blk	stl	pts	avg
				fg-fga	pct	3fg-fga	pct	ft-fa	pct	off	def	tot	avg							
UC RIVERSIDE	11/8/13	1	0-0	.000	0-0	.000	0-0	.000	0	0	0	0	0	0	0	0	0	0	0	0.0
ARKANSAS-PINE BLUFF	11/13/13	14	3-5	.600	2-4	.500	0-0	.000	0	0	0	0.0	2	1	0	0	0	8	4.0	
STONY BROOK	11/17/13	9	1-3	.333	1-3	.333	2-2	1.000	0	1	1	0.3	0	0	0	0	0	5	4.3	
at UNI	11/24/13	5	0-1	.000	0-1	.000	0-0	.000	0	0	0	0.3	0	0	0	0	0	0	3.3	
vs Boston College	11/29/13	1	0-0	.000	0-0	.000	0-0	.000	0	0	0	0.2	0	0	0	0	0	0	2.6	
vs UNCW	11/30/13	18	2-5	.400	0-2	.000	0-0	.000	0	0	0	0.2	1	2	1	0	0	4	2.8	
IDAHO STATE	12/7/13	12	2-3	.667	2-3	.667	0-0	.000	0	1	1	0.3	0	1	0	0	0	6	3.3	
DRAKE	12/21/13	3	0-0	.000	0-0	.000	0-0	.000	0	0	0	0.3	0	0	0	0	0	0	2.9	
NORTH DAKOTA	12/28/13	5	0-1	.000	0-0	.000	0-0	.000	0	0	0	0.2	0	0	1	0	0	0	2.6	
Totals		0	68	8-18	.444	5-13	.385	2-2	1.000	0	2	2	0.2	3	4	2	0	23	2.6	

Games played: 9
 Minutes/game: 7.6
 Points/game: 2.6
 FG Pct: 44.4
 3FG Pct: 38.5
 FT Pct: 100.0

Rebounds/game: 0.2
 Assists/game: 0.4
 Turnovers/game: 0.2
 Assist/turnover ratio: 2.0

Personal Bests

- Points:** 8 vs. Ark-Pine Bluff (11/13/13)
- Rebounds:** 2 vs. Texas A&M (11/26/11)
- FGM:** 3 vs. Ark-Pine Bluff (11/13/13)
- FGA:** 5, 2x, last vs. UNC-Wilmington (11/30/13)
- 3-pt FG:** 2, 2x, last vs. Idaho State (12/7/13)
- 3-pt FGA:** 4 vs. Ark-Pine Bluff (11/13/13)
- FTM:** 2, 2x, last vs. Stony Brook (11/13/13)
- FTA:** 2, 4x, last vs. Stony Brook (11/13/13)
- Assists:** 5 vs. W. Illinois (12/9/11)
- Steals:** ---
- Blocks:** ---
- Minutes:** 20 vs. W. Illinois (12/9/11)

Season	gp-gs	min/avg	Total		3-Point		F-Throws		Rebounds				Scoring							
			fg-fga	pct	fg-fga	pct	ft-fa	pct	off	def	tot	avg	pf	fo	ast	to	blk	stl	pts	avg
2011-12	21-0	129/6.1	5-16	.313	0-7	.000	3-4	.750	1	8	9	0.4	6	0	15	11	0	0	13	0.6
2013-14	9-0	68/7.6	8-18	.444	5-13	.385	2-2	1.000	0	2	2	0.2	3	0	4	2	0	0	23	2.6
TOTAL	30-0	197/6.6	13-34	.382	5-20	.250	5-6	.833	1	10	11	0.4	9	0	19	13	0	0	36	1.2





IOWA BASKETBALL

PLAYER BIOS

22 NCAA Tournaments • 5 Sweet Sixteens • 3 Elite Eights • 1993 NCAA Final Four • 11 Big Ten Titles

Hailey Schneden



2013-14 Game-by-Game

Opponent	Date	gs	min	Total		3-Pointers		Free throws		Rebounds				pf	a	t/o	blk	stl	pts	avg
				fg-fga	pct	3fg-fga	pct	ft-fa	pct	off	def	tot	avg							
ARKANSAS-PINE BLUFF	11/13/13	6	0-0	.000	0-0	.000	2-2	1.000	0	0	0	0.0	2	1	0	1	0	2	2.0	
STONY BROOK	11/17/13	9	1-1	1.000	0-0	.000	0-0	.000	0	1	1	0.5	1	1	0	1	1	2	2.0	
vs USC	11/28/13	1	0-0	.000	0-0	.000	0-0	.000	0	0	0	0.3	0	0	0	0	0	1.3		
vs UNCW	11/30/13	10	1-2	.500	0-0	.000	0-2	.000	1	1	2	0.8	1	0	1	0	0	2	1.5	
IDAHO STATE	12/7/13	3	1-2	.500	0-0	.000	0-0	.000	0	1	1	0.8	0	0	0	0	0	2	1.6	
DRAKE	12/21/13	1	0-0	.000	0-0	.000	0-0	.000	0	0	0	0.7	0	0	0	0	0	1.3		
NORTH DAKOTA	12/28/13	2	0-0	.000	0-0	.000	0-0	.000	0	1	1	0.7	0	1	0	0	1	0	1.1	
Totals		0	32	3-5	.600	0-0	.000	2-4	.500	1	4	5	0.7	4	3	1	2	8	1.1	

Games played: 7
 Minutes/game: 4.6
 Points/game: 1.1
 FG Pct: 60.0
 FT Pct: 50.0

Rebounds/game: 0.7
 Assists/game: 0.4
 Turnovers/game: 0.1
 Assist/turnover ratio: 3.0
 Steals/game: 0.3
 Blocks/game: 0.3

**Forward • 6-2 • Freshman
 Davenport, Iowa
 Assumption**

- Joined program as a walk-on
- Saw first career action in win over Arkansas-Pine Bluff on Nov. 13, playing six minutes
- Two-time all-state selection led Davenport Assumption to three-straight state titles, and four-straight conference championships

Personal Bests

- Points:** 2, 4x, last vs. Idaho State (12/7/13)
- Rebounds:** 2 vs. UNC-Wilmington (11/30/13)
- FGM:** 1, 3x, last vs. Idaho State (12/7/13)
- FGA:** 2, 2x, last vs. Idaho State (12/7/13)
- 3-pt FG:** ---
- 3-pt FGA:** ---
- FTM:** 2 vs. Ark-Pine Bluff (11/13/13)
- FTA:** 2, 2x, last vs. UNC-Wilmington (11/30/13)
- Assists:** 1, 2x, last vs. Stony Brook (11/17/13)
- Steals:** 1, 2x, last vs. North Dakota (12/28/13)
- Blocks:** 1, 2x, last vs. Stony Brook (11/17/13)
- Minutes:** 10 vs. UNC-Wilmington (11/30/13)

Season	gp-gs	min/avg	Total		3-Point		F-Throws		Rebounds				Scoring							
			fg-fga	pct	fg-fga	pct	ft-fa	pct	off	def	tot	avg	pf	fo	ast	to	blk	stl	pts	avg
2013-14	7-0	32/4.6	3-5	.600	0-0	.000	2-4	.500	1	4	5	0.7	4	0	3	1	2	2	8	1.1
TOTAL	7-0	32/4.6	3-5	.600	0-0	.000	2-4	.500	1	4	5	0.7	4	0	3	1	2	2	8	1.1





IOWA BASKETBALL

PLAYER BIOS

22 NCAA Tournaments • 5 Sweet Sixteens • 3 Elite Eights • 1993 NCAA Final Four • 11 Big Ten Titles

Nicole Smith



**Center • 6-4 • Sophomore
Rockton, Ill.
Hononegah**

- Will miss approximately 10-14 weeks with injury in right knee

Personal Bests

Points: 4 vs. Missouri State (12/19/12)
Rebounds: 1 vs. NIU (11/9/12)
FGM: 1, 2x, last vs. Texas (12/28/12)
FGA: 2 vs. NIU (11/9/12)
3-pt FG: ---
3-pt FGA: ---
FTM: 2 vs. Missouri State (12/19/12)
FTA: 2 vs. Missouri State (12/19/12)
Assists: ---
Steals: ---
Blocks: ---
Minutes: 4 vs. Missouri State (12/19/12)

Season	gp-gs	min/avg	Total		3-Point		F-Throws		Rebounds				Assists			Steals			Scoring	
			fg-fga	pct	fg-fga	pct	ft-fta	pct	off	def	tot	avg	pf	fo	ast	to	blk	stl	pts	avg
2012-13	7-0	12/1.7	2-4	.500	0-0	.000	2-2	1.000	0	1	1	0.1	2	0	0	1	0	0	6	0.9
TOTAL	7-0	12/1.7	2-4	.500	0-0	.000	2-2	1.000	0	1	1	0.1	2	0	0	1	0	0	6	0.9





IOWA BASKETBALL

PLAYER BIOS

22 NCAA Tournaments • 5 Sweet Sixteens • 3 Elite Eights • 1993 NCAA Final Four • 11 Big Ten Titles

Bethany Doolittle

2013-14 Game-by-Game



Center • 6-4 • Junior
Oakdale, Minn.
Hill-Murray

- Fifth all-time with 129 career blocks; Toni Foster is fourth with 145
- Tallied career-best seven blocks in Iowa's win over Drake (Dec. 21), one shy of the school record
- Posted 17 points and 10 rebounds in win against Idaho State (Dec. 7), registering her second career double-double
- Tallied three or more blocks in nine games
- Second in Big Ten in blocked shots (3.1), and 10th nationally
- Third in the Big Ten, and 33rd nationally, in field goal percentage (.576)
- Has three of the highest single-game block totals in the Big Ten this season
- Started all 16 games this season
- Named to Hawkeye Challenge All-Tournament Team
- 2013 Academic All-Big Ten Selection
- Started all 34 games last year, and played in all 31 as a freshman in 2011-12

Opponent	Date	gs	min	Total		3-Pointers		Free throws		Rebounds				pf	a	t/o	blk	stl	pts	avg	
				fg-fga	pct	3fg-fga	pct	ft-fa	pct	off	def	tot	avg								
UC RIVERSIDE	11/8/13	*	22	3-11	.273	0-0	.000	2-2	1.000	0	5	5	5.0	4	0	1	2	1	8	8.0	
DAYTON	11/10/13	*	41	10-13	.769	0-0	.000	2-4	.500	2	3	5	5.0	3	2	0	6	3	22	15.0	
ARKANSAS-PINE BLUFF	11/13/13	*	24	8-14	.571	0-0	.000	1-2	.500	1	3	4	4.7	1	2	1	4	2	17	15.7	
STONY BROOK	11/17/13	*	16	4-6	.667	0-0	.000	1-2	.500	4	3	7	5.3	4	0	2	5	0	9	14.0	
at Colorado	11/20/13	*	30	5-9	.556	0-0	.000	0-1	.000	4	3	7	5.6	3	0	2	1	2	10	13.2	
at UNI	11/24/13	*	35	5-15	.333	0-0	.000	1-3	.333	2	6	8	6.0	3	1	2	2	3	11	12.8	
vs USC	11/28/13	*	17	3-4	.750	0-0	.000	3-3	1.000	3	3	6	6.0	5	0	1	0	0	6	11.9	
vs Boston College	11/29/13	*	30	7-11	.636	0-0	.000	1-2	.500	0	3	3	5.6	3	3	2	1	1	15	12.3	
vs UNCW	11/30/13	*	18	6-6	1.000	0-0	.000	6-6	1.000	0	2	2	5.2	2	0	2	1	1	18	12.9	
SYRACUSE	12/5/13	*	38	12-16	.750	0-0	.000	1-2	.500	1	5	6	5.3	1	3	2	4	1	25	14.1	
IDAHO STATE	12/7/13	*	27	7-10	.700	0-0	.000	3-4	.750	3	7	10	5.7	1	4	0	3	3	17	14.4	
at Iowa State	12/12/13	*	39	6-11	.545	0-0	.000	0-0	.000	2	4	6	5.8	4	0	2	3	1	12	14.2	
DRAKE	12/21/13	*	30	3-9	.333	0-0	.000	0-0	.000	2	5	7	5.8	3	2	1	7	0	6	13.5	
NORTH DAKOTA	12/28/13	*	25	6-16	.375	0-0	.000	0-0	.000	0	3	3	5.6	3	0	1	4	1	12	13.4	
at Indiana	1/2/14	*	25	10-15	.667	0-0	.000	0-0	.000	3	2	5	5.6	5	1	0	6	0	20	13.9	
PENN STATE	1/5/14	*	24	4-6	.667	0-0	.000	0-0	.000	1	2	3	5.4	4	1	2	2	1	8	13.5	
Totals			16	441	99-172	.576	0-0	.000	18-28	.643	28	59	87	5.4	49	19	21	51	20	216	13.5

Games played: 16
 Minutes/game: 27.6
 Points/game: 13.5
 FG Pct: 57.6
 FT Pct: 64.3

Rebounds/game: 5.4
 Assists/game: 1.2
 Turnovers/game: 1.3
 Assist/turnover ratio: 0.9
 Steals/game: 1.3
 Blocks/game: 3.2

Personal Bests

Points: 25 vs. Syracuse (12/5/13)
Rebounds: 12 vs. Missouri State (12/19/12)
FGM: 12 vs. Syracuse (12/5/13)
FGA: 16, 2x, vs. North Dakota (12/28/13)
3-pt FG: ---
3-pt FGA: 1, 4x, last vs. Northwestern (3/7/13)
FTM: 6 vs. UNC-Wilmington (11/30/13)
FTA: 6, 2x, last vs. UNC-Wilmington (11/30/13)
Assists: 4, 2x, last vs. Idaho State (12/7/13)
Steals: 3, 6x, last vs. Idaho State (12/7/13)
Blocks: 7 vs. Drake (12/7/13)
Minutes: 42 vs. Ohio State (1/3/13)

Season	gp-gs	min/avg	Total		3-Point		F-Throws		Rebounds				Scoring							
			fg-fga	pct	fg-fga	pct	ft-fa	pct	off	def	tot	avg	pf	fo	ast	to	blk	stl	pts	avg
2011-12	31-0	366/11.8	46-99	.465	0-1	.000	24-30	.800	13	44	57	1.8	51	0	6	19	19	9	116	3.7
2012-13	34-34	966/28.4	113-267	.423	0-3	.000	19-28	.679	54	131	185	5.4	84	1	19	47	59	31	245	7.2
2013-14	16-16	441/27.6	99-172	.576	0-0	.000	18-28	.643	28	59	87	5.4	49	2	19	21	51	20	216	13.5
TOTAL	81-50	1773/21.9	258-538	.480	0-4	.000	61-86	.709	95	234	329	4.1	184	3	44	87	129	60	577	7.1





IOWA BASKETBALL

WOMEN'S HOOPS NOTES

Game-by-Game Results

Overall: 12-4

Big Ten: 0-2

Home: 8-1

Away: 1-3

Neutral: 3-0

Date	Opponent	Result	Attend.	Top Scorer	Top Rebounder
Nov. 8	UC Riverside #	W, 70-56	3,162	Logic (28)	Peschel (11)
Nov. 10	#14 Dayton #	W, 97-93 (OT)	3,370	Doolittle (22)	Peschel (14)
Nov. 13	Arkansas-Pine Bluff	W, 76-38	2,810	Doolittle, Dixon (17)	Till (12)
Nov. 17	Stony Brook	W, 78-40	3,470	Disterhoft (17)	Disterhoft (9)
Nov. 20	at #16 Colorado	L, 90-87	3,501	Logic (26)	Doolittle (7)
Nov. 24	at Northern Iowa	W, 67-60	3,502	Logic (17)	Logic (10)
Nov. 28	vs. USC ~	W, 78-65	507	Logic (22)	Disterhoft (8)
Nov. 29	vs. Boston College ~	W, 78-68	934	Dixon (17)	Disterhoft (7)
Nov. 30	vs. UNC-Wilmington ~	W, 102-65	934	Dixon (32)	Disterhoft (8)
Dec. 5	#22 Syracuse %	W, 97-91	3,323	Dixon (27)	Peschel (8)
Dec. 7	Idaho State	W, 95-47	3,168	Dixon (24)	Doolittle (10)
Dec. 12	at #11 Iowa State *	L, 83-70	11,543	Logic (18)	Logic (7)
Dec. 21	Drake	W, 73-51	5,598	Disterhoft (17)	Logic (17)
Dec. 28	North Dakota	W, 88-62	4,209	Logic (21)	Peschel (10)
Jan. 2	at Indiana	L, 86-84	2,888	Logic (25)	Logic (12)
Jan. 5	Penn State	L, 87-71	6,230	Dixon (22)	Till (8)
Jan. 8	Minnesota				
Jan. 12	at Wisconsin				
Jan. 16	Michigan State				
Jan. 19	at Ohio State				
Jan. 25	Indiana				
Jan. 29	at Minnesota				
Feb. 1	Nebraska				
Feb. 6	at Penn State				
Feb. 10	Northwestern				
Feb. 13	Illinois				
Feb. 16	at Purdue				
Feb. 22	at Michigan				
Feb. 27	Ohio State				
Mar. 2	at Illinois				

- Hawkeye Challenge

~ - Cancun Challenge

% - Big Ten/ACC Challenge

* - Iowa Corn Cy-Hawk Series

Attendance Summary	Games	Totals	Average
Home	9	35,340	3,926
Away	4	21,434	5,358
Neutral	3	2,375	791
Totals	16	59,149	3,696





IOWA BASKETBALL

WOMEN'S HOOPS NOTES

Game-by-Game Statistics

Team	Score	FG-A	PCT	3-PT. FG	PCT	FT-A	PCT	REB	PF	AS	TO	BLK	ST
UC Riverside	56	19-58	32.8%	3-21	14.3%	15-19	78.9%	45	21	10	20	2	4
at Iowa	70	24-65	36.9%	3-14	21.4%	16-24	79.2%	42	16	12	11	4	10
#14 Dayton	97	30-69	43.5%	10-26	38.5%	23-31	74.2%	40	21	17	21	5	9
at Iowa	93	34-72	47.2%	12-27	44.4%	17-21	81.0%	41	21	30	22	6	10
Arkansas-Pine Bluff	38	13-63	20.6%	3-8	37.5%	9-21	42.9%	49	20	4	17	3	7
at Iowa	76	29-70	41.4%	7-28	25.0%	11-20	55.0%	55	20	26	12	10	11
Stony Brook	40	11-59	18.6%	1-15	6.7%	17-24	70.8%	43	23	5	20	1	6
at Iowa	78	28-64	43.8%	5-28	19.9%	17-25	68.0%	50	23	15	13	11	11
Iowa	87	30-64	46.9%	6-21	28.6%	21-32	65.6%	35	30	11	20	2	12
at #16 Colorado	90	27-62	43.5%	6-19	31.6%	30-40	75.0%	44	29	18	20	3	9
Iowa	67	20-60	33.3%	3-18	16.7%	24-38	63.2%	46	23	10	14	4	10
at UNI	60	19-61	31.1%	7-36	19.4%	15-20	75.0%	43	30	10	18	2	3
USC	65	27-59	45.8%	3-11	27.3%	8-10	80.0%	36	25	16	18	2	9
vs. Iowa	78	22-60	43.3%	9-22	40.9%	17-20	85.0%	31	17	15	15	0	9
Boston College	68	24-54	44.4%	9-19	47.4%	11-17	64.7%	32	23	14	16	2	8
vs. Iowa	78	26-58	44.8%	8-25	32.0%	18-21	85.7%	31	17	23	14	1	5
UNC-Wilmington	65	24-60	40.0%	2-15	13.3%	15-19	78.9%	31	14	18	17	0	10
vs. Iowa	102	37-65	56.9%	9-22	40.9%	19-22	86.4%	38	14	30	13	1	11
#22 Syracuse	91	35-73	47.9%	10-30	30.0%	11-19	57.9%	43	23	21	11	5	8
at #25 Iowa	97	33-66	50%	11-25	44.0%	20-27	74.1%	38	19	28	13	7	5
Idaho State	47	14-65	21.5%	9-33	27.3%	10-16	62.5%	36	19	12	13	1	5
at #25 Iowa	95	31-55	56.4%	17-34	50.0%	16-25	64.0%	46	15	28	12	8	4
#21 Iowa	70	26-63	41.3%	5-15	33.3%	13-20	65.0%	37	30	8	18	4	8
at #11 Iowa State	83	18-56	32.1%	10-27	37.0%	37-49	75.5%	46	18	14	17	6	4
Drake	51	18-61	29.5%	6-29	20.7%	9-13	69.2%	43	11	12	21	1	4
at #22 Iowa	73	33-72	45.8%	4-26	15.4%	3-4	75.0%	42	17	20	12	10	14
North Dakota	62	23-58	39.7%	4-14	28.6%	12-22	54.5%	37	14	14	21	5	6
at #21 Iowa	88	31-67	46.3%	9-25	36.0%	17-20	85.0%	40	18	20	14	6	12
#22 Iowa	84	31-62	50.0%	3-17	17.6%	19-29	65.5%	39	26	13	13	7	3
at Indiana	86	28-64	43.8%	11-23	27.8%	19-33	57.6%	42	19	19	11	3	7
#15 Penn State	87	33-69	47.8%	5-15	33.3%	16-20	80.0%	50	23	12	19	6	6
at #22 Iowa	71	26-64	40.6%	6-20	30.0%	13-22	59.1%	34	25	16	18	7	7





IOWA BASKETBALL

WOMEN'S HOOPS NOTES

Season & Career Bests

Season Bests

Player	Points	3-Pointers	Rebounds	Assists	Blocks	Steals
#1 Alexa Kastanek	12 vs. UNCW	3 vs. North Dakota	7 vs. Ark. Pine Bluff	5, twice	1, twice	3 vs. UC Riverside
#2 Ally Disterhoft	19 vs. Dayton	3 vs. Idaho State	9, three times	4 vs. Ark. Pine Bluff	2 vs. Stony Brook	3 vs. North Dakota
#3 Claire Till	7 vs. USC	1, twice	12 vs. Ark. Pine Bluff	3 vs. UNCW	2, twice	3 vs. Drake
#21 Melissa Dixon	32 vs. UNCW	7, twice *	4, four times	5, twice	---	6 vs. Drake
#22 Samantha Logic	28 vs. UC Riverside	4 vs. USC	17 vs. Drake	14 vs. Dayton	2 vs. UC Riverside	4 vs. Penn State
#23 Theairra Taylor	16 vs. Idaho State	4 vs. Idaho State	7 vs. Syracuse	8 vs. Syracuse	2, twice	3, twice
#25 Kali Peschel	15 vs. Boston College	2 vs. Dayton	14 vs. Dayton	6 vs. Syracuse	2, twice	2 at UNI
#33 Kathryn Reynolds	8 vs. Ark. Pine Bluff	2, twice	1, twice	2 vs. UNCW	---	---
#40 Hailey Schneden	2, four times	---	2 vs. UNCW	1, twice	1, twice	1, twice
#45 Nicole Smith	---	---	---	---	---	---
#51 Bethany Doolittle	25 vs. Syracuse	---	10 vs. Idaho State	4 vs. Idaho State	7 vs. Drake	3, twice

Career Bests

Player	Points	3-Pointers	Rebounds	Assists	Blocks	Steals
#1 Alexa Kastanek	12 vs. UNCW	3 vs. North Dakota	7 vs. Ark. Pine Bluff	5, twice	1, twice	3 vs. UC Riverside
#2 Ally Disterhoft	19 vs. Dayton	3 vs. Idaho State	9, three times	4 vs. Ark. Pine Bluff	2 vs. Stony Brook	3 vs. North Dakota
#3 Claire Till	7, twice	1, four times	12 vs. Ark. Pine Bluff	3 vs. UNCW	2, twice	3 vs. Drake
#21 Melissa Dixon	32 vs. UNCW	7, twice *	4, seven times	5, twice	1, three times	6 vs. Drake
#22 Samantha Logic	28 vs. Dayton	4 vs. USC	18 at Michigan	14, twice *	2, three times	4, three times
#23 Theairra Taylor	22 vs. Nebraska	4, twice	11, twice	8 vs. Syracuse	5 vs. Northwestern	4, twice
#25 Kali Peschel	15 vs. Boston College	2 vs. Dayton	14 vs. Dayton	6 vs. Syracuse	2, twice	2 at UNI
#33 Kathryn Reynolds	8 vs. Ark. Pine Bluff	2, twice	2 vs. Texas A&M	5 vs. Western Illinois	---	---
#40 Hailey Schneden	2, four times	---	2 vs. UNCW	1, twice	1, twice	1 vs. Stony Brook
#45 Nicole Smith	4 vs. Missouri State	---	1 vs. Northern Illinois	---	---	---
#51 Bethany Doolittle	25 vs. Syracuse	---	12 vs. Missouri State	4, twice	7 vs. Drake	3, five times

BOLD - set career best during curent season

* - - tied school single-game record





The Last Time...

The Last Time a Player . . .

Had 30 or more points

Iowa -- 32, Melissa Dixon, vs. UNCW, 11/30/13
Opponent -- 31, Aulani Sinclair, Indiana, 2/28/13

Made at least 80% of her FGA (10 att.)

Iowa -- .800 (8-10), Ally Disterhoft, vs. UNCW, 11/30/13
Opponent -- .857 (12-14), Kelsey Budd, Bradley, 12/17/11

Made 100% of her FTA (10 att.)

Iowa -- 1.000 (11-11), Morgan Johnson, at Wisconsin, 1/10/13
Opponent -- 1.000 (11-11), Courtney Vandersloot, Gonzaga, 3/19/11

Had 15 or more rebounds

Iowa -- 17, Samantha Logic, vs. Drake, 12/21/13
Opponent -- 16, Seanna Johnson, Iowa State, 12/12/13

Had 10 or more assists

Iowa -- 12, Samantha Logic, vs. Penn State, 1/5/14
Opponent -- 10, Brittney McCoy, Minnesota, 2/18/10

Had 5 or more blocks

Iowa -- 6, Bethany Doolittle, at Indiana, 1/2/14
Opponent -- 5, Ebony Ellis, Northern Illinois, 12/8/07

Had 5 or more steals

Iowa -- 6, Melissa Dixon, vs. Drake, 12/21/13
Opponent -- 5, Kelva Atkins, UNCW, 11/30/13

The Last Time A Team . . .

Scored 100 or more points

Iowa -- 102 vs. UNCW, 11/30/13
Opponent -- 101, Iowa State, 12/3/03

Scored 40 or fewer points

Iowa -- 40, vs. Illinois, 2/10/77
Opponent -- 40, Stony Brook, 11/17/13

Won an overtime game

Iowa -- 97-93 vs. Dayton, 11/10/13
Opponent -- 81-78, Kansas State, 12/3/11

Made at least 60% of its FGA (20 att.)

Iowa -- .632 (36-57), vs. Rider, 11/26/05
Opponent -- .654 (34-52), Ohio State, 2/12/06

Made at least 50% of its 3-pt. FGA (8 att.)

Iowa -- .500 (17-34), vs. Idaho State, 12/7/13
Opponent -- .500 (13-26), Indiana, 2/28/13

Made at least 90% of its FTA (10 att.)

Iowa -- .944 (17-18), at Wisconsin, 1/10/13
Opponents -- .900 (9-10), Northwestern, 3/7/13

* - Carver-Hawkeye Arena record ^ - school record





IOWA BASKETBALL

WOMEN'S HOOPS NOTES

Miscellaneous Records and Statistics

GAME-BY-GAME, POINTS-REBOUNDS-ASSISTS-STEALS

# -- starter	1	2	21	22	23	25	33	40	45	51	
	Kastanek	Disterhoft	Till	Dixon	Logic	Taylor	Peschel	Reynolds	Schneden	Smith	Doolittle
Date	Opponent	P-R-A-S	P-R-A-S	P-R-A-S	P-R-A-S	P-R-A-S	P-R-A-S	P-R-A-S	P-R-A-S	P-R-A-S	P-R-A-S
Nov. 8	UC Riverside	5-0-1-3	7-8-0-0	4-5-1-1	2-1-3-1#	28-7-5-3#	9-1-1-0#	7-11-1-1#	0-0-0-0	DNP	8-5-0-1#
Nov. 10	#14 Dayton	0-1-0-0	19-6-2-1	5-1-0-0	13-1-0-0#	16-5-4-3#	10-4-5-2#	12-14-2-1#	DNP	DNP	22-5-2-3#
Nov. 13	Arkansas-Pine Bluff	9-5-2-1	12-9-4-1	0-12-2-1	17-1-4-2#	0-7-5-3#	9-5-2-1#	3-5-0-0#	8-0-1-0	DNP	17-4-2-2#
Nov. 17	Stony Brook	3-1-1-0	17-9-0-2	6-7-2-0	12-3-2-5#	8-5-7-0#	14-6-2-3#	2-7-0-0#	5-1-0-0	DNP	9-7-0-0#
Nov. 20	at #16 Colorado	6-1-1-1	8-3-1-0	6-4-0-1	7-4-2-3#	26-5-6-2#	12-3-1-2#	12-2-0-1#	DNP	DNP	10-7-0-2#
Nov. 24	at UNI	4-1-1-0	14-7-0-2	3-2-0-0	7-4-2-0#	17-10-2-2#	5-5-2-1#	6-6-2-2#	0-0-0-0	DNP	11-8-1-3#
Nov. 28	vs. USC	0-1-0-0	8-7-2-2	7-3-1-1	18-0-2-1#	22-3-7-1#	11-4-2-3#	6-6-1-1#	DNP	0-0-0-0	6-6-0-0#
Nov. 29	vs. Boston College	3-1-0-0	6-7-2-1	2-3-1-0	17-2-5-0#	10-4-6-3#	10-5-4-0#	15-2-2-0#	0-0-0-0	DNP	15-3-3-1#
Nov. 30	vs. UNC-Wilmington	12-1-1-2	16-8-3-1	4-3-3-1	32-4-1-0#	2-4-11-3#	5-5-6-2#	7-5-3-1#	4-0-2-0	DNP	18-2-0-1#
Dec. 5	#22 Syracuse	6-2-2-0	5-2-1-0	1-1-0-0	27-2-1-2#	14-3-7-1#	9-7-8-1#	10-8-6-0#	DNP	DNP	25-6-3-1#
Dec. 7	Idaho State	4-0-4-0	14-6-2-0	2-5-2-0	24-3-4-1#	5-5-4-0#	16-5-5-0#	5-6-2-0#	6-1-1-0	DNP	17-10-4-3#
Dec. 12	at #11 Iowa State	4-3-0-2	11-4-2-0	2-2-0-0	11-2-1-1#	18-7-4-1#	12-4-1-3#	0-3-0-0#	DNP	DNP	12-6-0-1#
Dec. 21	Drake	8-1-5-2	17-9-0-1	6-2-0-3	13-2-1-6#	12-17-10-2#	9-1-1-0#	2-2-1-0#	0-0-0-0	DNP	6-7-2-0#
Dec. 28	North Dakota	11-2-3-1	12-2-3-3	0-3-1-1	13-1-0-0#	21-7-8-2#	14-6-2-2#	5-10-1-1#	0-0-0-0	DNP	12-3-0-1#
Jan. 2	at Indiana	4-1-1-0	13-1-0-2	0-3-0-0	9-4-1-0#	25-12-3-1#	3-7-6-0#	10-3-1-0#	DNP	DNP	20-5-1-0#
Jan. 5	#15 Penn State	0-1-1-0	8-2-0-0	1-8-0-0	22-2-0-1#	13-4-12-4#	10-3-2-1#	9-4-0-0#	DNP	DNP	8-3-1-1#

IOWA RECORD WHEN...

Playing at home:.....	8-1	Iowa has more rebounds:.....	6-0
Playing on the road:.....	1-3	Opponent has more rebounds:.....	6-4
Playing on a neutral floor:.....	3-0	Rebounds are equal:.....	0-0
Leading at the half:.....	11-0	Iowa has more assists:.....	10-1
Trailing at the half:.....	1-4	Opponent has more assists:.....	1-3
Tied at the half:.....	0-0	Assists are equal:.....	1-0
Wearing white:.....	8-1	Iowa has fewer turnovers:.....	10-1
Wearing black:.....	4-3	Opponent has fewer turnovers:.....	2-2
Wearing gold:.....	0-0	Turnovers are equal:.....	0-1
Wearing pink:.....	0-0	Iowa has more steals:.....	8-3
Scoring 80+ points:.....	5-2	Opponent has more steals:.....	3-1
Scoring 70-79 points:.....	6-2	Steals are equal:.....	1-0
Scoring 60-69 points:.....	1-0	Playing on Sunday:.....	3-1
Scoring 59 or fewer points:.....	0-0	Playing on Monday:.....	0-0
Allowing 80+ points:.....	2-4	Playing on Tuesday:.....	0-0
Allowing 70-79 points:.....	0-0	Playing on Wednesday:.....	1-1
Allowing 60-69 points:.....	5-0	Playing on Thursday:.....	2-2
Allowing 59 or fewer points:.....	5-0	Playing on Friday:.....	2-0
Shooting at least 50% FG:.....	3-1	Playing on Saturday:.....	4-0
Shooting less than 50% FG:.....	9-3	Playing on BTN:.....	1-0
Shooting at least 80% FT:.....	5-0	Playing on CBS Sports Network:.....	0-0
Shooting less than 80% FT:.....	7-4	Playing on ESPN2:.....	0-0
Shooting at least 40% 3-pt. FG:.....	5-0	Playing on Mediacom:.....	2-1
Shooting less than 40% 3-pt. FG:.....	7-4	Playing on BTDN.....	5-0
Most 1st half points:..50 vs. UNC-Wilmington (Nov. 30)		Playing on KCRG.....	1-0
Most 2nd half points:.....60 vs. Syracuse (Dec. 5)		Largest Iowa lead:.....50 vs. Idaho State (Dec. 7)	
Fewest opponent 1st half points: 21, Stony Brook (Nov. 17)		Largest Iowa deficit:.....21 at Iowa State (Dec. 12)	
Fewest opponent 2nd half points: 18, Idaho State (Dec. 7)		Largest halftime lead:..31 vs. Arkansas-Pine Bluff (Nov. 13)	
		Largest halftime deficit:..13, 2X, last at Iowa St. (Dec. 12)	

LATE GAME CLUTCH FREE THROW SHOOTING

In Final Five Minutes of Game

Player	FTM	FTA	Pct.
Ally Disterhoft	8	10	.800
Theairra Taylor	3	5	.600
Melissa Dixon	4	7	.574
Kali Peschel	3	6	.500
Bethany Doolittle	1	2	.500
Alexa Kastanek	1	3	.333
Claire Till	0	3	.000
TOTALS	20	36	.555

In Final Two Minutes of Game

Player	FTM	FTA	Pct.
Melissa Dixon	4	4	1.000
Alexa Kastanek	1	2	.500
Claire Till	0	2	.000
TOTALS	5	8	.625

In Final One Minute of Game

Player	FTM	FTA	Pct.
Melissa Dixon	4	4	1.000
Ally Disterhoft	9	12	.750
Kali Peschel	3	4	.750
Samantha Logic	4	6	.667
Theairra Taylor	3	6	.500
Bethany Doolittle	1	2	.500
Claire Till	0	1	.000
Hailey Schneden	0	2	.000
TOTALS	24	37	.649

In Overtime

Player	FTM	FTA	Pct.
Samantha Logic	2	2	1.000
Kali Peschel	2	2	1.000
Ally Disterhoft	1	1	1.000
Bethany Doolittle	0	2	.000
TOTALS	5	7	.714





IOWA BASKETBALL

WOMEN'S HOOPS NOTES

Season Highs And Lows/Specialty Statistics

CATEGORY		IOWA	OPPONENTS
Points	High Low	102 vs. UNCW 67 at UNI	93, Dayton 38, Arkansas-Pine Bluff
FG Made	High Low	37 vs. UNCW 20 at UNI	35, Syracuse 11, Stony Brook
FG Att.	High Low	72, twice, last vs. Drake 58 vs. Boston College	73, Syracuse 54, Boston College
FG%	High Low	56.9 vs. UNCW 33.3 at UNI	47.9, Syracuse 18.6, Stony Brook
3FG Made	High Low	17 vs. Idaho State 3, three times, last at Indiana	11, Indiana 1, Stony Brook
3FG Att.	High Low	34 vs. Idaho State 14 vs. UC Riverside	36, UNI 8, Arkansas-Pine Bluff
3FG%	High Low	50.0 vs. Idaho State 15.4, vs. Drake	47.8, Indiana 6.7, Stony Brook
ETM	High Low	24 at UNI 3 vs. Drake	37, Iowa State 8, USC
ETA	High Low	38 at UNI 4 vs. Drake	49, Iowa State 10, USC
FT% (min. 10)	High Low	86.4 vs. UNCW 55.0 vs. Arkansas-Pine Bluff	80.0, twice, last Penn State 42.9, Arkansas-Pine Bluff
Off. Reb.	High Low	20 vs. Stony Brook 7 vs. UC Riverside	22, Stony Brook 8, UC Riverside
Def. Reb.	High Low	37 vs. Arkansas-Pine Bluff 19 vs. USC	37, twice, last UNI 17, UNCW
Total Reb.	High Low	55 vs. Arkansas-Pine Bluff 31, twice, last vs. Boston College	50, Penn State 31, UNCW
Assists	High Low	30, twice, last vs. UNCW 8 at Iowa State	21, Syracuse 4, Arkansas-Pine Bluff
Steals	High Low	14 vs. Drake 3 at Indiana	10, UNCW 3, UNI
Blocks	High Low	11 vs. Stony Brook 0 vs. USC	6, Iowa State 0, UNCW
Turnovers	High Low	22 vs. Dayton 11 vs. UC Riverside	21, three times, last North Dakota 11, twice, last Indiana
Fouls	High Low	30, twice, last at Iowa State 14 vs. UNCW	30, UNI 11, Drake

GAME-BY-GAME SPECIALTY STATS

Date	Opponent	IA-Opp.	IA-Opp.	IA-Opp.	IA-Opp.
		Pts. Off TO's	Pts. in Paint	2nd Chance	Fast Break
11/8	UC Riverside	17-8	36-16	7-12	14-0
11/10	Dayton	36-26	32-36	14-12	9-6
11/13	Arkansas-Pine Bluff	14-8	24-14	10-12	20-0
11/17	Stony Brook	22-8	38-18	22-11	0-2
11/20	Colorado	20-26	40-24	11-11	10-4
11/24	Northern Iowa	20-9	28-22	3-4	4-2
11/28	USC	20-19	32-40	11-11	5-8
11/29	Boston College	17-15	24-20	15-7	2-5
11/30	UNC-Wilmington	26-15	46-32	11-12	12-4
12/5	Syracuse	14-19	30-38	9-15	7-11
12/7	Idaho State	22-10	16-8	12-9	10-0
12/12	Iowa State	9-13	34-14	6-16	4-5
12/21	Drake	31-3	46-16	12-4	16-2
12/28	North Dakota	20-14	32-24	11-10	20-0
1/2	Indiana	16-7	50-32	11-14	2-0
1/5	Penn State	13-12	32-38	1-16	4-6
1/8	Minnesota				
1/12	Wisconsin				
1/16	Michigan State				
1/19	Ohio State				
1/25	Indiana				
1/29	Minnesota				
2/1	Nebraska				
2/6	Penn State				
2/10	Northwestern				
2/13	Illinois				
2/16	Purdue				
2/22	Michigan				
2/27	Ohio State				
3/2	Illinois				

IOWA AND OPPONENT INDIVIDUAL HIGH PERFORMANCES

CATEGORY	IOWA	OPPONENTS
Points	32 Melissa Dixon vs. UNCW	27 Maggie Lucas, Penn State
Field Goals Made	12 Bethany Doolittle vs. Syracuse	10 Brittney Sykes, Syracuse
Field Goals Attempted	20 Samantha Logic vs. UC Riverside	20 Maggie Lucas, Penn State
3-Point Field Goals Made	7 twice, last by Melissa Dixon vs. Syracuse	5 four times, last by Maggie Lucas, Penn State
3-Point Field Goals Attempted	13 Melissa Dixon vs. UNCW	13 Amber Sorenson, UNI
Free Throws Made	9 Samantha Logic vs. North Dakota	14 Jadda Buckley, Iowa State
Free Throws Attempted	12 Samantha Logic vs. North Dakota	16 Jadda Buckley, Iowa State
Offensive Rebounds	6 twice, last by Claire Till vs. Stony Brook	6 seven times, last by Gerardot and Deloach, Indiana
Defensive Rebounds	12 Samanta Logic vs. Drake	10 twice, last by Lizzy Wendell, Drake
Total Rebounds	17 Samantha Logic vs. Drake	16 Seanna Johnson, Iowa State
Assists	14 Samantha Logic vs. Dayton	9 Larryn Brooks, Indiana
Steals	6 Melissa Dixon vs. Drake	5 Kelva Atkins, UNCW
Blocks	7 Bethany Doolittle vs. Drake	3 Simone Deloach, Indiana





IOWA BASKETBALL

Overall Stats



IOWA WOMENS BASKETBALL Iowa Combined Team Statistics (as of Jan 05, 2014) All games



RECORD:	OVERALL	HOME	AWAY	NEUTRAL
ALL GAMES	12-4	8-1	1-3	3-0
CONFERENCE	0-2	0-1	0-1	0-0
NON-CONFERENCE	12-2	8-0	1-2	3-0

#	Player	gp-gs	min	avg	Total		3-Point		F-Throw		Rebounds				pf	dq	a	to	blk	stl	pts	avg
					fg-fga	fg%	3fg-fga	3fg%	ft-fa	ft%	off	def	tot	avg								
21	Dixon, Melissa	16-16	476	29.8	77-207	.372	49-144	.340	41-47	.872	4	32	36	2.3	50	1	35	28	0	23	244	15.3
22	Logic, Samantha	16-16	522	32.6	82-164	.500	14-42	.333	59-74	.797	26	79	105	6.6	37	0	111	60	5	31	237	14.8
51	Doolittle, Bethany	16-16	441	27.6	99-172	.576	0-0	.000	18-28	.643	28	59	87	5.4	49	2	19	21	51	20	216	13.5
02	Disterhoft, Ally	16-0	405	25.3	65-119	.546	14-31	.452	43-60	.717	25	65	90	5.6	34	1	22	29	5	16	187	11.7
23	Taylor, Theairra	16-16	422	26.4	55-134	.410	16-52	.308	32-49	.653	17	54	71	4.4	42	2	50	33	8	21	158	9.9
25	Peschel, Kali	16-16	382	23.9	31-87	.356	6-34	.176	43-57	.754	35	59	94	5.9	48	2	22	20	7	8	111	6.9
01	Kastanek, Alexa	16-0	221	13.8	28-74	.378	11-39	.282	11-21	.524	4	20	24	1.5	24	0	26	21	2	12	78	4.9
03	Till, Claire	16-0	256	16.0	17-47	.362	2-12	.167	13-28	.464	26	38	64	4.0	40	1	13	15	8	9	49	3.1
33	Reynolds, Kathryn	9-0	68	7.6	8-18	.444	5-13	.385	2-2	1.000	0	2	2	0.2	3	0	4	2	0	0	23	2.6
40	Schneden, Hailey	7-0	32	4.6	3-5	.600	0-0	.000	2-4	.500	1	4	5	0.7	4	0	3	1	2	2	8	1.1
Team											27	40	67				4					
Total.....		16	3225		465-1027	.453	117-367	.319	264-370	.714	193	452	645	40.3	331	9	305	234	88	142	1311	81.9
Opponents.....		16	3225		363-991	.366	99-341	.290	257-373	.689	230	430	660	41.2	339	-	216	280	47	105	1082	67.6

TEAM STATISTICS

	IOWA	OPP
SCORING	1311	1082
Points per game	81.9	67.6
Scoring margin	+14.3	-
FIELD GOALS-ATT	465-1027	363-991
Field goal pct	.453	.366
3 POINT FG-ATT	117-367	99-341
3-point FG pct	.319	.290
3-pt FG made per game	7.3	6.2
FREE THROWS-ATT	264-370	257-373
Free throw pct	.714	.689
F-Throws made per game	16.5	16.1
REBOUNDS	645	660
Rebounds per game	40.3	41.2
Rebounding margin	-0.9	-
ASSISTS	305	216
Assists per game	19.1	13.5
TURNOVERS	234	280
Turnovers per game	14.6	17.5
Turnover margin	+2.9	-
Assist/turnover ratio	1.3	0.8
STEALS	142	105
Steals per game	8.9	6.6
BLOCKS	88	47
Blocks per game	5.5	2.9
ATTENDANCE	35340	23809
Home games-Avg/Game	9-3927	4-5358
Neutral site-Avg/Game	-	3-792

Date	Opponent	Score	Att.
^ 11/8/13	UC RIVERSIDE	w 70-56	3162
^ 11/10/13	DAYTON	Wot 97-93	3370
11/13/13	ARKANSAS-PINE BLUFF	w 76-38	2810
11/17/13	STONY BROOK	w 78-40	3470
11/20/13	at Colorado	L 87-90	3501
11/24/13	at UNI	w 67-60	3502
11/28/13	vs USC	w 78-65	507
11/29/13	vs Boston College	w 78-68	934
11/30/13	vs UNCW	w 102-65	934
12/5/13	SYRACUSE	w 97-91	3323
12/7/13	IDAHO STATE	w 95-47	3168
12/12/13	at Iowa State	L 70-83	11543
12/21/13	DRAKE	w 73-51	5598
12/28/13	NORTH DAKOTA	w 88-62	4209
* 1/2/14	at Indiana	L 84-86	2888
* 1/5/14	PENN STATE	L 71-87	6230

^ = Hawkeye Challenge

* = Conference game

Score by Periods	1st	2nd	OT	Totals
Iowa	614	690	7	1311
Opponents	535	544	3	1082





IOWA BASKETBALL

Big Ten Stats



IOWA WOMENS BASKETBALL Iowa Combined Team Statistics (as of Jan 05, 2014) Conference games



RECORD:	OVERALL	HOME	AWAY	NEUTRAL
ALL GAMES	0-2	0-1	0-1	0-0
CONFERENCE	0-2	0-1	0-1	0-0
NON-CONFERENCE	0-0	0-0	0-0	0-0

#	Player	gp-gs	min	avg	Total		3-Point		F-Throw		Rebounds				a	to	blk	stl	pts	avg			
					fg-fga	fg%	3fg-fga	3fg%	ft-fga	ft%	off	def	tot	avg							pf	dq	
22	Logic, Samantha	2-2	74	37.0	14-26	.538	2-5	.400	8-9	.889	7	9	16	8.0	8	0	15	6	1	5	38	19.0	
21	Dixon, Melissa	2-2	76	38.0	10-28	.357	6-16	.375	5-8	.625	0	6	6	3.0	6	0	1	4	0	1	31	15.5	
51	Doolittle, Bethany	2-2	49	24.5	14-21	.667	0-0	.000	0-0	.000	4	4	8	4.0	9	1	2	2	8	1	28	14.0	
02	Disterhoft, Ally	2-0	44	22.0	6-10	.600	1-1	1.000	8-11	.727	0	3	3	1.5	5	0	0	5	0	2	21	10.5	
25	Peschel, Kali	2-2	46	23.0	6-13	.462	0-4	.000	7-11	.636	2	5	7	3.5	8	1	1	5	2	0	19	9.5	
23	Taylor, Theairra	2-2	53	26.5	5-16	.313	0-6	.000	3-8	.375	1	9	10	5.0	8	0	8	4	0	1	13	6.5	
01	Kastanek, Alexa	2-0	27	13.5	2-8	.250	0-4	.000	0-2	.000	1	1	2	1.0	2	0	2	2	1	0	4	2.0	
03	Till, Claire	2-0	31	15.5	0-4	.000	0-1	.000	1-2	.500	3	8	11	5.5	5	0	0	2	2	0	1	0.5	
Team											4	6	10									1	
Total.....		2	400		57-126	.452	9-37	.243	32-51	.627	22	51	73	36.5	51	2	29	31	14	10	155	77.5	
Opponents.....		2	400		61-133	.459	16-38	.421	35-53	.660	32	60	92	46.0	42	-	31	30	9	13	173	86.5	

TEAM STATISTICS	IOWA	OPP	Date	Opponent	Score	Att.
SCORING	155	173	* 1/2/14	at Indiana	L 84-86	2888
Points per game	77.5	86.5	* 1/5/14	PENN STATE	L 71-87	6230
Scoring margin	-9.0	-				
FIELD GOALS-ATT	57-126	61-133				
Field goal pct	.452	.459				
3 POINT FG-ATT	9-37	16-38				
3-point FG pct	.243	.421				
3-pt FG made per game	4.5	8.0				
FREE THROWS-ATT	32-51	35-53				
Free throw pct	.627	.660				
F-Throws made per game	16.0	17.5				
REBOUNDS	73	92				
Rebounds per game	36.5	46.0				
Rebounding margin	-9.5	-				
ASSISTS	29	31				
Assists per game	14.5	15.5				
TURNOVERS	31	30				
Turnovers per game	15.5	15.0				
Turnover margin	-0.5	-				
Assist/turnover ratio	0.9	1.0				
STEALS	10	13				
Steals per game	5.0	6.5				
BLOCKS	14	9				
Blocks per game	7.0	4.5				
ATTENDANCE	6230	2888				
Home games-Avg/Game	1-6230	1-2888				
Neutral site-Avg/Game	-	0-0				

Score by Periods	1st	2nd	Totals
Iowa	66	89	155
Opponents	81	92	173

