



When people think of collegiate field hockey, their thoughts primarily go out east, where Atlantic Coast Conference and Big East schools are often seen as national powerhouses.

The Big Ten though has quickly become one of the premier field hockey conferences in the nation.

In the 24 years the conference has sponsored field hockey, Big Ten schools have advanced to the NCAA Tournament 65 times.

Last season, Iowa, Michigan, Michigan State and Penn State represented the conference in the national tournament field of 16 teams. It also represented the eighth time in the last nine years that the conference

has had at least three or more representatives. In addition, it was the second time in the last three that the conference had four or more schools reach the tournament. Penn State fell to North Carolina in the national championship game. Michigan fell in the quarterfinals to Wake Forest. In addition, Michigan State was defeated by the Demon

Deacons in the first round. The Hawkeyes were defeated in double overtime against Boston during the first round.

In 2004, Michigan State reached the Final Four, making it the fourth consecutive year the Big Ten has sent a team to the Final Four. The league record for consecutive years in the National Semifinals is eight, when either Iowa or Northwestern reached the Final Four every year from 1983-1990.

In 2003, Michigan advanced to the Final Four for the third time in school history.

In 2002, the Big Ten had a pair of teams in the Final Four for the second-consecutive year when Michigan State and Penn State each won regional tournaments. The Nittany Lions advanced to the championship game and were the national runner-up.

In 2001, the Big Ten ended the year with five of its seven teams ranked in the top 20 by the NFHCA. Both Michigan and Michigan State represented the conference in the Final Four. The Wolverines went on to become the second Big Ten School to win the National Championship. Iowa was the first in 1986.

The Big Ten has been represented in the Final Four 21 times. The Hawkeyes lead the Big Ten Conference schools with 10 Final Four appearances.

Individually, the Big Ten produces some of the top field hockey players in the nation. In the last four seasons, the conference produced 43 NFHCA All-Americans, 14 of which were on the first team.

The Big Ten

Conference began sponsoring field hockey in 1981 with a conference tournament, then began full league play in 1982.

From 1989-91, five conference teams competed in the Midwest Collegiate Field Hockey Conference along with the Northern Illinois Huskies. But when Penn State joined up with the Big Ten in 1991, the league resumed sponsoring a conference season.

In conference play, each team plays each other only once, with the season ending with the Big Ten Tournament. The site of the Big Ten Tournament is determined on a rotating basis. The 2008 championships will be held in Bloomington, IN.





In June 2006, the Big Ten announced the creation of the Big Ten Network, a national network devoted to Big Ten athletic and academic programs. Available to all cable and satellite providers nationwide, with most programs offered in stunning high-definition television (HDTV), the network will allow fans to see their home teams, regardless of where they live.

The network is led by President Mark Silverman, a former Disney executive who came to the network after serving as the general manager and senior vice president of ABC Cable Networks Group since April of 2004, managing the company's equity in such channels as Lifetime Television, A&E Network and the History Channel, each of which recorded their best financial performance in 2005. Silverman was also responsible for developing and launching new cable channels, shows and other key initiatives.

The Big Ten Network launches its inaugural season in August 2007 with football, men's and women's basketball, a nightly studio show, classics and coaches shows, along with more Olympic sporting events and exposure for women's sports than has ever been aired on any other network. In June 2007, the Big Ten announced that the Big Ten Network will become the first national network to commit to "event equality" for men's and women's sports on all network-controlled media within the first three years of launch. This dedication to "event equality" highlights the Big Ten's ongoing dedication to gender equity, which is aligned with the commitment of conference institutions to provide fairness for all female student-athletes.

The programming on the Big Ten Network and alternative network-controlled platforms will include, but is not limited to: More than 35 football games each season, more than 105 regular season men's basketball games, a nightly studio show including segments from each campus, women's sports, including basketball, volleyball, soccer and softball, more than 170 Olympic sporting events including baseball, soccer, tennis, volleyball, swimming, diving and more, classic games and historical footage from ESPN and ABC libraries, original campus programming produced by Big Ten member universities showcasing their academic excellence, talented students and award-winning programs and weekly coaches shows.

Located in the historic Montgomery Ward building in Chicago, the Big Ten Network is the first national television network to call the largest city in the Midwest its home. The original section of the building was designated as a historic landmark in 2000 for its significant role in American retail history. The space includes two studios and three control rooms as well as a 20,000 square-foot office space.

In May of 2007, the Big Ten Network announced its first on-air hire, signing ESPN college sports expert Dave Revsine to be its lead studio host. Revsine joined ESPN in October of 1996 as an anchor for ESPN News and filled a variety of roles for the network over the past 10 years. The Northwestern graduate has anchored SportsCenter, hosted ESPN Radio's College GameDay for the last six years and hosted ESPN Radio's coverage of several BCS Championship games. He also hosted studio halftimes for basketball and co-hosted ESPN's coverage of the last two men's Final Fours.

In addition to airing more coverage of Big Ten sports than ever before, the Big Ten Network will also provide numerous benefits to communities around the Big Ten. Those include increased exposure for women's sports, providing positive role models for girls; a greater economic impact to the communities from added sporting event production, with the potential to generate higher attendance; and greater national exposure for the excellence that surrounds the academic endeavors of Big Ten universities, some of the most highly regarded in the nation. Also, an internship program at each of the 11 universities will offer students training for careers in sports, television and entertainment.

The Network can be found on major satellite providers such as DIRECTV and Dish Network and major cable outlets such as AT&T and Comcast.

The Big Ten Network is a joint venture between subsidiaries of the Big Ten Conference and Fox Cable Networks. For more information regarding the Big Ten Network, visit www.BigTenNetwork.com.

The Hawkeyes will be televised three times by the Network this fall. Iowa travels to Penn State (Oct. 10) and Michigan State (Oct. 25), both games will be taped delayed. In addition the Hawkeyes will be shown live when they host Michigan in Iowa City (Nov. 2nd).



The 2006 Hawkeyes join Director of Athletics Gary Barta and former Director of Women's Athletics Dr. Christine Grant for the re-dedication of Grant Field.



The 2007 season marked the third year the Hawkeyes have played on the new Grant Field. Grant Field is one of the best facilities in the nation with a state-of-the-art playing surface, permanent grandstand, concessions, rest rooms and a press box.

Whether playing on the new Grant Field, or on the original facility that was introduced in 1989, opponents have usually left Iowa City unhappy.

The Hawkeyes own an overall home record of 116-28, a conference record of 54-16 at home and an 11-2 record in NCAA tournament games played in Iowa City.

Originally named the Hawkeye Field Hockey Field, the facility was renamed in honor of former University of Iowa Women's Athletics Director and founder of Iowa Field Hockey Dr. Christine Grant on September 22, 1991. The new field was re-dedicated on October 8, 2006.

The Hawkeyes set a home attendance record October 24, 1993 with 1,339 fans watching Iowa defeat No. 4 Penn State, 4-0.

Iowa has gone undefeated on its home field in six separate seasons, including a 40-game home winning streak.

Top-notch locker rooms for Grant Field are located in the Hawkeye Tennis and Recreation Center (HTRC). Also in the HTRC is an athletic-training room and an indoor playing surface. The indoor field gives the Hawkeyes a chance to define their skills during the off-season and protects them from inclement weather.

Year-By-Year Grant Field Records (New stadium beginning 2005)

Year	Overall	Big Ten
2007	5-1	2-1
2006	3-3	1-2
2005	5-3	2-1
2004	8-1	3-0
2003	6-3	1-2
2002	2-2	0-2
2001	5-1	2-1
2000	5-3	2-1
1999	9-0	5-0
1998	5-3	2-3
1997	5-3	3-2
1996	9-1	5-0
1995	8-2	5-0
1994	5-2	4-1
1993	8-0	3-0
1992	10-0	4-0
1991	6-0	3-0 (MCFHC)
1990	8-0	4-0 (MCFHC)
1989	4-0	3-0
Total	116-28	54-16

MCFHC - Midwest Collegiate Field Hockey Conference

What Others Are Saying About Grant Field

"If I were a high school player looking to go to Iowa, I would take one step into that facility (Grant Field), and say 'Where do I sign?'. What a great facility. This place is start-of-the-art for college field hockey." - **Brent Stover**

"It is the best facility in the Big Ten." - **Kara Lentz**



Iowa Locker Room



Hawkeye Lounge



Athletic Training Room and Indoor Turf Facility



Grant Field is considered one of the top complexes in the country and participants have the advantage of state-of-the-art facilities. Campers also play alongside accomplished college players.



Each summer, field hockey players come to Iowa City for the Iowa Field Hockey Camp.



Campers ages 13-18 participate in the camp led by the Hawkeye coaching staff as well as current and former Iowa players. Head Coach Tracey Griesbaum and Assistant Coach Meridith Thorpe provide assistance to campers (right).



Hawkeyes In The Coaching Ranks

One of the most definitive statements that reflects upon the quality of the Iowa field hockey program is the number of alumni that have chosen to enter the coaching profession and the number of Hawkeye assistants that have become head coaches. Below is a list of former Hawkeyes who have or are currently coaching at various levels.

<u>Name</u>	<u>Position</u>	<u>School</u>	<u>Years at Iowa</u>	<u>Name</u>	<u>Position</u>	<u>School</u>	<u>Years at Iowa</u>
Joan Behrends	HC	White Plains H.S.	1982-86	Michele Madison	HC	Virginia	1982-89
Ange Bradley	HC	Syracuse	1995-96	Melisa Meccage	AC	Princeton	1993-97
Mary Casabian	AC	Virginia (1999-2001)	1993-96	Diane Monkiewicz	HC	Mansfield Univ.	1981-84
Lisa Cellucci	AHC	Iowa	1994-98	Quan Nim	AC	William and Mary	1995-99
Dawn Chamberlin	HC	Salisbury State	1981-85	Marcia Pankratz	HC	Michigan (1996-2004)	1982-86
Diane DeMiro	AC	West Essex H.S.	1993-96	Annette Payne	HC	Ball State	1994-97
Amy Fowler	HC	Dartmouth	1989-93	Emily Rinde-Thorsen	HC	Kimball Union H.S.	2000-02
Pattie Gillern	AC	Rutgers	2000-03	Amy Robertson	HC	Indiana	1989-92
Kristy Gleason	AC	Iowa (2006)	1989-94	Saleema Rogers	AC	Stanford (2005)	1999-02
Kristen Holmes	HC	Princeton	1992-96	Heather Schnepf	AC	Drexel	2003-06
Kerry Horgan	HC	Kent State (1997-2005)	1988-91	Patty Shea	HC	UMass (1997-06)	1989-95
Debbie Humpage	HC	Conn. College	1991-95	Liz Tchou	HC	Rutgers	1984-88
Lesley Irvine	HC	Stanford	1999	Sarah Thorn	AHC	American	1996-99
Sue Lowley	HC	Bridgewater College (1996-99)	1981-83	Kara Zappone	AC	Fairfield	2003-06
				Jessica Zosky	AC	Lehigh	2000-03

Head Coach = HC

Associate Head Coach = AHC

Assistant Coach = AC



Lisa Cellucci

Class of 1998

Associate Head Coach - Iowa



Liz Tchou

Class of 1988

Head Coach - Rutgers



Heather Schnepf

Class of 2006

Assistant Coach - Drexel

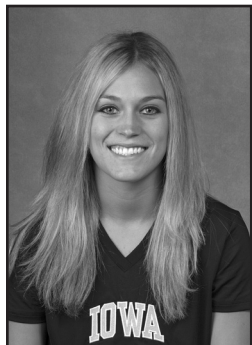


Sarah Thorn

Class of 1999

Associate Head Coach - American

MEGHAN BEAMESDERFER (2006-present)



- 2008 HPTC Midwest Region Team
- 2007 HPTC Midwest Region Team

CAROLINE BLAUM (2004-present)



- 2008 HPTC Midwest Region Team
- 2007 HPTC Midwest Region Team
- 2006 EPTC Midwest Region Team
- 2005 United States Under-21 Team
- 2004 United States Under-21 Squad (alternate)

TRICIA DEAN (2006-present)



- 2008 HPTC Midwest Region Team

ROZ ELLIS (2005-present)



- 2008 HPTC Midwest Region Team
- 2007 HPTC Midwest Region Team
- 2007 United States Under-21 Squad
- 2006 United States Under-21 Team
- 2006 U.S/Canada Challenge
- 2006 EPTC California Team

CAITLIN McCURDY (2005-present)



- 2007 HPTC Midwest Region Team
- 2007 United States Under-21 Team
- 2006 United States Under-21 Team
- 2006 U.S/Canada Challenge
- 2006 EPTC Midwest Region Team
- 2005 EPTC PA/NJ Team

LISSA MUNLEY (2005-present)



- 2008 HPTC Midwest Region Team
- 2007 HPTC Midwest Region Team (alternate)

LAUREN PFEIFFER (2005-present)



- 2008 HPTC Midwest Region Team
- 2007 HPTC Midwest Region Team
- 2007 United States Under-21 Squad
- 2006 United States Under-21 Team
- 2006 U.S/Canada Challenge
- 2006 EPTC Midwest region Team
- 2005 United States Under-21 Squad
- 2005 Canada/America Challenge

JESS WERLEY (2006-present)

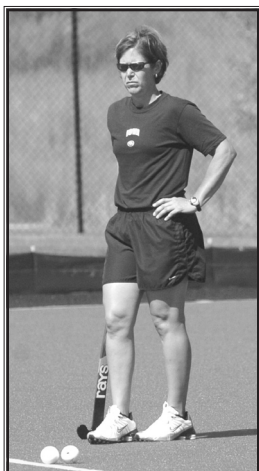


- 2008 HPTC Midwest Region Team (alternate)



HEAD COACH TRACEY GRIESBAUM

- 2008 Junior National Team Camp Coach
- 2008 Assistant Coach, HPTC Midwest Team
- 2005-06 Head Coach EPTC Midwest Team
- 2005-06 USA Elite Team Trials Coach
- 2000 USFHA National Coach of the Year
- 2001-04 Assistant Coach U.S. Under-21 Team
- 2000 Assistant Coach U.S. National Team
- 2000 Head Coach U.S. Under-21 Team
- 1999 Assistant Coach U.S. Under-20 Team
- 1998 Head Coach U.S. Under-23 Team
- 1997 and 1993 Assistant Coach U.S. Under-21 Team
- 2001-02 USFHA Board of Directors Member
- 1989-91, 1993 U.S. National Team Member
- 1999, 2001-2002 United Airlines Summer League



ASSISTANT COACH MERIDITH THORPE

- 1999-2000 Head Coach USFHA Futures
- 1997-1998 U.S. National Team
- 1995-1997 U.S. Under-21 Team
- 1994 U.S. Under-18 Team
- Three-time Olympic Festival Participant



ASSOCIATE HEAD COACH LISA CELLUCCI

- 2008 Junior National Team Camp Coach
- 2005-08 Asst. Coach HPTC Midwest Team
- 1999-00 U.S. National Team Member
- 1999 U.S. National Team Tour of England
- 1999 U.S. Pan American Team Alternate
- 1998 U.S. Under-23 Team Member
- 1993-95 Olympic Sports Festival
- 2000-04 A-Camp Coach
- 2000-04 B-Camp Coach
- 2005-07 HPTC Midwest Region Coach
- 2005-06 USA Elite Team Trials Camp Coach
- 1998-2002 United Airlines Summer League



VOLUNTEER ASSISTANT COACH BARB WEINBERG

- 2008 Olympic Team (alt.)
- 2008 Olympic Qualifying Team
- 2005-present U.S. National Team
- 2007-08 HPTC Midwest Region Team
- 2007 Chile Four-Nation Tournament
- 2006 World Cup Team
- 2006 World Cup Qualifying Team
- 2002 U.S. Under-23 Team (alt.)
- 2002 U.S. Under-23 Team South Africa Tour

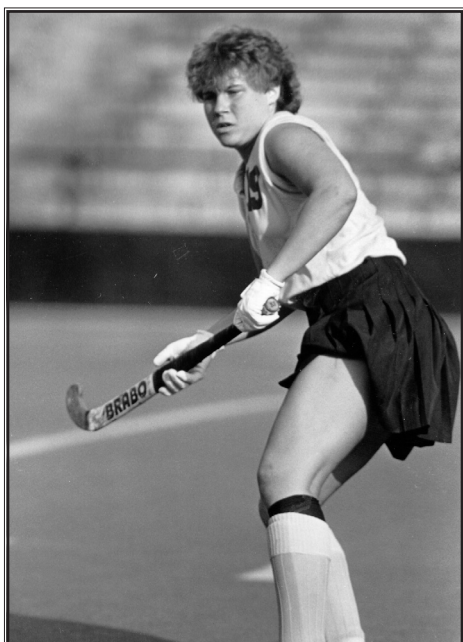


Former Hawkeyes Representing The United States National Team

Deb Brickey - 1989-90
 Lisa Cellucci - 1999
 Natalie Dawson - 2001-03
 Sarah Dawson - 2005-present
 Kris Fillat - 1990-93, '95-96, '99
 Kristy Gleason - 1990, '93, '97-98
 Kristen Holmes - 1995-96, 2005
 Mary Koboldt - 1987-90
 Donna Lee - 1985-90



Diane Loosbrock - 1989-90
 Melisa Miller - 1996
 Marcia Pankratz - 1985-90, '95-96
 Erica Richards - 1990
 Liz Tchou - 1989-93, '95-96
 Erin Walsh - 1990
 Barb Weinberg - 2005-present
 Andrea Wieland - 1991-93, '95-96



MARCIA PANKRATZ
(1982-86)

- 1988, 1996 U.S. Olympic Team
- 1985-90, 1995, U.S. National Team
- 1987, 1995 U.S. Pan American Team
- 1985, 1987, 1989 U.S. Olympic Festival
- 1986, 1994 U.S. World Cup Team
- 1985 U.S. Junior National Team
- First Team Big Ten All-Decade Team
- Two-time First Team All-American



LIZ TCHOU
(1984-88)

- 1996 U.S. Olympic Team
- 1989-93, 1995 U.S. National Team
- 1991, 1995 U.S. Pan American Team
- 1985, 1989-90 U.S. Olympic Festival
- 1994 U.S. World Cup Team
- 1988 U.S. National Reserve Team
- Only Hawkeye To Have Number Retired (3)
- Big Ten All-Decade Team (1981-91)



SARAH DAWSON
(2001-04)

- 2005-Present U.S. National Team
- 2007 HPTC Pennsylvania Region Team
- 2007 Champions Challenge
- 2006 World Cup Team
- First Team All-American (2004)
- Two-Time All-Big Ten



KRIS FILLAT (1988-92)

- 2000 U.S. Olympic Qualifying Team
- 1996 U.S. Olympic Team
- 1990-93, 95-96, 98-00 U.S. National Team
- 1991, 1995, 1999 U.S. Pan American Team
- 1990, 1994, 1998 U.S. World Cup Team
- Two-time first-team All-American
- Three-time All-Regional
- Two-time All-Big Ten
- 1992 NCAA All-Tournament Team
- 1990 U.S. Olympic Festival

"Being from California, I was hesitant about spending four years of my life in Iowa. As soon as I saw the campus and athletic facilities, there was no longer a doubt in my mind. Iowa was the perfect balance of community, academics and athletics. I was able to achieve my academic goals as well as my athletic ones."



ANDREA WIELAND (1987-91)

- 1996 U.S. Olympic Team
- 1991-93, 1995-96 U.S. National Team
- 1994, 1998 U.S. World Cup Team
- 1991, 1995 U.S. Pan American Team
- 1990-91 U.S. Olympic Festival
- 1988-89 U.S. Junior National Team
- Two-Time First Team All-American
- Three-time All-Regional
- Two-time First Team All-Big Ten

"I never would've made the Olympic team had I gone somewhere else. I learned how to compete, and I developed the total package of skills (mental, physical, emotional, nutritional) needed to compete at the highest level. I often find myself relying on the attitudes, teamwork and leadership skills I developed as a player at Iowa. I had the greatest coaches and teammates in the country looking out for my best interest personally, socially and athletically."



1996 Hawkeye Olympians Kris Fillat, Marcia Pankratz, Andrea Wieland and Liz Tchou.