



University of Iowa Women's Basketball

Game #14

December 31, 2009

2009-10 Schedule/Results 7-6 Overall, 0-2 Big Ten

11/14	vs. Santa Clara [^]	W, 67-51
11/15	vs. Illinois State [^]	W, 75-67
11/18	vs. Kansas	L, 66-55
11/22	at Northern Iowa	W, 81-70
11/24	William & Mary	W, 78-54
11/27	vs. West Virginia#	L, 66-69
11/28	vs. Columbia#	W, 72-69
12/2	vs. Boston College\$	L, 67-72
12/6	vs. Michigan	L, 51-54
12/10	at Iowa State+	L, 66-85
12/20	vs. Drake	W, 73-61
12/22	vs. South Dakota State	W, 82-69
12/28	at Penn State	L, 73-77 (OT)
12/31	vs. Wisconsin	5 p.m.
1/3	at Minnesota	2 p.m.
1/7	at Michigan	6 p.m.
1/14	vs. Penn State	7 p.m.
1/17	at Purdue	11 a.m.
1/21	at Illinois	7 p.m.
1/24	vs. Northwestern	4 p.m.
1/31	vs. Purdue	2 p.m.
2/4	at Ohio State	6:30 p.m.
2/7	vs. Michigan State	3:30 p.m.
2/11	at Indiana	6 p.m.
2/14	vs. Illinois	2 p.m.
2/18	vs. Minnesota	6:30 p.m.
2/21	at Northwestern	TBD
2/25	vs. Indiana	TBD
2/28	at Wisconsin	TBD
3/4-7	at Big Ten Tournament*	TBD

[^] -- KCRG-TV9 Hawkeye Challenge, Iowa City

-- Nugget Classic, Reno, NV

\$ -- ACC/Big Ten Challenge

+ -- Hy-Vee Cy-Hawk Series

* -- at Big Ten Tournament, Indianapolis, IN

Pronunciation Guide

Kachine Alexander	Kah-SHEEN
Lisa Bluder	BLUE-dir
Kelsey Cermak	SIR-mack
Kamille Wahlin	Kah-MEAL Wah-LEEN
Kelly Krei	CRY
Shante Jones	SHAN-tay
Gabby Machado	Muh-CHA-doe
Theairra Taylor	thee-AIR-uh

SID Contact: Aaron Blau
E-Mail: aaron-blau@hawkeyesports.com

Office: (319) 335-9268
Cell: (319) 430-5103



Wisconsin (11-2, 1-1) vs. Iowa (7-6, 0-2)

December 31, 2009 • 5 p.m.

Iowa City, IA • Carver-Hawkeye Arena

Radio: AM-800 KXIC, AM-600 WMT, AM-1040 WHO

TV: KCRG-TV9 • Webcast: bigtennetwork.com • Live Stats: hawkeyesports.com

Series Record: Iowa leads, 35-20



THE SETTING

The Iowa Hawkeyes (7-6, 0-2) host the Wisconsin Badgers (11-2, 1-1) Thursday at Carver-Hawkeye Arena. Tip-off on New Year's Eve is scheduled for 5 p.m.

Single-game tickets are \$9 for adults. Youth (18 and under) are admitted free.

PROMOTIONS

Thursday is a "Family Four Pack" night at Carver-Hawkeye Arena. Four tickets, four hot dogs and four sodas is just \$25. Fans who buy one ticket for Thursday's game will receive a free ticket when they present their souvenir FedEx Orange Bowl patch.

ON YOUR TELEVISION

Thursday's game will be televised live to a local audience on KCRG-TV9. John Campbell and Amy Herrig will call the action.

ON YOUR COMPUTER

Hawkeye fans can follow the game via live stats (Gametracker). The "GT" link can be accessed under the "Calendar" tab on the front page of hawkeyesports.com or on the women's basketball schedule page.

Fans can also watch a live webcast of the game on bigtennetwork.com for a \$2.99 fee.

ON YOUR RADIO

Brent Balbinot and Shelley Till will call Thursday's game for the Hawkeye Radio Network. The game can be heard on AM-800 KXIC, AM-600 WMT, AM-1040 WHO, and also on the Hawkeye All-Access page of hawkeyesports.com. Balbinot is in his sixth season as Iowa's play-by-play voice, while Till is in her fifth year providing analysis.

Tentative Starting Lineup (2009-10 averages)

Iowa Hawkeyes (7-6)					
Pos.	No.	Name	Ht.	Yr.	Statistical Summary
G	2	Kamille Wahlin	5-8	So.	16.7 ppg, 3.6 rpg, 3.3 apg, .430 FG%, .419 3PT% - Scored 200th point of the season at Penn State, and leads team with 217 total points
G	24	Jaime Printy	5-11	Fr.	13.2 ppg, 5.1 rpg, 3.5 apg, .433 FG%, .372 3PT% - Scored double figures in 10 of Iowa's 13 games
G	21	Kachine Alexander	5-9	Jr.	15.2 ppg, 11.3 rpg, 3.8 apg, .365 FG%, .143 3PT% - Scored 11 points and grabbed eight rebounds in first start after suffering stress fracture injury
F	20	Kelly Krei	6-2	So.	7.5 ppg, 4.8 rpg, 1.4 apg, .432 FG%, .429 3PT% - Leads team with 14 steals
C	12	Morgan Johnson	6-5	Fr.	10.5 ppg, 6.8 rpg, 2.1 bpg, .491 FG%, .697 FT% - Shooting a team-best .491 from the field

Head Coach: Lisa Bluder (Northern Iowa, 1983); 10th Season at Iowa (176-115); 26th Season Overall (532-257)



hawkeyesports.com

Inside the Numbers

	IOWA	WISC
Scoring Average	69.7	62.0
Scoring Defense	66.5	52.5
Scoring Margin	+3.2	+9.5
FG%	.412	.444
FG% Defense	.406	.351
FT%	.768	.689
3-PT FG%	.369	.337
3-PT FG% Defense	.314	.306
Rebound Margin	+1.6	+4.8
Assists Per Game	14.8	12.3
Turnovers Per Game	17.2	16.8
Turnover Margin	-0.5	+0.2
Steals Per Game	6.4	8.0
Blocks Per Game	4.2	3.5

Wisconsin vs. Iowa Series History

Iowa trails, 35-20
Last 10 meetings listed below

Date	Score	Site
Feb. 19, 2009	W, 72-65	Iowa City
Dec. 22, 2008	W, 73-63	Madison
Mar. 2, 2008	W, 87-78	Madison
Jan. 13, 2007	W, 78-74(OT)	Iowa City
Feb. 25, 2007	W, 103-93	Iowa City
Feb. 11, 2007	L, 73-84	Madison
Jan. 19, 2006	W, 68-59	Madison
Feb. 6, 2005	L, 78-88	Iowa City
Feb. 12, 2004	W, 87-82(OT)	Madison
Jan. 18, 2004	W, 66-46	Iowa City

How Many Times a Hawkeye Player...

Scored 30 or More Points	
Kamille Wahlin.....	1
Scored 20 or More Points	
Kamille Wahlin.....	4
Kachine Alexander.....	2
Jaime Printy.....	2
Scored 15 or More Points	
Kamille Wahlin.....	8
Jaime Printy.....	6
Morgan Johnson.....	4
Kachine Alexander.....	2
Kelly Krei.....	2
Theairra Taylor.....	1
Grabbed 10 or More Rebounds	
Kachine Alexander.....	3
Morgan Johnson.....	2
Grabbed 7 or More Rebounds	
Morgan Johnson.....	6
Kachine Alexander.....	4
Theairra Taylor.....	4
Jaime Printy.....	3
Kelly Krei.....	2
Gabby Machado.....	1
Kamille Wahlin.....	1
Dished out 7 or More Assists	
Jaime Printy.....	8
Dished out 5 or More Assists	
Jaime Printy.....	4
Kamille Wahlin.....	4
Kachine Alexander.....	2
Theairra Taylor.....	1
Recorded 4 or More Steals	
Kachine Alexander.....	1
Blocked 3 or More Shots	
Morgan Johnson.....	3
Theairra Taylor.....	2

2009-10 Margin of Victory/Defeat

Points	1	2	3	4	5	6	7	8	9	10-14	15-19	20+
Wins	0	0	1	0	0	0	0	1	0	3	1	1
Losses	0	0	2	1	1	0	0	0	0	1	1	0

IOWA HISTORY

Iowa has played 1,015 games, since beginning basketball in 1974. Iowa's overall record is 617-398 (.608). That includes a 309-152 (.670) mark in regular season Big Ten contests and a 290-86 (.771) mark in Carver-Hawkeye Arena.

ALL-TIME SERIES

Iowa leads the all-time series, 35-20. The Hawkeyes have won the last five games, dating back to the 2006-07 season.

The Hawkeyes have won five of the last six games in Iowa City. The Hawkeyes are 21-8 against the Badgers when the game is played in Iowa City.

SCOUTING WISCONSIN

The Wisconsin Badgers are 11-2 overall and 1-1 in Big Ten play. Wisconsin's only losses are to Green Bay (60-58) and Ohio State (70-55).

In their last game, the Badgers upset Michigan State, 62-54 Monday night in Madison. Alyssa Karel led the way with 21 points, while Lin Rae D'Alie netted 13 points and grabbed a team-high six rebounds. D'Alie also had a team-best seven assists and six steals. Wisconsin outscored Michigan State, 24-18 in the paint, and converted 21 points off turnovers.

Karel is the only player averaging double figures, at 14.5 points per game. Tara Steinbauer is the next leading scorer at 8.3 points per contest. Steinbauer also leads the team at 6.6 rebounds per game.

As a team, Wisconsin is shooting .444 from the field, including .337 from distance.

WISCONSIN VS. IOWA NOTES

- Wisconsin Head Coach Lisa Stone graduated from the University of Iowa, and was a member of the Hawkeye women's basketball team. She also replaced Lisa Bluder as head coach at Drake in 2000, when Bluder moved to Iowa. Stone was also the head coach at Cornell College in Mount Vernon from 1985-88.
- Wisconsin Director of Operations Stephanie Janke was recruited and played two seasons for Lisa Bluder at Drake, before Bluder moved to Iowa.

LAST MEETING

Iowa used an 11-0 run to start the second half, gaining control of the game and cruising to a 72-65 win over Wisconsin.

Five Hawkeyes scored double figures, including Kachine Alexander, Wendy Ausdemore and Megan Skouby, who all netted 15 points. Alexander also grabbed 12 rebounds.

The Hawkeyes finished the game 20-24 from the foul line, and limited Wisconsin to just 5-9 from the charity stripe.

2009-10 Iowa Hawkeye Roster

No.	Name	Yr.	Ht.	Pos.	Hometown (High School/College)
2	Kamille Wahlin	So.	5-8	G	Crookston, MN (Crookston)
11	Trisha Nesbitt	Fr.	5-7	G	Ames, IA (Ames)
12	Morgan Johnson	Fr.	6-5	C	Platte City, MO (Platte County)
13	Shante Jones	So.	5-9	G	Dayton, OH (Carroll)
20	Kelly Krei	So.	6-2	F	Iowa City, IA (City)
21	Kachine Alexander	Jr.	5-9	G	Minneapolis, MN (Benilde-St. Margaret's)
22	Kelsey Cermak	Jr.	6-1	F	Norwalk, IA (Norwalk)
23	Theairra Taylor	Fr.	5-11	G	St. Paul, MN (Central)
24	Jaime Printy	Fr.	5-11	G	Marion, IA (Linn-Mar)
31	Hannah Draxten	So.	6-0	G/F	Fergus Falls, MN (Fergus Falls)
45	JoAnn Hamlin	Sr.	6-3	F/C	Douglass, KS (Winfield/Kansas State)
50	Gabby Machado	Fr.	6-0	F	Pontiac, MI (Northern)

Head Coach: Lisa Bluder Associate Head Coach: Jan Jensen
Assistant Coaches: Jenni Fitzgerald and Shannon Gage



HAWKEYES FALL IN OVERTIME AT PENN STATE

The Hawkeyes dropped a heartbreaking, 77-73 decision in overtime at Penn State Monday night. Iowa now stands at 7-6 overall and 0-2 in Big Ten play.

Penn State led by five at haltime, and stretched the advantage to 10 points at the 11:57 mark in the second half. But, the Hawkeyes once again battled back, using a 12-1 run to take a slim 51-50 lead with 7:47 remaining. The teams battled back and forth in the final minutes, and two Nittany Lion free throws with 1:16 remaining tied the score at 62, forcing overtime.

With the score tied at 70 with 1:43 left in overtime, Penn State converted seven-straight free throws to escape with the win.

The Hawkeyes were led by Kamille Wahlin, who scored 27 points and drained a career high seven three pointers. Freshman Jaime Printy added 16 points and five rebounds, while Kachine Alexander scored 11 points and eight rebounds.

WAHLIN PUTTING UP THE POINTS

Sophomore Kamille Wahlin scored 20 points or more for the fourth time this season Monday night at Penn State. She led the Hawkeyes with 27 points and seven three pointers in the close overtime loss.

Wahlin netted a career high 33 points at Northern Iowa (Nov. 22). She scored 20 points the following game against William & Mary (Nov. 24) and 23 against Boston College (Dec. 2).

ALEXANDER BACK IN STARTING FIVE

Junior Kachine Alexander was back in the starting lineup Dec. 28 at Penn State, after coming off the bench the previous two contests.

Alexander started the first three games of the season before suffering a stress fracture in her right leg. She missed Iowa's next seven games, before returning to the lineup Dec. 20 against Drake. Alexander played 15 minutes against the Bulldogs and 25 minutes against South Dakota State Dec. 22, before starting and playing 35 minutes at Penn State.

THREE HAWKEYES OUT FOR SEASON

Senior JoAnn Hamlin, sophomore Hannah Draxten and freshman Theairra Taylor will all miss the season with injuries.

Hamlin has missed the entire season after having a blood clot removed in her right leg. Taylor suffered a torn ACL in Iowa's win over South Dakota State. Draxten has played four games this season, despite suffering from a herniated disc. It was announced after Iowa's loss at Penn State that Draxten will be forced to miss the rest of the season due to the back injury.

JOHNSON IN DOUBLE FIGURES

Freshman Morgan Johnson has scored in double figures in six of Iowa's last seven contests.

Johnson notched her first career double-double in Iowa's win over Columbia, scoring 18 points and grabbing 12 rebounds. She followed with a 16-point, six-rebound performance against Boston College. She added 12 points and seven boards against Michigan, and collected her second-career double-double with 13 points and 11 rebounds at Iowa State.

In Iowa's most recent games, Johnson was the teams' second-leading scorer with 16 points, and also chipped in five rebounds and four blocks against Drake. She netted 11 points, along with nine rebounds in Iowa's win over South Dakota State.

Head Coach Lisa Bluder

Lisa Bluder (pronounced BLUE-dir) is in her 10th season as head coach at the University of Iowa and her 26th season as a college head coach. She is a two-time Big Ten and WBCA Regional Coach of the Year, most recently earning honors a year ago in 2007-08.

Bluder, 47, has a career record of 532-257 (.674), including a 176-115 (.605) record at Iowa, a 187-106 (.638) record in 10 seasons (1990-2000) at Drake and a six-year mark (1984-90) of 169-36 (.824) at St. Ambrose. Bluder is Iowa's second all-time winningest coach and trails only C. Vivian Stringer. She has guided the Hawkeyes to six post-season tournaments (4 NCAA, 2 WNIT) and six upper-division finishes in the Big Ten Conference, including winning a share of the league championship in 2008 and tying for second place in 2009.

In her first season with the Hawkeyes, Bluder transformed a struggling program into a 21-game winner. Iowa finished second in the Big Ten, won the conference tournament and advanced to the second round of the NCAA Tournament. Bluder became Iowa's third coach to be named Big Ten Coach of the Year. She was also honored as the College Coach of the Year by the *Women's Basketball News Service* and was named the WBCA District 6 Coach of the Year. Iowa's 2001-02 squad finished fourth in the Big Ten and advanced to the second round of the NCAA Tournament for the second consecutive year. In 2003, Bluder guided the Hawkeyes to their first-ever WNIT appearance. Iowa, which had nine underclassmen on its roster, advanced to the quarterfinals before falling to Creighton. In 2004-05, Iowa finished 23-10, starting the year 13-0 and was the last Division I undefeated team standing. In 2005-06, Bluder mentored a team plagued by injuries to a fifth-place Big Ten finish and an NCAA Tournament berth.

In her 10 years at Drake, Bluder brought great success and tradition to the Bulldog program and established herself as one of the top coaches in the country. She led Drake to five 20-plus win seasons in her last six years, including five post-season appearances. She guided the Bulldogs to eight Missouri Valley Conference Tournament appearances, reaching the semifinals six times and winning the tournament four times. Bluder was also named the Conference Coach of the Year three times at Drake.

Bluder began her coaching career at St. Ambrose, where she coached six successful seasons, building the Bees into a NAIA powerhouse. During her tenure at St. Ambrose, Bluder guided the Bees to four straight national tournaments, including two consecutive Final Four appearances. The 1990 St. Ambrose team was ranked No. 1 and Bluder was named the NAIA Converse Coach of the Year.

A graduate of Linn-Mar High School in Marion, IA, Bluder was a three-year starter at Northern Iowa. She graduated from UNI in 1983 with a bachelor's degree in marketing.



Press Conferences

Below is a list of press conferences for Head Iowa Women's Basketball Coach Lisa Bluder. Press conferences will be held in the Press Room on the first floor of Carver-Hawkeye Arena. Select student-athletes will be available after Coach Bluder addresses the media.

Wednesday, Jan. 6 1:45 p.m.
 Wednesday, Jan. 13 11:45 a.m.
 Tuesday, Jan. 19 10:45 a.m.
 Thursday, Jan. 28 10:45 a.m.
 Tuesday, Feb. 2 10:45 a.m.
 Tuesday, Feb. 9 10:45 a.m.
 Wednesday, Feb. 17 11:45 a.m.
 Wednesday, Feb. 24 11:45 a.m.
 Tuesday, March 2 10:45 a.m.

Big Ten Coaches Tele-conferences

The Big Ten Conference has scheduled tele-conferences with women's basketball coaches each month during the Big Ten portion of the 2009-10 season. The tele-conferences are held the first Tuesday of January, February and March, and will begin at 9 a.m. (CT).

Contact the Big Ten office of the Iowa Sports Information Office for the tele-conference and play-back phone numbers. Below is a schedule of coaches.

9:00 Felisha Legette-Jack, Indiana
 9:08 Kevin Borseth, Michigan
 9:16 Coquese Washington, PSU
 9:24 Sharon Versyp, Purdue
 9:32 Jollette Law, Illinois
 9:40 Lisa Stone, Wisconsin
 9:48 Suzy Merchant, Michigan St.
 9:56 Jim Foster, Ohio State
10:04 Lisa Bluder, Iowa
 10:12 Pam Borton, Minnesota
 10:20 Joe McKeown, Northwestern
 10:28 Player of the Week (if available)

Big Ten Standings/Schedule

Team	Big Ten	Pct.	Overall	Pct.	Thursday, December 31
Ohio State	2-0	1.000	14-1	.933	Penn State at Illinois
Northwestern	2-0	1.000	11-2	.846	
Indiana	1-0	1.000	8-4	.667	
Wisconsin	1-1	.500	11-2	.846	Wisconsin at Iowa
Michigan	1-1	.500	9-3	.750	Michigan at Michigan State
Penn State	1-1	.500	9-3	.750	
Minnesota	1-1	.500	8-5	.615	
Purdue	1-1	.500	6-6	.500	Ohio State at Northwestern
Illinois	0-1	.000	8-3	.727	
Michigan State	0-2	.000	9-4	.692	
Iowa	0-2	.000	7-6	.538	Indiana at Purdue

OH, SO CLOSE

Four of Iowa's six losses have been by five points or less, with two of those being by three points.

The Hawkeyes had a three-point attempt at the buzzer against West Virginia fall short, that would have sent the game to overtime.

Against Boston College, Iowa missed a three-pointer with seven seconds left that would have tied the game.

Against Michigan, Iowa missed the front-end of a one-and-one from the free throw line with both 27 and 11 seconds left, each time trailing by only one point.

DRAINING FROM DISTANCE AND THE LINE

The Hawkeyes lead the Big Ten in three-pointers made (104, 8.0) and rank second in free throw percentage (.768) and three-point percentage (.369).

Individually, sophomore Kamille Wahlin is leading the conference in three-pointers made (3.0 per game) and minutes played (36.7). She also ranks fifth in scoring (16.7).

Freshman Morgan Johnson is fifth in the Big Ten in blocked shots (2.1 per game).

WAHLIN STEPPING UP

Sophomore Kamille Wahlin filled Iowa's scoring role when Kachine Alexander, the team's leading scorer, went down with an injury.

Wahlin averaged 17.7 points (.455 FG%, .420 3PT%, .917 FT%) in the seven games without Alexander. She also played an average of 37.6 minutes in those seven games.

UNDERCLASSMEN CONTRIBUTING

Iowa's freshmen and sophomore class are putting up big numbers for the Hawkeyes this season.

Hawkeye underclassmen are responsible for 88 percent of the teams' points, 72 percent of rebounds, 86 percent of minutes played, 85 percent of assists, 84 percent of steals and 91 percent of blocks.

LOGGING MAJOR MINUTES

Due to injuries, Iowa's roster has been forced to play a large amount of minutes so far.

Three players have played over 30 minutes a game. Kamille Wahlin is playing 36.7 minutes per game, Jaime Printy is playing 32.3 minutes and Kelly Krei is at 31.7.

PLAYING THEM ALL

Despite the injuries, six Hawkeyes have managed to play in all 13 games this season.

Kamille Wahlin, Jaime Printy, Morgan Johnson, Kelly Krei, Trisha Nesbitt and Kelsey Cermak have seen action in all contests. Wahlin, Printy and Johnson have started all 13 games, while Krei has started 12. Cermak has started two games for the Hawkeyes.



NEVER RIDING THE PINE

Sophomores Kelly Krei and Kamille Wahlin have both played all 40 minutes in back-to-back games this season.

Krei never left the court in consecutive games against Illinois State (Nov. 15) and Kansas (Nov. 18). Wahlin did the same against Boston College (Dec. 2) and Michigan (Dec. 6).

ALEXANDER NAMED CO-BIG TEN PLAYER OF THE WEEK

Junior Kachine Alexander was named co-Big Ten Player of the Week Nov. 16 after earning MVP honors at the KCRG-TV9 Hawkeye Challenge.

Alexander recorded double-doubles in each of Iowa's first two games. She tied a Hawkeye Challenge tournament record by grabbing 18 rebounds (nine offensive, nine defensive), along with netting 19 points in Iowa's season-opening win over Santa Clara. Both her 19 points and 18 rebounds were game highs.

Alexander followed on Sunday with a 21 point, 12 rebound (nine offensive, three defensive) performance in the championship game against Illinois State. Alexander was clutch down the stretch at the free-throw line, making 13-16 attempts from the charity stripe.

PRINTY NAMED BIG TEN FRESHMAN OF THE WEEK

Jaime Printy was named Big Ten Freshman of the Week, after her performances against William & Mary, West Virginia and Columbia.

Printy averaged 16.3 points, 6.7 rebounds and 5.3 assists, as the Hawkeyes posted a 2-1 record last week. Printy recorded her first-ever 20-point game against William & Mary, adding nine rebounds with five assists. Against West Virginia in the first round of the Nugget Classic in Reno, Printy netted 16 points with four boards and five assists in the close, three-point loss. The Marion, IA, native scored Iowa's first eight points against the Mountaineers, and made her first four shots, including a perfect 3-3 from distance.

Printy saved her best for last in Iowa's win over Columbia. She scored 12 points with five rebounds and three assists in the thrilling win. Printy nailed a three-pointer with 52 seconds left to tie the game, giving Iowa a chance to win on its next possession.

WAHLIN ON ALL-TOURNAMENT TEAMS

Sophomore Kamille Wahlin was chosen to both the KCRG-TV9 Hawkeye Challenge and Nugget Classic all-tournament teams.

In the season-opening Hawkeye Challenge, Wahlin netted 13 points and added three rebounds.

She was clutch down the stretch in the championship against Illinois State, scoring seven points during Iowa's crucial 12-2 run in the final three minutes of the second half to give the Hawkeyes the victory. Wahlin drained a three-pointer with 3:46 left to give Iowa a one-point lead (64-63). She then hit a jumper with 37 seconds left, extending Iowa's lead to five points (70-65). Wahlin added two free throws on the next trip down the court to seal the win.

Wahlin scored 16 points, grabbed four rebounds and dished out five assists against West Virginia in the Nugget Classic. She followed with 18 points, including the game-winning three-pointer with 10 seconds left, to go along with three points and four assists against Columbia in the consolation game.

JOHNSON TIES SCHOOL RECORD

Freshman Morgan Johnson tied a school record with seven blocked shots against Northern Iowa (Nov 22). Johnson now holds the record with Jerica Watson (vs. Kent State, 12/8/01) and Tangela Smith (at Michigan State, 1/15/95). She currently ranks third in the Big Ten in blocks per game (2.75).

Johnson added 11 points and eight rebounds in the win.

Hawkeyes Ink Talented Recruit

Jade Rogers has signed a National Letter of Intent to attend the University of Iowa next fall.

"We are eager to have Jade Rogers join our team," Bluder said. "Jade is a tremendous kid that loves the game, and has grown up as a Hawkeye fan. Jade will be a versatile player that can play a number of positions. She can post up or she can shoot the long ball. She is also a good rebounder. Jade has had a great career at Cedar Rapids Kennedy, and is looking forward to continuing her career as a Hawkeye."

Rogers, a 5-11 forward, is from nearby Hiawatha, IA, and attends Cedar Rapids Kennedy High School. She led the state in scoring (22.3) and rebounding (13.4) as a sophomore, and was named the Missouri Valley Conference Player of the Year. She also earned first team all-state, all-district, all-metro and all-conference honors.

Rogers suffered an ACL injury during the summer of the 2008, but returned to the court and helped lead Kennedy to the semifinal round of the state tournament. Rogers played in 17 games as a junior and averaged 17.9 points and 10.6 rebounds. She was named first team all-state, all-district, all-metro and all-conference, along with being named to the state tournament all-tournament team.

As a freshman, Rogers earned second team all-state honors, along with first team all-district, all-metro and all-conference recognition.

Rogers currently has 1,089 points (18.5 per game average), which is fourth on the all-time scoring list at Kennedy. She also holds school records for single-game rebounds (20), single-season rebounds per game (12.6) and is on pace to become Kennedy's career rebounding leader. Rogers is also a three-time team captain.

Rogers has also lettered in volleyball. She helped lead the Kennedy volleyball team to a state tournament appearance this year.

HAWKEYES TIE FREE-THROW MARK

Iowa tied the school record for single-game free throw percentage, converting all 16 attempts against Columbia (1.000).

Freshman Morgan Johnson led the way, going 6-6. Sophomore Kamille Wahlin and freshman Theairra Taylor each went 4-4, while freshman Gabby Machado finished 2-2.

PRINTY PUTS ON A SHOW AGAINST THE JACKS

Freshman Jaime Printy came up big for Iowa in the clutch against South Dakota State Dec. 22.

With the Hawkeyes ahead by one point (67-66) at the 3:34 mark in the second half, Printy ignited a 15-3 run to close the game, scoring the first seven points of the surge, and all nine of her second half points, during the crucial stretch.

Printy drained a long-distance three to put Iowa up four (70-66) at the three-minute mark. On the next two possessions, Printy sliced through the lane with the shot clock winding down, nailing layups to give Iowa a 74-66 advantage. She then scored the final two points of the game on a layup with two seconds remaining for the final count.

HOME GROWN HAWKEYES

Four Hawkeyes prepped in the state of Iowa. Those players are junior Kelsey Cermak (Norwalk), sophomore Kelly Krei (Iowa City) and freshmen Trisha Nesbitt (Ames) and Jaime Printy (Marion).

ON THE HORIZON

The Hawkeyes travel to Minneapolis Sunday to take on the Minnesota Golden Gophers. Game time is scheduled for 2 p.m.





University of Iowa Women's Basketball

Updated Iowa Player Bio

Kamille Wahlin



2

Guard, 5-8, Sophomore
Crookston MN
Crookston HS

- Nugget Classic all-tournament team selection.
- Hit game-winning three-pointer with 10 seconds remaining against Columbia.
- Scored career-high 33 points (11-19 FGs, 6-10 3Pt. FGs) in win at UNI.
- KCRG-TV9 Hawkeye Challenge all-tournament team selection.
- Named to the all-Big Ten Freshmen team last season.
- Believed to be the first Hawkeye true freshman to ever record a double-double in her first career start (14 points, 10 assists).

Personal Bests

Points: 33 at UNI (11/22/09)
Rebounds: 8 vs. Wisconsin (2/19/09)
FGM: 11 at UNI (11/22/09)
FGA: 19 at UNI (11/22/09)
3-pt FG: 7 at Penn State (12/28/09)
3-pt FGA: 11 vs. Michigan (12/6/09)
FTM: 5 at UNI (11/22/09)
FTA: 6 at UNI (11/22/09)
Assists: 10 vs. Michigan (1/26/09)
Steals: 3 vs. Texas St. (11/16/08)
Blocks: - - -
Minutes: 43 vs. Penn State (2/1/09)

2009-10 Game-by-Game

				Total		3-Pointers		Free throws		Rebounds											
Opponent	Date	gs	min	fg-fga	pct	3fg-fga	pct	ft-fa	pct	off	def	tot	avg	pf	a	t/o	blk	stl	pts	avg	
SANTA CLARA	11/14/09	*	28	5-13	.385	3-10	.300	0-0	.000	0	3	3	3.0	0	1	2	0	1	13	13.0	
ILLINOIS STATE	11/15/09	*	37	5-12	.417	2-5	.400	3-4	.750	0	4	4	3.5	2	2	2	0	0	15	14.0	
KANSAS	11/18/09	*	37	4-13	.308	1-5	.200	0-0	.000	0	1	1	2.7	0	0	7	0	0	9	12.3	
at UNI	11/22/09	*	40	11-19	.579	6-10	.600	5-6	.833	0	2	2	2.5	2	2	3	0	1	33	17.5	
WILLIAM & MARY	11/24/09	*	34	8-13	.615	4-8	.500	0-0	.000	1	5	6	3.2	1	5	1	0	1	20	18.0	
vs West Virginia	11/27/09	*	38	7-18	.389	2-6	.333	0-0	.000	2	2	4	3.3	2	5	7	0	1	16	17.7	
vs Columbia	11/28/09	*	37	5-13	.385	4-7	.571	4-4	1.000	0	3	3	3.3	0	4	2	0	2	18	17.7	
BOSTON COLLEGE	12/2/09	*	40	9-16	.563	3-6	.500	2-2	1.000	0	2	2	3.1	0	4	4	0	0	23	18.4	
MICHIGAN	12/6/09	*	40	3-15	.200	1-11	.091	0-0	.000	0	7	7	3.6	1	6	6	0	1	7	17.1	
at Iowa State	12/10/09	*	34	3-7	.429	1-2	.500	0-0	.000	0	4	4	3.6	1	3	5	0	0	7	16.1	
DRAKE	12/20/09	*	37	5-13	.385	2-3	.667	0-0	.000	1	4	5	3.7	0	6	3	0	0	12	15.7	
SOUTH DAKOTA STATE	12/22/09	*	32	6-11	.545	3-5	.600	2-2	1.000	0	4	4	3.8	4	1	2	0	0	17	15.8	
at Penn State	12/28/09	*	43	9-23	.391	7-15	.467	2-2	1.000	0	2	2	3.6	0	4	2	0	3	27	16.7	
Totals			13	477	80-186	.430	39-93	.419	18-20	.900	4	43	47	3.6	13	43	46	0	10	217	16.7

Games played: 13
 Minutes/game: 36.7
 Points/game: 16.7
 FG Pct: 43.0
 3FG Pct: 41.9

Rebounds/game: 3.6
 Assists/game: 3.3
 Turnovers/game: 3.5
 Assist/turnover ratio: 0.9
 Steals/game: 0.8

CAREER STATISTICS

YEAR	G/GS	FG-A	PCT	3-PT	PCT	FT-A	PCT	O-D-REB	AVG	PF-FO	AS	TO	BK	ST	PTS	AVG
Fresh.	32/14	90-191	.471	28-68	.412	35-46	.761	19-83-102	3.2	27-0	87	60	1	22	243	7.6
Soph.	13/13	80-186	.430	39-93	.419	18-20	.900	4-43-47	3.6	13-0	43	46	0	10	217	16.7
TOTALS	45/27	170-377	.451	67-161	.416	53-66	.803	23-126-149	3.3	40-0	130	106	1	32	460	10.2





University of Iowa Women's Basketball

Updated Iowa Player Bio

Trisha Nesbitt



11

Guard, 5-7, Freshman
Ames, IA
Ames HS

- Three-time all-conference and two-time first team all-district and all-state pick.
- Led the state in free throw makes (145) and attempts (207) as a senior.
- Finished prep career with 1,075 points, 424 assists and 162 steals.

Personal Bests

Points: 8 at UNI (11/22/09)
Rebounds: 3 vs. W&M (11/24/09)
FGM: 2, twice, last vs. Columbia (11/28/09)
FGA: 4, 3x, last at Iowa State (12/10/09)
3-pt FG: 2 vs. Columbia (11/28/09)
3-pt FGA: 3 vs. Columbia (11/28/09)
FTM: 4, twice, last vs. SDSU (12/22/09)
FTA: 5 at UNI (11/22/09)
Assists: 4, 3x, last at Iowa State (12/10/09)
Steals: 2 at UNI (11/22/09)
Blocks: - - -
Minutes: 21, 3x, last at Iowa State (12/10/09)

2009-10 Game-by-Game

Opponent	Date	gs	min	Total		3-Pointers		Free throws		Rebounds				pf	a	t/o	blk	stl	pts	avg
				fg-fga	pct	3fg-fga	pct	ft-fa	pct	off	def	tot	avg							
SANTA CLARA	11/14/09	10		0-1	.000	0-0	.000	0-0	.000	0	1	1	1.0	0	0	1	0	0	0	0.0
ILLINOIS STATE	11/15/09	3		0-1	.000	0-1	.000	0-0	.000	0	0	0	0.5	0	0	0	0	0	0	0.0
KANSAS	11/18/09	3		0-0	.000	0-0	.000	0-0	.000	0	0	0	0.3	1	0	0	0	0	0	0.0
at UNI	11/22/09	19		2-3	.667	0-1	.000	4-5	.800	0	2	2	0.8	4	4	1	0	2	8	2.0
WILLIAM & MARY	11/24/09	17		1-4	.250	0-1	.000	0-1	.000	0	3	3	1.2	0	1	0	0	0	2	2.0
vs West Virginia	11/27/09	17		1-4	.250	0-0	.000	0-0	.000	0	0	0	1.0	2	0	2	0	0	2	2.0
vs Columbia	11/28/09	21		2-4	.500	2-3	.667	0-0	.000	0	0	0	0.9	1	4	3	0	1	6	2.6
BOSTON COLLEGE	12/2/09	21		0-2	.000	0-1	.000	0-0	.000	0	0	0	0.8	3	1	2	0	0	0	2.3
MICHIGAN	12/6/09	16		1-3	.333	0-1	.000	0-0	.000	1	1	2	0.9	0	1	0	0	0	2	2.2
at Iowa State	12/10/09	21		1-4	.250	0-2	.000	3-3	1.000	1	1	2	1.0	3	4	1	0	0	5	2.5
DRAKE	12/20/09	11		0-0	.000	0-0	.000	0-0	.000	0	0	0	0.9	0	1	3	0	0	0	2.3
SOUTH DAKOTA STATE	12/22/09	12		1-3	.333	1-2	.500	4-4	1.000	0	2	2	1.0	1	3	1	0	0	7	2.7
at Penn State	12/28/09	16		0-1	.000	0-0	.000	0-0	.000	0	0	0	0.9	2	0	1	0	0	0	2.5
Totals		0	187	9-30	.300	3-12	.250	11-13	.846	2	10	12	0.9	17	19	15	0	3	32	2.5

Games played: 13
 Minutes/game: 14.4
 Points/game: 2.5
 FG Pct: 30.0
 3FG Pct: 25.0

Rebounds/game: 0.9
 Assists/game: 1.5
 Turnovers/game: 1.2
 Assist/turnover ratio: 1.3
 Steals/game: 0.2

CAREER STATISTICS

YEAR	G/GS	FG-A	PCT	3-PT	PCT	FT-A	PCT	O-D-REB	AVG	PF-FO	AS	TO	BK	ST	PTS	AVG
Fresh.	13/0	9-30	.300	3-12	.250	11-13	.846	2-10-12	0.9	17-0	19	15	0	3	32	2.5





University of Iowa Women's Basketball

Updated Iowa Player Bio

Morgan Johnson



12

Center, 6-5, Freshman
Platte City, MO
Platte County HS

- 18 points and 12 rebounds in win over Columbia for first-career double-double.
- Tied school record for blocks in a game with seven in win at UNI.
- Scored 15 points and grabbed five rebounds in 30 minutes of play in first career start in win over Santa Clara in season opener.
- "Miss Show Me Basketball" award winner, given to top prep senior in Missouri.
- Named the 2009 Direnna Award winner, given to top prep player in Kansas City area.
- *Kansas City Star* Scholar Athlete of the Year.

Personal Bests

Points: 18 vs. Columbia (11/28/09)
Rebounds: 12 vs. Columbia (11/28/09)
FGM: 8 vs. Drake (12/20/09)
FGA: 16 at Iowa State (12/10/09)
3-pt FG: 1 at Iowa State (12/10/09)
3-pt FGA: 2 at Iowa State (12/10/09)
FTM: 6 vs. Columbia (11/28/09)
FTA: 6, 3x, last vs. SDSU (12/22/09)
Assists: 4 at Iowa State (12/10/09)
Steals: 2 vs. Santa Clara (11/14/09)
Blocks: 7 at UNI (11/22/09)
Minutes: 34 vs. Boston College (12/2/09)

2009-10 Game-by-Game

				Total		3-Pointers		Free throws		Rebounds											
Opponent	Date	gs	min	fg-fga	pct	3fg-fga	pct	ft-fa	pct	off	def	tot	avg	pf	a	t/o	blk	stl	pts	avg	
SANTA CLARA	11/14/09	*	30	7-15	.467	0-0	.000	1-1	1.000	4	1	5	5.0	0	0	1	1	2	15	15.0	
ILLINOIS STATE	11/15/09	*	23	2-6	.333	0-0	.000	1-2	.500	0	5	5	5.0	3	0	1	1	1	5	10.0	
KANSAS	11/18/09	*	22	4-8	.500	0-0	.000	0-0	.000	3	4	7	5.7	4	2	2	2	0	8	9.3	
at UNI	11/22/09	*	31	5-10	.500	0-0	.000	1-3	.333	2	6	8	6.3	1	1	2	7	0	11	9.8	
WILLIAM & MARY	11/24/09	*	13	0-3	.000	0-0	.000	3-4	.750	1	1	2	5.4	2	1	2	2	0	3	8.4	
vs West Virginia	11/27/09	*	27	3-5	.600	0-0	.000	0-0	.000	1	3	4	5.2	2	1	3	2	0	6	8.0	
vs Columbia	11/28/09	*	30	6-8	.750	0-0	.000	6-6	1.000	3	9	12	6.1	3	0	0	0	1	18	9.4	
BOSTON COLLEGE	12/2/09	*	34	6-11	.545	0-0	.000	4-6	.667	3	3	6	6.1	1	0	3	2	1	16	10.3	
MICHIGAN	12/6/09	*	32	5-10	.500	0-1	.000	2-2	1.000	1	6	7	6.2	4	0	2	1	0	12	10.4	
at Iowa State	12/10/09	*	28	5-16	.313	1-2	.500	2-2	1.000	0	11	11	6.7	1	4	4	3	0	13	10.7	
DRAKE	12/20/09	*	29	8-10	.800	0-0	.000	0-1	.000	1	4	5	6.5	0	0	2	4	0	16	11.2	
SOUTH DAKOTA STATE	12/22/09	*	23	4-10	.400	0-0	.000	3-6	.500	5	4	9	6.8	4	0	0	1	1	11	11.2	
at Penn State	12/28/09	*	29	1-2	.500	0-0	.000	0-0	.000	2	5	7	6.8	2	0	4	1	0	2	10.5	
Totals			13	351	56-114	.491	1-3	.333	23-33	.697	26	62	88	6.8	27	9	26	27	6	136	10.5

Games played: 13
 Minutes/game: 27.0
 Points/game: 10.5
 FG Pct: 49.1
 3FG Pct: 33.3

Rebounds/game: 6.8
 Assists/game: 0.7
 Turnovers/game: 2.0
 Assist/turnover ratio: 0.3
 Steals/game: 0.5

CAREER STATISTICS

YEAR	G/GS	FG-A	PCT	3-PT	PCT	FT-A	PCT	O-D-REB	AVG	PF-FO	AS	TO	BK	ST	PTS	AVG
Fresh.	13/13	56-114	.491	1-3	.333	23-33	.697	26-62-88	6.8	27-0	9	26	27	6	136	10.5





University of Iowa Women's Basketball

Updated Iowa Player Bio

Shante Jones



13

Guard, 5-9, Sophomore
Dayton, OH
Carroll HS

- Career-high 8 points (4-6 FGs) in win over Santa Clara.
- Played in 10 games as a freshman.
- Shared a game high with three steals in season-opening win over Texas State in 2008-09.
- Posted two points, one rebound and one assist in win over Boston in 2008-09.

Personal Bests

Points: 8 vs. Santa Clara (11/14/09)
Rebounds: 2, 3x, last vs. Kansas (11/18/09)
FGM: 4 vs. Santa Clara (11/14/09)
FGA: 6 vs. Santa Clara (11/14/09)
3-pt FG: - - -
3-pt FGA: 1 at Drake (12/20/08)
FTM: 2 vs. Minnesota (3/6/09)
FTA: 2 vs. Minnesota (3/6/09)
Assists: 1, twice, last vs. Cal (11/29/09)
Steals: 3 vs. Texas State (11/16/08)
Blocks: 1, twice, last vs. Santa Clara (11/14/09)
Minutes: 10 vs. Kansas (11/18/09)

2009-10 Game-by-Game

Opponent	Date	gs	min	Total		3-Pointers		Free throws		Rebounds				pf	a	t/o	blk	stl	pts	avg
				fg-fga	pct	3fg-fga	pct	ft-fa	pct	off	def	tot	avg							
SANTA CLARA	11/14/09	7		4-6	.667	0-0	.000	0-0	.000	1	0	1	1.0	1	0	1	1	1	8	8.0
ILLINOIS STATE	11/15/09	5		0-2	.000	0-0	.000	0-0	.000	0	0	0	0.5	0	0	0	0	0	0	4.0
KANSAS	11/18/09	10		1-4	.250	0-0	.000	0-1	.000	0	2	2	1.0	1	1	0	0	0	2	3.3
at UNI	11/22/09	2		0-0	.000	0-0	.000	0-0	.000	0	0	0	0.8	1	0	1	0	0	0	2.5
Totals		0	24	5-12	.417	0-0	.000	0-1	.000	1	2	3	0.8	3	1	2	1	1	10	2.5

Games played: 4
 Minutes/game: 6.0
 Points/game: 2.5
 FG Pct: 41.7
 FT Pct: 0.0

Rebounds/game: 0.8
 Assists/game: 0.3
 Turnovers/game: 0.5
 Assist/turnover ratio: 0.5
 Steals/game: 0.3
 Blocks/game: 0.3

CAREER STATISTICS

YEAR	G/GS	FG-A	PCT	3-PT	PCT	FT-A	PCT	O-D-REB	AVG	PF-FO	AS	TO	BK	ST	PTS	AVG
Fresh.	10/0	3-11	.273	0-1	.000	2-3	.667	3-2-5	0.5	2-0	2	4	1	3	8	0.8
Soph.	4/0	5-12	.417	0-0	.000	0-1	.000	1-2-3	0.8	3-0	1	2	1	1	10	2.5
TOTALS	14/0	8-23	.348	0-1	.000	2-4	.500	4-4-8	0.6	5-0	3	6	2	4	18	1.3

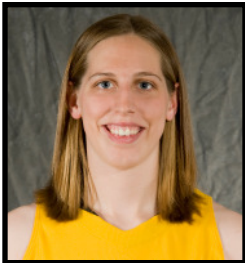




University of Iowa Women's Basketball

Updated Iowa Player Bio

Kelly Krei



20

Forward, 6-2, Sophomore
Iowa City, IA
City HS

- Netted a career-high 16 points and two blocks against West Virginia.
- Played all 40 minutes in win against Illinois State, scoring 15 points (4-6 3Pt. FGs).
- Played in 27 games as a freshman.
- Missed only seven free throws in her freshman season (30-37, .811).

Personal Bests

Points: 16 vs. WVU (11/27/09)
Rebounds: 9 vs. Drake (12/20/09)
FGM: 5, twice, last vs. Mich. (12/6/09)
FGA: 8, twice, last vs. WVU (11/27/09)
3-pt FG: 4 vs. Illinois State (11/15/09)
3-pt FGA: 6 vs. Illinois State (11/15/09)
FTM: 7 vs. Boston (11/22/08)
FTA: 8, twice, last vs. Boston (11/22/08)
Assists: 4, twice, last vs. Drake (12/20/09)
Steals: 3 vs. Boston College (12/2/09)
Blocks: 2, twice, last at Iowa St. (12/10/09)
Minutes: 40, twice, last vs. Kansas (11/18/09)

2009-10 Game-by-Game

				Total		3-Pointers		Free throws		Rebounds											
Opponent	Date	gs	min	fg-fga	pct	3fg-fga	pct	ft-fta	pct	off	def	tot	avg	pf	a	t/o	blk	stl	pts	avg	
SANTA CLARA	11/14/09	*	24	1-4	.250	0-1	.000	0-0	.000	0	3	3	3.0	3	4	3	0	2	2	2.0	
ILLINOIS STATE	11/15/09	*	40	4-8	.500	4-6	.667	3-6	.500	1	1	2	2.5	2	0	0	0	0	15	8.5	
KANSAS	11/18/09	*	40	1-7	.143	1-5	.200	3-5	.600	2	4	6	3.7	2	0	1	0	1	6	7.7	
at UNI	11/22/09	*	32	1-2	.500	1-2	.500	0-0	.000	0	5	5	4.0	3	1	1	1	1	3	6.5	
WILLIAM & MARY	11/24/09		25	1-6	.167	0-3	.000	0-0	.000	3	2	5	4.2	0	1	2	1	2	2	5.6	
vs West Virginia	11/27/09	*	33	5-8	.625	3-5	.600	3-4	.750	0	6	6	4.5	1	1	1	2	1	16	7.3	
vs Columbia	11/28/09	*	22	1-4	.250	1-3	.333	0-0	.000	0	0	0	3.9	5	2	5	0	0	3	6.7	
BOSTON COLLEGE	12/2/09	*	37	3-7	.429	1-3	.333	0-0	.000	2	6	8	4.4	1	2	1	0	3	7	6.8	
MICHIGAN	12/6/09	*	31	5-7	.714	2-4	.500	0-0	.000	2	1	3	4.2	2	1	1	0	1	12	7.3	
at Iowa State	12/10/09	*	33	3-3	1.000	3-3	1.000	0-0	.000	0	2	2	4.0	2	0	1	2	1	9	7.5	
DRAKE	12/20/09	*	33	1-3	.333	0-2	.000	0-0	.000	2	7	9	4.5	2	4	2	0	1	2	7.0	
SOUTH DAKOTA STATE	12/22/09	*	32	3-5	.600	1-1	1.000	5-7	.714	4	4	8	4.8	1	1	3	1	1	12	7.4	
at Penn State	12/28/09	*	30	3-10	.300	1-4	.250	2-3	.667	2	3	5	4.8	3	1	1	0	0	9	7.5	
Totals			12	412	32-74	.432	18-42	.429	16-25	.640	18	44	62	4.8	27	18	22	7	14	98	7.5

Games played: 13
 Minutes/game: 31.7
 Points/game: 7.5
 FG Pct: 43.2
 3FG Pct: 42.9

Rebounds/game: 4.8
 Assists/game: 1.4
 Turnovers/game: 1.7
 Assist/turnover ratio: 0.8
 Steals/game: 1.1

CAREER STATISTICS

YEAR	G/GS	FG-A	PCT	3-PT	PCT	FT-A	PCT	O-D-REB	AVG	PF-FO	AS	TO	BK	ST	PTS	AVG
Fresh.	27/0	19-54	.352	7-19	.368	30-37	.811	7-55-62	2.3	27-0	11	29	2	6	75	2.8
Soph.	13/12	32-74	.432	18-42	.429	26-25	.640	18-44-62	4.8	27-1	18	22	7	14	98	7.5
TOTALS	40/12	51-128	.398	25-61	.410	56-62	.903	25-99-124	3.1	54-1	29	51	9	20	173	4.3





University of Iowa Women's Basketball

Updated Iowa Player Bio

Kachine Alexander



21

Guard, 5-9, Junior
Minneapolis, MN
Benilde-St. Margaret's HS

- Returned to action Dec. 20 vs. Drake, after missing seven games with a stress fracture in her right leg.
- Has 12 career double-doubles.
- Has recorded double-doubles in each of Iowa's three games this season.
- Named co-Big Ten Player of the Week (11/16) after earning MVP honors of the KCRG-TV9 Hawkeye Challenge.
- Second team all-Big Ten selection by the league coaches as a sophomore.
- Became the first Big Ten women's basketball player to record two triple-doubles in the same season when she accomplished the feat as a sophomore.

Personal Bests

Points: 26 vs. Penn State (2/1/09)
Rebounds: 21 vs. Penn State (2/1/09)
FGM: 8, 3x, last vs. Kansas (11/18/09)
FGA: 21 vs. Santa Clara (11/14/09)
3-pt FG: 1, 4x, last vs. Kansas (11/18/09)
3-pt FGA: 4, twice, last vs. Ill. St. (11/15/09)
FTM: 14 vs. Ohio State (2/12/09)
FTA: 18 vs. Ohio State (2/12/09)
Assists: 12 vs. Northwestern (1/18/09)
Steals: 4 vs. Illinois State (11/15/09)
Blocks: 3 vs. Texas State (11/16/08)
Minutes: 50 vs. Penn State (2/1/09)

2009-10 Game-by-Game

Opponent	Date	gs	min	Total		3-Pointers		Free throws		Rebounds				pf	a	t/o	blk	stl	pts	avg
				fg-fga	pct	3fg-fga	pct	ft-fa	pct	off	def	tot	avg							
SANTA CLARA	11/14/09	*	30	8-21	.381	1-4	.250	2-2	1.000	9	9	18	18.0	2	5	4	1	1	19	19.0
ILLINOIS STATE	11/15/09	*	38	4-14	.286	0-4	.000	13-16	.813	9	3	12	15.0	3	4	4	2	4	21	20.0
KANSAS	11/18/09	*	36	8-16	.500	1-2	.500	6-8	.750	7	10	17	15.7	1	4	4	0	1	23	21.0
DRAKE	12/20/09	*	15	4-6	.667	0-0	.000	0-0	.000	2	4	6	13.3	1	1	1	0	0	8	17.8
SOUTH DAKOTA STATE	12/22/09		25	3-13	.231	0-2	.000	3-4	.750	2	5	7	12.0	2	5	5	0	3	9	16.0
at Penn State	12/28/09	*	38	4-15	.267	0-2	.000	3-4	.750	3	5	8	11.3	4	4	2	1	3	11	15.2
Totals		4	182	31-85	.365	2-14	.143	27-34	.794	32	36	68	11.3	13	23	20	4	12	91	15.2

Games played: 6
 Minutes/game: 30.3
 Points/game: 15.2
 FG Pct: 36.5
 3FG Pct: 14.3

Rebounds/game: 11.3
 Assists/game: 3.8
 Turnovers/game: 3.3
 Assist/turnover ratio: 1.2
 Steals/game: 2.0

CAREER STATISTICS

YEAR	G/GS	FG-A	PCT	3-PT	PCT	FT-A	PCT	O-D-REB	AVG	PF-FO	AS	TO	BK	ST	PTS	AVG
Fresh.	18/0	14-40	.350	0-1	.000	12-24	.500	26-26-52	2.9	21-0	12	15	2	10	40	2.2
Soph.	32/32	93-220	.423	2-12	.167	131-176	.744	84-198-282	8.8	81-3	121	94	7	29	319	10.0
Junior	6/4	31-85	.365	2-14	.143	27-34	.794	32-36-68	11.3	13-0	23	20	4	12	91	15.2
TOTALS	56/36	138-345	.400	4-26	.154	170-234	.726	142-260-402	7.18	115-3	156	129	13	51	450	8.0





University of Iowa Women's Basketball

Updated Iowa Player Bio

Kelsey Cermak



22

Forward, 6-1, Junior
Norwalk, IA
Norwalk HS

- Started first game of career in win at UNI.
- Set career-highs in rebounds (5) and minutes played (26), along with tying a career-high in points (5) in win over Santa Clara.
- Academic all-Big Ten in 2008-09.
- Played in 17 game as a sophomore.
- Did not see action in Iowa's first four games last year due to a back injury.

Personal Bests

Points: 5, twice, last vs. Santa Clara (11/14/09)
Rebounds: 5 vs. Santa Clara (11/14/09)
FGM: 2, 3x, last vs. Santa Clara (11/14/09)
FGA: 5, twice, last vs. W&M, 11/24/09)
3-pt FG: 1 vs. Illinois State (11/15/09)
3-pt FGA: 3 vs. Illinois State (11/15/09)
FTM: 2, 3x, last vs. BC (12/2/09)
FTA: 2, 4x, last vs. Santa Clara (11/14/09)
Assists: 2, twice, last vs. BC (12/2/09)
Steals: 1, 10x, last vs. BC (12/2/09)
Blocks: 2 vs. Minnesota (1/11/09)
Minutes: 26 vs. Santa Clara (11/14/09)

2009-10 Game-by-Game

Opponent	Date	gs	min	Total		3-Pointers		Free throws		Rebounds				pf	a	t/o	blk	stl	pts	avg
				fg-fga	pct	3fg-fga	pct	ft-fa	pct	off	def	tot	avg							
SANTA CLARA	11/14/09		26	2-5	.400	0-1	.000	1-2	.500	2	3	5	5.0	3	0	0	0	0	5	5.0
ILLINOIS STATE	11/15/09		16	1-3	.333	1-3	.333	0-0	.000	2	2	4	4.5	0	0	0	1	0	3	4.0
KANSAS	11/18/09		16	1-2	.500	0-0	.000	0-0	.000	0	1	1	3.3	2	0	0	0	1	2	3.3
at UNI	11/22/09	*	17	0-1	.000	0-0	.000	0-0	.000	1	2	3	3.3	1	1	0	0	0	0	2.5
WILLIAM & MARY	11/24/09	*	23	1-5	.200	0-0	.000	1-1	1.000	2	1	3	3.2	0	1	0	0	0	3	2.6
vs West Virginia	11/27/09		7	0-0	.000	0-0	.000	0-0	.000	0	0	0	2.7	0	0	0	0	0	0	2.2
vs Columbia	11/28/09		19	0-1	.000	0-1	.000	0-0	.000	1	0	1	2.4	2	0	0	0	1	0	1.9
BOSTON COLLEGE	12/2/09		9	0-1	.000	0-0	.000	2-2	1.000	0	1	1	2.3	2	2	0	0	1	2	1.9
MICHIGAN	12/6/09		7	0-1	.000	0-1	.000	0-0	.000	0	0	0	2.0	0	0	1	0	0	0	1.7
at Iowa State	12/10/09		7	0-0	.000	0-0	.000	0-0	.000	1	0	1	1.9	1	0	0	0	0	0	1.5
DRAKE	12/20/09		7	0-0	.000	0-0	.000	0-0	.000	0	0	0	1.7	0	1	0	0	0	0	1.4
SOUTH DAKOTA STATE	12/22/09		9	0-1	.000	0-0	.000	0-0	.000	1	0	1	1.7	1	0	0	0	0	0	1.3
at Penn State	12/28/09		15	1-1	1.000	0-0	.000	0-0	.000	0	0	0	1.5	0	0	1	0	1	2	1.3
Totals		2	178	6-21	.286	1-6	.167	4-5	.800	10	10	20	1.5	12	5	2	1	4	17	1.3

Games played: 13
 Minutes/game: 13.7
 Points/game: 1.3
 FG Pct: 28.6
 3FG Pct: 16.7

Rebounds/game: 1.5
 Assists/game: 0.4
 Turnovers/game: 0.2
 Assist/turnover ratio: 2.5
 Steals/game: 0.3

CAREER STATISTICS

YEAR	G/GS	FG-A	PCT	3-PT	PCT	FT-A	PCT	O-D-REB	AVG	PF-FO	AS	TO	BK	ST	PTS	AVG
Fresh.	10/0	2-6	.333	0-1	.000	6-7	.857	5-4-9	0.9	3-0	2	2	0	1	10	1.0
Soph.	17/0	2-9	.222	0-1	.000	0-0	.000	4-5-9	0.5	10-0	3	3	4	5	4	0.2
Junior	13/2	6-21	.286	1-6	.167	4-5	.800	10-10-20	1.5	12-0	5	2	1	4	17	1.3
TOTALS	40/2	10-36	.278	1-8	.125	10-12	.833	19-19-38	1.0	25-0	10	7	5	10	31	0.8





University of Iowa Women's Basketball

Updated Iowa Player Bio

Theairra Taylor



23

Guard, 5-11, Freshman
St. Paul, MN
Central HS

- 16 points, nine rebounds, five assists and three blocks in first career start against William & Mary.
- Scored 12 points, including eight in the final two minutes in win at UNI.
- Scored three points, grabbed five rebounds and added three assists in win over Santa Clara in first collegiate action.
- Finalist for 2009 Miss Minnesota Basketball.
- Associated Press and Pioneer Press first team all-State as a senior.
- Averaged 18.6 points, 8.0 rebounds, 3.6 steals and 2.8 assists as a senior.

Personal Bests

Points: 16 vs. W&M (11/24/09)
Rebounds: 9 vs. W&M (11/24/09)
FGM: 7 vs. W&M (11/24/09)
FGA: 15 vs. W&M (11/24/09)
3-pt FG: 2 vs. W&M (11/24/09)
3-pt FGA: 5 vs. Boston College (12/2/09)
FTM: 4, 3x, last vs. Columbia (11/28/09)
FTA: 4, 4x, last vs. Drake (12/20/09)
Assists: 5 vs. W&M (11/24/09)
Steals: 3, twice, last vs. Mich (12/6/09)
Blocks: 4, twice, last vs. Mich (12/6/09)
Minutes: 36 vs. W&M (11/24/09)

2009-10 Game-by-Game

Opponent	Date	gs	min	Total		3-Pointers		Free throws		Rebounds				pf	a	t/o	blk	stl	pts	avg
				fg-fga	pct	3fg-fga	pct	ft-fa	pct	off	def	tot	avg							
SANTA CLARA	11/14/09		18	1-7	.143	0-2	.000	1-2	.500	2	3	5	5.0	1	3	1	0	1	3	3.0
at UNI	11/22/09		24	4-8	.500	0-1	.000	4-4	1.000	1	6	7	6.0	3	0	2	0	2	12	7.5
WILLIAM & MARY	11/24/09 *		36	7-15	.467	2-3	.667	0-0	.000	4	5	9	7.0	1	5	2	3	1	16	10.3
vs West Virginia	11/27/09 *		26	2-6	.333	1-2	.500	0-1	.000	0	4	4	6.3	5	2	3	1	1	5	9.0
vs Columbia	11/28/09 *		27	3-11	.273	1-4	.250	4-4	1.000	1	6	7	6.4	2	4	4	0	1	11	9.4
BOSTON COLLEGE	12/2/09 *		32	2-12	.167	2-5	.400	0-0	.000	1	2	3	5.8	4	4	4	0	3	6	8.8
MICHIGAN	12/6/09 *		32	6-12	.500	1-3	.333	0-1	.000	1	6	7	6.0	2	4	4	4	3	13	9.4
at Iowa State	12/10/09 *		27	3-7	.429	2-4	.500	2-2	1.000	2	1	3	5.6	3	0	6	1	1	10	9.5
DRAKE	12/20/09 *		17	0-7	.000	0-2	.000	3-4	.750	2	1	3	5.3	1	2	2	1	0	3	8.8
SOUTH DAKOTA STATE	12/22/09 *		8	1-1	1.000	0-0	.000	0-0	.000	1	0	1	4.9	0	0	1	0	0	2	8.1
Totals		8	247	29-86	.337	9-26	.346	14-18	.778	15	34	49	4.9	22	24	29	10	13	81	8.1

Games played: 10
 Minutes/game: 24.7
 Points/game: 8.1
 FG Pct: 33.7
 3FG Pct: 34.6
 FT Pct: 77.8

Rebounds/game: 4.9
 Assists/game: 2.4
 Turnovers/game: 2.9
 Assist/turnover ratio: 0.8
 Steals/game: 1.3
 Blocks/game: 1.0

CAREER STATISTICS

YEAR	G/GS	FG-A	PCT	3-PT	PCT	FT-A	PCT	O-D-REB	AVG	PF-FO	AS	TO	BK	ST	PTS	AVG
Fresh.	10/8	29-86	.337	9-26	.346	14-18	.778	15-34-49	4.9	22-1	24	29	10	13	81	8.1





University of Iowa Women's Basketball

Updated Iowa Player Bio

Jaime Printy



24

Guard, 5-11, Freshman
Marion, IA
Linn-Mar HS

- 22 points, four rebounds, four assists and two steals with no turnovers in win over Drake.
- Named Big Ten Freshman of the Week (Nov. 30).
- 20 points, nine rebounds and five assists in win over William & Mary.
- Scored two points, grabbed five rebounds and added five assists in win over Santa Clara in first collegiate game.
- Played high school basketball at Head Coach Lisa Bluder's alma mater (Linn-Mar).
- Became youngest player (15) to ever verbally commit to the Iowa women's basketball program.

Personal Bests

Points: 22 vs. Drake (12/20/09)
Rebounds: 9 vs. W&M (11/24/09)
FGM: 8, twice, last vs. SDSU (12/22/09)
FGA: 17 vs. SDSU (12/22/09)
3-pt FG: 4, twice, last vs. Drake (12/20/09)
3-pt FGA: 9 vs. Columbia (11/28/09)
FTM: 4 vs. WVU (11/27/09)
FTA: 4 vs. WVU (11/27/09)
Assists: 8 vs. WVU (11/27/09)
Steals: 2, 5x, last vs. SDSU (12/22/09)
Blocks: 1 vs. W&M (11/24/09)
Minutes: 37 vs. Illinois State (11/15/09)

2009-10 Game-by-Game

				Total		3-Pointers		Free throws		Rebounds											
Opponent	Date	gs	min	fg-fga	pct	3fg-fga	pct	ft-fa	pct	off	def	tot	avg	pf	a	t/o	blk	stl	pts	avg	
SANTA CLARA	11/14/09	*	27	1-5	.200	0-4	.000	0-0	.000	1	4	5	5.0	2	6	2	0	1	2	2.0	
ILLINOIS STATE	11/15/09	*	37	6-12	.500	2-7	.286	2-2	1.000	1	6	7	6.0	2	4	2	0	0	16	9.0	
KANSAS	11/18/09	*	36	2-9	.222	1-7	.143	0-0	.000	1	5	6	6.0	3	5	3	0	2	5	7.7	
at UNI	11/22/09	*	32	4-8	.500	1-3	.333	3-3	1.000	1	4	5	5.8	5	3	6	0	0	12	8.8	
WILLIAM & MARY	11/24/09	*	33	7-13	.538	3-6	.500	3-3	1.000	1	8	9	6.4	3	5	3	1	0	20	11.0	
vs West Virginia	11/27/09	*	34	5-8	.625	3-4	.750	4-4	1.000	1	5	6	6.3	4	8	5	0	2	17	12.0	
vs Columbia	11/28/09	*	35	4-10	.400	4-9	.444	0-0	.000	1	4	5	6.1	2	3	3	0	0	12	12.0	
BOSTON COLLEGE	12/2/09	*	27	4-11	.364	3-6	.500	2-2	1.000	1	4	5	6.0	1	1	3	0	1	13	12.1	
MICHIGAN	12/6/09	*	34	1-9	.111	1-3	.333	2-3	.667	3	4	7	6.1	1	1	2	0	0	5	11.3	
at Iowa State	12/10/09	*	28	5-6	.833	2-3	.667	2-2	1.000	0	0	0	5.5	4	2	0	0	0	14	11.6	
DRAKE	12/20/09	*	28	8-12	.667	4-5	.800	2-2	1.000	2	2	4	5.4	0	4	0	0	2	22	12.5	
SOUTH DAKOTA STATE	12/22/09	*	31	8-17	.471	2-8	.250	0-0	.000	1	1	2	5.1	0	1	3	0	2	18	13.0	
at Penn State	12/28/09	*	38	6-21	.286	3-13	.231	1-1	1.000	2	3	5	5.1	4	2	2	0	2	16	13.2	
Totals			13	420	61-141	.433	29-78	.372	21-22	.955	16	50	66	5.1	31	45	34	1	12	172	13.2

Games played: 13
 Minutes/game: 32.3
 Points/game: 13.2
 FG Pct: 43.3
 3FG Pct: 37.2

Rebounds/game: 5.1
 Assists/game: 3.5
 Turnovers/game: 2.6
 Assist/turnover ratio: 1.3
 Steals/game: 0.9

CAREER STATISTICS

YEAR	G/GS	FG-A	PCT	3-PT	PCT	FT-A	PCT	O-D-REB	AVG	PF-FO	AS	TO	BK	ST	PTS	AVG
Fresh.	13/13	61-141	.433	29-78	.372	21-22	.955	16-50-66	5.1	31-1	45	34	1	12	172	13.2





University of Iowa Women's Basketball

Updated Iowa Player Bio

Hannah Draxten



31

G/F, 6-0, Sophomore
Fergus Falls, MN
Fergus Falls HS

- Saw first action of the season against West Virginia, after missing first five games with herniated disc in her back.
- Missed only one free throw as a freshman (10-11, .909).
- Played in 30 games and ranked fourth in team 3-pointers made (23) and attempted (65).
- Her 23 triples rank fifth-best in a single-season by an Iowa freshman.

Personal Bests

Points: 13 vs. Northwestern (1/18/09)
Rebounds: 8 at Michigan State (1/29/09)
FGM: 5 vs. Northwestern (1/18/09)
FGA: 9 vs. Northwestern (1/18/09)
3-pt FG: 3, twice, last vs. N'Western (1/18/09)
3-pt FGA: 6 vs. Northwestern (1/18/09)
FTM: 4, 4x, last vs. Ohio St. (3/7/09)
FTA: 2, 5x, last vs. Ohio St. (3/7/09)
Assists: 4, twice, last vs. Mich. St. (1/29/09)
Steals: 2, twice, last vs. Ohio St. (3/7/09)
Blocks: 1 vs. Minnesota (1/11/09)
Minutes: 28 at Michigan State (1/29/09)

2009-10 Game-by-Game

Opponent	Date	gs	min	Total		3-Pointers		Free throws		Rebounds				pf	a	t/o	blk	stl	pts	avg
				fg-fga	pct	3fg-fga	pct	ft-fa	pct	off	def	tot	avg							
vs West Virginia	11/27/09	5		0-1	.000	0-1	.000	0-0	.000	0	0	0	0.0	1	0	0	0	1	0	0.0
at Iowa State	12/10/09	10		0-1	.000	0-1	.000	0-0	.000	0	1	1	0.5	1	1	1	0	0	0	0.0
DRAKE	12/20/09	13		3-6	.500	2-5	.400	0-0	.000	2	1	3	1.3	1	0	2	0	1	8	2.7
SOUTH DAKOTA STATE	12/22/09	11		0-2	.000	0-1	.000	0-0	.000	1	0	1	1.3	0	0	1	0	1	0	2.0
Totals		0	39	3-10	.300	2-8	.250	0-0	.000	3	2	5	1.3	3	1	4	0	3	8	2.0

Games played: 4
 Minutes/game: 9.8
 Points/game: 2.0
 FG Pct: 30.0
 3FG Pct: 25.0

Rebounds/game: 1.3
 Assists/game: 0.3
 Turnovers/game: 1.0
 Assist/turnover ratio: 0.3
 Steals/game: 0.8

CAREER STATISTICS

YEAR	G/GS	FG-A	PCT	3-PT	PCT	FT-A	PCT	O-D-REB	AVG	PF-FO	AS	TO	BK	ST	PTS	AVG
Fresh.	30/0	32-93	.344	23-65	.354	10-11	.909	20-41-61	2.0	35-1	33	21	1	9	97	3.2
Soph.	4/0	3-10	.300	2-8	.250	0-0	.000	3-2-5	1.3	3-0	1	4	0	3	8	2.0
TOTALS	34/0	35-103	.340	25-73	.342	10-11	.909	23-43-66	1.9	38-1	34	25	1	12	105	3.1





University of Iowa Women's Basketball

Updated Iowa Player Bio

JoAnn Hamlin

2009-10 Game-by-Game



45

F/C, 6-3, Senior
Douglass, KS
Kansas State/Winfield HS

- Sidelined indefinitely after having blood clot removed in right leg.
- Started first 18 games of her junior year before suffering an ankle injury.
- Posted four double-doubles last season.
- Ranked second in team rebounding (6.0) and blocks (23).

Personal Bests

Points: 24 vs. Detroit (11/20/05)
Rebounds: 14 vs. South Carolina (11/28/08)
FGM: 11, twice, last vs. Missouri (2/1/06)
FGA: 18 vs. Missouri (2/1/06)
3-pt FG: 2, 3x, last at Drake (12/20/08)
3-pt FGA: 2 vs. Indiana (2/3/08)
FTM: 10 vs. Detroit (11/20/05)
FTA: 12 vs. Detroit (11/20/05)
Assists: 4 vs. Northern Illinois (12/8/07)
Steals: 3, 3x, last vs. Idaho St. (3/17/06)
Blocks: 5 at Drake (12/20/08)
Minutes: 36 vs. Minnesota (1/11/09)

CAREER STATISTICS

YEAR	G/GS	FG-A	PCT	3-PT	PCT	FT-A	PCT	O-D-REB	AVG	PF-FO	AS	TO	BK	ST	PTS	AVG
Fresh.	33/31	139-265	.525	0-2	.000	52-77	.675	61-91-152	4.6	171-9	19	62	22	26	330	10.0
Soph.	32/1	44-95	.463	6-9	.667	23-33	.697	31-67-98	3.1	61-3	27	36	23	12	117	3.7
Junior	27/18	83-169	.491	1-7	.143	37-54	.685	49-113-162	6.0	88-5	21	71	23	11	204	7.6
Senior																
TOTALS	92/50	266-529	.503	7-18	.389	112-164	.683	141-271-412	4.5	320-17	67	169	68	49	651	7.1





University of Iowa Women's Basketball

Updated Iowa Player Bio

Gabby Machado



50

Forward, 6-0, Freshman
Pontiac, MI
Northern HS

- 12 points, eight rebounds, two assists and two steals in win over William & Mary.
- Saw first collegiate action against Illinois State, and grabbed one rebound.
- Ranked in the Top 10 in the state of Michigan's 2009 class.
- Holds school record for career rebounds (1,106).
- Averaged 23 points, 14 rebounds and three assists as a senior.

Personal Bests

Points: 12 vs. W&M (11/24/09)
Rebounds: 8 vs. W&M (11/24/09)
FGM: 6 vs. W&M (11/24/09)
FGA: 10 vs. W&M (11/24/09)
3-pt FG: - - -
3-pt FGA: - - -
FTM: 4 vs. SDSU (12/22/09)
FTA: 6 vs. SDSU (12/22/09)
Assists: 2, twice, last vs. SDSU (12/22/09)
Steals: 2 vs. W&M (11/24/09)
Blocks: 1, 3x, last vs. Drake (12/20/09)
Minutes: 19 vs. W&M (11/24/09)

2009-10 Game-by-Game

Opponent	Date	gs	min	Total		3-Pointers		Free throws		Rebounds				pf	a	t/o	blk	stl	pts	avg
				fg-fga	pct	3fg-fga	pct	ft-fa	pct	off	def	tot	avg							
ILLINOIS STATE	11/15/09	1		0-0	.000	0-0	.000	0-0	.000	0	1	1	1.0	1	0	1	0	0	0	0.0
at UNI	11/22/09	3		1-3	.333	0-0	.000	0-0	.000	0	0	0	0.5	1	0	1	0	0	2	1.0
WILLIAM & MARY	11/24/09	19		6-10	.600	0-0	.000	0-0	.000	2	6	8	3.0	3	2	3	0	2	12	4.7
vs West Virginia	11/27/09	13		2-3	.667	0-0	.000	0-2	.000	2	1	3	3.0	4	0	1	1	0	4	4.5
vs Columbia	11/28/09	9		1-5	.200	0-0	.000	2-2	1.000	1	4	5	3.4	2	0	4	1	1	4	4.4
MICHIGAN	12/6/09	8		0-1	.000	0-0	.000	0-2	.000	0	1	1	3.0	1	0	2	0	0	0	3.7
at Iowa State	12/10/09	12		4-6	.667	0-0	.000	0-0	.000	0	2	2	2.9	4	0	1	1	0	8	4.3
DRAKE	12/20/09	10		1-4	.250	0-0	.000	0-0	.000	2	0	2	2.8	0	1	1	1	1	2	4.0
SOUTH DAKOTA STATE	12/22/09	17		1-6	.167	0-0	.000	4-6	.667	3	3	6	3.1	4	2	1	0	1	6	4.2
at Penn State	12/28/09	16		2-4	.500	0-0	.000	2-2	1.000	3	3	6	3.4	4	0	3	0	0	6	4.4
Totals		0	108	18-42	.429	0-0	.000	8-14	.571	13	21	34	3.4	24	5	18	4	5	44	4.4

Games played: 10
 Minutes/game: 10.8
 Points/game: 4.4
 FG Pct: 42.9
 FT Pct: 57.1

Rebounds/game: 3.4
 Assists/game: 0.5
 Turnovers/game: 1.8
 Assist/turnover ratio: 0.3
 Steals/game: 0.5

CAREER STATISTICS

YEAR	G/GS	FG-A	PCT	3-PT	PCT	FT-A	PCT	O-D-REB	AVG	PF-FO	AS	TO	BK	ST	PTS	AVG
Fresh.	10/0	18-42	.429	0-0	.000	8-14	.571	13-21-34	3.4	24-0	5	18	4	5	44	4.4





University of Iowa Women's Basketball

Game-by-Game Results

Overall: 7-5 Big Ten: 0-1 Home: 5-3 Away: 1-1 Neutral: 1-1

Date	Opponent	Result	Attend.	Top Scorer	Top Rebounder
Nov. 14	Santa Clara [^]	W, 67-51	2,277	Kachine Alexander (19)	Kachine Alexander (18)
Nov. 15	Illinois State [^]	W, 75-67	2,793	Kachine Alexander (21)	Kachine Alexander (12)
Nov. 18	Kansas	L, 55-66	3,336	Kachine Alexander (23)	Kachine Alexander (17)
Nov. 22	at Northern Iowa	W, 81-70	1,607	Kamille Wahlin (33)	Morgan Johnson (8)
Nov. 24	William & Mary	W, 78-54	2,537	Wahlin, Printy (20)	Taylor, Printy (9)
Nov. 27	vs. West Virginia [#]	L, 66-69	736	Jaime Printy (17)	Krei, Printy (6)
Nov. 28	vs. Columbia [#]	W, 72-69	261	Wahlin, Johnson (18)	Johnson (12)
Dec. 2	Boston College ^{\$}	L, 67-72	2,273	Kamille Wahlin (23)	Kelly Krei (8)
Dec. 6	Michigan [*]	L, 51-54	2,856	Theairra Taylor (13)	Four Players (7)
Dec. 10	at Iowa State	L, 66-85	12,244	Jaime Printy (14)	Morgan Johnson (11)
Dec. 20	Drake	W, 73-61	4,312	Jaime Printy (22)	Kelly Krei (9)
Dec. 22	South Dakota State	W, 82-69	2,440	Jaime Printy (18)	Morgan Johnson (9)
Dec. 28	at Penn State [*]	L, 73-77	4,286	Kamille Wahlin (27)	Kachine Alexander (8)
Dec. 31	Wisconsin [*]				
Jan. 3	at Minnesota [*]				
Jan. 7	at Michigan [*]				
Jan. 14	Penn State [*]				
Jan. 17	at Purdue [*]				
Jan. 21	at Illinois [*]				
Jan. 24	Northwestern [*]				
Jan. 31	Purdue [*]				
Feb. 4	at Ohio State [*]				
Feb. 7	Michigan State [*]				
Feb. 11	at Indiana [*]				
Feb. 14	Illinois [*]				
Feb. 18	Minnesota [*]				
Feb. 21	at Northwestern [*]				
Feb. 25	Indiana [*]				
Feb. 28	at Wisconsin [*]				

[^] - KCRG-TV9 Hawkeye Challenge, Iowa City, IA

[#] - Nugget Classic, Reno, NV

^{\$} - Big Ten/ACC Challenge

^{*} - Big Ten Conference Game

[%] - Big Ten Tournament, Indianapolis, IN

Attendance Summary	Games	Totals	Average
Home	8	23274	2909
Away	3	18137	6046
Neutral	2	997	498
Totals	13	42958	3228





University of Iowa Women's Basketball

Game-by-Game Statistics

Team	Score	FG-A	PCT	3-PT. FG	PCT	FT-A	PCT	REB	PF	AS	TO	BLK	ST
at Iowa	67	29-77	.377	4-22	.182	5-7	.714	50	12	19	15	3	9
Santa Clara	51	21-55	.382	5-20	.250	4-7	.571	34	10	14	24	2	6
at Iowa	75	22-58	.379	9-26	.346	22-30	.733	39	13	10	11	4	5
Illinois State	67	26-57	.456	4-15	.267	11-13	.846	35	23	17	15	4	5
at Iowa	55	21-59	.356	4-19	.211	9-14	.643	42	14	12	17	2	5
Kansas	66	26-69	.377	6-16	.375	8-12	.667	46	18	11	13	4	11
Iowa	81	28-54	.519	8-17	.471	17-21	.810	34	21	12	18	8	6
at Northern Iowa	70	23-64	.359	5-21	.238	19-24	.792	42	19	14	16	0	7
at Iowa	78	31-69	.449	9-21	.429	7-9	.778	49	10	21	14	7	6
William & Mary	54	23-65	.354	4-14	.286	4-14	.286	38	15	18	13	1	5
Iowa	66	25-53	.472	9-18	.500	7-11	.636	33	21	17	22	6	6
vs. West Virginia	69	24-63	.381	2-13	.154	19-22	.864	36	15	10	14	5	14
Iowa	72	22-56	.393	12-27	.444	16-16	1.000	38	17	17	21	1	7
vs. Columbia	69	24-62	.387	7-21	.333	14-22	.636	35	12	14	13	3	8
at Iowa	67	26-40	.400	9-21	.429	10-12	.833	30	12	14	17	2	9
Boston College	72	30-66	.455	5-21	.238	7-8	.875	45	18	14	22	1	9
at Iowa	51	21-58	.362	5-24	.208	4-8	.500	41	11	13	18	5	5
Michigan	54	23-58	.397	4-18	.222	4-9	.444	37	15	14	14	7	6
Iowa	66	24-50	.480	9-17	.529	9-9	1.000	28	20	14	19	7	2
at Iowa State	85	28-62	.452	16-34	.471	13-17	.765	32	13	21	9	4	9
at Iowa	73	30-61	.492	8-17	.471	5-7	.714	42	5	20	17	6	5
Drake	61	25-61	.410	11-22	.500	0-0	.000	27	11	17	16	2	6
at Iowa	82	27-69	.391	7-19	.368	21-29	.724	46	17	13	17	2	9
South Dakota State	69	24-54	.444	5-18	.278	16-20	.800	34	26	13	23	3	7
Iowa	73	26-78	.333	11-34	.324	10-12	.833	39	19	11	17	2	9
at Penn State	77	27-64	.422	2-10	.200	21-24	.875	49	18	14	0	9	9
at Iowa													
<u>Wisconsin</u>													
at Iowa													
<u>at Minnesota</u>													
at Iowa													
<u>at Michigan</u>													
at Iowa													
<u>Penn State</u>													
at Iowa													
<u>at Purdue</u>													
at Iowa													
<u>at Illinois</u>													
at Iowa													
<u>Northwestern</u>													
at Iowa													
<u>Purdue</u>													
at Iowa													
<u>at Ohio State</u>													
at Iowa													
<u>Michigan State</u>													
at Iowa													
<u>at Indiana</u>													
at Iowa													
<u>Illinois</u>													
at Iowa													
<u>Minnesota</u>													
at Iowa													
<u>at Northwestern</u>													
at Iowa													
<u>Indiana</u>													
at Iowa													
<u>at Wisconsin</u>													





University of Iowa Women's Basketball

Season & Career Bests

Season Bests

Player	Points	3-Pointers	Rebounds	Assists	Blocks	Steals
Kachine Alexander	23, Kansas	1, twice	18, Santa Clara	5, twice	2, Illinois State	3, twice
Kelsey Cermak	5, Santa Clara	1, Illinois State	5, Santa Clara	2, Boston College	1, Illinois State	1, four times
Hannah Draxten	8, Drake	2, Drake	3, Drake	1, Iowa State	---	1, three times
JoAnn Hamlin	---	---	---	---	---	---
Morgan Johnson	18, Columbia	1, Iowa State	12, Columbia	4, Iowa State	7, UNI	2, Santa Clara
Shante Jones	8, Santa Clara	---	2, Kansas	1, Kansas	1, Santa Clara	1, Santa Clara
Kelly Krei	16, WVU	4, Illinois State	9, Drake	4, twice	2, twice	3, Boston College
Gabby Machado	12, William & Mary	---	8, William & Mary	2, twice	1, four times	2, William & Mary
Trisha Nesbitt	8, UNI	2, Columbia	3, William & Mary	4, three times	---	2, UNI
Jaime Printy	22, Drake	4, twice	9, William & Mary	8, WVU	1, William & Mary	2, five times
Theairra Taylor	20, William & Mary	3, William & Mary	9, William & Mary	6, Santa Clara	4, Michigan	3, twice
Kamille Wahlin	33, UNI	7, Penn State	7, Michigan	6, twice	---	3, Penn State

Career Bests

Player	Points	3-Pointers	Rebounds	Assists	Blocks	Steals
Kachine Alexander	26, Penn State, '09	1, three times	21, Penn State, '09	12, N'western, '09*	3, Texas St, '08	3, three times
Kelsey Cermak	5, twice	1, Illinois State	5, Santa Clara	2, twice	2, Minnesota, '09	1, nine times
Hannah Draxten	13, N'western, '09	3, Duke, '08	8, Mich. State, '09	4, twice	1, Minnesota, '09	2, twice
JoAnn Hamlin	24, Detroit, '05	2, Indiana, '08	14, South Florida, '08	4, N. Illinois, '07	5, Drake, '08	3, three times
Morgan Johnson	18, Columbia	---	12, Columbia	4, Iowa State	7, UNI	2, Santa Clara
Shante Jones	8, Santa Clara	---	2, three times	1, three times	1, twice	3, Texas St, '08
Kelly Krei	16, WVU	4, Illinois State	9, Drake	4, twice	2, twice	3, Boston College
Gabby Machado	12, William & Mary	---	8, William & Mary	2, William & Mary	1, four times	2, William & Mary
Trisha Nesbitt	8, UNI	2, Columbia	3, William & Mary	4, three times	---	2, UNI
Jaime Printy	22, Drake	4, twice	9, William & Mary	8, WVU	1, William & Mary	2, five times
Theairra Taylor	20, William & Mary	3, William & Mary	9, William & Mary	6, Santa Clara	4, Michigan	3, twice
Kamille Wahlin	33, UNI	7, Penn State	8, Wisconsin, '09	10, Michigan, '09	1, Iowa State, '08	3, Texas St, '08

BOLD - set career best during current season

* - - tied school single-game and Carver-Hawkeye Arena record





University of Iowa Women's Basketball

The Last Time...

The Last Time a Player . . .

Had 30 or more points

Iowa -- 33, Kamille Wahlin, at Northern Iowa, 11/22/09
Opponent -- 32, Jantel Lavender, Ohio State, 2/12/09

Made at least 80% of her FGA (10 att.)

Iowa -- .900 (9-10), Wendy Ausdemore, Georgia Tech, 11/28/07
Opponent -- .875 (14-16), Liz Shimek, Michigan State, 3/3/06

Made 100% of her FTA (10 att.)

Iowa -- 1.000 (10-10), Kristi Smith vs. Ohio State, 2/12/09
Opponent -- 1.000 (13-13), Jolene Anderson, Wisconsin, 1/13/08*

Had 15 or more rebounds

Iowa -- 17, Kachine Alexander vs. Kansas, 11/18/09
Opponent -- 17, Jantel Lavender, Ohio State, 3/7/09

Had 10 or more assists

Iowa -- 10, Kachine Alexander vs. Penn State, 2/1/09
Opponent -- 13, Alison Lacey, Iowa State, 12/10/09

Had 5 or more blocks

Iowa -- 7, Morgan Johnson, at Northern Iowa, 11/22/09[^]
Opponent -- 5, Ebony Ellis, Northern Illinois, 12/8/07

Had 5 or more steals

Iowa -- 5, Kristi Smith vs. Indiana, 2/3/08
Opponent -- 5, Alison Lacey, Iowa State, 12/10/09

The Last Time A Team . . .

Scored 100 or more points

Iowa -- 100 vs. Minnesota, 2/12/88
Opponent -- 101, Iowa State, 12/3/03

Scored 40 or fewer points

Iowa -- 40, vs. Illinois, 2/10/77
Opponent -- 39, Iowa State, 12/4/02

Won an overtime game

Iowa -- 97-89 (3OT), vs. Penn State, 2/1/09
Opponent -- 77-73, Penn State, 12/28/09

Made at least 60% of its FGA (20 att.)

Iowa -- .632 (36-57), vs. Rider, 11/26/05
Opponent -- .654 (34-52), Ohio State, 2/12/06

Made at least 50% of its 3-pt. FGA (8 att.)

Iowa -- .529 (9-17) at Iowa State, 12/10/09
Opponent -- .500 (6-12), Ohio State, 2/21/08, (11-22), Drake, 12/20/09

Made at least 90% of its FTA (10 att.)

Iowa -- 1.000 (16-16) vs. Columbia, 11/28/09[^]
Opponents -- .944 (17-18), Indiana, 12/29/05

* - Carver-Hawkeye Arena record ^ - ties school record





University of Iowa Women's Basketball

Miscellaneous Records and Statistics

GAME-BY-GAME, POINTS-REBOUNDS-ASSISTS-STEALS

# -- starter		2	11	12	13	20	21	22	23	24	31	45	50
Date	Opponent	Wahlin	Nesbitt	Johnson	Jones	Krei	Alexander	Cermak	Taylor	Printy	Draxten	Hamlin	Machado
Nov. 14	Santa Clara	13-3-1-1#	0-1-0-0	15-5-0-2#	8-1-0-1	2-3-4-2#	19-18-5-1#	5-5-0-0	3-5-3-1	2-5-6-1#	DNP	DNP	DNP
Nov. 15	Illinois State	15-4-2-0#	0-0-0-0	5-5-0-1#	0-0-0-0	15-2-0-0#	21-12-4-4#	3-4-0-0#	DNP	16-7-4-0#	DNP	DNP	0-1-0-0
Nov. 18	Kansas	9-1-0-0#	0-0-0-0	8-7-2-0#	2-2-1-0	6-6-0-1#	23-17-4-1#	2-1-0-1	DNP	5-6-5-2#	DNP	DNP	DNP
Nov. 22	at Northern Iowa	33-2-2-1#	8-2-4-2	11-8-1-0#	0-0-0-0	3-5-1-1#	DNP	0-3-1-0#	12-7-0-2	12-5-3-0#	DNP	DNP	2-0-0-0
Nov. 24	William & Mary	20-6-5-1#	2-3-1-0	3-2-1-0#	DNP	2-5-1-2	DNP	3-3-1-0#	16-9-5-1#	20-9-5-0#	DNP	DNP	12-8-2-2
Nov. 27	vs. West Virginia	16-4-5-1#	2-0-0-0	6-4-0-1#	DNP	16-6-1-1#	DNP	0-0-0-0	5-4-2-1#	17-6-8-2#	0-0-0-1	DNP	4-3-0-0
Nov. 28	vs. Columbia	18-3-4-2#	6-0-4-1	18-12-0-1#	DNP	3-0-2-0#	DNP	0-1-0-1	11-7-4-1#	12-5-3-0#	DNP	DNP	4-5-0-1
Dec. 2	Boston College	23-2-4-0#	0-0-1-0	16-6-0-1#	DNP	7-8-2-3#	DNP	2-1-2-1	6-3-4-3#	13-5-1-1#	DNP	DNP	DNP
Dec. 6	Michigan	7-7-6-1#	5-7-1-0	12-7-0-0#	DNP	12-3-1-1#	DNP	0-0-0-0	13-7-4-3#	5-7-1-0#	DNP	DNP	0-1-0-0
Dec. 10	at Iowa State	7-4-3-0#	5-2-4-0	13-11-4-0#	DNP	9-2-0-1#	DNP	0-1-0-0	10-3-0-1#	14-0-2-0#	0-1-1-0	DNP	8-2-0-0
Dec. 20	Drake	12-5-6-0#	0-0-1-0	16-5-0-0#	DNP	2-9-4-1#	8-4-1-0	0-0-1-0	3-3-2-0#	22-4-4-2#	8-3-0-1	DNP	2-2-1-1
Dec. 22	South Dakota State	17-4-1-0#	7-2-3-0	11-9-0-1#	DNP	12-8-1-1#	9-7-5-3	0-1-0-0	2-1-0-0#	18-2-1-2#	0-1-0-1	DNP	6-6-2-1
Dec. 28	at Penn State	27-2-4-3#	0-0-0-0	2-7-0-0#	DNP	9-5-1-0#	11-8-4-3#	2-0-0-1	DNP	16-5-2-2	DNP	DNP	
Dec. 31	Wisconsin												
Jan. 3	at Minnesota												
Jan. 7	at Michigan												
Jan. 14	Penn State												
Jan. 17	at Purdue												
Jan. 21	at Illinois												
Jan. 24	Northwestern												
Jan. 31	Purdue												
Feb. 4	at Ohio State												
Feb. 7	Michigan State												
Feb. 11	at Indiana												
Feb. 14	Illinois												
Feb. 18	Minnesota												
Feb. 21	at Northwestern												
Feb. 25	Indiana												
Feb. 28	Wisconsin												

IOWA RECORD WHEN...

OVERALL	BIG TEN	OVERALL	BIG TEN
Playing at home:	5-3	0-1	0-0
Playing on the road:	1-2	0-1	0-2
Playing on a neutral floor:	1-1	0-0	0-0
Leading at the half:	4-1	0-0	0-1
Trailing at the half:	3-5	0-2	0-1
Tied at the half:	0-0	0-0	0-0
Wearing white:	2-2	0-0	0-0
Wearing black:	2-2	0-1	0-1
Wearing gold:	3-2	0-1	0-1
Scoring 80 points or more:	2-0	0-0	0-1
Scoring 70-79 points:	4-1	0-1	0-0
Scoring 60-69 points:	1-3	0-0	0-0
Scoring 50-59 points:	0-2	0-1	0-0
Scoring fewer than 50 points:	0-0	0-0	0-0
Allowing 80 points or more:	0-1	0-0	0-0
Allowing 70-79 points:	1-2	0-1	0-0
Allowing 60-69 points:	3-2	0-0	0-0
Allowing 50-59 points:	2-1	0-1	0-0
Allowing fewer than 50 points:	0-0	0-0	0-0
Shooting 50% or better FG:	1-0	0-0	0-0
Shooting less than 50% FG:	6-6	0-2	0-0
Opponent shoots 50% FG or better:	0-0	0-0	0-0
Opponent shoots less than 50% FG:	7-6	0-2	0-0
Iowa has higher FG%:	5-2	0-0	0-0
Opponent has higher FG%:	2-4	0-2	0-0
FG% is equal:	0-0	0-0	0-1
Iowa outrebounds opponent:	6-1	0-1	0-0
Opponent has more rebounds:	1-5	0-1	0-0
Rebounds are equal:	0-0	0-0	0-0
Shoots at least 80% FT:	3-3	0-1	0-0
Shoots less than 80% FT:	4-3	0-1	0-0
Opponent shoots at least 80% FT:	2-3	0-1	0-0
Opponent shoots less than 80% FT:	5-2	0-0	0-0
Iowa shoots more FT:	3-1	0-0	0-0
Opponent shoots more FT:	3-4	0-2	0-0
FT attempts are equal:	1-1	0-0	0-0
Iowa has higher FT%:	5-2	0-1	0-0
Opponent has higher FT%:	2-4	0-1	0-0
FT% is equal:	0-0	0-0	0-0
Shoots at least 40% 3-pt:	4-3	0-0	0-0
Shoots less than 40% 3-pt:	3-3	0-2	0-0
Opponent shoots at least 40% 3-pt:	1-1	0-0	0-0
Opponent shoots less than 40% 3-pt:	6-5	0-2	0-0
Iowa has higher 3-pt%:	5-4	0-1	0-0
Opponent has higher 3-pt%:	2-2	0-1	0-0
3-pt% is equal:	0-0	0-0	0-0

LATE GAME CLUTCH FREE THROW SHOOTING

IN FINAL FIVE MINUTES OF GAME

Player	FTM	FTA	Pct.
Kamille Wahlin	11	12	.917
Morgan Johnson	8	9	1.000
Kachine Alexander	5	9	.556
Theairra Taylor	5	7	.714
Jaime Printy	4	5	.800
Kelly Krei	5	6	.833
Trisha Nesbitt	4	4	1.000
Morgan Johnson	1	2	.500
Kelsey Cermak	1	2	.500
TOTALS	44	54	.815

IN FINAL TWO MINUTES OF GAME

Player	FTM	FTA	Pct.
Kamille Wahlin	7	8	.833
Theairra Taylor	5	7	.714
Kelly Krei	4	4	1.000
Trisha Nesbitt	4	4	1.000
Kachine Alexander	1	2	.500
Jaime Printy	0	1	.000
TOTALS	21	26	.808

IN FINAL ONE MINUTE OF GAME

Player	FTM	FTA	Pct.
Theairra Taylor	4	5	.800
Kamille Wahlin	4	4	1.000
Kelly Krei	4	4	1.000
Trisha Nesbitt	4	4	1.000
Kachine Alexander	1	2	.500
Jaime Printy	0	1	.000
TOTALS	17	18	.944





University of Iowa Women's Basketball

Season Highs And Lows/Specialty Statistics

CATEGORY			IOWA		OPPONENTS
<u>Points</u>	High	82	South Dakota State	85	Iowa State
	Low	51	Michigan	51	Santa Clara
<u>FG Made</u>	High	31	William & Mary	30	Boston College
	Low	21	Kansas/Michigan	21	Santa Clara
<u>FG Att.</u>	High	78	Penn State	69	Kansas
	Low	50	Iowa State	55	Santa Clara
<u>FG%</u>	High	.519	UNI	.456	Illinois State
	Low	.333	Penn State	.354	William & Mary
<u>3FG Made</u>	High	12	Columbia	16	Iowa State
	Low	4	Santa Clara/Kansas	2	West Virginia/Penn State
<u>3FG Att.</u>	High	34	Penn State	34	Iowa State
	Low	17	UNI/Iowa State/Drake	10	Penn State
<u>3FG%</u>	High	.529	Iowa State	.500	Drake
	Low	.182	Santa Clara	.154	West Virginia
<u>FTM</u>	High	22	Illinois State	21	Penn State
	Low	4	Michigan	0	Drake
<u>FTA</u>	High	30	Illinois State	24	UNI/Penn State
	Low	7	Santa Clara/Drake	0	Drake
<u>FT% (min. 10)</u>	High	1.000	Columbia	.875	Penn State
	Low	.500	Michigan	.286	William & Mary
<u>Off. Reb.</u>	High	21	twice	18	Kansas/UNI
	Low	5	UNI/Iowa State	7	Santa Clara
<u>Def. Reb.</u>	High	34	William & Mary	35	Penn State
	Low	20	Boston College	24	UNI
<u>Total Reb.</u>	High	50	Santa Clara	49	Penn State
	Low	28	Iowa State	32	Iowa State
<u>Assists</u>	High	21	William & Mary	21	Iowa State
	Low	10	Illinois State	10	West Virginia
<u>Steals</u>	High	9	three times	14	West Virginia
	Low	2	Iowa State	5	Illinois State/William & Mary
<u>Blocks</u>	High	8	UNI	9	Penn State
	Low	1	Columbia	0	UNI
<u>Turnovers</u>	High	22	West Virginia	25	Penn State
	Low	11	Illinois State	9	Iowa State
<u>Fouls</u>	High	21	UNI/West Virginia	26	South Dakota State
	Low	5	Drake	10	Santa Clara

GAME-BY-GAME SPECIALTY STATS

		Pts. Off	Pts. in	2nd	Fast
		TO's	Paint	Chance	Break
Date	Opponent	IA-Opp.	IA-Opp.	IA-Opp.	IA-Opp.
11/14	Santa Clara	19-2	38-20	13-2	16-8
11/15	Illinois St.	15-12	20-36	8-17	4-5
11/18	Kansas	11-11	28-30	10-15	5-8
11/22	at UNI	15-17	22-20	5-15	4-0
11/24	William & Mary	18-10	36-26	11-9	13-8
11/27	vs. West Virginia	15-19	24-44	9-21	10-12
11/28	vs. Columbia	16-26	13-28	8-11	4-13
12/2	Boston College	22-24	22-44	9-25	5-10
12/6	Michigan	10-8	14-34	14-8	2-12
12/10	at Iowa State	15-29	18-18	8-21	0-0
12/20	Drake	18-15	28-22	12-2	0-2
12/22	South Dakota State	29-17	30-26	29-11	5-4
12/28	at Penn State	12-16	20-32	8-10	2-10
12/31	Wisconsin	---	---	---	---
1/3	at Minnesota	---	---	---	---
1/7	at Michigan	---	---	---	---
1/14	Penn State	---	---	---	---
1/17	at Purdue	---	---	---	---
1/21	at Illinois	---	---	---	---
1/24	Northwestern	---	---	---	---
1/31	Purdue	---	---	---	---
2/4	at Ohio State	---	---	---	---
2/7	Michigan State	---	---	---	---
2/11	at Indiana	---	---	---	---
2/14	Illinois	---	---	---	---
2/18	Minnesota	---	---	---	---
2/21	at Northwestern	---	---	---	---
2/25	Indiana	---	---	---	---
2/28	at Wisconsin	---	---	---	---

IOWA AND OPPONENT INDIVIDUAL HIGH PERFORMANCES

CATEGORY		IOWA		OPPONENTS
<u>Points</u>	33	Kamille Wahlin vs. UNI	28	Tyra Grant (Penn State)
<u>Field Goals Made</u>	11	Kamille Wahlin vs. UNI	10	Maggie Krick (Illinois State)
<u>Field Goals Attempted</u>	23	Kamille Wahlin vs. Penn State	22	Maggie Krick (Illinois State)
<u>3-Point Field Goals Made</u>	7	Kamille Wahlin vs. Penn State	8	Kelsey Bolte (Iowa State)
<u>3-Point Field Goals Attempted</u>	15	Kamille Wahlin vs. Penn State	13	Kelsey Bolte (Iowa State)
<u>Free Throws Made</u>	13	Kachine Alexander vs. Illinois State	13	Tyra Grant (Penn State)
<u>Free Throws Attempted</u>	16	Kachine Alexander vs. Illinois State	14	Tyra Grant (Penn State)
<u>Offensive Rebounds</u>	9	Kachine Alexander vs. Santa Clara/Illinois State	6	Lizzie Boeck (UNI)
<u>Defensive Rebounds</u>	11	Morgan Johnson at Iowa State	10	Jenny Ryan (Michigan)
<u>Total Rebounds</u>	18	Kachine Alexander vs. Santa Clara	11	Three players
<u>Assists</u>	8	Jaime Printy vs. West Virginia	13	Alison Lacey (Iowa State)
<u>Steals</u>	4	Kachine Alexander vs. Illinois State	5	Alison Lacey (Iowa State)/Jones (Drake)
<u>Blocks</u>	7	Morgan Johnson vs. UNI	4	Nikki Greene
<u>Turnovers</u>	7	Kamille Wahlin vs. Kansas/West Virginia	6	Goldenberger (Santa Clara)/Johnson (Boston College)





University of Iowa Women's Basketball

Season Box Scores



Official Basketball Box Score -- Game Totals -- Final Statistics
Santa Clara vs Iowa
11/14/09 12 pm at Carver-Hawkeye Arena



Santa Clara 51 • 1-1

#	Player	Total		3-Ptr		Rebounds			PF	TP	A		TO	Blk	Stl	Min
		FG-FGA	FG-FGA	FT-FTA	FT-FTA	Off	Def	Tot			A	TO				
20	GOLDENBERGER, Magg	f	4-8	0-0	0-0	3	6	9	2	8	4	6	0	1	34	
21	GIPSON, Lena	f	6-11	0-0	1-3	1	4	5	4	13	1	3	1	3	29	
03	FULPS, Meagan	g	2-9	1-7	0-0	0	1	1	0	5	0	1	0	0	21	
04	FAITHFULL, Rhianna	g	1-3	1-3	0-0	0	2	2	0	3	3	3	0	0	23	
10	SHOJI, Alyssa	g	6-11	3-8	1-2	0	1	1	2	16	2	2	0	2	35	
13	ANDERSON, Telisha	g	1-2	0-0	2-2	0	2	2	2	4	2	3	1	0	15	
23	ARMSTRONG, Ashley	g	1-8	0-2	0-0	2	9	11	0	2	1	4	0	0	28	
45	GOEGGEL, Kimee	g	0-3	0-0	0-0	1	1	2	0	0	1	2	0	0	15	
Team						0	1	1								
Totals			21-55	5-20	4-7	7	27	34	10	51	14	24	2	6	200	

FG % 1st Half: 11-25 44.0% 2nd half: 10-30 33.3% Game: 21-55 38.2%
3FG % 1st Half: 4-11 36.4% 2nd half: 1-9 11.1% Game: 5-20 25.0%
FT % 1st Half: 0-2 0.0% 2nd half: 4-5 80.0% Game: 4-7 57.1%

Deadball
Rebounds
1

Iowa 67 • 1-0

#	Player	Total		3-Ptr		Rebounds			PF	TP	A		TO	Blk	Stl	Min
		FG-FGA	FG-FGA	FT-FTA	FT-FTA	Off	Def	Tot			A	TO				
20	Krei, Kelly	f	1-4	0-1	0-0	0	3	3	3	2	4	3	0	2	24	
12	Johnson, Morgan	c	7-15	0-0	1-1	4	1	5	0	15	0	1	1	2	30	
02	Wahlin, Kamille	g	5-13	3-10	0-0	0	3	3	0	13	1	2	0	1	28	
21	Alexander, Kachine	g	8-21	1-4	2-2	9	9	18	2	19	5	4	1	1	30	
24	Printy, Jaime	g	1-5	0-4	0-0	1	4	5	2	2	6	2	0	1	27	
11	Nesbitt, Trisha	g	0-1	0-0	0-0	0	1	1	0	0	0	1	0	0	10	
13	Jones, Shante	g	4-6	0-0	0-0	1	0	1	1	8	0	1	1	1	7	
22	Cermak, Kelsey	g	2-5	0-1	1-2	2	3	5	3	5	0	0	0	0	26	
23	Taylor, Theairra	g	1-7	0-2	1-2	2	3	5	1	3	3	1	0	1	18	
Team						2	2	4								
Totals			29-77	4-22	5-7	21	29	50	12	67	19	15	3	9	200	

FG % 1st Half: 14-40 35.0% 2nd half: 15-37 40.5% Game: 29-77 37.7%
3FG % 1st Half: 4-11 36.4% 2nd half: 2-9 22.2% Game: 4-22 18.2%
FT % 1st Half: 1-1 100.0% 2nd half: 4-6 66.7% Game: 5-7 71.4%

Deadball
Rebounds
2

Officials: Bryan Entlerline, Shannon Feck, Dave Rittman
Technical fouls: Santa Clara-None. Iowa-None.
Attendance: 2277
KCRG-TV9 Hawkeye Challenge: Game 1

Score by periods	1st	2nd	Total
Santa Clara	26	25	51
Iowa	31	36	67

Last FG - SCU 2nd-02:16, IOWA 2nd-00:27.
Largest lead - SCU by 2 1st-19:29, IOWA by 25 2nd-08:04.

Score tied - 3 times.
Lead changed - 3 times.



Official Basketball Box Score -- Game Totals -- Final Statistics
Illinois State vs Iowa
11/15/09 2 pm at Carver-Hawkeye Arena



Illinois State 67 • 1-1

#	Player		Total	3-Ptr	Rebounds											
			FG-FGA	FG-FGA	FT-FTA	Off	Def	TP	PF	TP	A	TO	Blk	Stl	Min	
40	Bracey, Ashleen	f	3-7	2-4	0-0	1	2	3	4	8	2	1	0	1	23	
31	Lewis, Nicole	c	8-9	0-0	4-4	2	3	5	2	20	0	0	2	1	35	
14	Clifton, Amanda	g	0-2	0-2	0-0	0	3	3	0	2	3	0	1	0	36	
32	Krick, Maggie	g	10-22	2-5	2-3	1	3	4	4	24	5	4	1	1	38	
33	Jackson, Shala	g	0-2	0-0	1-2	0	3	3	5	1	3	2	0	0	12	
01	Jenkins, Alexis	g	0-1	0-0	0-0	0	1	1	0	0	2	0	0	0	7	
24	Hanley, Emily	g	2-5	0-1	0-0	0	6	6	1	4	0	3	0	0	21	
34	Spanich, Hannah	g	3-9	0-3	4-4	4	0	4	4	10	3	2	1	1	28	
	Team					1	5	6								
Totals			26-57	4-15	11-13	9	26	35	23	67	17	15	4	5	200	

FG % 1st Half: 12-27 44.4% 2nd half: 14-30 46.7% Game: 26-57 45.6%
3FG % 1st Half: 3-7 42.9% 2nd half: 1-8 12.5% Game: 4-15 26.7%
FT % 1st Half: 4-5 80.0% 2nd half: 7-8 87.5% Game: 11-13 84.6%

Deadball
Rebounds
0

Iowa 75 • 2-0

#	Player	Total		3-Ptr		Rebounds			PF	TP	A		TO	Blk	Stl	Min
		FG-FGA	FG-FGA	FT-FTA	FT-FTA	Off	Def	Tot			A	TO				
20	Krei, Kelly	f	4-8	4-6	3-6	1	1	2	15	0	0	0	0	0	40	
12	Johnson, Morgan	c	2-6	0-0	1-2	0	5	5	3	5	0	1	1	1	23	
02	Wahlin, Kamille	g	5-12	2-5	3-4	0	4	4	2	15	2	2	0	0	37	
21	Alexander, Kachine	g	4-14	0-4	13-16	9	3	12	3	21	4	4	2	4	38	
24	Printy, Jaime	g	6-12	2-2	2	1	6	7	2	16	4	2	0	0	37	
11	Nesbitt, Trisha	g	0-1	0-1	0-0	0	0	0	0	0	0	0	0	0	3	
13	Jones, Shante	g	0-2	0-0	0-0	0	0	0	0	0	0	0	0	0	5	
22	Cermak, Kelsey	g	1-3	1-3	0-0	2	2	4	0	3	0	1	0	1	16	
50	Machado, Gabby	g	0-0	0-0	0-0	0	1	1	0	0	0	1	0	0	1	
Team						2	2	4								
Totals			22-58	9-26	22-30	15	24	39	13	75	10	11	4	5	200	

FG % 1st Half: 12-34 35.3% 2nd half: 10-24 41.7% Game: 22-58 37.9%
3FG % 1st Half: 7-19 36.8% 2nd half: 2-7 28.6% Game: 9-26 34.6%
FT % 1st Half: 5-5 100.0% 2nd half: 17-25 68.0% Game: 22-30 73.3%

Deadball
Rebounds
3

Officials: Laura Morris, Felicia Grinter, Bryan Entlerline
Technical fouls: Illinois State-None. Iowa-None.
Attendance: 2793
KCRG-TV9 Hawkeye Challenge Championship Game
All-Tournament Team: Alexander-IA (MVP), Gipson-SCU, Tukinaen-UCLA,
Lewis-ISU, Krick-ISU, Wahlin-IA
Fouled Out: Jackson SCU #33 2:34 2nd

Score by periods	1st	2nd	Total
Illinois State	31	36	67
Iowa	36	39	75

Points
ILS
IOWA

In
Paint
20
38

Off
T/O
2
19

2nd
Chance
2
13

Fast
Break
8
16

Bench
6
16



Official Basketball Box Score -- Game Totals -- Final Statistics
Kansas vs Iowa
11/18/09 7:00 pm at Carver-Hawkeye Arena



Kansas 66 • 2-0

#	Player	Total		3-Ptr		Rebounds			PF	TP	A		TO	Blk	Stl	Min
		FG-FGA	FG-FGA	FT-FTA	FT-FTA	Off	Def	Tot			A	TO				
01	Sutherland, Aishah	f	6-8	0-0	0-1	3	8	11	3	12	0	3	1	4	31	
14	Boogaard, Krysten	c	2-9	0-0	7-9	5	4	9	2	11	0	1	1	0	25	
04	McCray, Danielle	g	8-19	4-5	0-0	5	2	7	4	20	1	1	0	2	31	
20	Morris, Sade	g	4-10	1-2	1-2	0	1	1	1	10	2	3	0	4	34	
23	Goodrich, Angel	g	5-15	0-4	0-0	1	5	6	2	10	7	4	0	0	37	
00	Jacobs, LaChelda	g	0-1	0-0	0-0	0	0	0	0	0	0	0	0	0	5	
02	Kohn, Kelly	g	0-2	0-2	0-0	0	0	0	0	0	0	1	0	0	6	
13	Engelman, Monica	g	1-3	1-1	0-0	2	2	4	1	3	0	0	0	0	7	
22	Brown, Marisha	g	0-0	0-0	0-0	0	0	0	0	2	0	0	0	0	1	
24	Smith, Nicolle	g	0-2	0-2	0-0	0	2	2	3	0	1	0	2	1	23	
Team						2	4	6								
Totals			26-69	6-16	8-12	18	28	46	18	66	11	13	4	11	200	

FG % 1st Half: 11-38 28.9% 2nd half: 15-31 48.4% Game: 26-69 37.7%
3FG % 1st Half: 3-8 37.5% 2nd half: 4-8 50.0% Game: 6-16 37.5%
FT % 1st Half: 2-6 33.3% 2nd half: 5-6 83.3% Game: 8-12 66.7%

Deadball
Rebounds
1

Iowa 55 • 2-1

#	Player	Total		3-Ptr		Rebounds			PF	TP	A	TO	Blk	Stl	Min
		FG-FGA	FG-FGA	FT-FTA	Off	Def	Tot								
20	Krei, Kelly	f	1-7	1-5	3-5	2	4	6	2	6	0	1	0	1	40
12	Johnson, Morgan	c	4-8	0-0	0-0	3	4	7	4	8	2	2	2	0	22
02	Wahlin, Kamille	g	4-13	1-5	0-0	0	1	1	0	9	0	7	0	0	37
21	Alexander, Kachine	g	8-16	1-2	6-8	7	10	17	1	23	4	4	0	1	36
24	Printy, Jaime	g	2-9	1-7	0-0	1	5	6	3	5	5	3	0	2	36
11	Nesbitt, Trisha	g	0-0	0-0	0-0	0	0	0	0	1	0	0	0	0	3
13	Jones, Shante	g	1-4	0-0	0-1	0	2	2	1	2	1	0	0	0	16
22	Cermak, Kelsey	g	1-2	0-0	0-0	0	1	1	2	2	0	0	0	1	10
Team						1	1	2							
Totals			21-59	4-19	9-14	14	28	42	14	55	12	17	2	5	200



University of Iowa Women's Basketball

Season Box Scores



Official Basketball Box Score -- Game Totals -- Final Statistics
William & Mary vs Iowa
11/24/09 7 pm at Carver-Hawkeye Arena



William & Mary 54 • 2-2

#	Player		Total		3-Ptr		Rebounds		PF	TP	A	TO	Blk	Stl	Min
			FG	FGA	FT	FTA	Off	Def							
05	Correal, Emily	f	1-6	0-1	1-1	0	2	2	3	2	1	0	1	0	16
09	Aldridge, Janine	f	2-8	2-7	0-0	1	3	4	2	6	2	0	0	0	26
13	McKenna, Jaclyn	c	4-4	0-0	1-4	2	2	4	3	9	2	1	0	0	26
00	Pye, Taysa	g	8-20	0-0	2-7	3	2	5	2	18	4	3	0	1	31
25	DeHenzel, Katherine	g	2-7	2-6	0-0	0	7	7	3	6	5	3	0	3	34
03	Heath, Kelly		1-2	0-0	0-0	1	0	1	0	2	0	1	0	0	3
14	Barton, Robyn		0-0	0-0	0-0	0	0	0	0	0	0	1	0	0	3
15	Benson, Tiffany		1-5	0-0	0-2	1	1	2	2	2	0	1	0	0	11
23	Moller, Lindsey		0-1	0-0	0-0	0	0	0	1	0	1	1	0	0	9
24	Oblinger, Katy		0-0	0-0	0-0	0	0	0	0	0	0	0	0	0	6
32	Hilton, Taylor		3-9	0-0	0-0	2	5	7	0	6	1	1	0	1	12
44	Murchison, Chanel		1-3	0-0	0-0	1	0	1	0	2	1	0	0	0	23
Team						2	3	5							
Totals			23-65	4-14	4-14	13	25	38	15	54	18	13	1	5	200

FG % 1st Half: 11-29 37.9% 2nd half: 12-36 33.3% Game: 23-65 35.4%
3FG % 1st Half: 2-7 28.6% 2nd half: 2-7 28.6% Game: 4-14 28.6%
FT % 1st Half: 3-10 30.0% 2nd half: 1-4 25.0% Game: 4-14 28.6%

Deadball
Rebounds
5

Iowa 78 • 4-1

#	Player		Total FG-FGA	3-Ptr FT-FTA	Rebounds Off Def Tot	PF	TP	A	TO	Blk	Stl	Min			
22	Cermak, Kelsey	f	1-5	0-0	1-1	2	1	3	0	3	1	0	0	23	
23	Taylor, Theairra	f	7-15	2-3	0-0	4	5	9	1	16	5	2	3	36	
12	Johnson, Morgan	c	0-3	0-0	3-4	1	1	2	2	3	1	2	2	0	
02	Wahlin, Kamille	g	8-13	4-8	0-0	1	5	6	1	20	5	1	0	34	
24	Printy, Jaime	g	7-13	3-6	3-3	1	8	9	3	20	5	3	1	0	
11	Nesbitt, Trisha		1-4	0-1	0-1	0	3	3	0	2	1	0	0	17	
20	Krei, Kelly		1-6	0-3	0-0	3	2	5	0	2	1	2	1	25	
50	Machado, Gabby		6-10	0-0	0-0	2	6	8	3	12	2	3	0	2	
	Team					1	3	4			1				
Totals			31-69	9-21	7-9	15	34	49	10	78	21	14	7	6	200

FG % 1st Half: 15-34 44.1% 2nd half: 16-35 45.7% Game: 31-69 44.9%
3FG % 1st Half: 4-11 36.4% 2nd half: 5-10 50.0% Game: 9-21 42.9%
FT % 1st Half: 0-0 0.0% 2nd half: 7-9 77.8% Game: 7-9 77.8%

Deadball
Rebounds
0

Officials: Sue Bauch, Bob Trammell, Scott Fruehling
Technical fouls: William & Mary-None. Iowa-None.
Attendance: 2537

Score by periods	1st	2nd	Total
William & Mary	27	27	54
Iowa	34	44	78

Points	In	Off	2nd	Fast
W&M	26	10	9	8
IOWA	36	18	11	13



Official Basketball Box Score -- Game Totals -- Final Statistics
West Virginia vs Iowa
11/27/09 4 p.m. at Reno, Nev. (Lawlor Events Center)



West Virginia 69 • 4-1

#	Player	Total		3-Ptr		Rebounds		PF	TP	A	TO	Blk	Stl	Min	
		FG	FGA	FT	FTA	Off	Def								
05	MILES, Sarah	*	4-11	0-1	2-2	0	2	2	4	10	3	1	0	35	
10	REPELLA, Liz	*	5-12	0-5	4-6	1	5	6	3	14	2	3	1	39	
20	BUSSIE, Asya	*	5-13	0-0	5-6	5	2	7	3	15	0	2	1	37	
21	CAMPBELL, Korinne	*	4-10	1-3	6-6	5	4	9	1	15	2	2	1	32	
44	ALI, Madina	*	1-5	0-0	0-0	0	5	5	4	2	1	4	0	20	
12	HOUSE, Vanessa		3-6	1-4	0-0	1	2	3	0	7	2	1	0	29	
15	RICHARDS, Akeema		2-5	0-0	2-2	0	1	1	0	6	0	1	1	5	
35	BURTON, Natalie		0-1	0-0	0-0	1	0	1	0	0	0	0	1	0	
Team						2	0	2							
Totals			24-63	2-13	19-22	15	21	36	15	69	10	14	5	14	200

FG % 1st Half: 10-30 33.3% 2nd half: 14-33 42.4% Game: 24-63 38.1%
3FG % 1st Half: 1-6 16.7% 2nd half: 1-7 14.3% Game: 2-13 15.4%
FT % 1st Half: 9-10 90.0% 2nd half: 10-12 83.3% Game: 19-22 86.4%

Deadball
Rebounds
2

Iowa 66 • 4-2

#	Player	*	Total		3-Ptr		Rebounds		PF	TP	A	TO	Blk	Stl	Min
			FG	FGA	FT	FTA	Off	Def							
02	Wahlin, Kamille	*	7-18	2-6	0-0	2	2	4	2	16	5	7	0	38	
12	Johnson, Morgan	*	3-5	0-0	0-0	1	3	4	2	6	1	3	2	0	277
20	Krei, Kelly	*	5-8	3-5	3-4	0	6	6	1	16	1	1	2	1	33
23	Taylor, Theairra	*	2-6	1-2	0-1	0	4	4	5	5	2	3	1	1	26
24	Printy, Jaime	*	5-8	3-4	4-4	1	5	6	4	17	8	5	0	2	34
11	Nesbitt, Trisha		1-4	0-0	0-0	0	0	0	0	2	2	0	0	0	17
22	Cermak, Kelsey		0-0	0-0	0-0	0	0	0	0	0	0	0	0	0	7
31	Draxten, Hannah		0-1	0-1	0-0	0	0	0	1	0	0	0	0	1	5
50	Machado, Gabby		2-3	0-0	0-2	2	1	3	4	4	0	1	1	0	13
	Team					3	3	6							
	Totals		25-53	9-18	7-11	9	24	33	21	66	17	22	6	6	200

FG % 1st Half: 16-29 55.2% 2nd half: 9-24 37.5% Game: 25-53 47.2%
3FG % 1st Half: 4-9 44.4% 2nd half: 5-9 55.6% Game: 9-18 50.0%
FT % 1st Half: 0-0 0.0% 2nd half: 7-11 63.6% Game: 7-11 63.6%

Deadball
Rebounds
2,1

Officials: Brenda Pantoja, Julie Krommenhoek, Leah Gonyeau
Technical fouls: West Virginia-None. Iowa-None.
Attendance: 736

Score by periods	1st	2nd	Total
West Virginia	30	39	69
Iowa	36	30	66

Points	In	Off	2nd	Fast
WVU	44	19	12	10
IOWA	24	15	9	13

Last FG - WVU 2nd-02:52, IOWA 2nd-04:35.
Largest lead - WVU by 5 2nd-02:52, IOWA by 11 1st-11:53.

Score tied - 3 times.
Lead changed - 5 times.



Official Basketball Box Score -- Game Totals -- Final Statistics
Iowa vs Columbia
11/28/09 5 p.m. at Reno, Nev. (Lawlor Events Center)



Iowa 72 • 5-2

#	Player	Total		3-Ptr		Rebounds		PF	TP	A	TO	Blk	Stl	Min	
		FG	FGA	FT	FTA	Off	Def								
02	Wahlin, Kamille	*	5-13	4-7	4-4	0	3	3	0	18	4	2	0	27	
12	Johnson, Morgan	*	6-8	0-0	6-6	3	9	12	3	18	0	0	0	30	
20	Krei, Kelly	*	1-4	1-3	0-0	0	0	0	5	3	2	5	0	22	
23	Taylor, Theairra	*	3-11	1-4	4-4	1	6	7	2	11	4	4	0	27	
24	Printy, Jaime	*	4-10	4-9	0-0	1	4	5	2	12	3	3	0	35	
11	Nesbitt, Trisha		2-4	2-3	0-0	0	0	0	1	6	4	3	0	21	
22	Cermak, Kelsey		0-1	0-1	0-0	1	0	1	2	0	0	0	0	19	
50	Machado, Gabby		1-5	0-0	2-2	1	4	5	2	4	0	4	1	9	
Team						2	3	5							
Totals			22-56	12-27	16-16	9	29	38	17	72	17	21	1	7	200

FG % 1st Half: 11-31 35.5% 2nd half: 11-25 44.0% Game: 22-56 39.3%
3FG % 1st Half: 5-12 41.7% 2nd half: 7-15 46.7% Game: 12-27 44.4%
FT % 1st Half: 6-6 100.0% 2nd half: 10-10 100.0% Game: 16-16 100.0%

Deadball
Rebounds
0,1

Columbia 69 • 3-3

#	Player		Total		3-Ptr		Rebounds		PF	TP	A	TO	Blk	Stl	Min
			FG	FGA	FT	FTA	Off	Def							
04	Browne, Danielle	*	1-4	0-0	1-2	1	2	3	2	3	6	3	0	0	31
10	Barry, Kathleen	*	3-8	1-3	2-2	1	4	5	3	9	1	1	2	1	23
14	Yee, Sara	*	2-7	2-6	1-2	0	4	4	1	7	5	4	0	2	34
21	Lomax, Judie	*	4-8	0-0	7-12	2	9	11	0	15	1	2	0	3	39
34	Dwyer, Lauren	*	8-20	1-4	3-4	3	1	4	4	20	0	2	1	1	37
01	Ball, Taylor		0-1	0-0	0-0	0	0	0	0	0	0	0	0	0	2
11	Fuller, Jazmin		0-0	0-0	0-0	0	0	0	0	0	0	0	0	0	4
15	Stachon, Caitlin		0-1	0-0	0-0	0	0	0	0	0	0	0	0	0	1
20	Simpson, Tyler		0-1	0-0	0-0	0	0	0	0	0	0	0	0	0	3
22	Shafer, Melissa		3-4	1-2	0-0	2	0	2	1	7	1	0	0	0	12
41	Beato, Mary		3-8	2-6	0-0	0	1	1	1	8	0	0	0	1	14
	Team					1	4	5							
Totals			24-62	7-21	14-22	10	25	35	12	69	14	13	3	8	200

FG % 1st Half: 13-30 43.3% 2nd half: 11-32 34.4% Game: 24-62 38.7%
3FG % 1st Half: 5-10 50.0% 2nd half: 2-11 18.2% Game: 7-21 33.3%
FT % 1st Half: 3-6 50.0% 2nd half: 11-16 68.8% Game: 14-22 63.6%

Deadball
Rebounds
5,1

Officials: Brenda P



University of Iowa Women's Basketball

Season Box Scores



Official Basketball Box Score -- Game Totals -- Final Statistics
Michigan vs Iowa
12/6/09 5 p.m. at Carver-Hawkeye Arena



Michigan 54 • 5-2 1-0

#	Player		Total		3-Ptr		Rebounds			PF	TP	A	To	Blk	Stl	Min
			FG-FGA	FG-FGA	FT-FTA	Off	Def	Tot								
24	Ryan, Jenny	f	2-5	1-3	0-1	0	10	10	0	5	3	3	1	1	38	
33	Reynolds, Carmen	f	5-9	0-4	2-4	4	6	10	3	12	1	0	0	1	30	
25	Phillips, Krista	c	7-12	0-2	1-2	1	2	3	3	15	1	3	2	2	30	
03	Hicks, Veronica	g	4-13	2-5	1-2	2	3	5	1	11	2	1	1	0	39	
13	Hollins, Dayeesha	g	3-14	0-2	0-0	1	2	3	3	6	3	3	0	2	33	
10	Jones, Ashley		1-2	0-1	0-0	1	0	1	2	2	1	1	1	0	9	
11	Arnold, Sam		0-1	0-0	0-0	0	0	0	0	2	0	1	0	0	8	
12	Thompson, Kate		0-0	0-0	0-0	0	0	0	0	0	0	0	0	0	1	
20	Boylan, Courtney		1-1	1-1	0-0	0	0	0	0	3	1	1	0	0	10	
44	Sheffer, Rachel		0-1	0-0	0-0	0	0	0	1	0	0	1	0	0	4	
	Team					2	3	5								
Totals			23-58	4-18	4-9	11	26	37	15	54	14	14	7	6	200	

FG % 1st Half: 15-33 45.5% 2nd half: 8-25 32.0% Game: 23-58 39.7%
3FG % 1st Half: 4-12 33.3% 2nd half: 0-6 0.0% Game: 4-18 22.2%
FT % 1st Half: 0-0 0.0% 2nd half: 4-9 44.4% Game: 4-9 44.4%

Deadball
Rebounds
2

Iowa 51 • 5-4 0-1

#	Player		Total		3-Ptr		Rebounds			PF	TP	A	To	Blk	Stl	Min
			FG-FGA	FG-FGA	FT-FTA	Off	Def	Tot								
20	Krei, Kelly	f	5-7	2-4	0-0	2	1	3	2	12	1	1	0	1	31	
23	Taylor, Theairra	f	6-12	1-3	0-1	1	6	7	2	13	4	4	4	3	32	
12	Johnson, Morgan	c	5-10	0-1	2-2	1	6	7	4	12	0	2	1	0	32	
02	Wahlin, Kamille	g	3-15	1-11	0-0	0	7	7	1	7	6	6	0	1	40	
14	Printy, Jaime	g	1-9	1-3	2-3	3	4	7	1	5	1	2	0	0	34	
11	Nesbitt, Trisha		1-3	0-1	0-0	1	1	2	0	2	1	0	0	0	16	
22	Cermak, Kelsey		0-1	0-1	0-0	0	0	0	0	0	0	1	0	0	7	
50	Machado, Gabby		0-1	0-0	0-2	0	1	1	1	0	0	2	0	0	8	
Team						6	1	7								
Totals			21-58	5-24	4-8	14	27	41	11	51	13	18	5	5	200	

FG % 1st Half: 7-25 28.0% 2nd half: 14-33 42.4% Game: 21-58 36.2%
3FG % 1st Half: 2-11 18.2% 2nd half: 3-13 23.1% Game: 5-24 20.8%
FT % 1st Half: 4-4 100.0% 2nd half: 0-4 0.0% Game: 4-8 50.0%

Deadball
Rebounds
1

Officials: Bryan Enterline, Dennis DeMayo, Shannon Feck
Technical fouls: Michigan-None. Iowa-None.
Attendance: 2856

Score by periods	1st	2nd	Total
Michigan	34	20	54
Iowa	20	31	51

Last FG - MICH 2nd-00:01, IOWA 2nd-02:02.
Largest lead - MICH by 14 1st-00:07, IOWA None.

Score tied - 1 time.
Lead changed - 0 times.



Official Basketball Box Score -- Game Totals -- Final Statistics
Iowa vs Iowa State
12/10/09 7 p.m. at Hilton Coliseum - Ames, Iowa



Iowa 66 • 5-5, 0-1 Big Ten

#	Player	Total		3-Ptr		Rebounds			PF	TP	A		To	Blk	Stl	Min
		FG-FGA	FG-FGA	FT-FTA	FT-FTA	Off	Def	Tot			A	To				
02	Wahlin, Kamille	*	3-7	1-2	0-0	0	4	4	1	7	3	5	0	0	34	
12	Johnson, Morgan	*	5-16	1-2	2-2	0	11	11	1	13	4	4	3	0	28	
20	Krei, Kelly	*	3-3	3-3	0-0	0	2	2	2	9	0	1	2	1	33	
23	Taylor, Theairra	*	3-7	2-4	2-2	2	1	3	3	10	0	6	1	1	27	
14	Printy, Jaime	*	5-6	2-3	2-2	0	0	4	14	2	0	0	0	0	28	
11	Nesbitt, Trisha		1-4	0-2	3-3	1	1	2	3	5	4	1	0	0	21	
22	Cermak, Kelsey		0-0	0-0	0-0	1	0	1	1	0	0	0	0	0	7	
31	Draxten, Hannah		0-1	0-1	0-0	1	1	1	1	0	1	1	0	0	10	
50	Machado, Gabby		4-6	0-0	0-0	0	2	2	4	8	0	1	1	0	12	
Team						1	1	2								
Totals			24-50	9-17	9-9	5	23	28	20	66	14	19	7	2	200	

FG % 1st Half: 13-25 52.0% 2nd half: 11-25 44.0% Game: 24-50 48.0%
3FG % 1st Half: 2-4 50.0% 2nd half: 7-13 53.8% Game: 9-17 52.9%
FT % 1st Half: 1-1 100.0% 2nd half: 8-8 100.0% Game: 9-9 100.0%

Deadball
Rebounds
0,1

Iowa State 85 • 6-1, 0-0 Big 12

#	Player	Total		3-Ptr		Rebounds			PF	TP	A		To	Blk	Stl	Min
		FG-FGA	FG-FGA	FT-FTA	FT-FTA	Off	Def	Tot			A	To				
02	Williams, Whitney	*	5-6	4-5	0-0	0	0	0	0	14	0	1	0	1	25	
04	Lacey, Alison	*	5-16	2-8	7-7	4	7	11	2	19	13	1	2	5	35	
10	Stuckey, Denae	*	0-4	0-2	0-1	1	4	5	1	0	3	0	0	1	30	
11	Bolte, Kelsey	*	9-14	8-13	0-0	1	1	2	1	26	2	1	0	2	35	
33	Poppens, Chelsea	*	5-10	0-0	1	2	2	4	3	11	1	2	2	0	22	
12	Schroll, Jessica		2-5	0-0	2-3	0	0	0	3	6	1	0	0	0	11	
13	Florzak, Anna		0-0	0-0	0-0	0	0	0	0	0	0	0	0	0	4	
22	Lightbourne, Genesis		0-1	0-0	0-0	0	0	0	1	0	0	0	0	0	4	
23	Cole, Chassidy		2-4	2-4	2-3	0	4	4	1	8	0	1	0	0	15	
30	Mosman, Shellie		0-0	0-0	1-2	0	0	0	0	1	0	0	0	0	5	
42	Zimmerman, Amanda		0-2	0-2	0-0	1	2	3	1	0	1	2	0	0	14	
Team						2	1	3								
Totals			28-62	16-34	13-17	11	21	32	13	85	21	9	4	9	200	

FG % 1st Half: 16-35 45.7% 2nd half: 12-27 44.4% Game: 28-62 45.2%
3FG % 1st Half: 11-22 50.0% 2nd half: 5-12 41.7% Game: 16-34 47.1%
FT % 1st Half: 0-0 0.0% 2nd half: 13-17 76.5% Game: 13-17 76.5%

Deadball
Rebounds
3

Officials: Bob Trammell, Barb Smith, Amy Bonner
Technical fouls: Iowa-None. Iowa State-None.
Attendance: 12244
Fouled out: none
Alison Lacey with the 2nd triple double in school history. (J. Lobenstein)

Score by periods	1st	2nd	Total
Iowa	29	37	66



Official Basketball Box Score -- Game Totals -- Final Statistics
Drake vs Iowa
12/20/09 1:06 pm at Carver-Hawkeye Arena



Drake 61 • 6-3

#	Player	Total		3-Ptr		Rebounds			PF	TP	A		To	Blk	Stl	Min
		FG-FGA	FG-FGA	FT-FTA	FT-FTA	Off	Def	Tot			A	To				
22	Pearson, Kayla	f	1-3	1-1	0-0	1	1	2	1	3	3	4	0	0	21	
03	Jones, Monique	f	6-10	0-0	0-0	4	7	11	1	12	4	4	0	0	35	
15	Hackbarth, Rachael	c	2-13	0-0	0-0	2	2	4	3	4	1	4	0	0	28	
16	Plummer, Jordann	g	2-7	2-6	0-0	0	3	3	5	6	4	1	0	0	34	
34	Wollschlaeger, Amber	g	7-12	5-8	0-0	1	3	4	0	19	4	2	0	0	34	
12	Ritscher, Ellie		0-0	0-0	0-0	0	0	0	0	0	0	1	0	0	2	
23	Turk, Kristin		6-13	2-6	0-0	0	1	1	1	14	1	0	1	1	30	
32	Schechinger, Katie		1-3	1-1	0-0	0	2	2	0	3	0	0	1	0	16	
Team						0	0	0								
Totals			25-61	11-22	0-0	8	19	27	11	61	17	16	2	6	200	

FG % 1st Half: 12-30 40.0% 2nd half: 13-31 41.9% Game: 25-61 41.0%
3FG % 1st Half: 6-9 66.7% 2nd half: 5-12 41.7% Game: 11-22 50.0%
FT % 1st Half: 0-0 0.0% 2nd half: 0-0 0.0% Game: 0-0 0.0%

Deadball
Rebounds
0

Iowa 73 • 6-5

#	Player		Total		3-Ptr		Rebounds			PF	TP	A	To	Blk	Stl	Min
			FG-FGA	FG-FGA	FT-FTA	Off	Def	Tot								
20	Krei, Kelly	f	1-3	0-2	0-0	2	7	9	2	2	4	2	0	1	33	
23	Taylor, Theairra	f	0-7	0-2	3-4	2	1	3	1	3	2	2	1	0	17	
12	Johnson, Morgan	c	8-10	0-0	0-1	1	4	5	0	16	0	2	4	0	29	
02	Wahlin, Kamille	g	5-13	2-3	0-0	1	4	5	0	12	6	3	0	0	37	
14	Printy, Jaime	g	8-12	4-5	2-2	2	2	4	0	22	4	0	0	2	28	
11	Nesbitt, Trisha		0-0	0-0	0-0	0	0	0	0	0	1	3	0	0	11	
21	Alexander, Kachine		4-6	0-0	0-0	2	4	6	1	8	1	1	0	0	15	
22	Cermak, Kelsey		0-0	0-0	0-0	0	0	0	0	0	1	0	0	0	7	
31	Draxten, Hannah		3-6	2-5	0-0	2	1	3	1	8	0	2	0	1	13	
50	Machado, Gabby		1-4	0-0	0-0	2	0	2	0	2	1	1	1	1	10	
	Team					0	5	5				1				
Totals			30-61	8-17	5-7	14	28	42	5	73	20	17	6	5	200	



University of Iowa Women's Basketball

Season Box Scores



Official Basketball Box Score -- Game Totals -- Final Statistics
Iowa vs Penn State
12/28/09 7 p.m. at University Park, Pa.



Iowa 73 • 7-6 (0-2)

#	Player	Total		3-Ptr	Rebounds			PF	TP	A	TO	Blk	Stl	Min
		FG-FGA	FG-FGA	FT-FTA	Off	Def	Tot							
02	Wahlin, Kamille	* 9-23	7-15	2-2	0	2	2	0	27	4	2	0	3	43
12	Johnson, Morgan	* 1-2	0-0	0-0	2	5	7	2	2	0	4	1	0	29
20	Krei, Kelly	* 3-10	1-4	2-3	2	3	5	3	9	1	1	0	0	30
21	Alexander, Kachine	* 4-15	0-2	3-4	3	5	8	4	11	4	2	1	3	38
24	Printy, Jaime	* 6-21	3-13	1-1	2	3	5	4	16	2	2	0	2	38
11	Nesbitt, Trisha	0-1	0-0	0-0	0	0	0	2	0	0	1	0	0	16
22	Cermak, Kelsey	1-1	0-0	0-0	0	0	0	0	2	0	1	0	1	15
50	Machado, Gabby	2-4	0-0	2-2	3	3	6	4	6	0	3	0	0	16
Team					4	2	6							
Totals		26-77	11-34	10-12	16	23	39	19	73	11	17	2	9	225

FG % 1st Half: 12-35 34.3% 2nd half: 10-34 29.4% OT: 4-8 50.0% Game: 26-77 33.8% Deadball
3FG % 1st Half: 3-13 23.1% 2nd half: 6-16 37.5% OT: 2-5 40.0% Game: 11-34 32.4% Rebounds
FT % 1st Half: 4-4 100.0 2nd half: 5-6 83.3% OT: 1-2 50.0% Game: 10-12 83.3% 2

Penn State 77 • 9-3 (1-1)

#	Player	Total		3-Ptr	Rebounds			PF	TP	A	TO	Blk	Stl	Min
		FG-FGA	FG-FGA	FT-FTA	Off	Def	Tot							
01	Grant, Tyra	* 7-18	1-4	13-14	1	5	6	0	28	1	1	0	3	39
11	Trogele, Julia	* 3-4	0-0	2-2	1	2	3	5	8	3	3	1	1	27
20	Bentley, Alex	* 5-12	0-2	0-0	2	5	7	0	10	5	3	0	1	34
33	Monroe, Meredith	* 3-7	0-0	0-0	1	3	4	2	6	0	3	0	1	30
54	Greene, Nikki	* 2-7	0-0	0-0	4	2	6	3	4	0	4	4	0	22
02	Phillips, Emily	1-3	0-1	0-0	0	2	2	2	2	1	4	0	1	17
15	Womack, Renee	3-7	1-2	0-2	4	4	8	3	7	4	4	3	2	30
25	Studevent, Gizelle	0-0	0-0	0-0	0	0	0	1	0	0	0	0	0	2
40	Wolfe, Marisa	1-2	0-0	0-0	0	1	1	0	2	0	3	0	0	6
42	Wolff, Janessa	2-3	0-0	6-6	0	8	8	2	10	0	0	1	0	18
Team					1	3	4							
Totals		27-63	2-9	21-24	14	35	49	18	77	14	25	9	9	225

FG % 1st Half: 15-29 51.7% 2nd half: 8-23 34.8% OT: 4-11 36.4% Game: 27-63 42.9% Deadball
3FG % 1st Half: 1-4 25.0% 2nd half: 1-4 25.0% OT: 0-1 0.0% Game: 2-9 22.2% Rebounds
FT % 1st Half: 5-5 100.0 2nd half: 9-10 90.0% OT: 7-9 77.8% Game: 21-24 87.5% 2

Officials: Mark Zentz, Bill Titus, Shannon Feck
Technical fouls: Iowa-Team. Penn State-None.
Attendance: 4286

Score by periods	1st	2nd	OT	Total
Iowa	31	31	11	73
Penn State	36	26	15	77

Points	In	Off	2nd	Fast	Bench
Paint	Paint	T/O	Chance	Break	
IOWA	20	12	8	2	8
PSU	32	16	10	10	21

Last FG - IOWA OT-00:03, PSU OT-01:43.
Largest lead - IOWA by 4 2nd-02:05, PSU by 10 1st-04:37.

Score tied - 9 times.
Lead changed - 11 times.





2009-10 IOWA WOMEN'S BASKETBALL
Iowa Combined Team Statistics (as of Dec 30, 2009)
All games



RECORD:	OVERALL	HOME	AWAY	NEUTRAL
ALL GAMES	7-6	5-3	1-2	1-1
CONFERENCE	0-2	0-1	0-1	0-0
NON-CONFERENCE	7-4	5-2	1-1	1-1

##	Player	gp-gs	min	avg	Total		3-Point		F-Throw		Rebounds				pf dq		a to		blk stl		pts	avg
					fg-fga	fg%	3fg-fga	3fg%	ft-fga	ft%	off	def	tot	avg								
02	Wahlin, Kamille	13-13	477	36.7	80-186	.430	39-93	.419	18-20	.900	4	43	47	3.6	13	0	43	46	0	10	217	16.7
21	Alexander, Kachine	6-4	182	30.3	31-85	.365	2-14	.143	27-34	.794	32	36	68	11.3	13	0	23	20	4	12	91	15.2
24	Printy, Jaime	13-13	420	32.3	61-141	.433	29-78	.372	21-22	.955	16	50	66	5.1	31	1	45	34	1	12	172	13.2
12	Johnson, Morgan	13-13	351	27.0	56-114	.491	1-3	.333	23-33	.697	26	62	88	6.8	27	0	9	26	27	6	136	10.5
23	Taylor, Theairra	10-8	247	24.7	29-86	.337	9-26	.346	14-18	.778	15	34	49	4.9	22	1	24	29	10	13	81	8.1
20	Krei, Kelly	13-12	412	31.7	32-74	.432	18-42	.429	16-25	.640	18	44	62	4.8	27	1	18	22	7	14	98	7.5
50	Machado, Gabby	10-0	108	10.8	18-42	.429	0-0	.000	8-14	.571	13	21	34	3.4	24	0	5	18	4	5	44	4.4
13	Jones, Shante	4-0	24	6.0	5-12	.417	0-0	.000	0-1	.000	1	2	3	0.8	3	0	1	2	1	1	10	2.5
11	Nesbitt, Trisha	13-0	187	14.4	9-30	.300	3-12	.250	11-13	.846	2	10	12	0.9	17	0	19	15	0	3	32	2.5
31	Draxten, Hannah	4-0	39	9.8	3-10	.300	2-8	.250	0-0	.000	3	2	5	1.3	3	0	1	4	0	3	8	2.0
22	Cermak, Kelsey	13-2	178	13.7	6-21	.286	1-6	.167	4-5	.800	10	10	20	1.5	12	0	5	2	1	4	17	1.3
Team											28	29	57				5					
Total.....		13	2625		330-801	.412	104-282	.369	142-185	.768	168	343	511	39.3	192	3	193	223	55	83	906	69.7
Opponents.....		13	2625		324-799	.406	76-242	.314	140-192	.729	159	331	490	37.7	213	-	191	217	45	102	864	66.5

TEAM STATISTICS	IOWA	OPP
SCORING	906	864
Points per game	69.7	66.5
Scoring margin	+3.2	-
FIELD GOALS-ATT	330-801	324-799
Field goal pct	.412	.406
3 POINT FG-ATT	104-282	76-242
3-point FG pct	.369	.314
3-pt FG made per game	8.0	5.8
FREE THROWS-ATT	142-185	140-192
Free throw pct	.768	.729
F-Throws made per game	10.9	10.8
REBOUNDS	511	490
Rebounds per game	39.3	37.7
Rebounding margin	+1.6	-
ASSISTS	193	191
Assists per game	14.8	14.7
TURNOVERS	223	217
Turnovers per game	17.2	16.7
Turnover margin	-0.5	-
Assist/turnover ratio	0.9	0.9
STEALS	83	102
Steals per game	6.4	7.8
BLOCKS	55	45
Blocks per game	4.2	3.5
ATTENDANCE	22824	19134
Home games-Avg/Game	8-2853	3-6046
Neutral site-Avg/Game	-	2-498

	Date	Opponent		Score	Att.
#	11/14/09	SANTA CLARA	W	67-51	2277
#	11/15/09	ILLINOIS STATE	W	75-67	2793
	11/18/09	KANSAS	L	55-66	3336
	11-22-09	at UNI	W	81-70	1607
	11/24/09	WILLIAM & MARY	W	78-54	2537
^	11/27/09	vs West Virginia	L	66-69	736
^	11/28/09	vs Columbia	W	72-69	261
	12/2/09	BOSTON COLLEGE	L	67-72	2273
*	12/6/09	MICHIGAN	L	51-54	2856
	12/10/09	at Iowa State	L	66-85	12244
	12/20/09	DRAKE	W	73-61	4312
	12/22/09	SOUTH DAKOTA STATE	W	82-69	2440
*	12/28/09	at Penn State	Lot	73-77	4286

= KCRG-TV9 Hawkeye Challenge; Iowa City, IA

^ = at Nugget Classic; Reno, NV

* = Conference game

Score by Periods	1st	2nd	OT	Totals
Iowa	399	496	11	906
Opponents	426	423	15	864



2009-10 IOWA WOMEN'S BASKETBALL
Iowa Combined Team Statistics (as of Dec 30, 2009)
Conference games



RECORD:	OVERALL	HOME	AWAY	NEUTRAL
ALL GAMES	0-2	0-1	0-1	0-0
CONFERENCE	0-2	0-1	0-1	0-0
NON-CONFERENCE	0-0	0-0	0-0	0-0

#	Player	gp-gs	min	avg	Total		3-Point		F-Throw		Rebounds				pf	dq	a	to	blk	stl	pts	avg
					fg-fga	fg%	3fg-fga	3fg%	ft-fa	ft%	off	def	tot	avg								
02	Wahlin, Kamilie	2-2	83	41.5	12-38	.316	8-26	.308	2-2	1.000	0	9	9	4.5	1	0	10	8	0	4	34	17.0
23	Taylor, Theairra	1-1	32	32.0	6-12	.500	1-3	.333	0-1	.000	1	6	7	7.0	2	0	4	4	4	3	13	13.0
21	Alexander, Kachine	1-1	38	38.0	4-15	.267	0-2	.000	3-4	.750	3	5	8	8.0	4	0	4	2	1	3	11	11.0
20	Krei, Kelly	2-2	61	30.5	8-17	.471	3-8	.375	2-3	.667	4	4	8	4.0	5	0	2	2	0	1	21	10.5
24	Printy, Jaime	2-2	72	36.0	7-30	.233	4-16	.250	3-4	.750	5	7	12	6.0	5	0	3	4	0	2	21	10.5
12	Johnson, Morgan	2-2	61	30.5	6-12	.500	0-1	.000	2-2	1.000	3	11	14	7.0	6	0	0	6	2	0	14	7.0
50	Machado, Gabby	2-0	24	12.0	2-5	.400	0-0	.000	2-4	.500	3	4	7	3.5	5	0	0	5	0	0	6	3.0
11	Nesbitt, Trisha	2-0	32	16.0	1-4	.250	0-1	.000	0-0	.000	1	1	2	1.0	2	0	1	1	0	0	2	1.0
22	Cermak, Kelsey	2-0	22	11.0	1-2	.500	0-1	.000	0-0	.000	0	0	0	0.0	0	0	0	2	0	1	2	1.0
Team											10	3	13					1				
Total.....		2	425		47-135	.348	16-58	.276	14-20	.700	30	50	80	40.0	30	0	24	35	7	14	124	62.0
Opponents.....		2	425		50-121	.413	6-27	.222	25-33	.758	25	61	86	43.0	33	-	28	39	16	15	131	65.5

TEAM STATISTICS	IOWA	OPP
SCORING	124	131
Points per game	62.0	65.5
Scoring margin	-3.5	-
FIELD GOALS-ATT	47-135	50-121
Field goal pct	.348	.413
3 POINT FG-ATT	16-58	6-27
3-point FG pct	.276	.222
3-pt FG made per game	8.0	3.0
FREE THROWS-ATT	14-20	25-33
Free throw pct	.700	.758
F-Throws made per game	7.0	12.5
REBOUNDS	80	86
Rebounds per game	40.0	43.0
Rebounding margin	-3.0	-
ASSISTS	24	28
Assists per game	12.0	14.0
TURNOVERS	35	39
Turnovers per game	17.5	19.5
Turnover margin	+2.0	-
Assist/turnover ratio	0.7	0.7
STEALS	14	15
Steals per game	7.0	7.5
BLOCKS	7	16
Blocks per game	3.5	8.0
ATTENDANCE	2856	4286
Home games-Avg/Game	1-2856	1-4286
Neutral site-Avg/Game	-	0-0

Date	Opponent		Score	Att.
* 12/6/09	MICHIGAN	L	51-54	2856
* 12/28/09	at Penn State	Lot	73-77	4286

= KCRG-TV9 Hawkeye Challenge; Iowa City, IA

^ = at Nugget Classic; Reno, NV

* = Conference game

Score by Periods	1st	2nd	OT	Totals
Iowa	51	62	11	124
Opponents	70	46	15	131