

AN OPPORTUNITY TO SEE THE WORLD

As a member of the basketball program at the University of Iowa, education often expands beyond the classroom to various parts of the United States and the world.

Over the years, the Iowa basketball team has visited Alaska, Australia, Hawaii, London, Paris, Hong Kong, San Juan, Puerto Rico, the French Riviera, Switzerland, Italy, Belgium, Amsterdam, England, the Great Wall of China, the Virgin Islands and other exciting parts of the world.

This season, the Hawkeyes will spend the Thanksgiving holiday in Las Vegas while participating in the Las Vegas Invitational. The Hawkeyes are scheduled to visit Greece and Italy while traveling for a tour of exhibition games this summer.

Every four years the Iowa basketball team is permitted to take an overseas exhibition trip during the summer. On their most recent trip, members of the Iowa program traveled in Australia during a five-game, 10-day exhibition tour, visiting Sydney, Brisbane and Cairns. Because a trip can be taken every four years, every Hawkeye player has the opportunity to experience travel abroad as part of their total University of Iowa experience.

During the regular season, Iowa annually takes part in some of the top college basketball tournaments in the nation. Along with the visit to Las Vegas this season where the Hawkeyes will compete against West Virginia, Kansas State and Kentucky, Iowa traveled to South Padre Island a year ago over the Thanksgiving holiday.

In 2006-07, the Hawkeyes took part in the Paradise Jam, an eight team event held in St. Thomas, Virgin Islands. Iowa started the 2005-06 season by competing in the Guardians Classic for the second time in five seasons. After winning two games on their home floor, the Hawkeyes advanced to the Final Four of the event that also included Kentucky, Texas and West Virginia. Iowa advanced to the title game with a win over ninth-ranked Kentucky before second-ranked Texas handed Iowa its first loss of the year in the title game.

The Hawkeye basketball team returned to Hawaii during the 2005 season, placing second in the EA Sports Maui Invitational. Facing a tournament field that included Louisville, North Carolina, Stanford, Texas, Tennessee and Brigham Young, the Maui Invitational is one of the top tournaments of the year. The Hawkeyes defeated Louisville and Texas in the first two rounds before a loss to North Carolina, the eventual national champion, in the championship game.

Iowa took part in the Rainbow Classic in 2001, placing third in the eight team tournament in Honolulu, Hawaii. The Hawkeyes won the Maui Invitational in 1987, placed second in the Rainbow Classic in 1995 and also competed in the Maui Invitational in 1997.

In 1999-2000, Iowa opened the season in the IKON Coaches vs. Cancer Classic, playing two games in Madison Square Garden in New York City, competing against Connecticut, Stanford and Duke. Iowa defeated Connecticut, the defending NCAA champion, in the first round before falling to Stanford in the championship game.

During the 1998 summer, the Hawkeyes spent nearly two weeks in England, playing games against professional clubs there. Yet, more than basketball was being played. The Hawkeyes were able to develop relationships and experience cultures that transcend beyond the basketball court.



When the Hawkeyes travel they do so by charter flight, which allows for the safest and easiest travel possible to and from road games. The Hawkeyes are able to return to Iowa City immediately following road contests.

AN OPPORTUNITY TO SEE THE WORLD

While participating in the Las Vegas Invitational in November, the Hawkeyes will stay at the Red Rock Resort in Las Vegas.



Semi-final and final round games of the Las Vegas Invitational will be held at the Orleans Arena in Las Vegas.



Members of the Hawkeye program will be able to take in the sights in Greece and Italy this summer on their exhibition tour.



HAWKEYES ARE IN THE SPOTLIGHT



ESPN's Steve Lavin (left) and Brent Musberger (center) prepare for a telecast from Iowa's Carver-Hawkeye Arena.

The spotlight of media coverage follows the Iowa basketball team throughout the year.

With no professional sports teams in the state of Iowa, Hawkeye athletes are in the spotlight around the state and the Midwest. All Hawkeye games are covered by newspaper, radio and television outlets throughout the state, along with the exposure of having all games televised on regional and national telecasts.

Hawkeye basketball players learn to handle the exposure on almost a daily basis, improving their communication skills throughout their careers while dealing with the media throughout each season.



Bill Raftery (left) and Kevin Harlan prepare for a CBS-TV telecast from Carver-Hawkeye Arena.

During the 2005-06 season, Iowa appeared on national television 13 times over the course of the season, including a back-to-back games on CBS in the semi-finals and championship game of the Big Ten Conference Tournament. A year ago, nearly two-thirds of Iowa games were televised throughout the nation.

During the upcoming season, as many as 30 Hawkeye basketball games will be televised. The addition of the Big Ten Network, a national cable network, means an unprecedented number of games will have national television coverage for the second straight season. A year ago, 31 of 32 Hawkeye basketball games were televised.

HAWKEYES ARE IN THE SPOTLIGHT



A large media contingent fills the Media Room in Carver-Hawkeye Arena following home games. Iowa home games draw media attention on a local, regional and national scale.



Senior Cyrus Tate visits with members of the media during Media Day activities in Carver-Hawkeye Arena. Hawkeye players are exposed to local, regional and national news media throughout each season.



The official web site of Iowa athletics is **hawkeyesports.com**, while information specific to the Iowa basketball program can be found at **hawkeyebasketball.com**.

For detailed information on the success of the Iowa basketball program and information (including video highlights) and video tours of the UI campus, visit **gohawks.com**, Iowa's video interactive website.

With its inception in September, 1996, the University of Iowa athletic department was one of the first intercollegiate departments to develop a web site dedicated to athletics. The Iowa site includes information on all men's and women's athletic programs, ticket information, latest news releases and links that provide information concerning all aspects of the University of Iowa.

hawkeyesports.com has recently undergone a complete re-design of the entire site, including all pages associated with Hawkeye men's basketball. This re-design includes expansion of content in all forms, including editorial, photography, video and audio.

Since its inception, the Iowa website has been recognized as the best college football site by The National Football Report and recognized with a national award from the Newspaper Association of America.

The hawkeyebasketball.com site has the following features:

History of Iowa Basketball

Information on current and former Hawkeye players

Weekly Multimedia clips of Coach Lickliter media conferences

Information on current and former Hawkeye coaches

Photo of the Day from Iowa Basketball

Weekly Game Notes throughout the Season

"Live Stats" during each game, featuring up to the minute play-by-play descriptions and individual and team statistics during each Iowa game

Complete Game Reports, including Statistics, Play-by-Play, Game Notes and Coaches comments, following each Iowa game

Complete Season Statistics, including all individual and team statistical information, throughout the season

Complete history and records of the Iowa basketball program

GOHAWKS.COM OFFERS THE FOLLOWING FEATURES:

Video tour of the University of Iowa campus

An introduction to members of the Iowa basketball staff

Features on University of Iowa athletic and academic facilities

Information on Iowa's total athletic program

Additional feature information on the Iowa basketball program, along with information on current and former Hawkeye players



IOWA ALL-CENTURY BASKETBALL TEAM



During the course of the 2001-02 season, the Iowa basketball program selected, and honored, its all-Century basketball team. The 20-members of the team were brought to campus and recognized throughout a weekend of activities that put the final touches on season-long activities. All Iowa basketball lettermen were invited to gather in Iowa City for the weekend activities and more than 100 former players were able to attend the festivities.

In conjunction with the all-Century team, an all-Decade team of five players for each decade was also selected. The all-Century team was selected by fan balloting, and Iowa fans were also active in selecting the greatest games in Iowa basketball history.

ALL-CENTURY TEAM

- | | |
|-------------------------|--------------------------|
| B.J. Armstrong, 1986-89 | Bill Logan, 1954-56 |
| Fred Brown, 1970-71 | Roy Marble, 1986-89 |
| Carl Cain, 1954-56 | Don Nelson, 1960-62 |
| Chuck Darling, 1950-52 | Bill Seaberg, 1954-56 |
| Acie Earl, 1990-93 | Ben Selzer, 1932-34 |
| Dave Gunther, 1957-59 | Greg Stokes, 1982-85 |
| John Johnson, 1969-70 | Murray Wier, 1945-48 |
| Dick Ives, 1944-47 | Herb Wilkinson, 1945-47 |
| Kevin Kunnert, 1971-73 | Sam Williams, 1967-68 |
| Ronnie Lester, 1977-80 | Andre Woolridge, 1995-97 |

ALL-DECADE TEAMS

1900's

- James Barton, 1905-07
- Chester Buckner, 1906-08
- J.O. Perrine, 1907-09
- C.P. Schenck, 1902-05
- Walter Stewart, 1908-10

1910's

- Edwin Bannick, 1915-17
- Clifford Berrien, 1917-19
- Lawrence Dutton, 1915-17
- H.L. Von Lackum, 1914-16
- John Von Lackum, 1916-18

1920's

- Aubrey Devine, 1920-22
- Hector Janse, 1923-25
- Charles McConnell, 1925-27
- Forest Twogood, 1927-29
- George Van Deusen, 1925-27

1930's

- Howard Bastian, 1933-34
- John Grim, 1933-35
- Howard Moffitt, 1932-34
- Ben Selzer, 1932-34
- Ben Stephens, 1937-39

1940's

- Dave Danner, 1944-47
- Dick Ives, 1944-47
- Vic Siegel, 1940-42
- Murray Wier, 1945-48
- Herb Wilkinson, 1945-47

1950's

- Carl Cain, 1954-56
- Chuck Darling, 1950-52
- Dave Gunther, 1957-59
- Bill Logan, 1954-56
- Bill Seaberg, 1954-56

1960's

- Chad Calabria, 1968-70
- Don Nelson, 1960-62
- Jimmy Rodgers, 1963-65
- Glenn Vidnovic, 1968-70
- Sam Williams, 1967-68

1970's

- Fred Brown, 1970-71
- John Johnson, 1969-70
- Bruce King, 1975-77
- Kevin Kunnert, 1971-73
- Ronnie Lester, 1977-80

1980's

- B.J. Armstrong, 1986-89
- Bob Hansen, 1980-83
- Ed Horton, 1986-89
- Roy Marble, 1986-89
- Greg Stokes, 1982-85

1990's

- Acie Earl, 1990-93
- Dean Oliver, 1998-01
- Jess Settles, 1994-96, 99
- Chris Street, 1991-93
- Andre Woolridge, 1995-97



These members of Iowa's all-Century team returned to Carver-Hawkeye Arena during the 2001-02 season when Iowa celebrated its 100 years of basketball. Team members Fred Brown, Acie Earl, John Johnson, Don Nelson and Andre Woolridge were unable to attend. Team members Ben Selzer and Dick Ives are deceased.

Front row (l-r): Bill Seaberg, Herb Wilkinson, Murray Wier and B.J. Armstrong. Second row (l-r): Bill Logan, Roy Marble, Ronnie Lester and Sam Williams. Third row (l-r): Kevin Kunnert, Greg Stokes, Dave Gunther, Carl Cain and Chuck Darling.

"Along with being honored to be a part of the all-Century team, it was extra special for me to see and have an opportunity to visit with so many of my former teammates. All the festivities were super and greatly appreciated. It is great to be a Hawkeye!"

Chuck Darling, 1950-52
Iowa Letterman and all-American

IOWA BASKETBALL SUMMER CAMPS



(Above) Campers attending basketball camp at the University of Iowa have the opportunity to learn, watch and interact with members of the Iowa basketball staff and current and former Hawkeye players.



(Above) Former Hawkeye Mike Henderson, a native of Waterloo, now plays professional basketball overseas after helping the Hawkeyes win the 2006 Big Ten Conference Tournament.



(Left) Former Hawkeye Jeff Horner, the Most Valuable Player in the 2006 Big Ten Conference Tournament, helps distribute awards at Iowa's annual summer basketball camp.

Campers attending Iowa's most recent summer camps represented 25 states and five foreign countries. The Iowa basketball individual summer camps have been some of the most highly attended camps in the country.

Each summer, Iowa Coach Todd Lickliter and the Iowa basketball staff conduct youth basketball camps, on campus and around the state of Iowa. Along with the week-long day camps and overnight camps held on the University campus in Iowa City, the Iowa basketball program has also held day camps at different locations around the state.

The two sessions of the camps held on the Iowa campus each summer include the following:

A camp staff that includes Coach Todd Lickliter, Iowa's assistant coaches and current and former Iowa Hawkeye players

Four full-court games daily with players of similar abilities and age groups

Special awards ceremony in Iowa's Carver-Hawkeye Arena

Additional evening basketball clinics by Iowa camp staff on shooting, ball-handling and other fundamentals

Free NIKE camp T-shirt and basketball

Swimming, game room, racquetball, pizza, Hawk Shop and two feature movies each evening

Daily lecture series committed to the total student-athlete, including the areas of academics, drugs and alcohol

"Hustler of the Day" awards presented each day

Individual and team trophies and awards

Information concerning any of the Iowa men's basketball camps is available on the UI website, hawkeyesports.com and iowasportscamps.com, or by contacting secretary Pam Culver at 1-800-IA-Hoops (424-6677).



IOWA BASKETBALL INFORMATION

| | |
|---|-----|
| TV/Radio Photo Roster | 90 |
| Rosters/Pronunciation Guide..... | 91 |
| 2008-09 Outlook | 92 |
| Season at a Glance | 95 |
| Iowa Basketball Notes | 96 |
| Iowa Player Bios | 98 |
| Career Individual Game-By-Game Statistics | 117 |

RADIO | TV ROSTER



1 – ANTHONY TUCKER
Guard
6-4, 200, Freshman
Minnetonka, Minnesota
Minnetonka HS



2 – DAVID PALMER
Center
6-9, 240, Junior
Antioch, Tennessee
Antioch HS
Oak Hill Academy



4 – J.R. ANGLE
Guard
6-7, 215, Senior
Franklin, Indiana
Indian Creek HS



5 – MATT GATENS
Guard
6-5, 215, Freshman
Iowa City, Iowa
Iowa City HS



15 – DEVAN BAWINKEL
Guard
6-5, 210, Junior
Winnebago, Illinois
Winnebago HS
Highland, IL CC



20 – ANDREW BROMMER
Forward
6-9, 235, Freshman
Rosemount, Minnesota
Rosemount HS



23 – JERMAIN DAVIS
Guard
6-4, 200, Junior
Plymouth, Minnesota
Robbinsdale Cooper HS
Kirkwood, IA CC



24 – AARON FULLER
Forward
6-6, 210, Freshman
Mesa, Arizona
Mesa HS



30 – JEFF PETERSON
Guard
6-0, 192, Sophomore
Hyattsville, Maryland
DeMatha Catholic HS



32 – JAKE KELLY
Guard
6-6, 185, Sophomore
Carmel, Indiana
Carmel HS



34 – JOHN LICKLITER
Guard
5-11, 175, Freshman
Iowa City, Iowa
Iowa City HS



44 – CYRUS TATE
Forward
6-8, 255, Senior
Chicago, Illinois
Homewood-Flossmoor HS
Northeast, NE Community College



50 – JARRYD COLE
Forward
6-7, 250, Sophomore
Kansas City, Missouri
Winnetonka HS



COACH TODD LICKLITER
At Iowa: 13-19 (Second year)
Career: 144-80 (Seven years)

2008-09 IOWA BASKETBALL ROSTER

NUMERICAL

| NO. | NAME | POS. | HT. | WT. | YR. | HOMETOWN | HIGH SCHOOL/CC |
|-----|-----------------|------|------|-----|-----|-----------------|------------------|
| 1 | Anthony Tucker | G | 6-4 | 200 | Fr. | Minnetonka, MN | Minnetonka |
| 2 | * David Palmer | C | 6-9 | 240 | Jr. | Antioch, TN | Oak Hill Academy |
| 4 | *** J.R. Angle | G | 6-7 | 215 | Sr. | Franklin, IN | Indian Creek |
| 5 | Matt Gatens | G | 6-5 | 215 | Fr. | Iowa City, IA | Iowa City |
| 15 | Devan Bawinkel | G | 6-5 | 210 | Jr. | Winnebago, IL | Highland, IL CC |
| 20 | Andrew Brommer | F | 6-9 | 235 | Fr. | Rosemount, MN | Rosemount |
| 23 | Jermain Davis | G | 6-4 | 200 | Jr. | Plymouth, MN | Kirkwood, IA CC |
| 24 | Aaron Fuller | F | 6-6 | 210 | Fr. | Mesa, AZ | Mesa |
| 30 | * Jeff Peterson | G | 6-0 | 192 | So. | Hyattsville, MD | DeMatha Catholic |
| 32 | * Jake Kelly | G | 6-6 | 185 | So. | Carmel, IN | Carmel |
| 34 | John Licklitter | G | 5-11 | 175 | Fr. | Iowa City, IA | Iowa City |
| 44 | ** Cyrus Tate | F | 6-8 | 255 | Sr. | Chicago, IL | Northeast, NE CC |
| 50 | * Jarryd Cole | F | 6-7 | 250 | So. | Kansas City, MO | Winnetonka |

ALPHABETICAL

| NO. | NAME | POS. | HT. | WT. | YR. | HOMETOWN | HIGH SCHOOL/CC |
|-----|------------------|------|------|-----|-----|-----------------|------------------|
| 4 | *** ANGLE, J.R. | G | 6-7 | 215 | Sr. | Franklin, IN | Indian Creek |
| 15 | BAWINKEL, Devan | G | 6-5 | 210 | Jr. | Winnebago, IL | Highland, IL CC |
| 20 | BROMMER, Andrew | F | 6-9 | 235 | Fr. | Rosemount, MN | Rosemount |
| 50 | * COLE, Jarryd | F | 6-7 | 250 | So. | Kansas City, MO | Winnetonka |
| 23 | DAVIS, Jermain | G | 6-4 | 200 | Jr. | Plymouth, MN | Kirkwood, IA CC |
| 24 | FULLER, Aaron | F | 6-6 | 210 | Fr. | Mesa, AZ | Mesa |
| 5 | GATENS, Matt | G | 6-5 | 215 | Fr. | Iowa City, IA | Iowa City |
| 32 | * KELLY, Jake | G | 6-6 | 185 | So. | Carmel, IN | Carmel |
| 34 | LICKLITER, John | G | 5-11 | 175 | Fr. | Iowa City, IA | Iowa City |
| 2 | * PALMER, David | C | 6-9 | 240 | Jr. | Antioch, TN | Oak Hill Academy |
| 30 | * PETERSON, Jeff | G | 6-0 | 192 | So. | Hyattsville, MD | DeMatha Catholic |
| 44 | ** TATE, Cyrus | F | 6-8 | 255 | Sr. | Chicago, IL | Northeast, NE CC |
| 1 | TUCKER, Anthony | G | 6-4 | 200 | Fr. | Minnetonka, MN | Minnetonka |

* – denotes letters won

class reflects athletic eligibility

HEAD COACH:

Todd Licklitter

ASSISTANT COACHES:

Joel Cornette
LaVall Jordan
Chad Walthall

DIRECTOR OF BASKETBALL OPERATIONS:

Jerry Strom

VIDEO COORDINATOR:

Justin Wieck

GRADUATE MANAGER:

Garrett Licklitter

PRONUNCIATION GUIDE

| | |
|----------------|-------------|
| LaVall Jordan | luh-vell |
| Chad Walthall | WALL-thawl |
| Devan Bawinkel | BAU-wink-ul |
| Andrew Brommer | BRAU-mur |

2008-09 IOWA BASKETBALL OUTLOOK

As the Iowa Hawkeyes begin the second year of the Todd Lickliter era two things are certain: Iowa will feature a young team with seven of 12 scholarship players either in their first or second year, and the schedule is a challenging one.

The Iowa roster includes two seniors, three juniors, three sophomores and five freshmen. Seven of the 13 team members are in their first year in the program.

In Lickliter's first season the Hawkeyes finished eighth in the Big Ten Conference with a 6-12 record while posting a 13-19 overall mark. Iowa ranked second in the Big Ten and fifth in the nation in scoring defense (58.0). Six of Iowa's losses were by five points or less.

Lickliter, the 2007 National Coach of the Year, holds a career mark of 144-80 (.643) in seven seasons as a head coach. His past successes include four post-season appearances, as he led teams to the second round of the NIT (2002 and 2006) and a pair of trips to the NCAA Sweet Sixteen (2003 and 2007).

The Iowa assistant coaches, LaVall Jordan, Chad Walthall and Joel Cornette, have put in extensive hours recruiting and in player development, assisting Lickliter in achieving the goals they have set for the Hawkeye program.

"We have a terrific staff," noted Lickliter. "I'm thankful for their dedication and their efforts. They are committed to building a team that Iowa students, alumni and fans will want to fully support. We're hoping to fill Carver-Hawkeye Arena by assembling a group of talented players that are committed to a style of play that is fun to watch."

With six lettermen returning, Lickliter believes the program has advanced from a year ago. "Last year the members of our coaching staff were the only ones on the court who knew the system. This year, we're expecting our returning players to assist in the implementation process," said Lickliter. "They won't have it mastered, but everyone has

a better understanding of the expectations and the mindset requires. Our veterans will lead by example. Also, the new players have had the opportunity to play in open gyms all summer with the veterans and some former Hawkeyes. That should have been an opportunity to start the learning process. My past teams took the summer workouts

very seriously and used that time to initiate the new guys into the culture. Since coaches can't watch or organize open gyms, we have to trust we have the leadership within the team to focus on the right things. Hopefully they used that time to their advantage. I'm looking forward to the time when practice is efficient and productive."

The schedule Lickliter and his staff will face in their second year is a challenging one. Sixteen of 31 regular season games are against teams that advanced to post-season play a year ago, including 12 games against teams that participated in the NCAA Tournament.

During the non-conference portion of the schedule Iowa will meet teams from the Big East, Atlantic Coast, Big 12 and Missouri Valley conferences, along with a possible opponent from the Southeastern Conference. Iowa will take part in the Las Vegas Invitational, meeting West Virginia and either Kansas State or Kentucky in Las Vegas.

Iowa will host first and second round games of the Las Vegas event in Iowa City against Oakland University and Southeast Missouri State. For the in-state rivalry games, the Hawkeyes host Iowa State and Northern Iowa and travel to Drake.

"Overall, I think our schedule is challenging," said Lickliter. "It will always be a high quality schedule with 18 Big Ten games and the three in-state opponents. Add to that the fact that five of our non-conference games are away from home. Learning to respond well to travel is part of the process and we need to grow in that area as well."



Senior forward Cyrus Tate shot 66.7% from the field in Big Ten play a year ago, averaging 10.6 points and seven rebounds per game.

2008-09 IOWA BASKETBALL OUTLOOK

Licklitter likes his balance of returning players and newcomers, and feels his squad will be ready to improve on last year's record. More bodies, more experience and a better knowledge of the system should all add to that improvement.

"Our veterans are really disappointed with last year's record," added Licklitter. "Losing has to motivate you, and I think that is the case with our returning guys. They worked hard this spring. They really want to reestablish the proud tradition of Iowa basketball. I'm sure it carried over to the summer as well."

The returning players include senior forward Cyrus Tate (6-8, 255) and senior guard J.R. Angle (6-7, 215). Tate averaged 8.3 points a game last season and led the squad in rebounding at 5.4 per game. Tate's field goal percentage (.702) in Big Ten games led the league.

The lone returning junior, forward David Palmer (6-9, 240), will be joined by two junior college guards, Devan Bawinkel (6-5, 210) and Jermain Davis (6-4, 200).

The returning sophomore's include guard Jake Kelly (6-6, 185), forward Jarryd Cole (6-7, 250) and guard Jeff Peterson (6-0, 192). Kelly started 25 games as a freshman, averaging 7.3 points and shooting 40.8% from three-point range. Cole played in just 13 games, with six starts, before suffering a knee injury in the final non-conference game and missing the remainder of the season. He averaged 6.6 points and 4.8 rebounds. Peterson started 11 games at the point guard position and averaged 5.2 points and 3.1 assists.

"Jarryd's injury last year was a setback for him and our team," admitted Licklitter. "Although Jarryd was learning the system and adjusting and improving each day, Cyrus Tate responded to the team's needs, and in Jarryd's absence, truly committed to the concepts we were implementing. Cyrus' progress and success were obvious and I'm hoping everyone will build on his example. Always be prepared to contribute and committed to team success."

While his first Iowa team played well defensively, Licklitter feels the Hawkeyes can be better on defense and more consistent on offense this season.

"We showed improvement, last year at times," said Licklitter. "But, we were unable to show consistent improvement throughout the course of the season. I do think we will be improved in our scoring options this season. We can advance our defense from last year as well.

We have to take great pride in taking the next step on both ends of the court."

The group of new players includes two junior college guards in Bawinkel and Davis. Davis played last season at Kirkwood Community College, helping his team place third in the Division II Junior College National Tournament. Bawinkel averaged 13.5 points and 4.8 rebounds in one season at Highland, IL CC after spending his freshman season at West Virginia.

The incoming freshmen all come from successful prep programs. Iowa City native Matt Gatens (6-5, 215), led Iowa City HS to a state title and was named Iowa's "Mr. Basketball" and the Gatorade state Player of the Year. He averaged 22.1 points, 6.1 rebounds and five assists per game as a senior while scoring 1,928 career points. He was a two-time first team all-state selection and was named captain of the state tournament all-tournament team. Gatens led his team to a 25-1 record as a senior.

Anthony Tucker (6-4, 200) joins the Hawkeye program from Minnetonka, MN HS. Tucker led his team to the state title in Minnesota as a senior, averaging 21.8 points, 7.8 assists and 6.3 rebounds. He was a finalist for "Mr. Basketball" in Minnesota and was a first team all-state selection after leading his team to a 28-3 record.

The tallest member of the incoming class is Andrew Brommer (6-9, 235) from Rosemount, MN HS. He averaged 16.8 points and 8.1 rebounds as a senior, shooting 60% from the field. Like Tucker, he was a finalist for the "Mr. Basketball" award in Minnesota.

Aaron Fuller (6-6, 210) averaged 23.4 points and 10.6 rebounds as a senior at Mesa, AZ HS, where he was named the state Player of the Year by the *Arizona Republic* newspaper. Fuller shot 59.8% from the field and 70.4% from the free throw line.

John Licklitter (5-11, 175) also joins the program as a walk-on. He started every game at point guard for Iowa City HS as a senior, joining Gatens in leading the team to a 25-1 record and the state title. Licklitter contributed 11 points and three steals in the title game victory.

While the class of new players has posted impressive individual numbers, Licklitter likes the team success they have each enjoyed. "I'm excited about what this group can achieve as a team," he added. "Their approach to the game is team oriented."

Sophomore guard Jake Kelly started 25 games a year ago, averaging 7.3 points while shooting 43.5% from three-point range. He also ranked second on the team in steals.



2008-09 IOWA BASKETBALL OUTLOOK

"We do have more bodies this year, and that depth can hopefully lead to more balance," added Lickliter. "The incoming class was recruited to fit our system. Our returning players focus is team oriented as well. I believe this group will measure success by team accomplishment. It is each player's responsibility to play to their strengths and to know the strengths of their teammates. They have to make a commitment to being a team. They all want to contribute, but they have to learn what that means, learn to play Hawkeye basketball. And when we say "Hawkeye Basketball," we are referring to an approach to the game that includes effort, knowledge of the system, commitment to details, and persevering until complimenting one another becomes instinctive."

Among the areas of focus for this year's Hawkeyes will be reducing the number of turnovers from a year ago. "We want our guys to make the easy play, to have the discipline to not try to make the difficult plays, or put their teammates in difficult situations," explained the Hawkeye Coach. "And that includes shot selection. A bad shot is similar to a turnover. We have to make the opponent defend difficult actions; make it tough on them to guard us. It's a process of becoming comfortable every day in what we do best."

Lickliter sees the change in the three-point line for the upcoming season as a move that will improve the game. "I don't think the distance will have a major effect on shooting percentages," said Lickliter. "The intent of the change is to open up the court. We see this as an opportunity to create better spacing, and it can lead to good things within our offense. We'll have to make some adjustments in what we do, but it can be a real positive for us."

Within the Big Ten, the Hawkeyes play two games against all of the top five teams in the league a year ago. For the second straight season, Iowa meets Minnesota (home) and Illinois (away) just once. The Hawkeyes will play 17 home games, 12 road games and two contests on a neutral floor. The Big Ten Tournament is in Indianapolis again.



Sophomore guard Jeff Peterson averaged over three assists per game while starting 11 games in his first season.

IOWA BASKETBALL AT A GLANCE

2007-08 Record: 13-19 overall, 6-12 in Big Ten Conference (8th)

2007-08 Post-season: NA

Starters Returning/Lost: 2/3

Lettermen Returning/Lost: 6/5

Head Coach: Todd Lickliter

Birthdate: 4/17/55

Education: B.S. – Butler University, 1979

Career Record: 144-80 (.643, seven years)

Lickliter at Iowa: 13-19 (.406, one year)

Big Ten Record: 6-12 (.333)

Best Time to Call: Morning, contact Sports Information

Assistant Coaches: Joel Cornette, second year at Iowa (Butler, 2004)

LaVall Jordan, second year at Iowa (Butler, 2001)

Chad Walthall, second year at Iowa (Concordia College, MN, 1991)

Director of Basketball Operations: Jerry Strom, 28th year at Iowa (Concordia College, NE, 1976)

Video Coordinator: Justin Wieck (Iowa, 2006)

Graduate Manager: Garrett Lickliter (Marian College, 2007)

Basketball Secretaries: Shelly Deutsch, Pam Culver

Trainer/Travel Coordinator: John Streif

STARTERS RETURNING (2):

Jake Kelly (G, 6-6, 185, So., 7.3 ppg, 1.9 rpg)

Cyrus Tate (F, 6-8, 255, Sr., 8.3 ppg, 5.4 rpg)

LETTERMEN RETURNING (6):

J.R. Angle (G, 6-7, 215, Sr., 3.2 ppg, 1.7 rpg)

Jarryd Cole (F, 6-7, 250, So., 6.6 ppg, 4.8 rpg)

Jake Kelly (G, 6-6, 185, So., 7.3 ppg, 1.9 rpg)

David Palmer (C, 6-9, 240, Jr., 0.9 ppg, 0.6 rpg)

Jeff Peterson (G, 6-0, 192, So., 5.2 ppg, 3.1 apg)

Cyrus Tate (F, 6-8, 255, Sr., 8.3 ppg, 5.4 rpg)

NEWCOMERS (7):

Devan Bawinkel (G, 6-5, 210, Jr., Winnebago, IL, Highland, IL CC)

Andrew Brommer (F, 6-9, 235, Fr., Rosemount, MN, Rosemount HS)

Jermain Davis (G, 6-4, 200, Jr., Plymouth, MN, Kirkwood, IA CC)

Aaron Fuller (F, 6-6, 210, Fr., Mesa, AZ, Mesa HS)

Matt Gatens (G, 6-5, 215, Fr., Iowa City, IA, Iowa City HS)

John Lickliter (G, 5-11, 175, Fr., Iowa City, IA, Iowa City HS)

Anthony Tucker (G, 6-4, 200, Fr., Minnetonka, MN, Minnetonka HS)

LETTERMEN LOST (5):

Dan Bohall (G, 6-4, 193, Jr., 2.8 ppg, 1.0 rpg)

Tony Freeman (G, 6-1, 190, Sr., 13.8 ppg, 3.1 rpg, 3.2 apg)

Seth Gorney (F/C, 7-0, 245, 4.3 ppg, 5.2 rpg)

Justin Johnson (G, 6-6, 190, 11.8 ppg, 4.9 rpg)

Kurt Looby (C, 6-10, 210, 3.6 ppg, 4.6 rpg, 1.3 bpg)

LETTERMEN BY EXPERIENCE

3-year Lettermen (1): J.R. Angle

2-year Lettermen (1): Cyrus Tate

1-year Lettermen (4): Jarryd Cole, Jake Kelly, David Palmer, Jeff Peterson

PERSONNEL BREAKDOWN

By Class

Seniors (2): J.R. Angle, Cyrus Tate

Juniors (3): Devan Bawinkel, Jermain Davis, David Palmer

Sophomores (3): Jarryd Cole, Jake Kelly, Jeff Peterson

Freshmen (5): Andrew Brommer, Aaron Fuller, Matt Gatens, John Lickliter, Anthony Tucker

BY HEIGHT

5-11: John Lickliter

6-0: Jeff Peterson

6-4: Jermain Davis, Anthony Tucker

6-5: Devan Bawinkel, Matt Gatens

6-6: Aaron Fuller, Jake Kelly

6-7: J.R. Angle, Jarryd Cole

6-8: Cyrus Tate

6-9: Andrew Brommer, David Palmer

BY STATE

Arizona (1): Aaron Fuller

Illinois (2): Devan Bawinkel, Cyrus Tate

Indiana (2): J.R. Angle, Jake Kelly

Iowa (2): Matt Gatens, John Lickliter

Maryland (1): Jeff Peterson

Minnesota (3): Andrew Brommer, Jermain Davis, Anthony Tucker

Missouri (1): Jarryd Cole

Tennessee (1): David Palmer

IN SEASON BIRTHDAYS

Aaron Fuller, Dec. 3

Jermain Davis, Dec. 5

Devan Bawinkel, Dec. 14

Jeff Peterson, Jan. 27

John Lickliter, March 8

J.R. Angle, March 22

GAME DAY BIRTHDAYS

Jermain Davis, Dec. 5 vs. Bryant

IOWA BASKETBALL NOTES

IOWA HISTORY

Iowa has played 2,439 games since beginning basketball in 1902. Overall Iowa's record is 1,451-989 (.595). That includes a 912-316 (.743) record in home games, a 539-673 (.445) record in games away from Iowa City, a 690-677 (.504) mark in Big Ten games and a 318-90 (.779) record in Carver-Hawkeye Arena.

IOWA IN CARVER-HAWKEYE ARENA

Iowa has compiled a 318-90 (.779) record in Carver-Hawkeye Arena since the facility opened in January, 1983. Iowa is 151-73 (.674) in Big Ten games and 167-17 (.908) in non-Big Ten games.

IOWA PROGRAM REACHES 1,400 WINS

The Iowa basketball program reached 1,400 wins (now at 1,451) with a 79-46 victory over Texas-San Antonio on Nov. 26, 2005. Iowa ranks 36th on the all-time list for victories and is one of 50 NCAA Division I programs with as many as 1,400 wins. Iowa's basketball history includes 73 winning seasons and 24 years in which the Hawkeyes have won 20 or more games. Iowa (with 22) is one of less than 50 programs to earn more than 20 invitations into the NCAA Tournament.

TATE, COLE NAMED CAPTAINS

Senior forward Cyrus Tate and sophomore forward Jarryd Cole have been named as Iowa's captains for the 2008-09 season.

Tate averaged 8.3 points and 5.4 rebounds a year ago while starting 19 of the 31 games he appeared in. Tate shot 66.7% from the field for the season and 70.2% in Big Ten games. He led the conference in field goal percentage and was third in rebounding in conference games.

Cole started six of the 13 games he played before a knee injury in Iowa's final non-conference game forced him to miss the final 19 games. Cole averaged 6.6 points and 4.8 rebounds, shooting 66.7% from the field.

THE RETURNING CAST

Iowa returns two starters and six lettermen from a year ago. The returning starters include senior forward Cyrus Tate (6-8, 255) and sophomore guard Jake Kelly (6-6, 185). Tate started 19 games as a junior, averaging 8.3 points and 5.4 rebounds. Kelly started 25 of 32 games in his first season, averaging 7.3 points while shooting 43.5% from three-point range.

The four additional returning lettermen include junior center David Palmer (6-9, 240), senior guard J.R. Angle (6-7, 215), sophomore guard Jeff Peterson (6-0, 192) and sophomore forward Jarryd Cole (6-7, 250).

Iowa's returning players, last season, played 44.9% of all minutes in 32 games, scoring 44.9% of Iowa's points and grabbing 37.3% of Iowa's rebounds. The group also had 45.5% of the assists and 50% of the steals last season. They combined to shoot 45.8% from the field, 35.7% from three-point range and 63.1% from the free throw line.

HEAD COACH TODD LICKLITER

Todd Lickliter is in his second season as the head basketball coach at the University of Iowa. Lickliter spent six seasons (2001-07) as the head coach at Butler University. Lickliter, in seven seasons as a college head coach, holds a career mark of 144-80 (.643), including a 13-19 (.406) record in one season at Iowa. Lickliter posted a 131-61 (.682) record as Butler's head coach. He led Butler to four post-season tournament berths, including trips to the NCAA Sweet 16 in 2003 and 2007.

Lickliter was named the 2006-07 Division I Coach of the Year by the National Association of Basketball Coaches (NABC) and was recognized as the High-Major Coach of the Year by collegehoops.net. He was also named 2007 Horizon League Coach of the Year for the second consecutive year after guiding the Bulldogs to a school and league-record 29 victories.

Lickliter served as an assistant coach at Butler and Eastern Michigan and was a high school head coach in Indianapolis and Danville, IL.

Lickliter played his final two collegiate seasons at Butler, where he earned a B.S. degree in secondary education in 1979.

A YOUNG SQUAD

Iowa's roster of 13 players includes five freshmen, three sophomores, three juniors and two seniors. The sophomores are Jarryd Cole, Jake Kelly and Jeff Peterson. The freshmen include forward Andrew Brommer (6-9, 235), forward Aaron Fuller (6-6, 210), guard Matt Gatens (6-5, 215), guard John Lickliter (5-11, 175) and guard Anthony Tucker (6-4, 200).

In addition, junior guards Devan Bawinkel (6-5, 210) and Jermain Davis (6-4, 200) are both in their first year at Iowa after attending junior colleges a year ago.

HAWKEYES ARE TOUGH AT HOME

Iowa has won 42 of its last 52 games (.808 winning percentage) in Carver-Hawkeye Arena (15,500) over the last three seasons, including win streaks of 21 straight overall wins and 12 straight Big Ten Conference wins. Iowa has won 10 of its last 13 home games against ranked opponents.

Iowa was a perfect 17-0 at home in 2006 and 14-2 in 2007 before posting a 10-8 home record a year ago. Iowa has compiled a 19-6 Big Ten Conference record in that time.

A LOOK AT THE SCHEDULE

Iowa's schedule in 2008-09 includes a minimum of 32 games, with 17 of those games slated for Carver-Hawkeye Arena. Following an exhibition game against Wayne State (Nov. 9), the Hawkeyes open the regular season by hosting Charleston Southern on Friday, Nov. 14. The home schedule also includes dates with in-state rivals Northern Iowa (Dec. 9) and Iowa State (Dec. 12).

IOWA IN LAS VEGAS INVITATIONAL

Iowa will play four games while competing in the Las Vegas Invitational. Home games against Oakland University (Nov. 23) and Southeast Missouri State (Nov. 25) are preliminary round games.

Once in Las Vegas, Iowa will meet West Virginia on Friday, Nov. 28 and face either Kentucky or Kansas State the following evening. All three of those teams participated in the 2008 NCAA Tournament.

The 2008 event will take place Nov. 28-29, 2008 at the Orleans Arena in Las Vegas.

Kansas defeated eventual national champion Florida in the championship game of the tournament in 2006-07, while North Carolina won the event in 2007-08.

FOUR COACHES IN SECOND YEAR

Iowa's opponents in the final two rounds of the Las Vegas Invitational include West Virginia and either Kentucky or Kansas State. One thing the four programs have in common is that the head coach is in his second year at his current school.

Iowa's Todd Lickliter is in his second season after previously coaching at Butler and Kentucky's Billy Gilispie joined the Wildcats from Texas A&M prior to last season.

Bob Huggins is in his second year at West Virginia after previously coaching at Kansas State. When Huggins left Kansas State for his alma mater, Frank Martin took over as head coach at Kansas State.

HAWKEYES IN ACC/BIG TEN CHALLENGE

Iowa will travel to Boston College Dec. 2 (6:05 p.m. CT, ESPNU as part of the 2008 ACC/Big Ten Challenge. All 11 games in the Challenge will be televised on ESPN, ESPN2 or ESPNU.

Iowa is 2-5 in the Challenge after a 56-47 loss to Wake Forest last season in Iowa City. Iowa lost to Maryland, in Baltimore, in 2000, defeated Georgia Tech in 2001 in Iowa City, lost at Florida State in 2003 and lost to Duke, in Chicago, in 2002. Iowa did not take part in the event in 2003-04 and 2004-05.

Boston College won the only previous meeting between the two programs, claiming an 86-81 victory in the consolation round of the Far West Classic on Dec. 30, 1974.

Boston College posted a 14-17 record in 2008, including a 4-12 mark in league play. The Eagles are coached by Al Skinner, who has posted a 210-137 record in 11 seasons at Boston College. The Eagles play their home games at the Silvio O. Conte Forum (8,606).

Boston College has posted a 2-0 record in the ACC/Big Ten Challenge.

HAWKEYE SCHEDULE NOTES

- Iowa's schedule includes 17 home games, along with an exhibition game against Wayne State (Michigan). Iowa has opened the previous three seasons with an exhibition contest against a member of the Iowa Conference.
- After starting a majority of home games at 8 p.m. a year ago, the Hawkeyes have just two home games this season that start as late as 7:30 p.m. CT.
- Iowa's early season schedule includes four games in a seven day span in three different time zones. The Hawkeyes host Southeast Missouri State Wednesday, Nov. 25 (Central time), play in Las Vegas (Pacific time) Nov. 28-29 and play at Boston College (Eastern time) Dec. 2.
- For the first time since the 1982-83 season, Iowa will not host its own early season tournament in Iowa City. The Hawkeye Challenge was held for 26 consecutive years, with Iowa winning 24 of the 26 events while posting a 50-2 record.
- Along with hosting Charleston Southern to open the season, Iowa travels to play at The Citadel on Thursday, Nov. 20. Both Charleston Southern and The Citadel are located in Charleston, South Carolina.
- For the second time since 1997, Iowa will host nine Big Ten Conference games, as the league expanded the schedule to include 18 league games a year ago. Iowa does not play at Minnesota, while Illinois does not visit Carver-Hawkeye Arena.
- Iowa's Big Ten schedule includes five weekend home dates and four games during the week.

IOWA VS. RANKED TEAMS

These are Iowa's most recent wins vs. nationally ranked opponents:

At Home: 43-36 over sixth-ranked Michigan State, 1/12/08

On the Road: 70-67 over 21st-ranked Indiana, 2/11/06

Neutral Court: 67-60 over 7th-ranked Ohio State, 3/12/06

In semi-finals of Big Ten Tournament

POST-SEASON OPPONENTS

Sixteen of Iowa's 31 games during the regular season are against teams that advanced to post-season play last season. That includes 12 games against teams that participated in the NCAA Tournament. During the non-conference portion of the schedule Iowa will face teams from the Big East (West Virginia), Atlantic Coast (Boston College), Big 12 (Iowa State and possibly Kansas State) and Missouri Valley (Drake and Northern Iowa) conferences, along with a possible opponent (Kentucky) from the Southeastern Conference.

Iowa, in 2007-08, played 14 of 32 games against teams that advanced to post-season play. That included five teams that advanced to the NCAA Tournament (1-8), three opponents who competed in the NIT (1-3) and one opponent who participated in the initial College Basketball Invitational (0-1).

IOWA BASKETBALL NOTES

IOWA ON THE BIG TEN NETWORK

The majority of Iowa games throughout the season can be seen on the Big Ten Network, a national cable television network that now reaches over 70 million homes in its second year. The Big Ten Network is available on Mediacom, which provides cable service to over 400,000 customers throughout Iowa and the Midwest.

The Big Ten Network is also available through the nation's two satellite television companies, DirectTV and Dish Network.

IOWA ON THE TUBE

All but two of Iowa's game throughout the season are slated to be televised, with the exceptions being Iowa's game at The Citadel and Iowa's contest vs. West Virginia in the Las Vegas Invitational. It is also possible that Iowa's final game in the Las Vegas Invitational may not be televised.

LICKLITER VS. RANKED TEAMS

Iowa Coach Todd Lickliter holds a 7-10 record when coaching against nationally ranked opponents, including a 1-5 mark at Iowa and a 6-5 record in six seasons at Butler. In 2007-08, Iowa defeated sixth-ranked Michigan State (43-36), while dropping decisions to 11th-ranked Indiana (76-79), 24th-ranked Wisconsin (51-64), seventh-ranked Indiana (43-65), eighth-ranked Wisconsin (54-60) and 17th-ranked Michigan State (52-66). Lickliter's Butler teams defeated ranked opponents Louisville (14th), Maryland (18th), Mississippi State (20th), Ball State (21st), Tennessee (22nd) and Gonzaga (23rd). His teams are 0-3 vs. top five opponents, including losses to third-ranked Oklahoma in 2003, third-ranked Florida in 2007 and fifth-ranked Duke in 2003.

NATIONAL COACH OF THE YEAR

Iowa Coach Todd Lickliter was named the 2007 Division I national Coach of the Year by the National Basketball Coaches (NABC) after leading Butler to 29 wins and a spot in the NCAA Sweet Sixteen. With Iowa football Coach Kirk Ferentz earning national Coach of the Year in 2002, Iowa is one of three Division I institutions to have a former football and men's basketball national Coach of the Year currently coaching their respective team. The others are Florida (Urban Meyer and Billy Donovan) and Tennessee (Phillip Fulmer and Bruce Pearl). Four current Big Ten Conference head coaches have earned national Coach of the Year honors.

CHANGE IN THREE-POINT DISTANCE

The three-point line in college basketball has been extended to 20 feet, nine inches for the 2008-09 season. Previously the three-point line in college basketball was 19 feet, nine inches.

NO THREE-POINTERS

Since the three-point shot became part of the college game, Iowa has played 14 games in which it has failed to make a three-point attempt. Iowa had made at least one three-point basket in 53 straight games before missing all five attempts in a 71-61 home win over Purdue in 2004. Iowa's current streak includes at least one three-point basket in 150 straight games.

IOWA IN THE NCAA TOURNAMENT

Iowa made its 22nd appearance in the NCAA Tournament in 2006. Iowa earned the Big Ten Conference's automatic bid by virtue of claiming the league's tournament title. The Hawkeyes hold an overall record of 27-24 in the tournament, advancing to the Final Four in 1955 (fourth), 1956 (second) and 1980 (fourth). Iowa reached the regional championship in 1987 and lost in the regional semi-final in 1988 and 1999.

IOWA IN TOURNAMENT PLAY

Iowa has fared well while taking part in regular-season tournaments over the past 26 years. In that time Iowa has won the Great Alaska Shootout (1986-87), the Cal-Irvine Anteater Classic (1986-87), the Maui Classic (1987-88), the San Juan Thanksgiving Shootout (1992-93), the San Juan Christmas Shootout (1997-98), the Big Ten Conference Tournament in 2001 and 2006 and its own invitational 24 times. In addition, Iowa was runner-up in the 1985-86 Far West Classic, the 1987-88 All-College Tournament, the 1988-89 Chaminade Classic, the 1991-92 Tampa Tribune Holiday Invitational, the 1994-95 Rainbow Classic, the 1995-96 Great Alaska Shootout, the 1999-00 Coaches vs. Cancer Classic, the 2001-02 Guardians Classic, the 2005-06 Guardians Classic, the 2002 Big Ten Conference Tournament and the 2004 Maui Invitational.

IOWA INFORMATION ON THE WEB

Iowa basketball information is available on the University of Iowa's web site, hawkeyesports.com. Once you have entered the web site, you may obtain biographical information on Iowa players and coaches, game notes, game stories and box scores from all games throughout the season, plus team and individual cumulative stats and a pdf version of Iowa's History and Record book. Members of the media who wish to have this information forwarded via e-mail throughout the season may do so by contacting the Iowa Sports Information office with your e-mail address.

IOWA PHOTOS AVAILABLE

Up-to-date head shots of all Iowa players and coaches are available on the internet at pics.hawkeyebasketball.com. Contact the Iowa Sports Information office if you are in need of additional photos.

COACH LICKLITER WITH THE MEDIA

Following is a list of dates for basketball news conferences with Todd Lickliter. The news conferences will be held at 11:30 a.m. in the Press Room at Carver-Hawkeye Arena. Selected players will be available for interviews following the sessions with Coach Lickliter. Following are the news conference dates:

| | | | |
|----------|----------|-----------|-----------|
| November | Wed, 5th | Wed, 12th | |
| December | Mon, 8th | Thu, 18th | Mon, 29th |
| January | Tue, 6th | Thu, 15th | Tue, 27th |
| February | Mon, 9th | Thu, 19th | |
| March | Mon, 2nd | Mon, 9th | |

Coach Lickliter will also be available on the Big Ten tele-conference calls, which take place each Monday during the Big Ten season. More details on the Big Ten time schedule will be available at a later date.

IN-SEASON TELE-CONFERENCES

Following is a list of tele-conference dates with Coach Todd Lickliter. Each call will begin at 10:30 a.m. CT. Members of the media need to contact the UI Sports Information office for the dial in number and other details. Here are the tele-conference dates:

| | | | | | |
|----------|-----------|-----------|-----------|-----------|-----------|
| November | Wed, 19th | | | | |
| December | Mon, 1st | Thu, 4th | Thu, 11th | Fri, 26th | |
| January | Fri, 2nd | Sat, 10th | Tue, 20th | Fri, 23rd | Sat, 31st |
| February | Tue, 3rd | Fri, 6th | Fri, 13th | Tue, 24th | |
| March | Fri, 6th | | | | |

BIG TEN TELE-CONFERENCES

The Big Ten Conference office has scheduled tele-conferences with men's basketball coaches each week during the Big Ten portion of the 2008-09 season. The tele-conferences are held each Monday from 9-11 a.m. CT. The calls will be available for play-back for 24 hours.

Contact the Big Ten office or the Iowa Sports Information office for the tele-conference and play-back phone numbers. Following is the coach's order of appearance:

| | | | |
|------|-----------------------------|-------|--------------------------|
| 9:00 | Tom Crean, Indiana | 10:00 | Tom Izzo, Michigan State |
| 9:10 | TODD LICKLITER, IOWA | 10:10 | Bo Ryan, Wisconsin |
| 9:20 | Tubby Smith, Minnesota | 10:20 | John Beilein, Michigan |
| 9:30 | Bill Carmody, Northwestern | 10:30 | Thad Matta, Ohio State |
| 9:40 | Ed DeChellis, Penn State | 10:40 | Bruce Weber, Illinois |
| 9:50 | Matt Painter, Purdue | 10:50 | Player of the Week |

CREDENTIAL REQUESTS

Credential requests for Iowa home games should be made as soon as possible. Please send your written request (e-mail will also suffice) to Phil Haddy, Sports Information Office, 157 Carver-Hawkeye Arena, Iowa City, IA 52242. Phil's e-mail address is phillip-haddy@uiowa.edu and the office fax number is (319) 335-9417.

HIGH SPEED CONNECTIONS

For members of the media who cover Iowa home games on a regular basis, high speed connections are available, at no charge, in the media seating area of Carver-Hawkeye Arena. You are asked to provide your own Ethernet cord. A limited number of phone lines are also available.

Media covering Iowa basketball on a regular basis should have their own telephone line installed.

HIGHLIGHTS AND SOUND BITES ON SATELLITE

Sound bites with coaches and athletes from Iowa's winter sports teams are available each Wednesday throughout the winter.

The video sound bites are available from 3:30-3:45 p.m. CT and include all winter sports, including men's and women's basketball and wrestling. Contact the Iowa Sports Information office for coordinate information.

J. R. ANGLE

*****4 – J.R. Angle**
Guard
6-7, 215, Senior
Franklin, Indiana
Indian Creek HS

2007-08 – Saw action in 18 games, with two starts... averaged 3.2 points and 1.7 rebounds per game... four rebounds at Indiana... seven points, three rebounds and two assists at Wisconsin... five points, two rebounds and two assists against Indiana... career highs with 10 points, three steals and 23 minutes played in win over Southeastern Louisiana... three points against Drake... six points and four rebounds at Iowa State... three points and a career-high six rebounds in win at Northern Iowa... tied a career-high with eight points, four rebounds and career high three assists in win over Eastern Illinois... four points vs. Louisiana-Monroe... two points and three rebounds vs. Wake Forest... six points vs. Utah State... three points and three rebounds vs. Bradley... five points, three assists and two rebounds in Blowout.

2006-07 – Saw action in 28 of 31 games, with two starts... averaged 1.7 points and one rebound per game... career-high two assists in win over Purdue... three points and one rebound at Michigan State... three points and one assist in win at Minnesota... four points in win over Michigan State... two points and two rebounds in win over Texas Southern... four points, two rebounds and two steals in win over Georgia State... five points and four rebounds in first career start against Iowa State... two points against Northern Iowa... career-high eight points and two rebounds in win over Coppin State... career-high five rebounds in win over Texas-Pan American... tied career-high with five points at Arizona State... career-high five points vs. Villanova... three rebounds and one steal vs. Alabama in career-best 16 minutes... two points and two rebounds in win over The Citadel... six points and eight rebounds in Black and Gold Blowout.

2005-06 – Redshirted.

2004-05 – Saw action in 11 games, with no starts... two points against Cincinnati in NCAA Tournament... two points and two rebounds in win vs. Centenary... two rebounds in win at Drake... three points vs. North Carolina... three points and one rebound in win over Western Illinois... three points and two rebounds in exhibition win over Upper Iowa... seven rebounds and three assists in Blowout.

High school – Two-time Johnson County Player of the Year and two-time NIKE all-American... two-time participant in USA Basketball Youth Development Festival... three-time all-state selection... selected to participate in Indiana state all-Star contest following senior season... team captain as junior and senior and three-time team MVP... all-time leading scorer in Johnson County with 1,689 career points... averaged 27.3 points, 11.5 rebounds and 3.5 assists as a senior... scoring average ranked fourth best in the state of Indiana... shot 54.5% from the field, 88.9% from the free throw line and 41% percent from three-point range in final prep season... career totals also include 770 rebounds... named third team all-state as a junior... Johnson County Player of the Year as a junior... averaged 26.4 points, 12.2 rebounds and 3.2 assists per game as a junior, shooting 56% from the field and 84% from the free throw line... averaged 25.2 points per game as a sophomore.

Personal – Born 3/22/85... given name is Justin Russell... Health & Sports Studies major... member of prep Honor Roll... parents are Kathy and Larry Angle... high school coach was his father, Larry Angle.

CAREER BESTS

| | |
|------------------|--|
| Points: | 10 vs. Southeastern Louisiana, 12/29/07 |
| Rebounds: | 6 vs. Northern Iowa, 12/5/07 |
| FGM: | 3, three times, last vs. Wisconsin, 1/5/08 |
| FGA: | 7, twice, last vs. Indiana, 1/2/08 |
| FTM: | 3 at Michigan State, 2/17/07 |
| FTA: | 4 at Michigan State, 2/17/07 |
| Assists: | 3 vs. Eastern Illinois, 12/1/07 |
| Steals: | 3 vs. Southeastern Louisiana, 12/29/07 |
| Blocks: | 1 vs. Southeastern Louisiana, 12/29/07 |
| Minutes: | 25, twice, last vs. Indiana, 1/23/08 |



AR 4



CAREER STATISTICS

| YEAR | G/GS | FG-A | PCT | 3-PT | PCT | FT-A | PCT | O-D-RB | AVG | PF-DI | AS | TO | BK | ST | PTS | AVG |
|---------------|-------------|---------------|-------------|--------------|-------------|--------------|-------------|-----------------|------------|-------------|-----------|-----------|----------|----------|------------|------------|
| Fresh. | 11/0 | 4-11 | .364 | 2-5 | .400 | 0-0 | .000 | 1-5-6 | 0.5 | 2-0 | 1 | 6 | 0 | 0 | 10 | 0.9 |
| Soph. | 28/2 | 17-36 | .472 | 4-9 | .444 | 9-10 | .900 | 9-19-28 | 1.0 | 31-0 | 9 | 9 | 0 | 5 | 47 | 1.7 |
| Jun. | 18/2 | 19-54 | .352 | 14-41 | .341 | 5-10 | .500 | 7-24-31 | 1.7 | 20-0 | 11 | 11 | 1 | 4 | 57 | 3.2 |
| Career | 57/4 | 40-101 | .396 | 20-55 | .364 | 14-20 | .700 | 17-48-65 | 1.1 | 53-0 | 21 | 26 | 1 | 9 | 114 | 2.0 |

ANGLE VS. THE BIG TEN

| OPP | G/GS | FG-A | PCT | 3-PT | PCT | FT-A | PCT | RB | AVG | PF-DI | AS | TO | BK | ST | PTS | AVG |
|---------------|-------------|-------------|-------------|------------|-------------|------------|-------------|-----------|------------|-------------|----------|----------|----------|----------|-----------|------------|
| ILL | 1/0 | 0-1 | .000 | 0-1 | .000 | 0-0 | .000 | 0 | 0.0 | 0-0 | 0 | 0 | 0 | 0 | 0 | 0.0 |
| IND | 4/0 | 2-11 | .182 | 1-8 | .125 | 0-0 | .000 | 7 | 2.3 | 3-0 | 2 | 0 | 0 | 0 | 5 | 1.7 |
| MCH | 1/0 | 0-0 | .000 | 0-0 | .000 | 0-0 | .000 | 0 | 0.0 | 2-0 | 0 | 1 | 0 | 0 | 0 | 0.0 |
| MSU | 2/0 | 2-4 | .500 | 0-0 | .000 | 3-4 | .750 | 1 | 0.5 | 0-0 | 0 | 0 | 0 | 0 | 7 | 3.5 |
| MIN | 2/0 | 1-1 | 1.000 | 1-1 | 1.000 | 0-0 | .000 | 1 | 0.5 | 0-0 | 1 | 0 | 0 | 0 | 3 | 1.5 |
| NW | 3/0 | 0-1 | .000 | 0-0 | .000 | 0-0 | .000 | 0 | 0.0 | 1-0 | 1 | 0 | 0 | 0 | 0 | 0.0 |
| OSU | 2/0 | 0-7 | .000 | 0-4 | .000 | 0-0 | .000 | 0 | 0.0 | 2-0 | 0 | 1 | 0 | 0 | 0 | 0.0 |
| PSU | 3/0 | 0-2 | .000 | 0-0 | .000 | 0-0 | .000 | 1 | 1.0 | 2-0 | 1 | 0 | 0 | 0 | 0 | 0.0 |
| PUR | 4/0 | 1-1 | 1.000 | 0-0 | .000 | 0-0 | .000 | 1 | 0.3 | 1-0 | 2 | 2 | 0 | 0 | 2 | 0.3 |
| WIS | 2/0 | 3-6 | .500 | 1-3 | .333 | 0-0 | .000 | 4 | 2.0 | 3-0 | 2 | 2 | 0 | 0 | 7 | 3.5 |
| TOTALS | 24/0 | 9-34 | .259 | 2-7 | .286 | 3-4 | .750 | 15 | 0.7 | 14-0 | 9 | 6 | 0 | 0 | 24 | 1.1 |

ANGLE IN POST-SEASON PLAY

| YEAR | G/GS | FG-A | PCT | 3-PT | PCT | FT-A | PCT | RB | AVG | PF-DI | AS | TO | BK | ST | PTS | AVG |
|---------------|------------|------------|--------------|------------|-------------|------------|-------------|----------|------------|------------|----------|----------|----------|----------|----------|------------|
| 2005 Big Ten | 1/0 | 0-0 | .000 | 0-0 | .000 | 0-0 | .000 | 0 | 0.0 | 0-0 | 0 | 1 | 0 | 0 | 0 | 0.0 |
| 2007 Big Ten | 1/0 | 1-1 | 1.000 | 0-0 | .000 | 0-0 | .000 | 0 | 0.0 | 0-0 | 0 | 0 | 0 | 0 | 2 | 2.0 |
| TOTALS | 2/0 | 1-1 | 1.000 | 0-0 | .000 | 0-0 | .000 | 0 | 0.0 | 0-0 | 0 | 1 | 0 | 0 | 2 | 1.0 |
| 2005 NCAA | 1/0 | 1-1 | 1.000 | 0-0 | .000 | 0-0 | .000 | 0 | 0.0 | 0-0 | 0 | 0 | 0 | 0 | 2 | 2.0 |
| CAREER | 3/0 | 2-2 | 1.000 | 0-0 | .000 | 0-0 | .000 | 0 | 0.0 | 0-0 | 0 | 1 | 0 | 0 | 4 | 1.3 |

JARRYD COLE

***50 – Jarryd Cole**

Forward

6-7, 250, Sophomore

Kansas City, Missouri

Winnetonka HS

Hawk-Item – Named one of two captains for 2008-09 season.

2007-08 – Suffered torn left ACL in win over SE Louisiana (12/29/07) and missed final 19 games of the season . . . played in 13 games, with six starts . . . averaged 6.6 points and 4.8 rebounds per game, shooting 66.7% from the field . . . four points (2-2 FG's) and four rebounds before suffering injury in win over Southeastern Louisiana . . . 12 points (6-6 FG's) and five rebounds against Drake . . . career-highs with 15 points, nine rebounds and 35 minutes played at Iowa State . . . two points and five rebounds in win at Northern Iowa . . . 10 points (4-5 FG's) and four rebounds in win over Eastern Illinois . . . four points and seven rebounds while playing 35 minutes vs. Louisiana-Monroe in first start of career . . . 14 points and seven rebounds vs. Wake Forest . . . 10 points and six rebounds vs. Utah State . . . six points and seven rebounds in win over Maryland Eastern Shore . . . seven points, four rebounds and three steals in win over Florida Gulf Coast.



High school – Named first team all-state as a senior by prep coaches association and second team all-state by news media . . . nominated for DiRenna Award as Player of the Year in Kansas City . . . candidate for Mr. Show Me State award and a McDonald's all-American nominee . . . named conference Most Valuable Player and MVP of district tournament . . . named to Kansas City Suburban Big Six all-Conference and all-district first team for four seasons . . . three-time all-Metro selection by the *Kansas City Star* . . . named all-tournament at the Winnetonka Invitational Tournament and all-Tournament in Winnetonka's bracket of the Tournament of Champions in Peoria, IL . . . team captain as a junior and senior . . . named team MVP for four consecutive years . . . averaged 19.1 points, 13.7 rebounds and 5.2 blocked shots per game in leading team to 17-8 record as a senior . . . shot 55% from the field and 70% from the free throw line . . . led team to district title and co-championship of Suburban Big Six Conference . . . averaged 19.1 points and 14.8 rebounds per game as a junior . . . shot 58% from the field and 73% from the free throw line as a junior . . . averaged 16.3 points and 12.5 rebounds as a sophomore . . . had a solid summer with his Kansas City area AAU team prior to senior year . . . ranked as one of top 100 preps in the nation prior to senior season . . . named top 45 player at Reebok ABCD National Summer Camp prior to senior season . . . also lettered in football as defensive end and tight end as a sophomore.

Personal – Born 7/12/88 . . . open major . . . parents are Linda and Cornelius Cole . . . high school coach was Derek Howard.

CAREER BESTS

| | |
|------------------|---|
| Points: | 15 at Iowa State, 12/8/07 |
| Rebounds: | 9 at Iowa State, 12/8/07 |
| FGM: | 7, twice, last at Iowa State, 12/8/07 |
| FGA: | 10, twice, last at Iowa State, 12/8/07 |
| FTM: | 4 vs. Utah State, 11/24/07 |
| FTA: | 8 vs. Florida Gulf Coast, 11/18/07 |
| Assists: | 1, three times, last vs. Louisiana-Monroe, 11/30/07 |
| Steals: | 3 vs. Florida Gulf Coast, 11/18/07 |
| Blocks: | 1 vs. Northern Iowa, 12/5/07 |
| Minutes: | 35, twice, last at Iowa State, 12/8/07 |



Paul Cole
#50

CAREER STATISTICS

| YEAR | G/GS | FG-A | PCT | 3-PT | PCT | FT-A | PCT | O-D-RB | AVG | PF-DI | AS | TO | BK | ST | PTS | AVG |
|--------|------|-------|------|------|------|-------|------|----------|-----|-------|----|----|----|----|-----|-----|
| Fresh. | 13/6 | 36-54 | .667 | 0-1 | .000 | 14-31 | .452 | 26-36-62 | 4.8 | 37-1 | 3 | 23 | 2 | 7 | 86 | 6.6 |

JAKE KELLY

***30 – Jake Kelly**
Guard
6-6, 185, Sophomore
Carmel, Indiana
Carmel HS



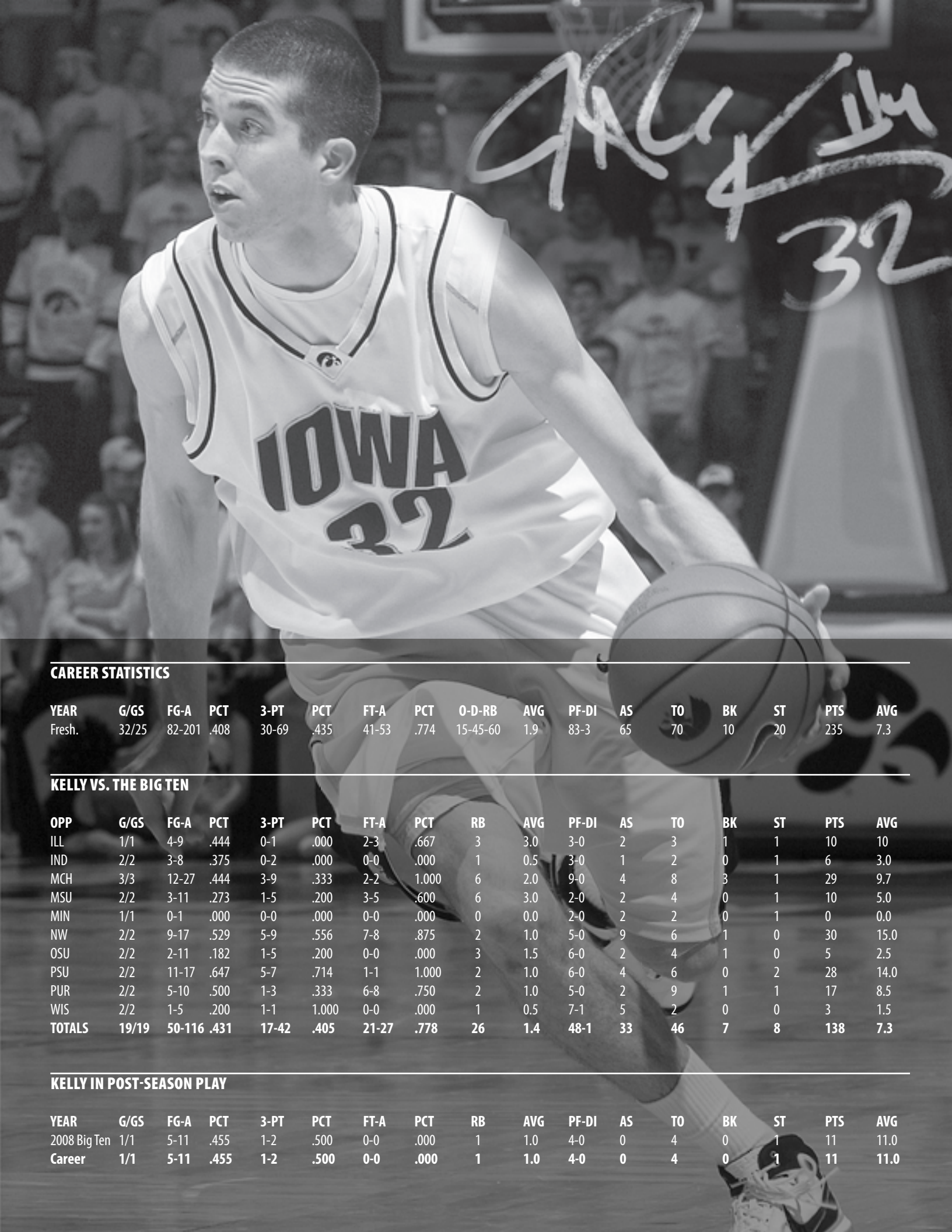
2007-08 – Played in all 32 games, with 25 starts . . . averaged 7.3 points and 1.9 rebounds, shooting 40.8% from the field and 77.4% from the free throw line . . . three-point percentage of 43.5% ranks first all-time for an Iowa freshman . . . 11 points vs. Michigan in Big Ten Tournament . . . 18 points (7-10 FG's, 4-5 3-pt. FG's), four assists and two rebounds in win at Northwestern . . . 10 points and three rebounds vs. Illinois . . . 17 points (7-9 FG's), four assists and two steals at Penn State . . . nine points and two assists at Michigan State . . . 12 points (7-8 FT's) and five assists in a career-high 40 minutes played in win over Northwestern . . . 12 points, five rebounds, three assists and two blocks against Michigan . . . five points at Purdue, including basket and free throw to tie the game with five seconds remaining . . . 11 points in win over Penn State . . . 12 points (5-5 FT's) and two assists against Purdue . . . played five minutes against Indiana before suffering sprained ankle . . . eight points against Drake . . . 13 points (4-4 FT's), tied a career-high with five rebounds and five assists at Iowa State . . . career-high 19 points (4-4 FT's) along with three rebounds and two steals in win at Northern Iowa . . . career-high six assists vs. Louisiana-Monroe . . . nine points, two points and two assists vs. Wake Forest . . . eight points, three rebounds and two assists vs. Utah State . . . 11 points, four rebounds and three assists vs. Bradley . . . eight points, five rebounds, three assists, three steals and two blocks in win over Maryland Eastern Shore.

High school – Earned first team all-conference honors and was named to the Indiana Junior All-Stars following junior season . . . earned pre-season all-state recognition heading into his senior season . . . team captain as a senior and team MVP in final three seasons . . . averaged 13.7 points and 2.9 rebounds in 21 games as a senior, helping team post 14-7 overall record . . . shot 48.5% from the field and 73.8% from the free throw line while ranking second on the team in assists (54) and steals (27) . . . averaged 11.3 points, 4.9 rebounds and 2.3 assists as a junior . . . helped prep team post a 17-7 mark as a junior, shooting 51.2% from the field, 35% from three-point range and 81.8% from the free throw line . . . earned four varsity letters as point guard and shooting guard . . . named to all-star team at the Adidas Superstar Camp prior to senior season . . . attended Marshall HS in Marshall, IL prior to playing final two seasons as a prep at Carmel.

Personal – Born 7/29/88 . . . Communication Studies major . . . parents are Bob Kelly and the late Julia Kelly . . . high school coach was Mark Galloway.

CAREER BESTS

| | |
|------------------|--|
| Points: | 19 vs. Northern Iowa, 12/5/07 |
| Rebounds: | 5, three times, last vs. Michigan, 2/14/08 |
| FGM: | 7, twice, last at Northwestern, 3/4/08 |
| FGA: | 13 vs. Northern Iowa, 12/5/07 |
| FTM: | 4, twice, last at Iowa State, 12/8/07 |
| FTA: | 4, twice, last at Iowa State, 12/8/07 |
| Assists: | 6 vs. Louisiana-Monroe, 11/30/07 |
| Steals: | 3 vs. Maryland Eastern Shore, 11/20/07 |
| Blocks: | 2, twice, last vs. Michigan, 2/14/08 |
| Minutes: | 40 vs. Northwestern, 2/19/08 |



KELLY
32

CAREER STATISTICS

| YEAR | G/GS | FG-A | PCT | 3-PT | PCT | FT-A | PCT | O-D-RB | AVG | PF-DI | AS | TO | BK | ST | PTS | AVG |
|--------|-------|--------|------|-------|------|-------|------|----------|-----|-------|----|----|----|----|-----|-----|
| Fresh. | 32/25 | 82-201 | .408 | 30-69 | .435 | 41-53 | .774 | 15-45-60 | 1.9 | 83-3 | 65 | 70 | 10 | 20 | 235 | 7.3 |

KELLY VS. THE BIG TEN

| OPP | G/GS | FG-A | PCT | 3-PT | PCT | FT-A | PCT | RB | AVG | PF-DI | AS | TO | BK | ST | PTS | AVG |
|---------------|--------------|---------------|-------------|--------------|-------------|--------------|-------------|-----------|------------|-------------|-----------|-----------|----------|----------|------------|------------|
| ILL | 1/1 | 4-9 | .444 | 0-1 | .000 | 2-3 | .667 | 3 | 3.0 | 3-0 | 2 | 3 | 1 | 1 | 10 | 10 |
| IND | 2/2 | 3-8 | .375 | 0-2 | .000 | 0-0 | .000 | 1 | 0.5 | 3-0 | 1 | 2 | 0 | 1 | 6 | 3.0 |
| MCH | 3/3 | 12-27 | .444 | 3-9 | .333 | 2-2 | 1.000 | 6 | 2.0 | 9-0 | 4 | 8 | 3 | 1 | 29 | 9.7 |
| MSU | 2/2 | 3-11 | .273 | 1-5 | .200 | 3-5 | .600 | 6 | 3.0 | 2-0 | 2 | 4 | 0 | 1 | 10 | 5.0 |
| MIN | 1/1 | 0-1 | .000 | 0-0 | .000 | 0-0 | .000 | 0 | 0.0 | 2-0 | 2 | 2 | 0 | 1 | 0 | 0.0 |
| NW | 2/2 | 9-17 | .529 | 5-9 | .556 | 7-8 | .875 | 2 | 1.0 | 5-0 | 9 | 6 | 1 | 0 | 30 | 15.0 |
| OSU | 2/2 | 2-11 | .182 | 1-5 | .200 | 0-0 | .000 | 3 | 1.5 | 6-0 | 2 | 4 | 1 | 0 | 5 | 2.5 |
| PSU | 2/2 | 11-17 | .647 | 5-7 | .714 | 1-1 | 1.000 | 2 | 1.0 | 6-0 | 4 | 6 | 0 | 2 | 28 | 14.0 |
| PUR | 2/2 | 5-10 | .500 | 1-3 | .333 | 6-8 | .750 | 2 | 1.0 | 5-0 | 2 | 9 | 1 | 1 | 17 | 8.5 |
| WIS | 2/2 | 1-5 | .200 | 1-1 | 1.000 | 0-0 | .000 | 1 | 0.5 | 7-1 | 5 | 2 | 0 | 0 | 3 | 1.5 |
| TOTALS | 19/19 | 50-116 | .431 | 17-42 | .405 | 21-27 | .778 | 26 | 1.4 | 48-1 | 33 | 46 | 7 | 8 | 138 | 7.3 |

KELLY IN POST-SEASON PLAY

| YEAR | G/GS | FG-A | PCT | 3-PT | PCT | FT-A | PCT | RB | AVG | PF-DI | AS | TO | BK | ST | PTS | AVG |
|--------------|------|------|------|------|------|------|------|----|-----|-------|----|----|----|----|-----|------|
| 2008 Big Ten | 1/1 | 5-11 | .455 | 1-2 | .500 | 0-0 | .000 | 1 | 1.0 | 4-0 | 0 | 4 | 0 | 1 | 11 | 11.0 |
| Career | 1/1 | 5-11 | .455 | 1-2 | .500 | 0-0 | .000 | 1 | 1.0 | 4-0 | 0 | 4 | 0 | 1 | 11 | 11.0 |

DAVID PALMER

***2 – David Palmer**
Center
6-9, 240, Junior
Antioch, Tennessee
Antioch HS
Oak Hill Academy



Hawk-Item – Redshirt in 2006-07 after transferring from Seton Hall.

2007-08 – Played in 14 games, with no starts . . . averaged 0.9 points and 0.6 rebounds . . . two rebounds against Indiana . . . three points in win over Eastern Illinois . . . seven points vs. Wake Forest . . . three points vs. Bradley . . . three rebounds in exhibition win over Simpson College . . . eight rebounds and two assists in Blowout.

2005-06 – Played his freshman season at Seton Hall . . . saw action in 27 games . . . averaged three points and two rebounds in 9.7 minutes per game . . . recorded season-high 11 points and seven rebounds in win over Morgan State . . . totaled eight points vs. Villanova, North Carolina State and DePaul.

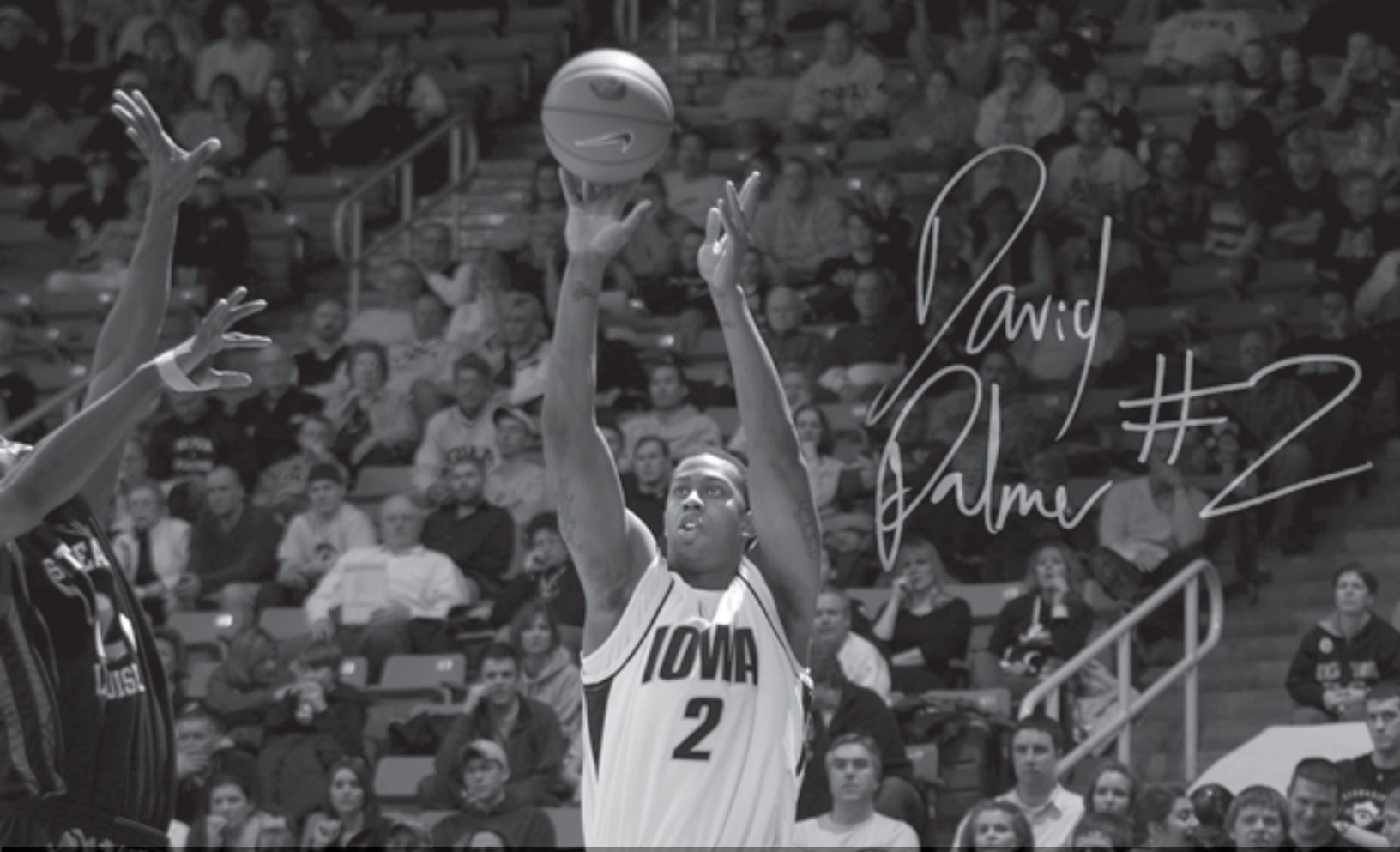
Prep School – As a senior at Oak Hill, averaged 5.8 points and 5.8 rebounds while shooting 56% from the field . . . was a part-time starter for a team that was ranked as the top team in the nation, according to USA Today.

High school – Played for three seasons at Antioch HS . . . averaged 14 points a game as a junior while playing only the final 10 games of the season after recovering from a broken ankle . . . competed in the 2003 Nike Hoop Jamboree and the 2003 Nike All-American Camp.

Personal – Born 7/16/86 . . . parents are Sharon and David Palmer . . . father played Division I basketball at Alcorn State (1982-86) . . . prep school coach was Steve Smith . . . high school coach was Barry Mangrum.

CAREER BESTS

| | |
|------------------|--|
| Points: | 11 vs. Morgan State, 12/29/05 |
| Rebounds: | 7 vs. Morgan State, 12/29/05 |
| FGM: | 5 vs. Morgan State, 12/29/05 |
| FGA: | 10 vs. Monmouth, 12/8/05 |
| FTM: | 2, three times, last vs. Wake Forest, 11/26/07 |
| FTA: | 4, twice, last vs. Wake Forest, 11/26/07 |
| Assists: | 1, three times, last vs. South Florida, 2/8/06 |
| Steals: | 1, seven times, last vs. Eastern Illinois, 12/1/07 |
| Blocks: | 1, three times, last vs. South Florida, 1/20/06 |
| Minutes: | 21 vs. Monmouth, 12/8/05 |



*David
Palmer #2*

CAREER STATISTICS

| YEAR | G/GS | FG-A | PCT | 3-PT | PCT | FT-A | PCT | O-D-RB | AVG | PF-DI | AS | TO | BK | ST | PTS | AVG |
|---------------|-------------|--------------|-------------|------------|-------------|--------------|-------------|-----------------|------------|-------------|----------|-----------|----------|----------|-----------|------------|
| *Fresh. | 27/0 | 35-77 | .455 | 0-1 | .000 | 10-17 | .588 | 25-28-53 | 2.0 | 52-0 | 3 | 10 | 5 | 5 | 80 | 3.0 |
| Soph. | 14/0 | 4-13 | .308 | 2-5 | .400 | 3-5 | .600 | 2-6-8 | 0.6 | 13-0 | 0 | 6 | 0 | 2 | 13 | 0.9 |
| Career | 41/0 | 39-90 | .433 | 2-6 | .333 | 13-22 | .591 | 27-34-61 | 1.5 | 65-0 | 3 | 16 | 5 | 7 | 93 | 2.3 |

*— 2005-06 at Seton Hall

PALMER VS. THE BIG TEN

| OPP | G/GS | FG-A | PCT | 3-PT | PCT | FT-A | PCT | RB | AVG | PF-DI | AS | TO | BK | ST | PTS | AVG |
|---------------|------------|------------|-------------|------------|-------------|------------|-------------|----------|------------|------------|----------|----------|----------|----------|----------|------------|
| ILL | 0/0 | 0-0 | .000 | 0-0 | .000 | 0-0 | .000 | 0 | 0.0 | 0-0 | 0 | 0 | 0 | 0 | 0 | 0.0 |
| IND | 1/0 | 0-0 | .000 | 0-0 | .000 | 0-0 | .000 | 2 | 2.0 | 3-0 | 0 | 0 | 0 | 0 | 0 | 0.0 |
| MCH | 0/0 | 0-0 | .000 | 0-0 | .000 | 0-0 | .000 | 0 | 0.0 | 0-0 | 0 | 0 | 0 | 0 | 0 | 0.0 |
| MSU | 1/0 | 0-0 | .000 | 0-0 | .000 | 0-0 | .000 | 0 | 0.0 | 0-0 | 0 | 0 | 0 | 0 | 0 | 0.0 |
| MIN | 0/0 | 0-0 | .000 | 0-0 | .000 | 0-0 | .000 | 0 | 0.0 | 0-0 | 0 | 0 | 0 | 0 | 0 | 0.0 |
| NW | 1/0 | 0-0 | .000 | 0-0 | .000 | 0-0 | .000 | 1 | 1.0 | 1-0 | 0 | 0 | 0 | 0 | 0 | 0.0 |
| OSU | 0/0 | 0-0 | .000 | 0-0 | .000 | 0-0 | .000 | 0 | 0.0 | 0-0 | 0 | 0 | 0 | 0 | 0 | 0.0 |
| PSU | 0/0 | 0-0 | .000 | 0-0 | .000 | 0-0 | .000 | 0 | 0.0 | 0-0 | 0 | 0 | 0 | 0 | 0 | 0.0 |
| PUR | 0/0 | 0-0 | .000 | 0-0 | .000 | 0-0 | .000 | 0 | 0.0 | 0-0 | 0 | 0 | 0 | 0 | 0 | 0.0 |
| WIS | 0/0 | 0-0 | .000 | 0-0 | .000 | 0-0 | .000 | 0 | 0.0 | 0-0 | 0 | 0 | 0 | 0 | 0 | 0.0 |
| TOTALS | 3/0 | 0-0 | .000 | 0-0 | .000 | 0-0 | .000 | 3 | 1.0 | 4-0 | 0 | 0 | 0 | 0 | 0 | 0.0 |

PALMER IN POST-SEASON PLAY

| YEAR | G/GS | FG-A | PCT | 3-PT | PCT | FT-A | PCT | RB | AVG | PF-DI | AS | TO | BK | ST | PTS | AVG |
|---------------|------------|------------|-------------|------------|-------------|------------|-------------|----------|------------|------------|----------|----------|----------|----------|----------|------------|
| 2006 Big East | 1/0 | 0-0 | .000 | 0-0 | .000 | 0-0 | .000 | 2 | 2.0 | 1-0 | 0 | 0 | 1 | 0 | 0 | 0.0 |
| 2008 Big Ten | 0/0 | 0-0 | .000 | 0-0 | .000 | 0-0 | .000 | 0 | 0.0 | 0-0 | 0 | 0 | 0 | 0 | 0 | 0.0 |
| YEAR | G/GS | FG-A | PCT | 3-PT | PCT | FT-A | PCT | RB | AVG | PF-DI | AS | TO | BK | ST | PTS | AVG |
| 2006 NCAA | 1/0 | 0-1 | .000 | 0-0 | .000 | 0-0 | .000 | 1 | 1.0 | 1-0 | 0 | 0 | 1 | 0 | 0 | 0.0 |
| Career | 2/0 | 0-1 | .000 | 0-0 | .000 | 0-0 | .000 | 3 | 1.5 | 2-0 | 0 | 0 | 2 | 0 | 0 | 0.0 |

JEFF PETERSON

***30 – Jeff Peterson**
Guard
6-0, 192, Sophomore
Hyattsville, Maryland
DeMatha Catholic HS

2007-08 – Played in 30 games, with 11 starts . . . averaged 5.2 points, 3.1 assists and two rebounds per game . . . six points and two assists at Penn State . . . seven points, three rebounds and four assists at Minnesota . . . six points, three rebounds and four assists against Wisconsin . . . three points, two rebounds and three assists in win over Ohio State . . . converted on 14-straight FT's before miss at Purdue . . . seven points, two assists and three rebounds at Purdue . . . 19 points (4-4 FG's, 2-2 3Pt FG's, 9-9 FT's), three rebounds and five assists in win over Penn State . . . matched career-high with nine assists in win at Michigan . . . eight points, two rebounds and two assists at Wisconsin . . . seven points, tied a career-high with five rebounds and five assists against Drake . . . four points and tied career-highs with five rebounds and two steals at Iowa State . . . did not play at Northern Iowa due to death in the family . . . nine points, career-high five rebounds and three assists vs. Louisiana-Monroe . . . five points, three rebounds and seven assists vs. Wake Forest . . . nine points and four assists in win over Florida Gulf Coast . . . career-high 20 points, two rebounds, two assists and two steals in win over Northern Colorado . . . 12 points, nine assists, four rebounds and two steals in in over Idaho State in first college game.

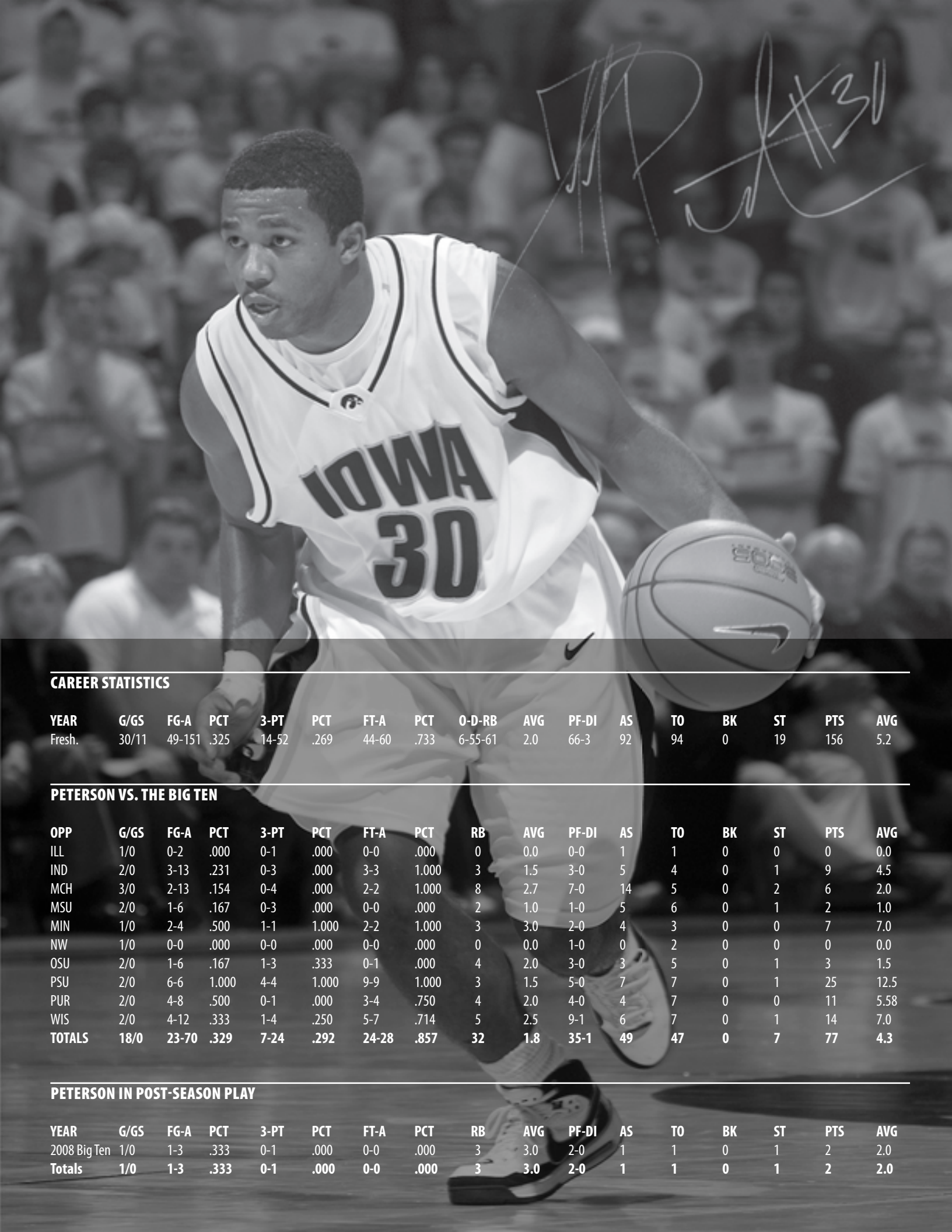


High school – Earned first team all-conference honors as a senior and was honorable mention all-Metro in the Washington, DC area . . . named third team all-conference as a junior . . . team captain as a junior and senior . . . candidate for DeMatha's U.S. Army Reserve Student-Athlete of the Year award . . . selected to play in Capital Classic in Washington, DC following senior season . . . served as team captain as a senior and was named team MVP . . . averaged 13.9 points, 7.7 assists, 3.4 rebounds and 1.8 steals per game as a senior, shooting 43% from three-point range and 79% from the free throw line . . . led DeMatha to a 33-6 record as a senior, leading DeMatha to its third straight Washington, DC city championship . . . DeMatha was ranked as high as second in the nation before being ranked 16th at the end of the season . . . averaged 10.1 points as a junior for DeMatha team that posted a 34-1 overall record and was ranked third in the nation at the end of the season . . . served as the sixth man as a sophomore, averaging seven points for a team that held a 29-2 record and was ranked ninth in the nation.

Personal – Born 1/27/89 in Springfield, MO . . . business major . . . completed prep career with a 3.98 cumulative GPA . . . parents are Chiquita Hendrick and John Peterson . . . high school coach was Mike Jones.

CAREER BESTS

| | |
|------------------|---|
| Points: | 20 vs. Northern Colorado, 11/14/07 |
| Rebounds: | 5, three times, last vs. Drake, 12/14/07 |
| FGM: | 7 vs. Northern Colorado, 11/14/07 |
| FGA: | 10, twice, last vs. Bradley, 11/23/07 |
| FTM: | 9 vs. Penn State, 1/26/08 |
| FTA: | 9, twice, last vs. Penn State, 1/26/08 |
| Assists: | 9, twice, last at Michigan, 1/19/08 |
| Steals: | 2, three times, last at Iowa State, 12/8/07 |
| Blocks: | |
| Minutes: | 40, twice, last vs. Wake Forest, 11/26/07 |



CAREER STATISTICS

| YEAR | G/GS | FG-A | PCT | 3-PT | PCT | FT-A | PCT | O-D-RB | AVG | PF-DI | AS | TO | BK | ST | PTS | AVG |
|--------|-------|--------|------|-------|------|-------|------|---------|-----|-------|----|----|----|----|-----|-----|
| Fresh. | 30/11 | 49-151 | .325 | 14-52 | .269 | 44-60 | .733 | 6-55-61 | 2.0 | 66-3 | 92 | 94 | 0 | 19 | 156 | 5.2 |

PETERSON VS. THE BIG TEN

| OPP | G/GS | FG-A | PCT | 3-PT | PCT | FT-A | PCT | RB | AVG | PF-DI | AS | TO | BK | ST | PTS | AVG |
|---------------|-------------|--------------|-------------|-------------|-------------|--------------|-------------|-----------|------------|-------------|-----------|-----------|----------|----------|-----------|------------|
| ILL | 1/0 | 0-2 | .000 | 0-1 | .000 | 0-0 | .000 | 0 | 0.0 | 0-0 | 1 | 1 | 0 | 0 | 0 | 0.0 |
| IND | 2/0 | 3-13 | .231 | 0-3 | .000 | 3-3 | 1.000 | 3 | 1.5 | 3-0 | 5 | 4 | 0 | 1 | 9 | 4.5 |
| MCH | 3/0 | 2-13 | .154 | 0-4 | .000 | 2-2 | 1.000 | 8 | 2.7 | 7-0 | 14 | 5 | 0 | 2 | 6 | 2.0 |
| MSU | 2/0 | 1-6 | .167 | 0-3 | .000 | 0-0 | .000 | 2 | 1.0 | 1-0 | 5 | 6 | 0 | 1 | 2 | 1.0 |
| MIN | 1/0 | 2-4 | .500 | 1-1 | 1.000 | 2-2 | 1.000 | 3 | 3.0 | 2-0 | 4 | 3 | 0 | 0 | 7 | 7.0 |
| NW | 1/0 | 0-0 | .000 | 0-0 | .000 | 0-0 | .000 | 0 | 0.0 | 1-0 | 0 | 2 | 0 | 0 | 0 | 0.0 |
| OSU | 2/0 | 1-6 | .167 | 1-3 | .333 | 0-1 | .000 | 4 | 2.0 | 3-0 | 3 | 5 | 0 | 1 | 3 | 1.5 |
| PSU | 2/0 | 6-6 | 1.000 | 4-4 | 1.000 | 9-9 | 1.000 | 3 | 1.5 | 5-0 | 7 | 7 | 0 | 1 | 25 | 12.5 |
| PUR | 2/0 | 4-8 | .500 | 0-1 | .000 | 3-4 | .750 | 4 | 2.0 | 4-0 | 4 | 7 | 0 | 0 | 11 | 5.58 |
| WIS | 2/0 | 4-12 | .333 | 1-4 | .250 | 5-7 | .714 | 5 | 2.5 | 9-1 | 6 | 7 | 0 | 1 | 14 | 7.0 |
| TOTALS | 18/0 | 23-70 | .329 | 7-24 | .292 | 24-28 | .857 | 32 | 1.8 | 35-1 | 49 | 47 | 0 | 7 | 77 | 4.3 |

PETERSON IN POST-SEASON PLAY

| YEAR | G/GS | FG-A | PCT | 3-PT | PCT | FT-A | PCT | RB | AVG | PF-DI | AS | TO | BK | ST | PTS | AVG |
|---------------|------------|------------|-------------|------------|-------------|------------|-------------|----------|------------|------------|----------|----------|----------|----------|----------|------------|
| 2008 Big Ten | 1/0 | 1-3 | .333 | 0-1 | .000 | 0-0 | .000 | 3 | 3.0 | 2-0 | 1 | 1 | 0 | 1 | 2 | 2.0 |
| Totals | 1/0 | 1-3 | .333 | 0-1 | .000 | 0-0 | .000 | 3 | 3.0 | 2-0 | 1 | 1 | 0 | 1 | 2 | 2.0 |

CYRUS TATE

****44 – Cyrus Tate**

Forward

6-8, 255, Senior

Chicago, Illinois

Homewood-Flossmoor HS

Northeast, NE CC

Hawk-Item – Named one of two captains for 2008-09 season.

2007-08 – Played in 31 games, with 19 starts . . . honored as recipient of 2008 Chris Street Award . . . averaged 8.3 points and 5.4 rebounds in all games, shooting 66.7% from the field . . . averaged 10.6 points and seven rebounds in Big Ten action . . . led the Big Ten in field goal percentage (70.2%) in league games only and ranked third in rebounds . . . recorded fourth career double-double with 16 points and 11 rebounds vs. Michigan in Big Ten Tournament . . . 14 points (4-7 FG's, 6-7 FT's) and six rebounds in win at Northwestern . . . five points, eight rebounds and two steals vs. Illinois . . . 11 points (5-7 FG's) at Penn State . . . named Big Ten Conference Player of the Week for his play vs. Michigan State and Northwestern . . . career-high 26 points (10-13 FG's, 6-7 FT's) and nine rebounds at Michigan State . . . third career double-double with 18 points and 11 rebounds in win over Northwestern . . . 10 points and six rebounds against Michigan . . . 15 points and eight rebounds against Wisconsin . . . two points and six rebounds in win over Ohio State . . . seven points and a career-high 13 rebounds in win over Penn State . . . eight points and five rebounds at Indiana . . . 21 points (8-10 FG's) and 11 rebounds in win at Michigan . . . 10 points and five rebounds vs. Purdue . . . nine points and seven rebounds in win over Michigan State . . . 10 points (4-5 FG's, 2-3 FT's) and six rebounds at Ohio State . . . eight points and eight rebounds at Wisconsin . . . eight points (3-3 FG's) and seven rebounds against Indiana . . . 10 points (3-3 FG's) and six rebounds in win over Southeastern Louisiana . . . did not play vs. Utah State due to injury . . . nine points and two assists in win over MD Eastern Shore . . . five points and eight rebounds in win over Idaho State.



2006-07 – Played in all 31 games, with 22 starts . . . averaged 4.2 points and 4.4 rebounds per game, shooting 46.2% from the field and 66% from the free throw line . . . in Big Ten games only, ranked 19th in the conference in rebounds per game (4.8) . . . three rebounds vs. Purdue in Big Ten Tournament . . . four points and seven rebounds in win over Illinois . . . recorded first career double-double with 11 points and 10 rebounds, along with a career-high three steals, in win over Purdue . . . two points and seven rebounds in win over Northwestern . . . six points and four rebounds at Wisconsin . . . six points and four rebounds in win over Indiana . . . four points and four rebounds in win at Michigan . . . six points and a career-high 10 rebounds vs. Wisconsin . . . two points and five rebounds in win over Penn State . . . three points and four rebounds at Indiana . . . three points, four rebounds and two blocks in win over Minnesota . . . career-high 14 points and nine rebounds in win over Michigan State . . . four points and five rebounds in win over Texas Southern . . . two points, three rebounds, two assists and two steals in win over Iowa State . . . six points and nine rebounds in win over Coppin State . . . six points, three rebounds and two steals vs. TX-Pan American . . . four points, seven rebounds and two assists at VA Tech . . . four points and five rebounds at Arizona State . . . nine points, seven rebounds and two steals in win over Toledo . . . 13 points (6-7 FG's) and three rebounds in win over The Citadel . . . 11 points, four rebounds and two blocks in exhibition win over Buena Vista.

Junior college – Attended Northeast CC for one season, starting 29 of 31 games . . . named junior college all-American while earning all-region and all-conference recognition averaged 19.6 points and 11 rebounds per game, shooting 60.4% from the field and 66.7% from the free throw line . . . recorded 36 blocked shots in 31 games.

High school – Named to Illinois Basketball Association (IBCA) and City Suburban all-star teams as a senior . . . earned all-state honors as a senior . . . earned all-conference honors as a junior and senior in the SICA East Conference . . . named one of top five post players in state of Illinois as a senior in 2004 . . . led team to second place finish in state tournament and was named team co-Most Valuable Player as a senior . . . averaged 15 points and 10 rebounds per game as a senior . . . averaged 11 points and nine rebounds as a junior and eight points per game as a sophomore . . . three-year varsity letterman.

Personal – Born 9/23/85 . . . American Studies major . . . parents are Katherine Jefferson and Winfred Tate . . . junior college coach was Dan Anderson . . . high school coach was Roy Condotti.

CAREER BESTS

| | |
|------------------|--|
| Points: | 26 at Michigan State, 2/23/08 |
| Rebounds: | 13 vs. Penn State, 1/26/08 |
| FGM: | 10 at Michigan State, 2/23/08 |
| FGA: | 13 at Michigan State, 2/23/08 |
| FTM: | 10 vs. Michigan, 3/13/08 |
| FTA: | 17 vs. Michigan, 3/13/08 |
| Assists: | 2, five times, last vs. Illinois, 3/1/08 |
| Steals: | 3, twice, last vs. Northwestern, 2/19/08 |
| Blocks: | 2 at Minnesota, 2/9/08 |
| Minutes: | 39 vs. Illinois, 3/1/08 |

CAREER STATISTICS

| YEAR | G/GS | FG-A | PCT | 3-PT | PCT | FT-A | PCT | O-D-RB | AVG | PF-DI | AS | TO | BK | ST | PTS | AVG |
|---------------|--------------|----------------|-------------|------------|-------------|----------------|-------------|--------------------|------------|--------------|-----------|-----------|-----------|-----------|------------|------------|
| Soph. | 31/22 | 48-104 | .462 | 0-0 | .000 | 35-53 | .660 | 47-88-135 | 4.4 | 93-4 | 13 | 42 | 8 | 17 | 131 | 4.2 |
| Jun. | 31/19 | 86-129 | .667 | 0-0 | .000 | 86-147 | .585 | 59-107-166 | 5.4 | 87-3 | 8 | 57 | 12 | 18 | 258 | 8.3 |
| Career | 62/41 | 134-233 | .575 | 0-0 | .000 | 121-200 | .605 | 106-195-301 | 4.9 | 180-7 | 21 | 99 | 20 | 35 | 389 | 6.3 |

TATE VS. THE BIG TEN

| YEAR | G/GS | FG-A | PCT | 3-PT | PCT | FT-A | PCT | O-D-RB | AVG | PF-DI | AS | TO | BK | ST | PTS | AVG |
|---------------|--------------|---------------|-------------|------------|-------------|---------------|-------------|-------------------|------------|--------------|----------|-----------|-----------|-----------|------------|------------|
| ILL | 3/3 | 4-11 | .364 | 0-0 | .000 | 3-10 | .400 | 4-13-17 | 5.7 | 10-1 | 2 | 3 | 0 | 3 | 11 | 3.7 |
| IND | 4/3 | 9-14 | .643 | 0-0 | .000 | 7-13 | .538 | 5-15-20 | 5.0 | 10-0 | 0 | 5 | 1 | 1 | 25 | 6.3 |
| MCH | 4/4 | 15-26 | .577 | 0-0 | .000 | 21-35 | .600 | 16-16-32 | 8.0 | 13-0 | 0 | 9 | 2 | 3 | 51 | 12.8 |
| MIN | 3/3 | 4-9 | .444 | 0-0 | .000 | 2-5 | .400 | 5-4-9 | 3.0 | 8-0 | 1 | 3 | 4 | 0 | 10 | 3.3 |
| MSU | 4/4 | 19-25 | .760 | 0-0 | .000 | 14-24 | .583 | 12-15-27 | 6.8 | 11-0 | 0 | 4 | 1 | 3 | 52 | 13.0 |
| NW | 3/3 | 12-18 | .667 | 0-0 | .000 | 10-15 | .667 | 8-16-24 | 8.0 | 8-0 | 0 | 8 | 1 | 4 | 34 | 11.3 |
| OSU | 3/2 | 6-8 | .750 | 0-0 | .000 | 4-5 | .800 | 3-10-13 | 4.3 | 12-1 | 1 | 2 | 0 | 0 | 16 | 5.3 |
| PUR | 4/4 | 7-7 | 1.000 | 0-0 | .000 | 10-16 | .625 | 7-16-23 | 5.8 | 15-1 | 1 | 8 | 1 | 5 | 24 | 6.0 |
| PSU | 4/4 | 8-11 | .727 | 0-0 | .000 | 4-8 | .500 | 7-15-22 | 5.5 | 15-1 | 1 | 6 | 0 | 2 | 20 | 5.0 |
| WIS | 4/4 | 13-27 | .481 | 0-0 | .000 | 9-17 | .529 | 13-17-30 | 7.5 | 13-0 | 3 | 4 | 4 | 1 | 35 | 8.8 |
| Totals | 36/34 | 97-156 | .622 | 0-0 | .000 | 84-148 | .568 | 80-137-217 | 6.0 | 115-4 | 9 | 52 | 14 | 22 | 278 | 7.7 |

TATE IN POST-SEASON PLAY

| YEAR | G/GS | FG-A | PCT | 3-PT | PCT | FT-A | PCT | O-D-RB | AVG | PF-DI | AS | TO | BK | ST | PTS | AVG |
|---------------|------------|------------|-------------|------------|-------------|--------------|-------------|---------------|------------|------------|----------|----------|----------|----------|-----------|------------|
| 2007 Big Ten | 1/1 | 0-0 | .000 | 0-0 | .000 | 1-2 | .500 | 2-1-3 | 3.0 | 4-0 | 0 | 0 | 0 | 1 | 1 | 1.0 |
| 2008 Big Ten | 1/1 | 3-6 | .500 | 0-0 | .000 | 10-17 | .588 | 7-4-11 | 11.0 | 4-0 | 0 | 4 | 1 | 2 | 16 | 16.0 |
| Totals | 2/2 | 3-6 | .500 | 0-0 | .000 | 11-19 | .579 | 9-5-14 | 7.0 | 8-0 | 0 | 4 | 1 | 3 | 17 | 8.5 |

DEVAN BAWINKEL



Guard | 6-5, 210, Junior | Winnebago, Illinois
Winnebago HS | Highland, IL CC

Hawk-Item – Signed a letter of intent to attend West Virginia during senior year . . . played in 20 games for West Virginia in 2006-07, averaging 1.9 points per game as West Virginia won the 2007 post-season NIT . . . shot 32.5% from the field and 75% from the free throw line for post-season NIT champions . . . career-best 13 points in 17 minutes in non-conference win over Slippery Rock . . . three assists in two games . . . fractured his hand in practice Feb. 2 and did not return to game action until March 13 . . . coach at West Virginia was John Beilein.

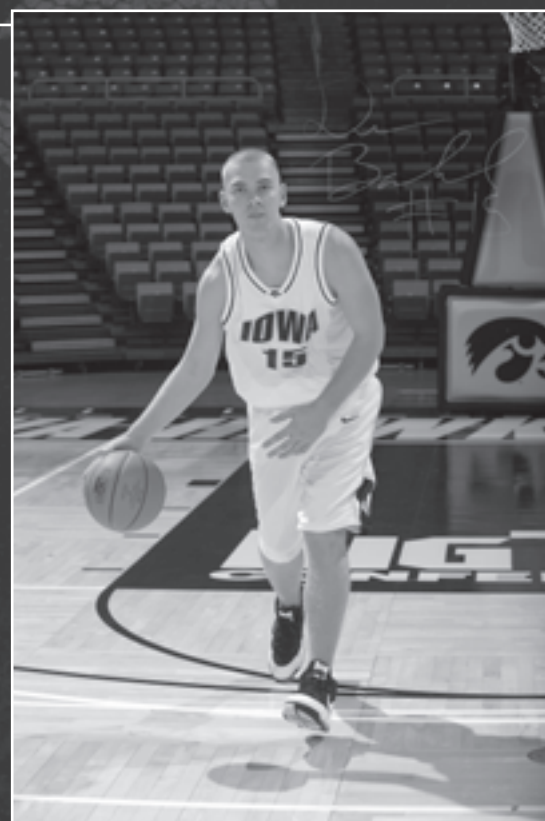
Junior college – Attended Highland Community College in Freeport, IL as a sophomore in 2007-08 . . . named Most Valuable Player in the Arrowhead Conference . . . named MVP of Region Four post-season tournament and was named to all-Region Four team for his play throughout the season . . . helped team win Arrowhead Conference title with 12-0 record as team posted overall record of 28-5 . . . helped team win regional title before ending season in district playoff . . . averaged 13.5 points, 4.8 rebounds and 4.1 assists per game . . . set school record with 10 three-point baskets vs. Kankakee and shot 44.6% from three-point range for the season, hitting 99 three-pointers . . . junior college coach was Pete Norman.

High school – Named Class-A Player of the Year as a prep senior by *Illinois Hoops* . . . earned Class-A first team all-state honors as a sophomore, junior and senior at Winnebago HS . . . selected to Rising Stars All-Star game and City vs. Suburbs All-Star game following senior season . . . was the only unanimous selection to all-state team as a senior . . . first team all-conference selection for three straight years . . . team MVP for three straight years and team captain as junior and senior . . . holds career records for points (2,185), rebounds (950), assists and steals . . . scored single-game best of 52 points . . . scored 51 points in a regional final . . . helped prep team finish as state runner-up in both 2004 and 2005 . . . team posted a 111-13 overall record during his four-year career . . . averaged 24.5 points, 8.5 rebounds, 5.6 assists and 2.4 steals per game as a senior . . . averaged 20.5 points, 8.1 rebounds and 4.5 assists as a junior . . . averaged 14.3 points as a sophomore . . . played AAU for Illinois Wolves . . . also competed in baseball as a prep, earning all-conference (centerfield) honors.

Personal – Born 12/14/87 . . . Communication Studies major . . . Honor Roll student as a prep, at Highland CC and at West Virginia . . . parents are Mary and Dave Bawinkel, both Iowa graduates . . . high school coach was Joe Murphy.

CAREER BESTS

Points: 13 vs. Slippery Rock, 11/14/06
Rebounds: 2 vs. Citadel, 12/20/06
FGM: 5 vs. Slippery Rock, 11/14/06
FGA: 6 vs. Slippery Rock, 11/14/06
3-pt. FG: 3 vs. Slippery Rock, 11/14/06
3-pt. FGA: 5 vs. MD Eastern Shore, 12/28/06
FTM: 2 vs. Marquette, 1/13/07
FTA: 2, twice, last vs. Marquette, 1/13/07
Assists: 3, twice, last vs. W. Michigan, 11/24/06
Steals: 1, twice, last vs. W. Michigan, 11/24/06
Blocks:
Minutes: 20 vs. Western Michigan, 11/24/06



CAREER STATISTICS

| YEAR | G/GS | FG-A | PCT | 3-PT | PCT | FT-A | PCT | O-D-RB | AVG | PF-DI | AS | TO | BK | ST | PTS | AVG |
|---------|------|-------|------|------|------|------|------|--------|-----|-------|----|----|----|----|-----|-----|
| *Fresh. | 20/0 | 13-40 | .325 | 8-29 | .276 | 3-4 | .750 | 0-8-8 | 0.4 | 8-0 | 12 | 8 | 0 | 2 | 37 | 1.9 |

* – 2006-07 at West Virginia

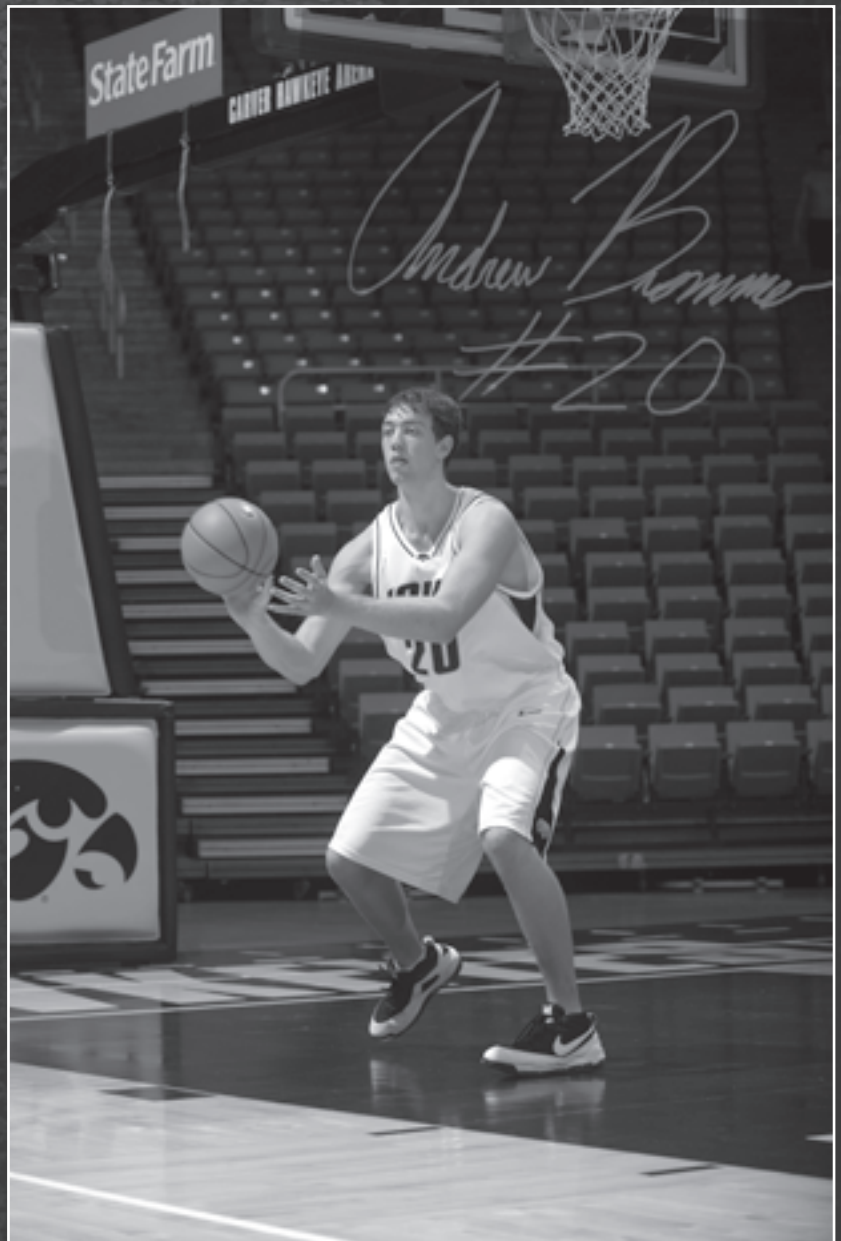
ANDREW BROMMER

**Forward | 6-9, 235, Freshman | Rosemount, Minnesota
Rosemount HS**



High school – Named first team all-state as a senior and honorable mention all-American by SuperPrep . . . first team all-conference as a senior, junior and sophomore, being a unanimous selection as a senior . . . one of 10 finalists for Minnesota’s “Mr. Basketball” as a senior and selected for Minnesota all-star game . . . team MVP as a sophomore, junior and senior and team captain as a senior . . . scored 1,391 career points . . . holds school record for career blocked shots and ranks second on career scoring list . . . team captain and Most Valuable Player as a senior . . . averaged 18 points and 11 rebounds as a senior as team posted 13-14 overall record . . . shot 59% from the field as a senior and averaged four assists and three blocked shots per game . . . averaged 17 points, nine rebounds, three assists and three blocked shots per game as a junior . . . member of 43 Hoops AAU team with Iowa freshman Anthony Tucker for two seasons, helping team to 16-and-under title at Hoosier Shootout in July, 2006.

Personal – Born 6/28/89 . . . Engineering major . . . parents are Noreen and Rob Brommer . . . named to academic all-state team as a senior . . . earned A Honor Roll recognition as a prep . . . helped prep team earn academic section title as a junior . . . high school coaches were Mike Manning and Steve Bender.



JERMAIN DAVIS

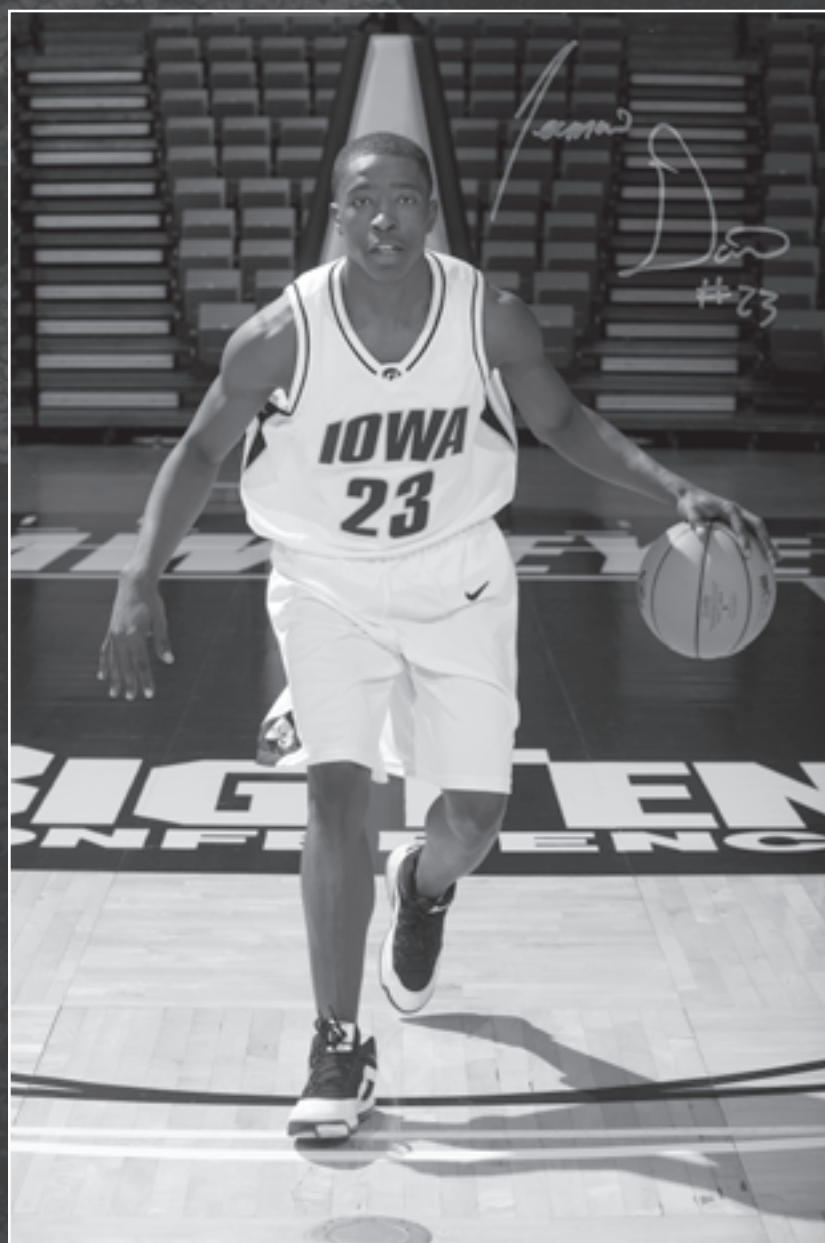
Guard | 6-4, 200, Junior | Plymouth, Minnesota
Robbinsdale Cooper HS | Kirkwood, IA CC



Junior college – Attended Kirkwood, IA CC as a sophomore, helping the Eagles reach the NJCAA Division II national tournament . . . placed third at national tournament and posted 32-4 overall record . . . team set school record for wins in a season . . . named honorable mention all-Region . . . scored 13 points in regional final game . . . scored six points as Kirkwood won first round game at national tournament . . . scored 15 points in second round game at nationals . . . scored 17 points in national semi-final loss . . . ended junior college career with 12 points in helping team earn third place finish in national tournament . . . for the season averaged 9.6 points, 3.3 rebounds and three assists per game . . . played freshman season at Southeastern, IA CC, averaging 10.9 points per game while earning team MVP honors . . . was second team all-conference while leading team in assists (five per game) and ranking third in steals . . . junior college coach at Kirkwood was Doug Wagemester.

High school – Attended Robbinsdale Cooper High School, helping prep team post 27-4 record as a senior . . . first team all-Conference in the North Suburban Conference as a senior while being named co-MVP of the conference . . . also first team all-conference as a junior . . . named to Metro area all-Defensive team . . . team Most Valuable Player and captain as a junior and senior . . . averaged 17 points, five rebounds, five assists and three steals as a junior, . . . shooting 54% from the field and 44% from three-point range and 82% from the free throw line . . . averaged 15 points, six assists, four rebounds and two steals as a junior . . . helped prep team establish school record for wins in a season while placing second in Class 4-A state tournament . . . named to all-tournament team at state tournament as a senior.

Personal – Born 12/5/86 . . . Communication Studies major . . . parents are Sherry and Charles Davis . . . high school coach was Kurt Pauly.



AARON FULLER

Forward | 6-6, 210, Freshman | Mesa, Arizona
Mesa HS



High school – Named Player of the Year for Class 4A-5A in Arizona by the *Arizona Republic* as a senior . . . earned first team all-state honors as a senior and was second team as a junior . . . first team all-conference as a junior and senior, along with earning MVP honors as a senior . . . selected as team Most Valuable Player as a junior and senior . . . team captain as a senior . . . named East Valley Region Player of the Year and *East Valley Tribune* Player of the Year . . . selected to compete in Arizona All-Star Game . . . helped team post 17-11 overall record, including 6-2 conference mark . . . led team to East Valley Region championship . . . set single game scoring record with 46 points against Westwood . . . tied school record for field goals in a season (237) and set single season scoring record with 631 points . . . averaged 24.5 points, 10.8 rebounds and 2.1 blocked shots per game as a senior, shooting 61% from the field and 73% from the free throw line . . . suffered injury (broken bone in jaw) in regional tournament championship and missed Class 5A Division I tournament loss.

Personal – Born 12/3/89 . . . Computer Science major . . . carried 3.1 GPA as a prep . . . parents are Sarita and Darryl Fuller . . . high school coach was Shane Burcar.



MATT GATENS

Guard | 6-5, 215, Freshman | Iowa City, Iowa
Iowa City HS



High school – Named Iowa’s “Mr. Basketball” and Gatorade Player of the Year in Iowa as a senior . . . first team all-state as a senior and junior after earning second team honors as a sophomore . . . named EA Sports second team all-American and Athlon Sports and ESPN Top 100 all-American . . . named to *The Sporting News* Super 99 (ranked #52) all-America team and earned all-America recognition from Scout.com, Rivals.com and CBSSports.com . . . two-time NIKE all-American . . . led team to state Class 4-A state title as a senior with a 25-1 overall record . . . team also won Mississippi Valley Conference title . . . named captain of state tournament all-tournament team . . . earned first team all-conference recognition four straight years . . . led all scorers in state championship game with 24 points (13-13 FTs), while also collecting five rebounds . . . collected 51 points (19-20 FTs) and 14 rebounds in three games at state tournament . . . holds City High career records for points (1,928), free throws, free throw attempts, assists and games played . . . ranks 39th in career points among Iowa high school players. Including third best total in Class 4-A . . . holds career scoring record for Mississippi Valley Conference . . . career free throw percentage of 83% (582-702) . . . averaged 22.1 points, 6.1 rebounds and five assists as senior, shooting 39.7% from three-point range and 83.3% from the free throw line . . . averaged 23 points, seven rebounds and five assists as a junior, 20.3 points, seven rebounds and four assists as a sophomore and 18 points, 5.5 rebounds and four assists as a freshman . . . was team captain in each of final three seasons and was four-time team MVP . . . member of Martin Bros. Select 17-and-under team which placed second at Rumble in the Bronx tournament in New York prior to senior season . . . selected to compete in National Basketball Association Top 100 all-American Camp, Kobe Bryant’s NIKE Skills Academy, which brings in the top 20 players in the nation at each position, and the NIKE LeBron James Skills Academy for the top 80 high school players in the United States . . . two-time invitee to the NIKE Basketball Jamboree in St. Louis, MO and the NIKE all-American Basketball Camp in Indianapolis . . . also competed for prep golf team, earning first team all-state honors and all-conference (three years) honors.

Personal – Born 6/13/89 . . . Pre-Business major . . . carried a 3.76 GPA as a prep . . . parents are Julie and Mike Gatens . . . father is an Iowa basketball letterman (1974-76) and mother is an Iowa graduate and former Hawkeye cheerleader . . . two sisters (Nicole and Megan) both competed in athletics at Iowa . . . made verbal commitment to Iowa program while in ninth grade . . . high school coach was Andy Woodley.



JOHN LICKLITER

Guard | 5-11, 175, Freshman | Iowa City, Iowa
Iowa City HS



High school – Started every game as a senior for prep team that won state Class 4-A state title while posting a 25-1 overall record . . . team also won Mississippi Valley Conference title . . . team captain as a senior . . . contributed 11 points and three steals in state title contest . . . attended Franklin Central HS in Indianapolis before moving to Iowa City for his final season . . . lettered at Franklin Central as a sophomore and junior, helping team post a 24-3 mark during his junior season.

Personal – Born 3/8/89 . . . Cinema major . . . parents are Joez and Todd Lickliter . . . father is Iowa's head basketball coach . . . high school coach at Iowa City HS was Andy Woodley.



ANTHONY TUCKER

Guard | 6-4, 200, Freshman | Minnetonka, Minnesota
Minnetonka HS



High school – Named Metro Player of the Year by *Minneapolis Star-Tribune* as a senior . . . first team all-state as a senior and finalist for Minnesota Mr. Basketball . . . only player in conference history to be unanimous selection to all-conference team as a freshman, sophomore, junior and senior . . . first team all-state as a junior by the *St. Paul Pioneer Press* . . . first team all-Metro as a junior and senior . . . three-point champion and Player of the Game at Minnesota Coaches Association all-star game . . . second team all-state selection as a sophomore . . . two-year team captain . . . led team to state championship as a senior as team posted 28-3 overall record . . . scored 27 points in state championship game, including 20 points in the second half as team rallied from a 22-point deficit in the first half . . . school career scoring leader with 1,908 points . . . set school record for three-point percentage (44.6%) as a senior . . . averaged 21.8 points per game as a senior, along with 6.3 rebounds, 7.8 assists and 2.8 assist to turnover ratio . . . as a senior shot 55.4% from the field, 44.6% (87-195) from three-point range and 80% from the free throw line . . . averaged 18.7 points, 5.9 rebounds and 6.8 assists per game as a junior, scoring in double figures in 26 of 28 games . . . shot 41% (62-150) from three-point range as a junior, fifth best percentage in school history . . . led prep team to 17-9 record as a junior, as team advanced to finals of Class 4-A, Section 2 . . . averaged 20.8 points, 4.2 rebounds and 4.5 assists as a sophomore and 14.6 points, 3.9 rebounds and 3.8 assists as a freshman . . . member of 43 Hoops AAU team (along with Iowa freshman Andrew Brommer) that won 16 and under title at Hoosier Shootout in July, 2006.

Personal – Born 9/2/89 . . . Pre-Business major . . . parents are Cindy Durand and Anthony Tucker . . . named to Minnetonka Student Leadership Honor Society . . . high school coach was John Hedstrom.



INDIVIDUAL GAME-BY-GAME STATISTICS

J.R. ANGLE

2004-05

| Opponent | Min. | FG-FGA | PCT | 3-PT. FG | PCT | FT-FTA | PCT | REB | PF | A | TO | BLK | STL | PTS |
|--------------------------|------------|-------------|-------------|------------|-------------|------------|-------------|------------|----------|----------|----------|----------|----------|------------|
| Western Illinois | 1 | 1-2 | .500 | 1-2 | .500 | 0-0 | .000 | 1 | 0 | 0 | 0 | 0 | 0 | 3 |
| vs. North Carolina | 2 | 1-1 | 1.000 | 1-1 | 1.000 | 0-0 | .000 | 0 | 0 | 0 | 0 | 0 | 0 | 3 |
| at Drake | 3 | 0-0 | .000 | 0-0 | .000 | 0-0 | .000 | 2 | 0 | 0 | 0 | 0 | 0 | 0 |
| Centenary | 5 | 1-2 | .500 | 0-1 | .000 | 0-0 | .000 | 2 | 1 | 1 | 1 | 0 | 0 | 2 |
| UNC-Greensboro | 2 | 0-2 | .000 | 0-1 | .000 | 0-0 | .000 | 0 | 0 | 0 | 1 | 0 | 0 | 0 |
| Western Carolina | 2 | 0-1 | .000 | 0-0 | .000 | 0-0 | .000 | 0 | 0 | 0 | 2 | 0 | 0 | 0 |
| vs. Texas Tech | 1 | 0-0 | .000 | 0-0 | .000 | 0-0 | .000 | 0 | 0 | 0 | 1 | 0 | 0 | 0 |
| Northwestern | 1 | 0-0 | .000 | 0-0 | .000 | 0-0 | .000 | 0 | 0 | 0 | 0 | 0 | 0 | 0 |
| at Penn State | 5 | 0-2 | .000 | 0-0 | .000 | 0-0 | .000 | 1 | 1 | 0 | 0 | 0 | 0 | 0 |
| vs. Purdue | 2 | 0-0 | .000 | 0-0 | .000 | 0-0 | .000 | 0 | 0 | 0 | 1 | 0 | 0 | 0 |
| vs. Cincinnati | 1 | 1-1 | 1.000 | 0-0 | .000 | 0-0 | .000 | 0 | 0 | 0 | 0 | 0 | 0 | 2 |
| Totals = 11 games | 25 | 4-11 | .364 | 2-5 | .400 | 0-0 | .000 | 6 | 2 | 1 | 6 | 0 | 0 | 10 |
| | 2.3 | | | | | | | 0.5 | | | | | | 0.9 |

2006-07

| Opponent | Min. | FG-FGA | PCT | 3-PT. FG | PCT | FT-FTA | PCT | REB | PF | A | TO | BLK | STL | PTS |
|--------------------------|------------|--------------|-------------|------------|-------------|-------------|-------------|------------|-----------|----------|----------|----------|----------|------------|
| The Citadel | 7 | 1-2 | .500 | 0-0 | .000 | 0-0 | .000 | 2 | 0 | 0 | 0 | 0 | 0 | 2 |
| vs. Toledo | 7 | 0-1 | .000 | 0-0 | .000 | 0-0 | .000 | 1 | 1 | 0 | 1 | 0 | 0 | 0 |
| vs. Alabama | 16 | 0-2 | .000 | 0-0 | .000 | 0-0 | .000 | 3 | 2 | 0 | 2 | 0 | 1 | 0 |
| vs. Villanova | 4 | 2-2 | 1.000 | 1-1 | 1.000 | 0-0 | .000 | 0 | 1 | 0 | 0 | 0 | 0 | 5 |
| at Arizona State | 12 | 2-4 | .500 | 1-2 | .500 | 0-0 | .000 | 1 | 0 | 0 | 0 | 0 | 0 | 5 |
| at Virginia Tech | 3 | 0-1 | .000 | 0-0 | .000 | 0-0 | .000 | 1 | 4 | 0 | 1 | 0 | 0 | 0 |
| Texas-Pan American | 12 | 0-1 | .000 | 0-1 | .000 | 0-0 | .000 | 5 | 1 | 1 | 0 | 0 | 0 | 0 |
| Coppin State | 13 | 3-4 | .750 | 0-0 | .000 | 2-2 | 1.000 | 2 | 2 | 1 | 0 | 0 | 0 | 8 |
| Northern Iowa | 11 | 0-1 | .000 | 0-1 | .000 | 2-2 | 1.000 | 0 | 1 | 0 | 0 | 0 | 1 | 2 |
| Iowa State | 15 | 2-2 | 1.000 | 1-1 | 1.000 | 0-0 | .000 | 2 | 4 | 0 | 1 | 0 | 1 | 5 |
| at Drake | 18 | 0-2 | .000 | 0-0 | .000 | 0-0 | .000 | 1 | 3 | 1 | 1 | 0 | 0 | 0 |
| Georgia State | 12 | 2-2 | 1.000 | 0-0 | .000 | 0-0 | .000 | 2 | 3 | 0 | 0 | 0 | 2 | 4 |
| Texas Southern | 10 | 1-2 | .500 | 0-1 | .000 | 0-0 | .000 | 2 | 0 | 0 | 0 | 0 | 0 | 2 |
| Cornell | 8 | 0-0 | .000 | 0-0 | .000 | 2-2 | 1.000 | 1 | 2 | 1 | 1 | 0 | 0 | 2 |
| Michigan State | 7 | 2-4 | .500 | 0-0 | .000 | 0-0 | .000 | 0 | 0 | 0 | 0 | 0 | 0 | 4 |
| at Illinois | 6 | 0-1 | .000 | 0-1 | .000 | 0-0 | .000 | 0 | 0 | 0 | 0 | 0 | 0 | 0 |
| Minnesota | 1 | 0-0 | .000 | 0-0 | .000 | 0-0 | .000 | 0 | 0 | 0 | 0 | 0 | 0 | 0 |
| at Indiana | 3 | 0-0 | .000 | 0-0 | .000 | 0-0 | .000 | 1 | 0 | 0 | 0 | 0 | 0 | 0 |
| at Ohio State | 6 | 0-3 | .000 | 0-0 | .000 | 0-0 | .000 | 0 | 2 | 0 | 0 | 0 | 0 | 0 |
| Penn State | 3 | 0-0 | .000 | 0-0 | .000 | 0-0 | .000 | 0 | 1 | 1 | 0 | 0 | 0 | 0 |
| Wisconsin | 5 | 0-0 | .000 | 0-0 | .000 | 0-0 | .000 | 1 | 1 | 0 | 0 | 0 | 0 | 0 |
| at Michigan | 2 | 0-0 | .000 | 0-0 | .000 | 0-0 | .000 | 0 | 2 | 0 | 1 | 0 | 0 | 0 |
| Indiana | 1 | 0-0 | .000 | 0-0 | .000 | 0-0 | .000 | 0 | 0 | 0 | 0 | 0 | 0 | 0 |
| at Minnesota | 7 | 1-1 | 1.000 | 1-1 | 1.000 | 0-0 | .000 | 1 | 0 | 1 | 0 | 0 | 0 | 3 |
| Northwestern | 3 | 0-0 | .000 | 0-0 | .000 | 0-0 | .000 | 0 | 0 | 1 | 0 | 0 | 0 | 0 |
| at Michigan State | 5 | 0-0 | .000 | 0-0 | .000 | 3-4 | .750 | 1 | 0 | 0 | 0 | 0 | 0 | 3 |
| Purdue | 6 | 0-0 | .000 | 0-0 | .000 | 0-0 | .000 | 1 | 1 | 2 | 1 | 0 | 0 | 0 |
| Totals = 28 games | 206 | 17-36 | .472 | 4-9 | .444 | 9-10 | .900 | 28 | 31 | 9 | 9 | 0 | 5 | 47 |
| | 7.4 | | | | | | | 1.0 | | | | | | 1.7 |

2007-08

| Opponent | Min. | FG-FGA | PCT | 3-PT. FG | PCT | FT-FTA | PCT | REB | PF | A | TO | BLK | STL | PTS |
|--------------------------|-------------|--------------|-------------|--------------|-------------|-------------|-------------|------------|-----------|-----------|-----------|----------|----------|------------|
| No. Colorado | 1 | 0-2 | .000 | 0-2 | .000 | 0-0 | .000 | 0 | 0 | 0 | 0 | 0 | 0 | 0 |
| Maryland-ES | 11 | 0-0 | .000 | 0-0 | .000 | 0-0 | .000 | 0 | 0 | 0 | 1 | 0 | 0 | 0 |
| vs. Bradley | 9 | 1-1 | 1.000 | 1-1 | 1.000 | 0-0 | .000 | 3 | 3 | 1 | 1 | 0 | 0 | 3 |
| vs. Utah State | 8 | 2-4 | .500 | 2-2 | 1.000 | 0-1 | .000 | 2 | 0 | 0 | 0 | 0 | 0 | 6 |
| Wake Forest | 11 | 0-0 | .000 | 0-0 | .000 | 2-2 | 1.000 | 3 | 1 | 0 | 0 | 0 | 0 | 2 |
| Louisiana-Monroe | 13 | 2-4 | .500 | 0-2 | .000 | 0-0 | .000 | 1 | 1 | 0 | 1 | 0 | 0 | 4 |
| Eastern Illinois | 19 | 2-5 | .400 | 2-4 | .500 | 2-3 | .667 | 4 | 2 | 3 | 2 | 0 | 0 | 8 |
| at Northern Iowa | 21 | 1-3 | .333 | 1-3 | .333 | 0-0 | .000 | 6 | 1 | 0 | 3 | 0 | 1 | 3 |
| at Iowa State | 25 | 2-4 | .400 | 2-4 | .500 | 0-2 | .000 | 4 | 4 | 1 | 0 | 0 | 0 | 6 |
| Drake | 6 | 1-1 | 1.000 | 1-1 | 1.000 | 0-0 | .000 | 0 | 1 | 0 | 0 | 0 | 0 | 3 |
| SE Louisiana | 23 | 3-7 | .429 | 3-7 | .439 | 1-2 | .500 | 0 | 1 | 2 | 0 | 1 | 3 | 10 |
| Indiana | 25 | 2-7 | .286 | 1-6 | .167 | 0-0 | .000 | 2 | 3 | 2 | 0 | 0 | 0 | 5 |
| at Wisconsin | 21 | 3-6 | .500 | 1-3 | .333 | 0-0 | .000 | 3 | 2 | 2 | 2 | 0 | 0 | 7 |
| at Ohio State | 11 | 0-4 | .000 | 0-4 | .000 | 0-0 | .000 | 0 | 0 | 0 | 1 | 0 | 0 | 0 |
| at Indiana | 6 | 0-4 | .000 | 0-2 | .000 | 0-0 | .000 | 4 | 0 | 0 | 0 | 0 | 0 | 0 |
| Penn State | 1 | 0-0 | .000 | 0-0 | .000 | 0-0 | .000 | 0 | 0 | 0 | 0 | 0 | 0 | 0 |
| Northwestern | 5 | 0-1 | .000 | 0-0 | .000 | 0-0 | .000 | 0 | 1 | 0 | 0 | 0 | 0 | 0 |
| Totals = 18 games | 216 | 19-54 | .352 | 14-41 | .341 | 5-10 | .500 | 31 | 20 | 11 | 11 | 1 | 4 | 57 |
| | 12.0 | | | | | | | 1.7 | | | | | | 3.2 |

INDIVIDUAL GAME-BY-GAME STATISTICS

DEVAN BAWINKEL

2006-07 (at West Virginia)

| Opponent | Min. | FG-FGA | PCT | 3-PT. FG | PCT | FT-FTA | PCT | REB | PF | A | TO | BLK | STL | PTS |
|--------------------------|------------|--------------|-------------|-------------|-------------|------------|-------------|------------|----------|-----------|----------|----------|----------|------------|
| Mount St. Mary's | 12 | 1-5 | .200 | 1-4 | .250 | 0-0 | .000 | 0 | 0 | 1 | 0 | 0 | 0 | 3 |
| Slippery Rock | 17 | 5-6 | .833 | 3-3 | 1.000 | 0-0 | .000 | 1 | 2 | 1 | 0 | 0 | 0 | 13 |
| Canisius | 10 | 0-2 | .000 | 0-2 | .000 | 1-2 | .500 | 1 | 0 | 0 | 0 | 0 | 1 | 1 |
| vs. Montana | 12 | 0-0 | .000 | 0-0 | .000 | 0-0 | .000 | 0 | 0 | 3 | 1 | 0 | 1 | 0 |
| vs. Western Michigan | 20 | 0-2 | .000 | 0-2 | .000 | 0-0 | .000 | 0 | 0 | 3 | 1 | 0 | 1 | 0 |
| vs. Arkansas | 4 | 0-2 | .000 | 0-1 | .000 | 0-0 | .000 | 1 | 0 | 0 | 0 | 0 | 0 | 0 |
| vs. NC State | 3 | 1-1 | 1.000 | 1-1 | 1.000 | 0-0 | .000 | 0 | 0 | 0 | 0 | 0 | 0 | 3 |
| at Duquesne | 7 | 1-3 | .333 | 0-0 | .000 | 0-0 | .000 | 1 | 0 | 0 | 0 | 0 | 0 | 2 |
| Savannah State | 11 | 1-3 | .333 | 0-2 | .000 | 0-0 | .000 | 0 | 1 | 0 | 1 | 0 | 0 | 2 |
| The Citadel | 12 | 1-4 | .250 | 0-3 | .000 | 0-0 | .000 | 2 | 0 | 0 | 0 | 0 | 0 | 2 |
| MD Eastern Shore | 16 | 2-5 | .400 | 2-5 | .400 | 0-0 | .000 | 1 | 2 | 1 | 1 | 0 | 0 | 6 |
| Connecticut | 9 | 0-1 | .000 | 0-0 | .000 | 0-0 | .000 | 0 | 1 | 1 | 3 | 0 | 0 | 0 |
| Villanova | 3 | 0-0 | .000 | 0-0 | .000 | 0-0 | .000 | 0 | 1 | 1 | 3 | 0 | 0 | 0 |
| St. John's | 9 | 1-2 | .500 | 1-2 | .500 | 0-0 | .000 | 0 | 1 | 0 | 1 | 0 | 0 | 3 |
| at Notre Dame | 11 | 0-1 | .000 | 0-1 | .000 | 0-0 | .000 | 0 | 0 | 0 | 1 | 0 | 0 | 0 |
| at Marquette | 9 | 0-2 | .000 | 0-2 | .000 | 2-2 | 1.000 | 1 | 0 | 0 | 0 | 0 | 0 | 2 |
| at Cincinnati | 2 | 0-0 | .000 | 0-0 | .000 | 0-0 | .000 | 0 | 1 | 0 | 0 | 0 | 0 | 0 |
| DePaul | 3 | 0-1 | .000 | 0-1 | .000 | 0-0 | .000 | 0 | 0 | 0 | 0 | 0 | 0 | 0 |
| at Rutgers | 7 | 0-0 | .000 | 0-0 | .000 | 0-0 | .000 | 0 | 0 | 1 | 0 | 0 | 0 | 0 |
| Delaware State | 3 | 0-0 | .000 | 0-0 | .000 | 0-0 | .000 | 0 | 0 | 0 | 0 | 0 | 0 | 0 |
| Totals = 20 games | 180 | 13-40 | .325 | 8-29 | .276 | 3-4 | .750 | 8 | 8 | 12 | 8 | 0 | 2 | 37 |
| | 9.0 | | | | | | | 0.4 | | | | | | 1.9 |

JARRYD COLE

2007-08

| Opponent | Min. | FG-FGA | PCT | 3-PT. FG | PCT | FT-FTA | PCT | REB | PF | A | TO | BLK | STL | PT |
|--------------------------|-------------|--------------|-------------|------------|-------------|--------------|-------------|------------|-----------|----------|-----------|----------|----------|------------|
| Idaho State | 14 | 1-1 | 1.000 | 0-0 | .000 | 0-1 | .000 | 1 | 3 | 0 | 0 | 0 | 1 | 2 |
| Northern Colorado | 11 | 0-0 | .000 | 0-0 | .000 | 0-0 | .000 | 1 | 3 | 1 | 2 | 0 | 0 | 0 |
| Florida Gulf Coast | 18 | 2-4 | .500 | 0-0 | .000 | 3-8 | .375 | 4 | 2 | 0 | 1 | 0 | 3 | 7 |
| Maryland Eastern Shore | 21 | 2-3 | .667 | 0-0 | .000 | 2-3 | .667 | 7 | 1 | 0 | 1 | 0 | 0 | 6 |
| vs. Bradley | 9 | 0-0 | .000 | 0-0 | .000 | 0-0 | .000 | 2 | 4 | 0 | 0 | 0 | 0 | 0 |
| vs. Utah State | 25 | 3-7 | .429 | 0-1 | .000 | 4-4 | 1.000 | 6 | 2 | 1 | 0 | 1 | 0 | 10 |
| Wake Forest | 33 | 7-10 | .700 | 0-0 | .000 | 0-1 | .000 | 7 | 4 | 0 | 3 | 0 | 1 | 14 |
| Louisiana-Monroe | 35 | 1-3 | .333 | 0-0 | .000 | 2-5 | .400 | 7 | 4 | 1 | 5 | 0 | 1 | 4 |
| Eastern Illinois | 29 | 4-5 | .800 | 0-0 | .000 | 2-3 | .667 | 4 | 3 | 0 | 2 | 0 | 0 | 10 |
| at Northern Iowa | 19 | 1-3 | .333 | 0-0 | .000 | 0-0 | .000 | 5 | 5 | 0 | 2 | 1 | 0 | 2 |
| at Iowa State | 35 | 7-10 | .700 | 0-0 | .000 | 1-4 | .250 | 9 | 2 | 0 | 1 | 0 | 0 | 15 |
| Drake | 32 | 6-6 | 1.000 | 0-0 | .000 | 0-0 | .000 | 5 | 3 | 0 | 4 | 0 | 0 | 12 |
| SE Louisiana | 21 | 2-2 | 1.000 | 0-0 | .000 | 0-2 | .000 | 4 | 1 | 0 | 2 | 0 | 1 | 4 |
| Totals = 13 games | 302 | 36-54 | .667 | 0-1 | .000 | 14-31 | .452 | 62 | 37 | 3 | 23 | 2 | 7 | 86 |
| | 23.2 | | | | | | | 4.8 | | | | | | 6.6 |

JAKE KELLY

2007-08

| Opponent | Min. | FG-FGA | PCT | 3-PT. FG | PCT | FT-FTA | PCT | REB | PF | A | TO | BLK | STL | PTS |
|------------------------|------|--------|------|----------|-------|--------|-------|-----|----|---|----|-----|-----|-----|
| Idaho State | 15 | 2-4 | .500 | 0-1 | .000 | 0-1 | .000 | 4 | 2 | 1 | 1 | 0 | 0 | 4 |
| No. Colorado | 23 | 1-6 | .167 | 0-1 | .000 | 1-2 | .500 | 0 | 1 | 0 | 1 | 0 | 2 | 3 |
| Florida Gulf Coast | 18 | 1-2 | .500 | 1-1 | 1.000 | 0-0 | .000 | 2 | 1 | 1 | 1 | 0 | 0 | 3 |
| Maryland Eastern Shore | 20 | 2-6 | .333 | 1-1 | 1.000 | 3-4 | .750 | 5 | 3 | 3 | 4 | 2 | 3 | 8 |
| vs. Bradley | 22 | 4-7 | .571 | 2-3 | .667 | 1-2 | .500 | 4 | 1 | 3 | 1 | 0 | 2 | 11 |
| vs. Utah State | 34 | 2-4 | .500 | 1-2 | .500 | 3-3 | 1.000 | 3 | 4 | 2 | 3 | 0 | 0 | 8 |
| Wake Forest | 27 | 4-8 | .500 | 1-4 | .250 | 0-0 | .000 | 2 | 5 | 2 | 1 | 0 | 0 | 9 |
| Louisiana-Monroe | 32 | 1-4 | .250 | 0-0 | .000 | 0-0 | .000 | 2 | 5 | 6 | 5 | 0 | 1 | 2 |
| Eastern Illinois | 27 | 1-9 | .111 | 1-4 | .250 | 0-0 | .000 | 2 | 1 | 4 | 3 | 0 | 0 | 3 |
| at Northern Iowa | 38 | 6-13 | .462 | 3-5 | .600 | 4-4 | 1.000 | 3 | 2 | 1 | 1 | 0 | 2 | 19 |
| at Iowa State | 35 | 4-9 | .444 | 1-2 | .500 | 4-4 | 1.000 | 5 | 4 | 5 | 3 | 0 | 0 | 13 |
| Drake | 29 | 3-6 | .500 | 2-2 | 1.000 | 0-0 | .000 | 1 | 4 | 1 | 0 | 1 | 0 | 8 |
| SE Louisiana | 37 | 1-7 | .143 | 0-1 | .000 | 4-6 | .667 | 1 | 2 | 3 | 1 | 0 | 2 | 6 |
| Indiana | 5 | 0-0 | .000 | 0-0 | .000 | 0-0 | .000 | 1 | 0 | 0 | 0 | 0 | 0 | 0 |
| at Wisconsin | 27 | 1-3 | .333 | 1-1 | 1.000 | 0-0 | .000 | 1 | 5 | 3 | 0 | 0 | 0 | 3 |
| at Ohio State | 25 | 0-6 | .000 | 0-3 | .000 | 0-0 | .000 | 1 | 3 | 0 | 3 | 1 | 0 | 0 |
| Michigan State | 34 | 0-5 | .000 | 0-3 | .000 | 1-2 | .500 | 4 | 0 | 0 | 2 | 0 | 0 | 1 |
| Purdue | 31 | 3-6 | .500 | 1-2 | .500 | 5-5 | 1.000 | 1 | 2 | 2 | 6 | 1 | 1 | 12 |
| at Michigan | 29 | 2-6 | .333 | 0-2 | .000 | 2-2 | 1.000 | 0 | 2 | 1 | 1 | 1 | 0 | 6 |
| at Indiana | 34 | 3-8 | .375 | 0-2 | .000 | 0-0 | .000 | 0 | 3 | 1 | 2 | 0 | 1 | 6 |
| Penn State | 19 | 4-8 | .500 | 3-4 | .750 | 0-0 | .000 | 0 | 3 | 0 | 3 | 0 | 0 | 11 |
| at Purdue | 21 | 2-4 | .500 | 0-1 | .000 | 1-3 | .333 | 1 | 3 | 0 | 3 | 0 | 0 | 5 |
| Ohio State | 15 | 2-5 | .400 | 1-2 | .500 | 0-0 | .000 | 2 | 3 | 2 | 1 | 0 | 0 | 5 |
| Wisconsin | 13 | 0-2 | .000 | 0-0 | .000 | 0-0 | .000 | 0 | 2 | 2 | 2 | 0 | 0 | 0 |
| at Minnesota | 13 | 0-1 | .000 | 0-0 | .000 | 0-0 | .000 | 0 | 2 | 2 | 2 | 0 | 1 | 0 |
| Michigan | 32 | 5-10 | .500 | 2-5 | .400 | 0-0 | .000 | 5 | 3 | 3 | 3 | 2 | 0 | 12 |

INDIVIDUAL GAME-BY-GAME STATISTICS

| | | | | | | | | | | | | | | |
|--------------------------|-------------|---------------|-------------|--------------|-------------|--------------|-------------|------------|-----------|-----------|-----------|-----------|-----------|------------|
| Northwestern | 40 | 2-7 | .286 | 1-4 | .250 | 7-8 | .875 | 0 | 1 | 5 | 1 | 1 | 0 | 12 |
| at Michigan State | 31 | 3-6 | .500 | 1-2 | .500 | 2-3 | .667 | 2 | 2 | 2 | 2 | 0 | 1 | 9 |
| at Penn State | 33 | 7-9 | .778 | 2-3 | .667 | 1-1 | 1.000 | 2 | 3 | 4 | 3 | 0 | 2 | 17 |
| Illinois | 38 | 4-9 | .444 | 0-1 | .000 | 2-3 | .667 | 3 | 3 | 2 | 3 | 1 | 1 | 10 |
| at Northwestern | 39 | 7-10 | .700 | 4-5 | .800 | 0-0 | .000 | 2 | 4 | 4 | 5 | 0 | 0 | 18 |
| vs. Michigan | 36 | 5-11 | .455 | 1-2 | .500 | 0-0 | .000 | 1 | 4 | 0 | 4 | 0 | 1 | 11 |
| Totals = 32 games | 872 | 82-201 | .408 | 30-69 | .435 | 41-53 | .774 | 60 | 83 | 65 | 70 | 10 | 20 | 235 |
| | 27.3 | | | | | | | 1.9 | | | | | | 7.3 |

DAVID PALMER

| Opponent | Min. | FG-FGA | PCT | 3-PT. FG | PCT | FT-FTA | PCT | REB | PF | A | TO | BLK | STL | PTS |
|--------------------------|------------|-------------|-------------|------------|-------------|------------|-------------|------------|-----------|----------|----------|----------|----------|------------|
| Northern Colorado | 1 | 0-0 | .000 | 0-0 | .000 | 0-0 | .000 | 0 | 1 | 0 | 1 | 0 | 0 | 0 |
| Maryland Eastern Shore | 5 | 0-0 | .000 | 0-0 | .000 | 0-0 | .000 | 1 | 0 | 0 | 0 | 0 | 0 | 0 |
| vs. Bradley | 7 | 1-3 | .333 | 1-2 | .500 | 0-0 | .000 | 0 | 1 | 0 | 1 | 0 | 0 | 3 |
| vs. Utah State | 5 | 0-1 | .000 | 0-0 | .000 | 0-0 | .000 | 0 | 1 | 0 | 0 | 0 | 0 | 0 |
| Wake Forest | 6 | 2-3 | .667 | 1-1 | 1.000 | 2-4 | .500 | 1 | 1 | 0 | 1 | 0 | 1 | 7 |
| Louisiana-Monroe | 3 | 0-0 | .000 | 0-0 | .000 | 0-0 | .000 | 0 | 0 | 0 | 0 | 0 | 0 | 0 |
| Eastern Illinois | 6 | 1-4 | .250 | 0-1 | .000 | 1-1 | 1.000 | 1 | 0 | 0 | 0 | 0 | 1 | 3 |
| at Northern Iowa | 1 | 0-0 | .000 | 0-0 | .000 | 0-0 | .000 | 0 | 1 | 0 | 0 | 0 | 0 | 0 |
| at Iowa State | 1 | 0-1 | .000 | 0-1 | .000 | 0-0 | .000 | 0 | 2 | 0 | 1 | 0 | 0 | 0 |
| Drake | 3 | 0-0 | .000 | 0-0 | .000 | 0-0 | .000 | 1 | 1 | 0 | 1 | 0 | 0 | 0 |
| SE Louisiana | 4 | 0-1 | .000 | 0-0 | .000 | 0-0 | .000 | 1 | 1 | 0 | 1 | 0 | 0 | 0 |
| Indiana | 1 | 0-0 | .000 | 0-0 | .000 | 0-0 | .000 | 2 | 3 | 0 | 0 | 0 | 0 | 0 |
| Northwestern | 3 | 0-0 | .000 | 0-0 | .000 | 0-0 | .000 | 1 | 1 | 0 | 0 | 0 | 0 | 0 |
| at Michigan State | 1 | 0-0 | .000 | 0-0 | .000 | 0-0 | .000 | 0 | 0 | 0 | 0 | 0 | 0 | 0 |
| Totals = 14 games | 47 | 4-13 | .308 | 2-5 | .400 | 3-5 | .600 | 8 | 13 | 0 | 6 | 0 | 2 | 13 |
| | 3.4 | | | | | | | 0.6 | | | | | | 0.9 |

JEFF PETERSON

| Opponent | Min. | FG-FGA | PCT | 3-PT. FG | PCT | FT-FTA | PCT | REB | PF | A | TO | BLK | STL | PTS |
|--------------------------|-------------|---------------|-------------|--------------|-------------|--------------|-------------|------------|-----------|-----------|-----------|----------|-----------|------------|
| Idaho State | 38 | 3-9 | .333 | 2-3 | .667 | 4-4 | 1.000 | 4 | 0 | 9 | 0 | 0 | 2 | 12 |
| No. Colorado | 36 | 7-10 | .700 | 1-2 | .500 | 5-9 | .556 | 2 | 3 | 2 | 6 | 0 | 2 | 20 |
| Florida Gulf Coast | 33 | 3-4 | .750 | 0-1 | .000 | 3-4 | .750 | 0 | 3 | 4 | 6 | 0 | 1 | 9 |
| Maryland Eastern Shore | 23 | 0-3 | .000 | 0-0 | .000 | 2-2 | 1.000 | 1 | 5 | 1 | 2 | 0 | 0 | 2 |
| vs. Bradley | 40 | 2-10 | .200 | 1-5 | .200 | 0-0 | .000 | 0 | 2 | 3 | 4 | 0 | 0 | 5 |
| vs. Utah State | 26 | 1-6 | .167 | 0-2 | .000 | 2-2 | 1.000 | 1 | 5 | 5 | 3 | 0 | 0 | 4 |
| Wake Forest | 40 | 2-9 | .222 | 0-4 | .000 | 1-7 | .143 | 3 | 3 | 7 | 7 | 0 | 1 | 5 |
| Louisiana-Monroe | 38 | 2-6 | .333 | 2-3 | .667 | 3-4 | .750 | 5 | 3 | 3 | 8 | 0 | 1 | 9 |
| Eastern Illinois | 36 | 1-6 | .167 | 0-3 | .000 | 0-0 | .000 | 2 | 0 | 2 | 3 | 0 | 1 | 2 |
| at Iowa State | 32 | 2-10 | .200 | 0-1 | .000 | 0-0 | .000 | 5 | 2 | 2 | 3 | 0 | 2 | 4 |
| Drake | 31 | 3-6 | .500 | 1-3 | .333 | 0-0 | .000 | 5 | 4 | 5 | 3 | 0 | 1 | 7 |
| SE Louisiana | 12 | 0-2 | .000 | 0-1 | .000 | 0-0 | .000 | 1 | 1 | 0 | 2 | 0 | 1 | 0 |
| Indiana | 33 | 2-9 | .222 | 0-1 | .000 | 2-2 | 1.000 | 2 | 3 | 4 | 2 | 0 | 1 | 6 |
| at Wisconsin | 25 | 3-7 | .429 | 0-2 | .000 | 2-3 | .667 | 2 | 4 | 2 | 5 | 0 | 1 | 8 |
| at Ohio State | 8 | 0-3 | .000 | 0-2 | .000 | 0-0 | .000 | 2 | 1 | 0 | 2 | 0 | 1 | 0 |
| Michigan State | 12 | 0-2 | .000 | 0-2 | .000 | 0-0 | .000 | 1 | 1 | 2 | 2 | 0 | 0 | 0 |
| Purdue | 11 | 2-5 | .400 | 0-1 | .000 | 0-0 | .000 | 1 | 0 | 2 | 2 | 0 | 0 | 4 |
| at Michigan | 28 | 0-4 | .000 | 0-1 | .000 | 2-2 | 1.000 | 3 | 1 | 9 | 2 | 0 | 1 | 2 |
| at Indiana | 21 | 1-4 | .250 | 0-1 | .000 | 1-1 | 1.000 | 1 | 0 | 1 | 2 | 0 | 0 | 3 |
| Penn State | 27 | 4-4 | 1.000 | 2-2 | 1.000 | 9-9 | 1.000 | 3 | 1 | 5 | 3 | 0 | 1 | 19 |
| at Purdue | 23 | 2-3 | .667 | 0-0 | .000 | 3-4 | .750 | 3 | 4 | 2 | 5 | 0 | 0 | 7 |
| Ohio State | 31 | 1-3 | .333 | 1-1 | 1.000 | 0-1 | .000 | 2 | 2 | 3 | 3 | 0 | 0 | 3 |
| Wisconsin | 27 | 1-5 | .200 | 1-1 | 1.000 | 3-4 | .750 | 3 | 5 | 4 | 2 | 0 | 0 | 6 |
| at Minnesota | 32 | 2-4 | .500 | 1-1 | 1.000 | 2-2 | 1.000 | 3 | 2 | 4 | 3 | 0 | 0 | 7 |
| Michigan | 27 | 1-6 | .167 | 0-2 | .000 | 0-0 | .000 | 2 | 4 | 4 | 2 | 0 | 0 | 2 |
| at Michigan State | 21 | 1-4 | .250 | 0-1 | .000 | 0-0 | .000 | 1 | 0 | 3 | 4 | 0 | 1 | 2 |
| at Penn State | 15 | 2-2 | 1.000 | 2-2 | 1.000 | 0-0 | .000 | 0 | 4 | 2 | 4 | 0 | 0 | 6 |
| Illinois | 4 | 0-2 | .000 | 0-1 | .000 | 0-0 | .000 | 0 | 0 | 1 | 1 | 0 | 0 | 0 |
| at Northwestern | 1 | 0-0 | .000 | 0-0 | .000 | 0-0 | .000 | 0 | 1 | 0 | 2 | 0 | 0 | 0 |
| vs. Michigan | 15 | 1-3 | .333 | 0-1 | .000 | 0-0 | .000 | 3 | 2 | 1 | 1 | 0 | 1 | 2 |
| Totals = 30 games | 746 | 49-151 | .325 | 14-52 | .269 | 44-60 | .733 | 61 | 66 | 92 | 94 | 0 | 19 | 156 |
| | 24.9 | | | | | | | 2.0 | | | | | | 5.2 |

INDIVIDUAL GAME-BY-GAME STATISTICS

CYRUS TATE

2006-07

| Opponent | Min. | FG-FGA | PCT | 3-PT. FG | PCT | FT-FTA | PCT | REB | PF | A | TO | BLK | STL | PTS |
|--------------------------|-------------|---------------|-------------|------------|------------|--------------|-------------|------------|-----------|-----------|-----------|----------|-----------|------------|
| The Citadel | 18 | 6-7 | .857 | 0-0 | .000 | 1-2 | .500 | 3 | 2 | 0 | 0 | 0 | 1 | 13 |
| vs. Toledo | 18 | 3-5 | .600 | 0-0 | .000 | 3-4 | .750 | 7 | 3 | 0 | 3 | 1 | 2 | 9 |
| vs. Alabama | 12 | 1-3 | .333 | 0-0 | .000 | 0-0 | .000 | 2 | 4 | 0 | 0 | 0 | 1 | 2 |
| vs. Villanova | 23 | 1-1 | 1.000 | 0-0 | .000 | 1-2 | .500 | 3 | 2 | 0 | 1 | 1 | 0 | 3 |
| at Arizona State | 25 | 2-3 | .667 | 0-0 | .000 | 0-1 | .000 | 5 | 3 | 0 | 3 | 0 | 0 | 4 |
| at Virginia Tech | 24 | 1-4 | .250 | 0-0 | .000 | 2-2 | 1.000 | 7 | 2 | 2 | 3 | 1 | 0 | 4 |
| Texas-Pan American | 22 | 2-3 | .667 | 0-0 | .000 | 2-2 | 1.000 | 3 | 2 | 1 | 1 | 0 | 2 | 6 |
| Coppin State | 28 | 2-8 | .250 | 0-0 | .000 | 2-3 | .667 | 9 | 1 | 0 | 0 | 0 | 0 | 6 |
| Northern Iowa | 26 | 1-8 | .125 | 0-0 | .000 | 0-0 | .000 | 4 | 4 | 1 | 1 | 0 | 0 | 2 |
| Iowa State | 21 | 0-3 | .000 | 0-0 | .000 | 2-2 | 1.000 | 3 | 2 | 2 | 0 | 1 | 2 | 2 |
| at Drake | 7 | 0-0 | .000 | 0-0 | .000 | 0-0 | .000 | 1 | 4 | 1 | 3 | 0 | 1 | 0 |
| Georgia State | 12 | 0-1 | .000 | 0-0 | .000 | 2-3 | .667 | 2 | 5 | 0 | 2 | 0 | 0 | 2 |
| Texas Southern | 16 | 1-2 | .500 | 0-0 | .000 | 5-6 | .833 | 5 | 4 | 0 | 2 | 0 | 0 | 7 |
| Cornell | 9 | 0-0 | .000 | 0-0 | .000 | 0-0 | .000 | 1 | 0 | 1 | 3 | 1 | 0 | 0 |
| Michigan State | 30 | 6-7 | .857 | 0-0 | .000 | 2-3 | .667 | 9 | 3 | 0 | 1 | 0 | 0 | 14 |
| at Illinois | 14 | 0-2 | .000 | 0-0 | .000 | 2-2 | 1.000 | 2 | 5 | 0 | 2 | 0 | 0 | 2 |
| Minnesota | 16 | 1-3 | .333 | 0-0 | .000 | 1-2 | .500 | 4 | 1 | 0 | 1 | 2 | 0 | 3 |
| at Indiana | 11 | 1-2 | .500 | 0-0 | .000 | 1-1 | 1.000 | 4 | 2 | 0 | 2 | 0 | 1 | 3 |
| at Ohio State | 13 | 2-2 | 1.000 | 0-0 | .000 | 0-0 | .000 | 1 | 5 | 1 | 1 | 0 | 0 | 4 |
| Penn State | 19 | 1-1 | 1.000 | 0-0 | .000 | 0-0 | .000 | 5 | 4 | 0 | 0 | 0 | 0 | 2 |
| Wisconsin | 35 | 3-8 | .375 | 0-0 | .000 | 0-2 | .000 | 10 | 3 | 2 | 1 | 1 | 0 | 6 |
| at Michigan | 16 | 2-8 | .250 | 0-0 | .000 | 0-0 | .000 | 4 | 4 | 0 | 1 | 1 | 1 | 4 |
| Indiana | 24 | 2-4 | .500 | 0-0 | .000 | 2-3 | .667 | 4 | 3 | 0 | 1 | 0 | 0 | 6 |
| At Minnesota | 13 | 0-1 | .000 | 0-0 | .000 | 0-0 | .000 | 2 | 4 | 1 | 1 | 0 | 0 | 0 |
| at Wisconsin | 24 | 3-5 | .600 | 0-0 | .000 | 0-0 | .000 | 4 | 2 | 0 | 2 | 0 | 0 | 6 |
| Northwestern | 23 | 1-2 | .500 | 0-0 | .000 | 0-0 | .000 | 7 | 2 | 0 | 3 | 0 | 1 | 2 |
| at Michigan State | 22 | 1-2 | .500 | 0-0 | .000 | 1-2 | .500 | 2 | 3 | 0 | 1 | 0 | 0 | 3 |
| Purdue | 25 | 3-3 | 1.000 | 0-0 | .000 | 5-6 | .833 | 10 | 5 | 1 | 2 | 0 | 3 | 11 |
| at Penn State | 16 | 0-1 | .000 | 0-0 | .000 | 0-0 | .000 | 2 | 4 | 0 | 2 | 0 | 0 | 0 |
| Totals = 31 games | 604 | 48-104 | .462 | 0-0 | .00 | 35-53 | .660 | 135 | 93 | 13 | 42 | 8 | 17 | 131 |
| | 19.5 | | | | | | | 4.4 | | | | | | 4.2 |

2007-08

| Opponent | Min. | FG-FGA | PCT | 3-PT. FG | PCT | FT-FTA | PCT | REB | PF | A | TO | BLK | STL | PTS |
|--------------------------|-------------|---------------|-------------|------------|-------------|---------------|-------------|------------|-----------|----------|-----------|-----------|-----------|------------|
| Idaho State | 18 | 2-2 | 1.000 | 0-0 | .000 | 1-1 | 1.000 | 8 | 2 | 0 | 2 | 0 | 2 | 5 |
| Northern Colorado | 18 | 2-3 | .667 | 0-0 | .000 | 3-4 | .750 | 3 | 3 | 0 | 3 | 0 | 2 | 7 |
| Florida Gulf Coast | 17 | 3-5 | .600 | 0-0 | .000 | 0-1 | .000 | 2 | 3 | 1 | 4 | 0 | 0 | 6 |
| Maryland Eastern Shore | 13 | 2-3 | .667 | 0-0 | .000 | 5-6 | .833 | 2 | 4 | 2 | 3 | 1 | 0 | 9 |
| vs. Bradley | 5 | 0-2 | .000 | 0-0 | .000 | 0-0 | .000 | 1 | 1 | 0 | 2 | 0 | 0 | 0 |
| Wake Forest | 15 | 1-3 | .333 | 0-0 | .000 | 0-0 | .000 | 2 | 1 | 0 | 1 | 0 | 0 | 2 |
| Louisiana-Monroe | 8 | 1-3 | .333 | 0-0 | .000 | 2-3 | .667 | 0 | 0 | 0 | 1 | 0 | 0 | 4 |
| Eastern Illinois | 9 | 0-0 | .000 | 0-0 | .000 | 0-0 | .000 | 1 | 2 | 1 | 3 | 1 | 0 | 0 |
| at Northern Iowa | 20 | 3-5 | .600 | 0-0 | .000 | 2-3 | .667 | 4 | 5 | 0 | 2 | 0 | 0 | 8 |
| at Iowa State | 8 | 0-0 | .000 | 0-0 | .000 | 0-0 | .000 | 0 | 1 | 0 | 1 | 0 | 0 | 0 |
| Drake | 4 | 0-0 | .000 | 0-0 | .000 | 0-0 | .000 | 0 | 0 | 0 | 1 | 0 | 0 | 0 |
| SE Louisiana | 14 | 3-3 | 1.000 | 0-0 | .000 | 4-7 | .571 | 6 | 5 | 0 | 3 | 0 | 0 | 10 |
| Indiana | 20 | 3-3 | 1.000 | 0-0 | .000 | 2-5 | .400 | 7 | 2 | 0 | 1 | 0 | 0 | 8 |
| at Wisconsin | 33 | 3-8 | .375 | 0-0 | .000 | 2-6 | .333 | 8 | 4 | 1 | 1 | 2 | 0 | 8 |
| at Ohio State | 26 | 4-5 | .800 | 0-0 | .000 | 2-3 | .667 | 6 | 4 | 0 | 1 | 0 | 0 | 10 |
| Michigan State | 28 | 2-3 | .667 | 0-0 | .000 | 5-12 | .417 | 7 | 2 | 0 | 0 | 0 | 2 | 9 |
| Purdue | 28 | 3-3 | 1.000 | 0-0 | .000 | 4-8 | .500 | 5 | 4 | 0 | 2 | 0 | 1 | 10 |
| at Michigan | 33 | 8-10 | .800 | 0-0 | .000 | 5-11 | .455 | 11 | 2 | 0 | 2 | 0 | 0 | 21 |
| at Indiana | 30 | 3-5 | .600 | 0-0 | .000 | 2-4 | .500 | 5 | 3 | 0 | 1 | 1 | 0 | 8 |
| Penn State | 30 | 2-2 | 1.000 | 0-0 | .000 | 3-6 | .500 | 13 | 2 | 0 | 1 | 0 | 1 | 7 |
| at Purdue | 16 | 1-1 | 1.000 | 0-0 | .000 | 0-0 | .000 | 5 | 2 | 0 | 4 | 1 | 0 | 2 |
| Ohio State | 25 | 0-1 | .000 | 0-0 | .000 | 2-2 | 1.000 | 6 | 3 | 0 | 0 | 0 | 0 | 2 |
| Wisconsin | 34 | 4-6 | .667 | 0-0 | .000 | 7-9 | .778 | 8 | 4 | 0 | 0 | 1 | 1 | 15 |
| at Minnesota | 31 | 3-5 | .600 | 0-0 | .000 | 1-3 | .333 | 3 | 3 | 0 | 1 | 2 | 0 | 7 |
| Michigan | 31 | 2-2 | 1.000 | 0-0 | .000 | 6-7 | .857 | 6 | 3 | 0 | 2 | 0 | 0 | 10 |
| Northwestern | 32 | 7-9 | .778 | 0-0 | .000 | 4-8 | .500 | 11 | 2 | 0 | 2 | 1 | 3 | 18 |
| at Michigan State | 32 | 10-13 | .769 | 0-0 | .000 | 6-7 | .857 | 9 | 3 | 0 | 2 | 1 | 1 | 26 |
| at Penn State | 19 | 5-7 | .714 | 0-0 | .000 | 1-2 | .500 | 2 | 5 | 1 | 3 | 0 | 1 | 11 |
| Illinois | 39 | 2-4 | .500 | 0-0 | .000 | 1-5 | .200 | 8 | 4 | 2 | 1 | 0 | 2 | 5 |
| at Northwestern | 32 | 4-7 | .571 | 0-0 | .000 | 6-7 | .857 | 6 | 4 | 0 | 3 | 0 | 0 | 14 |
| vs. Michigan | 37 | 3-6 | .500 | 0-0 | .000 | 10-17 | .588 | 11 | 4 | 0 | 4 | 1 | 2 | 16 |
| Totals = 31 games | 705 | 86-129 | .667 | 0-0 | .000 | 86-149 | .585 | 166 | 87 | 8 | 57 | 12 | 18 | 258 |
| | 22.7 | | | | | | | 5.4 | | | | | | 8.3 |