

# OFFICIAL NCAA BASKETBALL BOX SCORE

VISITORS (Last Name, First)

Date 3/10/88

Site Welsh-Ryan Arena; Evanston, IL

No.	IOWA	Pos	Total FG		3-point		FT	FTA	Rebounds			PF	TP	
			FG	FGA	FG	FGA			Off	Def	Tot			
22	Schneider, Jolynn	f	1	3	0	0	2	3	1	8	9	4	4	
25	Price, Franthea	f	5	14	0	3	9	10	2	4	6	4	19	
42	Berry, Shanda	c	6	13	0	0	0	0	2	1	3	4	12	
30	Edwards, Michelle	g	7	14	0	0	2	4	6	5	11	2	16	
34	Law, Jolette	g	7	11	0	1	0	1	1	2	3	3	14	
44	Fuller, Marva		1	4	0	0	1	2	1	3	4	1	3	
21	Christian, Robin		3	4	0	0	2	2	1	2	3	1	8	
12	Watts, Lorelei		0	0	0	0	0	0	0	0	0	0	0	
10	Schueler, Stephanie		0	0	0	0	0	0	0	0	0	0	0	
TEAM REBOUNDS (included in Totals)									3					
TOTALS			30	63	0	4	16	22	14	25	42	19	76	

A	TO	BLK	S	MIN
2	2	2	1	34
6	2	0	4	30
2	0	0	1	23
3	3	0	2	40
3	1	0	0	38
0	0	0	0	17
1	1	1	0	13
0	1	0	0	3
0	0	0	0	2
17 10 3 8 200				

TOTAL FG %: 1st Half 17-29 .586 2nd Half 13-34 .382 Game 30-63 .476  
 3-Pt. FG %: 1st Half 0-0 .--- 2nd Half 0-4 .000 Game 0-4 .000  
 FT %: 1st Half 5-8 .625 2nd Half 11-14 .786 Game 16-22 .727

Deadball Rebounds 3

HOME (Last Name, First)

No.	NORTHWESTERN	Pos	Total FG		3-point		FT	FTA	Rebounds			PF	TP	
			FG	FGA	FG	FGA			Off	Def	Tot			
22	Arnold, Laura (23)	f	7	16	0	0	2	2	2	5	7	5	16	
34	Lawless, Carrie	f	3	6	0	0	2	2	2	4	6	3	8	
24	Byrne, Kelly	c	0	6	0	0	1	4	2	2	4	0	1	
43	Wasielewski, Jeanine	g	6	9	0	0	3	4	0	4	4	1	15	
10	Cole, Kelly	g	5	14	1	3	5	7	2	3	5	4	16	
32	Garrett, Robin		2	2	0	0	0	1	0	2	2	2	4	
52	Whitmore, Mya		2	6	0	0	2	4	1	0	1	3	6	
44	Lee, Willa		0	0	0	0	0	0	0	0	0	1	0	
TEAM REBOUNDS (included in Totals)									5					
TOTALS			25	59	1	3	15	24	9	20	34	19	66	

A	TO	BLK	S	MIN
3	2	0	2	39
2	0	0	0	29
4	1	0	1	24
3	3	0	1	40
7	3	0	1	40
0	0	0	0	11
0	1	1	0	16
0	0	0	0	1
19 10 1 5 200				

TOTAL FG %: 1st Half 16-30 .533 2nd Half 9-29 .310 Game 25-59 .424  
 3-Pt. FG %: 1st Half 0-0 .--- 2nd Half 1-3 .333 Game 1-3 .333  
 FT %: 1st Half 4-8 .500 2nd Half 11-16 .688 Game 15-24 .625

Deadball Rebounds 3

OFFICIALS: Lou Pitt, Dennis Mayer

SCORE BY PERIODS	1st H.	2nd H.	OT	OT	FINAL
IOWA	39	37			76
NORTHWESTERN	36	30			66

Technical Fouls: \_\_\_\_\_

Attendance 365

NORTHWESTERN UNIVERSITY VS. UNIVERSITY OF IOWA  
 March 10, 1988 at Evanston, IL

FIRST HALF

IOWA STARTERS: Jolynn Schneider, Franthea Price, Shanda Berry, Michelle Edwards,  
 Jolette Law

NORTHWESTERN STARTERS: Laura Arnold, Carrie Lawless, Kelly Byrne, Jeanine Wasielewski,  
 Kelly Cole

<u>TIME</u>	<u>IOWA</u>	<u>UI</u>	<u>NU</u>	<u>NORTHWESTERN</u>
20:00	IOWA WINS TIP			
19:16		0	2	Cole 18 ft A-Byrne
18:44		0	4	Lawless layup
17:59		0	6	Wasielewski 18 ft A-Byrne
17:05	Law 16 ft A-Price	2	6	
16:48	Berry 10 ft A-Schneider	4	6	
16:23	Law P1, T1			
16:13		4	8	Wasielewski 16 ft A-Arnold
15:57	Berry 8 ft turnaroundA-Law	6	8	
15:35	Berry P1, T2	6	10	Lawless FT-G, FT-G
15:35	OFFICIAL TIME OUT			
15:17	Law 10 ft A-Price	8	10	
14:33	Schneider 15 ft A-Berry	10	10	
14:22	Berry P2, T3 FULLER/BERRY			Byrne FT-NG, FT-NG
13:54	Law layup A-Edwards	12	10	
13:35		12	12	Wasielewski 16 ft A-Cole
12:56	Schneider P1, T4			
12:13		12	14	Arnold 17 ft A-Cole
11:57	OFFICIAL TIME OUT			
11:52	Fuller FT-G, FT-NG	13	14	Arnold P1, T1
11:49				GARRETT/LAWLESS
11:19	Price layup off steal	15	14	
10:55		15	16	Garrett 5 ft A-Byrne
10:10		15	18	Cole 19 ft A-Arnold
9:45	Edwards 8 ft off rebound	17	18	
9:25	Price P1, T5	17	20	Arnold 17 ft A-Wasielewski
8:56	Edwards FT-NG, FT-G	18	20	Garrett P1, T2 WHITMORE/BYRNE
8:34	Law lay-in	20	20	
8:22	Edwards 15 ft A-Schneider	22	20	
8:05		22	22	Garrett 12 ft A-Wasielewski
7:52	Edwards FT-NG, FT-G	23	22	Garrett P2, T3
7:52	OFFICIAL TIME OUT			
7:33		23	24	Whitmore 5 ft turnaround
7:13	Law driving layup	25	24	
6:38	Edwards off. foul P1, T6			
6:25		25	26	Cole 17 ft A-Wasielewski
6:11	Price 18 ft A-Edwards	27	26	
5:47	Schneider P2, T7 CHRISTIAN/SCHNEIDER			Garrett (1+1) FT-NG
5:35				LAWLESS/GARRETT
5:32	Christian FT-G, FT-G	29	26	Whitmore P1, T4
5:27	Price P2			Cole (1+1) FT-NG
4:55	Edwards layup after steal	31	26	
4:36		31	28	Arnold layup A-Cole
4:12	Edwards 15 ft A-Price	33	28	
3:55		33	30	Whitmore layup A-Cole
3:28	Fuller 6 ft A-Price	35	30	
2:58	WATTS/PRICE			Lawless P1, T5 BYRNE/WHITMORE

OFFICIAL TIME OUT

NORTHWESTERN VS. IOWA  
March 10, 1988

FIRST HALF cont.

<u>TIME</u>	<u>IOWA</u>	<u>UI</u>	<u>NU</u>	<u>NORTHWESTERN</u>
2:47	Christian 12 ft	37	30	
2:30		37	32	Arnold 15 ft A-Lawless
2:07	Law P2 SCHUELER/LAW	37	34	Cole (1+1) FT-G, FT-G
1:48				Cole P1, T6
1:27	Christian layup	39	34	
:30		39	36	Arnold 15 ft A-Lawless

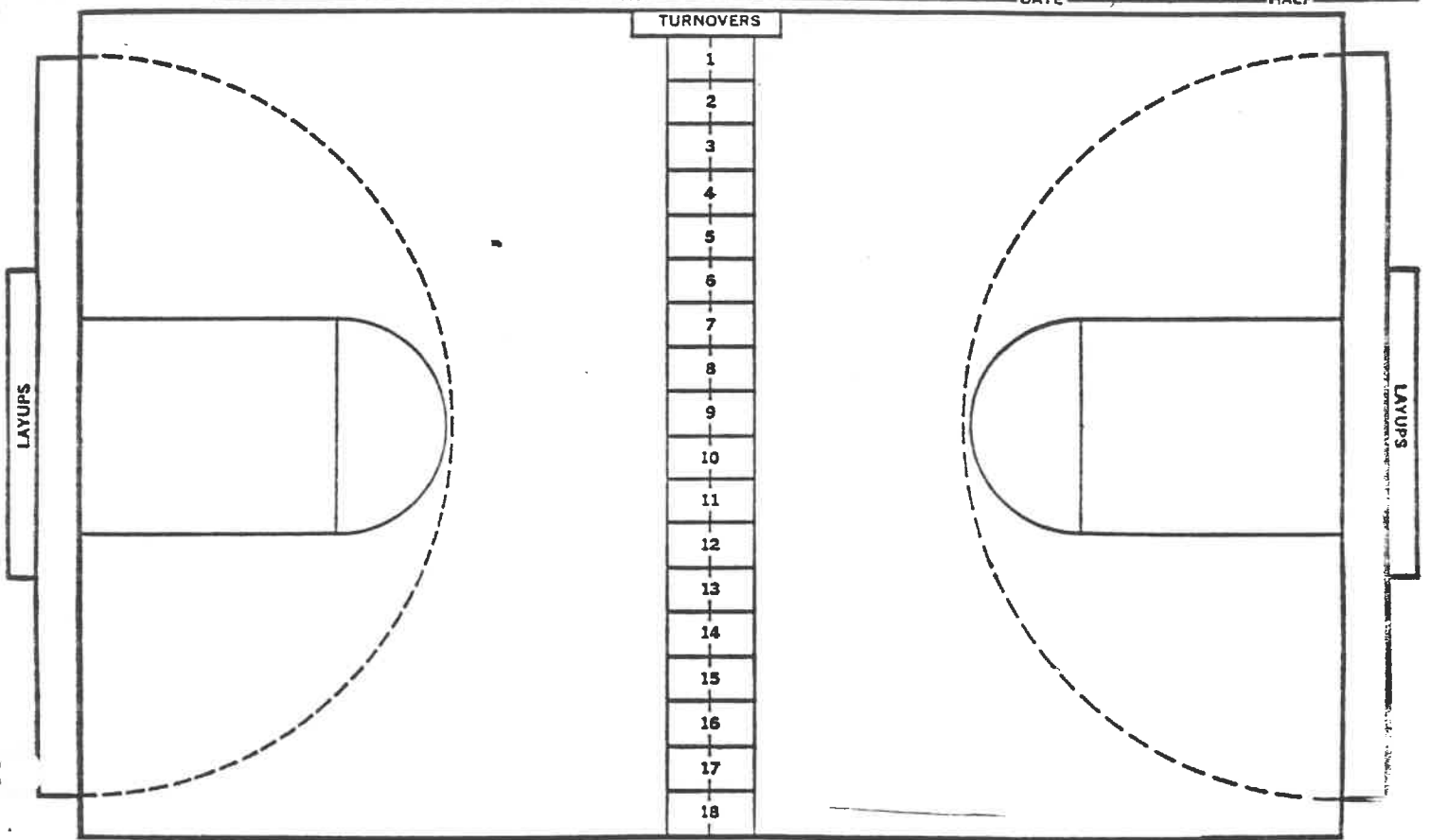
HALFTIME SCORE:

IOWA 39  
NORTHWESTERN 36

SCORE CHART Iowa

AT Northwestern

DATE 3/10/88 HALF



NO.	Iowa	FG-FGA	FT-FTA	RB	P	TP	A
22	Schneider	1-2	0-0	3	2	2	2
25	Price	2-5	0-0	0	2	4	4
42	Rerry	2-3	0-0	1	2	4	1
30	Edwards	4-9	2-4	5	1	10	2
34	Law	5-5	0-0	2	2	10	1
44	Fuller	1-3	1-2	4	0	3	0
21	Christian	2-2	2-2	1	0	6	0
12	Watts	0-0	0-0	0	0	0	0
10	Schueler	0-0	0-0	0	0	0	0
		-	-				
		-	-				
		-	-				
		-	-				
		-	-				
		-	-				
		-	-				
<b>TOTALS</b>		<b>17-29</b>	<b>5-8</b>	<b>16</b>	<b>9</b>	<b>39</b>	<b>10</b>

NO.	Northwestern	FG-FGA	FT-FTA	RB	P	TP	A
22	Arnold	5-8	0-0	5	1	10	2
34	Lawless	1-3	2-2	1	1	4	2
24	Byrne	0-2	0-2	1	0	0	3
43	Wasielewski	3-6	0-0	1	0	6	3
10	Cole	3-6	2-3	1	1	8	4
32	Garrett	2-2	0-1	0	2	4	0
52	Whitmore	2-3	0-0	1	1	4	0
		-	-				
		-	-				
		-	-				
		-	-				
		-	-				
		-	-				
		-	-				
		-	-				
		-	-				
<b>TOTALS</b>		<b>16-30</b>	<b>4-8</b>	<b>10</b>	<b>6</b>	<b>36</b>	<b>14</b>

PERCENTS .586 .625 1 TEAM REBOUNDS (NOT IN TOTAL)

PERCENTS .533 .500 2 TEAM REBOUNDS (NOT IN TOTAL)

Turnovers: 6  
3-pt. Shooting: 0-0

Turnovers: 4  
3-pt. Shooting: 0-0

SCORE BY HALVES:  
OFFICIALS:  
ATTENDANCE:

NORTHWESTERN VS. IOWA  
 March 10, 1988

SECOND HALF

UI STARTERS: Schneider, Price, Berry, Edwards, Law  
 NU STARTERS: Arnold, Lawless, Byrne, Wasielewski, Cole

<u>TIME</u>	<u>IOWA</u>	<u>UI</u>	<u>NU</u>	<u>NORTHWESTERN</u>
20:00	IOWA TAKES BALL OUT	39	36	
19:49	Price 12 ft A-Edwards	41	36	
19:20		41	38	Arnold driving layup
18:36		41	40	Cole 18 ft
18:11	Price layup	43	40	
18:03		43	42	Lawless lay-in A-Cole
17:47	Edwards 14 ft A-Law	45	42	
17:14	Berry 10 ft A-Price	47	42	
16:46	Berry layup	49	42	
16:41				TIME OUT - 1
15:35	Law P3, T1 CHRISTIAN/PRICE	49	44	Wasielewski FT-G, FT-G
15:17	Schneider FT-G, FT-G	51	44	Arnold P2, T1
14:52	Berry 8 ft A-Christian	53	44	
14:25				GARRETT/LAWLESS
13:39	PRICE/CHRISTIAN			
13:27				Cole P2, T2
13:24	Law lay-in A-Berry	55	44	
11:59	Berry 10 ft A-Price	57	44	TIME OUT - 2
11:40		57	46	Arnold 15 ft A-Byrne
11:22	Price off. foul P3, T2			
9:30	Berry P3, T3			LAWLESS/GARRETT
9:30		57	47	Byrne FT-NG, FT-G WHITMORE/BYRNE
9:02		57	49	Wasielewski 15 ft A-Cole
8:51				Whitmore P2, T3
8:49	Price 10 ft A-Law	59	49	
8:28	Price P4, T4 CHRISTIAN/PRICE			Whitmore FT-NG, FT-NG
8:00		OFFICIAL TIME OUT		
7:42		59	51	Lawless layup
6:33	Edwards 12 ft	61	51	
6:04	Berry P4, T5 FULLER/BERRY			
5:52	Fuller P1, T6	61	53	Whitmore FT-G, FT-G
5:35	Christian P1, T7	61	55	Arnold (1+1) FT-G, FT-G
5:19	Edwards 10 ft	63	55	
4:28	TIME OUT - 1			
4:09	Christian driving layup	65	55	
3:43	Edwards P2 after shot	65	57	Wasielewski 18 ft A-Arnold
		65	58	Wasielewski (1+1) FT-G, FT-NG
3:25				Whitmore P3, T4
3:21				Cole P3, T5
3:09	Schneider P3 BERRY/FULLER PRICE/CHRISTIAN	65	60	Cole (1+1) FT-G, FT-G
1:29				Wasielewski P1, T6
1:29				TIME OUT - 3
1:28	Price (1+1) FT-G, FT-G	67	60	Arnold P3, T7
1:19		67	63	Cole 3 pt A-Arnold
1:00	TIME OUT - 2			Arnold P4
1:00	Price (1+1) FT-G, FT-G	69	63	
:43	Price (1+1) FT-G, FT-G	71	63	Lawless P2
:33		71	65	Wasielewski 19 ft A-Cole

NORTHWESTERN VS. IOWA  
March 10, 1988

SECOND HALF cont.

<u>TIME</u>	<u>IOWA</u>	<u>UI</u>	<u>NU</u>	<u>NORTHWESTERN</u>
:31				TIME OUT -4 GARRETT/LAWLESS LEE/ARNOLD
:26	Law lay-in Law FT-NG	73	65	Lee P1 ARNOLD/LEE LAWLESS/GARRETT
:23	Schneider (1+1) FT-NG			Arnold P5-DQ GARRETT/ARNOLD
:22	Schneider P4	73	66	Cole (1+1) FT-G, FT-NG
:20	Price (1+1) FT-G, FT-G	75	66	Cole P4
:06	Price (1+1) FT-G, FT-NG	76	66	Lawless P3

FINAL SCORE:

IOWA 76  
NORTHWESTERN 66