

IOWA SOFTBALL

4 WCWS APPEARANCES 16 NCAA TOURNAMENTS 4 BIG REG. SEASON TITLES 2 BIG TOURNEY TITLES

2024 SCHEDULE

All times are Central Standard and subject to change

OVERALL: 16-12 (4-2)

| Date | Opponent | Location | Time/Result (CT) |
|------|-------------------|-------------------------|------------------|
| 2/9 | NC State | Clearwater, Florida | W, 2-0 |
| 2/9 | Western Ky. | Clearwater, Florida | W, 8-0 |
| 2/10 | NCCU | Clearwater, Florida | W, 4-1 |
| 2/10 | Notre Dame | Clearwater, Florida | L, 4-5 |
| 2/11 | Utah | Clearwater, Florida | L, 1-3 |
| 2/16 | Southern Illinois | Leesburg, Florida | L, 1-4 |
| 2/16 | Liberty | Leesburg, Florida | W, 4-2 |
| 2/17 | Kansas | Leesburg, Florida | Cancelled |
| 2/17 | Coastal Carolina | Leesburg, Florida | Cancelled |
| 2/18 | UC Riverside | Leesburg, Florida | Cancelled |
| 2/23 | UNF | Jacksonville, Florida | Cancelled |
| 2/24 | Jacksonville | Jacksonville, Florida | W, 5-3 |
| 2/24 | Jacksonville | Jacksonville, Florida | W, 4-2 |
| 2/25 | Harvard | Jacksonville, Florida | L, 2-8 |
| 2/25 | UNF | Jacksonville, Florida | L, 1-6 |
| 3/8 | CSU Bakersfield | San Jose, California | W, 17-1 (5) |
| 3/8 | San Jose State | San Jose, California | W, 3-2 |
| 3/9 | Santa Clara | Santa Clara, California | L, 2-4 |
| 3/9 | Santa Clara | Santa Clara, California | L, 2-3 |
| 3/10 | LMU | Stanford, California | L, 1-14 (5) |
| 3/11 | UC Davis | Davis, California | L, 2-3 (9) |
| 3/13 | St. Mary's | Moraga, California | L, 2-5 |
| 3/15 | Pacific | Stockton, California | W, 5-0 |
| 3/15 | Sacramento St. | Stockton, California | W, 1-0 |
| 3/16 | Pacific | Stockton, California | W, 10-1 (5) |
| 3/16 | Sacramento St. | Stockton, California | W, 6-1 |
| 3/21 | Wisconsin | Iowa City, Iowa | W, 4-1 |
| 3/23 | Wisconsin | Iowa City, Iowa | W, 10-4 |
| 3/23 | Wisconsin | Iowa City, Iowa | L, 0-2 |
| 3/29 | Michigan St. | Iowa City, Iowa | W, 4-0 |
| 3/30 | Michigan St. | Iowa City, Iowa | L, 2-8 |
| 3/31 | Michigan St. | Iowa City, Iowa | W, 1-0 |
| 4/2 | Drake | Iowa City, Iowa | Cancelled |
| 4/2 | Drake | Iowa City, Iowa | Cancelled |
| 4/5 | Purdue | West Lafayette, Indiana | 4 p.m. |
| 4/6 | Purdue | West Lafayette, Indiana | 1 p.m. |
| 4/7 | Purdue | West Lafayette, Indiana | Noon |
| 4/12 | Michigan | Ann Arbor, Michigan | 5 p.m. |
| 4/13 | Michigan | Ann Arbor, Michigan | 1 p.m. |
| 4/14 | Michigan | Ann Arbor, Michigan | Noon |
| 4/16 | Iowa State | Ames, Iowa | 4 p.m. |
| 4/19 | Indiana | Iowa City, Iowa | 5 p.m. |
| 4/20 | Indiana | Iowa City, Iowa | 2 p.m. |
| 4/21 | Indiana | Iowa City, Iowa | Noon |
| 4/23 | Nebraska | Lincoln, Nebraska | 4 p.m. |
| 4/23 | Nebraska | Lincoln, Nebraska | 6 p.m. |
| 4/26 | Minnesota | Iowa City, Iowa | 5 p.m. |
| 4/27 | Minnesota | Iowa City, Iowa | 2 p.m. |
| 4/28 | Minnesota | Iowa City, Iowa | Noon |
| 5/3 | Illinois | Champaign, Illinois | 5 p.m. |
| 5/4 | Illinois | Champaign, Illinois | 1 p.m. |
| 5/5 | Illinois | Champaign, Illinois | Noon |
| TBA | B1G Championships | Iowa City, Iowa | TBA |



Team ERA: 2.50 Team BA: .268

at Purdue

April 5-7

Michigan State's Record 14-18
 Series History Iowa leads, 49-21
 First Meeting 4/1/95, Iowa, 4-3
 Last Meeting 3/8/22, Purdue, 3-4(8)
 Head Coach Magali Frezzotti (2nd)
 Venue Bittinger Stadium



Team ERA: 5.37 Team BA: .269

THIS WEEK

The University of Iowa softball team travels to West Lafayette on April 5-7 to take on Purdue. The Hawkeyes will take on the Boilermakers at 4 pm (CT) on Friday, 1:00 pm (CT) on Saturday, and Noon (CT) on Sunday in Bittinger Stadium.

WATCH AND FOLLOW LIVE

All three games will be streamed on B1G+. Live stats will be available on hawkeyesports.com and updates will be available on X (@iowasoftball).

CONNECT WITH THE HAWKEYES

For all of the latest news and information on Iowa softball, visit hawkeyesports.com. Fans can also follow the program at Facebook.com/iowahawkeyessoftball and @iowasoftball on X and Instagram.

2024 STATS

HITTING

| Player | avg | gp-gs | ab | r | h | 2b | 3b | hr | rbi | tb | slg% | bb | hp | so | gdp | ob% | sf | sh | sb-att | po | a | e | fld% | | |
|-------------------|------|-------|-----|-----|-----|----|----|----|-----|-----|------|----|----|----|-----|------|----|----|--------|-----|-----|----|-------|--|--|
| Rylie Moss | .376 | 28-28 | 85 | 15 | 32 | 2 | 0 | 0 | 6 | 34 | .400 | 4 | 0 | 13 | 0 | .396 | 2 | 2 | 3-3 | 27 | 1 | 1 | .966 | | |
| Jena Young | .370 | 28-28 | 81 | 16 | 30 | 4 | 2 | 2 | 11 | 44 | .543 | 10 | 3 | 4 | 0 | .453 | 1 | 3 | 4-5 | 51 | 46 | 4 | .960 | | |
| Soo-Jin Berry | .340 | 28-28 | 94 | 20 | 32 | 4 | 3 | 0 | 21 | 42 | .447 | 5 | 1 | 11 | 1 | .376 | 1 | 0 | 5-5 | 30 | 44 | 7 | .914 | | |
| Devyn Greer | .293 | 15-14 | 41 | 0 | 12 | 2 | 0 | 0 | 9 | 14 | .341 | 0 | 1 | 8 | 0 | .310 | 0 | 0 | 0-0 | 0 | 5 | 0 | 1.000 | | |
| Jalen Adams | .286 | 6-6 | 14 | 1 | 4 | 0 | 0 | 0 | 0 | 4 | .286 | 1 | 1 | 1 | 0 | .375 | 0 | 0 | 0-0 | 4 | 21 | 0 | 1.000 | | |
| Sammy Diaz | .275 | 28-28 | 80 | 5 | 22 | 4 | 1 | 0 | 14 | 28 | .350 | 7 | 0 | 7 | 2 | .326 | 2 | 1 | 2-2 | 174 | 13 | 2 | .989 | | |
| Tory Bennett | .250 | 24-21 | 60 | 12 | 15 | 2 | 0 | 0 | 6 | 17 | .283 | 6 | 3 | 4 | 0 | .348 | 0 | 2 | 1-1 | 34 | 24 | 7 | .892 | | |
| Grace Banes | .235 | 28-28 | 81 | 13 | 19 | 3 | 0 | 0 | 8 | 22 | .272 | 13 | 2 | 6 | 1 | .347 | 2 | 2 | 1-2 | 51 | 3 | 1 | .982 | | |
| Devin Bowman | .205 | 18-13 | 39 | 1 | 8 | 1 | 1 | 0 | 7 | 11 | .282 | 6 | 0 | 12 | 0 | .311 | 0 | 2 | 0-0 | 6 | 0 | 0 | 1.000 | | |
| Brylee Klosterman | .196 | 18-17 | 46 | 7 | 9 | 1 | 0 | 0 | 8 | 10 | .217 | 10 | 0 | 7 | 0 | .333 | 1 | 1 | 3-3 | 25 | 0 | 0 | 1.000 | | |
| Echo Mattiello | .167 | 19-8 | 18 | 8 | 3 | 0 | 0 | 0 | 2 | 3 | .167 | 3 | 0 | 3 | 0 | .286 | 0 | 0 | 3-3 | 11 | 0 | 0 | 1.000 | | |
| Skylinn Pogue | .143 | 24-21 | 21 | 0 | 3 | 0 | 0 | 0 | 0 | 3 | .143 | 3 | 2 | 4 | 0 | .308 | 0 | 1 | 0-1 | 92 | 19 | 2 | .982 | | |
| Hannah Lindsay | .111 | 11-8 | 18 | 0 | 2 | 0 | 0 | 0 | 1 | 2 | .111 | 4 | 0 | 3 | 0 | .273 | 0 | 0 | 0-0 | 17 | 4 | 0 | 1.000 | | |
| Avery Jackson | .095 | 17-11 | 21 | 1 | 2 | 2 | 0 | 0 | 4 | 4 | .190 | 0 | 2 | 8 | 1 | .174 | 0 | 1 | 0-0 | 19 | 28 | 1 | .979 | | |
| Tatianna Roman | .077 | 9-2 | 13 | 1 | 1 | 0 | 0 | 0 | 0 | 1 | .077 | 0 | 0 | 2 | 0 | .077 | 0 | 0 | 0-0 | 1 | 0 | 1 | .500 | | |
| ----- | | | | | | | | | | | | | | | | | | | | | | | | | |
| Devin Simon | .250 | 20-1 | 4 | 7 | 1 | 1 | 0 | 0 | 2 | 2 | .500 | 0 | 0 | 1 | 0 | .250 | 0 | 0 | 5-5 | 0 | 0 | 0 | 1.000 | | |
| Anna Streff | .000 | 6-1 | 9 | 1 | 0 | 0 | 0 | 0 | 0 | 0 | .000 | 0 | 0 | 3 | 0 | .000 | 0 | 0 | 0-0 | 3 | 0 | 0 | 1.000 | | |
| Jaylee Ojo | .000 | 1-0 | 2 | 0 | 0 | 0 | 0 | 0 | 0 | 0 | .000 | 0 | 0 | 1 | 0 | .000 | 0 | 0 | 0-0 | 0 | 4 | 0 | 1.000 | | |
| Mya Clark | .000 | 2-0 | 1 | 0 | 0 | 0 | 0 | 0 | 0 | 0 | .000 | 0 | 0 | 0 | 0 | .000 | 0 | 0 | 0-0 | 0 | 0 | 0 | .000 | | |
| Haley Downe | .000 | 3-0 | 0 | 0 | 0 | 0 | 0 | 0 | 0 | 0 | .000 | 0 | 0 | 0 | 0 | .000 | 0 | 1 | 0-0 | 0 | 0 | 0 | .000 | | |
| Totals | .268 | 28 | 728 | 108 | 195 | 26 | 7 | 2 | 99 | 241 | .331 | 72 | 15 | 98 | 5 | .342 | 9 | 16 | 27-30 | 545 | 214 | 26 | .967 | | |

PITCHING

| Player | era | w-l | app | gs | cg | sho | sv | ip | h | r | er | bb | so | 2b | 3b | hr | b/avg | wp | hp | bk | sfa | sha |
|------------------|------|-------|-----|----|----|-----|----|-------|-----|-----|----|----|----|----|----|----|-------|----|----|----|-----|-----|
| Devyn Greer | 0.91 | 2-3 | 6 | 5 | 1 | 1/0 | 0 | 23.0 | 20 | 9 | 3 | 6 | 11 | 1 | 1 | 0 | .225 | 4 | 2 | 0 | 1 | 1 |
| Jalen Adams | 1.96 | 9-6 | 16 | 16 | 13 | 4/0 | 0 | 103.2 | 93 | 35 | 29 | 25 | 33 | 10 | 2 | 3 | .237 | 2 | 15 | 0 | 1 | 12 |
| Haley Downe | 2.90 | 1-0 | 7 | 0 | 0 | 0/0 | 1 | 9.2 | 9 | 7 | 4 | 7 | 5 | 1 | 1 | 1 | .237 | 0 | 1 | 0 | 1 | 0 |
| Andrea Jaskowiak | 3.11 | 1-0 | 4 | 0 | 0 | 0/0 | 0 | 9.0 | 11 | 4 | 4 | 6 | 3 | 2 | 0 | 0 | .344 | 0 | 0 | 0 | 1 | 1 |
| Jaylee Ojo | 4.02 | 3-2 | 9 | 6 | 1 | 1/0 | 1 | 31.1 | 23 | 20 | 18 | 28 | 41 | 4 | 1 | 2 | .207 | 3 | 1 | 0 | 0 | 3 |
| Maren Judisch | 9.80 | 0-1 | 3 | 1 | 0 | 0/0 | 1 | 5.0 | 9 | 8 | 7 | 2 | 3 | 1 | 0 | 1 | .409 | 2 | 0 | 0 | 1 | 1 |
| Totals | 2.50 | 16-12 | 28 | 28 | 15 | 6/0 | 3 | 181.2 | 165 | 83 | 65 | 74 | 96 | 19 | 5 | 7 | .241 | 11 | 19 | 0 | 5 | 18 |
| Opponents | 2.92 | 12-16 | 28 | 28 | 11 | 1/0 | 3 | 182.0 | 195 | 108 | 76 | 72 | 98 | 26 | 7 | 2 | .268 | 9 | 15 | 0 | 9 | 16 |



HAWKEYE HITS

LAST TIME OUT

The Hawkeyes took a three-game series against Michigan State in their second BIG match up. Iowa secured game one and three after falling in game two.

Sophomore Tory Bennett led the Hawkeyes offensively hitting .667 with two RBIs. Freshman Jena young recorded three hits with a double and a triple in the series.

Sophomore Jalen Adams led the pitching staff for Iowa. Adams picked up Iowa's first no hitter since 2021 in game one of the series. She finished the weekend with two wins and five strikeouts.

SCOUTING PURDUE

Head Coach Magali Frezzotti is in her second season with the Boilermakers. They enter the matchup with Iowa with a 14-18 record. Sophomore Sage Scarmardo leads Purdue offensively hitting .375 with four doubles and 13 RBIs. The Boilermaker pitching staff has a 5.37 ERA and has held opponents to a .277 BA against them. Kendall Klochack has three wins on the season with a 4.68 ERA tallying 31 strikeouts.

ROSTER BREAKDOWN

10 Hawkeyes hail from Iowa, seven from California, three from Arizona, two from Alabama and one each from Florida, Illinois, Kansas, and Missouri. The roster is comprised of nine freshmen, seven sophomores, eight juniors, and three seniors. There are 18 returning letterwinners and nine newcomers.

PLAYING THE BEST

The Hawkeyes will face 10 different teams that made the

2023 NCAA Tournament: Harvard, Indiana, Liberty, LMU, Minnesota, NCCU, Nebraska, Notre Dame, SIU and Utah. The Utes are the lone team that the Hawkeyes will face who advanced to the 2023 WCWS.

ADAMS IS BIG TIME

Sophomore Jalen Adams was named Big Ten co-pitcher of the week on April 1st.

The Fort Dodge, Iowa, native picked up two complete game shutout victories in the series win over Michigan State. Adams threw her first career no-hitter on Friday, the 19th no-hitter in program history. She allowed just two baserunners and had two strikeouts in the, 4-0, victory. This is the first seven inning no-hitter for the Hawkeyes since the 2015 season when Shayla Starkenburg no hit Southern Utah on Feb. 7th.

BIG TIME STATS

Junior Rylie Moss is having a breakout season thus far. She has started every game in right field for Iowa and is leading the team offensively hitting .376. She is ranked seventh in the Big Ten for BA.

Freshman Jena Young is second on the team with a .370 BA and has reached base in the last 13 games. She ranks third on the team with 11 RBIs.

Sophomore Jalen Adams has a 1.96 ERA which is fourth in the conference. She has been Iowa's go-to arm in the circle throwing 103.2 innings this season; fourth in the Big Ten. Adams has held opposing hitters to a .237 BA against.

CONSISTENCY IS KEY

The Hawkeyes had five athletes start every game thus far (Rylie

IOWA'S 2024 RECORD WHEN...

| | |
|----------------------|-------|
| Home games | 4-2 |
| Away games | 5-5 |
| Neutral site | 7-5 |
| Day games | 15-11 |
| Night games | 1-1 |
| vs Left starter | 4-3 |
| vs Right starter | 12-9 |
| Wearing black | 2-3 |
| Wearing grey | 3-4 |
| Wearing gold | 5-1 |
| Wearing pinstripes | 3-2 |
| Wearing camo | 2-0 |
| Wearing pink | 0-2 |
| Wearing white | 1-0 |
| 1-Run games | 3-3 |
| 2-Run games | 4-3 |
| Extra innings | 0-1 |
| Shutouts | 6-1 |
| Scoring 0-2 runs | 3-11 |
| 3-5 runs | 8-1 |
| 6-9 runs | 2-0 |
| 10+ runs | 3-0 |
| Opponent 0-2 runs | 14-1 |
| 3-5 runs | 2-7 |
| 6-9 runs | 0-3 |
| 10+ runs | 0-1 |
| Scored in 1st inning | 7-2 |
| Opp. scored in 1st | 1-4 |
| Scores first | 15-4 |
| Opp. scores first | 1-8 |
| After 4 leading | 9-1 |
| trailing | 0-9 |
| tied | 7-2 |
| After 5 leading | 9-1 |
| trailing | 1-8 |
| tied | 3-2 |
| After 6 leading | 11-0 |
| trailing | 0-10 |
| tied | 2-1 |
| Hit 0 home runs | 14-12 |
| ... 1 home run | 2-0 |
| ... 2+ home runs | 0-0 |
| Opponent 0 home runs | 15-7 |
| 1 home run | 1-4 |
| 2+ HRs | 0-1 |
| Made 0 errors | 10-3 |
| 1 error | 5-4 |
| 2+ errors | 1-5 |
| Opp. made 0 errors | 3-5 |
| 1 error | 5-2 |
| 2+ errors | 8-5 |
| Out-hit opponent | 14-1 |
| Out-hit by opponent | 2-10 |
| Hits are tied | 0-1 |
| On Monday | 0-2 |
| On Wednesday | 0-1 |
| On Thursday | 1-0 |
| On Friday | 8-1 |
| On Saturday | 6-5 |

HAWKEYE HITS

Moss, Jena Young, Soo-Jin Berry, Sammy Diaz, and Grace Baner). Three of those student-athletes are hitting .300 or above and are the top three hitters on the team. Freshman Berry leads the team with 21 RBIs on the season. Young is the only Hawkeye to record a home run with two on the season.

IMPROVEMENT IN THE CIRCLE

Pitching coach Mandy Gardner helped improve the staff ERA tremendously in one season at Iowa. The Hawkeyes ERA dropped 2.46 points from 2022 to 2023.

To start the 2024 season the pitching staff has a 2.50 ERA (3rd in the B1G) and has held opposing hitters to a .241 batting average against. Sophomore Jalen Adams has thrown 13 complete games in 16 starts. In Big Ten play Adams is leading the way with three wins and a 0.75 ERA.

LOOKING AHEAD

The Hawkeyes are set to host the 2024 Big Ten Conference Tournament in May. The tournament returns to Iowa City for the first time since the 2003 season.

Iowa was picked to finish 11th in the in the conference by Softball America and 13th by D1 Softball.

UP NEXT

The University of Iowa softball team heads to Ann Arbor, Mich. to take on Michigan in a three-game series. The Hawkeyes take on the Wolverines April 12-14 at 5 p.m., 1 p.m. and Noon (CT).

2024 BIG TEN STANDINGS

| Team | Big Ten | | Overall | |
|----------------|------------|-------------|--------------|-------------|
| | W-L-T | Pct. | W-L-T | Pct. |
| Michigan | 6-0 | 1.000 | 24-11 | .686 |
| Nebraska | 5-0 | 1.000 | 22-13 | .629 |
| Penn State | 5-1 | .833 | 26-7 | .788 |
| Northwestern | 5-1 | .833 | 19-8 | .704 |
| IOWA | 4-2 | .667 | 16-12 | .571 |
| Minnesota | 4-2 | .667 | 18-15 | .545 |
| Rutgers | 3-3 | .500 | 21-15 | .583 |
| Maryland | 3-3 | .500 | 16-17 | .485 |
| Ohio State | 2-4 | .333 | 19-12 | .316 |
| Purdue | 2-4 | .333 | 14-18 | .438 |
| Michigan State | 1-5 | .167 | 13-19 | .406 |
| Wisconsin | 1-5 | .167 | 12-20 | .375 |
| Indiana | 0-6 | .000 | 23-12 | .657 |
| Illinois | 0-5 | .000 | 13-19 | .406 |

2024 TEAM STAT LEADERS

OFFENSE

| | | |
|---|---|--|
| Batting avg 1. Rylie Moss .376 2. Jena Young .370 3. Soo-Jin Berry .340 4. Devyn Greer .293 5. Jalen Adams .286 | Slugging pct 1. Jena Young .543 2. Soo-Jin Berry .447 3. Rylie Moss .400 4. Sammy Diaz .350 5. Devyn Greer .341 | On base pct 1. Jena Young .453 2. Rylie Moss .396 3. Soo-Jin Berry .376 4. Jalen Adams .375 5. Tory Bennett .348 |
| Runs scored 1. Soo-Jin Berry 20 2. Jena Young 16 3. Rylie Moss 15 4. Grace Baner 13 5. Tory Bennett 12 | Hits 1. Soo-Jin Berry 32 Rylie Moss 32 3. Jena Young 30 4. Sammy Diaz 22 5. Grace Baner 19 | Runs batted in 1. Soo-Jin Berry 21 2. Sammy Diaz 14 3. Jena Young 11 4. Devyn Greer 9 5. 2 tied at..... 8 |
| Doubles 1. Sammy Diaz 4 Soo-Jin Berry 4 Jena Young 4 4. Grace Baner 3 5. 4 tied at. 2 | Triples 1. Soo-Jin Berry 3 2. Jena Young 2 3. Devin Bowman 1 Sammy Diaz 1 | Home runs 1. Jena Young 2 |
| Total bases 1. Jena Young 44 2. Soo-Jin Berry 42 3. Rylie Moss 34 4. Sammy Diaz 28 5. Grace Baner 22 | Walks 1. Grace Baner 13 2. Brylee Klosterman 10 Jena Young 10 4. Sammy Diaz 7 5. 2 tied at... 6 | Hit by pitch 1. Tory Bennett 3 Jena Young 3 3. Grace Baner 2 Avery Jackson 2 Skylinn Pogue 2 |
| Sac bunts 1. Jena Young 3 2. Grace Baner 2 Devin Bowman 2 Rylie Moss 2 Tory Bennett 2 | Sac flies 1. Grace Baner 2 Sammy Diaz 2 Rylie Moss 2 4. 3 tied at..... 1 | Stolen bases 1. Soo-Jin Berry 5 Devin Simon 5 3. Jena Young 4 4. 3 tied at. 3 |

PITCHING

| | | |
|--|--|--|
| Earned run avg 1. Devyn Greer 0.91 2. Jalen Adams 1.96 3. Haley Downe 2.90 4. Andrea Jaskowiak 3.11 5. Jaylee Ojo 4.02 | Opposing bat avg 1. Jaylee Ojo .207 2. Devyn Greer .225 3. Jalen Adams .237 4. Haley Downe .237 5. Andrea Jaskowiak .344 | Won-loss pct 1. Andrea Jaskowiak 1.000 Haley Downe 1.000 3. Jalen Adams .600 Jaylee Ojo .600 5. Devyn Greer .400 |
| Wins 1. Jalen Adams 9 2. Jaylee Ojo 3 3. Devyn Greer 2 4. Haley Downe 1 Andrea Jaskowiak 1 | Losses 1. Jalen Adams 6 2. Devyn Greer 3 3. Jaylee Ojo 2 4. Maren Judisch 1 | Saves 1. Haley Downe 1 Maren Judisch 1 Jaylee Ojo 1 |
| Innings pitched 1. Jalen Adams 103.2 2. Jaylee Ojo 31.1 3. Devyn Greer 23.0 4. Haley Downe 9.2 5. Andrea Jaskowiak 9.0 | Batters struck out 1. Jaylee Ojo 41 2. Jalen Adams 33 3. Devyn Greer 11 4. Haley Downe 5 5. 2 tied at.... 3 | Appearances 1. Jalen Adams 16 2. Jaylee Ojo 9 3. Haley Downe 7 4. Devyn Greer 6 5. Andrea Jaskowiak 4 |

2024 RESULTS

| Date | Opponent | Score | Inns | Overall | Big Ten | Pitcher of record |
|----------------|----------------------|--------|------|---------|---------|-------------------|
| Feb 09, 2024 | vs NC State | w 2-0 | 7 | 1-0-0 | 0-0-0 | Adams (W 1-0) |
| Feb 09, 2024 | vs Western Kentucky | w 8-0 | 5 | 2-0-0 | 0-0-0 | Greer (W 1-0) |
| Feb 10, 2024 | vs N.C. Central | w 4-1 | 7 | 3-0-0 | 0-0-0 | Jaskowiak (W 1-0) |
| Feb 10, 2024 | vs Notre Dame | L 4-5 | 7 | 3-1-0 | 0-0-0 | Greer (L 1-1) |
| Feb 11, 2024 | vs Utah | L 1-3 | 7 | 3-2-0 | 0-0-0 | Adams (L 1-1) |
| Feb 16, 2024 | vs Southern Illinois | L 1-4 | 7 | 3-3-0 | 0-0-0 | Greer (L 1-2) |
| Feb 16, 2024 | vs Liberty | w 4-2 | 7 | 4-3-0 | 0-0-0 | Adams (W 2-1) |
| Feb 24, 2024 | at Jacksonville-1 | w 5-3 | 7 | 5-3-0 | 0-0-0 | Adams (W 3-1) |
| Feb 24, 2024 | at Jacksonville-2 | w 4-2 | 7 | 6-3-0 | 0-0-0 | Downe (W 1-0) |
| Feb 25, 2024 | vs Harvard | L 2-8 | 7 | 6-4-0 | 0-0-0 | Ojo (L 0-1) |
| Feb 25, 2024 | at North Florida | L 1-6 | 7 | 6-5-0 | 0-0-0 | Adams (L 3-2) |
| Mar 08, 2024 | vs CSUB | w 17-1 | 5 | 7-5-0 | 0-0-0 | Greer (W 2-2) |
| Mar 08, 2024 | at San Jose State | w 3-2 | 7 | 8-5-0 | 0-0-0 | Adams (W 4-2) |
| Mar 09, 2024 | at Santa Clara-1 | L 2-4 | 7 | 8-6-0 | 0-0-0 | Adams (L 4-3) |
| Mar 09, 2024 | at Santa Clara-2 | L 2-3 | 7 | 8-7-0 | 0-0-0 | Greer (L 2-3) |
| Mar 10, 2024 | vs Loyola Marymount | L 1-14 | 5 | 8-8-0 | 0-0-0 | Judisch (L 0-1) |
| Mar 11, 2024 | at UC Davis | L 2-3 | (9) | 8-9-0 | 0-0-0 | Adams (L 4-4) |
| Mar 13, 2024 | at Saint Mary's | L 2-5 | 7 | 8-10-0 | 0-0-0 | Adams (L 4-5) |
| Mar 15, 2024 | at Pacific | w 5-0 | 7 | 9-10-0 | 0-0-0 | Adams (W 5-5) |
| Mar 15, 2024 | vs Sacramento State | w 1-0 | 7 | 10-10-0 | 0-0-0 | Ojo (W 1-1) |
| Mar 16, 2024 | at Pacific | w 10-1 | 5 | 11-10-0 | 0-0-0 | Ojo (W 2-1) |
| Mar 16, 2024 | vs Sacramento State | w 6-1 | 7 | 12-10-0 | 0-0-0 | Adams (W 6-5) |
| * Mar 21, 2024 | WISCONSIN | w 4-1 | 7 | 13-10-0 | 1-0-0 | Adams (W 7-5) |
| * Mar 23, 2024 | WISCONSIN-1 | w 10-4 | 7 | 14-10-0 | 2-0-0 | Ojo (W 3-1) |
| * Mar 23, 2024 | WISCONSIN-2 | L 0-2 | 7 | 14-11-0 | 2-1-0 | Adams (L 7-6) |
| * Mar 29, 2024 | MICHIGAN STATE | w 4-0 | 7 | 15-11-0 | 3-1-0 | Adams (W 8-6) |
| * Mar 30, 2024 | MICHIGAN STATE-1 | L 2-8 | 7 | 15-12-0 | 3-2-0 | Ojo (L 3-2) |
| * Mar 30, 2024 | MICHIGAN STATE-2 | w 1-0 | 7 | 16-12-0 | 4-2-0 | Adams (W 9-7) |

() extra inning game



2024 BIG TEN STATS

| Player | avg | gp-gs | ab | r | h | 2b | 3b | hr | rbi | tb | slg% | bb | hp | so | gdp | ob% | sf | sh | sb-att | po | a | e | fld% |
|-------------------|------|-------|-----|----|----|----|----|----|-----|----|------|----|----|----|-----|------|----|----|--------|-----|----|---|-------|
| Tory Bennett | .571 | 4-2 | 7 | 0 | 4 | 0 | 0 | 0 | 2 | 4 | .571 | 0 | 1 | 0 | 0 | .625 | 0 | 0 | 0-0 | 2 | 0 | 0 | 1.000 |
| Jena Young | .444 | 6-6 | 18 | 5 | 8 | 2 | 1 | 0 | 0 | 12 | .667 | 2 | 1 | 1 | 0 | .524 | 0 | 1 | 0-0 | 15 | 7 | 0 | 1.000 |
| Jalen Adams | .444 | 4-4 | 9 | 1 | 4 | 0 | 0 | 0 | 0 | 4 | .444 | 1 | 1 | 0 | 0 | .545 | 0 | 0 | 0-0 | 0 | 5 | 0 | 1.000 |
| Soo-Jin Berry | .429 | 6-6 | 21 | 5 | 9 | 1 | 1 | 0 | 6 | 12 | .571 | 0 | 0 | 1 | 1 | .409 | 1 | 0 | 0-0 | 8 | 10 | 0 | 1.000 |
| Rylie Moss | .364 | 6-6 | 22 | 2 | 8 | 0 | 0 | 0 | 2 | 8 | .364 | 0 | 0 | 4 | 0 | .348 | 1 | 0 | 0-0 | 4 | 1 | 0 | 1.000 |
| Devyn Greer | .333 | 5-5 | 15 | 0 | 5 | 2 | 0 | 0 | 4 | 7 | .467 | 0 | 1 | 4 | 0 | .375 | 0 | 0 | 0-0 | 0 | 0 | 0 | .000 |
| Sammy Diaz | .167 | 6-6 | 18 | 0 | 3 | 0 | 0 | 0 | 4 | 3 | .167 | 0 | 0 | 1 | 0 | .158 | 1 | 0 | 0-0 | 42 | 4 | 0 | 1.000 |
| Echo Mattiello | .143 | 6-4 | 7 | 2 | 1 | 0 | 0 | 0 | 1 | 1 | .143 | 2 | 0 | 1 | 0 | .333 | 0 | 0 | 0-0 | 4 | 0 | 0 | 1.000 |
| Avery Jackson | .125 | 6-6 | 8 | 0 | 1 | 1 | 0 | 0 | 2 | 2 | .250 | 0 | 2 | 2 | 1 | .300 | 0 | 1 | 0-0 | 9 | 17 | 1 | .963 |
| Grace Banas | .071 | 6-6 | 14 | 3 | 1 | 0 | 0 | 0 | 0 | 1 | .071 | 2 | 2 | 1 | 0 | .278 | 0 | 1 | 0-0 | 16 | 1 | 0 | 1.000 |
| ----- | | | | | | | | | | | | | | | | | | | | | | | |
| Skiylinn Pogue | .000 | 5-5 | 3 | 0 | 0 | 0 | 0 | 0 | 0 | 0 | .000 | 1 | 0 | 2 | 0 | .250 | 0 | 0 | 0-0 | 23 | 5 | 0 | 1.000 |
| Brylee Klosterman | .000 | 2-1 | 3 | 0 | 0 | 0 | 0 | 0 | 0 | 0 | .000 | 1 | 0 | 0 | 0 | .250 | 0 | 0 | 0-0 | 0 | 0 | 0 | .000 |
| Tatianna Roman | .000 | 3-0 | 2 | 1 | 0 | 0 | 0 | 0 | 0 | 0 | .000 | 0 | 0 | 1 | 0 | .000 | 0 | 0 | 0-0 | 0 | 0 | 0 | .000 |
| Hannah Lindsay | .000 | 2-1 | 1 | 0 | 0 | 0 | 0 | 0 | 0 | 0 | .000 | 3 | 0 | 0 | 0 | .750 | 0 | 0 | 0-0 | 3 | 0 | 0 | 1.000 |
| Devin Bowman | .000 | 2-0 | 1 | 0 | 0 | 0 | 0 | 0 | 0 | 0 | .000 | 0 | 0 | 0 | 0 | .000 | 0 | 1 | 0-0 | 0 | 0 | 0 | .000 |
| Devin Simon | .000 | 6-0 | 0 | 2 | 0 | 0 | 0 | 0 | 0 | 0 | .000 | 0 | 0 | 0 | 0 | .000 | 0 | 0 | 1-1 | 0 | 0 | 0 | .000 |
| Totals | .295 | 6 | 149 | 21 | 44 | 6 | 2 | 0 | 21 | 54 | .362 | 12 | 8 | 18 | 2 | .372 | 3 | 4 | 1-1 | 126 | 53 | 1 | .994 |
| Opponents | .205 | 6 | 146 | 15 | 30 | 7 | 1 | 4 | 13 | 51 | .349 | 14 | 4 | 24 | 1 | .293 | 0 | 4 | 5-6 | 114 | 58 | 5 | .972 |

(Big Ten games only Sorted by Earned run avg)

| Player | era | w-l | app | gs | cg | sho | sv | ip | h | r | er | bb | so | 2b | 3b | hr | b/avg | wp | hp | bks | sfa | sha |
|---------------|------|-----|-----|----|----|-----|----|------|----|----|----|----|----|----|----|----|-------|----|----|-----|-----|-----|
| Jalen Adams | 0.75 | 3-1 | 4 | 4 | 4 | 2/0 | 0 | 28.0 | 15 | 3 | 3 | 4 | 9 | 3 | 0 | 2 | .161 | 0 | 4 | 0 | 0 | 4 |
| Maren Judisch | 4.20 | 0-0 | 2 | 0 | 0 | 0/0 | 1 | 3.1 | 3 | 2 | 2 | 1 | 2 | 1 | 0 | 1 | .250 | 0 | 0 | 0 | 0 | 0 |
| Jaylee Ojo | 5.91 | 1-1 | 2 | 2 | 0 | 0/0 | 0 | 10.2 | 12 | 10 | 9 | 9 | 13 | 3 | 1 | 1 | .293 | 1 | 0 | 0 | 0 | 0 |
| Totals | 2.33 | 4-2 | 6 | 6 | 4 | 2/0 | 1 | 42.0 | 30 | 15 | 14 | 14 | 24 | 7 | 1 | 4 | .205 | 1 | 4 | 0 | 0 | 4 |
| Opponents | 3.50 | 2-4 | 6 | 6 | 4 | 1/0 | 0 | 38.0 | 44 | 21 | 19 | 12 | 18 | 6 | 2 | 0 | .295 | 2 | 8 | 0 | 3 | 4 |



INFORMATION

UNIVERSITY OF IOWA INFORMATION

Location _____ Iowa City, Iowa
 Founded _____ 1847
 Enrollment _____ 31,206
 President _____ Barb J. Wilson
 Athletics Director _____ Beth Goetz
 Senior Women's Admin _____ Lyla Clerry
 School Colors _____ Black and Gold
 Nickname _____ Hawkeyes
 Conference _____ Big Ten
 Facility _____ Bob Pearl Field

COACHING INFORMATION

Head Coach: _____ Renee Gillispie
 Alma Mater/Year: _____ West Texas A&M/1984
 Assistant Coach: _____ Brian Levin
 Alma Mater/Year: _____ Peru State College/1998
 Assistant Coach: _____ Mandy Gardner-Colegate
 Alma Mater: _____ Maryland/2015
 Assistant Coach: _____ Erin Doud-Johnson
 Alma Mater: _____ Iowa/2001=
 Director of Operations: _____ Miranda Miller
 Alma Mater/Year: _____ Nebraska-Kearney/2019

TEAM INFORMATION

2023 Overall Record _____ 35-27
 Hitters Returning/Lost _____ 15/77
 Pitchers Returning/Lost _____ 5/5
 Newcomers _____ 10
 Softball Office Phone: _____ 319-335-9257

ATHLETIC COMMUNICATIONS

Softball Contact: _____ Leandra Harasta
 Email: _____ leandra-harasta@uiowa.edu
 Cell Phone _____ 714-496-0186
 Office Phone: _____ 319-335-9411

NATIONAL RANKINGS

USA Today/NFCA Coaches Poll

1. Oklahoma
2. Duke
3. Georgia
4. Texas
5. LSU
6. Tennessee
7. Oklahoma St.
8. Stanford
9. Washington
10. Florida
11. Missouri
12. UCLA
13. Texas A&M
14. Alabama
15. Virginia Tech
16. Mississippi St.
17. Clemson
18. Florida St.
19. Arkansas
20. Cal
21. Arizona
22. South Carolina
23. Boston University
24. Oregon
25. Baylor

D1 Softball

1. Oklahoma
2. Stanford
3. Oklahoma St.
4. Texas
5. Duke
6. LSU
7. Tennessee
8. Washington
9. Georgia
10. Florida
11. Missouri
12. UCLA
13. Virginia Tech
14. Arkansas
15. Clemson
16. Mississippi St.
17. Texas A&M
18. Alabama
19. Florida St.
20. Texas St.
21. Boston University
22. Arizona
23. Cal
24. Northwestern
25. Charlotte

2024 ROSTER

| No. | Name | Pos. | Ht. | Yr. | Hometown / Highschool / Last School |
|-----|-------------------|------|------|--------|---|
| 00 | Haley Downe | RHP | 5-5 | Jr. | R/R Norwalk, Iowa / Norwalk |
| 1 | Tory Bennett | IF | 5-7 | So. | R/R Fort Dodge, Iowa / Fort Dodge |
| 2 | Georgia Lessmann | OF | 5-5 | Fr. | L/R Enterprise, Ala. / Enterprise |
| 3 | Mya Clark | RHP | 5-10 | Fr. | R/R Ardmore, Ala. / Athens |
| 4 | Maren Judisch | RHP | 5-9 | RS-Jr. | R/R Waukee, Iowa / Des Moines Christian / Baylor |
| 6 | Rylie Moss | OF | 5-5 | Jr. | L/R Muscatine, Iowa / Muscatine |
| 7 | Sammy Diaz | IF | 5-5 | Sr. | R/R Cypress, Calif. / Cypress |
| 9 | Tatianna Roman | OF | 5-4 | Jr. | L/R Garden Grove, Calif. / Cypress / Alabama A&M |
| 10 | Kelsey Winters | RHP | 5-7 | RS-Fr. | R/R Tampa, Florida / Newsome |
| 11 | Soo-Jin Berry | UTL | 5-9 | Fr. | L/R Pittsburg, Calif. / Clayton Valley Charter |
| 12 | Jalen Adams | RHP | 5-8 | So. | L/R Fort Dodge, Iowa / Fort Dodge |
| 13 | Skylinn Pogue | C/IF | 5-6 | So. | R/R Eureka, Missouri / Eureka |
| 14 | Deiree Rivera | C | 5-6 | Jr. | R/R Chino, Calif. / Bishop Amat Memorial |
| 17 | Anna Streff | UT | 5-6 | So. | R/R Marion, Iowa / Linn-Mar |
| 19 | Hannah Lindsay | C | 5-8 | Jr. | R/R Surprise, Ariz. / Shadow Ridge / New Mexico State |
| 20 | Devin Simon | IF | 5-5 | Fr. | R/R Cascade, Iowa / Cascade |
| 21 | Andrea Jaskowiak | RHP | 5-9 | Fr. | R/R Madison, Wisc. / Vel Phillips Memorial |
| 22 | Brylee Klosterman | OF | 5-5 | Sr. | L/L North Liberty, Iowa / Iowa City Liberty |
| 23 | Grace Banas | IF | 5-7 | Sr. | R/R Kansas City, Kan. / Piper |
| 24 | Jena Young | IF | 5-7 | Fr. | L/R Winterset, Iowa / Winterset |
| 25 | Devyn Greer | RHP | 5-6 | Jr. | L/R Huntington Beach, Calif. / Huntington Beach |
| 26 | Bridget Stover | C | 5-10 | So. | R/R Winterset, Iowa / Winterset |
| 27 | Amber DeSena | IF | 5-6 | RS-Jr. | R/R Concord, Calif. / Concord |
| 28 | Avery Jackson | IR | 5-3 | So. | R/R Kankakee, Illinois / Kankakee |
| 33 | Echo Mattiello | OF | 5-7 | So. | L/R Mesa, Arizona / Red Mountain |
| 34 | Jaylee Ojo | RHP | 5-11 | Fr. | R/R Sacramento, Calif. / Sheldon |
| 95 | Devin Bowman | IF | 5-4 | Fr. | R/R Mesa, Ariz. / Mount |

Head Coach: Renee Gillispie (6th season)
Assistant Coach: Brian Levin (2nd season)
Assistant Coach: Mandy Gardner-Colegate (2nd season)
Assistant Coach: Erin Doud-Johnson (5th season)
Director of Operations: Miranda Miller (1st season)
Athletic Trainer: Kaycie Landis (3rd season)

Pronunciations:

Renee Gillispie _____ gill-ESPY
 Brian Levin _____ Leh-VANN
 Jalen Adams _____ Jay-lin
 Soo-Jin Berry _____ sue gin
 Amber DeSena _____ Da-SEN-a
 Haley Downe _____ Down
 Andrea Jaskowiak _____ an-dree-uh Jass-co-v-eak
 Maren Judisch _____ ju-dish
 Brylee Klosterman _____ CLOSE-terman
 Echo Mattiello _____ matty-ellow
 Jaylee Ojo _____ jay-lee oh-joe
 Skylinn Pogue _____ Sky-lynn Pohg

HEAD COACH RENEE GILLISPIE



Renee Gillispie enters her sixth season as the head coach of the University of Iowa softball program in 2024. She was selected as the fifth head coach in program history on June 8, 2018.

In 2023, the Hawkeye's finished 35-27, and 10-13 in Big Ten play. Their 35 wins is the most in a season since 2009.

Iowa made its first conference tournament appearance since 2019. The Hawkeyes accepted an invite to the National Invitational Softball Championship (NISC) in Fort Collins, Colo. They went 4-0 on their way to the NISC championship title.

Coach Gillispie picked up her 100th win with Iowa on March 18th at USF. They defeated the Bulls 12-4 in six innings. Gillispie ranked 15th amongst active coaches in D1 with 947 wins at the end of the 2023 season.

Senior Nia Carter was named a third team All-American by Softball America. She was the first Hawkeye since 2009 to receive All-American honors.

Outfielders Carter and Tatianna Roman earned NFCA All-Region honors. Carter picked up first-team recognition for the second straight season after leading the conference in hits (101) and batting average (.479). Roman earned third-team honors after starting every game in centerfield in her first season as a Hawkeye. She hit .296 and led all outfielders with a .970 fielding percentage.

Carter was named first-team Big Ten and freshman Jalen Adams earned all-freshman recognition.

Iowa recorded 11 Academic All-Big Ten honorees for the second straight year. Senior Kalena Burns was named a Big Ten distinguished scholar.

In 2022, Coach Gillispie reached her 900th career win against Cornell on February 27th. Gillispie ranks 19th among active coaches in D1 and 38th all-time.

Junior outfielder Nia Carter was NFCA First-Team All-Region. She hit .405 with 66 hits, 18 RBI, slugged .466 and had an on-base percentage of .464. Her .405 batting average ranking seventh in single season school history. Carter led the team in batting average, hits, runs scored (26), triples (3), and total bases (76). In the classroom, Iowa recorded 11 Academic All-Big Ten honorees.

In 2021, the Hawkeyes achieved their highest regular season conference finish since 2012 and set a new program record with 26 conference wins.

In the circle, Iowa's ERA ranked 31st in the nation (2.34) and two of Iowa's three senior pitchers ranked in the top 10 in the Big Ten in ERA.

Senior pitcher Allison Doocy was named second team All-Region, and freshman Denali Loecker was named second team All-Big Ten. Loecker and Brylee Klosterman were both named to the All-Freshman team.

At the plate, freshman Denali Loecker led the team in batting average, doubles, home runs, RBIs, slugging percentage, and on-base percentage. Sophomore Nia Carter ranked as the toughest batter to strikeout in the Big Ten (23.7 K Average).

In the classroom, Iowa set a program record for the second straight year with 12 Academic All-Big Ten honorees. In addition, two of those honorees - Allison Doocy and Aralee Bogar - were named Big Ten Distinguished Scholars.

Gillispie had Iowa on a resurgent pace in 2020 before the cancellation of the season due to Covid-19. The Hawkeyes finished the season 17-5 and first in the Big Ten. Iowa was on pace to have its best season since 2009, that year's team won 42 games.

In 2019, the Iowa softball team finished the 2019 season 19-32 in Gillispie's first season. The Hawkeyes saw their longest winning streak since 2009 with eight straight wins during the nonconference season. Junior Allison Doocy was named second-team All-Big Ten for the second consecutive year. Academically, Iowa has two student-athletes named BIG Distinguished Scholars and three named Academic All-Big Ten.

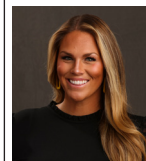
Gillispie came to Iowa after 18 years as head coach at UCF where she compiled a record of 625-403-1 (.608), won five conference championships, and advanced to seven NCAA Regionals, including four straight regional final appearances. Gillispie has won the A-Sun Championship (2005), CUSA Championship (2008), and AAC Championship (2014 & 2015).

Prior to UCF, Gillispie was a head coach at Texas Tech, Bradley and Joliet (IL.) Junior College.

Gillispie pitched in two NJCAA National Championship Tournaments while at Kirkwood. In 1981, she ranked ninth nationally as a NJCAA pitcher. Moving on to West Texas A&M University, she set nine career pitching records, including career wins, strikeouts, and saves. Gillispie was inducted into the West Texas A&M Athletics Hall of Fame in 2005 and the Danville High School Wall of Pride in 2013.



BRIAN LEVIN
Assistant Coach
2nd Season
Alma Mater: Peru State College



MANDY GARDNER-COLEGATE
Assistant Coach
2nd Season
Alma Mater: Maryland



ERIN DOUD-JOHNSON
Assistant Coach
5th Season
Alma Mater: Iowa



MIRANDA MILLER
Director of Operations
1st Season
Alma Mater: Nebraska-Kearney

Gillispie Quick Facts

6th season at Iowa
29th season as a head coach

Career Record: 963-704-3
Record at Iowa: 134-125

Coaching Experience

Iowa: 2018-present
UCF: 2001-2018
Texas Tech: 1995-1999
Bradley: 1992-1995



2024 MISC. STATS

| Multiple Hit Games | 2 | 3 | 4 | 5+ | Total |
|---------------------------|-----------|----------|----------|-----------|--------------|
| Soo-Jin Berry | 7 | 3 | - | - | 10 |
| Jena Young | 8 | - | - | - | 8 |
| Rylie Moss | 7 | 1 | - | - | 8 |
| Sammy Diaz | 3 | - | - | - | 3 |
| Brylee Klosterman | 3 | - | - | - | 3 |
| Grace Banes | 3 | - | - | - | 3 |
| Tory Bennett | 2 | 1 | - | - | 3 |
| Devyn Greer | 1 | - | 1 | - | 2 |
| TEAM | 34 | 5 | 1 | 0 | 40 |

| Multiple RBI Games | 2 | 3 | 4 | 5+ | Total |
|---------------------------|-----------|----------|----------|-----------|--------------|
| Soo-Jin Berry | 3 | 2 | - | - | 5 |
| Grace Banes | 3 | - | - | - | 3 |
| Sammy Diaz | 2 | 1 | - | - | 3 |
| Avery Jackson | 2 | - | - | - | 2 |
| Jena Young | - | 2 | - | - | 2 |
| Devyn Greer | 1 | - | 1 | - | 2 |
| Brylee Klosterman | 2 | - | - | - | 2 |
| Devin Bowman | 2 | - | - | - | 2 |
| Tory Bennett | 2 | - | - | - | 2 |
| Devin Simon | 1 | - | - | - | 1 |
| TEAM | 18 | 5 | 1 | 0 | 24 |

| Hitting Streaks | Longest | Current |
|------------------------|----------------|----------------|
| Sammy Diaz | 10 | 3 |
| Jena Young | 10 | 1 |
| Soo-Jin Berry | 7 | 1 |
| Rylie Moss | 7 | 7 |
| Grace Banes | 7 | - |
| Jalen Adams | 4 | 4 |
| Devyn Greer | 4 | - |
| Devin Bowman | 3 | - |
| Tory Bennett | 3 | 3 |
| Brylee Klosterman | 2 | - |
| Skylinn Pogue | 2 | - |
| Hannah Lindsay | 2 | - |
| Echo Mattiello | 1 | - |
| Tatianna Roman | 1 | - |
| Avery Jackson | 1 | - |
| Devin Simon | 1 | - |

| Reached Base Streaks | Longest | Current |
|-----------------------------|----------------|----------------|
| Sammy Diaz | 18 | 3 |
| Jena Young | 13 | 13 |
| Rylie Moss | 12 | 7 |
| Grace Banes | 8 | 1 |
| Soo-Jin Berry | 7 | 1 |
| Brylee Klosterman | 5 | 1 |
| Devyn Greer | 4 | - |
| Tory Bennett | 4 | 3 |
| Jalen Adams | 4 | 4 |
| Echo Mattiello | 4 | - |
| Skylinn Pogue | 3 | - |
| Devin Bowman | 3 | - |
| Hannah Lindsay | 2 | 1 |
| Tatianna Roman | 1 | - |
| Devin Simon | 1 | - |
| Avery Jackson | 1 | - |



00 **Haley**
DOWNIE

Jr. • 5-5 • RHP/OF • R/R
Nowalk, Iowa | Norwalk

Career Highs

R 1, 14x, last vs. Cal (2/25/22)
HN/A
IP 2.1, vs. Harvard (2/25/24)
SO 1, 5x, last vs. Bakersfield (3/8/24)

2024 GAME-BY-GAME STATS

| Date | Opponent | GS | IP | H | R | ER | BB | SO | 2B | 3B | HR | WP | BK | HBP | IBB | Score | W-L | Sv | ERA | NP |
|--------|----------------------|----|-----|---|---|----|----|----|----|----|----|----|----|-----|-----|-------|-----|----|------|----|
| Feb 10 | vs N.C. Central | | 0.2 | 0 | 0 | 0 | 0 | 1 | 0 | 0 | 0 | 0 | 0 | 0 | 0 | 4-1 | 0-0 | 1 | 0.00 | 12 |
| Feb 16 | vs Southern Illinois | | 1.2 | 2 | 1 | 0 | 0 | 1 | 1 | 0 | 0 | 0 | 0 | 0 | 0 | 1-4 | 0-0 | 1 | 0.00 | 6 |
| Feb 24 | at Jacksonville-2 | | 1.1 | 1 | 1 | 1 | 3 | 1 | 0 | 0 | 0 | 0 | 0 | 0 | 0 | 4-2 | 1-0 | 1 | 1.91 | 31 |
| Feb 25 | vs Harvard | | 2.1 | 2 | 2 | 0 | 1 | 1 | 0 | 0 | 0 | 0 | 0 | 0 | 0 | 2-8 | 1-0 | 1 | 1.17 | 41 |
| Mar 08 | vs CSUB | | 1.0 | 0 | 0 | 0 | 0 | 1 | 0 | 0 | 0 | 0 | 0 | 0 | 0 | 17-1 | 1-0 | 1 | 1.00 | 11 |
| Mar 09 | at Santa Clara-1 | | 2.0 | 0 | 0 | 0 | 1 | 0 | 0 | 0 | 0 | 0 | 0 | 0 | 0 | 2-4 | 1-0 | 1 | 0.78 | 22 |
| Mar 10 | vs Lovola Marvmount | | 0.2 | 4 | 3 | 3 | 2 | 0 | 0 | 1 | 1 | 0 | 0 | 1 | 0 | 1-14 | 1-0 | 1 | 2.90 | 21 |
| Totals | | 0 | 9.2 | 9 | 7 | 4 | 7 | 5 | 1 | 1 | 1 | 0 | 0 | 1 | 0 | 31-34 | 1-0 | 1 | 2.90 | - |

CAREER STATS

| Year | avg | gp-gs | ab | r | h | 2b | 3b | hr | rbi | tb | slg% | bb | hbp | so | gdp | ob% | sf | sh | sb-att | po | a | e | fld% |
|-------|------|-------|----|----|---|----|----|----|-----|----|------|----|-----|----|-----|------|----|----|--------|----|---|---|------|
| 2022 | .000 | 35-0 | 1 | 11 | 0 | 0 | 0 | 0 | 0 | 0 | .000 | 0 | 0 | 0 | 0 | .000 | 0 | 0 | 3-5 | 0 | 0 | 0 | .000 |
| 2023 | .000 | 45-0 | 1 | 12 | 0 | 0 | 0 | 0 | 0 | 0 | .000 | 0 | 0 | 1 | 0 | .000 | 0 | 0 | 3-5 | 0 | 0 | 0 | .000 |
| 2024 | .000 | 3-0 | 0 | 0 | 0 | 0 | 0 | 0 | 0 | 0 | .000 | 0 | 0 | 0 | 0 | .000 | 0 | 1 | 0-0 | 0 | 0 | 0 | .000 |
| TOTAL | .000 | 83-0 | 2 | 23 | 0 | 0 | 0 | 0 | 0 | 0 | .000 | 0 | 0 | 1 | 0 | .000 | 0 | 1 | 6-10 | 0 | 0 | 0 | .000 |

| Year | era | w-l | app | gs | cg | sho | sv | ip | h | r | er | bb | so | 2b | 3b | hr | bf | bavg | wp | hbp | bk | sfa | sha |
|-------|------|-----|-----|----|----|-----|----|-----|---|---|----|----|----|----|----|----|----|------|----|-----|----|-----|-----|
| 2024 | 2.90 | 1-0 | 7 | 0 | 0 | 0/0 | 1 | 9.2 | 9 | 7 | 4 | 7 | 5 | 1 | 1 | 1 | 47 | .237 | 0 | 1 | 0 | 1 | 0 |
| TOTAL | 2.90 | 1-0 | 7 | 0 | 0 | 0/0 | 1 | 9.2 | 9 | 7 | 4 | 7 | 5 | 1 | 1 | 1 | 47 | .237 | 0 | 1 | 0 | 1 | 0 |



1 Tory BENNETT

So. • 5-7 • IF • R/R

Fort Dodge, Iowa | Fort Dodge

Career Highs

R 3, vs. Western Kentucky (2/9/24)
 H 3, 4x, last vs. UC Davis (5/18/23)
 2B 2, vs. Lafayette (3/14/23)
 3B 1 vs. Bethune-Cookman (2/10/23)
 HR N/A
 RBI 2, 6x, last vs. Michigan State (3/30/24)
 SB 1, 3x, last vs. Northwestern (5/11/23)

2024 GAME-BY-GAME STATS

| Date | Opponent | Pos | AB | R | H | RBI | 2B | 3B | HR | BB | SB | CS | HBP | SAC | SF | GDP | K | PO | A | E | Avg |
|--------|----------------------|--------|----|----|----|-----|----|----|----|----|----|----|-----|-----|----|-----|---|----|----|---|------|
| Feb 09 | vs NC State | *2b | 2 | 0 | 0 | 0 | 0 | 0 | 0 | 0 | 0 | 0 | 1 | 0 | 0 | 0 | 1 | 3 | 1 | 0 | .000 |
| Feb 09 | vs Western Kentucky | *2b | 1 | 3 | 1 | 0 | 1 | 0 | 0 | 2 | 0 | 0 | 0 | 0 | 0 | 0 | 0 | 1 | 1 | 0 | .333 |
| Feb 10 | vs N.C. Central | *2b | 3 | 0 | 0 | 0 | 0 | 0 | 0 | 0 | 0 | 0 | 0 | 1 | 0 | 0 | 1 | 4 | 1 | 0 | .167 |
| Feb 10 | vs Notre Dame | *2b | 4 | 1 | 1 | 0 | 0 | 0 | 0 | 0 | 0 | 0 | 0 | 0 | 0 | 0 | 0 | 3 | 1 | 0 | .200 |
| Feb 11 | vs Utah | *2b | 3 | 0 | 0 | 0 | 0 | 0 | 0 | 0 | 0 | 0 | 0 | 0 | 0 | 0 | 1 | 2 | 0 | 0 | .154 |
| Feb 16 | vs Southern Illinois | *2b | 3 | 1 | 0 | 0 | 0 | 0 | 0 | 0 | 0 | 0 | 0 | 0 | 0 | 0 | 0 | 3 | 3 | 3 | .125 |
| Feb 16 | vs Liberty | *2b | 4 | 0 | 1 | 0 | 0 | 0 | 0 | 0 | 0 | 0 | 0 | 0 | 0 | 0 | 0 | 2 | 4 | 1 | .150 |
| Feb 24 | at Jacksonville-1 | *2b/ss | 1 | 2 | 0 | 0 | 0 | 0 | 0 | 2 | 1 | 0 | 0 | 0 | 0 | 0 | 0 | 1 | 1 | 0 | .143 |
| Feb 24 | at Jacksonville-2 | *2b | 3 | 1 | 1 | 1 | 0 | 0 | 0 | 0 | 0 | 0 | 0 | 0 | 0 | 0 | 0 | 2 | 2 | 1 | .167 |
| Feb 25 | vs Harvard | *2b | 3 | 0 | 0 | 0 | 0 | 0 | 0 | 0 | 0 | 0 | 0 | 0 | 0 | 0 | 0 | 2 | 1 | 1 | .148 |
| Mar 08 | vs CSUB | *2b | 4 | 3 | 3 | 2 | 1 | 0 | 0 | 0 | 0 | 0 | 0 | 0 | 0 | 0 | 0 | 0 | 1 | 0 | .226 |
| Mar 08 | at San Jose State | *2b | 3 | 0 | 2 | 0 | 0 | 0 | 0 | 0 | 0 | 0 | 0 | 0 | 0 | 0 | 0 | 0 | 1 | 0 | .265 |
| Mar 09 | at Santa Clara-1 | *2b | 3 | 0 | 0 | 0 | 0 | 0 | 0 | 0 | 0 | 0 | 1 | 0 | 0 | 0 | 0 | 1 | 1 | 0 | .243 |
| Mar 09 | at Santa Clara-2 | *2b | 1 | 0 | 0 | 0 | 0 | 0 | 0 | 1 | 0 | 0 | 0 | 1 | 0 | 0 | 0 | 1 | 1 | 1 | .237 |
| Mar 10 | vs Loyola Marymount | *ss | 2 | 0 | 0 | 0 | 0 | 0 | 0 | 0 | 0 | 0 | 0 | 0 | 0 | 0 | 0 | 3 | 1 | 0 | .225 |
| Mar 11 | at UC Davis | *2b | 3 | 0 | 0 | 0 | 0 | 0 | 0 | 1 | 0 | 0 | 0 | 0 | 0 | 0 | 1 | 3 | 4 | 0 | .209 |
| Mar 13 | at Saint Mary's | *2b | 3 | 0 | 1 | 0 | 0 | 0 | 0 | 0 | 0 | 0 | 0 | 0 | 0 | 0 | 0 | 1 | 0 | 0 | .217 |
| Mar 15 | at Pacific | *dh | 3 | 1 | 1 | 0 | 0 | 0 | 0 | 0 | 0 | 0 | 0 | 0 | 0 | 0 | 0 | 0 | 0 | 0 | .224 |
| Mar 15 | vs Sacramento State | *dh | 3 | 0 | 0 | 0 | 0 | 0 | 0 | 0 | 0 | 0 | 0 | 0 | 0 | 0 | 0 | 0 | 0 | 0 | .212 |
| Mar 16 | vs Sacramento State | ph | 1 | 0 | 0 | 1 | 0 | 0 | 0 | 0 | 0 | 0 | 0 | 0 | 0 | 0 | 0 | 0 | 0 | 0 | .208 |
| Mar 23 | WISCONSIN-1 | ph | 1 | 0 | 0 | 0 | 0 | 0 | 0 | 0 | 0 | 0 | 0 | 0 | 0 | 0 | 0 | 0 | 0 | 0 | .204 |
| Mar 29 | MICHIGAN STATE | ph/of | 1 | 0 | 1 | 0 | 0 | 0 | 0 | 0 | 0 | 0 | 0 | 0 | 0 | 0 | 0 | 0 | 0 | 0 | .218 |
| Mar 30 | MICHIGAN STATE-1 | *of | 2 | 0 | 1 | 2 | 0 | 0 | 0 | 0 | 0 | 0 | 1 | 0 | 0 | 0 | 0 | 0 | 0 | 0 | .228 |
| Mar 30 | MICHIGAN STATE-2 | *of | 3 | 0 | 2 | 0 | 0 | 0 | 0 | 0 | 0 | 0 | 0 | 0 | 0 | 0 | 0 | 2 | 0 | 0 | .250 |
| Totals | | 21gs | 60 | 12 | 15 | 6 | 2 | 0 | 0 | 6 | 1 | 0 | 3 | 2 | 0 | 0 | 4 | 34 | 24 | 7 | .250 |

On base pct. .348 • Slugging pct. .283

CAREER STATS

| Year | avg | gp-gs | ab | r | h | 2b | 3b | hr | rbi | tb | slg% | bb | hbp | so | gdp | ob% | sf | sh | sb-att | po | a | e | fld% |
|-------|------|-------|-----|----|----|----|----|----|-----|----|------|----|-----|----|-----|------|----|----|--------|-----|-----|----|------|
| 2023 | .303 | 62-62 | 201 | 29 | 61 | 12 | 1 | 0 | 25 | 75 | .373 | 16 | 3 | 22 | 0 | .360 | 2 | 4 | 3-3 | 99 | 115 | 19 | .918 |
| 2024 | .250 | 24-21 | 60 | 12 | 15 | 2 | 0 | 0 | 6 | 17 | .283 | 6 | 3 | 4 | 0 | .348 | 0 | 2 | 1-1 | 34 | 24 | 7 | .892 |
| TOTAL | .291 | 86-83 | 261 | 41 | 76 | 14 | 1 | 0 | 31 | 92 | .352 | 22 | 6 | 26 | 0 | .357 | 2 | 6 | 4-4 | 133 | 139 | 26 | .913 |



2 Georgia
LESSMANN

Fr. • 5-5 • OF • L/R
Enterprise, Alabama | Enterprise

Career Highs

| | |
|-----------|-----|
| R | N/A |
| 2B | N/A |
| 3B | N/A |
| RBI | N/A |
| SB..... | N/A |

2024 GAME-BY-GAME STATS

CAREER STATS



3 Mya
CLARK

Fr. • 5-10 • RHP • R/R
Ardmore, Alabama | Athens

Career Highs

| | |
|-----|------|
| IP | ---- |
| SO | ---- |
| R | ---- |
| 2B | ---- |
| 3B | ---- |
| RBI | ---- |

2024 GAME-BY-GAME STATS

| Date | Opponent | Pos | AB | R | H | RBI | 2B | 3B | HR | BB | SB | CS | HBP | SAC | SF | GDP | K | PO | A | E | Avg | |
|--------|----------|-----|----|---|---|-----|----|----|----|----|----|----|-----|-----|----|-----|---|----|---|---|-----|------|
| Feb 11 | vs Utah | ph | 1 | 0 | 0 | 0 | 0 | 0 | 0 | 0 | 0 | 0 | 0 | 0 | 0 | 0 | 0 | 0 | 0 | 0 | 0 | .000 |
| Totals | | Ogs | 1 | 0 | 0 | 0 | 0 | 0 | 0 | 0 | 0 | 0 | 0 | 0 | 0 | 0 | 0 | 0 | 0 | 0 | 0 | .000 |

On base pct. .000 • Slugging pct. .000

CAREER STATS

| Year | avg | gp-gs | ab | r | h | 2b | 3b | hr | rbi | tb | slg% | bb | hbp | so | gdp | ob% | sf | sh | sb-att | po | a | e | fld% |
|-------|------|-------|----|---|---|----|----|----|-----|----|------|----|-----|----|-----|------|----|----|--------|----|---|---|------|
| 2024 | .000 | 2-0 | 1 | 0 | 0 | 0 | 0 | 0 | 0 | 0 | .000 | 0 | 0 | 0 | 0 | .000 | 0 | 0 | 0-0 | 0 | 0 | 0 | .000 |
| TOTAL | .000 | 2-0 | 1 | 0 | 0 | 0 | 0 | 0 | 0 | 0 | .000 | 0 | 0 | 0 | 0 | .000 | 0 | 0 | 0-0 | 0 | 0 | 0 | .000 |



4 Maren
JUDISCH

Sr. • 5-9 • RHP • R/R

Waukee, Iowa | Des Moines Christian | Baylor

Career Highs

IP 7.0, vs. NIU, 3/13/21
SO 5, vs. PVAM, 3/1/22

2024 GAME-BY-GAME STATS

| Date | Opponent | GS* | IP | H | R | ER | BB | SO | 2B | 3B | HR | WP | BK | HBP | IBB | Score | W-L | Sv | ERA |
|--------|---------------------|-----|-----|---|---|----|----|----|----|----|----|----|----|-----|-----|-------|-----|----|-------|
| Mar 10 | vs Loyola Marymount | | 1.2 | 6 | 6 | 5 | 1 | 1 | 0 | 0 | 0 | 2 | 0 | 0 | 0 | 1-14 | 0-1 | 0 | 21.00 |
| Mar 23 | WISCONSIN-1 | | 2.2 | 0 | 0 | 0 | 0 | 2 | 0 | 0 | 0 | 0 | 0 | 0 | 0 | 10-4 | 0-1 | 1 | 8.08 |
| Mar 30 | MICHIGAN STATE-1 | | 0.2 | 3 | 2 | 2 | 1 | 0 | 1 | 0 | 1 | 0 | 0 | 0 | 0 | 2-8 | 0-1 | 1 | 9.80 |
| Totals | | 1 | 5.0 | 9 | 8 | 7 | 2 | 3 | 1 | 0 | 1 | 2 | 0 | 0 | 0 | 13-26 | 0-1 | 1 | 9.80 |

CAREER STATS

| Year | era | w-l | app | gs | cg | sho | sv | ip | h | r | er | bb | so | 2b | 3b | hr | bf | bavg | wp | hbp | bk | sfa | sha |
|-------|------|-----|-----|----|----|-----|----|------|----|----|----|----|----|----|----|----|----|--------|----|-----|----|-----|-----|
| 2021* | 2.25 | 3-1 | 14 | 4 | 2 | 1/0 | 0 | 37.1 | 32 | 12 | 12 | 10 | 20 | 4 | 0 | 5 | 0 | 99.000 | 2 | 4 | 0 | 1 | 3 |
| 2022* | 1.91 | 2-1 | 20 | 2 | 0 | 0/0 | 2 | 36.2 | 30 | 13 | 10 | 22 | 24 | 1 | 0 | 2 | 0 | 99.000 | 6 | 2 | 0 | 0 | 0 |
| 2024 | 8.08 | 0-1 | 2 | 1 | 0 | 0/0 | 1 | 4.1 | 6 | 6 | 5 | 1 | 3 | 0 | 0 | 0 | 21 | .333 | 2 | 0 | 0 | 1 | 1 |
| TOTAL | 8.08 | 0-1 | 2 | 1 | 0 | 0/0 | 1 | 4.1 | 6 | 6 | 5 | 1 | 3 | 0 | 0 | 0 | 21 | .333 | 2 | 0 | 0 | 1 | 1 |
| All* | 2.41 | 5-3 | 36 | 7 | 2 | 1/0 | 3 | 78.1 | 68 | 31 | 27 | 33 | 47 | 5 | 0 | 7 | 21 | 3.778 | 10 | 6 | 0 | 2 | 4 |



6
Rylie
MOSS

Jr. • 5-5 • OF • R/R
Muscatine, Iowa | Muscatine

Career Highs

R3 vs. Bakersfield, 3/8/24
 H3 vs. Bakersfield, 3/8/24
 2B 1, 2x, last vs. Saint Mary's, 3/13/24
 3BN/A
 HR N/A
 RBI 1, 5x, last vs. LMU, 3/10/24
 SB1, 6x, last vs. UNF, 2/25/24

2024 GAME-BY-GAME STATS

| Date | Opponent | Pos | AB | R | H | RBI | 2B | 3B | HR | BB | SB | CS | HBP | SAC | SF | GDP | K | PO | A | E | Avg |
|--------|----------------------|------|----|----|----|-----|----|----|----|----|----|----|-----|-----|----|-----|----|----|---|---|------|
| Feb 09 | vs NC State | *of | 3 | 0 | 2 | 0 | 0 | 0 | 0 | 0 | 0 | 0 | 0 | 0 | 0 | 0 | 0 | 2 | 0 | 0 | .667 |
| Feb 09 | vs Western Kentucky | *of | 2 | 0 | 0 | 0 | 0 | 0 | 0 | 0 | 0 | 0 | 0 | 0 | 0 | 0 | 1 | 1 | 0 | 0 | .400 |
| Feb 10 | vs N.C. Central | *of | 3 | 2 | 1 | 0 | 1 | 0 | 0 | 0 | 1 | 0 | 0 | 0 | 0 | 0 | 0 | 1 | 0 | 0 | .375 |
| Feb 10 | vs Notre Dame | *of | 3 | 0 | 1 | 0 | 0 | 0 | 0 | 0 | 0 | 0 | 0 | 0 | 0 | 0 | 0 | 0 | 0 | 0 | .364 |
| Feb 11 | vs Utah | *of | 3 | 0 | 1 | 0 | 0 | 0 | 0 | 0 | 0 | 0 | 0 | 0 | 0 | 0 | 0 | 2 | 0 | 0 | .357 |
| Feb 16 | vs Southern Illinois | *of | 2 | 0 | 0 | 0 | 0 | 0 | 0 | 0 | 0 | 0 | 0 | 0 | 0 | 0 | 1 | 4 | 0 | 0 | .312 |
| Feb 16 | vs Liberty | *of | 2 | 0 | 1 | 0 | 0 | 0 | 0 | 0 | 0 | 0 | 0 | 1 | 0 | 0 | 0 | 1 | 0 | 0 | .333 |
| Feb 24 | at Jacksonville-1 | *of | 3 | 0 | 1 | 1 | 0 | 0 | 0 | 0 | 0 | 0 | 0 | 0 | 1 | 0 | 1 | 1 | 0 | 0 | .333 |
| Feb 24 | at Jacksonville-2 | *of | 3 | 1 | 2 | 0 | 0 | 0 | 0 | 0 | 1 | 0 | 0 | 0 | 0 | 0 | 0 | 2 | 0 | 0 | .375 |
| Feb 25 | vs Harvard | *of | 4 | 0 | 1 | 0 | 0 | 0 | 0 | 0 | 0 | 0 | 0 | 0 | 0 | 0 | 1 | 1 | 0 | 0 | .357 |
| Feb 25 | at North Florida | *of | 3 | 0 | 1 | 1 | 0 | 0 | 0 | 0 | 1 | 0 | 0 | 0 | 0 | 0 | 1 | 2 | 0 | 0 | .355 |
| Mar 08 | vs CSUB | *of | 3 | 3 | 3 | 1 | 0 | 0 | 0 | 0 | 0 | 0 | 0 | 0 | 0 | 0 | 0 | 1 | 0 | 0 | .412 |
| Mar 08 | at San Jose State | *of | 2 | 1 | 2 | 0 | 0 | 0 | 0 | 1 | 0 | 0 | 0 | 0 | 0 | 0 | 0 | 1 | 0 | 0 | .444 |
| Mar 09 | at Santa Clara-1 | *of | 1 | 0 | 0 | 0 | 0 | 0 | 0 | 2 | 0 | 0 | 0 | 0 | 0 | 0 | 0 | 0 | 0 | 0 | .432 |
| Mar 09 | at Santa Clara-2 | *of | 3 | 0 | 1 | 0 | 0 | 0 | 0 | 0 | 0 | 0 | 0 | 0 | 0 | 0 | 0 | 1 | 0 | 1 | .425 |
| Mar 10 | vs Loyola Marymount | *of | 2 | 0 | 2 | 1 | 0 | 0 | 0 | 0 | 0 | 0 | 0 | 0 | 0 | 0 | 0 | 1 | 0 | 0 | .452 |
| Mar 11 | at UC Davis | *of | 4 | 1 | 1 | 0 | 0 | 0 | 0 | 0 | 0 | 0 | 0 | 0 | 0 | 0 | 0 | 1 | 0 | 0 | .435 |
| Mar 13 | at Saint Mary's | *of | 4 | 1 | 2 | 0 | 1 | 0 | 0 | 0 | 0 | 0 | 0 | 0 | 0 | 0 | 0 | 0 | 0 | 0 | .440 |
| Mar 15 | at Pacific | *of | 3 | 1 | 0 | 0 | 0 | 0 | 0 | 0 | 0 | 0 | 0 | 1 | 0 | 0 | 1 | 0 | 0 | 0 | .415 |
| Mar 15 | vs Sacramento State | *of | 3 | 1 | 1 | 0 | 0 | 0 | 0 | 0 | 0 | 0 | 0 | 0 | 0 | 0 | 0 | 0 | 0 | 0 | .411 |
| Mar 16 | at Pacific | *of | 4 | 1 | 0 | 0 | 0 | 0 | 0 | 0 | 0 | 0 | 0 | 0 | 0 | 0 | 1 | 0 | 0 | 0 | .383 |
| Mar 16 | vs Sacramento State | *of | 3 | 1 | 1 | 0 | 0 | 0 | 0 | 1 | 0 | 0 | 0 | 0 | 0 | 0 | 2 | 1 | 0 | 0 | .381 |
| Mar 21 | WISCONSIN | *of | 3 | 1 | 2 | 0 | 0 | 0 | 0 | 0 | 0 | 0 | 0 | 0 | 0 | 0 | 1 | 1 | 0 | 0 | .394 |
| Mar 23 | WISCONSIN-1 | *of | 4 | 0 | 1 | 1 | 0 | 0 | 0 | 0 | 0 | 0 | 0 | 0 | 1 | 0 | 0 | 1 | 0 | 0 | .386 |
| Mar 23 | WISCONSIN-2 | *of | 3 | 0 | 1 | 0 | 0 | 0 | 0 | 0 | 0 | 0 | 0 | 0 | 0 | 0 | 2 | 0 | 0 | 0 | .384 |
| Mar 29 | MICHIGAN STATE | *of | 4 | 1 | 2 | 1 | 0 | 0 | 0 | 0 | 0 | 0 | 0 | 0 | 0 | 0 | 0 | 1 | 0 | 0 | .390 |
| Mar 30 | MICHIGAN STATE-1 | *of | 4 | 0 | 1 | 0 | 0 | 0 | 0 | 0 | 0 | 0 | 0 | 0 | 0 | 0 | 1 | 1 | 1 | 0 | .383 |
| Mar 30 | MICHIGAN STATE-2 | *of | 4 | 0 | 1 | 0 | 0 | 0 | 0 | 0 | 0 | 0 | 0 | 0 | 0 | 0 | 0 | 0 | 0 | 0 | .376 |
| Totals | | 28gs | 85 | 15 | 32 | 6 | 2 | 0 | 0 | 4 | 3 | 0 | 0 | 2 | 2 | 0 | 13 | 27 | 1 | 1 | .376 |

On base pct. .396 • Slugging pct. .400

CAREER STATS

| Year | avg | gp-gs | ab | r | h | 2b | 3b | hr | rbi | tb | slg% | bb | hbp | so | gdp | ob% | sf | sh | sb-att | po | a | e | fld% |
|-------|------|-------|----|----|----|----|----|----|-----|----|------|----|-----|----|-----|------|----|----|--------|----|---|---|-------|
| 2023 | .222 | 29-24 | 45 | 4 | 10 | 0 | 0 | 0 | 4 | 10 | .222 | 2 | 0 | 14 | 0 | .255 | 0 | 2 | 1-1 | 36 | 1 | 1 | .974 |
| 2024 | .188 | 16-7 | 16 | 7 | 3 | 0 | 0 | 0 | 2 | 3 | .188 | 3 | 0 | 2 | 0 | .316 | 0 | 0 | 3-3 | 10 | 0 | 0 | 1.000 |
| TOTAL | .213 | 45-31 | 61 | 11 | 13 | 0 | 0 | 0 | 6 | 13 | .213 | 5 | 0 | 16 | 0 | .273 | 0 | 2 | 4-4 | 46 | 1 | 1 | .979 |



7 Sammy DIAZ

Sr. • 5-5 • IF • R/R

Cypress, California | Cypress

Career Highs

R 2, 5x, last vs. Bakersfield, 3/8/24
 H 3, 3x, last at Western Illinois, 4/19/23
 2B 2, vs. Sacramento St., 3/16/24
 3B 1, 3x, last vs. Bakersfield, 3/8/24
 HR 1, vs. 2x, last at Penn State, 3/26/23
 RBI 4, vs. Syracuse, 2/19/23
 SB 1, 2x, las vs. Sacramento St., 3/16/24

2024 GAME-BY-GAME STATS

| Date | Opponent | Pos | AB | R | H | RBI | 2B | 3B | HR | BB | SB | CS | HBP | SAC | SF | GDP | K | PO | A | E | Avg |
|--------|----------------------|------|----|---|----|-----|----|----|----|----|----|----|-----|-----|----|-----|---|-----|----|---|------|
| Feb 09 | vs NC State | *1b | 2 | 1 | 0 | 0 | 0 | 0 | 0 | 1 | 1 | 0 | 0 | 0 | 0 | 0 | 1 | 5 | 0 | 0 | .000 |
| Feb 09 | vs Western Kentucky | *1b | 2 | 0 | 0 | 1 | 0 | 0 | 0 | 0 | 0 | 0 | 0 | 0 | 1 | 0 | 0 | 6 | 0 | 0 | .000 |
| Feb 10 | vs N.C. Central | *1b | 2 | 1 | 1 | 0 | 1 | 0 | 0 | 1 | 0 | 0 | 0 | 0 | 0 | 0 | 0 | 3 | 0 | 0 | .167 |
| Feb 10 | vs Notre Dame | *1b | 3 | 0 | 0 | 0 | 0 | 0 | 0 | 0 | 0 | 0 | 0 | 0 | 0 | 0 | 0 | 7 | 0 | 0 | .111 |
| Feb 11 | vs Utah | *1b | 3 | 0 | 1 | 0 | 0 | 0 | 0 | 0 | 0 | 0 | 0 | 0 | 0 | 0 | 0 | 5 | 2 | 0 | .167 |
| Feb 16 | vs Southern Illinois | *1b | 3 | 0 | 1 | 0 | 0 | 0 | 0 | 0 | 0 | 0 | 0 | 0 | 0 | 0 | 1 | 7 | 1 | 0 | .200 |
| Feb 16 | vs Liberty | *1b | 4 | 0 | 1 | 1 | 0 | 0 | 0 | 0 | 0 | 0 | 0 | 0 | 0 | 0 | 1 | 6 | 1 | 0 | .211 |
| Feb 24 | at Jacksonville-1 | *1b | 3 | 0 | 1 | 0 | 0 | 0 | 0 | 0 | 0 | 0 | 0 | 0 | 0 | 0 | 0 | 5 | 0 | 0 | .227 |
| Feb 24 | at Jacksonville-2 | *1b | 2 | 0 | 0 | 0 | 0 | 0 | 0 | 1 | 0 | 0 | 0 | 0 | 0 | 0 | 0 | 5 | 0 | 0 | .208 |
| Feb 25 | vs Harvard | *1b | 3 | 0 | 0 | 0 | 0 | 0 | 0 | 1 | 0 | 0 | 0 | 0 | 1 | 0 | 0 | 5 | 0 | 0 | .185 |
| Feb 25 | at North Florida | *1b | 1 | 0 | 1 | 0 | 0 | 0 | 0 | 1 | 0 | 0 | 0 | 1 | 0 | 0 | 0 | 6 | 0 | 0 | .214 |
| Mar 08 | vs CSUB | *1b | 3 | 2 | 2 | 2 | 0 | 1 | 0 | 0 | 0 | 0 | 0 | 0 | 0 | 0 | 0 | 7 | 0 | 0 | .258 |
| Mar 08 | at San Jose State | *1b | 3 | 0 | 1 | 0 | 0 | 0 | 0 | 0 | 0 | 0 | 0 | 0 | 0 | 0 | 1 | 6 | 0 | 0 | .265 |
| Mar 09 | at Santa Clara-1 | *1b | 3 | 0 | 2 | 0 | 0 | 0 | 0 | 0 | 0 | 0 | 0 | 0 | 0 | 1 | 0 | 4 | 0 | 0 | .297 |
| Mar 09 | at Santa Clara-2 | *1b | 3 | 0 | 1 | 1 | 1 | 0 | 0 | 0 | 0 | 0 | 0 | 0 | 0 | 0 | 0 | 7 | 1 | 1 | .300 |
| Mar 10 | vs Loyola Marymount | *1b | 2 | 0 | 1 | 0 | 0 | 0 | 0 | 0 | 0 | 0 | 0 | 0 | 0 | 0 | 0 | 3 | 0 | 0 | .310 |
| Mar 11 | at UC Davis | *1b | 4 | 0 | 1 | 0 | 0 | 0 | 0 | 0 | 0 | 0 | 0 | 0 | 0 | 0 | 1 | 10 | 0 | 0 | .304 |
| Mar 13 | at Saint Mary's | *1b | 3 | 0 | 1 | 1 | 0 | 0 | 0 | 0 | 0 | 0 | 0 | 0 | 0 | 0 | 1 | 10 | 0 | 0 | .306 |
| Mar 15 | at Pacific | *1b | 4 | 0 | 1 | 0 | 0 | 0 | 0 | 0 | 0 | 0 | 0 | 0 | 0 | 0 | 0 | 7 | 0 | 0 | .302 |
| Mar 15 | vs Sacramento State | *1b | 3 | 0 | 1 | 0 | 0 | 0 | 0 | 0 | 0 | 0 | 0 | 0 | 0 | 0 | 0 | 8 | 3 | 0 | .304 |
| Mar 16 | at Pacific | *1b | 2 | 0 | 0 | 1 | 0 | 0 | 0 | 2 | 0 | 0 | 0 | 0 | 0 | 0 | 0 | 4 | 1 | 1 | .293 |
| Mar 16 | vs Sacramento State | *1b | 4 | 1 | 2 | 3 | 2 | 0 | 0 | 0 | 1 | 0 | 0 | 0 | 0 | 0 | 0 | 6 | 0 | 0 | .306 |
| Mar 21 | WISCONSIN | *1b | 2 | 0 | 0 | 1 | 0 | 0 | 0 | 0 | 0 | 0 | 0 | 0 | 1 | 0 | 0 | 7 | 0 | 0 | .297 |
| Mar 23 | WISCONSIN-1 | *1b | 4 | 0 | 0 | 1 | 0 | 0 | 0 | 0 | 0 | 0 | 0 | 0 | 0 | 0 | 1 | 8 | 1 | 0 | .279 |
| Mar 23 | WISCONSIN-2 | *1b | 3 | 0 | 0 | 0 | 0 | 0 | 0 | 0 | 0 | 0 | 0 | 0 | 0 | 0 | 0 | 5 | 0 | 0 | .268 |
| Mar 29 | MICHIGAN STATE | *1b | 3 | 0 | 1 | 2 | 0 | 0 | 0 | 0 | 0 | 0 | 0 | 0 | 0 | 0 | 0 | 7 | 1 | 0 | .270 |
| Mar 30 | MICHIGAN STATE-1 | *1b | 3 | 0 | 1 | 0 | 0 | 0 | 0 | 0 | 0 | 0 | 0 | 0 | 0 | 0 | 0 | 7 | 1 | 0 | .273 |
| Mar 30 | MICHIGAN STATE-2 | *1b | 3 | 0 | 1 | 0 | 0 | 0 | 0 | 0 | 0 | 0 | 0 | 0 | 0 | 0 | 0 | 8 | 1 | 0 | .275 |
| Totals | | 28gs | 80 | 5 | 22 | 14 | 4 | 1 | 0 | 7 | 2 | 0 | 0 | 1 | 2 | 2 | 7 | 174 | 13 | 2 | .275 |

On base pct. .326 • Slugging pct. .350

CAREER STATS

| Year | avg | gp-gs | ab | r | h | 2b | 3b | hr | rbi | tb | slg% | bb | hbp | so | gdp | ob% | sf | sh | sb-att | po | a | e | fld% |
|-------|------|---------|-----|----|----|----|----|----|-----|-----|------|----|-----|----|-----|------|----|----|--------|-----|----|----|------|
| 2021 | .222 | 33-26 | 63 | 8 | 14 | 1 | 0 | 0 | 1 | 15 | .238 | 5 | 0 | 13 | 0 | .279 | 0 | 2 | 0-1 | 24 | 29 | 5 | .914 |
| 2022 | .198 | 40-30 | 81 | 4 | 16 | 2 | 0 | 0 | 6 | 18 | .222 | 9 | 0 | 18 | 2 | .272 | 2 | 1 | 0-0 | 47 | 32 | 5 | .940 |
| 2023 | .254 | 62-62 | 181 | 17 | 46 | 7 | 2 | 2 | 24 | 63 | .348 | 27 | 1 | 35 | 2 | .354 | 0 | 3 | 0-0 | 372 | 8 | 4 | .990 |
| 2024 | .268 | 25-25 | 71 | 5 | 19 | 4 | 1 | 0 | 12 | 25 | .352 | 7 | 0 | 7 | 2 | .325 | 2 | 1 | 2-2 | 152 | 10 | 2 | .988 |
| TOTAL | .240 | 160-143 | 396 | 34 | 95 | 14 | 3 | 2 | 43 | 121 | .306 | 48 | 1 | 73 | 6 | .321 | 4 | 7 | 2-3 | 595 | 79 | 16 | .977 |



9 **Tafianna**
ROMAN

Jr. • 5-4 • OF • L/R

Garden Grove, California | Cypress | Alabama A&M

Career Highs

R3, vs. Alcorn St., 3/3/23
 H 3, 6x, last at Minnesota, 4/23/23
 2B 1, 8x, last at Western Illinois, 4/19/23
 3B 1, vs. Mississippi Valley, 4/29/22
 HR N/A
 RBI 3, vs. Mississippi Valley, 4/29/22
 SB.....2, vs. Tennessee St., 4/19/22

2024 GAME-BY-GAME STATS

| Date | Opponent | Pos | AB | R | H | RBI | 2B | 3B | HR | BB | SB | CS | HBP | SAC | SF | GDP | K | PO | A | E | Avg |
|--------|---------------------|-------|----|---|---|-----|----|----|----|----|----|----|-----|-----|----|-----|---|----|---|---|------|
| Feb 25 | at North Florida | ph | 1 | 0 | 0 | 0 | 0 | 0 | 0 | 0 | 0 | 0 | 0 | 0 | 0 | 0 | 0 | 0 | 0 | 0 | .000 |
| Mar 08 | vs CSUB | ph/of | 2 | 0 | 1 | 0 | 0 | 0 | 0 | 0 | 0 | 0 | 0 | 0 | 0 | 0 | 0 | 0 | 0 | 0 | .333 |
| Mar 09 | at Santa Clara-1 | ph | 1 | 0 | 0 | 0 | 0 | 0 | 0 | 0 | 0 | 0 | 0 | 0 | 0 | 0 | 0 | 0 | 0 | 0 | .250 |
| Mar 10 | vs Loyola Marymount | ph | 1 | 0 | 0 | 0 | 0 | 0 | 0 | 0 | 0 | 0 | 0 | 0 | 0 | 0 | 1 | 0 | 0 | 0 | .200 |
| Mar 11 | at UC Davis | *dh | 3 | 0 | 0 | 0 | 0 | 0 | 0 | 0 | 0 | 0 | 0 | 0 | 0 | 0 | 0 | 0 | 0 | 0 | .125 |
| Mar 13 | at Saint Mary's | *of | 3 | 0 | 0 | 0 | 0 | 0 | 0 | 0 | 0 | 0 | 0 | 0 | 0 | 0 | 0 | 1 | 0 | 1 | .091 |
| Mar 21 | WISCONSIN | ph | 1 | 0 | 0 | 0 | 0 | 0 | 0 | 0 | 0 | 0 | 0 | 0 | 0 | 0 | 0 | 0 | 0 | 0 | .083 |
| Mar 30 | MICHIGAN STATE-1 | ph | 1 | 0 | 0 | 0 | 0 | 0 | 0 | 0 | 0 | 0 | 0 | 0 | 0 | 0 | 1 | 0 | 0 | 0 | .077 |
| Totals | | 2gs | 13 | 1 | 1 | 0 | 0 | 0 | 0 | 0 | 0 | 0 | 0 | 0 | 0 | 0 | 2 | 1 | 0 | 1 | .077 |

On base pct. .077 • Slugging pct. .077

CAREER STATS

| Year | avg | gp-gs | ab | r | h | 2b | 3b | hr | rbi | tb | slg% | bb | hbp | so | gdp | ob% | sf | sh | sb-att | po | a | e | fld% |
|-------|------|---------|-----|----|-----|----|----|----|-----|-----|------|----|-----|----|-----|------|----|----|--------|-----|----|---|------|
| 2022* | .308 | 40-40 | 133 | 24 | 41 | 6 | 2 | 0 | 13 | 51 | .383 | 11 | 1 | 19 | 0 | .366 | 0 | 3 | 5-8 | 64 | 4 | 4 | .944 |
| 2023 | .296 | 62-62 | 196 | 32 | 58 | 7 | 0 | 0 | 13 | 65 | .332 | 19 | 5 | 35 | 0 | .373 | 0 | 9 | 4-6 | 90 | 6 | 3 | .970 |
| 2024 | .083 | 8-2 | 12 | 1 | 1 | 0 | 0 | 0 | 0 | 1 | .083 | 0 | 0 | 1 | 0 | .083 | 0 | 0 | 0-0 | 1 | 0 | 1 | .500 |
| TOTAL | .284 | 70-64 | 208 | 33 | 59 | 7 | 0 | 0 | 13 | 66 | .317 | 19 | 5 | 36 | 0 | .358 | 0 | 9 | 4-6 | 91 | 6 | 4 | .960 |
| All* | .293 | 110-104 | 341 | 57 | 100 | 13 | 2 | 0 | 26 | 117 | .343 | 30 | 6 | 55 | 0 | .361 | 0 | 12 | 9-14 | 155 | 10 | 8 | .954 |



10 | **Kelsey WINTERS**

So. • 5-7 • RHP • R/R
Tampa, Florida | Newsome

Career Highs

R N/A
H N/A
IP N/A
SO N/A

2024 GAME-BY-GAME STATS

| Game | IP | H | R | ER | SO | W | L | SV |
|------|----|---|---|----|----|---|---|----|
|------|----|---|---|----|----|---|---|----|

CAREER STATS



11 **Soo-Jin BERRY**

Fr. • 5-9 • UTL • L/R
 Pittsburg, California | Clayton Valley Charter

Career Highs

R 3, 2x, last vs. Wisconsin (3/23/24)
 H 3, 3x, last vs. Wisconsin (3/23/24)
 2B 1, 4x, last vs. Wisconsin (3/21/24)
 3B 1, 3x, last vs. Wisconsin (3/23/24)
 HR N/A
 RBI 3, 2x, last vs. Wisconsin (3/21/24)
 SB 2, vs. Harvard (2/25/24)

2024 GAME-BY-GAME STATS

| Date | Opponent | Pos | AB | R | H | RBI | 2B | 3B | HR | BB | SB | CS | HBP | SAC | SF | GDP | K | PO | A | E | Avg |
|--------|----------------------|------|----|----|----|-----|----|----|----|----|----|----|-----|-----|----|-----|----|----|----|---|------|
| Feb 09 | vs NC State | *3b | 3 | 0 | 0 | 0 | 0 | 0 | 0 | 0 | 0 | 0 | 0 | 0 | 0 | 0 | 0 | 0 | 2 | 0 | .000 |
| Feb 09 | vs Western Kentucky | *3b | 3 | 2 | 2 | 2 | 0 | 0 | 0 | 0 | 0 | 0 | 0 | 0 | 0 | 0 | 0 | 0 | 2 | 0 | .333 |
| Feb 10 | vs N.C. Central | *3b | 4 | 0 | 3 | 3 | 0 | 1 | 0 | 0 | 1 | 0 | 0 | 0 | 0 | 0 | 0 | 2 | 2 | 0 | .500 |
| Feb 10 | vs Notre Dame | *3b | 3 | 1 | 1 | 0 | 0 | 0 | 0 | 1 | 0 | 0 | 0 | 0 | 0 | 0 | 1 | 1 | 0 | 1 | .462 |
| Feb 11 | vs Utah | *3b | 3 | 1 | 1 | 0 | 1 | 0 | 0 | 0 | 0 | 0 | 0 | 0 | 0 | 0 | 2 | 0 | 1 | 0 | .438 |
| Feb 16 | vs Southern Illinois | *3b | 3 | 0 | 0 | 0 | 0 | 0 | 0 | 0 | 0 | 0 | 0 | 0 | 0 | 0 | 1 | 0 | 1 | 1 | .368 |
| Feb 16 | vs Liberty | *3b | 4 | 1 | 1 | 1 | 0 | 1 | 0 | 0 | 0 | 0 | 0 | 0 | 0 | 0 | 1 | 3 | 1 | 1 | .348 |
| Feb 24 | at Jacksonville-1 | *3b | 4 | 0 | 0 | 0 | 0 | 0 | 0 | 0 | 0 | 0 | 0 | 0 | 0 | 0 | 0 | 1 | 0 | 0 | .296 |
| Feb 24 | at Jacksonville-2 | *3b | 3 | 1 | 1 | 1 | 0 | 0 | 0 | 1 | 0 | 0 | 0 | 0 | 0 | 0 | 1 | 1 | 1 | 0 | .300 |
| Feb 25 | vs Harvard | *3b | 3 | 1 | 1 | 0 | 0 | 0 | 0 | 1 | 2 | 0 | 0 | 0 | 0 | 0 | 0 | 1 | 0 | 0 | .303 |
| Feb 25 | at North Florida | *3b | 3 | 0 | 1 | 0 | 0 | 0 | 0 | 1 | 1 | 0 | 0 | 0 | 0 | 0 | 1 | 2 | 2 | 1 | .306 |
| Mar 08 | vs CSUB | *3b | 4 | 1 | 2 | 2 | 0 | 0 | 0 | 0 | 0 | 0 | 0 | 0 | 0 | 0 | 0 | 0 | 1 | 0 | .325 |
| Mar 08 | at San Jose State | *3b | 4 | 1 | 2 | 1 | 0 | 0 | 0 | 0 | 0 | 0 | 0 | 0 | 0 | 0 | 1 | 1 | 1 | 0 | .341 |
| Mar 09 | at Santa Clara-1 | *3b | 4 | 0 | 2 | 1 | 0 | 0 | 0 | 0 | 0 | 0 | 0 | 0 | 0 | 0 | 0 | 3 | 0 | 1 | .354 |
| Mar 09 | at Santa Clara-2 | *3b | 3 | 1 | 1 | 0 | 0 | 0 | 0 | 0 | 0 | 0 | 0 | 0 | 0 | 0 | 0 | 0 | 4 | 0 | .353 |
| Mar 10 | vs Loyola Marymount | *dh | 2 | 0 | 0 | 0 | 0 | 0 | 0 | 0 | 0 | 0 | 0 | 0 | 0 | 0 | 1 | 0 | 0 | 0 | .340 |
| Mar 11 | at UC Davis | *3b | 4 | 0 | 0 | 0 | 0 | 0 | 0 | 0 | 0 | 0 | 0 | 0 | 0 | 0 | 0 | 2 | 5 | 0 | .316 |
| Mar 13 | at Saint Mary's | *3b | 3 | 0 | 0 | 0 | 0 | 0 | 0 | 0 | 0 | 0 | 0 | 0 | 0 | 0 | 0 | 1 | 5 | 1 | .300 |
| Mar 15 | at Pacific | *ss | 4 | 0 | 1 | 1 | 1 | 0 | 0 | 0 | 0 | 0 | 0 | 0 | 0 | 0 | 0 | 1 | 1 | 0 | .297 |
| Mar 15 | vs Sacramento State | *ss | 3 | 0 | 0 | 0 | 0 | 0 | 0 | 0 | 0 | 0 | 0 | 0 | 0 | 0 | 0 | 1 | 2 | 0 | .284 |
| Mar 16 | at Pacific | *ss | 3 | 3 | 3 | 1 | 1 | 0 | 0 | 0 | 1 | 0 | 1 | 0 | 0 | 0 | 0 | 1 | 1 | 0 | .314 |
| Mar 16 | vs Sacramento State | *ss | 3 | 2 | 1 | 2 | 0 | 0 | 0 | 1 | 0 | 0 | 0 | 0 | 0 | 0 | 0 | 2 | 2 | 1 | .315 |
| Mar 21 | WISCONSIN | *ss | 2 | 1 | 2 | 3 | 1 | 0 | 0 | 0 | 0 | 0 | 0 | 0 | 1 | 0 | 0 | 0 | 2 | 0 | .333 |
| Mar 23 | WISCONSIN-1 | *ss | 5 | 3 | 3 | 1 | 0 | 1 | 0 | 0 | 0 | 0 | 0 | 0 | 0 | 0 | 0 | 0 | 2 | 0 | .350 |
| Mar 23 | WISCONSIN-2 | *ss | 3 | 0 | 0 | 0 | 0 | 0 | 0 | 0 | 0 | 0 | 0 | 0 | 0 | 1 | 0 | 2 | 1 | 0 | .337 |
| Mar 29 | MICHIGAN STATE | *ss | 4 | 1 | 2 | 1 | 0 | 0 | 0 | 0 | 0 | 0 | 0 | 0 | 0 | 0 | 1 | 2 | 2 | 0 | .345 |
| Mar 30 | MICHIGAN STATE-1 | *ss | 3 | 0 | 0 | 0 | 0 | 0 | 0 | 0 | 0 | 0 | 0 | 0 | 0 | 0 | 0 | 1 | 2 | 0 | .333 |
| Mar 30 | MICHIGAN STATE-2 | *ss | 4 | 0 | 2 | 1 | 0 | 0 | 0 | 0 | 0 | 0 | 0 | 0 | 0 | 0 | 0 | 3 | 1 | 0 | .340 |
| Totals | | 28gs | 94 | 20 | 32 | 21 | 4 | 3 | 0 | 5 | 5 | 0 | 1 | 0 | 1 | 1 | 11 | 30 | 44 | 7 | .340 |

On base pct. .376 • Slugging pct. .447

CAREER STATS

| Year | avg | gp-gs | ab | r | h | 2b | 3b | hr | rbi | tb | slg% | bb | hbp | so | gdp | ob% | sf | sh | sb-att | po | a | e | fld% |
|-------|------|-------|----|----|----|----|----|----|-----|----|------|----|-----|----|-----|------|----|----|--------|----|----|---|------|
| 2024 | .340 | 28-28 | 94 | 20 | 32 | 4 | 3 | 0 | 21 | 42 | .447 | 5 | 1 | 11 | 1 | .376 | 1 | 0 | 5-5 | 30 | 44 | 7 | .914 |
| TOTAL | .340 | 28-28 | 94 | 20 | 32 | 4 | 3 | 0 | 21 | 42 | .447 | 5 | 1 | 11 | 1 | .376 | 1 | 0 | 5-5 | 30 | 44 | 7 | .914 |



12 Jalen ADAMS

So. • 5-8 • RHP • L/R
Fort Dodge, Iowa | Fort Dodge

Career Highs

IP 9.0, vs. Central Arkansas (3/4/23)
SO 7, vs. Omaha (3/5/23)
H 1, 4x, last vs. Michigan St. (3/30/24)
RBI 1, vs. Bethune-Cookman (2/10/23)

2024 GAME-BY-GAME STATS

| Date | Opponent | Pos | AB | R | H | RBI | 2B | 3B | HR | BB | SB | CS | HBP | SAC | SF | GDP | K | PO | A | E | Avg |
|--------|-------------------|------|----|---|---|-----|----|----|----|----|----|----|-----|-----|----|-----|---|----|----|---|------|
| Feb 10 | vs Notre Dame | *p | 2 | 0 | 0 | 0 | 0 | 0 | 0 | 0 | 0 | 0 | 0 | 0 | 0 | 0 | 1 | 0 | 4 | 0 | .000 |
| Mar 08 | at San Jose State | *p | 3 | 0 | 0 | 0 | 0 | 0 | 0 | 0 | 0 | 0 | 0 | 0 | 0 | 0 | 0 | 1 | 0 | 0 | .000 |
| Mar 21 | WISCONSIN | *p | 2 | 0 | 1 | 0 | 0 | 0 | 0 | 0 | 0 | 0 | 1 | 0 | 0 | 0 | 0 | 0 | 1 | 0 | .143 |
| Mar 23 | WISCONSIN-2 | *p | 2 | 0 | 1 | 0 | 0 | 0 | 0 | 0 | 0 | 0 | 0 | 0 | 0 | 0 | 0 | 0 | 1 | 0 | .222 |
| Mar 29 | MICHIGAN STATE | *p | 2 | 1 | 1 | 0 | 0 | 0 | 0 | 1 | 0 | 0 | 0 | 0 | 0 | 0 | 0 | 0 | 3 | 0 | .273 |
| Mar 30 | MICHIGAN STATE-2 | *p | 3 | 0 | 1 | 0 | 0 | 0 | 0 | 0 | 0 | 0 | 0 | 0 | 0 | 0 | 0 | 0 | 0 | 0 | .286 |
| Totals | | 13gs | 14 | 1 | 4 | 0 | 0 | 0 | 0 | 1 | 0 | 0 | 1 | 0 | 0 | 0 | 1 | 4 | 21 | 0 | .286 |

On base pct. .375 • Slugging pct. .286

#12 Jalen Adams - 16 appearances (All games)

| Date | Opponent | GS | IP | H | R | ER | BB | SO | 2B | 3B | HR | WP | BK | HBP | IBB | Score | W-L | Sv | ERA | NP |
|--------|---------------------|----|-------|----|----|----|----|----|----|----|----|----|----|-----|-----|-------|-----|----|------|-----|
| Feb 09 | vs NC State | * | 7.0 | 5 | 0 | 0 | 1 | 3 | 0 | 0 | 0 | 0 | 0 | 2 | 0 | 2-0 | 1-0 | 0 | 0.00 | 104 |
| Feb 10 | vs Notre Dame | * | 5.0 | 6 | 3 | 2 | 1 | 1 | 0 | 0 | 0 | 0 | 0 | 1 | 0 | 4-5 | 1-0 | 0 | 1.17 | 99 |
| Feb 11 | vs Utah | * | 6.0 | 9 | 3 | 3 | 2 | 1 | 1 | 0 | 0 | 0 | 0 | 1 | 0 | 1-3 | 1-1 | 0 | 1.94 | 86 |
| Feb 16 | vs Liberty | * | 7.0 | 7 | 2 | 2 | 2 | 2 | 1 | 0 | 0 | 2 | 0 | 1 | 0 | 4-2 | 2-1 | 0 | 1.96 | 125 |
| Feb 24 | at Jacksonville-1 | * | 5.0 | 7 | 3 | 3 | 3 | 3 | 1 | 0 | 0 | 0 | 0 | 0 | 0 | 5-3 | 3-1 | 0 | 2.33 | 106 |
| Feb 25 | at North Florida | * | 6.0 | 7 | 6 | 4 | 3 | 2 | 0 | 0 | 0 | 0 | 0 | 1 | 0 | 1-6 | 3-2 | 0 | 2.72 | 112 |
| Mar 08 | at San Jose State | * | 7.0 | 8 | 2 | 2 | 1 | 1 | 1 | 1 | 0 | 0 | 0 | 0 | 0 | 3-2 | 4-2 | 0 | 2.60 | 87 |
| Mar 09 | at Santa Clara-1 | * | 4.0 | 8 | 4 | 4 | 2 | 5 | 0 | 1 | 0 | 0 | 0 | 0 | 0 | 2-4 | 4-3 | 0 | 2.98 | 92 |
| Mar 11 | at UC Davis | * | 8.2 | 8 | 3 | 3 | 4 | 1 | 0 | 0 | 1 | 0 | 0 | 1 | 0 | 2-3 | 4-4 | 0 | 2.89 | 128 |
| Mar 13 | at Saint Mary's | * | 6.0 | 4 | 5 | 2 | 1 | 1 | 0 | 0 | 0 | 0 | 0 | 2 | 0 | 2-5 | 4-5 | 0 | 2.84 | 86 |
| Mar 15 | at Pacific | * | 7.0 | 2 | 0 | 0 | 0 | 2 | 1 | 0 | 0 | 0 | 0 | 1 | 0 | 5-0 | 5-5 | 0 | 2.55 | 82 |
| Mar 16 | vs Sacramento State | * | 7.0 | 7 | 1 | 1 | 1 | 2 | 2 | 0 | 0 | 0 | 0 | 1 | 0 | 6-1 | 6-5 | 0 | 2.41 | 103 |
| Mar 21 | WISCONSIN | * | 7.0 | 3 | 1 | 1 | 0 | 1 | 0 | 0 | 1 | 0 | 0 | 2 | 0 | 4-1 | 7-5 | 0 | 2.29 | 94 |
| Mar 23 | WISCONSIN-2 | * | 7.0 | 5 | 2 | 2 | 1 | 3 | 1 | 0 | 1 | 0 | 0 | 1 | 0 | 0-2 | 7-6 | 0 | 2.26 | - |
| Mar 29 | MICHIGAN STATE | * | 7.0 | 0 | 0 | 0 | 1 | 2 | 0 | 0 | 0 | 0 | 0 | 1 | 0 | 4-0 | 8-6 | 0 | 2.10 | 76 |
| Mar 30 | MICHIGAN STATE-2 | * | 7.0 | 7 | 0 | 0 | 2 | 3 | 2 | 0 | 0 | 0 | 0 | 0 | 0 | 1-0 | 9-6 | 0 | 1.96 | 110 |
| Totals | | 16 | 103.2 | 93 | 35 | 29 | 25 | 33 | 10 | 2 | 3 | 2 | 0 | 15 | 0 | 46-37 | 9-6 | 0 | 1.96 | - |

CAREER STATS

| Year | avg | gp-gs | ab | r | h | 2b | 3b | hr | rbi | tb | slg% | bb | hbp | so | gdp | ob% | sf | sh | sb-att | po | a | e | fld% |
|-------|------|-------|----|---|---|----|----|----|-----|----|------|----|-----|----|-----|------|----|----|--------|----|----|---|-------|
| 2023 | .000 | 15-12 | 23 | 1 | 0 | 0 | 0 | 0 | 1 | 0 | .000 | 3 | 0 | 6 | 0 | .115 | 0 | 0 | 0-0 | 7 | 39 | 2 | .958 |
| 2024 | .286 | 6-6 | 14 | 1 | 4 | 0 | 0 | 0 | 0 | 4 | .286 | 1 | 1 | 1 | 0 | .375 | 0 | 0 | 0-0 | 4 | 21 | 0 | 1.000 |
| TOTAL | .108 | 21-18 | 37 | 2 | 4 | 0 | 0 | 0 | 1 | 4 | .108 | 4 | 1 | 7 | 0 | .214 | 0 | 0 | 0-0 | 11 | 60 | 2 | .973 |

| Year | era | w-l | app | gs | cg | sho | sv | ip | h | r | er | bb | so | 2b | 3b | hr | bf | bavg | wp | hbp | bk | sfa | sha |
|-------|------|-------|-----|----|----|-----|----|-------|-----|-----|----|----|----|----|----|----|------|------|----|-----|----|-----|-----|
| 2023 | 2.02 | 11-13 | 34 | 23 | 10 | 1/2 | 2 | 159.2 | 140 | 72 | 46 | 45 | 65 | 22 | 4 | 13 | 701 | .230 | 4 | 26 | 0 | 3 | 19 |
| 2024 | 1.96 | 9-6 | 16 | 16 | 13 | 4/0 | 0 | 103.2 | 93 | 35 | 29 | 25 | 33 | 10 | 2 | 3 | 446 | .237 | 2 | 15 | 0 | 1 | 12 |
| TOTAL | 1.99 | 20-19 | 50 | 39 | 23 | 5/2 | 2 | 263.1 | 233 | 107 | 75 | 70 | 98 | 32 | 6 | 16 | 1147 | .233 | 6 | 41 | 0 | 4 | 31 |



13 **Skylinn**
POGUE

So. • 5-8 • RHP • R/R

Eureka, Missouri | Eureka

Career Highs

R 2, vs. Alcorn State (3/3/23)
 H 2, 2x, last vs. Maryland (5/20/23)
 2B N/A
 3B N/A
 HR 1, vs. Alcorn State (3/3/23)
 RBI 2, vs. Alcorn State (3/3/23)

2024 GAME-BY-GAME STATS

| Date | Opponent | Pos | AB | R | H | RBI | 2B | 3B | HR | BB | SB | CS | HBP | SAC | SF | GDP | K | PO | A | E | Avg |
|--------|---------------------|------|----|---|---|-----|----|----|----|----|----|----|-----|-----|----|-----|---|----|----|---|------|
| Feb 10 | vs N.C. Central | *c | 2 | 0 | 1 | 0 | 0 | 0 | 0 | 0 | 0 | 0 | 0 | 0 | 0 | 0 | 0 | 8 | 3 | 0 | .500 |
| Feb 11 | vs Utah | *c | 0 | 0 | 0 | 0 | 0 | 0 | 0 | 0 | 0 | 0 | 1 | 0 | 0 | 0 | 0 | 3 | 1 | 0 | .500 |
| Feb 24 | at Jacksonville-1 | c | 1 | 0 | 0 | 0 | 0 | 0 | 0 | 0 | 0 | 0 | 1 | 0 | 0 | 0 | 0 | 7 | 0 | 0 | .333 |
| Feb 25 | vs Harvard | *c | 2 | 0 | 0 | 0 | 0 | 0 | 0 | 0 | 0 | 0 | 0 | 0 | 0 | 0 | 0 | 4 | 2 | 0 | .200 |
| Feb 25 | at North Florida | *c | 2 | 0 | 0 | 0 | 0 | 0 | 0 | 0 | 0 | 0 | 0 | 0 | 0 | 0 | 1 | 3 | 0 | 0 | .143 |
| Mar 09 | at Santa Clara-1 | *c | 2 | 0 | 1 | 0 | 0 | 0 | 0 | 0 | 0 | 1 | 0 | 0 | 0 | 0 | 0 | 6 | 0 | 0 | .222 |
| Mar 10 | vs Loyola Marymount | c | 1 | 0 | 1 | 0 | 0 | 0 | 0 | 0 | 0 | 0 | 0 | 0 | 0 | 0 | 0 | 0 | 0 | 0 | .300 |
| Mar 13 | at Saint Mary's | *c | 2 | 0 | 0 | 0 | 0 | 0 | 0 | 0 | 0 | 0 | 0 | 0 | 0 | 0 | 0 | 2 | 0 | 1 | .250 |
| Mar 15 | vs Sacramento State | *c | 3 | 0 | 0 | 0 | 0 | 0 | 0 | 0 | 0 | 0 | 0 | 0 | 0 | 0 | 1 | 5 | 1 | 0 | .200 |
| Mar 16 | at Pacific | *c | 2 | 0 | 0 | 0 | 0 | 0 | 0 | 2 | 0 | 0 | 0 | 0 | 0 | 0 | 0 | 7 | 1 | 0 | .176 |
| Mar 16 | vs Sacramento State | *c | 1 | 0 | 0 | 0 | 0 | 0 | 0 | 0 | 0 | 0 | 0 | 1 | 0 | 0 | 0 | 2 | 1 | 0 | .167 |
| Mar 23 | WISCONSIN-1 | *c | 2 | 0 | 0 | 0 | 0 | 0 | 0 | 1 | 0 | 0 | 0 | 0 | 0 | 0 | 1 | 6 | 0 | 0 | .150 |
| Mar 30 | MICHIGAN STATE-1 | *c | 1 | 0 | 0 | 0 | 0 | 0 | 0 | 0 | 0 | 0 | 0 | 0 | 0 | 0 | 1 | 10 | 2 | 0 | .143 |
| Totals | | 21gs | 21 | 0 | 3 | 0 | 0 | 0 | 0 | 3 | 0 | 1 | 2 | 1 | 0 | 0 | 4 | 92 | 19 | 2 | .143 |

On base pct. .308 • Slugging pct. .143

CAREER STATS

| Year | avg | gp-gs | ab | r | h | 2b | 3b | hr | rbi | tb | slg% | bb | hbp | so | gdp | ob% | sf | sh | sb-att | po | a | e | fld% |
|-------|------|-------|----|---|----|----|----|----|-----|----|------|----|-----|----|-----|------|----|----|--------|-----|----|---|------|
| 2023 | .213 | 30-29 | 47 | 5 | 10 | 0 | 0 | 1 | 2 | 13 | .277 | 7 | 3 | 16 | 0 | .351 | 0 | 1 | 1-3 | 128 | 14 | 2 | .986 |
| 2024 | .150 | 22-19 | 20 | 0 | 3 | 0 | 0 | 0 | 0 | 3 | .150 | 3 | 2 | 3 | 0 | .320 | 0 | 1 | 0-1 | 80 | 15 | 2 | .979 |
| TOTAL | .194 | 52-48 | 67 | 5 | 13 | 0 | 0 | 1 | 2 | 16 | .239 | 10 | 5 | 19 | 0 | .341 | 0 | 2 | 1-4 | 208 | 29 | 4 | .983 |



14 **Desiree RIVERA**

Jr. • 5-6 • C • R/R
 Chino, California | Bishop Amat Memorial |
 Oregon State

Career Highs

R 2 vs. St. Mary's (3/31/22)
 H 3 vs. Arizona State (5/6/23)
 2B 2 vs. Utah (3/12/23)
 3B N/A
 HR 1 vs. UCLA (4/22/22)
 RBI 3, 2x, last vs. Arizona State (5/6/23)
 SB N/A

2024 GAME-BY-GAME STATS

Placeholder for 2024 Game-by-Game Stats

CAREER STATS

| Year | avg | gp-gs | ab | r | h | 2b | 3b | hr | rbi | tb | slg% | bb | hbp | so | gdp | ob% | sf | sh | sb-att | po | a | e | fld% |
|-------|------|-------|-----|----|----|----|----|----|-----|----|------|----|-----|----|-----|------|----|----|--------|-----|----|---|-------|
| 2022* | .180 | 48-45 | 122 | 7 | 22 | 3 | 0 | 1 | 13 | 28 | .230 | 7 | 4 | 20 | 1 | .248 | 0 | 1 | 0-0 | 328 | 21 | 0 | 1.000 |
| 2023* | .302 | 34-32 | 86 | 7 | 26 | 3 | 0 | 0 | 7 | 29 | .337 | 4 | 3 | 6 | 0 | .355 | 0 | 0 | 0-0 | 168 | 21 | 3 | .984 |
| All* | .231 | 82-77 | 208 | 14 | 48 | 6 | 0 | 1 | 20 | 57 | .274 | 11 | 7 | 26 | 1 | .292 | 0 | 1 | 0-0 | 496 | 42 | 3 | .994 |

* Statistics from prior team/school



17 Anna
STREFF

So. • 5-6 • UT • R/R

Marion, Iowa | Linn-Mar

Career Highs

R 2, vs. Buckenell (3/12/23)
 H 2, 2x, last at Penn State(3/26/23)
 2B 1, vs. Lafayette (3/14/23)
 3B 1, 2x, last vs. BYU (5/20/23)
 HR N/A
 RBI 1, 7x, last vs. BYU (5/20/23)
 SB N/A

2024 GAME-BY-GAME STATS

| Date | Opponent | Pos | AB | R | H | RBI | 2B | 3B | HR | BB | SB | CS | HBP | SAC | SF | GDP | K | PO | A | E | Avg | |
|--------|----------------------|-----|----|---|---|-----|----|----|----|----|----|----|-----|-----|----|-----|---|----|---|---|-----|------|
| Feb 11 | vs Utah | ph | 1 | 0 | 0 | 0 | 0 | 0 | 0 | 0 | 0 | 0 | 0 | 0 | 0 | 0 | 0 | 0 | 0 | 0 | 0 | .000 |
| Feb 16 | vs Southern Illinois | ph | 1 | 0 | 0 | 0 | 0 | 0 | 0 | 0 | 0 | 0 | 0 | 0 | 0 | 0 | 1 | 0 | 0 | 0 | 0 | .000 |
| Feb 24 | at Jacksonville-1 | 2b | 1 | 0 | 0 | 0 | 0 | 0 | 0 | 0 | 0 | 0 | 0 | 0 | 0 | 0 | 0 | 0 | 0 | 0 | 0 | .000 |
| Feb 25 | vs Harvard | ph | 1 | 0 | 0 | 0 | 0 | 0 | 0 | 0 | 0 | 0 | 0 | 0 | 0 | 0 | 0 | 0 | 0 | 0 | 0 | .000 |
| Feb 25 | at North Florida | *2b | 3 | 0 | 0 | 0 | 0 | 0 | 0 | 0 | 0 | 0 | 0 | 0 | 0 | 0 | 1 | 3 | 0 | 0 | 0 | .000 |
| Mar 09 | at Santa Clara-2 | dh | 2 | 1 | 0 | 0 | 0 | 0 | 0 | 0 | 0 | 0 | 0 | 0 | 0 | 0 | 1 | 0 | 0 | 0 | 0 | .000 |
| Totals | | 1gs | 9 | 1 | 0 | 0 | 0 | 0 | 0 | 0 | 0 | 0 | 0 | 0 | 0 | 0 | 3 | 3 | 0 | 0 | 0 | .000 |

On base pct. .000 • Slugging pct. .000

CAREER STATS

| Year | avg | gp-gs | ab | r | h | 2b | 3b | hr | rbi | tb | slg% | bb | hbp | so | gdp | ob% | sf | sh | sb-att | po | a | e | fld% |
|-------|------|-------|----|----|----|----|----|----|-----|----|------|----|-----|----|-----|------|----|----|--------|----|----|---|-------|
| 2023 | .205 | 33-28 | 78 | 9 | 16 | 1 | 2 | 0 | 7 | 21 | .269 | 4 | 1 | 19 | 0 | .253 | 0 | 3 | 0-1 | 50 | 41 | 5 | .948 |
| 2024 | .000 | 6-1 | 9 | 1 | 0 | 0 | 0 | 0 | 0 | 0 | .000 | 0 | 0 | 3 | 0 | .000 | 0 | 0 | 0-0 | 3 | 0 | 0 | 1.000 |
| TOTAL | .184 | 39-29 | 87 | 10 | 16 | 1 | 2 | 0 | 7 | 21 | .241 | 4 | 1 | 22 | 0 | .228 | 0 | 3 | 0-1 | 53 | 41 | 5 | .949 |



19 **Hannah**
LINDSAY

Jr. • 5-8 • C • R/R

Surprise, Arizona | Surprise | New Mexico State

Career Highs

R2, vs. Utah Valley (4/2/22)
 H2, 2x, last vs. Abilene Christian (5/5/23)
 2B1, 2x, last vs. Abilene Christian (5/5/23)
 3BN/A
 HR2 vs. Utah Valley (4/2/22)
 RBI4 vs. Cal Baptist (4/29/22)
 SB1 vs. Maine (3/11/23)

2024 GAME-BY-GAME STATS

| Date | Opponent | Pos | AB | R | H | RBI | 2B | 3B | HR | BB | SB | CS | HBP | SAC | SF | GDP | K | PO | A | E | Avg |
|--------|----------------------|-------|----|---|---|-----|----|----|----|----|----|----|-----|-----|----|-----|---|----|---|---|------|
| Feb 09 | vs NC State | *c | 2 | 0 | 0 | 0 | 0 | 0 | 0 | 0 | 0 | 0 | 0 | 0 | 0 | 0 | 1 | 5 | 1 | 0 | .000 |
| Feb 16 | vs Southern Illinois | c | 1 | 0 | 0 | 0 | 0 | 0 | 0 | 0 | 0 | 0 | 0 | 0 | 0 | 0 | 0 | 1 | 0 | 0 | .000 |
| Feb 16 | vs Liberty | *c | 2 | 0 | 0 | 0 | 0 | 0 | 0 | 1 | 0 | 0 | 0 | 0 | 0 | 0 | 1 | 3 | 0 | 0 | .000 |
| Feb 24 | at Jacksonville-1 | *c | 1 | 0 | 0 | 0 | 0 | 0 | 0 | 0 | 0 | 0 | 0 | 0 | 0 | 0 | 0 | 2 | 0 | 0 | .000 |
| Mar 10 | vs Loyola Marymount | *c/ph | 1 | 0 | 0 | 0 | 0 | 0 | 0 | 0 | 0 | 0 | 0 | 0 | 0 | 0 | 0 | 0 | 3 | 0 | .000 |
| Mar 11 | at UC Davis | *c | 3 | 0 | 1 | 1 | 0 | 0 | 0 | 0 | 0 | 0 | 0 | 0 | 0 | 0 | 0 | 1 | 0 | 0 | .100 |
| Mar 13 | at Saint Mary's | *dh | 3 | 0 | 1 | 0 | 0 | 0 | 0 | 0 | 0 | 0 | 0 | 0 | 0 | 0 | 0 | 0 | 0 | 0 | .154 |
| Mar 15 | at Pacific | *c | 4 | 0 | 0 | 0 | 0 | 0 | 0 | 0 | 0 | 0 | 0 | 0 | 0 | 0 | 1 | 2 | 0 | 0 | .118 |
| Mar 30 | MICHIGAN STATE-1 | ph | 1 | 0 | 0 | 0 | 0 | 0 | 0 | 0 | 0 | 0 | 0 | 0 | 0 | 0 | 0 | 0 | 0 | 0 | .111 |
| Mar 30 | MICHIGAN STATE-2 | *c | 0 | 0 | 0 | 0 | 0 | 0 | 0 | 3 | 0 | 0 | 0 | 0 | 0 | 0 | 0 | 3 | 0 | 0 | .111 |
| Totals | | 8gs | 18 | 0 | 2 | 1 | 0 | 0 | 0 | 4 | 0 | 0 | 0 | 0 | 0 | 0 | 3 | 17 | 4 | 0 | .111 |

On base pct. .273 • Slugging pct. .111

CAREER STATS

| Year | avg | gp-gs | ab | r | h | 2b | 3b | hr | rbi | tb | slg% | bb | hbp | so | gdp | ob% | sf | sh | sb-att | po | a | e | fld% |
|-------|------|-------|-----|----|----|----|----|----|-----|----|------|----|-----|----|-----|------|----|----|--------|----|----|---|-------|
| 2022* | .341 | 40-26 | 91 | 12 | 31 | 2 | 0 | 8 | 21 | 57 | .626 | 0 | 1 | 16 | 0 | .348 | 0 | 0 | 0-1 | 88 | 10 | 5 | .951 |
| 2023* | .320 | 40-36 | 103 | 9 | 33 | 4 | 0 | 6 | 18 | 55 | .534 | 9 | 2 | 14 | 0 | .386 | 0 | 0 | 1-2 | 91 | 4 | 3 | .969 |
| 2024 | .118 | 9-7 | 17 | 0 | 2 | 0 | 0 | 0 | 1 | 2 | .118 | 1 | 0 | 3 | 0 | .167 | 0 | 0 | 0-0 | 14 | 4 | 0 | 1.000 |
| TOTAL | .118 | 9-7 | 17 | 0 | 2 | 0 | 0 | 0 | 1 | 2 | .118 | 1 | 0 | 3 | 0 | .167 | 0 | 0 | 0-0 | 14 | 4 | 0 | 1.000 |



20 Devin
SIMON

Fr. • 5-5 • IF • R/R
Cascade, Iowa | Cascade

Career Highs

| | |
|-----------|----------------------------|
| R | 2, vs. Bakersfield, 3/8/24 |
| H | 1, vs. Bakersfield, 3/8/24 |
| 2B | 1, vs. Bakersfield, 3/8/24 |
| 3B | N/A |
| HR | N/A |
| RBI | N/A |
| SB | N/A |

2024 GAME-BY-GAME STATS

| Date | Opponent | Pos | AB | R | H | RBI | 2B | 3B | HR | BB | SB | CS | HBP | SAC | SF | GDP | K | PO | A | E | Avg | |
|--------|------------------|-------|----|---|---|-----|----|----|----|----|----|----|-----|-----|----|-----|---|----|---|---|-----|------|
| Mar 08 | vs CSUB | pr/dh | 2 | 2 | 1 | 2 | 1 | 0 | 0 | 0 | 0 | 0 | 0 | 0 | 0 | 0 | 0 | 0 | 0 | 0 | 0 | .500 |
| Mar 09 | at Santa Clara-2 | *dh | 1 | 0 | 0 | 0 | 0 | 0 | 0 | 0 | 0 | 0 | 0 | 0 | 0 | 0 | 0 | 0 | 0 | 0 | 0 | .333 |
| Mar 13 | at Saint Mary's | ph | 1 | 0 | 0 | 0 | 0 | 0 | 0 | 0 | 0 | 0 | 0 | 0 | 0 | 0 | 1 | 0 | 0 | 0 | 0 | .250 |
| Totals | | 1gs | 4 | 5 | 1 | 2 | 1 | 0 | 0 | 0 | 4 | 0 | 0 | 0 | 0 | 0 | 1 | 0 | 0 | 0 | 0 | .250 |

On base pct. .250 • Slugging pct. .500

CAREER STATS

| Year | avg | gp-gs | ab | r | h | 2b | 3b | hr | rbi | tb | slg% | bb | hbp | so | gdp | ob% | sf | sh | sb-att | po | a | e | fld% |
|-------|------|-------|----|---|---|----|----|----|-----|----|------|----|-----|----|-----|------|----|----|--------|----|---|---|------|
| 2024 | .250 | 17-1 | 4 | 6 | 1 | 1 | 0 | 0 | 2 | 2 | .500 | 0 | 0 | 1 | 0 | .250 | 0 | 0 | 5-5 | 0 | 0 | 0 | .000 |
| TOTAL | .250 | 17-1 | 4 | 6 | 1 | 1 | 0 | 0 | 2 | 2 | .500 | 0 | 0 | 1 | 0 | .250 | 0 | 0 | 5-5 | 0 | 0 | 0 | .000 |



21 Andrea
JASKOWIAK

Fr. • 5-9 • RHP • R/R
Madison, Wisconsin | Wel Phillips Memorial

Career Highs

IP 4.2, vs. NC Central (2/10/24)
SO 3, vs. NC Central (2/10/24)

2024 GAME-BY-GAME STATS

| Date | Opponent | GS | IP | H | R | ER | BB | SO | 2B | 3B | HR | WP | BK | HBP | IBB | Score | W-L | Sv | ERA | NP |
|--------|---------------------|----|-----|----|---|----|----|----|----|----|----|----|----|-----|-----|-------|-----|----|------|----|
| Feb 10 | vs N.C. Central | | 4.2 | 4 | 1 | 1 | 1 | 3 | 1 | 0 | 0 | 0 | 0 | 0 | 0 | 4-1 | 1-0 | 0 | 1.50 | 47 |
| Feb 25 | vs Harvard | | 1.2 | 3 | 2 | 2 | 2 | 0 | 0 | 0 | 0 | 0 | 0 | 0 | 0 | 2-8 | 1-0 | 0 | 3.32 | 29 |
| Mar 10 | vs Loyola Marymount | | 1.2 | 2 | 0 | 0 | 2 | 0 | 0 | 0 | 0 | 0 | 0 | 0 | 0 | 1-14 | 1-0 | 0 | 2.62 | 32 |
| Mar 16 | at Pacific | | 1.0 | 2 | 1 | 1 | 1 | 0 | 1 | 0 | 0 | 0 | 0 | 0 | 0 | 10-1 | 1-0 | 0 | 3.11 | 20 |
| Totals | | 0 | 9.0 | 11 | 4 | 4 | 6 | 3 | 2 | 0 | 0 | 0 | 0 | 0 | 0 | 17-24 | 1-0 | 0 | 3.11 | - |

CAREER STATS

| Year | era | w-l | app | gs | cg | sho | sv | ip | h | r | er | bb | so | 2b | 3b | hr | bf | bavg | wp | hbp | bk | sfa | sha |
|-------|------|-----|-----|----|----|-----|----|-----|----|---|----|----|----|----|----|----|----|------|----|-----|----|-----|-----|
| 2024 | 3.11 | 1-0 | 4 | 0 | 0 | 0/0 | 0 | 9.0 | 11 | 4 | 4 | 6 | 3 | 2 | 0 | 0 | 40 | .344 | 0 | 0 | 0 | 1 | 1 |
| TOTAL | 3.11 | 1-0 | 4 | 0 | 0 | 0/0 | 0 | 9.0 | 11 | 4 | 4 | 6 | 3 | 2 | 0 | 0 | 40 | .344 | 0 | 0 | 0 | 1 | 1 |



22 **Brylee**
KLOSTERMAN

Sr. • 5-5 • OF • L/L
North Liberty, Iowa | Liberty

Career Highs

R 3, vs. Michigan St., 4/7/23
 H 4, v Rutgers, 5/1/21
 2B 2 vs. EKU, 2/11/22
 3B 1, 5x, last vs. Michigan St., 4/9/23
 HR 1, 8x, last vs. BYU, 5/20/23
 RBI 2, 9x, last vs. BYU, 5/20/23

2024 GAME-BY-GAME STATS

| Date | Opponent | Pos | AB | R | H | RBI | 2B | 3B | HR | BB | SB | CS | HBP | SAC | SF | GDP | K | PO | A | E | Avg |
|--------|----------------------|------|----|---|---|-----|----|----|----|----|----|----|-----|-----|----|-----|---|----|---|---|------|
| Feb 09 | vs NC State | *of | 3 | 0 | 1 | 0 | 0 | 0 | 0 | 0 | 0 | 0 | 0 | 0 | 0 | 0 | 1 | 1 | 0 | 0 | .333 |
| Feb 09 | vs Western Kentucky | *of | 3 | 2 | 2 | 2 | 1 | 0 | 0 | 0 | 1 | 0 | 0 | 0 | 0 | 0 | 0 | 1 | 0 | 0 | .500 |
| Feb 10 | vs N.C. Central | *of | 3 | 0 | 0 | 0 | 0 | 0 | 0 | 1 | 0 | 0 | 0 | 0 | 0 | 0 | 1 | 0 | 0 | 0 | .333 |
| Feb 10 | vs Notre Dame | *of | 2 | 1 | 1 | 1 | 0 | 0 | 0 | 1 | 0 | 0 | 0 | 0 | 0 | 0 | 0 | 4 | 0 | 0 | .364 |
| Feb 11 | vs Utah | *of | 3 | 0 | 1 | 0 | 0 | 0 | 0 | 0 | 0 | 0 | 0 | 0 | 0 | 0 | 1 | 3 | 0 | 0 | .357 |
| Feb 16 | vs Southern Illinois | *of | 3 | 0 | 0 | 0 | 0 | 0 | 0 | 0 | 0 | 0 | 0 | 0 | 0 | 0 | 1 | 3 | 0 | 0 | .294 |
| Feb 16 | vs Liberty | *of | 4 | 0 | 2 | 1 | 0 | 0 | 0 | 0 | 0 | 0 | 0 | 0 | 0 | 0 | 0 | 3 | 0 | 0 | .333 |
| Feb 24 | at Jacksonville-1 | *of | 4 | 1 | 0 | 0 | 0 | 0 | 0 | 0 | 1 | 0 | 0 | 0 | 0 | 0 | 0 | 2 | 0 | 0 | .280 |
| Feb 24 | at Jacksonville-2 | *of | 3 | 0 | 0 | 1 | 0 | 0 | 0 | 0 | 0 | 0 | 0 | 0 | 1 | 0 | 0 | 1 | 0 | 0 | .250 |
| Feb 25 | vs Harvard | *of | 2 | 0 | 0 | 1 | 0 | 0 | 0 | 2 | 0 | 0 | 0 | 0 | 0 | 0 | 0 | 3 | 0 | 0 | .233 |
| Feb 25 | at North Florida | *of | 3 | 0 | 0 | 0 | 0 | 0 | 0 | 1 | 0 | 0 | 0 | 0 | 0 | 0 | 0 | 1 | 0 | 0 | .212 |
| Mar 08 | vs CSUB | *of | 1 | 2 | 0 | 0 | 0 | 0 | 0 | 1 | 1 | 0 | 0 | 0 | 0 | 0 | 0 | 0 | 0 | 0 | .206 |
| Mar 08 | at San Jose State | *of | 3 | 0 | 0 | 0 | 0 | 0 | 0 | 0 | 0 | 0 | 0 | 0 | 0 | 0 | 0 | 1 | 0 | 0 | .189 |
| Mar 09 | at Santa Clara-1 | *of | 2 | 0 | 0 | 0 | 0 | 0 | 0 | 0 | 0 | 0 | 0 | 1 | 0 | 0 | 1 | 2 | 0 | 0 | .179 |
| Mar 16 | at Pacific | *dh | 3 | 1 | 2 | 2 | 0 | 0 | 0 | 1 | 0 | 0 | 0 | 0 | 0 | 0 | 1 | 0 | 0 | 0 | .214 |
| Mar 16 | vs Sacramento State | *dh | 1 | 0 | 0 | 0 | 0 | 0 | 0 | 2 | 0 | 0 | 0 | 0 | 0 | 0 | 1 | 0 | 0 | 0 | .209 |
| Mar 21 | WISCONSIN | *dh | 3 | 0 | 0 | 0 | 0 | 0 | 0 | 0 | 0 | 0 | 0 | 0 | 0 | 0 | 0 | 0 | 0 | 0 | .196 |
| Mar 30 | MICHIGAN STATE-1 | ph | 0 | 0 | 0 | 0 | 0 | 0 | 0 | 1 | 0 | 0 | 0 | 0 | 0 | 0 | 0 | 0 | 0 | 0 | .196 |
| Totals | | 17gs | 46 | 7 | 9 | 8 | 1 | 0 | 0 | 10 | 3 | 0 | 0 | 1 | 1 | 0 | 7 | 25 | 0 | 0 | .196 |

On base pct. .333 • Slugging pct. .217

CAREER STATS

| Year | avg | gp-gs | ab | r | h | 2b | 3b | hr | rbi | tb | slg% | bb | hbp | so | gdp | ob% | sf | sh | sb-att | po | a | e | fld% |
|-------|------|---------|-----|----|-----|----|----|----|-----|-----|------|----|-----|----|-----|------|----|----|--------|-----|---|----|-------|
| 2021 | .316 | 44-43 | 117 | 20 | 37 | 0 | 4 | 2 | 19 | 51 | .436 | 15 | 1 | 25 | 0 | .396 | 1 | 4 | 2-2 | 66 | 1 | 3 | .957 |
| 2022 | .257 | 52-51 | 148 | 33 | 38 | 8 | 0 | 2 | 20 | 52 | .351 | 29 | 4 | 24 | 0 | .388 | 2 | 1 | 10-13 | 74 | 1 | 4 | .949 |
| 2023 | .264 | 41-37 | 110 | 29 | 29 | 6 | 1 | 4 | 12 | 49 | .445 | 16 | 2 | 22 | 2 | .367 | 0 | 0 | 0-1 | 67 | 2 | 3 | .958 |
| 2024 | .196 | 17-17 | 46 | 7 | 9 | 1 | 0 | 0 | 8 | 10 | .217 | 9 | 0 | 7 | 0 | .321 | 1 | 1 | 3-3 | 25 | 0 | 0 | 1.000 |
| TOTAL | .268 | 154-148 | 421 | 89 | 113 | 15 | 5 | 8 | 59 | 162 | .385 | 69 | 7 | 78 | 2 | .377 | 4 | 6 | 15-19 | 232 | 4 | 10 | .959 |



23 Grace **BANES**

Sr. • 5-7 • IF • R/R
 Kansas City, Kansas | Piper

Career Highs

R 3, vs. Wisconsin, 3/23/24
 H 2, 13x, last vs. Pacific, 3/16/24
 2B 2, vs. Purdue, 3/27/21
 3B 1, 4x, last at USF, 3/18/23
 HR 2, vs. BYU, 5/20/23
 RBI 3, 2x, last vs. UC Davis, 5/18/23
 SB 1, 5x, last vs. Miss. St., 2/11/23

2024 GAME-BY-GAME STATS

| Date | Opponent | Pos | AB | R | H | RBI | 2B | 3B | HR | BB | SB | CS | HBP | SAC | SF | GDP | K | PO | A | E | Avg |
|--------|----------------------|------|----|----|----|-----|----|----|----|----|----|----|-----|-----|----|-----|---|----|---|---|------|
| Feb 09 | vs NC State | *of | 4 | 0 | 1 | 0 | 0 | 0 | 0 | 0 | 0 | 0 | 0 | 0 | 0 | 0 | 0 | 2 | 1 | 1 | .250 |
| Feb 09 | vs Western Kentucky | *of | 3 | 1 | 1 | 0 | 0 | 0 | 0 | 0 | 0 | 0 | 0 | 0 | 0 | 0 | 0 | 3 | 0 | 0 | .286 |
| Feb 10 | vs N.C. Central | *of | 2 | 1 | 1 | 1 | 1 | 0 | 0 | 1 | 0 | 0 | 0 | 0 | 1 | 0 | 0 | 0 | 0 | 0 | .333 |
| Feb 10 | vs Notre Dame | *of | 3 | 1 | 1 | 0 | 0 | 0 | 0 | 1 | 0 | 0 | 0 | 0 | 0 | 1 | 0 | 1 | 0 | 0 | .333 |
| Feb 11 | vs Utah | *of | 3 | 0 | 0 | 0 | 0 | 0 | 0 | 0 | 0 | 0 | 0 | 0 | 0 | 0 | 1 | 0 | 0 | 0 | .267 |
| Feb 16 | vs Southern Illinois | *of | 2 | 0 | 0 | 0 | 0 | 0 | 0 | 0 | 1 | 0 | 0 | 0 | 0 | 0 | 0 | 1 | 0 | 0 | .235 |
| Feb 16 | vs Liberty | *of | 3 | 1 | 2 | 0 | 0 | 0 | 0 | 1 | 0 | 0 | 0 | 0 | 0 | 0 | 0 | 1 | 0 | 0 | .300 |
| Feb 24 | at Jacksonville-1 | *of | 3 | 1 | 1 | 2 | 0 | 0 | 0 | 1 | 1 | 0 | 0 | 0 | 0 | 0 | 1 | 2 | 0 | 0 | .304 |
| Feb 24 | at Jacksonville-2 | *of | 4 | 0 | 1 | 0 | 0 | 0 | 0 | 0 | 0 | 1 | 0 | 0 | 0 | 0 | 0 | 5 | 0 | 0 | .296 |
| Feb 25 | vs Harvard | *of | 1 | 0 | 1 | 0 | 0 | 0 | 0 | 3 | 0 | 0 | 0 | 0 | 0 | 0 | 0 | 2 | 0 | 0 | .321 |
| Feb 25 | at North Florida | *of | 4 | 0 | 2 | 0 | 1 | 0 | 0 | 0 | 0 | 0 | 0 | 0 | 0 | 0 | 0 | 1 | 0 | 0 | .344 |
| Mar 08 | vs CSUB | *of | 4 | 2 | 1 | 2 | 0 | 0 | 0 | 0 | 0 | 0 | 0 | 0 | 0 | 0 | 0 | 2 | 0 | 0 | .333 |
| Mar 08 | at San Jose State | *of | 3 | 1 | 1 | 0 | 0 | 0 | 0 | 1 | 0 | 0 | 0 | 0 | 0 | 0 | 1 | 1 | 1 | 0 | .333 |
| Mar 09 | at Santa Clara-1 | *of | 4 | 0 | 0 | 0 | 0 | 0 | 0 | 0 | 0 | 0 | 0 | 0 | 0 | 0 | 0 | 1 | 0 | 0 | .302 |
| Mar 09 | at Santa Clara-2 | *of | 4 | 0 | 1 | 0 | 0 | 0 | 0 | 0 | 0 | 0 | 0 | 0 | 0 | 0 | 0 | 1 | 0 | 0 | .298 |
| Mar 10 | vs Loyola Marymount | *of | 3 | 0 | 0 | 0 | 0 | 0 | 0 | 0 | 0 | 0 | 0 | 0 | 0 | 0 | 1 | 1 | 0 | 0 | .280 |
| Mar 11 | at UC Davis | *of | 4 | 0 | 0 | 0 | 0 | 0 | 0 | 0 | 0 | 0 | 0 | 0 | 0 | 0 | 1 | 1 | 0 | 0 | .259 |
| Mar 13 | at Saint Mary's | *of | 2 | 0 | 0 | 0 | 0 | 0 | 0 | 0 | 1 | 0 | 0 | 0 | 0 | 0 | 0 | 1 | 0 | 0 | .250 |
| Mar 15 | at Pacific | *of | 3 | 0 | 1 | 0 | 0 | 0 | 0 | 0 | 0 | 0 | 0 | 0 | 0 | 0 | 0 | 1 | 0 | 0 | .254 |
| Mar 15 | vs Sacramento State | *of | 2 | 0 | 0 | 1 | 0 | 0 | 0 | 0 | 0 | 0 | 0 | 0 | 1 | 0 | 0 | 3 | 0 | 0 | .246 |
| Mar 16 | at Pacific | *of | 3 | 2 | 2 | 2 | 1 | 0 | 0 | 1 | 0 | 0 | 0 | 0 | 0 | 0 | 0 | 1 | 0 | 0 | .266 |
| Mar 16 | vs Sacramento State | *of | 3 | 0 | 1 | 0 | 0 | 0 | 0 | 0 | 0 | 0 | 0 | 1 | 0 | 0 | 0 | 4 | 0 | 0 | .269 |
| Mar 21 | WISCONSIN | *of | 3 | 0 | 0 | 0 | 0 | 0 | 0 | 0 | 0 | 0 | 0 | 0 | 0 | 0 | 0 | 5 | 0 | 0 | .257 |
| Mar 23 | WISCONSIN-1 | *of | 3 | 3 | 1 | 0 | 0 | 0 | 0 | 1 | 0 | 0 | 0 | 0 | 0 | 0 | 0 | 4 | 0 | 0 | .260 |
| Mar 23 | WISCONSIN-2 | *of | 2 | 0 | 0 | 0 | 0 | 0 | 0 | 1 | 0 | 0 | 0 | 0 | 0 | 0 | 1 | 2 | 0 | 0 | .253 |
| Mar 29 | MICHIGAN STATE | *of | 2 | 0 | 0 | 0 | 0 | 0 | 0 | 0 | 0 | 0 | 1 | 0 | 0 | 0 | 0 | 5 | 0 | 0 | .247 |
| Mar 30 | MICHIGAN STATE-1 | *of | 2 | 0 | 0 | 0 | 0 | 0 | 0 | 0 | 0 | 0 | 0 | 1 | 0 | 0 | 0 | 0 | 1 | 0 | .241 |
| Mar 30 | MICHIGAN STATE-2 | *of | 2 | 0 | 0 | 0 | 0 | 0 | 0 | 0 | 0 | 0 | 1 | 0 | 0 | 0 | 0 | 0 | 0 | 0 | .235 |
| Totals | | 28gs | 81 | 13 | 19 | 8 | 3 | 0 | 0 | 13 | 1 | 1 | 2 | 2 | 2 | 1 | 6 | 51 | 3 | 1 | .235 |

On base pct. .347 • Slugging pct. .272

CAREER STATS

| Year | avg | gp-gs | ab | r | h | 2b | 3b | hr | rbi | tb | slg% | bb | hbp | so | gdp | ob% | sf | sh | sb-att | po | a | e | fld% |
|-------|------|---------|-----|----|-----|----|----|----|-----|-----|------|----|-----|----|-----|------|----|----|--------|-----|-----|----|------|
| 2021 | .197 | 44-44 | 122 | 20 | 24 | 5 | 0 | 3 | 12 | 38 | .311 | 15 | 8 | 18 | 1 | .324 | 0 | 1 | 1-3 | 70 | 67 | 7 | .951 |
| 2022 | .229 | 47-45 | 131 | 17 | 30 | 7 | 2 | 0 | 21 | 41 | .313 | 7 | 3 | 17 | 2 | .282 | 1 | 6 | 3-4 | 42 | 91 | 18 | .881 |
| 2023 | .267 | 61-59 | 187 | 25 | 50 | 9 | 3 | 5 | 33 | 80 | .428 | 15 | 4 | 25 | 1 | .333 | 1 | 1 | 1-1 | 96 | 98 | 8 | .960 |
| 2024 | .235 | 28-28 | 81 | 13 | 19 | 3 | 0 | 0 | 8 | 22 | .272 | 13 | 2 | 6 | 1 | .347 | 2 | 2 | 1-2 | 51 | 3 | 1 | .982 |
| TOTAL | .236 | 180-176 | 521 | 75 | 123 | 24 | 5 | 8 | 74 | 181 | .347 | 50 | 17 | 66 | 5 | .321 | 4 | 10 | 6-10 | 259 | 259 | 34 | .938 |



24 | **Jena**
YOUNG

Fr. • 5-7 • IF • L/R
Winterset, Iowa | Winterset

Career Highs

R N/A
 H 2, 7x, last vs. Wisconsin (3/23/24)
 2B 1, 3x last vs. Wisconsin (3/23/24)
 3B 1, vs. Pacific (3/15/24)
 HR 1, 2x, last vs. Pacific (3/16/24)
 RBI 3, 2x, last vs. Pacific (3/16/24)
 SB 1, 4x, last vs. Pacific (3/16/24)

2024 GAME-BY-GAME STATS

| Date | Opponent | Pos | AB | R | H | RBI | 2B | 3B | HR | BB | SB | CS | HBP | SAC | SF | GDP | K | PO | A | E | Avg |
|--------|----------------------|------|----|----|----|-----|----|----|----|----|----|----|-----|-----|----|-----|---|----|----|---|------|
| Feb 09 | vs NC State | *SS | 3 | 0 | 2 | 0 | 0 | 0 | 0 | 0 | 0 | 0 | 0 | 0 | 0 | 0 | 0 | 2 | 1 | 0 | .667 |
| Feb 09 | vs Western Kentucky | *SS | 2 | 0 | 1 | 1 | 0 | 0 | 0 | 1 | 0 | 0 | 0 | 0 | 0 | 0 | 0 | 2 | 0 | 0 | .600 |
| Feb 10 | vs N.C. Central | *SS | 2 | 0 | 0 | 0 | 0 | 0 | 0 | 1 | 0 | 0 | 0 | 0 | 0 | 0 | 0 | 3 | 0 | 0 | .429 |
| Feb 10 | vs Notre Dame | *SS | 1 | 0 | 1 | 1 | 0 | 0 | 0 | 1 | 0 | 0 | 0 | 0 | 1 | 0 | 0 | 0 | 4 | 0 | .500 |
| Feb 11 | vs Utah | *SS | 3 | 0 | 0 | 0 | 0 | 0 | 0 | 0 | 0 | 0 | 0 | 0 | 0 | 0 | 0 | 1 | 2 | 1 | .364 |
| Feb 16 | vs Southern Illinois | *SS | 3 | 0 | 1 | 0 | 0 | 0 | 0 | 0 | 0 | 0 | 0 | 0 | 0 | 0 | 0 | 0 | 3 | 0 | .357 |
| Feb 16 | vs Liberty | *SS | 3 | 1 | 2 | 0 | 0 | 0 | 0 | 0 | 0 | 0 | 1 | 0 | 0 | 0 | 0 | 2 | 1 | 0 | .412 |
| Feb 24 | at Jacksonville-1 | *SS | 3 | 0 | 1 | 1 | 0 | 0 | 0 | 0 | 1 | 0 | 0 | 0 | 0 | 0 | 1 | 0 | 2 | 0 | .400 |
| Feb 24 | at Jacksonville-2 | *SS | 4 | 1 | 1 | 0 | 0 | 0 | 0 | 0 | 0 | 0 | 0 | 0 | 0 | 0 | 0 | 1 | 1 | 0 | .375 |
| Feb 25 | vs Harvard | *SS | 4 | 0 | 1 | 0 | 0 | 0 | 0 | 0 | 1 | 0 | 0 | 0 | 0 | 0 | 0 | 1 | 3 | 0 | .357 |
| Feb 25 | at North Florida | *SS | 4 | 0 | 1 | 0 | 1 | 0 | 0 | 0 | 0 | 0 | 0 | 0 | 0 | 0 | 1 | 0 | 3 | 1 | .344 |
| Mar 08 | vs CSUB | *SS | 3 | 1 | 2 | 3 | 0 | 0 | 0 | 0 | 1 | 0 | 1 | 0 | 0 | 0 | 0 | 0 | 2 | 0 | .371 |
| Mar 08 | at San Jose State | *SS | 3 | 0 | 0 | 0 | 0 | 0 | 0 | 0 | 0 | 1 | 0 | 1 | 0 | 0 | 0 | 6 | 2 | 0 | .342 |
| Mar 09 | at Santa Clara-1 | *SS | 3 | 2 | 1 | 0 | 0 | 0 | 0 | 1 | 0 | 0 | 0 | 0 | 0 | 0 | 1 | 1 | 4 | 0 | .341 |
| Mar 09 | at Santa Clara-2 | *SS | 3 | 0 | 0 | 0 | 0 | 0 | 0 | 0 | 0 | 0 | 0 | 0 | 0 | 0 | 0 | 2 | 0 | 1 | .318 |
| Mar 10 | vs Loyola Marymount | *2b | 1 | 0 | 0 | 0 | 0 | 0 | 0 | 1 | 0 | 0 | 0 | 0 | 0 | 0 | 0 | 2 | 1 | 1 | .311 |
| Mar 11 | at UC Davis | *SS | 4 | 0 | 2 | 0 | 0 | 0 | 0 | 0 | 0 | 0 | 0 | 0 | 0 | 0 | 0 | 5 | 1 | 0 | .327 |
| Mar 13 | at Saint Mary's | *SS | 3 | 1 | 1 | 1 | 1 | 0 | 0 | 0 | 0 | 0 | 0 | 0 | 0 | 0 | 0 | 2 | 6 | 0 | .327 |
| Mar 15 | at Pacific | *2b | 4 | 2 | 2 | 3 | 0 | 1 | 1 | 0 | 0 | 0 | 0 | 0 | 0 | 0 | 0 | 1 | 2 | 0 | .339 |
| Mar 15 | vs Sacramento State | *2b | 2 | 0 | 1 | 0 | 0 | 0 | 0 | 1 | 0 | 0 | 0 | 0 | 0 | 0 | 0 | 3 | 0 | 0 | .345 |
| Mar 16 | at Pacific | *2b | 2 | 2 | 1 | 1 | 0 | 0 | 1 | 2 | 1 | 0 | 0 | 0 | 0 | 0 | 0 | 2 | 0 | 0 | .350 |
| Mar 16 | vs Sacramento State | *2b | 3 | 1 | 1 | 0 | 0 | 0 | 0 | 0 | 0 | 0 | 0 | 1 | 0 | 0 | 0 | 0 | 1 | 0 | .349 |
| Mar 21 | WISCONSIN | *2b | 3 | 1 | 2 | 0 | 1 | 0 | 0 | 0 | 0 | 0 | 0 | 0 | 0 | 0 | 0 | 2 | 3 | 0 | .364 |
| Mar 23 | WISCONSIN-1 | *2b | 3 | 2 | 2 | 0 | 0 | 0 | 0 | 1 | 0 | 0 | 1 | 0 | 0 | 0 | 0 | 0 | 0 | 0 | .377 |
| Mar 23 | WISCONSIN-2 | *2b | 3 | 0 | 1 | 0 | 0 | 0 | 0 | 0 | 0 | 0 | 0 | 0 | 0 | 0 | 0 | 5 | 0 | 0 | .375 |
| Mar 29 | MICHIGAN STATE | *2b | 4 | 1 | 2 | 0 | 1 | 0 | 0 | 0 | 0 | 0 | 0 | 0 | 0 | 0 | 1 | 2 | 0 | 0 | .382 |
| Mar 30 | MICHIGAN STATE-1 | *2b | 2 | 0 | 0 | 0 | 0 | 0 | 0 | 1 | 0 | 0 | 0 | 0 | 0 | 0 | 0 | 1 | 2 | 0 | .372 |
| Mar 30 | MICHIGAN STATE-2 | *2b | 3 | 1 | 1 | 0 | 0 | 1 | 0 | 0 | 0 | 0 | 0 | 1 | 0 | 0 | 0 | 5 | 2 | 0 | .370 |
| Totals | | 28gs | 81 | 16 | 30 | 11 | 4 | 2 | 2 | 10 | 4 | 1 | 3 | 3 | 1 | 0 | 4 | 51 | 46 | 4 | .370 |

On base pct. .453 • Slugging pct. .543

CAREER STATS

| Year | avg | gp-gs | ab | r | h | 2b | 3b | hr | rbi | tb | slg% | bb | hbp | so | gdp | ob% | sf | sh | sb-att | po | a | e | fld% |
|-------|------|-------|----|----|----|----|----|----|-----|----|------|----|-----|----|-----|------|----|----|--------|----|----|---|------|
| 2024 | .375 | 25-25 | 72 | 14 | 27 | 3 | 1 | 2 | 11 | 38 | .528 | 9 | 3 | 3 | 0 | .459 | 1 | 2 | 4-5 | 43 | 42 | 4 | .955 |
| TOTAL | .375 | 25-25 | 72 | 14 | 27 | 3 | 1 | 2 | 11 | 38 | .528 | 9 | 3 | 3 | 0 | .459 | 1 | 2 | 4-5 | 43 | 42 | 4 | .955 |



25 **Devyn GREER**

Jr. • 5-6 • RHP • L/R
 Huntington Beach, California | Huntington Beach

Career Highs

IP 7.0, vs. UM-Kansas City, 3/15/22
 SO 5, vs. CSUN, 2/25/23
 H 4, vs. Wisconsin (3/23/24)
 RBI 4, vs. Wisconsin (3/23/24)

2024 GAME-BY-GAME STATS

| Date | Opponent | Pos | AB | R | H | RBI | 2B | 3B | HR | BB | SB | CS | HBP | SAC | SF | GDP | K | PO | A | E | Avg | |
|--------|----------------------|------|----|---|----|-----|----|----|----|----|----|----|-----|-----|----|-----|---|----|---|---|-----|------|
| Feb 09 | vs NC State | *dh | 3 | 0 | 1 | 0 | 0 | 0 | 0 | 0 | 0 | 0 | 0 | 0 | 0 | 0 | 0 | 0 | 0 | 0 | 0 | .333 |
| Feb 09 | vs Western Kentucky | *p | 2 | 0 | 1 | 1 | 0 | 0 | 0 | 0 | 0 | 0 | 0 | 0 | 0 | 0 | 1 | 0 | 1 | 0 | 0 | .400 |
| Feb 10 | vs N.C. Central | *dh | 4 | 0 | 0 | 0 | 0 | 0 | 0 | 0 | 0 | 0 | 0 | 0 | 0 | 0 | 0 | 0 | 0 | 0 | 0 | .222 |
| Feb 10 | vs Notre Dame | ph/p | 1 | 0 | 0 | 0 | 0 | 0 | 0 | 0 | 0 | 0 | 0 | 0 | 0 | 0 | 0 | 0 | 0 | 0 | 0 | .200 |
| Feb 16 | vs Southern Illinois | *p | 2 | 0 | 0 | 0 | 0 | 0 | 0 | 0 | 0 | 0 | 0 | 0 | 0 | 0 | 1 | 0 | 0 | 0 | 0 | .167 |
| Feb 24 | at Jacksonville-2 | *p | 2 | 0 | 1 | 0 | 0 | 0 | 0 | 0 | 0 | 0 | 0 | 0 | 0 | 0 | 0 | 0 | 1 | 0 | 0 | .214 |
| Mar 08 | vs CSUB | *p | 3 | 0 | 2 | 1 | 0 | 0 | 0 | 0 | 0 | 0 | 0 | 0 | 0 | 0 | 1 | 0 | 3 | 0 | 0 | .294 |
| Mar 08 | at San Jose State | *dh | 4 | 0 | 1 | 2 | 0 | 0 | 0 | 0 | 0 | 0 | 0 | 0 | 0 | 0 | 0 | 0 | 0 | 0 | 0 | .286 |
| Mar 09 | at Santa Clara-1 | *dh | 4 | 0 | 1 | 1 | 0 | 0 | 0 | 0 | 0 | 0 | 0 | 0 | 0 | 0 | 1 | 0 | 0 | 0 | 0 | .280 |
| Mar 09 | at Santa Clara-2 | *p | 1 | 0 | 0 | 0 | 0 | 0 | 0 | 0 | 0 | 0 | 0 | 0 | 0 | 0 | 0 | 0 | 0 | 0 | 0 | .269 |
| Mar 23 | WISCONSIN-1 | *dh | 4 | 0 | 4 | 4 | 2 | 0 | 0 | 0 | 0 | 0 | 0 | 0 | 0 | 0 | 0 | 0 | 0 | 0 | 0 | .367 |
| Mar 23 | WISCONSIN-2 | *dh | 3 | 0 | 0 | 0 | 0 | 0 | 0 | 0 | 0 | 0 | 0 | 0 | 0 | 0 | 2 | 0 | 0 | 0 | 0 | .333 |
| Mar 29 | MICHIGAN STATE | *dh | 3 | 0 | 0 | 0 | 0 | 0 | 0 | 0 | 0 | 0 | 0 | 0 | 0 | 0 | 1 | 0 | 0 | 0 | 0 | .306 |
| Mar 30 | MICHIGAN STATE-1 | *dh | 2 | 0 | 1 | 0 | 0 | 0 | 0 | 0 | 0 | 0 | 1 | 0 | 0 | 0 | 0 | 0 | 0 | 0 | 0 | .316 |
| Mar 30 | MICHIGAN STATE-2 | *dh | 3 | 0 | 0 | 0 | 0 | 0 | 0 | 0 | 0 | 0 | 0 | 0 | 0 | 0 | 1 | 0 | 0 | 0 | 0 | .293 |
| Totals | | 14gs | 41 | 0 | 12 | 9 | 2 | 0 | 0 | 0 | 0 | 0 | 1 | 0 | 0 | 0 | 8 | 0 | 5 | 0 | 0 | .293 |

On base pct. .310 • Slugging pct. .341

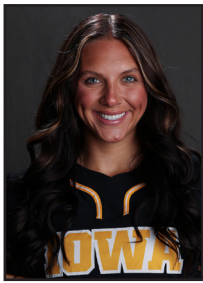
#25 Devyn Greer - 6 appearances (All games)

| Date | Opponent | GS | IP | H | R | ER | BB | SO | 2B | 3B | HR | WP | BK | HBP | IBB | Score | W-L | Sv | ERA | NP |
|--------|----------------------|----|------|----|---|----|----|----|----|----|----|----|----|-----|-----|-------|-----|----|------|----|
| Feb 09 | vs Western Kentucky | * | 5.0 | 4 | 0 | 0 | 0 | 2 | 0 | 0 | 0 | 0 | 0 | 0 | 0 | 8-0 | 1-0 | 0 | 0.00 | 62 |
| Feb 10 | vs Notre Dame | * | 1.0 | 1 | 2 | 1 | 2 | 0 | 0 | 0 | 0 | 1 | 0 | 0 | 0 | 4-5 | 1-1 | 0 | 1.17 | 23 |
| Feb 16 | vs Southern Illinois | * | 5.1 | 3 | 3 | 0 | 2 | 2 | 0 | 0 | 0 | 2 | 0 | 2 | 0 | 1-4 | 1-2 | 0 | 0.62 | 46 |
| Feb 24 | at Jacksonville-2 | * | 5.2 | 4 | 1 | 1 | 2 | 3 | 1 | 0 | 0 | 0 | 0 | 0 | 0 | 4-2 | 1-2 | 0 | 0.82 | 87 |
| Mar 08 | vs CSUB | * | 4.0 | 5 | 1 | 1 | 0 | 4 | 0 | 1 | 0 | 1 | 0 | 0 | 0 | 17-1 | 2-2 | 0 | 1.00 | 66 |
| Mar 09 | at Santa Clara-2 | * | 2.0 | 3 | 2 | 0 | 0 | 0 | 0 | 0 | 0 | 0 | 0 | 0 | 0 | 2-3 | 2-3 | 0 | 0.91 | 36 |
| Totals | | 5 | 23.0 | 20 | 9 | 3 | 6 | 11 | 1 | 1 | 0 | 4 | 0 | 2 | 0 | 36-15 | 2-3 | 0 | 0.91 | - |

CAREER STATS

| Year | avg | gp-gs | ab | r | h | 2b | 3b | hr | rbi | tb | slg% | bb | hbp | so | gdp | ob% | sf | sh | sb-att | po | a | e | fld% |
|-------|------|-------|----|---|----|----|----|----|-----|----|------|----|-----|----|-----|------|----|----|--------|----|----|---|-------|
| 2022 | .000 | 14-10 | 4 | 0 | 0 | 0 | 0 | 0 | 0 | 0 | .000 | 0 | 0 | 2 | 0 | .000 | 0 | 0 | 0-0 | 0 | 6 | 0 | 1.000 |
| 2023 | .000 | 1-1 | 0 | 0 | 0 | 0 | 0 | 0 | 0 | 0 | .000 | 0 | 0 | 0 | 0 | .000 | 0 | 0 | 0-0 | 2 | 6 | 0 | 1.000 |
| 2024 | .333 | 12-11 | 33 | 0 | 11 | 2 | 0 | 0 | 9 | 13 | .394 | 0 | 0 | 6 | 0 | .333 | 0 | 0 | 0-0 | 0 | 5 | 0 | 1.000 |
| TOTAL | .297 | 27-22 | 37 | 0 | 11 | 2 | 0 | 0 | 9 | 13 | .351 | 0 | 0 | 8 | 0 | .297 | 0 | 0 | 0-0 | 2 | 17 | 0 | 1.000 |

| Year | era | w-l | app | gs | cg | sho | sv | ip | h | r | er | bb | so | 2b | 3b | hr | bf | bavg | wp | hbp | bk | sfa | sha |
|-------|------|------|-----|----|----|-----|----|-------|-----|----|----|----|----|----|----|----|-----|------|----|-----|----|-----|-----|
| 2022 | 7.19 | 3-5 | 22 | 6 | 1 | 1/2 | 0 | 48.2 | 67 | 53 | 50 | 29 | 23 | 11 | 3 | 7 | 244 | .322 | 6 | 3 | 0 | 0 | 4 |
| 2023 | 3.41 | 4-2 | 12 | 7 | 1 | 0/2 | 0 | 37.0 | 44 | 21 | 18 | 15 | 26 | 6 | 2 | 3 | 169 | .312 | 7 | 5 | 0 | 2 | 6 |
| 2024 | 0.91 | 2-3 | 6 | 5 | 1 | 1/0 | 0 | 23.0 | 20 | 9 | 3 | 6 | 11 | 1 | 1 | 0 | 99 | .225 | 4 | 2 | 0 | 1 | 1 |
| TOTAL | 4.57 | 9-10 | 40 | 18 | 3 | 2/4 | 0 | 108.2 | 131 | 83 | 71 | 50 | 60 | 18 | 6 | 10 | 512 | .299 | 17 | 10 | 0 | 3 | 11 |



26 **Bridget**
STOVER

So • 5-10 • C • R/R
Winterset, Iowa | Winterset

Career Highs

| | |
|-----------|-----|
| R | N/A |
| H | N/A |
| 2B | N/A |
| 3B | N/A |
| HR | N/A |
| RBI | N/A |
| SB | N/A |

2024 GAME-BY-GAME STATS

| Game | Year | Day | Opp | ab | r | h | 2b | 3b | hr | rbi | tb | slg% | bb | hbp | so | gdp | ob% | sf | sh | sb-att | po | a | e | fld% | |
|----------------------------------|------|-----|-----|----|---|---|----|----|----|-----|----|------|----|-----|----|-----|-----|----|----|--------|----|---|---|------|--|
| [Empty Game-by-Game Stats Table] | | | | | | | | | | | | | | | | | | | | | | | | | |

CAREER STATS

| Year | avg | gp-gs | ab | r | h | 2b | 3b | hr | rbi | tb | slg% | bb | hbp | so | gdp | ob% | sf | sh | sb-att | po | a | e | fld% |
|-------|-------|-------|----|---|---|----|----|----|-----|----|-------|----|-----|----|-----|-------|----|----|--------|----|---|---|-------|
| 2023 | 1.000 | 2-0 | 1 | 0 | 1 | 0 | 0 | 0 | 0 | 1 | 1.000 | 0 | 0 | 0 | 0 | 1.000 | 0 | 0 | 0-0 | 1 | 0 | 0 | 1.000 |
| TOTAL | 1.000 | 2-0 | 1 | 0 | 1 | 0 | 0 | 0 | 0 | 1 | 1.000 | 0 | 0 | 0 | 0 | 1.000 | 0 | 0 | 0-0 | 1 | 0 | 0 | 1.000 |



27 | **Amber**
DESENA

Sr. • 5-6 • IF • R/R
Concord, California | Concord

Career Highs

R 1, 8x, last vs. Minnesota, 4/9/22
 H 2, 2x, last vs. Sam Houston, 3/19/22
 2B 2, vs. Sam Houston, 3/19/22
 3B N/A
 HR N/A
 RBI 2, vs. Wisconsin, 3/25/22
 SB 1, 4x, last vs. Wisconsin, 3/25/22

2024 GAME-BY-GAME STATS

| Year | avg | gp-gs | ab | r | h | 2b | 3b | hr | rbi | tb | slg% | bb | hbp | so | gdp | ob% | sf | sh | sb-att | po | a | e | fld% |
|-------|------|-------|-----|----|----|----|----|----|-----|----|------|----|-----|----|-----|------|----|----|--------|----|----|---|-------|
| 2021 | .094 | 26-12 | 32 | 8 | 3 | 1 | 0 | 0 | 1 | 4 | .125 | 3 | 0 | 11 | 1 | .171 | 0 | 0 | 2-2 | 14 | 12 | 1 | .963 |
| 2022 | .208 | 35-33 | 77 | 5 | 16 | 6 | 0 | 0 | 8 | 22 | .286 | 7 | 1 | 17 | 0 | .282 | 0 | 2 | 1-2 | 22 | 49 | 5 | .934 |
| 2023 | .000 | 4-0 | 2 | 1 | 0 | 0 | 0 | 0 | 0 | 0 | .000 | 1 | 0 | 1 | 0 | .333 | 0 | 1 | 0-0 | 1 | 1 | 0 | 1.000 |
| TOTAL | .171 | 65-45 | 111 | 14 | 19 | 7 | 0 | 0 | 9 | 26 | .234 | 11 | 1 | 29 | 1 | .252 | 0 | 3 | 3-4 | 37 | 62 | 6 | .943 |

CAREER STATS

| Year | avg | gp-gs | ab | r | h | 2b | 3b | hr | rbi | tb | slg% | bb | hbp | so | gdp | ob% | sf | sh | sb-att | po | a | e | fld% |
|-------|------|-------|-----|----|----|----|----|----|-----|----|------|----|-----|----|-----|------|----|----|--------|----|----|---|-------|
| 2021 | .094 | 26-12 | 32 | 8 | 3 | 1 | 0 | 0 | 1 | 4 | .125 | 3 | 0 | 11 | 1 | .171 | 0 | 0 | 2-2 | 14 | 12 | 1 | .963 |
| 2022 | .208 | 35-33 | 77 | 5 | 16 | 6 | 0 | 0 | 8 | 22 | .286 | 7 | 1 | 17 | 0 | .282 | 0 | 2 | 1-2 | 22 | 49 | 5 | .934 |
| 2023 | .000 | 4-0 | 2 | 1 | 0 | 0 | 0 | 0 | 0 | 0 | .000 | 1 | 0 | 1 | 0 | .333 | 0 | 1 | 0-0 | 1 | 1 | 0 | 1.000 |
| TOTAL | .171 | 65-45 | 111 | 14 | 19 | 7 | 0 | 0 | 9 | 26 | .234 | 11 | 1 | 29 | 1 | .252 | 0 | 3 | 3-4 | 37 | 62 | 6 | .943 |



28 **Avery JACKSON**

So. • 5-3 • IF • R/R
Kankakee, Illinois | Kankakee

Career Highs

R 2, vs. Syracuse (2/18/23)
H 2, 2x, last vs. BCU (2/24/23)
2B 1, 3x, last vs. Wisconsin (3/23/24)
3B 1, 2x, last vs. Syracuse (2/18/23)
HR 1, vs. Bethune-Cookman (2/24/23)
RBI 2, 6x, last vs. Wisconsin (3/23/24)

2024 GAME-BY-GAME STATS

| Date | Opponent | Pos | AB | R | H | RBI | 2B | 3B | HR | BB | SB | CS | HBP | SAC | SF | GDP | K | PO | A | E | Avg |
|--------|---------------------|------|----|---|---|-----|----|----|----|----|----|----|-----|-----|----|-----|---|----|----|---|------|
| Mar 10 | vs Loyola Marymount | *3b | 1 | 0 | 0 | 0 | 0 | 0 | 0 | 0 | 0 | 0 | 0 | 0 | 0 | 0 | 1 | 1 | 3 | 0 | .000 |
| Mar 15 | at Pacific | *3b | 3 | 0 | 0 | 0 | 0 | 0 | 0 | 0 | 0 | 0 | 0 | 0 | 0 | 0 | 2 | 4 | 1 | 0 | .000 |
| Mar 15 | vs Sacramento State | *3b | 3 | 0 | 0 | 0 | 0 | 0 | 0 | 0 | 0 | 0 | 0 | 0 | 0 | 0 | 2 | 0 | 3 | 0 | .000 |
| Mar 16 | at Pacific | *3b | 4 | 0 | 1 | 2 | 1 | 0 | 0 | 0 | 0 | 0 | 0 | 0 | 0 | 0 | 1 | 0 | 2 | 0 | .091 |
| Mar 16 | vs Sacramento State | *3b | 2 | 0 | 0 | 0 | 0 | 0 | 0 | 0 | 0 | 0 | 0 | 0 | 0 | 0 | 0 | 5 | 2 | 0 | .077 |
| Mar 21 | WISCONSIN | *3b | 2 | 0 | 0 | 0 | 0 | 0 | 0 | 0 | 0 | 0 | 0 | 0 | 0 | 1 | 1 | 3 | 2 | 1 | .067 |
| Mar 23 | WISCONSIN-1 | *3b | 2 | 0 | 1 | 2 | 1 | 0 | 0 | 0 | 0 | 0 | 2 | 0 | 0 | 0 | 0 | 2 | 2 | 0 | .118 |
| Mar 23 | WISCONSIN-2 | *3b | 2 | 0 | 0 | 0 | 0 | 0 | 0 | 0 | 0 | 0 | 0 | 0 | 0 | 0 | 0 | 2 | 4 | 0 | .105 |
| Mar 29 | MICHIGAN STATE | *3b | 2 | 0 | 0 | 0 | 0 | 0 | 0 | 0 | 0 | 0 | 0 | 0 | 0 | 0 | 1 | 1 | 1 | 0 | .095 |
| Mar 30 | MICHIGAN STATE-1 | *3b | 0 | 0 | 0 | 0 | 0 | 0 | 0 | 0 | 0 | 0 | 0 | 1 | 0 | 0 | 0 | 1 | 4 | 0 | .095 |
| Totals | | 11gs | 21 | 1 | 2 | 4 | 2 | 0 | 0 | 0 | 0 | 0 | 2 | 1 | 0 | 1 | 8 | 19 | 28 | 1 | .095 |

On base pct. .174 • Slugging pct. .190

CAREER STATS

| Year | avg | gp-gs | ab | r | h | 2b | 3b | hr | rbi | tb | slg% | bb | hbp | so | gdp | ob% | sf | sh | sb-att | po | a | e | fld% |
|-------|------|-------|-----|----|----|----|----|----|-----|----|------|----|-----|----|-----|------|----|----|--------|----|----|----|------|
| 2023 | .144 | 47-38 | 104 | 12 | 15 | 1 | 2 | 1 | 12 | 23 | .221 | 8 | 2 | 28 | 0 | .216 | 2 | 4 | 1-1 | 61 | 74 | 12 | .918 |
| 2024 | .105 | 14-8 | 19 | 1 | 2 | 2 | 0 | 0 | 4 | 4 | .211 | 0 | 2 | 7 | 1 | .190 | 0 | 0 | 0-0 | 17 | 19 | 1 | .973 |
| TOTAL | .138 | 61-46 | 123 | 13 | 17 | 3 | 2 | 1 | 16 | 27 | .220 | 8 | 4 | 35 | 1 | .212 | 2 | 4 | 1-1 | 78 | 93 | 13 | .929 |



33 Echo
MATTHEO

So. • 5-7 • OF • L/R
Mesa, Arizona | Red Mountain

Career Highs

R 1, 8x, last vs. Wisconsin (3/23/24)
H 3, vs. Stony Brook (2/12/23)
2B N/A
3B N/A
HR N/A
RBI 1, 5x, last vs. Wisconsin (3/23/23)

2024 GAME-BY-GAME STATS

| Date | Opponent | Pos | AB | R | H | RBI | 2B | 3B | HR | BB | SB | CS | HBP | SAC | SF | GDP | K | PO | A | E | Avg | |
|--------|---------------------|-----|----|---|---|-----|----|----|----|----|----|----|-----|-----|----|-----|---|----|---|---|-----|------|
| Feb 16 | vs Liberty | pr | 1 | 1 | 0 | 0 | 0 | 0 | 0 | 0 | 0 | 0 | 0 | 0 | 0 | 0 | 0 | 0 | 0 | 0 | 0 | .000 |
| Mar 15 | at Pacific | *of | 3 | 1 | 1 | 1 | 0 | 0 | 0 | 0 | 0 | 0 | 0 | 0 | 0 | 0 | 0 | 5 | 0 | 0 | 0 | .250 |
| Mar 15 | vs Sacramento State | *of | 2 | 0 | 0 | 0 | 0 | 0 | 0 | 0 | 0 | 0 | 0 | 0 | 0 | 0 | 0 | 2 | 1 | 0 | 0 | .167 |
| Mar 16 | at Pacific | *of | 3 | 1 | 1 | 0 | 0 | 0 | 0 | 0 | 2 | 0 | 0 | 0 | 0 | 0 | 0 | 0 | 0 | 0 | 0 | .222 |
| Mar 16 | vs Sacramento State | *of | 2 | 1 | 0 | 0 | 0 | 0 | 0 | 1 | 0 | 0 | 0 | 0 | 0 | 0 | 0 | 1 | 0 | 0 | 0 | .182 |
| Mar 21 | WISCONSIN | *of | 2 | 1 | 1 | 0 | 0 | 0 | 0 | 0 | 0 | 0 | 0 | 0 | 0 | 0 | 0 | 2 | 0 | 0 | 0 | .231 |
| Mar 23 | WISCONSIN-1 | *of | 1 | 0 | 0 | 1 | 0 | 0 | 0 | 2 | 0 | 0 | 0 | 0 | 0 | 0 | 0 | 0 | 0 | 0 | 0 | .214 |
| Mar 23 | WISCONSIN-2 | *of | 2 | 0 | 0 | 0 | 0 | 0 | 0 | 0 | 0 | 0 | 0 | 0 | 0 | 0 | 0 | 1 | 0 | 0 | 0 | .188 |
| Mar 29 | MICHIGAN STATE | *of | 2 | 0 | 0 | 0 | 0 | 0 | 0 | 0 | 0 | 0 | 0 | 0 | 0 | 0 | 1 | 1 | 0 | 0 | 0 | .167 |
| Totals | | 8gs | 18 | 8 | 3 | 2 | 0 | 0 | 0 | 3 | 3 | 0 | 0 | 0 | 0 | 0 | 3 | 11 | 0 | 0 | 0 | .167 |

On base pct. .286 • Slugging pct. .167

CAREER STATS

| Year | avg | gp-gs | ab | r | h | 2b | 3b | hr | rbi | tb | slg% | bb | hbp | so | gdp | ob% | sf | sh | sb-att | po | a | e | fld% |
|-------|------|-------|----|----|----|----|----|----|-----|----|------|----|-----|----|-----|------|----|----|--------|----|---|---|-------|
| 2023 | .222 | 29-24 | 45 | 4 | 10 | 0 | 0 | 0 | 4 | 10 | .222 | 2 | 0 | 14 | 0 | .255 | 0 | 2 | 1-1 | 36 | 1 | 1 | .974 |
| 2024 | .188 | 16-7 | 16 | 7 | 3 | 0 | 0 | 0 | 2 | 3 | .188 | 3 | 0 | 2 | 0 | .316 | 0 | 0 | 3-3 | 10 | 0 | 0 | 1.000 |
| TOTAL | .213 | 45-31 | 61 | 11 | 13 | 0 | 0 | 0 | 6 | 13 | .213 | 5 | 0 | 16 | 0 | .273 | 0 | 2 | 4-4 | 46 | 1 | 1 | .979 |



34 **Jaylee**
OJO

Fr. • 5-11 • RHP • R/R

Sacramento, California | Sheldon

Career Highs

IP 7.0, vs. Sacramento St. (3/15/24)
SO 9, vs. Michigan St. (3/30/24)

2024 GAME-BY-GAME STATS

| Date | Opponent | GS | IP | H | R | ER | BB | SO | 2B | 3B | HR | WP | BK | HBP | IBB | Score | W-L | Sv | ERA | NP |
|--------|---------------------|----|------|----|----|----|----|----|----|----|----|----|----|-----|-----|-------|-----|----|------|-----|
| Feb 10 | vs N.C. Central | * | 1.2 | 0 | 0 | 0 | 5 | 3 | 0 | 0 | 0 | 1 | 0 | 0 | 0 | 4-1 | 0-0 | 0 | 0.00 | 46 |
| Feb 24 | at Jacksonville-1 | | 2.0 | 2 | 0 | 0 | 2 | 5 | 0 | 0 | 0 | 0 | 0 | 1 | 0 | 5-3 | 0-0 | 1 | 0.00 | 49 |
| Feb 25 | vs Harvard | * | 2.0 | 3 | 4 | 4 | 2 | 3 | 0 | 0 | 1 | 0 | 0 | 0 | 0 | 2-8 | 0-1 | 1 | 4.94 | 49 |
| Mar 09 | at Santa Clara-2 | | 4.0 | 3 | 1 | 0 | 0 | 6 | 0 | 0 | 0 | 0 | 0 | 0 | 0 | 2-3 | 0-1 | 1 | 2.90 | 66 |
| Mar 10 | vs Loyola Marymount | | 0.0 | 1 | 5 | 5 | 4 | 0 | 0 | 0 | 0 | 1 | 0 | 0 | 0 | 1-14 | 0-1 | 1 | 6.52 | 27 |
| Mar 15 | vs Sacramento State | * | 7.0 | 1 | 0 | 0 | 4 | 4 | 1 | 0 | 0 | 0 | 0 | 0 | 0 | 1-0 | 1-1 | 1 | 3.78 | 107 |
| Mar 16 | at Pacific | * | 4.0 | 1 | 0 | 0 | 2 | 7 | 0 | 0 | 0 | 0 | 0 | 0 | 0 | 10-1 | 2-1 | 1 | 3.05 | 76 |
| Mar 23 | WISCONSIN-1 | * | 4.1 | 7 | 4 | 4 | 3 | 4 | 3 | 1 | 0 | 1 | 0 | 0 | 0 | 10-4 | 3-1 | 1 | 3.64 | - |
| Mar 30 | MICHIGAN STATE-1 | * | 6.1 | 5 | 6 | 5 | 6 | 9 | 0 | 0 | 1 | 0 | 0 | 0 | 0 | 2-8 | 3-2 | 1 | 4.02 | 131 |
| Totals | | 6 | 31.1 | 23 | 20 | 18 | 28 | 41 | 4 | 1 | 2 | 3 | 0 | 1 | 0 | 37-42 | 3-2 | 1 | 4.02 | - |

CAREER STATS

| Year | era | w-l | app | gs | cg | sho | sv | ip | h | r | er | bb | so | 2b | 3b | hr | bf | bavg | wp | hbp | bk | sfa | sha |
|-------|------|-----|-----|----|----|-----|----|------|----|----|----|----|----|----|----|----|-----|------|----|-----|----|-----|-----|
| 2024 | 3.64 | 3-1 | 8 | 5 | 1 | 1/0 | 1 | 25.0 | 18 | 14 | 13 | 22 | 32 | 4 | 1 | 1 | 114 | .205 | 3 | 1 | 0 | 0 | 3 |
| TOTAL | 3.64 | 3-1 | 8 | 5 | 1 | 1/0 | 1 | 25.0 | 18 | 14 | 13 | 22 | 32 | 4 | 1 | 1 | 114 | .205 | 3 | 1 | 0 | 0 | 3 |



95 Devin **BOWMAN**

Fr. • 5-4 • IF • R/R
Mesa, Arizona | Mountain View

Career Highs

R N/A
 H 1, 7x, last vs. Harvard (2/24/24)
 2B N/A
 3B N/A
 HR N/A
 RBI 2, 2x, last vs. Notre Dame (2/10/24)

2024 GAME-BY-GAME STATS

| Date | Opponent | Pos | AB | R | H | RBI | 2B | 3B | HR | BB | SB | CS | HBP | SAC | SF | GDP | K | PO | A | E | Avg |
|--------|----------------------|------|----|---|---|-----|----|----|----|----|----|----|-----|-----|----|-----|----|----|---|---|-------|
| Feb 09 | vs NC State | ph | 1 | 0 | 1 | 2 | 0 | 0 | 0 | 0 | 0 | 0 | 0 | 0 | 0 | 0 | 0 | 0 | 0 | 0 | 1.000 |
| Feb 09 | vs Western Kentucky | *dh | 2 | 0 | 1 | 0 | 0 | 0 | 0 | 1 | 0 | 0 | 0 | 0 | 0 | 0 | 1 | 0 | 0 | 0 | .667 |
| Feb 10 | vs N.C. Central | ph | 1 | 0 | 0 | 0 | 0 | 0 | 0 | 0 | 0 | 0 | 0 | 0 | 0 | 0 | 0 | 0 | 0 | 0 | .500 |
| Feb 10 | vs Notre Dame | *dh | 3 | 0 | 1 | 2 | 0 | 0 | 0 | 0 | 0 | 0 | 0 | 0 | 0 | 0 | 1 | 0 | 0 | 0 | .429 |
| Feb 11 | vs Utah | *dh | 3 | 0 | 0 | 0 | 0 | 0 | 0 | 0 | 0 | 0 | 0 | 0 | 0 | 0 | 0 | 0 | 0 | 0 | .300 |
| Feb 16 | vs Southern Illinois | *dh | 3 | 0 | 1 | 1 | 1 | 0 | 0 | 0 | 0 | 0 | 0 | 0 | 0 | 0 | 2 | 0 | 0 | 0 | .308 |
| Feb 16 | vs Liberty | *dh | 2 | 0 | 1 | 0 | 0 | 0 | 0 | 1 | 0 | 0 | 0 | 0 | 0 | 0 | 0 | 0 | 0 | 0 | .333 |
| Feb 24 | at Jacksonville-1 | *dh | 3 | 0 | 1 | 1 | 0 | 0 | 0 | 1 | 0 | 0 | 0 | 0 | 0 | 0 | 1 | 0 | 0 | 0 | .333 |
| Feb 24 | at Jacksonville-2 | *dh | 4 | 0 | 0 | 0 | 0 | 0 | 0 | 0 | 0 | 0 | 0 | 0 | 0 | 0 | 0 | 0 | 0 | 0 | .273 |
| Feb 25 | vs Harvard | *dh | 4 | 1 | 1 | 1 | 0 | 1 | 0 | 0 | 0 | 0 | 0 | 0 | 0 | 0 | 2 | 0 | 0 | 0 | .269 |
| Feb 25 | at North Florida | *dh | 2 | 0 | 0 | 0 | 0 | 0 | 0 | 2 | 0 | 0 | 0 | 0 | 0 | 0 | 1 | 0 | 0 | 0 | .250 |
| Mar 08 | vs CSUB | *dh | 2 | 0 | 1 | 0 | 0 | 0 | 0 | 0 | 0 | 0 | 0 | 0 | 0 | 0 | 1 | 0 | 0 | 0 | .267 |
| Mar 09 | at Santa Clara-2 | *of | 3 | 0 | 0 | 0 | 0 | 0 | 0 | 0 | 0 | 0 | 0 | 0 | 0 | 0 | 0 | 2 | 0 | 0 | .242 |
| Mar 10 | vs Loyola Marymount | *of | 2 | 0 | 0 | 0 | 0 | 0 | 0 | 0 | 0 | 0 | 0 | 0 | 0 | 0 | 1 | 1 | 0 | 0 | .229 |
| Mar 11 | at UC Davis | *of | 2 | 0 | 0 | 0 | 0 | 0 | 0 | 1 | 0 | 0 | 0 | 1 | 0 | 0 | 1 | 3 | 0 | 0 | .216 |
| Mar 16 | vs Sacramento State | ph | 1 | 0 | 0 | 0 | 0 | 0 | 0 | 0 | 0 | 0 | 0 | 0 | 0 | 0 | 1 | 0 | 0 | 0 | .211 |
| Mar 29 | MICHIGAN STATE | ph | 0 | 0 | 0 | 0 | 0 | 0 | 0 | 0 | 0 | 0 | 0 | 1 | 0 | 0 | 0 | 0 | 0 | 0 | .211 |
| Mar 30 | MICHIGAN STATE-1 | ph | 1 | 0 | 0 | 0 | 0 | 0 | 0 | 0 | 0 | 0 | 0 | 0 | 0 | 0 | 0 | 0 | 0 | 0 | .205 |
| Totals | | 13gs | 39 | 1 | 8 | 7 | 1 | 1 | 0 | 6 | 0 | 0 | 0 | 2 | 0 | 0 | 12 | 6 | 0 | 0 | .205 |

On base pct. .311 • Slugging pct. .282

CAREER STATS

| Year | avg | gp-gs | ab | r | h | 2b | 3b | hr | rbi | tb | slg% | bb | hbp | so | gdp | ob% | sf | sh | sb-att | po | a | e | fld% |
|-------|------|-------|----|---|---|----|----|----|-----|----|------|----|-----|----|-----|------|----|----|--------|----|---|---|-------|
| 2024 | .205 | 18-13 | 39 | 1 | 8 | 1 | 1 | 0 | 7 | 11 | .282 | 6 | 0 | 12 | 0 | .311 | 0 | 2 | 0-0 | 6 | 0 | 0 | 1.000 |
| TOTAL | .205 | 18-13 | 39 | 1 | 8 | 1 | 1 | 0 | 7 | 11 | .282 | 6 | 0 | 12 | 0 | .311 | 0 | 2 | 0-0 | 6 | 0 | 0 | 1.000 |