



IOWA SOFTBALL

4 Women's College World Series appearances
16 NCAA Tournament berths



4 Big Ten regular season championships
2 Big Ten Tournament championships

WEEK 1

FEB. 4, 2015

2015 SCHEDULE (0-0, 0-0)

UNI DOME TOURNAMENT (Cedar Falls, Iowa)

Feb. 6	vs. Drake	5:45 p.m.
Feb. 6	at Northern Iowa	8 p.m.
Feb. 7	vs. Southern Utah	12:45 p.m.
Feb. 7	vs. North Dakota State	3 p.m.
Feb. 8	vs. Green Bay	10 a.m.

UNIVERSITY OF FLORIDA TOURNAMENT (Gainesville, Fla.)

Feb. 14	vs. North Carolina State	9:30 a.m.
Feb. 14	at Florida	3 p.m.
Feb. 15	at Florida	8:30 a.m.

RAGIN' CAJUN INVITATIONAL (Lafayette, La.)

Feb. 20	vs. Hofstra	12 p.m.
Feb. 20	at Louisiana-Lafayette	2:30 p.m.
Feb. 21	vs. Hofstra	10 a.m.
Feb. 21	vs. Missouri State	5:30 p.m.
Feb. 22	vs. Missouri State	9:30 a.m.

UCF DOUBLETREE/RADISSON INVITE (Orlando, Fla.)

Feb. 27	vs. LIU Brooklyn	1 p.m.
Feb. 27	at UCF	5:30 p.m.
Feb. 28	vs. Princeton	10:30 a.m.
Feb. 28	vs. Florida A&M	3 p.m.

JUDI GARMAN CLASSIC (Fullerton, Calif.)

March 6	vs. San Jose State	2 p.m.
March 6	vs. Fresno State	9:30 a.m.
March 7	vs. San Diego State	2:30 p.m.
March 7	at Cal State Fullerton	7:30 p.m.
March 8	vs. Oregon	11 a.m.

UNIVERSITY OF OKLAHOMA TOURNAMENT (Norman, Okla.)

March 14	vs. East Carolina	12 p.m.
March 14	at Oklahoma	2:15 p.m.
March 15	vs. East Carolina	10 a.m.
March 15	at Oklahoma	2:30 p.m.
March 16	at Oklahoma	6 p.m.

March 17	at Oklahoma State	4 p.m.
March 18	at Tulsa	4 p.m.
March 20	vs. Maryland *	4 p.m.
March 21	vs. Maryland *	2 p.m.
March 22	vs. Maryland *	1 p.m.
March 24	vs. Nebraska *	4 p.m.
March 24	vs. Nebraska *	6 p.m.
March 27	at Michigan *	3 p.m.
March 28	at Michigan *	1 p.m.
March 29	at Michigan *	12 p.m.
April 1	at Drake	5:30 p.m.
April 2	vs. Western Illinois	6:30 p.m.
April 3	vs. Illinois *	6 p.m.
April 4	vs. Illinois *	2 p.m.
April 5	vs. Illinois *	1 p.m.
April 10	at Wisconsin *	5 p.m.
April 11	at Wisconsin *	12 p.m.
April 12	at Wisconsin *	12 p.m.
April 15	vs. Iowa State%	6 p.m.
April 17	at Purdue *	4 p.m.
April 18	at Purdue *	12 p.m.
April 19	at Purdue *	11 a.m.
April 22	at Missouri	3 p.m.
April 22	at Missouri	5 p.m.
April 24	at Minnesota *	6 p.m.
April 25	at Minnesota *	1 p.m.
April 26	at Minnesota *	12 p.m.
May 1	vs. Northwestern *	6 p.m.
May 2	vs. Northwestern *	2 p.m.
May 3	vs. Northwestern *	1 p.m.

* Big Ten Conference game All times listed as Central
% Iowa Corn Cy-Hawk Series Bold indicates home contest



Drake
0-0
Cedar Falls, Iowa
Friday, Feb. 6
5:45 p.m. (CT)



Northern Iowa
0-0
Cedar Falls, Iowa
Friday, Feb. 6
8 p.m. (CT)



Southern Utah
0-0
Cedar Falls, Iowa
Saturday, Feb. 7
12:45 p.m. (CT)



North Dakota State
0-0
Cedar Falls, Iowa
Saturday, Feb. 7
3 p.m. (CT)



Green Bay
0-0
Cedar Falls, Iowa
Sunday, Feb. 8
10 a.m. (CT)

PLAY BALL

The Hawkeyes open their 2015 season at the UNI Dome Tournament, Feb. 6-8, in Cedar Falls, Iowa. Iowa will face Drake and tournament host Northern Iowa on Friday, Southern Utah and North Dakota State on Saturday and conclude the weekend against Green Bay on Sunday Feb. 8.

FOLLOW THE ACTION

Fans can follow all the action with live stats (Gametracker). The "GT" link can be accessed under the "Calendar" tab on the front page of hawkeyesports.com or on the softball schedule page. For in-game updates, follow @IowaSoftball on Twitter and "like" our official page on Facebook, facebook.com/iowahawkeyesoftball.

TAKING ON THE BEST

Fifteen of Iowa's 2015 opponents are ranked or receiving votes in the USA Today/NFCA Division I Preseason poll released Jan. 20. They include: Florida (1), Oregon (2), Oklahoma (4), Michigan (8), Louisiana-Lafayette (9), Minnesota (15), Missouri (17), Nebraska (18), Tulsa (21), Wisconsin (RV), UCF (RV), North Carolina State (RV), Northwestern (RV), Hofstra (RV), and Cal State Fullerton (RV).

IN THE RANKINGS - B1G

Five Big Ten teams appeared the ESPN.com/USA Softball Collegiate Preseason poll released Jan. 27. No. 8 Michigan, No. 15 Minnesota, and No. 20 Nebraska are ranked within the top 25, while Wisconsin and Northwestern are both receiving votes.

B1G IN THE POSTSEASON

Five Big Ten teams punched their ticket to the 2014 NCAA Tournament. Co-Big Ten regular season champions Michigan and Nebraska and Big Ten Tournament Champion Minnesota won their regionals before losing in the Super Regional round. Both Wisconsin and Northwestern were knocked out of the postseason in the regional round.

2014 TEAM LEADERS

2014 BATTING

Player	avg	gp-gs	ab	r	h	2b	3b	hr	rbi	tb	slg%	bb	hp	so	gdp	ob%	sf	sh	sb-at	po	a	e	fld%
Blank, Megan	.361	47-47	133	21	48	11	3	5	25	80	.602	21	2	13	0	.452	1	2	3-3	77	110	12	.940
Luna, Brianna	.306	34-34	108	16	33	5	0	3	12	47	.435	7	6	18	0	.377	1	2	3-4	20	4	1	.960
Repole, Whitney	.265	42-39	113	18	30	6	0	3	10	45	.398	7	8	28	0	.349	1	1	1-1	16	2	6	.750
Massey, Kayla	.263	42-40	118	9	31	8	0	6	17	57	.483	13	2	18	0	.346	0	0	0-0	17	56	3	.961
Hoffman, Holly	.242	47-47	128	3	31	4	0	0	6	35	.273	9	3	30	1	.305	1	3	0-1	214	25	4	.984
Fritsch, Claire	.230	46-46	122	12	28	5	3	0	10	39	.320	11	2	27	0	.301	1	9	7-12	107	117	20	.918
Erickson, Erin	.229	47-47	140	17	32	7	0	4	14	51	.364	7	1	29	0	.268	1	2	0-2	47	3	4	.926
Zoeller, Michelle	.221	47-45	131	14	29	8	1	1	12	42	.321	6	2	33	0	.266	0	4	4-5	54	83	13	.913

2014 PITCHING

Player	era	w-l	app	gs	cq	sho	sv	ip	h	r	er	bb	so	2b	3b	hr	b/avg	wp	hp	bk	sfa	sha
Massey, Kayla	2.86	10-17	31	28	24	3/0	1	191.0	201	98	78	72	121	26	6	12	.263	6	4	0	3	21
Whitney, Micaela	5.39	2-3	14	4	1	0/0	1	36.1	47	38	28	28	23	10	0	5	.315	3	7	1	2	3
Starkenburg, Shayla	5.90	4-10	20	15	5	1/0	1	78.1	108	84	66	61	51	19	3	6	.322	4	6	2	2	7
Totals	3.94	16-30	47	47	30	4/0	2	305.2	356	220	172	161	195	55	9	23	.285	13	17	3	7	31
Opponents	2.57	30-16	47	47	27	13/2	5	312.2	299	141	115	97	264	59	11	23	.250	17	30	3	6	33



QUICK FACTS

UNIVERSITY OF IOWA INFORMATION

Location: Iowa City, Iowa
 Founded: 1847
 Enrollment: 31,498
 Nickname: Hawkeyes
 Mascot: Herky the Hawk
 Venue: Pearl Field/1,500
 Conference: Big Ten
 School Colors: Black and Gold
 President: Sally Mason
 Director of Athletics: Gary Barta
 Softball Administrator: Paula Jantz

COACHING INFORMATION

Head Coach: Marla Looper
 Alma Mater/Year: Florida State/1995
 Record at Iowa/Years: 100-104-1/4
 Overall Record/Years: 100-104-1/4
 Big Ten Record/Years: 42-48/4
 Assistant Coach: Adrianna Baggetta
 Alma Mater/Year: South Carolina/2002
 Assistant Coach: Adam Arbour
 Alma Mater/Year: Michigan/2011
 Volunteer Assistant Coach: Chelsey Carmody
 Alma Mater/Year: Iowa/2011

TEAM INFORMATION

2014 Overall Record: 16-30-1
 2013 Big Ten Record/Finish: 9-14/8th
 Starters Returning/Lost: 7/2
 Pitchers Returning/Lost: 1/2
 Letterwinners Ret./Lost: 11/5
 Newcomers: 8
 Softball Office Phone: 319-335-9257

ATHLETIC COMMUNICATIONS

Softball Contact: Jil Price
 Email: jil-price@hawkeyesports.com
 Office Phone: 319-335-9411
 Cell Phone: 319-930-8805
 Office Fax: 319-335-9417
 Press Box Phone: 319-335-9296
 Web Site: hawkeyesports.com
 Twitter: @iowasoftball
 Facebook: iowahawkeyessoftball



PRONUNCIATION GUIDE

Adrianna Baggetta: Adri-aw-na BUH-Get-UH
 Claire Fritsch: Frit-sh
 Sammi Gyerman: Guy-ur-man
 Kara Misel: MY-zle
 Whitney Repole: Rep-lee
 Shayla Starkenburg: Shea-luh

HEAD COACH MARLA LOOPER



Marla Looper concluded her fourth season as the head coach for the University of Iowa softball program in 2014. Looper owns an 100-104-1 overall and 42-48 Big Ten Conference record since the 2011 season.

Looper collected her 100th career victory in the 2014 season finale, when Erin Erickson delivered a walkoff, two-run home run to lift the Hawkeyes past Ohio State, 3-2. On the season, Iowa posted 16 wins -- nine in conference action and three over ranked opponents (16-30-1).

Megan Blank earned her third-straight first team All-Big Ten honor and was a second team NFCA All-Midwest Region selection after leading the Hawkeyes in batting average, slugging percentage, hits, doubles, triples, RBIs and walks. Kayla Massey earned her second career Big Ten Pitcher of the Week nod on March 31 after recording two complete game wins over Wisconsin. Three earned Academic All-Big Ten accolades including Haley Hansel, Whitney Repole and Michelle Zoeller.

Looper led the Hawkeyes to 30 wins in 2013 (30-24) in her third year, marking the most wins for the program since finishing 42-16 in 2009. Iowa posted six wins over ranked opponents.

Three Hawkeyes earned All-Big Ten honors -- Megan Blank was named to the first team, Johnnie Dowling earned second team honors, and Kayla Massey was named to the Big Ten All-Defensive team at pitcher. Blank earned her second-straight first team accolade, becoming the sixth Hawkeye in program history to earn first team honors in each of her first two seasons.

Blank was also named a 2013 NFCA First Team All-Midwest Region selection, earning her second all-region honor in as many seasons. Blank became the sixth Hawkeye in program history to garner all-region honors in each of her first two seasons. In the classroom, a school-record 10 Hawkeyes were named to the 2013 spring Academic All-Big Ten team.

During her second season with the Hawkeyes, Looper led the team to a runner-up finish in the Big Ten -- the program's highest finish since winning the league title in 2003. Iowa dropped two of its first three conference series before winning five straight to close out the season. It was the first time the team had won five straight series since the 2004 season.

Iowa entered the final weekend with a conference title within reach, but it couldn't close the gap with Michigan despite taking 2-of-3 games at Minnesota. The Hawkeyes finished with a 27-26 overall and 16-8 conference record in 2012.

Five players garnered All-Big Ten recognition, including three first team selections. Senior Liz Watkins, sophomore Kayla Massey and freshman Megan Blank earned first team accolades, sophomore Michelle Zoeller was a second team honoree and junior Johnnie Dowling was a third team selection.

Blank also garnered NFCA second team all-region honors during her freshman campaign. She is the ninth Hawkeye to earn first team All-Big Ten and all-region honors during her freshman season.

The Hawkeyes finished second in the Big Ten in pitching (2.31 ERA) and third in fielding (.967). The squad turned 26 double plays during the course of the season to rank sixth nationally in double plays per game (.49).

Looper guided the Hawkeyes to a 27-24 overall and a 9-11 Big Ten record in her first season in Iowa City. The first year head coach led the UI to a pair of six game winning streaks in her opening campaign and a tournament title at the Stetson Classic.

Iowa opened Big Ten Conference play strong, jumping out to an 8-3 record. Among the victories was a 4-2 triumph at No. 1 Michigan. The win, which pushed the overall mark to 26-16, was Iowa's first over a No. 1 ranked opponent since the 2005 season and the first over a ranked foe since 2008.

Looper's Hawkeyes were on the verge of completing a series sweep in Ann Arbor before the Wolverines rallied from a 2-0 deficit in the bottom of the seventh inning to claim the victory and halt Iowa's momentum.

A pair of Hawkeyes earned All-Big Ten recognition at the conclusion of the season. Liz Watkins was tabbed as a second team selection, while Katie Keim earned third team accolades.

Looper took over the reigns of the Iowa program after serving as an assistant coach at the University of Texas for 11 seasons (1999-2010). Looper helped lead the Longhorns to three College World Series appearances (2003, 2005 and 2006) and nine NCAA Tournament berths. She also helped guide Texas to back-to-back Big 12 regular season and tournament championships in 2002 and 2003 along with regular season championships in 2006 and 2010.

2015 IOWA SOFTBALL NUMERICAL ROSTER

No.	Name	Pos.	Class	B-T	Hometown (Last School)
1	Alyssa Navarro	IF/OF	So.	R-R	Dinuba, Calif. (Dinuba)
2	Erin Erickson	OF/1B	Jr.	R-L	Oakland, Calif. (Bishop O'Dowd)
4	Megan Blank	IF	Sr.	L-R	Culver City, Calif. (Marymount)
7	Claire Fritsch	IF/OF	So.	L-R	Round Rock, Texas (Round Rock)
8	Whitney Repole	OF	Jr.	R-R	San Antonio, Texas (Smithson Valley)
9	Sarah Kurtz	OF/IF	Fr.	R-R	Herndon, Va. (Herndon)
11	Kaitlyn Mullarkey	IF/OF	So.	L-L	Park Ridge, Ill. (Main South)
12	Angela Schmiederer	C	Fr.	R-R	Prospect Heights, Ill. (John Hersey)
17	Allie Wood	OF	Fr.	R-R	Cypress, Calif. (Cypress)
19	Jillian Navarrete	P/UT	Jr.	R-R	Carlsbad, N.M. (Butler Community College)
20	Daniella Ibarra	IF	Fr.	S-R	Emerson, N.J. (Immaculate Heart Academy)
21	Sammi Gyerman	OF	RS So.	L-L	San Pedro, Calif. (Palos Verdes)
22	Haley Hansel	OF	Jr.	L-R	Overland Park, Kan. (Blue Valley Southwest)
23	Kara Misel	IF	So.	R-R	Solon, Iowa (Solon)
24	Shayla Starkenburg	P	RS So.	R-R	Ankeny, Iowa (Ankeny)
27	Cheyenne Pratt	OF	Fr.	L-R	Festus, Mo. (Festus)
36	Ashley Yoways	IF/P	Fr.	R-R	Cedar Lake, Ind. (Hanover Central)
44	Daniela Chambers	C	Fr.	R-R	Irvine, Calif. (Irvine)
55	Holly Hoffman	C	RS Jr.	R-R	Osceola, Ind. (Penn)

Head Coach: Marla Looper (Fifth Season)

Assistant Coach: Adrianna Baggetta (Fifth Season)

Assistant Coach: Adam Arbour (First Season)

Volunteer Assistant Coach: Chelsey Carmody (Third Season)

Strength Coach: Landon Evans

Athletic Trainers: Ashley Leggett

Student Managers: Evan Decker and PJ Smith

SCOUTING DRAKE

Drake posted a 19-33 overall record in 2014, and finished sixth in the Missouri Valley Conference at 11-14. Iowa and Drake split a pair of meetings last season. Iowa won the first meeting, 9-0, in six innings at the Gettman Classic in Waco, Texas. Drake took the second meeting with a 5-3 win in Iowa's home opener on April 2. Iowa leads the all-time series 35-11.

SCOUTING NORTHERN IOWA

Northern Iowa finished fifth in the Missouri Valley Conference (14-12), and posted an overall record of 28-20 in 2014. The Panthers edged out a 9-8 win over the Hawkeyes at Pearl Field on April 30. Iowa has a 28-17 advantage in the all-time series.

SCOUTING SOUTHERN UTAH

Saturday marks the first meeting between the Hawkeyes and the Thunderbirds. Southern Utah finished third in the Big Sky Conference with a 10-6 mark, and posted a 23-31 overall record in 2014.

SCOUTING NORTH DAKOTA STATE

North Dakota State posted a 36-18 overall record and finished 13-3 in the Summit League a season ago. The Bison earned an NCAA Tournament berth following their Summit League Tournament title before being knocked out in the regional round. The Hawkeyes and Bison haven't met since 2007, when Iowa notched the 3-0 shutout win. Iowa holds a 5-0 edge in the all-time series.

SCOUTING GREEN BAY

Green Bay posted a 27-14 overall record in 2014 record, and took the Horizon League regular season title with an 11-5 mark. The Phoenix advanced to the NCAA Tournament after claiming the Horizon League Tournament title. The Hawkeyes hold a 10-0 all-time series lead over Green Bay.

STARTERS RETURNING

Iowa returns seven starters from a year ago in sophomores Alyssa Navarro and Kaitlyn Mullarkey, juniors Erin Erickson, Whitney Repole and Holly Hoffman, and senior Megan Blank. Sophomore Shayla Starkenburg started 15 games in the circle for the Hawkeyes in 2014.

MEET THE HAWKEYES

The 2015 roster is comprised of one senior -- Megan Blank, five juniors -- Erin Erickson, Haley Hansel, Holly Hoffman, Jillian Navarrete, Whitney Repole, six sophomores -- Claire Fritsch, Sammi Gyerman, Kara Misel, Kaitlyn Mullarkey, Alyssa Navarro, and Shayla Starkenburg, and seven freshmen -- Daniela Chambers, Daniella Ibarra, Sarah Kurtz, Cheyenne Pratt, Angela Schmiederer, Allie Wood, and Ashley Yoways. Iowa is led by fifth-year head coach Marla Looper, assistants Adrianna Baggetta and Adam Arbour, and volunteer assistant coach Chelsey Carmody.

MEET THE CAPTAINS

Sophomore walk-ons Kaitlyn Mullarkey and Kara Misel were voted 2015 captains by their teammates. Mullarkey stepped in last season when injuries created a spot in the field. She logged time in the outfield before joining the infield for the majority of the Big Ten season as Iowa's first baseman. Misel appeared primarily as a pinch runner in 2014.

BLANK NAMED PRESEASON ALL-BIG TEN

Senior shortstop Megan Blank was named a Preseason First Team All-Big Ten infielder by College Sports Madness on Feb. 4. Blank, a three-time regular season First Team All-Big Ten honoree, led the Hawkeyes in batting average (.361), slugging percentage (.602), on-base percentage (.452), hits (48), doubles (11), triples (3) and RBIs (25) in 2014.

2014 HITTING STREAKS

Name	Longest	Current
Kayla Massey	6	5
Erin Erickson	7	4
Brianna Luna	6	3
Whitney Repole	4	2
Alyssa Navarro	4	1
Megan Blank	9	--
Holly Hoffman	5	--
Claire Fritsch	4	--
Michelle Zoeller	3	--
Sammi Gyerman	3	--
Kaitlyn Mullarkey	2	--
Michaela Johnson	1	--

2014 REACHED BASE STREAKS

Name	Longest	Current
Kayla Massey	9	9
Megan Blank	14	7
Whitney Repole	5	5
Sammi Gyerman	4	4
Erin Erickson	9	4
Brianna Luna	10	3
Alyssa Navarro	5	1
Michaela Johnson	1	1
Claire Fritsch	6	--
Michelle Zoeller	4	--
Holly Hoffman	6	--
Kaitlyn Mullarkey	4	--

2014 MULTIPLE HIT GAMES

Name	2	3	4	5+	Total
Megan Blank	9	4	--	--	13
Brianna Luna	8	1	--	--	9
Michelle Zoeller	7	1	--	--	8
Kayla Massey	7	1	--	--	8
Whitney Repole	7	--	--	--	7
Holly Hoffman	5	2	--	--	7
Erin Erickson	7	--	--	--	7
Claire Fritsch	4	1	--	--	5
Alyssa Navarro	3	--	--	--	3
Kaitlyn Mullarkey	1	1	--	--	2
Sammi Gyerman	1	1	--	--	2

2014 MULTIPLE RBI GAMES

Name	2	3	4	5+	Total
Megan Blank	2	3	1	--	6
Michelle Zoeller	1	1	1	--	3
Kayla Massey	2	1	--	--	3
Erin Erickson	3	--	--	--	3
Brianna Luna	2	--	--	--	2
Claire Fritsch	2	--	--	--	2
Alyssa Navarro	1	--	--	--	1
Whitney Repole	--	1	--	--	1
Kaitlyn Mullarkey	--	--	1	--	1
Sammi Gyerman	1	--	--	--	1



IOWA SOFTBALL

4 Women's College World Series appearances
16 NCAA Tournament berths

4 Big Ten regular season championships
2 Big Ten Tournament championships

IOWA'S RECORD WHEN...

1-Run Games	0-0
2-Run Games	0-0
3-Run Games	0-0
4+-Run Games	0-0
Extra Innings	0-0
At Pearl Field	0-0
On the Road	0-0
At Neutral Site	0-0
Day Games	0-0
Night Games	0-0
vs. Lefty starter	0-0
vs. Righty starter	0-0
Iowa Scores First	0-0
Opponent Scores First	0-0
Scoring 2 Runs Or Less	0-0
Scoring 3+ Runs	0-0
Giving Up 2 Runs Or Less	0-0
Giving up 3+ Runs	0-0
Leading After Four Innings	0-0
Leading After Five Innings	0-0
Leading After Six Innings	0-0
Ranked Opponents	0-0
Massey Starts	0-0
Starkenburger Starts	0-0
Whitney Starts	0-0
Iowa Hits a Home Run	0-0
Iowa Hits No Home Runs	0-0
Opponent Hits a Home Run	0-0
Opponent Hits No Home Runs	0-0
Iowa Outhits Opponent	0-0
Opponent Outhits Iowa	0-0
Equal Number of Hits	0-0
Iowa Pitchers Record More K's	0-0
Opponent Pitchers Record More K's	0-0
Equal Number of Strikeouts	0-0
Flying To Game	0-0
Busing To Game	0-0
On Big Ten Network	0-0
On Big Ten Digital Network	0-0
On Longhorn Network	0-0
In Central Time Zone	0-0
In Eastern Time Zone	0-0
In Mountain Time Zone	0-0
In Pacific Time Zone	0-0
On Sunday	0-0
On Monday	0-0
On Tuesday	0-0
On Wednesday	0-0
On Thursday	0-0
On Friday	0-0
On Saturday	0-0

SCHEDULE AT A GLANCE

The Hawkeyes compete in six non-conference tournaments before opening Big Ten play. Iowa opens conference action on March 20 when it hosts Maryland at Pearl Field in Iowa City, Iowa.

HAWKEYE COACHING DEBUT

Adam Arbour joined the University of Iowa softball program as an assistant coach on July 30, 2014. Arbour spent the last three years as a volunteer assistant coach at Alabama under head coach Patrick Murphy. He helped the Crimson Tide to an NCAA National Championship in 2012 and a Women's College World Series Runner-Up finish in 2014. Prior to Alabama, Arbour served as a student manager at Michigan under head coach Carol Hutchins from 2008-11. While at Michigan, the Wolverines won three-straight Big Ten Championships (2009, 2010, 2011) and advanced to the Women's College World Series in 2009.

HAWKEYES IN 2014

The Hawkeyes posted a 16-30-1 overall record in 2014. Iowa finished eighth in the Big Ten with a 9-14 record.

2014 CONFERENCE RECAP

UI softball posted a 9-14 record in Big Ten play to finish eighth. The Hawkeyes began their conference slate with consecutive series wins over Illinois and Wisconsin. Iowa topped the Illini in games one and two (4-3 after nine innings and 10-7) before falling in the finale 4-3 after eight innings. The squad recorded game one and three wins over the Badgers by a score of 4-1, but dropped game two, 8-4. Iowa also won the series at Indiana, defeating the Hoosiers 1-0 in game one and 3-2 in game three. Indiana avoided the sweep with a 9-1, five inning win in the second contest of the series. The Hawkeyes also posted a win over No. 23 Northwestern (4-3), Michigan State (5-1) and Ohio State (3-2).

TAKING ON THE BEST

Nine of Iowa's 30 losses in 2014 came at the hands of ranked foes: No. 14/18 Missouri on Feb. 14 (2-1 in eight innings), No. 14/16 Baylor on Feb. 15 (2-0), No. 23/RV Northwestern on April 5 (6-4 and 4-1), No. 14 Minnesota on April 8 (2-0 and 7-0) and No. 19/22 Nebraska on April 11-12 (5-2, 9-1 in six innings and 18-0 in five innings). UI recorded its first win over a ranked opponent on April 6 against No. 23/RV Northwestern, 4-3, in walk off fashion, and added a pair of wins over No. 13/15-ranked Missouri, 3-1 and 13-9, on April 16. Each of Iowa's wins over ranked opponents came at Pearl Field in Iowa City.

The Hawkeyes have also been defeated by teams receiving votes in at least one of the national polls on six occasions this year: Lipscomb on Feb. 14 (10-0 in five innings), UAB on Feb. 15 (6-1 in nine innings), and Mississippi State on Feb. 21 (2-0), Feb. 22 (5-0), and Feb. 23 (9-1 in five innings).

3 IN A ROW

Senior Megan Blank received her third-straight First Team All-Big Ten accolade and was also named to the conference's All-Defensive Team, following the 2014 season. The shortstop is the eighth Iowa player to earn first team distinction three times.

Blank led the Hawkeyes in batting average (.361), slugging percentage (.602), on-base percentage (.452), hits (48), doubles (11), triples (3) and RBIs (25) last season. In Big Ten action, Blank hit at a .415 clip, slugged .677 and compiled an on-base percentage of .506. Seven of her 11 doubles, two of her three triples, two of her five home runs and 15 of her 25 RBIs came against conference foes.

Heading into her senior season, Blank ranks in several career categories at Iowa. She is second with a .398 batting average, sixth with 43 doubles, eighth with 18 home runs, ninth with 113 RBIs and 10th with 10 triples with one season remaining with the Hawkeyes. Blank led the team with 13 multiple-hit games and six multiple-RBI games, had the longest reached base streak (14) and owned the longest hitting streak (9). She ended the season with a seven-game reached base streak.



NFCA HONORS BLANK FOR 3RD-STRAIGHT YEAR

Shortstop Megan Blank collected her third-straight NFCA honor as she was a second team All-Midwest Region pick in 2014. The senior was named to the NFCA All-Midwest Region second team as a freshman and first team as a sophomore. She is the 16th player in Iowa history to earn three regional awards in her career.

CAREER UPDATES

Senior Megan Blank ranks second in career batting average (.398), sixth in doubles (43), eighth in home runs (18), ninth in RBIs (113) and 10th in triples (10).

WELCOME TO THE 100 CLUB

Fourth-year head coach Marla Looper collected her 100th career win, 3-2, in the 2014 regular season finale at Pearl Field against Ohio State.

Iowa recorded 27 wins in 2011, 27 wins in 2012 and added 30 wins in 2013. The team's 30 wins last season was the highest win total since 2009 when the Hawkeyes posted a 42-19 mark. UI softball added 16 wins -- nine in conference action and three over ranked foes -- in 2014 bringing Looper's career record to 100-104-1 (.490) as the Iowa skipper.

PRACTICE FACILITY

The Hawkeyes have benefited from two new facilities in 2015 -- the indoor Iowa Turf Facility, located at the Hawkeye Tennis and Recreation Complex, and the Jacobson Hitting Facility, located in football's former weight room. The HTRC Iowa Turf Facility has enabled the program to have consistency in team practices, while the Jacobson hitting cages have allowed student-athletes to take extra reps at any time.

GAME DAY ATMOSPHERE ADDITION

Hawkeye softball added a video scoreboard to their game day atmosphere in 2014. The board, which is approximately 16-feet tall and 28-feet wide, was a repurposed video wall from football's Kinnick Stadium. A border of Iowa softball accolades surrounds the video scoreboard and completes the new look. The video scoreboard made its debut at the 2014 home opener against Drake on April 2, 2014. Since then, it has been used to show in-game highlights, introductory videos, graphics, advertisements and additional content.

HAWKEYE TRADITION

Iowa has made four Women's College World Series appearances (1995, 1996, 1997, 2001) and played in 16 NCAA Tournaments in school history. The 16 appearances are the second most in Big Ten history, and the four WCWS appearances equal the second most in conference history. The Hawkeyes have won four Big Ten Conference regular season championships (1989, 1997, 2000, 2003) and two Big Ten Tournament titles (2001, 2003).

2014 FINAL BIG TEN CONFERENCE STANDINGS

	Big Ten		Overall	
Michigan	18-5	.783	47-15	.758
Nebraska	18-5	.783	44-18	.710
Minnesota	16-6	.727	44-12	.786
Wisconsin	15-7	.682	36-20	.643
Northwestern	14-9	.609	35-18	.660
Ohio State	13-10	.565	30-25	.545
Purdue	13-10	.565	27-28-1	.491
Iowa	9-14	.391	16-30-1	.351
Illinois	7-16	.304	24-26	.480
Indiana	5-18	.217	17-39-1	.307
Penn State	5-18	.217	14-35	.286
Michigan State	4-19	.174	12-37	.245

ESPN.com/USA Softball Collegiate Top-25 (Preseason 2015)

1.	Florida (15)	492
2.	Oregon (4)	475
3.	Oklahoma	429
4.	Alabama	423
5.	Florida State	417
6.	UCLA (1)	391
7.	Kentucky	374
8.	Michigan	367
9.	Louisiana-Lafayette	318
10.	Georgia	290
11.	Baylor	280
12.	Arizona	266
13.	Washington	251
14.	Tennessee	239
15.	Minnesota	210
16.	Arizona State	197
17.	Missouri	185
18.	LSU	177
19.	Auburn	162
20.	Nebraska	122
21.	Notre Dame	98
22.	Tulsa	61
23.	South Alabama	59
24.	Texas A&M	32
25.	Texas	31

Receiving Votes: Wisconsin (26), DePaul (24), USC Upstate (20), NC State (18), James Madison (15), Central Florida (13), North Carolina (7), Louisville (6), California (5), Stanford (4), South Carolina (4), Cal State Fullerton (3), Western Kentucky (3), Northwestern (2), Mississippi State (2), South Florida (1), Virginia Tech (1)

Iowa opponents in bold.

USA Today/NFCA Division I Top-25 (Preseason 2015)

1.	Florida (20)	699
2.	Oregon (8)	694
3.	Alabama	648
4.	Oklahoma	613
5.	Florida State	571
6.	Kentucky	565
7.	UCLA	536
8.	Michigan	493
9.	Louisiana-Lafayette	481
10.	Baylor	475
11.	Washington	411
12.	Georgia	402
13.	Tennessee	401
14.	Arizona	356
15.	Minnesota	298
16.	Arizona State	267
17.	Missouri	240
18.	Nebraska	213
19.	LSU	205
20.	Auburn	204
21.	Tulsa	175
22.	Notre Dame	133
23.	South Alabama	100
24.	Texas A&M	71
25.	DePaul	40

Receiving Votes: James Madison (36), USC Upstate (21), Wisconsin (16), UCF (16), North Carolina State (14), Northwestern (3), Stanford (3), South Carolina (3), Hofstra (2), Louisville (2), Cal State Fullerton (2)

Iowa opponents in bold.

IOWA vs. RANKED TEAMS IN 2014 (3-9)

Date	Team	Score
2/14	vs. #14/15 Missouri	L, 1-2 (8 innings)
2/15	at #14/16 Baylor	L, 0-2
3/1	at #9/10 Arizona	Cancelled
4/5	#23/RV Northwestern	L, 4-6
4/5	#23/RV Northwestern	L, 1-4
4/6	#23/RV Northwestern	W, 4-3
4/8	#14 Minnesota	L, 0-2
4/8	#14 Minnesota	L, 0-7
4/11	at #19/22 Nebraska	L, 2-5
4/11	at #19/22 Nebraska	L, 1-9 (6 innings)
4/12	at #19/22 Nebraska	L, 0-18 (5 innings)
4/16	#13/15 Missouri	W, 3-1
4/16	#13/15 Missouri	W, 13-8

IOWA SOFTBALL BY THE NUMBERS

2014 Iowa Team Highs

Longest Winning Streak	2-game winning streak, two times
Longest Losing Streak	5-game losing streak, two times
Current Streak	L1
Largest Margin of Victory	9 vs. Drake (2/16)
Largest Margin of Defeat	18 at Nebraska (4/12)
Most At-Bats	36 vs. UAB (2/15)
Most Runs Scored	13 vs. Missouri (4/16)
Most Hits	16 vs. Drake (2/16)
Most RBIs	13 vs. Missouri (4/16)
Most Doubles	6 vs. Missouri (4/16)
Most Triples	2 vs. Ohio (2/9)
Most Home Runs	4 at Iowa State (4/23)
Most Stolen Bases	2, six times, last vs. UNI (4/30)
Most Strikeouts (pitching)	12 vs. UNI (4/30)
Most Errors	4, three times, last at Wisconsin (3/29)
Most Runs Allowed	18 vs. Missouri (4/16)
Most Hits Allowed	15 vs. Illinois (5/8)
Most Walks Allowed	8 vs. Drake (4/2)

2014 Iowa Individual Team Batting Leaders

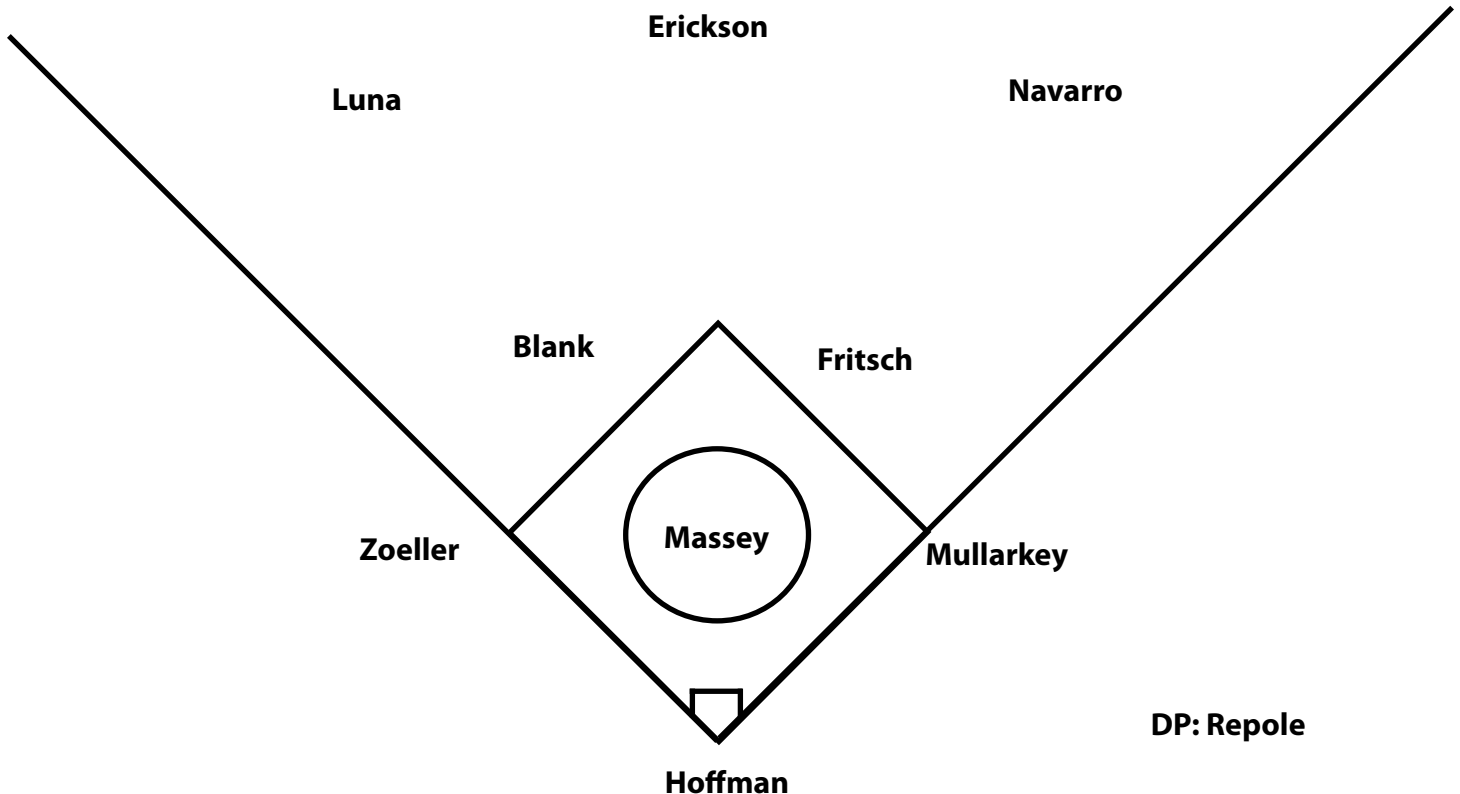
Batting Avg.361, Megan Blank
Games Played	47 (4 players)
Games Started	47 (3 players)
At Bats	140, Erin Erickson
Runs	21, Megan Blank

Hits	48, Megan Blank
Doubles	11, Megan Blank
Triples	3, Megan Blank/Claire Fritsch
Home Runs	6, Kayla Massey
RBIs	25, Megan Blank
Total Bases	80, Megan Blank
Walks	21, Megan Blank
Hit by Pitch	8, Whitney Repole
Strikeouts	33, Michelle Zoeller
On-Base Percentage452, Megan Blank
Sacrifice Flies	1, Blank/Erickson/Fritsch/Hoffman/Luna/Repole
Sacrifice Hits	9, Alyssa Navarro
Stolen Bases	7, Claire Fritsch
Stolen Base Attempts	12, Claire Fritsch

2014 Iowa Individual Pitching Leaders

ERA	2.86, Kayla Massey
Wins	10, Kayla Massey
Appearances	31, Kayla Massey
Games Started	28, Kayla Massey
Complete Games	24, Kayla Massey
Shutouts	3, Kayla Massey
Saves	1, Shayla Starkenburg/Micaela Whitney
Innings Pitched	191.0, Kayla Massey
Strikeouts	121, Kayla Massey
Opponent Batting Average263, Kayla Massey

2014 Starting Lineup





IOWA SOFTBALL

4 Women's College World Series appearances
16 NCAA Tournament berths

4 Big Ten regular season championships
2 Big Ten Tournament championships

2015 TV ROSTER



1
Alyssa Navarro
So. • IF/OF • R/R
Dinuba, Calif.



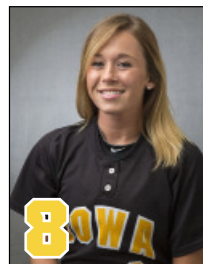
2
Erin Erickson
So. • OF/1B • R/L
Oakland, Calif.



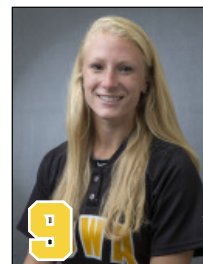
4
Megan Blank
Sr. • IF • L/R
Culver City, Calif.



7
Claire Fritsch
Fr. • IF/OF • L/R
Round Rock, Texas



8
Whitney Repole
Jr. • OF • R/R
San Antonio, Texas



9
Sarah Kurtz
Fr. • OF/IF • R/R
Herndon, Va.



11
Kaitlyn Mullarkey
So. • IF/OF • L/L
Park Ridge, Ill.



12
Angela Schmiederer
Fr. • C • R/R
Prospect Heights, Ill.



17
Allie Wood
Fr. • OF • R/R
Cypress, Calif.



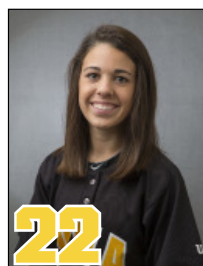
19
Jillian Navarrete
Jr. • P/UT • R/R
Carlsbad, N.J.



20
Daniella Ibarra
Fr. • IF • S/R
Emerson, N.J.



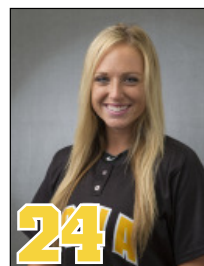
21
Sammi Gyerman
RS So. • OF • L/L
San Pedro, Calif.



22
Haley Hansel
Jr. • OF • L/R
Overland Park, Kan.



23
Kara Misel
So. • IF • R/R
Solon, Iowa



24
Shayla Starkenburg
RS So. • P • R/R
Ankeny, Iowa



27
Cheyenne Pratt
Fr. • OF • L/R
Festus, Mo.



36
Ashley Yoways
Fr. • IF/P • R/R
Cedar Lake, Ind.



44
Daniela Chambers
Fr. • C • R/R
Irvine, Calif.



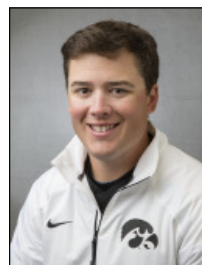
55
Holly Hoffman
RS Jr. • C • R/R
Osceola, Ind.



Marla Looper
Head Coach
5th Season



Adrianna Baggetta
Assistant Coach
5th Season



Adam Arbour
Assistant Coach
1st Season



Chelsey Carmody
Volunteer Assistant
3rd Season





IOWA SOFTBALL

4 Women's College World Series appearances
16 NCAA Tournament berths

4 Big Ten regular season championships
2 Big Ten Tournament championships

2014 STATS

2014 Iowa Softball Overall Statistics for Iowa (as of Jun 03, 2014) (All games Sorted by Batting avg)

Record: 16-30-1 Home: 5-10 Away: 7-14-1 Neutral: 4-6 Big Ten: 9-14

Player	avg	gp-gs	ab	r	h	2b	3b	hr	rbi	tb	slg%	bb	hp	so	gdp	ob%	sf	sh	sb-att	po	a	e	fld%
Blank, Megan	.361	47-47	133	21	48	11	3	5	25	80	.602	21	2	13	0	.452	1	2	3-3	77	110	12	.940
Luna, Brianna	.306	34-34	108	16	33	5	0	3	12	47	.435	7	6	18	0	.377	1	2	3-4	20	4	1	.960
Repole, Whitney	.265	42-39	113	18	30	6	0	3	10	45	.398	7	8	28	0	.349	1	1	1-1	16	2	6	.750
Massey, Kayla	.263	42-40	118	9	31	8	0	6	17	57	.483	13	2	18	0	.346	0	0	0-0	17	56	3	.961
Hoffman, Holly	.242	47-47	128	3	31	4	0	0	6	35	.273	9	3	30	1	.305	1	3	0-1	214	25	4	.984
Fritsch, Claire	.230	46-46	122	12	28	5	3	0	10	39	.320	11	2	27	0	.301	1	9	7-12	107	117	20	.918
Erickson, Erin	.229	47-47	140	17	32	7	0	4	14	51	.364	7	1	29	0	.268	1	2	0-2	47	3	4	.926
Zoeller, Michelle	.221	47-45	131	14	29	8	1	1	12	42	.321	6	2	33	0	.266	0	4	4-5	54	83	13	.913
Navarro, Alyssa	.193	43-39	88	11	17	1	2	0	7	22	.250	10	2	27	3	.290	0	9	2-3	184	14	4	.980

Gyerman, Sammi	.296	11-10	27	4	8	0	2	0	4	12	.444	3	0	6	0	.367	0	1	1-2	3	0	0	1.000
Mullarkey, Kaitlyn	.204	33-27	54	8	11	4	0	1	4	18	.333	1	1	24	0	.232	0	0	0-1	172	9	3	.984
Johnson, Michaela	.040	18-4	25	0	1	0	0	0	1	1	.040	2	1	7	0	.143	0	0	0-0	0	0	0	.000
Hansel, Haley	.000	31-9	5	6	0	0	0	0	0	0	.000	0	0	2	0	.000	0	0	2-2	4	0	2	.667
Misel, Kara	.000	9-2	2	2	0	0	0	0	0	0	.000	0	0	2	0	.000	0	0	0-0	0	0	0	.000
Whitney, Micaela	.000	10-10	0	0	0	0	0	0	0	0	.000	0	0	0	0	.000	0	0	0-0	1	5	0	1.000
Starkenbourg, Shayla	.000	3-2	0	0	0	0	0	0	0	0	.000	0	0	0	0	.000	0	0	0-0	1	22	3	.885
Totals	.250	47	1194	141	299	59	11	23	122	449	.376	97	30	264	4	.321	6	33	23-36	917	450	75	.948
Opponents	.285	47	1248	220	356	55	9	23	190	498	.399	161	17	195	10	.373	7	31	48-61	938	359	49	.964

(All games Sorted by Earned run avg)

Player	era	w-l	app	gs	cg	sho	sv	ip	h	r	er	bb	so	2b	3b	hr	b/avg	wp	hp	bks	sfa	sha
Massey, Kayla	2.86	10-17	31	28	24	3/0	0	191.0	201	98	78	72	121	26	6	12	.263	6	4	0	3	21
Whitney, Micaela	5.39	2-3	14	4	1	0/0	1	36.1	47	38	28	28	23	10	0	5	.315	3	7	1	2	3
Starkenbourg, Shayla	5.90	4-10	20	15	5	1/0	1	78.1	108	84	66	61	51	19	3	6	.322	4	6	2	2	7
Totals	3.94	16-30	47	47	30	4/0	2	305.2	356	220	172	161	195	55	9	23	.285	13	17	3	7	31
Opponents	2.57	30-16	47	47	27	13/2	5	312.2	299	141	115	97	264	59	11	23	.250	17	30	3	6	33





IOWA SOFTBALL

4 Women's College World Series appearances
16 NCAA Tournament berths

4 Big Ten regular season championships
2 Big Ten Tournament championships

2014 BIG TEN STATS

2014 Iowa Softball Conference statistics for Iowa (as of Jun 03, 2014) (Big Ten games only Sorted by Batting avg)

Record: 9-14 Home: 3-8 Away: 6-6 Big Ten: 9-14

Player	avg	gp-gs	ab	r	h	2b	3b	hr	rbi	tb	slg%	bb	hp	so	gdp	ob%	sf	sh	sb-att	po	a	e	fld%
Blank, Megan	.415	23-23	65	10	27	7	2	2	15	44	.677	11	1	5	0	.506	0	2	3-3	38	54	4	.958
Repole, Whitney	.314	19-17	51	6	16	1	0	1	4	20	.392	3	4	11	0	.390	1	0	0-0	5	1	2	.750
Luna, Brianna	.289	23-23	76	13	22	2	0	2	7	30	.395	5	2	12	0	.345	1	1	3-3	15	2	1	.944
Massey, Kayla	.276	21-20	58	6	16	5	0	4	8	33	.569	9	1	7	0	.382	0	0	0-0	13	31	0	1.000
Hoffman, Holly	.269	23-23	67	1	18	3	0	0	4	21	.313	3	1	15	1	.306	1	2	0-1	110	6	2	.983
Erickson, Erin	.209	23-23	67	6	14	1	0	2	8	21	.313	4	0	12	0	.250	1	0	0-1	21	2	1	.958
Fritsch, Claire	.169	22-22	65	4	11	0	1	0	3	13	.200	4	2	16	0	.239	0	5	2-5	50	51	11	.902
Zoeller, Michelle	.153	23-23	59	4	9	3	0	0	1	12	.203	4	2	20	0	.231	0	2	2-2	33	46	5	.940

Navarro, Alyssa	.152	20-17	33	5	5	1	1	0	2	8	.242	4	1	8	1	.263	0	6	1-2	40	2	2	.955
Mullarkey, Kaitlyn	.135	19-19	37	3	5	2	0	0	0	7	.189	1	1	20	0	.179	0	0	0-0	133	6	1	.993
Johnson, Michaela	.000	9-2	12	0	0	0	0	0	0	0	.000	1	1	4	0	.143	0	0	0-0	0	0	0	.000
Hansel, Haley	.000	16-5	1	4	0	0	0	0	0	0	.000	0	0	0	0	.000	0	0	1-1	2	0	1	.667
Whitney, Micaela	.000	4-4	0	0	0	0	0	0	0	0	.000	0	0	0	0	.000	0	0	0-0	0	0	0	.000
Misel, Kara	.000	3-0	0	1	0	0	0	0	0	0	.000	0	0	0	0	.000	0	0	0-0	0	0	0	.000
Totals	.242	23	591	63	143	25	4	11	52	209	.354	49	16	130	2	.315	4	18	12-18	461	213	32	.955
Opponents	.289	23	633	110	183	29	3	11	96	251	.397	73	11	102	2	.372	1	19	25-27	471	186	22	.968

(Big Ten games only Sorted by Earned run avg)

Player	era	w-l	app	gs	cg	sho	sv	ip	h	r	er	bb	so	2b	3b	hr	b/avg	wp	hp	bks	sfa	sha
Massey, Kayla	2.25	7-7	14	14	14	1/0	0	99.2	94	40	32	29	68	13	1	5	.244	2	4	0	1	14
Starkenbourg, Shayla	6.18	2-7	9	9	4	0/0	0	45.1	69	53	40	36	26	11	2	5	.343	3	5	0	0	5
Whitney, Micaela	10.50	0-0	5	0	0	0/0	0	8.2	20	17	13	8	8	5	0	1	.435	0	2	0	0	0
Totals	3.87	9-14	23	23	18	1/0	0	153.2	183	110	85	73	102	29	3	11	.289	5	11	0	1	19
Opponents	2.27	14-9	23	23	17	5/0	2	157.0	143	63	51	49	130	25	4	11	.242	5	16	0	4	18





IOWA SOFTBALL

4 Women's College World Series appearances
16 NCAA Tournament berths

4 Big Ten regular season championships
2 Big Ten Tournament championships

2014 RESULTS

2014 Iowa Softball Game Results for Iowa (as of May 08, 2014) (All games)

Date	Opponent	Score	Inns	Overall	Big Ten	Pitcher of record	Attend	Time
& Feb 7, 2014	vs UNC Greensboro	w 5-0	7	1-0-0	0-0-0	Starkenburgh (W 1-0)	464	2:01
& Feb 7, 2014	at South Carolina	L 0-1	7	1-1-0	0-0-0	Massey (L 0-1)	1123	1:46
& Feb 8, 2014	vs Presbyterian	w 6-3	7	2-1-0	0-0-0	Whitney (W 1-0)	1444	1:55
& Feb 9, 2014	vs Ohio	L 6-9	7	2-2-0	0-0-0	Massey (L 0-2)	209	2:34
^ Feb 14, 2014	vs Lipscomb	L 0-10	5	2-3-0	0-0-0	Starkenburgh (L 1-1)	658	1:35
^ Feb 14, 2014	vs #14 MISSOURI	L 1-2	(8)	2-4-0	0-0-0	Massey (L 0-3)	0	2:51
^ Feb 15, 2014	vs UAB	L 1-6	(9)	2-5-0	0-0-0	Whitney (L 1-1)	203	3:05
^ Feb 15, 2014	at #14 Baylor	L 0-2	7	2-6-0	0-0-0	Massey (L 0-4)	1247	1:30
^ Feb 16, 2014	vs Drake	w 9-0	6	3-6-0	0-0-0	Massey (W 1-4)	753	1:43
Feb 21, 2014	at Mississippi State	L 0-2	7	3-7-0	0-0-0	Massey (L 1-5)	345	1:41
Feb 22, 2014	at Mississippi State	L 0-5	7	3-8-0	0-0-0	Whitney (L 1-2)	354	2:02
Feb 23, 2014	at Mississippi State	L 1-9	5	3-9-0	0-0-0	Massey (L 1-6)	369	1:34
% Feb 28, 2014	vs Valparaiso	w 8-0	5	4-9-0	0-0-0	Massey (W 2-6)	417	1:25
% Mar 02, 2014	vs Longwood	L 1-4	7	4-10-0	0-0-0	Starkenburgh (L 1-2)	173	1:46
Mar 15, 2014	at Texas	L 1-9	5	4-11-0	0-0-0	Massey (L 2-7)	1050	1:44
Mar 16, 2014	at Texas	w 6-5	7	5-11-0	0-0-0	Starkenburgh (W 2-2)	739	2:43
Mar 17, 2014	at Texas	L 0-3	7	5-12-0	0-0-0	Massey (L 2-8)	523	2:02
Mar 19, 2014	at Texas State	L 0-4	7	5-13-0	0-0-0	Whitney (L 1-3)	495	1:55
* Mar 21, 2014	at Illinois	w 4-3	(9)	6-13-0	1-0-0	Massey (W 3-8)	204	2:01
* Mar 22, 2014	at Illinois-1	w 10-7	7	7-13-0	2-0-0	Starkenburgh (W 3-2)	358	2:17
* Mar 22, 2014	at Illinois-2	L 3-4	(8)	7-14-0	2-1-0	Massey (L 3-9)	358	2:00
* Mar 29, 2014	at Wisconsin-1	w 4-1	7	8-14-0	3-1-0	Massey (W 4-9)	475	2:03
* Mar 29, 2014	at Wisconsin-2	L 4-8	7	8-15-0	3-2-0	Starkenburgh (L 3-3)	475	2:32
* Mar 30, 2014	at Wisconsin	w 4-1	7	9-15-0	4-2-0	Massey (W 5-9)	477	1:55
Apr 02, 2014	DRAKE	L 3-5	7	9-16-0	4-2-0	Starkenburgh (L 3-4)	375	2:04
* Apr 05, 2014	#23 NORTHWESTERN-1	L 4-6	7	9-17-0	4-3-0	Massey (L 5-10)	512	2:18
* Apr 05, 2014	#23 NORTHWESTERN-2	L 1-4	7	9-18-0	4-4-0	Starkenburgh (L 3-5)	512	2:07
* Apr 06, 2014	#23 NORTHWESTERN	w 4-3	7	10-18-0	5-4-0	Massey (W 6-10)	633	2:05
* Apr 08, 2014	#14 MINNESOTA-1	L 0-2	7	10-19-0	5-5-0	Massey (L 6-11)	431	2:05
* Apr 08, 2014	#14 MINNESOTA-2	L 0-7	7	10-20-0	5-6-0	Starkenburgh (L 3-6)	431	2:08
* Apr 11, 2014	at #19 Nebraska-1	L 2-5	7	10-21-0	5-7-0	Massey (L 6-12)	-	2:00
* Apr 11, 2014	at #19 Nebraska-2	L 1-9	6	10-22-0	5-8-0	Starkenburgh (L 3-7)	672	1:33
* Apr 12, 2014	at #19 Nebraska	L 0-18	5	10-23-0	5-9-0	Starkenburgh (L 3-8)	1161	1:35
Apr 16, 2014	#13 MISSOURI-1	w 3-1	7	11-23-0	5-9-0	Massey (W 7-12)	415	1:24
Apr 16, 2014	#13 MISSOURI-2	w 13-9	7	12-23-0	5-9-0	Whitney (W 2-3)	415	2:05
* Apr 18, 2014	MICHIGAN STATE	L 0-1	7	12-24-0	5-10-0	Massey (L 7-13)	569	1:43
* Apr 19, 2014	MICHIGAN STATE	w 5-1	7	13-24-0	6-10-0	Starkenburgh (W 4-8)	613	1:57
* Apr 20, 2014	MICHIGAN STATE	L 0-4	7	13-25-0	6-11-0	Massey (L 7-14)	409	1:49
Apr 23, 2014	at Iowa State	T 6-6	5	13-25-1	6-11-0	None	227	3:24
* Apr 25, 2014	at Indiana	w 1-0	7	14-25-1	7-11-0	Massey (W 8-14)	289	1:20
* Apr 26, 2014	at Indiana	L 1-9	5	14-26-1	7-12-0	Starkenburgh (L 4-9)	373	1:24
* Apr 27, 2014	at Indiana	w 3-2	7	15-26-1	8-12-0	Massey (W 9-14)	607	1:49
Apr 30, 2014	NORTHERN IOWA	L 8-9	7	15-27-1	8-12-0	Massey (L 9-15)	414	2:13
* May 02, 2014	OHIO STATE	L 3-6	7	15-28-1	8-13-0	Massey (L 9-16)	471	2:02
* May 03, 2014	OHIO STATE	L 6-7	7	15-29-1	8-14-0	Starkenburgh (L 4-10)	622	2:25
* May 04, 2014	OHIO STATE	w 3-2	7	16-29-1	9-14-0	Massey (W 10-16)	545	2:20
May 08, 2014	vs Illinois	L 0-6	7	16-30-1	9-14-0	Massey (L 10-17)	0	2:17

() extra inning game

