



IOWA SOFTBALL

4 Women's College World Series appearances
16 NCAA Tournament berths



4 Big Ten regular season championships
2 Big Ten Tournament championships

WEEK 4

2014 SCHEDULE (3-9, 0-0)

CAROLINA CLASSIC (Columbia, S.C.)

Feb. 7	vs. UNC Greensboro	W, 5-0
Feb. 7	at South Carolina	L, 0-1
Feb. 8	vs. Presbyterian	W, 6-3
Feb. 9	vs. Ohio	L, 6-9

GETTERMAN CLASSIC (Waco, Texas)

Feb. 14	vs. Lipscomb	L, 0-10 (5)
Feb. 14	vs. #14/18 Missouri	L, 1-2 (8)
Feb. 15	vs. UAB	L, 1-6 (9)
Feb. 15	at #14/16 Baylor	L, 0-2
Feb. 16	vs. Drake	W, 9-0 (6)

Feb. 21	at Mississippi State	L, 0-2
Feb. 22	at Mississippi State	L, 0-5
Feb. 23	at Mississippi State	L, 1-9 (5)

WILDCAT INVITATIONAL (Tucson, Ariz.)

Feb. 28	vs. Valparaiso	2 p.m.
March 1	at #9/10 Arizona	7 p.m.
March 1	vs. UT Arlington	9 p.m.
March 2	vs. Longwood	10 a.m.

March 15	at Texas	4 p.m.
March 16	at Texas	4 p.m.
March 17	at Texas	7 p.m.
March 19	at Texas State	6 p.m.
March 21	at Illinois *	6 p.m.
March 22	at Illinois *	1 p.m.
March 23	at Illinois *	1 p.m.
March 28	at Wisconsin *	4 p.m.
March 29	at Wisconsin *	12 p.m.
March 30	at Wisconsin *	12 p.m.

April 2	Drake	6 p.m.
April 4	Northwestern *	6 p.m.
April 5	Northwestern *	2 p.m.
April 6	Northwestern *	1 p.m.
April 8	Minnesota (DH) *	3 p.m.
April 11	at Nebraska *	6 p.m.
April 12	at Nebraska *	2 p.m.
April 13	at Nebraska *	1 p.m.
April 16	Missouri (DH)	3 p.m.
April 18	Michigan State *	6 p.m.
April 19	Michigan State *	2 p.m.
April 20	Michigan State *	1 p.m.
April 23	at Iowa State %	4 p.m.
April 25	at Indiana *	4 p.m.
April 26	at Indiana *	12 p.m.
April 27	at Indiana *	12 p.m.
April 29	Western Illinois	7 p.m.
April 30	Northern Iowa	6:30 p.m.
May 2	Ohio State *	6 p.m.
May 3	Ohio State *	2 p.m.
May 4	Ohio State *	1 p.m.

BIG TEN TOURNAMENT (Evanston, Ill.)

May 8-11	TBA	TBA
----------	-----	-----

NCAA REGIONALS

May 15-18	TBA	TBA
-----------	-----	-----

NCAA SUPER REGIONALS

May 22-25	TBA	TBA
-----------	-----	-----

WOMEN'S COLLEGE WORLD SERIES

May 28-June 4	TBA	TBA
---------------	-----	-----

* Big Ten Conference game

% Iowa Corn Cy-Hawk Series

DH - doubleheader

BTN - Big Ten Network

BTDN - Big Ten Digital Network (video.BTN.com)

Bold indicates home games.

All times Central and subject to change.



Valparaiso
Crusaders
2-7
Tucson, Ariz.
Friday, Feb. 28
2 p.m. (CT)



No. 9/10 Arizona
Wildcats
15-1
Tucson, Ariz.
Saturday, March 1
6 p.m. (CT)



UT Arlington
Mavericks
9-5
Tucson, Ariz.
Saturday, March 1
8 p.m. (CT)



Longwood
Lancers
3-1
Tucson, Ariz.
Sunday, March 2
10 a.m. (CT)

PLAY BALL

UI softball travels to Tucson, Ariz., to play in the Wildcat Invitational this weekend, Feb. 28-March 2. The Hawkeyes face Valparaiso on Friday, No. 9/10 Arizona and UT Arlington on Saturday, and Longwood on Sunday. The three-game tournament is hosted by eight-time national champion, Arizona.

FOLLOW THE HAWKS

Fans can follow along with each game of the weekend for free through live stats or a live video stream. Links to both are available on the softball schedule page of hawkeyesports.com. For in-game updates and game delay information, follow @IowaSoftball on Twitter and "like" the official Facebook page, [facebook.com/iowahawkeyessoftball](https://www.facebook.com/iowahawkeyessoftball).

SERIES HISTORY

- Iowa and Valparaiso will meet for the first time in school history on Friday.
- Iowa trails Arizona, 5-0, in the all-time series. The teams last met on March 16, 2012. The Wildcats defeated the Hawkeyes, 6-1.
- Iowa leads UT Arlington, 3-2, in the all-time series. The Hawkeyes have won the last three contests played against the Mavericks, including a double header sweep on Feb. 24, 1990 (3-2 and 3-0) and a 1-0 win on Feb. 11, 2012.
- Iowa leads Longwood, 1-0, in the all-time series. The Hawkeyes topped the Lancers, 6-0, in the lone meeting of the teams on March 6, 2009.

LEADING THE HAWKEYES

- Claire Fritsch has a team-high .360 (9-for-25) batting average, .414 on-base-percentage, and three stolen bases.
- Erin Erickson leads the team with a .528 slugging percentage, two home runs, and six runs scored.
- Michelle Zoeller has a team-most 12 hits and five doubles.
- Erickson and Sammi Gyerman each have four RBI to lead the Hawkeyes.
- Kayla Massey leads Iowa in ERA (2.65), appearances (7), starts (7), complete games (5), inning pitched (39.2), and strikeouts (20).
- Shayla Starkenburg leads the way with a .167 opponent batting average and one save.
- Massey, Starkenburg, and Michaela Whitney each have one win in the circle for Iowa this year.

2014 TEAM LEADERS

BATTING

Player	avg	gp-gs	ab	r	h	2b	3b	hr	rbi	tb	slg%	bb	hp	so	gdp	ob%	sf	sh	sb-att	po	a	e	fld%
Fritsch, Claire	.360	12-12	25	3	9	3	0	0	3	12	.480	3	0	7	0	.414	1	1	3-4	26	33	6	.908
Luna, Brianna	.333	1-1	3	0	1	0	0	0	1	1	.333	0	1	1	0	.500	0	0	0-0	2	0	0	1.000
Zoeller, Michelle	.308	12-12	39	3	12	5	0	0	3	17	.436	1	0	7	0	.325	0	1	1-1	11	22	4	.892
Erickson, Erin	.306	12-12	36	6	11	2	0	2	4	19	.528	3	1	8	0	.375	0	0	0-1	11	1	1	.923
Gyerman, Sammi	.304	9-8	23	3	7	0	2	0	4	11	.478	2	0	5	0	.360	0	1	1-2	1	0	0	1.000
Blank, Megan	.257	12-12	35	5	9	1	1	0	2	12	.343	4	1	6	0	.350	0	0	0-0	21	27	5	.906
Mullarkey, Kaitlyn	.250	6-2	4	2	1	0	0	0	0	1	.250	0	0	1	0	.250	0	0	0-1	2	0	0	1.000
Hoffman, Holly	.219	12-12	32	1	7	0	0	0	1	7	.219	1	0	8	0	.242	0	1	0-0	45	9	1	.982

PITCHING

Player	era	w-l	app	gs	cg	sho	sv	ip	h	r	er	bb	so	2b	3b	hr	b/avg	wp	hp	bk	sfa	sha
Massey, Kayla	2.65	1-6	7	7	5	1/0	0	39.2	35	23	15	16	20	6	0	3	.223	2	0	0	1	3
Whitney, Michaela	3.30	1-2	5	3	1	0/0	0	23.1	21	15	11	14	14	3	0	3	.247	3	4	1	1	2
Starkenburg, Shayla	3.68	1-1	6	2	1	1/0	1	13.1	8	11	7	13	9	1	0	1	.167	1	0	2	1	1
Totals	3.03	3-9	12	12	7	2/0	1	76.1	64	49	33	43	43	10	0	7	.221	6	4	3	3	6
Opponents	2.01	9-3	12	12	5	5/2	2	80.0	78	29	23	19	77	15	3	2	.253	5	6	2	1	6



QUICK FACTS

UNIVERSITY OF IOWA INFORMATION

Location: Iowa City, Iowa
 Founded: 1847
 Enrollment: 31,065
 Nickname: Hawkeyes
 Mascot: Herky the Hawk
 Venue: Pearl Field/1,500
 Conference: Big Ten
 School Colors: Black and Gold
 President: Sally Mason
 Director of Athletics: Gary Barta
 Softball Administrator: Paula Jantz

COACHING INFORMATION

Head Coach: Marla Looper
 Alma Mater/Year: Florida State/1995
 Record at Iowa/Years: 84-74/3
 Overall Record/Years: 84-74/3
 Big Ten Record/Years: 33-34/3
 Assistant Coach: Adrianna Baggetta
 Alma Mater/Year: South Carolina/2002
 Assistant Coach: Stacy May-Johnson
 Alma Mater/Year: Iowa/2007
 Volunteer Assistant Coach: Chelsey Carmody
 Alma Mater/Year: Iowa/2011

TEAM INFORMATION

2013 Overall Record: 30-24
 2013 Big Ten Record/Finish: 8-15/9th
 Starters Returning/Lost: 6/3
 Pitchers Returning/Lost: 3/1
 Letterwinners Ret./Lost: 11/10
 Newcomers: 5
 Softball Office Phone: 319-335-9257

ATHLETIC COMMUNICATIONS

Softball Contact: Jill Price
 Email: jil-price@hawkeyesports.com
 Office Phone: 319-335-9411
 Cell Phone: 319-930-8805
 Office Fax: 319-335-9417
 Press Box Phone: 319-335-9296
 Web Site: hawkeyesports.com
 Twitter: @iowasoftball
 Facebook: iowahawkeyessoftball



PRONUNCIATION GUIDE

Adrianna Baggetta: Adri-aw-na BUH-Get-UH
 Claire Fritsch: Frit-sh
 Sammi Gyerman: Guy-ur-man
 Brianna Luna: Bri-aw-na
 Kara Misel: MY-zle
 Whitney Repole: Rep-lee
 Shayla Starkenburg: Shea-luh
 Micaela Whitney: Mi-kay-luh
 Michelle Zoeller: Zeller

HEAD COACH MARLA LOOPER



Marla Looper is entering her fourth season as the head coach for the University of Iowa softball program in 2014. Looper has posted an 84-74 overall and 33-34 Big Ten Conference record in her first three seasons in Iowa City.

Looper led the Hawkeyes to 30 wins in 2013 (30-24) in her third year, marking the most wins for the program since finishing 42-16 in 2009. Iowa posted six wins over ranked opponents.

Three Hawkeyes earned All-Big Ten honors -- Megan Blank was named to the first team, Johnnie Dowling earned second team honors, and Kayla Massey was named to the Big Ten All-Defensive team at pitcher. Blank earned her second-straight first team accolade, becoming the sixth Hawkeye in program history to earn first team honors in each of her first two seasons.

Blank was also named a 2013 NFCA First Team All-Midwest Region selection, earning her second all-region honor in as many seasons. Blank became the sixth Hawkeye in program history to garner all-region honors in each of her first two seasons.

In the classroom, a school-record 10 Hawkeyes were named to the 2013 spring Academic All-Big Ten team.

During her second season with the Hawkeyes, Looper led the team to a runner-up finish in the Big Ten -- the program's highest finish since winning the league title in 2003. Iowa dropped two of its first three conference series before winning five straight to close out the season. It was the first time the team had won five straight series since the 2004 season.

Iowa entered the final weekend with a conference title within reach, but it couldn't close the gap with Michigan despite taking 2-of-3 games at Minnesota. The Hawkeyes finished with a 27-26 overall and 16-8 conference record in 2012.

Five players garnered All-Big Ten recognition, including three first team selections. Senior Liz Watkins, sophomore Kayla Massey and freshman Megan Blank earned first team accolades, sophomore Michelle Zoeller was a second team honoree and junior Johnnie Dowling was a third team selection.

Blank also garnered NFCA second team all-region honors during her freshman campaign. She is the ninth Hawkeye to earn first team All-Big Ten and all-region honors during her freshman season.

The Hawkeyes finished second in the Big Ten in pitching (2.31 ERA) and third in fielding (.967). The squad turned 26 double plays during the course of the season to rank sixth nationally in double plays per game (.49).

Looper guided the Hawkeyes to a 27-24 overall and a 9-11 Big Ten record in her first season in Iowa City. The first year head coach led the UI to a pair of six game winning streaks in her opening campaign and a tournament title at the Stetson Classic.

Iowa opened Big Ten Conference play strong, jumping out to an 8-3 record. Among the victories was a 4-2 triumph at No. 1 Michigan. The win, which pushed the overall mark to 26-16, was Iowa's first over a No. 1 ranked opponent since the 2005 season and the first over a ranked foe since 2008.

Looper's Hawkeyes were on the verge of completing a series sweep in Ann Arbor before the Wolverines rallied from a 2-0 deficit in the bottom of the seventh inning to claim the victory and halt Iowa's momentum.

A pair of Hawkeyes earned All-Big Ten recognition at the conclusion of the season. Liz Watkins was tabbed as a second team selection, while Katie Keim earned third team accolades.

Looper took over the reigns of the Iowa program after serving as an assistant coach at the University of Texas for 11 seasons (1999-2010). Looper helped lead the Longhorns to three College World Series appearances (2003, 2005 and 2006) and nine NCAA Tournament berths. She also helped guide Texas to back-to-back Big 12 regular season and tournament championships in 2002 and 2003 along with regular season championships in 2006 and 2010.

2014 IOWA SOFTBALL NUMERICAL ROSTER

No.	Name	Pos.	Class	B-T	Hometown (Last School)
1	Alyssa Navarro	IF	Fr.	R-R	Dinuba, Calif. (Dinuba)
2	Erin Erickson	OF/1B	So.	R-L	Oakland, Calif. (Bishop O'Dowd)
3	Micaela Whitney	P	So.	R-R	Omaha, Neb. (Papillion-La Vista South)
4	Megan Blank	IF	Jr.	L-R	Culver City, Calif. (Marymount)
5	Brianna Luna	IF/OF	Sr.	R-R	Indio, Calif. (La Quinta)
7	Claire Fritsch	IF/OF	Fr.	L-R	Round Rock, Texas (Round Rock)
8	Whitney Repole	OF	So.	R-R	San Antonio, Texas (Smithson Valley)
11	Kaitlyn Mullarkey	1B	Fr.	L-L	Park Ridge, Ill. (Main South)
14	Michelle Zoeller	IF	Sr.	R-R	Mequon, Wis. (Homestead)
17	Kayla Massey	P	Sr.	R-R	Foothill Ranch, Calif. (Trabuco Hills)
21	Sammi Gyerman	OF	So.	L-L	San Pedro, Calif. (Palos Verdes)
22	Haley Hansel	OF	So.	L-R	Overland Park, Kan. (Blue Valley Southwest)
23	Kara Misel	IF	Fr.	R-R	Solon, Iowa (Solon)
24	Shayla Starkenburg	P	RS Fr.	R-R	Ankeny, Iowa (Ankeny)
25	Michaela Johnson	IF	Fr.	R-R	Wake Village, Texas (Texas High School)
55	Holly Hoffman	C	RS So.	R-R	Osceola, Ind. (Penn)

Head Coach: Marla Looper (Fourth Season)

Assistant Coach: Adrianna Baggetta (Fourth Season)

Assistant Coach: Stacy May-Johnson (Fourth Season)

Volunteer Assistant Coach: Chelsey Carmody (Second Season)

Strength Coach: Landon Evans

Athletic Trainers: Ashley Leggett & Brett Polan

Student Managers: Evan Decker, Reynard Marquez & Jacob Perkins

TOP GUN

Catcher Holly Hoffman has consistently been erasing base runners for the Hawkeyes this season. She has thrown out 7-of-15 runners attempting to steal a base on her for a 47 percent success rate. Her seven runners caught stealing leads the Big Ten, as the second-highest caught stealing total is five, held by Nebraska's Taylor Edwards. Hoffman needs to catch just five additional runners stealing to match her season total of 12 from 2013.

EQUAL BATTERY

Each Hawkeye starting pitcher has tallied a win in the 2014 season. Redshirt freshman Shayla Starkenburg notched her first win in the season-opener against UNC Greensboro on Feb. 7. She gave up one hit in the 5-0 shutout and held the Spartans hitless until the sixth. Sophomore Micaela Whitney picked up her first win on Feb. 8 against Presbyterian, 6-3. She struck out four in her 6.2 innings of work. Senior Kayla Massey earned her first win against Drake, 9-0, on Feb. 16. She struck out three and held the Bulldogs to five hits in her six innings.

2014 BIG TEN RANKINGS

- Michelle Zoeller ranks third in doubles (5).
- Sammi Gyerman is second in triples (2).
- Kayla Massey is second in games started (7), eighth in innings pitched (39.2), 10th in earned run average (2.65).
- Shayla Starkenburg leads the conference in saves (1) and triples allowed (0), is second in doubles allowed (1), third in games finished (4) and hits allowed (8), fourth in games in relief (4), fifth in earned runs allowed (7), sixth in home runs allowed (1), and seventh in opposing batting average (.167) and runs allowed (11).
- Claire Fritsch is fifth in assists (33) and fielding double plays (4).
- Alyssa Navarro is third in chances (106) and putouts (100), and fifth in fielding double plays (4).
- Holly Hoffman leads the conference in runners caught stealing (7).

TAKING ON THE BEST

Two of Iowa's nine losses this season have come at the hands of ranked foes: No. 14/18 Missouri on Feb. 14 (2-1 in eight innings) and No. 14/16 Baylor on Feb. 15 (2-0). The Hawkeyes have also been defeated by teams receiving votes in at least one of the national polls on six occasions this year: Lipscomb on Feb. 14 (10-0 in five innings), UAB on Feb. 15 (6-1 in nine innings), and Mississippi State on Feb. 21 (2-0), Feb. 22 (5-0), and Feb. 23 (9-1 in five innings).

Iowa is scheduled to play No. 9/10 Arizona once, No. 15/16 Nebraska three times, and No. 17/19 Missouri and No. 19/20 Minnesota twice in the remainder of the season. The Hawkeyes also match up against Northwestern and Texas three times, both are receiving votes in the polls.

IN PURSUIT OF 100

Fourth-year head coach Marla Looper has a career coaching record of 87-83 (.512). She is just 13 wins from achieving her 100th win as a head coach. Looper recorded 27 wins in 2011, 27 wins in 2012, and added 30 wins in 2013. Her 30 wins last season was the highest win total since 2009 when the Hawkeyes posted a 42-19 mark.

CHECKING OUT THE CRUSADERS

Horizon League member Valparaiso brings a 2-7 record into the Wildcat Invitational. The team is led by fourth-year head coach Jordan Stevens and assistant coaches Joylyn Ichiyama and Alex Lagesse. The roster is comprised of three freshmen, six sophomores, two juniors, and six seniors. The Crusaders have two with an average above .300, including Amanda Wisniewski (.409) and Kaitlyn Ranieri (.355). Molli Lindeman (1-1) and Taylor Weissenhofer (1-1) each have a win in the circle, while Sierra Pico (0-4) leads the team with a 2.39 ERA in 29.1 innings pitched.

2014 BIG TEN CONFERENCE STANDINGS

	Big Ten		Overall	
Minnesota	0-0	.000	12-1	.923
Michigan	0-0	.000	12-2	.857
Illinois	0-0	.000	11-3	.786
Northwestern	0-0	.000	10-4	.714
Nebraska	0-0	.000	9-5	.643
Wisconsin	0-0	.000	4-5	.444
Purdue	0-0	.000	5-7-1	.423
Ohio State	0-0	.000	4-6	.400
Michigan State	0-0	.000	4-7	.364
Penn State	0-0	.000	5-9	.357
Iowa	0-0	.000	3-9	.250
Indiana	0-0	.000	1-12-1	.107

ESPN.com/USA Softball Collegiate Top-25 (as of Feb. 25, 2014)

1.	Florida (15)	493
2.	Tennessee (4)	482
3.	Arizona State (1)	460
4.	Michigan	411
5.	UCLA	407
6.	Oregon	384
7.	Washington	374
8.	Kentucky	335
9.	Arizona	322
10.	Alabama	321
11.	Florida State	319
12.	Baylor	259
13.	Oklahoma	228
14.	Stanford	227
15.	Nebraska	218
16.	South Alabama	188
17.	Georgia	184
18.	Texas A&M	177
19.	Missouri	168
20.	Minnesota	104
21.	LSU	103
22.	Tulsa	98
23.	Notre Dame	61
24.	Arkansas	32
25.	Louisiana Lafayette	31

Receiving Votes: Auburn (30), USC Upstate (20), **Northwestern (19)**, **Texas (12)**, California (10), **Mississippi State (7)**, San Diego State (4), **Lipscomb (3)**, South Florida (3), Louisville (2), Cal State Fullerton (2), McNeese State (1), DePaul (1)

Iowa opponents in bold.

USA Today/NFCA Division I Top-25 (as of Feb. 25, 2014)

1.	Florida (20)	788
2.	Tennessee (10)	776
3.	Arizona State	728
4.	Oregon	672
5.	UCLA (1)	645
6.	Michigan	627
7.	Washington (1)	625
8.	Kentucky	559
9.	Florida State	535
10.	Arizona	509
11.	Alabama	472
12.	Baylor	414
13.	Texas A&M	358
14.	South Alabama	349
15.	Stanford	332
16.	Nebraska	328
17.	Missouri	315
18.	Georgia	290
19.	Minnesota	232
20.	Oklahoma	202
21.	Tulsa	159
22.	LSU	146
23.	Notre Dame	114
24.	Louisiana Lafayette	74
25.	Auburn	57

Receiving Votes: USC Upstate (44), **Northwestern (21)**, Hofstra (6), Cal State Fullerton (4), DePaul (4), McNeese State (3), **Mississippi State (3)**, **Lipscomb (1)**, Louisville (1), **Texas (1)**, **UAB (1)**

Iowa opponents in bold.

IOWA vs. RANKED TEAMS IN 2013 (6-9)

Date	Team	Score
2/9	vs. #11 Louisiana-Lafayette	W, 13-10
2/10	vs. #11 Louisiana-Lafayette	L, 0-11
2/22	at #1 Alabama	L, 0-5
2/23	at #1 Alabama	L, 1-4
3/1	vs. #15 Stanford	W, 7-6
3/1	vs. #24 Oregon State	W, 9-3
3/18	at #11 Louisville	W, 6-2
3/19	at #11 Louisville	L, 4-6
3/20	at #21 Kentucky	W, 3-1
4/5	#19 Nebraska	W, 6-2
4/6	#19 Nebraska	L, 1-11 (5)
4/7	#19 Nebraska	L, 2-3
4/20	at #9 Michigan	L, 3-5
4/21	at #9 Michigan	L, 6-8
4/21	at #9 Michigan	L, 0-8 (5)



IOWA SOFTBALL

4 Women's College World Series appearances
16 NCAA Tournament berths

4 Big Ten regular season championships
2 Big Ten Tournament championships

IOWA'S RECORD WHEN...

1-Run Games	0-2
2-Run Games	0-2
3-Run Games	1-1
4+-Run Games	2-5
Extra Innings	0-2
At Pearl Field	0-0
On the Road	0-5
At Neutral Site	3-4
Day Games	2-8
Night Games	1-1
vs. Lefty starter	0-3
vs. Righty starter	3-6
Iowa Scores First	2-3
Opponent Scores First	1-6
Scoring 2 Runs Or Less	0-8
Scoring 3+ Runs	3-1
Giving Up 2 Runs Or Less	2-4
Giving up 3+ Runs	1-5
Leading After Four Innings	3-2
Leading After Five Innings	3-1
Leading After Six Innings	2-0
Ranked Opponents	0-2
Massey Starts	1-6
Starkenburg Starts	1-1
Whitney Starts	1-2
Iowa Hits a Home Run	1-1
Iowa Hits No Home Runs	2-8
Opponent Hits a Home Run	0-6
Opponent Hits No Home Runs	3-3
Iowa Outhits Opponent	3-2
Opponent Outhits Iowa	0-4
Equal Number of Hits	0-3
Iowa Pitchers Record More K's	2-2
Opp. Pitchers Record More K's	1-7
Equal Number of Strikeouts	0-0
Flying To Game	3-6
Busing To Game	0-3
On Big Ten Network	0-0
On Big Ten Digital Network	0-0
On Fox Sports South	0-0
In Central Time Zone	1-7
In Eastern Time Zone	2-2
In Mountain Time Zone	0-0
In Pacific Time Zone	0-0
On Sunday	1-2
On Monday	0-0
On Tuesday	0-0
On Wednesday	0-0
On Thursday	0-0
On Friday	1-4
On Saturday	1-3

SCOUTING THE WILDCATS

Pac-12 member Arizona brings a 15-1 record and a No. 9/10 national ranking into the Wildcat Invitational. The team is led by 29th-year head coach Mike Candrea and assistant coaches Alicia Hollowell and Stacy Iveson. Four freshman, eight sophomores, five juniors, and five seniors make up the Wildcat roster. Nine regulars in the lineup are hitting above .300, including Alex Lavine (.485), Kellie Fox (.474), Courtney Rodriguez (.457), Kelsey Rodriguez (.424), Chelsea Suits (.412), Katiyana Mauga (.409), Mo Mercado (.357), Hallie Wilson (.317), and Chelsea Goodacre (.317). Nancy Bowling (4-0), Shelby Babcock (4-0), and Kenzie Fowler (2-0) are undefeated in the circle.

HONING IN ON THE MAVERICKS

Sun Belt member UT Arlington bring an overall record of 9-5 into the Wildcat Invitational. The Maverick roster consists of six freshmen, eight sophomores, two juniors, and one senior. The team is led by second-year head coach Kristie Fox and her assistants Andy Jarvis and Meagan Denny-White. Four Mavericks are hitting .300 or above so far this season, including Britnea Barilli (.364), Rebecca Stokes (.342), Meagan Michele (.341), and Jolene Schaefer (.316). Callie Collins (4-3) leads the team with a 3.24 ERA in 41.2 innings, followed by Shannon Carrico (4-1) with a 3.83 ERA in 47 innings pitched.

A LOOK AT THE LANCERS

Big South member Longwood is 3-1 on the season heading into the Wildcat Invitational. The Lancers are led by 17th-year head coach Kathy Riley and assistant coach Jennifer Steele. The roster is comprised of four freshmen, four sophomores, five juniors, and one senior. Five Lancers own a batting average above .300, including Emily Murphy (.800), Chelsea Sciacca (.429), Katie Shinrock (.364), Jamie Barbour (.333), and Carly Adams (.308). Jenna Carnes (1-0), Libby Morris (1-0), and Elizabeth McCarthy (1-1) all possess a win in the circle so far this season.

COLLEGE SPORTS MADNESS RUNDOWN

College Sports Madness recognized Iowa softball on several occasions in the preseason. The Hawkeyes were named the No. 40 team in the country by the site on Jan. 9. College Sports Madness also recognized shortstop Megan Blank as a preseason first team All-Big Ten and preseason second team All-American in February.

A STELLAR DEBUT

Redshirt freshman Shayla Starkenburg made a successful Hawkeye debut at the Carolina Classic. The right-handed pitcher collected the first start, win, shutout, and one-hitter of her Hawkeye career in Iowa's first game of 2014 against UNC Greensboro on Feb. 7. Her no-hit bid held until midway through the sixth, when UNCG recorded a single. She recorded five strikeouts in her seven innings

pitched.

Starkenburg made her second appearance of the season in relief against Presbyterian. She entered the contest in a bases loaded situation with two outs and an Iowa lead to protect. With the game on the line, Starkenburg ended the threat, forcing a ground out to end the game in Iowa's favor 6-3 and record her first career save.

Starkenburg made her third and final appearance against Ohio in relief. She held the Bobcats hitless and scoreless. On the weekend, Starkenburg posted 1-0 record, 0.00 ERA, and five strikeouts. She gave up just one hit, holding her opponents to a .043 batting average.

FRITSCH SHINES IN HOME STATE

Hawkeye infielder Claire Fritsch was named to the Gettysman Classic all-tournament team after leading all hitters with a .538 batting average (7-of-13). Of her seven total hits, two were doubles -- the first of her Iowa career. She also added an RBI, stolen base, sacrifice bunt and a run scored. The freshman grew up in Round Rock, Texas, just an hour and a half from Waco, and her parents were in the stands to see her excel on the field in an Iowa uniform.

TOP TIER

Hawkeye junior Megan Blank appeared on the Top 50 Watch List for the 2014 USA Softball Collegiate Player of the Year released on Jan. 29, 2014. The shortstop -- making the list for the first time in her career -- is 1-of-7 student-athletes from the Big Ten and 1-of-20 juniors included in the Top 50.

The list is narrowed to the top 25 on April 9, the top 10 on May 7, and the top 3 on May 21. The 2014 Softball Collegiate Player of the Year will be announced prior to the start of the Women's College World Series on May 27.

The award, given by the National Governing Body for softball in the United States, is designed to recognize outstanding athletic achievement by female collegiate softball players across the country.

A NEW BATTING LEADER

Megan Blank hit .437 in 2013, setting Iowa's single season batting average record. The previous record was .428, set by Kim Davis in 1993. Her career average is .413, also marking the highest in program history. Blank's 59 RBIs in 2013 mark the second-highest single-season total in program history. Debbie Bilbao posted a school record 61 RBIs in 1997. Blank also belted 11 home runs in 2013 -- the third-highest single-season total.





IOWA SOFTBALL

4 Women's College World Series appearances
16 NCAA Tournament berths

4 Big Ten regular season championships
2 Big Ten Tournament championships



The Cy-Hawk Series is in its 10th season in 2013-14, being sponsored for the second time by Iowa Corn.

Iowa has won the in-state competition five times, and Iowa State has won four, in a series that began in 2004-05. Iowa State captured the Cy-Hawk Series a year ago by a 17-11 margin.

Iowa captured the inaugural Cy-Hawk Series (13-8) in 2004-05 and won again in 2006-07 (13-8), 2008-09 (21-4) and 2010-11 (15-11). Iowa State won the competition in 2005-06 (13-8), 2007-08 (18-9), 2009-10 (16-11) and 2011-12 (17-11).

The 12-event series awards two points (except football, which is worth three) to the winning school in each head-to-head match-up between the two institutions. Additionally, one point is awarded to an institution if the graduation rate of its student-athletes is greater than the national average as reported each fall by the NCAA.

A commemorative Cy-Hawk Series Cup, which stands 31 inches tall and weighs 19 pounds, is displayed on the winning team's campus for an entire year after a victory. Replica cups are also presented as "traveling trophies" for individual victorious teams in the head-to-head competition.

This season's Iowa Corn Cy-Hawk Series schedule/results is listed below. All events are worth two points, except football, which is worth three points:

Date	Event	Site/Winner
9/6	Women's Soccer	Iowa
9/14	Football	Iowa
9/21	Volleyball	Iowa State
11/15	Men's Cross Country	Iowa State
11/15	Women's Cross Country	Iowa State
12/1	Wrestling	Iowa
12/12	Women's Basketball	Iowa State
12/13	Women's Swimming & Diving	Iowa
12/13	Men's Basketball	Iowa State
3/7	Women's Gymnastics	TBD
4/23	Softball	TBD

BLANK INVITED TO 2013 USA NATIONAL TEAM SELECTION CAMP

Shortstop Megan Blank was invited to the 2013 USA Softball Women's National Team Selection Camp, held in Oklahoma City on June 10-12 at the ASA Hall of Fame Complex following her sophomore season. Blank was one of 32 athletes, and one of six sophomores, invited.

BLANK HONORED BY NFCA

Shortstop Megan Blank was named a 2013 National Fastpitch Coaches Association (NFCA) First Team All-Midwest Region selection, earning her second all-region honor in as many seasons. Blank is the sixth Hawkeye in program history to garner all-region honors in each of her first two seasons. She became the ninth player in program history to earn all-region recognition as a freshman, as she was named to the second team.

BIG TOURNEY RETURNS IN 2013

The Big Ten Tournament returned in 2013 for the first time since 2008. The Hawkeyes have claimed two Big Ten Tournament titles (2001, 2003) and won 21 games in the event all-time -- the second most of any team. The conference tournament was discontinued from 2009-12. Iowa fell to Ohio State, 8-4, in the first round at Bowlin Stadium in Lincoln, Neb. The Hawkeyes held a 4-1 advantage moving to the bottom of the fifth before the Buckeyes plated six runs to rally for the victory.

HAWKEYE TRADITION

Iowa has made four Women's College World Series appearances (1995, 1996, 1997, 2001) and played in 16 NCAA Tournaments in school history. The 16 appearances are the second most in Big Ten history, and the four WCWS appearances equal the second most in conference history. The Hawkeyes have won four Big Ten Conference regular season championships (1989, 1997, 2000, 2003) and two Big Ten Tournament titles (2001, 2003).

HAWKEYES IN 2013

The University of Iowa softball team finished 30-24 overall in 2013, posting the most wins since finishing 42-16 in 2009. The Hawkeyes tied for ninth in the Big Ten with an 8-15 mark.

HAWKEYES JUST MISS 2013 NCAA TOURNAMENT

The Hawkeyes finished the regular season with an RPI of 33, and just missed the NCAA Tournament. Iowa was 39th in the final RPI -- the fifth-highest mark in the Big Ten.

ON DECK

The Hawkeyes play a three-game series at Texas, March 15-17, and continue their road trip with a single game at Texas State on March 19. Iowa is scheduled to open its Big Ten slate afterwards, beginning with a three-game series at Illinois, March 21-23.



IOWA SOFTBALL BY THE NUMBERS

2014 Iowa Team Highs

Longest Winning Streak	1-game winning streak, three times
Longest Losing Streak	5-game losing streak
Current Streak	L3
Largest Margin of Victory	9 vs. Drake (2/16)
Largest Margin of Defeat	10 vs. Lipscomb (2/14)
Most At-Bats	36 vs. UAB (2/15)
Most Runs Scored	9 vs. Drake (2/16)
Most Hits	16 vs. Drake (2/16)
Most RBIs	8 vs. Drake (2/16)
Most Doubles	3 vs. Ohio (2/9)
Most Triples	2 vs. Ohio (2/9)
Most Home Runs	1, twice; vs. Presbyterian (2/8), vs. Missouri (2/15)
Most Stolen Bases	1, six times
Most Strikeouts (pitching)	7 vs. Missouri (2/15)
Most Errors	4, twice, last vs. Mississippi State (2/23)
Most Runs Allowed	10 vs. Lipscomb (2/14)
Most Hits Allowed	12 vs. Ohio (2/9)
Most Walks Allowed	6 vs. UNC Greensboro (2/7)

2014 Iowa Individual Team Batting Leaders

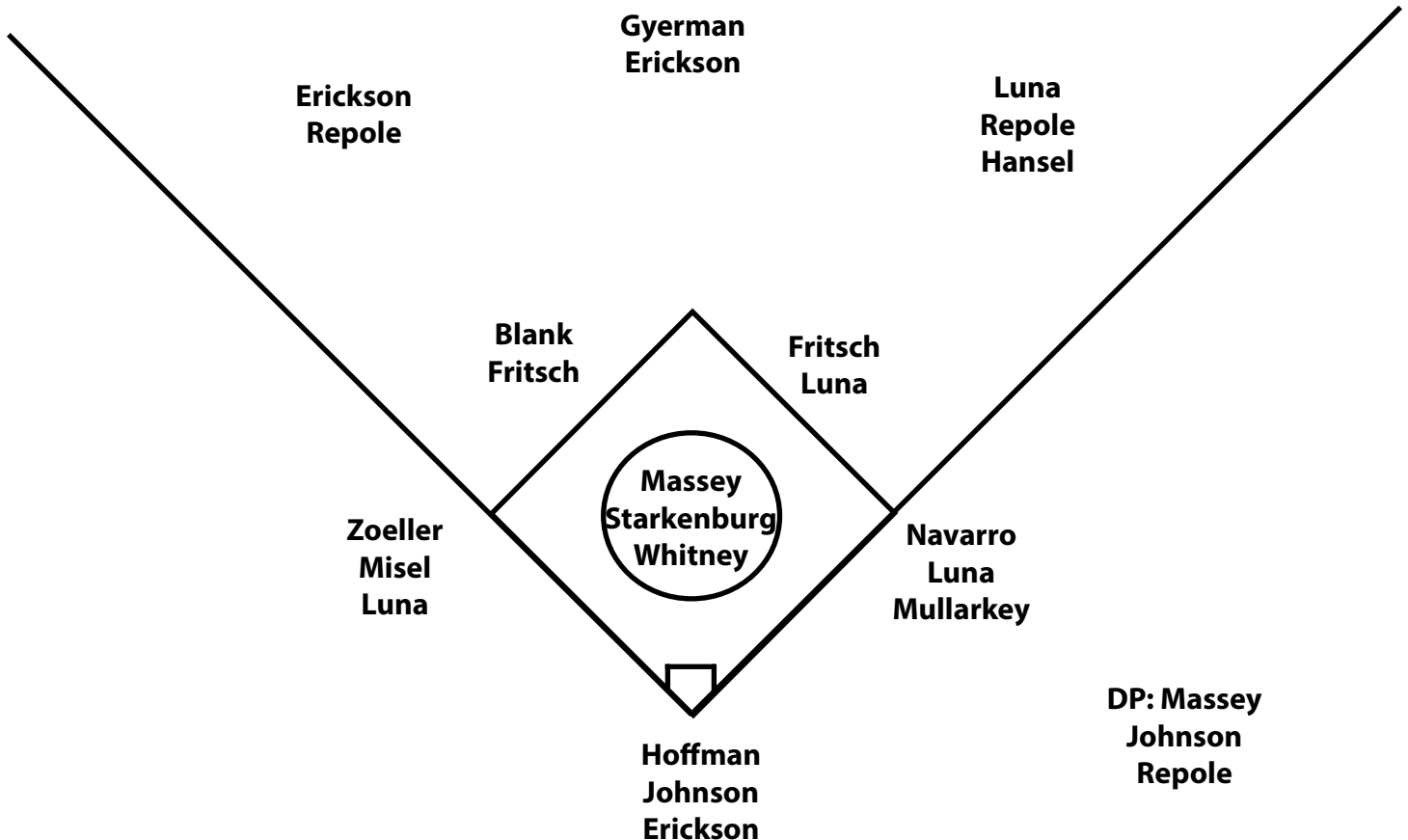
Batting Avg.360, Claire Fritsch
Games Played	12 (7 players)
Games Started	12 (6 players)
At Bats	39, Michelle Zoeller
Runs	6, Erin Erickson

Hits	12, Michelle Zoeller
Doubles	5, Michelle Zoeller
Triples	2, Sammi Gyerman
Home Runs	2, Erin Erickson
RBIs	4, Erin Erickson/Sammi Gyerman
Total Bases	19, Erin Erickson
Walks	4, Megan Blank
Hit by Pitch	2, Whitney Repole
Strikeouts	12, Alyssa Navarro
On-Base Percentage414, Claire Fritsch
Sacrifice Flies	1, Claire Fritsch
Sacrifice Hits	1 (6 players)
Stolen Bases	3, Claire Fritsch
Stolen Base Attempts	4, Claire Fritsch

2014 Iowa Individual Pitching Leaders

ERA	2.65, Kayla Massey
Wins	1, Kayla Massey/Shayla Starkenburg/Micaela Whitney
Appearances	7, Kayla Massey
Games Started	7, Kayla Massey
Complete Games	5, Kayla Massey
Shutouts	1, Kayla Massey/Shayla Starkenburg
Saves	1, Shayla Starkenburg
Innings Pitched	39.2, Kayla Massey
Strikeouts	20, Kayla Massey
Opponent Batting Average167, Shayla Starkenburg

HAWKEYE DEFENSIVE DEPTH CHART





IOWA SOFTBALL

4 Women's College World Series appearances
16 NCAA Tournament berths

4 Big Ten regular season championships
2 Big Ten Tournament championships

2014 TV ROSTER



1

Alyssa Navarro
Fr. • IF • R/R
Dinuba, Calif.



2

Erin Erickson
So. • OF • R/L
Oakland, Calif.



3

Micaela Whitney
So. • P • R/R
Omaha, Neb.



4

Megan Blank
Jr. • IF • L/R
Culver City, Calif.



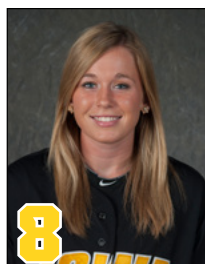
5

Brianna Luna
Sr. • OF • R/R
Indio, Calif.



7

Claire Fritsch
Fr. • OF • L/R
Round Rock, Texas



8

Whitney Repole
So. • OF • R/R
San Antonio, Texas



11

Kaitlyn Mullarkey
Fr. • 1B • L/L
Des Moines, Iowa



14

Michelle Zoeller
Sr. • IF • R/R
Mequon, Wis.



17

Kayla Massey
Sr. • P • R/R
Foothill Ranch, Calif.



21

Sammi Gyerman
So. • OF • L/L
San Pedro, Calif.



22

Haley Hansel
Fr. • OF • L/R
Overland Park, Kan.



23

Kara Misel
Fr. • IF • R/R
Solon, Iowa



24

Shayla Starkenburg
RS Fr. • P • R/R
Ankeny, Iowa



25

Michaela Johnson
Fr. • IF • R/R
Wake Village, Texas



55

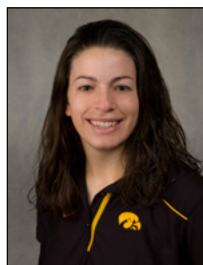
Holly Hoffman
RS So. • C • R/R
Osceola, Ind.



Marla Looper
Head Coach
4th Season



Adrianna Baggetta
Assistant Coach
4th Season



Stacy May-Johnson
Assistant Coach
4th Season



Chelsey Carmody
Volunteer Assistant
2nd Season





IOWA SOFTBALL

4 Women's College World Series appearances
16 NCAA Tournament berths

4 Big Ten regular season championships
2 Big Ten Tournament championships

2014 STATS

2014 Iowa Softball Overall Statistics for Iowa (as of Feb 26, 2014) (All games Sorted by Batting avg)

Record: 3-9 Home: 0-0 Away: 0-5 Neutral: 3-4 : 0-0

Player	avg	gp-gs	ab	r	h	2b	3b	hr	rbi	tb	slg%	bb	hp	so	gdp	ob%	sf	sh	sb-att	po	a	e	fld%
Fritsch, Claire	.360	12-12	25	3	9	3	0	0	3	12	.480	3	0	7	0	.414	1	1	3-4	26	33	6	.908
Luna, Brianna	.333	1-1	3	0	1	0	0	0	1	1	.333	0	1	1	0	.500	0	0	0-0	2	0	0	1.000
Zoeller, Michelle	.308	12-12	39	3	12	5	0	0	3	17	.436	1	0	7	0	.325	0	1	1-1	11	22	4	.892
Erickson, Erin	.306	12-12	36	6	11	2	0	2	4	19	.528	3	1	8	0	.375	0	0	0-1	11	1	1	.923
Gyerman, Sammi	.304	9-8	23	3	7	0	2	0	4	11	.478	2	0	5	0	.360	0	1	1-2	1	0	0	1.000
Blank, Megan	.257	12-12	35	5	9	1	1	0	2	12	.343	4	1	6	0	.350	0	0	0-0	21	27	5	.906
Mullarkey, Kaitlyn	.250	6-2	4	2	1	0	0	0	0	1	.250	0	0	1	0	.250	0	0	0-1	2	0	0	1.000
Hoffman, Holly	.219	12-12	32	1	7	0	0	0	1	7	.219	1	0	8	0	.242	0	1	0-0	45	9	1	.982
Repole, Whitney	.207	11-11	29	3	6	3	0	0	1	9	.310	2	2	9	0	.303	0	1	0-0	6	1	1	.875
Navarro, Alyssa	.206	12-12	34	3	7	0	0	0	1	7	.206	2	1	12	0	.270	0	1	1-1	100	5	1	.991
Massey, Kayla	.200	12-11	35	0	7	1	0	0	3	8	.229	1	0	8	0	.222	0	0	0-0	3	8	2	.846
Johnson, Michaela	.111	6-1	9	0	1	0	0	0	1	1	.111	0	0	2	0	.111	0	0	0-0	0	0	0	.000
Hansel, Haley	.000	8-2	3	0	0	0	0	0	0	0	.000	0	0	2	0	.000	0	0	0-0	0	0	1	.000
Misel, Kara	.000	1-0	1	0	0	0	0	0	0	0	.000	0	0	1	0	.000	0	0	0-0	0	0	0	.000
Totals	.253	12	308	29	78	15	3	2	24	105	.341	19	6	77	0	.308	1	6	6-10	229	112	23	.937
Opponents	.221	12	290	49	64	10	0	7	39	95	.328	43	4	43	3	.326	3	6	8-15	240	79	15	.955

(All games Sorted by Earned run avg)

Player	era	w-l	app	gs	cg	sho	sv	ip	h	r	er	bb	so	2b	3b	hr	b/avg	wp	hp	bk	sfa	sha
Massey, Kayla	2.65	1-6	7	7	5	1/0	0	39.2	35	23	15	16	20	6	0	3	.223	2	0	0	1	3
Whitney, Micaela	3.30	1-2	5	3	1	0/0	0	23.1	21	15	11	14	14	3	0	3	.247	3	4	1	1	2
Starkenbourg, Shayla	3.68	1-1	6	2	1	1/0	1	13.1	8	11	7	13	9	1	0	1	.167	1	0	2	1	1
Totals	3.03	3-9	12	12	7	2/0	1	76.1	64	49	33	43	43	10	0	7	.221	6	4	3	3	6
Opponents	2.01	9-3	12	12	5	5/2	2	80.0	78	29	23	19	77	15	3	2	.253	5	6	2	1	6





IOWA SOFTBALL

4 Women's College World Series appearances
16 NCAA Tournament berths

4 Big Ten regular season championships
2 Big Ten Tournament championships

2014 RESULTS

2014 Iowa Softball Game Results for Iowa (as of Feb 27, 2014) (All games)

Date	Opponent	Score	Inns	Overall	Pitcher of record	Attend	Time
2/7/2014	vs UNC Greensboro	w 5-0	7	1-0-0	0-0-0 Starkenburg (W 1-0)	464	2:01
2/7/2014	at South Carolina	L 0-1	7	1-1-0	0-0-0 Massey (L 0-1)	1123	1:46
2/8/2014	vs Presbyterian	w 6-3	7	2-1-0	0-0-0 Whitney (W 1-0)	1444	1:55
2/9/2014	vs Ohio	L 6-9	7	2-2-0	0-0-0 Massey (L 0-2)	209	2:34
^ Feb 14, 2014	vs Lipscomb	L 0-10	5	2-3-0	0-0-0 Starkenburg (L 1-1)	658	1:35
Feb 14, 2014	vs #14 MISSOURI	L 1-2	(8)	2-4-0	0-0-0 Massey (L 0-3)	0	2:51
Feb 15, 2014	vs UAB-^	L 1-6	(9)	2-5-0	0-0-0 Whitney (L 1-1)	203	3:05
^ Feb 15, 2014	at #14 Baylor	L 0-2	7	2-6-0	0-0-0 Massey (L 0-4)	1247	1:30
^ Feb 16, 2014	vs Drake	w 9-0	6	3-6-0	0-0-0 Massey (W 1-4)	753	1:43
Feb 21, 2014	at Mississippi State	L 0-2	7	3-7-0	0-0-0 Massey (L 1-5)	345	1:41
Feb 22, 2014	at Mississippi State	L 0-5	7	3-8-0	0-0-0 Whitney (L 1-2)	354	2:02
Feb 23, 2014	at Mississippi State	L 1-9	5	3-9-0	0-0-0 Massey (L 1-6)	369	1:34

() extra inning game

