

Appendix 2: Structure Plans

Road Stopping

Plans in this appendix may show existing roads subject to road stopping (e.g., Figure 2-15A). Road stopping is a process that can be undertaken under the Local Government Act 1974 or the Public Works Act 1981. It is separate from Resource Management Act processes but may run concurrently with them. Following road stopping, the land will cease to be road as defined by the Local Government Act.

Any areas shown in this appendix as subject to road stopping are indicative only and not surveyed. The final extent of any stopping will be determined by the formal road stopping process.

The road stopping identified in these Structure Plans does not necessarily show all potential future road stopping within Hamilton. It is expected that, from time-to-time, road stopping will occur without amendments being made to this appendix.

Structure Plans Locality Guide

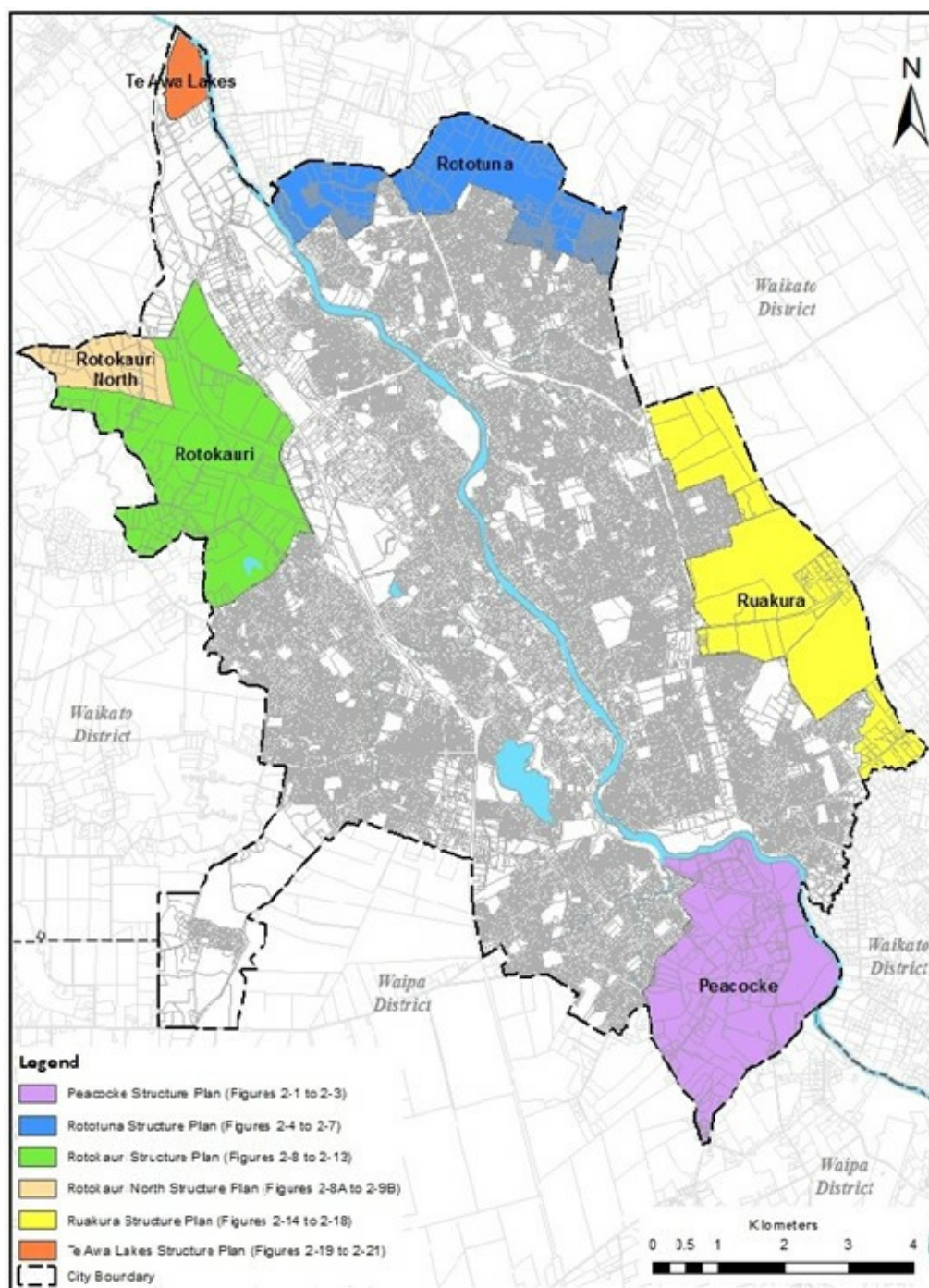


Figure 2-1: Peacocke Structure Plan – Land Use

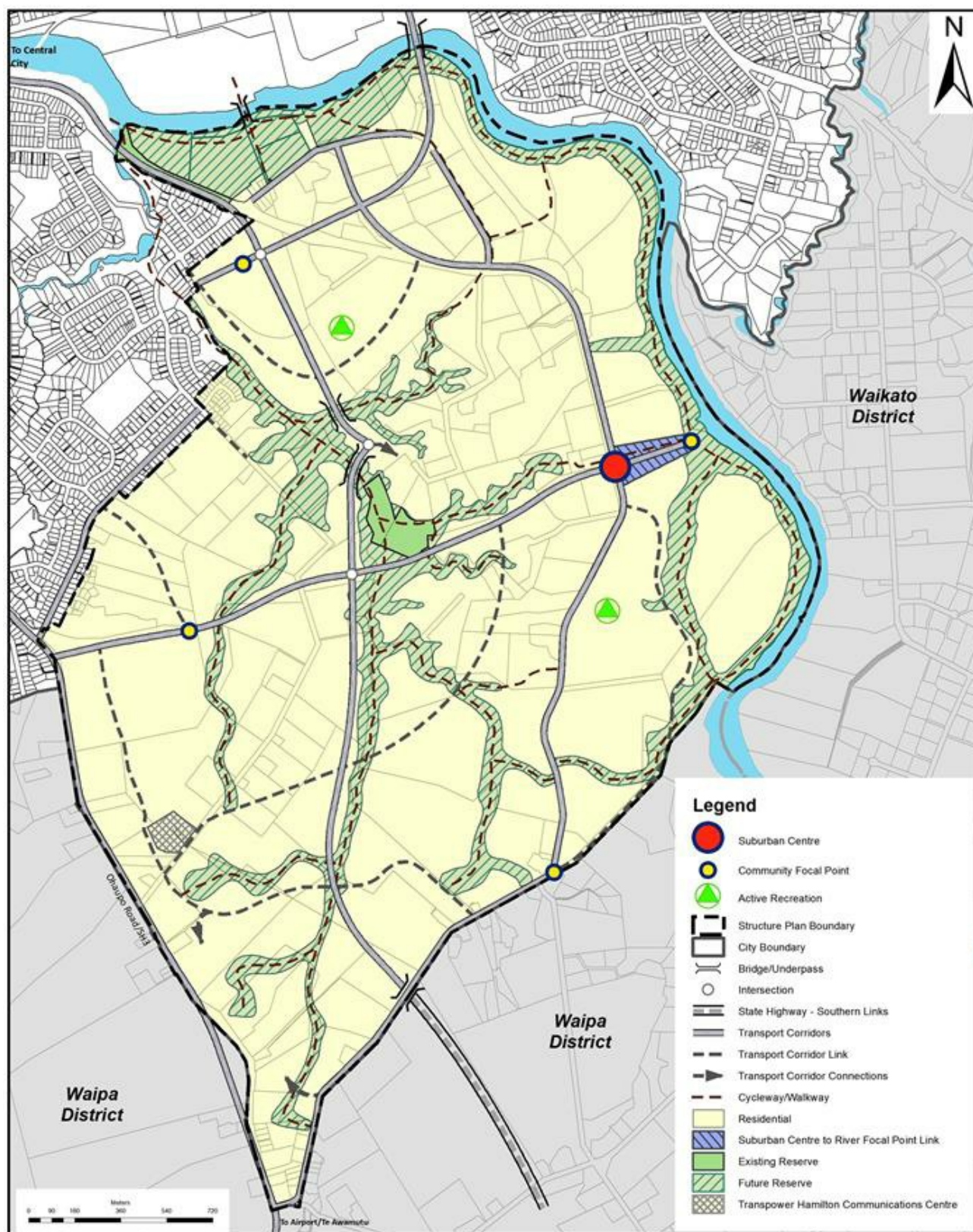


Figure 2-2: Peacocke Structure Plan – Staging and Transport Network

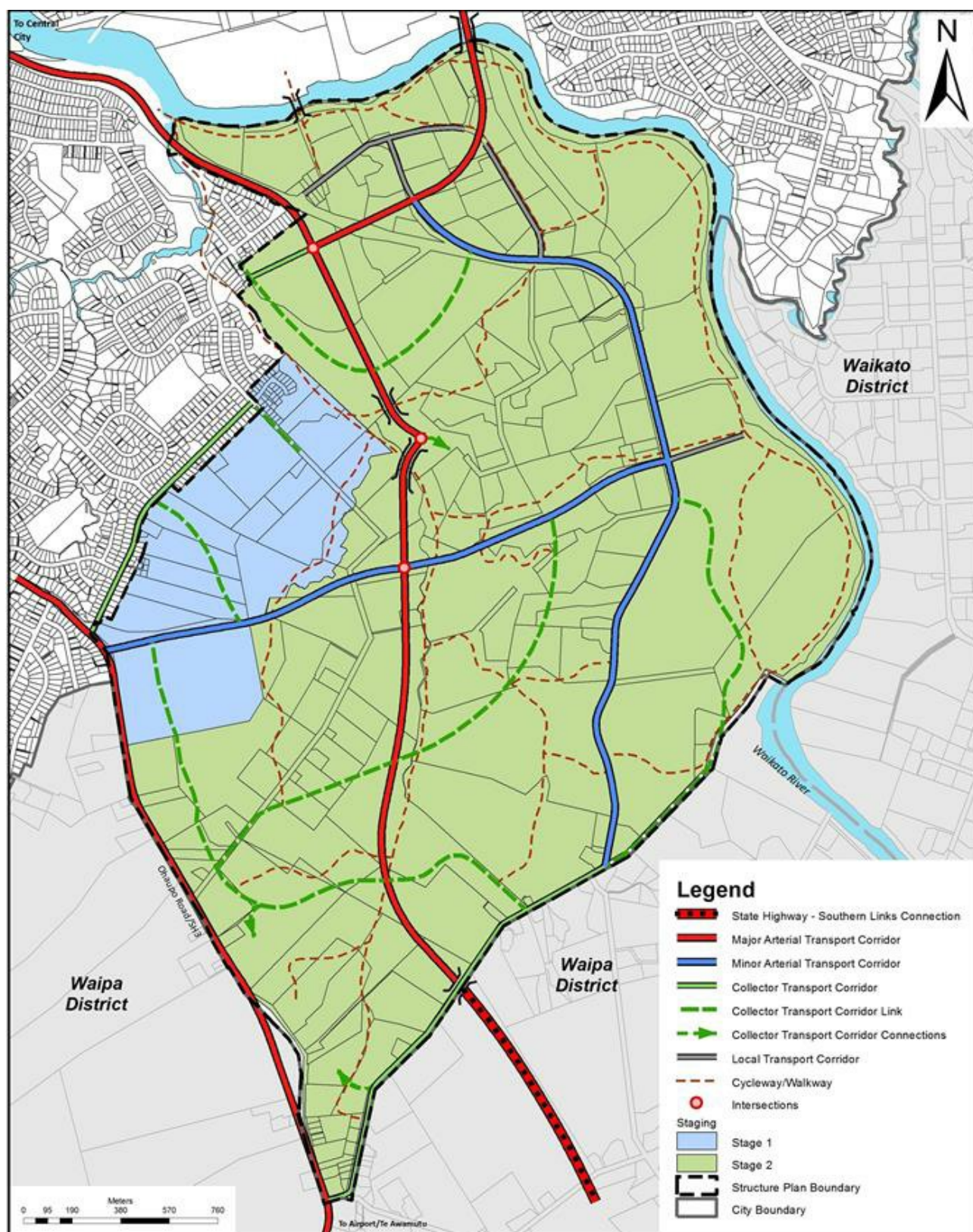


Figure 2-3: Peacocke Structure Plan – Character Areas and Neighbourhoods

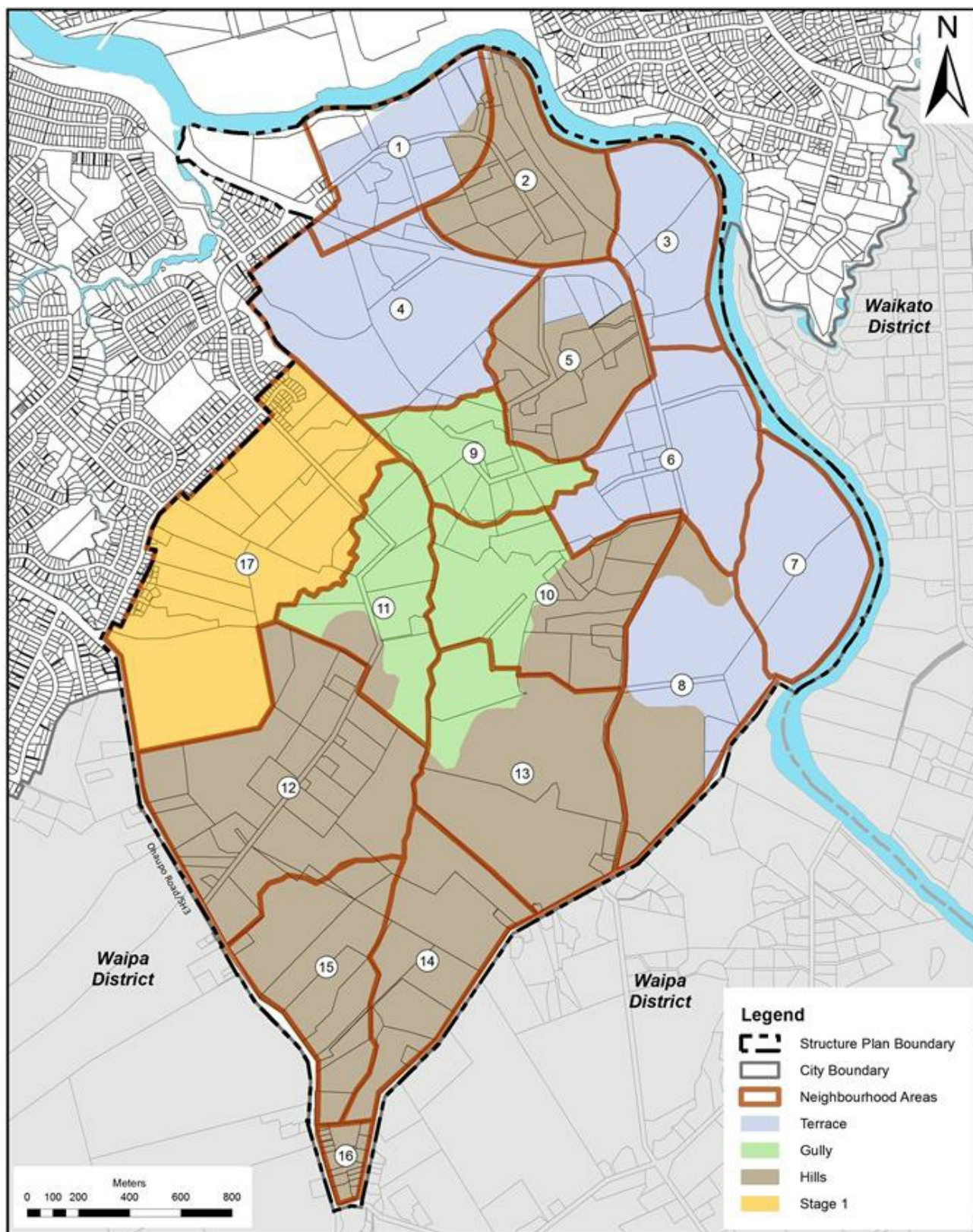


Figure 2-4: Rototuna Structure Plan – Land Use

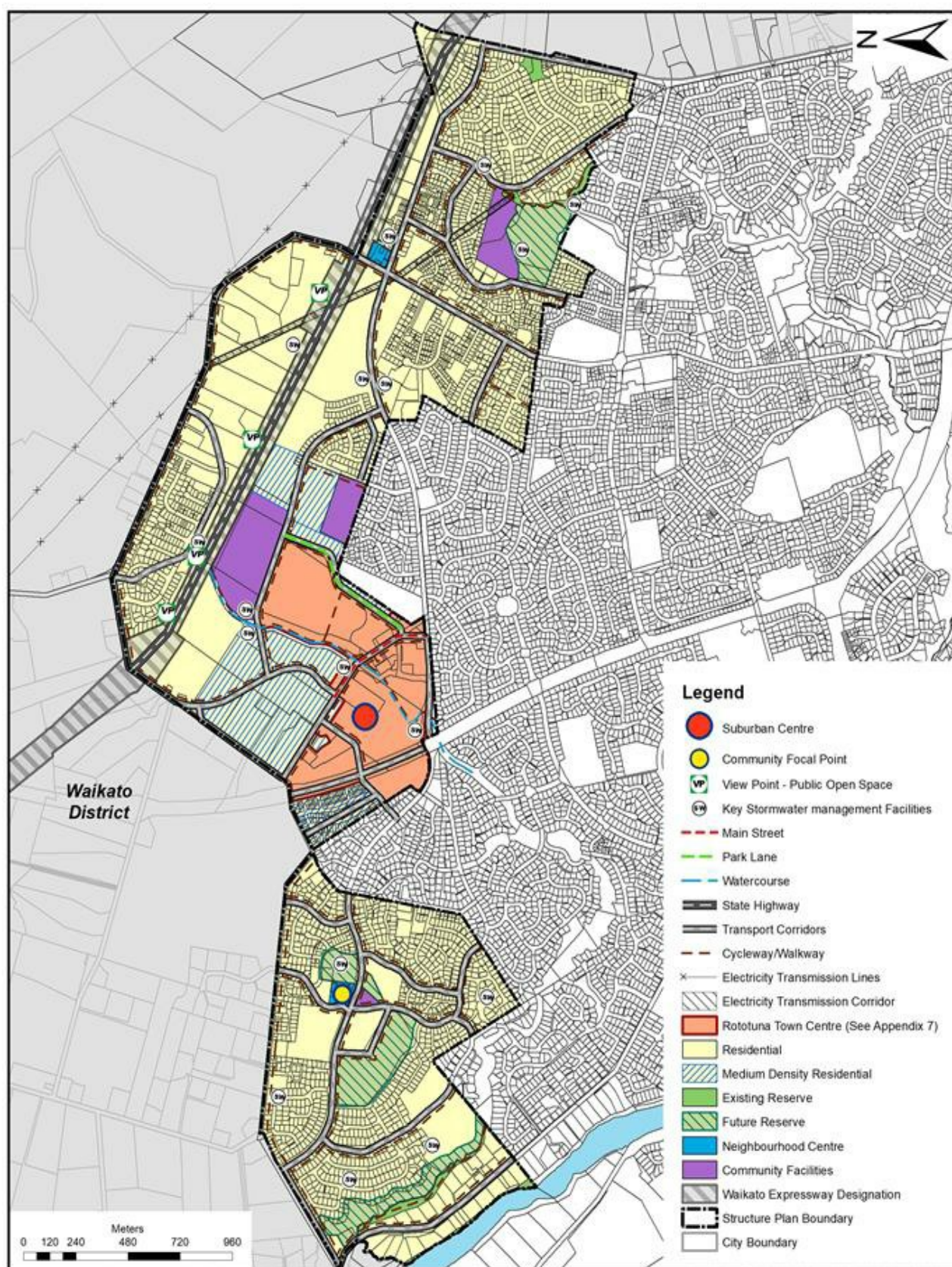


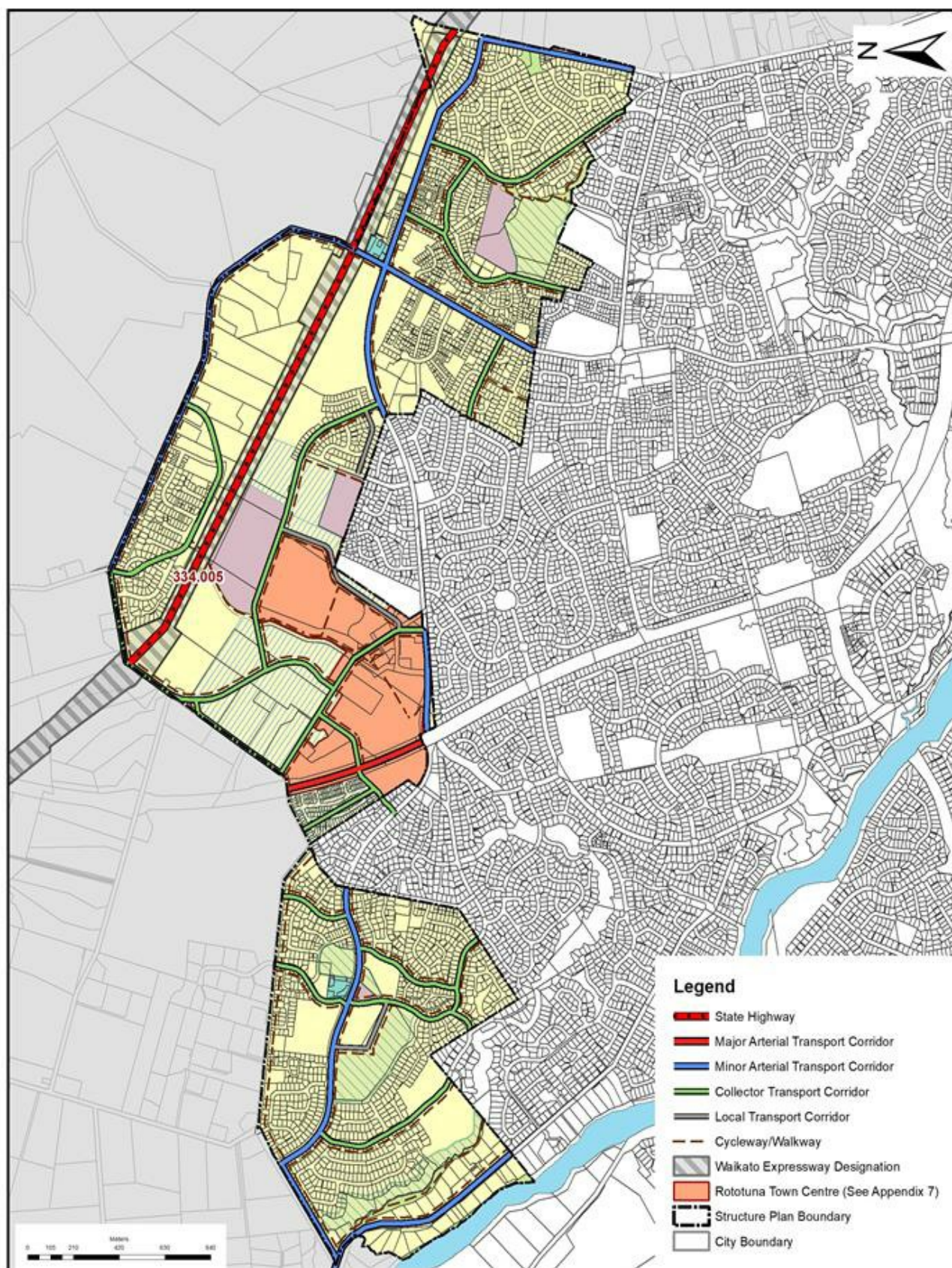
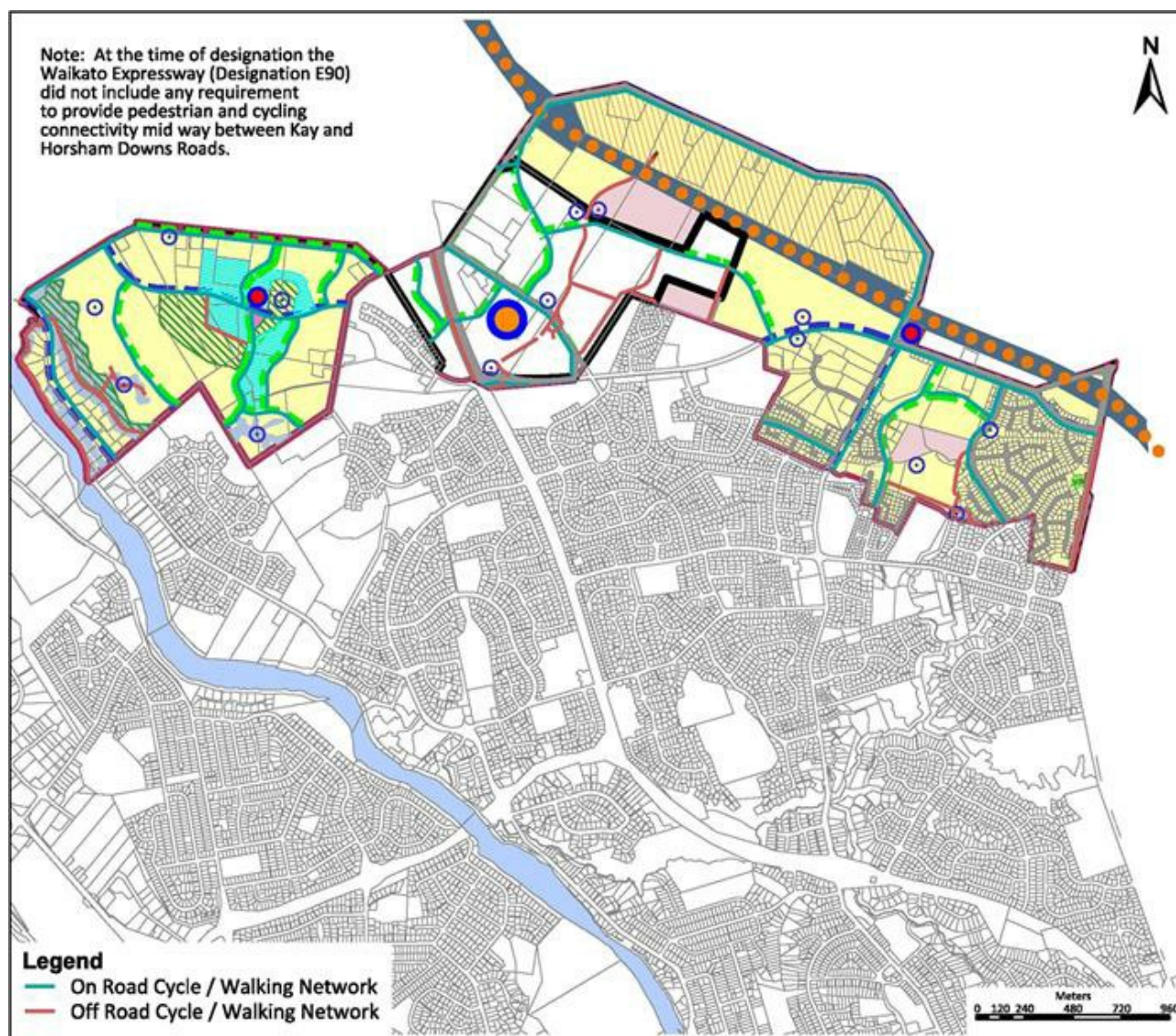
Figure 2-5: Rototuna Structure Plan – Transport Network

Figure 2-6: Rototuna Cycling and Walking Network**Figure 2-7: Rototuna Catchment Boundaries**

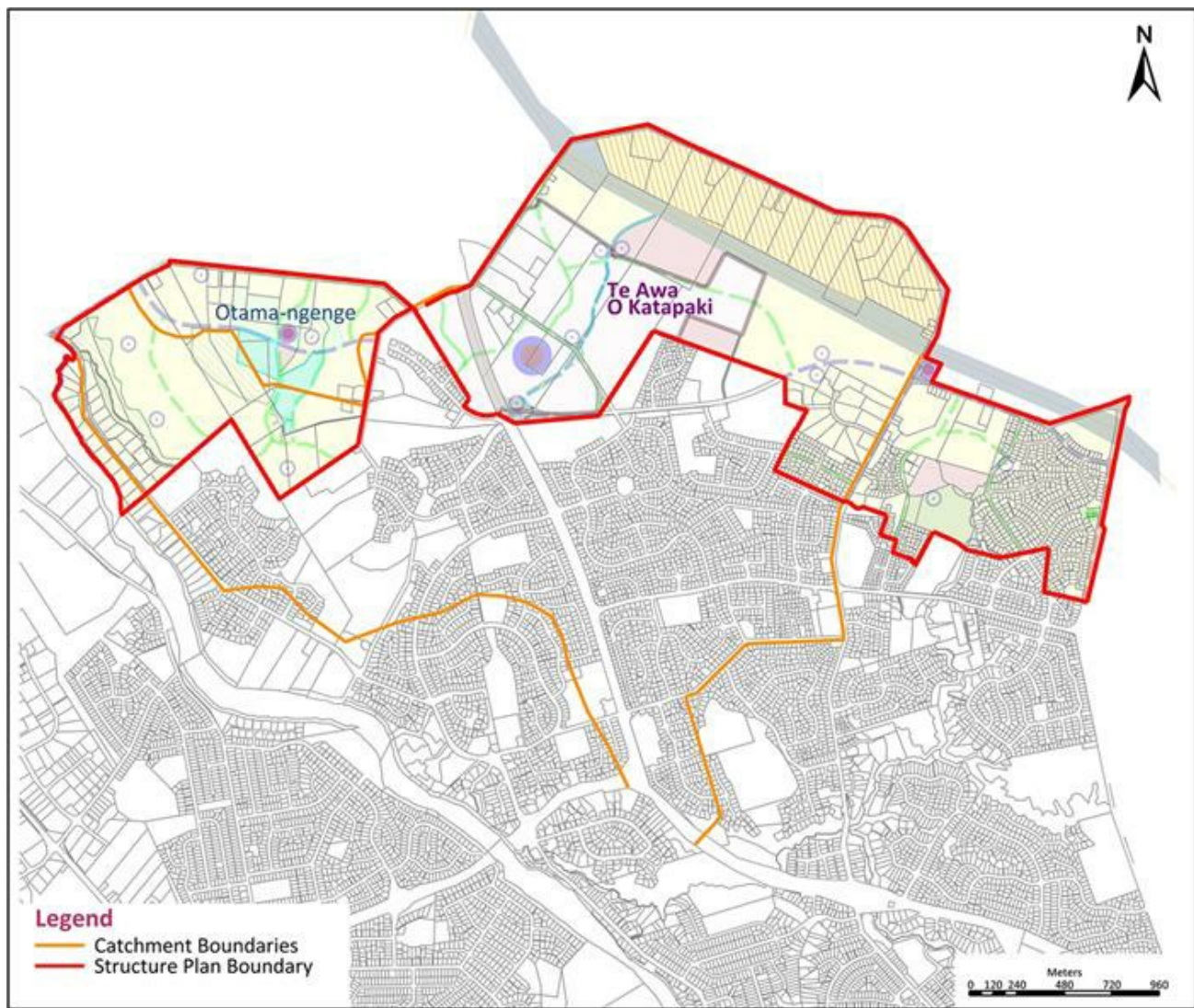
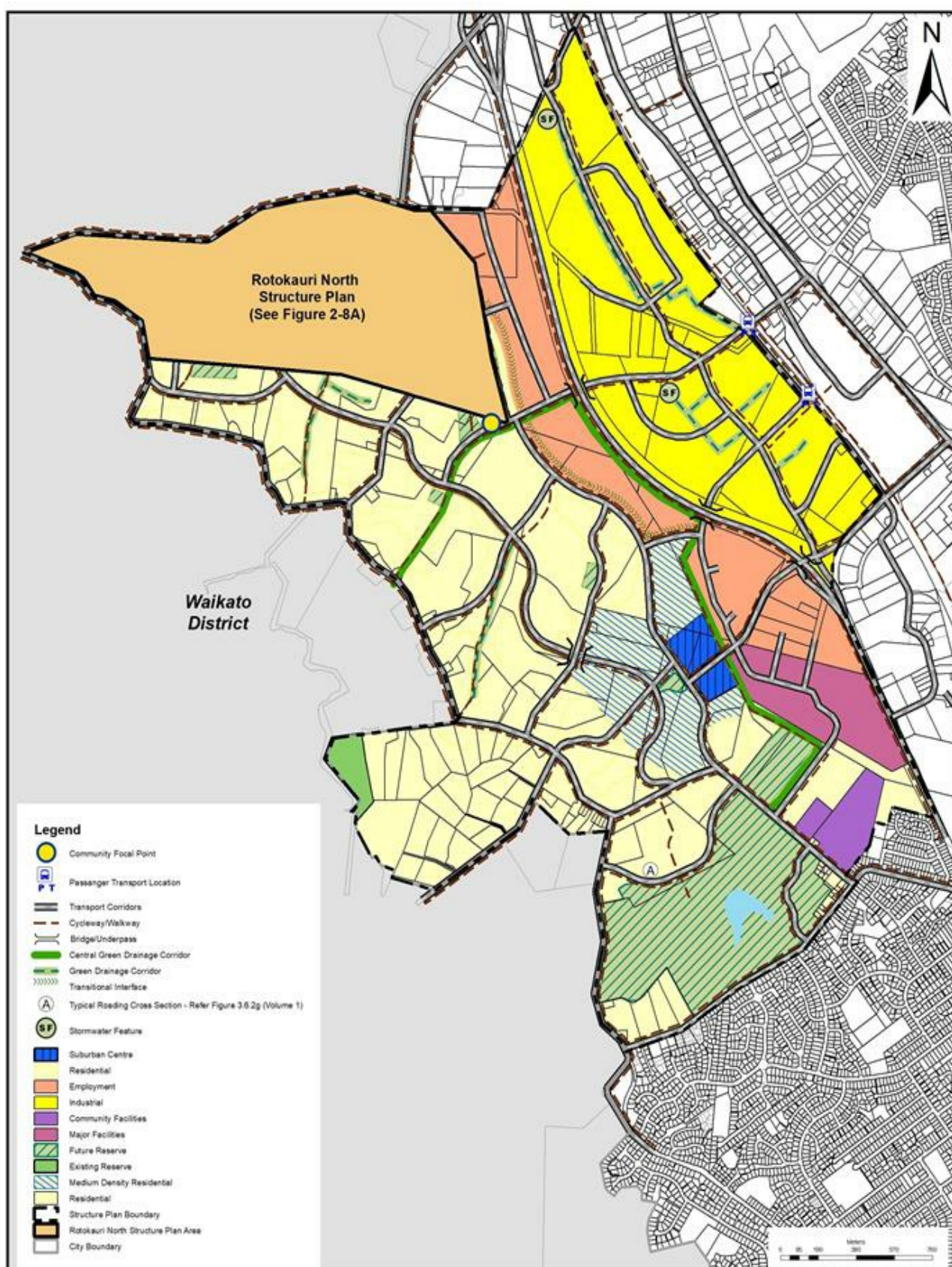


Figure 2-8: Rotokauri Structure Plan – Land Use





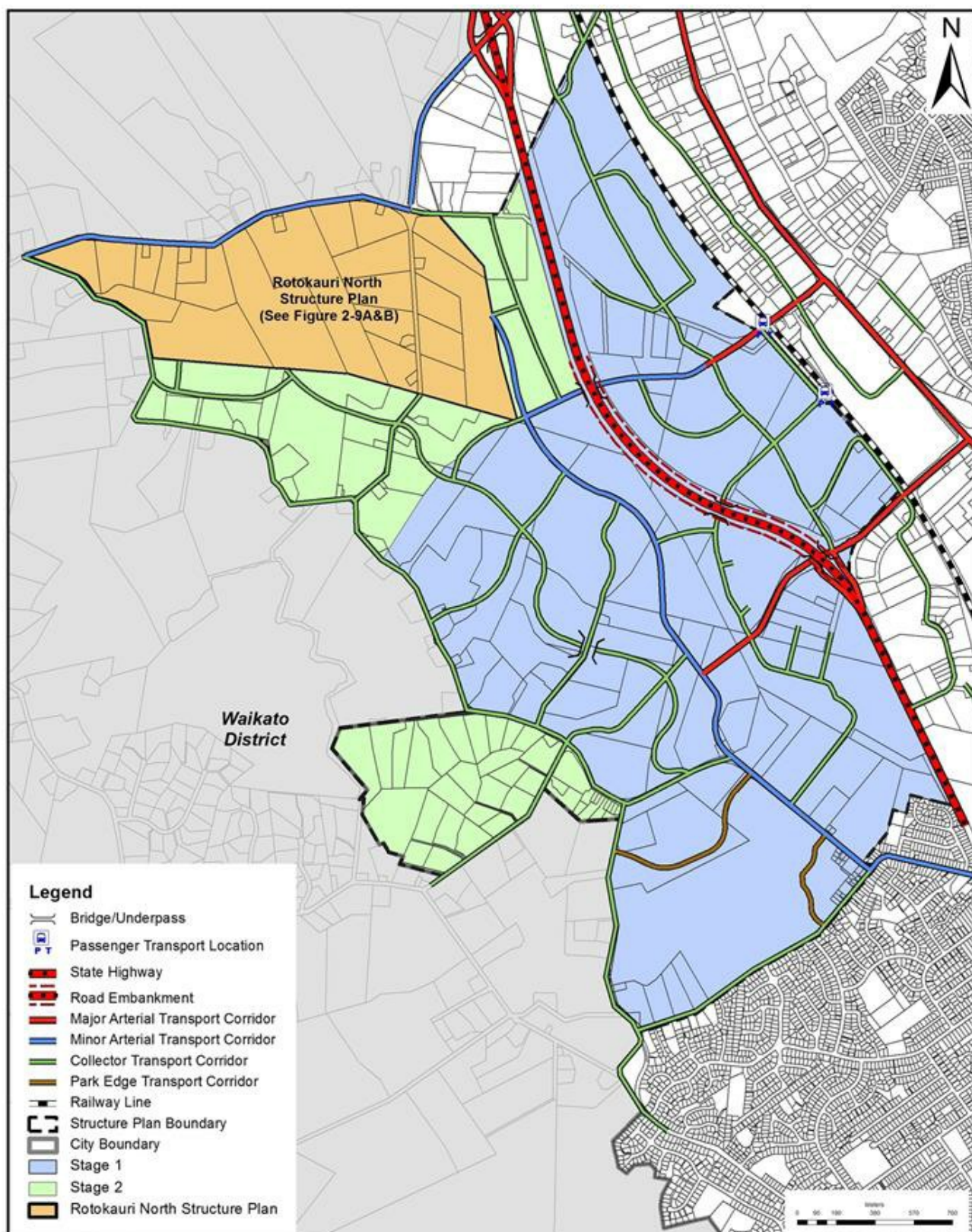


Figure 2-9A: Rotokauri North Strategic Infrastructure – Water and Waste Water

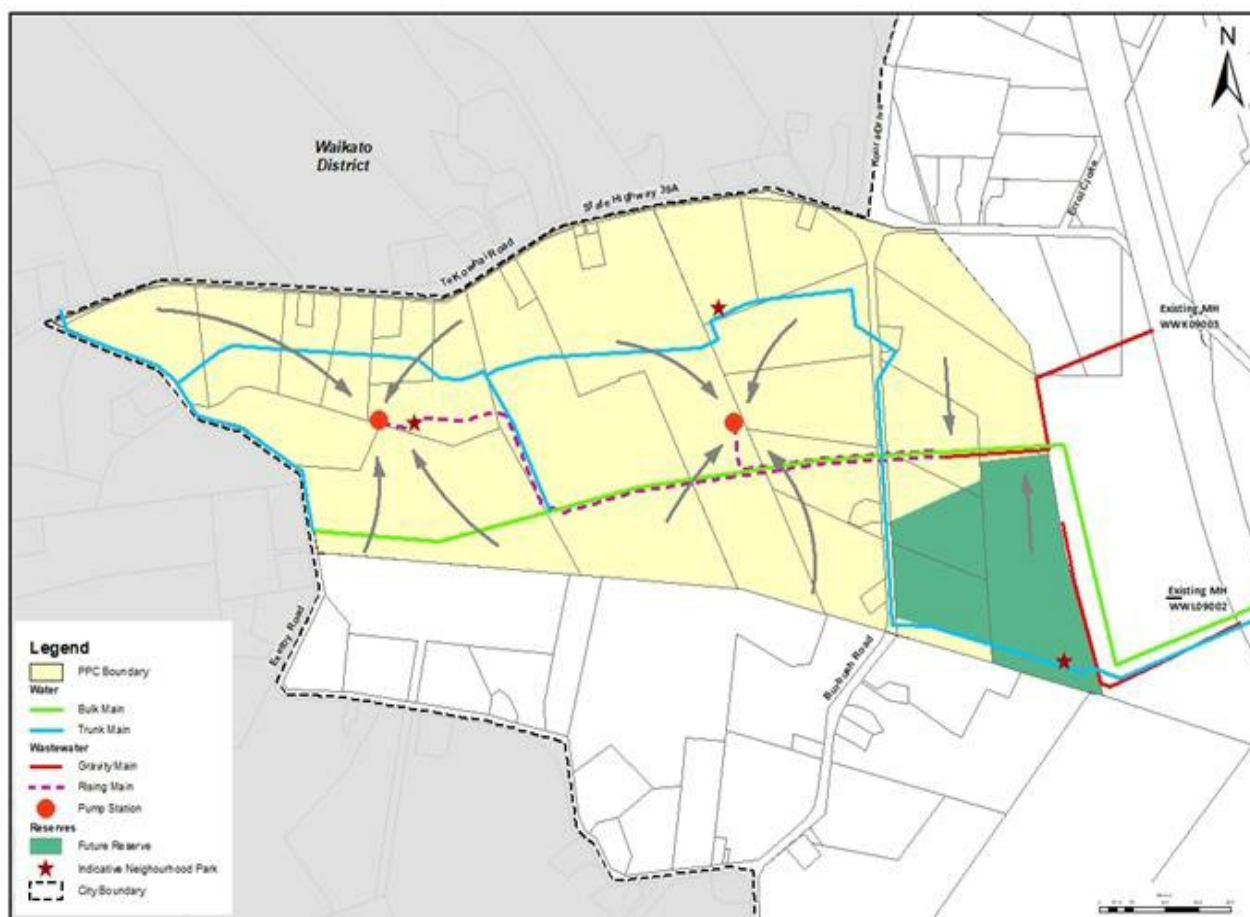


Figure 2-9B: Rotokauri North Strategic Infrastructure – Transport Network and Reserves

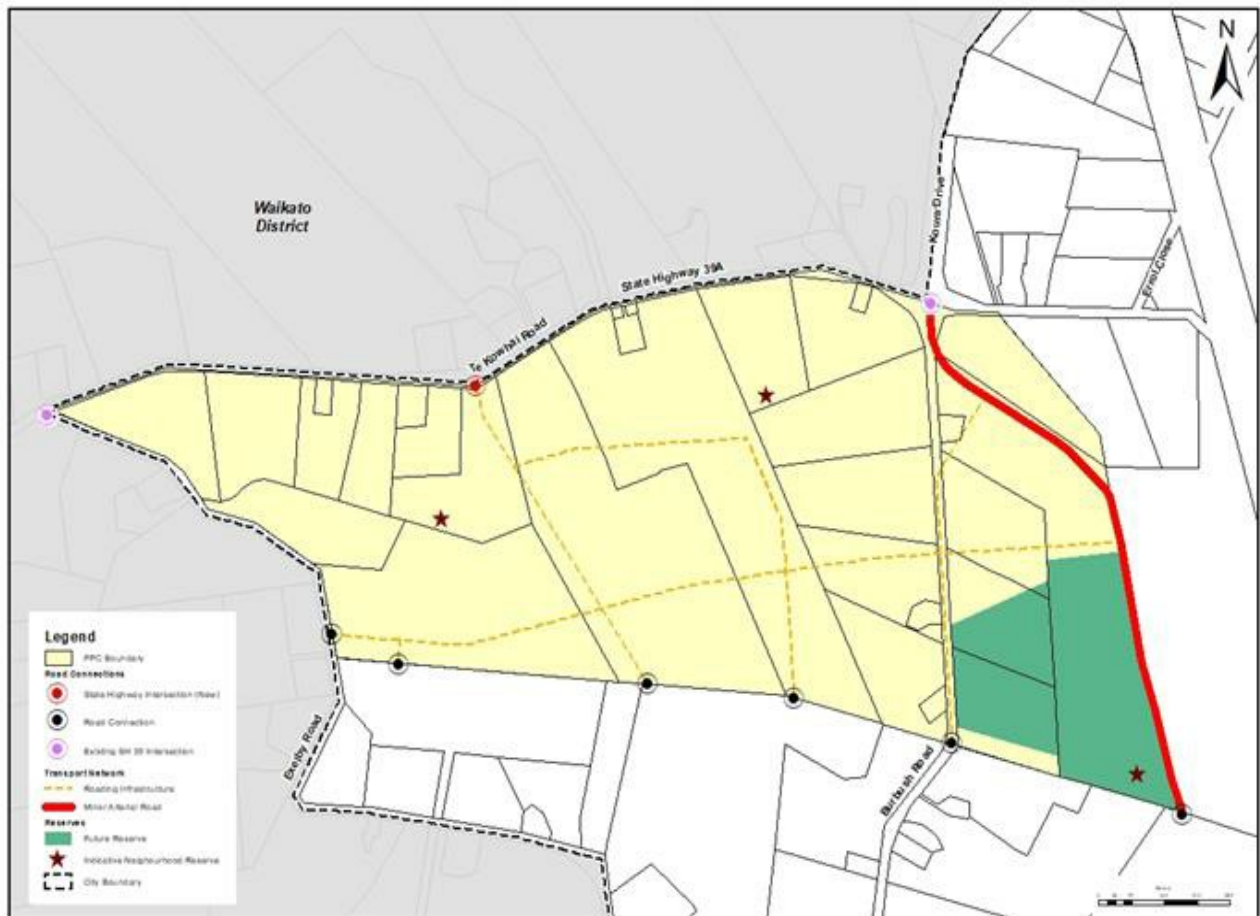


Figure 2-9C: Rotokauri North Indicative Waikato Regional Council Preferred Public Transport Route
(Note: this is not a Structure Plan Map but an information map only)



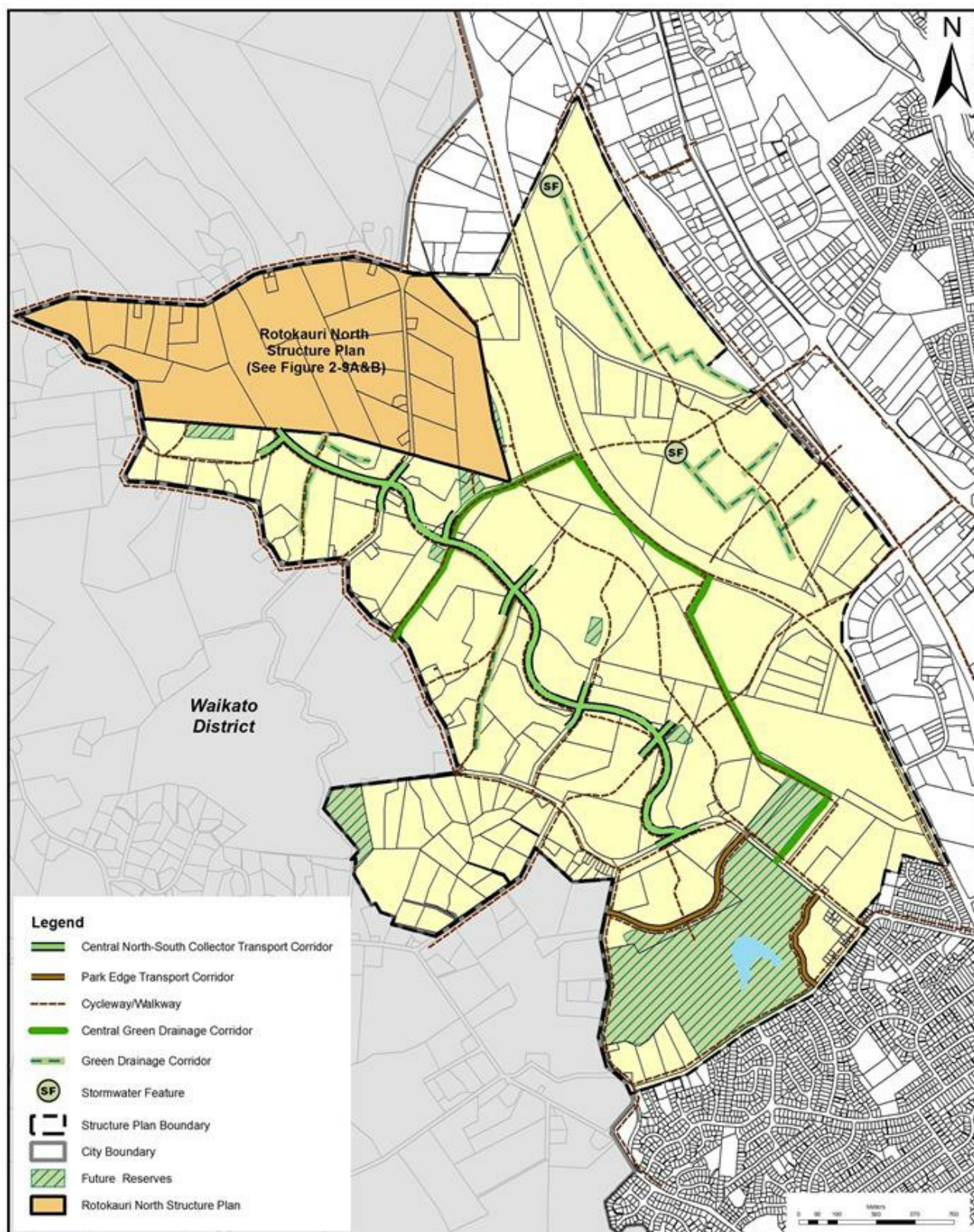


Figure 2-11: Rotokauri Neighbourhood Centre

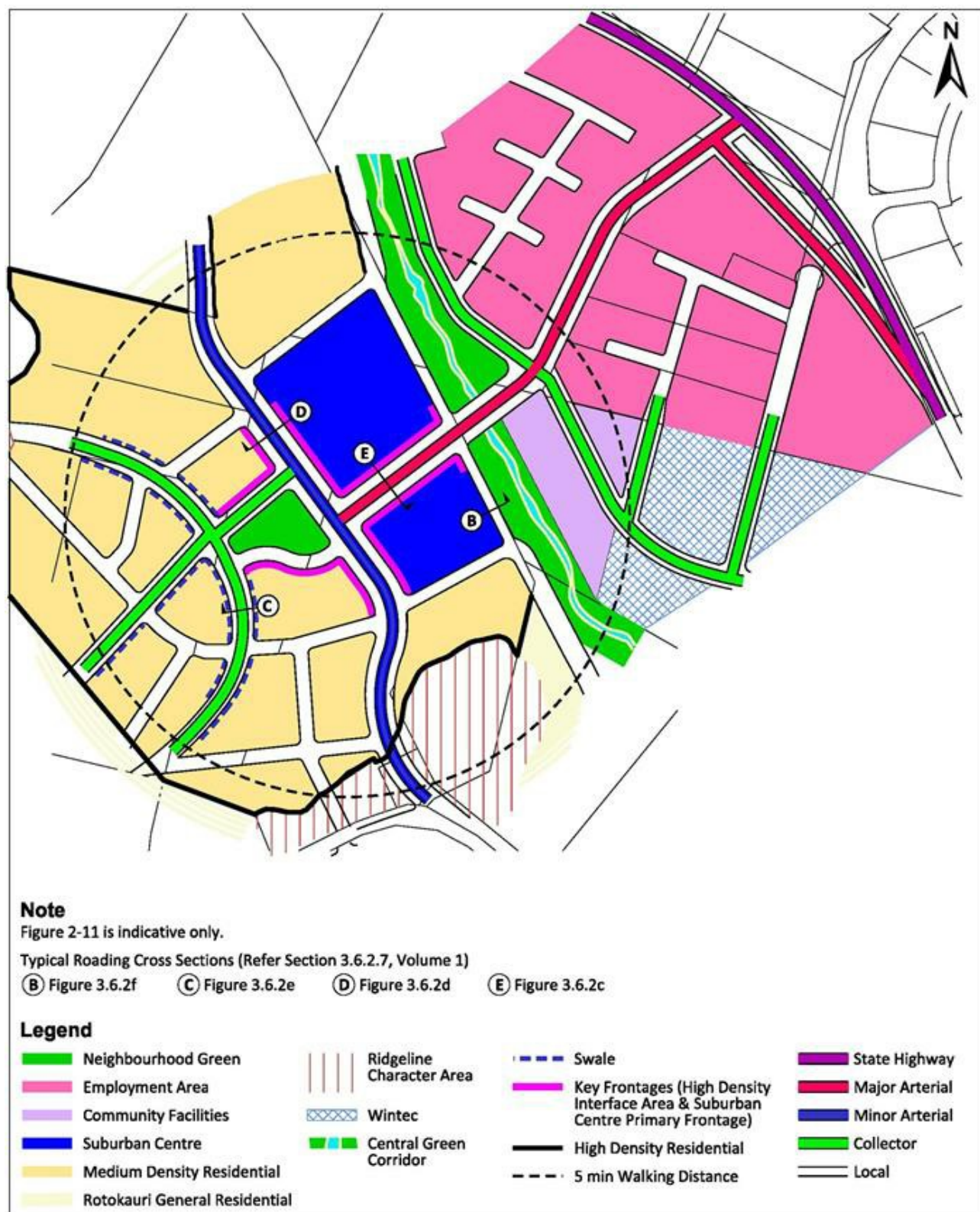


Figure 2-12: Rotokauri Interface Areas

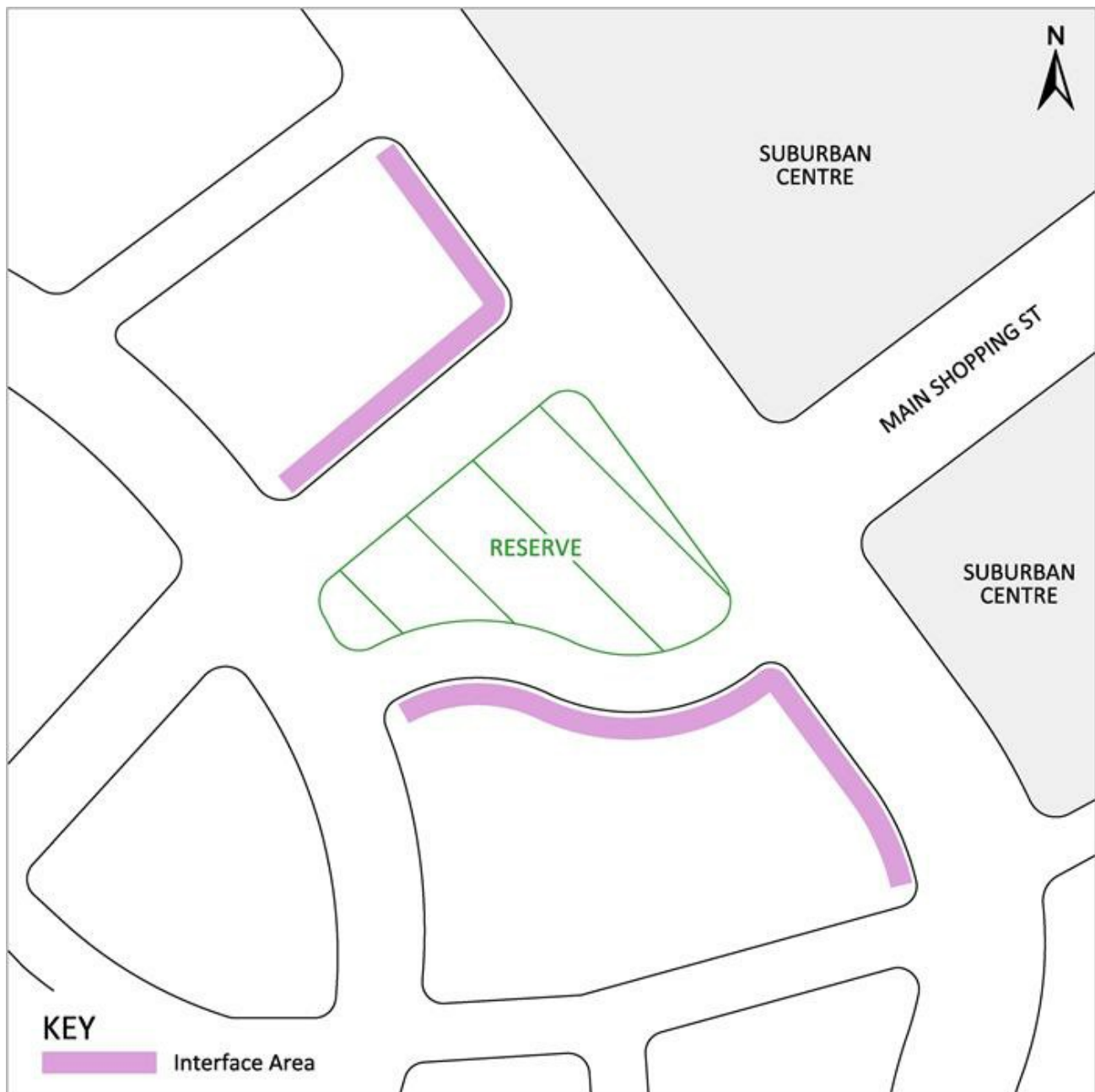


Figure 2-13: Rotokauri Suburban Centre Primary Frontages

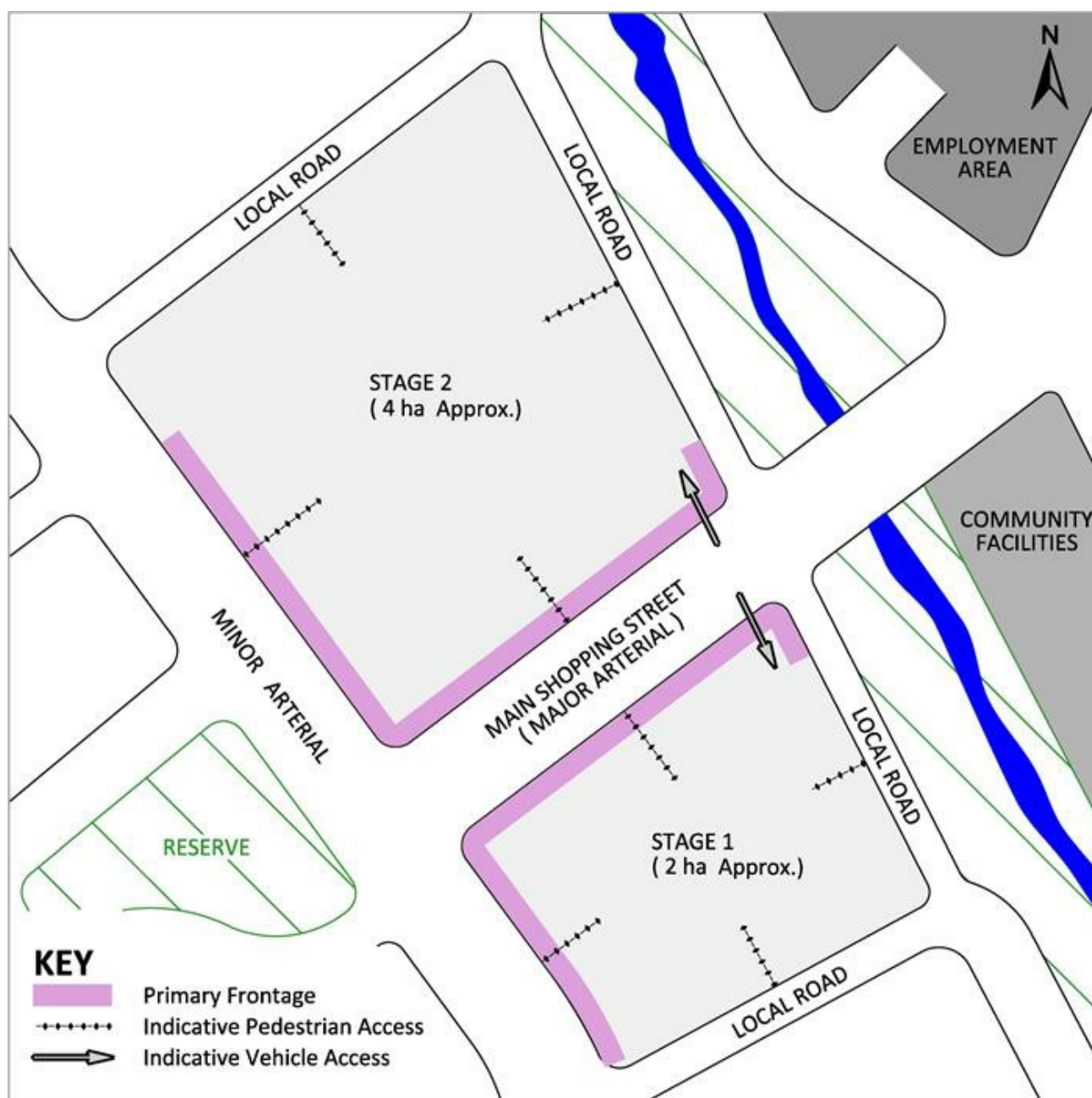


Figure 2-14: Ruakura Structure Plan – Land Use



Figure 2-15A: Ruakura Strategic Infrastructure – Transport

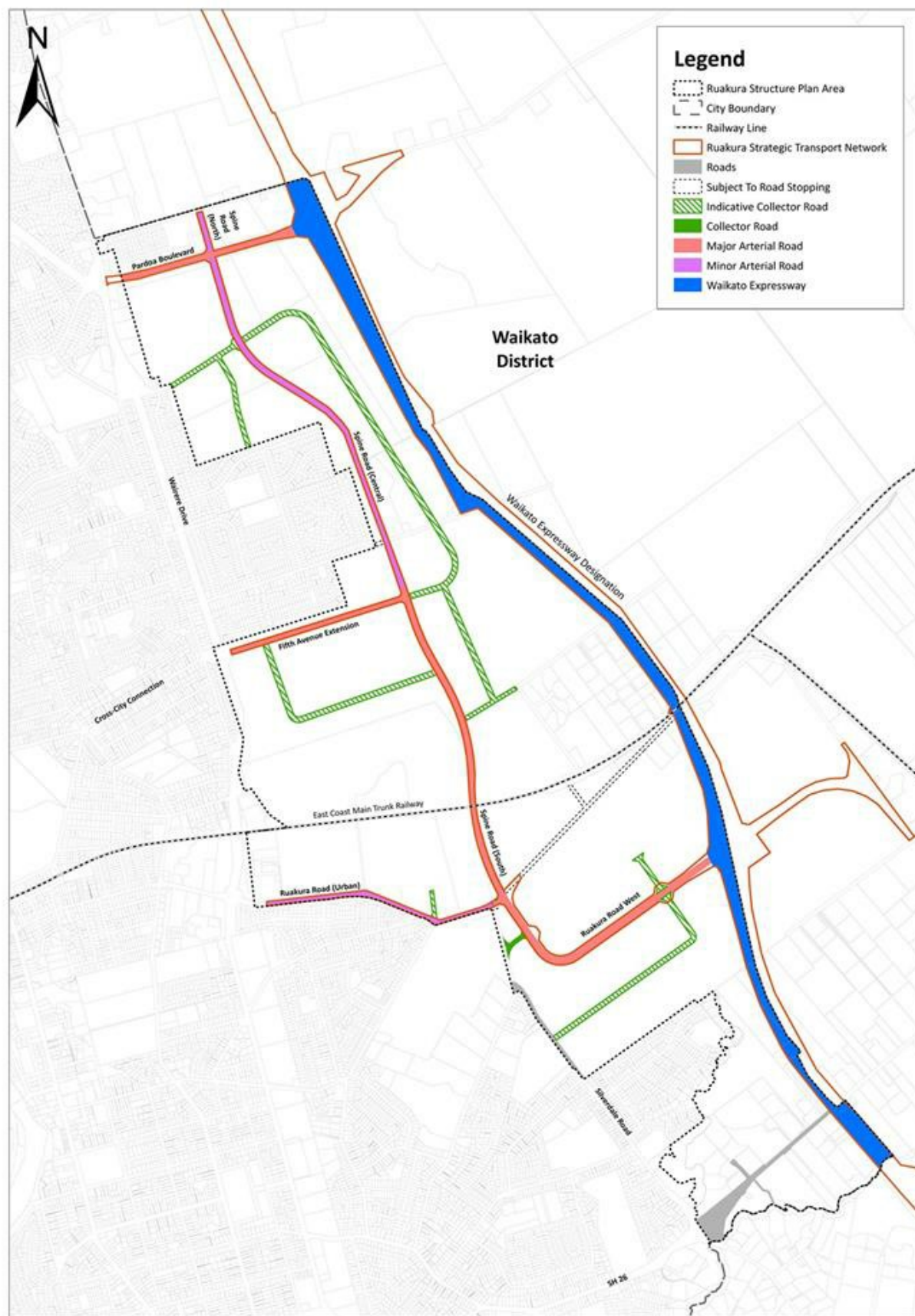


Figure 2-15B: Ruakura Strategic Infrastructure – Three Waters

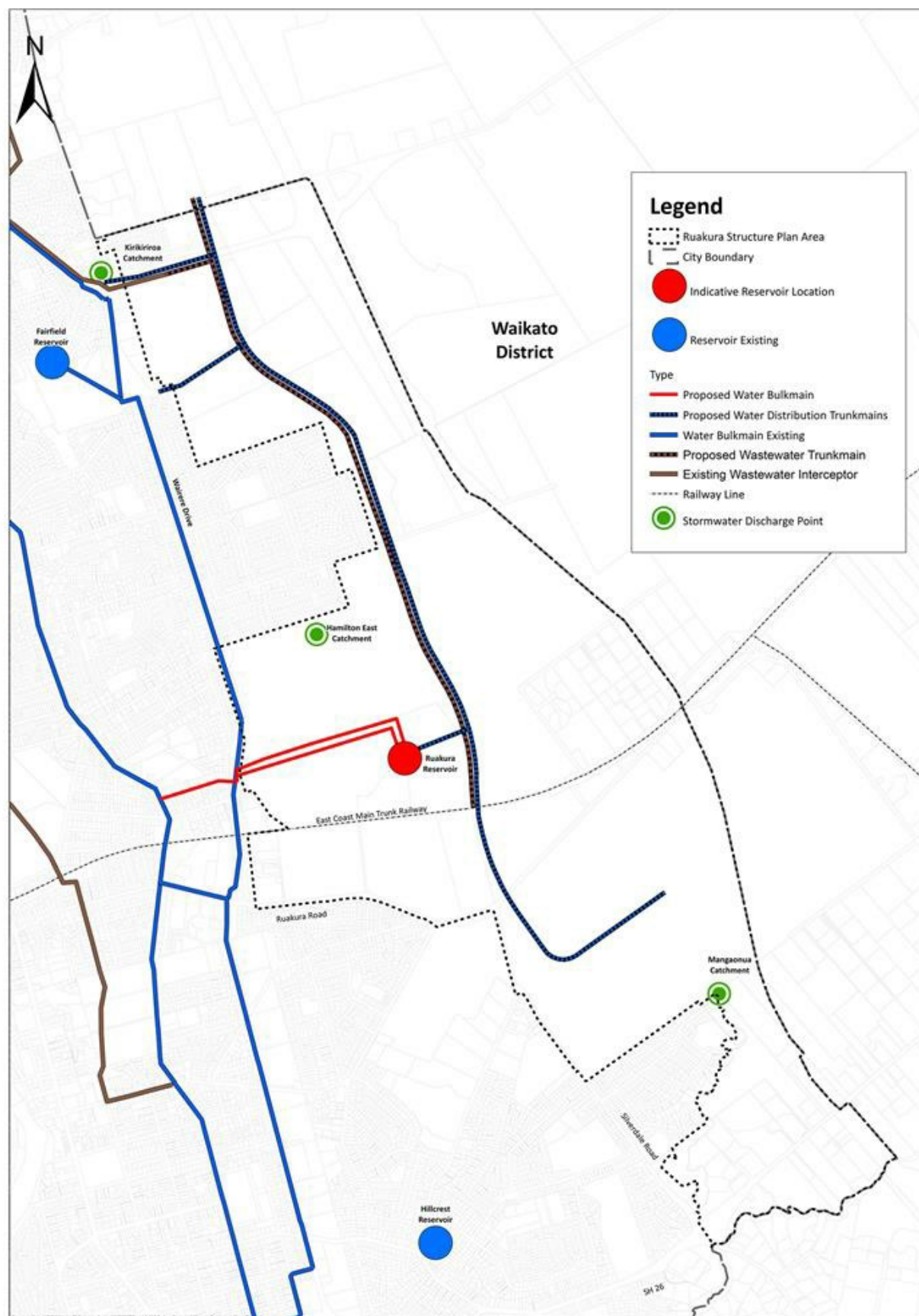


Figure 2-16: Ruakura Land Development Plan Areas

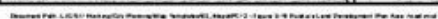
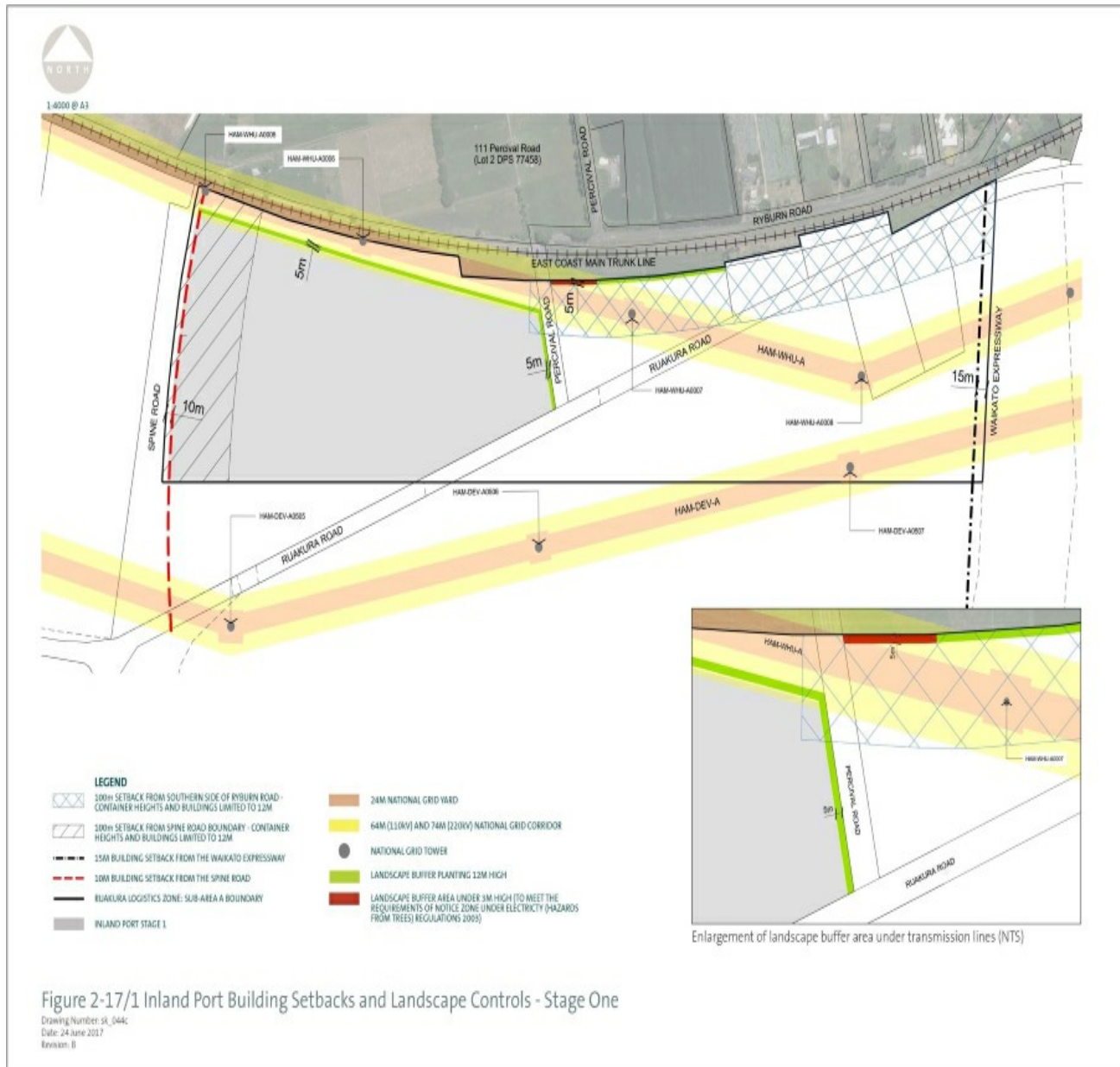


Figure 2-17/1: Inland Port Building Setbacks and Landscape Controls – Stage 1**Figure 2-17/2: Inland Port Building Setbacks and Landscape Controls – Stage 2**

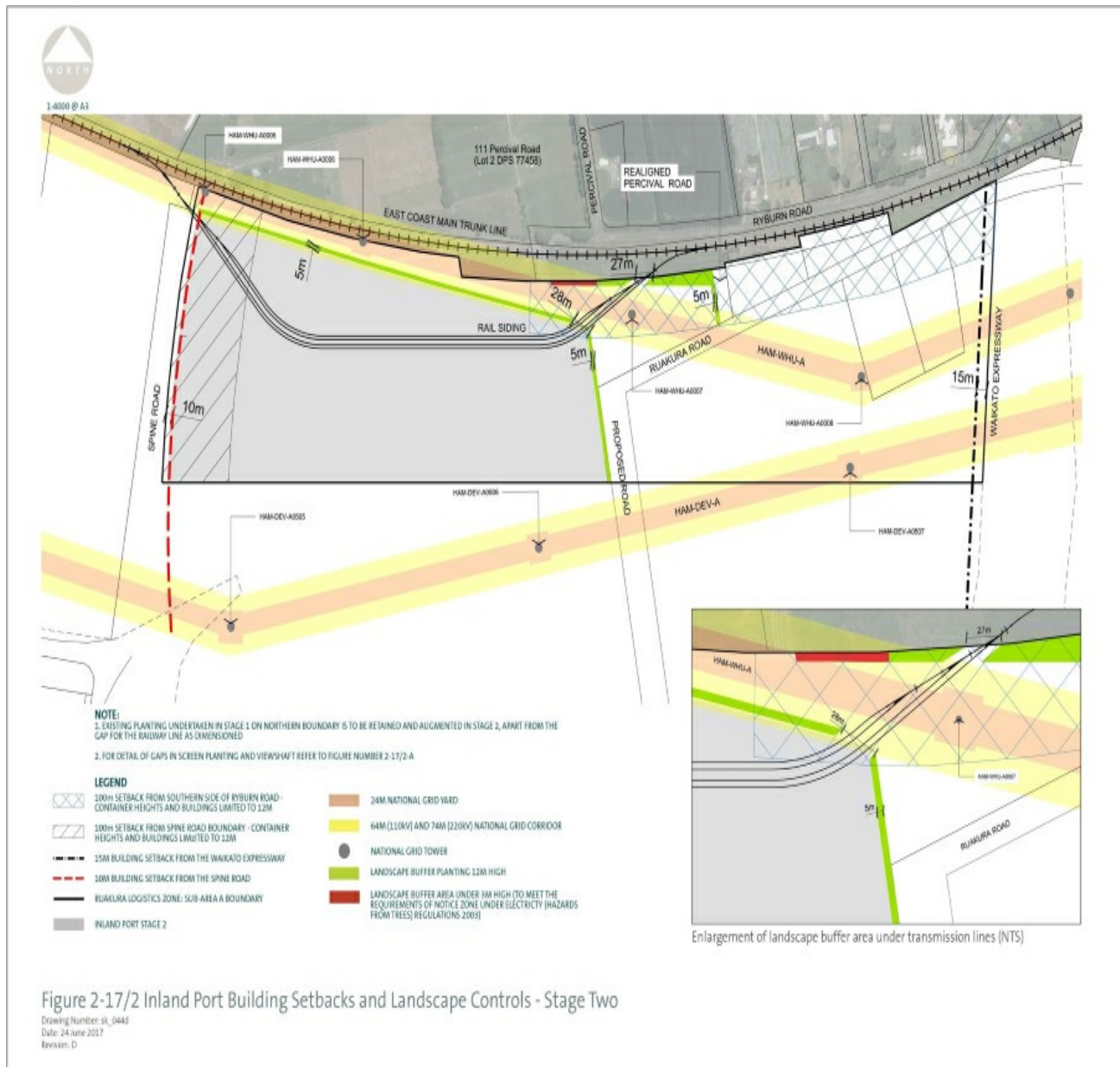


Figure 2-17/3: Inland Port Building Setbacks and Landscape Controls – Stage 3



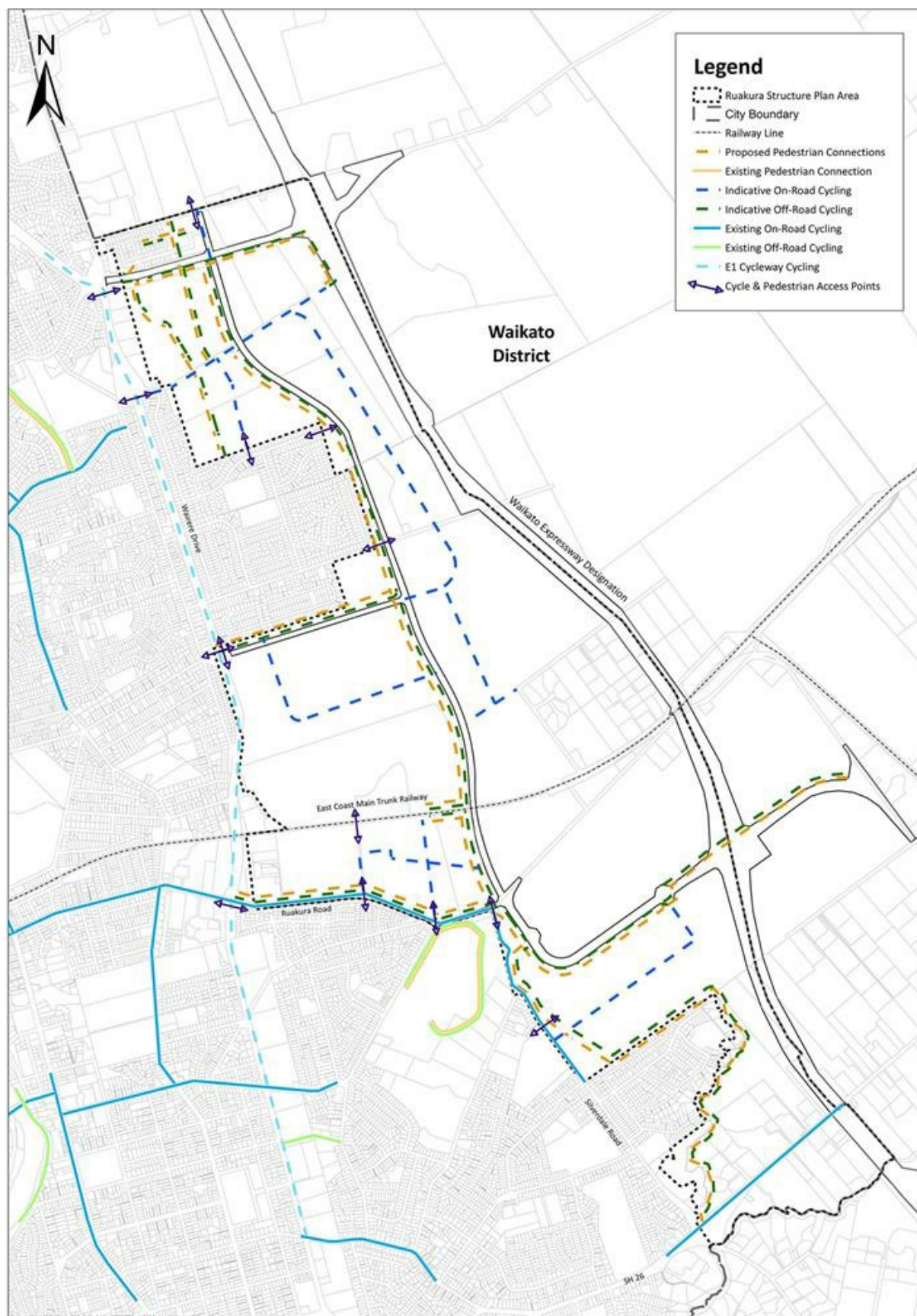


Figure 2-19: Te Awa Lakes Framework Plan

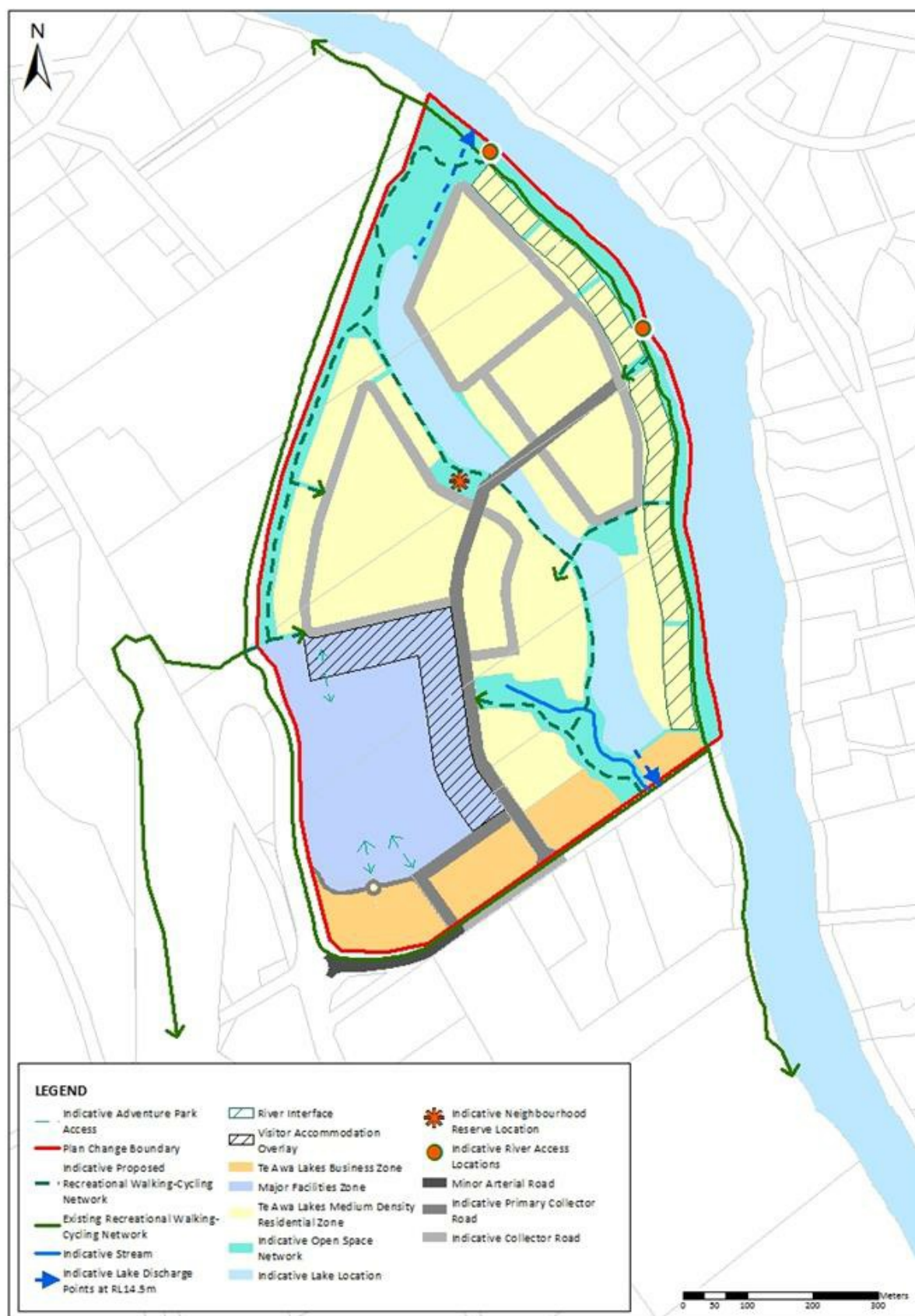


Figure 2-20: Te Awa Lakes Land Use

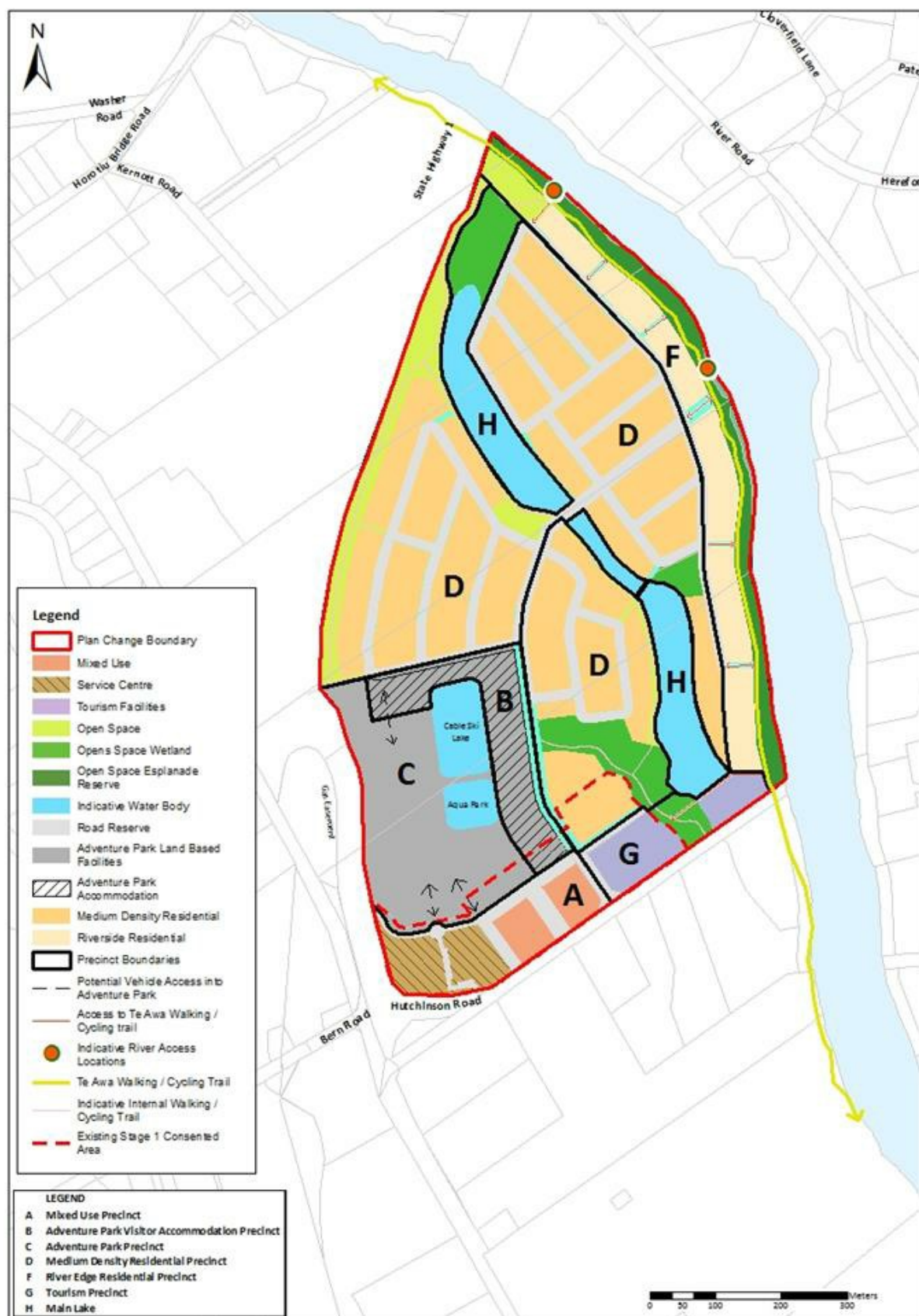


Figure 2-21: Te Awa Lakes Land Development Plan Areas

