

**This chapter is subject to the following plan changes:**

Proposed new text in Notified Plan Change 12 - underlined with green highlighting.

Proposed deleted text in Notified Plan Change 12 - ~~strikethrough with red highlighting~~.

Recommended amendments to Notified Plan Change 12:

- New text - underlined.
- Deleted Operative Plan text – ~~strikethrough~~.
- Deleted Notified Plan Change 12 text – ~~strikethrough~~.



Submission Points relating to recommended amendments.

## Appendix 2: Structure Plans

### Road Stopping

Plans in this appendix may show existing roads subject to road stopping (e.g., Figure 2-15A). Road stopping is a process that can be undertaken under the Local Government Act 1974 or the Public Works Act 1981. It is separate from Resource Management Act processes but may run concurrently with them. Following road stopping, the land will cease to be road as defined by the Local Government Act.

Any areas shown in this appendix as subject to road stopping are indicative only and not surveyed. The final extent of any stopping will be determined by the formal road stopping process.

The road stopping identified in these Structure Plans does not necessarily show all potential future road stopping within Hamilton. It is expected that, from time-to-time, road stopping will occur without amendments being made to this appendix.

### Structure Plans Locality Guide

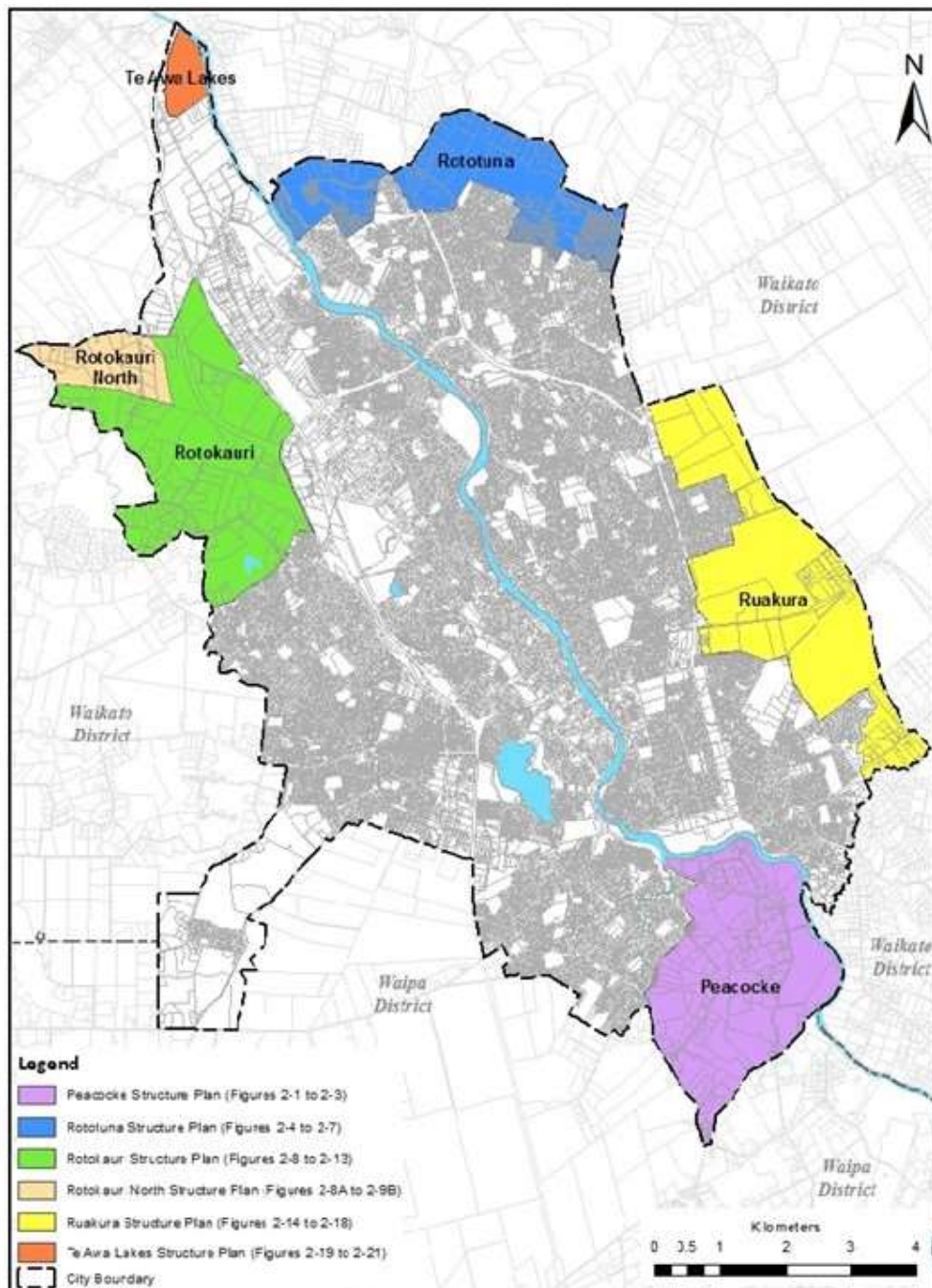


Figure 2-1: Peacocke Structure Plan – Land Use

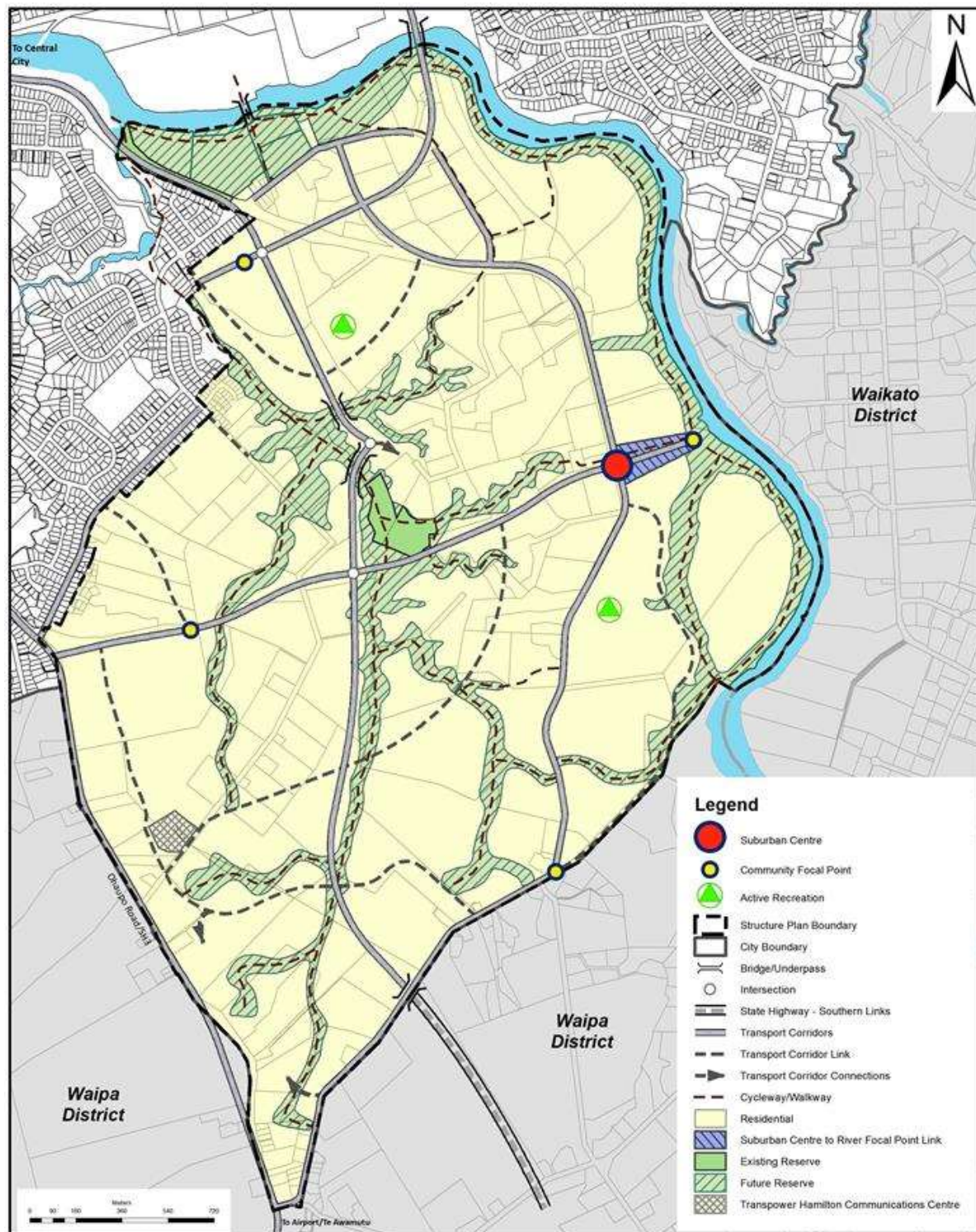
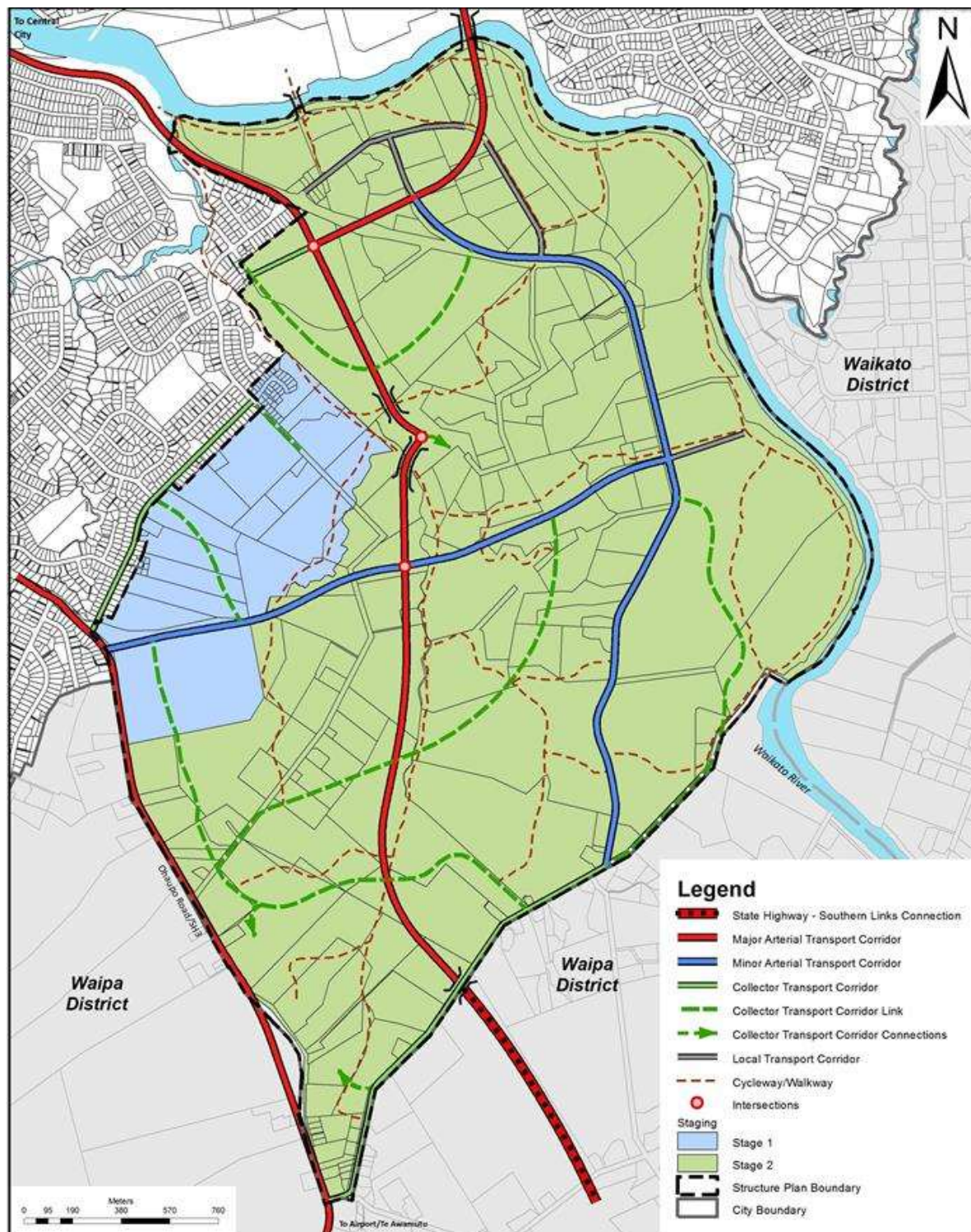




Figure 2-2: Peacocke Structure Plan – Staging and Transport Network





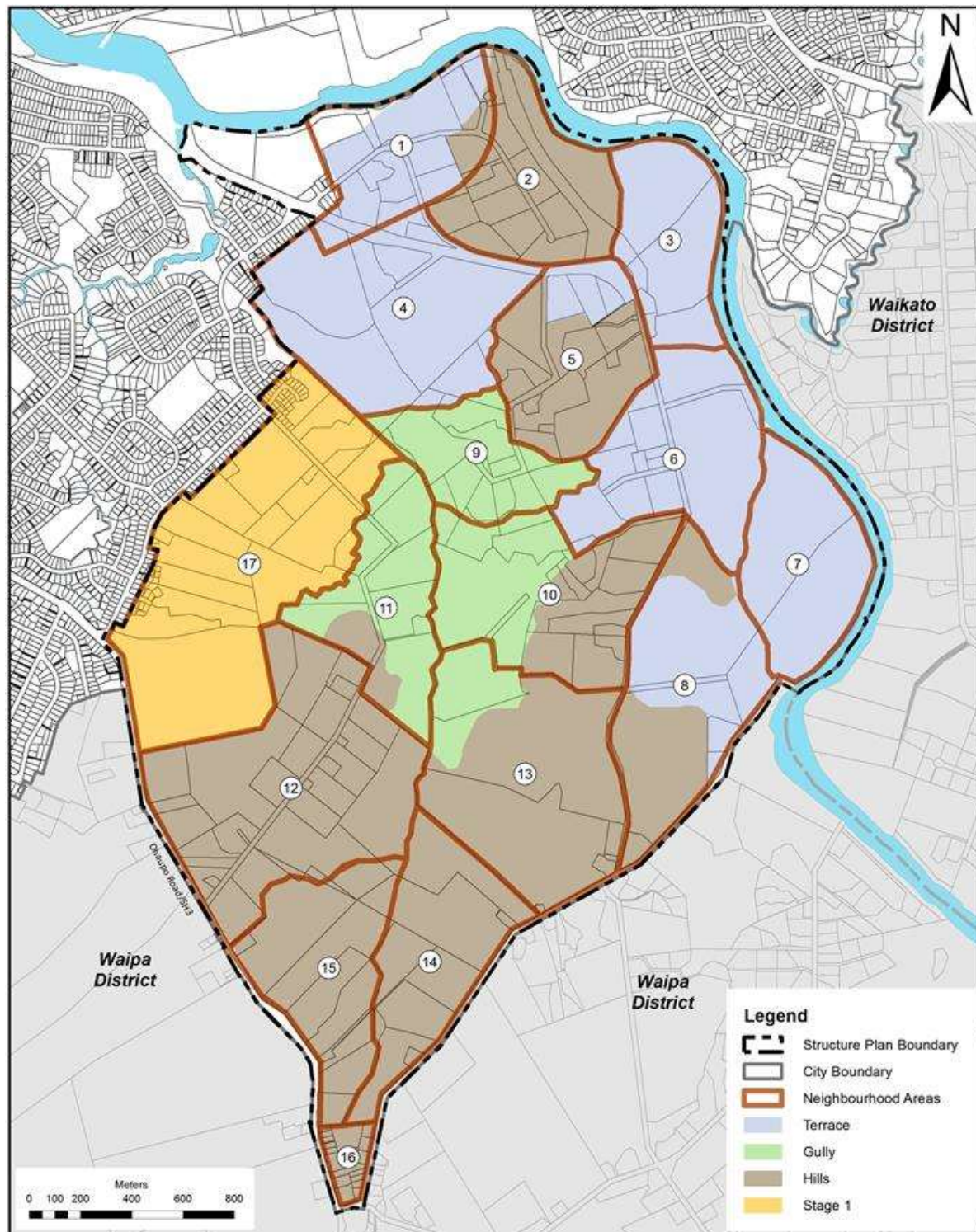
**Figure 2-3: Peacocke Structure Plan – Character Areas and Neighbourhoods**



Figure 2-4: Rototuna Structure Plan – Land Use

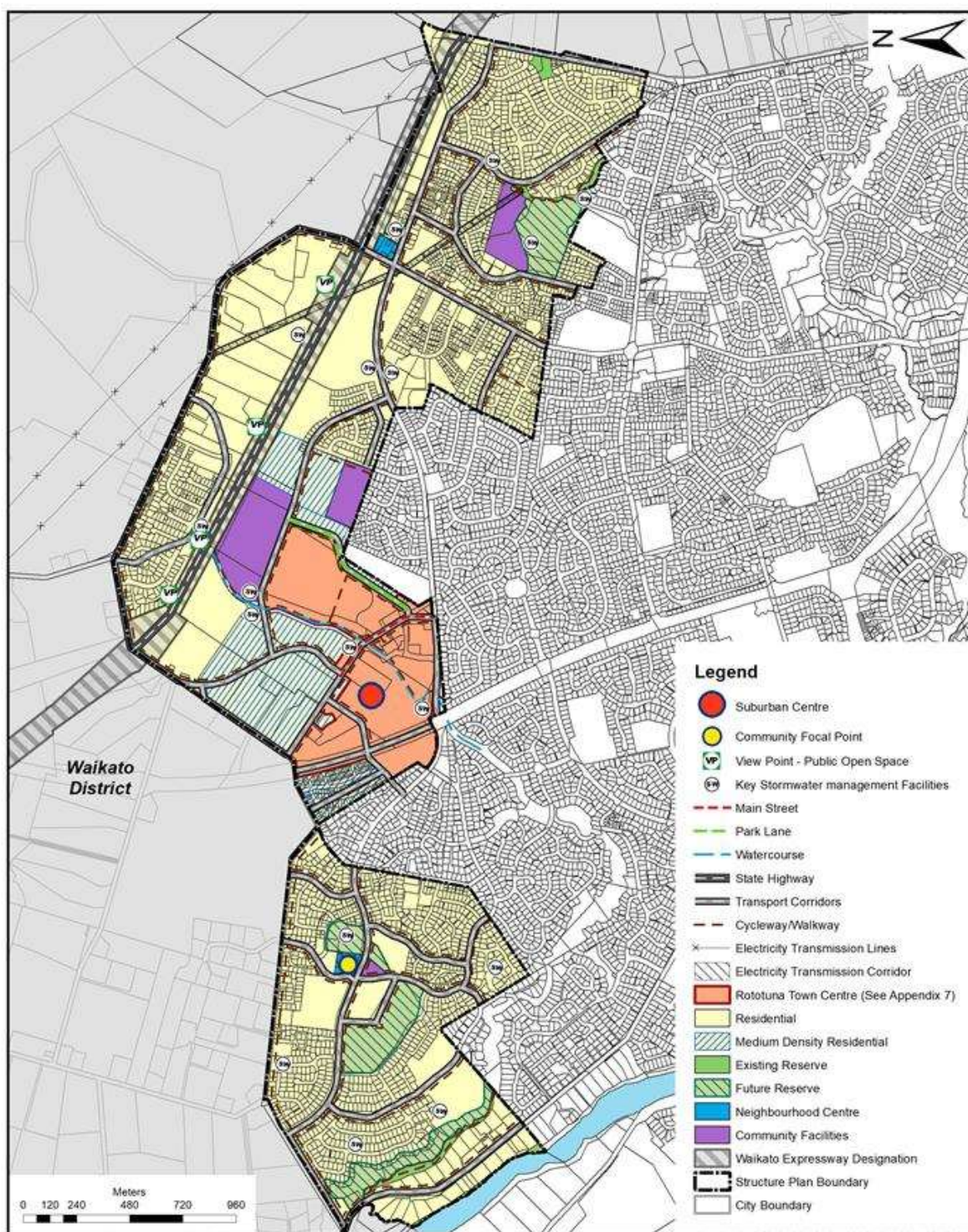
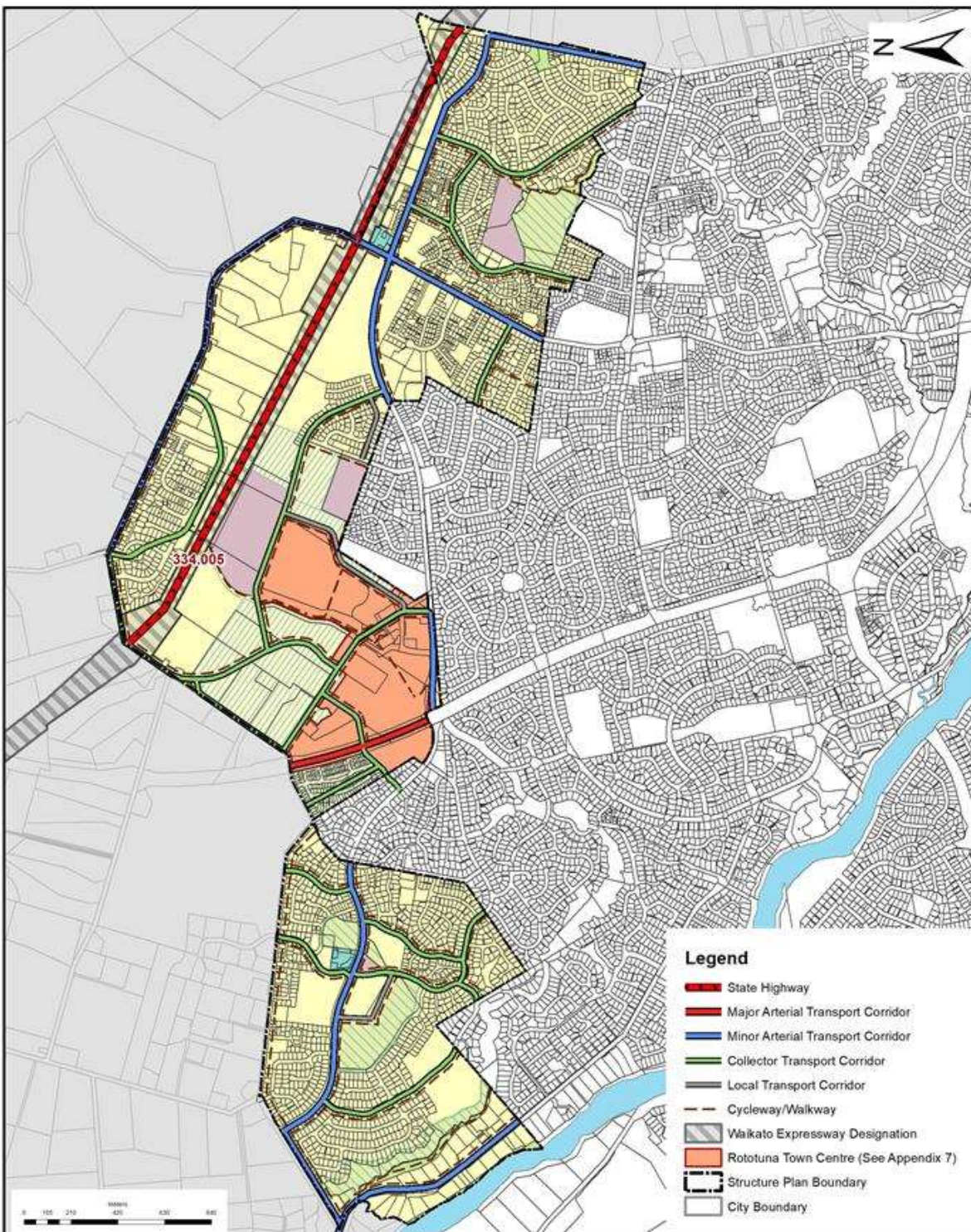
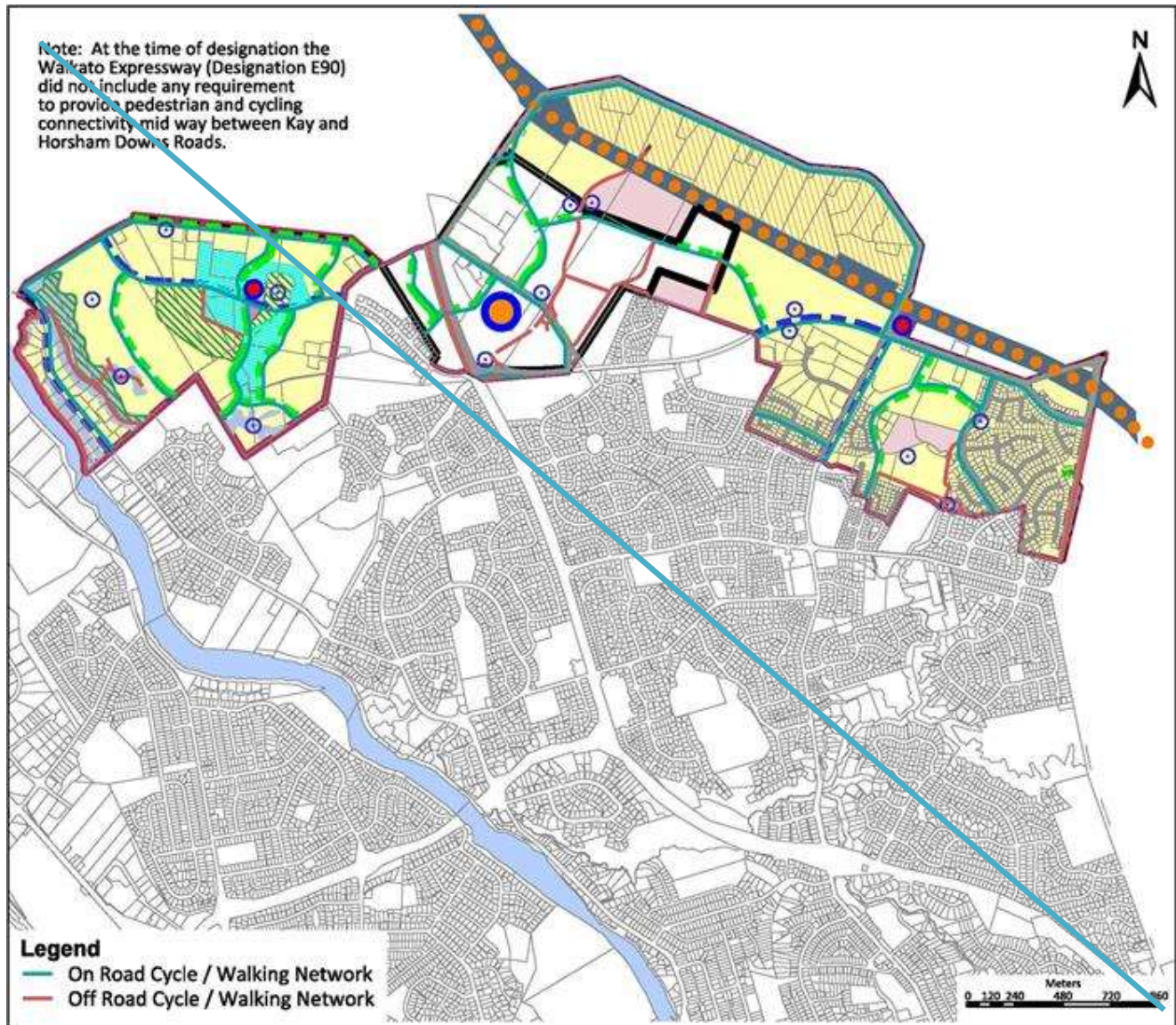




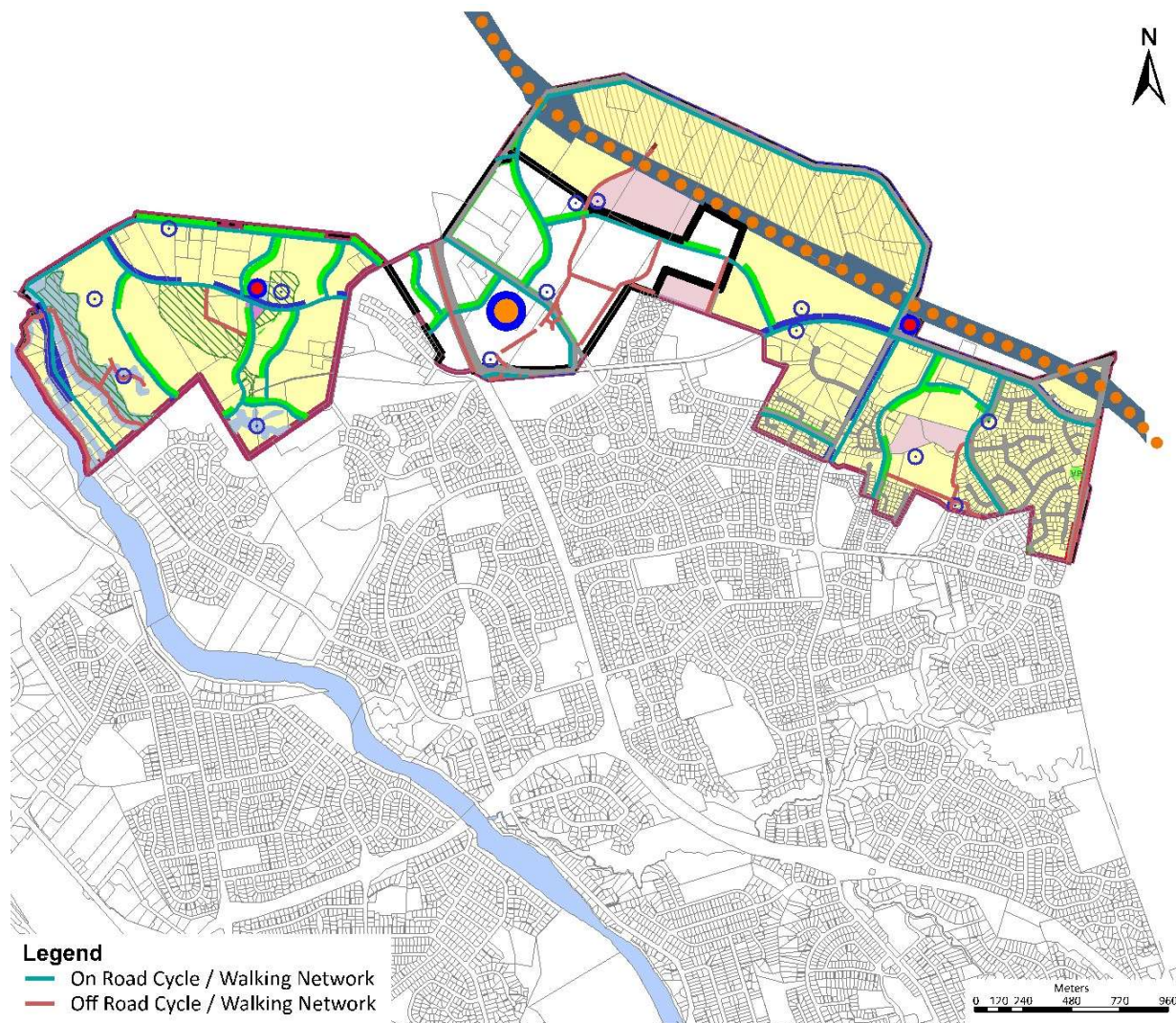
Figure 2-5: Rototuna Structure Plan – Transport Network



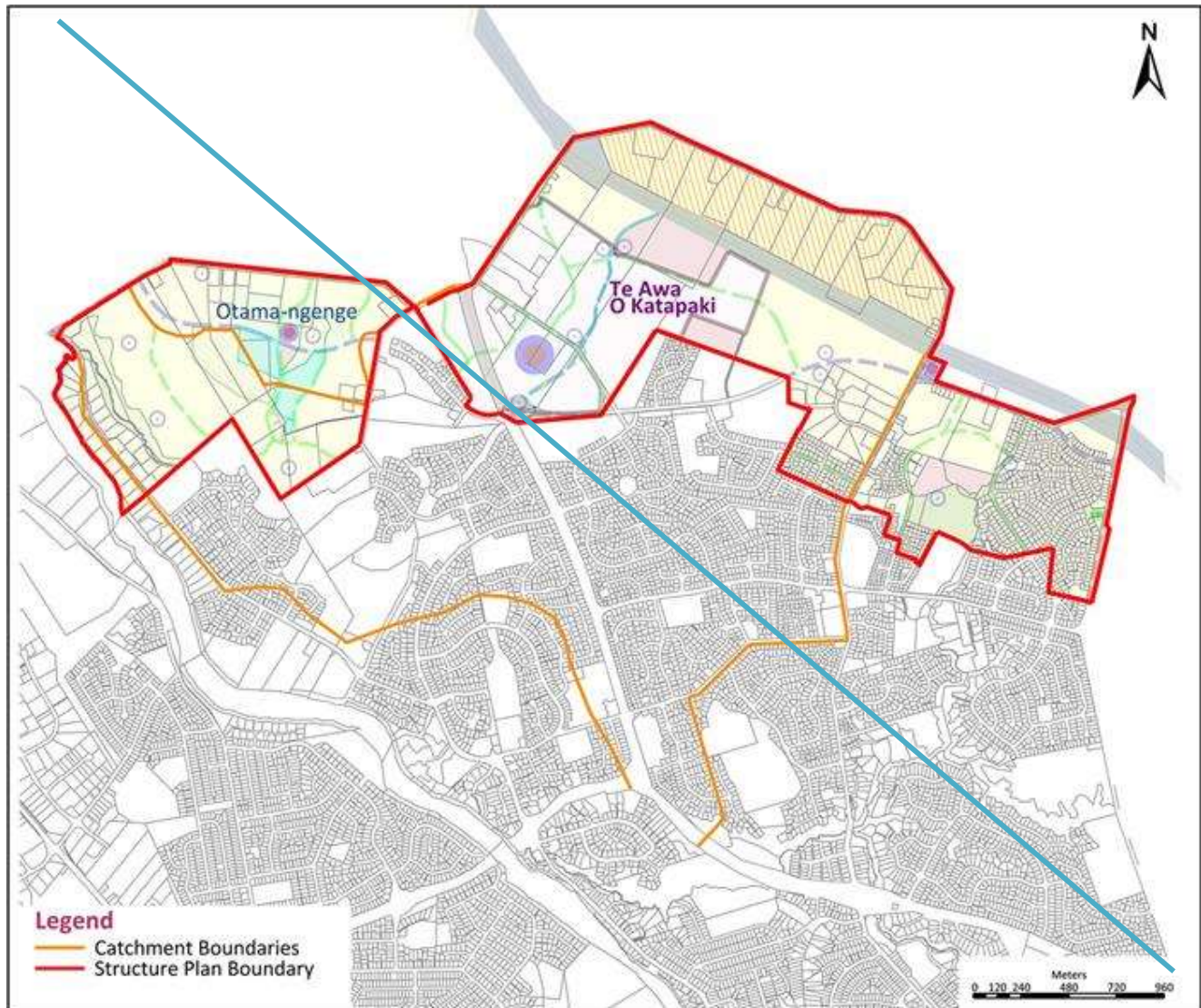


**Figure 2-6: Rototuna Cycling and Walking Network**



**Figure 2-6: Rototuna Cycling and Walking Network**

**Figure 2-7: Rototuna Catchment Boundaries**





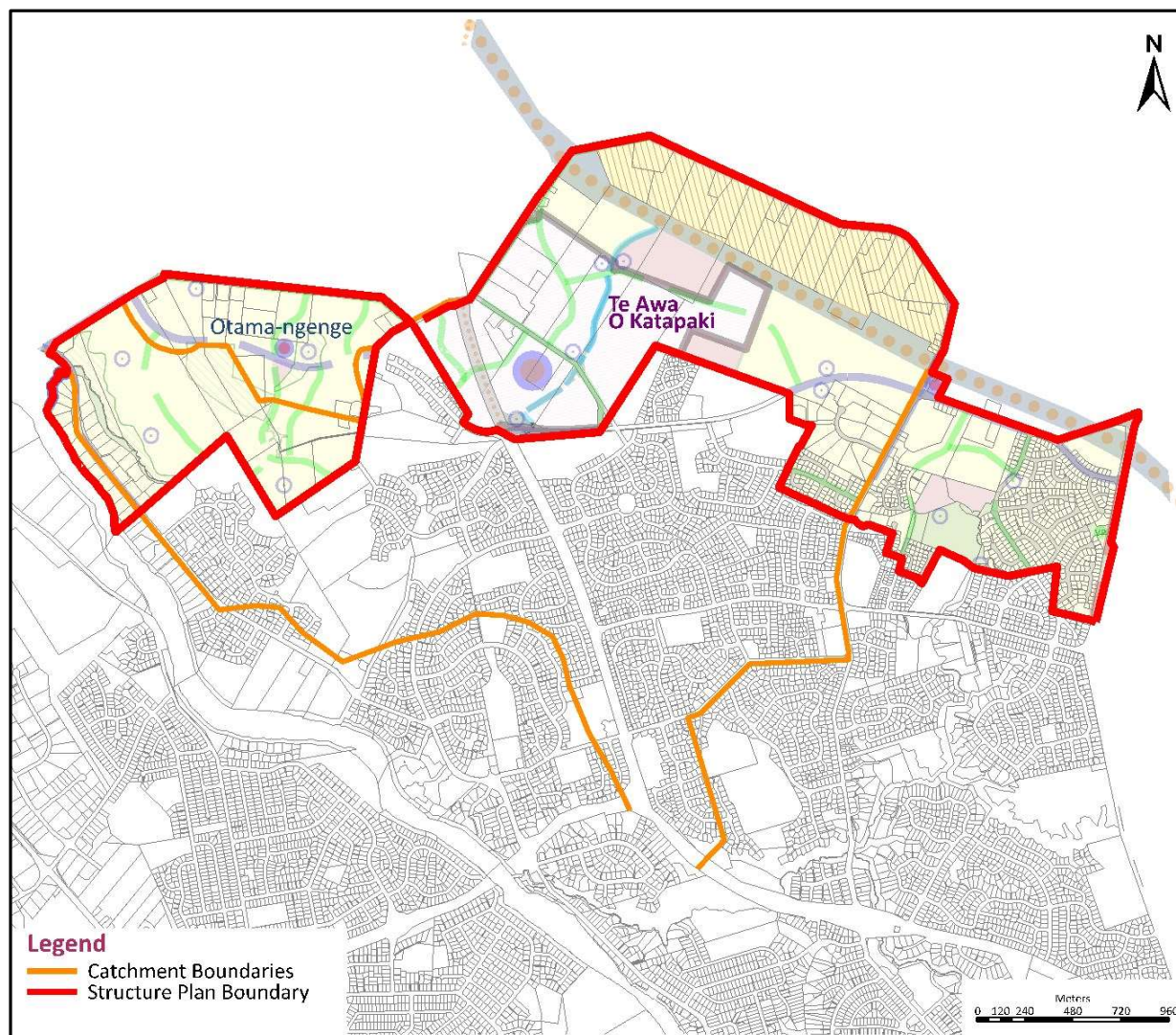
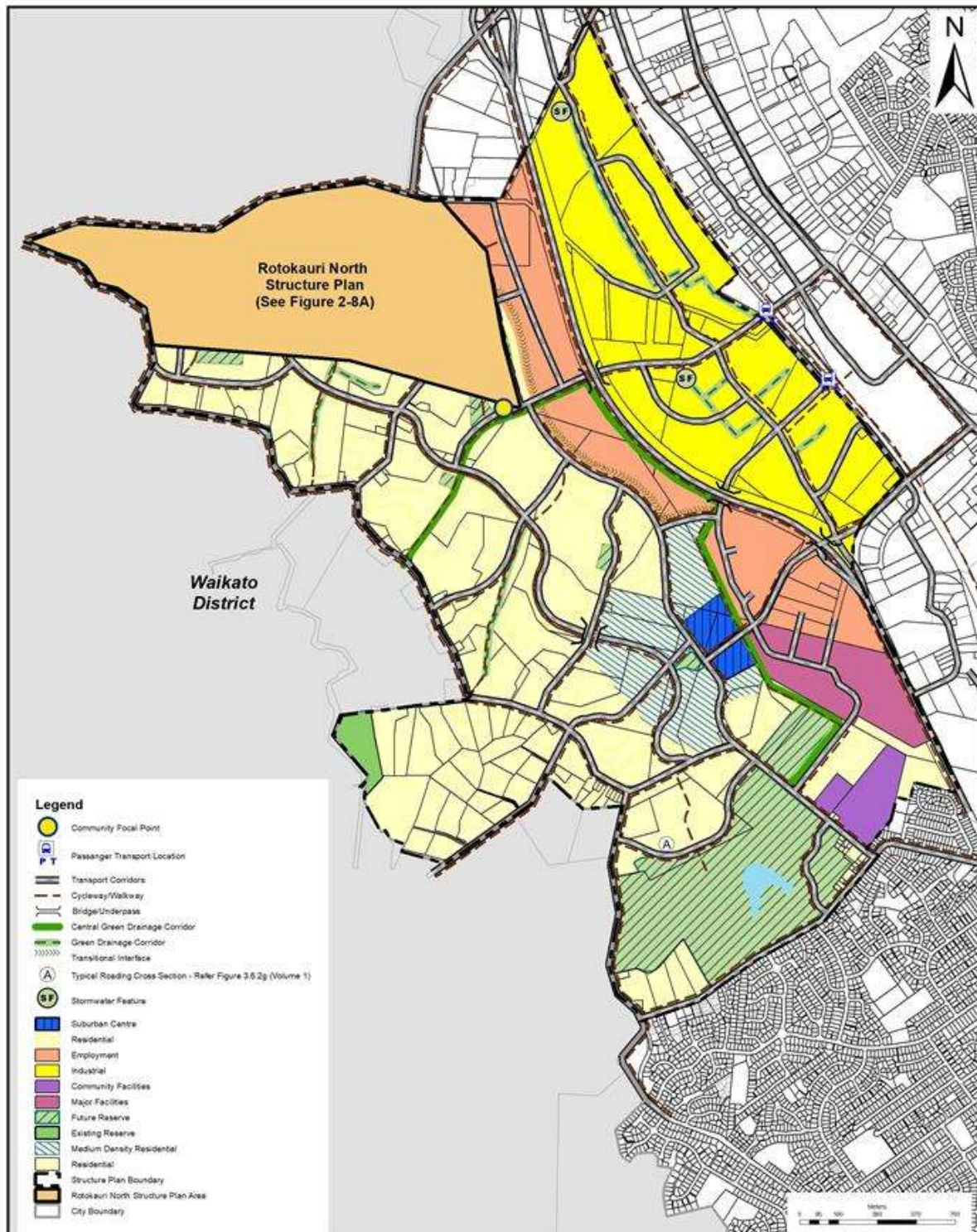
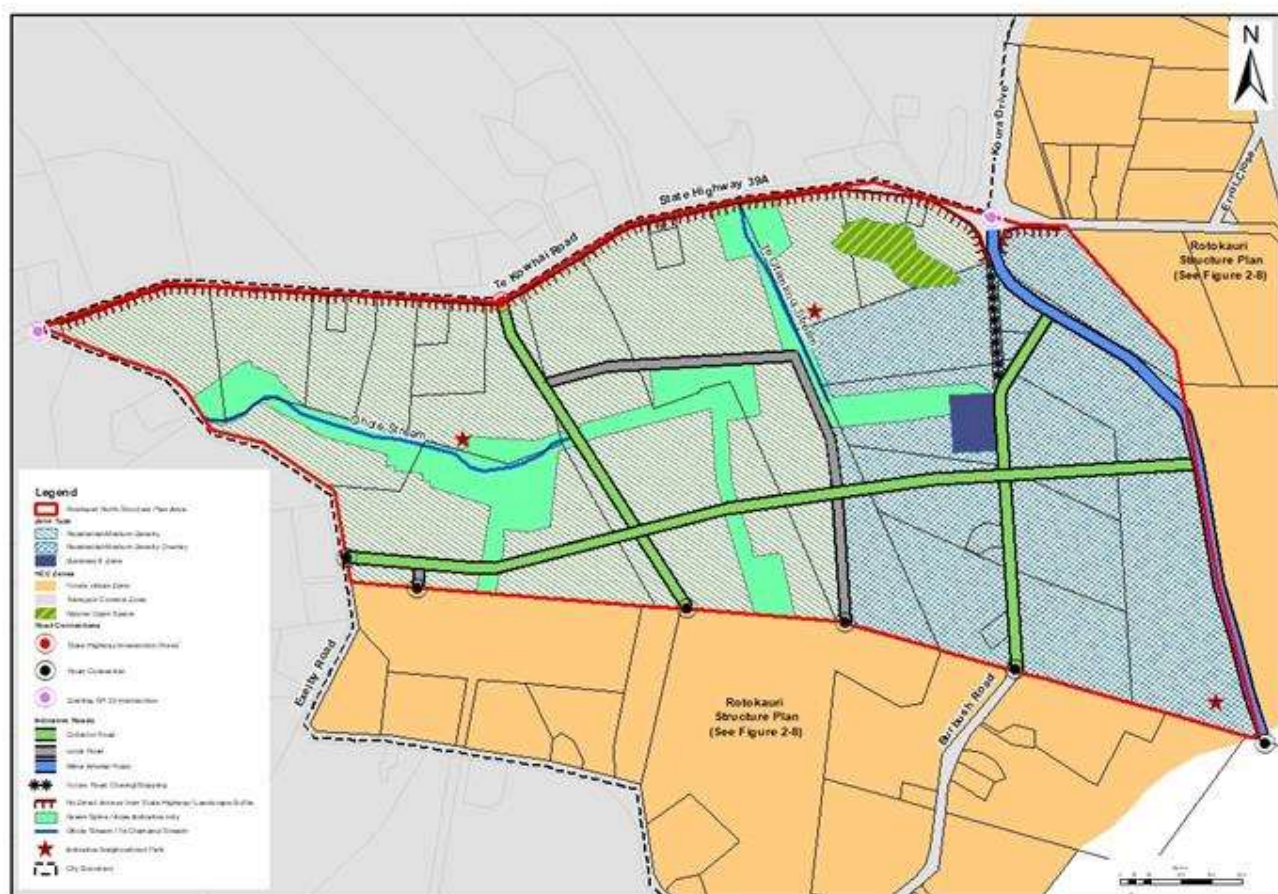
**Figure 2-7: Rototuna Catchment Boundaries**

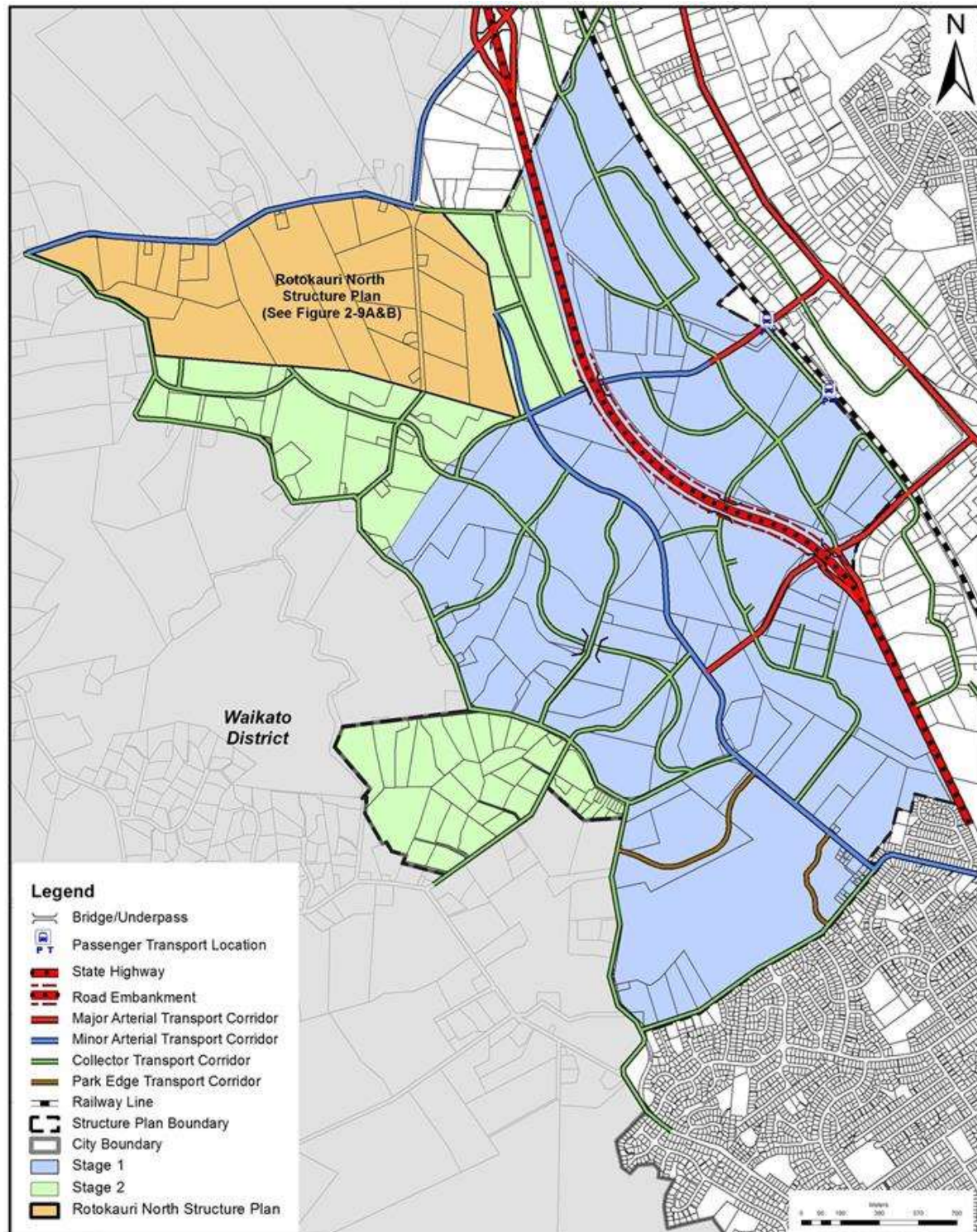
Figure 2-8: Rotokauri Structure Plan – Land Use



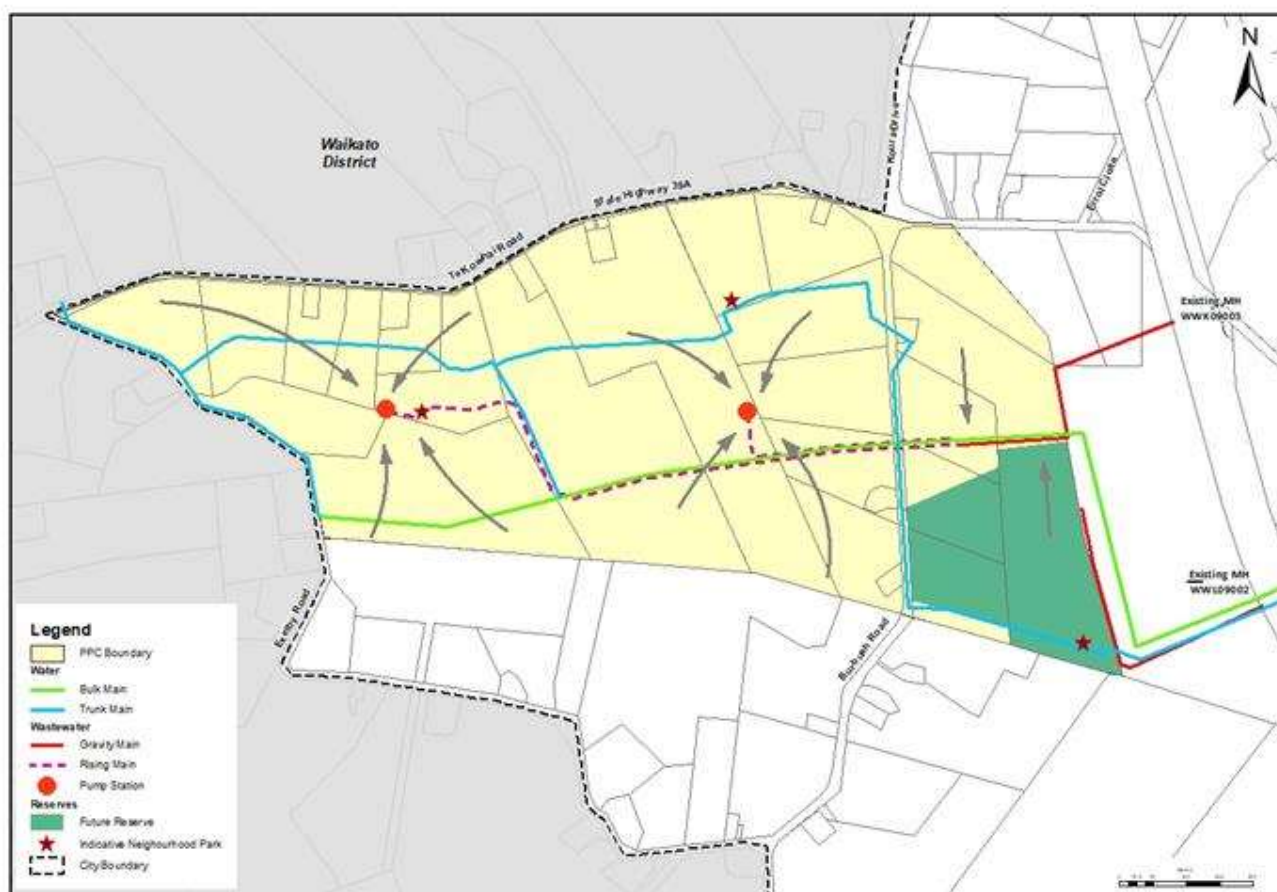


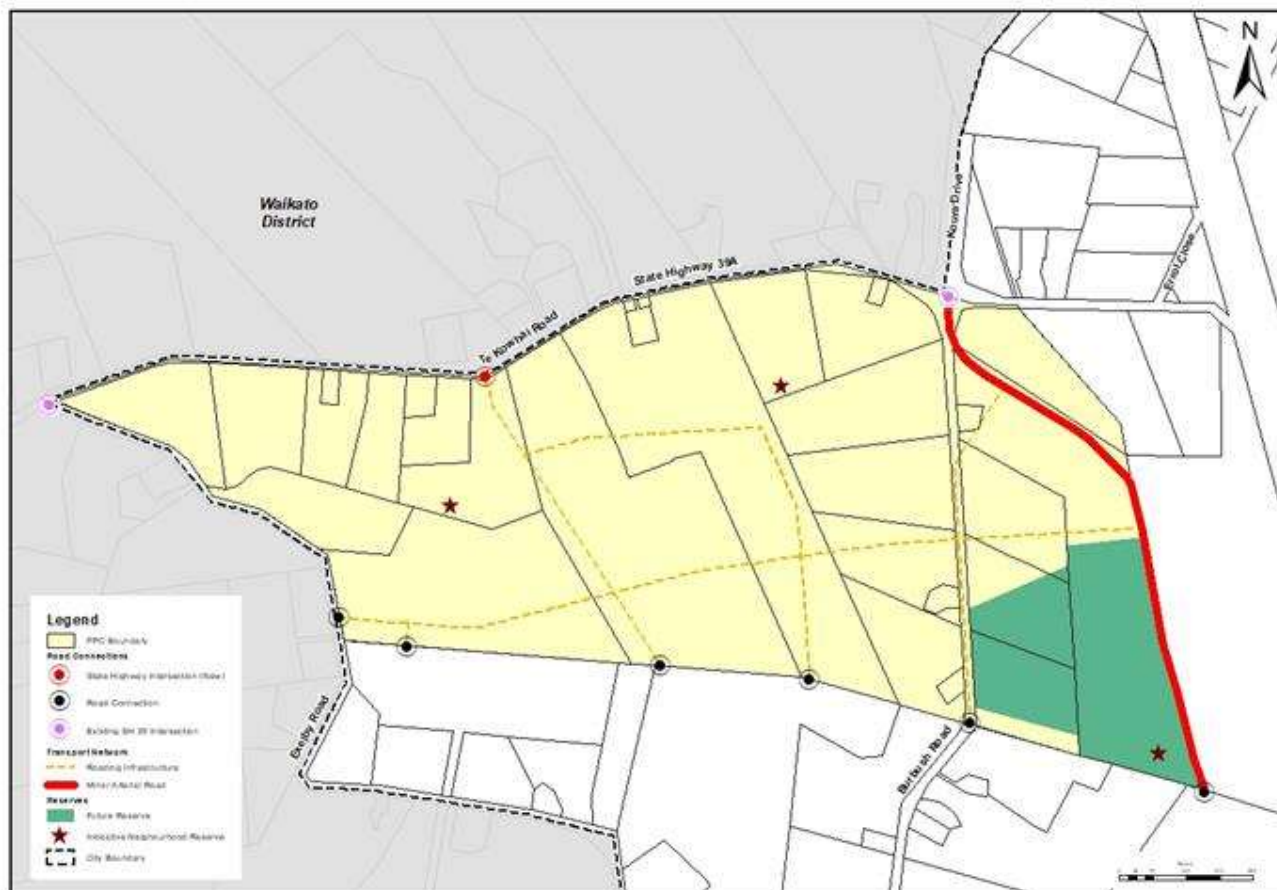
**Figure 2-8A: Rotokauri North Structure Plan**



**Figure 2-9: Rotokauri Structure Plan – Staging and Transport Network**

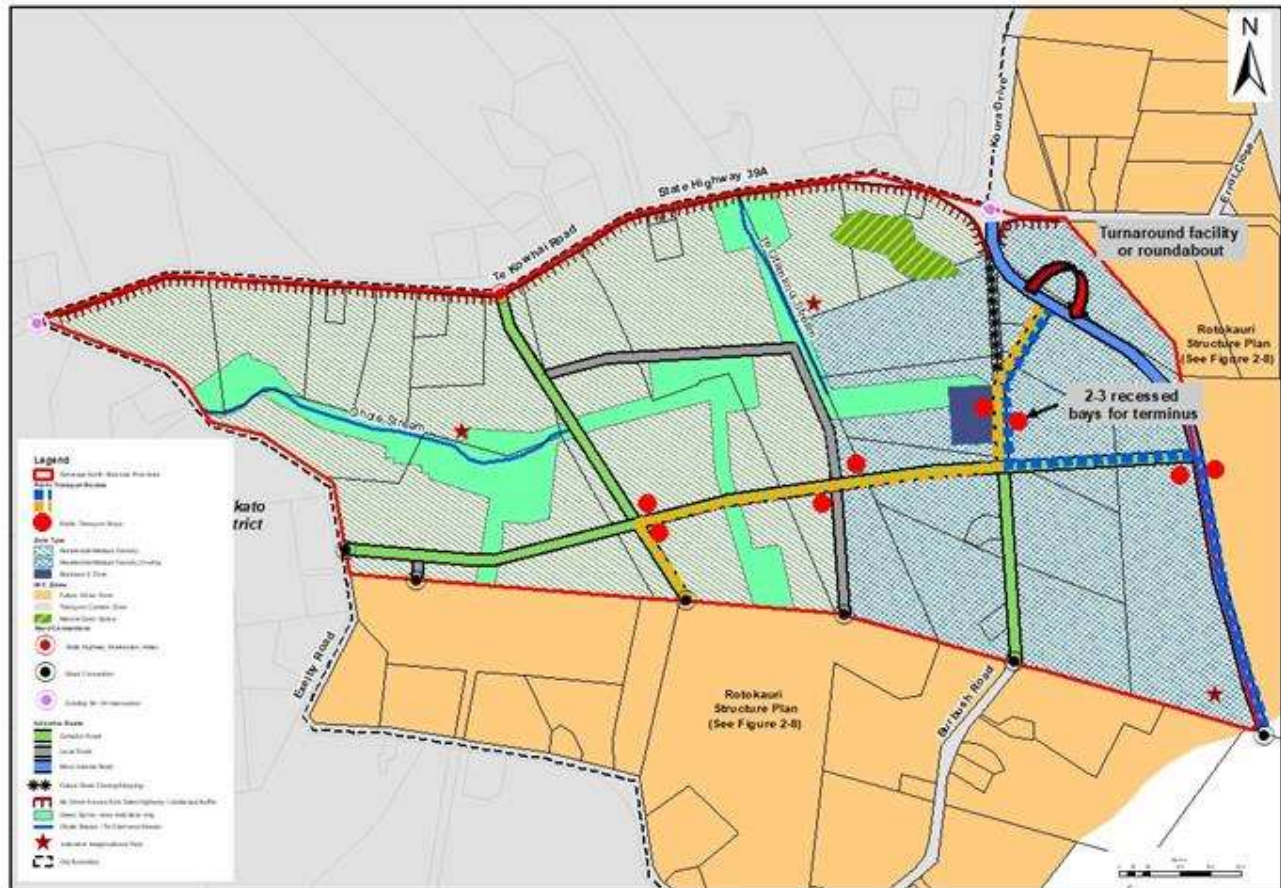


**Figure 2-9A: Rotokauri North Strategic Infrastructure – Water and Waste Water**

**Figure 2-9B: Rotokauri North Strategic Infrastructure – Transport Network and Reserves**



**Figure 2-9C:** Rotokauri North Indicative Waikato Regional Council Preferred Public Transport Route  
(Note: this is not a Structure Plan Map but an information map only)



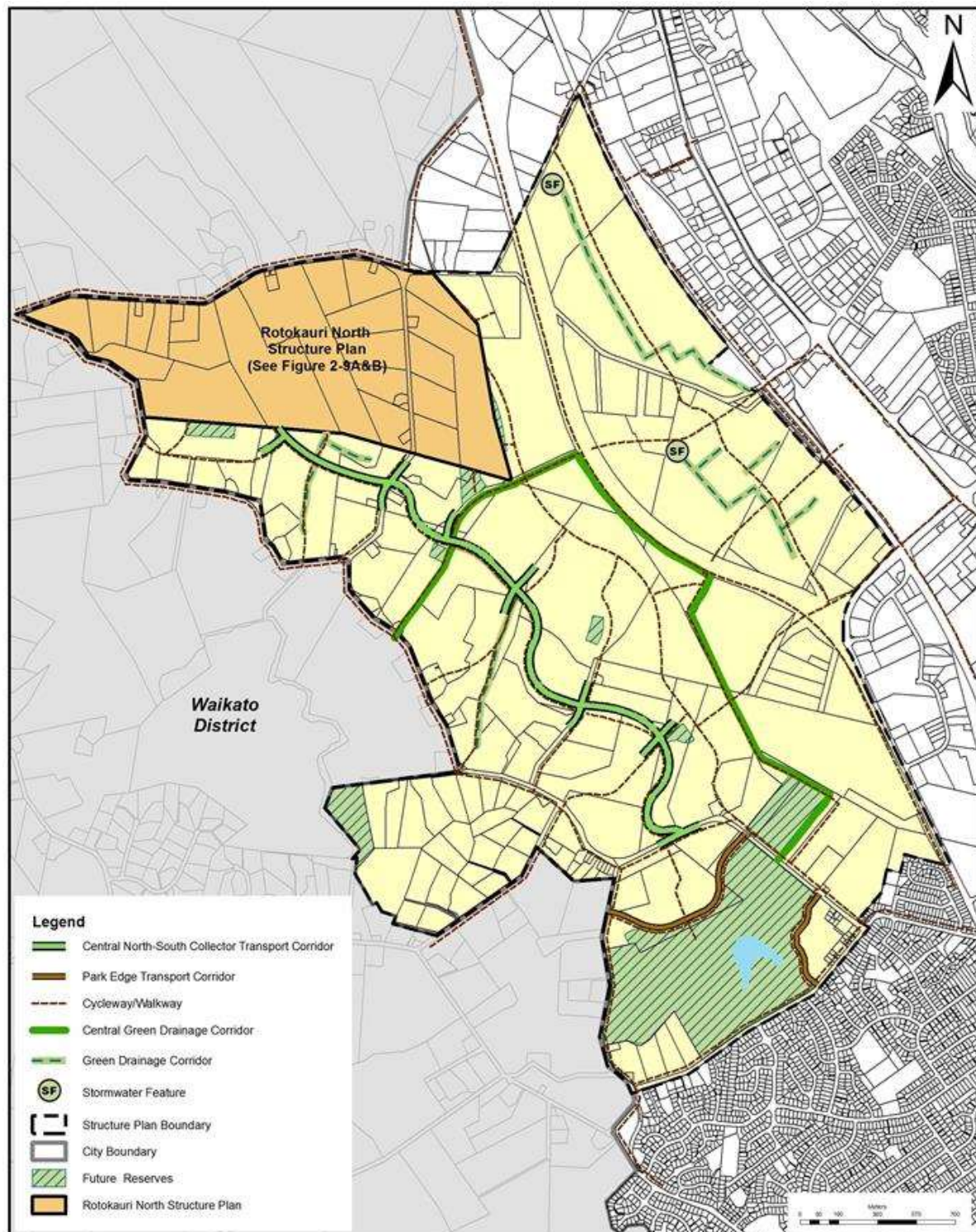
**Figure 2-10: Rotokauri Structure Plan – Open Space Network**



Figure 2-11: Rotokauri Neighbourhood Centre

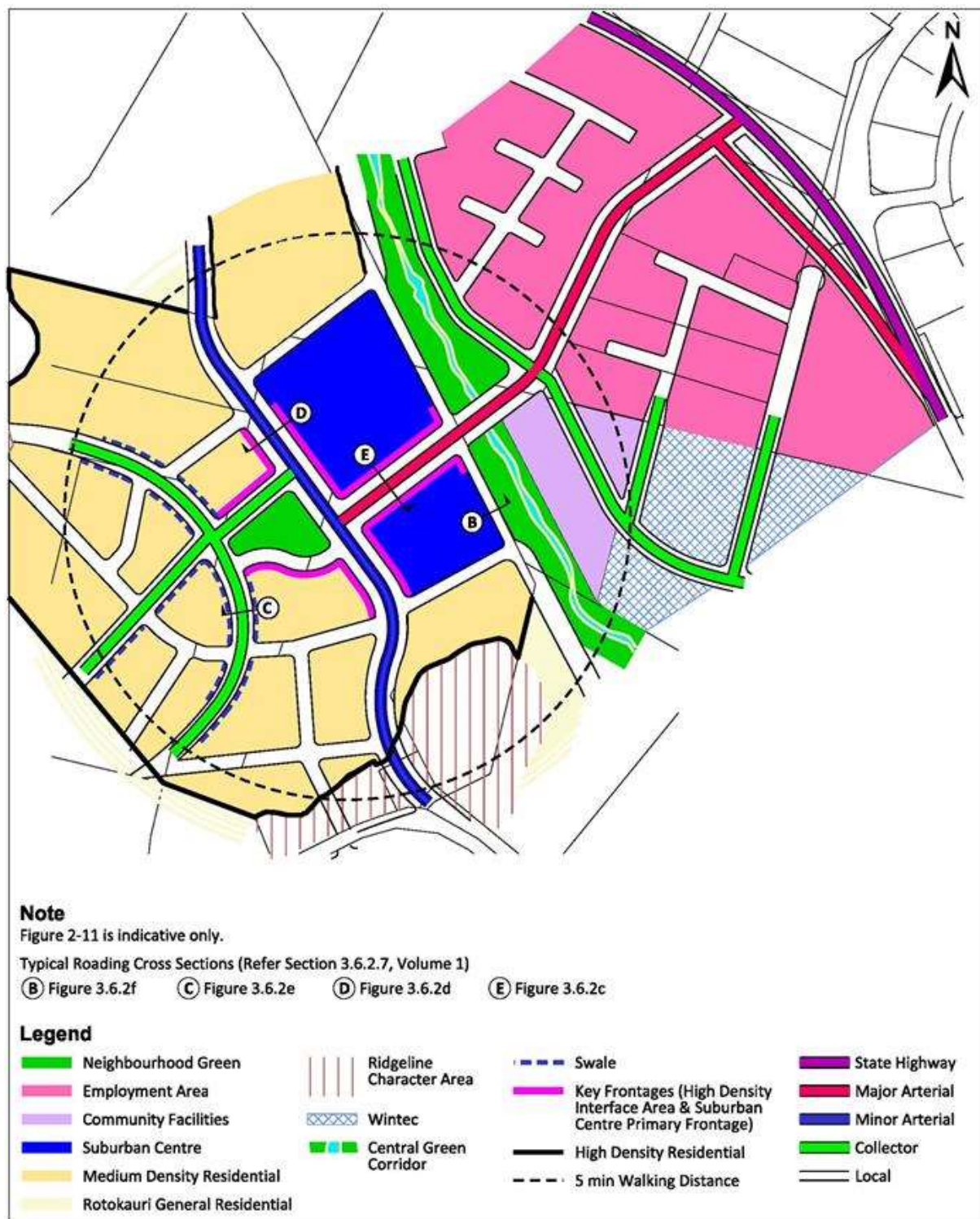


Figure 2-12: Rotokauri Interface Areas

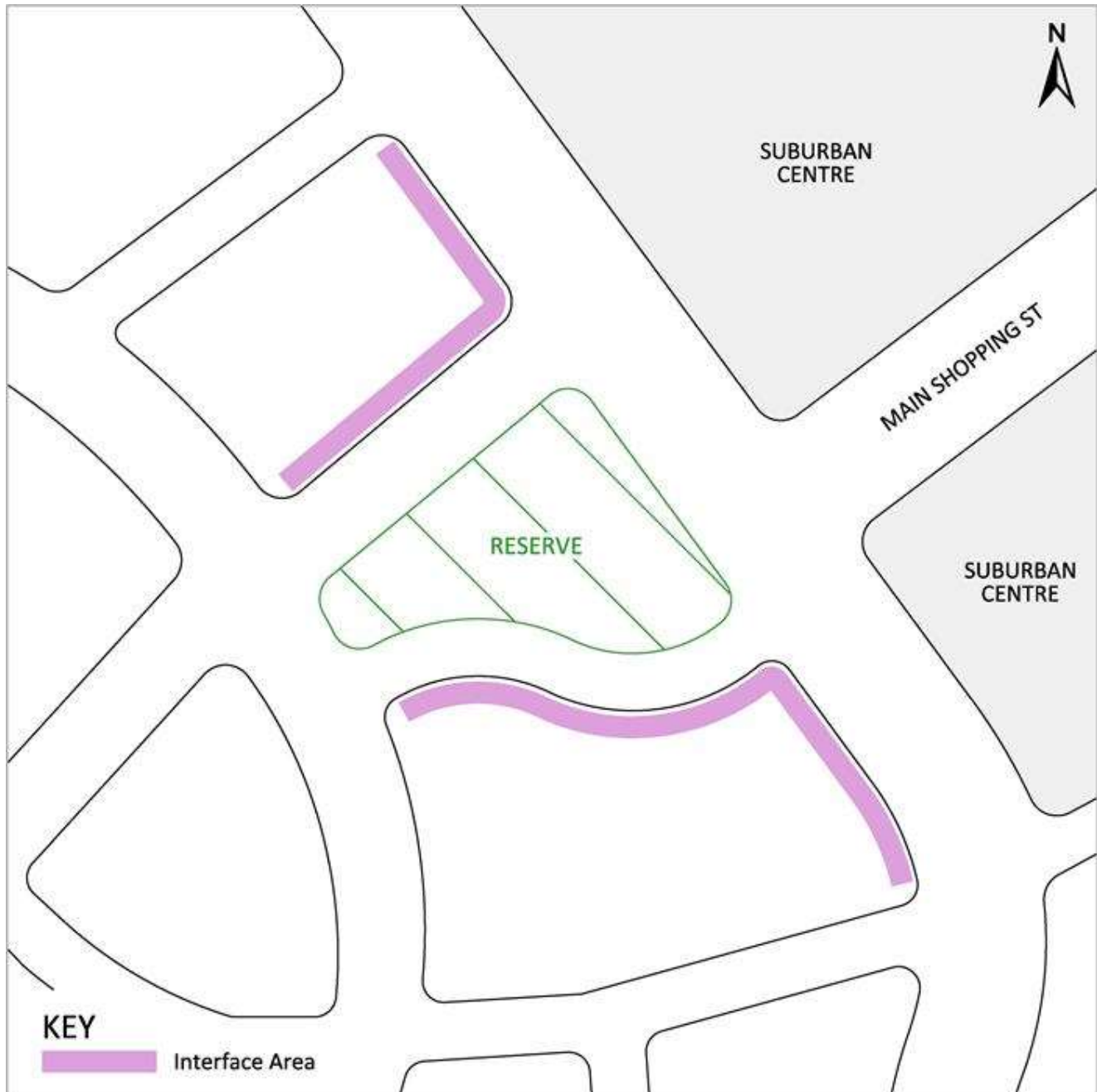
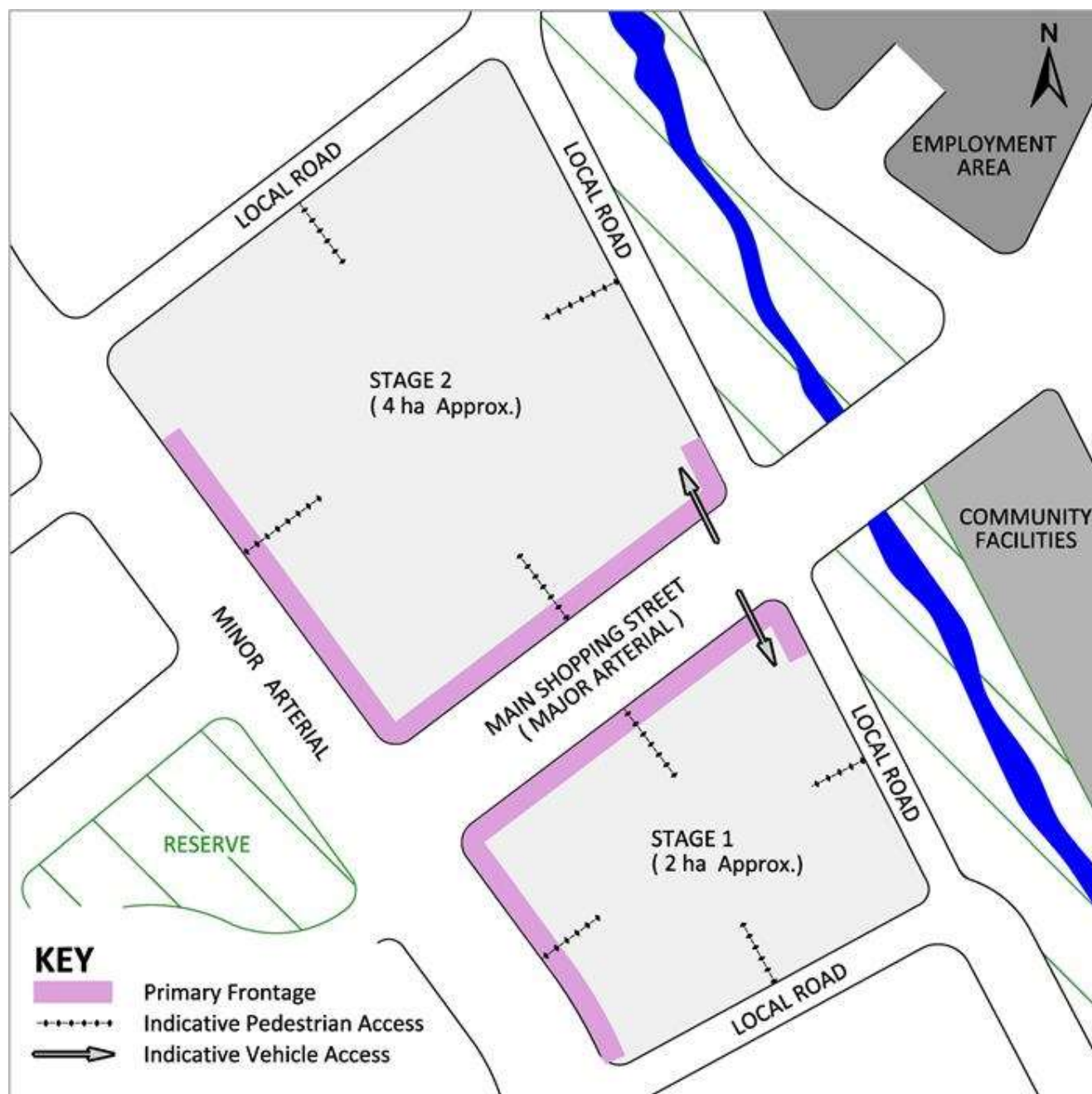
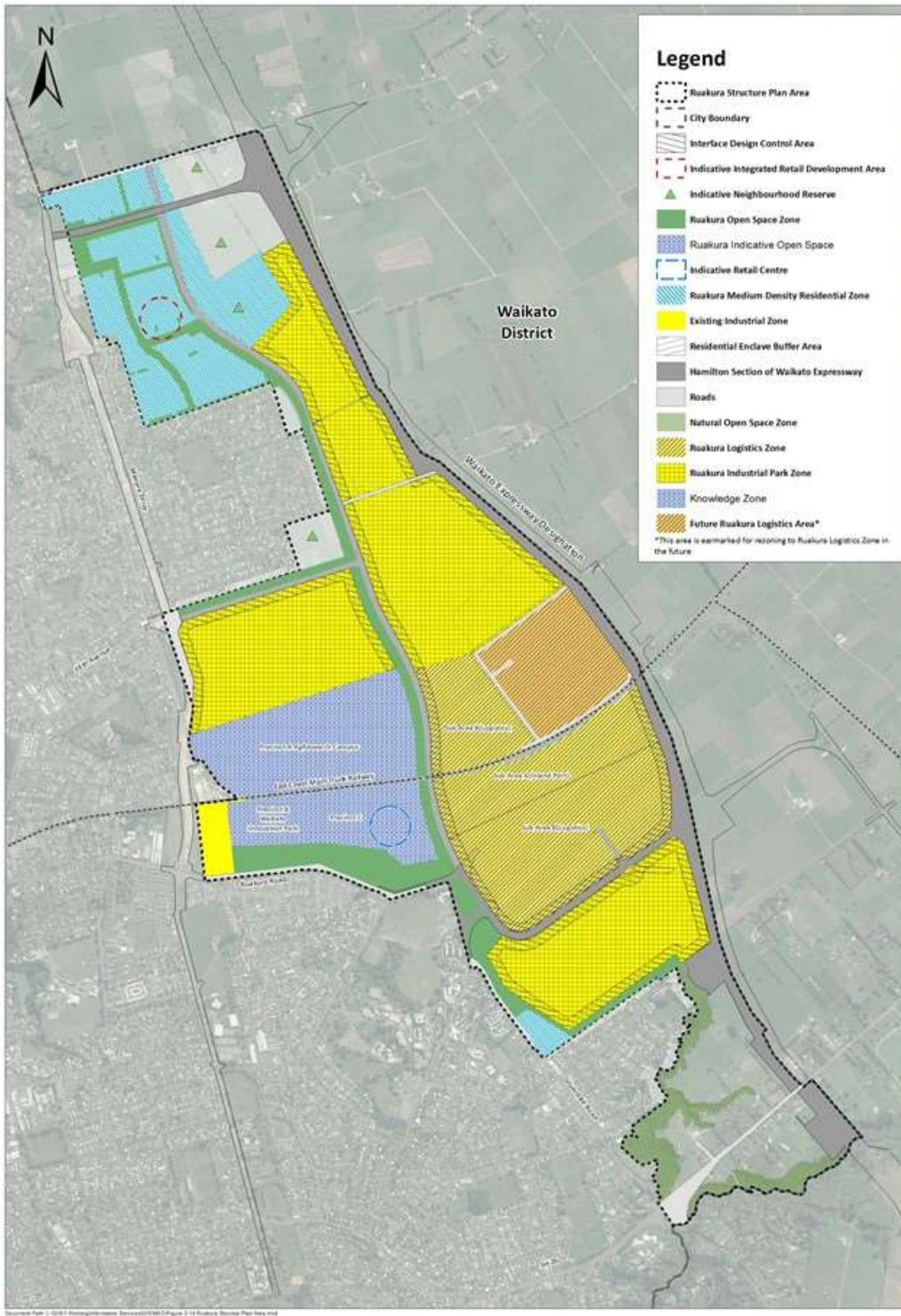




Figure 2-13: Rotokauri Suburban Centre Primary Frontages



**Figure 2-14: Ruakura Structure Plan – Land Use**





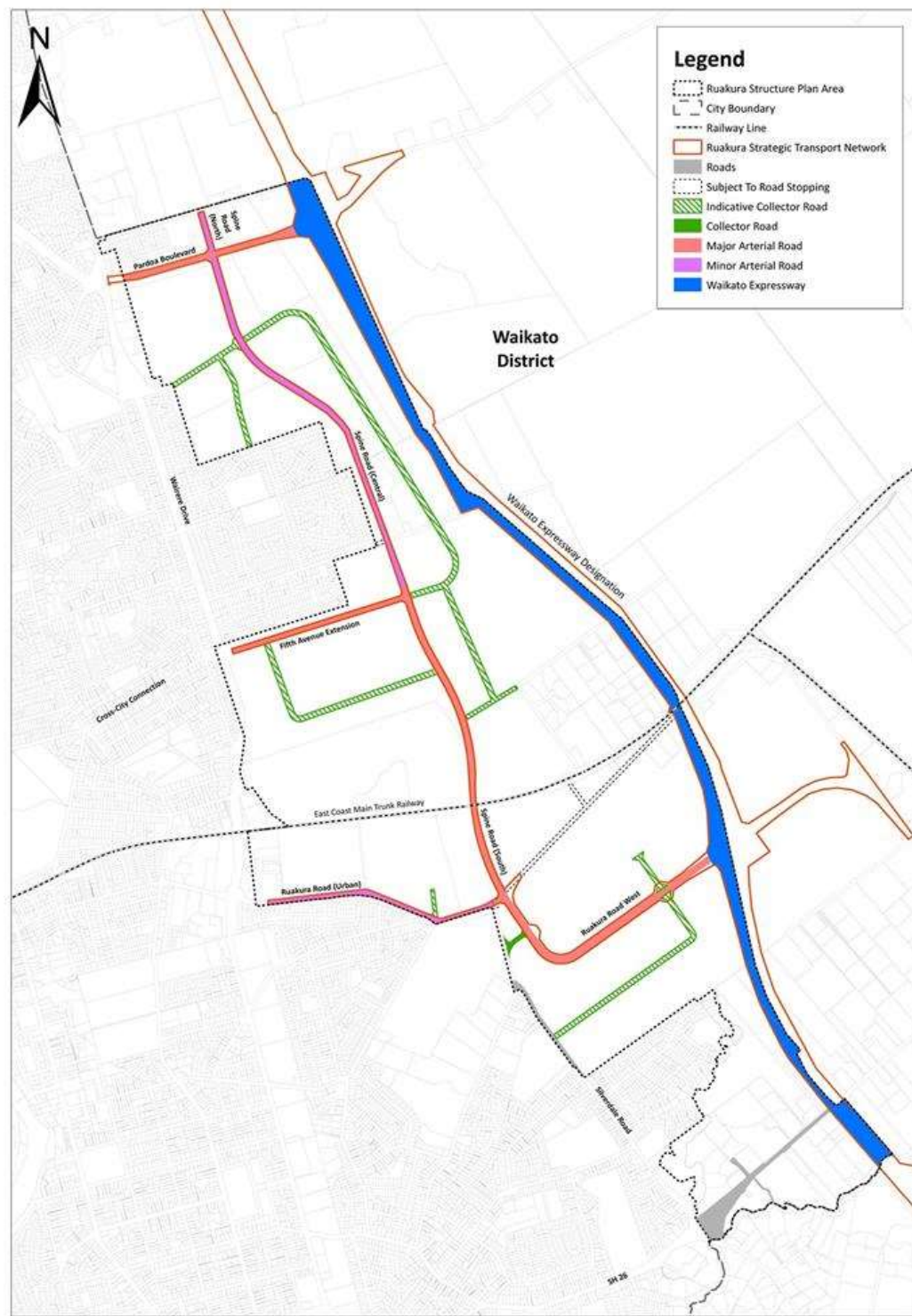
**Figure 2-15A: Ruakura Strategic Infrastructure – Transport**

Figure 2-15B: Ruakura Strategic Infrastructure – Three Waters

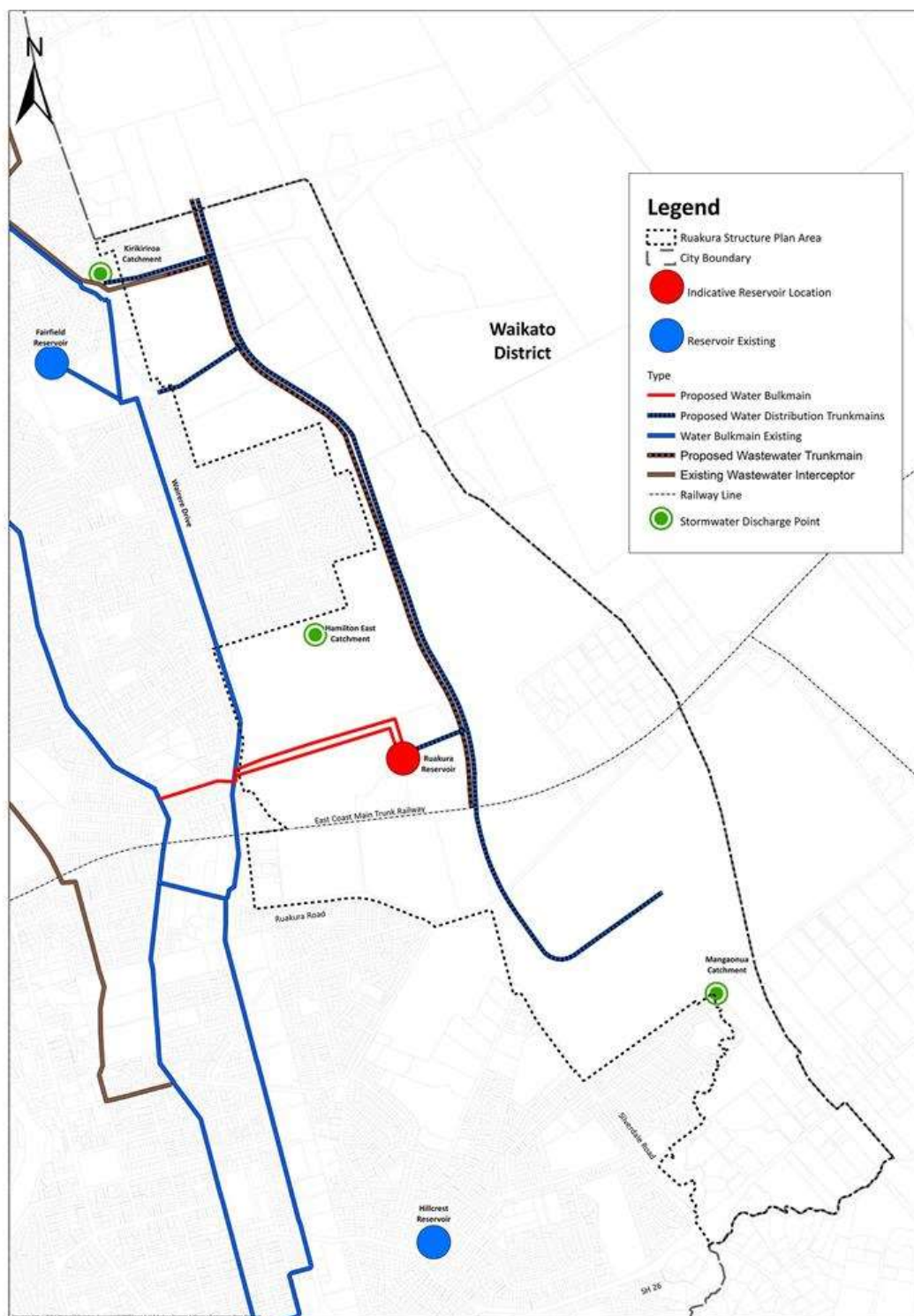




Figure 2-16: Ruakura Land Development Plan Areas

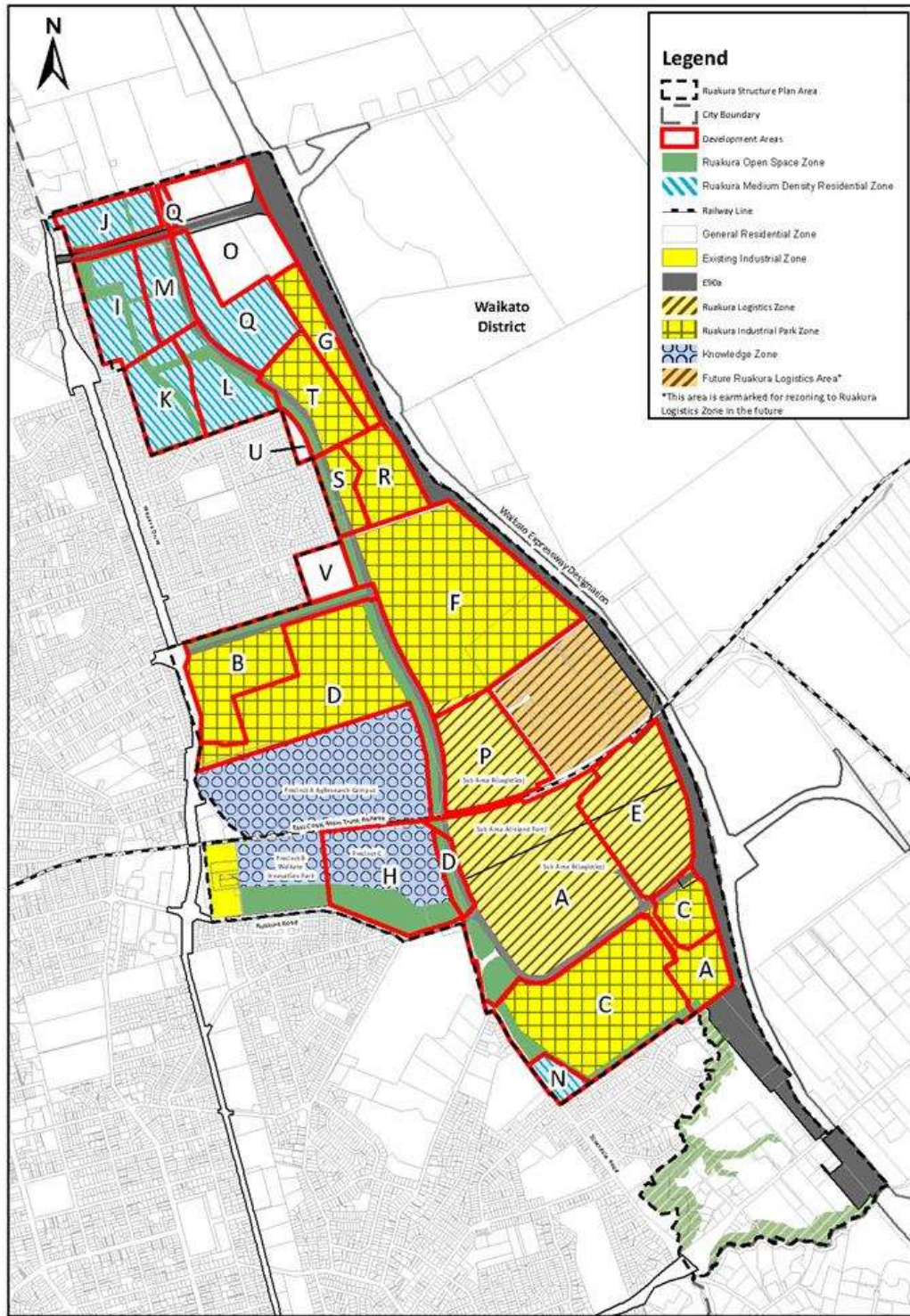


Figure 2-17/1: Inland Port Building Setbacks and Landscape Controls – Stage 1

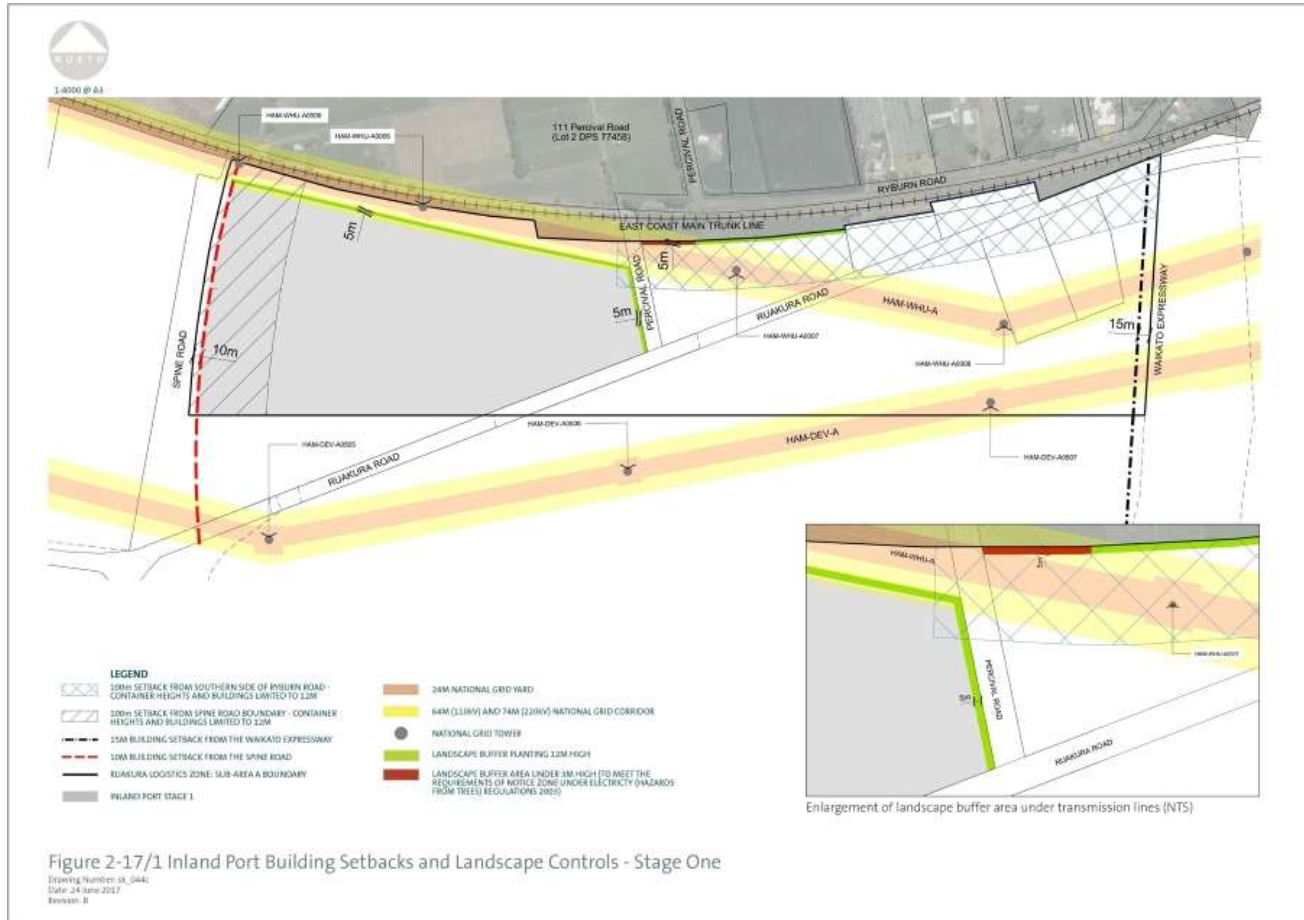




Figure 2-17/2: Inland Port Building Setbacks and Landscape Controls – Stage 2

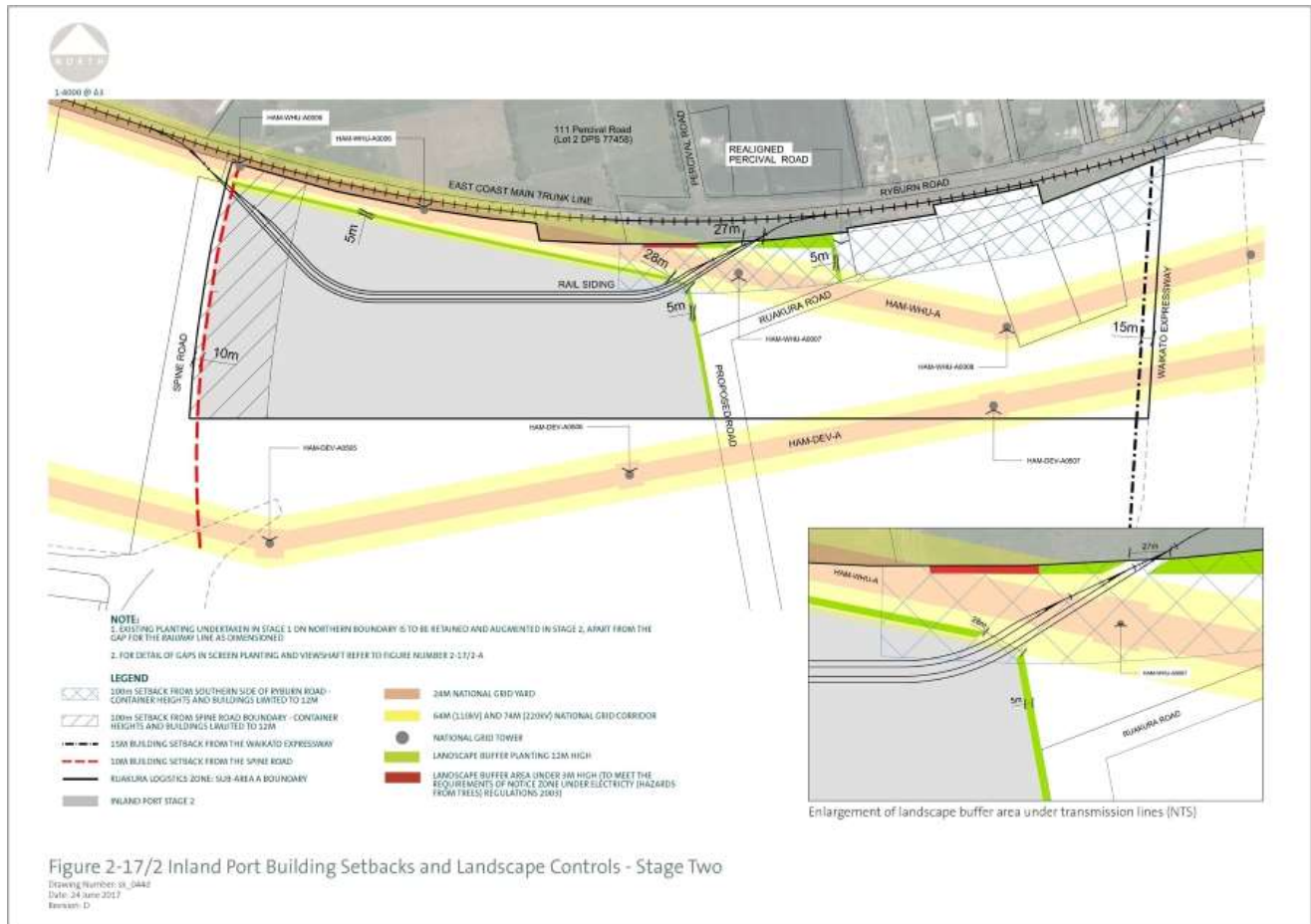
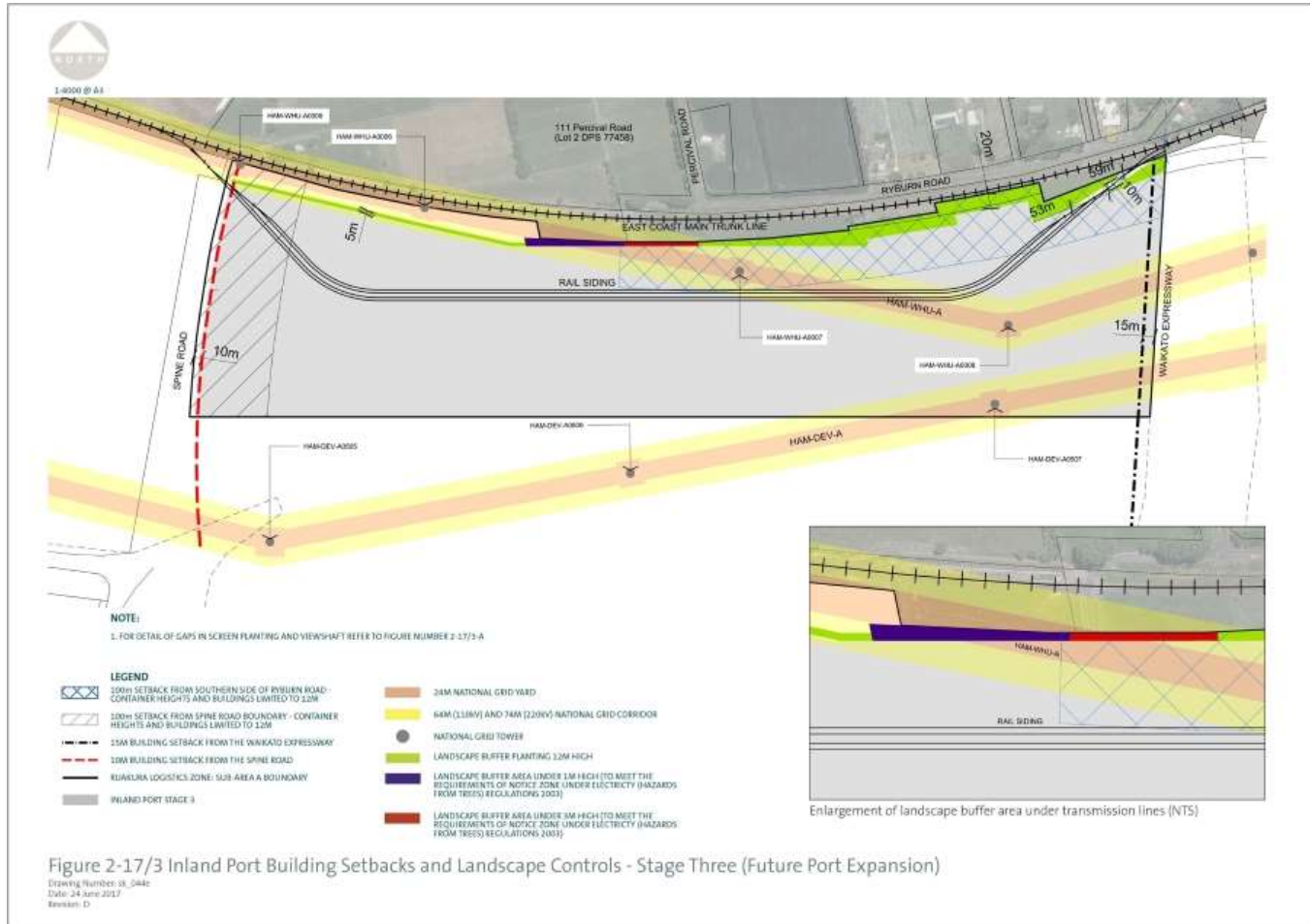


Figure 2-17/3: Inland Port Building Setbacks and Landscape Controls – Stage 3





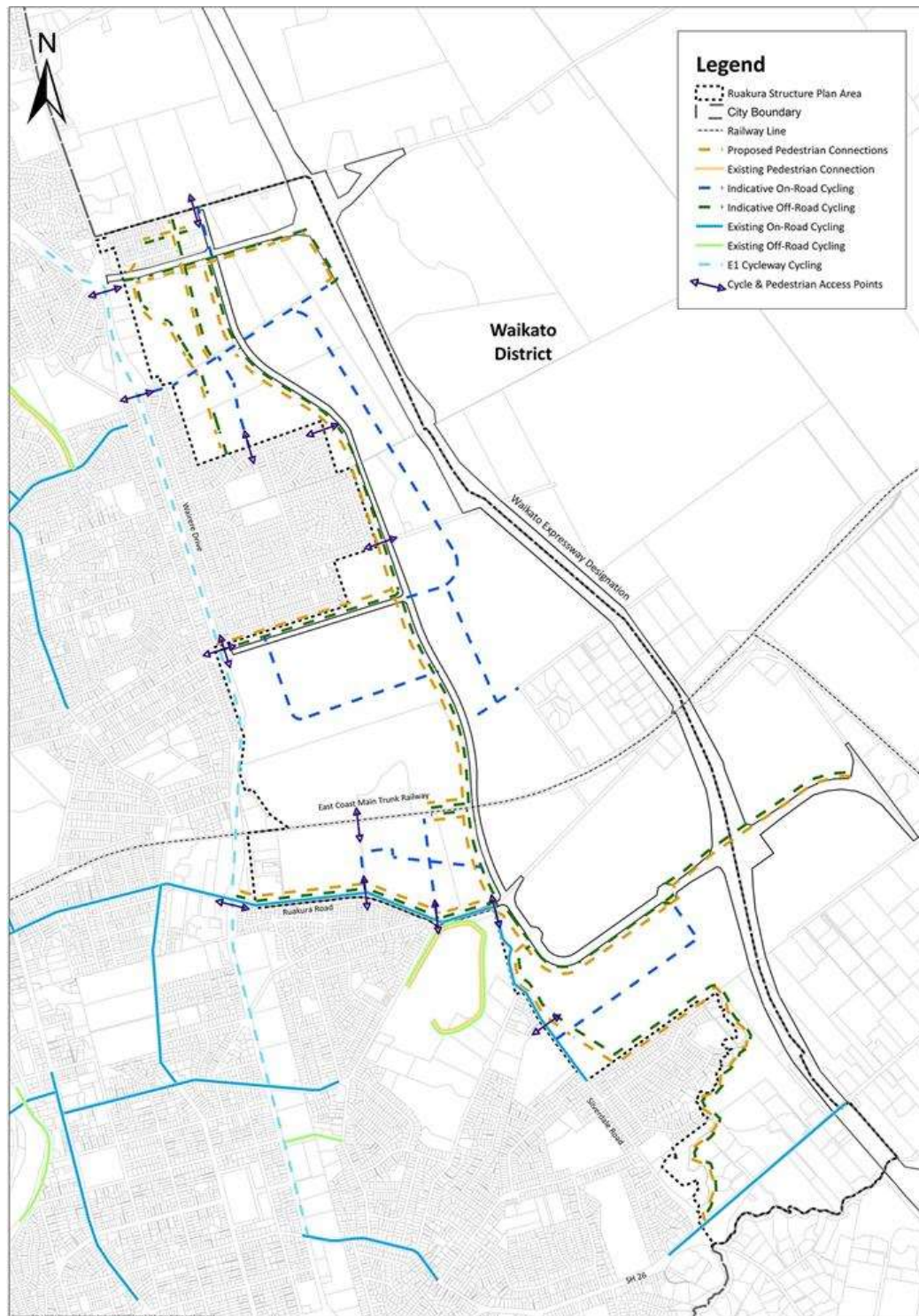
**Figure 2-18: Ruakura Cyclist & Pedestrian Network Plan**

Figure 2-19: Te Awa Lakes Framework Plan

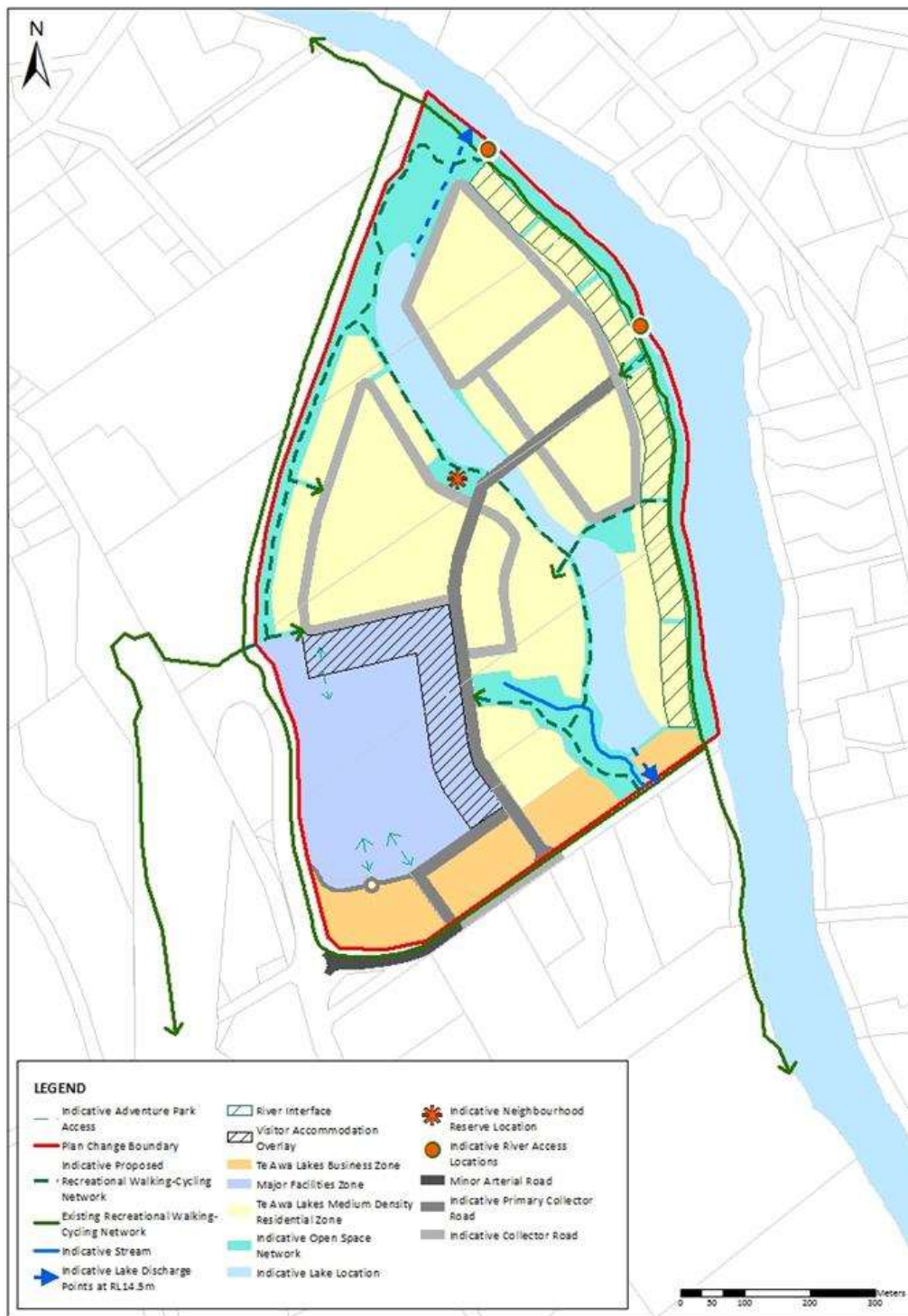




Figure 2-20: Te Awa Lakes Land Use

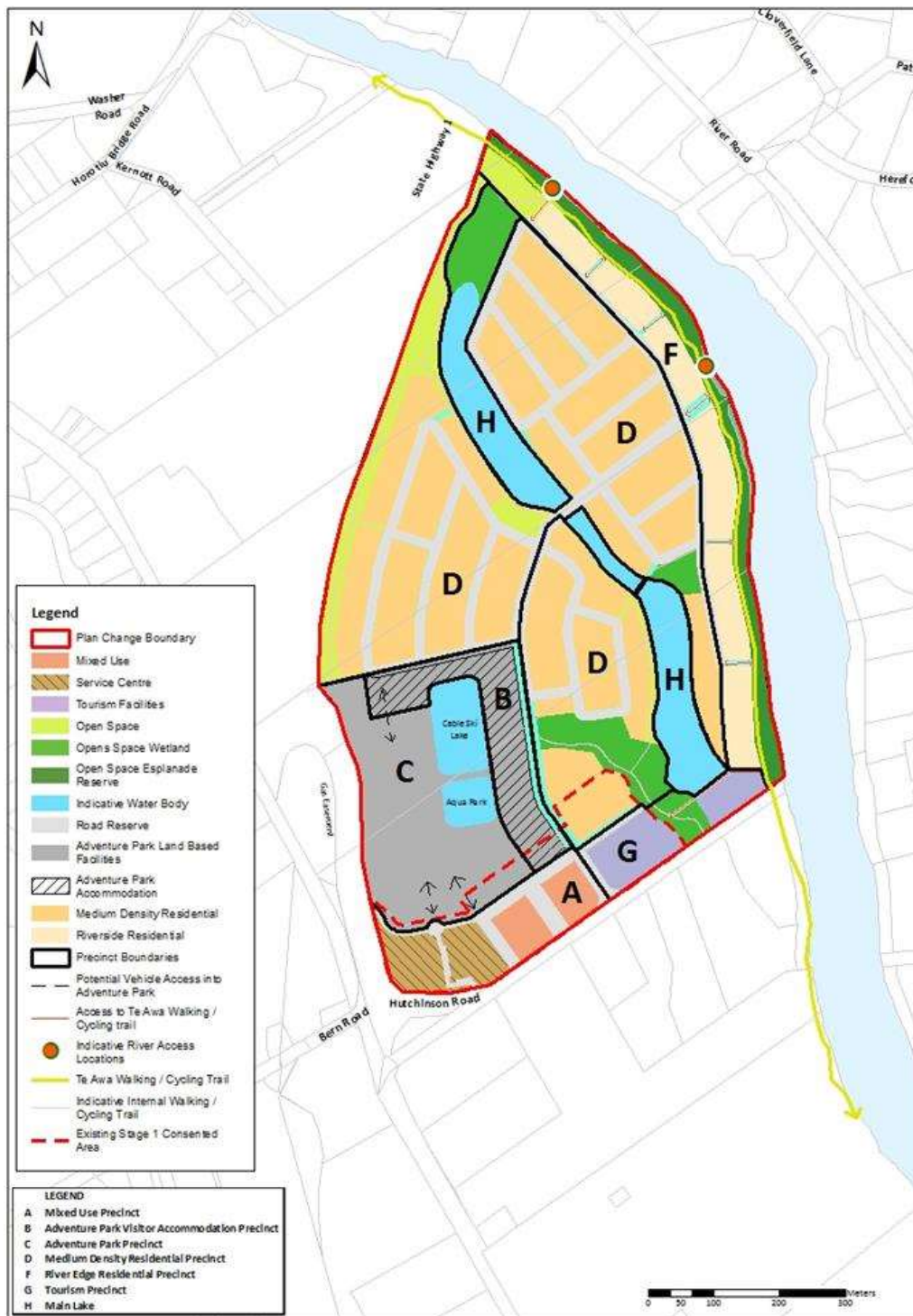


Figure 2-21: Te Awa Lakes Land Development Plan Areas

