

Addendum to Evidence of Ms Pryde (Bat Ecology); Director-General of Conservation):

It has been brought to our attention that the following three figures in Ms Pryde's evidence have not downloaded properly in the pdf'd version (pages 25, 27 and 28). These are provided separately. Please note that there has been some minor amendment to the Figure number (shown in ~~strike through~~ and underlined).

Page 25 – Figure 5

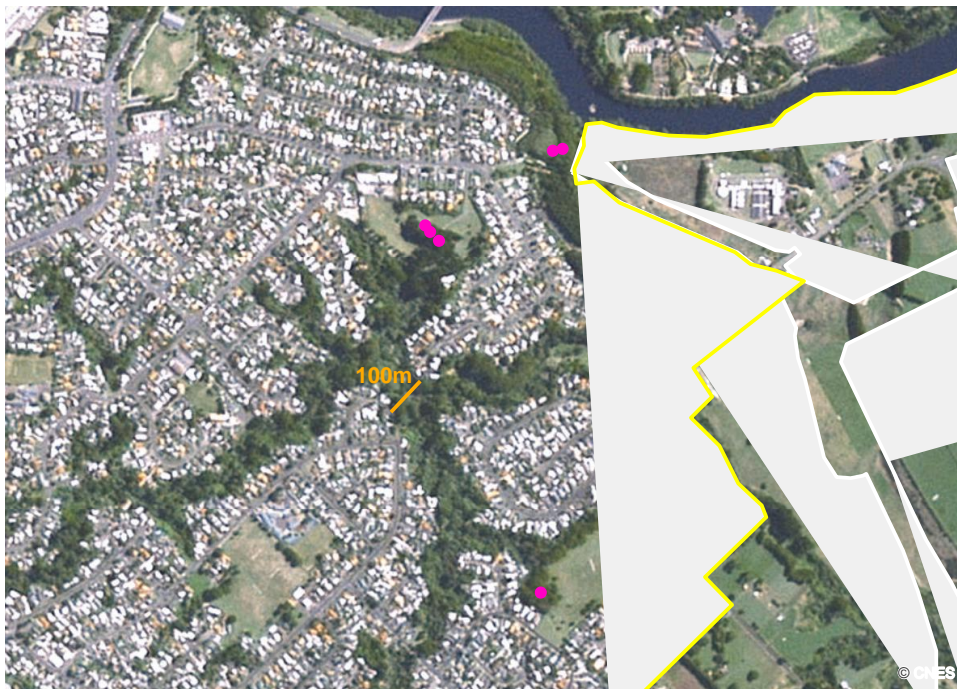


Figure 5: Sandford Park roosts (pink circle). Yellow boundary of the PSPA. A line (orange) indicating the length of 100 m for scale for the width of the corridors.

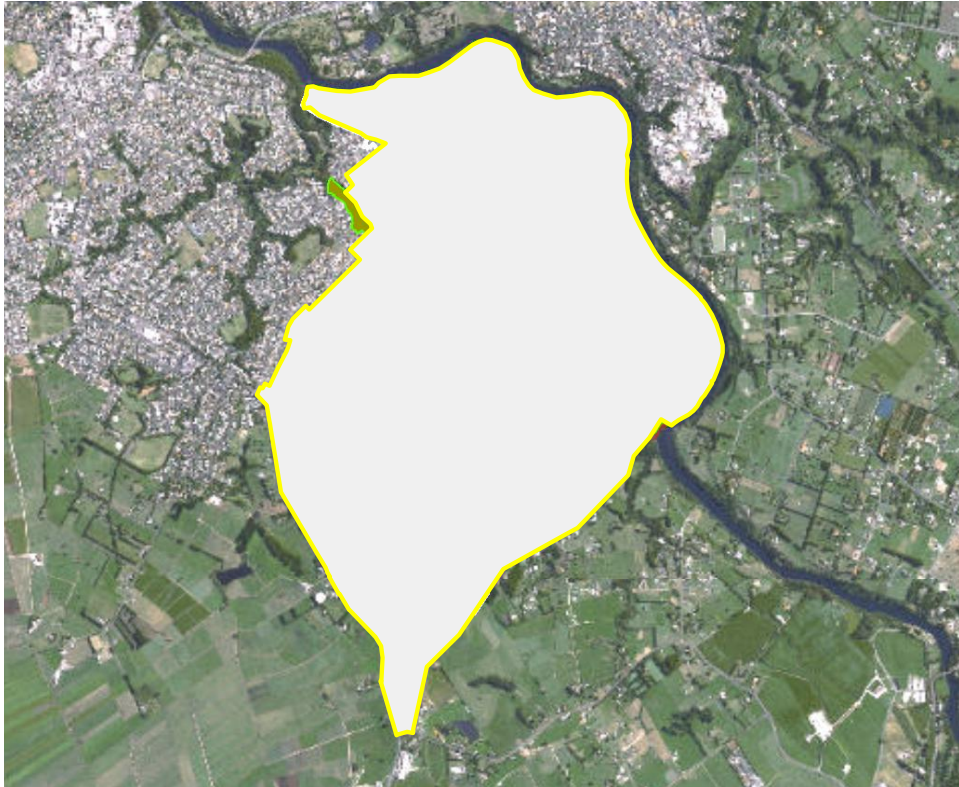


Figure 56: bright green area showing the open space zone. The brown area is the high value habitat and the purple areas is the medium value habitat. The orange area is where the Southern links road crosses the bat habitat, so the land is effectively lost to bats. The white line is the southern links roading.

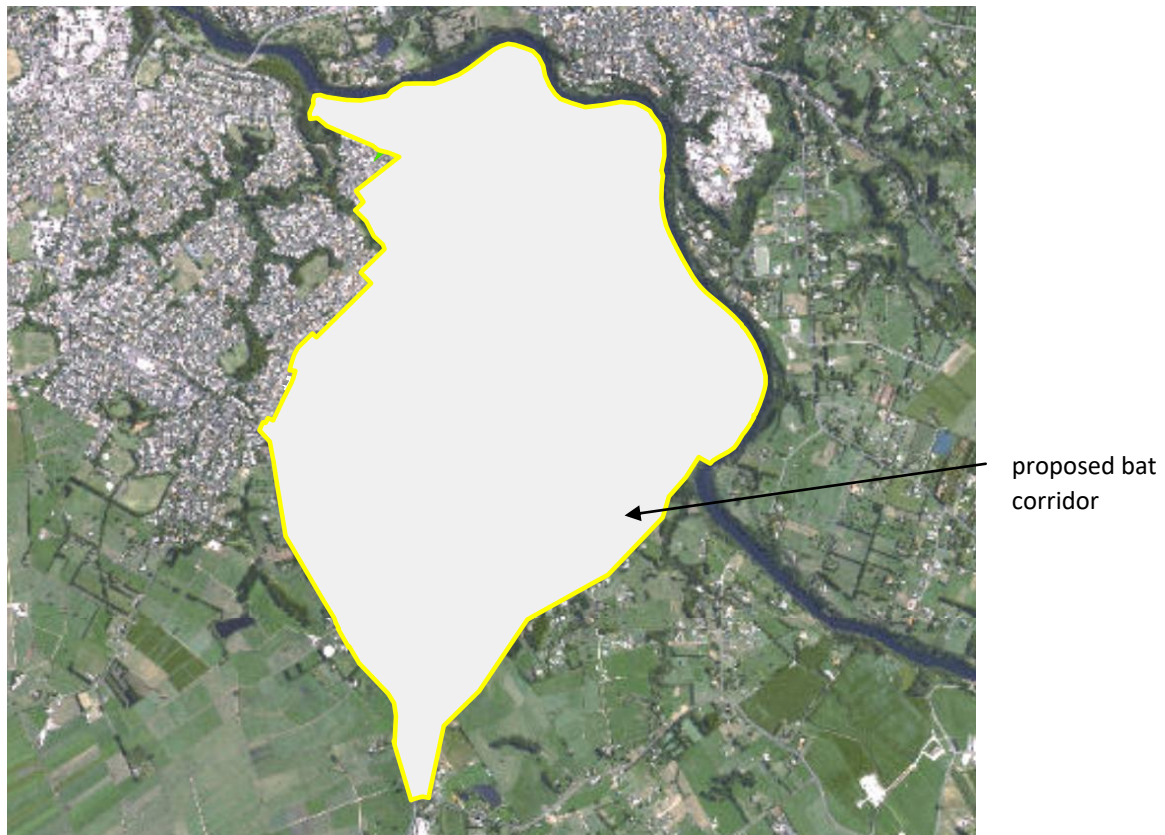


Figure 67: Proposed reserves in green, proposed wetlands in blue (data from HCC shapefiles downloaded August 2022). Note there is an additional corridor in the east that has not been mentioned on previous bat habitat maps.