



This chapter is subject to the following plan changes:

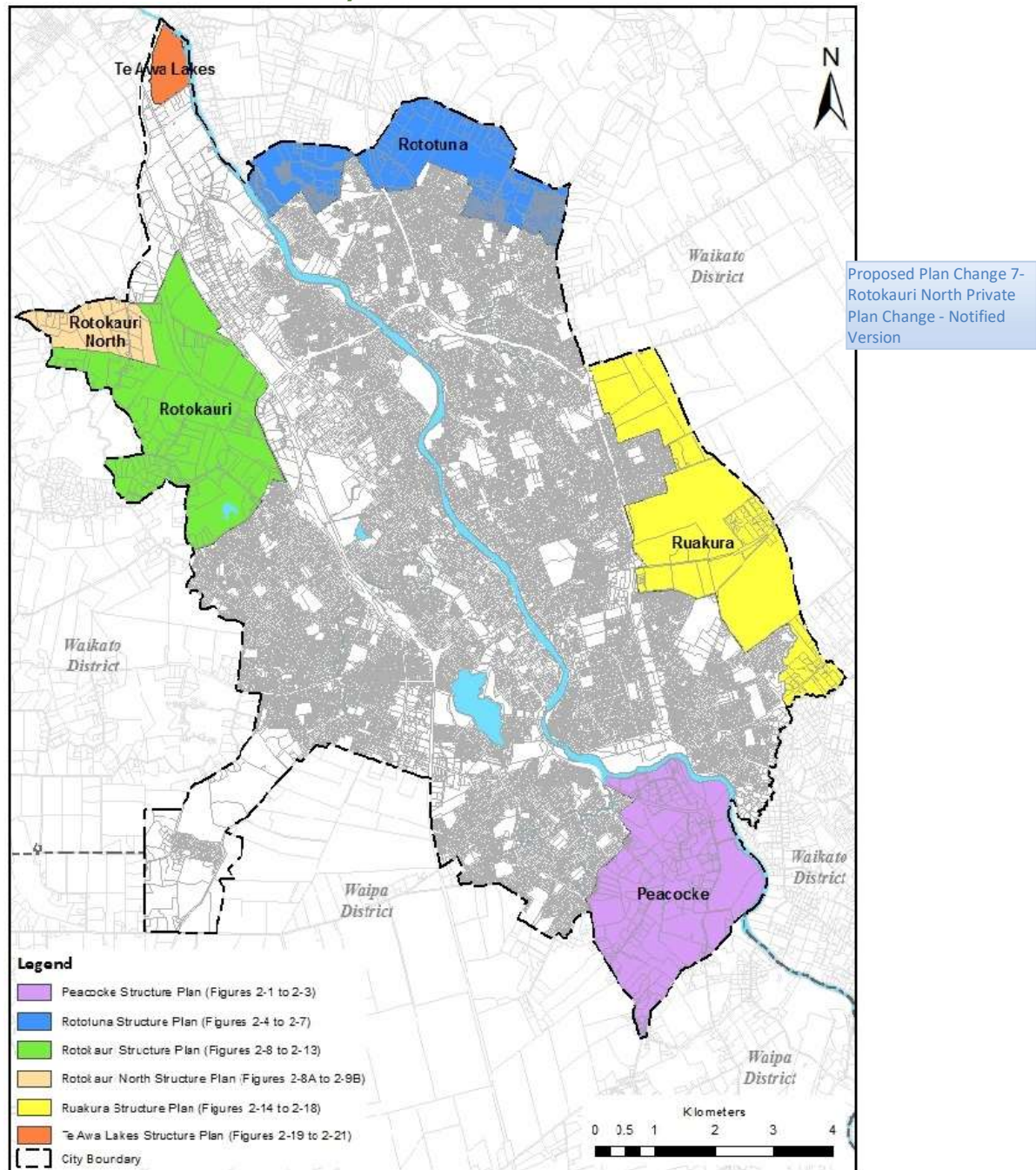
- Proposed Plan Change 7 – Rotokauri North Private Plan Change
- Plan Change 5 – Peacocke Structure Plan (insertions underlined)

Red – Peacocke SP as notified

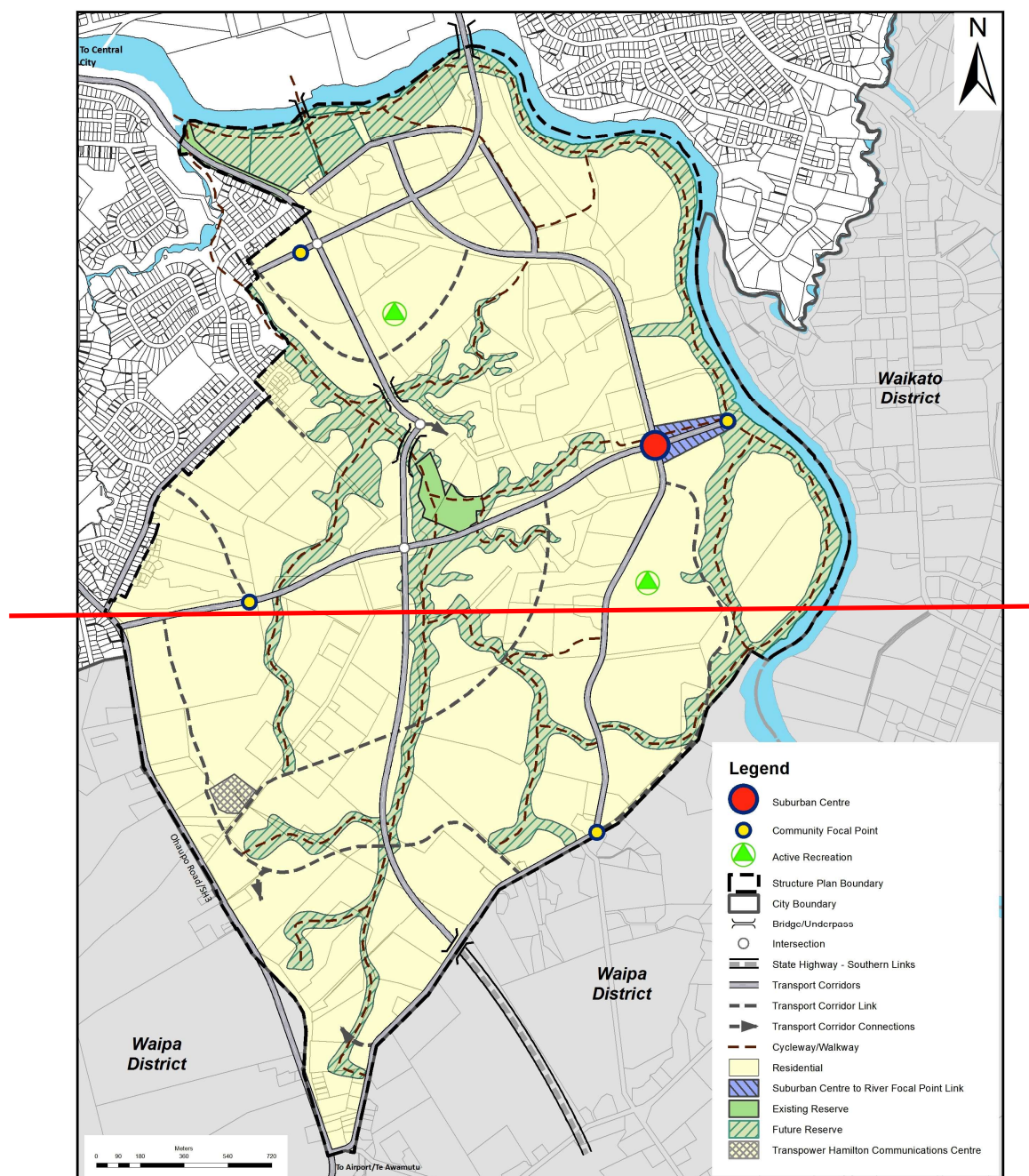
Green – Submitter changes

## Appendix 2: Structure Plans

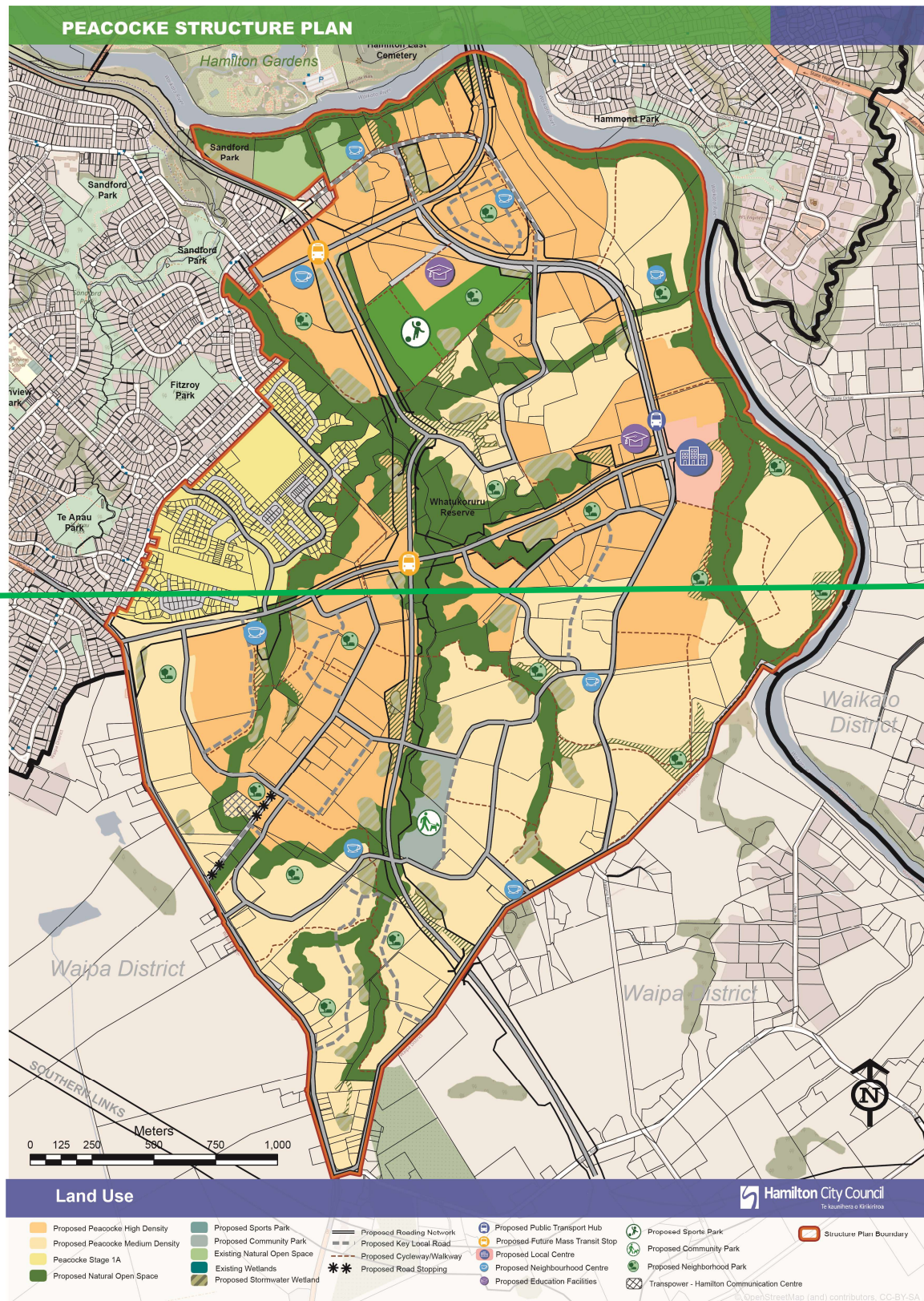
### Structure Plans Locality Guide



## 1. Figure 2-1: Peacocke Structure Plan – Land Use

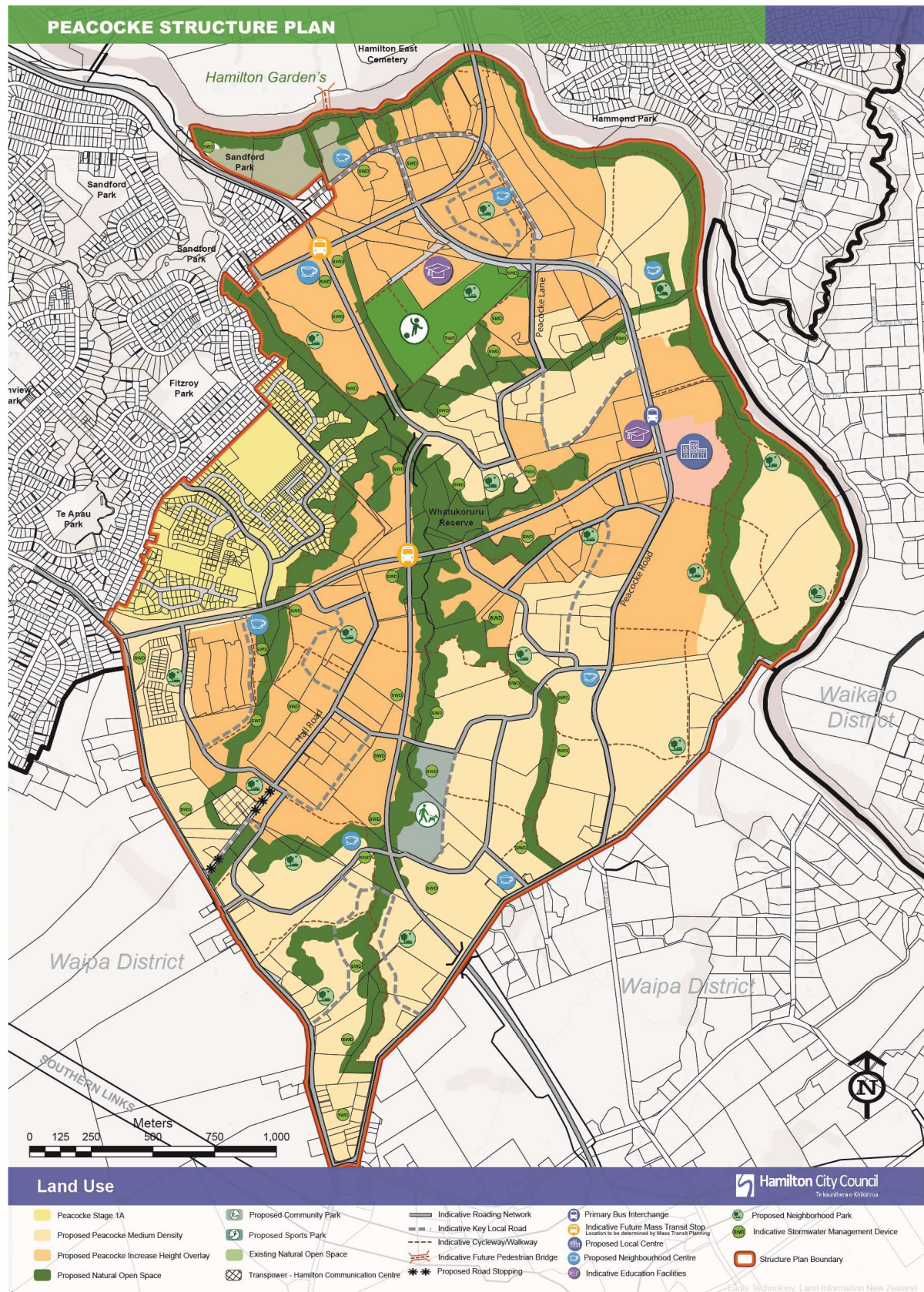
Plan Change 5 Peacocke  
Structure Plan



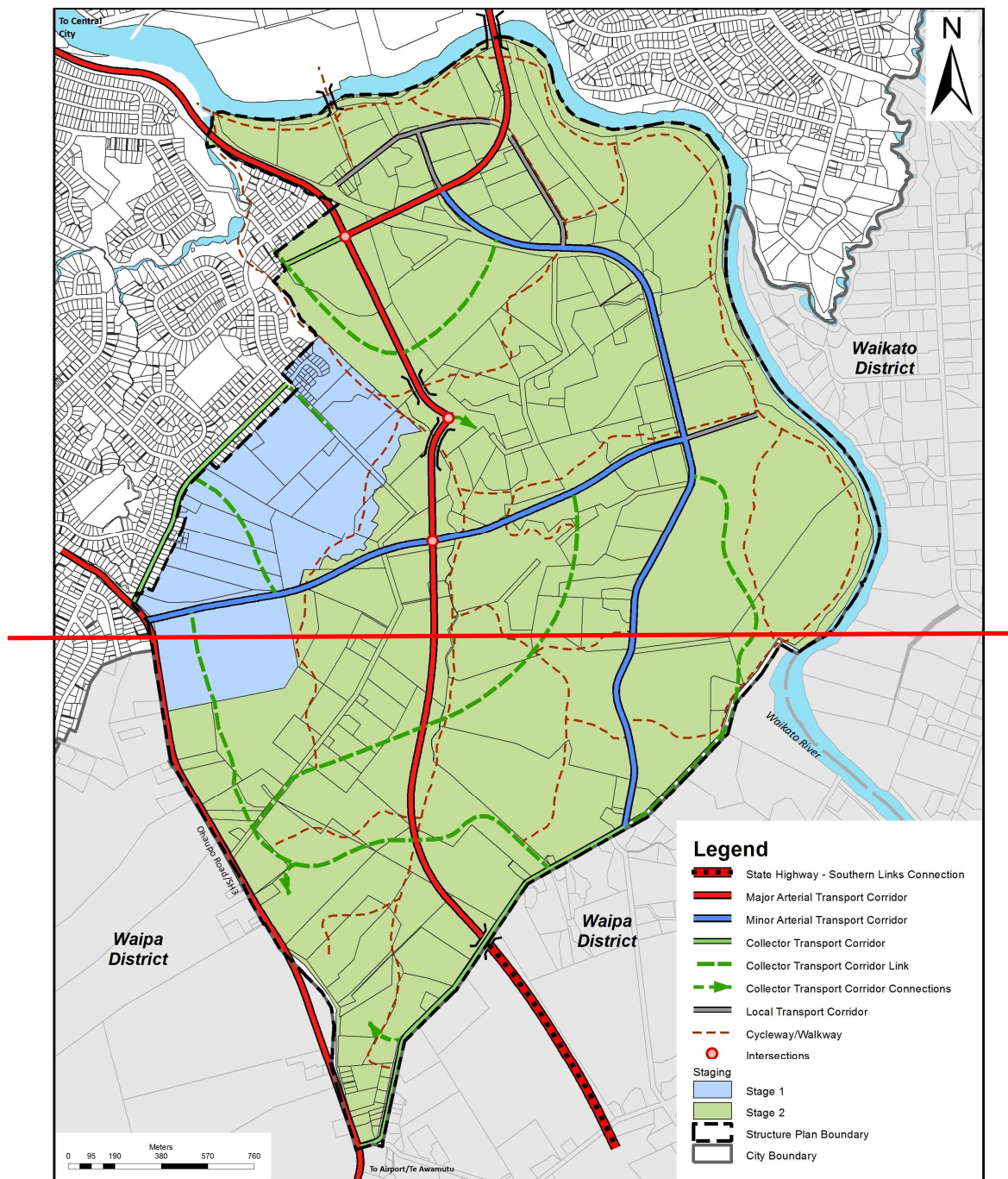


Plan Change 5 Peacocke  
Structure Plan

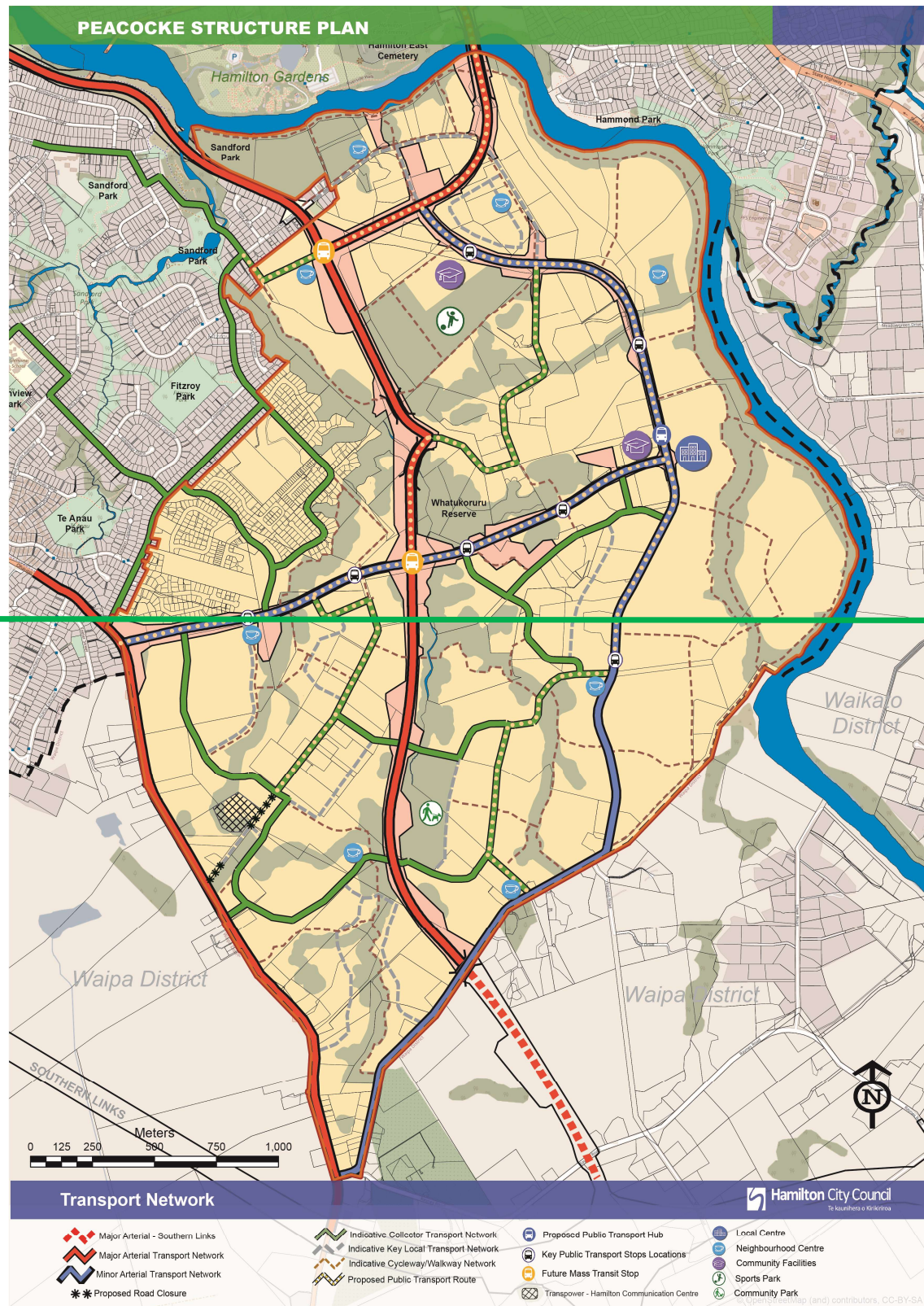






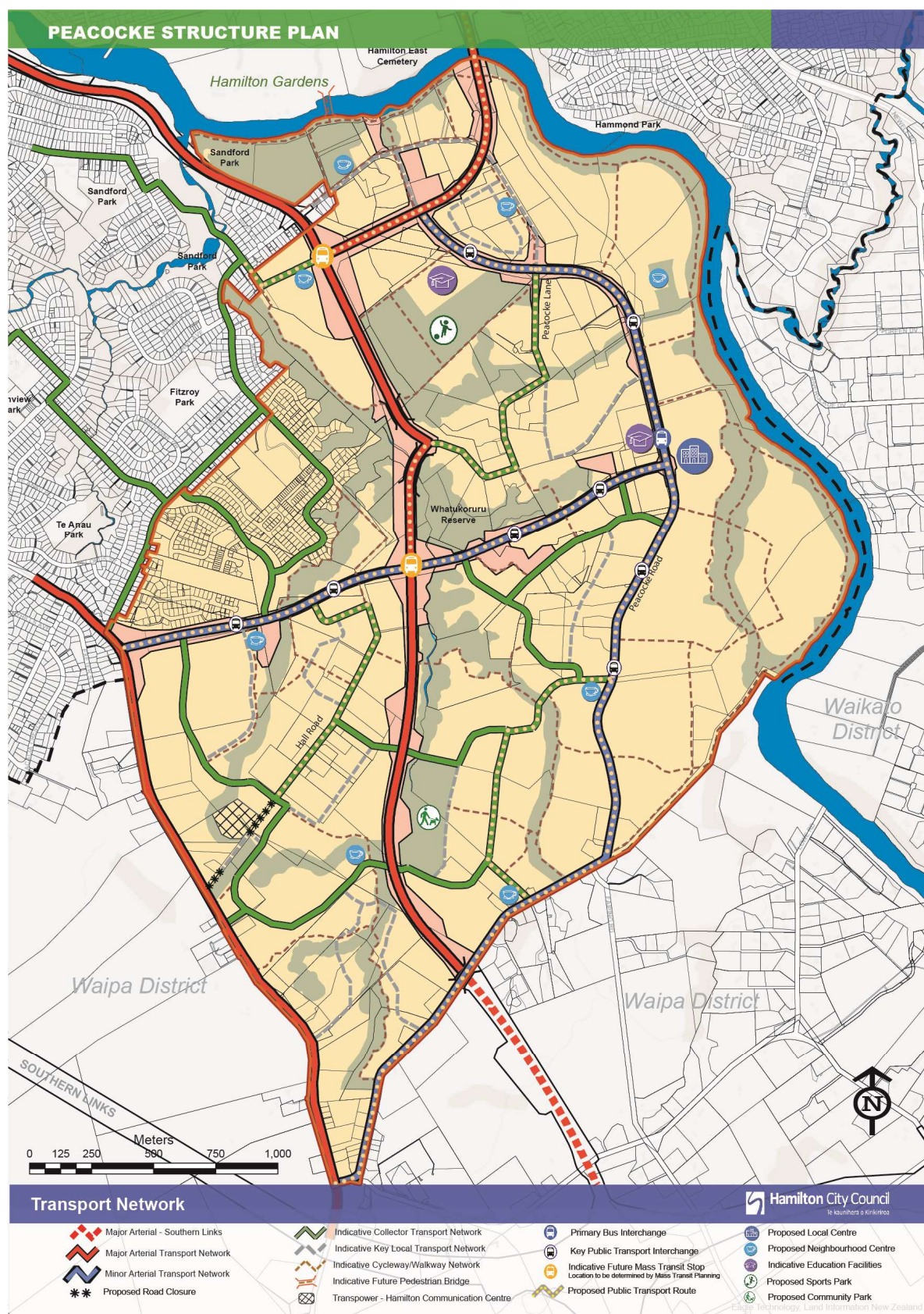
**Figure 2-2: Peacocke Structure Plan –Transport Network**

Plan Change 5 Peacocke  
Structure Plan

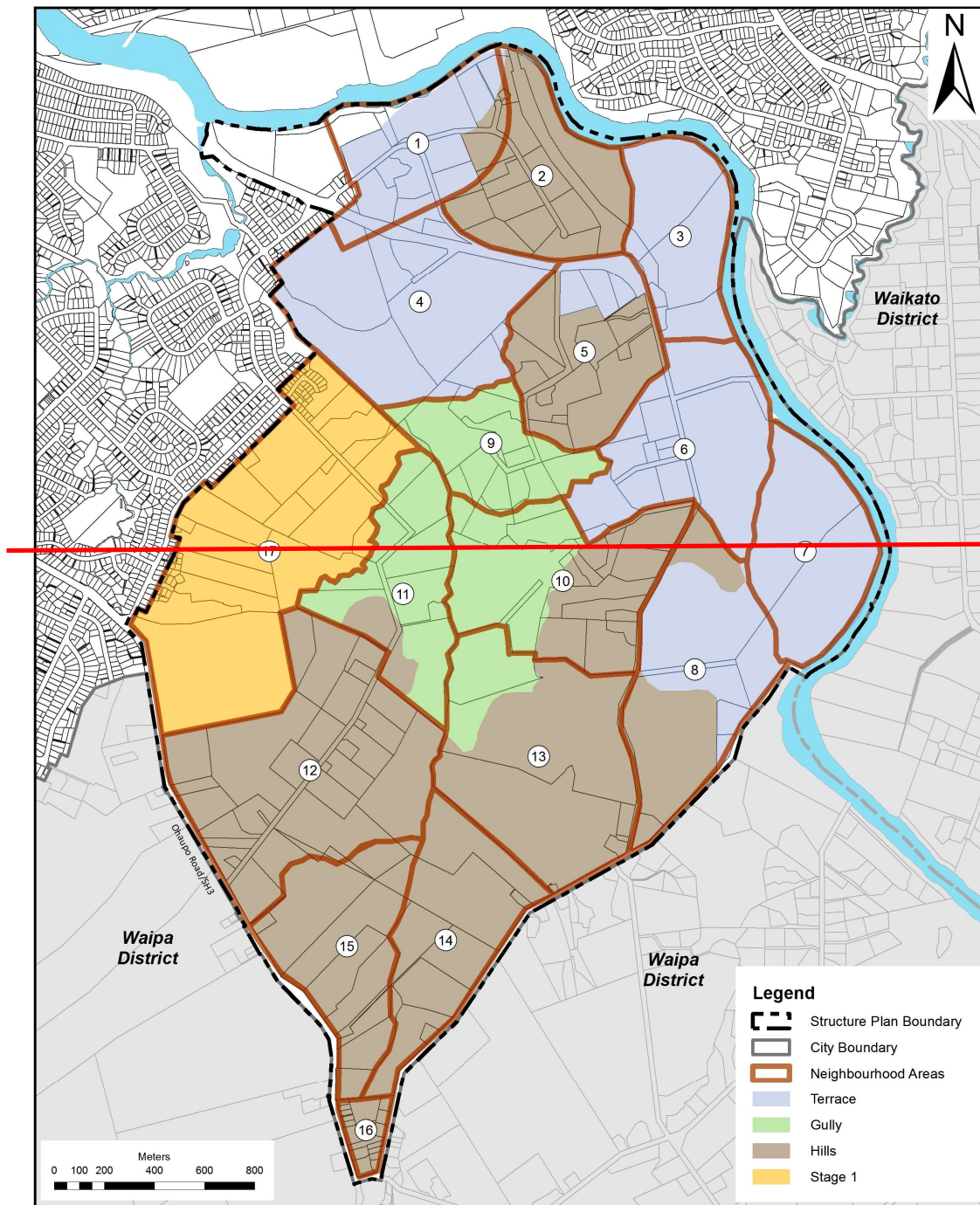


Plan Change 5 Peacocke  
Structure Plan

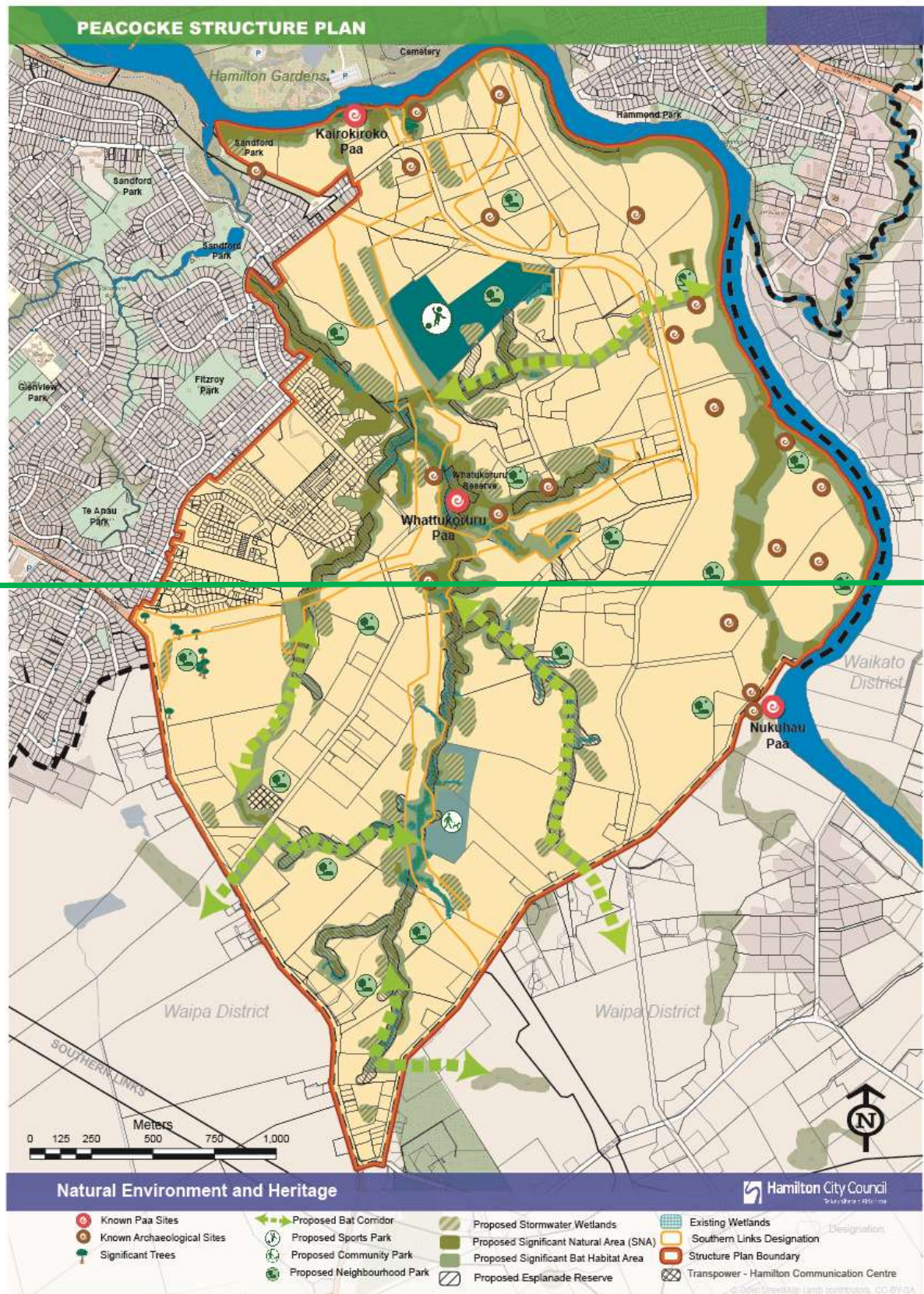






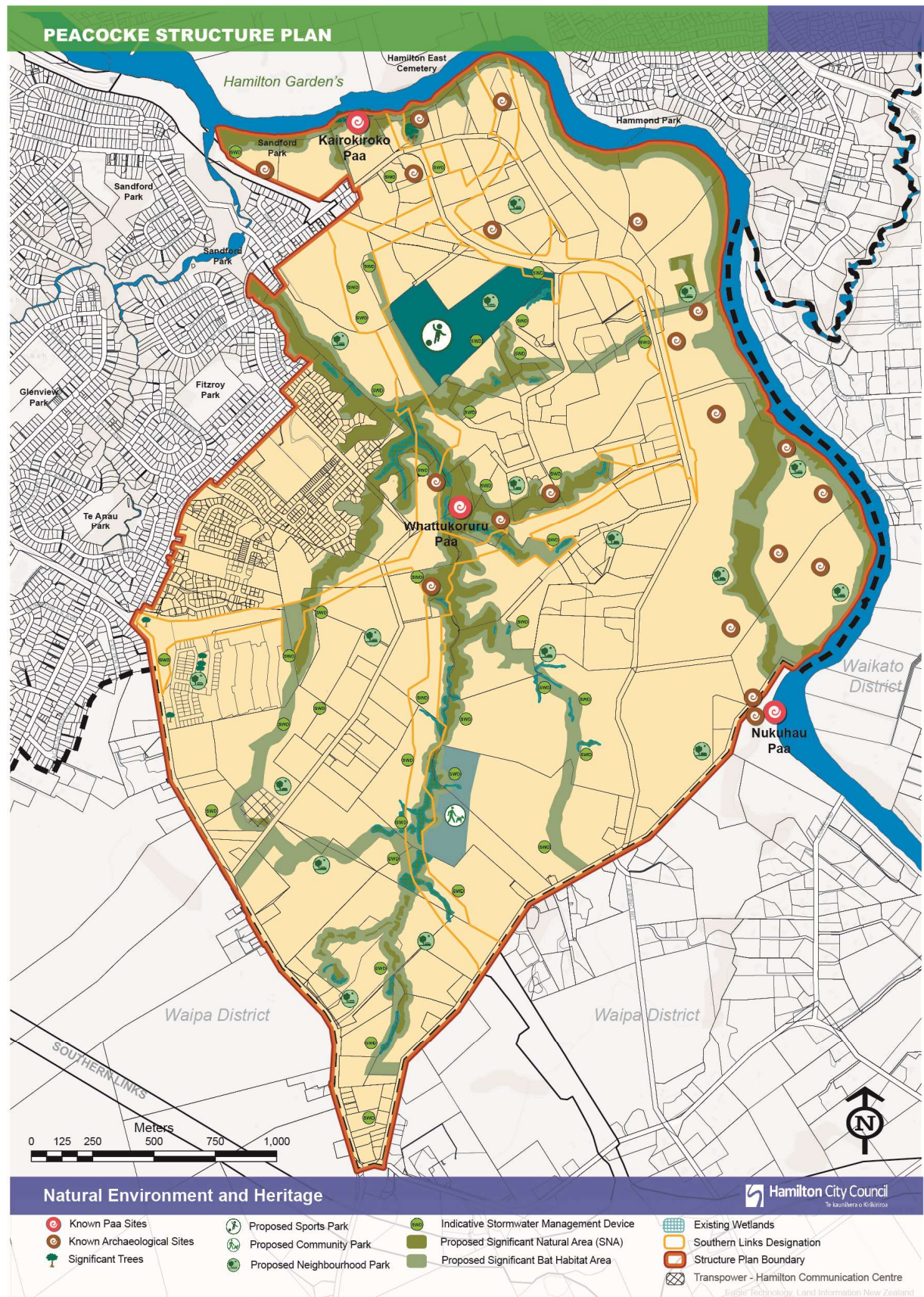
**Figure 2-3: Peacocke Structure Plan – Natural Environment and Heritage**



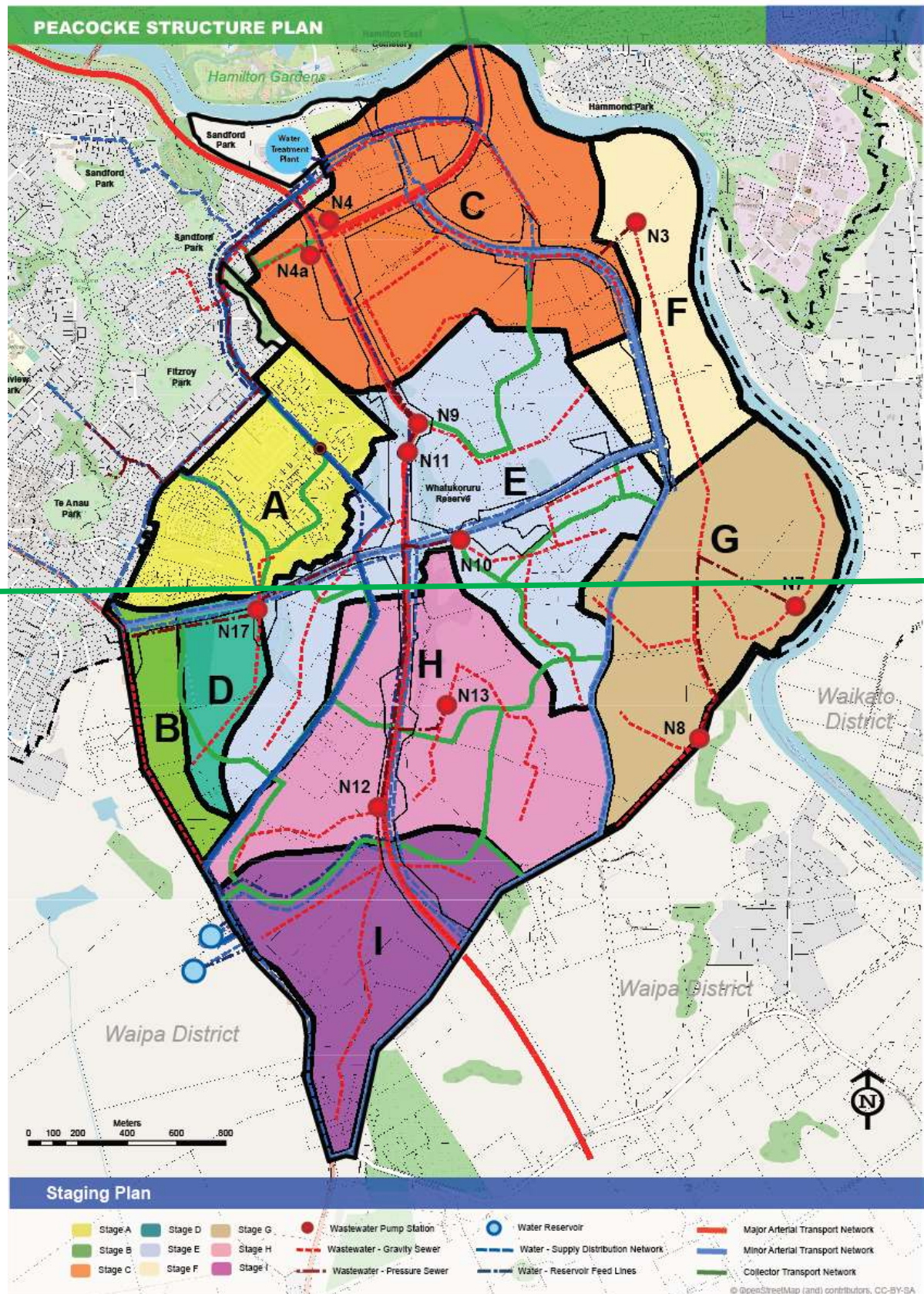


Plan Change 5 Peacocke  
Structure Plan

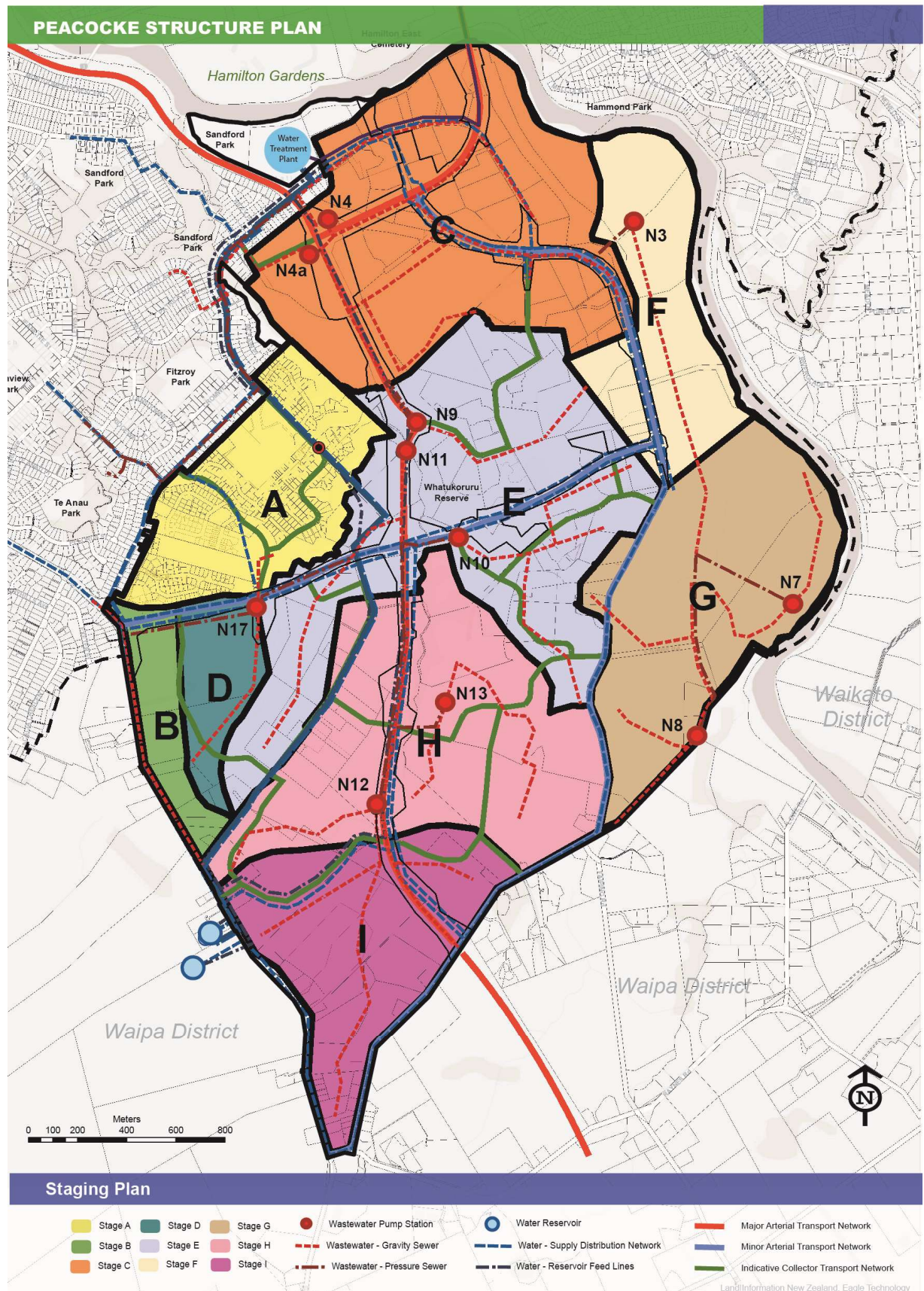




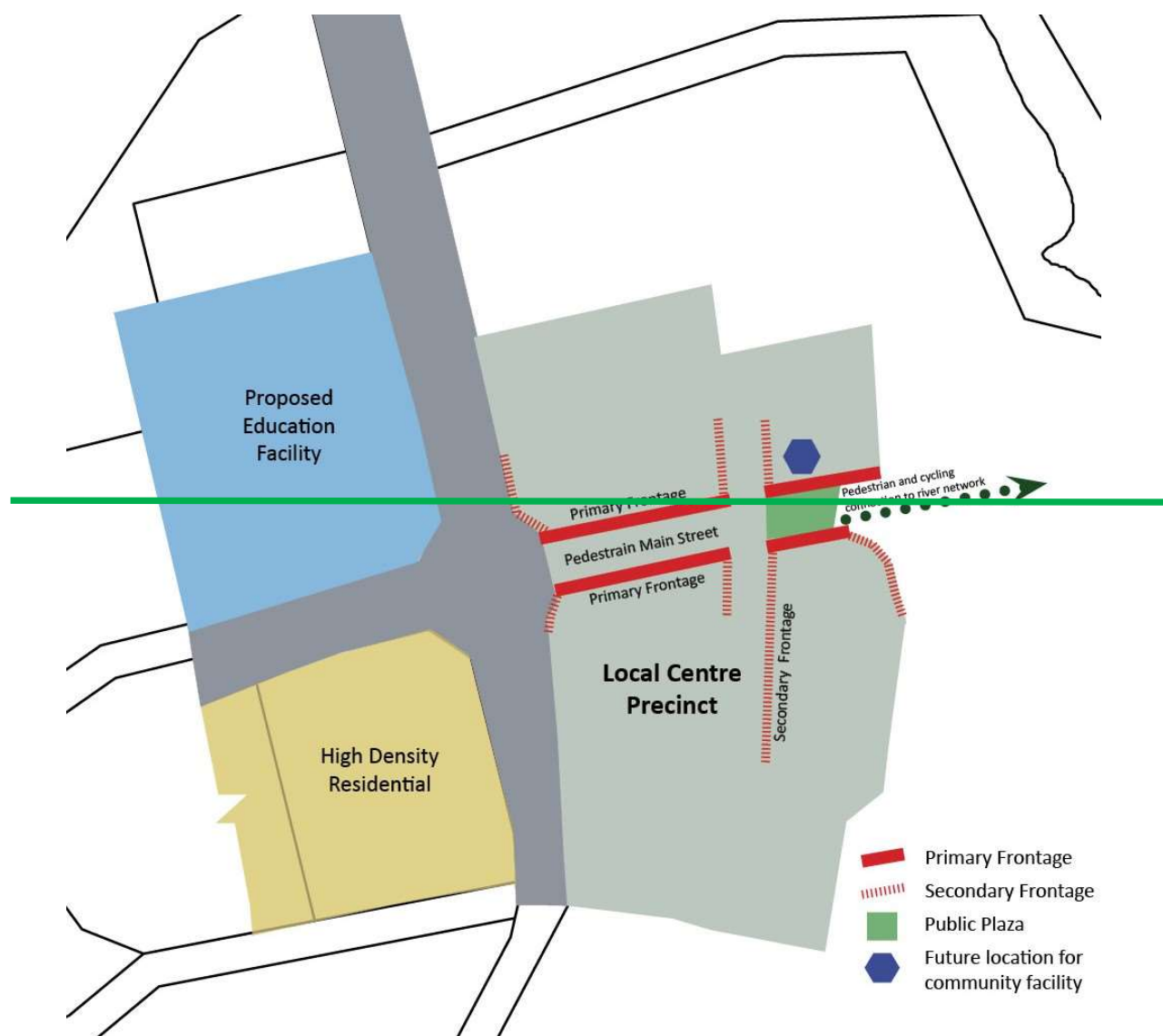


**Figure 2-3a: Peacocke Structure Plan – Staging and Infrastructure**



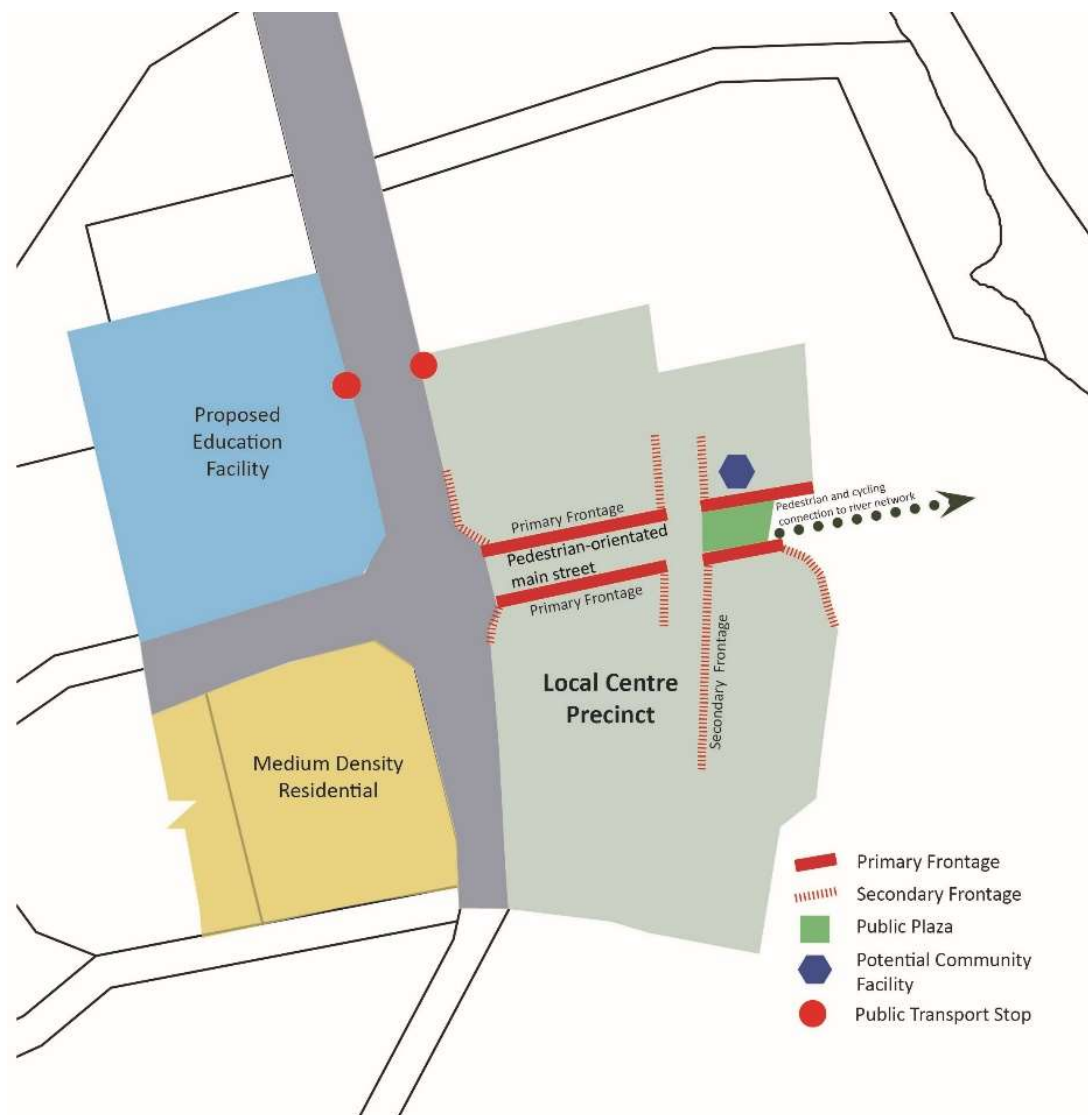




**Figure 2-3b: Peacocke Structure Plan – Peacocke Local Centre Concept**

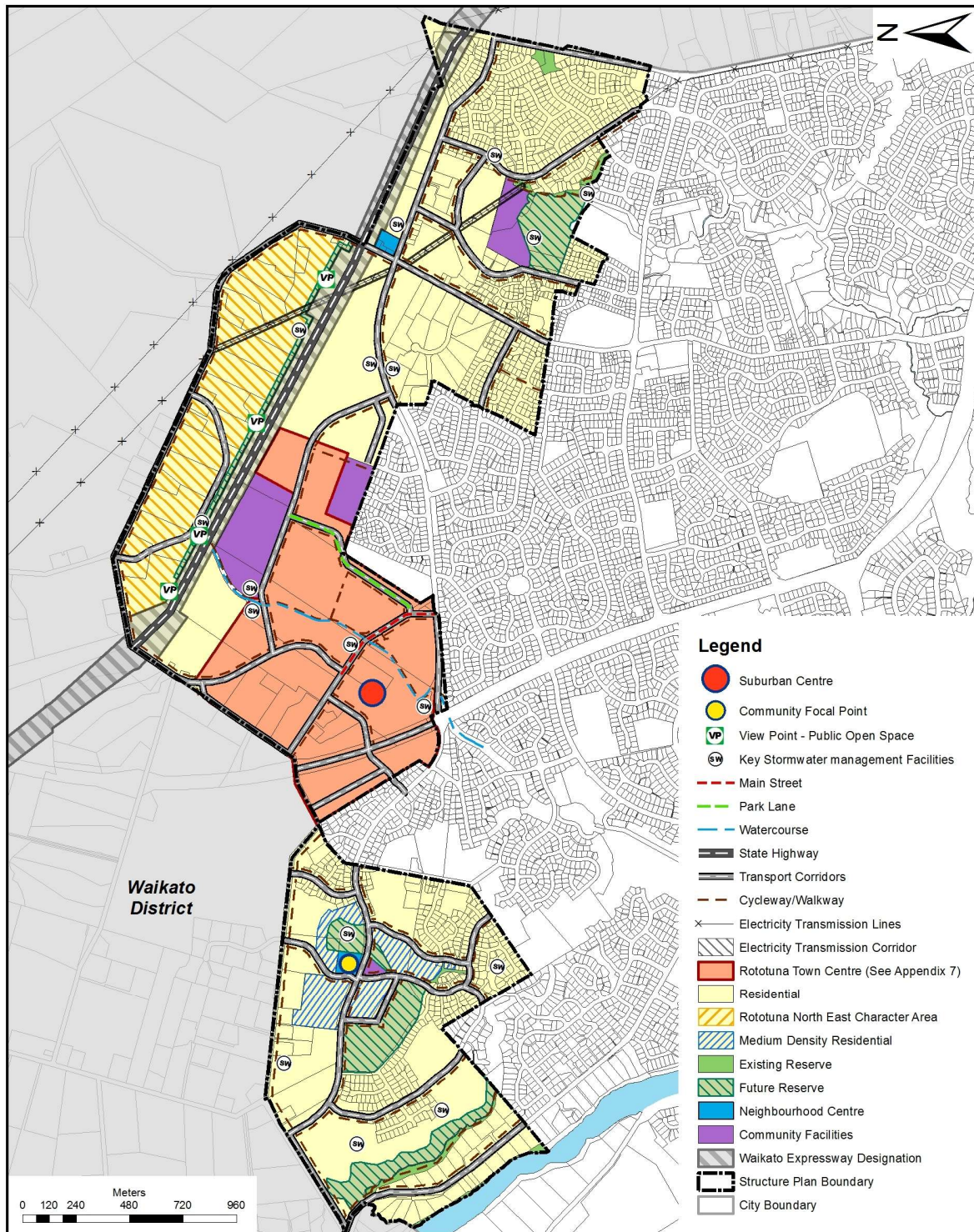
Plan Change 5 Peacocke  
Structure Plan



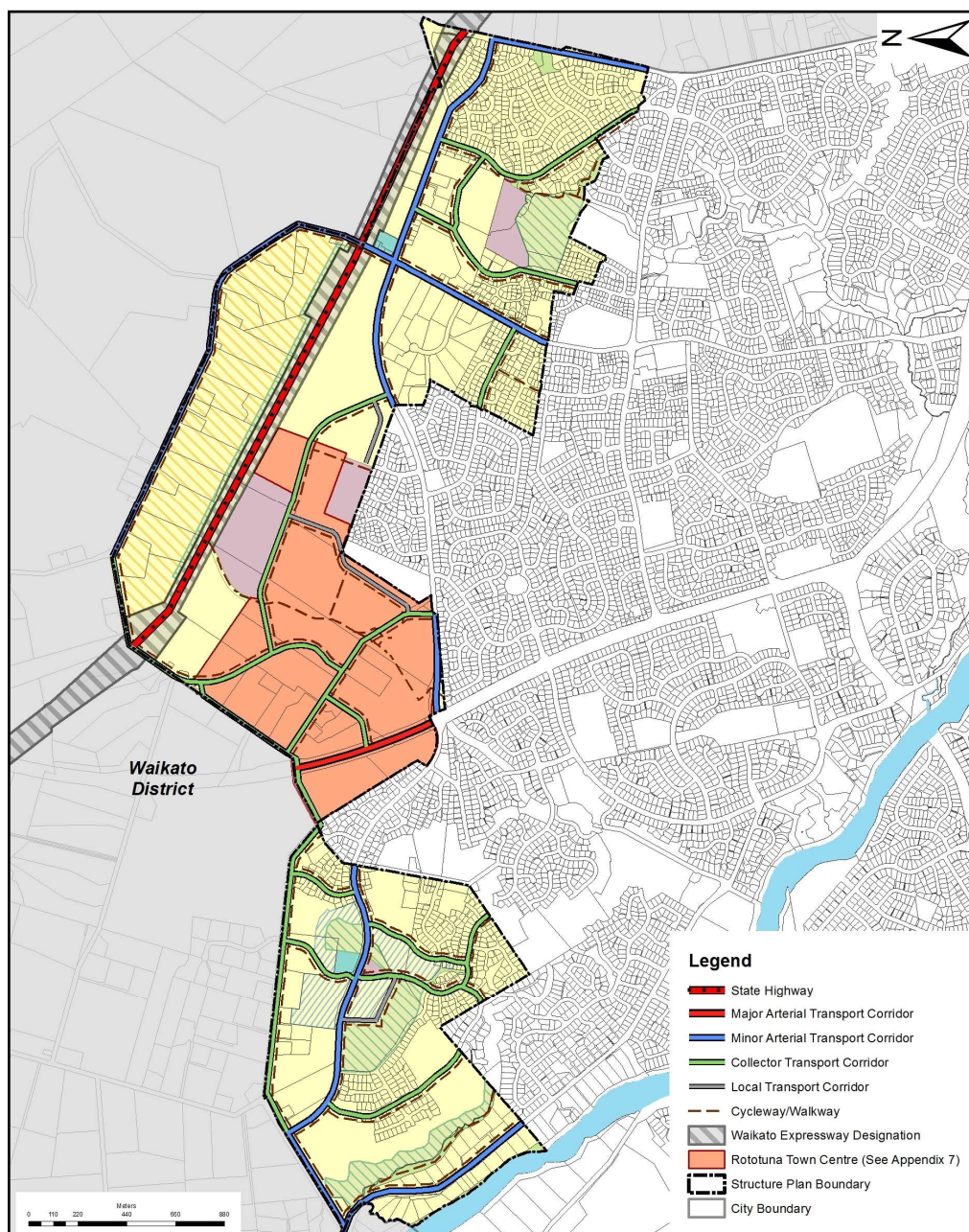


(53.95)

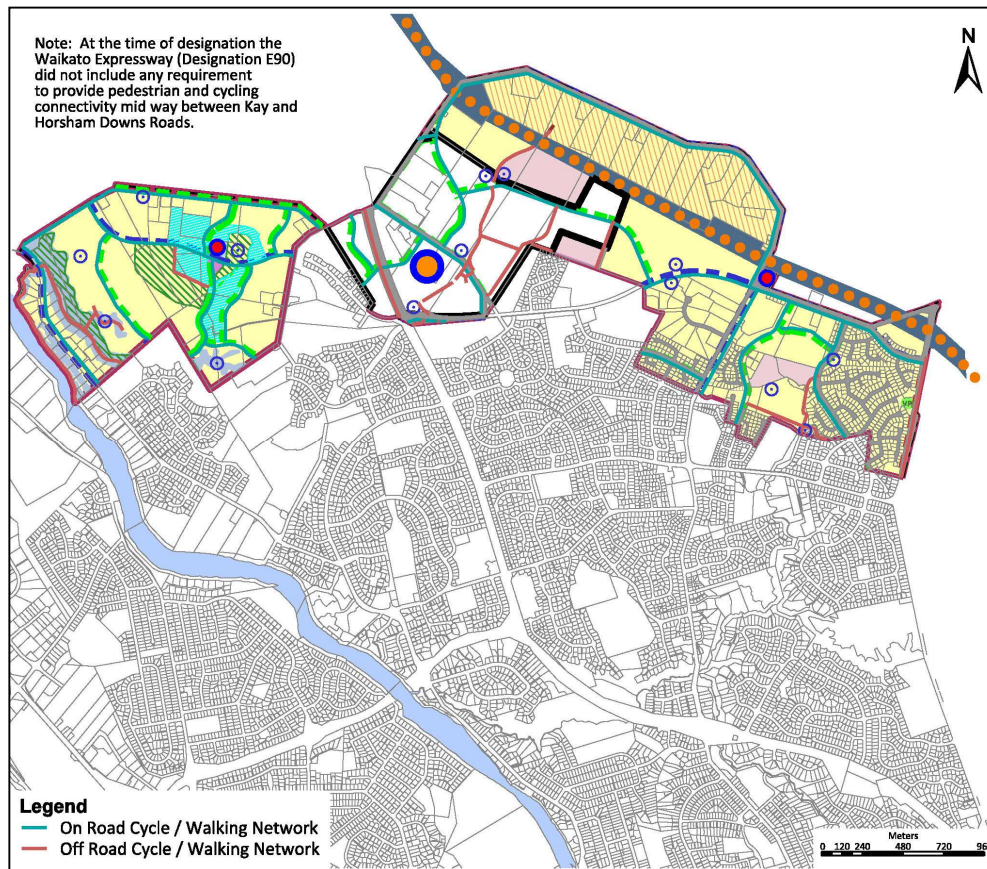


**Figure 2-4: Rototuna Structure Plan – Land Use**



**Figure 2-5: Rototuna Structure Plan – Transport Network**



**Figure 2-6: Rototuna Cycling and Walking Network**



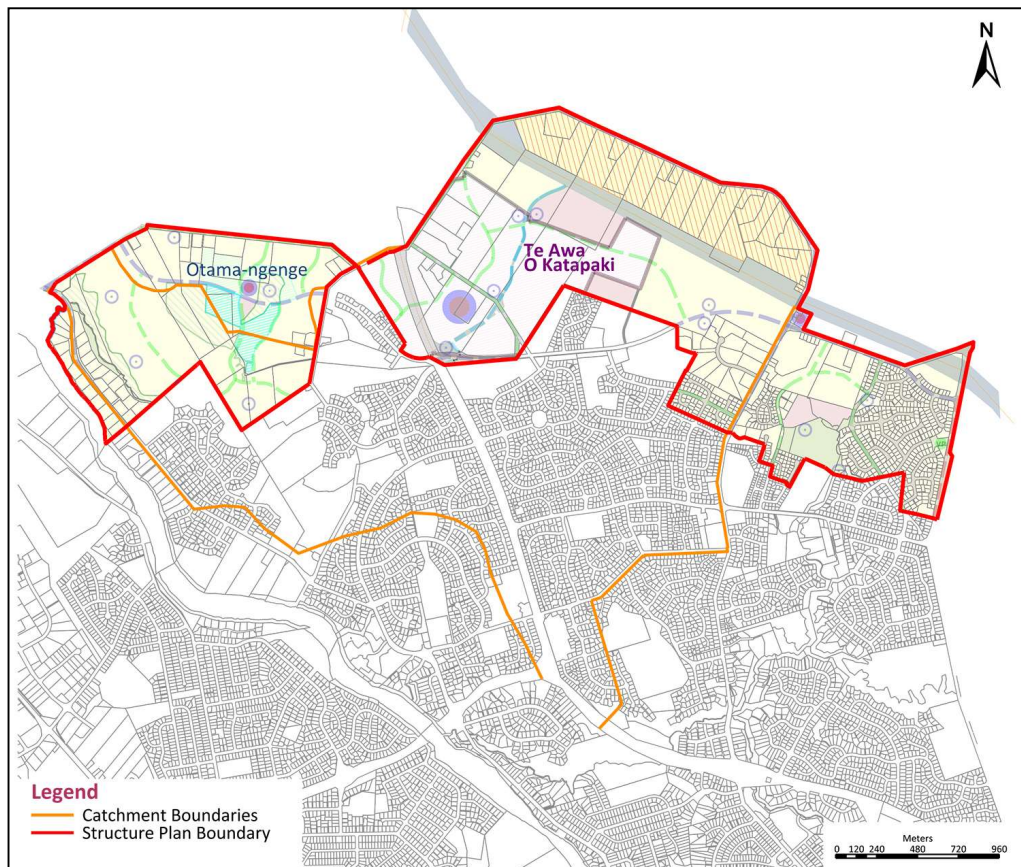
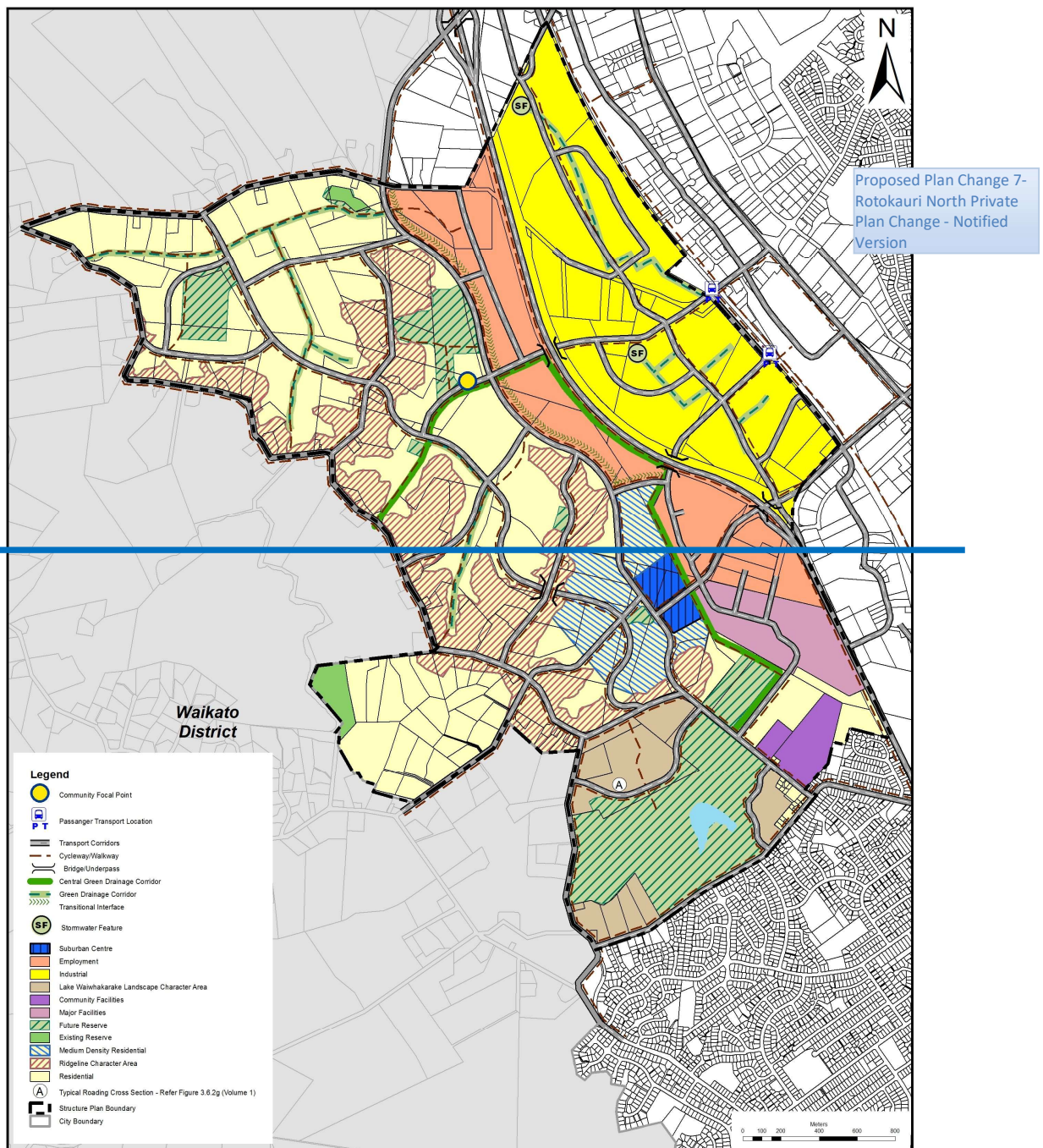
**Figure 2-7: Rototuna Catchment Boundaries**



Figure 2-8: Rotokauri Structure Plan – Land Use





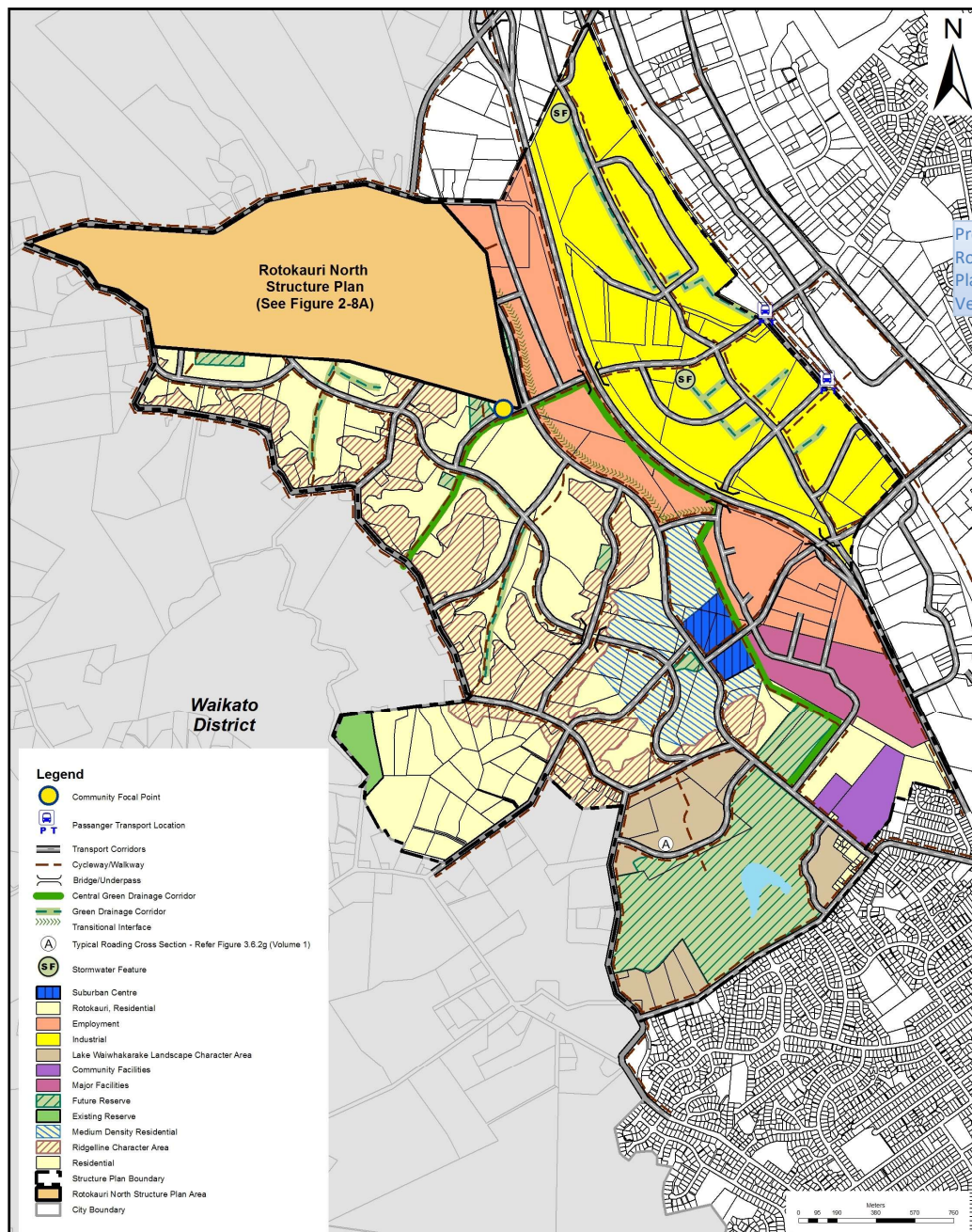
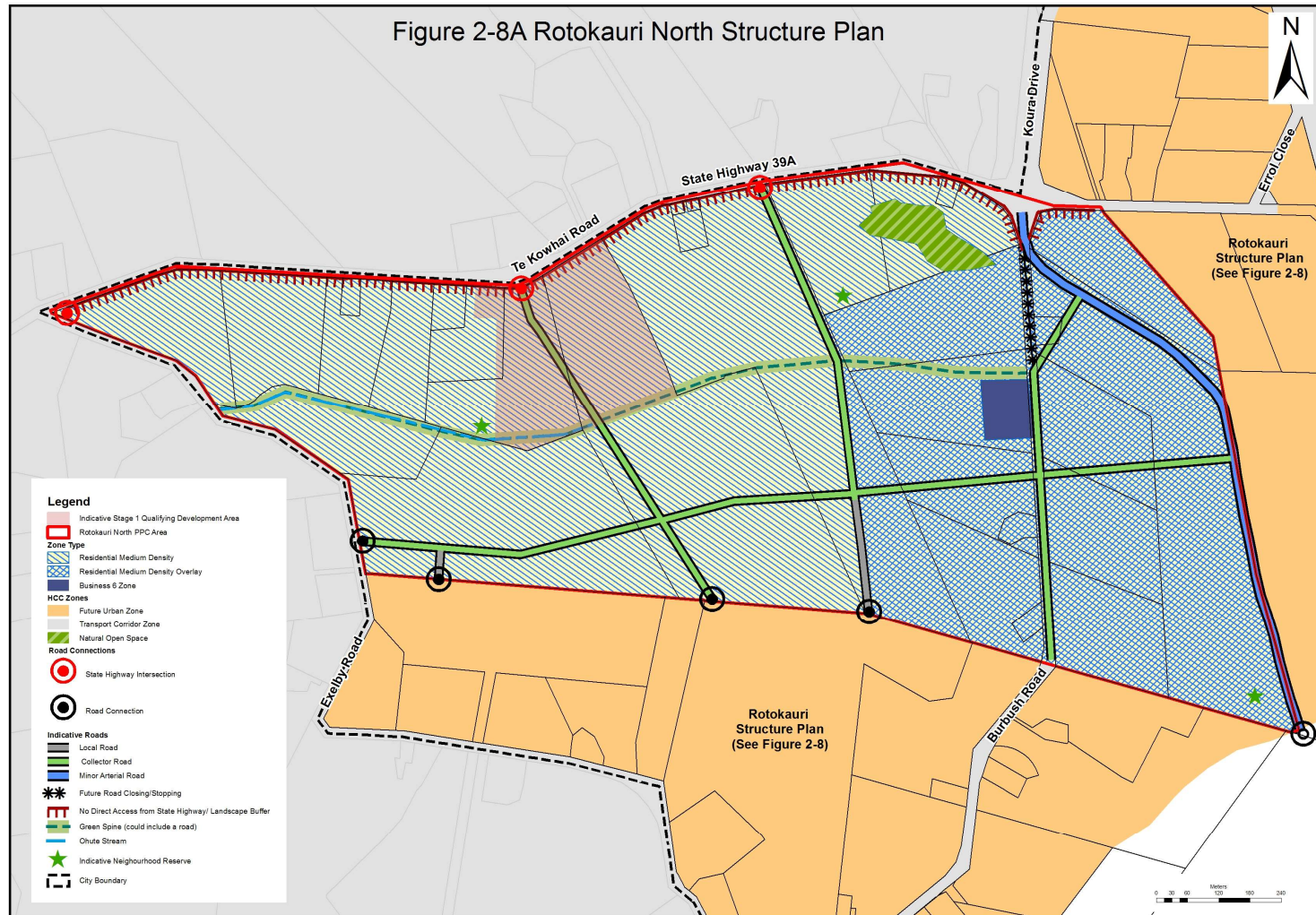






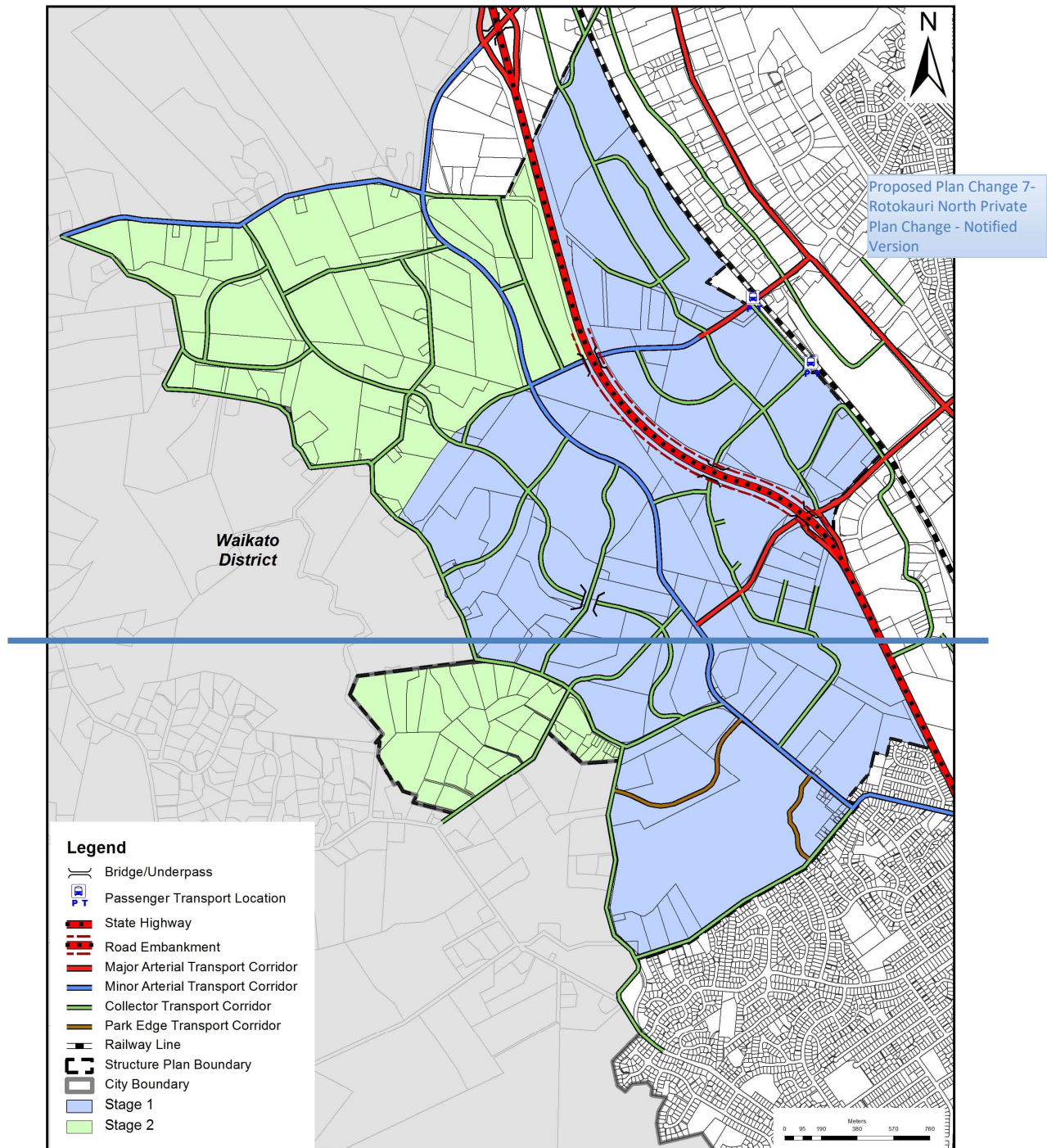
Figure 2-8A: Rotokauri North Structure Plan



Proposed Plan Change 7-  
Rotokauri North Private  
Plan Change - Notified  
Version



Figure 2-9: Rotokauri Structure Plan – Staging and Transport Network





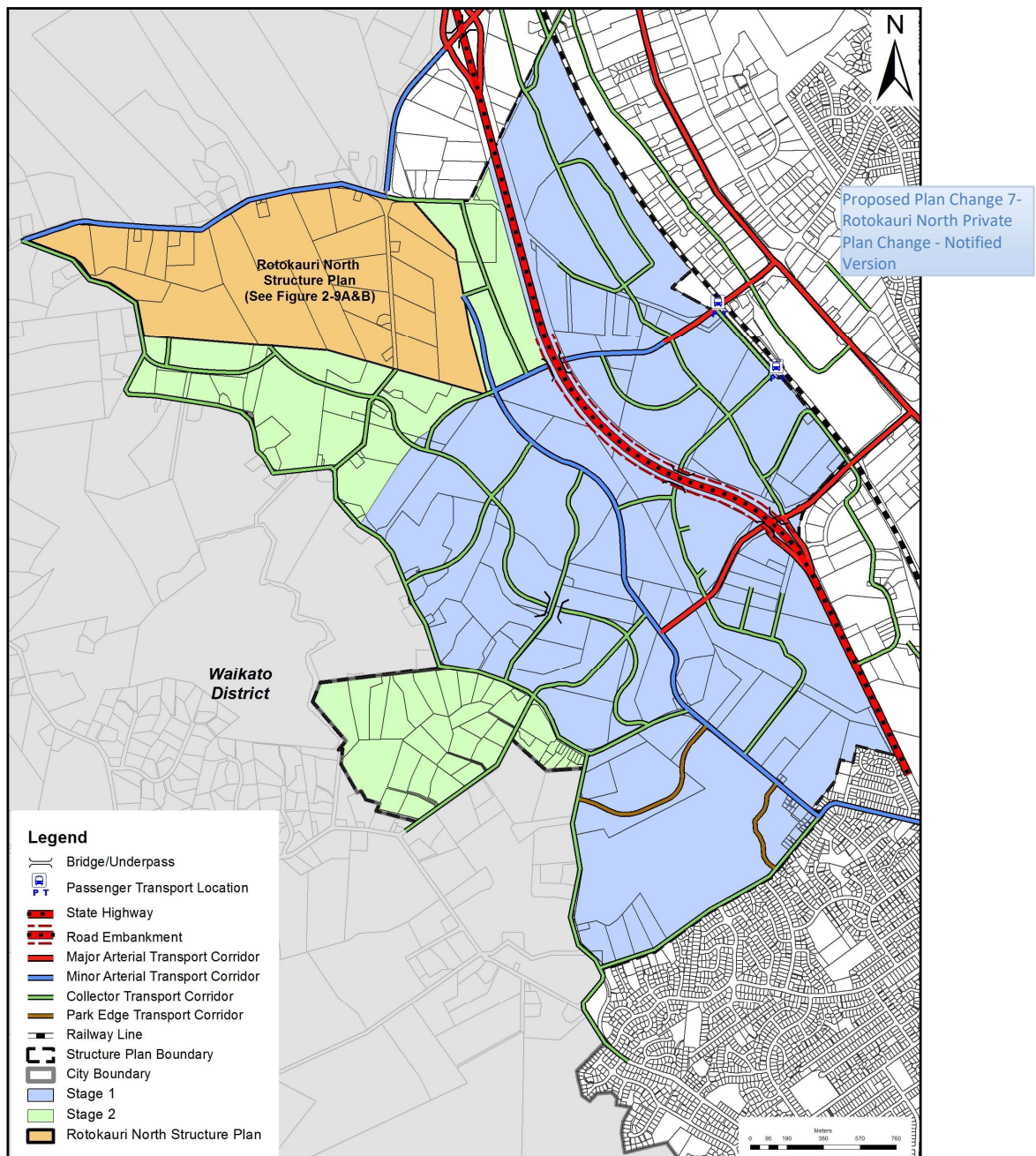
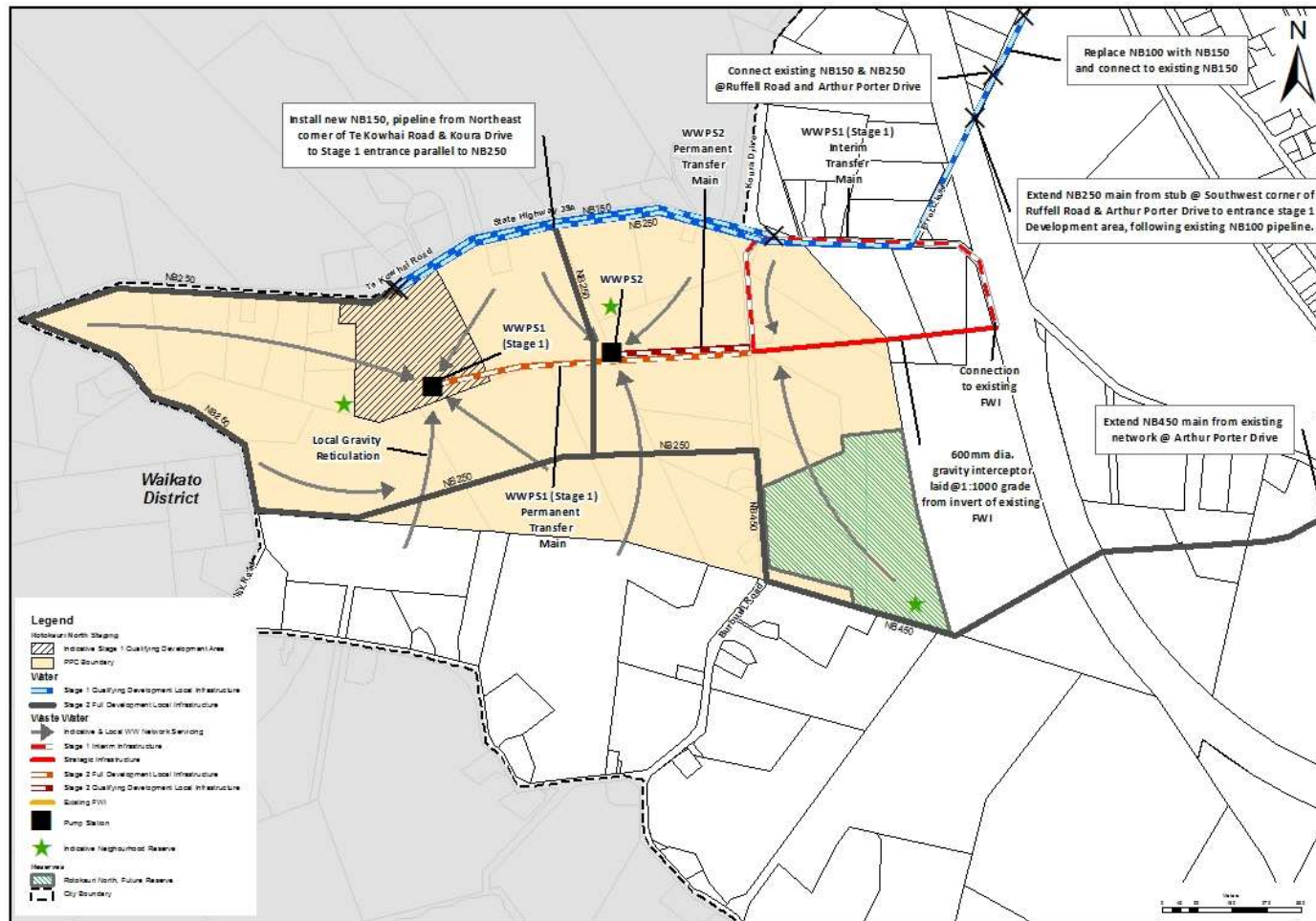




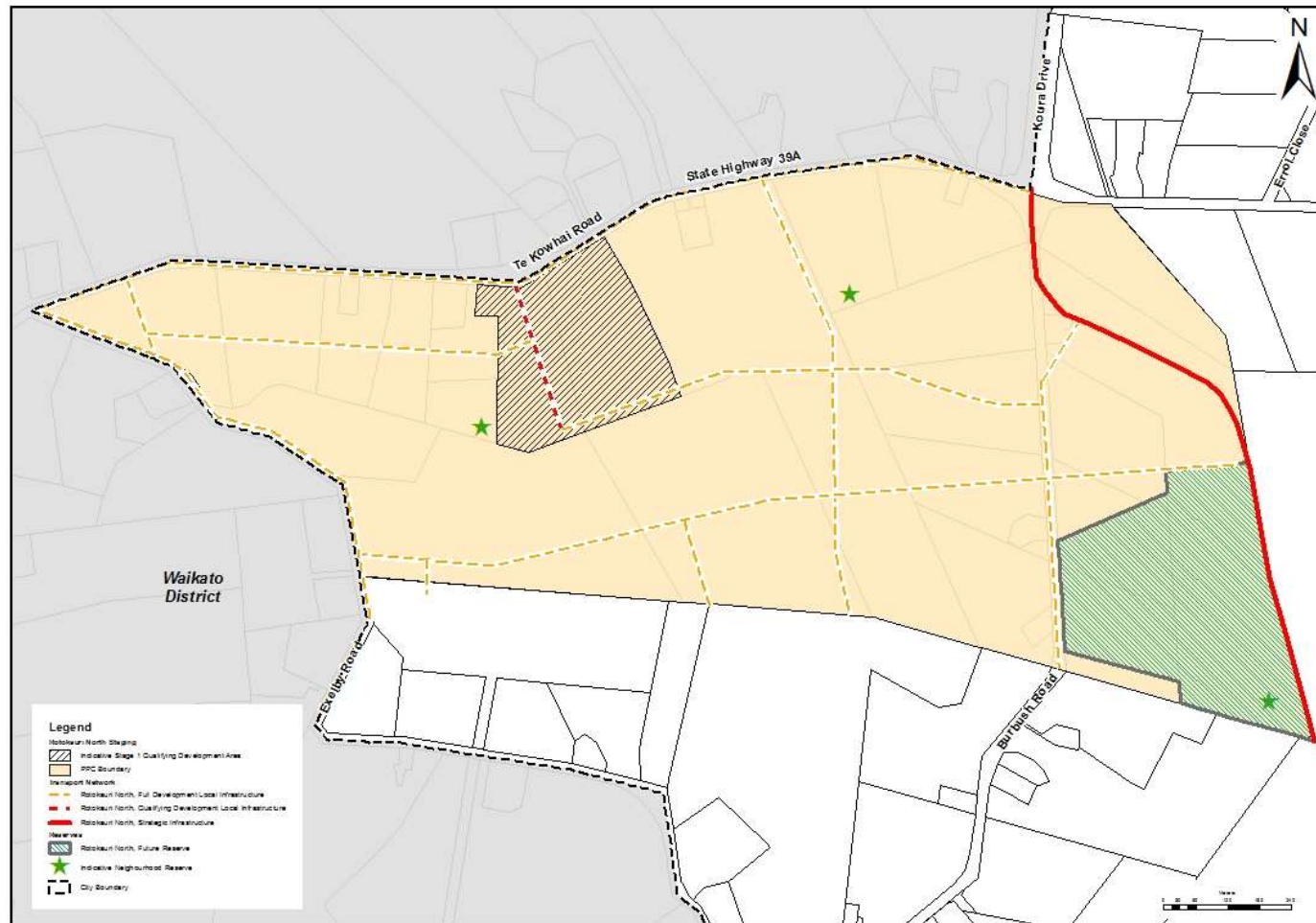
Figure 2-9A – Rotokauri North Strategic Infrastructure – Water and Waste Water



Proposed Plan Change 7-  
Rotokauri North Private  
Plan Change - Notified  
Version



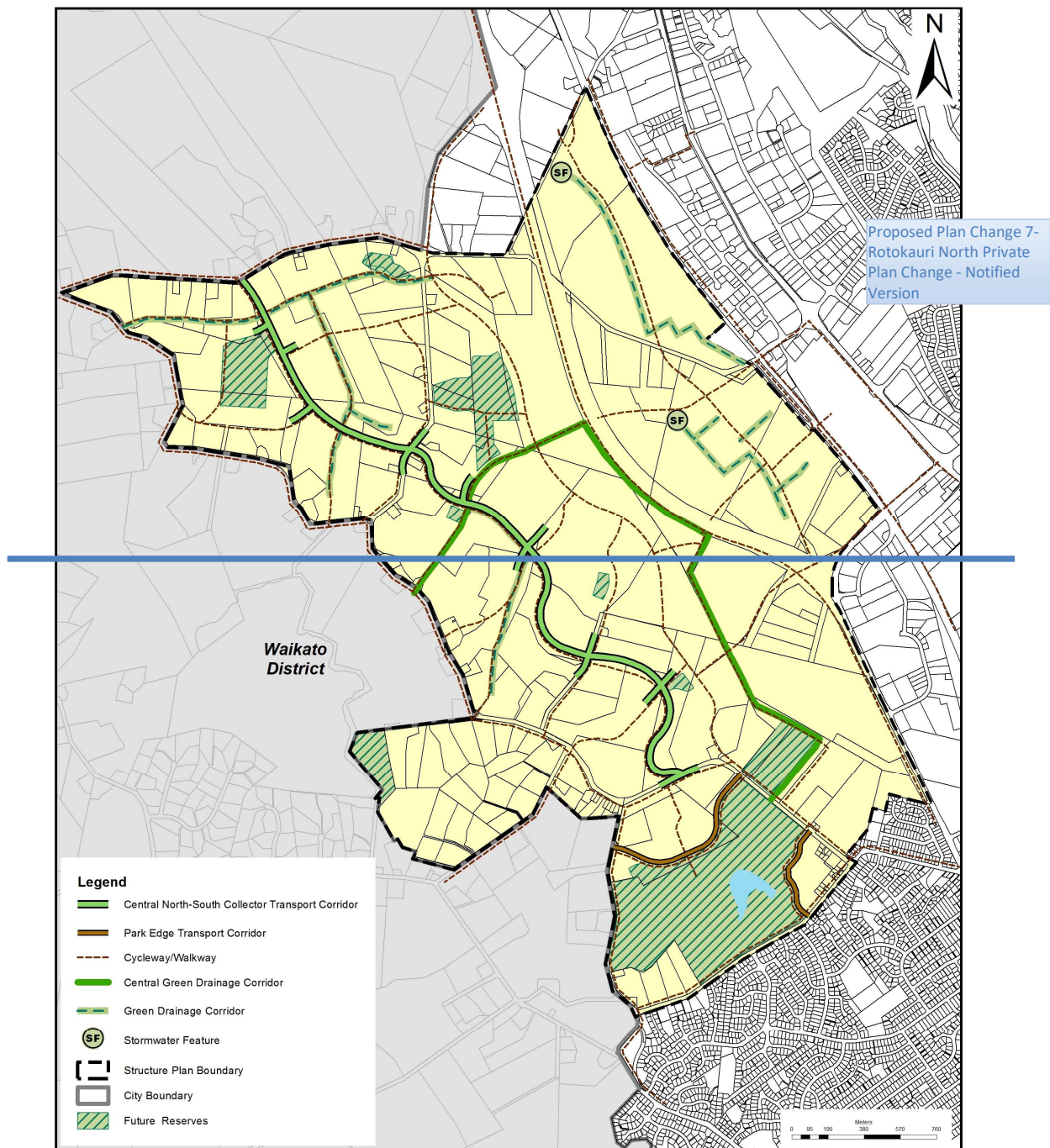
Figure 2-9B – Rotokauri North Strategic Infrastructure – Staging, Transport Network and Reserves



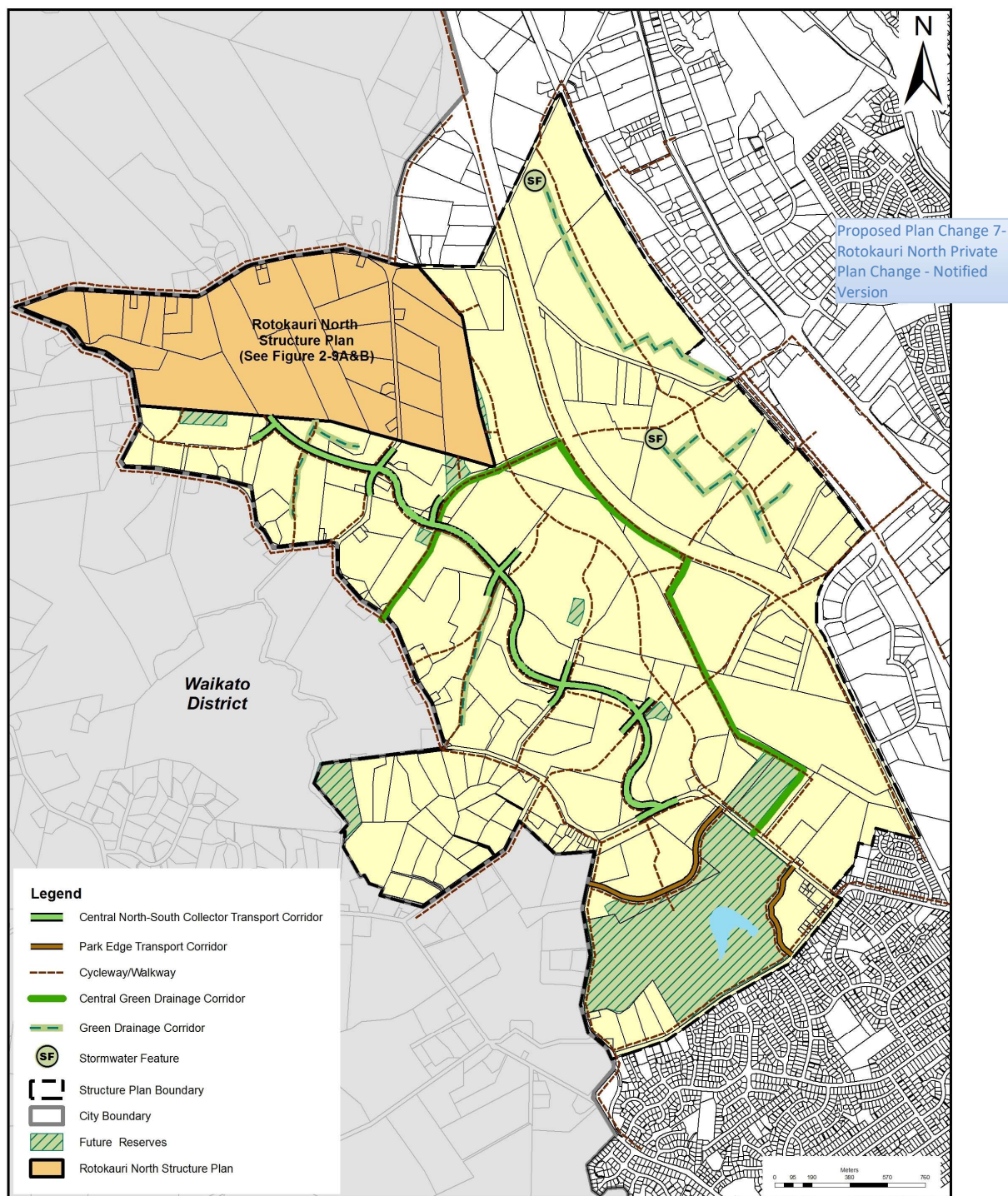
Proposed Plan Change 7-  
Rotokauri North Private  
Plan Change - Notified  
Version



Figure 2-10: Rotokauri Structure Plan – Open Space Network

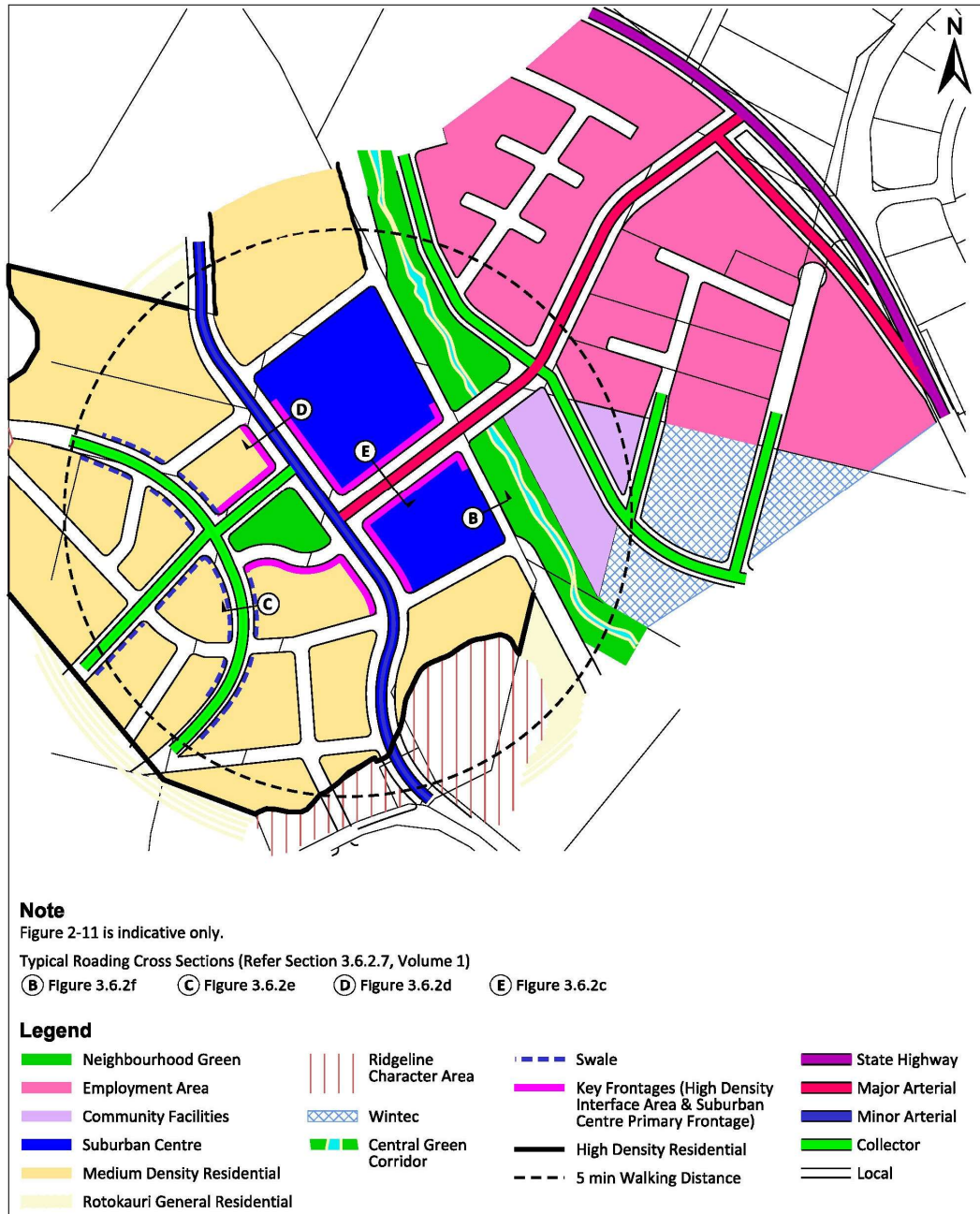




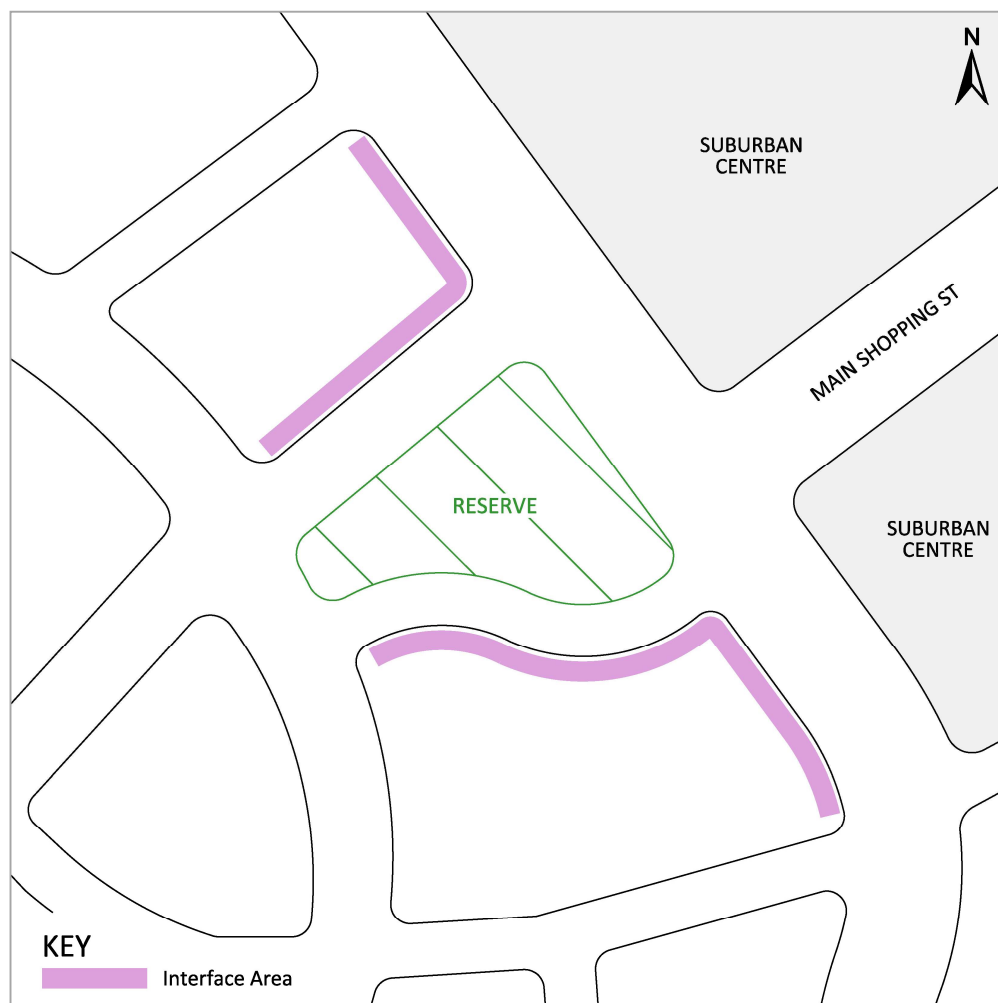


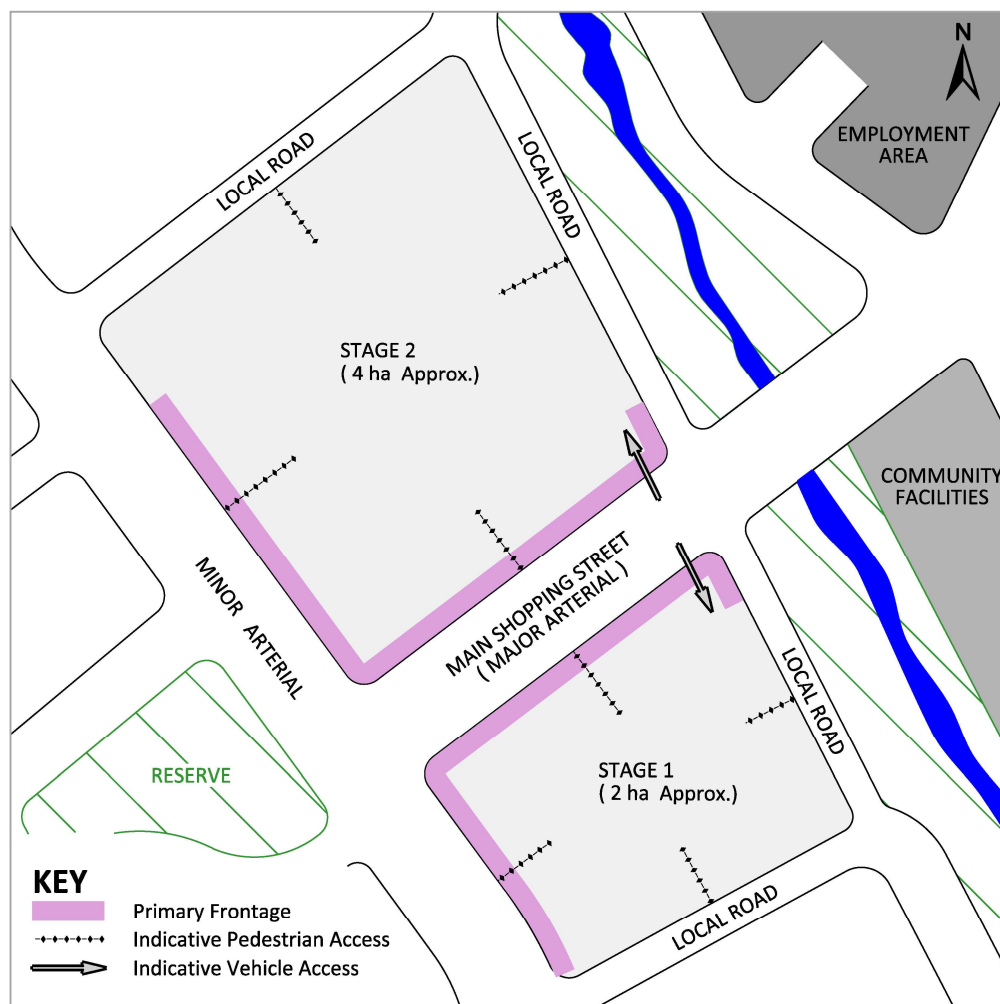


**Figure 2-11: Rotokauri Neighbourhood Centre**



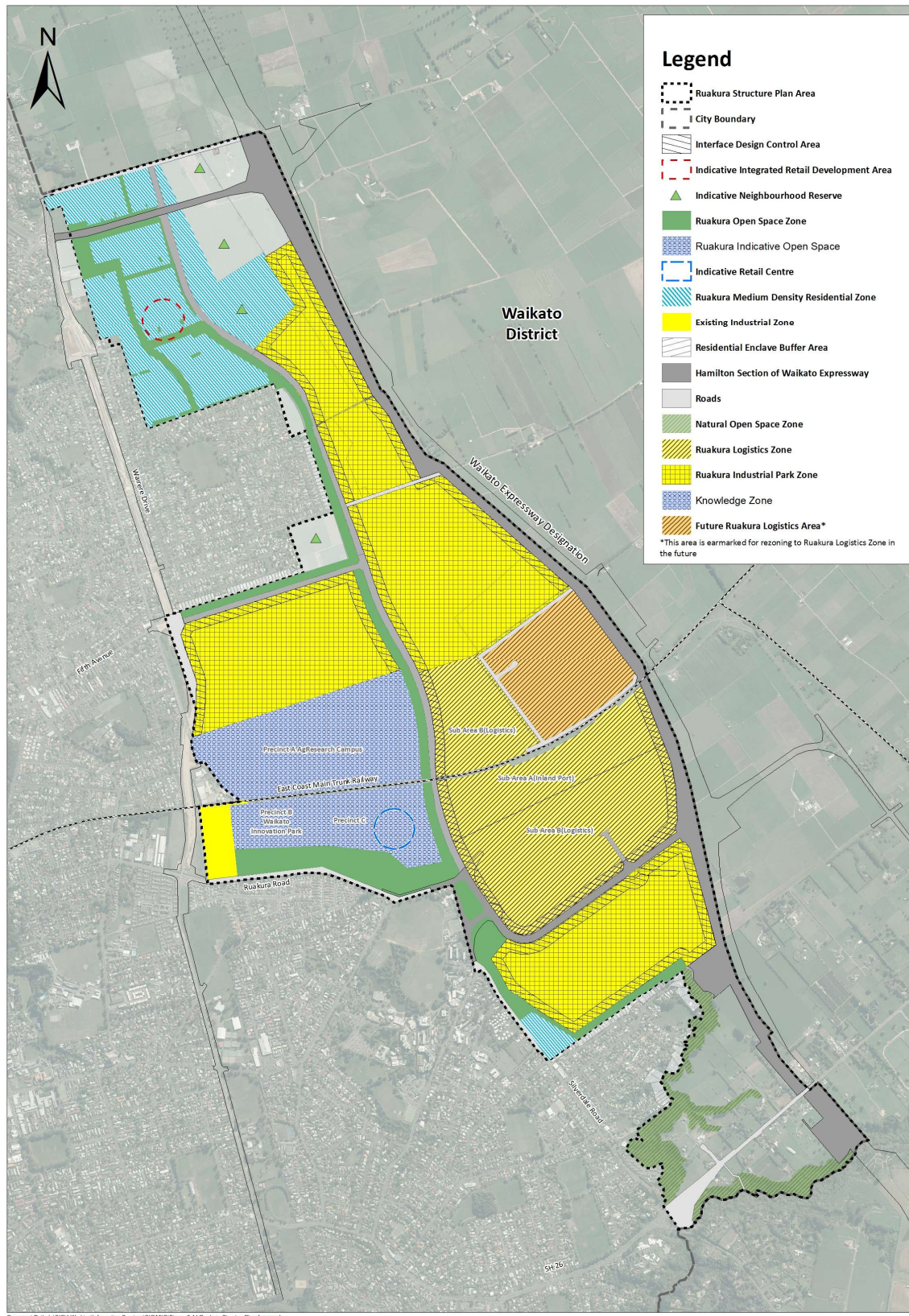


**Figure 2-12: Rotokauri Interface Areas**

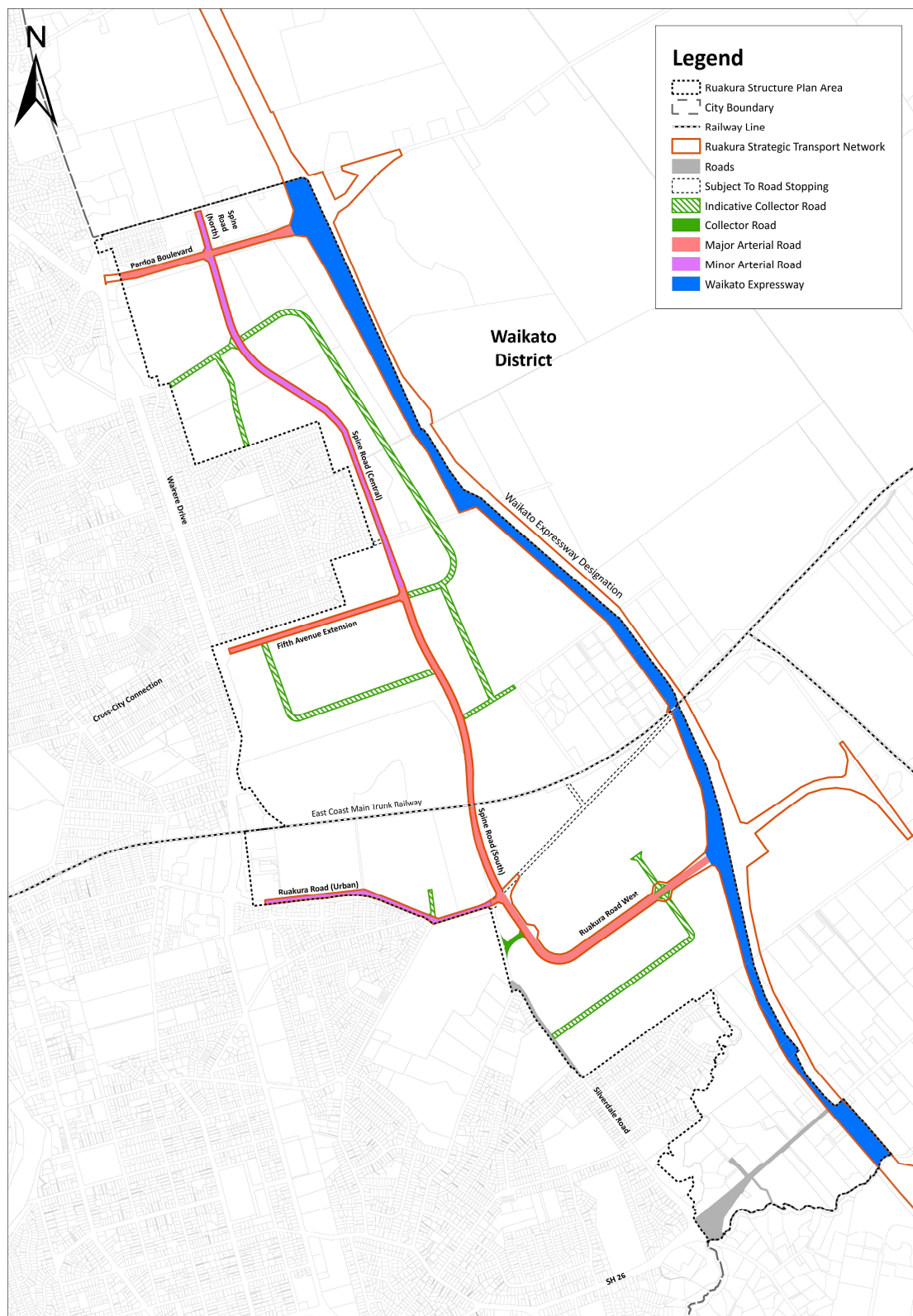
**Figure 2-13: Rotokauri Suburban Centre Primary Frontages**



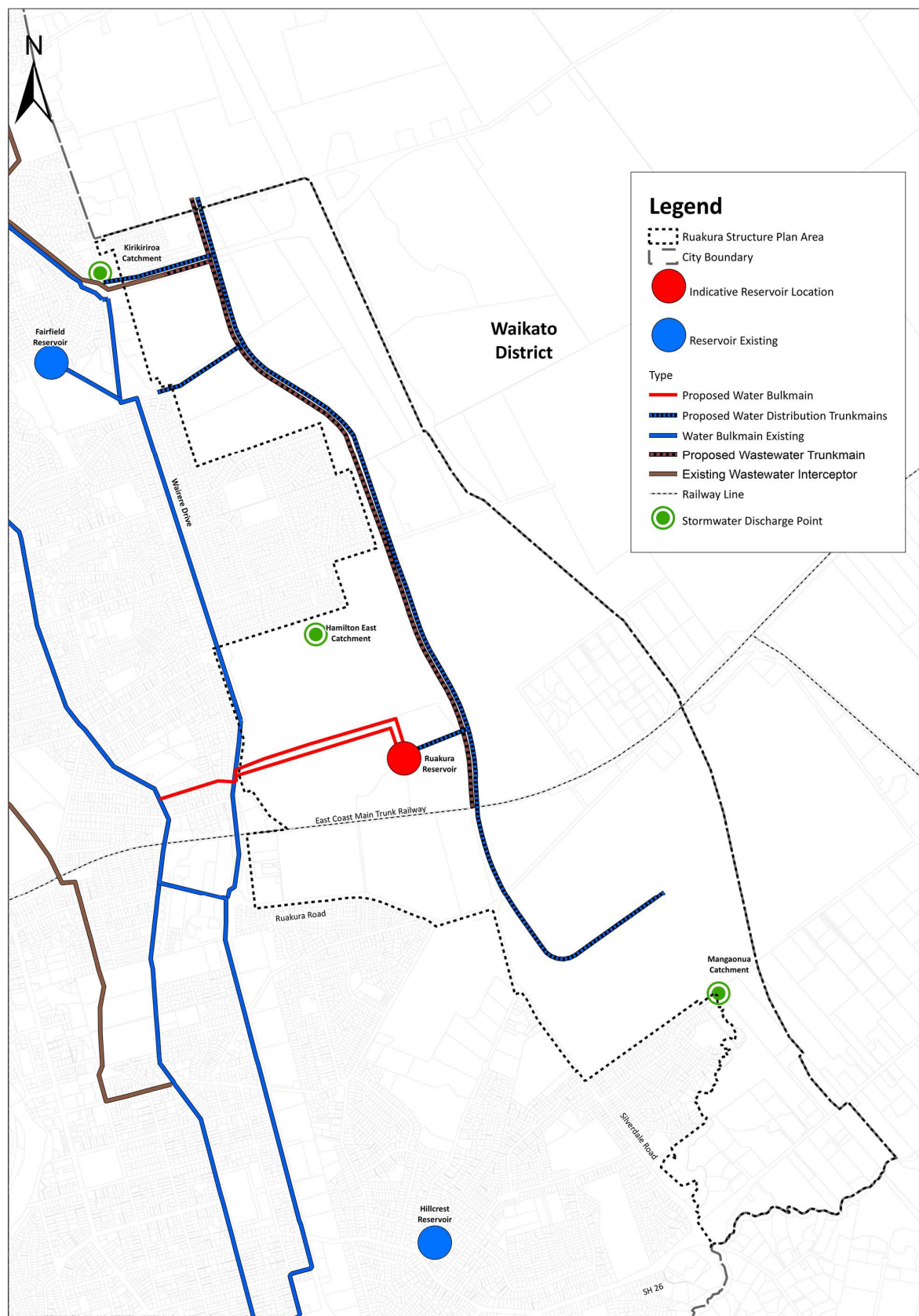
**Figure 2-14: Ruakura Structure Plan – Land Use**

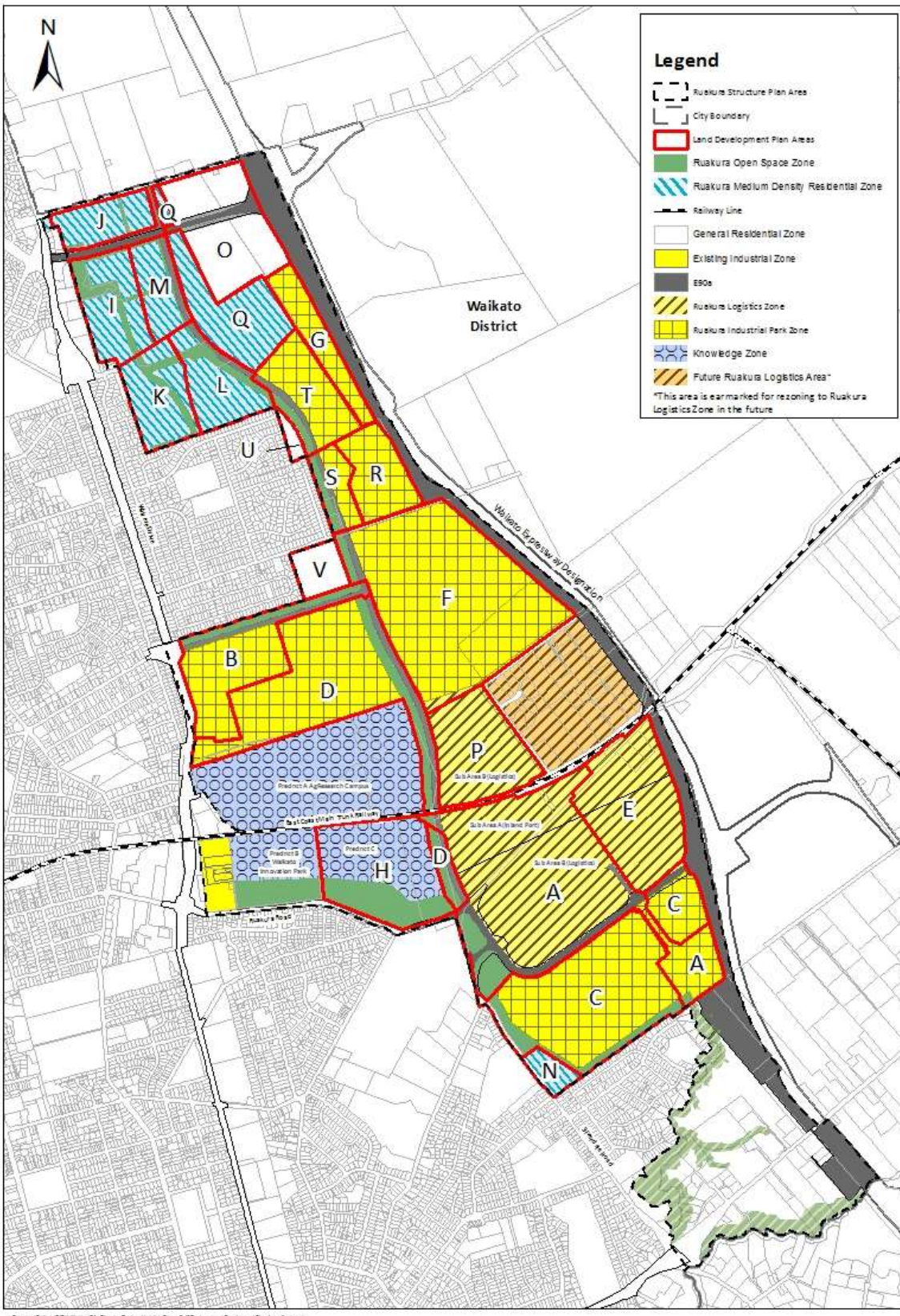




**Figure 2-15A: Ruakura Strategic Infrastructure – Transport**



**Figure 2-15B: Ruakura Strategic Infrastructure – Three Waters**

**Figure 2-16: Ruakura Land Development Plan Areas**



**Figure 2-17/1: Inland Port Building Setbacks and Landscape Controls – Stage 1**

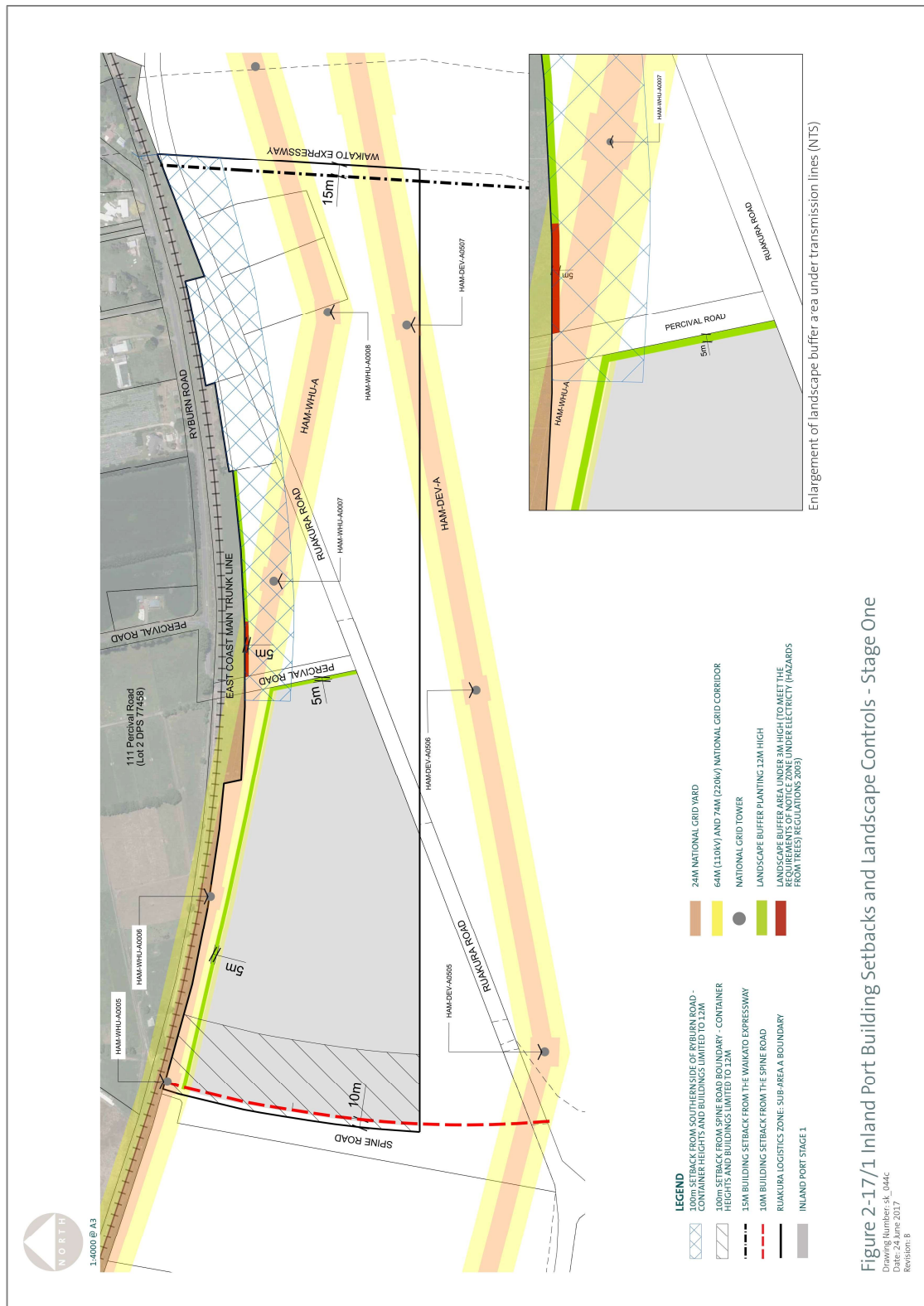


Figure 2-17/2: Inland Port Building Setbacks and Landscape Controls – Stage 2

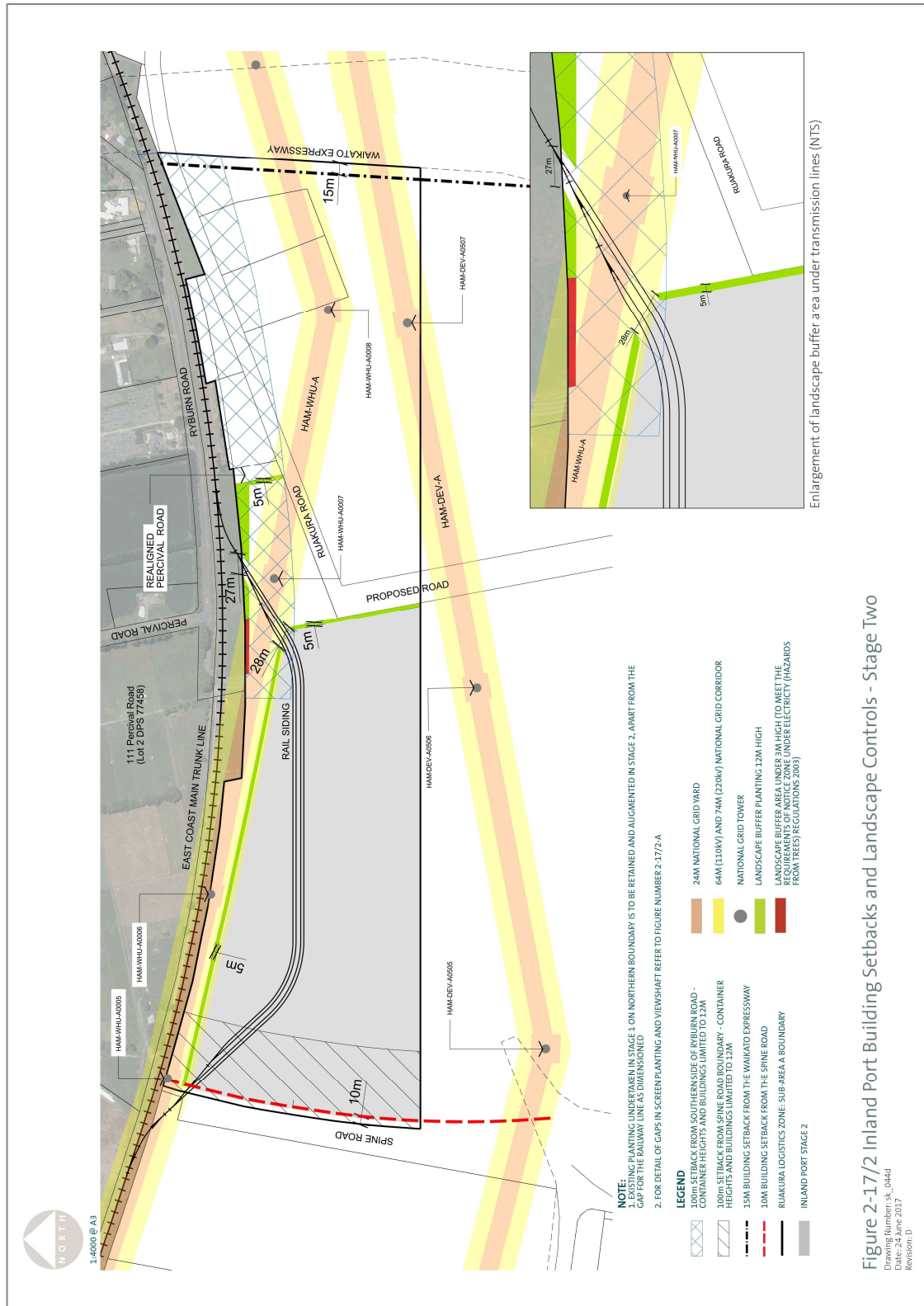
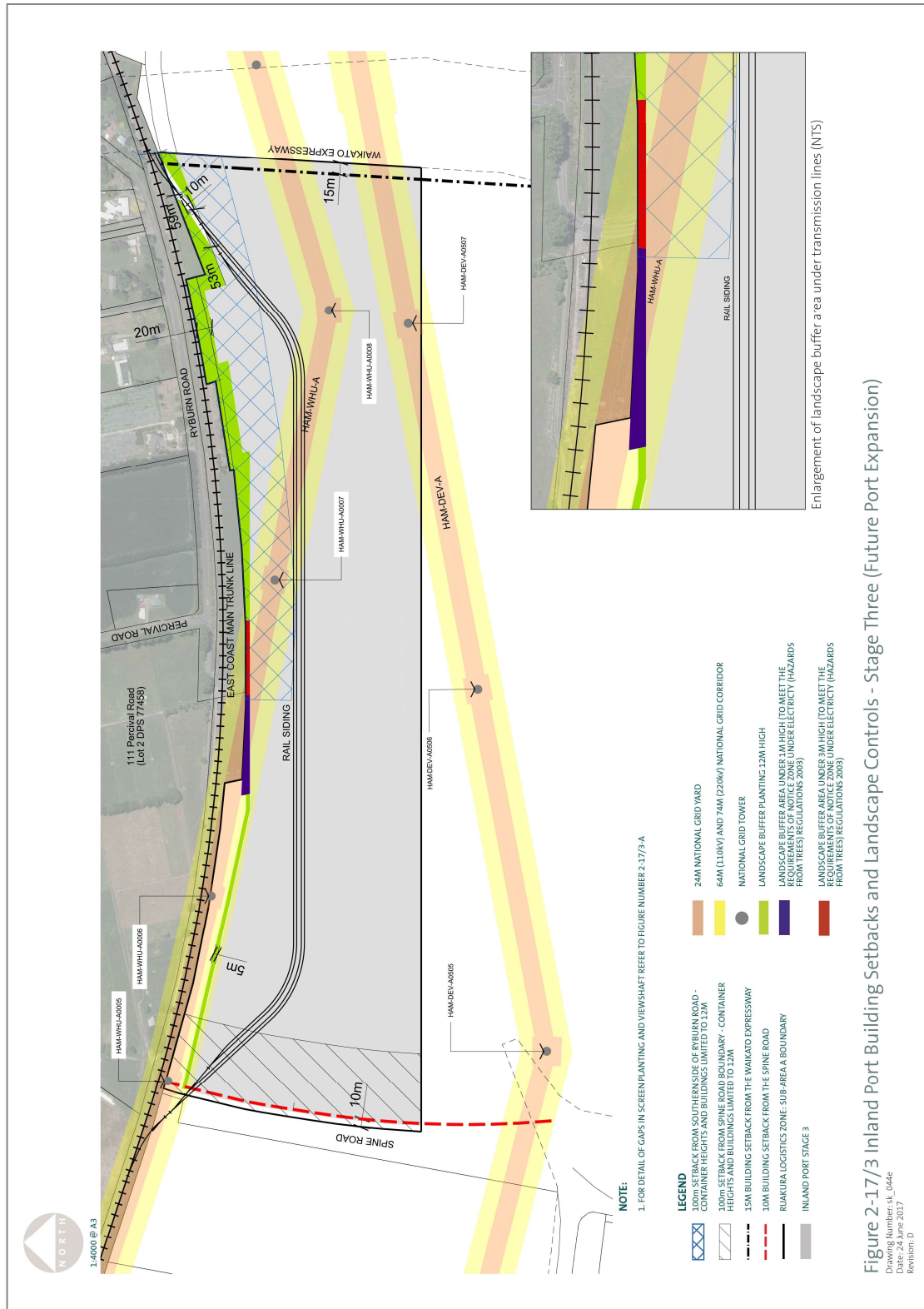


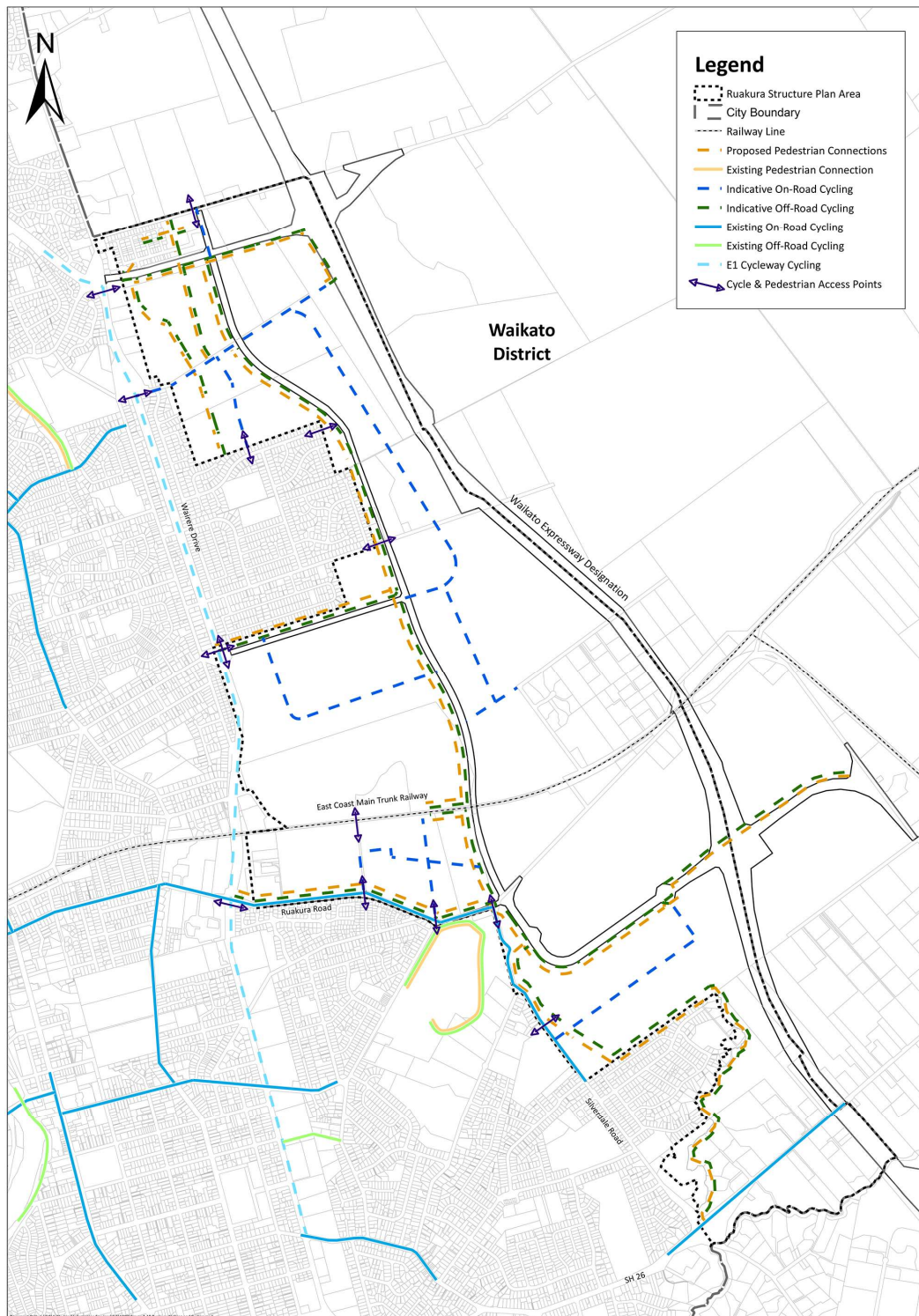
Figure 2-17/2 Inland Port Building Setbacks and Landscape Controls – Stage Two

Drawing Number: SL\_044d  
Date: 24 June 2017  
Revision: 0

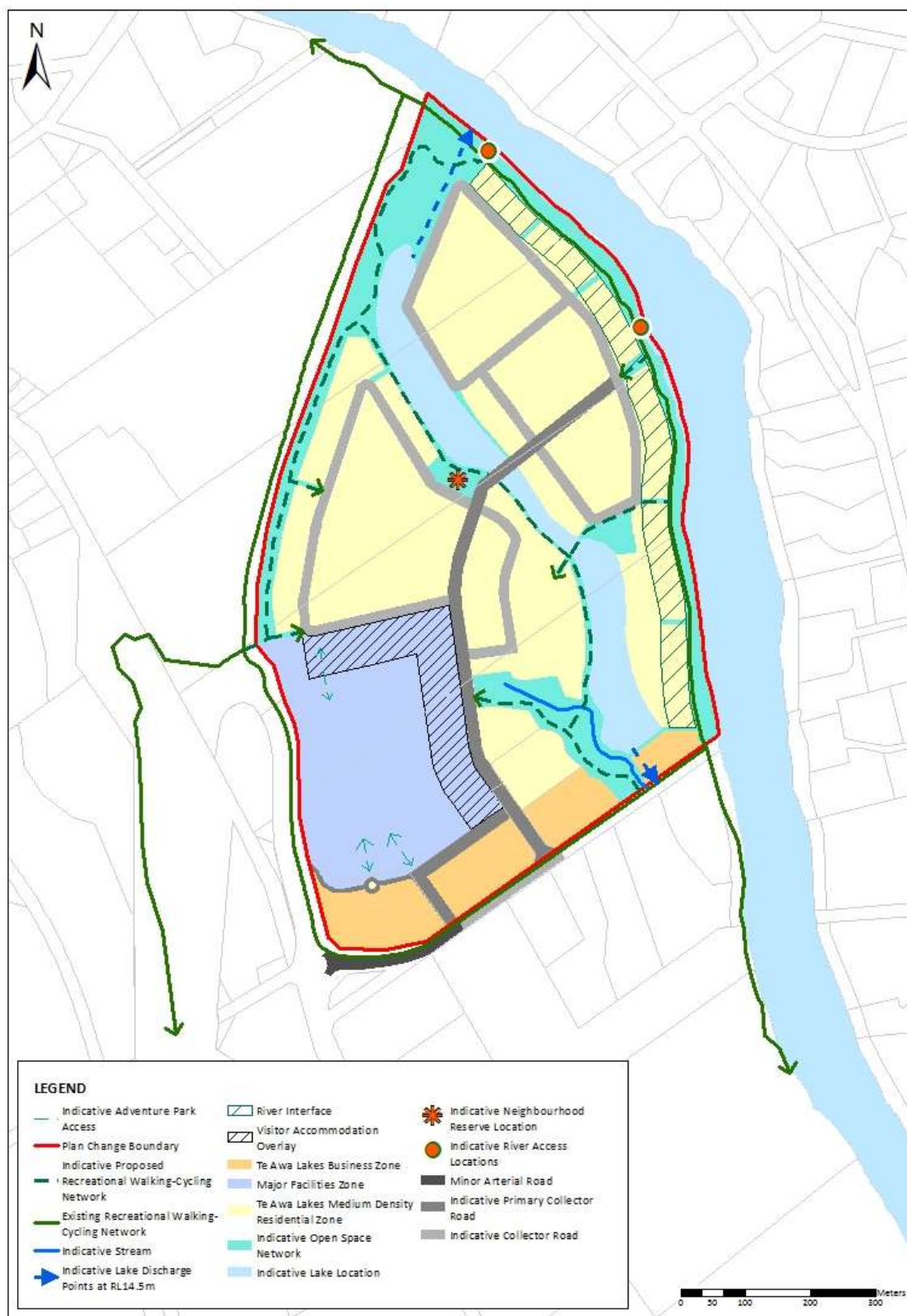


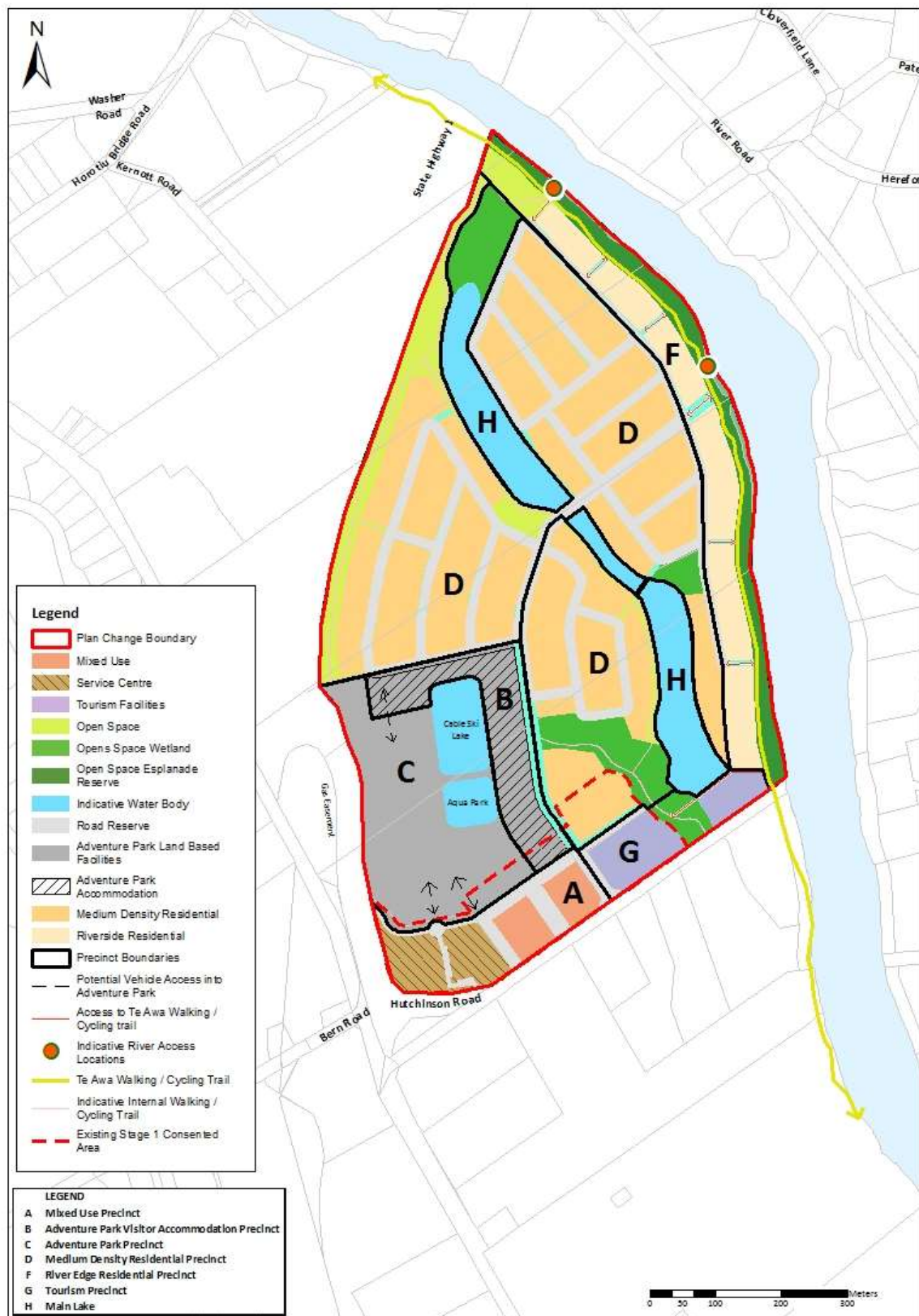
**Figure 2-17/3: Inland Port Building Setbacks and Landscape Controls – Stage 3**



**Figure 2-18: Ruakura Cyclist & Pedestrian Network Plan**



**Figure 2-19: Te Awa Lakes Framework Plan**

**Figure 2-20: Te Awa Lakes Land Use**



**Figure 2-21: Te Awa Lakes Land Development Plan Areas**