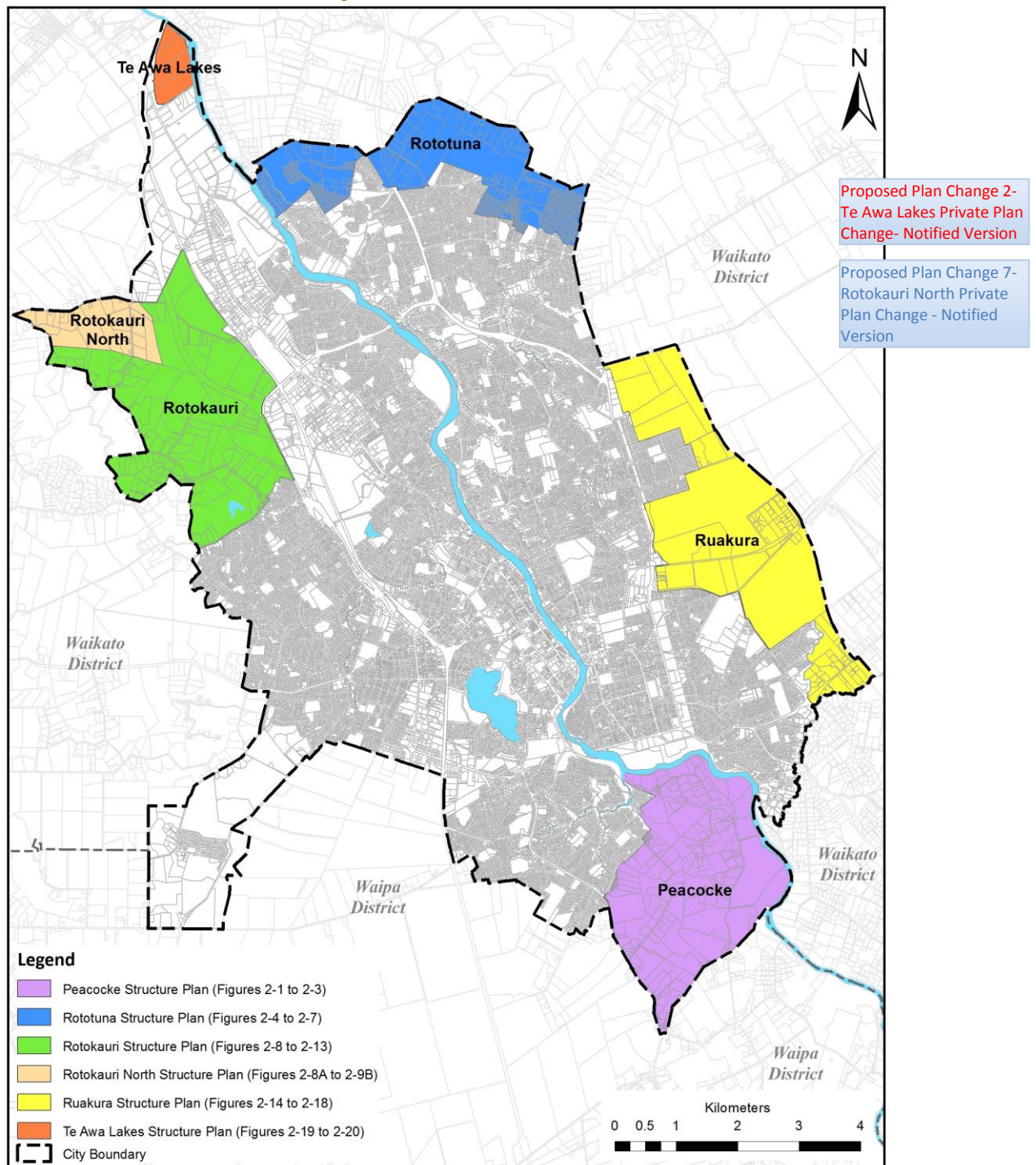
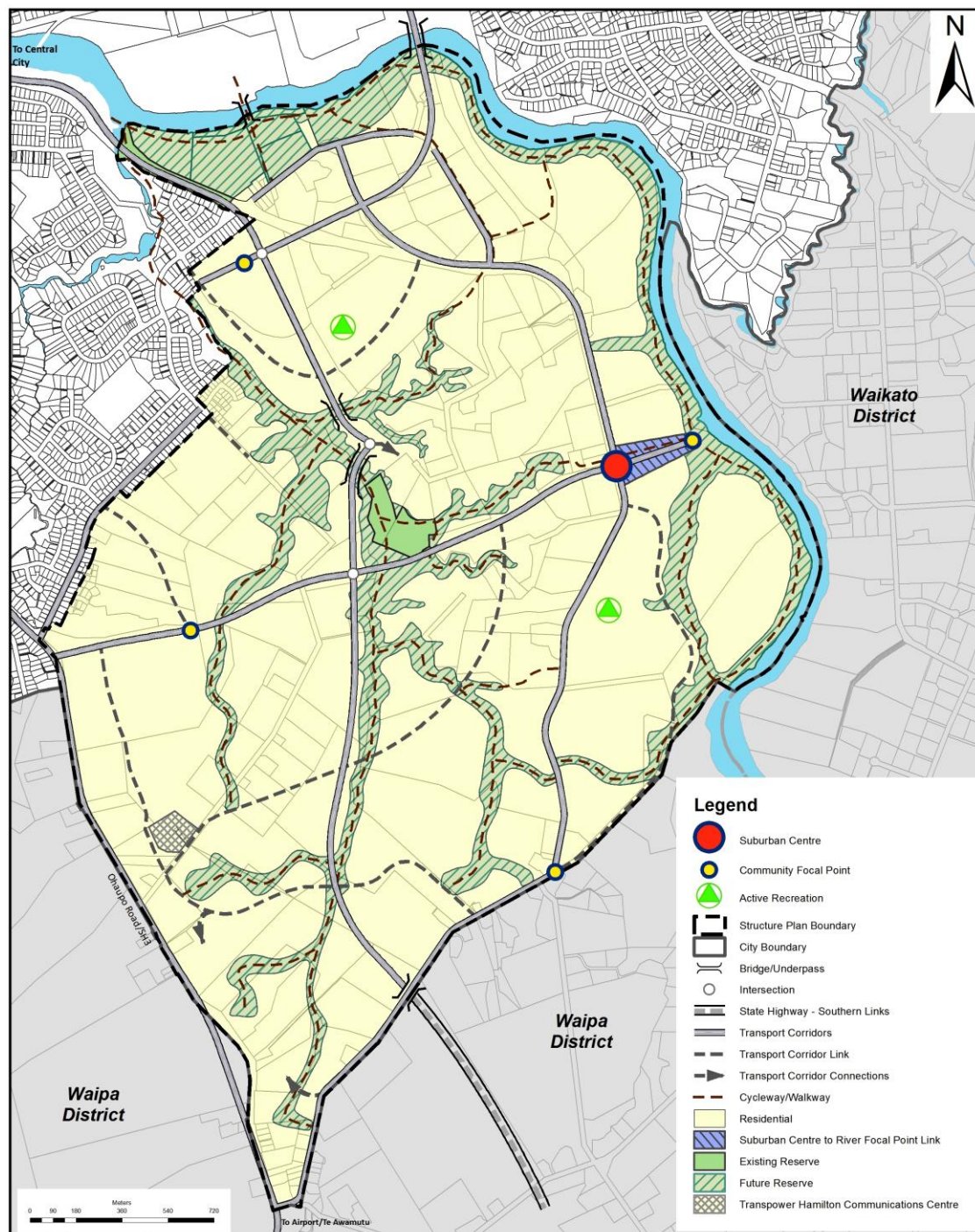




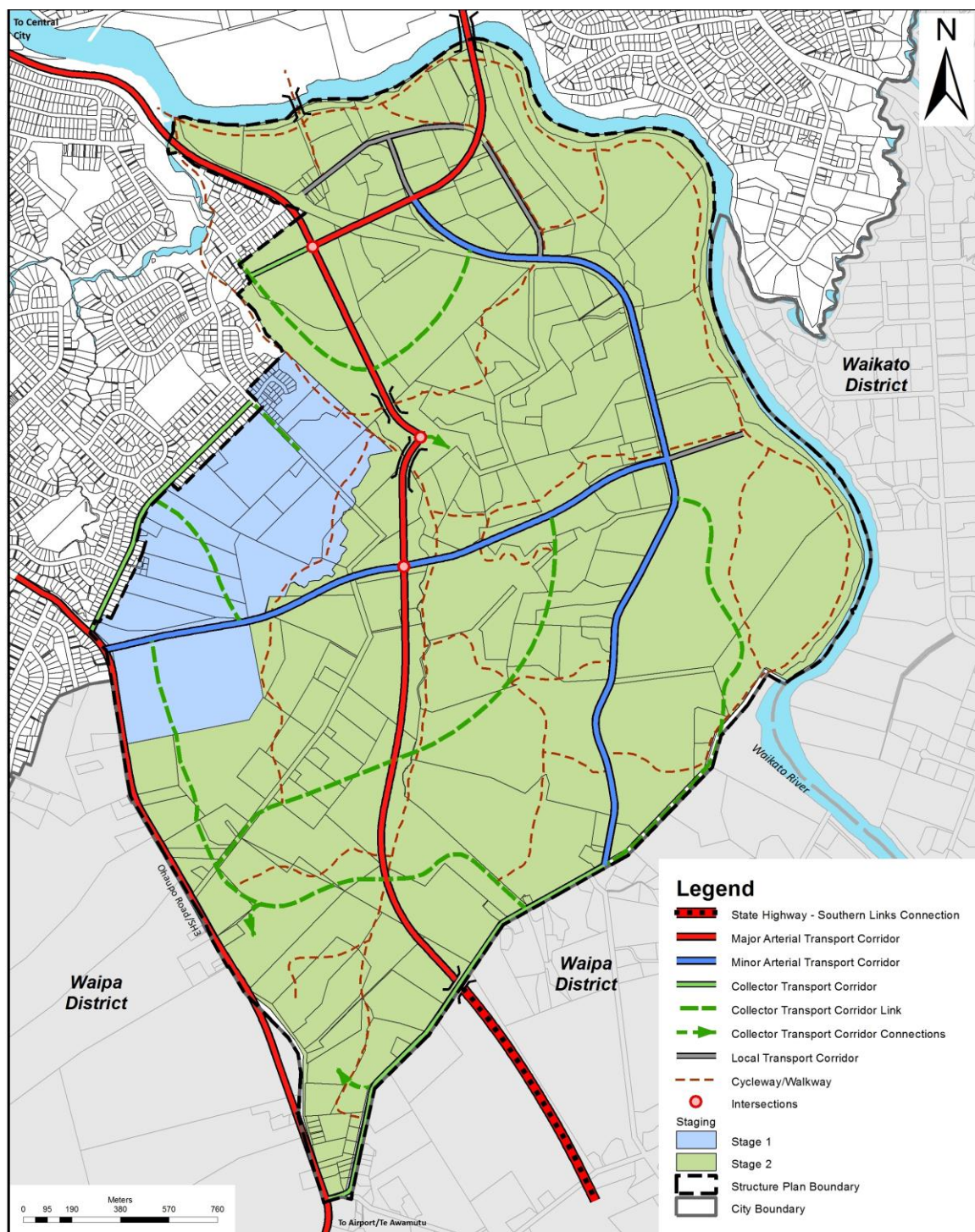
## Appendix 2: Structure Plans

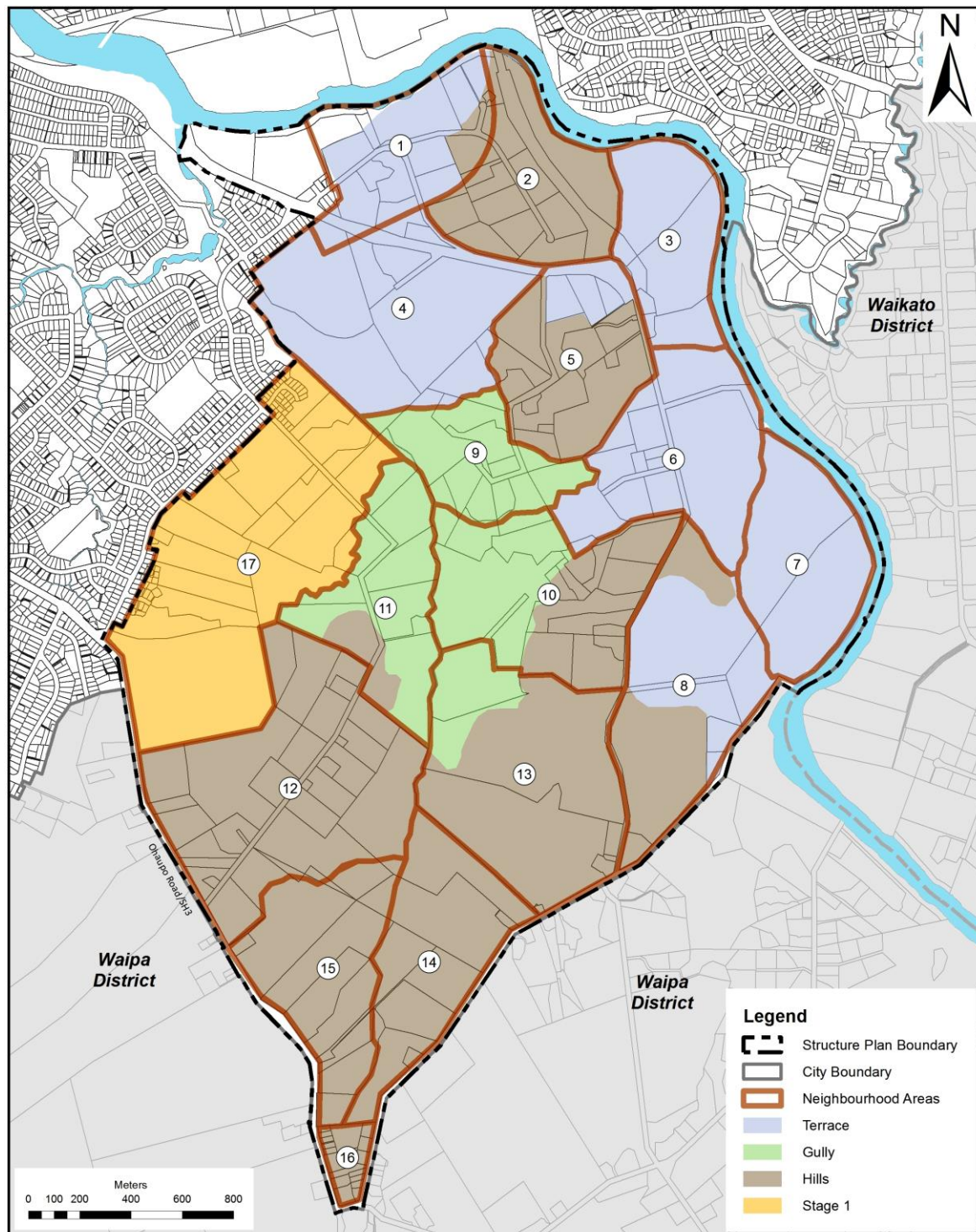
### Structure Plans Locality Guide



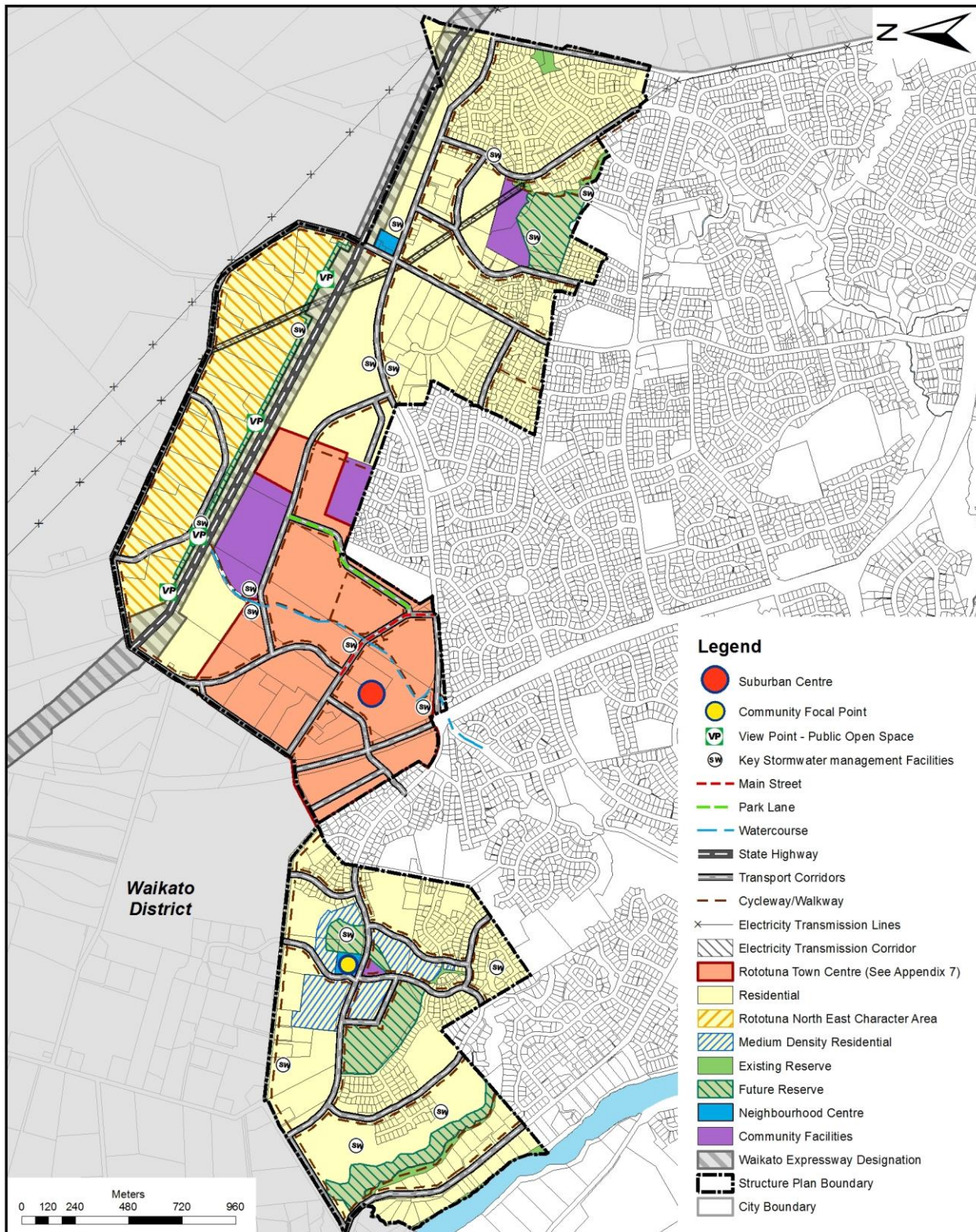
**Figure 2-1: Peacocke Structure Plan – Land Use**



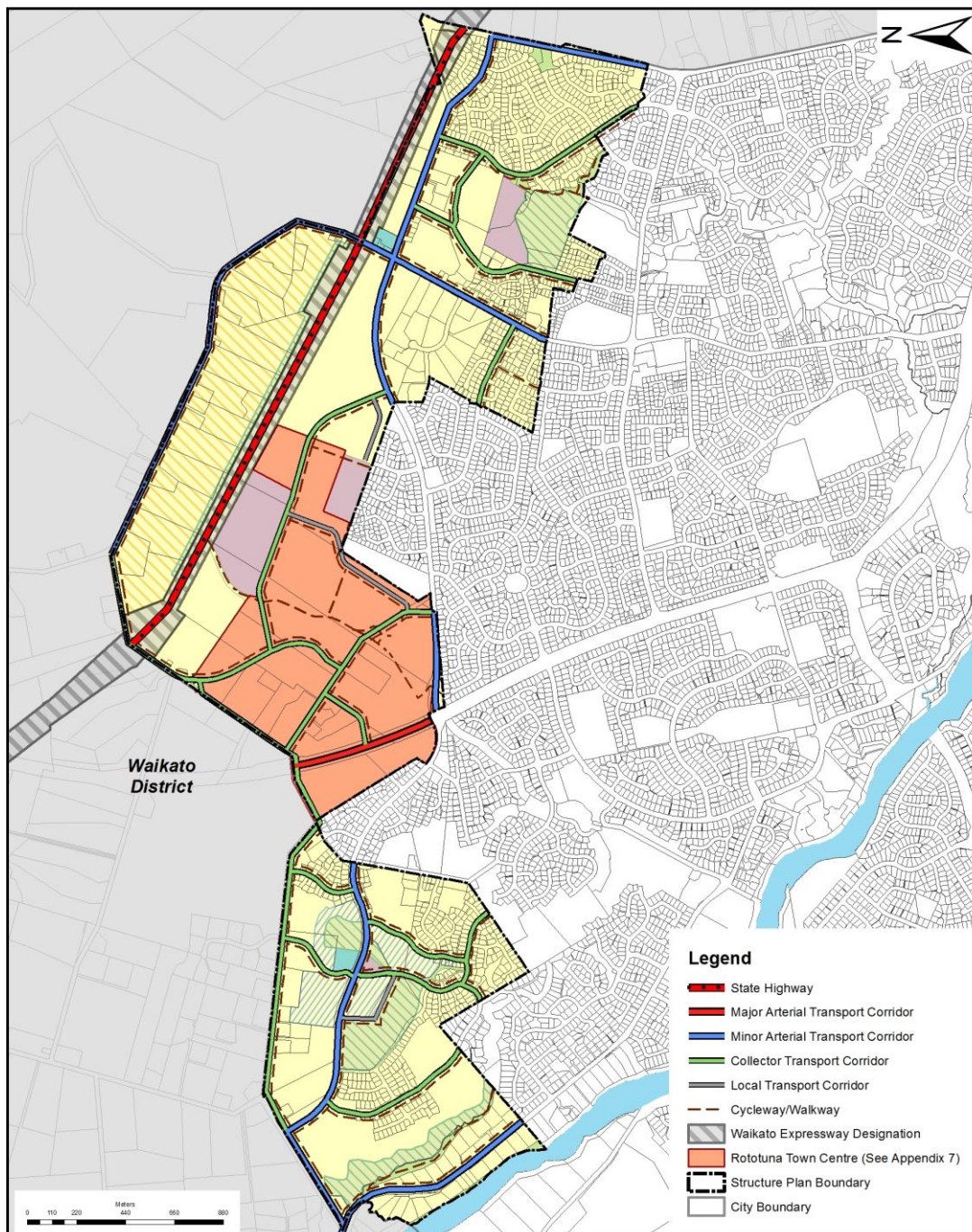
**Figure 2-2: Peacocke Structure Plan – Staging and Transport Network**

**Figure 2-3: Peacocke Structure Plan – Character Areas and Neighbourhoods**

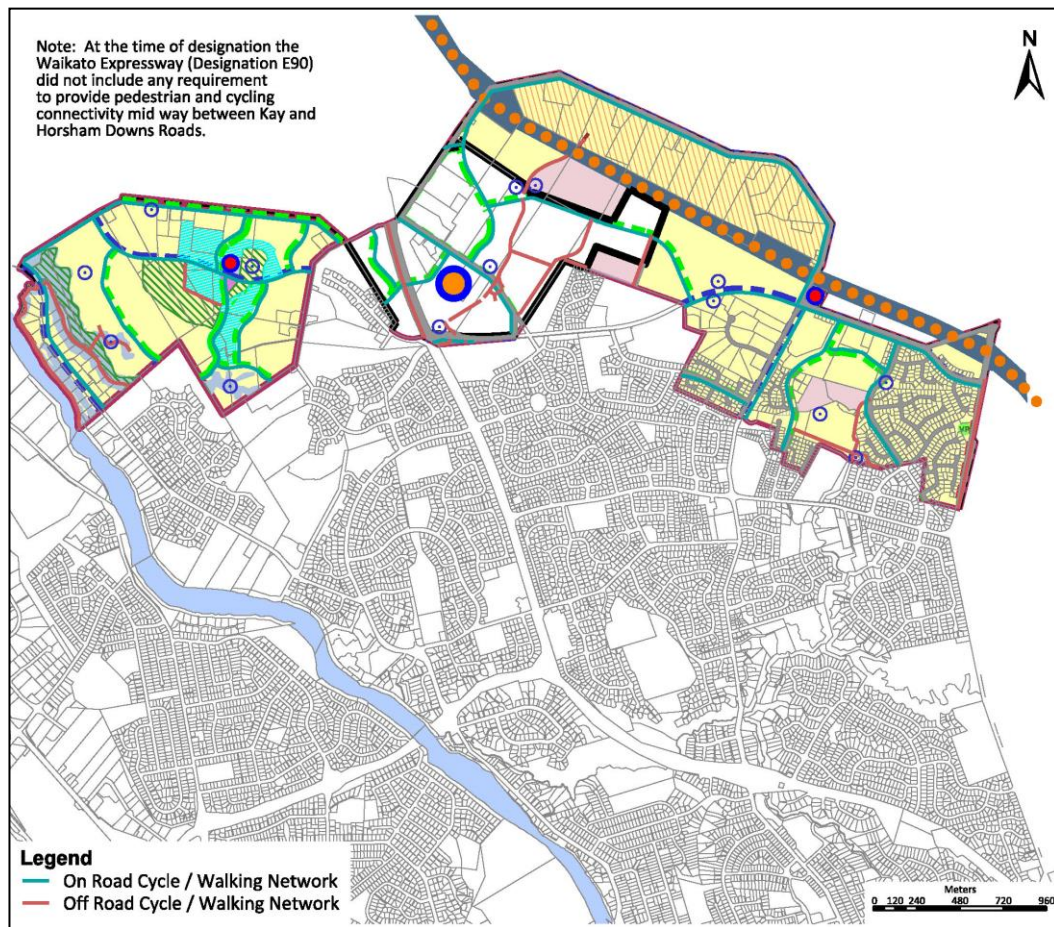


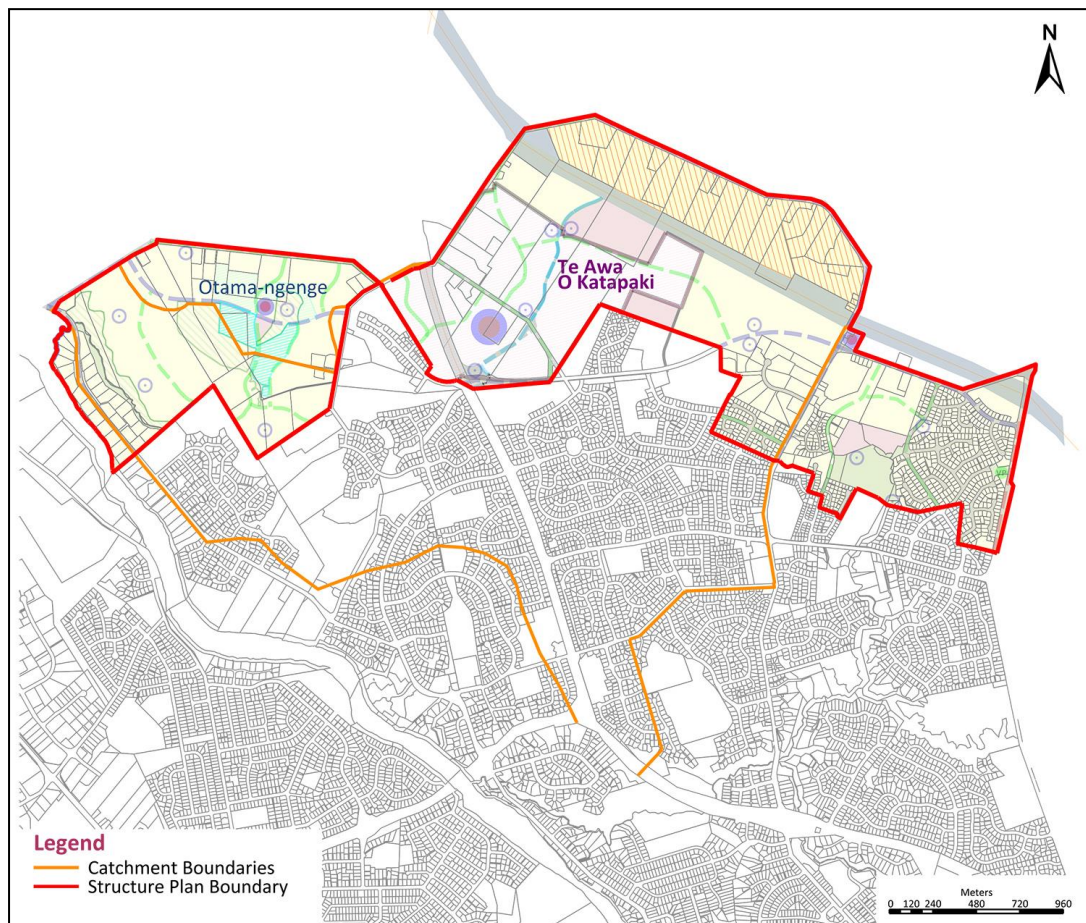
**Figure 2-4: Rototuna Structure Plan – Land Use**



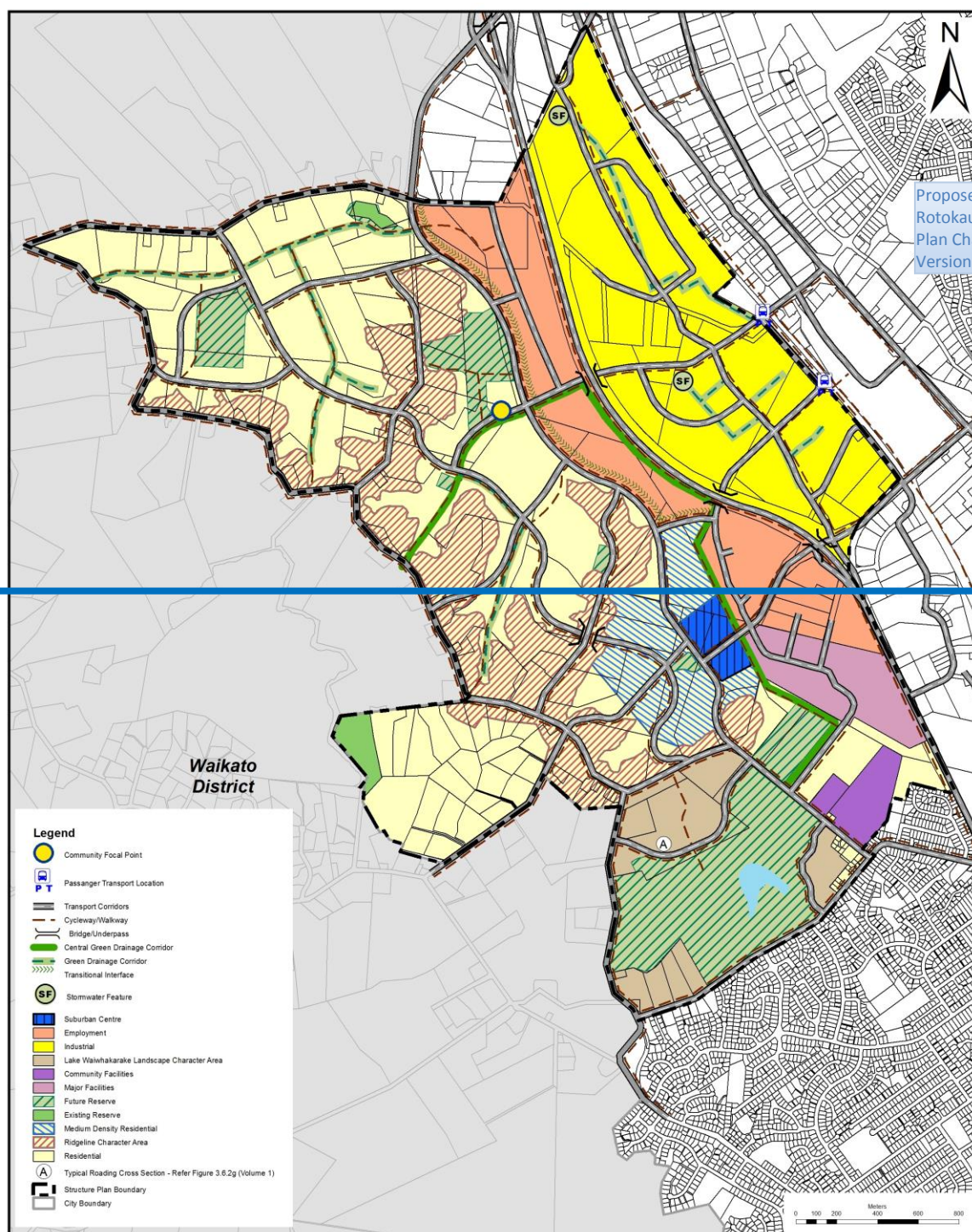
**Figure 2-5: Rototuna Structure Plan – Transport Network**



**Figure 2-6: Rototuna Cycling and Walking Network**

**Figure 2-7: Rototuna Catchment Boundaries**



**Figure 2-8: Rotokauri Structure Plan – Land Use**



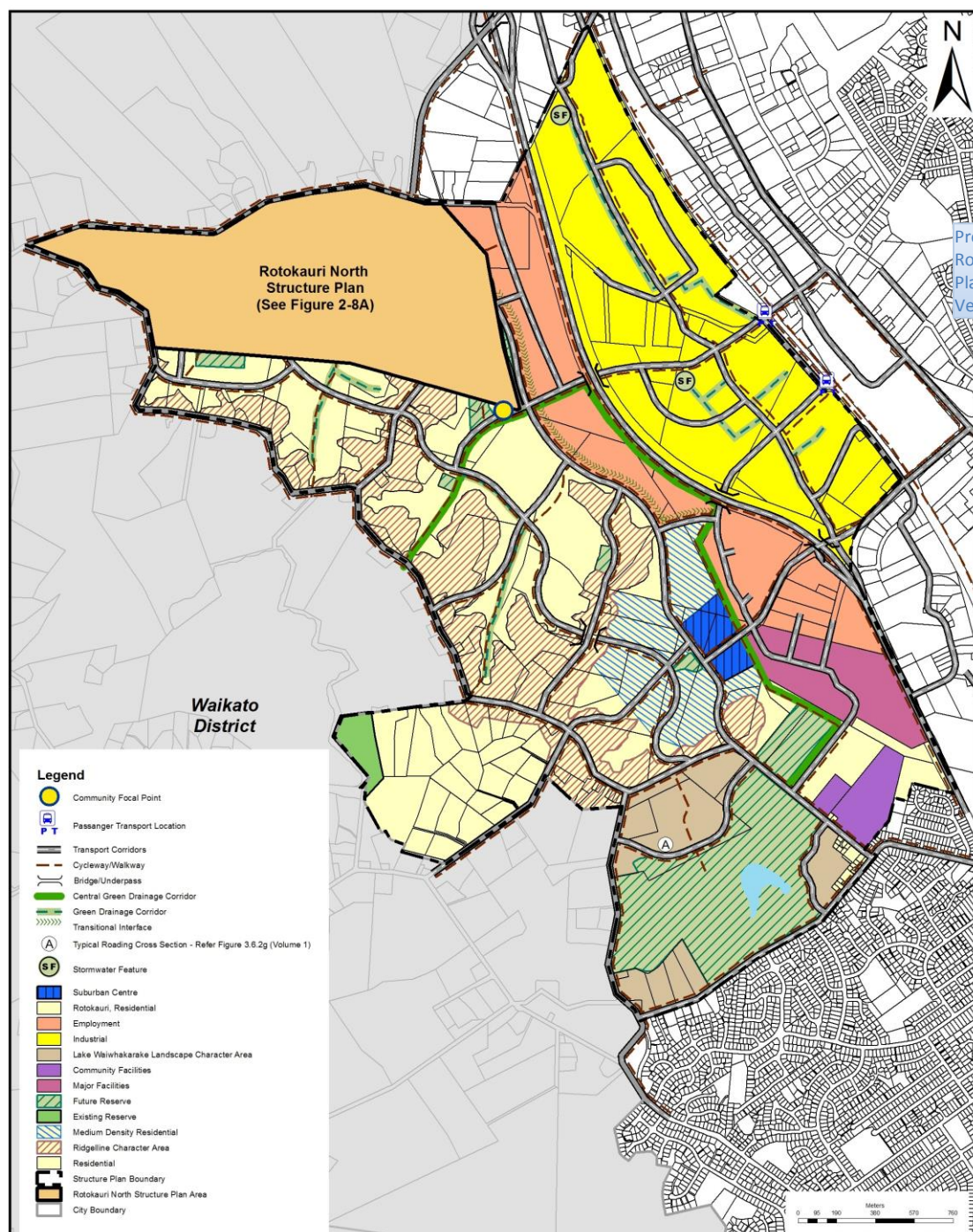
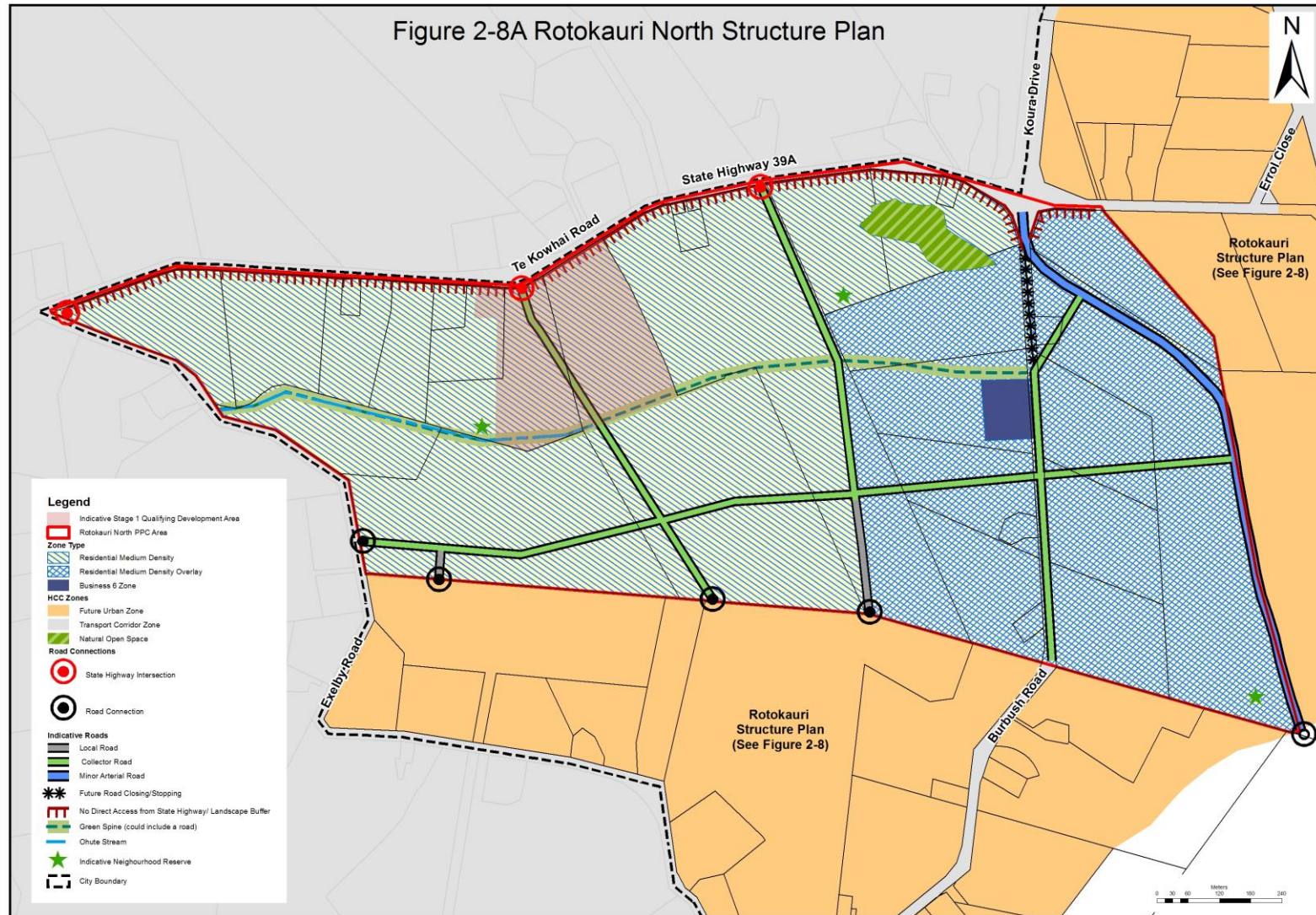






Figure 2-8A: Rotokauri North Structure Plan

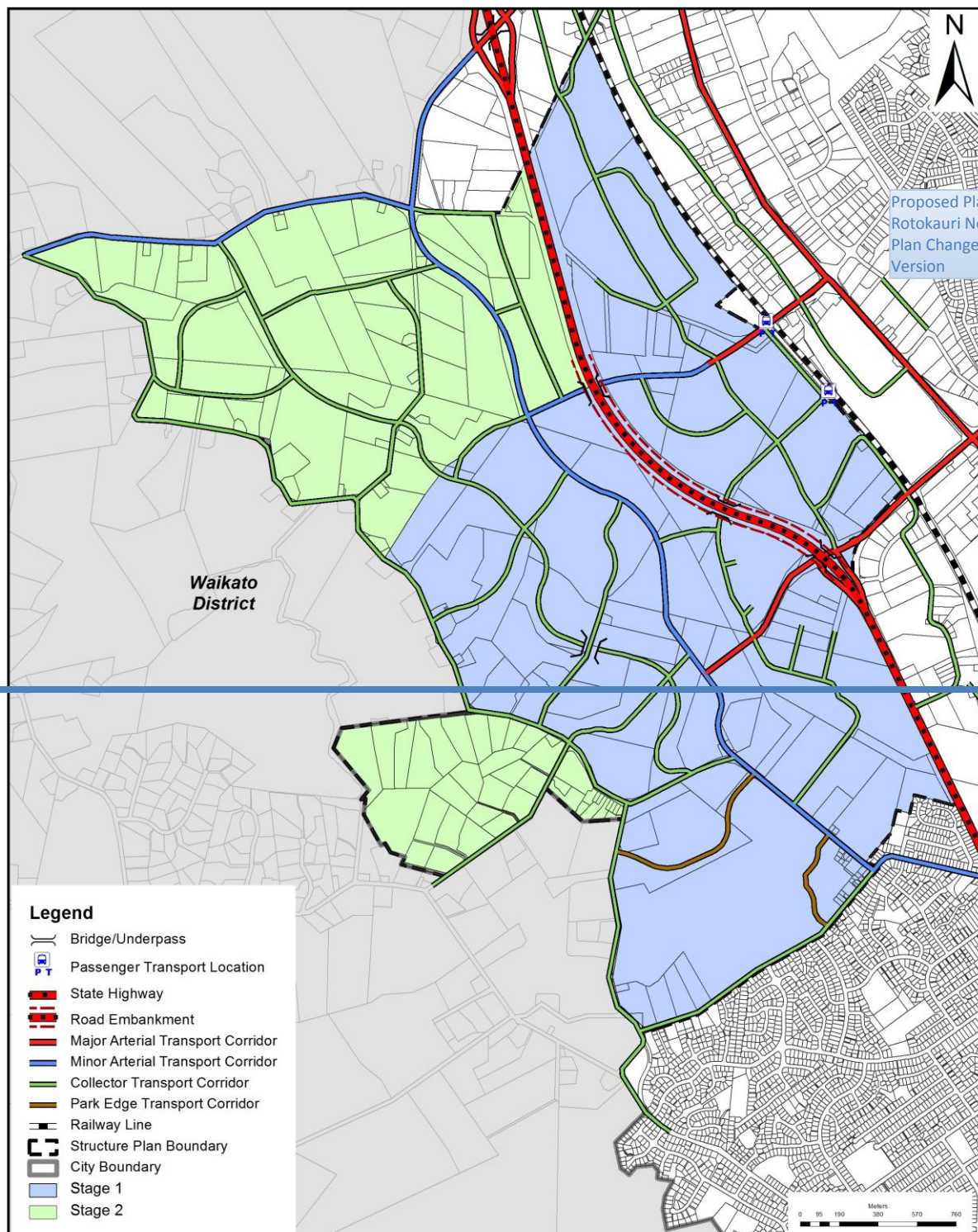


Proposed Plan Change 7-  
Rotokauri North Private  
Plan Change - Notified  
Version





Figure 2-9: Rotokauri Structure Plan – Staging and Transport Network





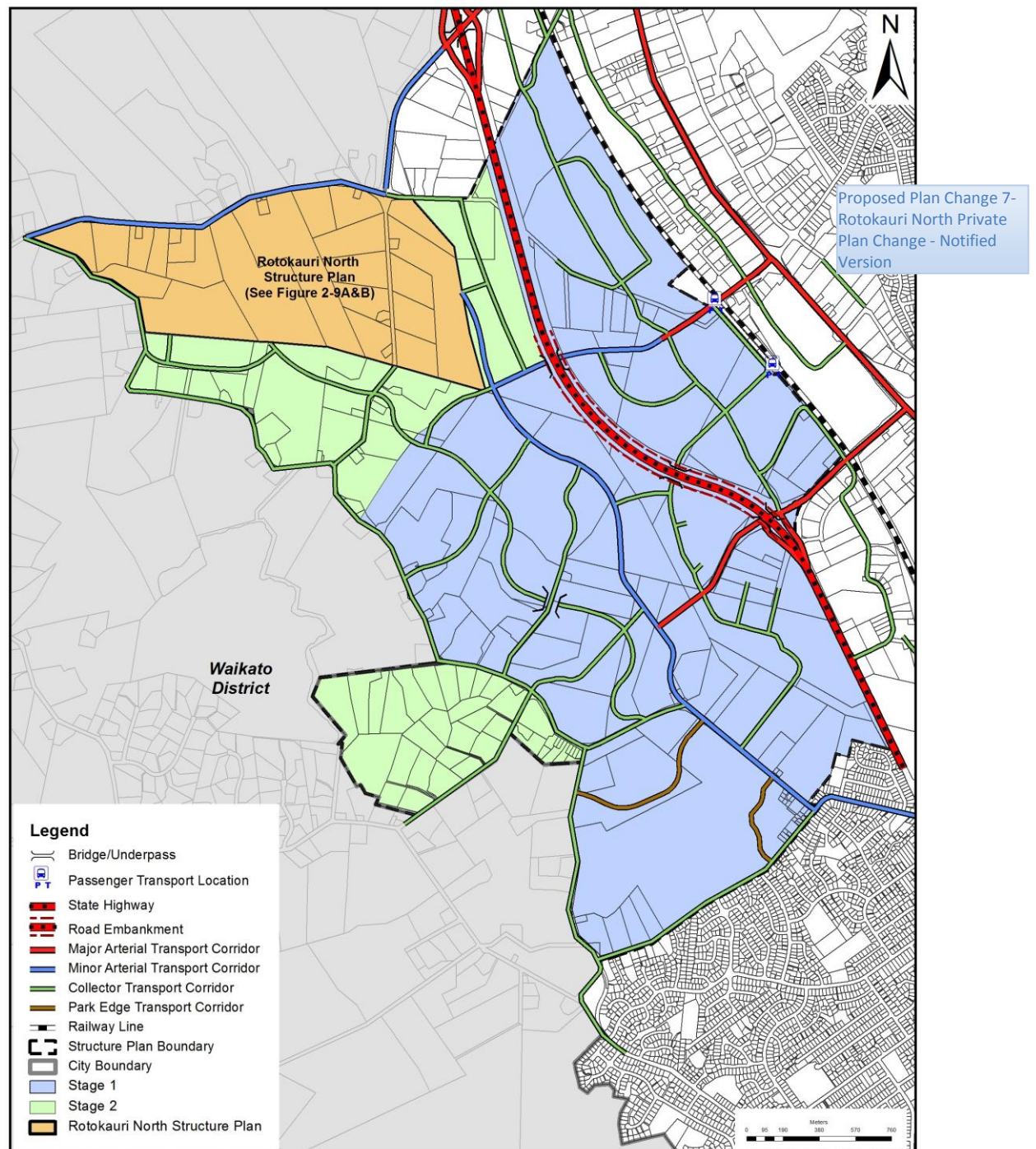
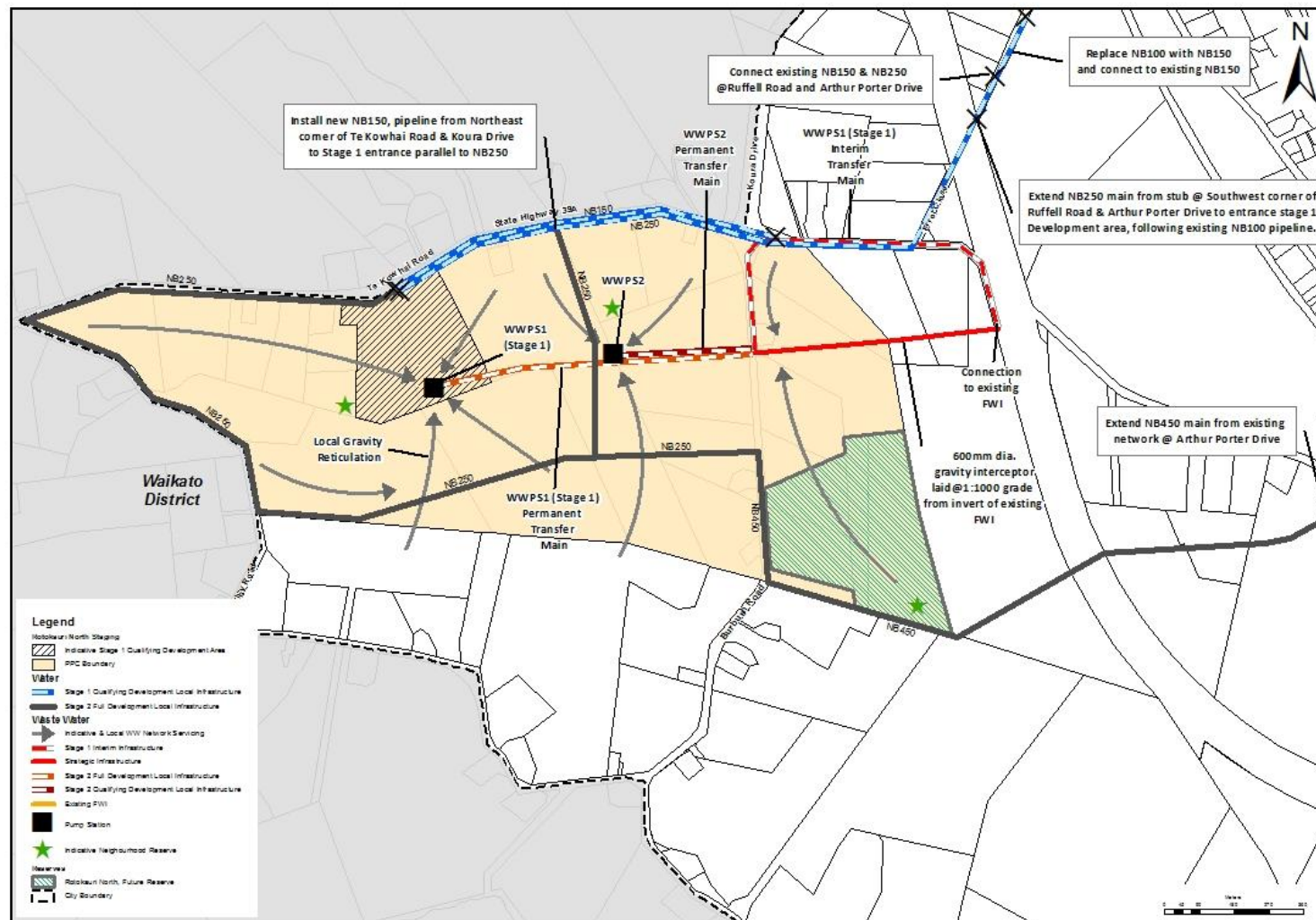




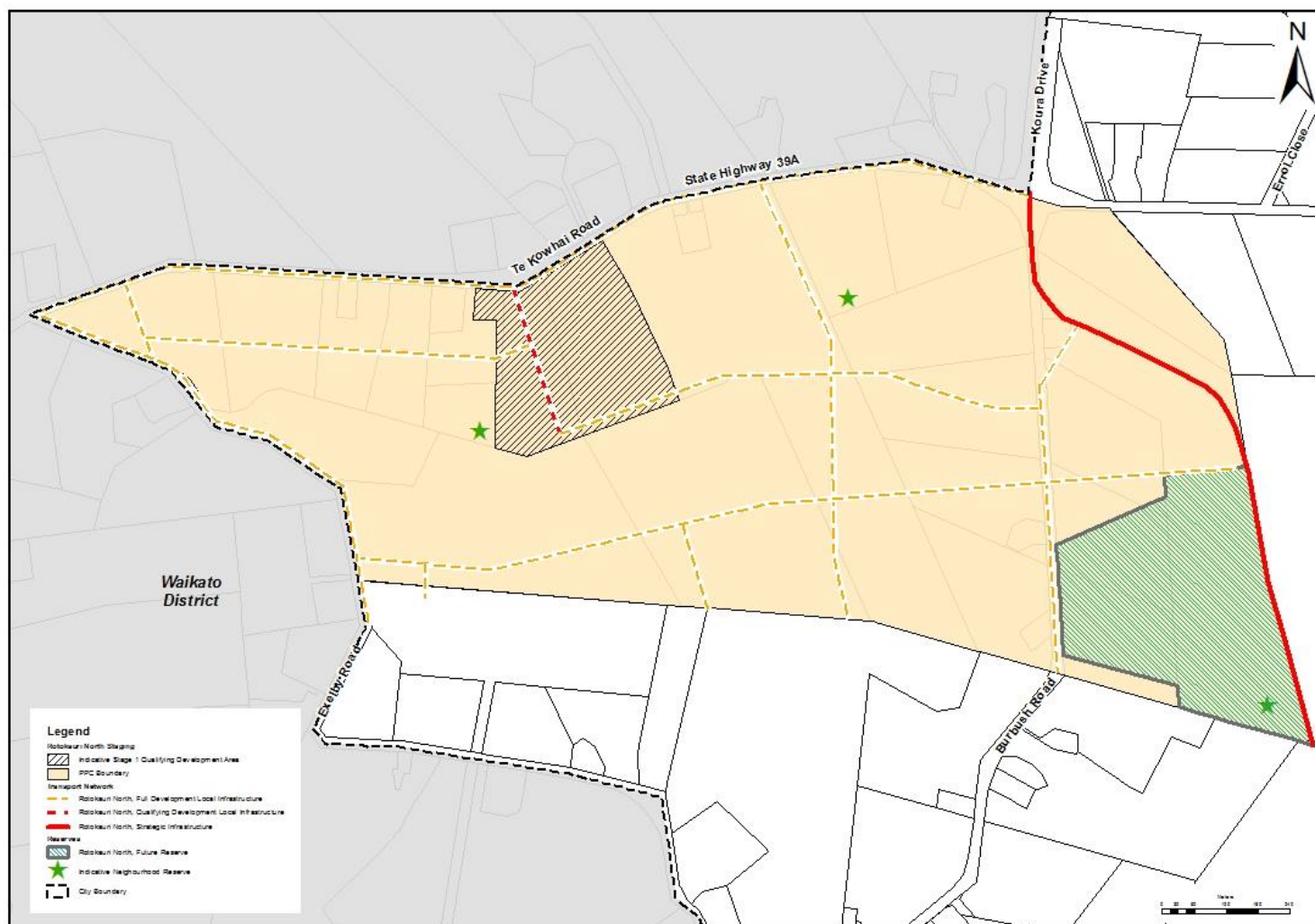


Figure 2-9A – Rotokauri North Strategic Infrastructure – Water and Waste Water



Proposed Plan Change 7-  
Rotokauri North Private  
Plan Change - Notified  
Version

Figure 2-9B – Rotokauri North Strategic Infrastructure – Staging, Transport Network and Reserves

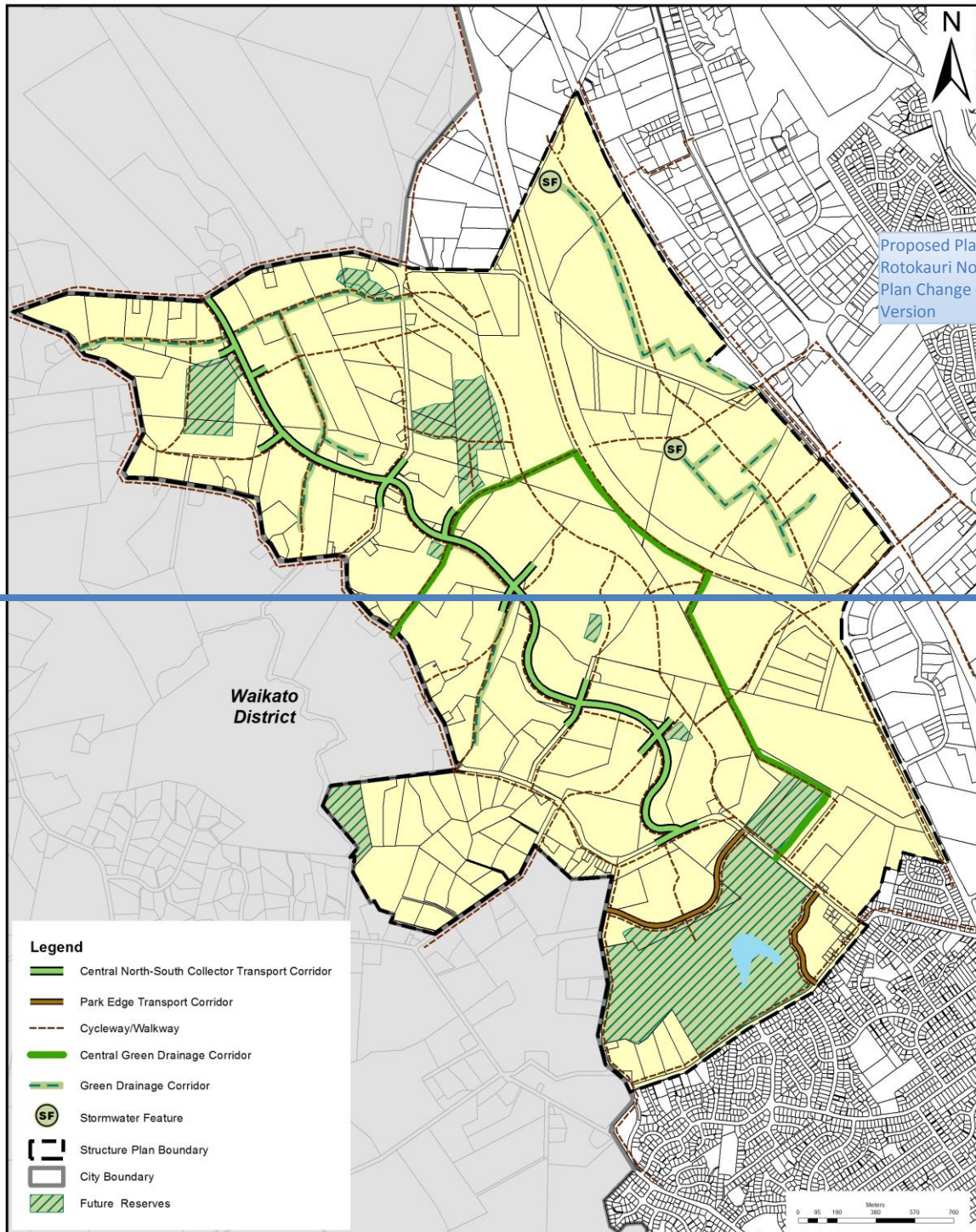


Proposed Plan Change 7-  
Rotokauri North Private  
Plan Change - Notified  
Version

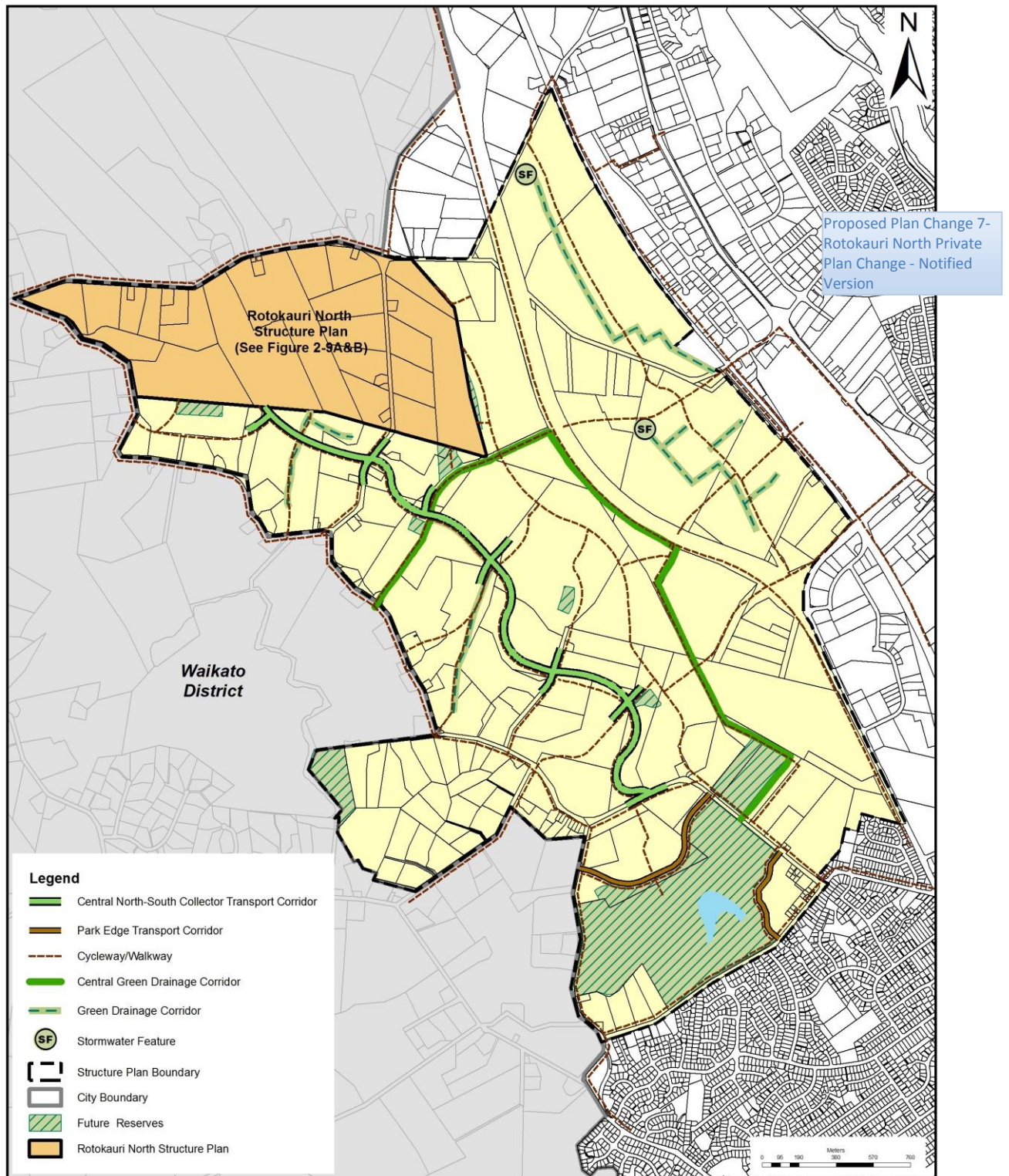




**Figure 2-10: Rotokauri Structure Plan – Open Space Network**



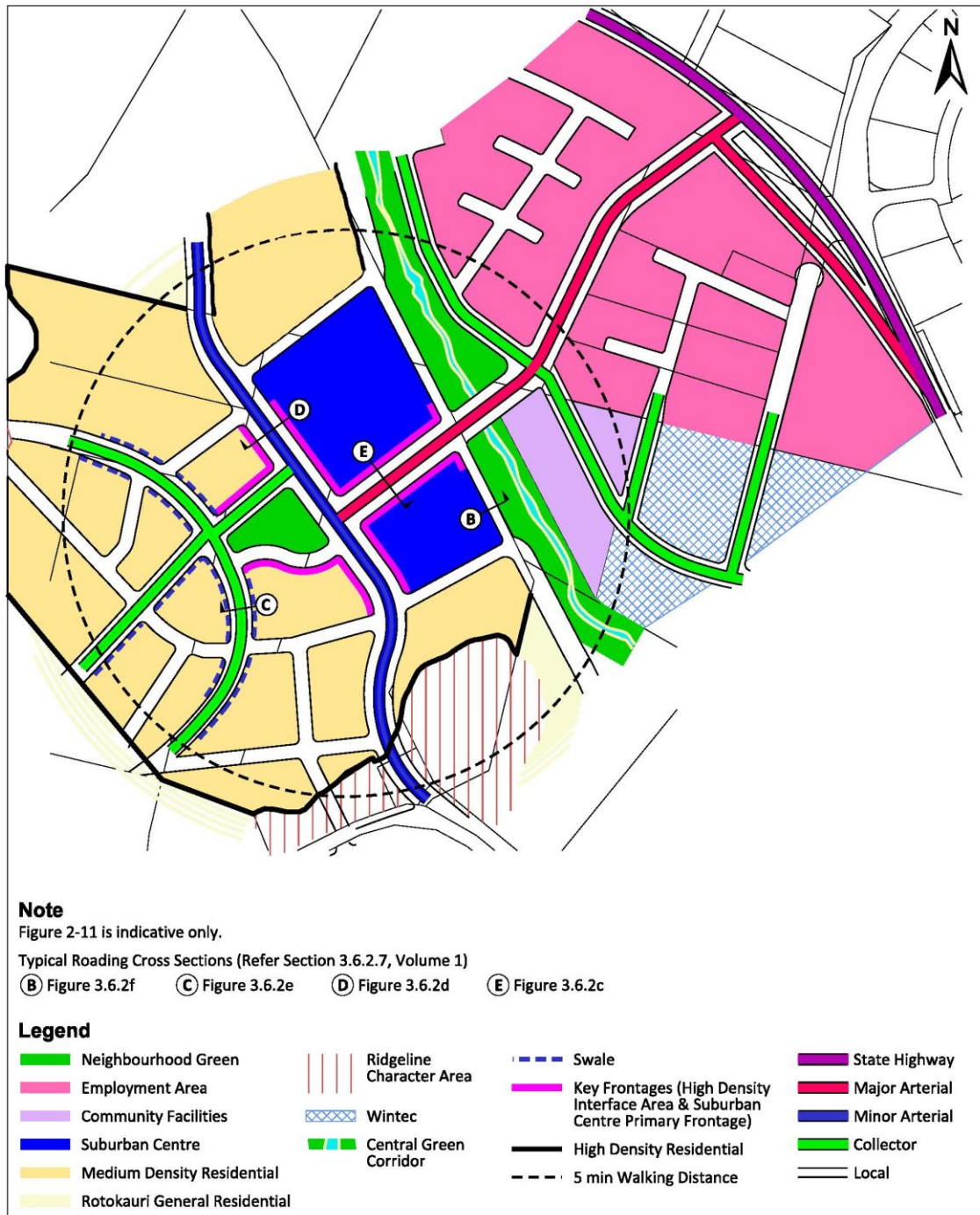


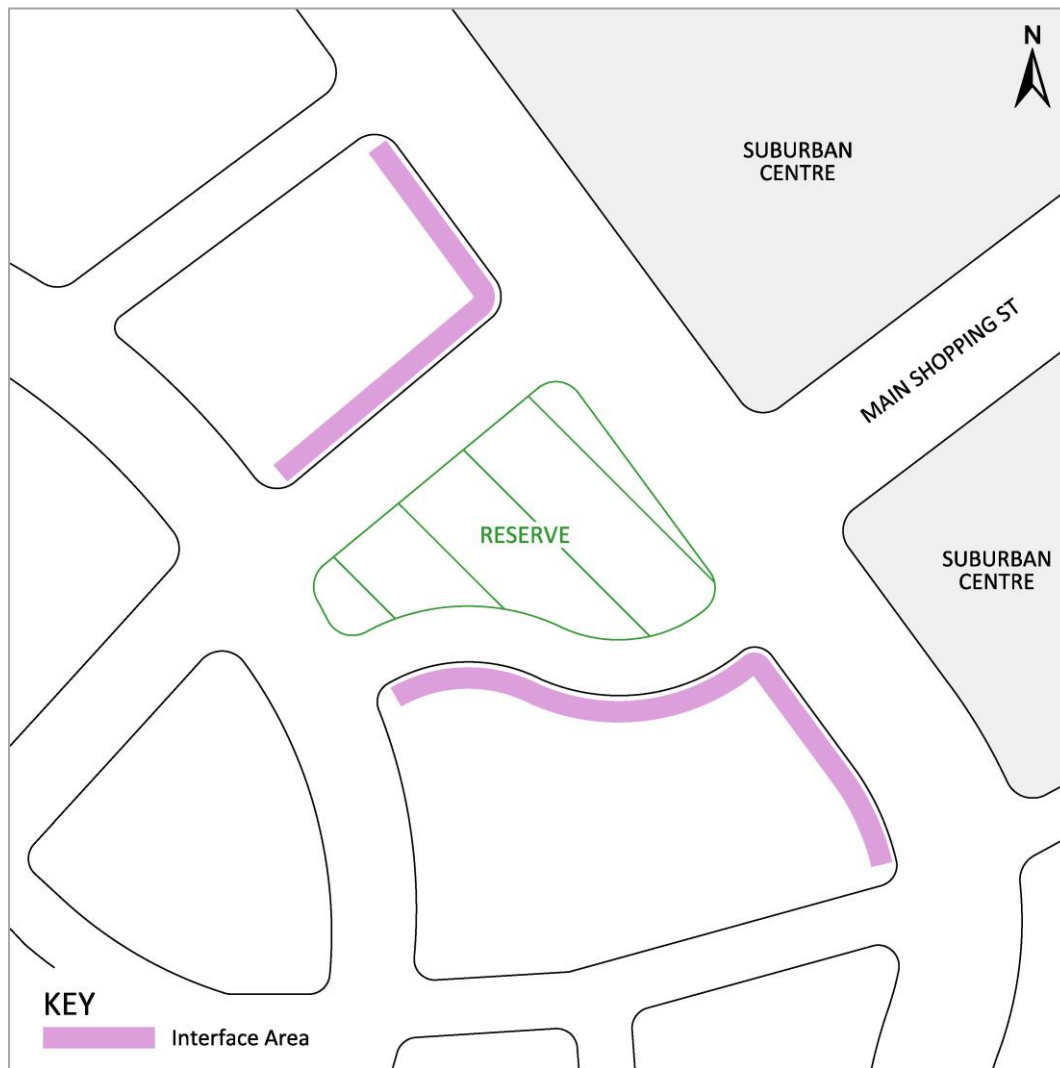




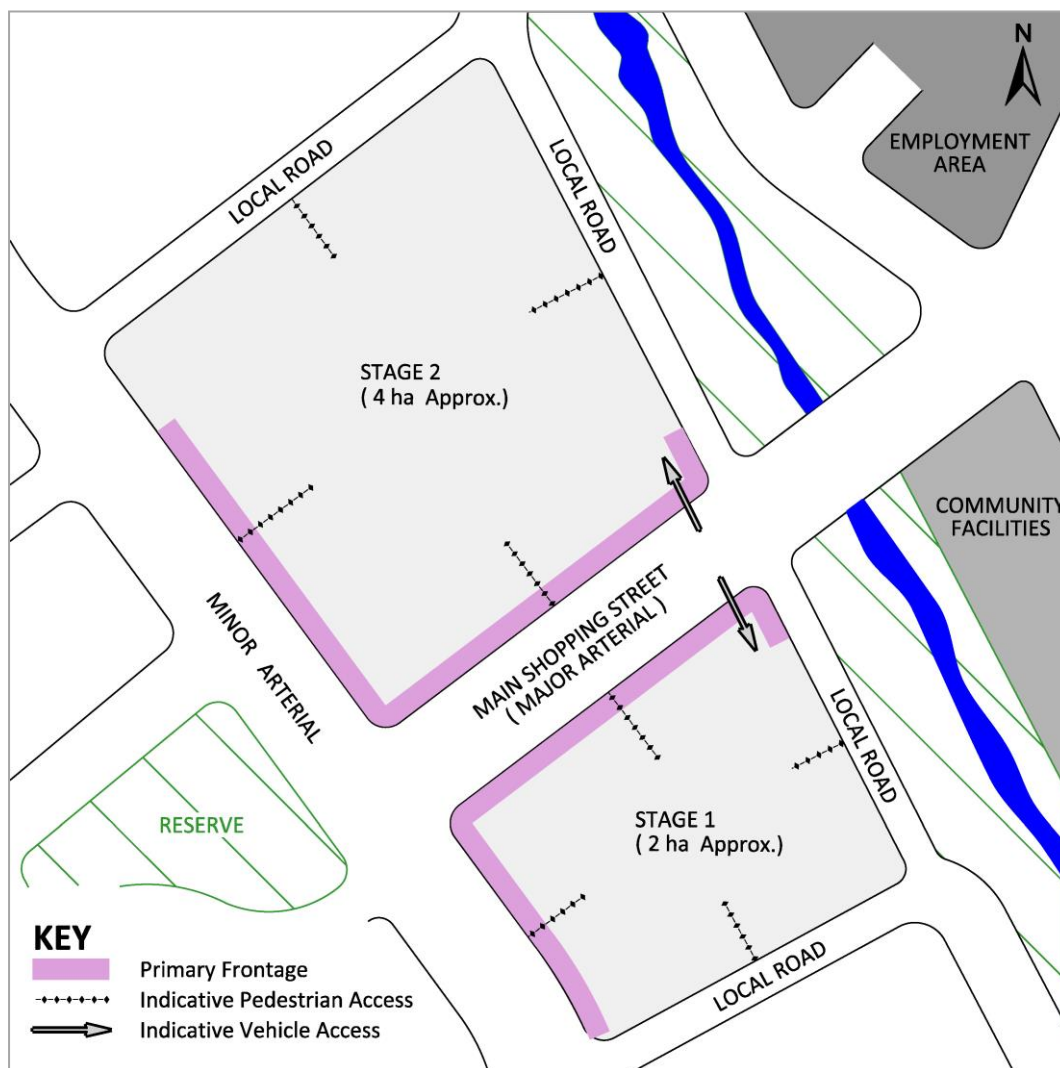


**Figure 2-11: Rotokauri Neighbourhood Centre**

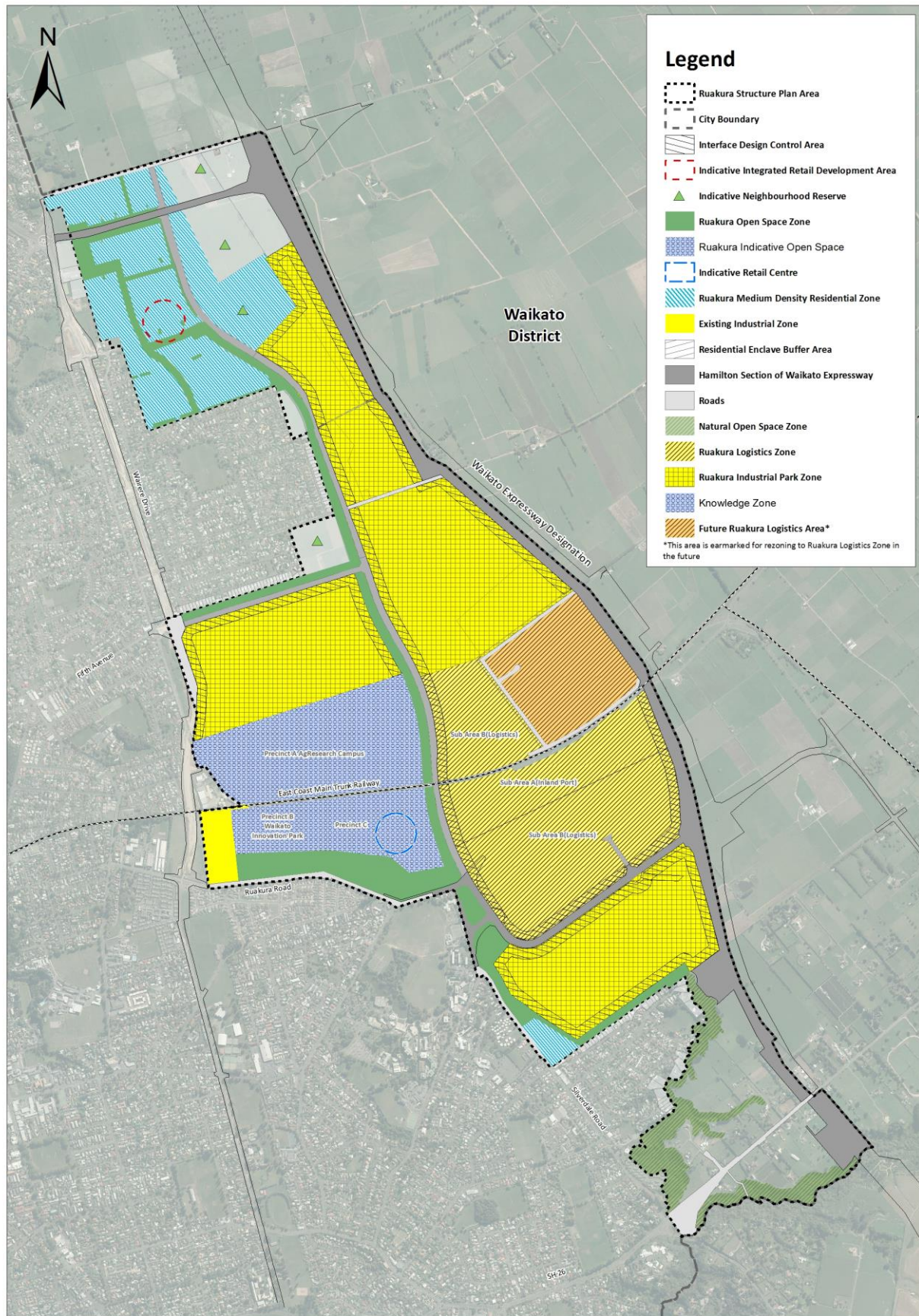


**Figure 2-12: Rotokauri Interface Areas**



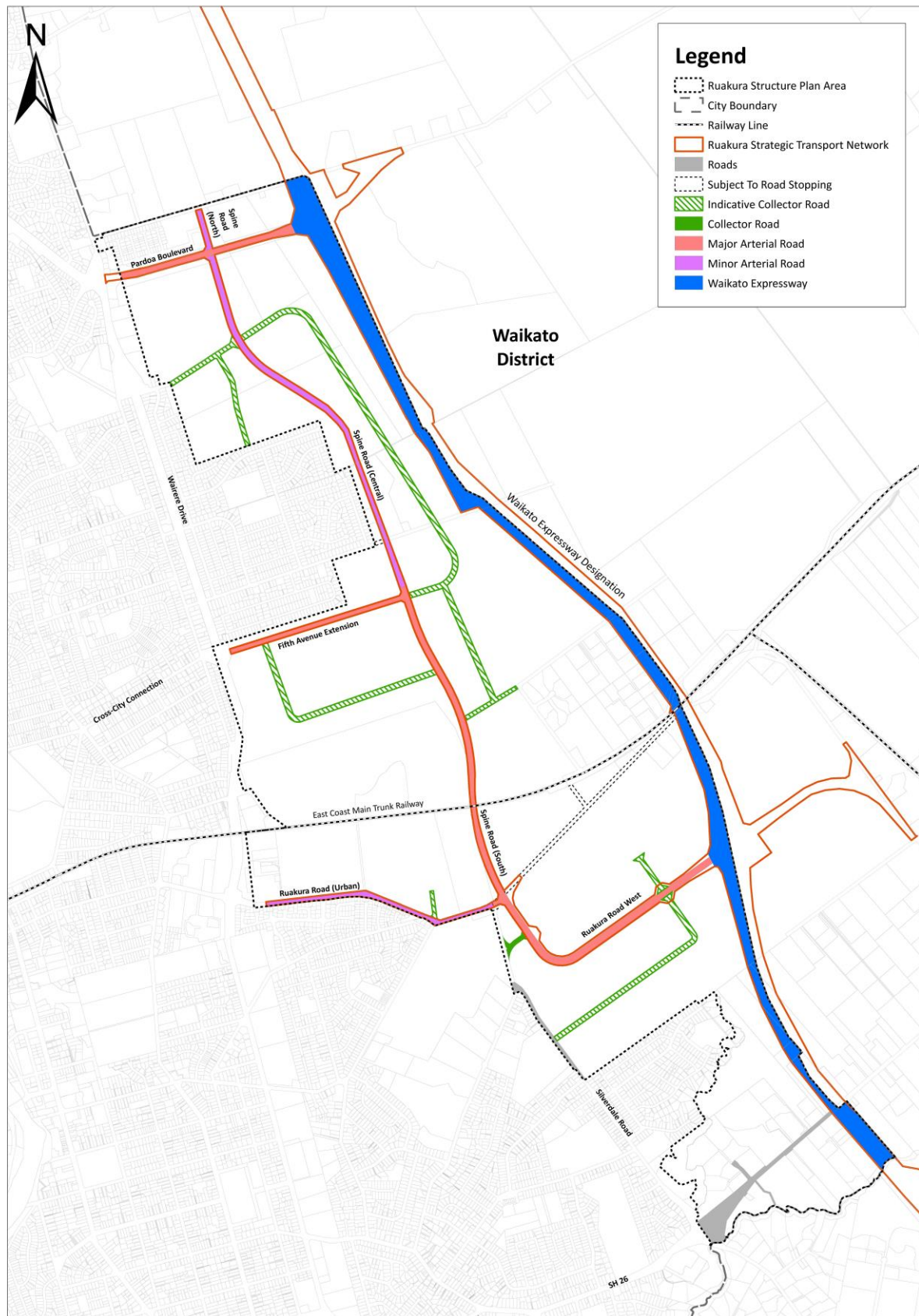
**Figure 2-13: Rotokauri Suburban Centre Primary Frontages**

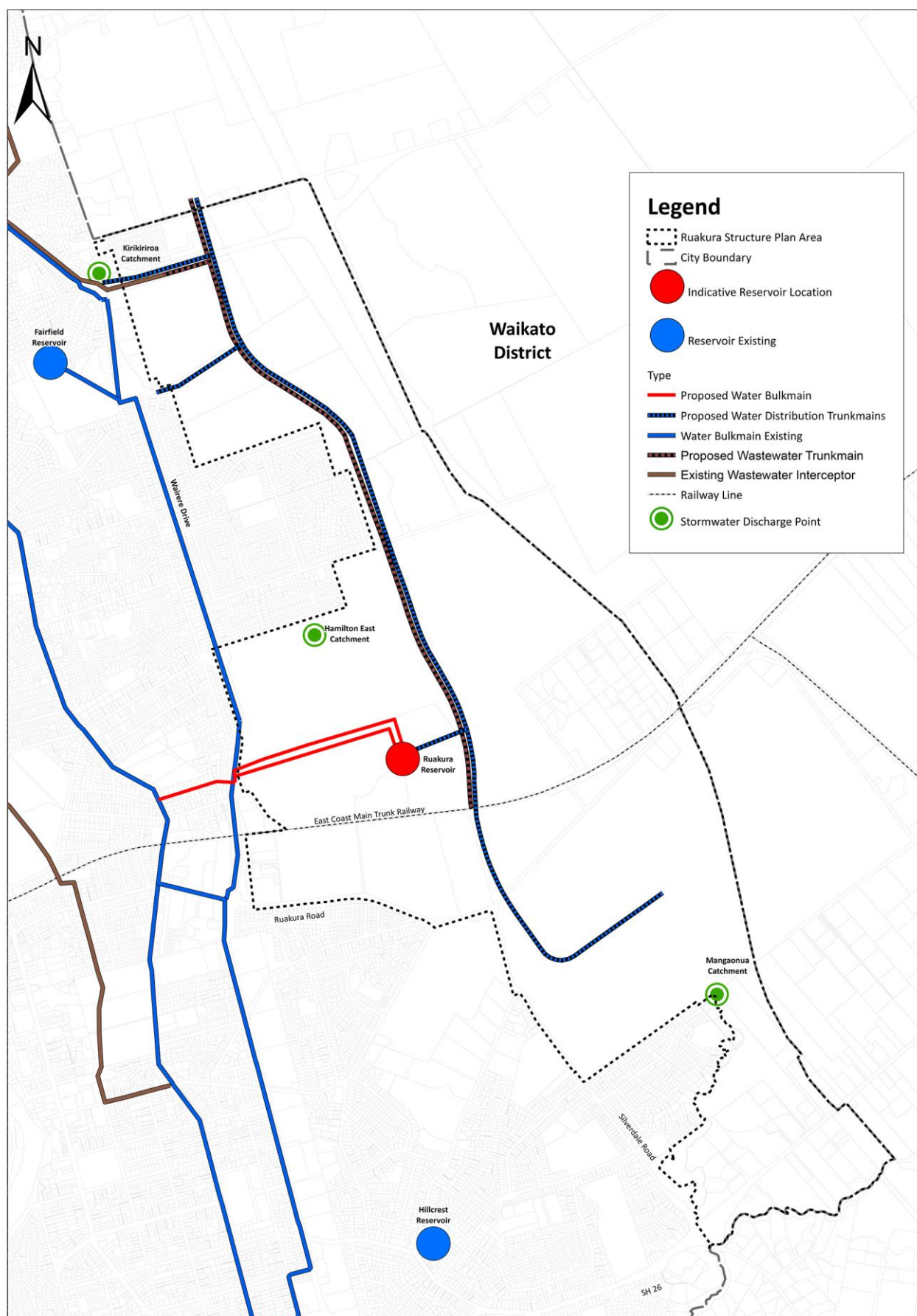
**Figure 2-14: Ruakura Structure Plan – Land Use**



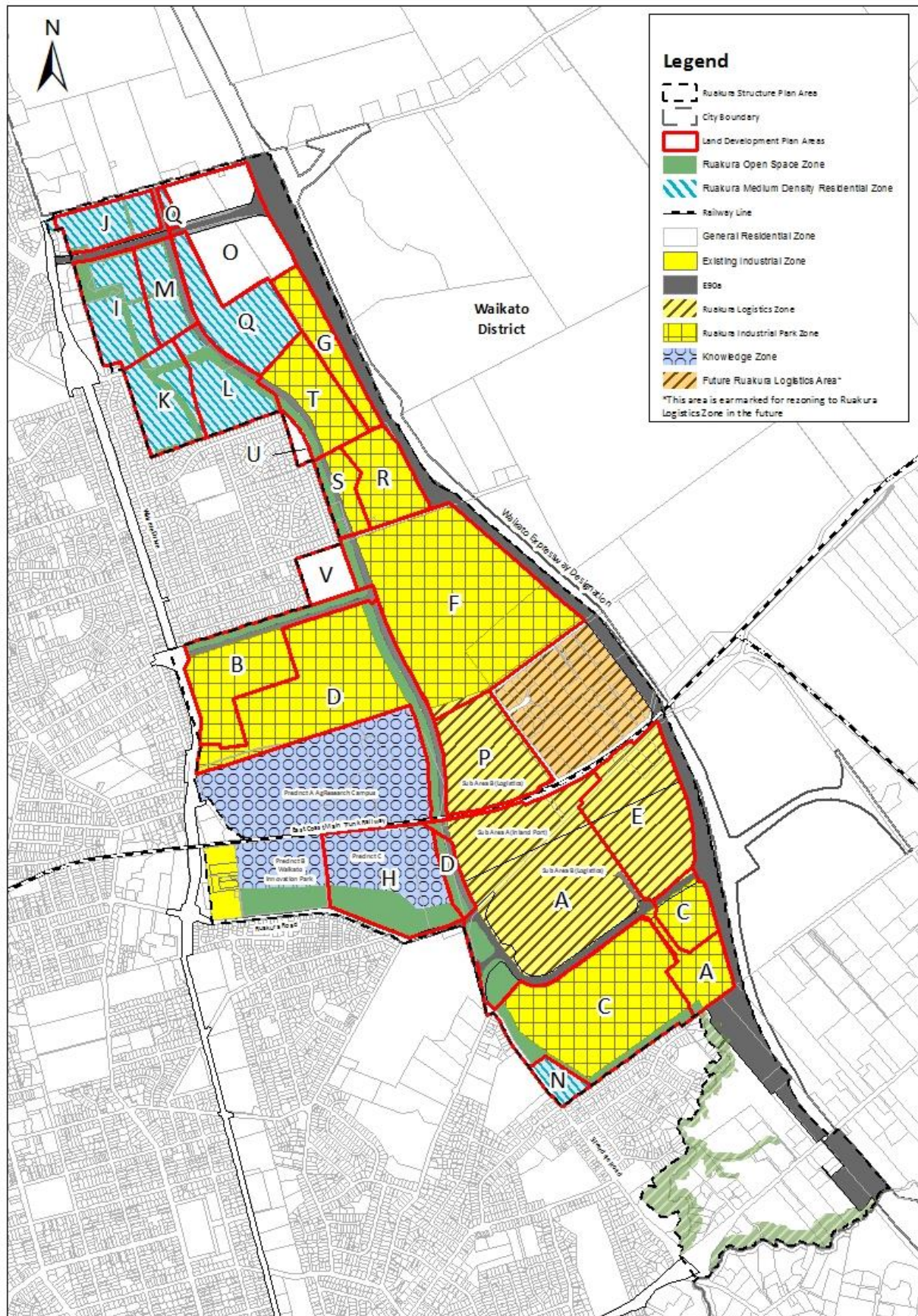


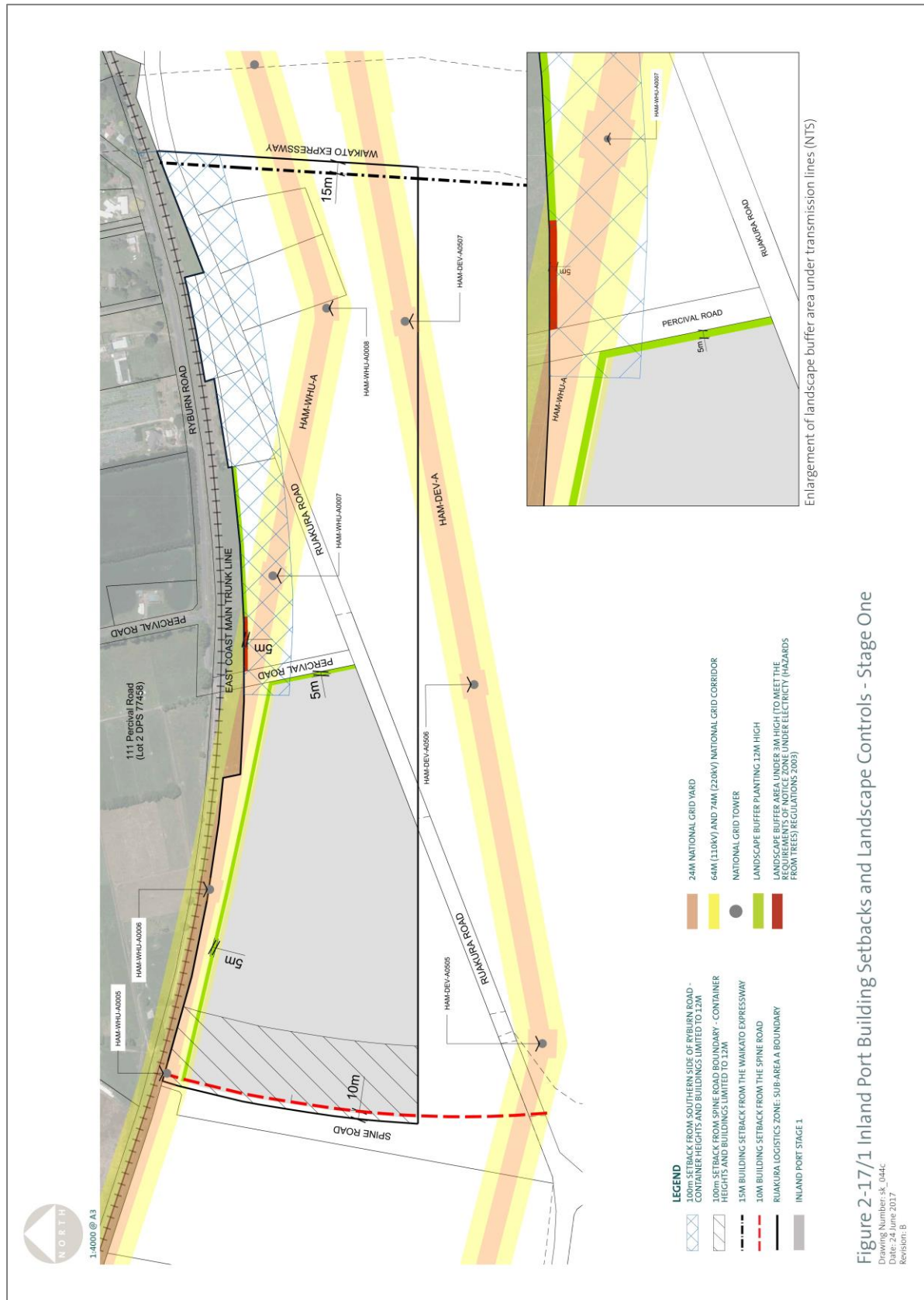
**Figure 2-15A: Ruakura Strategic Infrastructure – Transport**



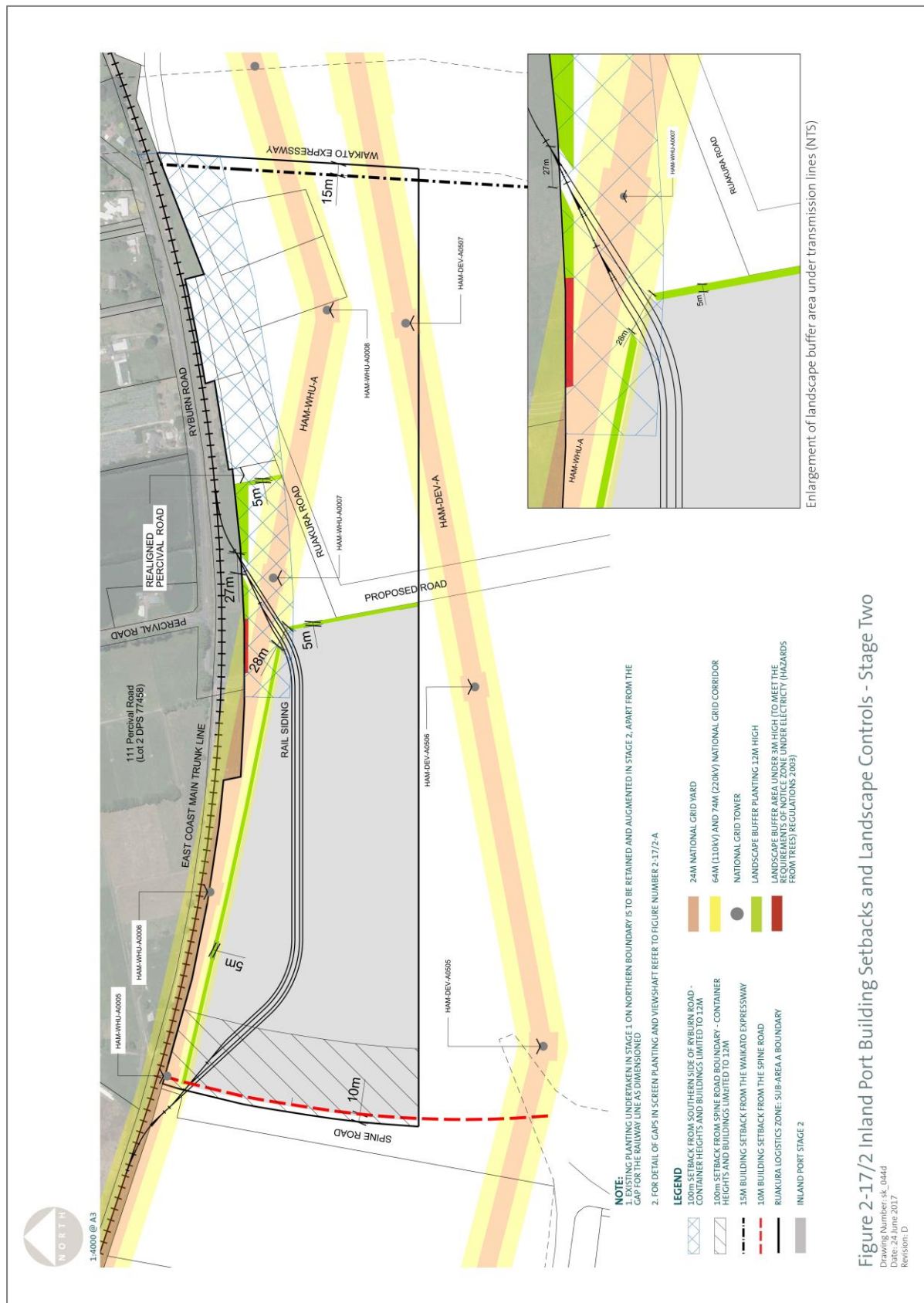
**Figure 2-15B: Ruakura Strategic Infrastructure – Three Waters**



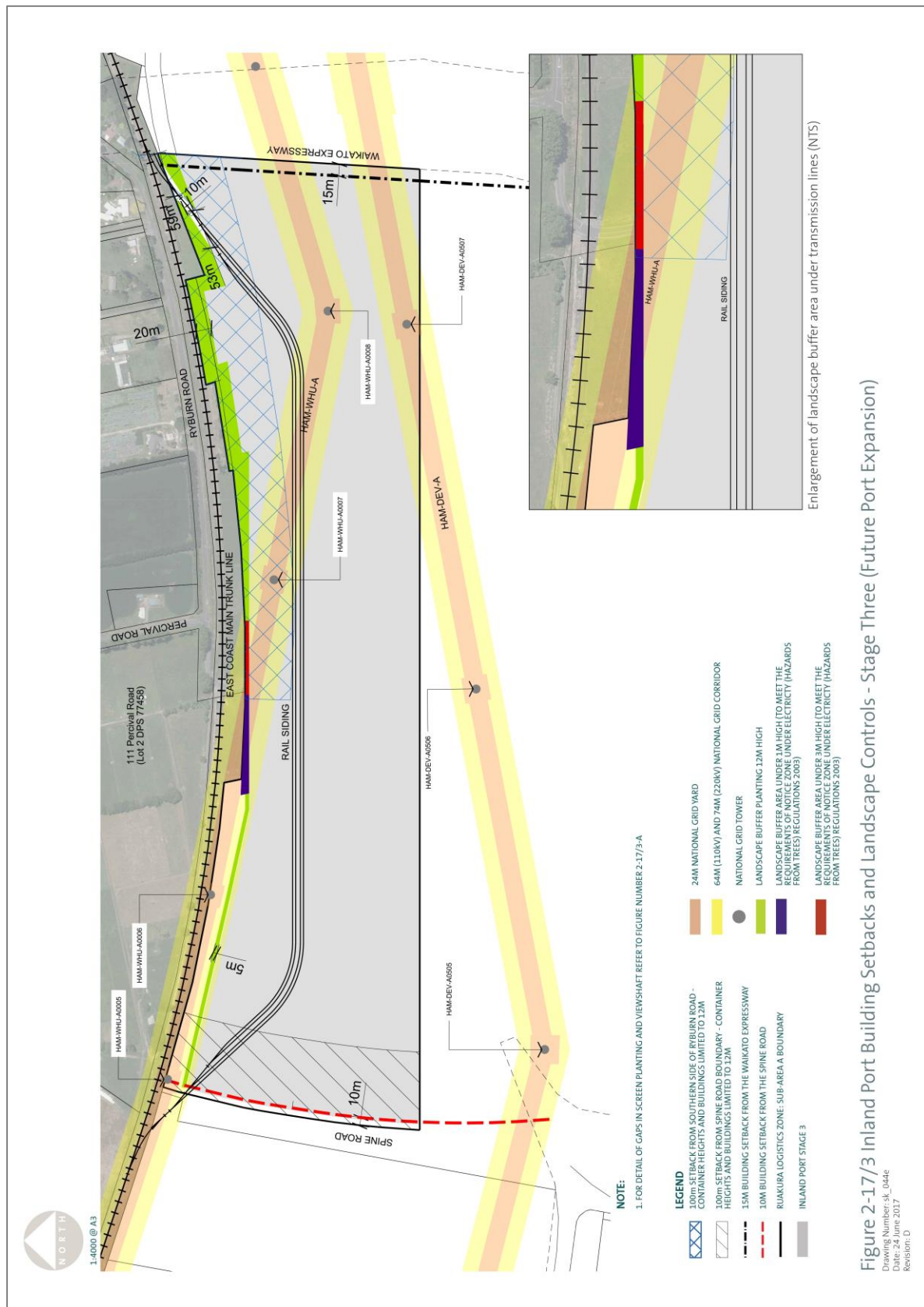
**Figure 2-16: Ruakura Land Development Plan Areas**

**Figure 2-17/1: Inland Port Building Setbacks and Landscape Controls – Stage 1****Figure 2-17/1 Inland Port Building Setbacks and Landscape Controls - Stage One**

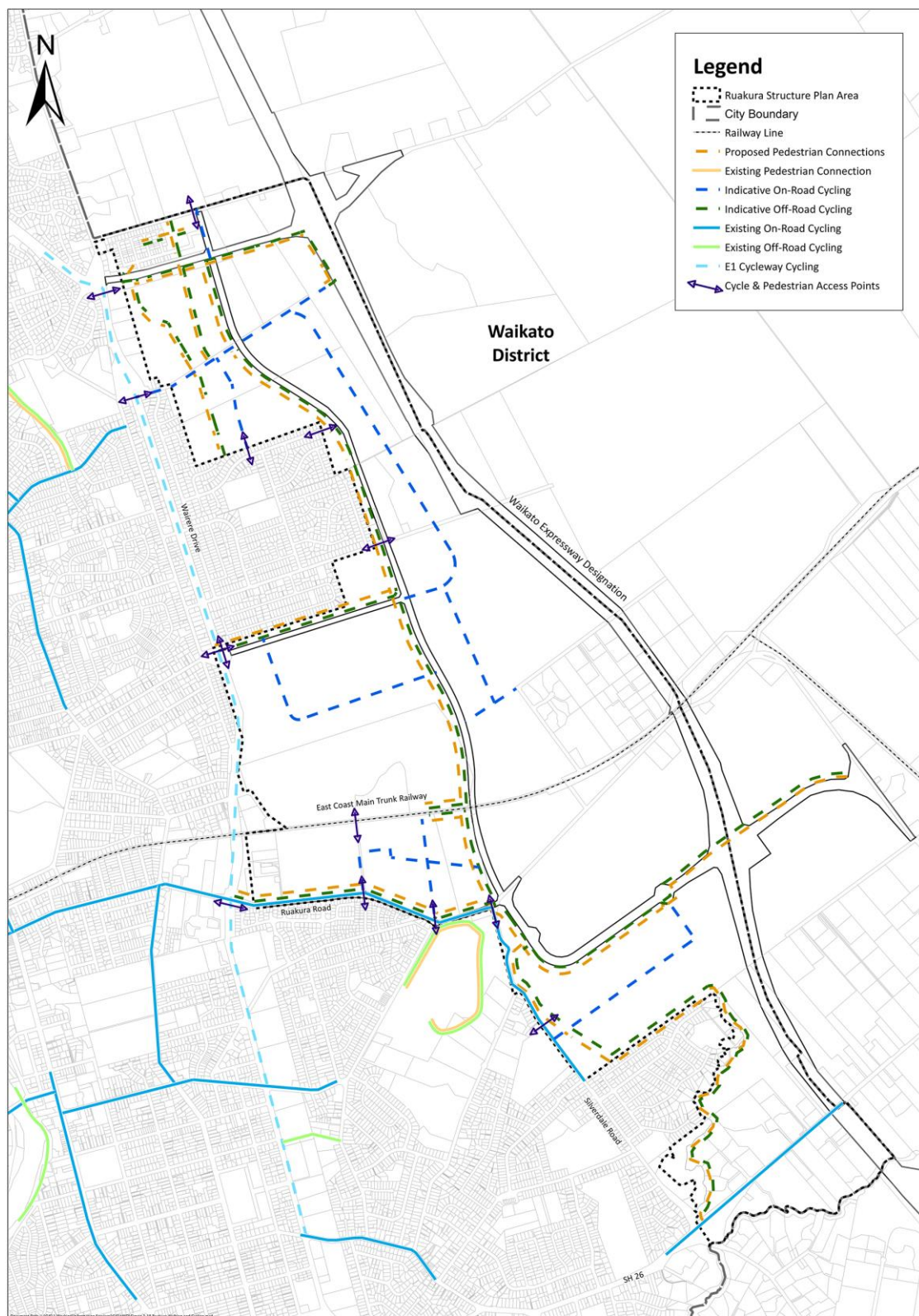


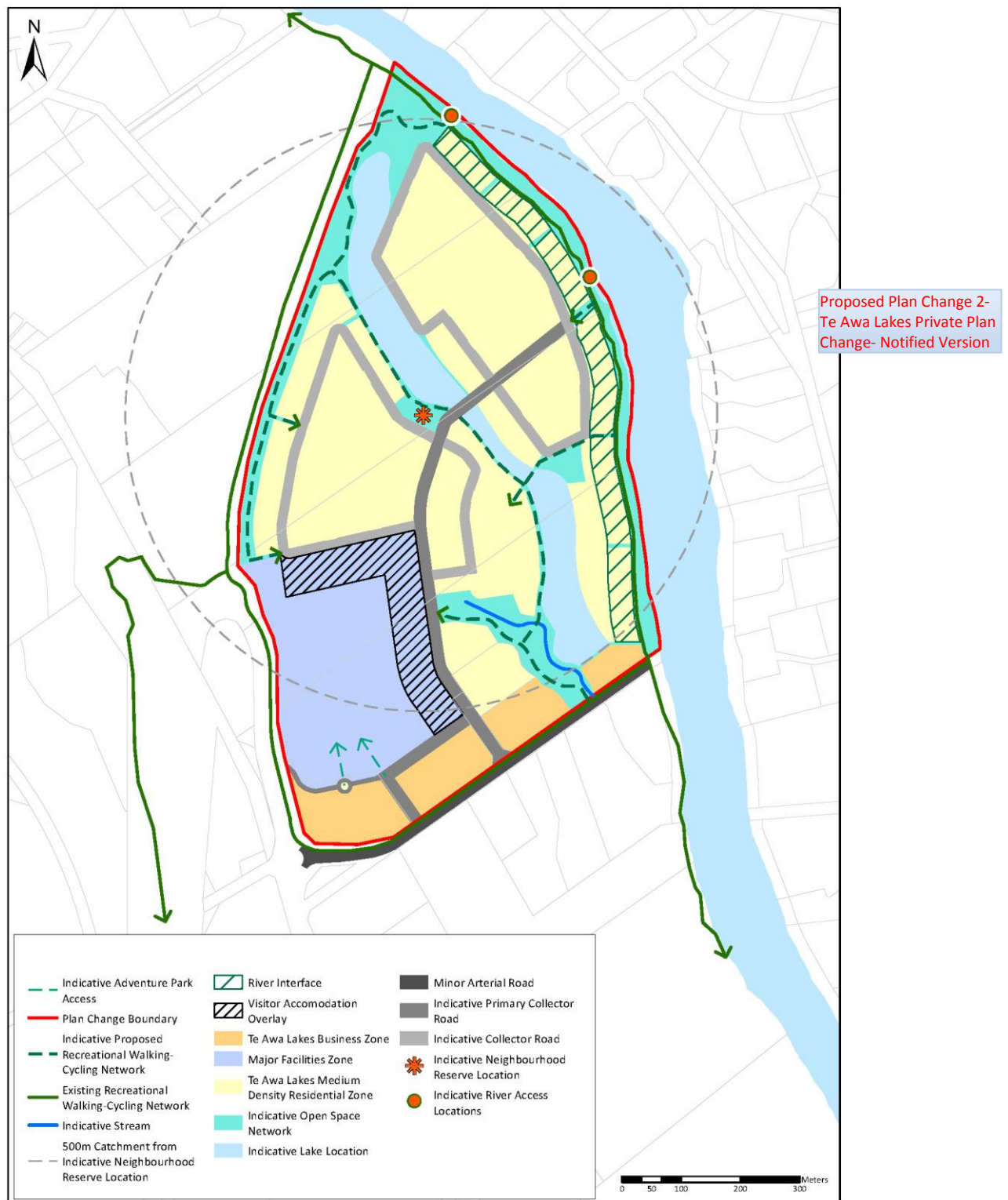
**Figure 2-17/2: Inland Port Building Setbacks and Landscape Controls – Stage 2****Figure 2-17/2 Inland Port Building Setbacks and Landscape Controls - Stage Two**

Drawing Number: sk\_044d  
Date: 24 June 2017  
Revision: D

**Figure 2-17/3: Inland Port Building Setbacks and Landscape Controls – Stage 3****Figure 2-17/3 Inland Port Building Setbacks and Landscape Controls – Stage Three (Future Port Expansion)**



**Figure 2-18: Ruakura Cyclist & Pedestrian Network Plan**

**Figure 2-19: Framework Plan**



**Figure 2-20: Land Development Plan Areas**

Proposed Plan Change 2-  
Te Awa Lakes Private Plan  
Change- Notified Version

