



## Appendix 2: Structure Plans

### Structure Plans Locality Guide

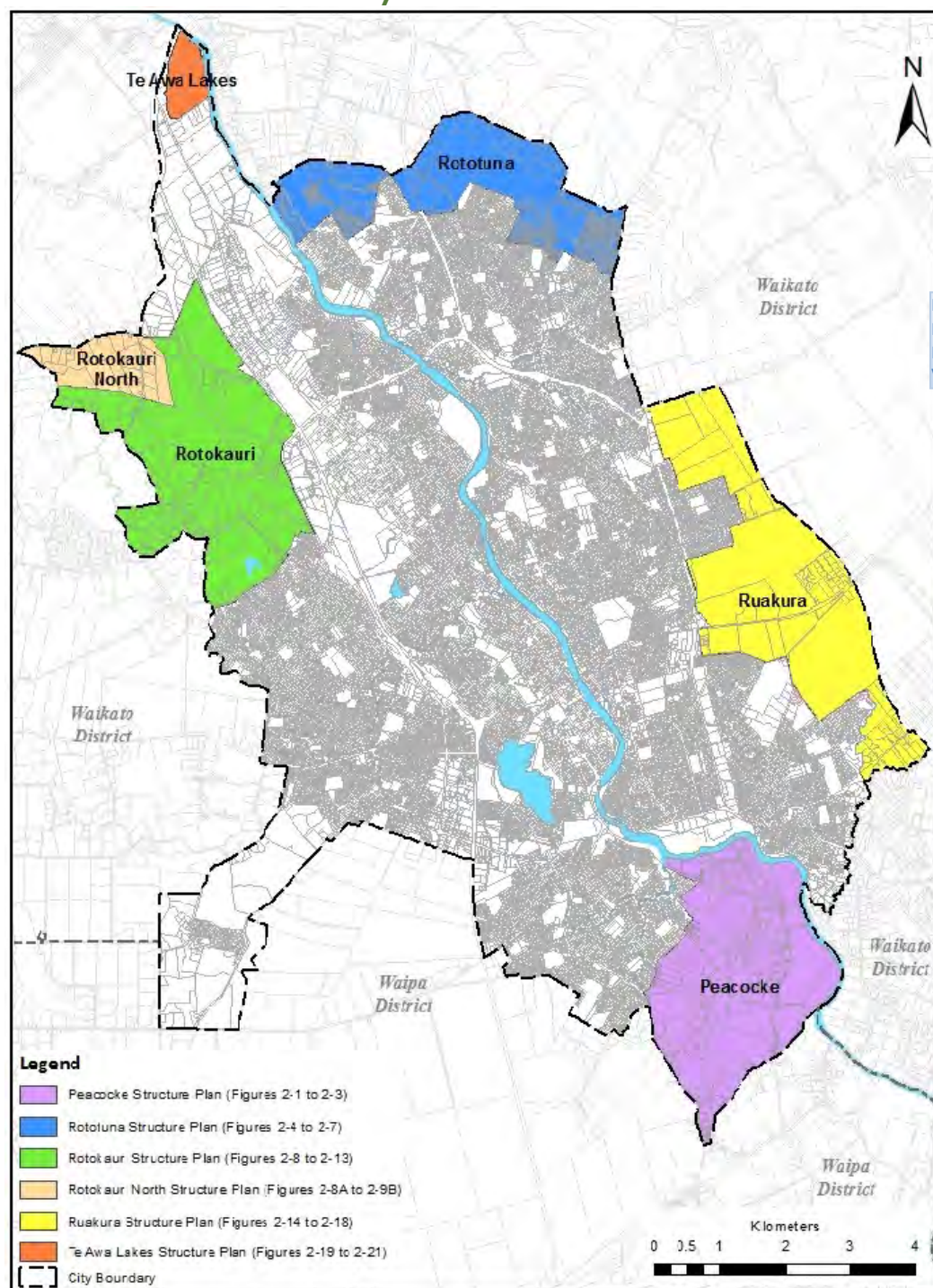




Figure 2-1: Peacocke Structure Plan – Land Use

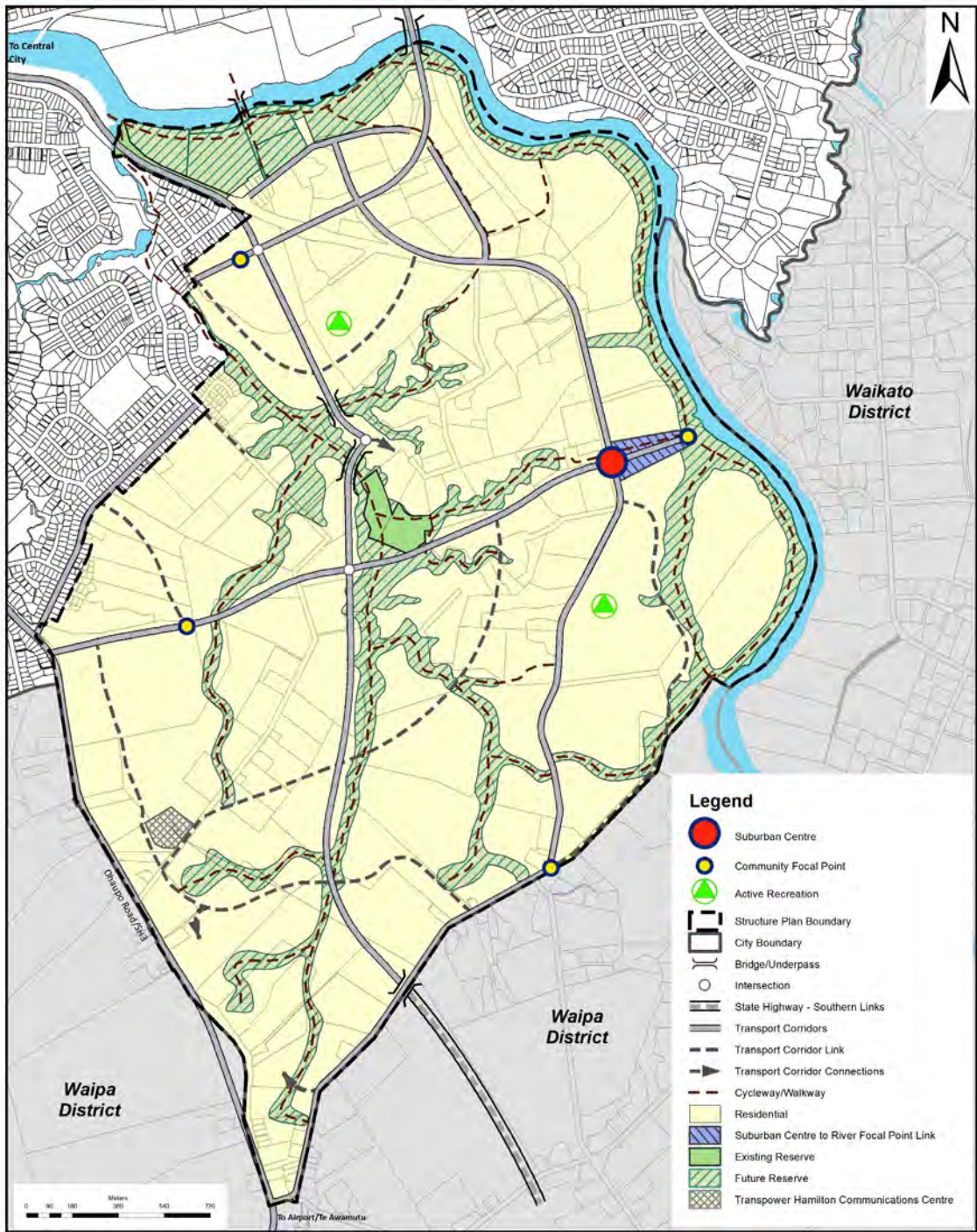




Figure 2-2: Peacocke Structure Plan – Staging and Transport Network

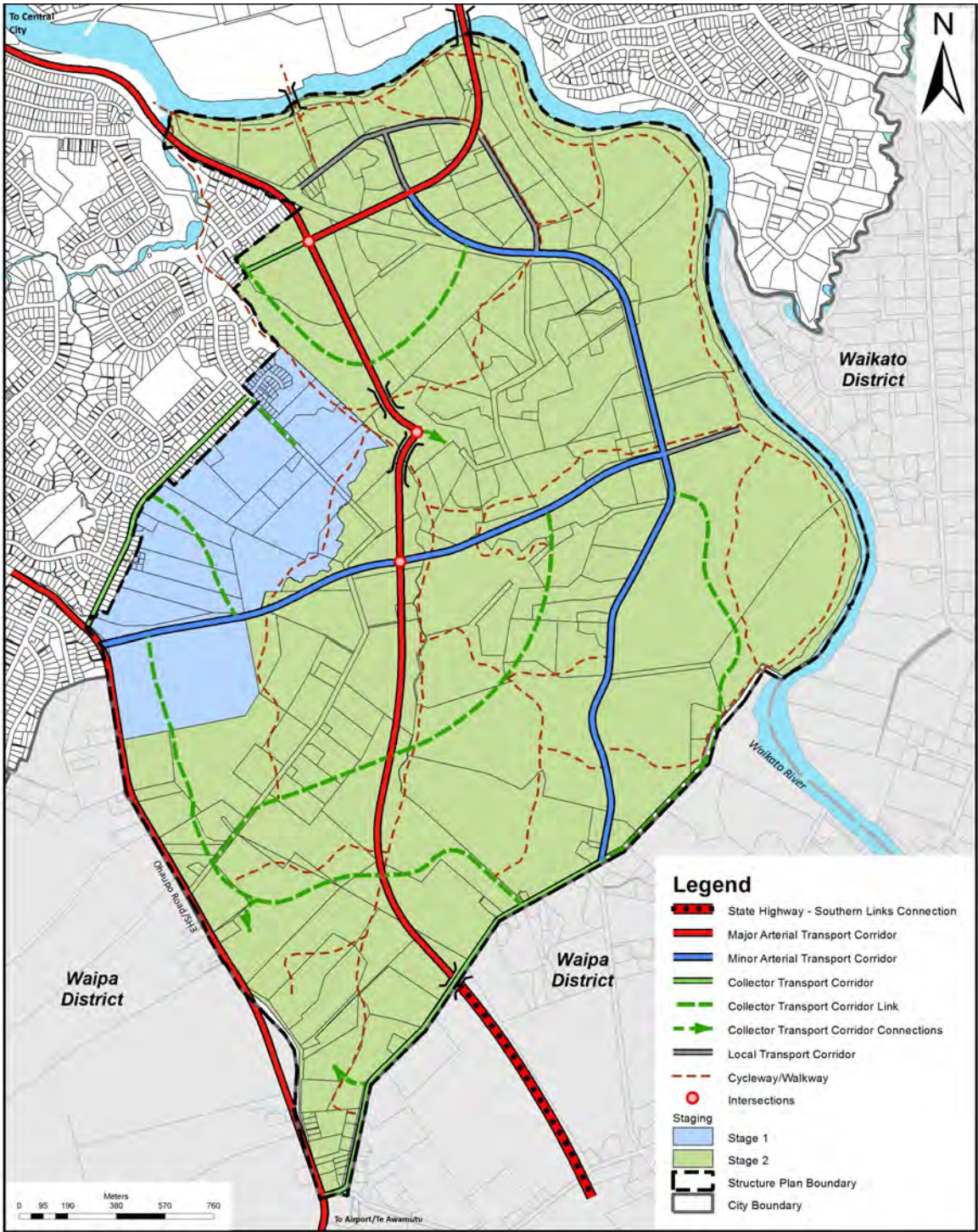
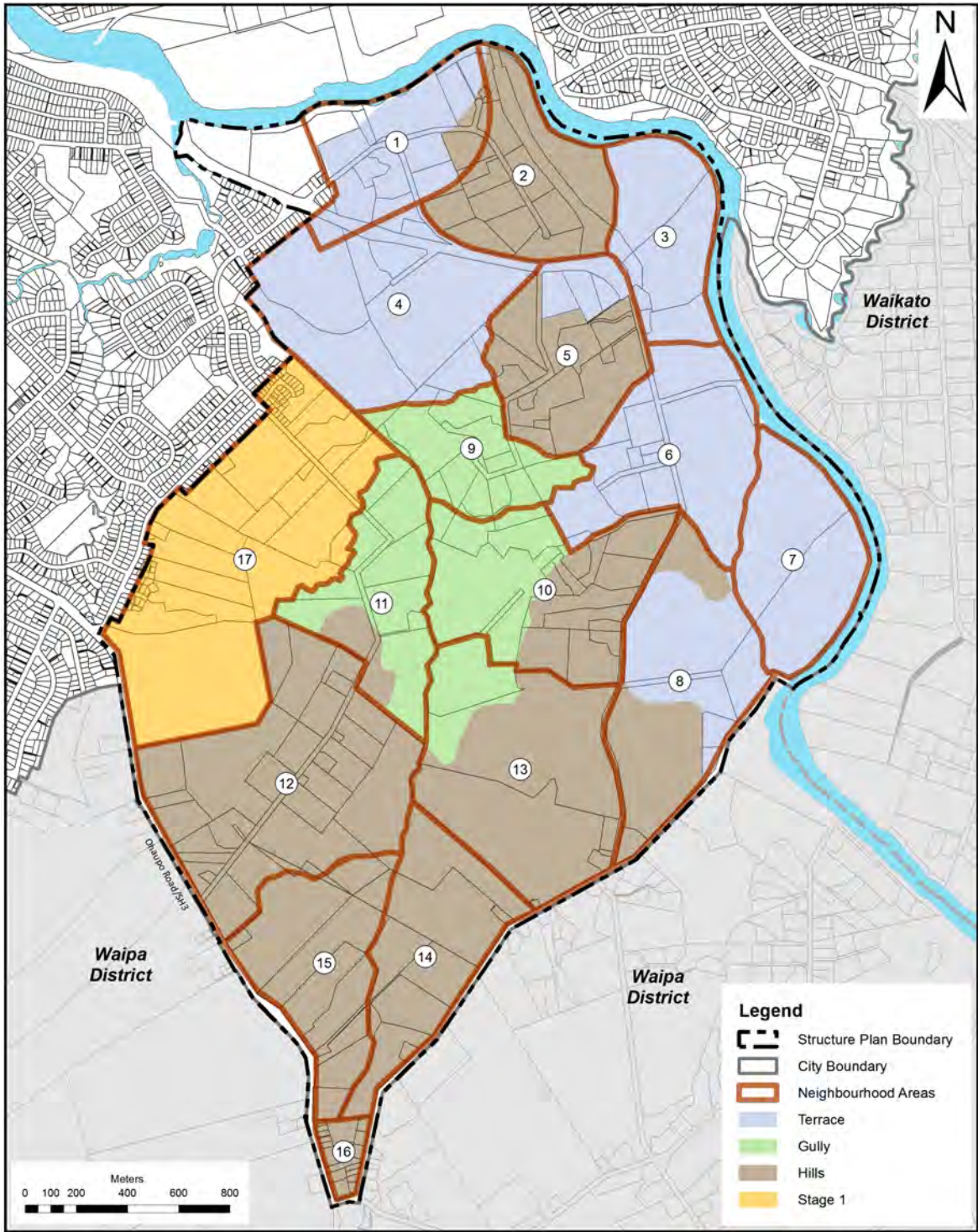




Figure 2-3: Peacocke Structure Plan – Character Areas and Neighbourhoods





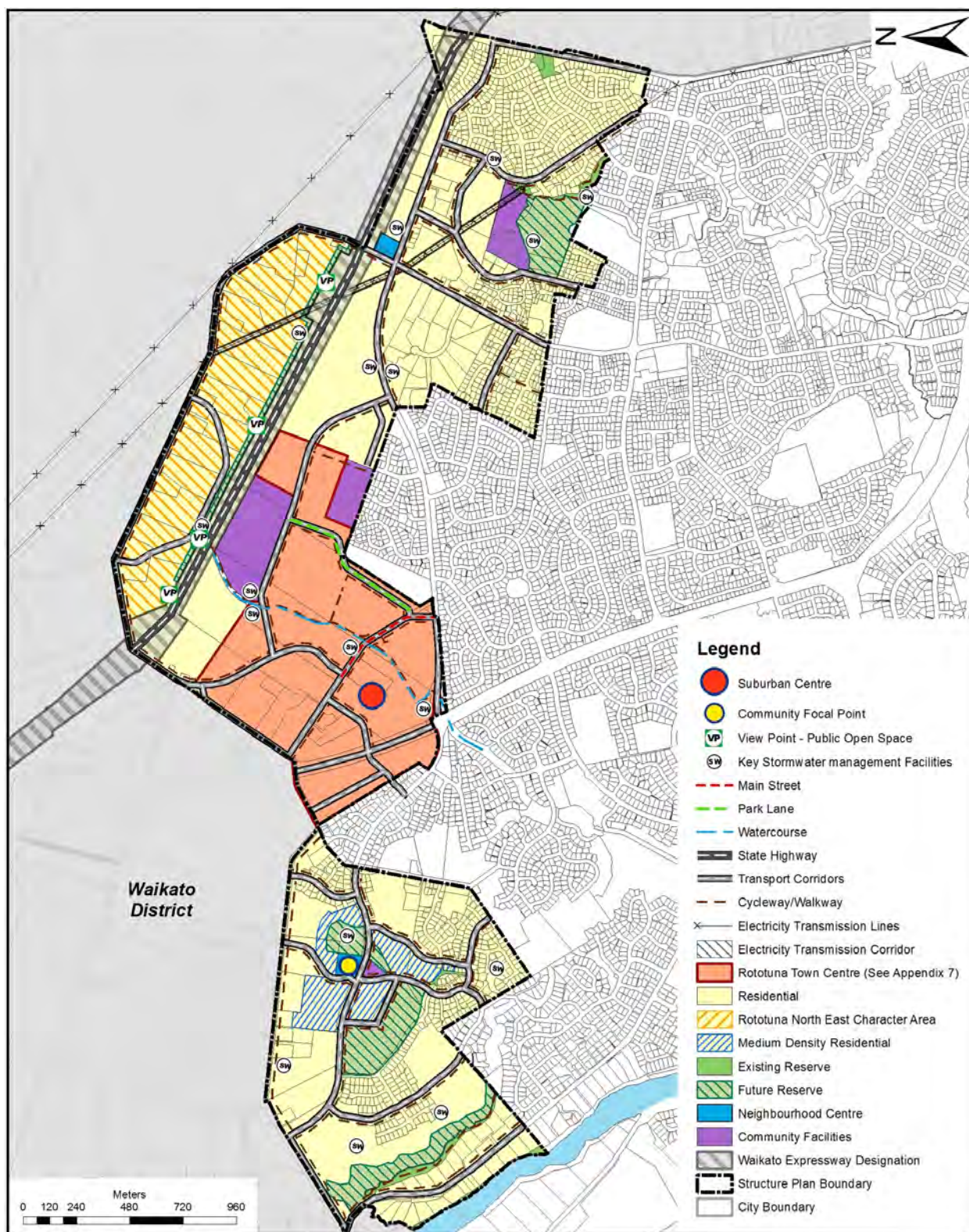
**Figure 2-4: Rototuna Structure Plan – Land Use**



Figure 2-5: Rototuna Structure Plan – Transport Network

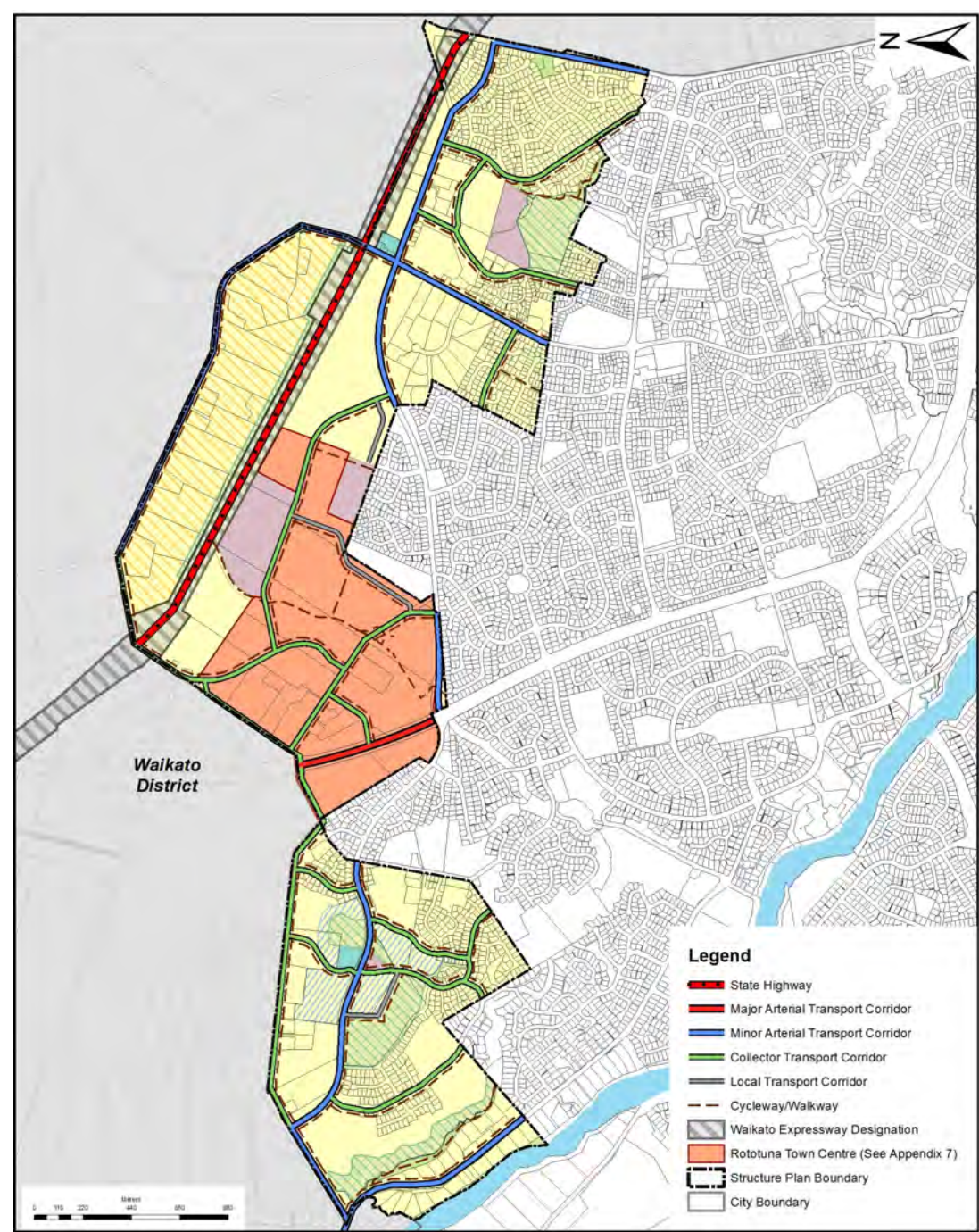


Figure 2-6: Rototuna Cycling and Walking Network

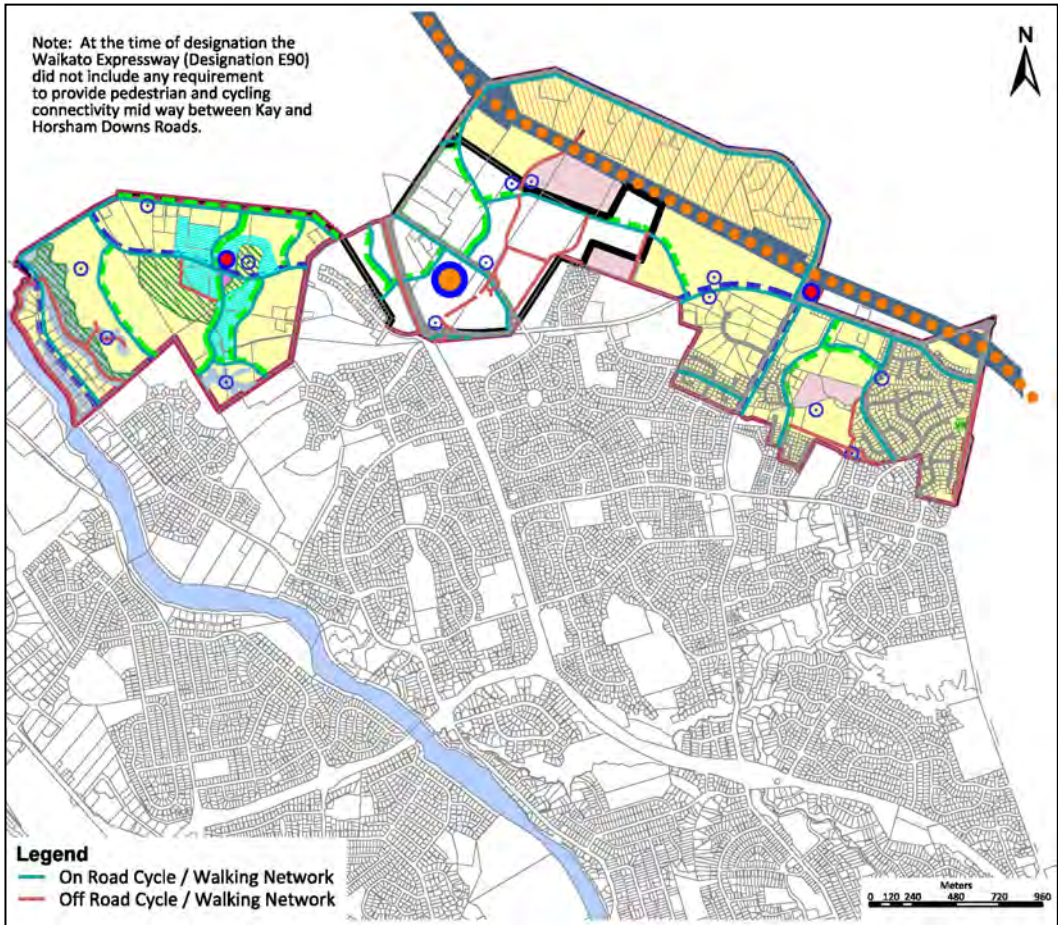




Figure 2-7: Rototuna Catchment Boundaries

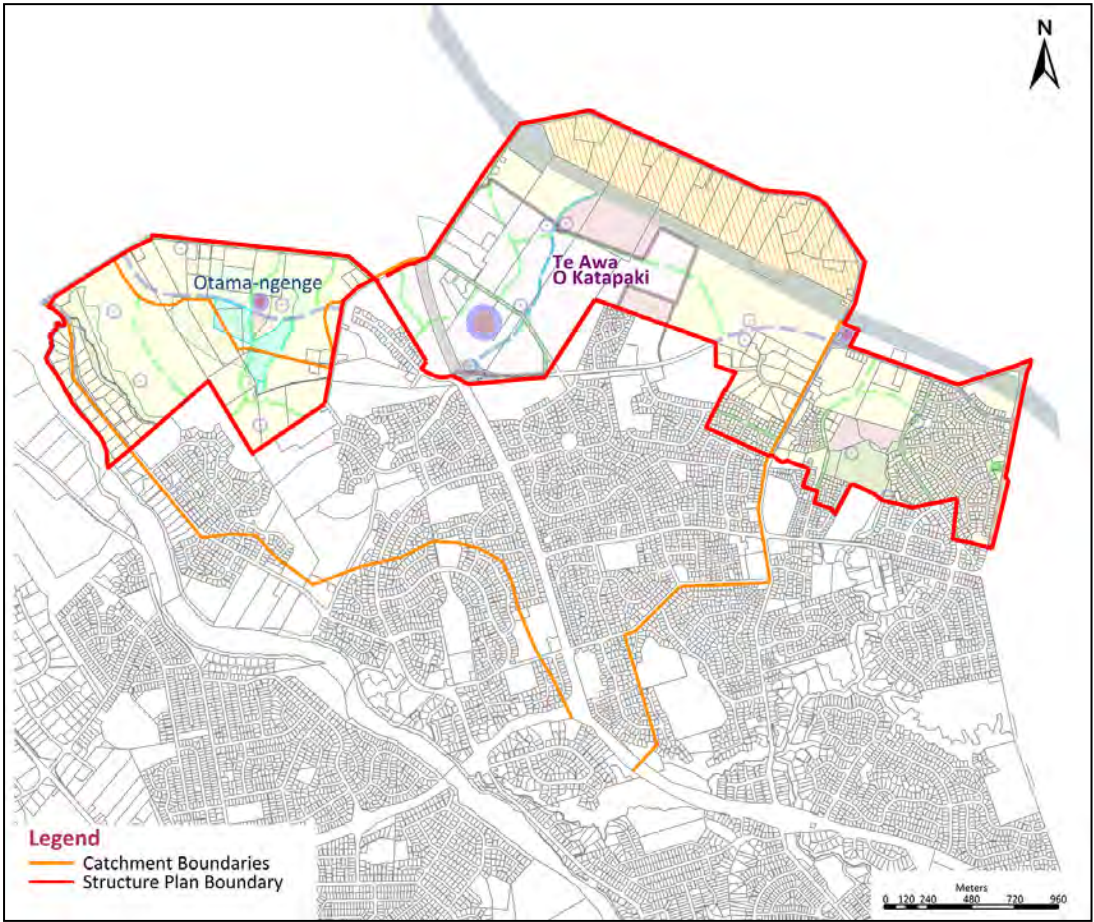
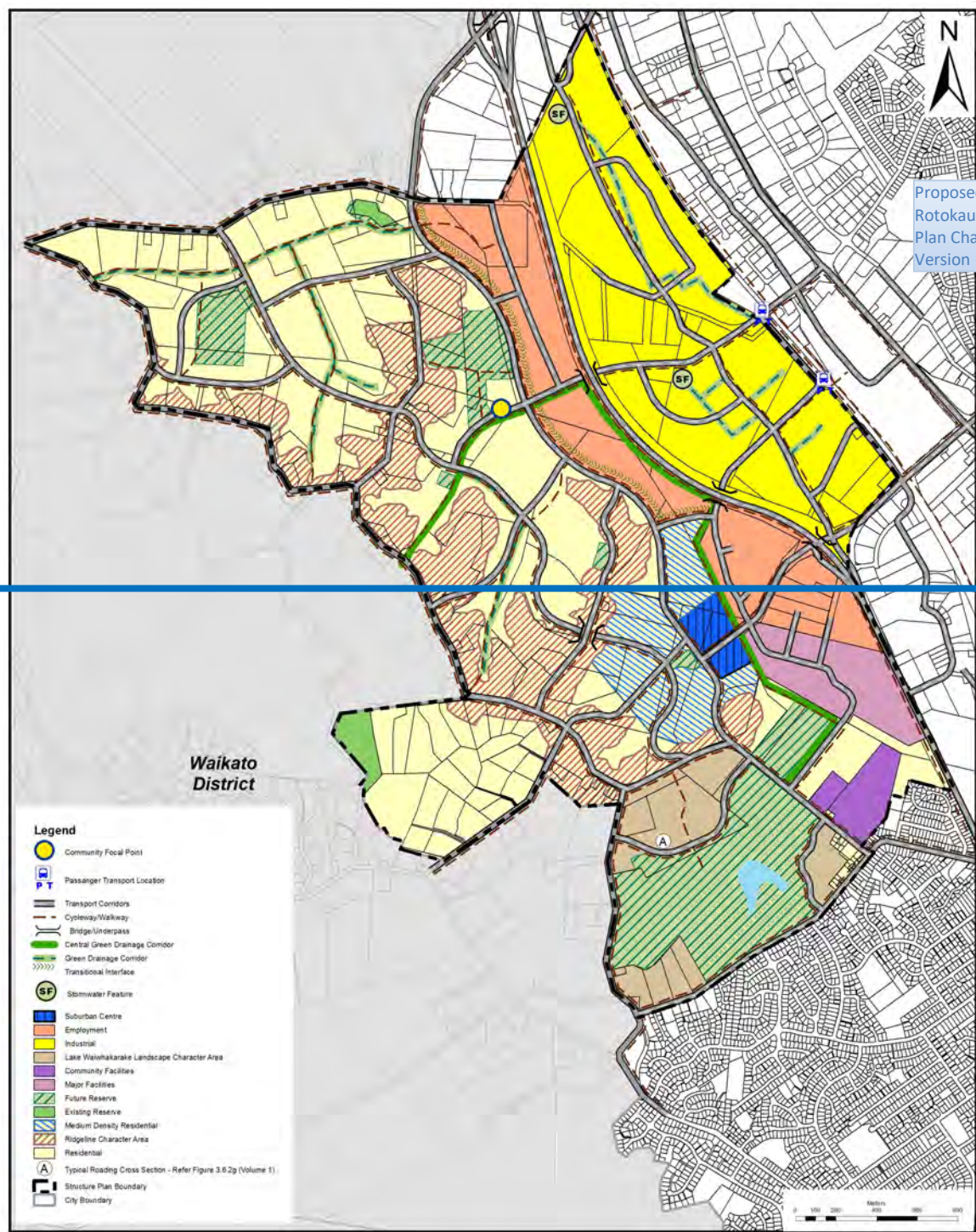
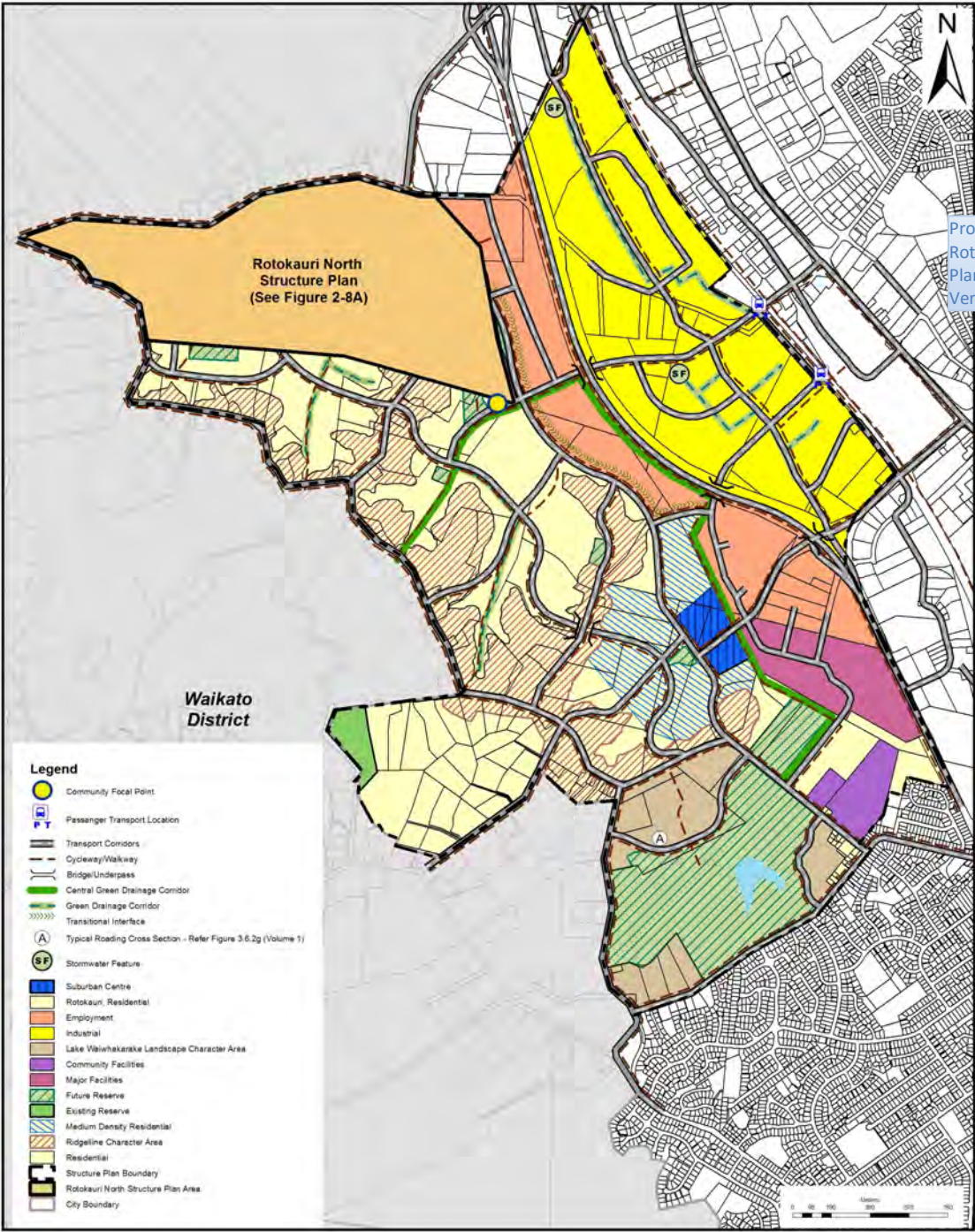




Figure 2-8: Rotokauri Structure Plan – Land Use





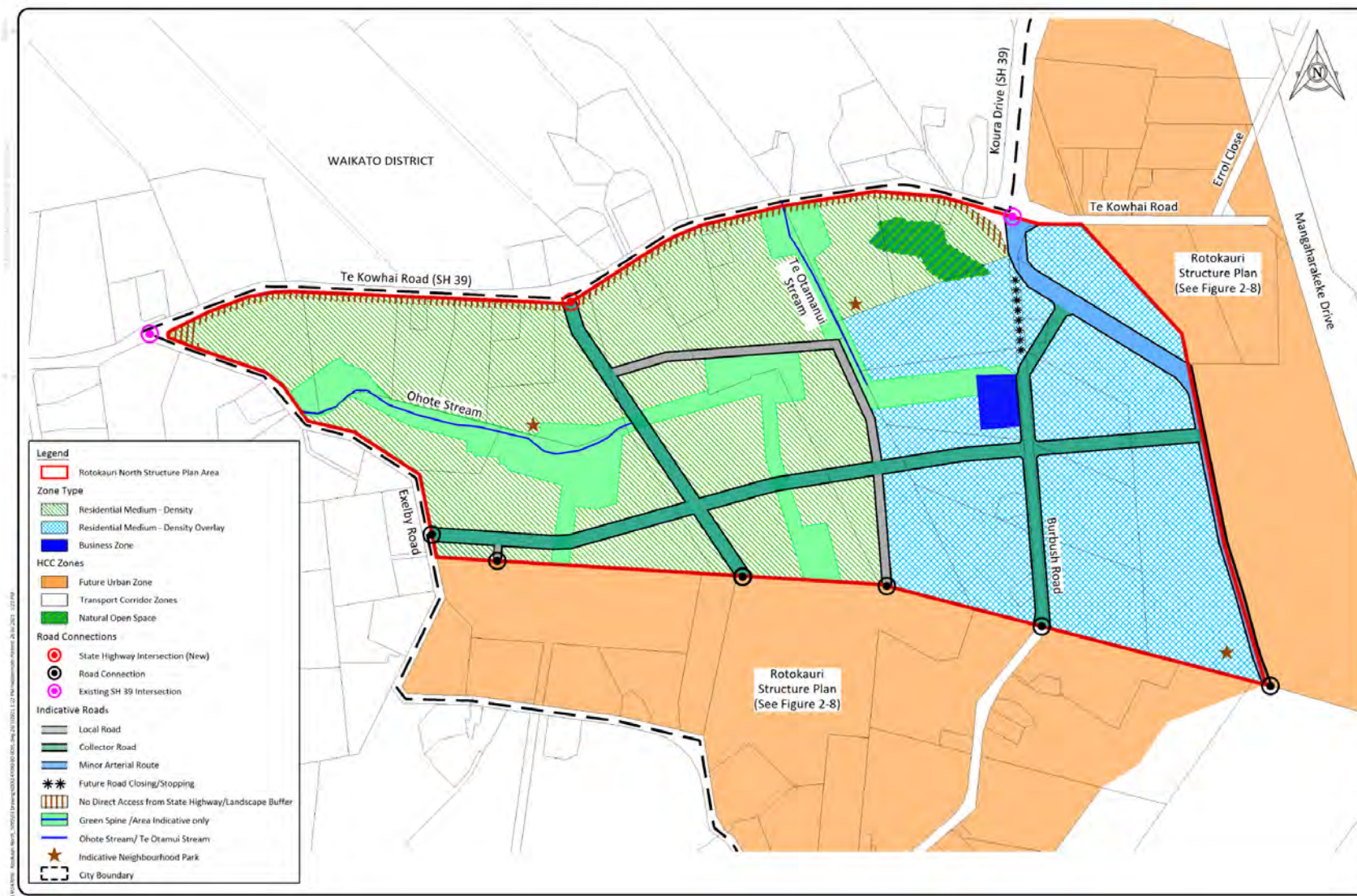


Proposed Plan Change 7-  
Rotokauri North Private  
Plan Change - Notified  
Version





**Figure 2-8A: Rotokauri North Structure Plan**

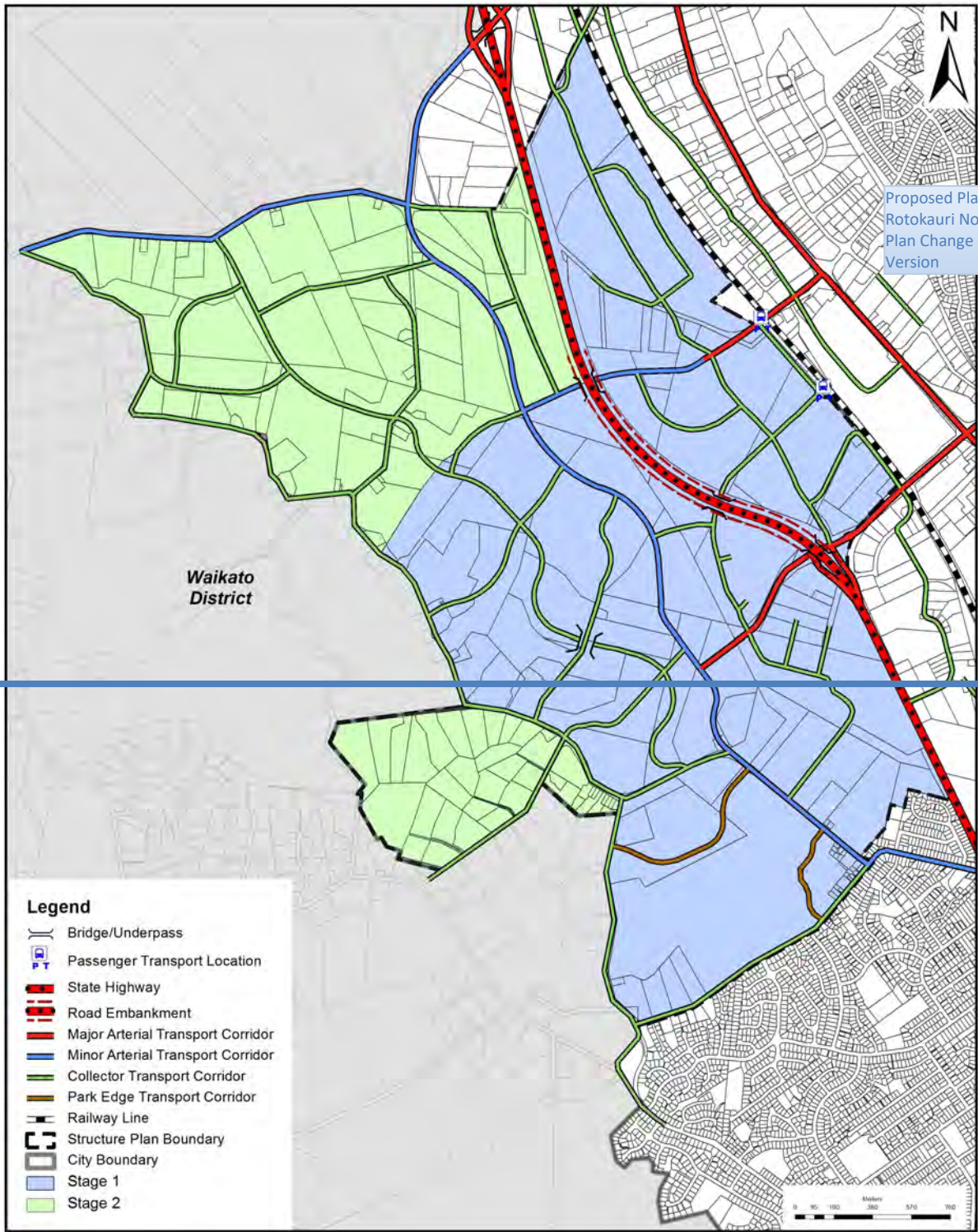


Proposed Plan Change 7-  
Rotokauri North Private  
Plan Change - Notified  
Version





Figure 2-9: Rotokauri Structure Plan – Staging and Transport Network





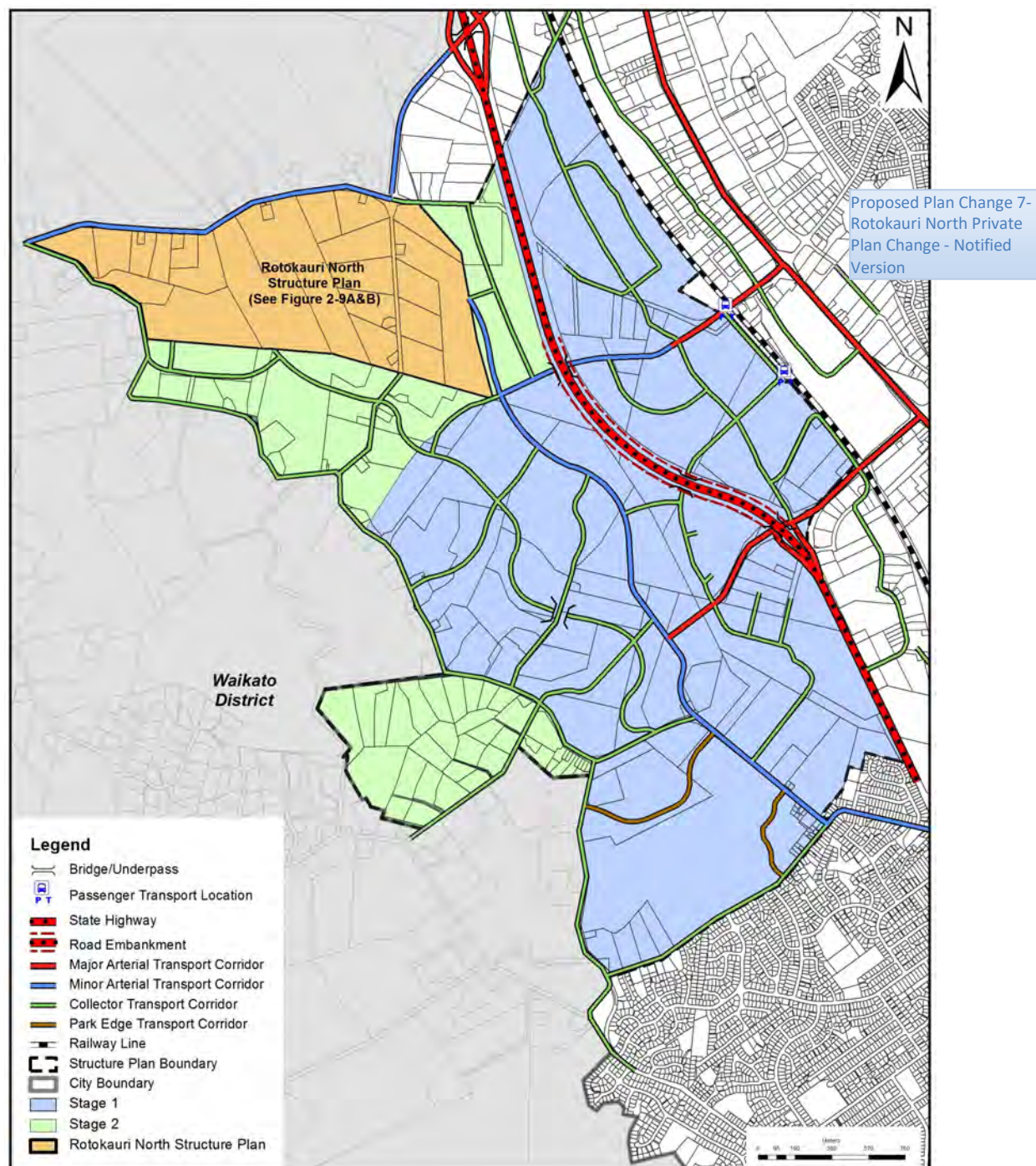
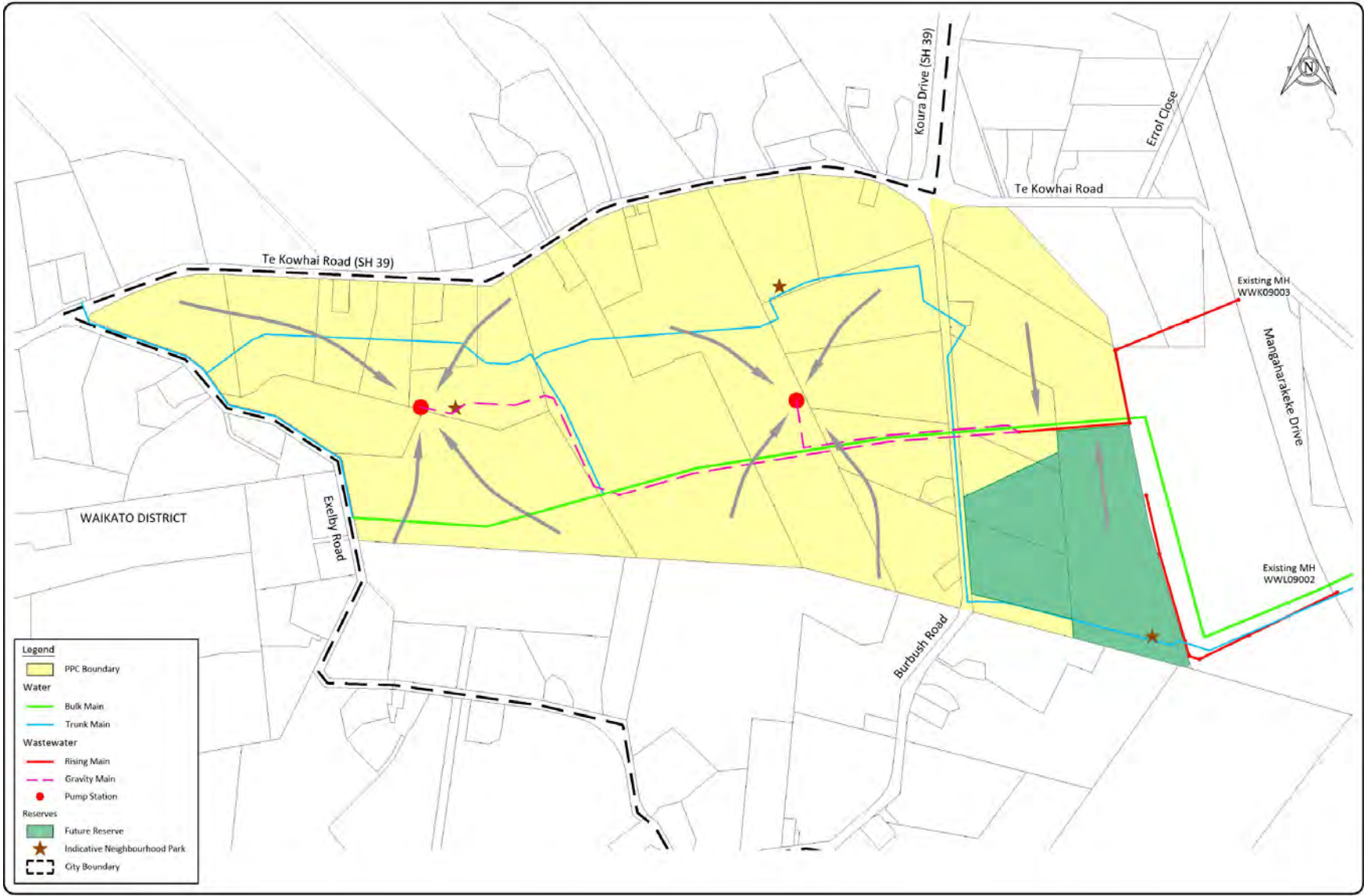






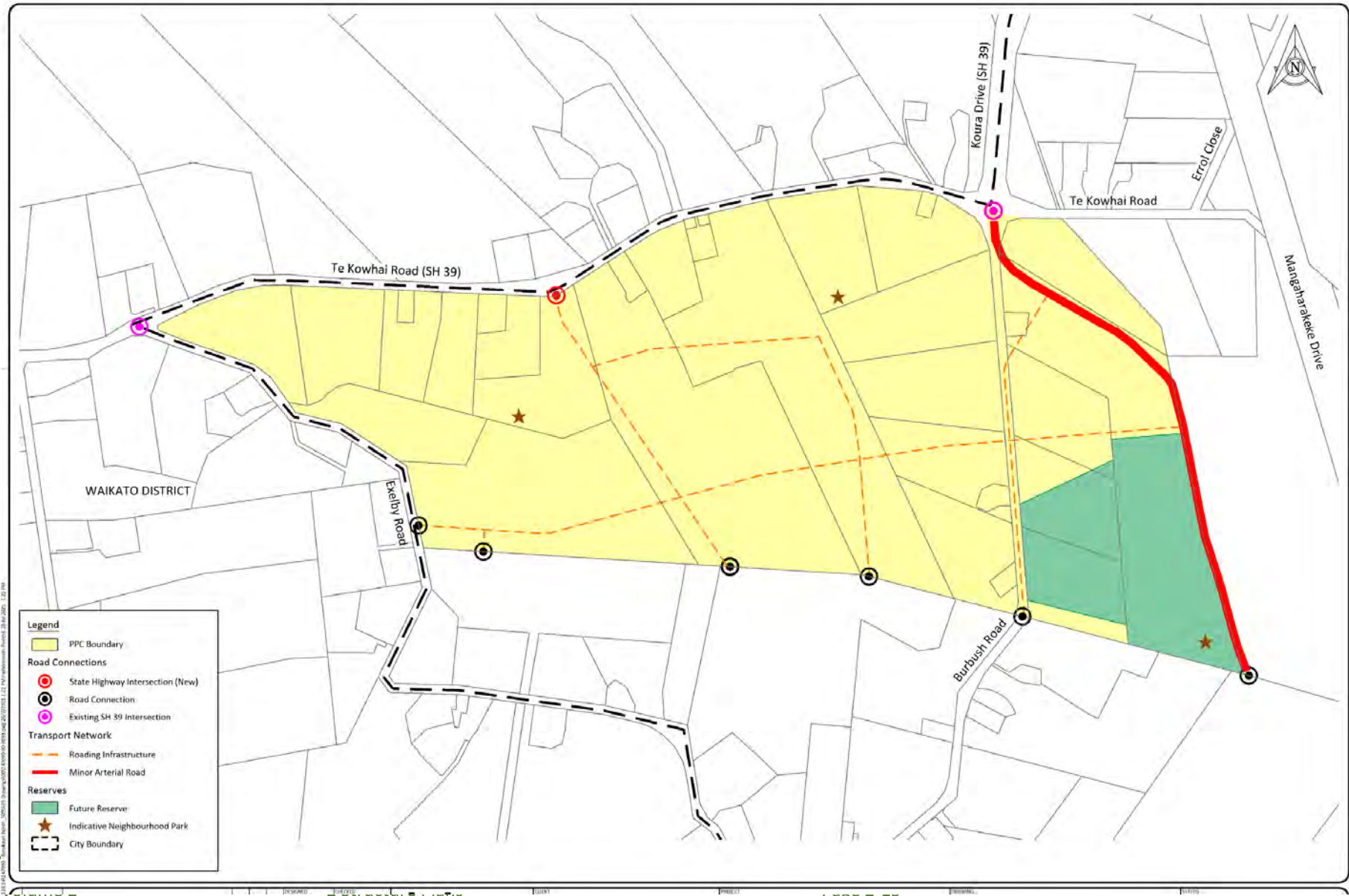
Figure 2-9A – Rotokauri North Strategic Infrastructure – Water and Waste Water



used Plan Change 7-  
kauri North Private  
Change - Notified  
on

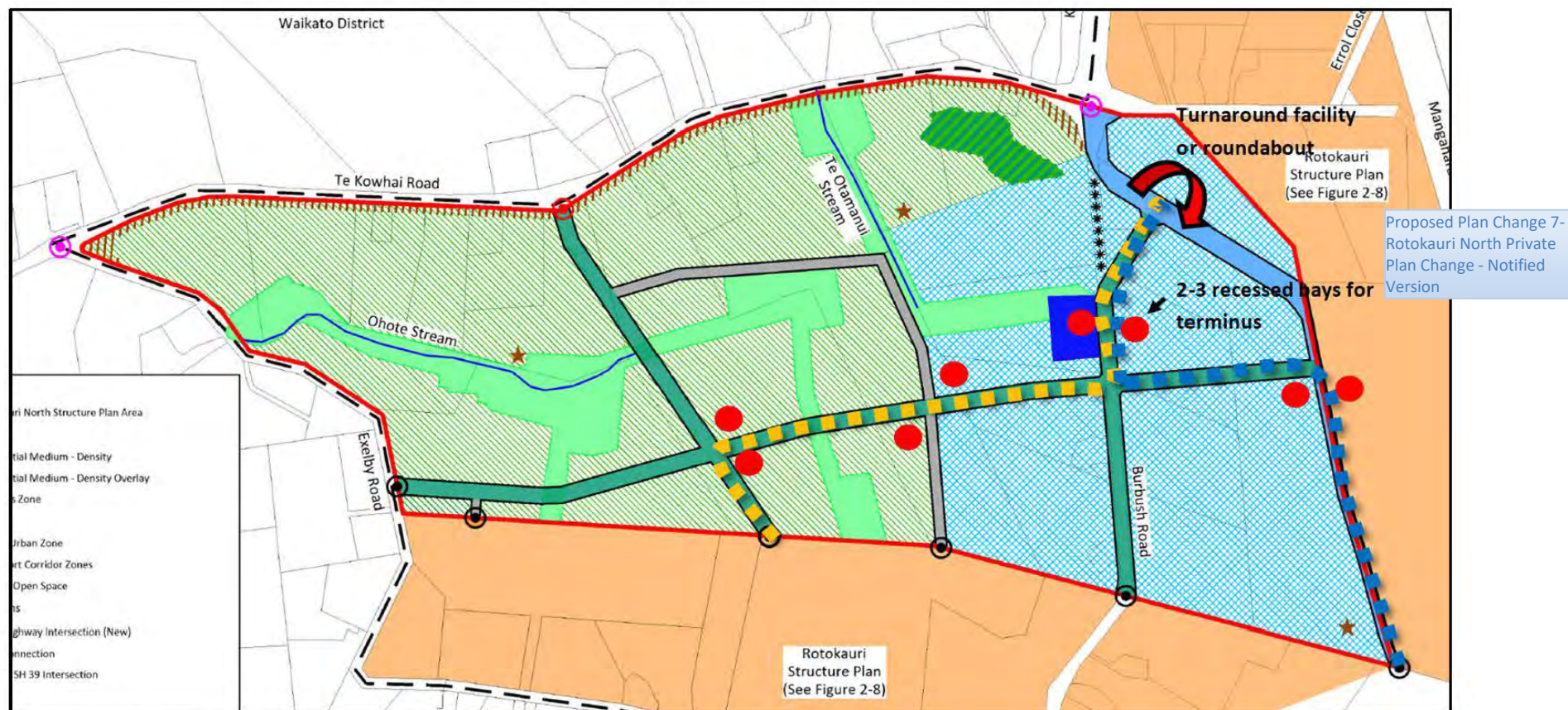


Figure 2-9B – Rotokauri North Strategic Infrastructure – Staging, Transport Network and Reserves





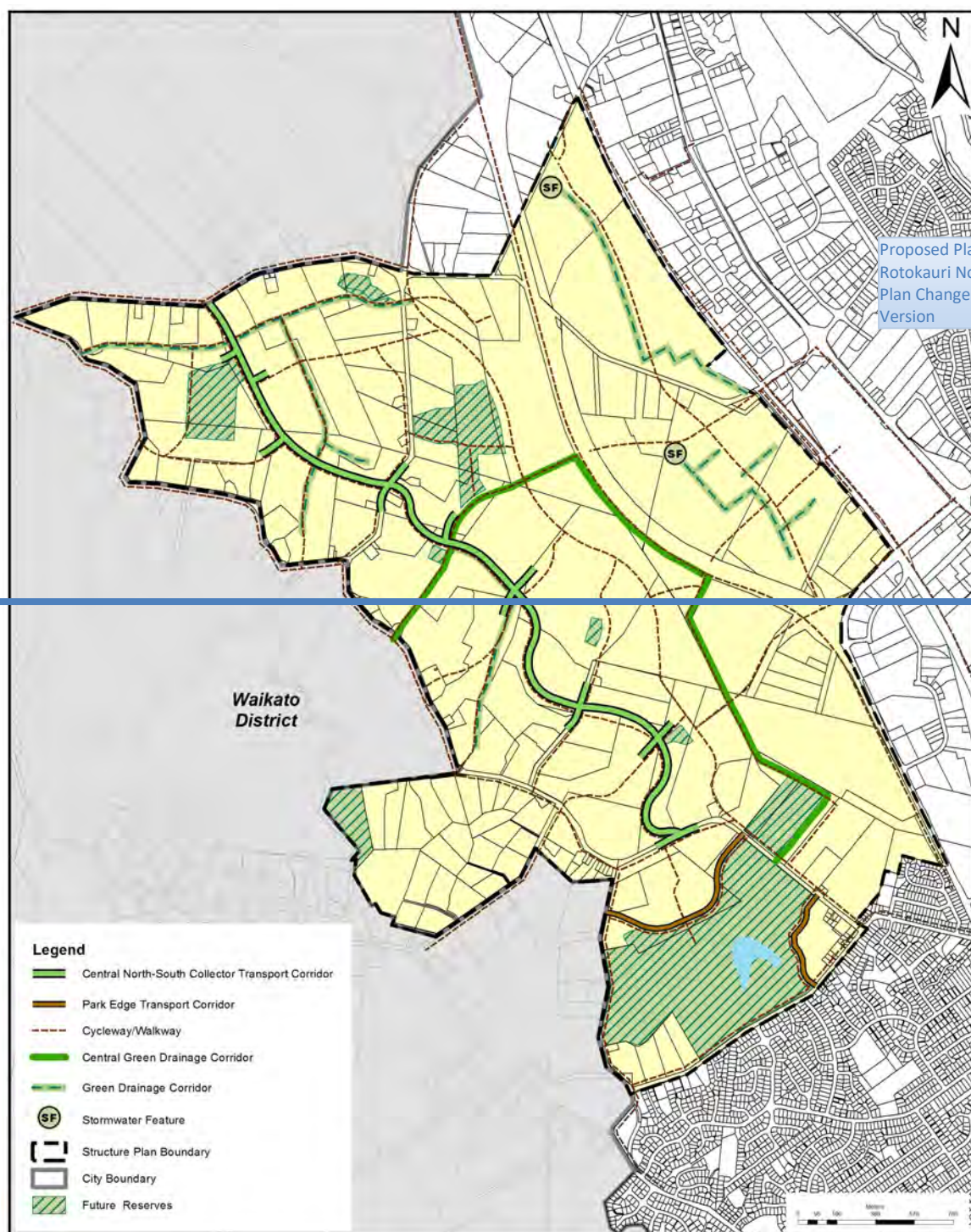
**Figure 2-9C – Rotokauri North Indicative Waikato Regional Council Preferred Public Transport Route**  
*(Note: this is not a Structure Plan Map but an information map only)*



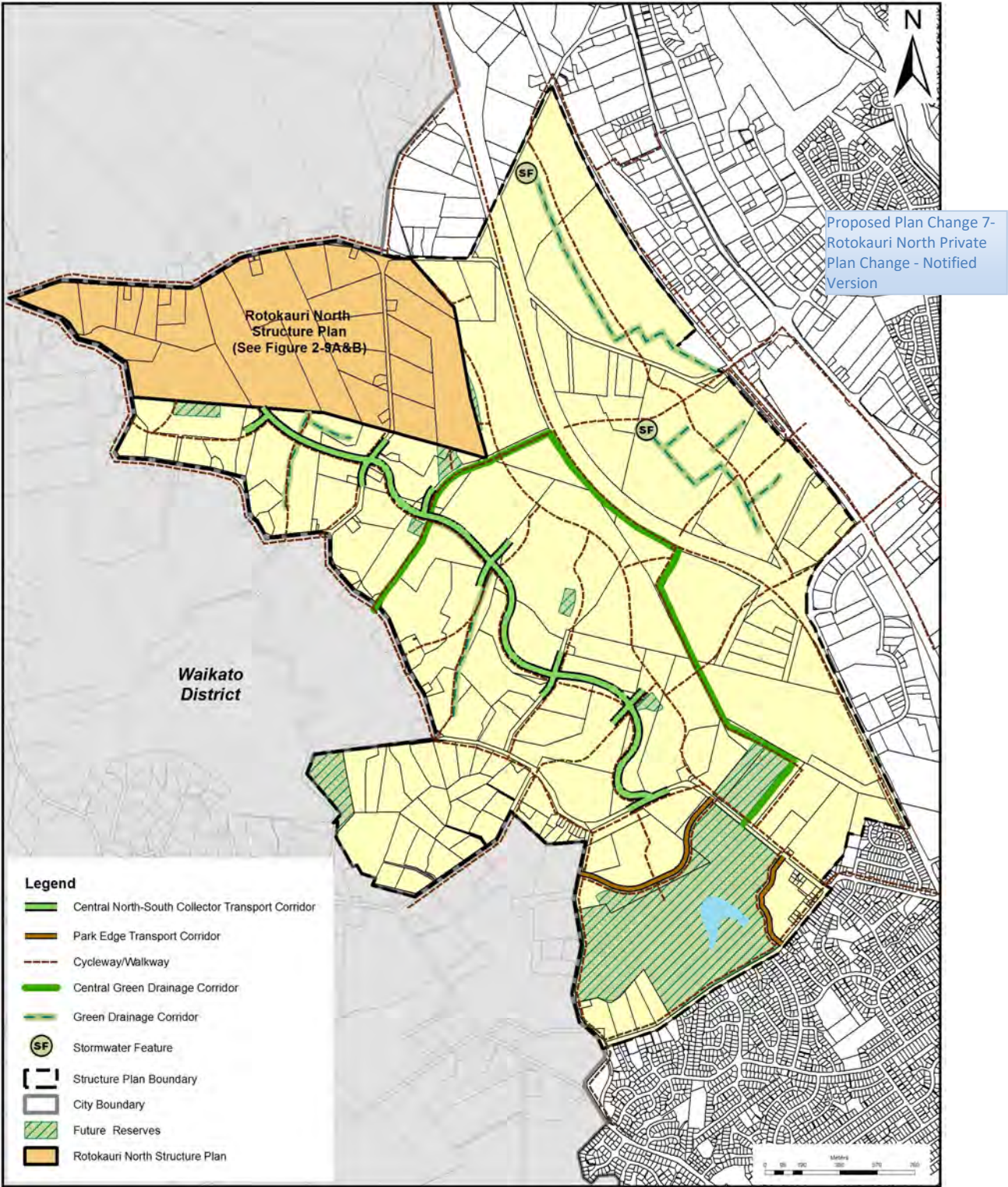




**Figure 2-10: Rotokauri Structure Plan – Open Space Network**











**Figure 2-11: Rotokauri Neighbourhood Centre**

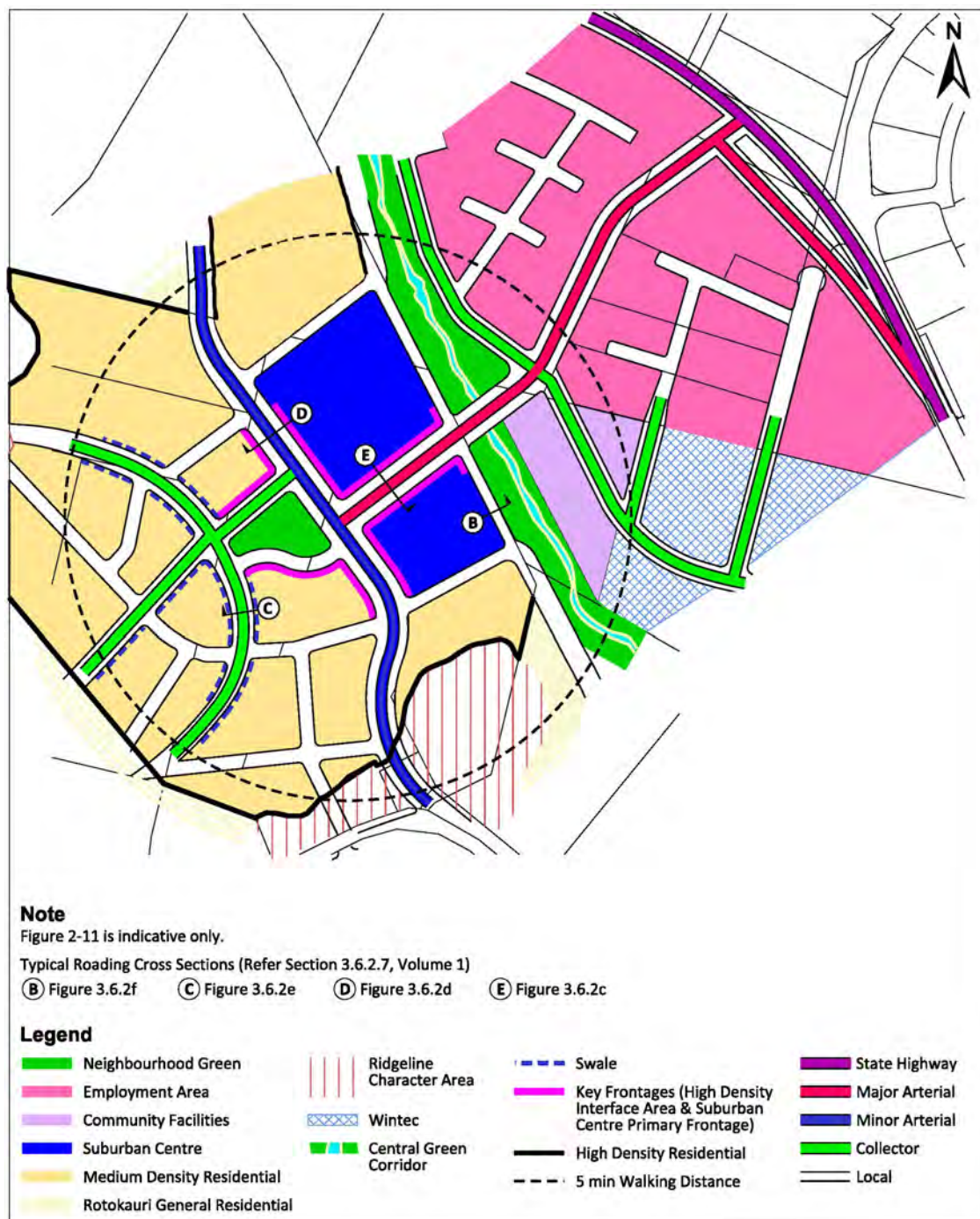


Figure 2-12: Rotokauri Interface Areas

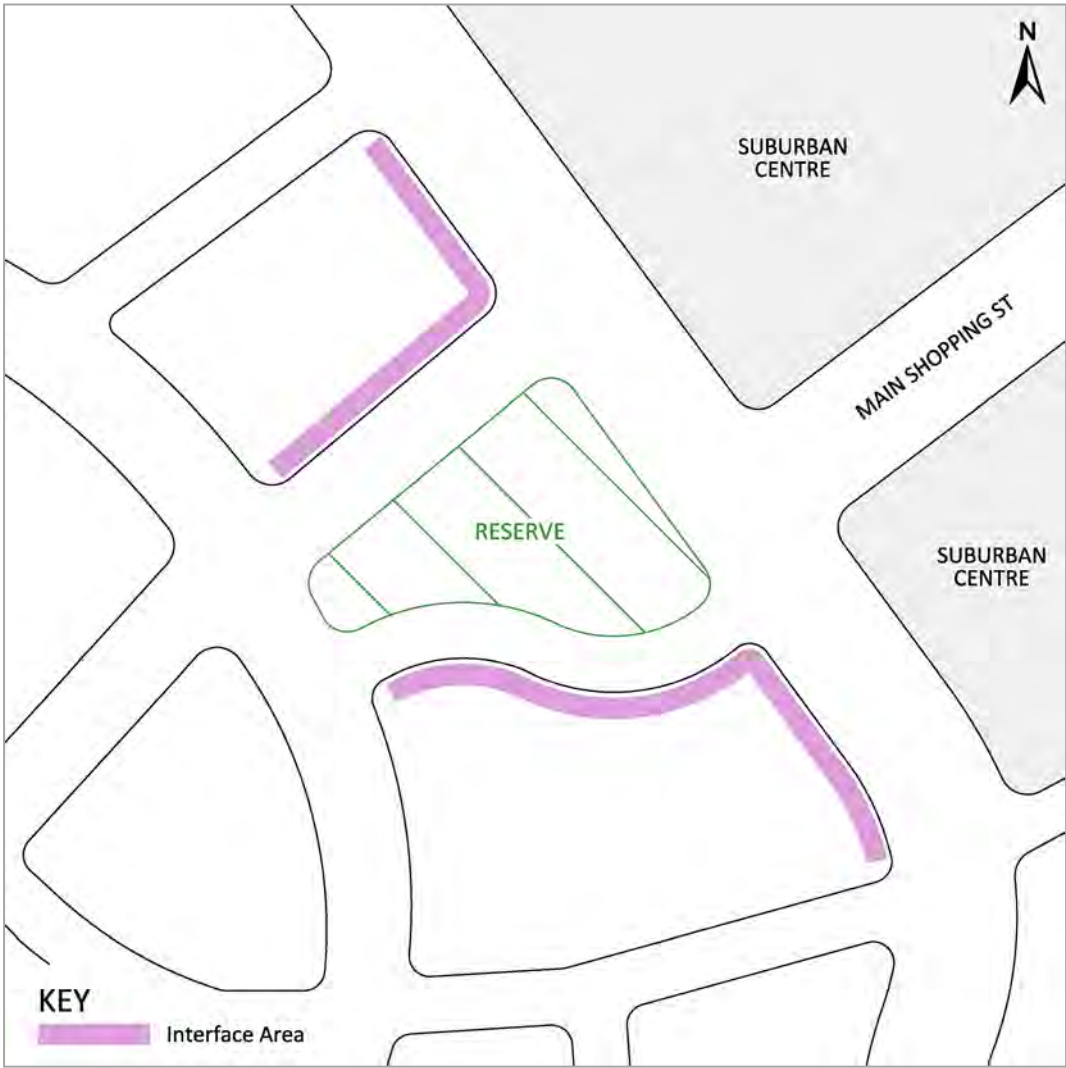
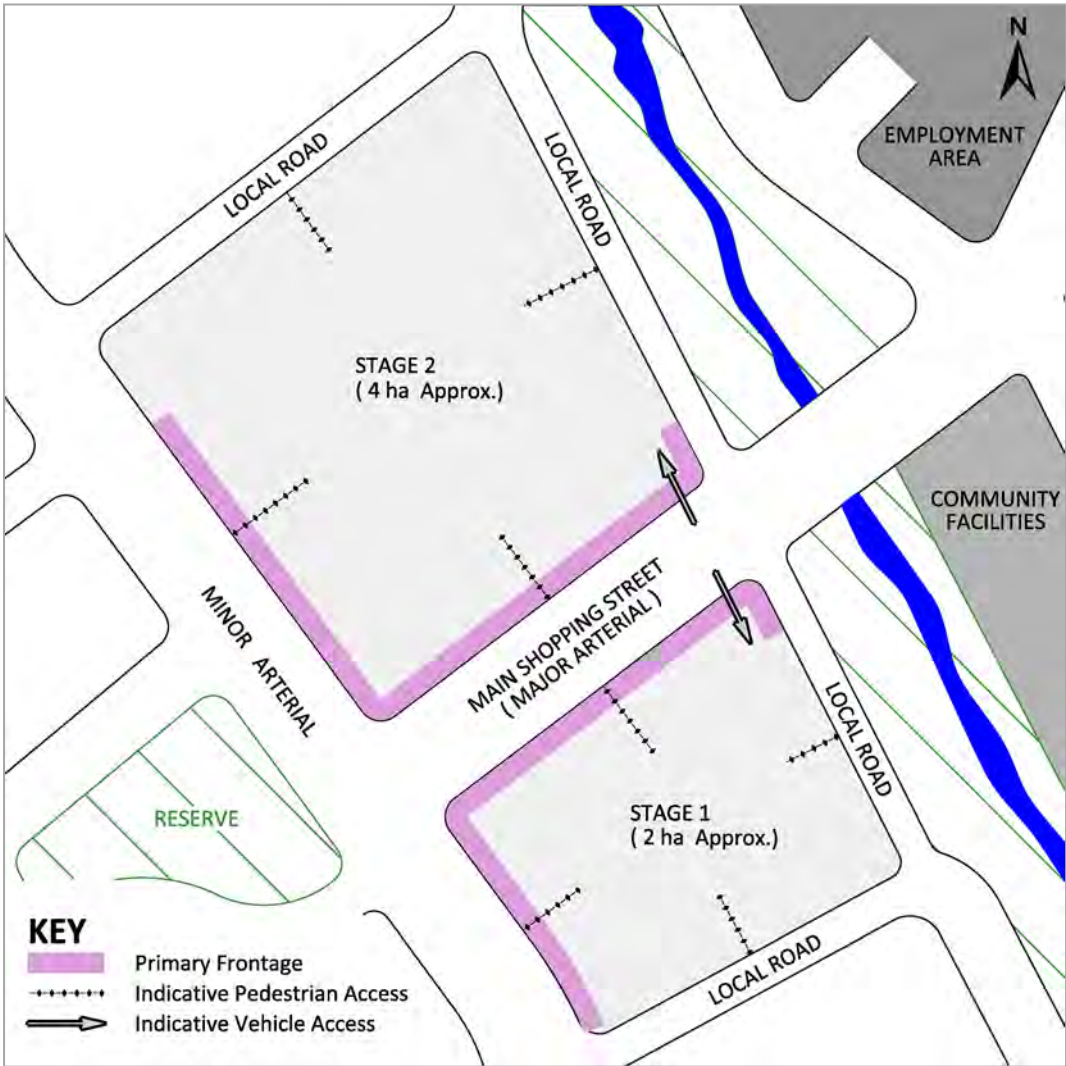
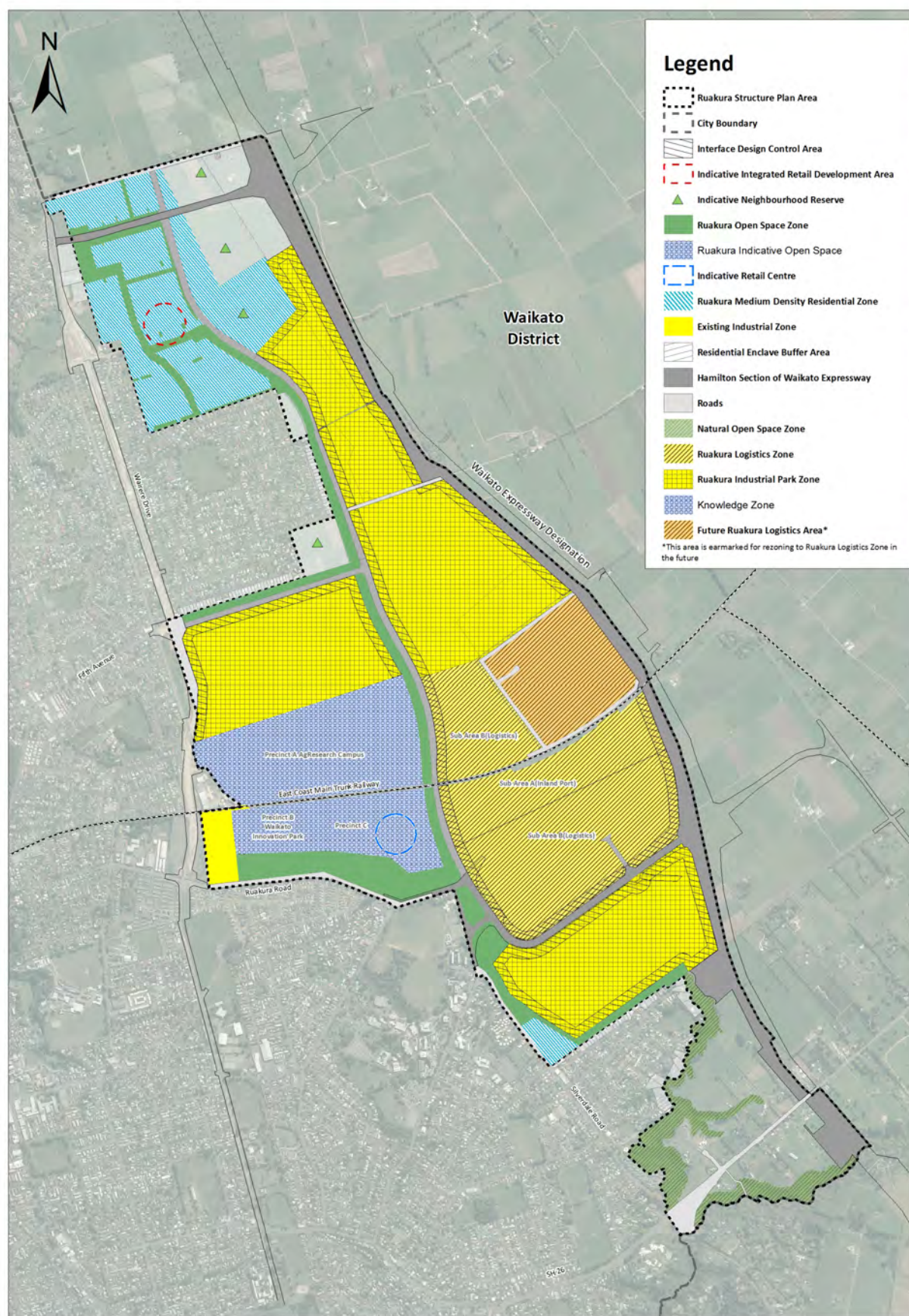




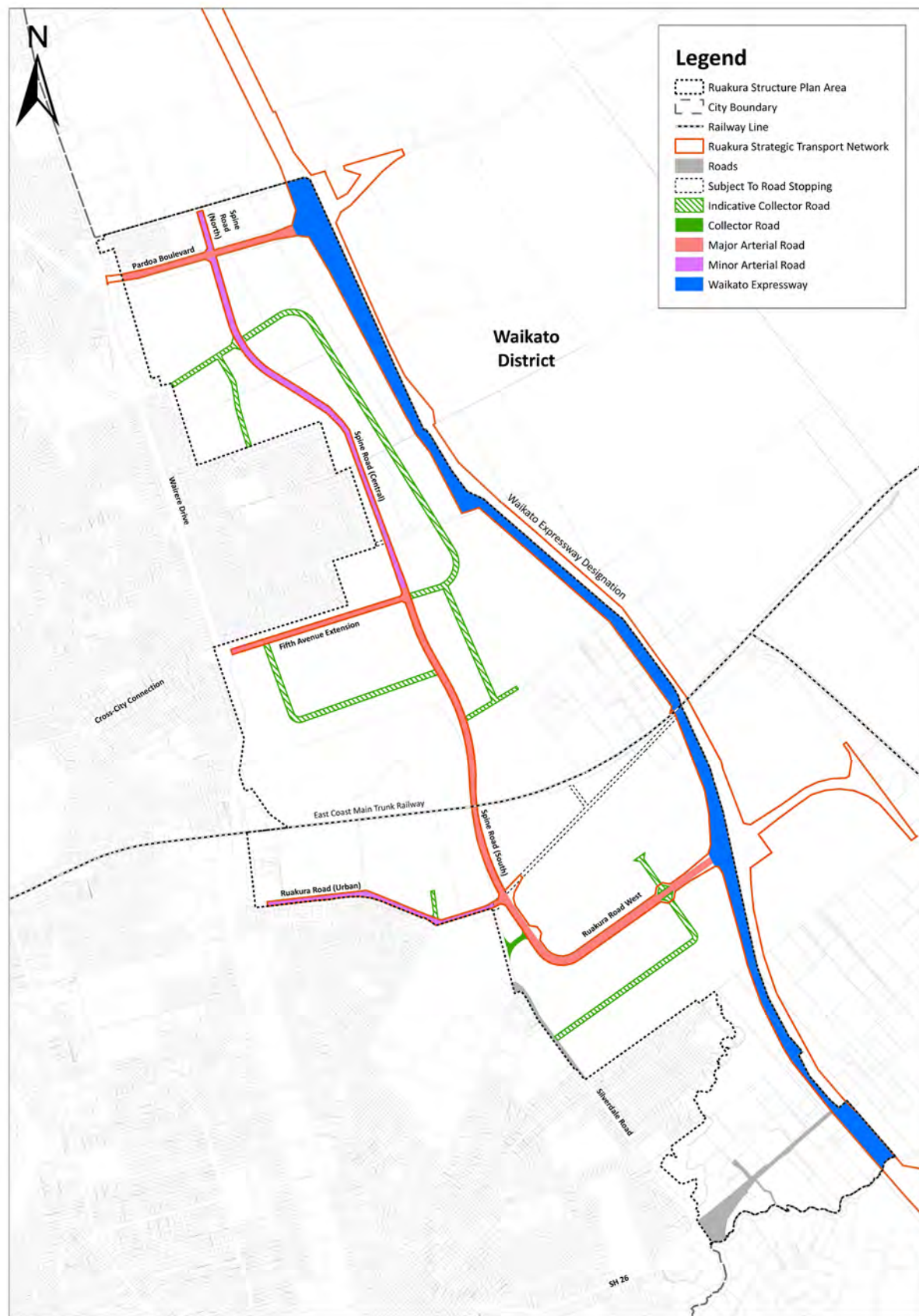
Figure 2-13: Rotokauri Suburban Centre Primary Frontages





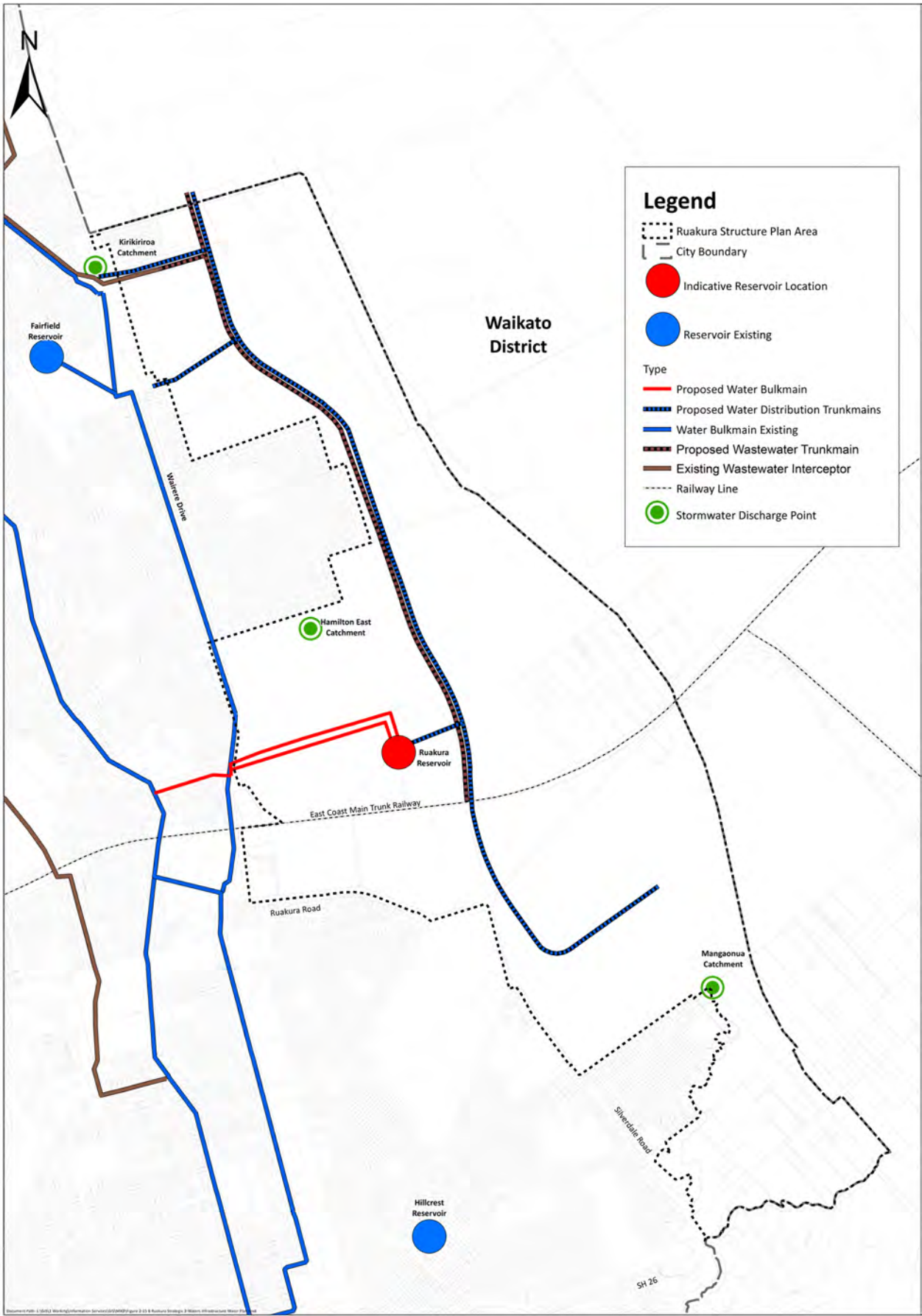
**Figure 2-14: Ruakura Structure Plan – Land Use**



**Figure 2-15A: Ruakura Strategic Infrastructure – Transport**



**Figure 2-15B:** Ruakura Strategic Infrastructure – Three Waters





The map displays the Ruakura Structure Plan Area, which is outlined by a dashed line. The area is divided into several zones and development areas, each identified by a letter and a specific color or pattern. The zones include:

- General Residential Zone:** Light grey background.
- Existing Industrial Zone:** Yellow background.
- Ruakura Open Space Zone:** Green background.
- Ruakura Medium Density Residential Zone:** Blue background with diagonal lines.
- Ruakura Logistics Zone:** Yellow background with diagonal lines.
- Ruakura Industrial Park Zone:** Yellow background with a grid pattern.
- Knowledge Zone:** Blue background with a circular pattern.
- Future Ruakura Logistics Area:** Yellow background with diagonal lines.

The map also shows the following features:

- City Boundary:** A solid black line.
- Land Development Plan Areas:** Outlined by a red line.
- Railway Line:** A black line with cross-ticks.
- ESOs:** Outlined by a thick black line.

The map includes a north arrow in the top left corner. The surrounding areas are labeled "Waikato District" and "Waikato Regional Council". The map also shows the "Ruakura River" and "Ruakura Road".



Figure 2-17/1: Inland Port Building Setbacks and Landscape Controls – Stage 1

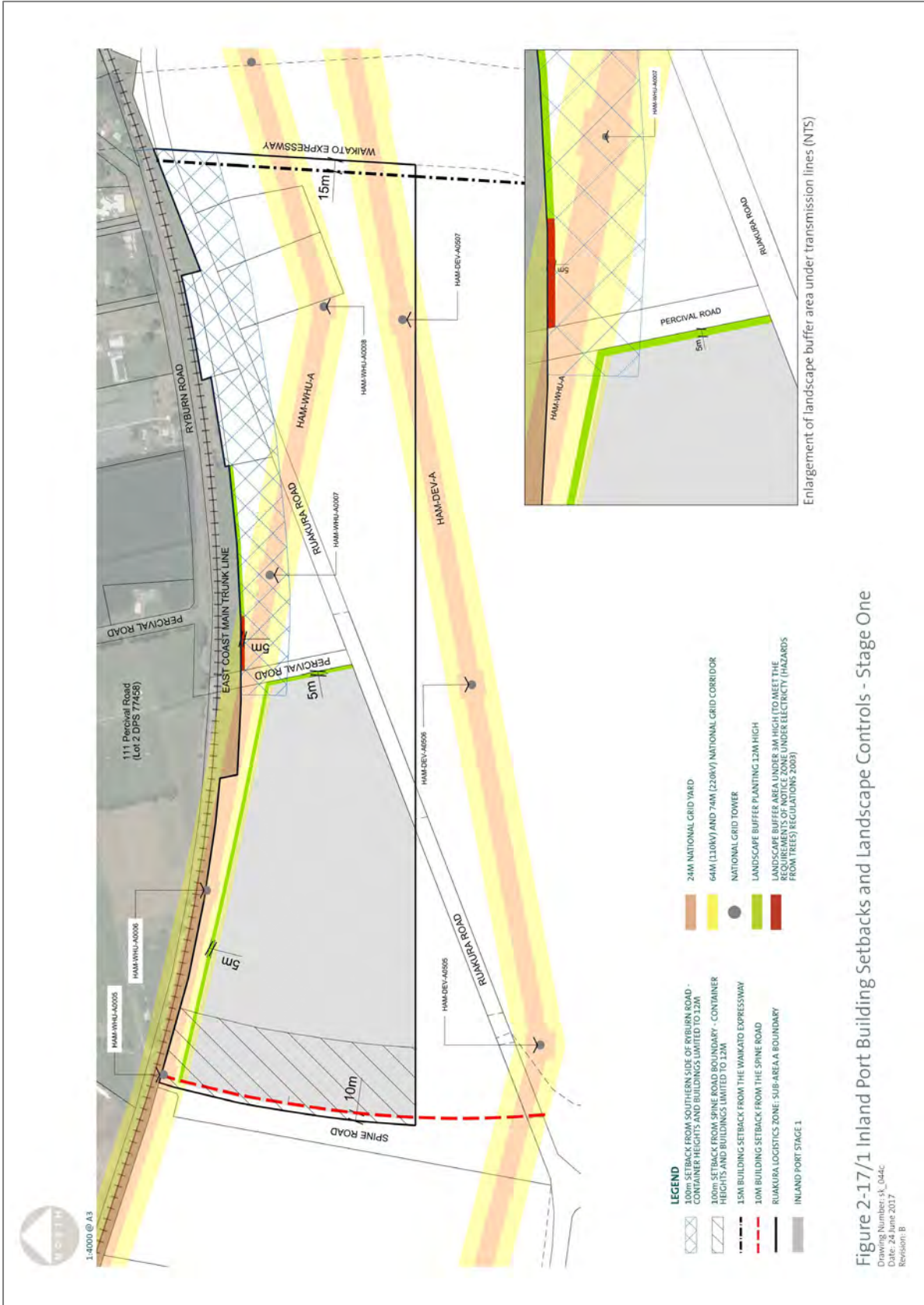


Figure 2-17/1 Inland Port Building Setbacks and Landscape Controls - Stage One



Figure 2-17/2: Inland Port Building Setbacks and Landscape Controls – Stage 2

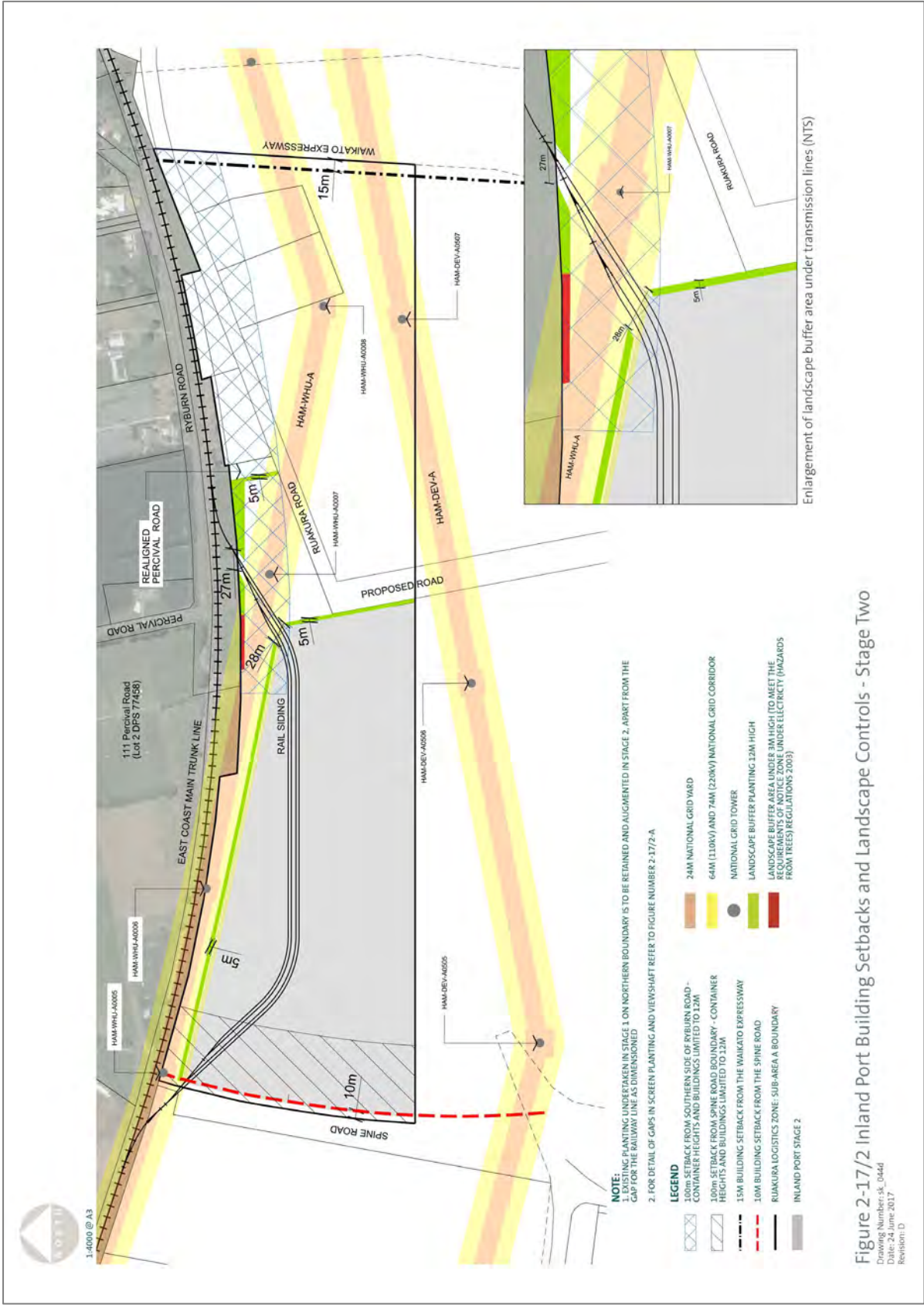


Figure 2-17/3: Inland Port Building Setbacks and Landscape Controls – Stage 3

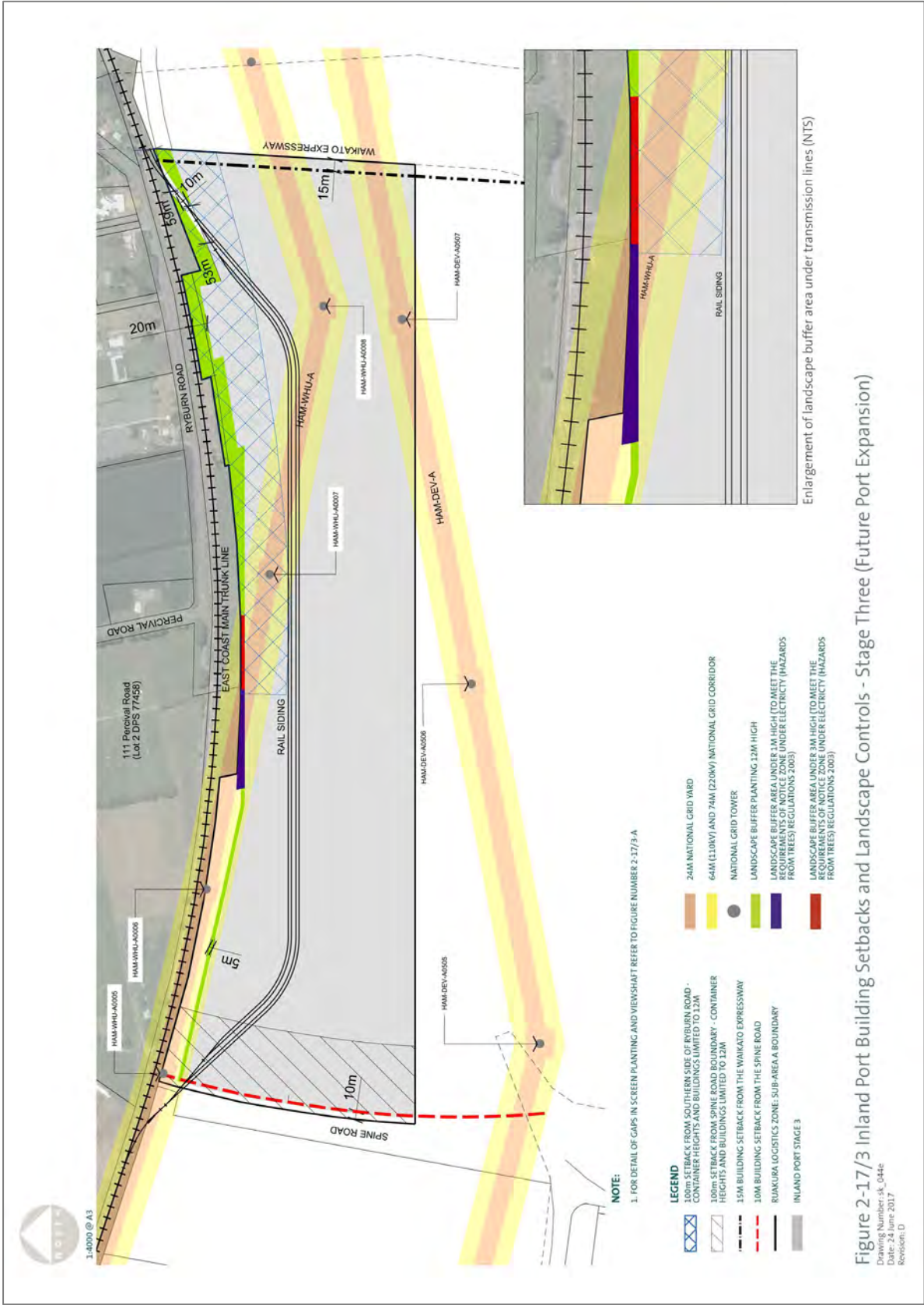
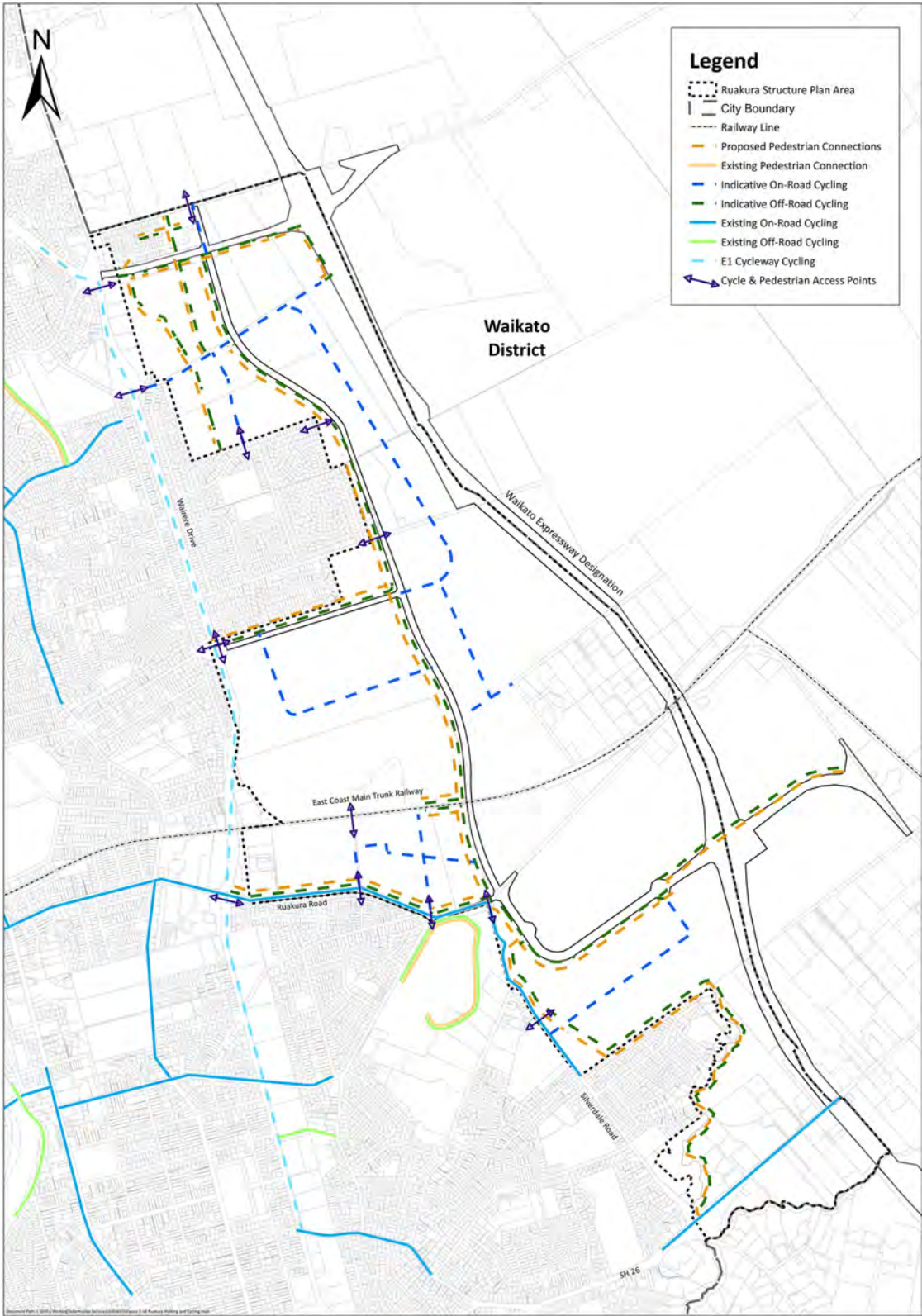




Figure 2-18: Ruakura Cyclist & Pedestrian Network Plan



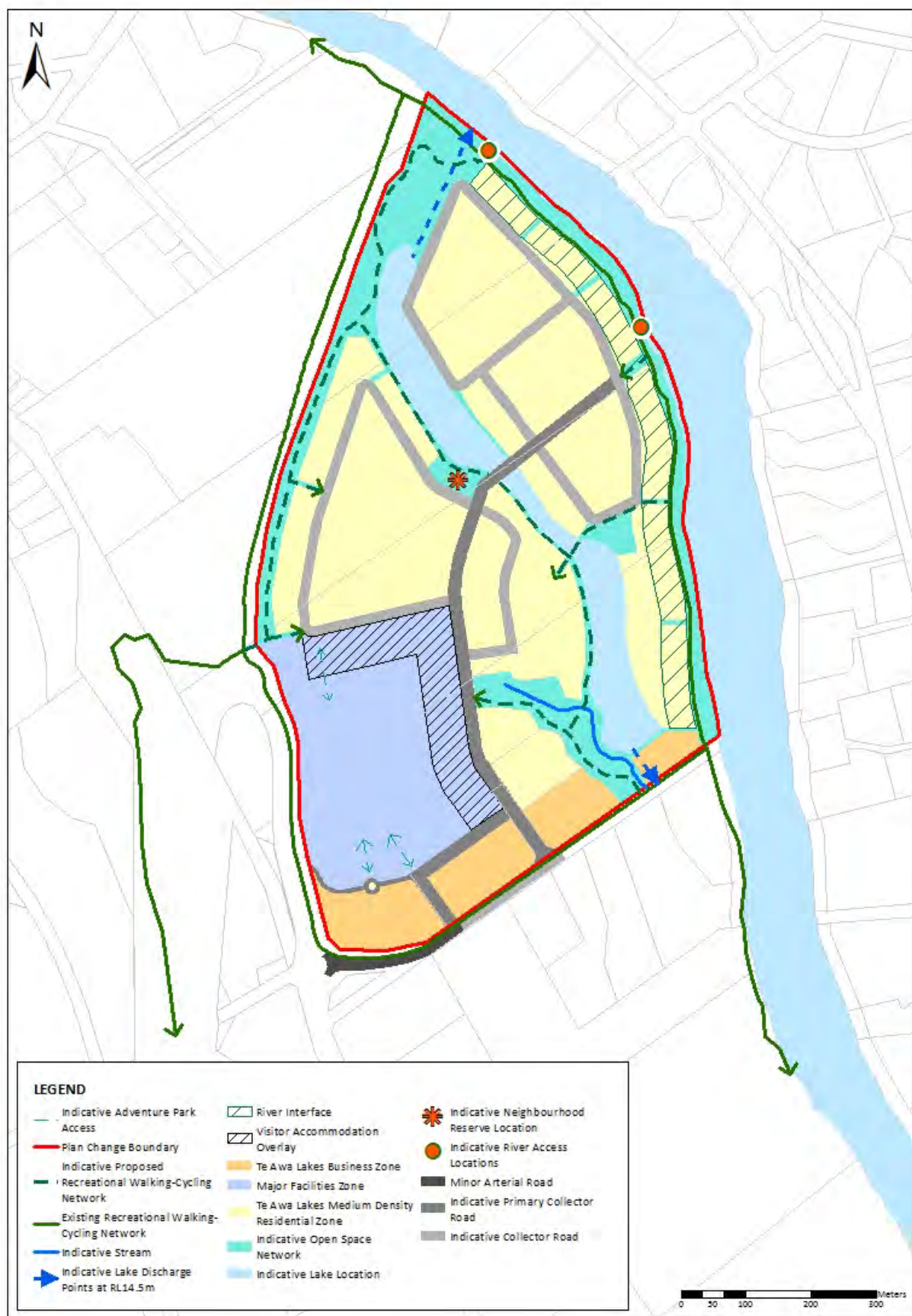
**Figure 2-19: Te Awa Lakes Framework Plan**



Figure 2-20: Te Awa Lakes Land Use

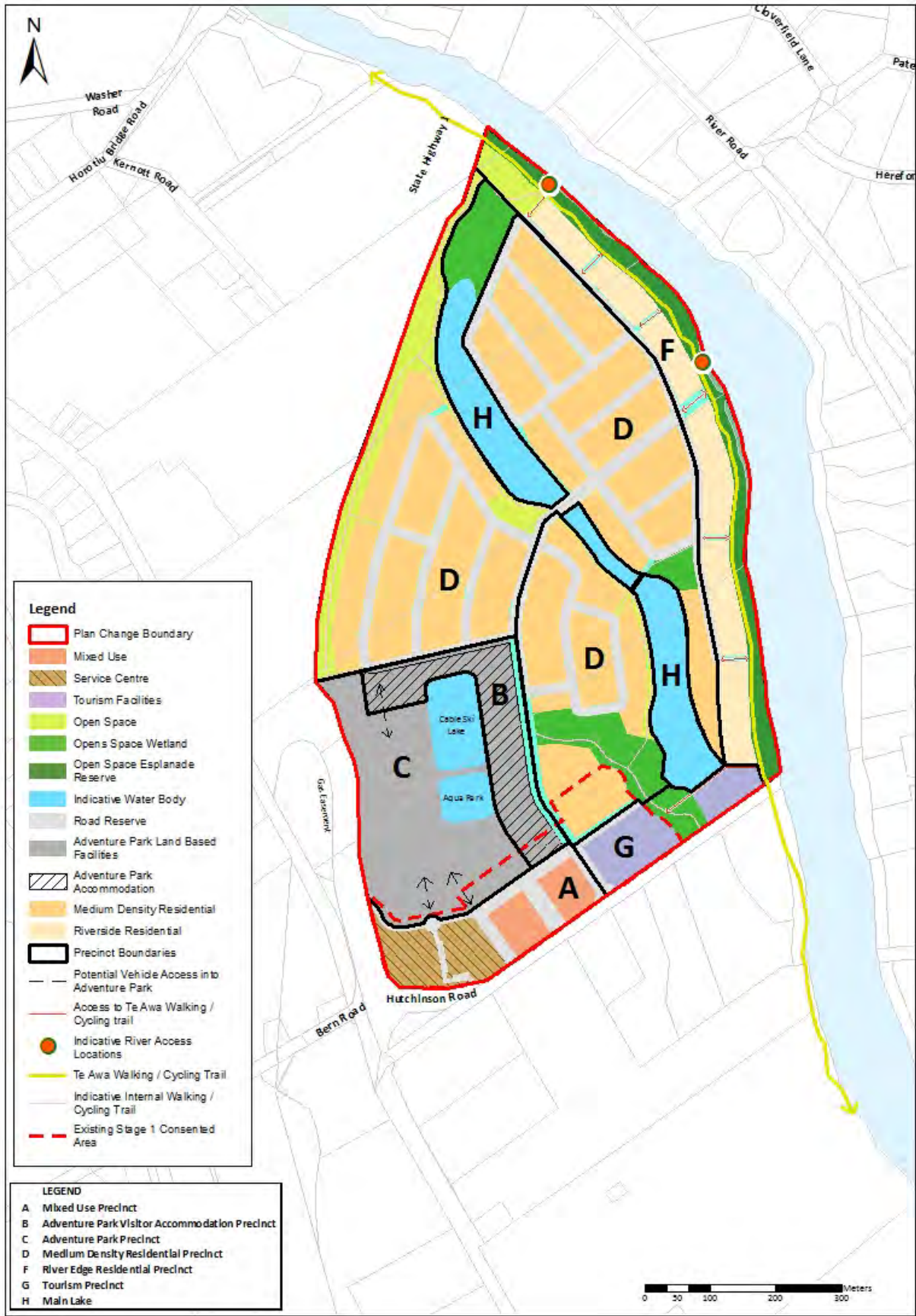


Figure 2-21: Te Awa Lakes Land Development Plan Areas

