

Hamilton East Heritage

By Waimarie: Hamilton East
Community House

Art deco: Riverina Hotel – Demolished: Now Shopping Centre, Clyde St



St Andrews Manse now The Link Te Aroha St



Demolished: Euphrasie House



40 Wellington St: Demolished



Developers moving off site to get round protections



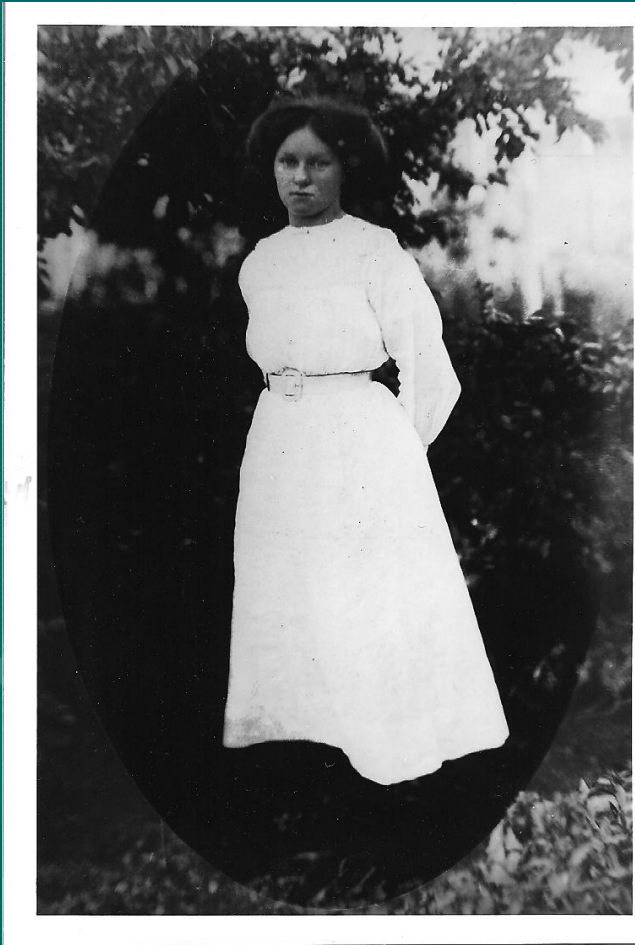
Heritage streets mostly demolished

- Manning St
- Fow St
- Palmerston St
- Wellington St from Nixon St to Grey St
- Firth St
- Cook St
- Coates St
- Right side of Albert St (high residential)
- And on it goes...

HHAs need stronger protections

- If there are few protections there may as well be no HHAs. Developers will:
- Move buildings offsite
- Build multiplexes down driveways
- Build tightly round protected properies
- Get consents to demolish heritage properties
- Multi-plexes built in straight rows do not foster a sense of community. They will become slums – see Coates St, Wellington St, etc.

Our Ancestors



- This area represents many families who have lived in the area for up to five generations. There is a wealth of knowledge of the history of the area; who lived in which house and when. All people need to know where they have come from and how their ancestors lived. Destroying this heritage leaves a society that is impoverished and disconnected from its culture and roots.
- My own grandmother's family owned a house in Wellington St -I now work in Wellington St. My children are 5th generation NZers.

Status quo: Likely outcomes



Albert St

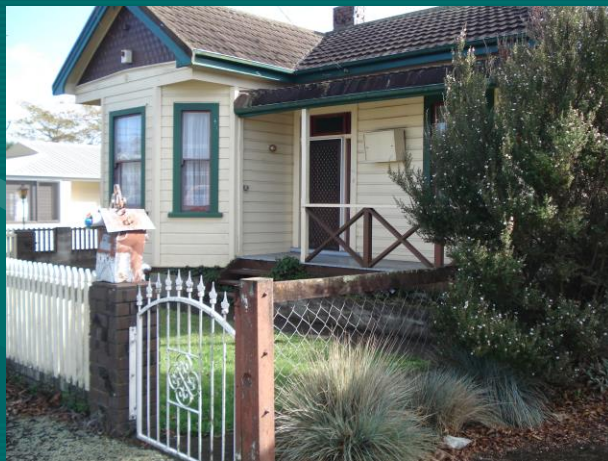


- Pressure on the infrastructure of the city for drainage, sewage and parking

Coates St



Status quo & more of the same: Likely outcomes



- Flooding
- Large areas of tarseal will result in runoff and flooding of roads, footpaths and neighbourhoods

Wellington St flats and villa

Emerging slums

- Slum areas will rapidly emerge with the attendant problems of poverty, vandalism and other social problems.



Landscaping



Nixon St



- Lack of landscaping (most of these dwellings do not contain a single blade of grass, a tree or even a potted plant) will contribute to the areas becoming rundown and depressing places for people to live in. We believe that some evidence of the natural environment in one's immediate living environment is imperative to sound psychological and spiritual health and well-being.

Emerging slums

- Slum areas will rapidly emerge with the attendant problems of poverty, vandalism and other social problems.



Grey St outside proposed Heritage Area



Grey St outside HA



Grey St outside HA



Grey St outside HA



Albert St outside HA



45 Albert St



69 Albert St

Albert St



Albert St



109 Albert St





126 Albert St



115 Albert St

127 Albert St



119 Albert St



Cook St: 5 Soldier's Cottages in a row



8 Sheridan St (listed) surrounded by new developments



Pressure on local facilities

- Increased pressure on local schools and community agencies to deal with the huge growth in the numbers of people living in the area



Permanent loss of Heritage

- There will be a permanent loss of our cultural and historical heritage in one of the oldest areas of Kirikiriroa, leaving a bleak heritage for future generations



Other concerns



- Continuing to make past mistakes
- Inappropriate subdivision
- Lack of design protocols
- Removal and destruction of historic homes
- Lack of consideration of heritage and amenity values
- Property values

Save our Heritage

- Even though a lot of historic homes have already been removed or destroyed, we do not believe that this is a reason not to save the remaining ones. We believe that old homes do not have to be built by leading architects of the day to be worthy of protection.



Plea for Action

- We believe that we have a very small window of opportunity left to fulfill this aim. It is our fervent hope that you will support this vision and help us to put the needs of the whole community before those of people wanting to make a quick buck before moving on to do more of the same, leaving behind an urban wasteland.

Brookfield St

