











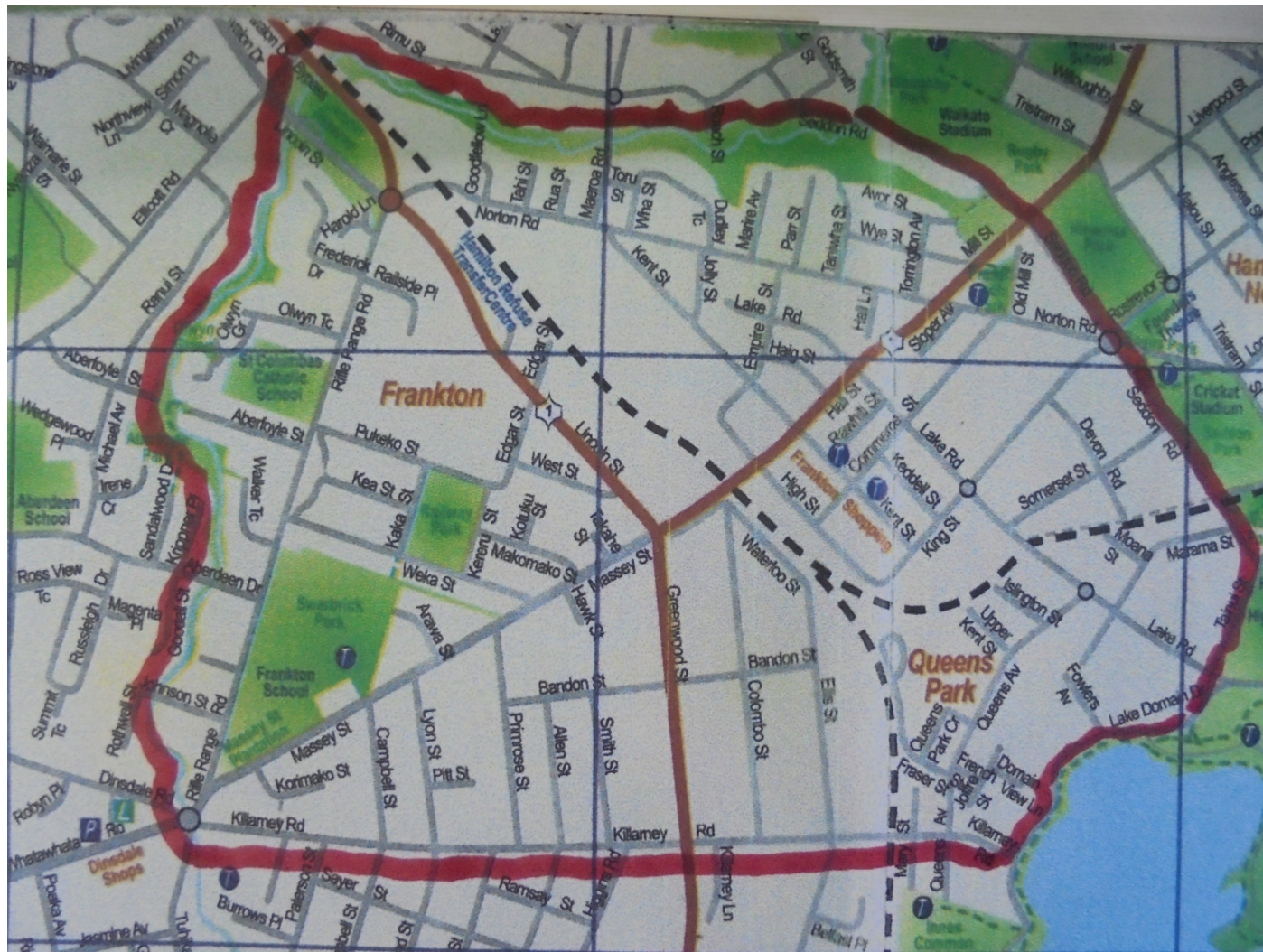
Frankton Village



Thomas & Mary Jolly

- 1867 Purchased land for a farm





Approximate
Boundary of farm on
present day map

1877



- Thomas offers Railways Dept. access over his land
- Railway Station built
- First train arrives
- First subdivisions of land sold

1910

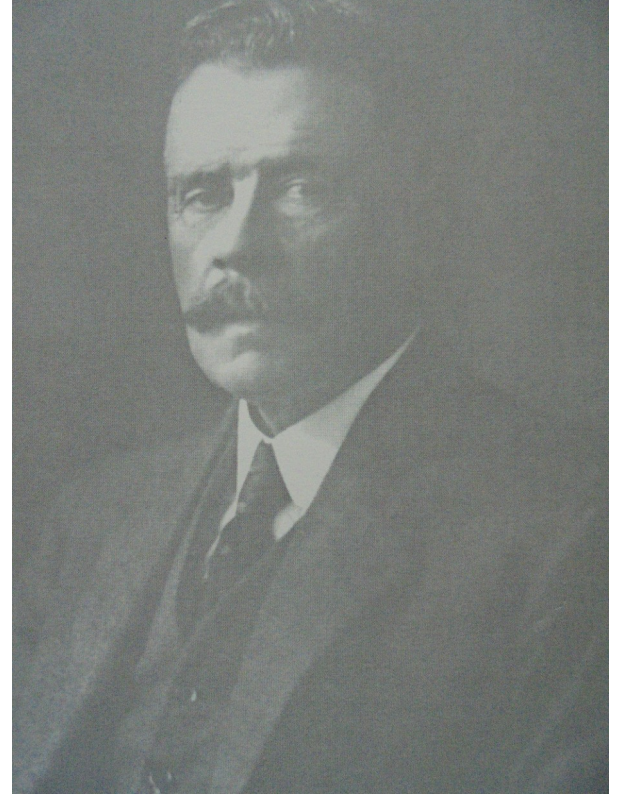


- Over 80 trains arriving each day

1913

May 1913 Frankton
becomes a Borough

Frank Jolly becomes
Mayor



1910 Windemere House Built



Demolished



Library
1923 - 1983(approx)



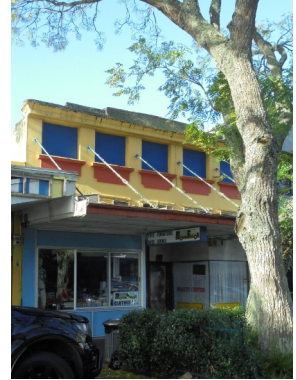
Movie Theatre
1922 - 1967



Town Hall
1911 - 1987

1948 Tornado





Sanford Clarkes General Store

Early 1900's



1911



Today

Including
the 1923
addition



1929 Frankton Hotel



1913 Post Office



1937 Coronation Building



Forlongs Opened here 1946

Belgraves Drapery and Clothing Store 1908 - 1983



205 Commerce Street 1920's



- Left side Shop
Butchers for 80 years
- Right side Shop
Chemists for 60 years

Spence's Menswear 1920's-1980's



1911



1911

Gosling Building





119 Commerce St
1920's











Acknowledgements

Historic Photo's
Frankton From Farm to Inner
City
Barry Lafferty

Other Photos
D Sorensen