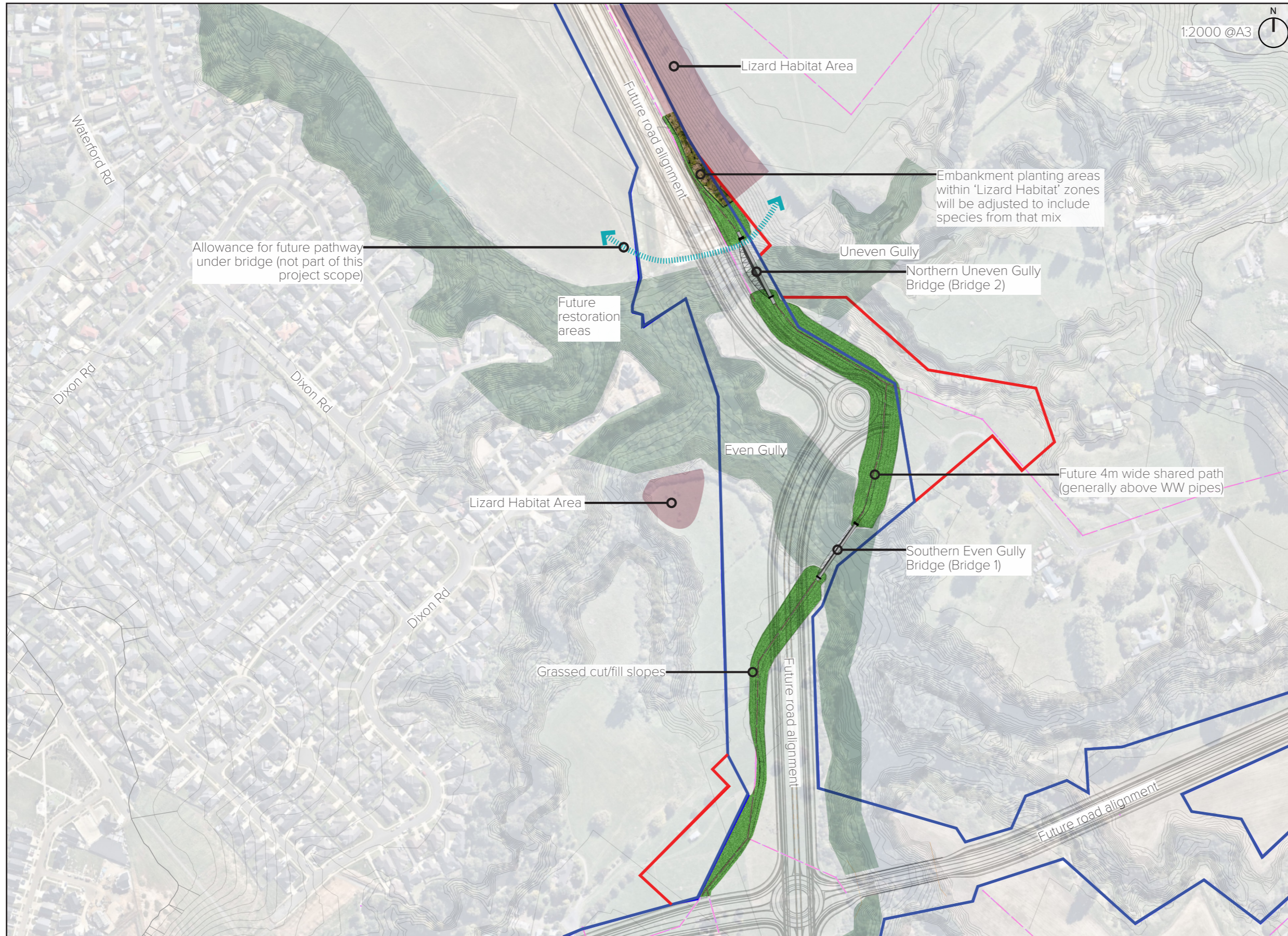


# LANDSCAPE PLAN - PHASE ONE

Site Plan



**KEY**

- Future 4m wide Shared path (generally above WW pipes)
- Grassed cut/fill slopes
- Embankment/path edge planting
- Bridge with 3m wide deck
- Future Road Alignment
- Lizard Habitat Areas (to inform detailed design)
- Future Gully Restoration areas (not part of this package)
- Existing Road Designation
- Proposed Alteration to Designation

This landscape concept package is supplied by Beca for the purpose of the Southern Links Designation Condition and follows the principles set out in the Peacocke Concept Landscape Management Plan (CLMP) produced by Adrian Morton Landscape Architects for Hamilton City Council.

The landscape approach is split into **two phases** as follows;

**Phase One)** Temporary stage associated with pipe construction: grass to majority of cut/fill batters associated with the Southern Gullies Peacocke Strategic Wastewater pipes and gully bridges, as per the plan on this sheet.

**Phase Two)** Plant cut/fill batters that are outside of the construction footprint of the future main arterials; with native, low growing species and keep the remaining slopes grassed as per stage one to allow minimal disruption during construction of the main arterials that will occur in the future - refer sheet 2 and 3 for detail.

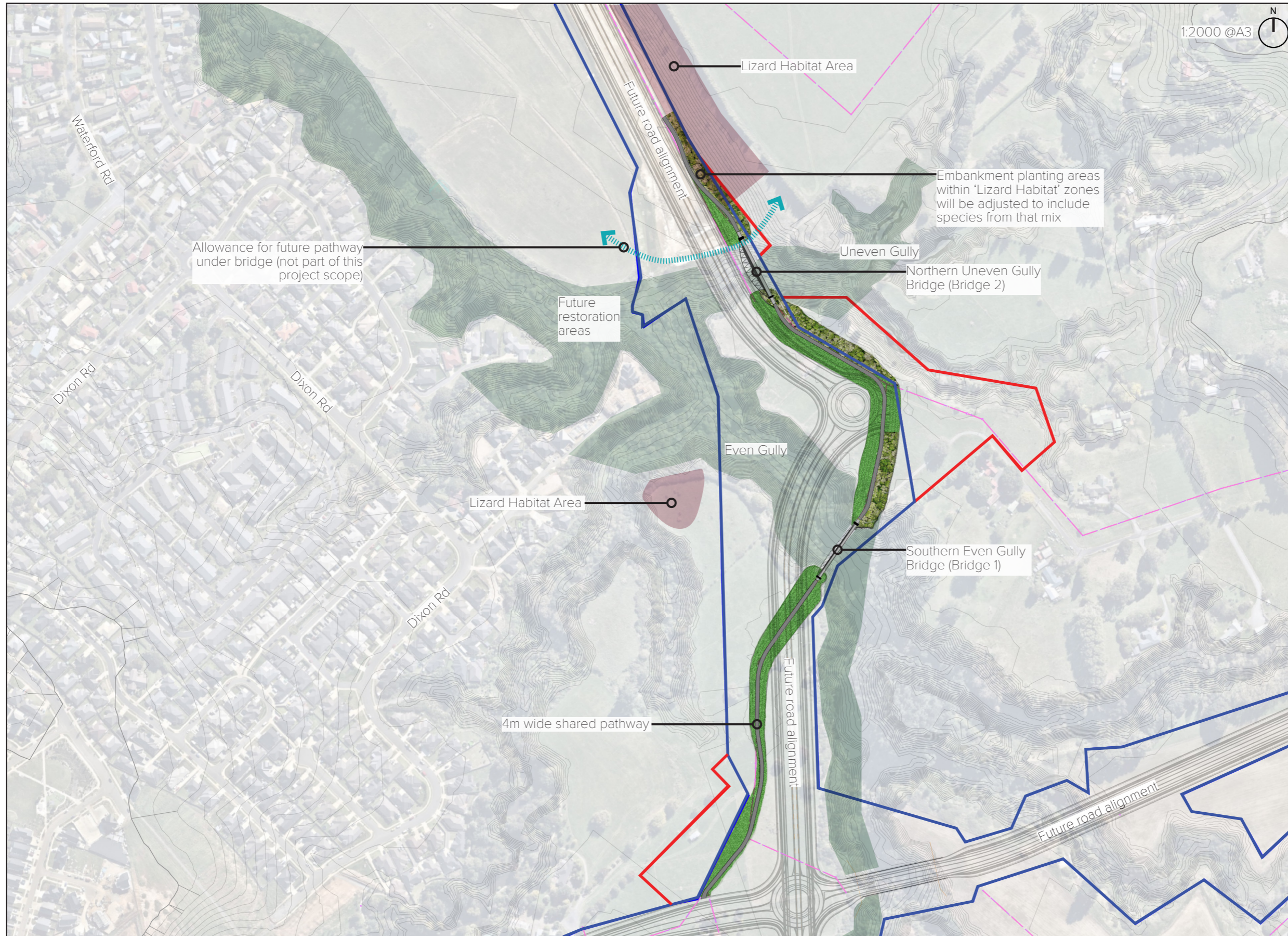
Any vegetation removed from the gullies for the construction of the pipes, shared path or gully bridges will require offset mitigation planting implemented as per the Environmental Management and Monitoring Plan (EMMP) by AECOM.

Refer to detail plan on sheet 3, typical cross sections on sheet 4 and planting palette outlining species selection on sheet 5. These plans are to be read in conjunction with both the WSP Pipeline and Beca Gully Bridges drawing sets. These plans are concept level only and are not to be used for construction purposes.

*Note: where there is cross over between 'Embankment planting' and 'Lizard Habitat', the Embankment planting mix will be adjusted to include species from the Lizard Habitat mix as set out in the EMMP by AECOM and the CLMP by Adrian Morton.*

# LANDSCAPE PLAN - PHASE TWO

Site Plan

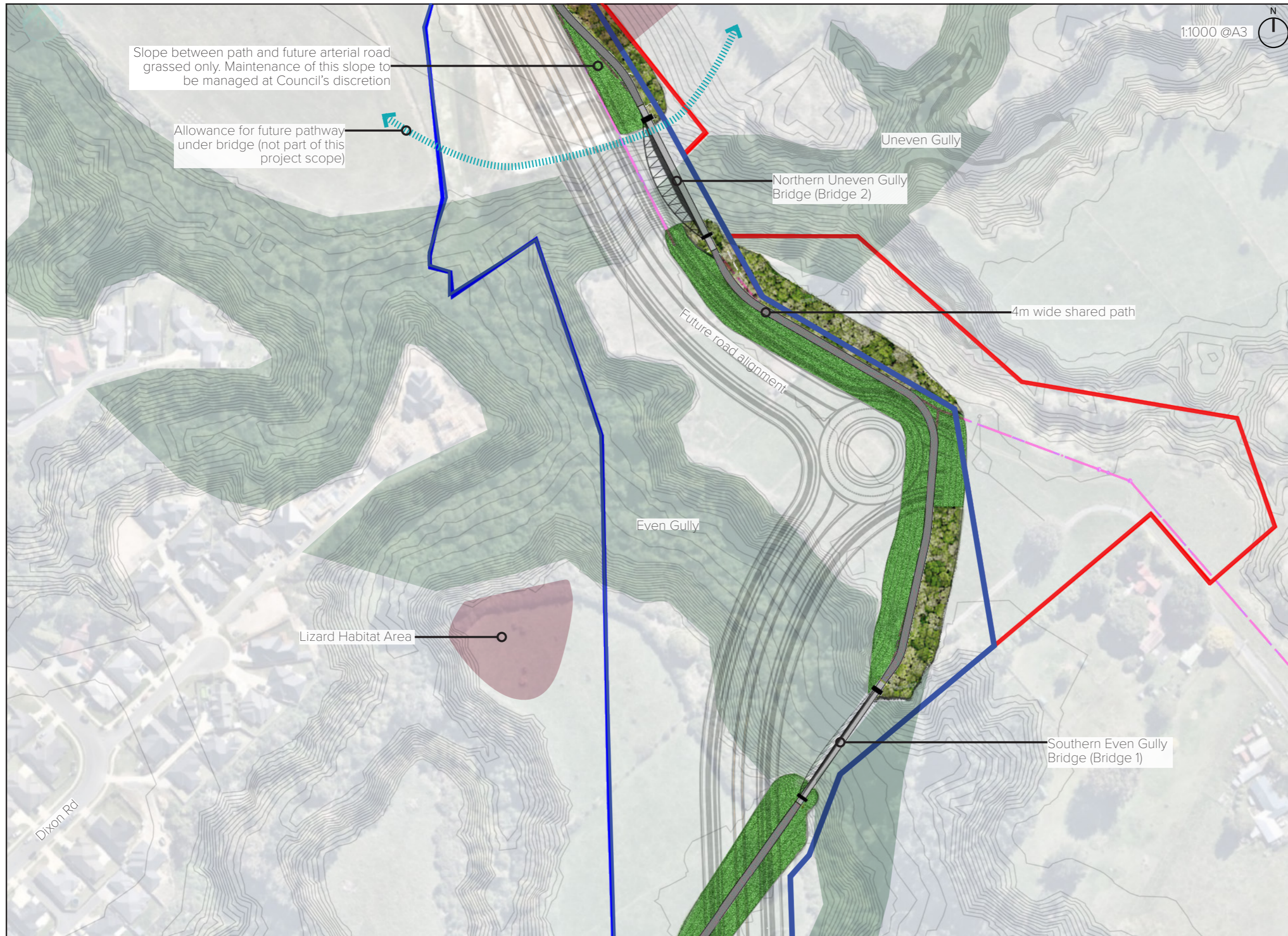


**KEY**

-  4m wide Shared path (generally above WW pipes)
-  Grassed cut/fill slopes
-  Embankment/path edge planting
-  Bridge with 3m wide deck
-  Future Road Alignment
-  Lizard Habitat Areas (to inform detailed design)
-  Future Gully Restoration areas (not part of this package)
-  Existing Road Designation
-  Proposed Alteration to Designation

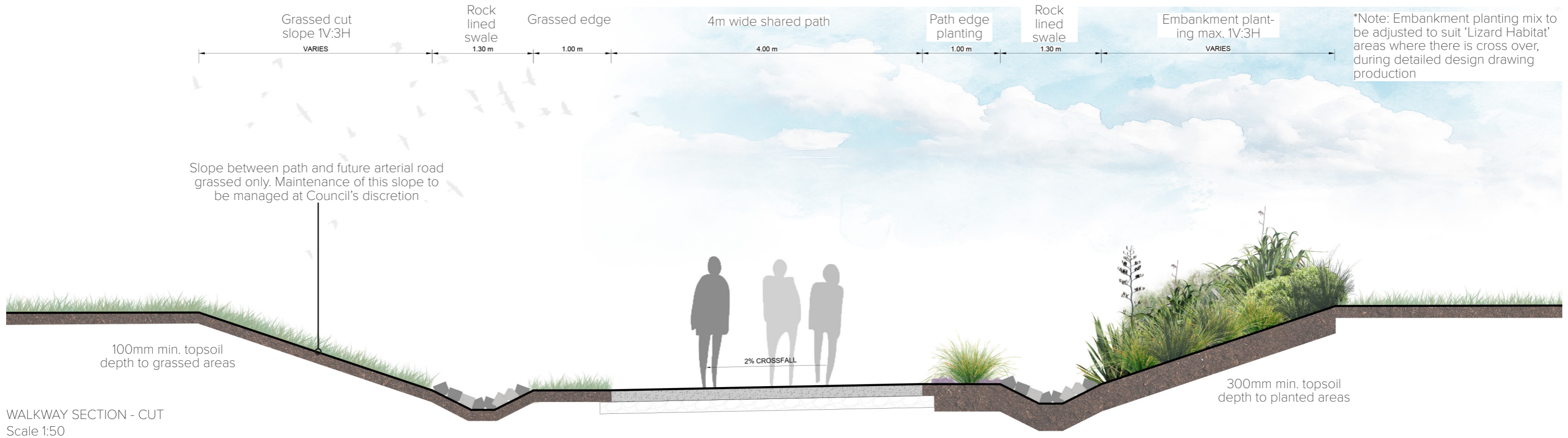
# LANDSCAPE PLAN - PHASE TWO

Gullies/Bridges Extent



KEY	
	4m wide Shared path (generally above WW pipes)
	Grassed cut/fill slopes
	Embankment/path edge planting
	Bridge with 3m wide deck
	Future Road Alignment
	Lizard Habitat Areas (to inform detailed design)
	Future Gully Restoration areas (not part of this package)
	Existing Road Designation
	Proposed Alteration to Designation

# LANDSCAPE CROSS SECTIONS - PHASE TWO



# LANDSCAPE PLANTING PALETTE

## PATH EDGE PLANTING



## EMBANKMENT PLANTING



BOTANICAL NAME	COMMON NAME	GRADE	SPACING	% OF MIX
<b>PATH EDGE PLANTING</b>				
<i>Acaena inermis purpurea</i>	Bidibidi	1L	0.6m crs	30%
<i>Apodasmia similis</i>	Oioi	1L	0.6m crs	25%
<i>Carex virgata</i>	Purei	1L	0.6m crs	30%
<i>Phormium 'Emerald Gem'</i>	Flax	1L	0.6m crs	15%

BOTANICAL NAME	COMMON NAME	GRADE	SPACING	% OF MIX
<b>EMBANKMENT PLANTING</b>				
<i>Cordyline australis</i>	Tī Kōuka	1L	1.0m crs	20%
<i>Hebe stricta</i>	Koromiko	1L	1.0m crs	20%
<i>Kunzea robusta</i>	Kanuka	1L	1.0m crs	20%
<i>Macropiper excelsum</i>	Kawakawa	1L	1.0m crs	20%
<i>Myrsine australis</i>	Red Matipo	1L	1.0m crs	20%

Note:  
 \*Embankment planting mix to be adjusted to suit 'Lizard Habitat' areas where there is cross over, during detailed design drawing production  
 \*Plants to be planted in clusters of 7 - 11 plants