

Warren Gumbley
Principal/Director

PO Box 7108, Hamilton East, Hamilton 3247
cell 027 471 2165 **landline** 07 856 9071
email warren@archaeologist.co.nz

Peacocke Strategic Transport: Heritage and Archaeological Site Management Plan

By W Gumbley and M Gainsford

September 2019

Contents

1.0 Purpose	3
2.0 Locations of archaeological sites	4
3.0 Roles and Responsibilities	5
3.1 Tangata Whenua and cultural monitoring	5
3.2 Contractors and Subcontractors	5
3.3 Project Archaeologist	5
3.4 Authority Holder	6
4.0 Protocols and Procedures	6
4.1 Archaeology instruction for construction crew	6
5.2 Accidental Finds Protocol	7
5.3 Koiwi (human remains) Protocol	8
6.0 Contacts	9

1.0 Purpose

- 1.1 The purpose of this document is to guide the management of archaeological sites and archaeological material during the development of the Peacocke Strategic Transport Project within the Southern Links designation.
- 1.2 This document is required by as a reference document to provide operational guidelines and procedures for day-to-day activities that may affect archaeological sites and material during development.
- 1.3 The plan includes a series of protocols and standard operating procedures to guide both known or planned activities and unforeseeable situations such as the accidental discovery of human remains (koiwi) or other archaeological deposits. It should be read in conjunction with the archaeological mitigation and research strategy.
- 1.4 The plan also makes allowance for the recording of archaeological deposits affected by the construction phase. The archaeological recording may take place as a formal archaeological investigation of identified archaeological sites undertaken prior to the commencement of construction, or as the result of active monitoring by an archaeologist of known and suspected archaeological deposits, or as a result of an accidental find outside an identified archaeological site.
- 1.4 This document it must be regarded as “living” document that will require periodic updating to accommodate the development of more specific management protocols following consultation between the Project Archaeologist, mana whenua and the contractors. The updates may be carried out at any time but a review must be carried out prior to the commencement of each development stage. Each update must be referred to Heritage NZ for authorisation.
- 1.5 The anticipated audience of this plan is:
 - The developer,
 - The development surveyors,
 - Construction contractors,
 - Construction workers/on-site crews,
 - Tangata Whenua,
 - Archaeological personnel,
 - HNZPT,
 - Hamilton City Council.

2.0 Archaeological sites

Three areas of archaeology have been positively identified (S4/210A, S14/210B, S14/326, S14/490) and a four possible archaeological sites areas (Sites A-D) have also been identified (Figure 1). All of the sites identified sites are associated with the intensive cultivation of kumara.

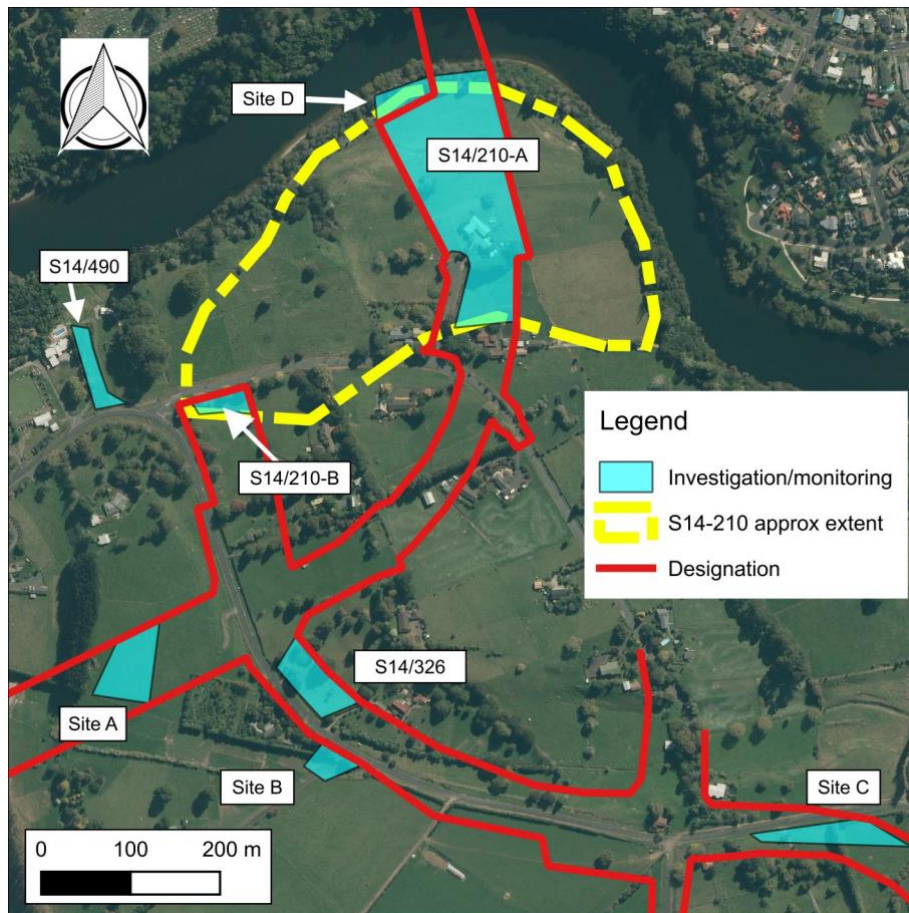


Figure 1: Locations of archaeological sites affected by the Southern Links Designation within the PST Project extent. Sites shown in blue are archaeological sensitive and are to be subject to archaeological investigation or archaeological monitoring or earthworks.

Sites S4/210A, S14/210B, S14/326, and S14/490 will be subject to archaeological investigation prior to construction works commencing. Sites A-D will be actively monitored by archaeologists and any archaeological remains will be recorded and sampled as appropriate.

Note that the areas identified are not precise but reflect the extent of Maaori-made soils. It is possible that the archaeological deposits within the designation are larger than the areas shown. Therefore, it important that before any work, including the erection of protective fencing, occurs within or near to (within 50 m) an identified archaeological site the Project Archaeologist must be consulted.

The horticultural sites include a soil made by the application of sand and gravel quarried from borrow pits (recognisable as large depressions in the ground surface). The sites can also include storage pits and the remains of kāinga (small domestic areas including the remains of structures and cooking).

Burials have also been found associated with these sites.

3.0 Roles and Responsibilities

3.1 Mana Whenua and cultural monitoring

Mana whenua will have access to the archaeological investigations to carry out any cultural monitoring as deemed appropriate by the TWWG.

3.2 Contractors and Subcontractors

Contactors have the following responsibilities with regard to archaeological material:

- To make available whatever machinery needed by the archaeologist;
- Earthworks within the area designated to be monitored by the archaeologist will only be undertaken under the supervision of an archaeologist;
- The contractor and/or authority holder will give reasonable notice of when earthworks are to take place in the area that requires monitoring;
- If any material or features that are suspected to be of archaeological importance (as per the site briefing by the archaeologist) are encountered in areas not being monitored by the archaeologist, the contractor will stop work and contact the project archaeologist and designated representative of the TWWG immediately;
- That an ADP protocol be followed to ensure that unforeseen discoveries are reported and can be investigated archaeologically (refer pages 5–6).

3.3 Project Archaeologist

The project archaeologist or their designated representative will oversee archaeological investigation and monitoring with such assistants as are required.

Key responsibilities of the archaeologists are as follows:

- Prior to the commencement of earthworks, the archaeologist shall provide an onsite briefing for contractors about the nature of the archaeology and the conditions of the authority granted by HNZPT; and
- Investigation of archaeological deposits shall be conducted in a professional and expedient manner to ensure the accurate recovery of archaeological information and that will incur minimal delays to the project.

3.4 Authority Holder

The Authority holder must ensure that allowance is made in the work schedule for any archaeological work required. This shall be determined in consultation with the project archaeologist. The authority holder is referred to the conditions of any Authority granted by Heritage NZ or Resource Consent for further details of their responsibilities with regard to notification of dates for the works, lodging copies of the final report, and meeting costs of the required archaeological work.

4.0 Protocols and Procedures

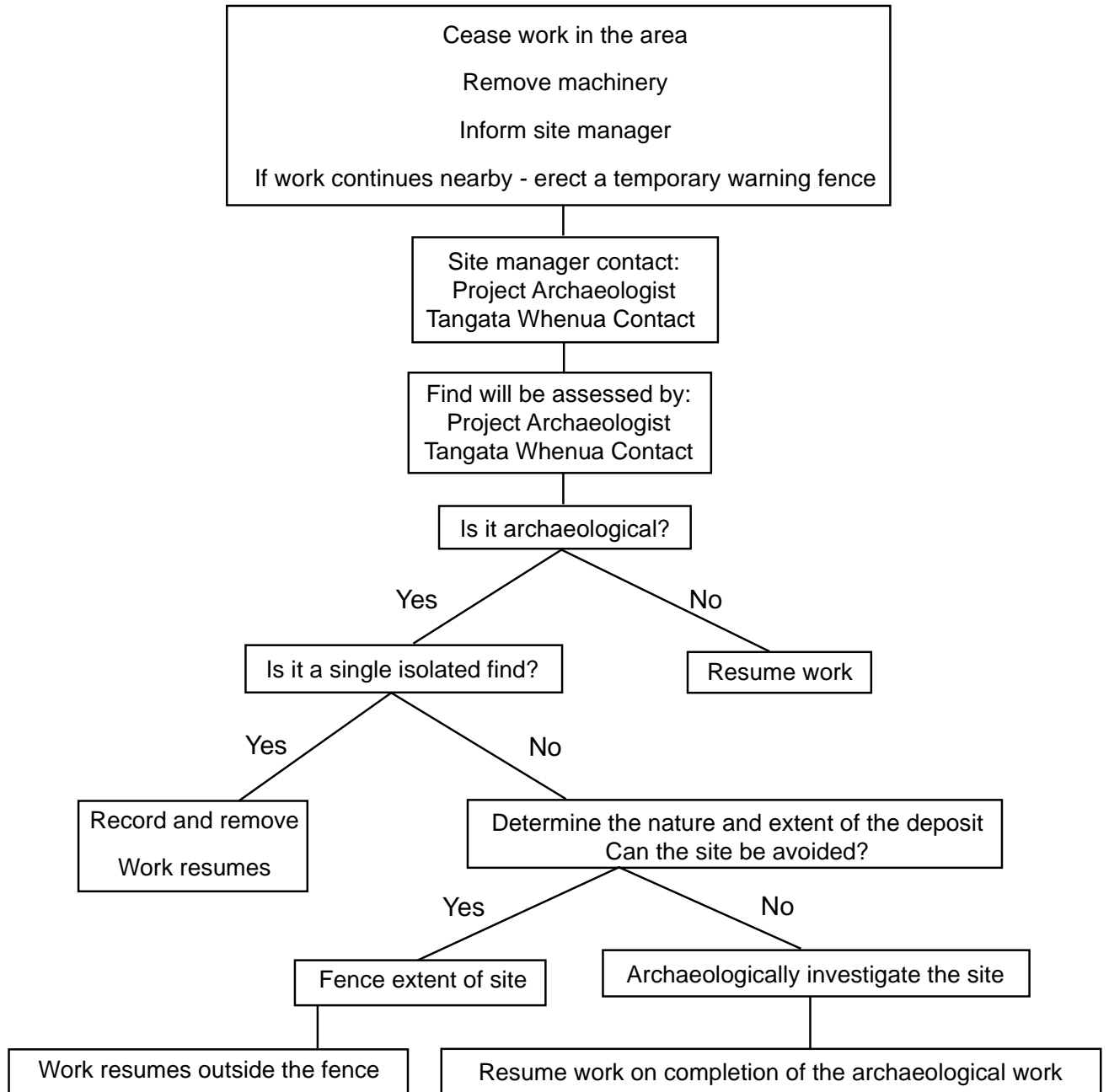
4.1 Archaeology instruction for construction crew

Since it is not always possible to anticipate the presence of archaeological deposits, especially single artefacts (taonga) or burials (koiwi), it is important that appropriate construction crews are briefed by an archaeologist and a representative of mana whenua on the archaeological and cultural issues and related protocols. These will include:

- Accidental finds protocol
- Koiwi (human remains) protocol

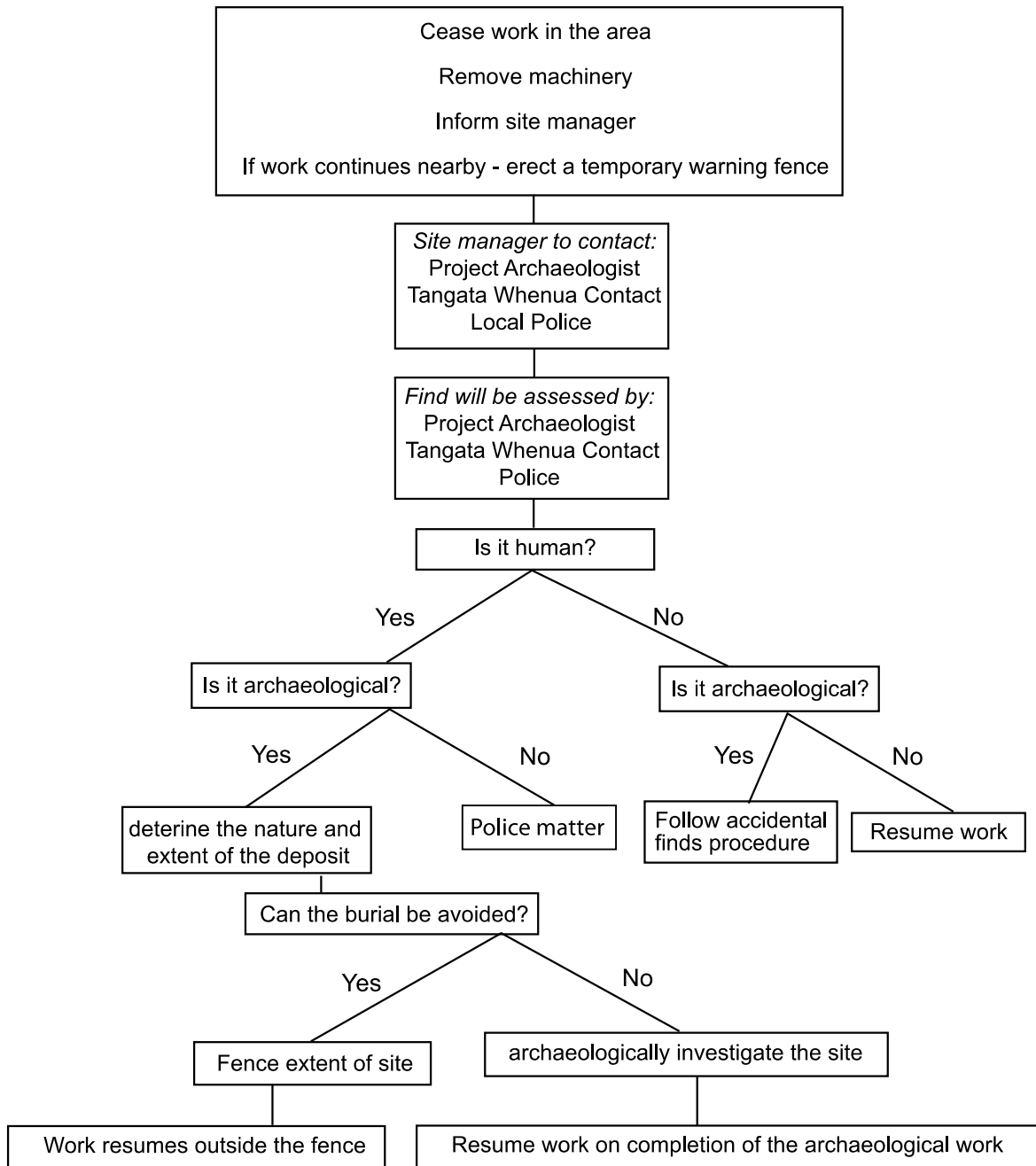
4.2 Accidental Finds Protocol

In the event that a suspected archaeological deposit is found:



4.3 Koiwi (human remains) Protocol

In the event that a suspected human remains are found:



5.0 Contacts

<i>Role</i>	<i>Name</i>	<i>Contact Phone</i>
Developer representative	Nathanael Savage (HCC)	07 838 6699
Project Manager	Jeremy Gibbons (BBO)	027 2235343
Project Archaeologist	Warren Gumbley Matthew Gainsford	027 4712165 021 0954957
Tangata whenua contact(s)	Marina Hape (TWWG)	0224517461
Site manager	TBC	TBC