



# Access Hamilton

**SUMMARY**

**Ara Kootuitui Kirikiriroa**  
August 2022



**Hamilton  
City Council**  
Te kaunihera o Kirikiriroa



# Vision

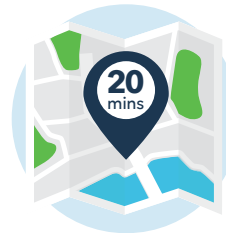
*“Our transport network enables everyone to connect to people and places in safe, accessible and smart ways”*



## The outcomes we want to achieve

- Everyone is safe and feels safe while using our streets and public spaces
- A low-emission transport system that is resilient against climate change
- Hamilton Kirikiriroa is a great place to live for everyone
- A healthy te awa o Waikato and natural sites which sustain abundant life and prosperous communities for all generations
- More people choose to travel on foot, by bike, by bus, or using micro-mobility devices such as scooters
- Hamilton Kirikiriroa is accessible for all because it has a city culture and heritage that is shared, protected and celebrated
- Hamilton Kirikiriroa is a great place for everyone to work and do business
- An adaptable, future-ready transport system that supports quality and compact urban form.

## The opportunities we have



**A 20-minute city**

**An easy walking and biking city**



**Parks and green spaces**

**Te awa o Waikato (the Waikato River)**



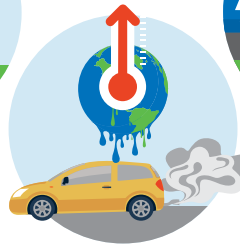
**Young population that embraces change**

## The challenges we're facing



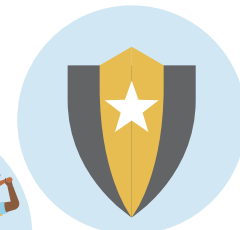
**Population growth**

**Climate change**



**Limited travel choices**

**Inclusivity for all**



**Safety and perception of safety**

# Our Hamilton Kirikiriroa

the heart of the North Island

**4th**  
largest city in  
New Zealand

Part of the  
**golden triangle**  
of economy

Diverse with over  
**160 ethnic groups**

Youngest of  
all NZ cities

Young  
population  
with a median  
age of  
**33**

As a strategic logistics and distribution  
hub encompassing Auckland and  
Tauranga

Home to  
**179k**  
people

**The Waikato River**  
a unique and beautiful treasure

A taonga (treasure) running through our city that  
provides a unique identity, cultural connection,  
and amenity for our people

**5k**  
more people living  
in our metro area  
every year

**418k**  
people are  
estimated to  
be living in the  
Hamilton-Waikato  
metro spatial area  
by 2051

Home to Waikato-Tainui for  
**over 700 years**

## Joining the dots

Given our wide range of responsibilities, Council has a large number of concepts, plans, policies and strategies. These all provide Hamiltonians with certainty and visibility over what we intend to do. The transport network and how we move around is part of almost everything we do and enables the community to benefit from many things Council provides. If people can't access parks safely for example, the benefits of our city's excellent parks won't be realised.

A key role of Access Hamilton is to "join the dots" and deliver directly to Council's purpose of improving the wellbeing of Hamiltonians.

It is important that our strategy aligns with wider strategies, policies and plans to attract support and funding to enable programmes and projects to benefit our local communities.



## The why

### **Our vision: Our transport network enables everyone to connect to people and places in safe, accessible and smart ways.**

We are committed to making Hamilton Kirikiriroa a place where everyone thrives socially and economically.

Like other cities, we are facing some big challenges including growing population, climate change and the safety and wellbeing of our communities.

Making changes to the transport system takes time and can involve significant costs.

We need to make sure we are doing the right thing at the right time and spending our money wisely.

This strategy sets out what's important to us and guides our investment decisions through our Long-Term and Annual Plans.





### A safe transport system

Safety and harm reduction is the top priority. Our outcome is that no one should be injured or killed while moving around Hamilton. Further, people should always feel safe using transport system - whether walking to a carpark, waiting for a bus or biking through a park.



### Genuine travel choices

Providing a range of transport options gives people travel choices, whether private vehicle, taxi, public transport, scootering or active transport such as walking and biking. These choices mean that everyone can access various parts of the city when they want to by a range of modes, and support mode shift and the benefits this brings.



### Climate change

Climate change is a major issue of our time and transport is a major contributor. Creating a low carbon transport system to support significant emissions reductions by 2030 and even less emission by 2050 will require early and sustained action.



### Inclusivity

Providing a range of transport options to make access to and within the city available for all is important, if everyone in our city is to meet their needs and thrive. We want to promote a fair transport system that allows all residents and visitors to safely and reliably access their preferred destination based on their individual needs.



### Enjoyable and liveable city

People's ability to enjoy life and thrive in the city they live in is important for their hauora (wellbeing) and their sense of belonging to the community. The way we move can contribute to this. Visitors to the city should also have good, clear transport choices.



### Thriving business and economic growth

Hamilton has employment opportunities for young people, and strong business connections with the rest of the North Island. Creating a transport system that is efficient and supports these opportunities and connections through freight movements is important for economic growth in a thriving city.



### Environmental responsibility

Our transport system should lessen our negative impacts on the environment. There is also a need to protect our taonga and te awa o Waikato, so that it continues to sustain abundant life.



### Supports quality growth and urban development

Hamilton is a rapidly growing city because it is an attractive place to live and work. This will need to be carefully managed to ensure this growth supports both the lifestyle we aspire to and the environmental outcomes we want to achieve.



## A safe transport system He puunaha waka whai ora

Safety and reducing harm is a top priority. Our principle is that no one should be injured or killed while moving around Hamilton Kirikiriroa. Further, people should always feel safe using our transport system whether walking to a carpark waiting for a bus or biking through a park.

### What does this look like?

Everyone is safe and feels safe while using our streets and public spaces.

### What will we focus on?

- Delivering infrastructure improvements to manage speed and make roads safer and
- Investigating and delivering connected, separated, safe bike and walking facilities on key routes
- Improving personal safety using the transport network via better lighting and surveillance
- Providing education to support safer behaviour on our public spaces and roads
- Providing bike safety education programmes for kids and adults



**In 2019, deaths and serious injury incidents cost us \$1.14 billion.**

## Climate change Te aahuarangi

Climate change is a major issue of our time and transport is a major contributor to carbon emissions. Creating a low carbon transport system to support significant emissions reductions by 2030 and even less emission by 2050, will require early and sustained action.

### What does this look like?

A low-emission transport system that is resilient against climate change.

### What will we focus on?

- Promoting low and zero emissions vehicles
- Delivering community and school programmes to encourage and support more people to walk, bike and use the bus
- Investigating zero emissions zones or congestion charge zone in central Hamilton
- Coordinating climate change initiatives with central government to promote Hamilton's needs
- Supporting schools to have travel plans that encourage mode shift



**Transport is the greatest contributor to emissions in our city.**



**We are the youngest city in New Zealand.**

## **Enjoyable and liveable city** **He taaone ngahau e tau ai te noho**

**People's ability to enjoy life and thrive in the city they live in is important for their hauora (wellbeing) and their sense of belonging to the community. The way we move can contribute to this. Visitors to the city should have good, clear transport choices.**

### **What does this look like?**

Hamilton Kirikiriroa is a great place for everyone to live.

### **What will we focus on?**

- Delivering wide, high quality footpaths between key destinations
- Working with Waikato Regional Council to improve public transport reliability and frequency
- Improving navigation around the city by providing accurate and timely wayfinding
- Promoting flexible and/or staggered working hours to reduce peak hour congestion
- Providing high quality, people-welcoming public transport centres to support mode shift

## **Environmental responsibility** **Ngaa haepapa moo te taiao**

**Our transport system should remove and mitigate negative impacts on the environment. There is also a need to protect our city's taonga (treasures) and te awa o Waikato, so that it continues to sustain abundant life.**

### **What does this look like?**

A healthy awa (river) and natural sites that sustain abundant life and prosperous communities for all generations.

### **What will we focus on?**

- Using underutilised road space for amenities, greenery and cultural landmarks
- Protecting the Waikato River through prioritising our blue/green network
- Supporting car share schemes and carpooling to decrease reliance on private cars
- Enhancing existing relationships with tangata whenua and continuing to work closely with them as partners to deliver the aspirations of this strategy
- Discouraging high-polluting vehicles on our roads to improve air quality, protect our environment and reduce noise



**We want a healthy awa (river) for our kids and grandkids to enjoy.**

## Genuine travel choice Ngāa whiringa haere

Providing a range of transport options gives people travel choices, whether private vehicle, taxi, public transport, scootering or active transport such as walking and biking. These choices mean that everyone can access various parts of the city when they want to by a range of modes, and supports mode shift and the benefits this brings.

### What does this look like?

More people choose to travel on foot, on a bike, by bus or using micro-mobility.

### What will we focus on?

- Providing high quality public transport priority infrastructure to improve public transport reliability and frequency
- Supporting integration of different transport modes across the region via seamless station access for key bus stations, high quality end of journey facilities, and park and ride facilities
- Supporting car share schemes and carpooling to decrease reliance on private cars
- Supporting developers to invest in the community and incorporate sustainable elements into design and construction
- Identifying people with transport disadvantages, and provide viable transport choices for all

*Hamilton Kirikiriroa has the highest car use rates for trip making in the country.*



*In 2013, 24% of people\* in the Waikato region had some form of disability.*



## Inclusivity Ngāa miro katoa

Providing a range of transport options to make access to the city available for all is important if everyone in our city is to meet their needs and thrive. We want to promote a fair transport system that allows all residents and visitors to safely and reliably access their preferred destination based on their individual needs.

### What does this look like?

Hamilton Kirikiriroa is accessible and inclusive for all because it has a city culture and heritage that is shared, protected and celebrated.

### What will we focus on?

- Implementing accessibility and mobility improvements in Hamilton
- Improving access to the Waikato River Path with better sporting, recreational and cultural opportunities
- Understanding and supporting expressions of Hamilton's cultures in transport corridors
- Engaging with our communities to understand their diverse and changing needs
- Encouraging and supporting migrant education for biking, public transport and electric vehicle use

## Thriving business and economic growth

### He oohanga puaawai, he tupunga rawa

Hamilton has ample employment opportunities for young people, and strong business connections with the rest of the North Island. Creating a transport system that is efficient and supports these opportunities and connections through freight movements is important for economic growth in a thriving city.

#### What does this look like?

Hamilton is a great place for everyone to work and do business.

#### What will we focus on?

- Supporting and requiring key employers to have workplace travel plans that encourage mode shift
- Supporting uptake of local electric distribution technology for businesses and local deliveries
- Supporting the future freight form, such as interregional rail freight, freight distribution centres on urban fringes, local electric and/or hydrogen distribution vehicles and infrastructure, system-wide planning, and reducing freight vehicle travel during peak hours
- Providing adequate and safe delivery and service spaces for business and retail
- Delivering a high quality urban realm for a vibrant central city

Only 1% of freight in the Waikato region is moved by rail - we should change this.



## Supports quality growth and urban development

### Hei tautoko i te tupu kounga me ngaa whanaketanga aa-taaone

Hamilton is a rapidly growing city because it is an attractive place to live and work. This will need to be carefully managed to ensure this growth supports the lifestyle we aspire to and the environmental outcomes we want to achieve.

Congestion is expected to increase by 50% in 2040 during peak traffic.

#### What does this look like?

An adaptable, future-ready transport system that supports quality and compact urban form.

#### What will we focus on?

- Delivering bike and micro-mobility parking in key destinations
- Optimising traffic signal timing to reduce delays for bus services, pedestrians and people on bikes
- Supporting high-density developments through policy, zoning, and maximising access by active modes and public transport
- Trialling technology to enable innovative solutions to understand and better manage transport use
- Identifying and implementing changes to kerbside spaces to optimise use of space and improve efficiency



# How will we measure success?

Our success in implementing this strategy will be understood through the monitoring and evaluation process. Monitoring will identify if changes are needed in the priorities and actions to ensure that we are on track to meet the desired outcomes. The performance measures summarised below relate directly to various strategies and frameworks including Waka Kotahi Land Transport Benefits Framework, Keeping Cities Moving Plan, Waikato Regional Public Transport Plan, to ensure consistency across organisations and regions.



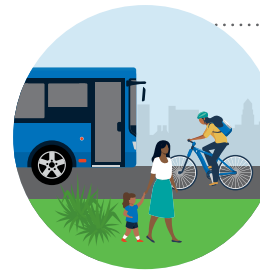
## A safe transport system

- deaths and serious injuries
- perception of safety of public transport, walking and biking



## Climate change

- CO2e emissions
- Vehicle kilometres traveled
- carbon neutral vehicles
- single occupant private vehicle



## Genuine travel choice

- mode share
- average travel time
- patronage
- cyclist numbers
- Hamiltonians' rating experience of public transport, walking and biking
- extent of walking and biking facilities

## Enjoyable and liveable city

- Hamiltonians' rating experience of public transport, walking and biking
- extent of walking and biking facilities
- extent of greenery in community places and on roads



## Environment responsibility

- ambient air quality - NO2 & PM10
- water quality - te awa o Waikato

## Supports quality growth and urban development

- use of technology for road network optimisation and flexible traveling information
- access to key economic destinations
- access to key social destination
- spatial coverage of public transport
- spatial coverage of biking
- patronage - number of people using public transport



## Thriving business and economic growth

- freight mode share
- access to key economic destinations
- freight throughput value



## Inclusivity

- investment in inclusive infrastructure
- number of engagement with tangata whenua and community groups
- walking and biking network condition
- access to key social destinations
- spatial coverage of biking facilities
- spatial coverage of public transport





## What's next?

The success of this strategy is in its implementation - actually making it happen.

The purpose of this strategy is to provide clarity on what Hamilton's transport future will look like and how we will get there.


### **Acknowledgements:**

Hamilton City Council would like to acknowledge and thank all the individuals, groups and organisations who assisted in the development of this strategy.

Hamilton City Council  
Garden Place, Private Bag 3010, Hamilton

 HamiltonCityCouncil

 @hamilton\_city\_nz

 07 838 6699

**hamilton.govt.nz**