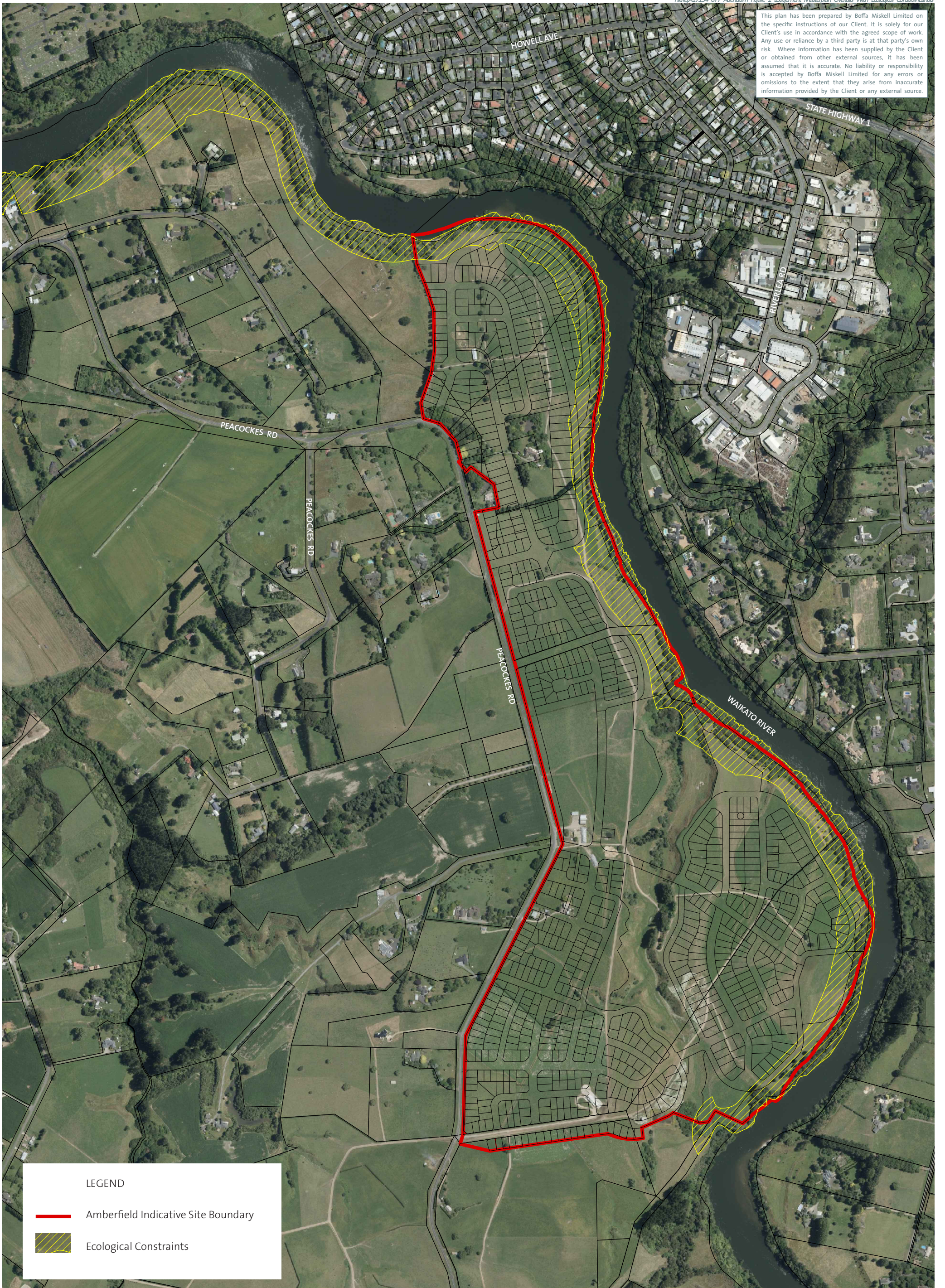
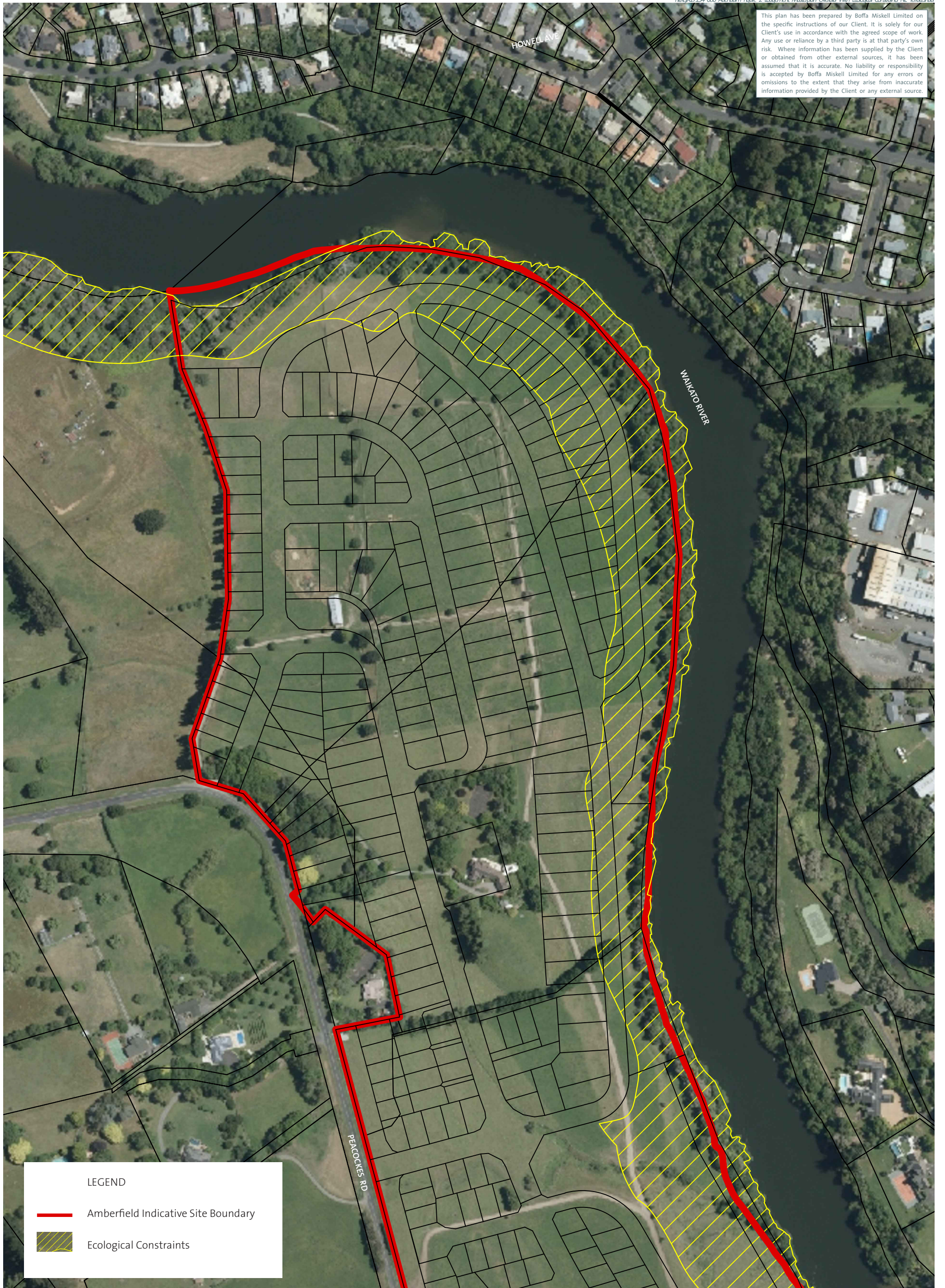


This plan has been prepared by Boffa Miskell Limited on the specific instructions of our Client. It is solely for our Client's use in accordance with the agreed scope of work. Any use or reliance by a third party is at that party's own risk. Where information has been supplied by the Client or obtained from other external sources, it has been assumed that it is accurate. No liability or responsibility is accepted by Boffa Miskell Limited for any errors or omissions to the extent that they arise from inaccurate information provided by the Client or any external source.



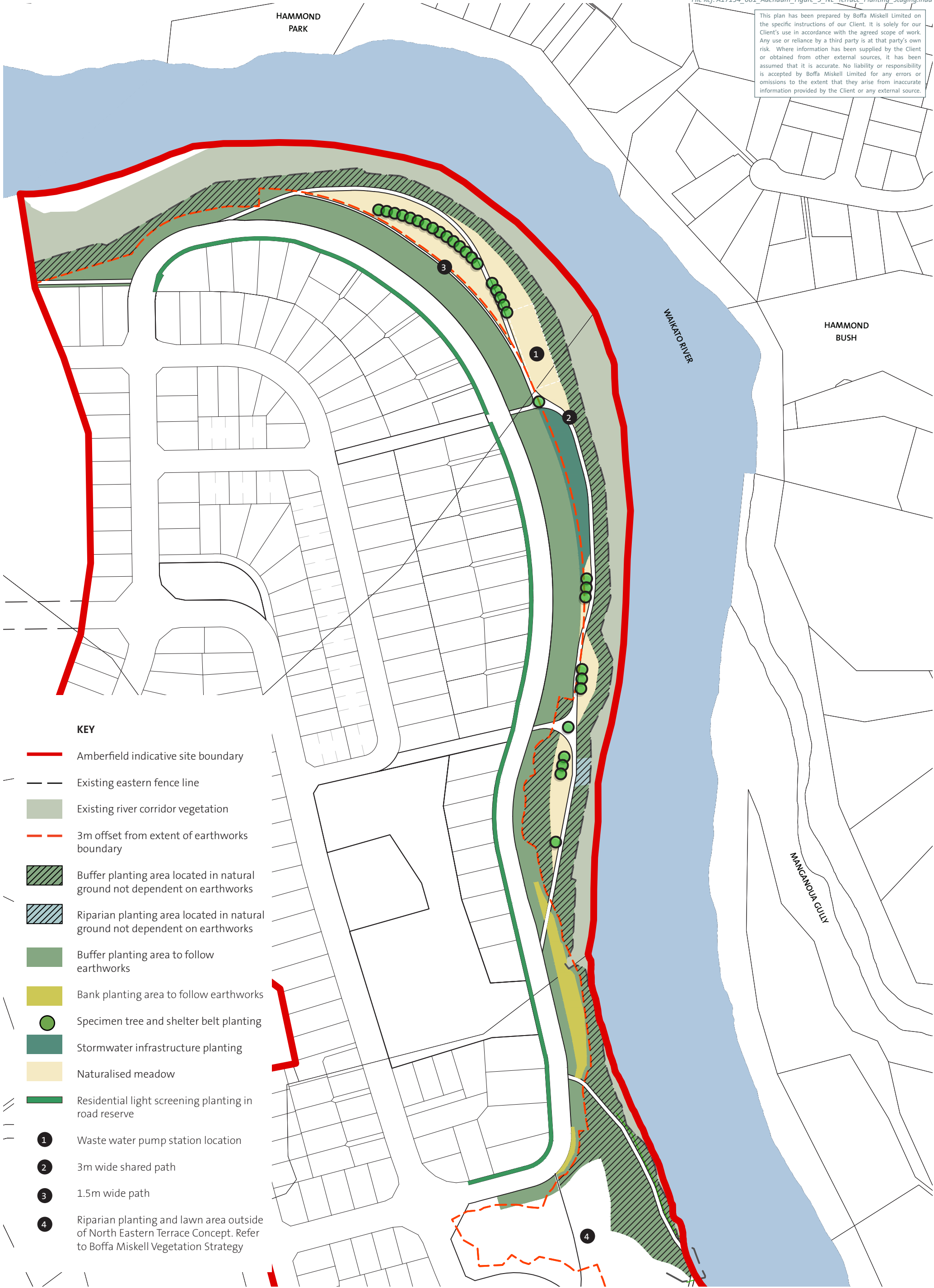


This plan has been prepared by Boffa Miskell Limited on the specific instructions of our Client. It is solely for our Client's use in accordance with the agreed scope of work. Any use or reliance by a third party is at that party's own risk. Where information has been supplied by the Client or obtained from other external sources, it has been assumed that it is accurate. No liability or responsibility is accepted by Boffa Miskell Limited for any errors or omissions to the extent that they arise from inaccurate information provided by the Client or any external source.

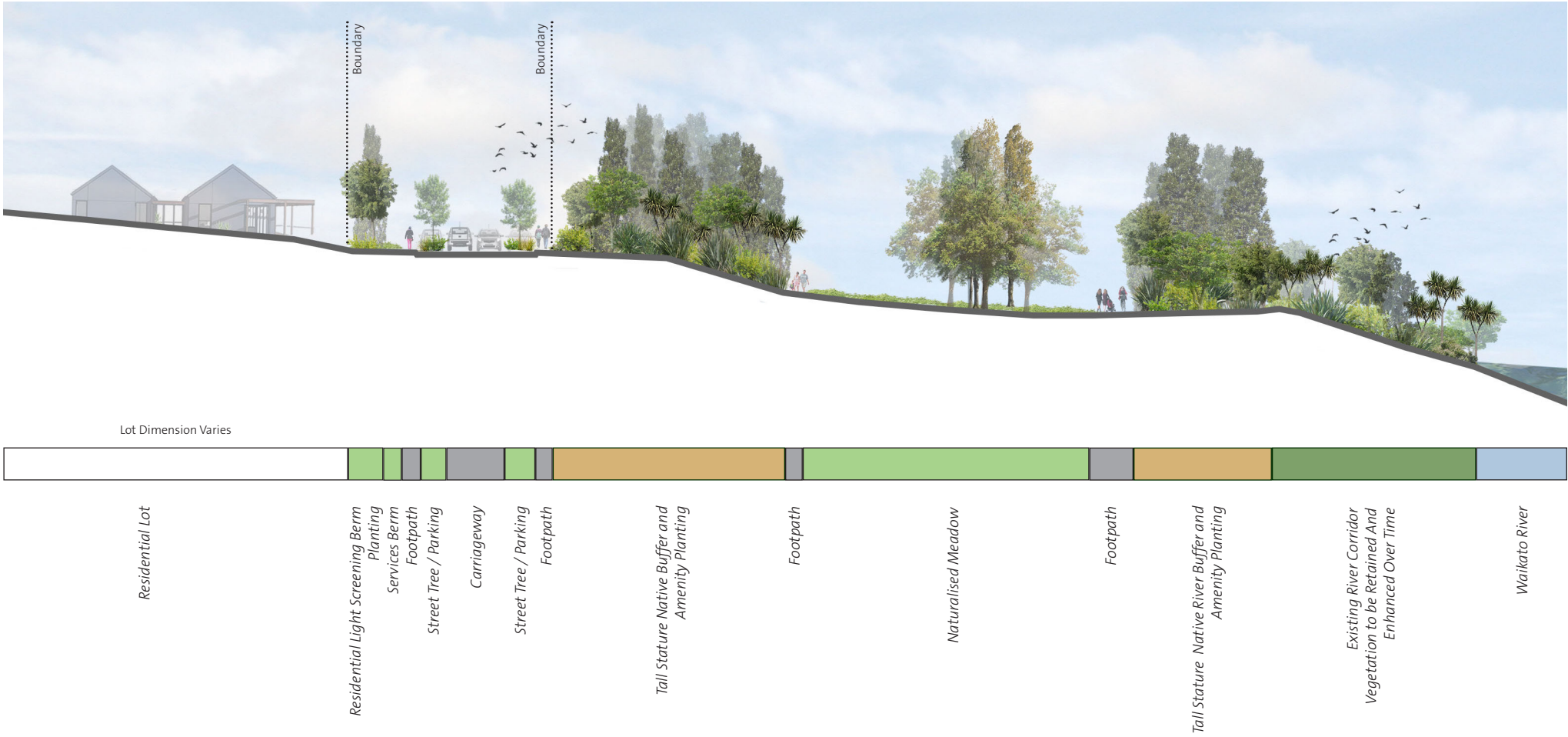




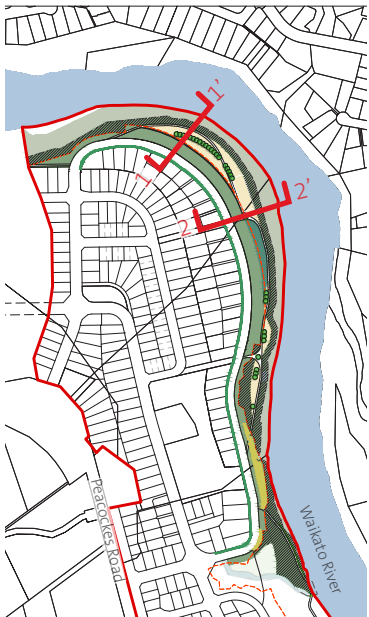
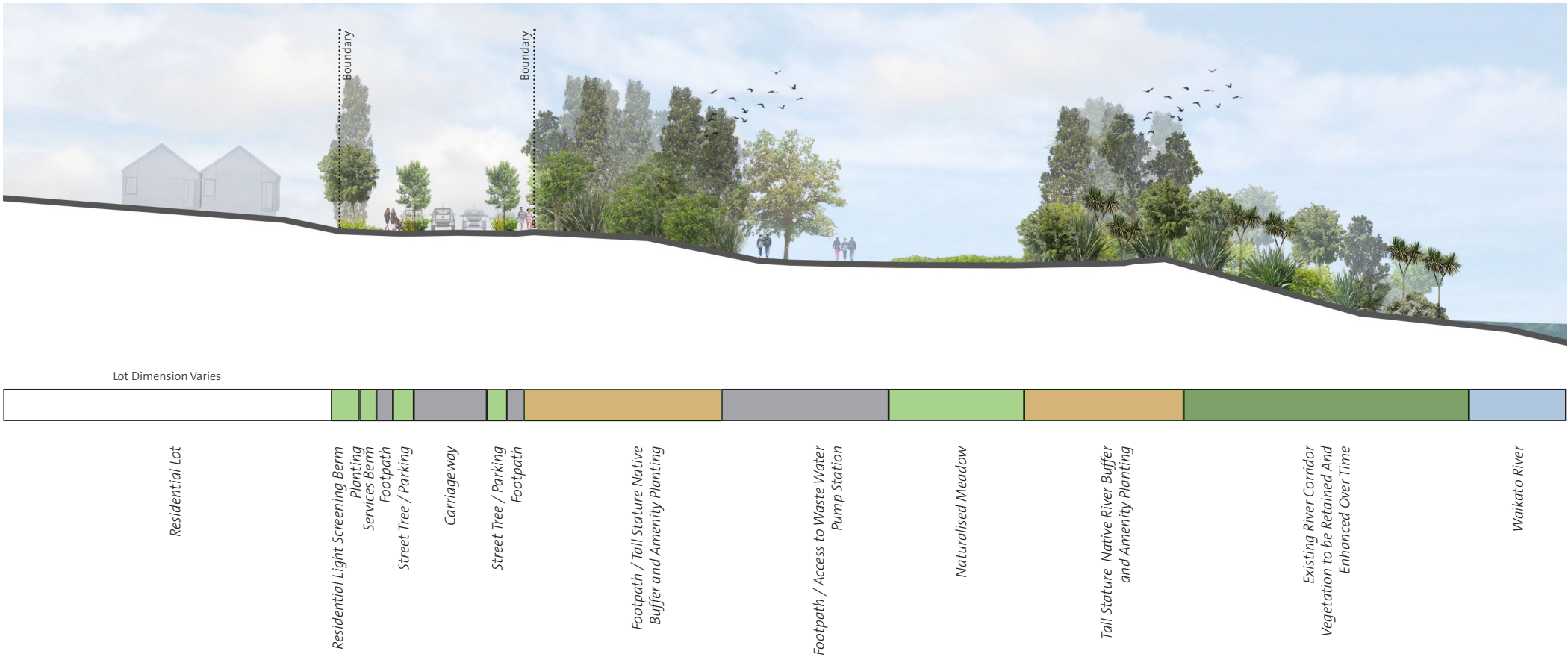
This plan has been prepared by Boffa Miskell Limited on the specific instructions of our Client. It is solely for our Client's use in accordance with the agreed scope of work. Any use or reliance by a third party is at that party's own risk. Where information has been supplied by the Client or obtained from other external sources, it has been assumed that it is accurate. No liability or responsibility is accepted by Boffa Miskell Limited for any errors or omissions to the extent that they arise from inaccurate information provided by the Client or any external source.



Section 1 - 1'



Section 2 - 2'



LOCATION PLAN

0 15m  
1:500 @ A3

AMBERFIELD  
PEACOCKE STRUCTURE PLAN

Figure 4  
NE Terrace Reserve  
Cross Section 1 & 2

Date: 19 February 2019  
Revision: B

Plan prepared for Weston Lea Ltd  
by Boffa Miskell Limited

Project Manager: Rachel deLambert  
@boffamiskell.co.nz

Drawn: BFo | Checked: RdL

This plan has been prepared by Boffa Miskell Limited on the specific instructions of our Client. It is solely for our Client's use in accordance with the agreed scope of work. Any use or reliance by a third party is at that party's own risk. Where information has been supplied by the Client or obtained from other external sources, it has been assumed that it is accurate. No liability or responsibility is accepted by Boffa Miskell Limited for any errors or omissions to the extent that they arise from inaccurate information provided by the Client or any external source.





- KEY**
- Reserve Boundary**  
Area 1.71Ha
  - Footpath**  
In-situ Concrete  
Colour - 8% Black Oxide  
Finish - Exposed agg  
13mm greywacke chip
  - Hoggin**  
GAP7 Compacted aggregate  
Colour - TBC
  - Lawn**  
Useable grass area
  - Soft Fall**  
Woodchip play surface  
300mm deep
  - Boardwalk**  
Timber
  - Amenity Garden Beds**  
Low planting native and exotic  
Comply with CPTED principles  
Low maintenance
  - Shade Gardens**  
woodland leaf litter and mulch. No  
specific groundcovers, but potential  
for daffidols.
  - Specimen Tree - Large**  
Exotic and deciduous  
Note - cross denotes existing
  - Specimen Tree - Medium**  
Exotic and deciduous  
Note - cross denotes existing
  - Bench Seats (x8)**  
Timber and steel
  - Picnic Tables (x2)**  
Exotic and deciduous
  - Bollards**  
Timber
  - Basketball Court**  
Existing tennis court converted into  
basketball court  
Concrete
  - Petanque**  
small chip suitable for petanque'  
Timber edge
  - Playground 1 Hub**  
Playground for play elements,  
refer materials page for suggested  
elements
  - Playground 2 Hub**  
Includes gym equipment such  
as pull up bars in the form of a  
sculptural peice, or peices, to add to  
the playground 2 hub.
  - Concrete Informal Steps**  
Concrete beams embedded in slope  
2000mm(w) x 200(d), with 4No  
4000mm wide
  - Concrete Steps with 'Pull out's'**  
2000mmx350x150 steps, with  
5000mm pullouts including timber  
seat tops
  - Road**  
Refer Road Heirarchy  
A17134\_200
  - Sales Office and Cafe**  
Area 0.36Ha  
Land to be retained by Weston Lea  
Ltd for Show Room / Cafe Function
  - Kick a Ball Space**  
Flat grass area for informal play

**NOTES**

For reference to streetscape design,  
refer A17134\_200 to A17134\_243

Contours shown at 0.5m intervals



LOCATION PLAN

0 30m  
1:1000 @ A3

N

**AMBERFIELD**  
**PEACOCKE STRUCTURE PLAN**

## Knoll Park Landscape Concept

DRAWING NUMBER A17134\_130

**Date: 14 February 2019**  
**Revision: D**

Plan prepared for Weston Lea Ltd  
by Boffa Miskell Limited

Project Manager: Rachel.deLambert  
@boffamiskell.co.nz

Drawn: BFo | Checked: JPo

This plan has been prepared by Boffa Miskell Limited on the specific instructions of our Client. It is solely for our Client's use in accordance with the agreed scope of work. Any use or reliance by a third party is at that party's own risk. Where information has been supplied by the Client or obtained from other external sources, it has been assumed that it is accurate. No liability or responsibility is accepted by Boffa Miskell Limited for any errors or omissions to the extent that they arise from inaccurate information provided by the Client or any external source.