



Technical Bulletin

Number: 181107-60-50-1

Date: 11/7/18

Recoil Install for Cube Inverters

This covers the following models (Read completely before performing service):

- 73540i
- 73536i
- 100148
- 73535i
- 100489
- 100455

1. Unscrew the 4 bolts holding the handle and remove the handle assembly.



2. Unscrew the fuel tank cap and remove the upper cover.

Note: After removing the upper cover, re-screw the fuel tank cap to prevent gasoline from escaping.



3. Remove (4) corner panels.



4. Unscrew the screws to remove the right cover.
Repeat for the left cover.



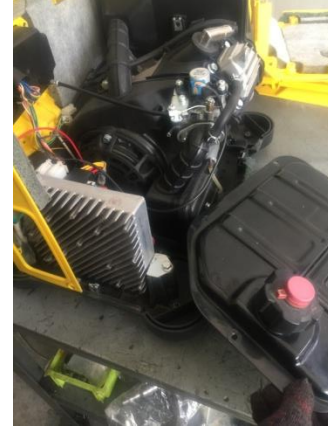
5. Unscrew the (3) bolts that hold the fuel tank.



6. Unscrew all screws & bolts of front cover and rear cover, and then remove the rear cover assembly.



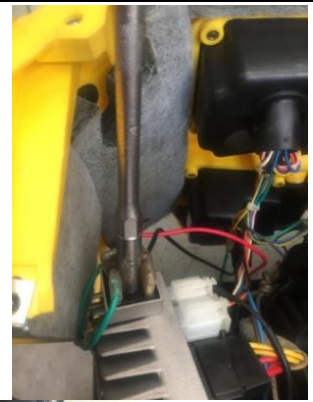
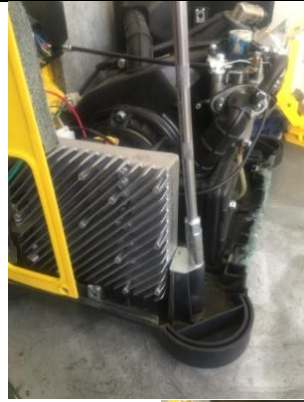
7. Unscrew the screw inside fuel ON/OFF switch. Loosen the clamp of fuel hose at the carburetor inlet nozzle to pull out the fuel hose, and then remove the fuel tank.



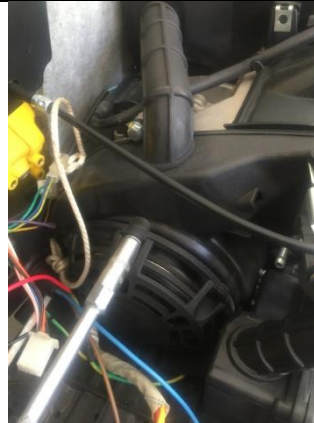
8. Pull out some length of rope from the recoil pulley and secure with a stop-knot at the recoil cover end. Remove the recoil handle.



9. Unscrew bolts of controller module, remove the rectifier on the controller module, and then unplug all connectors of the controller module and remove it



10. Unscrew the recoil assembly and replace.



11. Put the new spring into the pulley if need to replace a new spring.



12. Put the new rope into the pulley and secure with a stop-knot. And then rotate the rope clockwise [spring side towards to you] (about 3.5 turns) until the rope aligns with the open slot on the outer edge of the pulley.



13. Apply lubricant or grease to the shaft of the recoil cover and insert the pulley to the recoil cover.



14. Pull the rope into the slot and take the loose part of the rope inside the pulley and rotate the pulley about 3 turns [counter-clockwise] until the tension spring resists. Hold the pulley from reversing until the rope is ready to wind back onto the pulley. Feed the rope out to the hole of recoil cover and pull it through the guide hole on the outside of the recoil cover. Place the guide plate / pull handle on the rope and secure with a stop-knot.



15. Place the (2) detent springs as shown



16. Place 2 plastic detents into the spring positions with some lubricant. Note the detents must press the springs when installing.



17. Install the hoop onto the plastic press plate, and then put the plastic press plate onto the plastic detents. **Note: the salient of detents must snap into the guide slot of press plate.**



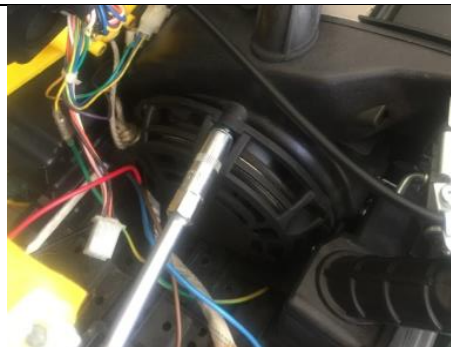
18. The bolt can have some locking glue, put the bolt into the through-hole of press plate and tighten the bolt.



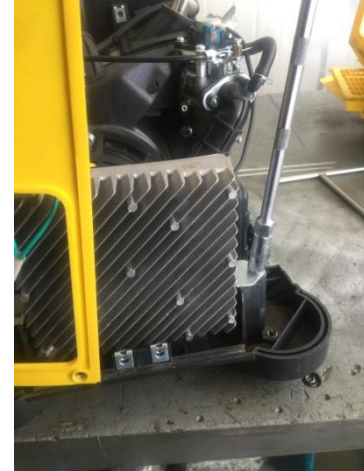
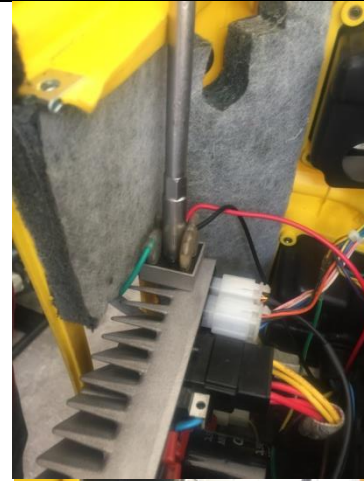
19. Secure a stop-knot at the end of the new recoil cover end.



20. Tighten the bolts and re-install the recoil handle at the front panel, then loosen the stop-knot. Attention: Do not allow the recoil rope to interfere with inner wire harness after installation.



21. Re-install the controller module and rectifier and plug all connectors.



22. Re-install the fuel tank and plug the fuel hose onto the carburetor inlet nozzle with the clamp. Re-install the fuel ON/OFF switch.



23. Reinstall rear cover assembly, front cover assembly and fuel tank.



24. Re-install the left cover assembly and right cover assembly.



25. Re-install the (4) corner panels. (Note the orientation of decorative sheets marked with up arrow). Re-install the upper cover assembly.



26. Re-install the handle



If you have any questions regarding the previous procedure, please contact our technical department Monday-Friday from 8:30 AM-5:00 PM PST at 877-338-0999.

If you have any questions, please contact Champion Power Equipment:

Champion Power Equipment, Inc.
12039 Smith Ave.
Santa Fe Springs, CA 90670
Phone: 1-877-338-0999
Email: tech@championpowerequipment.com