



Technical Bulletin

Number: 181108-60-50-2

Date: 11/8/18

Recoil Install for 3KW Inverters

This covers the following models (Read completely before performing service):

- 100204
- 100387
- 75537i
- 100476
- 100396
- 100233
- 100264
- 100262
- 100158
- 100523
- 75531i
- 100477
- 100263
- 100269
- 100261
- All similar body style inverters

1. Unscrew the screws and bolts for the left side panel.



2. Unscrew the bolts on the controller module and take out the controller module.

(If using a remote start or electric start version, unscrew the bracket with the controller module and battery (4) bolts. Take out the battery and unplug all connectors on the controller module and remove the whole bracket)



Electric/Remote Start Unit:



3. Loosen the cable holder on the recoil cover.



4. Unscrew (3) bolts of recoil assembly. Unscrew (2) screws of handle orientation plate at the panel side. Take out the recoil assembly with the handle orientation plate.



5. Pull rope out for some length and secure a stop-knot at the recoil cover end.



6. Remove the recoil handle and orientation plate.



7. Unscrew the bolts of the recoil cover and remove the recoil assembly

8. Put the new spring into the pulley if need to replace a new spring.



9. Put the new rope into the pulley and secure with a stop-knot. And then rotate the rope clockwise [spring side towards to you] (about 3.5 turns) until the rope aligns with the open slot on the outer edge of the pulley.



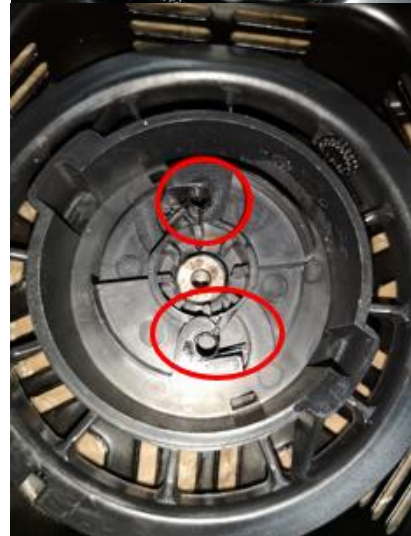
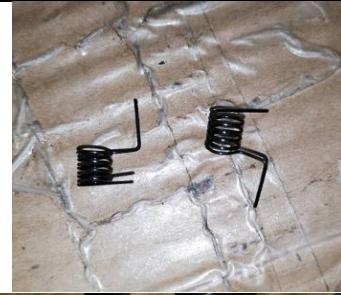
10. Apply lubricant or grease to the shaft of the recoil cover and insert the pulley to the recoil cover.



11. Pull the rope into the slot and take the loose part of the rope inside the pulley and rotate the pulley about 3 turns [counter-clockwise] until the tension spring resists. Hold the pulley from reversing until the rope is ready to wind back onto the pulley. Feed the rope out to the hole of recoil cover and pull it through the guide hole on the outside of the recoil cover. Place the guide plate / pull handle on the rope and secure with a stop-knot.



12. Place the (2) detent springs as shown



13. Put 2 detents into the spring positions with some lubricant. Note the detents must press the springs when install the detents.



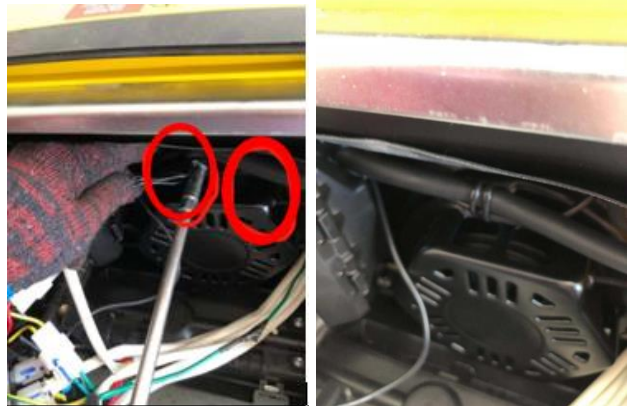
14. Put the bolt with some lubricant into the press plate, and then put a spring to the bolt. The bolt thread can have some locking glue. Put the press plate assembly onto the detents, and then tighten the bolt.



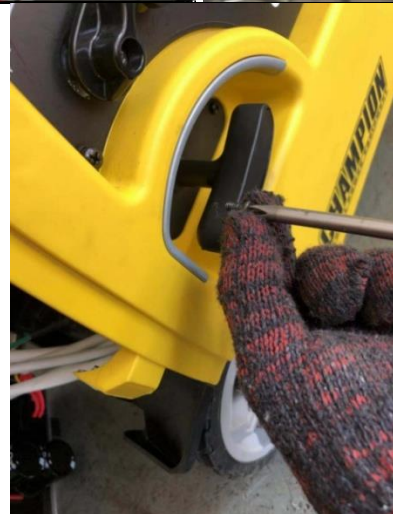
15. Install the orientation plate with a new recoil assembly.



16. Install the new recoil assembly. Tighten the cable holder on the recoil cover.



17. Install the orientation plate.



18. Re-install the controller module. To check all wire harness and connectors at the suitable position after installation.



19. Re-install the left panel.



If you have any questions regarding the previous procedure, please contact our technical department Monday-Friday from 8:30 AM-5:00 PM PST at 877-338-0999.

If you have any questions, please contact Champion Power Equipment:

Champion Power Equipment, Inc.
12039 Smith Ave.
Santa Fe Springs, CA 90670
Phone: 1-877-338-0999
Email: tech@championpowerequipment.com