

HOW TO APPLY YOUR GOSSAMERS

STEP 1



Start with clean, dry lashes. Apply *Whisper Light Flexible Bond* to the underside of your upper lashes. Dab the tip of the brush across your lash base, near the roots. To prevent unnecessary stickiness, do not brush all the way through to lash ends. A light bond coating will last for 1 to 3 days of lash wear. A heavy bond coating can last up to 7 days. Use either the clear or black formula, depending on your mood.

More Info:

Whisper Light is a hypoallergenic and dermatologist-tested bond exclusively designed to hold your Gossamers. Our Micro-Flex technology creates a flexible cushion underneath your lash line that protects your roots from any weight and tension. Our formula is made with biotin to nourish and protect the integrity of your natural lash while providing a strong hold.

Tip:

If the *Whisper Light Bond* starts to become a little clumpy in its container, try placing the container in warm water before applying.

STEP 2

Use the *Fuse Control Wand* to remove your Gossamer lashes from the cartridge. You can remove several at once (**Fig a.**), or one at a time (**Fig b.**). Hold the wand with the tip facing in if removing several Gossamers at once. Hold the wand with the tip pointing out if removing one Gossamer at a time.

For more control, hold the wand closer to where the ribbed metal ends and the curved tip begins.

Tip:

When first starting out, we recommend you remove only one Gossamer at a time to give you more precision as you become familiar with the application process.

a.

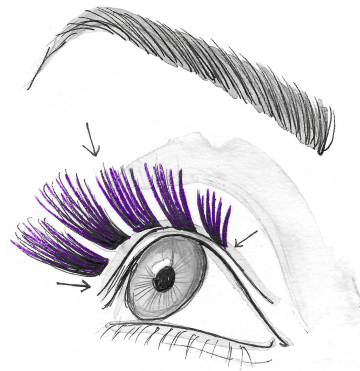


b.



STEP 3

Use the *Fuse Control Wand* to place your Gossamers underneath your top lashes. Thanks to your *Whisper Light Bond*, your Gossamers will immediately stick. Be sure to place the Gossamers on your lashes, never on the tightline.



Tips:

- For best placement control, apply one set of Gossamers at a time.
- Mix different Gossamer styles and lengths to create your own customized look. You can stack up to three sets of Gossamers on top of each other to create your very own lash masterpiece. Our Gossamers are virtually weightless and will never feel heavy on your eyelids.
- For the most natural look, apply one length shorter at the inner corner of your eye.

STEP 4

Use the *Fuse Control Wand* to clamp down on your Gossamers and “fuse” them to your natural lashes. Start by holding the Wand against your cheek and follow the curve of your eye from the corner to the bridge of your nose. Fuse, hold, and release.

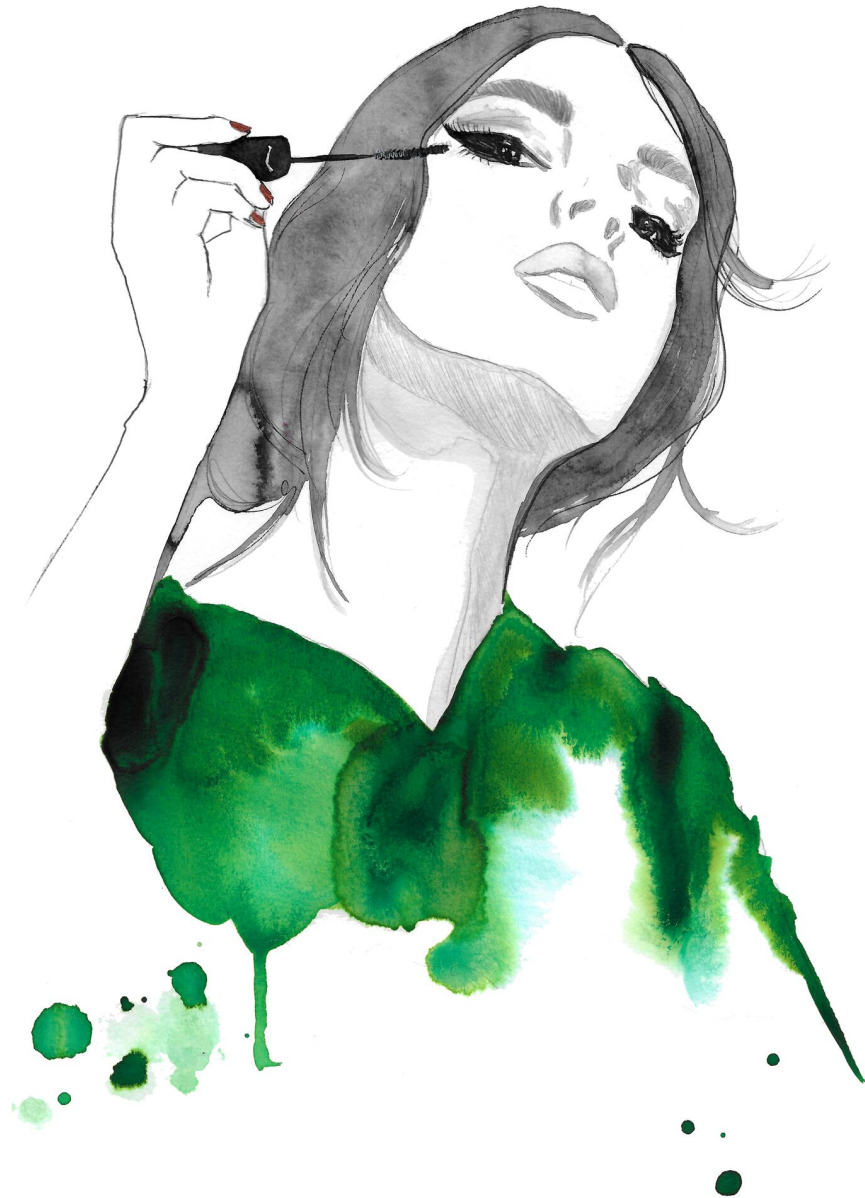
For the opposite eye, you may use the same dominant hand and cross over the bridge of your nose. Follow the curve of your eye, clamp down, hold for a few seconds, and release. For maximum fusion, apply pressure equally across your entire lash base.

Tips:

- Fusing is your friend! The more you fuse the longer the hold. Use your Wand before bed and in the morning to reinforce your hold. Fusing may even stimulate lash growth, like brushing your hair.
- To clean your Wand, use mild soap and water. Do not pick or peel the non-stick coating on the curved end of the wand. The coating is necessary to facilitate the Gossamer application process.



STEP 5



When satisfied with the length and fullness of your look, you may apply *Seal and Finish Clear Coat* to the underside of your top lashes to remove any stickiness.

To extend your wear, use the black *Whisper Light Flexible Bond* for touch-ups, and then fuse again.

Tip:

- To remove makeup without removing your Gossamer lashes, make sure to use a remover that does not contain oil. Also, try to avoid SOYF (sleeping on your face) and hot steam to keep your Gossamer lashes looking luscious and fluffy.
- If you wake up and find that a Gossamer has fallen off, simply reapply more *Whisper Light Bond*, reattach your Gossamer with your Wand, and fuse.

STEP 6

To remove your Gossamers, soak a cotton pad with *Melt Away*, or any waterproof eye makeup remover that's oil-based. Hold the pad to your lashes with your eyes closed for a few seconds. Gently slide off the Gossamers. Rinse your lids with warm water.

Tip:

With care, Gossamers can be cleansed and reused. For maximum reuse, do not pull them off your lashes as they are delicate and may come apart. Use a gentle shampoo to clean off bond residue.

