

help*force*

# Social Prescribing Webinar

Learning from today's webinar .....

Better understanding about what 'Social Prescribing' is?

Be curious to find out how Social Prescribing is being delivered in your local community?

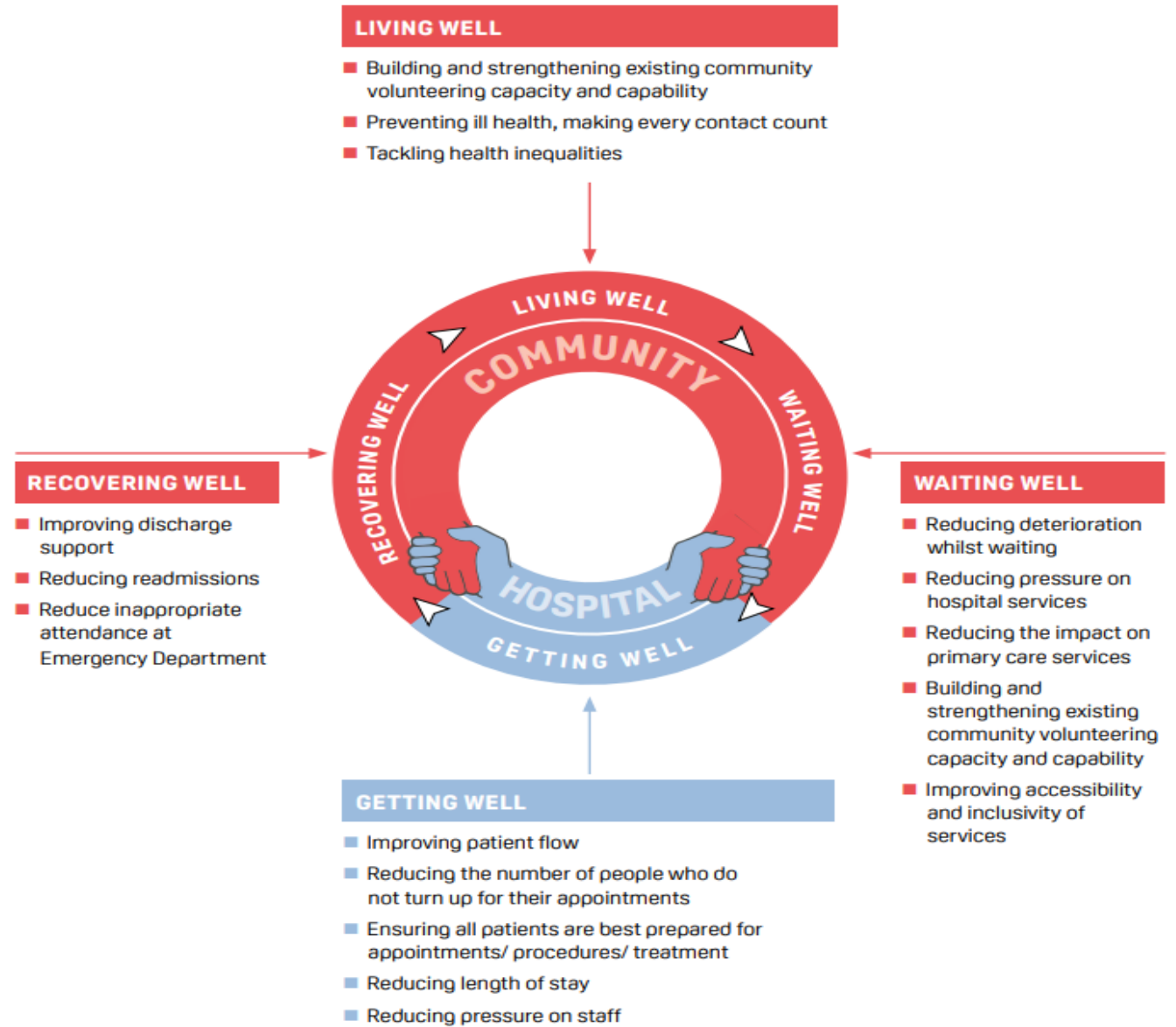
How your Trust currently connects to Social Prescribing?

Consider how Social Prescribing could support your Trust to -  
Improve volunteer supported discharged patient pathways  
Waiting Well Volunteer supported initiatives  
Staying Well at home

# Helpforce Back to Health (B2H) Framework

Social Prescribing supports our Back to Health Campaign ambitions to support you to increase volunteer opportunities to support patients/people ..

## Living Well and Waiting Well



# What is Social Prescribing?

Government's Strategy to End Loneliness ( 2019) and the NHS Long Term Plan (NHS England, 2019) emphasises the importance of **developing a network of social prescribing services to combat loneliness and isolation**

Definition - Social prescribing is a means of enabling GPs, nurses and other health and care professionals to refer people to a range of local, **non-clinical services** NOTE – new approaches include self referrals and emerging referral routes not exclusive to primary care

**Person Centred Approach** - people have choice and control over the way their care is planned and delivered, based on 'what matters to you'

**Identify the wider issues that impact on a person's health and wellbeing**, such as debt, poor housing, being unemployed, loneliness and caring responsibilities

**Helps people to become more confident, connected and in control of their lives** and this in turn helps them to be well

**Connections to local community based support opportunities** and range of activities with focus on social connectedness

# Learning from webinar

Please use the chat box to add your comments about –

- How you are currently connected to Social Prescribing?
- Further information and queries about Social Prescribing?
- Ideas about how Social prescribing could support your work?

Following today's webinar, we will be developing an information document about Social Prescribing based on your feedback

# help*force*

## Thank you

[help@helpforce.community](mailto:help@helpforce.community)  
[www.helpforce.community](http://www.helpforce.community)