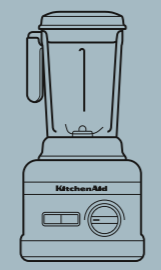
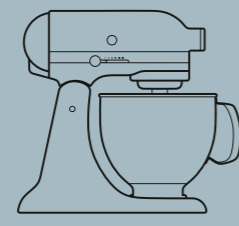


1919 100 2019

CELEBRATING 100 YEARS OF MAKING HISTORY



KitchenAid



BAKING

10 - 43

HEALTHY AND FRESH

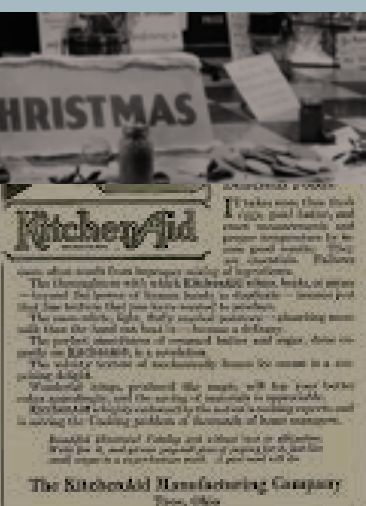
44 - 65

COFFEE AND BREAKFAST

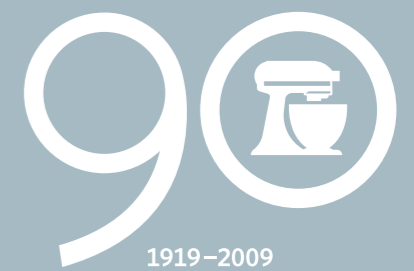
66 - 93

CULINARY

94 - 115



The KITCHENAID legacy



1919-2009



2013
The KitchenAid Artisan range is strengthened: new items include toasters, a kettle, hand blenders and food processor.

2009
KitchenAid celebrates its 90th anniversary and a special edition, in Candy Apple, is released.



2016
KitchenAid continues to introduce innovative award winning products in different categories including the launch of the world's most powerful Pro Line Blender.



2018
KitchenAid is the number one mixer brand in the world.*
*Source: Euromonitor International Limited; Consumer Appliances 2018 edition, retail volume sales, 2012 – 2017 Mixer Category data (includes stand mixers & hand mixers). ©2017 All rights reserved.

1919 **100** 2019

2019
100 Year Celebration of KitchenAid with the launch of limited-edition heritage inspired Misty Blue Stand Mixer and Queen of Hearts Stand Mixer.

Inspiring creativity in the kitchen since 1919



1936
Herbert Johnston employs Egmont Arens to create new models, which win awards for outstanding design.



1923
KitchenAid runs a national advertising campaign for the home mixer, to reach almost all USA households.

1919
The KitchenAid mixer is officially launched and is a market sensation.



1994
KitchenAid appliances are released in a spectrum of eight bold new colors.



1908
Herbert Johnston, an Ohio (USA) based engineer invents the first commercial mixer.

SENSATIONAL NEW KITCHENAID

that's **TWICE** as EASY to OWN!

The Food Mixer that "Does It All"... at an Exciting Price

POWERFUL AND PRACTICAL FOR ALL HOUSEHOLD MIXING, BEATING, WHIPPING, KNEADING, CHOPPING, SLICING, GRINDING, SHREDDING, SIEVING AND . . . MANY OTHER TASKS

The New Model "K" . . . beautiful modern lines—gleaming white Dulux trimmed in chromium—a *KitchenAid* in ALL that KitchenAid means! Compact . . . generous bowl capacity.



For the making since 1919...

Premium Performance. Exceptional Results. Legendary KitchenAid Quality

The idea of our flagship product – the stand mixer was formulated by Herbert Johnson, an engineer working at the Hobart Corporation. He had been inspired after seeing a baker mix dough, and thought that there must be a better way of doing the task. Prototype models were given to the wives of factory executives, and the product was named when one stated "I don't care what you call it, but I know it's the best kitchen aid I've ever had!"

Since the introduction of its legendary stand mixer in 1919, KitchenAid products have delivered premium standards of quality, long-lasting durability, and precision to the home kitchen. 97 years later, the KitchenAid brand now offers virtually everything you need for a well-equipped kitchen - high-performance appliances, cookware, bakeware, and essential kitchen tools - you'll find it all here, performance and perfection in equal measure.

Every KitchenAid is created with the same attention to detail, quality craftsmanship, versatile technology and timeless design. With the good wishes and support of the culinary fraternity, KitchenAid made its way into the Indian kitchens in September 2013 across major cities and we plan to move ahead with great product launches for the country's passionate gourmets.

■ NOW WITH THIS splendid new KitchenAid—the *completeness* of KitchenAid food preparing service is available *as never before* to every American home! Perhaps you've dreamed of

a KitchenAid—but never dreamed it *could* be so easy to own. Such a machine as this is the happy realization of our plans to bring you KitchenAid at a greatly reduced price.

Here's a KitchenAid styled by one of America's foremost designers—a model built and powered to "do it all" for you in the same masterly way as the large Model "G" shown below. Full planetary action in mixing and beating, with stationary bowl. Three definitely selected constant speeds. Full power at each speed. Practical attachments—see list:

The modest price may be paid on the Budget Plan—KitchenAid can be yours now, so easily. Let us send you *all* the good news about this new Model "K"

Attachments

- Vegetable Slicer
- Shredder Plates
- Food Chopper
- Colander & Sieve
- Juice Extractor
- Pastry Knife
- Coffee Grinder
- Pea Sheller
- Knife Sharpener
- and others



. . . Famous Model "G," the larger size

FRESH COFFEE

The last word on a much-advertised, much-talked-of subject—Coffee Freshness—is coffee freshly ground for each meal, in precisely the correct grade for your method of making. This smart electric mill, low-priced, always ready, is the way to better flavor!



KitchenAid
REG. U.S. PAT. OFF.

KitchenAid Division, The Hobart Manufacturing Co.
111 Penn. Ave., Troy, Ohio
Please tell me more about

- The new KitchenAid that is "Twice as Easy to Own"
- The Larger Model "G" KitchenAid
- KitchenAid Electric Coffee Mill

Name _____

Address _____

City and State _____



**#1 MIXER BRAND
IN THE WORLD***



*Source: Source: Euromonitor International Ltd; Consumer Appliances 2019ED; "mixers" as per mixers definitions (includes countertop mixers and hand mixers); Retail Volume Sales in units, 2018 data. ©2019 All rights reserved.



BAKING

Whatever you're creating, our iconic Stand Mixers and their extensive range of attachments and accessories will inspire you throughout your culinary journey.



Choose your size



3.3 L KitchenAid Mini Stand Mixer

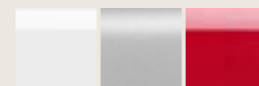
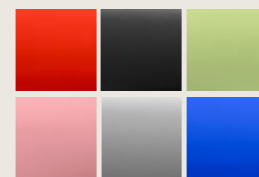


4.8 L KitchenAid Stand Mixer



6.9 L KitchenAid Stand Mixer

Choose your color



Choose your attachment



*Discover the perfect
Stand Mixer for you
in 3 steps*

3.3 L ARTISAN MINI TILT - HEAD STAND MIXER 5KSM3311X

For decades, the KitchenAid Artisan Stand Mixer has been a household staple and culinary icon. It's empowered throngs of epicureans and created a cult brand. With the launch of the Artisan Mini, there is now a smaller mixer that takes up less counterspace, is lighter in weight so you can easily move it around your kitchen and has the same iconic design and power as our other Tilt-Head stand mixers.



- A 25% lighter*, 20% smaller than the 4.8 L model
- B 10 mixing speeds with additional 1/2 speed for Soft Start®
- C Multipurpose attachment hub for easy usage
- D Premium finishes with chrome plated knobs



Technical Specifications

Wattage (Input)	250 W
Voltage	220-240 V
Motor type	Direct Current (DC) with Direct Drive
Speed Selections	Variable 10 1/2 Speeds
Mixing Action	Planetary
Transmission	Direct Drive
Bowl Size	3.3 L
Soft Start	Yes
Material Body	Full Die-Cast Metal
Dimensions Product	31.2 X 19.8 X 31.2 cm (HxWxD)
Dimensions Packaging	38.4 X 40.6 X 26.2 cm (HxWxD)
Net Weight	7.3 Kg
Gross Weight	8.3 Kg
Max. Dough Capacity	680 g of all-purpose flour and 8 egg whites (medium)
Minimum Capacity	1 egg

Colours you'll crave



4.8 L ARTISAN TILT - HEAD STAND MIXER 5KSM150

The stamp of a cook's personality expresses itself in the creation of sensuous culinary experiences, ones that encompass all the senses, including the eye. KitchenAid considers its mixers as a creative extension of the cook's hands. The product is designed to yield results you can be proud of. This Artisan Tilt Head Stand Mixer is all this in an iconic design.

*KitchenAid, the #1 mixer brand in the world**



- A Smooth, rounded Tilt Head design for easy cleaning and usage
- B 10 speeds for a slow stir to fast whip
- C Robust, stable and durable metal construction
- D 59 touch points original planetary action**
- E Single attachment hub for easy usage



6-WIRE WHISK FLAT BEATER DOUGH HOOK POURING SHIELD STAINLESS STEEL BOWL



**During operation, the flat beater moves around the stationary bowl, at the same time turning in the opposite direction on its own axis. The diagram shows the complete coverage of the bowl made by the path of the beater.

Technical Specifications

Wattage (Input)	300 W
Motor Type	Alternative Current (AC) with Direct Drive
Peak Output Motor	0.3 HP
Voltage	220 - 240 V
Frequency	50 / 60 HZ
RPM (Speed 1-10)	58 to 220
Mixing Action	Planetary
Material Body	Die-Cast Zinc
Type Speed Control	Hybrid electronic
Dimensions Product	36.2 X 22.2 X 34.3 cm (HxWxD)
Dimensions Packaging	42.6 X 28.9 X 41.3 cm (HxWxD)
Net Weight	10.6 Kg
Gross Weight	12.4 Kg
Max. Dough Capacity	1 kg (8 cups) of all purpose flour 800 g (6 cups) of whole wheat flour

Colours you'll crave



#1 MIXER BRAND IN THE WORLD*
*Source: Source: Euromonitor International Ltd; Consumer Appliances 2019ED; "mixers" as per mixers definitions (includes countertop mixers and hand mixers); Retail Volume Sales in units, 2018 data. ©2019 All rights reserved.

4.8 L HEAVY DUTY BOWL-LIFT STAND MIXER 5KPM5-5KPM50

The Bowl Lift Stand Mixer is designed for cooking enthusiasts who cook in quantity and want more power in the kitchen. The commercial style bowl lift is designed to handle heavy mixtures easily. Original planetary mixing action ensures thorough ingredient incorporation.



- A Bowl Lift design for easy attachment and removal of bowl
- B 10 speeds for a slow stir to fast whip
- C Stable and durable metal construction
- D 67 touch points original planetary action*
- E Single attachment hub for easy usage
-Emergency stop switch for increased safety (only on 5KPM50)



6-WIRE WHISK FLAT BEATER DOUGH HOOK POURING SHIELD STAINLESS STEEL BOWL

Technical Specifications

Wattage (Input)	315 W
Motor Type	AC (alternating current) with direct drive
Voltage	220 - 240 V
Frequency	50 / 60 HZ
RPM (Speed 1 – 10)	60 - 265 RPM
Mixing Action	Planetary
Bowl Capacity	4.8 L
Material Body	Die-Cast Zinc
Type Speed Control	Mix (mechanic / electronic)
Dimensions Product	41.1 X 33.8 X 26.4 cm (HxWxD)
Net Weight	12 Kg
Max. Dough Capacity	1 kg (8 cups) of all purpose flour 800 gms (6 cups) of whole wheat flour

Colours you'll crave

5KPM5 (Includes single bowl)

5KPM50 (Includes two bowls)



**During operation, the flat beater moves around the stationary bowl, at the same time turning in the opposite direction on its own axis. The diagram shows the complete coverage of the bowl made by the path of the beater.



#1 MIXER BRAND IN THE WORLD*
*Source: Source: Euromonitor International Ltd; Consumer Appliances 2019ED; "mixers" as per mixers definitions (includes countertop mixers and hand mixers); Retail Volume Sales in units, 2018 data. ©2019 All rights reserved.

HEAVY DUTY 6.9 L BOWL LIFT STAND MIXER 5KSM7591

The professional 6.9 L Bowl Lift Stand Mixer is one of the most powerful and robust KitchenAid Stand Mixer in its class. Its high-efficiency motor, combined with a direct drive system, makes it both silent and high performance, allowing for rapid and efficient mixing even with heavy dough or large quantities.



- A Smooth, rounded Bowl Lift Professional design for heavy usage
- B 6.9 L bowl for large quantities of food
- C Stable and durable metal construction
- D Original planetary action
- E 1.3 HP high efficiency motor
- F Single attachment hub for easy usage



Technical Specifications









Wattage (Input)	500 W
Peak Output Motor	1.3 HP (horsepower)
Motor Type	DC (direct current) with direct drive
Voltage	220 - 240 V
Frequency	50 / 60 Hz
R.P.M. (Speed 1 – 10)	40 - 200 RPM
Mixing Action	Planetary
Bowl Capacity	6.9 L
Material Body	Die-Cast Zinc
Type Speed Control	Electronic
Dimensions Product	41.9 × 28.7 × 37.1 cm (HxWxD)
Net Weight	12.2 Kg
Maximum Capacity	All-purpose flour 2.2 kg (16 cups) Whole wheat flour 1.75 kg (14 cups) Egg white 19 (medium), Whipped cream 1.9 L, Cake 4.5 kg, Bread dough (stiff yeast dough) 3.8 kg, Cookies (standard 5.1 cm - 2 inch cookie) 168 units (14 dozen)

Colours you'll crave



#1 MIXER BRAND IN THE WORLD*
*Source: Source: Euromonitor International Ltd; Consumer Appliances 2019ED; "mixers" as per mixers definitions (includes countertop mixers and hand mixers); Retail Volume Sales in units, 2018 data. ©2019 All rights reserved.

KNOW YOUR STAND MIXER

	MAX FLOUR ADVISED	PIE CRUST: GRAMS OF FLOUR	EGG WHITE	WHIPPED CREAM	CAKE	BREAD DOUGH	MASHED POTATOES	COOKIES	ACCESSORIES
3.3 L MINI 	680 G	350 - 400 G	1 - 8	350 - 400 ML (Depending upon the required thickness)	1.8 KG	750 G	2 KG	60 UNITS (5 DOZENS)	
4.8 L TILT HEAD 	1 KG (8 CUPS)	500 G	12 (MEDIUM)	1 L	2.7 KG	2 KG	2.7 KG	108 UNITS (9 DOZENS)	
4.8 L BOWL LIFT 	ALL PURPOSE: 1 KG (8 CUPS) WHOLE WHEAT: 800 G (6 CUPS)	500 G	12 (MEDIUM)	1 L	2.7 KG	2 KG	2.7 KG	108 UNITS (9 DOZENS)	
6.9 L BOWL LIFT 	2.2 KG (16 CUPS)	1150 G	19 (MEDIUM)	1.9 L	4.5 KG	3.8 KG	3.6 KG	168 UNITS (14 DOZENS)	

Limited Edition Heritage Stand Mixer

To celebrate our rich heritage and 100 years of making memories, KitchenAid is launching the limited-edition Stand Mixer featuring a heritage-inspired color - **Misty Blue**.



Unique Features:

- Heritage-inspired KitchenAid Logo (on the trimband)
- White Stainless Steel Bowl with 3D hobnail finish
- Custom power hub cover celebrating 100 years of KitchenAid
- White color matched accents (knobs, power cord)
- 100 year product packaging
- Exclusive in-box collectable (History of the Mixer)



Limited Edition Queen of Hearts Stand Mixer

For KitchenAid, red has been the most iconic and representative of the brand. In 2019, KitchenAid is debuting with *Queen of Hearts*, designed for the future.



Unique Features:

- Custom trimband - uses hundreds of miniature hearts to reflect the passion consumers have for making
- Sleek, modern chrome accents
- 100 year product packaging with unique unboxing experience for the Stand Mixer
- Stand Mixer: custom chrome medallion hub cover celebrating 100 years of KitchenAid



Make the KitchenAid Stand Mixer the culinary center of your kitchen by choosing from more than 15 optional attachments, as per your needs.



STAND MIXER ATTACHMENTS

*“Culinary delight is achieved by a mix of creativity, knowledge, a sense for harmony and the right tools.”
Since cooking is a process, we have turned the Stand Mixer into an irreplaceable “kitchen tool”- exactly what it was made for; allowing for a wide variety of accessories and attachments to simply be plugged in and ready to go. The Stand Mixer Accessories and Attachments increase cooking excellence while decreasing your work load.*



FOOD GRINDER

FGA

For mincing and grinding meat, fish, vegetables, dried bread, firm fleshed fruits as well as cheese. Comes with a 4 blade self-sharpening, coarse and fine stainless steel grinding plates and food stomper or wrench.



FOOD PROCESSOR

KSM1FPA

ExactSlice™ System offers both versatility and performance that can slice, shred and julienne.



ICE CREAM MAKER*

5KICA0WH

Produces up to 1.9 L of soft consistent ice cream, sorbets or frozen desserts. Liquid within the double walls of this innovative freeze bowl provides thorough, even freezing throughout the mixing process.

*Fits all Stand Mixers except KSM7 models.
For those models order KAICA



JUICER & SAUCE ATTACHMENT (SLOW JUICER)

KSM1JA

Enjoy fresh, healthy juices by choosing from three filters to customise the amount of pulp in your juice. Great for making sauces and jams!



PASTA ROLLER & CUTTER SET

KPRA

The Pasta Roller helps you make sheets of fresh homemade dough through to the desired thickness for perfectly uniform pasta.





ROTOR VEGETABLE SLICER/SHREDDER

RVSA

For slicing and shredding root and raw green vegetables, potatoes, cheese, various types of fruits, nuts and chocolate for toppings. Comes with medium, coarse shredding drums and a slicing drum.



SPIRALIZER

KSM1APC

Peel, spiralize, core and slice blades offers versatile cutting options. Easily creates fruits and vegetable spirals, ribbons and noodles.



FRUIT AND VEGETABLE STRAINER

FVSFGA

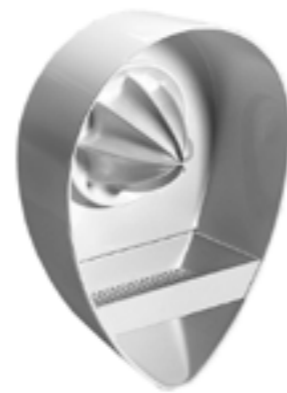
Must be used in combination with the FGA, for puréeing soft fruits and cooked vegetables. It strains the food to a purée and separates any pips, stems or skins.



CITRUS JUICER

JE

For making fresh citrus fruit juices.



GOURMET PASTA PRESS

KPEXTA

The pasta press comes with a combo tool, an accessory storage case, cleaning brush and set of 6 plates for making pasta of various lengths, widths and shapes. Each plate is composed of one metal frame and two plastic inserts.

* Does not fit on model 5KSM7990



WATER JACKET

K5AWJ

Perfect for when you're working with temperature-sensitive ingredients like butter for buttercream or whipping cream.

*Fits only 5KPM5, 5KPM50



RAVIOLI MAKER

KRAV

Complements the pasta sheet roller of the KPRA set. For stuffing your favourite pasta with your favourite filling. Made of durable, chromed metal.





SAUSAGE STUFFER

SSA

Must be used in combination with the FGA. It makes many varieties of sausages and comes with 2 tubes (10 mm and 16 mm).



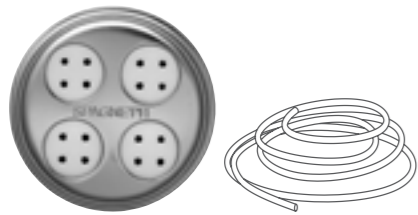
FOOD TRAY

FT

Can be used in combination with either the FGA or FVSP. For holding larger quantities of food for quicker, easier processing.



GOURMET PASTA PRESS PLATES



SPAGHETTI PLATE
Long, thin, round strands



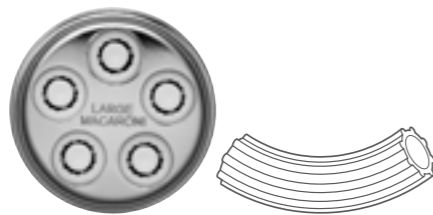
BUCATINI PLATE
Long, hollow pasta strands



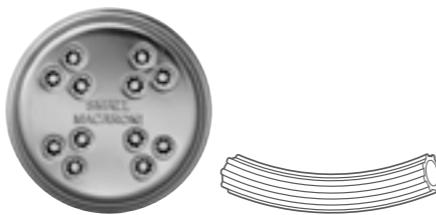
FUSILLI PLATE
Spiral - shaped pasta, +/- 4 cm



RIGATONI PLATE
Large, tube - shaped
pasta with ridges



LARGE MACARONI PLATE
Tube - shaped pasta
with ridges



SMALL MACARONI PLATE
Narrow, tube - shaped
pasta with ridges





FLEX EDGE BEATER

4.8 L TILT-HEAD STAND MIXER
Used for normal to heavy mixtures, such as cakes, frostings, cookies and mashed potatoes. The flexible edge design guarantees faster mixing, without stopping the motor and using a spatula. Coated metal with a silicone side. Dishwasher safe.



FLEX EDGE BEATER

6.9 L STAND MIXER
Used for normal to heavy mixtures, such as cakes, frostings, cookies and mashed potatoes. The flexible edge design guarantees faster mixing, without stopping the motor and using a spatula. Coated metal with a silicone side. Dishwasher safe.



FITTED COVERS*

Keep your Stand Mixer perfectly clean when not in use with this fitted Stand Mixer cover designed for KitchenAid Tilt Head Stand Mixers.

Available in 4 colours: Empire Red, Khaki, Silver Frost and Onyx Black

*Only applicable to the Artisan 4.8 L Stand Mixers.



2.8 L AND 4.8 L BOWL*

Complements the standard 4.8 L bowl and is utilized for mixing smaller quantities. 2.8 L bowl can be fitted onto the 4.8 L Tilt Head Stand Mixer. Both bowls are made of polished stainless steel. Dishwasher safe.



CERAMIC BOWL: BLACK MATTE & EMPIRE RED

Has a convenient pouring spout, made with titanium-reinforced ceramic to resist chipping, cracking, crazing and staining. Dishwasher, freezer, microwave and oven-safe.



4.8 L CERAMIC BOWL: INK WATERCOLOR & GOLD CONIFER

Has a convenient pouring spout, made with titanium-reinforced ceramic to resist chipping, cracking, crazing and staining. Dishwasher, freezer, microwave and oven-safe.



4.8 L FROSTED GLASS BOWL

Easy to read ingredient quantity marks moulded into the side of the bowl. Delivered with a silicone lid. Mixing bowl is made of durable, sturdy glass. Dishwasher, freezer and microwave safe.



4.8 L CLEAR GLASS BOWL

Easy to read ingredient quantity marks moulded into the side of the bowl. Delivered with a silicone lid. Mixing bowl is made of durable, sturdy glass. Dishwasher, freezer and microwave safe.



7 SPEED HAND MIXER 5KHM7210

Power. Versatility. All in the palm of your hand. KitchenAid Hand Mixers bring the whisk to where the action is. Intuitive design features, like Clean Touch Control Pad, keep the kitchen chaos from spreading. Adjusting speeds is now as tidy and simple as a press of a button. With the KitchenAid Hand Mixer, you'll be able to conquer it all, we might add, with one hand tied behind your back.



- Clean Touch™ Control Pad to regulate speed at the touch of a button
 - 7 mixing speeds for a slow stir to fast whip
- Soft start electronic control to prevent splattering of ingredients
- Electronic mixing sensor which adjusts mixing speed as per the load
 - Beater ejector button for easy and quick accessory removal
 - Lockable swivel cord for easy movement



STAINLESS STEEL
TURBO BEATERS



ACCESSORY BAG



STAINLESS STEEL
LIQUID ROD

Technical Specifications

Wattage (Input)	70 W
Motor Type	DC (Direct Current)
Voltage	220 - 240 V
Frequency	50 / 60 Hz
Material of Motor Body	Plastic
Dimensions Product	16.3 X 19.1 X 8.9 cm (HxWxD)
Net Weight	1.2 Kg

Colours you'll crave



**#1 MIXER BRAND
IN THE WORLD***

*Source: Source: Euromonitor International Ltd; Consumer Appliances 2019ED; "mixers" as per mixers definitions (includes countertop mixers and hand mixers); Retail Volume Sales in units, 2018 data. ©2019 All rights reserved.



HEALTHY & FRESH

Perfect Blend, Perfect Taste.

Fuel your vitality. Whip up healthy, mouthwatering creations with our stylish high-performance Blenders, Food Choppers & Food Processors



1.7 L DIAMOND BLENDER 5KSB1585

Named after its faceted jug design and intensely durable construction, the Diamond Blender is particularly suited to hot liquids and thick sauces that are blended to perfection in an innovative vortex design. Able to handle any ingredient, the stainless steel tri-blade means you can confidently crush ice cubes, puree soft fruits or blend extra-thick milkshakes, delivering silky smoothness every time. Looking to make food preparation easier than ever?

Look at the KitchenAid Diamond Blender!



A The stainless steel blades and diamond-shaped pitcher creates a powerful vortex for fast and thorough blending results

B Intelli-Speed® motor control maintains optimal speed to power through all ingredients


C Soft start® feature starts the motor at a slower speed for optimal results


D Large 1.75 L BPA-Free, scratch and stain resistant pitcher

E Clean touch control pad with smart symbols

F Stay put lid with ingredient cup

Functions

 **Hot Foods | Auto Stop** | Special Hot Foods button with 'Soft Start' feature starts very slowly then quickly increases speed for safe blending without splashing.

 **Crush Ice | Auto Stop** | Pulses at precise intervals for optimal ice crushing. Turn hard ice into snowy consistency in seconds

5 Speeds

 Chop

 Mix

 Puree

 Liquify

Pulse Pulse | Works with all speeds, giving greater control over texture and results.

Technical Specifications

Wattage (Input)	615 W
Peak Output Motor	0.9 HP (Horsepower)
Voltage	220 - 240 V
Frequency	50 - 60 Hz
Revolutions Per Minute	2000 to 11500 (Starting From Hot Foods)
Diamond Pitcher Capacity	1.7 L
Cord Length	114.3 cm (Under Base Storage)
Dimensions Product	41.9 X 22.9 X 21.6 cm (HxWxD)
Net Weight	4.5 Kg
Cookbook	✓

Colours you'll crave



ARTISAN POWER PLUS BLENDER WITH THERMAL CONTROL JAR 5KSB8270

KitchenAid, long known for the power, durability and eye-catching design of its iconic countertop appliances, is introducing a new high performance blender with the most power in its class. The new KitchenAid Artisan Power Plus Blender features a powerful 3.5 Peak HP motor with an added convenience of a dual-wall Thermal Control Jar that quickly heats blended ingredients in as little as five minutes, stays cool to the touch, and retains the temperature for hot soups and sauces.



- A Talon™ asymmetric stainless steel blade for thorough blending
- B Dishwasher safe BPA-Free dual wall thermal control jar
- C 11+ variable speeds
- D 4-Pre set Adapti-Blend™ programs: Soup, Smoothie, Juice and Self cleaning cycle
- E The most powerful* Blender with 3.5 Peak HP Motor

Technical Specifications

Wattage (Input)	1800 W
Peak Output Motor	3.5 Peak HP Motor (Horsepower) Designed Uniquely For Kitchenaid
Current	15 Amps
RPM	1,000 - 24,000 Rpm
Cord Length	106.7 cm
Dimensions Product	44.9 X 26.7 X 23.1 cm (HxWxD)
Net Weight	9.4 Kg

Colours you'll crave



*When testing the actual blender power output at the blade using a dynamometer, a machine laboratories use to measure mechanical power, this KitchenAid blender with its heavy duty motor and advanced motor control board, produces more power than the leading competitors. **On highest speed

ARTISAN POWER BLENDER 5KSB7068

The new KitchenAid Artisan Power Blender features a powerful 3.5 Peak HP motor that quickly blends all your ingredients to perfection for your juices, smoothies, chutneys and more! It features variable speeds from 1-11, plus PULSE and BOOST that gives you better control over the consistency of your blending. For easy use and care, we have a Self Clean Mode too.



- A** Asymmetric stainless steel blade*** for thorough blending at 4 different angles
- B** Dishwasher safe 2.6 L BPA-Free graded jar
- C** 11 precision speeds and Pulse/Boost
- D** Self cleaning cycle program
- E** Powerful blender with 3.5 Peak HP Motor**

Technical Specifications

Wattage (Input)	1800 W
Peak Output Motor	3.5 Peak HP Motor (Horsepower) Designed Uniquely For Kitchenaid
Speeds	11
Programs	Self-Cleaning Cycle
RPM	1,000 - 24,000 Rpm
Capacity pitcher	2.6 L Complete jar 1.65 L Marked max. fill
Material body	Die-Cast
Material coupler	Steel
Cord Length	106.7 cm
Dimensions Product	44.9 x 26.7 x 23.1 cm (HxWxD)
Net Weight	8.8 Kg
Gross weight	9.3 Kg
Master pack	1 unit
Master pack gross weight	9.3 Kg

Colours you'll crave



* When testing the actual blender power output at the blade using a dynamometer, a machine laboratories use to measure mechanical power, this KitchenAid blender with its heavy duty motor and advanced motor control board, produces more power than the leading competitors.

**Please see the Use and Care Guide for more details regarding blender use and performance.

***Patented blade in U.K. and Germany.

ARTISAN DELUXE HAND BLENDER 5KHB2569

It's time to get excited with the KitchenAid Artisan Deluxe Hand Blender. Perfectly weighted with a rubber hand stick grip, it powers through any culinary task, whether it's blending, mincing, chopping, whipping, pureeing or frothing. With five speeds and five attachments, it's perfect for small daily jobs that require a quick, smooth and uniform result.



- A** Powerful 5 speed motor
- B** Industry's first interchangeable bell blades
- C** Patented design pan and blade guards
- D** 600 ML BPA-Free chopper
- E** Whisk attachment for emulsifying and aerating
- F** 1 L BPA-Free jug with no-splash and no-skid base
- G** Storage case to keep accessories protected

Technical Specifications

Wattage (Input)	180 W
Motor	DC (Direct Current)
Voltage	220 - 240 V
Frequency	50 - 60 Hz
RPM	Bell Blades 6100 - 11000
(speed 1 - speed 5)	Whisk 610 - 1100
	Chopper 1020 - 1830
Dimensions Product	39.7 x 6.5 x 6.5 cm (HxWxD)
Net Weight	3.5 Kg (with accessories and storage case)



2-SPEED HAND BLENDER 5KHB1231

The KitchenAid Classic Hand Blender is one countertop appliance with limitless options and versatility. You can quickly and easily blend, puree, and crush all of your favorite ingredients with this 2-Speed Hand Blender. Great for smoothies, soups, hummus, dressings, sauces and so much more!



- A Powerful 2 speed DC motor
- B Removable stainless steel arm with fixed bell blade
- C 700 ML BPA-Free blending jar with lid

Technical Specifications

Wattage (Input)	180 W
Motor	DC (Direct Current)
Voltage	220 - 240 V
Frequency	50 - 60 Hz
RPM (speed 1 - 2)	11.000 RPM
Dimensions Product	40.6 x 6.4 x 6.4 cm (HxWxD)
Net Weight	0.9 Kg





**FOOD CHOPPER
AND
FOOD PROCESSORS**

FOOD CHOPPER 5KFC3516

Endless fresh options to quickly chop, mix and puree. This compact and lightweight 3.5 Cup Food Chopper is ideal for every day use - whether you want to eat healthier, be more creative, or just save time on meal prep. The perfect size for everyday use in the kitchen!



- A** Two speeds and Pulse operation for precise control
- B** 830 ML BPA-Free work bowl with pour spout and handle
- C** Stainless steel blade*
- D** Drizzle basin to incorporate liquid ingredients while processing



BPA-FREE BOWL



STAINLESS STEEL BLADE



LID WITH DRIZZLE BASIN

Technical Specifications

Wattage (Input)	240 W
Motor Type	AC (Alternating Current)
Voltage	220 - 240 V
Frequency	50 - 60 Hz
Revolutions Per Minute (Speed 1 to 2)	2450 To 3450* Rpm
Material of Motor Body	Plastic
Dimensions Product	22.2 X 17.8 X 14.3 cm (HxWxD)
Net Weight	1.2 Kg

*These measures can vary within a tolerance range of 20%

Colours you'll crave

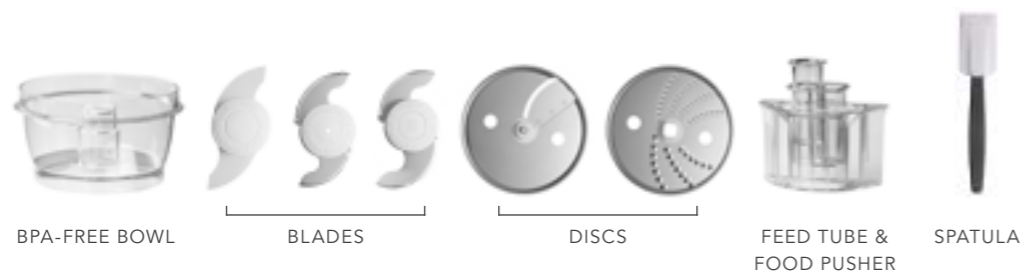


14 CUP FOOD PROCESSOR 5KFP1444

The 3.3 L KitchenAid Food Processor is designed for life's cooking challenges in all their glory. It's a reliable helper that cooks adore as it turns 'sophisticated' into 'simple'. This is our most versatile and complete food processor: for professional results consider it as your personal knife master to slice, chop, grate, purée and blend. Discover the key to delicious, good looking, food full of texture and flavour. The 3.3 L Food Processor; showcases your chef abilities.



- A ExactSlice™ System with adjustable slicing disc with first ever external lever
- B 3 in 1 Ultra Wide Mouth™ feed tube
- C Uniquely designed sharp blades and 2 optimized speeds
- D Lid with an UltraTight™ silicone seal
- E 2 BPA-Free plastic bowls



Technical Specifications

Wattage (Input)	300 W
Motor Type	AC (Alternating Current)
Voltage	220 - 240 V
Frequency	50 - 60 Hz
Dimensions Product	43 X 30 X 27.6 cm (HxWxD)
Net Weight	6.1 Kg

7 CUP FOOD PROCESSOR 5KFP0719

Prep with precision every day with the food processor that is easy to use, clean and store. The KitchenAid 7-Cup Food Processor features an innovative twist-free design that is easy to assemble, a sealed work bowl that makes clean-up a breeze, and the KitchenAid brand's most compact storage system for accessories, storing everything in the bowl!



- A** Illuminated LED-controls with 3 easy-press speed paddles options
- B** 2-in-1 feed tube
- C** Sealed lid with leak-resistant work bowl and sealed handle
- D** Multi-use accessories like blades and discs



BPA-FREE BOWL

MULTI-PURPOSE
BLADE

DOUGH
BLADE

DISCS

FEED TUBE &
FOOD PUSHER

Technical Specifications

Wattage (Input)	250 W
Motor Type	DC
Voltage	220 - 240 V
Frequency	50 - 60 Hz
Material of Body	Plastic
Material of Bowl	Plastic BPA-Free
Material of Blades & Discs	Stainless Steel
Dimensions Product	39 X 19.5 X 19.5 cm (HxWxD)
Net Weight	2.9 Kg

Colours you'll crave



EMPIRE RED

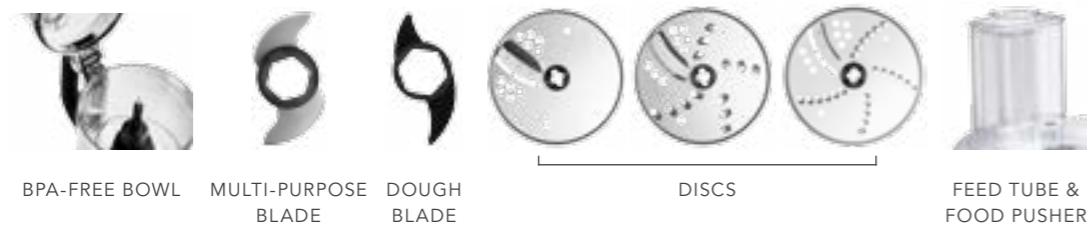
BLACK MATTE

9 CUP FOOD PROCESSOR 5KFP0919

Prep with precision every day with the food processor that is easy to use, clean and store. The KitchenAid 7-Cup Food Processor features an innovative twist-free design that is easy to assemble, a sealed work bowl that makes clean-up a breeze, and the KitchenAid brand's most compact storage system for accessories, storing everything in the bowl!



- A Illuminated LED-controls with 3 easy-press speed paddles options
- B 2-in-1 feed tube
- C Sealed lid with leak-resistant work bowl and sealed handle
- D Multi-use accessories like blades and discs



Technical Specifications

Wattage (Input)	250 W
Motor Type	DC
Voltage	220 - 240 V
Frequency	50 - 60 Hz
Material of Body	Plastic
Material of Bowl	Plastic BPA-Free
Material of Blades & Discs	Stainless Steel
Dimensions Product	42 X 19.5 X 19.5 cm (HxWxD)
Net Weight	2.96 Kg



COFFEE & BREAKFAST

Exceptional Coffee Made Simple.

Experience perfection with our
cutting-edge Coffee Machines,
Toasters and Kettles.



PERSONAL COFFEE MAKER 5KCM0402

KitchenAid is proud to present its innovative Personal Coffee Maker, a sleek, compact design to please every coffee enthusiast. In addition, the machine boasts distinctive features like brewing filter technology and electronic temperature control. This delivers an uninterrupted stream of hot water at constant temperature to extract a richer, fuller-bodied brew from ground coffee. Enjoy great coffee every single morning, all at the touch of a button.



- A** Easy one-touch brewing system
- B** 540 ML thermal travel mug
- C** Removable top load water tank
- D** Removable permanent filter



FILTERS

TRAVEL MUG

WATER TANK

Technical Specifications

Wattage	580 - 700 W
Voltage	220 - 240 V
Frequency	50 / 60 Hz
Material of Motor Body	Plastic
Dimensions Product	39.5 X 16.5 X 22.5 cm (HxWxD)
Net Weight	2.7 Kg

Colours you'll crave



EMPIRE RED

ONYX BLACK

SIPHON COFFEE BREWER 5KCM0812

The KitchenAid Siphon Coffee Brewer delivers the theatrical beauty and precision of traditional full immersion vacuum brewing, yet is simplified for the home, making a complex and velvety cup of coffee!



- A** Brew unit stand
- B** Premium glass construction
- C** Large 1L capacity
- D** Carafe with soft-touch handle and on/off switch with white LED- on- indicator light



CARAFE-BREW
UNIT STAND



STAINLESS STEEL
FILTER



CLEANING BRUSH
& COFFEE SCOOP



REUSABLE
FILTER

Technical Specifications

Wattage (Input)	1440 W
Capacity	1.18 L
Cord Length	85.1 cm
Dimensions Product	36.2 X 17.0 X 22.0 cm (HxWxD)
Net Weight	2.1 Kg



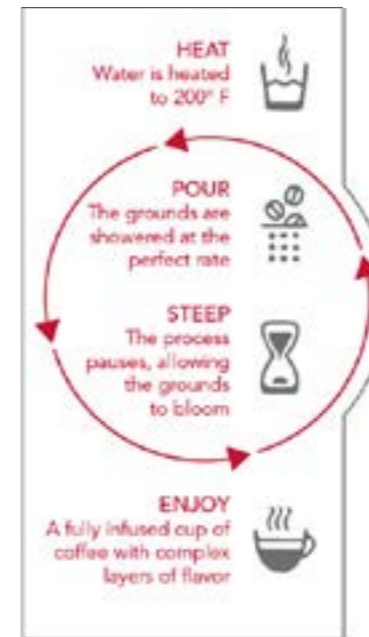
The new KitchenAid Pour Over Coffee Maker combines the flavor and control of the manual pour over process with the programmability and convenience of a traditional coffee maker. This Pour Over Coffee Maker heats and steeps in the pour over style, delivering maximum flavor extraction.



- A** Unique heating technology that heats water to the optimal range of 200°F
- B** Progress bar
- C** Roast selector with one touch medium and dark roast settings
- D** 1.18 L cup selector



Pour Over Brewing Technology



Technical Specifications

Wattage (Input)	1250 W
Cord Length	114.3 cm
Material Body	ABS Plastic
Dimensions Product	38.7 X 22.1 X 28.7 cm (HxWxD)
Net Weight	3.4 Kg



The SCAA is the Specialty Coffee Association of America, a non-profit trade organization and world-recognized leader in coffee knowledge development. For over 30 years, the SCAA has been dedicated to recognizing, developing and promoting specialty coffee by setting and maintaining quality standards for the industry.

HOW DID KITCHENAID POUR OVER COFFEE BREWER BECOME SCAA CERTIFIED?

The SCAA recognizes home brewers that meet its longstanding rigorous technical requirements: Ability to brew within the SCAA Gold Cup recommendations, Proper water temperature and Brewing time. The KitchenAid Pour Over Coffee Brewer is recognized as an exemplary home brewer, joining the short list of SCAA Certified Brewers.

COLD BREW COFFEE MAKER/INFUSER KCM4212SX

With the new KitchenAid Cold Brew Coffee Maker, it's easy to enjoy the smoother, richer and satisfying taste of coffee grounds or tea leaves slowly steeped for 12 - 24 hours at home. Always on tap, the convenience of the KitchenAid Cold Brew Coffee lets you enjoy a smooth refreshing cold brew at home anytime. So, Start Brewing Today!



- A Sleek, modern, built-in Stainless Steel tap
- B Aluminum carrying handle
- C Reusable Stainless Steel steeper



BREW JAR



STEEPER LID
AND OUTER LID



FILTER

Technical Specifications

Material Body	Glass and Stainless Steel components
Dimensions Product	17.5 x 17.8 x 20.3 cm (HxWxD)
Net Weight	2.5 Kg



AVAILABLE
SOON!!!

COFFEE GRINDER

Get started on a great pot of coffee in no time with KitchenAid Coffee Grinder. Grind coffee beans for up to 12 cups of coffee. It includes a removable steel bowl with measurement markings that ends the guesswork. One-touch button and clear lid lets you to monitor the grind easily and quickly.



- A One touch control
- B Stainless steel bowl

Technical Specifications

Wattage (Input)	170 W
Voltage	220 V
Cord Length	6.35 cm
Dimensions Product	22.23 X 10 X 4.64 cm (HxWxD)
Lid	Yes
Net Weight	1.0 Kg



A CRAFT COFFEE BREWER FOR EVERY TASTE

When it comes to coffee, everyone has their own preferences. This is why KitchenAid has developed the most comprehensive line of craft coffee brewers with advanced technology and exclusive designs, allowing you to prepare a personalized, delicious cup of coffee that is brewed to perfection.

GRIND SIZE



MEDIUM



MEDIUM COARSE



MEDIUM FINE



MEDIUM COARSE

BODY



MEDIUM



MEDIUM



LIGHT



MEDIUM

FLAVOR PROFILE



BALANCED FLAVOR



BRIGHT, COMPLEX



CLEAN, BRIGHT



MEDIUM FINE

KITCHENAID COFFEE BREWER



PERSONAL COFFEE MAKER

*Not a craft coffee brewer.



SIPHON COFFEE BREWER



POUR OVER COFFEE MAKER



COFFEE GRINDER

*Not a craft coffee brewer.





TOASTER

2 SLOT AUTOMATIC TOASTER 5KMT223

Experience the perfect start to every morning with the KitchenAid 2 Slot Automatic Toaster. A one touch control raises and lowers bread on demand, Crumpet and Defrost buttons toast everything just the way you want and a Keep Warm button keeps toast warm until you're ready without additional browning.



- A** One touch control
- B** 7 shade settings
- C** Extra wide 3.8 cms slots
- D** LED display
- E** Multi-function buttons: Keep Warm, Bagel, Defrost, Reheat & Toast/Cancel

Technical Specifications

Wattage (Input)	1100 W
Voltage	220 - 240 V
Frequency	50 - 60 Hz
Body Material	All Metal
Number of Slots	2
Dimensions Product	21 X 19.7 X 29.2 cm (HxWxD)
Net Weight (Product Accessories)	2.3 Kg
Removable Crumb Tray	✓
Special Functions	Keep Warm Bagel Defrost Reheat Toast/Cancel

Colours you'll crave



2 SLICE MANUAL TOASTER 5KMT2115

The KitchenAid 2 Slice Manual Toaster features toast, bagel, reheat, and keep warm functions, all of which can be started automatically by simply pressing each button. This toaster also features a defrost setting to toast frozen breads in under a minute.



- A Manual high-lift lever
- B Adjustable shade control dial with 5 shade settings
- C Extra wide 3.8 cms slots
- D Bagel button



CRUMB TRAY

Technical Specifications

Wattage (Input)	1100 W
Voltage	220 - 240 V
Body Material	All Metal
Number of Slots	2
Dimensions Product	21 × 28.6 × 18.4 cm (HxWxD)
Net Weight (Product Accessories)	1.8 Kg
Removable Crumb Tray	✓
Special Functions	Bagel Button Cancel Button

Colours you'll crave



ONYX BLACK

WHITE

PRO LINE 2 SLOT AUTOMATIC TOASTER 5KMT2204

Greeting the morning with a golden toast is one of life's most enjoyable simple pleasures. Late at night, a melting savoury cheese sandwich can be an indulgent moment of sustenance. The Pro Line Toaster truly offers the ultimate toasting experience: the Auto Sensor automatically lowers and lifts all types of toast before browning according to seven grades of "golden", counted down by an LED timer. Like a thoughtful friend, if you're called away, the Pro Line Toaster will also keep your toast warm. If the kitchen is the heart of the home, our Pro Line Toaster will be the heart of your kitchen.



- A Auto sensor with Keep Warm feature
- B 7 shade settings with LED countdown timer
- C Extra wide slots with automatic self-centering racks
- D Sandwich function with sandwich rack
- E Bagel, frozen function



CRUMB TRAY



SANDWICH RACK

Technical Specifications

Wattage (Input)	1250 W
Voltage	220 - 240 V
Frequency	50 - 60 Hz
Body Material	Die cast aluminium
Number of Slots	2
Dimensions Product	22.5 X 18 X 33 cm (HxWxD)
Net Weight (Product Accessories)	5 Kg
4 Toasting Functions	Bagel Frozen Sandwich Toast
Keep Warm Cycle	using low heat for upto 3 minutes (when not removed within 45 seconds)



Awarded the 'Initiative LifeCare' Award for 'Kitchen Innovation Product of the Year 2013'.



KETTLES

SMALL SPACE ELECTRIC KETTLE 5KEK1222

A cup of warm herb tea is all you need to start a new day or refresh yourself from the day's fatigue. The KitchenAid 1.25 L Electric Kettle ensures you get to your cup quickly, with no effort, and it's a delight to place on the counter top.

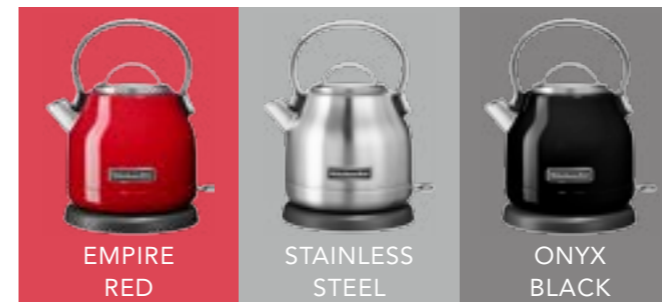


- Dome style with 1.25 L capacity
- On/Off switch with LED indicator light
- Stainless steel single wall construction with inner water level markings, wide fill opening, non-drip spout
 - Smooth aluminium handle for easy grip
- Removable limescale filter, 360° base and aluminium lid

Technical Specifications

Wattage (Input)	2200 W
Kettle Capacity	1.25 L
Material Body	CFM
Interior Material	Stainless Steel
Dimensions Product	26.16 X 17.8 X 22.6 cm (HxWxD)
Net Weight	1.14 Kg
Temperature	Upto 100°C (Boiling Only)
Single Wall	✓
Inside Marking	✓
Cordless Operation With 360O Base	✓
Concealed Heating Elements	✓
Removable Limescale Filter	✓
Removable Lid	✓
On / Off Switch	✓
Boil . Dry . Shut - Off	✓
Underbase Cord Storage	✓
Indicator Led Light	✓

Colours you'll crave



1.7 L ELECTRIC KETTLE 5KEK1722

Introducing the 1.7 L Electric Kettle, the perfect complement to the KitchenAid range of quality products. Expect exceptional performance thanks to the variable temperature settings and 30 minutes hold temperature feature, a sleek modern shape and soft grip handle. This stylish and chic addition will enhance any kitchen space.



- 1.7 L capacity
- Digital display with 6 temperature settings from 50°C to 100°C
 - Smart temperature sensor
 - Hold temperature function

Technical Specifications

Wattage (Input)	2000 W
Voltage	220 - 240 V
Frequency	50 / 60 Hz
Kettle Capacity	1.7 L
Material Of Body	Stainless Steel With Paint Layer
Interior Material	Single Wall Stainless Steel
Temperature Range	50°C - 100°C
Dimensions Product	25.7 X 21.8 X 15 cm (HxWxD)
Net Weight	1.2 Kg
Fast Boiling	✓
Concealed Boiling Element	✓
Back Lit Water Window	✓
Removable Limescale Filter	✓
Cordless Operation With 360° Base	✓
Stable Base With Non Slip Rubber	✓
Feet And Cord Storage	✓

* Battery operated

Temperature Guide

60° C	70° C	80° C	90° C	100° C
Delicate Tea	Green Tea Gyokuro Sencha	Blooming Tea	Black Tea Earl Grey English Breakfast	Boil Water
	White Tea Silver Needle	Chai Green White	Oolong Tea	Chai Red
		Green Tea Bencha Genmaicha	Hot Chocolate	Herbal Tea
			Instant Coffee	Rooibos Tea
				Yerba Maté
				Instant Soup
				Oatmeal

Colours you'll crave



EMPIRE RED

ONYX BLACK



CULINARY

Deliciously Homemade.

KitchenAid offers a large selection of cookware, bakeware, tools & gadgets to help make your next meal a culinary success.



TOOLS AND GADGETS

Exceed your culinary expectations with KitchenAid tools and gadgets. Enables professional results and the reliability you desire as you create your culinary masterpieces. These kitchen marvels are strong and durable, ergonomically built, dishwasher safe and the spoons, ladles and spatulas are heat resistant to 290°C. KitchenAid range of tools and gadgets is made to exacting standards for the most demanding chefs with its elegant design and stainless steel construction a delight to own and use.



SILICONE PASTA SERVER

KS005ER

Serve large portions of pasta; no mess, guaranteed



SILICONE LADLE

KS006ER

For easy serving of fresh soups, sauces and more



SILICONE SLOTTED SPOON

KS004ER

Scoop dumplings from a pot of broth while leaving excess grease or cooking liquid behind



CAN OPENER

KG130ER

Remove the top off any size can effortlessly



GARLIC PRESS

KG132ER

Crush, pulp or juice your garlic & shallots in a jiffy



ROTARY GRATER

KG2T4102ER

Comes with 3 Stainless Steel blades: slicing blade to cut hard vegetables; coarse blade for grating root vegetables and the fine blade for bread crumbs, grate chocolate as well as hard cheese



PIZZA WHEEL

KG113ER

Slice and serve any pizza quickly & easily



MEZZALUNA CHOPPER

KC173OHERA

Chop away your herbs



MEASURING SPOONS

KG057SS

Includes: ¼, ½, 1 tsp and 1 tbs



SILICONE BASTING BRUSH

KS051ER

Add that extra glaze or egg wash on your breads and buns with ease



PASTRY BRUSH

KG041ER

Baste phyllo dough with butter, breads with egg wash, ham with glaze and so on



SILICONE TIPPED TONGS

KG094ER

More barbecue and no more finger burns; special clip to adjust the width between the tongs



MASHER

KT008OHERA

Perfect for mashing soft vegetables or fruits



7" MESH STRAINER

KT161OHERA

Ideal for straining into bowls, jars, or into the sink



SERVING LADLE

KT016OHERA

Used to serve out individual portions of food



SALAD SPINNER

KG308ER

Uses a one-step pump mechanism to spin away excess moisture



**MANDOLINE SLICER
(With Set of 4 Prep Bowls)**

KG310ER

Helps you achieve consistent cuts with an adjustable table offering various slice thicknesses



5PC. MIXING SET

KM425ER

Includes a set of measuring cups, measuring spoons, utility whisk, silicone spatula and a silicone pastry brush



CHEESE PLANE

KT136OHERA

Plane thin slices of all types of cheese for snacks or platters



FIXED BLADE PEELER

KT145OHERA

Used to remove the outer skin or peel of fruits and vegetables



FLAT GRATER

KG302ER

Grate your cheese, chocolates vegetables and more



ASIAN STRAINER

KT010OHERA

Perfect for scooping food out of hot water and oil



**PROFESSIONAL
SERIES CUTLERY SET**

KKFMA07CA

Forged and designed from German steel with a block masterfully assembled in the United States, it's the only Professional Series Cutlery Set that offers this kind of KitchenAid style and dependability. Expertly crafted to be enduring, and ultra sharp. This cutlery collection has serious chops, so this cutlery makes chopping, peeling, filleting, slicing, cutting and sharpening an easy and enjoyable experience. Plus, it comes in a choice of uniquely painted die cast blocks, giving it a bold, contemporary look like no other in the world. Assembled in the U.S.

**STAINLESS STEEL
KNIFE SET**

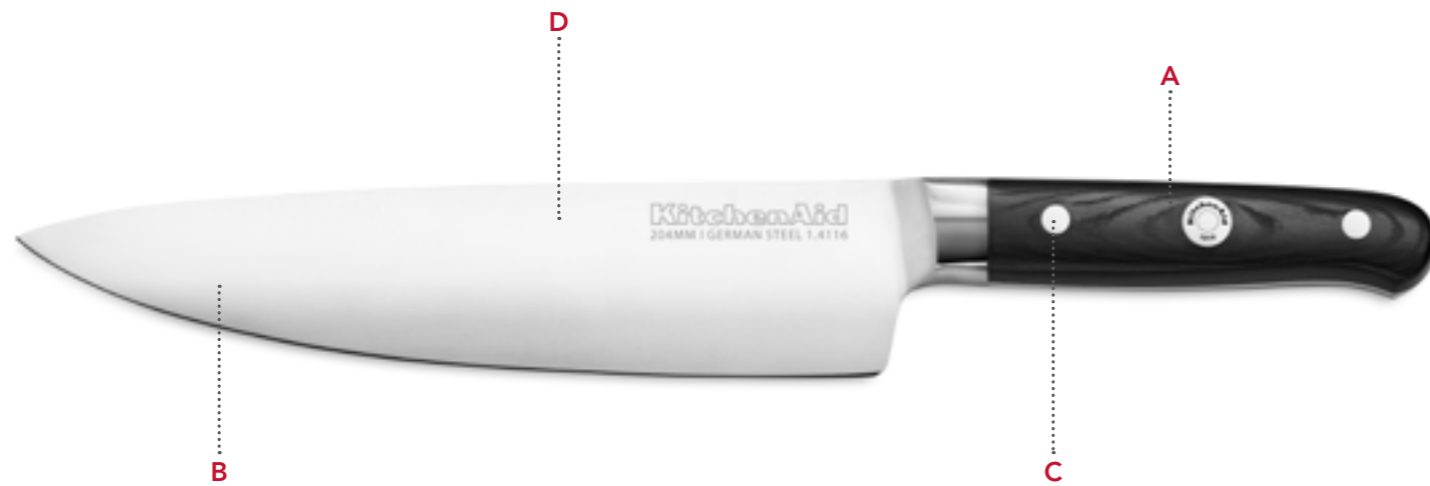
KN14STCSS

The KitchenAid 14-piece Knife Set contains a comprehensive assortment of the most frequently used kitchen knives including 6 steak knives (4.5 inch), a paring knife (3.5 inch), a serrated paring knife (3.75 inch), a serrated utility knife (5.5 inch), 2 chef's knife (6 inch & 8 inch), a santoku knife (7 inch) and a slicing knife (8 inch) . The blades are heat tempered for outstanding strength and durability and are also properly weighted for balance and control. Made from ultra-sharp, high-carbon, forged, Japanese stainless steel blades with comfortable-grip brushed stainless steel handles and stored in an attractive natural wooden block with stainless steel accents, this knife set makes an excellent gift for aspiring chefs. KitchenAid cutlery should be hand-washed only.



PROFESSIONAL SERIES CUTLERY

Get the edge you need in your kitchen! The KitchenAid Cutlery has cutting-edge design and German Stainless Steel, making them the perfect knives for culinary greatness. The KitchenAid Cutlery Collection makes chopping, peeling, filleting, slicing, cutting and sharpening an easy and enjoyable experience. Expertly crafted to be enduring, and ultra sharp — this cutlery collection has serious chops.



- A Triple Rivet Handle for superior hand control
- B IceTemp Hardened Blade edge-to-edge performance
- C Polished JewelSteel Rivets
- D Stainless Steel that is stain and corrosion resistant



7PC KNIFE SET INCLUDES

- 8" Chef
- 8" Scalloped Bread
- 5.5" Serrated Utility
- 3.5" Paring
- Shears
- Diamond Sharpener
- Block

Product Range - Open Stock



8" CHEF KNIFE

KKFTR8CHWM

Among the most versatile knives, it is great for chopping, mincing, slicing vegetables and meat, and other uses.



8" SCALLOPED BREAD KNIFE

KKFTR8BRWM

For cutting soft, fresh loaves of bread without squashing, also tomatoes and citrus fruits that have rind to cut through.



8" SLICING KNIFE

KKFTR8SLWM

Great for carving roasts and cutting thin slices of meat and can also be used to chop, mince and slice vegetables.



7" SANTOKU KNIFE

KKFTR7SKWM

Inspired from Japan, combines the features of a cleaver and a chef's knife. Ideal for thinly slicing, mincing and dicing.



7" FLEXIBLE FILET KNIFE

KKFTR7FLWM

Razor sharp edge and flexible blade specially designed for filleting and preparing fish or filet meat.



6" UTILITY KNIFE

KKFTR6SWWM

Multi-use knife, great for cutting sandwiches, slicing smaller meat, and cutting larger fruits.



5.5" SERRATED UTILITY KNIFE

KKFTR5SUWM

Perfect for slicing fruits, vegetables and smaller breads. Great for tomatoes, salami or small foods with hard skin.



5" BONING KNIFE

KKFTR5BOWM

Flexible and definitive for separating meat, poultry or fish from the bone with precise control.



3.5" PARING KNIFE

KKFTR3PRWM

Handy for smaller precision tasks like peeling, trimming, and slicing small fruits and vegetables.



3" PEELING KNIFE

KKFTR3PEWM

With a curved profile, especially effective for peeling small fruits and vegetables.



KITCHEN SHEARS

KKFTR4KSWM

Myriad uses from trimming pastry dough and snipping herbs to cutting up pizza and parchment paper.



DIAMOND SHARPENER*

KKFTR9SPWM

Sharpens and helps clean away microscopic metal shavings from the blade, enhancing each knife's performance.



*Not intended for use on serrated knives.

CLASSIC FORGED CUTLERY: TRIPLE RIVET

Get the edge you need in your kitchen! The KitchenAid Cutlery has cutting-edge design and German Stainless Steel, making them the perfect knives for culinary greatness. The KitchenAid Cutlery Collection makes chopping, peeling, filleting, slicing, cutting and sharpening an easy and enjoyable experience. Expertly crafted to be enduring, and ultra sharp — this cutlery collection has serious chops.



- A** German 1.4028 Stainless Steel
- B** Triple Rivet comfort polymer handle
- C** Hand sharpened blade
- D** Forged blade



3PC KNIFE SET INCLUDES

- 8" Chef
- 5.5" Serrated Utility
- 3.5" Paring

Product Range - Open Stock



8" CHEF KNIFE

KKFTR8CHOB

Among the most versatile knives, it is great for chopping, mincing, slicing vegetables and meat, and other uses.



8" SCALLOPED BREAD KNIFE

KKFTR8BROB

For cutting soft, fresh loaves of bread without squashing, also tomatoes and citrus fruits that have rind to cut through.



7" SANTOKU KNIFE

KKFTR7SKOB

Inspired from Japan, combines the features of a cleaver and a chef's knife. Ideal for thinly slicing, mincing and dicing.



6" CHEF KNIFE

KKFTR6CHOB

Among the most versatile knives, it is great for chopping, mincing, slicing vegetables and meat, and other uses.



6" CLEAVER

KKFTR6CLOB

For chopping and slicing through bones in meat, the stainless steel cleaver cuts through for you.



5.5" SERRATED UTILITY KNIFE

KKFTR5SUOB

Perfect for slicing fruits, vegetables and smaller breads. Great for tomatoes, salami or small foods with hard skin.



3.5" PARING KNIFE

KKFTR3PROB

Handy for smaller precision tasks like peeling, trimming, and slicing small fruits and vegetables.



KITCHEN SHEARS

KKSSF4APOB

Myriad uses from trimming pastry dough and snipping herbs to cutting up pizza and parchment paper.

TRI-PLY STAINLESS STEEL COOKWARE

With Stainless Steel cookware, you're assured superior performance and durability in any kitchen. The KitchenAid Tri-Ply Stainless Steel Cookware offers exceptional features such as three layer design for even heating, is dishwasher safe and suitable for oven temperatures up to 260°C.



- A 3-layer design: 18/10 Stainless Steel, Aluminium, 18/0 Stainless Steel
- B Satinless steel base
- C Welded stainless steel handles
- D Domed, tempered glass lid



8" SKILLET

Diameter 20 cm



10" SKILLET

Diameter 25 cm



STOCKPOT WITH LID

Capacity 7.6 L



1.5 L SAUCEPAN WITH LID

Capacity 1.5 L



2.8 L SAUCEPAN WITH LID

Capacity 2.8 L



SAUTE WITH HELPER

Capacity 2.8 L



INDUCTION
COOKING



ALL
COOKING
TYPES



DISHWASHER
SAFE

STOVE TOP KETTLES

Quickly prepare hot water to serve seasonal drinks, delicious soups, or hot cereals in style using the KitchenAid 1.9 L Stovetop Kettle. A graceful contoured profile lends an ornate touch to an iconic image of hearth and home.



- A 1.9 L capacity
- B Thumb-press spout
- C Removable lid
- D Polished Stainless Steel with vibrant coloured porcelain exterior
- E Attractive trim band



1.9 L Kettle with Full Stainless Steel Handle and Trim Band Product Range



WHITE



SUNKISSED LIME



CAMEO BLUE



DOULTON BLUE



PYRITE



ONYX BLACK

1.9 L Kettle with C Handle and Trim Band Product Range



EMIRE RED



SUNKISSED LIME



CAMEO BLUE



DOULTON BLUE



PYRITE



ONYX BLACK



BAKEWARE

BAKEWARE

To make your baking experience a unique and pleasurable one, KitchenAid offers you a wide range of bakeware designed in close cooperation with renowned international chefs. From pies to muffins, casseroles to cupcakes, bread to pizza, KitchenAid bakeware allows the job to be done delightfully. The durable, high performance bakeware metal made of a professional-weight steel base resists chipping, scratching and staining and is designed to ensure perfect results with every mixture. The heat-conducting aluminium surface creates the best browning effect of any mixture and is oven safe up to 230°C.



- Durable professional weight aluminised steel
- ILAG nonstick ultimate finish: PFOA & PTFE free
 - Folded design
- Dishwasher, freezer and refrigerator safe



Industrielack AG, Switzerland
Provides the ULTIMATE non-stick coating that is PFOA FREE.



PIE PAN

KBNSO09PI

Diameter: 23 cm
Depth: 5 cm



ROUND PAN

KBNSO09RD

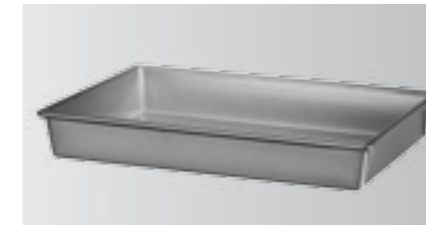
Diameter: 23 cm
Depth: 5 cm



THIN CRUST PIZZA PAN

KBNSO12TZ

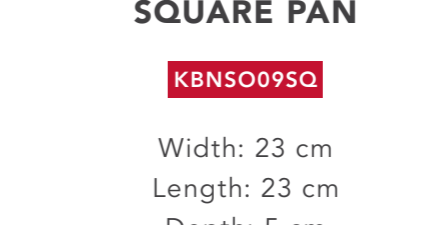
Diameter: 30 cm
Depth: 1.5 cm



CAKE PAN

KBNSO9X13

Width: 23 cm
Length: 33 cm
Depth: 5 cm



SQUARE PAN

KBNSO09SQ

Width: 23 cm
Length: 23 cm
Depth: 5 cm



LOAF PAN

KBNSO9X5Q

Width: 13 cm
Length: 23 cm
Depth: 8 cm



SNACKING LOAF PAN

KBNSO12SF

Width: 13 cm
Length: 30 cm
Depth: 6 cm



BUNDT PAN

KBNSO09KH

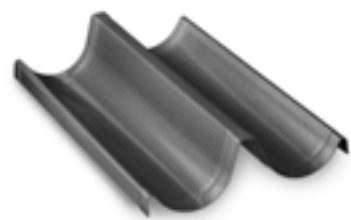
Diameter: 23.9 cm
Depth: 11.2 cm



SPRINGFORM PAN

KBNSO09SG

Diameter: 23 cm
Depth: 6.5 cm



DOUBLE BAGUETTE LOAF

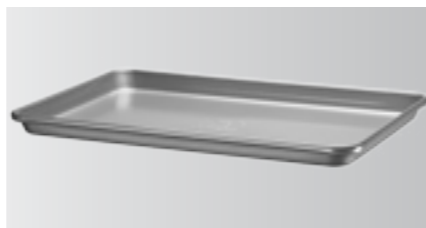
KBNSO2XBL

Width: 24.1 cm
Length: 40.6 cm
Depth: 6.4 cm

BAKING SHEET

KBNSO15BS

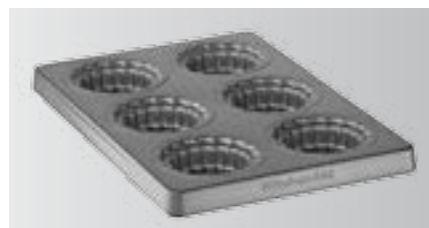
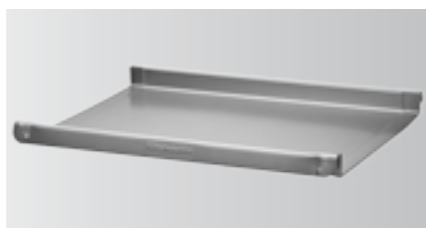
Width: 27.9 cm
Length: 38.1 cm
Depth: 2.8 cm



JELLY ROLL PAN

KBNSO15JR

Width: 25 cm
Length: 38 cm
Depth: 2.5 cm



6-CAVITY PIE PAN WITH REMOVABLE BOTTOMS

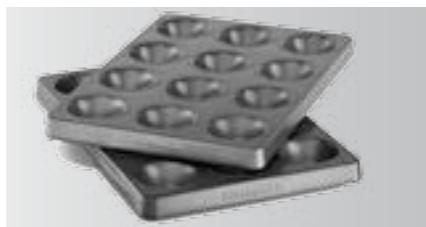
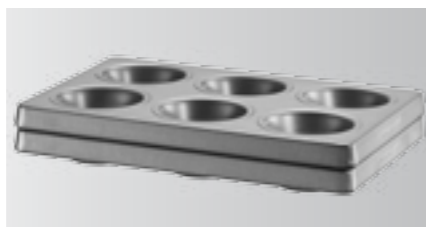
KBNSO06MP

Width: 18.7 cm
Length: 27.3 cm

MUFFIN PAN 6 CUP SET OF 2

KBNSS06MF

Width: 18 cm
Length: 27 cm



MINI MUFFIN PAN 12 CUP SET OF 2

KBNSS12MM

Width: 18 cm
Length: 27 cm



Industrielack AG, Switzerland
Provides the ULTIMATE non-stick coating that is PFOA FREE.

For delicious recipes, visit our blog,
The Kitchenthusiast at www.kitchenaid.in



KitchenAid

®/™ ©2019 KitchenAid. All rights reserved.

www.kitchenaid.in | info@kitchenaid.in

    /KitchenAidIndia

Toll free number: 1800 4190 790



No part of this publication may be reproduced and/or published in print, by photocopying, on microfilm or in any other manner without the prior written consent by KitchenAid.