

# JIRAH

AND THE ROAD OUT OF

# COPPERHEAD



 **PONDEROSA**  
**COUNSELOR** 

# JIRAH AND THE ROAD OUT OF COPPERHEAD

## TABLE OF CONTENTS

---

Camp Schedule . . . . . P. 3-5  
Map . . . . . Pg. 6-7  
Medical Needs . . . . . Pg. 8-9  
Important To Know . . . . . Pg. 10

Recreation . . . . . Pg. 11-14  
Memory Verses . . . . . Pg. 15-17  
Daily Breakdown . . . . . Pg. 18-31

## RULES: THE FIVE M'S

---

### 1. BE AT ALL MEALS

All meals served buffet style.  
Please clean up your own mess  
& stack chairs when leaving.

### 2. BE AT ALL MEETINGS

Please no food or drink in chapel.

### 3. BE MODEST

Girls - No spaghetti straps, strapless or halter tops, bare midriff, *short* shorts, 2-piece swimsuits, or spandex/leggings.

Guys - No sagging pants or *short* shorts. Shirts must be worn at all times except in and around the waterfront.

### 4. WEAR A MASK INDOORS

We ask that you wear a mask during indoor chapel sessions, indoor dining, shopping @ Apparel, Supply Co, Snack Shop and when social distancing isn't possible.

### 5. DON'T BE MESSING AROUND

Messing around includes, but is not limited to: No Drugs, Alcohol or Tobacco | No Firearms, Fireworks or Weapons of any kind | No Wrestling or Horseplay | No Guys in the Girls' Cabin Area | No Girls in the Guys' Cabin Area | No altering your physical appearance while at camp | No Electronic Devices | Stay out of the way of traffic | No Diving in the Lake | Anything else not included here that should be.

## **COUNSELOR MEETINGS:**

### **8:00 AM**

Please make sure to attend ALL of the counselor meetings to be informed on all that is happening! Don't forget, counselors may go through the staff line, for breakfast only, starting at 7:30am before the meeting starts. Fresh hot coffee will be awaiting you at the meeting!

### **LOOKING FOR A LEAD COUNSELOR?**

They can be found at all meals, chapels, rec activities and on the Ponderosa Deck at Free time.

## **CAMP SCHEDULE**

---

### **SUNDAY**

- 7:00pm . . . . . Opener–Ponderosa Chapel
- 7:00pm . . . . . Group #1
- 7:45pm . . . . . Group #2
- 8:30pm . . . . . Chapel
- 9:30pm . . . . . Signups for High Adventure & Paintball at the Activities Center
- 9:30pm . . . . . Youth Pastor Dessert – Pine Tree Patio
- 10:15pm . . . . . Head to Cabins
- 11:15pm . . . . . Quiet in Camp

### **MONDAY**

- 7:00am . . . . . Wake Up
- 7:30-8:45am . . . . . Breakfast & Devo Time
- 8:00am . . . . . Counselor Meeting
- 9:00-10:15am . . . . . Chapel
- 10:15-10:45am . . . . . Cabin Breakouts
- 11:00am . . . . . Recreation Chapel
- 11:15-12pm . . . . . Recreation
- 12:00-1:30pm . . . . . Lunch
- 1:00-5:30pm . . . . . Free time after Lunch
- 1:00-2:00pm . . . . . Swim Tests (Ponderosa Pool)
- 1:30pm . . . . . Info session & sign–ups for recording studio -Hume Recording Studio
- 5:00-6:45pm . . . . . Dinner
- 7:00pm . . . . . Chapel
- 9:00-10:15pm . . . . . Open Mic Night–Hume N' Beans Deck
- 10:15pm . . . . . Head to Cabins
- Cabin discussions
- 11:15pm . . . . . Quiet in Camp

## **TUESDAY**

- 7:00am . . . . . Wake Up
- 7:15am . . . . . Lake Run Participants meet at Pondy Lodge
- 7:30am . . . . . Lake Run begins
- 7:30-8:45am . . . . . Breakfast & Devo Time
- 8:00am . . . . . Counselor Meeting
- 9:00am . . . . . Chapel
- 10:15-10:45am . . . . Cabin Breakouts
- 11:00am . . . . . Recreation Chapel
- 11:15am . . . . . Recreation
- After Rec . . . . . Camp Picture on Lower Lawn
- 12:00-1:30pm . . . . Lunch
- 1:00-5:30pm . . . . Free Time (after lunch)
- 1:00-2:00pm . . . . Swim Tests–Ponderosa Pool
- 1:30pm . . . . . Basketball Tournament @ the Ark
- 1:30-4:30pm . . . . Metal Craft on Creekside Turf Lawn
- 4:00pm . . . . . Optional Speaker Seminar–Ponderosa Chapel
- 5:00-6:45pm . . . . Dinner
- 7:00pm . . . . . Chapel | Free Time after Chapel
- 9:15pm . . . . . Bike Jump participants meet @ Boathouse
- 9:30pm . . . . . Bike Jump
- 10:15pm . . . . . Head to Cabins | Cabin discussions
- 11:15pm . . . . . Quiet in Camp

## **WEDNESDAY**

- 8:00-9:15am . . . . . Breakfast & Devo Time
- 8:45-9:30am . . . . . Counselor Meeting
- 9:30am . . . . . Chapel (worship, seminars, snack)
- 11:30am-12:00pm . . . Cabin Breakouts
- 12:00-1:30pm . . . . Lunch
- 1:30-3:00pm . . . . Church Time (meet at church locations)
- 3:00-5:30pm . . . . Free Time after Church Time
- 5:00-6:45pm . . . . Dinner
- 7:00pm . . . . . Chapel
- Cabin Time (immediately after chapel)
- 9:30pm . . . . . Kajabe Tournament Finals – Upper Lawn after Cabin Time
- 10:15pm . . . . . Head to Cabins | Cabin discussions
- 11:15pm . . . . . Quiet in Camp

## THURSDAY

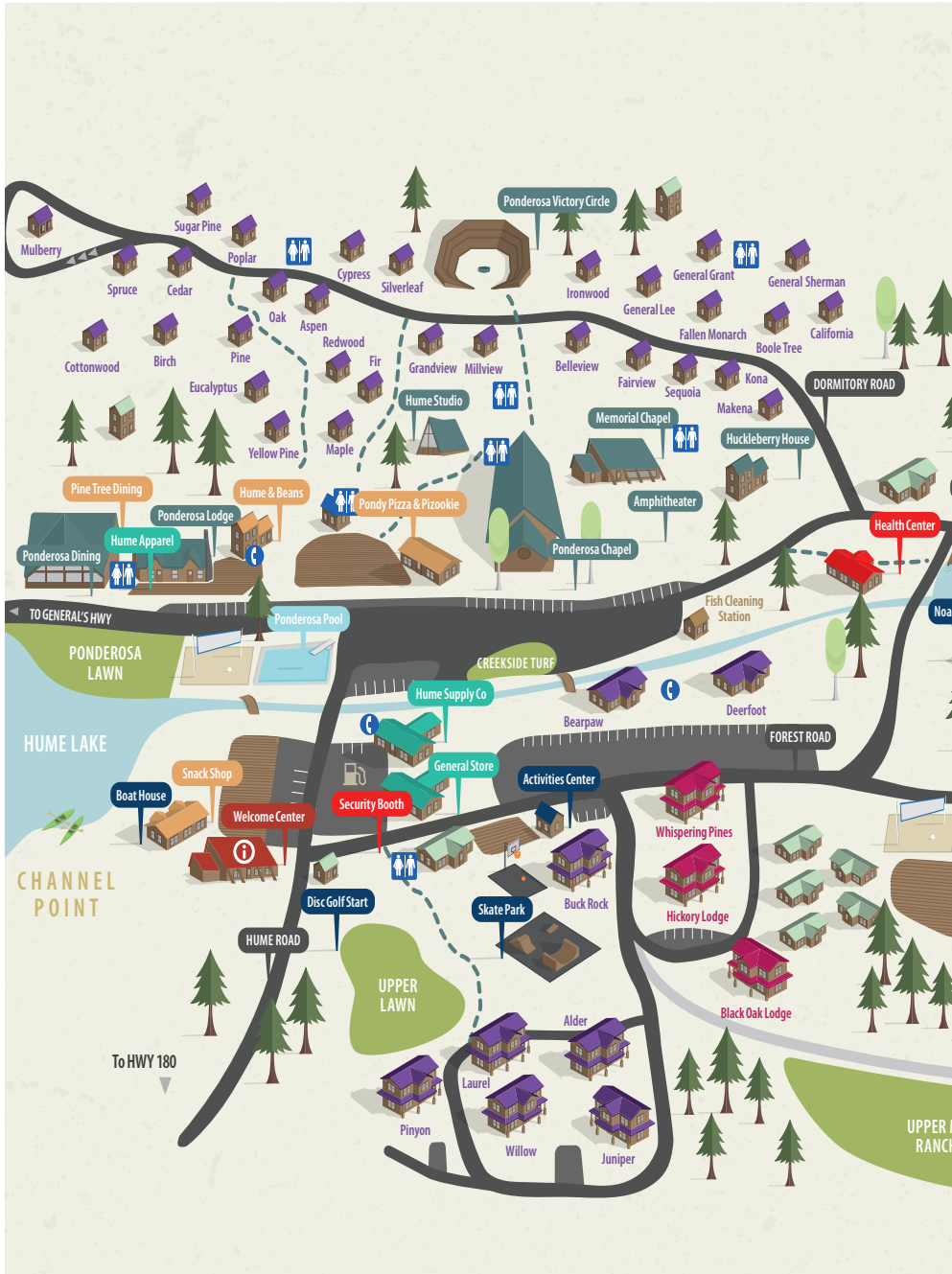
- 7:00am . . . . . Wake Up
- 7:30-8:45am . . . . . Breakfast & Devo Time
- 8:00am . . . . . Counselor Meeting
- 8:30-8:50am . . . . . Optional Early Morning Worship
- 9:00-10:30am . . . . . Chapel (worship & solo time)
- 10:45am . . . . . Recreation Chapel
- 11:00am . . . . . Recreation "Super Spirit Day"
- 12:00-1:30pm . . . . . Lunch
- 1:00-5:30pm . . . . . Free Time
- 1:30pm . . . . . Volleyball Tournament – Ponderosa Beach Court
- 3:00pm . . . . . Skate Park Competition
- 3:00pm . . . . . Production Seminar - Ponderosa Chapel
- 4:45pm . . . . . Youth Pastors meet outside of Ponderosa Chapel
- 6:00-7:15pm . . . . . Dinner on the Lawn
- 7:00pm . . . . . Gauntlet participants meet at the Boathouse
- 7:15pm . . . . . Gauntlet  
Chapel immediately following Gauntlet  
Head to Cabins after Chapel | Cabin discussions
- 11:15pm . . . . . Quiet in Camp

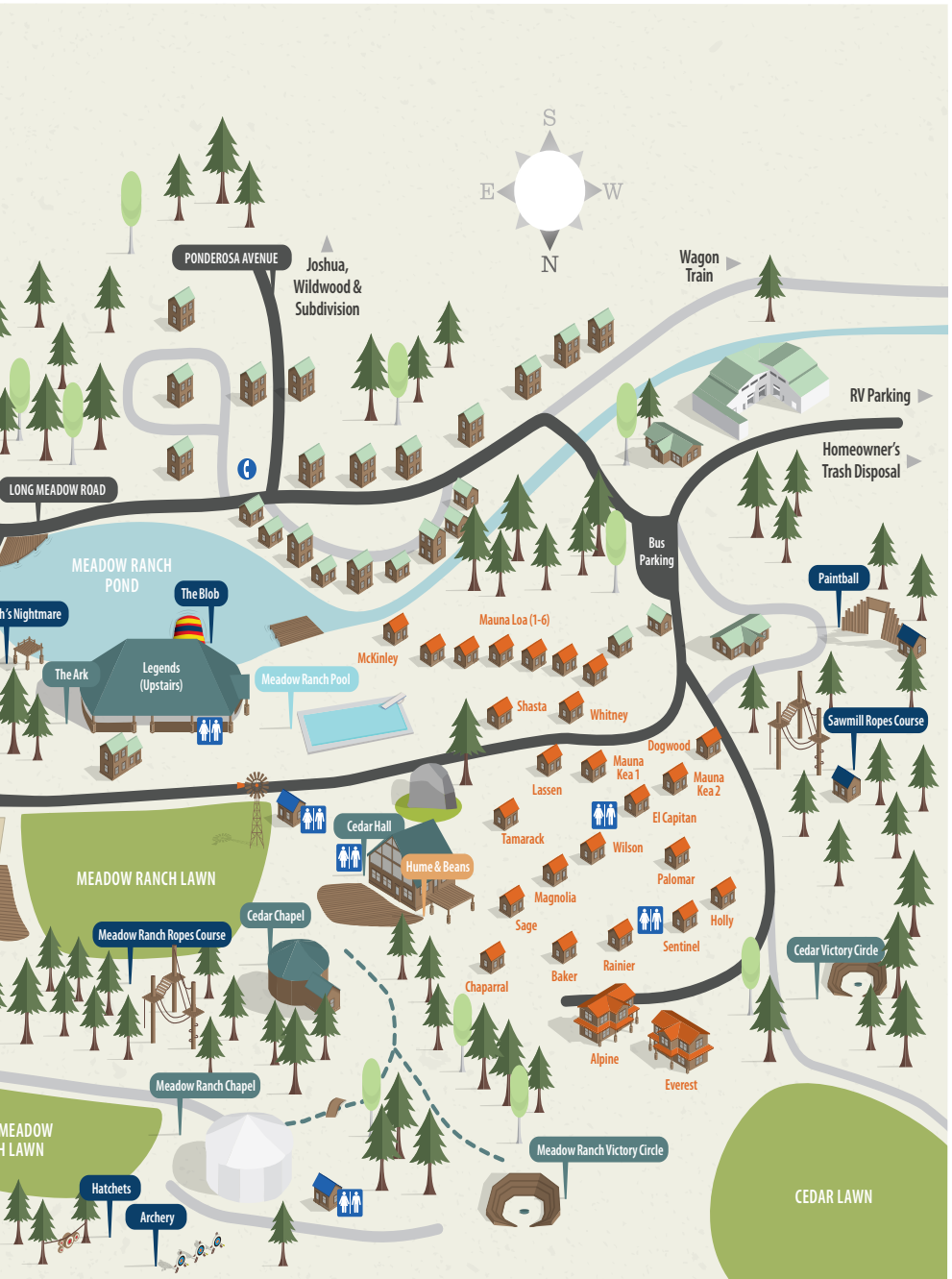
## FRIDAY

- 7:00am . . . . . Wake Up
- 7:15am . . . . . Dawn Patrol/Quiet Time–Volleybal Court
- 7:30-8:45am . . . . . Breakfast & Devo
- 8:00am . . . . . Counselor Meeting
- 9:00-9:30am . . . . . Chapel
- 9:30-10:45am . . . . . Church / Communion Time
- 11:00am . . . . . Recreation Chapel
- 11:15am . . . . . Recreation
- 12:00-1:30pm . . . . . Lunch
- 1:00-5:30pm . . . . . Free Time
- 1:30-4:30pm . . . . . Metal Craft–Creekside Turf Lawn
- 5:00-6:00pm . . . . . Senior Appreciation–Hume N' Beans Deck
- 5:30-6:45pm . . . . . Dinner
- 6:15-7:00pm . . . . . Staff vs. Counselor Wiffel Ball Game–Lower Lawn
- 6:45pm . . . . . Free Time
- 7:30pm . . . . . Chapel  
Victory Circle immediately after Chapel
- TBA . . . . . Head to Cabins & Lights Out

## SATURDAY

- 7:30-8:45am . . . . . Breakfast
- 8:45-9:30am . . . . . Clean Up Cabins
- 9:30am . . . . . Head for Home





# **THE HEALTH CENTER**

---

## **YOU AS A COUNSELOR ARE IN A POSITION TO ASSIST IN HAVING A SAFE WEEK.**

- + **It is your responsibility to see that your campers' health and safety are maintained while at camp.**
- + Do not administer any of your own medicine to any camper.
- + Drink plenty of water.
- + Encourage campers to eat all meals and drink plenty of fluids.
- + Try to remain calm when someone is injured. When injury occurs, your responsibility is crowd control. Contact a staff member to transport patient to the Health Center. Stay with the injured camper.
- + Do not hike or compete in activities barefooted. Bare feet are allowed in the pool and waterfront areas only.
- + Do not swim if you have an earache or sore throat.
- + Be sure to apply sunscreen regularly and use insect repellent.
- + Please discourage friends from coming to the Health Center when someone is injured
- + Please turn in any equipment lent out to a camper to the Health Center before leaving camp and make sure you pick up your camper's medications.
- + Please monitor your campers to assure compliance with any restrictions they may have, as you will be held accountable. All medication to campers should be dispensed by the nurse.

## **HEALTH CENTER HOURS: 8:00AM - 10:15PM**

- + During the hours of 8:00am - 1:00pm, contact the Lead Counselors before bringing your ill or injured camper to the Health Center. They will have a complete first aid kit. You need to be aware of what is happening to your campers.
- + The Health Center is open from 1:00pm - 5:00pm for walk-in patients.

## **AFTER HOURS: 10:15PM - 8:00AM**

- + Emergencies only—Please use discretion regarding incidents at night. An emergency is something which cannot wait until the following morning.
- + Please bring the camper to the Lead Counselors at Ponderosa Lodge before going to the Health Center after hours.

## **IN THE EVENT OF A TRULY LIFE THREATENING EMERGENCY, CALL 911 FROM ANY PHONE.**

Your church is responsible for transportation of any/all injured campers. If your church arrived in a bus, or if the situation is life-threatening, Hume Lake will arrange transportation.



# **MEDICINE DISPENSARY**

---

Under California State Law you are not allowed to administer any medicine to a minor, even over the counter medicine. Students are not allowed to have any medicine on them or in the cabin (even over the counter medicine) other than emergency EPI pens and inhalers.

In your cabin there is a lock box for you to keep your medicine and personal belongings. Please store them safely in there.

**Students may pick up their medicine inside Ponderosa Dining Hall during the following times:**

- + 7:30-9:00am
- + 11:45am-1:30pm
- + 4:45-6:45pm

\*\*Bedtime meds should be picked up by the counselor at Ponderosa dining during dinner.

# **CPR**

---

If a camper is found unconscious and unresponsive please do the following:

- + Survey the scene--make sure the scene is safe.
- + If there is a possible neck/back injury, have someone keep the camper's head/neck in the position you found them.
- + Check for responsiveness of victim--"are you ok?"
- + Send someone to start the EMS system (call 911) and bring an AED (Automatic External Defibrillator). If no one is with you, leave the victim and go get help.
- + Look for medical alert jewelry and question any of the witnesses while you are preparing to do CPR.
- + Check for a pulse. If no pulse after 10 seconds, begin compressions with 2 hands over the chest. Push hard (2 inches deep) & fast (to the rate of the song Staying Alive).
- + If a bystander is trained in CPR, they may open the airway & give 2 rescue breaths after every 30 compressions.
- + Keep doing CPR until trained staff take over.

**30 compressions to 2 breaths for 2 minutes, then check for a sign of circulation.**

# **IMPORTANT TO KNOW**

---

## **SWIM TESTS**

All campers who wish to swim in **any** body of water at Hume **must take a swim test**. Swim tests will be held from 1:00-2:00pm on Monday and Tuesday at the Ponderosa Pool. For more info, see a lifeguard at the Boathouse.

## **TOURNAMENTS**

Get involved in either the volleyball or basketball tournaments. The volleyball tournament is for teams of 6 players. Teams must include two people of opposite gender and you may have one counselor. The basketball tournament is for 3 players, each team may have one counselor. Guys play guys, girls play girls.

## **THE BOATHOUSE**

Rowboats: \$10 per hour | Canoes/Kayaks/Paddleboards: \$5 per hour | Bikes: \$5 per hour

## **ARCHERY**

Learn the art of archery and marksmanship. 1 hour session: \$5. Monday and Wednesday during free time. Sign up at the Activities Center.

## **ARCHERY TAG**

Bows & arrows + dodgeball + paintball, without the mess of paint = Archery Tag!  
Tuesday and Thursday during Free Time. 30 Minute Session: \$5. Sign up at the Activities Center

## **PAINTBALL**

Cost: \$20, includes a full hopper of paintballs. Bring money to purchase extra rounds-\$5/ hopper. Sign ups for you and your campers are on Sunday after Chapel at the Activities Center. Meet in front of the Activities Center for the bus pickup.

## **HIGH ADVENTURE ROPES COURSE**

Cost: \$20. Sign ups for you and your campers are on Sunday after Chapel at the Activities Center. Meet in front of the Activities Center for the bus pickup.

## **CAMP PHOTO**

The camp photo will be taken after recreation on Tuesday. Please turn in your order forms for camp pictures by 12:00pm on Tuesday at the General Store.

## **LATE NIGHT PIZOOKIE**

Surprise your students and have a late-night treat at your cabin! \$25 gets you our 9x14 sheet cookie with ice cream on top. Includes plastic silverware and napkins. Pick up your pizookie in the Ponderosa Dining Hall after Victory Circle. Sign up in the Snackshop by Friday at 5pm. Limited supply.

## **HUME STUDIOS RECORDING SESSION**

Are you interested in recording music or the music engineering process? Come sign up for one of our recording studio sessions! If you're interested, please come to our brief info meeting and signups at 1:30pm outside the Hume Studio building on Monday. The cost is \$25 for a 1 hour session and includes your finished CD project and a Hume Studio t-shirt.

# **RECREATION**

---

## **OUR PHILOSOPHY BEHIND RECREATION**

Above all, our desire is that recreation is simply another tool for bringing your students into a living, meaningful relationship with Jesus Christ. It is an opportunity for your students to bond together and for walls to breakdown, allowing trust and friendships to be built. Hopefully, this trust and friendship will translate into enriching conversations in your breakout sessions/cabin times.

## **BE INTENTIONAL WITH RECREATION**

**Encourage your students to get involved**

If you are sitting under the tree not wanting to participate or having a bad attitude, they will follow you. Whether you win or lose, remember the point is to have fun and to build unity within your group.

### **Be respectful**

It is easy to get a little too competitive, even as counselors. Remember, these students are watching you!! If you are yelling at the refs or are being rude to the other teams, it will just turn ugly. Show your students what it looks like to be competitive with integrity.

### **Try to include all the students**

Try to highlight all your students throughout the different competitions. Some of your students will be more athletic than others, so try to include everyone on your team and look for ways to let each student feel like they are included.

### **Dress appropriately**

Help us by making sure your students are NOT wearing sandals or have bare feet (unless they are at the pool). ALSO, please be sure that girls are NOT wearing skirts or have cut their shirts inappropriately and that guys are NOT wearing short shorts or spandex. A few of the games will be in the pool/lake and may require you to wear a swimsuit. ALL girls MUST wear a dark colored shirt if water is involved.

# RECREATION

---

## DAILY BREAKDOWN OF REC ACTIVITIES:

### MONDAY: 4-WAY GAMES

See page 13 for locations & where you are going!

### TUESDAY: KAJABE

See page 14 for which Can you are going to!

**BIKE JUMP:** Tuesday night @ 9:30pm (participants meet at Boat House @9:15pm)

### THURSDAY: SUPER SPIRIT DAY

#### DENIM ON DENIM

On Thursday morning come to rec decked out in anything Old West!

**GAUNTLET:** Thursday night @ 7:15pm (participants meet at Boat House @7:00pm)

### FRIDAY: THE GREAT RACE

Make sure your team is wearing running shoes + some are wearing swimsuits for water games.

## REC TEAMS

### WRANGLERS

1. Barb Ershop
2. Brandon Colts
3. Dusti Trails
4. Giddy Yup
5. Hal Stermagun
6. How D. Partner
7. Kat L. Drive
8. Kay Sadilla
9. Kenny Dewitt
10. Sil Vurspurs
11. Rich Furduhsky
12. Rick O' Shay
13. Tay Tertots
14. Tex E. Dermey

### RUSTLERS

15. Ben Krobery
16. Dyna Mite
17. Erma Dillo
18. Grover Yonder
19. Holden Yewup
20. Ian Cahoots
21. Chase M. Down
22. Lou Scannon
23. Reed M. Anne Weep
24. Robin D. Train
25. Russell N. Steers
26. Sharon Daloot
27. Stan Doff
28. Ty Emup

# MONDAY MORNING

## 4 WAY GAMES

ROUND 1		ROUND 2	
1 Barb Ershop 11 Rich Furduhsky 16 Dyna Mite 27 Stan Doff	<b>STATION 1</b> (Lower Lawn)	3 Dusti Trails 13 Tay Tertots 18 Grover Yonder 22 Lou Scannon	
2 Brandon Colts 13 Tay Tertots 17 Erma Dillo 22 Lou Scannon	<b>STATION 2</b> (Lower Lawn)	1 Barb Ershop 12 Rick O' Shay 16 Dyna Mite 28 Ty Emup	
3 Dusti Trails 12 Rick O' Shay 18 Grover Yonder 28 Ty Emup	<b>STATION 3</b> (Creekside Turf)	2 Brandon Colts 11 Rich Furduhsky 17 Erma Dillo 27 Stan Doff	
4 Giddy Yup 14 Tex E. Dermy 20 Ian Cahoots 24 Robin D. Train	<b>STATION 4</b> (Boathouse Lagoon)	6 How D. Partner 7 Kat L. Drive 15 Ben Krobery 19 Holden Yewup	
5 Hal Stermagun 10 Sil Vurspurs 21 Chase M. Down 23 Reed M. Anne Weep	<b>STATION 5</b> (Upper Lawn)	4 Giddy Yup 9 Kenny Dewitt 25 Russell N. Steers 26 Sharon Daloot	
6 How D. Partner 9 Kenny Dewitt 19 Holden Yewup 25 Russell N. Steers	<b>STATION 6</b> (Mud Pit)	8 Kay Sadilla 14 Tex E. Dermy 20 Ian Cahoots 21 Chase M. Down	
7 Kat L. Drive 8 Kay Sadilla 15 Ben Krobery 26 Sharon Daloot	<b>STATION 7</b> (Upper Upper Lawn)	5 Hal Stermagun 10 Sil Vurspurs 23 Reed M. Anne Weep 24 Robin D. Train	

No sandals. No bare feet. No skirts. No bad attitudes.

# TUESDAY MORNING

## KAJABE

ROUND 1		ROUND 2	
1 Barb Ershop 8 Kay Sadilla 15 Ben Krobery 22 Lou Scannon	<b>CAN 1</b>	6 How D. Partner 12 Rick O' Shay 18 Grover Yonder 24 Robin D. Train	
2 Brandon Colts 9 Kenny Dewitt 16 Dyna Mite 23 Reed M. Anne Weep	<b>CAN 2</b>	7 Kat L. Drive 13 Tay Tertots 19 Holden Yewup 25 Russell N. Steers	
3 Dusti Trails 10 Sil Vurspurs 17 Erma Dillo 24 Robin D. Train	<b>CAN 3</b>	1 Barb Ershop 14 Tex E. Dermey 20 Ian Cahoots 26 Sharon Daloot	
4 Giddy Yup 11 Rich Furduhsky 18 Grover Yonder 25 Russel N. Steers	<b>CAN 4</b>	2 Brandon Colts 8 Kay Sadilla 21 Chase M. Down 27 Stan Doff	
5 Hal Stermagun 12 Rick O' Shay 19 Holden Yewup 26 Sharon Daloot	<b>CAN 5</b>	3 Dusti Trails 9 Kenny Dewitt 15 Ben Krobery 28 Ty Emup	
6 How D. Partner 13 Tay Tertots 20 Ian Cahoots 27 Stan Doff	<b>CAN 6</b>	4 Giddy Yup 10 Sil Vurspurs 16 Dyna Mite 22 Lou Scannon	
7 Kat L. Drive 14 Tex E. Dermey 21 Chase M. Down 28 Ty Emup	<b>CAN 7</b>	5 Hal Stermagun 11 Rich Furduhsky 17 Erma Dillo 23 Reed M. Anne Weep	

# MEMORY VERSE GUIDELINES

## PHILOSOPHY

In light of recreation as a tool to bring students into a living, meaningful relationship with Jesus Christ, do not limit the use of these memory verses to winning recreation. Memory verses do earn valuable points, but more importantly, they are to assist you in meeting the spiritual needs of your students.

Each day is designed for you to gauge the spiritual temperature of your campers. Do these verses have any relevance, any meaning in their lives? Confront them, counsel them, encourage them—that is your responsibility.

With the above philosophy in mind, please do not “force feed” your students. If they do not desire to memorize Scripture, they do not have to. In light of the eternal value (not just temporal point value) encourage them as much as possible.

## DAILY GUIDELINES

- + Any translation may be used.
- + Each verse must be said word perfect.
- + There are no helps, no “gimmies.”
- + Verses must be recited before midnight each day.
- + A day missed cannot be made up.
- + Verses may not be said before the day due.  
(i.e. Thursday’s verses must be said by Thursday evening.)
- + Points awarded according to team percentage chart.  
(Shown to the right.)
- + Score sheets must be turned in to the Ponderosa Office by 3:00pm on Friday. Look for the Lead Counselor sitting on the deck.
- + Counselors may participate in memory verses.

## BONUS VERSE GUIDELINES

- + Any student is eligible to say the bonus verse.
- + The bonus requires reciting Exodus 34:5-9 before 3:00pm on Friday afternoon.
- + Students are allowed up to three mistakes for the whole passage.  
(Missing word, wrong word, etc.)
- + There are no helps, no “gimmies.”
- + Bonus verses may be written out, but only if a counselor is present.

If student recites passage with three or less mistakes that will count as one point toward team “Bonus Verse Score”. Team score is counted as an average and points are awarded in rank of highest average team score. (Shown to the right)

PERCENTAGE SCORING  
CHART FOR DAILY MEMORY  
VERSES

%	POINTS
100	2,500
90-99	2,250
80-89	2,000
70-79	1,750
60-69	1,500
50-59	1,250
40-49	1,000
30-39	800
20-29	600
10-19	400
1-9	200

BONUS VERSE POINTS

PLACE	POINTS
1	3,000
2	2,500
3	2,000
4	1,800
5	1,600
6	1,400
7	1,200
8	1,100
9	1,000
10	900
11	800
12	700
13	600
14	500
15-27	500
28	0

# MEMORY VERSES

---

## GUIDELINES

- + Any translation may be used.
- + Each verse must be stated word perfect.
- + No outside assistance.
- + Verse must be recited before midnight each day to a counselor.
- + Memorized verses count for points toward your team competitions.

## MONDAY: EXODUS 15:11-13 (ESV)

*"Who is like Thee among the gods, O LORD? Who is like Thee, majestic in holiness, Awesome in praises, working wonders? You stretched out your right hand; the earth swallowed them. You have led in your steadfast love the people whom you have redeemed; you have guided them by your strength to your holy abode."*

## TUESDAY: PSALM 103:11-13 (ESV)

*"For as high as the heavens are above the earth, so great is His steadfast love toward those who fear him; as far as the east is from the west, so far does he remove our transgressions from us. As a father shows compassion to his children, so the LORD shows compassion to those who fear him."*

## WEDNESDAY: DEUTERONOMY 31:6,8 (ESV)

*"Be strong and courageous. Do not be afraid or terrified because of them, for the Lord your God goes with you; he will never leave you nor forsake you...It is the LORD who goes before you. He will be with you; he will not leave you or forsake you. Do not fear or be dismayed."*

## THURSDAY: ISAIAH 45:7-9 (ESV)

*"I form light and create darkness; I make well-being and create calamity, I am the Lord, who does all these things." Shower, O heavens, from above, and let the clouds rain down righteousness; let the earth open, that salvation and righteousness may bear fruit; let the earth cause them both to sprout; I the Lord have created it. "Woe to him who strives with him who formed him, a pot among earthen pots! Does the clay say to him who forms it, 'What are you making?' or 'Your work has no handles'?"*



# **BONUS MEMORY VERSE**

---

## **GUIDELINES**

- + Any student is eligible to say the bonus verse.
- + The bonus requires reciting Exodus 34:5-9 before 3:00pm on Friday Afternoon.
- + Students are allowed up to three mistakes for the whole passage. (Missing word, wrong word, etc.)
- + There are no helps, no "gimmies."

## **FRIDAY (BONUS): EXODUS 34:5-9 (ESV)**

*"The LORD descended in the cloud and stood with him there, and proclaimed the name of the LORD. The LORD passed before him and proclaimed, "The LORD, the LORD, a God merciful and gracious, slow to anger, and abounding in steadfast love and faithfulness, keeping steadfast love for thousands, forgiving iniquity and transgression and sin, but who will by no means clear the guilty, visiting the iniquity of the fathers on the children and the children's children, to the third and the fourth generation." And Moses quickly bowed his head toward the earth and worshiped. And he said, "If now I have found favor in your sight, O Lord, please let the Lord go in the midst of us, for it is a stiff-necked people, and pardon our iniquity and our sin, and take us for your inheritance."*

# SUNDAY

## SUNDAY EVENING CHAPEL NOTES

---

---

---

---

---

---

---

---

---

---

---

---

---

---

---

---

---

---

---

---

---

---

---

---

---

## CABIN TIME QUESTIONS

- 1. Why are you here at camp this week?
  
- 2. What are you hoping to gain from this week?

## DEVO: GOD'S HOLINESS

God tells Moses to take off his shoes because Moses was standing on Holy Ground. Why do you think that is? What did the removal of shoes symbolize? The main thing this represents is that God is to be revered, that He is to be honored.

An understanding of the holiness of God is foundational in understanding the rest of His character. Over and over again throughout the bible, God declares himself to be holy. In contemporary culture, the meaning of the word "holy" has been suppressed and redefined, so it is important that we grasp the biblical definition of holiness. One writer says: "The primary meaning of holy is 'separate.' It comes from an ancient word that meant, 'to cut,' or 'to separate.' When we find a garment or another piece of merchandise that is outstanding, that has a superior excellence, we use the expression that it is 'a cut above the rest.'" God's holiness also includes the reality that He is totally pure, that there is not a trace of sin in Him or near Him. He is perfect.

Habbakuk 1:13 says: *"Your eyes are too pure to approve evil, And you cannot look on wickedness..."*

There are many attributes of God such as love, mercy, justice, knowledge etc. But it is important to understand that God's holiness is not just another attribute of His in a long list of other attributes. No, it is the overarching umbrella of the rest of His character. His love is a holy love, his mercy is a holy mercy, his justice is a holy justice. God cannot be understood apart from His holiness. It is how He defines himself.

1. Read psalm 24:3-5. Who are the ones that can ascend the hill of the Lord? How can we possibly attain that requirement?
2. Why do you think it is important to understand the Holiness of God? What are ways that culture suppresses this reality?
3. If God cannot tolerate even the smallest sin, what does that mean for you and I?

The holiness of God is not merely a subject for bible professors and pastors. It is something that every single person desperately needs to understand. God calls His children to "be Holy as I am Holy" which means that we need to understand the Holiness of the One we are called to reflect.

### REMINDERS

- + Pick up rec t-shirts behind the Gift Shop/General Store before morning chapel
- + **Youth Pastors:** Make sure you turn in your church breakout location at the Counselor Meeting with your top THREE options for Wednesday's church time.



**MONDAY EVENING CHAPEL NOTES**

---

---

---

---

---

---

---

---

---

---

---

---

---

---

---

---

---

---

---

---

---

---

---

**CABIN TIME QUESTIONS**

1. In light of God’s holiness, why does He have full authority to judge?
2. What are ways in which we diminish the seriousness of sin?
3. Do you think your sin deserves to be judged? Have you ever considered yourself as an enemy of God?

## DEVO: GOD'S LOVE

---

Yesterday we talked about God's justice and His wrath towards sin. This needs to be understood in order to even remotely comprehend His unfathomable love. God is love. This idea is most clearly represented in the death and resurrection of Jesus Christ. God, in order to satisfy His justice pours out His wrath on His one and only Son in order that you and I would never have to. Isaiah 53 tells us that the "punishment for our peace was laid upon Jesus." The question is: Why would God do this? Why would He send His only son to die for lost sinners? We read why in Romans 5:8 "But God demonstrates His own love towards us in that while we were yet sinners, Christ died for us." God's love is not merely an idea, but it is a reality that was clearly displayed as Jesus bore our sins on the cross.

Read Psalm 86:15. How does the psalmist describe God?

Read Deuteronomy 7:7-8. Why does God choose to set His love on people? The passage basically says "because He wants to." God chooses to love unworthy sinners.

God's love can not be bought, earned, or inherited, it is a free gift. Ephesians 2:1 says that we "were dead in our trespasses and sins," meaning that sinners are deserving of God's justice, but verse 4 says "but God being rich in mercy because of His GREAT LOVE in which he loved us made us alive." God extends the gift of salvation to lost sinners because "he so loved the world" (John 3:16) and shows us His nail pierced hands as evidence of His love and calls us to believe in Him.

Jesus says in John 15:9 to "abide in His love." What are ways that you can abide in the love of God? What keeps or prevents us from remaining in the love of God constantly?

### REMINDERS

- + There is a Optional Seminar today in Memorial Chapel at 4:00pm.
- + The Basketball Tournament is today at 1:30 at The Ark.
- + Bike Jump is tonight. Make sure to send 1 person from your rec team to the boathouse at 9:15pm.

## **TUESDAY MORNING CHAPEL NOTES**

---

---

---

---

---

---

---

---

---

---

---

---

---

---

---

---

---

---

---

---

---

---

---

---

---

---

---

---

---

---

## **CABIN BREAK OUT QUESTIONS**

1. What's one thing from chapel this morning that has impacted you? Why?
2. What was your view of missions before chapel and how has it changed?
3. Do you feel like missions is important and why do you feel that way?
4. What gifts has God given you and how can you use those gifts to glorify Him on the mission field?

**TUESDAY EVENING CHAPEL NOTES**

---

---

---

---

---

---

---

---

---

---

---

---

---

---

---

---

---

---

---

---

---

---

---

---

---

---

**CABIN TIME QUESTIONS**

- 1. If God required a blood sacrifice back then, and God is the same today as He was then, what does that mean we need today in our life to be saved?
- 2. God required a spotless lamb as a sacrifice, what makes us, as human beings, an insufficient sacrifice?
- 3. Looking at Ephesians 2:1-3, what can be determined about our standing in relation to God? Now look at verses 4-7, how does this change where we stand?



## DEVO: GOD'S PRESENCE

What is your view of God's presence? Maybe you have heard that God is everywhere, but have you ever thought about the fact that He is with us personally as well? Throughout the scripture, God reinforces repeatedly that He is always with His people. He does not deliver them and then remove Himself from them, rather He delivers them and then abides and dwells amongst them. We see this played out in the tabernacle and temple in the Old Testament and in Jesus Christ in the New Testament. John 1:14 says "the word became flesh and dwelt amongst us."

Read Psalm 139. What does the psalmist seem to be communicating about the presence of God?

1. How does the reality of God's presence in our life affect the way that we live?

Maybe you feel like God's presence is hard to feel at times in your life, but Jesus says in Matthew 28:20 "*surely I am with you, even to the end of the age.*" We will become more aware of God's presence in our life as we seek Him in His word and speak to Him in prayer. James 4:8 says "as we draw near to God he will draw near to us. God's presence is a reality, but is also something that we pursue.

2. Have you ever felt like you couldn't feel God's presence?

Many of the most godly characters in the bible have felt the same way. Psalm 23 reminds us that even "in the valley of the shadow of death" God is with us. Guiding us, protecting us, and leading us.

### REMINDERS

- + If you are a Youth Pastor, make sure you are at the counselor meeting to get your location for the church breakout session this afternoon

**SEMINAR 1 NOTES**

---

---

---

---

---

---

---

---

---

---

---

---

---

---

---

---

---

---

---

---

---

---

---

---

**SEMINAR 2 NOTES**

---

---

---

---

---

---

---

---

---

---

---

---

---

---

---

---

---

---

---

---

---

---

---

---

**CABIN BREAK OUT QUESTIONS**

1. Which seminar did you go to this morning? What are a few things you got out of it?



## DEVO: GOD'S SOVEREIGNTY

---

God's sovereignty means that He has never been surprised by anything. He not only knows all things, but He ordains all things, nothing has ever come to pass that contradicts His plan. God being sovereign means that there are no limitations upon His rule. Colossians 1:16 tells us that "whether thrones, or powers, rulers or authorities all things were created by Him and for Him." Sometimes the sovereignty of God can be difficult to swallow when we consider it with all the pain and sorrow we see around the world. But God's sovereignty can never be separated from His love for us and His perfect plan for His glory.

Read Romans 8:28. What is God ultimately working all things towards? Sometimes we interpret this passage and think that our life should always make sense to us, but like the Israelites who didn't always know where God was leading them, we can have absolute certainty that even when we can't see where God is leading us, we can trust that it is a part of His perfect plan for His glory.

1. Have there been any times in your life when you have doubted the sovereignty of God? How does God's love for us help us in moments when His sovereignty is hard to swallow?

2. If God is loving and holy and sovereign, how can we display our trust in Him at all times?

### REMINDERS

- + The Volleyball tournament is at 1:30pm on the Ponderosa Beach Court.
- + Youth Pastors: Meet at 4:45pm in front of Pandy Chapel for dinner with Sarah & Jonny.
- + Tonight is the Gauntlet. Make sure you talk as a rec team today to pick a counselor to participate.

**THURSDAY MORNING CHAPEL NOTES**

---

---

---

---

---

---

---

---

---

---

---

---

---

---

---

---

---

---

---

---

---

---

---

---

---

---

**CABIN BREAK OUT QUESTIONS**

1. During your time outside in God’s Word, what stood out to you in the scripture you read?

## **THURSDAY EVENING CHAPEL NOTES**

---

---

---

---

---

---

---

---

---

---

---

---

---

---

---

---

---

---

---

---

---

---

---

---

---

---

### **CABIN TIME QUESTIONS**

1. How does the reality that God is sovereign affect the way that you trust Him even when things are hard?
  
2. Why is it important to understand God's sovereignty alongside His other attributes? Meaning, why is crucial to consider God's goodness, love and eternity alongside His sovereign reign?
  
3. Throughout the bible we see that God is sovereign, but man is also responsible for the way that they respond to Him, how do we reconcile two equally true realities?

## DEVO: GOD'S SPEAKS

---

At the beginning of the week we talked about God's Holiness, that He is set apart, that He is transcendent, meaning that He is unlike us. The Israelites understood this reality, so when Moses was nearing his death, they assuredly became worried about how they were going to hear from God once Moses died. After all, he was the one who communicated God's words to the people. Moses responds to the people's panic and proclaims a message that is just as relevant today as it was when Moses proclaimed it then. The message is that God has revealed Himself in His word. Maybe you have heard somebody call the bible The Word of God, but what Moses calls the people to understand is that the bible is actually full of *The Words of God*.

1. Read Hebrews 4:12. How are the words of God described? Does your life reflect the reality that God speaks to us in His word?

2. Read Psalm 19:7-14. How does the psalmist describe the effect that the word of God has on his life?

One of the most severe plagues in the Old Testament is described in the book of Amos. This plague doesn't include frogs, insects, locust, darkness, or disease - what do you think it is? Amos 8:11 tells us that is "not a famine of bread, nor a thirst for water, but of hearing the words of the LORD." The most severe famine is a famine of hearing the words of God.

Ask God to never allow you to self-impose this famine on your own life by neglecting the truth He has given us in His word.

### REMINDERS

- + Turn in memory verse score sheets by 3:00pm at the Ponderosa Lodge Office.
- + Remind your seniors about Senior Appreciation on Hume & Beans Deck.
- + Staff vs. Counselor Wiffle Ball Game tonight-6:15pm

## **FRIDAY EVENING CHAPEL NOTES**

---

---

---

---

---

---

---

---

---

---

---

---

---

---

---

---

---

---

---

---

---

---

---

---

---

---

### **CABIN TIME QUESTIONS**

1. Do you truly view the bible as the words of God speaking to you authoritatively and personally?
2. If God speaks to us in His word, How should our priorities and our time reflect that reality?
3. Next time you want to “hear from God,” where do we turn?



# UPCOMING OPPORTUNITIES

---

**SUMMER YOUNG ADULTS RETREAT: September 10-12, 2021**

**WINTER: March 11-13, 2021**

Looking for a camp for your college age youth and young adults? Every summer and winter we put on a weekend of amazing activities, great speakers, fantastic music, and more coffee and food than they'll know what to do with. It is a unique retreat geared just for them. For more info or to register go to [www.hume.org/young-adults/](http://www.hume.org/young-adults/)

## **YOUTH WORKER'S RETREAT**

**November 8-13, 2021**

Our Youth Staff has come up with a retreat that will hopefully be relaxing, refreshing and encouraging for everyone that comes. For more info or to register, check out [www.hume.org/youth-workers/](http://www.hume.org/youth-workers/)

## **JOSHUA WILDERNESS INSTITUTE**



### **Gap Year Discipleship Program**

Are your students deciding what they should do after high school? Hume Lake's discipleship program, the Joshua Wilderness Institute, could be their answer! Students of the Joshua program spend a year living in community and hearing from impactful speakers. They travel internationally and are guided through spiritual practices that equip them to experience God more vibrantly for the rest of their lives. To get more information or connect with the Joshua Staff about promoting the program at your youth group, head to [hume.org/joshua](http://hume.org/joshua).

# **STAY CONNECTED**

---

**STAY IN CONTACT WITH YOUR STUDENTS**  
(name, cell, email)

---

---

---

---

---

---

---

---

---

---

---

---

---

---

---

---

---

---

---

---

---

---

---

---

---

---

---

---

---

---

**STAY IN CONTACT WITH US!**  
[info@hume.org](mailto:info@hume.org) | 559.305.7770

# JIRAH AND THE ROAD OUT OF COPPERHEAD



---

## GET IT ONLINE

[hume.org/media/ponderosa/2021](http://hume.org/media/ponderosa/2021)

All camp and wrap-up videos are available on our website to view and/or download, for free.

## STAY CONNECTED WITH HUME

[hume.org](http://hume.org) //  [humelake](#) //  [humelake](#)

Have fun photos from your time here at camp? Post them on Instagram or Facebook using the hashtags [#humesummer21](#) and [#humelake](#)!

## HUME APPAREL ONLINE

[humesupplyco.com](http://humesupplyco.com) //  [humeapparel](#) //  [humesupplyco](#)

Hume Apparel creates garments and accessories that help you shine bright as a light for Christ. We are determined to glorify God and share the message of Jesus through brilliant design and quality craftsmanship. Shop online or visit our store at Hume Lake.

---



