

## 2011 University of Miami Volleyball Match Notes

### Week 9 — Boston College, University of Maryland (Atlantic Coast Conference matches)

Volleyball Contact: Bryan J. Harvey 305.284.3249 (office) • 305.301.9826 (cell) • bharvey@miami.edu (e-mail)

Social Media: hurricanesports.com • twitter.com/hurricanesports • facebook.com/miamihurricanes

### 2011 SCHEDULE AND RESULTS (15-3, 6-3 ACC)

#### AUGUST

|                      |                           |        |                                  |
|----------------------|---------------------------|--------|----------------------------------|
| 21                   | Alumni Match (exhibition) | W, 5-0 | 25-11, 25-10, 25-9, 25-20, 15-7  |
| <i>Tiger Classic</i> |                           |        |                                  |
| 26                   | vs. Jacksonville State    | W, 3-0 | 25-19, 25-18, 25-14              |
| 27                   | vs. Louisiana-Lafayette   | W, 3-0 | 25-19, 25-21, 25-16              |
| 27                   | at LSU                    | W, 3-2 | 27-25, 13-25, 16-25, 25-22, 15-8 |

#### SEPTEMBER

|                                 |                           |        |                            |
|---------------------------------|---------------------------|--------|----------------------------|
| <i>Pepperdine Asics Classic</i> |                           |        |                            |
| 2                               | vs. UC Santa Barbara      | W, 3-0 | 25-19, 25-23, 25-22        |
| 3                               | vs. Georgia               | W, 3-0 | 25-19, 25-13, 27-25        |
| 3                               | at Pepperdine             | W, 3-1 | 18-25, 25-23, 25-21, 25-23 |
| <i>Hurricane Invitational</i>   |                           |        |                            |
| 8                               | Florida A&M               | W, 3-0 | 25-13, 25-18, 25-14        |
| 9                               | Auburn                    | W, 3-0 | 25-14, 25-22, 25-16        |
| 10                              | #18 Oklahoma              | W, 3-1 | 17-25, 25-17, 26-24, 25-19 |
| 14                              | at Florida State* (ESPNU) | L, 0-3 | 23-25, 21-25, 18-25        |
| 23                              | at Virginia Tech*         | W, 3-0 | 25-23, 25-20, 25-20        |
| 25                              | at Virginia*              | W, 3-0 | 25-20, 25-14, 25-22        |
| 30                              | Wake Forest*              | W, 3-0 | 25-18, 25-16, 25-23        |

#### OCTOBER

|    |                      |        |                                   |
|----|----------------------|--------|-----------------------------------|
| 2  | Duke*                | W, 3-0 | 25-22, 26-24, 25-20               |
| 7  | at NC State*         | W, 3-2 | 25-16, 19-25, 23-25, 27-25, 15-12 |
| 9  | at North Carolina*   | L, 2-3 | 29-31, 23-25, 25-19, 27-25, 11-15 |
| 14 | Clemson*             | W, 3-0 | 25-13, 25-22, 25-22               |
| 16 | Georgia Tech*        | L, 1-3 | 25-11, 22-25, 20-25, 21-25        |
| 21 | at Boston College*   |        | 7 p.m.                            |
| 23 | at Maryland*         |        | 2 p.m.                            |
| 28 | Virginia*            |        | 7 p.m.                            |
| 30 | Virginia Tech* (RSN) |        | 1 p.m.                            |

#### NOVEMBER

|    |                  |  |        |
|----|------------------|--|--------|
| 4  | North Carolina*  |  | 6 p.m. |
| 6  | NC State*        |  | 1 p.m. |
| 10 | at Duke*         |  | 7 p.m. |
| 12 | at Wake Forest*  |  | 5 p.m. |
| 18 | at Georgia Tech* |  | 7 p.m. |
| 19 | at Clemson*      |  | 6 p.m. |
| 26 | Florida State*   |  | 5 p.m. |

#### DECEMBER

|    |                            |
|----|----------------------------|
| 2  | NCAA First Round           |
| 3  | NCAA Second Round          |
| 9  | NCAA Regional Semifinals   |
| 10 | NCAA Regional Championship |
| 15 | NCAA National Semifinals   |
| 17 | NCAA National Championship |

Matches in **BOLD** are Home Competitions in James L. Knight Sports Complex  
All times are EASTERN

**Match #19:** No. 25 Miami at Boston College (Fri., Oct. 21 – 7 p.m.)

**Where:** Power Gymnasium (Chestnut Hill, Mass.)

**Live Stats:** Live stats available at HurricaneSports.com

**Match #20:** No. 25 Miami at Maryland (Sun., Oct. 23 – 2 p.m.)

**Where:** Comcast Pavilion (College Park, Md.)

**Live Stats & Video:** Live stats and video available at UMTerps.com



#### Hurricane Warnings

◆ The University of Miami is in the AVCA Top 25 Poll this week at No. 25. This is the sixth consecutive week the Hurricanes have been ranked in the Top 25 Coaches Poll – the longest stretch in school history...

◆ The Hurricanes have won the previous seven meetings against Boston College, while holding a six-match win streak against the Terrapins of Maryland...

◆ All-America senior outside hitter Lane Carico became the school's all-time leader in kills against Duke (Oct. 2), passing Karla Johnson (2002-05) atop the school record books...

### MIAMI PROBABLE STARTERS

| No. | Name            | Yr.   | Pos. | Ht.  | kpg  | pct.               | dps  | bps  | pps  |
|-----|-----------------|-------|------|------|------|--------------------|------|------|------|
| 1   | Alex Johnson    | Soph. | RS   | 6-0  | 2.83 | .249               | 3.17 | 0.63 | 3.38 |
| 2   | Lane Carico     | Sr.   | OH   | 5-11 | 3.46 | .265               | 4.10 | 0.38 | 3.93 |
| 3   | Taylor Hollins  | Soph. | OH   | 5-9  | 0.65 | .167               | 2.39 | 0.00 | 0.76 |
| 9   | Katie Gallagher | R-Sr. | S    | 5-11 | 1.08 | 11.00 <sup>A</sup> | 2.46 | 0.41 | 1.37 |
| 10  | Ryan Shaffer    | Soph. | DS   | 5-7  | 0.02 | .111               | 4.48 | 0.00 | 0.30 |
| 16  | Emani Sims      | R-Fr. | MB   | 5-11 | 1.57 | .297               | 0.19 | 0.91 | 2.09 |
| 21  | Ali Becker      | Sr.   | MB   | 6-1  | 2.84 | .380               | 0.48 | 1.00 | 3.44 |

<sup>A</sup> - assists per set

#### 2011 UNIVERSITY OF MIAMI HURRICANES ROSTER

| No. | Name                 | Pos. | Ht.  | Yr.-Exp. | Hometown/High School               |
|-----|----------------------|------|------|----------|------------------------------------|
| 1   | Alex Johnson         | RS   | 6-0  | Soph.-1L | Tallahassee, Fla./Leon             |
| 2   | Lane Carico          | OH   | 5-11 | Sr.-3L   | Manhattan Beach, Calif./Mira Costa |
| 3   | Taylor Hollins       | OH   | 5-9  | Soph.-1L | Long Beach, Calif./Lakewood        |
| 4   | Alexis Mourning      | MB   | 6-1  | Fr.-HS   | Arlington, Texas/Martin            |
| 5   | Eryn Croft           | OH   | 5-8  | Fr.-HS   | Gainesville, Fla./Gainesville      |
| 6   | Julia Giampaolo      | DS   | 5-7  | Soph.-1L | Torrington, Conn./Torrington       |
| 7   | Mariel Schofield     | DS   | 5-5  | Soph.-1L | Ijamsville, Md./Urbana             |
| 9   | Katie Gallagher      | S    | 5-11 | R-Sr.-3L | Winter Park, Fla./Lake Highland    |
| 10  | Ryan Shaffer         | DS   | 5-7  | Soph.-1L | San Jose, Calif./Archbishop Mitty  |
| 11  | Blair Fuentes        | S/H  | 6-0  | Fr.-HS   | Ridgewood, N.J./Ridgewood          |
| 12  | Lizzie Hale          | DS   | 6-0  | Jr.-2L   | Menlo Park, Calif./Menlo           |
| 16  | Emani Sims           | MB   | 5-11 | R-Fr.-HS | Glenview, Ill./Glenbrook South     |
| 17  | Christine Williamson | OH   | 5-11 | R-Sr.-3L | Tampa, Fla./Plant                  |
| 21  | Ali Becker           | MB   | 6-1  | Sr.-3L   | Katy, Texas/Cinco Ranch            |
| 23  | Nrithya Sundararaman | S/H  | 5-10 | Jr.-2L   | Naperville, Ill./Naperville        |

**Head Coach** – Nicole Lantagne Welch (Maryland, 1994), 11th Season

**Asst. Coach** – Felix Hou (Shanghai Physical Education Institute, 1986), Fourth Season

**Asst. Coach** – Ashley Woods (University of Miami, 2008), First Season

**Volunteer Asst. Coach** – Erin Mitchem (College of the Ozarks, 2010), First Season

**Strength & Conditioning** – Andrew Klich (Connecticut, 2002), Second Season

**Student Assistant** – Ariell Cooke

**Head Athletic Trainer** – Scott McGonagle

**Graduate Assistant Trainer** – Nancy Melnyk

**2011 UNIVERSITY OF MIAMI NUMERICAL ROSTER**

| No. | Name                 | Cl.   | Pos. | Ht.  | SP | Pct.  | KPS                    | APS   | DPS  | BPS  | Notes   |
|-----|----------------------|-------|------|------|----|-------|------------------------|-------|------|------|---|
| 1   | Alex Johnson         | Soph. | RS   | 6-0  | 56 | .255  | 2.84                   | 0.84  | 3.25 | 0.64 | Owens three double-doubles this year          |
| 2   | Lane Carico          | Sr.   | OH   | 5-11 | 54 | .257  | 3.44                   | 0.33  | 4.31 | 0.41 | Three-time ACC Player of the Week             |
| 3   | Taylor Hollins       | Soph. | OH   | 5-9  | 39 | .169  | 0.69                   | 0.28  | 2.64 | 0.00 | Career-high 13 kills at UNC                   |
| 4   | Alexis Mourning      | Fr.   | MB   | 6-1  | 18 | .388  | 1.33                   | 0.06  | 0.17 | 0.56 | Season-high 12 kills at UNC                   |
| 5   | Eryn Croft           | Fr.   | OH   | 5-8  |    |       | <i>Out with Injury</i> |       |      |      | Will miss the 2011 season following surgery   |
| 6   | Julia Giampaolo      | Soph. | DS   | 5-7  | 2  | .000  | 0.00                   | 0.00  | 0.50 | 0.00 | Spent freshman year as reserve DS             |
| 7   | Mariel Schofield     | Soph. | DS   | 5-5  | 32 | .000  | 0.00                   | 0.00  | 0.44 | 0.00 | Named to the AD's Honor Roll in 2010-11       |
| 9   | Katie Gallagher      | R-Sr. | S    | 5-11 | 56 | .272  | 1.11                   | 11.02 | 2.38 | 0.43 | Leads the ACC in assists per set              |
| 10  | Ryan Shaffer         | Soph. | DS   | 5-7  | 56 | .143  | 0.02                   | 0.29  | 4.64 | 0.00 | Career-high tying 32 digs at UNC              |
| 11  | Blair Fuentes        | Fr.   | S/H  | 6-0  | 5  | .000  | 0.40                   | 0.60  | 0.00 | 0.00 | Set all-time kills record in high school      |
| 12  | Lizzie Hale          | Jr.   | DS   | 6-0  | 51 | -.143 | 0.00                   | 0.29  | 1.31 | 0.02 | Serving specialist for the Hurricanes         |
| 16  | Emani Sims           | R-Fr. | MB   | 5-11 | 51 | .273  | 1.51                   | 0.04  | 0.22 | 0.94 | Second on the team in blocks per set          |
| 17  | Christine Williamson | R-Sr. | OH   | 5-11 | 54 | .197  | 2.19                   | 0.04  | 0.80 | 0.44 | Match-high 17 kills at LSU                    |
| 21  | Ali Becker           | Sr.   | MB   | 6-1  | 56 | .376  | 2.88                   | 0.04  | 0.52 | 1.00 | Ranks second in the ACC in hitting percentage |
| 23  | Nrithya Sundararaman | Jr.   | S/H  | 5-10 | 9  | -.200 | 0.00                   | 1.33  | 0.11 | 0.00 | Moved from setter to hitter last season       |

**No. 25 Hurricanes Head North for Key Road Trip...**

The 25th-ranked University of Miami volleyball team travels north this weekend for a pair of Atlantic Coast Conference matches at Boston College (Oct. 21) and Maryland (Oct. 23). The Canes play at BC on Friday at 7 p.m., followed by Sunday's contest against the Terrapins at 2 p.m.

Miami (15-3, 6-3, ACC) will look to rebound from its first home loss last Sunday in a four-set match against the Georgia Tech Yellow Jackets. Since 2008, head coach Nicole Lantagne Welch and the Hurricanes are second in the league for kills, while Boston College and Maryland, respectively.

The Hurricanes are led offensively by five players hitting .249-or better, as well as four players with 100-plus kills. As a team, the Hurricanes are second in the league for kills, while also being ranked second in hitting percentage. As a unit, UMiami tops the conference charts in digs as well.

Senior All-America outside hitter Lane Carico (Manhattan Beach) leads the Hurricanes with 211 kills (3.46 k/s), as well as sitting second defensively with 250 digs (4.10 d/s). Carico is the only player in the ACC ranked in the league's Top 10 for kills (4th), points (4th), digs (8th) and service aces (10th).

Joining Carico is Ali Becker (Katy, Texas) with 179 kills (2.84 k/s) and a team-leading 51 blocks (1.00 b/s). The senior middle blocker not only leads the league in hitting percentage (.380), but she is 21st in the NCAA this week in that department. The Texas native has developed nicely at the net for Lantagne Welch and her staff since her freshman year, and has been a force this year for the team in kills, blocks and hitting percentage.

Sophomore Alex Johnson (Tallahassee, Fla.) has 178 kills (2.83 k/s), followed by redshirt senior outside hitter Christine Williamson (Tampa, Fla.) with 133 kills. Johnson has also supplied defense for the team from her right side spot, adding 200 digs (3.17 d/s) in the process.

With three players averaging 3.00 digs or better, it is in fact sophomore libero Ryan Shaffer (San Jose, Calif.) topping the team in digs with 282 (4.48 d/s) as she ranks fourth in the league.

Redshirt senior setter Katie Gallagher (Winter Park, Fla.) leads the ACC in assists with 11.00 per set and ranks 30th in the nation.

**Scouting Boston College...**

Over its previous six matches, Boston College has hit just shy of .200, but have allowed

its opponents to hit at a .240 clip. Senior outside hitter Tsvetelina Dureva is the Eagles' leader on offense, averaging 3.18 points and 2.94 kills per set. Fellow outside hitter freshman Courtney Castle is second on the team with 2.38 kills per set, while her 0.33 aces per set is the league's second best.

Castle was named the ACC Freshman of the Week on Monday, Oct. 17 after helping the Eagles pick up their first conference road win since the 2009 campaign. In last weekend's victory at Wake Forest, Castle charted a career-best 18 kills with just three errors for a .441 hitting percentage – the highest by a BC player this season. The rookie also produced 12 digs against the Demon Deacons to record her fourth double-double of the season.

**Series against the Eagles...**

Miami leads the all-time series against the Boston College Eagles by a count of 12-2. In fact, the Hurricanes have won the previous seven meetings dating back to 2007. UMiami took both contests last season, including a 3-0 sweep in the last meeting in Coral Gables on Nov. 19, 2010.

**Scouting Maryland...**

Sophomore Mary Cushman, and freshmen Ashleigh Crutcher and Adreene Elliott lead the Terps offensively. The trio has combined for 221 of Maryland's 436 kills in conference play, while freshman Carlisle Abele has tallied 30 in the last four matches.

Junior setter Remy McBain touches the ball on every offensive play and has tallied 791 assists, second-most in the ACC. Her .291 hitting percentage is a career best and McBain is on pace to top her career high for kills in a season (146). Junior Caitlin Adams and Elliott lead the Terps in blocks. The two have combined for 144. Sophomore Sarah Harper continues to lead Maryland in digs with 349.

**Series against the Terrapins...**

The Miami Hurricanes hold a slim 8-7 advantage against the Maryland Terrapins all-time in the series. The Hurricanes have won the last six meetings, including a 3-0 decision last year in Coral Gables on Nov. 21.

**Carico Named Lowe's Senior CLASS Finalist...**

Lane Carico of the University of Miami has been selected as one of 10 finalists for this year's

**Pronunciations**

|                           |                                  |
|---------------------------|----------------------------------|
| (Lane) Carico             | CARE-uh-COE                      |
| (Julia) Giampaolo         | Gee-om-puh-LOW                   |
| (Mariel) Schofield        | SKOW-field                       |
| (Ryan) Shaffer            | Shah-fur                         |
| (Blair) Fuentes           | Foo-when-tez                     |
| Emani (Sims)              | EE-mahn-knee                     |
| Ali (Becker)              | Alley                            |
| Nrithya Sundararaman      | Nith-EE-uh<br>Soon-dar-ar-Rahman |
| (Nicole) Lantagne (Welch) | Lan-TANE                         |
| (Felix) Hou               | HOE                              |

**AVCA Coaches Poll  
Top 25**

**Poll #8  
(Oct. 17)**

| #   | School (First Place Votes) | Record      | Last      |
|-----|----------------------------|-------------|-----------|
| 1.  | Illinois (58)              | 19-0        | 1         |
| 2.  | California                 | 19-2        | 4         |
| 3.  | Southern California (2)    | 15-3        | 3         |
| 4.  | Nebraska                   | 15-1        | 5         |
| 5.  | Stanford                   | 14-3        | 7         |
| 6.  | UCLA                       | 16-3        | 6         |
| 7.  | Washington                 | 15-3        | 2         |
| 8.  | Hawai'i                    | 17-1        | 8         |
| 9.  | Penn State                 | 13-5        | 9         |
| 10. | Texas                      | 12-4        | 10        |
| 11. | Northern Iowa              | 19-1        | 12        |
| 12. | Purdue                     | 16-3        | 11        |
| 13. | Florida                    | 15-3        | 13        |
| 14. | Minnesota                  | 11-6        | 14        |
| 15. | Iowa State                 | 15-3        | 15        |
| 16. | San Diego                  | 20-1        | 17        |
| 17. | Pepperdine                 | 13-5        | 19        |
| 18. | Oregon                     | 12-6        | 16        |
| 19. | <b>Florida State</b>       | <b>15-4</b> | <b>21</b> |
| 20. | Tennessee                  | 16-3        | 18        |
| 21. | Michigan                   | 15-5        | 20        |
| 22. | Oklahoma                   | 18-5        | 22        |
| 23. | Ohio State                 | 14-7        | 24        |
| 24. | Kentucky                   | 17-4        | 25        |
| 25. | <b>Miami (Fla.)</b>        | <b>15-3</b> | <b>23</b> |

**Others Receiving Votes and appearing on two or more ballots:** Arizona 65; Colorado State 56; Dayton 39; Louisville 36; Texas A&M 35; **North Carolina 26**; Western Kentucky 24; Long Beach State 23; **Duke 11**; Kansas State 6; Missouri 4

# Nicole Lantagne Welch

**Head Coach**  
**11th Year at Miami**  
**Maryland, 1994**  
**Record at Miami: 207-112**  
**Overall Record: Same**



Nicole Lantagne Welch is in her 11th season as head coach of the University of Miami volleyball program. Under her guidance since 2001, the team has posted winning records in eight of the last 10 seasons,

including ending the 2010 campaign ranked No. 26 in the RPI polls and No. 28 in the Pabo rankings.

Last season, Lantagne Welch helped guide the Canes to their second 20-win season in the last three years, and the second consecutive year in which UMiami advanced to the NCAA Tournament. Miami ended the season with a 23-9 overall mark (13-7 Atlantic Coast Conference) and finished third in the conference regular season standings. Along the way, the Hurricanes defeated NCAA Tournament participants Florida State, Middle Tennessee State, Georgia Southern, Wichita State and North Carolina.

At the end of the year, Lantagne Welch saw her first-ever AVCA All-American honored in the form of Lane Carico, collecting third team accolades following a record-breaking year. Carico became the first player in school history with 1,000 kills and 1,000 digs in a career, as well as leading the ACC in double-doubles – and later being the only player in the league to amass at least 400 kills and 400 digs on the campaign.

Carico and teammate Katie Gallagher each claimed AVCA All-East Region Team honors, while freshman libero Ryan Shaffer set a new school record for digs by a freshman (539 / 4.53 per set). As for Carico, she would also earn her



third consecutive All-ACC Team nod and All-East Region honor.

In 2009, Lantagne Welch helped the Hurricanes to their second NCAA Tournament appearance, competing in the Gainesville [Fla.] Regional. UM earned an at-large bid to the NCAA Tournament after holding the 33rd toughest schedule in the nation according to the end-of-year RPI rankings. Earlier in the season, Lantagne Welch guided the Hurricanes to the Hampton Inn & Suites Northern Colorado Classic championship.

She would add to her growing list of All-Atlantic Coast Conference student-athletes, as well as All-America honorable mention performers, seeing senior libero Cassie Loessberg and sophomore outside hitter Lane Carico named to both lists. Carico and Loessberg each collected AVCA All-America Honorable Mention selections, while both were tabbed to the AVCA All-East Region Team.

During the 2008 campaign, Lantagne Welch led the Hurricanes to a tie for third place in the Atlantic Coast Conference (ACC) standings, and the team's best regular season record since 2002. During the year, Lantagne Welch collected her 150th career victory when the Canes defeated NC State, 3-0, on November 21, 2008. It was just two seasons ago that she posted her 100th career victory in the 2006 season-opener for UM with a 3-2 win over Alabama.

The 2008 season was special for UM as the team posted a record of 26-6 overall (14-6 ACC), finishing just one match shy of tying for an ACC Championship. Not to be overlooked was Lantagne Welch leading the Canes to three in-season tournament titles, including a tournament title at NCAA Tournament participant University of San Francisco as part of the Asics/Coca-Cola Invitational in San Francisco, Calif.

For those achievements and more, Lantagne Welch was tabbed ACC Coach of the Year, as well as American Volleyball Coaches Association (AVCA) East Region Coach of the Year. It was her first ACC coaching honor, while being the second AVCA Regional honor, collecting the award in 2002 during Miami's historic run to the Round of 16 in the NCAA Tournament.

Under her guidance, Lantagne Welch would later see freshman Lane Carico named ACC Freshman of the Year, as well as AVCA East Region Freshman of the Year. Carico would go on to be named to the All-ACC Second Team, as well as teammates Angelica Ellis and Genny Mayhew. Carico would represent the first-ever ACC Freshman of the Year coached by Lantagne Welch, while Ellis and Mayhew would become the seventh and eighth players in school history to be named to the All-ACC Volleyball Team.

Overall, her career at UM is highlighted in part by four seasons with at least 20 wins (2003-04, '08, '10) and a trip to the "Sweet 16" in the Hurricanes' first-ever appearance at the NCAA Tournament in 2002. In her 10 years at the helm in Coral Gables, Lantagne Welch has averaged 19.2 wins per seasons with a career record of 192-109.

A native of Encinitas, Calif., Lantagne Welch grew up in a family where volleyball had been a

major part of their livelihood. Her parents, Joe and JoAnn, owned and operated a highly regarded volleyball scouting service that evaluated high school players, covering the regions of California, Nevada and Arizona. Lantagne Welch's sister, Jenelle Duvall, was an All-American at the University of Pittsburgh and served as an assistant coach at Northern Arizona and Northern Illinois. She also served as head coach at Metro State College of Denver.

Lantagne Welch played at the University of Maryland from 1990-1993. In her role as a four-year starting setter, she guided the Terrapins to their first-ever Atlantic Coast Conference Championship (ACC) title and an automatic berth to the NCAA Tournament in 1990. As a top collegiate setter, Lantagne Welch garnered First Team All-Atlantic Coast Conference honors in 1992 and '93, and earned Second Team All-ACC accolades in 1991. She would also be named AVCA National Player of the Week (Oct. 12, 1993) following an upset victory over Florida State.

Serving as a team captain through her final two seasons, Lantagne Welch finished her outstanding collegiate career as Maryland's all-time assists, digs and matches played leader. Throughout her career in College Park, Lantagne Welch accumulated various academic honors including ACC Honor Roll and district academic All-America as a senior. She graduated in 1994 with a Bachelor of Science degree in Business Marketing. For her accomplishments as a student-athlete, Lantagne Welch was named to the Atlantic Coast Conference 50th Anniversary Volleyball Team along with five other Terrapins from teams of the 1990s.

Lantagne Welch began her coaching career in 1994 as an assistant coach on the Maryland staff before becoming a graduate assistant coach at Ohio University in 1995. At Ohio, she developed training sessions for setters and assisted in the scouting of opponents and in the development of game plans.

Lantagne Welch arrived at Miami after serving as an assistant coach at Texas A&M. During her three seasons there, the Aggies finished ranked in the top 20 and qualified for the NCAA Tournament each season (1997-99). In 1999, Texas A&M advanced to the elite eight of the NCAA Tournament, compiling a 28-6 record and a No. 9 final ranking.

In 2002, she married Wesley Paul Welch of Denver City, Texas, in her hometown of Encinitas, Calif. On Dec. 7, 2004, the couple celebrated the birth of their daughter, Riley Jaye and on April 8, 2007, son Ayden Fletcher was born. Lantagne Welch and her family reside in Coral Gables.

- 2002 AVCA/Tachikara All-District I\*/Northeast Coach of the Year
- 2008 AVCA East Region Coach of the Year
- 2008 ACC Coach of the Year

## Lantagne Welch's Record at Miami

| YEAR         | OVERALL    |            |             | ACC        |           |             | FINISH |
|--------------|------------|------------|-------------|------------|-----------|-------------|--------|
|              | W          | L          | PCT.        | W          | L         | PCT.        |        |
| 2001         | 17         | 7          | .708        | —          | —         | —           | —      |
| 2002         | 27         | 6          | .818        | 10         | 3         | .769        | t-2nd  |
| 2003         | 22         | 9          | .710        | 9          | 3         | .750        | 3rd    |
| 2004         | 17         | 9          | .654        | 11         | 5         | .688        | 2nd    |
| 2005         | 16         | 14         | .533        | 11         | 11        | .500        | 6th    |
| 2006         | 12         | 19         | .387        | 9          | 13        | .409        | t-9th  |
| 2007         | 14         | 17         | .452        | 8          | 14        | .364        | t-8th  |
| 2008         | 26         | 6          | .813        | 14         | 6         | .700        | t-3rd  |
| 2009         | 18         | 13         | .581        | 11         | 9         | .550        | t-5th  |
| 2010         | 23         | 9          | .719        | 12         | 3         | .800        | 3rd    |
| 2011         | 15         | 3          | .833        | 6          | 3         | .667        | —      |
| <b>TOTAL</b> | <b>207</b> | <b>112</b> | <b>.649</b> | <b>101</b> | <b>70</b> | <b>.591</b> | —      |

**Note:** Miami was independent from a conference during the 2001 campaign. UM competed in the BIG EAST Conference from 2002-2004. They started in the Atlantic Coast Conference during the 2005 season.



## Hurricanes VB Media Policy

### KNIGHT SPORTS COMPLEX

Press row for University of Miami volleyball matches is located on the north side of the court at the James L. Knight Sports Complex, in-between the team benches. The media entrance to the arena is from the southwest corner of the Complex, and the southwest entrance is also used for Will Call pick-up of credentials. Parking is located in either the lot for Alex Rodriguez Park, or Cobb Stadium directly adjacent to the Knight Sports Complex.

### MEDIA & PHOTO PASSES

Credentials for Hurricanes home matches are issued for working media only and must be requested through the sports media relations office at least 24 hours prior to the selected home event you wish to attend. Credentials are issued on a match-by-match basis and a formal request must be issued to the Miami Office of Athletic Communications. Only photographers on assignment from an accredited media agency will be issued credentials. Photographers are required to abide by the guidelines set forth by the NCAA on shooting limitations from the sidelines. Those not complying with the guidelines may be removed.

### MEDIA SERVICES

Pregame media supplements including notes, statistics, media guides and gameday programs will be available prior to the start of the first set. Between-set and final statistics, plus a running play-by-play and post match notes will be provided. Final statistics will be emailed and/or faxed via Miami's broadcast system following the conclusion of the match. In-game questions or concerns can be addressed on press row by Assistant Athletic Communications Director Bryan J. Harvey.

### WEBSITES

As a general rule, fan-based web sites containing at least one or more of the following: chat rooms, message boards, recruiting information, scouting reports and links to news sites, as well as other fan-based features shall not be issued credentials to Miami volleyball matches. Local and national organizations that maintain a news-based web site in connection with their regular newspaper or magazine, as well as radio or television broadcast, shall be issued credentials on a match-by-match basis. Live, real-time updates will not be permitted. Fan-based web sites wishing to discuss coverage and credential options should contact the Office of Athletic Communications at (305) 284-3244.

### INTERVIEWS

Following home games, Miami head coach Nicole Lantagne Welch will return to the court to handle any media questions, and players will also be available after a brief cooling-off period following the match's conclusion. Miami's locker will be closed at all times.

### TELEPHONES

Telephone lines at the Knight Sports Complex are limited to home radio and the visiting teams' "official" sports administrator/media relations contact. All media wishing to file stories should contact Bryan J. Harvey prior to the conclusion of the match in order to make arrangements to be escorted back to the Office of Sports Media Relations in order to work in a work-friendly environment. Any and all questions will be addressed in this designated area.

Lowe's Senior CLASS Award for volleyball. To be eligible for the award, a student-athlete must be classified as an NCAA Division I senior and have notable achievements in four areas of excellence – community, classroom, character and competition.

Carico, an outside hitter from Manhattan Beach, Calif., became Miami's all-time leader in kills during the second set of the Hurricanes' 3-0 win over Duke on Sunday, Oct. 2. The 2010 AVCA Third Team All-America player currently has 1,532 kills throughout her career. She also ranks second all-time in points (1,733), third in kills per set (3.75), third in digs (1,505), fourth in service aces (109) and eighth in sets played (409).

On the campaign, Carico has helped the Hurricanes to their first-ever regular season ranking with the Canes getting as high as No. 20 in Week Five. Carico is fourth in the Atlantic Coast Conference (ACC) in kills with 186 (3.44 per set), fifth in digs with 233 (4.31 per set) and fourth in points with 212.5 (3.94 per set). She's also second on the team with 15 service aces.

### **Lane Carico Earns Third ACC Weekly Honor...**

For the third time this year, Lane Carico picked up ACC Player of the Week honors after a stellar performance against Wake Forest and Duke last weekend.

Carico helped Miami extend its winning streak to four matches and its home court winning streak to 10 straight as she registered 5.50 kills per set and 3.67 digs per set in wins over Wake Forest and Duke, respectively. The native of Manhattan Beach, Calif. hit .389 over the weekend and put down a team-high 33 kills against just five errors on 72 swings for the Canes.

She helped Miami sweep Duke and break a three-match losing skid to the Blue Devils, recording the first win over Duke since a 3-0 decision in 2008. Additionally, Carico became the school's all-time leader in kills with 1,495, surpassing Karla Johnson for the top honor. In both matches on the weekend, Carico picked up double-doubles to extend her streak to four and increase her total to nine on the year.

### **Life In the Fast Lane...**

Senior outside hitter Lane Carico's fourth kill of the match versus Duke on October 2 allowed her to etch her name as the school's all-time leader in kills, surpassing Karla Johnson (2002-05) atop the list. Currently, Carico has 1,495 career kills.

### **Coaching Milestone Achieved...**

UMiami head coach Nicole Lantagne Welch collected her 200th career win following the Hurricanes 3-0 win over Auburn. Lantagne Welch is already the winningest coach in UM volleyball history, and has served as the only coach since the program was brought back in 2001.

### **Miami on the National Stage...**

When Miami travelled to Florida State for a nationally televised game on ESPNU on Sept. 14, and that was the first nationally televised contest for the Hurricanes in school history. UMiami will host Virginia Tech in another televised match on Oct. 30.

### **Canes with High RPI...**

With the first Ratings Percentage Index (RPI) poll released Monday, Oct. 17, the Hurricanes

## 2011 DOUBLE-DOUBLES

### **Alex Johnson (4)**

- 8/27 vs. La.-Lafayette (17 kills, 13 digs)
- 8/27 at LSU (14 kills, 17 digs)
- 9/3 at Pepperdine (21 kills, 14 digs)
- 10/14 vs. Clemson (10 kills, 12 digs)

### **Lane Carico (12)**

- 8/27 at LSU (11 kills, 17 digs)
- 9/3 vs. Georgia (10 kills, 15 digs)
- 9/3 at Pepperdine (13 kills, 20 digs)
- 9/9 vs. Auburn (11 kills, 12 digs)
- 9/10 vs. Oklahoma (19 kills, 16 digs)
- 9/23 at Virginia Tech (11 kills, 17 digs)
- 9/25 at Virginia (13 kills, 11 digs)
- 9/30 vs. Wake Forest (19 kills, 10 digs)
- 10/2 vs. Duke (14 kills, 12 digs)
- 10/7 at NC State (15 kills, 24 digs)
- 10/9 at North Carolina (22 kills, 23 digs)
- 10/14 vs. Clemson (11 kills, 10 digs)

### **Katie Gallagher (4)**

- 9/3 at Pepperdine (51 assists, 14 digs)
- 9/10 vs. Oklahoma (48 assists, 16 digs)
- 10/9 at North Carolina (60 assists, 19 digs)
- 10/16 vs. Georgia Tech (37 assists, 14 digs)

### **Taylor Hollins (1)**

- 10/9 at North Carolina (13 kills, 19 digs)

### **Christine Williamson (1)**

- 8/27 at LSU (17 kills, 11 digs)

## WHAT RETURNED IN 2011

### **What Returned From 2010: The Breakdown**

Team Hitting Percentage: .245  
 80% of kills (1,409 of 1,757)  
 83% of attacks (3,933 of 4,724)  
 94% of assists (1,529 of 1,634)  
 92% of service aces (133 of 145)  
 96% of digs (2,083 of 2,170)  
 64% of block solos (35 of 55)  
 73% of block assists (272 of 372)  
 80% of points (1,713 of 2,143)

## Volleyball Magazine/Asics Poll Top 20

| <b>Poll #8<br/>(Oct. 18)</b> |                                   |               |             |
|------------------------------|-----------------------------------|---------------|-------------|
| <b>#</b>                     | <b>School (First Place Votes)</b> | <b>Record</b> | <b>Last</b> |
| 1.                           | Illinois (10)                     | 19-0          | 1           |
| 2.                           | California                        | 19-2          | 3           |
| 3.                           | Southern California               | 15-3          | 5           |
| 4.                           | Nebraska                          | 15-1          | 4           |
| 5.                           | Stanford                          | 14-3          | 7           |
| 6.                           | UCLA                              | 16-3          | 6           |
| 7.                           | Washington                        | 15-3          | 2           |
| 8.                           | Hawai'i                           | 17-1          | 8           |
| 9.                           | Penn State                        | 13-5          | 9           |
| 10.                          | Texas                             | 12-4          | 11          |
| 11.                          | Florida                           | 15-3          | 12          |
| 12.                          | Purdue                            | 16-3          | 10          |
| 13.                          | Northern Iowa                     | 19-1          | 13          |
| 14.                          | Minnesota                         | 11-6          | 14          |
| 15.                          | Iowa State                        | 15-3          | 15          |
| 16.                          | Oregon                            | 12-6          | 16          |
| 17.                          | Pepperdine                        | 13-5          | 19          |
| 18.                          | San Diego                         | 20-1          | 17          |
| 19.                          | Florida State                     | 15-4          | RV          |
| 20.                          | Tennessee                         | 16-3          | 18          |

## Atlantic Coast Conference

### 2011 ACC STANDINGS

| School         | ACC        | Overall     |
|----------------|------------|-------------|
| Florida State  | 9-0        | 15-4        |
| North Carolina | 8-2        | 16-5        |
| Duke           | 7-3        | 13-6        |
| <b>Miami</b>   | <b>6-3</b> | <b>15-3</b> |
| Clemson        | 5-4        | 13-7        |
| Georgia Tech   | 4-5        | 11-8        |
| Virginia Tech  | 4-5        | 11-9        |
| Maryland       | 3-6        | 9-12        |
| Boston College | 3-6        | 7-13        |
| NC State       | 3-7        | 15-8        |
| Virginia       | 2-7        | 8-11        |
| Wake Forest    | 2-8        | 5-14        |

### UPCOMING ACC SCHEDULE

#### Friday, Oct. 21

|                               |        |
|-------------------------------|--------|
| Clemson at Virginia           | 7 p.m. |
| Florida State at Maryland     | 7 p.m. |
| Georgia Tech at Virginia Tech | 7 p.m. |
| Miami at Boston College       | 7 p.m. |
| NC State at Duke              | 7 p.m. |
| North Carolina at Wake Forest | 7 p.m. |

#### Saturday, Oct. 22

|                          |        |
|--------------------------|--------|
| Georgia Tech at Virginia | 7 p.m. |
|--------------------------|--------|

#### Sunday, Oct. 23

|                                 |        |
|---------------------------------|--------|
| Florida State at Boston College | Noon   |
| Clemson at Virginia Tech        | 1 p.m. |
| Miami at Maryland               | 2 p.m. |

#### Wednesday, Oct. 26

|                                  |           |
|----------------------------------|-----------|
| Georgia Tech at Middle Tennessee | 6:30 p.m. |
|----------------------------------|-----------|

#### Thursday, Oct. 27

|                            |        |
|----------------------------|--------|
| Maryland at North Carolina | 7 p.m. |
|----------------------------|--------|

#### Friday, Oct. 28

|                                  |        |
|----------------------------------|--------|
| Boston College at North Carolina | 7 p.m. |
| Duke at Clemson                  | 7 p.m. |
| Maryland at NC State             | 7 p.m. |
| Virginia at Miami                | 7 p.m. |
| Virginia Tech at Florida State   | 7 p.m. |
| Wake Forest at Georgia Tech      | 7 p.m. |

### Hurricanes Record vs. Conferences

|                      |     |
|----------------------|-----|
| Atlantic Coast       | 6-3 |
| Big XII              | 1-0 |
| Big West             | 1-0 |
| Mid-Eastern Athletic | 1-0 |
| Ohio Valley          | 0-0 |
| Southeastern         | 3-0 |
| Sun Belt             | 2-0 |
| West Coast           | 1-0 |

## 2011 ACC PRESEASON POLL

| Rank | School            | Votes     |
|------|-------------------|-----------|
| 1.   | Duke (9)          | 117       |
| 2.   | Florida State (3) | 110       |
| 3.   | North Carolina    | 98        |
| 4.   | <b>MIAMI</b>      | <b>96</b> |
| 5.   | Georgia Tech      | 73        |
| 6.   | Virginia Tech     | 72        |
| 7.   | Clemson           | 64        |
| 8.   | Maryland          | 47        |
| 9.   | Virginia          | 45        |
| 10.  | Wake Forest       | 36        |
| 11.  | NC State          | 22        |
| 12.  | Boston College    | 12        |

## ACC PLAYER OF THE WEEK

### August

8/28 Monique Mead (Jr., RS) \_\_\_\_\_ Georgia Tech

### September

9/5 Lane Carico (OH, Sr.) \_\_\_\_\_ Miami

9/12 Lane Carico (OH, Sr.) \_\_\_\_\_ Miami

9/19 Elise Walch (Soph., MB) \_\_\_\_\_ Florida State

9/26 Christiana Gray (Jr., MB) \_\_\_\_\_ Duke

### October

10/3 Lane Carico (OH, Sr.) \_\_\_\_\_ Miami

10/11 Emily McGee (Jr., OH) \_\_\_\_\_ North Carolina

10/17 Sareea Freeman (Jr., MB) \_\_\_\_\_ Florida State

## ACC FRESHMAN OF THE WEEK

### August

8/28 Jeme Obeime (OH) \_\_\_\_\_ Duke

### September

9/5 Ashleigh Crutcher (OH) \_\_\_\_\_ Maryland

9/12 Nicole Glass (OH) \_\_\_\_\_ NC State

9/19 Danae Rosendall (S) \_\_\_\_\_ Wake Forest

9/26 Adreene Elliott (MB) \_\_\_\_\_ Maryland

### October

10/3 Kellie Barnum (S) \_\_\_\_\_ Boston College

10/10 Nicole Glass (OH) \_\_\_\_\_ NC State

10/17 Courtney Castle (OH) \_\_\_\_\_ Boston College

## 2011 HONOR ROLL

### LANE CARICO

- Preseason All-ACC Team
- Pepperdine Asics Classic MVP
- Pepperdine Asics Classic All-Tournament Team
- ACC Player of the Week (Sept. 5-11)
- Hurricane Invitational MVP
- Hurricane Invitational All-Tournament Team
- ACC Player of the Week (Sept. 12-18)
- School record for career kills (Oct. 2 vs. Duke)
- ACC Player of the Week (Oct. 3-9)

### KATIE GALLAGHER

- Preseason All-ACC Team
- Tiger Classic All-Tournament Team
- Pepperdine Asics Classic All-Tournament Team
- Hurricane Invitational All-Tournament Team

### ALEX JOHNSON

- Tiger Classic MVP
- Tiger Classic All-Tournament Team
- Pepperdine Asics Classic All-Tournament Team
- Hurricane Invitational All-Tournament Team

### RYAN SHAFFER

- Tiger Classic All-Tournament Team
- Pepperdine Asics Classic Defensive MVP
- Pepperdine Asics Classic All-Tournament Team

## MIAMI BY THE NUMBERS

|         |     |
|---------|-----|
| At home | 6-1 |
| Away    | 5-2 |
| Neutral | 4-0 |

|                  |      |
|------------------|------|
| In night matches | 10-1 |
| In day matches   | 5-2  |
| At a tournament  | 9-0  |

|                                  |     |
|----------------------------------|-----|
| In the Atlantic Coast Conference | 6-3 |
| ACC home record                  | 3-1 |
| ACC road record                  | 3-2 |
| ACC night record                 | 4-1 |
| ACC day record                   | 2-2 |

|                            |      |
|----------------------------|------|
| Against ranked opponents   | 1-0  |
| Top 5 opponents            | 0-0  |
| Top 10 opponents           | 0-0  |
| Against unranked opponents | 14-3 |

|                   |      |
|-------------------|------|
| Leading in kills  | 10-1 |
| Trailing in kills | 4-2  |
| Tied in kills     | 1-0  |

|                    |      |
|--------------------|------|
| Leading in blocks  | 11-0 |
| Trailing in blocks | 3-1  |
| Tied in blocks     | 1-2  |

|                  |      |
|------------------|------|
| Leading in digs  | 12-1 |
| Trailing in digs | 3-2  |
| Tied in digs     | 0-0  |

|                               |      |
|-------------------------------|------|
| Leading in attack percentage  | 14-1 |
| Trailing in attack percentage | 1-2  |

|                          |      |
|--------------------------|------|
| Leading in service aces  | 11-0 |
| Trailing in service aces | 2-3  |
| Tied in service aces     | 2-0  |

|                        |     |
|------------------------|-----|
| Hitting .400 or better | 0-0 |
| Hitting .350 to .399   | 5-0 |
| Hitting .300 to .349   | 1-0 |
| Hitting .250 to .299   | 5-1 |
| Hitting .200 to .249   | 3-2 |
| Hitting below .200     | 1-0 |

|                                 |      |
|---------------------------------|------|
| Holding opponents below .100    | 0-0  |
| Holding opponents below .200    | 10-0 |
| Holding opponents below .250    | 4-1  |
| Holding opponents below .275    | 1-0  |
| Holding opponents below .300    | 0-1  |
| Opponent hitting .300 or better | 0-1  |

|                |      |
|----------------|------|
| In three games | 11-1 |
| In four games  | 2-1  |
| In five games  | 2-1  |

|                        |      |
|------------------------|------|
| When winning set one   | 13-1 |
| When winning set two   | 13-0 |
| When winning set three | 13-1 |
| When winning set four  | 4-1  |
| When winning set five  | 2-0  |

|                       |     |
|-----------------------|-----|
| When losing set one   | 2-2 |
| When losing set two   | 2-3 |
| When losing set three | 2-2 |
| When losing set four  | 0-1 |
| When losing set five  | 0-1 |

|                              |     |
|------------------------------|-----|
| When wearing white uniforms  | 4-1 |
| When wearing orange uniforms | 4-1 |
| When wearing green uniforms  | 6-2 |

## MIAMI IN THE ACC RANKINGS

### ALL MATCHES

#### Team:

|                             |       |     |
|-----------------------------|-------|-----|
| Hitting Percentage          | .271  | 2nd |
| Opponent Hitting Percentage | .202  | 7th |
| Assists Per Set             | 13.33 | 2nd |
| Kills Per Set               | 14.56 | 2nd |
| Blocks Per Set              | 2.18  | 7th |
| Aces Per Set                | 1.14  | 6th |
| Digs Per Set                | 18.65 | 1st |

#### Individual:

|                    |                 |       |       |
|--------------------|-----------------|-------|-------|
| Hitting Percentage | Ali Becker      | .380  | 1st   |
| Kills Per Set      | Lane Carico     | 3.46  | 4th   |
| Assists Per Set    | Katie Gallagher | 11.00 | 1st   |
| Aces Per Set       | Ryan Shaffer    | 0.29  | 7th   |
|                    | Lane Carico     | 0.28  | 10th  |
| Blocks Per Set     | Ali Becker      | 1.00  | T-9th |
| Digs Per Set       | Ryan Shaffer    | 4.48  | 4th   |
|                    | Lane Carico     | 4.10  | 8th   |
| Points Per Set     | Lane Carico     | 3.93  | 4th   |

### CONFERENCE MATCHES

#### Team:

|                             |       |     |
|-----------------------------|-------|-----|
| Hitting Percentage          | .264  | 1st |
| Opponent Hitting Percentage | .218  | 7th |
| Assists Per Set             | 13.75 | 2nd |
| Kills Per Set               | 14.84 | 2nd |
| Blocks Per Set              | 2.12  | 9th |
| Aces Per Set                | 1.03  | 5th |
| Digs Per Set                | 18.09 | 1st |

#### Individual:

|                    |                 |       |      |
|--------------------|-----------------|-------|------|
| Hitting Percentage | Ali Becker      | .431  | 2nd  |
| Kills Per Set      | Lane Carico     | 4.00  | 1st  |
|                    | Ali Becker      | 3.44  | 6th  |
| Assists Per Set    | Katie Gallagher | 11.44 | 1st  |
| Digs Per Set       | Lane Carico     | 4.06  | 7th  |
|                    | Ryan Shaffer    | 3.97  | 10th |
| Points Per Set     | Lane Carico     | 4.30  | 4th  |
|                    | Ali Becker      | 4.06  | 7th  |

## SEASON HIGHS

### INDIVIDUAL

|                            |      |                                   |          |
|----------------------------|------|-----------------------------------|----------|
| <b>Hitting Percentage:</b> | .476 | Ali Becker at North Carolina      | Oct. 9   |
| <b>Kills (3 sets):</b>     | 19   | Lane Carico vs. Wake Forest       | Sept. 30 |
| <b>Kills (4 sets):</b>     | 21   | Alex Johnson at Pepperdine        | Sept. 3  |
| <b>Kills (5 sets):</b>     | 22   | Lane Carico at North Carolina     | Oct. 9   |
|                            | 22   | Ali Becker at North Carolina      | Oct. 9   |
| <b>Attempts (3 sets):</b>  | 39   | Lane Carico vs. Wake Forest       | Sept. 30 |
| <b>Attempts (4 sets):</b>  | 59   | Lane Carico vs. Oklahoma          | Sept. 10 |
| <b>Attempts (5 sets):</b>  | 63   | Lane Carico at North Carolina     | Oct. 9   |
| <b>Assists (3 sets):</b>   | 39   | Katie Gallagher vs. Clemson       | Oct. 14  |
|                            |      | Katie Gallagher at Virginia       | Sept. 25 |
| <b>Assists (4 sets):</b>   | 51   | Katie Gallagher at Pepperdine     | Sept. 3  |
| <b>Assists (5 sets):</b>   | 60   | Katie Gallagher at North Carolina | Oct. 9   |
| <b>Digs (3 sets):</b>      | 19   | Ryan Shaffer vs. Auburn           | Sept. 9  |
| <b>Digs (4 sets):</b>      | 26   | Ryan Shaffer at Pepperdine        | Sept. 3  |
| <b>Digs (5 sets):</b>      | 32   | Ryan Shaffer at North Carolina    | Oct. 9   |
| <b>Service Aces:</b>       | 6    | Ryan Shaffer vs. Florida A&M      | Sept. 8  |
| <b>Total Blocks:</b>       | 9    | Emani Sims at LSU                 | Aug. 27  |

### TEAM

|                            |      |                      |          |
|----------------------------|------|----------------------|----------|
| <b>Hitting Percentage:</b> | .387 | at Virginia          | Sept. 25 |
| <b>Kills (3 sets):</b>     | 50   | at Virginia          | Sept. 25 |
| <b>Kills (4 sets):</b>     | 62   | vs. Oklahoma         | Sept. 10 |
|                            | 62   | at Pepperdine        | Sept. 3  |
| <b>Kills (5 sets):</b>     | 84   | at North Carolina    | Oct. 9   |
| <b>Attempts (3 sets):</b>  | 136  | vs. Duke             | Sept. 30 |
| <b>Attempts (4 sets):</b>  | 186  | at Pepperdine        | Sept. 3  |
| <b>Attempts (5 sets):</b>  | 237  | at North Carolina    | Oct. 9   |
| <b>Assists (3 sets):</b>   | 49   | at Virginia          | Sept. 25 |
| <b>Assists (4 sets):</b>   | 60   | vs. Oklahoma         | Sept. 10 |
| <b>Assists (5 sets):</b>   | 74   | at North Carolina    | Oct. 9   |
| <b>Digs (3 sets):</b>      | 61   | vs. Auburn           | Sept. 9  |
|                            | 61   | vs. UC Santa Barbara | Sept. 2  |
| <b>Digs (4 sets):</b>      | 96   | at Pepperdine        | Sept. 3  |
| <b>Digs (5 sets):</b>      | 129  | at North Carolina    | Oct. 9   |
| <b>Service Aces:</b>       | 9    | vs. Florida A&M      | Sept. 8  |
| <b>Total Blocks:</b>       | 14.5 | at NC State          | Oct. 7   |

## AVCA Player of the Week

### August

8/29 Molly Kreklow (Soph., S) \_\_\_\_\_ Missouri

### September

9/6 Rachel Vukson (Sr., S) \_\_\_\_\_ UCF

9/12 Jordyn Skinner (Jr., OH) \_\_\_\_\_ Western Kentucky

9/19 Kelly Murphy (Sr., S/H) \_\_\_\_\_ Florida

9/27 Kelly Reeves (Soph., OH) \_\_\_\_\_ UCLA

### October

10/4 Kristy Jaeckel (Sr., OH) \_\_\_\_\_ Florida

10/11 Kelsey Robinson (Soph., OH) \_\_\_\_\_ Tennessee

10/18 Karissa Cook (Jr., S) \_\_\_\_\_ Stanford

## CVU.com Player of the Week

### August

8/30 Lena Oliver (Soph., LIB) \_\_\_\_\_ Western Michigan

### September

9/6 Rachel Vukson (Sr., S) \_\_\_\_\_ UCF

9/12 Jordyn Skinner (Jr., OH) \_\_\_\_\_ Western Kentucky

9/19 Kaitlynn Pelger (Soph., MB) \_\_\_\_\_ Kansas State

9/27 Hannah Veith (Sr., MB) \_\_\_\_\_ Robert Morris

### October

10/4 Cayla Fielder (Sr., MB) \_\_\_\_\_ Arkansas State

10/11 McKenzie Adams (Soph., MB) \_\_\_\_\_ UTSA

10/18 Jennifer Keddy (Jr., MB) \_\_\_\_\_ Cal Poly

have the third-highest RPI in the ACC. UMiami is No. 24, while Florid State has the highest at No. 6, followed by North Carolina at No. 18. For Lantagne Welch, this is the highest RPI poll position for her program.

### Miami Storms Through Commonwealth State...

Last weekend, the No. 21 Hurricanes swept through the state of Virginia defeating both Virginia Tech and Virginia with 3-0 decisions. For UMiami, it was the first time since 2007 it had beaten the Cavaliers of UVa on the road.

### Miami Takes Hurricane Invitational Title...

With wins against FAMU, Auburn and nationally ranked Oklahoma, the Hurricanes collected their second consecutive Hurricane Invite title inside the James L. Knight Sports Complex. Overall, the Canes have won four of the last five Hurricane Invitational titles. The win over No. 18 Oklahoma was the first win for the Hurricanes over a ranked team since Dec. 7, 2002 when they defeated No. 15 Wisconsin in the Madison [Wis.] Regional of the NCAA Tournament.

### Carico Repeats as ACC Player of the Week...

University of Miami senior outside hitter Lane Carico was once again selected as ACC Player of the Week (Sept. 12-18). This marked the second straight week Carico picked up conference player of the week accolades.

The Manhattan Beach, Calif. native compiled 30 kills on a .258 hitting percentage for 3.75 kills per set and had 32 digs in eight sets. She also had five blocks and four service aces. Carico came up huge in the win over No. 18 Oklahoma with 19 kills and 16 digs to help pull off the come-from-behind upset. It was the first victory over a ranked opponent for the Hurricanes since December 7, 2002, when Miami beat No. 15 Wisconsin in the NCAA Tournament.

### Carico, Gallagher, Johnson All-Tournament...

Lane Carico, Katie Gallagher and Alex Johnson were all named to the Hurricane Invitational All-Tournament Team after helping UMiami to the tournament title. Carico picked up Hurricane Invitational MVP honors in staking a season-high 19 kills and posting 16 digs in the championship match win over the Sooners.

### Gallagher Moves Into Record Books...

During the Hurricane Invitational, redshirt senior setter Katie Gallagher became just the second player in UMiami volleyball history to post at least 4,000 assists and 1,000 digs in a career. She joins Jill Robinson (2003-06) as the only other Hurricanes player to do so.

### Lane Carico Wins ACC Player of the Week...

Lane Carico was named as the Atlantic Coast Conference Player of the Week (Sept. 4-10) after turning in 3.10 kills per set and 5.00 digs per set in three matches at the *Pepperdine Asics Classic* in Malibu, Calif. The Canes won the tournament



## 2011 Match-by-Match Starting Lineups

| Date     | Opponent             | W/L | Score  | Setter    | Outside Hitter | Opp. Hitter | Outside Hitter | Middle Blocker | Middle Blocker | Libero  |
|----------|----------------------|-----|--------|-----------|----------------|-------------|----------------|----------------|----------------|---------|
| Aug. 26  | vs. Jacksonville St. | W   | 3-0    | Gallagher | Carico         | Johnson     | Williamson     | Sims           | Becker         | Shaffer |
| Aug. 27  | vs. La.-Lafayette    | W   | 3-0    | Gallagher | Carico         | Johnson     | Williamson     | Sims           | Becker         | Shaffer |
| Aug. 27  | at LSU               | W   | 3-2    | Gallagher | Carico         | Johnson     | Hale           | Sims           | Becker         | Shaffer |
| Sept. 2  | vs. UC Santa Barbara | W   | 3-0    | Gallagher | Carico         | Johnson     | Hale           | Sims           | Becker         | Shaffer |
| Sept. 3  | vs. Georgia          | W   | 3-0    | Gallagher | Carico         | Johnson     | Hale           | Sims           | Becker         | Shaffer |
| Sept. 3  | at Pepperdine        | W   | 3-1    | Gallagher | Carico         | Johnson     | Hale           | Sims           | Becker         | Shaffer |
| Sept. 8  | Florida A&M          | W   | 3-0    | Gallagher | Carico         | Johnson     | Williamson     | Sims           | Becker         | Shaffer |
| Sept. 9  | Auburn               | W   | 3-0    | Gallagher | Carico         | Johnson     | Williamson     | Sims           | Becker         | Shaffer |
| Sept. 10 | #18 Oklahoma         | W   | 3-1    | Gallagher | Carico         | Johnson     | Williamson     | Sims           | Becker         | Shaffer |
| Sept. 14 | at Florida State*    | L   | 0-3    | Gallagher | Carico         | Johnson     | Williamson     | Sims           | Becker         | Shaffer |
| Sept. 23 | at Virginia Tech*    | W   | 3-0    | Gallagher | Carico         | Johnson     | Williamson     | Sims           | Becker         | Shaffer |
| Sept. 25 | at Virginia*         | W   | 3-0    | Gallagher | Carico         | Johnson     | Williamson     | Sims           | Becker         | Shaffer |
| Sept. 30 | Wake Forest*         | W   | 3-0    | Gallagher | Carico         | Johnson     | Williamson     | Sims           | Becker         | Shaffer |
| Oct. 2   | Duke*                | W   | 3-0    | Gallagher | Carico         | Johnson     | Williamson     | Sims           | Becker         | Shaffer |
| Oct. 7   | at NC State*         | W   | 3-2    | Gallagher | Carico         | Johnson     | Williamson     | Sims           | Becker         | Shaffer |
| Oct. 9   | at North Carolina*   | L   | 2-3    | Gallagher | Carico         | Johnson     | Hollins        | Sims           | Becker         | Shaffer |
| Oct. 14  | Clemson*             | W   | 3-0    | Gallagher | Carico         | Johnson     | Hollins        | Sims           | Becker         | Shaffer |
| Oct. 16  | Georgia Tech*        | L   | 1-3    | Gallagher | Carico         | Johnson     | Hollins        | Sims           | Becker         | Shaffer |
| Oct. 21  | at Boston College*   |     | 7 p.m. |           |                |             |                |                |                |         |
| Oct. 23  | at Maryland*         |     | 2 p.m. |           |                |             |                |                |                |         |
| Oct. 28  | Virginia*            |     | 7 p.m. |           |                |             |                |                |                |         |
| Oct. 30  | Virginia Tech*       |     | 1 p.m. |           |                |             |                |                |                |         |
| Nov. 4   | North Carolina*      |     | 6 p.m. |           |                |             |                |                |                |         |
| Nov. 6   | NC State*            |     | 1 p.m. |           |                |             |                |                |                |         |
| Nov. 10  | at Duke*             |     | 7 p.m. |           |                |             |                |                |                |         |
| Nov. 12  | at Wake Forest*      |     | 5 p.m. |           |                |             |                |                |                |         |
| Nov. 18  | at Georgia Tech*     |     | 7 p.m. |           |                |             |                |                |                |         |
| Nov. 19  | at Clemson*          |     | 6 p.m. |           |                |             |                |                |                |         |
| Nov. 26  | Florida State*       |     | 5 p.m. |           |                |             |                |                |                |         |

with a 3-1 decision against the host Pepperdine Waves.

### Carico Takes Top Honors...

Senior All-America outside hitter Lane Carico finished as the top offensive performer at the *Pepperdine Asics Classic*. She was named the Tournament MVP after helping Miami to the tournament title.

### Canes Take Tiger Classic Title...

UMiami took down LSU in the title match of the Tiger Classic to begin the 2011 regular season inside the Maravich Center in Baton Rouge, La.

For the Canes, it marked the fourth consecutive year they have won a regular season tournament on the road.

### Carico and Gallagher Named Preseason All-ACC...

Senior outside hitter Lane Carico and redshirt senior Katie Gallagher were named to the Preseason All-ACC Team announced Tuesday by the ACC Office.

Carico has been named to the All-ACC Team the last two years and the All-ACC Freshman Team in 2008.

### Miami Predicted to Finish Fourth in ACC Preseason Poll...

The Canes have been predicted to finish fourth in the Preseason ACC Poll voted on by head coaches from around the league.

UMiami was predicted to finish fourth last season before ending the year third in the final standings.

### Last Time Out - vs. Georgia Tech (Oct. 16)...

Two Georgia Tech players combined for 31 kills to help lead the visiting Yellow Jackets to an upset of No. 23 Miami, 3-1, in Atlantic Coast Conference volleyball action Sunday afternoon inside the James L. Knight Sports Complex. The Yellow Jackets took the win on scores of 11-25, 25-22, 25-20, 25-21.

Miami (15-3, 6-3 ACC) suffered the first home loss of the 2011 season, and the first since Oct. 22, 2010 (vs. Duke).

The Hurricanes came out strong in the opening set, running away with a 25-11 decision behind the efforts of four Lane Carico kills and two more from Christine Williamson. As the Canes hit .300 in the frame, Georgia Tech (11-8, 4-5 ACC) was limited to just a .000 attack percentage.

However, the next three frames would go to the Yellow Jackets as they rode the precision of Kaleigh Colson who hit at a .800 clip in the match

with 12 kills on just 15 swings. The percentage for Colson was a season-high allowed by UMiami, with the previous high being .706 staked by Florida State's Elise Walch (12k-0e-17ta) on Sept. 14.

The Rambling Wreck's Colson also setup 34 assists on the day from her setter position, as 19 of those went to outside hitter Monique Mead. Mead would go on to add six digs and four blocks (three assisted). Libero Nicki Meyer sprawled out for a team-high tying 11 digs.

For Miami, the kills came from Carico with a team-high 14, extending her double-digit streak to eight matches. Senior middle blocker Ali Becker added eight kills.

Sophomore right side Alex Johnson registered nine kills for UM and redshirt senior setter Katie Gallagher handed out 37 assists with a match-high 14 digs for the double-double. Sophomore libero Ryan Shaffer, seeing time as a starter away from the libero position in the fourth set, claimed 13 digs on the day.

## 2011 Match-by-Match Leaders

| Opponent                  | Kills                   | Attacks         | Assists        | Aces                       | Digs                 | Total Blocks                 | Points                  |
|---------------------------|-------------------------|-----------------|----------------|----------------------------|----------------------|------------------------------|-------------------------|
| <b>Jacksonville State</b> | Johnson, Williamson (8) | Carico (22)     | Gallagher (32) | Carico (4)                 | Shaffer (14)         | Becker, Carico (3)           | Carico (12.5)           |
| <b>La.-Lafayette</b>      | Johnson (17)            | Johnson (32)    | Gallagher (37) | Carico (2)                 | Johnson (13)         | Johnson (5)                  | Johnson (20)            |
| <b>LSU</b>                | Williamson (17)         | Williamson (53) | Gallagher (40) | Johnson (2)                | Shaffer (30)         | Sims (9)                     | Johnson (18.5)          |
| <b>UC Santa Barbara</b>   | Johnson (9)             | Carico (32)     | Gallagher (30) | Hale (2)                   | Carico (15)          | Becker (6)                   | Becker (12)             |
| <b>Georgia</b>            | Carico, Williamson (10) | Carico (28)     | Gallagher (25) | Shaffer (2)                | Carico, Shaffer (15) | Sims (4)                     | Carico, Williamson (11) |
| <b>Pepperdine</b>         | Johnson (21)            | Carico (48)     | Gallagher (51) | Johnson, Schofield (1)     | Shaffer (26)         | Becker(6)                    | Johnson (23)            |
| <b>Florida A&amp;M</b>    | Johnson (11)            | Johnson (22)    | Gallagher (30) | Shaffer (6)                | Shaffer (12)         | Three players with four each | Johnson (13.5)          |
| <b>Auburn</b>             | Johnson (13)            | Carico (32)     | Gallagher (34) | Carico (2)                 | Shaffer (19)         | Three players with two each  | Carico, Johnson (14)    |
| <b>Oklahoma</b>           | Carico (19)             | Carico (59)     | Gallagher (48) | Hale (2)                   | Johnson (19)         | Sims (4)                     | Carico (21.5)           |
| <b>Florida State</b>      | Becker (12)             | Carico (27)     | Gallagher (29) | Johnson (1)                | Carico (16)          | Sims (4)                     | Becker (12)             |
| <b>Virginia Tech</b>      | Becker (13)             | Carico (28)     | Gallagher (35) | Hollins, Johnson (1)       | Carico (17)          | Sims (4)                     | Becker (15.5)           |
| <b>Virginia</b>           | Carico (13)             | Carico (30)     | Gallagher (39) | Hale, Hollins (2)          | Carico (11)          | Becker (2)                   | Carico (14)             |
| <b>Wake Forest</b>        | Carico (19)             | Carico (39)     | Gallagher (38) | Shaffer (2)                | Shaffer (12)         | Becker (4)                   | Carico (19)             |
| <b>Duke</b>               | Carico (14)             | Carico (33)     | Gallagher (38) | Carico, Shaffer (2)        | Johnson (14)         | Becker (5)                   | Carico (16)             |
| <b>NC State</b>           | Carico (15)             | Carico (49)     | Gallagher (51) | Johnson (3)                | Carico (24)          | Becker (8)                   | Becker, Carico (17.5)   |
| <b>North Carolina</b>     | Becker, Carico (22)     | Carico (63)     | Gallagher (60) | Schofield (1)              | Shaffer (32)         | Mourning (4)                 | Becker (23.5)           |
| <b>Clemson</b>            | Carico (11)             | Carico (25)     | Gallagher (39) | Carico, Shaffer (1)        | Johnson (12)         | Becker, Johnson (3)          | Carico (12.5)           |
| <b>Georgia Tech</b>       | Carico (14)             | Carico (33)     | Gallagher (37) | Five players with one each | Gallagher (14)       | Becker (4)                   | Carico (15)             |
| <b>Boston College</b>     |                         |                 |                |                            |                      |                              |                         |
| <b>Maryland</b>           |                         |                 |                |                            |                      |                              |                         |
| <b>Virginia</b>           |                         |                 |                |                            |                      |                              |                         |
| <b>Virginia Tech</b>      |                         |                 |                |                            |                      |                              |                         |
| <b>North Carolina</b>     |                         |                 |                |                            |                      |                              |                         |
| <b>NC State</b>           |                         |                 |                |                            |                      |                              |                         |
| <b>Duke</b>               |                         |                 |                |                            |                      |                              |                         |
| <b>Wake Forest</b>        |                         |                 |                |                            |                      |                              |                         |
| <b>Georgia Tech</b>       |                         |                 |                |                            |                      |                              |                         |
| <b>Clemson</b>            |                         |                 |                |                            |                      |                              |                         |
| <b>Florida State</b>      |                         |                 |                |                            |                      |                              |                         |





# HURRICANES CHASING HISTORY

## Career Record Book

### Attack Pct. (min. 800 attempts)

|     |             |                             |                   |
|-----|-------------|-----------------------------|-------------------|
| 1.  | .323        | <b>Ali Becker</b>           | <b>2008-pres.</b> |
| 2.  | .315        | Valeria Tipiana             | 2001-04           |
| 3.  | .306        | Marcela Gamarra             | 2001-02           |
| 4.  | <b>.301</b> | <b>Katie Gallagher</b>      | <b>2007-pres.</b> |
| 5.  | .275        | Angelica Ellis              | 2005-08           |
| 6.  | .265        | Ariell Cooke                | 2007-10           |
| 7.  | .263        | Francheska Savage           | 2002-06           |
| 8.  | .256        | Ciara Michel                | 2003-07           |
| 9.  | .256        | Ashley Woods                | 2004-08           |
| 10. | .253        | Karla Johnson               | 2002-05           |
| 11. | .249        | Ley Santaella Sante         | 2003              |
| 12. | .245        | Lici McGee                  | 2006-10           |
| 13. | .243        | Robin Lewullis              | 2002-03           |
| 14. | <b>.239</b> | <b>Christine Williamson</b> | <b>2007-pres.</b> |
| 15. | <b>.238</b> | <b>Lane Carico</b>          | <b>2008-pres.</b> |
| 16. | <b>.238</b> | <b>Alex Johnson</b>         | <b>2010-pres.</b> |
| 17. | .216        | Jill Robinson               | 2003-06           |
| 18. | .205        | Elizabeth Tyson             | 2001-04           |
| 19. | .186        | Bridget Bomhack             | 2005-08           |
| 20. | .175        | Genny Mayhew                | 2006-09           |

### Kills

|     |             |                             |                   |
|-----|-------------|-----------------------------|-------------------|
| 1.  | <b>1532</b> | <b>Lane Carico</b>          | <b>2008-pres.</b> |
| 2.  | 1484        | Karla Johnson               | 2002-05           |
| 3.  | 1411        | Valeria Tipiana             | 2001-04           |
| 4.  | 1325        | Francheska Savage           | 2002-06           |
| 5.  | 1018        | Genny Mayhew                | 2006-09           |
| 6.  | 1002        | Elizabeth Tyson             | 2001-04           |
| 7.  | 962         | Ciara Michel                | 2003-07           |
| 8.  | 845         | Marcela Gamarra             | 2001-02           |
| 9.  | <b>706</b>  | <b>Christine Williamson</b> | <b>2007-pres.</b> |
| 10. | 689         | Ashley Woods                | 2004-08           |
| 11. | <b>675</b>  | <b>Ali Becker</b>           | <b>2008-pres.</b> |
| 12. | 538         | Angelica Ellis              | 2005-08           |
| 13. | 490         | Ariell Cooke                | 2007-10           |
| 14. | 463         | Lici McGee                  | 2006-10           |
| 15. | 433         | Ley Santaella Sante         | 2003              |
| 16. | 429         | Robin Lewullis              | 2002-03           |
| 17. | <b>418</b>  | <b>Katie Gallagher</b>      | <b>2007-pres.</b> |
| 18. | 385         | Jill Robinson               | 2003-06           |
| 19. | <b>364</b>  | <b>Alex Johnson</b>         | <b>2010-pres.</b> |
| 20. | 343         | Bridget Bomhack             | 2005-08           |

### Assists

|     |             |                             |                   |
|-----|-------------|-----------------------------|-------------------|
| 1.  | 4937        | Jill Robinson               | 2003-06           |
| 2.  | <b>4572</b> | <b>Katie Gallagher</b>      | <b>2007-pres.</b> |
| 3.  | 2025        | Mallorey James              | 2001-04           |
| 4.  | <b>1104</b> | <b>Nrithya Sundararaman</b> | <b>2009-pres.</b> |
| 5.  | 634         | Margie Young                | 2002-03           |
| 6.  | 554         | Jamie Grass                 | 2001-04           |
| 7.  | 260         | Bridget Bomhack             | 2005-08           |
| 8.  | 254         | Valeria Tipiana             | 2001-04           |
| 9.  | 217         | Cassie Loessberg            | 2006-09           |
| 10. | 155         | Ashley Woods                | 2004-08           |
| 11. | <b>142</b>  | <b>Alex Johnson</b>         | <b>2010-pres.</b> |
| 12. | <b>124</b>  | <b>Lane Carico</b>          | <b>2008-pres.</b> |
| 13. | 97          | Michelle Bruin              | 2004-07           |
| 14. | 83          | Maria Andersson             | 2007-09           |
| 15. | 82          | Genny Mayhew                | 2006-09           |
| 16. | 77          | Ann Gallo                   | 2003-06           |
| 17. | 64          | Elizabeth Tyson             | 2001-04           |
| 18. | 59          | Karla Johnson               | 2002-05           |
| 19. | 57          | Lauren Rinderknecht         | 2005-06           |
| 20. | 52          | Marcela Gamarra             | 2001-02           |

### Service Aces

|    |            |                        |                   |
|----|------------|------------------------|-------------------|
| 1. | 133        | Cassie Loessberg       | 2006-09           |
| 2. | 131        | Valeria Tipiana        | 2001-04           |
| 3. | <b>120</b> | <b>Katie Gallagher</b> | <b>2007-pres.</b> |
| 4. | <b>109</b> | <b>Lane Carico</b>     | <b>2008-pres.</b> |

|     |           |                     |                   |
|-----|-----------|---------------------|-------------------|
| 5.  | 99        | Elizabeth Tyson     | 2001-04           |
| 6.  | 95        | Karla Johnson       | 2002-05           |
| 7.  | 84        | Maria Andersson     | 2007-09           |
| 8.  | 68        | Jill Robinson       | 2003-06           |
| 9.  | 65        | Ann Gallo           | 2003-06           |
| 10. | 60        | Marcela Gamarra     | 2001-02           |
| 11. | 57        | Francheska Savage   | 2002-06           |
| 12. | 55        | Angelica Ellis      | 2005-08           |
| 13. | 45        | Jamie Grass         | 2001-04           |
|     | 45        | Genny Mayhew        | 2006-09           |
| 15. | 41        | Ley Santaella Sante | 2003              |
| 16. | 39        | Kristi Sprinkel     | 2001              |
|     | 39        | Kaitlin Kozak       | 2002-05           |
| 18. | <b>37</b> | <b>Alex Johnson</b> | <b>2010-pres.</b> |
|     | <b>37</b> | <b>Lizzie Hale</b>  | <b>2009-pres.</b> |
| 20. | <b>36</b> | <b>Ryan Shaffer</b> | <b>2010-pres.</b> |

### Digs

|     |             |                        |                   |
|-----|-------------|------------------------|-------------------|
| 1.  | 2008        | Cassie Loessberg       | 2006-09           |
| 2.  | 1621        | Jamie Grass            | 2001-04           |
| 3.  | <b>1505</b> | <b>Lane Carico</b>     | <b>2008-pres.</b> |
| 4.  | <b>1063</b> | <b>Katie Gallagher</b> | <b>2007-pres.</b> |
| 5.  | 1001        | Jill Robinson          | 2003-06           |
| 6.  | 968         | Valeria Tipiana        | 2001-04           |
| 7.  | 878         | Ann Gallo              | 2003-06           |
| 8.  | 808         | Elizabeth Tyson        | 2001-04           |
| 9.  | <b>799</b>  | <b>Ryan Shaffer</b>    | <b>2010-pres.</b> |
| 10. | 722         | Genny Mayhew           | 2006-09           |
| 11. | 633         | Michelle Bruin         | 2004-07           |
| 12. | 591         | Maria Andersson        | 2007-09           |
| 13. | 586         | Karla Johnson          | 2002-05           |
| 14. | 544         | Marcela Gamarra        | 2001-02           |
| 15. | <b>455</b>  | <b>Alex Johnson</b>    | <b>2010-pres.</b> |
| 16. | 412         | Bridget Bomhack        | 2005-08           |
| 17. | 411         | Francheska Savage      | 2002-06           |
| 18. | <b>404</b>  | <b>Taylor Hollins</b>  | <b>2010-pres.</b> |
| 19. | 368         | Mallorey James         | 2001-04           |
| 20. | 339         | Ashley Youngs          | 2001-04           |

### Block Solos

|     |           |                             |                   |
|-----|-----------|-----------------------------|-------------------|
| 1.  | 122       | Ciara Michel                | 2003-07           |
| 2.  | 75        | Karla Johnson               | 2002-05           |
| 3.  | 71        | Francheska Savage           | 2002-06           |
| 4.  | 48        | Lici McGee                  | 2006-10           |
| 5.  | 38        | Jill Robinson               | 2003-06           |
| 6.  | 37        | Angelica Ellis              | 2005-08           |
| 7.  | <b>30</b> | <b>Ali Becker</b>           | <b>2008-pres.</b> |
| 8.  | 29        | Ashley Woods                | 2004-08           |
| 9.  | <b>28</b> | <b>Lane Carico</b>          | <b>2008-pres.</b> |
|     | 28        | Ariell Cooke                | 2007-10           |
| 11. | 25        | Robin Lewullis              | 2002-03           |
| 12. | 24        | Genny Mayhew                | 2006-09           |
| 13. | 23        | Valeria Tipiana             | 2001-04           |
|     | <b>23</b> | <b>Katie Gallagher</b>      | <b>2007-pres.</b> |
| 15. | 19        | Elizabeth Tyson             | 2001-04           |
| 16. | <b>18</b> | <b>Christine Williamson</b> | <b>2007-pres.</b> |
| 17. | 17        | Marcela Gamarra             | 2001-02           |
| 18. | 15        | Kristi Sprinkel             | 2001              |
| 19. | 14        | Bridget Bomhack             | 2005-08           |
| 20. | 13        | Sandra Totten               | 2001              |

### Block Assists

|     |            |                   |                   |
|-----|------------|-------------------|-------------------|
| 1.  | 451        | Ciara Michel      | 2003-07           |
| 2.  | 283        | Karla Johnson     | 2002-05           |
| 3.  | 277        | Francheska Savage | 2002-06           |
| 4.  | 276        | Valeria Tipiana   | 2001-04           |
| 5.  | <b>243</b> | <b>Ali Becker</b> | <b>2008-pres.</b> |
| 6.  | 232        | Jill Robinson     | 2003-06           |
| 7.  | 228        | Robin Lewullis    | 2002-03           |
| 8.  | 227        | Angelica Ellis    | 2005-08           |
| 9.  | 209        | Ashley Woods      | 2004-08           |
| 10. | 186        | Lici McGee        | 2006-10           |

|     |            |                             |                   |
|-----|------------|-----------------------------|-------------------|
| 11. | 163        | Ariell Cooke                | 2007-10           |
| 12. | <b>156</b> | <b>Katie Gallagher</b>      | <b>2007-pres.</b> |
| 13. | <b>128</b> | <b>Lane Carico</b>          | <b>2008-pres.</b> |
| 14. | 127        | Elizabeth Tyson             | 2001-04           |
| 15. | <b>104</b> | <b>Christine Williamson</b> | <b>2007-pres.</b> |
| 16. | 100        | Genny Mayhew                | 2006-09           |
| 17. | 87         | Marcela Gamarra             | 2001-02           |
|     | <b>87</b>  | <b>Alex Johnson</b>         | <b>2010-pres.</b> |
| 19. | 73         | Bridget Bomhack             | 2005-08           |
|     | 73         | Kristi Sprinkel             | 2001              |

### Total Blocks

|     |            |                             |                   |
|-----|------------|-----------------------------|-------------------|
| 1.  | 573        | Ciara Michel                | 2003-07           |
| 2.  | 358        | Karla Johnson               | 2002-05           |
| 3.  | 348        | Francheska Savage           | 2002-06           |
| 4.  | 299        | Valeria Tipiana             | 2001-04           |
| 5.  | <b>273</b> | <b>Ali Becker</b>           | <b>2008-pres.</b> |
| 6.  | 270        | Jill Robinson               | 2003-06           |
| 7.  | 264        | Angelica Ellis              | 2005-08           |
| 8.  | 253        | Robin Lewullis              | 2002-03           |
| 9.  | 238        | Ashley Woods                | 2004-08           |
| 10. | 234        | Lici McGee                  | 2006-10           |
| 11. | 191        | Ariell Cooke                | 2007-10           |
| 12. | <b>179</b> | <b>Katie Gallagher</b>      | <b>2007-pres.</b> |
| 13. | <b>156</b> | <b>Lane Carico</b>          | <b>2008-pres.</b> |
| 14. | 146        | Elizabeth Tyson             | 2001-04           |
| 15. | 124        | Genny Mayhew                | 2006-09           |
| 16. | <b>122</b> | <b>Christine Williamson</b> | <b>2007-pres.</b> |
| 17. | 104        | Marcela Gamarra             | 2001-02           |
| 18. | <b>89</b>  | <b>Alex Johnson</b>         | <b>2010-pres.</b> |
| 19. | 88         | Kristi Sprinkel             | 2001              |
| 20. | 87         | Bridget Bomhack             | 2005-08           |

### Points

|     |               |                             |                   |
|-----|---------------|-----------------------------|-------------------|
| 1.  | 1795.5        | Karla Johnson               | 2002-05           |
| 2.  | <b>1733.0</b> | <b>Lane Carico</b>          | <b>2008-pres.</b> |
| 3.  | 1703.0        | Valeria Tipiana             | 2001-04           |
| 4.  | 1591.5        | Francheska Savage           | 2002-06           |
| 5.  | 1316.5        | Ciara Michel                | 2003-07           |
| 6.  | 1183.5        | Elizabeth Tyson             | 2001-04           |
| 7.  | 1137.0        | Genny Mayhew                | 2006-09           |
| 8.  | 965.5         | Marcela Gamarra             | 2001-02           |
| 9.  | <b>833.5</b>  | <b>Ali Becker</b>           | <b>2008-pres.</b> |
| 10. | 825.5         | Ashley Woods                | 2004-08           |
| 11. | <b>777.0</b>  | <b>Christine Williamson</b> | <b>2007-pres.</b> |
| 12. | 743.5         | Angelica Ellis              | 2005-08           |
| 13. | <b>639.0</b>  | <b>Katie Gallagher</b>      | <b>2007-pres.</b> |
| 14. | 619.5         | Ariell Cooke                | 2007-10           |
| 15. | 607.0         | Jill Robinson               | 2003-06           |
| 16. | 604.0         | Lici McGee                  | 2006-10           |
| 17. | 597.0         | Robin Lewullis              | 2002-03           |
| 18. | 498.0         | Ley Santaella Sante         | 2003              |
| 19. | <b>446.5</b>  | <b>Alex Johnson</b>         | <b>2010-pres.</b> |
| 20. | 426.5         | Bridget Bomhack             | 2005-08           |





**1** ALEX JOHNSON  
RS, 6-0, Soph.  
Tallahassee, Fla.



**2** LANE CARICO  
OH, 5-11, Sr.  
Manhattan Beach, Calif.



**3** TAYLOR HOLLINS  
OH, 5-9, Soph.  
Long Beach, Calif.



**4** ALEXIS MOURNING  
MB, 6-1, Fr.  
Arlington, Texas



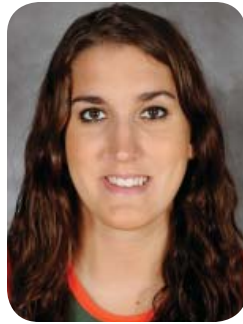
**5** ERYN CROFT  
OH, 5-8, Fr.  
Gainesville, Fla.



**6** JULIA GIAMPAOLO  
LIB, 5-7, Soph.  
Torrington, Conn.



**7** MARIEL SCHOFIELD  
DS, 5-5, Soph.  
Ijamsville, Md.



**9** KATIE GALLAGHER  
S, 5-11, R-Sr.  
Winter Park, Fla.



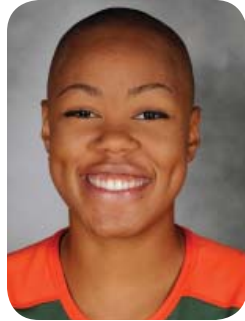
**10** RYAN SHAFFER  
DS, 5-7, Soph.  
San Jose, Calif.



**11** BLAIR FUENTES  
S/H, 6-0, Fr.  
Ridgewood, N.J.



**16** EMANI SIMS  
MB, 5-11, R-Fr.  
Glenview, Ill.



**17** CHRISTINE WILLIAMSON  
OH, 5-11, R-Sr.  
Tampa, Fla.



**21** ALI BECKER  
MB, 6-1, Sr.  
Katy, Texas



**23** NRITHYA SUNDARARAMAN  
S/H, 5-10, Jr.  
Naperville, Ill.



**SCOTT MCGONAGLE**  
Head Athletic Trainer  
First Season



**NICOLE LANTAGNE WELCH**  
Head Coach  
11th Season



**FELIX HOU**  
Assistant Coach  
Fourth Season



**ASHLEY WOODS**  
Assistant Coach  
First Season



**ERIN MITCHEM**  
Volunteer Assistant  
First Season



**ARIELL COOKE**  
Student Assistant  
Oakland, Calif.



**#1 Alex Johnson • Right Side • 6-0 • Sophomore • Tallahassee, Fla. • Leon HS**

**Awards:** 2011 – Tiger Classic MVP; Tiger Classic All-Tournament Team; Pepperdine Asics Classic All-Tournament Team; Hurricane Invitational All-Tournament Team

|                  | 2011 Match Highs                    | Career Match Highs                   |
|------------------|-------------------------------------|--------------------------------------|
| <b>Attempts:</b> | 43, at Pepperdine (9/3)             | Same                                 |
| <b>Kills:</b>    | 21, at Pepperdine (9/3)             | Same                                 |
| <b>Hitting:</b>  | .500, vs. Jacksonville State (8/26) | .625, vs. Florida Atlantic (8/31/10) |
| <b>Digs:</b>     | 19, vs. Oklahoma (9/10)             | 23, vs. Virginia (9/26/10)           |
| <b>Aces:</b>     | 3, at NC State (10/7)               | 3, four times                        |
| <b>Blocks:</b>   | 6, at NC State (10/7)               | Same                                 |

| DATE              | OPPONENT               | RESULT | MS | SP | K   | E   | TA  | PCT   | A    | SA  | SE | RE | DIG | BS  | BA | TOT | BE | BHE | PTS  |       |
|-------------------|------------------------|--------|----|----|-----|-----|-----|-------|------|-----|----|----|-----|-----|----|-----|----|-----|------|-------|
| Aug. 26           | vs. Jacksonville State | W, 3-0 | *  | 3  | 8   | 1   | 14  | .500  | 2    | 0   | 0  | 2  | 13  | 0   | 1  | 1   | 0  | 0   | 8.5  |       |
| Aug. 27           | vs. La.-Lafayette      | W, 3-0 | *  | 3  | 17  | 2   | 32  | .469  | 2    | 0   | 1  | 1  | 13  | 1   | 4  | 5   | 0  | 0   | 20.0 |       |
| Aug. 27           | at LSU                 | W, 3-2 | *  | 5  | 14  | 5   | 41  | .220  | 2    | 2   | 0  | 1  | 17  | 0   | 5  | 5   | 2  | 0   | 18.5 |       |
| Sept. 2           | vs. UC Santa Barbara   | W, 3-0 | *  | 3  | 9   | 1   | 28  | .286  | 2    | 0   | 0  | 1  | 8   | 0   | 1  | 1   | 0  | 0   | 9.5  |       |
| Sept. 3           | vs. Georgia            | W, 3-0 | *  | 3  | 8   | 5   | 25  | .120  | 4    | 1   | 0  | 1  | 4   | 0   | 3  | 3   | 0  | 0   | 10.5 |       |
| Sept. 3           | at Pepperdine          | W, 3-1 | *  | 4  | 21  | 4   | 43  | .395  | 2    | 1   | 1  | 2  | 14  | 0   | 2  | 2   | 1  | 0   | 23.0 |       |
| Sept. 8           | FLORIDA A&M            | W, 3-0 | *  | 3  | 11  | 2   | 22  | .409  | 2    | 1   | 2  | 0  | 6   | 0   | 3  | 3   | 0  | 0   | 13.5 |       |
| Sept. 9           | AUBURN                 | W, 3-0 | *  | 3  | 13  | 4   | 26  | .346  | 2    | 1   | 1  | 0  | 6   | 0   | 0  | 0   | 0  | 0   | 14.0 |       |
| Sept. 10          | #18 OKLAHOMA           | W, 3-1 | *  | 4  | 9   | 4   | 25  | .200  | 6    | 1   | 1  | 1  | 19  | 0   | 1  | 1   | 1  | 0   | 10.5 |       |
| Sept. 14          | at Florida State       | L, 0-3 | *  | 3  | 7   | 5   | 25  | .080  | 2    | 1   | 1  | 0  | 12  | 0   | 2  | 2   | 0  | 0   | 9.0  |       |
| Sept. 23          | at Virginia Tech       | W, 3-0 | *  | 3  | 6   | 6   | 20  | .000  | 3    | 1   | 0  | 0  | 14  | 0   | 2  | 2   | 0  | 1   | 8.0  |       |
| Sept. 25          | at Virginia            | W, 3-0 | *  | 3  | 8   | 1   | 17  | .412  | 7    | 0   | 1  | 2  | 10  | 0   | 1  | 1   | 1  | 0   | 8.5  |       |
| Sept. 30          | WAKE FOREST            | W, 3-0 | *  | 3  | 8   | 0   | 23  | .348  | 2    | 0   | 1  | 0  | 11  | 0   | 0  | 0   | 0  | 0   | 8.0  |       |
| Oct. 2            | DUKE                   | W, 3-0 | *  | 3  | 7   | 1   | 22  | .273  | 3    | 1   | 0  | 1  | 14  | 0   | 2  | 2   | 0  | 0   | 9.0  |       |
| Oct. 7            | at NC State            | W, 3-2 | *  | 5  | 8   | 4   | 28  | .143  | 5    | 3   | 1  | 2  | 11  | 0   | 6  | 6   | 1  | 0   | 14.0 |       |
| Oct. 9            | at North Carolina      | L, 2-3 | *  | 5  | 5   | 7   | 28  | -.071 | 1    | 0   | 0  | 0  | 10  | 0   | 2  | 2   | 0  | 0   | 6.0  |       |
| Oct. 14           | CLEMSON                | W, 3-0 | *  | 3  | 10  | 2   | 24  | .333  | 4    | 0   | 2  | 0  | 12  | 1   | 2  | 3   | 0  | 0   | 12.0 |       |
| Oct. 16           | GEORGIA TECH           | L, 1-3 | *  | 4  | 9   | 7   | 27  | .074  | 9    | 1   | 2  | 1  | 6   | 0   | 1  | 1   | 1  | 0   | 10.5 |       |
| <b>2011 Total</b> |                        |        |    |    | 63  | 178 | 61  | 470   | .249 | 60  | 14 | 14 | 15  | 200 | 2  | 38  | 40 | 7   | 1    | 213.0 |
| <b>2010 Total</b> |                        |        |    |    | 120 | 205 | 63  | 629   | .226 | 95  | 24 | 37 | 13  | 273 | 1  | 52  | 53 | 4   | 2    | 256.0 |
| <b>CAREER</b>     |                        |        |    |    | 183 | 383 | 124 | 1099  | .236 | 155 | 38 | 51 | 28  | 473 | 3  | 90  | 93 | 11  | 3    | 469.0 |





**#2 Lane Carico • Outside Hitter • 5-11 • Senior • Manhattan Beach, Calif. • Mira Costa HS**

**Awards:** 2011 – Preseason All-ACC Team; Pepperdine Asics Classic MVP; Pepperdine Asics Classic All-Tournament Team; ACC Player of the Week (Sept. 5-10); Hurricane Invitational MVP; Hurricane Invitational All-Tournament Team; ACC Player of the Week (Sept. 12-17); ACC Player of the Week (Oct. 3-8); UMIAMI All-Time Kills Leader

|                  | 2011 Match Highs                 | Career Match Highs              |
|------------------|----------------------------------|---------------------------------|
| <b>Attempts:</b> | 63, at North Carolina (10/9)     | 83, vs. Clemson (10/2/10)       |
| <b>Kills:</b>    | 22, at North Carolina (10/9)     | 36, vs. Clemson (10/2/10)       |
| <b>Hitting:</b>  | .394, vs. Duke                   | .464, at NC State (11/21/08)    |
| <b>Digs:</b>     | 24, at NC State (10/7)           | 27, at Virginia (10/24/08)      |
| <b>Aces:</b>     | 4, vs. Jacksonville State (8/26) | 5, vs. VCU (9/6/08)             |
| <b>Blocks:</b>   | 4, vs. UC Santa Barbara (9/2)    | 6, at North Carolina (11/20/08) |

| DATE              | OPPONENT               | RESULT | MS | SP | K          | E           | TA         | PCT         | A           | SA         | SE         | RE         | DIG       | BS          | BA        | TOT        | BE         | BHE       | PTS      |               |
|-------------------|------------------------|--------|----|----|------------|-------------|------------|-------------|-------------|------------|------------|------------|-----------|-------------|-----------|------------|------------|-----------|----------|---------------|
| Aug. 26           | vs. Jacksonville State | W, 3-0 | *  | 3  | 7          | 3           | 22         | .182        | 1           | 4          | 0          | 0          | 9         | 0           | 3         | 3          | 0          | 0         | 12.5     |               |
| Aug. 27           | vs. La.-Lafayette      | W, 3-0 | *  | 3  | 4          | 2           | 20         | .100        | 2           | 2          | 3          | 0          | 12        | 0           | 0         | 0          | 0          | 0         | 6.0      |               |
| Aug. 27           | at LSU                 | W, 3-2 | *  | 5  | 11         | 4           | 45         | .156        | 1           | 0          | 0          | 2          | 17        | 0           | 1         | 1          | 0          | 0         | 11.5     |               |
| Sept. 2           | vs. UC Santa Barbara   | W, 3-0 | *  | 3  | 8          | 0           | 32         | .250        | 0           | 0          | 0          | 1          | 15        | 1           | 3         | 4          | 1          | 0         | 10.5     |               |
| Sept. 3           | vs. Georgia            | W, 3-0 | *  | 3  | 10         | 1           | 28         | .321        | 0           | 1          | 0          | 0          | 15        | 0           | 0         | 0          | 0          | 0         | 11.0     |               |
| Sept. 3           | at Pepperdine          | W, 3-1 | *  | 4  | 13         | 3           | 48         | .208        | 2           | 0          | 0          | 1          | 20        | 0           | 3         | 3          | 0          | 0         | 14.5     |               |
| Sept. 8           | FLORIDA A&M            | W, 3-0 | *  | 1  | 0          | 0           | 2          | .000        | 0           | 1          | 0          | 0          | 4         | 0           | 0         | 0          | 0          | 0         | 1.0      |               |
| Sept. 9           | AUBURN                 | W, 3-0 | *  | 3  | 11         | 1           | 32         | .312        | 1           | 2          | 0          | 0          | 12        | 0           | 2         | 2          | 1          | 0         | 14.0     |               |
| Sept. 10          | #18 OKLAHOMA           | W, 3-1 | *  | 4  | 19         | 5           | 59         | .237        | 1           | 1          | 1          | 0          | 16        | 0           | 3         | 3          | 0          | 0         | 21.5     |               |
| Sept. 14          | at Florida State       | L, 0-3 | *  | 3  | 9          | 4           | 27         | .185        | 1           | 0          | 1          | 0          | 16        | 0           | 0         | 0          | 0          | 0         | 9.0      |               |
| Sept. 23          | at Virginia Tech       | W, 3-0 | *  | 3  | 11         | 1           | 28         | .357        | 0           | 0          | 1          | 0          | 17        | 0           | 1         | 1          | 0          | 0         | 11.5     |               |
| Sept. 25          | at Virginia            | W, 3-0 | *  | 3  | 13         | 4           | 30         | .300        | 0           | 1          | 1          | 0          | 11        | 0           | 0         | 0          | 3          | 0         | 14.0     |               |
| Sept. 30          | WAKE FOREST            | W, 3-0 | *  | 3  | 19         | 4           | 39         | .385        | 1           | 0          | 0          | 0          | 10        | 0           | 0         | 0          | 0          | 0         | 19.0     |               |
| Oct. 2            | DUKE                   | W, 3-0 | *  | 3  | 14         | 1           | 33         | .394        | 2           | 2          | 3          | 1          | 12        | 0           | 0         | 0          | 2          | 0         | 16.0     |               |
| Oct. 7            | at NC State            | W, 3-2 | *  | 5  | 15         | 4           | 49         | .224        | 2           | 1          | 2          | 0          | 24        | 0           | 3         | 3          | 1          | 0         | 17.5     |               |
| Oct. 9            | at North Carolina      | L, 2-3 | *  | 5  | 22         | 6           | 63         | .254        | 2           | 0          | 0          | 0          | 23        | 0           | 2         | 2          | 0          | 0         | 23.0     |               |
| Oct. 14           | CLEMSON                | W, 3-0 | *  | 3  | 11         | 2           | 25         | .360        | 1           | 1          | 0          | 0          | 10        | 0           | 1         | 1          | 1          | 0         | 12.5     |               |
| Oct. 16           | GEORGIA TECH           | L, 1-3 | *  | 4  | 14         | 3           | 33         | .333        | 1           | 1          | 2          | 0          | 7         | 0           | 0         | 0          | 0          | 0         | 15.0     |               |
| <b>2011 Total</b> |                        |        |    |    | <b>61</b>  | <b>211</b>  | <b>48</b>  | <b>615</b>  | <b>.265</b> | <b>20</b>  | <b>17</b>  | <b>15</b>  | <b>4</b>  | <b>250</b>  | <b>1</b>  | <b>22</b>  | <b>23</b>  | <b>9</b>  | <b>0</b> | <b>240.0</b>  |
| <b>2010 Total</b> |                        |        |    |    | <b>123</b> | <b>471</b>  | <b>151</b> | <b>1401</b> | <b>.228</b> | <b>44</b>  | <b>38</b>  | <b>33</b>  | <b>16</b> | <b>454</b>  | <b>9</b>  | <b>35</b>  | <b>44</b>  | <b>9</b>  | <b>2</b> | <b>535.5</b>  |
| <b>2009 Total</b> |                        |        |    |    | <b>116</b> | <b>506</b>  | <b>167</b> | <b>1320</b> | <b>.257</b> | <b>30</b>  | <b>21</b>  | <b>42</b>  | <b>22</b> | <b>402</b>  | <b>9</b>  | <b>32</b>  | <b>41</b>  | <b>18</b> | <b>1</b> | <b>552.0</b>  |
| <b>2008 Total</b> |                        |        |    |    | <b>116</b> | <b>369</b>  | <b>136</b> | <b>1075</b> | <b>.217</b> | <b>32</b>  | <b>35</b>  | <b>38</b>  | <b>27</b> | <b>416</b>  | <b>9</b>  | <b>40</b>  | <b>49</b>  | <b>18</b> | <b>2</b> | <b>433.0</b>  |
| <b>Career</b>     |                        |        |    |    | <b>416</b> | <b>1557</b> | <b>502</b> | <b>4414</b> | <b>.239</b> | <b>126</b> | <b>111</b> | <b>128</b> | <b>69</b> | <b>1522</b> | <b>28</b> | <b>129</b> | <b>157</b> | <b>54</b> | <b>5</b> | <b>1760.5</b> |



**#3 Taylor Hollins • Outside Hitter • 5-9 • Sophomore • Long Beach, Calif. • Lakewood HS**

|                  | 2011 Match Highs             | Career Match Highs             |
|------------------|------------------------------|--------------------------------|
| <b>Attempts:</b> | 38, at North Carolina (10/9) | Same                           |
| <b>Kills:</b>    | 13, at North Carolina (10/9) | Same                           |
| <b>Hitting:</b>  | .429, vs. Oklahoma (9/10)    | Same                           |
| <b>Digs:</b>     | 19, at North Carolina (10/9) | Same                           |
| <b>Aces:</b>     | 2, twice                     | 3, twice                       |
| <b>Blocks:</b>   | N/A                          | 1, vs. San Francisco (9/10/10) |

| DATE              | OPPONENT               | RESULT | MS  | SP         | K         | E         | TA         | PCT         | A         | SA        | SE        | RE        | DIG        | BS       | BA       | TOT      | BE       | BHE      | PTS         |
|-------------------|------------------------|--------|-----|------------|-----------|-----------|------------|-------------|-----------|-----------|-----------|-----------|------------|----------|----------|----------|----------|----------|-------------|
| Aug. 26           | vs. Jacksonville State | W, 3-0 | DNP |            |           |           |            |             |           |           |           |           |            |          |          |          |          |          |             |
| Aug. 27           | vs. La.-Lafayette      | W, 3-0 | DNP |            |           |           |            |             |           |           |           |           |            |          |          |          |          |          |             |
| Aug. 27           | at LSU                 | W, 3-2 | DNP |            |           |           |            |             |           |           |           |           |            |          |          |          |          |          |             |
| Sept. 2           | vs. UC Santa Barbara   | W, 3-0 | DNP |            |           |           |            |             |           |           |           |           |            |          |          |          |          |          |             |
| Sept. 3           | vs. Georgia            | W, 3-0 |     | 1          | 0         | 0         | 0          | .000        | 0         | 0         | 0         | 0         | 0          | 0        | 0        | 0        | 0        | 0        | 0.0         |
| Sept. 3           | at Pepperdine          | W, 3-1 |     | 4          | 1         | 1         | 6          | .000        | 2         | 0         | 0         | 1         | 10         | 0        | 0        | 0        | 0        | 0        | 1.0         |
| Sept. 8           | FLORIDA A&M            | W, 3-0 |     | 2          | 2         | 1         | 3          | .333        | 0         | 0         | 0         | 0         | 2          | 0        | 0        | 0        | 0        | 0        | 2.0         |
| Sept. 9           | AUBURN                 | W, 3-0 |     | 3          | 1         | 1         | 4          | .000        | 0         | 0         | 0         | 1         | 11         | 0        | 0        | 0        | 0        | 1        | 1.0         |
| Sept. 10          | #18 OKLAHOMA           | W, 3-1 |     | 4          | 4         | 1         | 7          | .429        | 3         | 0         | 2         | 2         | 14         | 0        | 0        | 0        | 0        | 0        | 4.0         |
| Sept. 14          | at Florida State       | L, 0-3 |     | 3          | 1         | 0         | 2          | .500        | 1         | 0         | 0         | 0         | 5          | 0        | 0        | 0        | 0        | 0        | 1.0         |
| Sept. 23          | at Virginia Tech       | W, 3-0 |     | 3          | 1         | 1         | 5          | .000        | 1         | 1         | 0         | 0         | 7          | 0        | 0        | 0        | 0        | 0        | 2.0         |
| Sept. 25          | at Virginia            | W, 3-0 |     | 3          | 1         | 0         | 3          | .333        | 1         | 2         | 1         | 0         | 6          | 0        | 0        | 0        | 0        | 0        | 3.0         |
| Sept. 30          | WAKE FOREST            | W, 3-0 |     | 3          | 0         | 0         | 4          | .000        | 0         | 0         | 0         | 0         | 9          | 0        | 0        | 0        | 0        | 0        | 0.0         |
| Oct. 2            | DUKE                   | W, 3-0 |     | 3          | 1         | 2         | 3          | -.333       | 0         | 0         | 0         | 0         | 9          | 0        | 0        | 0        | 0        | 0        | 1.0         |
| Oct. 7            | at NC State            | W, 3-2 |     | 5          | 2         | 2         | 8          | .000        | 0         | 2         | 1         | 0         | 11         | 0        | 0        | 0        | 0        | 0        | 4.0         |
| Oct. 9            | at North Carolina      | L, 2-3 | *   | 5          | 13        | 4         | 38         | .237        | 3         | 0         | 1         | 1         | 19         | 0        | 0        | 0        | 0        | 0        | 13.0        |
| Oct. 14           | CLEMSON                | W, 3-0 | *   | 3          | 0         | 0         | 3          | .000        | 1         | 0         | 0         | 0         | 3          | 0        | 0        | 0        | 0        | 0        | 0.0         |
| Oct. 16           | GEORGIA TECH           | L, 1-3 | *   | 4          | 3         | 1         | 10         | .200        | 1         | 0         | 1         | 0         | 4          | 0        | 0        | 0        | 0        | 0        | 3.0         |
| <b>2011 Total</b> |                        |        |     | <b>46</b>  | <b>30</b> | <b>14</b> | <b>96</b>  | <b>.167</b> | <b>13</b> | <b>5</b>  | <b>6</b>  | <b>5</b>  | <b>110</b> | <b>0</b> | <b>0</b> | <b>0</b> | <b>0</b> | <b>1</b> | <b>35.0</b> |
| <b>2010 Total</b> |                        |        |     | <b>109</b> | <b>38</b> | <b>22</b> | <b>172</b> | <b>.093</b> | <b>36</b> | <b>22</b> | <b>9</b>  | <b>12</b> | <b>301</b> | <b>0</b> | <b>1</b> | <b>1</b> | <b>0</b> | <b>0</b> | <b>60.5</b> |
| <b>Career</b>     |                        |        |     | <b>155</b> | <b>68</b> | <b>36</b> | <b>268</b> | <b>.119</b> | <b>49</b> | <b>27</b> | <b>15</b> | <b>17</b> | <b>411</b> | <b>0</b> | <b>1</b> | <b>1</b> | <b>0</b> | <b>1</b> | <b>95.5</b> |



**#4 Alexis Mounring • Middle Blocker • 6-1 • Freshman • Arlington, Texas • Martin HS**

|                  | 2011 Match Highs               | Career Match Highs |
|------------------|--------------------------------|--------------------|
| <b>Attempts:</b> | 24, at North Carolina (10/9)   | Same               |
| <b>Kills:</b>    | 12, at North Carolina (10/9)   | Same               |
| <b>Hitting:</b>  | .417, at North Carolina (10/9) | Same               |
| <b>Digs:</b>     | 2, at North Carolina (10/9)    | N/A                |
| <b>Aces:</b>     | N/A                            | N/A                |
| <b>Blocks:</b>   | 4, at North Carolina (10/9)    | Same               |

| DATE                     | OPPONENT               | RESULT | MS         | SP | K         | E         | TA       | PCT       | A           | SA       | SE       | RE       | DIG      | BS       | BA       | TOT      | BE        | BHE      | PTS      |             |
|--------------------------|------------------------|--------|------------|----|-----------|-----------|----------|-----------|-------------|----------|----------|----------|----------|----------|----------|----------|-----------|----------|----------|-------------|
| Aug. 26                  | vs. Jacksonville State | W, 3-0 |            | 1  | 1         | 0         | 1        | 1.000     | 0           | 0        | 0        | 0        | 0        | 1        | 0        | 1        | 0         | 0        | 2.0      |             |
| Aug. 27                  | vs. La.-Lafayette      | W, 3-0 |            | 1  | 2         | 0         | 2        | 1.000     | 0           | 0        | 0        | 0        | 0        | 0        | 2        | 2        | 0         | 0        | 3.0      |             |
| Aug. 27                  | at LSU                 | W, 3-2 | <i>DNP</i> |    |           |           |          |           |             |          |          |          |          |          |          |          |           |          |          |             |
| Sept. 2                  | vs. UC Santa Barbara   | W, 3-0 | <i>DNP</i> |    |           |           |          |           |             |          |          |          |          |          |          |          |           |          |          |             |
| Sept. 3                  | vs. Georgia            | W, 3-0 |            | 1  | 0         | 0         | 2        | .000      | 0           | 0        | 0        | 0        | 0        | 0        | 0        | 0        | 0         | 0        | 0.0      |             |
| Sept. 3                  | at Pepperdine          | W, 3-1 |            | 1  | 0         | 0         | 2        | .000      | 0           | 0        | 0        | 0        | 0        | 0        | 0        | 0        | 0         | 0        | 0.0      |             |
| Sept. 8                  | FLORIDA A&M            | W, 3-0 |            | 3  | 4         | 2         | 7        | .286      | 1           | 0        | 0        | 0        | 1        | 0        | 0        | 0        | 0         | 0        | 4.0      |             |
| Sept. 9                  | AUBURN                 | W, 3-0 | <i>DNP</i> |    |           |           |          |           |             |          |          |          |          |          |          |          |           |          |          |             |
| Sept. 10                 | #18 OKLAHOMA           | W, 3-1 |            | 1  | 2         | 0         | 2        | 1.000     | 0           | 0        | 0        | 0        | 0        | 0        | 0        | 0        | 0         | 0        | 2.0      |             |
| Sept. 14                 | at Florida State       | L, 0-3 |            | 2  | 0         | 0         | 2        | .000      | 0           | 0        | 0        | 0        | 0        | 0        | 0        | 0        | 0         | 0        | 0.0      |             |
| Sept. 23                 | at Virginia Tech       | W, 3-0 | <i>DNP</i> |    |           |           |          |           |             |          |          |          |          |          |          |          |           |          |          |             |
| Sept. 25                 | at Virginia            | W, 3-0 | <i>DNP</i> |    |           |           |          |           |             |          |          |          |          |          |          |          |           |          |          |             |
| Sept. 30                 | WAKE FOREST            | W, 3-0 | <i>DNP</i> |    |           |           |          |           |             |          |          |          |          |          |          |          |           |          |          |             |
| Oct. 2                   | DUKE                   | W, 3-0 |            | 1  | 0         | 0         | 1        | .000      | 0           | 0        | 0        | 0        | 0        | 0        | 0        | 0        | 0         | 0        | 0.0      |             |
| Oct. 7                   | at NC State            | W, 3-2 |            | 2  | 3         | 1         | 6        | .333      | 0           | 0        | 0        | 0        | 0        | 0        | 3        | 3        | 1         | 0        | 4.5      |             |
| Oct. 9                   | at North Carolina      | L, 2-3 |            | 5  | 12        | 2         | 24       | .417      | 0           | 0        | 0        | 0        | 2        | 1        | 3        | 4        | 1         | 0        | 14.5     |             |
| Oct. 14                  | CLEMSON                | W, 3-0 | <i>DNP</i> |    |           |           |          |           |             |          |          |          |          |          |          |          |           |          |          |             |
| Oct. 16                  | GEORGIA TECH           | L, 1-3 | <i>DNP</i> |    |           |           |          |           |             |          |          |          |          |          |          |          |           |          |          |             |
| <b>2011 Total/Career</b> |                        |        |            |    | <b>18</b> | <b>24</b> | <b>5</b> | <b>49</b> | <b>.388</b> | <b>1</b> | <b>0</b> | <b>0</b> | <b>0</b> | <b>3</b> | <b>2</b> | <b>8</b> | <b>10</b> | <b>2</b> | <b>0</b> | <b>30.0</b> |





**#5 Eryn Croft • Outside Hitter • 5-8 • Freshman • Gainesville, Fla. • Gainesville HS**

|                  | 2011 Match Highs | Career Match Highs |
|------------------|------------------|--------------------|
| <b>Attempts:</b> | N/A              | N/A                |
| <b>Kills:</b>    | N/A              | N/A                |
| <b>Hitting:</b>  | N/A              | N/A                |
| <b>Digs:</b>     | N/A              | N/A                |
| <b>Aces:</b>     | N/A              | N/A                |
| <b>Blocks:</b>   | N/A              | N/A                |

| DATE     | OPPONENT               | RESULT | MS  | SP | K | E | TA | PCT | A | SA | SE | RE | DIG | BS | BA | TOT | BE | BHE | PTS |
|----------|------------------------|--------|-----|----|---|---|----|-----|---|----|----|----|-----|----|----|-----|----|-----|-----|
| Aug. 26  | vs. Jacksonville State | W, 3-0 | DNP |    |   |   |    |     |   |    |    |    |     |    |    |     |    |     |     |
| Aug. 27  | vs. La.-Lafayette      | W, 3-0 | DNP |    |   |   |    |     |   |    |    |    |     |    |    |     |    |     |     |
| Aug. 27  | at LSU                 | W, 3-2 | DNP |    |   |   |    |     |   |    |    |    |     |    |    |     |    |     |     |
| Sept. 2  | vs. UC Santa Barbara   | W, 3-0 | DNP |    |   |   |    |     |   |    |    |    |     |    |    |     |    |     |     |
| Sept. 3  | vs. Georgia            | W, 3-0 | DNP |    |   |   |    |     |   |    |    |    |     |    |    |     |    |     |     |
| Sept. 3  | at Pepperdine          | W, 3-1 | DNP |    |   |   |    |     |   |    |    |    |     |    |    |     |    |     |     |
| Sept. 8  | FLORIDA A&M            | W, 3-0 | DNP |    |   |   |    |     |   |    |    |    |     |    |    |     |    |     |     |
| Sept. 9  | AUBURN                 | W, 3-0 | DNP |    |   |   |    |     |   |    |    |    |     |    |    |     |    |     |     |
| Sept. 10 | #18 OKLAHOMA           | W, 3-1 | DNP |    |   |   |    |     |   |    |    |    |     |    |    |     |    |     |     |
| Sept. 14 | at Florida State       | L, 0-3 | DNP |    |   |   |    |     |   |    |    |    |     |    |    |     |    |     |     |
| Sept. 23 | at Virginia Tech       | W, 3-0 | DNP |    |   |   |    |     |   |    |    |    |     |    |    |     |    |     |     |
| Sept. 25 | at Virginia            | W, 3-0 | DNP |    |   |   |    |     |   |    |    |    |     |    |    |     |    |     |     |
| Sept. 30 | WAKE FOREST            | W, 3-0 | DNP |    |   |   |    |     |   |    |    |    |     |    |    |     |    |     |     |
| Oct. 2   | DUKE                   | W, 3-0 | DNP |    |   |   |    |     |   |    |    |    |     |    |    |     |    |     |     |
| Oct. 7   | at NC State            | W, 3-2 | DNP |    |   |   |    |     |   |    |    |    |     |    |    |     |    |     |     |
| Oct. 9   | at North Carolina      | L, 2-3 | DNP |    |   |   |    |     |   |    |    |    |     |    |    |     |    |     |     |
| Oct. 14  | CLEMSON                | W, 3-0 | DNP |    |   |   |    |     |   |    |    |    |     |    |    |     |    |     |     |
| Oct. 16  | GEORGIA TECH           | L, 1-3 | DNP |    |   |   |    |     |   |    |    |    |     |    |    |     |    |     |     |



**#6 Julia Giampaolo • Defensive Specialist • 5-7 • Sophomore • Torrington, Conn. • Torrington HS**

|                  | 2011 Match Highs       | Career Match Highs     |
|------------------|------------------------|------------------------|
| <b>Attempts:</b> | N/A                    | 1, vs. Auburn (9/3/10) |
| <b>Kills:</b>    | N/A                    | N/A                    |
| <b>Hitting:</b>  | N/A                    | N/A                    |
| <b>Digs:</b>     | 1, at Pepperdine (9/3) | Same                   |
| <b>Aces:</b>     | N/A                    | N/A                    |
| <b>Blocks:</b>   | N/A                    | N/A                    |

| DATE              | OPPONENT               | RESULT | MS  | SP | K | E | TA | PCT  | A    | SA | SE | RE | DIG | BS | BA | TOT | BE | BHE | PTS |     |
|-------------------|------------------------|--------|-----|----|---|---|----|------|------|----|----|----|-----|----|----|-----|----|-----|-----|-----|
| Aug. 26           | vs. Jacksonville State | W, 3-0 | DNP |    |   |   |    |      |      |    |    |    |     |    |    |     |    |     |     |     |
| Aug. 27           | vs. La.-Lafayette      | W, 3-0 |     | 1  | 0 | 0 | 0  | .000 | 0    | 0  | 0  | 0  | 0   | 0  | 0  | 0   | 0  | 0   | 0.0 |     |
| Aug. 27           | at LSU                 | W, 3-2 | DNP |    |   |   |    |      |      |    |    |    |     |    |    |     |    |     |     |     |
| Sept. 2           | vs. UC Santa Barbara   | W, 3-0 | DNP |    |   |   |    |      |      |    |    |    |     |    |    |     |    |     |     |     |
| Sept. 3           | vs. Georgia            | W, 3-0 | DNP |    |   |   |    |      |      |    |    |    |     |    |    |     |    |     |     |     |
| Sept. 3           | at Pepperdine          | W, 3-1 |     | 1  | 0 | 0 | 0  | .000 | 0    | 0  | 0  | 1  | 1   | 0  | 0  | 0   | 0  | 0   | 0.0 |     |
| Sept. 8           | FLORIDA A&M            | W, 3-0 | DNP |    |   |   |    |      |      |    |    |    |     |    |    |     |    |     |     |     |
| Sept. 9           | AUBURN                 | W, 3-0 | DNP |    |   |   |    |      |      |    |    |    |     |    |    |     |    |     |     |     |
| Sept. 10          | #18 OKLAHOMA           | W, 3-1 | DNP |    |   |   |    |      |      |    |    |    |     |    |    |     |    |     |     |     |
| Sept. 14          | at Florida State       | L, 0-3 | DNP |    |   |   |    |      |      |    |    |    |     |    |    |     |    |     |     |     |
| Sept. 23          | at Virginia Tech       | W, 3-0 | DNP |    |   |   |    |      |      |    |    |    |     |    |    |     |    |     |     |     |
| Sept. 25          | at Virginia            | W, 3-0 | DNP |    |   |   |    |      |      |    |    |    |     |    |    |     |    |     |     |     |
| Sept. 30          | WAKE FOREST            | W, 3-0 | DNP |    |   |   |    |      |      |    |    |    |     |    |    |     |    |     |     |     |
| Oct. 2            | DUKE                   | W, 3-0 | DNP |    |   |   |    |      |      |    |    |    |     |    |    |     |    |     |     |     |
| Oct. 7            | at NC State            | W, 3-2 | DNP |    |   |   |    |      |      |    |    |    |     |    |    |     |    |     |     |     |
| Oct. 9            | at North Carolina      | L, 2-3 | DNP |    |   |   |    |      |      |    |    |    |     |    |    |     |    |     |     |     |
| Oct. 14           | CLEMSON                | W, 3-1 | DNP |    |   |   |    |      |      |    |    |    |     |    |    |     |    |     |     |     |
| Oct. 16           | GEORGIA TECH           | L, 1-3 | DNP |    |   |   |    |      |      |    |    |    |     |    |    |     |    |     |     |     |
| <b>2011 Total</b> |                        |        |     |    | 2 | 0 | 0  | 0    | .000 | 0  | 0  | 0  | 1   | 1  | 0  | 0   | 0  | 0   | 0   | 0.0 |
| <b>2010 Total</b> |                        |        |     |    | 2 | 0 | 0  | 1    | .000 | 0  | 0  | 0  | 0   | 0  | 0  | 0   | 0  | 0   | 0   | 0.0 |
| <b>Career</b>     |                        |        |     |    | 4 | 0 | 0  | 1    | .000 | 0  | 0  | 0  | 1   | 1  | 0  | 0   | 0  | 0   | 0   | 0.0 |



**#7 Mariel Schofield • Defensive Specialist • 5-5 • Sophomore • Ijamsville, Md. • Urbana HS**

|                  | 2011 Match Highs | Career Match Highs |
|------------------|------------------|--------------------|
| <b>Attempts:</b> | N/A              | 1, three times     |
| <b>Kills:</b>    | N/A              | N/A                |
| <b>Hitting:</b>  | N/A              | N/A                |
| <b>Digs:</b>     | 3, twice         | 3, three times     |
| <b>Aces:</b>     | 1, four times    | 1, four times      |
| <b>Blocks:</b>   | N/A              | N/A                |

| DATE              | OPPONENT               | RESULT | MS         | SP        | K        | E        | TA       | PCT         | A        | SA       | SE       | RE       | DIG       | BS       | BA       | TOT      | BE       | BHE      | PTS        |     |
|-------------------|------------------------|--------|------------|-----------|----------|----------|----------|-------------|----------|----------|----------|----------|-----------|----------|----------|----------|----------|----------|------------|-----|
| Aug. 26           | vs. Jacksonville State | W, 3-0 |            | 3         | 0        | 0        | 0        | .000        | 0        | 1        | 2        | 0        | 2         | 0        | 0        | 0        | 0        | 0        | 1.0        |     |
| Aug. 27           | vs. La.-Lafayette      | W, 3-0 |            | 3         | 0        | 0        | 0        | .000        | 0        | 0        | 0        | 0        | 0         | 0        | 0        | 0        | 0        | 0        | 0.0        |     |
| Aug. 27           | at LSU                 | W, 3-2 |            | 5         | 0        | 0        | 0        | .000        | 0        | 0        | 1        | 0        | 3         | 0        | 0        | 0        | 0        | 0        | 0.0        |     |
| Sept. 2           | vs. UC Santa Barbara   | W, 3-0 |            | 3         | 0        | 0        | 0        | .000        | 0        | 0        | 0        | 0        | 1         | 0        | 0        | 0        | 0        | 0        | 0.0        |     |
| Sept. 3           | vs. Georgia            | W, 3-0 |            | 3         | 0        | 0        | 0        | .000        | 0        | 0        | 0        | 0        | 0         | 0        | 0        | 0        | 0        | 0        | 0.0        |     |
| Sept. 3           | at Pepperdine          | W, 3-1 |            | 1         | 0        | 0        | 0        | .000        | 0        | 1        | 1        | 0        | 0         | 0        | 0        | 0        | 0        | 0        | 1.0        |     |
| Sept. 8           | FLORIDA A&M            | W, 3-0 |            | 2         | 0        | 0        | 0        | .000        | 0        | 0        | 0        | 0        | 1         | 0        | 0        | 0        | 0        | 0        | 0.0        |     |
| Sept. 9           | AUBURN                 | W, 3-0 | <i>DNP</i> |           |          |          |          |             |          |          |          |          |           |          |          |          |          |          |            |     |
| Sept. 10          | #18 OKLAHOMA           | W, 3-1 | <i>DNP</i> |           |          |          |          |             |          |          |          |          |           |          |          |          |          |          |            |     |
| Sept. 14          | at Florida State       | L, 0-3 | <i>DNP</i> |           |          |          |          |             |          |          |          |          |           |          |          |          |          |          |            |     |
| Sept. 23          | at Virginia Tech       | W, 3-0 | <i>DNP</i> |           |          |          |          |             |          |          |          |          |           |          |          |          |          |          |            |     |
| Sept. 25          | at Virginia            | W, 3-0 | <i>DNP</i> |           |          |          |          |             |          |          |          |          |           |          |          |          |          |          |            |     |
| Sept. 30          | WAKE FOREST            | W, 3-0 |            | 1         | 0        | 0        | 0        | .000        | 0        | 0        | 0        | 0        | 0         | 0        | 0        | 0        | 0        | 0        | 0.0        |     |
| Oct. 2            | DUKE                   | W, 3-0 |            | 3         | 0        | 0        | 0        | .000        | 0        | 0        | 1        | 0        | 3         | 0        | 0        | 0        | 0        | 0        | 0.0        |     |
| Oct. 7            | at NC State            | W, 3-2 | 3          | 0         | 0        | 0        | 0        | .000        | 0        | 0        | 0        | 0        | 2         | 0        | 0        | 0        | 0        | 0        | 0.0        |     |
| Oct. 9            | at North Carolina      | L, 2-3 | 5          | 0         | 0        | 0        | 0        | .000        | 0        | 1        | 0        | 0        | 2         | 0        | 0        | 0        | 0        | 0        | 1.0        |     |
| Oct. 14           | CLEMSON                | W, 3-0 | <i>DNP</i> |           |          |          |          |             |          |          |          |          |           |          |          |          |          |          |            |     |
| Oct. 16           | GEORGIA TECH           | L, 1-3 | 1          | 0         | 0        | 0        | 0        | .000        | 0        | 1        | 0        | 0        | 0         | 0        | 0        | 0        | 0        | 0        | 1.0        |     |
| <i>2011 Total</i> |                        |        |            | 33        | 0        | 0        | 0        | .000        | 0        | 4        | 6        | 0        | 14        | 0        | 0        | 0        | 0        | 0        | 4.0        |     |
| <i>2010 Total</i> |                        |        |            | 18        | 0        | 0        | 3        | .000        | 1        | 1        | 2        | 0        | 6         | 0        | 0        | 0        | 0        | 0        | 0          | 1.0 |
| <b>Career</b>     |                        |        |            | <b>51</b> | <b>0</b> | <b>0</b> | <b>3</b> | <b>.000</b> | <b>1</b> | <b>5</b> | <b>8</b> | <b>0</b> | <b>20</b> | <b>0</b> | <b>0</b> | <b>0</b> | <b>0</b> | <b>0</b> | <b>5.0</b> |     |





**#9 Katie Gallagher • Setter • 5-11 • Redshirt Senior • Winter Park, Fla. • Lake Highland Prep**

**Awards:** 2011 – Preseason All-ACC Team; Tiger Classic All-Tournament Team; Pepperdine Asics Classic All-Tournament Team; Hurricane Invitational All-Tournament Team

|                  | 2011 Match Highs             | Career Match Highs             |
|------------------|------------------------------|--------------------------------|
| <b>Attempts:</b> | 20, at LSU (8/27)            | Same                           |
| <b>Kills:</b>    | 8, vs. Oklahoma (9/10)       | 9, twice                       |
| <b>Assists:</b>  | 60, at North Carolina (10/9) | 62, at Virginia (9/21/07)      |
| <b>Digs:</b>     | 19, at North Carolina (10/9) | 23, at Virginia (10/24/08)     |
| <b>Aces:</b>     | 1, four times                | 11, vs. Jacksonville (8/25/07) |
| <b>Blocks:</b>   | 3, three times               | 5, four times                  |

| DATE              | OPPONENT               | RESULT | MS | SP | K   | E   | TA | PCT  | A    | SA   | SE  | RE  | DIG | BS   | BA | TOT | BE  | BHE | PTS |       |
|-------------------|------------------------|--------|----|----|-----|-----|----|------|------|------|-----|-----|-----|------|----|-----|-----|-----|-----|-------|
| Aug. 26           | vs. Jacksonville State | W, 3-0 | *  | 3  | 5   | 0   | 9  | .556 | 32   | 0    | 2   | 0   | 3   | 0    | 0  | 0   | 0   | 0   | 5.0 |       |
| Aug. 27           | vs. La.-Lafayette      | W, 3-0 | *  | 3  | 5   | 1   | 9  | .444 | 37   | 0    | 0   | 0   | 6   | 0    | 0  | 0   | 0   | 1   | 5.0 |       |
| Aug. 27           | at LSU                 | W, 3-2 | *  | 5  | 5   | 2   | 20 | .150 | 40   | 0    | 1   | 0   | 6   | 0    | 3  | 3   | 1   | 0   | 6.5 |       |
| Sept. 2           | vs. UC Santa Barbara   | W, 3-0 | *  | 3  | 5   | 0   | 10 | .500 | 30   | 0    | 2   | 0   | 9   | 0    | 0  | 0   | 0   | 0   | 5.0 |       |
| Sept. 3           | vs. Georgia            | W, 3-0 | *  | 3  | 2   | 0   | 6  | .333 | 25   | 1    | 0   | 0   | 8   | 0    | 1  | 1   | 0   | 0   | 3.5 |       |
| Sept. 3           | at Pepperdine          | W, 3-1 | *  | 4  | 6   | 1   | 13 | .385 | 51   | 0    | 0   | 0   | 14  | 0    | 2  | 2   | 0   | 0   | 7.0 |       |
| Sept. 8           | FLORIDA A&M            | W, 3-0 | *  | 3  | 2   | 1   | 5  | .200 | 30   | 0    | 1   | 0   | 4   | 0    | 0  | 0   | 0   | 0   | 2.0 |       |
| Sept. 9           | AUBURN                 | W, 3-0 | *  | 3  | 4   | 1   | 9  | .333 | 34   | 0    | 1   | 0   | 7   | 1    | 1  | 2   | 0   | 0   | 5.5 |       |
| Sept. 10          | #18 OKLAHOMA           | W, 3-1 | *  | 4  | 8   | 1   | 19 | .368 | 48   | 0    | 1   | 0   | 16  | 0    | 1  | 1   | 0   | 0   | 8.5 |       |
| Sept. 14          | at Florida State       | L, 0-3 | *  | 3  | 3   | 1   | 11 | .182 | 29   | 0    | 0   | 0   | 8   | 0    | 2  | 2   | 0   | 0   | 4.0 |       |
| Sept. 23          | at Virginia Tech       | W, 3-0 | *  | 3  | 2   | 1   | 9  | .111 | 35   | 0    | 1   | 0   | 4   | 1    | 1  | 2   | 0   | 1   | 3.5 |       |
| Sept. 25          | at Virginia            | W, 3-0 | *  | 3  | 4   | 1   | 10 | .300 | 39   | 1    | 0   | 0   | 8   | 0    | 1  | 1   | 1   | 0   | 5.5 |       |
| Sept. 30          | WAKE FOREST            | W, 3-0 | *  | 3  | 3   | 1   | 7  | .286 | 38   | 0    | 1   | 0   | 5   | 0    | 2  | 2   | 0   | 0   | 4.0 |       |
| Oct. 2            | DUKE                   | W, 3-0 | *  | 3  | 3   | 3   | 14 | .000 | 38   | 0    | 0   | 0   | 9   | 0    | 3  | 3   | 0   | 2   | 4.5 |       |
| Oct. 7            | at NC State            | W, 3-2 | *  | 5  | 4   | 1   | 11 | .273 | 51   | 1    | 0   | 0   | 7   | 0    | 3  | 3   | 0   | 0   | 6.5 |       |
| Oct. 9            | at North Carolina      | L, 2-3 | *  | 5  | 1   | 0   | 11 | .091 | 60   | 0    | 0   | 0   | 19  | 1    | 1  | 2   | 0   | 2   | 2.5 |       |
| Oct. 14           | CLEMSON                | W, 3-0 | *  | 3  | 2   | 0   | 7  | .286 | 39   | 0    | 0   | 0   | 8   | 0    | 0  | 0   | 0   | 1   | 2.0 |       |
| Oct. 16           | GEORGIA TECH           | L, 1-3 | *  | 4  | 4   | 2   | 8  | .250 | 37   | 1    | 1   | 0   | 14  | 0    | 2  | 2   | 1   | 0   | 6.0 |       |
| <b>2011 Total</b> |                        |        |    |    | 63  | 68  | 17 | 188  | .271 | 693  | 4   | 11  | 0   | 155  | 3  | 23  | 26  | 3   | 7   | 86.5  |
| <b>2010 Total</b> |                        |        |    |    | 113 | 110 | 22 | 271  | .325 | 1211 | 15  | 31  | 0   | 298  | 9  | 44  | 53  | 15  | 7   | 156.0 |
| <b>2009 Total</b> |                        |        |    |    | 29  | 28  | 3  | 70   | .357 | 299  | 3   | 8   | 0   | 57   | 0  | 22  | 22  | 3   | 2   | 42.0  |
| <b>2008 Total</b> |                        |        |    |    | 114 | 131 | 32 | 324  | .306 | 1202 | 32  | 30  | 1   | 288  | 5  | 42  | 47  | 8   | 17  | 189.0 |
| <b>2007 Total</b> |                        |        |    |    | 113 | 87  | 22 | 240  | .271 | 1243 | 67  | 67  | 2   | 287  | 6  | 27  | 33  | 14  | 37  | 173.5 |
| <b>Career</b>     |                        |        |    |    | 432 | 424 | 96 | 1093 | .300 | 4648 | 121 | 147 | 3   | 1085 | 23 | 158 | 181 | 43  | 70  | 647.0 |



**#10 Ryan Shaffer • Defensive Specialist • 5-7 • Sophomore • San Jose, Calif. • Archbishop Mitty HS**

**Awards: 2011** – Tiger Classic All-Tournament Team; Pepperdine Asics Classic Defensive MVP; Pepperdine Asics Classic All-Tournament Team

|                          | 2011 Match Highs             | Career Match Highs |
|--------------------------|------------------------------|--------------------|
| <b>Digs:</b>             | 32, at North Carolina (10/9) | 32, twice          |
| <b>Kills:</b>            | 1, at Virginia Tech (9/23)   | 1, four times      |
| <b>Assists</b>           | 3, twice                     | 3, six times       |
| <b>Aces:</b>             | 6, vs. Florida A&M (9/8)     | Same               |
| <b>20+ Digs Matches:</b> | 3                            | 12                 |
| <b>30+ Digs Matches:</b> | 2                            | 2                  |

| DATE              | OPPONENT               | RESULT | MS | SP | K   | E | TA | PCT   | A    | SA | SE | RE | DIG | BS  | BA | TOT | BE | BHE | PTS |      |
|-------------------|------------------------|--------|----|----|-----|---|----|-------|------|----|----|----|-----|-----|----|-----|----|-----|-----|------|
| Aug. 26           | vs. Jacksonville State | W, 3-0 |    | 3  | 0   | 0 | 0  | .000  | 2    | 0  | 1  | 1  | 14  | 0   | 0  | 0   | 0  | 0   | 0.0 |      |
| Aug. 27           | vs. La.-Lafayette      | W, 3-0 |    | 3  | 0   | 0 | 0  | .000  | 0    | 1  | 0  | 0  | 9   | 0   | 0  | 0   | 0  | 0   | 1.0 |      |
| Aug. 27           | at LSU                 | W, 3-2 |    | 5  | 0   | 0 | 1  | .000  | 0    | 0  | 2  | 0  | 30  | 0   | 0  | 0   | 0  | 0   | 0.0 |      |
| Sept. 2           | vs. UC Santa Barbara   | W, 3-0 |    | 3  | 0   | 0 | 1  | .000  | 0    | 1  | 1  | 0  | 12  | 0   | 0  | 0   | 0  | 0   | 1.0 |      |
| Sept. 3           | vs. Georgia            | W, 3-0 |    | 3  | 0   | 0 | 0  | .000  | 0    | 2  | 1  | 1  | 15  | 0   | 0  | 0   | 0  | 0   | 2.0 |      |
| Sept. 3           | at Pepperdine          | W, 3-1 |    | 4  | 0   | 0 | 3  | .000  | 0    | 0  | 2  | 1  | 26  | 0   | 0  | 0   | 0  | 0   | 0.0 |      |
| Sept. 8           | FLORIDA A&M            | W, 3-0 |    | 3  | 0   | 0 | 0  | .000  | 0    | 6  | 1  | 0  | 12  | 0   | 0  | 0   | 0  | 0   | 6.0 |      |
| Sept. 9           | AUBURN                 | W, 3-0 |    | 3  | 0   | 0 | 0  | .000  | 1    | 1  | 1  | 0  | 19  | 0   | 0  | 0   | 0  | 0   | 1.0 |      |
| Sept. 10          | #18 OKLAHOMA           | W, 3-1 |    | 4  | 0   | 0 | 0  | .000  | 2    | 1  | 0  | 0  | 18  | 0   | 0  | 0   | 0  | 0   | 1.0 |      |
| Sept. 14          | at Florida State       | L, 0-3 |    | 3  | 0   | 0 | 0  | .000  | 2    | 0  | 1  | 2  | 6   | 0   | 0  | 0   | 0  | 0   | 0.0 |      |
| Sept. 23          | at Virginia Tech       | W, 3-0 |    | 3  | 1   | 0 | 1  | 1.000 | 0    | 0  | 2  | 0  | 13  | 0   | 0  | 0   | 0  | 0   | 1.0 |      |
| Sept. 25          | at Virginia            | W, 3-0 |    | 3  | 0   | 0 | 0  | .000  | 2    | 0  | 0  | 0  | 10  | 0   | 0  | 0   | 0  | 0   | 0.0 |      |
| Sept. 30          | WAKE FOREST            | W, 3-0 |    | 3  | 0   | 0 | 1  | .000  | 1    | 2  | 1  | 2  | 12  | 0   | 0  | 0   | 0  | 0   | 2.0 |      |
| Oct. 2            | DUKE                   | W, 3-0 |    | 3  | 0   | 0 | 0  | .000  | 3    | 2  | 1  | 0  | 11  | 0   | 0  | 0   | 0  | 0   | 2.0 |      |
| Oct. 7            | at NC State            | W, 3-2 |    | 5  | 0   | 0 | 0  | .000  | 0    | 0  | 2  | 2  | 21  | 0   | 0  | 0   | 0  | 0   | 0.0 |      |
| Oct. 9            | at North Carolina      | L, 2-3 |    | 5  | 0   | 0 | 0  | .000  | 3    | 0  | 0  | 2  | 32  | 0   | 0  | 0   | 0  | 0   | 0.0 |      |
| Oct. 14           | CLEMSON                | W, 3-0 |    | 3  | 0   | 0 | 1  | .000  | 0    | 1  | 0  | 0  | 9   | 0   | 0  | 0   | 0  | 0   | 1.0 |      |
| Oct. 16           | GEORGIA TECH           | L, 1-3 |    | 4  | 0   | 0 | 1  | .000  | 1    | 1  | 0  | 3  | 13  | 0   | 0  | 0   | 0  | 0   | 1.0 |      |
| <b>2011 Total</b> |                        |        |    |    | 63  | 1 | 0  | 9     | .111 | 17 | 18 | 16 | 14  | 282 | 0  | 0   | 0  | 0   | 0   | 19.0 |
| <b>2010 Total</b> |                        |        |    |    | 119 | 3 | 0  | 16    | .188 | 33 | 20 | 22 | 25  | 539 | 0  | 0   | 0  | 0   | 2   | 23.0 |
| <b>Career</b>     |                        |        |    |    | 182 | 4 | 0  | 25    | .160 | 50 | 38 | 38 | 39  | 821 | 0  | 0   | 0  | 0   | 2   | 42.0 |



**#11 Blair Fuentez • Setter/Hitter • 6-0 • Freshman • Ridgewood, N.J. • Ridgewood HS**

|                  | 2011 Match Highs               | Career Match Highs |
|------------------|--------------------------------|--------------------|
| <b>Attempts:</b> | 4, at NC State (10/7)          | Same               |
| <b>Kills:</b>    | 1, twice                       | Same               |
| <b>Hitting:</b>  | .500, at North Carolina (10/9) | Same               |
| <b>Digs:</b>     | N/A                            | N/A                |
| <b>Aces:</b>     | 1, vs. Wake Forest (9/30)      | Same               |
| <b>Blocks:</b>   | N/A                            | N/A                |

| DATE                     | OPPONENT               | RESULT | MS  | SP       | K        | E        | TA       | PCT         | A        | SA       | SE       | RE       | DIG      | BS       | BA       | TOT      | BE       | BHE      | PTS        |
|--------------------------|------------------------|--------|-----|----------|----------|----------|----------|-------------|----------|----------|----------|----------|----------|----------|----------|----------|----------|----------|------------|
| Aug. 26                  | vs. Jacksonville State | W, 3-0 | DNP |          |          |          |          |             |          |          |          |          |          |          |          |          |          |          |            |
| Aug. 27                  | vs. La.-Lafayette      | W, 3-0 |     | 1        | 0        | 0        | 0        | .000        | 1        | 0        | 0        | 0        | 0        | 0        | 0        | 0        | 0        | 0        | 0.0        |
| Aug. 27                  | at LSU                 | W, 3-2 | DNP |          |          |          |          |             |          |          |          |          |          |          |          |          |          |          |            |
| Sept. 2                  | vs. UC Santa Barbara   | W, 3-0 | DNP |          |          |          |          |             |          |          |          |          |          |          |          |          |          |          |            |
| Sept. 3                  | vs. Georgia            | W, 3-0 | DNP |          |          |          |          |             |          |          |          |          |          |          |          |          |          |          |            |
| Sept. 3                  | at Pepperdine          | W, 3-1 | DNP |          |          |          |          |             |          |          |          |          |          |          |          |          |          |          |            |
| Sept. 8                  | FLORIDA A&M            | W, 3-0 | DNP |          |          |          |          |             |          |          |          |          |          |          |          |          |          |          |            |
| Sept. 9                  | AUBURN                 | W, 3-0 | DNP |          |          |          |          |             |          |          |          |          |          |          |          |          |          |          |            |
| Sept. 10                 | #18 OKLAHOMA           | W, 3-1 |     | 1        | 0        | 0        | 1        | .000        | 0        | 0        | 0        | 0        | 0        | 0        | 0        | 0        | 0        | 0        | 0.0        |
| Sept. 14                 | at Florida State       | L, 0-3 | DNP |          |          |          |          |             |          |          |          |          |          |          |          |          |          |          |            |
| Sept. 23                 | at Virginia Tech       | W, 3-0 | DNP |          |          |          |          |             |          |          |          |          |          |          |          |          |          |          |            |
| Sept. 25                 | at Virginia            | W, 3-0 | DNP |          |          |          |          |             |          |          |          |          |          |          |          |          |          |          |            |
| Sept. 30                 | WAKE FOREST            | W, 3-0 |     | 1        | 0        | 0        | 0        | .000        | 1        | 1        | 1        | 0        | 0        | 0        | 0        | 0        | 0        | 0        | 1.0        |
| Oct. 2                   | DUKE                   | W, 3-0 | DNP |          |          |          |          |             |          |          |          |          |          |          |          |          |          |          |            |
| Oct. 7                   | at NC State            | W, 3-2 |     | 1        | 1        | 2        | 4        | -.250       | 0        | 0        | 0        | 0        | 0        | 0        | 0        | 0        | 0        | 0        | 1.0        |
| Oct. 9                   | at North Carolina      | L, 2-3 |     | 1        | 1        | 0        | 2        | .500        | 1        | 0        | 0        | 0        | 0        | 0        | 0        | 0        | 0        | 0        | 1.0        |
| Oct. 14                  | CLEMSON                | W, 3-0 | DNP |          |          |          |          |             |          |          |          |          |          |          |          |          |          |          |            |
| Oct. 16                  | GEORGIA TECH           | L, 1-3 | DNP |          |          |          |          |             |          |          |          |          |          |          |          |          |          |          |            |
| <b>2011 Total/Career</b> |                        |        |     | <b>5</b> | <b>2</b> | <b>2</b> | <b>7</b> | <b>.000</b> | <b>3</b> | <b>1</b> | <b>1</b> | <b>0</b> | <b>0</b> | <b>0</b> | <b>0</b> | <b>0</b> | <b>0</b> | <b>0</b> | <b>3.0</b> |



**#12 Lizzie Hale • Defensive Specialist • 6-0 • Junior • Menlo Park, Calif. • Menlo School**

|                  | <b>2011 Match Highs</b>          | <b>Career Match Highs</b>        |
|------------------|----------------------------------|----------------------------------|
| <b>Attempts:</b> | 5, vs. Jacksonville State (8/26) | 12, at Boston College (10/16/09) |
| <b>Kills:</b>    | N/A                              | 3, at Boston College (10/16/09)  |
| <b>Hitting:</b>  | N/A                              | N/A                              |
| <b>Digs:</b>     | 13, twice                        | 18, at Boston College (10/16/09) |
| <b>Aces:</b>     | 2, four times                    | 3, twice                         |
| <b>Blocks:</b>   | 1, at North Carolina (10/9)      | 2, at Boston College (10/16/09)  |

| DATE              | OPPONENT               | RESULT | MS | SP         | K         | E         | TA        | PCT          | A         | SA        | SE        | RE        | DIG        | BS       | BA       | TOT      | BE       | BHE      | PTS         |
|-------------------|------------------------|--------|----|------------|-----------|-----------|-----------|--------------|-----------|-----------|-----------|-----------|------------|----------|----------|----------|----------|----------|-------------|
| Aug. 26           | vs. Jacksonville State | W, 3-0 |    | 3          | 0         | 0         | 5         | .000         | 2         | 1         | 1         | 3         | 6          | 0        | 0        | 0        | 0        | 0        | 1.0         |
| Aug. 27           | vs. La.-Lafayette      | W, 3-0 |    | 3          | 0         | 0         | 1         | .000         | 2         | 0         | 0         | 0         | 4          | 0        | 0        | 0        | 0        | 0        | 0.0         |
| Aug. 27           | at LSU                 | W, 3-2 | *  | 5          | 0         | 0         | 1         | .000         | 2         | 0         | 2         | 3         | 9          | 0        | 0        | 0        | 0        | 0        | 0.0         |
| Sept. 2           | vs. UC Santa Barbara   | W, 3-0 | *  | 3          | 0         | 2         | 2         | -1.000       | 3         | 2         | 0         | 0         | 13         | 0        | 0        | 0        | 0        | 0        | 2.0         |
| Sept. 3           | vs. Georgia            | W, 3-0 | *  | 3          | 0         | 0         | 3         | .000         | 2         | 0         | 0         | 0         | 6          | 0        | 0        | 0        | 0        | 0        | 0.0         |
| Sept. 3           | at Pepperdine          | W, 3-1 | *  | 4          | 0         | 0         | 0         | .000         | 1         | 0         | 2         | 0         | 4          | 0        | 0        | 0        | 0        | 0        | 0.0         |
| Sept. 8           | FLORIDA A&M            | W, 3-0 |    | 3          | 0         | 0         | 0         | .000         | 0         | 1         | 1         | 1         | 2          | 0        | 0        | 0        | 0        | 0        | 1.0         |
| Sept. 9           | AUBURN                 | W, 3-0 |    | 3          | 0         | 0         | 0         | .000         | 0         | 0         | 0         | 0         | 4          | 0        | 0        | 0        | 0        | 0        | 0.0         |
| Sept. 10          | #18 OKLAHOMA           | W, 3-1 |    | 4          | 0         | 0         | 0         | .000         | 0         | 2         | 1         | 0         | 2          | 0        | 0        | 0        | 0        | 0        | 2.0         |
| Sept. 14          | at Florida State       | L, 0-3 |    | 3          | 0         | 0         | 0         | .000         | 0         | 0         | 1         | 0         | 1          | 0        | 0        | 0        | 0        | 0        | 0.0         |
| Sept. 23          | at Virginia Tech       | W, 3-0 |    | 3          | 0         | 0         | 1         | .000         | 0         | 0         | 0         | 0         | 2          | 0        | 0        | 0        | 0        | 0        | 0.0         |
| Sept. 25          | at Virginia            | W, 3-0 |    | 3          | 0         | 0         | 0         | .000         | 0         | 2         | 0         | 0         | 0          | 0        | 0        | 0        | 0        | 0        | 0.0         |
| Sept. 30          | WAKE FOREST            | W, 3-0 |    | 3          | 0         | 0         | 0         | .000         | 0         | 2         | 0         | 0         | 0          | 0        | 0        | 0        | 0        | 0        | 2.0         |
| Oct. 2            | DUKE                   | W, 3-0 |    | 3          | 0         | 0         | 0         | .000         | 0         | 1         | 0         | 0         | 1          | 0        | 0        | 0        | 0        | 0        | 1.0         |
| Oct. 7            | at NC State            | W, 3-2 |    | 3          | 0         | 0         | 0         | .000         | 1         | 0         | 1         | 0         | 0          | 0        | 0        | 0        | 0        | 0        | 0.0         |
| Oct. 9            | at North Carolina      | L, 2-3 |    | 5          | 0         | 0         | 1         | .000         | 2         | 0         | 0         | 1         | 13         | 0        | 1        | 1        | 0        | 0        | 0.5         |
| Oct. 14           | CLEMSON                | W, 3-0 |    | 3          | 0         | 0         | 0         | .000         | 0         | 0         | 1         | 0         | 3          | 0        | 0        | 0        | 0        | 0        | 0.0         |
| Oct. 16           | GEORGIA TECH           | L, 1-3 |    | 4          | 0         | 0         | 0         | .000         | 0         | 0         | 0         | 1         | 1          | 0        | 0        | 0        | 0        | 0        | 0.0         |
| <b>2011 Total</b> |                        |        |    | <b>58</b>  | <b>0</b>  | <b>2</b>  | <b>14</b> | <b>-.143</b> | <b>15</b> | <b>9</b>  | <b>10</b> | <b>9</b>  | <b>71</b>  | <b>0</b> | <b>1</b> | <b>1</b> | <b>0</b> | <b>0</b> | <b>9.5</b>  |
| <b>2010 Total</b> |                        |        |    | <b>107</b> | <b>3</b>  | <b>6</b>  | <b>31</b> | <b>-.097</b> | <b>17</b> | <b>10</b> | <b>11</b> | <b>6</b>  | <b>92</b>  | <b>0</b> | <b>0</b> | <b>0</b> | <b>0</b> | <b>0</b> | <b>13.0</b> |
| <b>2009 Total</b> |                        |        |    | <b>96</b>  | <b>7</b>  | <b>4</b>  | <b>29</b> | <b>.103</b>  | <b>13</b> | <b>18</b> | <b>12</b> | <b>10</b> | <b>119</b> | <b>0</b> | <b>4</b> | <b>4</b> | <b>0</b> | <b>0</b> | <b>27.0</b> |
| <b>Career</b>     |                        |        |    | <b>261</b> | <b>10</b> | <b>12</b> | <b>74</b> | <b>-.027</b> | <b>45</b> | <b>37</b> | <b>33</b> | <b>25</b> | <b>282</b> | <b>0</b> | <b>5</b> | <b>5</b> | <b>0</b> | <b>0</b> | <b>49.5</b> |





**#16 Emani Sims • Middle Blocker • 5-11 • Redshirt Freshman • Glenview, Ill. • Glenbrook South HS**

|                  | <b>2011 Match Highs</b>             | <b>Career Match Highs</b> |
|------------------|-------------------------------------|---------------------------|
| <b>Attempts:</b> | 18, at NC State (10/7)              | Same                      |
| <b>Kills:</b>    | 7, three times                      | Same                      |
| <b>Hitting:</b>  | .545, vs. Jacksonville State (8/26) | Same                      |
| <b>Digs:</b>     | 2, three times                      | Same                      |
| <b>Aces:</b>     | N/A                                 | N/A                       |
| <b>Blocks:</b>   | 9, at LSU (8/27)                    | Same                      |

| DATE                     | OPPONENT               | RESULT | MS | SP | K         | E         | TA        | PCT        | A           | SA       | SE       | RE       | DIG      | BS        | BA       | TOT       | BE        | BHE      | PTS      |              |
|--------------------------|------------------------|--------|----|----|-----------|-----------|-----------|------------|-------------|----------|----------|----------|----------|-----------|----------|-----------|-----------|----------|----------|--------------|
| Aug. 26                  | vs. Jacksonville State | W, 3-0 | *  | 3  | 7         | 1         | 11        | .545       | 0           | 0        | 0        | 0        | 0        | 0         | 2        | 2         | 0         | 0        | 8.0      |              |
| Aug. 27                  | vs. La.-Lafayette      | W, 3-0 | *  | 3  | 7         | 1         | 12        | .500       | 0           | 0        | 0        | 0        | 2        | 0         | 2        | 2         | 1         | 0        | 8.0      |              |
| Aug. 27                  | at LSU                 | W, 3-2 | *  | 5  | 3         | 1         | 7         | .286       | 0           | 0        | 0        | 0        | 1        | 3         | 6        | 9         | 0         | 0        | 9.0      |              |
| Sept. 2                  | vs. UC Santa Barbara   | W, 3-0 | *  | 3  | 7         | 2         | 15        | .333       | 0           | 0        | 0        | 0        | 0        | 0         | 1        | 1         | 1         | 0        | 7.5      |              |
| Sept. 3                  | vs. Georgia            | W, 3-0 | *  | 3  | 4         | 2         | 16        | .125       | 1           | 0        | 0        | 0        | 0        | 0         | 4        | 4         | 1         | 0        | 6.0      |              |
| Sept. 3                  | at Pepperdine          | W, 3-1 | *  | 4  | 4         | 3         | 15        | .067       | 0           | 0        | 0        | 0        | 2        | 1         | 3        | 4         | 0         | 1        | 6.5      |              |
| Sept. 8                  | FLORIDA A&M            | W, 3-0 | *  | 3  | 7         | 0         | 12        | .583       | 0           | 0        | 0        | 0        | 1        | 0         | 4        | 4         | 0         | 0        | 9.0      |              |
| Sept. 9                  | AUBURN                 | W, 3-0 | *  | 3  | 4         | 1         | 10        | .300       | 0           | 0        | 0        | 0        | 1        | 0         | 1        | 1         | 0         | 0        | 4.5      |              |
| Sept. 10                 | #18 OKLAHOMA           | W, 3-1 | *  | 4  | 6         | 2         | 17        | .235       | 0           | 0        | 0        | 0        | 0        | 0         | 4        | 4         | 0         | 1        | 8.0      |              |
| Sept. 14                 | at Florida State       | L, 0-3 | *  | 3  | 5         | 0         | 13        | .385       | 1           | 0        | 0        | 0        | 0        | 0         | 4        | 4         | 0         | 0        | 7.0      |              |
| Sept. 23                 | at Virginia Tech       | W, 3-0 | *  | 3  | 5         | 1         | 12        | .333       | 0           | 0        | 0        | 0        | 1        | 0         | 4        | 4         | 0         | 0        | 7.0      |              |
| Sept. 25                 | at Virginia            | W, 3-0 | *  | 3  | 5         | 1         | 10        | .400       | 0           | 0        | 0        | 0        | 0        | 1         | 0        | 1         | 0         | 0        | 6.0      |              |
| Sept. 30                 | WAKE FOREST            | W, 3-0 | *  | 3  | 3         | 4         | 10        | -.100      | 0           | 0        | 0        | 0        | 2        | 0         | 1        | 1         | 0         | 0        | 3.5      |              |
| Oct. 2                   | DUKE                   | W, 3-0 | *  | 3  | 3         | 2         | 13        | .077       | 0           | 0        | 0        | 0        | 0        | 1         | 3        | 4         | 1         | 0        | 5.5      |              |
| Oct. 7                   | at NC State            | W, 3-2 | *  | 4  | 6         | 3         | 18        | .167       | 0           | 0        | 1        | 0        | 1        | 1         | 2        | 3         | 1         | 0        | 8.0      |              |
| Oct. 9                   | at North Carolina      | L, 2-3 | *  | 1  | 1         | 0         | 3         | .333       | 0           | 0        | 0        | 0        | 0        | 0         | 0        | 0         | 0         | 0        | 1.0      |              |
| Oct. 14                  | CLEMSON                | W, 3-0 | *  | 3  | 8         | 0         | 13        | .615       | 0           | 0        | 0        | 0        | 0        | 0         | 2        | 2         | 0         | 0        | 9.0      |              |
| Oct. 16                  | GEORGIA TECH           | L, 1-3 | *  | 4  | 6         | 1         | 15        | .333       | 0           | 0        | 0        | 0        | 0        | 0         | 3        | 3         | 1         | 0        | 7.5      |              |
| <b>2011 Total/Career</b> |                        |        |    |    | <b>58</b> | <b>91</b> | <b>25</b> | <b>222</b> | <b>.297</b> | <b>2</b> | <b>0</b> | <b>1</b> | <b>0</b> | <b>11</b> | <b>7</b> | <b>46</b> | <b>53</b> | <b>6</b> | <b>2</b> | <b>121.0</b> |



**#17 Christine Williamson • Outside Hitter • 5-11 • Redshirt Senior • Tampa, Fla. • Plant HS**

|                  | <b>2011 Match Highs</b>  | <b>Career Match Highs</b>   |
|------------------|--------------------------|-----------------------------|
| <b>Attempts:</b> | 53, at LSU (8/27)        | Same                        |
| <b>Kills:</b>    | 17, at LSU (8/27)        | 19, three times             |
| <b>Hitting:</b>  | .692, vs. Georgia (9/2)  | Same                        |
| <b>Digs:</b>     | 11, at LSU (8/27)        | Same                        |
| <b>Aces:</b>     | N/A                      | 1, vs. Duke (11/8/09)       |
| <b>Blocks:</b>   | 4, vs. Florida A&M (9/8) | 7, at Wake Forest (10/8/09) |

| DATE              | OPPONENT               | RESULT | MS | SP | K          | E          | TA         | PCT         | A           | SA        | SE       | RE       | DIG       | BS         | BA        | TOT        | BE         | BHE       | PTS      |              |
|-------------------|------------------------|--------|----|----|------------|------------|------------|-------------|-------------|-----------|----------|----------|-----------|------------|-----------|------------|------------|-----------|----------|--------------|
| Aug. 26           | vs. Jacksonville State | W, 3-0 | *  | 3  | 8          | 1          | 16         | .438        | 0           | 0         | 0        | 0        | 0         | 0          | 1         | 1          | 1          | 0         | 8.5      |              |
| Aug. 27           | vs. La.-Lafayette      | W, 3-0 | *  | 3  | 6          | 2          | 22         | .182        | 0           | 0         | 0        | 0        | 3         | 0          | 1         | 1          | 1          | 0         | 6.5      |              |
| Aug. 27           | at LSU                 | W, 3-2 |    | 5  | 17         | 10         | 53         | .132        | 1           | 0         | 0        | 0        | 11        | 0          | 2         | 2          | 0          | 0         | 18.0     |              |
| Sept. 2           | vs. UC Santa Barbara   | W, 3-0 |    | 3  | 7          | 4          | 21         | .143        | 1           | 0         | 0        | 0        | 3         | 0          | 1         | 1          | 0          | 0         | 7.5      |              |
| Sept. 3           | vs. Georgia            | W, 3-0 |    | 3  | 10         | 1          | 13         | .692        | 0           | 0         | 0        | 0        | 3         | 0          | 2         | 2          | 0          | 0         | 11.0     |              |
| Sept. 3           | at Pepperdine          | W, 3-1 |    | 4  | 9          | 2          | 31         | .226        | 0           | 0         | 1        | 0        | 4         | 1          | 1         | 2          | 0          | 0         | 10.5     |              |
| Sept. 8           | FLORIDA A&M            | W, 3-0 | *  | 3  | 6          | 1          | 14         | .357        | 0           | 0         | 0        | 0        | 2         | 0          | 4         | 4          | 0          | 0         | 8.0      |              |
| Sept. 9           | AUBURN                 | W, 3-0 | *  | 3  | 4          | 2          | 17         | .118        | 0           | 0         | 0        | 0        | 1         | 0          | 0         | 0          | 0          | 0         | 4.0      |              |
| Sept. 10          | #18 OKLAHOMA           | W, 3-1 | *  | 4  | 5          | 2          | 22         | .136        | 0           | 0         | 0        | 0        | 2         | 0          | 2         | 2          | 1          | 0         | 6.0      |              |
| Sept. 14          | at Florida State       | L, 0-3 | *  | 3  | 2          | 3          | 16         | -.062       | 0           | 0         | 0        | 0        | 0         | 0          | 0         | 0          | 0          | 0         | 2.0      |              |
| Sept. 23          | at Virginia Tech       | W, 3-0 | *  | 3  | 4          | 1          | 16         | .188        | 0           | 0         | 0        | 0        | 1         | 0          | 3         | 3          | 0          | 0         | 5.5      |              |
| Sept. 25          | at Virginia            | W, 3-0 | *  | 3  | 9          | 0          | 19         | .474        | 0           | 0         | 0        | 0        | 2         | 0          | 0         | 0          | 0          | 0         | 9.0      |              |
| Sept. 30          | WAKE FOREST            | W, 3-0 | *  | 3  | 6          | 3          | 13         | .231        | 0           | 0         | 0        | 0        | 2         | 0          | 1         | 1          | 1          | 0         | 6.5      |              |
| Oct. 2            | DUKE                   | W, 3-0 | *  | 3  | 8          | 6          | 28         | .071        | 0           | 0         | 0        | 0        | 2         | 0          | 3         | 3          | 0          | 0         | 9.5      |              |
| Oct. 7            | at NC State            | W, 3-2 | *  | 5  | 10         | 5          | 29         | .172        | 0           | 0         | 0        | 0        | 4         | 0          | 1         | 1          | 0          | 0         | 10.5     |              |
| Oct. 9            | at North Carolina      | L, 2-3 |    | 3  | 7          | 5          | 25         | .080        | 0           | 0         | 0        | 0        | 3         | 1          | 0         | 1          | 1          | 0         | 8.0      |              |
| Oct. 14           | CLEMSON                | W, 3-1 |    | 3  | 8          | 2          | 19         | .316        | 0           | 0         | 0        | 1        | 1         | 0          | 2         | 2          | 0          | 0         | 9.0      |              |
| Oct. 16           | GEORGIA TECH           | L, 1-3 |    | 4  | 7          | 2          | 19         | .263        | 0           | 0         | 0        | 1        | 3         | 1          | 2         | 3          | 2          | 0         | 9.0      |              |
| <b>2011 Total</b> |                        |        |    |    | <b>61</b>  | <b>133</b> | <b>52</b>  | <b>393</b>  | <b>.206</b> | <b>2</b>  | <b>0</b> | <b>1</b> | <b>2</b>  | <b>47</b>  | <b>3</b>  | <b>26</b>  | <b>29</b>  | <b>7</b>  | <b>0</b> | <b>149.0</b> |
| <b>2010 Total</b> |                        |        |    |    | <b>122</b> | <b>338</b> | <b>113</b> | <b>847</b>  | <b>.266</b> | <b>13</b> | <b>0</b> | <b>2</b> | <b>5</b>  | <b>61</b>  | <b>8</b>  | <b>42</b>  | <b>50</b>  | <b>15</b> | <b>3</b> | <b>367.0</b> |
| <b>2009 Total</b> |                        |        |    |    | <b>95</b>  | <b>220</b> | <b>94</b>  | <b>560</b>  | <b>.225</b> | <b>9</b>  | <b>1</b> | <b>5</b> | <b>8</b>  | <b>40</b>  | <b>8</b>  | <b>30</b>  | <b>38</b>  | <b>8</b>  | <b>1</b> | <b>244.0</b> |
| <b>2008 Total</b> |                        |        |    |    | <b>26</b>  | <b>30</b>  | <b>12</b>  | <b>76</b>   | <b>.237</b> | <b>1</b>  | <b>0</b> | <b>0</b> | <b>0</b>  | <b>7</b>   | <b>0</b>  | <b>10</b>  | <b>10</b>  | <b>0</b>  | <b>0</b> | <b>35.0</b>  |
| <b>Career</b>     |                        |        |    |    | <b>304</b> | <b>721</b> | <b>271</b> | <b>1876</b> | <b>.240</b> | <b>25</b> | <b>1</b> | <b>8</b> | <b>15</b> | <b>155</b> | <b>19</b> | <b>108</b> | <b>127</b> | <b>30</b> | <b>4</b> | <b>795.0</b> |



**#21 Ali Becker • Middle Blocker • 6-1 • Senior • Katy, Texas • Cinco Ranch HS**

|                  | 2011 Match Highs             | Career Match Highs               |
|------------------|------------------------------|----------------------------------|
| <b>Attempts:</b> | 42, at North Carolina (10/9) | Same                             |
| <b>Kills:</b>    | 22, at North Carolina (10/9) | Same                             |
| <b>Hitting:</b>  | .556, vs. Wake Forest (9/30) | .611, vs. Georgia Tech (10/8/10) |
| <b>Digs:</b>     | 6, at North Carolina (10/9)  | Same                             |
| <b>Aces:</b>     | N/A                          | 2, twice                         |
| <b>Blocks:</b>   | 8, at NC State (10/7)        | 10, at Wake Forest (10/8/09)     |

| DATE              | OPPONENT               | RESULT | MS | SP | K          | E          | TA         | PCT         | A           | SA        | SE       | RE        | DIG      | BS         | BA        | TOT        | BE         | BHE       | PTS      |              |
|-------------------|------------------------|--------|----|----|------------|------------|------------|-------------|-------------|-----------|----------|-----------|----------|------------|-----------|------------|------------|-----------|----------|--------------|
| Aug. 26           | vs. Jacksonville State | W, 3-0 | *  | 3  | 5          | 0          | 13         | .385        | 0           | 0         | 0        | 0         | 2        | 0          | 3         | 3          | 0          | 0         | 6.5      |              |
| Aug. 27           | vs. La.-Lafayette      | W, 3-0 | *  | 3  | 8          | 0          | 14         | .571        | 0           | 0         | 0        | 0         | 2        | 0          | 1         | 1          | 0          | 0         | 8.5      |              |
| Aug. 27           | at LSU                 | W, 3-2 | *  | 5  | 5          | 4          | 30         | .033        | 0           | 0         | 0        | 0         | 3        | 0          | 4         | 4          | 2          | 0         | 7.0      |              |
| Sept. 2           | vs. UC Santa Barbara   | W, 3-0 | *  | 3  | 8          | 2          | 16         | .375        | 0           | 0         | 0        | 0         | 0        | 2          | 4         | 6          | 0          | 1         | 12.0     |              |
| Sept. 3           | vs. Georgia            | W, 3-0 | *  | 3  | 7          | 1          | 15         | .400        | 0           | 0         | 0        | 0         | 3        | 0          | 2         | 2          | 0          | 0         | 8.0      |              |
| Sept. 3           | at Pepperdine          | W, 3-1 | *  | 4  | 8          | 3          | 25         | .200        | 0           | 0         | 0        | 0         | 1        | 1          | 5         | 6          | 0          | 0         | 11.5     |              |
| Sept. 8           | FLORIDA A&M            | W, 3-0 | *  | 3  | 10         | 2          | 16         | .500        | 0           | 0         | 2        | 0         | 1        | 1          | 3         | 4          | 0          | 0         | 12.5     |              |
| Sept. 9           | AUBURN                 | W, 3-0 | *  | 3  | 9          | 3          | 25         | .240        | 0           | 0         | 0        | 0         | 0        | 0          | 2         | 2          | 0          | 0         | 10.0     |              |
| Sept. 10          | #18 OKLAHOMA           | W, 3-1 | *  | 4  | 9          | 0          | 17         | .529        | 0           | 0         | 0        | 0         | 3        | 0          | 3         | 3          | 0          | 0         | 10.5     |              |
| Sept. 14          | at Florida State       | L, 0-3 | *  | 3  | 12         | 1          | 25         | .440        | 0           | 0         | 0        | 0         | 2        | 0          | 0         | 0          | 0          | 0         | 12.0     |              |
| Sept. 23          | at Virginia Tech       | W, 3-0 | *  | 3  | 13         | 2          | 27         | .407        | 0           | 0         | 0        | 0         | 0        | 1          | 3         | 4          | 0          | 0         | 15.5     |              |
| Sept. 25          | at Virginia            | W, 3-0 | *  | 3  | 10         | 2          | 17         | .471        | 0           | 0         | 0        | 0         | 2        | 0          | 2         | 2          | 0          | 0         | 11.0     |              |
| Sept. 30          | WAKE FOREST            | W, 3-0 | *  | 3  | 10         | 0          | 18         | .556        | 0           | 0         | 0        | 0         | 3        | 2          | 2         | 4          | 0          | 0         | 13.0     |              |
| Oct. 2            | DUKE                   | W, 3-0 | *  | 3  | 12         | 3          | 22         | .409        | 0           | 0         | 0        | 0         | 0        | 0          | 5         | 5          | 1          | 0         | 14.5     |              |
| Oct. 7            | at NC State            | W, 3-2 | *  | 5  | 13         | 3          | 32         | .312        | 0           | 0         | 0        | 0         | 1        | 1          | 7         | 8          | 1          | 0         | 17.5     |              |
| Oct. 9            | at North Carolina      | L, 2-3 | *  | 5  | 22         | 2          | 42         | .476        | 2           | 0         | 0        | 0         | 6        | 1          | 1         | 2          | 0          | 1         | 23.5     |              |
| Oct. 14           | CLEMSON                | W, 3-0 | *  | 3  | 10         | 2          | 18         | .444        | 0           | 0         | 0        | 0         | 1        | 1          | 2         | 3          | 0          | 0         | 12.0     |              |
| Oct. 16           | GEORGIA TECH           | L, 1-3 | *  | 4  | 8          | 2          | 15         | .400        | 0           | 0         | 0        | 0         | 0        | 2          | 2         | 4          | 1          | 0         | 11.0     |              |
| <b>2011 Total</b> |                        |        |    |    | <b>63</b>  | <b>179</b> | <b>32</b>  | <b>387</b>  | <b>.380</b> | <b>2</b>  | <b>0</b> | <b>2</b>  | <b>0</b> | <b>30</b>  | <b>12</b> | <b>51</b>  | <b>63</b>  | <b>5</b>  | <b>2</b> | <b>216.5</b> |
| <b>2010 Total</b> |                        |        |    |    | <b>111</b> | <b>228</b> | <b>59</b>  | <b>509</b>  | <b>.332</b> | <b>12</b> | <b>0</b> | <b>1</b>  | <b>0</b> | <b>33</b>  | <b>8</b>  | <b>88</b>  | <b>96</b>  | <b>8</b>  | <b>3</b> | <b>280.0</b> |
| <b>2009 Total</b> |                        |        |    |    | <b>112</b> | <b>222</b> | <b>69</b>  | <b>519</b>  | <b>.295</b> | <b>5</b>  | <b>6</b> | <b>24</b> | <b>1</b> | <b>48</b>  | <b>10</b> | <b>81</b>  | <b>91</b>  | <b>7</b>  | <b>0</b> | <b>278.5</b> |
| <b>2008 Total</b> |                        |        |    |    | <b>55</b>  | <b>64</b>  | <b>23</b>  | <b>154</b>  | <b>.266</b> | <b>2</b>  | <b>1</b> | <b>4</b>  | <b>1</b> | <b>9</b>   | <b>3</b>  | <b>27</b>  | <b>30</b>  | <b>5</b>  | <b>0</b> | <b>81.5</b>  |
| <b>Career</b>     |                        |        |    |    | <b>341</b> | <b>693</b> | <b>183</b> | <b>1569</b> | <b>.325</b> | <b>21</b> | <b>7</b> | <b>31</b> | <b>2</b> | <b>120</b> | <b>33</b> | <b>247</b> | <b>280</b> | <b>25</b> | <b>5</b> | <b>856.5</b> |



**#23 Nrihya Sundararaman • Setter/Hitter • 5-10 • Junior • Naperville, Ill. • Naperville HS**

|                  | <b>2011 Match Highs</b>     | <b>Career Match Highs</b>           |
|------------------|-----------------------------|-------------------------------------|
| <b>Attempts:</b> | 3, vs. Florida A&M (9/8)    | 14, vs. North Dakota State (9/5/09) |
| <b>Kills:</b>    | N/A                         | 8, twice                            |
| <b>Assists:</b>  | 5, vs. Florida A&M (9/8)    | 63, vs. UT-Arlington (8/27/10)      |
| <b>Digs:</b>     | 1, vs. La.-Lafayette (8/27) | 16, at Virginia (11/1/09)           |
| <b>Aces:</b>     | N/A                         | 3, vs. UT-Arlington (8/27/10)       |
| <b>Blocks:</b>   | N/A                         | 3, twice                            |

| DATE              | OPPONENT               | RESULT | MS  | SP  | K   | E  | TA  | PCT   | A    | SA | SE | RE | DIG | BS | BA | TOT | BE | BHE | PTS   |
|-------------------|------------------------|--------|-----|-----|-----|----|-----|-------|------|----|----|----|-----|----|----|-----|----|-----|-------|
| Aug. 26           | vs. Jacksonville State | W, 3-0 | DNP |     |     |    |     |       |      |    |    |    |     |    |    |     |    |     |       |
| Aug. 27           | vs. La.-Lafayette      | W, 3-0 |     | 1   | 0   | 0  | 1   | .000  | 2    | 0  | 1  | 0  | 1   | 0  | 0  | 0   | 0  | 1   | 0.0   |
| Aug. 27           | at LSU                 | W, 3-2 |     | 2   | 0   | 0  | 0   | .000  | 2    | 0  | 0  | 0  | 0   | 0  | 0  | 0   | 1  | 0   | 0.0   |
| Sept. 2           | vs. UC Santa Barbara   | W, 3-0 | DNP |     |     |    |     |       |      |    |    |    |     |    |    |     |    |     |       |
| Sept. 3           | vs. Georgia            | W, 3-0 |     | 2   | 0   | 0  | 0   | .000  | 3    | 0  | 0  | 0  | 0   | 0  | 0  | 0   | 1  | 0   | 0.0   |
| Sept. 3           | at Pepperdine          | W, 3-1 |     | 1   | 0   | 0  | 0   | .000  | 0    | 0  | 0  | 0  | 0   | 0  | 0  | 0   | 0  | 0   | 0.0   |
| Sept. 8           | FLORIDA A&M            | W, 3-0 |     | 2   | 0   | 1  | 3   | -.333 | 5    | 0  | 1  | 0  | 0   | 0  | 0  | 0   | 0  | 0   | 0.0   |
| Sept. 9           | AUBURN                 | W, 3-0 | DNP |     |     |    |     |       |      |    |    |    |     |    |    |     |    |     |       |
| Sept. 10          | #18 OKLAHOMA           | W, 3-1 | DNP |     |     |    |     |       |      |    |    |    |     |    |    |     |    |     |       |
| Sept. 14          | at Florida State       | L, 0-3 |     | 1   | 0   | 0  | 1   | .000  | 0    | 0  | 0  | 0  | 0   | 0  | 0  | 0   | 0  | 0   | 0.0   |
| Sept. 23          | at Virginia Tech       | W, 3-0 | DNP |     |     |    |     |       |      |    |    |    |     |    |    |     |    |     |       |
| Sept. 25          | at Virginia            | W, 3-0 | DNP |     |     |    |     |       |      |    |    |    |     |    |    |     |    |     |       |
| Sept. 30          | WAKE FOREST            | W, 3-0 | DNP |     |     |    |     |       |      |    |    |    |     |    |    |     |    |     |       |
| Oct. 2            | DUKE                   | W, 3-0 | DNP |     |     |    |     |       |      |    |    |    |     |    |    |     |    |     |       |
| Oct. 7            | at NC State            | W, 3-2 | DNP |     |     |    |     |       |      |    |    |    |     |    |    |     |    |     |       |
| Oct. 9            | at North Carolina      | L, 2-3 | DNP |     |     |    |     |       |      |    |    |    |     |    |    |     |    |     |       |
| Oct. 14           | CLEMSON                | W, 3-0 | DNP |     |     |    |     |       |      |    |    |    |     |    |    |     |    |     |       |
| Oct. 16           | GEORGIA TECH           | L, 1-3 | DNP |     |     |    |     |       |      |    |    |    |     |    |    |     |    |     |       |
| <b>2011 Total</b> |                        |        |     | 9   | 0   | 1  | 5   | -.200 | 12   | 0  | 2  | 0  | 1   | 0  | 0  | 0   | 2  | 1   | 0.0   |
| <b>2010 Total</b> |                        |        |     | 45  | 13  | 9  | 50  | .080  | 158  | 3  | 3  | 0  | 26  | 0  | 10 | 10  | 2  | 0   | 21.0  |
| <b>2009 Total</b> |                        |        |     | 116 | 94  | 36 | 258 | .225  | 934  | 9  | 20 | 1  | 147 | 5  | 55 | 60  | 9  | 17  | 135.5 |
| <b>Career</b>     |                        |        |     | 170 | 107 | 46 | 313 | .195  | 1104 | 12 | 25 | 1  | 174 | 5  | 65 | 70  | 13 | 18  | 156.5 |