



WAKE FOREST BASKETBALL

GAME NOTES



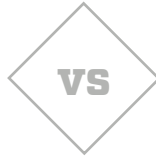
DECEMBER 29, 2019 | 2:00 P.M. | WATSCO CENTER (7972) | CORAL GABLES, FL | ACC NETWORK
GAME 12

Head Coach: Jen Hoover
Season: 8th
Alma Mater: Wake Forest, '91
2019-20 Home Record: 4-2
2019-20 Away Record: 1-2
2019-20 Neutral Record: 2-0
Record at WF: 105-128
Head Coaching Record: 125-131
Rank: --
Points Scored (gm): 73.2
Points Allowed (gm): 61.9



WAKE FOREST DEMON DEACONS

Record: 7-4 | ACC: 0-0



MIAMI HURRICANES

Record: 8-3 | ACC: 0-0

Head Coach: Katie Meier
Season: 15th
Alma Mater: Duke '90
2019-20 Home Record: 7-2
2019-20 Away Record: 0-1
2019-20 Neutral Record: 1-0
Record at Miami (FL): 285-175
Head Coaching Record: 361-220
Rank: RV
Points Scored (gm): 72.0
Points Allowed (gm): 64.5

BY THE NUMBERS

WF	Stat Comparison	Miami (FL)
7-4	Record	8-3
0-0	Conf. Record	0-0
73.2	Scoring Offense	72.0
61.9	Scoring Defense	64.5
46.0	FG Pct.	42.6
34.5	3-Pt. FG Pct.	31.8
4.5	3-Pt./Game	6.3
70.8	FT Pct.	67.4
44.5	Rebounds	43.1
+14.6	Reb. Margin	+9.3
15.0	Assists	13.8
16.5	Turnovers	17.8
-1.5	Turnover Margin	-4.0
6.3	Steals	8.8
3.2	Blocks	4.0

SERIES HISTORY

Overall	Miami leads, 12-9
at Wake Forest	Miami leads, 5-3
at Miami	Miami leads, 5-3
Neutral	Wake Forest leads, 3-2
Jen Hoover vs. Miami	2-7
Last WF Win	Jan. 7, 2018
Last Miami Win	Jan. 6, 2019
Last WF win at Miami	Jan. 7, 2018
Last Miami win at WF	Jan. 6, 2019
Current Streak	Miami, 2
Longest WF Win Streak	4 (2008-2010)
Longest Miami Win Streak	3 (2013-2014)
Largest WF Win	15 (2 times)
Largest Miami Win	31 (1/4/14, 53-84)

PREVIOUS MATCHUPS

Date	W/L	Site	Score
2019	L	H	72-57
2018	L	N	68-60
2018	W	A	61-50
2017	L	H	79-56
2016	L	A	71-60
2015	W	H	60-59
2014	L	A	72-64
2014	L	H	84-53

WAKE FOREST VS. MIAMI (FL)

WAKE FOREST STORYLINES

- Wake Forest will participate in their first conference game of the season when the Demon Deacons travel to the Watsco Center in Coral Gables, Fla. to take on the Miami Hurricanes on Dec. 29 on Sunday afternoon at 2:00 p.m.
- The Deacons are 7-4 to start ACC play and will play a 8-3 Hurricanes team that has posted wins over Jackson State, North Florida, IUPUI, NC A&T, Miami (OH), Binghamton, UNC-Asheville, and Washington State.

LAST TIME OUT

- Sparked by a 16-0 run in the third quarter it helped Wake Forest take a 59-51 lead with 3:29 left in the quarter. From that point, the Demon Deacons led the rest of the way to capture its third consecutive victory.
- Gina Conti helped seal the victory when she stole the ball with 1:28 left in the game. She raced down to the other end for a layup to make it 71-66 with less than 90 seconds remaining in the game.

OPPONENT INFORMATION & SERIES HISTORY

- Miami leads the series 12-9.
- Miami leads the series 5-3 in games played at Wake Forest.
- Miami leads the series 5-3 in games played at Miami.
- On a neutral court, Wake leads the series 3-2.
- This year will mark the 22nd (Dec. 29) and 23rd (Feb. 27) meetings between the two teams, respectively.
- Wake lost the first ever matchup between the schools, 65-81 on a neutral court on Jan. 10, 1983.
- Wake started off the series winning six of the first nine matchups but have since lost nine of the last 12.
- Wake's longest winning streak in the series is four, starting at home on Feb. 24, 2008 with a 50-45 win at home and ending with a 46-74 loss at Miami on Feb. 21, 2011.
- Wake is looking to beat the Hurricanes at home for the first time since Feb. 26, 2015.
- Wake lost the last matchup, 57-72 at home on Jan. 6, 2019.

DEACON NOTES

- Wake Forest is first in the ACC in rebounding margin at +14.55 and the only team in the league to rank in the top three in both offense and defensive rebound per game.
- Ivana Raca is eighth in the league in scoring at 15.73 PPG.
- Alex Sharp is sixth in the league in rebounding at 9.00 RPG.
- Gina Conti is fifth in the league in assists at 5.00 RPG.

PROJECTED WAKE FOREST LINEUP

No.	Name	Pos.	Yr.	Ht.	PPG	RPG	APG	MPG
14	Alex Sharp	G	Sr.	6-1	13.3	9.0	2.5	29.9
5	Gina Conti	G	Jr.	5-10	10.8	3.0	5.0	30.7
11	Ivana Raca	F	Jr.	6-2	15.7	6.4	1.2	33.7
44	Ona Udoh	F	Sr.	6-1	7.8	5.4	0.6	19.1
32	Alexandria Scruggs	G	Fr.	5-10	6.8	3.5	1.1	20.4

Off the Bench...								
No.	Name	Pos.	Yr.	Ht.	PPG	RPG	APG	MPG
0	Maya Banks	F	Jr.	6-4	2.3	1.8	0.3	6.3
2	Kaia Harrison	G	Fr.	5-7	3.4	1.9	1.9	19.7
21	Raegyn Branch	F	Sr.	6-2	2.3	1.2	0.4	8.4
23	Christina Morra	F	So.	6-2	7.2	3.8	0.1	12.8

SCHEDULE & RESULTS

NOVEMBER

5	UNC WILMINGTON	W, 65-55
8	C OF CHARLESTON	W, 106-50
10	UNCG	L, 67-65
15	UNC CHARLOTTE	L, 77-65
22	at St. John's	L, 84-72
25	at Elon	W, 69-57
30	EAST CAROLINA	W, 76-53

DECEMBER

5	at East Tennessee State	L, 67-60
16	CAMPBELL%	W, 74-49
20	Dayton\$	W, 78-59
21	Florida\$	W, 73-68
29	at Miami*	2:00

JANUARY

2	at Duke*	6:00
5	GEORGIA TECH*	12:00
9	CLEMSON*	7:00
12	at Louisville*	2:00
16	VIRGINIA*	7:00
19	at NC State*	2:00
23	FLORIDA STATE*	7:00
26	SYRACUSE*	4:00
30	at Pittsburgh*	7:00

FEBRUARY

2	at Boston College*	1:00
6	NOTRE DAME*	7:00
9	at Georgia Tech*	2:00
13	at Clemson*	7:00
16	VIRGINIA TECH*	1:00
20	at Florida State*	7:00
23	NORTH CAROLINA*	12:00
27	MIAMI*	7:00

MARCH

4	ACC First Round	TBD
5	ACC Second Round	TBD
6	ACC Quarterfinals	TBD
7	ACC Semifinals	TBD
8	ACC Finals	TBD

Home games in BOLD CAPS
% - School Day Game
\$ - West Palm Invitational
* - ACC Game

ATHLETIC COMMUNICATIONS

Athletic Communications Office
Will Pantages, Associate AD/Ath. Comm.
Steve Shutt, Associate AD/Ath. Comm.
Steve Kirkland, Director of Communications
Jay Garneau, Assoc. Director
Grace Bolin, Asst. Director
Andrew Kovar, Asst. Director
Office Phone: (336) 758-5640

#GODEACS

WAKE FOREST BASKETBALL

QUICK FACTS

BASKETBALL HISTORY

First Year of Women's Basketball	1971-72
Overall All-Time Record	584-736 (.442)
Home Record (2019-20)	4-2
Away Record (2019-20)	1-2
Neutral Record (2019-20)	2-0
Winning Seasons	12
.500 Seasons	5
Losing Seasons	28
17+ Win Seasons	6
Record at LJV Coliseum	240-201 (.544)

ACC INFO

All-Time ACC Record	146-448 (.246)
Best ACC Finish	3rd (1987-88)
Winning Seasons	1
.500 Seasons	5
Losing Seasons	36

NCAA TOURNAMENT

Appearances	1
Last Appearance	1988
Won-Loss Record	1-1

WNIT

Appearances	6
Last Appearance	2017
Won-Loss Record	5-6

NATIONAL RANKINGS

Total Weeks in the AP Poll	5
Highest AP Poll Rank	16th
Total Weeks in Coaches Poll	16
Highest Coaches Poll Rank	15th

ACC HONORS

All-ACC Selections	31
ACC Player of the Year	0
ACC Rookie of the Year	1
ACC Coach of the Year	1
ACC All-Freshman Team	13
Academic All-ACC Selections	15
ACC Player of the Week	22
ACC Rookie of the Week	27
All-Tournament (1st Team)	4
All-Tournament (2nd Team)	7

NATIONAL HONORS

All-Americans	10x (6 players)
Freshman All-Americans	3
Academic 1st Team All-Americans	1
USBWA Nat'l Player of the Week	1

DOUBLE-FIGURE GAMES

Player	2019-20 Season	Career
Ivana Raca	9	34
Gina Conti	5	18
Alex Sharp	9	47
Ona Udoh	3	15
Christina Morra	4	6
Maya Banks	0	1
Alexandria Scruggs	4	4
Raegyn Branch	1	3
Kaylen Dickson	0	0
Ellen Hahne	0	0

NOTING THE ECU GAME

- Wake Forest got out to a hot start and cruised to a 76-53 win over East Carolina inside the LJV Coliseum on Nov. 30.
- Four different Demon Deacons (4-3) scored in double figures, and Wake Forest out-rebounded the Pirates (3-5) by a 49-20 margin.
- The Deacs also shot 57.4 (27-of-47) percent in the game, limiting ECU to just 31.4 percent (22-of-70).
- Gina Conti totaled 19 points without missing a shot. She was 6-of-6 from the floor and 3-of-3 from long range, also sinking all four free throws.
- Ona Udoh recorded a double-double with 12 points on 6-of-6 shooting and 10 boards, also blocking four shots.
- Alex Sharp pulled down 15 rebounds to match her career high, also scoring seven points.

NOTING THE ELON GAME

- Wake Forest used a dominant rebounding performance and a hot start to beat Elon 69-57 Nov. 25 at the Schar Center in Elon.
- With Ona Udoh in early foul trouble, Christina Morra and Maya Banks both filled in admirably with Morra scoring 11 points to go with seven rebounds. She was a team-best five-for-five at the free throw line.
- Sharp led the Deacons with a double-double of 17 points and 13 rebounds.
- Alexandria Scruggs scored 12 points including eight in the first quarter.
- Ivana Raca had 13 points and six boards.
- Gina Conti led all players with six assists.

NOTING THE ST. JOHN'S GAME

- Wake Forest fell to St. John's 82-74 Nov. 22 at Carnesecca Arena despite a career-high 25 points from junior guard Gina Conti.
- Conti scored her 25 points — 19 in the second half — on 7-of-12 shooting and a perfect 10-of-10 from the charity stripe.
- Ivana Raca and Alex Sharp each finished a rebound away from a double-double, as Raca scored 20 points and Sharp tallied 14, with each pulling down nine boards.
- Ona Udoh grabbed nine rebounds and scored six points.

NOTING THE UNC CHARLOTTE GAME

- Wake Forest dropped a 77-65 decision to Charlotte at the LJV on Nov. 15.
- Ivana Raca scored a career-high 23 points for the Deacons.
- Raca also set a career-high with four 3-pointers.
- Ona Udoh contributed 17 points on eight-of-nine field goal shooting.
- The contest marked Wake Forest's fourth game in 11 days to open the season.

NOTING THE UNC GREENSBORO GAME

- Wake Forest fell to UNC Greensboro 67-65 Nov. 10 at LJV Coliseum despite 21 points from senior guard Alex Sharp.
- Sharp led the Deacs in scoring, going 7-for-13 from the field and 6-of-7 from the free-throw line.
- Gina Conti had 13 points and tied for the team-high with four assists.
- Wake Forest held a 49-31 rebounding advantage but could not contain UNC's Nadine Soliman who netted a game-high 26 points.
- The Deacons committed 21 turnovers to 12 by the Spartans.

NOTING THE COLLEGE OF CHARLESTON GAME

- Wake Forest scored a 106-50 win over the College of Charleston on Nov. 8.
- Ona Udoh scored a career-high 23 points to lead all scorers.
- Udoh also notched career-bests with 10 field goals made and 13 field goal attempts.
- Ivana Raca added 21 points on nine-of-12 shooting for her best night of the young season.
- Raca's nine field goals mark a career-high.
- The Demon Deacons received 45 points off the bench, 27 points off turnovers and 32 points in the paint.
- It was Wake Forest's first 100-point game since scoring a 100-94 win over NC State on Feb. 27, 2011.

NOTING THE UNCW GAME

- Alex Sharp collected a double-double as Wake Forest opened the season with a 65-55 victory over UNC Wilmington Nov. 5 at the LJV Coliseum.
- The Demon Deacons had a dominant third quarter effort and got inspired play from the freshman class in the season opening win.
- Trailing at the half by a point, Wake outscored UNCW 18-6 in the third quarter, holding the Seahawks to 1-of-7 shooting while forcing six turnovers. A pair of quick Gina Conti buckets launched an 8-0 Wake Forest run to start the streak. A 3-pointer by freshman guard Alexandria Scruggs gave the Deacs an eight-point lead at 42-34.

NOTING THE ETSU GAME

- Ivana Raca led the Demon Deacons with 18 points while Christina Morra matched her career-high with 13 points. Alex Sharp had eight points and a game-high 11 boards.
- Wake Forest (4-4) led 33-31 at halftime and 53-47 through three quarters. But the Deacons hit a dry spell in the fourth quarter, being outscored 20-7 and shooting just three-for-16 from the floor.

DEACS' RECORD WHEN...

Overall	7-4
At Home	4-2
On Road	1-2
Neutral Site	2-0
After a Win	5-2
After a Loss	2-2
In Overtime	0-0
vs. Ranked Opponents	0-0
vs. Top-10 Opponents	0-0
vs. ACC Opponents	0-0
vs. Nonconference Opponents	7-4
Leading at Half	6-2
Trailing at Half	1-2
Tied at Half	0-0

POINTS

Scoring 49 points or less	0-0
Scoring 50-59 points	4-4
Scoring 60-69 points	4-4
Scoring 70-79 points	5-1
Scoring 80-89 points	1-0
Scoring 90-99 points	1-0
Scoring 100 or more points	1-0
Opp. scoring 49 points or less	1-0
Opp. scoring 50-59 points	5-4
Opp. scoring 60-69 points	1-4
Opp. scoring 70-79 points	0-2
Opp. scoring 80-89 points	0-1
Opp. scoring 90-99 points	0-0
Opp. scoring 100 or more points	0-0

SHOOTING

40 percent or better (FG)	7-3
Less than 40 percent (FG)	0-1
35 percent or better (3FG)	6-0
Less than 35 percent (3FG)	1-4
75 percent or better (FT)	6-0
Less than 75 percent (FT)	1-4
Opp. 40 pct. or better (FG)	2-3
Opp. less than 40 pct. (FG)	5-1
Opp. 35 pct. or better (3FG)	3-2
Opp. less than 35 pct. (3FG)	4-2
Opp. 75 pct. or better (FT)	0-1
Opp. less than 75 pct. (FT)	7-3

DAY/MONTH

On Mondays	2-0
On Tuesdays	1-0
On Wednesdays	0-0
On Thursdays	0-1
On Fridays	2-2
On Saturdays	2-0
On Sundays	0-1
In November	4-3
In December	3-1
In January	0-0
In February	0-0
In March	0-0

FG ATTEMPTS

Attempt more field goals	3-3
Opp. attempts more field goals	4-1
Field goal attempts are tied	0-0

3-PT. FG ATTEMPTS

Attempt more 3-pt. field goals	1-2
Opp. attempts more 3-pt. field goals	6-2
3-pt. field goal attempts are tied	0-0

FREE THROW ATTEMPTS

Attempt more free throws	5-1
Opp. attempts more free throws	2-3
Free throw attempts are tied	0-0

REBOUNDS

Out-rebound opponent	7-3
Opponent has more rebounds	0-0
Rebounds are tied	0-1
Record 12 or more offensive rebounds	6-4
Record 11 or fewer offensive rebounds	1-0

TURNOVERS

Commit more turnovers	5-4
Opp. commits more turnovers	2-0
Turnovers are tied	0-0

SECOND CHANCE POINTS

More 2nd chance points	7-3
Opp. has more 2nd chance points	0-1
2nd chance points are tied	0-0

POINTS IN THE PAINT

More points in the paint	5-4
Opp. has more points in the paint	2-0
Points in the paint are tied	0-0

FAST BREAK POINTS

More fast break points	3-1
Opp. has more fast break points	4-3
Fast break points are tied	0-0

WAKE FOREST BASKETBALL

STREAKS

Overall	Won 3
Ranked Anywhere	0-0
Unranked Anywhere	7-4
At Home	Won 2
Home Nonconference	Won 2
Home ACC	0-0
Home vs. Ranked	0-0
Home vs. Unranked	Won 2
On Road	1-2
Road Nonconference	1-2
Road ACC	0-0
Road vs. Ranked	0-0
Road vs. Unranked	1-2
Neutral	2-0
Neutral vs. Ranked	0-0
Neutral vs. Unranked	2-0

CONSECUTIVE DOUBLE-DIGIT SCORING GAMES

Ivana Raca	8
Alex Sharp	3
	--

CAREER GAMES PLAYED/STARTS HISTORY

Player	GP	Starts	Current Streak	Career Long
Ona Udoh	99	59	11	47
Alex Sharp	89	82	17	44
Gina Conti	72	52	51	51
Ivana Raca	72	41	41	41
Maya Banks	60	10	0	16
Raegyn Branch	58	7	58	58
Ellen Hahne	37	9	0	12
Kaylen Dickson	34	8	0	15
Christina Morra	32	0	11	11
Kaia Harrison	11	4	11	11
Alexandria Scruggs	11	6	11	11
Anaia Hoard	7	0	0	2

CAREER DOUBLE-DOUBLES

Player	2019-20	Career
Alex Sharp	2	16
Ona Udoh	2	6
Christina Morra	1	1

PLAYER SUPERLATIVES

Scored 20 or More Points

Ivana Raca	4
Alex Sharp	3
Gina Conti	1
Ona Udoh	1

Scored 15-19 Points

Alex Sharp	5
Ivana Raca	5
Gina Conti	3
Ona Udoh	2
Alexandria Scruggs	1

Grabbed 10 or More Rebounds

Alex Sharp	4
Ona Udoh	1
Christina Morra	1

Grabbed 7-9 Rebounds

Alex Sharp	7
Ivana Raca	5
Ona Udoh	3
Christina Morra	3
Gina Conti	1
Alexandria Scruggs	1

Dished Out 5 or More Assists

Gina Conti	7
------------	---

Recorded 3 or More Steals

Gina Conti	1
Kaia Harrison	1

Blocked 2 or More Shots

Ona Udoh	3
Alex Sharp	2

FIRST POINTS / FIRST SUBSTITUTION

Opponent	1st Pts	How	Time	Opp	1st Sub	Time
UNC-W	Sharp	Jumper	9:23	UNCW	Hoard, Morra	5:53
CoFC	Raca	Jumper	9:41	C of C	Hahne, Scruggs	5:10
UNC-G	Sharp	FT	9:36	UNCG	Scruggs	4:48
UNC-C	Udoh	Layup	9:48	UNCC	Scruggs	5:42
St. Johns	Raca	Layup	9:47	St. Johns	Banks	6:00
Elon	Sharp	Layup	9:42	Elon	Banks	8:05
ECU	Raca	Jumper	9:42	ECU	Branch	4:54
ETSU	Conti	Jumper	9:34	ETSU	Harrison, Morra	3:48
Campbell	Sharp	3-Point	9:53	Camp.	Morra	6:40
Dayton	Sharp	Jumper	5:49	Dayton	Morra	6:10
Florida	Conti	Layup	9:53	Florida	Morra	5:54
Miami (FL)						
Duke						
Georgia Tech						
Clemson						
Louisville						
Virginia						
NC State						
Florida State						
Syracuse						
Pittsburgh						
Boston College						
Notre Dame						
Georgia Tech						
Clemson						
Virginia Tech						
Florida State						
North Carolina						
Miami (FL)						

STARTERS

G	G	G	F	F
Conti	Hahne	Sharp	Raca	Udoh
Harrison	Conti	Sharp	Raca	Udoh
Harrison	Conti	Sharp	Raca	Udoh
Conti	Sharp	Harrison	Raca	Udoh
Conti	Sharp	Harrison	Raca	Udoh
Sharp	Scruggs	Raca	Conti	Udoh
Conti	Sharp	Scruggs	Udoh	Raca
Conti	Sharp	Scruggs	Raca	Udoh
Conti	Sharp	Scruggs	Raca	Udoh
Conti	Sharp	Scruggs	Raca	Udoh
Conti	Sharp	Scruggs	Raca	Udoh

NOTING THE CAMPBELL GAME

- Limited Campbell to single-digit points over the last three quarters of play.
- Ivana Raca and Alex Sharp each scored 19 points to lead Wake Forest while Alexandria Scruggs poured in 12 points. Raca led all players with eight rebounds.
- Outscored Campbell 53-24 over the final three quarters
- The crowd of 9,121 accounted for the third-largest home crowd in Wake Forest women's basketball history.

NOTING THE DAYTON GAME

- The Deacs led nearly the entire way with the help of a 17-0 through the final seven minutes of the first quarter. The run helped them hold a double-digit lead throughout much of the first half.
- Ivana Raca led the way with a game-high 20 points including 14 in the third quarter alone.
- Wake Forest set a new school record for points in a quarter when it scored 37 in the third quarter to open up a 26-point lead

NOTING THE FLORIDA GAME

- Trailing by eight with 7:39 left in the third, the Demon Deacons went on a 16-0 run. The Deacs were helped by 10 points combined from Raegyn Branch and Ona Udoh during the stretch, taking a 59-51 lead.
- Gina Conti sealed the victory. After a layup with 1:48 left in the game, Conti stole the ball from the Gators just 20 seconds later. She ran the length of the floor to give the Demon Deacons a 71-66 lead.
- Alex Sharp knocked down threes on back-to-back-to-back possessions to give Wake a 37-34 advantage midway through the second quarter. She finished with a team-high 21 points in the victory.

COACH HOOVER EARNS 100TH WAKE FOREST WIN

- Wake Forest head coach Jen Hoover earned her 100th win at Wake Forest when the Demon Deacons defeated the College of Charleston on Friday, November 8 by a 106-50 score.
- Now in her eighth year at her alma mater, Hoover won her 100th career game on Dec. 9, 2017 with a 92-50 win over Maryland Eastern Shore.
- Hoover posted a 20-13 record in the 2011-12 season, her lone season as the head coach at High Point.
- Hoover is a member of the Wake Forest Sports Hall of Fame as a dominant player for the Demon Deacons. She scored 1,728 points and grabbed 1,006 rebounds during her career and graduated as Wake Forest's all-time leader in points and rebounds.

ACC STANDINGS (12/28)

Team	ACC	Overall
Florida State	1-0	12-0
Duke	1-0	7-4
NC State	0-0	11-0
Louisville	0-0	11-1
Virginia Tech	0-0	10-1
North Carolina	0-0	9-1
Georgia Tech	0-0	9-2
Miami (FL)	0-0	8-3
Wake Forest	0-0	7-4
Syracuse	0-0	6-5
Virginia	0-0	5-6
Notre Dame	0-0	5-7
Pittsburgh	0-0	3-8
Boston College	0-1	7-5
Clemson	0-1	4-8

ACC PRESEASON POLL (COACHES)

Team	Points	1st Votes
1. Louisville	223	13
2. NC State	201	2
3. Florida State	190	--
4. Miami	185	--
5. Notre Dame	159	--
6. Syracuse	150	--
7. Duke	143	--
8. Clemson	105	--
9. North Carolina	92	--
10. Virginia Tech	91	--
11. Georgia Tech	70	--
12. Virginia	67	--
13. Boston College	58	--
14. Pittsburgh	41	--
15. Wake Forest	25	--

ACC PRESEASON POLL (BLUE RIBBON PANEL)

Team	Points	1st Votes
1. Louisville	713	34
2. NC State	637	8
3. Florida State	623	3
4. Notre Dame	580	4
5. Miami	579	--
6. Syracuse	497	--
7. Duke	432	--
8. Clemson	353	--
9. North Carolina	343	--
10. Virginia Tech	291	--
11. Virginia	229	--
12. Georgia Tech	225	--
13. Boston College	168	--
14. Pittsburgh	122	--
15. Wake Forest	89	--

WAKE FOREST BASKETBALL



0 **MAYA BANKS**
Jr. | 6-4 | F
Chandler, Ariz.
Hamilton



1 **ANAIA HOARD**
Fr. | 5-10 | G
Camon, France
Wesleyan Christian



2 **KAIJA HARRISON**
Fr. | 5-7 | G
Stockholm, Sweden
Riksbasketgymnasiet Luleå



3 **MACK MAIER**
Fr. | 2-10 | G
Parker, Colo.
Chaparral



5 **GINA CONTI**
Jr. | 5-10 | G
Grove City, Ohio
Grove City



10 **ELLEN HAHNE**
So. | 5-11 | G
Stockholm, Sweden
Riksbasketgymnasiet Luleå



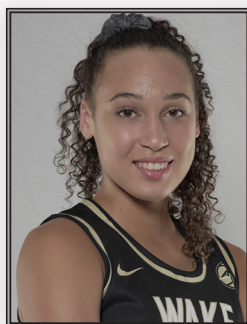
11 **IVANA RACA**
Jr. | 6-2 | F
Belgrade, Serbia
1st Lyceum of Voula



12 **KAYLEN DICKSON**
So. | 5-11 | G
Gurnee, Ill.
Warren Township



14 **ALEX SHARP**
Sr. | 6-1 | G
Melbourne, Australia
Australian Institute of Sport



20 **OLIVIA SUMMIEL**
Fr. | 6-2 | F
Cayville, Conn.
Marianapolis Prep



21 **RAEGYN BRANCH**
Sr. | 6-2 | F
Arlington, Tenn.
Arlington



23 **CHRISTINA MORRA**
So. | 6-2 | F
Toronto, Ontario
Kings Christian Collegiate



32 **ALEXANDRIA SCRUGGS**
Fr. | 5-10 | G
Fayetteville, NC
E.E. Smith



44 **ONA UDOH**
Sr. | 6-1 | F
Fayetteville, N.C.
Terry Sanford



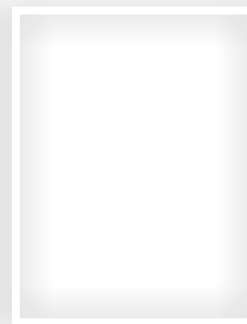
JEN HOOVER
Head Coach
Wake Forest, 1991



MELISSA D'AMICO
Assistant Coach
Notre Dame, 2008



JERMAINE WOODS
Assistant Coach
Christopher Newport, 2003



DANE SPARROW
Assistant Coach
UNCG, 2012