

# CAROLINA WOMEN'S BASKETBALL

2020-21 GAME NOTES » 1994 National Champions » Eight-Time ACC Champions

## SCHEDULE/RESULTS

7-2 OVERALL, 2-2 ACC  
7-0 HOME • 0-2 AWAY • 0-0 NEUTRAL

Date	Opponent	Time/Result
Nov. 25	Radford (ACCNX)	W, 90-61
Nov. 28	UNCG (ACCNX)	W, 96-35
Nov. 29	High Point (ACCNX)	W, 95-70
Dec. 3	S.C. State (ACCNX)	W, 98-28
Dec. 6	Charlotte (ACCN)	W, 81-75
Dec. 10	At Wake Forest (ACCN)	L, 57-54
Dec. 14	At Miami (ACCN)	L, 67-63
Dec. 17	#18 Syracuse (ACCN)	W, 92-68
Dec. 20	Wake Forest (ACCNX)	W, 77-74 OT
Dec. 31	At Syracuse -- PPD	
Jan. 3	At Pittsburgh -- PPD	
Jan. 5	At #2 Louisville -- PPD	
Jan. 10	Miami (RSN)	1 PM
Jan. 14	Virginia Tech (ACCNX)	6 PM
Jan. 17	Duke -- Canceled	
Jan. 21	At Virginia (ACCNX)	6 PM
Jan. 24	Notre Dame (ESPNU)	Noon
Jan. 31	At Virginia Tech (ACCNX)	4 PM
Feb. 4	Florida State (ACCNX)	6 PM
Feb. 7	NC State (ACCN)	2 PM
Feb. 11	Boston College (ACCNX)	6 PM
Feb. 14	Virginia (ACCN)	4 PM
Feb. 18	At Clemson (ACCNX)	7 PM
Feb. 21	At NC State (ESPN2)	Noon
Feb. 25	Georgia Tech (ACCNX)	6 PM
Feb. 28	At Duke -- Canceled	

### ACC Tournament (Greensboro, N.C.)

March 3-7 Greensboro Coliseum

**BOLD** home game at Carmichael Arena

\* ACC game

( ) denotes television network

All times Eastern and subject to change

Rankings are AP poll at time of game

## THE MATCHUP: Jan. 10, 2021



### North Carolina (7-2, 2-2 ACC)

Head Coach: Courtney Banghart (Dartmouth, 2000)

Career Record: 277-119 (14th season)

Record at North Carolina: 23-16 (Second season)



### Miami (5-4, 2-4 ACC)

Head Coach: Katie Meier (Duke, 1989)

Career Record: 373-236 (20th season)

Record at Miami: 297-191 (16th season)

### ALL-TIME SERIES

UNC leads 15-10

### LAST MEETING

Miami won 67-63 in Coral Gables, Fla., on 12/14/20

### GAME COVERAGE

TV: RSN/ACCNX

• Tom Werme, Kelley Deyo

Radio: Tar Heel Sports Network

WCHL 97.9/1360

• Matt Krause

## TIPPING OFF

• Four Tar Heels are averaging double-figure scoring with seven at 7.6 or more points per game. Senior center Janelle Bailey leads the team at 14.2 ppg.

• Janelle Bailey (1,526 career points) and Stephanie Watts (1,422) are 18th and 23rd respectively on the NCAA DI list of active career leaders in points. They're the ACC leaders in career points.

• With Petra Holešinská passing 1,000 career points in the Dec. 20 win over Wake Forest, a quarter of the Tar Heel players (along with Bailey and Watts) have reached that landmark.

• At the same time, half the Tar Heel players (six of 12 on the roster) have yet to reach the 100-career-points mark.

## BY THE NUMBERS

3

» Weeks since UNC last played. The Tar Heels' most recent action was an OT win over Wake Forest on Dec. 20.

0

» Times UNC has been outrebounded this season. The Tar Heels lead the ACC in rebounding (49.9 rpg) and rank 2nd in rebounding margin.

39

» Career double-doubles for Janelle Bailey. That figure ranks third among all active NCAA Division I players.

## TAR HEEL ROSTER

#	Name	Pos.	Ht.	Yr.	Hometown (High School/College)
0	Alexandra Zelaya	F	6-4	Fr.	Goodyear, Ariz. (Millennium)
1	Alyssa Ustby	G	6-1	Fr.	Rochester, Minn. (Lourdes)
2	Petra Holešinská	G	5-10	Gr.	Vracov, Czech Republic (Sportovní Gymnazium Ludvíka Danka /Univ. of Illinois)
3	Kennedy Todd-Williams	G	5-11	Fr.	Jacksonville, N.C. (Jacksonville)
4	Kennedy Tucker	G	5-10	So.	Little Rock, Ark. (North Little Rock)
5	Stephanie Watts	G	5-11	Gr.	Wesley Chapel, N.C. (Weddington / Univ. of Southern California)
11	Ariel Young	G	6-1	R-So.	Tallahassee, Fla. (Lincoln / Univ. of Michigan)
21	Malu Tshitenge	F	6-3	So.	Germantown, Md. (St. John's College)
25	Deja Kelly	G	5-8	Fr.	San Antonio, Texas (Duncanville)
30	Jaelynn Murray	F	6-2	R-Jr.	Columbia, S.C. (Dreher)
31	Anya Poole	F	6-2	Fr.	Raleigh, N.C. (Southeast Raleigh)
44	Janelle Bailey	C	6-4	Sr.	Charlotte, N.C. (Providence Day School)

### Staff

Head Coach: Courtney Banghart

Assistant Coach/Recruiting Coordinator: Carrie Moore

Assistant Coaches: Joanne Aluka-White, Adrian Walters

Director of Operations: Meghin Williams-Banx

Director of Player Personnel, Development and Recruiting Operations: Jackie Manuel

Director of Scouting and Video Operations: Chris Leazier

Director of Outreach, Alumni and Administration: Tori Niemann

Volunteer Graduate Assistant Coach: Liz Roberts

### UNC Athletic Communications

Women's Basketball Contact: Dana Gelin  
dgelin@unc.edu, 919-455-8289

FOLLOW @UNCWBB



#GoHeels



## The Rivalry

The Tar Heels and Hurricanes are meeting for the 26th time in a series that dates back to the 1980-81 season. UNC leads the overall series 14-11 but UM took the season's first meeting, 67-63 in Coral Gables, Fla., on Dec. 14.

- The Tar Heels lead 11-9 since the Hurricanes joined the ACC in 2004-05.

- In last year's matchup at Carmichael Arena, Tar Heel center Janelle Bailey led all scorers with a season-high 28 points. She also had a game-high 15 rebounds for one of her 11 double-doubles on the season.

- In this season's first game, a hastily-arranged meeting in Coral Gables, Fla., just over a month ago on Dec. 14, UNC fell by four, 67-63. Playing at the Hurricanes' Watsco Center in a rare Monday afternoon game, the Tar Heels trailed through most of the game but never let the game get away and cut the margin to two points with 25 seconds to play.

Freshman Alyssa Ustby came off the bench to lead UNC with a career-high 17 points on 7-for-10 shooting. In 29 minutes of play, she also had eight rebounds and a career-high four steals. Ustby has been in the starting lineup for the two games since then. Janelle Bailey had her first double-double of the season with 14 points and a team-best 13 rebounds.

- The first Miami matchup was one of just three times this season the Tar Heels have trailed at halftime. UNC came back to win in the other two instances (High Point, home vs. Wake). The game at Miami is the only time this season UNC has trailed going into the fourth quarter (down 51-45). Additionally, it was the Tar Heels' lowest-performing first half of the year, with season lows in first-half points and field goal percentage (UNC trailed 33-23 at the break after shooting 31 percent).

- This is the first time since 2011-12 that the Tar Heels and Hurricanes have met twice in a season. The original schedule included one meeting, on Jan. 10 at Miami, but an additional one was added for Dec. 14 after

Head-to-Head		
82.9 (2)	Scoring Av.	66.7 (14)
.443 (6)	FG %	.364 (15)
.313 (11)	3FG %	.274 (14)
.700 (8)	FT %	.669 (12)
49.9 (1)	RPG	42.0 (8)
16.6 (3)	APG	12.2 (12)
6.3 (11)	SPG	5.0 (8)
3.56 (9)	BPG	1.6 (15)
57.4 (2)	Scoring Defense	63.7 (9)
.318 (2)	FG% Defense	.398 (10)
.291 (7)	3FG% Defense	.252 (4)
6.33 (T9)	3FG Per Game	6.78 (T7)
23.4 (3)	Scoring Margin	3.0 (11)
16.7 (2)	Reb. Margin	0.8 (12)
1.30 (1)	Assist/TO Ratio	0.83 (0)
3.00 (3)	Turnover Margin	2.11 (4)

*(ACC ranking in parentheses, through games of 1/7/20)*

### Series vs. Miami:

#### UNC leads 15-10

1980-81	W	75	61	(N)
1983-84	W	77	64	(N)
1986-87	W	89	71	(A)
1987-88	L	69	75	(H)
1991-92	L	72	86	(A)
2004-05	W	83	52	(H)
	W	64	57	(N)
2005-06	W	90	57	(A)
2006-07	W	93	70	(H)
2007-08	W	79	61	(A)
2008-09	W	90	76	(H)
2009-10	L	69	80	(A)
2010-11	L	66	78	(H)
	W	83	57	(N)
2011-12	W	65	63	(H)
	L	37	61	(A)
2012-13	W	64	62	(A)
2013-14	L	80	83	(H)
2014-15	W	66	65	(A)
2015-16	L	61	76	(H)
2016-17	L	88	100	(A)
2017-18	L	72	92	(H)
2018-19	L	68	76	(A)
2019-20	W	78	58	(H)
2020-21	L	67	63	(A)

both teams had open dates due to postponements. UNC was set to play at Louisville on Dec. 13 but after that game was postponed on Dec. 11, the Miami matchup was added to the schedule.

## Scouting Miami

Miami is 5-4 overall and 2-4 in ACC play coming off a 63-60 loss at Wake Forest on Thursday night.

- Unlike UNC, which has not played since the holiday break, the Hurricanes have played four times since Dec. 31.

- Sunday's game is Miami's third road game of the season, all in the state of North Carolina. The other two were losses at NC State and Wake Forest.

- Senior guard Kelsey Marshall leads the team in scoring with 14.4 points per game. She's the only Hurricane averaging double figures, with three between 9.0 and 9.7. Senior guard Taylor Mason leads the team in rebounding with 6.3 per game.

## Notable Numbers

- Sunday's game will be **Janelle Bailey's 100th** in a Tar Heel uniform. She has started 98 of her 99 career games at UNC.

- UNC ranks in the **top 10 in NCAA Division I** in rebounding margin (6th), rebounds per game (7th), defensive rebounds per game (8th), field goal percentage defense (9th), and free throw attempts (9th)

- The Tar Heels rank in the **ACC's top three** in nine of 17 statistical categories:

**First** in total rebounding, offensive rebounding and assist-turnover ratio

## Courtney Banghart

### Head Coach • Second Season at UNC



The 2020-21 season is the second at UNC for head coach Courtney Banghart.

She was announced on April 30, 2019 as UNC's head coach, the first new face in the position since 1986. She came to Chapel Hill after 12 years as the head coach at Princeton, where her teams won seven Ivy League crowns and made eight NCAA Tournament appearances. (Before her arrival, Princeton hadn't reached the tournament even once.)

A New Hampshire native, Banghart was a three-year starter at Dartmouth, where she twice earned All-Ivy honors. She still holds the Ivy League record for career three-pointers (273) and as a senior competed in the three-point shooting contest at Butler's

Hinkle Fieldhouse during the men's Final Four in Indianapolis.

#### More on Banghart:

- She was the 2015 Naismith National Coach of the Year and is the only current ACC coach to have won that honor.

- In 2015 she was named to Fortune's list of the World's 50 Greatest Leaders. Others on the list that year: Pope Francis, Bill and Melinda Gates, Chief Justice John Roberts Jr., LeBron James, Elon Musk and Taylor Swift.

- She holds a bachelor's degree in neuroscience and a master's degree in writing and leadership, both from Dartmouth. Her graduate thesis was on sport leadership.

- She hitchhiked through Alaska after college, after ditching the outdoor leadership course in which she was enrolled.

- Right around the time she got the Princeton job, she and her brother were finalists to appear on "The Amazing Race."

- A four-time soccer state champion in high school, she planned to play that sport at Dartmouth until a coaching change made her rethink her path and talk the women's basketball coach into giving her a spot. (She also won two high school state titles in basketball and three in tennis.)

## Banghart Year-By-Year

### Princeton

2007-08	7-23
2008-09	14-14
2009-10	26-3
2010-11	24-5
2011-12	24-5
2012-13	22-7
2013-14	21-9
2014-15	31-1
2015-16	23-6
2016-17	16-14
2017-18	24-6
2018-19	22-10

**Total 254-103**

### UNC

2019-20	16-14
2020-21	7-2

**Total 23-16**

**Career 277-119**



**Second** in scoring, scoring defense, scoring margin, defensive rebounding and rebounding margin

**Third** in assists and turnover margin

• **Janelle Bailey is seven rebounds away**

from becoming the 10th player in program history with 1,500 points and 900 rebounds. Should she reach 1,000 career rebounds, she'll be the sixth player in UNC history with 1,500 points and 1,000 boards.

• **Bailey** is averaging a double-double in ACC play with 17.3 points and 10.3 rebounds over UNC's four league games. She's averaging 14.2 points and 8.8 rebounds in on the season.

• **UNC has won the rebounding battle** in all nine games this season. The Tar Heels lead the ACC in rebounding with 49.9 per game and rank second in rebounding margin at 16.56.

• **UNC is 5-0** this season when shooting 70 percent or better from the **free throw line**.

• The win over Wake Forest on Dec. 20 marked the first time this season UNC has **shot lower than 40 percent** from the field and still won. It's just the second time this season (the other was Charlotte) that an opponent has shot better than 40 percent against UNC.

• In all seven wins this season, UNC has had **four or more players in double figures**.

In each of the two losses, three players have scored in double figures.

• **UNC scored 90 or more points** in its first four games this season. The last time the Tar Heels reached 90 four games in a row was at the start of the 2007-08 season, in wins over Elon, Coppin State, Syracuse and Georgia State Nov. 13-19, 2007.

## Bailey Earns Weekly Honor

Senior center Janelle Bailey was named ACC Player of the Week on Dec. 21 following a week in which she averaged 19.3 points and 11 rebounds over three games for UNC.

Bailey scored a season-high 25 points and grabbed eight rebounds in a highly-efficient 24 minutes of play against the Orange. She was also 5-for-5 from the foul line and had two assists and two steals. She bookended that performance with a pair of double-doubles: at Miami on Monday, she finished with 14 points and 13 rebounds. Against Wake Forest on her home court at Carmichael Arena on Sunday, Bailey had 19 points and 12 rebounds in the win.

This marks the third time in her career that Bailey has been named ACC Player of the Week. After earning Freshman of the Week honors seven times in her first season as a Tar Heel, she earned the Player of the Week recognition once as a sophomore and then shared the honor once as a junior.

## Deeper Bench This Season

Although the UNC roster is slightly smaller this season (12 compared with 15), the Tar Heels are a far deeper team than last year and that has been evident in the first nine games. UNC is averaging 30.9 points per game off the bench, with a high of 57 against High Point and a low of seven at Wake Forest. (No other game has seen fewer than 24 points from the Tar Heel bench.)

• **UNC's bench has outscored the opponent bench in all but the Syracuse game this season.** (The Orange got 35 points off the bench while the Tar Heels got 26.) In comparison, last year's team saw its bench outscore the opposition just

## New Season, New Numbers

Just two of the Tar Heels are sporting the same numbers they wore for UNC last season. In the case of seven of the 12, it's because they're new to Carolina uniforms. Three of the five returners will be in different numbers for 2000-21.

### #0: ALEXANDRA ZELAYA

This season is Zelaya's debut in No. 0 and she took a circuitous path to get there, including pondering whether it's even a number in the first place. She wore jersey No. 3 through middle and high school but when she committed to UNC, she found out that Kennedy Todd-Williams already had dibs on that jersey. "At first I thought, 'That kind of sucks,' but then I realized I'm moving on from high school Ali to college Ali and this is a fresh start – different state, different people, different coaches, different teammates," Zelaya said. Within the family, her older sister (Adriana) had claimed No. 1 and her younger sister (Avalyn) had No. 5. Within her preferred parameter of odd single digits that weren't already taken in the Zelaya family, the basketball-eligible choices were, well, nil. "I brought up zero and at first my family didn't really like it – you think, 'Is zero even a number?' It's just really different. And I want to be different so that kind of highlighted everything I wanted it to be. So I picked zero and it's really grown on me."

### #1: ALYSSA USTBY

When Ustby was a freshman in high school, she got jersey No. 21 because it was the only one left. She grew to love it and wanted to stick with it, but at UNC it belongs to Malu Tshitenge. So she wanted something close ... 12 is retired (Ivory Latta), 2 is taken (Petra Holešinská), so she picked No. 1. It has extra significance to Ustby because it was recently vacated by Taylor Koenen, a 2020 graduate who, like Ustby, is from Minnesota. "It's a special number," Ustby said, "and I'm keeping the Minnesota legacy going."

### #2: PETRA HOLESINSKA

Holešinská wore jersey No. 13 at Illinois. When she came to Chapel Hill as a graduate student she wanted a fresh start and a new number, so went with jersey No. 2.

### #3: KENNEDY TODD-WILLIAMS

Todd-Williams has worn No. 3 since she started playing basketball, around age 5. She liked that it was also the jersey number of greats Candace Parker and Chris Paul, some of her favorites. The number takes a deeper meaning from signifying the trio of her mother, her sister, Taylor, and herself.

### #4: KENNADY TUCKER

Tucker wore No. 3 and No. 23 growing up but neither was available when she got to Chapel Hill, the former because it was then worn by Madinah Muhammad and the latter because it's retired for Charlotte Smith. So she chose 4, and wore it proudly last season. "And this year I just decided to stay with it," Tucker said. "It's my number now."

### #5: STEPHANIE WATTS

Watts has worn No. 5 since high school, including the first four years she spent at UNC and last season at Southern California. She initially picked it because her father wore it when he played in college, at Long Island University. "It's stuck with me," Watts said. "When I got back here and I had the opportunity to get 5 again I thought, let me just continue it."

### #11: ARIEL YOUNG

After transferring to UNC from Michigan in January of 2020, Young was listed as No. 5. This year, she's No. 11 because it's the closest she could get to No. 12, her traditional choice. She wore that number growing up because her father, C.Y., wore it during his playing career at Georgia Southern and overseas. Young was No. 12 at Michigan, but at UNC that jersey is retired for Ivory Latta. So 11 was the next best thing, but last year was worn by Emily Sullivan. This year, it belongs to Young.

### #21: MALU TSHITENGE

Like Tucker, Tshitenge picked a new number as a freshman because her usual selection wasn't available. She wore 20 throughout high school, initially choosing it because her birthday is Nov. 20. When she got to UNC, Leah Church had 20 so Tshitenge went with 21. Now, 20 is available but Tshitenge isn't making the switch. "I've gotten used to it and I'm very superstitious so I don't want to change now," she said. "Things are going well in 21 so far."

### #25: DEJA KELLY

Kelly wears the number in honor of her father, Darren, who played at the University of Texas and overseas. "Growing up watching him play inspired me," Kelly said. "I decided to pick his number at a really young age and it stuck."

### #30: JAELYNN MURRAY

Murray likes No. 30 because it (kind of) rhymes with her last name. She wore it in high school and through her first two years at UNC. Last season, she suffered an ACL injury in the preseason and missed the entire year. Janelle Bailey, a close friend since the two came on their recruiting visit together, wore Murray's jersey number in tribute. Murray, who was on the bench, wore Bailey's No. 44 for the season. Although incredibly grateful for Bailey's gesture, Murray is excited to be back on the court in her old number. "It was well-respected while I was gone, but having it back means so much," Murray said. "She took very good care of it – she repped it really well."

### #31: ANYA POOLE

The number was handed to her as a seventh grader and she's stuck with it ever since.

### #44: JANELLE BAILEY

Number 44 has been Bailey's since high school because her older sister, Gigi, wore it. The exception was the 2019-20 season, when she wore Jaelynn Murray's jersey No. 30 in tribute. Now she's back to 44.



six times all year. Last season the Tar Heels averaged just 8.5 points off the bench and in four games got zero points from subs.

- In four ACC games this season, UNC has averaged 20.3 points off the bench, with seven at Wake Forest, 24 at Miami, 26 against Syracuse and 24 at home vs. Wake Forest.

- UNC doesn't have a player ranked in the ACC's top 25 in minutes. Freshman Deja Kelly leads the team with an average of 28.3 minutes per game after playing 38+ minutes in each of the past two games, against Syracuse and Wake Forest. Petra Holešínková, who played a career-high 40 minutes in UNC's game at Wake Forest on Dec. 10, is just behind with 27.2 per game.

## Staying flexible

Like most other teams, the Tar Heels have already had schedule revisions due to Covid. They were supposed to play at Louisville on Dec. 13 but found out on the evening of Dec. 11 that game would be postponed. After Miami also had an open Sunday, an impromptu match-up was arranged, with the ACC announcing on the evening of Dec. 12 that UNC would travel to Miami to play on the afternoon of Dec. 14.

- A Monday matchup gave UNC three games in the final week before the holiday break. It's the second time this year Carolina had played three times in a week: The Tar Heels opened with a trio of home games in five days, hosting Radford, UNCG and High Point on Nov. 25-29.

- The ACC announced on Dec. 28 that UNC's Dec. 31 game at Syracuse had been postponed and at that point the Tar Heels still expected to play at Pitt on Jan. 3. But that game eventually was postponed as well, giving Carolina a break of more than two weeks between its Dec. 20 game against Wake Forest and its Jan. 5 game at Louisville.

- Eventually that rescheduled Jan. 5 game at Louisville also was postponed, giving the Tar Heels three weeks of idleness between the Dec. 20 game against Wake and the Jan. 10 game against Miami.

## Preseason ACC Honors

Senior Janelle Bailey was named to the Preseason All-ACC Team and freshman Deja Kelly was picked for the Newcomer Watch List. The Tar Heels were consensus honorees.

- In the team rankings, the Tar Heels were fourth by the coaches and fifth by the Blue Ribbon panel, the highest since 2014.

## Milestone Watch

*Heading into the Miami game*

### Janelle Bailey

- 99 games played
- 98 games started
- 893 rebounds

### Petra Holešínková

- 97 games played
- 1001 career points
- 500 three-point attempts

### Alyssa Ustby

- 96 career points

### Stephanie Watts

- 1422 career points
- 97 games played



## Fast Facts/History

### University of North Carolina

Location.....	Chapel Hill, N.C.
Chartered.....	1789
Undergraduate Enrollment.....	18,814
Chancellor.....	Kevin Guskiewicz
Director of Athletics.....	Bubba Cunningham
Faculty Athletic Representative.....	Lissa Broome
Senior Women's Administrator.....	Marielle vanGelder
Affiliation.....	NCAA Division I
Conference.....	Atlantic Coast Conference
Nickname.....	Tar Heels
School colors.....	Carolina blue and white
Home arena.....	Carmichael Arena (6,822)
Athletic department phone.....	(919) 962-6000
Ticket office phones.....	(919) 962-2296, (800) 722-4335
Athletic department website.....	GoHeels.com

### Carolina Basketball Staff

Head Coach.....	Courtney Banghart (2nd season at UNC)
Career record.....	277-119
Record at UNC.....	23-16
Assistant Coach/Recruiting Coord.....	Carrie Moore
Assistant Coach.....	Joanne Aluka-White
Assistant Coach.....	Adrian Walters
Director of Operations.....	Meghin Williams-Banx
Director of Player Personnel, Devel. and Recruiting Ops.....	Jackie Manuel
Director of Scouting and Video Operations.....	Chris Leazier
Director of Outreach, Alumni Relations and Admin.....	Tori Niemann
Volunteer Graduate Assistant Coach.....	Liz Roberts

### Athletic Communications

Associate Director/WBB Contact.....	Dana Gelin
Email.....	dgelin@unc.edu
Phone.....	919-455-8289

### Carolina Program History

First season as a varsity program.....	1974-75
All-time overall record.....	992-471
All-time ACC record.....	376-258
ACC Championships.....	Nine (most in the ACC) 1984, 1994, 1995, 1997, 1998, 2005, 2006, 2007, 2008
ACC Tournament record.....	62-34
NCAA Tournament appearances.....	27 (most in ACC)
All-time NCAA Tournament record.....	47-26
NCAA Championships.....	One (1994)
Most recent NCAA Tournament appearance.....	2019

### Carolina Women's Basketball

NCAA Championship

1994

NCAA Final Four Appearances

1994 • 2006 • 2007

NCAA Appearances (27)

1983 • 1984 • 1985 • 1986 • 1987 • 1992

1993 • 1994 • 1995 • 1997 1998 • 1999

2000 • 2002 • 2003 2004 • 2005 • 2006

2007 • 2008 • 2009 • 2010 • 2011 • 2013

2014 • 2015 • 2019

ACC Tournament Championships (9)

1984 • 1994 • 1995 • 1997 • 1998

2005 • 2006 • 2007 • 2008

IN 2018, 1,416 CAROLINIANS LOST THEIR LIVES TO GUN VIOLENCE. ALMOST 4 PEOPLE PER DAY WERE KILLED WITH GUNS.

ASK THE GUN OWNERS IN YOUR LIFE TO LOCK UP THEIR GUNS. HAVING AN UNLOCKED, LOADED FIREARM IN THE HOME IS A RISK TOO HIGH TO TAKE.

STRONG ON OWN. BEST TOGETHER.

 ×   
**STOP THE VIOLENCE**  
GUN VIOLENCE AWARENESS



### Bigger than Basketball: Educate and Activate

Throughout the 2020-21 campaign, the UNC women's basketball team will highlight various causes, dedicating the season to advocating for and bringing awareness to issues that are near and dear to the Tar Heel student-athletes and coaching staff.

UNC hosts Miami on Sunday and the team has dedicated the game to raising awareness around the issue of gun violence, which includes any death or injury caused by a firearm. Gun violence comes in many different forms, including homicide, suicide, domestic violence, unintentional shootings and police shootings.

Some facts about gun violence:

- Approximately 38,000 Americans die of gun violence each year, an average of 100 per day. (Giffords.org)
- In 2018, nearly two in three firearm deaths in North Carolina were suicides. From 2008 to 2018, the number of children in the state who died by suicide with a gun doubled. (<https://www.ncgv.org/>)
- Americans are 25 times more likely to be killed in a gun homicide than people in other high income countries. (giffords.org)
- Gun violence is a major public health problem and is a leading cause of premature death in the U.S. (<https://www.apha.org/topics-and-issues/gun-violence>)

This week the team virtually spent time with representatives from North Carolinians Against Gun Violence learning more about the issue of gun violence and how they can use their voices to bring awareness to the cause. The team then put together a short video to help bring awareness to this issue.

You can help by advocating for gun safety, donating financially for research and resources, and making sure you and those around you are educated on gun safety and proper storage.

The following organizations offer opportunities to make an impact.

- The Coalition to Stop Gun Violence (csgv.org)
- American Public Health Association (apha.org/topics-and-issues/gun-violence)
- North Carolinians Against Gun Violence (ncgv.org)
- Giffords (giffords.org)

Together we can work toward ending gun violence.

### 2020-21 Season Overview

**Radford Game:** Food Insecurity

**UNCG, High Point Games:** Black Lives Matter movement

**South Carolina State, Charlotte Games:** Down syndrome awareness

**Wake Forest, Miami Games:** Literacy awareness

**Syracuse, Wake Forest Games:** Homelessness

**Week of Dec. 28-Jan. 3:** Alzheimer's awareness

**Miami Game:** Gun violence



## Active NCAA Career Leaders

The three Tar Heels who are fourth-year players – Janelle Bailey, Petra Holešínková and Stephanie Watts – rank among the active statistical leaders in NCAA Division I basketball in a number of categories.

### Highlights:

- Stephanie Watts ranks third in career three-point attempts and sixth in three-pointers made.
- Janelle Bailey ranks third in double-doubles, fifth in rebounds and 17th in points. She's the highest-ranked ACC player in each of those categories.

### JANELLE BAILEY

- Double-doubles: 3rd (39)
- Points: 17th (1526)
- Scoring average: 24th (15.4)
- Rebounds: 5th (893)
- Rebounding average: 7th (9.0)
- Field goals made: 12th (589)
- Field goal attempts: 17th (1262)
- Free throws made: 19th (331)
- Free throw attempts: 20th (444)

### STEPHANIE WATTS

- Points: 21st (1422)
- Three-point field goals: 6th (251)
- Three-point fg per game: 12th (2.59)
- Field goal attempts: 13th (1,300)
- Three-point fg attempts: 3rd (783)
- Three-point fg attempts per game: 1st (8.07)
- Double-doubles: 31 (19)

### PETRA HOLESINSKA

- Points: 101st (1,001)
- Three-point field goal attempts: 33rd (500)

*Through games of Jan. 7*

## UNC in the NCAA Rankings

*Through games of Jan. 7*

### Team:

Scoring Offense: 21  
 Scoring Defense: 62  
 Scoring Margin: 16  
 Rebounds per game: 7  
 Rebounding Margin: 6  
 Assist-Turnover Ratio: 22  
 Assists per game: 47  
 Turnovers per game: 28  
 FG percentage: 70  
 FG percentage defense: 9  
 Defensive rebounds per game: 8

## UNC in the ACC Rankings

*Through games of Jan. 7*

### Team:

Scoring: 2  
 Scoring Margin: 2  
 Rebounding Margin: 2  
 Turnover Margin: 3  
 Assist-Turnover Ratio: 1  
 FG percentage: 6  
 3pt FG percentage: 11  
 FT percentage: 7  
 3pt FGs: 9  
 Rebounding: 1  
 Blocks: 9  
 Assists: 3  
 Steals: 11  
 Scoring Defense: 2  
 FG Percentage Defense: 2  
 3pt FG Percentage Defense: 7  
 Rebounding Defense: 5  
 Offensive Rebounds: 1  
 Defensive Rebounds: 2

### Individual:

**Scoring**  
 15. Bailey  
**Rebounds**  
 6. Bailey; 9. Poole, 19. Todd-Williams  
**Offensive Rebounds**  
 6. Poole, T8. Todd-Williams, 11. Bailey  
**Defensive Rebounds**  
 5. Bailey, T13. Watts  
**FG Percentage**  
 7. Bailey  
**3pt FG Percentage**  
 14. Holešínková  
**3pt FG Per Game**  
 T10. Holešínková  
**FT Percentage**  
 12. Kelly  
**Assists**  
 14. Kelly  
**Assist-Turnover Ratio**  
 9. Kelly  
**Blocks**  
 20. Poole, 21. Bailey  
**Steals**  
 18. Watts  
**Minutes**  
 -- No one in top 25

## Tar Heel Record Book

### Three-Pointers Made

	Gms	Makes
1. Ivory Latta (2004-07)	138	345
2. Coretta Brown (2000-03)	131	251
<b>3. S. Watts (2016-present)</b>	<b>93</b>	<b>245</b>
4. Nikki Teasley (1998-2002)	125	236
5. S. Lawrence (1992-95)	125	227
6. Italee Lucas (2008-11)	138	226
7. Jamie Cherry (2015-18)	129	222
8. Tonya Sampson (1991-94)	123	194
9. Brittany Rountree (2012-15)	139	170
10. Juana Brown (1998-2001)	124	168

### Total Rebounds

	Gms	Reb	Avg
1. B. McGlade (1977-80)	121	1,251	10.34
2. Charlotte Smith (1992-95)	129	1,200	9.30
3. Erlana Larkins (2005-08)	141	1,173	8.32
4. Dawn Royster (1984-87)	110	1,108	10.07
5. Tracy Reid (1995-98)	121	1,065	8.80
6. Henrietta Walls (1980-83)	123	1,024	8.33
7. L. Atkinson (2003-06)	134	1,012	7.55
8. L. Barksdale (1998-2001)	130	977	7.52
9. Jessica Breland (2007-11)	142	960	6.76
10. Tonya Sampson (1991-94)	123	924	7.51
<b>J. Bailey (2017-present)</b>	<b>99</b>	<b>893</b>	<b>9.02</b>

### Rebounding Average

	Games	Reb	Avg
1. B. McGlade (1977-80)	121	1,251	10.34
2. Dawn Royster (1984-87)	110	1,108	10.07
3. Charlotte Smith (1992-95)	129	1,200	9.30
<b>4. J. Bailey (2018-present)</b>	<b>99</b>	<b>893</b>	<b>9.02</b>
5. S. Mavunga (2014-15)	72	640	8.89
6. Tracy Reid (1995-98)	121	1,065	8.80
7. Henrietta Walls (1980-83)	123	1,024	8.33
8. Erlana Larkins (2005-08)	141	1,173	8.32
9. L. Atkinson (2003-06)	134	1,012	7.55
10. L. Barksdale (1998-2001)	130	977	7.52

*Through games of Dec. 20*

**2020 ROSTER**

#	Player	Pos.	Ht.	Cl.	Hometown (High School/Previous College)
0	Alexandra Zelaya	F	6-4	Fr.	Goodyear, Ariz. / Millennium
1	Alyssa Ustby	G	6-1	Fr.	Rochester, Minn. / Lourdes
2	Petra Holešínská	G	5-10	Gr.	Vracov, Czech Republic / Sportovni Gymnazium Ludvika Danka / University of Illinois
3	Kennedy Todd-Williams	G	5-11	Fr.	Jacksonville, N.C. / Jacksonville
4	Kennady Tucker	G	5-10	So.	Little Rock, Ark. / North Little Rock
5	Stephanie Watts	G	5-11	Gr.	Wesley Chapel, N.C. / Weddington / Univ. of Southern California
11	Ariel Young	G	6-1	R-So.	Tallahassee, Fla. / Lincoln / University of Michigan
21	Malu Tshitenge	F	6-3	So.	Germantown, Md. / St. John's College
25	Deja Kelly	G	5-8	Fr.	San Antonio, Texas / Duncanville
30	Jaelynn Murray	F	6-2	R-Jr.	Columbia, S.C. / Dreher
31	Anya Poole	F	6-2	Fr.	Raleigh, N.C. / Southeast Raleigh
44	Janelle Bailey	C	6-4	Sr.	Charlotte, N.C. / Providence Day School

**Staff****Head Coach:** Courtney Banghart**Assistant Coach/Recruiting Coordinator:** Carrie Moore**Assistant Coaches:** Joanne Aluka-White, Adrian Walters**Director of Operations:** Meghin Williams-Banx**Director of Player Personnel, Development and Recruiting Operations:** Jackie Manuel**Director of Scouting and Video Operations:** Chris Leazier**Director of Outreach, Alumni and Administration:** Tori Niemann**Volunteer Graduate Assistant Coach:** Liz Roberts**By Class****Grad Students**Holešínská  
Watts**Sophomores**Tshitenge  
Tucker**Senior**

Bailey

**Freshmen**Kelly  
Poole  
Todd-Williams  
Ustby  
Zelaya**RS Junior**

Murray

**RS Sophomore**

Young

**Alphabetically**44 Janelle Bailey  
2 Petra Holešínská  
25 Deja Kelly  
30 Jaelynn Murray  
14 Anya Poole  
3 Kennedy Todd-Williams  
21 Malu Tshitenge  
4 Kennady Tucker  
1 Alyssa Ustby  
5 Stephanie Watts  
11 Ariel Young  
0 Alexandra Zelaya**Pronunciations**

Joanne Aluka-White: uh-LEW-kah

Courtney Banghart: BANG-heart

Petra Holešínská:  
PET-rah hole-eh-SHEEN-ska

Deja Kelly: DAY-zhuh

Chris Leazier: LAY-zher

Jaelynn Murray: JAY-lin

Tori Niemann: NEE-min

Anya Poole: AHN-yuh

Malu Tshitenge: mah-LOO chi-TEN-gay

Alyssa Ustby: UST-bee

Alexandra Zelaya: zeh-LIE-uh





**#0 ALEXANDRA ZELAYA**  
(ze-LIE-uh)  
Freshman • Forward • 6-4  
Goodyear, Ariz. (Millennium)



**#1 Alyssa Ustby**  
(a-LISS-a UST-bee)  
Freshman • Guard • 6-1  
Rochester, Minn. (Lourdes)



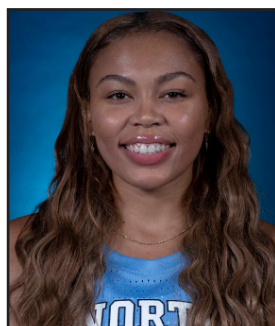
**#2 Petra Holešinská**  
(hole-eh-SHEEN-ska)  
Graduate • Guard • 5-10  
Vracov, Czech Republic  
(Univ. of Illinois/ Sportovni  
Gymnazium Ludvika Danka)



**#3 Kennedy  
Todd-Williams**  
Freshman • Guard • 5-11  
Jacksonville, N.C.  
(Jacksonville)



**#4 Kennady Tucker**  
Sophomore • Guard • 5-10  
Little Rock (N. Little Rock0)



**#5 Stephanie Watts**  
Graduate • Guard • 5-11  
Wesley Chapel, N.C.  
(Southern California/  
Weddington HS)



**#11 Ariel Young**  
RS Sophomore • Guard • 6-1  
Tallahassee, Fla.  
(Univ. of Michigan/Lincoln HS)



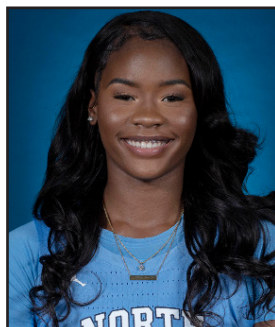
**#21 Malu Tshitenge**  
(mah-LOO chi-TEN-gay)  
Sophomore • Forward • 6-3  
Germantown, Md.  
(St. John's College)



**#25 Deja Kelly**  
Freshman • Guard • 5-9  
San Antonio, Texas  
(Duncanville)



**#30 Jaelynn Murray**  
RS Junior • Forward • 6-2  
Columbia, S.C. (Dreher)



**#31 Anya Poole**  
(AHN-yuh)  
Freshman • Forward • 6-2  
Raleigh, N.C.  
(Southeast Raleigh)



**#44 Janelle Bailey**  
Senior • Center • 6-4  
Charlotte, N.C.  
(Providence Day)



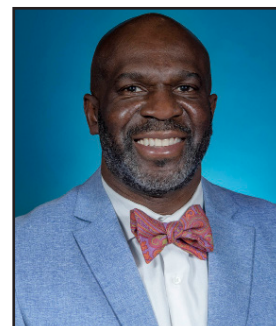
**Courtney Banghart**  
(BANG-hart)  
Head Coach  
2nd Season



**Carrie Moore**  
Assistant Coach/Recruiting  
Coordinator  
2nd Season



**Joanne Aluka-White**  
(ah-LOO-kuh)  
Assistant Coach  
2nd Season



**Adrian Walters**  
Assistant Coach  
1st Season





## Game-By-Game Starting Lineups

Date	Opponent	G	G	G	F	C
Nov. 25	Radford	Kelly	Holešínká	Todd-Williams	Tshitenge	Bailey
Nov. 28	UNCG	Kelly	Holešínká	Todd-Williams	Tshitenge	Bailey
Nov. 29	High Point	Kelly	Holešínká	Todd-Williams	Tshitenge	Bailey
Dec. 3	South Carolina State	Kelly	Holešínká	Todd-Williams	Tshitenge	Bailey
Dec. 6	Charlotte	Kelly	Holešínká	Watts	Poole	Bailey
Dec. 10	Wake Forest	Kelly	Holešínká	Watts	Poole	Bailey
Dec. 14	Miami	Kelly	Holešínká	Watts	Poole	Bailey
Dec. 17	Syracuse	Kelly	Ustby	Watts	Poole	Bailey
Dec. 20	Wake Forest	Kelly	Ustby	Watts	Poole	Bailey

## Game-By-Game Leaders

Date	Opponent	Result	Points	Rebounds	Assists	Minutes
Nov. 25	Radford	W, 90-61	Kelly-19	Todd-Williams, Poole-9	Todd-Williams-4	Ustby-26
Nov. 28	UNCG	W, 96-35	Poole-15	Young-10	Kelly, Tucker-5	Kelly-24
Nov. 29	High Point	W, 95-70	Watts-21	Watts-12	Watts-6	Watts-28
Dec. 3	S.C. State	W, 98-28	Kelly-16	Poole-11	Todd-Williams-9	Todd-Williams-21
Dec. 6	Charlotte	W, 81-75	Watts-17	Bailey, Watts, Ustby-6	Holešínká-5	Watts-34
Dec. 10	Wake Forest	L, 57-54	Holešínká, Poole-12	Poole-11	Holešínká-3	Holešínká-40
Dec. 14	Miami	L, 67-63	Ustby-17	Bailey-13	Ustby-3	Kelly-34
Dec. 17	Syracuse	W, 92-68	Bailey-25	Poole-11	Kelly-8	Kelly-38
Dec. 20	Wake Forest	W, 77-74 OT	Bailey-19	Bailey-12	Kelly-4	Bailey-41

## SPECIALTY STATS

	Pts in paint	Pts off turnover	Second chance	Fast Break	Bench
<b>UNC</b>	<b>48</b>	<b>17</b>	<b>28</b>	<b>14</b>	<b>33</b>
RU	18	9	10	7	19
<b>UNC</b>	<b>46</b>	<b>27</b>	<b>22</b>	<b>15</b>	<b>45</b>
UNCG	6	6	6	0	10
<b>UNC</b>	<b>62</b>	<b>22</b>	<b>20</b>	<b>8</b>	<b>57</b>
HPU	14	11	6	6	18
<b>UNC</b>	<b>50</b>	<b>40</b>	<b>19</b>	<b>16</b>	<b>29</b>
SCST	8	8	2	3	0
<b>UNC</b>	<b>24</b>	<b>14</b>	<b>6</b>	<b>8</b>	<b>26</b>
CLT	26	20	6	4	22
<b>UNC</b>	<b>38</b>	<b>12</b>	<b>10</b>	<b>15</b>	<b>7</b>
WFU	28	12	10	11	6
<b>UNC</b>	<b>38</b>	<b>6</b>	<b>15</b>	<b>1</b>	<b>24</b>
UM	20	17	13	3	23
<b>UNC</b>	<b>38</b>	<b>14</b>	<b>10</b>	<b>8</b>	<b>26</b>
SU	26	10	17	7	35
<b>UNC</b>	<b>36</b>	<b>19</b>	<b>20</b>	<b>10</b>	<b>24</b>
WFU	22	15	13	6	5

### UNC highs

PIP: 62 HPU  
PoTO: 40 SCST  
2nd: 28 Radford  
FB: 16 SCST  
Bench: 57 HPU

### UNC highs v. ACC

PIP: 38 x3  
PoTO: 19 WFU2  
2nd: 20 WFU2  
FB: 15 WFU  
Bench: 26 SU

### UNC lows

PIP: 24 CLT  
PoTO: 12 WFU  
2nd: 6 CLT  
FB: 8 x3  
Bench: 7 CLT

### Opponent highs

PIP: 28 WFU  
PoTO: 20 CLT  
2nd: 17 SU  
FB: 11 WFU  
Bench: 35 SU

### Opponent lows

PIP: 6 UNCG  
PoTO: 6 UNCG  
2nd: 2, SCST  
FB: 0 UNCG  
Bench: 0, SCST



# MISCELLANEOUS STATS

## Record with Starting Lineup

Holešinská, Todd-Williams, Tshitenge, Kelly,

Bailey: 4-0

Holešinská, Watts, Kelly, Poole, Bailey: 1-2 (0-2 ACC)

Watts, Kelly, Ustby, Poole, Bailey: 2-0 (2-0 ACC)

## Games as leading scorer (or tied for lead)

	20-21	Career*
Stephanie Watts	2	27
Janelle Bailey	2	27
Deja Kelly	2	2
Anya Poole	2	2
Malu Tshitenge	0	2
Petra Holešinská	1	1
Alyssa Ustby	1	1

\* -- at UNC

## Double-Digit Scoring Games

	20-21	Career*
Janelle Bailey	8	82
Stephanie Watts	2	68
Malu Tshitenge	1	17
Petra Holešinská	8	8
Deja Kelly	6	6
Anya Poole	4	4
Alyssa Ustby	6	6
Kennedy Todd-Williams	3	3
Ariel Young	1	1
Jaelynn Murray	0	1

\* -- at UNC

## Consecutive double-digit scoring games

Janelle Bailey	4
Alyssa Ustby	3
Petra Holešinská	2
Kennedy Todd-Williams	1

## 20+ point games

	20-21	Career*
Janelle Bailey	1	22
Stephanie Watts	1	19
Deja Kelly	1	1
Petra Holešinská	1	1

\* -- at UNC

## 30-point games

	20-21	Career
Janelle Bailey	0	3
Stephanie Watts	0	3

## Games as leading rebounder (or tied)

	20-21	Career*
Janelle Bailey	3	58
Stephanie Watts	1	31
Malu Tshitenge	0	8
Anya Poole	4	4
Jaelynn Murray	0	3
Kennedy Todd-Williams	1	1
Ariel Young	1	1
Alyssa Ustby	1	1

\* -- at UNC

## Double-digit rebounding games

	20-21	Career*
Janelle Bailey	2	44
Stephanie Watts	1	20
Malu Tshitenge	0	6
Anya Poole	4	4
Jaelynn Murray	0	3
Ariel Young	1	1
Alyssa Ustby	1	1
Kennedy Todd-Williams	2	2

\* -- at UNC

## Games as leader in assists (or tied for lead)

	20-21	Career*
Stephanie Watts	1	17
Janelle Bailey	0	4
Kennedy Tucker	1	2
Kennedy Todd-Williams	2	2
Petra Holešinská	2	2
Deja Kelly	3	3
Alyssa Ustby	1	1

\* -- at UNC

## Double-digit assists

	20-21	Career
Stephanie Watts	1	18
Kennedy Todd-Williams	2	2
Malu Tshitenge	0	5
Anya Poole	1	1
Alyssa Ustby	1	1

\* -- at UNC

## Consecutive games played

Malu Tshitenge	39
Janelle Bailey	10
Deja Kelly	9
Petra Holesinska	9
Alyssa Ustby	9
Anya Poole	9
Kennedy Todd-Williams	9
Ariel Young	9
Stephanie Watts	8
Kennedy Tucker	1

## Consecutive games started

Janelle Bailey	10
Deja Kelly	9
Anya Poole	5
Stephanie Watts	5
Alyssa Ustby	2

## Games Fouled Out (2020-21 season)

Ariel Young	1
-------------	---

## 2020-21 Margins

	Wins	Losses
1	0	0
2	0	0
3	1	1
4	0	1
5	0	0
6-10	1	0
11-15	0	0
16-19	0	0
20-29	3	0
30+	2	0

## Largest UNC Lead

70 (1:01 to play in Q4)..... vs. S.C. State

## Largest UNC Lead in ACC play

24 (final score, 92-68)..... SU, 12/17

## Largest UNC Deficit

21 (00:33 Q1).....HPU, 11/29

## Largest UNC Deficit in ACC play

17 (7:41 Q2).....WFU, 12/20

## Largest UNC Lead in a Loss

9 (0:40 Q1).....WFU, 12/10

## Largest UNC Deficit in a Win

21 (00:33 Q1).....HPU, 11/29

## Largest UNC Deficit in an ACC win

17 (7:41 Q2).....WFU, 12/20

## Largest UNC Halftime Lead

40 points (51-11)..... vs. UNCG, 11/28

## Largest UNC Halftime Deficit

10 points (33-23)..... vs. Miami, 12/14

## Largest UNC Halftime Deficit in a Win

5 points (43-38)..... vs. HPU, 11/29

5 points (35-30)..... vs. WFU, 12/20

## Highest UNC 1st Half FG%

60.6 percent..... vs. UNCG, 11/28

## Lowest 1st Half FG%

31.0 percent (9-29)..... vs. Miami, 12/14

## Highest 2nd Half FG%

63.9 percent..... vs. High Point, 11/29

## Lowest UNC 2nd Half FG%

36.4 percent (12-33)..... vs. Wake, 12/10

## Most Points by Carolina in a Quarter

35 points (3rd quarter)..... vs. SC State, 12/3

## Fewest Points by Carolina in a Quarter

11 points (2nd)..... vs. Wake Forest, 12/10

11 points (1st)..... vs. Miami, 12/14

## Most Points by Carolina in 1st Half

51 points..... vs. UNCG, 11/28

## Fewest Points by Carolina in 1st Half

23..... vs. Miami, 12/14

## Most Points by Carolina in 2nd Half

57 points.....HPU, 11/29

## Fewest Points by Carolina in 2nd Half

29 points.....Wake Forest, 12/10

## Most Points by Opponent in a Quarter

31 points (1st quarter).....High Point, 11/29

## Fewest Points by Opponent in a Quarter

3 points (2nd).....SC State, 12/3

## Most Points by Opponent in 1st Half

43 points.....High Point, 11/29

## Fewest Points by Opponent in 1st Half

11 points.....UNCG, 11/28

## Most Points by Opponent in 2nd Half

38 points.....Wake Forest, 12/10

## Fewest Points by Opponent in 2nd Half

15 points..... vs. SC State, 12/3

## Most Points from the Bench

57.....High Point, 11/29

## Fewest Points from the Bench

7.....Wake Forest, 12/10

## Most Points from Opponent Bench

**UNC'S RECORD WHEN ...**

	<b>Overall</b>	<b>ACC</b>		
Overall .....	7-2	2-2	Scoring less than 50 points .....	0-0 0-0
At home .....	7-0	2-0	Scoring 50-59 .....	0-1 0-1
<i>W: Radford, UNCG, High Point, SCSt, Charlotte, Syracuse, WFU</i>			<i>L: Wake Forest</i>	
On the road.....	0-2	0-2	Scoring 60-69 .....	0-1 0-1
<i>L: Wake Forest, Miami</i>			<i>L: Miami</i>	
At a neutral site.....	0-0	0-0	Scoring 70-79 .....	1-0 1-0
			<i>W: WFU2</i>	
Vs. ranked opponents.....	1-0	1-0	Scoring 80-89 .....	1-0 0-0
<i>W: Syracuse</i>			<i>W: Charlotte</i>	
Leading at the half.....	5-1	1-1	Scoring 90-99 .....	5-0 1-0
<i>W: Radford, UNCG, SC State, Charlotte, Syracuse; L: Wake Forest</i>			<i>W: Radford, UNCG, High Point, SC State, Syracuse</i>	
Trailing at the half .....	2-1	1-1	Scoring 100 points or more .....	0-0 0-0
<i>W: High Point, WFU2; L: Miami</i>				
Tied at the half.....	0-0	0-0	Allowing 50 points or less .....	2-0 0-0
Leading after first quarter .....	5-1	1-1	<i>W: UNCG, SC State</i>	
<i>W: Radford, UNCG, SC State, Charlotte, Syracuse; L: Wake Forest</i>			Allowing 51-59 points .....	0-1 0-1
Trailing after first quarter .....	2-1	1-1	<i>L: Wake Forest</i>	
<i>W: High Point, WFU2; L: Miami</i>			Allowing 60-69 points .....	2-1 1-1
Tied after first quarter .....	0-0	0-0	<i>W: Radford, Syracuse; L: Miami</i>	
Leading after third quarter .....	7-1	2-1	Allowing 70-79 points .....	3-0 1-0
<i>W: Radford, UNCG, High Point, SC State, Charlotte, Syracuse, WFU2;</i>			<i>W: High Point, Charlotte, WFU2</i>	
<i>L: Wake Forest</i>			Allowing 80-89 points .....	0-0 0-0
Trailing after third quarter .....	0-1	0-1	Allowing 90 points or more .....	0-0 0-0
<i>L: Miami</i>				
Tied after third quarter .....	0-0	0-0	Margin is 1-4 points .....	1-2 1-2
Playing overtime .....	1-0	1-0	<i>W: WFU2; L: Wake Forest, Miami</i>	
<i>W: WFU2</i>			Margin is 5-9 points .....	1-0 0-0
Shooting 50% or better.....	2-0	0-0	<i>W: Charlotte (6)</i>	
<i>W: UNCG, SC State</i>			Margin is 10 points or more .....	5-0 1-0
Shooting between 40-49% .....	4-0	1-0	<i>W: Radford, UNCG, High Point, SC State, Syracuse</i>	
<i>W: Radford, High Point, Charlotte, Syracuse</i>				
Shooting below 40% .....	1-2	1-2	One Tar Heel in double figures .....	0-0 0-0
<i>W: WFU2; L: Wake Forest, Miami</i>			Two Tar Heels in double figures .....	0-0 0-0
Opponents shoot 50% or better.....	0-0	0-0	Three Tar Heels in double figures.....	0-2 0-2
Opponent shoots between 40-49% .....	2-0	1-0	<i>L: Wake Forest, Miami</i>	
<i>W: Charlotte, WFU2</i>			Four Tar Heels in double figures.....	3-0 2-0
Opponent shoots below 40%.....	5-2	1-2	<i>W: Charlotte, Syracuse, WFU2</i>	
<i>W: Radford, UNCG, High Point, SC State, Syracuse; L: Wake Forest, Miami</i>			Five Tar Heels in double figures .....	3-0 0-0
Carolina outrebounds its opponent.....	7-2	2-2	<i>W: UNCG, High Point, SC State</i>	
<i>W: Radford, UNCG, High Point, SC State, Charlotte, Syracuse, WFU2</i>			Six Tar Heels in double figures .....	1-0 0-0
<i>L: Wake Forest, Miami</i>			<i>W: Radford</i>	
Carolina gets outrebounded .....	0-0	0-0	In November.....	3-0 0-0
Teams are tied in rebounding .....	0-0	0-0	<i>W: Radford, UNCG, High Point</i>	
Carolina has 10 or more steals.....	1-0	0-0	In December.....	4-2 2-2
<i>W: High Point</i>			<i>W: SC State, Charlotte, Syracuse, WFU2; L: Wake Forest, Miami</i>	
Carolina shoots 70% or better from FT .....	5-0	2-0	In January.....	0-0 0-0
<i>W: UNCG, High Point, SC State, Syracuse, WFU2</i>			In February.....	0-0 0-0
UNC bench outscores opponent bench.....	6-2	1-2	In March.....	0-0 0-0
<i>W: Radford, UNCG, High Point, SC State, Charlotte, WFU2; L: Wake Forest, Miami</i>				
Opponent bench outscores UNC's .....	1-0	1-0		
<i>W: Syracuse</i>				
Bench points are tied.....	0-0	0-0		

## SEASON/CAREER HIGHS

### #0 Alexandra Zelaya..... 2020-21 ..... Career

Points.....	7 vs. UNCG, 11/28/20	Same
Rebounds.....	7 vs. Radford, 11/25/20	Same
FG.....	3 vs. UNCG, 11/28/20	Same
FGA.....	7 vs. Radford, 11/25/20	Same
3FG.....	1 vs. UNCG, 11/28/20	Same
3FGA.....	3 vs. UNCG, 11/28/20	Same
FT.....	3 vs. Radford, 11/25/20	Same
FTA.....	4 vs. Radford, 11/25/20	Same
Assists.....	2 vs. SCST, 12/3/20	Same
Steals.....	1 vs. Radford, 11/25/20	Same
Blocks.....	1 vs. Radford, 11/25/20	Same
Minutes.....	22 vs. Radford, 11/25/20	Same

### #1 Alyssa Ustby..... 2020-21 ..... Career

Points.....	17 vs. Miami, 12/14/20	Same
Rebounds.....	11 vs. HPU, 11/29/20	Same
FG.....	7, 2x; last vs. WFU, 12/20/20	Same
FGA.....	11, 2x; last vs. WFU, 12/20/20	Same
3FG.....	2 vs. Syracuse, 12/17/20	Same
3FGA.....	3 vs. Syracuse, 12/17/20	Same
FT.....	5 vs. HPU, 11/29/20	Same
FTA.....	7 vs. Miami, 12/14/20	Same
Assists.....	3, 3x; last vs. Syracuse, 12/17/20	Same
Steals.....	4 vs. Miami, 12/14/20	Same
Blocks.....	1, 4x; last vs. WFU, 12/20/20	Same
Minutes.....	41 vs. WFU, 12/20/20	Same

### #2 Petra Holešinská..... 2020-21 ..... Career

Points.....	21 vs. Syracuse, 12/17/20	29 vs. Chicago St, 11/5/19
Rebounds.....	3, Wake Forest, 12/10/20	11 vs. Wright St, 12/11/16
FG.....	6, 2x; last vs. Syracuse, 12/17/20	9, 4x
FGA.....	16, Wake Forest, 12/10/20	18 vs. Evansville, 12/15/19
3FG.....	4, 3x; last vs. Syracuse, 12/17/20	7 vs. Evansville, 12/15/19
3FGA.....	10, 2x; last vs. WFU, 12/20/20	14 vs. Evansville, 12/15/19
FT.....	7 vs. Charlotte, 12/6/20	9, 2x, last vs. Rutgers, 1/9/20
FTA.....	10 vs. Charlotte, 12/6/20	12 vs. Nebraska, 3/1/17
Assists.....	7 vs. SC ST, 12/3/20	7 vs. SC ST, 12/3/20
Steals.....	3, WFU, 12/20/20	5 vs. Missouri, 12/20/19
Blocks.....	1 vs. SC ST, 12/3/20	3 vs. Purdue Ft Wayne, 12/2/16
Minutes.....	40, Wake Forest, 12/10/20	40, Wake Forest, 12/10/20

### #3 K. Todd-Williams .... 2020-21 ..... Career

Points.....	14 vs. SC ST, 12/3/20	Same
Rebounds.....	10 vs. SC ST, 12/3/20	Same
FG.....	4, 2X; last vs. SC ST, 12/3/20	Same
FGA.....	13 vs. Radford, 11/25/20	Same
3FG.....	2 vs. Charlotte, 12/6/20	Same
3FGA.....	3 vs. Charlotte, 12/6/20	Same
FT.....	5, 2x; last vs. WFU, 12/20/20	Same
FTA.....	10 vs. WFU, 12/20/20	Same
Assists.....	9 vs. SC ST, 12/3/20	Same
Steals.....	4 vs. SC ST, 12/3/20	Same
Blocks.....	1, 3x; last vs. Miami, 12/14/20	Same
Minutes.....	28 vs. WFU, 12/20/20	Same

### #4 Kennady Tucker ..... 2020-21 ..... Career

Points.....	2 vs. HPU, 11/29/20	7, 2x; last vs. Pitt, 12/30/19
Rebounds.....	3 vs. SC ST, 12/3/20	5, 2x; last vs. Va Tech, 1/5/20
FG.....	1, 3x; last vs. Miami, 12/14/20	3 vs. Pitt, 12/30/19
FGA.....	4 vs. SC ST, 12/3/20	5, 2x; last vs. Pitt, 12/30/19
3FG.....	0	1, 3x; last vs. Pitt, 12/30/19
3FGA.....	0	2 vs. WCU, 11/7/19
FT.....	0	4 vs. NC Central, 12/8/19
FTA.....	0	5 vs. Miami, 1/16/20
Assists.....	5 vs. UNCG, 11/28/20	5 vs. UNCG, 11/28/20
Steals.....	0	2, 4x; last vs. Miami, 1/16/20
Blocks.....	0	0
Minutes.....	16 vs. UNCG, 11/28/20	28 vs. Pitt, 12/30/19

### #5 Stephanie Watts ..... 2020-21 ..... Career

Points.....	21 vs. HPU, 11/29/20	39 vs. Charleston So., 11/22/16
Rebounds.....	12 vs. HPU, 11/29/20	14 at Miami, 1/20/19
FG.....	9 vs. HPU, 11/29/20	13 vs. Charleston So., 11/22/16
FGA.....	15 vs. HPU, 11/29/20	24, 2x; last vs. Bucknell, 11/20/16
3FG.....	2, 2x; last vs. Charlotte, 12/6/20	10 vs. Charleston So., 11/22/16
3FGA.....	6, 2x; last vs. Charlotte, 12/6/20	16 vs. UNCW, 12/5/18
FT.....	7 vs. Charlotte, 12/6/20	10 vs. NC State, 2/21/16
FTA.....	8 vs. Charlotte, 12/6/20	14 vs. NC State, 2/21/16
Assists.....	6 vs. HPU, 11/29/20	8, 2x; last vs. Syracuse, 1/7/16
Steals.....	5 vs. HPU, 11/29/20	5, 3x; last vs. HPU, 11/29/20
Blocks.....	1, 3x; last vs. Wake Forest, 12/20/20	6 vs. USC Upstate, 12/16/15
Minutes.....	34 vs. Charlotte, 12/6/20	45, 2x; last vs. Auburn, 12/20/18

### #11 Ariel Young..... 2020-21 ..... Career

Points.....	11 vs. UNCG, 11/28/20	11 vs. UNCG, 11/28/20
Rebounds.....	10 vs. UNCG, 11/28/20	14 vs. Detroit Mercy, 11/19/18
FG.....	4 vs. UNCG, 11/28/20	4 vs. UNCG, 11/28/20
FGA.....	5 vs. UNCG, 11/28/20	5 vs. UNCG, 11/28/20
3FG.....	2 vs. Charlotte, 12/6/20	2 vs. Charlotte, 12/6/20
3FGA.....	3 vs. Charlotte, 12/6/20	3 vs. Charlotte, 12/6/20
FT.....	5 vs. Radford, 11/25/20	5 vs. Radford, 11/25/20
FTA.....	6 vs. Radford, 11/25/20	6 vs. Radford, 11/25/20
Assists.....	3 vs. UNCG, 11/28/20	3, 2x; last vs. UNCG, 11/28/20
Steals.....	2 vs. HPU, 11/29/20	2 vs. HPU, 11/29/20
Blocks.....	1 vs. UNCG, 11/28/20	2 vs. Marquette, 12/2/18
Minutes.....	19 vs. SC ST, 12/3/20	18 vs. Radford, 11/25/20

### #21 Malu Tshitenge..... 2020-21 ..... Career

Points.....	11 vs. SC ST, 12/3/20	19, 2x; last vs. UNCW, 12/20/19
Rebounds.....	7 vs. Radford, 11/25/20	6 vs. CSU, 11/15/19
FG.....	5 vs. SC ST, 12/3/20	8 vs. WCU, 11/7/19
FGA.....	8 vs. SC ST, 12/3/20	13 vs. CSU, 11/15/19
3FG.....	0	0
3FGA.....	0	0
FT.....	1, 2x; last vs. SC ST, 12/3/20	8 vs. NC Central, 12/8/19
FTA.....	2 vs. UNCG, 11/28/20	10 vs. NC Central, 12/8/19
Assists.....	1 vs. Radford, 11/25/20	3 vs. WCU, 11/7/19
Steals.....	1 vs. UNCG, 11/28/20	2, 2x; last vs. Yale, 12/28/19
Blocks.....	0	2 vs. Elon, 11/22/19
Minutes.....	21 vs. Radford, 11/25/20	38, 2x; last vs. FSU, 1/12/20

### #25 Deja Kelly..... 2020-21 ..... Career

Points.....	22 vs. Syracuse, 12/17/20	Same
Rebounds.....	5 vs. Syracuse, 12/17/20	Same
FG.....	7 vs. Radford, 11/25/20	Same
FGA.....	21 vs. Miami, 12/14/20	Same
3FG.....	3, 2x; last vs. Miami, 12/14/20	Same
3FGA.....	6, 3x; last vs. Syracuse, 12/17/20	Same
FT.....	8 vs. Syracuse, 12/17/20	Same
FTA.....	9 vs. Syracuse, 12/17/20	Same
Assists.....	8 vs. Syracuse, 12/17/20	Same
Steals.....	1, 6x; last vs. Syracuse, 12/17/20	Same
Blocks.....	0	Same
Minutes.....	39 vs. WFU, 12/20/20	Same

### #30 Jaelynn Murray..... 2020-21 ..... Career

Points.....	6 vs. UNCG, 11/28/20	10 vs. Presbyterian, 12/5/17
Rebounds.....	3 vs. UNCG, 11/28/20	12 vs. Furman, 12/10/17
FG.....	3 vs. UNCG, 11/28/20	4, 2x; last at Georgia Tech, 2/15/18
FGA.....	4 vs. UNCG, 11/28/20	9 vs. NC State, 1/18/18
3FG.....	0	1, 6x; last vs. UNCG, 12/14/18
3FGA.....	0	4 vs. NC State, 1/18/18
FT.....	0	3 vs. Radford, 11/16/17
FTA.....	0	4, 4x; last vs. Louisville, 2/18/18
Assists.....	1 vs. HPU, 11/29/20	4 vs. UNCG, 12/14/18
Steals.....	0	3 vs. Colorado, 11/12/17
Blocks.....	0	4, 2x; last vs. Miami, 2/4/18
Minutes.....	12 vs. SC ST, 12/3/20	30 vs. Boston College, 2/28/18

### #31 Anya Poole..... 2020-21 ..... Career

Points.....	15, 2x; last vs. HPU, 11/29/20	Same
Rebounds.....	11, 3x; last vs. Syracuse, 12/17/20	Same
FG.....	6, 2x; last vs. Wake Forest, 12/10/20	Same
FGA.....	11, Wake Forest, 12/10/20	Same
3FG.....	2, UNCG, 11/28/20	Same
3FGA.....	2, UNCG, 11/28/20	Same
FT.....	3, 3x; last vs. Syracuse, 12/17/20	Same
FTA.....	5, Radford, 11/25/20	Same
Assists.....	2, CLT, 12/6/20	Same
Steals.....	1, Wake Forest, 12/10/20	Same
Blocks.....	2, 2x; last vs. Wake Forest, 12/10/20	Same
Minutes.....	30, Syracuse, 12/17/20	Same

### #44 Janelle Bailey..... 2020-21 ..... Career

Points.....	25 vs. Syracuse, 12/17/20	31 vs. Boston College, 2/21/19
Rebounds.....	13 vs. Miami, 12/14/20	19 at Wake Forest, 1/14/18
FG.....	10 vs. Syracuse, 12/17/20	12, 2x; last vs. BC, 2/21/19
FGA.....	15 vs. Syracuse, 12/17/20	20 at Virginia, 1/25/18
3FG.....	1 vs. SC ST, 12/3/20	3 vs. Rice, 12/18/18
3FGA.....	2, 3x; last vs. Miami, 12/14/20	6 vs. Rice, 12/18/18
FT.....	5, 2x; last vs. WFU, 12/20/20	10 vs. Miami, 1/16/20
FTA.....	7 vs. WFU, 12/20/20	13 vs. Howard, 12/28/18
Assists.....	2, 3x; last vs. WFU, 12/20/20	4, Va Tech, 1/5/20
Steals.....	2 vs. Syracuse, 12/17/20	3 vs. Temple, 11/28/19
Blocks.....	3 vs. Miami, 12/14/20	5 vs. Minnesota, 11/29/17
Minutes.....	41 vs. WFU, 12/20/20	44 at Wake Forest, 1/14/18



# SCORING/SHOOTING PERCENTAGE BY QUARTER, HALF, GAME

Game	Q1		Q2		1st half		Q3		Q4		2nd half		OT		Game	
	Pts	FG%	Pts	FG%	Pts	FG%	Pts	FG%	Pts	FG%	Pts	FG%	Pts	FG%	Pts	FG%
UNC	28	64.7 (11-17)	18	33.3 (8-24)	46	46.3 (19-41)	21	37.5 (6-16)	23	36.4 (8-22)	44	36.8 (14-38)			90	41.8 (33-79)
RU	12	29.4 (5-17)	18	30.8 (4-13)	30	30.0 (9-30)	17	42.9 (6-14)	14	26.3 (5-19)	31	33.3 (11-33)			61	31.7 (20-63)
UNC	25	50.0 (9-18)	26	78.6 (11-14)	51	60.6 (20-33)	18	46.2 (6-13)	27	52.6 (10-19)	45	50.0 (16-32)			96	56.3 (36-64)
UNCG	6	10.5 (2-19)	5	18.2 (2-11)	11	13.3 (4-30)	7	00.0 (0-9)	17	37.5 (6-16)	24	24.0 (6-25)			35	18.2 (10-55)
UNC	14	27.3 (6-22)	24	38.1 (8-21)	38	32.6 (14-43)	24	52.4 (11-21)	33	80.0 (12-15)	57	63.9 (23-36)			95	46.8 (37-79)
HPU	32	52.6 (10-19)	11	30.0 (3-10)	43	33.3 (13-29)	14	27.8 (5-18)	13	25.0 (3-12)	27	26.7 (8-30)			70	35.6 (21-59)
UNC	20	40.0 (8-20)	23	62.5 (10-16)	43	50.0 (18-36)	35	57.1 (12-21)	20	56.3 (9-16)	55	56.8 (21-37)			98	53.4 (39-73)
SCST	10	16.7 (3-18)	3	07.7 (1-13)	13	12.9 (4-31)	8	30.0 (3-10)	7	16.7 (2-12)	15	22.7 (5-22)			28	17.0 (9-53)
UNC	21	42.9 (6-14)	20	53.8 (7-13)	41	48.1 (13-27)	22	50.0 (7-14)	18	30.0 (3-10)	40	41.7 (10-24)			81	45.1 (23-51)
CLT	15	41.2 (7-17)	25	66.7 (10-15)	40	53.1 (17-32)	17	36.8 (7-19)	18	30.8 (4-13)	35	34.4 (11-32)			75	43.8 (28-64)
UNC	14	38.9 (7-18)	11	26.7 (4-15)	25	33.3 (11-33)	13	35.7 (5-14)	16	36.8 (7-19)	29	36.4 (12-33)			54	34.8 (23-66)
WFU	7	25.0 (3-12)	12	21.4 (3-14)	19	21.4 (6-28)	17	33.3 (7-21)	21	61.5 (8-13)	38	44.1 (15-34)			57	35.0 (21-60)
UNC	11	27.8 (5-18)	12	36.4 (4-11)	23	31.0 (9-29)	22	50.0 (9-18)	18	31.8 (7-22)	40	40.0 (16-40)			63	36.2 (25-69)
MIAMI	13	29.4 (5-17)	20	33.3 (6-18)	33	31.4 (11-35)	18	30.0 (6-20)	16	36.4 (4-11)	34	32.2 (10-31)			67	31.8 (21-66)
UNC	21	47.4 (9-19)	24	46.7 (7-15)	45	47.1(16-34)	24	37.5 (6-16)	23	57.1 (8-14)	47	46.7 (14-30)			92	46.9 (30-64)
SYR	9	16.7 (3-18)	23	38.9 (7-18)	32	27.8 (10-36)	15	29.4 (5-17)	21	31.8 (7-22)	36	30.8 (12-39)			68	29.3 (22-75)
UNC	10	40.0 (4-10)	20	41.2 (7-17)	30	40.1 (11-27)	23	28.6 (6-21)	15	38.5 (5-13)	38	32.4 (11-34)	9	50.0 (3-6)	77	37.3 (25-67)
WFU	22	50.0 (8-16)	13	33.3 (5-15)	35	41.9 (13-31)	14	44.4 (4-9)	19	42.9 (6-14)	33	43.5 (10-23)	6	25.0 (2-8)	74	40.3 (25-62)

## SUPERLATIVES

### UNC

#### Points in a quarter

High: 35, SCST, 3rd  
Low: 10, WFU2, 1st

#### Points in a half

High: 57, HPU, 2nd  
Low: 23, Miami, 1st

#### Points in a game

High: 98, SCST  
Low: 54, WFU

#### FG % in a quarter

High: 80.0, HPU, 4th  
Low: 26.7, WFU, 2nd

#### FG % in a half

High: 63.9, HPU, 2nd  
Low: 31.0, Miami, 1st

#### FG % in a game

High: 56.3, UNCG

Low: 34.8, WFU

#### FG made in a quarter

High: 12, 2x  
Low: 3, CLT, 4th

#### FG in a half

High: 23, HPU, 2nd  
Low: 9, Miami, 1st

#### FG in a game

High: 39, SCST  
Low: 23, CLT, WFU

#### 3FG made in a quarter

High: 6, SCST, 3rd  
Low: 0, 6x, last vs WFU2, 1st

#### 3FG made in a half

High: 8, SCST 2nd  
Low: 1, 5x, last vs WFU2, 1st

#### 3FG made in a game

High: 10, SCST, CLT  
Low: 2, WFU

#### FT made in a quarter

High: 11, SYR1 3rd  
Low: 0, 5x, last vs SU1 1st

#### FT made in a half

High: 16, CLT 2nd, SYR1 2nd

#### FT made in a game

High: 25, CLT  
Low: 6, WFU (6-9)

### OPPONENT

#### Points in a quarter

High: 32, HPU, 1st  
Low: 3, SCST, 2nd

#### Points in a half

High: 43, HPU, 1st  
Low: 11, UNCG, 1st

#### Points in a game

High: 75, CLT  
Low: 28, SCST

#### FG % in a quarter

High: 66.7, CLT, 2nd  
Low: 07.7, SCST, 2nd

#### FG % in a half

High: 53.1, CLT  
Low: 12.9, SCST

#### FG % in a game

High: 43.8, CLT  
Low: 17.0, SCST

#### FG made in a quarter

High: 10, 2x  
Low: 0, UNCG, 3rd

#### FG in a half

High: 17, CLT 1st  
Low: 4, 2x

#### FG in a game

High: 28, CLT  
Low: 9, SCST

#### 3FG in a quarter

High: 8, HPU 1st  
Low: 0, 10x, last vs UM

#### 3FG in a half

High: 11, HPU, 1st  
Low: 0, 3x, last vs WFU

#### 3FG in a game

High: 14, WFU2  
Low: 2, SCST, WFU

#### FT in a quarter

High: 8, 2x, last UM 4th  
Low: 0, 5x, last WFU1, 2nd

#### FT in a half

High: 11, Miami, 2nd  
Low: 2, CLT 1st

#### FT in a game

High: 16, UM  
Low: 8, SCST



**#0**

**ALEXANDRA ZELAYA**

(zeh-LIE-uh)  
**FR • FORWARD • 6-4**  
**GOODYEAR, ARIZ.**  
**(Millennium HS)**

Major Undeclared



**.....2020-01 SEASON HIGHS ..... CAREER HIGHS**

Points.....	7 vs. UNCG, 11/28/20.....	Same
Rebounds.....	7 vs. Radford, 11/25/20.....	Same
FG.....	3 vs. UNCG, 11/28/20.....	Same
FGA.....	7 vs. Radford, 11/25/20.....	Same
3FG.....	1 vs. UNCG, 11/28/20.....	Same
3FGA.....	3 vs. UNCG, 11/28/20.....	Same
FT.....	3 vs. Radford, 11/25/20.....	Same
FTA.....	4 vs. Radford, 11/25/20.....	Same
Assists.....	2 vs. SCST, 12/3/20.....	Same
Steals.....	1 vs. Radford, 11/25/20.....	Same
Blocks.....	1 vs. Radford, 11/25/20.....	Same
Minutes.....	22 vs. Radford, 11/25/20.....	Same

**Bio Updates**

- Has come off the bench to provide post depth in five of nine games

**More on Zelaya**

- Goes by "Ali"
- State champion in her junior and senior years of high school

**2020-21 Game-by-Game**

Date	Opponent	GS	FG-A	3FG-A	FT-A	O-D-R	A	T	B	S	Pts	Min
11/25	Radford		1-7	0-1	3-4	3-4-7	1	2	1	1	5	17
11/28	UNCG		3-5	1-3	0-0	1-1-2	0	1	0	0	7	14
11/29	High Point		0-0	0-0	0-0	0-1-1	0	0	0	0	0	4
12/3	SCST		0-6	0-2	0-0	0-2-2	2	0	0	0	0	14
12/6	CLT	DNP										
12/10	WFU	DNP										
12/13	UM		0-1	0-0	0-0	0-1-1	0	0	0	0	0	1
12/17	SU	DNP										
12/20	WFU	DNP										

**Career**

		Field Goals		3-Point		F-Throws		Rebounds				Scoring								
SEASON	TEAM	GP-GS	MIN/AVG	FG-FGA	FG%	3FG-FGA	3FG%	FT-FTA	FT%	OFF	DEF	TOT	AVG	PF-FO	AST	TO	BLK	STL	PTS	AVG
2020-21	UNC	5-0	53/10.7	4-19	.211	1-6	.167	3-4	.750	4	9	13	2.6	4-0	3	3	1	1	12	2.4
<b>TOTAL</b>		<b>5-0</b>	<b>53/10.7</b>	<b>4-19</b>	<b>.211</b>	<b>1-6</b>	<b>.167</b>	<b>3-4</b>	<b>.750</b>	<b>4</b>	<b>9</b>	<b>13</b>	<b>2.6</b>	<b>4-0</b>	<b>3</b>	<b>3</b>	<b>1</b>	<b>1</b>	<b>12</b>	<b>2.4</b>



#1

**ALYSSA USTBY**  
**FR • GUARD • 6-1**  
**ROCHESTER, MINN.**  
**(Lourdes HS)**

Major Undeclared



**.....2020-21 SEASON HIGHS ..... CAREER HIGHS**

Points.....	17 vs. Miami, 12/14/20.....	Same
Rebounds.....	11 vs. HPU, 11/29/20.....	Same
FG.....	7, 2x; last vs. WFU, 12/20/20.....	Same
FGA.....	11, 2x; last vs. WFU, 12/20/20.....	Same
3FG.....	2 vs Syracuse, 12/17/20.....	Same
3FGA.....	3 vs Syracuse, 12/17/20.....	Same
FT.....	5 vs. HPU, 11/29/20.....	Same
FTA.....	7 vs. Miami, 12/14/20.....	Same
Assists.....	3, 3x; last vs. Syracuse, 12/17/20.....	Same
Steals.....	4 vs. Miami, 12/14/20.....	Same
Blocks.....	1, 4x; last vs. WFU, 12/20/20.....	Same
Minutes.....	41 vs. WFU, 12/20/20.....	Same

**Bio Updates**

- Came off the bench in the first seven games of the season and made her first career start in the eighth, on Dec. 17 vs. Syracuse
- Led the team in minutes with 26 vs. Radford
- Had her first career double-double against High Point on 11/29. All 11 rebounds and 13 of her 15 points came in the second, third and fourth quarters. (She finished the first with two points and no boards.)
- Led UNC with a career-high 17 points (7-10 shooting) at Miami. Also set career highs in steals and minutes in that game.
- Played a career-high 41 minutes in the OT win over Wake on 12/20

**More on Ustby**

- Played all five positions on her high school team
- Was a three-sport athlete in high school, playing soccer and softball in addition to basketball and earning 14 varsity letters

**2020-21 Game-by-Game**

Date	Opponent	GS	FG-A	3FG-A	FT-A	O-D-R	A	T	B	S	Pts	Min
11/25	Radford		6-7	0-0	1-2	2-4-6	3	1	1	2	13	26
11/28	UNCG		1-2	0-0	0-0	0-1-1	1	0	1	0	2	14
11/29	High Point		5-11	0-1	5-5	4-7-11	1	1	1	3	15	27
12/3	SC ST		3-4	1-1	0-1	1-0-1	1	4	0	0	16	7
12/6	Charlotte		5-9	1-2	2-6	1-5-6	0	2	0	1	13	22
12/10	WFU		2-3	0-1	0-0	0-1-1	0	1	0	1	4	18
12/14	UM		7-10	0-1	3-7	4-4-8	3	2	0	4	17	29
12/17	Syracuse	*	4-7	2-3	0-0	0-3-3	3	1	1	0	10	28
12/20	WFU	*	7-11	1-2	0-0	2-4-6	2	1	0	1	15	21

**Career**

SEASON	TEAM	GP-GS	MIN/AVG	Field Goals		3-Point		F-Throws		Rebounds				Scoring						
				FG-FGA	FG%	3FG-FGA	3FG%	FT-FTA	FT%	OFF	DEF	TOT	AVG	PF-FO	AST	TO	BLK	STL	PTS	AVG
2020-21	UNC	9-2	220/24.5	40-64	.625	5-11	.455	11-21	.524	14	29	43	4.8	18-0	14	13	5	10	96	10.7
<b>TOTAL</b>		<b>9-2</b>	<b>220/24.5</b>	<b>40-64</b>	<b>.625</b>	<b>5-11</b>	<b>.455</b>	<b>11-21</b>	<b>.524</b>	<b>14</b>	<b>29</b>	<b>43</b>	<b>4.8</b>	<b>18-0</b>	<b>14</b>	<b>13</b>	<b>5</b>	<b>10</b>	<b>96</b>	<b>10.7</b>



#2

# Petra Holešinská

GR • GUARD • 5-10

VRACOV, CZECH REPUBLIC  
(Sportovni Gymnazium Ludvika Danka/  
University of Illinois)

PET-rah hole-eh-SHEEN-ska

Enrolled in the Masters of Educational  
Innovation, Technology  
and Entrepreneurship program

## .....2020-21 SEASON HIGHS ..... CAREER HIGHS

Points.....21 vs Syracuse, 12/17/20.....29 vs. Chicago St, 11/5/19  
Rebounds .....3, Wake Forest, 12/10/20.....11 vs. Wright St, 12/11/16  
FG.....6, 2x; last vs. Syracuse, 12/17/20.....9, 4x  
FGA.....16, Wake Forest, 12/10/20.....18 vs. Evansville, 12/15/19  
3FG.....4, 3x; last vs. Syracuse, 12/17/20.....7 vs. Evansville, 12/15/19  
3FGA.....10, 2x; last vs. WFU, 12/20/20.....14 vs. Evansville, 12/15/19  
FT.....7 vs. Charlotte, 12/6/20.....9, 2x, last vs. Rutgers, 1/9/20  
FTA.....10 vs. Charlotte, 12/6/20.....12 vs. Nebraska, 3/1/17  
Assists.....7 vs. SC ST, 12/3/20.....7 vs. SC ST, 12/3/20  
Steals.....3, WFU, 12/20/20.....5 vs. Missouri, 12/20/19  
Blocks.....1 vs. SC ST, 12/3/20.....3 vs. Purdue Ft Wayne, 12/2/16  
Minutes.....40, Wake Forest, 12/10/20.....40, Wake Forest, 12/10/20

### Bio Updates

- Started the first seven games of the season
- Came off the bench for a season-high 21 in the eighth game, vs. Syracuse on 12/17. She went 4 for 10 from three-point range in that game after going 0 for 10 in the previous two games
- Career-high seven assists vs. South Carolina State
- Season-best 7-10 from the free throw line vs. Charlotte
- Played a career-high 40 minutes at Wake Forest
- Scored her 1,000th career point in the home game against Wake Forest (free throw with 21 seconds to play in OT)

### More on Holešinská

- Came to UNC after four years at University of Illinois. Sat out the 2018-19 season with a knee injury so had a year of eligibility remaining
- Graduated from Illinois in May 2020 with a bachelor's degree in marketing

### 2020-21 Game-by-Game

Date	Opponent	GS	FG-A	3FG-A	FT-A	O-D-R	A	T	B	S	Pts	Min
11/25	Radford	*	5-12	4-8	0-0	0-2-2	1	1	0	0	14	25
11/28	UNCG	*	5-7	4-8	0-0	0-2-2	1	0	0	0	14	16
11/29	High Point	*	5-10	2-5	0-0	1-1-2	2	2	0	0	12	23
12/3	SCSt	*	5-10	2-6	1-1	0-2-2	7	1	1	2	13	20
12/6	Charlotte	*	2-5	2-4	7-10	1-0-1	5	0	0	0	13	33
12/10	WFU	*	6-16	0-6	0-1	1-2-3	3	3	0	1	12	40
12/14	Miami	*	2-8	0-4	1-4	0-2-2	2	4	0	0	5	26
12/17	Syracuse		6-12	4-10	5-6	0-1-1	2	2	0	1	21	28
12/20	WFU		4-14	3-10	3-3	0-1-1	2	1	0	3	14	33

### Career

SEASON	TEAM	GP-GS	MIN/AVG	Field Goals		3-Point		F-Throws		Rebounds				Scoring						
				FG-FGA	FG%	3FG-FGA	3FG%	FT-FTA	FT%	OFF	DEF	TOT	AVG	PF-FO	AST	TO	BLK	STL	PTS	AVG
2016-17	Illini	31-29	875/28.2	111-295	.376	54-152	.355	48-56	.857	17	102	119	3.8	88-3	37	53	8	24	324	10.5
2017-18	Illini	27-11	609/22.6	62-212	.292	36-117	.308	20-30	.667	23	86	109	4.0	57-0	31	43	9	16	180	6.7
2019-20	Illini	30-30	808/26.9	122-314	.389	71-173	.410	64-83	.771	20	60	80	2.7	65-0	43	60	2	29	379	12.6
2020-21	UNC	9-7	246/27.3	40-94	.426	21-58	.362	17-25	.680	3	13	16	1.8	18-0	25	14	1	7	118	13.1
<b>TOTAL FOR UNC</b>		<b>9-7</b>	<b>246/27.3</b>	<b>40-94</b>	<b>.426</b>	<b>21-58</b>	<b>.362</b>	<b>17-25</b>	<b>.680</b>	<b>3</b>	<b>13</b>	<b>16</b>	<b>1.8</b>	<b>18-0</b>	<b>25</b>	<b>14</b>	<b>1</b>	<b>7</b>	<b>118</b>	<b>13.1</b>
<b>TOTAL</b>		<b>97-77</b>	<b>2538/26.2</b>	<b>335-915</b>	<b>.366</b>	<b>182-500</b>	<b>.364</b>	<b>149-194</b>	<b>.768</b>	<b>63</b>	<b>261</b>	<b>324</b>	<b>3.3</b>	<b>228-3</b>	<b>136</b>	<b>170</b>	<b>20</b>	<b>76</b>	<b>1001</b>	<b>10.3</b>





**#3**  
**KENNEDY**  
**TODD-WILLIAMS**  
**FR • GUARD • 5-11**  
**JACKSONVILLE, N.C.**  
**(Jacksonville HS)**

Major: Pre-Business

**Bio Updates**

- Started the first four games of the season and has come off the bench in the five since then
- Against South Carolina State, came one assist away from the first triple-double in program history with 14 points, 10 rebounds and nine assists in 21 minutes of play
- Had her second career double-double with 10 points and 10 rebounds on Dec. 20 against Wake Forest

**More on Todd-Williams**

- Missed most of her junior year at Jacksonville High after tearing her ACL. In her first game back (1/24/2020), had a triple-double (22 points, 12 rebounds, 10 assists) against her rival high school

**Career**

		Field Goals		3-Point		F-Throws		Rebounds				Scoring								
SEASON	TEAM	GP-GS	MIN/AVG	FG-FGA	FG%	3FG-FGA	3FG%	FT-FTA	FT%	OFF	DEF	TOT	AVG	PF-FO	AST	TO	BLK	STL	PTS	AVG
2020-21	UNC	9-4	184/20.4	20-50	.400	5-9	.556	26-36	.722	27	32	59	6.6	15-0	20	14	3	7	71	7.9
<b>TOTAL</b>		<b>9-4</b>	<b>184/20.4</b>	<b>20-50</b>	<b>.400</b>	<b>5-9</b>	<b>.556</b>	<b>26-36</b>	<b>.722</b>	<b>27</b>	<b>32</b>	<b>59</b>	<b>6.6</b>	<b>15-0</b>	<b>20</b>	<b>14</b>	<b>3</b>	<b>7</b>	<b>71</b>	<b>7.9</b>

**.....2020-21 SEASON HIGHS ..... CAREER HIGHS**

Points.....	14 vs. SC ST, 12/3/20	.....	Same
Rebounds.....	10 vs. SC ST, 12/3/20	.....	Same
FG.....	4, 2X; last vs. SC ST, 12/3/20	.....	Same
FGA.....	13 vs. Radford, 11/25/20	.....	Same
3FG.....	2 vs Charlotte, 12/6/20	.....	Same
3FGA.....	3 vs. Charlotte, 12/6/20	.....	Same
FT.....	5, 2x; last vs. WFU, 12/20/20	.....	Same
FTA.....	10 vs. WFU, 12/20/20	.....	Same
Assists.....	9 vs. SC ST, 12/3/20	.....	Same
Steals.....	4 vs. SC ST, 12/3/20	.....	Same
Blocks.....	1, 3x; last vs. Miami, 12/14/20	.....	Same
Minutes.....	28 vs. WFU, 12/20/20	.....	Same

**2020-21 Game-by-Game**

Date	Opponent	GS	FG-A	3FG-A	FT-A	O-D-R	A	T	B	S	Pts	Min
11/25	Radford	*	4-13	0-1	4-4	4-5-9	4	1	1	1	12	26
11/28	UNCG	*	2-4	1-1	4-4	2-0-2	1	1	0	0	9	13
11/29	High Point	*	3-6	0-0	1-1	0-4-4	0	0	1	0	7	21
12/3	SCSt	*	4-7	1-1	5-6	7-3-10	9	2	0	4	14	21
12/6	Charlotte		2-3	2-3	1-2	1-4-5	1	2	0	0	7	22
12/10	Wake Forest		0-3	0-0	2-2	2-0-2	0	2	0	1	2	5
12/14	Miami		2-6	0-0	1-2	5-3-8	2	2	1	1	5	24
12/17	Syracuse		1-3	0-1	3-5	2-7-9	2	2	0	0	5	20
12/20	WFU		2-5	1-2	5-10	4-6-10	1	2	0	0	10	28



**#4**

**KENNADY TUCKER**

**SO. • GUARD • 5-10**  
**LITTLE ROCK, ARK.**  
**(North Little Rock HS)**

Major Undeclared



**.....2020-21 SEASON HIGHS ..... CAREER HIGHS**

Points..... 2 vs. HPU, 11/29/20.....7, 2x; last vs. Pitt, 12/30/19  
 Rebounds..... 3 vs. SC ST, 12/3/20..... 5, 2x; last vs. Va Tech, 1/5/20  
 FG..... 1, 2x; last vs. SC ST, 12/3/20.....3 vs. Pitt, 12/30/19  
 FGA..... 4 vs. SC ST, 12/3/20.....5, 2x; last vs. Pitt, 12/30/19  
 3FG..... 0.....1, 3x; last vs. Pitt, 12/30/19  
 3FGA..... 0.....2 vs. WCU, 11/7/19  
 FT..... 0..... 4 vs. NC Central, 12/8/19  
 FTA..... 0.....5 vs. Miami, 1/16/20  
 Assists..... 5 vs. UNCG, 11/28/20.....5 vs. UNCG, 11/28/20  
 Steals..... 0..... 2, 4x; last vs. Miami, 1/16/20  
 Blocks..... 0.....0  
 Minutes..... 16 vs. UNCG, 11/28/20.....28 vs. Pitt, 12/30/19

**Bio Updates**

- Missed the first game with an injury and has come off the bench to play in five games since then
- Had five assists in 16 minutes on the court against UNCG

**More on Tucker**

- Favorite non-basketball athlete is Serena Williams
- Dream job is to be a sports psychologist and own a shoe store on the side.

**2020-21 Game-by-Game**

Date	Opponent	GS	FG-A	3FG-A	FT-A	O-D-R	A	T	B	S	Pts	Min
11/25	Radford	DNP										
11/28	UNCG		0-1	0-0	0-0	1-0-1	5	0	0	0	0	16
11/29	High Point		1-2	0-0	0-0	0-0-0	1	0	0	0	2	18
12/3	SCSt		1-4	0-0	0-0	3-0-3	4	2	0	0	2	14
12/6	Charlotte	DNP										
12/10	WFU	DNP										
12/14	Miami		1-1	0-0	0-0	1-0-1	0	1	0	0	2	10
12/17	Syracuse	DNP										
12/20	WFU		0-0	0-0	0-0	0-0-0	0	0	0	0	0	3

**Career**

SEASON	TEAM	GP-GS	MIN/AVG	Field Goals		3-Point		F-Throws		Rebounds				Scoring						
				FG-FGA	FG%	3FG-FGA	3FG%	FT-FTA	FT%	OFF	DEF	TOT	AVG	PF-FO	AST	TO	BLK	STL	PTS	AVG
2019-20	UNC	30-0	419/14.0	13-65	.200	4-22	.182	18-28	.643	17	23	40	1.3	55-1	23	28	2	20	48	1.6
2020-21	UNC	5-0	51/10.2	3-8	.375	0-0	.000	0-0	.000	5	0	5	1.0	5-0	10	3	0	0	6	1.2
<b>TOTAL</b>		<b>35-0</b>	<b>471/13.4</b>	<b>16-73</b>	<b>.219</b>	<b>4-22</b>	<b>.182</b>	<b>18-28</b>	<b>.643</b>	<b>22</b>	<b>23</b>	<b>45</b>	<b>1.3</b>	<b>60-1</b>	<b>33</b>	<b>31</b>	<b>2</b>	<b>20</b>	<b>54</b>	<b>1.5</b>



**#5**

**STEPHANIE WATTS**

**GR • GUARD • 5-11**  
**WESLEY CHAPEL, N.C.**  
**(Weddington HS)**

Post-Baccalaureate program

**.....2020-21 SEASON HIGHS ..... CAREER HIGHS**

Points..... 21 vs. HPU, 11/29/20 ..... 39 vs. Charleston So., 11/22/16  
 Rebounds ..... 12 vs. HPU, 11/29/20 ..... 14 at Miami, 1/20/19  
 FG..... 9 vs. HPU, 11/29/20 ..... 13 vs. Charleston So., 11/22/16  
 FGA ..... 15 vs. HPU, 11/29/20 ..... 24, 2x; last vs. Bucknell, 11/20/16  
 3FG..... 2, 2x; last vs. Charlotte, 12/6/20 ..... 10 vs. Charleston So., 11/22/16  
 3FGA ..... 6, 2x; last vs. Charlotte, 12/6/20 ..... 16 vs. UNCW, 12/5/18  
 FT ..... 7 vs. Charlotte, 12/6/20 ..... 10 vs. NC State, 2/21/16  
 FTA ..... 8 vs. Charlotte, 12/6/20 ..... 14 vs. NC State, 2/21/16  
 Assists ..... 6 vs. HPU, 11/29/20 ..... 8, 2x; last vs. Syracuse, 1/7/16  
 Steals ..... 5 vs. HPU, 11/29/20 ..... 5, 3x; last vs. HPU, 11/29/20  
 Blocks ..... 1, 2x; last vs. Wake Forest, 12/20/20 ..... 6 vs. USC Upstate, 12/16/15  
 Minutes ..... 34 vs. Charlotte, 12/6/20 ..... 45, 2x; last vs. Auburn, 12/20/18

**Bio Updates**

- Missed the season opener with an injury
- Came off the bench vs. High Point to lead the team with a stellar stat line: 21 points, 12 rebounds, six assists, five steals, one turnover, in 28 minutes.
- Was a season-best 7-for-8 from the foul line against Charlotte
- Moved into the starting lineup for the game vs. Charlotte

**More on Watts**

- Spent the 2019-20 season at Southern California as a graduate student. Played in just four games and was granted an additional year of eligibility.

**2020-21 Game-by-Game**

Date	Opponent	GS	FG-A	3FG-A	FT-A	O-D-R	A	T	B	S	Pts	Min
11/25	Radford	DNP										
11/28	UNCG		2-8	0-2	0-0	0-3-3	4	0	0	4	4	21
11/29	High Point		9-15	2-6	1-1	2-10-12	6	1	1	5	21	28
12/3	SCSt		2-8	1-4	0-0	0-4-4	1	1	1	1	5	17
12/6	Charlotte	*	4-8	2-6	7-8	0-6-6	4	1	0	1	17	34
12/10	WFU	*	2-9	1-4	0-0	0-3-3	2	1	1	1	5	28
12/14	Miami	*	0-6	0-5	0-0	0-4-4	0	3	0	0	0	20
12/17	Syracuse	*	0-6	0-3	0-0	2-6-8	3	2	0	0	0	19
12/20	WFU	*	2-8	0-5	5-5	0-2-2	2	1	0	1	9	20

**Career**

SEASON	TEAM	GP-GS	MIN/AVG	Field Goals		3-Point		F-Throws		Rebounds				Scoring						
				FG-FGA	FG%	3FG-FGA	3FG%	FT-FTA	FT%	OFF	DEF	TOT	AVG	PF-FO	AST	TO	BLK	STL	PTS	AVG
2015-16	UNC	32-29	1086/33.9	159-442	.360	76-260	.292	77-108	.713	59	172	231	7.2	96-3	80	100	44	45	471	14.7
2016-17	UNC	26-26	888/34.2	158-403	.392	81-249	.325	41-63	.651	62	143	205	7.9	71-0	57	90	31	53	438	16.8
2018-19	UNC	27-27	928/34.4	147-354	.415	82-220	.373	35-53	.660	46	102	148	5.5	79-2	84	74	27	51	411	15.2
2019-20	USC	4-2	95/23.7	13-33	.394	6-19	.316	9-10	.900	4	20	24	6.0	8-0	6	7	7	4	41	10.3
2020-21	UNC	8-5	188/23.4	21-68	.309	6-35	.171	13-14	.929	4	38	42	5.3	12-0	22	10	4	12	61	7.6
<b>TOTAL FOR UNC</b>		<b>93-87</b>	<b>3089/33.2</b>	<b>485-1267</b>	<b>.383</b>	<b>245-764</b>	<b>.321</b>	<b>166-238</b>	<b>.697</b>	<b>171</b>	<b>455</b>	<b>626</b>	<b>6.7</b>	<b>258-5</b>	<b>243</b>	<b>274</b>	<b>106</b>	<b>161</b>	<b>1381</b>	<b>14.8</b>
<b>TOTAL</b>		<b>97-89</b>	<b>3184/32.8</b>	<b>498-1300</b>	<b>.383</b>	<b>251-783</b>	<b>.321</b>	<b>175-248</b>	<b>.706</b>	<b>175</b>	<b>475</b>	<b>650</b>	<b>6.7</b>	<b>266-5</b>	<b>249</b>	<b>281</b>	<b>113</b>	<b>165</b>	<b>1422</b>	<b>14.7</b>



**#11**

**ARIEL YOUNG**

**SO (RS) • GUARD • 6-1  
TALLAHASSEE, FLA.  
(Lincoln HS/Univ. of Michigan)**

Major: Exercise and Sport Science



.....2020-21 SEASON HIGHS .....		.....CAREER HIGHS .....	
Points.....	11 vs. UNCG, 11/28/20	11 vs. UNCG, 11/28/20	
Rebounds .....	10 vs. UNCG, 11/28/20	14 vs. Detroit Mercy, 11/19/18	
FG.....	4 vs. UNCG, 11/28/20	4 vs. UNCG, 11/28/20	
FGA.....	5 vs. UNCG, 11/28/20	5 vs. UNCG, 11/28/20	
3FG.....	2 vs. Charlotte, 12/6/20	2 vs. Charlotte, 12/6/20	
3FGA.....	3 vs. Charlotte, 12/6/20	3 vs. Charlotte, 12/6/20	
FT.....	5 vs. Radford, 11/25/20	5 vs. Radford, 11/25/20	
FTA.....	6 vs. Radford, 11/25/20	6 vs. Radford, 11/25/20	
Assists.....	3 vs. UNCG, 11/28/20	3, 2x; last vs UNCG, 11/28/20	
Steals.....	2 vs. HPU, 11/29/20	2 vs. HPU, 11/29/20	
Blocks.....	1 vs. UNCG, 11/28/20	2 vs. Marquette, 12/2/18	
Minutes.....	19 vs. SC ST, 12/3/20	18 vs. Radford, 11/25/20	

**Bio Updates**

- Has come off the bench to play in every game
- Had her first career double-double against UNCG with 11 points and 10 rebounds in just 15 minutes of play
- Has made 14 of 15 free throws this season, including her last 12 in a row heading into the Wake Forest game

**More on Young**

- Transferred to UNC from Michigan, enrolling in Jan. of 2020 and beginning practice with the team. Became eligible at the end of the fall semester.
- Her father, C.Y., is an assistant coach for the men's team at Florida State
- Her mother, Carolyn (Jones), was the 1991 SEC Player of the Year and a member of the 1992 U.S. Olympic team.

**2020-21 Game-by-Game**

Date	Opponent	GS	FG-A	3FG-A	FT-A	O-D-R	A	T	B	S	Pts	Min
11/25	Radford		0-4	0-2	5-6	2-0-2	0	0	0	0	5	18
11/28	UNCG		4-5	0-1	3-3	4-6-10	3	2	1	1	11	15
11/29	High Point		0-1	0-0	4-4	3-1-4	1	2	0	2	4	12
12/3	SCSt		3-4	1-2	2-2	0-1-1	1	1	0	1	9	19
12/6	Charlotte		2-3	2-3	0-0	0-2-2	0	0	0	0	6	10
12/10	WFU		0-3	0-1	0-0	0-3-3	0	2	0	0	0	10
12/14	Miami		0-2	0-1	0-0	0-0-0	0	1	0	0	0	4
12/17	Syracuse		0-0	0-0	0-0	0-0-0	0	0	0	0	0	2
12/20	WFU		0-0	0-0	0-0	0-1-1	0	0	0	0	0	1

**Career**

SEASON	TEAM	GP-GS	MIN/AVG	Field Goals		3-Point		F-Throws		Rebounds				Scoring						
				FG-FGA	FG%	3FG-FGA	3FG%	FT-FTA	FT%	OFF	DEF	TOT	AVG	PF-FO	AST	TO	BLK	STL	PTS	AVG
2018-19	Mich	20-0	113/5.7	7-21	.333	1-4	.250	1-7	.143	3	9	12	0.6	20-0	9	16	3	3	16	0.8
2020-21	UNC	9-0	90/10.0	9-22	.409	3-10	.300	14-15	.933	9	14	23	2.6	16-1	5	8	1	4	35	3.9
<b>TOTAL FOR UNC</b>		<b>9-0</b>	<b>90/10.0</b>	<b>9-22</b>	<b>.409</b>	<b>3-10</b>	<b>.300</b>	<b>14-15</b>	<b>.933</b>	<b>9</b>	<b>14</b>	<b>23</b>	<b>2.6</b>	<b>16-1</b>	<b>5</b>	<b>8</b>	<b>1</b>	<b>4</b>	<b>35</b>	<b>3.9</b>
<b>TOTAL</b>		<b>29-0</b>	<b>203/7.0</b>	<b>16-43</b>	<b>.372</b>	<b>4-14</b>	<b>.286</b>	<b>15-22</b>	<b>.682</b>	<b>12</b>	<b>23</b>	<b>35</b>	<b>1.2</b>	<b>36-1</b>	<b>14</b>	<b>24</b>	<b>4</b>	<b>7</b>	<b>51</b>	<b>1.8</b>





**#21**

**MALU TSHITENGE**

(mah-LOO chi-TEN-gay)

**SO • FORWARD • 6-3**

**GERMANTOWN, MD.**

**(ST. JOHN'S COLLEGE)**

Major: Business Administration



..... <b>2020-21 SEASON HIGHS</b> .....	<b>CAREER HIGHS</b>
Points..... 11 vs. SC ST, 12/3/20 .....	19, 2x; last vs. UNCW, 12/20/19
Rebounds..... 7 vs. Radford, 11/25/20 .....	6 vs. CSU, 11/15/19
FG..... 5 vs. SC ST, 12/3/20 .....	8 vs. WCU, 11/7/19
FGA..... 8 vs. SC ST, 12/3/20 .....	13 vs. CSU, 11/15/19
3FG..... 0 .....	0
3FGA..... 0 .....	0
FT..... 1, 2x; last vs. SC ST, 12/3/20 .....	8 vs. NC Central, 12/8/19
FTA..... 2 vs. UNCG, 11/28/20 .....	10 vs. NC Central, 12/8/19
Assists..... 1 vs. Radford, 11/25/20 .....	3 vs. WCU, 11/7/19
Steals..... 1 vs. UNCG, 11/28/20 .....	2, 2x; last vs. Yale, 12/28/19
Blocks..... 0 .....	2 vs. Elon, 11/22/19
Minutes..... 21 vs. Radford, 11/25/20 .....	38, 2x; last vs. FSU, 1/12/20

**Bio Updates**

- Starter in the first four games and has come off the bench since then
- Scored 11 points on 5-for-8 shooting against S.C. State

**More on Tshitenge**

- Named to the All-ACC Academic Team and the ACC All-Freshman Team in 2020
- As a freshman, led the ACC and ranked 15th in the nation in offensive rebounds (4.1 per game)
- Hall of Fame center Dikembe Mutombo is her uncle.
- Helped St. John's College to three straight state titles
- If she could play another sport she'd pick tennis

**2020-21 Game-by-Game**

Date	Opponent	GS	FG-A	3FG-A	FT-A	O-D-R	A	T	B	S	Pts	Min
11/25	Radford	*	1-5	0-0	0-0	5-2-7	1	0	0	0	2	16
11/28	UNCG	*	2-3	0-0	1-2	1-4-5	0	4	0	1	5	21
11/29	High Point	*	0-2	0-0	0-0	0-0-0	0	1	0	0	0	4
12/3	SCSt	*	5-8	0-0	1-1	1-1-2	0	1	0	0	11	19
12/6	Charlotte		0-1	0-0	0-0	0-0-0	0	0	0	0	0	7
12/10	Wake Forest		0-0	0-0	1-2	1-0-1	0	1	1	0	1	11
12/14	Miami		0-0	0-0	0-0	0-0-0	0	0	0	0	0	2
12/17	Syracuse		0-0	0-0	0-2	0-0-0	0	1	0	0	0	11
12/20	WFU		0-0	0-0	0-0	1-1-2	0	0	0	0	0	5

**Career**

SEASON	TEAM	GP-GS	MIN/AVG	Field Goals		3-Point		F-Throws		Rebounds				Scoring						
				FG-FGA	FG%	3FG-FGA	3FG%	FT-FTA	FT%	OFF	DEF	TOT	AVG	PF-FO	AST	TO	BLK	STL	PTS	AVG
2019-20	UNC	30-30	912/30.4	131-225	.582	0-0	.000	54-87	.621	124	99	223	7.4	72-1	27	36	15	19	316	10.5
2020-21	UNC	9-4	96/10.6	8-19	.421	0-0	.000	3-7	.429	9	8	17	1.9	8-0	1	8	1	1	19	2.1
<b>TOTAL</b>	<b>39-34</b>	<b>1008/25.8</b>	<b>139-244</b>	<b>.570</b>	<b>0-0</b>	<b>.000</b>	<b>57-94</b>	<b>.606</b>	<b>133</b>	<b>107</b>	<b>240</b>	<b>6.2</b>	<b>80-1</b>	<b>28</b>	<b>44</b>	<b>16</b>	<b>20</b>	<b>335</b>	<b>8.6</b>	



**#25**

**DEJA KELLY**  
**FR • GUARD • 5-8**  
**SAN ANTONIO, TEXAS**  
**(Duncanville HS)**

Major: Pre-Media & Journalism



**.....2020-21 SEASON HIGHS ..... CAREER HIGHS**

Points.....	22 vs Syracuse, 12/17/20	.....	Same
Rebounds.....	5 vs Syracuse, 12/17/20	.....	Same
FG.....	7 vs. Radford, 11/25/20	.....	Same
FGA.....	21 vs. Miami, 12/14/20	.....	Same
3FG.....	3, 2x; last vs. Miami, 12/14/20	.....	Same
3FGA.....	6, 3x; last vs. Syracuse, 12/17/20	.....	Same
FT.....	8 vs Syracuse, 12/17/20	.....	Same
FTA.....	9 vs Syracuse, 12/17/20	.....	Same
Assists.....	8 vs Syracuse, 12/17/20	.....	Same
Steals.....	1, 6x; last vs. Syracuse, 12/17/20	.....	Same
Blocks.....	0	.....	Same
Minutes.....	39 vs WFU, 12/20/20	.....	Same

**Honors**

- Named to the ACC's Preseason Newcomer Watch List (one of five)

**Bio Updates**

- Led the Tar Heels in scoring with 19 points vs Radford in her college debut
- Also led the team with 16 points in the win over South Carolina State, hitting six of her seven shots from the field, including three of four from 3-point range, in 13 minutes of play
- At Miami, scored 16 points, with nine of them coming in the final 1:14 of the game
- Scored a season-high 22 against Syracuse, adding a season-high eight assists. She led the team in minutes in that game, playing 38, including the entirety of the first half

**More on Kelly**

- 2020 McDonald's All-American and Jordan Brand All-American
- Finished her prep career with 3,216 points, an average of 22.2 per game

**2020-21 Game-by-Game**

Date	Opponent	GS	FG-A	3FG-A	FT-A	O-D-R	A	T	B	S	Pts	Min
11/25	Radford	*	7-15	2-6	3-4	0-4-4	3	1	0	1	19	26
11/28	UNCG	*	5-10	1-4	2-2	0-2-2	5	1	0	1	13	24
11/29	High Point	*	2-8	0-2	0-2	0-2-2	3	0	0	1	4	24
12/3	SCSt	*	6-7	3-4	1-1	0-0-0	1	1	0	0	16	13
12/6	Charlotte	*	3-11	1-4	4-5	0-2-2	2	8	0	1	11	26
12/10	Wake Forest	*	2-11	1-6	2-2	0-2-2	1	4	0	1	7	31
12/14	Miami	*	6-21	3-6	1-1	1-1-2	2	1	0	1	16	34
12/17	Syracuse	*	6-14	2-6	8-9	1-4-5	8	2	0	1	22	38
12/20	WFU	*	1-7	0-4	3-4	0-4-4	4	3	0	1	39	5

**Career**

SEASON	TEAM	GP-GS	MIN/AVG	FG-FGA	FG%	3FG-FGA	3FG%	FT-FTA	FT%	OFF	DEF	TOT	AVG	PF-FO	AST	TO	BLK	STL	PTS	AVG
2020-21	UNC	9-9	254/28.2	38-104	.365	13-42	.310	24-30	.800	2	21	23	2.6	16-0	29	21	0	8	113	12.6
<b>TOTAL</b>		<b>9-9</b>	<b>254/28.2</b>	<b>38-104</b>	<b>.365</b>	<b>13-42</b>	<b>.310</b>	<b>24-30</b>	<b>.800</b>	<b>2</b>	<b>21</b>	<b>23</b>	<b>2.6</b>	<b>16-0</b>	<b>29</b>	<b>21</b>	<b>0</b>	<b>8</b>	<b>113</b>	<b>12.6</b>



**#30**

**JAELYNN MURRAY**

**JR (RS) • FORWARD • 6-2**

**COLUMBIA, S.C.**

**(Dreher HS)**

Major: Information & Library Sciences



**.....2020-21 SEASON HIGHS ..... CAREER HIGHS**

Points..... 6 vs. UNCG, 11/28/20 ..... 10 vs. Presbyterian, 12/5/17  
 Rebounds ..... 3 vs. UNCG, 11/28/20 ..... 12 vs. Furman, 12/10/17  
 FG..... 3 vs. UNCG, 11/28/20 4, 2x; last at Georgia Tech, 2/15/18  
 FGA ..... 4 vs. UNCG, 11/28/20 ..... 9 vs. NC State, 1/18/18  
 3FG ..... 0 ..... 1, 6x; last vs. UNCG, 12/14/18  
 3FGA ..... 0 ..... 4 vs. NC State, 1/18/18  
 FT ..... 0 ..... 3 vs. Radford, 11/16/17  
 FTA ..... 0 ..... 4, 4x; last vs. Louisville, 2/18/18  
 Assists ..... 1 vs. HPU, 11/29/20 ..... 4 vs. UNCG, 12/14/18  
 Steals ..... 0 ..... 3 vs. Colorado, 11/12/17  
 Blocks ..... 0 ..... 4, 2x; last vs. Miami, 2/4/18  
 Minutes ..... 12 vs. SC ST, 12/3/20 ..... 30 vs. Boston College, 2/28/18

**Bio Updates**

- Returned to the court after missing all of last season – she suffered a torn ACL in the team’s final exhibition game prior to the 2019-20 season
- Scored six points on 3-for-4 shooting against UNCG

**More on Murray**

- Represents the team on UNC’s Student-Athlete Advisory Council
- Her mother played at South Carolina

**2020-21 Game-by-Game**

Date	Opponent	GS	FG-A	3FG-A	FT-A	O-D-R	A	T	B	S	Pts	Min
11/25	Radford		0-1	0-0	0-0	0-1-1	0	0	0	0	0	11
11/28	UNCG		3-4	0-0	0-0	0-3-3	0	0	0	0	6	9
11/29	High Point		0-2	0-0	0-0	0-2-2	1	0	0	0	0	5
12/3	SCSt		2-3	0-0	0-0	0-1-1	0	1	0	0	4	12
12/6	Charlotte	DNP										
12/10	WFU	DNP										
12/14	Miami	DNP										
12/17	Syracuse	DNP										
12/20	WFU	DNP										

**Career**

SEASON	TEAM	GP-GS	MIN/AVG	Field Goals		3-Point		F-Throws		Rebounds				Scoring						
				FG-FGA	FG%	3FG-FGA	3FG%	FT-FTA	FT%	OFF	DEF	TOT	AVG	PF-FO	AST	TO	BLK	STL	PTS	AVG
2017-18	UNC	31-29	613/19.8	49-128	.383	5-27	.185	24-35	.686	49	111	160	5.2	73-3	29	32	28	19	127	4.1
2018-19	UNC	30-2	308/10.3	22-55	.400	1-11	.091	9-13	.692	17	48	65	2.2	33-0	11	17	15	5	54	1.8
2020-21	UNC	4-0	38/9.4	5-10	.500	0-0	.000	0-0	.000	0	7	7	1.8	3-0	1	1	0	0	10	2.5
<b>TOTAL</b>		<b>65-31</b>	<b>959/14.7</b>	<b>76-193</b>	<b>.394</b>	<b>6-38</b>	<b>.158</b>	<b>33-48</b>	<b>.688</b>	<b>66</b>	<b>166</b>	<b>232</b>	<b>3.6</b>	<b>109-3</b>	<b>41</b>	<b>50</b>	<b>43</b>	<b>24</b>	<b>191</b>	<b>2.9</b>



**#31**

**ANYA POOLE**

**FR • FORWARD • 6-2**  
**Raleigh, N.C.**  
**(SE Raleigh HS)**

Major: Pre-Nursing



**.....2020-21 SEASON HIGHS ..... CAREER HIGHS**

Points.....	15, 2x; last vs. HPU, 11/29/20	.....	Same
Rebounds.....	11, 3x; last vs. Syracuse, 12/17/20	.....	Same
FG.....	6, 2x; last vs. Wake Forest, 12/10/20	.....	Same
FGA.....	11, Wake Forest, 12/10/20	.....	Same
3FG.....	2, UNCG, 11/28/20	.....	Same
3FGA.....	2, UNCG, 11/28/20	.....	Same
FT.....	3, 3x; last vs. Syracuse, 12/17/20	.....	Same
FTA.....	5, Radford, 11/25/20	.....	Same
Assists.....	2, CLT, 12/6/20	.....	Same
Steals.....	1, Wake Forest, 12/10/20	.....	Same
Blocks.....	2, 2x; last vs. Wake Forest, 12/10/20	.....	Same
Minutes.....	30, Syracuse, 12/17/20	.....	Same

**Bio Updates**

- Scored in double figures in her first three games as a Tar Heel
- Grabbed a career-best 11 rebounds against South Carolina State
- Made her first career start vs. Charlotte on Dec. 6
- Had her first career double-double at Wake Forest with 12 points and 11 rebounds
- Led UNC in rebounding vs Syracuse with 11

**More on Poole**

- First-team all-state selection who finished high school with a record of 114-9

**2020-21 Game-by-Game**

Date	Opponent	GS	FG-A	3FG-A	FT-A	O-D-R	A	T	B	S	Pts	Min
11/25	Radford		4-5	0-0	2-6	6-3-9	1	1	0	0	10	20
11/28	UNCG		5-8	2-2	3-5	1-2-3	1	1	1	0	13	24
11/29	High Point		6-10	0-0	3-4	6-0-6	1	0	1	0	15	20
12/3	SCSt		1-3	0-0	0-0	1-10-11	0	1	2	0	2	15
12/6	Charlotte *		2-4	0-0	1-2	2-2-4	2	3	1	0	5	22
12/10	Wake Forest *		6-11	0-0	0-0	3-8-11	1	0	2	1	12	29
12/14	Miami *		1-4	0-0	2-4	3-7-10	1	0	1	0	4	20
12/17	Syracuse *		3-7	0-0	3-4	4-7-11	1	2	0	0	9	30
12/20	WFU *		2-8	0-0	1-2	3-3-6	0	2	0	0	5	15

**Career**

				Field Goals		3-Point		F-Throws		Rebounds				Scoring						
SEASON	TEAM	GP-GS	MIN/AVG	FG-FGA	FG%	3FG-FGA	3FG%	FT-FTA	FT%	OFF	DEF	TOT	AVG	PF-FO	AST	TO	BLK	STL	PTS	AVG
2020-21	UNC	9-5	186/20.7	30-60	.500	2-2	1.000	15-27	.556	29	42	71	7.9	12-0	8	10	8	1	77	8.6
<b>TOTAL</b>		<b>9-5</b>	<b>186/20.7</b>	<b>30-60</b>	<b>.500</b>	<b>2-2</b>	<b>1.000</b>	<b>15-27</b>	<b>.556</b>	<b>29</b>	<b>42</b>	<b>71</b>	<b>7.9</b>	<b>12-0</b>	<b>8</b>	<b>10</b>	<b>8</b>	<b>1</b>	<b>77</b>	<b>8.6</b>



**#44**

**JANELLE BAILEY**

**SR • CENTER • 6-4  
CHARLOTTE, N.C.  
(Providence Day School)**

Major: Communication Studies

**Honors**

- Preseason All-ACC team (voted by both coaches and media)
- Lisa Leslie Award watch list for the third year in a row (one of 20 total, one of five from ACC)
- "Wade Watch" the preseason list (one of 30 total, one of four from the ACC)
- ACC Player of the Week on Dec. 21 after averaging 19.3 points and 11 rebounds vs. Miami, Syracuse and Wake Forest

**Bio Updates**

- Among active DI players, ranks second in double-doubles, third in rebounds and 16th in points. She's the highest-ranked ACC player in each of those categories.
- Scored a season-high 25 points in 24 minutes of play against Syracuse. Was 10-15 from the field and 5-5 from the foul line.
- Led UNC in scoring (19) and rebounding (12) in the OT win over Wake Forest

**More on Bailey**

- Wore jersey No. 30 in 2019-20 in honor of teammate Jaelynn Murray, who tore an ACL in the team's final exhibition game and missed the season. Now that Murray is back, Bailey is No. 44 again.
- In 2020, named All-ACC first team by the Blue Ribbon Panel and honorable mention by the coaches
- Favorite class she's taken at UNC is Sociological Perspectives.
- Won four state championships in high school.

**.....2020-21 SEASON HIGHS ..... CAREER HIGHS**

Points.....	25 vs. Syracuse, 12/17/20	31 vs. Boston College, 2/21/19
Rebounds.....	13 vs. Miami, 12/14/20	19 at Wake Forest, 1/14/18
FG.....	10 vs. Syracuse, 12/17/20	12, 2x; last vs. BC, 2/21/19
FGA.....	15 vs. Syracuse, 12/17/20	20 at Virginia, 1/25/18
3FG.....	1 vs. SC ST, 12/3/20	3 vs. Rice, 12/18/18
3FGA.....	2, 3x; last vs. Miami, 12/14/20	6 vs. Rice, 12/18/18
FT.....	5, 2x; last vs. WFU, 12/20/20	10 vs. Miami, 1/16/20
FTA.....	7 vs. WFU, 12/20/20	13 vs. Howard, 12/28/18
Assists.....	2, 3x; last vs. WFU, 12/20/20	4, Va Tech, 1/5/20
Steals.....	2 vs. Syracuse, 12/17/20	3 vs. Temple, 11/28/19
Blocks.....	3 vs. Miami, 12/14/20	5 vs. Minnesota, 11/29/17
Minutes.....	41 vs. WFU, 12/20/20	44 at Wake Forest, 1/14/18

**2020-21 Game-by-Game**

Date	Opponent	GS	FG-A	3FG-A	FT-A	O-D-R	A	T	B	S	Pts	Min
11/25	Radford	*	5-10	0-0	0-2	2-4-6	2	1	0	0	10	12
11/28	UNCG	*	4-7	0-2	2-2	3-5-8	0	0	1	0	10	21
11/29	HPU	*	6-12	0-0	3-5	4-5-9	0	2	0	1	15	22
12/3	SCSt	*	7-9	1-1	0-0	1-8-9	1	0	1	0	15	20
12/6	Charlotte	*	3-7	0-2	3-4	1-5-6	1	0	1	0	9	24
12/10	Wake Forest	*	5-10	0-0	1-2	3-5-8	2	1	1	2	11	26
12/14	Miami	*	6-10	0-2	2-4	1-12-13	1	1	3	0	14	29
12/17	Syracuse	*	10-15	0-1	5-5	2-6-8	2	1	1	2	25	24
12/20	WFU	*	7-14	0-1	5-7	6-6-12	2	4	0	1	19	41

**Career Double-Doubles – 39**

**2017-18 – 13**

- 19 pts, 10 reb vs. Radford, 11/16/17
- 15 pts, 13 reb vs. Minnesota, 11/17
- 25 pts, 13 reb vs. Hartford, 12/1/17
- 19 pts, 10 reb vs. Mercer, 12/28/17
- 10 pts, 11 reb vs. Clemson, 1/11/18
- 30 pts, 19 reb vs. Wake Forest, 1/14/18
- 11 pts, 10 reb vs. Notre Dame, 2/1/18
- 18 pts, 13 reb vs. Virginia Tech, 2/7/18
- 13 pts, 10 reb vs. NC State, 2/11/18
- 10 pts, 10 reb vs. Georgia Tech, 2/15/18
- 25 pts, 12 reb vs. Syracuse, 2/22/18
- 12 pts, 12 reb vs. Duke, 2/25/18
- 16 pts, 13 reb vs. Boston College, 2/28/18

**2018-19 – 13**

- 13 pts, 10 reb vs. Kent State, 11/9/18
- 26 pts, 11 reb vs. Colorado, 11/18/18
- 20 pts, 11 reb vs. UCLA, 11/22/18
- 21 pts, 10 reb vs. Maine, 12/2/18
- 13 pts, 12 reb vs. UNCW, 12/5/18
- 23 pts, 10 reb vs. UNCG, 12/14/18
- 19 pts, 12 reb vs. Rice, 12/18/18
- 30 pts, 14 reb vs. Howard, 12/28/18
- 21 pts, 14 reb vs. Virginia Tech, 1/24/19
- 16 pts, 13 reb vs. NC State, 2/3/19
- 18 pts, 10 reb vs. Pitt, 2/14/19
- 10 pts, 11 reb vs. NC State, 2/24/19
- 19 pts, 10 reb vs. Notre Dame, 3/8/19

**2019-20 – 11**

- 21 pts, 10 reb vs. Western Carolina, 11/7/19
- 20 pts, 15 reb vs. Navy, 11/11/19
- 19 pts, 11 reb vs. Temple, 11/28/19
- 13 pts, 11 reb vs. Illinois, 12/5/19
- 19 pts, 12 reb vs. NC Central, 12/8/19
- 10 pts, 11 reb vs. Alabama, 12/15/19
- 10 pts, 15 reb vs. UNCW, 12/20/19
- 16 pts, 16 reb vs. Yale, 12/28/19
- 28 pts, 15 reb vs. Miami, 1/16/20
- 20 pts, 11 reb vs. Ga Tech, 1/23/20
- 23 pts, 17 reb vs. Virginia, 1/30/20

**2020-21 – 2**

- 14 pts, 13 reb vs. Miami, 12/14/20
- 19 pts, 12 reb vs. WFU, 12/20/20

**Career Stats**

SEASON	TEAM	GP-GS	MIN/AVG	Field Goals		3-Point		F-Throws		Rebounds				Scoring						
				FG-FGA	FG%	3FG-FGA	3FG%	FT-FTA	FT%	OFF	DEF	TOT	AVG	PF-FO	AST	TO	BLK	STL	PTS	AVG
2017-18	UNC	31-31	1001/32.3	195-402	.485	0-0	.000	83-121	.686	113	170	283	9.1	117-6	28	67	38	20	473	15.3
2018-19	UNC	32-31	1060/33.1	202-429	.471	12-46	.261	118-157	.752	90	189	279	8.7	112-4	34	54	22	21	534	16.7
2019-20	UNC	27-27	886/32.8	139-337	.412	4-9	.444	109-135	.807	59	193	252	9.3	81-3	52	76	32	22	391	14.5
2020-21	UNC	9-9	219/24.3	53-94	.564	1-9	.111	21-31	.677	23	56	79	8.8	21-0	11	10	8	6	128	14.2
<b>TOTAL</b>		<b>99-98</b>	<b>3166/32.0</b>	<b>589-1262</b>	<b>.467</b>	<b>17-64</b>	<b>.266</b>	<b>331-444</b>	<b>.745</b>	<b>285</b>	<b>608</b>	<b>893</b>	<b>9.0</b>	<b>331-13</b>	<b>125</b>	<b>207</b>	<b>100</b>	<b>69</b>	<b>1526</b>	<b>15.4</b>



**Radford - 61** Record: 0-1

NO.	Name	Min	FG	3P	FT	Rebounds	Fouls	TP	AS	TO	ST	Blocks	+/-	
			M-A	M-A	M-A	OR DR TOT	PF	FD				BS BA		
00	Rachel LaLonde	F 26:15	4-9	2-5	0-0	0 6 6	2	0	10	2	2	0	2	0
2	Tina Lindenfeld	F 31:44	4-10	3-7	2-2	1 1 2	1	2	13	2	0	1	0	-29
30	Taiye Johnson	C 17:14	1-6	0-0	3 1 4	5 1 2	0	0	5	0	1	0	1	-14
3	Ariel Williams	G 24:05	3-6	0-1	5-8	1 6 7	2	4	11	2	0	0	0	-23
14	Makaila Wilson	G 34:32	2-10	0-3	2-2	0 0 0	1	1	6	3	0	0	0	-26
22	Ashley Tudor	27:04	3-9	2-4	3-3	1 4 5	4	4	11	0	0	0	2	-15
24	Kyanna Morgan	23:11	1-9	1-5	0-0	1 1 2	4	0	3	1	1	0	0	-29
1	Destinee Marshall	15:55	2-4	1-2	0-0	0 1 1	4	0	5	1	1	0	0	-5
<b>Team</b>						3 4 7			0		1			
<b>Totals</b>			20-63	9-27	12-17	10 24 34	23	13	61	12	15	1	4	3

Officials: Mark Hirdcastle, Krystle Apellaniz, Ne. Cepp

**Shooting By Period**

1st FG%	5-17	29.4%
3PT%	2-7	28.6%
FT%	0-0	0%
2nd FG%	4-13	30.8%
3PT%	2-6	33.3%
FT%	8-8	100%
3rd FG%	6-14	42.9%
3PT%	3-9	33.3%
FT%	2-4	50%
4th FG%	5-19	26.3%
3PT%	2-5	40%
FT%	2-5	40%
GM FG%	20-63	31.7%
3PT%	9-27	33.3%
FT%	12-17	70.6%

Dead Ball Rebounds: 5, 0  
 Technical Fouls: NONE

**North Carolina - 90** Record: 1-0

NO.	Name	Min	FG	3P	FT	Rebounds	Fouls	TP	AS	TO	ST	Blocks	+/-
			M-A	M-A	M-A	OR DR TOT	PF	FD				BS BA	
21	Malu Tshitenge	F 15:58	1-5	0-0	0-0	5 2 7	1	1	2	1	0	0	0
44	Janelle Bailey	C 11:56	5-10	0-0	0-2	2 4 6	2	2	10	2	1	0	0
2	Petra Holesinska	G 25:20	5-12	4-8	0-0	0 2 2	1	2	14	1	0	0	0
3	Kennedy Todd-Williams	G 25:51	4-13	0-1	4-4	4 5 9	0	4	12	3	1	1	1
25	Deja Kelly	G 25:31	7-15	2-6	3-4	0 4 4	1	3	19	3	1	1	0
1	Alyssa Ustby	26:07	6-7	0-0	1-2	2 4 6	2	1	13	3	1	2	1
0	Alexandra Zelaya	20:54	1-7	0-1	3-4	3 4 7	2	2	5	1	2	1	1
31	Anya Poole	19:54	4-5	0-0	2-6	6 3 9	0	4	10	1	1	0	0
11	Ariel Young	17:49	0-4	0-2	5-6	2 0 2	2	3	5	0	0	0	1
30	Jaelynn Murray	10:40	0-1	0-0	0-0	0 1 1	2	1	0	0	0	0	0
<b>Team</b>						2 4 6			0		0		
<b>Totals</b>			33-79	6-18	18-28	26 33 59	13	23	90	16	8	5	3

**Shooting By Period**

1st FG%	11-17	64.7%
3PT%	3-4	75%
FT%	3-4	75%
2nd FG%	8-24	33.3%
3PT%	2-7	28.6%
FT%	2-4	50%
3rd FG%	6-16	37.5%
3PT%	1-4	25.0%
FT%	8-8	100%
4th FG%	8-22	36.4%
3PT%	0-3	0.0%
FT%	7-14	50%
GM FG%	33-79	41.8%
3PT%	6-18	33.3%
FT%	18-28	64.3%

Dead Ball Rebounds: 6, 0  
 Technical Fouls: NONE

	RAD	UNC
Biggest lead	1 (1st 9:03)	32 (4th 0:25)
Best Scoring Run	9 (3rd 5:57)	10 (3rd 0:00)
Lead Changes	2	
Times Tied	0	
Time with Lead	00:11	39:07

Points from	RAD	UNC
Turnovers	9	17
Paint	18	48
Second Chance	10	28
Fast Breaks	7	14
Bench	19	33

Period by Period Scoring	1st	2nd	3rd	4th	TOT
RAD	12	18	17	14	61
UNC	28	18	21	23	90

**UNC Greensboro - 35 • 0-1**

##	Player	Total	3-Ptr	FT-FTA	Rebounds	PF	TP	A	TO	Blk	Stl	Min
		FG-FGA	FG-FGA		Off Def Tot							
33	Pernilla Sorensen	F 2-11	2-10	2-2	3 4 7	1	8	0	1	0	0	33:20
22	Lily Izundu	C 2-4	1-1	0-0	1 0 1	5	0	0	0	0	0	09:03
1	Tori Powell	G 0-9	0-5	2-4	0 0 0	2	2	2	2	4	0	34:24
12	Cece Crudup	G 1-11	0-4	2-2	2 2 4	4	4	0	3	0	1	23:37
20	Amber Redmond	G 2-4	0-1	2-4	0 0 0	1	6	0	0	0	1	32:49
15	Khalis Cain	0-2	0-0	0-0	1 2 3	1	0	0	2	0	0	23:28
00	Jayla Johnson	0-2	0-0	0-0	0 0 0	0	0	0	1	0	0	03:59
5	Jordan Releford	0-7	1-4	1-1	0 0 0	3	6	0	0	0	0	08:32
10	Rhianna Council	0-1	0-1	2-2	1 0 1	2	2	0	2	0	0	11:19
24	Jaylynn Brown	0-1	0-1	0-0	0 0 0	0	0	0	1	0	0	04:13
11	Excellanx Greer	1-3	0-0	0-0	0 2 2	1	2	3	0	0	0	15:16
<b>Team</b>					5 1 6				3			
<b>Totals</b>		10-55	4-27	11-15	13 11 24	20	35	5	17	0	4	200:00

FG % 1st: 2-9 22.2% 2nd: 2-11 18.2% 3rd: 0-9 0.0% 4th: 6-16 37.5% Game: 10-55 18.2%  
 3PT % 1st: 0-10 0.0% 2nd: 0-4 0.0% 3rd: 0-5 0.0% 4th: 4-8 50.0% Game: 4-27 14.8%  
 FT % 1st: 2-2 100.0% 2nd: 1-2 50.0% 3rd: 7-10 70.0% 4th: 1-1 100.0% Game: 11-15 73.3%

**North Carolina - 96 • 2-0**

##	Player	Total	3-Ptr	FT-FTA	Rebounds	PF	TP	A	TO	Blk	Stl	Min
		FG-FGA	FG-FGA		Off Def Tot							
21	Malu Tshitenge	F 2-3	0-0	1-2	1 4 5	0	5	0	4	0	1	21:15
44	Janelle Bailey	C 4-7	0-2	2-2	3 5 8	1	10	0	0	1	0	21:03
2	Petra Holesinska	G 5-7	4-5	0-0	0 2 2	2	14	1	0	0	0	16:17
3	Kennedy Todd-Williams	G 2-4	1-1	4-4	2 0 2	4	9	1	1	0	0	13:11
25	Deja Kelly	G 5-10	1-4	2-2	0 2 2	1	13	5	1	0	1	23:31
1	Alyssa Ustby	1-2	0-0	0-0	0 1 1	0	2	1	0	1	0	14:05
5	Stephanie Watts	2-8	0-2	0-0	0 3 3	2	4	0	4	0	4	21:22
31	Anya Poole	5-8	2-2	3-5	1 2 3	1	15	1	1	1	1	14:38
0	Alexandra Zelaya	3-5	1-3	0-0	1 1 2	2	7	0	1	0	0	13:51
4	Kennedy Tucker	0-1	0-0	0-0	1 0 1	0	1	0	5	0	0	16:29
30	Jaelynn Murray	3-4	0-0	0-0	0 3 3	0	6	0	0	0	0	09:13
11	Ariel Young	4-5	0-1	3-3	4 6 10	2	11	3	2	1	1	15:05
<b>Team</b>					1 2 3				0			
<b>Totals</b>		36-64	9-20	15-18	14 31 45	16	96	21	10	4	7	200:00

FG % 1st: 9-18 50.0% 2nd: 11-14 78.6% 3rd: 6-13 46.2% 4th: 10-19 52.6% Game: 36-64 56.3%  
 3PT % 1st: 2-6 33.3% 2nd: 4-6 66.7% 3rd: 2-3 66.7% 4th: 1-5 20.0% Game: 9-20 45.0%  
 FT % 1st: 5-6 83.3% 2nd: 0-0 0.0% 3rd: 4-4 100.0% 4th: 6-8 75.0% Game: 15-18 83.3%

Officials: Kevin Dillard, Timothy Bryant, Erika Herriman-Camarota  
 Technical fouls: UNC Greensboro - NONE North Carolina - NONE  
 Attendance: 0

Score by periods	1st	2nd	3rd	4th	Total	In	Off	2nd	Fast		
						Points	Paint	T/O	Chance	Break	Bench
UNC Greensboro	6	5	7	17	35	6	6	6	0	10	
North Carolina	25	26	18	27	96	46	27	22	15	45	

Last FG - NCG 4th 0:09, UNC 4th 0:33  
 Largest lead - NCG by 2 1st - 8-42, UNC by 65 4th - 120  
 NCG led for 0:25, UNC led for 38:17. Game was tied for 01:18  
 Score tied - 0 times, Lead changed - 1 time.

**Game 1**

**Game 2**

**Game 3**

**Game 4**

**High Point - 70 • 0-1**

##	Player	Total	3-Ptr	FT-FTA	Rebounds	PF	TP	A	TO	Blk	Stl	Min
		FG-FGA	FG-FGA		Off Def Tot							
33	Danielle Deoul	F 2-6	1-2	0-0	0 1 1	1	5	1	0	0	1	16:03
11	Jordan Edwards	G 2-9	1-7	5-7	0 1 1	1	3	10	7	2	0	25:35
12	Jenson Edwards	G 3-5	3-4	0-0	1 4 5	2	9	4	1	1	1	33:21
21	Skyler Curran	G 9-20	5-14	5-6	0 8 8	4	28	1	5	1	0	27:34
22	Chyna McMichel	G 0-2	0-1	0-0	2 1 3	1	0	0	2	1	0	28:47
5	Claire Wyatt	1-4	1-3	0-0	0 2 2	2	3	1	0	0	0	16:34
23	Miya Bull	2-3	1-2	0-0	1 2 3	2	5	0	1	0	0	15:25
4	Cydne Johnson	0-3	0-2	2-2	0 0 0	1	2	0	1	0	0	08:57
0	Courtney Meadows	0-0	0-0	0-0	0 0 0	1	0	0	2	0	0	05:58
1	Lalmani Simmons	0-2	0-0	1-2	0 1 0	1	0	1	0	0	0	04:53
25	Zaria Wright	2-5	1-3	2-2	0 1 0	1	7	0	2	0	0	09:56
10	Callie Scheier	0-0	0-0	0-0	0 0 0	0	0	0				



Official Basketball Box Score - Final  
**Wake Forest vs North Carolina**  
 12/20/20 Carmichael Arena, Chapel Hill

Game Time: 1:00 F  
 Game Duration: 2:00

**Wake Forest - 74 • 4-3 (1-2)**

##	Player	F	Total FG-FGA	3-Ptr FG-FGA	FT-FTA	Rebounds			PF	TP	A	TO	Blk	Stl	Min
						Off	Def	Tot							
11	Ivana Raca	F	4-9	1-2	2-2	3	6	9	0	11	3	4	1	0	36:31
23	Christina Morra	F	2-5	0-0	4-4	1	3	4	4	8	2	3	1	1	23:22
5	Gina Conti	G	4-15	3-8	1-2	1	2	3	4	12	7	2	1	1	43:38
24	Jewel Spear	G	8-17	6-12	0-0	0	1	1	4	22	3	0	1	2	40:21
32	Alexandria Scruggs	G	5-9	4-7	2-4	2	3	5	3	16	2	4	0	1	34:42
20	Olivia Summiel	G	2-3	0-0	1-2	3	3	6	4	5	1	0	0	1	24:35
2	Kaia Harrison	G	0-3	0-1	0-0	0	0	0	2	0	1	1	0	1	10:56
15	Nevaeah Brown	G	0-1	0-0	0-0	0	0	0	2	0	0	0	0	0	05:22
25	Demeara Hinds	G	0-0	0-0	0-2	1	0	1	2	0	0	1	0	0	05:16
1	Anaia Hoard	G	0-0	0-0	0-0	0	0	0	0	0	0	0	0	0	00:17
<b>Team</b>						0	2	2				2			
<b>Totals</b>			25-62	14-30	10-16	11	20	31	25	74	19	17	4	7	225:00
FG %		1st:	8-16 50.0%	2nd:	5-15 33.3%	3rd:	4-9 44.4%	4th:	6-14 42.9%	OT:	2-8 25.0%	Game:		25-62 40.3%	DeadBall
3PT %		1st:	2-4 50.0%	2nd:	3-8 37.5%	3rd:	3-6 50.0%	4th:	4-8 50.0%	OT:	2-5 40.0%	Game:		14-30 46.7%	Rebounds
FT %		1st:	4-7 57.1%	2nd:	0-0 0.0%	3rd:	3-6 50.0%	4th:	3-3 100.0%	OT:	0-0 0.0%	Game:		10-16 62.5%	1, 3

**North Carolina - 77 • 7-2 (2-2)**

##	Player	F	Total FG-FGA	3-Ptr FG-FGA	FT-FTA	Rebounds			PF	TP	A	TO	Blk	Stl	Min
						Off	Def	Tot							
31	Anya Poole	F	2-8	0-0	1-2	3	3	6	1	5	0	2	0	0	14:31
44	Janelle Bailey	C	7-14	0-1	5-7	6	6	12	3	19	2	4	0	1	41:28
1	Alyssa Ustby	G	7-11	1-2	0-0	2	4	6	4	15	2	1	1	0	40:32
5	Stephanie Watts	G	2-8	0-5	5-5	0	2	2	1	9	2	1	1	0	20:02
25	Deja Kelly	G	1-7	0-4	3-4	0	4	4	1	5	4	3	0	1	38:49
2	Petra Holesinská	G	4-14	3-10	3-3	0	1	1	1	14	2	1	0	3	32:59
3	Kennedy Todd-Williams	G	2-5	1-2	5-10	4	6	10	2	10	1	2	0	0	28:20
21	Malu Tshitenge	G	0-0	0-0	0-0	1	1	2	1	0	0	0	0	0	05:10
4	Kennady Tucker	G	0-0	0-0	0-0	0	0	0	0	0	0	0	0	0	02:55
11	Ariel Young	G	0-0	0-0	0-0	0	1	1	0	0	0	0	0	0	00:14
<b>Team</b>						1	1	2				0			
<b>Totals</b>			25-67	5-24	22-31	17	29	46	14	77	13	14	2	5	225:00
FG %		1st:	4-10 40.0%	2nd:	7-17 41.2%	3rd:	6-21 28.6%	4th:	5-13 38.5%	OT:	3-6 50.0%	Game:		25-67 37.3%	DeadBall
3PT %		1st:	0-4 0.0%	2nd:	1-6 16.7%	3rd:	3-8 37.5%	4th:	1-5 20.0%	OT:	0-1 0.0%	Game:		5-24 20.8%	Rebounds
FT %		1st:	2-4 50.0%	2nd:	5-5 100.0%	3rd:	8-11 72.7%	4th:	4-5 80.0%	OT:	3-6 50.0%	Game:		22-31 71.0%	11, 2

Officials: Mark Hardcastle, Pualani Spurlock-Welsh, Billy Smith  
 Technical fouls: Wake Forest - NONE North Carolina - NONE  
 Attendance: 0

Score by periods	1st	2nd	3rd	4th	OT	Total
Wake Forest	22	13	14	19	6	74
North Carolina	10	20	23	15	9	77

	In	Off	2nd	Fast
Points	Paint	T/O	Chance	Break
WFU	22	15	13	6
UNC	36	19	20	10

Last FG - WFU OT1-0.07, UNC OT1 - 0.17.  
 Largest lead - WFU by 17 2nd - 7-41, UNC by 10 4th - 8-20  
 WFU led for 28:27, UNC led for 12:36, Game was tied for 03:57

Score tied - 6 times.  
 Lead changed - 8 times.

**Game 9      Game 10**

**Game 11      Game 12**



## 2020-21 North Carolina Women's Basketball Combined Team Statistics All games

### Game Records

Record	Overall	Home	Away	Neutral
ALL GAMES	7-2	7-0	0-2	0-0
CONFERENCE	2-2	2-0	0-2	0-0
NON-CONFERENCE	5-0	5-0	0-0	0-0

### Score by Periods

Team	1st	2nd	3rd	4th	OT	TOT
North Carolina	164	178	202	193	9	746
Opponents	126	130	127	146	6	535

### Team Box Score

No.	Player				Total		3-Point		F-Throw		Rebounds											
		GP-GS	MIN	AVG	FG-FGA	FG%	3FG-FGA	3FG%	FT-FTA	FT%	OFF	DEF	TOT	AVG	PF	DQ	A	TO	BLK	STL	PTS	AVG
44	BAILEY, Janelle	9-9	219:02	24.3	53-94	.564	1-9	.111	21-31	.677	23	56	79	8.8	21	0	11	10	8	6	128	14.2
2	HOLEŠINSKÁ, Petra	9-7	246:08	27.3	40-94	.426	21-58	.362	17-25	.680	3	13	16	1.8	18	0	25	14	1	7	118	13.1
25	KELLY, Deja	9-9	254:09	28.2	38-104	.365	13-42	.310	24-30	.800	2	21	23	2.6	16	0	29	21	0	8	113	12.6
1	USTBY, Alyssa	9-2	220:04	24.5	40-64	.625	5-11	.455	11-21	.524	14	29	43	4.8	18	0	14	13	5	10	96	10.7
31	POOLE, Anya	9-5	186:27	20.7	30-60	.500	2-2	1.000	15-27	.556	29	42	71	7.9	12	0	8	10	8	1	77	8.6
3	TODD-WILLIAMS, Kennedy	9-4	183:47	20.4	20-50	.400	5-9	.556	26-36	.722	27	32	59	6.6	15	0	20	14	3	7	71	7.9
5	WATTS, Stephanie	8-5	187:32	23.4	21-68	.309	6-35	.171	13-14	.929	4	38	42	5.3	12	0	22	10	4	12	61	7.6
11	YOUNG, Ariel	9-0	89:54	10.0	9-22	.409	3-10	.300	14-15	.933	9	14	23	2.6	16	1	5	8	1	4	35	3.9
30	MURRAY, Jaelynn	4-0	37:44	9.4	5-10	.500	0-0	.000	0-0	.000	0	7	7	1.8	3	0	1	1	0	0	10	2.5
0	ZELAYA, Alexandra	5-0	53:28	10.7	4-19	.211	1-6	.167	3-4	.750	4	9	13	2.6	4	0	3	3	1	1	12	2.4
21	TSHITENGE, Malu	9-4	95:42	10.6	8-19	.421	0-0	.000	3-7	.429	9	8	17	1.9	8	0	1	8	1	1	19	2.1
4	TUCKER, Kennedy	5-0	51:02	10.2	3-8	.375	0-0	.000	0-0	.000	5	0	5	1.0	5	0	10	3	0	0	6	1.2
Team											20	31	51									
<b>Total</b>		<b>9</b>	<b>1825</b>		<b>271-612</b>	<b>.443</b>	<b>57-182</b>	<b>.313</b>	<b>147-210</b>	<b>.700</b>	<b>149</b>	<b>300</b>	<b>449</b>	<b>49.9</b>	<b>148</b>	<b>1</b>	<b>149</b>	<b>115</b>	<b>32</b>	<b>57</b>	<b>746</b>	<b>82.9</b>
<b>Opponents</b>		<b>9</b>	<b>1825</b>		<b>177-557</b>	<b>.318</b>	<b>72-247</b>	<b>.291</b>	<b>109-164</b>	<b>.665</b>	<b>96</b>	<b>204</b>	<b>300</b>	<b>33.3</b>	<b>193</b>	<b>4</b>	<b>91</b>	<b>142</b>	<b>27</b>	<b>49</b>	<b>535</b>	<b>59.4</b>

### Team Statistics

	UNC	OPP
<b>Scoring</b>	<b>746</b>	<b>535</b>
Points per game	82.9	59.4
Scoring margin	+23.4	-
<b>Field goals-att</b>	<b>271-612</b>	<b>177-557</b>
Field goal pct	.443	.318
<b>3 point fg-att</b>	<b>57-182</b>	<b>72-247</b>
3-point FG pct	.313	.291
3-pt FG made per game	6.3	8.0
<b>Free throws-att</b>	<b>147-210</b>	<b>109-164</b>
Free throw pct	.700	.665
F-Throws made per game	16.3	12.1
<b>Rebounds</b>	<b>449</b>	<b>300</b>
Rebounds per game	49.9	33.3
Rebounding margin	+16.6	-
<b>Assists</b>	<b>149</b>	<b>91</b>
Assists per game	16.6	10.1
<b>Turnovers</b>	<b>115</b>	<b>142</b>
Turnovers per game	12.8	15.8
Turnover margin	+3.0	-
Assist/turnover ratio	1.3	0.6
<b>Steals</b>	<b>57</b>	<b>49</b>
Steals per game	6.3	5.4
<b>Blocks</b>	<b>32</b>	<b>27</b>
Blocks per game	3.6	3.0
<b>Winning streak</b>	<b>2</b>	<b>-</b>
Home win streak	7	-
<b>Attendance</b>	<b>0</b>	<b>0</b>
Home games-Avg/Game	7-0	2-0
Neutral site-Avg/Game	-	0-0

### Team Results

Date	Opponent		Score	Att.
11/25/2020	Radford	W	90-61	0
11/28/2020	UNC Greensboro	W	96-35	0
11/29/2020	High Point	W	95-70	0
12/03/2020	South Carolina St.	W	98-28	0
12/06/2020	Charlotte	W	81-75	0
12/10/2020	at Wake Forest	L	54-57	0
12/14/2020	at Miami (FL)	L	63-67	0
12/17/2020	Syracuse	W	92-68	0
12/20/2020	Wake Forest	Wot	77-74	0



## 2020-21 North Carolina Women's Basketball Combined Team Statistics In Conference games

### Game Records

Record	Overall	Home	Away	Neutral
ALL GAMES	2-2	2-0	0-2	0-0
CONFERENCE	2-2	2-0	0-2	0-0
NON-CONFERENCE	0-0	0-0	0-0	0-0

### Score by Periods

Team	1st	2nd	3rd	4th	OT	TOT
North Carolina	56	67	82	72	9	286
Opponents	51	68	64	77	6	266

### Team Box Score

No.	Player			Total		3-Point		F-Throw		Rebounds												
		GP-GS	MIN	AVG	FG-FGA	FG%	3FG-FGA	3FG%	FT-FTA	FT%	OFF	DEF	TOT	AVG	PF	DQ	A	TO	BLK	STL	PTS	AVG
44	BAILEY, Janelle	4-4	120:52	30.2	28-49	.571	0-4	.000	13-18	.722	12	29	41	10.3	13	0	7	7	5	5	69	17.3
2	HOLEŠÍNSKÁ, Petra	4-2	126:53	31.7	18-50	.360	7-30	.233	9-14	.643	1	6	7	1.8	9	0	9	10	0	5	52	13.0
25	KELLY, Deja	4-4	141:51	35.5	15-53	.283	6-22	.273	14-16	.875	2	11	13	3.3	9	0	15	10	0	4	50	12.5
1	USTBY, Alyssa	4-2	115:12	28.8	20-31	.645	3-7	.429	3-7	.429	6	12	18	4.5	12	0	8	5	2	5	46	11.5
31	POOLE, Anya	4-4	94:10	23.5	12-30	.400	0-0	.000	6-10	.600	13	25	38	9.5	7	0	3	4	3	1	30	7.5
3	TODD-WILLIAMS, Kennedy	4-0	80:21	20.1	5-17	.294	1-3	.333	11-19	.579	13	16	29	7.3	9	0	5	8	1	2	22	5.5
5	WATTS, Stephanie	4-4	86:48	21.7	4-29	.138	1-17	.059	5-5	1.000	2	15	17	4.3	5	0	7	7	2	1	14	3.5
4	TUCKER, Kennady	2-0	12:45	6.4	1-1	1.000	0-0	.000	0-0	.000	1	0	1	0.5	1	0	0	1	0	0	2	1.0
21	TSHITENGE, Malu	4-0	28:51	7.2	0-0	.000	0-0	.000	1-4	.250	2	1	3	0.8	6	0	0	2	1	0	1	0.3
0	ZELAYA, Alexandra	1-0	01:17	1.3	0-1	.000	0-0	.000	0-0	.000	0	1	1	1.0	0	0	0	0	0	0	0	0.0
11	YOUNG, Ariel	4-0	15:60	4.0	0-5	.000	0-2	.000	0-0	.000	0	4	4	1.0	2	0	0	3	0	0	0	0.0
Team											7	16	23									
<b>Total</b>		<b>4</b>	<b>825</b>		<b>103-266</b>	<b>.387</b>	<b>18-85</b>	<b>.212</b>	<b>62-93</b>	<b>.667</b>	<b>59</b>	<b>136</b>	<b>195</b>	<b>48.8</b>	<b>73</b>	<b>0</b>	<b>54</b>	<b>57</b>	<b>14</b>	<b>23</b>	<b>286</b>	<b>71.5</b>
<b>Opponents</b>		<b>4</b>	<b>825</b>		<b>89-263</b>	<b>.338</b>	<b>34-117</b>	<b>.291</b>	<b>54-88</b>	<b>.614</b>	<b>50</b>	<b>108</b>	<b>158</b>	<b>39.5</b>	<b>90</b>	<b>1</b>	<b>43</b>	<b>55</b>	<b>12</b>	<b>30</b>	<b>266</b>	<b>66.5</b>

### Team Statistics

	UNC	OPP
<b>Scoring</b>	<b>286</b>	<b>266</b>
Points per game	71.5	66.5
Scoring margin	+5.0	-
<b>Field goals-att</b>	<b>103-266</b>	<b>89-263</b>
Field goal pct	.387	.338
<b>3 point fg-att</b>	<b>18-85</b>	<b>34-117</b>
3-point FG pct	.212	.291
3-pt FG made per game	4.5	8.5
<b>Free throws-att</b>	<b>62-93</b>	<b>54-88</b>
Free throw pct	.667	.614
F-Throws made per game	15.5	13.5
<b>Rebounds</b>	<b>195</b>	<b>158</b>
Rebounds per game	48.8	39.5
Rebounding margin	+9.3	-
<b>Assists</b>	<b>54</b>	<b>43</b>
Assists per game	13.5	10.8
<b>Turnovers</b>	<b>57</b>	<b>55</b>
Turnovers per game	14.3	13.8
Turnover margin	-0.5	-
Assist/turnover ratio	0.9	0.8
<b>Steals</b>	<b>23</b>	<b>30</b>
Steals per game	5.8	7.5
<b>Blocks</b>	<b>14</b>	<b>12</b>
Blocks per game	3.5	3.0
<b>Winning streak</b>	<b>2</b>	<b>-</b>
Home win streak	2	-
<b>Attendance</b>	<b>0</b>	<b>0</b>
Home games-Avg/Game	2-0	2-0
Neutral site-Avg/Game	-	0-0

### Team Results

Date	Opponent		Score	Att.
12/10/2020	at Wake Forest	L	54-57	0
12/14/2020	at Miami (FL)	L	63-67	0
12/17/2020	Syracuse	W	92-68	0
12/20/2020	Wake Forest	Wot	77-74	0





**2020-21 North Carolina Women's Basketball  
Team Overall Conference  
All games**

**Summary**

Player	Overall Statistics										Conference Statistics									
	GP-GS	MIN/G	FG%	3FG%	FT%	R/G	A/G	STL	BLK	PTS/G	GP-GS	MIN/G	FG%	3FG%	FT%	R/G	A/G	STL	BLK	PTS/G
BAILEY, Janelle	9-9	24.3	.564	.111	.677	8.8	1.2	6	8	14.2	4-4	30.2	.571	.000	.722	10.3	1.8	5	5	17.3
HOLEŠÍNSKÁ, Petra	9-7	27.3	.426	.362	.680	1.8	2.8	7	1	13.1	4-2	31.7	.360	.233	.643	1.8	2.3	5	0	13.0
KELLY, Deja	9-9	28.2	.365	.310	.800	2.6	3.2	8	0	12.6	4-4	35.5	.283	.273	.875	3.3	3.8	4	0	12.5
USTBY, Alyssa	9-2	24.5	.625	.455	.524	4.8	1.6	10	5	10.7	4-2	28.8	.645	.429	.429	4.5	2.0	5	2	11.5
POOLE, Anya	9-5	20.7	.500	1.000	.556	7.9	0.9	1	8	8.6	4-4	23.5	.400	.000	.600	9.5	0.8	1	3	7.5
TODD-WILLIAMS, Kennedy	9-4	20.4	.400	.556	.722	6.6	2.2	7	3	7.9	4-0	20.1	.294	.333	.579	7.3	1.3	2	1	5.5
WATTS, Stephanie	8-5	23.4	.309	.171	.929	5.3	2.8	12	4	7.6	4-4	21.7	.138	.059	1.000	4.3	1.8	1	2	3.5
YOUNG, Ariel	9-0	10.0	.409	.300	.933	2.6	0.6	4	1	3.9	4-0	4.0	.000	.000	.000	1.0	0.0	0	0	0.0
MURRAY, Jaelynn	4-0	9.4	.500	.000	.000	1.8	0.3	0	0	2.5	0-0	0.0	.000	.000	.000	0.0	0.0	0	0	0.0
ZELAYA, Alexandra	5-0	10.7	.211	.167	.750	2.6	0.6	1	1	2.4	1-0	1.3	.000	.000	.000	1.0	0.0	0	0	0.0
TSHITENGE, Malu	9-4	10.6	.421	.000	.429	1.9	0.1	1	1	2.1	4-0	7.2	.000	.000	.250	0.8	0.0	0	1	0.3
TUCKER, Kennady	5-0	10.2	.375	.000	.000	1.0	2.0	0	0	1.2	2-0	6.4	1.000	.000	.000	0.5	0.0	0	0	1.0
<b>Totals</b>	<b>9</b>		<b>.443</b>	<b>.313</b>	<b>.700</b>	<b>49.9</b>	<b>16.6</b>	<b>57</b>	<b>32</b>	<b>82.9</b>	<b>4</b>		<b>.387</b>	<b>.212</b>	<b>.667</b>	<b>48.8</b>	<b>13.5</b>	<b>23</b>	<b>14</b>	<b>71.5</b>
<b>Opponent</b>	<b>9</b>		<b>.318</b>	<b>.291</b>	<b>.665</b>	<b>33.3</b>	<b>10.1</b>	<b>49</b>	<b>27</b>	<b>59.4</b>	<b>4</b>		<b>.338</b>	<b>.291</b>	<b>.614</b>	<b>39.5</b>	<b>10.8</b>	<b>30</b>	<b>12</b>	<b>66.5</b>

**Scoring**

Player	Overall Statistics								Conference Statistics							
	FG-FGA	FG%	3FG-3FGA	3FG%	FT-FTA	FT%	PTS	PTS/G	FG-FGA	FG%	3FG-3FGA	3FG%	FT-FTA	FT%	PTS	PTS/G
BAILEY, Janelle	53-94	.564	1-9	.111	21-31	.677	128	14.2	28-49	.571	0-4	.000	13-18	.722	69	17.3
HOLEŠÍNSKÁ, Petra	40-94	.426	21-58	.362	17-25	.680	118	13.1	18-50	.360	7-30	.233	9-14	.643	52	13.0
KELLY, Deja	38-104	.365	13-42	.310	24-30	.800	113	12.6	15-53	.283	6-22	.273	14-16	.875	50	12.5
USTBY, Alyssa	40-64	.625	5-11	.455	11-21	.524	96	10.7	20-31	.645	3-7	.429	3-7	.429	46	11.5
POOLE, Anya	30-60	.500	2-2	1.000	15-27	.556	77	8.6	12-30	.400	0-0	.000	6-10	.600	30	7.5
TODD-WILLIAMS, Kennedy	20-50	.400	5-9	.556	26-36	.722	71	7.9	5-17	.294	1-3	.333	11-19	.579	22	5.5
WATTS, Stephanie	21-68	.309	6-35	.171	13-14	.929	61	7.6	4-29	.138	1-17	.059	5-5	1.000	14	3.5
YOUNG, Ariel	9-22	.409	3-10	.300	14-15	.933	35	3.9	0-5	.000	0-2	.000	0-0	.000	0	0.0
MURRAY, Jaelynn	5-10	.500	0-0	.000	0-0	.000	10	2.5	0-0	.000	0-0	.000	0-0	.000	0	0.0
ZELAYA, Alexandra	4-19	.211	1-6	.167	3-4	.750	12	2.4	0-1	.000	0-0	.000	0-0	.000	0	0.0
TSHITENGE, Malu	8-19	.421	0-0	.000	3-7	.429	19	2.1	0-0	.000	0-0	.000	1-4	.250	1	0.3
TUCKER, Kennady	3-8	.375	0-0	.000	0-0	.000	6	1.2	1-1	1.000	0-0	.000	0-0	.000	2	1.0
<b>Totals</b>	<b>271-612</b>	<b>.443</b>	<b>57-182</b>	<b>.313</b>	<b>147-210</b>	<b>.700</b>	<b>746</b>	<b>82.9</b>	<b>103-266</b>	<b>.387</b>	<b>18-85</b>	<b>.212</b>	<b>62-93</b>	<b>.667</b>	<b>286</b>	<b>71.5</b>
<b>Opponent</b>	<b>177-557</b>	<b>.318</b>	<b>72-247</b>	<b>.291</b>	<b>109-164</b>	<b>.665</b>	<b>535</b>	<b>59.4</b>	<b>89-263</b>	<b>.338</b>	<b>34-117</b>	<b>.291</b>	<b>54-88</b>	<b>.614</b>	<b>266</b>	<b>66.5</b>

**Totals**

Player	Overall Statistics										Conference Statistics									
	O-REB	D-REB	TOTAL	Pf	FO	A	TO	A/TO	HI	PTS	O-REB	D-REB	TOTAL	Pf	FO	A	TO	A/TO	HI	PTS
BAILEY, Janelle	23	56	79	21	0	11	10	1.1	25	12	29	41	13	0	7	7	1.0	25	25	
HOLEŠÍNSKÁ, Petra	3	13	16	18	0	25	14	1.8	21	1	6	7	9	0	9	10	0.9	21	21	
KELLY, Deja	2	21	23	16	0	29	21	1.4	22	2	11	13	9	0	15	10	1.5	22	22	
USTBY, Alyssa	14	29	43	18	0	14	13	1.1	17	6	12	18	12	0	8	5	1.6	17	17	
POOLE, Anya	29	42	71	12	0	8	10	0.8	15	13	25	38	7	0	3	4	0.8	12	12	
TODD-WILLIAMS, Kennedy	27	32	59	15	0	20	14	1.4	14	13	16	29	9	0	5	8	0.6	10	10	
WATTS, Stephanie	4	38	42	12	0	22	10	2.2	21	2	15	17	5	0	7	7	1.0	9	9	
YOUNG, Ariel	9	14	23	16	1	5	8	0.6	11	0	4	4	2	0	0	3	0.0	0	0	
MURRAY, Jaelynn	0	7	7	3	0	1	1	1.0	6	0	0	0	0	0	0	0	0.0	0	0	
ZELAYA, Alexandra	4	9	13	4	0	3	3	1.0	7	0	1	1	0	0	0	0	0.0	0	0	
TSHITENGE, Malu	9	8	17	8	0	1	8	0.1	11	2	1	3	6	0	0	2	0.0	1	1	
TUCKER, Kennady	5	0	5	5	0	10	3	3.3	2	1	0	1	1	0	0	1	0.0	2	2	
<b>Totals</b>	<b>149</b>	<b>300</b>	<b>449</b>	<b>148</b>	<b>1</b>	<b>149</b>	<b>115</b>	<b>1.3</b>	<b>98</b>	<b>59</b>	<b>136</b>	<b>195</b>	<b>73</b>	<b>0</b>	<b>54</b>	<b>57</b>	<b>0.9</b>	<b>92</b>	<b>92</b>	
<b>Opponent</b>	<b>96</b>	<b>204</b>	<b>300</b>	<b>193</b>	<b>4</b>	<b>91</b>	<b>142</b>	<b>0.6</b>	<b>75</b>	<b>50</b>	<b>108</b>	<b>158</b>	<b>90</b>	<b>1</b>	<b>43</b>	<b>55</b>	<b>0.8</b>	<b>74</b>	<b>74</b>	



**2020-21 North Carolina Women's Basketball  
Season Schedule/Results & Leaders  
All games**

**Game Records**

Record	Overall	Home	Away	Neutral
ALL GAMES	7-2	7-0	0-2	0-0
CONFERENCE	2-2	2-0	0-2	0-0
NON-CONFERENCE	5-0	5-0	0-0	0-0

**Team Results**

Date	Opponent		Score	Att.	High Points	High Rebounds
11/25/2020	Radford	W	90-61	0	(19) KELLY, Deja	(9) TODD-WILLIAMS, Kennedy (9) POOLE, Anya
11/28/2020	UNC Greensboro	W	96-35	0	(15) POOLE, Anya	(10) YOUNG, Ariel
11/29/2020	High Point	W	95-70	0	(21) WATTS, Stephanie	(12) WATTS, Stephanie
12/03/2020	South Carolina St.	W	98-28	0	(16) KELLY, Deja	(11) POOLE, Anya
12/06/2020	Charlotte	W	81-75	0	(17) WATTS, Stephanie	(6) BAILEY, Janelle (6) WATTS, Stephanie (6) USTBY, Alyssa
12/10/2020	at Wake Forest	L	54-57	0	(12) HOLESÍNSKÁ, Petra (12) POOLE, Anya	(11) POOLE, Anya
12/14/2020	at Miami (FL)	L	63-67	0	(17) USTBY, Alyssa	(13) BAILEY, Janelle
12/17/2020	Syracuse	W	92-68	0	(25) BAILEY, Janelle	(11) POOLE, Anya
12/20/2020	Wake Forest	Wot	77-74	0	(19) BAILEY, Janelle	(12) BAILEY, Janelle

**Attendance Summary**

	Games	Attend	Avg/Game
Home	7	0	0
Away	2	0	0
Neutral	0	0	0
<b>Total</b>	<b>9</b>	<b>0</b>	<b>0</b>



**2020-21 North Carolina Women's Basketball  
Team Game-by-Game  
All games**

Opponent	Date	Score		Total		3-Pointers		Free throws		Rebounds										
				FG-FGA	PCT	3FG-FGA	PCT	FT-FTA	PCT	OFF	DEF	TOT	AVG	PF	A	TO	BLK	STL	PTS	AVG
Radford	11/25/2020	90-61	W	33-79	.418	6-18	.333	18-28	.643	26	33	59	59.0	13	16	8	3	5	90	90.0
UNC Greensboro	11/28/2020	96-35	W	36-64	.563	9-20	.450	15-18	.833	14	31	45	52.0	16	21	10	4	7	96	93.0
High Point	11/29/2020	95-70	W	37-79	.468	4-14	.286	17-22	.773	21	35	56	53.3	19	16	9	4	11	95	93.7
South Carolina St.	12/03/2020	98-28	W	39-73	.534	10-21	.476	10-12	.833	21	37	58	54.5	13	27	15	5	8	98	94.8
Charlotte	12/06/2020	81-75	W	23-51	.451	10-24	.417	25-37	.676	8	28	36	50.8	14	15	16	2	3	81	92.0
at Wake Forest	12/10/2020	54-57	L	23-66	.348	2-18	.111	6-9	.667	11	30	41	49.2	16	9	15	5	8	54	85.7
at Miami (FL)	12/14/2020	63-67	L	25-69	.362	3-19	.158	10-22	.455	18	39	57	50.3	20	11	15	5	6	63	82.4
Syracuse	12/17/2020	92-68	W	30-64	.469	8-24	.333	24-31	.774	13	38	51	50.4	23	21	13	2	4	92	83.6
Wake Forest	12/20/2020	77-74	Wot	25-67	.373	5-24	.208	22-31	.710	17	29	46	49.9	14	13	14	2	5	77	82.9
<b>Total</b>		<b>746</b>		<b>271-612</b>	<b>.443</b>	<b>57-182</b>	<b>.313</b>	<b>147-210</b>	<b>.700</b>	<b>149</b>	<b>300</b>	<b>449</b>	<b>49.9</b>	<b>148</b>	<b>149</b>	<b>115</b>	<b>32</b>	<b>57</b>	<b>746</b>	<b>82.9</b>
Opponents		535		177-557	.318	72-247	.291	109-164	.665	96	204	300	33.3	193	91	142	27	49	535	59.4

**North Carolina Averages**

Games Played	Points/game	FG Pct	3FG Pct	FT Pct	Rebounds/game	Assists/game	Turnovers/game	Assist/Turnover ratio	Steals/game	Blocks/game
9	82.9	44.3	31.3	70.0	49.9	16.6	12.8	1.3	6.3	3.6



**2020-21 North Carolina Women's Basketball  
Team High/Low Analysis  
All games**

**North Carolina - Game Highs**

<b>POINTS</b>	98		South Carolina St. (12/03/2020)
	96		UNC Greensboro (11/28/2020)
	95		High Point (11/29/2020)
	92		Syracuse (12/17/2020)
	90		Radford (11/25/2020)
<b>FIELD GOALS MADE</b>	39		South Carolina St. (12/03/2020)
	37		High Point (11/29/2020)
<b>FIELD GOAL ATTEMPTS</b>	79		High Point (11/29/2020)
	79		Radford (11/25/2020)
<b>FIELD GOAL PERCENTAGE</b>	.563	(36-64)	UNC Greensboro (11/28/2020)
	.534	(39-73)	South Carolina St. (12/03/2020)
<b>3 PT FG MADE</b>	10		Charlotte (12/06/2020)
	10		South Carolina St. (12/03/2020)
<b>3 PT FG ATTEMPTS</b>	24		Wake Forest (12/20/2020)
	24		Syracuse (12/17/2020)
	24		Charlotte (12/06/2020)
<b>3 PT FG PERCENTAGE</b>	.476	(10-21)	South Carolina St. (12/03/2020)
	.450	(9-20)	UNC Greensboro (11/28/2020)
<b>FREE THROWS MADE</b>	25		Charlotte (12/06/2020)
	24		Syracuse (12/17/2020)
<b>FREE THROW ATTEMPTS</b>	37		Charlotte (12/06/2020)
	31		Wake Forest (12/20/2020)
	31		Syracuse (12/17/2020)
<b>FREE THROW PERCENTAGE</b>	.833	(15-18)	UNC Greensboro (11/28/2020)
	.833	(10-12)	South Carolina St. (12/03/2020)
<b>REBOUNDS</b>	59		Radford (11/25/2020)
	58		South Carolina St. (12/03/2020)
<b>ASSISTS</b>	27		South Carolina St. (12/03/2020)
	21		Syracuse (12/17/2020)
	21		UNC Greensboro (11/28/2020)
<b>STEALS</b>	11		High Point (11/29/2020)
	8		at Wake Forest (12/10/2020)
	8		South Carolina St. (12/03/2020)
<b>BLOCKED SHOTS</b>	5		at Miami (FL) (12/14/2020)
	5		at Wake Forest (12/10/2020)
	5		South Carolina St. (12/03/2020)
<b>TURNOVERS</b>	16		Charlotte (12/06/2020)
	15		at Miami (FL) (12/14/2020)
	15		at Wake Forest (12/10/2020)
	15		South Carolina St. (12/03/2020)
<b>FOULS</b>	23		Syracuse (12/17/2020)
	20		at Miami (FL) (12/14/2020)



**2020-21 North Carolina Women's Basketball  
Team High/Low Analysis  
All games**

**Opponent - Game Highs**

<b>POINTS</b>	75	Charlotte (12/06/2020)
	74	Wake Forest (12/20/2020)
	70	High Point (11/29/2020)
	68	Syracuse (12/17/2020)
	67	at Miami (FL) (12/14/2020)
<b>FIELD GOALS MADE</b>	28	Charlotte (12/06/2020)
	25	Wake Forest (12/20/2020)
<b>FIELD GOAL ATTEMPTS</b>	75	Syracuse (12/17/2020)
	66	at Miami (FL) (12/14/2020)
<b>FIELD GOAL PERCENTAGE</b>	.438 (28-64)	Charlotte (12/06/2020)
	.403 (25-62)	Wake Forest (12/20/2020)
<b>3 PT FG MADE</b>	14	Wake Forest (12/20/2020)
	13	High Point (11/29/2020)
<b>3 PT FG ATTEMPTS</b>	38	High Point (11/29/2020)
	36	Syracuse (12/17/2020)
<b>3 PT FG PERCENTAGE</b>	.467 (14-30)	Wake Forest (12/20/2020)
	.417 (10-24)	Charlotte (12/06/2020)
<b>FREE THROWS MADE</b>	16	at Miami (FL) (12/14/2020)
	15	Syracuse (12/17/2020)
	15	High Point (11/29/2020)
<b>FREE THROW ATTEMPTS</b>	28	Syracuse (12/17/2020)
	28	at Miami (FL) (12/14/2020)
<b>FREE THROW PERCENTAGE</b>	.813 (13-16)	at Wake Forest (12/10/2020)
	.789 (15-19)	High Point (11/29/2020)
<b>REBOUNDS</b>	46	at Miami (FL) (12/14/2020)
	43	Syracuse (12/17/2020)
<b>ASSISTS</b>	19	Wake Forest (12/20/2020)
	14	High Point (11/29/2020)
<b>STEALS</b>	9	at Wake Forest (12/10/2020)
	7	Wake Forest (12/20/2020)
	7	Syracuse (12/17/2020)
	7	at Miami (FL) (12/14/2020)
<b>BLOCKED SHOTS</b>	6	Syracuse (12/17/2020)
	6	South Carolina St. (12/03/2020)
<b>TURNOVERS</b>	24	South Carolina St. (12/03/2020)
	17	Wake Forest (12/20/2020)
	17	High Point (11/29/2020)
	17	UNC Greensboro (11/28/2020)
<b>FOULS</b>	27	Syracuse (12/17/2020)
	27	Charlotte (12/06/2020)





**2020-21 North Carolina Women's Basketball  
Team High/Low Analysis  
All games**

**North Carolina - Game Lows**

<b>POINTS</b>	54	at Wake Forest (12/10/2020)
	63	at Miami (FL) (12/14/2020)
	77	Wake Forest (12/20/2020)
	81	Charlotte (12/06/2020)
	90	Radford (11/25/2020)
<b>FIELD GOALS MADE</b>	23	at Wake Forest (12/10/2020)
	23	Charlotte (12/06/2020)
<b>FIELD GOAL ATTEMPTS</b>	51	Charlotte (12/06/2020)
	64	Syracuse (12/17/2020)
	64	UNC Greensboro (11/28/2020)
<b>FIELD GOAL PERCENTAGE</b>	.348 (23-66)	at Wake Forest (12/10/2020)
	.362 (25-69)	at Miami (FL) (12/14/2020)
<b>3 PT FG MADE</b>	2	at Wake Forest (12/10/2020)
	3	at Miami (FL) (12/14/2020)
<b>3 PT FG ATTEMPTS</b>	14	High Point (11/29/2020)
	18	at Wake Forest (12/10/2020)
	18	Radford (11/25/2020)
<b>3 PT FG PERCENTAGE</b>	.111 (2-18)	at Wake Forest (12/10/2020)
	.158 (3-19)	at Miami (FL) (12/14/2020)
<b>FREE THROWS MADE</b>	6	at Wake Forest (12/10/2020)
	10	at Miami (FL) (12/14/2020)
	10	South Carolina St. (12/03/2020)
<b>FREE THROW ATTEMPTS</b>	9	at Wake Forest (12/10/2020)
	12	South Carolina St. (12/03/2020)
<b>FREE THROW PERCENTAGE</b>	.455 (10-22)	at Miami (FL) (12/14/2020)
	.643 (18-28)	Radford (11/25/2020)
<b>REBOUNDS</b>	36	Charlotte (12/06/2020)
	41	at Wake Forest (12/10/2020)
<b>ASSISTS</b>	9	at Wake Forest (12/10/2020)
	11	at Miami (FL) (12/14/2020)
<b>STEALS</b>	3	Charlotte (12/06/2020)
	4	Syracuse (12/17/2020)
<b>BLOCKED SHOTS</b>	2	Wake Forest (12/20/2020)
	2	Syracuse (12/17/2020)
	2	Charlotte (12/06/2020)
<b>TURNOVERS</b>	8	Radford (11/25/2020)
	9	High Point (11/29/2020)
<b>FOULS</b>	13	South Carolina St. (12/03/2020)
	13	Radford (11/25/2020)



**2020-21 North Carolina Women's Basketball  
Team High/Low Analysis  
All games**

**Opponent - Game Lows**

<b>POINTS</b>	28	South Carolina St. (12/03/2020)
	35	UNC Greensboro (11/28/2020)
	57	at Wake Forest (12/10/2020)
	61	Radford (11/25/2020)
	67	at Miami (FL) (12/14/2020)
<b>FIELD GOALS MADE</b>	9	South Carolina St. (12/03/2020)
	10	UNC Greensboro (11/28/2020)
<b>FIELD GOAL ATTEMPTS</b>	53	South Carolina St. (12/03/2020)
	55	UNC Greensboro (11/28/2020)
<b>FIELD GOAL PERCENTAGE</b>	.170 (9-53)	South Carolina St. (12/03/2020)
	.182 (10-55)	UNC Greensboro (11/28/2020)
<b>3 PT FG MADE</b>	2	at Wake Forest (12/10/2020)
	2	South Carolina St. (12/03/2020)
<b>3 PT FG ATTEMPTS</b>	14	South Carolina St. (12/03/2020)
	21	at Wake Forest (12/10/2020)
<b>3 PT FG PERCENTAGE</b>	.095 (2-21)	at Wake Forest (12/10/2020)
	.143 (2-14)	South Carolina St. (12/03/2020)
<b>FREE THROWS MADE</b>	8	South Carolina St. (12/03/2020)
	9	Charlotte (12/06/2020)
<b>FREE THROW ATTEMPTS</b>	12	South Carolina St. (12/03/2020)
	13	Charlotte (12/06/2020)
<b>FREE THROW PERCENTAGE</b>	.536 (15-28)	Syracuse (12/17/2020)
	.571 (16-28)	at Miami (FL) (12/14/2020)
<b>REBOUNDS</b>	24	South Carolina St. (12/03/2020)
	24	UNC Greensboro (11/28/2020)
<b>ASSISTS</b>	4	South Carolina St. (12/03/2020)
	5	Syracuse (12/17/2020)
	5	UNC Greensboro (11/28/2020)
<b>STEALS</b>	1	Radford (11/25/2020)
	2	High Point (11/29/2020)
<b>BLOCKED SHOTS</b>	0	UNC Greensboro (11/28/2020)
	1	at Miami (FL) (12/14/2020)
	1	at Wake Forest (12/10/2020)
<b>TURNOVERS</b>	11	at Miami (FL) (12/14/2020)
	13	Syracuse (12/17/2020)
<b>FOULS</b>	12	South Carolina St. (12/03/2020)
	15	at Wake Forest (12/10/2020)



**2020-21 North Carolina Women's Basketball**  
**Player Highs Analysis**  
**All games**

**North Carolina - Individual Game Highs**

<b>POINTS</b>	25		Janelle Bailey vs Syracuse (12/17/2020)
	22		Deja Kelly vs Syracuse (12/17/2020)
	21		Petra Holesínská vs Syracuse (12/17/2020)
	21		Stephanie Watts vs High Point (11/29/2020)
	19		Janelle Bailey vs Wake Forest (12/20/2020)
	19		Deja Kelly vs Radford (11/25/2020)
<b>FIELD GOALS MADE</b>	10		Janelle Bailey vs Syracuse (12/17/2020)
	9		Stephanie Watts vs High Point (11/29/2020)
<b>FIELD GOAL ATTEMPTS</b>	21		Deja Kelly at Miami (FL) (12/14/2020)
	16		Petra Holesínská at Wake Forest (12/10/2020)
<b>FIELD GOAL PERCENTAGE (min 5 made)</b>	.857	(6-7)	Deja Kelly vs South Carolina St. (12/03/2020)
	.857	(6-7)	Alyssa Ustby vs Radford (11/25/2020)
<b>3 PT FG MADE</b>	4		Petra Holesínská vs Syracuse (12/17/2020)
	4		Petra Holesínská vs UNC Greensboro (11/28/2020)
	4		Petra Holesínská vs Radford (11/25/2020)
<b>3 PT FG ATTEMPTS</b>	10		Petra Holesínská vs Wake Forest (12/20/2020)
	10		Petra Holesínská vs Syracuse (12/17/2020)
<b>3 PT FG PERCENTAGE (min 2 made)</b>	1.000	(2-2)	Anya Poole vs UNC Greensboro (11/28/2020)
	.800	(4-5)	Petra Holesínská vs UNC Greensboro (11/28/2020)
<b>FREE THROWS MADE</b>	8		Deja Kelly vs Syracuse (12/17/2020)
	7		Petra Holesínská vs Charlotte (12/06/2020)
	7		Stephanie Watts vs Charlotte (12/06/2020)
<b>FREE THROW ATTEMPTS</b>	10		Kennedy Todd-Williams vs Wake Forest (12/20/2020)
	10		Petra Holesínská vs Charlotte (12/06/2020)
<b>FREE THROW PERCENTAGE (min 3 made)</b>	1.000	(5-5)	Stephanie Watts vs Wake Forest (12/20/2020)
	1.000	(5-5)	Janelle Bailey vs Syracuse (12/17/2020)
	1.000	(5-5)	Alyssa Ustby vs High Point (11/29/2020)
	1.000	(4-4)	Ariel Young vs High Point (11/29/2020)
	1.000	(4-4)	Kennedy Todd-Williams vs UNC Greensboro (11/28/2020)
	1.000	(4-4)	Kennedy Todd-Williams vs Radford (11/25/2020)
	1.000	(3-3)	Petra Holesínská vs Wake Forest (12/20/2020)
	1.000	(3-3)	Ariel Young vs UNC Greensboro (11/28/2020)
<b>REBOUNDS</b>	13		Janelle Bailey at Miami (FL) (12/14/2020)
	12		Janelle Bailey vs Wake Forest (12/20/2020)
	12		Stephanie Watts vs High Point (11/29/2020)
<b>ASSISTS</b>	9		Kennedy Todd-Williams vs South Carolina St. (12/03/2020)
	8		Deja Kelly vs Syracuse (12/17/2020)
<b>STEALS</b>	5		Stephanie Watts vs High Point (11/29/2020)
	4		Alyssa Ustby at Miami (FL) (12/14/2020)
	4		Kennedy Todd-Williams vs South Carolina St. (12/03/2020)
	4		Stephanie Watts vs UNC Greensboro (11/28/2020)
<b>BLOCKED SHOTS</b>	3		Janelle Bailey at Miami (FL) (12/14/2020)
	2		Anya Poole at Wake Forest (12/10/2020)
	2		Anya Poole vs South Carolina St. (12/03/2020)
<b>TURNOVERS</b>	8		Deja Kelly vs Charlotte (12/06/2020)
	4		Janelle Bailey vs Wake Forest (12/20/2020)
	4		Petra Holesínská at Miami (FL) (12/14/2020)
	4		Deja Kelly at Wake Forest (12/10/2020)
	4		Alyssa Ustby vs South Carolina St. (12/03/2020)
	4		Malu Tshitenge vs UNC Greensboro (11/28/2020)



2020-21 North Carolina Women's Basketball  
Player Highs Analysis  
All games

North Carolina - Individual Game Highs

FOULS		
	5	Ariel Young vs High Point (11/29/2020)
	4	Alyssa Ustby vs Wake Forest (12/20/2020)
	4	Deja Kelly vs Syracuse (12/17/2020)
	4	Alyssa Ustby vs Syracuse (12/17/2020)
	4	Anya Poole vs Syracuse (12/17/2020)
	4	Janelle Bailey at Miami (FL) (12/14/2020)
	4	Kennedy Todd-Williams at Miami (FL) (12/14/2020)
	4	Petra Holesínská at Wake Forest (12/10/2020)
	4	Janelle Bailey at Wake Forest (12/10/2020)
	4	Janelle Bailey vs Charlotte (12/06/2020)
	4	Ariel Young vs South Carolina St. (12/03/2020)
	4	Petra Holesínská vs High Point (11/29/2020)
	4	Kennedy Todd-Williams vs UNC Greensboro (11/28/2020)





**2020-21 North Carolina Women's Basketball  
Player Highs Analysis  
All games**

**Opponent - Individual Game Highs**

<b>POINTS</b>	28		Skyler Curran vs High Point (11/29/2020)
	22		Jewel Spear vs Wake Forest (12/20/2020)
	22		Octavia Jett-Wilson vs Charlotte (12/06/2020)
	20		Destiny Harden at Miami (FL) (12/14/2020)
	18		Emily Engstler vs Syracuse (12/17/2020)
<b>FIELD GOALS MADE</b>	9		Skyler Curran vs High Point (11/29/2020)
	8		Jewel Spear vs Wake Forest (12/20/2020)
	8		Octavia Jett-Wilson vs Charlotte (12/06/2020)
<b>FIELD GOAL ATTEMPTS</b>	20		Skyler Curran vs High Point (11/29/2020)
	17		Jewel Spear vs Wake Forest (12/20/2020)
<b>FIELD GOAL PERCENTAGE (min 5 made)</b>	.778	(7-9)	Emily Engstler vs Syracuse (12/17/2020)
	.556	(5-9)	Alexandria Scruggs vs Wake Forest (12/20/2020)
<b>3 PT FG MADE</b>	6		Jewel Spear vs Wake Forest (12/20/2020)
	5		Skyler Curran vs High Point (11/29/2020)
<b>3 PT FG ATTEMPTS</b>	14		Skyler Curran vs High Point (11/29/2020)
	12		Jewel Spear vs Wake Forest (12/20/2020)
	12		Mariah Linney vs Charlotte (12/06/2020)
<b>3 PT FG PERCENTAGE (min 2 made)</b>	1.000	(2-2)	Cali Konek vs Charlotte (12/06/2020)
	.750	(3-4)	Kiara Fisher vs Syracuse (12/17/2020)
	.750	(3-4)	Octavia Jett-Wilson vs Charlotte (12/06/2020)
	.750	(3-4)	Jenson Edwards vs High Point (11/29/2020)
<b>FREE THROWS MADE</b>	5		Destiny Harden at Miami (FL) (12/14/2020)
	5		Gina Conti at Wake Forest (12/10/2020)
	5		Jordan Edwards vs High Point (11/29/2020)
	5		Skyler Curran vs High Point (11/29/2020)
	5		Ariel Williams vs Radford (11/25/2020)
<b>FREE THROW ATTEMPTS</b>	9		Destiny Harden at Miami (FL) (12/14/2020)
	8		Kamilla Cardoso vs Syracuse (12/17/2020)
	8		Taylor Mason at Miami (FL) (12/14/2020)
	8		Ariel Williams vs Radford (11/25/2020)
<b>FREE THROW PERCENTAGE (min 3 made)</b>	1.000	(4-4)	Christina Morra vs Wake Forest (12/20/2020)
	1.000	(4-4)	Naomi Mbandu at Miami (FL) (12/14/2020)
	1.000	(4-4)	Christina Morra at Wake Forest (12/10/2020)
	1.000	(3-3)	Trinity Klock vs South Carolina St. (12/03/2020)
	1.000	(3-3)	Ashley Tudor vs Radford (11/25/2020)
<b>REBOUNDS</b>	13		Kamilla Cardoso vs Syracuse (12/17/2020)
	12		Destiny Harden at Miami (FL) (12/14/2020)
	12		Ivana Raca at Wake Forest (12/10/2020)
<b>ASSISTS</b>	7		Gina Conti vs Wake Forest (12/20/2020)
	7		Jordan Edwards vs High Point (11/29/2020)
<b>STEALS</b>	4		Jacquece Alston vs South Carolina St. (12/03/2020)
	3		Emily Engstler vs Syracuse (12/17/2020)
	3		Gina Conti at Wake Forest (12/10/2020)
<b>BLOCKED SHOTS</b>	3		Amiah Lindsay vs South Carolina St. (12/03/2020)
	2		Maeva Djaldi-Tabdi vs Syracuse (12/17/2020)
	2		Kamilla Cardoso vs Syracuse (12/17/2020)
	2		Rachel LaLonde vs Radford (11/25/2020)
<b>TURNOVERS</b>	5		Trinity Klock vs South Carolina St. (12/03/2020)
	5		Skyler Curran vs High Point (11/29/2020)
	5		Taiye Johnson vs Radford (11/25/2020)
<b>FOULS</b>	5		Kiara Fisher vs Syracuse (12/17/2020)
	5		Jacee Busick vs Charlotte (12/06/2020)
	5		Lily Izundu vs UNC Greensboro (11/28/2020)
	5		Taiye Johnson vs Radford (11/25/2020)