



INDIANA HOOSIERS

No. 4/6 Indiana (4-1) vs. Miami (FL) (4-1)

Game 6

2021 Pink Flamingo Championships

Saturday, November 27, 2021 • Baha Mar Convention Center • Nassau, Bahamas • 8:30 p.m. ET
TV: FloHoops • Radio: WHCC 105.1 FM (Austin Render) • Live Stats: HoosierStats.com

2021-22 SCHEDULE

Date	Opponent	Time/Result	TV
11/5	UIndy (exh.)	W, 97-43	
11/10	at Butler	W, 86-63	
11/14	^{13/13} Kentucky	W, 88-67	
11/16	Norfolk State	W, 72-42	
11/20	at Quinnipiac	W, 69-57	
<i>Baha Mar Pink Flamingo Classic</i>			
11/25	vs. Stanford	L, 66-69	
11/26	vs. Miami (FL)	8:30 p.m.	FloHoops
<i>Big Ten/ACC Challenge</i>			
12/2	NC State	7 p.m.	ESPN2
12/6	Penn State*	6 p.m.	BTN
12/9	Fairfield	7 p.m.	BIG+
12/12	at Ohio State*	7 p.m.	BTN
12/19	Western Michigan	1 p.m.	BIG+
12/21	Wright State	7 p.m.	BIG+
12/23	SIU	1 p.m.	BIG+
12/30	at Rutgers*	8 p.m.	FS1
1/2	Maryland*	3 p.m.	ESPN2
1/5	at Wisconsin*	7:30 p.m.	BIG+
1/13	Nebraska*	6 p.m.	BTN
1/16	at Purdue*	2 p.m.	BIG+
1/19	Michigan State*	7 p.m.	BIG+
1/23	at Iowa*	6 p.m.	BTN
1/27	Illinois*	7 p.m.	BIG+
1/31	at Michigan*	7 p.m.	ESPN2
2/3	Minnesota	7 p.m.	BIG+
2/6	Purdue*	1 p.m.	BIG+
2/10	at Illinois*	8 p.m.	BIG+
2/14	at Nebraska*	7 p.m.	BTN
2/17	Northwestern*	6 p.m.	BTN
2/20	Iowa*	5 p.m.	BTN
2/25	at Maryland*	7 or 8 p.m.	BTN

Big Ten Tournament (Gainbridge Fieldhouse, Indianapolis)

3/2-3/6 TBD

All homes games in **BOLD CAPS**

* Big Ten Conference game

BTN - Big Ten Network televised game

BIG+ - Big Ten Network+ streamed game

All Times Eastern

THE OPENING TIP

No. 4/6 Indiana will look to bounce back on Saturday night as it faces Miami (FL) in the finale of the Pink Flamingo Championship. Tipoff is set for 8:30 p.m. ET.

PROJECTED STARTERS

Indiana Hoosiers				Miami Hurricanes					
Head Coach: Teri Moren				Head Coach: Katie Meier					
Career Record: 351-211 (19th Season)				Career Record: 307-199 (17th Season)					
Indiana Record: 152-81 (8th Season)				Miami (FL) Record: 383-244 (21st Season)					
NO.	PLAYER	HT.	POS.	YR.	NO.	PLAYER	HT.	POS.	YR.
4	Nicole Cardaño-Hillary	5-6	G	Gr.	5	Mykea Gray	5-4	G	Sr.
10	Aleksa Gulbe	6-3	F	Sr.	20	Kelsey Marshall	5-9	G	Gr.
14	Ali Patberg	5-11	G	Gr.	21	Lola Pendande	6-4	F	Jr.
34	Grace Berger	6-0	G	Sr.	25	Karla Erjavec	5-10	G	Sr.
54	Mackenzie Holmes	6-2	F	Jr.	35	Naomi Mbandu	6-2	F	Sr.

2021-22 ROSTER

#	Name	Ht.	Pos.	Yr.	Hometown/High School/Previous College
1	Kaitlin Peterson	5-9	G	Fr.	Eufaula, Ala./Eufaula
3	Grace Waggoner	6-0	G	Jr.	Vincennes, Ind./Vincennes Rivet
4	Nicole Cardaño-Hillary	5-6	G	Gr.	Madrid, Spain/Vista Ridge/George Mason
5	Caitlin Hose	5-10	G	Sr.	Hazel Green, Ala./Hazel Green/Georgia
10	Aleksa Gulbe	6-3	F	Sr.	Riga, Latvia/TTT Riga
14	Ali Patberg	5-11	G	Sr.	Columbus, Ind./Columbus North/Notre Dame
21	Keyarah Berry	5-9	G	Fr.	Rockmart, Ga./Rockmart
22	Chloe Moore-McNeil	5-11	G	So.	Sharon, Tenn./Greenfield
23	Kiandra Browne	6-2	F	So.	Montreal, Quebec, Canada/St-Laurent
24	Mona Zaric	6-2	F	Fr.	Novi Sad, Serbia
25	Arielle Wisne	6-5	C	R-So.	Thornton, Colo./Horizon
34	Grace Berger	6-0	G	Sr.	Louisville, Ky./Sacred Heart
54	Mackenzie Holmes	6-3	F	Jr.	Gorham, Maine/Gorham

Head Coach: Teri Moren

Associate Head Coach: Rhet Wierzba

Associate Head Coach: Glenn Box

Assistant Coach: Ashley Williams

Director of Operations: Liz Honegger

Director of Player Development: Briana Schomaeker

Athletic Trainer: Ben Tate

Team and Recruitment Analyst: McIntyre Webb

Graduate Managers: Shayna Gore, Brittney Patrick, Liam Shanahan

Pronunciation Guide

Keyanna: Key-aun-ah

Cardaño: Car-DAWN-yoh

Aleksa Gulbe: Alexa Ghoul-bay

Arielle Wisne: Air-e-I Wiss-nee

Moren: MORE-in

Wierzba: Weerz-buh

2021-22 RADIO/TV ROSTER



1 • Kaitlin Peterson
Freshman



3 • Grace Waggoner
Junior



4 • Nicole Cardaño-Hillary
Graduate Student



5 • Caitlin Hose
Senior



10 • Aleksa Gulbe
Senior



14 • Ali Patberg
Graduate Student



21 • Keyarah Berry
Freshman



22 • Chloe Moore-McNeil
Sophomore



23 • Kiandra Browne
Sophomore



24 • Mona Zaric
Freshman



25 • Arielle Wisne
Redshirt Sophomore



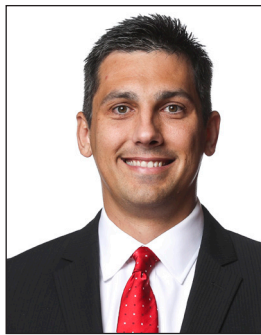
34 • Grace Berger
Senior



54 • Mackenzie Holmes
Junior



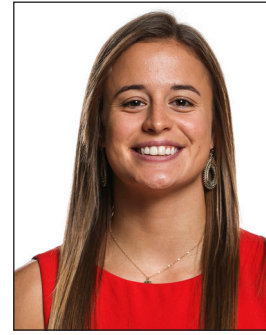
Teri Moren
Head Coach



Rhet Wierzba
Associate Head Coach



Glenn Box
Associate Head Coach



Ashley Williams
Assistant Coach

TIME TO BOUNCE BACK

Indiana will look to bounce back on Saturday night as it fell in its Pink Flamingo Championship opener on Thursday to Stanford. The Hoosiers shot a season lows 32.4 percent from the field and 70 percent from the line and were outrebounded by 19.

BACK TO THE BAHAMAS

For the first time since the 2009-10 season, Indiana will play in the Bahamas during Thanksgiving week in the inaugural Pink Flamingo Championship. The Hoosiers went 1-1 in the last time on the island at the Junkaroo Jam where it fell to then No. 15/18 Virginia and defeated Charlotte.

SURVIVED A BOBCAT ATTACK

IU used a strong second half to push past Quinnipiac, 67-59, on the road Saturday. The Hoosiers trailed by as many as 13 points in the second quarter, but responded after the break as it outscored the Bobcats 40-26 behind double figure performances from four players. Senior guard Grace Berger led the way with 17 points while graduate student guard Ali Patberg chipped in 12 and junior forward Mackenzie Holmes and graduate student guard Nicole Cardaño-Hillary added 10 each.

HOOSIERS NO. 4 IN AP POLL

Another program record for highest ranking in school history was set on Nov. 15 as it jumped four spots to No. 4. It bested its previous high ranking of No. 8 to start the 2021-22 season.

STUMPED THE 'CATS

Indiana had four in double figures paced by Holmes' career-night to defeat No. 13 Kentucky, 88-67. It's the second largest win in program history over the Wildcats, just behind a 29-point victory in the first ever meeting in 1974. Joining Holmes in double figures were Berger (19 points, 9 rebounds), Patberg (16 points, 4 assists) and Cardaño-Hillary (12 points, 7 assists, 2 steals).

IN THE RECORD BOOKS

Three Hoosiers currently have their name in the IU record book

Grace Berger

1,068 career points (26th all-time)

Ali Patberg

1,438 points (15th all-time)

440 assists (3rd all-time)

Mackenzie Holmes

114 blocks (8th all-time)

HOLMES, BERGER NAMED PRESEASON-ALL BIG TEN; HOOSIERS PICKED SECOND

Senior guard Grace Berger and junior forward Mackenzie Holmes each earned a spot on the preseason All-Big Ten 10-member team while Indiana was picked to finish second overall in a vote by the league's coaches and media. The Hoosiers have been voted in the top 5 of the conference's preseason poll for the third-consecutive season.

THREE NAMED TO WATCH LISTS

Three Hoosiers earned spots on preseason award watch lists for the upcoming 2021-22 season.

Ali Patberg

2022 Nancy Lieberman Award (nation's top point guard)

2022 Wade Watch preseason watchlist

Grace Berger

2022 Cheryl Miller Award preseason watch list (nation's top small forward)

2022 Wooden Award preseason Top 50 watch list

2022 Wade Watch preseason watch list

Mackenzie Holmes

2022 Lisa Leslie Award preseason watch list (nation's top center).

LET'S RECAP LAST SEASON

2020-21 proved to be another historic year for the Hoosiers, who advanced to the NCAA Elite Eight and finished with 20 wins for the sixth-consecutive season. Indiana also set a new program record by going 16-2 overall in Big Ten play, finishing second overall. It's 16 league wins marked a new program high while placing four on All-Big Ten teams. Berger and Holmes pulled in a combined three All-American honors last season.

SEVENTH-YEAR SENIOR

Graduate student Ali Patberg returns for her seventh and final season of eligibility in 2021-22 as she is believed to be the second-ever NCAA Division I women's basketball player to play a seventh collegiate season. After earning her sixth year waiver in July 2019, the Columbus, Ind. native is taking advantage of the extra year of eligibility granted by the NCAA as a result of the COVID-19 pandemic. Patberg joins Isis Young, who played seven collegiate seasons and graduating from Siena in 2019-20.

MACK ATTACK

Junior forward Mackenzie Holmes returns after a noteworthy sophomore campaign that landed her on the All-Big Ten first team and pulled in the program's first Associated Press All-American honorable mention honors. She finished the season as IU's leading scorer and rebounder with 17.8 points

QUICK FACTS

School.....	Indiana University
Location.....	Bloomington, Ind.
Enrollment.....	48,514
Founded.....	1820
Nickname.....	Hoosiers
Colors.....	Cream and Crimson
Conference.....	Big Ten
Arena (Capacity).....	Simon Skjodt Assembly Hall (17,222)
Assembly Hall Press Row.....	812-855-2754
University President.....	Pamela Whitten
Athletics Director.....	Scott Dolson

COACHING STAFF

Head Coach.....	Teri Moren
Alma Mater, Year.....	Purdue, 1992
Record at Indiana (Years).....	152-81 (8th year)
Career Record (Years).....	351-211 (19th year)
Associate Head Coaches.....	Rhet Wierzba Glenn Box
Assistant Coach.....	Ashley Williams
Director of Operations.....	Liz Honegger
Director of Player Development.....	Briana Schomaeker
Team & Recruitment Analyst.....	McIntyre Webb
Basketball Office Phone.....	(812) 855-3013

TEAM INFORMATION

Starters Returning/Lost.....	5/0
Letterwinners Returning/Lost.....	9/4

2020-21 IN REVIEW

Overall Record.....	21-6
Big Ten Record (Regular Season Finish) ..	16-2 (2nd)
Postseason Finish.....	NCAA Elite Eight

TEAM HISTORY

First Year of Women's Basketball.....	1971-72
Record (Years).....	815-652 (50th year)
Big Ten Record (Years).....	297-367 (36th year)
Big Ten Regular-Season Titles.....	1 (1983)
Big Ten Tournament Titles.....	1 (2002)
NCAA Tournament Appearances (Record).....	6 (6-7)
Last NCAA Tournament Appearance.....	2016
WNIT Championships.....	1 (2018)

ATHLETICS MEDIA RELATIONS

Women's Basketball SID.....	Megan Kramper
Office Phone.....	812-856-4053
Cell Phone.....	618-334-5321
E-mail.....	mkramper@indiana.edu
Fax.....	812-855-9401
Press Row Phone.....	812-855-2754
Mailing Address.....	Athletics Media Relations Assembly Hall, 1001 East 17th St. Bloomington, IN 47408
Athletics Web Site.....	IUHoosiers.com Women's Basketball on Twitter..... @IndianaWBB
Teri Moren on Twitter.....	@TeriMoren
Basketball on Facebook.....	/IndianaWBB
Basketball on Snapchat.....	IndianaWBB

CAREER BY THE NUMBERS

CAREER DOUBLE-FIGURE SCORING GAMES

Ali Patberg.....	69
Grace Berger.....	51
Mackenzie Holmes.....	41
Aleksa Gulbe.....	24
Nicole Cardaño-Hillary*.....	12
Kiandra Browne.....	2

CAREER 20-PLUS POINT SCORING GAMES

Ali Patberg.....	21
Mackenzie Holmes.....	13
Grace Berger.....	11
Nicole Cardaño-Hillary.....	1
Aleksa Gulbe.....	1

CAREER DOUBLE-DOUBLES

Mackenzie Holmes.....	8
Grace Berger.....	3
Ali Patberg.....	3
Aleksa Gulbe.....	4
Kiandra Browne.....	1
Nicole Cardaño-Hillary*.....	1

CAREER TRIPLE-DOUBLES

Grace Berger.....	3
-------------------	---

CAREER DOUBLE-FIGURE REBOUNDING GAMES

Mackenzie Holmes.....	10
Grace Berger.....	7
Aleksa Gulbe.....	5
Kiandra Browne.....	1
Nicole Cardaño-Hillary*.....	1
Ali Patberg.....	1

CAREER FIVE-PLUS ASSIST GAMES

Ali Patberg.....	35
Grace Berger.....	21
Nicole Cardaño-Hillary*.....	4

CAREER THREE-PLUS STEALS GAMES

Ali Patberg.....	14
Grace Berger.....	10
Nicole Cardaño-Hillary.....	5
Aleksa Gulbe.....	4
Mackenzie Holmes.....	1

CAREER 3-PLUS 3-POINT FG MADE GAMES

Ali Patberg.....	14
Nicole Cardaño-Hillary*.....	6
Grace Berger.....	1
Aleksa Gulbe.....	2

CAREER STARTS

Ali Patberg.....	95
Grace Berger.....	66
Aleksa Gulbe.....	62
Mackenzie Holmes.....	34
Nicole Cardaño-Hillary*.....	22

*-at IU

VERSUS THE OPPONENT

2021-22 STATS (ALL GAMES)

MIA.....	Category.....	IU
56.8.....	Points Per Game.....	75.8
51.4.....	Points Allowed Per Game.....	60.0
+5.4.....	Scoring Margin.....	+15.8
.331.....	Field Goal Percentage.....	.466
.343.....	Opponent FG Percentage.....	.391
.254.....	3-Pt. Field Goal Percentage.....	.394
.277.....	Opp. 3-Pt. FG Percentage.....	.311
.648.....	Free Throw Percentage.....	.833
.42.2.....	Rebounds Per Game.....	37.8
+6.0.....	Rebounding Margin.....	+4.0
11.8.....	Assists Per Game.....	16.8
20.0.....	Turnovers Per Game.....	13.0
9.0.....	Steals Per Game.....	5.6
4.4.....	Blocks Per Game.....	2.8

ABOUT THE HURRICANES

Miami opened the season 4-0 before it dropped its Pink Flamingo opener to Washington State, 62-47. They are led by Kelsey Marshall who averages 11.6 points and 4.0 rebounds per game. As a team, they're averaging 58.0 points per game while shooting 33.1 percent from the floor.

SERIES HISTORY

Series tied at 2-2

LAST MEETING

12/4/19 - W, 58-45 (Coral Gables, Fla.)

and 7.6 boards per game while she also shot 60.7 percent from the floor.

BERGER BALL

The nation's leader in triple-doubles last season is set to return for her senior season. Berger pulled in All-Big Ten first team, WBCA and USWBA All-American honorable mention last season as she was the team's second leading scorer with 15.4 points per game. Her three triple-doubles were the program's first in school history last year as she added a solid stat line that included 6.8 rebounds, 4.6 assists and 44.1 field goal percent from the floor.

GULBE READY TO GO

Senior forward Aleksa Gulbe also comes off one of her most impressive seasons at IU, posting All-Big Ten honorable mention honors a season ago. She averaged 9.0 points and 6.9 rebounds per game while shooting 44.8 percent from the floor. She started in all 27 games and was a steady presence for the Hoosiers as she also had two double-doubles. She increased her career block total to 80 after last season, which ranks 10th all-time in school history.

NIKKI'S A BIT PESKY

Graduate student guard Nicole Cardaño-Hillary is back for her final season at IU after frustrating offenses for a majority of the 2020-21 slate. While she was known for her scoring at her previous stop at George Mason, she stepped up her defensive game at Indiana. She played in 24 games in her first season, recording multiple steals in nine games and averaged 1.3 steals per game.

VETERAN LED GROUP

Returning all five starters from last season, the Hoosiers boast a wealth of experience

in their core group. Among its five returning starters - Ali Patberg, Mackenzie Holmes, Grace Berger, Aleksa Gulbe and Nicole Cardaño-Hillary - the group holds 261 combined career starts at Indiana, 257 career games played, 4,076 career points and 10,743 minutes played heading in to the 2021-22 season.

WHO'S NEW?

Four new players joined the program in the offseason. Freshmen Kaitlin Peterson (Eufaula, Ala.), Keyarah Berry (Rockmart, Ga.) and Mona Zaric (Novi Sad, Serbia) all enter their first collegiate basketball seasons. Transfer senior guard Caitlin Hose (Hazel Green, Ala.) was also added to the roster this summer, coming to the program from Georgia where she played her first three seasons.

THE SCHEDULE

Indiana will face a grueling 2021-22 schedule with non-conference matchups set with three ranked teams (No. 13 Kentucky, No. 7 Stanford and No. 5 NC State). Big Ten play also features four other teams ranked in the Top 25, (No. 3 Maryland, No. 9 Iowa, No. 11 Michigan, No. 17 Ohio State).

TOP 25 POLLS

ASSOCIATED PRESS WEEK ONE NOVEMBER 15, 2021

Rank	School	Record	Points	Prev.
1	South Carolina(30)	6-0	750	1
2	Maryland	6-0	710	3
3	UConn	3-1	696	2
4	Indiana	4-0	630	4
5	NC State	4-1	623	5
6	Baylor	3-1	564	6
7	Stanford	3-1	560	7
8	Iowa	4-0	557	8
9	Arizona	4-0	489	11
10	Louisville	3-1	481	10
11	Tennessee	4-0	424	16
12	Michigan	5-0	396	11
13	Iowa State	4-0	392	14
14	Texas	3-1	339	16
15	Oregon	3-2	285	9
16	Oregon State	3-0	254	15
17	Florida State	4-0	234	17
18	South Florida	4-2	228	5
19	UCLA	3-0	222	20
20	Kentucky	3-1	191	19
21	Ohio State	3-0	150	21
22	West Virginia	3-0	128	22
23	Texas A&M	4-0	126	24
24	Virginia Tech	5-0	105	25
25	Florida Gulf Coast	5-0	63	1

Others receiving votes: Georgia 54, Georgia Tech 40, Notre Dame 14, Colorado 10, Washington State 8, DePaul 6, BYU 6, Arkansas 6, Duke 4, **Michigan State 3**, Gonzaga 1, Oklahoma 1

Dropped from rankings: Georgia Tech 18

USA TODAY/WBCA COACHES WEEK 3 NOVEMBER 23, 2021

Rank	School	Record	Points	Prev.
1	South Carolina(31)	6-0	799	1
2	UConn	3-1	741	2
3	Maryland	6-0	730	4
4	NC State	4-1	686	4
5	Stanford (1)	3-1	672	2
6	Indiana	4-0	653	7
7	Louisville	3-1	590	6
8	Baylor	3-1	526	8
9	Michigan	5-0	493	10
10	Tennessee	4-0	488	12
11	Iowa	4-0	469	11
12	Arizona	4-0	450	15
13	Oregon	3-2	393	9
14	Iowa State	4-0	327	16
15	UCLA	3-0	324	16
16	Texas	3-1	290	21
17	Kentucky	3-1	287	13
18	Texas A&M	4-0	259	19
19	Oregon State	3-0	223	20
20	South Florida	4-2	193	22
21	Georgia	4-0	179	23
22	Florida State	4-0	116	24
23	West Virginia	3-0	104	23
24	Ohio State	3-0	89	25
25	Georgia Tech	4-1	75	20

Others receiving votes: Virginia Tech 62, Florida Gulf Coast 42, Gonzaga 36, Notre Dame 14, North Carolina 13, Missouri State 12, Colorado 11, UCF 10, Washington State 9, **Michigan State 9**, BYU 5, Wake Forest 5, Oklahoma 4, Tulane 3, Utah 3, Ole Miss 3, Arkansas 2, Belmont 1

2021-22 opponents in **bold**

STREAKS

TEAM

Current Streak	Lost 1
Current Home Streak	Won 7
Current Road Streak	Won 9
Current Conference Streak	Won 9

INDIVIDUAL

Consecutive Games With a Point	Berger
89	Berger
Consecutive Games With a Rebound	Holmes
64	Holmes
Consecutive Games With Double Digit Scoring	Patberg
4	Patberg
Consecutive Games With an Assist	Berger
46	Berger
Consecutive Games With a Steal	Berger
3	Berger
Consecutive Games With a Block	Holmes
21	Holmes

SEASON

Wins	4, (11/10/21-11/25/21)
Home Wins	2, (11/14/21-present)
Road Wins	2, (11/10/21-present)
Conference Wins	N/A

SEASON DOUBLE-DOUBLES

Aleksa Gulbe

22 points, 12 rebounds
vs. Norfolk State

SEASON TRIPLE-DOUBLES

THE HOOSIERS WHEN...

Home	2-0
Away	2-0
Neutral	0-1
Playing in overtime	0-0
Leading at half	3-0
Trailing at half	1-1
Tied at half	0-0
IU outrebounds an opponent	4-0
IU gets outrebounded	0-1
Ties in rebounds	0-0
IU shoots 50 percent or better	3-0
IU shoots less than 50 percent	1-1
Opponent shoots 50 percent or better	1-0
Opponent shoots less than 50 percent	3-1
IU shoots 70 percent or better from FT line	4-1
IU shoots less than 70 percent from FT line	0-0
Opponent shoots 70 percent or better from FT line	3-0
Opponent shoots less than 70 percent from FT line	1-1
IU makes more free throws than opponent	3-1
IU makes less free throws than opponent	1-0
IU is equal in free throws as opponent	0-0
IU hits 5 or less 3-pointers	2-0
IU hits 6-9 3-pointers	2-1
IU hits 10+ 3-pointers	0-0
IU scores 59 points or fewer	0-0
IU scores between 60-69 points	1-1
IU scores between 70-79 points	1-0
IU scores between 80-89 points	2-0
IU scores 90+ points	0-0
Holding opponent to 59 points or fewer	2-0
Holding opponent to between 60-69 points	2-1
Opponent scores 70 or more points	0-0
IU wins offensive glass	2-0
IU loses offensive glass	1-1
Ties offensive glass	1-0
IU wins defensive glass	3-0
IU loses defensive glass	0-1
Ties defensive glass	1-0
IU has 12 or fewer turnovers	2-1
IU has more than 12 turnovers	2-0
Leading with five minutes left in regulation	4-0
Trailing with five minutes left in regulation	0-1
Tied with five minutes left in regulation	0-0
Three IU players score in double figures	1-1
Four IU players score in double figures	3-0
Five IU players score in double figures	0-0
Six IU players score in double figures	0-0
Margin is 5 points or fewer	0-0
Margin is 6-10 points	1-1
Margin is 11-20 points	0-0
Margin is 21 or more points	3-0
Playing on Monday	0-0
Playing on Tuesday	1-0
Playing on Wednesday	1-0
Playing on Thursday	0-1
Playing on Friday	0-0
Playing on Saturday	1-0
Playing on Sunday	1-0
Playing in November	4-1
Playing in December	0-0
Playing in January	0-0
Playing in February	0-0
Playing in March	0-0
Night Games	2-0
Day Games	2-1

THE LAST TIME AN INDIANA TEAM

Scored 100 Points..... 100, vs. Eastern Kentucky (11/25/20)
Scored 90 Points 90, vs. Penn State (2/10/21)
Scored Fewer than 60 Points 58, at Illinois (2/14/21)
Scored Fewer than 50 Points 46, at Michigan State (12/28/17)
Won by 100 Points Never
Won by 30 Points 30, vs. Norfolk St. (11/16/21)
Shot 65 pct from the floor..... 676, vs. Michigan State (1998)
Shot 60 pct from the floor 606, vs. Northern Kentucky (12/8/16)
Shot 50 pct from the floor 50.9, vs. Norfolk St. (11/16/21)
Shot less than 35 pct from the floor..... 32.4 vs. Stanford (11/25/21)
Shot 50 pct from 3-point range 54.5, vs. Kentucky (11/14/21)
Shot less than 35 pct from 3-point range 30.8 (8-26), at Butler (11/10/21)
Made 10 3-point field goals 11, vs. Michigan State (3/1/18)
Shot 75 pct from the FT line (min. 5 made)92.3 (12-13), at Quinnipiac (11/20/21)
Shot less than 50 pct from the FT line 37.5, vs. Minnesota (1/4/17)
Had 70 or more Rebounds Never
Had 60-70 Rebounds 61, vs. Nebraska (12/20/20)
Had 50-60 Rebounds 50, at Wisconsin (2/24/21)
Had 30 Offensive Rebounds Never
Had 20 Offensive Rebounds 23, vs. Nebraska (12/20/20)
Had 40 or more Assists Never
Had 30-40 Assists Never
Had 20-39 Assists 22, vs. Norfolk St (11/16/21)
Had 20 Turnovers 22, vs. Norfolk St (11/16/21)
Had less than 10 Turnovers 7, vs. Stanford (11/25/21)
Had 5 or less Turnovers 2, at Penn State (1/7/21)
Had 10-20 Steals 12, vs. Stanford (11/25/21)
Had 20 or More Steals..... 24, vs. Ball State (1991)
Had 15 Blocked Shots..... Never
Had 10 Blocked Shots 11, vs. Eastern Kentucky (11/25/20)
Had two 30-point scorers Never
Had three 20-point scorers..... Never
Had two 20-point scorers Aleksa Gulbe (22), Mackenzie Holmes (22) vs. Norfolk St. (11/16/21)
Had seven double-figure scorers..... Never
Had six double-figure scorers..... vs. Northern Kentucky (12/8/16)
Had five double-figure scorers..... vs. NC State (NCAA Tournament) (3/27/21)
Had four double-figure scorers..... vs. Kentucky (11/14/21)
Had no players score in double figures at Michigan (2/18/15)
Had two double-figure rebounders...Aleksa Gulbe (10), Grace Berger (12), vs. NC State (3/27/21)
Had three double-figure rebounders Never
Had three with double-doubles Never
Had two with double-doublesAleksa Gulbe, Grace Berger vs. NC State (3/27/21)
Had two with double figure assists..... Never
Scored 70 points or more in the first half Never
Scored 60 points or more in first half 62, vs. Nicholls State (11/10/19)
Scored 50 points or more in first half..... 52, at Wisconsin (1/13/19)
Scored 60 pts or more in second half Never
Scored 50 points or more in the second half 50, vs. Kentucky (11/14/21)
Scored 20 points or less in first half Never
Scored 20 points or less in second half Never
Failed to make a 3-point field goal at Penn State (2/2/12)
Defeated a ranked team vs. No. 13/13 Kentucky (11/14/21)
Defeated a top 10 team vs. No. 3/3 NC State (NCAA Tournament, 3/27/21)
Lost to a ranked team vs. No. 7/5 Stanford (11/25/21)
Lost to an unranked team vs. Michigan State (3/11/21)
Lost to an unranked team at home vs. Tennessee (12/17/20)
Lost a regular season, non-conference game vs. Tennessee (12/17/20)
Lost a regular season, non-conference home game .. vs. Tennessee (12/17/20)
Won an overtime game vs. Wisconsin (75-65, 1/30/20)
Lost an overtime game..... vs. Northwestern (69-71, 1/16/20)
Won a double-overtime game..... vs. Minnesota (80-77, 1/17/08)
Lost a double-overtime game at Iowa (85-91, 1/12/20)
Won a triple-overtime game Never
Lost a triple-overtime game Never
Won a quadruple-overtime game vs. Michigan State (3/1/18)
Lost a quadruple-overtime game Never

THE LAST TIME AN INDIANA INDIVIDUAL

Recorded a Triple-Double (Pts/Reb/Ast) .. Grace Berger (17, 11, 10) vs. Penn St. (2/10/21)
Recorded a Triple-Double (Pts/Reb/Blk) Never
Recorded a Double-Double (Pts/Reb)..... Aleksa Gulbe (22, 12 vs. Norfolk St.)
Recorded a Double-Double (Pts/Ast) Tyra Buss (17, 10 vs. Chattanooga, 11/20/17)
Recorded a Double-Double(Reb/Ast) Never
Recorded a Double-Double (Pts/Blk) Never
Had a 20/10 Performance (Pts/Ast) Tyra Buss (28, 11 vs. Arkansas State, 11/11/17)
Had a 20/10 Performance (Pts/Reb) Aleksa Gulbe (22, 12 vs. Norfolk St., 11/16/21)
Had a 20/20 Performance (Pts/Reb)..... Never
Had a 30/20 Performance (Pts/Reb)Jill Chapman (35,21 vs. Ball Sate 12/4/99)
Had a 40/20 Performance (Pts/Reb)..... Never
Scored 50 Points..... Never
Scored 40 Points 40, Karna Abram, vs. Michigan State (1987)
Scored 30 Points 38, Amanda Cahill, vs. Michigan State (3/1/18)
Had 20 Rebounds 20, Alexis Gassion, vs. Oakland (12/17/16)
Had 15 Rebounds 15, Kym Royster, vs. Southern (11/14/17)
Had 10 Assists 11, Grace Berger vs. Norfolk St. (11/16/21)
Had 5 Steals 5, Grace Berger, at Florida (11/22/19)
Had 5 Blocked Shots 5, Mackenzie Holmes vs. Arizona (3/29/21)
Had 10 Blocked Shots 10, Quacy Barnes, vs. Youngstown State, (1997)

THE LAST TIME AN INDIANA OPPONENT

Scored 100 Points..... 109, Michigan State (109, 3/1/18)
Scored 90 Points Missouri State (98, 12/9/18)
Scored Fewer than 60 Points Quinnipiac (59, 11/20/21)
Scored Fewer than 50 Points Norfolk St. (42, 11/16/21)
Scored Fewer than 40 Points Presbyterian (37, 11/11/16)
Scored Fewer than 30 Points Taylor (24, 2/21/75)
Won by 30 Points Maryland (36, 2/5/17)
Shot 65 pct from the floor..... Never
Shot 60 pct from the floor Ohio State (63.1%, 1/8/15)
Shot 50 pct from the floor NC State (50.0%, 3/27/21)
Shot less than 35 pct from the floor..... Norfolk St. (25%, 11/16/21)
Shot 50 pct from 3-point range Iowa (57.1%, 3/3/21)
Shot less than 35 pct from 3-point range Belmont (19.2%, 3/24/21)
Made 10 3-point field goals Oregon (13, 3/24/19)
Shot 75 pct from FT line (min. 5 made) Quinnipiac (9-10, 11/20/21)
Shot less than 50 pct from the FT line Samford (33.3%, 2-6, 12/3/20)
Had 50 Rebounds Tennessee (51, 12-17-20)
Had 20 Offensive Rebounds South Carolina (20, 11/28/2019)
Had 20 Assists Iowa (21, 1/12/20)
Had 20 Turnovers..... Ohio State (20, 2/27/21)
Had less than 10 Turnovers Iowa (9, 3/3/21)
Had 10 Steals Norfolk St. (13, 11/16/21)
Had 10 Blocked Shots Nebraska (11, 2/9/20)
Had two 20-point scorers UCLA (25,24 12/22/19)
Had two double-figure rebounders Never
Had no players in double figures VCU (3/22/21)
Scored 50 points or more in first half..... N/A*
Scored 50 points or more in the second half Penn State (50, 12/31/18)
Scored 20 points or less in first half Belmont (18, 3/24/21)
Scored 20 points or less in second half VCU (15, 3/22/21)
Failed to make a 3-point field goal Purdue (3/6/21)

THE LAST TIME AN OPPONENT INDIVIDUAL

Had a 30/10 Performance (Pts/Reb) . Ari McDonald, Arizona (33,11 3/29/21)
Had a 20/10 Performance (Pts/Reb) Cameron Brink (21, 22 11/25/21)
Scored 20 Points..... Cameron Brink (21, 11/25/21)
Scored 30 Points Ari McDonald, Arizona (3/29/21)
Scored 40 Points N/A*
Had 20 Rebounds Cameron Brink (22, 11/25/21)
Had 15 Rebounds Betnijah Laney, Rutgers (3/5/15)
Had 10 Assists Kathleen Doyle, Iowa (1/12/20)
Had 5 Steals Braxtin Miller, Ohio State (1/28/21)
Had 5 Blocked Shots Cameron Brink (11/25/21)

2021-22 OVERALL STATISTICS

Game Records

Record	Overall	Home	Away	Neutral
ALL GAMES	4-1	2-0	2-0	0-1
CONFERENCE	0-0	0-0	0-0	0-0
NON-CONFERENCE	4-1	2-0	2-0	0-1

Score by Periods

Team	1st	2nd	3rd	4th	OT	TOT
Indiana	78	103	100	98	0	379
Opponents	74	81	78	67	0	300

Team Box Score

No.	Player	Total			3-Point		F-Throw		Rebounds				Other									
		GP-GS	MIN	AVG	FG-FGA	FG%	3FG-3FGA	3FG%	FT-FTA	FT%	OFF	DEF	TOT	AVG	PF	DQ	A	TO	BLK	STL	PTS	AVG
54	HOLMES, Mackenzie	5-5	137:10	27.4	34-63	.540	2-3	.667	8-8	1.000	13	21	34	6.8	10	0	3	10	6	6	78	15.6
34	BERGER, Grace	5-5	174:34	34.9	28-76	.368	2-5	.400	14-19	.737	5	23	28	5.6	14	0	28	13	0	7	72	14.4
4	CARDANO-HILLARY, Nicole	5-5	171:36	34.3	24-42	.571	13-21	.619	9-15	.600	6	27	33	6.6	9	0	20	10	0	6	70	14.0
14	PATBERG, Ali	5-5	164:41	32.9	25-50	.500	6-17	.353	14-15	.933	1	14	15	3.0	13	0	24	7	1	3	70	14.0
10	GULBE, Aleksa	5-5	173:45	34.7	19-47	.404	4-14	.286	12-13	.923	10	24	34	6.8	12	0	7	13	4	5	54	10.8
23	BROWNE, Kiandra	5-0	73:21	14.7	8-12	.667	0-2	.000	4-4	1.000	4	7	11	2.2	13	0	0	3	1	0	20	4.0
22	MOORE-MCNEIL, Chloe	5-0	58:59	11.8	4-11	.364	1-6	.167	2-2	1.000	1	11	12	2.4	3	0	2	4	1	1	11	2.2
1	PETERSON, Kaitlin	3-0	08:52	3.0	1-5	.200	0-2	.000	2-2	1.000	0	1	1	0.3	0	0	0	1	0	0	4	1.3
24	ZARIC, Mona	1-0	01:57	2.0	0-0	.000	0-0	.000	0-0	.000	0	0	0	0.0	0	0	0	1	0	0	0	0.0
3	WAGGONER, Grace	5-0	10:35	2.1	0-0	.000	0-0	.000	0-0	.000	0	4	4	0.8	1	0	0	1	1	0	0	0.0
25	WISNE, Arielle	2-0	03:12	1.6	0-0	.000	0-0	.000	0-0	.000	0	0	0	0.0	0	0	0	1	0	0	0	0.0
21	BERRY, Keyarah	1-0	01:19	1.3	0-0	.000	0-0	.000	0-0	.000	0	0	0	0.0	1	0	0	0	0	0	0	0.0
5	HOSE, Caitlin	4-0	19:59	5.0	0-1	.000	0-1	.000	0-0	.000	0	0	0	0.0	1	0	0	0	0	0	0	0.0
Team											12	5	17					1				
Total		5	1000		143-307	.466	28-71	.394	65-78	.833	52	137	189	37.8	77	0	84	65	14	28	379	75.8
Opponents		5	1000		118-302	.391	23-74	.311	41-62	.661	51	118	169	33.8	98	3	47	72	23	30	300	60.0

Team Statistics

	IND	OPP
Scoring	379	300
Points per game	75.8	60.0
Scoring margin	+15.8	-
Field goals-att	143-307	118-302
Field goal pct	.466	.391
3 point fg-att	28-71	23-74
3-point FG pct	.394	.311
3-pt FG made per game	5.6	4.6
Free throws-att	65-78	41-62
Free throw pct	.833	.661
F-Throws made per game	13.0	8.2
Rebounds	189	169
Rebounds per game	37.8	33.8
Rebounding margin	+4.0	-
Assists	84	47
Assists per game	16.8	9.4
Turnovers	65	72
Turnovers per game	13.0	14.4
Turnover margin	+1.4	-
Assist/turnover ratio	1.3	0.7
Steals	28	30
Steals per game	5.6	6.0
Blocks	14	23
Blocks per game	2.8	4.6
Winning streak	0	-
Home win streak	2	-
Attendance	8792	3775
Home games-Avg/Game	2-4396	2-1888
Neutral site-Avg/Game	-	1-0

Team Results

Date	Opponent		Score	Att.
11/10/2021	at Butler	W	86-63	2360
11/14/2021	Kentucky	W	88-67	5394
11/16/2021	Norfolk St.	W	72-42	3398
11/20/2021	at Quinnipiac	W	67-59	1415
11/25/2021	vs Stanford	L	66-69	0

2020-21 BIG TEN STATISTICS

Game Records

Record	Overall	Home	Away	Neutral
ALL GAMES	16-2	8-1	8-1	0-0
CONFERENCE	16-2	8-1	8-1	0-0
NON-CONFERENCE	0-0	0-0	0-0	0-0

Score by Periods

Team	1st	2nd	3rd	4th	OT	TOT
Indiana	296	348	343	406	0	1393
Opponents	271	278	290	279	0	1118

Team Box Score

No.	Player	Overall			Total		3-Point		F-Throw		Rebounds				Other Stats							
		GP-GS	MIN	AVG	FG-FGA	FG%	3FG-FGA	3FG%	FT-FTA	FT%	OFF	DEF	TOT	AVG	PF	DQ	A	TO	BLK	STL	PTS	AVG
54	HOLMES, Mackenzie	18-18	555:05	30.8	141-235	.600	0-4	.000	57-72	.792	58	86	144	8.0	44	0	9	31	50	16	339	18.8
34	BERGER, Grace	18-18	610:18	33.9	99-224	.442	7-19	.368	67-87	.770	16	101	117	6.5	40	1	87	34	4	23	272	15.1
14	PATBERG, Ali	18-18	610:53	33.9	88-212	.415	22-66	.333	56-73	.767	13	71	84	4.7	32	0	72	32	4	13	254	14.1
10	GULBE, Aleksa	18-18	559:30	31.1	59-122	.484	14-37	.378	41-50	.820	41	68	109	6.1	45	2	23	22	11	20	173	9.6
13	PENN, Jaelynn	7-6	191:03	27.3	27-70	.386	8-24	.333	4-5	.800	4	23	27	3.9	17	0	15	16	1	12	66	9.4
4	CARDANO-HILLARY, Nicole	18-12	481:14	26.7	61-159	.384	24-80	.300	19-40	.475	11	56	67	3.7	33	1	41	29	0	23	165	9.2
23	BROWNE, Kiandra	14-0	135:10	9.7	12-22	.545	0-1	.000	12-15	.800	10	17	27	1.9	31	1	3	10	1	2	36	2.6
2	WARTHEN, Keyanna	18-0	138:36	7.7	16-27	.593	4-6	.667	5-8	.625	5	6	11	0.6	9	0	8	7	1	6	41	2.3
22	MOORE-MCNEIL, Chloe	16-0	105:47	6.6	6-23	.261	4-17	.235	5-8	.625	1	13	14	0.9	11	0	10	5	0	3	21	1.3
51	NOVEROSKE, Hannah	7-0	18:23	2.6	2-5	.400	0-0	.000	1-2	.500	3	4	7	1.0	4	0	0	3	3	2	5	0.7
33	PATTERSON, Danielle	10-0	57:07	5.7	3-13	.231	0-2	.000	1-2	.500	3	10	13	1.3	5	0	2	4	0	0	7	0.7
3	WAGGONER, Grace	18-0	88:09	4.9	3-7	.429	0-0	.000	4-6	.667	4	12	16	0.9	10	0	6	2	4	1	10	0.6
11	WILSON, Chanel	8-0	21:33	2.7	1-3	.333	0-1	.000	2-2	1.000	0	2	2	0.3	0	0	3	2	2	3	4	0.5
25	WISNE, Arielle	9-0	22:50	2.5	0-1	.000	0-0	.000	0-0	.000	0	5	5	0.6	7	0	0	2	2	0	0	0.0
12	PRICE, Paige	4-0	04:22	1.1	0-1	.000	0-1	.000	0-0	.000	0	1	1	0.3	0	0	0	0	0	0	0	0.0
Team											25	29	54					7				
Total		18	3600		518-1124	.461	83-258	.322	274-370	.741	194	504	698	38.8	288	5	279	206	83	124	1393	77.4
Opponents		18	3600		419-1077	.389	85-281	.302	195-264	.739	164	450	614	34.1	339	8	171	276	59	93	1118	62.1

Team Statistics

	IND	OPP
Scoring	1393	1118
Points per game	77.4	62.1
Scoring margin	+15.3	-
Field goals-att	518-1124	419-1077
Field goal pct	.461	.389
3 point fg-att	83-258	85-281
3-point FG pct	.322	.302
3-pt FG made per game	4.6	4.7
Free throws-att	274-370	195-264
Free throw pct	.741	.739
F-Throws made per game	15.2	10.8
Rebounds	698	614
Rebounds per game	38.8	34.1
Rebounding margin	+4.7	-
Assists	279	171
Assists per game	15.5	9.5
Turnovers	206	276
Turnovers per game	11.4	15.3
Turnover margin	+3.9	-
Assist/turnover ratio	1.4	0.6
Steals	124	93
Steals per game	6.9	5.2
Blocks	83	59
Blocks per game	4.6	3.3
Winning streak	9	-
Home win streak	5	-
Attendance	0	601
Home games-Avg/Game	9-0	9-67
Neutral site-Avg/Game	-	0-0

Team Results

Date	Opponent	Score	Att.
12/20/2020	Nebraska	W 81-45	0
12/23/2020	at Minnesota	W 75-54	0
12/31/2020	Illinois	W 79-56	0
01/04/2021	at Maryland	L 80-84	0
01/07/2021	at Penn St.	W 85-64	175
01/10/2021	Wisconsin	W 74-49	0
01/14/2021	at Purdue	W 66-45	160
01/24/2021	at Northwestern	W 74-61	1
01/28/2021	Ohio St.	L 70-78	0
01/31/2021	Michigan St.	W 79-67	0
02/07/2021	at Iowa	W 85-72	265
02/10/2021	Penn St.	W 90-65	0
02/14/2021	at Illinois	W 58-50	0
02/18/2021	Michigan	W 70-65	0
02/24/2021	at Wisconsin	W 77-49	0
02/27/2021	at Ohio St.	W 87-75	0
03/03/2021	Iowa	W 89-80	0
03/06/2021	Purdue	W 74-59	0

BIG TEN STANDINGS (AS OF 11-22-21)

TEAM	BIG	PCT.	OVERALL	PCT.
Indiana	0-0	.000	4-0	1.000
Iowa	0-0	.000	4-0	1.000
Maryland	0-0	.000	6-0	1.000
Michigan	0-0	.000	4-0	1.000
Nebraska	0-0	.000	5-0	1.000
Ohio State	0-0	.000	3-0	1.000
Michigan St.	0-0	.000	4-1	.800
Rutgers	0-0	.000	4-1	.800
Illinois	0-0	.000	3-1	.750
Northwestern	0-0	.000	3-1	.750
Penn State	0-0	.000	3-1	.750
Purdue	0-0	.000	3-1	.750
Minnesota	0-0	.000	4-2	.667
Wisconsin	0-0	.000	1-2	.333

BIG TEN STATS (AS OF 11-22-21)

TEAM		
Scoring Offense		78.3, 7th
Scoring Defense		57.8, 6th
Field Goal %		.508, 2nd
3FG %		.386, 4th
Free Throw %		.879, 1st
Rebounding Defense		27.5, 1st
Rebounding Margin		+10.3, 5th
Assist/Turnover Ratio		+1.28, 5th
Assists		18.50, 5th
INDIVIDUAL		
Scoring	Mackenzie Holmes	18.0, 6th
Rebounding	Aleksa Guble	7.3, 10th
Field Goal	Mackenzie Holmes	60.8, 6th
Assists	Ali Patberg	5.8, 4th
Assist/Turnover Ratio	Ali Patberg	+4.6, 4th

NCAA STATS (AS OF 11-22-21)

TEAM		
Assist/Turnover Ratio		1.28, 40th
Assists		74, 39th
Assists Per Game		18.5, 35th
Field Goal %		50.8, 8th
Free Throw %		87.9, 3rd
3PT FG %		38.6, 44th
INDIVIDUAL		
Assist/Turnover Ratio	Ali Patberg	4.6, 20th
Assists	Ali Patberg	23, 42nd
Assists Per Game	Ali Patberg	5.8, 36th
Field Goal %	Mackenzie Holmes	60.8, 41st
Free Throw %	Aleksa Guble	1.000, 1st
3PT FG %	Nicole Cardaño-Hillary	62.5, 13th

2021-22 HOME GAME STATISTICS ONLY

No.	Player	Total					3-Point			F-Throw		Rebounds				PF DQ A			TO BLK STL			PTS	AVG										
		GP-GS	MIN	AVG	FG-FGA	FG%	3FG-3FGA	3FG%	FT-FTA	FT%	OFF	DEF	TOT	AVG	PF	DQ	A	TO	BLK	STL													
54	HOLMES, Mackenzie	2-2	53:54	26.9	22-30	.733	1-1	1.000	6-6	1.000	3	7	10	5.0	2	0	1	4	2	3	51	25.5											
14	PATBERG, Ali	2-2	67:39	33.8	11-19	.579	3-6	.500	8-9	.889	1	4	5	2.5	5	0	11	2	0	2	33	16.5											
10	GULBE, Aleksa	2-2	66:31	33.3	13-20	.650	3-4	.750	1-1	1.000	5	16	21	10.5	5	0	2	8	4	1	30	15.0											
34	BERGER, Grace	2-2	68:37	34.3	8-25	.320	1-2	.500	8-11	.727	3	13	16	8.0	5	0	15	7	0	1	25	12.5											
4	CARDANO-HILLARY, Nicole	2-2	63:53	31.9	4-11	.364	3-7	.429	2-4	.500	3	8	11	5.5	1	0	11	5	0	2	13	6.5											
23	BROWNE, Kiandra	2-0	29:20	14.7	1-2	.500	0-1	.000	2-2	1.000	1	4	5	2.5	5	0	0	2	1	0	4	2.0											
1	PETERSON, Kaitlin	2-0	06:36	3.3	0-3	.000	0-1	.000	2-2	1.000	0	0	0	0.0	0	0	1	0	0	0	2	1.0											
22	MOORE-MCNEIL, Chloe	2-0	20:50	10.4	0-2	.000	0-1	.000	2-2	1.000	1	6	7	3.5	1	0	0	4	0	1	2	1.0											
24	ZARIC, Mona	1-0	01:57	2.0	0-0	.000	0-0	.000	0-0	.000	0	0	0	0.0	0	0	0	1	0	0	0	0.0											
3	WAGGONER, Grace	2-0	06:21	3.2	0-0	.000	0-0	.000	0-0	.000	0	3	3	1.5	1	0	0	0	0	0	0	0.0											
25	WISNE, Arielle	1-0	01:57	2.0	0-0	.000	0-0	.000	0-0	.000	0	0	0	0.0	0	0	0	1	0	0	0	0.0											
21	BERRY, Keyarah	1-0	01:19	1.3	0-0	.000	0-0	.000	0-0	.000	0	0	0	0.0	1	0	0	0	0	0	0	0.0											
5	HOSE, Caitlin	2-0	11:06	5.6	0-0	.000	0-0	.000	0-0	.000	0	0	0	0.0	1	0	0	0	0	0	0	0.0											
Team												7	2	9																			
Total		2	400		59-112	.527	11-23	.478	31-37	.838	24	63	87	43.5	27	0	40	36	7	10	160	80.0											
Opponents		2	400		42-125	.336	10-35	.286	15-23	.652	23	34	57	28.5	46	1	15	27	9	20	109	54.5											

2021-22 AWAY GAME STATISTICS ONLY

No.	Player	Total					3-Point			F-Throw		Rebounds				PF DQ A			TO BLK STL			PTS	AVG											
		GP-GS	MIN	AVG	FG-FGA	FG%	3FG-3FGA	3FG%	FT-FTA	FT%	OFF	DEF	TOT	AVG	PF	DQ	A	TO	BLK	STL														
4	CARDANO-HILLARY, Nicole	2-2	70:06	35.1	15-21	.714	7-9	.778	2-3	.667	2	12	14	7.0	5	0	8	3	0	1	39	19.5												
34	BERGER, Grace	2-2	68:54	34.5	16-32	.500	1-2	.500	2-2	1.000	1	5	6	3.0	7	0	6	4	0	2	35	17.5												
54	HOLMES, Mackenzie	2-2	50:41	25.3	9-21	.429	1-2	.500	2-2	1.000	6	8	14	7.0	4	0	1	5	2	2	21	10.5												
14	PATBERG, Ali	2-2	62:23	31.2	7-17	.412	2-8	.250	2-2	1.000	0	9	9	4.5	5	0	12	3	1	0	18	9.0												
23	BROWNE, Kiandra	2-0	32:00	16.0	7-8	.875	0-1	.000	2-2	1.000	3	1	4	2.0	4	0	0	1	0	0	16	8.0												
10	GULBE, Aleksa	2-2	73:04	36.5	3-14	.214	0-6	.000	10-10	1.000	3	5	8	4.0	3	0	5	5	0	1	16	8.0												
22	MOORE-MCNEIL, Chloe	2-0	31:20	15.7	3-8	.375	0-4	.000	0-0	.000	0	3	3	1.5	2	0	2	0	1	0	6	3.0												
1	PETERSON, Kaitlin	1-0	02:16	2.3	1-2	.500	0-1	.000	0-0	.000	0	1	1	1.0	0	0	0	0	0	0	2	2.0												
5	HOSE, Caitlin	1-0	05:01	5.0	0-1	.000	0-1	.000	0-0	.000	0	0	0	0.0	0	0	0	0	0	0	0	0.0												
3	WAGGONER, Grace	2-0	03:00	1.5	0-0	.000	0-0	.000	0-0	.000	0	1	1	0.5	0	0	0	1	1	0	0	0.0												
25	WISNE, Arielle	1-0	01:15	1.3	0-0	.000	0-0	.000	0-0	.000	0	0	0	0.0	0	0	0	0	0	0	0	0.0												
Team												2	2	4																				
Total		2	400		61-124	.492	11-34	.324	20-21	.952	17	47	64	32.0	30	0	34	22	5	6	153	76.5												
Opponents		2	400		47-107	.439	10-27	.370	18-21	.857	9	44	53	26.5	35	1	16	29	7	6	122	61.0												

2021-22 NEUTRAL SITE STATISTICS ONLY

No.	Player	Total					3-Point			F-Throw		Rebounds				PF DQ A			TO BLK STL			PTS	AVG											
		GP-GS	MIN	AVG	FG-FGA	FG%	3FG-3FGA	3FG%	FT-FTA	FT%	OFF	DEF	TOT	AVG	PF	DQ	A	TO	BLK	STL														
14	PATBERG, Ali	1-1	34:39	34.7	7-14	.500	1-3	.333	4-4	1.000	0	1	1	1.0	3	0	1	2	0	1	19	19.0												
4	CARDANO-HILLARY, Nicole	1-1	37:37	37.6	5-10	.500	3-5	.600	5-8	.625	1	7	8	8.0	3	0	1	2	0	3	18	18.0												
34	BERGER, Grace	1-1	37:03	37.0	4-19	.211	0-1	.000	4-6	.667	1	5	6	6.0	2	0	7	2	0	4	12	12.0												
10	GULBE, Aleksa	1-1	34:10	34.2	3-13	.231	1-4	.250	1-2	.500	2	3	5	5.0	4	0	0	0	0	3	8	8.0												
54	HOLMES, Mackenzie	1-1	32:35	32.6	3-12	.250	0-0	.000	0-0	.000	4	6	10	10.0	4	0	1	1	2	1	6	6.0												
22	MOORE-MCNEIL, Chloe	1-0	06:49	6.8	1-1	1.000	1-1	1.000	0-0	.000	0	2	2	2.0	0	0	0	0	0	0	3	3.0												
23	BROWNE, Kiandra	1-0	12:01	12.0	0-2	.000	0-0	.000	0-0	.000	0	2	2	2.0	4	0	0	0	0	0	0	0.0												
5	HOSE, Caitlin	1-0	03:52	3.9	0-0	.000	0-0	.000	0-0	.000	0	0	0	0.0	0	0	0	0	0	0	0	0.0												
3	WAGGONER, Grace	1-0	01:14	1.2	0-0	.000	0-0	.000	0-0	.000	0	0	0	0.0	0	0	0	0	0	0	0	0.0												
Team												3	1	4																				
Total		1	200		23-71	.324	6-14	.429	14-20	.700	11	27	38	38.0	20	0	10	7	2	12	66	66.0												
Opponents		1	200		29-70	.414	3-12	.250	8-18	.444	19	40	59	59.0	17	1	16	16	7	4	69	69.0												

STARTING LINEUPS

11-10-21 at Butler
Cardaño-Hillary Patberg Berger Gulbe Holmes

11-14-21 vs. No. 13 Kentucky
Cardaño-Hillary Patberg Berger Gulbe Holmes

11-16-21 vs. Norfolk St.
Cardaño-Hillary Patberg Berger Gulbe Holmes

11-20-21 at Quinnipiac
Cardaño-Hillary Patberg Berger Gulbe Holmes

11-25-21 vs. No. 7/5 Stanford
Cardaño-Hillary Patberg Berger Gulbe Holmes



TERI MOREN

HEAD COACH

EIGHTH YEAR AT INDIANA • 19TH YEAR OVERALL AS COLLEGE HEAD COACH

Teri Moren enters her seventh season with Indiana Women's Basketball in the 2020-21 season.

The Indiana native has taken the program to new levels in her six seasons at the helm, coming off the program's fourth-straight 20-win season in 2019-20, when it set a new program mark for wins with a 24-8 overall record. In this historic season, IU was ranked in both national polls for much of the season including all 20 weeks of the Associated Press top 25 where it topped out at a program-record ranking of No. 12. They made history in the 2019 Paradise Jam where the Hoosiers upset then No. 5/6 South Carolina in the program's first top five non-conference victory in school history. In Big Ten play, Indiana finished fourth for the third time under Moren and went 13-5, setting a new school mark for wins in a conference season.

Moren, a Seymour, Indiana native, has coached 17 All-Big Ten honorees including 2019-20 first team honorees Ali Patberg and Grace Berger – the first time since 1986 that the program featured a pair of first team selections and just third time overall. In addition, junior guard Jaelynn Penn earned her third-straight All-Big Ten accolades on the honorable mention team and freshman forward Mackenzie Holmes was a Big Ten All-Freshman honoree.

Placing a priority on academics through her mantra "Graduate. Win. Serve" the Hoosiers have received 28 Academic All-Big Ten selections. In 2017-18, Amanda Cahill became the program's second back-to-back CoSIDA Academic All-American with a 3.92 GPA in Elementary education. In all, IU has had seven CoSIDA Academic All-District honors

It was another historic year for the Hoosiers in 2018-19, as Moren guided her team to its fourth-straight postseason appearance with an at-large bid in to the NCAA Tournament. IU won its first-round game over Texas and made its second appearance in four seasons in the Big Dance. They won 23 games, its fourth-straight 20-win season where three players earned All-Big Ten honors in Ali Patberg, Jaelynn Penn and Brenna Wise. The Hoosiers got off to a hot start, opening up the 2018-19 season 10-0 overall and had five Top 50 RPI wins and two AP Top 15 victories for the first time since 2001-02. In the classroom, seven players earned All-Big Ten honors, the most in a single season in program history while Patberg and Wise were honored as CoSIDA Academic All-District honorees.

The Hoosiers made history in 2017-18, claiming the WNIT Championship and guiding the program to a 23-14 overall record. IU won 15 of its final 17 games en route to hanging a banner inside Simon Skjodt Assembly Hall. Tyra Buss repeated for the third-straight time as a All-Big Ten First Team selection and second-straight WBCA All-American honorable mention while Amanda Cahill was a All-Big Ten Second Team honoree and CoSIDA Academic All-American for the second-consecutive season. The program's 23 wins marked the eighth time in program history the Hoosiers have reached 20 wins or more, including in three-straight seasons for the first time ever.

A record number of fans came out in Moren's fourth year in 2017-18, with four of the top 10 attended games in school history coming during the historic WNIT run. The Hoosiers averaged over 4,000 fans per game and set a new program attendance record during the WNIT Championship game where 13,007 fans saw IU defeat Virginia Tech, 65-57.

In 2016-17, Moren guided IU to 23 wins and an appearance in the WNIT Quarterfinals. The program also featured its first All-American in 31 years, as Tyra Buss was named a WBCA All-American Honorable Mention. For the first time since 2008-09, Indiana featured three players on All-Big Ten teams highlighted by a repeat All-Big Ten First Team selection Tyra Buss. Junior forward Amanda Cahill (second team) and senior guard Alexis Gassion (honorable mention) were also honored, as Gassion was selected to the league's All-Defensive team, also the first selection since 2008-09. In addition, Cahill earned CoSIDA Academic All-American honors, the first for the program since 1989 and the fifth player ever in school history.

In her second season 2015-16, Moren was named the Big Ten Coach of the Year after leading Indiana to a 21-12 overall record and the program's to its first NCAA Tournament berth in 14 years. Moren led the Hoosiers to the most regular season wins (20) in program history while also tying for overall wins (21) in a single season. Indiana had the school's second-most Big Ten victories (12) ever on her way to being named Big Ten Coach of the Year. She became just the second IU coach to earn the award (Maryalce Jeremiah, 1983) while leading the The Hoosiers won their first NCAA Tournament game since 1983 with a 62-58 triumph over eighth-seeded Georgia in the first round at Notre Dame as the No. 9 seed in the Lexington Region.

IU's 12 Big Ten victories were the school's most since 1982-83. Moren's 2015-16 Hoosiers finished fourth in the Big Ten, the school's highest conference finish in 18 years, and earned a No. 4 seed in the Big Ten Tournament, tying for the program's highest seed ever in conference tournament play. That season, Buss was named First Team All-Big Ten, becoming the first IU player to earn first team honors since 2006. Cahill earned Second Team All-Big Ten accolades. Buss and Cahill become the first IU duo to earn all-conference recognition in the same season since 2010.

During her first year in Bloomington in 2014-15, Moren led the Hoosiers to the program's best scoring average (71.9 ppg) since 1995-96, the best team free throw percentage (74.3 percent) since 2003-04 and the most steals (284) since 2010-11. IU nailed 236 3-point field goals, the second best total in school history, and also cracked the top five in program history in free throw percentage (4th), points scored (5th, 2,229), points per game (5th) and 3-point field goal percentage (5th, 33.1 percent)

Indiana University Vice President and Director of Athletics Fred Glass announced the hiring of Seymour, Ind., native as head coach of the IU women's basketball program on August 9, 2014. Prior to Indiana, Moren won a Missouri Valley Conference championship during her four seasons with Indiana State. She led the Sycamores to two WNIT appearances and had six players named All-MVC. ISU finished with a 20-12 record in 2013-14, the program's first 20-win season in eight years and just the fifth 20-win campaign in school history. With a 14-4 record in conference games, Moren's Sycamores won a share of the regular season MVC title and earned the No. 1 overall seed in the MVC Tournament.

Prior to ISU, Moren was associate head coach at Georgia Tech. In each of her three years there, the Yellow Jackets made an NCAA Tournament appearance and won 22 or more games each season.

Moren began her head coaching career at the University of Indianapolis (2000-07). The 2003 WBCA Region 4 Coach of the Year in NCAA Division II, her teams went to three consecutive NCAA Division II Tournaments and earned Great Lakes Valley Conference regular season and tournament titles in 2003.

Moren began her coaching career in 1992-93 at Butler (1992-1998), leading the Bulldogs to three 20-win seasons. Moren then spent two years as an assistant at Northwestern (1998-2000).

A 1992 graduate of Purdue University, Moren earned her bachelor's degree in the therapeutic recreation. She was a four-year basketball letterwinner and two-year starter for the Boilermakers under Women's Basketball Hall of Fame Coach Lin Dunn. She was part of three NCAA Tournament teams and Purdue's first Big Ten championship.

Moren graduated from Seymour High School in 1987 and was named an Indiana All Star. She led the Owls to four sectional titles, two regional championships, a semi-state win and a 1987 state finals appearance. She was inducted into the Indiana Basketball Hall of Fame on April 26, 2014 and will be part of the inaugural class of the Seymour Athletics Hall of Fame in December 2017.

PERSONAL
DATE OF BIRTH: April 14, 1969
HOMETOWN: Seymour, Ind.
HIGH SCHOOL: Seymour High School
COLLEGE: Purdue (1992)

COACHING EXPERIENCE
BUTLER UNIVERSITY
 1992-98: Assistant Coach

NORTHWESTERN UNIVERSITY
 1998-00: Assistant Coach

UNIVERSITY OF INDIANAPOLIS
 2000-07: Head Coach

GEORGIA TECH
 2007-10: Associate Head Coach

INDIANA STATE UNIVERSITY
 2010-14: Head Coach

INDIANA UNIVERSITY
 2014-Present: Head Coach

YEAR-BY-YEAR HEAD COACHING RECORD

YEAR	SCHOOL	OVERALL	CONF.
2000-01	Indianapolis	14-13	10-10
2001-02	Indianapolis	15-11	11-9
2002-03*^	Indianapolis	29-3	18-2
<i>NCAA Tournament • GLVC Regular Season Champions • GLVC Tournament Champions</i>			
2003-04	Indianapolis	23-9	14-6
<i>NCAA Tournament • GLVC Tournament Runner-up</i>			
2004-05	Indianapolis	22-10	12-8
<i>NCAA Tournament • GLVC Tournament Runner-up</i>			
2005-06	Indianapolis	11-16	6-13
2006-07	Indianapolis	16-11	9-10
2010-11	Indiana State	16-16	8-10
2011-12	Indiana State	15-16	9-9
2012-13	Indiana State	18-13	10-8
<i>WNIT</i>			
2013-14	Indiana State	20-12	14-4
<i>WNIT • MVC Regular Season Champions</i>			
2014-15	Indiana	15-16	4-14
2015-16*	Indiana	21-12	12-6
<i>NCAA Tournament</i>			
2016-17	Indiana	23-11	10-6
<i>WNIT</i>			
2017-18	Indiana	23-14	9-7
<i>WNIT Champions</i>			
2018-19	Indiana	21-13	8-10
<i>NCAA Tournament</i>			
2019-20	Indiana	24-8	13-5
2020-21	Indiana	21-6	16-2
2021-22	Indiana	4-1	0-0
TOTALS		351-211	193-139

* = Conference COY ^ = WBCA Regional CO

TERI MOREN ERA TEAM RECORDS

ALL GAMES

	High	Low
Points	115, vs. Gardner-Webb, 11-15-14	26, vs. Samford, 12-3-20
Points (1Q)	37, at Wisconsin, 1-13-19	4, vs. Auburn, 12-3-17
Points (2Q)	28, vs. Minnesota, 2-18-16	5, vs. Maryland, 1-27-19
Points (3Q)	34, at Austin Peay, 11-28-15	6, 2x, last vs. Purdue (BIG Tourn), 3-3-17
Points (4Q)	33, at Northwestern, 1-24-16	5, at Indiana State, 12-8-15
Points (1H)	67, vs. Gardner Webb, 11-15-14	17, 2x, last vs. Michigan St., 12-28-17
Points (2H)	56, at Austin Peay, 11-28-15	20, at Indiana State, 12-8-16
Margin	+64, vs. Nicholls St, 11-10-19	+2, 5x, last at Illinois, 12-28-18
FG	46, vs. Gardner Webb, 11-15-14	15, vs. Rutgers, 12-28-14
FGA	88, vs. Michigan St., 3-1-18	41, at Butler, 12-11-19
FG%	.640 at North Texas, 12-6-16	.281, vs. Ohio State, 1-8-15
3FG	16, vs. Gardner-Webb, 11-15-14	1, 4x, last vs. Maryland, 1-20-20
3FGA	36, vs. Ohio State, 1-8-15	6, vs. Missouri St. 12-9-18
3FG%	.700, vs. Yale, 12-28-15	.000 vs. Arizona, 3-29-21
FT	32, vs. Michigan, 1-3-16	0, at Minnesota, 1-18-15
FTA	42, 2x, last vs. Minnesota, 2-18-16	2, at Minnesota, 1-18-15
FT%	1.000, 4x, last vs. Texas, 3-22-19	.000, at Minnesota, 1-18-15
REB	61, vs. Nebraska 12-20-20	18, 2x, last at Michigan, 1-10-18
REB Margin	+30, at North Texas, 12-6-16	-23, at Michigan, 2-18-15
Assists	33, vs. Nicholls State, 11-10-19	4, 2x, last vs. Tennessee, 12-17-20
Turnovers	28, at North Texas, 12-6-16	2, at Penn State, 1-7-21
Blocks	9, 2x, last vs. Purdue, 3-22-18	0, 10x, last at Rutgers, 2-18-19
Steals	18, 3x, last vs. UMass Lowell, 11-23-16	0, vs. Baylor, 11-29-19
Fouls	28, vs. Minnesota, 2-18-16	8, 3x, last vs. ECU, 11-25-20

BIG TEN GAMES

High	Low
93, vs. Minnesota, 2-8-16	46, vs. Michigan State, 12-28-17
37, at Wisconsin, 1-13-19	8, at Nebraska, 2-19-17
28, vs. Minnesota, 2-18-16	5, vs. Maryland, 1-27-19
25, 2x, last at Iowa, 2-21-16	6, vs. Purdue (BIG Tourn), 3-3-17
33, at Northwestern, 1-24-16	9, at Illinois, 12-28-19
44, 3x, last vs. PSU, 2-27-16	17, 2x, last vs. Michigan St., 12-28-17
56, vs. Iowa, 2-4-16	24, at Rutgers, 3-1-15
+28, vs. Northwestern, 2/11/17	+2, 2x, last at Illinois (85-83), 12-28-18
35, at Penn State, 12-28-16	15, vs. Rutgers, 12-28-14
78, at Illinois, 12-28-18	42, vs. Rutgers, 1-27-18
.617, vs. Michigan State, 12-28-19	.281, vs. Ohio State, 1-8-15
13, 2x, last at Iowa, 2-24-18	1, 4x, last at Maryland, 1-20-20
36, vs. Ohio State 1-8-15	7, 2x, last vs. Michigan State, 12-28-19
.611, at Michigan State, 1-20-18	.077, at Ohio State, 1-10-19
32, vs. Michigan, 1-3-16	0, at Minnesota, 1-18-15
42, 2x, last vs. Minnesota, 2-18-16	2, at Minnesota, 1-18-15
1.000, 2x, last at Iowa, 2-14-16	.000, at Minnesota, 1-18-15
61, vs. Nebraska 12-20-20	18, 2x, last at Michigan, 1-10-18
+15, at Purdue, 1-4-15	-23, at Michigan, 2-18-15
24, at Northwestern, 1-24-16	4, at Ohio State, 1-10-19
23, 2x, last at Minnesota, 2-20-18	2, at Penn State, 1-7-21
9, vs. Michigan 1-3-16	0, 10x, last vs. Rutgers, 2-18-19
17, vs. Milwaukee, 3-18-18	1, 3x, last at Ohio State, 1-7-16
28, vs. Minnesota, 2-18-16	9, last at Wisconsin, 1-29-17

VS. DI OPPONENTS

Arkansas St.	1-0	Jackson State	1-0	Purdue	10-4	West Virginia	0-1
Auburn	0-2	Kansas State	0-1	Quinnipiac	1-0	Wichita State	3-4
Austin Peay	1-0	Kentucky	1-1	Rutgers	5-5	Wisconsin	7-1
Ball State	1-0	Louisville	0-1	Saint Louis	2-0	Wright State	0-0
Baylor	0-1	Loyola (Chicago)	2-1	Saint Mary's	0-1	Yale	2-0
Belmont	2-1	Loyola Marymount	1-0	Samford	2-0	Youngstown St.	1-1
Boston College	1-0	LSU	0-1	Southern	1-0		
Bradley	7-1	Marquette	0-1	SIU Edwardsville	1-0	Bold	denotes 20-21 oppo- nents
Butler	5-2	Marshall	2-0	Southern Illinois	8-0		
Chattanooga	2-2	Maryland	0-11	South Alabama	1-0		
Chicago State	2-0	Miami (Fla.)	1-1	South Carolina	1-0		
Creighton	1-3	Michigan	5-6	South Daktoa	1-0		
DePaul	0-1	Michigan State	6-4	Stanford	0-0		
Detroit	1-0	Milwaukee	3-0	Stetson	0-1		
Drake	3-3	Minnesota	7-3	Stony Brook	1-0		
East Tenn. St	1-1	Missouri	0-1	TCU	1-0		
Eastern Ky.	1-0	Missouri State	5-3	Tennessee	0-1		
Eastern Illinois	3-1	Morehead State	1-0	Tennessee State	1-0		
Evansville	5-2	Mount St. Mary's	1-0	Texas	1-0		
Fairfield	0-0	Nebraska	7-2	Tulane	0-1		
FIU	0-1	Nicholls State	1-0	UAB	1-0		
Florida	3-0	Norfolk State	1-0	UCLA	1-1		
Furman	1-0	N. Kentucky	2-0	UC Davis	1-0		
Gardner-Webb	1-0	NC State	1-1	UMass Lowell	1-0		
Georgia	1-0	North Florida	2-0	USC Upstate	1-0		
Georgia Tech	1-0	North Texas	2-0	UT Martin	4-1		
Grambling State	0-1	Northern Illinois	2-1	Vanderbilt	1-0		
Illinois	9-0	Northern Iowa	4-5	Valparaiso	2-0		
Illinois (Chicago)	2-0	Northwestern	5-5	VCU	1-0		
Illinois State	4-2	Notre Dame	0-2	Villanova	0-1		
Incarnate Word	1-0	Oakland	3-0	Virginia	0-1		
Indiana	0-2	Ohio	0-1	Virginia Tech	1-0		
Indiana State	1-1	Ohio State	1-8	Wake Forest	1-0		
Iowa	5-5	Oregon	0-1	Washington State	0-0		
IPFW	2-0	Penn State	8-2	W. Kentucky	1-0		
IUPUI	2-2	Presbyterian	1-0	W. Michigan	1-0		

VS. CONFERENCE OPPONENTS

ASUN	3-0
AAC	1-1
ACC	5-6
A10	3-0
American East	2-0
Big Ten	75-55
Big 12	2-3
Big East	5-5
Big South	1-0
Big West	1-0
Conference USA	5-2
Horizon	12-1
Ivy League	2-0
MAAC	1-1
MAC	4-2
MEAC	1-0
MVC	42-31
NEC	1-0
OVC	14-3
Pac 12	1-2
SEC	7--6
SoCon	7-3
Southland	2-0
Summit League	5-2
Sun Belt	2-0
SWAC	2-1
WAC	2-0



#1 • KAITLIN PETERSON

Fr. • G • 5-9
Eufaula, Ala. • Eufaula

NOTES ON PETERSON

- Scored 2,967 points, 591 rebounds, 588 steals and 492 assists at Eufaula High School
- Averaged 25.0 points, 5.7 steals, 4.9 assists and 3.9 rebounds per game
- 2021 Alabama All-Star
- Four-time Alabama Sports Writers Association all-state selection
- Rated No. 41 overall recruit by All Star Girls Report and No. 54 by Prospects Nation
- Major: human development family studies
- Birthday: June 12

2021-22 GAME-BY-GAME

Opponent	Date	GS	MIN	Total		3-Pointers		Free throws		Rebounds				PF	A	TO	BLK	STL	PTS	AVG
				FG-FGA	PCT	3FG-3FGA	PCT	FT-FTA	PCT	OFF	DEF	TOT	AVG							
at Butler	11/10/2021		02:16	1-2	.500	0-1	.000	0-0	.000	0	1	1	1.0	0	0	0	0	0	2	2.0
Kentucky	11/14/2021		01:02	0-1	.000	0-0	.000	0-0	.000	0	0	0	0.5	0	0	0	0	0	0	1.0
Norfolk St.	11/16/2021		05:34	0-2	.000	0-1	.000	2-2	1.000	0	0	0	0.3	0	1	0	0	2	1.3	
Totals		0	08:52	1-5	.200	0-2	.000	2-2	1.000	0	1	1	0.3	0	1	0	0	4	1.3	

GAME AND CAREER HIGHS

2021-22 Game Highs

Points ...2, 2x, last vs. Norfolk St. (11/16/21)
 Rebounds N/A
 Assists N/A
 Steals N/A
 Blocks1, at Butler (11/10/21)
 FG Made1, at Butler (11/10/21)
 3FG Made N/A
 FT Made2, vs. Norfolk St. (11/16/21)
 Minutes5, vs. Norfolk St. (11/16/21)

Player Averages

Games Played	Minutes/game	Points/game	FG Pct	3FG Pct	FT Pct	Rebounds/game	Assists/game	Turnovers/game	Assist/Turnover ratio	Steals/game	Blocks/game
3	3.0	1.3	20.0	0.0	100.0	0.3	0.0	0.3	0.0	0.0	0.0

Career Highs

Points ...2, 2x, last vs. Norfolk St. (11/16/21)
 Rebounds N/A
 Assists N/A
 Steals N/A
 Blocks1, at Butler (11/10/21)
 FG Made1, at Butler (11/10/21)
 3FG Made N/A
 FT Made2, vs. Norfolk St. (11/16/21)
 Minutes5, vs. Norfolk St. (11/16/21)

CAREER STATISTICS

SEASON	TEAM	GP-GS	MIN/AVG	Field Goals		3-Point		F-Throws		Rebounds				Scoring						
				FG-FGA	FG%	3FG-3FGA	3FG%	FT-FTA	FT%	OFF	DEF	TOT	AVG	PF-FO	A	TO	BLK	STL	PTS	AVG
2021-22	IND	3-0	9/3.0	1-5	.200	0-2	.000	2-2	1.000	0	1	1	0.3	0-0	0	1	0	0	4	1.3
TOTAL		3-0	9/3.0	1-5	.200	0-2	.000	2-2	1.000	0	1	1	0.3	0-0	0	1	0	0	4	1.3



#3 • GRACE WAGGONER

Jr. • G • 6-0
Vincennes, Ind • Vincennes Rivet

NOTES ON WAGGONER

- 2020-21 Academic All-Big Ten selection
- Appeared in 26 games off the bench as a sophomore and plays a key defensive role for the Hoosiers
- Scored buckets in four games and set a new career-high 6 points against Illinois
- Awarded a basketball scholarship in Oct. 2021 - also receives a Lilly Endowment Community Scholarship
- This will be her final season at IU as she graduates in May to pursue her MBA at the Kelley School of Business
- Major: Finance
- Birthday: Sept. 2

GAME AND CAREER HIGHS

2021-22 Game Highs

Points N/A
 Rebounds 2, vs. Norfolk St. (11/16/21)
 Assists N/A
 Steals N/A
 Blocks 1, at Butler (11/10/21)
 FG Made N/A
 3FG Made N/A
 FT Made N/A
 Minutes 3, vs. Kentucky (11/14/21)

Career Highs

Points 6, vs. Illinois (12/31/20)
 Rebounds 9, vs. Eastern Ky. (11/25/20)
 Assists 3, vs. YSU (12/15/19)
 Steals 2, 2x, last vs. Nebraska (2/27/20)
 Blocks 2, at Minnesota (12/23/20)
 FG Made 2, 2x, last vs. Illinois (12/31/20)
 3FG Made 1, vs. Illinois (1/6/20)
 FT Made 2, vs. Illinois (12/31/20)
 Minutes 12, 3x, last at Wisconsin (2/24/21)

2021-22 GAME-BY-GAME

Opponent	Date	GS	MIN	Total		3-Pointers		Free throws		Rebounds				PF	A	TO	BLK	STL	PTS	AVG
				FG-FGA	PCT	3FG-3FGA	PCT	FT-FTA	PCT	OFF	DEF	TOT	AVG							
at Butler	11/10/2021		02:16	0-0	.000	0-0	.000	0-0	.000	0	0	0	0.0	0	0	1	1	0	0	0.0
Kentucky	11/14/2021		03:50	0-0	.000	0-0	.000	0-0	.000	0	1	1	0.5	1	0	0	0	0	0	0.0
Norfolk St.	11/16/2021		02:31	0-0	.000	0-0	.000	0-0	.000	0	2	2	1.0	0	0	0	0	0	0	0.0
at Quinnipiac	11/20/2021		00:44	0-0	.000	0-0	.000	0-0	.000	0	1	1	1.0	0	0	0	0	0	0	0.0
vs Stanford	11/25/2021		01:14	0-0	.000	0-0	.000	0-0	.000	0	0	0	0.8	0	0	0	0	0	0	0.0
Totals		0	10:35	0-0	.000	0-0	.000	0-0	.000	0	4	4	0.8	1	0	1	1	0	0	0.0

Player Averages

Games Played	Minutes/game	Points/game	FG Pct	3FG Pct	FT Pct	Rebounds/game	Assists/game	Turnovers/game	Assist/Turnover ratio	Steals/game	Blocks/game
5	2.1	0.0	0.0	0.0	0.0	0.8	0.0	0.2	0.0	0.0	0.2

CAREER STATISTICS

SEASON	TEAM	GP-GS	MIN/AVG	Field Goals		3-Point		F-Throws		Rebounds				Scoring						
				FG-FGA	FG%	3FG-3FGA	3FG%	FT-FTA	FT%	OFF	DEF	TOT	AVG	PF-FO	A	TO	BLK	STL	PTS	AVG
2019-20	IND	15-0	82/5.5	3-9	.333	1-5	.200	2-5	.400	3	6	9	0.6	11-0	6	6	2	4	9	0.6
2020-21	IND	26-0	118/4.5	5-13	.385	0-2	.000	4-6	.667	7	20	27	1.0	14-0	8	2	4	2	14	0.5
2021-22	IND	5-0	11/2.1	0-0	.000	0-0	.000	0-0	.000	0	4	4	0.8	1-0	0	1	1	0	0	0.0
TOTAL		46-0	210/4.6	8-22	.364	1-7	.143	6-11	.545	10	30	40	0.9	26-0	14	9	7	6	23	0.5





#4 • NICOLE CARDAÑO-HILLARY

Gr. • G • 5-6

Madrid, Spain • Vista Ridge/George Mason

NOTES ON CARDAÑO-HILLARY

- Over five games, averaging 14.0 ppg, 6.6 rpg, and 4.0 apg.
- Scored an IU high 29 points on 11-for-12 shooting and 7-for-8 from the 3-point line at Butler in the season opener
- Eclipsed the 2,000 point scoring mark against Butler
- Played in 24 games, making 17 starts in her first season at IU in 2020-21
- A transfer from George Mason where she was the Atlantic 10 Player of the Year (2018-19), Atlantic 10 Rookie of the Year (2017-18) and a two-time Atlantic 10 All-Conference selection
- Is Mason's all-time leading scorer with 1,766 career points
- Major: sports media
- Birthday: Feb. 27

GAME AND CAREER HIGHS

2021-22 Game Highs

Points 29, at Butler (11/10/21)
 Rebounds 8, 2x, last vs. Stanford (11/25/21)
 Assists 7, vs. Kentucky (11/14/21)
 Steals 2, vs. Kentucky (11/14/21)
 Blocks N/A
 FG Made 11, at Butler (11/10/21)
 3FG Made 7, at Butler (11/10/21)
 FT Made 5, vs. Stanford (11/25/21)
 Minutes . 37, 2x, last vs. Stanford (11/25/21)

Career Highs

Points 41, at Penn State (11/24/19)*
 Rebounds 11, at Ohio State (2/27/21)
 Assists 8, at Navy (12/19/19)*
 Steals 7, at Rhode Island (1/14/18)
 Blocks . 1, 8x, last vs. Michigan St. (3/11/21)
 FG Made 14, vs. George Washington (2/6/19)*
 3FG Made 7, at Butler (11/10/21)
 FT Made 15, vs. Rhode Island (1/27/19)*
 Minutes . 40, 2x, last at George Washington (2/15/20)*

* - at George Mason

2021-22 GAME-BY-GAME

Opponent	Date	GS	MIN	Total		3-Pointers		Free throws		Rebounds				PF	A	TO	BLK	STL	PTS	AVG	
				FG-FGA	PCT	3FG-3FGA	PCT	FT-FTA	PCT	OFF	DEF	TOT	AVG								
at Butler	11/10/2021	*	32:43	11-12	.917	7-8	.875	0-0	.000	1	5	6	6.0	3	5	1	0	0	29	29.0	
Kentucky	11/14/2021	*	34:10	4-6	.667	3-5	.600	1-2	.500	0	6	6	6.0	1	7	4	0	2	12	20.5	
Norfolk St.	11/16/2021	*	29:43	0-5	.000	0-2	.000	1-2	.500	3	2	5	5.7	0	4	1	0	0	1	14.0	
at Quinnipiac	11/20/2021	*	37:23	4-9	.444	0-1	.000	2-3	.667	1	7	8	6.3	2	3	2	0	1	10	13.0	
vs Stanford	11/25/2021	*	37:37	5-10	.500	3-5	.600	5-8	.625	1	7	8	6.6	3	1	2	0	3	18	14.0	
Totals			5	171:36	24-42	.571	13-21	.619	9-15	.600	6	27	33	6.6	9	20	10	0	6	70	14.0

Player Averages

Games Played	Minutes/game	Points/game	FG Pct	3FG Pct	FT Pct	Rebounds/game	Assists/game	Turnovers/game	Assist/Turnover ratio	Steals/game	Blocks/game
5	34.3	14.0	57.1	61.9	60.0	6.6	4.0	2.0	2.0	1.2	0.0

CAREER STATISTICS

SEASON	TEAM	GP-GS	MIN/AVG	Field Goals		3-Point		F-Throws		Rebounds				Scoring						
				FG-FGA	FG%	3FG-3FGA	3FG%	FT-FTA	FT%	OFF	DEF	TOT	AVG	PF-FO	A	TO	BLK	STL	PTS	AVG
2017-18	GMU	34-34	1111/32.7	200-576	.347	68-223	.305	137-183	.749	26	87	113	3.3	93-2	102	129	4	84	605	17.8
2018-19	GMU	30-30	1073/35.8	210-569	.369	43-155	.277	150-200	.750	27	105	132	4.4	66-1	95	133	1	65	613	20.4
2019-20	GMU	30-30	1029/34.3	190-534	.356	48-173	.277	120-155	.774	39	115	154	5.1	84-1	95	117	2	67	548	18.3
2020-21	IND	24-17	657/27.4	73-204	.358	27-99	.273	32-59	.542	15	73	88	3.7	45-1	47	35	1	31	205	8.5
2021-22	IND	5-5	172/34.3	24-42	.571	13-21	.619	9-15	.600	6	27	33	6.6	9-0	20	10	0	6	70	14.0
TOTAL FOR IND	29-22	829/28.6	97-246	.394	40-120	.333	41-74	.554	21	100	121	4.2	54-1	67	45	1	37	275	9.5	
TOTAL	123-116	4043/32.9	697-1925	.362	199-671	.297	448-612	.732	113	407	520	4.2	297-5	359	424	8	253	2041	16.6	



#5 • CAITLIN HOSE

Sr. • G • 5-10

Hazel Green, Ala. • Hazel Green/Georgia

NOTES ON HOSE

- Played in 12 games off the bench for a Georgia squad that went 21-7 and made the 2nd round of the NCAA Tournament in 2021
- Made 61 career appearances for the Bulldogs and made a combined 13 starts in three seasons
- Graduated from Georgia in May 2021 with a degree in sports management
- An All-State player at Hazel Green High School where she was the Alabama Sports Writers Association 6A Player of the Year in 2018
- Led Hazel Green to four state championship game appearances including a state title as a senior
- Averaged 16.7 points, 6.7 rebounds, 5.9 assists and 1.9 steals as a senior at Hazel Green
- Major: non-declared (master's degree)
- Birthday: November 15

GAME AND CAREER HIGHS

2021-22 Game Highs

Points.....N/A
 Rebounds.....N/A
 Assists.....N/A
 Steals.....N/A
 Blocks.....N/A
 FG Made.....N/A
 3FG Made.....N/A
 FT Made.....N/A
 Minutes.....8, vs. Norfolk St. (11/16/21)

Career Highs

Points.....14, vs. Gardner-Webb (12/22/19)*
 Rebounds.....5, 4x, last vs. Gardner-Webb (12/22/19)*
 Assists.....4, 2x, last vs. Texas A&M (2/20/20)*
 Steals.....3, vs. Winthrop (11/11/18)*
 Blocks.....1, 3x, last vs. Georgia State (12/17/20)*
 FG Made.....5, vs. Gardner-Webb (12/22/19)*
 3FG Made.....3, at Auburn (2/3/19)*
 FT Made.....*
 Minutes.....36, at Auburn (2/3/19)*

* - at Georgia

2021-22 GAME-BY-GAME

Opponent	Date	GS	MIN	Total		3-Pointers		Free throws		Rebounds				PF	A	TO	BLK	STL	PTS	AVG
				FG-FGA	PCT	3FG-3FGA	PCT	FT-FTA	PCT	OFF	DEF	TOT	AVG							
at Butler	11/10/2021		05:01	0-1	.000	0-1	.000	0-0	.000	0	0	0	0.0	0	0	0	0	0	0	0.0
Kentucky	11/14/2021		03:09	0-0	.000	0-0	.000	0-0	.000	0	0	0	0.0	0	0	0	0	0	0	0.0
Norfolk St.	11/16/2021		07:57	0-0	.000	0-0	.000	0-0	.000	0	0	0	0.0	1	0	0	0	0	0	0.0
vs Stanford	11/25/2021		03:52	0-0	.000	0-0	.000	0-0	.000	0	0	0	0.0	0	0	0	0	0	0	0.0
Totals		0	19:59	0-1	.000	0-1	.000	0-0	.000	0	0	0	0.0	1	0	0	0	0	0	0.0

Player Averages

Games Played	Minutes/game	Points/game	FG Pct	3FG Pct	FT Pct	Rebounds/game	Assists/game	Turnovers/game	Assist/Turnover ratio	Steals/game	Blocks/game
4	5.0	0.0	0.0	0.0	0.0	0.0	0.0	0.0	0.0	0.0	0.0

CAREER STATISTICS

SEASON	TEAM	GP-GS	MIN/AVG	Field Goals		3-Point		F-Throws		Rebounds				Scoring						
				FG-FGA	FG%	3FG-3FGA	3FG%	FT-FTA	FT%	OFF	DEF	TOT	AVG	PF-FO	A	TO	BLK	STL	PTS	AVG
2018-19	UGa	20-4	261/13.1	20-63	.317	9-43	.209	4-6	.667	11	26	37	1.9	13-0	14	11	1	11	53	2.7
2019-20	UGa	29-9	379/13.1	25-92	.272	13-57	.228	9-12	.750	13	37	50	1.7	18-0	28	20	1	15	72	2.5
2020-21	UGa	12-0	82/6.9	7-18	.389	6-15	.400	0-0	.000	3	5	8	0.7	3-0	5	5	1	2	20	1.7
2021-22	IND	4-0	20/5.0	0-1	.000	0-1	.000	0-0	.000	0	0	0	0.0	1-0	0	0	0	0	0	0.0
TOTAL FOR IND	4-0	20/5.0	0-1	.000	0-1	.000	0-0	.000	0-0	0	0	0	0.0	1-0	0	0	0	0	0	0.0
TOTAL	65-13	742/11.4	52-174	.299	28-116	.241	13-18	.722	27	68	95	1.5	35-0	47	36	3	28	145	2.2	





#10 • ALEKSA GULBE

Sr. • F • 6-3
Riga, Latvia • TTT Riga

NOTES ON GULBE

- Recorded her third career double-double against Norfolk St. (22 points, 12 rebounds)
- Is 11-for-11 at the line this season
- All-Big Ten Honorable Mention (media)
- Started all 27 games where she averaged 9.0 points and 6.9 rebounds per game
- Shot 44.8 percent from the floor and 78.8 percent at the free throw line as a junior
- Ranks 10th in school history in career blocks with 84
- Set a new program record in a NCAA Tournament game with 15 rebounds versus Belmont
- Third IU player from Latvia - Kristiana Stauere (2011-12) and Linda Rubene (2011-13)
- Major: Public Financial Management
- Birthdate: February 5

2021-21 GAME-BY-GAME

Opponent	Date	GS	MIN	Total		3-Pointers		Free throws		Rebounds				PF	A	TO	BLK	STL	PTS	AVG	
				FG-FGA	PCT	3FG-3FGA	PCT	FT-FTA	PCT	OFF	DEF	TOT	AVG								
at Butler	11/10/2021	*	33:48	2-7	.286	0-3	.000	4-4	1.000	2	4	6	6.0	1	3	2	0	0	8	8.0	
Kentucky	11/14/2021	*	36:10	4-7	.571	0-0	.000	0-0	.000	2	7	9	7.5	3	1	2	2	1	8	8.0	
Norfolk St.	11/16/2021	*	30:21	9-13	.692	3-4	.750	1-1	1.000	3	9	12	9.0	2	1	6	2	0	22	12.7	
at Quinniac	11/20/2021	*	39:16	1-7	.143	0-3	.000	6-6	1.000	1	1	2	7.3	2	2	3	0	1	8	11.5	
vs Stanford	11/25/2021	*	34:10	3-13	.231	1-4	.250	1-2	.500	2	3	5	6.8	4	0	0	0	3	8	10.8	
Totals			5	173:45	19-47	.404	4-14	.286	12-13	.923	10	24	34	6.8	12	7	13	4	5	54	10.8

GAME AND CAREER HIGHS

2021-22 Game Highs

Points..... 22, vs. Norfolk St. (11/16/21)
 Rebounds 12, vs. Norfolk St. (11/16/21)
 Assists 3, at Butler (11/10/21)
 Steals..... 3, vs. Stanford (11/25/21)
 Blocks ..2, 2x, last vs. Norfolk St. (11/16/21)
 FG Made9, vs. Norfolk St. (11/16/21)
 3FG Made3, vs. Norfolk St. (11/16/21)
 FT Made..... 6, at Quinniac (11/20/21)
 Minutes..... 39, at Quinniac (11/20/21)

Player Averages

Games Played	Minutes/ game	Points/ game	FG Pct	3FG Pct	FT Pct	Rebounds/ game	Assists/ game	Turnovers/ game	Assist/Turnover ratio	Steals/ game	Blocks/ game
5	34.7	10.8	40.4	28.6	92.3	6.8	1.4	2.6	0.5	1.0	0.8

Career Highs

Points..... 22, vs. Norfolk St. (11/16/21)
 Rebounds 12, 2x, last vs. Norfolk St. (11/16/21)
 Assists3, 3x, last at Butler (11/10/21)
 Steals.....4, vs. Illinois (12/31/20)
 Blocks 4, at UCLA (12/2/18)
 FG Made9, vs. Norfolk St. (11/16/21)
 3FG Made3, vs. Norfolk St. (11/16/21)
 FT Made9, 3x, last at Minnesota (12/23/20)
 Minutes.....40, at Ohio State (2/27/21)

CAREER STATISTICS

SEASON	TEAM	GP-GS	MIN/AVG	Field Goals		3-Point		F-Throws		Rebounds				Scoring						
				FG-FGA	FG%	3FG-3FGA	3FG%	FT-FTA	FT%	OFF	DEF	TOT	AVG	PF-FO	A	TO	BLK	STL	PTS	AVG
2018-19	IND	32-0	545/17.0	55-146	.377	12-33	.364	41-48	.854	48	66	114	3.6	90-0	11	33	23	8	163	5.1
2019-20	IND	31-30	728/23.5	90-203	.443	9-38	.237	89-122	.730	50	121	171	5.5	89-2	18	50	37	22	278	9.0
2020-21	IND	27-27	865/32.0	86-192	.448	18-56	.321	52-66	.788	65	122	187	6.9	70-3	29	37	20	31	242	9.0
2021-22	IND	5-5	174/34.7	19-47	.404	4-14	.286	12-13	.923	10	24	34	6.8	12-0	7	13	4	5	54	10.8
TOTAL		95-62	2311/24.3	250-588	.425	43-141	.305	194-249	.779	173	333	506	5.3	261-5	65	133	84	66	737	7.8



#14 • ALI PATBERG

Gr. • G • 5-11

Columbus, Ind. • Columbus North/Notre Dame

NOTES ON PATBERG

- 2022 Nancy Lieberman Award preseason watch list
- 2022 Wade Trophy watchlist
- Entering her 7th college basketball season - 2nd player in NCAA Division I WBB history to play a 7th season (Isis Young, Siena)
- Ranks 3rd in IU history with 440 career assists
- Ranks 15th in IU history 1,438 career points
- 2020-21 All-Big Ten Second Team (coaches and media) - a 3x All-Big Ten honoree
- Major: Graduated in May 2020 with a bachelor's degree in finance from the Kelley School of Business; pursuing a master's degree in recreational administrator
- Birthdate: Sept. 11

2021-22 GAME-BY-GAME

Opponent	Date	GS	MIN	Total		3-Pointers		Free throws		Rebounds				PF	A	TO	BLK	STL	PTS	AVG
				FG-FGA	PCT	3FG-3FGA	PCT	FT-FTA	PCT	OFF	DEF	TOT	AVG							
at Butler	11/10/2021	*	30:57	2-10	.200	0-6	.000	2-2	1.000	0	3	3	3.0	1	10	1	1	0	6	6.0
Kentucky	11/14/2021	*	33:25	6-10	.600	1-1	1.000	3-3	1.000	0	2	2	2.5	4	5	1	0	0	16	11.0
Norfolk St.	11/16/2021	*	34:14	5-9	.556	2-5	.400	5-6	.833	1	2	3	2.7	1	6	1	0	2	17	13.0
at Quinnipiac	11/20/2021	*	31:26	5-7	.714	2-2	1.000	0-0	.000	0	6	6	3.5	4	2	2	0	0	12	12.8
vs Stanford	11/25/2021	*	34:39	7-14	.500	1-3	.333	4-4	1.000	0	1	1	3.0	3	1	2	0	1	19	14.0
Totals			5 164:41	25-50	.500	6-17	.353	14-15	.933	1	14	15	3.0	13	24	7	1	3	70	14.0

GAME AND CAREER HIGHS

2021-22 Game Highs

Points.....19, vs. Stanford (11/25/21)
 Rebounds6, at Quinnipiac (11/20/21)
 Assists10, at Butler (11/10/21)
 Steals.....2, vs. Norfolk St. (11/16/21)
 Blocks1, at Butler (11/10/21)
 FG Made7, vs. Stanford (11/25/21)
 3FG Made2, 2x, last at Quinnipiac (11/20/21)
 FT Made.....5, vs. Norfolk St. (11/16/21)
 Minutes 34, 2x, last vs. Stanford (11/25/21)

Player Averages

Games Played	Minutes/game	Points/game	FG Pct	3FG Pct	FT Pct	Rebounds/game	Assists/game	Turnovers/game	Assist/Turnover ratio	Steals/game	Blocks/game
5	32.9	14.0	50.0	35.3	93.3	3.0	4.8	1.4	3.4	0.6	0.2

Career Highs

Points..... 30, at Wake Forest (11/28/18)
 Rebounds ...13, vs. North Florida (11/18/18)
 Assists13, vs. Missouri State (12/9/18)
 Steals..... 5, vs. Samford (12/3/20)
 Blocks ... 2, 3x, last at Minnesota (2/22/20)
 FG Made 12, at Minnesota (2/22/20)
 3FG Made6, vs. Iowa (2/21/19)
 FT Made.....12, vs. Rutgers (3/6/20)
 Minutes..... 47, at Iowa (1/12/20)

CAREER STATISTICS

SEASON	TEAM	GP-GS	MIN/AVG	Field Goals		3-Point		F-Throws		Rebounds				Scoring						
				FG-FGA	FG%	3FG-3FGA	3FG%	FT-FTA	FT%	OFF	DEF	TOT	AVG	PF-FO	A	TO	BLK	STL	PTS	AVG
2016-17	ND	22-0	169/7.7	6-11	.545	0-1	.000	6-8	.750	4	20	24	1.1	17-0	11	8	0	3	18	0.8
2018-19	IND	31-31	1102/35.5	169-386	.438	41-104	.394	111-138	.804	22	132	154	5.0	72-0	149	99	10	37	490	15.8
2019-20	IND	32-32	1143/35.7	179-365	.490	34-88	.386	107-136	.787	27	120	147	4.6	59-0	168	75	17	39	499	15.6
2020-21	IND	27-27	924/34.2	137-324	.423	30-104	.288	75-102	.735	14	90	104	3.9	47-0	99	49	4	24	379	14.0
2021-22	IND	5-5	165/32.9	25-50	.500	6-17	.353	14-15	.933	1	14	15	3.0	13-0	24	7	1	3	70	14.0
TOTAL FOR IND	95-95	3333/35.1	510-1125	.453	111-313	.355	307-391	.785	64	356	420	4.4	191-0	440	230	32	103	1438	15.1	
TOTAL	117-95	3502/29.9	516-1136	.454	111-314	.354	313-399	.784	68	376	444	3.8	208-0	451	238	32	106	1456	12.4	

#21 • KEYARAH BERRY

Fr. • G • 5-9

Rockmart, Ga. • Rockmart



NOTES ON BERRY

- Scored 3,340 points, pulled down 1,027 rebounds and 500 steals in her career at Rockmart High School ...
- 2021 6AAA Player of the Year, 2021 GACA North Player of the Year, 2021 Northwest Tip off Club Player of the Year, 2021 Atlanta Tip off First Team and Atlanta Journal Constitution First team honoree as a senior
- Her 3,340 career points ranks second all-time in the state of Georgia
- As a senior, scored 905 total points for a 33.5 points per game average while also averaging 9.0 rebounds, 3.0 assist and 3.2 steals per game while shooting 55.5 percent from the floor and 34 percent from behind the arc
- No. 79 recruit in the country by All Star Girls Report and No. 142 by Prospects Nation.
- Major: exercise science
- Birthday: April 6

GAME AND CAREER HIGHS

2021-22 Game Highs

Points N/A
 Rebounds N/A
 Assists N/A
 Steals N/A
 Blocks N/A
 FG Made N/A
 3FG Made N/A
 FT Made N/A
 Minutes 1, vs. Norfolk St. (11/16/21)

Career Highs

Points N/A
 Rebounds N/A
 Assists N/A
 Steals N/A
 Blocks N/A
 FG Made N/A
 3FG Made N/A
 FT Made N/A
 Minutes 1, vs. Norfolk St. (11/16/21)

2021-21 GAME-BY-GAME

Opponent	Date	GS	MIN	Total		3-Pointers		Free throws		Rebounds				PF	A	TO	BLK	STL	PTS	AVG
				FG-FGA	PCT	3FG-3FGA	PCT	FT-FTA	PCT	OFF	DEF	TOT	AVG							
Norfolk St.	11/16/2021		01:19	0-0	.000	0-0	.000	0-0	.000	0	0	0	0.0	1	0	0	0	0	0	0.0
Totals		0	01:19	0-0	.000	0-0	.000	0-0	.000	0	0	0	0.0	1	0	0	0	0	0	0.0

Player Averages

Games Played	Minutes/game	Points/game	FG Pct	3FG Pct	FT Pct	Rebounds/game	Assists/game	Turnovers/game	Assist/Turnover ratio	Steals/game	Blocks/game
1	1.3	0.0	0.0	0.0	0.0	0.0	0.0	0.0	0.0	0.0	0.0

CAREER STATISTICS

SEASON	TEAM	GP-GS	MIN/AVG	Field Goals		3-Point		F-Throws		Rebounds				Scoring							
				FG-FGA	FG%	3FG-3FGA	3FG%	FT-FTA	FT%	OFF	DEF	TOT	AVG	PF-FO	A	TO	BLK	STL	PTS	AVG	
2021-22	IND	1-0	1/1.3	0-0	.000	0-0	.000	0-0	.000	0	0	0	0.0	1-0	0	0	0	0	0	0	0.0
TOTAL		1-0	1/1.3	0-0	.000	0-0	.000	0-0	.000	0	0	0	0.0	1-0	0	0	0	0	0	0	0.0



#22 • CHLOE MOORE-MCNEIL

So. • G • 5-11
Sharon, Tenn. • Greenfield

NOTES ON MOORE-MCNEIL

- Scored four points in the win at Quinnipiac in 16 minutes off the bench
- Played in 25 games off the bench for IU as a true freshman
- A two-time Tennessee Class A Miss Basketball out of Greenfield High School
- Helped her team to a 34-0 record as a senior and averaged 20.8 points, 5.2 rebounds and 4.0 assists per game while shooting 40 from 3-point range
- Scored 2,598 points in her high school career and finished with more than 500 rebounds, 500 assists and 400 steals
- Major: exercise science
- Birthday: June 5

GAME AND CAREER HIGHS

2021-22 Game Highs

Points..... 4, at Quinnipiac (11/20/21)
Rebounds 5, vs. Norfolk St. (11/16/21)
Assists 2, at Butler (11/10/21)
Steals 1, vs. Norfolk St. (11/16/21)
Blocks 1, at Quinnipiac (11/20/21)
FG Made 2, at Quinnipiac (11/20/21)
3FG Made 1, vs. Stanford (11/25/21)
FT Made 2, vs. Kentucky (11/14/21)
Minutes 16, at Quinnipiac (11/20/21)

Career Highs

Points 7, 2x, last vs. Nebraska (12/20/20)
Rebounds 4, vs. Samford (12/3/20)
Assists 3, at Kentucky (12/6/20)
Steals... 1, 6x, last vs. Michigan St. (3/11/21)
Blocks N/A
FG Made 3, 2x, last vs. Nebraska (12/20/20)
3FG Made 2, vs. Michigan (2/18/21)
FT Made 3, at Ohio State (2/27/21)
Minutes 18, at Kentucky (12/6/20)

2021-22 GAME-BY-GAME

Opponent	Date	GS	MIN	Total		3-Pointers		Free throws		Rebounds				PF	A	TO	BLK	STL	PTS	AVG
				FG-FGA	PCT	3FG-3FGA	PCT	FT-FTA	PCT	OFF	DEF	TOT	AVG							
at Butler	11/10/2021		15:14	1-5	.200	0-3	.000	0-0	.000	0	0	0	0.0	1	2	0	0	0	2	2.0
Kentucky	11/14/2021		11:36	0-2	.000	0-1	.000	2-2	1.000	0	2	2	1.0	1	0	1	0	0	2	2.0
Norfolk St.	11/16/2021		09:14	0-0	.000	0-0	.000	0-0	.000	1	4	5	2.3	0	0	3	0	1	0	1.3
at Quinnipiac	11/20/2021		16:06	2-3	.667	0-1	.000	0-0	.000	0	3	3	2.5	1	0	0	1	0	4	2.0
vs Stanford	11/25/2021		06:49	1-1	1.000	1-1	1.000	0-0	.000	0	2	2	2.4	0	0	0	0	0	3	2.2
Totals		0	58:59	4-11	.364	1-6	.167	2-2	1.000	1	11	12	2.4	3	2	4	1	1	11	2.2

Player Averages

Games Played	Minutes/ game	Points/ game	FG Pct	3FG Pct	FT Pct	Rebounds/ game	Assists/ game	Turnovers/ game	Assist/Turnover ratio	Steals/ game	Blocks/ game
5	11.8	2.2	36.4	16.7	100.0	2.4	0.4	0.8	0.5	0.2	0.2

CAREER STATISTICS

SEASON	TEAM	GP-GS	MIN/AVG	Field Goals		3-Point		F-Throws		Rebounds				Scoring						
				FG-FGA	FG%	3FG-3FGA	3FG%	FT-FTA	FT%	OFF	DEF	TOT	AVG	PF-FO	A	TO	BLK	STL	PTS	AVG
2020-21	IND	25-0	184/7.3	10-38	.263	4-27	.148	8-17	.471	1	23	24	1.0	17-0	17	8	0	7	32	1.3
2021-22	IND	5-0	59/11.8	4-11	.364	1-6	.167	2-2	1.000	1	11	12	2.4	3-0	2	4	1	1	11	2.2
TOTAL		30-0	243/8.1	14-49	.286	5-33	.152	10-19	.526	2	34	36	1.2	20-0	19	12	1	8	43	1.4



#23 • KIANDRA BROWNE

So. • G • 5-6

Montreal, Quebec, Canada • St-Laurent

NOTES ON BROWNE

- Saw action in 21 games as a freshman in 2020-21
- Recorded her first career double-double against Nebraska with 12 points and 10 rebounds
- A member of Canada's U18 National Team where she participated in the 2018 FIBA U18 Championships in Mexico City where the team won the silver medal
- Spent the 2019-20 season at Winston-Salem Christian in Winston-Salem, North Carolina where she was a McDonald's All-American nominee and the team's leading scorer
- A member of the gold medal winning team at the 2017 Canada Summer Games where she averaged 23.0 minutes per game, 9.6 points per game and 5.2 rebounds per game
- Major: criminal justice
- Birthday: Feb. 6

GAME AND CAREER HIGHS

2021-22 Game Highs

Points.....10, at Butler (11/10/21)
 Rebounds3, 2x, last vs. Norfolk St. (11/16/21)
 Assists N/A
 Steals..... N/A
 Blocks..... 1, vs. Norfolk St. (11/16/21)
 FG Made 4, at Butler (11/10/21)
 3FG Made N/A
 FT Made 2, 2x, last vs. Norfolk St. (11/16/21)
 Minutes.....17, 2x, vs. Norfolk St. (11/16/21)

Career Highs

Points.....12, vs. Nebraska (12/20/20)
 Rebounds10, vs. Nebraska (12/20/20)
 Assists 2, vs. Nebraska (12/20/20)
 Steals..... 1, 2x, last at Illinois (2/14/21)
 Blocks..... 1, 2x, vs. Norfolk St. (11/16/21)
 FG Made 4, at Butler (11/10/21)
 3FG Made N/A
 FT Made..... 6, vs. Nebraska (12/20/20)
 Minutes.....17, 2x, vs. Norfolk St. (11/16/21)

2021-22 GAME-BY-GAME

Opponent	Date	GS	MIN	Total		3-Pointers		Free throws		Rebounds				PF	A	TO	BLK	STL	PTS	AVG
				FG-FGA	PCT	3FG-3FGA	PCT	FT-FTA	PCT	OFF	DEF	TOT	AVG							
at Butler	11/10/2021		17:24	4-5	.800	0-1	.000	2-2	1.000	2	1	3	3.0	4	0	0	0	0	10	10.0
Kentucky	11/14/2021		11:47	1-2	.500	0-1	.000	0-0	.000	1	1	2	2.5	2	0	0	0	0	2	6.0
Norfolk St.	11/16/2021		17:33	0-0	.000	0-0	.000	2-2	1.000	0	3	3	2.7	3	0	2	1	0	2	4.7
at Quinniac	11/20/2021		14:36	3-3	1.000	0-0	.000	0-0	.000	1	0	1	2.3	0	0	1	0	0	6	5.0
vs Stanford	11/25/2021		12:01	0-2	.000	0-0	.000	0-0	.000	0	2	2	2.2	4	0	0	0	0	0	4.0
Totals		0	73:21	8-12	.667	0-2	.000	4-4	1.000	4	7	11	2.2	13	0	3	1	0	20	4.0

Player Averages

Games Played	Minutes/ game	Points/ game	FG Pct	3FG Pct	FT Pct	Rebounds/ game	Assists/ game	Turnovers/ game	Assist/Turnover ratio	Steals/ game	Blocks/ game
5	14.7	4.0	66.7	0.0	100.0	2.2	0.0	0.6	0.0	0.0	0.2

CAREER STATISTICS

SEASON	TEAM	GP-GS	MIN/AVG	Field Goals		3-Point		F-Throws		Rebounds				Scoring						
				FG-FGA	FG%	3FG-3FGA	3FG%	FT-FTA	FT%	OFF	DEF	TOT	AVG	PF-FO	A	TO	BLK	STL	PTS	AVG
2020-21	IND	21-0	174/8.3	15-26	.577	0-1	.000	14-20	.700	14	19	33	1.6	35-1	4	12	1	2	44	2.1
2021-22	IND	5-0	73/14.7	8-12	.667	0-2	.000	4-4	1.000	4	7	11	2.2	13-0	0	3	1	0	20	4.0
TOTAL		26-0	248/9.5	23-38	.605	0-3	.000	18-24	.750	18	26	44	1.7	48-1	4	15	2	2	64	2.5



#24 • MONA ZARIC

Fr. • F • 6-1
Novi Sad, Serbia

NOTES ON ZARIC

- Played for Keravnos B.C. for 10 years and Sistema Rosa Pordenone for 2 years
- A two-time U16 Cypriot Championship and U18 Cypriot Championship winner
- Named to the league's senior team three times and senior super cup team three times
- Named U16 and U18 Cypriot League MVP a total of four times
- Averaged 4.4 points, 2.8 rebounds and shot 36 percent from 3-point range in the U20 Challengers in July 2021
- Major: exercise science
- Birthday: November 29

2021-21 GAME-BY-GAME

Opponent	Date	GS	MIN	Total		3-Pointers		Free throws		Rebounds				PF	A	TO	BLK	STL	PTS	AVG
				FG-FGA	PCT	3FG-3FGA	PCT	FT-FTA	PCT	OFF	DEF	TOT	AVG							
Norfolk St.	11/16/2021		01:57	0-0	.000	0-0	.000	0-0	.000	0	0	0	0.0	0	0	1	0	0	0	0.0
Totals		0	01:57	0-0	.000	0-0	.000	0-0	.000	0	0	0	0.0	0	0	1	0	0	0	0.0

GAME AND CAREER HIGHS

2021-22 Game Highs

Points..... N/A
 Rebounds N/A
 Assists N/A
 Steals N/A
 Blocks N/A
 FG Made N/A
 3FG Made N/A
 FT Made..... N/A
 Minutes.....2, vs. Norfolk St. (11/16/21)

Player Averages

Games Played	Minutes/ game	Points/ game	FG Pct	3FG Pct	FT Pct	Rebounds/ game	Assists/ game	Turnovers/ game	Assist/Turnover ratio	Steals/ game	Blocks/ game
1	2.0	0.0	0.0	0.0	0.0	0.0	0.0	1.0	0.0	0.0	0.0

Career Highs

Points..... N/A
 Rebounds N/A
 Assists N/A
 Steals N/A
 Blocks N/A
 FG Made N/A
 3FG Made N/A
 FT Made..... N/A
 Minutes.....2, vs. Norfolk St. (11/16/21)

CAREER STATISTICS

SEASON	TEAM	GP-GS	MIN/AVG	Field Goals		3-Point		F-Throws		Rebounds				Scoring						
				FG-FGA	FG%	3FG-3FGA	3FG%	FT-FTA	FT%	OFF	DEF	TOT	AVG	PF	FO	A	TO	BLK	STL	PTS
2021-22	IND	1-0	2/2.0	0-0	.000	0-0	.000	0-0	.000	0	0	0	0.0	0-0	0	1	0	0	0	0.0
TOTAL		1-0	2/2.0	0-0	.000	0-0	.000	0-0	.000	0	0	0	0.0	0-0	0	1	0	0	0	0.0





#25 • ARIELLE WISNE

R-So. • C • 6-5
Thornton, Colo. • Horizon

NOTES ON WISNE

- Played in 13 games as a redshirt freshman
- Scored her first career baskets against Eastern Kentucky in the season opener where she scored 4 points and went 2-for-4 from the field and grabbed three rebounds
- Redshirted her true freshman season to develop her game
- Major: media
- Birthday: May 12

2020-21 GAME-BY-GAME

GAME AND CAREER HIGHS

2020-21 Game Highs

Points N/A
 Rebounds N/A
 Assists N/A
 Steals N/A
 Blocks N/A
 FG Made N/A
 3FG Made N/A
 FT Made N/A
 Minutes 1, at Butler (11/10/21)

Career Highs

Points 4, vs. Eastern Ky. (11/25/20)
 Rebounds 3, vs. Eastern Ky. (11/25/20)
 Assists N/A
 Steals N/A
 Blocks 1, 2x, last at Illinois (2/14/21)
 FG Made 2, vs. Eastern Ky. (11/25/20)
 3FG Made N/A
 FT Made N/A
 Minutes 8, vs. Samford (12/3/20)

Opponent	Date	GS	MIN	Total		3-Pointers		Free throws		Rebounds				PF	A	TO	BLK	STL	PTS	AVG
				FG-FGA	PCT	3FG-3FGA	PCT	FT-FTA	PCT	OFF	DEF	TOT	AVG							
at Butler	11/10/2021		01:15	0-0	.000	0-0	.000	0-0	.000	0	0	0	0.0	0	0	0	0	0	0	0.0
Norfolk St.	11/16/2021		01:57	0-0	.000	0-0	.000	0-0	.000	0	0	0	0.0	0	0	1	0	0	0	0.0
Totals		0	03:12	0-0	.000	0-0	.000	0-0	.000	0	0	0	0.0	0	0	1	0	0	0	0.0

Player Averages

Games Played	Minutes/game	Points/game	FG Pct	3FG Pct	FT Pct	Rebounds/game	Assists/game	Turnovers/game	Assist/Turnover ratio	Steals/game	Blocks/game
2	1.6	0.0	0.0	0.0	0.0	0.0	0.0	0.5	0.0	0.0	0.0

CAREER STATISTICS

SEASON	TEAM	GP-GS	MIN/AVG	Field Goals		3-Point		F-Throws		Rebounds				Scoring						
				FG-FGA	FG%	3FG-3FGA	3FG%	FT-FTA	FT%	OFF	DEF	TOT	AVG	PF-FO	A	TO	BLK	STL	PTS	AVG
2020-21	IND	13-0	39/3.0	2-6	.333	0-0	.000	0-0	.000	4	5	9	0.7	9-0	0	3	3	0	4	0.3
2021-22	IND	2-0	3/1.6	0-0	.000	0-0	.000	0-0	.000	0	0	0	0.0	0-0	0	1	0	0	0	0.0
TOTAL		15-0	42/2.8	2-6	.333	0-0	.000	0-0	.000	4	5	9	0.6	9-0	0	4	3	0	4	0.3



#34 • GRACE BERGER

Sr. • G • 6-0
Louisville, Ky. • Sacred Heart

NOTES ON BERGER

- 2022 Cheryl Miller preseason watch list
- 2022 Wooden Award Preseason Top 50
- 2022 Wade Trophy watchlist
- 2021-22 preseason All-Big Ten
- Won a gold medal with USA Basketball in June at the 2021 AmeriCup in San Juan, Puerto Rico
- Averaged 5.2 points, 3.2 rebounds and 1.8 assists to help USA go 6-0 in the event
- 2021 WBCA and USWBA All-American honorable mention
- 2020-21 All-Big Ten First Team (coaches and media)
- Led the nation in triple doubles (3) in 2020-21
- IU's second leading scorer last season averaging 15.4 points, 6.8 rebounds and 4.6 assists per game
- Graduated from IU with undergraduate degree in sports marketing and management in May 2021
- Major: recreational administration (master's degree)
- Birthdate: June 3

GAME AND CAREER HIGHS

2020-21 Game Highs

Points 19, vs. Kentucky (11/14/21)
Rebounds 9, vs. Kentucky (11/14/21)
Assists 11, vs. Norfolk St. (11/16/21)
Steals 1, 3x, last at Quinnipiac (11/20/21)
Blocks N/A
FG Made 9, at Butler (11/10/21)
3FG Made 1, 2x, last at Quinnipiac (11/20/21)
FT Made 6, vs. Kentucky (11/14/21)
Minutes 37, vs. Stanford (11/25/21)

Career Highs

Points 26, at Maryland (1/4/21)
Rebounds 12, vs. NC State (3/27/21)
Assists 12, at Penn St. (1/7/21)
Steals 5, at Florida (11/22/19)
Blocks ... 1, 12x, last vs. Wisconsin (1/10/21)
FG Made 13, at Maryland (1/4/21)
3FG Made 3, vs. Mount St. Mary's (11/7/19)
FT Made 10, vs. Ohio St. (1/28/21)
Minutes 41, at Iowa (1/12/20)

2021-22 GAME-BY-GAME

Opponent	Date	GS	MIN	Total		3-Pointers		Free throws		Rebounds				PF	A	TO	BLK	STL	PTS	AVG	
				FG-FGA	PCT	3FG-3FGA	PCT	FT-FTA	PCT	OFF	DEF	TOT	AVG								
at Butler	11/10/2021	*	33:49	9-15	.600	0-1	.000	0-0	.000	0	1	1	1.0	3	3	2	0	1	18	18.0	
Kentucky	11/14/2021	*	36:38	6-16	.375	1-2	.500	6-8	.750	3	6	9	5.0	4	4	3	0	0	19	18.5	
Norfolk St.	11/16/2021	*	31:59	2-9	.222	0-0	.000	2-3	.667	0	7	7	5.7	1	11	4	0	1	6	14.3	
at Quinnipiac	11/20/2021	*	35:05	7-17	.412	1-1	1.000	2-2	1.000	1	4	5	5.5	4	3	2	0	1	17	15.0	
vs Stanford	11/25/2021	*	37:03	4-19	.211	0-1	.000	4-6	.667	1	5	6	5.6	2	7	2	0	4	12	14.4	
Totals			5	174:34	28-76	.368	2-5	.400	14-19	.737	5	23	28	5.6	14	28	13	0	7	72	14.4

Player Averages

Games Played	Minutes/game	Points/game	FG Pct	3FG Pct	FT Pct	Rebounds/game	Assists/game	Turnovers/game	Assist/Turnover ratio	Steals/game	Blocks/game
5	34.9	14.4	36.8	40.0	73.7	5.6	5.6	2.6	2.2	1.4	0.0

CAREER STATISTICS

SEASON	TEAM	GP-GS	MIN/AVG	Field Goals		3-Point		F-Throws		Rebounds				Scoring						
				FG-FGA	FG%	3FG-3FGA	3FG%	FT-FTA	FT%	OFF	DEF	TOT	AVG	PF-FO	A	TO	BLK	STL	PTS	AVG
2018-19	IND	34-4	691/20.3	79-187	.422	5-23	.217	25-48	.521	5	89	94	2.8	50-0	53	53	3	24	188	5.5
2019-20	IND	30-30	1032/34.4	154-338	.456	15-50	.300	70-91	.769	12	144	156	5.2	58-1	104	76	5	43	393	13.1
2020-21	IND	27-27	922/34.1	154-349	.441	11-34	.324	96-129	.744	23	160	183	6.8	61-3	124	55	5	31	415	15.4
2021-22	IND	5-5	175/34.9	28-76	.368	2-5	.400	14-19	.737	5	23	28	5.6	14-0	28	13	0	7	72	14.4
TOTAL		96-66	2819/29.4	415-950	.437	33-112	.295	205-287	.714	45	416	461	4.8	183-4	309	197	13	105	1068	11.1



#54 • MACKENZIE HOLMES

Jr. • F • 6-3
Gorham, Maine • Gorham

NOTES ON HOLMES

- Big Ten Player of the Week (11/15/21)
- 2021-22 preseason All-Big Ten
- 2022 Lisa Leslie Award preseason watch list
- The Athletic Preseason All-American honorable mention
- 2021 Associated Press All-American Honorable Mention
- 2020-21 All-Big Ten First Team (coaches and media)
- 2020-21 All-Big Ten Defensive Team (media)
- Led the Hoosiers in scoring (17.8 ppg.) and rebounding (7.6 rpg.) and shot 60.7 percent from the floor
- Ranks 8th all-time in school history with 112 career blocks
- Major: human development & family studies
- Birthday: November 1

2021-22 GAME-BY-GAME

Opponent	Date	GS	MIN	Total		3-Pointers		Free throws		Rebounds			PF	A	TO	BLK	STL	PTS	AVG		
				FG-FGA	PCT	3FG-3FGA	PCT	FT-FTA	PCT	OFF	DEF	TOT								AVG	
at Butler	11/10/2021	*	25:17	5-10	.500	1-2	.500	0-0	.000	4	4	8	8.0	0	1	2	1	2	11	11.0	
Kentucky	11/14/2021	*	28:13	11-15	.733	1-1	1.000	6-6	1.000	3	4	7	7.5	2	1	2	1	2	29	20.0	
Norfolk St.	11/16/2021	*	25:41	11-15	.733	0-0	.000	0-0	.000	0	3	3	6.0	0	0	2	1	1	22	20.7	
at Quinnipiac	11/20/2021	*	25:24	4-11	.364	0-0	.000	2-2	1.000	2	4	6	6.0	4	0	3	1	0	10	18.0	
vs Stanford	11/25/2021	*	32:35	3-12	.250	0-0	.000	0-0	.000	4	6	10	6.8	4	1	1	2	1	6	15.6	
Totals			5	137:10	34-63	.540	2-3	.667	8-8	1.000	13	21	34	6.8	10	3	10	6	6	78	15.6

GAME AND CAREER HIGHS

2021-22 Game Highs

Points29, vs. Kentucky (11/14/21)
 Rebounds10, vs. Stanford (11/25/21)
 Assists1, 3x, last vs. Stanford (11/25/21)
 Steals2, 2x, last vs. Kentucky (11/14/21)
 Blocks1, 6x, last vs. Stanford (11/25/21)
 FG Made11, 2x, last vs. Norfolk St. (11/16/21)
 3FG Made 1, 2x, last vs. Kentucky (11/14/21)
 FT Made6, vs. Kentucky (11/14/21)
 Minutes32, vs. Stanford (11/25/21)

Player Averages

Games Played	Minutes/game	Points/game	FG Pct	3FG Pct	FT Pct	Rebounds/game	Assists/game	Turnovers/game	Assist/Turnover ratio	Steals/game	Blocks/game
5	27.4	15.6	54.0	66.7	100.0	6.8	0.6	2.0	0.3	1.2	1.2

Career Highs

Points29, vs. Kentucky (11/14/21)
 Rebounds13, at Iowa (2/7/21)
 Assists2, at Minnesota (2/22/20)
 Steals3, 2x, last vs. Michigan (2/18/21)
 Blocks7, vs. Eastern Ky. (11/25/20)
 FG Made13, vs. Eastern Ky. (11/25/20)
 3FG Made1, at Butler (11/10/21)
 FT Made11, vs. Wisconsin (1/30/20)
 Minutes35, vs. Iowa (3/3/21)

CAREER STATISTICS

SEASON TEAM	GP-GS	MIN/AVG	Field Goals		3-Point		F-Throws		Rebounds				Scoring							
			FG-FGA	FG%	3FG-3FGA	3FG%	FT-FTA	FT%	OFF	DEF	TOT	AVG	PF-FO	A	TO	BLK	STL	PTS	AVG	
2019-20	IND	32-2	609/19.0	144-227	.634	0-0	.000	56-86	.651	64	102	166	5.2	75-1	10	41	27	23	344	10.8
2020-21	IND	27-27	821/30.4	202-333	.607	0-6	.000	76-97	.784	69	137	206	7.6	65-1	11	42	81	25	480	17.8
2021-22	IND	5-5	137/27.4	34-63	.540	2-3	.667	8-8	1.000	13	21	34	6.8	10-0	3	10	6	6	78	15.6
TOTAL		64-34	1567/24.5	380-623	.610	2-9	.222	140-191	.733	146	260	406	6.3	150-2	24	93	114	54	902	14.1

BOX SCORES

Official Basketball Box Score - Final														Game Time: 7:00 PM																												
Indiana at Butler														Game Duration: 1:43																												
11/10/21 Hinkle Fieldhouse, Indianapolis														Attendance: 2,360																												
2021-22 Women's Basketball														Officials: Maj Forstberg, Bruce Morris, Ashley Gloss																												
Indiana - 86														Record: 1-0																												
NO. Name	Min	FG	3P	FT	Rebounds	Fouls	TP	AS	TO	ST	Blocks	BS	BA	+/-	Shooting By Period																											
10 Aleksa Gulbe	33:48	2-7	0-3	4-4	2 4 6	1 5	8	3	2	0	1	0	1	25	1 st FG% 44.4%	44.4%																										
54 Mackenzie Holmes	25:17	5-10	1-2	0-0	4 4 8	0	0	11	1	2	2	1	1	14	3 rd FT% 0.0%	0.0%																										
4 Nicole Cardano-Hillary	32:43	11-12	7-8	0-0	1 5 6	3	4	29	5	1	0	0	0	20	2 nd FG% 10-14	71.4%																										
14 Ali Patberg	30:57	2-10	0-6	2-2	0 3 3	1	1	6	10	1	0	1	0	22	3 rd FT% 2-3	66.7%																										
34 Grace Berger	33:49	9-15	0-1	0-0	1 1 1	3	2	18	3	2	1	0	0	21	FT% 4-4	100%																										
22 Chloe Moore-McNeil	15:14	1-5	0-3	0-0	0 0 0	1	0	2	2	0	0	0	1	5	3 rd FG% 6-19	31.6%																										
23 Kiandra Browne	17:24	4-5	0-1	2-2	1 3 4	3	4	3	10	0	0	0	0	7	FT% 2-2	100%																										
5 Caitlin Hose	05:01	0-1	0-0	0-0	0 0 0	0	0	0	0	0	0	0	0	1	4 th FG% 11-16	68.8%																										
1 Kaitlin Peterson	02:16	1-2	0-1	0-0	1 1 0	0	0	2	0	0	0	0	0	0	3 rd FT% 2-7	28.6%																										
3 Grace Waggoner	02:16	0-0	0-0	0-0	0 0 0	0	0	0	1	0	1	0	0	0	FT% 2-2	100%																										
25 Arielle Wisne	01:15	0-0	0-0	0-0	0 0 0	0	0	0	0	0	0	0	0	0	GM FG% 35-67	52.2%																										
Team					2 2 4	0	0	0	0	0	0	0	0	0	3 rd FT% 8-26	30.8%																										
Totals		35-67	8-26	8-8	11 21 32	13 16	86	24	9	3	3	3	23		FT% 8-8	100.0%																										
Technical Fouls: NONE														Dead Ball Rebounds: 0, 2																												
Butler - 63														Record: 0-1																												
NO. Name	Min	FG	3P	FT	Rebounds	Fouls	TP	AS	TO	ST	Blocks	BS	BA	+/-	Shooting By Period																											
20 Alex Richard	25:17	10-13	0-0	0-0	0 4 4	1	0	20	1	3	1	0	0	-16	1 st FG% 6-13	46.2%																										
2 Genesis Parker	14:26	0-4	0-1	0-0	2 2 2	1	3	0	1	3	0	0	0	-13	3 rd FT% 0-3	0.0%																										
5 Emilia Serton	26:46	1-1	1-1	0-0	1 2 0	0	3	0	0	0	0	0	0	-12	FT% 1-1	100%																										
10 Trinity White	25:28	3-11	1-2	2-2	0 4 4	4	3	9	1	2	0	0	0	-16	2 nd FG% 9-15	60.0%																										
11 Tenley Dowell	25:15	1-3	1-3	2-2	1 4 5	4	2	5	1	2	1	0	0	-11	3 rd FT% 1-1	100%																										
32 Sydney Jaynes	12:27	1-4	0-0	1-2	1 0 1	5	2	3	0	6	2	1	0	-7	FT% 0-0	0%																										
55 Kendall Winger	25:14	1-1	1-1	0-0	3 3 1	1	3	2	1	0	0	0	0	-11	3 rd FT% 0-0	0%																										
13 Zoe Jackson	29:21	7-10	0-2	4-5	0 0 0	0	2	18	2	0	0	0	0	-17	FT% 8-10	80%																										
25 Ellen Ross	15:46	1-3	0-1	0-0	0 0 0	0	0	2	0	0	1	0	0	-12	4 th FG% 7-13	53.8%																										
Team					0 3 3	0	0	0	0	1					3 rd FT% 3-4	75.0%																										
Totals		25-50	4-11	9-11	3 21 24	16 13	63	8	18	2	3	3	23		FT% 4-11	36.4%																										
Technical Fouls: NONE														Dead Ball Rebounds: 1, 0																												
<table border="1"> <thead> <tr> <th colspan="2">IND</th> <th colspan="2">BUT</th> <th colspan="2">Points from Turnovers</th> <th colspan="2">IND</th> <th colspan="2">BUT</th> <th colspan="4">Period by Period Scoring</th> </tr> <tr> <th>Biggest lead</th> <td>25 (4th 3:17)</td> <th>1 (2nd 9:25)</th> <th>Turnovers</th> <td>21</td> <th>7</th></tr></thead></table>														IND		BUT		Points from Turnovers		IND		BUT		Period by Period Scoring				Biggest lead	25 (4 th 3:17)	1 (2 nd 9:25)	Turnovers	21	7	1st	2nd	3rd	4th	TOT				
IND		BUT		Points from Turnovers		IND		BUT		Period by Period Scoring																																
Biggest lead	25 (4 th 3:17)	1 (2 nd 9:25)	Turnovers	21	7																																					
Best Scoring Run	10 (2 nd 2:48)	6 (4 th 6:45)	Paint	44	34	IND	17	26	17	28	86																															
Lead Changes	2	2	Second Chance	11	2	BUT	13	19	14	17	63																															
Times Tied	0	0	Fast Breaks	12	0																																					
Time with Lead	39:04	00:22	Bench	14	26																																					

Official Basketball Box Score - Final														Game Time: 5:00 PM																																																																																						
Kentucky at Indiana														Game Duration: 1:52																																																																																						
11/14/21 Simon Skelton Assembly Hall, Bloomington														Attendance: 5,394																																																																																						
2021-22 Women's Basketball														Officials: Gina Cross, Felicia Griener, Brian Hall																																																																																						
Kentucky - 67														Record: 2-1																																																																																						
NO. Name	Min	FG	3P	FT	Rebounds	Fouls	TP	AS	TO	ST	Blocks	BS	BA	+/-	Shooting By Period																																																																																					
44 DreLuna Edwards	22:37	3-10	1-3	0-0	0 5 5	4	0	7	0	3	1	0	0	-16	1 st FG% 6-16	37.5%																																																																																				
1 Robyn Benton	33:29	4-10	1-2	2-4	2 2 4	3	2	11	1	0	1	1	1	-19	3 rd FT% 2-4	50%																																																																																				
3 Jazmine Massengill	33:42	2-5	0-0	0-0	1 1 2	4	2	4	2	1	0	0	0	-17	2 nd FG% 7-15	46.7%																																																																																				
10 Rhyne Howard	39:39	9-18	2-6	3-4	3 6 9	4	6	23	2	3	2	1	1	-22	3 rd FT% 0-2	0.0%																																																																																				
12 Treasure Hunt	27:10	1-6	0-2	2-4	3 2 5	2	2	4	1	2	1	0	0	-7	FT% 4-5	80%																																																																																				
00 Olivia Owens	12:40	1-3	0-0	0-0	0 0 0	4	1	2	0	2	0	1	1	-6	3 rd FG% 9-19	47.4%																																																																																				
11 Jada Walker	26:49	7-13	0-0	2-3	1 0 1	2	5	16	1	2	1	0	0	-18	3 rd FT% 2-3	66.7%																																																																																				
34 Emma King	03:54	0-0	0-0	0-0	0 0 0	1	0	0	0	0	0	0	0	-1	FT% 1-2	50%																																																																																				
Team					2 2 4	0	0	0	0	0	0	0	0	0	4 th FG% 5-15	33.3%																																																																																				
Totals		27-65	4-13	9-15	12 18 30	24 18	67	7	12	7	4	3	21		3 rd FT% 2-7	28.6%																																																																																				
Technical Fouls: NONE														Dead Ball Rebounds: 3, 0																																																																																						
Indiana - 88														Record: 2-0																																																																																						
NO. Name	Min	FG	3P	FT	Rebounds	Fouls	TP	AS	TO	ST	Blocks	BS	BA	+/-	Shooting By Period																																																																																					
10 Aleksa Gulbe	36:10	4-7	0-0	0-0	2 7 9	3	0	0	8	1	2	1	2	0	12	1 st FG% 9-16	56.3%																																																																																			
54 Mackenzie Holmes	28:12	11-15	1-1	6-6	3 4 7	2	3	29	1	2	2	1	1	22	3 rd FT% 2-3	66.7%																																																																																				
4 Nicole Cardano-Hillary	34:10	4-6	3-5	1-2	0 6 6	1	5	12	7	4	2	0	0	-12	FT% 0-0	0%																																																																																				
14 Ali Patberg	33:25	6-10	1-1	3-3	0 2 2	4	4	16	5	1	0	0	0	17	2 nd FG% 7-15	46.7%																																																																																				
34 Grace Berger	36:38	6-16	1-2	6-8	3 6 9	4	9	19	4	3	0	0	1	22	3 rd FT% 1-3	33.3%																																																																																				
22 Chloe Moore-McNeil	11:36	0-2	0-1	2-2	0 2 2	1	1	2	0	1	0	0	1	5	FT% 2-3	66.7%																																																																																				
23 Kiandra Browne	11:48	1-2	0-1	0-0	1 1 2	2	2	2	0	0	0	0	0	-1	3 rd FG% 9-15	60.0%																																																																																				
5 Caitlin Hose	03:09	0-0	0-0	0-0	0 0 0	0	0	0	0	0	0	0	0	0	FT% 9-12	75%																																																																																				
3 Grace Waggoner	03:50	0-0	0-0	0-0	0 1 1	0	0	0	0	0	0	0	0	1	4 th FG% 8-13	61.5%																																																																																				
1 Kaitlin Peterson	01:02	0-1	0-0	0-0	0 0 0	0	0	0	0	0	0	0	0	-1	3 rd FT% 1-2	50.0%																																																																																				
Team					2 0 2	0	0	1							FT% 6-6	100%																																																																																				
Totals		32-59	6-11	18-21	11 29 40	18 24	88	18	14	5	3	4	21		GM FG% 32-59	54.2%																																																																																				
Technical Fouls: NONE														Dead Ball Rebounds: 1, 0																																																																																						
<table border="1"> <thead> <tr> <th colspan="2">UKY</th> <th colspan="2">IND</th> <th colspan="2">Points from Turnovers</th> <th colspan="2">IND</th> <th colspan="4">Period by Period Scoring</th> </tr> <tr> <th>Biggest lead</th> <td>4 (1st 8:24)</td> <th>22 (4th 1:38)</th> <th>Turnovers</th> <td>12</td> <th>13</th> <th>1st</th> <th>2nd</th> <th>3rd</th> <th>4th</th> <th>TOT</th> <th></th> <th></th> <th></th> <th></th> </tr> <tr> <th>Best Scoring Run</th> <td>6 (2nd 5:51)</td> <th>11 (1st 3:00)</th> <th>Paint</th> <td>34</td> <th>44</th> <th>UKY</th> <th>14</th> <th>18</th> <th>21</th> <th>14</th> <th>67</th> <th></th> <th></th> <th></th> </tr> <tr> <th>Lead Changes</th> <td>1</td> <th>1</th> <th>Second Chance</th> <td>13</td> <th>20</th> <th>IND</th> <th>20</th> <th>18</th> <th>27</th> <th>23</th> <th>88</th> <th></th> <th></th> <th></th> </tr> <tr> <th>Times Tied</th> <td>3</td> <th>3</th> <th>Fast Breaks</th> <td>8</td> <th>14</th> <th></th> <th></th> <th></th> <th></th> <th></th> <th></th> <th></th> <th></th> <th></th> </tr> <tr> <th>Time with Lead</th> <td>02:54</td> <th>34:45</th> <th>Bench</th> <td>18</td> <th>4</th> <th></th> <th></th> <th></th> <th></th> <th></th> <th></th> <th></th> <th></th> <th></th> </tr> </thead> </table>														UKY		IND		Points from Turnovers		IND		Period by Period Scoring				Biggest lead	4 (1 st 8:24)	22 (4 th 1:38)	Turnovers	12	13	1st	2nd	3rd	4th	TOT					Best Scoring Run	6 (2 nd 5:51)	11 (1 st 3:00)	Paint	34	44	UKY	14	18	21	14	67				Lead Changes	1	1	Second Chance	13	20	IND	20	18	27	23	88				Times Tied	3	3	Fast Breaks	8	14										Time with Lead	02:54	34:45	Bench	18	4									
UKY		IND		Points from Turnovers		IND		Period by Period Scoring																																																																																												
Biggest lead	4 (1 st 8:24)	22 (4 th 1:38)	Turnovers	12	13	1st	2nd	3rd	4th	TOT																																																																																										
Best Scoring Run	6 (2 nd 5:51)	11 (1 st 3:00)	Paint	34	44	UKY	14	18	21	14	67																																																																																									
Lead Changes	1	1	Second Chance	13	20	IND	20	18	27	23	88																																																																																									
Times Tied	3	3	Fast Breaks	8	14																																																																																															
Time with Lead	02:54	34:45	Bench	18	4																																																																																															

Official Basketball Box Score - Final														Game Time: 7:00 PM		
Norfolk St. at Indiana														Game Duration: 1:43		
11/16/21 Simon Skelton Assembly Hall, Bloomington														Attendance: 3,398		
2021-22 Women's Basketball														Officials: Nykhesha Thompson, Karleena Tobin, Angel Kent		
Norfolk St. - 42														Record: 2-2		
NO. Name	Min	FG	3P	FT	Rebounds	Fouls	TP	AS	TO	ST	Blocks	BS	BA	+/-	Shooting By Period	
10 Mahogonie Williams	21:11	0-9	0-3	0-0	2 1 3	3	0	0	4	2	3	0	0	-28	1 st FG% 5-16	31.3%
30 Tatiana Jones	26:38	2-7	1-1	0-0	1 3 4	5	0	0	2	2	1	0	0	-20	3 rd FT% 4-9	44.4%
1 Deja Francis	33:52	4-9	1-1	2-3	1 2 3	1	2	12	6	1	2	0	1	-26	FT% 0-0	0%
2 Niyia Fields	25:27	0-6	0-5	0-0	0 2 2	2	1	0	0	0	0	0	0	-19	2 nd FG% 3-14	21.4%
11 Armani Franklin	26:27	3-8	1-2	1-2	3 5 2	2	8	0	1	2	0	2	2	-25	3 rd FT% 1-3	33.3%
5 Camille Downs	19:38	3-5	0-0	1-2	3 4 2	4	2	9	1	5	2	0	1	-17	FT% 0-0	0%
4 Lacee Savage	17:20	0-1	0-0	0-0	3 3 3	3	0	0	0	0	0	0	0	-9	3 rd FG% 5-18	27.8%
21 Janay Turner	11:13	0-4	0-3	0-0	1 1 1	1	0	0	0	0	0	0	0	-3	3 rd FT% 1-4	25.0%
24 Danajah Williams	11:00	3-5	0-1	2-2	0 0 0	1	1	8	0	0	0	0	0	-9	4 th FG% 2-12	16.7%
12 Makoye Diawara	03:48	0-1	0-1	0-0	1 0 1	0	0	0	0	0	0	0	0	-4	3 rd FT% 0-6	0.0%
0 Crystal White	03:26	0-1	0-0	0-0	0 0 0	0	0	1	0	1	1	0	0	2	FT% 2-2	100%
Team					1 1 2	0	0	1							GM FG% 15-60	25.0%
Totals		15-60	6-22	6-8	11 16 27	22 8	42	8	15	13	5	4	30			

BOX SCORES



Official Basketball Box Score - Final
Stanford at Indiana
 11/25/21 Baha Mar Convention Center, Nassau
 2021-22 Women's Basketball

Game Time: 1:33 PM
 Game Duration: 1:47

Officials: Julie Krommenhoek, Kelsey Reynolds, Kelly Broomfield

Stanford - 69

Record: 4-1

NO.	Name	Min	FG		3P	FT		Rebounds		Fouls		TP	AS	TO	ST	Blocks		+/-
			M/A	A/A		M/A	A/A	OR	DR	PF	FD					BS	BA	
11	Ashlyn Praelatal	F 15:30	3-7	0-3	0-0	3	3	6	2	1	6	1	1	0	0	0	0	4
22	Cameron Brink	F 32:14	10-24	0-1	1-6	7	15	22	2	9	21	5	5	0	5	1	4	4
3	Anna Wilson	G 16:35	1-3	0-1	0-0	1	2	3	1	0	2	0	1	0	0	0	0	-9
12	Lexie Hull	G 23:30	1-6	0-1	1-2	1	1	2	5	1	3	3	3	2	0	0	0	17
24	Lacie Hull	G 25:53	2-4	1-2	2-2	1	7	8	3	1	7	1	1	0	0	0	0	8
33	Hannah Jump	G 27:59	2-4	1-2	0-0	1	1	2	1	1	5	2	0	0	1	0	0	2
5	Francesca Belibi	F 17:40	6-11	0-0	2-4	2	3	5	1	4	14	2	1	0	1	1	4	4
30	Haley Jones	F 21:48	3-8	0-1	2-2	0	5	5	0	2	8	2	1	1	0	0	0	-7
44	Kiki Iriafen	G 00:47	0-1	0-0	0-2	2	1	3	0	1	0	0	0	0	0	0	0	0
2	Agnes Emma-Nnopus	G 01:54	0-0	0-0	0-0	0	0	0	0	0	0	0	0	0	0	0	0	-1
14	Jordan Hamilton	G 09:26	1-1	1-1	0-0	0	2	2	1	0	3	0	2	0	0	0	0	2
21	Brooke Demetre	G 00:28	0-0	0-0	0-0	0	0	0	1	0	0	0	0	0	0	0	0	0
10	Alyssa Jerome	G 05:56	0-1	0-0	0-0	0	0	0	0	0	0	0	1	1	0	0	0	-9
Team						1	0	1			0							
Totals			29-70	3-12	8-18	19	40	59	17	20	69	16	16	4	7	2	3	3

Shooting By Period	
1 st FG%	8-21 38.1%
3PT%	0-2 0.0%
FT%	1-4 25%
2 nd FG%	9-20 45.0%
3PT%	2-4 50.0%
FT%	0-0 0%
3 rd FG%	8-15 53.3%
3PT%	1-4 25.0%
FT%	1-2 50%
4 th FG%	4-14 28.6%
3PT%	0-2 0.0%
FT%	6-12 50%
GM FG%	29-70 41.4%
3PT%	3-12 25.0%
FT%	8-18 44.4%

Dead Ball Rebounds: 5.0

Technical Fouls: NONE

Indiana - 66

Record: 4-1

NO.	Name	Min	FG		3P	FT		Rebounds		Fouls		TP	AS	TO	ST	Blocks		+/-
			M/A	A/A		M/A	A/A	OR	DR	PF	FD					BS	BA	
10	Aleksa Gulbe	F 34:10	3-13	1-4	1-2	2	3	5	4	1	8	0	0	3	0	4	2	2
54	Mackenzie Holmes	F 32:35	3-12	0-0	0-0	4	6	10	4	1	6	1	1	1	2	2	3	3
4	Nicole Cardano-Hillary	G 37:37	5-10	3-5	5-8	1	7	8	3	6	18	1	2	3	0	0	1	1
14	Ali Palberg	G 34:39	7-14	1-3	4-4	0	1	1	3	5	19	1	2	1	0	1	-3	3
34	Grace Berger	G 37:02	4-19	0-1	4-6	1	5	6	2	3	12	7	2	4	0	0	2	2
22	Chloe Moore-McNeil	G 06:50	1-1	1-1	0-0	0	2	2	0	0	3	0	0	0	0	0	0	-4
23	Kiandra Browne	G 12:00	0-2	0-0	0-0	0	2	2	4	0	0	0	0	0	0	0	0	-11
5	Caillin Hose	G 03:52	0-0	0-0	0-0	0	0	0	0	0	0	0	0	0	0	0	0	-5
3	Grace Waggoner	G 01:15	0-0	0-0	0-0	0	0	0	0	0	0	0	0	0	0	0	0	0
Team						3	1	4			0							
Totals			23-71	6-14	14-20	11	27	38	20	17	66	10	7	12	2	7	-3	3

Shooting By Period	
1 st FG%	7-18 38.9%
3PT%	0-1 0.0%
FT%	0-2 0%
2 nd FG%	6-19 31.6%
3PT%	3-4 75.0%
FT%	5-6 83.3%
3 rd FG%	6-18 33.3%
3PT%	2-4 50.0%
FT%	4-4 100%
4 th FG%	4-16 25.0%
3PT%	1-5 20.0%
FT%	5-8 62.5%
GM FG%	23-71 32.4%
3PT%	6-14 42.9%
FT%	14-20 70.0%

Dead Ball Rebounds: 3.0

Technical Fouls: NONE

	SFD		IND		Points from	SFD	IND	Period by Period Scoring			
	1st	2nd	3rd	4th				TOT			
Biggest lead	10 (2 nd 6:10)	4 (1 st 5:47)	Turnovers	4	17						
Best Scoring Run	8 (1 st 3:40)	7 (2 nd 1:14)	Paint	46	24						
Lead Changes	1		Second Chance	13	10	SFD	17	20	18	14	69
Times Tied	3		Fast Breaks	4	15	IND	14	20	18	14	66
Time with Lead	34:12	04:22	Bench	30	3						