

2025-26 WOMEN'S BASKETBALL GAME NOTES



GAME 10 | DEC. 21, 2025 | 12 P.M. | CORAL GABLES, FL



**KENNESAW STATE
OWLS**

6-3, 0-0 CUSA

NET: 191

HEAD COACH **OCTAVIA BLUE** 5th SEASON
54-75 AS HEAD COACH/AT KSU

1ST MEETING VS. MIAMI AT KSU

VS

**MIAMI
HURRICANES**

7-4, 1-1 ACC

NET: 48

HEAD COACH **TRICIA CULLOP** 2nd SEASON
21-19 AS HEAD COACH AT MIAMI



SERIES HISTORY

Meeting 2nd
Series Record Miami leads 1-0
Last Meeting Nov. 12, 2010 (Miami W 93-69)
Last Kennesaw State Win
Current Streak L1

TALE OF THE TAPE



2025-26 SEASON STATS



66.9	POINTS PER GAME	72.9
57.1	POINTS ALLOWED PER GAME	61.8
9.8	SCORING MARGIN	11.1
45.1	FG%	44.4
38.2	FG% DEFENSE	41.0
34.8	3PT%	28.0
62.9	FREE THROW%	68.1
36.8	REBOUNDS PER GAME	38.7
10.9	ASSISTS PER GAME	12.6
17.6	TURNOVERS PER GAME	13.7
10.6	STEALS PER GAME	6.8
3.2	BLOCKS PER GAME	3.6

NUMBERS TO KNOW

4

Four of KSU's nine games have been decided by single digits, including three by one point.

6

With six wins, KSU has its best start through nine games since 2014-15.

6

TaTianna Stovall's six blocks at Georgia State are a CUSA single-game season-high.

8

Keyarah Berry has scored in double figures in eight of nine games.

37

KSU has outscored opponents in the paint in each game, averaging 37 an outing.

TODAY'S GAME

STRONG START

>> At 6-3, KSU has achieved the program's best start under Blue and best nine-game start since the 2014-15 season. A seventh win on Sunday would give the Owls their best 10-game start since 2014-15.

HOMECOMING FOR COACH BLUE

>> Sunday's game marks KSU head coach Octavia Blue's return to a place rich with her own basketball history.

A native of nearby Deerfield Beach, Florida, Blue prepped at Fort Lauderdale's Nova High School before beginning a prolific four-year career as a Miami Hurricane (1994-98).

Blue averaged 15.8 points and 6.2 rebounds on her way to 1,724 career points – a mark that still ranks eighth all-time at Miami. As a senior in 1997-98, Blue averaged 19.2 points and 5.7 rebounds while shooting a school-record 45.3% from three.

Blue finished her senior season with All-America honors and went on to be inducted in the Miami Sports Hall of Fame in 2008.

Prior to taking the helm at KSU, Blue held assistant (2012-20) and associate head coaching (2020-21) positions at Miami.

POWER CONFERENCE OPPONENT

>> Sunday's matchup gives KSU an opportunity at its first all-time win over an ACC team and first win over a power conference foe since defeating Providence 53-51 on Dec. 21, 2023.

LAST GAME TOP SIX

NO.	PLAYER	PTS	REB	AST	STL	BLK	FG%
#13	Shania Nichols	19	3	3	3	0	5-12
#2	Trynce Taylor	16	9	3	3	0	8-9
#21	Keyarah Berry	9	3	2	0	0	4-9
#23	TaTianna Stovall	8	7	2	0	6	3-7
#10	Gabby Bendeck-Giron	8	1	5	2	0	2-6
#1	Marihya Hart	5	0	0	0	0	2-4

2025-26 SCHEDULE/RESULTS

	6-3 OVR	0-0 CUSA	4-1 HOME	2-2 AWAY	0-0 NEUTRAL
TUES 11/4		SHORTER			W 85-36
SAT 11/8		FLORIDA ATLANTIC			L 68-69
WED 11/12		at East Tennessee State			W 64-63
SAT 11/15		TENNESSEE TECH			W 61-60
TUES 11/25		at South Alabama			L 66-54
FRI 11/28		USC UPSTATE			W 55-41
MON 12/1		at Alabama			L 79-65
SAT 12/6		THOMAS (Ga.)			W 81-37
SUN 12/14		at Georgia State			W 69-63
SUN 12/21		at Miami (Fla.)			12 P.M.
MON 12/29		LIFE			7 P.M.
FRI 1/2		MIDDLE TENNESSEE*			7 P.M.
SUN 1/4		WESTERN KENTUCKY*			2 P.M.
THURS 1/8		at Missouri State*			7 P.M.
SAT 1/10		FIU at Florida International*			1 P.M.
SAT 1/17		JACKSONVILLE STATE*			2 P.M.
THURS 1/22		UTEP*			7 P.M.
SAT 1/24		NEW MEXICO STATE*			2 P.M.
THURS 1/29		at Louisiana Tech*			7:30 P.M.
SAT 1/31		at Sam Houston*			3 P.M.
THURS 2/5		DELAWARE*			7 P.M.
SAT 2/7		LIBERTY*			2 P.M.
THURS 2/12		at Western Kentucky*			12 P.M.
SAT 2/14		at Middle Tennessee*			5 P.M.
THURS 2/19		SAM HOUSTON*			7 P.M.
SAT 2/21		LOUISIANA TECH*			2 P.M.
THURS 2/26		at New Mexico State*			8 P.M.
SAT 2/28		UTEP*			4 P.M.
SAT 3/7		at Jacksonville State*			3 P.M.
3/10-14		2026 Conference USA Tournament			

Home Games in ALL CAPS

All times eastern

* - CUSA Conference Game

FOLLOW THE OWLS

X/TWITTER AND INSTAGRAM

@KSUOWLSWBB | @KSUOWLNATION (X) / @KENNESAWSTATEOWLS (IG)

FACEBOOK

KENNESAW STATE WOMEN'S BASKETBALL | KENNESAW STATE OWLS

KSU WBB COMMUNICATIONS

ASSISTANT DIRECTOR OF ATHLETICS COMMUNICATIONS

JOSEPH HOVEY | jhovey1@kennesaw.edu | 385-242-5474





QUICK FACTS

University
Institution..... Kennesaw State University
Location..... Kennesaw, Ga.
Founded..... 1963
Enrollment..... 51,375
Nickname..... Owls
Colors..... Black and Gold
Mascot..... Scrappy the Owl

Athletics

Affiliation..... NCAA Division I FBS
Conference..... Conference USA
University President..... Dr. Kathy Schwaig (Sh-WHY-g)
Director of Athletics..... Milton Overton
Athletics Website..... KSUOwls.com

Program Information

Home Court..... VyStar Arena at the KSU Convocation Center
Capacity..... 3,805
Record in the Convo..... 134-123 (.521)
2024-25 Record..... 13-18 (.419)
Starters Returning/Lost..... 1/4
Players Returning/Lost..... 5/9
First Season of Competition..... 1982-83
All-Time Record..... 640-596 (.518)
All-Time Home Record..... 357-206 (.634)
NCAA Division I Record..... 435-454 (.489)
Division I Conference Record..... 120-202 (.372)
CUSA (2024-pres.)..... 7-11 (.389)

REFERENCING KSU

Acceptable Uses

..... Kennesaw State University
..... Kennesaw State
..... Kennesaw State Owls
..... KSU
..... Owls
..... The Owls
..... Black and Gold
..... The Saw

Not Acceptable

..... Kennesaw
..... Kennesaw University
..... University of Kennesaw
..... K-State
..... K State
..... K. State
..... Lady Owls
..... Golden Owls
..... Fighting Owls
..... Kenn
..... Kenn. State
..... Kenn St
..... KSAWST

PROGRAM HISTORY

2025-26 (Octavia Blue)..... 6-3
2024-25 (Blue) - First season in CUSA..... 13-18
2023-24 (Blue)..... 11-19
2022-23 (Blue)..... 15-16
2021-22 (Blue)..... 9-19
2020-21 (Khadija Head)..... 7-12
2019-20 (Agnus Berenato)..... 13-16
2018-19 (Berenato)..... 9-22
2017-18 (Berenato)..... 7-19
2016-17 (Berenato)..... 10-20
2015-16 (Nirra Perry)..... 11-19
2014-15 (Perry)..... 17-13
2013-14 (Perry)..... 6-24
2012-13 (Perry)..... 7-24
2011-12 (Colby Tilley)..... 14-17
2010-11 (Tilley)..... 9-21
2009-10 (Tilley)..... 11-19
2008-09 (Tilley)..... 15-14
2007-08 (Tilley)..... 16-12
2006-07 (Tilley)..... 12-17
2005-06 (Tilley) - NCAA Division I season/ASUN..... 5-22
2004-05 (Tilley)..... 18-12
2003-04 (Tilley)..... 19-10
2002-03 (Tilley)..... 16-13
2001-02 (Tilley)..... 17-10
2000-01 (Tilley)..... 19-8
1999-2000 (Tilley)..... 25-5
1998-99 (Tilley)..... 28-4
1997-98 (Tilley)..... 18-10
1996-97 (Tilley)..... 30-2
1995-96 (Tilley)..... 17-12
1994-95 (Susan Montgomery) - NCAA DII season/PBC ... 15-12
1993-94 (Montgomery) - Transition to NCAA DII..... 18-11
1992-93 (Montgomery)..... 19-11
1991-92 (Ron Walker)..... 22-9
1990-91 (Walker)..... 20-11
1989-90 (Walker)..... 15-14
1988-89 (Walker)..... 24-4
1987-88 (Walker)..... 24-8
1986-87 (Walker)..... 16-9
1985-86 (Rhonda Seagraves)..... 16-12
1984-85 (Gary Wisener)..... 9-19
1982-83 (Wisener) - NAIA/GIAC..... 9-14

POSTSEASON

Atlantic Sun Conference Semifinals..... 2011, 2017, 2019
Peach Belt Conference Tournament Champions..... 1997
Peach Belt Conference Runner-Up..... 1996, 2005
NAIA District Tournament Champions..... 1988, 1993
NCAA Division II South Atlantic Regional Champions.... 1997
NCAA Division II Elite Eight..... 1997

SHINING OWLS

No. 1 Marihya Hart | Jr. | Guard
TCCAA All-Conference First Team (at JSCC)*..... 2025
TCCAA Player of the Week (at JSCC)*..... Feb. 6, 2025

No. 2 Trynce Taylor | R-So. | Forward
Atlantic Sun All-Freshman Team..... 2024
ASUN Freshman of the Week..... 12/27/23, 1/8/24, 3/2/24

No. 10 Gabriela Bendeck-Giron | Sr. | Guard
NJCAA Academic All-American (at Pensacola St)*..... 2024

No. 13 Shania Nichols | Jr. | Guard
NJCAA Honorable Mention All-American (at NDSCS)*..... 2024
Mon-Dak All-Conference First Team (at NDSCS)*..... 2024

No. 21 Keyarah Berry | Gr. | Guard
Preseason All-Conference USA Team..... 2025-26
Conference USA Player of the Week..... Nov. 18, 2024

* - earned before arriving at Kennesaw State

NATIONAL RANKINGS

Associated Press Top 25 Poll (Week 7)

RANK	TEAM	RECORD
1.	UConn	10-0
2.	Texas	12-0
3.	South Carolina	10-1
4.	UCLA	9-1
5.	LSU	11-0
6.	Michigan	9-1
7.	Maryland	12-0
8.	Oklahoma	11-1
9.	TCU	11-0
10.	Iowa State	12-0
11.	Iowa	10-1
12.	Kentucky	11-1
13.	Vanderbilt	9-0
14.	Ole Miss	10-1
15.	Baylor	10-2
16.	Louisville	10-3
17.	Tennessee	7-2
18.	North Carolina	9-3
19.	USC	7-3
20.	Notre Dame	8-2
21.	Ohio State	9-1
22.	Washington	9-1
23.	Nebraska	11-0
24.	Michigan State	9-1
25.	Princeton	10-1





GAMES LED KSU IN

Scoring	2025-26	2024-25	Career	KSU W/L
Keyarah Berry	4	8	17	6-11
Shania Nichols	3	0	3	3-0
Latazia Williamson	1		1	1-0
Gabriela Bendeck-Giron	1	--	1	1-0

Rebounding	2025-26	2024-25	Career	KSU W/L
Keyarah Berry	3	6	10	3-7
Trynce Taylor	4	0	9	5-5
TaTianna Stovall	2	0	2	1-1

Assists	2025-26	2024-25	Career	KSU W/L
Kailyn Fields	3	7	18	10-8
Keyarah Berry	1	2	3	1-2
Kaelyn Flowers	3	0	3	2-1
Shania Nichols	1	0	1	0-1
Gabriela Bendeck-Giron	1	0	1	1-0

MILESTONES

Double-Doubles	2025-26	2024-25	Career	KSU W/L
Keyarah Berry	2	3	5	4-1
Trynce Taylor	--	0	2	1-1

20+ Points	2025-26	2024-25	Career	KSU W/L
Keyarah Berry	2	6	9	5-4
Shania Nichols	2	--	2	2-0
Latazia Williamson	1	--	1	1-0

10+ Rebounds	2025-26	2024-25	Career	KSU W/L
Keyarah Berry	2	3	5	4-1
Trynce Taylor	1	0	3	2-1

5+ Assists	2025-26	2024-25	Career	KSU W/L
Kailyn Fields	1	3	7	4-3
Kaelyn Flowers	2	0	2	2-0
Gabriela Bendeck-Giron	1	0	1	1-0

5+ Steals	2025-26	2024-25	Career	KSU W/L
Kailyn Fields	--	1	1	1-0
Keyarah Berry	1	0	1	1-0

CURRENT STREAKS

Stat	Streak	Streak Start
Wins	2	12/6/25
At Home	3	11/15/25
On the Road	1	12/14/25
Neutral Site	--	--
Losses	--	--
Wins When Leading After Q1	2	12/6/25
At Home	10	11/16/24
On the Road	--	--
Wins When Leading After Q2	11	1/16/25
At Home	8	1/23/25
On the Road	3	1/16/25
Wins When Leading After Q3	9	1/25/25
At Home	5	1/25/25
On the Road	3	2/20/25

C-USA STANDINGS

Rk.	Team	W/L	Conf.	Strk	L10
1.	UTEP	7-2	0-0	L2	
2.	Sam Houston	5-2	0-0	L1	
3.	Liberty	6-3	0-0	L1	
	KSU	6-3	0-0	W2	
5.	Missouri State	7-4	0-0	L1	
6.	Delaware	5-3	0-0	L1	
7.	FIU	4-3	0-0	W3	
8.	LA Tech	5-4	0-0	L1	
9.	Jax State	5-5	0-0	W3	
10.	MTSU	4-6	0-0	L1	
	WKU	4-6	0-0	W1	
12.	NM State	3-6	0-0	W2	

AS OF DECEMBER 10, 2025

C-USA PRESEASON POLL

Rk.	Team (1st Place Votes)	Points
1.	Louisiana Tech (5)	128
2.	Liberty (5)	125
3.	Middle Tennessee (2)	123
4.	Missouri State	107
5.	Western Kentucky	96
6.	Florida International	74
7.	Sam Houston	59
T-8.	Kennesaw State	57
T-8.	UTEP	57
10.	New Mexico State	51
11.	Delaware	36
12.	Jacksonville State	23

2025-26 NCAA RANKS

Team	NCAA Rank	Value
FG%	61st	45.1
Rebound Margin	64th	6.9
Scoring Defense	66th	57.1
3pt FG%	67th	34.8
Steals/G	73rd	10.6

Individual	NCAA Rank	Value
Shania Nichols (3PT%-min2/G)	8th	51.5
Keyarah Berry (SPG)	46th	3.1

2025-26 C-USA RANKS

Team	CUSA Rank	Value
Field Goal Percentage	1st	45.1
3pt FG Percentage	1st	34.8
Opponent Rebounds	1st	29.9
Scoring Defense	2nd	57.1
Scoring Margin	2nd	9.8
Rebound Margin	3rd	6.9
Steals per Game	3rd	10.6

Individual	CUSA Rank	Value
Keyarah Berry (FG Made)	2nd	56
Keyarah Berry (Steals)	2nd	25
Keyarah Berry (FG%)	4th	48.3
Shania Nichols (3pt Made)	5th	17
Shania Nichols (3pt/Game)	5th	2.1

#ALLINNALLOUT

2025-26 KSU Women's Basketball Season Theme

>> This year's theme/hashtag #AllInNALLOut exemplifies what head coach Octavia Blue expects from her Owls squad this season. It means that the team is 100% committed and goes out on the court with 100% effort. #AllInNALLOut represents this team in that, in Blue's words "will give it their all on the court this season and live with the results." And while hashtags are just another form of social media, Blue and her staff are holding the 2025-26 Owls to that #AllInNALLOut standard this season.

MORE STORYLINES

SECOND QUARTER CATALYST

>> KSU used a 24-14 second quarter to take a 39-31 lead to the break at Georgia State. The Owls are outscoring teams by a combined 35 points in the second quarter and have won 11 straight games dating back to Jan. 16, 2025, when leading at the half.

POWER IN THE PAINT

>> KSU has outscored opponents in the paint in each of nine games, averaging 36.9 paint points and winning the battle down low by an average of 11.3 points per game. The Owls have also outscored opponents in second chance points in eight games and average 11.9 points in the category.

CLOSE CONTESTS

>> Four of KSU's nine games have been decided by single digits, including three by a single point. The Owls are 3-1 in games decided by nine points or fewer and 2-1 in one-point games.

KEYARAH'S CLIMB

>> Berry, a graduate student from Rockmart, Georgia, can cap her final season in Kennesaw ranked among the top 10 all-time in KSU history in numerous individual career statistical categories.

The Rockmart High School product currently ranks fourth at KSU in the Division I era (2005-) with 269 career free throw attempts and ninth with 171 career free throws made.

Berry is eight games shy of 10th in DI-era career games played and 69 points from 10th in DI-era career scoring.





2025-26 SPECIALTIES

Game	Paint Points	Points off Turnovers	2nd Chance Points	Fast Break Points
1	42 (+34)	37 (+29)	13 (+5)	23 (+19)
2	44 (+18)	11 (-7)	11 (+8)	3 (-3)
3	28 (+4)	10 (-13)	17 (+6)	6 (-3)
4	40 (+16)	18 (-3)	6 (-5)	16 (+12)
5	42 (+6)	12 (-8)	11 (+1)	9 (-2)
6	24 (+6)	27 (+10)	9 (+2)	13 (+13)
7	40 (+4)	18 (+7)	13 (+1)	4 (-4)
8	34 (+10)	31 (+17)	15 (+10)	18 (+18)
9	38 (+4)	15 (-5)	12 (+1)	4 (-2)

Inside the 2025-26 Roster

>> Kennesaw State women's basketball returns just 77 career NCAA Division I starts and 189 games played on the team's roster to the 2025-26 campaign.

>> Including the Owls' new additions, the team boasts 125 career NCAA Division I starts and 384 games played.

>> Graduate Keyarah Berry, senior Gabriela Bendeck-Giron, junior Kailyn Fields, redshirt sophomore Trynce Taylor and sophomore Mame Kane are the lone returners on the Owls' roster this season.

>> Joining KSU this season are graduate Fanta Daffe, juniors Marihya Hart, Shania Nichols and Latazia Williamson, sophomores Emaya Lewis and Kaelyn Flowers and freshmen TaTianna Stovall and Madysone Elliott.

Experience is Key

>> KSU women's basketball has no shortage of game experience on the 2025-26 roster,

The 2025-26 squad has amassed 356 games played, 114 starts and 5,409 minutes of action prior to the season, averaging 15.2 minutes per game.

NCAA On-Court Experience, 2025-26 KSU WBB Roster

Player	GP	GS	Min/G
Keyarah Berry	90	37	17.3
Kailyn Fields	61	51	22.4
Latazia Williamson	33	6	10.0
Fanta Daffe	32	1	5.9
Trynce Taylor	30	11	21.2
Shania Nichols	29	7	23.4
Kaelyn Flowers	28	1	11.1
Emaya Lewis	22	--	8.6
Mame Kane	21	--	4.3
Gabriela Bendeck-Giron	10	--	5.5
TEAM TOTALS	356	114	15.2

*Entering 2025-26 season

2025-26 QUARTER BREAKDOWN

Game	1ST (KSU-OPP)	2ND (KSU-OPP)	3RD (KSU-OPP)	4TH (KSU-OPP)
1	19-8	19-13	34-9	13-6 (W)
2	16-19	15-18	21-24	16-8 (L)
3	11-11	19-18	20-11	14-23 (W)
4	15-14	18-19	17-12	11-15 (W)
5	16-13	12-15	16-28	10-10 (L)
6	16-13	13-8	8-12	18-8 (W)
7	13-29	18-15	19-15	15-20 (L)
8	18-11	21-4	21-12	21-10 (W)
9	15-17	24-14	15-13	17-17 (W)
TOTAL	139-135	159-124	169-138	135-117





2025-26 KENNESAW STATE GAME HIGHS (ALL GAMES)

Category	Value	TEAM	Game	Value	PLAYER	Player (Game)
Points Scored (GM)	85		vs. Shorter (11/4/25)	25		Keyarah Berry vs. FAU (11/8/25)
Points Scored (Half)	47		vs. Shorter (11/4/25) - 2nd	21		Keyarah Berry vs. FAU (11/8/25) - 2nd
Points Scored (Qtr)	34		vs. Shorter (11/4/25) - 3rd	14		Keyarah Berry vs. FAU (11/8/25) - 3rd
FGs Made	32		vs. Shorter (11/4/25)	10		Keyarah Berry vs. FAU (11/8/25)
FG Attempts	65		vs. Thomas (12/6/25)	18		Keyarah Berry vs. USC Upstate (11/28/25)
FG Percentage	51.6%		vs. Shorter (11/4/25)	8/9		Trynce Taylor at Georgia State (12/14/25)
3-Pointers Made	11		vs. Thomas (12/6/25)	6		Shania Nichols vs. Shorter (11/4/25)
3-Point Percentage	53.3%		vs. Shorter (11/4/25)	83.3%* - min. 6 att.		Shania Nichols vs. USC Upstate (11/28/25)
Free Throws Made	15		vs. FAU (11/8/25)	6		T. Taylor vs USC Upstate and K. Fields vs. Shorter
FT Attempts	31		vs. FAU (11/8/25)	10		Keyarah Berry vs. TTU (11/15/25)
FT Percentage	92.3%		at Georgia State (12/14/25)	7/7		Shania Nichols at Georgia State (12/14/25)
Rebounds	49		vs. Thomas (12/6/25)	12		K. Berry vs USC Upstate and T. Taylor at ETSU
Assists	16		at Georgia State (12/14/25)	7		Kailyn Fields vs. Shorter (11/4/25)
Steals	13		at Alabama (12/1/25)	5		Keyarah Berry vs. USC Upstate (11/28/25)
Blocked Shots	6		at Georgia State (12/14/25)	6		TaTianna Stovall at Georgia State (12/14/25)

2025-26 KENNESAW STATE GAME HIGHS (CUSA GAMES)

Category	Value	TEAM	Game	Value	PLAYER	Player (Game)
Points Scored (GM)	--		--	--		--
Points Scored (Half)	--		--	--		--
Points Scored (Qtr)	--		--	--		--
FGs Made	--		--	--		--
FG Attempts	--		--	--		--
FG Percentage	--		--	--		--
3-Pointers Made	--		--	--		--
3-Point Percentage	--		--	--		--
Free Throws Made	--		--	--		--
FT Attempts	--		--	--		--
FT Percentage	--		--	--		--
Rebounds	--		--	--		--
Assists	--		--	--		--
Steals	--		--	--		--
Blocked Shots	--		--	--		--





OWL HOOPS RECORDS WHEN...

Stat	2025-26	2024-25	Under Coach Blue
Overall	6-3	13-18	54-75
At Home	4-1	8-6	35-26
On the Road	2-2	4-11	16-46
At Neutral Site	0-0	1-1	3-3
Conference Games	0-0	7-11	29-39
Non-Conference Games	6-3	5-6	23-32
Versus Teams from Georgia	3-0	2-1	12-9
Versus a Ranked Opponent	0-0	0-0	0-5
Versus a Team .500 or above	2-3	7-14	26-56
Versus a Team Below .500	3-0	4-2	27-17
Overtime	0-0	1-0	2-2
Double-Overtime	0-0	0-0	0-1
Postseason Games	0-0	1-1	2-4
On Mondays	0-1	2-1	3-12
On Tuesdays	1-1	1-0	4-3
On Wednesdays	1-0	0-1	3-8
On Thursdays	0-0	5-5	17-18
On Fridays	1-0	0-1	3-5
On Saturdays	2-1	3-9	21-23
On Sundays	1-0	1-1	2-6
In November	4-2	2-3	11-16
In December	2-1	3-3	12-13
In January	0-0	3-5	15-18
In February	0-0	3-5	12-20
In March	0-0	2-2	5-5
Day Game (Before 6:00pm)	4-1	6-10	28-40
Night Game (After 6:00pm)	2-2	7-8	26-35
Scores First	5-1	7-11	32-38
Opponent Scores First	1-2	6-7	21-37
Leading After First Quarter	4-1	10-4	39-19
Trailing After First Quarter	1-2	2-13	10-54
Tied After First Quarter	1-0	1-1	5-2
Leading After Second Quarter	5-0	8-3	38-12
Trailing After Second Quarter	0-2	4-17	13-62
Tied After Second Quarter	1-1	0-0	3-2
Leading After Third Quarter	6-0	7-2	39-9
Trailing After Third Quarter	0-3	5-16	10-64
Tied After Third Quarter	0-0	0-0	1-2
Higher FG %	6-0	11-2	45-9
Lower FG %	0-3	2-16	9-66
Tied in FG %	0-0	0-0	0-0
Higher 3-PT %	3-0	8-5	37-15
Lower 3-PT %	2-3	4-13	15-59
Tied in 3-PT %	1-0	1-1	2-1
Have a Player w/ a Double-Double	1-1	9-8	23-20
Allow a Double-Double Player	0-0	3-5	8-20
Have a Player Score 20+	4-1	9-6	25-23
Allow a 20+ Scorer	0-1	2-6	14-22
In Single-Digit Games	3-1	6-7	29-31





VYSTAR ARENA

at the KSU Convocation Center

Opened **May 12, 2005**

Capacity **3,805**

Attendance Record **3,805**

2023 ASUN Men's Basketball Championship Game vs. Liberty

Home to KSU Women's Basketball **since Dec. 1, 2005**

Home to KSU Men's Basketball **since Nov. 26, 2005**

Home to KSU Volleyball **since Aug. 29, 2006**



DEFENDING THE NEST

Kennesaw State WBB is **35-26**

at VyStar Arena under
head coach Octavia Blue

Under Blue, KSU is **11-2**
vs. teams from the state
of Georgia at VyStar Arena

TOP 10 MOST-ATTENDED KSU WOMEN'S BASKETBALL GAMES AT VYSTAR ARENA

Rank	Opponent	Attendance
1	Shorter (Feb. 11, 2020)	1,604
2	ETSU (Feb. 4, 2012)	1,524
3	Lipscomb (Feb. 8, 2020)	1,429
4	NJIT (Feb. 9, 2019)	1,374
5	Jacksonville (Jan. 25, 2020)	1,359
6	Central Arkansas (Jan. 28, 2023)	1,302
7	NJIT (Feb. 29, 2020)	1,178
8	Jacksonville State (March 8, 2025)	1,158
9	Bellarmine (Feb. 11, 2023)	1,148
10	Chattanooga (Dec. 21, 2010)	1,144

TOP 10 MOST-ATTENDED BLUE ERA GAMES AT VYSTAR ARENA

Rank	Opponent	Attendance
1	Central Arkansas (Jan. 28, 2023)	1,302
2	Jacksonville State (March 8, 2025)	1,158
3	Bellarmine (Feb. 11, 2023)	1,148
4	North Alabama (Jan. 26, 2023)	1,037
5	Georgetown (Dec. 28, 2023)	970
6	Liberty (March 1, 2025)	951
7	Shorter (Nov. 4, 2025)	883
8	Stetson (Feb. 17, 2024)	812
9	Central Arkansas (Jan. 27, 2024)	794
10	Thomas (Ga.) (Nov. 9, 2021)	792





HEAD COACH OCTAVIA BLUE



**ALMA MATER UNIVERSITY OF MIAMI - 1998
HIGH SCHOOL | NOVA HIGH SCHOOL**

53-75 OVERALL RECORD AT KENNESAW STATE

FIFTH SEASON AS HEAD COACH

SIGNED CONTRACT EXTENSION THRU 2026-27 ON DEC. 7, 2023

29-39 CONFERENCE RECORD

35-26 HOME RECORD

FASTEST KSU HEAD COACH TO 30 DI WINS (74 GAMES)

FASTEST KSU HEAD COACH TO 20 DI HOME WINS (35 HOME GAMES)

10 NCAA DIVISION I TOURNAMENT APPEARANCES (AS PLAYER & COACH)

FIRST WNBA DRAFT PICK IN MIAMI (FLA.) HISTORY

15TH OVERALL PICK IN THE 1998 WNBA DRAFT (LA SPARKS)

EIGHTH HEAD COACH IN KSU WBB HISTORY

1,724 POINTS AT MIAMI (4TH IN PROGRAM HISTORY AT GRADUATION)

BLUE'S CAREER (U.S.)

1994-1998	University of Miami
	Student-Athlete
1998	Los Angeles Sparks
	Player
2003-04	Houston Comets
	Player
2008-09	St. John's
	Assistant Coach
2009-12	Georgia Tech
	Assistant Coach
2012-20	Miami (Fla.)
	Assistant Coach
2020-21	Miami (Fla.)
	Associate Head Coach
2021-present	Kennesaw State
	Head Coach - 49-72 (.400)

YEAR-BY-YEAR

1994-95	Miami (Student-Athlete)	11-16
1995-96	Miami (Student-Athlete)	14-13
1996-97	Miami (Student-Athlete)	15-14
1997-98	Miami (Student-Athlete)	19-10
1998	Los Angeles Sparks (Player)	12-18
2003	Houston Comets (Player)	11-5
2004	Houston Comets (Player)	7-6
2008-09	St. John's (Assistant Coach)	20-15
2009-10	Georgia Tech (AC)	23-10
2010-11	Georgia Tech (AC)	24-11
2011-12	Georgia Tech (AC)	26-9
2012-13	Miami (AC)	21-11
2013-14	Miami (AC)	16-15
2014-15	Miami (AC)	20-13
2015-16	Miami (AC)	24-9
2016-17	Miami (AC)	24-9
2017-18	Miami (AC)	21-11
2018-19	Miami (AC)	25-9
2019-20	Miami (AC)	15-15
2020-21	Miami (Associate HC)	11-11
2021-22	Kennesaw State (HC)	9-19
2022-23	Kennesaw State (HC)	15-16
2023-24	Kennesaw State (HC)	11-19
2024-25	Kennesaw State (HC)	13-18
2025-26	Kennesaw State (HC)	4-3
Coaching Record (HC & Assistant)		322-223 (.591)
Overall Record as Head Coach		52-75 (.410)
Overall Record		411-305 (.574)

POSTSEASON

1997-98	Miami	NCAA Tourney R1
2003	Houston Comets	Western Conf. Semis
2009-10	Georgia Tech	NCAA Tourney R1
2010-11	Georgia Tech	NCAA Tourney R2
2011-12	Georgia Tech	NCAA Sweet 16
2012-13	Miami	NCAA Tourney R1
2014-15	Miami	NCAA Tourney R2
2015-16	Miami	NCAA Tourney R1
2016-17	Miami	NCAA Tourney R2
2017-18	Miami	NCAA Tourney R1
2018-19	Miami	NCAA Tourney R2





THE BLUE ERA | COACH BLUE BIO

Octavia Blue enters her fifth season at the helm of the Kennesaw State women's basketball program in 2025-26. In the Owls' first season as a member of Conference USA, she coached All-CUSA First Team selection Precis Harden to five CUSA Player of the Week honors as Harden (16) and the Owls (19) led the conference in double-doubles. The Owls secured wins over Georgia State as well as road victories against Seattle and Chattanooga in the non-conference slate. KSU's victory over Seattle (64-41) marked the fewest points scored by SU in a non-conference home game since Dec. 2004. In CUSA play, the Black and Gold won seven league games and clinched the No. 7 overall seed in the 2025 Conference USA tourney. In the first round, KSU secured a victory over UTEP to advance to the quarterfinal round.

The 2023-24 campaign was filled with several milestones for the Blue Era and Kennesaw State women's basketball. The Miami alum became the fastest KSU WBB head coach to 30 Division I wins and 20 home wins while also leading the Owls to their first 4-0 starts to an ASUN schedule in program history. She also oversaw the longest ASUN regular season win streak of six-straight games. The Owls achieved their most weekly ASUN honors since 2014-15 and the second-most ASUN Freshman of the Week awards in program history. KSU led the conference in double-doubles and offensive rebounds per game.

Year three was also highlighted by spectacular performances where Precis Harden led the conference with 10 double-doubles, Carly Hooks had the most 30-point games and Kundall Golden's 49 blocks now only set the KSU DI single-season record, it led the ASUN and was 59th in the country at the conclusion of the season. 2023-24 featured the best rebounding defense in KSU single-season history (since 1983-84), the third-best rebounding margin in KSU DI history and the fourth-best scoring defense in KSU DI history. The Owls' 85-75 win at Bellarmine was the most points scored by KSU in a road ASUN victory since Feb. 18, 2006. Their 31-point win at Queens to end the regular season tied the largest margin of victory in Atlantic Sun action in Kennesaw State history, tying the mark set on Feb. 4, 2008.

In her second season during 2022-23, she led the Owls to a 15-16 record including a win over Jax State in the ASUN tournament first round. Against conference foes, KSU went 10-8 and 9-4 inside the KSU Convocation Center. Her 24 wins in the first two seasons marked the second-most by a KSU women's basketball coach in their first two seasons at the helm in Owls' DI history.

KSU finished 9-19, including a 7-8 record at home in Blue's first season. The Owls set a program record by eclipsing the 100-point mark for the first time in a 100-31 victory over Thomas University in the season opener. Under Blue's guidance, Amani Johnson was named to the ASUN All-Conference Second Team, the ASUN All-Academic Team and was one of 12 student-athletes to receive the ASUN Winner for Life award.

Kennesaw State Director of Athletics Milton Overton announced Octavia Blue as the next women's basketball head coach on April 29, 2021. Blue joined KSU after a successful nine-year run as an assistant coach for the University of Miami.

"I am pleased to welcome a rising star in the coaching industry, Octavia Blue, to lead our women's basketball program," said Overton. "I have been impressed with her values, ability to connect with student-athletes, and coaching acumen. Coach Blue shares our mission to 'build champions in the classroom, on the court, in the community and in life with academic integrity and excellence.' I am excited for Owl Nation to see the brand of basketball and program Coach Blue will build at Kennesaw State. Her experiences developing winning teams and individuals at Miami, Georgia Tech, and St. John's, combined with her impressive accolades as a former student-athlete, will be instrumental in leading our program to a championship level."

Coaching at her alma mater, Blue recently served as associate head coach for the 2020-21 season. She has been on staff with Miami women's basketball as an assistant coach since the 2012-13 season and has accumulated 14 seasons as a coach after her Hall-of-Fame playing career.

"I could not be more excited and honored to join the KSU family and be the next head coach of the women's basketball team," said Blue. "The opportunities for greatness this university provides on and off the court, along with its community support, makes Kennesaw State a really special place. I am eager to roll up my sleeves and get to work!"

Working primarily with post players, Blue has coached eight players to 10 total All-Atlantic Coast Conference honors at Miami, including six first-team accolades and two All-ACC Defensive Team honors. Notably, she worked closely with Beatrice Mompremier, who earned AP and WBCA All-America recognition in back-to-back seasons. Mompremier was a 2019 and 2020 finalist for the Lisa Leslie Center of the Year Award and was tabbed ACC Preseason Player of the Year ahead of the 2019-20 campaign.

Five players signed WNBA contracts during Blue's nine seasons at Miami, including Mompremier, who was selected 20th overall in the 2020 WNBA Draft by the Los Angeles Sparks. In total, Blue has coached 14 Hurricanes that have gone on to play professionally.

Blue brought considerable tournament experience to KSU. She has coached the Hurricanes to six NCAA Tournament appearances (2013, 2015-19), and a trip to the WNIT in 2014.

Blue holds not only a strong insight from the sidelines but has developed her total skillsets through symposiums and workshops. In 2019, Blue participated in the Women Leaders in College Sports/Next Up Program at the WBCA Convention and was also a member of the Next Chair Symposium. In 2017, she served as an assistant coaches' board member for the Kay Yow Cancer Fund. That same year, she attended the Indiana Fever training camp.

"It has been an honor to serve as the lead for our women's basketball coaching search on behalf of AD Overton. KSU is a progressive and competitive R2 institution, with great leadership, community support and a winning spirit which has made this a nationally coveted position; evidenced by a talented, diverse pool of over 100 applicants," said Chief Operating Officer Tamica Smith Jones. "After engaging our key stakeholders, including our remarkable scholar-athletes, we determined the right fit would be a winner, elite recruiter and player developer whose passion for the game and our team would build both a caring and competitive culture. Coach Blue connected with our stakeholders and communicated a clear vision to advance our program toward winning at the next level. She shared her commitment to retain, recruit, hire, develop and empower a great team of people. Her enthusiasm and passion are infectious, and we hope it will bring campus, community and national excitement around our women's basketball program that it deserves."

Blue holds familiarity in the region after working three seasons as an assistant coach and recruiting coordinator at Georgia Tech. During her time in Atlanta, the Yellow Jackets posted three 20-plus win seasons, made three NCAA tournament appearances and reeled in two top-25 recruiting classes (No. 24 in 2011 and No. 13 in 2012).

She coached three All-ACC players and three WNBA Draft picks. Brigitte Ardoski was drafted by the Atlanta Dream in the second round in 2010, Alex Montgomery was taken in the first round by the New York Liberty in 2011 and Sasha Goodlett was picked in the first round in 2012 by the Indiana Fever.

Blue's first season as a Division I assistant coach was in 2008-09 at St. John's, where she helped the Red Storm advance to the WNIT. Under the guidance of Blue, Dashena Stevens was named the 2008-09 BIG EAST Rookie of the Year.

From 1994-98, Blue amassed 1724 points at Miami, placing her fourth in program history at the time, and still good for eighth. She shot a school record 45.3 percent from three as a senior.

After her decorated collegiate career, she was selected No. 15 overall in 1998 by the Los Angeles Sparks, becoming Miami's first WNBA Draft pick.

Blue had an extensive professional career that lasted from 1998-2006, which included playing for two WNBA teams and international clubs in Greece, Israel, France, Turkey and Poland.

She returned to Miami to complete her degree in sociology/sport management in 2007 and was inducted into the UM Sports Hall of Fame and named an ACC Women's Basketball Legend in 2008. In 2016, Blue's No. 10 jersey became the fourth in program history raised to the rafters in Coral Gables, Fla.





THE COACHING STAFF



ASSOCIATE HEAD COACH
KEISHA McCLINIC

Keisha McClinic enters her third season at KSU in 2025-26 as the associate head coach under head coach Octavia Blue. McClinic has coached collegiately since 2009, and most recently held the same title at Tennessee State and East Tennessee State.

Her first season with the Owls in 2023-24 was filled with several milestones for Kennesaw State women's basketball. Kennesaw State achieved its first 3-0 and 4-0 starts to an Atlantic Sun schedule in program history. The squad also set a program record for an ASUN regular season win streak at six-straight games. The Owls achieved their most weekly ASUN honors since 2014-15 and the second-most ASUN Freshman of the Week awards in program history. KSU led the conference in double-doubles and offensive rebounds per game.

Prencis Harden led the conference with 10 double-doubles, Carly Hooks had the most 30-point games and Kundall Golden's 49 blocks now only set the KSU DI single-season record, it led the ASUN and was 59th in the country at the conclusion of the season. 2023-24 featured the best rebounding defense in KSU single-season history (since 1983-84), the third-best rebounding margin in KSU DI history and the fourth-best scoring defense in KSU DI history. The Owls' 85-75 win at Bellarmine was the most points scored by KSU in a road ASUN victory since Feb. 18, 2006. Their 31-point win at Queens to end the regular season tied the largest margin of victory in Atlantic Sun action in Kennesaw State history, tying the mark set on Feb. 4, 2008.

"I am thankful and excited to have Coach McClinic join our women's basketball staff as associate head coach. Her experience level is invaluable," said Blue. "She is a great person, teacher of the game, and a connected, well-respected recruiter in the region."

McClinic joins The Nest after three seasons in Nashville. She balanced both sides of the ball as TSU's defensive coordinator during her first and third seasons and switched as the offensive coordinator in 2021-22. The veteran coach mentored the Ohio Valley Conference's 2022 Freshman of the Year and 2023 second-team all-conference performer Gia Adams, as well as 2023 first team and all-newcomer honoree Erica Haynes-Overton.

During her time at Tennessee State the team ranked in the top five nationally among NCAA Division I schools in forced turnovers per game (2022), steals per game, and total steals (2022).

Off the court, McClinic succeeded in instilling the importance of academics. Serving as the academic coordinator, she guided three Tigers to the All-OVC Academic team. McClinic also scoured the recruiting trail, with a heavy focus on the junior college ranks.

"What impressed me most about Coach Mac is her passion for the overall development of her student-athletes and her ability to create authentic relationships," said Blue, who is entering her third season leading the Owls.

Prior to TSU, McClinic coached across the Volunteer State for four seasons at ETSU. Her efforts showed in both on and off-the-court awards. She mentored six all-conference performers, and Haynes-Overton to a pair of Southern Conference Defensive Player of the Year accolades and the SoCon Freshman of the Year honor. The Buccs' 2018 WNIT berth highlighted her stay in Johnson City.

As the team's academic liaison, ETSU averaged at least a 3.0 GPA or higher each semester. McClinic also was the team's compliance liaison and assisted with community service events.

McClinic enjoyed a stellar career at Middle Tennessee State where she was the 2004 Sun Belt Defensive Player of the Year and led the Blue Raiders to consecutive conference crowns in 2004-05. She graduated with the most games played (120) in program history and ranked second in career steals with 246. As a team captain, McClinic's Sun Belt Defensive Player of the Year award was buoyed by the fourth-most steals per game (3.5) in the NCAA. As a senior, she helped the Blue Raiders upset 12th-ranked North Carolina in the first round of the NCAA Tournament.

McClinic later began her coaching career at Alabama. From 2009-11, McClinic was the director of player development, and from 2011-12, became the director of operations. Her time in Tuscaloosa, along with a UA master's degree, led to three years as an assistant coach and recruiting coordinator at Pensacola State College, and a season at Murray State with the same titles.

This is a homecoming opportunity for McClinic. She starred at Eagles Landing High School in Stockbridge where her jersey was retired in 2019.

"Coach Mac has made significant contributions to the success of every program she has been a part of in her career," said Blue. "I am confident she will do the same here at KSU."



ASSISTANT COACH
CHRIS STRAKER

Straker comes to the Owls for the 2025-26 campaign after being the assistant coach and recruiting coordinator for the University of San Francisco.

"I am thrilled to welcome Coach Straker to our staff," Blue said. "His depth of experience, passion for the game, and proven ability to develop talent will be a tremendous asset to our program. He brings a fresh perspective and a commitment to our team's success both on and off the court. I'm confident that our student-athletes will benefit greatly from his leadership and mentorship."

With the Dons, Straker assisted in the development of post players and helped Debora Dos Santos earn All-Conference First Team honors. Prior to his stint with San Fran, he was an assistant coach for San Jose State women's basketball and helped coordinate the program's life-after-graduation program.

"I'm incredibly honored and excited to join the Kennesaw State women's basketball program," Straker said. "It's a privilege to work with Coach Blue, whose vision and leadership I deeply respect. I'm looking forward to contributing to the growth of our student-athletes and helping to continue build something special here at KSU."

Straker also served as assistant coach for Georgia Southern from 2019-22, helping GSU achieve a top five scoring offense in the nation and tops in the Sun Belt Conference. At Columbus State University, he helped the program to 2018-19 Peach Belt Conference runner-up. From 2012-17 he was an undergrad assistant for San Diego State, assisting with the team that made the 2012-13 WNIT.

While in the United Kingdom, he was head coach for Leeds Beckett University and led the team to the 2010-11 British Universities National Championship. As head coach of the Manchester Mystics in 2009, he coached the U18 team to a national title and amassed a 70-10 overall record. He graduated from San Diego State with a bachelor's degree in communications and from Columbus State with a master's in servant leadership in 2021.





KSU DI SINGLE-GAME HIGHS

Category	Value	TEAM	Game	Value	PLAYER	Player (Game)
Points Scored (GM)	109		vs. Coastal Georgia (12/29/22)	45		Amani Johnson at Liberty (3/7/20)
Fewest Pts Allowed	25*		vs. Coastal Georgia (12/2/23)			
Most Combined Points	193		at Furman (11/18/05)			
Fewest Combined Points	69		at Clemson (11/10/17)			
Points Scored (Half)	67		vs. Lipscomb - 2nd (2/25/17)			
Points Scored (Qtr)	35		vs. Lipscomb - 4th (2/25/17)			
FGs Made	39 (2x)		last: vs. Life (12/21/20)	16		Amani Johnson at Liberty (3/7/20)
FG Attempts	84		vs. Shorter (2/11/20)	49 (2x)		last: Aareon Smith vs. Lipscomb (1/9/16)
FG Percentage	60%		at Georgia Southern (11/17/19)	100%* - min. 8 made		Alexis Poole at Lipscomb (1/13/20)
3-Pointers Made	14		vs. North Florida (1/24/21)	9*		Ashley Holliday vs. Mercer (1/26/11)
3-Point Percentage	58.3%		vs. Louisiana Tech (2/13/25)	100%* - min. 6 made		Amani Johnson vs. North Florida (1/24/21)
Free Throws Made	30		at Queens (2/2/22)	18*		Kristina Wells vs. Lipscomb (2/6/14)
FT Attempts	40		vs. Lipscomb (12/5/09)	23*		Kristina Wells vs. Lipscomb (2/6/14)
FT Percentage	100%* (several)		last: vs. Middle Tennessee (1/9/25)	100%* - several (min. 6 made)		last: Trynce Taylor vs. USC Upstate (11/28/25)
Rebounds	68*		vs. Shorter (2/11/20)	22		Sametria Gideon vs. Lipscomb (2/25/11)
Assists	25		vs. Middle Georgia State (12/31/19)	13		Amani Johnson vs. Coastal Georgia (12/29/22)
Steals	22 (2x)		last: vs. Thomas (11/9/21)	9		Greteya Kelley vs. Jacksonville State (11/9/07)
Blocked Shots	11*		vs. Berry (1/16/21)	7		Jasmine McAllister vs. Jacksonville (3/6/15)

* - Also Kennesaw State Women's Basketball All-Time Record

BLUE ERA SINGLE-GAME HIGHS

Category	Value	TEAM	Game	Value	PLAYER	Player (Game)
Points Scored (GM)	109		vs. Coastal Georgia (12/29/22)	39		Prencis Harden at UTEP (2/20/25)
Fewest Pts Allowed	25*		vs. Coastal Georgia (12/2/23)			
Most Combined Points	175		at North Florida (2/24/24)			
Fewest Combined Points	92		vs. Chattanooga (11/29/23)			
Points Scored (Half)	59		vs. Coastal Georgia - 1st (12/29/22)			
Points Scored (Qtr)	33		vs. Coastal Georgia - 2nd (12/29/22)			
FGs Made	38 (2x)		last: vs. Coastal Georgia (12/29/22)	13 (2x)		last: Prencis Harden at UTEP (2/20/25)
FG Attempts	82		vs. Thomas (11/9/21)	27		Carly Hooks at North Florida (2/24/24)
FG Percentage	55.1%		vs. Jacksonville State (1/27/22)	90% - min. 8 made		Morgan Dillard at FGCU (1/20/24)
Lowest Opposing FG%	20.0%		vs. Coastal Georgia (12/3/23)			
3-Pointers Made	11		vs. Middle Georgia State (11/10/22)	6		Shania Nichols vs. Shorter (11/4/25)
3-Point Percentage	63.6%		vs. Queens (3/1/23)	83.3%		Shania Nichols vs. USC Upstate (11/28/25)
Free Throws Made	30		at Queens (2/2/22)	13		Prencis Harden at UTEP (2/20/25)
FT Attempts	39		at Queens (2/2/22)	14 (2x)		last: Prencis Harden at UTEP (2/20/25)
FT Percentage	100%*		vs. Middle Tennessee (1/9/25)	100%* - several (min. 6 made)		last: Trynce Taylor vs. USC Upstate (11/28/25)
Rebounds	61		vs. Middle Georgia State (11/10/22)	16 (2x)		last: Prencis Harden vs. MTSU (1/9/24)
Assists	24		vs. Thomas (11/9/21)	13		Amani Johnson vs. Coastal Georgia (12/29/22)
Steals	22		vs. Thomas (11/9/21)	6 (2x)		last: Carly Hooks vs. UTEP (3/11/25)
Blocked Shots	8		vs. Chattanooga (11/30/23)	6		TaTianna Stovall at Georgia State (12/14/25)





KSU DI SEASON HIGHS

Category	TEAM		PLAYER	
	Value	Season	Value	Player (Season)
Points Scored	2,098	2022-23	481	Alexis Poole (2019-20)
FGs Made	760	2022-23	178	Alexis Poole (2019-20)
FG Attempts	1,898	2022-23	411	Angie Smith (2010-11)
FG Percentage	43.4%	2019-20	57.8%	Alexis Poole (2019-20)
3-Pointers Made	179	2015-16	78	Taylor Mills (2011-12)
3-Point Percentage	33.0%	2015-16	40.8%	Breanna Hoover (2019-20)
Free Throws Made	430	2022-23	148	Kristina Wells (2013-14)
FT Attempts	626	2022-23	206	Kristina Wells (2013-14)
FT Percentage	78.0%	2019-20	86.7%	Deandrea Sawyers (2016-17)
Rebounds	1,243	2011-12	324	Sametria Gideon (2012-13)
Assists	416	2011-12	151	Amani Johnson (2022-23)
Steals	356	2007-08	106	Greteya Kelley (2007-08)
Blocked Shots	121	2011-12	49	Kyndall Golden (2023-24)

BLUE ERA SEASON HIGHS

Category	TEAM		PLAYER	
	Value	Season	Value	Player (Season)
Points Scored	2,098	2022-23	478	Prencis Harden (2024-25)
FGs Made	760	2022-23	173	Prencis Harden (2024-25)
FG Attempts	1,898	2022-23	409	Carly Hooks (2023-24)
FG Percentage	40.0%	2022-23	57.5%	Gabi Legister (2022-23)
3-Pointers Made	148	2022-23	45	Lyndsey Whilby (2022-23)
3-Point Percentage	30.2%	2022-23	36.7%	Jah'Che Whitfield (2022-23)
Free Throws Made	430	2022-23	132	Prencis Harden (2024-25)
FT Attempts	626	2022-23	173	Prencis Harden (2024-25)
FT Percentage	69.9%	2024-25	80.6%	Amani Johnson (2022-23)
Rebounds	1,122	2023-24	314	Prencis Harden (2024-25)
Assists	374	2024-25	151	Amani Johnson (2022-23)
Steals	255	2024-25	46	Whitfield & A. Johnson (2022-23)
Blocked Shots	104	2022-23	49	Kyndall Golden (2023-24)





THE LAST TIME KENNESAW STATE...

Scored 100 Points.....	vs. Coastal Georgia; Dec. 29, 2022 (109)
Won by 30 or More Points.....	vs. Thomas, Dec. 6, 2025 (50)
Led by 20+ at Halftime.....	vs. Thomas, Dec. 6, 2025 (26)
Shot 65% or Better from the Floor.....	N/A
Shot 60-64% from the Floor.....	at Georgia Southern, Nov. 17, 2019 (60.0%)
Shot 50-59% from the Floor.....	vs. Shorter, Nov. 4, 2025 (51.6%)
2+ Players with 20+ Points.....	vs. New Mexico State, Jan. 23, 2025 (Hooks and Harden)
2+ Players with 15-19 Points.....	at Georgia State, Dec. 14, 2025 (Nichols and Taylor)
3+ Players with 10+ Points.....	vs. Thomas, Dec. 6, 2025 (Flowers, Berry, Bendeck-Giron)
2+ Players with 10+ Rebounds.....	vs. New Mexico State, Jan. 23, 2025 (Berry and Harden)
2+ Players Post a Double-Double.....	vs. UTEP, Jan. 25, 2025 (Berry and Harden)
Faced AP Top 25 Opponent.....	at #22 FGCU, Feb. 17, 2022
Went to Overtime.....	at Sam Houston, Jan. 16, 2025
Played in Double Overtime.....	at North Florida, Feb. 24, 2024
Won after trailing by 15+.....	vs. Providence, Dec. 21, 2023 (19)
Won after trailing entering the fourth quarter.....	vs. Jax State, March 8, 2025 (44-39)

THE LAST TIME AN OWL...

Scored 40+ Points.....	Amani Johnson vs. Liberty, Mar. 7, 2020 (45)
Scored 30-39 Points.....	Prencis Harden at UTEP, Feb. 20, 2025 (39)
Grabbed 20+ Rebounds.....	Sametria Gideon vs. Lipscomb, Feb. 25, 2011 (22)
Grabbed 15-19 Rebounds.....	Prencis Harden vs. New Mexico State, Jan. 23, 2025 (16)
Had 10+ Assists.....	Amani Johnson vs. Coastal Georgia, Dec. 29, 2022 (13)
Had 5+ Steals.....	Keyarah Berry vs USC Upstate, Nov. 28, 2025 (5)
Had 5+ Blocked Shots.....	TaTianna Stovall at Georgia State, Dec. 14, 2025 (6)
Posted a Double-Double.....	Keyarah Berry vs USC Upstate, Nov. 28, 2025 (10 pts, 12 reb.)
Posted a Triple-Double.....	Kristina Wells at Lipscomb, Jan. 9, 2014 (18 pts, 11 reb, 11 assists)
Made 5+ 3-Pointers.....	Shania Nichols vs USC Upstate, Nov. 28, 2025 (5)





STARTING LINEUPS BY GAME

Opponent (Date)	Starting Lineup (# Start this Season)					# Lineup	Record
Shorter (Nov. 4)	Berry (1)	Fields (1)	Flowers (1)	Taylor (1)	Williamson (1)	1	
Florida Atlantic (Nov. 8)	Berry (2)	Fields (2)	Flowers (2)	Taylor (2)	Williamson (2)	1	
at ETSU (Nov. 12)	Berry (3)	Fields (3)	Flowers (3)	Taylor (3)	Williamson (3)	1	
Tennessee Tech (Nov. 15)	Berry (4)	Fields (4)	Flowers (4)	Taylor (4)	Williamson (4)	1	
at South Alabama (Nov. 25)	Berry (5)	Fields (5)	Flowers (5)	Taylor (5)	Williamson (5)	1	3-2
USC Upstate (Nov. 28)	Berry (6)	Nichols (1)	Flowers (6)	Taylor (6)	Williamson (6)	2	
at Alabama (Dec. 1)	Berry (7)	Nichols (2)	Flowers (7)	Taylor (7)	Williamson (7)	2	1-1
Thomas (Dec. 6)	Berry (8)	Stovall (1)	Flowers (8)	Taylor (8)	Williamson (8)	3	1-0
at Georgia State (Dec. 14)	Berry (9)	Nichols (3)	Flowers (9)	Taylor (9)	Stovall (2)	4	1-0
at Miami (Dec. 21)							
Life (Dec. 29)							
Middle Tennessee (Jan. 2)							
Western Kentucky (Jan. 4)							
at Missouri State (Jan. 8)							
at Florida International (Jan. 10)							
Jacksonville State (Jan. 17)							
UTEP (Jan. 22)							
New Mexico State (Jan. 24)							
at Louisiana Tech (Jan. 29)							
at Sam Houston (Jan. 31)							
Delaware (Feb. 5)							
Liberty (Feb. 7)							
at Western Kentucky (Feb. 12)							
at Middle Tennessee (Feb. 14)							
Sam Houston (Feb. 19)							
Louisiana Tech (Feb. 21)							
at New Mexico State (Feb. 26)							
at UTEP (Feb. 28)							
at Jacksonville State (March 7)							





#0 KAILYN FIELDS

GUARD | JUNIOR
5-6 | ATLANTA, GA.
GALLOWAY HS



Player Notes

>> Returning team leader in assists per game (2.2), total assists (68), three pointers made (29), three-point percentage (30.9%), and free throw percentage (72.0%)

>> Only returner to play in all 31 games last season

2025-26 STATS

Opponent	Date	GS	MIN	Total		3-Pointers		Free throws		Rebounds				PF	A	TO	BLK	STL	PTS	AVG
				FG-FGA	PCT	3FG-3FGA	PCT	FT-FTA	PCT	OFF	DEF	TOT	AVG							
Shorter	11/04/2025	*	29:38	3-4	.750	2-2	1.000	6-8	.750	1	3	4	4.0	1	3	1	0	2	14	14.0
Fla. Atlantic	11/08/2025	*	33:11	3-4	.750	1-2	.500	1-3	.333	0	0	0	2.0	2	2	1	0	3	8	11.0
at ETSU	11/12/2025	*	33:52	2-5	.400	2-4	.500	1-2	.500	0	0	0	1.3	2	4	1	0	3	7	9.7
Tennessee Tech	11/15/2025	*	35:28	2-7	.286	0-3	.000	1-2	.500	0	3	3	1.8	3	3	5	0	1	5	8.5
at South Alabama	11/25/2025	*	38:20	1-6	.167	0-3	.000	0-0	.000	0	0	0	1.4	1	6	4	0	3	2	7.2
Totals		5	170:29	11-26	.423	5-14	.357	9-15	.600	1	6	7	1.4	9	18	12	0	12	36	7.2

Player Averages

Games Played	Minutes/game	Points/game	FG Pct	3FG Pct	FT Pct	Rebounds/game	Assists/game	Turnovers/game	Assist/Turnover ratio	Steals/game	Blocks/game
5	34.1	7.2	42.3	35.7	60.0	1.4	3.6	2.4	1.5	2.4	0.0

CAREER STATS

				Field Goals		3-Point		F-Throws		Rebounds								Scoring		
SEASON	TEAM	GP-GS	MIN/AVG	FG-FGA	FG%	3FG-3FGA	3FG%	FT-FTA	FT%	OFF	DEF	TOT	AVG	PF-FO	A	TO	BLK	STL	PTS	AVG
2023-24	KennSt	30-21	611/20.4	31-107	.290	10-47	.213	11-17	.647	12	34	46	1.5	29-0	58	52	0	21	83	2.8
2024-25	KennSt	31-30	758/24.5	44-132	.333	29-94	.309	18-25	.720	9	33	42	1.4	27-0	68	62	3	35	135	4.4
2025-26	KennSt	5-5	170/34.1	11-26	.423	5-14	.357	9-15	.600	1	6	7	1.4	9-0	18	12	0	12	36	7.2
TOTAL		66-56	1539/23.3	86-265	.325	44-155	.284	38-57	.667	22	73	95	1.4	65-0	144	126	3	68	254	3.8

Single Game Highs

Statistic	Value	
Points	16	at Louisiana Tech 01/18/25
Rebounds	5	vs Providence 12/21/23
Assists	6	vs Georgetown 12/28/23, vs Queens (NC) 01/06/24, at South Alabama 11/25/25
Steals	5	vs Erskine 11/16/24
Blocks	2	vs Liberty 03/01/25
FG Made	6	at Louisiana Tech 01/18/25
FG Attempts	12	at Louisiana Tech 01/18/25
3FG Made	4	at Louisiana Tech 01/18/25
3FG Attempts	10	at Louisiana Tech 01/18/25
FT Made	6	vs Shorter 11/04/25
FT Attempts	8	vs Shorter 11/04/25





#1 MARIHYA HART

GUARD | JUNIOR
5-8 | MEMPHIS, TENN.
JACKSON STATE CC

**Player Notes**

>> Spent 2024-25 season at Jackson State CC
>> Earned Tennessee Community College Athletic Association (TCCAA) All-Conference First-Team honors

2025-26 STATS

Opponent	Date	GS	MIN	Total		3-Pointers		Free throws		Rebounds				PF	A	TO	BLK	STL	PTS	AVG
				FG-FGA	PCT	3FG-3FGA	PCT	FT-FTA	PCT	OFF	DEF	TOT	AVG							
Shorter	11/04/2025		09:31	2-4	.500	0-1	.000	1-1	1.000	0	2	2	2.0	1	0	0	0	0	5	5.0
Fla. Atlantic	11/08/2025		04:58	0-1	.000	0-0	.000	0-0	.000	0	2	2	2.0	0	0	1	0	0	0	2.5
at South Alabama	11/25/2025		02:60	0-3	.000	0-0	.000	0-0	.000	0	0	0	1.3	0	0	0	0	0	0	1.7
USC Upstate	11/28/2025		07:40	0-2	.000	0-0	.000	0-0	.000	0	1	1	1.3	0	0	0	0	0	0	1.3
at Alabama	12/01/2025		01:25	0-0	.000	0-0	.000	0-0	.000	0	2	2	1.4	0	0	0	0	0	0	1.0
Thomas (GA)	12/06/2025		23:49	3-7	.429	2-6	.333	0-0	.000	1	2	3	1.7	2	1	5	0	0	8	2.2
at Georgia St.	12/14/2025		08:48	2-4	.500	1-2	.500	0-0	.000	0	0	0	1.4	0	0	0	0	0	5	2.6
Totals		0	59:10	7-21	.333	3-9	.333	1-1	1.000	1	9	10	1.4	3	1	6	0	0	18	2.6

Player Averages

Games Played	Minutes/game	Points/game	FG Pct	3FG Pct	FT Pct	Rebounds/game	Assists/game	Turnovers/game	Assist/Turnover ratio	Steals/game	Blocks/game
7	8.5	2.6	33.3	33.3	100.0	1.4	0.1	0.9	0.2	0.0	0.0

CAREER STATS

				Field Goals		3-Point		F-Throws		Rebounds				Scoring						
SEASON	TEAM	GP-GS	MIN/AVG	FG-FGA	FG%	3FG-3FGA	3FG%	FT-FTA	FT%	OFF	DEF	TOT	AVG	PF-FO	A	TO	BLK	STL	PTS	AVG
2025-26	KennSt	7-0	59/8.5	7-21	.333	3-9	.333	1-1	1.000	1	9	10	1.4	3-0	1	6	0	0	18	2.6
TOTAL		7-0	59/8.5	7-21	.333	3-9	.333	1-1	1.000	1	9	10	1.4	3-0	1	6	0	0	18	2.6

Single Game Highs

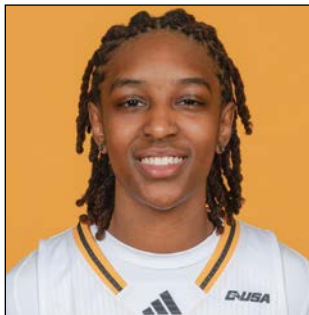
Statistic	Value	
Points	8	vs Thomas (GA) 12/06/25
Rebounds	3	vs Thomas (GA) 12/06/25
Assists	1	vs Thomas (GA) 12/06/25
FG Made	3	vs Thomas (GA) 12/06/25
FG Attempts	7	vs Thomas (GA) 12/06/25
3FG Made	2	vs Thomas (GA) 12/06/25
3FG Attempts	6	vs Thomas (GA) 12/06/25
FT Made	1	vs Shorter 11/04/25
FT Attempts	1	vs Shorter 11/04/25





#2 TRYNCE TAYLOR

FORWARD | R-SOPHOMORE
6-1 | ALPHARETTA, GA.
ST. FRANCIS HS



Player Notes

- >> Missed the entirety of the 2024-25 season due to a lower body injury
- >> In 2023-24, became the second Owl to win at least three ASUN freshman weekly awards, joining Owl legend Amani Johnson
- >> Led KSU in field goal percentage in 2023-24 at 50%

2025-26 STATS

Opponent	Date	GS	MIN	Total		3-Pointers		Free throws		Rebounds				PF	A	TO	BLK	STL	PTS	AVG
				FG-FGA	PCT	3FG-3FGA	PCT	FT-FTA	PCT	OFF	DEF	TOT	AVG							
Shorter	11/04/2025	*	22:31	5-9	.556	0-0	.000	0-2	.000	3	3	6	6.0	2	1	2	1	1	10	10.0
Fla. Atlantic	11/08/2025	*	25:54	3-12	.250	0-1	.000	1-4	.250	0	7	7	6.5	1	0	1	1	0	7	8.5
at ETSU	11/12/2025	*	30:15	3-7	.429	0-0	.000	2-2	1.000	2	10	12	8.3	2	2	1	0	1	8	8.3
Tennessee Tech	11/15/2025	*	33:19	7-12	.583	0-0	.000	3-7	.429	3	6	9	8.5	1	1	1	2	0	17	10.5
at South Alabama	11/25/2025	*	25:18	3-5	.600	0-0	.000	0-2	.000	2	4	6	8.0	4	1	4	0	1	6	9.6
USC Upstate	11/28/2025	*	19:23	2-4	.500	0-1	.000	6-6	1.000	0	6	6	7.7	3	1	3	0	0	10	9.7
at Alabama	12/01/2025	*	25:04	2-8	.250	0-1	.000	2-4	.500	1	5	6	7.4	4	0	3	0	0	6	9.1
Thomas (GA)	12/06/2025	*	17:18	2-6	.333	0-1	.000	0-0	.000	2	5	7	7.4	1	4	3	0	1	4	8.5
at Georgia St.	12/14/2025	*	40:00	8-9	.889	0-0	.000	0-0	.000	2	7	9	7.6	1	3	4	0	3	16	9.3
Totals		9	239:01	35-72	.486	0-4	.000	14-27	.519	15	53	68	7.6	19	13	22	4	7	84	9.3

Player Averages

Games Played	Minutes/game	Points/game	FG Pct	3FG Pct	FT Pct	Rebounds/game	Assists/game	Turnovers/game	Assist/Turnover ratio	Steals/game	Blocks/game
9	26.6	9.3	48.6	0.0	51.9	7.6	1.4	2.4	0.6	0.8	0.4

CAREER STATS

				Field Goals		3-Point		F-Throws		Rebounds									Scoring	
SEASON	TEAM	GP-GS	MIN/AVG	FG-FGA	FG%	3FG-3FGA	3FG%	FT-FTA	FT%	OFF	DEF	TOT	AVG	PF-FO	A	TO	BLK	STL	PTS	AVG
2023-24	KennSt	30-11	636/21.2	89-178	.500	1-2	.500	47-81	.580	56	95	151	5.0	65-1	19	70	14	37	226	7.5
2025-26	KennSt	9-9	239/26.6	35-72	.486	0-4	.000	14-27	.519	15	53	68	7.6	19-0	13	22	4	7	84	9.3
TOTAL		39-20	875/22.4	124-250	.496	1-6	.167	61-108	.565	71	148	219	5.6	84-1	32	92	18	44	310	7.9

Single Game Highs

Statistic	Value
Points	19 at Mississippi St. 12/11/23
Rebounds	12 at Mississippi St. 12/11/23, at ETSU 11/12/25
Assists	4 vs Thomas (GA) 12/06/25
Steals	4 at Jacksonville 02/22/24
Blocks	2 vs Providence 12/21/23, vs Austin Peay 02/01/24, vs Tennessee Tech 11/15/25
FG Made	8 at Mississippi St. 12/11/23, at Georgia St. 12/14/25
FG Attempts	12 vs San Diego St. 12/20/23, vs Fla. Atlantic 11/08/25, vs Tennessee Tech 11/15/25
3FG Made	1 at Austin Peay 03/08/24
3FG Attempts	1 6 times
FT Made	6 vs USC Upstate 11/28/25
FT Attempts	8 vs Georgetown 12/28/23





#4 FANTA DAFTE

FORWARD | GRADUATE
5-10 | PARIS, FRANCE
SAINT FRANCIS (PA.)

**Player Notes**

>> Spent the last two seasons at Saint Francis University

2025-26 STATS

Opponent	Date	GS	MIN	Total		3-Pointers		Free throws		Rebounds				PF	A	TO	BLK	STL	PTS	AVG
				FG-FGA	PCT	3FG-3FGA	PCT	FT-FTA	PCT	OFF	DEF	TOT	AVG							
Shorter	11/04/2025		04:57	0-1	.000	0-0	.000	0-0	.000	0	0	0	0.0	0	0	0	0	1	0	0.0
Thomas (GA)	12/06/2025		12:04	1-4	.250	1-3	.333	0-0	.000	0	0	0	0.0	0	0	0	0	0	3	1.5
Totals		0	17:01	1-5	.200	1-3	.333	0-0	.000	0	0	0	0.0	0	0	0	0	1	3	1.5

Player Averages

Games Played	Minutes/game	Points/game	FG Pct	3FG Pct	FT Pct	Rebounds/game	Assists/game	Turnovers/game	Assist/Turnover ratio	Steals/game	Blocks/game
2	8.5	1.5	20.0	33.3	0.0	0.0	0.0	0.0	0.0	0.5	0.0

CAREER STATS

SEASON	TEAM	GP-GS	MIN/AVG	Field Goals		3-Point		F-Throws		Rebounds				Scoring						
				FG-FGA	FG%	3FG-3FGA	3FG%	FT-FTA	FT%	OFF	DEF	TOT	AVG	PF-FO	A	TO	BLK	STL	PTS	AVG
2023-24	SF-PA	23-0	154/6.7	7-22	.318	0-2	.000	3-8	.375	8	17	25	1.1	20-0	2	5	2	5	17	0.7
2024-25	SF-PA	9-1	34/3.8	0-4	.000	0-2	.000	0-0	.000	0	6	6	0.7	1-0	0	2	1	1	0	0.0
2025-26	KennSt	2-0	17/8.5	1-5	.200	1-3	.333	0-0	.000	0	0	0	0.0	0-0	0	0	0	1	3	1.5
TOTAL FOR KennSt		2-0	17/8.5	1-5	.200	1-3	.333	0-0	.000	0	0	0	0.0	0-0	0	0	0	1	3	1.5
TOTAL		34-1	205/6.0	8-31	.258	1-7	.143	3-8	.375	8	23	31	0.9	21-0	2	7	3	7	20	0.6

Single Game Highs

Statistic	Value
Points	6 vs Youngstown St. 12/09/23
Rebounds	4 at Rutgers 11/18/23, at Penn St. 12/17/23, vs Youngstown St. 12/09/23
Assists	1 at Rutgers 11/18/23, at Sacred Heart 03/11/24
Steals	1 7 times
Blocks	2 at Sacred Heart 03/07/24
FG Made	2 vs Youngstown St. 12/09/23
FG Attempts	6 vs Youngstown St. 12/09/23
3FG Made	1 vs Thomas (GA) 12/06/25
3FG Attempts	3 vs Thomas (GA) 12/06/25
FT Made	2 vs Youngstown St. 12/09/23
FT Attempts	4 at Le Moyne 03/02/24





#8

EMAYA LEWIS**FORWARD | SOPHOMORE****6-3 | LOGANVILLE, GA.****FLORIDA ATLANTIC****Player Notes**

>> Played her freshman season at FAU

2025-26 STATS

Opponent	Date	GS	MIN	Total		3-Pointers		Free throws		Rebounds				PF	A	TO	BLK	STL	PTS	AVG
				FG-FGA	PCT	3FG-3FGA	PCT	FT-FTA	PCT	OFF	DEF	TOT	AVG							
Shorter	11/04/2025		11:04	2-3	.667	0-0	.000	0-0	.000	2	1	3	3.0	0	0	1	1	0	4	4.0
Fla. Atlantic	11/08/2025		01:24	0-1	.000	0-0	.000	0-0	.000	0	0	0	1.5	1	0	0	0	0	0	2.0
Tennessee Tech	11/15/2025		01:39	0-0	.000	0-0	.000	0-0	.000	0	0	0	1.0	1	0	0	0	0	0	1.3
at South Alabama	11/25/2025		00:31	0-0	.000	0-0	.000	0-0	.000	0	0	0	0.8	0	0	0	0	1	0	1.0
USC Upstate	11/28/2025		12:60	0-4	.000	0-0	.000	0-0	.000	1	3	4	1.4	0	0	0	2	0	0	0.8
at Alabama	12/01/2025		01:32	0-0	.000	0-0	.000	0-0	.000	0	0	0	1.2	1	0	1	1	1	0	0.7
Thomas (GA)	12/06/2025		15:43	4-8	.500	0-0	.000	0-0	.000	3	2	5	1.7	1	0	1	1	0	8	1.7
at Georgia St.	12/14/2025		05:56	0-1	.000	0-0	.000	0-0	.000	0	0	0	1.5	0	0	0	0	0	0	1.5
Totals		0	50:49	6-17	.353	0-0	.000	0-0	.000	6	6	12	1.5	4	0	3	5	2	12	1.5

Player Averages

Games Played	Minutes/game	Points/game	FG Pct	3FG Pct	FT Pct	Rebounds/game	Assists/game	Turnovers/game	Assist/Turnover ratio	Steals/game	Blocks/game
8	6.4	1.5	35.3	0.0	0.0	1.5	0.0	0.4	0.0	0.3	0.6

CAREER STATS

				Field Goals		3-Point		F-Throws		Rebounds								Scoring		
SEASON	TEAM	GP-GS	MIN/AVG	FG-FGA	FG%	3FG-3FGA	3FG%	FT-FTA	FT%	OFF	DEF	TOT	AVG	PF-FO	A	TO	BLK	STL	PTS	AVG
2024-25	FAU	22-0	190/8.6	21-56	.375	0-0	.000	5-8	.625	18	39	57	2.6	14-1	2	24	9	6	47	2.1
2025-26	KennSt	8-0	51/6.4	6-17	.353	0-0	.000	0-0	.000	6	6	12	1.5	4-0	0	3	5	2	12	1.5
TOTAL FOR KennSt		8-0	51/6.4	6-17	.353	0-0	.000	0-0	.000	6	6	12	1.5	4-0	0	3	5	2	12	1.5
TOTAL		30-0	240/8.0	27-73	.370	0-0	.000	5-8	.625	24	45	69	2.3	18-1	2	27	14	8	59	2.0

Single Game Highs

Statistic	Value	
Points	8	vs Thomas (GA) 12/06/25
Rebounds	8	vs Bethune-Cookman 11/16/24, vs Tulane 12/29/24
Assists	1	at TCU 12/04/24, at South Fla. 01/18/25
Steals	1	8 times
Blocks	3	vs Bethune-Cookman 11/16/24
FG Made	4	vs Thomas (GA) 12/06/25
FG Attempts	9	vs Tulane 12/29/24
FT Made	3	vs Bethune-Cookman 11/16/24
FT Attempts	4	vs Bethune-Cookman 11/16/24





#10

GABRIELA BENDECK-GIRON
GUARD | SENIOR
5-4 | BARRANQUILLA, COLOMBIA
PENSCAOLA STATE



Player Notes

>> 2024 NJCAA Academic All-American at Pensacola State

2025-26 STATS

Opponent	Date	GS	MIN	Total		3-Pointers		Free throws		Rebounds											
				FG-FGA	PCT	3FG-3FGA	PCT	FT-FTA	PCT	OFF	DEF	TOT	AVG	PF	A	TO	BLK	STL	PTS	AVG	
Shorter	11/04/2025		04:23	0-1	.000	0-0	.000	0-0	.000	0	0	0	0.0	1	0	0	0	0	0	0.0	
at Alabama	12/01/2025		00:54	0-0	.000	0-0	.000	0-0	.000	0	0	0	0.0	0	0	0	0	0	0	0.0	
Thomas (GA)	12/06/2025		19:49	5-7	.714	4-5	.800	1-2	.500	1	0	1	0.3	1	1	2	0	0	15	5.0	
at Georgia St.	12/14/2025		26:16	2-6	.333	2-5	.400	2-2	1.000	0	1	1	0.5	1	5	2	0	2	8	5.8	
Totals		0	51:22	7-14	.500	6-10	.600	3-4	.750	1	1	2	0.5	3	6	4	0	2	23	5.8	

Player Averages

Games Played	Minutes/ game	Points/ game	FG Pct	3FG Pct	FT Pct	Rebounds/ game	Assists/ game	Turnovers/ game	Assist/Turnover ratio	Steals/ game	Blocks/ game
4	12.8	5.8	50.0	60.0	75.0	0.5	1.5	1.0	1.5	0.5	0.0

CAREER STATS

			Field Goals		3-Point		F-Throws		Rebounds				Scoring							
SEASON	TEAM	GP-GS	MIN/AVG	FG-FGA	FG%	3FG-3FGA	3FG%	FT-FTA	FT%	OFF	DEF	TOT	AVG	PF-FO	A	TO	BLK	STL	PTS	AVG
2024-25	KennSt	10-0	55/5.5	7-23	.304	5-19	.263	2-2	1.000	1	5	6	0.6	2-0	3	3	0	0	21	2.1
2025-26	KennSt	4-0	51/12.8	7-14	.500	6-10	.600	3-4	.750	1	1	2	0.5	3-0	6	4	0	2	23	5.8
TOTAL		14-0	106/7.6	14-37	.378	11-29	.379	5-6	.833	2	6	8	0.6	5-0	9	7	0	2	44	3.1

Single Game Highs

Statistic	Value	
Points	15	vs Thomas (GA) 12/06/25
Rebounds	3	vs Erskine 11/16/24
Assists	5	at Georgia St. 12/14/25
Steals	2	at Georgia St. 12/14/25
FG Made	5	vs Thomas (GA) 12/06/25
FG Attempts	7	vs Thomas (GA) 12/06/25
3FG Made	4	vs Thomas (GA) 12/06/25
3FG Attempts	5	vs Thomas (GA) 12/06/25, at Georgia St. 12/14/25
FT Made	2	vs Life (GA) 11/04/24, at Georgia St. 12/14/25





#12 KAELYN FLOWERS

GUARD | SOPHOMORE
5-6 | MURFREESBORO, TENN..
FGCU



Player Notes

>> Played her freshman season at FGCU

2025-26 STATS

Opponent	Date	GS	MIN	Total		3-Pointers		Free throws		Rebounds				PF		A		TO		BLK		STL		PTS		AVG
				FG-FGA	PCT	3FG-3FGA	PCT	FT-FTA	PCT	OFF	DEF	TOT	AVG													
Shorter	11/04/2025	*	24:02	4-6	.667	0-0	.000	0-2	.000	1	2	3	3.0	0	7	1	0	3	8	8.0						
Fla. Atlantic	11/08/2025	*	23:13	1-2	.500	0-0	.000	1-2	.500	0	3	3	3.0	4	0	3	0	0	3	5.5						
at ETSU	11/12/2025	*	31:26	2-5	.400	0-2	.000	1-2	.500	0	0	0	2.0	3	2	4	0	1	5	5.3						
Tennessee Tech	11/15/2025	*	31:50	3-7	.429	1-2	.500	4-6	.667	0	2	2	2.0	3	5	2	0	4	11	6.8						
at South Alabama	11/25/2025	*	20:17	2-5	.400	0-1	.000	3-3	1.000	0	0	0	1.6	2	1	2	0	2	7	6.8						
USC Upstate	11/28/2025	*	37:00	2-4	.500	0-1	.000	2-2	1.000	0	0	0	1.3	0	1	1	0	4	6	6.7						
at Alabama	12/01/2025	*	30:29	2-9	.222	0-2	.000	4-4	1.000	0	1	1	1.3	5	4	2	0	2	8	6.9						
Thomas (GA)	12/06/2025	*	22:00	4-7	.571	2-3	.667	4-4	1.000	1	1	2	1.4	3	4	1	0	1	14	7.8						
at Georgia St.	12/14/2025	*	10:18	2-3	.667	0-1	.000	0-0	.000	0	0	0	1.2	3	0	2	0	2	4	7.3						
Totals		9	230:34	22-48	.458	3-12	.250	19-25	.760	2	9	11	1.2	23	24	18	0	19	66	7.3						

Player Averages

Games Played	Minutes/game	Points/game	FG Pct	3FG Pct	FT Pct	Rebounds/game	Assists/game	Turnovers/game	Assist/Turnover ratio	Steals/game	Blocks/game
9	25.6	7.3	45.8	25.0	76.0	1.2	2.7	2.0	1.3	2.1	0.0

CAREER STATS

				Field Goals		3-Point		F-Throws		Rebounds												Scoring	
SEASON	TEAM	GP-GS	MIN/AVG	FG-FGA	FG%	3FG-3FGA	3FG%	FT-FTA	FT%	OFF	DEF	TOT	AVG	PF-FO	A	TO	BLK	STL	PTS	AVG			
2024-25	FGCU	28-1	312/11.1	31-73	.425	9-34	.265	11-16	.688	5	21	26	0.9	32-0	12	23	1	24	82	2.9			
2025-26	KennSt	9-9	231/25.6	22-48	.458	3-12	.250	19-25	.760	2	9	11	1.2	23-1	24	18	0	19	66	7.3			
TOTAL FOR KennSt		9-9	231/25.6	22-48	.458	3-12	.250	19-25	.760	2	9	11	1.2	23-1	24	18	0	19	66	7.3			
TOTAL		37-10	542/14.7	53-121	.438	12-46	.261	30-41	.732	7	30	37	1.0	55-1	36	41	1	43	148	4.0			

Single Game Highs

Statistic	Value
Points	14 vs Thomas (GA) 12/06/25
Rebounds	3 vs Shorter 11/04/25, vs Fla. Atlantic 11/08/25
Assists	7 vs Shorter 11/04/25
Steals	6 vs New College (FL) 12/04/24
Blocks	1 vs Eastern Ky. 01/25/25
FG Made	5 vs North Florida 02/12/25
FG Attempts	9 vs New College (FL) 12/04/24, at Alabama 12/01/25
3FG Made	2 vs Thomas (GA) 12/06/25
3FG Attempts	3 8 times
FT Made	4 4 times
FT Attempts	6 vs Tennessee Tech 11/15/25





#13 SHANIA NICHOLS

GUARD | JUNIOR
5-7 | SAINT PAUL, MINN.
IU INDIANAPOLIS



Player Notes

- >> 2024 NJCAA DI Honorable Mention All-American at North Dakota State College of Science
- >> 2024 Mon-Dak First Team All-Conference
- >> Started her collegiate career at N.D. State College of Science before playing the 2024-25 season at IU Indianapolis

2025-26 STATS

Opponent	Date	GS	MIN	Total		3-Pointers		Free throws		Rebounds				PF	A	TO	BLK	STL	PTS	AVG
				FG-FGA	PCT	3FG-3FGA	PCT	FT-FTA	PCT	OFF	DEF	TOT	AVG							
Shorter	11/04/2025		18:37	7-11	.636	6-9	.667	0-0	.000	0	1	1	1.0	4	1	3	0	0	20	20.0
Fla. Atlantic	11/08/2025		23:36	2-4	.500	0-1	.000	0-2	.000	0	3	3	2.0	4	0	1	0	2	4	12.0
at ETSU	11/12/2025		12:28	1-2	.500	1-1	1.000	0-0	.000	1	0	1	1.7	3	0	2	0	0	3	9.0
Tennessee Tech	11/15/2025		18:03	2-3	.667	0-0	.000	0-0	.000	0	3	3	2.0	3	1	4	0	1	4	7.8
at South Alabama	11/25/2025		14:45	0-8	.000	0-7	.000	0-0	.000	0	2	2	2.0	1	1	3	0	2	0	6.2
USC Upstate	11/28/2025	*	28:11	6-7	.857	5-6	.833	3-3	1.000	1	1	2	2.0	3	0	3	0	1	20	8.5
at Alabama	12/01/2025	*	32:21	5-9	.556	3-5	.600	5-7	.714	0	5	5	2.4	3	4	5	0	2	18	9.9
at Georgia St.	12/14/2025	*	39:20	5-12	.417	2-4	.500	7-7	1.000	1	2	3	2.5	2	3	10	0	3	19	11.0
Totals		3	187:20	28-56	.500	17-33	.515	15-19	.789	3	17	20	2.5	23	10	31	0	11	88	11.0

Player Averages

Games Played	Minutes/game	Points/game	FG Pct	3FG Pct	FT Pct	Rebounds/game	Assists/game	Turnovers/game	Assist/Turnover ratio	Steals/game	Blocks/game
8	23.4	11.0	50.0	51.5	78.9	2.5	1.3	3.9	0.3	1.4	0.0

CAREER STATS

				Field Goals		3-Point		F-Throws		Rebounds												Scoring	
SEASON	TEAM	GP-GS	MIN/AVG	FG-FGA	FG%	3FG-3FGA	3FG%	FT-FTA	FT%	OFF	DEF	TOT	AVG	PF-FO	A	TO	BLK	STL	PTS	AVG			
2024-25	IUIndy	29-7	680/23.4	81-204	.397	36-98	.367	69-78	.885	16	56	72	2.5	81-1	52	83	4	34	267	9.2			
2025-26	KennSt	8-3	187/23.4	28-56	.500	17-33	.515	15-19	.789	3	17	20	2.5	23-0	10	31	0	11	88	11.0			
TOTAL FOR KennSt		8-3	187/23.4	28-56	.500	17-33	.515	15-19	.789	3	17	20	2.5	23-0	10	31	0	11	88	11.0			
TOTAL		37-10	867/23.4	109-260	.419	53-131	.405	84-97	.866	19	73	92	2.5	104-1	62	114	4	45	355	9.6			

Single Game Highs

Statistic	Value
Points	37 vs Southern Ill. 11/16/24
Rebounds	7 vs N.C. A&T 12/21/24
Assists	5 vs Milwaukee 01/29/25
Steals	5 vs Oakland 02/26/25
Blocks	1 4 times
FG Made	9 at Purdue Fort Wayne 01/25/25, vs Southern Ill. 11/16/24
FG Attempts	16 at Purdue Fort Wayne 01/25/25
3FG Made	6 vs Purdue Fort Wayne 12/11/24, vs Shorter 11/04/25
3FG Attempts	11 at Cleveland St. 12/07/24
FT Made	17 vs Southern Ill. 11/16/24
FT Attempts	18 vs Southern Ill. 11/16/24





#21 KEYARAH BERRY

GUARD | GRADUATE
5-9 | ROCKMART, GA.
INDIANA

**Player Notes**

>> 2025 Preseason All-CUSA Selection (Program's first preseason CUSA honor)
 >> Earned program's first CUSA Player of the Week award on 11/18
 >> Returning team leader in points per game (12.0), points (359), steals per game (1.4), steals (41), rebounds per game (5.7), total rebounds (172), field goal percentage (45.4%), field goals made (137) and free throws made (70)

2025-26 STATS

Opponent	Date	GS	MIN	Total		3-Pointers		Free throws		Rebounds											
				FG-FGA	PCT	3FG-3FGA	PCT	FT-FTA	PCT	OFF	DEF	TOT	AVG	PF	A	TO	BLK	STL	PTS	AVG	
Shorter	11/04/2025	*	13:33	5-9	.556	0-1	.000	3-3	1.000	1	0	1	1.0	1	0	1	0	3	13	13.0	
Fla. Atlantic	11/08/2025	*	24:14	10-16	.625	0-1	.000	5-9	.556	1	0	1	1.0	3	1	2	0	3	25	19.0	
at ETSU	11/12/2025	*	36:22	4-13	.308	0-2	.000	6-8	.750	5	3	8	3.3	3	2	2	0	3	14	17.3	
Tennessee Tech	11/15/2025	*	30:00	8-16	.500	0-0	.000	4-10	.400	3	3	6	4.0	4	0	0	0	3	20	18.0	
at South Alabama	11/25/2025	*	35:07	7-12	.583	1-1	1.000	4-4	1.000	3	7	10	5.2	1	0	1	2	2	19	18.2	
USC Upstate	11/28/2025	*	35:33	5-18	.278	0-6	.000	0-0	.000	3	9	12	6.3	4	2	3	0	5	10	16.8	
at Alabama	12/01/2025	*	36:00	9-15	.600	0-0	.000	1-3	.333	4	4	8	6.6	3	0	0	0	3	19	17.1	
Thomas (GA)	12/06/2025	*	25:32	4-8	.500	2-4	.500	2-2	1.000	1	4	5	6.4	1	1	0	1	3	12	16.5	
at Georgia St.	12/14/2025	*	23:20	4-9	.444	0-2	.000	1-2	.500	0	3	3	6.0	2	2	4	0	0	9	15.7	
Totals		9	259:42	56-116	.483	3-17	.176	26-41	.634	21	33	54	6.0	22	8	13	3	25	141	15.7	

Player Averages

Games Played	Minutes/game	Points/game	FG Pct	3FG Pct	FT Pct	Rebounds/game	Assists/game	Turnovers/game	Assist/Turnover ratio	Steals/game	Blocks/game
9	28.9	15.7	48.3	17.6	63.4	6.0	0.9	1.4	0.6	2.8	0.3

CAREER STATS

SEASON	TEAM	GP-GS	MIN/AVG	Field Goals FG-FGA FG%	3-Point 3FG-3FGA 3FG%	F-Throws FT-FTA FT%	Rebounds OFF DEF TOT AVG	PF-FO	A	TO	BLK	STL	PTS	AVG
2024-25	KennSt	10-0	55/5.5	7-23 .304	5-19 .263	2-2 1.000	1 5 6 0.6	2-0	3	3	0	0	21	2.1
2025-26	KennSt	4-0	51/12.8	7-14 .500	6-10 .600	3-4 .750	1 1 2 0.5	3-0	6	4	0	2	23	5.8
TOTAL		14-0	106/7.6	14-37 .378	11-29 .379	5-6 .833	2 6 8 0.6	5-0	9	7	0	2	44	3.1

Single Game Highs

Statistic	Value	
Points	15	vs Thomas (GA) 12/06/25
Rebounds	3	vs Erskine 11/16/24
Assists	5	at Georgia St. 12/14/25
Steals	2	at Georgia St. 12/14/25
FG Made	5	vs Thomas (GA) 12/06/25
FG Attempts	7	vs Thomas (GA) 12/06/25
3FG Made	4	vs Thomas (GA) 12/06/25
3FG Attempts	5	vs Thomas (GA) 12/06/25, at Georgia St. 12/14/25
FT Made	2	vs Life (GA) 11/04/24, at Georgia St. 12/14/25
FT Attempts	2	vs Life (GA) 11/04/24, vs Thomas (GA) 12/06/25, at Georgia St. 12/14/25





#22

LATAZIA WILLIAMSON
FORWARD | JUNIOR
6-1 | NASHVILLE, TENN.
MEMPHIS



Player Notes

- >> Spent her first two seasons at Memphis
- >> Recorded four multi-block games last season

2025-26 STATS

Opponent	Date	GS	MIN	Total		3-Pointers		Free throws		Rebounds				PF	A	TO	BLK	STL	PTS	AVG
				FG-FGA	PCT	3FG-3FGA	PCT	FT-FTA	PCT	OFF	DEF	TOT	AVG							
Shorter	11/04/2025	*	14:42	0-1	.000	0-0	.000	2-2	1.000	1	2	3	3.0	3	0	0	1	0	2	2.0
Fla. Atlantic	11/08/2025	*	10:20	3-4	.750	0-0	.000	1-3	.333	4	1	5	4.0	5	0	1	0	0	7	4.5
at ETSU	11/12/2025	*	25:19	9-14	.643	0-0	.000	2-2	1.000	1	4	5	4.3	5	0	2	0	0	20	9.7
Tennessee Tech	11/15/2025	*	06:36	0-1	.000	0-0	.000	0-0	.000	1	0	1	3.5	4	0	2	0	0	0	7.3
at South Alabama	11/25/2025	*	25:27	2-5	.400	0-0	.000	2-6	.333	1	3	4	3.6	1	0	4	0	0	6	7.0
USC Upstate	11/28/2025	*	29:26	2-7	.286	0-0	.000	0-0	.000	1	2	3	3.5	1	1	1	2	1	4	6.5
at Alabama	12/01/2025	*	22:45	2-10	.200	0-0	.000	0-2	.000	3	1	4	3.6	4	0	3	2	3	4	6.1
Thomas (GA)	12/06/2025	*	19:27	2-6	.333	0-0	.000	1-4	.250	2	4	6	3.9	2	0	2	0	0	5	6.0
Totals		8	154:02	20-48	.417	0-0	.000	8-19	.421	14	17	31	3.9	25	1	15	5	4	48	6.0

Player Averages

Games Played	Minutes/game	Points/game	FG Pct	3FG Pct	FT Pct	Rebounds/game	Assists/game	Turnovers/game	Assist/Turnover ratio	Steals/game	Blocks/game
8	19.3	6.0	41.7	0.0	42.1	3.9	0.1	1.9	0.1	0.5	0.6

CAREER STATS

SEASON	TEAM	GP-GS	MIN/AVG	Field Goals		3-Point		F-Throws		Rebounds				Scoring						
				FG-FGA	FG%	3FG-3FGA	3FG%	FT-FTA	FT%	OFF	DEF	TOT	AVG	PF-FO	A	TO	BLK	STL	PTS	AVG
2023-24	Mem	7-0	24/3.4	3-13	.231	0-0	.000	1-3	.333	6	4	10	1.4	6-0	0	3	1	0	7	1.0
2024-25	Mem	26-6	306/11.8	18-54	.333	0-3	.000	12-16	.750	18	36	54	2.1	50-0	7	23	19	4	48	1.8
2025-26	KennSt	8-8	154/19.3	20-48	.417	0-0	.000	8-19	.421	14	17	31	3.9	25-2	1	15	5	4	48	6.0
TOTAL FOR KennSt		8-8	154/19.3	20-48	.417	0-0	.000	8-19	.421	14	17	31	3.9	25-2	1	15	5	4	48	6.0
TOTAL		41-14	484/11.8	41-115	.357	0-3	.000	21-38	.553	38	57	95	2.3	81-2	8	41	25	8	103	2.5

Single Game Highs

Statistic	Value	
Points	20	at ETSU 11/12/25
Rebounds	8	vs Charlotte 01/29/25
Assists	1	8 times
Steals	3	at Alabama 12/01/25
Blocks	4	at UTSA 02/15/25
FG Made	9	at ETSU 11/12/25
FG Attempts	14	at ETSU 11/12/25
3FG Attempts	1	at Southern Miss. 12/08/24, at ETSU 12/01/24, at UAB 01/08/25
FT Made	2	9 times
FT Attempts	6	at South Alabama 11/25/25





#23

TATIANNA STOVALL
FORWARD | FRESHMAN
6-1 | CLEVELAND, TENN.
BRADLEY CENTRAL HS



Player Notes

- >> 2022 TSSAA State Tournament MVP for Bradley Central HS
- >> Four-time state champion and two-time all-state selection
- >> Set the program-record with 57 blocks at The Webb School

2025-26 STATS

Opponent	Date	GS	MIN	Total		3-Pointers		Free throws		Rebounds				PF	A	TO	BLK	STL	PTS	AVG
				FG-FGA	PCT	3FG-3FGA	PCT	FT-FTA	PCT	OFF	DEF	TOT	AVG							
Shorter	11/04/2025		18:54	2-7	.286	0-1	.000	1-1	1.000	2	2	4	4.0	1	1	0	0	2	5	5.0
Fla. Atlantic	11/08/2025		20:35	1-4	.250	0-0	.000	3-4	.750	4	5	9	6.5	3	1	3	0	1	5	5.0
at ETSU	11/12/2025		18:57	1-2	.500	0-0	.000	0-0	.000	2	3	5	6.0	4	3	2	0	0	2	4.0
Tennessee Tech	11/15/2025		27:42	1-4	.250	0-0	.000	0-2	.000	2	6	8	6.5	3	2	2	0	2	2	3.5
at South Alabama	11/25/2025		25:19	5-5	1.000	0-0	.000	0-0	.000	2	1	3	5.8	0	0	2	0	0	10	4.8
USC Upstate	11/28/2025		16:56	2-3	.667	0-0	.000	0-0	.000	2	0	2	5.2	4	1	2	1	0	4	4.7
at Alabama	12/01/2025		28:07	4-6	.667	0-0	.000	2-2	1.000	1	2	3	4.9	4	0	1	2	1	10	5.4
Thomas (GA)	12/06/2025	*	16:10	2-4	.500	0-0	.000	0-0	.000	0	4	4	4.8	2	2	0	1	3	4	5.3
at Georgia St.	12/14/2025	*	32:59	3-7	.429	0-0	.000	2-2	1.000	4	3	7	5.0	3	2	1	6	0	8	5.6
Totals		2	205:39	21-42	.500	0-1	.000	8-11	.727	19	26	45	5.0	24	12	13	10	9	50	5.6

Player Averages

Games Played	Minutes/game	Points/game	FG Pct	3FG Pct	FT Pct	Rebounds/game	Assists/game	Turnovers/game	Assist/Turnover ratio	Steals/game	Blocks/game
9	22.9	5.6	50.0	0.0	72.7	5.0	1.3	1.4	0.9	1.0	1.1

CAREER STATS

				Field Goals		3-Point		F-Throws		Rebounds				Scoring						
SEASON	TEAM	GP-GS	MIN/AVG	FG-FGA	FG%	3FG-3FGA	3FG%	FT-FTA	FT%	OFF	DEF	TOT	AVG	PF-FO	A	TO	BLK	STL	PTS	AVG
2025-26	KennSt	9-2	206/22.9	21-42	.500	0-1	.000	8-11	.727	19	26	45	5.0	24-0	12	13	10	9	50	5.6
TOTAL		9-2	206/22.9	21-42	.500	0-1	.000	8-11	.727	19	26	45	5.0	24-0	12	13	10	9	50	5.6

Single Game Highs

Statistic	Value
Points	10 at Alabama 12/01/25, at South Alabama 11/25/25
Rebounds	9 vs Fla. Atlantic 11/08/25
Assists	3 at ETSU 11/12/25
Steals	3 vs Thomas (GA) 12/06/25
Blocks	6 at Georgia St. 12/14/25
FG Made	5 at South Alabama 11/25/25
FG Attempts	7 vs Shorter 11/04/25, at Georgia St. 12/14/25
3FG Attempts	1 vs Shorter 11/04/25
FT Made	3 vs Fla. Atlantic 11/08/25
FT Attempts	4 vs Fla. Atlantic 11/08/25





#25

MADYSON ELLIOTT

GUARD | FRESHMAN

5-10 | MEMPHIS, TENN.

NASHVILLE MAGNET HS



Player Notes

- >> Named one of the top point guards in the state of Tennessee by TN Varsity and Prep Girls Hoops
- >> Four-time all-district selection

2025-26 STATS

Opponent	Date	GS	MIN	Total		3-Pointers		Free throws		Rebounds				PF	A	TO	BLK	STL	PTS	AVG
				FG-FGA	PCT	3FG-3FGA	PCT	FT-FTA	PCT	OFF	DEF	TOT	AVG							
Shorter	11/04/2025		20:16	2-5	.400	0-1	.000	0-0	.000	1	0	1	1.0	1	1	2	0	0	4	4.0
Fla. Atlantic	11/08/2025		27:05	3-6	.500	0-1	.000	3-4	.750	1	1	2	1.5	0	0	1	1	0	9	6.5
at ETSU	11/12/2025		08:34	1-1	1.000	1-1	1.000	0-0	.000	0	1	1	1.3	0	0	0	0	0	3	5.3
Tennessee Tech	11/15/2025		13:54	1-3	.333	0-1	.000	0-0	.000	1	0	1	1.3	1	1	1	0	0	2	4.5
at South Alabama	11/25/2025		08:31	1-1	1.000	0-0	.000	0-0	.000	2	0	2	1.4	1	0	0	0	0	2	4.0
USC Upstate	11/28/2025		12:52	0-3	.000	0-1	.000	1-2	.500	1	0	1	1.3	1	0	1	0	0	1	3.5
at Alabama	12/01/2025		21:19	0-7	.000	0-2	.000	0-0	.000	1	1	2	1.4	2	1	0	0	1	0	3.0
Thomas (GA)	12/06/2025		24:41	3-6	.500	0-2	.000	0-1	.000	2	3	5	1.9	4	1	3	0	2	6	3.4
at Georgia St.	12/14/2025		11:58	0-1	.000	0-0	.000	0-0	.000	1	3	4	2.1	0	1	0	0	0	0	3.0
Totals		0	149:10	11-33	.333	1-9	.111	4-7	.571	10	9	19	2.1	10	5	8	1	3	27	3.0

Player Averages

Games Played	Minutes/game	Points/game	FG Pct	3FG Pct	FT Pct	Rebounds/game	Assists/game	Turnovers/game	Assist/Turnover ratio	Steals/game	Blocks/game
9	16.6	3.0	33.3	11.1	57.1	2.1	0.6	0.9	0.6	0.3	0.1

CAREER STATS

				Field Goals		3-Point		F-Throws		Rebounds				Scoring						
SEASON	TEAM	GP-GS	MIN/AVG	FG-FGA	FG%	3FG-3FGA	3FG%	FT-FTA	FT%	OFF	DEF	TOT	AVG	PF-FO	A	TO	BLK	STL	PTS	AVG
2025-26	KennSt	9-0	149/16.6	11-33	.333	1-9	.111	4-7	.571	10	9	19	2.1	10-0	5	8	1	3	27	3.0
TOTAL		9-0	149/16.6	11-33	.333	1-9	.111	4-7	.571	10	9	19	2.1	10-0	5	8	1	3	27	3.0

Single Game Highs

Statistic	Value	
Points	9	vs Fla. Atlantic 11/08/25
Rebounds	5	vs Thomas (GA) 12/06/25
Assists	1	5 times
Steals	2	vs Thomas (GA) 12/06/25
Blocks	1	vs Fla. Atlantic 11/08/25
FG Made	3	vs Fla. Atlantic 11/08/25, vs Thomas (GA) 12/06/25
FG Attempts	7	at Alabama 12/01/25
3FG Made	1	at ETSU 11/12/25
3FG Attempts	2	at Alabama 12/01/25, vs Thomas (GA) 12/06/25
FT Made	3	vs Fla. Atlantic 11/08/25
FT Attempts	4	vs Fla. Atlantic 11/08/25





#33 MAME KANE

CENTER | SOPHOMORE
6-6 | DAKAR, SENEGAL
THE ACADEMY (FLA.)

**Player Notes**

- >> First KSU women's basketball DI student-athlete from Senegal
- >> Tallest player (6'6") in KSU women's basketball DI history

2025-26 STATS

Opponent	Date	GS	MIN	Total FG-FGA	PCT	3-Pointers 3FG-3FGA	PCT	Free throws FT-FTA	PCT	Rebounds				PF	A	TO	BLK	STL	PTS	AVG
Shorter	11/04/2025		07:52	0-1	.000	0-0	.000	0-0	.000	1	3	4	4.0	0	0	0	0	0	0	0.0
Fla. Atlantic	11/08/2025		05:30	0-0	.000	0-0	.000	0-0	.000	0	1	1	2.5	2	0	0	0	0	0	0.0
at ETSU	11/12/2025		02:47	1-2	.500	0-0	.000	0-0	.000	1	0	1	2.0	0	0	0	0	0	2	0.7
Tennessee Tech	11/15/2025		01:30	0-0	.000	0-0	.000	0-0	.000	0	0	0	1.5	0	0	0	1	0	0	0.5
at South Alabama	11/25/2025		03:24	1-3	.333	0-0	.000	0-0	.000	0	0	0	1.2	0	0	0	0	0	2	0.8
at Alabama	12/01/2025		00:05	0-0	.000	0-0	.000	0-0	.000	0	0	0	1.0	0	0	0	0	0	0	0.7
Thomas (GA)	12/06/2025		03:27	1-2	.500	0-0	.000	0-1	.000	0	0	0	0.9	0	0	2	0	0	2	0.9
Totals		0	24:35	3-8	.375	0-0	.000	0-1	.000	2	4	6	0.9	2	0	2	1	0	6	0.9

Player Averages

Games Played	Minutes/ game	Points/ game	FG Pct	3FG Pct	FT Pct	Rebounds/ game	Assists/ game	Turnovers/ game	Assist/Turnover ratio	Steals/ game	Blocks/ game
7	3.5	0.9	37.5	0.0	0.0	0.9	0.0	0.3	0.0	0.0	0.1

CAREER STATS**KANE, Mame**

SEASON	TEAM	GP-GS	MIN/AVG	Field Goals		3-Point		F-Throws		Rebounds				Scoring						
				FG-FGA	FG%	3FG-3FGA	3FG%	FT-FTA	FT%	OFF	DEF	TOT	AVG	PF-FO	A	TO	BLK	STL	PTS	AVG
2024-25	KennSt	21-0	90/4.3	5-15	.333	0-0	.000	4-6	.667	4	17	21	1.0	24-0	0	8	3	0	14	0.7
2025-26	KennSt	7-0	25/3.5	3-8	.375	0-0	.000	0-1	.000	2	4	6	0.9	2-0	0	2	1	0	6	0.9
TOTAL		28-0	114/4.1	8-23	.348	0-0	.000	4-7	.571	6	21	27	1.0	26-0	0	10	4	0	20	0.7

Single Game Highs

Statistic	Value
Points	7 vs Erskine 11/16/24
Rebounds	4 at Seattle U 12/16/24, vs Shorter 11/04/25
Blocks	2 vs Life (GA) 11/04/24
FG Made	2 vs Erskine 11/16/24
FG Attempts	3 at Belmont 11/14/24, at South Alabama 11/25/25, vs Erskine 11/16/24
FT Made	3 vs Erskine 11/16/24
FT Attempts	4 vs Erskine 11/16/24





Game Records

Record	Overall	Home	Away	Neutral
ALL GAMES	6-3	4-1	2-2	0-0
CONFERENCE	0-0	0-0	0-0	0-0
NON-CONFERENCE	6-3	4-1	2-2	0-0

Score by Periods

Team	1st	2nd	3rd	4th	OT	TOT
Kennesaw St.	139	159	169	135	0	602
Opponents	135	124	138	117	0	514

Team Box Score

No.	Player				Total		3-Point		F-Throw		Rebounds														
		GP-GS	MIN	AVG	FG-FGA	FG%	3FG-3FGA	3FG%	FT-FTA	FT%	OFF	DEF	TOT	AVG	PF	DQ	A	TO	BLK	STL	PTS	AVG			
21	BERRY, Keyarah	9-9	259:42	28.9	56-116	.483	3-17	.176	26-41	.634	21	33	54	6.0	22	0	8	13	3	25	141	15.7			
13	NICHOLS, Shania	8-3	187:20	23.4	28-56	.500	17-33	.515	15-19	.789	3	17	20	2.5	23	0	10	31	0	11	88	11.0			
2	TAYLOR, Trynce	9-9	239:01	26.6	35-72	.486	0-4	.000	14-27	.519	15	53	68	7.6	19	0	13	22	4	7	84	9.3			
12	FLOWERS, Kaelyn	9-9	230:34	25.6	22-48	.458	3-12	.250	19-25	.760	2	9	11	1.2	23	1	24	18	0	19	66	7.3			
0	FIELDS, Kailyn	5-5	170:29	34.1	11-26	.423	5-14	.357	9-15	.600	1	6	7	1.4	9	0	18	12	0	12	36	7.2			
22	WILLIAMSON, Latazia	8-8	154:02	19.3	20-48	.417	0-0	.000	8-19	.421	14	17	31	3.9	25	2	1	15	5	4	48	6.0			
10	BENDECK-GIRON, Gabriela	4-0	51:22	12.8	7-14	.500	6-10	.600	3-4	.750	1	1	2	0.5	3	0	6	4	0	2	23	5.8			
23	STOVALL, TaTianna	9-2	205:39	22.9	21-42	.500	0-1	.000	8-11	.727	19	26	45	5.0	24	0	12	13	10	9	50	5.6			
25	ELLIOTT, Madyson	9-0	149:10	16.6	11-33	.333	1-9	.111	4-7	.571	10	9	19	2.1	10	0	5	8	1	3	27	3.0			
1	HART, Marihya	7-0	59:10	8.5	7-21	.333	3-9	.333	1-1	1.000	1	9	10	1.4	3	0	1	6	0	0	18	2.6			
4	DAFFE, Fanta	2-0	17:01	8.5	1-5	.200	1-3	.333	0-0	.000	0	0	0	0.0	0	0	0	0	0	1	3	1.5			
8	LEWIS, Emaya	8-0	50:49	6.4	6-17	.353	0-0	.000	0-0	.000	6	6	12	1.5	4	0	0	3	5	2	12	1.5			
33	KANE, Mame	8-0	25:40	3.2	3-8	.375	0-0	.000	0-1	.000	2	4	6	0.8	2	0	0	2	1	0	6	0.8			
Team											20	26	46					11							
Total		9	1800		228-506	.451	39-112	.348	107-170	.629	115	216	331	36.8	167	3	98	158	29	95	602	66.9			
Opponents		9	1800		179-469	.382	45-139	.324	111-169	.657	90	179	269	29.9	157	3	87	170	27	83	514	57.1			

Team Statistics

	KENNST	OPP
Scoring	602	514
Points per game	66.9	57.1
Scoring margin	+9.8	-
Field goals-att	228-506	179-469
Field goal pct	.451	.382
3 point fg-att	39-112	45-139
3-point FG pct	.348	.324
3-pt FG made per game	4.3	5.0
Free throws-att	107-170	111-169
Free throw pct	.629	.657
F-Throws made per game	11.9	12.3
Rebounds	331	269
Rebounds per game	36.8	29.9
Rebounding margin	+6.9	-
Assists	98	87
Assists per game	10.9	9.7
Turnovers	158	170
Turnovers per game	17.6	18.9
Turnover margin	+1.3	-
Assist/turnover ratio	0.6	0.5
Steals	95	83
Steals per game	10.6	9.2
Blocks	29	27
Blocks per game	3.2	3.0
Winning streak	2	-
Home win streak	3	-
Attendance	2841	3940
Home games-Avg/Game	5-568	4-985
Neutral site-Avg/Game	-	0-0

Team Results

Date	Opponent		Score	Att.
11/04/2025	Shorter	W	85-36	883
11/08/2025	Fla. Atlantic	L	68-69	567
11/12/2025	at ETSU	W	64-63	234
11/15/2025	Tennessee Tech	W	61-60	515
11/25/2025	at South Alabama	L	54-66	380
11/28/2025	USC Upstate	W	55-41	471
12/01/2025	at Alabama	L	65-79	2467
12/06/2025	Thomas (GA)	W	81-37	405
12/14/2025	at Georgia St.	W	69-63	859





2025-26 ROSTER

No.	Name	Pos.	Ht.	Cl.	Name Pronunciation	Hometown / Previous School
0	Kailyn Fields	G	5-6	Jr.	Kay-lynn	Atlanta, Ga. / Galloway HS
1	Marihya Hart	G	5-8	Jr.	Mariah	Memphis, Tenn. / Jackson State CC
2	Trynce Taylor	F	6-1	R-So.	Trin-niece	Alpharetta, Ga. / St. Francis HS
4	Fanta Daffe	F	5-10	Gr.	Fawn-tuh Daf-fay	Paris, France / Saint Francis (Pa.)
8	Emaya Lewis	F	6-3	So.		Loganville, Ga. / FAU
10	Gabriela Bendeck-Giron	G	5-4	Sr.	Gear-on	Barranquilla, Colombia / Pensacola State
12	Kaelyn Flowers	G	5-6	So.		Murfreesboro, Tenn. / FGCU
13	Shania Nichols	G	5-7	Jr.	Shun-iah	Saint Paul, Minn. / IU Indianapolis
21	Keyarah Berry	G	5-9	Gr.		Rockmart, Ga. / Indiana
22	Latazia Williamson	F	6-1	Jr.	LAH-tay-juh	Nashville, Tenn. / Memphis
23	TaTianna Stovall	F	6-1	Fr.		Cleveland, Tenn. / Bradley Central HS
25	Madysen Elliott	G	5-10	Fr.		Memphis, Tenn. / East Nashville Magnet HS
33	Mame Kane	C	6-6	So.	Mom Cain	Dakar, Senegal / The Academy (Orlando, Fla.)

Name	Title	Season at KSU	Alma Mater (Grad Year)
Octavia Blue	Head Coach	Fifth	Miami (1994)
Keisha McClinic	Associate Head Coach	Third	Middle Tennessee St (2004)
Chris Straker	Assistant Coach	First	San Diego State (2018)
Erykah Davenport	Director of Women's Basketball Operations	First	Miami (2018)

ROSTER BY POSITION

No.	Centers (1)	Class
33	Mame Kane	Freshman
No.	Forwards (5)	Class
2	Trynce Taylor	R-Sophomore
4	Fanta Daffe	Graduate
8	Emaya Lewis	Sophomore
22	Latazia Williamson	Junior
23	TaTianna Stovall	Freshman
No.	Guards (7)	Class
0	Kailyn Fields	Sophomore
1	Marihya Hart	Junior
10	Gabriela Bendeck-Giron	Junior
12	Kaelyn Flowers	Sophomore
13	Shania Nichols	Junior
21	Keyarah Berry	Graduate
25	Madysen Elliott	Freshman

ROSTER BY CLASS

No.	Freshmen (2)	Position
23	TaTianna Stovall	Forward
25	Madysen Elliott	Guard
No.	Sophomores (4)	Position
2	Trynce Taylor (Redshirt)	Forward
8	Emaya Lewis	Forward
12	Kaelyn Flowers	Guard
33	Mame Kane	Center
No.	Juniors (4)	Position
0	Kailyn Fields	Guard
1	Marihya Hart	Guard
13	Shania Nichols	Guard
22	Latazia Williamson	Forward
No.	Seniors (1)	Position
10	Gabriela Bendeck-Giron	Guard
No.	Graduates (2)	Position
4	Fanta Daffe	Forward
21	Keyarah Berry	Guard

ROSTER BY HOMETOWN

No.	Georgia (4)	City
0	Kailyn Fields	Atlanta
2	Trynce Taylor	Alpharetta
8	Emaya Lewis	Loganville
21	Keyarah Berry	Rockmart
No.	Minnesota (1)	City
13	Shania Nichols	Saint Paul
No.	Tennessee (5)	City
1	Marihya Hart	Memphis
12	Kaelyn Flowers	Murfreesboro
22	Latazia Williamson	Nashville
23	TaTianna Stovall	Cleveland
25	Madysen Elliott	Memphis
No.	Colombia (1)	City
10	Gabriela Bendeck-Giron	Barranquilla
No.	Senegal (1)	City
33	Mame Kane	Dakar
No.	France (1)	City
4	Fanta Daffe	Paris





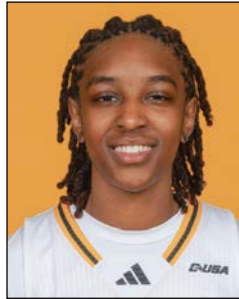
2025-26 TV/RADIO CHART



**#0
KAILYN
FIELDS**
5-6 | Junior
Guard
Atlanta, Ga.



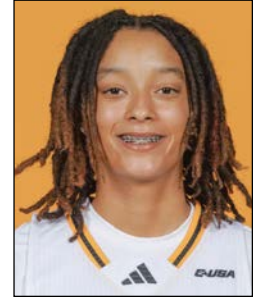
**#1
MARIHYA
HART**
5-8 | Junior
Guard
Memphis, Tenn.



**#2
TRYNCE
TAYLOR**
6-1 | R-Sophomore
Forward
Alpharetta, Ga.



**#4
FANTA
DAFFE**
5-10 | Graduate
Forward
Paris, France



**#8
EMAYA
LEWIS**
6-3 | Sophomore
Forward
Loganville, Ga.



**#10
GABRIELA
BENDECK-GIRON**
5-4 | Senior
Guard
Barranquilla, Colombia



**#12
KAELYN
FLOWERS**
5-6 | Sophomore
Guard
Murfreesboro, Tenn.



**#13
SHANIA
NICHOLS**
5-7 | Junior
Guard
Saint Paul, Minn.



**#21
KEYARAH
BERRY**
5-9 | Graduate
Guard
Rockmart, Ga.



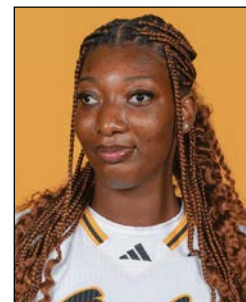
**#22
LATAZIA
WILLIAMSON**
6-1 | Junior
Forward
Nashville, Tenn.



**#23
TATIANNA
STOVALL**
6-1 | Freshman
Forward
Cleveland, Tenn.



**#25
MADYSON
ELLIOTT**
5-10 | Freshman
Guard
Memphis, Tenn.



**#33
MAME
KANE**
6-6 | Sophomore
Center
Dakar, Senegal

