



2023 NEBRASKA WOMEN'S TENNIS

HOME AWAY

1.27	1.29	2.4	2.4	2.10	2.12	2.17	2.19	2.24	2.26	2.26	3.10
											
3.17	3.19	3.22	3.25	3.31	4.2	4.7	4.9	4.14	4.16	4.22	4.23
											



UNIVERSITY OF NEBRASKA WOMEN'S TENNIS

2023 Season Preview.....1-3
 2023 Roster 2
 2023 Schedule..... 2
 2023 Big Ten Championships Info..... 2
 2023 Opponent Information 3

Coaches and Support Staff4-10
 Head Coach Scott Jacobson 4
 Associate Head Coach Lisa Hart..... 5
 University of Nebraska Administration 6
 Director of Athletics Trev Alberts 7
 Senior Associate A.D./Life Skills Keith Zimmer... 8
 Deputy A.D./SWA Marquita Armstead 8
 Women's Tennis Support Staff 8
 Nebraska Chancellor Ronnie Green 9
 Faculty Athletic Representative Scott Fuess Jr. ... 9
 Big Ten Conference 10

2023 Huskers 11-20
 Samantha Alicea 11
 Isabel Adrover Gallego..... 12
 Raphaëlle Lacasse 13
 Vivien Sandberg 14
 Anfisa Danilchenko 15
 Lucy Loy 16
 Jillian Roa 17
 Ana Carmen Zamburek 18

2022 Review and History19-31
 2022 Season in Review 19
 2022 Results/Stats 20-21
 Series & Yearly Records 22
 Year-by-Year Results (2000-22)..... 23-25
 Single-Season and Career Records 26
 Honors & Awards..... 27
 Letterwinners 28

This is Nebraska29 -56
 Champions in Athletics and Academics 29
 This is Nebraska Women's Tennis..... 30-31
 Sid & Hazel Dillon Tennis Center..... 32-33
 Championship Facilities..... 34-35
 National Powers 36-37
 Athletic Medicine/Nutrition 38-39
 Nebraska Athletic Performance Lab..... 40-41
 Academic Success 42-43
 Academic Experience..... 44-45
 Life Skills 46-47
 University of Nebraska..... 48-49
 University of Nebraska Campus/Majors ... 50-51
 City of Lincoln..... 52-53
 Adidas 54

Media Guide Credits
 The 2022-23 Nebraska women's tennis media guide was written and designed by Communications Student Natalie Frick. Editing assistance was provided by Director of Operations Jeff Griesch. The guide was produced entirely on Adobe InDesign and printed at the University of Nebraska Printing Services. Photos by Scott Bruhn.



Media Information

All interviews of student-athletes and coaches must be arranged through Natalie Frick by e-mail nfrick2@huskers.unl.edu at least one day in advance. Weekly releases and match results are available at Huskers.com.

Quick Facts

Location Lincoln, Neb.
 Population 292,657
 Enrollment 23,805
 Nickname Cornhuskers, Huskers
 Colors Scarlet and Cream
 Affiliation NCAA Division I
 Conference Big Ten
 Chancellor Ronnie Green
 Vice Chancellor, Athletic Director... Trev Alberts
 Deputy A.D./SWA Marquita Armstead

Women's Tennis Information

Head Coach..... Scott Jacobson
 Record at Nebraska 454-277
 Years at Nebraska 32
 Jacobson's E-mail sjacobson@huskers.com
 Jacobson's Cell (402) 450-6229
 Associate Head Coach..... Lisa Hart
 Years at Nebraska Second
 Hart's E-mail..... lhart@huskers.com
 Hart's Cell (509) 432-9446
 Tennis Secretary..... Ellen Shutts
 Tennis Office Phone..... (402) 472-9430
 Tennis Office Fax (402) 472-2272
 Facility Sid and Hazel Dillon Tennis Center
 2022 Overall Record..... 15-10
 2022 Big Ten Record/Finish..... 7-4
 2022 Final ITA Ranking 59
 Letterwinners Returning/Lost 5/5

Communications

Associate A.D./Communications..... Keith Mann
 Women's Tennis Contact Natalie Frick
 Office Phone..... (402) 472-6263
 Cell Phone (402) 215-3028
 Office Fax (402) 472-2005
 Frick's Cell Phone (913) 276-9715
 Frick's Email nfrick2@huskers.unl.edu
 Photographer Scott Bruhn
 Administrative Associate Vicki Capazo
 Website Huskers.com

NEBRASKA
 Integrity ■ Trust ■ Respect ■ Teamwork ■ Loyalty

Nebraska Athletics Mission Statement

The mission of the University of Nebraska Athletic Department is to serve our student-athletes, coaches, staff and fans by: Displaying **INTEGRITY** in every decision and action; Building and maintaining **TRUST** with others; Giving **RESPECT** to each person we encounter; Pursuing unity of purpose through **TEAMWORK**; Maintaining **LOYALTY** to student-athletes, co-workers, fans and the University of Nebraska.

Huskers.com

Complete results, releases and statistics will be updated each week on the official athletic department home page at Huskers.com. Updated biographies for Nebraska tennis athletes, along with current roster and schedule information are also available, along with other special features.



2023 WOMEN'S TENNIS ROSTER AND SCHEDULE

SCHEDULE

Date	Opponent	Time
Jan. 27	Western Michigan	4 p.m.
Jan. 29	Utah State	11 a.m.
Feb. 4	Gonzaga	10 a.m.
Feb. 4	North Dakota	4 p.m.
Feb. 10	Colorado State	4 p.m.
Feb. 12	South Dakota	1 p.m.
Feb. 19	Colorado State	10 a.m.
Feb. 17	Washington State	3 p.m.
Feb. 19	Minnesota	11 a.m.
Feb. 24	Colorado	4 p.m.
Feb. 26	Wyoming	10 a.m.
Feb. 26	Kansas City	2:30 p.m.
March 10	Wichita State	5 p.m.
March 17	Michigan	11 a.m.
March 19	Michigan State	10 a.m.
March 22	Creighton	4 p.m.
March 25	Iowa	Noon
March 31	Indiana	4 p.m.
April 2	Purdue	11 a.m.
April 7	Ohio State	4 p.m.
April 9	Penn State	11 a.m.
April 14	Maryland	5 p.m.
April 16	Rutgers	11 a.m.
April 22	Illinois	11 a.m.
April 23	Northwestern	Noon
April 26-30	Big Ten Tournament	TBD

*Home Matches in Red at Dillon Tennis Center



Senior Samantha Alicea is going into her third and final year at Nebraska. Following her 2022 season, Alicea earned Academic All-Big Ten honors and was named to the 2022 Tom Osborne Citizenship Team. Before college, Alicea was ranked No. 45 nationally and No. 4 in the state of Florida.

2023 NEBRASKA WOMEN'S TENNIS ROSTER

Athlete	Year	Hometown	Previous School
Samantha Alicea	Sr.	Miami, Fla.	Arizona State
Isabel Adrover Gallego	Jr.	Mallorca, Spain	Mallorca Tennis Club Teulera
Anfisa Danilchenko	So.	Moscow, Russia	Minnesota
Raphaëlle Lacasse	Jr.	Montreal, Canada	Kansas
Lucy Loy	So.	Fishers, Ind.	Fishers High School
Jillian Roa	So.	La Crescenta, Calif.	Colegio Luis Vives
Vivien Sandberg	Jr.	Ahaus, Germany	--
Ana Carmen Zamburek	So.	Santo Domingo, Dominican Republic	Baylor

Head Coach: Scott Jacobson (32nd season, Blue Earth, Minn.)

Assistant Coach: Lisa Hart (2nd season, Sunnyside, Wash.)

STUDENT-ATHLETE AND COACH INTERVIEWS

All media requests for interviews with Nebraska women's tennis student-athletes and coaches should be directed to Natalie Frick (nfrick2@huskers.unl.edu) of the Nebraska Communications Office at least 24 hours in advance.

The best time for in-season interviews is before and after practice, which generally runs from 1:30-3:30 p.m. at the Dillon Tennis Center. With advance notice, telephone interviews can be arranged for other hours, depending on class and practice schedules. For interviews following competition, Nebraska student-athletes and coaches are generally available following a five-minute cooling-off period after the competition has concluded.

2023 HUSKERS BY CLASS

Seniors (1).....	Samantha Alicea
Juniors (3).....	Isabel Adrover Gallego
.....	Raphaëlle Lacasse
.....	Vivien Sandberg
Sophomores (4).....	Anfisa Danilchenko
.....	Lucy Loy
.....	Jillian Roa
.....	Ana Carmen Zamburek
Freshmen (0).....	

2023 HUSKER HOMES

California (1).....	Jillian Roa
Canada (1).....	Raphaëlle Lacasse
Dominican Republic (1).....	Ana Carmen Zamburek
Florida (1).....	Samantha Alicea
Germany (1).....	Vivien Sandberg
Indiana (1).....	Lucy Loy
Spain (1).....	Isabel Adrover Gallego
Russia (1).....	Anfisa Danilchenko

PRONUNCIATION GUIDE

Isabel Adrover Gallego.....	Add-Rover Guy-Ay-go
Samantha Alicea.....	All-ee-say-uh
Anfisa Danilchenko.....	Ann-fee-suh Dan-ill-chen-ko
Raphaëlle Lacasse.....	Raf-i-el Luh-koss-ay
Jillian Roa.....	Row-uh
Ana Carmen Zamburek.....	Zam-burr-eck

2023 SCHEDULE



2023 BIG TEN OPPONENTS

Feb. 19	vs. Minnesota	11 a.m.
March 17	vs. Michigan	11 a.m.
March 19	at Michigan State	10 a.m.
March 25	at Iowa	Noon
March 31	vs. Indiana	4 p.m.
April 2	vs. Purdue	11 a.m.
April 7	at Ohio State	4 p.m.
April 9	at Penn State	11 a.m.
April 14	vs. Maryland	5 p.m.
April 16	vs. Rutgers	11 a.m.
April 22	at Illinois	11 a.m.
April 23	at Northwestern	Noon

*Home Matches in Red at Dillon Tennis Center



The Huskers look to continue last season's success in Big Ten play, after they finished 11-5 with quality wins over Wisconsin, Minnesota and Illinois.

MINNESOTA GOLDEN GOPHERS

Location	Minneapolis, Minn.
Head Coach	Catrina Thompson
2022 Record	18-10
2022 Big Ten Record	6-7
Series Record vs. NU	4-11
Website	gophersports.com

PENN STATE NITTANY LIONS

Location	University Park, Pa.
Head Coach	Alexandra Anghelescu
2022 Record	11-13
2022 Big Ten Record	5-6
Series Record vs. NU	4-7
Website	gopsusports.com

OHIO STATE BUCKEYES

Location	Columbus, Ohio
Head Coach	Melissa Schaub
2022 Record	21-6
2022 Big Ten Record	11-0
Series Record vs. NU	9-6
Website	ohiostatebuckeyes.com

PURDUE BOILERMAKERS

Location	West Lafayette, Ind.
Head Coach	Laura Glitz
2022 Record	12-13
2022 Big Ten Record	6-10
Series Record vs. NU	6-6
Website	purduesports.com

INDIANA HOOSIERS

Location	Bloomington, Ind.
Head Coach	Ramiro Azcui
2022 Record	10-15
2022 Big Ten Record	3-8
Series Record vs. NU	3-5
Website	iuhoosiers.com

NORTHWESTERN WILDCATS

Location	Evanston, Ill.
Head Coach	Claire Pollard
2022 Record	14-10
2022 Big Ten Record	8-3
Series Record vs. NU	12-2
Website	nusports.com

ILLINOIS FIGHTING ILLINI

Location	Champaign-Urbana, Ill.
Head Coach	Evan Clark
2022 Record	16-9
2022 Big Ten Record	8-3
Series Record vs. NU	7-5
Website	fightingillini.com

RUTGERS SCARLET KNIGHTS

Location	New Brunswick, N.J.
Head Coach	Hilary Ritchie
2022 Record	18-7
2022 Big Ten Record	0-11
Series Record vs. NU	1-6
Website	scarletknights.com

MARYLAND TERRAPINS

Location	College Park, Md.
Head Coach	Katie Dougherty
2022 Record	18-7
2022 Big Ten Record	6-5
Series Record vs. NU	3-3
Website	umterps.com

MICHIGAN WOLVERINES

Location	Ann Arbor, Mich.
Head Coach	Ronni Bernstein
2022 Record	20-6
2022 Big Ten Record	10-1
Series Record vs. NU	9-0
Website	mgoblue.com

MICHIGAN STATE SPARTANS

Location	East Lansing, Mich.
Head Coach	Kim Bruno
2022 Record	9-14
2022 Big Ten Record	1-10
Series Record vs. NU	6-3
Website	msuspartans.com

IOWA HAWKEYES

Location	Iowa City, Iowa
Head Coach	Sasha Schmid
2022 Record	17-9
2022 Big Ten Record	2-9
Series Record vs. NU	8-8
Website	hawkeyesports.com

WISCONSIN BADGERS

Location	Madison, Wis.
Head Coach	Kelcy McKenna
2022 Record	17-9
2022 Big Ten Record	8-3
Series Record vs. NU	3-8
Website	uwbadgers.com



SCOTT JACOBSON

Head Coach | 32nd Season | Blue Earth, Minn.



HONORS & AWARDS

- Big Ten Regular-Season Champions (2013)
- Big Ten Co-Coach of the Year (2012)
- Big 12 Coach of the Year (2005, 2010)
- Six NCAA Tournament Appearances (2005, 2006, 2010, 2011, 2012, 2013)
- Nebraska Herman Award (Team GPA) (2005, 2006, 2011, 2012, 2013, 2014, 2018, 2019, 2020)

A HISTORY OF SUCCESS

Entering his 32nd season as Nebraska women's tennis head coach, Scott Jacobson has had his Huskers consistently ranked among the top 75 teams nationally for nearly 20 years, while making regular NCAA Tournament appearances the past decade.

Jacobson owns 454 victories at the helm of the Huskers and has averaged more than 15 wins per season. Jacobson ranks 16th in wins among active NCAA head coaches. Jacobson has been laying the foundation for the Nebraska program brick by brick since his first season in 1991-92, his program has been defined by consistent success.

2013 CONFERENCE TITLE SEASON

He led Nebraska to the Big Ten Conference regular-season title in 2013. From 2010 to 2013, Jacobson's Huskers produced the most successful stretch in school history, winning 20 or more matches for four straight seasons to advance to four consecutive NCAA tournaments. NU finished No. 16 in the final ITA rankings in both 2012 and 2013, including the program's first NCAA Sweet 16 appearance in 2013.

Since that Sweet 16 appearance, Jacobson has been building the women's tennis program back to a point of national prominence, aided by the addition of the world-class Sid and Hazel Dillon Tennis Center. Over the past four seasons, The Big Red has increased its win total from 10 wins in 2019 to 15 victories in 2022.

BUILDING A WINNER

In 2020, Jacobson guided Claire Reifeis to a unanimous first-team All-Big Ten selection following a 6-4 singles mark in the spring and a 5-3 doubles record. He also coached three freshmen to nine singles wins in Chloe Kuckelman (9-5), Ellie

Kuckelman (9-2) and Kristina Novak (9-3).

With an 11-4 overall record and a 9-0 record at home, the Huskers were confident before the season was cut short due to COVID. Nebraska landed at No. 51 in the final 2020 ITA rankings.

JACOBSON GUIDES WEATHERHOLT

Mary Weatherholt, the greatest player in program history, capped her Husker career by finishing as the runner-up at the 2013 NCAA Singles Championship. Weatherholt was a first-team All-American in both singles and doubles play in 2013, as she teamed with fellow All-American Patricia Veresova to advance to the final eight in the doubles competition.

Off the court, Weatherholt claimed one of the NCAA's top overall honors as a winner of an NCAA Top Ten Award in 2014. She was the Big Ten Women's Tennis Athlete of the Year in both 2012 and 2013, and she was Nebraska's Female Student-Athlete of the Year in 2012-13. Weatherholt added a Big Ten Sportsmanship Award, while claiming the ITA Cissie Leary Sportsmanship Award, which is presented to the nation's top women's tennis student-athlete.

BREAKING RECORDS

The Huskers' record-breaking 2013 season followed on the heels of a 2012 campaign that featured a 24-5 overall record and a 9-2 Big Ten mark in Nebraska's first year in the conference.

Weatherholt, who returned to the court after suffering a knee injury as a sophomore in 2011, again led the Huskers along with Veresova, Weinstein, Janine Weinreich and senior Madeleine Geibert.

A three-time all-conference pick both athletically and academically, Geibert set the NU record with 181 combined wins before Weatherholt broke the record the following season. Jacobson earned 2012 Big Ten Co-Coach-of-the-Year honors after leading the Big Red to the second round of the NCAA Tournament.

NEBRASKA'S BIG 12 FAREWELL

In Nebraska's final season in the Big 12 Conference in 2011, Jacobson led the Huskers to a 20-win campaign despite dealing with the loss of Weatherholt to a knee injury early in the fall. NU finished fourth in a loaded Big 12, producing a 7-4 conference mark while qualifying for their third straight NCAA Tournament.

Geibert and Veresova both earned All-Big 12 honors. Jacobson capped his association with the Big 12 Conference by leading seven Huskers to Big 12 individual titles and 26 first-team All-Big 12 awards.

COACH OF THE YEAR

In 2010, Nebraska posted the first 20-win campaign in school history, finishing with a 22-6 overall record that included a 9-2 Big 12 mark and a third-place conference finish. Jacobson was named Big 12 Coach of the Year for the second time, while leading the Huskers to their first-ever NCAA Tournament victory with a first-round win over Illinois.

Jacobson, who led Nebraska to its first NCAA Tournament with an 18-4 record and a 9-2 Big 12 mark in 2005, was also the 2005 Big 12 Coach of the Year. The 2006 team added a 17-10 overall record while featuring Big 12 Freshman-of-the-Year Kim Hartmann on its way to a second straight NCAA Tournament bid.

ACADEMIC EXCELLENCE

While Nebraska has seen its most success on the court under Jacobson, the veteran head coach also emphasizes excellence in the classroom and in the community.

During his career, Jacobson's Huskers have earned numerous academic all-conference accolades. Jacobson also guided the athletic career of two-time CoSIDA Academic All-American Imke Reimers.

The women's tennis team also earned the Herman Award four straight years from 2011 to 2014 and most recently from 2018 to 2020. The 2020 squad earned a cumulative GPA of 3.686.

JACOBSON'S COACHING PHILOSOPHY

"By helping our student-athletes develop the values of dedication, cooperation, compassion and the ability to handle adversity with courage, we help them grow as both tennis players and as people. Through a belief in one another and a positive approach to competition, we can build meaningful relationships off the tennis court and continue a winning tradition on it."

QUICK HITS

- Three-time conference coach of the year
- 17 straight winning seasons (1997-2013)
- Led team to 17 top-75 national rankings
- Guided NU to six NCAA Tournament bids in the past 10 seasons
- 16th winningest active Division 1 coach
- One NCAA Sweet 16 appearance (2013)
- Has coached two first-team All-Americans

JACOBSON'S YEAR-BY-YEAR RECORD

Year	Record	Conf. Record	Rank
1992	6-7	3-4	--
1993	7-12	1-6	--
1994	11-10	3-4	--
1995	8-15	2-5	--
1996	5-15	2-5	--
1997	16-9	2-6	60
1998	14-9	4-7	64
1999	17-9	4-7	69
2000	19-6	6-5	58
2001	19-6	6-5	53
2002	13-9	3-8	66
2003	12-11	2-9	73
2004	16-9	5-6	75
2005	18-4	9-2	39
2006	17-10	6-5	43
2007	13-9	4-7	--
2008	16-7	5-6	--
2009	16-7	7-4	56
2010	22-6	9-2	35
2011	20-8	7-4	43
2012	24-5	9-2	16
2013	24-6	10-1	16
2014	8-17	0-10	--
2015	12-12	0-11	--
2016	17-8	4-7	--
2017	19-8	5-6	--
2018	18-7	7-4	45
2019	10-17	2-9	--
2020	11-4	1-0	51
2021	11-6	11-5	28
2022	15-10	7-4	59
Career	454-277	146-166	

LISA HART

Associate Head Coach | Second Season | Sunnyside, Washington



HONORS & AWARDS

- Community Service Award by the USTA and ITA (2004, 2005, 2007, 2011, 2013)
- 46 Pac-12 All-Academic honors
- 39 ITA All-Academic awards
- 2 ESPN The Magazine/CoSIDA All-District VIII First Team recipients
- 7 Cissie Leary ITA Northwest Region Sportsmanship Award winners
- 6 ITA Northwest Region Arthur Ashe Award recipients

COLLEGE COACHING

Lisa Hart joined the Nebraska women's tennis program as an associate head coach in July of 2021.

Prior to joining the Husker coaching staff, Hart served as the head coach at Washington State for 18 seasons from 2003 to 2021. She led the Cougars to 246 wins and NCAA Championship appearances in 2008, 2012 and 2019. Hart has also coached four players who have reached the NCAA Singles Championships.

During her time at WSU, Hart's teams saw success in the classroom and put an emphasis on community service. In each of the last 14 seasons, the Cougars received the Intercollegiate Tennis Association (ITA) All-Academic team award. Hart was also a six-time winner of the Community Service Award by the United States Tennis Association and ITA for her significant contributions in developing community-based tennis programs. She was named the national winner of the USTA/ITA Community Outreach Award in 2008.

On the court, Hart's teams posted 12 or more victories in 13 seasons with the Cougars, including a program-record 21 victories in 2018. The following season was also successful with the team reaching the NCAA Championships for the seventh time in program history. Additionally, both a singles

NCAA COACHING EXPERIENCE

WASHINGTON STATE UNIVERSITY

HEAD, WOMEN'S TENNIS -- 2003-2021

VIRGINIA TECH

ASSISTANT, WOMEN'S TENNIS --

UNIVERSITY OF NEBRASKA

ASSISTANT, WOMEN'S TENNIS -- 2021

player and doubles team made it to the tournament for the first time since 2002.

Hart's best season at the time came in 2012, when she led the Cougars to a 19-7 record, tying for the most wins in school history, and a second-round showing at the NCAA Women's Tennis Championship. That season included six wins over nationally ranked teams, a first-round victory over No. 36 Florida State at the NCAA Championship, and a weekend sweep over No. 26 Arizona and No. 27 Arizona State.

Hart capped the 2012 season by being named the Pac-12 Conference Coach of the Year, the 2012 Intercollegiate Tennis Association Northwest Region Coach of the Year and the 2012 United States Professional Tennis Association/Pacific Northwest Division College Coach of the Year.

During her WSU tenure, Hart mentored four players to the NCAA Singles Championships along with one doubles team. Hart coached 39 players who received ITA All-Academic awards, two CoSIDA First Team All-District VIII recipients, seven Cissie Leary Sportsmanship and six Arthur Ashe Leadership and Sportsmanship award winners.

COLLEGE PLAYING DAYS

Hart was a tennis standout at Nebraska, finishing her career as one of the most successful women's tennis players in school

history. She was the 1995 Big Eight Freshman of the Year, recorded 74 career singles victories, and won the Big 12 Conference No. 2 singles title as a senior in 1998.

Her dedication and excellence on the court was matched in the classroom as Hart was a three-time academic all-conference selection, earning first-team academic All-Big 12 honors as a senior. She was selected by the Intercollegiate Tennis Association as the Central Region's Cissie Leary Sportsmanship Award winner. As a senior, Hart also received the Arthur Ashe Sportsmanship and Leadership Award.

PERSONAL

A native of Sunnyside, Wash., Hart had an outstanding high school career at Sunnyside High where she was a three-time state champion. She also earned All-America honors as a high school sophomore. Hart earned a bachelor's degree in elementary education from Nebraska and also holds a master's degree in education with an emphasis in physical education and sports studies from Nebraska.

Hart has one daughter, Mary Beth and one son, Paul.

HART ON NEBRASKA

"I would like to thank Scott Jacobson and Keith Zimmer for giving me the opportunity to coach at the University of Nebraska. Coach Jacobson is a proven winner on the court, deeply cares about his players and is just a wonderful person. Being able to coach at my alma mater with the coach I played for is a dream come true. I am excited and eager to help our players have a positive and transformational student-athlete experience and cannot wait to get started."





TED CARTER

University of Nebraska President (Third Year)

Carter brought with him a distinguished record in education, partnerships and military service, having come to Nebraska from the U.S. Naval Academy, his alma mater, where he served as superintendent. Under his leadership, the Naval Academy achieved a No. 1 national ranking and new records in student success and diversity. Carter previously was president of the U.S. Naval War College in Newport, R.I. A retired Vice Admiral with 38 years of service, Carter has logged more than 6,300 flying hours and holds the American record for carrier-arrested landings.

In his first year at the University of Nebraska – faced with the unexpected and unprecedented challenges presented by COVID-19 – Carter has led with a focus on the land-grant priorities of access and opportunity for students and families. He launched the Nebraska Promise, a financial aid program guaranteeing free tuition for low- and middle-income Nebraskans, and implemented a multi-year budget plan that included a two-year, across-the-board tuition freeze. The result was system-wide growth in enrollment, including record gains among underrepresented students.

Carter oversaw the awarding of a \$92 million federal contract for the university's National Strategic Research Institute, one of only 14 University-Affiliated Research Centers in the country conducting exclusive research for the Department of Defense. During Carter's tenure, the NU system has been ranked among the world's top 100 institutions for earning research patents, the Omaha campus was selected as the home for a new federal counterterrorism research center, the Institute of Agriculture and Natural Resources launched a new effort

focused on rural vitality, and the medical center opened an education, training and preparedness facility that positions Nebraska as the world leader in the fight against infectious disease.

Carter serves as the chair of the Daugherty Water for Food Global Institute's Board of Directors. He is a board member for the Greater Omaha Chamber of Commerce, the Nebraska State Chamber of Commerce and Industry, the Naval Historical Foundation and the Naval Aviation Museum Foundation. Carter is also a member of the Aspen Institute's Higher Education Working Group and the Association of Public and Land-Grant Universities' Council of Presidents. He is an ex-officio member on the board of the University of Nebraska Foundation, the philanthropic partner of the university system that has a \$1.7 billion endowment.

Carter earned his bachelor's degree in physics and oceanography from the U.S. Naval Academy, where he played hockey and served as team captain. He is a graduate of the Navy Fighter Weapons School (Top Gun) and holds educational credentials from the Navy Nuclear Power School, the U.S. Air Force Air War College, the Naval War College and the Armed Forces Staff College. Carter's military career includes service for the Carrier Strike Group Twelve, in which he commanded 20 ships, two nuclear-powered aircraft carriers, and two carrier wings that were deployed to Afghanistan and the Arabian Gulf.

The son of an English teacher, Carter was raised in the rural, one-high school town of Burrillville, R.I. He and his wife, Lynda, live in Lincoln and have two adult children, Brittany and Christopher.

Ted Carter became the eighth president of the University of Nebraska on Jan. 1, 2020, following a national search by the Board of Regents.

As president, Carter leads a four-campus university system that enrolls nearly 52,000 students and employs 16,000 faculty and staff on campuses in Lincoln, Omaha and Kearney, plus academic divisions and research and extension centers across the state. He serves as chief spokesman and chief executive officer for the system, which operates on a \$2.8 billion annual budget and includes a flagship Big Ten institution, a world-renowned academic health sciences center, Division I athletics programs, and preeminent institutes focused on water and agriculture, national security and defense, infectious disease and early childhood education.

NEBRASKA BOARD OF REGENTS



Timothy Clare
District 1



Jack Stark
District 2



Jim Pillen
District 3



Elizabeth O'Connor
District 4



Robert Schafer
District 5



Paul Kenney
District 6



Bob Phares
District 7



Barbara Weitz
District 8



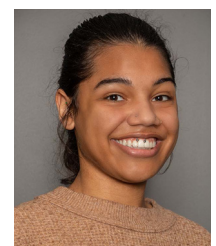
Emily Saadi
Nebraska-Lincoln



Jacob Drake
Nebraska-Lincoln



Nicole Kent
Nebraska-Medical
Center



Tori Sims
Nebraska-Omaha



TREV ALBERTS

Vice Chancellor, Director of Athletics (Second season) Nebraska

baseball team won back-to-back Summit League regular-season championships in 2013 and 2014, while the men's basketball team made its first Division I postseason appearance in 2014 with a berth in the CollegenInsider.com Postseason Tournament.

During UNO's time in the Division I ranks under Alberts tenure, the Mavericks had six teams and four student-athletes qualify for the NCAA Tournament, including hockey advancing to the Frozen Four in 2015 and men's soccer reaching the second round of the NCAA Tournament in the spring of 2021. He also expanded opportunities, adding men's golf and men's soccer in 2011 and Omaha will begin a men's swimming and diving program in 2021-22.

Throughout his tenure in Omaha, Alberts was focused on enhancing the student-athlete experience, including the construction and staffing of the Hamilton Academic Excellence Room and the development of the Ethel S. Abbott Student-Athlete Development Wing. Those efforts paid off in Nebraska-Omaha student-athletes posting consistent collective semester grade point averages above 3.3 for 18 consecutive semesters, including at least a 3.5 in each of his final three semesters.

The facilities around Omaha Athletics received a major uplift during his tenure. Maverick Park opened in March of 2021 to rave reviews as the home to the Mavericks' baseball and softball programs. Funding for the complex, which includes a 1,500-seat baseball facility and a 650-seat softball facility, were raised privately and provided both programs a permanent on-campus home for the first time.

Another crowning achievement was the opening of Baxter Arena in 2015. Alberts directed efforts to secure community support and funding to build the on-campus arena, which allowed the nationally prominent hockey program to play on campus and also serve as the home of the men's and women's basketball and volleyball programs. Caniglia Field underwent renovations in 2012, making it one of the finest collegiate soccer facilities in the country, highlighted by a FIFA 2-star rated playing surface and one of the largest LED videoboards in a soccer-only college facility.

Alberts' work on behalf of hockey, UNO's established Division I sport, also paid dividends. He successfully guided the Mavericks into the new National Collegiate Hockey Conference in 2013-14. The following year, Omaha reached the 2015 NCAA Frozen Four.

In addition, Alberts and his team led Omaha Athletics into a partnership with Learfield, a national leader in the marketing of collegiate athletics, and developed Omaha Sports Properties. As the exclusive corporate sponsorship sales unit for UNO Athletics, Omaha Sports Properties further enhanced revenue and increased brand prominence locally, regionally and nationally.

As part of UNO's reclassification to Division I, Alberts oversaw the rebranding of UNO athletics with new primary and secondary logos and a greater focus on strengthening the Maverick brand both regionally and nationally.

As a student-athlete, Alberts was an All-American on and off the football field as a Husker Blackshirt. He was Nebraska's first Butkus Award winner in 1993, helping Coach Tom Osborne's Huskers to an undefeated regular season and an Orange Bowl appearance against Florida State. A first-team All-American by every major publication in 1993, he was also the Football News National Defensive Player of the Year, the Big Eight Male Athlete of the Year, and the Big Eight Defensive Player of the Year. His No. 34 jersey was retired at the 1994 Red-White Spring Game. In 2015, he was elected to the College Football Hall of Fame.

Off the field, Alberts earned the NCAA's highest honor, The Today's Top Six Award. A three-time academic All-Big Eight honoree, he was a CoSIDA Academic All-American in 1993. He graduated from Nebraska before his senior season.

Alberts was the fifth pick in the 1994 NFL Draft by the Indianapolis Colts and played for the Colts until 1996. Following his NFL career, he served as an analyst on college and professional football games for major national networks, including ESPN, CNN/SI and CBS Sports Network.

Alberts and his wife Angela have three children – Chase, Ashtynne and Breanna.

NEBRASKA ATHLETIC DIRECTORS

1928-1931	H.D. Gish
1932-1936	Dana X. Bible
1937-1942	Lawrence McCeney "Biff" Jones
1942-1947	A.J. Lewandowski
1948-1953	George "Potsy" Clark
1954-1960	J.W. "Bill" Orwig
1961*	Charles Miller & Joseph Soshnik
1962-1966	W.H. "Tippy" Dye
1967-1992	Bob Devaney
1993-2002	Bill Byrne
2003-2007	Steve Pederson
2007-2012	Tom Osborne
2013-2017	Shawn Eichorst
2017-2021	Bill Moos
2021-present	Trev Alberts

*Interim Co-Directors

ADMINISTRATIVE EXPERIENCE

NEBRASKA (2021-PRESENT)

♦ATHLETIC DIRECTOR

NEBRASKA-OMAHA (2009-2021)

♦ATHLETIC DIRECTOR

PERSONAL

Nebraska, B.A.

Family: Angela (wife); Chase (son); Ashtynne and Breanna (daughters)

A veteran administrator and College Football Hall of Famer, Trev Alberts was named Vice Chancellor for Athletics at the University of Nebraska on July 14, 2021. Alberts returned to his alma mater after spending 12 years at Nebraska-Omaha, guiding the program through a successful transition to the Division I level.

Alberts' tenure leading UNO athletics was marked by successes in competition and in academics; by transitioning the university's athletic programs to NCAA Division I in 2011; and by establishing new homes for many UNO athletics teams, including Baxter Arena, the Maverick Park baseball/softball complex and the soccer pitch at Caniglia Field.

Alberts took the bold step in announcing that Omaha would reclassify from Division II to Division I in all sports in 2011 and simultaneously securing conference affiliation with the Summit League for all of the department's then-Division II programs. His vision for UNO's reclassifying teams was demonstrated even before the four-year transition period had ended. The Omaha





KEITH ZIMMER

Executive Associate A.D. Life Skills/Tennis Administrator

Keith Zimmer enters his 36th year at Nebraska directing the Life Skills and Enrichment program while also serving as sports administrator for women's basketball, softball, men's tennis and women's tennis.

A member of the Big Ten Sports Management Committee, Zimmer works closely with the College of Business to assist with the administration of the Master's in Intercollegiate Athletic Administration program. Since 2015, Nebraska Life Skills implemented the Post Eligibility Scholarship provided to Huskers who have lettered, graduated and exhausted eligibility at Nebraska. Zimmer hired Nebraska Athletics Diversity and Inclusion Director DaWon Baker and together numerous initiatives have been implemented within campus and the community promoting respect acceptance and unity.

Additional critical components of Nebraska Life Skills includes individual student-athlete career meetings, required four year tiered proactive education, community outreach, postgraduate scholarship awards life after sports transition and the offering of four leadership organizations. The

N-Vest mentoring group, Inner Circle, N-Volved and the Student-Athlete Advisory Committee further develop leadership qualities of more than 150 student-athletes annually. Zimmer also assists with the direction of Nebraska's annual student-athlete achievement event, "A Night at the Lied." Zimmer is the Life Skills sport contact for football, volleyball, softball, swimming and diving, men's tennis and women's tennis.

Zimmer, who worked in Nebraska's Academic Services area from 1987 to 2006, while pioneering Nebraska's Life Skills program, is regarded as a national leader in the life skills area. He received one of the top honors in college athletics, being selected as the Life Skills Administrator of the Year and has also received the Chancellor's Award for Exemplary Service to Students and is an honorary member of both Golden Key National Honor Society and Mortar Board.

Zimmer earned his bachelor's degree at Wayne State College and his master's in education from Springfield (Mass.) College. Zimmer and his wife Michelle, have two sons, Logan and Caden.



MARQUITA ARMSTEAD

Executive Associate A.D./SWA

Marquita Armstead was hired as Nebraska's Executive Associate Athletic Director and Senior Woman Administrator on Dec. 16, 2021, and she officially began her duties on Feb. 1, 2022. Armstead came to Nebraska from the University of South Florida, where she served in a similar role.

Armstead was a member of the South Florida athletics administration from March of 2016 to January of 2022. She originally joined USF as Associate Athletic Director for Compliance, before being elevated to Senior Associate Director of Athletics/Senior Woman Administrator in August of 2017.

In her role with the Bulls, Armstead serves as the sport administrator for men's and women's basketball, and had previous sport oversight of softball, men's soccer, women's tennis and as the secondary sport administrator for football. Armstead also oversees several USF student-athlete support departments, including academic services, student-athlete enhancement, sports medicine, nutrition, sport psychology, student rights and responsibilities and Title IX.

In her position with the Huskers, Armstead

has sport supervision for men's basketball and volleyball. She will be a member of the Big Ten Sport Management Council, and has oversight of athletic medicine, sports psychology, the athletic performance lab (NAPL), strength and conditioning, performance nutrition, Title IX and gender equity.

In addition to her work at USF, Armstead has a strong athletic administration background at four other schools. Before her time at South Florida, Armstead worked at Georgia Tech from 2012 to 2016, where she served as Director of Compliance for her final three years in Atlanta. Prior to Georgia Tech, Armstead was the Director of Compliance at the University of Tennessee Chattanooga for six years. She also served internships in compliance at Mississippi State and Ohio University.

Armstead earned her bachelor's degree from Mississippi State in 2005 and earned a master's of sports administration from the school in 2006. She received a Master of Business Administration degree from Tennessee Chattanooga in 2013 and is a 2012 NCAA Leadership Institute graduate. Armstead is married to Demetric Armstead and the couple has a son, Braylon.

SUPPORT STAFF

Tim Henrichs



Director of Event Management/
Secondary Sport Administrator

Eric Johnson



Assistant Strength Coach

Ellen Shutts



Secretary

Mattie Fowler Burkhardt



Secondary Sport Administrator

Lisa Kopecky



Assistant Director of Performance
Nutrition



RONNIE GREEN

University of Nebraska-Lincoln Chancellor (Seventh Year) Virginia Tech (1983)

Dr. Ronnie D. Green is Chancellor of the University of Nebraska-Lincoln, Nebraska’s flagship, Land-Grant and Big Ten institution, where he oversees an enrollment of over 25,000 students and 6,000 faculty and staff.

He received bachelor’s and master’s degrees in animal science from Virginia Tech and Colorado State University, respectively. His doctoral program was completed jointly at the University of Nebraska-Lincoln and the USDA-ARS U.S. Meat Animal Research Center in animal breeding and genetics.

Green has served on the animal science faculties of Texas Tech University and Colorado State University, and as the national program leader

for animal production research for the USDA’s Agricultural Research Service and executive secretary of the White House’s interagency working group on animal genomics within the National Science and Technology Council. Prior to returning to NU, Green served as a global executive for Pfizer Animal Health’s animal genomics business.

Green has published 130 refereed publications and abstracts, nine book chapters and 56 invited symposia papers; and has delivered invited presentations in 43 U.S. states and 21 countries around the world. He is a past-president of both the American Society of Animal Science (ASAS) and the National Block and Bridle Club and has served in a number of leadership positions for the U.S. Beef Improvement Federation, National Cattlemen’s Beef Association, National Pork Board, the National Research Council of the National Academy of Sciences, the Association of Public and Land-Grant Universities, and Alpha Gamma Rho national fraternity. He currently is a member of a number of boards including the Big Ten Council of Presidents and Chancellors, Neogen Corporation, and Supporters of Agricultural Research, and was recently named to the Presidential Forum of the NCAA representing the Big Ten Conference, and an inaugural member of the NCAA Division I Board Infractions Process Committee. He was named a fellow of ASAS in 2014 and a fellow of the American Association for the Advancement of Science in 2015. In 2017 Dr. Green was honored with the American Society of Animal Science’s Morrison

NEBRASKA'S CHANCELLORS

1871-1876	Allen R. Benton
1876-1882	Edmund B. Farfield
1884-1888	Invin J. Manatt
1888-1891	Charles E. Bessey
1891-1895	James H. Canfield
1895-1899	George E. MacLean
1900-1908	E. Benjamin Andrews
1908-1927	Samuel Avery
1927-1938	Edgar A. Burnett
1938-1946	Chauncey S. Boucher
1947-1953	Reuben G. Gustavson
1953-1954	John K. Selleck*
1954-1968	Clifford Hardin
1968-1971	Joseph Soshnik
1972-1975	James H. Zumberge
1975-1976	Adam C. Breckenridge*
1976-1980	Roy A. Young
1980-1981	Robert H. Rutford
1981-1991	Martin A. Massengale
1991-1991	Jack Goebel
1991-1995	Graham B. Spanier
1995-1996	Joan R. Leitzel*
1996-2000	James Moeser
2000-2016	Harvey S. Perlman
2016-Present	Ronnie Green

*Interim Chancellor

Award, the highest international academic recognition for an animal scientist.

Ronnie and his wife Jane, a double UNL alumna, are the proud parents of four children – Justin, Nate, Kelli and Regan Green – all UNL graduates – and one granddaughter, Charlotte.



SCOTT M. FUESS JR.

Faculty Athletic Representative (Third Year)

Delaware (1982)

athletes, maintaining the positive relationship between athletics and faculty, NCAA compliance, developing and responding to NCAA legislative proposals and representing the university at related NCAA and Big Ten Conference meetings.

The half-time position - which was restructured to an expected term of five years - reports directly to Chancellor Ronnie Green and consults with the Athletic Director. The representative splits academic year time equally between academic responsibilities and faculty representative duties.

Fuess, the Steinhart Distinguished Professor of Business and former chair of the College of Business’ economics department, has worked at the University of Nebraska-Lincoln since 1986. He serves on the Faculty Senate’s Intercollegiate Athletics Committee, having chaired the committee for 2018-19 and a sub-committee in 2017-18.

In August 2018, Fuess was named director of the university’s cross-disciplinary master’s degree program that offers a specialization in intercollegiate athletics administration. The program - which has been completed by 48

NEBRASKA'S FACULTY REPS

1931-1946	T.J. Thompson
1947-1958	Earl Fullbrook
1959-1964	Charles S. Miller
1965-1968	Merk Hobson
1969-1970	John R. Davis
1971-1982	Keith L. Broman
1982-1997	James O’Hanlon
1997-2020	Josephine Potuto
2020-Present	Scott M. Fuess Jr.

Scott M. Fuess Jr. was named the University of Nebraska-Lincoln faculty athletics representative on Feb. 21, 2020.

As faculty athletics representative, Fuess serves as a liaison between the Office of the Chancellor and Athletic Department. Areas of focus in the role include the welfare of student-

Huskers - is built on MBA coursework, allowing students to earn hands-on experiences through Nebraska Athletics, industry professionals, other universities and alumni.

Fuess earned a bachelor’s degree from the University of Delaware, as well as master’s and doctoral degrees from Purdue University. His research interests revolve around issues of economics, primarily in labor, collegiate athletics and Japan.



BIG TEN CONFERENCE

Known as one of intercollegiate sports' most successful undertakings, the Big Ten is home to a lineage of legendary names and an ongoing tradition of developing strong leaders. Even in its infancy, the conference established itself as the preeminent collection of institutions in the nation, where the pursuit of academic excellence prevailed as the definitive goal.

The history of the Big Ten traces back more than 125 years to the Palmer House hotel in Chicago, where on January 11, 1895, then-Purdue president James H. Smart and leaders from the University of Chicago, University of Illinois, University of Michigan, University of Minnesota, Northwestern University and University of Wisconsin set out to organize and develop principles for the regulation of intercollegiate athletics.

At that meeting, a blueprint for the administration of college athletics under the direction of appointed faculty representatives was outlined. The presidents' first known action "restricted eligibility for athletics to bonafide, full-time students who were not delinquent in their studies." That important legislation, along with other legislation that would follow in the coming years, served as the primary building block for intercollegiate athletics.

On February 8, 1896, one faculty member from each of those seven universities met at the same Palmer House and officially established the mechanics of the conference, which was officially incorporated as the "Intercollegiate Conference Athletic Association" in 1905.

Indiana University and the State University of Iowa became the eighth and ninth members in 1899. In 1908, Michigan briefly withdrew its membership, and in 1912 Ohio State University joined the conference, bringing its membership total back to nine. Upon Michigan's return in 1917, the conference was first referred to as the "Big Ten" by media members, and that name was eventually incorporated in 1987.

As the 1900s opened, faculty representatives established rules for intercollegiate athletics that were novel for the time. As early as 1904, the faculty approved legislation that required eligible athletes to meet entrance requirements and to have completed a full year's work, along with having one year of residence.

In 1901, the first Big Ten Championship event was staged when the outdoor track and field championships were held at the University of Chicago. The debut event marked what is now a staple of conference competition. Today, the Big Ten sponsors 28 official sports, 14 for men and 14 for women, including the addition of men's ice hockey and men's and women's lacrosse over the last four years. Big Ten schools compete in a total of 42 different sports, furthering the conference's commitment to broad-based programming and providing more participation opportunities than any conference in the country.

One of the conference's proudest traditions began in 1902 when Michigan took on Stanford in the Rose Bowl, the nation's first bowl game. Big Ten teams only appeared in Pasadena twice before the conference signed an exclusive contract with the Tournament of Roses in 1946, making it the first bowl game with permanent conference affiliations. But Michigan's appearance in 1902 cultivated a relationship that has endured for more than a century. In January 2014, Michigan State defeated Stanford in the 100th Rose Bowl Game.

Coupling the academic goals set forth by the leaders of the charter members of the conference and their steadfast commitment to athletics, the conference instituted the Big Ten Medal of Honor in 1915. It is awarded annually by each conference institution to a student of the graduating class who has attained the greatest proficiency in scholarship and athletics. For more than 100 years, it has been the most prestigious honor a student competing in Big Ten athletics can receive.

In 1922, Major John L. Griffith became the conference's first "Commissioner of Athletics." Griffith was the first of six men to assume the role of commissioner in the conference's history, followed by Kenneth L. "Tug" Wilson in 1945, Bill Reed in 1961, Wayne Duke in 1971, Jim Delany in 1989, and current commissioner Kevin Warren in 2020.

After nearly 30 years with 10 members, the conference consolidated to nine schools when the University of Chicago formally withdrew its membership in 1946. Michigan State College (now Michigan State University) was added to the Big Ten three years later, bringing the number of affiliated conference schools to 10 once again.

In 1955, the Big Ten formulated a revenue-sharing model designed to pool all football television rights of its members and share those proceeds equally. The conference and its members continue to utilize a revenue-sharing model, dividing media rights, bowl payouts and other profits among all conference institutions.

While academics have always played an integral role in the conference, presidents of the Big Ten member institutions formalized the primacy of academics with the establishment of the Big Ten Academic Alliance (formerly the Committee on Institutional Cooperation) in 1958. The Big Ten Academic Alliance is an academic consortium of all Big Ten universities. Annually, the schools currently constituting the Big Ten Academic Alliance produced over \$10 billion in funded research, \$5 billion more than any other conference.

In one of Duke's first actions as commissioner, he oversaw the adoption of the Big Ten Advisory Commission in 1972, designed to study conference programs and make suggestions which would further Big Ten objectives. The Advisory Commission enlists former students that competed in Big Ten athletics to serve as liaisons to the NCAA's Diversity and Inclusion Department, the Big Ten Student-Athlete Advisory Commission and other organizations.

In 1981, the conference presidents and chancellors endorsed a proposal that enabled universities to affiliate their women's intercollegiate programs with the conference, and the first conference championships for women were staged that fall. The Big Ten was the first conference to voluntarily adopt male and female participation goals after launching its Gender Equity Action Plan in 1992.

In December of 1989, the conference agreed in principle to invite Pennsylvania State University for membership. On June 4, 1990, the Council of Presidents officially voted to integrate Penn State into the conference, giving the Big Ten 11 members.

In 2004, the Big Ten implemented a pilot program of instant replay for college football. Following the season, the conference forwarded replay proposals to the NCAA regarding the future use of instant replay, where it approved country-wide testing in 2005. In 2006, the NCAA approved the use of instant replay for all conferences.



Kevin Warren
Commissioner

In 2006, Delany announced the creation of the first conference-owned television network, a 20-year agreement with FOX Networks to create what would become the Big Ten Network (BTN). Launched on Aug. 30, 2007, BTN now produces more than 1,800 events across all platforms each year. BTN is in almost 60 million homes in the U.S. and Canada via the nation's major video providers and more than 300 additional video providers across the country. BTN is also available through the majority of OTT providers, and via the Fox Sports App, which delivers live and on-demand programming to computers, smartphones and tablets. In addition, the BTN+ platform streams hundreds of events each season.

On June 11, 2010, the Big Ten Council of Presidents/Chancellors (COP/C) approved a formal membership application by the University of Nebraska, expanding the conference to 12 institutions. Nebraska officially joined the Big Ten on July 1, 2011.

The conference expanded its footprint further in 2012 when the COP/C approved formal membership applications from the University of Maryland and Rutgers University on November 19 and 20, respectively. Maryland and Rutgers became official Big Ten members on July 1, 2014, giving the conference almost 9,500 students participating in intercollegiate athletics and more than 11,000 participation opportunities on 350 teams.

On June 3, 2013, the Big Ten announced that Johns Hopkins University had been accepted as the conference's first sport affiliate member. Johns Hopkins' addition in men's lacrosse gave the Big Ten six institutions sponsoring the sport, allowing the debut of men's lacrosse as an official conference sport and building on the Big Ten's tradition of broad-based sports competition. On June 17, 2015, the conference announced that Johns Hopkins was accepted as a sport affiliate member for women's lacrosse beginning with the 2016-17 academic year. On March 23, 2016, the conference announced that Notre Dame would be joining the Big Ten for men's ice hockey beginning with the 2017-18 academic year.

Since opening in the fall of 2013, the Big Ten conference center hosts more than 300 meetings annually for member institutions, Big Ten Academic Alliance (formerly CIC) related committees and coaches' groups. The headquarters also features an interactive digital museum — the Big Ten Experience — which brings the conference's storied academic and athletic history to life. For more information on the Big Ten Experience, go to bigten.org.

In June 2014, the Big Ten opened a second office in New York City, featuring both office and meeting space in Midtown Manhattan. Big Ten staff members are based in the New York City office to provide expanded coverage and service, while other conference and institutional administrators utilize the space as necessary when conducting business on the East Coast. The Big Ten and its member institutions also have access to satellite office space in Washington, D.C.

Warren and his staff work to meet the educational needs of student-athletes to allow them to excel in all areas of their lives. The conference office manages 27 different championships and tournaments, offers legislative and compliance services, oversees the production and distribution of more than 2,000 events annually, provides staff services to coaching and administrative personnel, and remains a vital resource for media and fans seeking information on the Big Ten.

During his first year, Warren helped spark a number of groundbreaking conference initiatives. On March 7, 2020, in advance of the rising tide of the COVID-19 pandemic, the conference partnered with all 14 of its member institutions to create the Big Ten Task Force for Emerging Infectious Diseases. This group was formed to provide counsel and sound medical advice to ensure the health, safety and wellness of the Big Ten's students, coaches, administrators and fans. It includes representatives from a diverse set of disciplines across campus healthcare systems and schools of public health and their input serves as a resource for the conference in making important decisions based on information received from local, state and federal health departments, along with the NCAA.

Less than two months later on May 4, 2020, the conference announced the formation of the Big Ten Mental Health and Wellness Cabinet, featuring representation from all 14 member institutions, as well as sport affiliate members Johns Hopkins (men's and women's lacrosse) and Notre Dame (men's ice hockey). The goal of the cabinet is to promote optimal mental health for Big Ten student-athletes through a comprehensive, systemic and interdisciplinary approach to establishing mental health programs, while also providing counsel, advice and expertise to the conference office.

Following the death of Minneapolis resident George Floyd, Warren penned an open letter on June 1, 2020, announcing the formation of what became known as the Big Ten Equality Coalition. This group, which features student-athletes, coaches, athletic directors, chancellors, presidents and other members of the Big Ten family from all 14 member institutions, has a stated goal of seeking tangible ways to actively and constructively combat racism and hate around the world, while also empowering student-athletes to express their rights to free speech and peaceful protest. The United States Library of Congress selected Warren's open letter for inclusion in its historic collection.

A product of the conversations emerging from the coalition was the creation of the Big Ten Voter Registration Initiative. This non-partisan, conference-wide collaboration encourages student-athletes to take part in the electoral process and is led by a Voter Registration Committee that includes representatives from all 14 Big Ten institutions. The Voter Registration Committee has partnered with the National Lawyers' Committee for Civil Rights Under Law to develop educational programming and outreach tools, and to collaborate with other established civic platforms.

More than 125 years after its inception, the Big Ten remains a national leader in intercollegiate athletics on and off the field. Big Ten programs have combined to win more than 450 team and 1,800 individual national championships, consistently taking home individual honors for athletic and academic accomplishments and fulfilling the Big Ten's mission of academic achievement and athletic success.

BIG TEN OFFICE
5440 Park Place
Rosemont, IL, 60018
Phone: (847) 696-1010
Fax: (847) 696-1150
www.bigten.org

BIG

SAMANTHA ALICEA

Senior | Miami, Fla. | Palmetto High School | Arizona State

HONORS & AWARDS

- ITA Scholar-Athlete (2021)
- Arthur Ashe Jr. Sports Scholar Award (2022)
- Academic All-Big Ten (2022)
- Nebraska Scholar-Athlete Honor Roll (Fall 2021; Spring 2021, 2022)
- Tom Osborne Citizenship Team (2021, 2022)
- Miami Herald Player of the Year (2018)
- State, Regional, District, GMAC Champion (2018)
- #1 Singles undefeated season (2018)
- #1 Doubles undefeated season (2018)
- State Finalist (2016, 17)
- Regional, District, GMAC Champion (2016, 17)
- MVP and Coaches Award

2022-23: QUOTING COACH JACOBSON

"Sammie has developed into a very strong singles player and a phenomenal doubles player. She continued to grow confidence throughout the course of this past spring, and we expect that to carry forward into this, her final season. She has a great understanding of the concept of team, and we are expecting her to excel to her highest levels. Sammie is a tremendous competitor in a team setting and has always shown a willingness to do whatever it takes to be successful on the court."

2021-22: JUNIOR

In her junior season, Samantha Alicea competed in 24 singles matches, posting a 15-9 overall singles record and an 11-7 record in the spring, tying for third on the team in overall wins. She competed at three different singles positions, tallying a 6-4 mark at No. 5, a 4-3 record at No. 4, and a 4-1 record in the No. 6 spot. In doubles action, Alicea competed with Ellie Kuckelman in all of her 17 matches and finished the season with a 10-4 spring record.

Off the court, Alicea earned Academic All-Big Ten honors and was named to the 2022 Tom Osborne Citizenship Team.

2020-21: JUNIOR

In her first year playing for the Huskers, the junior transfer from Arizona State saw action during the spring season in both singles and doubles matches. Alicea went 1-2 in singles play, with an impressive win

over Maryland's Ebony Sampson (6-3, 6-3) at the Big Ten Tournament in the No. 6 position. On the doubles side, Alicea teamed up with Kristina Novak for a 2-2 record, winning at both the No. 1 and No. 2 positions.

Off the court, Alicea earned a spot on the Nebraska Scholar-Athlete Honor Roll in the Spring of 2021. She was also a member of the Tom Osborne Citizenship Team.

BEFORE NEBRASKA

Alicea joined the Huskers after spending two seasons at Arizona State. During her time as a Sun Devil, Alicea went 7-7 in singles and 18-3 in doubles. The Miami, Fla., native finished 2019 ranked No. 85 in doubles. She closed out the 2019 season on a 12-match winning streak.

Before college, Alicea was ranked No. 45 nationally and No. 4 in the state of Florida according to tennisrecruiting.net.

PERSONAL

An Academic All-Big Ten selection as a psychology major in 2022, Alicea is a three-time Nebraska Scholar-Athlete Honor Roll choice. She is also a two-time member of the Tom Osborne Citizenship Team.

WHY SHE CHOSE NEBRASKA

"I chose Nebraska because of the amazing atmosphere between the team and coaches. As soon as I met the team I felt like I was already part of the Husker family. Not to mention how amazing the facilities are. I now have all the resources I need to succeed on and off the court."

SINGLES

Year	Spring	Big Ten	Fall	Total
2020-21	1-2	0-2	0-0	1-2
2021-22	11-7	7-3	4-0	14-9
Totals	12-9	7-5	4-0	15-11

DOUBLES

Year	Spring	Big Ten	Fall	Total
2020-21	2-2	2-2	0-0	2-2
2021-22	13-7	8-3	2-1	16-8
Totals	15-9	10-5	2-1	18-10



ISABEL ADROVER GALLEGO

Junior | Mallorca, Spain | Mallorca Tennis Club Teulera

HONORS & AWARDS

- ITA Scholar-Athlete (2021)
- Arthur Ashe Jr. Sports Scholar Award (2021, 2022)
- Academic All-Big Ten (2021, 2022)
- Big Ten Sportsmanship Award (2020)
- Nebraska Scholar-Athlete Honor Roll (Fall 2019, 2020, 2021; Spring 2020, 2021, 2022)
- Tom Osborne Citizenship Team (2020, 2021, 2022)
- No. 36 player in Spain's national rankings
- No. 372 player in ITF World Tennis Singles ranking
- Singles Runner-Up at Canary Island 15k
- ITF Junior Yellow Bowl Doubles champion

2022-23: QUOTING COACH JACOBSON

"Isa's game has grown tremendously over the course of the summer and the fall. She continues to grasp the style of play that best suits her game on hard courts. Her game is well balanced and is fully capable of playing long points from the baseline as well as attacking the net when the opportunity presents itself. She has a wicked slice backhand that causes tremendous frustration for opponents. Isa is tremendously gifted and continues to grow in the mental portion of the game. We will continue to rely on her for her leadership throughout the course of the season."

2021-22: SOPHOMORE

Isabel Adrover Gallego competed in 24 singles matches during the 2021-22 season. She posted a 9-15 overall singles record and a 7-11 record in the spring. She competed at three different singles positions, posting a 7-5 mark at No. 2, a 1-3 record at No. 3 and 1-0 overall in the No.1 spot. In doubles action, Adrover Gallego competed with Chloe Kuckelman in 18 matches, posting a 7-6 record.

Off the court, Adrover Gallego earned Academic All-Big Ten honors for the second straight season and was a member of the 2022 Tom Osborne Citizenship Team.

2020-21: SOPHOMORE

Gallego saw extensive action in her sophomore season, competing in 25 singles matches, the most of any Husker. She posted a 12-13 overall singles record and 6-12 record in the spring, tying for third on the team in

overall wins. She competed at two different singles positions, posting a 4-9 mark at No. 2 and a 1-1 record at No. 3. In doubles actions, Adrover Gallego competed with Claire Reifeis in all of her 17 matches, posting an 11-6 record.

The Mallorca, Spain native had an outstanding fall, recording a 6-1 singles record and becoming the second Husker of the season to capture an ITA Fall Circuit Title. In the November event, Adrover Gallego won her quarterfinal and semifinal matches to get her to the finals, where she defeated Denver's Anna Riedmiller, 6-7 (4), 6-2, 1-0 (10-8)

Off the court, Adrover Gallego was named to the 2021 Tom Osborne

Citizenship Team and the Nebraska Scholar-Athlete Honor Roll in the fall and spring.

2019-20: FRESHMAN

Adrover Gallego won 10 singles matches in an impressive freshman season that was shortened due to COVID-19. One of four Huskers to post double-digit singles victories in 2019-20, Adrover Gallego went 10-6 in singles competitions, including a 5-2 mark during the spring. She competed out of the No. 2 and 3 spots as a freshman, posting a 2-1 mark out of the No. 2 spot and a 3-1 record from the No. 3 position. In doubles play, Adrover Gallego went 5-5, including a 4-2 mark during the spring. She teamed with Claire Reifeis to post a 4-1 record, including a perfect 3-0 mark during the spring.

BEFORE NEBRASKA

Adrover Gallego came to Nebraska from Mallorca, Spain, where she was a top tennis prospect, ranking No. 36 nationally and No. 372 in the ITF World Tennis Singles rankings.

PERSONAL

Isabel is the daughter of Miguel Angel Adrover Vidal and Isabel Gallego Ortiz. Isabel has two older brothers, Tomeu and Miguel and an older sister, Patricia. She was born and raised in Mallorca, Spain. A two-time Academic All-Big Ten selection, Isabel has earned six spots on the Nebraska Scholar-Athlete Honor Roll. She is a three-time member of the Tom Osborne Citizenship Team.

WHY SHE CHOSE NEBRASKA

"I chose Nebraska because I love the amazing facilities that we have, because of the confidence that the coach and the team gave me from the beginning."



SINGLES

Year	Spring	Big Ten	Fall	Total
2019-20	5-2	1-0	5-4	10-6
2020-21	6-12	6-11	6-1	12-13
2021-22	9-15	3-6	2-4	9-15
Totals	20-29	10-17	13-9	31-34

DOUBLES

Year	Spring	Big Ten	Fall	Total
2019-20	4-2	0-0	1-3	5-5
2020-21	11-6	11-5	0-0	11-6
2021-22	9-10	5-6	1-3	10-12
Totals	24-18	16-11	2-6	26-23

RAPHAËLLE LACASSE

Junior I Montreal, Canada | Kansas University

2022-23 QUOTING SCOTT JACOBSON

“Raphi comes to Nebraska with the highest UTR (Universal Tennis Rating) of anyone that has ever played at Nebraska. She hits a tremendous ball off the ground and a very heavy ball. We would describe Raphi’s game as an aggressive baseliner who can hurt you from anywhere on the court. Raphi has a really big serve and tremendous work ethic. Her passion for the game is second to none and is always desiring more time on the court. In addition, she has a contagious optimism, which spreads throughout our team. We believe there’s greatness within and excited for the opportunities that will be coming her way this coming spring.”

BEFORE NEBRASKA

Raphaëlle Lacasse, a native of Montreal, Canada, joins Baylor transfer Ana Carmen Zamburek as newcomers to the 2022-23 team. A transfer from Kansas, Lacasse spent the last year with the Jayhawks and brings an impressive resume to Nebraska. Last season, she was a constant in the doubles and singles lineup and helped the Jayhawks achieve a top 30 national ranking.

In 2021, she had a Top 700 WTA Singles ranking and a Top 800 WTA doubles ranking. She boasted a Universal Tennis Rating (UTR) of 11.45 and was an ITF 15k tournament singles champion in Cancun, Mexico. Lacasse also reached seven ITF 15k doubles finals during her junior career and was a National Canadian doubles champion in the under 18 division.



SINGLES

Year	Spring	Conf.	Fall	Total
2021-22*	4-8	0-3	0-3	4-11

* at KU

DOUBLES

Year	Spring	Conf.	Fall	Total
2021-22*	8-12	2-7	0-1	8-13

* at KU

VIVIEN SANDBERG

Junior I Ahaus, Germany

HONORS & AWARDS

- ITA Scholar-Athlete (2021)
- Arthur Ashe Jr. Sports Scholar Award (2022)
- Big Ten Distinguished Scholar (2022)
- Academic All-Big Ten (2022)
- Nebraska Scholar-Athlete Honor Roll (Fall 2020, 2021; Spring 2021, 2022)
- Tom Osborne Citizenship Team (2021, 2022)
- No. 8 German Under-18 Ranking
- Westphalia Junior Singles & Doubles Champion (2016)
- 5th-Place Finish at the 2018 North-East German Women's Championships
- 2019 Berlin-Brandenburg Team Championship

2022-23: QUOTING SCOTT JACOBSON

"Vivien's development over the course of the summer and this fall have exceeded expectations. She has become a much more consistent baseliner, calmer on the court and a greater competitor. She's adapted to many different levels and styles of play this fall on competition days. Her backhand slice has grown dramatically and allowed her to get back in points when in a defensive situation. We have tremendously high expectations for her this coming spring and are proud of her continued commitment to the game and her development."

2021-22: SOPHOMORE

Vivien Sandberg, a native of Ahaus, Germany, saw action in her sophomore season at Nebraska. She finished with an overall singles record of 4-4. In doubles, she went 3-3 on the season and was partnered with Jillian Roa, Lucy Loy and Jessica Aragon.

In the classroom, Sandberg earned All-Big Ten accolades and was named to the Nebraska Scholar-Athlete Honor Roll. She was also a member of the 2022 Tom Osborne Citizenship Team.

2020-21: FRESHMAN

Sandberg saw action in her freshman season at Nebraska. She finished with an overall singles record of 0-4. In doubles, she went 1-4 on the season and was partnered with Jessica Aragon, Chloe Kuckelman,

Kristina Novak and Maja Makoric, including a 1-0 mark paired with Makoric.

In the classroom, Sandberg was named to the Nebraska Scholar-Athlete Honor Roll for her academic success in the fall and spring semester.

BEFORE NEBRASKA

Sandberg trained at both the Approach Tennis Academy in Enschede, Netherlands, with coaches Geerco Holtkamp and Add Lüttikhues and at the MKG-Tennis Academy in Cologne, Germany, under the tutelage of Marc-Kevin Goellner and his wife Syna Goellner-Schreiber. Sandberg held a German U18 ranking of No. 8. Her accolades include a Westphalia junior singles and doubles championship in 2016. In 2018 Sandberg finished fifth at the North-East German Women's Championships. In 2019, Sandberg won the Berlin-Brandenburg team championship and made the doubles semifinals of the Oldenzaal ITF 15k. She also competed with her club, TC Union Münster. Sandberg chose Nebraska over Northern Arizona and Memphis.

PERSONAL

A business administration major, Sandberg was a Big Ten Distinguished Scholar and an Academic All-Big Ten honoree in 2022. She is a four-time Nebraska Scholar-Athlete Honor Roll selection. She is also a two-time member of the Tom Osborne Citizenship Team.

WHY SHE CHOSE NEBRASKA

"I chose Nebraska because of the amazing atmosphere and facility as well as the coaches and teammates and the possibility to study international business."

SINGLES

Year	Spring	Big Ten	Fall	Total
2020-21	0-4	0-4	0-0	0-4
2021-22	3-1	2-1	2-3	4-4
Totals	3-5	2-5	2-3	4-8

DOUBLES

Year	Spring	Big Ten	Fall	Total
2020-21	1-4	1-4	0-0	1-4
2021-22	2-0	0-0	1-3	3-3
Totals	3-4	1-4	1-3	4-7



ANFISA DANILCHENKO

Sophomore | Moscow, Russia | Minnesota

2022-23: QUOTING SCOTT JACOBSON

"Anfisa is an incredible baseliner. She hits a very heavy ball off both forehand and backhand sides and looks to get in at opportune times. She is a tremendous competitor and is always fighting on the court. Anfisa has great balance to her game, a very strong and consistent serve, tremendous return, but most importantly a competitive mind. We're very excited to have her in the program competing for our Husker family and believe she will have tremendous success moving forward in both singles and doubles."

BEFORE NEBRASKA

Anfisa Danilchenko, a native of Moscow, Russia, spent last season at Minnesota and saw action in multiple singles and doubles positions. She finished the season with a 20-7 singles record and a 17-8 doubles record. During her junior career, Danilchenko reached an ITF ranking of 205, a WTA ranking of 1,180 and a UTR of 10.79. She won Grade 4 singles and doubles titles, while also being a finalist for Grade 1 and 3 ITF doubles.

PERSONAL

The daughter of Igor and Marina Danilchenko, Anfisa was born on Aug. 30, 2001. She has a sister, Elena, and a twin brother, Ilarion, who is on the Nebraska men's tennis team

WHY SHE CHOSE NEBRASKA

"I chose Nebraska because I like the tennis program and the academics are very good."

SINGLES

Year	Spring	Conf.	Fall	Total
2021-22*	10-5	0-0	10-2	20-7
Totals	10-5	0-0	10-2	20-7

* at Minnesota

DOUBLES

Year	Spring	Conf.	Fall	Total
2021-22*	9-6	0-0	7-3	16-8
Totals	9-6	0-0	2-1	16-8

* at Minnesota



LUCY LOY

Sophomore | Fishers, Ind.

HONORS & AWARDS

- Nebraska Scholar-Athlete Honor Roll (Fall 2021; Spring 2022)
- Tom Osborne Citizenship Team (2022)

2022-23: QUOTING SCOTT JACOBSON

“Lucy’s greatest strength is her net game as well as a strong competitive spirit. We saw tremendous development in the later stages of the fall as she continues to grow in confidence. Her development with her serve and forehand are moving in the right direction, and she continues to be a tremendous asset on the doubles court. Lucy’s work ethic is a constant in our program which bodes well for continued growth in her game.”

2021-22: FRESHMAN

Lucy Loy saw action in her first-year at Nebraska. The freshman from Fishers, Ind. finished with an overall singles record of 7-2. In doubles, she went 3-1 on the season and was partnered with Jillian Roa, Chloe Kuckelman, and Vivien Sandberg.

Off the court, Loy was a member of the 2022 Tom Osborne Citizenship Team.

BEFORE NEBRASKA

Loy joined the Huskers from Fishers, Ind. Previously, Loy played club tennis at Indianapolis Racquet Club for Coach Jamie Dieveney and competed for Fishers High School, under Coach Dave Heffern. A four-time letterwinner, Loy received all-state honorable mention in 2018, second-team all-state honors in 2019 and first-team all-state honors in 2021. Loy was a regional finalist in 2019 and a state semifinalist in 2021. On the club side, Loy was a Midwest level 2 and 3 doubles winner and a level 3 singles winner. In the classroom, Loy received the scholar athlete award, the National Honors Society award and dean’s list recognition.

PERSONAL

The daughter of Rob and Cheryl Loy, Lucy was born on Dec. 29, 2002. She has two brothers, Will and Matt, and is majoring in accounting and business.

WHY LUCY CHOSE NEBRASKA

“I visited and loved the team and the coaches. Everyone was very welcoming and seemed like they all got along well. The facilities were very nice, and Nebraska treats their athletes well. I hear all good things about Nebraska, and I’m excited for

SINGLES

Year	Spring	Big Ten	Fall	Total
2021-22	2-0	0-0	5-2	7-2
Totals	2-0	0-0	5-2	24-12

DOUBLES

Year	Spring	Big Ten	Fall	Total
2021-22	1-0	0-0	2-1	3-1
Totals	1-0	0-0	2-1	3-1



JILLIAN ROA

Sophomore | La Crescenta, Calif.

HONORS & AWARDS

- Nebraska Scholar-Athlete Honor Roll (Fall 2021; Spring 2022)
- Tom Osborne Citizenship Team (2022)

2022-23: QUOTING SCOTT JACOBSON

"Jillian has been a warrior this fall and has come back stronger than ever from her shoulder surgery. She has tremendous work ethic, phenomenal foot speed and footwork. In addition, Jillian has a tremendous competitive spirit and is always fighting on the court. Her game this fall continues to blossom as she continues to gain strength. She has developed an improved net game and improved backhand slice. As she continues to spend more time on the court, she gains more and more confidence. We are excited about our future this coming spring and beyond."

2021-22: FRESHMAN

Jillian Roa, a native of La Crescenta, Calif., saw action in her freshman season at Nebraska. She finished with an overall singles record of 6-7. In doubles, she went 2-4 on the season and was partnered with Vivien Sandberg, Lucy Loy, Samantha Alicea and Isabel Adrover Gallego.

In the classroom, Roa became a member of the 2022 Tom Osborne Citizenship Team.

BEFORE NEBRASKA

Prior to Nebraska, Roa was a standout player in high school where she won the singles junior ITF title in Skopje, Macedonia. Roa was also regional U18 Champion of the Balearic Islands, and she reached the singles finals in a junior ITF in La Nucia, Spain. Off the court, Roa received an award for Academic Excellence for having the top grade in her class and one of the highest on the Balearic Islands. Roa chose Nebraska over Michigan State and Louisville.

PERSONAL

The daughter of Florencio Roa and Loraine Yap, Jillian was born on July 18, 2003 in Phoenix, Ariz., she was raised in

La Crescenta, Calif. Jillian has one brother, Lucas. During her high school years, Jillian lived and trained away from her family at the Global Tennis Team, a tennis academy in Mallorca, Spain. She earned spots on the Nebraska Scholar-Athlete Honor Roll in the fall and spring semesters of 2021-22. She was also a member of the 2022 Tom Osborne Citizenship Team.

WHY JILLIAN CHOSE NEBRASKA

"I chose Nebraska because I felt like I could really improve as a player and as a person after getting to know the coaches and the team. The atmosphere is really supportive, and I'm really excited to be a part of the team."

SINGLES

Year	Spring	Big Ten	Fall	Total
2021-22	1-3	0-0	5-4	6-7
Totals	1-3	0-0	3-4	6-7

DOUBLES

Year	Spring	Big Ten	Fall	Total
2021-22	0-1	0-0	2-3	2-4
Totals	0-1	0-0	2-3	2-4



ANA CARMEN ZAMBUREK

Sophomore | Santo Domingo, Dominican Republic | Baylor

2022-23: QUOTING SCOTT JACOBSON

"Ana has played her best this fall against the better skill sets. She hits an incredibly big ball off both her forehand and backhand side. Ana continues to work on honing in her consistency off the baseline, and shot selection. She has tremendous upside and is very receptive to advancing her game and growing a better understanding of proper strategy. She has the unique and rare ability to hit a winner from anywhere on the court. The opportunity for a great spring exists, and we are very proud of the growth she has made this fall."

BEFORE NEBRASKA

Ana Carmen Zamurek, a native of Santo Domingo, Dominican Republic, brings an impressive resume to Nebraska. She spent her freshman season at Baylor, helping the Bears to a season-high No. 11 ranking and a regular season record of 15-8. Zamburek saw action in both singles and doubles and was a major contributor at both No. 2 and No. 3 doubles.

In her junior career, the member of the Dominican Republic Fed Cup Team was a doubles finalist in a 25K pro tournament, had a career-best ITF singles rankings at No. 247 in March of 2021 and made it to four singles finals and nine doubles finals.

PERSONAL

The daughter of Martin Zamburek and Alexandra Martes Low, Ana was born on March 16, 2003 in Guayacanes, San Pedro de Macoris. Ana has one sister, Eva, and plans to major in textiles and apparel design.

WHY ANA CHOSE NEBRASKA

"I felt instant chemistry with the coaches and fell in love with what is waiting."



SINGLES

Year	Spring	Conf.	Fall	Total
2021-22*	2-2	0-0	5-6	7-8
Totals	2-2	0-0	5-6	7-8

*at Baylor

DOUBLES

Year	Spring	Conf.	Fall	Total
2021-22*	7-7	3-3	6-6	13-13
Totals	7-7	3-3	6-6	13-13

*at Baylor

2022 SEASON SHOWS TEAM PROGRESS

2021-22 SEASON FACTS

OVERALL RECORD 15-10

Home.....10-6
 Road4-2
 Neutral.....1-2
 Record in 7-0 Matches.....1-0
 Record in 6-1 Matches.....2-0
 Record in 5-2 Matches.....1-0
 Record in 4-3 Matches.....1-4
 Record in 4-0 Matches.....6-0
 Record in 4-1 Matches.....3-4

BIG TEN RECORD 7-4

Home.....3-3
 Road4-1

BIG TEN CONFERENCE FINAL STANDINGS

1. Ohio State21-6
2. Michigan20-6
3. Wisconsin17-9
4. Illinois15-9
5. Northwestern.....14-10
6. Nebraska15-10
7. Maryland18-7
8. Minnesota18-10
9. Penn State11-13
10. Purdue12-13
11. Indiana10-15
12. Iowa.....7-16
13. Michigan State9-14
14. Rutgers5-18

RECORD VS. RANKED OPPONENTS 6-10

SPRING SINGLES RECORD 39-19

Samantha Alicea11-7
 Maja Makoric14-6
 Kristina Novak.....14-6

SPRING DOUBLES RECORD 30-11

Chloe Kuckelman/Isabel Adrover Gallego...7-6
 Kristina Novak/Maja Makoric.....13-1
 Samantha Alicea/Ellie Kuckelman10-4

BIG TEN SINGLES RECORD 61-48

Samantha Alicea7-3
 Maja Makoric6-4
 Kristina Novak.....9-3

BIG TEN DOUBLES RECORD 32-19

Isabel Adrover Gallego/Chloe Kuckelman ...5-6
 Kristina Novak/Maja Makoric.....9-0
 Samantha Alicea/Ellie Kuckelman8-3

OVERALL SINGLES RECORD 80-58

Samantha Alicea15-9
 Chloe Kuckelman.....14-7
 Kristina Novak.....21-10

OVERALL DOUBLES RECORD..... 48-24

Hayley Haakenstad/Chloe Kuckelman..12-2
 Claire Reifeis/Isabel Adrover Gallego...11-6



2022 BIG TEN AWARDS

ATHLETE OF THE YEAR

Kari Miller, Michigan

FRESHMAN OF THE YEAR

Sydni Ratliff, Ohio State

ALL-BIG TEN FIRST TEAM

- Kate Duong, Illinois
 - Lara Schneider, Indiana
 - SELMA CADAR, Maryland
 - Jaedan Brown, Michigan
 - Kari Miller, Michigan
 - RACHEL HANFORD, Minnesota
 - Kristina Novak, Nebraska**
 - Clarissa Hand, Northwestern
 - Maria Shusharina, Northwestern
 - Isabelle Boulais, Ohio State
 - IRINA CANTOS SIEMERS, Ohio State
 - Sofiya Chekhlystova, Penn State
 - Csilla Fodor, Purdue
 - AVA MARKHAM, Wisconsin
- *Unanimous selections in CAPS

BIG TEN CHAMPIONSHIPS

APRIL 28 - FIRST ROUND

- #11 Purdue 4, #14 Rutgers 1
- #12 Iowa 4, #13 Michigan State 3

APRIL 29 - SECOND ROUND

- #7 Maryland 4, #10 Indiana 0
- #6 Nebraska 4, #11 Purdue 0
- #8 Minnesota 4, #9 Penn State 3
- #5 Illinois 4, #12 Iowa 3

APRIL 30 - QUARTERFINALS

- #2 Michigan 4, #7 Maryland 1
- #3 Northwestern 4, #6 Nebraska 3
- #1 Ohio State 4, #8 Minnesota 0
- #4 Wisconsin 4, #5 Illinois 1

MAY 1 - SEMIFINALS

- #2 Michigan 4, #3 Northwestern 3
- #1 Ohio State 4, #4 Wisconsin 0

MAY 2 - CHAMPIONSHIP

- #2 Michigan 4, #1 Ohio State 0



2022 SPRING RESULTS



The 2021-22 squad finished 15-10 overall. From left: Jessica Argon, Vivien Sandberg, Chloe Kuckleman, Maja Makoric, Samantha Alicea, Kristina Novak, Ellie Kuckleman, Isabel Adrover Gallego, Jillian Roa, Lucy Loy

Overall Record: 15-10 // Big Ten: 7-4 // Home: 10-6 // Away: 4-2 // vs. Ranked Teams: 5-10

Date	Opponent	W/L	Score	Overall	Big Ten	Ranked
Jan. 25, 2022	Creighton	W	7-0	1-0	--	--
Jan. 29, 2022	at #6 Duke	L	0-4	1-1	--	0-1
Jan. 30, 2022	vs. #19 Furman	L	1-4	1-2	--	0-2
Feb. 6, 2022	Wichita State	W	6-1	2-2	--	0-2
Feb. 11, 2022	#39 Kansas	L	3-4	2-3	--	0-3
Feb. 13, 2022	#48 Memphis	W	4-1	3-3	--	1-3
Feb. 19, 2022	Colorado State	W	4-0	4-3	--	1-3
Feb. 19, 2022	South Dakota	W	4-0	5-3	--	1-3
March 2, 2022	#71 Kansas State	L	1-4	5-4	--	1-4
March 5, 2022	#45 Minnesota	W	6-1	6-4	--	2-4
March 9, 2022	Omaha	W	7-0	7-4	--	2-4
March 16, 2022	#41 Texas Tech	L	1-4	7-5	--	2-5
March 18, 2022	#70 Penn State*	W	5-2	8-5	1-0	3-5
March 20, 2022	#4 Ohio State*	L	3-4	8-6	1-1	3-6
March 26, 2022	at #65 Purdue*	W	4-1	9-6	2-1	4-6
March 27, 2022	at Indiana*	W	4-3	10-6	3-1	4-6
April 1, 2022	#35 Northwestern*	L	1-4	10-7	3-2	4-7
April 3, 2022	#59 Illinois*	L	3-4	10-8	3-3	4-8
April 9, 2022	at Rutgers*	W	4-0	11-8	4-3	4-8
April 10, 2022	at #69 Maryland*	W	4-0	12-8	5-3	5-8
April 15, 2022	at #22 Michigan*	L	1-4	12-9	5-4	5-9
April 17, 2022	Michigan State*	W	4-1	13-9	6-4	5-9
April 23, 2022	Iowa*	W	4-0	14-9	7-4	5-9
April 28, 2022	vs. Purdue	W	4-0	15-9	7-4	5-9
April 29, 2022	vs. #39 Northwestern	L	3-4	15-10	7-4	5-10

-Home matches in Bold

-*Big Ten Conference Dual

2021-22 INDIVIDUAL STATISTICS

Singles Fall 2021/Spring 2022 Stats

Name	Fall	Overall	Spring	Big Ten	#1	#2	#3	#4	#5	#6
Isabel Adrover Gallego	2-4	9-15	7-11	3-6	1-0	7-5	1-3	--	--	--
Samantha Alicea	4-0	15-9	11-7	7-3	--	--	--	4-3	6-4	4-1
Jessica Aragon	--	--	--	--	--	--	--	--	--	--
Chloe Kuckelman	4-1	14-7	10-6	4-3	--	1-0	3-2	2-4	4-0	--
Ellie Kuckelman	--	5-4	5-4	3-4	--	--	--	--	4-2	1-2
Lucy Loy	5-2	7-2	2-0	--	--	--	--	--	1-0	1-0
Maja Makoric	1-1	13-8	14-6	6-4	--	2-3	6-2	4-0	--	--
Kristina Novak	5-4	21-10	14-6	9-3	16-4	--	--	--	--	--
Jillian Roa	5-4	7-7	2-3	--	--	--	--	--	--	2-2
Vivien Sandberg	2-3	4-4	2-1	1-1	--	--	--	--	0-1	2-0
Totals	28-19	92-66	68-44	33-24	17-4	10-8	12-6	9-6	14-7	12-6

Doubles Fall 2021/Spring 2022 Stats

Team	Fall	Overall	Spring	Big Ten	#1	#2	#3
Chloe Kuckelman/Samantha Alicea	2-1	2-1	--	--	--	--	--
Chloe Kuckelman/Lucy Loy	1-1	1-1	--	--	--	--	--
Chloe Kuckelman/Isabel Adrover Gallego	4-1	11-7	7-6	5-6	2-0	8-7	--
Vivien Sandberg/Jillian Roa	2-2	2-2	--	--	--	--	--
Vivien Sandberg/R. Dzik (Poland)	0-1	0-1	--	--	--	--	--
Lucy Loy/Jillian Roa	1-0	1-0	--	--	--	--	--
Kristina Novak/Maja Makoric	4-3	18-4	13-1	9-0	14-1	--	--
Kristina Novak/Isabel Adrover Gallego	1-2	1-2	--	--	--	--	--
Jillian Roa/Isabel Adrover Gallego	0-1	0-1	--	--	--	--	--
Jillian Roa/Samantha Alicea	--	0-1	0-1	--	--	--	0-1
Chloe Kuckelman/Ellie Kuckelman	--	2-1	2-1	--	0-1	1-1	--
Jessica Aragon/Vivien Sandberg	--	1-0	1-0	--	--	--	1-0
Samantha Alicea/Isabel Adrover Gallego	--	0-2	0-2	--	--	--	0-2
Samantha Alicea/Ellie Kuckelman	--	13-4	10-4	8-3	--	3-1	7-3
Kristina Novak/Samantha Alicea	--	1-0	1-0	--	--	1-0	--
Totals	11-11	48-24	30-11	22-9	17-2	13-7	13-7



NEBRASKA SERIES & YEARLY RECORDS

Nebraska vs. Big Ten Opponents

Team	Series	2022 Record
Illinois	Illinois leads, 7-5	16-9, 8-3
Indiana	Nebraska leads, 5-3	10-15, 3-8
Iowa	tied, 8-8	7-17, 2-9
Maryland	tied, 3-3	18-7, 6-5
Michigan	Michigan leads, 9-0	20-6, 10-1
Michigan State	Michigan State leads, 6-3	9-14, 1-10
Minnesota	Nebraska leads, 11-4	18-10, 6-7
Northwestern	Northwestern leads, 12-2	14-10, 8-3
Ohio State	Ohio State leads, 9-6	21-6, 11-0
Penn State	Nebraska leads, 7-4	11-13, 5-6
Purdue	tied, 6-6	12-13, 3-8
Rutgers	Nebraska leads, 6-1	5-18, 0-11
Wisconsin	Nebraska leads, 8-3	17-9, 8-3

Nebraska Year-by-Year Records

Year	Conference	Head Coach	Record	Conf. Finish	Final Rank
1976	Big Eight	Gail Whitaker	N/A	4th	--
1977	Big Eight	Sig Garnett	N/A	1st	--
1978	Big Eight	Henry Cox	N/A	1st (tie)	--
1979	Big Eight	Skip Salzenstein	7-6	6th	--
1980	Big Eight	Julie Wood	18-7	6th	--
1981	Big Eight	Julie Wood	18-17	7th	--
1982	Big Eight	Kathy Hawkins	14-11	4th	--
1983	Big Eight	Kathy Hawkins	16-12	3rd	--
1984	Big Eight	Kathy Hawkins	12-12	4th	--
1985	Big Eight	Kathy Hawkins	12-14	4th	--
1986	Big Eight	Kathy Hawkins	9-8	4th	--
1987	Big Eight	Kathy Hawkins	9-16	4th	--
1988	Big Eight	Kerry McDermott	5-12	5th	--
1989	Big Eight	Gregg Calvin	9-5	5th	--
1990	Big Eight	Gregg Calvin	17-7	3rd	--
1991	Big Eight	Gregg Calvin	7-6	4th	--
1992	Big Eight	Scott Jacobson	6-7	5th	--
1993	Big Eight	Scott Jacobson	7-12	6th	--
1994	Big Eight	Scott Jacobson	11-10	4th	--
1995	Big Eight	Scott Jacobson	8-15	3rd (tie)	--
1996	Big Eight	Scott Jacobson	5-15	6th	--
1997	Big 12	Scott Jacobson	16-9	6th	60th
1998	Big 12	Scott Jacobson	14-9	9th	64th
1999	Big 12	Scott Jacobson	17-9	8th	69th
2000	Big 12	Scott Jacobson	19-6	6th	58th
2001	Big 12	Scott Jacobson	19-6	6th	55th
2002	Big 12	Scott Jacobson	13-9	10th	66th
2003	Big 12	Scott Jacobson	12-11	10th	76th
2004	Big 12	Scott Jacobson	16-9	7th	75th
2005	Big 12	Scott Jacobson	18-4	3rd	39th
2006	Big 12	Scott Jacobson	17-10	5th	43rd
2007	Big 12	Scott Jacobson	13-9	8th	--
2008	Big 12	Scott Jacobson	16-7	7th	74th
2009	Big 12	Scott Jacobson	16-7	4th	56th
2010	Big 12	Scott Jacobson	22-6	3rd	37th
2011	Big 12	Scott Jacobson	20-8	4th (tie)	43rd
2012	Big Ten	Scott Jacobson	24-5	3rd (tie)	16th
2013	Big Ten	Scott Jacobson	24-6	1st (tie)	16th
2014	Big Ten	Scott Jacobson	8-17	12th	--
2015	Big Ten	Scott Jacobson	12-12	13th	--
2016	Big Ten	Scott Jacobson	17-8	10th	--
2017	Big Ten	Scott Jacobson	19-8	7th	--
2018	Big Ten	Scott Jacobson	18-7	4th (tie)	45th
2019	Big Ten	Scott Jacobson	10-17	12th	--
2020	Big Ten	Scott Jacobson	11-4	1st (tie)	51st
2021	Big Ten	Scott Jacobson	11-6	5th	--
2022	Big Ten	Scott Jacobson	15-10	6th	59th

vs. Non-Conference Opponents

Air Force	11-1	Nebraska-Kearney	4-0
Alabama	0-1	Nebraska Wesleyan	2-0
Arizona	0-2	New Mexico	2-3
Arizona State	0-4	New Mexico State	2-0
Arkansas	10-18	Nicholls State	1-0
Arkansas-Little Rock	2-1	North Carolina	0-2
Army	1-0	North Dakota	4-0
Baylor	2-20	North Texas	2-0
Boise State	1-2	Northern Arizona	1-0
Bowling Green	2-0	Northern Colorado	2-0
BYU	0-2	North Florida	0-1
Cal Poly	1-1	Northern Illinois	6-0
California-Irvine	3-4	Northern Iowa	11-0
California-Riverside	1-0	Northwest Missouri State	2-0
California-Santa Barbara	0-2	Notre Dame	1-0
Cal State Fullerton	10-2	Oklahoma	12-24
Cal State Long Beach	1-1	Oklahoma State	7-27
Cal State Northridge	6-0	Old Dominion	0-1
Cal State Sacramento	1-0	Oral Roberts	0-2
Central Oklahoma	1-0	Omaha	9-0
Clemson	0-1	Oregon	2-1
Colorado	19-18	Pacific	0-1
Colorado State	24-0	Pepperdine	0-1
Connecticut	1-0	Sacramento State	1-0
Creighton	32-0	Saint John's	1-0
Denver	4-0	Saint Mary's	1-0
Doane	2-0	Saint Louis	6-0
Drake	22-14	San Diego	1-1
Duke	0-1	San Diego State	0-2
Eastern Michigan	14-0	South Carolina	0-2
Florida International	1-0	South Dakota	7-0
Fresno State	0-5	South Dakota State	2-0
Furman	1-1	Southeast Missouri State	1-0
George Washington	1-0	Southern Illinois-Edwardsville	2-4
Georgia State	1-0	Southern Utah	1-0
Georgia Tech	0-1	Stephens College	7-1
Gonzaga	0-1	TCU	2-0
Gustavus Adolphus	4-0	Tennessee	1-0
Hawaii	0-1	Texas	0-18
Houston	2-1	Texas A&M	4-14
Idaho	1-1	Texas Tech	16-10
Idaho State	1-0	Tulane	0-1
Illinois-Chicago	2-0	Tulsa	8-3
Illinois State	9-0	UCF	0-1
Indiana State	3-0	UMKC	4-0
Iowa State	42-4	UNLV	1-2
Kansas	15-26	Utah	2-2
Kansas State	34-15	UTEP	1-0
Long Beach State	4-4	Vanderbilt	1-1
Loyola Marymount	4-0	Vermont	1-0
Louisiana - Lafayette	2-0	Virginia	0-1
Louisiana - Monroe	0-1	Wake Forest	0-1
Louisville	1-0	Washington	1-0
LSU	0-1	Washington State	2-2
Marquette	1-0	Weber State	1-0
Memphis	2-0	West Virginia	1-0
Miami	0-1	Western Illinois	1-0
Miami (Ohio)	17-10	Western Michigan	1-1
Missouri	28-9	Wichita State	22-14
Missouri State	15-0	Wyoming	19-0
Montana	2-0	Yale	0-1
Montana State	4-2	TOTAL (including Big Ten) ... 638-430	

YEAR-BY-YEAR RESULTS (SINCE 2000)

-*Conference Tournament Matches -^NCAA Tournament Matches

2000 19-6 OVERALL (6-5 BIG 12)			
Date	Opponent	W/L	Score
Feb. 5	Eastern Michigan	W	7-2
Feb. 12	Texas	L	3-6
Feb. 15	Creighton	W	9-0
Feb. 18	Bowling Green	W	8-1
Feb. 20	Wyoming	W	9-0
Feb. 26	SW Missouri State	W	9-0
Feb. 27	Wichita State	W	9-0
March 3	Oklahoma Christian	W	9-0
March 4	Northern Iowa	W	9-0
March 5	OCU	W	9-0
March 11	vs. Iowa State	W	7-2
March 12	at Colorado	W	7-2
March 15	vs. Montana State	W	9-0
March 16	at Cal State Fullerton	W	9-0
March 17	at Cal State Northridge	W	6-3
March 24	Texas Tech	W	8-1
April 2	Texas A&M	L	4-5
April 4	at Missouri	W	8-1
April 9	at Baylor	L	1-8
April 12	Kansas	W	9-0
April 15	at Oklahoma State	L	4-5
April 16	at Oklahoma	L	4-5
April 22	Kansas State	W	5-4
April 27	vs. Texas Tech*	W	5-0
April 28	vs. Texas A&M*	L	4-5

April 26	vs. Iowa State*	W	5-2
April 27	vs. Baylor*	L	0-5
2002 13-9 OVERALL (3-8 BIG 12)			
Date	Opponent	W/L	Score
Jan. 25	Wichita State	W	7-0
Jan. 27	Denver	W	5-2
Feb. 8	at Missouri	W	4-3
Feb. 9	Texas	L	2-5
Feb. 15	Wyoming	W	6-1
Feb. 16	SW Missouri State	W	6-1
Feb. 23	Colorado State	W	6-1
Feb. 24	Northern Iowa	W	7-0
Feb. 27	Creighton	W	6-1
March 2	at Baylor	L	0-7
March 9	Texas A&M	L	1-6
March 10	Colorado	L	3-4
March 18	vs. Connecticut	W	7-0
March 20	at Cal State Fullerton	W	7-0
March 23	at Cal State Northridge	W	5-2
March 30	Texas Tech	L	3-4
March 31	Iowa State	W	5-2
April 6	at Oklahoma State	L	1-6
April 7	at Oklahoma	W	4-3
April 14	Kansas	L	2-5
April 20	Kansas State	L	1-6
April 25	vs. Oklahoma*	L	1-4

2004 16-9 OVERALL (5-6 BIG 12)			
Date	Opponent	W/L	Score
Jan. 30	Colorado State	W	5-2
Jan. 31	Montana State	W	7-0
Feb. 1	Illinois-Chicago	W	5-2
Feb. 6	Wichita State	W	7-0
Feb. 8	Wyoming	W	7-0
Feb. 12	Air Force	W	7-0
Feb. 14	Texas	L	1-6
Feb. 20	at Ohio State	L	1-6
Feb. 21	vs. Yale	W	5-2
Feb. 27	Creighton	W	7-0
March 6	at Baylor	L	2-5
March 13	Texas A&M	L	0-7
March 17	vs. Utah	W	7-0
March 20	at Long Beach State	L	0-7
March 26	Iowa State	W	7-0
March 28	Saint Louis	W	7-0
April 3	at Missouri	L	3-4
April 10	Kansas State	W	7-0
April 11	Texas Tech	W	4-3
April 17	Kansas	L	3-4
April 18	Colorado	W	5-2
April 24	at Oklahoma State	W	4-3
April 25	at Oklahoma	L	0-7
April 29	vs. Oklahoma State	W	4-3
May 1	vs. Texas A&M	L	0-4

2001 19-6 OVERALL (6-5 BIG 12)			
Date	Opponent	W/L	Score
Feb. 2	Colorado State	W	5-2
Feb. 3	Wichita State	W	7-0
Feb. 6	Creighton	W	7-0
Feb. 10	Indiana State	W	7-0
Feb. 11	Montana State	W	7-0
Feb. 16	Montana	W	7-0
Feb. 17	Drake	W	4-1
Feb. 17	Eastern Michigan	W	5-2
Feb. 24	at Texas	L	3-4
Feb. 25	at Texas A&M	L	1-6
March 3	Missouri	W	7-0
March 4	SW Missouri State	W	4-3
March 11	vs. Penn State	W	4-3
March 13	at Cal State Fullerton	W	7-0
March 16	at Cal State Northridge	W	5-2
March 25	at Texas Tech	W	6-1
April 1	at Kansas State	L	3-4
April 8	Oklahoma	W	6-1
April 13	at Iowa State	W	6-1
April 14	at Colorado	W	4-3
April 17	at Kansas	W	4-3
April 21	Baylor	L	2-5
April 22	Oklahoma State	L	2-5

2003 12-11 OVERALL (2-9 BIG 12)			
Date	Opponent	W/L	Score
Jan. 31	Wichita State	W	6-1
Feb. 2	Wyoming	W	6-1
Feb. 7	Drake	W	4-3
Feb. 9	Colorado State	W	4-3
Feb. 15	Missouri	L	1-6
Feb. 16	SW Missouri State	W	4-3
Feb. 22	at Texas	L	2-5
Feb. 23	at Texas A&M	L	0-7
March 1	Ohio State	W	4-3
March 5	Creighton	W	7-0
March 8	at Kansas	L	2-5
March 14	Eastern Michigan	W	4-3
March 15	Illinois State	W	5-2
March 23	at UC Irvine	L	3-4
March 30	at Texas Tech	W	5-2
April 5	Oklahoma	L	1-6
April 6	Oklahoma State	L	3-4
April 10	Baylor	L	0-7
April 12	at Colorado	L	1-6
April 13	at Denver	W	4-3
April 15	at Kansas State	L	0-7
April 19	Iowa State	W	6-1
April 24	vs. Missouri*	L	0-4

2005 18-4 OVERALL (9-2 BIG 12)			
Date	Opponent	W/L	Score
Jan. 20	Creighton	W	7-0
Jan. 23	Colorado State	W	6-1
Jan. 28	Wyoming	W	7-0
Jan. 30	Southwest Mo. State	W	7-0
Feb. 4	Iowa	W	5-2
Feb. 6	Washington State	W	7-0
Feb. 12	Missouri	W	6-1
Feb. 19	at Texas	L	0-7
Feb. 20	at Texas A&M	W	4-3
Feb. 25	Drake	W	7-0
Feb. 26	Utah	W	6-1
Feb. 27	Wichita State	W	7-0
March 3	Baylor	L	2-5
March 5	Oklahoma	W	5-2
March 12	at Kansas	W	6-1
March 26	at Texas Tech	W	4-3
April 3	Oklahoma State	W	4-3
April 16	at Iowa State	W	7-0
April 20	at Kansas State	W	4-3
April 24	at Colorado	W	4-3
April 29	vs. Colorado*	L	2-4
May 13	vs. South Carolina^	L	0-4



The 2005 Nebraska women's tennis team brought home 18 wins during the regular season, including a 9-2 mark in the Big 12 Conference (from left: Imke Reimers, Ewelina Skaza, Ellinor Zugner, Pamela Castillejos, Gitte Ostermann, Milena Schulz-Gartner, Katie Garcia and Jennifer Cremieux).

2006 17-10 OVERALL (6-5 BIG 12)			
Date	Opponent	W/L	Score
Jan. 27	Colorado State	W	5-2
Jan. 29	Illinois-Chicago	W	6-1
Feb. 3	Air Force	W	7-0
Feb. 5	Drake	W	5-2
Feb. 11	Texas	L	1-6
Feb. 13	Arkansas	W	4-3
Feb. 18	at Missouri	W	5-2
Feb. 24	Missouri State	W	7-0
Feb. 26	Iowa	L	3-4
March 4	at Baylor	L	1-6
March 11	Wichita State	W	5-2
March 12	Colorado	W	4-3
March 15	at UC Irvine	L	1-6
March 16	at Long Beach State	L	3-4
March 19	at Loyola Marymount	W	4-0
March 19	vs. Ohio State	W	4-0
March 26	Texas Tech	L	3-4
April 5	Kansas	W	4-3
April 9	Texas A&M	W	5-2
April 15	at Oklahoma	L	3-4
April 16	at Oklahoma State	W	4-3
April 22	Iowa State	W	7-0
April 23	Kansas State	L	3-4
April 27	vs. Iowa State*	W	4-0
April 28	vs. Texas Tech*	W	4-0
April 29	vs. Baylor*	L	1-4
May 12	vs. Michigan^	L	3-4

YEAR-BY-YEAR RESULTS (SINCE 2000)

2007 13-9 OVERALL (4-7 BIG 12)

Date	Opponent	W/L	Score
Jan. 24	Creighton	W	7-0
Jan. 26	Wyoming	W	6-1
Jan. 28	Wichita State	L	1-6
Feb. 2	Drake	W	6-1
Feb. 4	Colorado State	W	4-3
Feb. 11	Missouri	W	6-1
Feb. 24	at Texas	L	0-7
Feb. 25	at Texas A&M	L	0-7
March 2	Baylor	L	1-6
March 4	Saint Louis	W	7-0
March 10	at Kansas	L	2-5
March 14	at UC Riverside	W	6-1
March 23	Northern Iowa	W	7-0
March 31	at Iowa State	W	6-1
April 7	Oklahoma	W	4-3
April 8	Oklahoma State	L	2-5
April 13	Indiana State	W	5-2
April 15	at Kansas State	W	5-2
April 22	at Colorado	L	3-4
April 25	vs. Texas Tech	L	3-4
April 26	vs. Missouri*	W	4-0
April 27	vs. Baylor*	L	0-4

2008 16-7 OVERALL (5-6 BIG 12)

Date	Opponent	W/L	Score
Jan. 25	Creighton	W	7-0
Feb. 1	Illinois State	W	7-0
Feb. 3	Colorado State	W	7-0
Feb. 8	Drake	W	7-0
Feb. 10	Wyoming	W	7-0
Feb. 15	Saint Louis	W	7-0
Feb. 16	Central Oklahoma	W	7-0
Feb. 22	at Iowa State	W	6-1
Feb. 24	SW Missouri State	W	7-0
Feb. 29	Air Force	W	7-0
March 2	Northern Iowa	W	4-0
March 8	Baylor	L	0-7
March 14	Texas Tech	W	6-1
March 20	at Loyola Marymount	W	6-1
March 28	at Texas A&M	L	0-7
March 29	at Texas	L	1-6
April 5	at Oklahoma State	L	2-5
April 6	at Oklahoma	W	4-3
April 11	Missouri	W	5-2
April 13	Colorado	L	3-4
April 18	at Kansas	L	3-4
April 20	Kansas State	W	6-1
April 24	vs. Kansas State*	L	3-4

2009 16-7 OVERALL (7-4 BIG 12)

Date	Opponent	W/L	Score
Jan. 30	Creighton	W	7-0
Feb. 6	Wyoming	W	7-0
Feb. 8	Drake	W	6-1
Feb. 13	Eastern Michigan	W	7-0
Feb. 15	Colorado State	W	7-0

Feb. 27	West Virginia	W	6-1
March 1	Iowa State	W	5-2
March 4	Wichita State	W	4-3
March 7	Northern Iowa	W	6-1
March 13	Kansas	W	6-1
March 17	at San Diego State	L	3-4
March 21	at Baylor	L	0-7
March 27	Texas A&M	L	2-5
March 28	Texas	L	3-4
April 1	at Tulsa	L	2-5
April 3	Oklahoma State	W	4-3
April 5	Oklahoma	W	6-1
April 11	at Kansas State	L	2-5
April 17	at Missouri	W	4-3
April 19	at Colorado	W	5-2
April 22	vs. Texas Tech	W	4-3
April 24	vs. Colorado*	W	4-0
April 25	vs. Baylor*	L	0-4

2010 22-6 OVERALL (9-2 BIG 12)

Date	Opponent	W/L	Score
Jan. 26	Creighton	W	6-1
Jan. 27	Nebraska-Kearney	W	6-1
Jan. 29	Wichita State	W	4-3
Jan. 31	Minnesota	W	4-3
Feb. 5	Arkansas-Little Rock	W	5-2
Feb. 7	Wyoming	W	5-2
Feb. 13	Air Force	W	7-0
Feb. 13	Drake	W	7-0
Feb. 20	Eastern Michigan	W	7-0
Feb. 26	Colorado State	W	6-1
Feb. 28	Tulsa	L	2-5
March 12	Colorado	W	7-0
March 14	Missouri	W	7-0
March 19	at Long Beach State	L	2-5
March 21	at UC-Irvine	W	4-3
March 26	Kansas State	W	7-0
March 28	at Kansas	W	5-2
April 2	at Iowa State	W	6-1
April 9	Texas Tech	W	4-3
April 11	Baylor	L	1-6
April 16	at Texas	L	1-6
April 17	at Texas A&M	W	5-2
April 23	at Oklahoma	W	6-1
April 24	at Oklahoma State	W	4-3
April 30	at Texas Tech*	W	4-0
May 1	vs. Texas*	L	0-4
May 14	vs. Illinois^	L	4-2
May 15	vs. Northwestern^	L	0-4

2011 20-8 OVERALL (7-4 BIG 12)

Date	Opponent	W/L	Score
Jan. 29	vs. Boise State	W	5-2
Jan. 30	at Northwestern	L	0-7
Feb. 4	Wyoming	W	6-1
Feb. 6	Illinois State	W	7-0
Feb. 12	Eastern Michigan	W	7-0
Feb. 12	Northern Iowa	W	6-1
Feb. 16	at Wichita State	W	4-3

Feb. 26	Colorado State	W	6-1
Feb. 27	Creighton	W	7-0
March 5	at Wisconsin	W	6-1
March 6	at Minnesota	W	7-0
March 11	Ohio State	W	4-3
March 13	at Iowa	W	5-2
March 18	Oklahoma	L	1-6
March 20	Oklahoma State	W	4-3
March 23	at Tulsa	L	1-6
March 27	at Missouri	W	4-3
April 1	at Kansas State	W	4-3
April 3	Kansas	W	5-2
April 8	at Baylor	L	0-7
April 10	at Texas Tech	W	4-3
April 15	Texas	L	2-5
April 17	Texas A&M	L	2-6
April 20	at Colorado	W	7-0
April 23	Iowa State	W	7-0
April 28	Colorado	W	4-0
April 29	vs. Texas A&M*	L	4-0
May 14	vs. Tulsa^	L	2-4

2012 24-5 OVERALL (9-2 BIG TEN)

Date	Opponent	W/L	Score
Jan. 28	vs. Arkansas	W	5-2
Jan. 29	vs. Northwestern	L	3-4
Feb. 4	Wyoming	W	6-1
Feb. 4	Eastern Michigan	W	7-0
Feb. 11	Air Force	W	7-0
Feb. 11	Northern Iowa	W	7-0
Feb. 17	Washington State	W	4-3
Feb. 19	Miami (Ohio)	W	5-2
Feb. 24	Wichita State	W	6-1
Feb. 26	Colorado State	W	7-0
Feb. 29	Kansas State	W	4-3
March 2	Saint Louis	W	7-0
March 4	Colorado	W	7-0
March 9	Iowa	W	6-1
March 11	Tulsa	W	6-1
March 20	at Long Beach State	W	4-3
March 24	at Illinois	L	3-4
March 25	at Northwestern	W	5-2
March 30	Ohio State	W	4-0
April 1	Penn State	W	6-1
April 7	at Purdue	W	5-2
April 8	at Indiana	W	5-2
April 13	Michigan	L	1-6
April 15	Michigan State	W	6-1
April 20	Minnesota	W	7-0
April 22	at Wisconsin	W	6-1
April 27	vs. Purdue*	L	2-4
May 11	vs. North Texas^	W	4-0
May 12	vs. Texas^	L	2-4

2013 24-6 OVERALL (10-1 BIG TEN)

Date	Opponent	W/L	Score
Jan. 12	Eastern Michigan	W	7-0
Jan. 22	Creighton	W	6-1



The 2010 Huskers posted the first of four consecutive 20-wins seasons for the Nebraska women's tennis team (from left: Abby Buxton, Patricia Veresova, Stefanie Weinstein, Wiveca Swarting, Mary Weatherholt, Janine Weinreich, Jennifer Holmberg, Madeleine Geibert and Chelsea Finnegan).

Jan. 26	Tennessee	W	4-3
Jan. 27	Notre Dame	W	4-1
Feb. 2	at Ohio State	W	4-2
Feb. 8	vs. Miami	L	2-4
Feb. 9	vs. Vanderbilt	W	4-3
Feb. 10	vs. Baylor	W	4-1
Feb. 15	Illinois State	W	6-1
Feb. 17	Colorado State	W	7-0
Feb. 22	UALR	W	7-0
Feb. 24	Wyoming	W	7-0
March 2	Kansas State	W	7-0
March 5	at Iowa	W	7-0
March 8	Illinois	W	6-1
March 10	Northwestern	W	4-3
March 17	at San Diego	L	2-5
March 21	vs. Oklahoma State	L	2-5
March 31	at Penn State	W	5-1
April 5	Purdue	W	6-1
April 7	Indiana	W	5-2
April 13	at Michigan	L	2-5
April 14	at Michigan State	W	6-1
April 19	at Minnesota	W	6-1
April 21	Wisconsin	W	4-0
April 26	vs. Minnesota*	W	4-0
April 27	vs. Northwestern*	L	1-4
May 10	Wichita State^	W	5-0
May 11	UNLV^	W	4-1
May 17	vs. North Carolina^	L	1-4

2014 8-17 OVERALL (0-11 BIG TEN)			
Date	Opponent	W/L	Score
Jan. 21	Creighton	W	7-0
Jan. 25	Georgia Tech	L	0-4
Jan. 26	Texas Tech	L	1-4
Jan. 31	Kansas	L	3-4
Feb. 14	Eastern Michigan	W	5-2
Feb. 16	Illinois State	W	5-2
Feb. 22	Air Force	W	5-2
Feb. 22	Northern Iowa	W	4-1
Feb. 28	Drake	L	2-5
March 2	Colorado State	W	7-0
March 7	Wyoming	W	5-2
March 9	Miami (Ohio)	W	4-3
March 14	Iowa	L	1-6
March 15	Wichita State	L	1-4
March 21	at Wisconsin	L	3-4
March 23	Minnesota	L	2-4
March 28	Michigan State	L	3-4
March 30	Michigan	L	0-7
April 5	at Indiana	L	1-6
April 6	at Purdue	L	1-6
April 12	at Northwestern	L	0-7
April 13	at Illinois	L	2-4
April 18	Penn State	L	3-4
April 20	Ohio State	L	0-4
April 24	at Illinois*	L	0-4

2015 12-12 OVERALL (0-11 BIG TEN)			
Date	Opponent	W/L	Score
Jan. 24	Army	W	6-1
Jan. 24	Air Force	W	5-2
Feb. 6	Drake	W	5-2
Feb. 8	Eastern Michigan	W	6-1
Feb. 13	Colorado State	W	7-0
Feb. 15	Missouri	W	5-2
Feb. 20	Wyoming	W	6-1
Feb. 22	Illinois State	W	6-1
Feb. 25	St. John's	W	5-2
Feb. 27	Denver	W	6-1
March 1	Wichita State	L	0-4
March 6	Georgia State	W	5-2
March 8	Purdue	L	1-5
March 13	Maryland	L	0-7
March 15	at Michigan State	L	3-4
March 20	Indiana	L	3-4
March 25	at Loyola Marymount	W	4-3
March 29	at Iowa	L	3-4
April 3	at Wisconsin	L	1-6
April 5	at Minnesota	L	2-5
April 10	Penn State	L	3-4
April 12	Ohio State	L	0-7
April 18	at Illinois	L	1-6
April 19	at Northwestern	L	0-7

2016 17-8 OVERALL (4-7 BIG TEN)			
Date	Opponent	W/L	Score
Jan. 22	South Dakota State	W	7-0
Jan. 29	Eastern Michigan	W	5-2
Jan. 31	Air Force	W	6-1
Feb. 5	Creighton	W	6-1
Feb. 5	UMKC	W	7-0
Feb. 7	Wyoming	W	4-3
Feb. 13	Wichita State	L	1-6
Feb. 14	Colorado State	W	7-0
Feb. 19	Miami (Ohio)	W	4-3
Feb. 21	Memphis	W	4-3
Feb. 26	South Dakota	W	6-1

Feb. 27	Drake	W	4-0
March 2	Iowa	W	5-2
March 5	at Purdue	L	2-5
March 12	Rutgers	W	4-0
March 12	Omaha	W	4-0
March 22	at Cal State Fullerton	W	4-3
March 25	Minnesota	W	4-3
March 27	Wisconsin	W	4-3
April 2	at Northwestern	L	2-5
April 3	at Illinois	L	1-4
April 8	at Penn State	L	2-5
April 10	at Ohio State	L	0-7
April 15	Michigan State	L	1-6
April 17	Michigan	L	2-5

2017 19-8 OVERALL (5-6 BIG TEN)			
Date	Opponent	W/L	Score
Jan. 27	Air Force	W	6-1
Jan. 28	UMKC	W	7-0
Jan. 28	South Dakota	W	7-0
Feb. 4	Wyoming	W	6-1
Feb. 4	North Dakota	W	7-0
Feb. 10	Eastern Michigan	W	6-1
Feb. 12	Creighton	W	7-0
Feb. 17	Drake	W	4-0
Feb. 19	Colorado State	W	7-0
Feb. 22	at Rutgers	W	7-0
Feb. 26	Omaha	W	7-0
Feb. 26	#35 Wichita State	W	4-3
March 4	Houston	W	4-0
March 5	Illinois State	W	4-0
March 11	Purdue	W	5-2
March 11	at Cal State Fullerton	L	1-4
March 25	at Minnesota	L	3-4
March 26	at Wisconsin	W	5-2
March 31	#40 Northwestern	L	0-4
April 2	Illinois	W	4-2
April 7	Penn State	W	5-2
April 8	#3 Ohio State	L	0-7
April 15	at Michigan State	L	0-4
April 16	at #9 Michigan	L	0-7
April 22	at Iowa	L	3-4
April 27	vs. Minnesota	W	4-3
April 28	vs. #4 Ohio State	L	0-4

2018 18-7 OVERALL (7-4 BIG TEN)			
Date	Opponent	W/L	Score
Jan. 26	at #3 Vanderbilt	L	1-4
Jan. 27	vs. Virginia	L	2-4
Feb. 2	Colorado State	W	7-0
Feb. 4	Eastern Michigan	W	4-0
Feb. 4	South Dakota	W	6-0
Feb. 10	SIUE	W	7-0
Feb. 10	North Dakota	W	6-0
Feb. 16	Wyoming	W	4-0
Feb. 18	Wichita State	W	4-3
Feb. 23	at #35 Kansas State	W	4-2
Feb. 25	Iowa State	W	4-0
March 2	UMKC	W	4-0
March 4	Illinois State	W	4-0
March 7	at #19 Ohio State	W	4-3
March 16	Michigan State	L	2-4
March 18	#34 Michigan	L	3-4
March 25	Penn State	W	7-0
March 31	at Purdue	L	3-4
April 1	at Indiana	W	6-1
April 6	at Rutgers	W	5-2
April 8	at Maryland	L	2-4
April 14	Iowa	W	4-0
April 20	Wisconsin	W	4-0
April 22	Minnesota	W	4-3
April 27	vs. #19 Illinois*	L	0-4

2019 10-17 OVERALL (2-9 BIG TEN)			
Date	Opponent	W/L	Score
Jan. 19	Air Force	L	3-4
Jan. 19	Creighton	W	6-1
Jan. 26	vs. Old Dominion	L	0-4
Jan. 27	vs. Gonzaga	L	1-4
Feb. 1	Kansas State	L	1-4
Feb. 3	UMKC	W	4-0
Feb. 3	South Dakota	W	4-0
Feb. 6	at #11 Kansas	L	1-4
Feb. 9	Drake	W	4-0
Feb. 15	Louisville	W	4-2
Feb. 17	Wichita State	L	1-4
Feb. 23	Colorado State	W	4-3
Feb. 23	North Dakota	W	5-0
March 2	#31 Washington State	L	1-4
March 3	Iowa State	L	3-4
March 16	at #23 Michigan	L	0-7
March 17	at Michigan State	L	3-4
March 22	#14 Ohio State	L	2-5
March 24	at Penn State	L	3-4
March 29	Indiana	L	2-5
March 31	Purdue	L	3-4
April 5	Maryland	W	6-1

April 7	Rutgers	L	3-4
April 13	Iowa	W	4-2
April 20	at Minnesota	L	3-4
April 21	at Wisconsin	L	3-4

2020 11-4 OVERALL (1-0 BIG TEN)			
Date	Opponent	W/L	Score
Jan. 18	Sacramento State	W	7-0
Jan. 24	Florida International	W	4-0
Feb. 1	Air Force	W	4-3
Feb. 1	Creighton	W	4-0
Feb. 8	at Baylor	L	1-6
Feb. 14	UC Santa Barbara	L	1-4
Feb. 16	at #16 UCF	L	0-4
Feb. 21	Colorado State	W	6-1
Feb. 23	Iowa State	W	5-2
Feb. 26	at Rutgers	W	6-1
Feb. 29	Wichita State	W	6-1
March 4	at Kansas State	L	3-4
March 7	Wyoming	W	6-1
March 7	Illinois State	W	4-0

2021 11-6 OVERALL (11-5 BIG TEN)			
Date	Opponent	W/L	Score
Feb. 12	#8 Northwestern	L	3-4
Feb. 14	Illinois	W	5-2
Feb. 19	at Minnesota	W	4-3
Feb. 21	at Wisconsin	W	4-3
Feb. 26	Purdue	W	6-1
Feb. 28	Indiana	W	5-2
March 5	#10 Ohio State	L	2-5
March 7	Penn State	W	4-2
March 12	at #12 Northwestern	L	2-4
March 14	at Illinois	W	4-3
March 19	Minnesota	W	6-1
March 21	#40 Wisconsin	W	4-0
March 28	at #37 Iowa	L	2-4
April 9	at Maryland	W	5-2
April 11	at Rutgers	W	5-2
April 18	#43 Iowa	L	1-4
April 29	Maryland	L	3-4

2022 15-10 OVERALL (7-4 BIG TEN)			
Date	Opponent	W/L	Score
Jan. 25	Creighton	W	7-0
Jan. 29	#6 Duke	L	0-4
Jan. 30	Furman University	L	1-4
Feb. 4	#26 Iowa State	-	-
Feb. 6	Wichita State	W	6-1
Feb. 11	#39 Kansas	L	3-4
Feb. 13	#48 Memphis	W	4-1
Feb. 19	Colorado State	W	4-0
Feb. 19	South Dakota	W	4-0
March 2	#71 Kansas State	L	1-4
March 5	#45 Minnesota	W	6-1
March 9	Omaha	W	7-0
March 16	#41 Texas Tech	L	1-4
March 18	#70 Penn State	W	5-2
March 20	#4 Ohio State	L	3-4
March 26	#65 Purdue	W	4-1
March 27	Indiana	W	4-3
April 1	#35 Northwestern	L	1-4
April 3	#59 Illinois	L	3-4
April 9	Rutgers	W	4-0
April 10	#69 Maryland	W	4-0
April 15	#22 Michigan	L	1-4
April 17	Michigan State	W	4-1
April 23	Iowa	W	4-0
April 28	Purdue	W	4-0
April 29	#39 Northwestern	L	3-4



The 2012 Nebraska women's tennis team produced a school-record 24-5 mark and advanced to the second round of the NCAA Tournament (from left: Jennifer Holmberg, Patricia Veresova, Stefanie Weinstein, Mary Weatherholt, Izabella Zgierska, Janine Weinreich, Madeleine Geibert and Maik Zeppernick).

NEBRASKA RECORDS



The 2012-13 Huskers put together the most successful campaign in program history, finishing with a 24-6 record and a 10-1 mark in the Big Ten. The team won its first Big Ten title as co-champions of the regular season with Michigan. Nebraska also advanced to the Sweet 16 in the NCAA Tournament for the first time in school history. Back row from left: Maggy Lehmicke, Stefanie Weinstein, Janine Weinreich, Izabella Zgierska, Mary Weatherholt, Patricia Veresova. Front row from left: Maike Zeppernick, Lauren Wagner.

Career Combined Wins

Player	Wins	Year
1. Mary Weatherholt	208	2008-13
2. Stefanie Weinstein	186	2009-13
3. Madeleine Geibert	181	2008-12
4. Sandra Noetzel	172	1996-00
5. Imke Reimers	164	2004-08

Career Singles Wins

Player	Wins	Year
1. Mary Weatherholt	123	2008-13
2. Sandra Noetzel	101	1996-00
3. Madeleine Geibert	90	2008-12
Wiveca Swarting	90	2006-10
Imke Reimers	90	2004-08

Career Singles Winning Percentage

Player	Wins	Pct.	Year
1. Mary Weatherholt	123-23	.842	2008-13
2. Nancy Tyggum	35-13	.729	1987-90
3. Patricia Veresova	75-28	.728	2010-13
4. Imke Reimers	90-34	.726	2004-08
5. Katarina Balan	86-33	.722	1998-02

Career Doubles Individual Wins

Player	Wins	Year
1. Stefanie Weinstein	97	2009-13
2. Madeleine Geibert	91	2008-12
3. Mary Weatherholt	85	2008-13
4. Janine Weinreich	77	2009-13
5. Imke Reimers	74	2004-08

Season Combined Wins

Player	Wins	Year
1. Mary Weatherholt	56	2011-12
2. Stefanie Weinstein	54	2011-12
3. Mary Weatherholt	52	2012-13
Patricia Veresova	52	2011-12
5. Stefanie Weinstein	51	2012-13
Doneta Holmen	51	1989-90

Season Singles Wins

Player	Wins	Year
1. Mary Weatherholt	36	2008-09
2. Mary Weatherholt	30	2012-13
Mary Weatherholt	30	2011-12
Wiveca Swarting	30	2008-09
Sandra Noetzel	30	1998-99

Season Singles Winning Percentage

Player	Wins	Pct.	Year
1. Mary Weatherholt	30-2	.938	2012-13
2. Mary Weatherholt	36-4	.900	2008-09
3. Pamela Castillejos	22-3	.880	2004-05
4. Amy Frisch	22-5	.814	1999-00
5. Mary Weatherholt	26-6	.812	2009-10
Gitte Ostermann	26-6	.812	2004-05

Season Doubles Individual Wins

Player	Wins	Year
1. Janine Weinreich	29	2012-13
Stefanie Weinstein	29	2011-12
3. Stefanie Weinstein	28	2012-13
lidiko Guba	28	1989-90
Doneta Holmen	28	1989-90
Nancy Tyggum	28	1989-90
Kathrin Edelkotter	28	1989-90

Season Doubles Team Wins

Player	Wins	Year
1. Weinstein/Weinreich	28	2012-13
Edelkotter/Guba	28	1989-90
Holmen/Tyggum	28	1989-90
4. Geibert/Weinstein	26	2011-12
5. Weatherholt/Veresova	22	2012-13

Most Team Wins

Year	Record
1. 2013	24-6
2012	24-5
3. 2010	22-6
4. 2011	20-8
5. 2001	19-6
2000	19-6
2017	19-8

Fewest Team Losses

Year	Record
1. 2005	18-4
2020	11-4
2. 2012	24-5
1989	9-5
4. 2013	24-6
2010	22-6
2001	19-6
2000	19-6
1979	7-6
1991	7-6

Season Team Winning Percentage

Year	Record	Pct.
1. 2012	24-5	.828
2. 2005	18-4	.818
3. 2013	24-6	.800
4. 2010	22-6	.786
5. 2001	19-6	.730
2000	19-6	.730

HONORS & AWARDS

NCAA Top Ten Award

Year	Name
2014	Mary Weatherholt

All-Americans

Year	Name	Position
1986	Cari L. Groce	Doubles
1986	Liz A. Mooney	Doubles
2013	Mary Weatherholt	Singles/Doubles
2013	Patricia Veresova	Doubles

Academic All-Americans

Year	Name	Team
2007	Imke Reimers	Second-Team
2008	Imke Reimers	First-Team
2019	Marina Cozac	Third-Team

Nebraska Athletics Hall of Fame

Year	Name
2015	Liz Mooney (Shaffer)

Nebraska Female Student-Athlete of the Year

Year	Name
2013	Mary Weatherholt

ITA National Cissie Leary Sportsmanship Award

Year	Name
2013	Mary Weatherholt

Big Ten Female Tennis Athlete of the Year

Year	Name
2012	Mary Weatherholt
2013	Mary Weatherholt

Big 12 Singles Champions

Year	Name	Position
1998	Lisa Hart	No. 2
2000	Amy Frisch	No. 6
2010	Jennifer Holmberg	No. 6

Big Eight Singles Champions

Year	Name	Position
1977	Vickie Maseman	No. 4
1977	Ruth Anderson	No. 6
1978	Sue Sloboth	No. 3
1978	Vickie Maseman	No. 4
1978	Dee Pavelka	No. 6

Big 12 Doubles Champions

Year	Name	Position
2000	Katarina Balan	No. 2
	Maria Laura Fernandez	No. 2
2008	Jana Albers	No. 1
	Imke Reimers	No. 1
2010	Jennifer Holmberg	No. 3
	Mary Weatherholt	No. 3

Big Eight Doubles Champions

Year	Name	Position
1977	Kathy Hawkins	No. 2
	Dee Pavelka	No. 2
1977	Vickie Maseman	No. 3
	Ruth Anderson	No. 3

Big 12 Freshman of the Year

Year	Name
2006	Kim Hartmann
2009	Mary Weatherholt

Big Eight Freshman of the Year

Year	Name
1994	Annie Yang
1995	Lisa Hart

Big Ten Coach of the Year

Year	Name
2012	Scott Jacobson (co-coach)

Big 12 Coach of the Year

Year	Name
2005	Scott Jacobson
2010	Scott Jacobson

First-Team All-Big Ten

Year	Name
2012	Mary Weatherholt (unanimous)
2013	Mary Weatherholt (unanimous)
2013	Patricia Veresova
2019	Claire Reifeis
2020	Claire Reifeis (unanimous)
2021	Kristina Novak
2022	Kristina Novak

Second-Team All-Big Ten

Year	Name
2012	Patricia Veresova
2013	Stefanie Weinstein

First-Team All-Big 12

Year	Name	Position
1997-98-99-00	Sandra Noetzel	Singles
1996-97-98	Lisa Hart	Singles
2000	Gina Pelazini	Doubles
2003-04-05	Gitte Ostermann	Singles
2005	Gitte Ostermann	Doubles
2005	Katie Garcia	Doubles
2006	Kim Hartmann	Singles
2007	Diana Kuhl	Doubles
2007-08	Imke Reimers	Doubles
2007-08	Imke Reimers	Singles
2008	Jana Albers	Doubles
2009-10-11	Madeleine Geibert	Singles
2009-10	Mary Weatherholt	Singles
2010	Madeleine Geibert	Doubles
2010	Stefanie Weinstein	Doubles
2011	Patricia Veresova	Singles

Big Ten Distinguished Scholar

Year	Name
2012	Mary Weatherholt
2012	Janine Weinreich
2012	Stefanie Weinstein
2012	Maike Zeppernick
2014-15-16	Maggy Lehmicke
2015-16-18	Katerina Matysova
2016	Mackenna Maddox-Herr
2017-18	Paula Del Cueto Castillo
2018-19	Elizabeth Gould
2018-20-21	Hayley Haakenstad
2018-19	Jeannie Lozowski
2018-20-21	Claire Reifeis
2019	Marina Cozac
2021	Ellie Kuckelman
2021	Chloe Kuckelman
2020-21	Emma Worley
2021	Jessica Aragon

Academic All-Big Ten

Year	Name
2012	Madeleine Geibert
2012	Jennifer Holmberg
2012-13	Patricia Veresova
2012-13	Mary Weatherholt
2012-13	Janine Weinreich
2012-13	Stefanie Weinstein
2012-13-14	Maike Zeppernick
2013-14-15	Izabella Zgierska
2014-15-16	Maggy Lehmicke
2014-15-16	Lauren Wagner
2015-16-17	Lisa Andersson
2015-16-17	Mary Hanna
2015-16-17-18	Katerina Matysova
2015	Spurti Shivalingaiyah
2016	Mackenna Maddox-Herr
2017-18	Paula Del Cueto Castillo

2017	Sydney Harlow
2017-18-19	Elizabeth Gould
2018	M'Balía Bangoura
2018-19-20-21	Hayley Haakenstad
2018-19	Jeannie Lozowski
2018-19-20-21	Claire Reifeis
2019	Marina Cozac
2019-20-21	Emma Worley
2020-21	Jessica Aragon
2021-22	Isabel Adrover Gallego
2021	Chloe Kuckelman
2021	Ellie Kuckelman
2021	Kristina Novak
2022	Samantha Alicea

Academic All-Big 12

Year	Name
1996*-97-98*	Lisa Hart
1997	Kristie Bilecky
1997*-98*	Jennifer Thoste
1997*-98*	Adriana Dulic
1998	Danica Hardy
1998	Kelli Clark
1998-99*-00*	Gina Pelazini
1998*-99*-00*-01*	Ndali Ijomah
1999*-00*	Sandra Noetzel
2000*-01*-02	Katarina Balan
2000*-01*-02*	Amy Frisch
2001*-02*-03*-04*	Rebecca Harvey
2003*	Stacey Tomkiewicz
2003*-04*-05*	Gitte Ostermann
2001-02-03-04*	Leslie Harvey
2003-04*	Anna Oehme
2004-05*	Katie Garcia
2004*-06*	Jennifer Cremieux
2004-05-06	Pamela Schallejos
2005*-06*	Milena Schulz-Gartner
2006*	Ewelina Skaza
2006*-07*-08*	Imke Reimers
2008*-09*-10*	Wiveca Swarting
2009*	Marianne Cicmanec
2009	Stephanie Evans
2009*	Ashley Finnegan
2010*-11	Madeleine Geibert
2010*-11*	Jennifer Holmberg
2010*	Mary Weatherholt
2011*	Abby Buxton
2011*	Patricia Veresova
2011*	Janine Weinreich
2011*	Stefanie Weinstein

*(First-Team Selection)

Academic All-Big Eight

Year	Name
1989	Lidiko Guba
1989	Meghan Quinn
1991*-92*	Ann Flannery
1993*	Frauke Hachtmann
1994*-95*	Annie Yang

*(First-Team Selection)

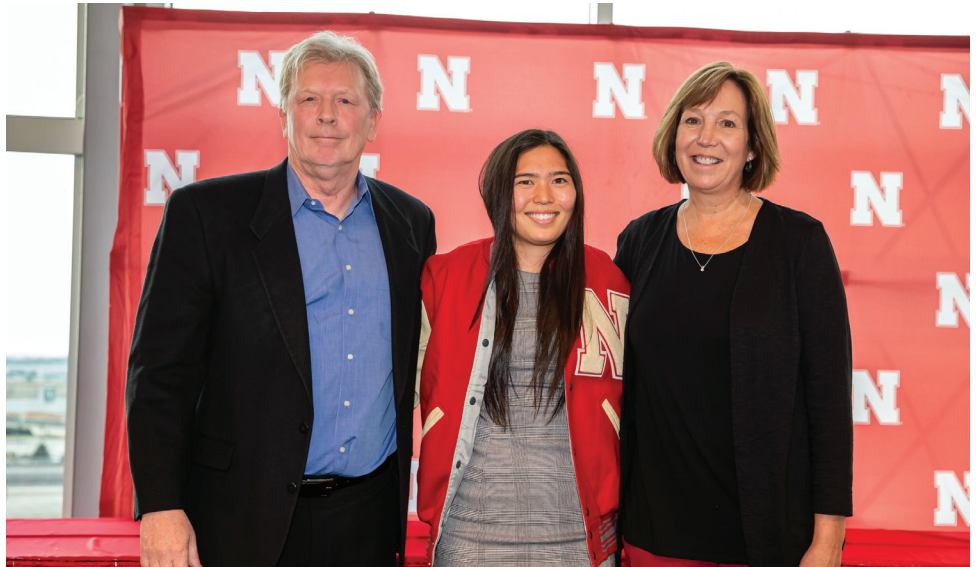
Big Ten Sportsmanship Award

Year	Name
2012	Mary Weatherholt
2013	Mary Weatherholt
2014	Maike Zeppernick
2015	Maggy Lehmicke
2016	Katerina Matysova
2017	Paula Del Cueto Castillo
2018	Vasanti Shinde
2019	Hayley Haakenstad
2020	Isabel Adrover Gallego
2021	Maja Makoric
2022	Kristina Novak

NEBRASKA ALL-TIME LETTERWINNERS

All-Time Letterwinners

Adrover Gallego, Isabel.....	2020-21-22
Albers, Jana.....	2008-09
Alicea, Samantha.....	2021-22
Anderson, Ruth.....	1977
Anderson, Sue.....	1977
Andersson, Lisa.....	2014-15-16-17
Aragon, Jessica.....	2019-20-21-22
Baccarani, Jen.....	2003
Balan, Katarina.....	1999-00-01-02
Bangoura, M'Balía.....	2017-18
Baranovski, Anna.....	2020
Bauers, Susan.....	1978-79
Bilecky, Kristie.....	1996-97
Botts, Lara.....	1996-97
Briant, Patti.....	1978
Brooks, Lisa.....	1983-84-85-86
Buxton, Abby.....	2008-09-10-11
Campbell, Cathy.....	1977
Castillejos, Pamela.....	2003-04-05-06
Chandronnait, Amber.....	2008
Cicmanec, Marianne.....	2007-08-09
Clark, Kelli.....	1998
Collins, Rachel.....	1989-90-91-92
Coutresis, Tina.....	1990-91-92-93
Cozac, Marina.....	2018-19
Cremieux, Jennifer.....	2003-04, 2006
Del Cueto Castillo, Paula.....	2016-17-18
Diedrich, Jenn.....	1987-88
Distefano, Kerry M.....	1979-80-81-82
Dulic, Adriana.....	1997-98
Dunlap, Margaret.....	1981
Edelkotter, Kathrin.....	1989
Evans, Stephanie.....	2008-09
Fernandez, Maria Laura.....	2000
Finnegan, Ashley.....	2007-08-09
Finnegan, Chelsea.....	2010-11
Finley, Ashley.....	1993
Fischer, Geri Ann.....	1976
Fischer, Kathy.....	1981-82
Flannery, Ann F.....	1990-91-92-93
Frisch, Amy.....	1999-00-01-02
Galvan, Zarina.....	1992-93
Gandini, Claudia.....	1988-89-90
Garcia, Katie.....	2002-03-04-05
Geibert, Madeleine.....	2009-10-11-12
Givens, Lee Ann.....	1982-83
Glover, Helen.....	1976
Gould, Elizabeth.....	2016-17-18, 19
Groce, Cari L.....	1984-85-86-87
Guba, Iidiko.....	1988-89-90-91
Haakenstad, Hayley.....	2017-18-19-20-21
Hachtmann, Frauke.....	1992-93-94-95
Hagan, Margaret Shelia.....	1984
Halahan, Jean.....	1984
Hall, Mary.....	1976
Hanna, Mary.....	2014-15-16-17
Hardy, Danica.....	1998-99
Harlow, Sydney.....	2016-17
Hart, Lisa.....	1995-96-97-98
Hartmann, Kim.....	2006
Harvey, Leslie.....	2001-02-03-04
Harvey, Rebecca.....	2001-02-03-04
Hawkins, Kathy.....	1976-77
Hayes, Susan.....	1982-83
Heute, Vanessa.....	2006
Holmberg, Jennifer.....	2009-10-11-12
Holmen, Doneta A.....	1987-88-89
Huerter, Judy.....	1978-79-80-81



Husker Jessica Aragon received her letterjacket and joined the N Club in 2018-19 (from left: Coach Scott Jacobson, Jessica Aragon, and Ann Swanson Bartek).

Ijomah, Ndali.....	1998-99-00-01	Rase, Sharon.....	1976-77
Jones, Leslie.....	1989	Rees, Emily.....	2018
Junius, Heidi.....	1991-92-93	Reifeis, Claire.....	2017-18-19-20
Ketmayura, Rose.....	2001-02-03-04	Reiman, Cindi.....	1980-81-82-83
Kinard, Elissa.....	2001-02	Reimers, Imke.....	2005-06-07-08
Kochen, Lori.....	1977-78	Ring, Maria.....	2007-08-09
Krager, Cindy.....	1979	Rissi, Rocky R.....	1980
Kried, Cathy.....	1976-77	Roa, Jillian.....	2022
Kuckelman, Chloe.....	2020-21-22	Roberts, Beverly.....	1985
Kuckelman, Ellie.....	2020-22	Sandberg, Vivien.....	2021-22
Kuhl, Diana.....	2007	Schmitz, Carrie B.....	1979-80-81
Lashway, Brianna.....	2018	Schroeder, Mary.....	1978
Lehmicke, Maggie.....	2013-14-15-16	Scribner, Barbara.....	1976
Liptak, Catherine.....	1994	Schulz-Gartner, Milena.....	2004-05-06
Loy, Lucy.....	2022	Shaneyfelt, Margaret.....	1976
Lozowski, Jeannie.....	2017-18-19	Shinde, Vasanti.....	2016-17-18-19
Maddox-Herr, Mackenna.....	2015-16	Shivalingaiah, Spurti.....	2016-17
Magiera, Mimi.....	1981-82-83	Skaza, Ewelina.....	2005-06
Makoric, Maja.....	2021-22	Sloboth, Sue.....	1977-78-79-80
Marcum, Christine G.....	1976	Startin, Jane.....	1992-93-94-95
Martin, Vickie.....	1986-87	Stephens, Anne E.....	1986-87-88
Maseman, Vickie.....	1976-77-78	Sulz, Hannah.....	2014
Matthews, Molly.....	1977-78	Svoboda, Lynn.....	1982-83
Matysova, Katerina.....	2015-16-17-18	Swanson, Ann E.....	1980-81-82-83
McNellis, Alison.....	1994	Swarting, Wiveca.....	2007-08-09-10
McVicker, Joyce.....	1976-77-78	Tomkiewicz, Stacey.....	2000-01-02-03
Miner, Jane.....	1980	Thoste, Jennifer.....	1995-96-97-98
Mooney, Liz A.....	1983-84-85-86	Tyggum, Nancy.....	1988-89-90
Moore, Mary Susan.....	1979-80-81-82	Veresova, Patricia.....	2011-12-13
Mortell, Jenny M.....	1983-84-85-86	Wagner, Joanna.....	1977
Noetzel, Sandra.....	1997-98-99-00	Wagner, Lauren.....	2013-14-15-16
Novak, Kristina.....	2020-21-22	Waldhauser, Michelle.....	1993-94-95-96
Oehme, Anna.....	2002-03-04	Walz, Janet.....	1978
Ostermann, Gitte.....	2002-03-04-05	Weatherholt, Mary.....	2009-10-11-12-13
O'Shea, Karen.....	1977-78	Weidman, Wendy.....	1977-78
Pavelka, Dee.....	1977-78-79	Weinreich, Janine.....	2010-11-12-13
Pelazini, Gina.....	1997-98-99-00	Weinstein, Stefanie.....	2010-11-12-13
Pisarcik, Jamie.....	1982-83-84-85	Worley, Emma.....	2017-18-19-20-21
Pisarcik, Jill.....	1984-85-86-87	Yang, Annie.....	1994-95-96-97
Popova, Maria.....	2007	Yarmus, April.....	1994
Porter, Julia.....	1976	Young, Mary Jo.....	1987-88
Putthoff, Frederike.....	2011	Zeppernick, Maike.....	2011-12-13-14
Quinn, Meghan.....	1988-89-90-91	Zgierska, Izabella.....	2012-13-14-15
Rapp, Sue.....	1976	Zugner, Ellinor.....	2005-06

CHAMPIONS IN ATHLETICS, ACADEMICS, LIFE

The Nebraska women's tennis program has established itself as a national contender. In 2013, the Huskers advanced to the NCAA Sweet 16 and played host to the first and second rounds of the NCAA Tournament for the first time. It was Nebraska's sixth NCAA appearance in an eight-year span.

Coach Scott Jacobson is in his 32nd season as the winningest coach in Nebraska tennis history. He helped 2013 All-American Mary Weatherholt to a second-place finish at the 2013 NCAA Singles Championship. Weatherholt added an NCAA Elite Eight finish alongside fellow 2013 All-American Patricia Veresova in doubles. Weatherholt also captured the 17th of Nebraska's NCAA-leading 18 NCAA Top Ten Award, after being named Nebraska's Female Student-Athlete of the Year.



Left: Mary Weatherholt set the all-time record for career wins at 208, the first and only women's player in Nebraska history to surpass the 200-win mark. Weatherholt was the 2013 NCAA Singles runner-up, 2013 NCAA/ITA All-American in both singles and doubles, Big Ten Women's Tennis Athlete-of-the-year in both 2012 and 2013 and earned the NCAA Top Ten Award for her performance on the court, in the classroom and community.

Right: Gitte Ostermann (top) was a three-time All-Big 12 pick and led NU to its first-ever NCAA Tournament team appearance in 2005. Imke Reimers (bottom) was a two-time CoSIDA Academic All-American at Nebraska and earned a prestigious NCAA Postgraduate Scholarship in 2008.





**THIS IS NEBRASKA
WOMEN'S TENNIS**



MARY WEATHERHOLT, NCAA RUNNER-UP



PATRICIA VERESOVA, ALL-AMERICAN



NCAA TOURNAMENT SWEET 16 TEAM



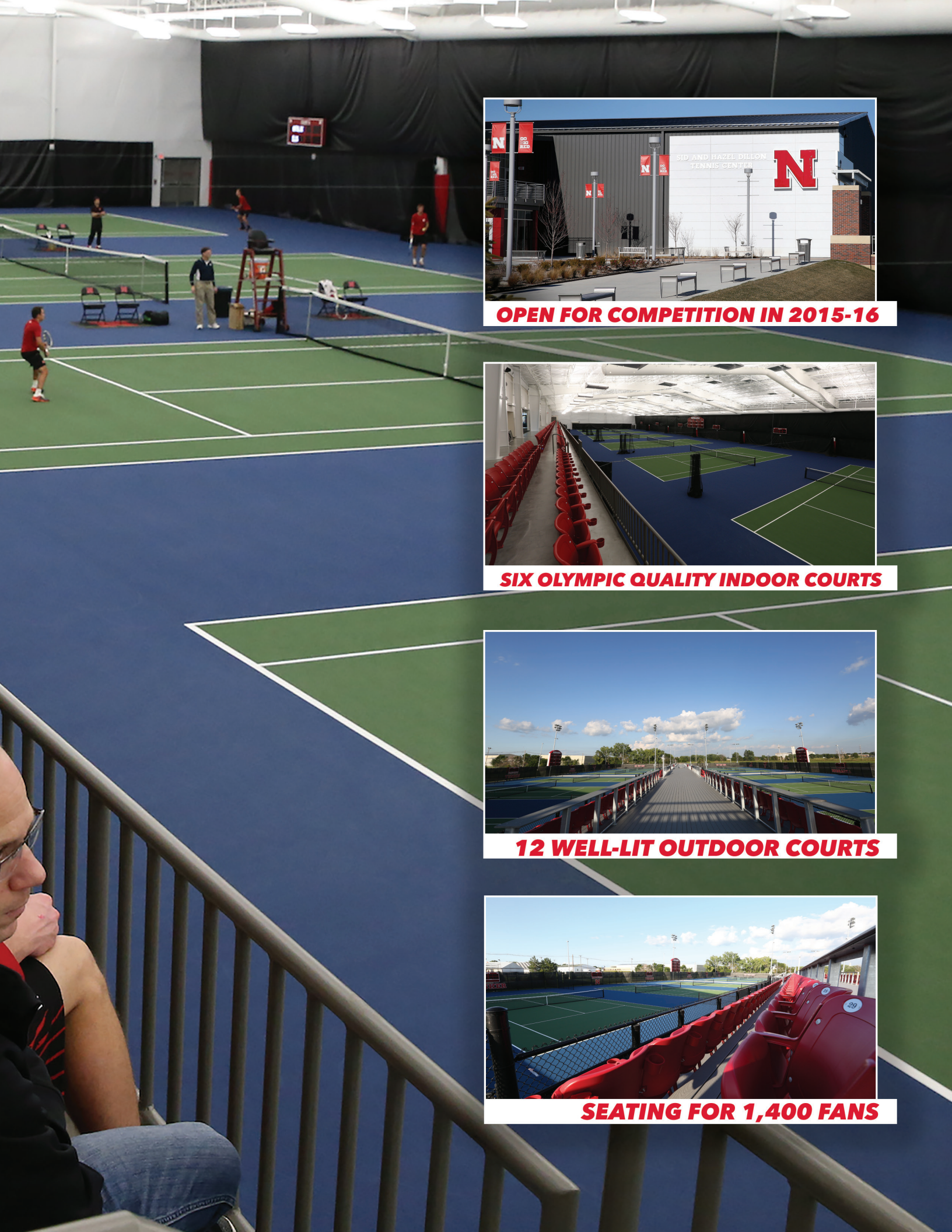
STEFANIE WEINSTEIN, NU DOUBLES WIN LEADER



N



**SID & HAZEL DILLON
TENNIS CENTER**



OPEN FOR COMPETITION IN 2015-16



SIX OLYMPIC QUALITY INDOOR COURTS



12 WELL-LIT OUTDOOR COURTS



SEATING FOR 1,400 FANS



CHAMPIONSHIP FACILITIES



PINNACLE BANK ARENA



HAWKS FIELD



BOB DEVANEY SPORTS CENTER

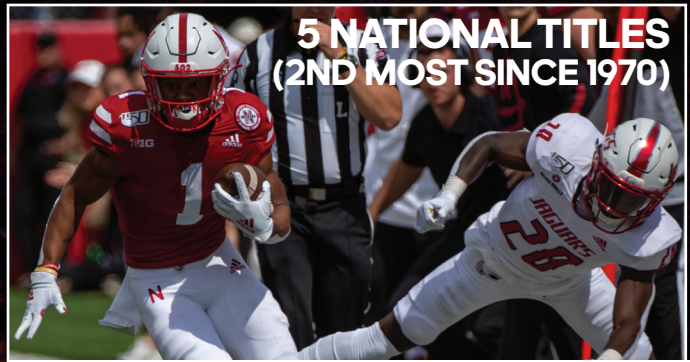


BARBARA HIBNER STADIUM



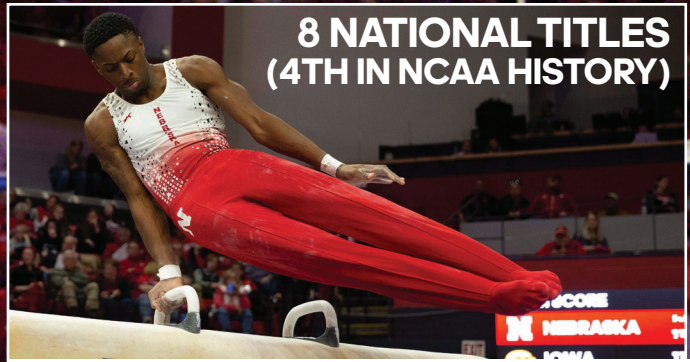
NATIONAL POWERS

FIVE VOLLEYBALL NATIONAL CHAMPIONSHIPS
(3RD IN NCAA HISTORY)



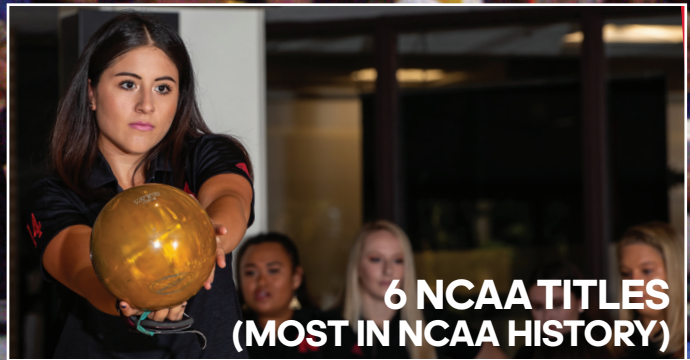
**5 NATIONAL TITLES
(2ND MOST SINCE 1970)**

FOOTBALL



**8 NATIONAL TITLES
(4TH IN NCAA HISTORY)**

MEN'S GYMNASTICS



**6 NCAA TITLES
(MOST IN NCAA HISTORY)**

BOWLING



**2 INDOOR
NCAA TITLES
(4TH IN NCAA HISTORY)**

WOMEN'S TRACK AND FIELD



ATHLETIC MEDICINE



ALTER-G TREADMILLS



HYDROTHERAPY POOLS



ON-SITE X-RAY FACILITY

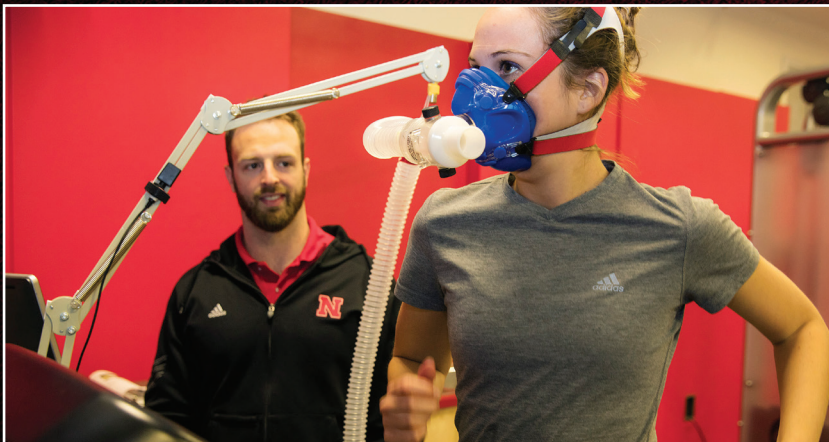
NAPL

NEBRASKA ATHLETIC PERFORMANCE LAB

A ONE-OF-A-KIND RESEARCH AND TESTING FACILITY THAT PROVIDES NEBRASKA STUDENT-ATHLETES WITH THE LATEST ADVANCEMENTS IN EQUIPMENT, TRAINING TECHNIQUES AND MEDICAL TECHNOLOGY.



GROUNDBREAKING RESEARCH

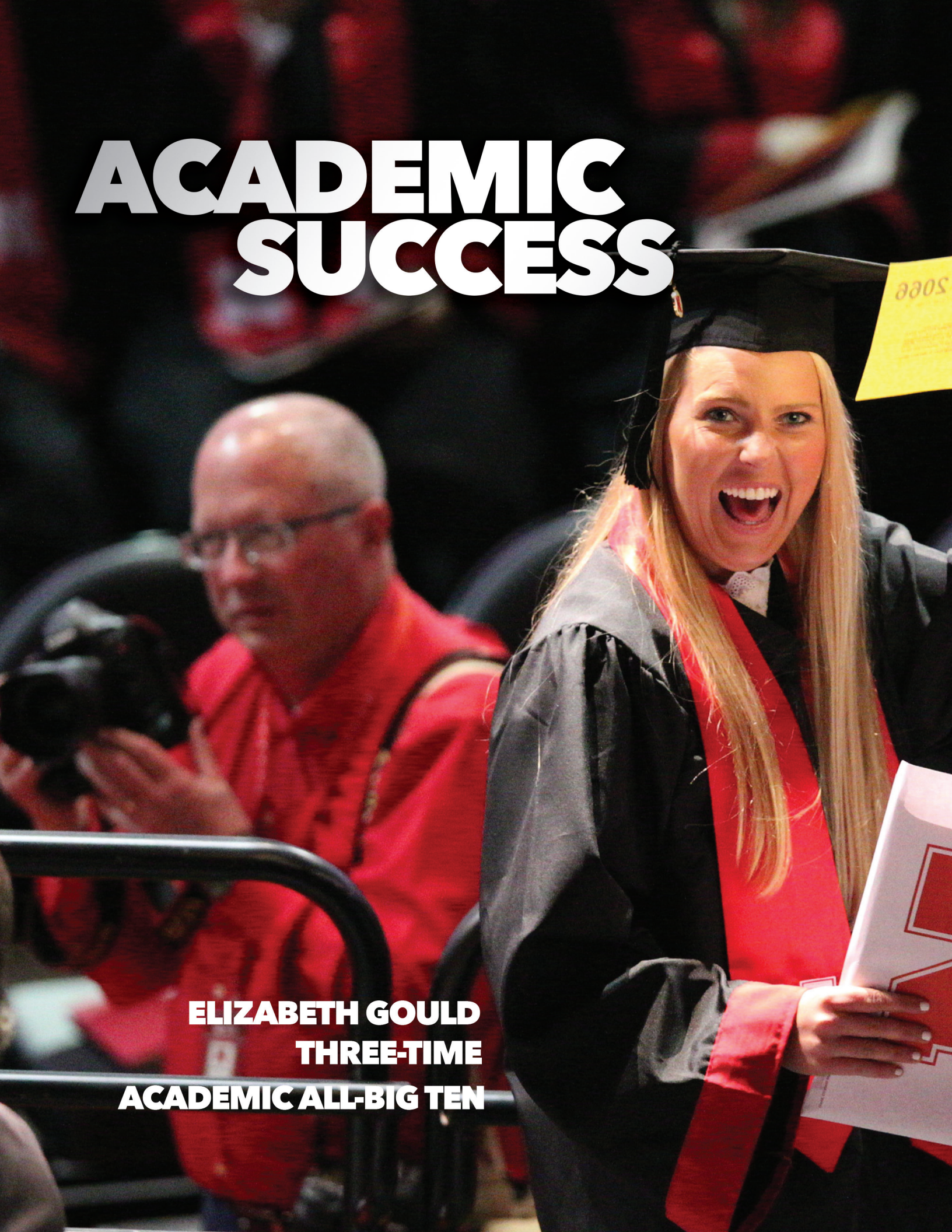


STATE-OF-THE-ART EQUIPMENT



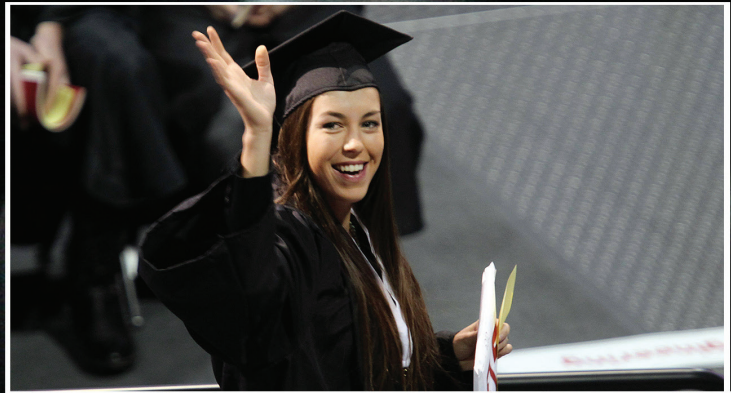
ACADEMIC SUCCESS

ELIZABETH GOULD
THREE-TIME
ACADEMIC ALL-BIG TEN





MARY HANNA, THREE-TIME ALL-BIG TEN



PATRICIA VERESOVA, TWO-TIME ALL-BIG TEN



2019 NEBRASKA HERMAN TEAM GPA WINNERS

ACADEMIC EXPERIENCE





MARINA COZAC, 2019 ACADEMIC ALL-AMERICAN



STUDENT LIFE COMPLEX

ACADEMIC ALL-AMERICANS
DIVISION I SCHOOLS, ALL TIME

N	347
NY	274
S	271

LIFE SKILLS





NO FILTER
OPEN YOUR MIND, CHANGE YOUR VIEW, LEAVE YOUR MARK.

NEBRASKA
HUSKERS

NEBRASKA
WRESTLING
HUSKERS

NEBRASKA
HUSKERS
N

NEBRASKA
HUSKERS

THE UNIVERSITY OF NEBRASKA





THE UNIVERSITY OF NEBRASKA

INNOVATION CAMPUS, CITY CAMPUS & DOWNTOWN LINCOLN

76 MASTER'S DEGREE PROGRAMS

150+ UNDERGRADUATE MAJORS

500+ STUDENT ORGANIZATIONS

24,431 TOTAL ENROLLMENT

130+ COUNTRIES REPRESENTED

50 STATES REPRESENTED

200,000+ LIVING ALUMNI



CONNECT

THE MILL



**“LINCOLN IS
CLEARLY
ON THE RISE.”**

VIA SILICON PRAIRIE NEWS

NO. 1 MOST CONTENT CITY
24/7 WALLSTREET

HAPPIEST CITY IN AMERICA
GALLUP WELL-BEING INDEX

**NO. 1 CITY IN BEST PLACES
FOR BUSINESS AND CAREERS**
VIA FORBES

**NO. 2 CITY IN HIGHEST
QUALITY OF LIFE**
HUFFINGTON POST

NO. 6 BEST COLLEGE TOWN
AIER

**TOP 10 MOST BEAUTIFUL
CITIES IN THE USA**
THE CULTURE TRIP



Ball Arena

Principale Bank Arena

SULLIVANS

RAILYARD

GATE 25 GATE 23

OPENING

THE MILL

Espresso & Coffee

MAYMARBET

HARPHAM BROS. CO. HARNESS AND SADDLERY

**CREATIVITY
IS THE ANSWER**

**CREATIVITY
THE ANSWER**

**CREATIVITY
THE ANSWER**



www.adidas.com/us/NEB

**CREATIVITY
IS THE ANSWER**
**CREATIVITY
IS THE ANSWER**
**CREATIVITY
THE ANSWER**