

# NEBRASKA

## SOFTBALL

### NEBRASKA AT MICHIGAN

FRIDAY	SATURDAY	SUNDAY
<b>at Michigan</b> 6 p.m. (Central)  <b>TV: FS1</b> <b>Video: Fox Sports</b>	<b>at Michigan</b> 1 p.m. (Central)  <b>Video: Big Ten+</b>	<b>at Michigan</b> Noon (Central)  <b>Video: Big Ten+</b>

Live audio of every Nebraska game available on Huskers.com & the Huskers app

The Nebraska softball team travels to Ann Arbor this weekend for a pivotal three-game series with Michigan in a battle of two of the top three teams in the Big Ten standings.

Michigan (30-14) enters the weekend in second place in the Big Ten standings with an 11-3 conference record. Nebraska (25-16) is third in the standings with an 8-3 Big Ten record. In addition to trying to improve their conference standing, Michigan and Nebraska are also looking to strengthen their position for a potential at-large NCAA Tournament berth.

Both the Huskers and Wolverines are in the top 50 of the NCAA RPI and each school has claimed its highest RPI ranking of the season this week. Nebraska is No. 44 in the RPI heading into Friday's game after a season-high ranking of No. 43 on Tuesday. Michigan brings a season-high RPI ranking of 50 into this weekend's series.

Including this weekend's series, Nebraska has three challenging weekend series remaining on its conference schedule. After taking on second-place Michigan this weekend, the Huskers will host league-leading Northwestern next weekend. NU then closes the regular season with a three-game series at Minnesota, which is fifth in the Big Ten standings.

Fans can watch Friday's game on FS1 or the Fox Sports app. The final two games will air on Big Ten+, with subscriptions starting at \$9.99 per month. A free radio broadcast of every game this season will be available on Huskers.com or the official Huskers app.

### LEADING OFF

- Six of Nebraska's 24 players (25 percent of the roster) are out for the season with an injury.
- A total of 12 Huskers have missed at least one game due to injury this season.
- Nebraska is averaging 6.1 runs per game this season. Only twice in program history (2015 and 2022) has a Husker team averaged 6.0 runs per game.
- NU leads the Big Ten and ranks seventh nationally with 76 doubles. The Huskers are on pace for 111 doubles this season which would be a Big Ten record.
- Nebraska leads the Big Ten with 127 extra-base hits.
- Nebraska has won four games when trailing after six innings this season, its most such wins in a season this century.
- **Billie Andrews** is two home runs shy of becoming the sixth player in Big Ten history with 60 career home runs.
- **Billie Andrews** and **Sydney Gray** are the only players to win multiple Big Ten Player of the Week awards this season.
- **Brooke Andrews** enters this weekend's series with 99 career RBIs.
- **Kaylin Kinney** is one of only six pitchers nationally with at least 15 wins and four saves this season.

### HUSKERS TO WATCH



**Samantha Bland** reached base in nine of her 13 plate appearances in three games at Rutgers last week. She went 5-for-9 with two doubles and three RBIs while also drawing four walks.



**Kaylin Kinney** has earned the win or the save in 19 of Nebraska's 25 wins this season. She ranks 15th nationally in appearances (31), 25th in wins (15) and 31st in saves (4).

### 2024 SCHEDULE (25-16, 8-3 B1G)

<i>Puerto Vallarta Challenge (Puerto Vallarta, Mexico)</i>		
Feb. 8	vs. #7 Washington	L, 0-8 (5)
Feb. 9	vs. #11 Duke	L, 1-6
Feb. 9	vs. Long Beach St.	W, 7-2
Feb. 10	vs. Utah Valley	W, 3-2
<i>Troy Cox Classic (Las Cruces, N.M.)</i>		
Feb. 16	at New Mexico St. (Game 1)	L, 0-3
Feb. 16	at New Mexico St. (Game 2)	W, 4-1
Feb. 17	vs. Montana	W, 15-4 (5)
Feb. 17	vs. Sacramento St.	W, 5-4
Feb. 18	vs. Sacramento St.	W, 8-3
<i>Mary Nutter Collegiate Classic (Cathedral City, Calif.)</i>		
Feb. 23	vs. San Diego St.	L, 2-3 (8)
Feb. 23	vs. #19 UCLA	L, 8-9
Feb. 24	vs. #23 Oregon	W, 6-0
Feb. 25	vs. #20 Utah	L, 5-9
Feb. 25	vs. Cal State Fullerton	W, 6-3
<i>Big Red Invitational (Bowlin Stadium)</i>		
March 1	Wichita St.	L, 1-7
March 2	Wichita St.	L, 4-17 (6)
March 2	#14 Missouri	L, 6-10
March 3	#14 Missouri	L, 1-5
<i>Razorback Rumble (Fayetteville, Ark.)</i>		
March 8	vs. Northern Iowa	W, 13-3 (6)
March 8	vs. Saint Francis	W, 7-6
March 9	vs. Saint Francis	L, 3-6 (8)
March 9	vs. South Alabama	W, 5-1
March 12	Northern Colorado	L, 3-5
March 12	Maine	W, 10-0 (5)
<i>Big Red Spring Classic (Bowlin Stadium)</i>		
March 14	Northern Colorado	W, 6-5 (10)
March 15	North Dakota	W, 11-10
March 16	Creighton (NPM)	W, 9-0 (5)
March 17	Northern Colorado	W, 12-4 (6)
March 20	Omaha	L, 2-5
March 22	Illinois (BTN)	W, 5-4 (8)
March 23	Illinois	W, 16-6 (5)
March 29	at Wisconsin	W, 11-7
March 30	at Wisconsin	W, 7-3
March 31	at Wisconsin	W, 5-4 (9)
April 2	Kansas	W, 5-0
April 5	Penn St.	L, 1-2
April 6	Penn St.	W, 10-2 (5)
April 7	Penn St.	L, 5-6 (10)
April 12	at Rutgers	L, 3-9
April 13	at Rutgers	W, 13-5 (6)
April 14	at Rutgers	W, 7-6 (8)
April 19	at Michigan (FS1)	6 p.m.
April 20	at Michigan	1 p.m.
April 21	at Michigan	Noon
April 23	Iowa (Game 1) (BTN)	4 p.m.
April 23	Iowa (Game 2) (BTN)	6:30 p.m.
April 26	Northwestern	5:30 p.m.
April 27	Northwestern	1:30 p.m.
April 28	Northwestern	11 a.m.
May 3	at Minnesota (BTN)	TBA
May 4	at Minnesota (BTN)	2 p.m.
May 5	at Minnesota (BTN)	TBA
May 8-11	at Big Ten Tournament	

NEBRASKA SOFTBALL FACTS

UNIVERSITY INFORMATION

Location	Lincoln, Neb.
Population	298,126
Founded	1869
Enrollment	25,390
Nickname	Cornhuskers, Huskers
Colors	Scarlet & Cream
Conference	Big Ten
Athletic Director	Troy Dannen

ATHLETIC COMMUNICATIONS

Softball Contact	Matt Smith
E-Mail	msmith@huskers.com
Cell Phone	(402) 770-5926

2024 COACHING STAFF

Head Coach	Rhonda Revelle
Nebraska Record	1,122-658 (32nd year)
Career Record	1,130-674 (33rd year)
Assoc. Head Coach	Lori Sippel (35th year)
Assistant Coach	Diane Miller (16th year)
Assistant Coach	Olivia Ferrell (1st year)
Director of Operations	Erin Bohling (5th year)

2023 SEASON REVIEW

Overall Record	36-22
Big Ten Record (Finish)	13-10 (4th)
NCAA Record (Finish)	2-2 (t-17th)

2024 TEAM OUTLOOK

Letterwinners Returning/Lost	16/3
Total Starters Returning/Lost	8/2
Position Starters Returning/Lost	8/1
Starting Pitchers Returning/Lost	2/1
Returning All-Conference Players	7*
Returning All-Region Players	8*
Returning All-Americans	2*
Newcomers	8

\*includes honors at a player's previous school

STADIUM INFORMATION

Home Stadium	Bowlin Stadium
Record at Bowlin Stadium	272-118 (.697)

PROGRAM HISTORY

First Year of Softball	1976
All-Time Record	1,603-953 (.627)
All-Time Conference Record	450-321 (.584)
Big Ten Record	169-112 (.601)
Overall Conference Titles	20
Big Eight Titles	12
Big 12 Titles	6
Big Ten Titles	2
NCAA Tournament Appearances	26
WCWS Appearances	7
NCAA Tournament Record	65-56 (.537)
NCAA Regional Record	55-39 (.585)
NCAA Super Regional Record	2-3 (.400)
WCWS Record	8-14 (.363)
NFCA All-Americans	29
Academic All-Americans	30

PRONUNCIATION GUIDE

Katelyn Caneda	kuh-NAY-duh
Elisa Gulfin	uh-LEASE-uh
Mckinley Malecha	muh-LECK-uh
Caitlin Olensky	oh-LEN-ski
Rhonda Revelle	ruh-VELL
Abbie Squier	SKWHY-er
Malia Thoms	muh-LEE-uh TOMES
Talia Tokheim	TALL-yuh TOKE-heim
Haidyn Warner	WERE-nerr

NEBRASKA ROSTER & SCHEDULE NOTES

• The Nebraska roster features 24 players, the largest roster in school history. The Huskers' nine seniors are also the most in school history.

• Nebraska's roster has eight players who have previously earned all-region honors.

ALL-REGION PLAYERS

- Billie Andrews, SS
- Brooke Andrews, OF
- Jordy Bahl, RHP/UTL\*
- Katelyn Caneda, 2B
- Peyton Cody, C\*
- Sydney Gray, 3B
- Sarah Harness, RHP\*
- Abbie Squier, OF

\*all-region selection at previous school

• NU's roster has seven players who have previously earned all-conference honors.

ALL-CONFERENCE PLAYERS

- Billie Andrews, SS
- Brooke Andrews, OF
- Jordy Bahl, RHP/UTL\*
- Katelyn Caneda, 2B
- Peyton Cody, C\*
- Sarah Harness, RHP\*
- Abbie Squier, OF

\*all-region selection at previous school

• Two of the players above (**Jordy Bahl** and **Abbie Squier**) are out for the season due to injury. Squier will still serve as one of four team captains this season.

2024 TEAM CAPTAINS

- Billie Andrews, Sr.
- Kaylin Kinney, Sr.
- Mckinley Malecha, Jr.
- Abbie Squier, Sr.

• **Rhonda Revelle** has won more games than any other head coach (male or female) in the history of Husker Athletics.

• Revelle is in her 32nd season. She is tied with former women's golf coach Robin Krapfl as the longest serving female head coach in the history of Nebraska Athletics.

• Associate Head Coach **Lori Sippel** is in her 35th year at Nebraska. Sippel is believed to be the longest-tenured assistant coach in the history of Husker Athletics.

• Revelle (1981-83) and Sippel (1985-88) also played for NU. Including their playing and coaching careers, Revelle and Sippel have been a part of 1,421 of Nebraska's 1,603 all-time victories (89 percent).

• Nebraska is scheduled to play 22 home games, which would be the most regular-season home games in the 23-year history of Bowlin Stadium.

• NU has 22 home games scheduled along with 14 true road games. The last time the Huskers played more home games than road games in a season was 2010.

• Nebraska is set for a 22-game Big Ten schedule in the final year the conference will feature 14 teams. The Huskers will not play Indiana, Maryland, Michigan State, Ohio State or Purdue this season.

• Iowa is hosting the Big Ten Tournament, which is set for May 8-11. The top 12 teams in the final regular-season standings qualify for the tournament.

• The 64-team NCAA Tournament bracket will be announced on Sunday, May 12 at 6 p.m. (Central) on ESPN2.

2024 NEBRASKA NUMERICAL ROSTER

NO.	NAME	POS.	B/T	HT.	YR.	HOMETOWN
00	Mckinley Malecha	C/INF	R/R	5-8	Jr.	Lakeville, Minn.
2	Sarah Harness	RHP	R/R	5-9	Sr.	Bowling Green, Mo.
3	Bella Bacon	INF	R/R	5-10	So.	Omaha, Neb.
4	Malia Thoms	INF/OF	L/R	5-4	Fr.	Lincoln, Neb.
6	Billie Andrews	INF	R/R	5-8	Sr.	Gretna, Neb.
7	Sydney Gray	INF	R/R	5-5	Sr.	Tucson, Ariz.
8	Abbie Squier	OF	R/R	5-7	Sr.	Lincoln, Neb.
11	Talia Tokheim	OF	R/R	5-7	So.	San Carlos, Calif.
16	Elisa Gulfin	RHP	R/R	5-8	Fr.	Brea, Calif.
18	Peyton Cody	C/UTL	R/R	5-9	Sr.	Mission Viejo, Calif.
19	Caitlynn Neal	OF	L/R	5-3	Sr.	Dewey, Ariz.
20	Abbey Newlun	INF	R/R	5-7	Sr.	The Woodlands, Texas
22	Caitlin Olensky	LHP	L/L	5-5	Fr.	Montville, N.J.
24	Ava Bredwell	C	R/R	5-7	Jr.	Shawnee, Kan.
26	Alina Felix	OF	L/R	5-7	So.	Tucson, Ariz.
27	Brooke Andrews	OF	R/R	5-8	Sr.	Gretna, Neb.
29	Samantha Bland	INF/OF	R/R	5-7	Fr.	Chino Hills, Calif.
32	Ashley Smetter	INF	R/R	5-5	So.	Lincoln, Neb.
33	Emmerson Cope	RHP/UTL	R/R	5-11	Fr.	Topeka, Kan.
44	Kaylin Kinney	RHP/UTL	R/R	5-10	Sr.	Cedar Rapids, Iowa
55	Dakota Carter	OF	R/R	5-6	So.	Eastvale, Calif.
66	Katelyn Caneda	INF	L/R	5-2	So.	Cerritos, Calif.
77	Haidyn Warner	C	R/R	5-9	So.	Oro Valley, Ariz.
98	Jordy Bahl	RHP/UTL	R/R	5-8	Jr.	Papillion, Neb.

## MICHIGAN & NEBRASKA BOAST RICH HISTORIES

Michigan and Nebraska have historically been the Big Ten's best softball programs. The Wolverines and Huskers rank as the top two Big Ten teams in several categories

### MICHIGAN & NEBRASKA HISTORICAL BIG TEN RANKINGS

Category	Michigan	B1G Rank	Nebraska	B1G Rank
All-Time Wins	1,903	1st	1,603	2nd
NCAA Tournaments	29	1st	26	2nd
NCAA Tournament Wins	104	1st	65	2nd
World Series	12	1st	7	2nd
All-Americans	69	1st	29	2nd
Academic All-Americans	17	2nd	30	1st

## OFFENSE RANKS HIGHLY IN SCHOOL HISTORY

Nebraska boasts one of the top offenses in school history this season. The Huskers rank seventh nationally in doubles (76), 28th in home runs (46) and 30th in scoring (6.1 runs per game).

- With a .300 average that currently ranks seventh in school history, NU is looking to post a .300 batting average for the third straight season and for the seventh time in program history.
- Nebraska also owns a .493 slugging percentage that is on pace to rank fifth in school history.
- The Huskers are averaging 6.1 runs per game. That currently ranks as the second-highest scoring average in school history. Only twice in program history has Nebraska averaged 6.0 runs per game: 2015 (6.9 runs per game) and 2022 (6.0 runs per game).
- Nebraska leads the Big Ten with 127 extra-base hits and is on pace for 164 extra-base hits this season. That extra-base hit total would rank third in school history.
- The Huskers also lead the Big Ten with 76 doubles and are on pace for 111 doubles. The school record for doubles is 94 and the Big Ten doubles record is 110 by Minnesota in 2015.

### NEBRASKA RECORD WATCH: 2024 HUSKER OFFENSE

Category	Current Total	Projected Total	Projected Rank
Doubles	76	111	1st
Runs Per Game	6.1	6.1	2nd
Extra-Base Hits	127	164	3rd
Slugging Percentage	.493	.493	5th
Average	.300	.300	7th

## HUSKERS SHOWING COMEBACK ABILITY IN 2024

Nebraska has shown a knack for coming from behind this season. The Huskers have trailed in 15 of their 25 wins, including nine times when Nebraska came back from a multi-run deficit.

- The Huskers have won four times when trailing after six innings this season. Nebraska is 4-10 when trailing after six innings in 2024 after a 3-74 record in the previous five seasons.
- Nebraska's four wins this season when trailing after six innings match the 2016 team for the most wins when trailing after six innings since at least 2000.

## NEBRASKA LEADING THE BIG TEN IN EXTRA-BASE HITS

Nebraska has hit 76 doubles, five triples and 46 home runs for a total of 127 extra-base hits this season. That total leads the Big Ten and two Huskers rank in the top five in extra-base hits.

- Nebraska leads the Big Ten with 127 extra-base hits. The Huskers lead the conference with 76 doubles and are tied for second with 46 home runs, two shy of the Big Ten lead.
- Individually, **Billie Andrews** ranks third in the Big Ten with 26 extra-base hits. **Ava Bredwell** is tied for fifth in the Big Ten with 22 extra-base hits.

### BIG TEN EXTRA-BASE HIT LEADERS (GAMES THROUGH APRIL 17)

Rk.	School	2B	3B	HR	XBH
1.	Nebraska	76	5	46	127
2.	Penn State	75	15	34	124
3.	Minnesota	73	4	46	123

### INDIVIDUAL BIG TEN EXTRA-BASE HIT LEADERS (GAMES THROUGH APRIL 17)

Rk.	Player	School	2B	3B	HR	XBH
1.	Morgan Smith	Rutgers	9	4	19	32
2.	Jess Oakland	Minnesota	12	0	17	29
3.	Billie Andrews	Nebraska	9	2	15	26
4.	Maddie Gordon	Penn State	15	1	9	25
t-5.	Ava Bredwell	Nebraska	13	3	6	22

## PROJECTED LINEUP

**1 #6 BILLIE ANDREWS • SS**  
.388 • 46 R • 52 H • 9 2B • 15 HR • 35 RBIs  
196 Career Starts • 196 Starts at SS

**2 #66 KATELYN CANEDA • 2B**  
.255 • 15 R • 25 H • 5 2B • 1 HR • 19 RBIs  
96 Career Starts • 96 Starts at 2B

**3 #18 PEYTON CODY • DP**  
.354 • 9 R • 23 H • 3 2B • 3 HR • 13 RBIs  
161 Career Starts • 78 Starts at DP

**4 #29 SAMANTHA BLAND • LF**  
.310 • 22 R • 39 H • 12 2B • 4 HR • 30 RBIs  
38 Career Starts • 31 Starts in LF

**5 #27 BROOKE ANDREWS • CF**  
.326 • 32 R • 42 H • 12 2B • 1 HR • 21 RBIs  
177 Career Starts • 105 Starts in CF

**6 #19 CAITLYNN NEAL • RF**  
.247 • 17 R • 22 H • 5 2B • 2 HR • 16 RBIs  
178 Career Starts • 69 Starts in RF

**7 #3 BELLA BACON • 1B**  
.290 • 22 R • 31 H • 4 2B • 0 HR • 16 RBIs  
43 Career Starts • 37 Starts at 1B

**8 #7 SYDNEY GRAY • 3B**  
.268 • 25 R • 34 H • 8 2B • 10 HR • 30 RBIs  
165 Career Starts • 165 Starts at 3B

**9 #24 AVA BREDWELL • C**  
.325 • 27 R • 37 H • 13 2B • 6 HR • 25 RBIs  
131 Career Starts • 124 Starts at C

**10 #44 KAYLIN KINNEY • P**  
15-10 • 4.11 ERA • 122.2 IP • 68 SO  
77 Career Starts • 28 Starts at P

**#00 MCKINLEY MALECHA • C/INF**  
.167 • 9 R • 2 H • 0 2B • 0 HR • 4 RBIs

**#2 SARAH HARNES • RHP**  
5-3 • 4.65 ERA • 75.1 IP • 40 SO • 40 BB

**#4 MALIA THOMS • INF/OF**  
.214 • 0 R • 3 H • 1 2B • 0 HR • 2 RBIs

**#16 ELISA GULFIN • RHP**  
0-0 • 0.00 ERA • 0.0 IP • 0 SO • 0 BB

**#20 ABBEY NEWLUN • INF**  
.000 • 0 R • 0 H • 0 2B • 0 HR • 0 RBI

**#26 ALINA FELIX • OF**  
.286 • 7 R • 12 H • 1 2B • 0 HR • 6 RBIs

**#32 ASHLEY SMETTER • INF**  
.214 • 5 R • 3 H • 1 2B • 0 HR • 0 RBI

**#33 EMMERSON COPE • RHP/UTL**  
.270 • 10 H • 8 RBIs | 2-0 • 4.42 ERA

**#77 HAIDYN WARNER • C**  
.000 • 0 R • 0 H • 0 2B • 0 HR • 0 RBI

**BIG TEN STANDINGS**

Rk.	Team	Big Ten Record
1.	Northwestern	13-1
2.	Michigan	11-3
3.	<b>Nebraska</b>	<b>8-3</b>
4.	Penn State	9-5
5.	Rutgers	8-6
	Minnesota	8-6
	Purdue	8-6
8.	Indiana	7-7
9.	Ohio State	5-9
	Wisconsin	5-9
11.	Iowa	4-8
12.	Maryland	4-10
13.	Illinois	3-10
14.	Michigan State	2-12

**HUSKER CONFERENCE HISTORY**

**BIG EIGHT CONFERENCE (1976-1995)**

Year	Record	Finish	Tournament
1977	1-4	t-4th	N/A
1978	4-3	7th	t-6th
1979	3-8	6th	t-6th
1980	8-9	4th	N/A
1981	5-6	3rd	3rd
1982	9-3	1st	1st
1983	3-7	7th	N/A
1984	6-2	1st	1st
1985	11-1	1st	1st
1986	9-3	1st	1st
1987	8-2	1st	1st
1988	7-3	1st	1st
1989	6-4	3rd	t-5th
1990	3-5	5th	2nd
1991	3-5	5th	t-4th
1992	2-6	5th	t-4th
1993	5-11	5th	N/A
1994	5-15	6th	N/A
1995	10-6	3rd	N/A
<b>TOTAL</b>	<b>108-103</b>		<b>12 total titles</b>

**BIG 12 CONFERENCE (1996-2011)**

Year	Record	Finish	Tournament
1996	10-8	4th	2nd
1997	10-6	4th	5th
1998	16-0	1st	1st
1999	10-8	4th	2nd
2000	15-2	2nd	1st
2001	16-2	1st	5th
2002	11-5	2nd	2nd
2003	10-8	6th	t-4th
2004	14-3	1st	1st
2005	9-9	7th	t-5th
2006	13-4	2nd	t-3rd
2007	10-8	5th	t-5th
2008	4-14	t-9th	2nd
2009	9-9	5th	t-5th
2010	7-11	t-6th	t-5th
2011	9-9	6th	N/A
<b>TOTAL</b>	<b>173-106</b>		<b>6 total titles</b>

**BIG TEN CONFERENCE (2012-PRES.)**

Year	Record	Finish	Tournament
2012	14-9	3rd	N/A
2013	16-6	2nd	t-3rd
2014	18-5	t-1st	t-5th
2015	17-6	3rd	2nd
2016	13-9	5th	t-5th
2017	13-10	5th	t-9th
2018	9-13	9th	t-9th
2019	9-14	t-8th	t-9th
2021	22-22	8th	N/A
2022	17-5	2nd	1st
2023	13-10	4th	t-3rd
2024	8-3	-	-
<b>TOTAL</b>	<b>169-112</b>		<b>2 total titles</b>

**SEVERAL HUSKERS SWINGING HOT BATS**

Entering the Michigan series, several Huskers are swinging hot bats at the plate.

- **Katelyn Caneda** has had a productive second half of the season following a freshman All-Big Ten campaign. Caneda is batting .341 over the last 15 games. She has produced 14 hits, three doubles, one homer, nine RBIs and 11 runs over the last 15 games compared to 11 hits, two doubles, no home runs, 10 RBIs and four runs scored in her first 25 games of the season.

**CANEDA OVER THE LAST 15 GAMES**

Player	Avg.	GP-GS	AB	R	H	2B	HR	RBI	BB	SLG%	OB%
Katelyn Caneda	.341	15-15	41	11	14	3	1	9	6	.488	.426

- **Peyton Cody**, a first-year transfer from St. John's, has started 22 of Nebraska's 41 games and is second on the team with a .354 average. In the last five games, Cody is 8-for-17 with six RBIs and four runs. In her first 23 games of the season, Cody had seven RBIs and five runs.

**CODY IN HER 5-GAME HITTING STREAK**

Player	Avg.	GP-GS	AB	R	H	2B	HR	RBI	BB	SLG%	OB%
Peyton Cody	.471	5-5	17	4	8	0	1	6	2	.647	.526

- **Samantha Bland** has been one of the top freshman hitters in the Big Ten. She ranks second on a veteran Nebraska offense with 12 doubles and 30 RBIs to complement a .310 average. Over the past 17 games, Bland leads Nebraska with a .407 average.

**BLAND OVER THE LAST 17 GAMES**

Player	Avg.	GP-GS	AB	R	H	2B	HR	RBI	BB	SLG%	OB%
Samantha Bland	.407	17-17	59	13	24	6	2	16	8	.610	.485

- Returning All-Big Ten selection **Brooke Andrews** owns the longest active hitting streak on the team at seven games entering the Michigan series. Andrews is hitting .458 (11-for-24) during her hitting streak.

**BROOKE ANDREWS IN HER 7-GAME HITTING STREAK**

Player	Avg.	GP-GS	AB	R	H	2B	HR	RBI	BB	SLG%	OB%
Brooke Andrews	.458	7-7	24	5	11	3	0	3	2	.583	.481

- **Caitlynn Neal** has hit her way back into the lineup. In a stretch of three games from March 31 to April 5, Neal earned at bats as a defensive replacement and went 4-for-5 with a double off the bench. She has returned to the starting lineup the past five games and is 7-for-16 (.438) in those five games with a double and two home runs.

- Overall, Neal has reached base safely in a team-high eight consecutive games. During the last eight games, Neal has produced 11 hits, two doubles, two homers and 10 RBIs. In her first 29 games this year, Neal totaled 11 hits, three doubles, no home runs and six RBIs.

**NEAL IN HER 8-GAME REACHED BASE STREAK**

Player	Avg.	GP-GS	AB	R	H	2B	HR	RBI	BB	SLG%	OB%
Caitlynn Neal	.524	8-5	21	6	11	2	2	10	2	.905	.565

**THE LAST TIME A HUSKER**

Had 6+ At Bats	5 players vs. Wisconsin (5/8/16)
Had 5+ Hits	Brooke Andrews (5) vs. Northern Colorado (3/17/24)
Scored 4+ Runs	Billie Andrews (4) vs. Northern Colorado (3/17/24)
Had 3+ Doubles	Cam Ybarra (4) vs. Lehigh (3/7/20)
Had 2+ Homers	Talia Tokheim (2) at Wisconsin (3/30/24)
Had 3+ Homers	Kaylan Jablonski (3) at Cal State Fullerton (3/17/18)
Homered in 1st Career AB	Hailey Decker vs. UIC (2/8/13)
Stole 3+ Bases	Nikki Haget (3) vs. La Salle (3/12/11)
Drew 4+ Walks	Billie Andrews (4) vs. Rutgers (4/2/22)
Had 3+ HBP	Samantha Owen (3) vs. Pittsburgh (2/17/19)
Had 5+ RBIs	Sydney Gray (5) at Wisconsin (3/30/24)
Threw a No-Hitter	Sarah Harness at New Mexico St. (2/24/23)
Threw a Perfect Game	Ashley DeBuhr vs. Iowa St. (4/13/05)
Had 10+ Strikeouts	Sarah Harness (11) vs. Lamar (2/11/23)
Had 15+ Strikeouts	Ashley Hagemann (17) at Omaha (4/19/12)
Had a 10-Game Hit Streak	Brooke Andrews (11) in 2023
Had a 15-Game Hit Streak	Billie Andrews (19) in 2024
Had a 20-Game Hit Streak	Billie Andrews (23) in 2022
Had a 25-Game Hit Streak	Taylor Edwards (25) in 2013-14

### KINNEY PITCHING WELL DESPITE INCREASED WORKLOAD

Kaylin Kinney has pitched in 31 of Nebraska's 41 games (76 percent), ranking 15th nationally in appearances. Kinney has pitched in 13 of Nebraska's last 14 games and in 10 of the Huskers' 11 Big Ten Conference games. She has started 14 games and thrown 122.2 innings this season after combining for 14 starts and 114.1 innings in her first three seasons.

- Kinney is 15-10 this season with four saves. She has earned either the win of the save in 19 of Nebraska's 25 victories. Kinney has been involved in the decision in 12 of Nebraska's last 14 games, posting a 7-2 record with three saves during that stretch.
- Kinney ranks 25th nationally in wins and 31st in saves. She is one of only six Division I pitchers with at least 15 wins and four saves this season.

#### PITCHERS WITH AT LEAST 15 WINS & 4 SAVES

Player	School	Wins	Saves
Cera Blanchard	Southeastern Louisiana	15	4
NiJaree Canady	Stanford	15	4
Emiley Kennedy	Texas A&M	16	4
<b>Kaylin Kinney</b>	<b>Nebraska</b>	<b>15</b>	<b>4</b>
Bridget Nemeth	Penn State	18	4
Emily Winburn	Delaware	19	4

#### KINNEY OVER NEBRASKA'S LAST 10 GAMES

Pitcher	ERA	W-L	APP	GS	CG	SHO	SV	IP	R	ER	SO	BB	AVG.
Kaylin Kinney	2.67	3-2	9	5	2	0	3	42.0	20	16	24	13	.250

### BILLIE ANDREWS BREAKS HUSKER HOME RUN RECORD

Billie Andrews ranks 10th nationally in home runs per game (0.4) with 15 homers in 37 games. She is Nebraska's all-time home run leader with 58 career homers.

- Andrews hit the record-breaking 55th home run of her career against Illinois on March 22. Nebraska's previous home run record was 54, set by Taylor Edwards (2011-14).
- Andrews has also tied another home run record. She has seven games with multiple homers in her career, tying Tristen Edwards (2017-21) for the most multi-homer games in NU history.
- Andrews has 15 home runs this season. She is the first Husker to hit 15 or more home runs in three different seasons and just the second to have two 15-homer seasons.
- Andrews ranks 13th among all active Division I players with 58 career home runs.

### BILLIE ANDREWS BECOMES SECOND HUSKER IN 40-40 CLUB

Billie Andrews has joined Jennifer Lizama as the only players in program history to hit 40 career home runs and steal 40 career bases. With three more stolen bases, Andrews would become the first Husker with 50 career home runs and 50 career stolen bases.

- Nationally, there are only nine active Division I players with 40 career home runs and 40 career stolen bases. Of those nine, Andrews is one of only four players who has played her entire career in a power conference.

### ANDREWS CAREER RECORD WATCH

#### BATTING AVERAGE

1. Ali Viola (1995-98)	.418
2. Tobin Echo-Hawk (1993-96)	.379
3. Jennifer Lizama (1997-2000)	.378
4. Lizzy Rock (2005-06)	.374
5. MJ Knighten (2014-17)	.357
6. Kiki Stokes (2013-16)	.350
7. Tristen Edwards (2017-21)	.349
8. Anne Steffan (2002-05)	.347
<b>9. Billie Andrews (2021-present)</b>	<b>.346</b>
10. Lisa Wangler (2000-03)	.346

#### HITS

1. Tobin Echo-Hawk (1993-96)	266
2. Kim Ogee (2000-03)	263
Ali Viola (1995-98)	263
4. Jennifer Lizama (1997-2000)	254
5. MJ Knighten (2014-17)	253
6. Kiki Stokes (2013-16)	233
7. Nicole Trimboli (2001-04)	232
<b>8. Billie Andrews (2021-present)</b>	<b>223</b>
9. Alicia Armstrong (2013-16)	221
10. Taylor Edwards (2011-14)	220

#### HOME RUNS

<b>1. Billie Andrews (2021-present)</b>	<b>58</b>
2. Taylor Edwards (2011-14)	54
3. Ali Viola (1995-98)	53

#### EXTRA-BASE HITS

1. Ali Viola (1995-98)	105
2. Tristen Edwards (2017-21)	99
<b>3. Billie Andrews (2021-present)</b>	<b>96</b>

#### RUNS

1. Kiki Stokes (2013-16)	200
2. Jennifer Lizama (1997-2000)	199
3. MJ Knighten (2014-17)	183
4. Kim Ogee (2000-03)	182
<b>Billie Andrews (2021-present)</b>	<b>182</b>

#### RBIs

1. Ali Viola (1995-98)	213
2. Taylor Edwards (2011-14)	202
3. MJ Knighten (2014-17)	186
4. Brooke Thomason (2010-13)	177
5. Nicole Trimboli (2001-04)	173
6. Tatum Edwards (2011-14)	158
7. Tristen Edwards (2017-21)	157
<b>8. Billie Andrews (2021-present)</b>	<b>147</b>

#### TOTAL BASES

1. Ali Viola (1995-98)	478
2. Jennifer Lizama (1997-2000)	451
<b>3. Billie Andrews (2021-present)</b>	<b>440</b>

#### SLUGGING PERCENTAGE

1. Ali Viola (1995-98)	.760
<b>2. Billie Andrews (2021-present)</b>	<b>.683</b>
3. Tristen Edwards (2017-21)	.674
4. Christie McCoy (1997-98)	.642
5. Jennifer Lizama (1997-2000)	.635

#### MULTI-HOME RUN GAMES

<b>1. Billie Andrews (2021-present)</b>	<b>7</b>
Tristen Edwards (2017-21)	7
3. Tatum Edwards (2011-14)	6
Ali Viola (1995-98)	6

#### THE LAST TIME NEBRASKA...

Beat a No. 1 Team	vs. No. 1 Michigan (1-0 on 4/8/16)
Beat a Top-5 Team	vs. No. 1 Michigan (1-0 on 4/8/16)
Beat a Top-10 Team	vs. No. 6 Texas A&M (6-3 on 2/22/18)
Beat a Ranked Team	vs. No. 23 Oregon (6-0 on 2/24/24)
Won When Trailing After 6 Innings	at Wisconsin (3/31/24)
Lost When Leading After 6 Innings	vs. Penn State (4/7/24)
Scored 10+ Runs	at Rutgers [13] (4/13/24)
Scored 15+ Runs	vs. Illinois [16] (3/23/24)
Scored 20+ Runs	at Maryland [26] (4/3/16)
Allowed 10+ Runs	vs. North Dakota [10] (3/15/24)
Allowed 15+ Runs	vs. Wichita St. [17] (3/2/24)
Allowed 20+ Runs	vs. Northwestern [22] (4/27/23)
Recorded 15+ Hits	vs. Sacramento St. [15] (2/18/24)
Recorded 20+ Hits	at Maryland [21] (4/3/16)
Hit 6+ Doubles	vs. Montana [6] (2/17/24)
Hit 4+ Home Runs	at Wisconsin [4] (3/29/24)
Stole 6+ Bases	at Purdue [6] (4/13/19)
Drew 10+ Walks	vs. Omaha [10] (2/11/22)
Was No-Hit	at No. 24 Minesota (4/7/21)

**NEBRASKA BY THE NUMBERS**

**65 NCAA TOURNAMENT WINS**  
Nebraska has won 65 games in its 26 NCAA Tournament appearances (65-56). The 65 postseason wins rank 20th in NCAA history.

**30 ACADEMIC ALL-AMERICANS**  
Huskers have combined to earn 30 Academic All-America honors, a total that ranks third among all Division I softball programs.

**29 ALL-AMERICANS**  
A total of 18 Huskers have combined for 29 All-America awards, including seven multi-time All-Americans.

**26 NCAA TOURNAMENTS**  
The Huskers have made 26 appearances in the NCAA Tournament, including 13 straight from 1995 to 2007. Nebraska's 26 postseason appearances rank 14th in NCAA history.

**23 REVELLE ALL-AMERICANS**  
Rhonda Revelle has guided 15 players to a total of 23 All-America awards in her first 31 seasons as Nebraska's head coach.

**20 CONFERENCE TITLES**  
Nebraska has won a total of 20 conference championships. The Huskers won 12 Big Eight titles, six Big 12 crowns and have captured a pair of Big Ten titles.

**15 TOP-25 RANKINGS**  
Nebraska has been ranked in the final NFCA poll in 15 of the 29 years the poll has existed. The Huskers were one of only six teams nationally to be ranked in the final poll in each of the first 12 years it existed (1995 to 2006).

**14 REVELLE ACADEMIC ALL-AMERICANS**  
Rhonda Revelle has produced 14 academic All-Americans at Nebraska. That total ranks fourth among all active Division I softball head coaches.

**7 WCWS APPEARANCES**  
Nebraska has advanced to the Women's College World Series seven times to rank 15th in NCAA history.

**4 SOFTBALL OLYMPIANS**  
Four former Huskers have competed in the Olympics, combining for five Olympic Games. A fifth Husker (Taylor Edwards) was a 2020 Olympic alternate for Team USA.

**BILLIE ANDREWS MOVING INTO BIG TEN RECORD BOOK**

Billie Andrews' production at the plate is leaving its mark in the Big Ten record book. Andrews already finds herself on the Big Ten's all-time home runs list and she is also looking for a place on the Big Ten's career slugging percentage top 10.

- Andrews' 58 career home runs rank sixth in Big Ten history. Andrews is on pace to finish her career with 63 home runs, a total that would rank fourth in Big Ten history.
- Andrews' .683 career slugging percentage currently ranks 10th in Big Ten history.
- Andrews is on pace to hit 20 home runs this season. Andrews is bidding to become just the third player in Big Ten history with two 20-home run seasons. The only two Big Ten players with two 20-home run seasons are Michigan's Sierra Romero and Samantha Findlay.

**BILLIE ANDREWS AMONG NATION'S EXTRA-BASE HIT LEADERS**

Billie Andrews ranks third in school history with 96 career extra-base hits, including 26 this season. Forty-three percent of her career hits have gone for extra bases.

- Andrews ranks 15th nationally with 25 extra-base hits. She ranks seventh in extra-base hits per game (0.70) and fourth among Power Conference players.
- Andrews has at least one extra-base hit in 22 of her 37 games this season. Andrews has also had three games this season with multiple extra-base hits.
- In addition to ranking fourth in extra-base hits per game, Andrews ranks seventh nationally in runs per game (1.2), eighth in home runs per game (0.4) and 24th in slugging percentage (.821). Andrews is one of only seven players nationally - and one of four from a Power Conference - who ranks in the top 25 nationally in each of those three categories.
- Andrews ranks 21st among all active Division I players with 96 career extra-base hits. She ranks ninth in career extra-base hits per game (0.49).

**2024 NCAA LEADERS IN EXTRA-BASE HITS PER GAME**

Rk.	Player	School	2B	3B	HR	XBH	GMS	XBH/GM
1.	Jenna Golembiewski	Miami (Ohio)	10	1	24	35	39	0.90
2.	Karli Spaid	Miami (Ohio)	6	1	25	32	40	0.80
3.	Emma Jackson	East Carolina	22	2	9	323	44	0.75
4.	Claire Davidson	Duke	14	1	15	30	42	0.71
5.	Morgan Smith	Rutgers	9	4	19	32	45	0.71
6.	Jess Oakland	Minnesota	12	0	17	29	41	0.71
7.	<b>Billie Andrews</b>	<b>Nebraska</b>	<b>9</b>	<b>2</b>	<b>15</b>	<b>26</b>	<b>37</b>	<b>0.70</b>
8.	Haley Painter	Nevada	14	4	14	32	46	0.70
9.	Gabby Herrera	Nevada	14	2	15	31	45	0.69
	Brooklyn Maxwell	UNC Greensboro	13	5	13	31	45	0.69

Games through April 17; Minimum 20 games played

**NEBRASKA'S 2024 RECORD WHEN...**

Overall	25-16	Out-Hitting Opponent	18-3
Non-Conference	17-13	Out-Hit by Opponent	6-13
Big Ten Conference	8-3	Scoring First	15-8
Home	9-8	Opponent Scores First	10-8
Neutral	10-6	Scoring in the First Inning	14-7
Road	6-3	Scoring Fewer than 3 Runs	0-8
Night Games	3-3	Scoring 5 or More Runs	22-4
Day Games	22-13	Scoring 10 or More Runs	9-0
Sunday	5-3	Allowing Fewer Than 3 Runs	9-1
Monday	0-0	Allowing 5 or More Runs	7-13
Tuesday	2-1	Allowing 10 or More Runs	1-2
Wednesday	0-1	Leading After Five Innings	16-4
Thursday	1-1	Leading After Six Innings	12-2
Friday	7-7	Trailing After Five Innings	3-9
Saturday	10-3	Trailing After Six Innings	4-10
vs. Ranked Opponents	1-6	Tied After Five Innings	1-2
vs. Unranked Opponents	24-10	Tied After Six Innings	1-2
Extra Innings	4-3	Committing 0 Errors	13-5
1-Run Games	8-4	Committing 2 or More Errors	4-5

## HUSKERS RACKING UP PLAYER OF THE WEEK AWARDS

Huskers have won four of the eight Big Ten Player of the Week awards this season, with **Sydney Gray** and **Billie Andrews** each winning the award twice. Gray and Andrews are the only two Big Ten players who have won more than one player of the week award this season.

- Gray won her first award this season following the Troy Cox Classic. She won for a second time this year and for the third time in her career following the Razorback Rumble.
- Gray went 5-for-16 at the Troy Cox Classic with three homers and 10 RBIs. She averaged 1.0 hit, 1.0 run and 2.0 RBIs per game over five games. Gray won her second award after going 5-for-16 (.385) with one double, three home runs and five RBIs at the Razorback Rumble.
- Andrews won her first award this season following the Mary Nutter Classic, when she was also named the NCAA Player of the Week. Andrews won her second award of the season and third of her career on March 18 after helping NU to a 5-1 record the previous week.
- Andrews put up big numbers in five games at the Mary Nutter Classic. She went 13-for-21 (.619) with one double, four home runs, six RBIs, eight runs and a 1.238 slugging percentage. In three games against ranked teams, Andrews 10-for-13 with four home runs, five RBIs and seven runs scored.
- Her second award came after Andrews went 10-for-22 (.455) with one double, four home runs, 10 runs score and 14 RBIs in six homes games during the second full week of March. She averaged 1.7 hits, 1.7 runs and 2.3 RBIs per game over the six games. Andrews homered in both of Nebraska's midweek games then went 7-for-15 with a double, two homers, eight runs and nine RBIs in four games at the Big Red Spring Classic.

## HUSKERS HIT BY INJURY BUG

Nebraska has had its share of adversity this season, as the Huskers have dealt with multiple injuries. Six Huskers have suffered season-ending injuries and a total of 12 players have missed at least one game this season due to injury, including six returning all-region players.

- **Abbie Squier**, a returning All-Big Ten and all-region selection, is out for the season following offseason surgery. Squier had been the Huskers' starting right fielder the past two seasons and was a first-team All-Big Ten selection in 2022.
- **Jordy Bahl** suffered a knee injury in the first game that required season-ending surgery. A first-year transfer from Oklahoma, Bahl was a first-team All-American in both 2022 and 2023. She was the Big 12 Pitcher of the Year both seasons after going 44-2 with a 0.99 ERA.
- **Caitlin Olensky** suffered a season-ending injury against Illinois on March 22. She owns Nebraska's lowest ERA this season by nearly a full run.
- **Talia Tokheim** missed the first 23 games this season while rehabbing a season-ending injury from 2023. Upon her return, Tokheim hit three home runs in six starts before she suffered a season-ending injury against Penn State on April 7.
- **Dakota Carter**, Nebraska's top pinch runner, is out for the season with a shoulder injury.
- **Abbey Newlun** is considered the sixth Husker to have suffered a season-ending injury. Newlun suffered a knee injury during the fall that required surgery. She has yet to play in a game this season and is unlikely to be medically cleared before the end of the season.
- Returning all-region selections **Billie Andrews**, **Brooke Andrews**, **Katelyn Caneda** and **Peyton Cody** have all missed time this season due to injury, with Billie Andrews, Caneda and Cody each missing multiple games.

## ANDREWS AMONG BIG TEN & NATIONAL LEADERS

**Billie Andrews** is the Big Ten's active career leader in hits and home runs, and she also ranks highly among the Big Ten and active national leaders in other categories.

- Andrews leads all Big Ten players in hits (223) and home runs (58) while ranking second in runs (182) and RBIs (147). Andrews is second to Indiana's Cora Bassett (186) in runs scored, but Bassett is in her fifth season while Andrews is in her fourth year. Similarly, Andrews is second in RBIs behind Penn State's Gaby Garcia (163), a first-year transfer in her fifth season.
- Nationally, Andrews is ranked 10th among all active players in career home runs (58), 15th in total bases (440) and 21st in runs (182).

### ANDREWS' ACTIVE BIG TEN RANKS

- **Hits:** 1st (223)
- **Runs:** 2nd (182)
- **Home Runs:** 1st (58)
- **RBIs:** 2nd (147)

## BOWLIN STADIUM



Bowlin Stadium opened in 2002 and is in its 23rd season in 2024. The facility features space for nearly 3,000 fans and includes an underground system that heats the field. Just past the right field fence is the Alex Gordon Training Complex, a spacious indoor training facility. Down the right field line, the clubhouse features a locker room, players' lounge, training room and coaches' offices.

### BOWLIN STADIUM FACTS

- Nebraska has won nearly 70 percent of its games at Bowlin Stadium.
- Bowlin Stadium has hosted four NCAA Regionals (2004, 2005, 2007 and 2013).
- NU has ranked in the top 25 nationally in attendance 15 times at Bowlin Stadium, including four seasons ranked in the top 10.

### YEARLY RECORDS

Year	Record	Pct.
2002	9-5	.643
2003	14-7	.667
2004	14-6	.700
2005	9-7	.563
2006	20-1	.952
2007	18-5	.783
2008	13-9	.591
2009	13-5	.722
2010	12-8	.600
2011	10-4	.714
2012	15-1	.938
2013	18-4	.818
2014	13-3	.813
2015	11-6	.647
2016	11-5	.688
2017	13-6	.684
2018	10-7	.588
2019	7-9	.412
2020	0-0	.000
2021	11-5	.688
2022	14-2	.875
2023	8-5	.615
2024	9-8	.571
<b>TOTAL</b>	<b>272-118</b>	<b>.697</b>

### LARGEST CROWDS

1. 2,628	Wichita St./Missouri	3/2/2024
2. 2,599	Penn State	4/6/2024
3. 2,362	Creighton	3/16/2024
4. 2,340	Missouri	3/3/2024
5. 2,319	Wichita St.	3/1/2024
6. 2,302	Michigan	4/9/2016
7. 2,301	Penn State	4/7/2024
8. 2,211	Penn State	4/5/2024
9. 2,204	Ohio State	4/19/2014
10. 2,170	Omaha	3/20/2024

**NEBRASKA VS. MICHIGAN**

**SERIES HISTORY**

- **Series Record:** Michigan leads, 17-15
- **In Lincoln:** Michigan leads, 5-4
- **In Ann Arbor:** Michigan leads, 3-2
- **At a Neutral Site:** Series tied, 9-9
- **Current Win Streak:** Michigan, 1 game
- **Revelle vs. Michigan:** 14-14
- **Revelle vs. Tholl:** 1-2
- **Tholl vs. Nebraska:** 2-1

**ALL-TIME MEETINGS**

DATE	LOCATION	RESULT
3/30/1984	Neutral	NEB, 1-0
3/2/1989	Neutral	MICH, 6-5
3/23/1991	Neutral	MICH, 7-0
3/28/1992	Neutral	MICH, 3-0
3/26/1993	Neutral	NEB, 3-1
3/1/1996	Neutral	NEB, 9-5
2/28/1997	Neutral	MICH, 2-0
3/2/1997	Neutral	MICH, 4-0
2/28/1998	Neutral	NEB, 3-2
3/17/2001	Neutral	NEB, 5-0
5/25/2002	Neutral	NEB, 1-0
2/14/2004	Neutral	NEB, 5-4
2/27/2004	Neutral	MICH, 5-1 (8)
4/26/2013	Lincoln	NEB, 6-1
4/27/2013	Lincoln	MICH, 5-3
4/28/2013	Lincoln	NEB, 7-4
5/9/2015	Neutral	MICH, 6-1
4/8/2016	Lincoln	NEB, 1-0
4/9/2016	Lincoln	MICH, 4-1
4/10/2016	Lincoln	MICH, 8-6
3/23/2019	Ann Arbor	MICH, 8-0 (6)
3/23/2019	Ann Arbor	MICH, 7-2
3/24/2019	Ann Arbor	MICH, 12-0(5)
3/11/2021	Neutral	MICH, 2-1 (8)
3/11/2021	Neutral	MICH, 2-0
3/12/2021	Neutral	NEB, 5-4 (8)
3/25/2022	Ann Arbor	NEB, 3-2
3/25/2022	Ann Arbor	NEB, 7-4
5/14/2022	Neutral	NEB, 3-1 (8)
3/30/2023	Lincoln	MICH, 10-1(5)
3/31/2023	Lincoln	NEB, 8-0 (5)
4/1/2023	Lincoln	MICH, 4-2

**NOTABLE GAMES**

**NEBRASKA 3, MICHIGAN 1 (8 INN.)  
MAY 14, 2022**

Nebraska defeated Michigan 3-1 in eight innings to win its only Big Ten Tournament title in 2022. Cam Ybarra drove in two of Nebraska's three runs, including the go-ahead RBI double in the top of the eighth inning. The game marked the final meeting between Hall of Fame coaches Rhonda Revelle and Carol Hutchins, with the win giving Revelle a 13-12 record against her good friend Hutchins.

**NEBRASKA 1, MICHIGAN 0  
APRIL 8, 2016**

Nebraska posted its third win ever over a No. 1-ranked team when the Huskers shut out Michigan, 1-0 at Bowlin Stadium. Cassie McClure fired a four-hit shutout for NU.

**NEBRASKA 1, MICHIGAN 0  
MAY 25, 2002**

In the only postseason meeting in series history, Nebraska defeated Michigan, 1-0, in an elimination game at the 2002 Women's College World Series. Peaches James and Leigh Ann Walker combined on a one-hit shutout for NU.

**STATISTICAL COMPARISON**

TEAM	W-L	AVG.	SCORING	OPP. SCORING	ERA	FLD%
Nebraska	25-16	.300	6.1	4.8	4.19	.971
Michigan	30-14	.280	5.2	3.2	2.81	.968
<b>NEB DIFF.</b>	<b>-3.5</b>	<b>+0.20</b>	<b>+0.9</b>	<b>+1.6</b>	<b>+1.38</b>	<b>+0.003</b>

**SCOUTING MICHIGAN (30-14, 11-3)**

Michigan won its 30th game of the season Wednesday, defeating in-state rival Michigan State, 5-1. The Wolverines are 30-14 and have won six straight games. Michigan is in second place in the Big Ten standings with an 11-3 conference record. The Wolverines have swept every Big Ten series with the exception of Northwestern in the first weekend of April, when the first-place Wildcats swept Michigan.

Nebraska and Michigan share seven common opponents this season in Cal State Fullerton, Illinois, Long Beach State, Maine, Northern Colorado, Sacramento State and UCLA. The Huskers posted a 9-2 record against that group while Michigan went 5-4.

Michigan is 10-0 at home as the Wolverines are one of only 14 teams with a perfect home record in 2024. Dating back to last year Michigan has won 12 straight home games.

The Wolverine offense has come alive over the second half of the season. In the first 19 games this season, Michigan averaged only 3.0 runs per game. But in the last 26 games, the Wolverines have averaged 6.9 runs per game. Michigan is hitting .336 as a team in conference play, the second-best batting average in the Big Ten.

Defensively, Michigan is allowing 3.2 runs per game while posting a 2.81 team ERA and .968 fielding percentage. The Wolverines lead the Big Ten with 277 strikeouts and rank second in the conference in ERA and opponent batting average (.233).

- **Maddie Erickson** is hitting .366 to lead a trio of Michigan starters batting above .300. Erickson also leads the team in hits (52), doubles (11) and RBIs (32) while ranking second in home runs (8) and slugging percentage (.613).
- **Ellie Sieler** is second on the team with a .362 average, and her 11 sacrifice bunts lead the Big Ten and rank 11th nationally. Sieler has scored a team-high 35 runs while adding six doubles, two triples and four home runs.
- **Ella McVey** is hitting .303 to round out the three Michigan starters with a .300 average.
- **Keke Tholl** is batting .281 and leads the Wolverines with 12 home runs and a .620 slugging percentage. She also ranks second on the team with 30 RBIs. Tholl is the reigning co-Big Ten Player of the Week after she went 7-for-12 with five home runs in five games last week.
- **Jenissa Conway** is one of the top power threats in the Michigan lineup, as she has five doubles, four triples, eight home runs and 26 RBIs.
- **Ella Stephenson** is the reigning Big Ten Freshman of the Week after she went 8-for-19 (.421) with five runs and five RBIs in five games last week. Stephenson is hitting .244 on the year.
- In the circle, **Lauren Derkowski** and **Erin Hoehn** have been the Wolverines' primary pitchers this season, combining to throw 76 percent of the team's innings.
- Derkowski is 12-7 with three saves and a 2.37 ERA in 132.2 innings. Derkowski ranks second in the Big Ten in innings and strikeouts (143) and fourth in ERA. Nationally, Derkowski ranks 27th nationally in strikeouts.
- Hoehn is 14-4 with two saves and a 3.14 ERA in 84.2 innings. She leads the team in wins and opponents are hitting just .218 against her.
- **Jessica LeBeau** (2-2, 2.97 ERA in 37.2 IP), **Hannah George** (2-1, 2.59 ERA in 24.1 IP) and **Emerson Aiken** (0-0, 8.40 ERA in 5.0 IP) round out the Michigan staff.
- **Bonnie Tholl** is in her second season as Michigan's head coach after previously spending 29 years as a Wolverine assistant coach. Tholl has guided Michigan to a 56-39 record in her two seasons as head coach.
- Overall, Tholl is in her 31st season on the Michigan staff in 2024. She has helped the Wolverines win the 2005 national championship, 22 Big Ten regular-season championships and 10 Big Ten Tournament titles in her time as a Wolverine coach.





# RHONDA REVELLE

**32<sup>ND</sup> SEASON AT NEBRASKA**

**1,122-658 RECORD**

**33<sup>RD</sup> CAREER SEASON**

**1,130-674 RECORD**

**WINNINGEST COACH IN THE HISTORY OF HUSKER ATHLETICS**

**COACH OF THE YEAR IN 3 POWER CONFERENCES**

**NFCA HALL OF FAMER**

## HEAD COACH RHONDA REVELLE

### COACHING STOPS

Nebraska (Head Coach)	1993-present
San Jose State (Assistant)	1989-92
Cal State-Hayward (Assistant)	1988
Nebraska Wesleyan (Head Coach)	1987
Nebraska Wesleyan (Assistant)	1986

### NEBRASKA WESLEYAN (1987)

Year	Record	Conf.	Finish	Tourn.	Finish
1987	8-16	7-5	N/A	--	--

### NEBRASKA (1993-PRESENT)

Year	Record	Conf.	Finish	Tourn.	Finish
1993	18-23	5-11	5th	--	--
1994	25-33	5-15	6th	--	--
1995	43-20	10-6	3rd	--	--
1996	42-23	10-8	4th	3-2	2nd
1997	29-24	10-6	4th	1-2	t-5th
1998	48-12	16-0	1st	4-0	1st
1999	35-21	10-8	4th	3-1	2nd
2000	52-21	15-2	2nd	4-1	1st
2001	51-15	16-2	1st	2-2	t-3rd
2002	50-14	11-5	3rd	3-1	2nd
2003	39-17	10-8	6th	2-2	t-3rd
2004	45-17	14-3	1st	4-0	1st
2005	36-23	9-9	7th	2-2	t-5th
2006	44-12	13-4	2nd	2-2	t-3rd
2007	37-20	10-8	5th	0-1	t-7th
2008	25-28	4-14	t-9th	3-1	2nd
2009	35-19	9-9	5th	0-1	t-7th
2010	30-29	7-11	t-6th	0-1	t-7th
2011	41-14	9-9	6th	--	--
2012	33-22	14-9	3rd	--	--
2013	45-16	16-6	2nd	1-1	t-3rd
2014	44-18	18-5	t-1st	0-1	t-5th
2015	35-23	17-6	3rd	2-1	2nd
2016	35-21	13-9	5th	1-1	t-5th
2017	24-29	13-11	5th	0-1	t-9th
2018	31-23	9-13	9th	0-1	t-9th
2019	21-31	9-14	9th	0-1	t-9th
2020	9-14	0-0	--	--	--
2021	22-22	22-22	8th	--	--
2022	41-16	17-5	2nd	3-0	1st
2023	36-22	13-10	4th	1-1	t-3rd
2024	25-16	8-3	--	--	--

### COACHING NUMBERS

Conference Coach-of-the-Year Awards	4
Big Ten Coach of the Year	1
Big 12 Coach of the Year	2
Big Eight Coach of the Year	1
Conference Titles	8
Big Ten Conference Titles	2
Big 12 Conference Titles	6
NCAA Tournament Appearances	22
Women's College World Series	3
NFCA All-Americans	24
Academic All-Americans	14

### NFCA HALL-OF-FAME COACHES

(ACTIVE DIVISION I COACHES ONLY)

Coach	Induction Year
<b>Rhonda Revelle, Nebraska</b>	<b>2010</b>
Patty Gasso, Oklahoma	2012
Patrick Murphy, Alabama	2013
Jo Evans, UC Santa Barbara	2015
Karen Weekly, Tennessee	2018
Jenny Allard, Pittsburgh	2022
Lonni Alameda, Florida State	2023

### WINS AT CURRENT SCHOOL

(ACTIVE DIVISION I COACHES ONLY)

1. Patty Gasso, Oklahoma	1,495
2. Patrick Murphy, Alabama	1,265
<b>3. Rhonda Revelle, Nebraska</b>	<b>1,122</b>
4. Ken Eriksen, South Florida	1,113
5. Bob Coolen, Hawaii	1,095
6. Karen Weekly, Tennessee	1,073

(INCLUDES GAMES THROUGH APRIL 18, 2024)

### NCAA TOURNAMENTS AT CURRENT SCHOOL

(ACTIVE DIVISION I COACHES ONLY)

1. Patty Gasso, Oklahoma	28
2. Patrick Murphy, Alabama	24
<b>3. Rhonda Revelle, Nebraska</b>	<b>22</b>
4. Karen Weekly, Tennessee	20
5. Heather Tarr, Washington	18
6. Tim Walton, Florida	17
7. Kelly Inouye-Perez, UCLA	16

### ACADEMIC ALL-AMERICANS

(ACTIVE DIVISION I COACHES ONLY)

1. Patrick Murphy, Alabama	35
2. Karen Weekly, Tennessee	26
3. Tim Walton, Florida	22
<b>4. Rhonda Revelle, Nebraska</b>	<b>14</b>

### NCAA TOURNAMENT (NEBRASKA)

Year	Round	Record	Finish	Rank
1995	Regional	1-2	t-17th	18th
1996	Regional	1-2	t-17th	18th
1997	Regional	2-2	t-9th	25th
1998	WCWS	4-2	t-5th	5th
1999	Regional	4-2	t-9th	20th
2000	Regional	3-2	t-17th	14th
2001	Regional	2-2	t-17th	14th
2002	WCWS	5-2	t-5th	6th
2003	Regional	3-2	t-17th	13th
2004	Regional	3-2	t-9th	14th
2005	Regional	1-2	t-33rd	25th
2006	Regional	2-2	t-17th	15th
2007	Regional	0-2	t-49th	--
2009	Regional	1-2	t-33rd	--
2010	Regional	1-2	t-33rd	--
2011	Regional	2-2	t-17th	21st
2013	WCWS	5-3	t-7th	8th
2014	Super Reg.	4-3	t-9th	16th
2015	Regional	1-2	t-33rd	--
2016	Regional	2-2	t-17th	--
2022	Regional	1-2	t-33rd	--
2023	Regional	2-2	t-17th	--



**#00 MCKINLEY MALECHA • C/INF**

	AVG.	G-GS	R	H	2B	HR	RBI	BB	SLG%	OB%
2024	.167	20-4	9	2	0	0	4	0	.167	.167
Career	.143	28-7	9	2	0	0	4	0	.143	.143

- Team captain has started 4 career games at catcher & 3 at first base
- Academic All-Big Ten selection (2023)
- 5-time Nebraska Scholar-Athlete Honor Roll member
- 2-time Tom Osborne Citizenship Team member
- NU's 1st player from Minnesota since All-American Anne Steffan (2002-05)



**#2 SARAH HARNESS • RHP**

	W-L	ERA	APP	GS	CG	SHO	SV	IP	SO	AVG.
2024	5-3	4.65	24	15	1	1	1	75.1	40	.281
Career	62-29	2.84	142	98	50	11	6	644.2	586	.243

- 8-time conference pitcher of the week (7 in Missouri Valley; 1 in Big Ten)
- First-team All-Missouri Valley selection at Southern Illinois (2022)
- Second-Team All-Missouri Valley pick at Southern Illinois (2021)
- Second-Team All-Midwest Region selection at Southern Illinois (2021)
- NU Scholar-Athlete Honor Roll & Tom Osborne Citizenship Team member



**#3 BELLA BACON • INF**

	AVG.	G-GS	R	H	2B	HR	RBI	BB	SLG%	OB%
2024	.290	38-37	22	31	4	0	16	7	.327	.363
Career	.281	64-43	23	39	4	0	21	11	.309	.367

- First-year transfer from Purdue who has started 37 games at first base
- Has set career highs in starts (37), hits (31), runs (22), doubles (4) & RBIs (16)
- Played in 26 games with six starts at DP as a freshman in 2023
- Reached base 16 times in 42 plate appearances for the Boilermakers
- Lone Omaha native on Nebraska's roster



**#4 MALIA THOMS • INF/OF**

	AVG.	G-GS	R	H	2B	HR	RBI	BB	SLG%	OB%
2024	.214	10-3	0	3	1	0	2	2	.286	.313
Career	.214	10-3	0	3	1	0	2	2	.286	.313

- No. 42 overall recruit by Extra Inning Softball is 3-for-14 with two RBIs
- Hit 17 home runs with 40 extra-base hits for the Aces Fastpitch club team
- Four-time all-conference selection for Waverly High School
- First Waverly High product to play for NU since Jaime Borg (2004-07)
- 1 of 3 Lincoln natives on the Husker roster



**#6 BILLIE ANDREWS • INF**

	AVG.	G-GS	R	H	2B	HR	RBI	BB	SLG%	OB%
2024	.388	37-37	46	52	9	15	35	15	.821	.461
Career	.346	196-196	182	223	33	58	147	91	.683	.430

- NFCA Third-Team All-American (2023) & 2-time all-region selection
- 1 of 3 Nebraska natives to be an All-American (Peaches James & Kim Ogee)
- 3-time All-Big Ten honoree, including two first-team selections
- Nebraska's all-time home run leader with 58 homers (6th in Big Ten history)
- Has started all but four games at shortstop the past four years



**#7 SYDNEY GRAY • INF**

	AVG.	G-GS	R	H	2B	HR	RBI	BB	SLG%	OB%
2024	.268	41-41	25	34	8	10	30	17	.567	.356
Career	.295	166-165	95	147	28	26	104	61	.512	.373

- NFCA Third-Team All-Midwest Region selection (2023)
- 2-time Big Ten Player of the Week in 2024; 3-time winner in her career
- Has started 151 of Nebraska's 156 games at third base the past three years
- Academic All-Region honoree (2023)
- 2-time Big Ten Distinguished Scholar & 2-time Academic All-Big Ten pick



**#16 ELISA GULFIN • RHP**

	W-L	ERA	APP	GS	CG	SHO	SV	IP	SO	AVG.
2024	0-0	0.00	0	0	0	0	0	0.0	0	.000
Career	0-0	0.00	0	0	0	0	0	0.0	0	.000

- Del Ray League Pitcher of the Year for Saint Paul High School
- First-team all-league & all-area selection in high school
- Struck out 113 batters in 26 appearances as a senior
- 1 of 3 freshmen pitchers on Nebraska's roster
- 1 of 4 current Huskers from the Corona Angels club program



**#18 PEYTON CODY • C/UTL**

	AVG.	G-GS	R	H	2B	HR	RBI	BB	SLG%	OB%
2024	.354	28-22	9	23	3	3	13	8	.538	.432
Career	.321	177-161	77	157	32	23	113	26	.540	.350

- First-year transfer from St. John's who is 2nd on the team in average (.354)
- Is in her 6th year due to a medical hardship (2022) & Covid year (2020)
- Big East co-Freshman of the Year & first-team All-Big East selection (2019)
- Started 149 games at St. John's & hit .316 with 20 homers & 100 RBIs
- Earned both a bachelor's & master's degree from St. John's



**#19 CAITLYN NEAL • OF**

	AVG.	G-GS	R	H	2B	HR	RBI	BB	SLG%	OB%
2024	.247	37-26	17	22	5	2	16	7	.371	.306
Career	.265	178-146	78	115	29	10	72	18	.410	.301

- Has started 146 games in her career with starts at all three outfield spots
- Has started 69 games in right field, 55 in center field & 22 in left field
- Has 29 career doubles, which rank 4th among all active Huskers
- Was a hitter & pitcher as a freshman before focusing solely on hitting
- 1 of 4 current Huskers from the Arizona Desert Thunder club program



**#20 ABBEY NEWLUN • INF**

	AVG.	G-GS	R	H	2B	HR	RBI	BB	SLG%	OB%
2024	.000	0-0	0	0	0	0	0	0	.000	.000
Career	.152	24-14	1	5	1	0	0	3	.182	.222

- Suffered a knee injury during the fall and has yet to play this season
- Big Ten Sportsmanship Award winner (2023)
- Has started 14 career games with eight starts at DP & six starts at 1B
- Big Ten Distinguished Scholar (2023)
- 2-time Academic All-Big Ten & 7-time NU Scholar Athlete Honor Roll pick



**#24 AVA BREDWELL • C**

	AVG.	G-GS	R	H	2B	HR	RBI	BB	SLG%	OB%
2024	.325	40-39	27	37	13	6	25	21	.649	.438
Career	.302	144-131	88	108	25	11	59	46	.503	.392

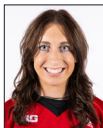
- Has started 124 of NU's 156 games behind the plate the last three years
- Big Ten Freshman of the Year (2022)
- Academic All-District selection (2023)
- Big Ten Distinguished Scholar (2023)
- Academic All-Big Ten selection (2023) & 5-time Husker honor roll member



**#26 ALINA FELIX • OF**

	AVG.	G-GS	R	H	2B	HR	RBI	BB	SLG%	OB%
2024	.286	26-17	7	12	1	0	6	6	.310	.388
Career	.275	41-27	14	19	2	1	10	9	.348	.367

- Has set career highs in starts (17), hits (12), RBIs (6) & walks (6) in 2024
- Played in 15 games with 10 starts as a freshman in 2023
- Has started games at right field (17), designated player (7) & left field (3)
- NU Scholar-Athlete Honor Roll & Tom Osborne Citizenship Team member
- 1 of 4 current Huskers from the Arizona Desert Thunder club program



**#27 BROOKE ANDREWS • OF**

	AVG.	G-GS	R	H	2B	HR	RBI	BB	SLG%	OB%
2024	.326	40-40	32	42	12	1	21	11	.442	.380
Career	.291	209-177	108	150	33	20	99	40	.483	.350

- NFCA Second-Team All-Midwest Region selection (2023)
- First-Team All-Big Ten selection (2023)
- Ranks 4th among active Huskers in career RBIs (99) and home runs (20)
- Started 44 games on the infield before moving to the outfield in 2022
- 3-time Academic All-Big Ten selection



**#29 SAMANTHA BLAND • INF/OF**

	AVG.	G-GS	R	H	2B	HR	RBI	BB	SLG%	OB%
2024	.310	40-38	22	39	12	4	30	11	.500	.374
Career	.310	40-38	22	39	12	4	30	11	.500	.374

- Freshman who has started games in LF (31), RF (2), SS (4) & 2B (1)
- Ranks 2nd on the team in doubles (12) and RBIs (30)
- Softball MVP & Female Athlete of the Year at Chino Hills High School
- 2-time league MVP & 2-time LA Times All-Star
- 1 of 4 current Huskers from the Corona Angels club program



**#32 ASHLEY SMETTER • INF**

	AVG.	G-GS	R	H	2B	HR	RBI	BB	SLG%	OB%
2024	.214	11-3	5	3	1	0	0	2	.286	.313
Career	.273	25-3	7	6	2	0	0	2	.364	.333

- Has started three games this season (two at 2B and one as the DP)
- Played in 14 games with one start as the designated player in 2023
- NFCA High School All-American at Lincoln Southwest High School
- Was a 2-time state champion in Nebraska's largest class
- NU Scholar-Athlete Honor Roll & Tom Osborne Citizenship Team member



**#33 EMMERSON COPE • UTL**

	AVG.	G-GS	R	H	2B	HR	RBI	BB	SLG%	OB%
2024	.270	17-13	4	10	2	1	8	4	.405	.386
Career	.270	17-13	4	10	2	1	8	4	.405	.386

- Freshman who has seen action at first base and as the designated player
- Hit .577 with 15 homers & 43 RBIs as a senior at Washburn Rural High
- 2-time all-state selection & 2-time league player of the year
- Helped Washburn to state a runner-up finish as a junior & senior
- Ranked as the nation's No. 26 overall recruit by Extra Inning Softball



**#33 EMMERSON COPE • RHP**

	W-L	ERA	APP	GS	CG	SHO	SV	IP	SO	AVG.
2024	2-0	4.42	18	5	0	0	2	31.2	5	.360
Career	2-0	4.42	18	5	0	0	2	31.2	5	.360

- Did not pitch the opening weekend but is 2-0 with two saves since
- 2-time Kansas 6A Pitcher of the Year
- Was 14-3 with a 1.50 ERA as a senior at Washburn Rural High School
- Helped Washburn to state a runner-up finish as a junior & senior
- Ranked as the nation's No. 26 overall recruit by Extra Inning Softball



**#44 KAYLIN KINNEY • UTL**

	AVG.	G-GS	R	H	2B	HR	RBI	BB	SLG%	OB%
2024	.292	11-8	2	7	0	0	1	1	.292	.320
Career	.239	87-65	29	42	7	8	31	28	.415	.364

- Is back after playing only 3 weeks in 2023 before a season-ending injury
- 37 percent of her career hits have gone for extra bases (7 2B & 8 HR)
- Has started games at designated player (48), pitcher (24) & right field (1)
- Big Ten Distinguished Scholar (2023) & 2-time Academic All-Big Ten pick
- 7-time member of the Nebraska Scholar-Athlete Honor Roll



**#44 KAYLIN KINNEY • RHP**

	W-L	ERA	APP	GS	CG	SHO	SV	IP	SO	AVG.
2024	15-10	4.11	31	14	4	0	4	122.2	68	.296
Career	21-14	3.75	75	28	8	3	7	237.0	135	.283

- 4 saves are tied for the Big Ten lead & 15 wins rank 3rd in the Big Ten
- Has earned the win or the save in 19 of Nebraska's 25 wins
- Played the first 3 weeks of the 2023 season before a season-ending injury
- Was 1-1 with a 0.84 ERA and one save in 25.0 innings before her injury
- Big Ten Distinguished Scholar (2023) & 2-time Academic All-Big Ten pick



**#66 KATELYN CANADA • INF**

	AVG.	G-GS	R	H	2B	HR	RBI	BB	SLG%	OB%
2024	.255	40-38	15	25	5	1	19	9	.337	.318
Career	.326	98-96	45	88	16	3	53	18	.426	.377

- Ranked as the preseason No. 9 second baseman nationally by D1Softball
- All-Region, All-Big Ten & Big Ten All-Defensive Team selection in 2023
- Started every game at second base as a freshman in 2023
- Hit .366, posting the third-highest average for a freshman in NU history
- 1st freshman to lead NU in batting average since Alicia Armstrong in 2013



**#77 HAIDYN WARNER • C**

	AVG.	G-GS	R	H	2B	HR	RBI	BB	SLG%	OB%
2024	.000	8-2	0	0	0	0	0	0	.000	.000
Career	.083	13-3	0	1	0	0	0	0	.083	.083

- Has played in 12 games with three career starts at catcher (2 in 2024)
- Had her lone hit of the 2023 season in her start against Missouri State
- 3-Time Nebraska Scholar-Athlete Honor Roll member
- Tom Osborne Citizenship Team member
- 1 of 4 current Huskers from the Arizona Desert Thunder club program

## INDIVIDUAL SEASON &amp; CAREER HIGHS

## #00 MCKINLEY MALECHA • C/INF • JR.

SEASON HIGH	CATEGORY	CAREER HIGH
1 twice	Hits	same
1 nine times	Runs	same
2 vs. Maine	RBIs	same
none	2B	none
none	HR	none

## #19 CAITLYNN NEAL • OF • SR.

SEASON HIGH	CATEGORY	CAREER HIGH
3 twice	Hits	3 six times
2 four times	Runs	3 vs. Creighton (2022)
4 at Rutgers	RBIs	6 vs. Minnesota (2022)
1 five times	2B	2 three times
1 twice	HR	1 10 times

## #3 BELLA BACON • INF • SO.

SEASON HIGH	CATEGORY	CAREER HIGH
2 six times	Hits	2 seven times
2 five times	Runs	same
2 three times	RBIs	same
1 four times	2B	same
none	HR	none

\*at Purdue

## #20 ABBEY NEWLUN • INF • SR.

SEASON HIGH	CATEGORY	CAREER HIGH
none	Hits	2 vs. Indiana (2023)
none	Runs	1 vs. UT Arlington (2022)
none	RBIs	none
none	2B	1 vs. Indiana (2023)
none	HR	none

## #4 MALIA THOMS • INF/OF • FR.

SEASON HIGH	CATEGORY	CAREER HIGH
1 three times	Hits	same
none	Runs	none
1 twice	RBIs	same
1 vs. Northern Colorado	2B	same
none	HR	none

## #24 AVA BREDWELL • C • JR.

SEASON HIGH	CATEGORY	CAREER HIGH
3 three times	Hits	3 four times
2 seven times	Runs	3 twice
3 at Rutgers	RBIs	5 vs. Iowa (2022)
2 twice	2B	2 three times
1 six times	HR	1 11 times

## #6 BILLIE ANDREWS • INF • SR.

SEASON HIGH	CATEGORY	CAREER HIGH
4 vs. #20 Utah	Hits	4 twice
4 vs. Northern Colorado	Runs	same
4 vs. Northern Colorado	RBIs	5 at Long Beach State (2022)
2 vs. Long Beach St.	2B	same
2 vs. #19 UCLA	HR	2 seven times

## #26 ALINA FELIX • OF • SO.

SEASON HIGH	CATEGORY	CAREER HIGH
2 three times	Hits	same
2 twice	Runs	2 three times
1 six times	RBIs	2 vs. New Mexico (2023)
1 at New Mexico St. - 2	2B	1 twice
none	HR	1 vs. CSU Bakersfield (2023)

## #7 SYDNEY GRAY • INF • SR.

SEASON HIGH	CATEGORY	CAREER HIGH
4 at Wisconsin	Hits	same
3 at Wisconsin	Runs	3 five times
6 vs. Sacramento St.	RBIs	same
1 eight times	2B	2 vs. UCF (2022)
2 twice	HR	2 four times

## #27 BROOKE ANDREWS • OF • SR.

SEASON HIGH	CATEGORY	CAREER HIGH
5 vs. Northern Colorado	Hits	same
3 at New Mexico St. - 2	Runs	3 twice
5 vs. Northern Colorado	RBIs	5 three times
2 vs. #14 Missouri	2B	2 twice
1 at New Mexico St. - 2	HR	2 at Rutgers (2021)

## #18 PEYTON CODY • C/UTL • SR.

SEASON HIGH	CATEGORY	CAREER HIGH
4 vs. Sacramento St.	Hits	same
2 at Rutgers	Runs	3 twice*
3 vs. Penn State	RBIs	5 vs. Rhode Island (2021)*
1 three times	2B	2 twice*
1 three times	HR	2 three times*

\*at St. John's

## #29 SAMANTHA BLAND • INF/OF • FR.

SEASON HIGH	CATEGORY	CAREER HIGH
4 vs. North Dakota	Hits	same
3 vs. Illinois	Runs	same
4 vs. #20 Utah	RBIs	same
2 three times	2B	same
1 four times	HR	same

## INDIVIDUAL SEASON & CAREER HIGHS

### #32 ASHLEY SMETTER • INF • SO.

SEASON HIGH	CATEGORY	CAREER HIGH
2 vs. Montana	Hits	same
2 vs. Montana	Runs	same
none	RBI	none
1 vs. Montana	2B	1 twice
none	HR	none

### #33 EMMERSON COPE • UTL • FR.

SEASON HIGH	CATEGORY	CAREER HIGH
3 vs. Cal State Fullerton	Hits	same
2 vs. Montana	Runs	same
3 vs. Cal State Fullerton	RBI	same
1 twice	2B	same
1 vs. Cal State Fullerton	HR	same

### #44 KAYLIN KINNEY • UTL • SR.

SEASON HIGH	CATEGORY	CAREER HIGH
2 twice	Hits	2 seven times
1 vs. Maine	Runs	3 vs. Wichita State (2022)
1 vs. Long Beach St.	RBI	6 vs. Wichita State (2022)
none	2B	1 seven times
none	HR	2 twice

### #66 KATELYN CANEDA • INF • SO.

SEASON HIGH	CATEGORY	CAREER HIGH
2 eight times	Hits	3 three times
3 vs. Northern Colorado	Runs	3 twice
3 twice	RBI	4 at Indiana (2023)
1 five times	2B	1 16 times
1 at Rutgers	HR	1 three times

### #77 HAIDYN WARNER • C • SO.

SEASON HIGH	CATEGORY	CAREER HIGH
none	Hits	1 vs. Missouri State (2023)
none	Runs	none
none	RBI	none
none	2B	none
none	HR	none

### #2 SARAH HARNESS • RHP • SR.

SEASON HIGH/LOW	CATEGORY	CAREER HIGH/LOW
6.0 vs. Saint Francis	Innings	15.0 vs. Missouri St. (2022)^
6 vs. Maine	Strikeouts	15 vs. Eastern Ky. (2022)^
5 vs. Maine	Hits (low)*	0 twice
0 vs. Maine	Walks (low)*	0 eight times
0 vs. Maine	Runs (low)*	0 11 times
0 vs. Maine	Earned Runs (low)*	0 13 times

\*complete game only

^at Southern Illinois

### #16 ELISA GULFIN • RHP • FR.

SEASON HIGH/LOW	CATEGORY	CAREER HIGH/LOW
none	Innings	none
none	Strikeouts	none
none	Hits (low)	none
none	Walks (low)	none
none	Runs (low)	none
none	Earned Runs (low)	none

### #33 EMMERSON COPE • RHP • FR.

SEASON HIGH/LOW	CATEGORY	CAREER HIGH/LOW
4.1 vs. Kansas	Innings	same
2 twice	Strikeouts	same
1 four times	Hits (low)	same
0 13 times	Walks (low)	same
0 seven times	Runs (low)	same
0 eight times	Earned Runs (low)	same

### #44 KAYLIN KINNEY • RHP • SR.

SEASON HIGH/LOW	CATEGORY	CAREER HIGH/LOW
9.1 vs. Penn State	Innings	same
5 twice	Strikeouts	8 vs. New Mexico (2023)
5 vs. Penn State	Hits (low)*	1 vs. Rutgers (2022)
1 vs. Penn State	Walks (low)*	0 vs. New Mexico (2023)
1 vs. South Alabama	Runs (low)*	0 three times
1 vs. South Alabama	Earned Runs (low)*	0 three times

\*complete game only

# SEASON STATISTICS

Record: 25-16 Home: 9-8 Away: 6-2 Neutral: 10-6 Big Ten: 8-3

Player	avg	gp-gs	ab	r	h	2b	3b	hr	rbi	tb	slg%	bb	hp	so	gdp	ob%	sf	sh	sb-att	po	a	e	fld%
Andrews, Billie	.388	37-37	134	46	52	9	2	15	35	110	.821	15	3	17	1	.461	0	0	13-13	62	93	6	.963
Cody, Peyton	.354	28-22	65	9	23	3	0	3	13	35	.538	8	1	11	0	.432	0	1	0-0	0	1	0	1.000
Andrews, Brooke	.326	40-40	129	32	42	12	0	1	21	57	.442	11	1	25	0	.380	1	5	5-5	79	8	1	.989
Bredwell, Ava	.325	40-39	114	27	37	13	3	6	25	74	.649	21	2	20	0	.438	0	3	1-2	137	16	0	1.000
Bland, Samantha	.310	40-38	126	22	39	12	0	4	30	63	.500	11	2	11	1	.374	0	1	2-3	51	13	7	.901
Kinney, Kaylin	.292	11-8	24	2	7	0	0	0	1	7	.292	1	0	11	0	.320	0	0	0-0	5	25	0	1.000
Bacon, Bella	.290	38-37	107	22	31	4	0	0	16	35	.327	7	7	15	2	.363	3	0	0-0	277	4	4	.986
Felix, Alina	.286	26-17	42	7	12	1	0	0	6	13	.310	6	1	8	1	.388	0	1	0-0	23	0	0	1.000
Cope, Emmerson	.270	17-13	37	4	10	2	0	1	8	15	.405	4	3	8	0	.386	0	0	1-1	6	9	0	1.000
Gray, Sydney	.268	41-41	127	25	34	8	0	10	30	72	.567	17	1	20	1	.356	1	1	2-4	37	91	5	.962
Caneda, Katelyn	.255	40-38	98	15	25	5	0	1	19	33	.337	9	1	12	0	.318	2	3	1-2	59	56	4	.966
Tokheim, Talia	.250	9-6	20	8	5	0	0	3	6	14	.700	3	0	6	1	.348	0	0	0-0	4	0	0	1.000
Neal, Caitlynn	.247	37-26	89	17	22	5	0	2	16	33	.371	7	1	9	0	.306	1	2	0-1	49	6	1	.982
Smetter, Ashley	.214	11-3	14	5	3	1	0	0	0	4	.286	2	0	4	0	.313	0	0	0-0	13	6	1	.950
Thoms, Malia	.214	10-3	14	0	3	1	0	0	2	4	.286	2	0	4	0	.313	0	0	0-0	1	0	0	1.000
Malecha, Mckinley	.167	20-4	12	9	2	0	0	0	4	2	.167	1	0	2	0	.231	0	0	1-1	17	2	1	.950
Warner, Haidyn	.000	8-2	6	0	0	0	0	0	0	0	.000	0	0	1	0	.000	0	0	0-0	16	0	2	.889
Bahl, Jordyn	.000	1-1	0	0	0	0	0	0	0	0	.000	1	1	0	0	1.000	0	0	1-1	0	0	0	.000
Olensky, Caitlin	.000	1-0	0	0	0	0	0	0	0	0	.000	1	0	0	0	1.000	0	0	0-0	0	3	0	1.000
-----																							
Harness, Sarah	.000	2-2	0	0	0	0	0	0	0	0	.000	0	0	0	0	.000	0	0	0-0	0	5	2	.714
Totals	.300	41	1158	250	347	76	5	46	232	571	.493	127	24	184	7	.378	8	17	27-33	836	338	34	.972
Opponents	.294	41	1118	195	329	58	5	31	184	490	.438	111	36	143	15	.373	10	26	41-45	819	313	59	.950

LOB - Team (269), Opp (272). DPs turned - Team (22), Opp (13). CI - Team (0), Opp (2). IBB - Team (3), Andrews, Bi. 3. Picked off - Felix 1.

## (All games Sorted by Earned run avg)

Player	era	w-l	app	gs	cg	sho	sv	ip	h	r	er	bb	so	2b	3b	hr	b/avg	wp	hp	bks	sfa	sha
Olensky, Caitlin	3.30	3-2	16	6	1	1/0	0	46.2	47	23	22	16	27	6	1	3	.264	6	12	0	2	3
Kinney, Kaylin	4.11	15-10	31	14	4	0/2	4	122.2	145	86	72	42	68	24	1	12	.296	13	17	0	5	13
Cope, Emmerson	4.42	2-0	18	5	0	0/1	2	31.2	50	24	20	9	5	11	2	4	.360	3	3	0	0	3
Harness, Sarah	4.65	5-3	24	15	1	1/1	1	75.1	85	59	50	40	40	17	1	12	.281	3	3	0	3	6
Bahl, Jordyn	9.00	0-1	1	1	0	0/0	0	2.1	2	3	3	4	3	0	0	0	.250	3	1	0	0	1
Totals	4.19	25-16	41	41	6	4/2	7	278.2	329	195	167	111	143	58	5	31	.294	28	36	0	10	26
Opponents	4.95	16-25	41	41	11	2/0	3	273.0	347	250	193	127	184	76	5	46	.300	18	24	0	8	17

PB - Team (7), Bredwell 7, Opp (10). Pickoffs - Team (0), Opp (1). SBA/ATT - Bredwell (37-41), Kinney (19-21), Harness (10-11), Cope (6-6), Olensky (3-4), Bahl (3-3), Warner (3-3), Malecha (1-1).

# BIG TEN STATISTICS

Record: 8-3 Home: 3-2 Away: 5-1 Big Ten: 8-3

Player	avg	gp-gs	ab	r	h	2b	3b	hr	rbi	tb	slg%	bb	hp	so	gdp	ob%	sf	sh	sb-att	po	a	e	fld%
Cope, Emmerson	.667	1-1	3	1	2	0	0	0	1	2	.667	0	1	1	0	.750	0	0	0-0	0	0	0	.000
Cody, Peyton	.455	8-7	22	4	10	0	0	1	6	13	.591	3	0	3	0	.520	0	1	0-0	0	1	0	1.000
Neal, Caitlynn	.400	11-6	25	6	10	2	0	2	10	18	.720	2	0	1	0	.444	0	1	0-0	14	3	1	.944
Gray, Sydney	.342	11-11	38	8	13	3	0	3	11	25	.658	4	0	7	1	.405	0	0	0-1	11	21	1	.970
Bland, Samantha	.324	11-11	37	10	12	2	0	1	7	17	.459	6	1	2	0	.432	0	1	1-1	21	1	1	.957
Andrews, Brooke	.314	10-10	35	5	11	3	0	0	5	14	.400	2	0	6	0	.342	1	2	0-0	24	0	0	1.000
Andrews, Billie	.308	11-11	39	15	12	0	1	3	9	23	.590	8	0	8	0	.426	0	0	4-4	17	31	1	.980
Bacon, Bella	.290	11-11	31	7	9	1	0	0	2	10	.323	1	5	4	2	.395	1	0	0-0	83	0	2	.976
Tokheim, Talia	.278	6-5	18	6	5	0	0	3	6	14	.778	2	0	4	1	.350	0	0	0-0	3	0	0	1.000
Bredwell, Ava	.273	11-11	33	10	9	5	1	2	7	22	.667	6	0	7	0	.385	0	1	0-1	37	2	0	1.000
Caneda, Katelyn	.250	11-11	32	5	8	3	0	1	9	14	.438	3	0	5	0	.314	0	2	0-0	19	20	0	1.000
Felix, Alina	.167	7-2	6	3	1	0	0	0	0	1	.167	1	0	1	0	.286	0	1	0-0	4	0	0	1.000
Thoms, Malia	.000	3-1	3	0	0	0	0	0	0	0	.000	0	0	1	0	.000	0	0	0-0	0	0	0	.000
Smetter, Ashley	.000	1-1	2	0	0	0	0	0	0	0	.000	0	0	2	0	.000	0	0	0-0	0	0	0	.000
Warner, Haidyn	.000	1-0	1	0	0	0	0	0	0	0	.000	0	0	0	0	.000	0	0	0-0	0	0	1	1.000
Kinney, Kaylin	.000	1-0	1	0	0	0	0	0	0	0	.000	0	0	1	0	.000	0	0	0-0	1	8	0	1.000
Malecha, Mckinley	.000	6-0	0	3	0	0	0	0	0	0	.000	1	0	0	0	1.000	0	0	0-0	0	1	1	.500
Totals	.313	11	326	83	102	19	2	16	73	173	.531	39	7	53	4	.396	2	9	5-7	234	88	9	.973
Opponents	.278	11	309	54	86	19	4	14	51	155	.502	28	4	38	2	.342	4	7	12-14	231	82	22	.934

LOB - Team (70), Opp (64). DPs turned - Team (4), Opp (6). CI - Team (0), Opp (1). IBB - Team (3), Andrews, Bi. 3.

## (Big Ten games only Sorted by Earned run avg)

Player	era	w-l	app	gs	cg	sho	sv	ip	h	r	er	bb	so	2b	3b	hr	b/avg	wp	hp	bks	sfa	sha
Olenksy, Caitlin	0.00	0-0	1	1	0	0/0	0	1.0	0	0	0	0	0	0	0	0	.000	0	0	0	0	0
Kinney, Kaylin	3.40	5-2	10	6	3	0/0	2	47.1	51	27	23	15	25	11	1	5	.279	5	3	0	2	5
Harness, Sarah	5.78	3-1	7	3	0	0/0	0	23.0	25	20	19	9	13	3	1	8	.275	0	1	0	2	2
Cope, Emmerson	7.35	0-0	5	1	0	0/0	0	6.2	10	7	7	4	0	5	2	1	.313	1	0	0	0	0
Totals	4.40	8-3	11	11	3	0/0	2	78.0	86	54	49	28	38	19	4	14	.278	6	4	0	4	7
Opponents	5.18	3-8	11	11	5	0/0	0	77.0	102	83	57	39	53	19	2	16	.313	8	7	0	2	9

PB - Team (2), Bredwell 2, Opp (2). SBA/ATT - Bredwell (12-14), Kinney (6-8), Harness (5-5), Cope (1-1).