

# NEBRASKA

## SOFTBALL



### SHOCKER INVITATIONAL

FRIDAY	SATURDAY	SUNDAY
<b>vs. South Dakota State</b> 10 a.m. (Central) <i>Video: None</i>	<b>vs. Missouri</b> 3 p.m. (Central) <i>Video: None</i>	<b>vs. Missouri</b> 12 p.m. (Central) <i>Video: None</i>
<b>vs. #16 Oklahoma State</b> 12:30 p.m. (Central) <i>Video: None</i>	<b>at Wichita State</b> 5:30 p.m. (Central) <i>Video: None</i>	

Live audio of every Nebraska game available on Huskers.com & the Huskers app

The No. 18 Nebraska softball team will travel to Wichita, Kan., for its third tournament of the year at the Shocker Invitational on Feb. 28-March 1. NU will play five games over three days, including a top-25 matchup against No. 16 Oklahoma State.

The Huskers will open the tournament against South Dakota State on Friday, Feb. 28 at 10 a.m. (CT) and will have an immediate turnaround to face off against No. 16 Oklahoma State at 12:30 p.m. (CT). The Big Red will play two games on Saturday -- one against Missouri at 3 p.m. (CT) and one against host Wichita State at 5:30 p.m. (CT). Nebraska will close the Shocker Invitational with another matchup with Missouri at 12 p.m. (CT) on Sunday, March 2.

Nebraska competed at the Mary Nutter Collegiate Classic last weekend and compiled a record of 4-2, its first winning record at the tournament since 2011. NU collected wins over Baylor, San Jose State, Howard and Utah and took losses against No. 4 UCLA and No. 8 Duke. As a team, the Huskers hit .331 in Cathedral City and knocked 12 home runs, along with seven doubles and a triple.

The Big Red was tabbed No. 18 by the NFCA this week and No. 16 by D1 Softball, Softball America and USA Softball.

All five games this week and every game this season will have a free radio broadcast with Nate Rohr on the call. The radio broadcast is available at Huskers.com/listen and on the official Huskers app.

### LEADING OFF

- The 2025 season marks the sixth season that Nebraska has competed in Wichita State's home tournament. NU owns a record of 18-4 across its five previous tournaments.
- The Big Red posted undefeated records in its first three appearances at the Shocker Invitational -- 5-0 in 2005, 5-0 in 2007 and 4-0 in 2009.
- The Huskers are ranked No. 18 in the NFCA Poll. NU has been ranked every week this season.
- Abbie Squier had her fourth multi-homer game against Utah, knocking a home run in the second and fourth innings.
- In the game against San Jose State, NU hit four straight home runs in the third inning. That marked the first time in school history that the Big Red hit back-to-back-to-back-to-back homers.
- Nebraska now has 10 run-rule victories on the season, which is tied for the most in the NCAA.
- In the Huskers' 12 victories this season, they have outscored their opponents 134-21, including a 123-19 margin in the run-rule wins.
- NU has scored 10 runs in nine of its sixteen games this season, including eight of its past 11 games.

### HUSKERS TO WATCH



**Jordy Bahl** pitched 20.0 innings at the Mary Nutter Collegiate Classic, the most of any player at the tournament. She compiled a record of 2-1 and an ERA of 1.40 while striking out 24 batters.



**Abbie Squier** tied the highest batting average on the team at the Mary Nutter Collegiate Classic at .500 (8-for-16) and notched three home runs, a double and six runs scored.

### 2025 SCHEDULE (12-4, 0-0 B1G)

NFCA Leadoff Classic (Clearwater, Fla.)

Feb. 6	vs. #6 Tennessee	W, 7-1
Feb. 7	vs. Southern Mississippi	W, 12-2 (5)
Feb. 7	vs. Bethune-Cookman	W, 9-1 (5)
Feb. 8	vs. #13 Texas Tech	L, 5-6
Feb. 9	vs. #24 Mississippi State	L, 0-3

Troy Cox Classic (Las Cruces, N.M.)

Feb. 14	vs. Texas A&M - CC	W, 20-1 (5)
Feb. 14	at New Mexico State	W, 10-0 (6)
Feb. 15	vs. Montana	W, 13-5 (6)
Feb. 15	vs. Northern Colorado	W, 10-0 (5)
Feb. 16	vs. Montana	W, 16-3 (5)

Mary Nutter Collegiate Classic (Cathedral City, Calif.)

Feb. 20	vs. Baylor	W, 4-1
Feb. 20	vs. #4 UCLA	L, 1-9 (6)
Feb. 21	vs. #11 Duke	L, 0-3 (8)
Feb. 22	vs. San Jose State	W, 12-4 (6)
Feb. 22	vs. Howard	W, 11-1 (5)
Feb. 23	vs. Utah	W, 10-2 (5)

Shocker Invitational (Wichita, Kan.)

Feb. 28	vs. South Dakota State	10 a.m.
Feb. 28	vs. #16 Oklahoma State	12:30 p.m.
March 1	vs. Missouri	3 p.m.
March 1	at Wichita State	5:30 p.m.
March 2	vs. Missouri	12 p.m.

Big Red Spring Fling (Bowlin Stadium)

March 6	Northern Colorado	2:30 p.m.
March 6	Northern Colorado	5 p.m.
March 7	Northern Iowa	5 p.m.
March 8	South Dakota State	2:30 p.m.
March 9	Northern Iowa	2:30 p.m.

March 14	at Ohio State	5 p.m.
March 15	at Ohio State	1 p.m.
March 16	at Ohio State*	12 p.m.

March 21	Minnesota	5 p.m.
March 22	Minnesota	1 p.m.
March 23	Minnesota	12 p.m.

March 26	at Omaha	5 p.m.
March 29	Purdue	1 p.m.
March 30	Purdue	5 p.m.
March 31	Purdue	4 p.m.

April 4	at Iowa	5 p.m.
April 5	at Iowa	2 p.m.
April 6	at Iowa	1 p.m.

April 9	Creighton	6 p.m.
April 12	at Northwestern	TBA
April 13	at Northwestern	4 p.m.
April 14	at Northwestern	TBA

April 18	Indiana	5 p.m.
April 19	Indiana	1 p.m.

April 25	at Washington	8 p.m.
April 26	at Washington	TBA
April 27	at Washington	3 p.m.

May 2	Maryland	5 p.m.
May 3	Maryland	1 p.m.
May 4	Maryland	12 p.m.

May 7-10 at Big Ten Tournament (West Lafayette, Ind.)

\*game will not count toward Big Ten standings

## NEBRASKA SOFTBALL FACTS

## UNIVERSITY INFORMATION

Location	Lincoln, Neb.
Population	293,678
Founded	1869
Enrollment	24,431
Nickname	Cornhuskers, Huskers
Colors	Scarlet & Cream
Conference	Big Ten
Director of Athletics	Troy Dannen

## ATHLETIC COMMUNICATIONS

Softball Contact	Paige Trutna
E-Mail	ptrutna2@huskers.com
Cell Phone	(402) 429-7576

## 2025 COACHING STAFF

Head Coach	Rhonda Revelle
Nebraska Record	1,127-665 (33rd year)
Career Record	1,135-681 (34th year)
Assoc. Head Coach	Lori Sippel (36th year)
Assistant Coach	Diane Miller (17th year)
Assistant Coach	Olivia Ferrell (2nd year)
Graduate Assistant	Allie Light (1st year)
Director of Operations	Erin Bohling (5th year)

## 2024 SEASON REVIEW

Overall Record	30-23
Big Ten Record (Finish)	12-9 (4th)
NCAA Record (Finish)	N/A

## 2025 TEAM OUTLOOK

Letterwinners Returning/Lost	14/8
Total Starters Returning/Lost	5/5
Position Starters Returning/Lost	5/3
Starting Pitchers Returning/Lost	0/2
Returning All-Conference Players	7*
Returning All-Region Players	6*
Returning All-Americans	1*
Newcomers	11

\*includes honors at a player's previous school

## STADIUM INFORMATION

Home Stadium	Bowlin Stadium
Record at Bowlin Stadium	274-120 (.695)

## PROGRAM HISTORY

First Year of Softball	1976
All-Time Record	1,608-960 (.618)
All-Time Conference Record	454-327 (.581)
Big Ten Record	173-118 (.594)
Overall Conference Titles	20
Big Eight Titles	12
Big 12 Titles	6
Big Ten Titles	2
NCAA Tournament Appearances	26
WCWS Appearances	7
NCAA Tournament Record	65-56 (.537)
NCAA Regional Record	55-39 (.585)
NCAA Super Regional Record	2-3 (.400)
WCWS Record	8-14 (.363)
NFCA All-Americans	30
CSC Academic All-Americans	31

## PRONUNCIATION GUIDE

Katelyn Canada	kuh-NAY-duh
Hannah/Lauren Camenzind	Cam-en-zin-d
Ava Kuszak	KOOS-zak
McKinley Malecha	muh-LECK-uh
Carlie Muhlbach	Mule-bock
Caitlin Olensky	oh-LEN-ski
Rhonda Revelle	ruh-VELL
Lori Sippel	Sih-pull
Abbie Squier	SKWHY-er
Malia Thoms	TOMES
Talia Tokheim	TALL-yuh TOKE-heim
Haidyn Warner	WERE-nerr

## NEBRASKA ROSTER &amp; SCHEDULE NOTES

• Nebraska's roster features 25 players, tied for the largest roster in school history. The roster features 10 Nebraska natives.

• Nebraska's squad is made up of three seniors, 11 juniors, six sophomores and five freshmen. The junior class is the largest of its kind in program history.

## ALL-REGION PLAYERS

- Jordy Bahl, RHP/UTL\*
  - Ava Bredwell, C
  - Lauren Camenzind, INF\*
  - Katelyn Canada, INF
  - Ava Kuszak, INF\*
  - Abbie Squier, OF
- \*all-region selection at previous school

## ALL-CONFERENCE PLAYERS

- Jordy Bahl, RHP/UTL\*
  - Ava Bredwell, C
  - Hannah Camenzind, LHP/UTL\*
  - Katelyn Canada, INF
  - Ava Kuszak, INF\*
  - Kylee Magee, RHP\*
  - Abbie Squier, OF
- \*all-conference selection at previous school

## 2025 TEAM CAPTAINS

- Jordy Bahl, Jr.
- McKinley Malecha, Sr.
- Abbie Squier, Sr.

• **Rhonda Revelle** has won more games than any other head coach (male or female) in the history of Husker Athletics. Entering the 2025 season, Revelle has the sixth-most wins of any active Division I head coach. Revelle is in her 33rd season and is the longest-tenured head coach in Husker Athletics history.

• Associate Head Coach **Lori Sippel** is in her 36th year at Nebraska. Sippel is the

longest-tenured female assistant coach in the history of Nebraska Athletics.

• Revelle (1981-83) and Sippel (1985-88) also played for NU. Including their playing and coaching careers, Revelle and Sippel have been a part of 1,431 of Nebraska's 1,608 all-time victories (89 percent).

• Assistant coach **Diane Miller** rounds out the Husker coaching staff. In her 17th season, Miller has helped Nebraska's offense set more than 40 school records.

• The Huskers are scheduled to play 51 regular-season games in 2025, including 17 home games, 19 neutral-site games and 15 away games. This will mark the second straight year that NU will have more home games than true road games on the schedule.

• Nebraska will play a 22-game Big Ten schedule in 2025. This year marks the first season that Oregon, UCLA and Washington have joined the conference. The Huskers will play three-game series against Minnesota, Purdue, Iowa, Northwestern, Washington and Maryland. NU will host Indiana for a two-game series and will play three games against Ohio State, with two counting toward conference standings. The Big Red will also face UCLA at the Mary Nutter Collegiate Classic – that game will not count toward the Big Ten standings.

• The 2025 Big Ten Tournament will be held in West Lafayette, Ind., from May 7-10.

## 2025 NEBRASKA NUMERICAL ROSTER

NO.	NAME	POS.	B/T	HT.	YR.	HOMETOWN
00	McKinley Malecha	C	R/R	5-8	Sr.	Lakeville, Minn.
1	Olivia DiNardo	C/UTL	L/R	5-7	Jr.	San Mateo, Calif.
2	Lauren Camenzind	INF/C	R/R	5-7	Jr.	Valley, Neb.
3	Bella Bacon	INF	R/R	5-10	Jr.	Omaha, Neb.
4	Malia Thoms	INF/OF	L/R	5-4	So.	Lincoln, Neb.
5	Macie Vickers	C	R/R	5-7	Fr.	Escalon, Calif.
7	Ava Kuszak	INF	R/R	5-7	Jr.	Broomfield, Colo.
8	Abbie Squier	OF	R/R	5-7	Sr.	Lincoln, Neb.
9	Hannah Camenzind	LHP/UTL	L/L	5-7	Jr.	Valley, Neb.
11	Talia Tokheim	OF	R/R	5-7	Jr.	San Carlos, Calif.
14	Kacie Hoffmann	OF	L/L	5-9	Jr.	Elkhorn, Neb.
15	Kennadi Williams	UTL	R/R	5-4	Fr.	Lincoln, Neb.
18	Nessa McMillen	OF/UTL	R/R	5-9	Fr.	Blair, Neb.
22	Caitlin Olensky	LHP	L/L	5-5	So.	Montville, N.J.
24	Ava Bredwell	C	R/R	5-7	Sr.	Shawnee, Kan.
26	Alina Felix	OF	L/R	5-7	Jr.	Tucson, Ariz.
27	Natalia Hill	INF/OF	R/R	5-3	Fr.	Norwalk, Calif.
29	Samantha Bland	INF	R/R	5-7	So.	Chino Hills, Calif.
31	Kylee Magee	RHP	R/R	5-9	So.	Anaheim, Calif.
33	Emmerson Cope	RHP/UTL	R/R	5-11	So.	Topeka, Kan.
55	Dakota Carter	OF	R/R	5-6	Jr.	Eastvale, Calif.
66	Katelyn Canada	INF	L/R	5-2	Jr.	Cerritos, Calif.
72	Carlie Muhlbach	C/UTL	R/R	5-7	Fr.	Gretna, Neb.
77	Haidyn Warner	C	R/R	5-9	Jr.	Oro Valley, Ariz.
98	Jordy Bahl	RHP/UTL	R/R	5-8	Jr.	Papillion, Neb.

## HUSKER HOME RUN QUICK HITTERS

The Nebraska softball team has enjoyed a solid start to the season from the plate, most notably with its home run numbers.

- Nebraska leads the nation with 36 home runs in only 16 games.
- NU is on pace to hit 115 home runs in a 51-game regular season. The school record for home runs in a season is 76 in 2022, and the Big Ten record is 118 by Michigan in 2015 (68 games).
- A total of 12 Huskers have hit a home run this season, including eight players with multiple home runs.
- The Huskers have homered five times in a game on four occasions this season, including three consecutive games to open the Troy Cox Classic.
- Nebraska has produced eight innings this season with multiple home runs, including four innings with three or more home runs.
- Nebraska has hit back-to-back home runs five times this season, including three times with three consecutive home runs that includes a school-record four straight home runs against San Jose State on Feb. 22.
- **Ava Kuszak**, **Jordy Bahl** and **Abbie Squier** have all had a multi-homer game this season, including a three-home run game from Kuszak against Montana on Feb. 16 which tied the Nebraska and Big Ten records for home runs in a game.
- Kuszak has hit more home runs herself (10) than 214 NCAA Division I teams and more than eight Big Ten schools.
- Together, Kuszak (10) and Jordy Bahl (6) have combined for 16 home runs. Their two-player combined total of 16 home runs would rank 28th among all NCAA Division I teams this spring and would be more than 12 Big Ten schools have hit as a team.
- Five Huskers – Bahl, Kuszak, **Bella Bacon**, **Alina Felix** and **Malia Thoms** – have already matched or exceeded their career highs in home runs.

## NEBRASKA'S INDIVIDUAL NATIONAL AND CONFERENCE RANKS

Stat	Player	National Rank	Big Ten Rank	Value
Home Runs	Ava Kuszak	1	1	10
Home Runs per Game	Ava Kuszak	2	1	0.71
Extra Base Hits	Jordy Bahl	3	1	15
Slugging Percentage	Ava Kuszak	5	1	1.275
Total Bases	Jordy Bahl	5	1	51
Total Bases	Ava Kuszak	5	1	51
RBIs per Game	Ava Kuszak	7	3	1.90
Extra Base Hits	Ava Kuszak	9	2	12
RBIs	Ava Kuszak	9	1	24
Strikeouts	Jordy Bahl	11	4	54
Slugging Percentage	Jordy Bahl	13	2	1.159
Runs	Ava Kuszak	14	2	19
Triples	Jordy Bahl	17	1	2
Runs Per Game	Ava Kuszak	18	2	1.36
Hits	Jordy Bahl	27	2	22
Earned Run Average	Jordy Bahl	29	3	0.80
Strikeout-to-Walk Ratio	Jordy Bahl	35	5	6.75

## HUSKERS IN THE RECORD BOOKS

The Nebraska softball team has set numerous program bests, both team and individual, so far this season.

- The Big Red scored 10+ runs in five straight games from Feb. 14-16 for the first time in program history.
- NU notched five home runs in three straight games for what is believed to be the first time in school history.
- In the Huskers' game against San Jose State at the Mary Nutter Collegiate Classic, they hit four straight home runs for the first time in program history.
- Nebraska scored 102 runs in its first 10 games of the season, which marked the quickest the team has hit the 100-run milestone.
- **Ava Kuszak** posted three home runs in the second game against Montana and is now tied with Kaylan Jablonski and Christie McCoy for the school record.

## NEBRASKA BY THE NUMBERS

**65 NCAA TOURNAMENT WINS**  
Nebraska has won 65 games in its 26 NCAA Tournament appearances (65-56). The 65 postseason wins rank 20th in NCAA history.

**31 ACADEMIC ALL-AMERICANS**  
Huskers have combined to earn 31 Academic All-America honors, a total that ranks third among all Division I softball programs.

**30 ALL-AMERICANS**  
A total of 18 Huskers have combined for 30 All-America awards, including eight multi-time All-Americans.

**26 NCAA TOURNAMENTS**  
The Huskers have made 26 appearances in the NCAA Tournament, including 13 straight from 1995 to 2007. Nebraska's 26 postseason appearances rank 14th in NCAA history.

**24 REVELLE ALL-AMERICANS**  
Rhonda Revelle has guided 15 players to a total of 24 All-America honor in her first 32 seasons as Nebraska's head coach.

**20 CONFERENCE TITLES**  
Nebraska has won a total of 20 conference championships. The Huskers won 12 Big Eight titles, six Big 12 crowns and have captured a pair of Big Ten titles.

**15 TOP-25 RANKINGS**  
Nebraska has been ranked in the final NFCA poll in 15 of the 29 years the poll has existed. The Huskers were one of only six teams nationally to be ranked in the final poll in each of the first 12 years it existed (1995 to 2006).

**15 REVELLE ACADEMIC ALL-AMERICANS**  
Rhonda Revelle has produced 15 academic All-Americans at Nebraska. That total ranks fourth among all active Division I softball head coaches.

**7 WCWS APPEARANCES**  
Nebraska has advanced to the Women's College World Series seven times to rank 15th in NCAA history.

**4 SOFTBALL OLYMPIANS**  
Four former Huskers have competed in the Olympics, combining for five Olympic Games. A fifth Husker (Taylor Edwards) was a 2020 Olympic alternate for Team USA.

## COLLEGE SOFTBALL POLLS

## USA TODAY/NFCA COACHES POLL

Rk.	Team	Record	Pts.	Prev.
1.	Texas (15)	15-1	753	1
2.	Oklahoma (9)	14-0	736	2
3.	Florida (6)	18-1	729	3
4.	UCLA	14-2	676	4
5.	LSU (1)	14-0	630	6
6.	Texas A&M	15-1	627	7
7.	Tennessee	13-3	551	5
8.	Duke	13-3	513	11
9.	Florida State	11-3	497	8
10.	Georgia	14-0	494	9
11.	Arkansas	14-1	460	10
12.	Arizona	15-2	446	13
13.	Texas Tech	13-3	303	12
14.	Oregon	15-1	376	19
15.	Virginia Tech	12-3	312	15
16.	Oklahoma State	8-4	291	14
17.	Stanford	12-2	281	18
18.	<b>Nebraska</b>	<b>12-4</b>	<b>273</b>	<b>16</b>
19.	South Carolina	15-0	260	21
20.	Auburn	14-1	202	20
21.	Mississippi State	13-2	190	17
22.	Alabama	10-6	113	23
23.	San Diego State	12-3	75	25
24.	Kentucky	10-5	52	24
25.	Florida Atlantic	15-2	44	RV

## ESPN.COM/USA SOFTBALL POLL

Rk.	Team	Record	Pts.	Prev.
1.	Oklahoma (11)	14-0	603	2
2.	Texas (7)	15-1	599	1
3.	Florida (6)	18-1	585	3
4.	UCLA	14-2	532	4
5.	Texas A&M	15-1	521	6
6.	LSU (1)	14-0	519	5
7.	Tennessee	13-3	419	7
8.	Florida State	11-3	408	8
9.	Duke	13-3	404	14
10.	Arizona	15-2	394	11
11.	Georgia	14-0	388	9
12.	Arkansas	14-1	366	10
13.	Texas Tech	14-3	318	12
14.	Oregon	15-1	317	19
15.	Oklahoma State	8-4	286	13
16.	<b>Nebraska</b>	<b>12-4</b>	<b>242</b>	<b>15</b>
17.	Virginia Tech	12-3	222	17
18.	Stanford	12-2	195	20
19.	Auburn	14-1	178	18
20.	Mississippi State	13-2	150	16
21.	South Carolina	15-0	134	24
22.	Alabama	10-6	121	21
23.	San Diego State	12-3	118	23
24.	Liberty	12-3	58	25
25.	Virginia	9-5	31	RV

## NEBRASKA'S TEAM NATIONAL AND CONFERENCE RANKS

Stat	National Rank	Big Ten Rank	Value
Home Runs	1	1	36
Home Runs per Game	1	1	2.3
Slugging Percentage	3	1	.685
Total Runs	3	1	140
RBIs	5	1	122
Scoring	5	1	8.75
Run Differential	7	2	98
Hits	8	1	155
RBIs per Game	9	1	7.63
Strikeout-to-Walk Ratio	10	3	4.00
Batting Average	14	1	.362

## BAHL SOLID AT THE PLATE

Nebraska softball pitcher and utility player **Jordy Bahl** has not only had an impact in the circle, but her offense is a force to be reckoned with.

- Jordy Bahl ranks in the top 20 nationally in doubles (9th), home runs (15th) and triples (17th). She is the only player in the country who ranks in the top 20 in each of those categories.
- Bahl ranks third in the country with 15 extra-base hits, one shy of co-national leaders Taylor Shumaker (Florida) and Allison Benning (North Florida). Bahl has played in four fewer games than Shumaker and three fewer games than Benning.
- On the season, 15 of Bahl's 22 hits have gone for extra bases. She averages an extra-base hit every 2.9 at bats and 1.0 extra-base hit per game.
- Bahl also ranks fifth nationally in total bases (51), 13th in slugging percentage (1.159) and 14th in runs scored (19).
- Bahl has nearly as many hits herself as she has allowed as a pitcher. Bahl has 22 hits in 44 at bats at the plate and in the circle, she has allowed only 23 hits in 155 opponent at bats.
- Bahl has also scored more runs herself (19) than she has allowed (13) in 43.2 innings in the circle.

## WHAT NEBRASKA RETURNS IN 2025

Nebraska's 2025 roster consists of 25 total athletes. Fourteen of those are returners.

- The Huskers welcome back 14 letterwinners from last season – Bella Bacon, Jordy Bahl, Samantha Bland, Ava Bredwell, Katelyn Caneda, Dakota Carter, Emmerson Cope, Alina Felix, Mckinley Malecha, Caitlin Olensky, Abbie Squier, Malia Thoms, Talia Tokheim and Haidyn Warner.
- NU returns half of its starting lineup from 2024 in outfielder **Samantha Bland**, catcher **Ava Bredwell**, first baseman **Bella Bacon**, second baseman **Katelyn Caneda** and designated player **Emmerson Cope**.
- Nebraska returns three of its top five hitters from 2024 – **Ava Bredwell** (.329), **Emmerson Cope** (.304) and **Alina Felix** (.302).
- Returners **Ava Bredwell**, **Samantha Bland**, **Bella Bacon** and **Katelyn Caneda** each started in more than 95 percent of the Huskers' games last season.

## THE LAST TIME A HUSKER

Had 6+ At Bats	5 players vs. Wisconsin (5/8/16)
Had 5+ Hits	Brooke Andrews (5) vs. Northern Colorado (3/17/24)
Scored 4+ Runs	Billie Andrews (4) vs. Northern Colorado (3/17/24)
Had 3+ Doubles	Cam Ybarra (4) vs. Lehigh (3/7/20)
Had 2+ Homers	Abbie Squier (2) vs. Utah (2/23/25)
Had 3+ Homers	Ava Kuszak (3) vs. Montana (2/16/25)
Homered in 1st Career AB	Hailey Decker vs. UIC (2/8/13)
Stole 3+ Bases	Nikki Haget (3) vs. La Salle (3/12/11)
Drew 4+ Walks	Billie Andrews (4) vs. Rutgers (4/2/22)
Had 3+ HBP	Samantha Owen (3) vs. Pittsburgh (2/17/19)
Had 5+ RBIs	Ava Kuszak (6) vs. Montana (2/16/25)
Threw a No-Hitter	Jordy Bahl vs. Northern Colorado (5 inn., 2/15/25)
Threw a Perfect Game	Ashley DeBuhr vs. Iowa St. (4/13/05)
Had 10+ Strikeouts	Jordy Bahl (10) vs. Duke (2/21/25)
Had 15+ Strikeouts	Ashley Hagemann (17) at Omaha (4/19/12)
Had a 10-Game Hit Streak	Brooke Andrews (11) in 2023
Had a 15-Game Hit Streak	Billie Andrews (19) in 2024
Had a 20-Game Hit Streak	Billie Andrews (23) in 2022
Had a 25-Game Hit Streak	Taylor Edwards (25) in 2013-14



## HUSKERS HIT THE PORTAL

Nebraska utilized the transfer portal this offseason, bringing in six new players -- **Hannah** and **Lauren Camenzind** and **Kacie Hoffmann** from Arkansas, **Olivia DiNardo** from Arizona, **Kylee Magee** from Arizona State and **Ava Kuszak** from Wisconsin.

- **Hannah Camenzind** was a second-team All-SEC member in 2023. Over her two seasons with the Razorbacks, she posted a 14-3 record with 3.11 ERA over 119.1 total innings. At the plate, she batted .308.
- **Lauren Camenzind** was a third-team NFCA All-South Region member in 2023. Over her two seasons at Arkansas, she played in 86 games (79 starts) at both catcher and shortstop.
- **DiNardo** racked up numerous accolades during her two years at Arizona. She was a second-team NFCA All-West Region member in 2023 and a Third-Team member in 2024 and was named a Second-Team All-Pac-12 and Pac-12 All-Freshman Team honoree in 2023. Over the course of two seasons with the Wildcats, DiNardo started 102 games and built up a batting average of .340, along with 15 doubles, 20 home runs and 74 RBIs.
- **Hoffmann** played in 106 games with 96 starts during her time with Arkansas. She hit .244 and logged 16 doubles, 15 home runs and 47 RBIs.
- **Kuszak** earned second-team All-Big Ten honors and third-team NFCA All-Great Lakes Region accolades in 2024. During her two seasons at Wisconsin, she played in 76 games with 65 starts and notched 16 doubles, 10 home runs and 33 RBIs on a .278 batting average.
- **Magee** was named a member of the Pac-12 All-Freshman Team at Arizona State in 2023. She suffered an injury early in the 2024 season. She pitched in 27 games with 24 starts and compiled a 3.51 ERA and two saves, along with striking out 79 batters in 89.2 innings.

### NEBRASKA'S TRANSFERS

PLAYER	POS.	CLASS	PREVIOUS SCHOOL
Hannah Camenzind	LHP/UTL	Jr.	Arkansas
Lauren Camenzind	INF/C	Jr.	Arkansas
Olivia DiNardo	C/UTL	Jr.	Arizona
Kacie Hoffmann	OF	Jr.	Arkansas
Ava Kuszak	INF	Jr.	Wisconsin
Kylee Magee	RHP	So.	Arizona State

### HUSKER TRANSFER STATS

PLAYER	G-GS	AVG.	AB	R	H	2B	HR	RBI	SLG%	OB%
Ava Kuszak	14-14	.475	40	19	19	2	10	24	1.275	.558
Lauren Camenzind	16-15	.439	41	10	18	0	0	11	.488	.521
Kacie Hoffmann	15-13	.371	35	6	13	4	3	11	.743	.476
Olivia DiNardo	13-13	.361	36	4	13	3	1	9	.528	.452
Hannah Camenzind	15-13	.300	40	9	12	1	0	8	.325	.333
<b>TOTAL</b>	<b>73-68</b>	<b>.391</b>	<b>192</b>	<b>48</b>	<b>75</b>	<b>10</b>	<b>14</b>	<b>63</b>	<b>.672</b>	<b>.476</b>

### THE LAST TIME NEBRASKA...

Beat a No. 1 Team	vs. No. 1 Michigan (1-0 on 4/8/16)
Beat a Top-5 Team	vs. No. 1 Michigan (1-0 on 4/8/16)
Beat a Top-10 Team	vs. No. 6 Tennessee (7-1 on 2/6/25)
Beat a Ranked Team	vs. No. 6 Tennessee (7-1 on 2/6/25)
Won When Trailing After 6 Innings	at Wisconsin (3/31/24)
Lost When Leading After 6 Innings	vs. No. 13 Texas Tech (2/8/25)
Scored 10+ Runs	vs. Utah [10] (2/23/25)
Scored 15+ Runs	vs. Montana [16] (2/16/25)
Scored 20+ Runs	vs. Texas A&M-Corpus Christi (2/14/25)
Allowed 10+ Runs	at Michigan [11] (4/21/24)
Allowed 15+ Runs	vs. Wichita State [17] (3/2/24)
Allowed 20+ Runs	vs. Northwestern [22] (4/27/23)
Recorded 15+ Hits	vs. Montana [17] (2/16/25)
Recorded 20+ Hits	at Maryland [21] (4/3/16)
Hit 6+ Doubles	vs. Montana [6] (2/17/24)
Hit 4+ Home Runs	vs. Utah [4] (2/23/25)
Stole 6+ Bases	at Purdue [6] (4/13/19)
Drew 10+ Walks	vs. Omaha [10] (2/11/22)
Was No-Hit	at No. 24 Minnesota (4/7/21)

## COLLEGE SOFTBALL POLLS

### D1 SOFTBALL POLL

Rk.	Team	Record	Prev.
1.	Oklahoma	14-0	2
2.	Texas	15-1	1
3.	Florida	18-1	3
4.	Texas A&M	15-1	8
5.	LSU	14-0	5
6.	UCLA	14-2	7
7.	Arizona	15-2	10
8.	Duke	13-3	13
9.	Tennessee	13-3	6
10.	Florida State	11-3	4
11.	Oregon	15-1	23
12.	Oklahoma State	8-4	11
13.	Arkansas	14-1	9
14.	Georgia	14-0	12
15.	Texas Tech	15-3	14
<b>16.</b>	<b>Nebraska</b>	<b>12-4</b>	<b>15</b>
17.	Stanford	12-2	20
18.	Virginia Tech	12-3	16
19.	Mississippi State	13-2	17
20.	San Diego State	12-3	19
21.	South Carolina	15-0	24
22.	Florida Atlantic	15-2	6-0
23.	Auburn	14-1	18
24.	Liberty	12-3	22
25.	Alabama	10-6	NR

### SOFTBALL AMERICA POLL

Rk.	Team	Record	Prev.
1.	Texas	15-1	1
2.	Oklahoma	12-0	2
3.	Florida	18-1	3
4.	UCLA	14-2	4
5.	Texas A&M	15-1	8
6.	LSU	14-0	6
7.	Arizona	15-2	9
8.	Duke	13-3	15
9.	Florida State	11-3	5
10.	Arkansas	14-1	10
11.	Tennessee	13-3	7
12.	Georgia	14-0	11
13.	Oregon	15-1	21
14.	Texas Tech	14-3	13
15.	Oklahoma State	8-4	12
<b>16.</b>	<b>Nebraska</b>	<b>12-4</b>	<b>14</b>
17.	South Carolina	15-0	22
18.	San Diego State	12-3	18
19.	Auburn	14-1	17
20.	Mississippi State	13-2	16
21.	Liberty	12-3	20
22.	Alabama	10-6	23
23.	Virginia Tech	12-3	19
24.	Stanford	12-2	NR
25.	Florida Atlantic	15-2	25

## BIG TEN STANDINGS

Rk.	Team	Overall Record
1.	Oregon	15-1
2.	UCLA	14-2
3.	Indiana	10-3
4.	Iowa	10-3
5.	<b>Nebraska</b>	<b>12-4</b>
6.	Ohio State	9-3-1
7.	Michigan	8-5
8.	Purdue	9-6
9.	Wisconsin	9-6
10.	Washington	9-7
11.	Illinois	7-6
12.	Rutgers	7-9
13.	Northwestern	6-8
14.	Maryland	5-8
15.	Minnesota	5-9
16.	Penn State	5-9
17.	Michigan State	4-8

## HUSKER CONFERENCE HISTORY

## BIG EIGHT CONFERENCE (1976-1995)

Year	Record	Finish	Tournament
1977	1-4	t-4th	N/A
1978	4-3	7th	t-6th
1979	3-8	6th	t-6th
1980	8-9	4th	N/A
1981	5-6	3rd	3rd
1982	9-3	1st	1st
1983	3-7	7th	N/A
1984	6-2	1st	1st
1985	11-1	1st	1st
1986	9-3	1st	1st
1987	8-2	1st	1st
1988	7-3	1st	1st
1989	6-4	3rd	t-5th
1990	3-5	5th	2nd
1991	3-5	5th	t-4th
1992	2-6	5th	t-4th
1993	5-11	5th	N/A
1994	5-15	6th	N/A
1995	10-6	3rd	N/A
<b>TOTAL</b>	<b>108-103</b>		<b>12 total titles</b>

## BIG 12 CONFERENCE (1996-2011)

Year	Record	Finish	Tournament
1996	10-8	4th	2nd
1997	10-6	4th	5th
1998	16-0	1st	1st
1999	10-8	4th	2nd
2000	15-2	2nd	1st
2001	16-2	1st	5th
2002	11-5	2nd	2nd
2003	10-8	6th	t-4th
2004	14-3	1st	1st
2005	9-9	7th	t-5th
2006	13-4	2nd	t-3rd
2007	10-8	5th	t-5th
2008	4-14	t-9th	2nd
2009	9-9	5th	t-5th
2010	7-11	t-6th	t-5th
2011	9-9	6th	N/A
<b>TOTAL</b>	<b>173-106</b>		<b>6 total titles</b>

## BIG TEN CONFERENCE (2012-PRES.)

Year	Record	Finish	Tournament
2012	14-9	3rd	N/A
2013	16-6	2nd	t-3rd
2014	18-5	t-1st	t-5th
2015	17-6	3rd	2nd
2016	13-9	5th	t-5th
2017	13-10	5th	t-9th
2018	9-13	9th	t-9th
2019	9-14	t-8th	t-9th
2021	22-22	8th	N/A
2022	17-5	2nd	1st
2023	13-10	4th	t-3rd
2024	12-9	4th	t-3rd
<b>TOTAL</b>	<b>173-118</b>		<b>2 total titles</b>

## HUSKERS RETURNING FROM INJURIES

Nebraska faced significant adversity in 2024, as a total of six players suffered season-ending injuries, including four that are returning for the 2025 season. Additionally, Arizona State transfer Kylee Magee had to use the offseason for rehab.

- **Jordy Bahl** suffered a knee injury in the Huskers' 2024 season opener that required season-ending surgery. Bahl was a First-Team All-American, the Big 12 Pitcher of the Year and one of 10 national finalists for player of the year in 2022 and 2023.
- **Abbie Squier**, a returning All-Big Ten and all-region selection, returns after being out for the 2024 season due to surgery. In 2022 and 2023, she was the Big Red's starting left fielder.
- **Dakota Carter**, the Huskers' designated player, was deemed out for the 2024 season before it even began. In 2023, she scored 13 runs as a pinch runner and appeared in 39 games.
- **Caitlin Olensky** suffered a season-ending injury in the Huskers' conference opener against Illinois last year. Before her injury, she compiled a record of 3-2 with a team-best 3.30 ERA.
- **Emmerson Cope** was out for almost a month of the 2024 season after battling a back injury. When she was in the lineup, the Topeka, Kan., native amassed an ERA of 4.76 in the circle. She racked up 21 hits, 10 runs, six homers and 19 RBIs.
- **Talia Tokheim** missed the first 23 games of the season while rehabbing an injury from 2023. She returned for nine games before suffering another season-ending injury in game three of the Penn State series. In her limited time on the field, she notched 46 total bases and seven home runs.
- **Kylee Magee** suffered a season-ending injury after racking up six appearances with four starts in her sophomore year with the Sun Devils. In her first two years at Arizona State, she struck out 79 batters in 89.2 innings.

## SCOUTING SOUTH DAKOTA STATE (5-8)

The Jackrabbits are 5-8 on the year and bat .285 as a team after competing at the East Texas A&M Leadoff, Whataburger Invitational and Michelle Short & Adam Brown Tournament. They have knocked 15 home runs and 94 hits so far this season. South Dakota State's pitching staff posts an ERA of 5.32 and has struck out 58 batters.

- **Amanda Vacanti** has a team-high batting average of .429 and is one of four Jackrabbits with an average above .300. She has notched 12 hits, two doubles and seven RBIs.
- **Brooke Dumont** is 13-for-32 (.406) on the season with six runs, four home runs and 13 RBIs.
- **Dumont, Alli Boyle** and **Akayla Barnard** have each started all 13 games for South Dakota State.
- **Vacanti** also has the lowest ERA of the Jackrabbit pitching staff at 2.74. She has pitched 15.1 innings. **Taylor Baker** has pitched 19.2 innings and **Madi Mangulis** has pitched 19.0. Baker has struck out 21 batters and walked 17, while Mangulis has struck out 12 and walked five.
- **Kristina McSweeney** is in her third year with South Dakota State and led the Jackrabbits to a regular-season Summit League championship last year.

## NEBRASKA'S 2025 RECORD WHEN...

Overall	12-4	Out-Hitting Opponent	12-1
Non-Conference	12-4	Out-Hit by Opponent	0-2
Big Ten Conference	0-0	Scoring First	7-1
Home	0-0	Opponent Scores First	5-3
Neutral	11-4	Scoring in the First Inning	4-1
Road	1-0	Scoring Fewer than 3 Runs	0-3
Night Games	4-1	Scoring 5 or More Runs	2-0
Day Games	8-3	Scoring 10 or More Runs	9-0
Sunday	2-1	Allowing Fewer Than 3 Runs	9-0
Monday	0-0	Allowing 5 or More Runs	0-2
Tuesday	0-0	Allowing 10 or More Runs	0-0
Wednesday	0-0	Leading After Five Innings	5-1
Thursday	2-1	Leading After Six Innings	2-1
Friday	4-1	Trailing After Five Innings	0-2
Saturday	4-1	Trailing After Six Innings	0-1
vs. Ranked Opponents	1-4	Tied After Five Innings	0-1
vs. Unranked Opponents	11-0	Tied After Six Innings	0-1
Extra Innings	0-1	Committing 0 Errors	3-3
1-Run Games	0-0	Committing 2 or More Errors	5-1

**SCOUTING #16 OKLAHOMA STATE (8-4)**

The Cowgirls have compiled a record of 8-4 this season, having competed at the Puerto Vallarta College Challenge, Shriners Children's Clearwater Invitational and Michelle Short & Adam Brown Tournament. They hit .312 as a team and their pitchers own an ERA of 3.38.

- **Rosie Davis** is 13-for-34 (.382) with a team-high 16 RBIs, along with three home runs and two doubles this season.
- **Megan Delgadillo** has notched 16 hits and four RBIs, along with nine runs scored for Oklahoma State.
- **Karli Godwin** and **Tallen Edwards** each have six RBIs and four doubles and have started all 12 games for the Cowgirls.
- Nebraska native **Ruby Meylan** leads the Oklahoma State pitching staff with a 2.06 ERA and 3-0 record across 34.0 innings. She has struck out 40 batters and walked only eight and has allowed 10 earned runs.
- **Katie Kutz** has pitched 24.0 innings, compiled a record of 5-1 and struck out 20 batters for Oklahoma State.
- **Kenny Gajewski** took over in 2016 and has led the Cowgirls to the NCAA Tournament every year, including five Women's College World Series.

**SCOUTING MISSOURI (8-8)**

The Tigers are an even 8-8 on the season after competing at the NFCA Leadoff Classic, Shriners Children's Clearwater Invitational and Mary Nutter Collegiate Classic. Missouri bats .259 as a team and owns an ERA of 3.58.

- **Julia Crenshaw** is 18-for-50 this season and leads the Tigers with a .360 batting average. She also has knocked three home runs and four doubles and scored 15 runs.
- **Stefania Abruscato** has posted 14 hits with a .326 batting average, and contributed 10 RBIs, five doubles and two homers.
- **Madison Walker** has notched a team-high five home runs this season.
- Five players for the Tigers have over 10 hits, and three of those players – **Crenshaw**, **Abruscato** and **Claire Cahalan** – own a batting average above .300.
- **Marissa McCann** is Missouri's ace, having pitched 40.2 innings and compiled an ERA of 2.93. She has struck out 28 batters and allowed 17 earned runs.
- **Larissa Anderson** was named the head coach at Missouri prior to the 2019 season and has a 225-123 record so far.

**SCOUTING WICHITA STATE (9-5)**

The Shockers have competed at the GCU Kickoff Classic, the Shriners Children's Clearwater Invitational and the OU Tournament and own a record of 9-5 on the season. They hit .285 as a team and their pitching staff posts an ERA of 3.29.

- **Lauren Lucas** leads the Wichita State offense with a .452 batting average (19-for-42), three home runs, five doubles and 14 runs scored.
- **Taylor Sedlacek**, **Ellee Eck** and **Sami Hood**, along with **Lucas**, have all started in every game for the Shockers.
- **Sedlacek** owns a batting average of .342, along with 13 hits, 11 runs scored, five doubles and three homers.
- **Eck** has logged eight RBIs, 14 runs scored, three doubles and a homer on a .341 batting average.
- **Chloe Barber** has pitched 37.2 innings for the Shockers and has a record of 2-3 with a 2.04 ERA. She has struck out 36 batters, walked 22 and allowed 11 earned runs.
- **Kristi Bredbenner** is in her 14th season with Wichita State in 2025 and has led the Shockers to five NCAA Regional appearances and an NCAA Regional Final appearance.

**BOWLIN STADIUM**

Bowlin Stadium opened in 2002 and is in its 24th season in 2025. The facility features space for more than 3,000 fans and includes an underground system that heats the field. Just past the right field fence is the Alex Gordon Training Complex, a spacious indoor training facility. The clubhouse features a locker room, players' lounge, training room and coaches' offices.

**BOWLIN STADIUM FACTS**

- Nebraska has won almost 70% of its games in Bowlin Stadium.
- Bowlin Stadium has hosted four NCAA Regionals (2004, 2005, 2007 and 2013).
- NU has ranked in the top 25 nationally in attendance 16 times at Bowlin Stadium, including five seasons ranked in the top 10.

**YEARLY RECORDS**

Year	Record	Pct.
2002	9-5	.643
2003	14-7	.667
2004	14-6	.700
2005	9-7	.563
2006	20-1	.952
2007	18-5	.783
2008	13-9	.591
2009	13-5	.722
2010	12-8	.600
2011	10-4	.714
2012	15-1	.938
2013	18-4	.818
2014	13-3	.813
2015	11-6	.647
2016	11-5	.688
2017	13-6	.684
2018	10-7	.588
2019	7-9	.412
2020	0-0	.000
2021	11-5	.688
2022	14-2	.875
2023	8-5	.615
2024	11-10	.523
<b>TOTAL</b>	<b>274-120</b>	<b>.695</b>

**LARGEST CROWDS**

1. 2,691	Northwestern	4/27/2024
2. 2,628	Wichita St./Missouri	3/2/2024
3. 2,599	Penn State	4/6/2024
4. 2,362	Creighton	3/16/2024
5. 2,340	Missouri	3/3/24
6. 2,319	Wichita St.	3/1/2024
7. 2,318	Iowa	4/24/2024
8. 2,302	Michigan	4/9/2016
9. 2,301	Penn State	4/7/2024
10. 2,211	Penn State	4/5/2024

**HUSKER AWARD TRACKER**

**PRESEASON**

NFCA Preseason Poll - No. 19  
USA Softball Preseason Poll - No. 16  
D1 Softball Preseason Poll - No. 14  
Softball America Preseason Poll - No. 21

**Jordy Bahl**

USA Softball Top 53 Watchlist  
D1 Softball No. 2 Player to Watch  
D1 Softball No. 2 Pitcher to Watch  
D1 Softball Preseason First-Team All-American  
Softball America Preseason First-Team All-American  
Softball America No. 9 Player to Watch  
Big Ten Player to Watch

**Nessa McMillen**

Softball America Freshman to Watch

**Ava Kuszak**

Big Ten Player to Watch

**Olivia DiNardo**

Big Ten Player to Watch

**REGULAR SEASON**

**Jordy Bahl**

NFCA Leadoff Classic All-Tournament Team  
Big Ten Co-Pitcher of the Week - 2/17  
NFCA Co-Player of the Week - 2/18  
Mary Nutter Classic All-Tournament Team

**Ava Kuszak**

Big Ten Co-Player of the Week - 2/17  
Softball America Star of the Week - 2/18

**Abbie Squier**

Mary Nutter Classic All-Tournament Team

**Kacie Hoffmann**

Mary Nutter Classic All-Tournament Team

**2025 STATISTICAL COMPARISON**

CATEGORY	NEB	SDSU
Record	12-4	5-8
Batting Average	.362	.285
Runs/Game	8.8	5.0
Runs Allowed/Game	2.6	5.8
ERA	2.02	5.32
Fielding Percentage	.953	.956

**SERIES HISTORY**

CATEGORY	RECORD
Overall Record	NEB, 20-3
Current Win Streak	SDSU, 2 games
Last Nebraska Win	March 4, 2022
Last SDSU Win	Feb. 10, 2023
Revelle vs. SDSU	20-3
McSweeney vs. NEB	1-0

**2025 STATISTICAL COMPARISON**

CATEGORY	NEB	OSU
Record	12-4	8-4
Batting Average	.362	.312
Runs/Game	8.8	5.3
Runs Allowed/Game	2.6	3.8
ERA	2.02	3.38
Fielding Percentage	.953	.969

**SERIES HISTORY**

CATEGORY	RECORD
Overall Record	OSU, 51-48
Current Win Streak	OSU, 4 games
Last Nebraska Win	Feb. 28, 2014
Last OSU Win	May 20, 2023
Revelle vs. OSU	28-35
Gajewski vs. NEB	4-0

**2025 STATISTICAL COMPARISON**

CATEGORY	NEB	MISSOURI
Record	12-4	8-8
Batting Average	.362	.259
Runs/Game	8.8	6.6
Runs Allowed/Game	2.6	7.3
ERA	2.02	3.58
Fielding Percentage	.953	.967

**SERIES HISTORY**

CATEGORY	RECORD
Overall Record	NEB, 57-40
Current Win Streak	Missouri, 2 games
Last Nebraska Win	March 1, 2020
Last Missouri Win	March 3, 2024
Revelle vs. Missouri	33-26
Anderson vs. NEB	3-1

**2025 STATISTICAL COMPARISON**

CATEGORY	NEB	WSU
Record	12-4	9-5
Batting Average	.362	.285
Runs/Game	8.8	5.6
Runs Allowed/Game	2.6	3.9
ERA	2.02	3.29
Fielding Percentage	.953	.962

**SERIES HISTORY**

CATEGORY	RECORD
Overall Record	NEB, 39-26
Current Win Streak	NEB, 1 game
Last Nebraska Win	May 19, 2023
Last WSU Win	May 18, 2023
Revelle vs. WSU	25-17
Bredbenner vs. NEB	13-8





# RHONDA REVELLE

**33RD SEASON AT NEBRASKA**

**1,127-665 RECORD**

**34TH CAREER SEASON**

**1,135-681 RECORD**

**WINNINGEST COACH IN THE  
HISTORY OF HUSKER ATHLETICS**

**COACH OF THE YEAR IN  
3 POWER CONFERENCES**

**NFCA HALL OF FAMER**

## COACHING NUMBERS

Conference Coach-of-the-Year Awards	4
Big Ten Coach of the Year	1
Big 12 Coach of the Year	2
Big Eight Coach of the Year	1
Conference Titles	8
Big Ten Conference Titles	2
Big 12 Conference Titles	6
NCAA Tournament Appearances	22
Women's College World Series	3
NFCA All-Americans	24
Academic All-Americans	15

## NFCA HALL-OF-FAME COACHES

(ACTIVE DIVISION I COACHES ONLY)

Coach	Induction Year
Rhonda Revelle, Nebraska	2010
Patty Gasso, Oklahoma	2012
Patrick Murphy, Alabama	2013
Jo Evans, UC Santa Barbara	2015
Karen Weekly, Tennessee	2018
Jenny Allard, Pittsburgh	2022
Lonni Alameda, Florida State	2023

## WINS AT CURRENT SCHOOL

(ACTIVE DIVISION I COACHES ONLY)

1. Patty Gasso, Oklahoma	1,528
2. Patrick Murphy, Alabama	1,286
3. Rhonda Revelle, Nebraska	1,139
4. Ken Eriksen, South Florida	1,130
5. Bob Coolen, Hawaii	1,109
6. Karen Weekly, Tennessee	1,098

(LIST INCLUDES GAMES THROUGH FEB. 25, 2025)

## NCAA TOURNAMENTS AT CURRENT SCHOOL

(ACTIVE DIVISION I COACHES ONLY)

1. Patty Gasso, Oklahoma	29
2. Patrick Murphy, Alabama	25
3. Karen Weekly, Tennessee	23
4. Rhonda Revelle, Nebraska	22

## ACADEMIC ALL-AMERICANS

(ACTIVE DIVISION I COACHES ONLY)

1. Patrick Murphy, Alabama	35
2. Karen Weekly, Tennessee	28
3. Tim Walton, Florida	23
4. Rhonda Revelle, Nebraska	15

## HEAD COACH RHONDA REVELLE

### COACHING STOPS

Nebraska (Head Coach)	1993-present
San Jose State (Assistant)	1989-92
Cal State-Hayward (Assistant)	1988
Nebraska Wesleyan (Head Coach)	1987
Nebraska Wesleyan (Assistant)	1986

### NEBRASKA WESLEYAN (1987)

Year	Record	Conf.	Finish	Tourn.	Finish
1987	8-16	7-5	N/A	--	--

### NEBRASKA (1993-PRESENT)

Year	Record	Conf.	Finish	Tourn.	Finish
1993	18-23	5-11	5th	--	--
1994	25-33	5-15	6th	--	--
1995	43-20	10-6	3rd	--	--
1996	42-23	10-8	4th	3-2	2nd
1997	29-24	10-6	4th	1-2	t-5th
1998	48-12	16-0	1st	4-0	1st
1999	35-21	10-8	4th	3-1	2nd
2000	52-21	15-2	2nd	4-1	1st
2001	51-15	16-2	1st	2-2	t-3rd
2002	50-14	11-5	3rd	3-1	2nd
2003	39-17	10-8	6th	2-2	t-3rd
2004	45-17	14-3	1st	4-0	1st
2005	36-23	9-9	7th	2-2	t-5th
2006	44-12	13-4	2nd	2-2	t-3rd
2007	37-20	10-8	5th	0-1	t-7th
2008	25-28	4-14	t-9th	3-1	2nd
2009	35-19	9-9	5th	0-1	t-7th
2010	30-29	7-11	t-6th	0-1	t-7th
2011	41-14	9-9	6th	--	--
2012	33-22	14-9	3rd	--	--
2013	45-16	16-6	2nd	1-1	t-3rd
2014	44-18	18-5	t-1st	0-1	t-5th
2015	35-23	17-6	3rd	2-1	2nd
2016	35-21	13-9	5th	1-1	t-5th
2017	24-29	13-11	5th	0-1	t-9th
2018	31-23	9-13	9th	0-1	t-9th
2019	21-31	9-14	9th	0-1	t-9th
2020	9-14	0-0	--	--	--
2021	22-22	22-22	8th	--	--
2022	41-16	17-5	2nd	3-0	1st
2023	36-22	13-10	4th	1-1	t-3rd
2024	30-23	12-9	4th	1-1	t-3rd
2025	12-4	0-0	--	--	--

### NCAA TOURNAMENT (NEBRASKA)

Year	Round	Record	Finish	Rank
1995	Regional	1-2	t-17th	18th
1996	Regional	1-2	t-17th	18th
1997	Regional	2-2	t-9th	25th
1998	WCWS	4-2	t-5th	5th
1999	Regional	4-2	t-9th	20th
2000	Regional	3-2	t-17th	14th
2001	Regional	2-2	t-17th	14th
2002	WCWS	5-2	t-5th	6th
2003	Regional	3-2	t-17th	13th
2004	Regional	3-2	t-9th	14th
2005	Regional	1-2	t-33rd	25th
2006	Regional	2-2	t-17th	15th
2007	Regional	0-2	t-49th	--
2009	Regional	1-2	t-33rd	--
2010	Regional	1-2	t-33rd	--
2011	Regional	2-2	t-17th	21st
2013	WCWS	5-3	t-7th	8th
2014	Super Reg.	4-3	t-9th	16th
2015	Regional	1-2	t-33rd	--
2016	Regional	2-2	t-17th	--
2022	Regional	1-2	t-33rd	--
2023	Regional	2-2	t-17th	--

**#00 MCKINLEY MALECHA • C/INF**

	AVG.	G-GS	R	H	2B	HR	RBI	BB	SLG%	OB%
2025	.333	4-0	1	1	0	0	0	0	.333	.333
Career	.176	42-7	14	3	0	0	4	1	.176	.222

- Serving as one of three team captains in 2025
- Academic All-Big Ten selection (2023, 2024)
- 2024 Big Ten Sportsmanship Award Winner
- Played in 30 games with four starts in 2024
- Scored 13 runs and had two hits in 2024

**#1 OLIVIA DINARDO • C/UTL**

	AVG.	G-GS	R	H	2B	HR	RBI	BB	SLG%	OB%
2025	.361	13-13	4	13	3	1	9	4	.528	.452
Career	.342	119-117	56	116	18	21	83	45	.581	.421

- Started 102 games for Arizona before transferring to NU in 2025
- NFCA All-West Region (Second-Team, 2023; Third-Team, 2024)
- Second-Team All-Pac-12 in 2023
- Started 74 games as the designated player and 28 starts at catcher
- Hit .340 in her two seasons with 15 doubles, 20 homers and 74 RBIs

**#2 LAUREN CAMENZIND • INF/C**

	AVG.	G-GS	R	H	2B	HR	RBI	BB	SLG%	OB%
2025	.439	16-15	10	18	0	0	11	6	.488	.521
Career	.272	102-94	39	65	9	2	39	18	.343	.333

- Played in 86 games for Arkansas before transferring to Nebraska in 2025
- NFCA Third-Team All-South Region (2023)
- Started at catcher as a freshman and shortstop as a sophomore
- Notched 47 hits and two home runs in two years with the Razorbacks
- Two-time state champion at Omaha Skutt Catholic

**#3 BELLA BACON • INF**

	AVG.	G-GS	R	H	2B	HR	RBI	BB	SLG%	OB%
2025	.280	13-11	6	7	0	2	3	1	.714	.286
Career	.280	89-65	33	56	5	1	27	14	.333	.359

- Started 49 games out of 50 that she played in 2024
- Set career highs in every offensive category in her sophomore season
- Hit .285 with five doubles and 20 RBIs in 2024
- Academic All-Big Ten and Big Ten Distinguished Scholar (2024)
- 2-time Nebraska Scholar-Athlete Honor Roll

**#4 MALIA THOMS • OF**

	AVG.	G-GS	R	H	2B	HR	RBI	BB	SLG%	OB%
2025	.286	6-0	1	2	0	1	4	0	.714	.286
Career	.273	17-3	1	6	2	1	6	2	.500	.333

- 2-time Nebraska Scholar-Athlete Honor Roll
- Tom Osborne Citizenship Team (2024)
- Started three games in 2024 as the designated player
- Hit .267 for the Huskers
- Contributed four hits and two doubles in her freshman season

**#5 MACIE VICKERS • C**

	AVG.	G-GS	R	H	2B	HR	RBI	BB	SLG%	OB%
2025	.000	2-0	0	0	0	0	0	0	.000	.000
Career	.000	2-0	0	0	0	0	0	0	.000	.000

- 3-year captain at Escalon High School
- Trans Valley League Offensive Player of the Year as a junior
- 3-time All-League Selection
- Batted .500 as a junior with seven doubles, one triple and three HRs
- 3-sport athlete in high school

**#7 AVA KUSZAK • INF**

	AVG.	G-GS	R	H	2B	HR	RBI	BB	SLG%	OB%
2025	.475	14-14	19	19	2	10	24	7	1.275	.558
Career	.312	90-79	56	73	18	20	57	27	.654	.387

- Big Ten Co-Player of the Week (Feb. 17, 2025)
- Tied school record for home runs in a game with three against Montana
- Played two seasons at Wisconsin before transferring to Nebraska in 2025
- Second-Team All-Big Ten (2024)
- NFCA Third-Team All-Great Lakes Region (2024)

**#8 ABBIE SQUIER • OF**

	AVG.	G-GS	R	H	2B	HR	RBI	BB	SLG%	OB%
2025	.433	16-15	16	13	3	4	10	6	.933	.514
Career	.308	158-139	85	120	22	17	65	31	.501	.388

- Serving as one of three team captains in 2025
- Redshirted in 2024 following an offseason surgery
- First-Team All-Big Ten & Big Ten All-Defensive Team (2022)
- NFCA Second-Team All-Midwest Region (2022)
- 3-time Academic All-Big Ten

**#9 HANNAH CAMENZIND • UTL**

	AVG.	G-GS	R	H	2B	HR	RBI	BB	SLG%	OB%
2025	.300	15-13	9	12	1	0	8	0	.325	.333
Career	.305	85-44	22	40	5	1	25	3	.397	.348

- Played two seasons at Arkansas before transferring to Nebraska in 2025
- Second-Team All-SEC (2023)
- Owns a .308 batting average over 46 games
- Has posted 13 runs and 28 hits during her career
- Notched 17 RBIs, four doubles, two triples and a home run

**#9 HANNAH CAMENZIND • LHP**

	W-L	ERA	APP	GS	CG	SHO	SV	IP	SO	AVG.
2025	1-1	2.06	8	4	0	0/0	0	17.0	14	.182
Career	15-4	2.98	56	21	4	2	1	136.1	63	.227

- Played two seasons at Arkansas before transferring to Nebraska in 2025
- Second-Team All-SEC (2023)
- Compiled a 14-3 record over 48 games and 17 starts
- Posted an ERA of 3.11 and an opponent batting average of .273
- Was 1 of 3 freshman pitchers to make an All-SEC team in 2023

**#11 TALIA TOKHEIM • OF**

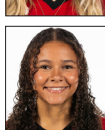
	AVG.	G-GS	R	H	2B	HR	RBI	BB	SLG%	OB%
2025	.333	8-1	2	3	0	2	3	0	1.000	.300
Career	.324	32-19	17	22	6	9	22	7	.809	.377

- Made her return in 2025 from a season-ending injury in 2024
- Played in nine games with six starts
- Career slugging percentage ranks first on the team
- Academic All-Big Ten (2024)
- 4-time Nebraska Scholar-Athlete Honor Roll

**#14 KACIE HOFFMANN • OF**

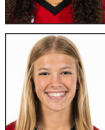
	AVG.	G-GS	R	H	2B	HR	RBI	BB	SLG%	OB%
2025	.371	15-13	6	13	4	3	11	4	.743	.476
Career	.259	121-109	45	76	20	18	58	17	.519	.332

- Played three years at Arkansas before transferring to Nebraska in 2025
- SEC All-Tournament Team (2022)
- Started 96 games for the Razorbacks
- Hit .244 and amassed 63 hits, 15 home runs and 47 RBIs
- 51% of her hits went for extra bases

**#15 KENNADI WILLIAMS • UTL**

	AVG.	G-GS	R	H	2B	HR	RBI	BB	SLG%	OB%
2025	.000	11-0	6	3	0	0	0	1	.000	.500
Career	.000	11-0	6	3	0	0	0	1	.000	.500

- 2-time All-State pick who led Lincoln Southwest to four state tournaments
- First-Team All-Nebraska and Super-State selection as a senior
- Lincoln Journal Star 2022 High School Female Athlete of the Year
- Missed her junior season due to injury
- Also plays basketball for Nebraska

**#18 NESSA MCMILLEN • OF/UTL**

	AVG.	G-GS	R	H	2B	HR	RBI	BB	SLG%	OB%
2025	.000	16-9	4	0	0	0	0	0	.000	.000
Career	.000	16-9	4	0	0	0	0	0	.000	.000

- 4-time All-State selection
- Hit above .400 in each of her four seasons in high school
- Tied the Nebraska all-class record with three home runs in a game
- Batted .538 with 14 doubles, three triples and 13 home runs as a senior
- 4-time All-Conference member



## #22 CAITLIN OLENSKY • LHP

	W-L	ERA	APP	GS	CG	SHO	SV	IP	SO	AVG.
2025	0-0	5.60	4	1	0	0/0	0	5.0	4	.286
Career	3-2	3.52	20	7	1	0	0	51.2	31	.225

- Making her return in 2025 from a season-ending injury in 2024
- Had a team-best 3.30 ERA in 2024 and was 3-2
- Became the first Husker freshman pitcher to start a Big Ten opener
- 2024-25 Student-Athlete Advisory Committee Representative
- 2-time Nebraska Scholar-Athlete Honor Roll



## #24 AVA BREDWELL • C/UTL

	AVG.	G-GS	R	H	2B	HR	RBI	BB	SLG%	OB%
2025	.233	14-10	9	7	0	2	6	2	.433	.273
Career	.300	170-153	101	126	26	15	69	49	.502	.391

- NFCA Third-Team All-Midwest Region (2024)
- Big Ten Freshman of the Year (2022)
- Started 50 games at catcher for Nebraska in 2024
- Is 1 of 9 players on the team with a career batting average over .300
- Led NU in doubles, triples and walks in 2024



## #36 ALINA FELIX • OF

	AVG.	G-GS	R	H	2B	HR	RBI	BB	SLG%	OB%
2025	.333	5-0	2	1	0	1	3	0	1.333	.500
Career	.288	52-27	18	21	2	2	13	10	.397	.388

- Started 17 games in her sophomore season in 2024
- Hit .302 with 13 hits, nine runs and six RBIs in 2024
- Had three straight games with multiple hits and an RBI in 2024
- Academic All-Big Ten (2024)
- Big Ten Distinguished Scholar (2024)



## #27 NATALIA HILL • INF/OF

	AVG.	G-GS	R	H	2B	HR	RBI	BB	SLG%	OB%
2025	.000	3-1	2	0	0	0	0	2	.000	1.000
Career	.000	3-1	2	0	0	0	0	2	.000	1.000

- First-team All-California outfield selection as a senior
- First-team All-CIF selection as a junior and senior
- 3-time first-team All-League member
- Long Beach Press-Telegram Player of the Year as a senior
- Helped her team to a state championship as a senior



## #29 SAMANTHA BLAND • INF/OF

	AVG.	G-GS	R	H	2B	HR	RBI	BB	SLG%	OB%
2025	.265	16-16	12	13	3	3	11	1	.510	.275
Career	.281	68-66	43	61	17	9	47	16	.484	.338

- Has notched three homers and 13 hits in 2025
- Big Ten All-Freshman Team (2024)
- Posted 48 hits, 36 RBIs and six home runs in her freshman year
- Tied for first on the team in doubles and ranked second in hits in 2024
- Notched 14 doubles, the 2nd-most by a freshman in school history



## #31 KYLEE MAGEE • RHP

	W-L	ERA	APP	GS	CG	SHO	SV	IP	SO	AVG.
2025	2-1	4.97	6	3	0	0/1	0	12.2	13	.300
Career	7-8	3.69	33	27	4	2/3	2	102.1	92	.225

- Played 2 seasons for Arizona State before transferring to Nebraska in 2025
- Pac-12 All-Freshman Team (2023)
- Pitched in 27 games with 24 starts and compiled an ERA of 3.51
- Struck out 79 batters in 89.2 innings
- Missed most of 2024 season due to injury



## #33 EMMERSON COPE • RHP

	W-L	ERA	APP	GS	CG	SHO	SV	IP	SO	AVG.
2025	4-0	1.87	7	1	0	0/0	0	15.0	7	.250
Career	6-0	3.97	28	6	0	0	2	54.2	13	.292

- Has a 4-0 record in 2025 and has pitched 15.0 innings
- Went 2-0 with one save in 39.2 innings in 2024
- Ranked second on the team and seventh in the Big Ten in saves in 2024
- Allowed one earned run or less in 13-of-21 of her freshman appearances
- Threw 3 scoreless innings in her debut against New Mexico State in 2024



## #33 EMMERSON COPE • UTL

	AVG.	G-GS	R	H	2B	HR	RBI	BB	SLG%	OB%
2025	.375	11-9	5	9	0	1	4	5	.500	.483
Career	.323	49-32	15	30	3	7	23	12	.581	.434

- Has a batting average of .375 in 2025
- Was in the starting batting order 23 times as a freshman
- Notched 10 runs and 21 hits in 2024
- 2-time Nebraska Scholar-Athlete Honor Roll
- Tom Osborne Citizenship Team (2024)



## #55 DAKOTA CARTER • OF

	AVG.	G-GS	R	H	2B	HR	RBI	BB	SLG%	OB%
2025	.000	7-0	3	0	0	0	0	0	.000	.000
Career	.091	46-4	16	1	0	0	0	3	.091	.286

- Redshirted in 2024 after suffering a season-ending injury in the offseason
- Appeared in 39 games in 2023 and posted 13 runs
- Academic All-Big Ten (2024)
- 3-time Nebraska Scholar-Athlete Honor Roll
- 2-time Tom Osborne Citizenship Team



## #66 KATELYN CANADA • INF

	AVG.	G-GS	R	H	2B	HR	RBI	BB	SLG%	OB%
2025	.286	6-2	4	2	1	0	1	1	.429	.375
Career	.322	116-110	52	99	18	3	56	25	.417	.381

- First-Team All-Big Ten (2023)
- Big Ten All-Defensive and All-Freshman Teams (2023)
- Played in 52 games with 50 starts at second base in 2024
- Hit .266 with 34 hits, 18 runs, six doubles, one homer and 21 RBIs
- Academic All-Big Ten (2024)



## #72 CARLIE MUHLBACH • C/UTL

	AVG.	G-GS	R	H	2B	HR	RBI	BB	SLG%	OB%
2025	.000	0-0	0	0	0	0	0	0	.000	.000
Career	.000	0-0	0	0	0	0	0	0	.000	.000

- Broke the Gretna school record for single-season home runs (21) and RBIs (61), both of which were previously held by former Husker Billie Andrews
- Omaha World-Herald All-Nebraska and All-State selection in 2024
- Batted .459 in her two seasons at Gretna
- Only allowed one stolen base in 87 innings



## #77 HAIDYN WARNER • C

	AVG.	G-GS	R	H	2B	HR	RBI	BB	SLG%	OB%
2025	.000	2-0	0	0	0	0	0	0	.000	.000
Career	.083	16-3	0	1	0	0	0	0	.083	.083

- Played in eight games with two starts at catcher in 2024
- Big Ten Distinguished Scholar (2024)
- Academic All-Big Ten (2024)
- 4-time Nebraska Scholar-Athlete Honor Roll
- 2-time Tom Osborne Citizenship Team



## #98 JORDY BAHL • UTL

	AVG.	G-GS	R	H	2B	HR	RBI	BB	SLG%	OB%
2025	.500	15-14	19	22	7	6	14	3	1.159	.560
Career	.429	102-62	33	36	9	6	23	6	.798	.495

- Had a season-ending injury in 2024 after transferring to NU from Oklahoma
- 2-time NFCA First-Team All-American (2022, 2023)
- Has a .429 career batting average
- 2-time USA Softball Collegiate Player of the Year Top 10 Finalist
- 2023 Most Outstanding Player (WCWS)



## #98 JORDY BAHL • RHP

	W-L	ERA	APP	GS	CG	SHO	SV	IP	SO	AVG.
2025	5-2	0.80	7	7	6	1/1	0	43.2	54	.148
Career	49-5	1.02	79	54	32	16/22	5	334.2	454	.138

- Had a season-ending injury in 2024 after transferring to NU from Oklahoma
- 2-time NFCA First-Team All-American (2022, 2023)
- 2023 Big 12 Pitcher of the Year (at Oklahoma)
- Active NCAA career leader in win percentage (.922)
- 2023 Most Outstanding Player (WCWS)



## INDIVIDUAL SEASON &amp; CAREER HIGHS

## #00 MCKINLEY MALECHA • C/INF • SR.

SEASON HIGH	CATEGORY	CAREER HIGH
1 vs. Texas A&M-Corpus Christi	Hits	1 three times
1 vs. Texas A&M-Corpus Christi	Runs	1 fourteen times
none	RBIs	2 vs. Maine (2024)
none	2B	none
none	HR	none

## #1 OLIVIA DINARDO • C/UTL • JR.

SEASON HIGH	CATEGORY	CAREER HIGH
3 vs. Baylor	Hits	4 vs. Texas A&M-Commerce (2023)
2 at New Mexico State	Runs	3 vs. NC State (2023)
3 vs. Texas Tech	RBIs	5 vs. Washington (2024)
2 at Baylor	2B	2 three times
1 at New Mexico State	HR	1 twenty-one times

## #2 LAUREN CAMENZIND • INF/C • JR.

SEASON HIGH	CATEGORY	CAREER HIGH
2 seven times	Hits	3 at Missouri (2023)
2 twice	Runs	2 five times
3 vs. Bethune-Cookman	RBIs	3 twice
none	2B	1 nine times
none	HR	1 twice

## #3 BELLA BACON • INF • JR.

SEASON HIGH	CATEGORY	CAREER HIGH
2 vs. Montana	Hits	2 nine times
2 vs. Northern Colorado	Runs	2 six times
2 vs. Montana	RBIs	2 vs. Montana (2025)
none	2B	1 five times
1 twice	HR	1 twice

## #4 MALIA THOMS • OF • SO.

SEASON HIGH	CATEGORY	CAREER HIGH
1 twice	Hits	1 six times
1 vs. Texas A&M-Corpus Christi	Runs	1 vs. Texas A&M-Corpus Christi (2025)
4 vs. Texas A&M-Corpus Christi	RBIs	4 vs. Texas A&M-Corpus Christi (2025)
none	2B	1 twice
1 vs. Texas A&M-Corpus Christi	HR	1 vs. Texas A&M-Corpus Christi (2025)

## #5 MACIE VICKERS • C • FR.

SEASON HIGH	CATEGORY	CAREER HIGH
none	Hits	none
none	Runs	none
none	RBIs	none
none	2B	none
none	HR	none

## #7 AVA KUSZAK • INF • JR.

SEASON HIGH	CATEGORY	CAREER HIGH
4 vs. Montana	Hits	4 vs. Montana (2025)
4 vs. Montana	Runs	4 vs. Montana (2025)
6 vs. Montana	RBIs	6 vs. Montana (2025)
1 twice	2B	1 eighteen times
3 vs. Montana	HR	3 vs. Montana (2025)

## #8 ABBIE SQUIER • OF • SR.

SEASON HIGH	CATEGORY	CAREER HIGH
3 twice	Hits	3 seven times
2 five times	Runs	3 three times
4 vs. Utah	RBIs	5 at Iowa (2023)
1 three times	2B	2 vs. Indiana (2022)
2 vs. Utah	HR	2 four times

## #9 HANNAH CAMENZIND • UTL • JR.

SEASON HIGH	CATEGORY	CAREER HIGH
2 vs. Baylor	Hits	3 vs. Florida Atlantic (2024)
2 vs. Bethune-Cookman	Runs	3 vs. UNI (2024)
2 twice	RBIs	3 vs. Marshall (2024)
1 vs. Texas A&M-Corpus Christi	2B	1 five times
none	HR	1 at Weber St. (2023)

## #11 TALIA TOKHEIM • OF • JR.

SEASON HIGH	CATEGORY	CAREER HIGH
1 three times	Hits	3 at Missouri St. (2023)
1 twice	Runs	3 at Wisconsin (2024)
1 three times	RBIs	4 twice
none	2B	1 six times
1 twice	HR	2 twice

## #14 KACIE HOFFMANN • OF • JR.

SEASON HIGH	CATEGORY	CAREER HIGH
2 three times	Hits	3 at Mississippi St. (2023)
2 vs. San Jose State	Runs	2 seven times
3 vs. Howard	RBIs	4 at Florida St. (2023)
1 four times	2B	1 nineteen times
1 three times	HR	2 at Mississippi St. (2024)

## #15 KENNADI WILLIAMS • UTL • FR.

SEASON HIGH	CATEGORY	CAREER HIGH
none	Hits	none
1 six times	Runs	1 six times
none	RBIs	none
none	2B	none
none	HR	none

## #18 NESSA MCMILLEN • OF/UTL • FR.

SEASON HIGH	CATEGORY	CAREER HIGH
none	Hits	none
1 four times	Runs	1 four times
none	RBIs	none
none	2B	none
none	HR	none

## #24 AVA BREDWELL • C/UTL • SR.

SEASON HIGH	CATEGORY	CAREER HIGH
2 vs. Northern Colorado	Hits	3 four times
2 twice	Runs	3 twice
4 vs. Northern Colorado	RBIs	5 vs. Iowa (2022)
none	2B	2 three times
1 twice	HR	1 fifteen times

## #26 ALINA FELIX • OF • JR.

SEASON HIGH	CATEGORY	CAREER HIGH
1 vs. Texas A&M-Corpus Christi	Hits	2 three times
2 vs. Texas A&M-Corpus Christi	Runs	3 twice
3 vs. Texas A&M-Corpus Christi	RBIs	3 vs. Texas A&M-Corpus Christi (2025)
none	2B	1 twice
1 vs. Texas A&M-Corpus Christi	HR	1 twice

## #27 NATALIA HILL • INF/OF • FR.

SEASON HIGH	CATEGORY	CAREER HIGH
none	Hits	none
1 twice	Runs	1 twice
none	RBIs	none
none	2B	none
none	HR	none



## INDIVIDUAL SEASON &amp; CAREER HIGHS

## #29 SAMANTHA BLAND • INF/OF • SO.

SEASON HIGH	CATEGORY	CAREER HIGH
3 vs. Tennessee	Hits	4 vs. North Dakota (2024)
2 three times	Runs	3 vs. Illinois (2024)
2 four times	RBIs	4 vs. Utah (2024)
1 three times	2B	2 three times
1 three times	HR	1 nine times

## #33 EMMERSON COPE • UTL • SO.

SEASON HIGH	CATEGORY	CAREER HIGH
2 three times	Hits	3 vs. Cal State Fullerton (2024)
1 five times	Runs	2 at Montana (2024)
3 vs. Southern Miss	RBIs	3 four times
none	2B	1 three times
1 vs. Southern Miss	HR	1 seven times

## #55 DAKOTA CARTER • OF • SO.

SEASON HIGH	CATEGORY	CAREER HIGH
none	Hits	1 at Omaha (2023)
1 three times	Runs	1 sixteen times
none	RBIs	none
none	2B	none
none	HR	none

## #66 KATELYN CANEDA • INF • JR.

SEASON HIGH	CATEGORY	CAREER HIGH
1 twice	Hits	3 three times
1 three times	Runs	2 twice
1 vs. Texas A&M-Corpus Christi	RBIs	4 at Indiana (2023)
1 vs. Texas A&M-Corpus Christi	2B	1 eighteen times
none	HR	1 three times

## #72 CARLIE MUHLBACH • C/UTL • FR.

SEASON HIGH	CATEGORY	CAREER HIGH
none	Hits	none
none	Runs	none
none	RBIs	none
none	2B	none
none	HR	none

## #77 HAIDYN WARNER • C • JR.

SEASON HIGH	CATEGORY	CAREER HIGH
none	Hits	1 at Missouri St. (2023)
none	Runs	none
none	RBIs	none
none	2B	none
none	HR	none

## #98 JORDY BAHL • UTL • JR.

SEASON HIGH	CATEGORY	CAREER HIGH
4 vs. Montana	Hits	4 vs. Montana (2025)
3 three times	Runs	3 three times
3 twice	RBIs	3 twice
2 vs. Montana	2B	2 vs. Montana (2025)
2 at New Mexico State	HR	2 at New Mexico State (2025)

## #9 HANNAH CAMENZIND • LHP • JR.

SEASON HIGH/LOW	CATEGORY	CAREER HIGH/LOW
4.0 vs. Bethune-Cookman	Innings	7.0 vs. South Alabama (2024)#
5 vs. San Jose State	Strikeouts	5 twice
1 vs. UCLA	Hits (low)*	1 three times
0 vs. Bethune-Cookman	Walks (low)*	0 six times#
1 twice	Runs (low)*	0 six times#
0 vs. Bethune-Cookman	Earned Runs (low)*	0 10 times#
*starts only		#at Arkansas

## #22 CAITLIN OLENSKY • LHP • SO.

2.0 vs. Montana	Innings	7.0 vs. Northern Colorado (2024)
2 vs. Howard	Strikeouts	4 twice
2 vs. Montana	Hits (low)*	0 twice
1 vs. Montana	Walks (low)*	0 six times
3 vs. Montana	Runs (low)*	0 seven times
3 vs. Montana	Earned Runs (low)*	0 seven times
*starts only		

## #31 KYLEE MAGEE • RHP • SO.

3.0 vs. Southern Miss	Innings	7.0 against Northwestern (2024)\$
4 vs. Southern Miss	Strikeouts	11 against Northwestern (2024)\$
3 twice	Hits (low)*	0 twice\$
0 vs. Montana	Walks (low)*	0 four times\$
2 vs. Southern Miss	Runs (low)*	0 seven times\$
0 vs. Montana	Earned Runs (low)*	0 nine times\$
*starts only		\$at Arizona State

## #33 EMMERSON COPE • RHP • SO.

3.1 vs. Howard	Innings	4.2 at Michigan (2024)
2 twice	Strikeouts	2 four times
4 vs. Howard	Hits (low)*	3 at Wisconsin (2024)
1 vs. Howard	Walks (low)*	0 three times
0 vs. Howard	Runs (low)*	0 twice
0 vs. Howard	Earned Runs (low)*	0 three times
*starts only		

## #98 JORDY BAHL • RHP • JR.

8.0 vs. Duke	Innings	8.1 vs. Tennessee (2022)^
10 twice	Strikeouts	16 vs. Tennessee (2022)^
0 vs. Northern Colorado	Hits (low)*	0 four times
0 three times	Walks (low)*	0 12 times
0 twice	Runs (low)*	0 17 times
0 four times	Earned Runs (low)*	0 21 times
*starts only		^ at Oklahoma

## 2025 SEASON STATISTICS

Record: 8-2 Home: 0-0 Away: 1-0 Neutral: 7-2 Big Ten: 0-0

Player	avg	gp-gs	ab	r	h	2b	3b	hr	rbi	tb	slg%	bb	hp	so	gdp	ob%	sf	sh	sb-att	po	a	e	fld%
Ava Kuszak	.552	10-10	29	16	16	1	0	8	19	41	1.414	5	1	5	0	.595	2	0	1-2	14	17	4	.886
Jordy Bahl	.538	9-8	26	14	14	5	1	5	12	36	1.385	1	2	3	0	.586	0	2	1-2	24	2	0	1.000
Lauren Camenzind	.522	10-9	23	8	12	0	1	0	9	14	.609	5	1	1	0	.621	0	0	0-0	11	17	0	1.000
Katelyn Caneda	.400	4-1	5	3	2	1	0	0	1	3	.600	1	0	0	0	.500	0	0	0-0	1	2	0	1.000
Malia Thoms	.400	4-0	5	1	2	0	0	1	4	5	1.000	0	0	0	0	.400	0	0	0-0	0	0	0	.000
Olivia DiNardo	.391	8-8	23	4	9	1	0	1	9	13	.565	2	1	3	1	.462	0	0	0-0	11	1	1	.923
Emmerson Cope	.375	8-6	16	4	6	0	0	1	3	9	.563	5	0	3	1	.524	0	0	0-0	0	3	0	1.000
Abbie Squier	.357	10-9	14	10	5	2	0	1	1	10	.714	5	0	4	0	.526	0	0	2-2	4	0	0	1.000
Samantha Bland	.333	10-10	30	9	10	3	0	2	9	19	.633	1	0	3	0	.355	0	0	0-1	3	15	4	.818
Kacie Hoffmann	.333	10-9	24	2	8	3	0	0	4	11	.458	2	2	1	0	.429	0	0	0-0	5	0	0	1.000
Mckinley Malecha	.333	4-0	3	1	1	0	0	0	0	1	.333	0	0	2	0	.333	0	0	1-1	0	0	0	.000
Alina Felix	.333	4-0	3	2	1	0	0	1	3	4	1.333	0	1	0	0	.500	0	0	0-0	1	0	0	1.000
Bella Bacon	.294	8-7	17	4	5	0	0	1	2	8	.471	0	1	3	0	.333	0	0	1-1	44	1	3	.938
Talia Tokheim	.286	6-1	7	2	2	0	0	2	3	8	1.143	0	0	2	0	.250	1	0	0-0	1	0	0	1.000
Hannah Camenzind	.261	9-7	23	6	6	1	0	0	6	7	.304	0	1	2	0	.292	0	0	1-1	3	2	0	1.000
Ava Bredwell	.222	9-6	18	5	4	0	0	1	4	7	.389	1	0	4	0	.263	0	0	0-0	37	1	1	.974
Nessa McMillen	.000	10-5	3	3	0	0	0	0	0	0	.000	0	0	0	0	.000	0	0	1-1	5	0	0	1.000
Kennadi Williams	.000	7-0	1	3	0	0	0	0	0	0	.000	1	0	1	0	.500	0	0	0-0	1	0	0	1.000
Macie Vickers	.000	2-0	1	0	0	0	0	0	0	0	.000	0	0	0	0	.000	0	0	0-0	3	0	0	1.000
Haidyn Warner	.000	2-0	0	0	0	0	0	0	0	0	.000	0	0	0	0	.000	0	0	0-0	2	0	0	1.000
Kylee Magee	.000	2-2	0	0	0	0	0	0	0	0	.000	0	0	0	0	.000	0	0	0-0	0	2	0	1.000
Natalia Hill	.000	2-0	0	2	0	0	0	0	0	0	.000	2	0	0	0	1.000	0	0	0-0	0	0	0	.000
Dakota Carter	.000	4-0	0	3	0	0	0	0	0	0	.000	0	0	0	0	.000	0	0	0-0	0	0	0	.000
Totals	.380	10	271	102	103	17	2	24	89	196	.723	31	10	37	2	.457	3	2	8-11	170	64	13	.947
Opponents	.198	10	217	22	43	10	1	4	20	67	.309	11	6	54	3	.255	1	1	5-7	167	62	21	.916

LOB - Team (48), Opp (44). DPs turned - Team (3), Opp (2).

## (All games Sorted by Earned run avg)

Player	era	w-l	app	gs	cg	sho	sv	ip	h	r	er	bb	so	2b	3b	hr	b/avg	wp	hp	bks	sfa	sha
Jordy Bahl	0.30	3-1	4	4	3	1/1	0	23.2	16	7	1	2	30	2	1	1	.182	2	2	0	0	1
Emmerson Cope	0.62	3-0	5	0	0	0/0	0	11.1	8	1	1	0	5	2	0	0	.195	0	1	0	0	0
Hannah Camenzind	0.72	1-0	5	2	0	0/0	0	9.2	7	2	1	3	7	2	0	0	.179	1	0	0	0	0
Kylee Magee	3.50	1-1	4	3	0	0/1	0	8.0	10	9	4	5	10	4	0	1	.286	0	0	0	1	0
Caitlin Olensky	5.25	0-0	3	1	0	0/0	0	4.0	2	3	3	1	2	0	0	2	.143	0	3	0	0	0
Totals	1.24	8-2	10	10	3	2/1	0	56.2	43	22	10	11	54	10	1	4	.198	3	6	0	1	1
Opponents	10.94	2-8	10	10	1	1/0	0	55.2	103	102	87	31	37	17	2	24	.380	18	10	0	3	2

PB - Team (0), Opp (5). SBA/ATT - Bredwell (4-5), Bahl (3-4), Magee (1-2), DiNardo (1-2), Cope (1-1).