

NEBRASKA

SOFTBALL

NEBRASKA VS. PURDUE

SATURDAY

vs. Purdue
1 p.m. (Central)

Video: B1G+ (\$)

SUNDAY

vs. Purdue
5 p.m. (Central)

Video: Big Ten Network

MONDAY

vs. Purdue
4 p.m. (Central)

Video: Big Ten Network

Live audio of every Nebraska game available on Huskers.com & the Huskers app

The No. 20 Nebraska softball team is set to host the Purdue Boilermakers for a three-game series this weekend. The games are scheduled for Saturday at 11 a.m. (CT), Sunday at 5 p.m. (CT) and Monday at 4 p.m. (CT).

The Huskers are No. 20 in the NFCA Coaches Poll and have been ranked every week this season. They were also tabbed No. 20 in the ESPN/USA Softball rankings.

Last weekend, NU hosted a three-game conference series against Minnesota and went undefeated. The Huskers won by a score of 8-0 (6 innings) on Friday, 8-3 on Saturday and 8-2 on Sunday. The Big Red outscored the Golden Gophers 24-5 across the three games. As a team, Nebraska hit .349 and held Minnesota to .216, while the Husker pitchers compiled an ERA of 1.75. Jordy Bahl, Kylee Magee and Hannah Camenzind grabbed a win apiece. On Wednesday, NU took on the Omaha Mavericks and grabbed a 5-0 victory behind 13 strikeouts and a shutout from Jordy Bahl and a grand slam and five RBIs from Olivia DiNardo.

Saturday's game will be streamed on B1G+, while the Sunday and Monday contests will be televised on the Big Ten Network. Every game will have a free radio broadcast with Nate Rohr on the call. The radio broadcast is available at Huskers.com/listen and on the official Huskers app. Fans are reminded that Bowlin Stadium is cashless and reentry will not be allowed.

LEADING OFF

- Nebraska now has 64 home runs this season, which ranks fourth in school history. The school record is 76.
- Olivia DiNardo's five RBIs against Omaha put her at 100 for her career and tied her career high.
- The Huskers are ranked No. 20 in the NFCA Poll. NU has been ranked by the NFCA every week this season.
- Hannah Camenzind has played in 99 games over the course of her career. The Huskers' first game against Purdue on Saturday is expected to be her 100th collegiate game.
- Jordy Bahl has had four double-digit strikeout games this season.
- The Huskers' pitching staff ranks 15th nationally in improved ERA. NU's ERA in 2024 was 4.35 and it is 2.72 in 2025.
- Ava Bredwell is 21 RBIs away from amassing 100+ hits, 100+ runs and 100+ RBIs in her career. Abbie Squier is 27 RBIs and six runs away from that accomplishment.
- Nebraska has 15 run-rule victories on the year. The school record for most run-rule wins in a season is 17 (2015).
- Nebraska has scored 10+ runs in 14 of its 32 games this season.

HUSKERS TO WATCH



Jordy Bahl threw a one-hit shutout that included 13 strikeouts, and Bahl retired the final 17 batters against the Mavericks. Her 13 strikeouts were a season high.



Olivia DiNardo hit a grand slam against Omaha and had five RBIs, which tied her career high. Along with the grand slam, she notched an RBI double.

2025 SCHEDULE (24-8, 4-1 B1G)

NFCA Leadoff Classic (Clearwater, Fla.)

Feb. 6	vs. #6 Tennessee	W, 7-1
Feb. 7	vs. Southern Mississippi	W, 12-2 (5)
Feb. 7	vs. Bethune-Cookman	W, 9-1 (5)
Feb. 8	vs. #13 Texas Tech	L, 5-6
Feb. 9	vs. #24 Mississippi State	L, 0-3

Troy Cox Classic (Las Cruces, N.M.)

Feb. 14	vs. Texas A&M - CC	W, 20-1 (5)
Feb. 14	at New Mexico State	W, 10-0 (6)
Feb. 15	vs. Montana	W, 13-5 (6)
Feb. 15	vs. Northern Colorado	W, 10-0 (5)
Feb. 16	vs. Montana	W, 16-3 (5)

Mary Nutter Collegiate Classic (Cathedral City, Calif.)

Feb. 20	vs. Baylor	W, 4-1
Feb. 20	vs. #4 UCLA	L, 1-9 (6)
Feb. 21	vs. #11 Duke	L, 0-3 (8)
Feb. 22	vs. San Jose State	W, 12-4 (6)
Feb. 22	vs. Howard	W, 11-1 (5)
Feb. 23	vs. Utah	W, 10-2 (5)

Shocker Invitational (Wichita, Kan.)

Feb. 28	vs. South Dakota State	W, 8-5 (8)
Feb. 28	vs. #16 Oklahoma State	L, 0-1
March 1	vs. Missouri	L, 1-7
March 1	at Wichita State	W, 15-0 (5)
March 2	vs. Missouri	W, 10-9

Big Red Spring Fling (Bowlin Stadium)

March 8	Northern Iowa	W, 14-1 (5)
March 8	Northern Colorado	W, 12-4 (6)
March 9	Northern Iowa	W, 9-1 (5)
March 9	South Dakota State	W, 5-4 (9)

March 14	at RV Ohio State	W, 9-5
March 15	at RV Ohio State	L, 12-13
March 16	at RV Ohio State*	L, 6-12

March 21	Minnesota	W, 8-0 (6)
March 22	Minnesota	W, 8-3
March 23	Minnesota	W, 8-2

March 26	at Omaha	W, 5-0
March 29	Purdue	11 a.m.
March 30	Purdue	5 p.m.
March 31	Purdue	4 p.m.

April 4	at Iowa	5 p.m.
April 5	at Iowa	2 p.m.
April 6	at Iowa	1 p.m.

April 9	Creighton	6 p.m.
April 12	at Northwestern	TBA
April 13	at Northwestern	4 p.m.
April 14	at Northwestern	TBA

April 18	Indiana	5 p.m.
April 19	Indiana	1 p.m.

April 25	at Washington	8 p.m.
April 26	at Washington	TBA
April 27	at Washington	3 p.m.

May 2	Maryland	5 p.m.
May 3	Maryland	1 p.m.
May 4	Maryland	12 p.m.

May 7-10	at Big Ten Tournament (West Lafayette, Ind.)	
----------	--	--

*game will not count toward Big Ten standings

NEBRASKA SOFTBALL FACTS

UNIVERSITY INFORMATION

Location	Lincoln, Neb.
Population	293,678
Founded	1869
Enrollment	24,431
Nickname	Cornhuskers, Huskers
Colors	Scarlet & Cream
Conference	Big Ten
Director of Athletics	Troy Dannen

ATHLETIC COMMUNICATIONS

Softball Contact	Paige Trutna
E-Mail	ptrutna2@huskers.com
Cell Phone	(402) 429-7576

2025 COACHING STAFF

Head Coach	Rhonda Revelle
Nebraska Record	1,151-673 (33rd year)
Career Record	1,159-689 (34th year)
Assoc. Head Coach	Lori Sippel (36th year)
Assistant Coach	Diane Miller (17th year)
Assistant Coach	Olivia Ferrell (2nd year)
Graduate Assistant	Allie Light (1st year)
Director of Operations	Erin Bohling (5th year)

2024 SEASON REVIEW

Overall Record	30-23
Big Ten Record (Finish)	12-9 (4th)
NCAA Record (Finish)	N/A

2025 TEAM OUTLOOK

Letterwinners Returning/Lost	14/8
Total Starters Returning/Lost	5/5
Position Starters Returning/Lost	5/3
Starting Pitchers Returning/Lost	0/2
Returning All-Conference Players	7*
Returning All-Region Players	6*
Returning All-Americans	1*
Newcomers	11

*includes honors at a player's previous school

STADIUM INFORMATION

Home Stadium	Bowlin Stadium
Record at Bowlin Stadium	274-120 (.695)

PROGRAM HISTORY

First Year of Softball	1976
All-Time Record	1,608-960 (.618)
All-Time Conference Record	454-327 (.581)
Big Ten Record	173-118 (.594)
Overall Conference Titles	20
Big Eight Titles	12
Big 12 Titles	6
Big Ten Titles	2
NCAA Tournament Appearances	26
WCWS Appearances	7
NCAA Tournament Record	65-56 (.537)
NCAA Regional Record	55-39 (.585)
NCAA Super Regional Record	2-3 (.400)
WCWS Record	8-14 (.363)
NFCA All-Americans	30
CSC Academic All-Americans	31

PRONUNCIATION GUIDE

Katelyn Canada	kuh-NAY-duh
Hannah/Lauren Camenzind	Cam-en-zin-d
Ava Kuszak	KOOS-zak
McKinley Malecha	muh-LECK-uh
Carlie Muhlbach	Mule-bock
Caitlin Olensky	oh-LEN-ski
Rhonda Revelle	ruh-VELL
Lori Sippel	Sih-pull
Abbie Squier	SKWHY-er
Malia Thoms	TOMES
Talia Tokheim	TALL-yuh TOKE-heim
Haidyn Warner	WERE-nerr

NEBRASKA ROSTER & SCHEDULE NOTES

• Nebraska's roster features 25 players, tied for the largest roster in school history. The roster features 10 Nebraska natives.

• Nebraska's squad is made up of three seniors, 11 juniors, six sophomores and five freshmen. The junior class is the largest of its kind in program history.

ALL-REGION PLAYERS

- Jordy Bahl, RHP/UTL*
 - Ava Bredwell, C
 - Lauren Camenzind, INF*
 - Katelyn Canada, INF
 - Ava Kuszak, INF*
 - Abbie Squier, OF
- *all-region selection at previous school

ALL-CONFERENCE PLAYERS

- Jordy Bahl, RHP/UTL*
 - Ava Bredwell, C
 - Hannah Camenzind, LHP/UTL*
 - Katelyn Canada, INF
 - Ava Kuszak, INF*
 - Kylee Magee, RHP*
 - Abbie Squier, OF
- *all-conference selection at previous school

2025 TEAM CAPTAINS

- Jordy Bahl, Jr.
- McKinley Malecha, Sr.
- Abbie Squier, Sr.

• **Rhonda Revelle** has won more games than any other head coach (male or female) in the history of Husker Athletics. Entering the 2025 season, Revelle has the sixth-most wins of any active Division I head coach. Revelle is in her 33rd season and is the longest-tenured head coach in Husker Athletics history.

• Associate Head Coach **Lori Sippel** is in her 36th year at Nebraska. Sippel is the longest-tenured female assistant coach in the history of Nebraska Athletics.

• Revelle (1981-83) and Sippel (1985-88) also played for NU. Including their playing and coaching careers, Revelle and Sippel have been a part of 1,431 of Nebraska's 1,608 all-time victories (89 percent).

• Assistant coach **Diane Miller** rounds out the Husker coaching staff. In her 17th season, Miller has helped Nebraska's offense set more than 40 school records.

• The Huskers are scheduled to play 50 regular-season games in 2025, including 16 home games, 19 neutral-site games and 15 away games. This will mark the second straight year that NU will have more home games than true road games on the schedule.

• Nebraska will play a 22-game Big Ten schedule in 2025. This year marks the first season that Oregon, UCLA and Washington have joined the conference. The Huskers will play three-game series against Minnesota, Purdue, Iowa, Northwestern, Washington and Maryland. NU will host Indiana for a two-game series and will play three games against Ohio State, with two counting toward conference standings. The Big Red will also face UCLA at the Mary Nutter Collegiate Classic – that game will not count toward the Big Ten standings.

• The 2025 Big Ten Tournament will be held in West Lafayette, Ind., from May 7-10.

2025 NEBRASKA NUMERICAL ROSTER

NO.	NAME	POS.	B/T	HT.	YR.	HOMETOWN
00	McKinley Malecha	C	R/R	5-8	Sr.	Lakeville, Minn.
1	Olivia DiNardo	C/UTL	L/R	5-7	Jr.	San Mateo, Calif.
2	Lauren Camenzind	INF/C	R/R	5-7	Jr.	Valley, Neb.
3	Bella Bacon	INF	R/R	5-10	Jr.	Omaha, Neb.
4	Malia Thoms	INF/OF	L/R	5-4	So.	Lincoln, Neb.
5	Macie Vickers	C	R/R	5-7	Fr.	Escalon, Calif.
7	Ava Kuszak	INF	R/R	5-7	Jr.	Broomfield, Colo.
8	Abbie Squier	OF	R/R	5-7	Sr.	Lincoln, Neb.
9	Hannah Camenzind	LHP/UTL	L/L	5-7	Jr.	Valley, Neb.
11	Talia Tokheim	OF	R/R	5-7	Jr.	San Carlos, Calif.
14	Kacie Hoffmann	OF	L/L	5-9	Jr.	Elkhorn, Neb.
15	Kennadi Williams	UTL	R/R	5-4	Fr.	Lincoln, Neb.
18	Nessa McMillen	OF/UTL	R/R	5-9	Fr.	Blair, Neb.
22	Caitlin Olensky	LHP	L/L	5-5	So.	Montville, N.J.
24	Ava Bredwell	C	R/R	5-7	Sr.	Shawnee, Kan.
26	Alina Felix	OF	L/R	5-7	Jr.	Tucson, Ariz.
27	Natalia Hill	INF/OF	R/R	5-3	Fr.	Norwalk, Calif.
29	Samantha Bland	INF	R/R	5-7	So.	Chino Hills, Calif.
31	Kylee Magee	RHP	R/R	5-9	So.	Anaheim, Calif.
33	Emmerson Cope	RHP/UTL	R/R	5-11	So.	Topeka, Kan.
55	Dakota Carter	OF	R/R	5-6	Jr.	Eastvale, Calif.
66	Katelyn Canada	INF	L/R	5-2	Jr.	Cerritos, Calif.
72	Carlie Muhlbach	C/UTL	R/R	5-7	Fr.	Gretna, Neb.
77	Haidyn Warner	C	R/R	5-9	Jr.	Oro Valley, Ariz.
98	Jordy Bahl	RHP/UTL	R/R	5-8	Jr.	Papillion, Neb.

CAMENZIND TWINS MAKING AN IMPACT

Nebraska natives **Hannah** and **Lauren Camenzind** both transferred to the Huskers from Arkansas this season and are having solid seasons with their hometown team.

- Both twins are making their marks at the plate, as Hannah bats .381 and Lauren bats .315 on the season. Hannah has 25 RBIs, 12 doubles and three homers, while Lauren has logged 17 RBIs and 29 hits. In the Huskers' series against Minnesota, the two combined for nine hits.
- The two have both started in a majority of the Huskers' games -- Lauren has played in every game and has started 31, 29 of them at second base. Hannah has played in 29 games and started 26.
- Hannah is also having an impact in the circle, as she has the second-lowest ERA on the team at 3.53 and a record of 4-2. In last Saturday's game against Minnesota, she struck out a career-high seven batters.
- In Big Ten competition, Hannah has racked up a team-high seven RBIs and a batting average of .588, along with five doubles, four runs and a homer.
- Lauren bats .389 against conference opponents and has four RBIs, three doubles and five runs scored.

HUSKER HOME RUN QUICK HITTEES

The Nebraska softball team has enjoyed a solid season at the plate, most notably with its home run numbers.

- Nebraska is second in the nation with 64 home runs in only 32 games.
- NU is on pace to hit 100 home runs in a 50-game regular season. The school record for home runs in a season is 76 in 2022, and the Big Ten record is 118 by Michigan in 2015 (68 games).
- A total of 14 Huskers have hit a home run this season, including 12 players with multiple home runs.
- The Huskers have homered five times in a game on four occasions this season, including three consecutive games to open the Troy Cox Classic.
- Nebraska has produced 11 innings this season with multiple home runs, including five innings with three or more home runs.
- Nebraska has hit back-to-back home runs five times this season, including three times with three consecutive home runs that includes a school-record four straight home runs against San Jose State on Feb. 22.
- **Ava Kuszak (twice), Jordy Bahl, Abbie Squier and Emmerson Cope (twice)** have all had a multi-homer game this season, including a three-home run game from Kuszak against Montana on Feb. 16 which tied the Nebraska and Big Ten records for home runs in a game.
- Kuszak has hit more home runs herself (12) than 109 NCAA Division I teams.
- Together, Kuszak (12) and Jordy Bahl (11) have combined for 23 home runs. Their two-player combined total of 23 home runs would rank 94th among all NCAA Division I teams this spring and would be more than five Big Ten schools have hit as a team.
- Twelve Huskers -- Bahl, Kuszak, Squier, **Bella Bacon, Alina Felix, Malia Thoms, Lauren Camenzind, and Alina Felix** -- have already matched or exceeded their career season highs in home runs.

NEBRASKA'S TEAM GAME HIGHS

At bats:	36	-	vs South Dakota State (Feb 28, 2025 at Wichita, Kan.)
Runs scored:	20	-	vs Texas A&M-CC (Feb 14, 2025 at Las Cruces, NM)
Hits:	17	-	vs Montana (Feb 15, 2025 at Las Cruces, NM)
RBIs:	18	-	vs Texas A&M-CC (Feb 14, 2025 at Las Cruces, NM)
Doubles:	5	-	vs Northern Colorado (Mar 08, 2025)
Triples:	1	-	(4 times)
Home runs:	5	-	(4 times)
Total bases:	34	-	vs Montana (Feb 15, 2025 at Las Cruces, NM)
Walks:	7	-	vs Texas A&M-CC (Feb 14, 2025 at Las Cruces, NM)
Strikeouts:	13	-	vs Tennessee (Feb 06, 2025 at Clearwater, Fla.)
Sac hits:	2	-	vs South Dakota State (Feb 28, 2025 at Wichita, Kan.)
Sac flies:	2	-	vs Missouri (Mar 02, 2025 at Wichita, Kan.)
	2	-	at Ohio State (Mar 16, 2025)
Stolen bases:	3	-	vs Bethune-Cookman (Feb 07, 2025 at Clearwater, Fla.)
	3	-	vs Minnesota (Mar 23, 2025)
Hit by pitch:	3	-	vs South Dakota State (Mar 09, 2025)
Caught stealing:	1	-	(5 times)
Runners LOB:	12	-	vs South Dakota State (Mar 09, 2025)
Hit into DP:	1	-	(8 times)

NEBRASKA BY THE NUMBERS

65 NCAA TOURNAMENT WINS
Nebraska has won 65 games in its 26 NCAA Tournament appearances (65-56). The 65 postseason wins rank 20th in NCAA history.

31 ACADEMIC ALL-AMERICANS
Huskers have combined to earn 31 Academic All-America honors, a total that ranks third among all Division I softball programs.

30 ALL-AMERICANS
A total of 18 Huskers have combined for 30 All-America awards, including eight multi-time All-Americans.

26 NCAA TOURNAMENTS
The Huskers have made 26 appearances in the NCAA Tournament, including 13 straight from 1995 to 2007. Nebraska's 26 postseason appearances rank 14th in NCAA history.

24 REVELLE ALL-AMERICANS
Rhonda Revelle has guided 15 players to a total of 24 All-America honor in her first 32 seasons as Nebraska's head coach.

20 CONFERENCE TITLES
Nebraska has won a total of 20 conference championships. The Huskers won 12 Big Eight titles, six Big 12 crowns and have captured a pair of Big Ten titles.

15 TOP-25 RANKINGS
Nebraska has been ranked in the final NFCA poll in 15 of the 29 years the poll has existed. The Huskers were one of only six teams nationally to be ranked in the final poll in each of the first 12 years it existed (1995 to 2006).

15 REVELLE ACADEMIC ALL-AMERICANS
Rhonda Revelle has produced 15 academic All-Americans at Nebraska. That total ranks fourth among all active Division I softball head coaches.

7 WCWS APPEARANCES
Nebraska has advanced to the Women's College World Series seven times to rank 15th in NCAA history.

4 SOFTBALL OLYMPIANS
Four former Huskers have competed in the Olympics, combining for five Olympic Games. A fifth Husker (Taylor Edwards) was a 2020 Olympic alternate for Team USA.

COLLEGE SOFTBALL POLLS

USA TODAY/NFCA COACHES POLL

Rk.	Team	Record	Pts.	Prev.
1.	Texas (16)	31-2	757	2
2.	Oklahoma (14)	29-1	756	1
3.	LSU	29-2	700	3
4.	Florida (1)	30-4	697	4
5.	Texas A&M	26-5	633	5
6.	Oregon	29-3	602	8
T-7.	Florida State	29-5	573	9
T-7.	UCLA	28-5	573	6
9.	Tennessee	26-6	526	7
10.	South Carolina	24-6	467	11
11.	Arizona	29-5	466	10
12.	Arkansas	23-6	420	14
13.	Stanford	23-3	374	17
14.	Texas Tech	24-9	365	12
15.	Georgia	23-8	356	13
16.	Virginia Tech	25-5	333	16
17.	Oklahoma State	19-7	293	15
18.	Mississippi State	27-6	255	18
19.	Ole Miss	26-6	188	20
20.	Nebraska	23-8	165	21
21.	Duke	21-12	127	19
22.	Ohio State	25-6-1	113	25
23.	Florida Atlantic	29-5	100	22
24.	Virginia	24-8	56	RV
25.	Auburn	21-11	41	23

ESPN.COM/USA SOFTBALL POLL

Rk.	Team	Record	Pts.	Prev.
1.	Texas (17)	31-2	617	2
2.	Oklahoma (8)	29-1	605	1
3.	LSU	29-2	563	3
4.	Florida	30-4	554	4
5.	Texas A&M	26-5	504	6
6.	Oregon	29-3	472	8
7.	UCLA	28-5	469	5
8.	Florida State	29-5	467	9
9.	Arizona	29-5	399	T-10
10.	Tennessee	26-6	397	7
11.	South Carolina	24-6	389	T-10
12.	Virginia Tech	25-5	333	14
13.	Texas Tech	24-9	315	12
14.	Arkansas	23-6	312	16
15.	Oklahoma State	19-7	289	13
16.	Stanford	23-3	256	17
17.	Georgia	23-8	248	15
18.	Mississippi State	27-6	189	19
19.	Duke	21-12	140	18
20.	Nebraska	23-8	129	21
21.	Ole Miss	26-6	122	20
22.	Virginia	24-8	97	23
23.	Ohio State	25-6-1	84	25
24.	Liberty	27-6	65	22
25.	Alabama	22-12	39	24

NEBRASKA'S INDIVIDUAL NATIONAL AND CONFERENCE RANKS

Stat	Player	National Rank	Big Ten Rank	Value
Runs per Game	Jordy Bahl	3	1	1.37
Extra Base Hits	Jordy Bahl	4	3	24
Complete Games	Jordy Bahl	5	2	11
Doubles	Hannah Camenzind	6	3	12
Total Bases	Jordy Bahl	7	2	92
Runs	Jordy Bahl	8	1	41
Slugging Percentage	Jordy Bahl	8	3	.989
Doubles per Game	Hannah Camenzind	10	3	0.41
Home Runs per Game	Ava Kuszak	12	2	0.41
Victories	Jordy Bahl	12	3	12
Runs per Game	Ava Kuszak	13	3	1.24
Strikeouts	Jordy Bahl	14	2	117
Home Runs	Ava Kuszak	16	3	12
Batting Average	Jordy Bahl	23	4	.473
Doubles	Jordy Bahl	23	6	11
Runs	Ava Kuszak	23	5	36
Home Runs	Jordy Bahl	24	5	11

NEBRASKA'S TEAM NATIONAL AND CONFERENCE RANKS

Stat	National Rank	Big Ten Rank	Value
Home Runs	2	2	63
Home Runs per Game	2	2	2.03
Scoring	3	2	8.55
Total Runs	6	2	265
Hits	9	1	306
RBI's	9	3	232
Batting Average	10	3	.354
Run Differential	12	4	156

*games through March 24

HUSKERS IN THE RECORD BOOKS

- The Big Red scored 10+ runs in five straight games from Feb. 14-16 for the first time in program history.
- NU notched five home runs in three straight games for what is believed to be the first time in school history.
- In the Huskers' game against San Jose State at the Mary Nutter Collegiate Classic, they hit four straight home runs for the first time in program history.
- Nebraska scored 102 runs in its first 10 games of the season, which marked the quickest the team has hit the 100-run milestone.
- The Huskers scored 200 runs in their first 23 games of the season, which marked the quickest the team has hit the 200-run milestone.
- **Ava Kuszak** posted three home runs in the second game against Montana and is now tied with Kaylan Jablonski and Christie McCoy for the school record for home runs in a game.

THE LAST TIME A HUSKER

Had 6+ At Bats	5 players vs. Wisconsin (5/8/16)
Had 5+ Hits	Brooke Andrews (5) vs. Northern Colorado (3/17/24)
Scored 4+ Runs	Ava Kuszak (4) vs. Montana (2/16/25)
Had 3+ Doubles	Cam Ybarra (4) vs. Lehigh (3/7/20)
Had 2+ Homers	Emmerson Cope (2) at Ohio State (3/15/25)
Had 3+ Homers	Ava Kuszak (3) vs. Montana (2/16/25)
Homered in 1st Career AB	Hailey Decker vs. UIC (2/8/13)
Stole 3+ Bases	Nikki Haget (3) vs. La Salle (3/12/11)
Drew 4+ Walks	Billie Andrews (4) vs. Rutgers (4/2/22)
Had 3+ HBP	Samantha Owen (3) vs. Pittsburgh (2/17/19)
Had 5+ RBI's	Olivia DiNardo (5) at Omaha (3/26/25)
Threw a No-Hitter	Jordy Bahl vs. Northern Colorado (5 inn., 2/15/25)
Threw a Perfect Game	Ashley DeBuhr vs. Iowa St. (4/13/05)
Had 10+ Strikeouts	Jordy Bahl (13) at Omaha (3/26/25)
Had 15+ Strikeouts	Ashley Hagemann (17) at Omaha (4/19/12)
Had a 10-Game Hit Streak	Jordy Bahl (14) in 2025
Had a 15-Game Hit Streak	Billie Andrews (19) in 2024
Had a 20-Game Hit Streak	Billie Andrews (23) in 2022
Had a 25-Game Hit Streak	Taylor Edwards (25) in 2013-14

TEAM OFFENSIVE RECORDS NEBRASKA IS ON PACE TO BREAK IN 2025

Stat	Total	50-Game Pace	School Record
Batting Average	.351	.351	.337
Runs	270	422	400
Runs Per Game	8.4	8.4	6.9
Slugging Percentage	.638	.638	.523
Extra-Base Hits	125	195	173

INDIVIDUAL OFFENSIVE RECORDS NEBRASKA IS ON PACE TO BREAK IN 2025

Player	Stat	Total	Pace	NU Record
Jordy Bahl	Batting Average	.454	.454	.439
Jordy Bahl	Slugging Percentage	.948	.948	.865
Jordy Bahl	Extra-Base Hits	24	38	35
Ava Kuszak	Slugging Percentage	.863	.863	.865

BAHL SOLID AT THE PLATE

Nebraska softball pitcher and utility player **Jordy Bahl** has not only had an impact in the circle, but her offense is a force to be reckoned with.

- Bahl ranks in the top 20 nationally in extra-base hits (4th), total bases (7th), slugging percentage (8th), runs (8th) and runs per game (3rd).
- Bahl is tied for fourth in the country with 24 extra-base hits on the season. She is tied with Jasmyn Burns of Ohio State, Taylor Shumaker of Florida, Delaney Keith of Coastal Carolina and Rachel Roupe of Liberty.
- On the season, 24 of Bahl's 44 hits have gone for extra bases. She averages an extra-base hit every 3.9 at bats and almost one extra-base hit per game.
- Bahl has nearly as many hits herself as she has allowed as a pitcher. Bahl has 44 hits in 97 at bats at the plate and in the circle, she has allowed only 53 hits in 397 opponent at bats.
- Bahl has also scored more runs herself (41) than she has allowed (38) in 100.1 innings in the circle.

WHAT NEBRASKA RETURNED IN 2025

Nebraska's 2025 roster consists of 25 total athletes. Fourteen of those are returners.

- The Huskers welcome back 14 letterwinners from last season – **Bella Bacon**, **Jordy Bahl**, **Samantha Bland**, **Ava Bredwell**, **Katelyn Caneda**, **Dakota Carter**, **Emmerson Cope**, **Alina Felix**, **Mckinley Malecha**, **Caitlin Olensky**, **Abbie Squier**, **Malia Thoms**, **Talia Tokheim** and **Haidyn Warner**.
- NU returns half of its starting lineup from 2024 in outfielder **Samantha Bland**, catcher **Ava Bredwell**, first baseman **Bella Bacon**, second baseman **Katelyn Caneda** and designated player **Emmerson Cope**.
- Nebraska returns three of its top five hitters from 2024 – **Ava Bredwell** (.329), **Emmerson Cope** (.304) and **Alina Felix** (.302).
- Returners **Ava Bredwell**, **Samantha Bland**, **Bella Bacon** and **Katelyn Caneda** each started in more than 95 percent of the Huskers' games last season.

THE LAST TIME NEBRASKA...

Beat a No. 1 Team	vs. No. 1 Michigan (1-0 on 4/8/16)
Beat a Top-5 Team	vs. No. 1 Michigan (1-0 on 4/8/16)
Beat a Top-10 Team	vs. No. 6 Tennessee (7-1 on 2/6/25)
Beat a Ranked Team	vs. No. 6 Tennessee (7-1 on 2/6/25)
Won When Trailing After 6 Innings	vs. South Dakota State (2/28/25)
Lost When Leading After 6 Innings	vs. No. 13 Texas Tech (2/8/25)
Scored 10+ Runs	at Ohio State [12] (3/15/25)
Scored 15+ Runs	at Wichita State [15] (3/1/25)
Scored 20+ Runs	vs. Texas A&M-Corpus Christi (2/14/25)
Allowed 10+ Runs	at Ohio State [12] (3/16/25)
Allowed 15+ Runs	vs. Wichita State [17] (3/2/24)
Allowed 20+ Runs	vs. Northwestern [22] (4/27/23)
Recorded 15+ Hits	vs. Montana [17] (2/16/25)
Recorded 20+ Hits	at Maryland [21] (4/3/16)
Hit 6+ Doubles	vs. Montana [6] (2/17/24)
Hit 4+ Home Runs	at Ohio State [4] (2/15/25)
Stole 6+ Bases	at Purdue [6] (4/13/19)
Drew 10+ Walks	vs. Omaha [10] (2/11/22)
Was No-Hit	at No. 24 Minnesota (4/7/21)

COLLEGE SOFTBALL POLLS

D1 SOFTBALL POLL

Rk.	Team	Record	Prev.
1.	Texas	31-2	2
2.	Oklahoma	29-1	1
3.	Florida	30-4	3
4.	LSU	29-2	4
5.	Florida State	29-5	14
6.	Texas A&M	26-5	5
7.	Arizona	29-5	8
8.	Oregon	30-3	9
9.	UCLA	28-5	6
10.	South Carolina	24-6	10
11.	Tennessee	27-6	7
12.	Virginia Tech	25-5	15
13.	Oklahoma State	19-7	12
14.	Arkansas	23-7	22
15.	Stanford	23-3	17
16.	Texas Tech	24-9	11
17.	Mississippi State	27-6	16
18.	Duke	21-12	13
19.	Georgia	23-8	19
20.	Liberty	27-6	21
21.	Ohio State	25-6-1	20
22.	Florida Atlantic	29-5	24
23.	Clemson	24-9	NR
24.	Ole Miss	26-6	18
25.	Arizona State	23-10	23

SOFTBALL AMERICA POLL

Rk.	Team	Record	Prev.
1.	Texas	31-2	1
2.	Oklahoma	29-1	2
3.	LSU	29-2	3
4.	Florida	30-4	4
5.	Texas A&M	26-5	6
6.	Arizona	29-5	7
7.	Oregon	29-3	8
8.	Florida State	29-5	10
9.	UCLA	28-5	5
10.	South Carolina	24-6	11
11.	Virginia Tech	25-5	15
12.	Arkansas	23-6	20
13.	Texas Tech	24-9	12
14.	Tennessee	26-6	9
15.	Oklahoma State	19-7	13
16.	Stanford	23-3	18
17.	Mississippi State	27-6	16
18.	Ohio State	25-6-1	22
19.	Ole Miss	26-6	14
20.	Georgia	23-8	19
21.	Duke	21-12	17
22.	Liberty	27-6	21
23.	Florida Atlantic	29-5	23
24.	Virginia	24-8	NR
25.	Clemson	24-9	NR

BIG TEN STANDINGS

Rk.	Team	Conference	Overall
1.	Michigan	4-0	25-8
1.	Northwestern	4-0	15-11
3.	Nebraska	4-1	24-8
3.	Ohio State	4-1	27-6-1
3.	Oregon	4-1	29-3
3.	UCLA	4-1	29-5
7.	Iowa	3-1	21-9
8.	Washington	3-2	24-9
9.	Maryland	3-4	15-15
9.	Wisconsin	3-4	19-12
11.	Indiana	2-3	22-8
12.	Minnesota	2-5	13-18
12.	Penn State	2-5	14-16
12.	Purdue	2-5	17-14
15.	Illinois	1-4	13-16
15.	Rutgers	1-4	16-19
17.	Michigan State	1-6	9-16

HUSKER CONFERENCE HISTORY

BIG EIGHT CONFERENCE (1976-1995)

Year	Record	Finish	Tournament
1977	1-4	t-4th	N/A
1978	4-3	7th	t-6th
1979	3-8	6th	t-6th
1980	8-9	4th	N/A
1981	5-6	3rd	3rd
1982	9-3	1st	1st
1983	3-7	7th	N/A
1984	6-2	1st	1st
1985	11-1	1st	1st
1986	9-3	1st	1st
1987	8-2	1st	1st
1988	7-3	1st	1st
1989	6-4	3rd	t-5th
1990	3-5	5th	2nd
1991	3-5	5th	t-4th
1992	2-6	5th	t-4th
1993	5-11	5th	N/A
1994	5-15	6th	N/A
1995	10-6	3rd	N/A
TOTAL	108-103		12 total titles

BIG 12 CONFERENCE (1996-2011)

Year	Record	Finish	Tournament
1996	10-8	4th	2nd
1997	10-6	4th	5th
1998	16-0	1st	1st
1999	10-8	4th	2nd
2000	15-2	2nd	1st
2001	16-2	1st	5th
2002	11-5	2nd	2nd
2003	10-8	6th	t-4th
2004	14-3	1st	1st
2005	9-9	7th	t-5th
2006	13-4	2nd	t-3rd
2007	10-8	5th	t-5th
2008	4-14	t-9th	2nd
2009	9-9	5th	t-5th
2010	7-11	t-6th	t-5th
2011	9-9	6th	N/A
TOTAL	173-106		6 total titles

BIG TEN CONFERENCE (2012-PRES.)

Year	Record	Finish	Tournament
2012	14-9	3rd	N/A
2013	16-6	2nd	t-3rd
2014	18-5	t-1st	t-5th
2015	17-6	3rd	2nd
2016	13-9	5th	t-5th
2017	13-10	5th	t-9th
2018	9-13	9th	t-9th
2019	9-14	t-8th	t-9th
2021	22-22	8th	N/A
2022	17-5	2nd	1st
2023	13-10	4th	t-3rd
2024	12-9	4th	t-3rd
2025	4-1	--	--
TOTAL	177-119		2 total titles

HUSKERS HIT THE PORTAL

Nebraska utilized the transfer portal this offseason, bringing in six new players -- **Hannah** and **Lauren Camenzind** and **Kacie Hoffmann** from Arkansas, **Olivia DiNardo** from Arizona, **Kylee Magee** from Arizona State and **Ava Kuszak** from Wisconsin.

- **Hannah Camenzind** was a second-team All-SEC member in 2023. Over her two seasons with the Razorbacks, she posted a 14-3 record with 3.11 ERA over 119.1 total innings. At the plate, she batted .308.
- **Lauren Camenzind** was a third-team NFCA All-South Region member in 2023. Over her two seasons at Arkansas, she played in 86 games (79 starts) at both catcher and shortstop.
- **DiNardo** racked up numerous accolades during her two years at Arizona. She was a second-team NFCA All-West Region member in 2023 and a Third-Team member in 2024 and was named a Second-Team All-Pac-12 and Pac-12 All-Freshman Team honoree in 2023. Over the course of two seasons with the Wildcats, DiNardo started 102 games and built up a batting average of .340, along with 15 doubles, 20 home runs and 74 RBIs.
- **Hoffmann** played in 106 games with 96 starts during her time with Arkansas. She hit .244 and logged 16 doubles, 15 home runs and 47 RBIs.
- **Kuszak** earned second-team All-Big Ten honors and third-team NFCA All-Great Lakes Region accolades in 2024. During her two seasons at Wisconsin, she played in 76 games with 65 starts and notched 16 doubles, 10 home runs and 33 RBIs on a .278 batting average.
- **Magee** was named a member of the Pac-12 All-Freshman Team at Arizona State in 2023. She suffered an injury early in the 2024 season. She pitched in 27 games with 24 starts and compiled a 3.51 ERA and two saves, along with striking out 79 batters in 89.2 innings.

NEBRASKA'S TRANSFERS

PLAYER	POS.	CLASS	PREVIOUS SCHOOL
Hannah Camenzind	LHP/UTL	Jr.	Arkansas
Lauren Camenzind	INF/C	Jr.	Arkansas
Olivia DiNardo	C/UTL	Jr.	Arizona
Kacie Hoffmann	OF	Jr.	Arkansas
Ava Kuszak	INF	Jr.	Wisconsin
Kylee Magee	RHP	So.	Arizona State

HUSKER TRANSFER STATS

PLAYER	G-GS	AVG.	AB	R	H	2B	HR	RBI	SLG%	OB%
Ava Kuszak	30-30	.411	95	37	39	7	12	34	.863	.500
Lauren Camenzind	32-31	.315	92	20	29	3	1	17	.402	.388
Kacie Hoffmann	27-24	.366	71	11	26	4	5	17	.662	.438
Olivia DiNardo	28-26	.395	76	11	30	5	5	26	.658	.471
Hannah Camenzind	29-26	.381	84	22	32	12	3	25	.631	.441
TOTAL	146-137	.373	418	101	156	31	26	119	.644	.449

NEBRASKA'S 2025 RECORD WHEN...

Overall	24-8	Out-Hitting Opponent	24-2
Non-Conference	20-7	Out-Hit by Opponent	0-4
Big Ten Conference	4-1	Scoring First	13-1
Home	7-0	Opponent Scores First	11-7
Neutral	13-6	Scoring in the First Inning	9-1
Road	4-2	Scoring Fewer than 3 Runs	0-5
Night Games	9-1	Scoring 5 or More Runs	9-1
Day Games	15-7	Scoring 10 or More Runs	13-1
Sunday	5-2	Allowing Fewer Than 3 Runs	15-1
Monday	0-0	Allowing 5 or More Runs	1-3
Tuesday	0-0	Allowing 10 or More Runs	0-2
Wednesday	1-0	Leading After Five Innings	11-2
Thursday	2-1	Leading After Six Innings	8-1
Friday	7-2	Trailing After Five Innings	0-5
Saturday	8-3	Trailing After Six Innings	1-5
vs. Ranked Opponents	1-5	Tied After Five Innings	3-1
vs. Unranked Opponents	23-3	Tied After Six Innings	0-1
Extra Innings	2-1	Committing 0 Errors	8-3
1-Run Games	2-3	Committing 2 or More Errors	7-3

HUSKERS RETURNING FROM INJURIES

Nebraska faced significant adversity in 2024, as a total of six players suffered season-ending injuries, including four that are returning for the 2025 season. Additionally, Arizona State transfer **Kylee Magee** had to use the offseason for rehab.

- **Jordy Bahl** suffered a knee injury in the Huskers' 2024 season opener that required season-ending surgery. Bahl was a First-Team All-American, the Big 12 Pitcher of the Year and one of 10 national finalists for player of the year in 2022 and 2023.
- **Abbie Squier**, a returning All-Big Ten and all-region selection, returns after being out for the 2024 season due to surgery. In 2022 and 2023, she was the Big Red's starting left fielder.
- **Dakota Carter**, the Huskers' designated player, was deemed out for the 2024 season before it even began. In 2023, she scored 13 runs as a pinch runner and appeared in 39 games.
- **Caitlin Olensky** suffered a season-ending injury in the Huskers' conference opener against Illinois last year. Before her injury, she compiled a record of 3-2 with a team-best 3.30 ERA.
- **Emmerson Cope** was out for almost a month of the 2024 season after battling a back injury. When she was in the lineup, the Topeka, Kan., native amassed an ERA of 4.76 in the circle. She racked up 21 hits, 10 runs, six homers and 19 RBIs.
- **Talia Tokheim** missed the first 23 games of the season while rehabbing an injury from 2023. She returned for nine games before suffering another season-ending injury in game three of the Penn State series. In her limited time on the field, she notched 46 total bases and seven home runs.
- **Kylee Magee** suffered a season-ending injury after racking up six appearances with four starts in her sophomore year with the Sun Devils. In her first two years at Arizona State, she struck out 79 batters in 89.2 innings.

2025 Nebraska Softball Team Game-by-Game for Nebraska (as of Mar 27, 2025) Batting (All games)

Date	Opponent	ab	r	h	rbi	2b	3b	hr	tb	bb	tbb	sb	cs	hbp	sac	sf	gdp	k	po	a	e	lob	avg
Feb 06	vs Tennessee	26	7	6	5	1	0	1	10	1	0	0	1	2	0	1	1	13	21	7	1	2	.231
Feb 07	vs Southern Miss	24	12	12	11	2	0	2	20	3	0	1	0	1	0	0	0	2	15	7	1	3	.360
Feb 07	vs Bethune-Cookman	24	9	9	5	2	1	1	16	2	0	3	0	1	0	0	0	2	15	9	3	4	.365
Feb 08	vs Texas Tech	31	5	9	5	0	0	0	9	1	0	0	1	0	1	0	0	2	20	3	4	7	.343
Feb 09	vs Mississippi State	27	0	5	0	2	0	0	7	0	0	1	0	0	0	0	0	6	18	8	0	6	.311
Feb 14	vs Texas A&M-CC	28	20	13	18	3	0	5	31	7	0	1	0	2	0	0	1	1	15	4	0	2	.338
Feb 14	at NM State	27	10	10	10	2	0	5	27	4	0	1	0	2	0	1	0	4	18	8	2	6	.342
Feb 15	vs Montana	35	13	17	12	2	0	5	34	4	0	1	0	1	0	0	0	4	18	9	2	10	.365
Feb 15	vs Northern Colorado	22	10	8	9	0	0	2	14	3	0	0	1	0	1	1	0	0	15	5	0	2	.365
Feb 16	vs Montana	27	16	14	14	3	1	3	28	6	0	0	0	1	0	0	0	3	15	4	0	6	.380
Feb 20	vs Baylor	27	4	8	4	2	0	1	13	3	0	0	1	1	0	1	0	1	21	7	2	7	.372
Feb 20	vs UCLA	20	1	3	1	0	0	0	3	4	0	1	0	1	1	1	0	8	17	7	0	8	.358
Feb 21	vs Duke	28	0	5	0	1	1	0	8	0	0	1	0	0	0	0	0	9	24	9	0	5	.344
Feb 22	vs San Jose State	32	12	14	8	1	0	5	30	3	0	1	0	1	0	0	0	2	18	5	2	7	.352
Feb 22	vs Howard	25	11	12	10	1	0	2	19	0	0	0	0	1	0	1	0	3	15	9	1	4	.360
Feb 23	vs Utah	25	10	10	10	2	0	4	24	2	0	0	0	2	0	0	0	3	15	7	1	4	.362
Feb 28	vs South Dakota State	36	8	13	8	3	0	2	22	1	0	0	0	1	2	0	0	3	24	11	0	8	.362
Feb 28	vs Oklahoma State	22	0	2	0	0	0	0	2	1	0	0	0	0	1	0	0	9	21	6	1	3	.350
Mar 01	vs Missouri	24	1	4	1	1	0	0	5	0	0	0	1	1	0	0	0	3	21	11	2	3	.341
Mar 01	at Wichita State	30	15	14	13	1	0	4	27	5	0	0	0	1	1	0	1	3	15	7	1	7	.348
Mar 02	vs Missouri	29	10	10	10	0	0	3	19	3	0	0	0	2	0	2	0	6	21	7	1	5	.348
Mar 08	NORTHERN IOWA	25	14	12	12	4	0	3	25	4	0	0	0	0	0	0	0	3	15	1	1	3	.354
Mar 08	NORTHERN COLORAD	29	12	12	12	5	0	2	23	4	0	1	0	2	0	0	0	0	18	9	2	6	.356
Mar 09	NORTHERN IOWA	22	9	9	7	3	1	2	20	2	0	0	0	0	1	0	0	0	15	5	1	4	.358
Mar 09	SOUTH DAKOTA STAT	35	5	8	5	0	0	1	11	4	0	1	0	3	0	1	0	2	27	14	3	12	.351
*Mar 14	at Ohio State	33	9	13	9	4	0	3	26	2	0	0	0	1	0	0	0	3	21	2	1	6	.353
*Mar 15	at Ohio State	35	12	13	8	3	0	4	28	4	0	0	0	1	0	0	0	5	18	5	2	7	.354
Mar 16	at Ohio State	31	6	11	5	2	0	2	19	0	0	0	0	0	0	2	0	2	18	2	1	6	.354
*Mar 21	MINNESOTA	26	8	10	7	2	0	1	15	4	0	0	0	1	0	0	0	2	18	10	0	7	.355
*Mar 22	MINNESOTA	30	8	12	6	1	0	0	13	2	0	2	0	2	0	0	0	2	21	4	0	8	.357
*Mar 23	MINNESOTA	30	8	8	7	1	0	0	9	3	0	3	0	0	0	0	0	2	21	9	0	7	.354
3/26/2025	at Omaha	28	5	7	5	3	0	1	13	2	0	0	0	1	0	0	0	3	21	7	0	5	.351
Totals		893	270	313	237	57	4	64	570	84	0	18	5	32	8	11	3	111	595	218	35	180	.351

BOWLIN STADIUM



Bowlin Stadium opened in 2002 and is in its 24th season in 2025. The facility features space for more than 3,000 fans and includes an underground system that heats the field. Just past the right field fence is the Alex Gordon Training Complex, a spacious indoor training facility. The clubhouse features a locker room, players' lounge, training room and coaches' offices.

BOWLIN STADIUM FACTS

- Nebraska has won 70% of its games in Bowlin Stadium.
- Bowlin Stadium has hosted four NCAA Regionals (2004, 2005, 2007 and 2013).
- NU has ranked in the top 25 nationally in attendance 16 times at Bowlin Stadium, including five seasons ranked in the top 10.

YEARLY RECORDS

Year	Record	Pct.
2002	9-5	.643
2003	14-7	.667
2004	14-6	.700
2005	9-7	.563
2006	20-1	.952
2007	18-5	.783
2008	13-9	.591
2009	13-5	.722
2010	12-8	.600
2011	10-4	.714
2012	15-1	.938
2013	18-4	.818
2014	13-3	.813
2015	11-6	.647
2016	11-5	.688
2017	13-6	.684
2018	10-7	.588
2019	7-9	.412
2020	0-0	.000
2021	11-5	.688
2022	14-2	.875
2023	8-5	.615
2024	11-10	.523
2025	7-0	1.000
TOTAL	281-120	.701

LARGEST CROWDS

1.	2,691	Northwestern	4/27/2024
2.	2,628	Wichita St./Missouri	3/2/2024
3.	2,599	Penn State	4/6/2024
4.	2,473	Minnesota	3/22/2025
5.	2,428	UNI/UNC	3/8/2025
6.	2,384	UNI/SDSU	3/9/2025
7.	2,362	Creighton	3/16/2024
8.	2,340	Missouri	3/3/2024
9.	2,319	Wichita St.	3/1/2024
10.	2,318	Iowa	4/24/2024

HUSKER AWARD TRACKER

PRESEASON

NFCA Preseason Poll - No. 19
 USA Softball Preseason Poll - No. 16
 D1 Softball Preseason Poll - No. 14
 Softball America Preseason Poll - No. 21

Jordy Bahl

- USA Softball Top 53 Watchlist
- D1 Softball No. 2 Player to Watch
- D1 Softball No. 2 Pitcher to Watch
- D1 Softball Preseason First-Team All-American
- Softball America Preseason First-Team All-American
- Softball America No. 9 Player to Watch
- Big Ten Player to Watch

Nessa McMillen

- Softball America Freshman to Watch

Ava Kuszak

- Big Ten Player to Watch

Olivia DiNardo

- Big Ten Player to Watch

REGULAR SEASON

Jordy Bahl

- NFCA Leadoff Classic All-Tournament Team
- Big Ten Co-Pitcher of the Week - 2/17
- NFCA Co-Player of the Week - 2/18
- Mary Nutter Classic All-Tournament Team
- Softball America No. 2 Two-Way Player - March Position Power Rankings
- D1 Softball No. 2 Pitcher - Biweekly Position Power Rankings
- Big Ten Pitcher of the Week - 2/24

Ava Kuszak

- Big Ten Co-Player of the Week - 2/17
- Softball America Star of the Week - 2/18
- Softball America No. 2 Shortstop - March Position Power Rankings

Abbie Squier

- Mary Nutter Classic All-Tournament Team

Kacie Hoffmann

- Mary Nutter Classic All-Tournament Team

2025 STATISTICAL COMPARISON

CATEGORY	NEB	PUR
Record	24-8	17-14
Batting Average	.351	.301
Runs/Game	8.4	5.6
Runs Allowed/Game	3.4	4.0
ERA	2.72	3.27
Fielding Percentage	.959	.959

SERIES HISTORY

CATEGORY	RECORD
Overall Record	NEB, 18-10
Current Win Streak	NEB, 4 games
Last Nebraska Win	March 25, 2023
Last Purdue Win	March 13, 2021
Revelle vs. PUR	18-10
Frezzotti vs. NEB	0-0

SCOUTING PURDUE (17-14, 2-5 BIG TEN)

Purdue is 17-14 on the season with a 2-5 mark in Big Ten competition. As a team, the Boilermakers bat .301 and have an ERA of 3.27.

- The Huskers and Boilermakers have common opponents in Baylor and UCLA. Nebraska downed the Bears but fell to the Bruins, while Purdue lost to both teams – once to Baylor and three times to UCLA.
- Sophomore **Moriah Polar** is sixth nationally (first in the Big Ten) in batting average at .515 and fifth nationally (first in the Big Ten) in hits with 51.
- Polar, a preseason Big Ten Player to Watch, has a .583 on base percentage, along with four doubles, three triples and 22 RBIs.
- **Julia Gossett** bats .293 with a team-high four home runs, along with six doubles, 24 RBIs and 16 runs scored.
- **Jordyn Ramos** has started all 31 games for the Boilermakers and has racked up three homers, five doubles, two triples and 22 RBIs on a .279 batting average.
- **Khloe Banks** owns the second-highest batting average on the team at .389 and has started every game this season. She has eight RBIs, a homer, two doubles and five triples.
- **Delaney Reefer** is 24-for-78 on the year, including 10 doubles, 15 RBIs and two home runs.
- **Kyndall Bailey** has a double, triple and home run on the season, along with 17 RBIs on a .225 average.
- **Alivia Meeks** has started 27 games this year and compiled three homers, four doubles, 14 hits and 13 RBIs.
- **Ashlynn Campbell** totals five RBIs and 18 hits and has started every game for Purdue.
- **Madi Elish** has pitched the most innings for the Boilermakers at 69.0 and has compiled an ERA of 2.33 and record of 6-4. She totals 31 strikeouts, 23 earned runs and 19 walks.
- **Julia Gossett** owns an ERA of 4.54 and record of 4-5 across 57.0 innings. She has grabbed the most strikeouts on the team with 56, and allowed 37 earned runs and 40 walks.
- **Kendall Klochack** has thrown 44.2 innings with a 2.35 ERA and 6-4 record. She has tallied 15 earned runs and 17 strikeouts.
- **Emma Bailey** (1-1, 4.42 ERA) and **Kadyn Camper** (0-0, 5.55 ERA) round out the Boilermaker pitching staff.
- **Magali Frezzotti** became the head coach of the Boilermakers in June of 2023 after serving as an assistant coach for two years.



RHONDA REVELLE

33RD SEASON AT NEBRASKA
1,151-673 RECORD

34TH CAREER SEASON
1,159-689 RECORD

**WINNINGEST COACH IN THE
HISTORY OF HUSKER ATHLETICS**

**COACH OF THE YEAR IN
3 POWER CONFERENCES**

NFCA HALL OF FAMER

COACHING NUMBERS

Conference Coach-of-the-Year Awards	4
Big Ten Coach of the Year	1
Big 12 Coach of the Year	2
Big Eight Coach of the Year	1
Conference Titles	8
Big Ten Conference Titles	2
Big 12 Conference Titles	6
NCAA Tournament Appearances	22
Women's College World Series	3
NFCA All-Americans	24
Academic All-Americans	15

NFCA HALL-OF-FAME COACHES

(ACTIVE DIVISION I COACHES ONLY)

Coach	Induction Year
Rhonda Revelle, Nebraska	2010
Patty Gasso, Oklahoma	2012
Patrick Murphy, Alabama	2013
Jo Evans, UC Santa Barbara	2015
Karen Weekly, Tennessee	2018
Jenny Allard, Pittsburgh	2022
Lonni Alameda, Florida State	2023

WINS AT CURRENT SCHOOL

(ACTIVE DIVISION I COACHES ONLY)

1. Patty Gasso, Oklahoma	1,544
2. Patrick Murphy, Alabama	1,299
3. Rhonda Revelle, Nebraska	1,151
4. Ken Eriksen, South Florida	1,145
5. Bob Coolen, Hawaii	1,117
6. Karen Weekly, Tennessee	1,112

(LIST INCLUDES GAMES THROUGH MARCH 27, 2025)

NCAA TOURNAMENTS AT CURRENT SCHOOL

(ACTIVE DIVISION I COACHES ONLY)

1. Patty Gasso, Oklahoma	29
2. Patrick Murphy, Alabama	25
3. Karen Weekly, Tennessee	23
4. Rhonda Revelle, Nebraska	22

ACADEMIC ALL-AMERICANS

(ACTIVE DIVISION I COACHES ONLY)

1. Patrick Murphy, Alabama	35
2. Karen Weekly, Tennessee	28
3. Tim Walton, Florida	23
4. Rhonda Revelle, Nebraska	15

HEAD COACH RHONDA REVELLE

COACHING STOPS

Nebraska (Head Coach)	1993-present
San Jose State (Assistant)	1989-92
Cal State-Hayward (Assistant)	1988
Nebraska Wesleyan (Head Coach)	1987
Nebraska Wesleyan (Assistant)	1986

NEBRASKA WESLEYAN (1987)

Year	Record	Conf.	Finish	Tourn.	Finish
1987	8-16	7-5	N/A	--	--

NEBRASKA (1993-PRESENT)

Year	Record	Conf.	Finish	Tourn.	Finish
1993	18-23	5-11	5th	--	--
1994	25-33	5-15	6th	--	--
1995	43-20	10-6	3rd	--	--
1996	42-23	10-8	4th	3-2	2nd
1997	29-24	10-6	4th	1-2	t-5th
1998	48-12	16-0	1st	4-0	1st
1999	35-21	10-8	4th	3-1	2nd
2000	52-21	15-2	2nd	4-1	1st
2001	51-15	16-2	1st	2-2	t-3rd
2002	50-14	11-5	3rd	3-1	2nd
2003	39-17	10-8	6th	2-2	t-3rd
2004	45-17	14-3	1st	4-0	1st
2005	36-23	9-9	7th	2-2	t-5th
2006	44-12	13-4	2nd	2-2	t-3rd
2007	37-20	10-8	5th	0-1	t-7th
2008	25-28	4-14	t-9th	3-1	2nd
2009	35-19	9-9	5th	0-1	t-7th
2010	30-29	7-11	t-6th	0-1	t-7th
2011	41-14	9-9	6th	--	--
2012	33-22	14-9	3rd	--	--
2013	45-16	16-6	2nd	1-1	t-3rd
2014	44-18	18-5	t-1st	0-1	t-5th
2015	35-23	17-6	3rd	2-1	2nd
2016	35-21	13-9	5th	1-1	t-5th
2017	24-29	13-11	5th	0-1	t-9th
2018	31-23	9-13	9th	0-1	t-9th
2019	21-31	9-14	9th	0-1	t-9th
2020	9-14	0-0	--	--	--
2021	22-22	22-22	8th	--	--
2022	41-16	17-5	2nd	3-0	1st
2023	36-22	13-10	4th	1-1	t-3rd
2024	30-23	12-9	4th	1-1	t-3rd
2025	24-8	4-1	--	--	--

NCAA TOURNAMENT (NEBRASKA)

Year	Round	Record	Finish	Rank
1995	Regional	1-2	t-17th	18th
1996	Regional	1-2	t-17th	18th
1997	Regional	2-2	t-9th	25th
1998	WCWS	4-2	t-5th	5th
1999	Regional	4-2	t-9th	20th
2000	Regional	3-2	t-17th	14th
2001	Regional	2-2	t-17th	14th
2002	WCWS	5-2	t-5th	6th
2003	Regional	3-2	t-17th	13th
2004	Regional	3-2	t-9th	14th
2005	Regional	1-2	t-33rd	25th
2006	Regional	2-2	t-17th	15th
2007	Regional	0-2	t-49th	--
2009	Regional	1-2	t-33rd	--
2010	Regional	1-2	t-33rd	--
2011	Regional	2-2	t-17th	21st
2013	WCWS	5-3	t-7th	8th
2014	Super Reg.	4-3	t-9th	16th
2015	Regional	1-2	t-33rd	--
2016	Regional	2-2	t-17th	--
2022	Regional	1-2	t-33rd	--
2023	Regional	2-2	t-17th	--



#00 MCKINLEY MALECHA • C/INF

	AVG.	G-GS	R	H	2B	HR	RBI	BB	SLG%	OB%
2025	.250	6-0	2	1	0	0	0	0	.250	.250
Career	.167	44-7	15	3	0	0	4	1	.167	.211

- Serving as one of three team captains in 2025
- Has played in six games in 2025
- Has tied her career high in both hits (1) and runs (1) this season
- Academic All-Big Ten selection (2023, 2024)
- 2024 Big Ten Sportsmanship Award Winner



#1 OLIVIA DINARDO • C/UTL

	AVG.	G-GS	R	H	2B	HR	RBI	BB	SLG%	OB%
2025	.395	28-26	11	30	5	5	26	7	.658	.471
Career	.351	134-130	63	133	20	25	100	48	.602	.428

- 2025 Big Ten Player to Watch
- Is one of five Huskers to have started over 100 games
- Hit a grand slam and had five RBIs against Omaha
- NFCA All-West Region (Second-Team, 2023; Third-Team, 2024)
- Second-Team All-Pac-12 in 2023



#2 LAUREN CAMENZIND • INF/C

	AVG.	G-GS	R	H	2B	HR	RBI	BB	SLG%	OB%
2025	.315	32-31	20	29	3	1	17	10	.402	.388
Career	.262	118-110	49	76	12	3	45	22	.341	.323

- Has started 29 games at second base and two at shortstop in 2025
- Bats .389 in Big Ten competition
- Notched 47 hits and two home runs in two years with the Razorbacks
- NFCA Third-Team All-South Region (2023)
- Two-time state champion at Omaha Skutt Catholic



#3 BELLA BACON • INF

	AVG.	G-GS	R	H	2B	HR	RBI	BB	SLG%	OB%
2025	.304	28-20	14	17	2	2	8	2	.446	.361
Career	.284	104-74	41	66	7	2	32	15	.341	.362

- Has started 20 games at first base in 2025
- Has set or tied career highs in every offensive category in 2025
- Hits .304 in 2025
- Academic All-Big Ten and Big Ten Distinguished Scholar (2024)
- 2-time Nebraska Scholar-Athlete Honor Roll



#4 MALIA THOMS • OF

	AVG.	G-GS	R	H	2B	HR	RBI	BB	SLG%	OB%
2025	.333	8-0	1	3	0	1	4	0	.667	.333
Career	.273	19-3	1	7	2	1	6	2	.500	.346

- Knocked her first career home run, a grand slam, in 2025
- Has played in eight games in 2025
- Has set new career highs in runs, RBIs and homers in 2025
- Tom Osborne Citizenship Team (2024)
- Started three games in 2024 as the designated player



#5 MACIE VICKERS • C

	AVG.	G-GS	R	H	2B	HR	RBI	BB	SLG%	OB%
2025	.000	3-0	0	0	0	0	0	0	.000	.000
Career	.000	3-0	0	0	0	0	0	0	.000	.000

- Has played in three games in 2025
- 3-year captain at Escalon High School
- Trans Valley League Offensive Player of the Year as a junior
- 3-time All-League Selection
- Batted .500 as a junior with seven doubles, one triple and three HRs



#7 AVA KUSZAK • INF

	AVG.	G-GS	R	H	2B	HR	RBI	BB	SLG%	OB%
2025	.413	30-30	37	39	7	12	34	13	.863	.500
Career	.322	106-95	74	93	23	22	67	33	.637	.399

- Big Ten Co-Player of the Week (Feb. 17, 2025)
- Tied school record for home runs in a game with three against Montana
- Is one of three Huskers with a batting average above .400 in 2025
- Leads the team in RBIs and homers in 2025
- Second-Team All-Big Ten (2024)



#8 ABBIE SQUIER • OF

	AVG.	G-GS	R	H	2B	HR	RBI	BB	SLG%	OB%
2025	.348	32-30	25	23	4	7	18	13	.727	.463
Career	.306	174-154	94	130	23	20	73	38	.506	.391

- Serving as one of three team captains in 2025
- Has played in all 32 games for NU and started 30 in 2025
- Is six runs and 27 RBIs away from 100 runs, 100 hits and 100 RBIs
- First-Team All-Big Ten & Big Ten All-Defensive Team (2022)
- NFCA Second-Team All-Midwest Region (2022)



#9 HANNAH CAMENZIND • UTL

	AVG.	G-GS	R	H	2B	HR	RBI	BB	SLG%	OB%
2025	.381	29-26	22	32	12	3	25	5	.631	.441
Career	.343	99-57	35	60	16	4	42	8	.526	.396

- Has started 26 games and played in 29 in 2025
- Knocked home runs in back-to-back games against Wichita State and Missouri
- Owns a .343 batting average over 99 games played in her career
- Has posted 34 runs and 60 hits in her career
- Played two seasons at Arkansas before transferring to Nebraska in 2025



#9 HANNAH CAMENZIND • LHP

	W-L	ERA	APP	GS	CG	SHO	SV	IP	SO	AVG.
2025	4-2	3.53	15	9	1	0	0	43.2	36	.265
Career	18-5	3.22	63	26	5	2	1	163.0	85	.235

- Has an ERA of 3.53 and a record of 4-2 in 2025
- Has made nine starts in the circle, the second-most on the team, in 2025
- Played two seasons at Arkansas before transferring to Nebraska in 2025
- Compiled a 14-3 record over 48 games and 17 starts at Arkansas
- Was 1 of 3 freshman pitchers to make an All-SEC team in 2023



#11 TALIA TOKHEIM • OF

	AVG.	G-GS	R	H	2B	HR	RBI	BB	SLG%	OB%
2025	.300	9-1	2	3	0	2	3	0	.900	.273
Career	.319	33-19	17	22	6	9	22	7	.797	.372

- Made her return in 2025 from a season-ending injury in 2024
- Has played in nine games in 2025
- Career slugging percentage ranks second on the team
- Academic All-Big Ten (2024)
- 4-time Nebraska Scholar-Athlete Honor Roll



#14 KACIE HOFFMANN • OF

	AVG.	G-GS	R	H	2B	HR	RBI	BB	SLG%	OB%
2025	.366	27-24	11	26	4	5	17	6	.662	.438
Career	.270	133-120	50	89	20	20	64	19	.526	.339

- Has started 24 games in right field in 2025
- Was named to the Mary Nutter Collegiate Classic All-Tournament Team
- Has racked up 50 runs and 89 hits in her career
- Played three years at Arkansas before transferring to Nebraska in 2025
- SEC All-Tournament Team (2022)



#15 KENNADI WILLIAMS • UTL

	AVG.	G-GS	R	H	2B	HR	RBI	BB	SLG%	OB%
2025	.000	23-1	10	0	0	0	0	1	.000	.333
Career	.000	23-1	10	0	0	0	0	1	.000	.333

- Has pinch run in 23 games in 2025; made her first start against Minnesota
- 2-time All-State pick who led Lincoln Southwest to four state tournaments
- First-Team All-Nebraska and Super-State selection as a senior
- Lincoln Journal Star 2022 High School Female Athlete of the Year
- Also plays basketball for Nebraska



#18 NESSA MCMILLEN • OF/UTL

	AVG.	G-GS	R	H	2B	HR	RBI	BB	SLG%	OB%
2025	.000	23-9	5	0	0	0	0	0	.000	.250
Career	.000	23-9	5	0	0	0	0	0	.000	.250

- Has started nine games in the outfield for Nebraska in 2025
- 4-time All-State selection
- Hit above .400 in each of her four seasons in high school
- Tied the Nebraska all-class record with three home runs in a game
- 4-time All-Conference member



#22 CAITLIN OLENSKY • LHP

	W-L	ERA	APP	GS	CG	SHO	SV	IP	SO	AVG.
2025	0-0	4.85	7	1	0	0/0	0	8.2	8	.297
Career	3-2	3.54	23	7	1	0	0	55.1	35	.230

- Making her return in 2025 from a season-ending injury in 2024
- Had a team-best 3.30 ERA in 2024 and was 3-2 in 2024
- Became the first Husker freshman pitcher to start a Big Ten opener
- 2024-25 Student-Athlete Advisory Committee Representative
- 2-time Nebraska Scholar-Athlete Honor Roll



#24 AVA BREDWELL • C/UTL

	AVG.	G-GS	R	H	2B	HR	RBI	BB	SLG%	OB%
2025	.300	30-23	18	21	1	4	16	6	.486	.342
Career	.304	185-165	110	140	27	17	79	53	.504	.391

- Has started 23 games at catcher in 2025
- Has racked up 21 hits and 16 RBIs in 2025
- NFCA Third-Team All-Midwest Region (2024)
- Big Ten Freshman of the Year (2022)
- Has played in and started more games than anyone on the 2025 roster



#36 ALINA FELIX • OF

	AVG.	G-GS	R	H	2B	HR	RBI	BB	SLG%	OB%
2025	.429	9-0	3	3	0	2	5	0	1.286	.500
Career	.299	56-27	19	23	2	3	15	10	.442	.393

- Has played in nine games in 2025
- Hit two home runs in 2025
- Has the highest slugging percentage on the team at 1.286
- Academic All-Big Ten (2024)
- Big Ten Distinguished Scholar (2024)



#27 NATALIA HILL • INF/OF

	AVG.	G-GS	R	H	2B	HR	RBI	BB	SLG%	OB%
2025	.000	17-13	3	0	0	0	0	2	.000	.500
Career	.000	17-13	3	0	0	0	0	2	.000	.500

- Has started 13 games, 12 of them in center field, in 2025
- First-team All-California outfield selection as a senior
- First-team All-CIF selection as a junior and senior
- 3-time first-team All-League member
- Long Beach Press-Telegram Player of the Year as a senior



#29 SAMANTHA BLAND • INF/OF

	AVG.	G-GS	R	H	2B	HR	RBI	BB	SLG%	OB%
2025	.245	32-32	25	23	5	4	19	5	.426	.277
Career	.273	84-81	56	71	19	10	55	20	.458	.328

- Has started every game at third base for NU
- Combined to either score or bat in 44 runs in 2025
- Has notched four homers and 23 hits in 2025
- Big Ten All-Freshman Team (2024)
- Posted 48 hits, 36 RBIs and six home runs in her freshman year



#31 KYLEE MAGEE • RHP

	W-L	ERA	APP	GS	CG	SHO	SV	IP	SO	AVG.
2025	3-2	4.90	11	5	0	0	0	20.0	19	.268
Career	8-9	3.77	38	29	4	2/4	2	109.2	98	.221

- Has appeared in 11 games for the Huskers in 2025
- Played 2 seasons for Arizona State before transferring to Nebraska in 2025
- Pac-12 All-Freshman Team (2023)
- Struck out 79 batters in 89.2 innings at Arizona State
- Missed most of 2024 season due to injury



#33 EMMERSON COPE • RHP

	W-L	ERA	APP	GS	CG	SHO	SV	IP	SO	AVG.
2025	4-1	3.55	13	2	0	0/0	0	25.2	8	.282
Career	6-1	4.29	34	7	0	0	2	65.1	14	.285

- Has tied her career bests in runs (0) and earned runs (0) in 2025
- Allowed one earned run or less in 13-of-21 of her freshman appearances
- Ranked second on the team and seventh in the Big Ten in saves in 2024
- Has a 4-0 record in 2025 and has pitched 15.0 innings
- Went 2-0 with one save in 39.2 innings in 2024



#33 EMMERSON COPE • UTL

	AVG.	G-GS	R	H	2B	HR	RBI	BB	SLG%	OB%
2025	.386	22-15	10	17	2	5	13	5	.773	.440
Career	.336	60-38	20	38	5	11	32	12	.673	.425

- Has a batting average of .386 in 2025
- Is one of four Huskers with a multi-homer game this season
- Notched 10 runs and 21 hits in 2024
- 2-time Nebraska Scholar-Athlete Honor Roll
- Tom Osborne Citizenship Team (2024)



#55 DAKOTA CARTER • OF

	AVG.	G-GS	R	H	2B	HR	RBI	BB	SLG%	OB%
2025	.000	7-0	3	0	0	0	0	0	.000	.000
Career	.091	46-4	16	1	0	0	0	3	.091	.286

- Making her return in 2025 after redshirting in 2024 because of an injury
- Has pinch run in seven games in 2025
- Academic All-Big Ten (2024)
- 3-time Nebraska Scholar-Athlete Honor Roll
- 2-time Tom Osborne Citizenship Team



#66 KATELYN CANADA • INF

	AVG.	G-GS	R	H	2B	HR	RBI	BB	SLG%	OB%
2025	.222	12-2	6	2	1	0	1	1	.333	.300
Career	.320	122-110	54	99	18	3	56	25	.414	.379

- Has played in 12 games and started two in 2025
- First-Team All-Big Ten (2023)
- Big Ten All-Defensive and All-Freshman Teams (2023)
- Played in 52 games with 50 starts at second base in 2024
- Academic All-Big Ten (2024)



#72 CARLIE MUHLBACH • C/UTL

	AVG.	G-GS	R	H	2B	HR	RBI	BB	SLG%	OB%
2025	.000	0-0	0	0	0	0	0	0	.000	.000
Career	.000	0-0	0	0	0	0	0	0	.000	.000

- Redshirting the 2025 season
- Broke the Gretna school record for single-season home runs (21) and RBIs (61), both of which were previously held by former Husker Billie Andrews
- Omaha World-Herald All-Nebraska and All-State selection in 2024
- Only allowed one stolen base in 87 innings



#77 HAIDYN WARNER • C

	AVG.	G-GS	R	H	2B	HR	RBI	BB	SLG%	OB%
2025	.000	2-0	0	0	0	0	0	0	.000	.000
Career	.083	16-3	0	1	0	0	0	0	.083	.083

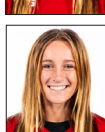
- Has played in two games in 2025
- Big Ten Distinguished Scholar (2024)
- Academic All-Big Ten (2024)
- 4-time Nebraska Scholar-Athlete Honor Roll
- 2-time Tom Osborne Citizenship Team



#98 JORDY BAHL • UTL

	AVG.	G-GS	R	H	2B	HR	RBI	BB	SLG%	OB%
2025	.454	31-30	41	44	11	11	31	8	.948	.522
Career	.423	118-78	55	58	13	11	40	11	.788	.494

- Has the highest batting average on the team at .454
- Fourth in the country with 24 extra-base hits
- Ranks seventh nationally with 92 total bases
- Had a season-ending injury in 2024 after transferring to NU from Oklahoma
- 2-time NFCA First-Team All-American (2022, 2023)



#98 JORDY BAHL • RHP

	W-L	ERA	APP	GS	CG	SHO	SV	IP	SO	AVG.
2025	13-3	1.53	19	15	2	3/2	1	100.1	130	.149
Career	57-6	1.18	91	62	38	18/24	6	391.1	530	.137

- Has the lowest ERA on the team at 1.53
- Two-time Big Ten Pitcher of the Week
- Second nationally in active career win percentage (.904)
- Had a season-ending injury in 2024 after transferring to NU from Oklahoma
- 2023 Big 12 Pitcher of the Year (at Oklahoma)

INDIVIDUAL SEASON & CAREER HIGHS

#00 MCKINLEY MALECHA • C/INF • SR.

SEASON HIGH	CATEGORY	CAREER HIGH
1 vs. Texas A&M-Corpus Christi	Hits	1 three times
1 twice	Runs	1 fifteen times
none	RBIs	2 vs. Maine (2024)
none	2B	none
none	HR	none

#1 OLIVIA DINARDO • C/UTL • JR.

SEASON HIGH	CATEGORY	CAREER HIGH
3 vs. Baylor	Hits	4 vs. Texas A&M-Commerce (2023)
2 at New Mexico State	Runs	3 vs. NC State (2023)
5 at Omaha	RBIs	5 twice
2 at Baylor	2B	2 three times
1 four times	HR	1 twenty-four times

#2 LAUREN CAMENZIND • INF/C • JR.

SEASON HIGH	CATEGORY	CAREER HIGH
2 nine times	Hits	3 at Missouri (2023)
2 four times	Runs	2 seven times
3 vs. Bethune-Cookman	RBIs	3 twice
1 three times	2B	1 twelve times
1 vs. Northern Colorado	HR	1 three times

#3 BELLA BACON • INF • JR.

SEASON HIGH	CATEGORY	CAREER HIGH
2 four times	Hits	2 twelve times
2 twice	Runs	2 seven times
2 vs. Montana	RBIs	2 vs. Montana (2025)
1 twice	2B	1 seven times
1 twice	HR	1 twice

#4 MALIA THOMS • OF • SO.

SEASON HIGH	CATEGORY	CAREER HIGH
1 three times	Hits	1 seven times
1 vs. Texas A&M-Corpus Christi	Runs	1 vs. Texas A&M-Corpus Christi (2025)
4 vs. Texas A&M-Corpus Christi	RBIs	4 vs. Texas A&M-Corpus Christi (2025)
none	2B	1 twice
1 vs. Texas A&M-Corpus Christi	HR	1 vs. Texas A&M-Corpus Christi (2025)

#5 MACIE VICKERS • C • FR.

SEASON HIGH	CATEGORY	CAREER HIGH
none	Hits	none
none	Runs	none
none	RBIs	none
none	2B	none
none	HR	none

#7 AVA KUSZAK • INF • JR.

SEASON HIGH	CATEGORY	CAREER HIGH
4 vs. Montana	Hits	4 vs. Montana (2025)
4 vs. Montana	Runs	4 vs. Montana (2025)
6 vs. Montana	RBIs	6 vs. Montana (2025)
2 vs. Northern Colorado	2B	2 vs. Northern Colorado (2025)
3 vs. Montana	HR	3 vs. Montana (2025)

#8 ABBIE SQUIER • OF • SR.

SEASON HIGH	CATEGORY	CAREER HIGH
3 three times	Hits	3 eight times
2 six times	Runs	3 three times
4 vs. Utah	RBIs	5 at Iowa (2023)
1 four times	2B	2 vs. Indiana (2022)
2 vs. Utah	HR	2 four times

#9 HANNAH CAMENZIND • UTL • JR.

SEASON HIGH	CATEGORY	CAREER HIGH
3 at Ohio State	Hits	3 twice
2 four times	Runs	3 vs. UNI (2024)
4 at Ohio State	RBIs	4 at Ohio State (2025)
2 twice	2B	2 twice
1 three times	HR	1 four times

#11 TALIA TOKHEIM • OF • JR.

SEASON HIGH	CATEGORY	CAREER HIGH
1 three times	Hits	3 at Missouri St. (2023)
1 twice	Runs	3 at Wisconsin (2024)
1 three times	RBIs	4 twice
none	2B	1 six times
1 twice	HR	2 twice

#14 KACIE HOFFMANN • OF • JR.

SEASON HIGH	CATEGORY	CAREER HIGH
3 at Ohio State	Hits	3 twice
2 vs. San Jose State	Runs	2 seven times
3 vs. Howard	RBIs	4 at Florida St. (2023)
1 four times	2B	1 nineteen times
1 five times	HR	2 at Mississippi St. (2024)

#15 KENNADI WILLIAMS • UTL • FR.

SEASON HIGH	CATEGORY	CAREER HIGH
none	Hits	none
1 ten times	Runs	1 ten times
none	RBIs	none
none	2B	none
none	HR	none

#18 NESSA MCMILLEN • OF/UTL • FR.

SEASON HIGH	CATEGORY	CAREER HIGH
none	Hits	none
1 five times	Runs	1 five times
none	RBIs	none
none	2B	none
none	HR	none

#24 AVA BREDWELL • C/UTL • SR.

SEASON HIGH	CATEGORY	CAREER HIGH
3 vs. Minnesota	Hits	3 five times
2 three times	Runs	3 twice
4 vs. Northern Colorado	RBIs	5 vs. Iowa (2022)
1 vs. Minnesota	2B	2 three times
1 four times	HR	1 seventeen times

#26 ALINA FELIX • OF • JR.

SEASON HIGH	CATEGORY	CAREER HIGH
1 three times	Hits	2 three times
2 vs. Texas A&M-Corpus Christi	Runs	3 twice
3 vs. Texas A&M-Corpus Christi	RBIs	3 vs. Texas A&M-Corpus Christi (2025)
none	2B	1 twice
1 vs. Texas A&M-Corpus Christi	HR	1 twice

#27 NATALIA HILL • INF/OF • FR.

SEASON HIGH	CATEGORY	CAREER HIGH
none	Hits	none
1 three times	Runs	1 three times
none	RBIs	none
none	2B	none
none	HR	none

INDIVIDUAL SEASON & CAREER HIGHS

#29 SAMANTHA BLAND • INF/OF • SO.

SEASON HIGH	CATEGORY	CAREER HIGH
3 vs. Tennessee	Hits	4 vs. North Dakota (2024)
2 six times	Runs	3 vs. Illinois (2024)
2 seven times	RBIs	4 vs. Utah (2024)
1 five times	2B	2 three times
1 four times	HR	1 ten times

#33 EMMERSON COPE • UTL • SO.

SEASON HIGH	CATEGORY	CAREER HIGH
3 vs. South Dakota State	Hits	3 twice
2 twice	Runs	2 three times
4 twice	RBIs	4 twice
1 twice	2B	1 five times
2 twice	HR	2 twice

#55 DAKOTA CARTER • OF • SO.

SEASON HIGH	CATEGORY	CAREER HIGH
none	Hits	1 at Omaha (2023)
1 three times	Runs	1 sixteen times
none	RBIs	none
none	2B	none
none	HR	none

#66 KATELYN CANEDA • INF • JR.

SEASON HIGH	CATEGORY	CAREER HIGH
1 twice	Hits	3 three times
1 seven times	Runs	2 twice
1 vs. Texas A&M-Corpus Christi	RBIs	4 at Indiana (2023)
1 vs. Texas A&M-Corpus Christi	2B	1 eighteen times
none	HR	1 three times

#72 CARLIE MUHLBACH • C/UTL • FR.

SEASON HIGH	CATEGORY	CAREER HIGH
none	Hits	none
none	Runs	none
none	RBIs	none
none	2B	none
none	HR	none

#77 HAIDYN WARNER • C • JR.

SEASON HIGH	CATEGORY	CAREER HIGH
none	Hits	1 at Missouri St. (2023)
none	Runs	none
none	RBIs	none
none	2B	none
none	HR	none

#98 JORDY BAHL • UTL • JR.

SEASON HIGH	CATEGORY	CAREER HIGH
4 vs. Montana	Hits	4 vs. Montana (2025)
3 five times	Runs	3 five times
3 five times	RBIs	3 five times
2 vs. Montana	2B	2 vs. Montana (2025)
2 at New Mexico State	HR	2 at New Mexico State (2025)

#9 HANNAH CAMENZIND • LHP • JR.

SEASON HIGH/LOW	CATEGORY	CAREER HIGH/LOW
5.0 twice	Innings	7.0 vs. South Alabama (2024)#
7 vs. Minnesota	Strikeouts	7 vs. Minnesota (2025)
1 vs. UCLA	Hits (low)*	1 three times
0 twice	Walks (low)*	0 seven times#
1 three times	Runs (low)*	0 six times#
0 vs. Bethune-Cookman	Earned Runs (low)*	0 10 times#
	*starts only	#at Arkansas

#22 CAITLIN OLENSKY • LHP • SO.

2.0 twice	Innings	7.0 vs. Northern Colorado (2024)
2 three times	Strikeouts	4 twice
2 vs. Montana	Hits (low)*	0 twice
1 vs. Montana	Walks (low)*	0 six times
3 vs. Montana	Runs (low)*	0 seven times
3 vs. Montana	Earned Runs (low)*	0 seven times
	*starts only	

#31 KYLEE MAGEE • RHP • SO.

3.0 twice	Innings	7.0 against Northwestern (2024)\$
4 vs. Southern Miss	Strikeouts	11 against Northwestern (2024)\$
3 four times	Hits (low)*	0 twice\$
0 vs. Montana	Walks (low)*	0 four times\$
2 vs. Southern Miss	Runs (low)*	0 seven times\$
0 twice	Earned Runs (low)*	0 10 times\$
	*starts only	\$at Arizona State

#33 EMMERSON COPE • RHP • SO.

3.1 twice	Innings	4.2 at Michigan (2024)
2 twice	Strikeouts	2 four times
3 vs. Minnesota	Hits (low)*	3 twice
1 twice	Walks (low)*	0 three times
0 vs. Howard	Runs (low)*	0 twice
0 vs. Howard	Earned Runs (low)*	0 three times
	*starts only	

#98 JORDY BAHL • RHP • JR.

9.0 vs. South Dakota St.	Innings	9.0 vs. South Dakota St. (2025)
13 at Omaha	Strikeouts	16 vs. Tennessee (2022)^
0 vs. Northern Colorado	Hits (low)*	0 four times
0 six times	Walks (low)*	0 15 times
0 six times	Runs (low)*	0 21 times
0 nine times	Earned Runs (low)*	0 26 times
	*starts only	^ at Oklahoma

2025 SEASON STATISTICS

Record: 24-8 Home: 7-0 Away: 4-2 Neutral: 13-6 Big Ten: 4-1

Player	avg	gp-gs	ab	r	h	2b	3b	hr	rbi	tb	slg%	bb	hp	so	gdp	ob%	sf	sh	sb-att	po	a	e	fld%
Jordy Bahl	.454	31-30	97	41	44	11	2	11	31	92	.948	8	7	9	0	.522	1	2	4-5	80	22	2	.981
Alina Felix	.429	9-0	7	3	3	0	0	2	5	9	1.286	0	1	0	0	.500	0	0	0-0	1	0	0	1.000
Ava Kuszak	.411	30-30	95	37	39	7	0	12	34	82	.863	13	6	16	0	.500	2	0	2-3	31	46	8	.906
Olivia DiNardo	.395	28-26	76	11	30	5	0	5	26	50	.658	7	4	10	1	.471	0	0	0-0	25	2	2	.931
Emmerson Cope	.386	22-15	44	10	17	2	0	5	13	34	.773	5	0	8	1	.440	1	0	0-0	0	6	0	1.000
Hannah Camenzind	.381	29-26	84	22	32	12	0	3	25	53	.631	5	4	7	0	.441	0	1	2-2	14	9	0	1.000
Kacie Hoffmann	.366	27-24	71	11	26	4	1	5	17	47	.662	6	3	6	0	.438	0	0	0-0	15	0	0	1.000
Abbie Squier	.348	32-30	66	25	23	4	0	7	18	48	.727	13	2	12	0	.463	1	0	3-3	22	1	2	.920
Malia Thoms	.333	8-0	9	1	3	0	0	1	4	6	.667	0	0	1	0	.333	0	0	0-0	0	0	0	.000
Lauren Camenzind	.315	32-31	92	20	29	3	1	1	17	37	.402	10	1	9	1	.388	0	2	1-2	41	46	5	.946
Bella Bacon	.304	28-20	56	14	17	2	0	2	8	25	.446	2	3	4	0	.361	0	0	2-2	138	3	6	.959
Ava Bredwell	.300	30-23	70	18	21	1	0	4	16	34	.486	6	0	8	0	.342	3	0	1-1	175	7	3	.984
Talia Tokheim	.300	9-1	10	2	3	0	0	2	3	9	.900	0	0	3	0	.273	1	0	0-0	1	0	0	1.000
Mckinley Malecha	.250	6-0	4	2	1	0	0	0	0	1	.250	0	0	3	0	.250	0	0	1-1	0	0	0	.000
Samantha Bland	.245	32-32	94	25	23	5	0	4	19	40	.426	5	0	12	0	.277	2	3	0-1	18	63	7	.920
Katelyn Caneda	.222	12-2	9	7	2	1	0	0	1	3	.333	1	0	1	0	.300	0	0	0-0	2	3	0	1.000
Nessa McMillen	.000	23-9	3	5	0	0	0	0	0	0	.000	0	1	0	0	.250	0	0	2-2	10	0	0	1.000
Natalia Hill	.000	17-13	2	3	0	0	0	0	0	0	.000	2	0	0	0	.500	0	0	0-1	16	1	0	1.000
Kennadi Williams	.000	23-1	2	10	0	0	0	0	0	0	.000	1	0	1	0	.333	0	0	0-0	1	0	0	1.000
Macie Vickers	.000	3-0	2	0	0	0	0	0	0	0	.000	0	0	1	0	.000	0	0	0-0	3	0	0	1.000
Haidyn Warner	.000	2-0	0	0	0	0	0	0	0	0	.000	0	0	0	0	.000	0	0	0-0	2	0	0	1.000
Kylee Magee	.000	4-4	0	0	0	0	0	0	0	0	.000	0	0	0	0	.000	0	0	0-0	0	8	0	1.000
Caitlin Olensky	.000	1-0	0	0	0	0	0	0	0	0	.000	0	0	0	0	.000	0	0	0-0	0	1	0	1.000
Dakota Carter	.000	7-0	0	3	0	0	0	0	0	0	.000	0	0	0	0	.000	0	0	0-0	0	0	0	.000
Totals	.351	32	893	270	313	57	4	64	237	570	.638	84	32	111	3	.421	11	8	18-23	595	218	35	.959
Opponents	.215	32	763	109	164	43	2	22	100	277	.363	71	17	201	4	.295	4	11	13-18	579	226	55	.936

LOB - Team (180), Opp (164). DPs turned - Team (10), Opp (8). CI - Team (1), Bredwell 1.

(All games Sorted by Earned run avg)

Player	era	w-l	app	gs	cg	sho	sv	ip	h	r	er	bb	so	2b	3b	hr	b/avg	wp	hp	bks	sfa	sha
Jordy Bahl	1.53	13-3	19	15	12	3/2	1	100.1	53	38	22	31	130	11	1	10	.149	8	5	0	0	5
Hannah Camenzind	3.53	4-2	15	9	1	0/0	0	43.2	49	30	22	16	36	15	1	3	.265	1	3	0	0	3
Emmerson Cope	3.55	4-1	13	2	0	0/0	0	25.2	29	13	13	10	8	7	0	3	.282	0	2	0	2	1
Caitlin Olensky	4.85	0-0	7	1	0	0/0	0	8.2	11	6	6	1	8	3	0	4	.297	0	3	0	0	0
Kylee Magee	4.90	3-2	11	5	0	0/2	0	20.0	22	22	14	13	19	7	0	2	.268	4	4	0	2	2
Totals	2.72	24-8	32	32	13	5/2	1	198.1	164	109	77	71	201	43	2	22	.215	13	17	0	4	11
Opponents	7.80	8-24	32	32	6	3/0	0	193.0	313	270	215	84	111	57	4	64	.351	35	32	0	11	8

PB - Team (2), Bredwell 2, Opp (10). SBA/ATT - Bredwell (10-14), Bahl (4-8), H. Camenzind (5-5), DiNardo (3-4), Cope (3-3), Magee (1-2).

2025 BIG TEN STATISTICS

2025 Nebraska Softball
Conference statistics for Nebraska (as of Mar 23, 2025)
(Big Ten games only Sorted by Batting avg)

Record: 4-1 Home: 3-0 Away: 1-1 Big Ten: 4-1

Player	avg	gp-gs	ab	r	h	2b	3b	hr	rbi	tb	slg%	bb	hp	so	gdp	ob%	sf	sh	sb-att	po	a	e	fld%
Hannah Camenzind	.588	5-5	17	4	10	5	0	1	7	18	1.059	3	0	0	0	.650	0	0	0-0	3	1	0	1.000
Ava Bredwell	.538	5-5	13	3	7	1	0	1	4	11	.846	2	0	0	0	.600	0	0	1-1	40	0	1	.976
Kacie Hoffmann	.429	4-4	14	3	6	0	0	2	5	12	.857	1	0	1	0	.467	0	0	0-0	1	0	0	1.000
Emmerson Cope	.400	3-1	5	2	2	0	0	2	4	8	1.600	0	0	1	0	.400	0	0	0-0	0	1	0	1.000
Lauren Camenzind	.389	5-5	18	5	7	3	0	0	4	10	.556	1	0	3	0	.421	0	0	1-1	10	2	0	1.000
Bella Bacon	.375	5-3	8	4	3	1	0	0	2	4	.500	1	1	0	0	.500	0	0	1-1	19	0	0	1.000
Jordy Bahl	.353	5-5	17	8	6	0	0	2	4	12	.706	2	2	0	0	.476	0	0	0-0	13	2	1	.938
Samantha Bland	.294	5-5	17	5	5	1	0	0	2	6	.353	1	0	1	0	.333	0	0	0-0	2	18	0	1.000
Olivia DiNardo	.286	5-4	14	2	4	0	0	0	2	4	.286	1	0	2	0	.333	0	0	0-0	0	0	0	.000
Ava Kuszak	.278	5-5	18	4	5	0	0	0	3	5	.278	2	1	2	0	.381	0	0	1-1	3	5	1	.889
Abbie Squier	.077	5-4	13	2	1	0	0	0	0	1	.077	1	1	4	0	.200	0	0	1-1	6	0	0	1.000
Kennadi Williams	.000	4-1	0	2	0	0	0	0	0	0	.000	0	0	0	0	.000	0	0	0-0	0	0	0	.000
Katelyn Caneda	.000	2-0	0	1	0	0	0	0	0	0	.000	0	0	0	0	.000	0	0	0-0	0	0	0	.000
Nessa McMillen	.000	3-0	0	0	0	0	0	0	0	0	.000	0	0	0	0	.000	0	0	0-0	1	0	0	1.000
Natalia Hill	.000	4-3	0	0	0	0	0	0	0	0	.000	0	0	0	0	.000	0	0	0-0	1	0	0	1.000
Totals	.364	5	154	45	56	11	0	8	37	91	.591	15	5	14	0	.437	0	0	5-5	99	30	3	.977
Opponents	.258	5	132	23	34	14	0	5	23	63	.477	20	0	38	0	.353	1	2	1-1	94	42	13	.913

LOB - Team (35), Opp (34). DPs turned - Team (0), Opp (1). CI - Team (1), Bredwell 1.

(Big Ten games only Sorted by Earned run avg)

Player	era	w-l	app	gs	cg	sho	sv	ip	h	r	er	bb	so	2b	3b	hr	b/avg	wp	hp	bk	sfa	sha
Kylee Magee	0.00	1-0	1	0	0	0/0	0	3.0	0	0	0	2	3	0	0	0	.000	0	0	0	0	0
Caitlin Olensky	3.50	0-0	1	0	0	0/0	0	2.0	3	1	1	0	2	1	0	1	.333	0	0	0	0	0
Jordy Bahl	3.57	2-0	4	2	2	1/0	1	15.2	12	11	8	12	22	4	0	2	.203	1	0	0	0	1
Emmerson Cope	3.94	0-1	2	1	0	0/0	0	5.1	5	3	3	5	1	2	0	0	.263	0	0	0	1	1
Hannah Camenzind	8.00	1-0	2	2	0	0/0	0	7.0	14	8	8	1	10	7	0	2	.389	0	0	0	0	0
Totals	4.24	4-1	5	5	2	1/0	1	33.0	34	23	20	20	38	14	0	5	.258	1	0	0	1	2
Opponents	7.15	1-4	5	5	0	0/0	0	31.1	56	45	32	15	14	11	0	8	.364	2	5	0	0	0

PB - Team (1), Bredwell 1, Opp (2). SBA/ATT - Bredwell (1-1), Cope (1-1).