

NEBRASKA

SOFTBALL



NEBRASKA AT WASHINGTON

FRIDAY	SATURDAY	SUNDAY
at Washington 8 p.m. (Central)	at Washington 5 p.m. (Central)	at Washington 3 p.m. (Central)
TV: FS1	TV: Big Ten Network	Video: B1G+ (\$)

Live audio of every Nebraska game available on Huskers.com & the Huskers app

The No. 18 Nebraska softball team will travel to Seattle, Wash., to take on the Washington Huskies in a three-game Big Ten series this weekend. Friday's game is set for 8 p.m. (CT), Saturday's contest will start at 5 p.m. (CT) and Sunday's matchup will begin at 3 p.m. (CT).

NU was tabbed No. 18 by the NFCA Coaches Poll this week, No. 21 by USA Softball, No. 22 by Softball America and No. 23 by D1 Softball.

Last weekend, the Huskers hosted the Indiana Hoosiers in a two-game conference series. The Big Red dropped the first game, 2-6, but bounced back to run-rule IU in game two by a score of 12-4. Eight Nebraska athletes recorded a hit and four -- Samantha Bland, Kacie Hoffmann, Ava Kuszak and Ava Bredwell -- had two or more. Kylee Magee grabbed the win in the circle after tossing 4.0 innings and allowing four earned runs. She recorded five strikeouts, a season-high mark.

The Huskers are 33-11 on the season with a 12-4 mark in conference play, while Washington is 31-13 (9-6 Big Ten).

Friday's game will be on FS1, Saturday's contest will be televised on the Big Ten Network and Sunday's matchup will be on B1G+. This weekend's games will have a free radio broadcast with Camden Cohn on the call. The radio broadcast is available at Huskers.com/listen and on the official Huskers app.

LEADING OFF

- Nebraska now has 85 home runs on the season and has the school record for most homers in a season.
- Nebraska has been prone to big innings, scoring four or more runs in an inning 35 times, including 15 innings with six or more runs and seven innings with eight or more runs.
- Ava Kuszak is currently tied for eighth place in school history with 16 home runs on the season, and Jordy Bahl is tied for fourth in school history with 31 extra-base hits.
- The Huskers are ranked No. 18 in the NFCA Poll. NU has been ranked by the NFCA every week this season.
- Nebraska is currently ranked sixth nationally in run differential, tied with Oklahoma. NU has scored 365 runs to its opponents' 136, for a differential of 229.
- With her next home run, Jordy Bahl would become the first player in school history to notch 15 homers and 15 doubles in the same season. Bahl also reached 100 appearances in her career in the series against Indiana.
- NU currently has three athletes batting above .400 -- Jordy Bahl, Ava Kuszak and Olivia DiNardo. The only time the Huskers have finished the season with multiple batters above .400 was when it had two in 2015.

HUSKERS TO WATCH



Kylee Magee threw 4.0 innings in the 12-4, run-rule win over Indiana. She also struck out a season-high five batters. She tossed a complete game on April 13 at Northwestern and allowed one run and only three hits.



Kacie Hoffmann has reached base in 21 straight games for the Big Red. In the second game against Indiana, she was 3-for-3 with a double and an RBI.

2025 SCHEDULE (33-11, 12-4 B1G)

NFCA Leadoff Classic (Clearwater, Fla.)

Feb. 6	vs. #6 Tennessee	W, 7-1
Feb. 7	vs. Southern Mississippi	W, 12-2 (5)
Feb. 7	vs. Bethune-Cookman	W, 9-1 (5)
Feb. 8	vs. #13 Texas Tech	L, 5-6
Feb. 9	vs. #24 Mississippi State	L, 0-3

Troy Cox Classic (Las Cruces, N.M.)

Feb. 14	vs. Texas A&M - CC	W, 20-1 (5)
Feb. 14	at New Mexico State	W, 10-0 (6)
Feb. 15	vs. Montana	W, 13-5 (6)
Feb. 15	vs. Northern Colorado	W, 10-0 (5)
Feb. 16	vs. Montana	W, 16-3 (5)

Mary Nutter Collegiate Classic (Cathedral City, Calif.)

Feb. 20	vs. Baylor	W, 4-1
Feb. 20	vs. #4 UCLA	L, 1-9 (6)
Feb. 21	vs. #11 Duke	L, 0-3 (8)
Feb. 22	vs. San Jose State	W, 12-4 (6)
Feb. 22	vs. Howard	W, 11-1 (5)
Feb. 23	vs. Utah	W, 10-2 (5)

Shocker Invitational (Wichita, Kan.)

Feb. 28	vs. South Dakota State	W, 8-5 (8)
Feb. 28	vs. #16 Oklahoma State	L, 0-1
March 1	vs. Missouri	L, 1-7
March 1	at Wichita State	W, 15-0 (5)
March 2	vs. Missouri	W, 10-9

Big Red Spring Fling (Bowlin Stadium)

March 8	Northern Iowa	W, 14-1 (5)
March 8	Northern Colorado	W, 12-4 (6)
March 9	Northern Iowa	W, 9-1 (5)
March 9	South Dakota State	W, 5-4 (9)

March 14	at RV Ohio State	W, 9-5
March 15	at RV Ohio State	L, 12-13
March 16	at RV Ohio State*	L, 6-12

March 21	Minnesota	W, 8-0 (6)
March 22	Minnesota	W, 8-3
March 23	Minnesota	W, 8-2

March 26	at Omaha	W, 5-0
March 29	Purdue	W, 13-1 (5)
March 30	Purdue	W, 6-0
March 31	Purdue	L, 2-6

April 4	at Iowa	W, 12-0 (5)
April 5	at Iowa	W, 14-1 (5)
April 6	at Iowa	L, 2-5

April 9	Creighton	W, 8-2
April 12	at Northwestern	W, 11-1 (5)
April 13	at Northwestern	W, 10-1 (5)
April 14	at Northwestern	W, 3-0

April 18	Indiana	L, 2-6
April 19	Indiana	W, 12-4 (5)

April 25	at Washington	8 p.m.
April 26	at Washington	9 p.m.
April 27	at Washington	3 p.m.

May 2	Maryland	5 p.m.
May 3	Maryland	1 p.m.
May 4	Maryland	12 p.m.

May 7-10 at Big Ten Tournament (West Lafayette, Ind.)

*game will not count toward Big Ten standings

NEBRASKA SOFTBALL FACTS

UNIVERSITY INFORMATION

Location	Lincoln, Neb.
Population	293,678
Founded	1869
Enrollment	24,431
Nickname	Cornhuskers, Huskers
Colors	Scarlet & Cream
Conference	Big Ten
Director of Athletics	Troy Dannen

ATHLETIC COMMUNICATIONS

Softball Contact	Paige Trutna
E-Mail	ptrutna2@huskers.com
Cell Phone	(402) 429-7576

2025 COACHING STAFF

Head Coach	Rhonda Revelle
Nebraska Record	1,160-676 (33rd year)
Career Record	1,168-692 (34th year)
Assoc. Head Coach	Lori Sippel (36th year)
Assistant Coach	Diane Miller (17th year)
Assistant Coach	Olivia Ferrell (2nd year)
Graduate Assistant	Allie Light (1st year)
Director of Operations	Erin Bohling (5th year)

2024 SEASON REVIEW

Overall Record	30-23
Big Ten Record (Finish)	12-9 (4th)
NCAA Record (Finish)	N/A

2025 TEAM OUTLOOK

Letterwinners Returning/Lost	14/8
Total Starters Returning/Lost	5/5
Position Starters Returning/Lost	5/3
Starting Pitchers Returning/Lost	0/2
Returning All-Conference Players	7*
Returning All-Region Players	6*
Returning All-Americans	1*
Newcomers	11

*includes honors at a player's previous school

STADIUM INFORMATION

Home Stadium	Bowlin Stadium
Record at Bowlin Stadium	285-122 (.700)

PROGRAM HISTORY

First Year of Softball	1976
All-Time Record	1,641-971 (.628)
All-Time Conference Record	466-331 (.585)
Big Ten Record	185-122 (.603)
Overall Conference Titles	20
Big Eight Titles	12
Big 12 Titles	6
Big Ten Titles	2
NCAA Tournament Appearances	26
WCWS Appearances	7
NCAA Tournament Record	65-56 (.537)
NCAA Regional Record	55-39 (.585)
NCAA Super Regional Record	2-3 (.400)
WCWS Record	8-14 (.363)
NFCA All-Americans	30
CSC Academic All-Americans	31

PRONUNCIATION GUIDE

Katelyn Canada	kuh-NAY-duh
Hannah/Lauren Camenzind	Cam-en-zin-d
Ava Kuszak	KOOS-zak
McKinley Malecha	muh-LECK-uh
Carlie Muhlbach	Mule-bock
Caitlin Olensky	oh-LEN-ski
Rhonda Revelle	ruh-VELL
Lori Sippel	Sih-pull
Abbie Squier	SKWHY-er
Malia Thoms	TOMES
Talia Tokheim	TALL-yuh TOKE-heim
Haidyn Warner	WERE-nerr

NEBRASKA ROSTER & SCHEDULE NOTES

• Nebraska's roster features 25 players, tied for the largest roster in school history. The roster features 10 Nebraska natives.

• Nebraska's squad is made up of three seniors, 11 juniors, six sophomores and five freshmen. The junior class is the largest of its kind in program history.

ALL-REGION PLAYERS

- Jordy Bahl, RHP/UTL*
 - Ava Bredwell, C
 - Lauren Camenzind, INF*
 - Katelyn Canada, INF
 - Ava Kuszak, INF*
 - Abbie Squier, OF
- *all-region selection at previous school

ALL-CONFERENCE PLAYERS

- Jordy Bahl, RHP/UTL*
 - Ava Bredwell, C
 - Hannah Camenzind, LHP/UTL*
 - Katelyn Canada, INF
 - Ava Kuszak, INF*
 - Kylee Magee, RHP*
 - Abbie Squier, OF
- *all-conference selection at previous school

2025 TEAM CAPTAINS

- Jordy Bahl, Jr.
- McKinley Malecha, Sr.
- Abbie Squier, Sr.

• **Rhonda Revelle** has won more games than any other head coach (male or female) in the history of Husker Athletics. Entering the 2025 season, Revelle has the sixth-most wins of any active Division I head coach. Revelle is in her 33rd season and is the longest-tenured head coach in Husker Athletics history.

• Associate Head Coach **Lori Sippel** is in her 36th year at Nebraska. Sippel is the longest-tenured female assistant coach in the history of Nebraska Athletics.

• Revelle (1981-83) and Sippel (1985-88) also played for NU. Including their playing and coaching careers, Revelle and Sippel have been a part of 1,464 of Nebraska's 1,641 all-time victories (89 percent).

• Assistant coach **Diane Miller** rounds out the Husker coaching staff. In her 17th season, Miller has helped Nebraska's offense set more than 40 school records.

• The Huskers are scheduled to play 50 regular-season games in 2025, including 16 home games, 19 neutral-site games and 15 away games. This will mark the second straight year that NU will have more home games than true road games on the schedule.

• Nebraska will play a 22-game Big Ten schedule in 2025. This year marks the first season that Oregon, UCLA and Washington have joined the conference. The Huskers will play three-game series against Minnesota, Purdue, Iowa, Northwestern, Washington and Maryland. NU will host Indiana for a two-game series and will play three games against Ohio State, with two counting toward conference standings. The Big Red will also face UCLA at the Mary Nutter Collegiate Classic – that game will not count toward the Big Ten standings.

• The 2025 Big Ten Tournament will be held in West Lafayette, Ind., from May 7-10.

2025 NEBRASKA NUMERICAL ROSTER

NO.	NAME	POS.	B/T	HT.	YR.	HOMETOWN
00	McKinley Malecha	C	R/R	5-8	Sr.	Lakeville, Minn.
1	Olivia DiNardo	C/UTL	L/R	5-7	Jr.	San Mateo, Calif.
2	Lauren Camenzind	INF/C	R/R	5-7	Jr.	Valley, Neb.
3	Bella Bacon	INF	R/R	5-10	Jr.	Omaha, Neb.
4	Malia Thoms	INF/OF	L/R	5-4	So.	Lincoln, Neb.
5	Macie Vickers	C	R/R	5-7	Fr.	Escalon, Calif.
7	Ava Kuszak	INF	R/R	5-7	Jr.	Broomfield, Colo.
8	Abbie Squier	OF	R/R	5-7	Sr.	Lincoln, Neb.
9	Hannah Camenzind	LHP/UTL	L/L	5-7	Jr.	Valley, Neb.
11	Talia Tokheim	OF	R/R	5-7	Jr.	San Carlos, Calif.
14	Kacie Hoffmann	OF	L/L	5-9	Jr.	Elkhorn, Neb.
15	Kennadi Williams	UTL	R/R	5-4	Fr.	Lincoln, Neb.
18	Nessa McMillen	OF/UTL	R/R	5-9	Fr.	Blair, Neb.
22	Caitlin Olensky	LHP	L/L	5-5	So.	Montville, N.J.
24	Ava Bredwell	C	R/R	5-7	Sr.	Shawnee, Kan.
26	Alina Felix	OF	L/R	5-7	Jr.	Tucson, Ariz.
27	Natalia Hill	INF/OF	R/R	5-3	Fr.	Norwalk, Calif.
29	Samantha Bland	INF	R/R	5-7	So.	Chino Hills, Calif.
31	Kylee Magee	RHP	R/R	5-9	So.	Anaheim, Calif.
33	Emmerson Cope	RHP/UTL	R/R	5-11	So.	Topeka, Kan.
55	Dakota Carter	OF	R/R	5-6	Jr.	Eastvale, Calif.
66	Katelyn Canada	INF	L/R	5-2	Jr.	Cerritos, Calif.
72	Carlie Muhlbach	C/UTL	R/R	5-7	Fr.	Gretna, Neb.
77	Haidyn Warner	C	R/R	5-9	Jr.	Oro Valley, Ariz.
98	Jordy Bahl	RHP/UTL	R/R	5-8	Jr.	Papillion, Neb.

HUSKERS DRAWING LARGE CROWDS

The Nebraska softball team has not only made its mark on the field, but with attendance records posted in 2025.

- On Saturday, April 19, the Huskers drew a crowd of 2,699 fans, which is the largest crowd in program history. It overtook the previous record crowd of 2,691, which was set on April 27, 2024 against Northwestern. NU has grabbed five of the top 10 marks in school history so far this season.
- The Big Red is currently ranked fourth nationally in average attendance with 2,228 fans per game. Alabama is first (3,745), Oklahoma is second (3,468) and Arkansas is third (2,912). NU has ranked in the top 10 nationally in average attendance six times -- including 2025 -- in program history.

NEBRASKA'S PROGRAM RECORD CROWDS

DATE	OPPONENT	# FANS	RANK
April 19	Indiana	2,699	1st
March 22	Minnesota	2,473	5th
March 8	UNI/UNC	2,428	6th
March 9	UNI/SDSU	2,384	7th
April 9	Creighton	2,334	10th

HUSKER HOME RUN QUICK HITTEES

The Nebraska softball team has enjoyed a solid season at the plate, most notably with its home run numbers.

- Nebraska is third in the nation with 85 home runs in only 44 games and is on pace to hit 97 home runs in a 50-game regular season. NU broke the school record for single-season home runs against Creighton on April 9.
- A total of 14 Huskers have hit a home run this season, including 13 players with multiple home runs.
- The Huskers have homered five times in a game on five occasions this season, including three consecutive games to open the Troy Cox Classic.
- Nebraska has produced 15 innings this season with multiple home runs, including five innings with three or more home runs.
- Nebraska has hit back-to-back home runs seven times this season, including three times with three consecutive home runs that includes a school-record four straight home runs against San Jose State on Feb. 22.
- Ava Kuszak (twice), Jordy Bahl, Samantha Bland, Abbie Squier, Emerson Cope (twice) and Hannah Camenzind** have all had a multi-homer game this season, including three-home run games from Kuszak against Montana on Feb. 16 and Bland at Iowa on April 5, both of which tied the Nebraska and Big Ten records for home runs in a game.
- Kuszak has hit more home runs herself (16) than 83 NCAA Division I teams. Together, Kuszak (16) and Jordy Bahl (14) have combined for 30 home runs. Their two-player combined total of 30 home runs would rank 121st among all NCAA Division I teams this spring and would be more than four Big Ten schools have hit as a team.
- Eleven Huskers – Bahl, Kuszak, Squier, Cope, Bland, **Bella Bacon, Alina Felix, Hannah Camenzind, Malia Thoms** and **Lauren Camenzind** – have already matched or exceeded their career season highs in home runs.

NEBRASKA'S TEAM GAME HIGHS

At bats:	36	-	vs South Dakota State (Feb 28, 2025 at Wichita, Kan.)
Runs scored:	20	-	vs Texas A&M-CC (Feb 14, 2025 at Las Cruces, NM)
Hits:	17	-	vs Montana (Feb 15, 2025 at Las Cruces, NM)
RBIs:	18	-	vs Texas A&M-CC (Feb 14, 2025 at Las Cruces, NM)
Doubles:	5	-	vs Northern Colorado (Mar 08, 2025)
Triples:	1	-	(6 times)
Home runs:	6	-	at Iowa Hawkeyes (Apr 05, 2025)
Total bases:	34	-	vs Montana (Feb 15, 2025 at Las Cruces, NM)
	34	-	at Iowa Hawkeyes (Apr 05, 2025)
Walks:	10	-	at Iowa Hawkeyes (Apr 04, 2025)
Strikeouts:	13	-	vs Tennessee (Feb 06, 2025 at Clearwater, Fla.)
Sac hits:	2	-	vs South Dakota State (Feb 28, 2025 at Wichita, Kan.)
	2	-	vs Indiana (Apr 19, 2025)
Sac flies:	2	-	vs Missouri (Mar 02, 2025 at Wichita, Kan.)
	2	-	at Ohio State (Mar 16, 2025)
Stolen bases:	4	-	vs Indiana (Apr 19, 2025)
Hit by pitch:	3	-	vs South Dakota State (Mar 09, 2025)
	3	-	vs Creighton (Apr 09, 2025)
Caught stealing:	1	-	(8 times)
Runners LOB:	12	-	vs South Dakota State (Mar 09, 2025)
Hit into DP:	2	-	vs Creighton (Apr 09, 2025)
	2	-	at Northwestern (Apr 14, 2025)

NEBRASKA BY THE NUMBERS

65 NCAA TOURNAMENT WINS
Nebraska has won 65 games in its 26 NCAA Tournament appearances (65-56). The 65 postseason wins rank 20th in NCAA history.

31 ACADEMIC ALL-AMERICANS
Huskers have combined to earn 31 Academic All-America honors, a total that ranks third among all Division I softball programs.

30 ALL-AMERICANS
A total of 18 Huskers have combined for 30 All-America awards, including eight multi-time All-Americans.

26 NCAA TOURNAMENTS
The Huskers have made 26 appearances in the NCAA Tournament, including 13 straight from 1995 to 2007. Nebraska's 26 postseason appearances rank 14th in NCAA history.

24 REVELLE ALL-AMERICANS
Rhonda Revelle has guided 15 players to a total of 24 All-America honors in her first 32 seasons as Nebraska's head coach.

20 CONFERENCE TITLES
Nebraska has won a total of 20 conference championships. The Huskers won 12 Big Eight titles, six Big 12 crowns and have captured a pair of Big Ten titles.

15 TOP-25 RANKINGS
Nebraska has been ranked in the final NFCA poll in 15 of the 29 years the poll has existed. The Huskers were one of only six teams nationally to be ranked in the final poll in each of the first 12 years it existed (1995 to 2006).

15 REVELLE ACADEMIC ALL-AMERICANS
Rhonda Revelle has produced 15 academic All-Americans at Nebraska. That total ranks fourth among all active Division I softball head coaches.

7 WCWS APPEARANCES
Nebraska has advanced to the Women's College World Series seven times to rank 15th in NCAA history.

4 SOFTBALL OLYMPIANS
Four former Huskers have competed in the Olympics, combining for five Olympic Games. A fifth Husker (Taylor Edwards) was a 2020 Olympic alternate for Team USA.

COLLEGE SOFTBALL POLLS

USA TODAY/NFCA COACHES POLL

Rk.	Team	Record	Pts.	Prev.
1.	Texas A&M (16)	39-6	749	1
2.	Texas (5)	41-6	731	3
3.	Oklahoma (3)	39-5	714	2
4.	Tennessee (7)	37-9	700	4
5.	Oregon	41-5	658	5
6.	Florida State	40-6	602	7
7.	UCLA	41-7	594	6
8.	Florida	39-10	559	8
9.	Arkansas	34-9	511	11
10.	LSU	36-10	508	9
11.	Texas Tech	36-10	436	14
12.	Arizona	37-9	418	12
13.	South Carolina	34-11	411	34
14.	Virginia Tech	37-7	396	10
15.	Stanford	32-8	340	15
16.	Ole Miss	33-12	278	17
17.	Mississippi State	33-14	270	16
18.	Nebraska	33-11	223	18
19.	Clemson	37-12	210	20
20.	Alabama	31-18	188	22
21.	Duke	34-14	172	19
22.	Ohio State	37-10-1	133	24
23.	Oklahoma State	27-15	112	21
24.	Georgia	28-17	59	23
25.	Virginia	33-14	46	25

ESPN.COM/USA SOFTBALL POLL

Rk.	Team	Record	Pts.	Prev.
1.	Tennessee (16)	37-9	610	2
2.	Texas A&M (8)	39-6	597	1
3.	Texas (1)	41-6	580	3
4.	Oklahoma	39-5	544	4
5.	Oregon	41-5	523	6
6.	Florida	39-10	471	7
7.	Florida State	40-6	463	8
8.	UCLA	41-7	452	5
9.	Arkansas	34-9	435	10
10.	LSU	36-10	407	9
11.	South Carolina	34-11	387	12
12.	Texas Tech	36-10	362	14
13.	Arizona	37-9	320	13
14.	Virginia Tech	37-7	293	11
15.	Alabama	31-18	243	T-17
16.	Stanford	32-9	239	16
17.	Mississippi State	33-14	199	15
18.	Duke	34-14	188	T-17
19.	Clemson	37-12	187	19
20.	Ole Miss	33-12	162	20
21.	Nebraska	33-11	128	21
22.	Ohio State	37-10-1	105	24
23.	Oklahoma State	27-15	86	22
24.	Georgia	28-17	34	23
25.	Grand Canyon	37-6	32	RV

NEBRASKA'S INDIVIDUAL NATIONAL AND CONFERENCE RANKS

Stat	Player	National Rank	Big Ten Rank	Value
Hits Allowed per Seven Innings	Jordy Bahl	6	2	3.95
Strikeouts	Jordy Bahl	6	1	195
Complete Games	Jordy Bahl	9	1	16
Shutouts	Jordy Bahl	10	1	5
Strikeouts per Seven Innings	Jordy Bahl	10	2	9.8
ERA	Jordy Bahl	12	2	1.45
Slugging Percentage	Jordy Bahl	12	5	0.924
Extra-Base Hits	Jordy Bahl	13	5	31
Runs per Game	Jordy Bahl	13	2	1.21
WHIP	Jordy Bahl	15	3	0.94
Victories	Jordy Bahl	16	3	18
Home Runs per Game	Ava Kuszak	17	4	0.38
Batting Average	Jordy Bahl	18	5	0.458
Home Runs	Ava Kuszak	21	6	16
Runs	Jordy Bahl	21	4	52
Doubles	Jordy Bahl	23	4	15
On-Base Percentage	Jordy Bahl	27	4	0.541

NEBRASKA'S TEAM NATIONAL AND CONFERENCE RANKS

Stat	National Rank	Big Ten Rank	Value
Scoring	2	2	8.30
Extra-Base Hits	3	2	172
Home Runs	3	2	85
Slugging Percentage	3	2	0.643
Home Runs per Game	4	2	1.93
Batting Average	6	2	.354
Total Runs	6	3	365
RBIs per Game	7	3	7.36
RBIs	9	3	324
Doubles	10	4	81
Hits	13	2	427
ERA	19	3	2.50

BAHL SOLID AT THE PLATE

Nebraska softball pitcher and utility player **Jordy Bahl** has not only had an impact in the circle, but her offense is a force to be reckoned with.

- Bahl ranks in the top 25 nationally in slugging percentage (12th), runs per game (13th), extra-base hits (13th), batting average (18th), runs (21st) and doubles (23rd).
- On the season, 31 of Bahl's 60 hits have gone for extra bases. She averages an extra-base hit every 4.2 at bats and almost one extra-base hit per game.
- Bahl has nearly as many hits herself as she has allowed as a pitcher. Bahl has 60 hits in 131 at bats at the plate and in the circle, she has allowed only 79 hits in 575 opponent at bats.
- Bahl has also scored more runs herself (52) than she has allowed (51) in 140.0 innings in the circle.

THE LAST TIME A HUSKER

Had 6+ At Bats	5 players vs. Wisconsin (5/8/16)
Had 5+ Hits	Brooke Andrews (5) vs. Northern Colorado (3/17/24)
Scored 4+ Runs	Ava Kuszak (4) vs. Montana (2/16/25)
Had 3+ Doubles	Cam Ybarra (4) vs. Lehigh (3/7/20)
Had 2+ Homers	Samantha Bland (3) at Iowa (4/5/25)
Had 3+ Homers	Samantha Bland (3) at Iowa (4/5/25)
Homered in 1st Career AB	Hailey Decker vs. UIC (2/8/13)
Stole 3+ Bases	Nikki Haget (3) vs. La Salle (3/12/11)
Drew 4+ Walks	Billie Andrews (4) vs. Rutgers (4/2/22)
Had 3+ HBP	Samantha Owen (3) vs. Pittsburgh (2/17/19)
Had 5+ RBIs	Samantha Bland (5) at Iowa (4/5/25)
Threw a No-Hitter	Jordy Bahl vs. Northern Colorado (5 inn., 2/15/25)
Threw a Perfect Game	Ashley DeBuhr vs. Iowa St. (4/13/05)
Had 10+ Strikeouts	Jordy Bahl (13) at Northwestern (4/14/25)
Had 15+ Strikeouts	Ashley Hagemann (17) at Omaha (4/19/12)
Had a 10-Game Hit Streak	Jordy Bahl (14) in 2025
Had a 15-Game Hit Streak	Billie Andrews (19) in 2024
Had a 20-Game Hit Streak	Billie Andrews (23) in 2022
Had a 25-Game Hit Streak	Taylor Edwards (25) in 2013-14

TEAM OFFENSIVE RECORDS NEBRASKA IS ON PACE TO BREAK IN 2025

Stat	Total	50-Game Pace	School Record
Batting Average	.354	.354	.337
Runs	351	415	400
Runs Per Game	8.3	8.3	6.9
Slugging Percentage	.643	.643	.523
Extra-Base Hits	172	195	173

INDIVIDUAL OFFENSIVE RECORDS NEBRASKA IS ON PACE TO BREAK IN 2025

Player	Stat	Total	Pace	NU Record
Jordy Bahl	Batting Average	.458	.458	.439
Jordy Bahl	Slugging Percentage	.924	.924	.865
Jordy Bahl	Extra-Base Hits	31	35	35
Ava Kuszak	Slugging Percentage	.866	.866	.865

HUSKERS IN THE RECORD BOOKS

- The 2025 Nebraska softball team is first in school history with 85 home runs on the season.
- As it stands, the 2025 squad is second in school history in extra-base hits with 172 on the season. It would rank first in batting average (.354), slugging percentage (.643) and on-base percentage (.435).
- The Big Red scored 10+ runs in five straight games from Feb. 14-16 for the first time in program history.
- NU notched five home runs in three straight games for what is believed to be the first time in school history.
- In the Huskers' game against San Jose State at the Mary Nutter Collegiate Classic, they hit four straight home runs for the first time in program history.
- Nebraska scored 102 runs in its first 10 games of the season, which marked the quickest the team has hit the 100-run milestone. The Huskers scored 200 runs in their first 23 games of the season, which marked the quickest the team has hit the 200-run milestone.
- NU scored 300 runs through 37 games, which marked the quickest the team has hit the 300-run milestone. Before this year, the fastest pace was games 43 in 2015.
- **Ava Kuszak** and **Samantha Bland** have both posted three-homer games and are now tied with Kaylan Jablonski and Christie McCoy for the school record for home runs in a game.
- **Kuszak** is currently tied for eighth place in school history with 16 home runs on the season, and **Jordy Bahl** is tied for fourth in school history with 31 extra-base hits.
- If the season ended today, **Bahl** would be first in school history in batting average (.458), **Kuszak** would be tied for seventh (.409) and **DiNardo** would be eighth (.408). Bahl would also rank first in slugging percentage (.924), while Kuszak would rank second (.866).

THE LAST TIME NEBRASKA...

Beat a No. 1 Team	vs. No. 1 Michigan (1-0 on 4/8/16)
Beat a Top-5 Team	vs. No. 1 Michigan (1-0 on 4/8/16)
Beat a Top-10 Team	vs. No. 6 Tennessee (7-1 on 2/6/25)
Beat a Ranked Team	vs. No. 6 Tennessee (7-1 on 2/6/25)
Won When Trailing After 6 Innings	vs. South Dakota State (2/28/25)
Lost When Leading After 6 Innings	vs. No. 13 Texas Tech (2/8/25)
Scored 10+ Runs	vs. Indiana [12] (4/19/25)
Scored 15+ Runs	at Wichita State [15] (3/1/25)
Scored 20+ Runs	vs. Texas A&M-Corpus Christi [20] (2/14/25)
Allowed 10+ Runs	at Ohio State [12] (3/16/25)
Allowed 15+ Runs	vs. Wichita State [17] (3/2/24)
Allowed 20+ Runs	vs. Northwestern [22] (4/27/23)
Recorded 15+ Hits	vs. Montana [17] (2/16/25)
Recorded 20+ Hits	at Maryland [21] (4/3/16)
Hit 6+ Doubles	vs. Montana [6] (2/17/24)
Hit 4+ Home Runs	at Iowa [6] (4/5/25)
Stole 6+ Bases	at Purdue [6] (4/13/19)
Drew 10+ Walks	at Iowa [10] (4/4/25)
Was No-Hit	at No. 24 Minesota (4/7/21)

COLLEGE SOFTBALL POLLS

D1 SOFTBALL POLL

Rk.	Team	Record	Prev.
1.	Texas	41-6	2
2.	Texas A&M	39-6	1
3.	Tennessee	37-9	4
4.	Florida State	40-6	3
5.	Oklahoma	39-5	5
6.	Oregon	40-5	13
7.	Arkansas	34-9	7
8.	Florida	39-10	8
9.	UCLA	41-7	6
10.	South Carolina	35-11	9
11.	Texas Tech	36-10	10
12.	LSU	36-10	10
13.	Arizona	37-9	11
14.	Clemson	37-12	15
15.	Duke	34-14	17
16.	Stanford	32-9	18
17.	Virginia Tech	37-7	12
18.	Alabama	31-18	19
19.	Mississippi State	33-14	16
20.	Ole Miss	33-12	20
21.	Ohio State	37-10-1	NR
22.	Virginia	33-14	23
23.	Nebraska	33-11	21
24.	Grand Canyon	37-6	25
25.	Florida Atlantic	38-9	NR

SOFTBALL AMERICA POLL

Rk.	Team	Record	Prev.
1.	Tennessee	37-9	6
2.	Texas A&M	39-6	1
3.	Texas	41-6	3
4.	Florida State	40-6	4
5.	Oklahoma	39-5	2
6.	Arkansas	34-9	5
7.	Oregon	41-5	10
8.	Florida	39-10	11
9.	UCLA	41-7	7
10.	South Carolina	34-11	8
11.	Texas Tech	36-10	14
12.	LSU	36-10	9
13.	Arizona	37-9	12
14.	Alabama	31-18	18
15.	Clemson	37-12	15
16.	Stanford	32-9	17
17.	Ohio State	37-10-1	20
18.	Virginia Tech	37-7	13
19.	Ole Miss	33-12	19
20.	Mississippi State	33-14	16
21.	Duke	34-14	19
22.	Nebraska	33-11	22
23.	Virginia	33-14	24
24.	Grand Canyon	37-6	25
25.	Florida Atlantic	38-9	NR

BIG TEN STANDINGS

Rk.	Team	Conference	Overall
1.	Oregon	14-2	41-5
2.	UCLA	13-3	41-7
3.	Nebraska	12-4	33-11
3.	Northwestern	12-4	24-15-1
5.	Ohio State	11-5	37-10-1
6.	Washington	9-6	31-13
7.	Iowa	8-6	26-16
8.	Michigan	9-7	31-15
9.	Wisconsin	10-8	30-16
10.	Indiana	8-8	29-13
10.	Purdue	8-8	25-17
12.	Penn State	6-8	20-22
13.	Illinois	4-11	18-23
14.	Michigan State	4-12	14-25
15.	Maryland	3-13	16-25
16.	Minnesota	3-15	14-28
17.	Rutgers	1-15	17-31

HUSKER CONFERENCE HISTORY

BIG EIGHT CONFERENCE (1976-1995)

Year	Record	Finish	Tournament
1977	1-4	t-4th	N/A
1978	4-3	7th	t-6th
1979	3-8	6th	t-6th
1980	8-9	4th	N/A
1981	5-6	3rd	3rd
1982	9-3	1st	1st
1983	3-7	7th	N/A
1984	6-2	1st	1st
1985	11-1	1st	1st
1986	9-3	1st	1st
1987	8-2	1st	1st
1988	7-3	1st	1st
1989	6-4	3rd	t-5th
1990	3-5	5th	2nd
1991	3-5	5th	t-4th
1992	2-6	5th	t-4th
1993	5-11	5th	N/A
1994	5-15	6th	N/A
1995	10-6	3rd	N/A

TOTAL 108-103 12 total titles

BIG 12 CONFERENCE (1996-2011)

Year	Record	Finish	Tournament
1996	10-8	4th	2nd
1997	10-6	4th	5th
1998	16-0	1st	1st
1999	10-8	4th	2nd
2000	15-2	2nd	1st
2001	16-2	1st	5th
2002	11-5	2nd	2nd
2003	10-8	6th	t-4th
2004	14-3	1st	1st
2005	9-9	7th	t-5th
2006	13-4	2nd	t-3rd
2007	10-8	5th	t-5th
2008	4-14	t-9th	2nd
2009	9-9	5th	t-5th
2010	7-11	t-6th	t-5th
2011	9-9	6th	N/A

TOTAL 173-106 6 total titles

BIG TEN CONFERENCE (2012-PRES.)

Year	Record	Finish	Tournament
2012	14-9	3rd	N/A
2013	16-6	2nd	t-3rd
2014	18-5	t-1st	t-5th
2015	17-6	3rd	2nd
2016	13-9	5th	t-5th
2017	13-10	5th	t-9th
2018	9-13	9th	t-9th
2019	9-14	t-8th	t-9th
2021	22-22	8th	N/A
2022	17-5	2nd	1st
2023	13-10	4th	t-3rd
2024	12-9	4th	t-3rd
2025	12-4	--	--

TOTAL 181-120 2 total titles

HUSKERS HIT THE PORTAL

Nebraska utilized the transfer portal this offseason, bringing in six new players -- **Hannah** and **Lauren Camenzind** and **Kacie Hoffmann** from Arkansas, **Olivia DiNardo** from Arizona, **Kylee Magee** from Arizona State and **Ava Kuszak** from Wisconsin.

- **Hannah Camenzind** was a second-team All-SEC member in 2023. Over her two seasons with the Razorbacks, she posted a 14-3 record with 3.11 ERA over 119.1 total innings. At the plate, she batted .308.
- **Lauren Camenzind** was a third-team NFCA All-South Region member in 2023. Over her two seasons at Arkansas, she played in 86 games (79 starts) at both catcher and shortstop.
- **DiNardo** racked up numerous accolades during her two years at Arizona. She was a second-team NFCA All-West Region member in 2023 and a Third-Team member in 2024 and was named a Second-Team All-Pac-12 and Pac-12 All-Freshman Team honoree in 2023. Over the course of two seasons with the Wildcats, DiNardo started 102 games and built up a batting average of .340, along with 15 doubles, 20 home runs and 74 RBIs.
- **Hoffmann** played in 106 games with 96 starts during her time with Arkansas. She hit .244 and logged 16 doubles, 15 home runs and 47 RBIs.
- **Kuszak** earned second-team All-Big Ten honors and third-team NFCA All-Great Lakes Region accolades in 2024. During her two seasons at Wisconsin, she played in 76 games with 65 starts and notched 16 doubles, 10 home runs and 33 RBIs on a .278 batting average.
- **Magee** was named a member of the Pac-12 All-Freshman Team at Arizona State in 2023. She suffered an injury early in the 2024 season. She pitched in 27 games with 24 starts and compiled a 3.51 ERA and two saves, along with striking out 79 batters in 89.2 innings.

NEBRASKA'S TRANSFERS

PLAYER	POS.	CLASS	PREVIOUS SCHOOL
Hannah Camenzind	LHP/UTL	Jr.	Arkansas
Lauren Camenzind	INF/C	Jr.	Arkansas
Olivia DiNardo	C/UTL	Jr.	Arizona
Kacie Hoffmann	OF	Jr.	Arkansas
Ava Kuszak	INF	Jr.	Wisconsin
Kylee Magee	RHP	So.	Arizona State

HUSKER TRANSFER STATS

PLAYER	G-GS	AVG.	AB	R	H	2B	HR	RBI	SLG%	OB%
Ava Kuszak	42-42	.409	127	47	52	10	16	45	.866	.509
Olivia DiNardo	37-34	.408	103	13	42	8	5	35	.631	.483
Kacie Hoffmann	39-36	.393	107	20	42	9	7	24	.692	.476
Hannah Camenzind	41-38	.356	118	31	42	13	6	31	.619	.457
Lauren Camenzind	44-43	.308	120	30	37	4	2	25	.408	.399
TOTAL	203-193	.374	575	141	215	44	36	160	.645	.465

WHAT NEBRASKA RETURNED IN 2025

Nebraska's 2025 roster consists of 25 total athletes. Fourteen of those are returners.

- The Huskers welcomed back 14 letterwinners from last season – **Bella Bacon**, **Jordy Bahl**, **Samantha Bland**, **Ava Bredwell**, **Katelyn Caneda**, **Dakota Carter**, **Emmerson Cope**, **Alina Felix**, **McKinley Malecha**, **Caitlin Olensky**, **Abbie Squier**, **Malia Thoms**, **Talia Tokheim** and **Haidyn Warner**.

NEBRASKA'S 2025 RECORD WHEN...

Overall	33-11	Out-Hitting Opponent	33-3
Non-Conference	21-7	Out-Hit by Opponent	0-6
Big Ten Conference	12-4	Scoring First	22-3
Home	11-2	Opponent Scores First	11-8
Neutral	13-6	Scoring in the First Inning	13-2
Road	9-3	Scoring Fewer than 3 Runs	0-8
Night Games	11-1	Scoring 5 or More Runs	10-1
Day Games	22-10	Scoring 10 or More Runs	19-1
Sunday	7-3	Allowing Fewer Than 3 Runs	23-1
Monday	1-1	Allowing 5 or More Runs	1-5
Tuesday	0-0	Allowing 10 or More Runs	0-2
Wednesday	2-0	Leading After Five Innings	14-3
Thursday	2-1	Leading After Six Innings	11-1
Friday	8-3	Trailing After Five Innings	0-7
Saturday	12-3	Trailing After Six Innings	1-8
vs. Ranked Opponents	1-5	Tied After Five Innings	3-1
vs. Unranked Opponents	32-6	Tied After Six Innings	0-1
Extra Innings	2-1	Committing 0 Errors	15-3
1-Run Games	2-3	Committing 2 or More Errors	7-4

- NU returned half of its starting lineup from 2024 in outfielder **Samantha Bland**, catcher **Ava Bredwell**, first baseman **Bella Bacon**, second baseman **Katelyn Canada** and designated player **Emmerson Cope**.
- Nebraska returned three of its top five hitters from 2024 – **Ava Bredwell** (.329), **Emmerson Cope** (.304) and **Alina Felix** (.302).
- Returners **Ava Bredwell**, **Samantha Bland**, **Bella Bacon** and **Katelyn Canada** each started in more than 95 percent of the Huskers' games last season.

HUSKERS RETURNING FROM INJURIES

Nebraska faced significant adversity in 2024, as a total of six players suffered season-ending injuries, including four that are returning for the 2025 season. Additionally, Arizona State transfer **Kylee Magee** had to use the offseason for rehab.

- **Jordy Bahl** suffered a knee injury in the Huskers' 2024 season opener that required season-ending surgery. Bahl was a First-Team All-American, the Big 12 Pitcher of the Year and one of 10 national finalists for player of the year in 2022 and 2023.
- **Abbie Squier**, a returning All-Big Ten and all-region selection, returns after being out for the 2024 season due to surgery. In 2022 and 2023, she was the Big Red's starting left fielder.
- **Dakota Carter**, the Huskers' designated player, was deemed out for the 2024 season before it even began. In 2023, she scored 13 runs as a pinch runner and appeared in 39 games.
- **Caitlin Olensky** suffered a season-ending injury in the Huskers' conference opener against Illinois last year. Before her injury, she compiled a record of 3-2 with a team-best 3.30 ERA.
- **Emmerson Cope** was out for almost a month of the 2024 season after battling a back injury. When she was in the lineup, the Topeka, Kan., native amassed an ERA of 4.76 in the circle. She racked up 21 hits, 10 runs, six homers and 19 RBIs.
- **Talia Tokheim** missed the first 23 games of the season while rehabbing an injury from 2023. She returned for nine games before suffering another season-ending injury in game three of the Penn State series. In her limited time on the field, she notched 46 total bases and seven home runs.
- **Kylee Magee** suffered a season-ending injury after racking up six appearances with four starts in her sophomore year with the Sun Devils. In her first two years at Arizona State, she struck out 79 batters in 89.2 innings.

NEBRASKA'S OFFENSIVE TEAM GAME-BY-GAME

Date	Opponent	ab	r	h	rbi	2b	3b	hr	tb	bb	lbb	sb	cs	hbp	sac	sf	gdp	k	po	a	e	lob	avg
Feb 06	vs Tennessee	26	7	6	5	1	0	1	10	1	0	0	1	2	0	1	1	13	21	7	1	2	.231
Feb 07	vs Southern Miss	24	12	12	11	2	0	2	20	3	0	1	0	1	0	0	0	2	15	7	1	3	.360
Feb 07	vs Bethune-Cookman	24	9	9	5	2	1	1	16	2	0	3	0	1	0	0	0	2	15	9	3	4	.365
Feb 08	vs Texas Tech	31	5	9	5	0	0	0	9	1	0	0	1	0	1	0	0	2	20	3	4	7	.343
Feb 09	vs Mississippi State	27	0	5	0	2	0	0	7	0	0	1	0	0	0	0	0	6	18	8	0	6	.311
Feb 14	vs Texas A&M-CC	28	20	13	18	3	0	5	31	7	0	1	0	2	0	0	1	1	15	4	0	2	.338
Feb 14	at NM State	27	10	10	10	2	0	5	27	4	0	1	0	2	0	1	0	4	18	8	2	6	.342
Feb 15	vs Montana	35	13	17	12	2	0	5	34	4	0	1	0	1	0	0	0	4	18	9	2	10	.365
Feb 15	vs Northern Colorado	22	10	8	9	0	0	2	14	3	0	0	1	0	1	1	0	0	15	5	0	2	.365
Feb 16	vs Montana	27	16	14	14	3	1	3	28	6	0	0	0	1	0	0	0	3	15	4	0	6	.380
Feb 20	vs Baylor	27	4	8	4	2	0	1	13	3	0	0	1	1	0	1	0	1	21	7	2	7	.372
Feb 20	vs UCLA	20	1	3	1	0	0	0	3	4	0	1	0	0	1	1	1	0	8	17	7	0	.358
Feb 21	vs Duke	28	0	5	0	1	1	0	8	0	0	1	0	0	0	0	0	9	24	9	0	5	.344
Feb 22	vs San Jose State	32	12	14	8	1	0	5	30	3	0	1	0	1	0	0	0	2	18	5	2	7	.352
Feb 22	vs Howard	25	11	12	10	1	0	2	19	0	0	0	0	1	0	1	0	3	15	9	1	4	.360
Feb 23	vs Utah	25	10	10	10	2	0	4	24	2	0	0	0	2	0	0	0	3	15	7	1	4	.362
Feb 28	vs South Dakota State	36	8	13	8	3	0	2	22	1	0	0	0	1	2	0	0	3	24	11	0	8	.362
Feb 28	vs Oklahoma State	22	0	2	0	0	0	0	2	1	0	0	0	0	1	0	0	9	21	6	1	3	.350
Mar 01	vs Missouri	24	1	4	1	1	0	0	5	0	0	0	1	1	0	0	0	3	21	11	2	3	.341
Mar 01	at Wichita State	30	15	14	13	1	0	4	27	5	0	0	0	1	1	0	1	3	15	7	1	7	.348
Mar 02	vs Missouri	29	10	10	10	0	0	3	19	3	0	0	0	2	0	2	0	6	21	7	1	5	.348
Mar 08	NORTHERN IOWA	25	14	12	12	4	0	3	25	4	0	0	0	0	0	0	0	3	15	1	1	3	.354
Mar 08	NORTHERN COLORAD	29	12	12	12	5	0	2	23	4	0	1	0	2	0	0	0	0	18	9	2	6	.356
Mar 09	NORTHERN IOWA	22	9	9	7	3	1	2	20	2	0	0	0	0	1	0	0	0	15	5	1	4	.358
Mar 09	SOUTH DAKOTA STAT	35	5	8	5	0	0	1	11	4	0	1	0	3	0	1	0	2	27	14	3	12	.351
*Mar 14	at Ohio State	33	9	13	9	4	0	3	26	2	0	0	0	1	0	0	0	3	21	2	1	6	.353
*Mar 15	at Ohio State	35	12	13	8	3	0	4	28	4	0	0	0	1	0	0	0	5	18	5	2	7	.354
Mar 16	at Ohio State	31	6	11	5	2	0	2	19	0	0	0	0	0	0	2	0	2	18	2	1	6	.354
*Mar 21	MINNESOTA	26	8	10	7	2	0	1	15	4	0	0	0	1	0	0	0	2	18	10	0	7	.355
*Mar 22	MINNESOTA	30	8	12	6	1	0	0	13	2	0	2	0	2	0	0	0	2	21	4	0	8	.357
*Mar 23	MINNESOTA	30	8	8	7	1	0	0	9	3	0	3	0	0	0	0	0	2	21	9	0	7	.354
3/26/2025	at Omaha	28	5	7	5	3	0	1	13	2	0	0	0	1	0	0	0	3	21	7	0	5	.351
*Mar 29	PURDUE	25	13	13	13	1	0	3	23	3	0	2	0	0	0	1	0	2	15	6	1	4	.355
*Mar 30	PURDUE	28	6	10	6	2	1	0	14	1	0	0	0	1	0	0	0	7	21	10	0	6	.355
*Mar 31	PURDUE	29	2	7	2	0	0	2	13	5	0	1	0	0	0	0	0	5	21	7	2	11	.352
*Apr 04	at Iowa Hawkeyes	20	12	7	11	3	0	1	13	10	0	1	1	2	0	1	0	2	15	2	0	6	.352
*Apr 05	at Iowa Hawkeyes	26	14	12	14	4	0	6	34	5	0	3	0	1	0	1	0	5	15	4	0	4	.355
*Apr 06	at Iowa Hawkeyes	29	2	8	1	3	0	0	11	2	0	2	0	0	0	0	0	7	18	7	1	8	.352
Apr 09	CREIGHTON	26	8	11	8	3	0	3	23	4	0	0	1	3	0	0	1	0	21	5	1	7	.354
*Apr 12	at Northwestern	25	11	10	10	2	0	2	18	4	0	0	0	1	1	0	0	6	15	3	0	5	.355
*Apr 13	at Northwestern	28	10	13	8	0	0	3	22	3	0	3	0	2	0	0	1	2	15	6	0	8	.358
*Apr 14	at Northwestern	25	3	6	2	2	0	0	8	4	1	0	0	2	1	0	0	3	21	2	0	8	.355
*Apr 18	INDIANA	24	2	4	2	0	1	1	9	5	0	0	1	2	0	0	0	3	21	9	1	8	.351
*Apr 19	INDIANA	27	12	13	10	4	0	0	17	5	0	4	0	2	2	0	0	1	15	4	0	10	.354
Totals		1205	365	427	324	81	6	85	775	135	1	34	8	48	12	14	5	154	808	283	41	265	.354

BOWLIN STADIUM



Bowlin Stadium opened in 2002 and is in its 24th season in 2025. The facility features space for nearly 3,000 fans and includes an underground system that heats the field. Just past the right field fence is the Alex Gordon Training Complex, a spacious indoor training facility. The clubhouse features a locker room, players' lounge, training room and coaches' offices.

BOWLIN STADIUM FACTS

- Nebraska has won 70% of its games in Bowlin Stadium.
- Bowlin Stadium has hosted four NCAA Regionals (2004, 2005, 2007 and 2013).
- NU has ranked in the top 25 nationally in attendance 16 times at Bowlin Stadium, including five seasons ranked in the top 10.

YEARLY RECORDS

Year	Record	Pct.
2002	9-5	.643
2003	14-7	.667
2004	14-6	.700
2005	9-7	.563
2006	20-1	.952
2007	18-5	.783
2008	13-9	.591
2009	13-5	.722
2010	12-8	.600
2011	10-4	.714
2012	15-1	.938
2013	18-4	.818
2014	13-3	.813
2015	11-6	.647
2016	11-5	.688
2017	13-6	.684
2018	10-7	.588
2019	7-9	.412
2020	0-0	.000
2021	11-5	.688
2022	14-2	.875
2023	8-5	.615
2024	11-10	.523
2025	11-2	.846
TOTAL	285-122	.700

LARGEST CROWDS

1. 2,699	Indiana	4/19/2025
2. 2,691	Northwestern	4/27/2024
3. 2,628	Wichita St./Missouri	3/2/2024
4. 2,599	Penn State	4/6/2024
5. 2,473	Minnesota	3/22/2025
6. 2,428	UNI/UNC	3/8/2025
7. 2,384	UNI/SDSU	3/9/2025
8. 2,362	Creighton	3/16/2024
9. 2,340	Missouri	3/3/2024
10. 2,334	Creighton	4/9/2025

HUSKER AWARD TRACKER

PRESEASON

NFCA Preseason Poll - No. 19
USA Softball Preseason Poll - No. 16
D1 Softball Preseason Poll - No. 14
Softball America Preseason Poll - No. 21

Jordy Bahl

- USA Softball Top 53 Watchlist
- D1 Softball No. 2 Player to Watch
- D1 Softball No. 2 Pitcher to Watch
- D1 Softball Preseason First-Team All-American
- Softball America Preseason First-Team All-American
- Softball America No. 9 Player to Watch
- Big Ten Player to Watch

Nessa McMillen

- Softball America Freshman to Watch

Ava Kuszak

- Big Ten Player to Watch

Olivia DiNardo

- Big Ten Player to Watch

REGULAR SEASON

Jordy Bahl

- NFCA Leadoff Classic All-Tournament Team
- Big Ten Co-Pitcher of the Week - 2/17
- NFCA Co-Player of the Week - 2/18
- Mary Nutter Classic All-Tournament Team
- Softball America No. 2 Two-Way Player - March Position Power Rankings
- D1 Softball No. 2 Pitcher - Biweekly Position Power Rankings
- Big Ten Pitcher of the Week - 3/24
- Big Ten Pitcher of the Week - 3/31
- Softball America No. 1 Two-Way Player - April Position Power Rankings
- Big Ten Pitcher of the Week - 4/14

Ava Kuszak

- Big Ten Co-Player of the Week - 2/17
- Softball America Star of the Week - 2/18
- Softball America No. 2 Shortstop - March Position Power Rankings
- Softball America No. 6 Shortstop - April Position Power Rankings
- D1 Softball #3 Shortstop - 4/2

Abbie Squier

- Mary Nutter Classic All-Tournament Team

Kacie Hoffmann

- Mary Nutter Classic All-Tournament

2025 STATISTICAL COMPARISON

CATEGORY	NEB	WASH
Record	33-11	31-13
Batting Average	.354	.292
Runs/Game	8.3	5.8
Runs Allowed/Game	3.1	2.8
ERA	2.50	2.62
Fielding Percentage	.964	.975

SERIES HISTORY

CATEGORY	RECORD
Overall Record	WASH, 14-4
Current Win Streak	WASH, 5 games
Last Nebraska Win	March 8, 2014
Last WASH Win	Feb. 8, 2024
Revelle vs. WASH	4-14
Tarr vs. NEB	10-2

SCOUTING WASHINGTON (31-13, 9-6 BIG TEN)

Washington is 31-13 on the season with a 9-6 mark in conference competition. The Huskies bat .292 on the season and have an ERA of 2.62.

- Washington and Nebraska have common opponents in Howard, Utah, Montana and UCLA. The Huskies are 4-3 against those opponents, while the Huskers are 4-1.
- Washington's pitching staff ranks sixth nationally and second in the Big Ten in strikeout-to-walk ratio and seventh nationally and third in the Big Ten in strikeouts per seven innings.
- **Alexis DeBoer** is 12th nationally and fourth in the Big Ten with 17 home runs on the season. She bats .364 and has a team-high 48 RBIs and 47 runs, along with seven doubles.
- **Jadyn Glab** has started every game for the Huskies and has a .308 batting average. She has 12 home runs and eight doubles, along with 41 hits and 37 runs.
- **Alycia Flores** has 28 RBIs on the season and a team-high 10 doubles. She has racked up 32 runs and 37 hits, along with five home runs.
- **Ava Carroll** has played in 42 games and owns a batting average of .337 on the season. She has 18 RBIs, five doubles and a homer on 34 hits.
- **Giselle Alvarez** has posted 28 RBIs, seven home runs, four doubles and 31 hits in 2025.
- **Jade Bubke** has nine RBIs, two home runs and four doubles on 21 hits across 27 games started.
- **Sophi Mazzola** owns a .291 batting average and has 32 hits, 26 runs, 21 RBIs, four doubles and four homers on the year.
- **Charity Sevaaetasi** and **Riley Peschek** have batting averages of .265 and .217, respectively. Sevaaetasi has 16 RBIs and five home runs, while Peschek adds 18 RBIs on 18 hits.
- **Morgan Reimer** has pitched the most innings for the Huskies at 94.1 and has a 2.75 ERA. She has a record of 13-6 and has struck out 110 batters and allowed 37 earned runs.
- **Sophia Ramuno** has the lowest ERA on the team at 2.04, along with a record of 9-4 across 92.2 innings. She has struck out 122 batters and allowed 27 earned runs.
- **Stevie Hansen** has tossed 69.0 innings for Washington and has an ERA of 2.54 and a 7-2 record. She has allowed 25 earned runs while striking out 64 batters.
- **Rylee Rehbein** rounds out the pitching staff. She is 2-1 with a 3.64 ERA and has struck out 23 batters while allowing 23 earned runs.
- **Heather Tarr** is in her 21st season with the Huskies and has a career record of 851-326-1. She began her career at Washington in 2005.



RHONDA REVELLE

33RD SEASON AT NEBRASKA

1,160-676 RECORD

34TH CAREER SEASON

1,168-692 RECORD

**WINNINGEST COACH IN THE
HISTORY OF HUSKER ATHLETICS**

**COACH OF THE YEAR IN
3 POWER CONFERENCES**

NFCA HALL OF FAMER

COACHING NUMBERS

Conference Coach-of-the-Year Awards	4
Big Ten Coach of the Year	1
Big 12 Coach of the Year	2
Big Eight Coach of the Year	1
Conference Titles	8
Big Ten Conference Titles	2
Big 12 Conference Titles	6
NCAA Tournament Appearances	22
Women's College World Series	3
NFCA All-Americans	24
Academic All-Americans	15

NFCA HALL-OF-FAME COACHES

(ACTIVE DIVISION I COACHES ONLY)

Coach	Induction Year
Rhonda Revelle, Nebraska	2010
Patty Gasso, Oklahoma	2012
Patrick Murphy, Alabama	2013
Jo Evans, UC Santa Barbara	2015
Karen Weekly, Tennessee	2018
Jenny Allard, Pittsburgh	2022
Lonni Alameda, Florida State	2023

WINS AT CURRENT SCHOOL

(ACTIVE DIVISION I COACHES ONLY)

1. Patty Gasso, Oklahoma	1,553
2. Patrick Murphy, Alabama	1,307
3. Rhonda Revelle, Nebraska	1,160
4. Ken Eriksen, South Florida	1,153
5. Bob Coolen, Hawaii	1,125
6. Karen Weekly, Tennessee	1,122

(LIST INCLUDES GAMES THROUGH APRIL 22, 2025)

NCAA TOURNAMENTS AT CURRENT SCHOOL

(ACTIVE DIVISION I COACHES ONLY)

1. Patty Gasso, Oklahoma	29
2. Patrick Murphy, Alabama	25
3. Karen Weekly, Tennessee	23
4. Rhonda Revelle, Nebraska	22

ACADEMIC ALL-AMERICANS

(ACTIVE DIVISION I COACHES ONLY)

1. Patrick Murphy, Alabama	35
2. Karen Weekly, Tennessee	28
3. Tim Walton, Florida	23
4. Rhonda Revelle, Nebraska	15

HEAD COACH RHONDA REVELLE

COACHING STOPS

Nebraska (Head Coach)	1993-present
San Jose State (Assistant)	1989-92
Cal State-Hayward (Assistant)	1988
Nebraska Wesleyan (Head Coach)	1987
Nebraska Wesleyan (Assistant)	1986

NEBRASKA WESLEYAN (1987)

Year	Record	Conf.	Finish	Tourn.	Finish
1987	8-16	7-5	N/A	--	--

NEBRASKA (1993-PRESENT)

Year	Record	Conf.	Finish	Tourn.	Finish
1993	18-23	5-11	5th	--	--
1994	25-33	5-15	6th	--	--
1995	43-20	10-6	3rd	--	--
1996	42-23	10-8	4th	3-2	2nd
1997	29-24	10-6	4th	1-2	t-5th
1998	48-12	16-0	1st	4-0	1st
1999	35-21	10-8	4th	3-1	2nd
2000	52-21	15-2	2nd	4-1	1st
2001	51-15	16-2	1st	2-2	t-3rd
2002	50-14	11-5	3rd	3-1	2nd
2003	39-17	10-8	6th	2-2	t-3rd
2004	45-17	14-3	1st	4-0	1st
2005	36-23	9-9	7th	2-2	t-5th
2006	44-12	13-4	2nd	2-2	t-3rd
2007	37-20	10-8	5th	0-1	t-7th
2008	25-28	4-14	t-9th	3-1	2nd
2009	35-19	9-9	5th	0-1	t-7th
2010	30-29	7-11	t-6th	0-1	t-7th
2011	41-14	9-9	6th	--	--
2012	33-22	14-9	3rd	--	--
2013	45-16	16-6	2nd	1-1	t-3rd
2014	44-18	18-5	t-1st	0-1	t-5th
2015	35-23	17-6	3rd	2-1	2nd
2016	35-21	13-9	5th	1-1	t-5th
2017	24-29	13-11	5th	0-1	t-9th
2018	31-23	9-13	9th	0-1	t-9th
2019	21-31	9-14	9th	0-1	t-9th
2020	9-14	0-0	--	--	--
2021	22-22	22-22	8th	--	--
2022	41-16	17-5	2nd	3-0	1st
2023	36-22	13-10	4th	1-1	t-3rd
2024	30-23	12-9	4th	1-1	t-3rd
2025	33-11	12-4	--	--	--

NCAA TOURNAMENT (NEBRASKA)

Year	Round	Record	Finish	Rank
1995	Regional	1-2	t-17th	18th
1996	Regional	1-2	t-17th	18th
1997	Regional	2-2	t-9th	25th
1998	WCWS	4-2	t-5th	5th
1999	Regional	4-2	t-9th	20th
2000	Regional	3-2	t-17th	14th
2001	Regional	2-2	t-17th	14th
2002	WCWS	5-2	t-5th	6th
2003	Regional	3-2	t-17th	13th
2004	Regional	3-2	t-9th	14th
2005	Regional	1-2	t-33rd	25th
2006	Regional	2-2	t-17th	15th
2007	Regional	0-2	t-49th	--
2009	Regional	1-2	t-33rd	--
2010	Regional	1-2	t-33rd	--
2011	Regional	2-2	t-17th	21st
2013	WCWS	5-3	t-7th	8th
2014	Super Reg.	4-3	t-9th	16th
2015	Regional	1-2	t-33rd	--
2016	Regional	2-2	t-17th	--
2022	Regional	1-2	t-33rd	--
2023	Regional	2-2	t-17th	--



#00 MCKINLEY MALECHA • C/INF

	AVG.	G-GS	R	H	2B	HR	RBI	BB	SLG%	OB%
2025	.250	9-0	3	1	0	0	0	0	.250	.250
Career	.167	47-7	16	3	0	0	4	1	.167	.211

- Serving as one of three team captains in 2025
- Has played in nine games in 2025
- Tied career highs both hits (1 vs. TAMU-CC) and runs (1, three times) in 2025
- Academic All-Big Ten selection (2023, 2024)
- 2024 Big Ten Sportsmanship Award Winner



#1 OLIVIA DINARDO • C/UTL

	AVG.	G-GS	R	H	2B	HR	RBI	BB	SLG%	OB%
2025	.408	37-34	13	42	8	5	35	10	.631	.483
Career	.357	143-138	65	145	23	25	109	51	.599	.434

- 2025 Big Ten Player to Watch
- Is one of three Huskers with an average above .400
- Hit a grand slam and had five RBIs against Omaha
- NFCA All-West Region (Second-Team, 2023; Third-Team, 2024)
- Second-Team All-Pac-12 in 2023



#2 LAUREN CAMENZIND • INF/C

	AVG.	G-GS	R	H	2B	HR	RBI	BB	SLG%	OB%
2025	.308	44-43	30	37	4	2	25	17	.408	.399
Career	.264	130-122	59	84	13	4	53	29	.349	.333

- Has started 41 games at second base and two at shortstop in 2025
- Bats .318 in Big Ten competition
- Notched 47 hits and two home runs in two years with the Razorbacks
- NFCA Third-Team All-South Region (2023)
- Two-time state champion at Omaha Skutt Catholic



#3 BELLA BACON • INF

	AVG.	G-GS	R	H	2B	HR	RBI	BB	SLG%	OB%
2025	.313	39-31	23	26	5	3	13	7	.482	.400
Career	.290	115-86	50	75	10	3	37	20	.363	.374

- Has started 31 games at first base in 2025
- Has set or tied career highs in every offensive category in 2025
- Hits .313 in 2025
- Academic All-Big Ten and Big Ten Distinguished Scholar (2024)
- 2-time Nebraska Scholar-Athlete Honor Roll



#4 MALIA THOMS • OF

	AVG.	G-GS	R	H	2B	HR	RBI	BB	SLG%	OB%
2025	.300	9-0	1	3	0	1	4	0	.600	.300
Career	.280	20-3	1	7	2	1	6	2	.480	.333

- Knocked her first career home run, a grand slam, in 2025
- Has played in nine games in 2025
- Has set new career highs in runs, RBIs and homers in 2025
- Tom Osborne Citizenship Team (2024)
- Started three games in 2024 as the designated player



#5 MACIE VICKERS • C

	AVG.	G-GS	R	H	2B	HR	RBI	BB	SLG%	OB%
2025	.000	3-0	0	0	0	0	0	0	.000	.000
Career	.000	3-0	0	0	0	0	0	0	.000	.000

- Has played in three games in 2025
- 3-year captain at Escalon High School
- Trans Valley League Offensive Player of the Year as a junior
- 3-time All-League Selection
- Batted .500 as a junior with seven doubles, one triple and three HRs



#7 AVA KUSZAK • INF

	AVG.	G-GS	R	H	2B	HR	RBI	BB	SLG%	OB%
2025	.409	42-42	47	52	10	16	45	22	.866	.509
Career	.330	118-107	84	106	26	26	78	42	.660	.415

- Big Ten Co-Player of the Week (Feb. 17, 2025)
- Tied school record for home runs in a game with three against Montana
- Is one of three Huskers with a batting average above .400 in 2025
- Leads the team in RBIs and homers in 2025
- Second-Team All-Big Ten (2024)



#8 ABBIE SQUIER • OF

	AVG.	G-GS	R	H	2B	HR	RBI	BB	SLG%	OB%
2025	.329	39-34	27	24	4	7	19	13	.671	.438
Career	.303	181-158	96	131	23	20	74	38	.500	.388

- Serving as one of three team captains in 2025
- Has played in 39 games for NU and started 34 in 2025
- One of seven Huskers to have started over 100 games
- First-Team All-Big Ten & Big Ten All-Defensive Team (2022)
- NFCA Second-Team All-Midwest Region (2022)



#9 HANNAH CAMENZIND • UTL

	AVG.	G-GS	R	H	2B	HR	RBI	BB	SLG%	OB%
2025	.356	41-38	31	42	13	6	31	15	.619	.457
Career	.335	112-69	44	70	17	7	48	18	.536	.414

- Has started 38 games and played in 41 in 2025
- Knocked home runs in back-to-back games against Wichita State and Missouri
- Owns a .225 batting average over 112 games played in her career
- Has posted 44 runs and 70 hits in her career
- Played two seasons at Arkansas before transferring to Nebraska in 2025



#9 HANNAH CAMENZIND • LHP

	W-L	ERA	APP	GS	CG	SHO	SV	IP	SO	AVG.
2025	5-2	3.11	21	10	1	0	0	56.1	44	.263
Career	19-5	3.11	69	27	5	2	1	175.2	93	.234

- Has an ERA of 3.11 and a record of 5-2 in 2025
- Has made 10 starts in the circle, the second-most on the team, in 2025
- Played two seasons at Arkansas before transferring to Nebraska in 2025
- Compiled a 14-3 record over 48 games and 17 starts at Arkansas
- Was 1 of 3 freshman pitchers to make an All-SEC team in 2023



#11 TALIA TOKHEIM • OF

	AVG.	G-GS	R	H	2B	HR	RBI	BB	SLG%	OB%
2025	.300	9-1	2	3	0	2	3	0	.900	.273
Career	.319	33-19	17	22	6	9	22	7	.797	.372

- Made her return in 2025 from a season-ending injury in 2024
- Has played in nine games in 2025
- Career slugging percentage ranks second on the team
- Academic All-Big Ten (2024)
- 4-time Nebraska Scholar-Athlete Honor Roll



#14 KACIE HOFFMANN • OF

	AVG.	G-GS	R	H	2B	HR	RBI	BB	SLG%	OB%
2025	.393	39-36	20	42	9	7	24	10	.692	.476
Career	.288	145-132	59	105	25	22	71	23	.548	.361

- Has started 36 games in right field in 2025
- Was named to the Mary Nutter Collegiate Classic All-Tournament Team
- Has racked up 59 runs and 105 hits in her career
- Played three years at Arkansas before transferring to Nebraska in 2025
- SEC All-Tournament Team (2022)



#15 KENNADI WILLIAMS • UTL

	AVG.	G-GS	R	H	2B	HR	RBI	BB	SLG%	OB%
2025	.000	34-1	15	0	0	0	0	1	.000	.333
Career	.000	34-1	15	0	0	0	0	1	.000	.333

- Has appeared in 34 games in 2025; made her first start against Minnesota
- 2-time All-State pick who led Lincoln Southwest to four state tournaments
- First-Team All-Nebraska and Super-State selection as a senior
- Lincoln Journal Star 2022 High School Female Athlete of the Year
- Also plays basketball for Nebraska and is coach Amy Williams' daughter



#18 NESSA MCMILLEN • OF/UTL

	AVG.	G-GS	R	H	2B	HR	RBI	BB	SLG%	OB%
2025	.000	33-9	7	0	0	0	0	0	.000	.200
Career	.000	33-9	7	0	0	0	0	0	.000	.200

- Has started nine games in the outfield for Nebraska in 2025
- 4-time All-State selection
- Hit above .400 in each of her four seasons in high school
- Tied the Nebraska all-class record with three home runs in a game
- 4-time All-Conference member



#22 CAITLIN OLENSKY • LHP

	W-L	ERA	APP	GS	CG	SHO	SV	IP	SO	AVG.
2025	0-0	4.85	7	1	0	0/0	0	8.2	8	.297
Career	3-2	3.54	23	7	1	0	0	55.1	35	.230

- Making her return in 2025 from a season-ending injury in 2024
- Had a team-best 3.30 ERA in 2024 and was 3-2 in 2024
- Became the first Husker freshman pitcher to start a Big Ten opener
- 2024-25 Student-Athlete Advisory Committee Representative
- 2-time Nebraska Scholar-Athlete Honor Roll



#24 AVA BREDWELL • C/UTL

	AVG.	G-GS	R	H	2B	HR	RBI	BB	SLG%	OB%
2025	.270	42-35	27	27	2	5	18	8	.460	.319
Career	.298	198-178	119	146	28	18	81	55	.498	.384

- Has started 35 games at catcher in 2025
- Has racked up 27 hits and 18 RBIs in 2025
- NFCA Third-Team All-Midwest Region (2024)
- Big Ten Freshman of the Year (2022)
- Has played in and started more games than anyone on the 2025 roster



#36 ALINA FELIX • OF

	AVG.	G-GS	R	H	2B	HR	RBI	BB	SLG%	OB%
2025	.375	11-0	3	3	0	2	5	1	1.125	.500
Career	.295	58-27	19	23	2	3	15	11	.436	.396

- Has played in 11 games in 2025
- Hit two home runs in 2025
- Has the highest slugging percentage on the team at 1.286
- Academic All-Big Ten (2024)
- Big Ten Distinguished Scholar (2024)



#27 NATALIA HILL • INF/OF

	AVG.	G-GS	R	H	2B	HR	RBI	BB	SLG%	OB%
2025	.000	27-19	3	0	0	0	0	2	.000	.400
Career	.000	27-19	3	0	0	0	0	2	.000	.400

- Has started 19 games, 18 of them in center field, in 2025
- First-team All-California outfield selection as a senior
- First-team All-CIF selection as a junior and senior
- 3-time first-team All-League member
- Long Beach Press-Telegram Player of the Year as a senior



#29 SAMANTHA BLAND • INF/OF

	AVG.	G-GS	R	H	2B	HR	RBI	BB	SLG%	OB%
2025	.308	44-44	39	41	7	9	37	7	.579	.336
Career	.296	96-93	70	89	21	15	73	22	.522	.347

- Has started every game at third base for NU
- Combined to either score or bat in 71 runs in 2025
- Tied school record with three home runs at Iowa (4/5/25)
- Big Ten All-Freshman Team (2024)
- Posted 48 hits, 36 RBIs and six home runs in her freshman year



#31 KYLEE MAGEE • RHP

	W-L	ERA	APP	GS	CG	SHO	SV	IP	SO	AVG.
2025	6-3	4.27	16	9	1	0	0	37.2	36	.257
Career	11-10	3.74	43	33	5	2/4	2	127.1	115	.214

- Has appeared in 16 games for the Huskers in 2025
- Threw a complete game in NU's 10-1, five-inning win over Northwestern
- Played 2 seasons for Arizona State before transferring to Nebraska in 2025
- Pac-12 All-Freshman Team (2023)
- Missed most of 2024 season due to injury



#33 EMMERSON COPE • RHP

	W-L	ERA	APP	GS	CG	SHO	SV	IP	SO	AVG.
2025	4-1	3.41	14	2	0	0/0	0	26.2	8	.287
Career	6-1	4.22	35	7	0	0	2	66.1	14	.287

- Has tied her career bests in runs (0) and earned runs (0) in 2025
- Allowed one earned run or less in 13-of-21 of her freshman appearances
- Ranked second on the team and seventh in the Big Ten in saves in 2024
- Has a 4-1 record in 2025 and has pitched 26.2 innings
- Went 2-0 with one save in 39.2 innings in 2024



#33 EMMERSON COPE • UTL

	AVG.	G-GS	R	H	2B	HR	RBI	BB	SLG%	OB%
2025	.379	28-19	11	22	3	6	16	7	.741	.439
Career	.339	66-42	21	43	6	12	35	14	.669	.427

- Has a batting average of .379 in 2025
- Is one of six Huskers with a multi-homer game this season
- Notched 10 runs and 21 hits in 2024
- 2-time Nebraska Scholar-Athlete Honor Roll
- Tom Osborne Citizenship Team (2024)



#55 DAKOTA CARTER • OF

	AVG.	G-GS	R	H	2B	HR	RBI	BB	SLG%	OB%
2025	.000	7-0	3	0	0	0	0	0	.000	.000
Career	.091	46-4	16	1	0	0	0	3	.091	.286

- Making her return in 2025 after redshirting in 2024 because of an injury
- Has pinch run in seven games in 2025
- Academic All-Big Ten (2024)
- 3-time Nebraska Scholar-Athlete Honor Roll
- 2-time Tom Osborne Citizenship Team



#66 KATELYN CANADA • INF

	AVG.	G-GS	R	H	2B	HR	RBI	BB	SLG%	OB%
2025	.222	14-2	8	2	1	0	1	1	.333	.300
Career	.320	124-110	56	99	18	3	56	25	.414	.379

- Has played in 14 games and started two in 2025
- First-Team All-Big Ten (2023)
- Big Ten All-Defensive and All-Freshman Teams (2023)
- Played in 52 games with 50 starts at second base in 2024
- Academic All-Big Ten (2024)



#72 CARLIE MUHLBACH • C/UTL

	AVG.	G-GS	R	H	2B	HR	RBI	BB	SLG%	OB%
2025	.000	0-0	0	0	0	0	0	0	.000	.000
Career	.000	0-0	0	0	0	0	0	0	.000	.000

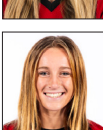
- Redshirting the 2025 season
- Broke the Gretna school record for single-season home runs (21) and RBIs (61), both of which were previously held by former Husker Billie Andrews
- Omaha World-Herald All-Nebraska and All-State selection in 2024
- Only allowed one stolen base in 87 innings



#77 HAIDYN WARNER • C

	AVG.	G-GS	R	H	2B	HR	RBI	BB	SLG%	OB%
2025	.000	2-0	0	0	0	0	0	0	.000	.000
Career	.083	16-3	0	1	0	0	0	0	.083	.083

- Has played in two games in 2025
- Big Ten Distinguished Scholar (2024)
- Academic All-Big Ten (2024)
- 4-time Nebraska Scholar-Athlete Honor Roll
- 2-time Tom Osborne Citizenship Team



#98 JORDY BAHL • UTL

	AVG.	G-GS	R	H	2B	HR	RBI	BB	SLG%	OB%
2025	.458	43-41	52	60	15	14	48	14	.924	.541
Career	.433	130-90	66	74	17	14	57	17	.801	.515

- Has the highest batting average on the team at .458
- 13th in the country with 31 extra-base hits
- Ranks 13th nationally with 121 total bases
- Had a season-ending injury in 2024 after transferring to NU from Oklahoma
- 2-time NFCA First-Team All-American (2022, 2023)



#98 JORDY BAHL • RHP

	W-L	ERA	APP	GS	CG	SHO	SV	IP	SO	AVG.
2025	18-5	1.45	28	22	16	5/3	2	140.0	195	.159
Career	62-8	1.19	100	69	42	20/25	7	431.0	595	.138

- Has the lowest ERA on the team at 1.45
- Four-time Big Ten Pitcher of the Week
- Third nationally and first in D-I in active career win percentage (.886)
- Had a season-ending injury in 2024 after transferring to NU from Oklahoma
- 2023 Big 12 Pitcher of the Year (at Oklahoma)

INDIVIDUAL SEASON & CAREER HIGHS

#00 MCKINLEY MALECHA • C/INF • SR.

SEASON HIGH	CATEGORY	CAREER HIGH
1 vs. Texas A&M-Corpus Christi	Hits	1 three times
1 twice	Runs	1 fifteen times
none	RBIs	2 vs. Maine (2024)
none	2B	none
none	HR	none

#1 OLIVIA DINARDO • C/UTL • JR.

SEASON HIGH	CATEGORY	CAREER HIGH
3 three times	Hits	4 vs. Texas A&M-Commerce (2023)
2 at New Mexico State	Runs	3 vs. NC State (2023)
5 at Omaha	RBIs	5 twice
2 twice	2B	2 four times
1 four times	HR	1 twenty-four times

#2 LAUREN CAMENZIND • INF/C • JR.

SEASON HIGH	CATEGORY	CAREER HIGH
3 at Iowa	Hits	3 twice
2 six times	Runs	2 nine times
3 twice	RBIs	3 three times
1 four times	2B	1 thirteen times
1 twice	HR	1 four times

#3 BELLA BACON • INF • JR.

SEASON HIGH	CATEGORY	CAREER HIGH
2 six times	Hits	2 fourteen times
2 four times	Runs	2 nine times
3 at Iowa	RBIs	3 at Iowa (2025)
1 four times	2B	1 nine times
1 three times	HR	1 three times

#4 MALIA THOMS • OF • SO.

SEASON HIGH	CATEGORY	CAREER HIGH
1 three times	Hits	1 seven times
1 vs. Texas A&M-Corpus Christi	Runs	1 vs. Texas A&M-Corpus Christi (2025)
4 vs. Texas A&M-Corpus Christi	RBIs	4 vs. Texas A&M-Corpus Christi (2025)
none	2B	1 twice
1 vs. Texas A&M-Corpus Christi	HR	1 vs. Texas A&M-Corpus Christi (2025)

#5 MACIE VICKERS • C • FR.

SEASON HIGH	CATEGORY	CAREER HIGH
none	Hits	none
none	Runs	none
none	RBIs	none
none	2B	none
none	HR	none

#7 AVA KUSZAK • INF • JR.

SEASON HIGH	CATEGORY	CAREER HIGH
4 vs. Montana	Hits	4 vs. Montana (2025)
4 vs. Montana	Runs	4 vs. Montana (2025)
6 vs. Montana	RBIs	6 vs. Montana (2025)
2 vs. Northern Colorado	2B	2 vs. Northern Colorado (2025)
3 vs. Montana	HR	3 vs. Montana (2025)

#8 ABBIE SQUIER • OF • SR.

SEASON HIGH	CATEGORY	CAREER HIGH
3 three times	Hits	3 eight times
2 six times	Runs	3 three times
4 vs. Utah	RBIs	5 at Iowa (2023)
1 four times	2B	2 vs. Indiana (2022)
2 vs. Utah	HR	2 four times

#9 HANNAH CAMENZIND • UTL • JR.

SEASON HIGH	CATEGORY	CAREER HIGH
3 twice	Hits	3 three times
2 six times	Runs	3 vs. UNI (2024)
4 at Ohio State	RBIs	4 at Ohio State (2025)
2 twice	2B	2 twice
2 vs. Purdue	HR	2 vs. Purdue (2025)

#11 TALIA TOKHEIM • OF • JR.

SEASON HIGH	CATEGORY	CAREER HIGH
1 three times	Hits	3 at Missouri St. (2023)
1 twice	Runs	3 at Wisconsin (2024)
1 three times	RBIs	4 twice
none	2B	1 six times
1 twice	HR	2 twice

#14 KACIE HOFFMANN • OF • JR.

SEASON HIGH	CATEGORY	CAREER HIGH
3 three times	Hits	3 four times
3 vs. Purdue	Runs	3 vs. Purdue (2025)
4 vs. Purdue	RBIs	4 twice
2 vs. Creighton	2B	2 vs. Creighton (2025)
2 vs. Purdue	HR	2 twice

#15 KENNADI WILLIAMS • UTL • FR.

SEASON HIGH	CATEGORY	CAREER HIGH
none	Hits	none
1 fifteen times	Runs	1 fifteen times
none	RBIs	none
none	2B	none
none	HR	none

#18 NESSA MCMILLEN • OF/UTL • FR.

SEASON HIGH	CATEGORY	CAREER HIGH
none	Hits	none
1 seven times	Runs	1 seven times
none	RBIs	none
none	2B	none
none	HR	none

#24 AVA BREDWELL • C/UTL • SR.

SEASON HIGH	CATEGORY	CAREER HIGH
3 vs. Minnesota	Hits	3 five times
2 four times	Runs	3 twice
4 vs. Northern Colorado	RBIs	5 vs. Iowa (2022)
1 vs. Minnesota	2B	2 three times
1 five times	HR	1 eighteen times

#26 ALINA FELIX • OF • JR.

SEASON HIGH	CATEGORY	CAREER HIGH
1 three times	Hits	2 three times
2 vs. Texas A&M-Corpus Christi	Runs	3 twice
3 vs. Texas A&M-Corpus Christi	RBIs	3 vs. Texas A&M-Corpus Christi (2025)
none	2B	1 twice
1 vs. Texas A&M-Corpus Christi	HR	1 twice

#27 NATALIA HILL • INF/OF • FR.

SEASON HIGH	CATEGORY	CAREER HIGH
none	Hits	none
1 three times	Runs	1 three times
none	RBIs	none
none	2B	none
none	HR	none

INDIVIDUAL SEASON & CAREER HIGHS

#29 SAMANTHA BLAND • INF/OF • SO.

SEASON HIGH	CATEGORY	CAREER HIGH
3 three times	Hits	4 vs. North Dakota (2024)
3 at Iowa	Runs	3 twice
5 at Iowa	RBIs	5 at Iowa (2025)
1 seven times	2B	2 three times
3 at Iowa	HR	3 at Iowa (2025)

#33 EMMERSON COPE • UTL • SO.

SEASON HIGH	CATEGORY	CAREER HIGH
3 vs. South Dakota State	Hits	3 twice
2 twice	Runs	2 three times
4 twice	RBIs	4 twice
1 three times	2B	1 six times
2 twice	HR	2 twice

#55 DAKOTA CARTER • OF • SO.

SEASON HIGH	CATEGORY	CAREER HIGH
none	Hits	1 at Omaha (2023)
1 three times	Runs	1 sixteen times
none	RBIs	none
none	2B	none
none	HR	none

#66 KATELYN CANEDA • INF • JR.

SEASON HIGH	CATEGORY	CAREER HIGH
1 twice	Hits	3 three times
1 eight times	Runs	2 twice
1 vs. Texas A&M-Corpus Christi	RBIs	4 at Indiana (2023)
1 vs. Texas A&M-Corpus Christi	2B	1 eighteen times
none	HR	1 three times

#72 CARLIE MUHLBACH • C/UTL • FR.

SEASON HIGH	CATEGORY	CAREER HIGH
none	Hits	none
none	Runs	none
none	RBIs	none
none	2B	none
none	HR	none

#77 HAIDYN WARNER • C • JR.

SEASON HIGH	CATEGORY	CAREER HIGH
none	Hits	1 at Missouri St. (2023)
none	Runs	none
none	RBIs	none
none	2B	none
none	HR	none

#98 JORDY BAHL • UTL • JR.

SEASON HIGH	CATEGORY	CAREER HIGH
4 vs. Montana	Hits	4 vs. Montana (2025)
3 five times	Runs	3 five times
5 at Northwestern	RBIs	5 at Northwestern (2025)
2 vs. Montana	2B	2 vs. Montana (2025)
2 at New Mexico State	HR	2 at New Mexico State (2025)

#9 HANNAH CAMENZIND • LHP • JR.

SEASON HIGH/LOW	CATEGORY	CAREER HIGH/LOW
5.0 three times	Innings	7.0 vs. South Alabama (2024)#
7 vs. Minnesota	Strikeouts	7 vs. Minnesota (2025)
1 vs. UCLA	Hits (low)*	1 three times
0 twice	Walks (low)*	0 seven times#
0 vs. Purdue	Runs (low)*	0 six times#
0 twice	Earned Runs (low)*	0 10 times#
	*starts only	#at Arkansas

#22 CAITLIN OLENSKY • LHP • SO.

2.0 twice	Innings	7.0 vs. Northern Colorado (2024)
2 three times	Strikeouts	4 twice
2 vs. Montana	Hits (low)*	0 twice
1 vs. Montana	Walks (low)*	0 six times
3 vs. Montana	Runs (low)*	0 seven times
3 vs. Montana	Earned Runs (low)*	0 seven times
	*starts only	

#31 KYLEE MAGEE • RHP • SO.

5.0 at Northwestern	Innings	7.0 vs. Northwestern (2024)\$
5 vs. Indiana	Strikeouts	11 vs. Northwestern (2024)\$
1 vs. Iowa	Hits (low)*	0 twice\$
0 vs. Montana	Walks (low)*	0 four times\$
1 twice	Runs (low)*	0 seven times\$
0 twice	Earned Runs (low)*	0 10 times\$
	*starts only	\$at Arizona State

#33 EMMERSON COPE • RHP • SO.

3.1 twice	Innings	4.2 at Michigan (2024)
2 twice	Strikeouts	2 four times
3 vs. Minnesota	Hits (low)*	3 twice
1 twice	Walks (low)*	0 three times
0 vs. Howard	Runs (low)*	0 twice
0 vs. Howard	Earned Runs (low)*	0 three times
	*starts only	

#98 JORDY BAHL • RHP • JR.

9.0 vs. South Dakota St.	Innings	9.0 vs. South Dakota St. (2025)
14 at Northwestern	Strikeouts	16 vs. Tennessee (2022)^
0 vs. Northern Colorado	Hits (low)*	0 four times
0 six times	Walks (low)*	0 15 times
0 eight times	Runs (low)*	0 23 times
0 12 times	Earned Runs (low)*	0 29 times
	*starts only	^ at Oklahoma

2025 SEASON STATISTICS

Record: 33-11 Home: 11-2 Away: 9-3 Neutral: 13-6 Big Ten: 12-4

Player	avg	gp-gs	ab	r	h	2b	3b	hr	rbi	tb	slg%	bb	hp	so	gdp	ob%	sf	sh	sb-att	po	a	e	fld%
Jordy Bahl	.458	43-41	131	52	60	15	2	14	48	121	.924	14	11	11	0	.541	1	2	7-8	92	26	2	.983
Ava Kuszak	.409	42-42	127	47	52	10	0	16	45	110	.866	22	7	29	0	.509	3	0	4-5	43	65	10	.915
Olivia DiNardo	.408	37-34	103	13	42	8	0	5	35	65	.631	10	5	14	1	.483	0	0	0-0	25	2	2	.931
Kacie Hoffmann	.393	39-36	107	20	42	9	1	7	24	74	.692	10	7	8	1	.476	0	0	1-1	27	0	0	1.000
Emmerson Cope	.379	28-19	58	11	22	3	0	6	16	43	.741	7	0	11	1	.439	1	0	0-0	0	6	0	1.000
Alina Felix	.375	11-0	8	3	3	0	0	2	5	9	1.125	1	1	1	0	.500	0	0	0-0	1	0	0	1.000
Hannah Camenzind	.356	41-38	118	31	42	13	0	6	31	73	.619	15	7	9	0	.457	0	1	4-4	22	13	1	.972
Abbie Squier	.329	39-34	73	27	24	4	0	7	19	49	.671	13	2	15	0	.438	1	0	3-3	24	1	2	.926
Bella Bacon	.313	39-31	83	23	26	5	0	3	13	40	.482	7	5	5	1	.400	0	1	2-2	192	4	6	.970
Lauren Camenzind	.308	44-43	120	30	37	4	1	2	25	49	.408	17	1	11	1	.399	0	3	1-2	50	55	7	.938
Samantha Bland	.308	44-44	133	39	41	7	1	9	37	77	.579	7	0	17	0	.336	3	4	1-2	23	81	7	.937
Talia Tokheim	.300	9-1	10	2	3	0	0	2	3	9	.900	0	0	3	0	.273	1	0	0-0	1	0	0	1.000
Malia Thoms	.300	9-0	10	1	3	0	0	1	4	6	.600	0	0	1	0	.300	0	0	0-0	0	0	0	.000
Ava Bredwell	.270	42-35	100	27	27	2	1	5	18	46	.460	8	1	12	0	.319	4	1	5-6	265	16	4	.986
Mckinley Malecha	.250	9-0	4	3	1	0	0	0	0	1	.250	0	0	3	0	.250	0	0	1-1	0	0	0	.000
Katelyn Caneda	.222	14-2	9	8	2	1	0	0	1	3	.333	1	0	1	0	.300	0	0	0-1	2	3	0	1.000
Nessa McMillen	.000	33-9	4	7	0	0	0	0	0	0	.000	0	1	0	0	.200	0	0	3-3	11	0	0	1.000
Natalia Hill	.000	27-19	3	3	0	0	0	0	0	0	.000	2	0	1	0	.400	0	0	0-1	23	2	0	1.000
Kennadi Williams	.000	34-1	2	15	0	0	0	0	0	0	.000	1	0	1	0	.333	0	0	2-3	1	0	0	1.000
Macie Vickers	.000	3-0	2	0	0	0	0	0	0	0	.000	0	0	1	0	.000	0	0	0-0	3	0	0	1.000
Haidyn Warner	.000	3-0	0	0	0	0	0	0	0	0	.000	0	0	0	0	.000	0	0	0-0	3	0	0	1.000
Kylee Magee	.000	4-4	0	0	0	0	0	0	0	0	.000	0	0	0	0	.000	0	0	0-0	0	8	0	1.000
Caitlin Olensky	.000	1-0	0	0	0	0	0	0	0	0	.000	0	0	0	0	.000	0	0	0-0	0	1	0	1.000
Dakota Carter	.000	7-0	0	3	0	0	0	0	0	0	.000	0	0	0	0	.000	0	0	0-0	0	0	0	.000
Totals	.354	44	1205	365	427	81	6	85	324	775	.643	135	48	154	5	.435	14	12	34-42	808	283	41	.964
Opponents	.215	44	1023	136	220	52	3	26	127	356	.348	113	33	291	4	.311	6	19	24-30	785	308	65	.944

LOB - Team (265), Opp (253). DPs turned - Team (10), Opp (14). CI - Team (2), Bredwell 2. IBB - Team (1), Bahl 1.

(All games Sorted by Earned run avg)

Player	era	w-l	app	gs	cg	sho	sv	ip	h	r	er	bb	so	2b	3b	hr	b/avg	wp	hp	bks	sfa	sha
Jordy Bahl	1.45	18-5	28	22	16	5/3	2	140.0	79	51	29	53	195	15	1	12	.159	11	16	0	1	7
Hannah Camenzind	3.11	5-2	21	10	1	0/1	0	56.1	62	35	25	21	44	19	2	3	.263	1	4	0	1	4
Emmerson Cope	3.41	4-1	14	2	0	0/0	0	26.2	31	13	13	10	8	7	0	3	.287	0	2	0	2	1
Kylee Magee	4.27	6-3	16	9	1	0/2	0	37.2	37	31	23	28	36	8	0	4	.257	5	8	0	2	7
Caitlin Olensky	4.85	0-0	7	1	0	0/0	0	8.2	11	6	6	1	8	3	0	4	.297	0	3	0	0	0
Totals	2.50	33-11	44	44	18	8/3	2	269.1	220	136	96	113	291	52	3	26	.215	17	33	0	6	19
Opponents	8.03	11-33	44	44	7	3/0	1	261.2	427	365	300	135	154	81	6	85	.354	41	48	0	14	12

PB - Team (4), Bredwell 4, Opp (13). SBA/ATT - Bredwell (21-26), Bahl (9-14), Magee (5-6), H. Camenzind (6-6), DiNardo (3-4), Cope (4-4).

2025 BIG TEN STATISTICS

2025 Nebraska Softball
Conference statistics for Nebraska (as of Apr 19, 2025)
(Big Ten games only Sorted by Batting avg)

Record: 12-4 Home: 6-2 Away: 6-2 Big Ten: 12-4

Player	avg	gp-gs	ab	r	h	2b	3b	hr	rbi	tb	slg%	bb	hp	so	gdp	ob%	sf	sh	sb-att	po	a	e	fld%
Jordy Bahl	.447	16-15	47	18	21	4	0	5	21	40	.851	8	6	2	0	.574	0	0	3-3	25	5	1	.968
Kacie Hoffmann	.435	15-15	46	11	20	3	0	4	11	35	.761	5	4	3	0	.527	0	0	1-1	10	0	0	1.000
Samantha Bland	.423	16-16	52	18	22	3	1	4	17	39	.750	3	0	6	0	.446	1	1	1-1	7	35	0	1.000
Olivia DiNardo	.390	14-12	41	4	16	3	0	0	11	19	.463	4	1	6	0	.457	0	0	0-0	0	0	0	.000
Hannah Camenzind	.380	16-16	50	12	19	6	0	4	13	37	.740	12	1	2	0	.508	0	0	2-2	11	4	1	.938
Bella Bacon	.364	15-13	33	13	12	4	0	1	7	19	.576	5	2	1	1	.475	0	1	1-1	68	1	0	1.000
Ava Kuszak	.333	16-16	48	12	16	2	0	3	13	27	.563	10	2	15	0	.459	1	0	3-3	13	23	3	.923
Emmerson Cope	.333	8-4	15	3	5	1	0	3	6	15	1.000	2	0	4	0	.412	0	0	0-0	0	1	0	1.000
Lauren Camenzind	.318	16-16	44	14	14	4	0	1	11	21	.477	7	0	5	0	.412	0	1	1-1	19	10	1	.967
Ava Bredwell	.300	16-16	40	11	12	2	1	1	5	19	.475	4	1	4	0	.370	1	1	5-6	120	9	2	.985
Abbie Squier	.100	12-8	20	4	2	0	0	0	1	2	.100	1	1	7	0	.182	0	0	1-1	8	0	0	1.000
Nessa McMillen	.000	12-0	1	2	0	0	0	0	0	0	.000	0	0	0	0	.000	0	0	1-1	2	0	0	1.000
Malia Thoms	.000	1-0	1	0	0	0	0	0	0	0	.000	0	0	0	0	.000	0	0	0-0	0	0	0	.000
Alina Felix	.000	2-0	1	0	0	0	0	0	0	0	.000	1	0	1	0	.500	0	0	0-0	0	0	0	.000
Natalia Hill	.000	13-8	1	0	0	0	0	0	0	0	.000	0	0	1	0	.000	0	0	0-0	7	1	0	1.000
Katelyn Caneda	.000	4-0	0	2	0	0	0	0	0	0	.000	0	0	0	0	.000	0	0	0-1	0	0	0	.000
Kennadi Williams	.000	14-1	0	7	0	0	0	0	0	0	.000	0	0	0	0	.000	0	0	2-2	0	0	0	.000
Haidyn Warner	.000	1-0	0	0	0	0	0	0	0	0	.000	0	0	0	0	.000	0	0	0-0	1	0	0	1.000
Mckinley Malecha	.000	3-0	0	1	0	0	0	0	0	0	.000	0	0	0	0	.000	0	0	0-0	0	0	0	.000
Totals	.361	16	440	132	159	32	2	26	116	273	.620	62	18	57	1	.457	3	4	21-23	291	90	8	.979
Opponents	.229	16	363	48	83	22	0	8	48	129	.355	58	15	119	0	.355	3	10	12-13	282	117	23	.945

LOB - Team (113), Opp (112). DPs turned - Team (0), Opp (5). CI - Team (2), Bredwell 2. IBB - Team (1), Bahl 1.

(Big Ten games only Sorted by Earned run avg)

Player	era	w-l	app	gs	cg	sho	sv	ip	h	r	er	bb	so	2b	3b	hr	b/avg	wp	hp	bk	sfa	sha
Jordy Bahl	1.99	6-2	12	8	6	3/1	2	49.1	33	23	14	30	79	7	0	3	.186	4	10	0	1	3
Kylee Magee	3.05	4-1	6	4	1	0/0	0	20.2	15	9	9	17	20	1	0	2	.211	1	4	0	0	5
Emmerson Cope	3.32	0-1	3	1	0	0/0	0	6.1	7	3	3	5	1	2	0	0	.292	0	0	0	1	1
Caitlin Olensky	3.50	0-0	1	0	0	0/0	0	2.0	3	1	1	0	2	1	0	1	.333	0	0	0	0	0
Hannah Camenzind	3.75	2-0	7	3	0	0/1	0	18.2	25	12	10	6	17	11	0	2	.305	0	1	0	1	1
Totals	2.67	12-4	16	16	7	4/1	2	97.0	83	48	37	58	119	22	0	8	.229	5	15	0	3	10
Opponents	8.12	4-12	16	16	1	0/0	1	94.0	159	132	109	62	57	32	2	26	.361	8	18	0	3	4

PB - Team (3), Bredwell 3, Opp (5). SBA/ATT - Bredwell (12-13), Bahl (5-6), Magee (4-4), Cope (2-2), H. Camenzind (1-1).