



Leaving Certificate Options

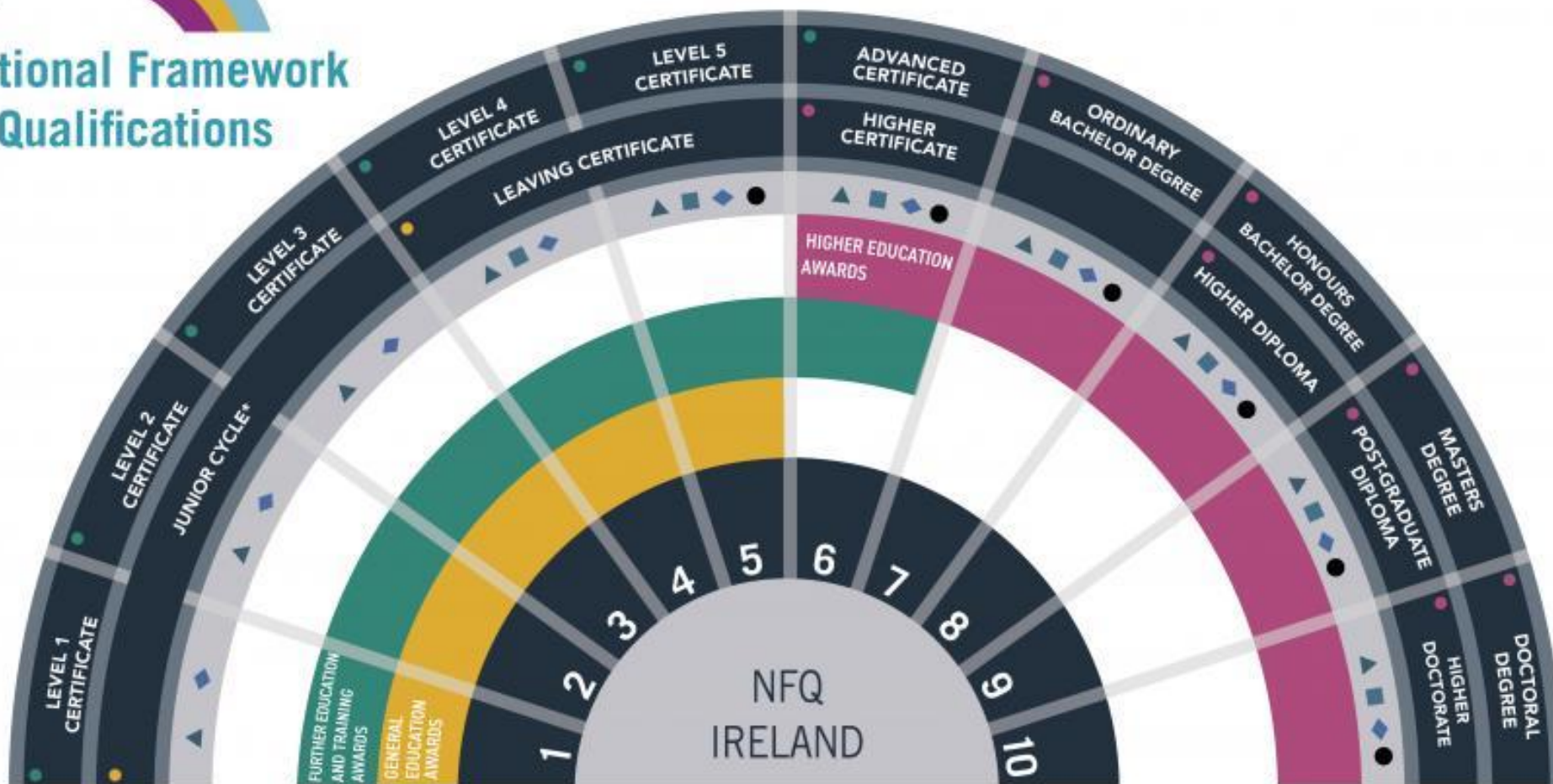
Leaving Certificate Established

Or

Leaving Certificate Applied



National Framework of Qualifications



CLASSES OF AWARD


IRISH REGISTER OF QUALIFICATIONS



Leaving Certificate
Established

Leaving Certificate Established

The Leaving Certificate (Established) is a two-year programme that aims to provide learners with a broad, balanced education while also offering them a chance to specialise towards particular higher education and career options.

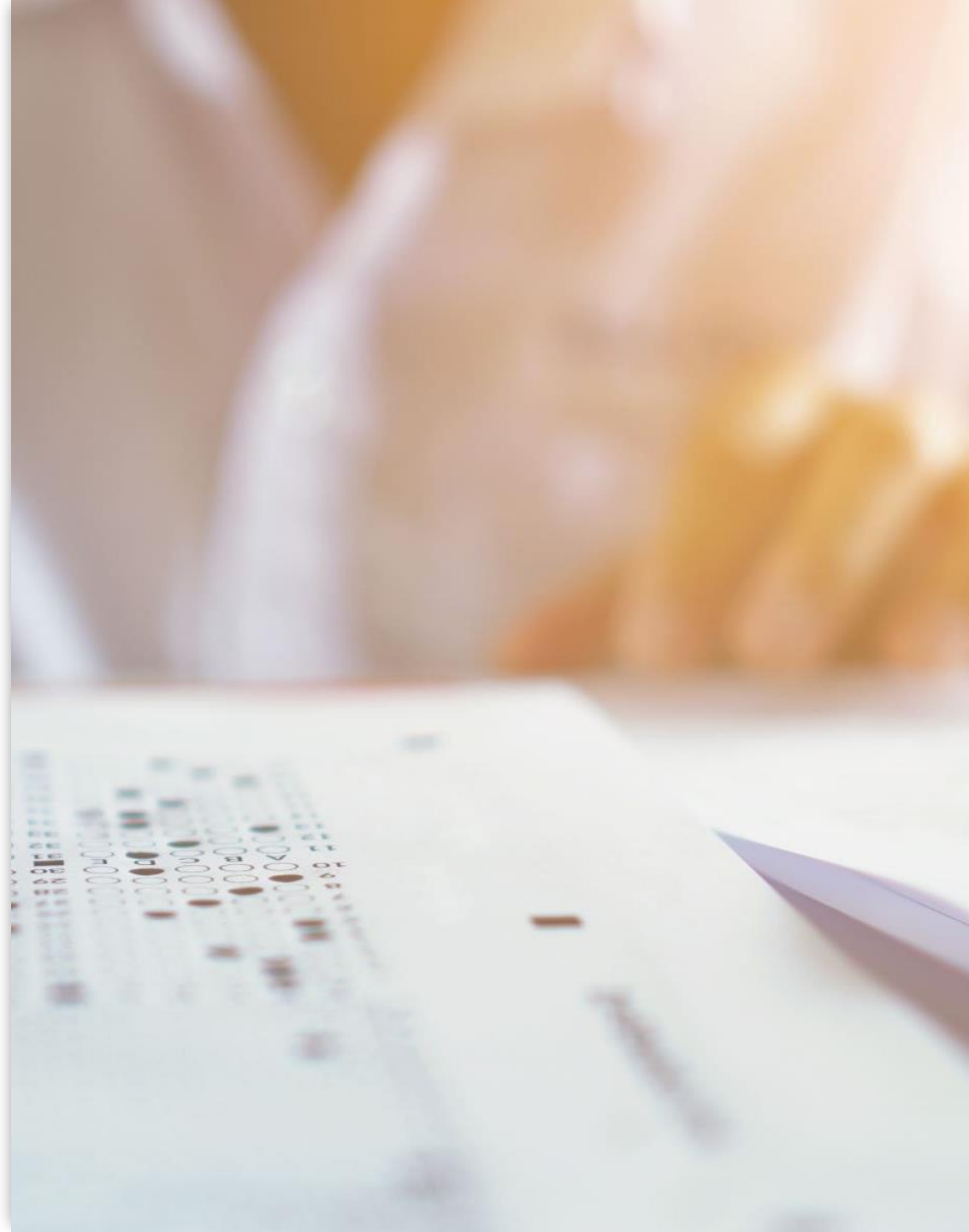


In general, students usually study seven subjects for examination.

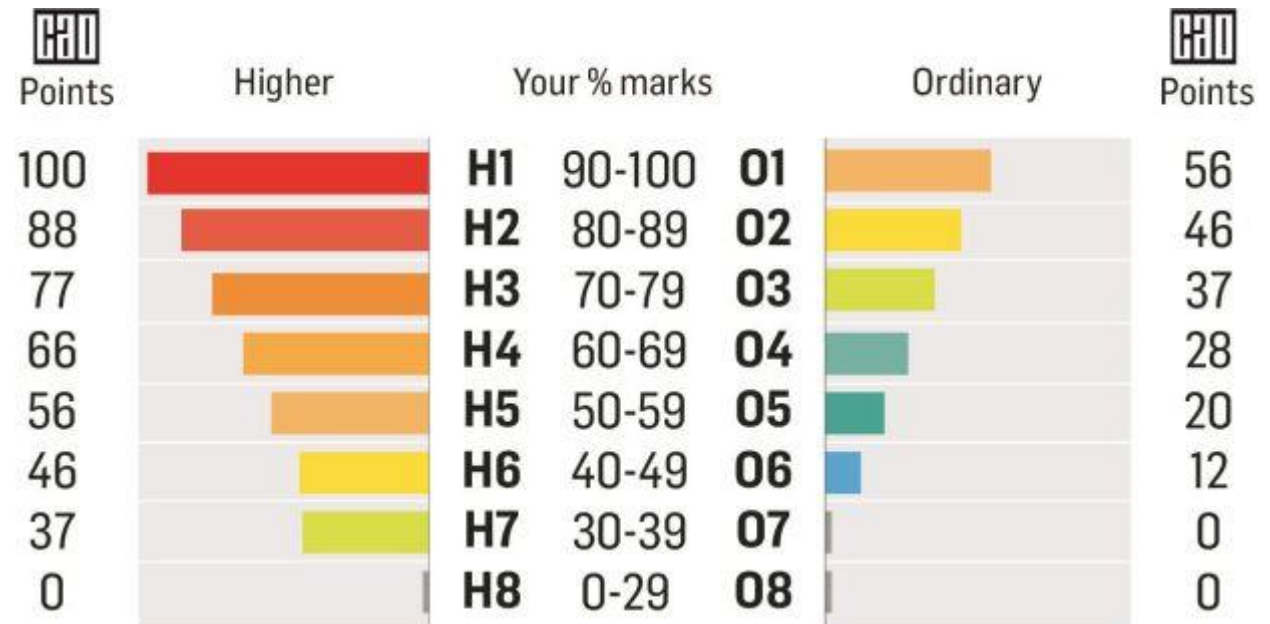
Subjects are normally studied at either Ordinary or Higher Level. Two subjects, Irish and Mathematics, can be studied at Foundation Level.

Assessment

- Formal assessment in senior cycle, as used to test and certify achievement, is managed and administered by the State Examinations Commission. A broad range of assessment methods are used across the range of Leaving Certificate subjects, including oral and aural examinations, coursework and practical examinations.
- At the end of senior cycle, **June of 6th year**, students who have followed the Leaving Certificate Established take the Leaving Certificate examinations. A student's achievement in this examination is directly linked to the process of selection for courses of study in further and higher education.
- **Higher education (university) = Points through CAO**



Leaving Certificate Points System



+25 Bonus points for H1-H6 maths

LCVP link modules Distinction 66 Merit 46 Pass 28

Choosing Subjects

Core subjects usually


- English
- Irish – unless exemption
- Maths

4 more subjects to be selected

- Language
- Science
- Social Studies
- Business
- Artistic
- Technical



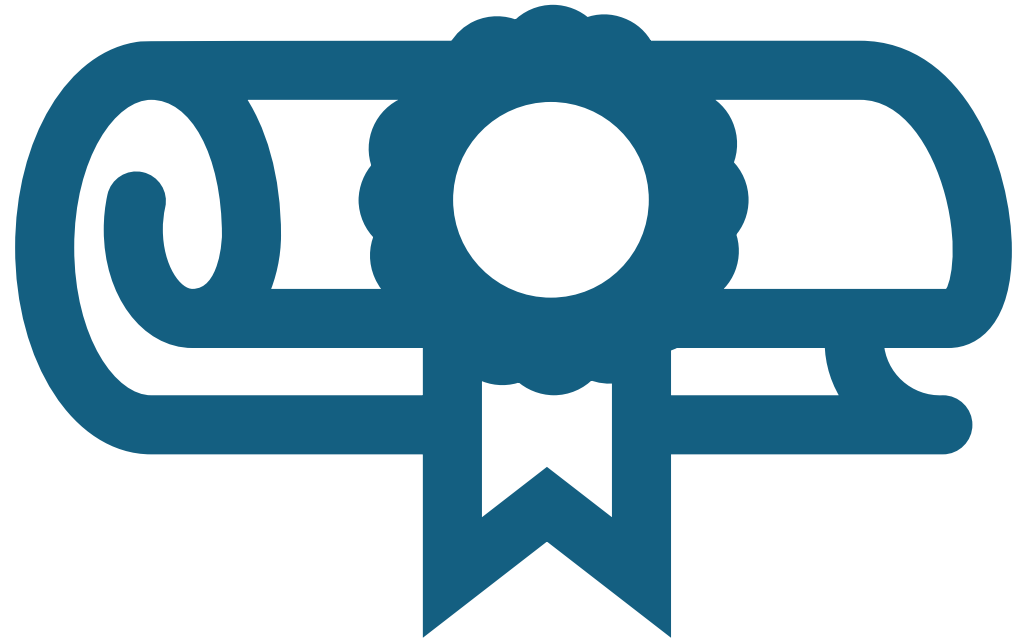
Post School Options

- Work
 - College or university – degree courses
 - Post Leaving Certificate courses
 - Apprenticeship
- 

**Leaving certificate
Applied**

What it is

- **Leaving Cert Applied**
 - Is an alternative to the traditional Leaving Certificate Established.
 - Is a two-year Leaving Certificate Programme available to students who wish to follow a **practical** Leaving Certificate programme with a **vocational** focus.
 - Has the core subjects of English, Maths, and languages but delivered in a different manner.



What's different about it?

- ❑ It is a practical Leaving Certificate programme which places particular emphasis on preparation for the world of work and lifelong learning.
 - ❑ There is less emphasis on the final examinations as coursework is assessed throughout the two years and students gain 'credits' as they go along.
-
- ❑ Four times throughout the two years students get a statement of their results from the State Examinations Commission.
 - ❑ Work experience is a significant component of the programme and students get to sample a range of jobs.

Leaving Cert Applied Subjects

English & Communication

Mathematical Application

Gaeilge Chumarsáideach – 6th year only

Hotel Catering and Tourism

Graphic & Construction or Hair & Beauty

Spanish – 5th year only

Music – elective taken in 5th year

Art

Social Education

Vocational Preparation and Guidance

Introduction to Information & Communication Technology

Personal Reflection

Science – elective taken in 6th year

Credits and sessions

Credits

- Credits are awarded for various assessments that are completed over the 2 years.
- Students can achieve a total of 200 credits
- Irish exemption total achievable = 192

Sessions

- **Session 1 (5th Year)**
 - **September – January**
- **Session 2 (5th Year)**
 - **February – May**
- **Session 3 (6th Year)**
 - **September – January**
- **Session 4 (6th Year)**
 - **February - May**

Attendance

- Attendance is a crucial element of the programme
- Students must obtain **90%** attendance
- If students are absent, they will need a **medical cert** to explain

assessment

Key Assignments

- All subjects have a number of key assignments to be completed over the 2 years
- **Key Assignments + 90% Attendance = 62 credits (31%)**

Tasks

- These are more indebt assessments which are carried out individually or as part of a group
- These are marked by an independent examiner who comes to the school and interviews students
- **There are 7 in total = 70 credits = (35%)**

Final Exam

- There 5 final written exams
- Spanish is completed in the June of 5th year i.e. **June 2027 DO NOT BOOK HOLIDAYS FOR FIRST AND SECOND WEEK OF JUNE!!!!**
- The remaining 4 are completed in the June of 6th year
 - **English & Communication**
 - **Hotel, Catering and Tourism**
 - **Graphic & Construction or Hair and Beauty**
 - **Mathematical Application**
- **These are worth 68 credits (34%)**

Assessment

Key Assignments + 90% attendance	62 credits	31%
7 Tasks @ 10 credits each	70 credits	35%
7 final exams	68 credits	34%
Total	200 credits	100%

Certification awarded at 3rd levels

Pass	120 – 139 credits	60 – 69%
Merit	140 – 169 credits	70 – 84%
Distinction	170 – 200 credits	85 – 100%

Work experience

- Students complete work placement every Wednesday
- 4 work experience modules
 - 5th year
 - September to end of January
 - February to the end of May
 - 6th year
 - September to end of January
 - February to the end of May
- Students find the work experience themselves
- Students must complete 4 different placements
- Can repeat one of the placements

What happens after 6th year?

-
- Students have several options
 1. Apply directly to do a Level 5 Post Leaving Cert Course in a college of further education
 - They can't go directly into a university, however once they complete a L5 course they can apply to go to university through CAO
 2. Apply to do an apprenticeship
 3. Go straight into the world of work
 4. Or

What's the main difference?

Leaving Certificate Established

- Direct route into university using the points system
- Some subjects have project work = 20% of overall grade
- Majority of marks from final exam.
- Needed if you want to study medicine or veterinary medicine

Leaving Certificate Applied

- Indirect route to university
 - Students have to complete a Further Education course first and then apply to CAO for university
- Continuous assessment over the two years = 2/3 of grades
- Final exam = 1/3 of grades