

**NORITZ**  
TANKLESS WATER HEATERS

# COMMERCIAL GUIDE

2024





## QUALITY AND PERFORMANCE TRUSTED BY COMMERCIAL PROFESSIONALS

### Businesses Prefer Noritz Commercial Tankless Water Heaters

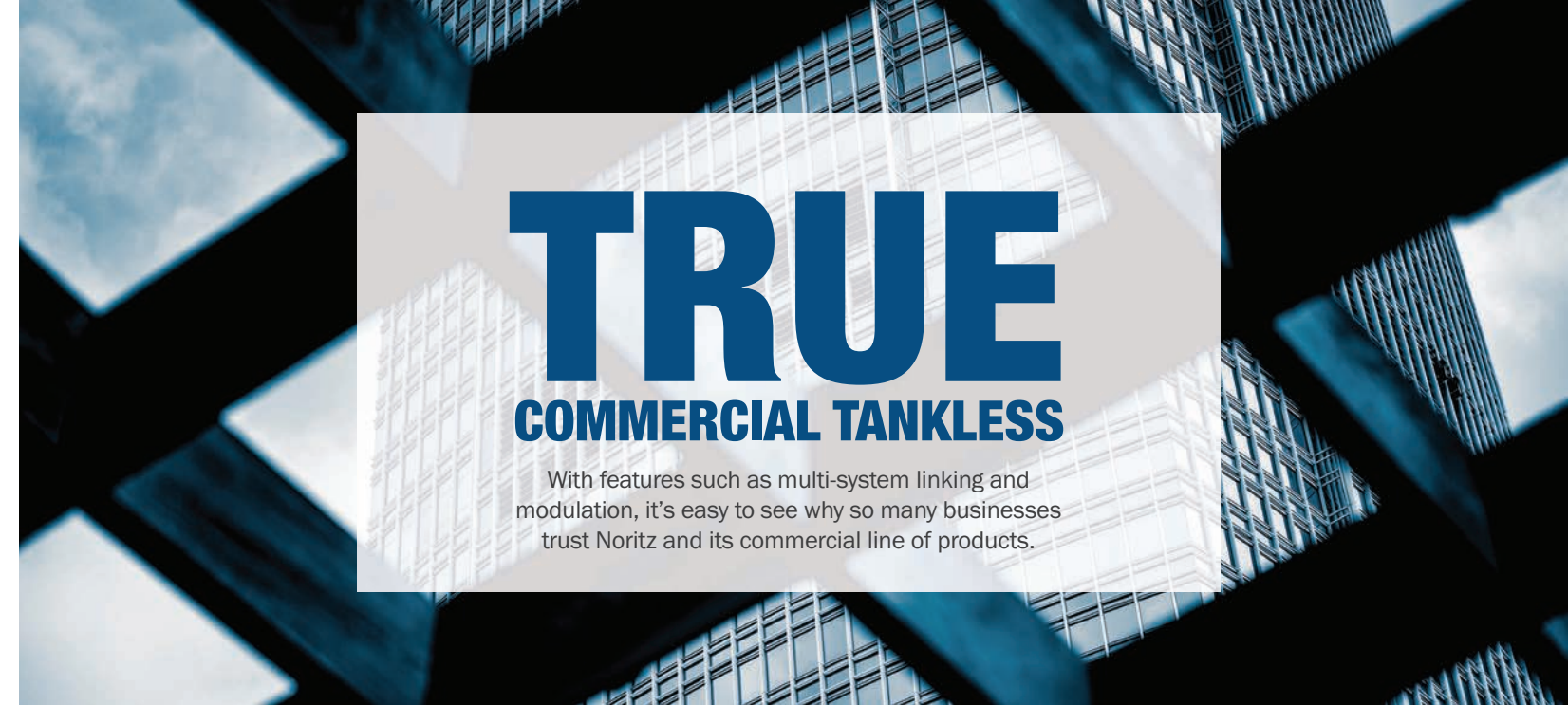
It's time to forego the unreliability and cumbersome footprint that commercial tank type water heaters and boilers typify.

Losing their touch over time, traditional commercial water heating equipment has become dated and obsolete; problematic in terms of space, redundancy, cost, and overall system life.

The limitations traditional equipment has come to represent have presented opportunities for Noritz to innovate TRUE hot water solutions for commercial applications. Speaking of space, Noritz Commercial Tankless Water Heaters sleek modular design allows each unit to be installed in versatile locations and types. Multi systems are installed on site or available as pre-fabricated Commercial Rack systems in either wall or floor mount configurations designed to recover valuable space in your building. (CR Series)

In terms of reliability and system life, The Noritz multi-system takes tanks and boilers to task as its intelligent modulation works to stage, balance, and distribute all hot water loads evenly between the units during operation, maximizing output, efficiencies, and system life. The scalability of the Noritz Multi-system inherently builds in redundancy, positioning Noritz as the new benchmark in commercial water heating.

#### Affiliations



# TRUE COMMERCIAL TANKLESS

With features such as multi-system linking and modulation, it's easy to see why so many businesses trust Noritz and its commercial line of products.



## TRUSTED

Since 1951, Noritz commitment and mission has been to “make people happy through hot water.” With over 16,000,000 units serving people’s hot water needs worldwide, our goal is to provide sustainable customer focused solutions for hot water.

## RELIABLE

Noritz Commercial Tankless Water Heaters are modular and can be linked to create redundancy. Even when one unit needs service or is not in operation, hot water will be delivered seamlessly by other units in the system. Noritz Redundancy in commercial applications provides a reliable, uninterrupted source of hot water which translates to piece of mind for our customers & their bottom line.



## UNMATCHED

Noritz Commercial Tankless Water Heaters are the only TRUE commercial grade tankless water heaters on the market and we continue to lead the industry in terms of innovation, quality, and performance. In addition, Noritz Intelligent Modular Water Heating Technology can link up to 24 units in a single system providing unmatched performance and reliability.

## EFFICIENT

For the rest of the pack, efficiency is a mere watermark to aim for. For Noritz, efficiency is our name. From an ultra efficient 0.96 UEF to the lean JPS just in time manufacturing process we utilize to manufacture our product.



## Features & Benefits

### The Benefits of Commercial Water Heating

Noritz's line of commercial water heaters can meet any demand you throw at them. Need to add more units to meet unanticipated demand? No problem. With the Noritz commercial system you can scale your system with ease to make sure your needs are met.



### Scalability

With a myriad of features, it's easy to see why the Noritz Commercial Line of Tankless is the preferred choice for businesses who are looking to upgrade their hot water delivery systems.



### Efficiency

With our intelligent modulation and load tracking we make sure that none of the heaters in your array are overworked. With equalization of the load, your heaters will take turns to increase lifespan and uptime.



### Redundancy

With the commercial redundancy functionality you never have to worry about never having hot water. Our heaters intelligently provide back up in the rare case of an issue or maintenance is required on another unit. Our system works seamlessly to pick up the slack so you don't go without hot water.



### Versatility

Our small footprint and variety of installation methods makes Noritz the clear choice in versatility. Tricky installation site or complicated plumbing? No problem.

## The Tankless Advantage

See how a Noritz Commercial Tankless stacks up against standard tanks and boilers.

### Tankless vs. Boiler



Concern	Noritz Tankless System	Boiler with Storage Systems
Heat Loss	✔ Zero standby heat loss.	Foam insulation on boiler room components.
Installation Footprint	✔ Indoor or outdoor installation and can be installed on walls or racks.	Indoor installation only taking up a large footprint for the boiler plus storage.
Cycling	✔ Multi-system offers load tracking, cycling any number of heaters based on demand. With high turndown ratios, tankless enables gas savings.	Low turndown ratio has overheating and cycling issues that wastes energy.
Redundancy	✔ Multi-system offers redundancy and simplifies service and maintenance with no down time. Single units can be isolated for service while others continue hot water production.	Single hot water boiler with storage tank. Failure in either component will compromise hot water supply.

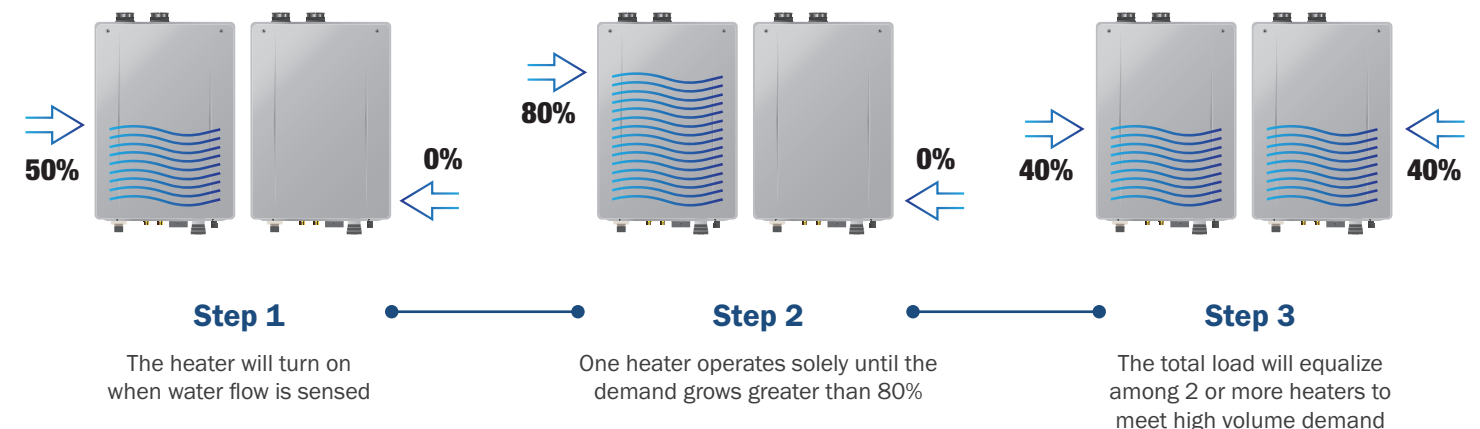
### Tankless vs. Tank



Feature	Noritz Tankless System CR60-WH-2 (2 Unit System)	Commercial Tank
Capacity	✔ Continuous Flow	Limited to tank storage
Weight	✔ 70 lbs. per unit	~500 lbs.
Redundancy	✔ Continuous operation after failure	No reserve; Failure results in total hot water loss until replaced.
BTUs	✔ Up to 399,800	199,000

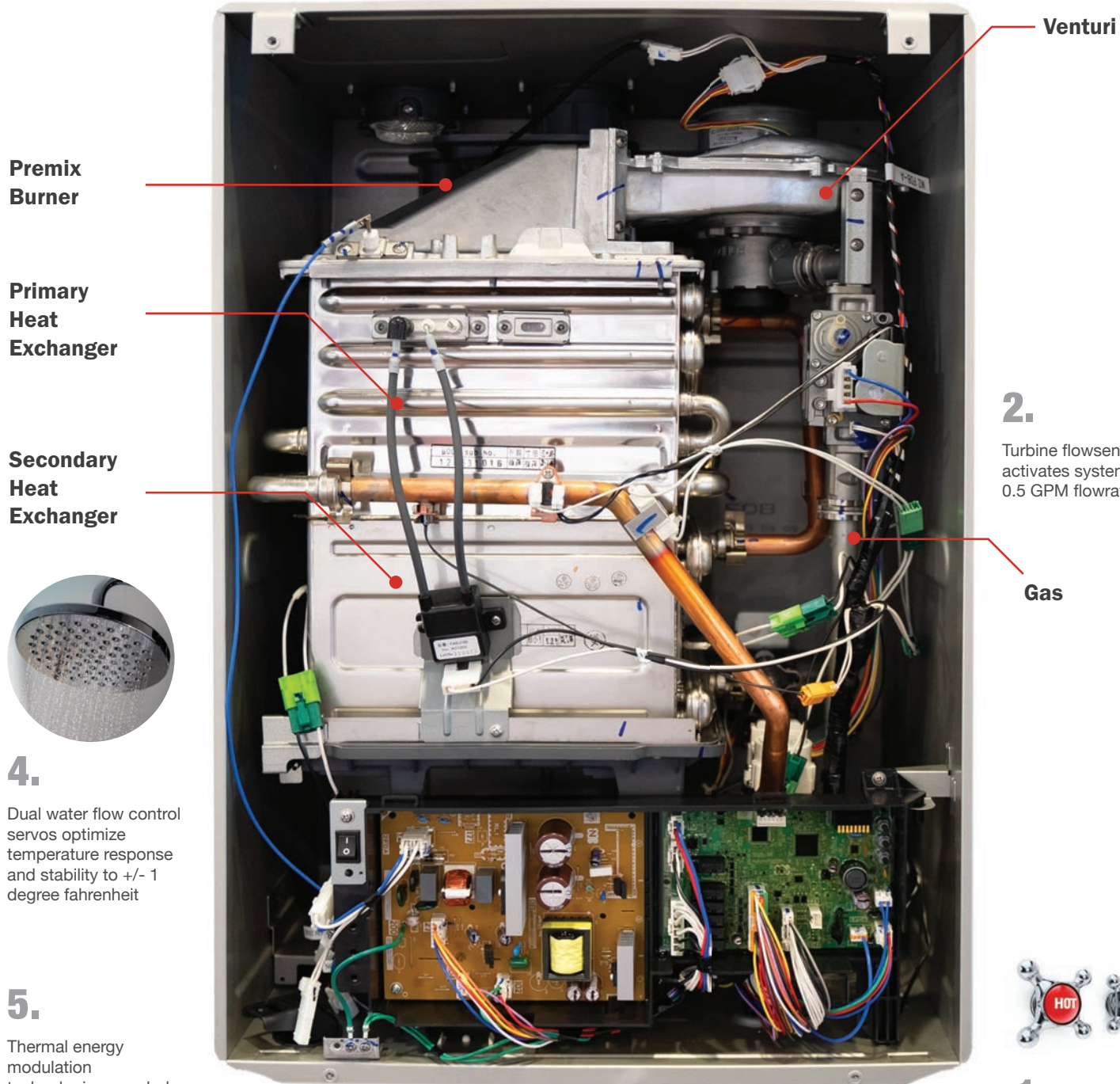
## Noritz Intelligent System

In a multi-system setup, the Noritz commercial units will communicate and work in unison to even out the load on each individual unit, maximizing output and system life. With the ability to modulate between multiple units with the use of a system controller makes Noritz commercial water heaters the most efficient water heating system on the market today.



# Breaking Down Tankless Technology

Knowing how a tankless water heater works can be a deciding factor when you want to make the switch. We've put together a list of steps to help you understand just how a tankless water heater works.



Premix Burner

Primary Heat Exchanger

Secondary Heat Exchanger

4.

Dual water flow control servos optimize temperature response and stability to +/- 1 degree fahrenheit

5.

Thermal energy modulation technologies coupled with dual stainless steel heat exchangers achieves ultra high UEF of 0.96.

3.

Down fired pre-mix burner with variable speed power fan & negative pressure regulating gas valve modulates air/gas input. Electronic ignition initializes combustion

2.

Turbine flowsensor activates system at 0.5 GPM flowrate



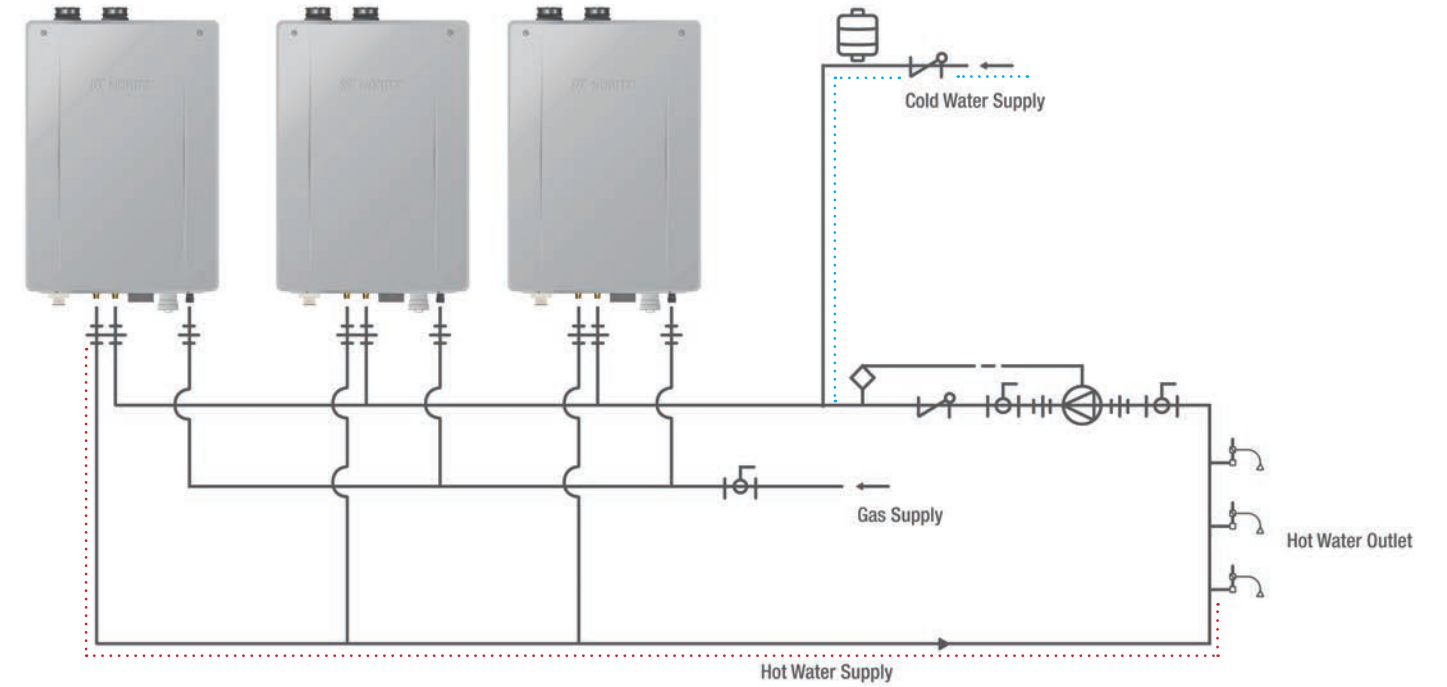
1.

Domestic hot water usage demand

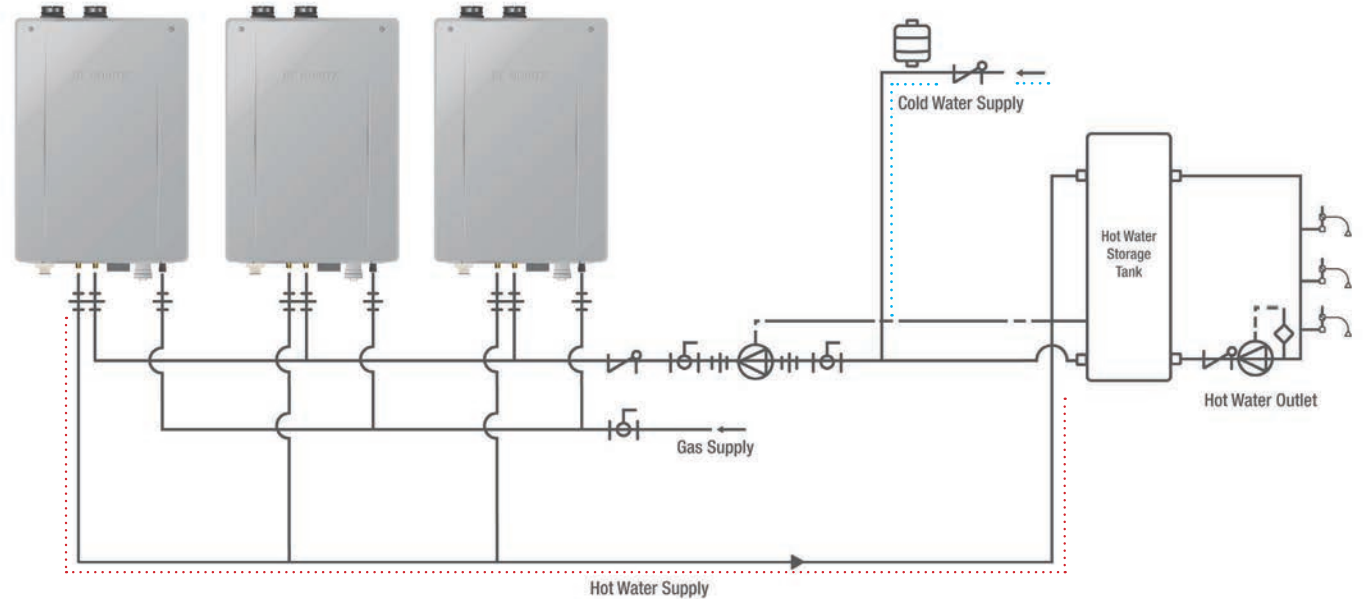
## Tankless Diagrams

Noritz tankless systems can be utilized for a variety of commercial applications without delay in hot water delivery.

### Multi-System Recirculation Diagram



### Multi-System with Storage Tank Diagram



NEXT GEN

# TRUE

COMMERCIAL TANKLESS

## THE NORITZ NCC199CDV

Our NCC199CDV provides industry leading performance for any commercial water heating application. An impressive 10-year heat exchanger warranty comes included, providing businesses with years of hot water without the worry.

### 10 Year Heat Exchanger Warranty

The Noritz NCC199CDV is backed with a 10 year heat exchanger warranty.

For more details, visit:  
[www.Noritz.com/CDVWarranty](http://www.Noritz.com/CDVWarranty)

### New Common Vent Capability

Provides scalability of up to 6 heaters on a single venting system without the need for an external non-return valve.

### Dual High Grade Stainless Steel Heat Exchangers

The right materials for the right situation. The NCC199CDV utilizes 2 types of stainless steel: High temperature for the primary and corrosion resistant for the secondary.

### 2" Vent Connections

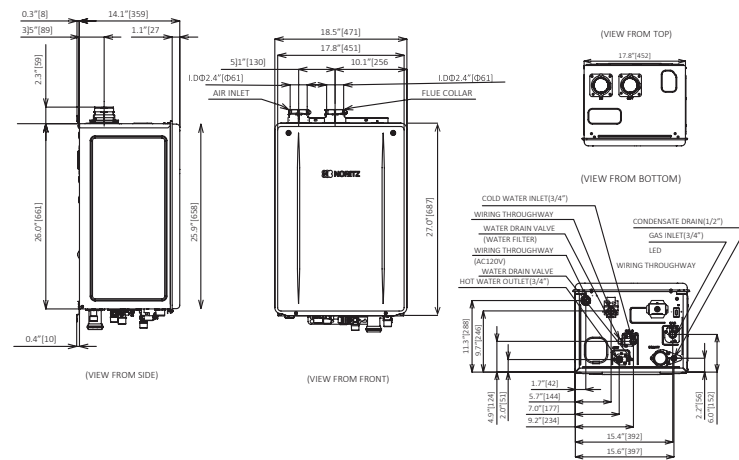
Offers flexible venting options for vertical or horizontal termination with PVC, CPVC, or PP venting, as well as outdoor installations with OD vent cap. Ability to vent up to 65' with 2" and 150' with 3" materials.

### Pre-Mix Burner

Combined with a unique negative pressure Venturi gas valve, the NCC199CDV is Energy Star certified & features an ultra-efficient 0.96 UEF.

### Ultra Low Nox

Produces only 14 ppm. 33% less emissions than the SCAQMD limitations of 20ppm NOx.



ENERGY STAR CERTIFIED



Feature

## Upgraded Heat Exchanger

The right materials for the right situation. The NCC199CDV heat exchanger has been re-engineered with a new blend of stainless steel to maximize performance and reliability. These parts and materials have been specifically selected for their high temperature performance and maximum corrosion resistance, constructed as a single-body unit.

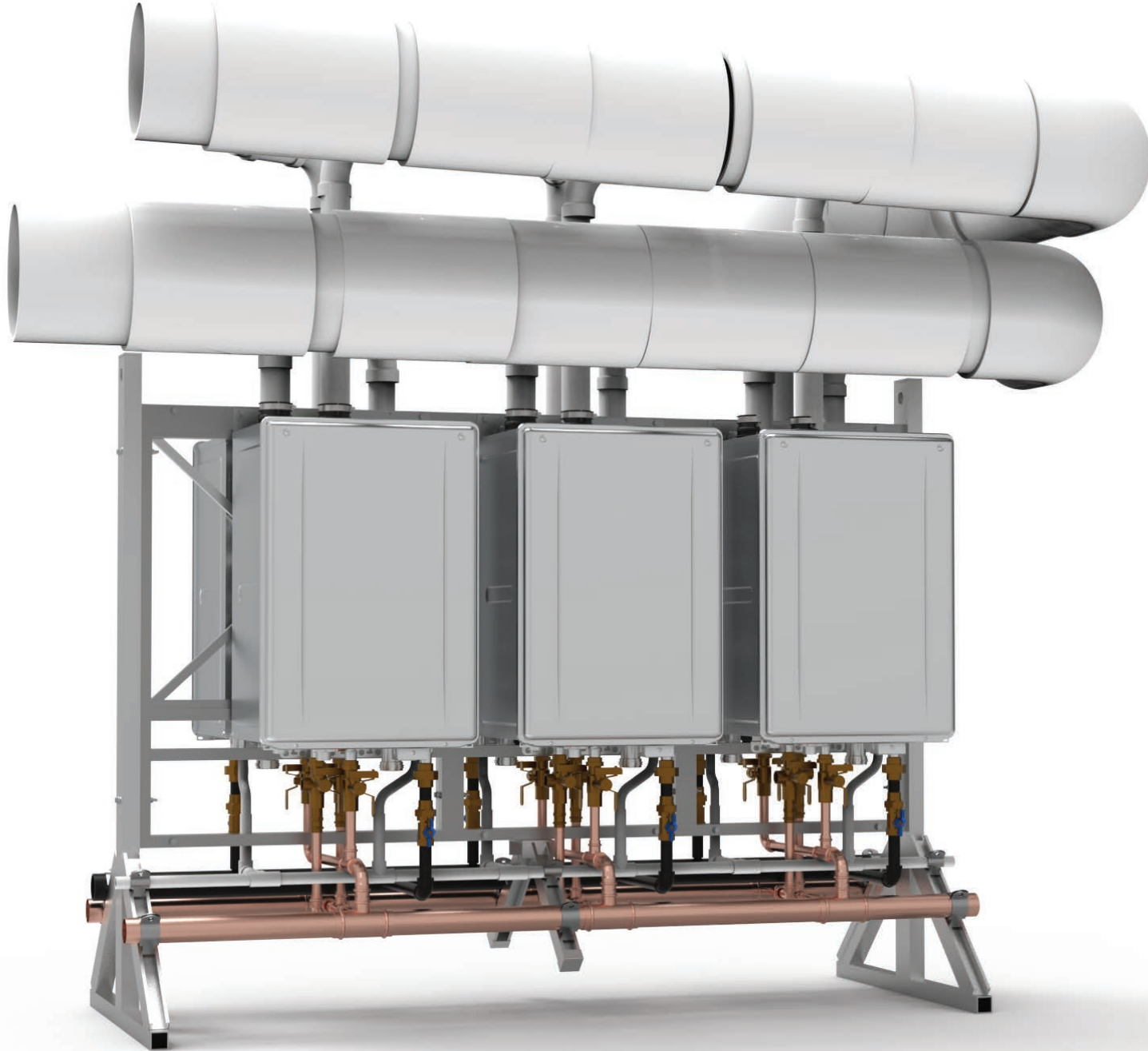
Along with a 0.96 UEF, the Noritz NCC199CDV Commercial Tankless is built ready to provide your business with years of hot water delivery.

Technical Specifications - NCC199CDV		
Min. / Max. BTU	18K - 199,900 BTUh	
Capacity Range	0.5 - 11.1 GPM (30°F Rise)	
Weight	70 lbs.	
UEF	0.96	
Connection Sizes	Water Inlet	NPT 3/4"
	Hot Water Outlet	NPT 3/4"
	Gas Inlet	NPT 3/4"
	Condensate Drain	NPT 1/2"
Water Holding Capacity		0.82 Gallon (3.1 L)
Temperature Settings	°F Mode	100-150° (In 5° F Intervals) 160° F, 170° F, 185° F (14 Options)
	°C Mode	37-48° C (In 1°C intervals), 50-85°C (In 5° intervals) (20 options)
Operating Pressure		15-150 psi (Recommended 50 to 80 psi for maximum performance)
Included Accessories		Remote controller, remote controller cord, anchoring screws, wall mounting bracket

**COMMON VENTING OFFERS**  
**TRUE**  
**INSTALLATION FLEXIBILITY**

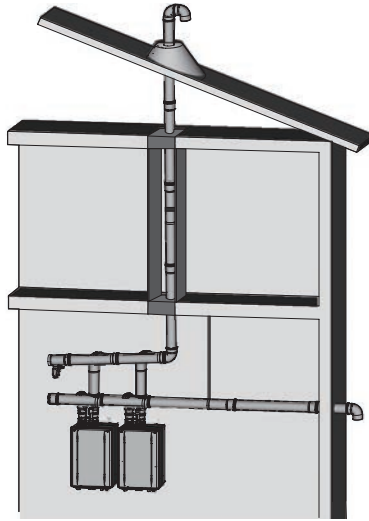
With **Noritz Common Venting**, up to 6 Noritz Water Heaters are able to share the same venting system. This means significantly reduced penetrations through the wall or roof – resulting in less labor and a cleaner finished look.

The use of a larger vent diameter system allows for longer vent runs for larger and taller buildings – up to 200 ft. of equivalent vent length. The system is independently tested and approved for use by CSA in both the US and Canada. With the new built-in exhaust non-return valve, scalability of up to 6 heaters is possible now without an external non-return valve.

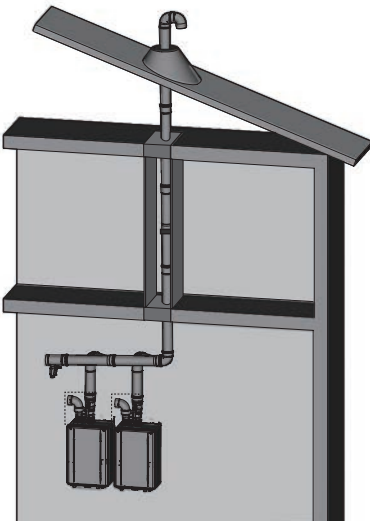


**Ultimate Versatility**  
**For Vent Configuration**

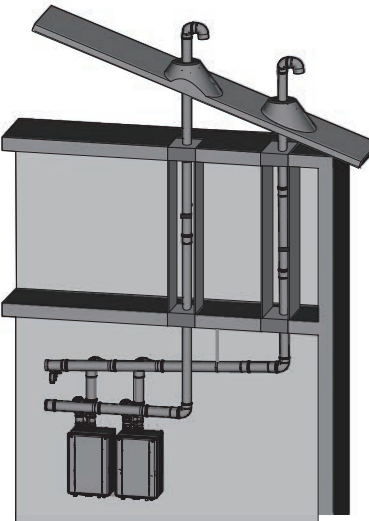
Figuring out where to safely and efficiently route the exhaust system is one of the biggest hurdles for any HVAC system designer. Noritz Common Venting offers designers the most flexibility to decide how to safely and efficiently route the vent. For room air installations, the combustion air can be drawn from the room environment, further reducing the installation complexity by requiring only a single penetration for the exhaust.



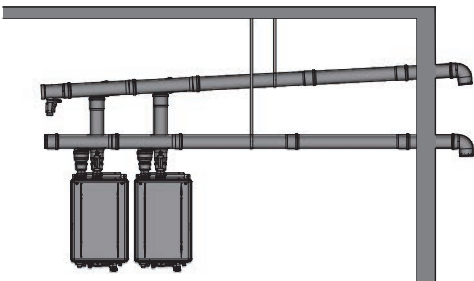
**Split Exhaust**



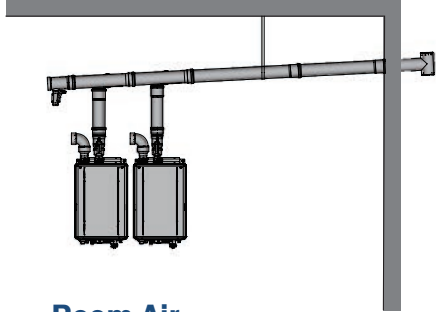
**Room Air Vertical**



**Direct Vent Vertical**



**Direct Vent - Horizontal**



**Room Air - Horizontal**



**Offers A Clean, Labor Saving Install While Ensuring The Utmost In Safety And Performance**

- ➔ Tested with safety in mind – each water heater uses a built-in non-return valve to prevent flue gas from entering idle units.
- ➔ Reduces wall or ceiling penetrations.
- ➔ Utilizes either ULCS-636 approved Polypropylene (PP) venting (capable of handling temperatures up to 230 °F) or Schedule 40/80 PVC
- ➔ Easy installations with flexibility to vent in a variety of ways.

# Quality Meets Performance

Never worry about your business' hot water supply again. From restaurants to hospitals, the Noritz Commercial tankless water heating line is built to handle any demand with ease.



GQ-C3260WZ-FF US  
**NCC199CDV**

### Featured Specs

- 10 Year Commercial Warranty
- Minimum 18,000 to Max 199,900 BTUh
- Multi-System Capability
- Ultra-Low NOx



Technical Specifications	
Unit Dimensions	27" (w) x 18.5" (w) x 14.1" (d)
Weight	70 lbs.
Vent Type	DV / OD
Gas Consumption	Min. 18K BTUh - Max. 199,900 BTUh
Capacity Range	0.5 - 11.1 GPM
UEF	0.96
Temperature Settings	100°F - 185°F (In 5° Intervals), 160°, 170°, 185°



GQ-2857WZ-FFA US  
**NC380SV**

### Featured Specs

- 5 Year Warranty on Heat Exchanger and Parts / 1 Year Reasonable Labor
- Commercial-Grade Heat Exchanger
- Wireless Compatibility

Technical Specifications	
Unit Dimensions	29.7"(h) x 19.1"(w) x 11.8"(d)
Weight	106 lbs.
Gas Consumption	Min. 22,500 - Max. 380,000 BTUh
NG & LP	Natural Gas / Propane
Capacity Range	0.7 - 13.2 GPM
Thermal Efficiency	80% (NG) / 81% (LP)
Temperature Settings	100°F - 150°F (In 5° Intervals), 160°, 170°, 180°F



GQ-2857WZ-FFA US  
**NC199DVC**

### Featured Specs

- 84% Thermal Efficiency
- Minimum 16,000 to Max 199,900 BTUh
- 0.5 to 9.8 GPM
- Multi-System Capability
- Commercial-Grade Heat Exchanger



GQ-2857WZ US LP  
GQ-2857WZ US NG  
**NC1990D**

### Featured Specs

- 84% Thermal Efficiency
- Minimum 16,000 to Max 199,900 BTUh
- 0.5 to 9.8 GPM
- Multi-System Capability
- Commercial-Grade Heat Exchanger

Technical Specifications	
Indoor Unit Dimensions	23.6" (h) x 13.8"(w) x 11"(d)
Outdoor Unit Dimensions	23.6"(h) x 13.8"(w) x 9.4"(d)
Weight	58 lbs.
Gas Consumption	Min. 16K BTUh - Max. 199,900 BTUh
NG & LP	Natural Gas / Propane
Capacity Range	0.5 - 9.8 GPM
Thermal Efficiency	84%
Temperature Settings	100°F - 185°F (In 5° Intervals)
UEF	.82



GQ-C5032WZ-FF US  
**NCC300DV**

### Featured Specs

- 5 Year Warranty on Heat Exchanger and Parts / 1 Year Reasonable Labor
- Wireless Compatibility
- Ultra Low NOx

Technical Specifications	
Unit Dimensions	32.7" (h) x 18.9"(w) x 14.2"(d)
Weight	108 lbs.
Gas Consumption	Min. 15K BTUh - Max. 300,000 BTUh
Capacity Range	0.5 - 13.2 GPM
Thermal Efficiency	97%
Temperature Settings	100°F - 150°F (In 5° Intervals), 160°, 170°, 185°F



GQ-C5032WZ US  
**NCC3000D**

### Featured Specs

- 5 Year Warranty on Heat Exchanger and Parts / 1 Year Reasonable Labor
- Wireless Compatibility
- Ultra Low NOx

Technical Specifications	
Unit Dimensions	32.7" (h) x 18.9"(w) x 14.2"(d)
Weight	108 lbs.
Gas Consumption	Min. 15K BTUh - Max. 300,000 BTUh
Capacity Range	0.5 - 13.2 GPM
Thermal Efficiency	97%
Temperature Settings	100°F - 150°F (In 5° Intervals), 160°, 170°, 185°F

Technical Specifications	
Indoor Unit Dimensions	23.6" (h) x 13.8"(w) x 11"(d)
Outdoor Unit Dimensions	23.6"(h) x 13.8"(w) x 9.4"(d)
Weight	58 lbs.
Gas Consumption	Min. 16K BTUh - Max. 199,900 BTUh
NG & LP	Natural Gas / Propane
Capacity Range	0.5 - 9.8 GPM
Thermal Efficiency	84%
Temperature Settings	100°F - 185°F (In 5° Intervals)
UEF	.82



# HH

## HYBRID HOT SERIES

BY NORITZ®

Our latest **innovation...**

### The First Tankless and Tank Combo from Noritz


**Endless Hot Water. Quicker Recovery.**

The NEW Hybrid Hot Series by Noritz® brings together the storage of a standard tank with the power and efficiency of a tankless to take on any commercial hot water demand.

Combined to meet the hot water requirements of businesses, the Hybrid Hot Series by Noritz® utilizes the latest in tankless and tank storage technologies to create a powerful and reliable solution for business owners. The Hybrid Hot also offers common venting for multiple units to ensure endless hot water is always available.

Noritz is proud to present our latest innovation in tankless technology.

### Performance

Approved Gas Types	Natural Gas or Propane	
Efficiency		0.96 UEF
	Ratings not certified by AHRI	98% Thermal Efficiency
First Hour Rating	317 GPH	

SCAN HERE TO WATCH OUR HYBRID HOT EXPLAINER VIDEO



### Features



#### The Best of Tank and Tankless

With an endless supply of hot water, lower pressure drop, and no limitation of hot water flow rate, the Hybrid Hot Series by Noritz® combines features of both technologies to provide the most reliable hot water delivery system to date for commercial applications.



#### Faster Hot Water Recovery

The Hybrid Hot offers the best BTU possible at the quickest rate, providing businesses with energy savings and more. Thanks to its **Integrated Pump**, hot water recovery speed with the Hybrid Hot is faster than other tank and tankless combinations.



#### Cement Lining

With no anode rod and a greater warranty than other tanks on the market, our tank also features cement lining for superior corrosion resistance.



#### Continuous Hot Water Delivery

If your tank suddenly runs out of hot water, no need to worry. The Hybrid Hot Series by Noritz® can continue to provide hot water using the paired NCC199CDV tankless even after your stored supply is depleted\*.

\*Hot water capabilities are limited

### Technical Specs

Hybrid Hot Series by Noritz®	
Product Number	NHH199100-1-NG NHH199100-1-LP
Installation Location	Indoor
Working Pressure	Water: 15 - 150 psi Gas: NG: 3.5 - 10.5" LP: 8.0 - 14.0"
Connection Size	Cold Water: NPT 1-1/2" Hot Water: NPT 1-1/2" Return (Recirc): NPT 3/4" Gas: NPT 3/4"
Vent	Type: DV / SV Size: 2" / 3" Max Length: 2": 65' / 3": 150' Common Vent: Yes (Up to 6 Units)
Dimensions	H: 67 3/4" W: 28" D: 43.5"
Weight	544 lbs.
Power Supply	120 VAC (60Hz)
Tank Capacity	119 Gallons (Cement Lined)
Tankless Capacity	18,000 - 199,900 BTU/h
Temperature Setting	100 - 185°F (37 - 85° C)



### Recovery Capacity

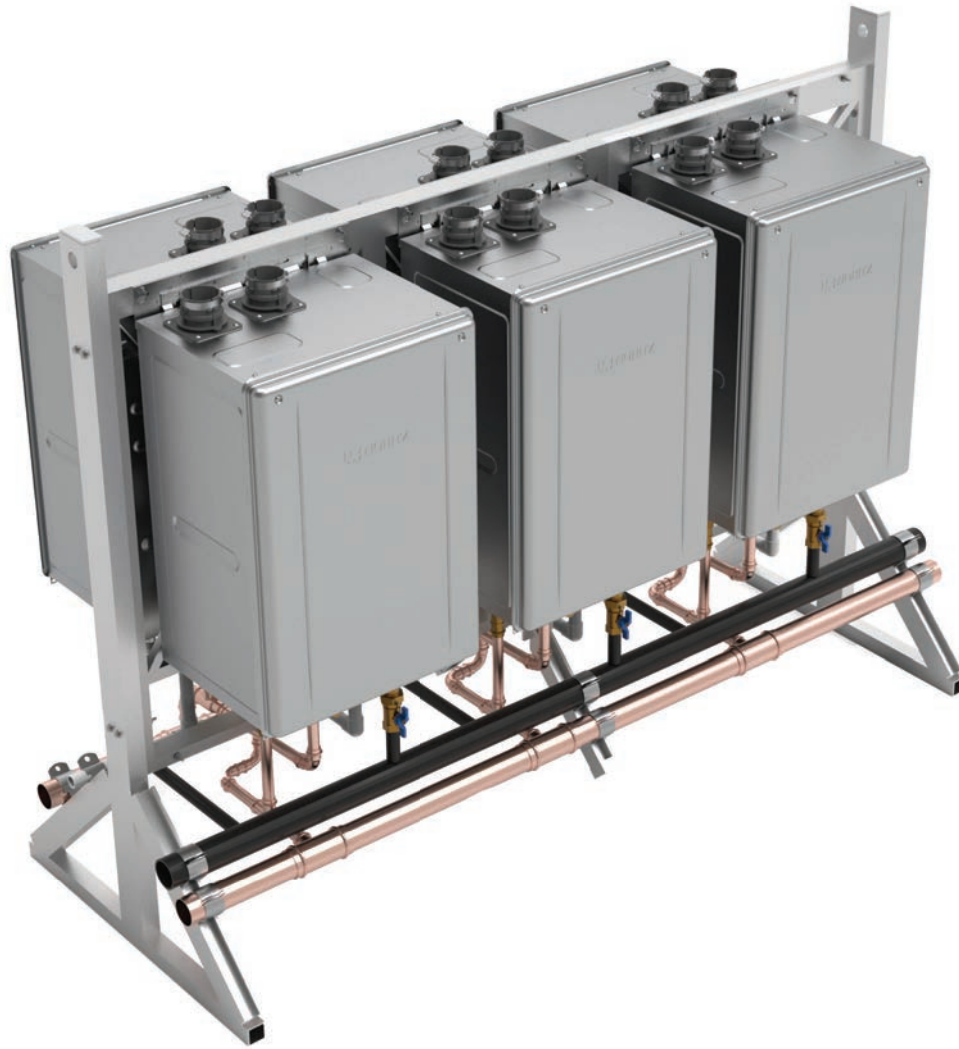
Product Number	Approx. Tank Capacity	Max Input (Btu/hr)	GPH vs Temperature Rise												
			30°F	40°F	50°F	60°F	70°F	80°F	90°F	100°F	110°F	120°F	130°F	140°F	
NHH199100	119 Gal	199,900	780	585	468	390	334	292	260	234	213	195	180	167	



True Commercial Tankless

# Commercial Rack System (CR)

The Noritz CR Commercial Rack System (formerly CWHS) has been redesigned for maximum performance and ease of installation. The CR is a pre-fabricated racking system for use in flat rooftop or mechanical room applications for commercial multi-systems. A new low profile design and a variety of installation options make this new rack system ideal for business owners looking to replace outdated storage tanks.



## Commercial Rack System Features

### New Low Profile Design

Redesigned with lower center of gravity for increased stability and easier transportation.

### Reduced Install Time

Pre-piped condensate manifold and condensate line along with pre-wiring required for multi-systems reduces installation time.

### Simplified Venting

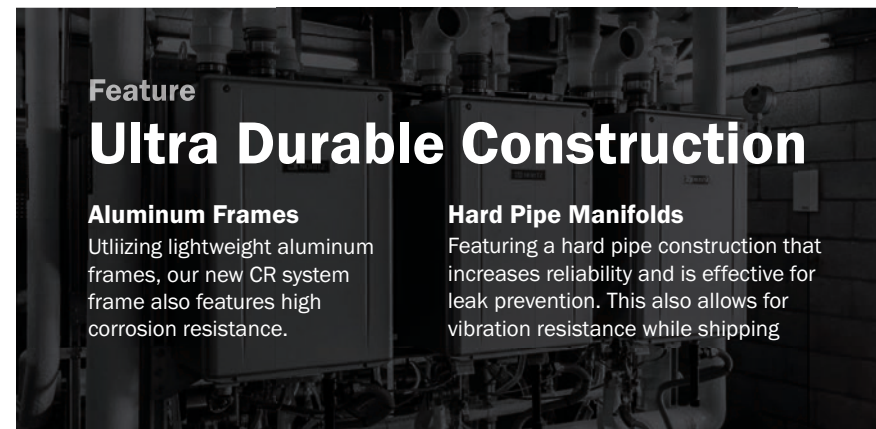
Built-in non-return valve allows for common venting up to 6 units on a single manifold without the need for external accessories.

### New Wall Mount Option

The redesigned wall mounted option allows for more space savings without sacrificing performance.

### Easy Scalability

Standardized water and gas lines allow easy connection of multiple rack systems in-line.



## Feature Ultra Durable Construction

### Aluminum Frames

Utilizing lightweight aluminum frames, our new CR system frame also features high corrosion resistance.

### Hard Pipe Manifolds

Featuring a hard pipe construction that increases reliability and is effective for leak prevention. This also allows for vibration resistance while shipping



## Dimensions

Item Number	Rack Type	UPC	Included Main Components		Cold / Hot Water & Gas Manifold				Rack Dimensions			Total Weight (lbs)
			GQ-C3260WZ-FF US	SC-401-6M	Cold	Hot	Condensate Drain Manifold	Gas Manifolds	L	D	H	
CR60-WH-2-LP	2 Unit Wall Hanging, LP	860003319932	2	1	2"	2"	3/4"	2"	54 1/4"	17"	44"	259
CR60-WH-2-NG	2 Unit Wall Hanging, NG	860003319949										
CR60-WH-3-LP	3 Unit Wall Hanging, LP	860003319956	3	1	2"	2"	3/4"	2"	78"	17"	44"	386
CR60-WH-3-NG	3 Unit Wall Hanging, NG	860003319963										
CR60-FS-3-LP	3 Unit Free Standing, LP	850018743556	3	1	2"	2"	3/4"	2"	52 1/4"	30"	56 3/4"	386
CR60-FS-3-NG	3 Unit Free Standing, NG	850018743549										
CR60-FS-4-LP	4 Unit Free Standing, LP	860003319970	4	1	2"	2"	3/4"	2"	54 1/4"	30"	56 3/4"	444
CR60-FS-4-NG	4 Unit Free Standing, NG	860003319987										
CR60-FS-5-LP	5 Unit Free Standing, LP	850018743099	5	1	2"	2"	3/4"	2"	78"	30"	56 3/4"	560
CR60-FS-5-NG	5 Unit Free Standing, NG	850018743082										
CR60-FS-6-LP	6 Unit Free Standing, LP	817000013752	6	1	2"	2"	3/4"	2"	78"	30"	56 3/4"	641
CR60-FS-6-NG	6 Unit Free Standing, NG	860003319994										

## Hot Water Supply Capacity

Item Number	Heater Quantity	Heater Configuration	Min BTU/hr Input	Max BTU Input	Hot Water Capacity (GPM)						
					50°	60°	70°	80°	90°	100°	110°
CR60-WH-2-LP	2	Wall Hanging In-Series	18,000	399,800	15.7	13.1	11.2	9.8	8.7	7.8	7.1
CR60-WH-2-NG											
CR60-WH-3-LP	3	Wall Hanging In-Series	18,000	599,700	23.5	19.6	16.8	14.7	13.1	11.8	10.7
CR60-WH-3-NG											
CR60-FS-3-LP	3	Free Standing	18,000	599,700	23.5	19.6	16.8	14.7	13.1	11.8	10.7
CR60-FS-3-NG											
CR60-FS-4-LP	4	Free Standing 2x2 Back to Back	18,000	799,600	31.3	26.1	22.4	19.6	17.4	15.7	14.2
CR60-FS-4-NG											
CR60-FS-5-LP	5	Free Standing 3x2 Back to Back	18,000	999,500	39.2	32.7	28.0	24.5	21.8	19.6	17.8
CR60-FS-5-NG											
CR60-FS-6-LP	6	Free Standing 3x3 Back to Back	18,000	1,199,400	47.0	39.2	33.6	29.4	26.1	23.5	21.4
CR60-FS-6-NG											

## Additional Options And Accessories



WH-3

### Wall Hanging Rack

The new wall hanging rack allows installers to accommodate for existing conduit and piping without interference, reducing additional installation time. A new floor stand also comes included which allows for easy positioning while fixing to a wall.



### CR60 Wheel Kit

Noritz CR60 Wheel Kit is designed to simplify logistics of moving Noritz Commercial Racks from the crate to the mechanical room. Designed to last, the wheel kits are compatible to move all Noritz Commercial Rack configurations for years to come.

### Wheel Kit Features

#### Faster Mobility

Relocate your CR system with ease using the CR60 Wheel Kit's rubber casters for a fast and smooth transition.

#### Designed For The New CR

The CR60 wheel kit is designed to work smoothly with all configurations of Noritz new Commercial Rack systems.

#### Move Your System With Ease

Placed at the ends of your CR floor standing system, the CR60 Wheel Kit provides installers an easier way to pick up and move without the need for heavy lifting.



Item #  
**CR60-CA**

## CA Update Commercial Rack System

The updated Noritz CR Commercial Rack System brings new features designed to create a hassle free and easy installation. The CR system update comes with a redesigned gas header with built-in gas sediment traps and an additional shutoff valve, simplifying both installation and service.

### Rack System Updates

#### › Test Pressure

Factory testing of gas header at 60psi for 30 minutes. Field pressure testing at 60 psi compatible; Additional gas shutoff valves are also included to isolate gas header and protect tankless units during field test



#### › Drips and Sediment Traps

Gas Sediment traps now come built in

#### › Mechanically Formed Tee Fittings



2 Unit Wall Mount	3 Unit Wall Mount	4 Unit Wall Mount	6 Unit Floor Mount
Max Qty. of Racks	Max Qty. of Racks	Max Qty. of Racks	Max Qty. of Racks
<b>5</b>	<b>3</b>	<b>3</b>	<b>2</b>

## Dimensions

Item Number	Rack Type	UPC	Included Main Components		Cold / Hot Water & Gas Manifold				Rack Dimensions			Total Weight (lbs)
			GQ-C3260WZ-FF US	SC-401-6M	Cold	Hot	Condensate Drain Manifold	Gas Manifolds	L	D	H	
CR60-WH-2-LP-CA	2 Unit Wall Hanging, LP	860003319932	2	1	2"	2"	3/4"	2"	54 1/4"	17"	44"	259
CR60-WH-2-NG-CA	2 Unit Wall Hanging, NG	860003319949										
CR60-WH-3-LP-CA	3 Unit Wall Hanging, LP	860003319956	3	1	2"	2"	3/4"	2"	78"	17"	44"	386
CR60-WH-3-NG-CA	3 Unit Wall Hanging, NG	860003319963										
CR60-FS-3-LP-CA	3 Unit Free Standing, LP	850018743570	3	1	2"	2"	3/4"	2"	52 1/4"	30"	56 3/4"	386
CR60-FS-3-NG-CA	3 Unit Free Standing, NG	850018743563										
CR60-FS-4-LP-CA	4 Unit Free Standing, LP	860003319970	4	1	2"	2"	3/4"	2"	54 1/4"	30"	56 3/4"	444
CR60-FS-4-NG-CA	4 Unit Free Standing, NG	860003319987										
CR60-FS-5-LP-CA	5 Unit Floor Mount, LP	850018743099	5	1	2"	2"	3/4"	2"	78"	30"	56 3/4"	560
CR60-FS-5-NG-CA	5 Unit Floor Mount, NG	850018743082										
CR60-FS-6-LP-CA	6 Unit Free Standing, LP	817000013752	6	1	2"	2"	3/4"	2"	78"	30"	56 3/4"	641
CR60-FS-6-NG-CA	6 Unit Free Standing, NG	860003319994										

## Commercial Models

Available for both indoor and outdoor installations, our commercial line of tankless water heaters are designed to take on any hot water demand.



Model	Condensing			Non-Condensing		
	NCC3000D	NCC300DV	NCC199CDV	NC380SV	NC199DVC	NC1990D
GQ Reference Number	GQ-C5032WZ US	GQ-C5032WZ-FF US	GQ-C3260WZ-FF US	N/A	GQ-2857WZ-FFA US	GQ-2857WZ US
SV Conversion	N/A	Yes	Yes	No	N/A	N/A
Vent Type	OD	DV	DV / OD	SV	DVC	OD
Dimensions (Inches)	32.7 x 18.9 x 14.2	32.7 x 18.9 x 14.2	27.0 x 18.5 x 14.1	29.7 x 19.1 x 11.8	23.6 x 13.8 x 11.0	23.6 x 13.8 x 9.4
Weight (lbs)	108 lbs.		70 lbs.	106 lbs.	58 lbs.	54 lbs.
Min./Max. Btuh	15,000 - 300,000		18,000 - 199,900	22,500 - 380,000	16,000 - 199,900	16,000 - 199,900
Thermal Efficiency / UEF	97%		0.96 UEF	NG: 80% LP: 81%	0.82 UEF	0.82 UEF
Max. Hot Water Capacity	35°F Rise: 13.2 GPM		35°F Rise: 11.1 GPM	35°F Rise: 13.2 GPM	35°F Rise: 9.8 GPM	35°F Rise: 9.8 GPM
Water Inlet	1"		3/4"	1"	3/4"	3/4"
Hot Water Outlet	1"		3/4"	1"	3/4"	3/4"
Gas Inlet (1/2 in. capable)	3/4"		3/4"	3/4"	3/4"	3/4"
Temp. Settings	100-150°F (In 5°F Intervals), 160, 170, 185° F			100-150°F (In 5°F Intervals), 160, 170, 180°F	100-150°F (In 5° F Intervals), 160, 170, 185° F	
Default Temp. Option	N/A			120, 130, 140, 180°F	120, 130, 140, 185°F	
Warranty	5 year warranty on heat exchanger, 5 year warranty on parts & 1 year reasonable labor*			<b>10 YEAR WARRANTY ON HEAT EXCHANGER</b> , 5 year warranty on parts & 1 year reasonable labor*	5 year warranty on heat exchanger, 5 year warranty on parts & 1 year reasonable labor*	
Ultra Low NOx	Yes			No	Yes	
Quick Connect	Yes					
Remote Included	Yes					
Min/Max Flowrate	0.5 GPM / 13.2 GPM		0.5 GPM / 11.1 GPM	0.7 GPM / 13.2 GPM	0.5 GPM / 9.8 GPM	
High Altitude Approved	Up to 4,500 ft.		Up to 10,000 ft.	Up to 8,000 ft.		
Wireless Compatible	Yes					
Common Vent Capable	No		Up to 6 Units	No		
Commercial Energy Star	Yes		No			
PVC	No	Yes			No	
ASME	No			Yes	No	



## Case Studies

The Noritz Commercial line is the most precise and efficient method of heating water for any commercial project. Built to endure what any business application throws at them, it's easy to see why many businesses prefer the Noritz Commercial line for their applications.





## Project Profile

# Wedgworth's Inc.

Tired of running short of hot water to meet its daily 35,000-gallon need at two of its facilities, Wedgworth's, Inc. finds tankless a reliable, affordable and cost-saving alternative.

- › **Units:**  
NC380 Tankless  
NCC300 Tankless
- › **Number of Units:**  
17
- › **Location:**  
Lake Placid, Florida

**“...I COULD EASILY REPLACE 10, MAYBE MORE, OF THOSE TANKLESS UNITS ANNUALLY, AND STILL FINISH BELOW MY FORMER EXPENSES FOR BOILER SERVICE. ADD THE MONTHLY AND YEARLY INSPECTION FEES TO THE MAINTENANCE COSTS, AND THE SAVINGS WITH TANKLESS ARE TREMENDOUS.”**

Ken Bruce  
Director of Liquid Operations

## Challenge

To meet the needs of an industrial fertilizer manufacturer whose operations in Clewiston and Lake Placid, Florida, require approximately 35,000 gallons of hot water daily. The objectives were to :

- (1) meet this high demand on a consistent basis, even when servicing is required, while also
- (2) maximizing fuel savings and
- (3) environmental stewardship.



## Solution

Wedgworth's had previously used a gas-fired boiler system to meet the massive hot-water needs of its production processes in both facilities. In recent years, management found three insurmountable problems with this approach:



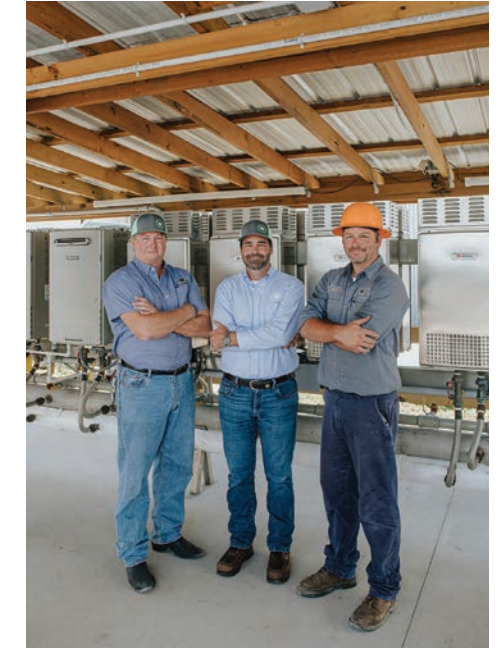
Boilers had poor “service availability,” with only one or two professional contractors in the area capable of handling maintenance issues in a timely and effective manner. Boilers inevitably created safety concerns: “When there is a safety mishap with a boiler, it is usually a major issue,” says Ken Bruce, Director of Liquid Operations in Lake Placid.

Boilers are insufficiently environmentally friendly. Diesel fuel does not burn cleanly enough, according to Bruce, who adds: “The boilers continued to burn fuel in an idle mode even when there was no demand for hot water.”



## Outcome

Besides providing an uninterrupted flow of hot water, the multiple-tankless option offers the ability to service any of the five units without shutting down the entire system. In addition, brewmaster Joel Iverson believes that had he opted for a steam boiler system, the price tag would be roughly double of his new, million-BTU tankless system, fully installed.





**Project Profile**

# Oahu Community Correctional Center

After replacing aging boilers with multiple Noritz tankless water heaters, administrators at Hawaii’s Oahu Community Correctional Center were able to safeguard reliable hot water supplies for its 1,200 inmates.

- › **Units:**  
NC199CDV Commercial Tankless Water Heater
- › **Number of Units:**  
18
- › **Location:**  
Oahu, Honolulu

**“USING TANKLESS HEATERS FOR THIS PROJECT WAS TWO OR THREE TIMES LESS EXPENSIVE AND ABOUT 100 TIMES EASIER THAN ADDING A NEW REPLACEMENT BOILER AND STORAGE TANK...A NEW BOILER WOULD TAKE WEEKS TO INSTALL, COST MORE TO OPERATE, AND STILL OFFER ONLY 0.70-0.87 UEF; COMPARED WITH A 0.96 UEF RATE PROVIDED BY THE TANKLESS SOLUTION.”**

Mason Hasegawa  
Contractor, Mason’s Plumbing Service

## Challenge

Replace two failing 23-year-old 1,000,000 BTU boilers with a multi-tankless commercial heater system at Hawaii’s Oahu Community Correctional Center to safeguard reliable hot water supplies for its 1,200 inmates.



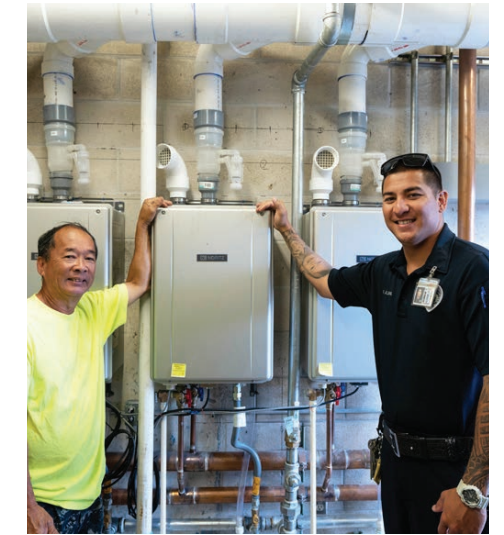
## Solution

Installed eighteen NCC199CDV gas-fired commercial condensing tankless heaters to improve the resiliency and reliability of the correctional facility’s hot water supply system.



## Outcome

Besides providing an uninterrupted flow of hot water, the multiple-tankless option offers the ability to service any of the eighteen units without shutting down the entire system. Furthermore, load balancing ensures that operation is equalized across all units, so one doesn’t suffer undue wear and tear. “Using tankless heaters for this project was two or three times less expensive and about 100 times easier than adding a new replacement boiler and storage tank,” says Mason Hasegawa, with Honolulu-based Mason’s Plumbing Service, who estimates he installs tankless heaters twice as frequently as conventional storage tank-type heaters.



PROJECT: Oahu Community Correctional Center	EXISTING: 23-year-old 1,000,000 BTU boilers and two storage tanks	NEW: 18 NCC199CDV gas-fired commercial condensing tankless heaters	% Change
<b>BTU Input</b>	2M	3.6M	+80%
<b>Storage</b>	1,000 gal.	N/A	
<b>Uniform Energy Factor</b>	.62	.96	+34%
<b>GPM Recovery</b>	35.4	100.7	+184%
<b>Total BTUh Recovery</b>	2.48M	3.59M	45%
<b>Operational Redundancy</b>	2x	15x	+13x
<b>Turn Down Ratio</b>	4:1	198:1	
<b>Installation</b>	Aerial Crane	Skid-mounted / Hand dolly	



**NORITZ**  
TANKLESS WATER HEATERS

# True Industry Solutions

## Our Proven Track Record

From the hospitality to medical industries, businesses trust our tankless systems for their reliability and efficiency across the United States.



### Restaurants

#### Qdoba

Nationwide

**Model:** NCC199 Series

**Quantity:** 2

**Indoor / Outdoor:** Indoor & Outdoor

**Max BTUH Input:** 1,199,400

**Thermal Efficiency:** 94%

**GPM:** 30 GPM @ 75 Degree Rise

**Replaced:** Storage tank water heater.  
100 gallon / 199,000 BTUH

**Motivating Factor:**

Space Savings, Redundancy, Warranty



#### PF Chang's

Nationwide

**Model:** NC380

**Quantity:** 4

**Indoor / Outdoor:** Indoor & Outdoor

**Max BTUH Input:** 1,520,000

**Thermal Efficiency:** 80%

**GPM:** 32 GPM @ 75 Degree Rise

**Replaced:** Storage tank water heater.  
100 gallon / 199,000 BTUH

**Motivating Factor:**

Space Savings, Redundancy, Warranty



#### 4th Street Market

Santa Ana, Ca

**Model:** NC199 Series

**Quantity:** 22

**Indoor / Outdoor:** Outdoor

**Max BTUH Input:** 4,397,800

**Thermal Efficiency:** 86%

**GPM:** 101 GPM @ 75 Degree Rise



## Hotels



### Fairfield Inn

Rockledge, Florida

**Model:** NCC199 Series  
**Quantity:** 5  
**Indoor / Outdoor:** Indoor  
**Max BTUH Input:** 999,500  
**Thermal Efficiency:** 94%  
**GPM:** 31 GPM @ 60 Degree Rise

**Replaced:** Storage tank water heater. 2 x 100 gallon  
**Motivating Factor:** Space Savings, Redundancy, High Efficiency

### Inn at Sunset Cliffs

Carlsbad, California

**Model:** NCC199 Series  
**Quantity:** 5  
**Indoor / Outdoor:** Indoor  
**Max BTUH Input:** 999,500  
**Thermal Efficiency:** 94%  
**GPM:** 31 GPM @ 60 Degree Rise

**Replaced:** Storage tank water heater. 2 x 100 gallon.  
**Motivating Factor:** Space Savings, Redundancy, High Efficiency

## Office Buildings



### Oakley Headquarters

Lake Forest, CA

**Model:** NC380  
**Quantity:** 30  
**Indoor / Outdoor:** Outdoor  
**Max BTUH Input:** 11,400,000  
**Thermal Efficiency:** 80%  
**GPM:** 330 GPM @ 65 Degree Rise

**Replaced:** Large Storage Tank and Boiler  
**Motivating Factor:** High Efficiency, Redundancy, Space Savings

## Hospital



### VA Hospital

Salt Lake City, Utah

**Model:** NCC199CDV  
**Quantity:** 4  
**Indoor / Outdoor:** Indoor  
**Max BTUH Input:** 799,600  
**Thermal Efficiency:** 98%  
**GPM:** 20 GPM @ 75 Degree Rise

**Replaced:** 2 x 100 Gallon Storage Tanks  
**Motivating Factor:** High Efficiency, Redundancy, Space Savings

## Laundry



## Campuses



### Speed Queens Laundromat

Georgia and Texas

**Model:** NCC199 Series  
**Quantity:** 8  
**Indoor / Outdoor:** Indoor  
**Max BTUH Input:** 1,599,200  
**Thermal Efficiency:** 94%  
**GPM:** 43 GPM @ 70 Degree Rise

**Motivating Factor:** Space Savings, Energy Savings, Equipment Savings vs. 4 x BTH199 Cyclone Tanks

### University Of Southern Florida Dorms

South Tampa, Florida

**Model:** NCC199 Pre-Built Rack  
**Quantity:** 6  
**Indoor / Outdoor:** Indoor  
**Max BTUH Input:** 1,199,400  
**Thermal Efficiency:** 94%  
**GPM:** 45 GPM @ 50 Degree Rise

**Replaced:** Storage tank water heater, AO Smith Cyclones, 3 x 100 Gallon  
**Motivating Factor:** Lower Equipment Cost, Modulation, Better Warranty

## Brewery



### Monday Night Brewing

Atlanta, Georgia

**Model:** NCC199 PreBuilt Floor Mount Rack  
**Quantity:** 5  
**Indoor / Outdoor:** Indoor  
**Max BTUH Input:** 999,500  
**Thermal Efficiency:** 94%  
**GPM:** 15.7 GPM @ 120 Degree Rise

**Replaced:** 5 Total Units (CWHS408)  
**Motivating Factor:** Equipment Cost Savings, Redundancy

Accessories

# Do More With Your Tankless

Utilize your Noritz Commercial Tankless to its fullest potential along with keeping your unit in top shape with our wide selection of accessories.

## Water Treatment



### Scale Shield Water Treatment (SS-HB-3)

The SS-HB-3 scale shield kit removes sediment and reduces scale formation. It also reduces corrosion caused by chlorides, silica, and dissolved iron.

Only good for 1 CDV



### Condensate Neutralizer Kit (NT20A)

Neutralize acidic condensate before it is dumped into common drains. Intended use: up to 3,000,000 BTU/hr or 5 GPH.

## Unit Control



### Noritz System Controller (SC-XX)

Available system controller models can provide a central communication link for up to 6, 12, or 24 unit multi-systems.



### Commercial Remote Controller

- Temperature adjustment from 100-185° (°C or °F)
- Recirculation Control Feature
- Time Stamps Error Codes



### Commercial Wifi Adapter

The Noritz NWCC Commercial Wifi Adapter allows business owners and contractors to take full control of their tankless system.



## Additional Installation Accessories

### Isolator Valve Kit (IK-WV)

Isolation Valve Kit with PRV to easily isolate heater from plumbing.



### Commercial Rack System (MR-2)

Prefabricated racks can support up to 2 units back to back.



### Quick Connect Cord (QC)

Provide simple staging and modulation for 2 units in small applications



### Remote Controller Cord (RC-Cord)

Additional cord lengths up to 26 feet available.



System Controller Primary Functions	
<b>Application Selection</b>	Standard, Recirculation, or Storage Tank Recovery
<b>Staging Control</b>	Staging is determined on application setting. In the case of storage tank recovery, all heaters operate at the same time to provide the fastest recovery rate.
<b>Firing Rotation</b>	Sequential rotation every 24 hours or 8 hours combustion time so no single heater is overrun. Wear is evenly distributed across all heaters.

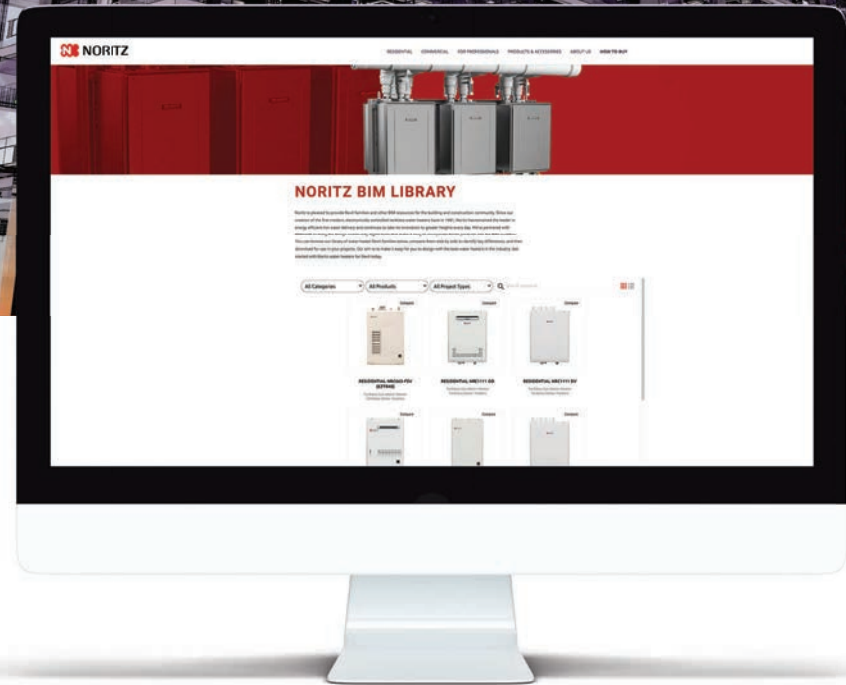
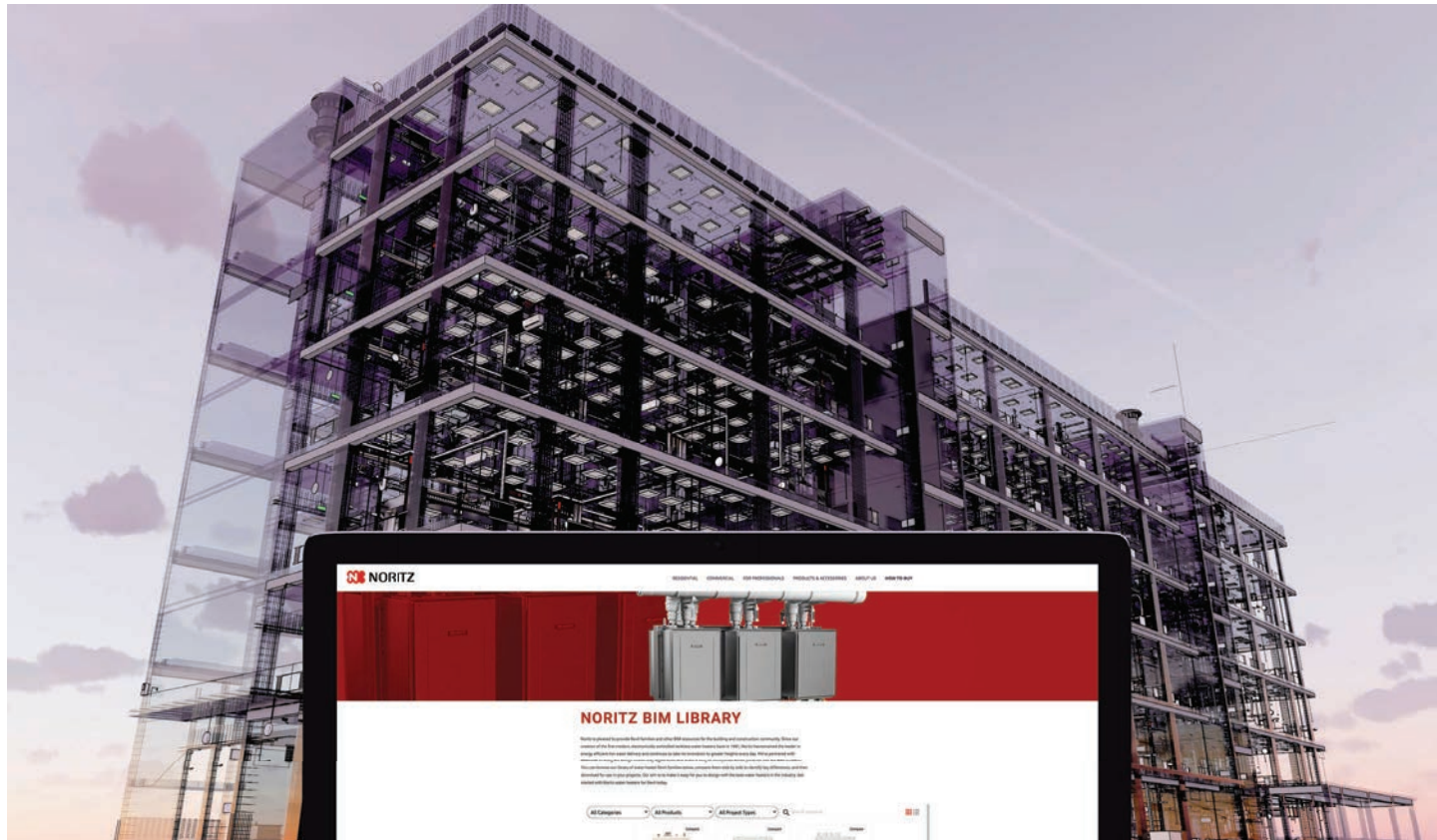
Additional System Controller Options	
<b>Pump</b>	Control relays for up to two pumps with simultaneous or alternating operation.
<b>Operation And Warning Lights</b>	Relay points to create additional alerts of operation and error conditions.
<b>Aquastat And Timer</b>	Utilize the internal aquastat controls and timer functions when a recirculation pump is controlled by the system controller.
<b>Exhaust Fan</b>	Connect a fan or damper relay to provide mechanical combustion air supply or operate an exhaust damper in cold climates whenever heater(s) operate.
<b>Thermostat For Storage Tank Control</b>	Connect the storage tank thermostat to alert the pump relay to activate because of low temperature in the storage tank.
<b>External Operation Switch</b>	Enable an external switch to power down the system other than from the primary remote.
<b>Wifi Capable</b>	Provides visibility of heater status when paired with our new Commercial Wifi Adapter (NWCC-ADAPTER).

## Multisystem Control

Superior commercial unit linking made easy

Units Used	2	6	12	24
Accessory	QC-2	SC-401-6M	SCU-401-12M	SCU-401-24M





## BIM Library Now Available

Are you an architect or engineer looking to use Noritz in your next project? We've partnered with **BIMsmith** to bring our tankless water heaters into your BIM workflow.

Scan Here to Visit the Noritz BIM Library Site



# PROCARD +

## Our Newest Program for Contractors - ProCard Plus!

Noritz is excited to introduce **ProCard+**! Available as an upgrade to our existing ProCard, this new subscription-based program brings you even more qualified leads as well as tools to expand your business with Noritz, the industry's most trusted line of tankless water heaters.

ProCard+ brings even more benefits to contractors looking to expand their business and service even more customers in their area.



### Get More Leads

With ProCard+, installers receive even more qualified leads, thanks to our new and improved lead retrieval system.



### Custom Prequalifying Questions

Gain quick access to customer information with customizable questionnaires and photo submissions.



### Business Profile +

ProCard+ users enjoy access to our Business Profile Plus, a customizable profile page with additional pictures, reviews and business information.



### Rise to the Top

Our ProCard+ users automatically place higher in our 'Find an Installer' page, giving your business more leads in your area.

	PROCARD	PROCARD +
Get Listed on our Contractor Finder	✓	✓
Register Warranties	✓	✓
Get Leads	✓	✓
Advanced Business Profile	-	✓
Higher Ranking on Contractor Finder	-	✓
Improved Lead Retrieval System	-	✓
Customize Prequalifying Questions for Customers	-	✓

Get Certified Parts For Any Noritz Repair. Period.

## Support Site & Parts Ordering

Our newly redesigned support page is your go-to source for all technical specs and support documents for all Noritz tankless water heaters. In addition, we're excited to share the addition of parts ordering online! Find all the parts you need, available 24/7 to order. Stock your truck with all those necessary parts today!

Visit [SUPPORT.NORITZ.COM](https://SUPPORT.NORITZ.COM)



### Parts Ordering Online

Get the parts you need 24/7. Our new parts ordering feature saves time and minimizes waiting when you need it most. Keep your parts stocked and ready for any scenario.



### Technical Literature

Our technical literature page offers owners a vast library of documents for each heater including spec sheets, owner's guides, install manuals, parts lists, and certification documents.



### Part Search Tool

Allows you to search for parts easily. Access a complete overview of technical spec info, installation, accessories, approvals, & warranty.



### Warranty Calculator

This calculator is designed to approximate the length of your warranty terms. Now more precise when you add an installation date or maintenance monitor data.





# Commercial Quality You Can Trust

Our NCC199CDV offers industry leading performance and a 10 year heat exchanger warranty to tackle any commercial water heating application, keeping your business with hot water for years to come.



## › Commercial Consultation

Have a question on specs, sizing, or how you can build Noritz into your next project? Talk to our commercial experts directly at: [Commercial@Noritz.com](mailto:Commercial@Noritz.com)

## › Technical Support

Noritz America provides two customer-service initiatives:

- A Technical Support Website
- An In-House Call Center with the goal of delivering information more quickly and efficiently to customers, whether their preferred method is the telephone or online.

To speak to one of our Tech Support Professionals:

**866-766-7489 (Press 1)**

Visit our Technical Support Site at:

**[Support.Noritz.com](http://Support.Noritz.com)**

### Affiliations



11160 Grace Avenue  
Fountain Valley, CA 92708

**Phone:**  
1-866-766-7489

**Tech Support Hours:**  
Monday - Friday  
5am - 6pm PST  
Saturday  
7am - 4pm PST

**Fax:**  
(714) 241-1514

Follow us on social media  
**@NORITZAMERICA**