

sibab

SNICKERI ; BLIKSTORP

INTE BARA ETT SNICKERI

Vi tillverkar inredning utifrån visioner om en bättre morgondag

HOTELL • RESTAURANG • KONTOR • BUTIK • OFFENTLIG MILJÖ



sibab

@sibab_interior

Instagram Facebook LinkedIn







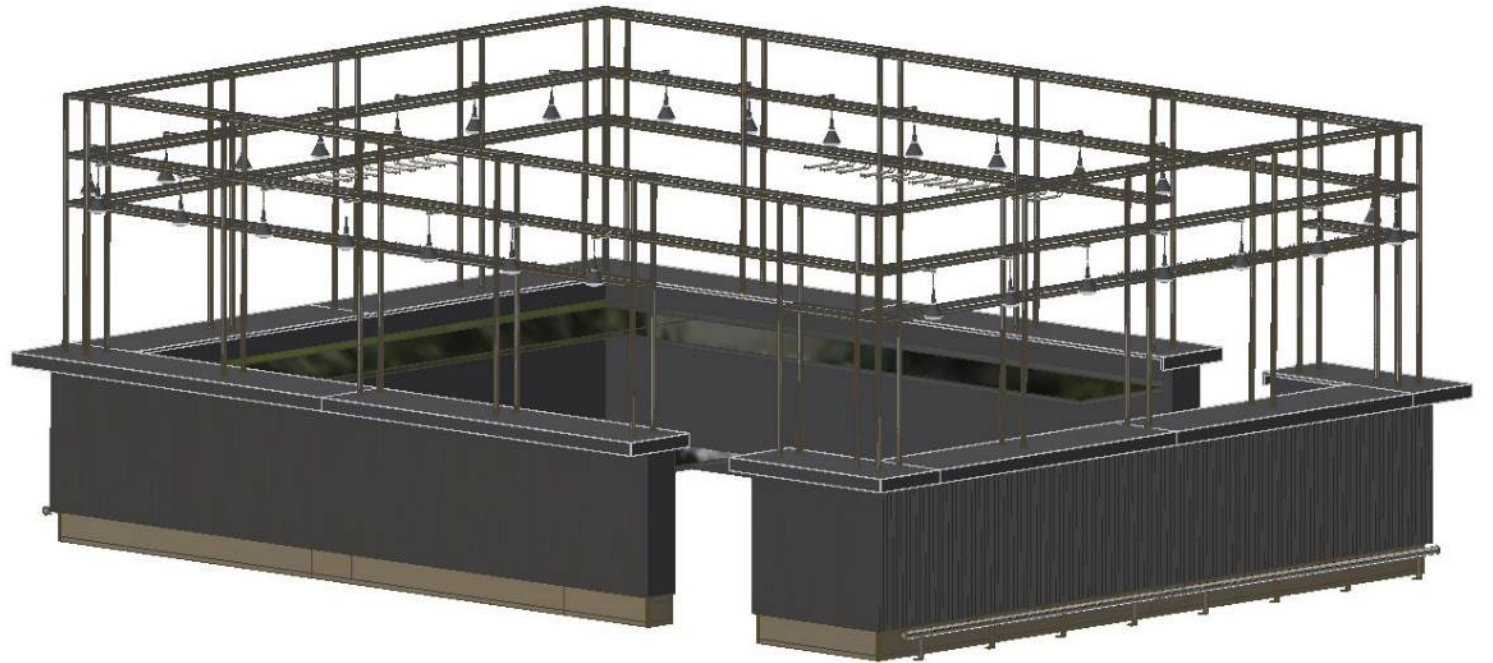
**För att kunna tillverka mer hållbar, cirkulär &
återbrukad specialinredning behöver vi släppa stuprören!
Samarbeta, våga göra annorlunda och lita på varandra.**

Möbel

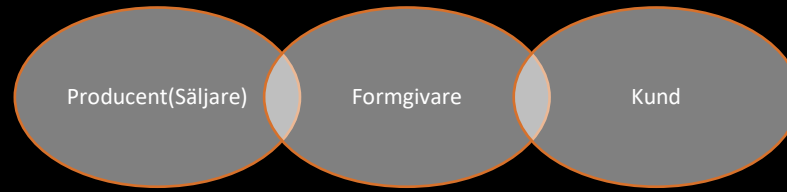


OFFECCT - Lite

Specialinredning



Bar Quality Match



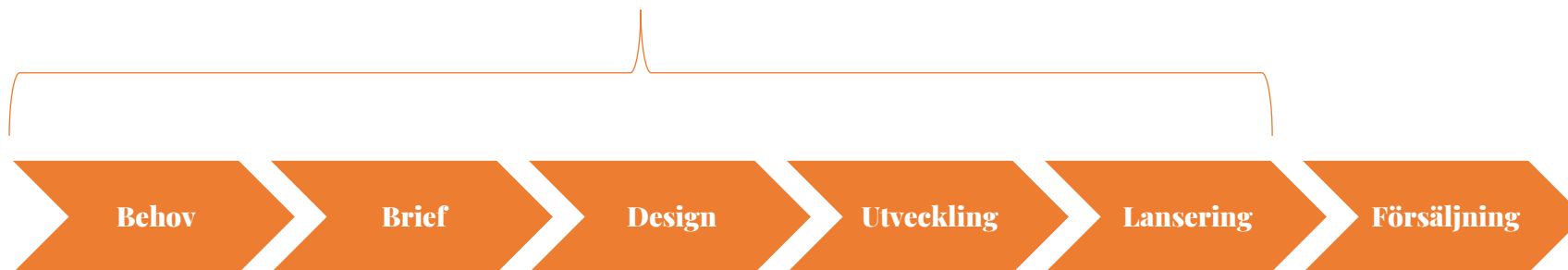
Möbler

Formgivare & Producent jobbar tillsammans under hela processen.



Produktutvecklingstid

2-3 år

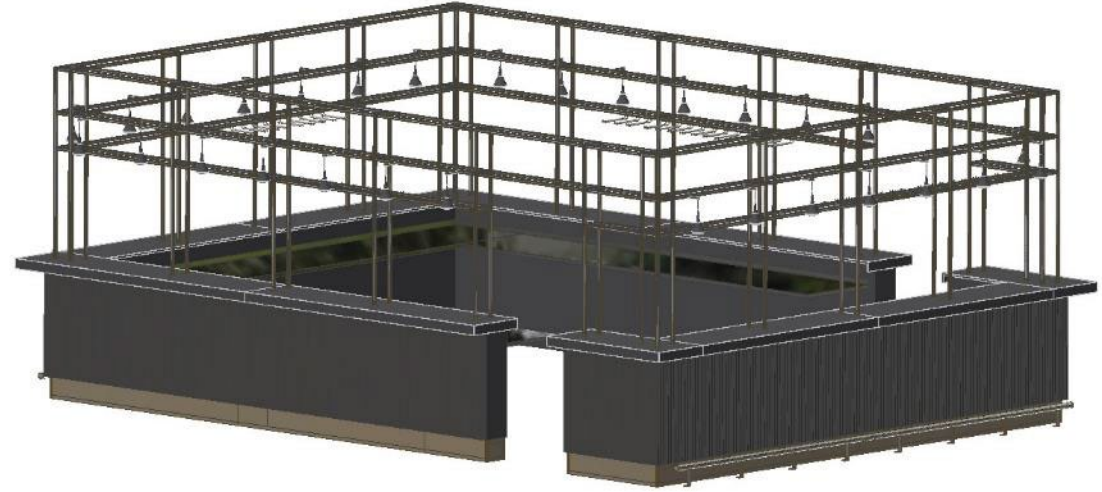




Specialinredning

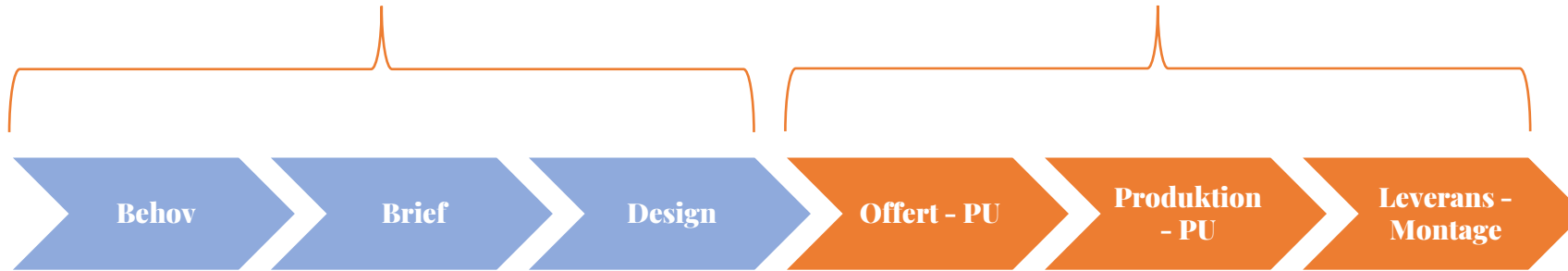
Inredningsarkitekt & Producent jobbar separerat under processen.

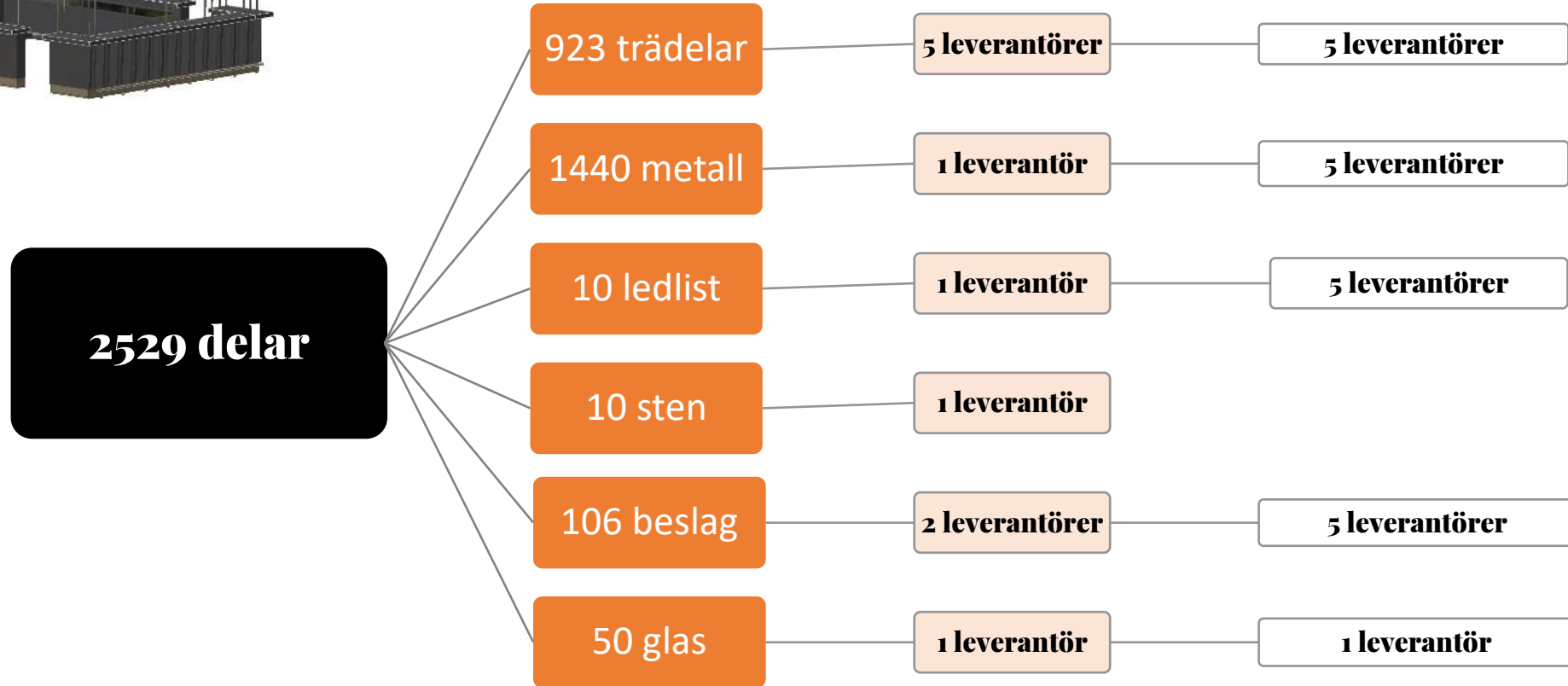




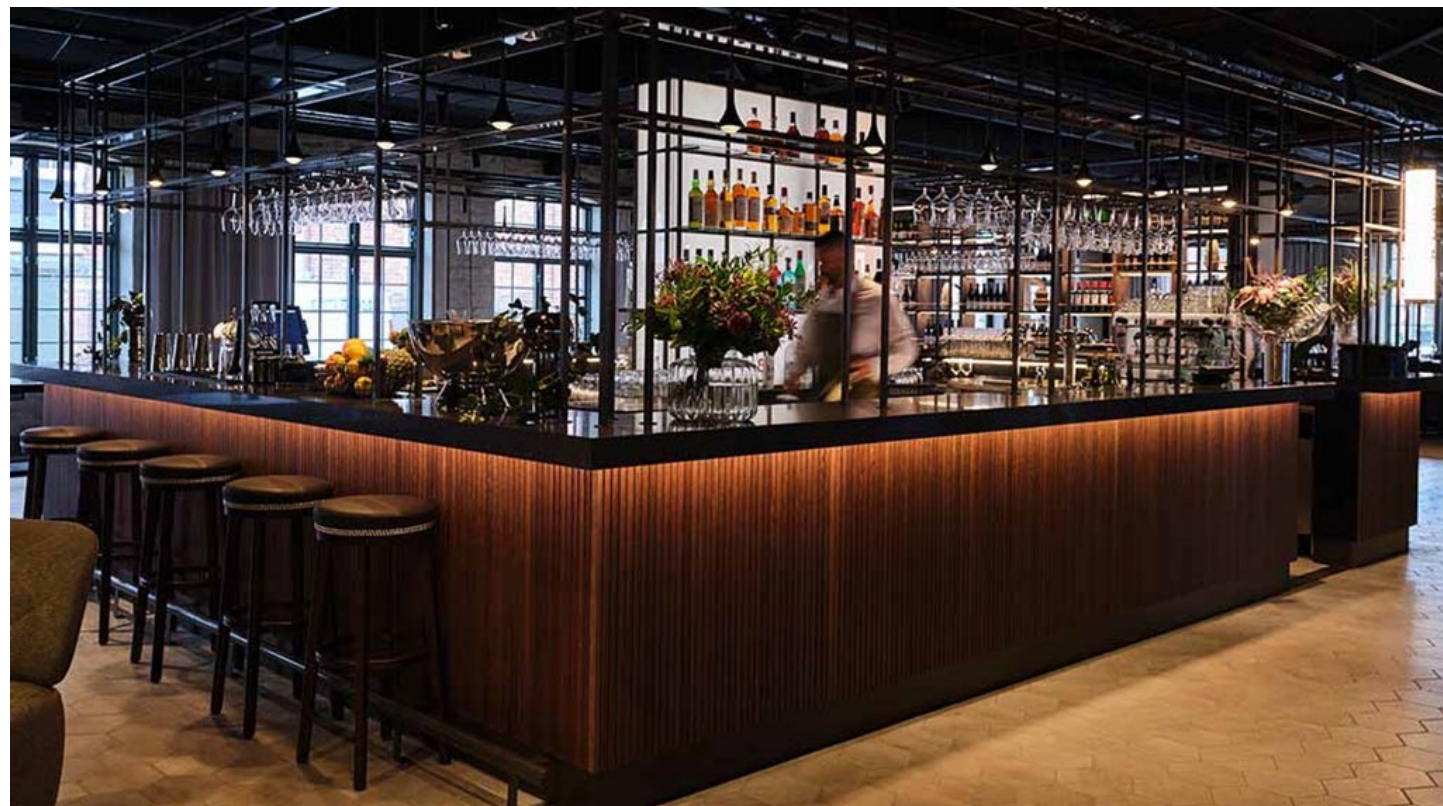
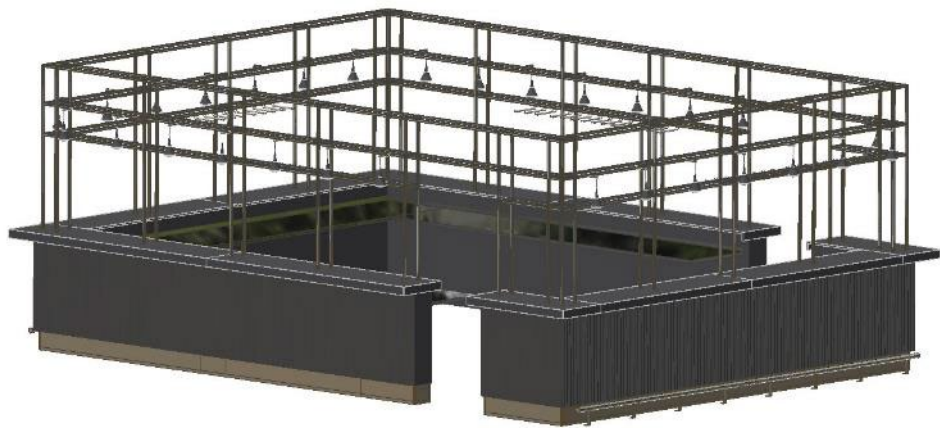
**Produktutveckling
xx veckor**

**Produktutveckling & Produktion
8-12 veckor**





32 leverantörer t.o.m. 3:e



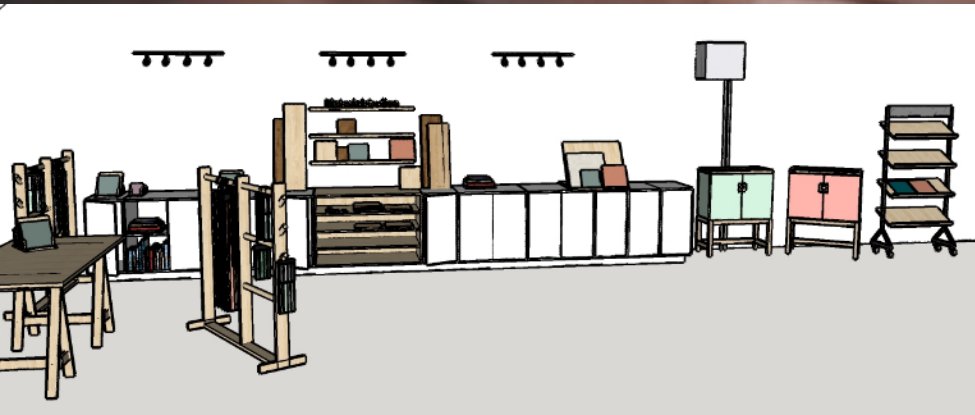
sibab

360 STUDIO & ARENA

@sibab_interior



Inredningsstudio & materialstudio



A close-up photograph of a person's hands working on a design project. The hands are holding a pen and drawing on a white sheet of paper, which appears to be a blueprint or technical drawing. A wooden ruler is placed horizontally across the drawing. The background is a dark wooden table, and the overall scene is softly lit, creating a professional and focused atmosphere.

**80% av en produkts
miljöpåverkan avgörs i
designfasen.** (TMF)

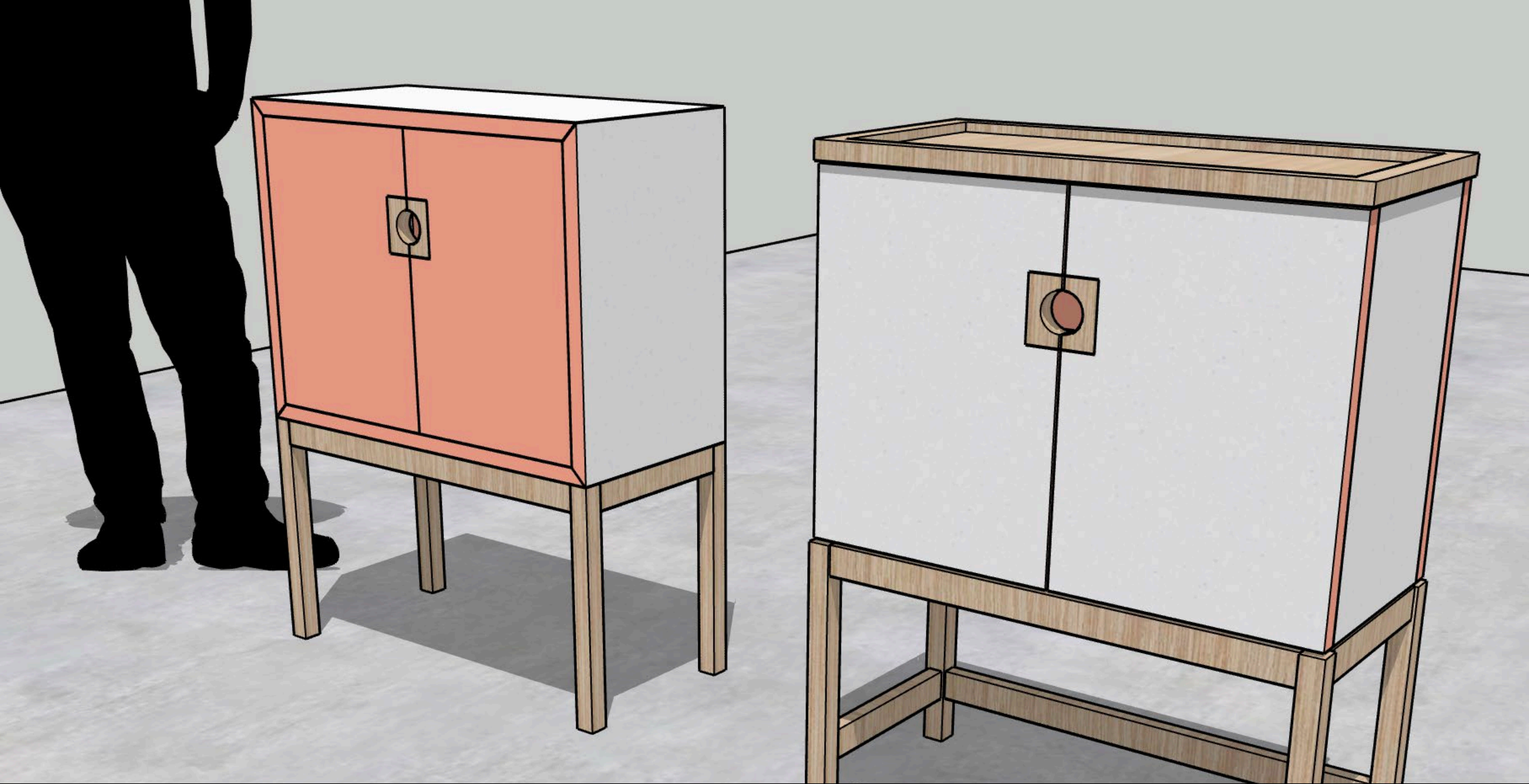
A large, sprawling pile of garbage, including plastic bottles, paper, and other debris, dominates the foreground and middle ground. The sky is filled with dramatic, colorful clouds in shades of blue, orange, and white, suggesting a sunset or sunrise. In the background, a few industrial structures are visible. The overall scene conveys a message about waste and resource management.

Vår nya råvara!



Våga testa:
Mjölkkartongskåpet!







**Tänka nytt i processen, jobba med de som vill samma
och våga testa nya material på vägen!**



TACK!