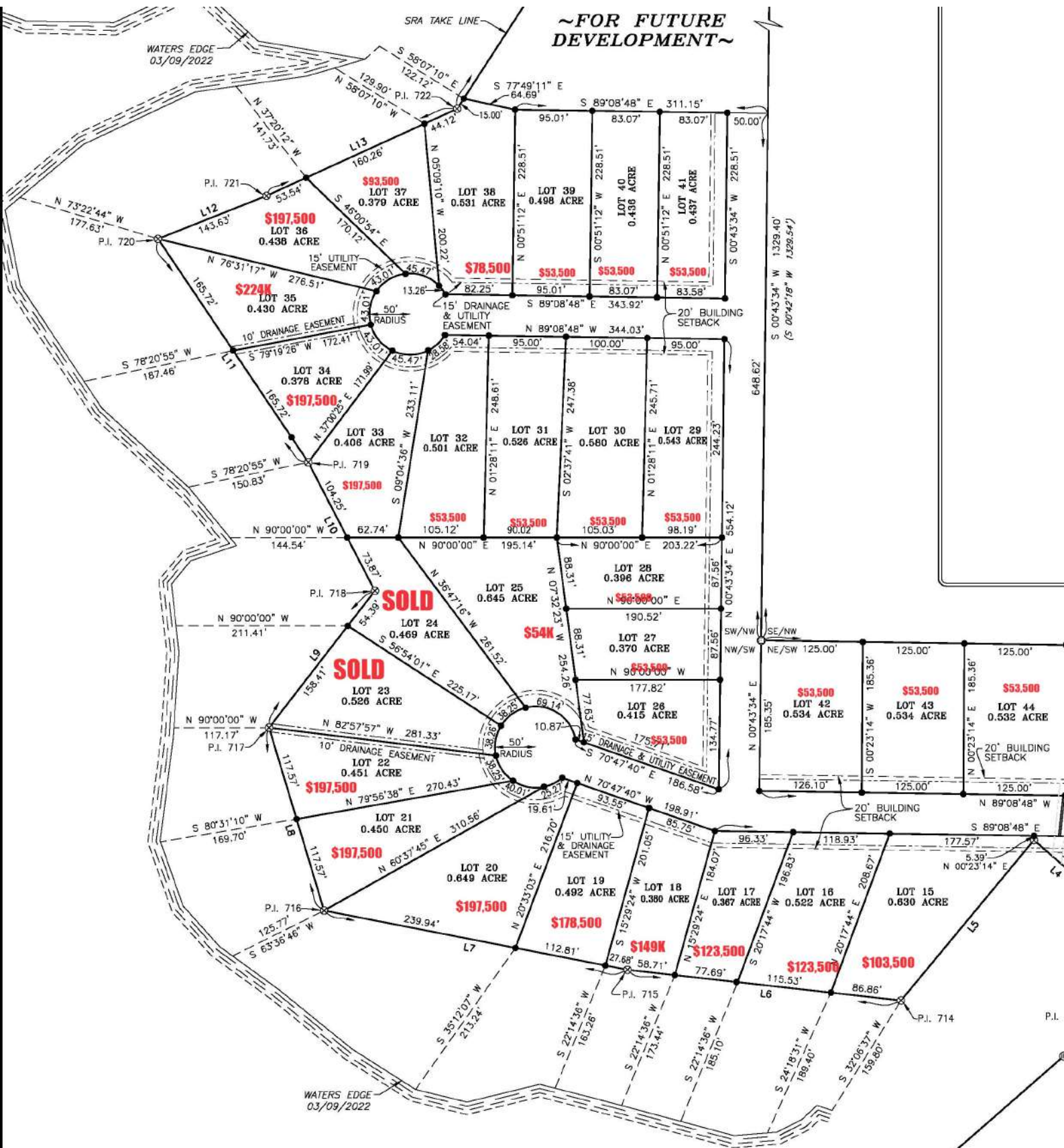


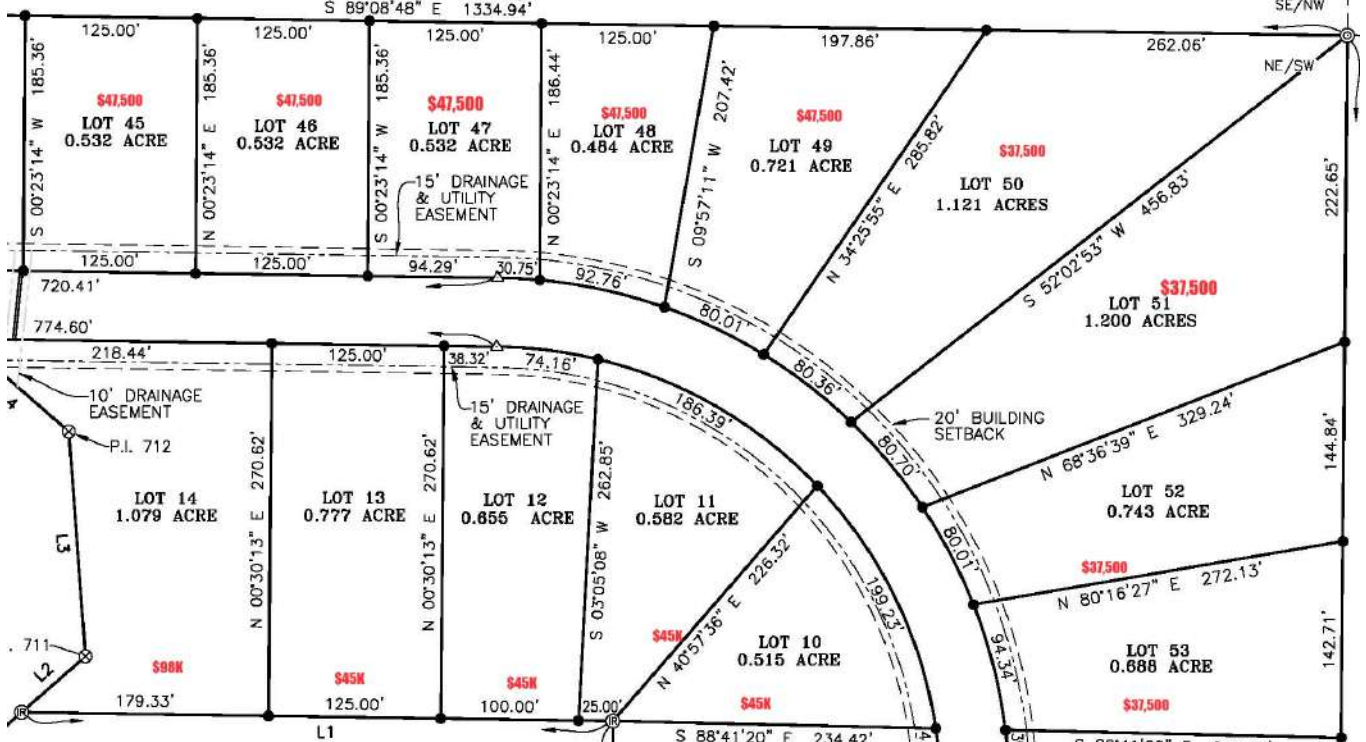
~FOR FUTURE DEVELOPMENT~



TOLEDO BEND RESERVIOR

P.I. 710

(S 89°09'35" E 1334.69')
S 89°08'48" E 1334.94'



RECORD BEARING & DISTANCE

LINE	BEARING	DISTANCE
L2	N 48°50'14" E	N/A
L3	N 04°36'33" W	163.78'
L4	N 48°55'19" W	94.23'
L5	S 39°37'23" W	256.34'
L6	N 83°35'52" W	338.70'
L7	N 78°57'19" W	380.63'
L8	N 16°43'38" W	234.98'
L9	N 37°42'41" E	212.72'
L10	N 27°20'41" W	178.15'
L11	N 33°56'29" W	331.40'
L12	N 68°25'49" E	143.63'
L13	N 65°26'58" E	258.16'
L14	N 32°53'22" E	292.58'
L15	N 39°06'18" W	207.48'
L16	S 33°01'44" W	280.07'
L17	N 69°24'07" W	175.80'
L18	N 81°38'09" W	364.40'
L19	N 21°19'10" W	334.68'
L20	N 33°34'03" E	N/A

MEASURED BEARING & DISTANCE

LINE	BEARING	DISTANCE
L1	N 89°08'50" W	429.34'
L2	N 48°50'45" E	61.74'
L3	N 04°15'30" W	163.78'
L4	N 48°58'31" W	94.23'
L5	S 39°39'07" W	256.35'
L6	N 83°36'00" W	338.79'
L7	N 78°57'22" W	380.43'
L8	N 16°44'11" W	235.13'
L9	N 37°43'09" E	212.80'
L10	N 27°22'04" W	178.12'
L11	N 33°55'54" W	331.44'
L12	N 68°20'47" E	143.63'
L13	N 65°28'17" E	257.91'
L14	N 32°57'23" E	292.41'
L15	N 38°59'30" W	207.21'
L16	S 33°05'20" W	280.00'
L17	N 69°26'21" W	175.79'
L18	N 81°36'06" W	364.39'
L19	N 21°20'39" W	334.74'
L20	N 33°39'11" E	109.65'

CURVE DATA TABLE

LOT	CHORD BEARING	CHORD LENGTH	RADIUS	ARC LENGTH
9	S 04°48'36" E	41.20'	325.00'	41.23'
10	S 26°00'21" E	196.13'	325.00'	199.23'
11	S 59°59'51" E	183.84'	325.00'	186.39'
12	S 82°57'51" E	74.00'	325.00'	74.16'
20	N 63°40'59" E	25.00'	50.00'	25.27'
21	S 78°54'57" E	38.95'	50.00'	40.01'
22	S 34°04'42" E	37.32'	50.00'	38.25'
23	S 09°45'27" W	37.33'	55.00'	38.26'
24	S 53°35'36" W	37.32'	50.00'	38.25'
25	N 67°37'21" W	60.00'	50.00'	69.14'
32	N 47°13'34" E	28.19'	50.00'	28.58'
33	N 89°39'06" E	43.92'	50.00'	45.47'
34	S 39°39'20" E	41.69'	50.00'	43.01'
35	S 09°37'37" W	41.69'	50.00'	43.01'
36	S 58°54'37" W	41.69'	50.00'	43.01'
37	N 70°23'44" W	43.92'	50.00'	45.47'
38	N 36°44'41" W	13.22'	50.00'	13.26'
47	N 87°07'40" W	30.74'	375.00'	30.75'
48	N 77°41'32" W	92.53'	375.00'	176.83'
49	N 64°29'36" W	79.86'	375.00'	80.01'
50	N 52°14'29" W	80.21'	375.00'	80.36'
51	N 39°56'13" W	80.55'	375.00'	80.70'
52	N 27°39'33" W	79.86'	375.00'	80.01'
53	N 14°20'24" W	94.09'	375.00'	94.34'
54	N 04°05'48" W	39.73'	375.00'	39.75'

