

Monthly Housing Statistics

February 2016



SINGLE FAMILY HOMES

Median Sales Price	
\$700,000	+8.0%
Closed Sales	
240	+19.4%
Average Sales Price	
\$830,331	+6.6%

CONDOS

Median Sales Price	
\$378,444	+16.1%
Closed Sales	
324	+11.7%
Average Sales Price	
\$431,976	+13.1%

INDEX:

Monthly Indicators	2
Closed Sales	3
Median Sales Price	4
Median Days on Market	5
New Listings	6
Pending Sales	7
Months of Inventory	8
Active Listings	9
Average Sales Price	10
% of Original Listing Price Received	11
Active Continue to Show	12
Housing Supply Overview	13
Pending Sales (by price range)	14-15
Median Days on Market (by price range)	16-17
% of list price received (by price range)	18-19
Inventory of Homes (by price range)	20-21
Months Supply of Inventory (price range)	22-23
Historical Graphs	24-25

Monthly Indicators

February 2016

	Single Family Homes					
	Feb-16	Feb-15	%	YTD-16	YTD-15	%
Closed Sales	240	201	19.4%	472	411	14.8%
Median Sales Price	\$700,000	\$648,000	8.0%	\$715,000	\$665,000	7.5%
Median Days on Market	23	25	-8.0%	22	26	-15.4%
New Listings	414	382	8.4%	834	776	7.5%
Pending Sales	350	372	-5.9%	691	675	2.4%
Months of Inventory	2.7	2.7	0.0%	--	--	--
Active Listings	1,118	1,102	1.5%	--	--	--
Average Sales Price	\$830,331	\$778,870	6.6%	\$835,632	\$789,385	5.9%
% of Original Listing Price Received	99.6%	98.2%	1.4%	97.9%	96.5%	1.5%

	Condos					
	Feb-16	Feb-15	%	YTD-16	YTD-15	%
Closed Sales	324	290	11.7%	662	576	14.9%
Median Sales Price	\$378,444	\$326,000	16.1%	\$375,000	\$350,000	7.1%
Median Days on Market	23	29	-20.7%	21	28	-25.0%
New Listings	605	594	1.9%	1,171	1,199	-2.3%
Pending Sales	500	441	13.4%	971	842	15.3%
Months of Inventory	2.9	3.2	-9.4%	--	--	--
Active Listings	1,665	1,745	-4.6%	--	--	--
Average Sales Price	\$431,976	\$382,109	13.1%	\$425,394	\$416,110	2.2%
% of Original Listing Price Received	97.8%	97.0%	0.8%	97.9%	95.9%	2.1%

SOURCE: Honolulu Board of REALTORS®, compiled from MLS data.

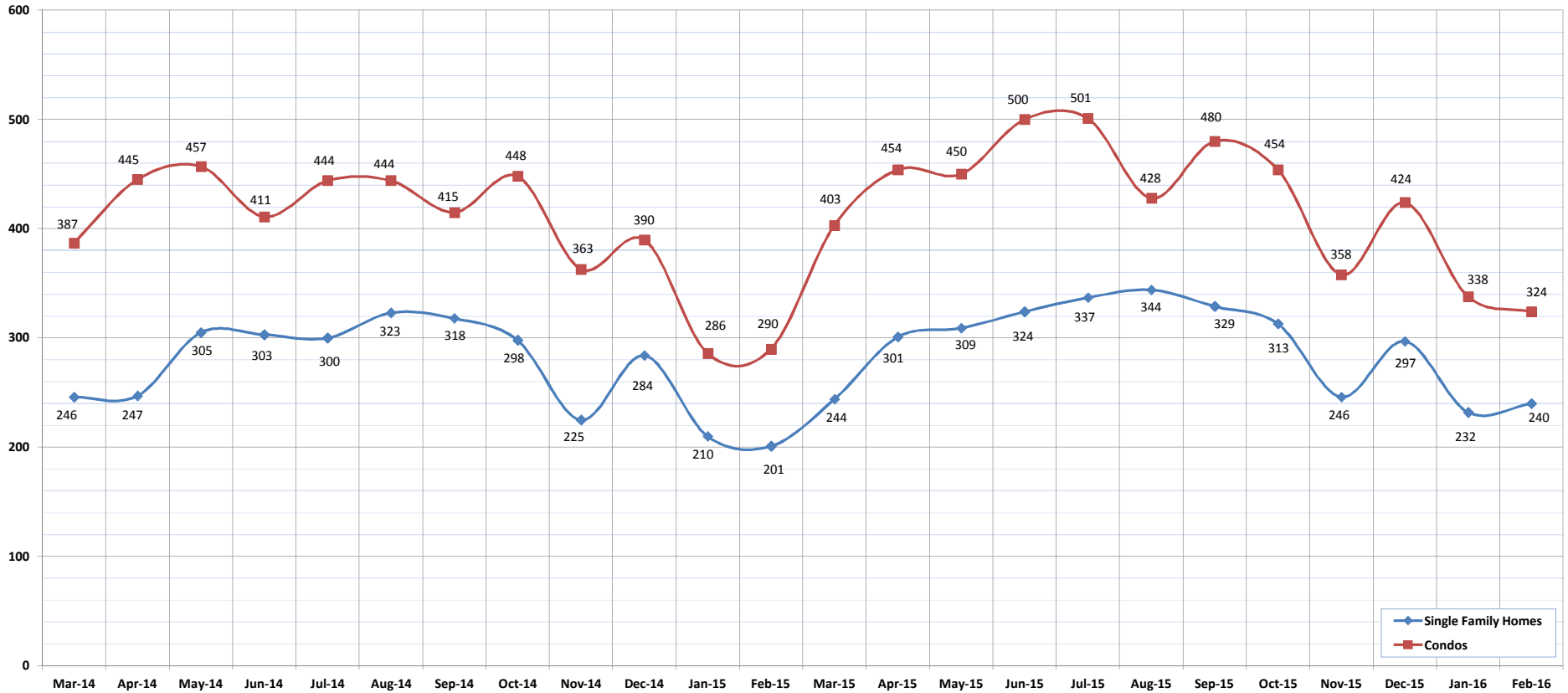


Closed Sales

February-16

OAHU, HAWAII

(A count of all properties that have closed in a given month.)



	Mar-14	Apr-14	May-14	Jun-14	Jul-14	Aug-14	Sep-14	Oct-14	Nov-14	Dec-14	Jan-15	Feb-15	Mar-15	Apr-15	May-15	Jun-15	Jul-15	Aug-15	Sep-15	Oct-15	Nov-15	Dec-15	Jan-16	Feb-16
Closed Sales: Single Family Homes	246	247	305	303	300	323	318	298	225	284	210	201	244	301	309	324	337	344	329	313	246	297	232	240
Closed Sales: Condos	387	445	457	411	444	444	415	448	363	390	286	290	403	454	450	500	501	428	480	454	358	424	338	324
Closed Sales: Total	633	692	762	714	744	767	733	746	588	674	496	491	647	755	759	824	838	772	809	767	604	721	570	564

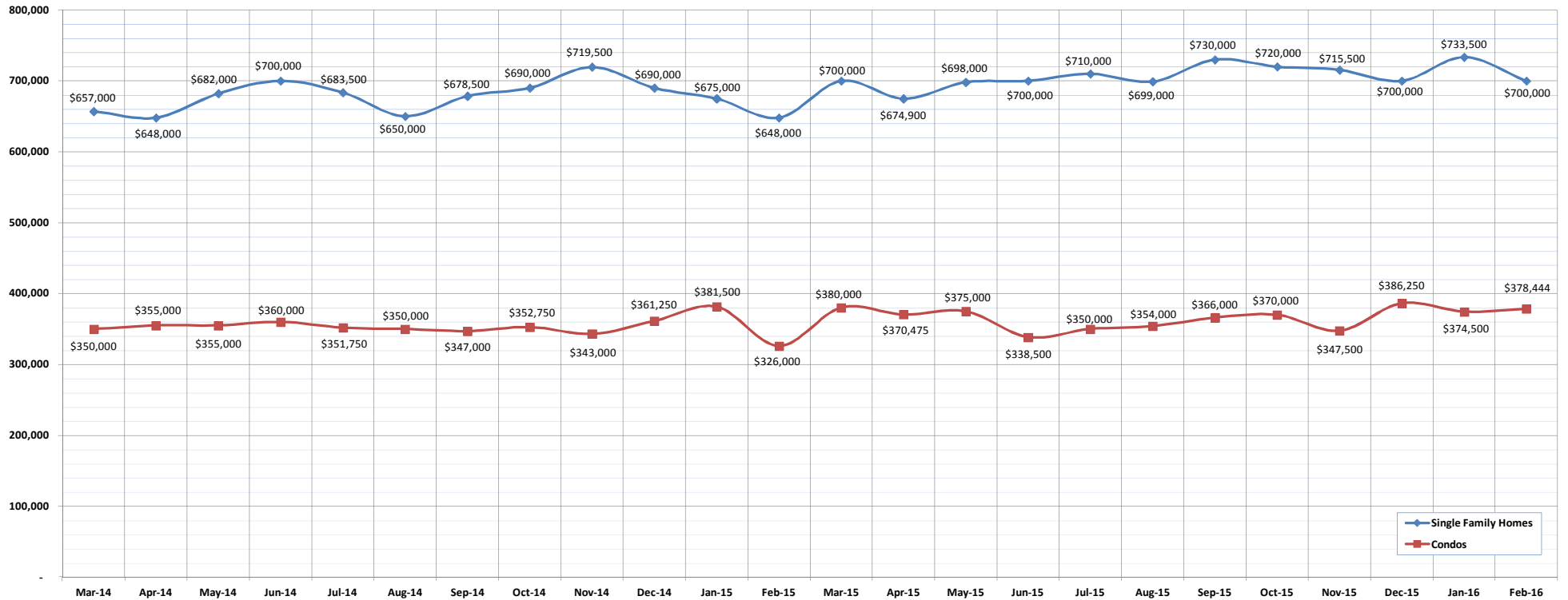
SOURCE: Honolulu Board of REALTORS® , compiled from MLS data.

Median Sales Price

February-16

OAHU, HAWAII

(The median sales price for all closed properties in a given month.)



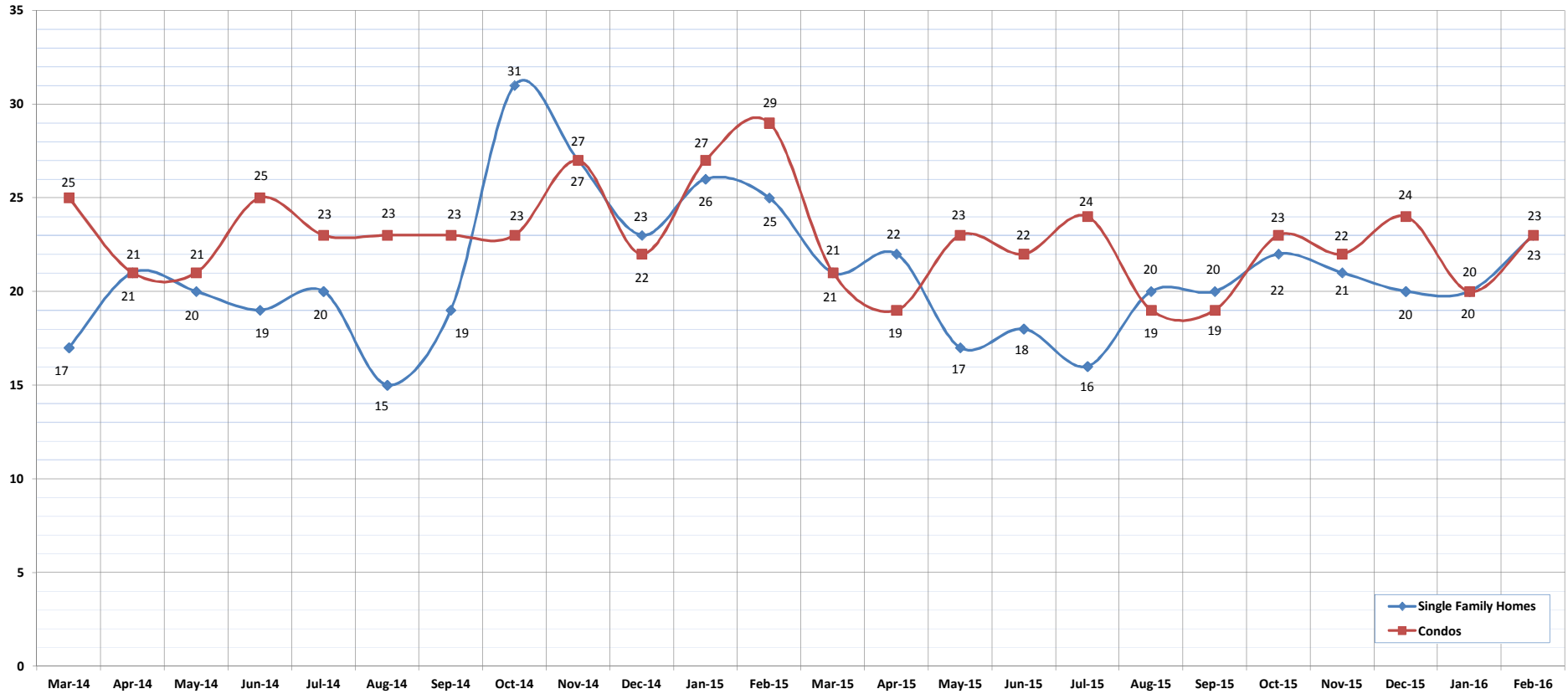
	Mar-14	Apr-14	May-14	Jun-14	Jul-14	Aug-14	Sep-14	Oct-14	Nov-14	Dec-14	Jan-15	Feb-15	Mar-15	Apr-15	May-15	Jun-15	Jul-15	Aug-15	Sep-15	Oct-15	Nov-15	Dec-15	Jan-16	Feb-16
Median Sales Price : SFH	657,000	648,000	682,000	700,000	683,500	650,000	678,500	690,000	719,500	690,000	675,000	648,000	700,000	674,900	698,000	700,000	710,000	699,000	730,000	720,000	715,500	700,000	733,500	700,000
Median Sales Price: Condos	350,000	355,000	355,000	360,000	351,750	350,000	347,000	352,750	343,000	361,250	381,500	326,000	380,000	370,475	375,000	338,500	350,000	354,000	366,000	370,000	347,500	386,250	374,500	378,444

Median Days on Market

February-16

OAHU, HAWAII

(The median number of days between when a property is first listed and when an offer is accepted.)



	Mar-14	Apr-14	May-14	Jun-14	Jul-14	Aug-14	Sep-14	Oct-14	Nov-14	Dec-14	Jan-15	Feb-15	Mar-15	Apr-15	May-15	Jun-15	Jul-15	Aug-15	Sep-15	Oct-15	Nov-15	Dec-15	Jan-16	Feb-16
Median Days on Market: SFH	17	21	20	19	20	15	19	31	27	23	26	25	21	22	17	18	16	20	20	22	21	20	20	23
Median Days on Market: Condos	25	21	21	25	23	23	23	23	27	22	27	29	21	19	23	22	24	19	19	23	22	24	20	23

SOURCE: Honolulu Board of REALTORS®, compiled from MLS data.

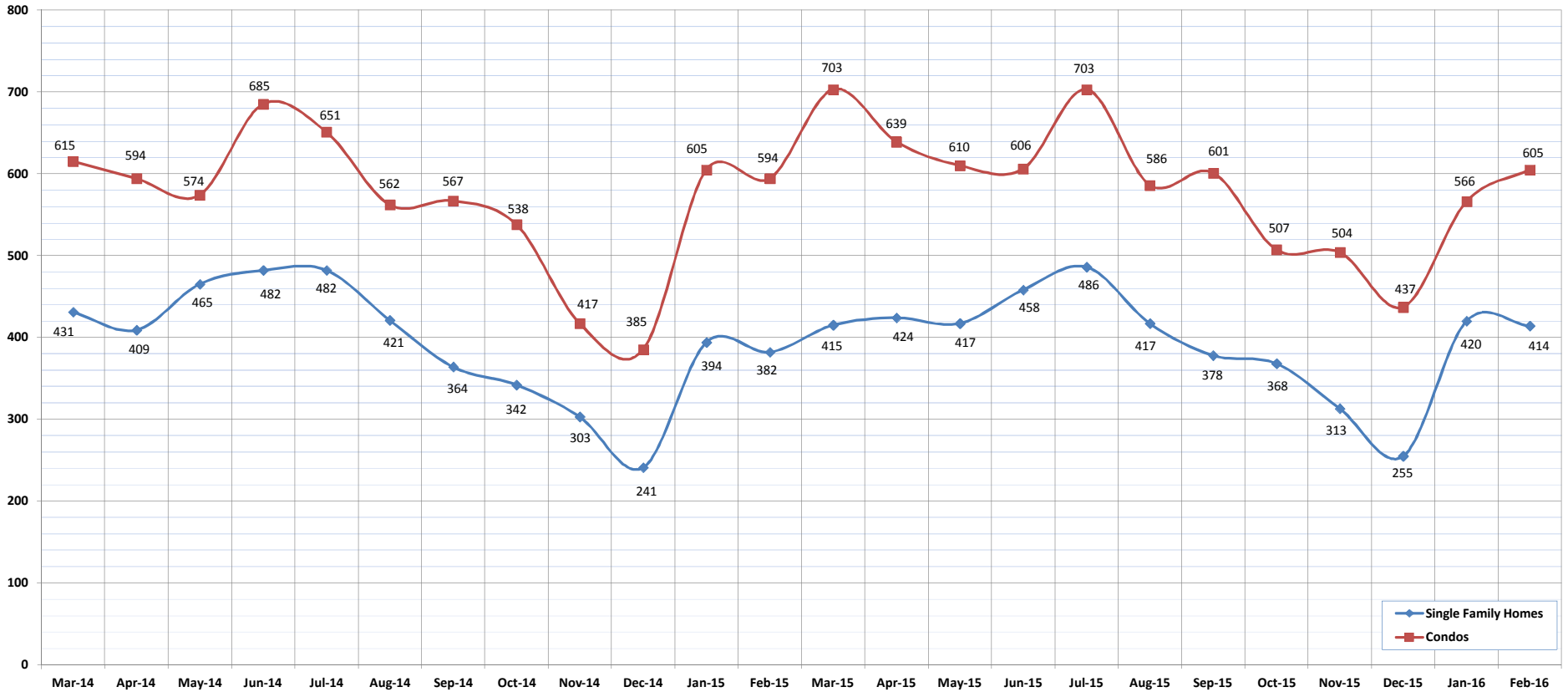


New Listings

February-16

OAHU, HAWAII

(A count of the properties that have been newly listed on the market in a given month.)



	Mar-14	Apr-14	May-14	Jun-14	Jul-14	Aug-14	Sep-14	Oct-14	Nov-14	Dec-14	Jan-15	Feb-15	Mar-15	Apr-15	May-15	Jun-15	Jul-15	Aug-15	Sep-15	Oct-15	Nov-15	Dec-15	Jan-16	Feb-16
New Listings: Single Family Homes	431	409	465	482	482	421	364	342	303	241	394	382	415	424	417	458	486	417	378	368	313	255	420	414
New Listings: Condos	615	594	574	685	651	562	567	538	417	385	605	594	703	639	610	606	703	586	601	507	504	437	566	605
New Listings: Total	1046	1003	1039	1167	1133	983	931	880	720	626	999	976	1118	1063	1027	1064	1189	1003	979	875	817	692	986	1019

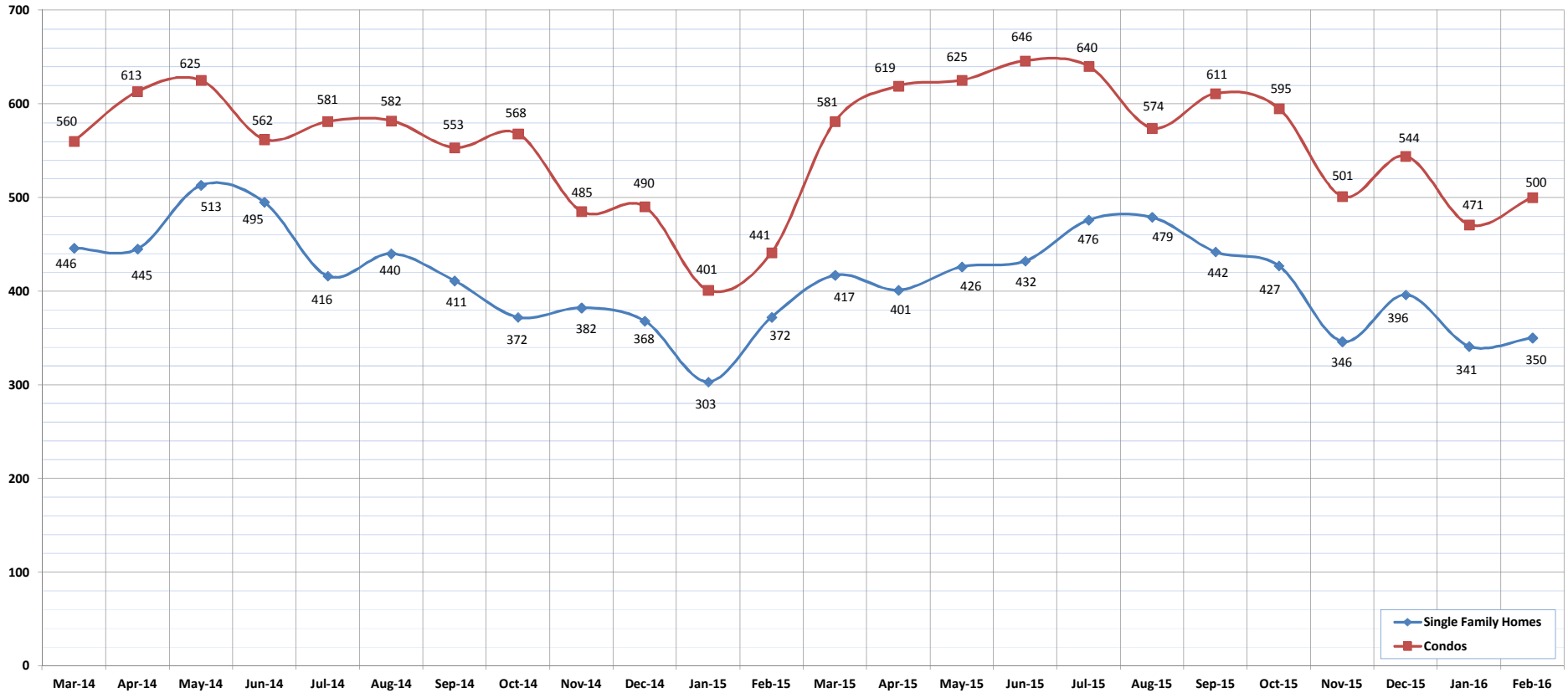
SOURCE: Honolulu Board of REALTORS® , compiled from MLS data.

Pending Sales

February-16

OAHU, HAWAII

(A count of the properties that have offers accepted on them in a given month.)



	Mar-14	Apr-14	May-14	Jun-14	Jul-14	Aug-14	Sep-14	Oct-14	Nov-14	Dec-14	Jan-15	Feb-15	Mar-15	Apr-15	May-15	Jun-15	Jul-15	Aug-15	Sep-15	Oct-15	Nov-15	Dec-15	Jan-16	Feb-16
Pending Sales: Single Family Homes	446	445	513	495	416	440	411	372	382	368	303	372	417	401	426	432	476	479	442	427	346	396	341	350
Pending Sales: Condos	560	613	625	562	581	582	553	568	485	490	401	441	581	619	625	646	640	574	611	595	501	544	471	500
Pending Sales: Total	1006	1058	1138	1057	997	1022	964	940	867	858	704	813	998	1020	1051	1078	1116	1053	1053	1022	847	940	812	850

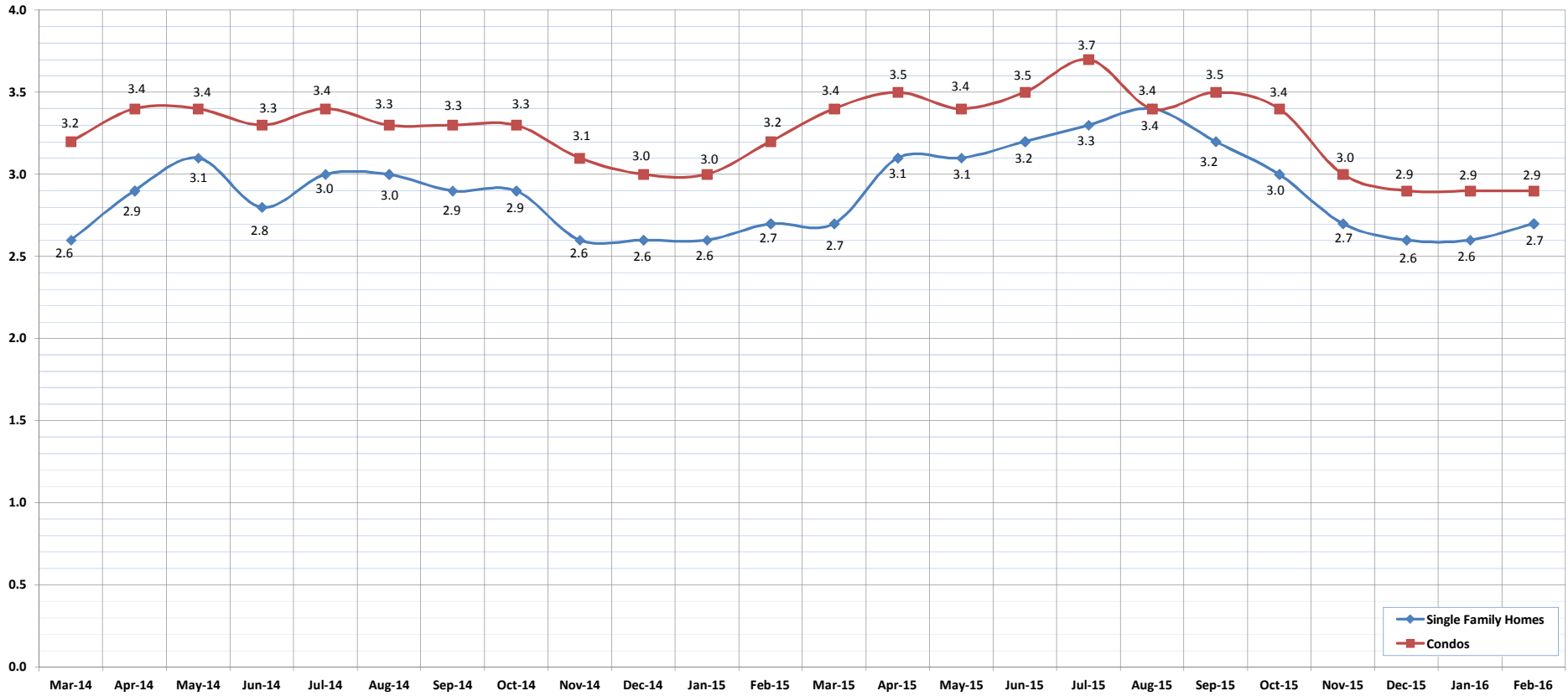
SOURCE: Honolulu Board of REALTORS®, compiled from MLS data.

Months of Inventory

February-16

OAHU, HAWAII

(Compares the number of active listings available to the average monthly pending sales.)



	Mar-14	Apr-14	May-14	Jun-14	Jul-14	Aug-14	Sep-14	Oct-14	Nov-14	Dec-14	Jan-15	Feb-15	Mar-15	Apr-15	May-15	Jun-15	Jul-15	Aug-15	Sep-15	Oct-15	Nov-15	Dec-15	Jan-16	Feb-16
Month of Inventory : SFH	2.6	2.9	3.1	2.8	3.0	3.0	2.9	2.9	2.6	2.6	2.6	2.7	2.7	3.1	3.1	3.2	3.3	3.4	3.2	3.0	2.7	2.6	2.6	2.7
Months of Inventory: Condos	3.2	3.4	3.4	3.3	3.4	3.3	3.3	3.3	3.1	3.0	3.0	3.2	3.4	3.5	3.4	3.5	3.7	3.4	3.5	3.4	3.0	2.9	2.9	2.9

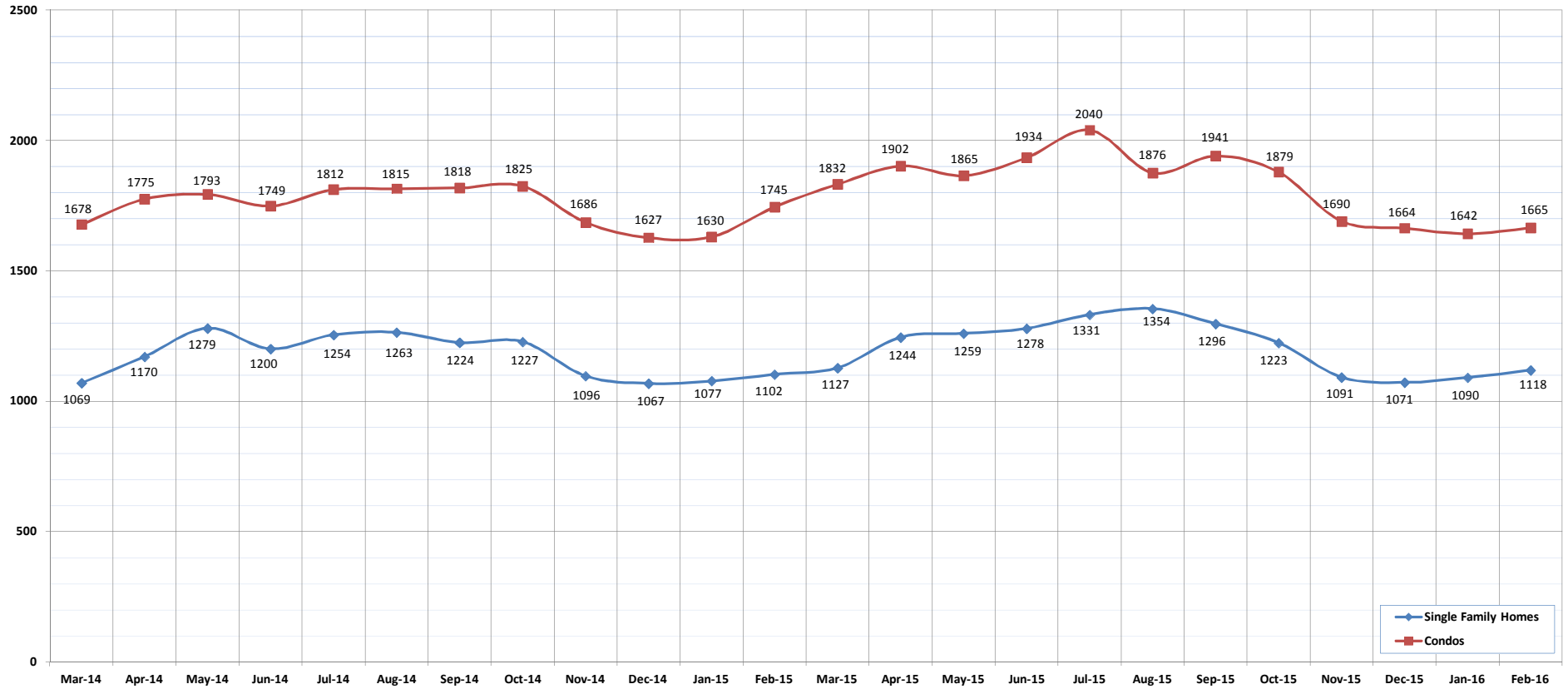
SOURCE: Honolulu Board of REALTORS®, compiled from MLS data.



Active Listings

February-16
OAHU, HAWAII

(The number of properties available for purchase during a given month.)



	Mar-14	Apr-14	May-14	Jun-14	Jul-14	Aug-14	Sep-14	Oct-14	Nov-14	Dec-14	Jan-15	Feb-15	Mar-15	Apr-15	May-15	Jun-15	Jul-15	Aug-15	Sep-15	Oct-15	Nov-15	Dec-15	Jan-16	Feb-16
Active Listings: Single Family Homes	1069	1170	1279	1200	1254	1263	1224	1227	1096	1067	1077	1102	1127	1244	1259	1278	1331	1354	1296	1223	1091	1071	1090	1118
Active Listings: Condos	1678	1775	1793	1749	1812	1815	1818	1825	1686	1627	1630	1745	1832	1902	1865	1934	2040	1876	1941	1879	1690	1664	1642	1665
Active Listings: Total	2747	2945	3072	2949	3066	3078	3042	3052	2782	2694	2707	2847	2959	3146	3124	3212	3371	3230	3237	3102	2781	2735	2732	2783

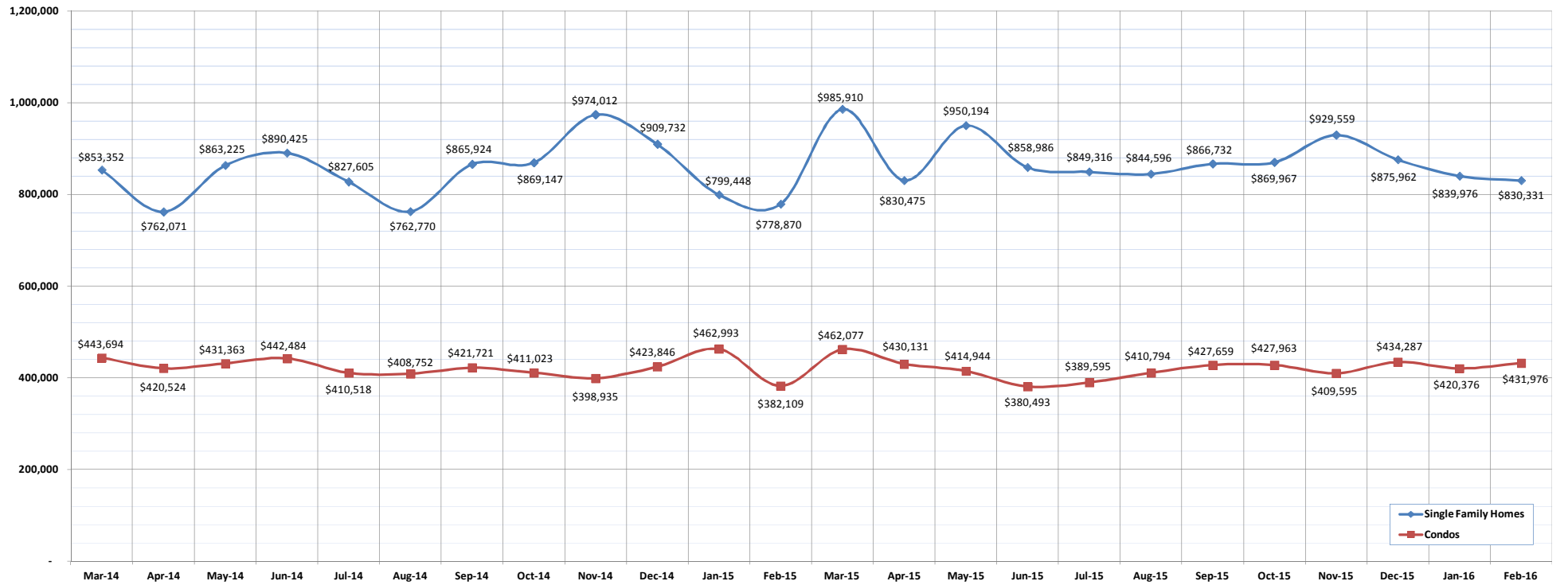
SOURCE: Honolulu Board of REALTORS®, compiled from MLS data.

Average Sales Price

February-16

OAHU, HAWAII

(The average sales price for all closed sales in a given month.)



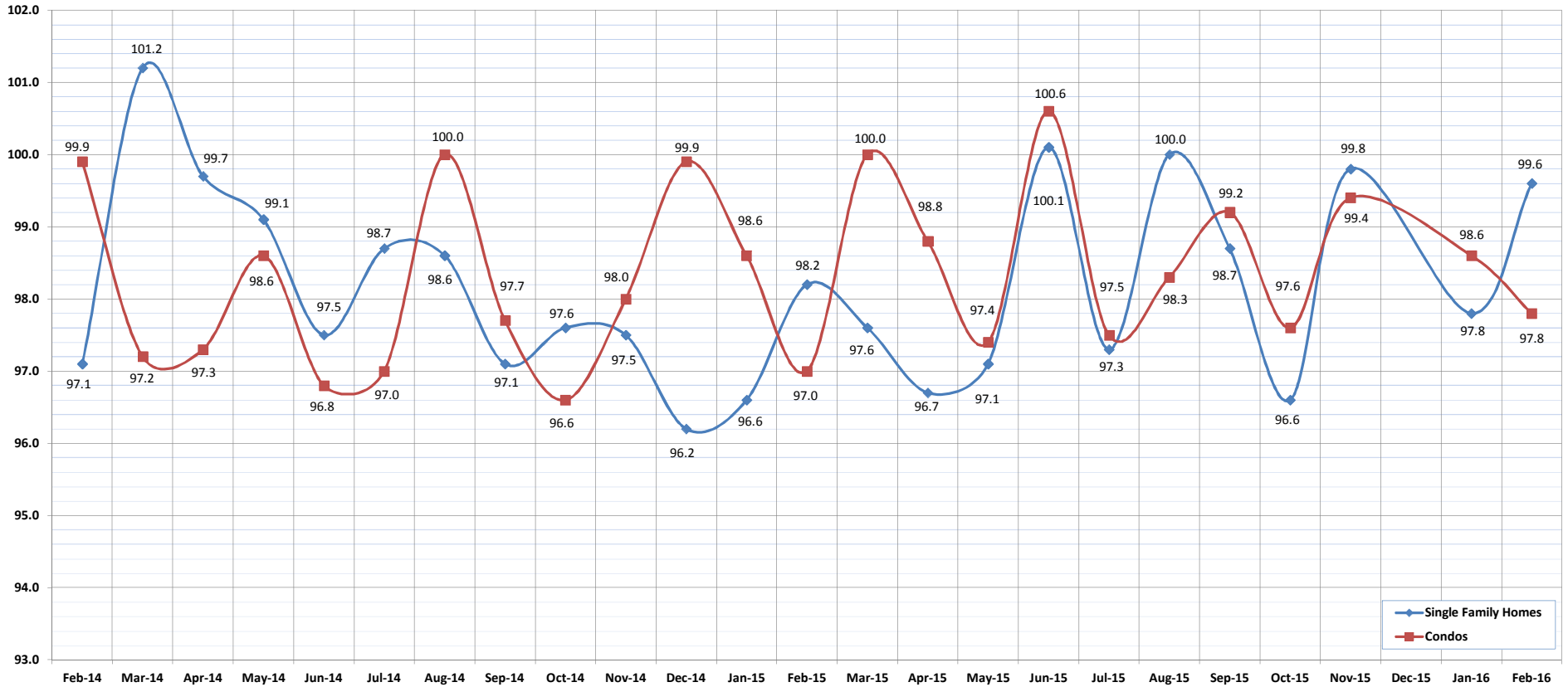
	Mar-14	Apr-14	May-14	Jun-14	Jul-14	Aug-14	Sep-14	Oct-14	Nov-14	Dec-14	Jan-15	Feb-15	Mar-15	Apr-15	May-15	Jun-15	Jul-15	Aug-15	Sep-15	Oct-15	Nov-15	Dec-15	Jan-16	Feb-16
Average Sales Price: SFH	853,352	762,071	863,225	890,425	827,605	762,770	865,924	869,147	974,012	909,732	799,448	778,870	985,910	830,475	950,194	858,986	849,316	844,596	866,732	869,967	929,559	875,962	839,976	830,331
Average Sales Price: Condos	443,694	420,524	431,363	442,484	410,518	408,752	421,721	411,023	398,935	423,846	462,993	382,109	462,077	430,131	414,944	380,493	389,595	410,794	427,659	427,963	409,595	434,287	420,376	431,976

Percent of Original List Price Received

February-16

OAHU, HAWAII

(The percentage found when dividing a property's sales price by the original list price.)



	Feb-14	Mar-14	Apr-14	May-14	Jun-14	Jul-14	Aug-14	Sep-14	Oct-14	Nov-14	Dec-14	Jan-15	Feb-15	Mar-15	Apr-15	May-15	Jun-15	Jul-15	Aug-15	Sep-15	Oct-15	Nov-15	Jan-16	Feb-16
Percent of Original List Price: SFH	97.1	101.2	99.7	99.1	97.5	98.7	98.6	97.1	97.6	97.5	96.2	96.6	98.2	97.6	96.7	97.1	100.1	97.3	100.0	98.7	96.6	99.8	97.8	99.6
Percent of Original List Price: Condos	99.9	97.2	97.3	98.6	96.8	97.0	100.0	97.7	96.6	98.0	99.9	98.6	97.0	100.0	98.8	97.4	100.6	97.5	98.3	99.2	97.6	99.4	98.6	97.8

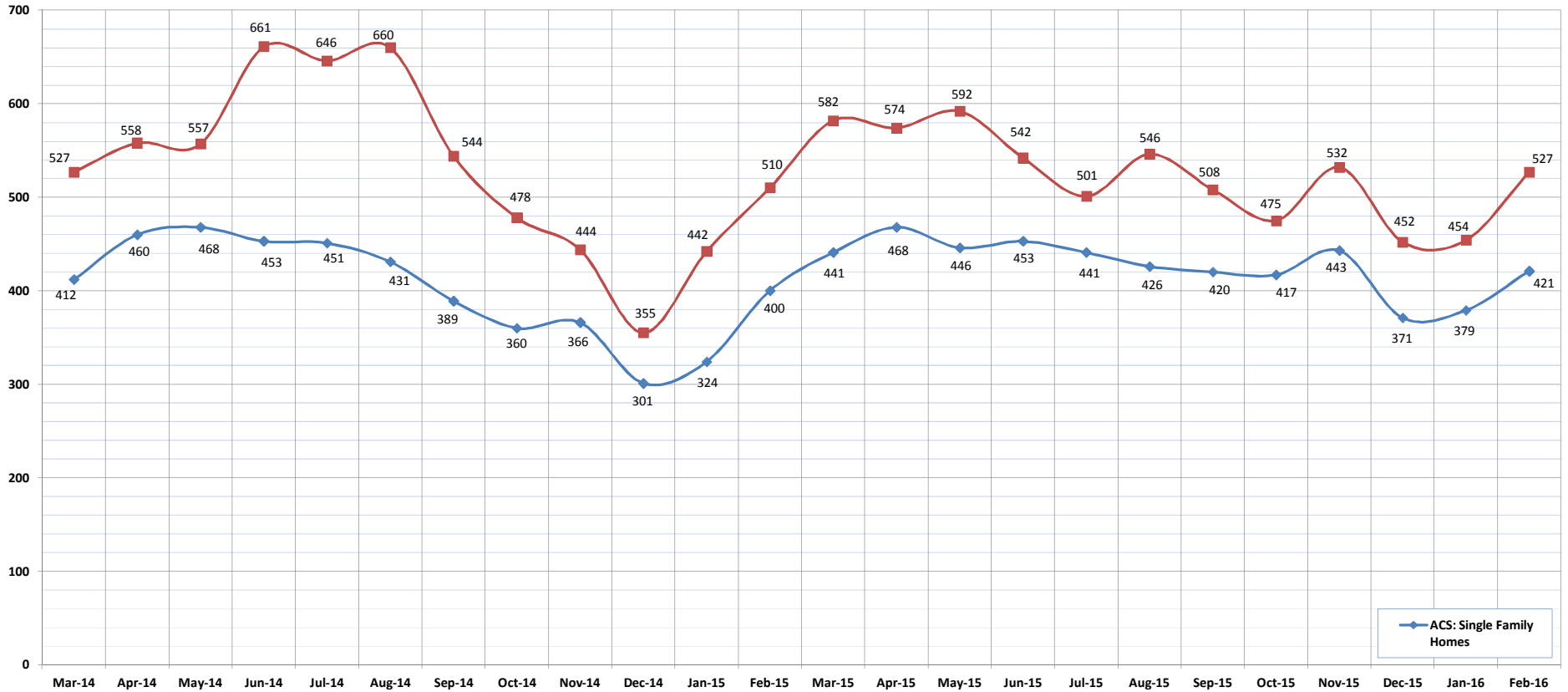
SOURCE: Honolulu Board of REALTORS®, compiled from MLS data.

Active Continue to Show

February-16

OAHU, HAWAII

(A count of the properties that are in ACS during the current month.)



	Mar-14	Apr-14	May-14	Jun-14	Jul-14	Aug-14	Sep-14	Oct-14	Nov-14	Dec-14	Jan-15	Feb-15	Mar-15	Apr-15	May-15	Jun-15	Jul-15	Aug-15	Sep-15	Oct-15	Nov-15	Dec-15	Jan-16	Feb-16
ACS: Single Family Homes	412	460	468	453	451	431	389	360	366	301	324	400	441	468	446	453	441	426	420	417	443	371	379	421
ACS: Condos	527	558	557	661	646	660	544	478	444	355	442	510	582	574	592	542	501	546	508	475	532	452	454	527

SOURCE: Honolulu Board of REALTORS®, compiled from MLS data.

Housing Supply Overview

February 2016

Single Family Homes	Pending Sales			Days on Market			Percentage of Original Price Received			Inventory of Homes for Sale			Months Supply of Inventory		
	Feb-16	Feb-15	%	Feb-16	Feb-15	%	Feb-16	Feb-15	%	Feb-16	Feb-15	%	Feb-16	Feb-15	%
\$350,000 and Below	138	162	-14.8%	36	28	28.6%	96.0%	98.2%	-2.2%	27	40	-32.5%	2.1	2.6	-19.2%
\$350,001 - \$475,000	302	361	-16.3%	20	21	-4.8%	97.9%	98.8%	-0.9%	62	84	-26.2%	2.2	2.4	-8.3%
\$475,001 - \$550,000	380	418	-9.1%	15	19	-21.1%	98.6%	98.6%	0.0%	70	72	-2.8%	2.2	2.0	10.0%
\$550,001 - \$650,000	675	641	5.3%	16	21	-23.8%	98.5%	98.5%	0.0%	124	137	-9.5%	2.2	2.6	-15.4%
\$650,001 - \$800,000	861	704	22.3%	21	22	-4.5%	98.0%	97.9%	0.1%	197	186	5.9%	2.9	3.2	-9.4%
\$800,001 - \$1.1M	707	597	18.4%	22	20	10.0%	97.5%	98.0%	-0.5%	184	168	9.5%	3.4	3.4	0.0%
\$1.1M - \$1.9M	456	357	27.7%	30	34	-11.8%	95.3%	95.7%	-0.4%	217	195	11.3%	6.2	6.3	-1.6%
\$1.9M and Above	161	158	1.9%	59	60	-1.7%	93.3%	93.5%	-0.2%	237	220	7.7%	17.7	17.7	0.0%
All Single Family Homes	3680	3398	8.3%	20	22	-9.1%	98.3%	98.2%	0.1%	1118	1102	1.5%	3.7	3.8	-2.6%

Condos	Pending Sales			Days on Market			Percentage of Original Price Received			Inventory of Homes for Sale			Months Supply of Inventory		
	Feb-16	Feb-15	%	Feb-16	Feb-15	%	Feb-16	Feb-15	%	Feb-16	Feb-15	%	Feb-16	Feb-15	%
\$150,000 and below	385	483	-20.3%	44	40	10.0%	90.6%	93.6%	-3.2%	147	181	-18.8%	4.4	5.1	-13.7%
\$150,001 - \$200,000	335	425	-21.2%	32	34	-5.9%	96.4%	95.1%	1.4%	99	143	-30.8%	3.2	4.1	-22.0%
\$200,001 - \$250,000	419	559	-25.0%	29	26	11.5%	96.6%	96.4%	0.2%	95	146	-34.9%	2.4	3.2	-25.0%
\$250,001 - \$300,000	657	708	-7.2%	21	24	-12.5%	98.0%	97.5%	0.5%	158	191	-17.3%	2.8	3.4	-17.6%
\$300,001 - \$375,000	1041	902	15.4%	17	23	-26.1%	98.1%	97.1%	1.0%	203	256	-20.7%	2.5	3.5	-28.6%
\$375,001 - \$475,000	1075	955	12.6%	16	19	-15.8%	98.8%	98.1%	0.7%	249	215	15.8%	3.0	2.9	3.4%
\$475,001 - \$700,000	962	857	12.3%	25	20	25.0%	98.0%	98.3%	-0.3%	314	288	9.0%	4.2	4.3	-2.3%
\$700,001 and above	484	524	-7.6%	43	43	0.0%	96.0%	94.7%	1.4%	400	325	23.1%	9.5	8.3	14.5%
All Condos	5358	6270	-14.5%	22	24	-8.3%	98.7%	97.8%	0.9%	1665	1745	-4.6%	3.8	4.0	-5.0%

SOURCE: Honolulu Board of REALTORS® , compiled from MLS data.

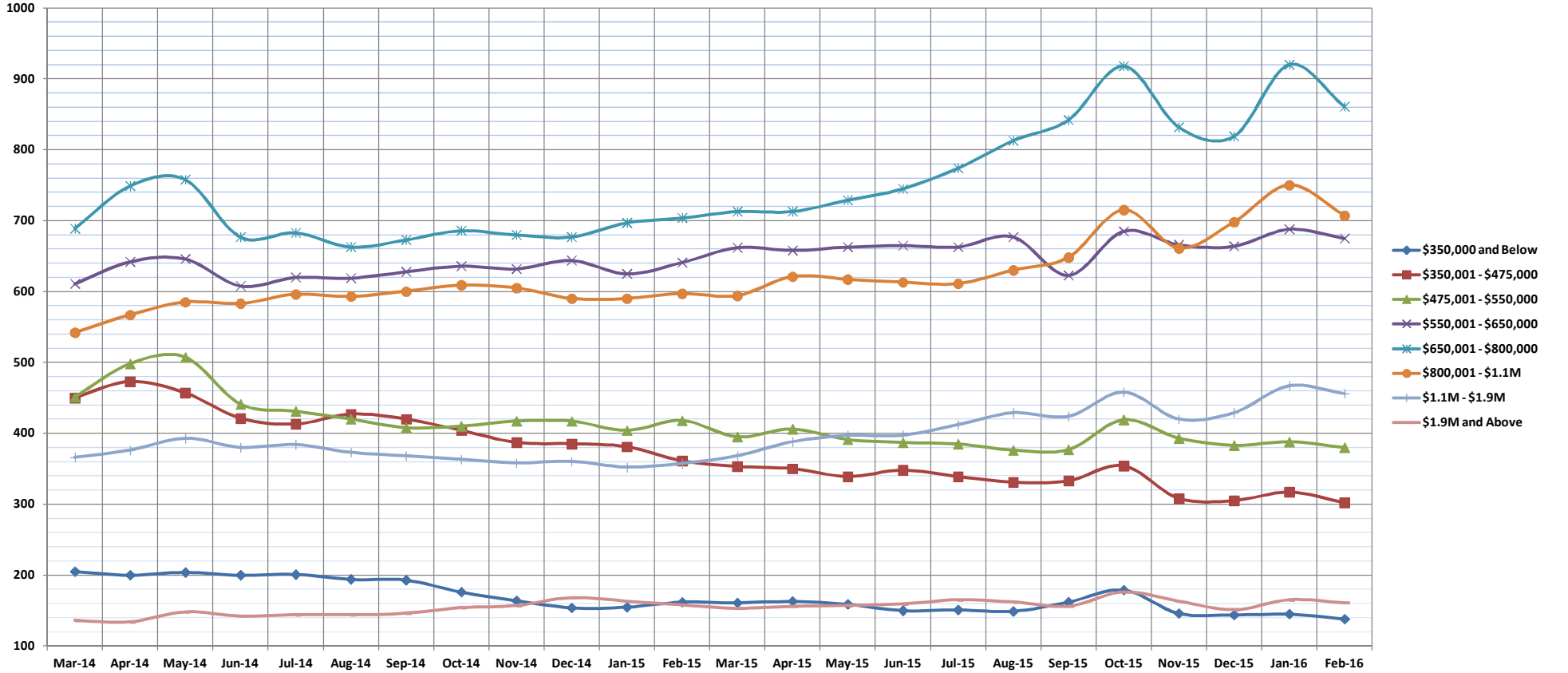


Pending Sales

Feb-16

Single Family Homes: Monthly, by Price Range

(A count of properties that have offers accepted on them in a given month. Based on a 12 month rolling total.)



	Mar-14	Apr-14	May-14	Jun-14	Jul-14	Aug-14	Sep-14	Oct-14	Nov-14	Dec-14	Jan-15	Feb-15	Mar-15	Apr-15	May-15	Jun-15	Jul-15	Aug-15	Sep-15	Oct-15	Nov-15	Dec-15	Jan-16	Feb-16
\$350,000 and Below	205	200	204	200	201	194	193	176	164	154	155	162	161	163	159	150	151	149	162	179	146	144	145	138
\$350,001 - \$475,000	450	473	457	421	413	427	420	404	387	385	381	361	353	350	339	348	339	331	333	354	308	305	317	302
\$475,001 - \$550,000	451	498	507	441	431	420	408	410	417	417	404	418	395	406	391	387	385	376	377	419	393	383	388	380
\$550,001 - \$650,000	611	642	646	608	620	619	628	636	632	644	625	641	662	658	663	665	663	677	623	685	666	664	688	675
\$650,001 - \$800,000	689	749	758	677	683	663	673	686	680	677	697	704	713	729	745	774	813	842	918	832	819	920	861	
\$800,001 - \$1.1M	542	567	585	583	596	593	600	609	605	590	590	597	594	621	617	613	611	630	648	715	661	698	750	707
\$1.1M - \$1.9M	366	376	393	380	384	373	368	363	358	360	352	357	368	388	397	397	412	429	424	458	420	429	467	456
\$1.9M and Above	136	134	148	142	144	144	146	154	157	168	163	158	153	156	157	159	165	162	156	176	163	151	165	161
All Single Family Homes	3450	3639	3698	3452	3472	3433	3436	3438	3400	3395	3367	3398	3399	3455	3452	3464	3500	3567	3565	3904	3589	3593	3840	3680

SOURCE: Honolulu Board of REALTORS®, compiled from MLS data.

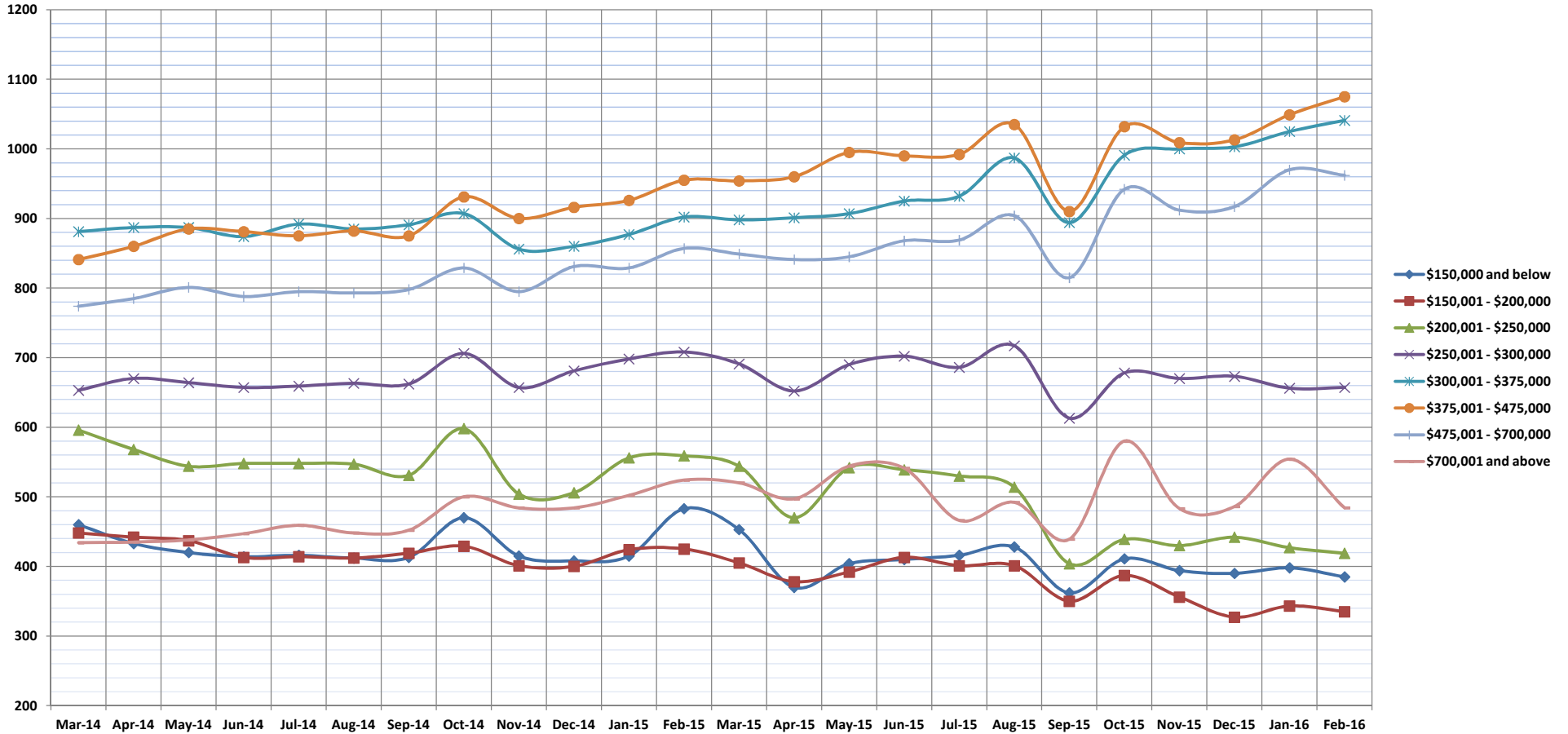


Pending Sales

Feb-16

Condos: Monthly, by Price Range

(A count of properties that have offers accepted on them in a given month. Based on a 12 month rolling total.)



	Mar-14	Apr-14	May-14	Jun-14	Jul-14	Aug-14	Sep-14	Oct-14	Nov-14	Dec-14	Jan-15	Feb-15	Mar-15	Apr-15	May-15	Jun-15	Jul-15	Aug-15	Sep-15	Oct-15	Nov-15	Dec-15	Jan-16	Feb-16
\$150,000 and below	460	433	420	414	416	412	413	470	415	408	415	483	453	370	404	410	416	428	362	411	394	390	398	385
\$150,001 - \$200,000	448	442	437	413	414	412	419	429	401	400	424	425	405	378	392	413	401	401	350	387	356	327	343	335
\$200,001 - \$250,000	596	568	544	548	548	547	531	598	504	506	556	559	544	470	542	539	530	514	404	439	430	442	427	419
\$250,001 - \$300,000	653	670	664	657	659	663	662	706	657	681	698	708	691	652	690	702	686	717	613	678	670	673	656	657
\$300,001 - \$375,000	881	887	887	874	892	885	891	907	856	860	877	902	898	901	907	925	932	987	894	991	1000	1003	1025	1041
\$375,001 - \$475,000	841	860	885	881	875	882	875	931	900	916	926	955	954	960	995	990	992	1035	910	1032	1009	1013	1049	1075
\$475,001 - \$700,000	774	785	801	788	795	793	798	829	795	831	829	857	849	841	845	868	869	904	815	942	912	917	970	962
\$700,001 and above	434	435	438	447	459	448	452	500	484	484	502	524	520	497	544	541	466	492	439	580	483	486	554	484
All Condos	5087	5080	5076	5022	5058	5042	5041	5370	5012	5086	5227	6270	5314	5069	5319	5388	5292	5478	4787	5460	5254	5251	5422	5358

SOURCE: Honolulu Board of REALTORS®, compiled from MLS data.

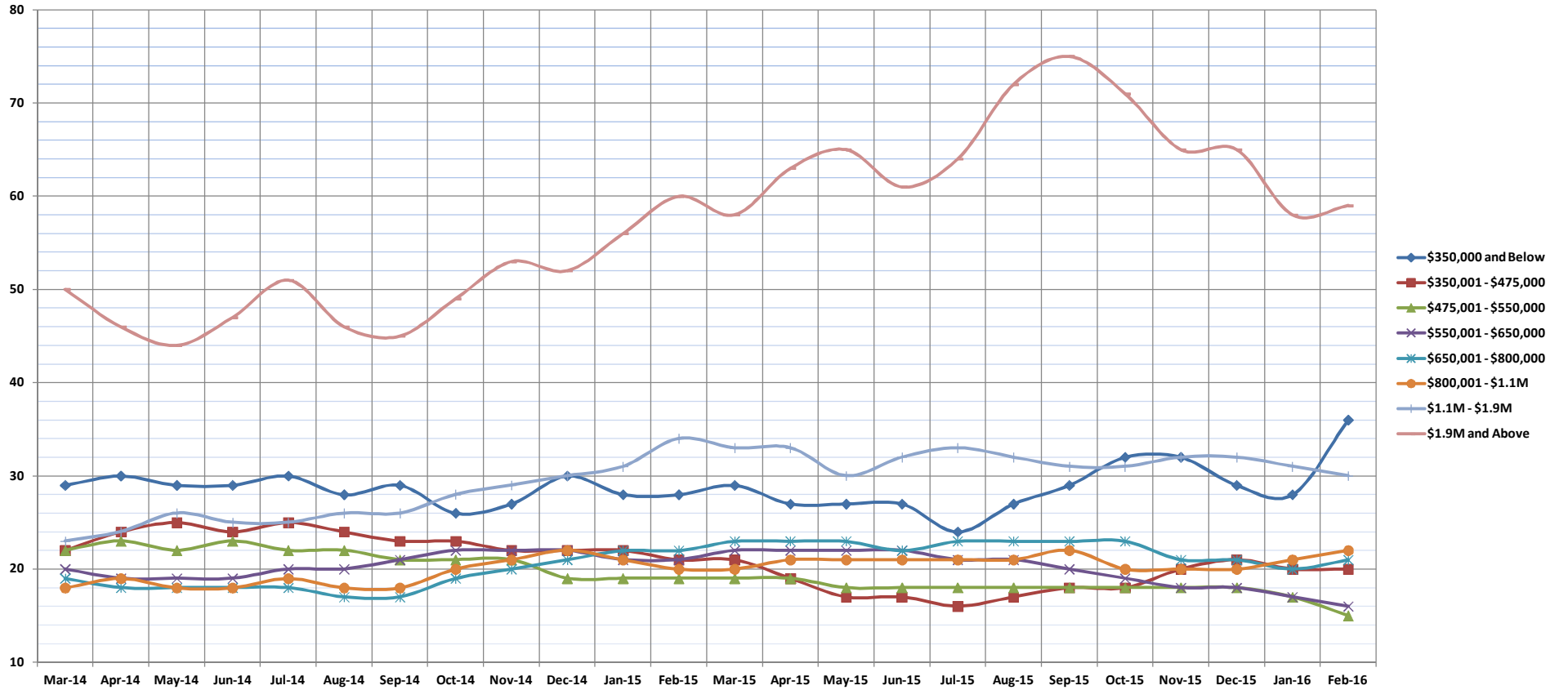


Days on Market Until Sale

Feb-16

Single Family Homes: Monthly, by Price Range

(The median number of days between when a property is first listed and when an offer is accepted. Based on a 12 month rolling median.)



	Mar-14	Apr-14	May-14	Jun-14	Jul-14	Aug-14	Sep-14	Oct-14	Nov-14	Dec-14	Jan-15	Feb-15	Mar-15	Apr-15	May-15	Jun-15	Jul-15	Aug-15	Sep-15	Oct-15	Nov-15	Dec-15	Jan-16	Feb-16	
\$350,000 and Below	29	30	29	29	30	28	29	26	27	30	28	28	29	27	27	27	24	27	29	32	32	29	28	36	
\$350,001 - \$475,000	22	24	25	24	25	24	23	23	22	22	22	21	21	19	17	17	16	17	18	18	18	20	21	20	20
\$475,001 - \$550,000	22	23	22	23	22	22	21	21	21	19	19	19	19	19	18	18	18	18	18	18	18	18	18	17	15
\$550,001 - \$650,000	20	19	19	19	20	20	21	22	22	21	21	21	22	22	22	22	21	21	20	19	18	18	17	16	
\$650,001 - \$800,000	19	18	18	18	18	17	17	19	20	21	22	21	22	23	23	22	23	23	23	23	23	23	21	20	21
\$800,001 - \$1.1M	18	19	18	18	19	18	18	20	21	22	21	20	20	21	21	21	21	21	21	22	20	20	20	21	22
\$1.1M - \$1.9M	23	24	26	25	25	26	26	28	29	30	31	34	33	33	30	32	33	32	31	31	31	32	31	30	
\$1.9M and Above	50	46	44	47	51	46	45	49	53	52	56	60	58	63	65	61	64	72	75	71	65	65	58	59	
All Single Family Homes	21	21	20	20	20	20	20	21	22	22	22	22	22	22	22	22	22	22	22	22	21	21	21	20	20

SOURCE: Honolulu Board of REALTORS®, compiled from MLS data.

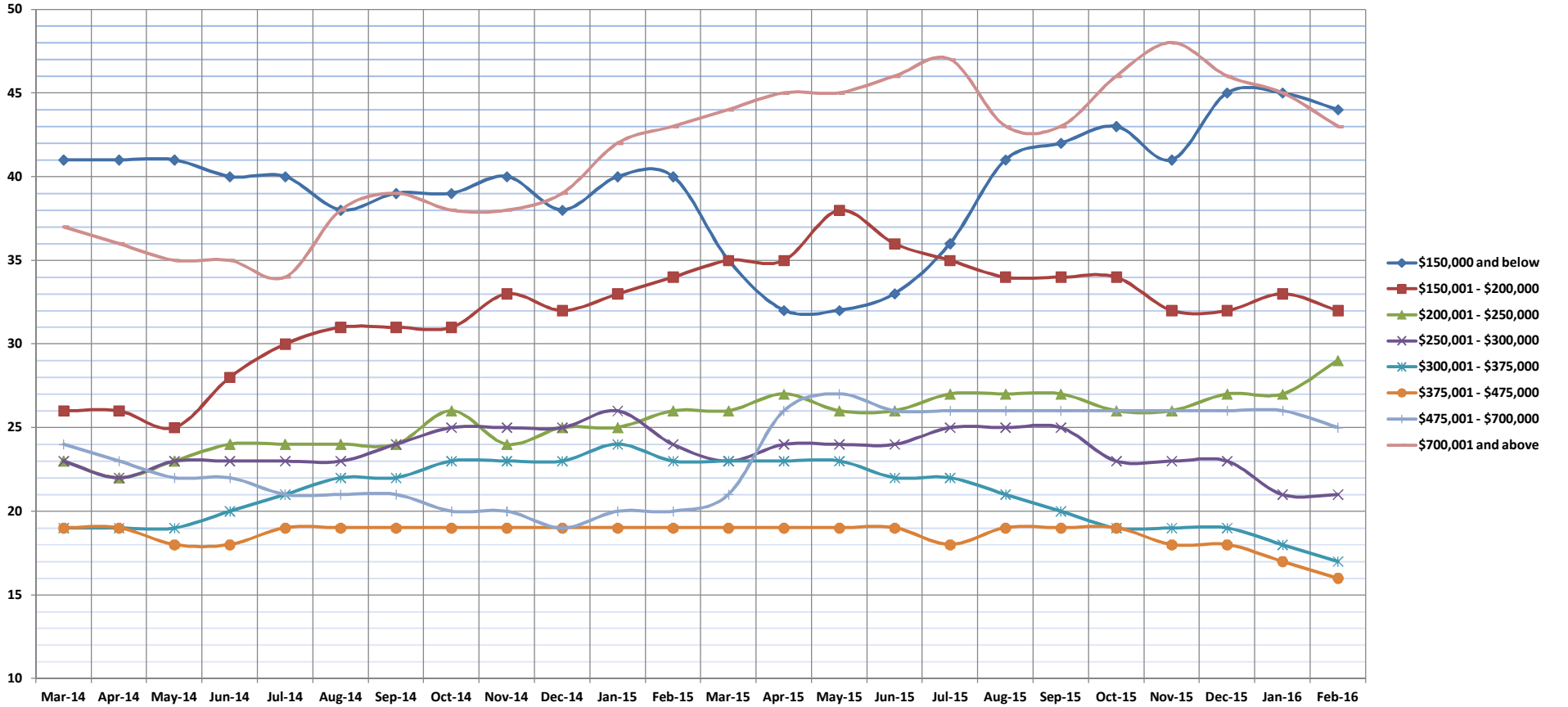


Days on Market Until Sale

Feb-16

Condos: Monthly, by Price Range

(The median number of days between when a property is first listed and when an offer is accepted. Based on a 12 month rolling median.)



	Mar-14	Apr-14	May-14	Jun-14	Jul-14	Aug-14	Sep-14	Oct-14	Nov-14	Dec-14	Jan-15	Feb-15	Mar-15	Apr-15	May-15	Jun-15	Jul-15	Aug-15	Sep-15	Oct-15	Nov-15	Dec-15	Jan-16	Feb-16	
\$150,000 and below	41	41	41	40	40	38	39	39	40	38	40	40	35	32	32	33	36	41	42	43	41	45	45	44	
\$150,001 - \$200,000	26	26	25	28	30	31	31	31	33	32	33	34	35	35	38	36	35	34	34	34	34	32	32	33	32
\$200,001 - \$250,000	23	22	23	24	24	24	24	26	24	25	25	26	26	27	26	26	27	27	27	26	26	27	27	29	
\$250,001 - \$300,000	23	22	23	23	23	23	24	25	25	25	26	24	23	24	24	24	25	25	25	23	23	23	21	21	
\$300,001 - \$375,000	19	19	19	20	21	22	22	23	23	23	24	23	23	23	23	22	22	21	20	19	19	19	18	17	
\$375,001 - \$475,000	19	19	18	18	19	19	19	19	19	19	19	19	19	19	19	19	18	19	19	19	19	18	18	17	16
\$475,001 - \$700,000	24	23	22	22	21	21	21	20	20	19	20	20	21	26	27	26	26	26	26	26	26	26	26	25	
\$700,001 and above	37	36	35	35	34	38	39	38	38	39	42	43	44	45	45	46	47	43	43	46	48	46	45	43	
All Condos	23	23	23	23	23	24	24	24	25	24	25	24	24	24	24	24	24	23	23	23	23	23	22	22	

SOURCE: Honolulu Board of REALTORS®, compiled from MLS data.

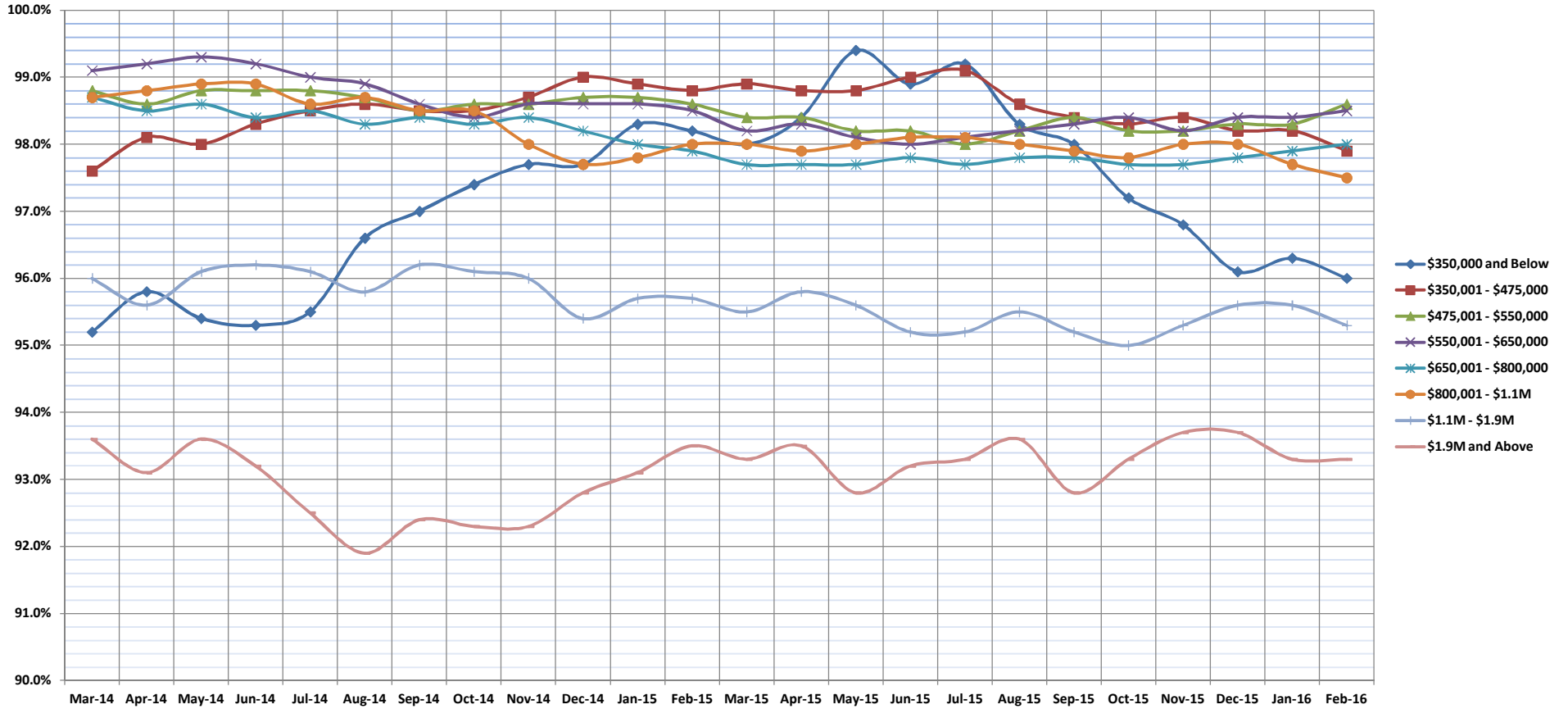


Percentage of Original Price Received

Feb-16

Single Family Homes: Monthly, by Price Range

(The average percentage found when dividing a property's sales price by the original list price. Based on a rolling 12 month average.)



	Mar-14	Apr-14	May-14	Jun-14	Jul-14	Aug-14	Sep-14	Oct-14	Nov-14	Dec-14	Jan-15	Feb-15	Mar-15	Apr-15	May-15	Jun-15	Jul-15	Aug-15	Sep-15	Oct-15	Nov-15	Dec-15	Jan-16	Feb-16	
\$350,000 and Below	95.2%	95.8%	95.4%	95.3%	95.5%	96.6%	97.0%	97.4%	97.7%	97.7%	98.3%	98.2%	98.0%	98.4%	99.4%	98.9%	99.2%	98.3%	98.0%	97.2%	96.8%	96.1%	96.3%	96.0%	
\$350,001 - \$475,000	97.6%	98.1%	98.0%	98.3%	98.5%	98.6%	98.5%	98.5%	98.7%	99.0%	98.9%	98.8%	98.9%	98.8%	98.8%	99.0%	99.1%	98.6%	98.4%	98.3%	98.4%	98.2%	98.2%	98.2%	97.9%
\$475,001 - \$550,000	98.8%	98.6%	98.8%	98.8%	98.8%	98.7%	98.5%	98.6%	98.6%	98.7%	98.7%	98.6%	98.4%	98.4%	98.2%	98.2%	98.0%	98.2%	98.4%	98.2%	98.2%	98.3%	98.3%	98.6%	
\$550,001 - \$650,000	99.1%	99.2%	99.3%	99.2%	99.0%	98.9%	98.6%	98.4%	98.6%	98.6%	98.6%	98.5%	98.6%	98.3%	98.1%	98.0%	98.1%	98.2%	98.3%	98.4%	98.2%	98.2%	98.4%	98.5%	
\$650,001 - \$800,000	98.7%	98.5%	98.6%	98.4%	98.5%	98.3%	98.4%	98.3%	98.4%	98.2%	98.0%	97.9%	97.7%	97.7%	97.7%	97.8%	97.7%	97.8%	97.8%	97.7%	97.8%	97.7%	97.7%	98.0%	
\$800,001 - \$1.1M	98.7%	98.8%	98.9%	98.9%	98.6%	98.7%	98.5%	98.5%	98.0%	97.7%	97.8%	98.0%	98.0%	97.9%	98.0%	98.1%	98.1%	98.0%	97.9%	97.8%	98.0%	98.0%	97.7%	97.5%	
\$1.1M - \$1.9M	96.0%	95.6%	96.1%	96.2%	96.1%	95.8%	96.2%	96.1%	96.0%	95.4%	95.7%	95.7%	95.5%	95.8%	95.6%	95.2%	95.2%	95.5%	95.2%	95.0%	95.3%	95.6%	95.6%	95.3%	
\$1.9M and Above	93.6%	93.1%	93.6%	93.2%	92.5%	91.9%	92.4%	92.3%	92.3%	92.8%	93.1%	93.5%	93.3%	93.5%	92.8%	93.2%	93.3%	93.6%	92.8%	93.3%	93.7%	93.7%	93.3%	93.3%	
All Single Family Homes	98.9%	99.2%	99.3%	99.2%	99.1%	99.1%	99.0%	98.8%	98.6%	98.3%	98.1%	98.2%	97.9%	97.6%	97.5%	97.7%	97.6%	97.7%	97.7%	97.4%	98.1%	98.2%	98.3%	98.3%	

SOURCE: Honolulu Board of REALTORS®, compiled from MLS data.

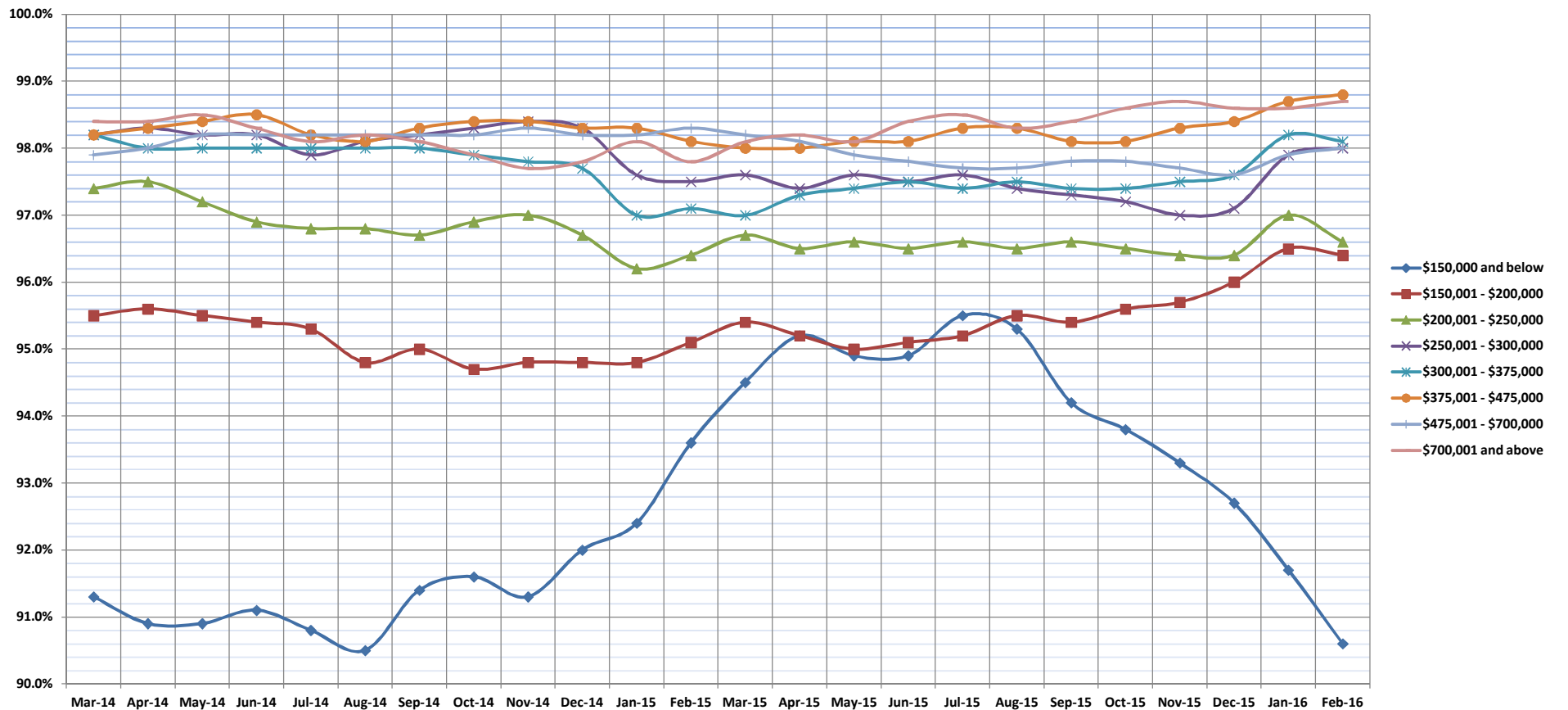


Percentage of Original Price Received

Feb-16

Condos: Monthly, by Price Range

(The average percentage found when dividing a property's sales price by the original list price. Based on a rolling 12 month average.)



	Mar-14	Apr-14	May-14	Jun-14	Jul-14	Aug-14	Sep-14	Oct-14	Nov-14	Dec-14	Jan-15	Feb-15	Mar-15	Apr-15	May-15	Jun-15	Jul-15	Aug-15	Sep-15	Oct-15	Nov-15	Dec-15	Jan-16	Feb-16	
\$150,000 and below	91.3%	90.9%	90.9%	91.1%	90.8%	90.5%	91.4%	91.6%	91.3%	92.0%	92.4%	93.6%	94.5%	95.2%	94.9%	94.9%	95.5%	95.3%	94.2%	93.8%	93.3%	92.7%	91.7%	90.6%	
\$150,001 - \$200,000	95.5%	95.6%	95.5%	95.4%	95.3%	94.8%	95.0%	94.7%	94.8%	94.8%	95.1%	95.4%	95.2%	95.0%	95.1%	95.2%	95.5%	95.4%	95.6%	95.7%	96.0%	96.5%	96.4%	96.4%	
\$200,001 - \$250,000	97.4%	97.5%	97.2%	96.9%	96.8%	96.8%	96.7%	96.9%	97.0%	96.7%	96.2%	96.4%	96.7%	96.5%	96.6%	96.5%	96.6%	96.5%	96.6%	96.5%	96.6%	96.5%	96.4%	96.4%	97.0%
\$250,001 - \$300,000	98.2%	98.3%	98.2%	98.2%	97.9%	98.1%	98.2%	98.3%	98.4%	98.3%	97.6%	97.5%	97.6%	97.4%	97.6%	97.5%	97.6%	97.4%	97.5%	97.6%	97.4%	97.5%	97.4%	97.4%	98.0%
\$300,001 - \$375,000	98.2%	98.0%	98.0%	98.0%	98.0%	98.0%	98.0%	98.0%	97.9%	97.8%	97.7%	97.1%	97.0%	97.1%	97.1%	97.3%	97.3%	97.4%	97.5%	97.4%	97.5%	97.4%	97.4%	97.4%	98.1%
\$375,001 - \$475,000	98.2%	98.3%	98.4%	98.5%	98.2%	98.1%	98.3%	98.4%	98.4%	98.3%	98.3%	98.1%	98.0%	98.0%	98.1%	98.1%	98.3%	98.3%	98.3%	98.3%	98.3%	98.3%	98.1%	98.1%	98.8%
\$475,001 - \$700,000	97.9%	98.0%	98.2%	98.2%	98.2%	98.2%	98.2%	98.2%	98.3%	98.2%	98.2%	98.3%	98.2%	98.3%	98.2%	98.1%	97.9%	97.8%	97.7%	97.7%	97.8%	97.8%	97.7%	97.8%	98.0%
\$700,001 and above	97.1%	96.9%	96.6%	96.2%	96.4%	95.1%	95.0%	95.1%	95.2%	95.2%	94.8%	94.7%	94.7%	94.7%	95.0%	95.6%	95.4%	96.3%	96.4%	96.4%	96.5%	96.8%	96.4%	96.0%	
All Condos	98.4%	98.4%	98.5%	98.3%	98.1%	98.2%	98.1%	97.9%	97.7%	97.8%	98.1%	97.8%	98.1%	98.2%	98.1%	98.4%	98.5%	98.3%	98.4%	98.6%	98.7%	98.6%	98.6%	98.7%	

SOURCE: Honolulu Board of REALTORS®, compiled from MLS data.

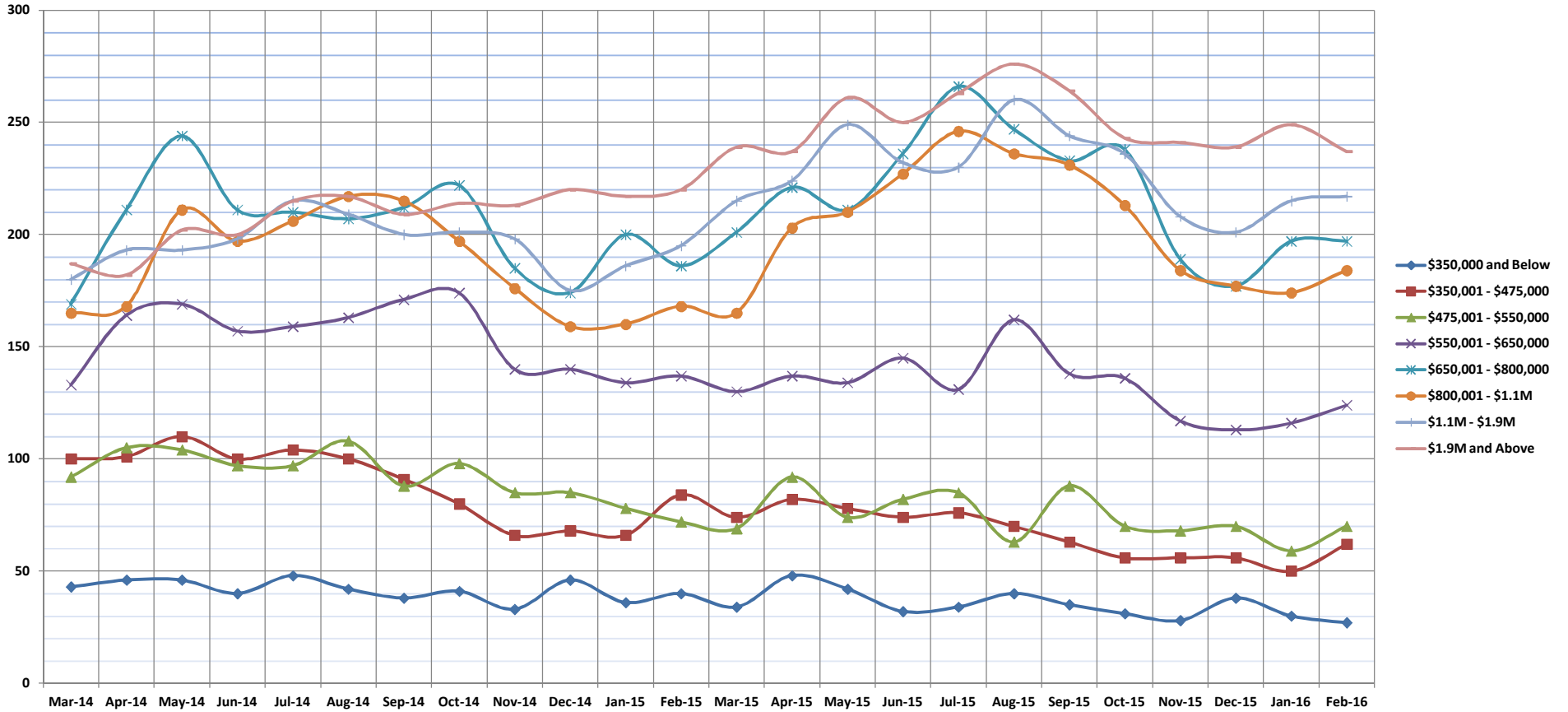


Inventory of Homes for Sale

Feb-16

Single Family Homes: Monthly, by Price Range

(The number of properties available for sale in active status at the end of a given month.)



	Mar-14	Apr-14	May-14	Jun-14	Jul-14	Aug-14	Sep-14	Oct-14	Nov-14	Dec-14	Jan-15	Feb-15	Mar-15	Apr-15	May-15	Jun-15	Jul-15	Aug-15	Sep-15	Oct-15	Nov-15	Dec-15	Jan-16	Feb-16
\$350,000 and Below	43	46	46	40	48	42	38	41	33	46	36	40	34	48	42	32	34	40	35	31	28	38	30	27
\$350,001 - \$475,000	100	101	110	100	104	100	91	80	66	68	66	84	74	82	78	74	76	70	63	56	56	56	50	62
\$475,001 - \$550,000	92	105	104	97	97	108	88	98	85	85	78	72	69	92	74	82	85	63	88	70	68	70	59	70
\$550,001 - \$650,000	133	164	169	157	159	163	171	174	140	140	134	137	130	137	134	145	131	162	138	136	117	113	116	124
\$650,001 - \$800,000	169	211	244	211	210	207	212	222	185	174	200	186	201	221	211	236	266	247	233	238	189	177	197	197
\$800,001 - \$1.1M	165	168	211	197	206	217	215	197	176	159	160	168	165	203	210	227	246	236	231	213	184	177	174	184
\$1.1M - \$1.9M	180	193	193	198	215	209	200	201	198	175	186	195	215	224	249	232	230	260	244	236	208	201	215	217
\$1.9M and Above	187	182	202	200	215	217	209	214	213	220	217	220	239	237	261	250	263	276	264	243	241	239	249	237
All Single Family Homes	1069	1170	1279	1200	1254	1263	1224	1227	1096	1067	1077	1102	1127	1244	1259	1278	1331	1354	1296	1223	1091	1071	1090	1118

SOURCE: Honolulu Board of REALTORS®, compiled from MLS data.

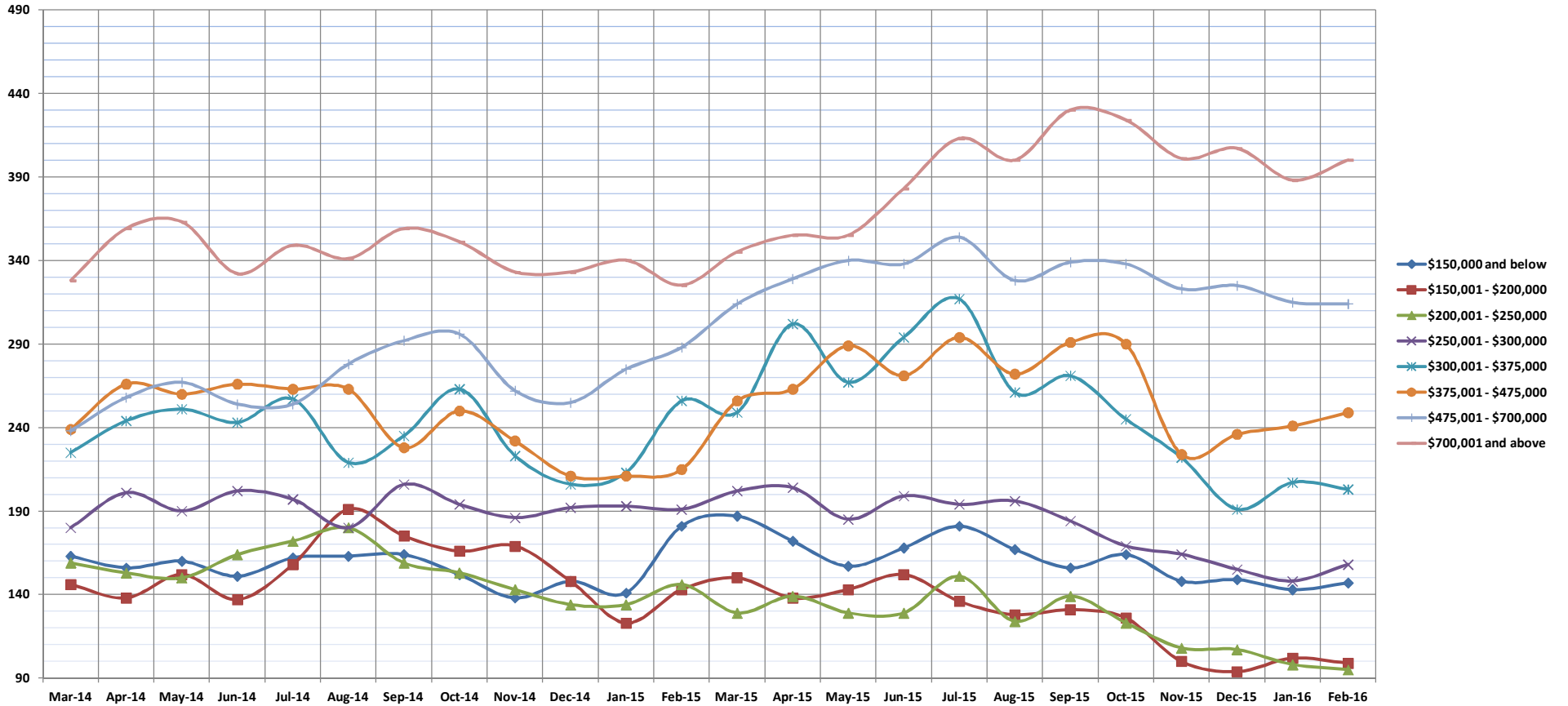


Inventory of Homes for Sale

Feb-16

Condos: Monthly, by Price Range

(The number of properties available for sale in active status at the end of a given month.)



	Mar-14	Apr-14	May-14	Jun-14	Jul-14	Aug-14	Sep-14	Oct-14	Nov-14	Dec-14	Jan-15	Feb-15	Mar-15	Apr-15	May-15	Jun-15	Jul-15	Aug-15	Sep-15	Oct-15	Nov-15	Dec-15	Jan-16	Feb-16
\$150,000 and below	163	156	160	151	162	163	164	152	138	148	141	181	187	172	157	168	181	167	156	164	148	149	143	147
\$150,001 - \$200,000	146	138	152	137	158	191	175	166	169	148	123	143	150	138	143	152	136	128	131	126	100	94	102	99
\$200,001 - \$250,000	159	153	150	164	172	180	159	153	143	134	134	146	129	139	129	129	151	124	139	123	108	107	98	95
\$250,001 - \$300,000	180	201	190	202	197	180	206	194	186	192	193	191	202	204	185	199	194	196	184	169	164	155	148	158
\$300,001 - \$375,000	225	244	251	243	257	219	235	263	223	206	213	256	249	302	267	294	317	261	271	245	222	191	207	203
\$375,001 - \$475,000	239	266	260	266	263	263	228	250	232	211	211	215	256	263	289	271	294	272	291	290	224	236	241	249
\$475,001 - \$700,000	238	258	267	254	254	278	292	296	262	255	275	288	314	329	340	338	354	328	339	338	323	325	315	314
\$700,001 and above	328	359	363	332	349	341	359	351	333	333	340	325	345	355	355	383	413	400	430	424	401	407	388	400
All Condos	1678	1775	1793	1749	1812	1815	1818	1825	1686	1627	1630	1745	1832	1902	1865	1934	2040	1876	1941	1879	1690	1664	1642	1665

SOURCE: Honolulu Board of REALTORS®, compiled from MLS data.

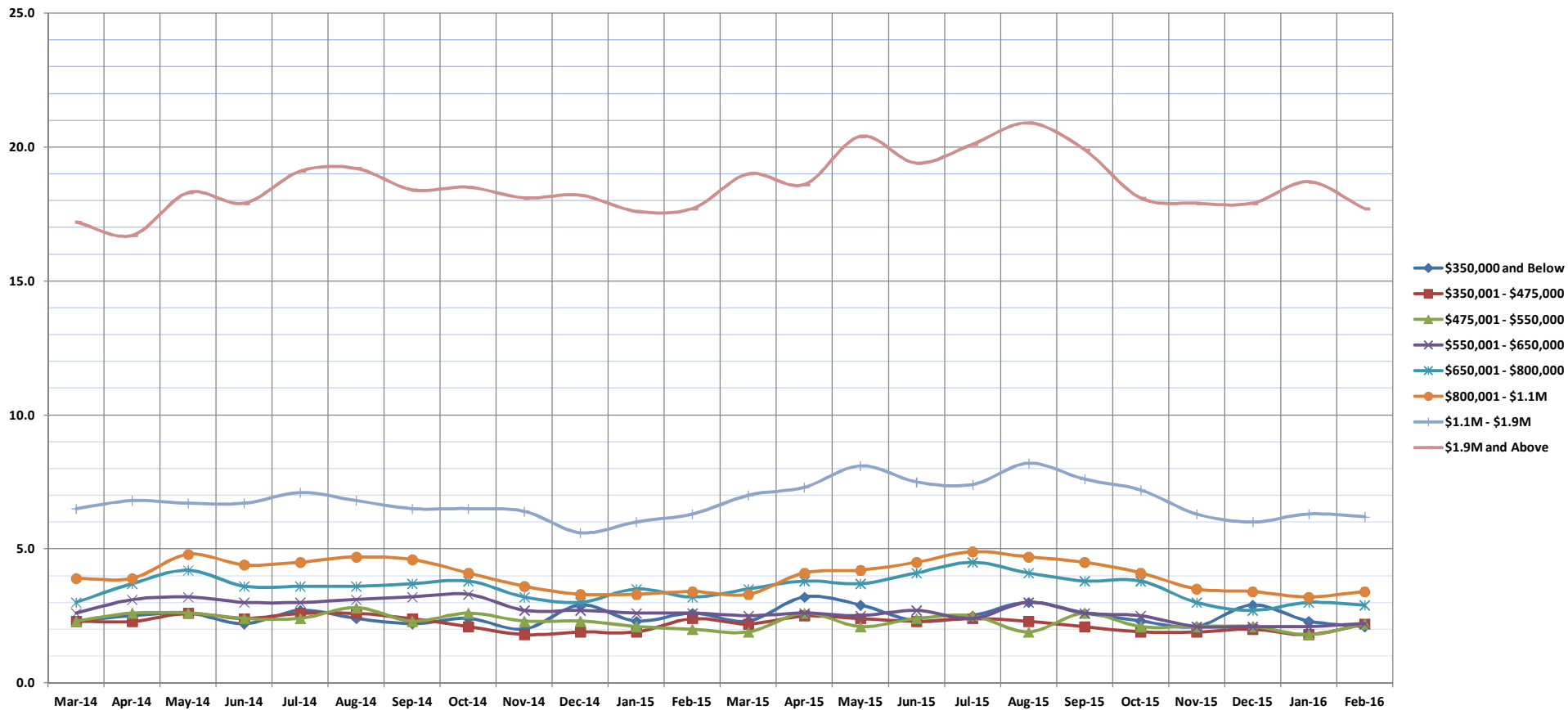


Months Supply of Inventory

Feb-16

Single Family Homes: Monthly, by Price Range

(Compares the number of active listings available to the average monthly pending sales from the last 12 months.)



	Mar-14	Apr-14	May-14	Jun-14	Jul-14	Aug-14	Sep-14	Oct-14	Nov-14	Dec-14	Jan-15	Feb-15	Mar-15	Apr-15	May-15	Jun-15	Jul-15	Aug-15	Sep-15	Oct-15	Nov-15	Dec-15	Jan-16	Feb-16
\$350,000 and Below	2.3	2.5	2.6	2.2	2.7	2.4	2.2	2.4	2.0	2.9	2.3	2.6	2.3	3.2	2.9	2.3	2.5	3.0	2.6	2.3	2.1	2.9	2.3	2.1
\$350,001 - \$475,000	2.3	2.3	2.6	2.4	2.6	2.6	2.4	2.1	1.8	1.9	1.9	2.4	2.2	2.5	2.4	2.3	2.4	2.3	2.1	1.9	1.9	2.0	1.8	2.2
\$475,001 - \$550,000	2.3	2.6	2.6	2.4	2.4	2.8	2.3	2.6	2.3	2.3	2.1	2.0	1.9	2.6	2.1	2.4	2.5	1.9	2.6	2.1	2.1	2.1	1.8	2.2
\$550,001 - \$650,000	2.6	3.1	3.2	3.0	3.0	3.1	3.2	3.3	2.7	2.7	2.6	2.6	2.5	2.6	2.5	2.7	2.4	3.0	2.6	2.5	2.1	2.1	2.1	2.2
\$650,001 - \$800,000	3.0	3.7	4.2	3.6	3.6	3.6	3.7	3.8	3.2	3.0	3.5	3.2	3.5	3.8	3.7	4.1	4.5	4.1	3.8	3.8	3.0	2.7	3.0	2.9
\$800,001 - \$1.1M	3.9	3.9	4.8	4.4	4.5	4.7	4.6	4.1	3.6	3.3	3.3	3.4	3.3	4.1	4.2	4.5	4.9	4.7	4.5	4.1	3.5	3.4	3.2	3.4
\$1.1M - \$1.9M	6.5	6.8	6.7	6.7	7.1	6.8	6.5	6.5	6.4	5.6	6.0	6.3	7.0	7.3	8.1	7.5	7.4	8.2	7.6	7.2	6.3	6.0	6.3	6.2
\$1.9M and Above	17.2	16.7	18.3	17.9	19.1	19.2	18.4	18.5	18.1	18.2	17.6	17.7	19.0	18.6	20.4	19.4	20.1	20.9	19.9	18.1	17.9	17.9	18.7	17.7
All Single Family Homes	3.7	4.0	4.3	4.0	4.2	4.3	4.2	4.2	3.8	3.7	3.7	3.8	3.9	4.3	4.4	4.5	4.7	4.7	4.5	4.2	3.7	3.7	3.7	3.7

SOURCE: Honolulu Board of REALTORS®, compiled from MLS data.

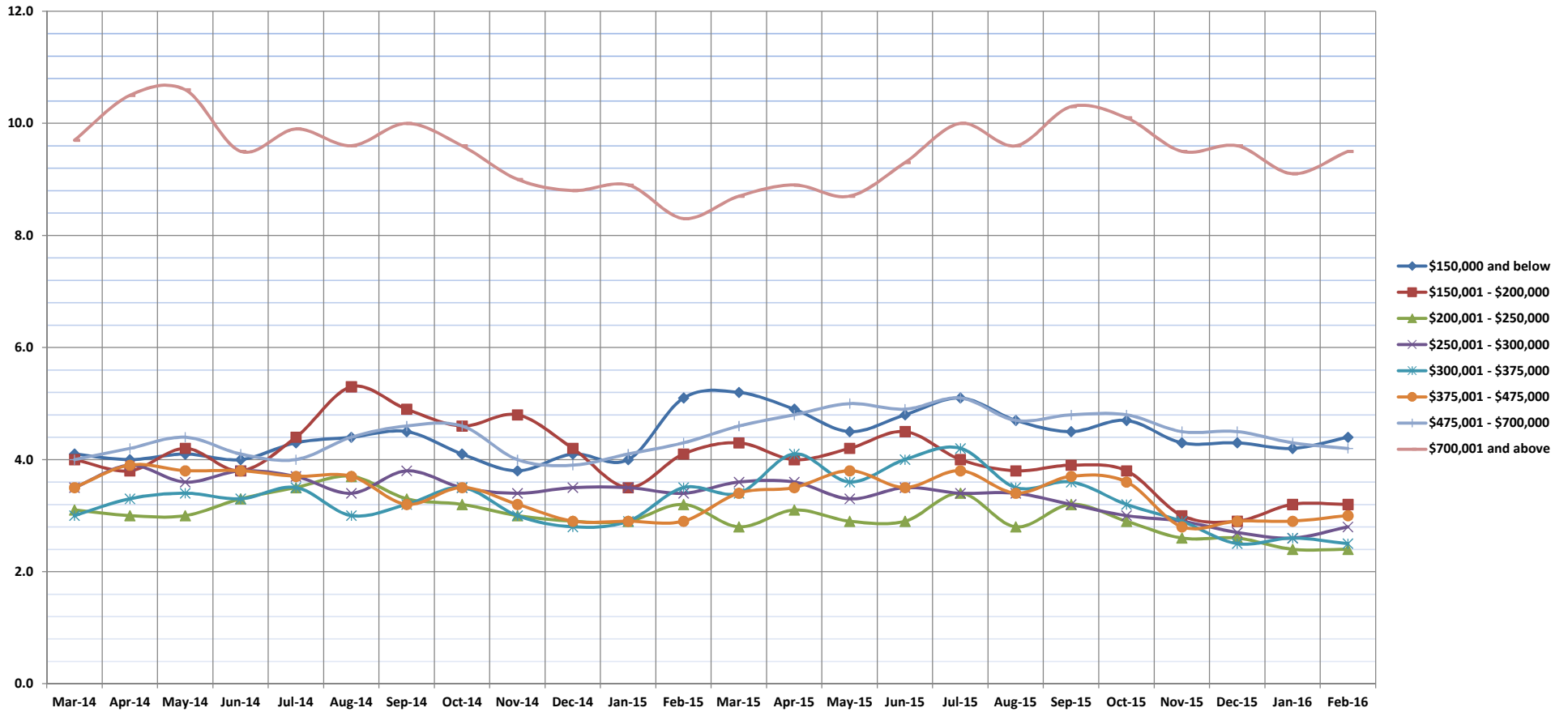


Months Supply of Inventory

Feb-16

Condos: Monthly, by Price Range

(Compares the number of active listings available to the average monthly pending sales from the last 12 months.)



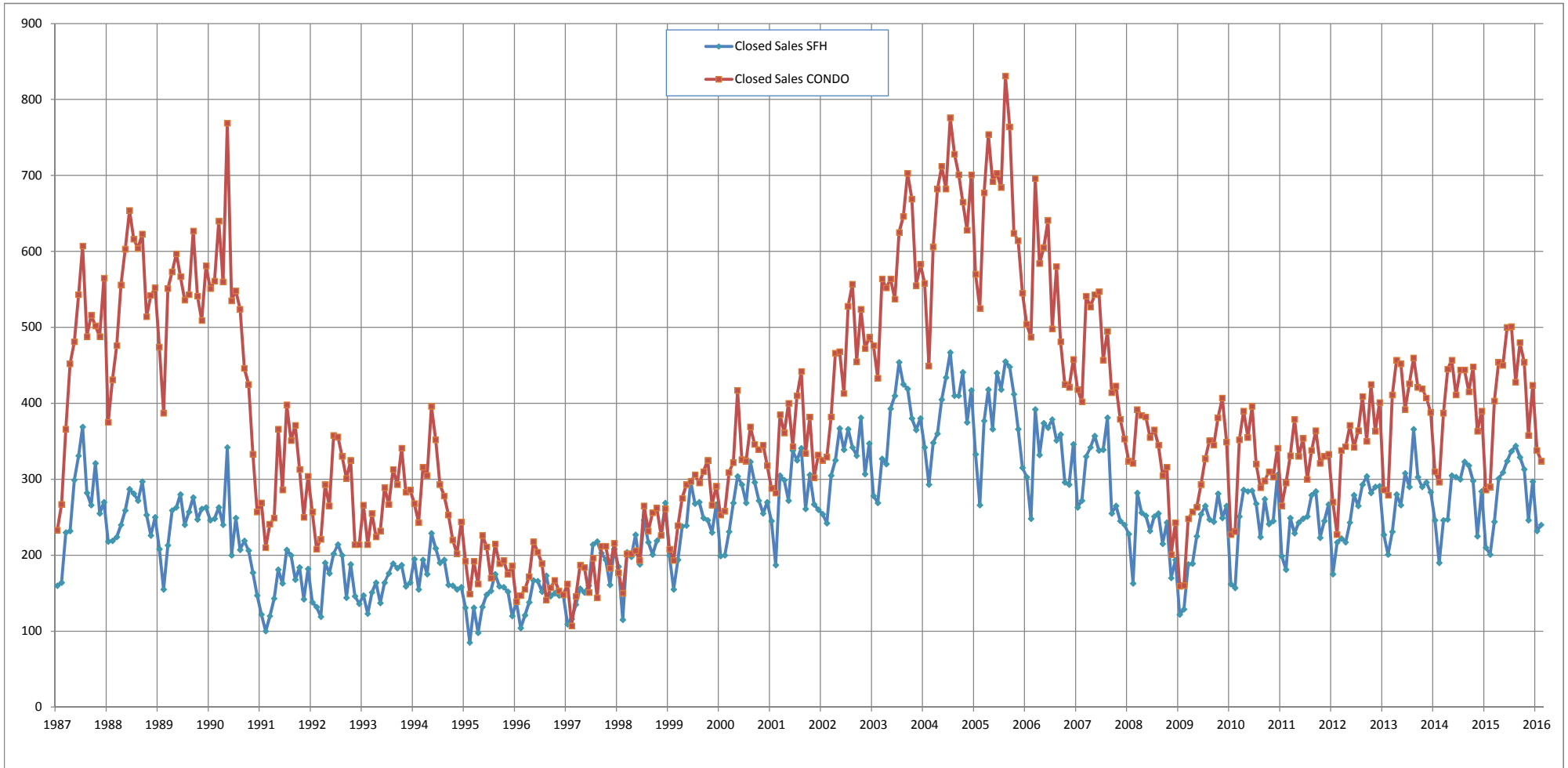
	Mar-14	Apr-14	May-14	Jun-14	Jul-14	Aug-14	Sep-14	Oct-14	Nov-14	Dec-14	Jan-15	Feb-15	Mar-15	Apr-15	May-15	Jun-15	Jul-15	Aug-15	Sep-15	Oct-15	Nov-15	Dec-15	Jan-16	Feb-16
\$150,000 and below	4.1	4.0	4.1	4.0	4.3	4.4	4.5	4.1	3.8	4.1	4.0	5.1	5.2	4.9	4.5	4.8	5.1	4.7	4.5	4.7	4.3	4.3	4.2	4.4
\$150,001 - \$200,000	4.0	3.8	4.2	3.8	4.4	5.3	4.9	4.6	4.8	4.2	3.5	4.1	4.3	4.0	4.2	4.5	4.0	3.8	3.9	3.8	3.0	2.9	3.2	3.2
\$200,001 - \$250,000	3.1	3.0	3.0	3.3	3.5	3.7	3.3	3.2	3.0	2.9	2.9	3.2	2.8	3.1	2.9	2.9	3.4	2.8	3.2	2.9	2.6	2.6	2.4	2.4
\$250,001 - \$300,000	3.5	3.9	3.6	3.8	3.7	3.4	3.8	3.5	3.4	3.5	3.5	3.4	3.6	3.6	3.3	3.5	3.4	3.4	3.2	3.0	2.9	2.7	2.6	2.8
\$300,001 - \$375,000	3.0	3.3	3.4	3.3	3.5	3.0	3.2	3.5	3.0	2.8	2.9	3.5	3.4	4.1	3.6	4.0	4.2	3.5	3.6	3.2	2.9	2.5	2.6	2.5
\$375,001 - \$475,000	3.5	3.9	3.8	3.8	3.7	3.7	3.2	3.5	3.2	2.9	2.9	2.9	3.4	3.5	3.8	3.5	3.8	3.4	3.7	3.6	2.8	2.9	2.9	3.0
\$475,001 - \$700,000	4.0	4.2	4.4	4.1	4.0	4.4	4.6	4.6	4.0	3.9	4.1	4.3	4.6	4.8	5.0	4.9	5.1	4.7	4.8	4.8	4.5	4.5	4.3	4.2
\$700,001 and above	9.7	10.5	10.6	9.5	9.9	9.6	10.0	9.6	9.0	8.8	8.9	8.3	8.7	8.9	8.7	9.3	10.0	9.6	10.3	10.1	9.5	9.6	9.1	9.5
All Condos	4.0	4.3	4.3	4.2	4.3	4.3	4.3	4.3	4.0	3.8	3.8	4.0	4.2	4.4	4.3	4.4	4.6	4.2	4.4	4.2	3.8	3.7	3.7	3.8

SOURCE: Honolulu Board of REALTORS®, compiled from MLS data.

Closed Sales

Single Family Homes and Condos

OAHU, HAWAII: Jan 1987 to the Present

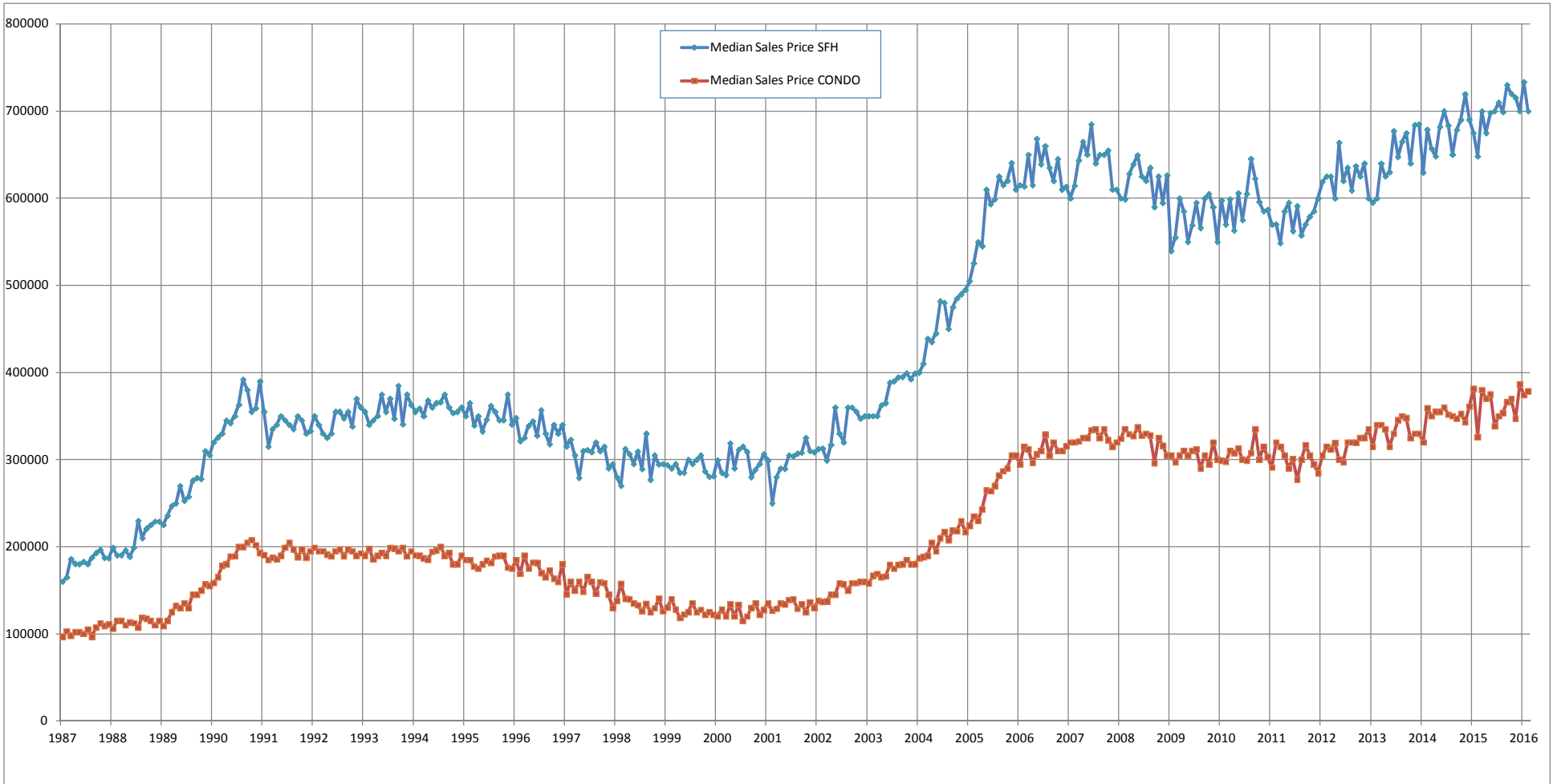


SOURCE: Honolulu Board of REALTORS® , compiled from MLS data.

Median Sales Price

Single Family Homes and Condos

OAHU, HAWAII: Jan 1987 to the Present



SOURCE: Honolulu Board of REALTORS®, compiled from MLS data.