

# Monthly Housing Statistics

## January 2019



### SINGLE FAMILY HOMES

Median Sales Price	
\$767,500	-0.6%
Closed Sales	
246	-2.4%
Average Sales Price	
\$967,119	+3.0%

### CONDOS

Median Sales Price	
\$399,000	-7.2%
Closed Sales	
326	-12.8%
Average Sales Price	
\$490,812	+0.1%

### INDEX:

<b>Monthly Indicators</b>	<b>2</b>
Closed Sales	3
Median Sales Price	4
Median Days on Market	5
New Listings	6
Pending Sales	7
Months of Inventory	8
Active Listings	9
Average Sales Price	10
% of Original Listing Price Received	11
Active Continue to Show	12
<b>Housing Supply Overview</b>	<b>13</b>
Pending Sales (by price range)	14-15
Median Days on Market (by price range)	16-17
% of list price received (by price range)	18-19
Inventory of Homes (by price range)	20-21
Months Supply of Inventory (price range)	22-23
<b>Historical Graphs</b>	<b>24-25</b>
<b>Price Graphs</b>	<b>26-27</b>

# Monthly Indicators

January 2019

	Single Family Homes					
	Jan-19	Jan-18	%	YTD-19	YTD-18	%
<b>Closed Sales</b>	246	252	-2.4%	246	252	-2.4%
<b>Median Sales Price</b>	\$767,500	\$772,000	-0.6%	\$767,500	\$772,000	-0.6%
<b>Median Days on Market</b>	27	21	28.6%	27	21	28.6%
<b>New Listings</b>	519	426	21.8%	519	426	21.8%
<b>Pending Sales</b>	352	404	-12.9%	352	404	-12.9%
<b>Months of Inventory</b>	3.0	1.9	57.9%	--	--	--
<b>Active Listings</b>	1,370	1,003	36.6%	--	--	--
<b>Average Sales Price</b>	\$967,119	\$938,831	3.0%	\$967,119	\$938,831	3.0%
<b>% of Original Listing Price Received</b>	96.1%	98.3%	-2.2%	96.1%	98.3%	-2.2%

	Condos					
	Jan-19	Jan-18	%	YTD-19	YTD-18	%
<b>Closed Sales</b>	326	374	-12.8%	326	374	-12.8%
<b>Median Sales Price</b>	\$399,000	\$430,000	-7.2%	\$399,000	\$430,000	-7.2%
<b>Median Days on Market</b>	27	19	42.1%	27	19	42.1%
<b>New Listings</b>	867	730	18.8%	867	730	18.8%
<b>Pending Sales</b>	454	565	-19.6%	454	565	-19.6%
<b>Months of Inventory</b>	3.4	2.4	41.7%	--	--	--
<b>Active Listings</b>	2,237	1,699	31.7%	--	--	--
<b>Average Sales Price</b>	\$490,812	\$490,461	0.1%	\$490,812	\$490,461	0.1%
<b>% of Original Listing Price Received</b>	97.3%	98.1%	-0.8%	97.3%	98.1%	-0.8%

SOURCE: Honolulu Board of REALTORS® , compiled from MLS data.

Page 2

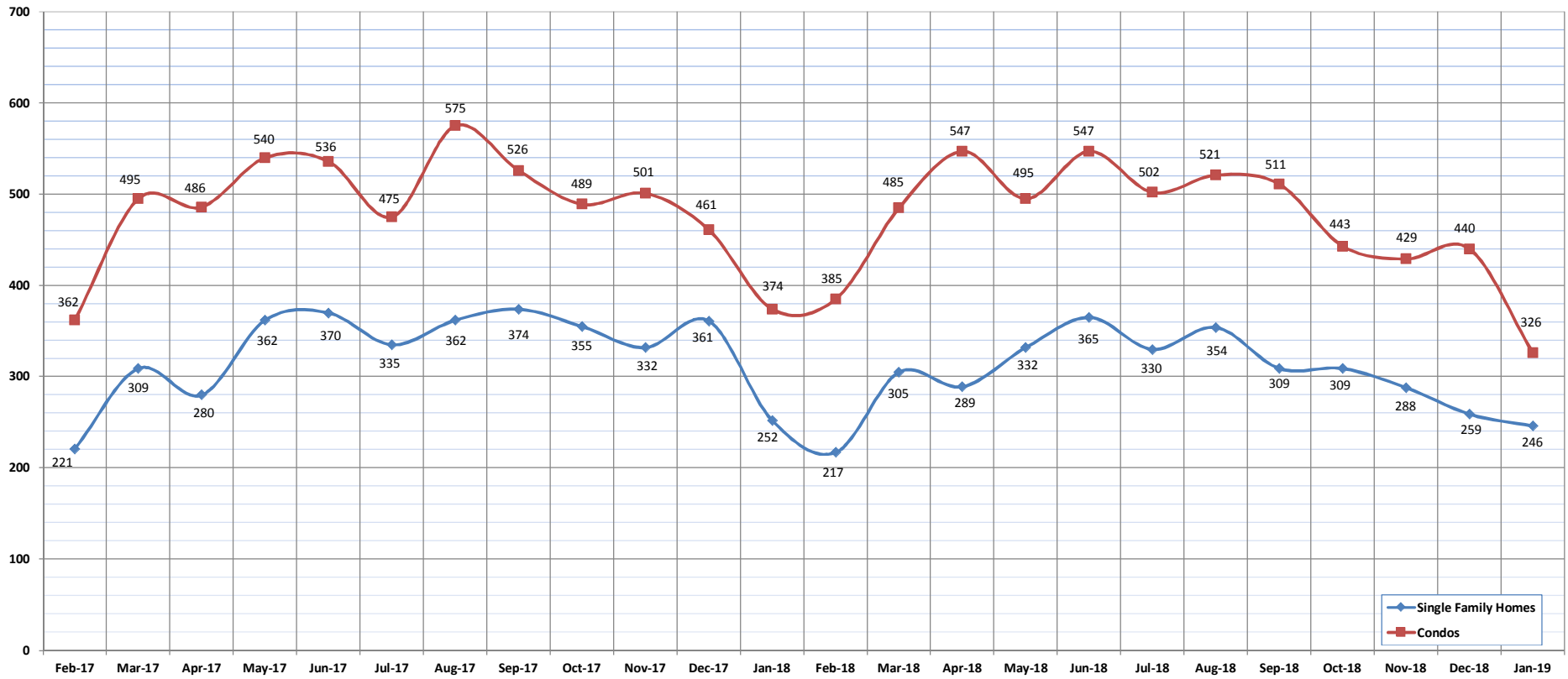


# Closed Sales

January-19

OAHU, HAWAII

(A count of all properties that have closed in a given month.)



	Feb-17	Mar-17	Apr-17	May-17	Jun-17	Jul-17	Aug-17	Sep-17	Oct-17	Nov-17	Dec-17	Jan-18	Feb-18	Mar-18	Apr-18	May-18	Jun-18	Jul-18	Aug-18	Sep-18	Oct-18	Nov-18	Dec-18	Jan-19
Closed Sales: Single Family Homes	221	309	280	362	370	335	362	374	355	332	361	252	217	305	289	332	365	330	354	309	309	288	259	246
Closed Sales: Condos	362	495	486	540	536	475	575	526	489	501	461	374	385	485	547	495	547	502	521	511	443	429	440	326
Closed Sales: Total	583	804	766	902	906	810	937	900	844	833	822	626	602	790	836	827	912	832	875	820	752	717	699	572

SOURCE: Honolulu Board of REALTORS®, compiled from MLS data.

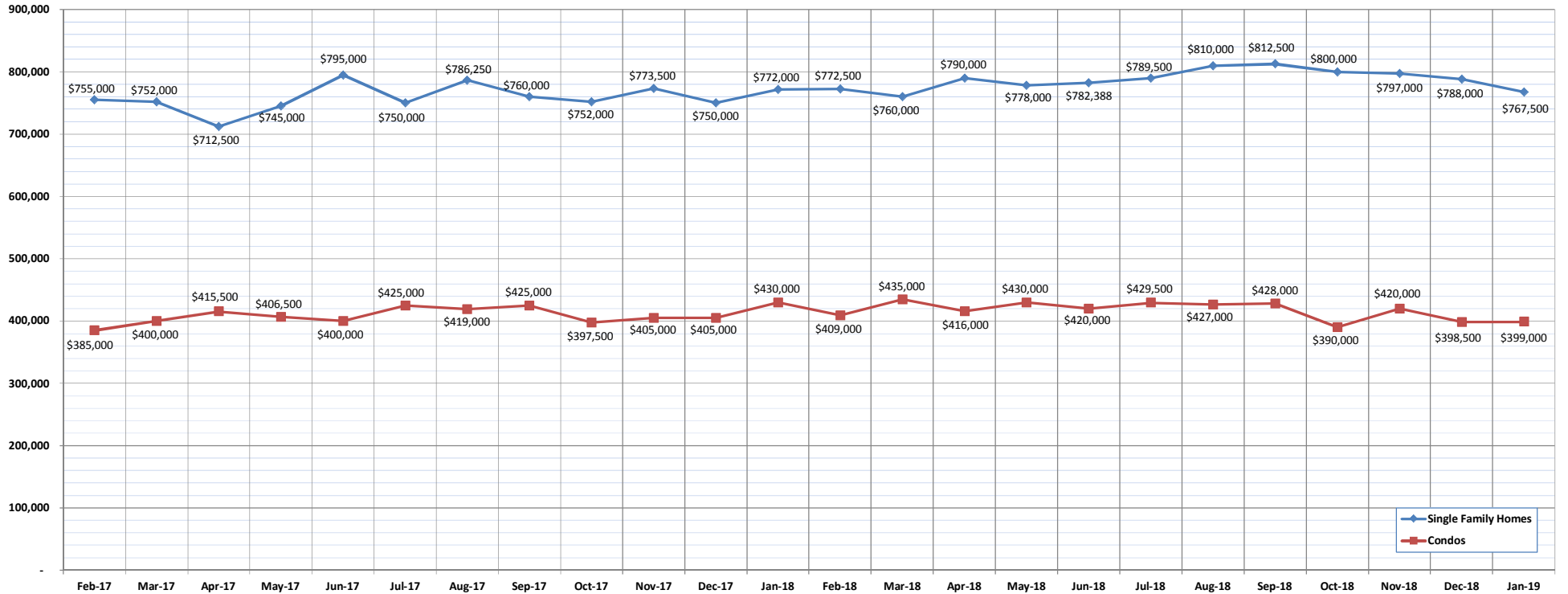


# Median Sales Price

January-19

OAHU, HAWAII

(The median sales price for all closed properties in a given month.)



	Feb-17	Mar-17	Apr-17	May-17	Jun-17	Jul-17	Aug-17	Sep-17	Oct-17	Nov-17	Dec-17	Jan-18	Feb-18	Mar-18	Apr-18	May-18	Jun-18	Jul-18	Aug-18	Sep-18	Oct-18	Nov-18	Dec-18	Jan-19	
Median Sales Price : SFH	755,000	752,000	712,500	745,000	795,000	750,000	786,250	760,000	752,000	773,500	750,000	772,000	772,500	760,000	790,000	778,000	782,388	789,500	810,000	812,500	800,000	797,000	788,000	767,500	
Median Sales Price : Condos	385,000	400,000	415,500	406,500	400,000	425,000	419,000	425,000	397,500	405,000	405,000	430,000	409,000	435,000	416,000	416,000	430,000	420,000	429,500	427,000	428,000	390,000	420,000	398,500	399,000

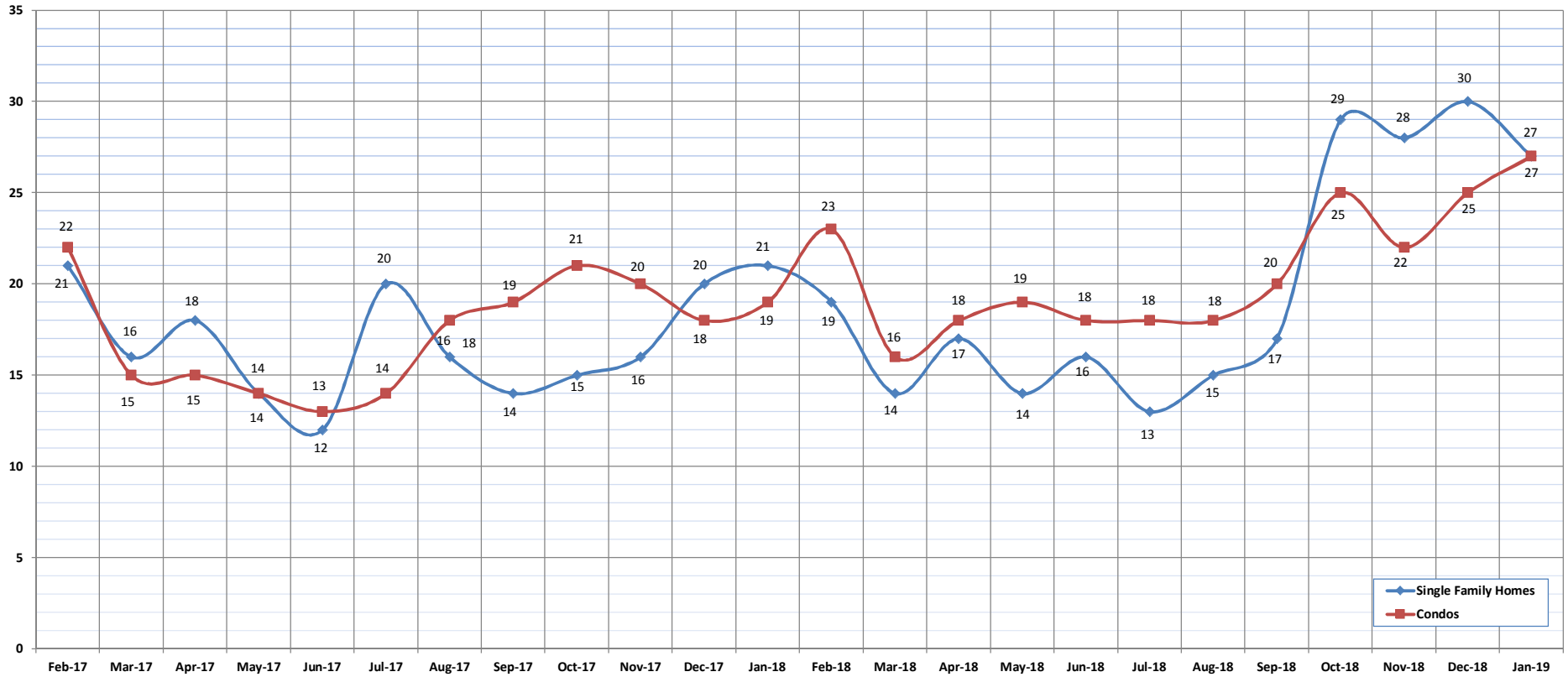
SOURCE: Honolulu Board of REALTORS®, compiled from MLS data.

# Median Days on Market

January-19

OAHU, HAWAII

(The median number of days between when a property is first listed and when an offer is accepted.)



	Feb-17	Mar-17	Apr-17	May-17	Jun-17	Jul-17	Aug-17	Sep-17	Oct-17	Nov-17	Dec-17	Jan-18	Feb-18	Mar-18	Apr-18	May-18	Jun-18	Jul-18	Aug-18	Sep-18	Oct-18	Nov-18	Dec-18	Jan-19
Median Days on Market: SFH	21	16	18	14	12	20	16	14	15	16	20	21	19	14	17	14	16	13	15	17	29	28	30	27
Median Days on Market: Condos	22	15	15	14	13	14	18	19	21	20	18	19	23	16	18	19	18	18	18	20	25	22	25	27

SOURCE: Honolulu Board of REALTORS®, compiled from MLS data.

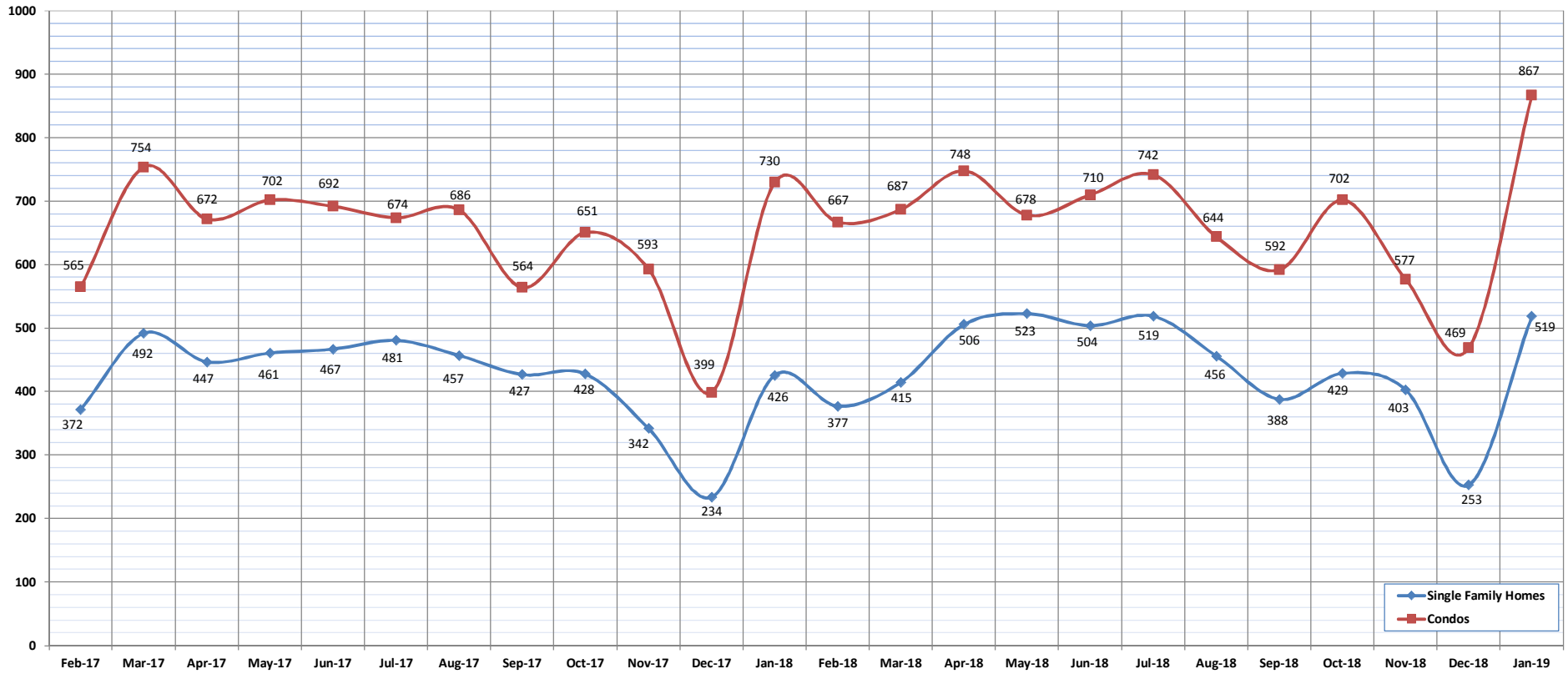


# New Listings

January-19

OAHU, HAWAII

(A count of the properties that have been newly listed on the market in a given month.)



	Feb-17	Mar-17	Apr-17	May-17	Jun-17	Jul-17	Aug-17	Sep-17	Oct-17	Nov-17	Dec-17	Jan-18	Feb-18	Mar-18	Apr-18	May-18	Jun-18	Jul-18	Aug-18	Sep-18	Oct-18	Nov-18	Dec-18	Jan-19
<b>New Listings: Single Family Homes</b>	372	492	447	461	467	481	457	427	428	342	234	426	377	415	506	523	504	519	456	388	429	403	253	519
<b>New Listings: Condos</b>	565	754	672	702	692	674	686	564	651	593	399	730	667	687	748	678	710	742	644	592	702	577	469	867
<b>New Listings: Total</b>	937	1246	1119	1163	1159	1155	1143	991	1079	935	633	1156	1044	1102	1254	1201	1214	1261	1100	980	1131	980	722	1386

SOURCE: Honolulu Board of REALTORS®, compiled from MLS data.

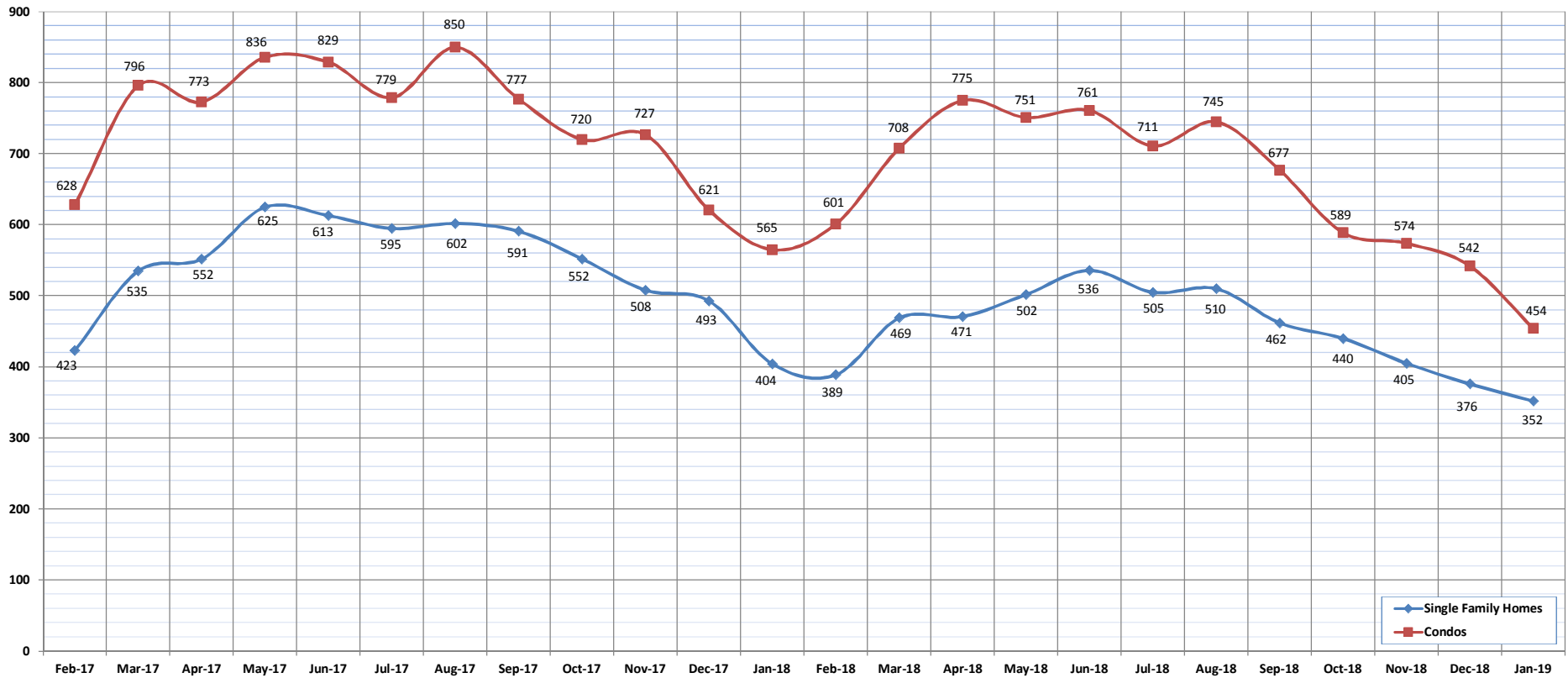


# Pending Sales

January-19

OAHU, HAWAII

(A count of the properties that have offers accepted on them in a given month.)



	Feb-17	Mar-17	Apr-17	May-17	Jun-17	Jul-17	Aug-17	Sep-17	Oct-17	Nov-17	Dec-17	Jan-18	Feb-18	Mar-18	Apr-18	May-18	Jun-18	Jul-18	Aug-18	Sep-18	Oct-18	Nov-18	Dec-18	Jan-19
Pending Sales: Single Family Homes	423	535	552	625	613	595	602	591	552	508	493	404	389	469	471	502	536	505	510	462	440	405	376	352
Pending Sales: Condos	628	796	773	836	829	779	850	777	720	727	621	565	601	708	775	751	761	711	745	677	589	574	542	454
Pending Sales: Total	1051	1331	1325	1461	1442	1374	1452	1368	1272	1235	1114	969	990	1177	1246	1253	1297	1216	1255	1139	1029	979	918	806

SOURCE: Honolulu Board of REALTORS®, compiled from MLS data.

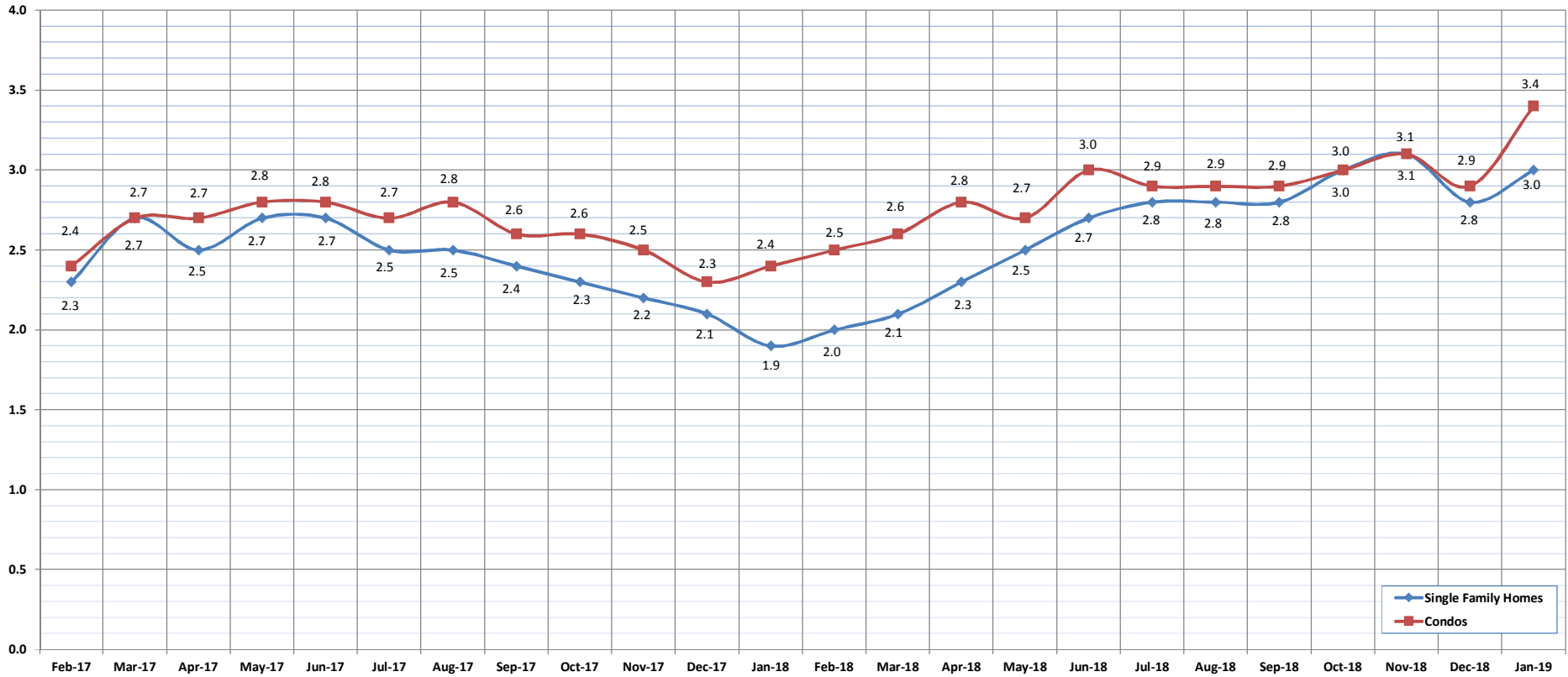


# Months of Inventory

January-19

OAHU, HAWAII

(Compares the number of active listings available to the average monthly pending sales.)



	Feb-17	Mar-17	Apr-17	May-17	Jun-17	Jul-17	Aug-17	Sep-17	Oct-17	Nov-17	Dec-17	Jan-18	Feb-18	Mar-18	Apr-18	May-18	Jun-18	Jul-18	Aug-18	Sep-18	Oct-18	Nov-18	Dec-18	Jan-19
Month of Inventory : SFH	2.3	2.7	2.5	2.7	2.7	2.5	2.5	2.4	2.3	2.2	2.1	1.9	2.0	2.1	2.3	2.5	2.7	2.8	2.8	2.8	3.0	3.1	2.8	3.0
Months of Inventory: Condos	2.4	2.7	2.7	2.8	2.8	2.7	2.8	2.6	2.6	2.5	2.3	2.4	2.5	2.6	2.8	2.7	3.0	2.9	2.9	2.9	3.0	3.1	2.9	3.4

SOURCE: Honolulu Board of REALTORS®, compiled from MLS data.



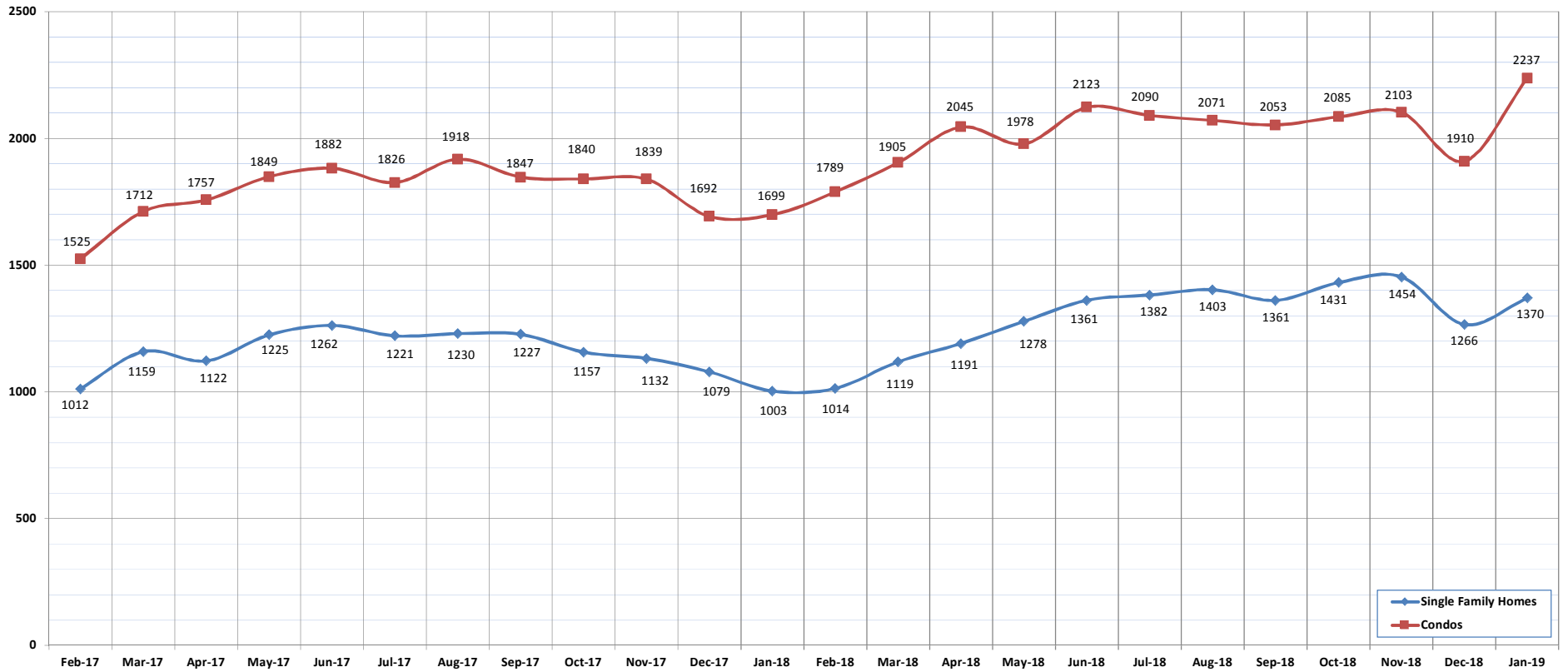


# Active Listings

January-19

OAHU, HAWAII

(The number of properties available for purchase during a given month.)



	Feb-17	Mar-17	Apr-17	May-17	Jun-17	Jul-17	Aug-17	Sep-17	Oct-17	Nov-17	Dec-17	Jan-18	Feb-18	Mar-18	Apr-18	May-18	Jun-18	Jul-18	Aug-18	Sep-18	Oct-18	Nov-18	Dec-18	Jan-19
Active Listings: Single Family Homes	1012	1159	1122	1225	1262	1221	1230	1227	1157	1132	1079	1003	1014	1119	1191	1278	1361	1382	1403	1361	1431	1454	1266	1370
Active Listings: Condos	1525	1712	1757	1849	1882	1826	1918	1847	1840	1839	1692	1699	1789	1905	2045	1978	2123	2090	2071	2053	2085	2103	1910	2237
Active Listings: Total	2537	2871	2879	3074	3144	3047	3148	3074	2997	2971	2771	2702	2803	3024	3236	3256	3484	3472	3474	3414	3516	3557	3176	3607

SOURCE: Honolulu Board of REALTORS®, compiled from MLS data.

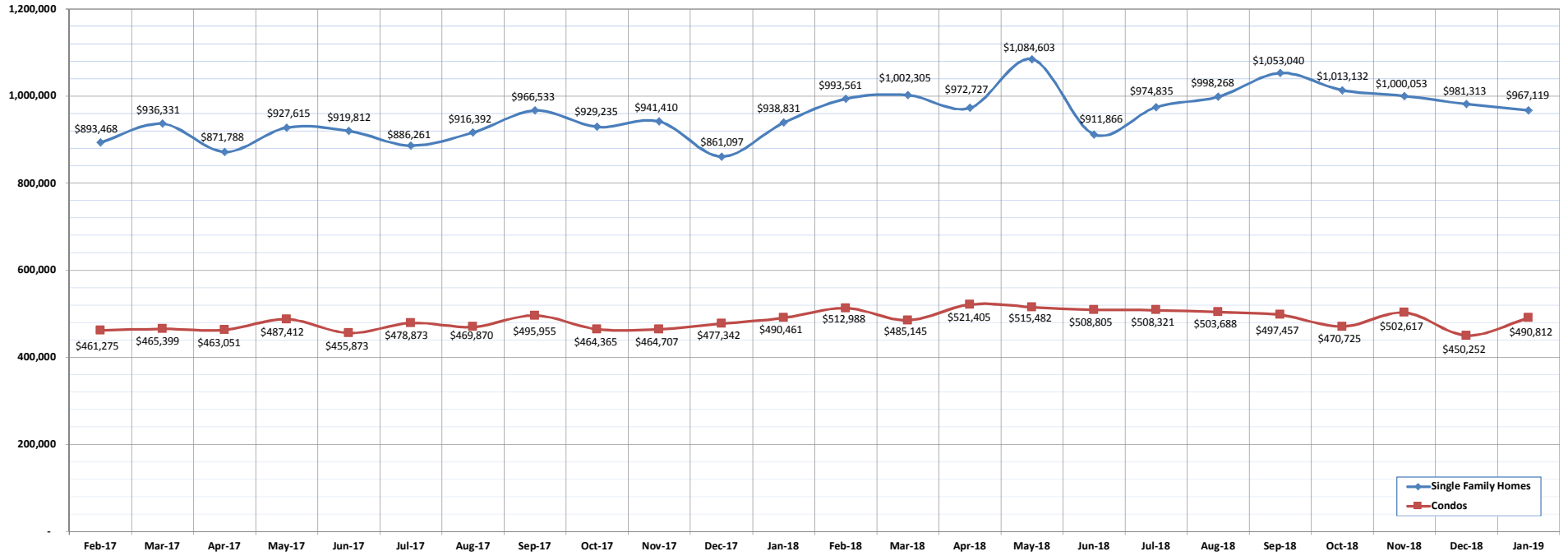


# Average Sales Price

January-19

OAHU, HAWAII

(The average sales price for all closed sales in a given month.)



	Feb-17	Mar-17	Apr-17	May-17	Jun-17	Jul-17	Aug-17	Sep-17	Oct-17	Nov-17	Dec-17	Jan-18	Feb-18	Mar-18	Apr-18	May-18	Jun-18	Jul-18	Aug-18	Sep-18	Oct-18	Nov-18	Dec-18	Jan-19
<b>Average Sales Price: SFH</b>	893,468	936,331	871,788	927,615	919,812	886,261	916,392	966,533	929,235	941,410	861,097	938,831	993,561	1,002,305	972,727	1,084,603	911,866	974,835	998,268	1,053,040	1,013,132	1,000,053	981,313	967,119
<b>Average Sales Price: Condos</b>	461,275	465,399	463,051	487,412	455,873	478,873	469,870	495,955	464,365	464,707	477,342	490,461	512,988	485,145	521,405	515,482	508,805	508,321	503,688	497,457	470,725	502,617	450,252	490,812

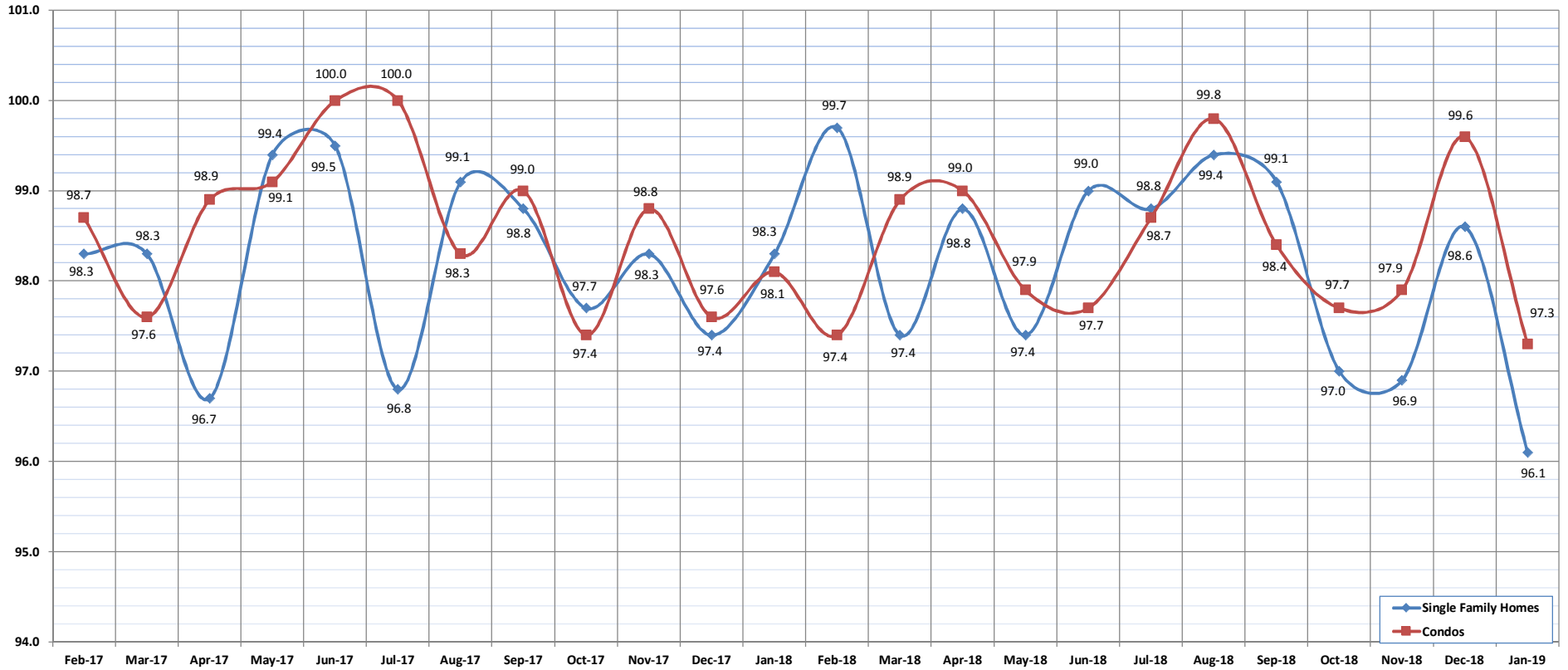
SOURCE: Honolulu Board of REALTORS®, compiled from MLS data.

# Percent of Original List Price Received

January-19

OAHU, HAWAII

(The percentage found when dividing a property's sales price by the original list price.)



	Feb-17	Mar-17	Apr-17	May-17	Jun-17	Jul-17	Aug-17	Sep-17	Oct-17	Nov-17	Dec-17	Jan-18	Feb-18	Mar-18	Apr-18	May-18	Jun-18	Jul-18	Aug-18	Sep-18	Oct-18	Nov-18	Dec-18	Jan-19	
Percent of Original List Price: SFH	98.3	98.3	96.7	99.4	99.5	96.8	99.1	98.8	97.7	98.3	97.4	98.3	99.7	97.4	98.8	97.4	99.0	98.8	99.4	99.1	97.0	96.9	98.6	96.1	
Percent of Original List Price: Condos	98.7	97.6	98.9	99.1	100.0	100.0	98.3	99.0	97.4	98.8	97.6	98.1	97.4	98.9	99.0	97.9	97.7	98.7	99.8	99.8	98.4	97.7	97.9	99.6	97.3

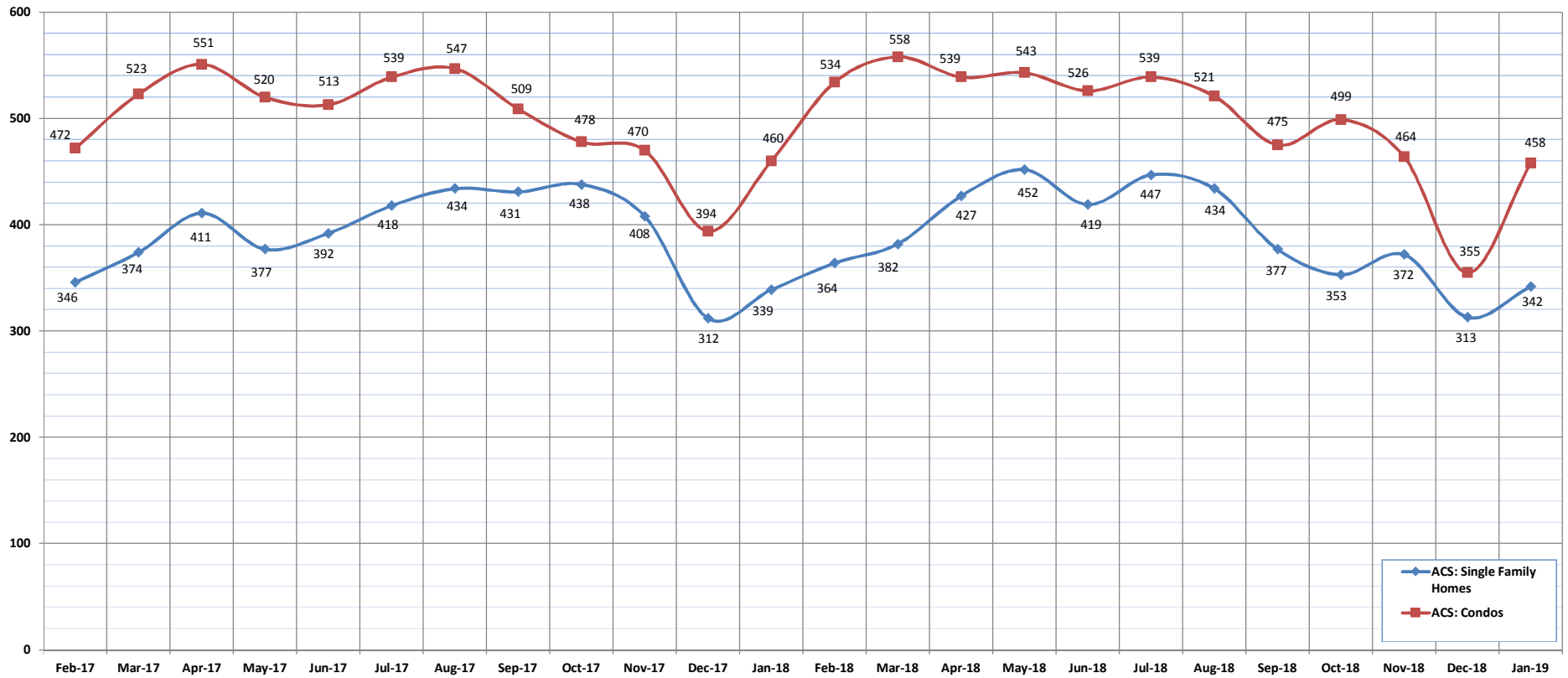
SOURCE: Honolulu Board of REALTORS®, compiled from MLS data.

# Active Continue to Show

January-19

OAHU, HAWAII

(A count of the properties that are in ACS during the current month.)



	Feb-17	Mar-17	Apr-17	May-17	Jun-17	Jul-17	Aug-17	Sep-17	Oct-17	Nov-17	Dec-17	Jan-18	Feb-18	Mar-18	Apr-18	May-18	Jun-18	Jul-18	Aug-18	Sep-18	Oct-18	Nov-18	Dec-18	Jan-19
ACS: Single Family Homes	346	374	411	377	392	418	434	431	438	408	312	339	364	382	427	452	419	447	434	377	353	372	313	342
ACS: Condos	472	523	551	520	513	539	547	509	478	470	394	460	534	558	539	543	526	539	521	475	499	464	355	458

SOURCE: Honolulu Board of REALTORS®, compiled from MLS data.

# Housing Supply Overview

January 2019

Single Family Homes	Pending Sales			Days on Market			Percentage of Original Price Received			Inventory of Homes for Sale			Months Supply of Inventory		
	Jan-19	Jan-18	%	Jan-19	Jan-18	%	Jan-19	Jan-18	%	Jan-19	Jan-18	%	Jan-19	Jan-18	%
\$350,000 and Below	61	93	-34.4%	41	36	13.9%	95.3%	96.1%	-0.8%	25	14	78.6%	4.3	1.5	186.7%
\$350,001 - \$475,000	157	197	-20.3%	23	28	-17.9%	97.8%	98.4%	-0.6%	25	45	-44.4%	1.6	2.6	-38.5%
\$475,001 - \$550,000	213	273	-22.0%	26	14	85.7%	97.3%	99.2%	-1.9%	64	43	48.8%	3.1	1.8	72.2%
\$550,001 - \$650,000	491	675	-27.3%	21	12	75.0%	99.0%	99.6%	-0.6%	125	91	37.4%	2.6	1.6	62.5%
\$650,001 - \$800,000	1038	1127	-7.9%	19	16	18.8%	98.0%	98.7%	-0.7%	276	180	53.3%	3.0	2.0	50.0%
\$800,001 - \$1.1M	986	969	1.8%	20	17	17.6%	98.4%	98.9%	-0.5%	321	210	52.9%	3.8	2.7	40.7%
\$1.1M - \$1.9M	596	572	4.2%	27	31	-12.9%	95.3%	96.3%	-1.0%	305	201	51.7%	6.1	4.4	38.6%
\$1.9M and Above	197	184	7.1%	37	60	-38.3%	92.5%	92.4%	0.1%	229	219	4.6%	14.2	14.3	-0.7%
<b>All Single Family Homes</b>	<b>3739</b>	<b>4090</b>	<b>-8.6%</b>	<b>20</b>	<b>17</b>	<b>17.6%</b>	<b>98.2%</b>	<b>98.2%</b>	<b>0.0%</b>	<b>1370</b>	<b>1003</b>	<b>36.6%</b>	<b>4.1</b>	<b>3.0</b>	<b>36.7%</b>

Condos	Pending Sales			Days on Market			Percentage of Original Price Received			Inventory of Homes for Sale			Months Supply of Inventory		
	Jan-19	Jan-18	%	Jan-19	Jan-18	%	Jan-19	Jan-18	%	Jan-19	Jan-18	%	Jan-19	Jan-18	%
\$150,000 and below	265	303	-12.5%	38	42	-9.5%	89.0%	93.9%	-5.2%	98	125	-21.6%	4.0	4.3	-7.0%
\$150,001 - \$200,000	280	298	-6.0%	31	23	34.8%	96.4%	96.1%	0.3%	92	75	22.7%	3.9	2.7	44.4%
\$200,001 - \$250,000	378	437	-13.5%	23	20	15.0%	96.4%	96.8%	-0.4%	150	100	50.0%	4.4	2.8	57.1%
\$250,001 - \$300,000	438	501	-12.6%	22	21	4.8%	97.5%	97.7%	-0.2%	161	111	45.0%	4.3	2.5	72.0%
\$300,001 - \$375,000	965	1091	-11.5%	17	13	30.8%	98.5%	98.6%	-0.1%	231	208	11.1%	2.7	2.3	17.4%
\$375,001 - \$475,000	1170	1244	-5.9%	19	13	46.2%	98.4%	98.5%	-0.1%	361	273	32.2%	3.6	2.7	33.3%
\$475,001 - \$700,000	1528	1517	0.7%	20	16	25.0%	98.4%	98.7%	-0.3%	504	364	38.5%	3.8	3.0	26.7%
\$700,001 and above	831	693	19.9%	33	44	-25.0%	96.6%	96.6%	0.0%	640	443	44.5%	9.9	8.2	20.7%
<b>All Condos</b>	<b>5855</b>	<b>6084</b>	<b>-3.8%</b>	<b>21</b>	<b>17</b>	<b>23.5%</b>	<b>98.3%</b>	<b>98.6%</b>	<b>-0.3%</b>	<b>2237</b>	<b>1699</b>	<b>31.7%</b>	<b>4.5</b>	<b>3.4</b>	<b>32.4%</b>

SOURCE: Honolulu Board of REALTORS®, compiled from MLS data.

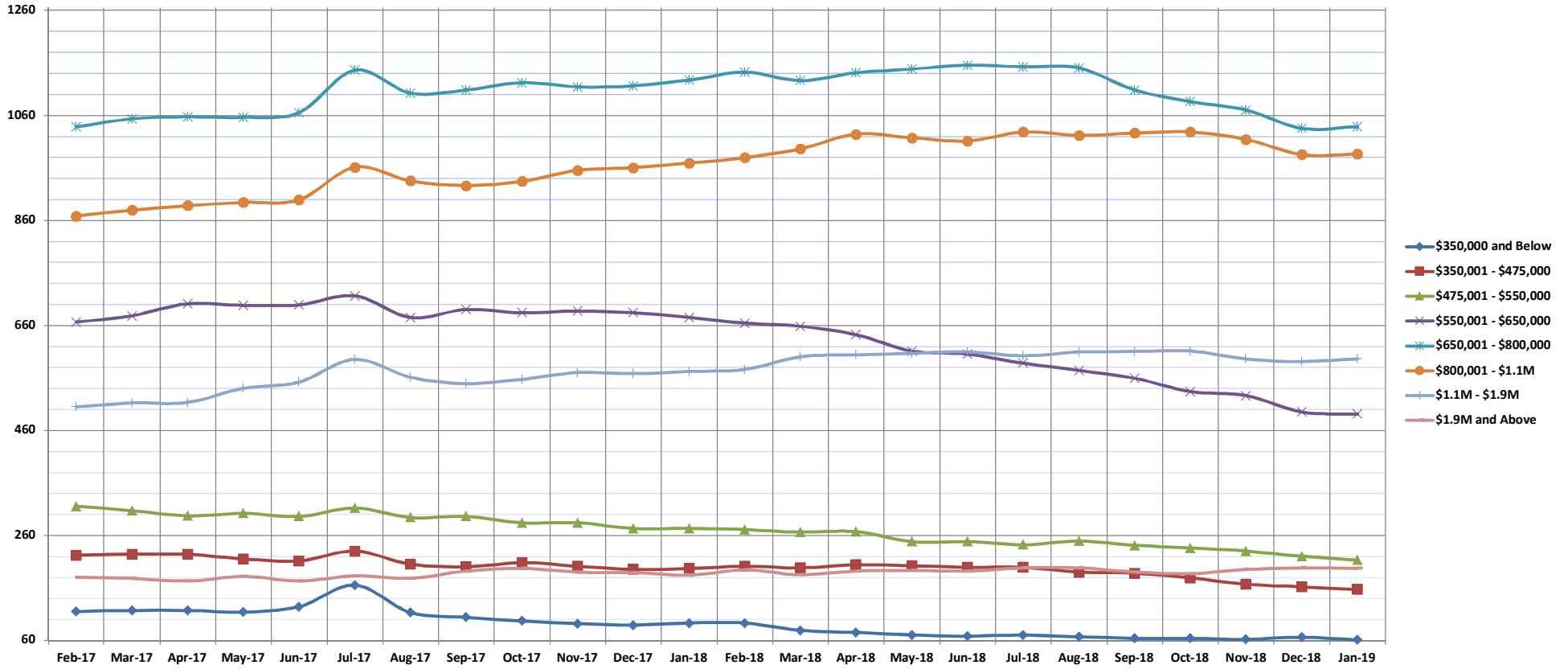


# Pending Sales

Jan-19

Single Family Homes: Monthly, by Price Range

(A count of properties that have offers accepted on them in a given month. Based on a 12 month rolling total.)



	Feb-17	Mar-17	Apr-17	May-17	Jun-17	Jul-17	Aug-17	Sep-17	Oct-17	Nov-17	Dec-17	Jan-18	Feb-18	Mar-18	Apr-18	May-18	Jun-18	Jul-18	Aug-18	Sep-18	Oct-18	Nov-18	Dec-18	Jan-19
\$350,000 and Below	115	117	117	114	124	165	113	104	97	92	89	93	93	79	75	70	68	70	67	64	64	62	66	61
\$350,001 - \$475,000	222	224	224	215	211	230	205	200	208	201	195	197	201	198	204	202	199	199	190	188	179	167	162	157
\$475,001 - \$550,000	315	307	297	302	296	312	294	296	284	284	273	273	271	266	267	248	248	242	249	241	236	230	220	213
\$550,001 - \$650,000	666	678	701	698	699	716	675	690	684	687	684	675	664	658	642	611	605	588	574	559	534	526	495	491
\$650,001 - \$800,000	1038	1053	1057	1056	1065	1146	1102	1108	1122	1114	1116	1127	1142	1126	1141	1148	1155	1152	1150	1108	1086	1070	1035	1038
\$800,001 - \$1.1M	868	879	888	894	899	961	935	926	934	955	960	969	979	996	1024	1017	1011	1028	1022	1026	1028	1014	985	986
\$1.1M - \$1.9M	505	512	513	540	552	595	561	549	557	570	568	572	576	600	604	607	609	602	609	610	611	596	591	596
\$1.9M and Above	180	178	173	182	173	183	178	192	197	190	189	184	194	185	192	193	192	198	198	190	187	195	198	197
All Single Family Homes	3909	3948	3970	4001	4019	4308	4063	4065	4083	4093	4074	4090	4120	4108	4149	4096	4087	4079	4059	3986	3925	3860	3752	3739

SOURCE: Honolulu Board of REALTORS®, compiled from MLS data.

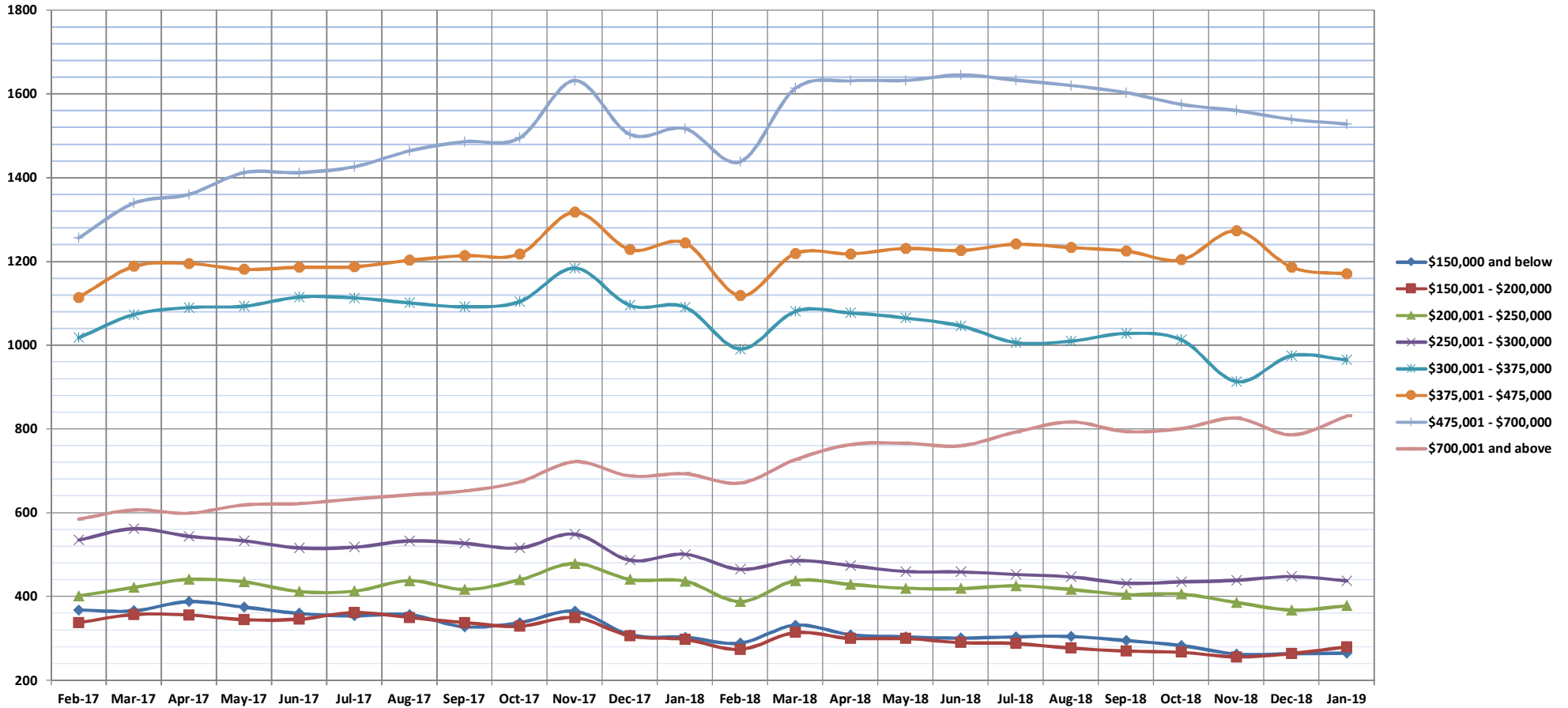


# Pending Sales

Jan-19

Condos: Monthly, by Price Range

(A count of properties that have offers accepted on them in a given month. Based on a 12 month rolling total.)



	Feb-17	Mar-17	Apr-17	May-17	Jun-17	Jul-17	Aug-17	Sep-17	Oct-17	Nov-17	Dec-17	Jan-18	Feb-18	Mar-18	Apr-18	May-18	Jun-18	Jul-18	Aug-18	Sep-18	Oct-18	Nov-18	Dec-18	Jan-19
<b>\$150,000 and below</b>	368	366	388	375	360	354	357	328	338	365	309	303	289	332	309	304	301	304	305	295	283	263	264	265
<b>\$150,001 - \$200,000</b>	338	357	356	345	346	362	350	338	329	350	306	298	274	314	300	300	290	288	277	270	267	256	264	280
<b>\$200,001 - \$250,000</b>	402	422	441	435	412	413	438	417	440	479	441	437	388	438	429	420	419	426	417	405	406	386	368	378
<b>\$250,001 - \$300,000</b>	535	562	544	533	516	518	533	527	516	549	487	501	465	486	474	460	459	453	447	432	435	439	448	438
<b>\$300,001 - \$375,000</b>	1018	1073	1090	1093	1115	1113	1101	1092	1104	1184	1095	1091	991	1081	1077	1065	1046	1006	1010	1028	1013	913	975	965
<b>\$375,001 - \$475,000</b>	1114	1188	1195	1181	1186	1187	1203	1214	1218	1318	1228	1244	1118	1219	1218	1231	1226	1241	1233	1225	1204	1273	1186	1170
<b>\$475,001 - \$700,000</b>	1256	1339	1360	1412	1412	1426	1464	1486	1495	1632	1503	1517	1438	1613	1631	1632	1645	1633	1620	1603	1575	1560	1539	1528
<b>\$700,001 and above</b>	585	607	599	619	622	633	643	652	674	722	688	693	671	727	763	766	760	793	817	794	801	826	786	831
<b>All Condos</b>	5616	5914	5973	5993	5969	6006	6089	6054	6114	6599	6057	6084	5634	6210	6201	6178	6146	6144	6126	6052	5984	5916	5830	5855

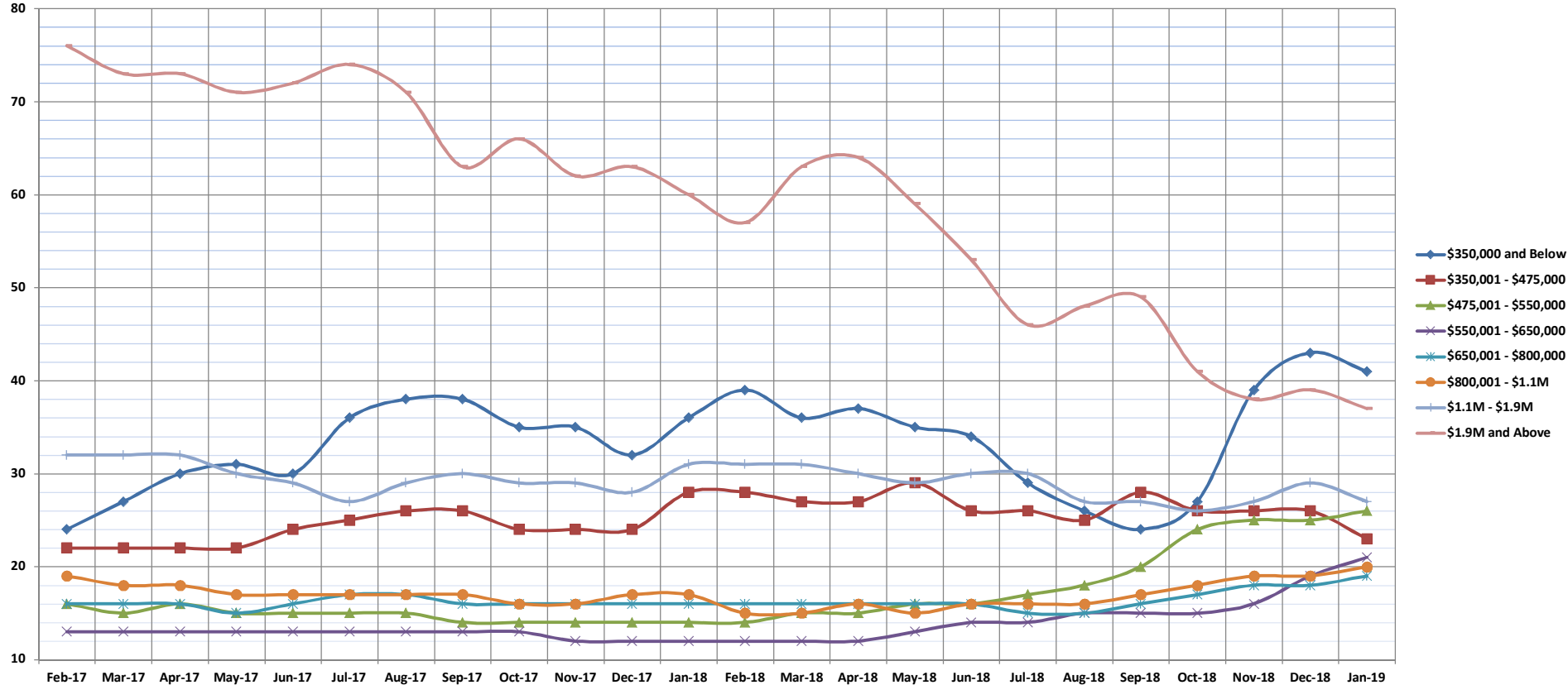
SOURCE: Honolulu Board of REALTORS®, compiled from MLS data.

# Days on Market Until Sale

Jan-19

Single Family Homes: Monthly, by Price Range

(The median number of days between when a property is first listed and when an offer is accepted. Based on a 12 month rolling median.)



	Feb-17	Mar-17	Apr-17	May-17	Jun-17	Jul-17	Aug-17	Sep-17	Oct-17	Nov-17	Dec-17	Jan-18	Feb-18	Mar-18	Apr-18	May-18	Jun-18	Jul-18	Aug-18	Sep-18	Oct-18	Nov-18	Dec-18	Jan-19		
<b>\$350,000 and Below</b>	24	27	30	31	30	36	38	38	35	35	32	36	39	36	37	35	34	29	26	26	25	24	27	39	43	41
<b>\$350,001 - \$475,000</b>	22	22	22	22	24	25	26	26	24	24	24	28	28	27	27	29	26	26	26	25	28	26	26	26	26	23
<b>\$475,001 - \$550,000</b>	16	15	16	15	15	15	15	14	14	14	14	14	14	15	15	16	16	17	18	20	24	25	25	26	26	
<b>\$550,001 - \$650,000</b>	13	13	13	13	13	13	13	13	13	12	12	12	12	12	12	13	14	14	15	15	15	15	16	19	21	
<b>\$650,001 - \$800,000</b>	16	16	16	15	16	17	17	16	16	16	16	16	16	16	16	16	16	15	15	16	17	18	18	19	19	
<b>\$800,001 - \$1.1M</b>	19	18	18	17	17	17	17	17	16	16	17	17	15	15	16	15	16	16	16	16	17	18	19	19	20	
<b>\$1.1M - \$1.9M</b>	32	32	32	30	29	27	29	30	29	29	28	31	31	31	30	29	30	30	30	27	27	26	27	29	27	
<b>\$1.9M and Above</b>	76	73	73	71	72	74	71	63	66	62	63	60	57	63	64	59	53	46	48	49	41	38	39	37	37	
<b>All Single Family Homes</b>	18	18	18	18	17	18	18	18	17	17	17	17	17	17	17	17	17	16	16	16	16	18	19	19	20	

SOURCE: Honolulu Board of REALTORS®, compiled from MLS data.



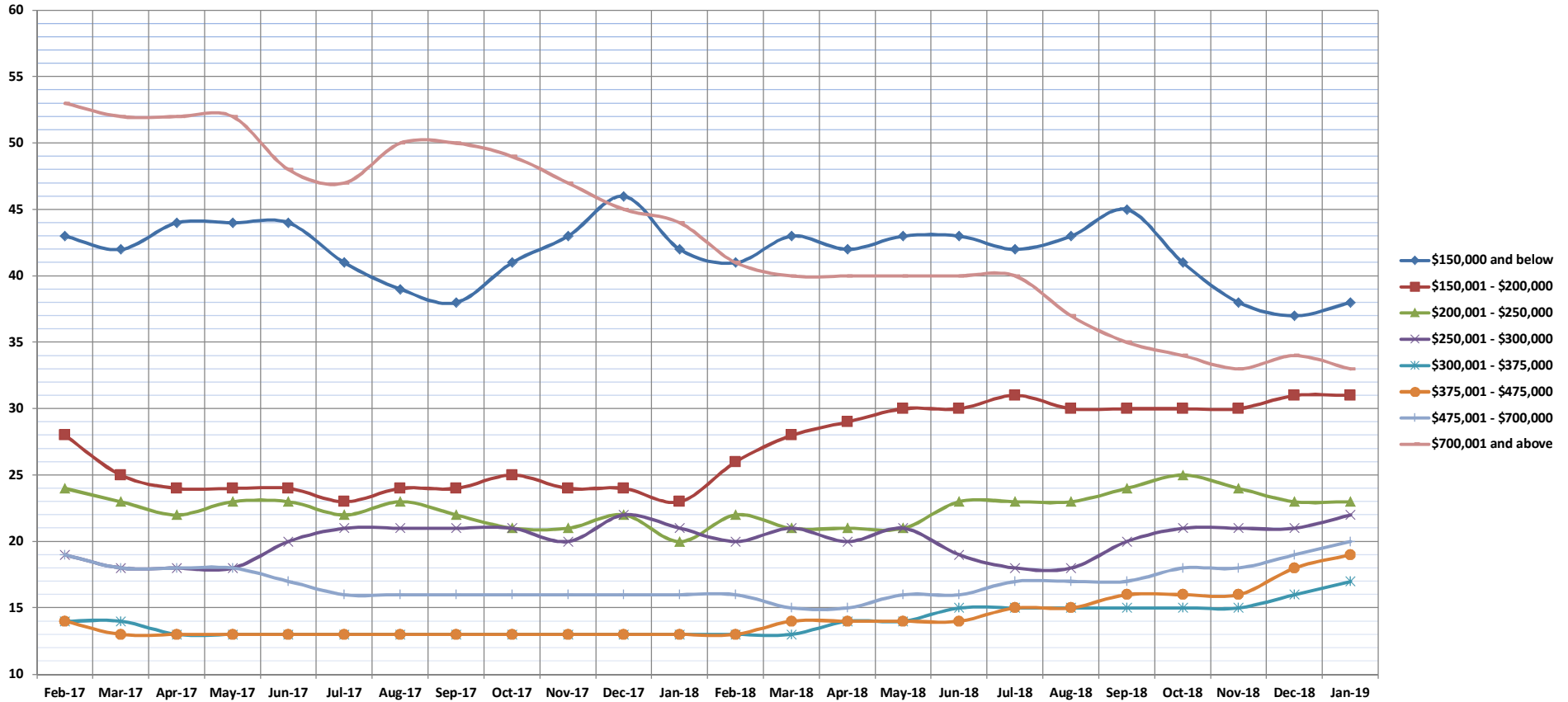


# Days on Market Until Sale

Jan-19

Condos: Monthly, by Price Range

(The median number of days between when a property is first listed and when an offer is accepted. Based on a 12 month rolling median.)



	Feb-17	Mar-17	Apr-17	May-17	Jun-17	Jul-17	Aug-17	Sep-17	Oct-17	Nov-17	Dec-17	Jan-18	Feb-18	Mar-18	Apr-18	May-18	Jun-18	Jul-18	Aug-18	Sep-18	Oct-18	Nov-18	Dec-18	Jan-19		
\$150,000 and below	43	42	44	44	44	41	39	38	41	43	46	42	41	43	42	43	42	43	43	42	43	45	41	38	37	38
\$150,001 - \$200,000	28	25	24	24	24	23	24	24	25	24	24	23	26	28	29	30	30	31	30	30	30	30	30	31	31	
\$200,001 - \$250,000	24	23	22	23	23	22	23	22	21	21	22	20	22	21	21	21	23	23	23	24	25	24	23	23	23	
\$250,001 - \$300,000	19	18	18	18	20	21	21	21	21	20	22	21	20	21	20	21	19	18	18	20	21	21	21	22	22	
\$300,001 - \$375,000	14	14	13	13	13	13	13	13	13	13	13	13	13	13	14	14	14	15	15	15	15	15	15	16	17	
\$375,001 - \$475,000	14	13	13	13	13	13	13	13	13	13	13	13	13	14	14	14	14	15	15	16	16	16	16	18	19	
\$475,001 - \$700,000	19	18	18	18	17	16	16	16	16	16	16	16	16	15	15	16	16	17	17	17	17	17	18	18	19	20
\$700,001 and above	53	52	52	52	48	47	50	50	49	47	45	44	41	40	40	40	40	40	40	37	35	34	33	34	33	
All Condos	20	19	19	19	18	18	18	18	18	18	18	17	17	18	18	18	19	19	19	19	19	20	20	21	21	

SOURCE: Honolulu Board of REALTORS®, compiled from MLS data.

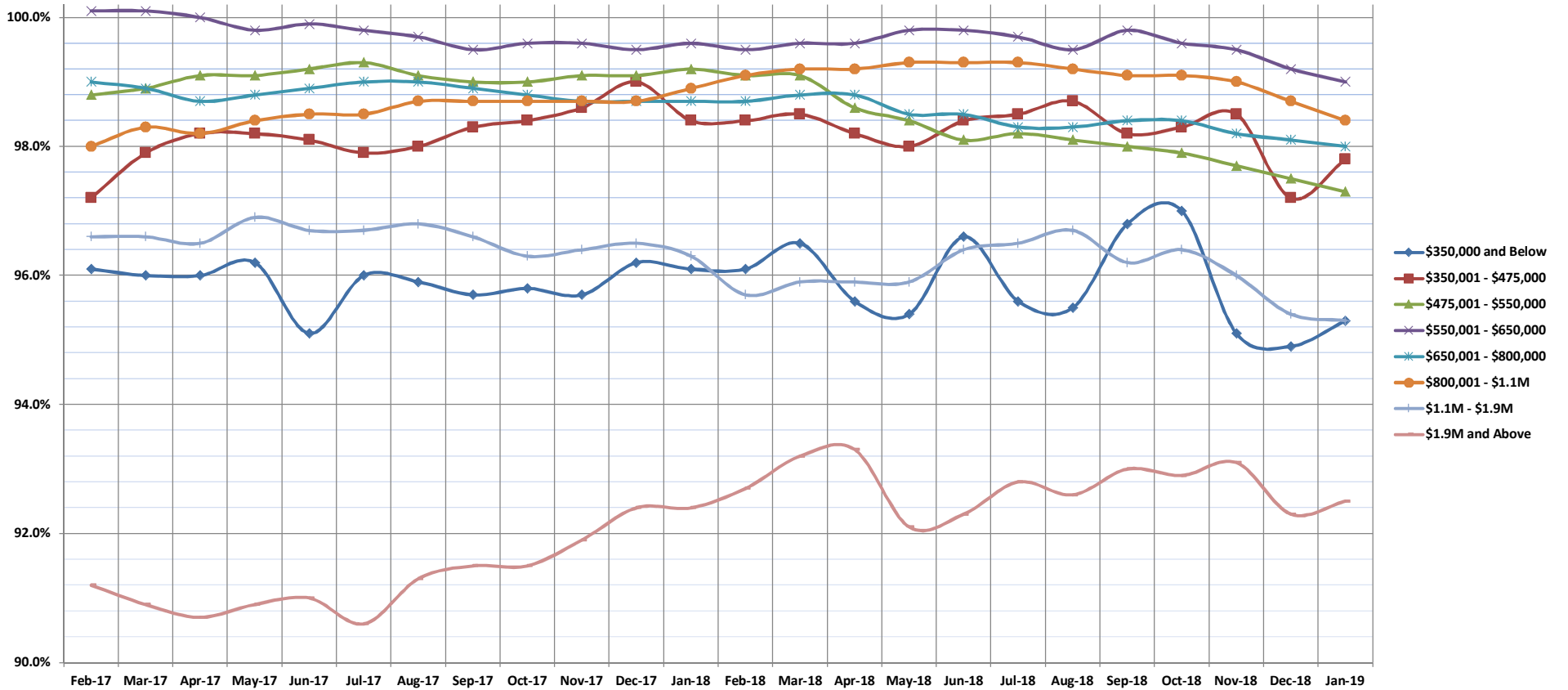


# Percentage of Original Price Received

Jan-19

Single Family Homes: Monthly, by Price Range

(The average percentage found when dividing a property's sales price by the original list price. Based on a rolling 12 month average.)



	Feb-17	Mar-17	Apr-17	May-17	Jun-17	Jul-17	Aug-17	Sep-17	Oct-17	Nov-17	Dec-17	Jan-18	Feb-18	Mar-18	Apr-18	May-18	Jun-18	Jul-18	Aug-18	Sep-18	Oct-18	Nov-18	Dec-18	Jan-19
<b>\$350,000 and Below</b>	96.1%	96.0%	96.0%	96.2%	95.1%	96.0%	95.9%	95.7%	95.8%	95.7%	96.2%	96.1%	96.1%	96.5%	95.6%	95.4%	96.6%	95.6%	95.5%	96.8%	97.0%	95.1%	94.9%	95.3%
<b>\$350,001 - \$475,000</b>	97.2%	97.9%	98.2%	98.2%	98.1%	97.9%	98.0%	98.3%	98.4%	98.6%	99.0%	98.4%	98.4%	98.5%	98.2%	98.0%	98.4%	98.5%	98.7%	98.2%	98.3%	98.5%	97.2%	97.8%
<b>\$475,001 - \$550,000</b>	98.8%	98.9%	99.1%	99.1%	99.2%	99.3%	99.1%	99.0%	99.0%	99.1%	99.1%	99.2%	99.1%	99.1%	98.6%	98.4%	98.1%	98.2%	98.1%	98.0%	97.9%	97.7%	97.5%	97.3%
<b>\$550,001 - \$650,000</b>	100.1%	100.1%	100.0%	99.8%	99.9%	99.8%	99.7%	99.5%	99.6%	99.6%	99.5%	99.6%	99.5%	99.6%	99.6%	99.8%	99.8%	99.7%	99.5%	99.8%	99.6%	99.5%	99.2%	99.0%
<b>\$650,001 - \$800,000</b>	99.0%	98.9%	98.7%	98.8%	98.9%	99.0%	99.0%	98.9%	98.8%	98.7%	98.7%	98.7%	98.7%	98.8%	98.8%	98.5%	98.5%	98.3%	98.3%	98.4%	98.4%	98.2%	98.1%	98.0%
<b>\$800,001 - \$1.1M</b>	98.0%	98.3%	98.2%	98.4%	98.5%	98.5%	98.7%	98.7%	98.7%	98.7%	98.7%	98.9%	99.1%	99.2%	99.2%	99.3%	99.3%	99.3%	99.2%	99.1%	99.1%	99.0%	98.7%	98.4%
<b>\$1.1M - \$1.9M</b>	96.6%	96.6%	96.5%	96.9%	96.7%	96.7%	96.8%	96.6%	96.3%	96.4%	96.5%	96.3%	95.7%	95.9%	95.9%	95.9%	96.4%	96.5%	96.7%	96.2%	96.4%	96.0%	95.4%	95.3%
<b>\$1.9M and Above</b>	91.2%	90.9%	90.7%	90.9%	91.0%	90.6%	91.3%	91.5%	91.5%	91.9%	92.4%	92.4%	92.7%	93.2%	93.3%	92.1%	92.3%	92.8%	92.6%	93.0%	92.9%	93.1%	92.3%	92.5%
<b>All Single Family Homes</b>	99.0%	98.9%	98.7%	98.8%	98.9%	98.7%	98.6%	98.5%	98.4%	98.3%	98.2%	98.2%	98.3%	98.3%	98.4%	98.3%	98.2%	98.4%	98.4%	98.4%	98.4%	98.3%	98.4%	98.2%

SOURCE: Honolulu Board of REALTORS®, compiled from MLS data.

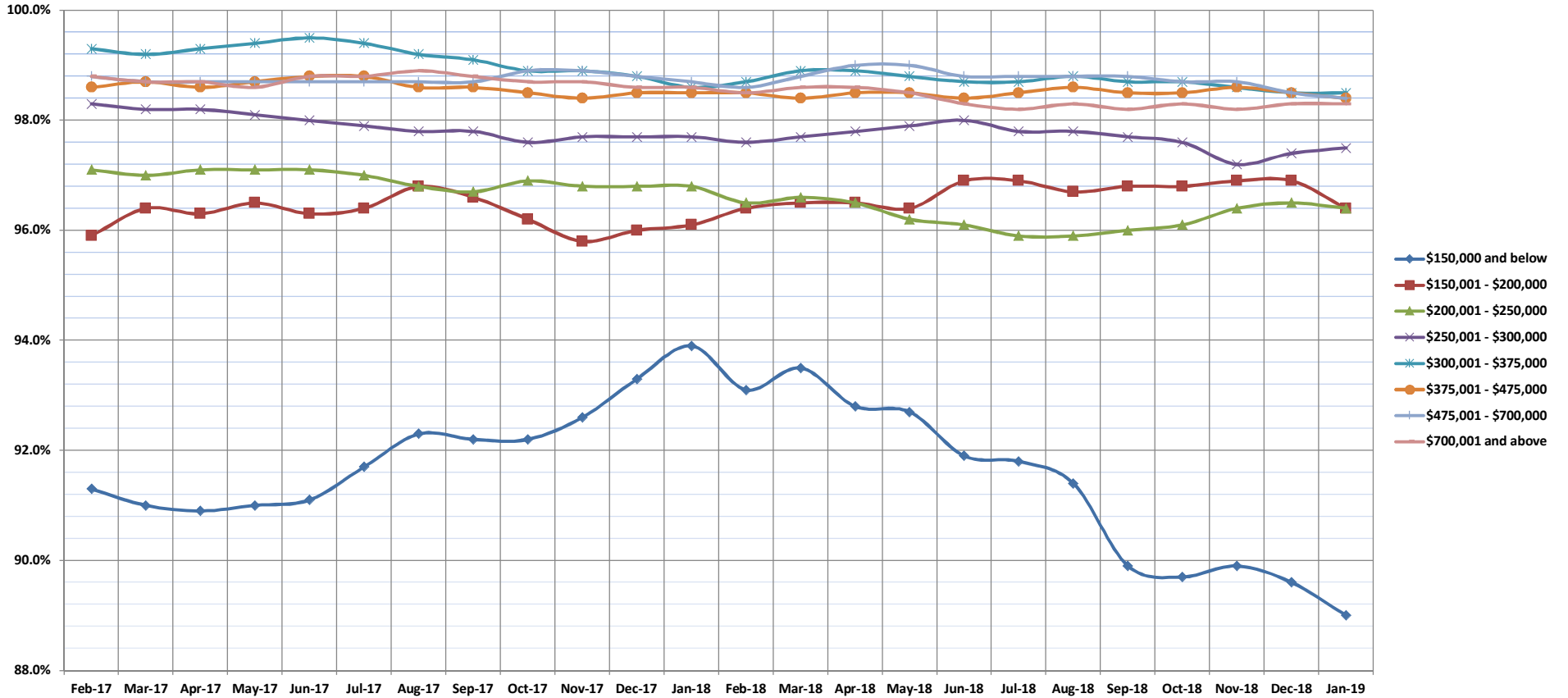


# Percentage of Original Price Received

Jan-19

Condos: Monthly, by Price Range

(The average percentage found when dividing a property's sales price by the original list price. Based on a rolling 12 month average.)



	Feb-17	Mar-17	Apr-17	May-17	Jun-17	Jul-17	Aug-17	Sep-17	Oct-17	Nov-17	Dec-17	Jan-18	Feb-18	Mar-18	Apr-18	May-18	Jun-18	Jul-18	Aug-18	Sep-18	Oct-18	Nov-18	Dec-18	Jan-19
<b>\$150,000 and below</b>	91.3%	91.0%	90.9%	91.0%	91.1%	91.7%	92.3%	92.2%	92.2%	92.6%	93.3%	93.9%	93.1%	93.5%	92.8%	92.7%	91.9%	91.8%	91.4%	89.9%	89.7%	89.9%	89.6%	89.0%
<b>\$150,001 - \$200,000</b>	95.9%	96.4%	96.3%	96.5%	96.3%	96.4%	96.8%	96.6%	96.2%	95.8%	96.0%	96.1%	96.4%	96.5%	96.5%	96.4%	96.9%	96.9%	96.7%	96.8%	96.8%	96.9%	96.9%	96.4%
<b>\$200,001 - \$250,000</b>	97.1%	97.0%	97.1%	97.1%	97.1%	97.0%	96.8%	96.7%	96.9%	96.8%	96.8%	96.8%	96.5%	96.6%	96.5%	96.2%	96.1%	95.9%	95.9%	96.0%	96.1%	96.4%	96.5%	96.4%
<b>\$250,001 - \$300,000</b>	98.3%	98.2%	98.2%	98.1%	98.0%	97.9%	97.8%	97.8%	97.6%	97.7%	97.7%	97.7%	97.6%	97.7%	97.8%	97.9%	98.0%	97.8%	97.8%	97.7%	97.6%	97.2%	97.4%	97.5%
<b>\$300,001 - \$375,000</b>	99.3%	99.2%	99.3%	99.4%	99.5%	99.4%	99.2%	99.1%	98.9%	98.9%	98.8%	98.6%	98.7%	98.9%	98.9%	98.8%	98.7%	98.8%	98.7%	98.8%	98.7%	98.8%	98.7%	98.5%
<b>\$375,001 - \$475,000</b>	98.6%	98.7%	98.6%	98.7%	98.7%	98.7%	98.7%	98.6%	98.5%	98.7%	98.9%	98.8%	98.7%	98.6%	98.7%	98.4%	98.5%	98.8%	98.8%	98.8%	98.8%	98.8%	98.7%	98.5%
<b>\$475,001 - \$700,000</b>	98.8%	98.7%	98.7%	98.7%	98.7%	98.7%	98.7%	98.7%	98.7%	98.7%	98.8%	98.7%	98.6%	98.6%	98.7%	98.6%	98.8%	98.8%	98.8%	98.8%	98.7%	98.8%	98.8%	98.4%
<b>\$700,001 and above</b>	94.6%	95.5%	95.7%	95.4%	95.7%	95.8%	95.8%	95.7%	95.8%	96.1%	96.5%	96.6%	96.7%	96.8%	96.4%	96.5%	96.5%	96.5%	96.8%	96.6%	96.5%	96.4%	96.6%	96.6%
<b>All Condos</b>	98.8%	98.7%	98.7%	98.6%	98.8%	98.8%	98.9%	98.8%	98.7%	98.7%	98.6%	98.6%	98.5%	98.6%	98.6%	98.5%	98.3%	98.2%	98.3%	98.2%	98.3%	98.2%	98.3%	98.3%

SOURCE: Honolulu Board of REALTORS®, compiled from MLS data.

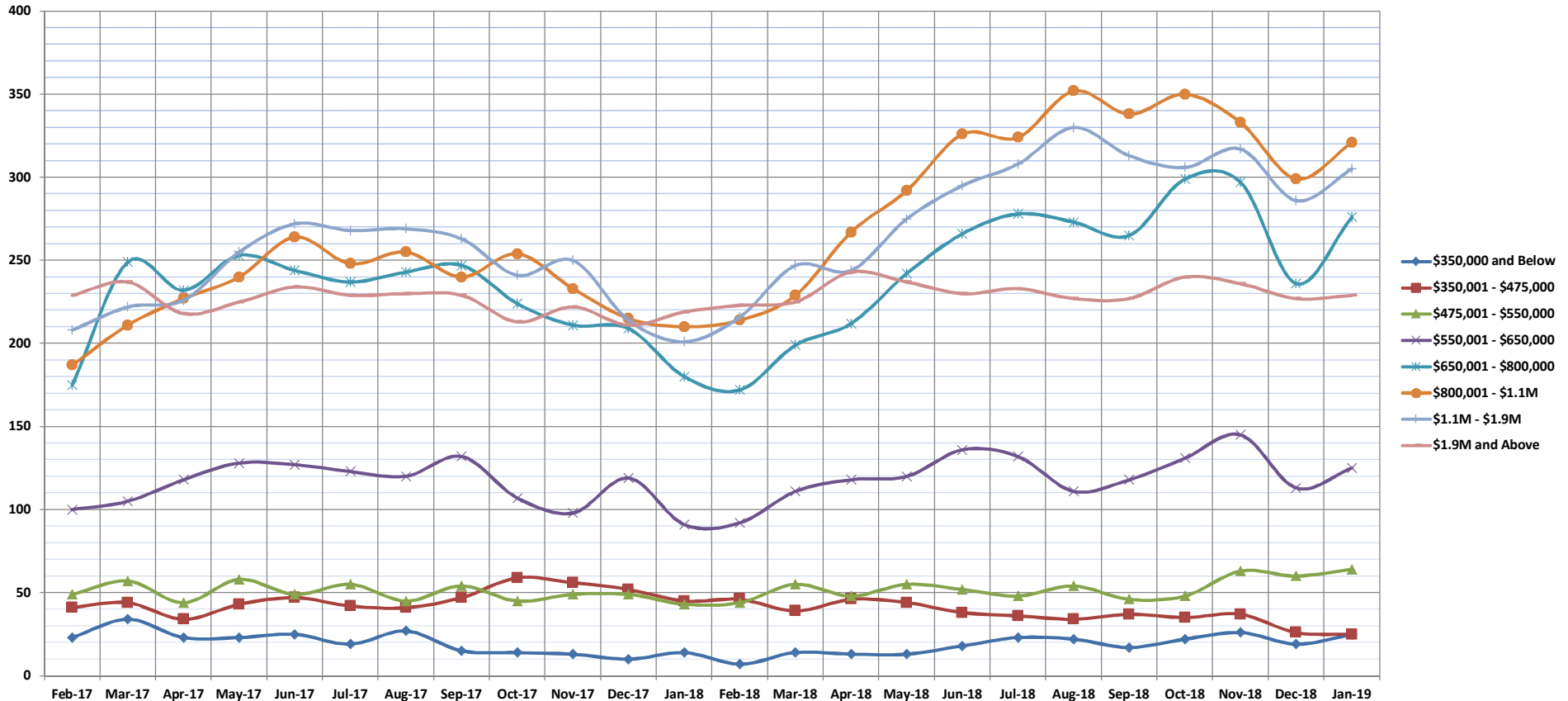


# Inventory of Homes for Sale

Jan-19

Single Family Homes: Monthly, by Price Range

(The number of properties available for sale in active status at the end of a given month.)



	Feb-17	Mar-17	Apr-17	May-17	Jun-17	Jul-17	Aug-17	Sep-17	Oct-17	Nov-17	Dec-17	Jan-18	Feb-18	Mar-18	Apr-18	May-18	Jun-18	Jul-18	Aug-18	Sep-18	Oct-18	Nov-18	Dec-18	Jan-19
<b>\$350,000 and Below</b>	23	34	23	23	25	19	27	15	14	13	10	14	7	14	13	13	18	23	22	17	22	26	19	25
<b>\$350,001 - \$475,000</b>	41	44	34	43	47	42	41	47	59	56	52	45	46	39	46	44	38	36	34	37	35	37	26	25
<b>\$475,001 - \$550,000</b>	49	57	44	58	49	55	45	54	45	49	49	43	44	55	48	55	52	48	54	46	48	63	60	64
<b>\$550,001 - \$650,000</b>	100	105	118	128	127	123	120	132	107	98	119	91	92	111	118	120	136	132	111	118	131	145	113	125
<b>\$650,001 - \$800,000</b>	175	249	232	253	244	237	243	247	224	211	209	180	172	199	212	242	266	278	273	265	299	297	236	276
<b>\$800,001 - \$1.1M</b>	187	211	227	240	264	248	255	240	254	233	215	210	214	229	267	292	326	324	352	338	350	333	299	321
<b>\$1.1M - \$1.9M</b>	208	222	226	255	272	268	269	263	241	250	214	201	216	247	244	275	295	308	330	313	306	317	286	305
<b>\$1.9M and Above</b>	229	237	218	225	234	229	230	229	213	222	211	219	223	225	243	237	230	233	227	240	236	227	229	229
<b>All Single Family Homes</b>	1012	1159	1112	1225	1262	1221	1230	1227	1157	1132	1079	1003	1014	1119	1191	1278	1361	1382	1403	1361	1431	1454	1266	1370

SOURCE: Honolulu Board of REALTORS®, compiled from MLS data.

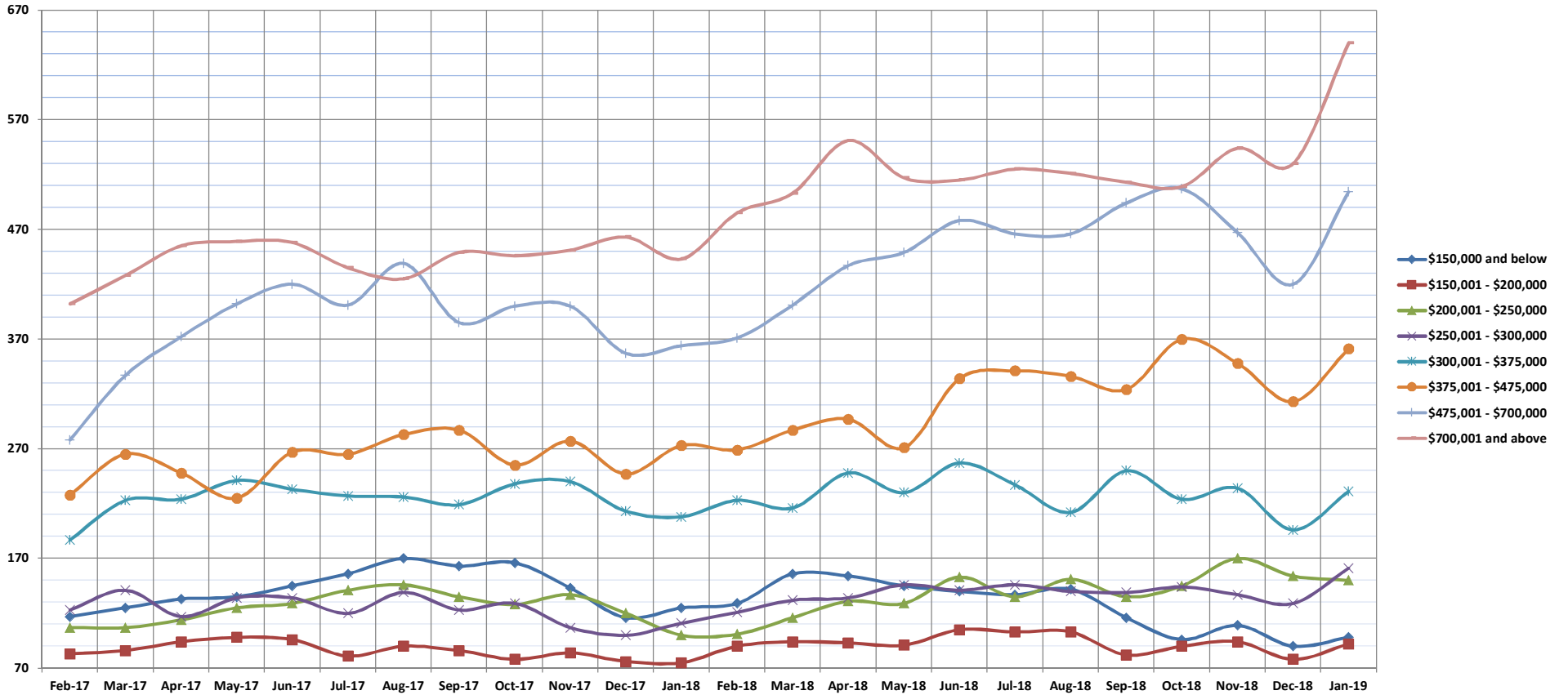


# Inventory of Homes for Sale

Jan-19

Condos: Monthly, by Price Range

(The number of properties available for sale in active status at the end of a given month.)



	Feb-17	Mar-17	Apr-17	May-17	Jun-17	Jul-17	Aug-17	Sep-17	Oct-17	Nov-17	Dec-17	Jan-18	Feb-18	Mar-18	Apr-18	May-18	Jun-18	Jul-18	Aug-18	Sep-18	Oct-18	Nov-18	Dec-18	Jan-19
\$150,000 and below	117	125	133	135	145	156	170	163	166	143	116	125	129	156	154	145	140	137	142	116	96	109	90	98
\$150,001 - \$200,000	83	86	94	98	96	81	90	86	78	84	76	75	90	94	93	91	105	103	103	82	90	94	78	92
\$200,001 - \$250,000	107	107	114	125	129	141	146	135	128	137	120	100	101	116	131	129	153	135	151	135	145	170	154	150
\$250,001 - \$300,000	123	141	117	134	134	120	139	123	129	107	100	111	121	132	134	146	141	146	140	139	144	137	129	161
\$300,001 - \$375,000	187	223	224	241	233	227	226	219	238	240	213	208	223	216	248	230	257	237	212	250	224	234	196	231
\$375,001 - \$475,000	228	265	248	225	267	265	283	287	255	277	247	273	269	287	297	271	334	341	336	324	370	348	313	361
\$475,001 - \$700,000	278	337	372	402	420	401	439	385	400	400	357	364	371	401	437	449	478	466	466	494	507	467	420	504
\$700,001 and above	402	428	455	459	458	435	425	449	446	451	463	443	485	503	551	517	515	525	521	513	509	544	530	640
All Condos	1525	1712	1757	1849	1882	1826	1918	1847	1840	1839	1692	1699	1789	1905	2045	1978	2123	2090	2071	2053	2085	2103	1910	2237

SOURCE: Honolulu Board of REALTORS®, compiled from MLS data.

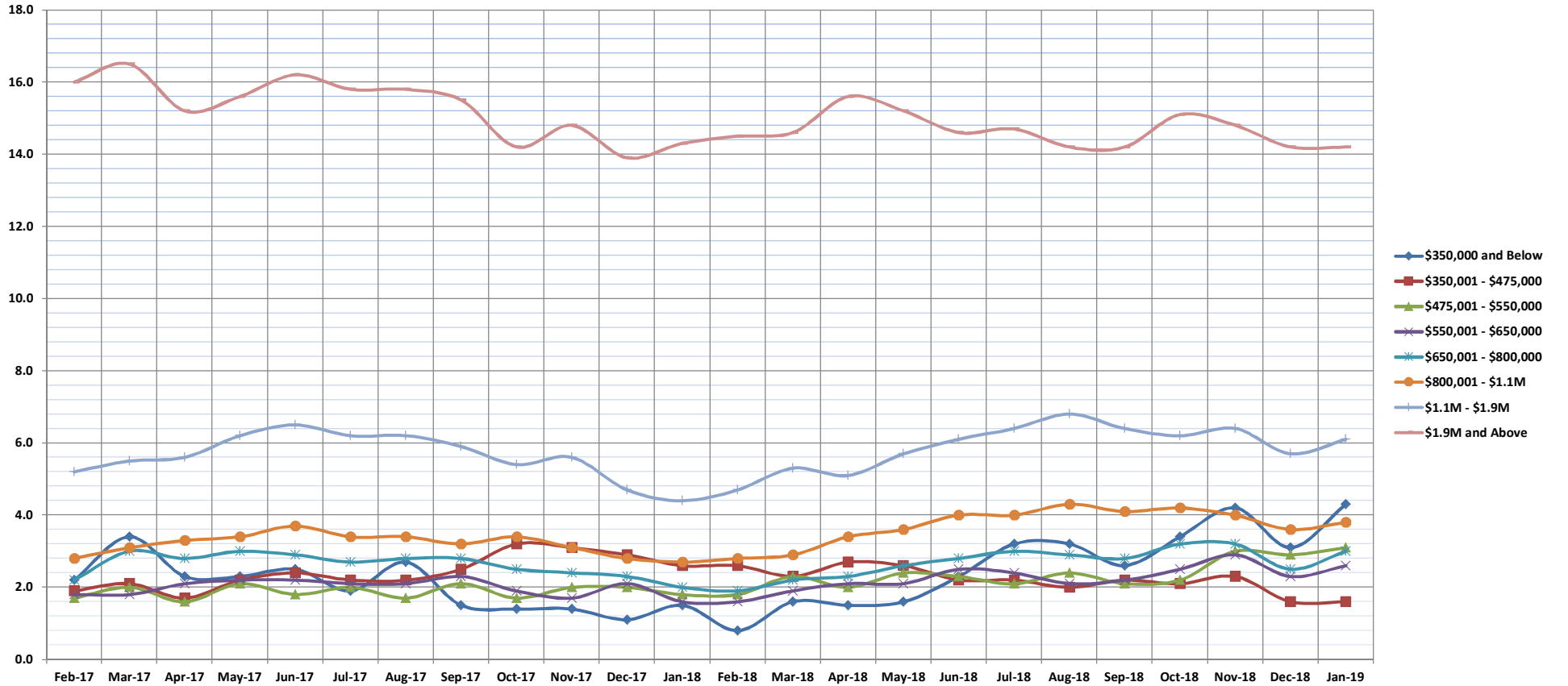


# Months Supply of Inventory

Jan-19

Single Family Homes: Monthly, by Price Range

(Compares the number of active listings available to the average monthly pending sales from the last 12 months.)



	Feb-17	Mar-17	Apr-17	May-17	Jun-17	Jul-17	Aug-17	Sep-17	Oct-17	Nov-17	Dec-17	Jan-18	Feb-18	Mar-18	Apr-18	May-18	Jun-18	Jul-18	Aug-18	Sep-18	Oct-18	Nov-18	Dec-18	Jan-19
\$350,000 and Below	2.2	3.4	2.3	2.3	2.5	1.9	2.7	1.5	1.4	1.4	1.1	1.5	0.8	1.6	1.5	1.6	2.3	3.2	3.2	2.6	3.4	4.2	3.1	4.3
\$350,001 - \$475,000	1.9	2.1	1.7	2.2	2.4	2.2	2.2	2.5	3.2	3.1	2.9	2.6	2.6	2.3	2.7	2.6	2.2	2.2	2.0	2.2	2.1	2.3	1.6	1.6
\$475,001 - \$550,000	1.7	2.0	1.6	2.1	1.8	2.0	1.7	2.1	1.7	2.0	2.0	1.8	1.8	2.3	2.0	2.4	2.3	2.1	2.4	2.1	2.2	3.0	2.9	3.1
\$550,001 - \$650,000	1.8	1.8	2.1	2.2	2.2	2.1	2.1	2.3	1.9	1.7	2.1	1.6	1.6	1.9	2.1	2.1	2.5	2.4	2.1	2.2	2.5	2.9	2.3	2.6
\$650,001 - \$800,000	2.2	3.0	2.8	3.0	2.9	2.7	2.8	2.8	2.5	2.4	2.3	2.0	1.9	2.2	2.3	2.6	2.8	3.0	2.9	2.8	3.2	3.2	2.5	3.0
\$800,001 - \$1.1M	2.8	3.1	3.3	3.4	3.7	3.4	3.4	3.2	3.4	3.1	2.8	2.7	2.8	2.9	3.4	3.6	4.0	4.0	4.3	4.1	4.2	4.0	3.6	3.8
\$1.1M - \$1.9M	5.2	5.5	5.6	6.2	6.5	6.2	6.2	5.9	5.4	5.6	4.7	4.4	4.7	5.3	5.1	5.7	6.1	6.4	6.8	6.4	6.2	6.4	5.7	6.1
\$1.9M and Above	16.0	16.5	15.2	15.6	16.2	15.8	15.8	15.5	14.2	14.8	13.9	14.3	14.5	14.6	15.6	15.2	14.6	14.7	14.2	14.2	15.1	14.8	14.2	14.2
All Single Family Homes	3.2	3.6	3.5	3.8	3.9	3.7	3.7	3.7	3.4	3.4	3.2	3.0	3.0	3.3	3.5	3.7	4.0	4.1	4.1	4.0	4.2	4.3	3.8	4.1

SOURCE: Honolulu Board of REALTORS®, compiled from MLS data.

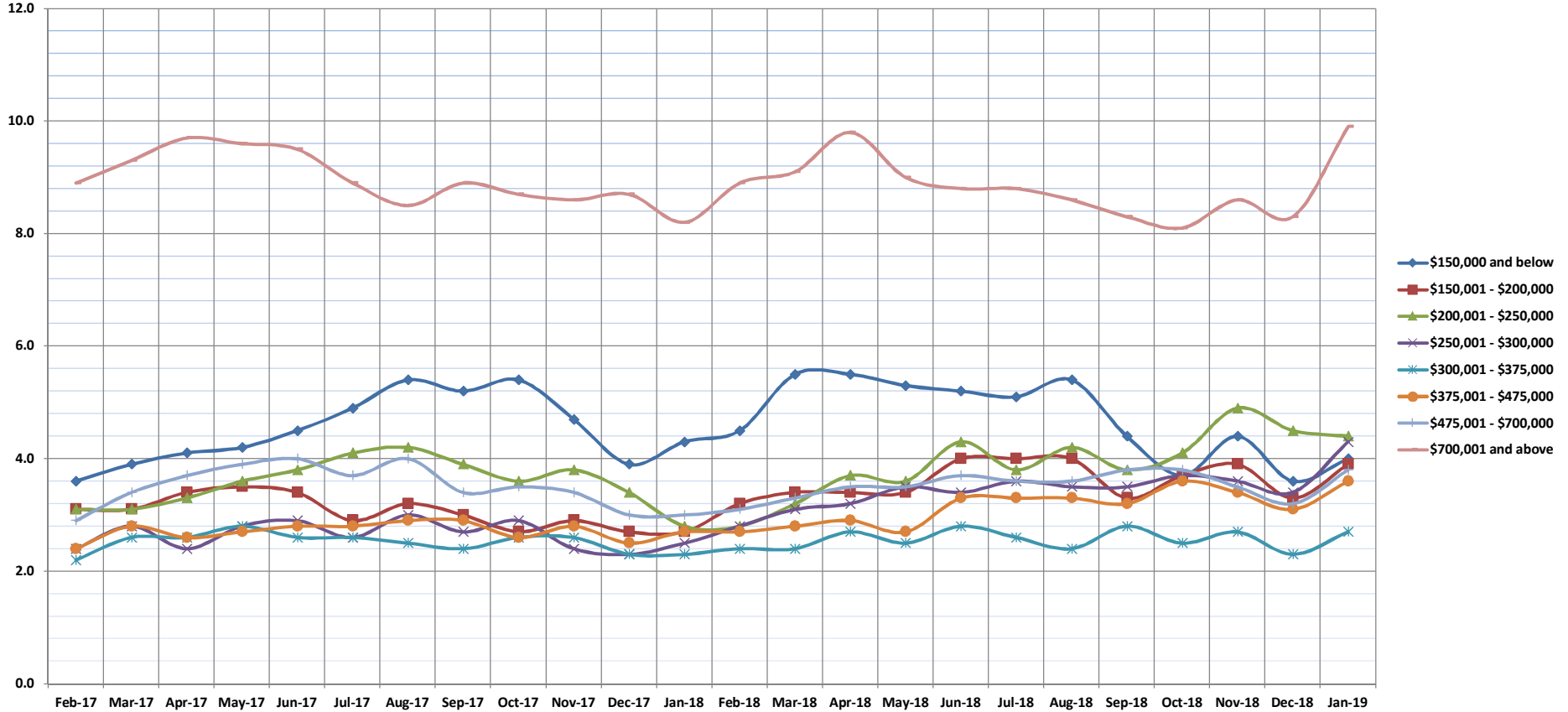


# Months Supply of Inventory

Jan-19

Condos: Monthly, by Price Range

(Compares the number of active listings available to the average monthly pending sales from the last 12 months.)



	Feb-17	Mar-17	Apr-17	May-17	Jun-17	Jul-17	Aug-17	Sep-17	Oct-17	Nov-17	Dec-17	Jan-18	Feb-18	Mar-18	Apr-18	May-18	Jun-18	Jul-18	Aug-18	Sep-18	Oct-18	Nov-18	Dec-18	Jan-19
\$150,000 and below	3.6	3.9	4.1	4.2	4.5	4.9	5.4	5.2	5.4	4.7	3.9	4.3	4.5	5.5	5.5	5.3	5.2	5.1	5.4	4.4	3.7	4.4	3.6	4.0
\$150,001 - \$200,000	3.1	3.1	3.4	3.5	3.4	2.9	3.2	3.0	2.7	2.9	2.7	2.7	3.2	3.4	3.4	3.4	4.0	4.0	4.0	3.3	3.7	3.9	3.3	3.9
\$200,001 - \$250,000	3.1	3.1	3.3	3.6	3.8	4.1	4.2	3.9	3.6	3.8	3.4	2.8	2.8	3.2	3.7	3.6	4.3	3.8	4.2	3.8	4.1	4.9	4.5	4.4
\$250,001 - \$300,000	2.4	2.8	2.4	2.8	2.9	2.6	3.0	2.7	2.9	2.4	2.3	2.5	2.8	3.1	3.2	3.5	3.4	3.6	3.5	3.5	3.7	3.6	3.4	4.3
\$300,001 - \$375,000	2.2	2.6	2.6	2.8	2.6	2.6	2.5	2.4	2.6	2.6	2.3	2.3	2.4	2.4	2.7	2.5	2.8	2.6	2.4	2.8	2.5	2.7	2.3	2.7
\$375,001 - \$475,000	2.4	2.8	2.6	2.7	2.8	2.8	2.9	2.9	2.6	2.8	2.5	2.7	2.7	2.8	2.9	2.7	3.3	3.3	3.3	3.2	3.6	3.4	3.1	3.6
\$475,001 - \$700,000	2.9	3.4	3.7	3.9	4.0	3.7	4.0	3.4	3.5	3.4	3.0	3.0	3.1	3.3	3.5	3.5	3.7	3.6	3.6	3.8	3.8	3.5	3.2	3.8
\$700,001 and above	8.9	9.3	9.7	9.6	9.5	8.9	8.5	8.9	8.7	8.6	8.7	8.2	8.9	9.1	9.8	9.0	8.8	8.8	8.6	8.3	8.1	8.6	8.3	9.9
All Condos	3.3	3.7	3.7	3.9	3.9	3.8	3.9	3.8	3.7	3.7	3.4	3.4	3.6	3.8	4.0	3.9	4.2	4.1	4.1	4.0	4.1	4.2	3.8	4.5

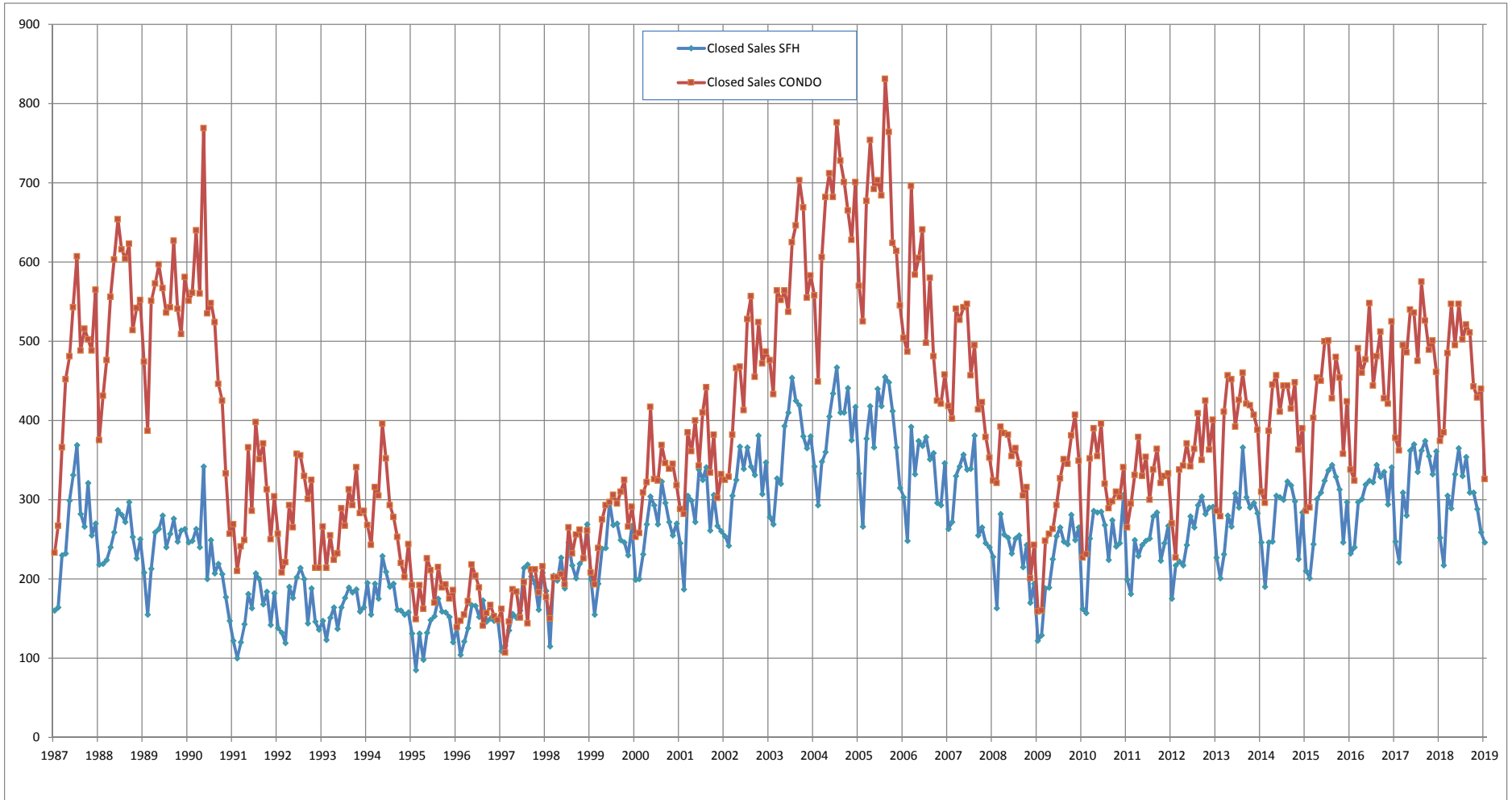
SOURCE: Honolulu Board of REALTORS®, compiled from MLS data.



# Closed Sales

## Single Family Homes and Condos

OAHU, HAWAII: Jan 1987 to the Present



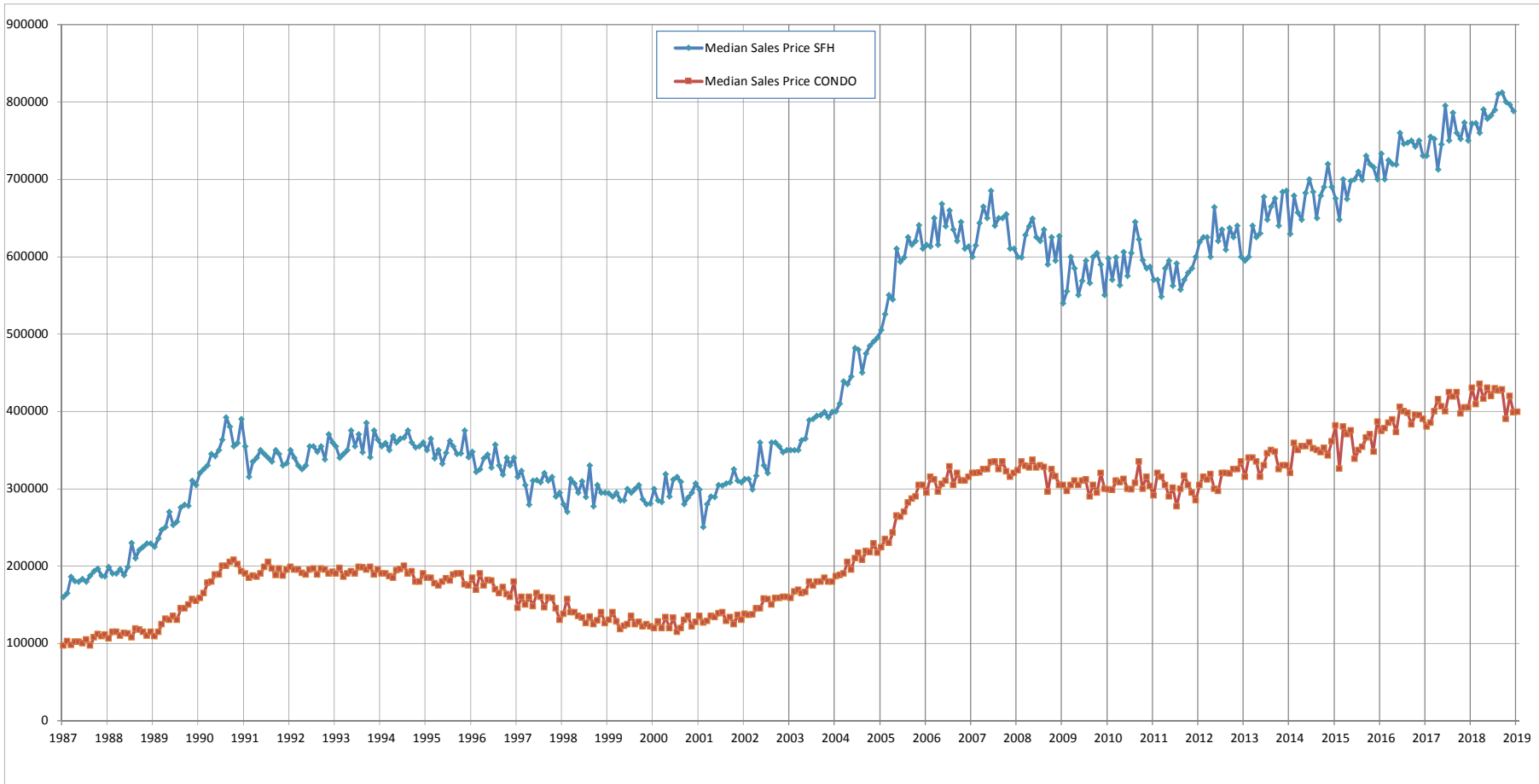
SOURCE: Honolulu Board of REALTORS® , compiled from MLS data.



# Median Sales Price

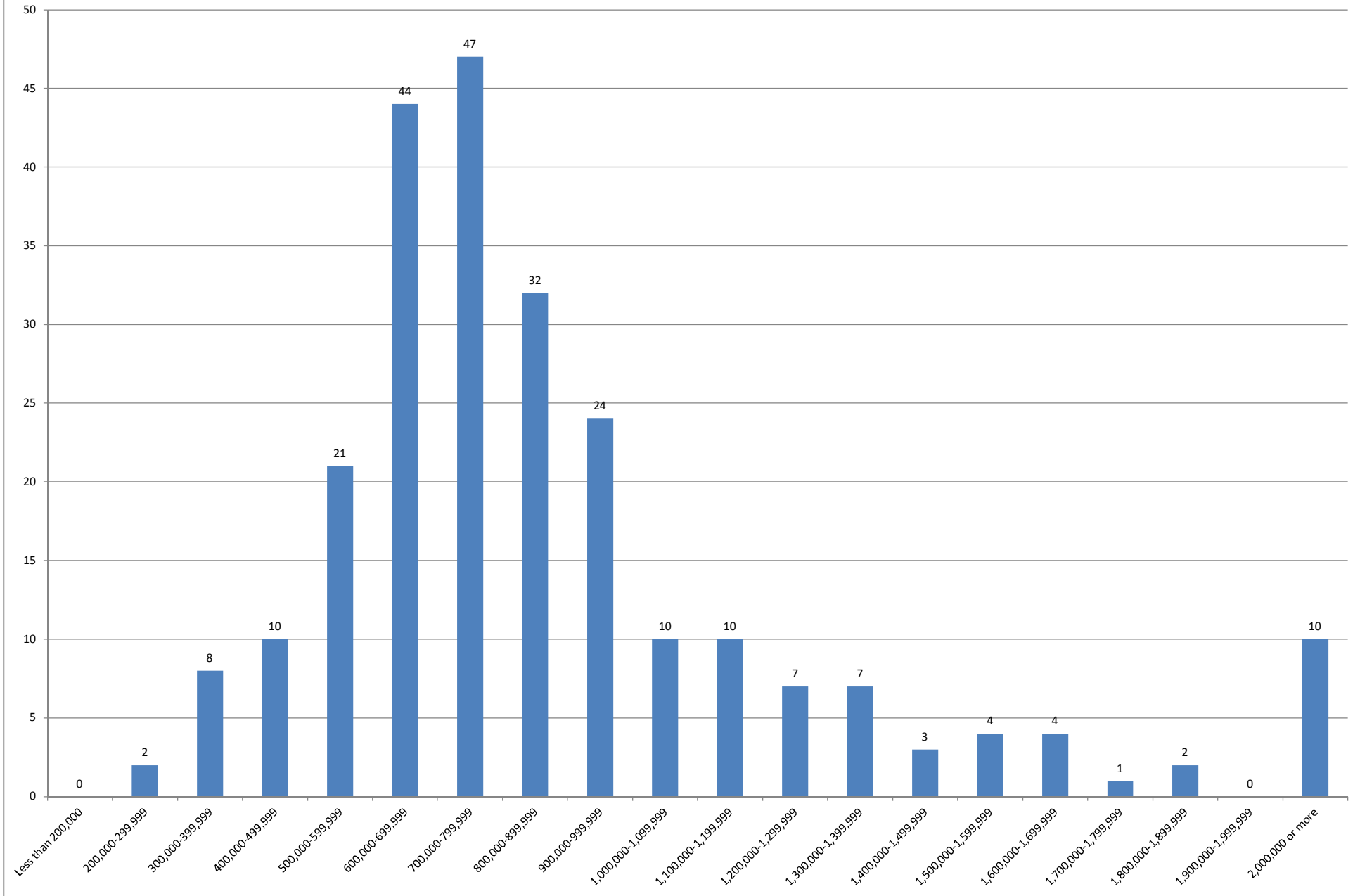
## Single Family Homes and Condos

OAHU, HAWAII: Jan 1987 to the Present



SOURCE: Honolulu Board of REALTORS®, compiled from MLS data.

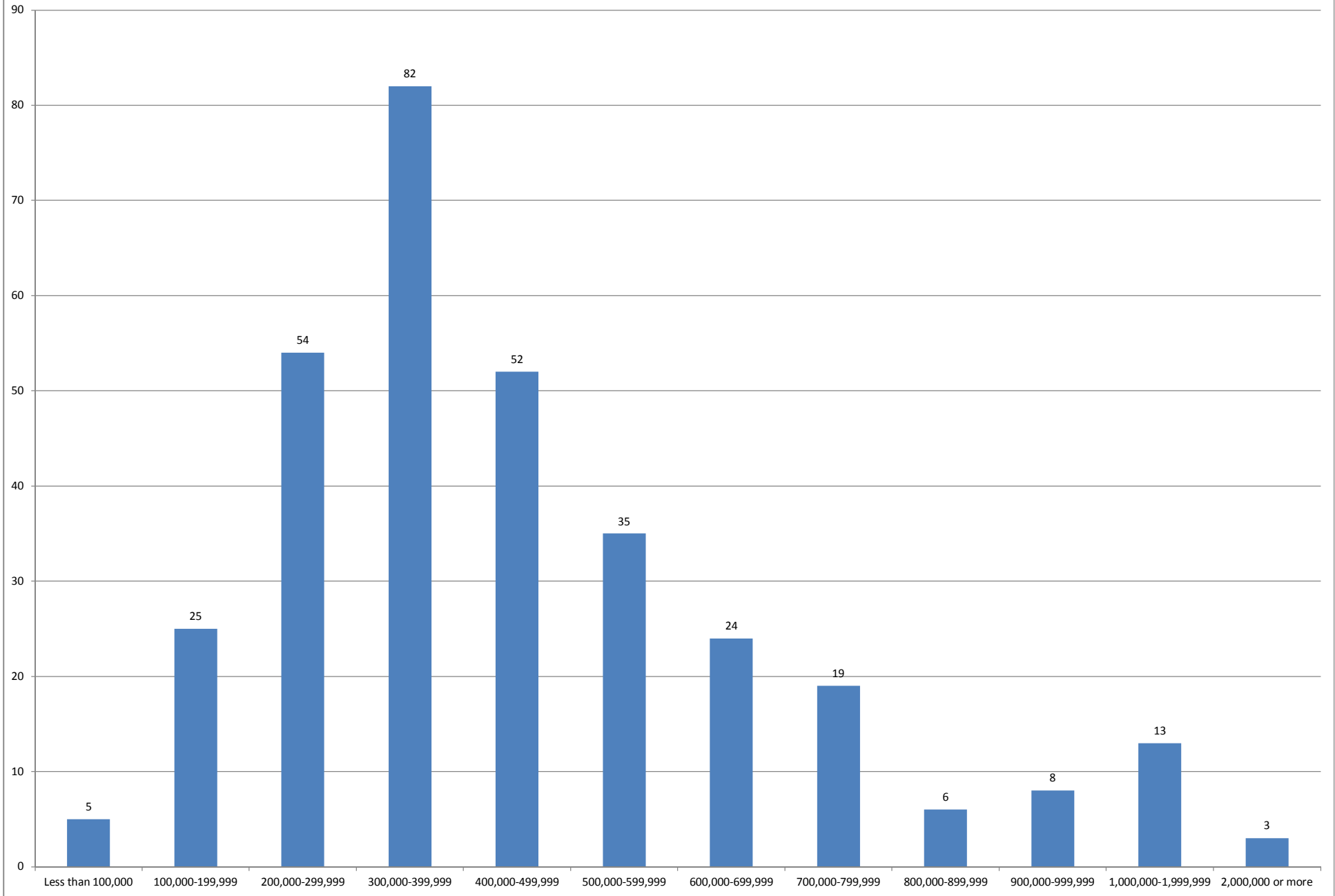
### January 2019 Single Family Homes Sold



SOURCE: Honolulu Board of REALTORS® , compiled from MLS data.



### January 2019 Condos Sold



SOURCE: Honolulu Board of REALTORS® , compiled from MLS data.

