

# Monthly Housing Statistics

## March 2019



### SINGLE FAMILY HOMES

Median Sales Price	
\$782,500	+3.0%
Closed Sales	
276	-9.5%
Average Sales Price	
\$905,155	-9.7%

### CONDOS

Median Sales Price	
\$429,000	-1.4%
Closed Sales	
467	-3.7%
Average Sales Price	
\$515,150	+6.2%

### INDEX:

<b>Monthly Indicators</b>	<b>2</b>
Closed Sales	3
Median Sales Price	4
Median Days on Market	5
New Listings	6
Pending Sales	7
Months of Inventory	8
Active Listings	9
Average Sales Price	10
% of Original Listing Price Received	11
Active Continue to Show	12
<b>Housing Supply Overview</b>	<b>13</b>
Pending Sales (by price range)	14-15
Median Days on Market (by price range)	16-17
% of list price received (by price range)	18-19
Inventory of Homes (by price range)	20-21
Months Supply of Inventory (price range)	22-23
<b>Historical Graphs</b>	<b>24-25</b>
<b>Price Graphs</b>	<b>26-27</b>

# Monthly Indicators

March 2019

	Single Family Homes					
	Mar-19	Mar-18	%	YTD-19	YTD-18	%
Closed Sales	276	305	-9.5%	730	774	-5.7%
Median Sales Price	\$782,500	\$760,000	3.0%	\$780,000	\$765,000	2.0%
Median Days on Market	24	14	71.4%	24	18	33.3%
New Listings	468	415	12.8%	1,370	1,218	12.5%
Pending Sales	424	469	-9.6%	1,111	1,262	-12.0%
Months of Inventory	3.4	2.1	61.9%	--	--	--
Active Listings	1,495	1,119	33.6%	--	--	--
Average Sales Price	\$905,155	\$1,002,305	-9.7%	\$953,343	\$980,350	-2.8%
% of Original Listing Price Received	97.4%	97.4%	0.0%	97.5%	98.1%	-0.6%

	Condos					
	Mar-19	Mar-18	%	YTD-19	YTD-18	%
Closed Sales	467	485	-3.7%	1,114	1,244	-10.5%
Median Sales Price	\$429,000	\$435,000	-1.4%	\$411,250	\$425,000	-3.2%
Median Days on Market	22	16	37.5%	25	18	38.9%
New Listings	712	687	3.6%	2,242	2,084	7.6%
Pending Sales	659	708	-6.9%	1,611	1,874	-14.0%
Months of Inventory	3.6	2.6	38.5%	--	--	--
Active Listings	2,349	1,905	23.3%	--	--	--
Average Sales Price	\$515,150	\$485,145	6.2%	\$504,753	\$493,369	2.3%
% of Original Listing Price Received	97.7%	98.9%	-1.2%	96.5%	98.8%	-2.3%

SOURCE: Honolulu Board of REALTORS®, compiled from MLS data.

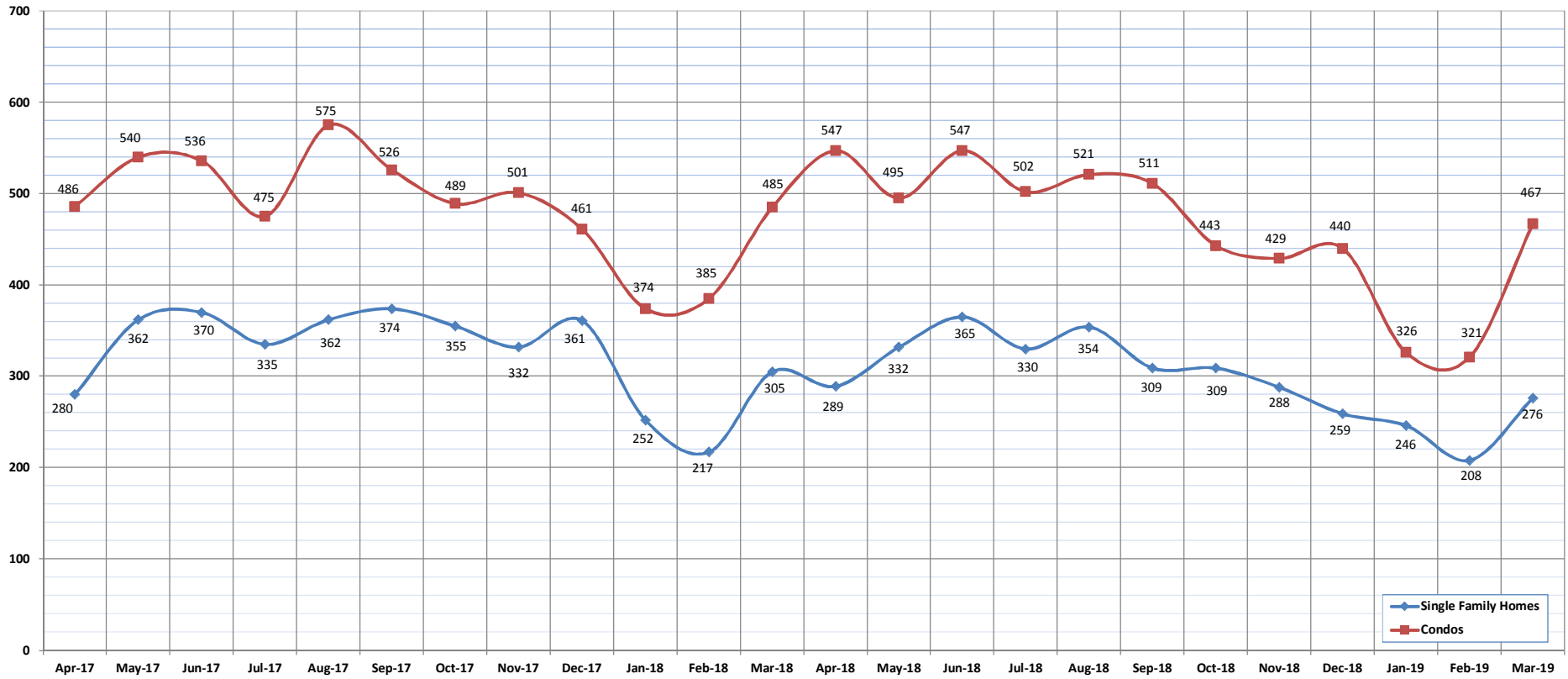


# Closed Sales

March-19

OAHU, HAWAII

(A count of all properties that have closed in a given month.)



	Apr-17	May-17	Jun-17	Jul-17	Aug-17	Sep-17	Oct-17	Nov-17	Dec-17	Jan-18	Feb-18	Mar-18	Apr-18	May-18	Jun-18	Jul-18	Aug-18	Sep-18	Oct-18	Nov-18	Dec-18	Jan-19	Feb-19	Mar-19	
Closed Sales: Single Family Homes	280	362	370	335	362	374	355	332	361	252	217	305	289	332	365	330	354	309	309	288	259	246	208	276	
Closed Sales: Condos	486	540	536	475	575	526	489	501	461	374	385	485	547	495	547	502	521	511	443	443	429	440	326	321	467
Closed Sales: Total	766	902	906	810	937	900	844	833	822	626	602	790	836	827	912	832	875	820	752	717	699	572	529	743	

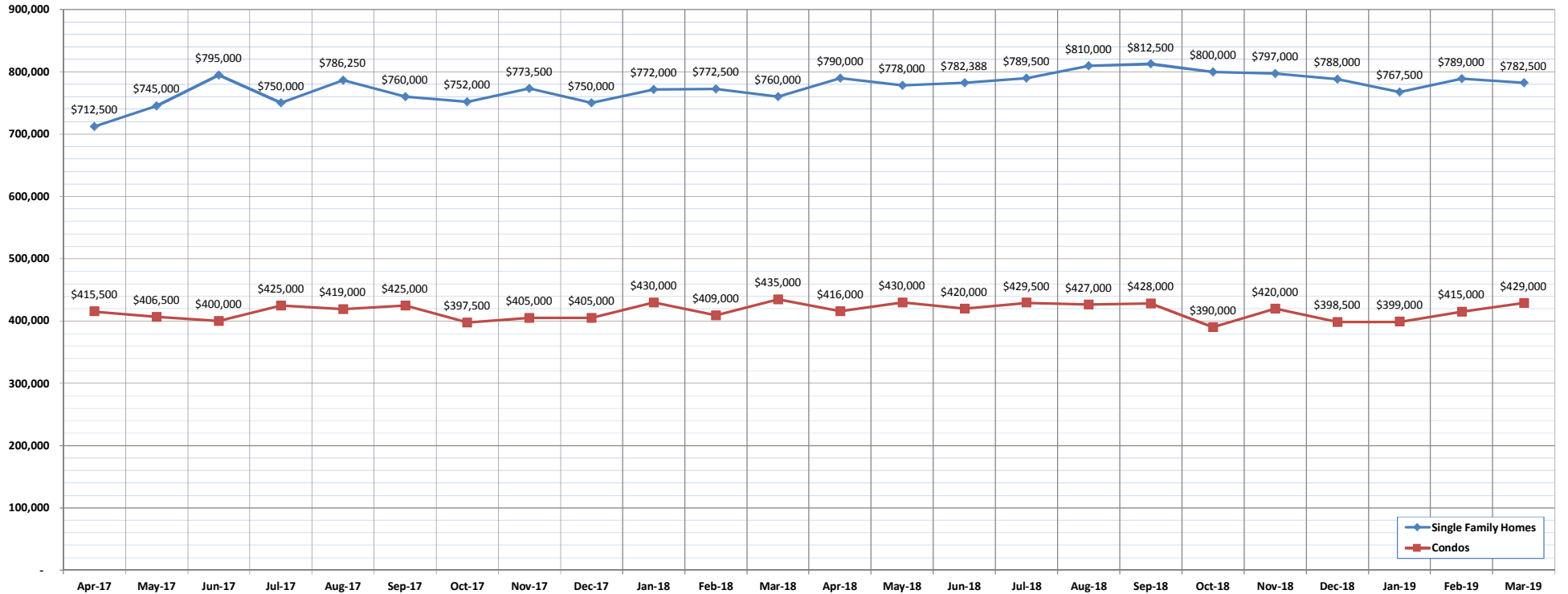
SOURCE: Honolulu Board of REALTORS®, compiled from MLS data.

# Median Sales Price

March-19

OAHU, HAWAII

(The median sales price for all closed properties in a given month.)



	Apr-17	May-17	Jun-17	Jul-17	Aug-17	Sep-17	Oct-17	Nov-17	Dec-17	Jan-18	Feb-18	Mar-18	Apr-18	May-18	Jun-18	Jul-18	Aug-18	Sep-18	Oct-18	Nov-18	Dec-18	Jan-19	Feb-19	Mar-19
Median Sales Price : SFH	712,500	745,000	795,000	750,000	786,250	760,000	752,000	773,500	750,000	772,000	772,500	760,000	790,000	778,000	782,388	789,500	810,000	812,500	800,000	797,000	788,000	767,500	789,000	782,500
Median Sales Price: Condos	415,500	406,500	400,000	425,000	419,000	425,000	397,500	405,000	405,000	430,000	409,000	435,000	416,000	430,000	420,000	429,500	427,000	428,000	390,000	420,000	398,500	399,000	415,000	429,000

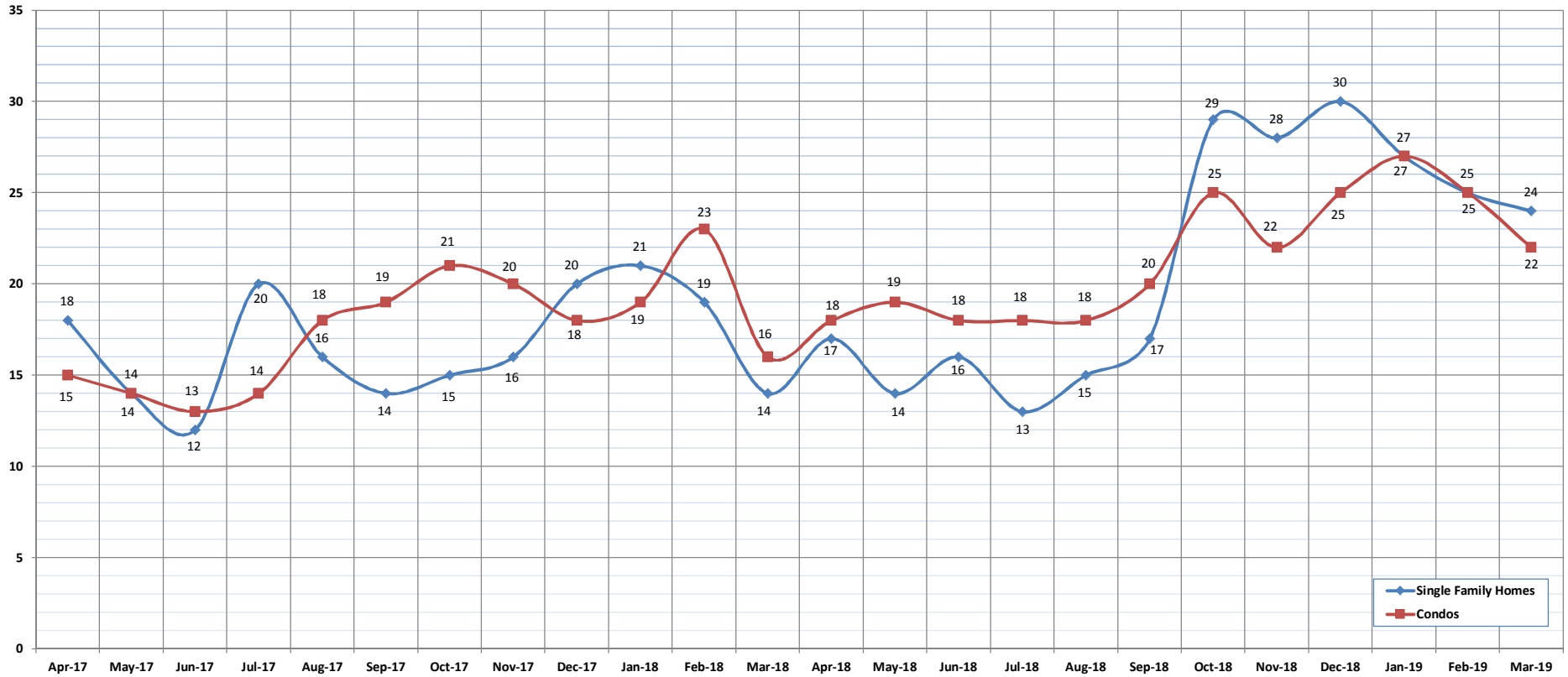
SOURCE: Honolulu Board of REALTORS®, compiled from MLS data.

# Median Days on Market

March-19

OAHU, HAWAII

(The median number of days between when a property is first listed and when an offer is accepted.)



	Apr-17	May-17	Jun-17	Jul-17	Aug-17	Sep-17	Oct-17	Nov-17	Dec-17	Jan-18	Feb-18	Mar-18	Apr-18	May-18	Jun-18	Jul-18	Aug-18	Sep-18	Oct-18	Nov-18	Dec-18	Jan-19	Feb-19	Mar-19
Median Days on Market: SFH	18	14	12	20	16	14	15	16	20	21	19	14	17	14	16	13	15	17	29	28	30	27	25	24
Median Days on Market: Condos	15	14	13	14	18	19	21	20	18	19	23	16	18	19	18	18	18	20	25	22	25	27	25	22

SOURCE: Honolulu Board of REALTORS®, compiled from MLS data.

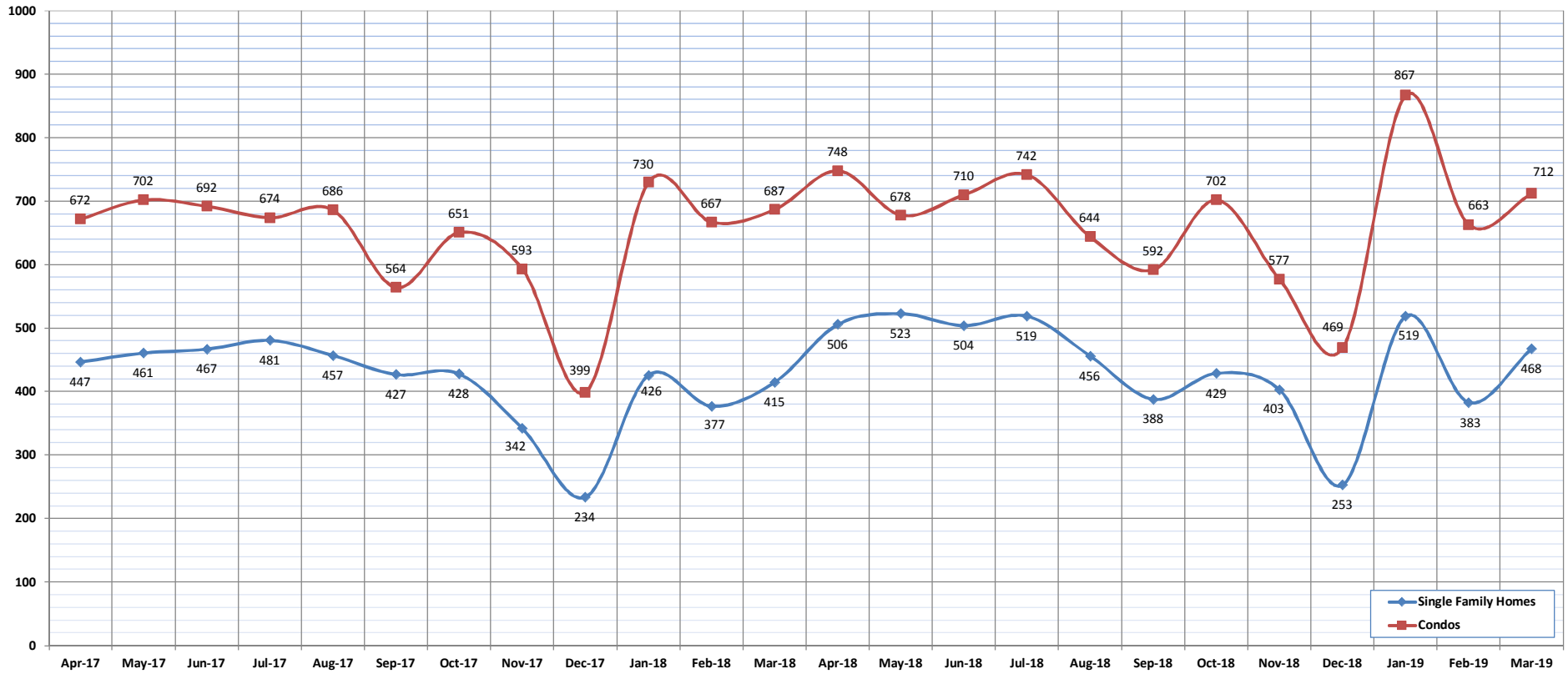


# New Listings

March-19

OAHU, HAWAII

(A count of the properties that have been newly listed on the market in a given month.)



	Apr-17	May-17	Jun-17	Jul-17	Aug-17	Sep-17	Oct-17	Nov-17	Dec-17	Jan-18	Feb-18	Mar-18	Apr-18	May-18	Jun-18	Jul-18	Aug-18	Sep-18	Oct-18	Nov-18	Dec-18	Jan-19	Feb-19	Mar-19
<b>New Listings: Single Family Homes</b>	447	461	467	481	457	427	428	342	234	426	377	415	506	523	504	519	456	388	429	403	253	519	383	468
<b>New Listings: Condos</b>	672	702	692	674	686	564	651	593	399	730	667	687	748	678	710	742	644	592	702	577	469	867	663	712
<b>New Listings: Total</b>	1119	1163	1159	1155	1143	991	1079	935	633	1156	1044	1102	1254	1201	1214	1261	1100	980	1131	980	722	1386	1046	1180

SOURCE: Honolulu Board of REALTORS®, compiled from MLS data.

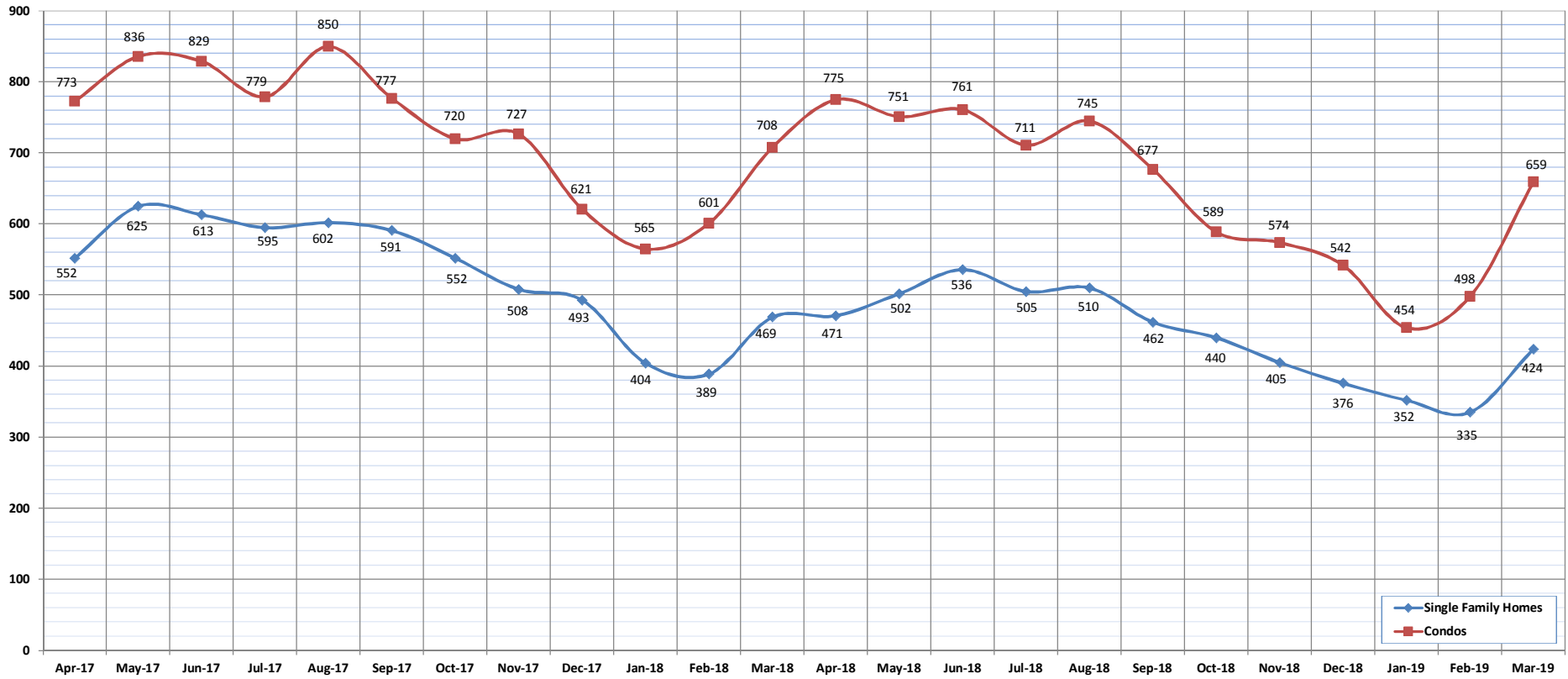


# Pending Sales

March-19

OAHU, HAWAII

(A count of the properties that have offers accepted on them in a given month.)



	Apr-17	May-17	Jun-17	Jul-17	Aug-17	Sep-17	Oct-17	Nov-17	Dec-17	Jan-18	Feb-18	Mar-18	Apr-18	May-18	Jun-18	Jul-18	Aug-18	Sep-18	Oct-18	Nov-18	Dec-18	Jan-19	Feb-19	Mar-19
Pending Sales: Single Family Homes	552	625	613	595	602	591	552	508	493	404	389	469	471	502	536	505	510	462	440	405	376	352	335	424
Pending Sales: Condos	773	836	829	779	850	777	720	727	621	565	601	708	775	751	761	711	745	677	589	574	542	454	498	659
Pending Sales: Total	1325	1461	1442	1374	1452	1368	1272	1235	1114	969	990	1177	1246	1253	1297	1216	1255	1139	1029	979	918	806	833	1083

SOURCE: Honolulu Board of REALTORS®, compiled from MLS data.

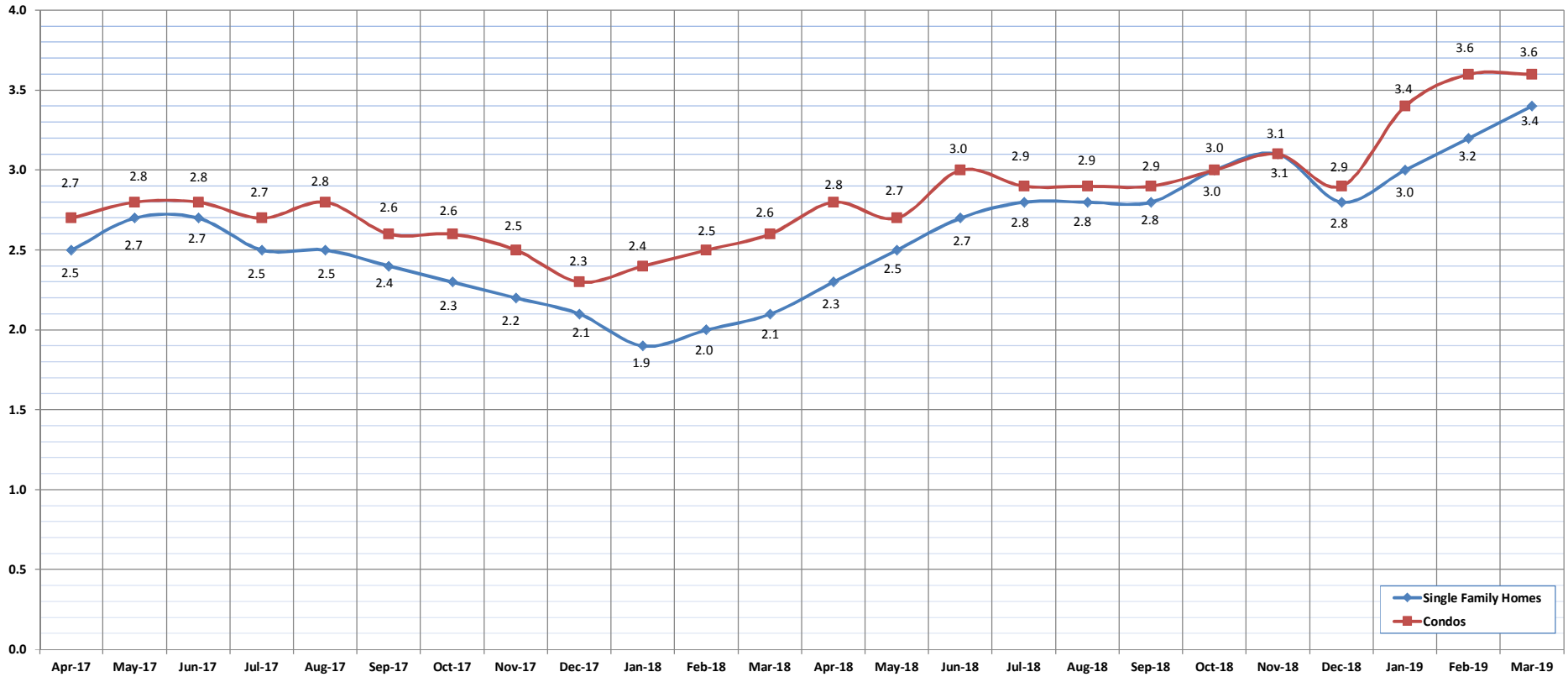


# Months of Inventory

March-19

OAHU, HAWAII

(Compares the number of active listings available to the average monthly pending sales.)



	Apr-17	May-17	Jun-17	Jul-17	Aug-17	Sep-17	Oct-17	Nov-17	Dec-17	Jan-18	Feb-18	Mar-18	Apr-18	May-18	Jun-18	Jul-18	Aug-18	Sep-18	Oct-18	Nov-18	Dec-18	Jan-19	Feb-19	Mar-19
Month of Inventory : SFH	2.5	2.7	2.7	2.5	2.5	2.4	2.3	2.2	2.1	1.9	2.0	2.1	2.3	2.5	2.7	2.8	2.8	2.8	3.0	3.1	2.8	3.0	3.2	3.4
Months of Inventory: Condos	2.7	2.8	2.8	2.7	2.8	2.6	2.6	2.5	2.3	2.4	2.5	2.6	2.8	2.7	3.0	2.9	2.9	2.9	3.0	3.1	2.9	3.4	3.6	3.6

SOURCE: Honolulu Board of REALTORS®, compiled from MLS data.

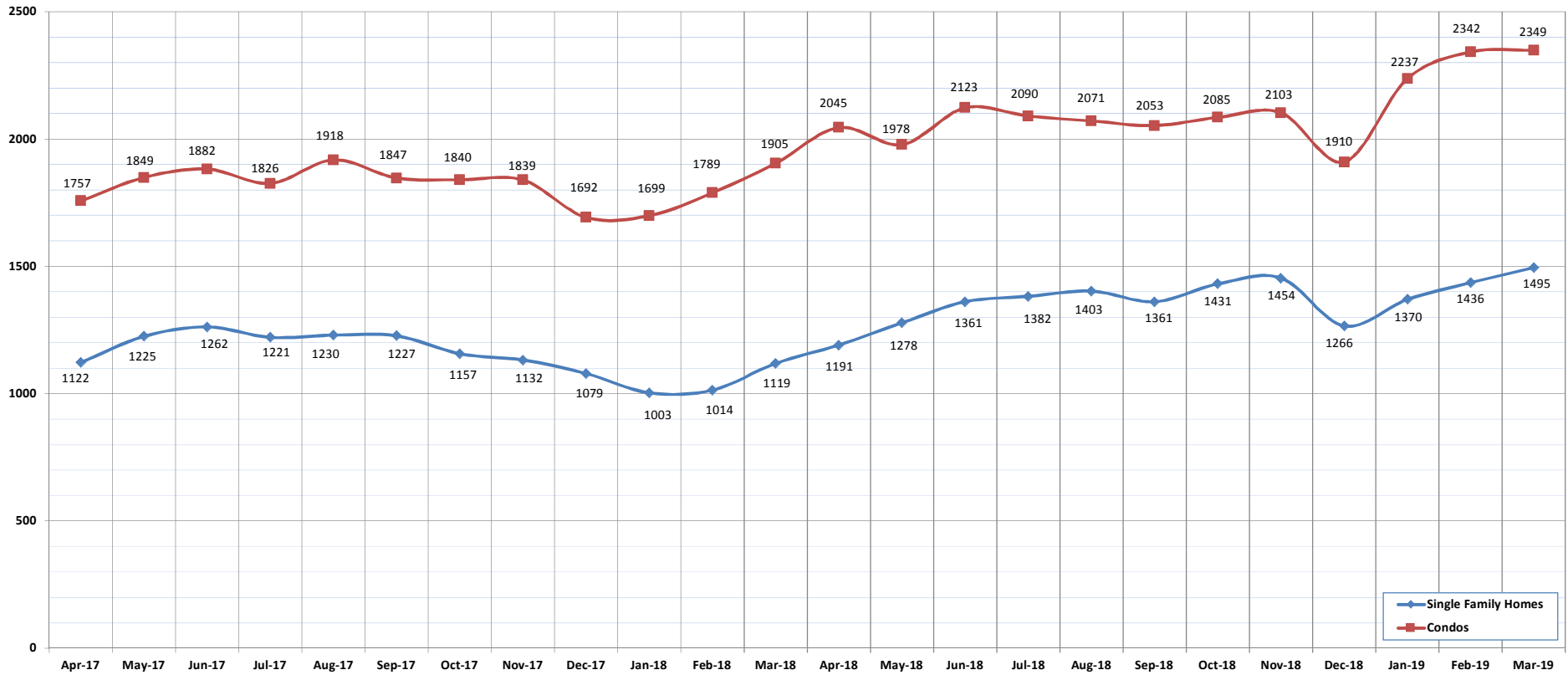


# Active Listings

March-19

OAHU, HAWAII

(The number of properties available for purchase during a given month.)



	Apr-17	May-17	Jun-17	Jul-17	Aug-17	Sep-17	Oct-17	Nov-17	Dec-17	Jan-18	Feb-18	Mar-18	Apr-18	May-18	Jun-18	Jul-18	Aug-18	Sep-18	Oct-18	Nov-18	Dec-18	Jan-19	Feb-19	Mar-19
Active Listings: Single Family Homes	1122	1225	1262	1221	1230	1227	1157	1132	1079	1003	1014	1119	1191	1278	1361	1382	1403	1361	1431	1454	1266	1370	1436	1495
Active Listings: Condos	1757	1849	1882	1826	1918	1847	1840	1839	1692	1699	1789	1905	2045	1978	2123	2090	2071	2053	2085	2103	1910	2237	2342	2349
Active Listings: Total	2879	3074	3144	3047	3148	3074	2997	2971	2771	2702	2803	3024	3236	3256	3484	3472	3474	3414	3516	3557	3176	3607	3778	3844

SOURCE: Honolulu Board of REALTORS®, compiled from MLS data.

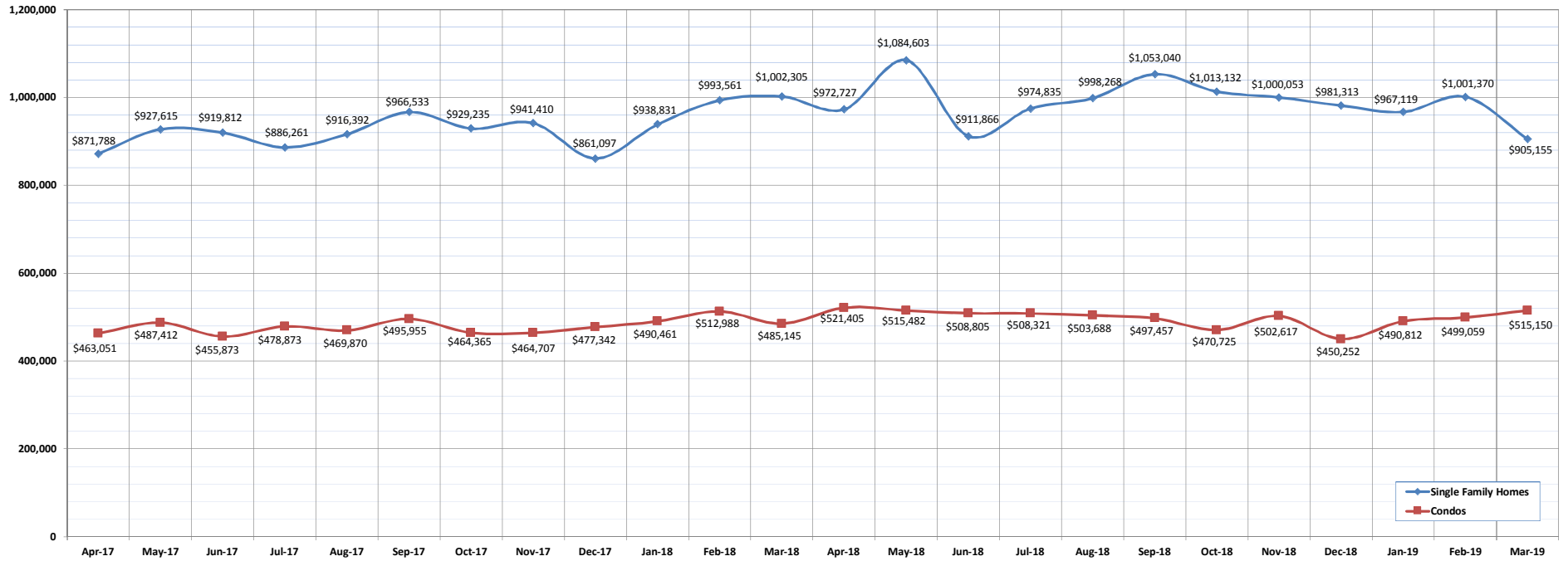


# Average Sales Price

March-19

OAHU, HAWAII

(The average sales price for all closed sales in a given month.)



	Apr-17	May-17	Jun-17	Jul-17	Aug-17	Sep-17	Oct-17	Nov-17	Dec-17	Jan-18	Feb-18	Mar-18	Apr-18	May-18	Jun-18	Jul-18	Aug-18	Sep-18	Oct-18	Nov-18	Dec-18	Jan-19	Feb-19	Mar-19
Average Sales Price: SFH	871,788	927,615	919,812	886,261	916,392	966,533	929,235	941,410	861,097	938,831	993,561	1,002,305	972,727	1,084,603	911,866	974,835	998,268	1,053,040	1,013,132	1,000,053	981,313	967,119	1,001,370	905,155
Average Sales Price: Condos	463,051	487,412	455,873	478,873	469,870	495,955	464,365	464,707	477,342	490,461	512,988	485,145	521,405	515,482	508,805	508,321	503,688	497,457	470,725	502,617	450,252	490,812	499,059	515,150

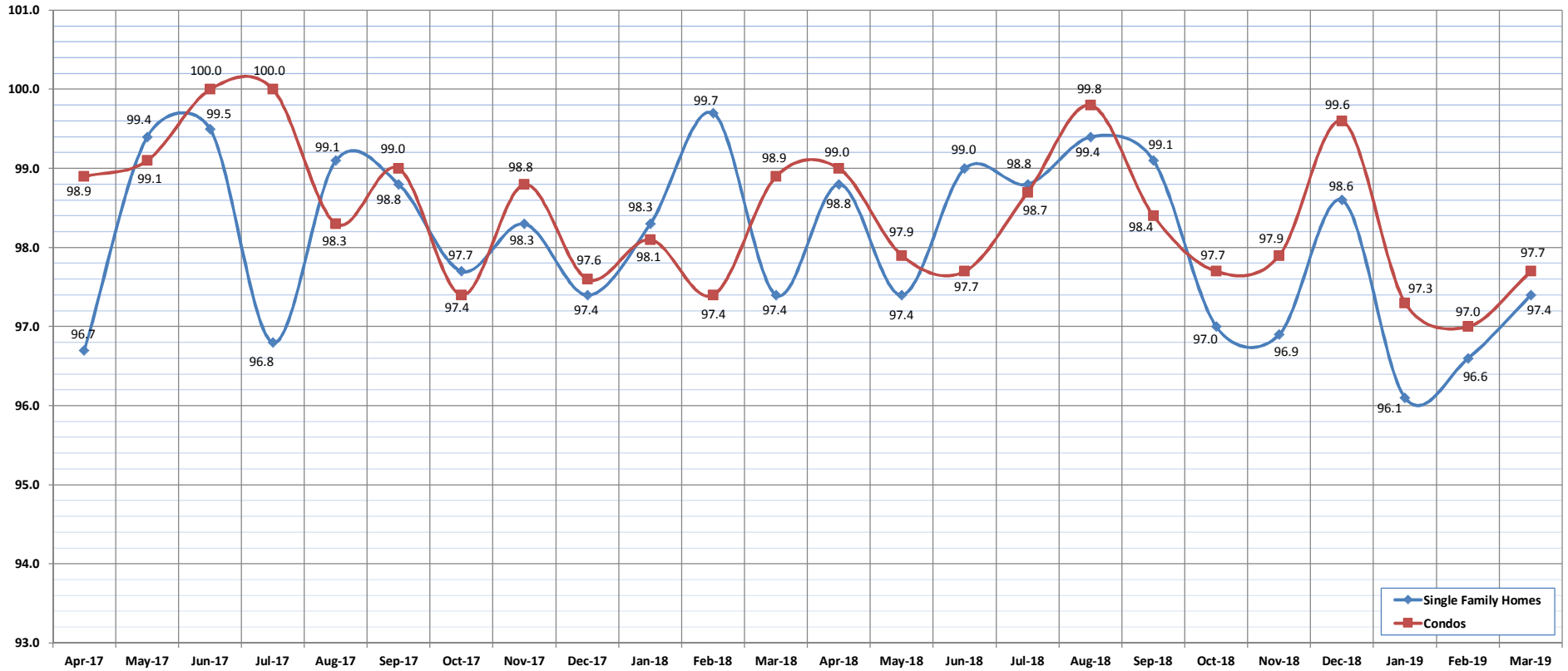
SOURCE: Honolulu Board of REALTORS®, compiled from MLS data.

# Percent of Original List Price Received

March-19

OAHU, HAWAII

(The percentage found when dividing a property's sales price by the original list price.)



	Apr-17	May-17	Jun-17	Jul-17	Aug-17	Sep-17	Oct-17	Nov-17	Dec-17	Jan-18	Feb-18	Mar-18	Apr-18	May-18	Jun-18	Jul-18	Aug-18	Sep-18	Oct-18	Nov-18	Dec-18	Jan-19	Feb-19	Mar-19
Percent of Original List Price: SFH	96.7	99.4	99.5	96.8	99.1	98.8	97.7	98.3	97.4	98.3	99.7	97.4	98.8	97.4	99.0	98.8	99.4	99.1	97.0	96.9	98.6	96.1	96.6	97.4
Percent of Original List Price: Condos	98.9	99.1	100.0	100.0	98.3	99.0	97.4	98.8	97.6	98.1	97.4	98.9	99.0	97.9	97.7	98.7	99.8	98.4	97.7	97.9	99.6	97.3	97.0	97.7

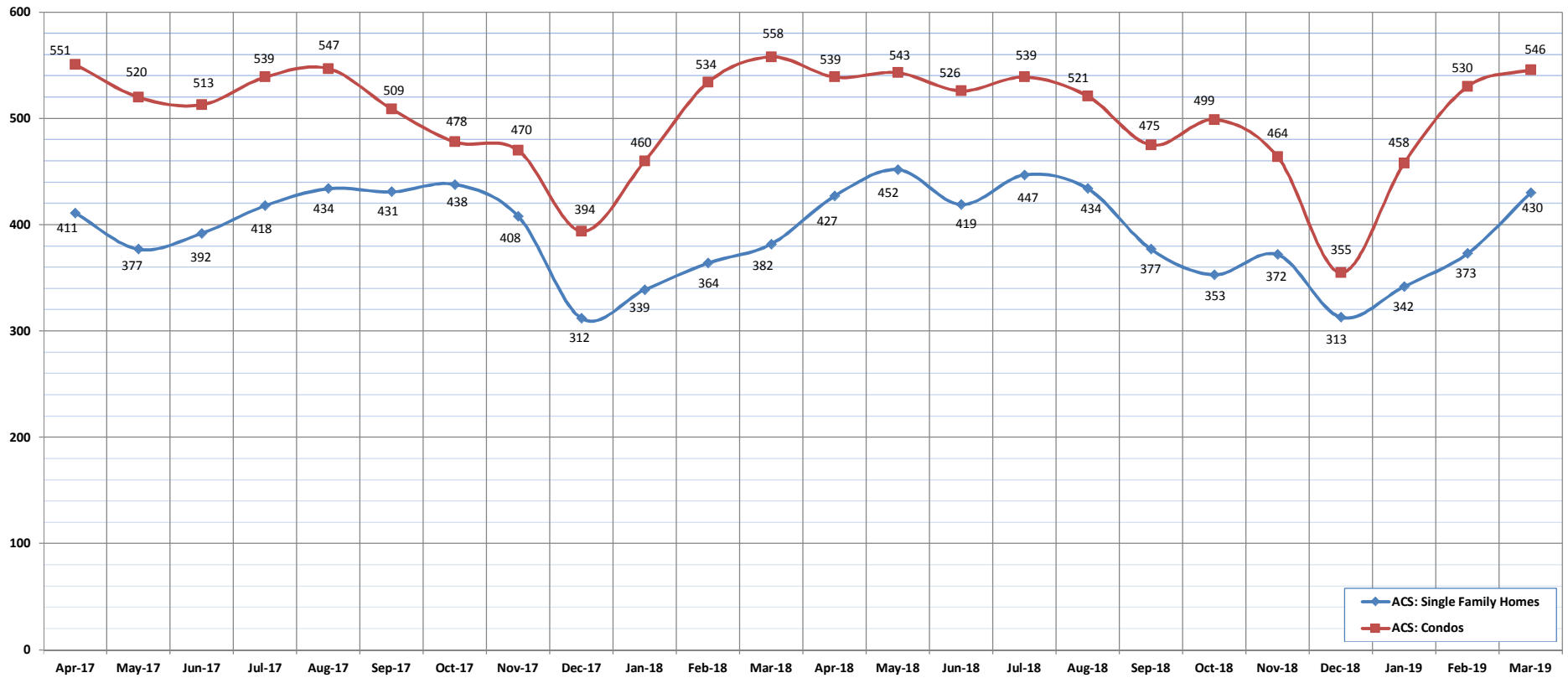
SOURCE: Honolulu Board of REALTORS®, compiled from MLS data.

# Active Continue to Show

March-19

OAHU, HAWAII

(A count of the properties that are in ACS during the current month.)



	Apr-17	May-17	Jun-17	Jul-17	Aug-17	Sep-17	Oct-17	Nov-17	Dec-17	Jan-18	Feb-18	Mar-18	Apr-18	May-18	Jun-18	Jul-18	Aug-18	Sep-18	Oct-18	Nov-18	Dec-18	Jan-19	Feb-19	Mar-19	
ACS: Single Family Homes	411	377	392	418	434	431	438	408	312	339	364	382	427	452	419	447	434	434	377	353	372	313	342	373	430
ACS: Condos	551	520	513	539	547	509	478	470	394	460	534	558	539	543	526	539	521	475	499	464	355	458	530	546	

SOURCE: Honolulu Board of REALTORS®, compiled from MLS data.

# Housing Supply Overview

March 2019

Single Family Homes	Pending Sales			Days on Market			Percentage of Original Price Received			Inventory of Homes for Sale			Months Supply of Inventory		
	Mar-19	Mar-18	%	Mar-19	Mar-18	%	Mar-19	Mar-18	%	Mar-19	Mar-18	%	Mar-19	Mar-18	%
\$350,000 and Below	59	79	-25.3%	42	36	15.5%	94.5%	96.5%	-2.1%	26	14	85.7%	4.8	1.6	197.7%
\$350,001 - \$475,000	142	198	-28.3%	23	27	-13.9%	98.0%	98.5%	-0.5%	29	39	-25.6%	2.0	2.3	-15.0%
\$475,001 - \$550,000	210	266	-21.1%	29	15	94.4%	97.0%	99.1%	-2.1%	58	55	5.5%	3.0	2.3	28.7%
\$550,001 - \$650,000	496	658	-24.6%	25	12	108.3%	98.6%	99.6%	-1.0%	127	111	14.4%	2.8	1.9	45.4%
\$650,001 - \$800,000	1015	1126	-9.9%	22	16	37.0%	97.6%	98.8%	-1.2%	322	199	61.8%	3.5	2.2	60.5%
\$800,001 - \$1.1M	1026	996	3.0%	20	15	31.1%	98.0%	99.2%	-1.2%	392	229	71.2%	4.6	2.9	60.1%
\$1.1M - \$1.9M	601	600	0.2%	27	31	-14.2%	95.4%	95.9%	-0.5%	315	247	27.5%	6.3	5.3	18.3%
\$1.9M and Above	186	185	0.5%	28	63	-55.0%	92.5%	93.2%	-0.7%	226	225	0.4%	14.0	14.6	-3.8%
<b>All Single Family Homes</b>	<b>3735</b>	<b>4108</b>	<b>-9.1%</b>	<b>21</b>	<b>17</b>	<b>25.0%</b>	<b>97.9%</b>	<b>98.3%</b>	<b>-0.4%</b>	<b>1495</b>	<b>1119</b>	<b>33.6%</b>	<b>4.6</b>	<b>3.3</b>	<b>38.2%</b>

Condos	Pending Sales			Days on Market			Percentage of Original Price Received			Inventory of Homes for Sale			Months Supply of Inventory		
	Mar-19	Mar-18	%	Mar-19	Mar-18	%	Mar-19	Mar-18	%	Mar-19	Mar-18	%	Mar-19	Mar-18	%
\$150,000 and below	265	332	-20.2%	38	43	-10.7%	88.9%	93.5%	-4.9%	94	156	-39.7%	3.9	5.5	-28.2%
\$150,001 - \$200,000	262	314	-16.6%	29	28	3.6%	96.2%	96.5%	-0.3%	109	94	16.0%	4.7	3.4	38.9%
\$200,001 - \$250,000	389	438	-11.2%	23	21	11.5%	96.6%	96.6%	0.0%	133	116	14.7%	4.0	3.2	23.9%
\$250,001 - \$300,000	439	486	-9.7%	23	21	8.7%	97.4%	97.7%	-0.3%	155	132	17.4%	4.2	3.1	34.4%
\$300,001 - \$375,000	976	1081	-9.7%	17	13	28.8%	98.3%	98.9%	-0.6%	242	216	12.0%	2.9	2.4	20.6%
\$375,001 - \$475,000	1181	1219	-3.1%	19	14	36.3%	98.3%	98.4%	-0.1%	369	287	28.6%	3.6	2.8	30.3%
\$475,001 - \$700,000	1496	1613	-7.3%	23	15	50.6%	98.0%	98.8%	-0.8%	577	401	43.9%	4.4	3.3	32.6%
\$700,001 and above	810	727	11.4%	31	40	-21.7%	96.7%	96.8%	-0.1%	670	503	33.2%	10.1	9.1	11.0%
<b>All Condos</b>	<b>5818</b>	<b>6210</b>	<b>-6.3%</b>	<b>21</b>	<b>18</b>	<b>19.0%</b>	<b>98.1%</b>	<b>98.6%</b>	<b>-0.5%</b>	<b>2349</b>	<b>1905</b>	<b>23.3%</b>	<b>4.7</b>	<b>3.8</b>	<b>23.5%</b>

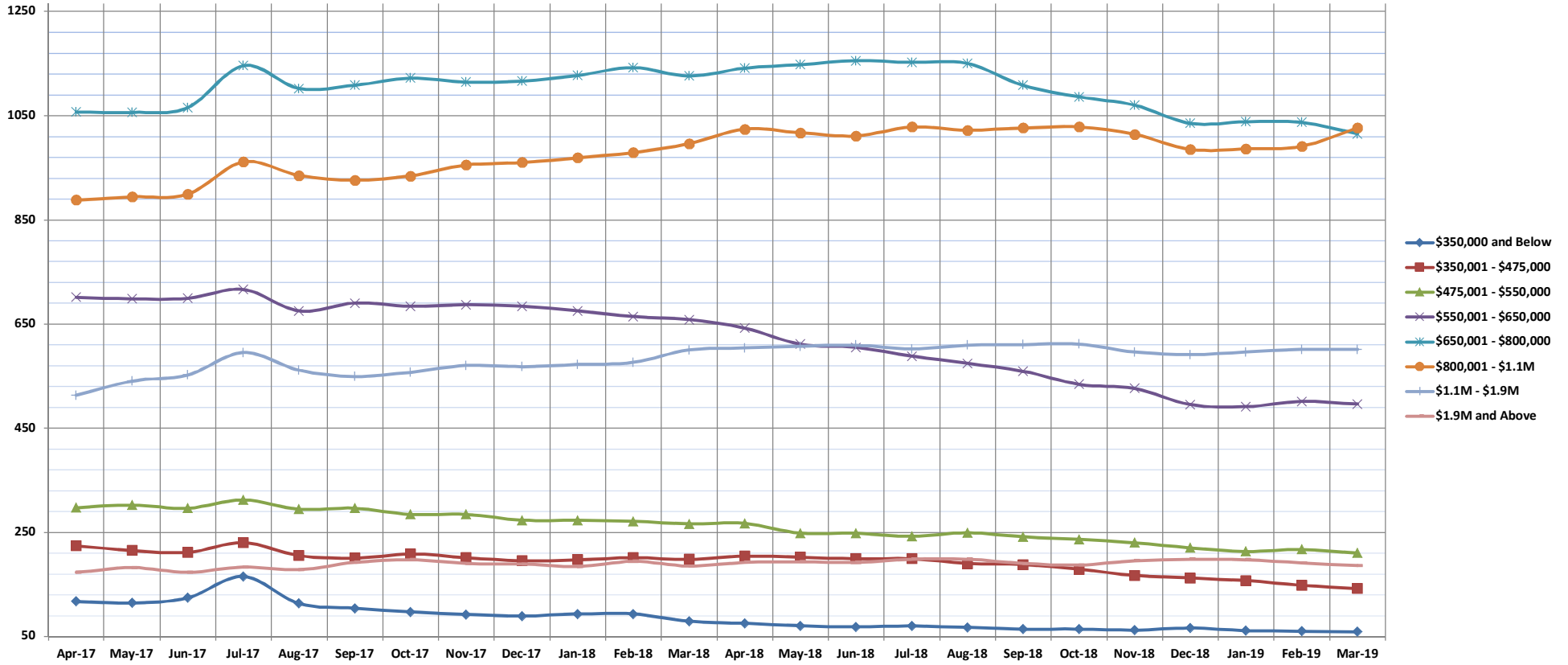
SOURCE: Honolulu Board of REALTORS®, compiled from MLS data.

# Pending Sales

Mar-19

Single Family Homes: Monthly, by Price Range

(A count of properties that have offers accepted on them in a given month. Based on a 12 month rolling total.)



	Apr-17	May-17	Jun-17	Jul-17	Aug-17	Sep-17	Oct-17	Nov-17	Dec-17	Jan-18	Feb-18	Mar-18	Apr-18	May-18	Jun-18	Jul-18	Aug-18	Sep-18	Oct-18	Nov-18	Dec-18	Jan-19	Feb-19	Mar-19
\$350,000 and Below	117	114	124	165	113	104	97	92	89	93	93	79	75	70	68	70	67	64	64	62	66	61	60	59
\$350,001 - \$475,000	224	215	211	230	205	200	208	201	195	197	201	198	204	202	199	199	190	188	179	167	162	157	148	142
\$475,001 - \$550,000	297	302	296	312	294	296	284	284	273	273	271	266	267	248	248	242	249	241	236	230	220	213	217	210
\$550,001 - \$650,000	701	698	699	716	675	690	684	687	684	675	664	658	642	611	605	588	574	559	534	526	495	491	501	496
\$650,001 - \$800,000	1057	1056	1065	1146	1102	1108	1122	1114	1116	1127	1142	1126	1141	1148	1155	1152	1150	1108	1086	1070	1035	1038	1037	1015
\$800,001 - \$1.1M	888	894	899	961	935	926	934	955	960	969	979	996	1024	1017	1011	1028	1022	1026	1028	1014	985	986	991	1026
\$1.1M - \$1.9M	513	540	552	595	561	549	557	570	568	572	576	600	604	607	609	602	609	610	611	596	591	596	601	601
\$1.9M and Above	173	182	173	183	178	192	197	190	189	184	194	185	192	193	192	198	198	190	187	195	198	197	191	186
All Single Family Homes	3970	4001	4019	4308	4063	4065	4083	4093	4074	4090	4120	4108	4149	4096	4087	4079	4059	3986	3925	3860	3752	3739	3746	3735

SOURCE: Honolulu Board of REALTORS®, compiled from MLS data.

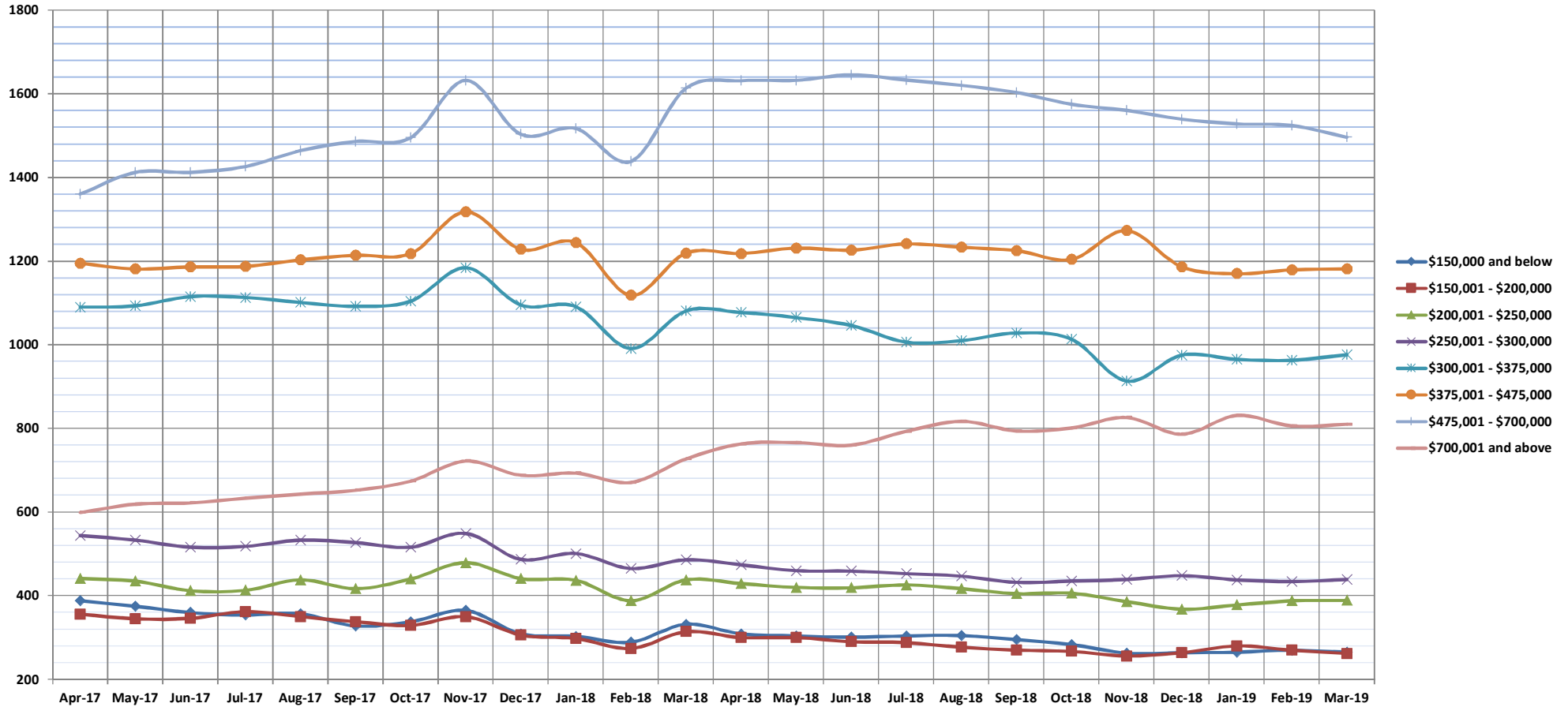


# Pending Sales

Mar-19

Condos: Monthly, by Price Range

(A count of properties that have offers accepted on them in a given month. Based on a 12 month rolling total.)



	Apr-17	May-17	Jun-17	Jul-17	Aug-17	Sep-17	Oct-17	Nov-17	Dec-17	Jan-18	Feb-18	Mar-18	Apr-18	May-18	Jun-18	Jul-18	Aug-18	Sep-18	Oct-18	Nov-18	Dec-18	Jan-19	Feb-19	Mar-19
<b>\$150,000 and below</b>	388	375	360	354	357	328	338	365	309	303	289	332	309	304	301	304	305	295	283	263	264	265	270	265
<b>\$150,001 - \$200,000</b>	356	345	346	362	350	338	329	350	306	298	274	314	300	300	290	288	277	270	267	256	264	280	270	262
<b>\$200,001 - \$250,000</b>	441	435	412	413	438	417	440	479	441	437	388	438	429	420	419	426	417	405	406	386	368	378	388	389
<b>\$250,001 - \$300,000</b>	544	533	516	518	533	527	516	549	487	501	465	486	474	460	459	453	447	432	435	439	448	438	434	439
<b>\$300,001 - \$375,000</b>	1090	1093	1115	1113	1101	1092	1104	1184	1095	1091	991	1081	1077	1065	1046	1006	1010	1028	1013	913	975	965	963	976
<b>\$375,001 - \$475,000</b>	1195	1181	1186	1187	1203	1214	1218	1318	1228	1244	1118	1219	1218	1231	1226	1241	1233	1225	1204	1273	1186	1170	1179	1181
<b>\$475,001 - \$700,000</b>	1360	1412	1412	1426	1464	1486	1495	1632	1503	1517	1438	1613	1631	1632	1645	1633	1620	1603	1575	1560	1539	1528	1524	1496
<b>\$700,001 and above</b>	599	619	622	633	643	652	674	722	688	693	671	727	763	766	760	793	817	794	801	826	786	831	806	810
<b>All Condos</b>	5973	5993	5969	6006	6089	6054	6114	6599	6057	6084	5634	6210	6201	6178	6146	6144	6126	6052	5984	5916	5830	5855	5834	5818

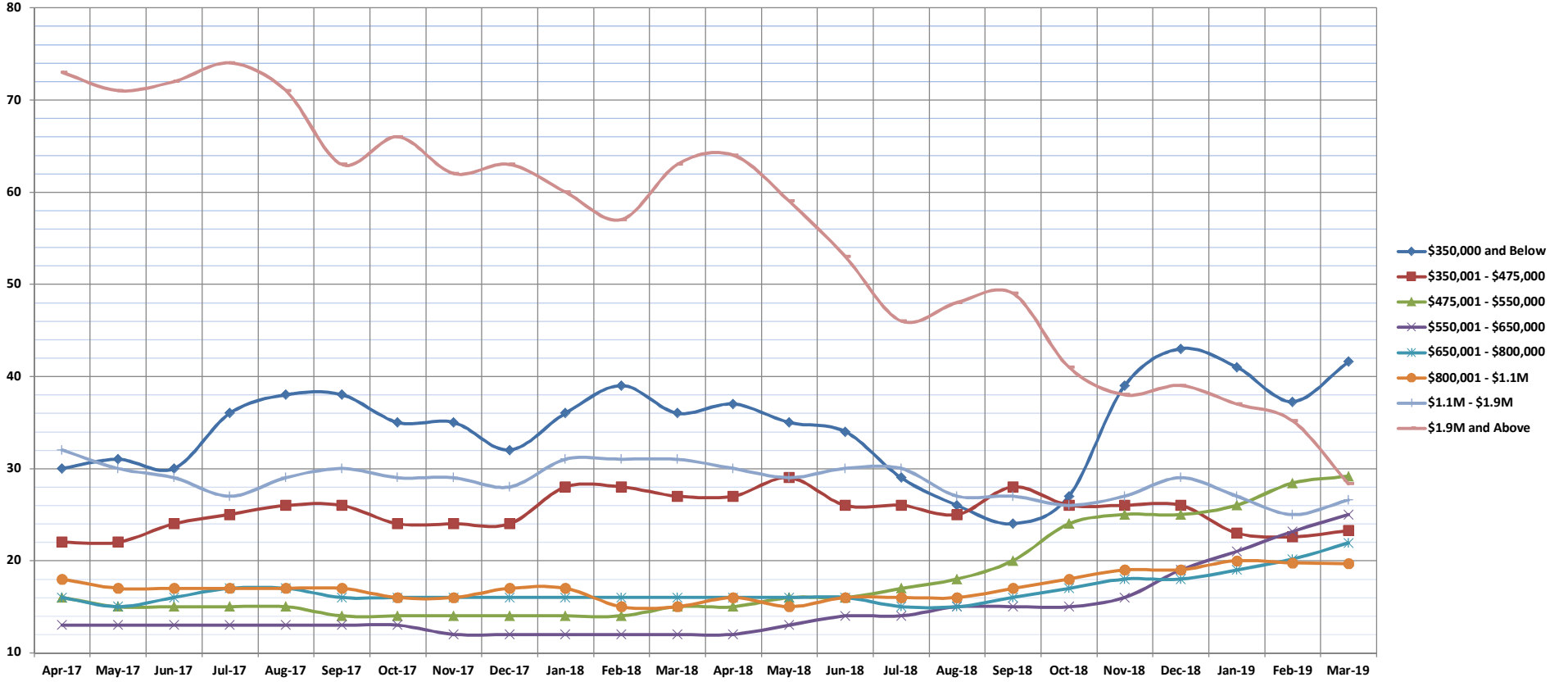
SOURCE: Honolulu Board of REALTORS®, compiled from MLS data.

# Days on Market Until Sale

Mar-19

Single Family Homes: Monthly, by Price Range

(The median number of days between when a property is first listed and when an offer is accepted. Based on a 12 month rolling median.)



	Apr-17	May-17	Jun-17	Jul-17	Aug-17	Sep-17	Oct-17	Nov-17	Dec-17	Jan-18	Feb-18	Mar-18	Apr-18	May-18	Jun-18	Jul-18	Aug-18	Sep-18	Oct-18	Nov-18	Dec-18	Jan-19	Feb-19	Mar-19	
<b>\$350,000 and Below</b>	30	31	30	36	38	38	35	35	32	36	39	36	37	35	34	29	26	26	24	27	39	43	41	37	42
<b>\$350,001 - \$475,000</b>	22	22	24	25	26	26	24	24	24	28	28	27	27	29	26	26	25	28	26	26	26	26	23	23	23
<b>\$475,001 - \$550,000</b>	16	15	15	15	15	14	14	14	14	14	14	15	15	16	16	17	18	20	24	25	25	26	28	29	
<b>\$550,001 - \$650,000</b>	13	13	13	13	13	13	12	12	12	12	12	12	12	13	14	14	15	15	15	16	19	21	23	25	
<b>\$650,001 - \$800,000</b>	16	15	16	17	17	16	16	16	16	16	16	16	16	16	16	15	15	16	17	18	18	19	20	22	
<b>\$800,001 - \$1.1M</b>	18	17	17	17	17	17	16	16	17	17	15	15	16	15	16	16	16	16	17	18	19	19	20	20	
<b>\$1.1M - \$1.9M</b>	32	30	29	27	29	30	29	28	31	31	31	30	29	30	30	27	27	26	26	27	29	27	25	27	
<b>\$1.9M and Above</b>	73	71	72	74	71	63	66	62	63	60	57	63	64	59	53	46	48	49	41	38	39	37	35	28	
<b>All Single Family Homes</b>	18	18	17	18	18	18	17	17	17	17	17	17	17	17	17	16	16	16	18	19	19	20	20	21	

SOURCE: Honolulu Board of REALTORS®, compiled from MLS data.



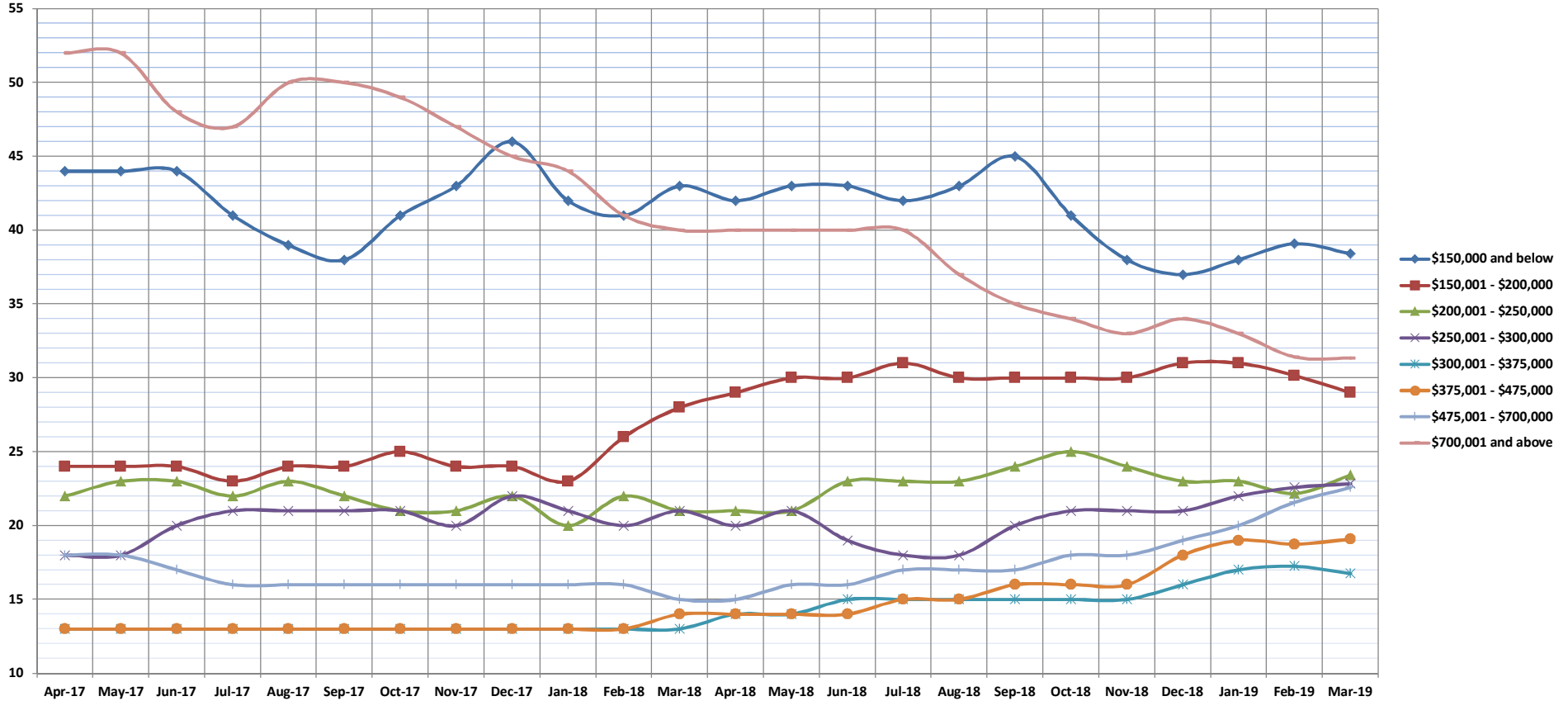


# Days on Market Until Sale

Mar-19

Condos: Monthly, by Price Range

(The median number of days between when a property is first listed and when an offer is accepted. Based on a 12 month rolling median.)



	Apr-17	May-17	Jun-17	Jul-17	Aug-17	Sep-17	Oct-17	Nov-17	Dec-17	Jan-18	Feb-18	Mar-18	Apr-18	May-18	Jun-18	Jul-18	Aug-18	Sep-18	Oct-18	Nov-18	Dec-18	Jan-19	Feb-19	Mar-19
\$150,000 and below	44	44	44	41	39	38	41	43	46	42	41	43	42	43	43	42	43	45	41	38	37	38	39	38
\$150,001 - \$200,000	24	24	24	23	24	24	25	24	24	23	26	28	29	30	30	31	30	30	30	30	31	31	30	29
\$200,001 - \$250,000	22	23	23	22	23	22	21	21	22	20	22	21	21	21	23	23	23	24	25	24	23	23	22	23
\$250,001 - \$300,000	18	18	20	21	21	21	21	20	22	21	20	21	20	21	19	18	18	20	21	21	21	22	23	23
\$300,001 - \$375,000	13	13	13	13	13	13	13	13	13	13	13	13	14	14	15	15	15	15	15	15	16	17	17	17
\$375,001 - \$475,000	13	13	13	13	13	13	13	13	13	13	13	14	14	14	14	15	15	16	17	18	18	19	19	19
\$475,001 - \$700,000	18	18	17	16	16	16	16	16	16	16	16	15	15	15	16	17	17	17	18	18	19	20	22	23
\$700,001 and above	52	52	48	47	50	50	49	47	45	44	41	40	40	40	40	40	37	35	34	33	34	33	31	31
All Condos	19	19	18	18	18	18	18	18	18	17	17	18	18	18	19	19	19	19	19	20	20	21	21	21

SOURCE: Honolulu Board of REALTORS®, compiled from MLS data.

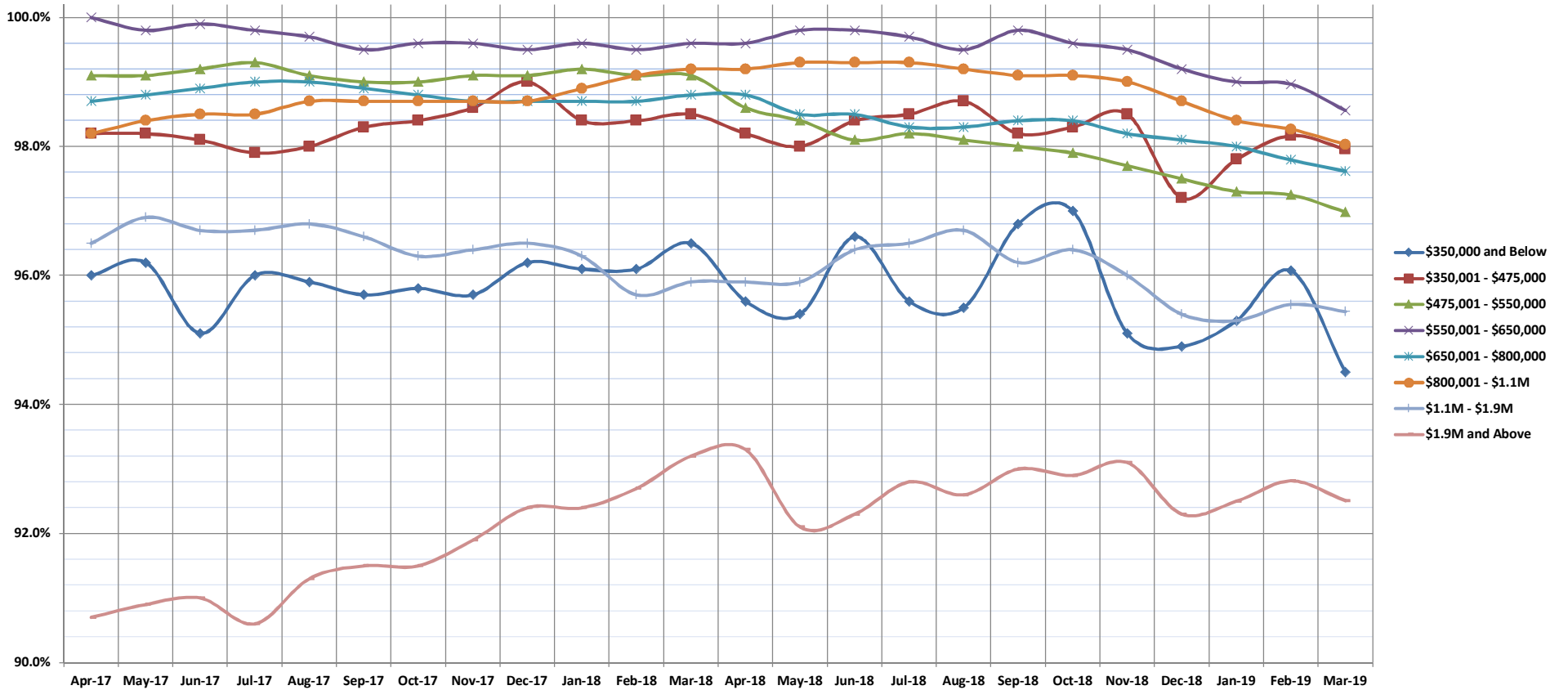


# Percentage of Original Price Received

Mar-19

Single Family Homes: Monthly, by Price Range

(The average percentage found when dividing a property's sales price by the original list price. Based on a rolling 12 month average.)



	Apr-17	May-17	Jun-17	Jul-17	Aug-17	Sep-17	Oct-17	Nov-17	Dec-17	Jan-18	Feb-18	Mar-18	Apr-18	May-18	Jun-18	Jul-18	Aug-18	Sep-18	Oct-18	Nov-18	Dec-18	Jan-19	Feb-19	Mar-19
<b>\$350,000 and Below</b>	96.0%	96.2%	95.1%	96.0%	95.9%	95.7%	95.8%	95.7%	96.2%	96.1%	96.1%	96.5%	95.6%	95.4%	96.6%	95.6%	95.5%	96.8%	97.0%	95.1%	94.9%	95.3%	96.1%	94.5%
<b>\$350,001 - \$475,000</b>	98.2%	98.2%	98.1%	97.9%	98.0%	98.3%	98.4%	98.6%	99.0%	98.4%	98.4%	98.5%	98.2%	98.0%	98.4%	98.5%	98.7%	98.2%	98.3%	98.5%	97.2%	97.8%	98.2%	98.0%
<b>\$475,001 - \$550,000</b>	99.1%	99.1%	99.2%	99.3%	99.1%	99.0%	99.0%	99.1%	99.1%	99.2%	99.1%	99.1%	98.6%	98.4%	98.1%	98.2%	98.1%	98.0%	97.9%	97.7%	97.5%	97.3%	97.3%	97.0%
<b>\$550,001 - \$650,000</b>	100.0%	99.8%	99.9%	99.8%	99.7%	99.5%	99.6%	99.6%	99.5%	99.6%	99.5%	99.6%	99.6%	99.8%	99.8%	99.7%	99.5%	99.8%	99.6%	99.5%	99.2%	99.0%	99.0%	98.6%
<b>\$650,001 - \$800,000</b>	98.7%	98.8%	98.9%	99.0%	99.0%	98.9%	98.8%	98.7%	98.7%	98.7%	98.7%	98.8%	98.8%	98.5%	98.5%	98.3%	98.3%	98.4%	98.4%	98.2%	98.1%	98.0%	97.8%	97.6%
<b>\$800,001 - \$1.1M</b>	98.2%	98.4%	98.5%	98.5%	98.7%	98.7%	98.7%	98.7%	98.7%	98.9%	99.1%	99.2%	99.2%	99.3%	99.3%	99.3%	99.2%	99.1%	99.1%	99.0%	98.7%	98.4%	98.3%	98.0%
<b>\$1.1M - \$1.9M</b>	96.5%	96.9%	96.7%	96.7%	96.8%	96.6%	96.3%	96.4%	96.5%	96.3%	95.7%	95.9%	95.9%	95.9%	96.4%	96.5%	96.7%	96.2%	96.4%	96.0%	95.4%	95.3%	95.6%	95.4%
<b>\$1.9M and Above</b>	90.7%	90.9%	91.0%	90.6%	91.3%	91.5%	91.5%	91.9%	92.4%	92.4%	92.7%	93.2%	93.3%	92.1%	92.3%	92.8%	92.6%	93.0%	92.9%	93.1%	92.3%	92.5%	92.8%	92.5%
<b>All Single Family Homes</b>	98.7%	98.8%	98.9%	98.7%	98.6%	98.5%	98.4%	98.3%	98.2%	98.2%	98.3%	98.3%	98.4%	98.3%	98.2%	98.4%	98.4%	98.4%	98.4%	98.3%	98.4%	98.2%	97.9%	97.9%

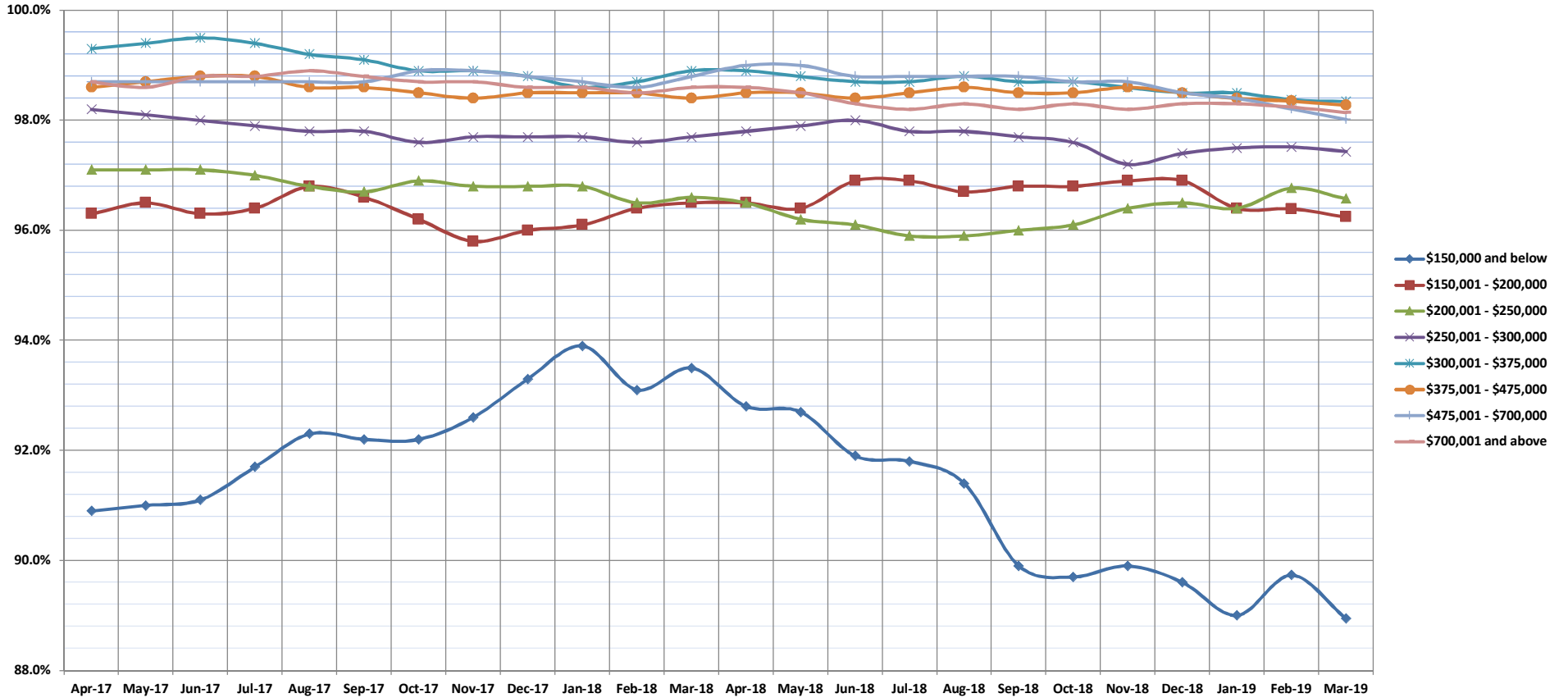
SOURCE: Honolulu Board of REALTORS®, compiled from MLS data.

# Percentage of Original Price Received

Mar-19

Condos: Monthly, by Price Range

(The average percentage found when dividing a property's sales price by the original list price. Based on a rolling 12 month average.)



	Apr-17	May-17	Jun-17	Jul-17	Aug-17	Sep-17	Oct-17	Nov-17	Dec-17	Jan-18	Feb-18	Mar-18	Apr-18	May-18	Jun-18	Jul-18	Aug-18	Sep-18	Oct-18	Nov-18	Dec-18	Jan-19	Feb-19	Mar-19	
<b>\$150,000 and below</b>	90.9%	91.0%	91.1%	91.7%	92.3%	92.2%	92.2%	92.6%	93.3%	93.9%	93.1%	93.5%	92.8%	92.7%	91.9%	91.8%	91.4%	89.9%	89.7%	89.9%	89.6%	89.0%	89.7%	88.9%	
<b>\$150,001 - \$200,000</b>	96.3%	96.5%	96.3%	96.4%	96.8%	96.6%	96.2%	95.8%	96.0%	96.1%	96.4%	96.5%	96.5%	96.4%	96.9%	96.9%	96.7%	96.8%	96.8%	96.8%	96.9%	96.4%	96.4%	96.2%	
<b>\$200,001 - \$250,000</b>	97.1%	97.1%	97.1%	97.0%	96.8%	96.7%	96.9%	96.8%	96.8%	96.8%	96.5%	96.6%	96.5%	96.2%	96.1%	95.9%	95.9%	96.0%	96.1%	96.4%	96.5%	96.4%	96.8%	96.6%	
<b>\$250,001 - \$300,000</b>	98.2%	98.1%	98.0%	97.9%	97.8%	97.8%	97.6%	97.7%	97.7%	97.7%	97.6%	97.7%	97.8%	97.9%	98.0%	97.8%	97.8%	97.8%	97.7%	97.6%	97.2%	97.4%	97.5%	97.4%	
<b>\$300,001 - \$375,000</b>	99.3%	99.4%	99.5%	99.4%	99.2%	99.1%	98.9%	98.9%	98.8%	98.6%	98.7%	98.9%	98.9%	98.8%	98.7%	98.7%	98.8%	98.7%	98.8%	98.7%	98.7%	98.6%	98.5%	98.4%	98.3%
<b>\$375,001 - \$475,000</b>	98.6%	98.7%	98.8%	98.8%	98.6%	98.6%	98.5%	98.4%	98.5%	98.5%	98.5%	98.4%	98.5%	98.5%	98.4%	98.5%	98.6%	98.5%	98.5%	98.6%	98.5%	98.5%	98.4%	98.3%	
<b>\$475,001 - \$700,000</b>	98.7%	98.7%	98.7%	98.7%	98.7%	98.7%	98.9%	98.9%	98.8%	98.7%	98.8%	98.8%	98.8%	99.0%	98.8%	98.8%	98.8%	98.8%	98.8%	98.8%	98.7%	98.7%	98.5%	98.4%	98.0%
<b>\$700,001 and above</b>	95.7%	95.4%	95.7%	95.8%	95.8%	95.7%	95.8%	96.1%	96.5%	96.6%	96.7%	96.8%	96.4%	96.5%	96.5%	96.8%	96.6%	96.5%	96.5%	96.5%	96.4%	96.6%	96.6%	96.7%	
<b>All Condos</b>	98.7%	98.6%	98.8%	98.8%	98.9%	98.8%	98.7%	98.7%	98.6%	98.6%	98.5%	98.6%	98.6%	98.5%	98.3%	98.2%	98.3%	98.2%	98.3%	98.2%	98.3%	98.2%	98.3%	98.1%	

SOURCE: Honolulu Board of REALTORS®, compiled from MLS data.

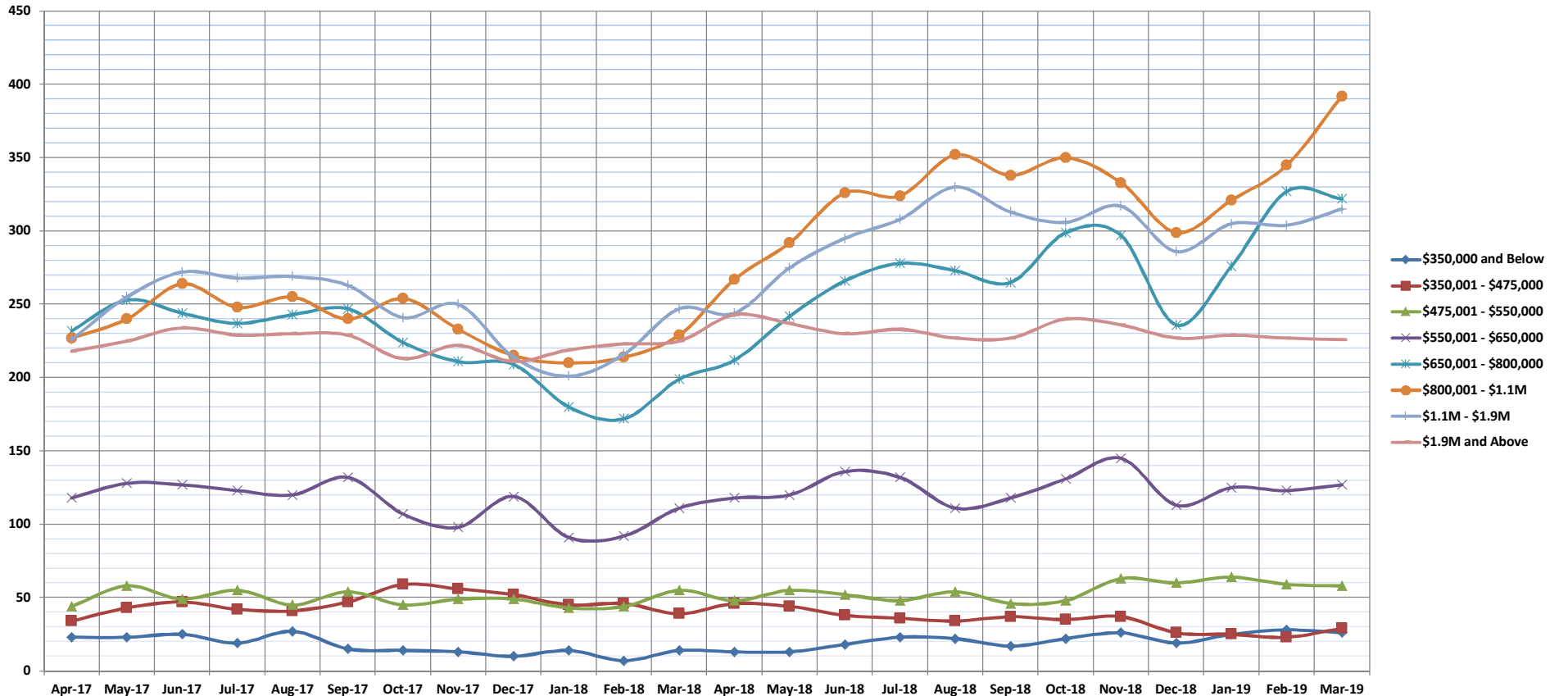


# Inventory of Homes for Sale

Mar-19

Single Family Homes: Monthly, by Price Range

(The number of properties available for sale in active status at the end of a given month.)



	Apr-17	May-17	Jun-17	Jul-17	Aug-17	Sep-17	Oct-17	Nov-17	Dec-17	Jan-18	Feb-18	Mar-18	Apr-18	May-18	Jun-18	Jul-18	Aug-18	Sep-18	Oct-18	Nov-18	Dec-18	Jan-19	Feb-19	Mar-19
\$350,000 and Below	23	23	25	19	27	15	14	13	10	14	7	14	13	13	18	23	22	17	22	26	19	25	28	26
\$350,001 - \$475,000	34	43	47	42	41	47	59	56	52	45	46	39	46	44	38	36	34	37	35	37	26	25	23	29
\$475,001 - \$550,000	44	58	49	55	45	54	45	49	49	43	44	55	48	55	52	48	54	46	48	63	60	64	59	58
\$550,001 - \$650,000	118	128	127	123	120	132	107	98	119	91	92	111	118	120	136	132	111	118	131	145	113	125	123	127
\$650,001 - \$800,000	232	253	244	237	243	247	224	211	209	180	172	199	212	242	266	278	273	265	299	297	236	276	327	322
\$800,001 - \$1.1M	227	240	264	248	255	240	254	233	215	210	214	229	267	292	326	324	352	338	350	333	299	321	345	392
\$1.1M - \$1.9M	226	255	272	268	269	263	241	250	214	201	216	247	244	275	295	308	330	313	306	317	286	305	304	315
\$1.9M and Above	218	225	234	229	230	229	213	222	211	219	223	225	243	237	230	233	227	227	240	236	227	229	227	226
<b>All Single Family Homes</b>	<b>1112</b>	<b>1225</b>	<b>1262</b>	<b>1221</b>	<b>1230</b>	<b>1227</b>	<b>1157</b>	<b>1132</b>	<b>1079</b>	<b>1003</b>	<b>1014</b>	<b>1119</b>	<b>1191</b>	<b>1278</b>	<b>1361</b>	<b>1382</b>	<b>1403</b>	<b>1361</b>	<b>1431</b>	<b>1454</b>	<b>1266</b>	<b>1370</b>	<b>1436</b>	<b>1495</b>

SOURCE: Honolulu Board of REALTORS®, compiled from MLS data.

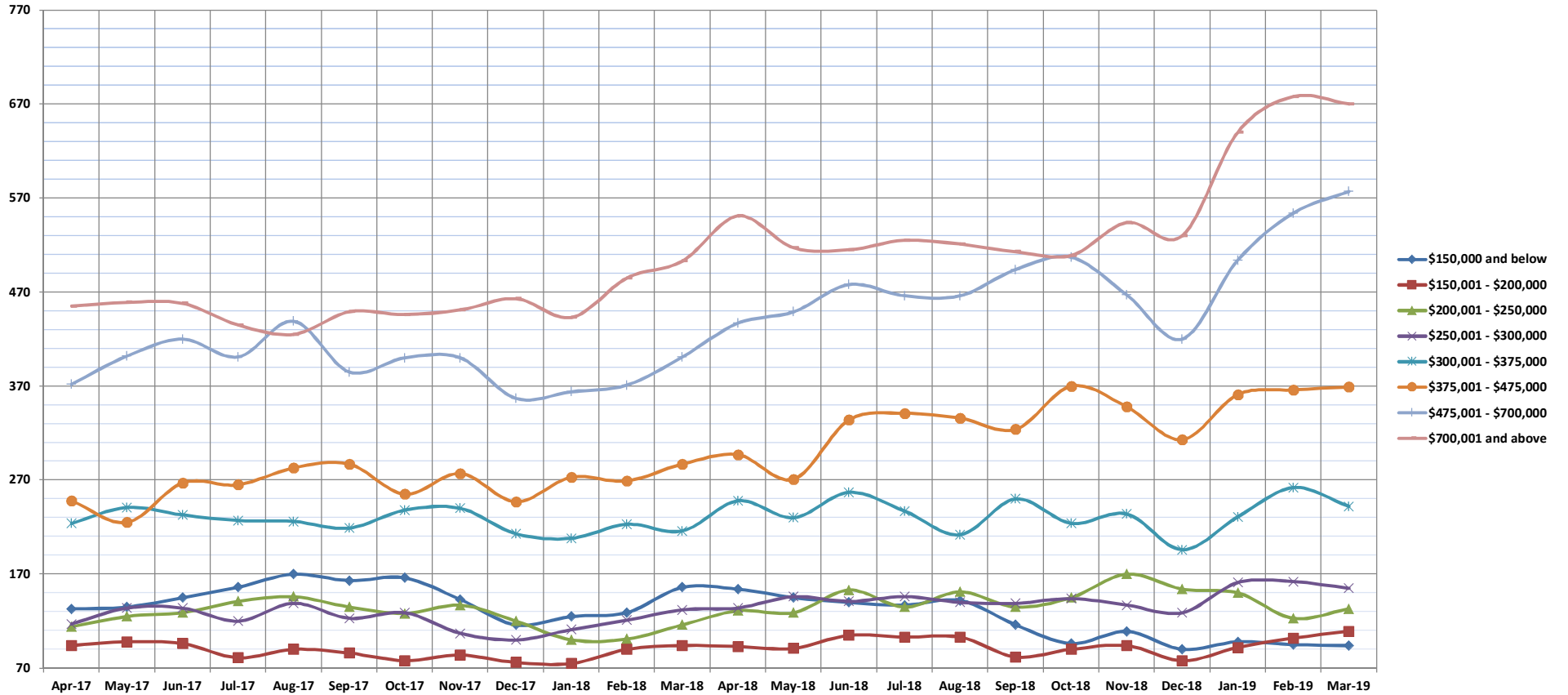


# Inventory of Homes for Sale

Mar-19

Condos: Monthly, by Price Range

(The number of properties available for sale in active status at the end of a given month.)



	Apr-17	May-17	Jun-17	Jul-17	Aug-17	Sep-17	Oct-17	Nov-17	Dec-17	Jan-18	Feb-18	Mar-18	Apr-18	May-18	Jun-18	Jul-18	Aug-18	Sep-18	Oct-18	Nov-18	Dec-18	Jan-19	Feb-19	Mar-19
\$150,000 and below	133	135	145	156	170	163	166	143	116	125	129	156	154	145	140	137	142	116	96	109	90	98	95	94
\$150,001 - \$200,000	94	98	96	81	90	86	78	84	76	75	90	94	93	91	105	103	103	82	90	94	78	92	102	109
\$200,001 - \$250,000	114	125	129	141	146	135	128	137	120	100	101	116	131	129	153	135	151	135	145	170	154	150	123	133
\$250,001 - \$300,000	117	134	134	120	139	123	129	107	100	111	121	132	134	146	141	146	140	139	144	137	129	161	162	155
\$300,001 - \$375,000	224	241	233	227	226	219	238	240	213	208	223	216	248	230	257	237	212	250	224	234	196	231	262	242
\$375,001 - \$475,000	248	225	267	265	283	287	255	277	247	273	269	287	297	271	334	341	336	324	370	348	313	361	366	369
\$475,001 - \$700,000	372	402	420	401	439	385	400	400	357	364	371	401	437	449	478	466	466	494	507	467	420	504	554	577
\$700,001 and above	455	459	458	435	445	449	446	451	463	443	485	503	551	517	515	525	521	513	509	544	530	640	678	670
<b>All Condos</b>	<b>1757</b>	<b>1849</b>	<b>1882</b>	<b>1826</b>	<b>1918</b>	<b>1847</b>	<b>1840</b>	<b>1839</b>	<b>1692</b>	<b>1699</b>	<b>1789</b>	<b>1905</b>	<b>2045</b>	<b>1978</b>	<b>2123</b>	<b>2090</b>	<b>2071</b>	<b>2053</b>	<b>2085</b>	<b>2103</b>	<b>1910</b>	<b>2237</b>	<b>2342</b>	<b>2349</b>

SOURCE: Honolulu Board of REALTORS®, compiled from MLS data.

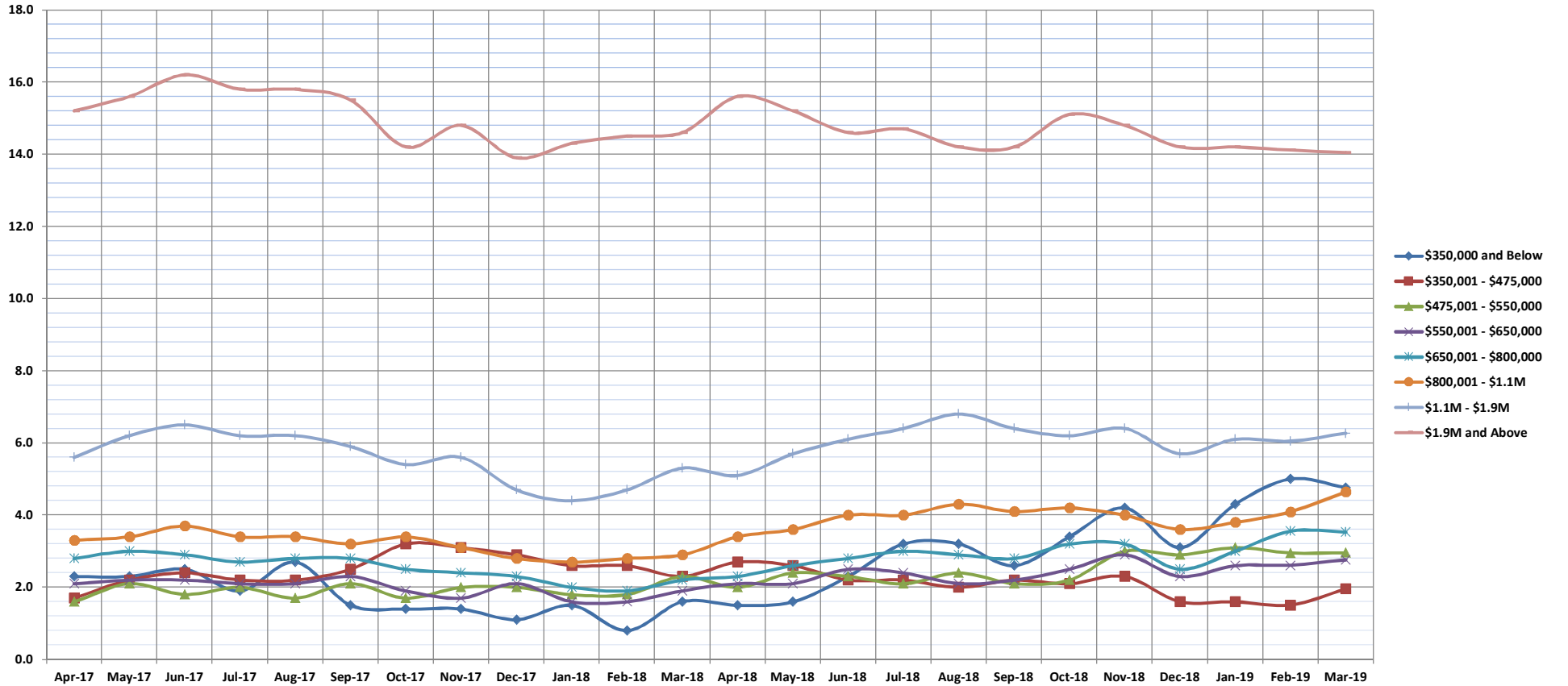


# Months Supply of Inventory

Mar-19

Single Family Homes: Monthly, by Price Range

(Compares the number of active listings available to the average monthly pending sales from the last 12 months.)



	Apr-17	May-17	Jun-17	Jul-17	Aug-17	Sep-17	Oct-17	Nov-17	Dec-17	Jan-18	Feb-18	Mar-18	Apr-18	May-18	Jun-18	Jul-18	Aug-18	Sep-18	Oct-18	Nov-18	Dec-18	Jan-19	Feb-19	Mar-19
\$350,000 and Below	2.3	2.3	2.5	1.9	2.7	1.5	1.4	1.4	1.1	1.5	0.8	1.6	1.5	1.6	2.3	3.2	3.2	2.6	3.4	4.2	3.1	4.3	5.0	4.8
\$350,001 - \$475,000	1.7	2.2	2.4	2.2	2.2	2.5	3.2	3.1	2.9	2.6	2.6	2.3	2.7	2.6	2.2	2.2	2.0	2.2	2.1	2.3	1.6	1.6	1.5	2.0
\$475,001 - \$550,000	1.6	2.1	1.8	2.0	1.7	2.1	1.7	2.0	2.0	1.8	1.8	2.3	2.0	2.4	2.3	2.1	2.4	2.1	2.2	3.0	2.9	3.1	3.0	3.0
\$550,001 - \$650,000	2.1	2.2	2.2	2.1	2.1	2.3	1.9	1.7	2.1	1.6	1.6	1.9	2.1	2.1	2.5	2.4	2.1	2.2	2.5	2.9	2.3	2.6	2.6	2.8
\$650,001 - \$800,000	2.8	3.0	2.9	2.7	2.8	2.8	2.5	2.4	2.3	2.0	1.9	2.2	2.3	2.6	2.8	3.0	2.9	2.8	3.2	3.2	2.5	3.0	3.6	3.5
\$800,001 - \$1.1M	3.3	3.4	3.7	3.4	3.4	3.2	3.4	3.1	2.8	2.7	2.8	2.9	3.4	3.6	4.0	4.0	4.3	4.1	4.2	4.0	3.6	4.1	4.6	4.6
\$1.1M - \$1.9M	5.6	6.2	6.5	6.2	6.2	5.9	5.4	5.6	4.7	4.4	4.7	5.3	5.1	5.7	6.1	6.4	6.8	6.4	6.2	6.4	5.7	6.1	6.0	6.3
\$1.9M and Above	15.2	15.6	16.2	15.8	15.8	15.5	14.2	14.8	13.9	14.3	14.5	14.6	15.6	15.2	14.6	14.7	14.2	14.2	15.1	14.8	14.2	14.1	14.1	14.0
All Single Family Homes	3.5	3.8	3.9	3.7	3.7	3.7	3.4	3.4	3.2	3.0	3.0	3.3	3.5	3.7	4.0	4.1	4.1	4.0	4.2	4.3	3.8	4.1	4.3	4.6

SOURCE: Honolulu Board of REALTORS®, compiled from MLS data.

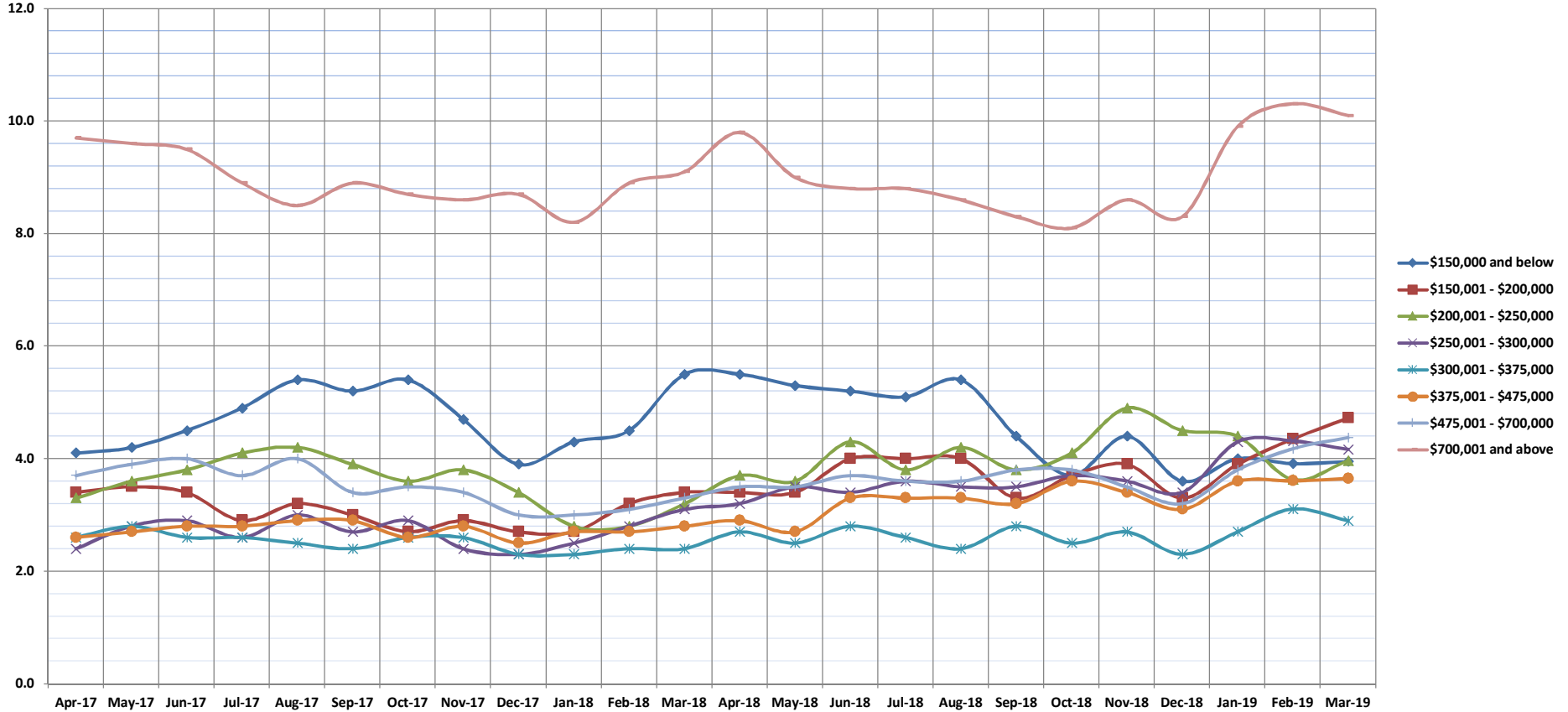


# Months Supply of Inventory

Mar-19

Condos: Monthly, by Price Range

(Compares the number of active listings available to the average monthly pending sales from the last 12 months.)



	Apr-17	May-17	Jun-17	Jul-17	Aug-17	Sep-17	Oct-17	Nov-17	Dec-17	Jan-18	Feb-18	Mar-18	Apr-18	May-18	Jun-18	Jul-18	Aug-18	Sep-18	Oct-18	Nov-18	Dec-18	Jan-19	Feb-19	Mar-19
\$150,000 and below	4.1	4.2	4.5	4.9	5.4	5.2	5.4	4.7	3.9	4.3	4.5	5.5	5.5	5.3	5.2	5.1	5.4	4.4	3.7	4.4	3.6	4.0	3.9	3.9
\$150,001 - \$200,000	3.4	3.5	3.4	2.9	3.2	3.0	2.7	2.9	2.7	2.7	3.2	3.4	3.4	3.4	4.0	4.0	4.0	3.3	3.7	3.9	3.3	3.9	4.4	4.7
\$200,001 - \$250,000	3.3	3.6	3.8	4.1	4.2	3.9	3.6	3.8	3.4	2.8	2.8	3.2	3.7	3.6	4.3	3.8	4.2	3.8	4.1	4.9	4.5	4.4	3.6	4.0
\$250,001 - \$300,000	2.4	2.8	2.9	2.6	3.0	2.7	2.9	2.4	2.3	2.5	2.8	3.1	3.2	3.5	3.4	3.6	3.5	3.5	3.7	3.6	3.4	4.3	4.3	4.2
\$300,001 - \$375,000	2.6	2.8	2.6	2.6	2.5	2.4	2.6	2.6	2.3	2.3	2.4	2.4	2.7	2.5	2.8	2.6	2.4	2.8	2.5	2.7	2.3	2.7	3.1	2.9
\$375,001 - \$475,000	2.6	2.7	2.8	2.8	2.9	2.9	2.6	2.8	2.5	2.7	2.7	2.8	2.9	2.7	3.3	3.3	3.3	3.2	3.6	3.4	3.1	3.6	3.6	3.6
\$475,001 - \$700,000	3.7	3.9	4.0	3.7	4.0	3.4	3.5	3.4	3.0	3.0	3.1	3.3	3.5	3.5	3.7	3.6	3.6	3.8	3.8	3.5	3.2	3.8	4.2	4.4
\$700,001 and above	9.7	9.6	9.5	8.9	8.5	8.9	8.7	8.6	8.7	8.2	8.9	9.1	9.8	9.0	8.8	8.8	8.6	8.3	8.1	8.6	8.3	9.9	10.3	10.1
All Condos	3.7	3.9	3.9	3.8	3.9	3.8	3.7	3.7	3.4	3.4	3.6	3.8	4.0	3.9	4.2	4.1	4.1	4.0	4.1	4.2	3.8	4.5	4.7	4.7

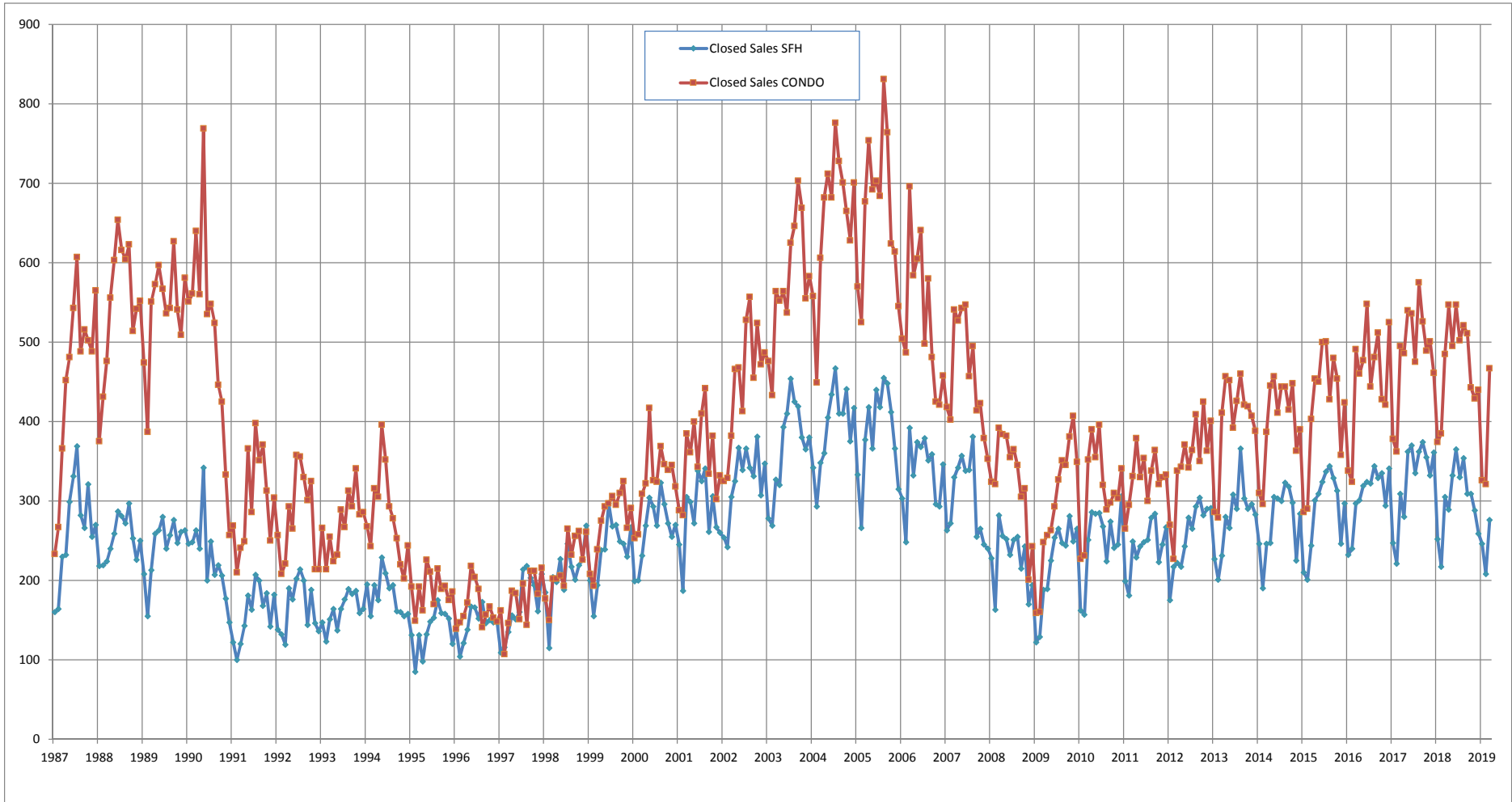
SOURCE: Honolulu Board of REALTORS®, compiled from MLS data.



# Closed Sales

## Single Family Homes and Condos

OAHU, HAWAII: Jan 1987 to the Present



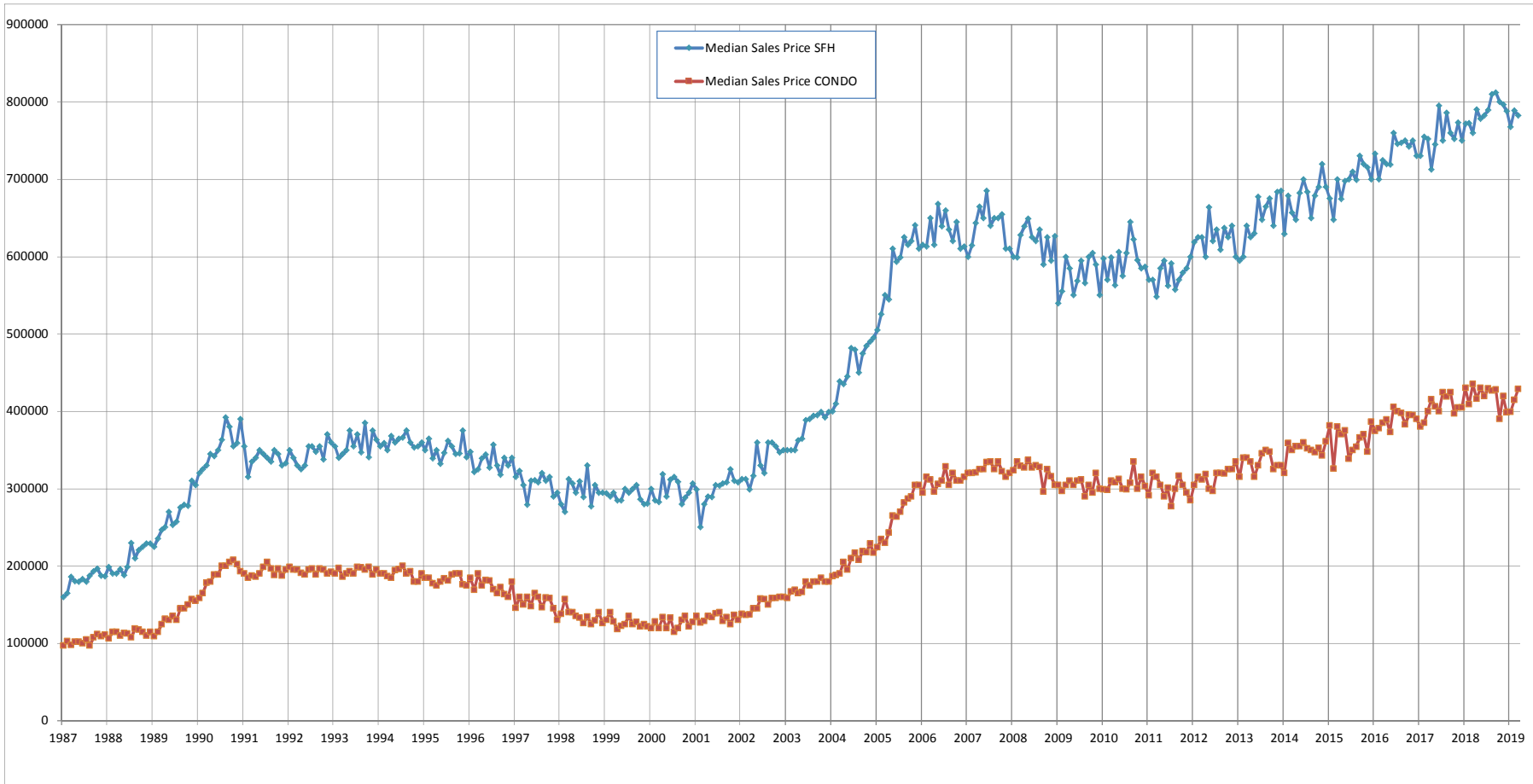
SOURCE: Honolulu Board of REALTORS® , compiled from MLS data.



# Median Sales Price

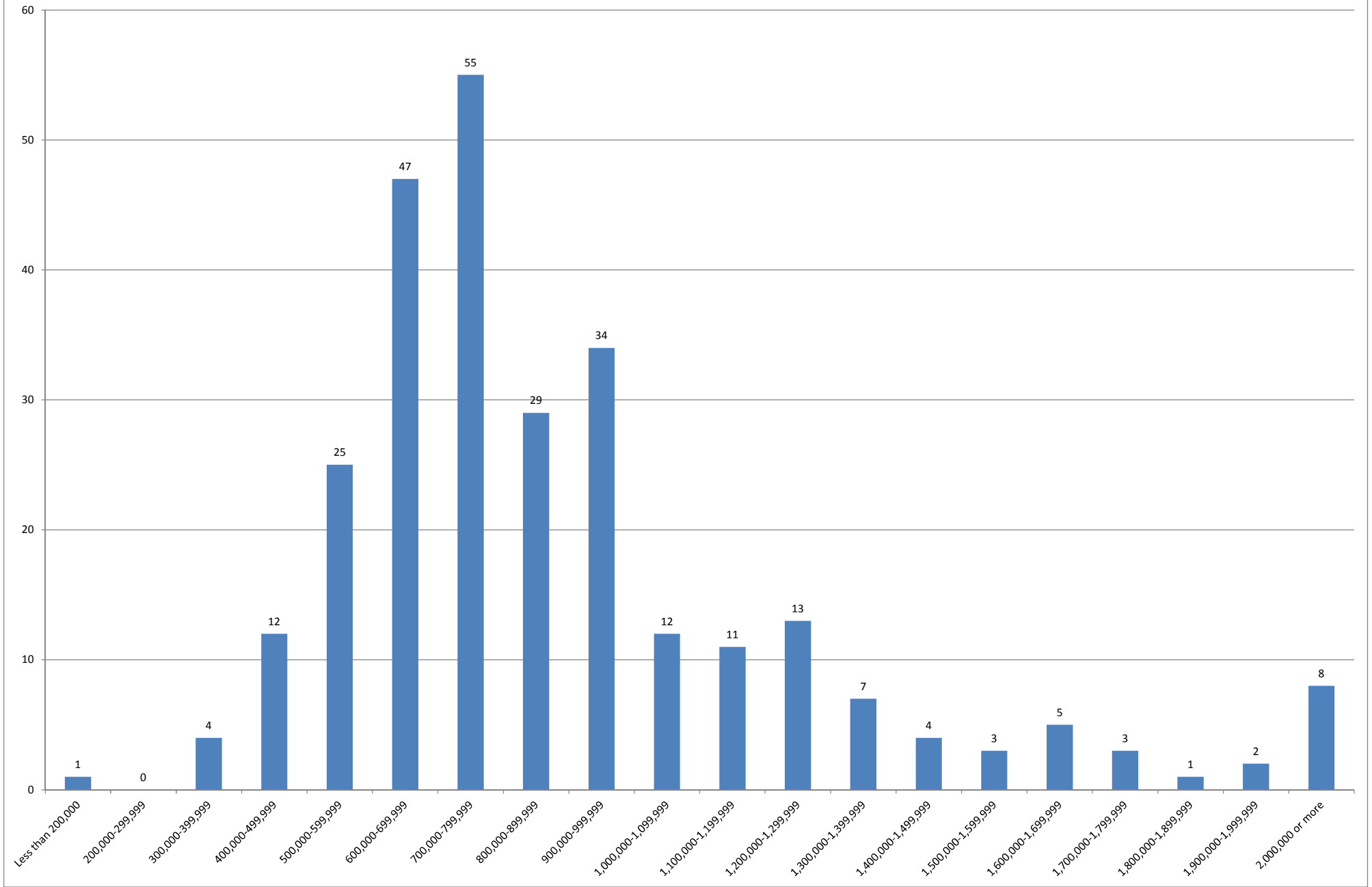
## Single Family Homes and Condos

OAHU, HAWAII: Jan 1987 to the Present



SOURCE: Honolulu Board of REALTORS®, compiled from MLS data.

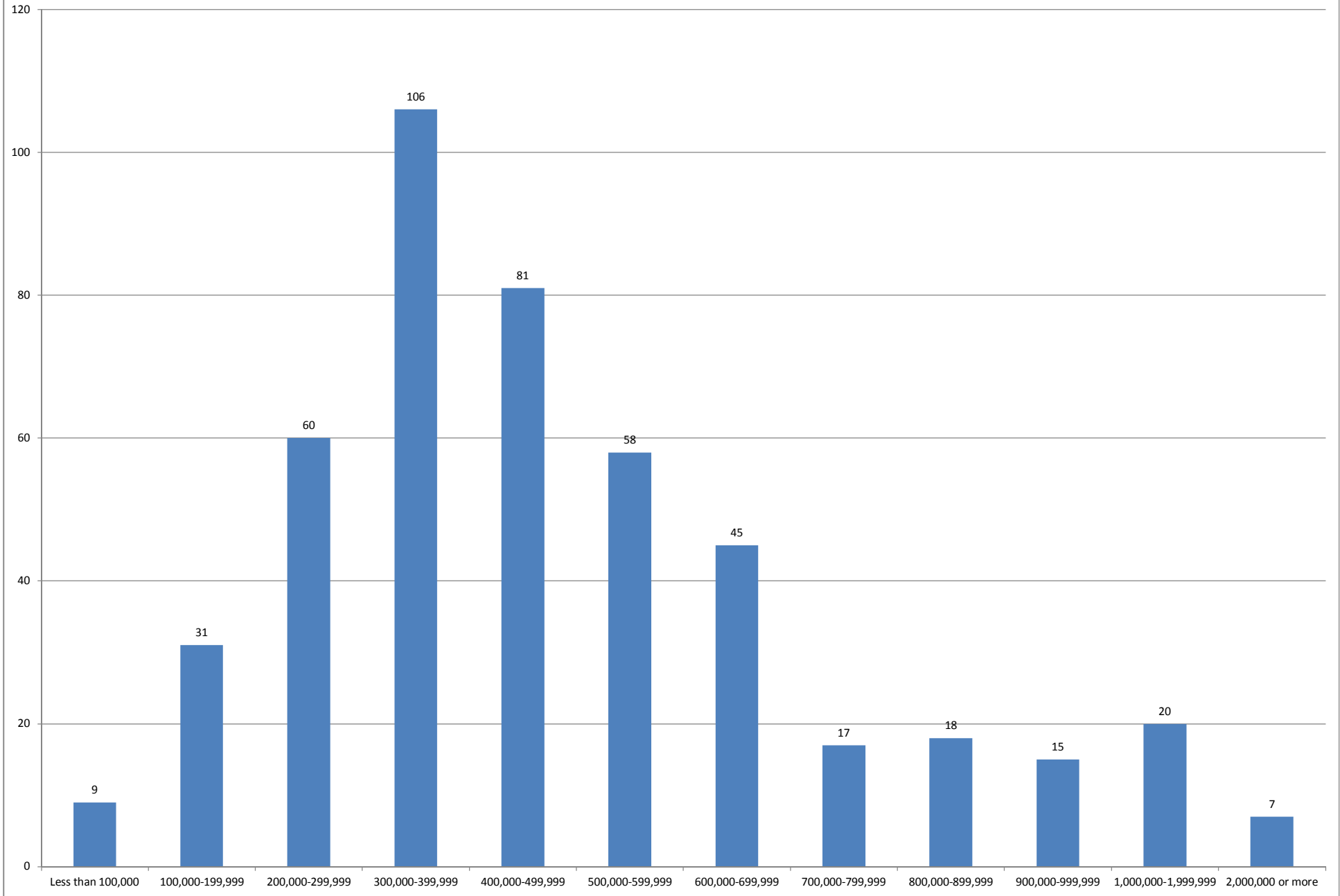
### March 2019 Single Family Homes Sold



SOURCE: Honolulu Board of REALTORS®, compiled from MLS data.



### March 2019 Condos Sold



SOURCE: Honolulu Board of REALTORS® , compiled from MLS data.