



- LEGEND:**
- 1/2" IRON ROD SET
 - ⊙ SEWER MANHOLE
 - ⊙ CURB INLET
 - ⊙ FIRE HYDRANT
 - ⊙ DRAIN MANHOLE
 - ⊙ WATER MANHOLE

RECORD DRAWINGS

Compiled from information furnished by Contractor.

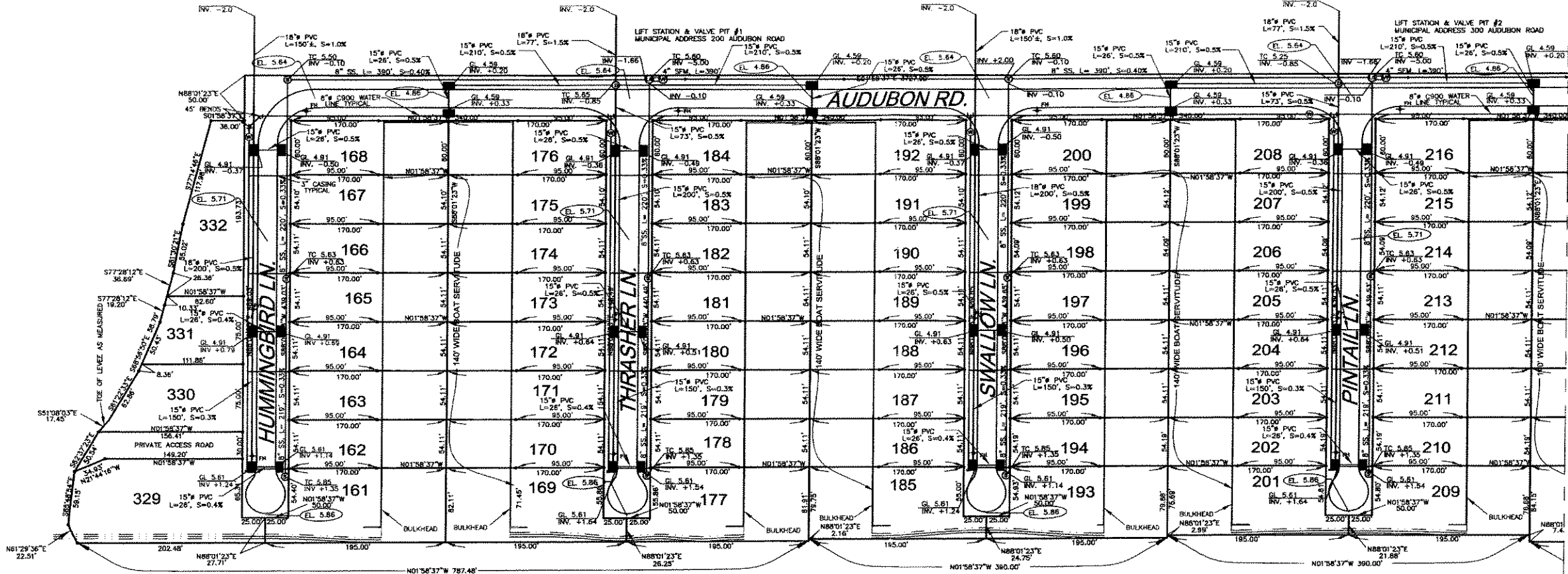


John A. Elgert
REGISTERED PROFESSIONAL ENGINEER



A RESUBDIVISION OF THE WEST SIDE OF THE WILKINSON CANAL THE MYRTLE GROVE MARINA, PHASE II SECTION 10, TTYS-RISE - MYRTLE GROVE PLACEMINES PARISH, LOUISIANA

BARRIERE CONSTRUCTION COMPANY, L.L.C.



MATCHLINE A-A
(SEE SHEET 2)

GENERAL NOTES

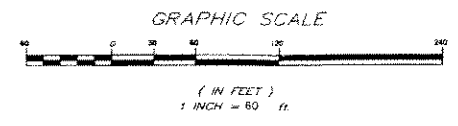
THE LOCATIONS OF UNDERGROUND AND OTHER NONVISIBLE UTILITIES SHOWN HEREON HAVE BEEN DETERMINED FROM DATA EITHER FURNISHED BY THE AGENCIES CONTROLLING SUCH DATA AND/OR EXTRACTED FROM RECORDS MADE AVAILABLE TO US BY THE AGENCIES CONTROLLING SUCH RECORDS. WHERE FOUND THE SURFACE FEATURES OF LOCATIONS ARE SHOWN. THE ACTUAL NONVISIBLE LOCATIONS MAY VARY FROM THOSE SHOWN HEREON. EACH AGENCY SHOULD BE CONTACTED RELATIVE TO THE PRECISE LOCATION OF ITS UNDERGROUND INSTALLATION PRIOR TO ANY RELIANCE UPON THE ACCURACY OF SUCH LOCATIONS SHOWN HEREON, INCLUDING PRIOR TO EXCAVATION AND DIGGING.

Approval Date _____
Approved By: _____

Director Of Operations _____

Parish President _____

Ordinance No. _____



NO.	DATE	DESCRIPTION	BY	CHKD
1	1/7/06	REVISION TO SHOW MARKINGS AND DISTANCES		
2	6/10/06	REVISION TO SHOW MUNICIPAL ADDRESSES AND ADDRESS OF UTILITY STATIONS		
3	7/20/06	PARISH PRESIDENT APPROVED		
4	4/7/06	CHANGE OF SIZE IN LOTS 200, 201, & 202		

SCALE: 1"=60'

DATE: 2/24/06

DRAWN BY: D.R.W. CHECKED BY: J.S.T.

DRAWING NO. F-4586-2003

PROJECT NO. 5281

SHEET 1 OF 4

LEGEND:
 ● 1/2" IRON ROD SET
 ○ SEWER MANHOLE
 ◻ CURB INLET
 ◻ FIRE HYDRANT
 ◻ DRAIN MANHOLE
 ◻ WATER MANHOLE

RECORD DRAWINGS
 Derived from information furnished by Contractor



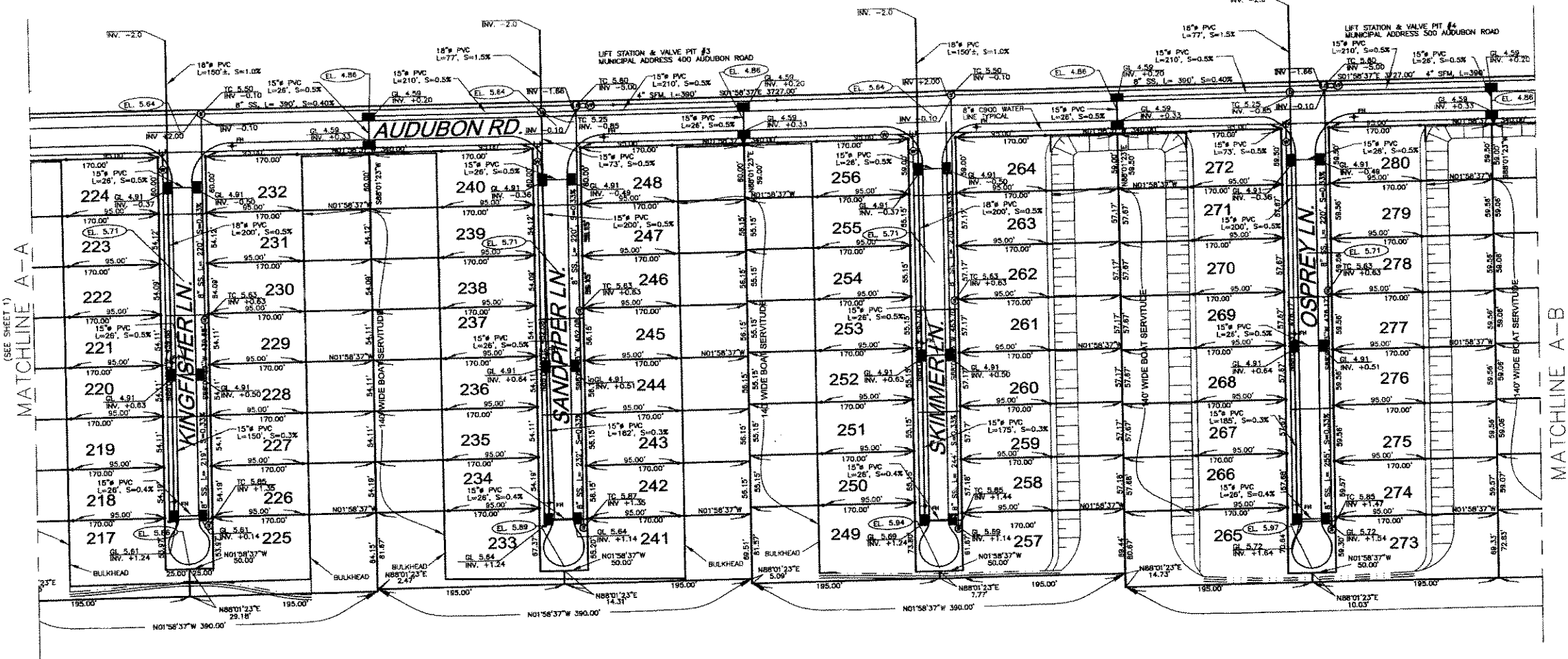
J. A. Ferguson
 REGISTERED PROFESSIONAL ENGINEER SURVEYOR

BCM
 CORPORATION, L.L.C.
 Professional Land Surveyors
 514 WILLIAMS BOULEVARD
 LAFAYETTE, LOUISIANA 70503
 Phone: (337) 485-2000
 Fax: (337) 485-2005
 E-mail: info@bcmllc.com

A RESUBDIVISION OF
 THE WEST SIDE OF THE WILKINSON CANAL
 MYRTLE GROVE MARINA, PHASE II
 SECTION 10, T17S-R25E - MYRTLE GROVE
 PLAQUEMINES PARISH, LOUISIANA

I certify that this plan represents an actual survey made by me or a Licensed Surveyor in my employ and that the same is a true and correct copy of the original as shown to me. I am a duly Licensed Surveyor in the State of Louisiana. My Commission Expires on 12/31/2010.

BARRIER CONSTRUCTION COMPANY, L.L.C.



MATCHLINE A-A
 (SEE SHEET 1)

MATCHLINE A-B
 (SEE SHEET 3)

GENERAL NOTES

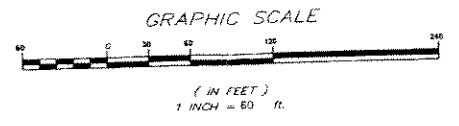
THE LOCATIONS OF UNDERGROUND AND OTHER NONVISIBLE UTILITIES SHOWN HEREON HAVE BEEN DETERMINED FROM DATA EITHER FURNISHED BY THE AGENCIES CONTROLLING SUCH DATA AND/OR EXTRACTED FROM RECORDS MADE AVAILABLE TO US BY THE AGENCIES CONTROLLING SUCH RECORDS. WHERE FOUND THE SURFACE FEATURES OF LOCATIONS ARE SHOWN. THE ACTUAL NONVISIBLE LOCATIONS MAY VARY FROM THOSE SHOWN HEREON. EACH AGENCY SHOULD BE CONTACTED RELATIVE TO THE PRECISE LOCATION OF ITS UNDERGROUND INSTALLATION PRIOR TO ANY RELIANCE UPON THE ACCURACY OF SUCH LOCATIONS SHOWN HEREON, INCLUDING PRIOR TO EXCAVATION AND DIGGING.

Approval Date _____
 Approved By _____

Director Of Operations _____

Parish President _____

Ordinance No. _____



NO.	DATE	BY	DESCRIPTION
1	7/7/06	E.A.H.	REVISED TO SHOW MEASUREMENTS AND DISTANCES
2	8/20/06	E.A.H.	REVISED TO SHOW MUNICIPAL ADDRESSES OF SEWER LIFT STATIONS
3	9/20/06	E.A.H.	REVISED TO SHOW MEASUREMENTS AND NEW PROPERTY LINES
4	4/27/08	E.A.H.	CHANGE OF SIZE OF LOTS 220, 231 & 232

REVISION RECORD

SCALE: 1"=60'

DATE: 2/24/06

DRAWN BY: D.R.W. CHECKED BY: J.S.T.

DRAWING NO. F-4986-2003

PROJECT NO. 5281

SHEET 2 OF 4

